



# AB SIĞIR VE DANA ETİ PAZAR DURUMU

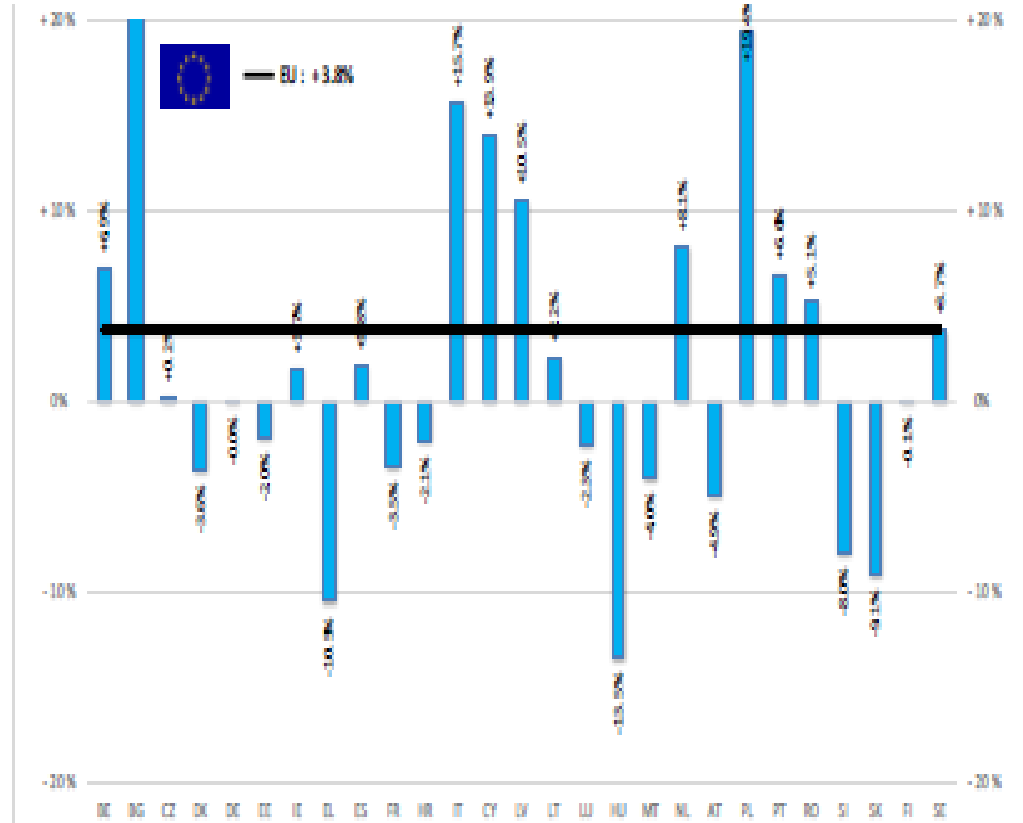
20 Haziran 2024



European  
Commission

BAŞ	HEADS	Jan-Mar 24/23
BOĞA	Bull	+5.5%
ÖKÜZ	Bullock	+3.0%
İNEK	Cow	+4.5%
DÜVE	Heifer	+6.5%
BUZAĞI	Calve	idem
GENÇ SİĞİR	Young cattle	-8.0%
Büyükbaş Hayvan Eti	Meat of bovine animals	+3.8%

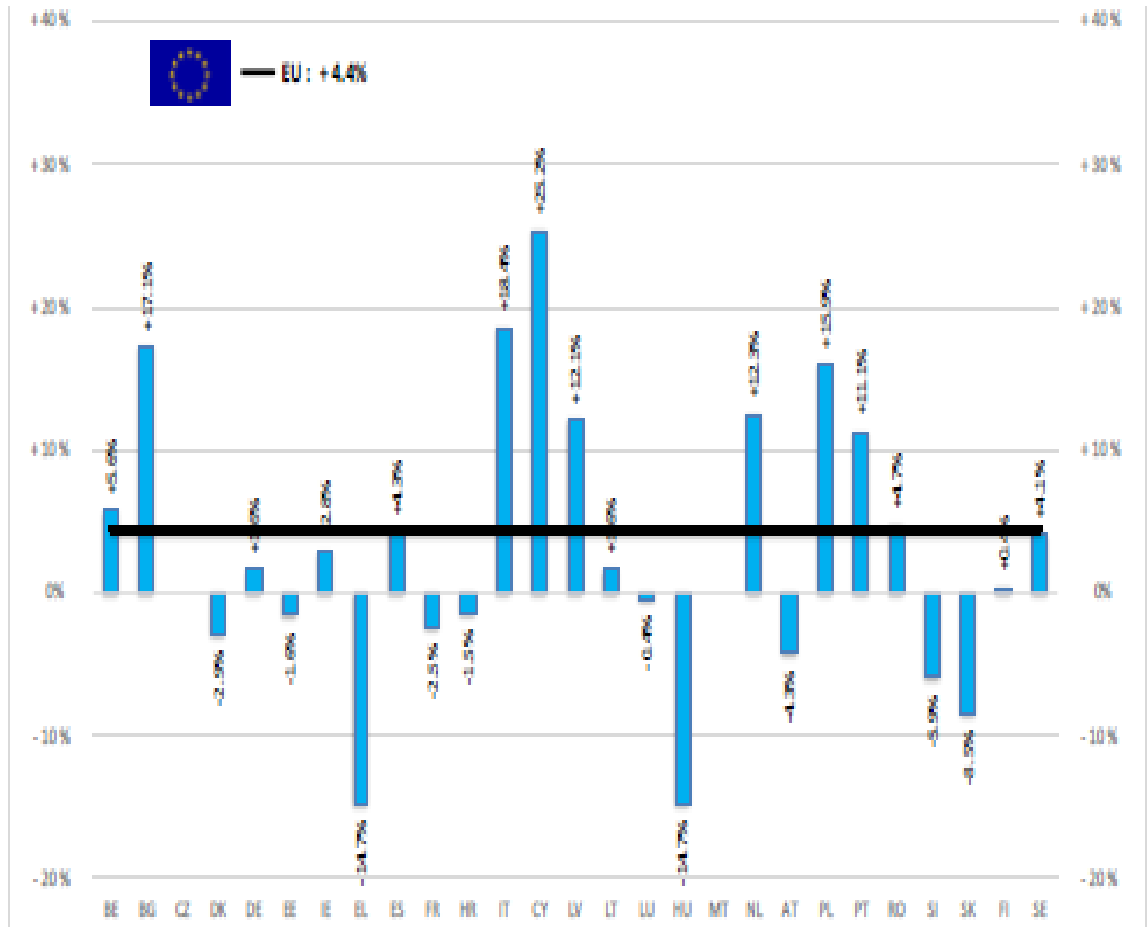
Estimates for last month of period :



Source : Euro - Newcronis

TON	TONNES	Jan-Mar 24/23
		EU
BOĞA	Bull	+5.2%
ÖKÜZ	Bullock	+2.2%
İNEK	Cow	+4.5%
DÜVE	Heifer	+6.7%
BUZAĞI	Calve	+4.8%
GENÇ SİĞİR	Young cattle	-6.9%
Büyükbaş Hayvan Eti	Meat of bovine animals	+4.4%

Estimates for last month of period :

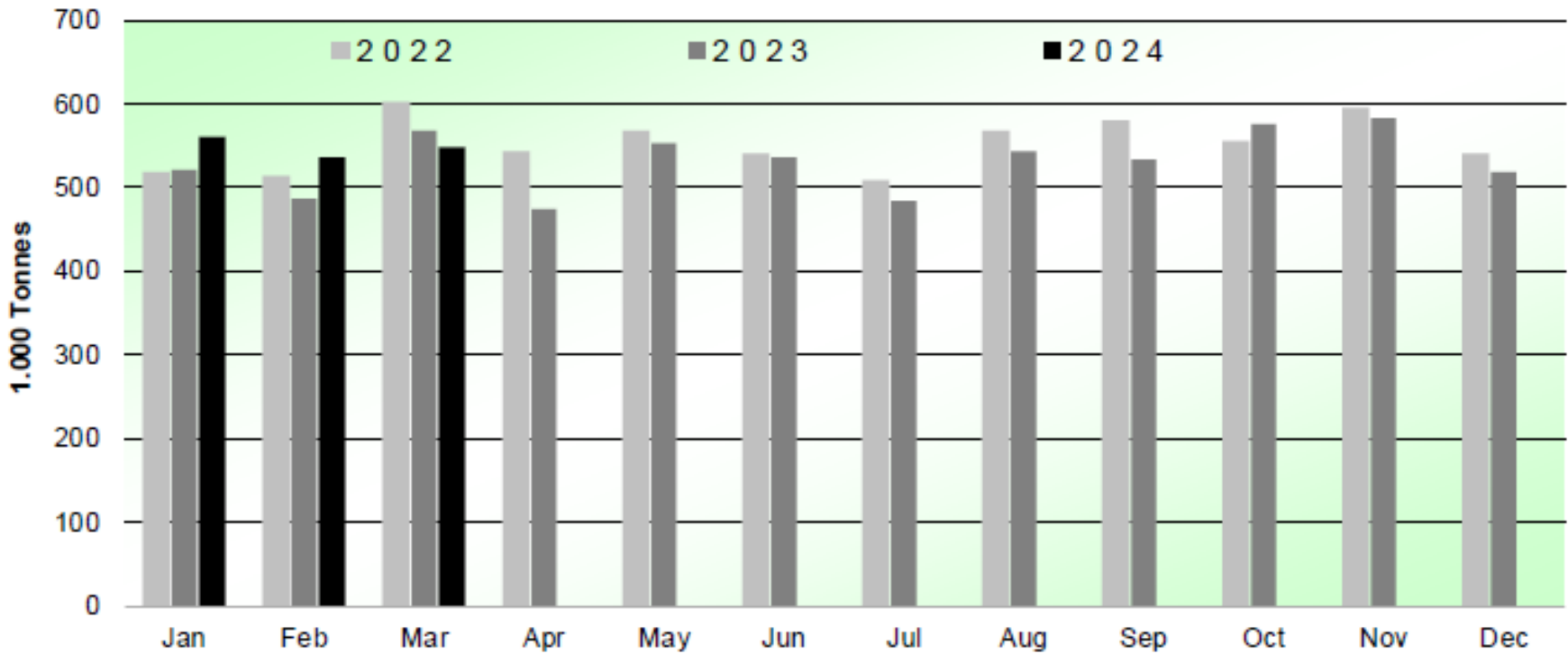


Source : ESTAT - Newcronos



# SIĞIR VE DANA ETİ ÜRETİMİ (AB Kesimler – Ton)

## Beef & Veal Production (EU Slaughtering) - Tonnes



Source : EStat-Newcronos



EU Prices week		23	Evolution since last week	Evolution since last month	Evolution since last year
<b>Carcasse</b>	Average A/C/Z-R3	506.3	+ 0.0%	+ 0.7%	+ 2.0%
	Young Bovines (Z)	507.9	- 0.1%	+ 0.0%	- 0.5%
	Young Bulls (A)	501.6	- 0.1%	+ 1.1%	+ 3.0%
	Steers (C)	530.8	+ 0.5%	- 0.2%	+ 0.2%
	Cows (D)	427.8	+ 0.2%	+ 1.8%	+ 0.2%
	Heifers (E)	521.2	+ 0.4%	+ 1.5%	+ 1.7%
	Calves slaughtered <8M	608.7	- 0.8%	- 0.7%	- 1.3%
<b>Live Animals</b>	Male Calves Dairy Type	146.1	+ 2.3%	+ 8.5%	- 2.4%
	Male Calves Beef Type	277.2	- 0.5%	+ 4.7%	- 0.9%
	Young Store Cattle	3.51	+ 1.1%	+ 1.9%	+ 5.3%
	Yearling Male Store Cattle	4.09	+ 0.1%	+ 3.0%	+ 11.4%
	Yearling Female Store Cattle	3.16	+ 2.0%	+ 4.2%	+ 7.7%

Sources : MSs notifications (Regulation (EU) 1182/2017 and 1184/2017

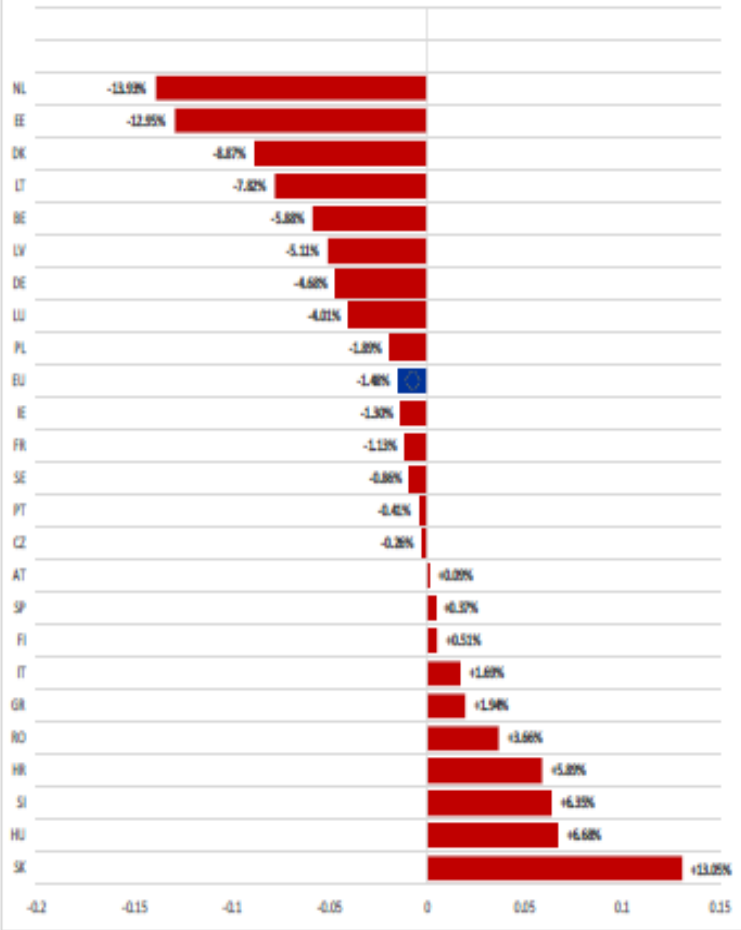
# KARKAS FİYATLARI



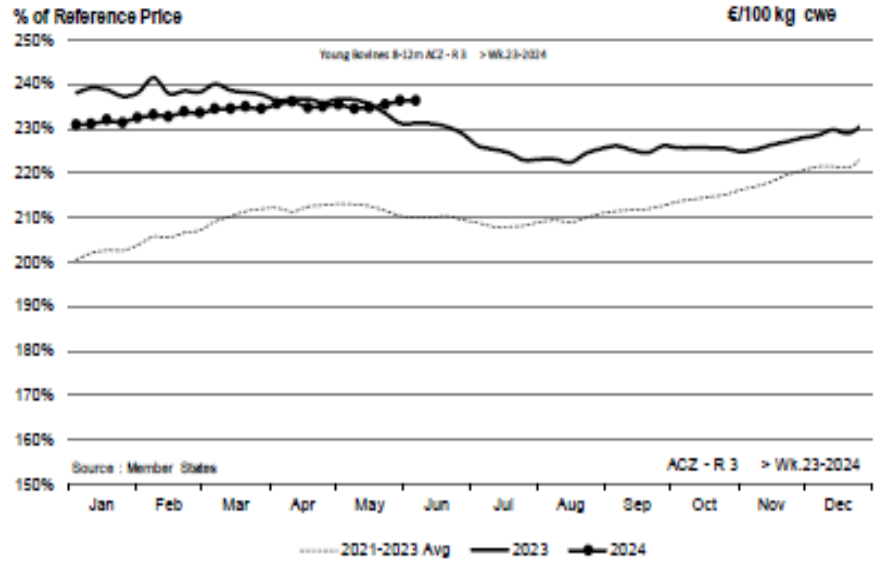
European Commission

# AB DEĞİŞİM A/C/Z. R3

EU ACZ R3 Price Comparison between average monthly price June 2023 - May 2024 compared to June 2022 - May 2023



ACZ - R 3 > Wk.23-2024

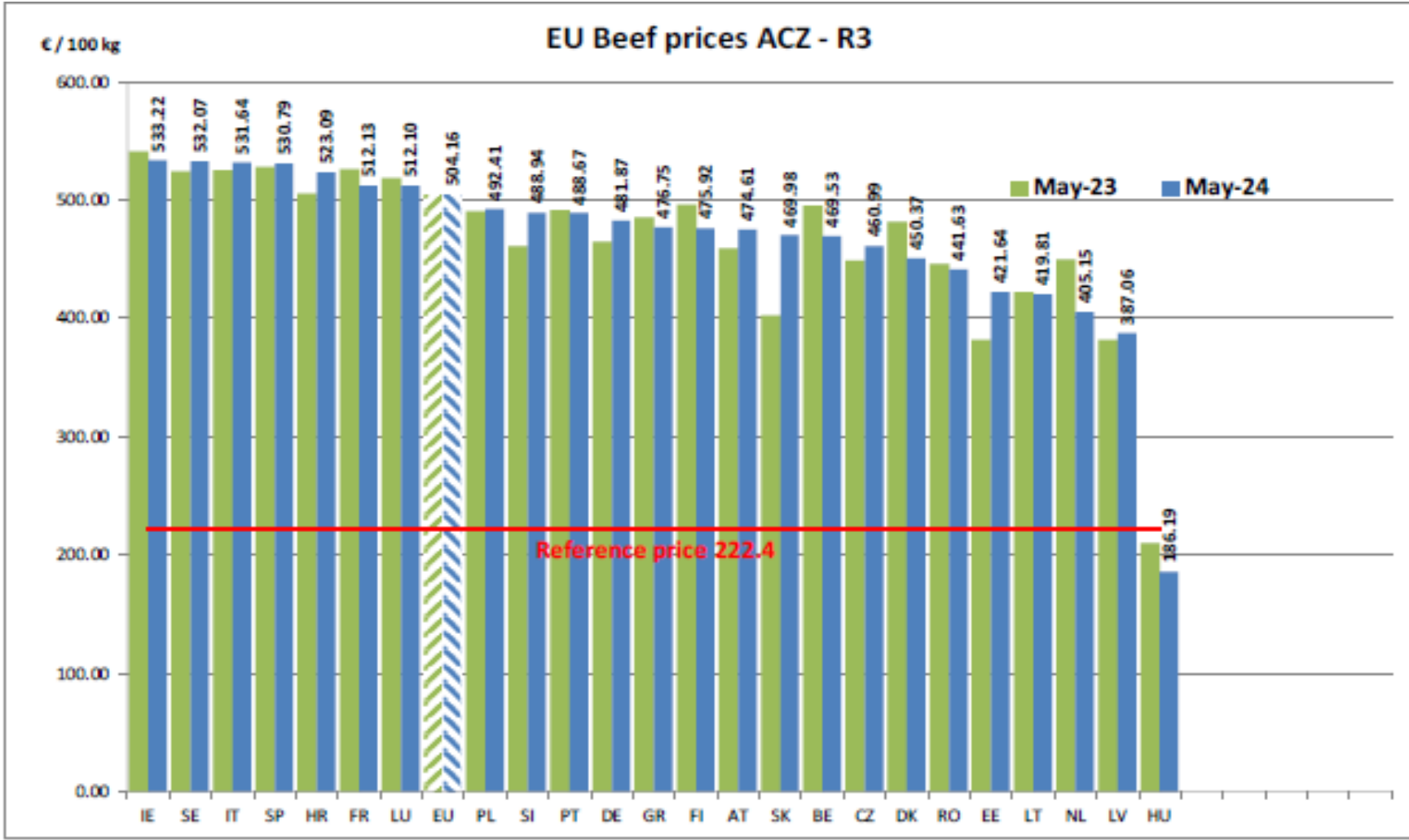


Price in week 23 :	506.37	Average price in May 2024 :	504.16
% change y/y :	+ 2.04%	% change y/y :	+ 0.00%
% Ref. Price in wk 0 :	223.1%		



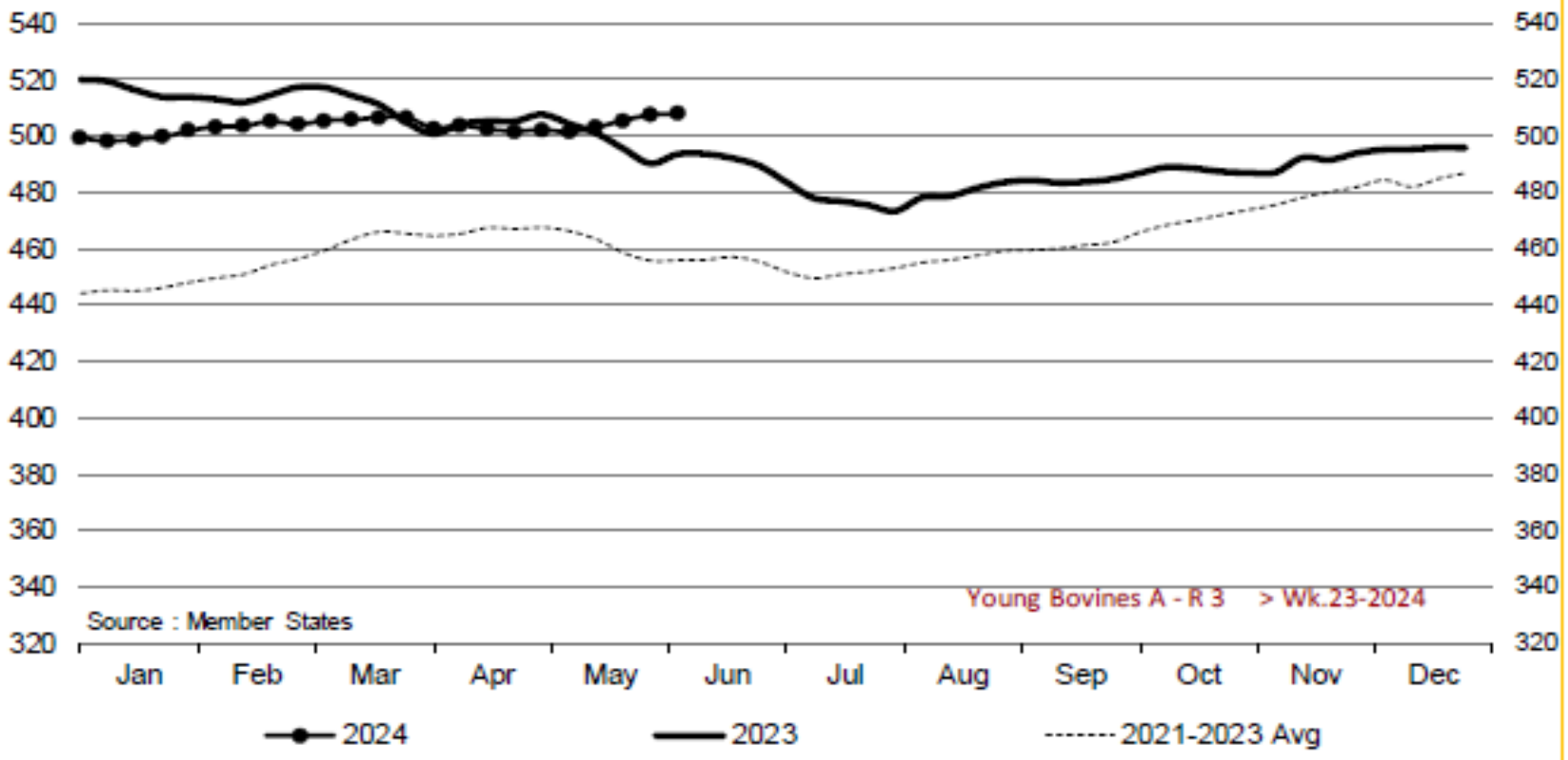
# KARKAS FİYATLARI

AB DEĞİŞİM  
A/C/Z. R3





### Young Bovines A - R 3 > Wk.23-2024



Price in week 23 : 507.82  
% change y/y : + 2.8%

Average price in May 2024 : 503.81  
% change y/y : + 0.5%

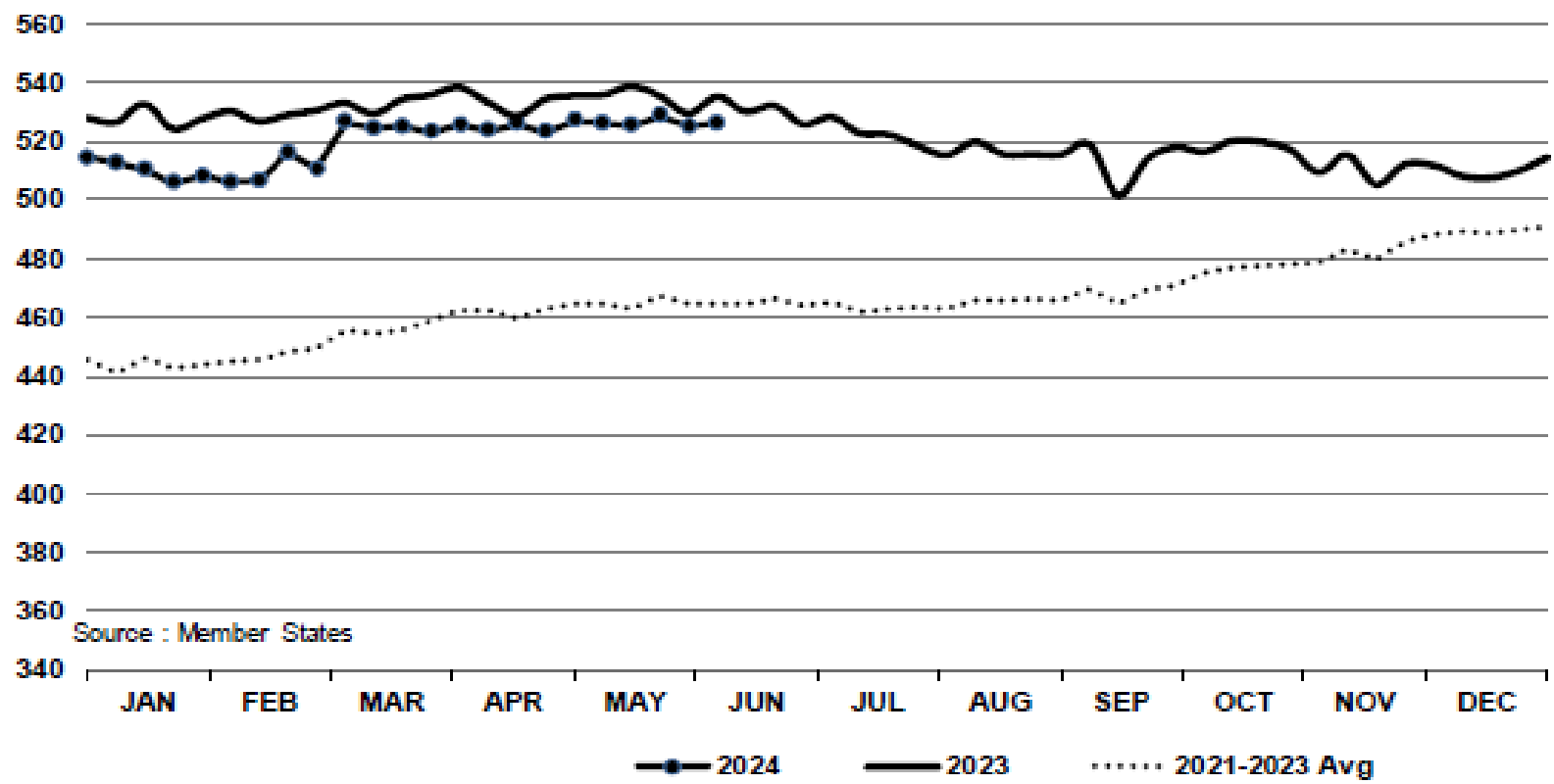


# KARKAS FİYATLARI

AB DEĞİŞİM  
GENÇ SIĞIR – 8-12 M  
Z.R.3



In € / 100 kg      Young Bovines 8-12m Z - R 3      > Wk.23-2024

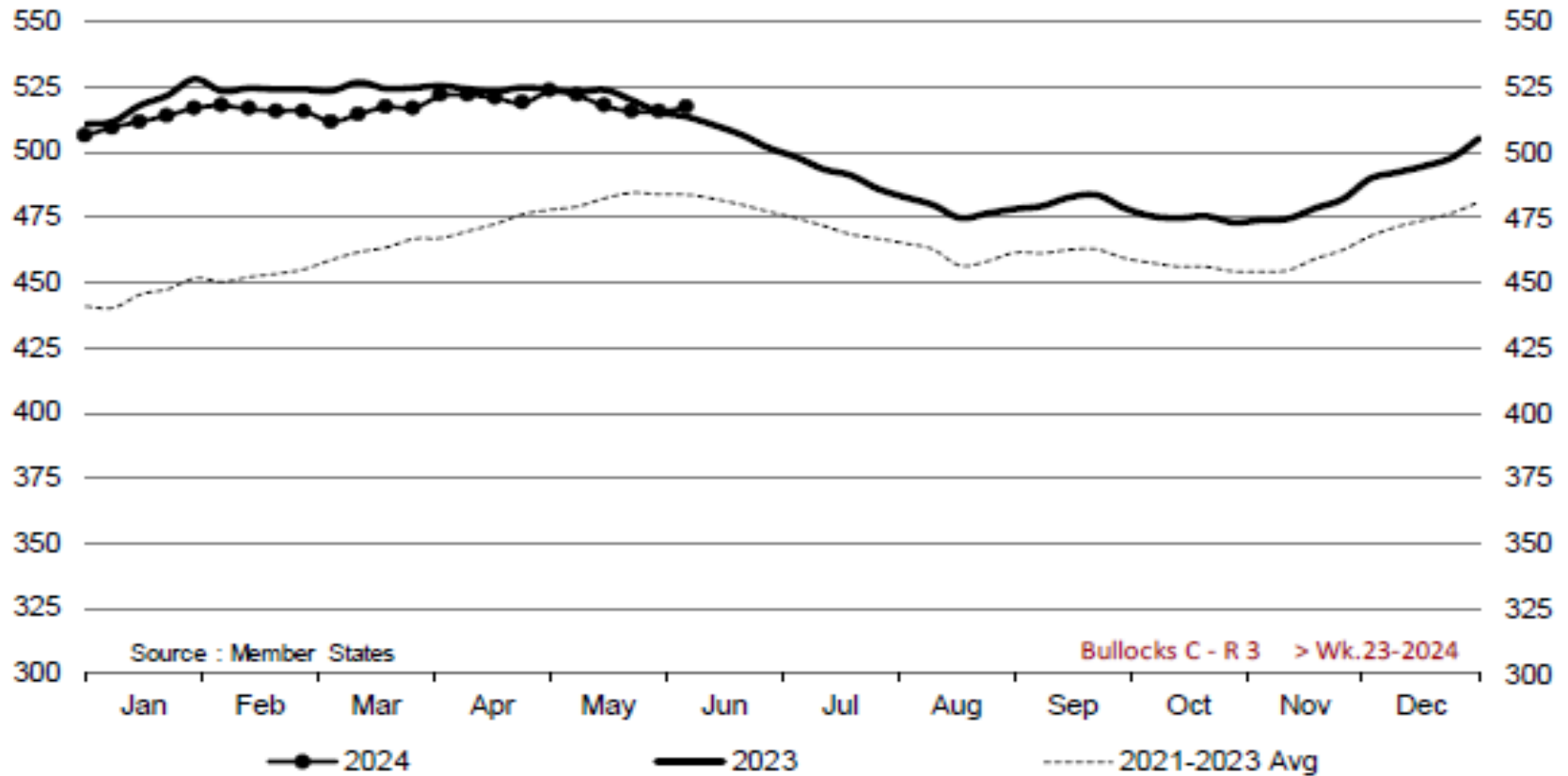


Source : Member States

Price in week 23 : 526.12      09/05/2024      Average price in May 2024 : 526.54  
% change y/y : - 1.7%      % change y/y : - 1.7%



## Bullocks C - R 3 > Wk.23-2024

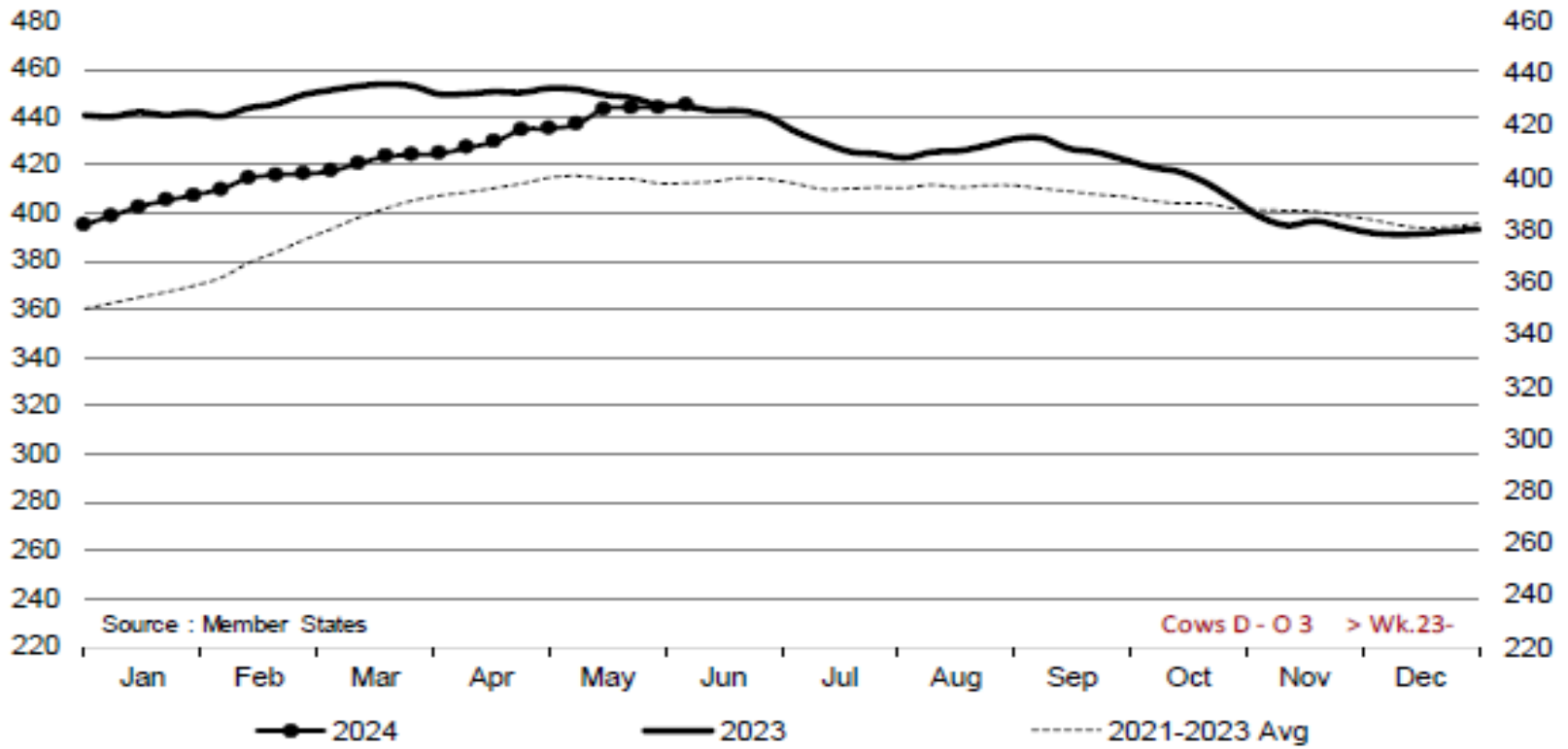


Price in week 23 : 517.30  
% change y/y : + 0.7%

Average price in May 2024 : 518.85  
% change y/y : - 0.6%



Cows D - O 3 > Wk.23-2024

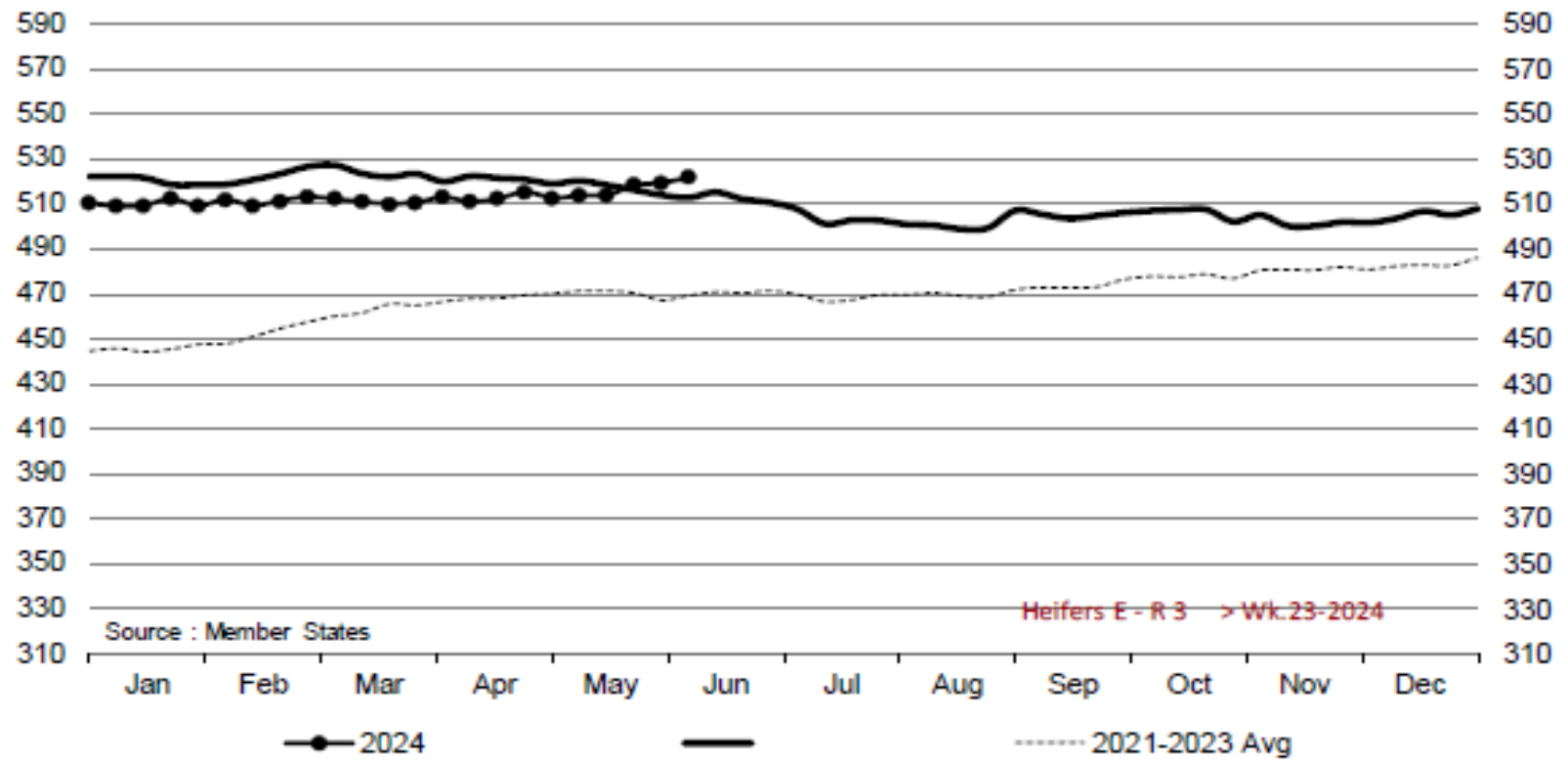


Price in week 23 : 427.80  
% change y/y : + 0.2%

Average price in May 2024 : 423.88  
% change y/y : - 1.9%



## Heifers E - R 3 > Wk.23-2024

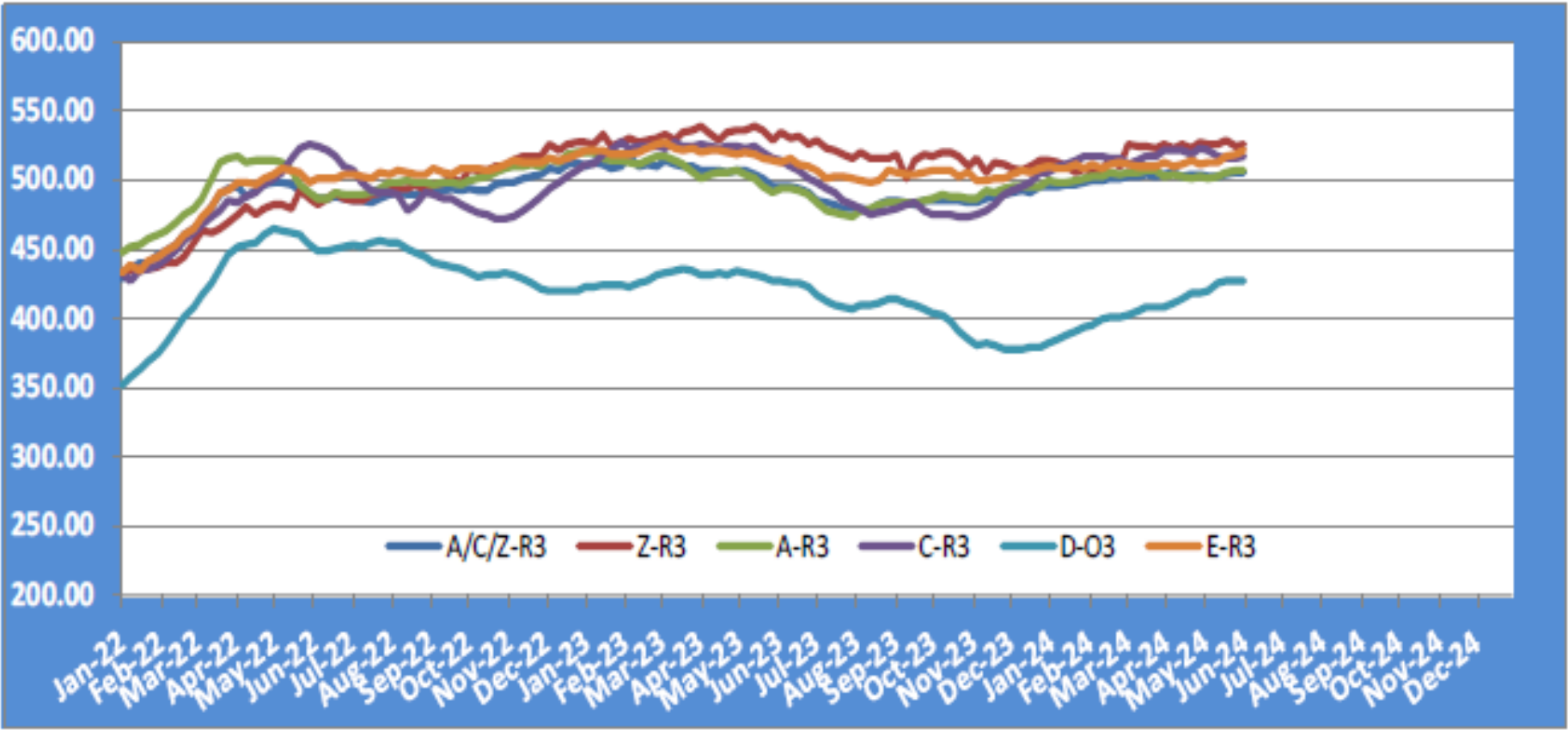


Price in week 23 : 521.20  
% change y/y : + 1.7%

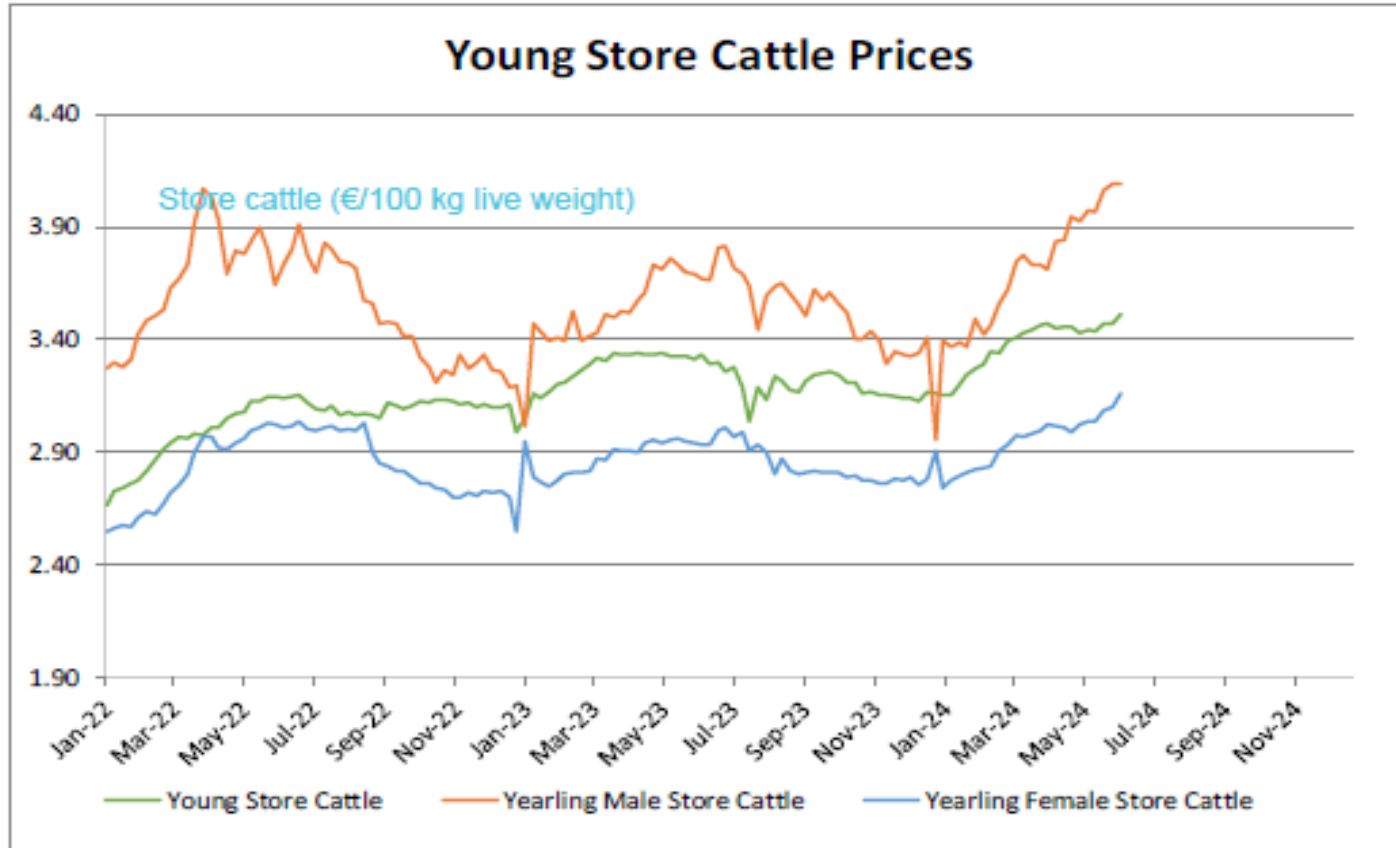
Average price in May 2024 : 515.07  
% change y/y : - 0.6%

# KARKAS FİYATLARI

# AB TÜM KATEGORİLERE GLOBAL BAKIŞ



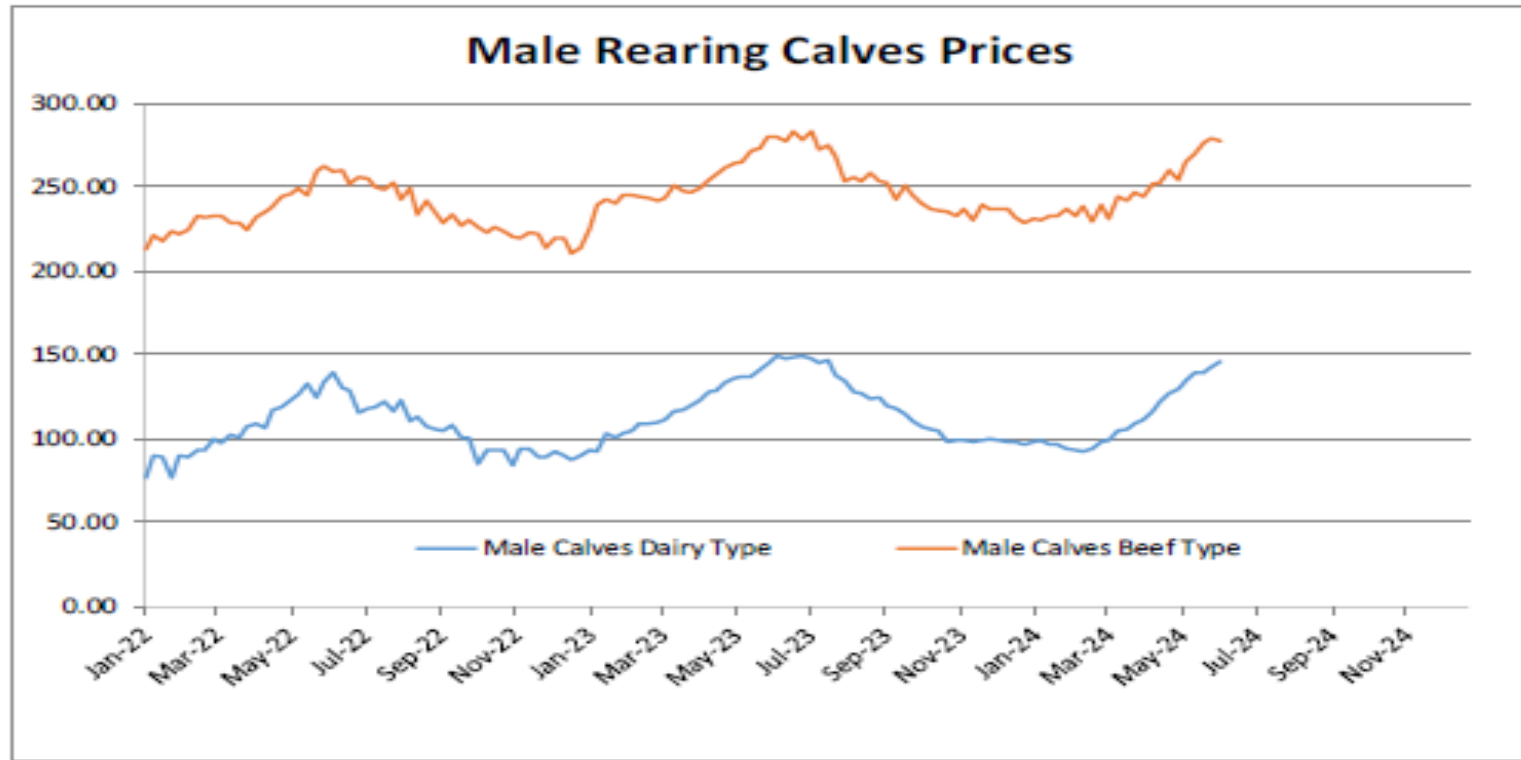
## Besilik siğır (€ / 100 kg canlı ağırlık)



Young Store Cattle Price in	Week 23	3.51	Yearling Male Store Cattle Price	4.09
	Change y/y	+5.3%	Change y/y	+11.4%
Yearling Female Store Cattle Price		3.16		
	Change y/y	+7.7%		

### 8 gün ve 4 haftalık erkek buzağlar (€/baş)

Male calves aged between 8 days and 4 weeks (€/head)



**Male Rearing Calves Beef type**

Price in Week 23 277.29

Change y/y -0.9%

**Male Rearing Calves Dairy type**

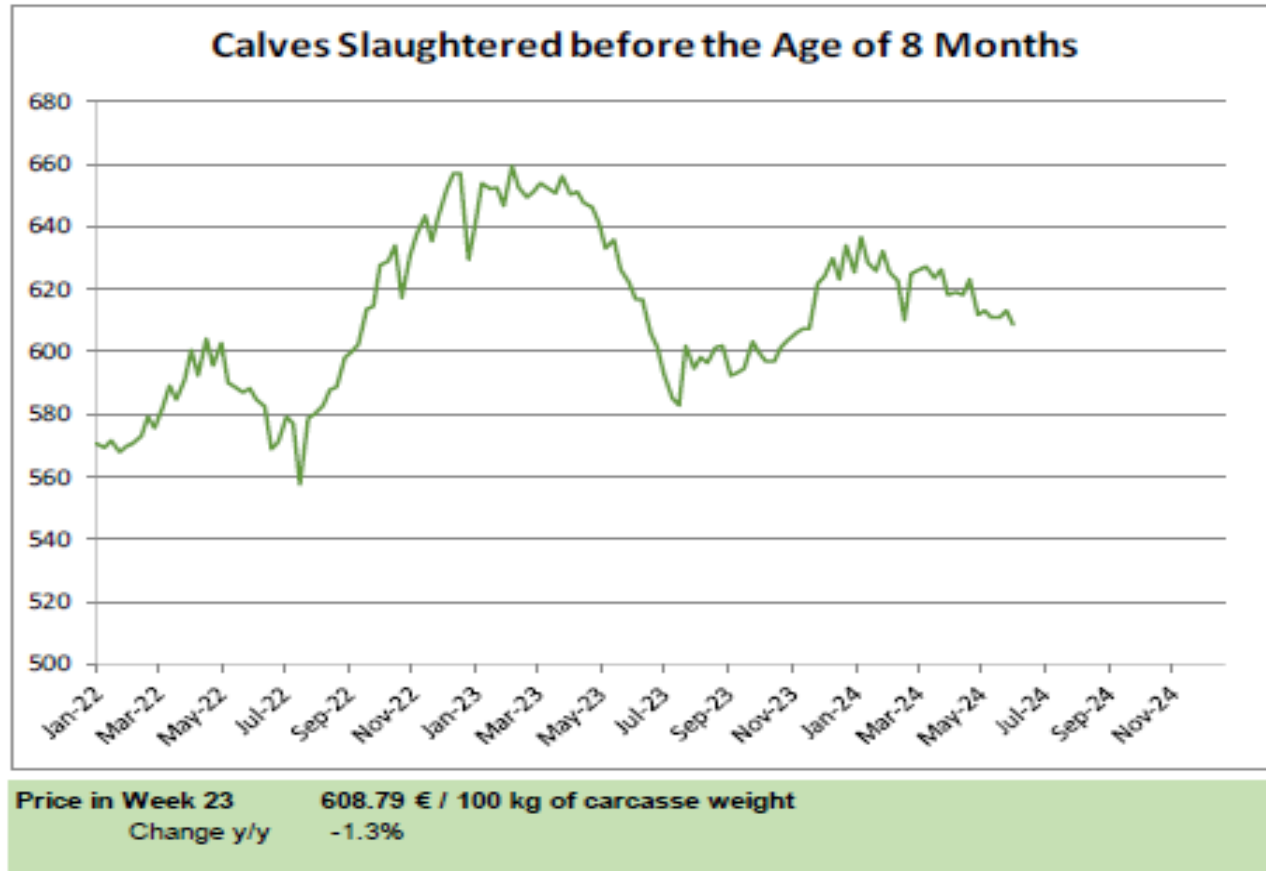
Price in Week 23 146.18

Change y/y -2.4%



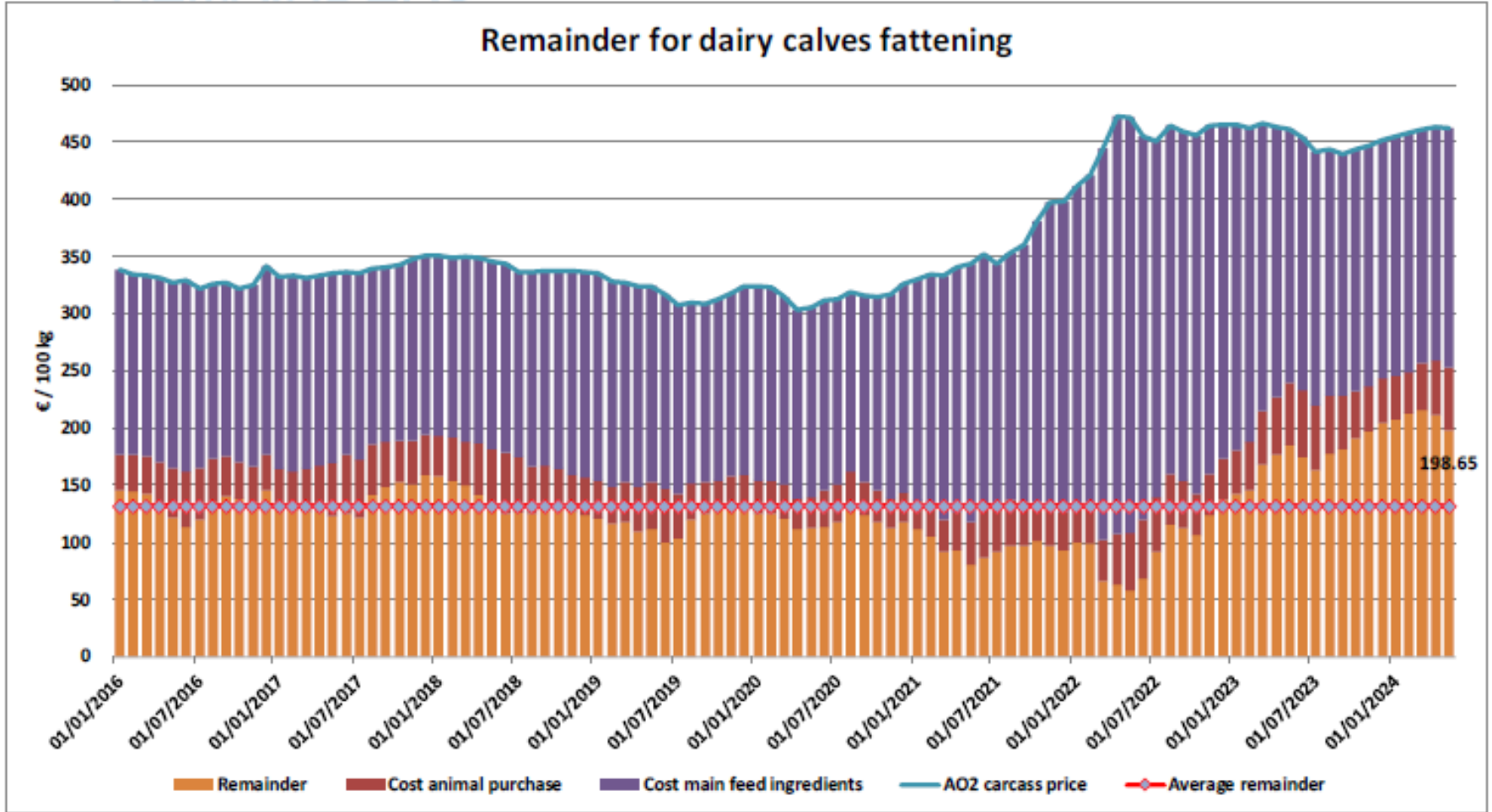
## 8 aylıktan küçük kesilen buzağlar (€ / 100 kg canlı ağırlık)

Calves slaughtered before the age of less than 8 months  
(€/100 kg cw)

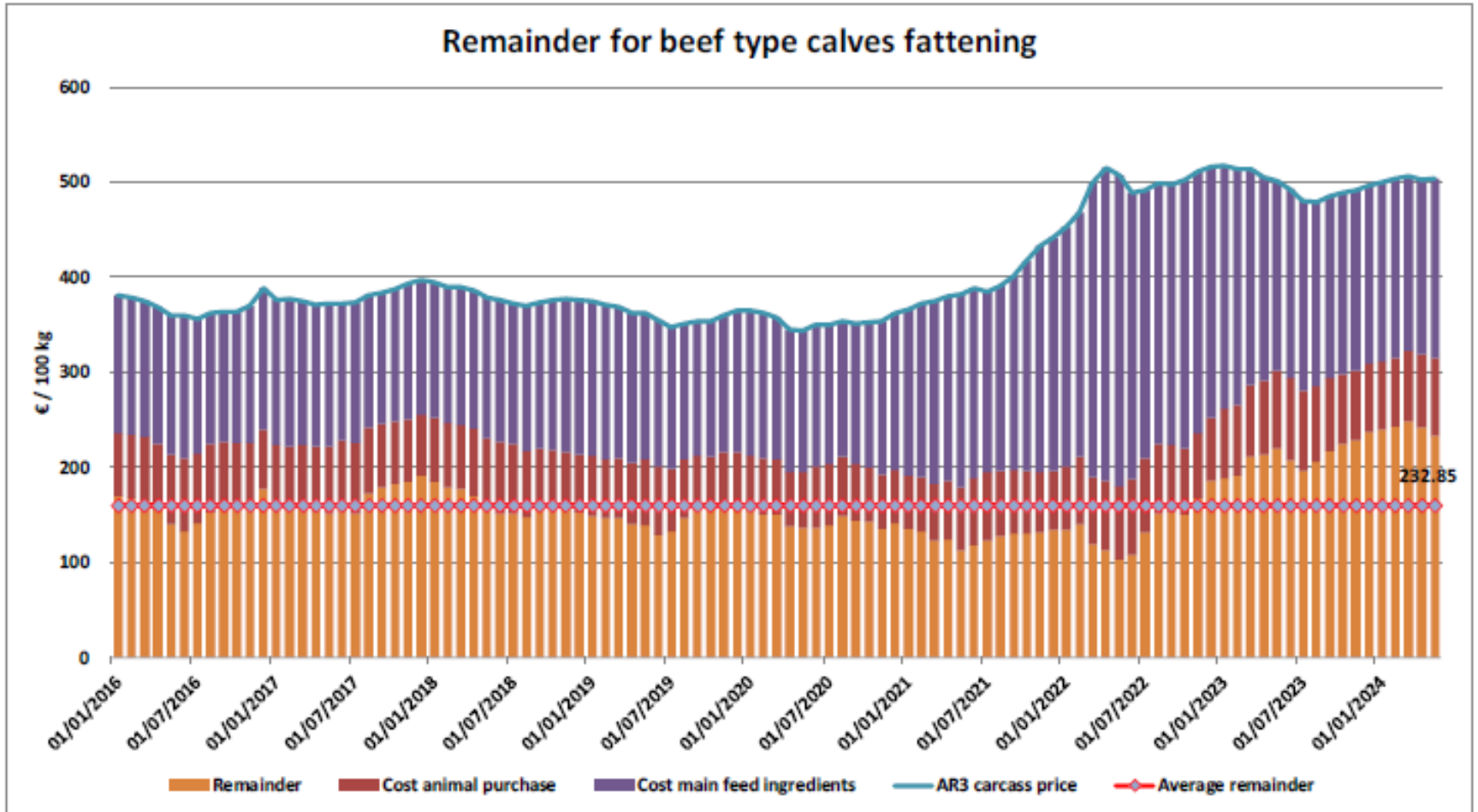




## Süt Buzağları Besiciliği İçin Kalanlar

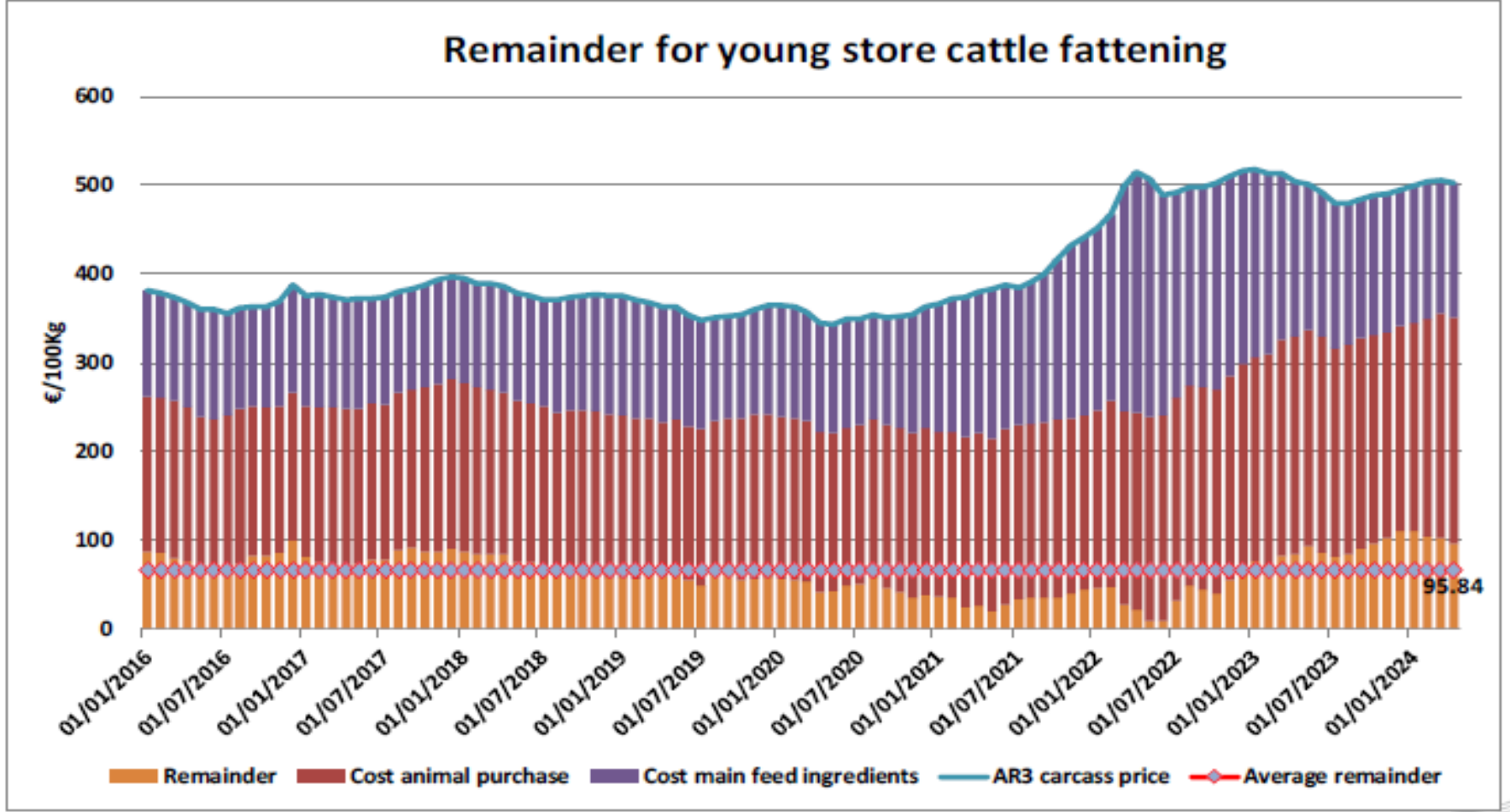


## Sığır Tipi Buzağı Besiciliği İçin Kalanlar





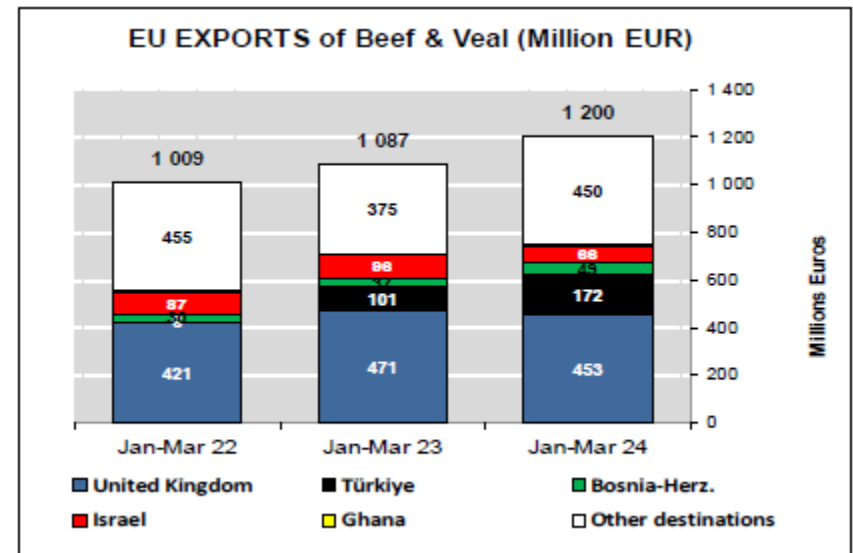
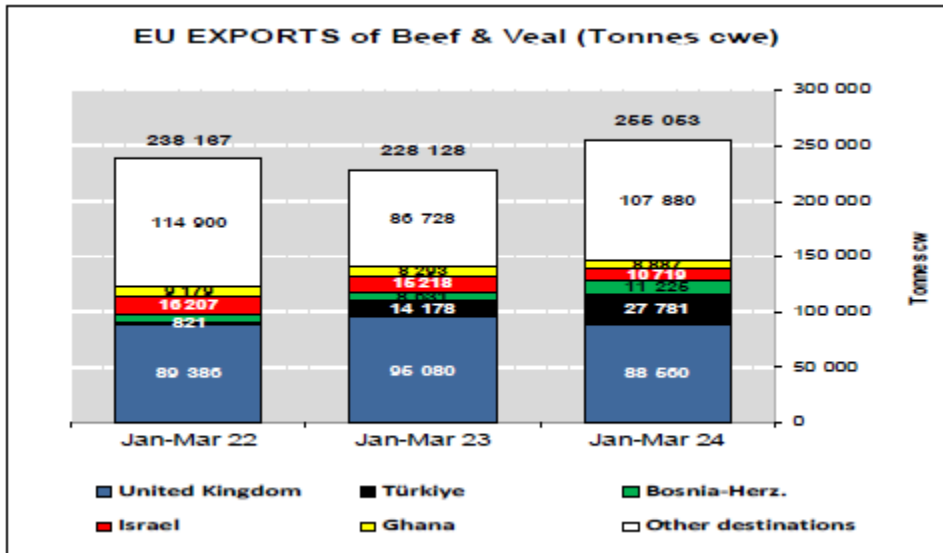
## Genç Besilik Sığır Besiciliği İçin Kalanlar



## AB sığır eti ve canlı hayvan ihracatı (yağlar hariç): Pazar Rakamları (COMEXT – ton ca)

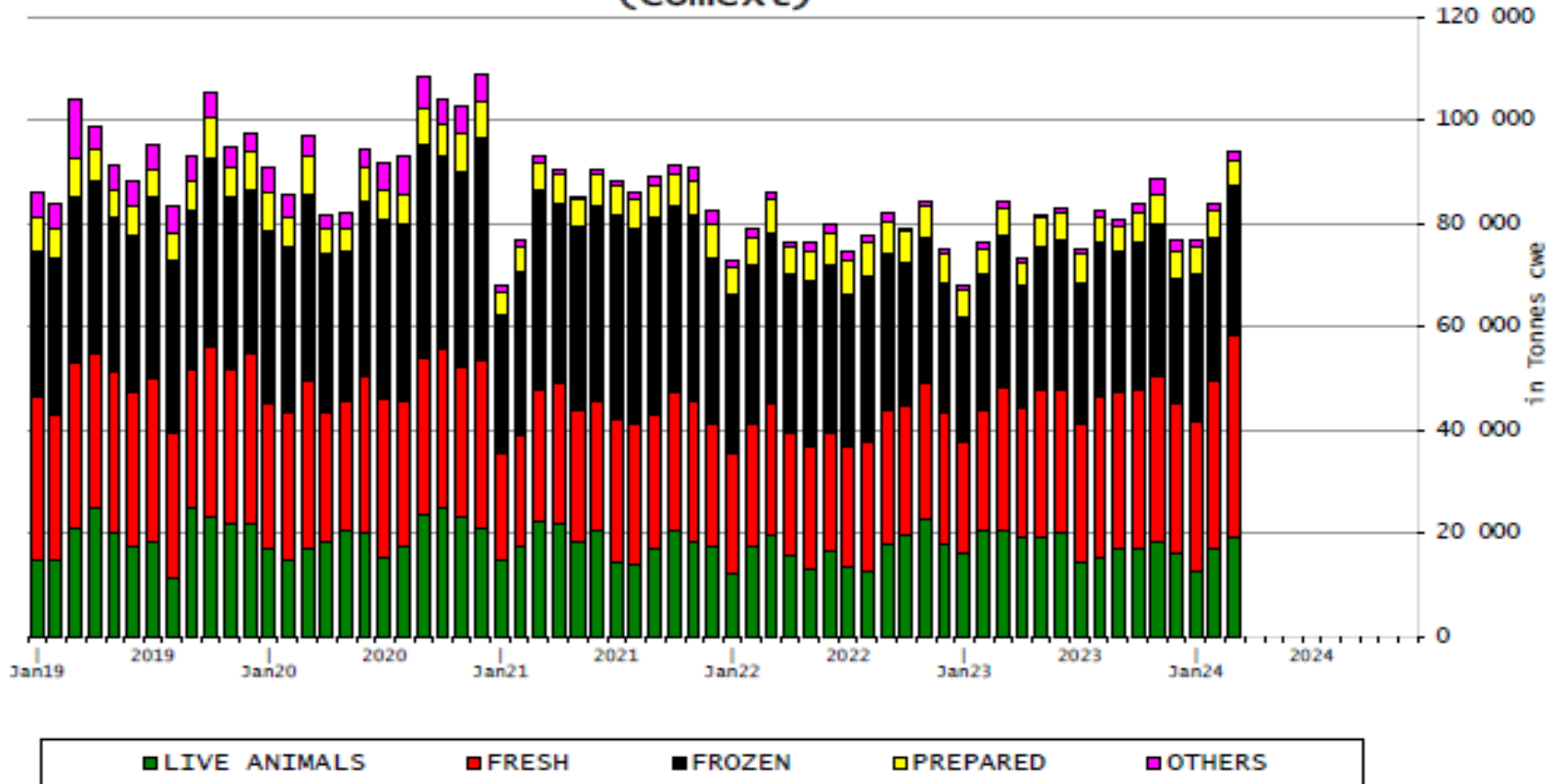
Destinations	2020		2021		2022		2023		Jan-Mar 24		Compared to Jan-Mar 23
	tonnes	%	tonnes	%	tonnes	%	tonnes	%	tonnes	%	
United Kingdom	450 514	39.5%	344 633	33.4%	366 332	38.9%	363 470	38.1%	88 560	34.7%	- 6.9%
Türkiye	22 338	2.0%	14 953	1.5%	14 168	1.5%	90 197	9.5%	27 781	10.9%	+ 95.9%
Bosnia-Herz.	34 896	3.1%	40 504	3.9%	38 796	4.1%	45 149	4.7%	11 225	4.4%	+ 30.1%
Israel	56 139	4.9%	66 022	6.4%	63 618	6.7%	45 069	4.7%	10 719	4.2%	- 29.6%
Ghana	47 344	4.2%	47 618	4.6%	32 171	3.4%	33 784	3.5%	8 887	3.5%	+ 7.2%
Algeria	39 396	3.5%	24 111	2.3%	25 459	2.7%	11 124	1.2%	7 815	3.1%	+ 91.2%
Lebanon	33 709	3.0%	19 527	1.9%	21 026	2.2%	21 402	2.2%	7 634	3.0%	+ 143.3%
Ivory Coast	32 433	2.8%	29 187	2.8%	29 882	3.2%	30 114	3.2%	6 987	2.7%	- 0.1%
Kosovo	10 391	0.9%	16 478	1.6%	17 069	1.8%	22 677	2.4%	6 445	2.5%	+ 61.5%
Hong Kong	56 713	5.0%	44 769	4.3%	10 570	1.1%	21 614	2.3%	6 351	2.5%	+ 9.7%
Philippines	33 650	3.0%	34 671	3.4%	29 922	3.2%	18 545	1.9%	5 314	2.1%	+ 71.3%
Switzerland	28 223	2.3%	28 717	2.8%	24 958	2.6%	19 355	2.0%	4 718	1.8%	- 21.6%
Morocco	10 049	0.9%	11 868	1.2%	8 273	0.9%	25 635	2.7%	4 164	1.6%	- 19.0%
Canada	20 450	1.8%	20 670	2.0%	19 928	2.1%	15 985	1.7%	4 006	1.6%	+ 32.7%
Chile	8 664	0.8%	9 915	1.0%	9 159	1.0%	10 195	1.1%	3 737	1.5%	+ 115.1%
Angola	1 737	0.2%	7 600	0.7%	8 070	0.9%	8 390	0.9%	3 065	1.2%	+ 102.7%
Other Destinations	254 804	22.4%	269 734	26.2%	223 095	23.7%	170 555	17.9%	47 644	18.7%	
<b>Total</b>	<b>1 139 450</b>		<b>1 030 978</b>		<b>942 496</b>		<b>953 259</b>		<b>255 053</b>		
% change			- 10%		- 9%		+ 1%		+ 11.8%		

## AB Sığır Eti ve Canlı Hayvan İhracatları (yağlar hariç)

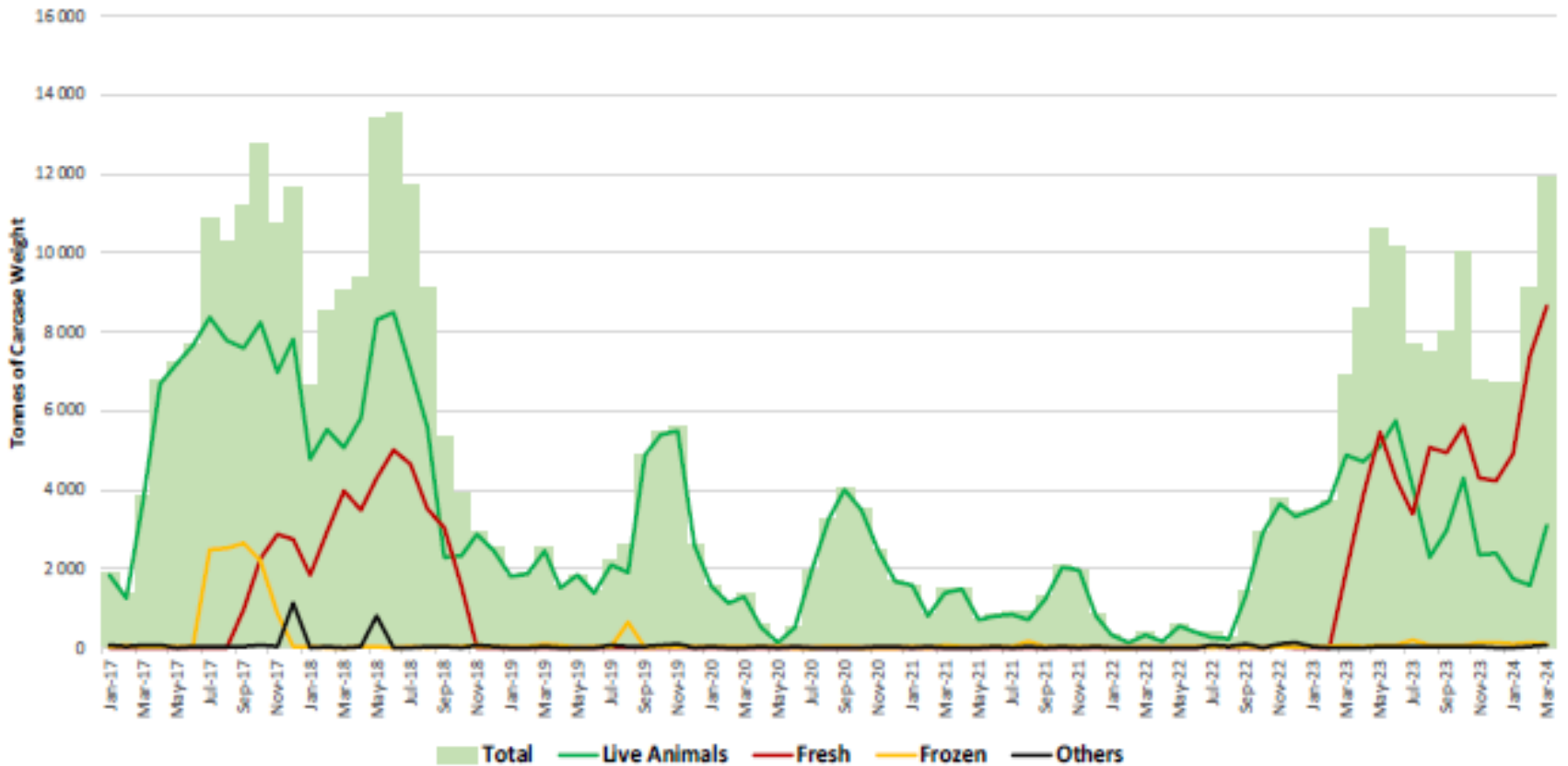


## AB Sığır Eti İhracatları

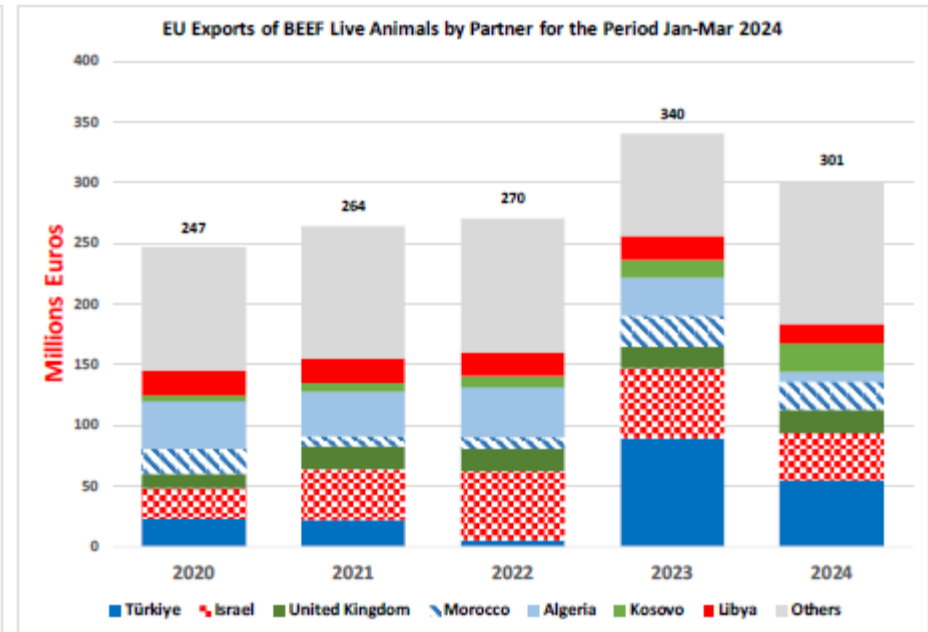
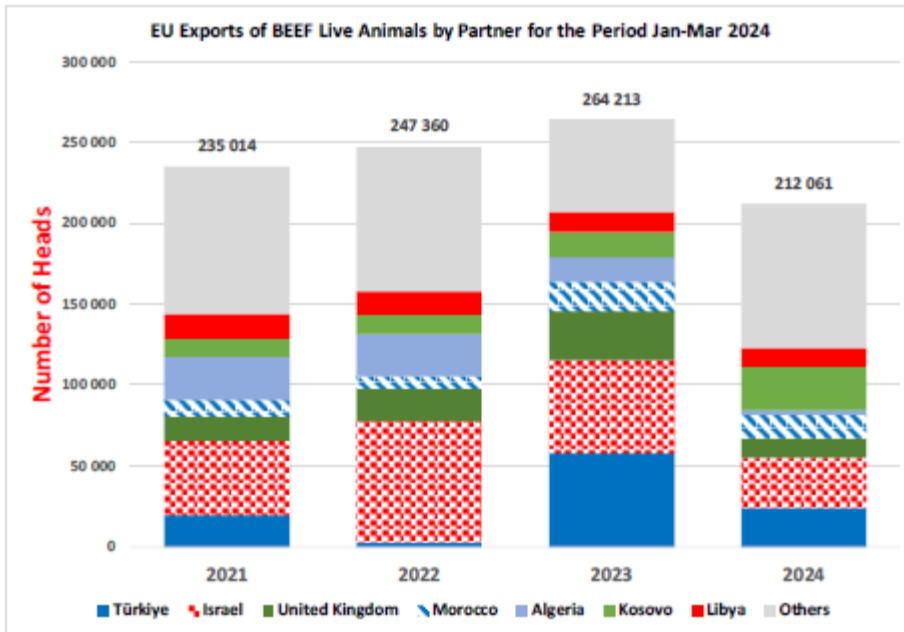
### EU Exports of BEEF products (Comext)



EU Beef Exports to Turkey  
Source : Comext - In Tonnes of cwe



## AB Canlı Hayvan İhracatları

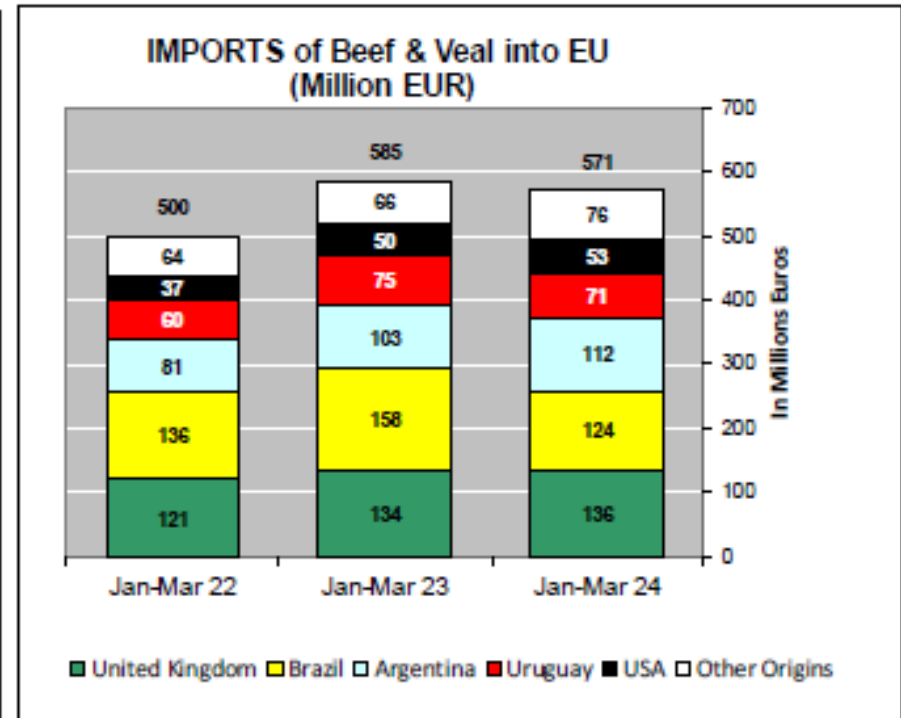
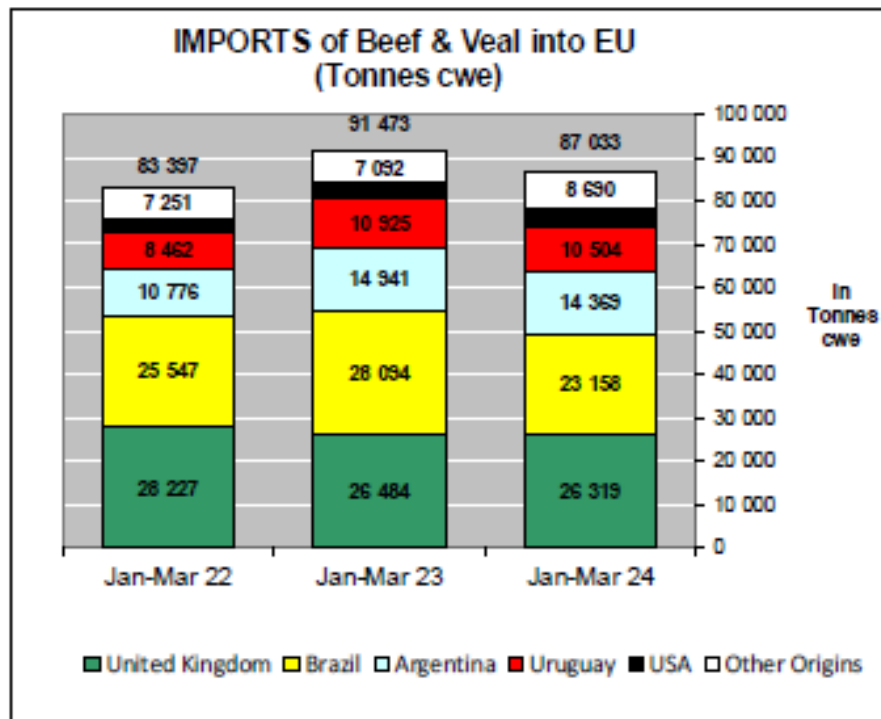




## AB Canlı Hayvan ve Sığır Eti İthalatları (Yağlar hariç) (Ton)

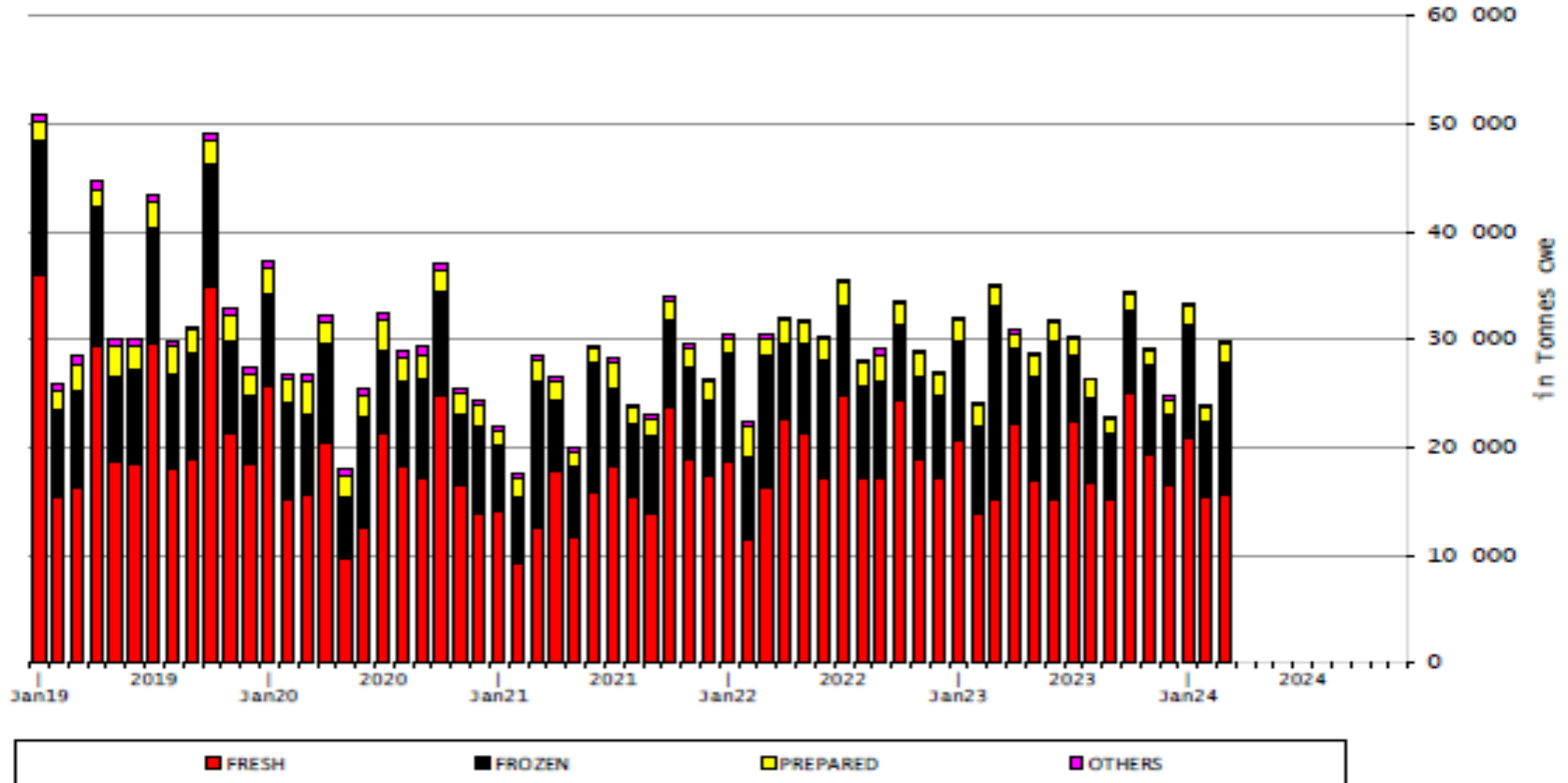
Origins	2020		2021		2022		2023		Jan-Mar 24		Compared to Jan-Mar 23
	tonnes	%	tonnes	%	tonnes	%	tonnes	%	tonnes	%	
United Kingdom	120 743	35.1%	87 596	28.3%	118 767	33.0%	106 945	30.5%	26 319	30.2%	- 0.6%
Brazil	84 139	24.4%	81 737	26.4%	86 512	24.0%	86 831	24.7%	23 158	26.6%	- 17.6%
Argentina	56 421	16.4%	52 300	16.9%	62 584	17.4%	63 079	18.0%	14 369	16.5%	- 3.8%
Uruguay	34 611	10.0%	42 689	13.8%	37 619	10.5%	41 565	11.8%	10 504	12.1%	- 3.9%
USA	16 532	4.8%	14 910	4.8%	17 269	4.8%	18 281	5.2%	3 992	4.6%	+ 1.4%
Namibia	1 445	0.4%	1 996	0.6%	5 168	1.4%	7 577	2.2%	1 800	2.1%	+ 27.7%
Australia	11 058	3.2%	8 925	2.9%	8 385	2.3%	7 727	2.2%	1 536	1.8%	+ 17.1%
Paraguay	4 234	1.2%	3 933	1.3%	5 404	1.5%	4 768	1.4%	1 423	1.6%	+ 5.4%
New Zealand	6 116	1.8%	4 380	1.4%	5 202	1.4%	4 518	1.3%	1 152	1.3%	+ 21.9%
Switzerland	4 187	1.2%	4 714	1.5%	4 730	1.3%	3 627	1.0%	960	1.1%	+ 5.1%
Botswana	788	0.2%	331	0.1%	928	0.3%	1 610	0.5%	924	1.1%	+++
Canada	1 550	0.5%	1 816	0.6%	2 172	0.6%	1 468	0.4%	329	0.4%	- 21.3%
Japan	789	0.2%	1 478	0.5%	2 143	0.6%	834	0.2%	189	0.2%	+ 38.0%
Serbia	931	0.3%	963	0.3%	1 058	0.3%	812	0.2%	136	0.2%	- 49.9%
Norway	335	0.1%	571	0.2%	704	0.2%	670	0.2%	135	0.2%	- 5.9%
Chile	168	0.0%	238	0.1%	378	0.1%	365	0.1%	46	0.1%	- 48.5%
Other Destinations	357	0.1%	710	0.2%	961	0.3%	352	0.1%	61	0.1%	
<b>Total</b>	<b>344 403</b>		<b>309 267</b>		<b>359 985</b>		<b>351 030</b>		<b>87 033</b>		
% change			- 10%		+ 16%		- 2%		- 4.9%		

## AB Sığır Eti ve Canlı Hayvan İthalatları (Yağlar hariç) (Ton)



## AB Sığır Eti Ürünleri İthalatları (Ton karkas ağırlık eşdeğeri)

### EU Imports of BEEF products



## AB'nin Birleşik Krallık ile Ticareti

### EU Export of BEEF (excluding fats) to UK by Products from Jan to Mar

In Tons of Carcase Weight

	2022			2023			2024			% 2024/2023	
	United Kingdom	Extra-EU	%	United Kingdom	Extra-EU	%	United Kingdom	Extra-EU	%	United Kingdom	Extra-EU
Live Animals	3 288	49 330	6.7%	6 797	57 132	11.9%	4 799	49 395	9.7%	-29.4%	-13.5%
Meats	86 098	188 837	45.6%	88 284	170 996	51.6%	83 761	205 658	40.7%	-5.1%	+20.3%
Fresh	46 808	70 429	66.5%	48 174	70 057	68.8%	48 410	97 764	49.5%	+0.5%	+39.5%
Frozen	23 825	57 855	41.2%	25 417	45 710	55.6%	21 436	46 494	46.1%	-15.7%	+1.7%
Salted Meat	102	650	15.7%	98	660	14.8%	95	528	18.0%	-2.5%	-20.0%
Prepared	10 451	17 194	60.8%	9 966	14 957	66.6%	8 916	15 531	57.4%	-10.5%	+3.8%
Fresh Offals	1 924	2 609	73.7%	1 718	2 676	64.2%	1 402	2 286	61.3%	-18.4%	-14.6%
Frozen Offals	2 824	35 975	7.8%	2 774	34 328	8.1%	3 415	38 548	8.9%	+23.1%	+12.3%
Salted Offals	64	3 970	1.6%	51	2 489	2.1%	37	4 421	0.8%	-28.3%	+77.6%
Prepared Offal	100	154	64.9%	87	118	73.8%	51	85	59.7%	-41.8%	-27.9%
<b>Total Beef</b>	<b>89 386</b>	<b>238 167</b>	<b>37.5%</b>	<b>95 080</b>	<b>228 128</b>	<b>41.7%</b>	<b>88 560</b>	<b>255 053</b>	<b>34.7%</b>	<b>-6.9%</b>	<b>+11.8%</b>

Source : Comext

## AB'nin Birleşik Krallık ile Ticareti

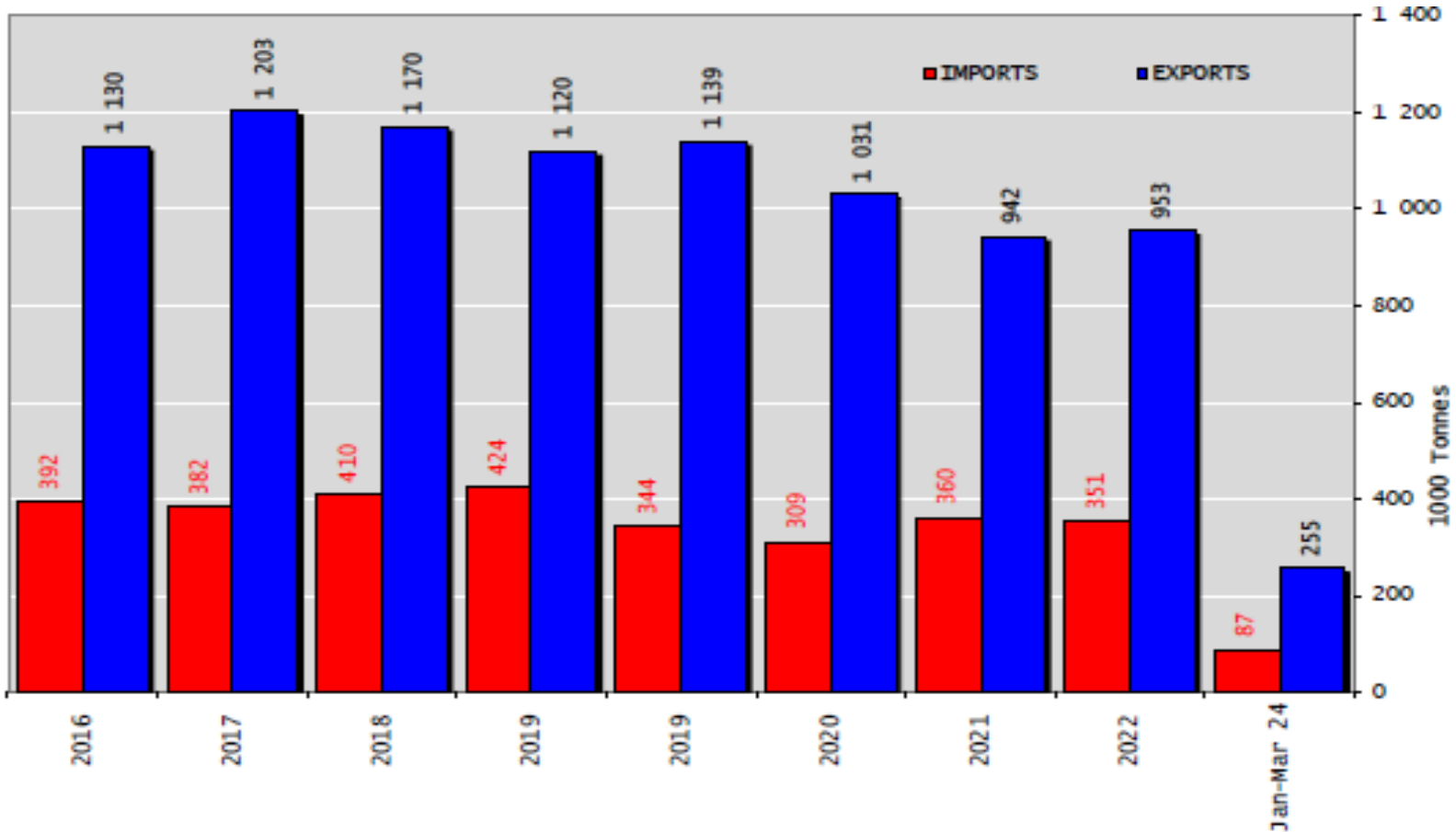
### EU Import of BEEF (excluding fats) from UK by Products from Jan to Mar

In Tons of Carcase Weight

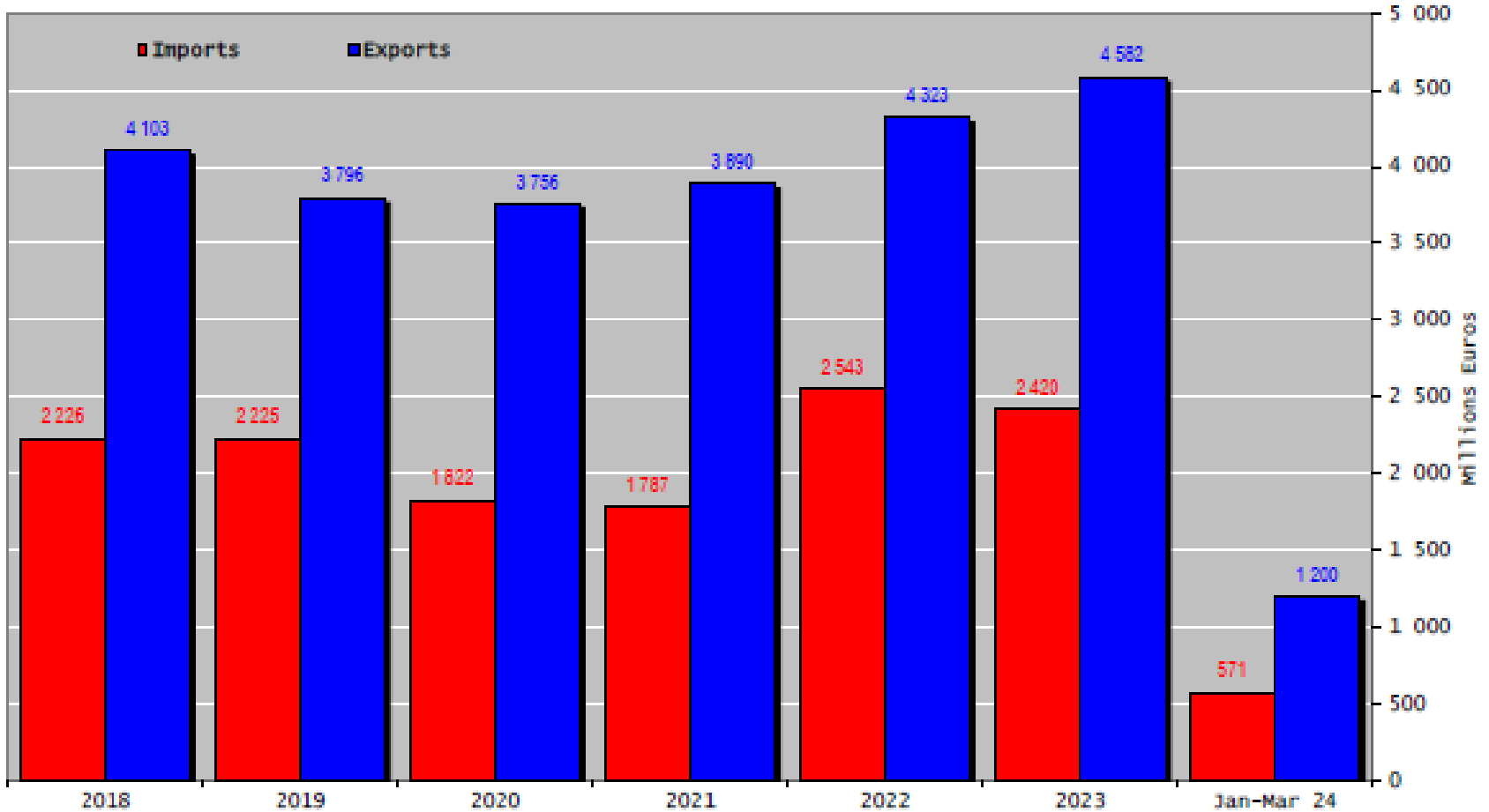
	2022			2023			2024			% 2024/2023	
	United Kingdom	Extra-EU	%	United Kingdom	Extra-EU	%	United Kingdom	Extra-EU	%	United Kingdom	Extra-EU
Live Animals	202	210	96.6%	18	56	33.1%	24	29	81.1%	+28.5%	-47.6%
Meats	28 024	83 187	33.7%	26 465	91 417	28.9%	26 296	87 004	30.2%	-0.6%	-4.8%
Fresh	18 834	44 791	42.0%	16 976	48 261	35.2%	18 349	50 393	36.4%	+8.1%	+4.4%
Frozen	5 216	29 056	18.0%	5 363	34 043	15.8%	4 271	28 651	14.9%	-20.4%	-15.8%
Salted Meat	39	848	4.6%	104	687	15.1%	67	704	9.5%	-36.0%	+2.5%
Prepared	2 083	5 903	35.3%	1 893	5 725	33.1%	1 604	4 544	35.3%	-15.3%	-20.6%
Fresh Offals	1 144	1 440	79.4%	1 267	1 580	80.2%	1 262	1 558	81.0%	-0.4%	-1.4%
Frozen Offals	696	1 099	63.3%	853	1 103	77.4%	736	1 140	64.5%	-13.8%	+3.4%
Salted Offals	8	13	60.0%	7	12	60.5%	7	12	59.8%	-1.6%	-0.4%
Prepared Offal	4	37	11.3%	1	5	15.2%	1	2	37.6%	-7.3%	-62.5%
<b>Total Beef</b>	<b>28 227</b>	<b>83 397</b>	<b>33.8%</b>	<b>26 484</b>	<b>91 473</b>	<b>29.0%</b>	<b>26 319</b>	<b>87 033</b>	<b>30.2%</b>	<b>-0.6%</b>	<b>-4.9%</b>

Source : Estat - Comext

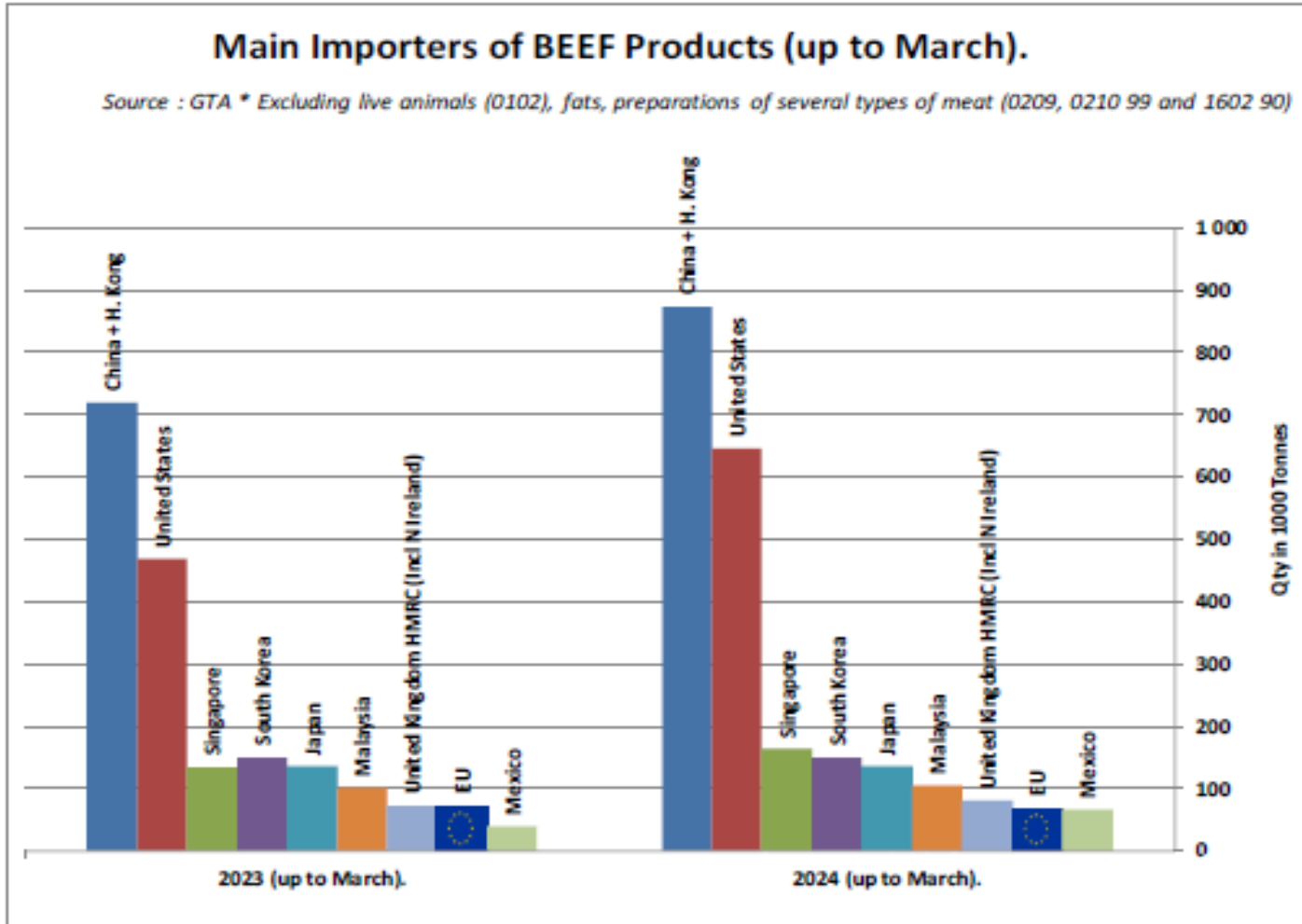
## Siğır Eti Ürünleri ve Canlı Hayvan Ticaret Dengesi (Ton)



## Siğir Eti Ürünleri ve Canlı Hayvan Ticaret Dengesi (Milyon Euro)



## SIĞIR ETİ ÜRÜNLERİNİN NET İTHALATÇILARI (MART)

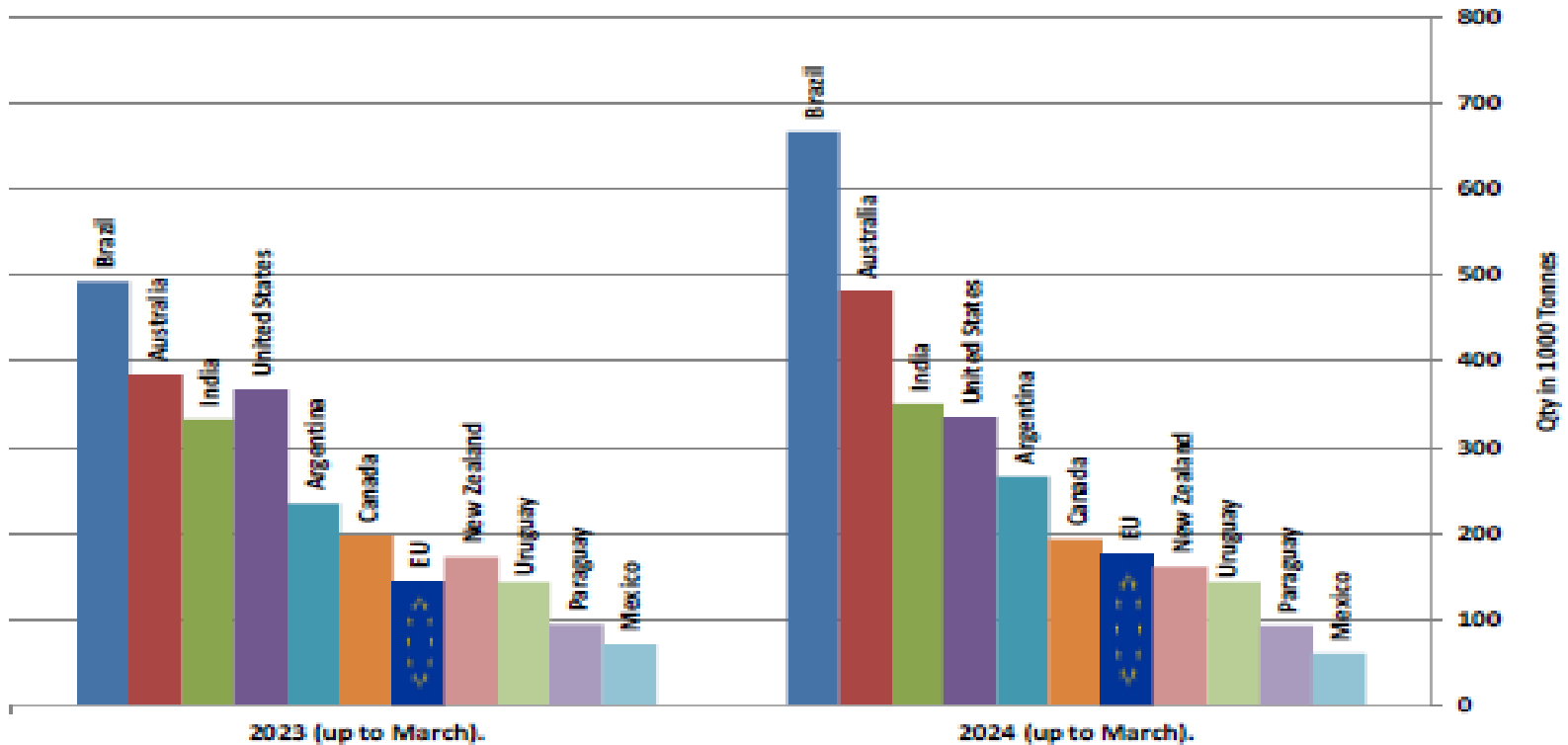




## SIĞIR ETİ ÜRÜNLERİNİN NET İHRACATÇILARI (MART)

### Main Exporters of BEEF Products (up to March).

Source : GTA \* Excluding live animals (0102), fats, preparations of several types of meat (0209, 0210 99 and 1602 90)

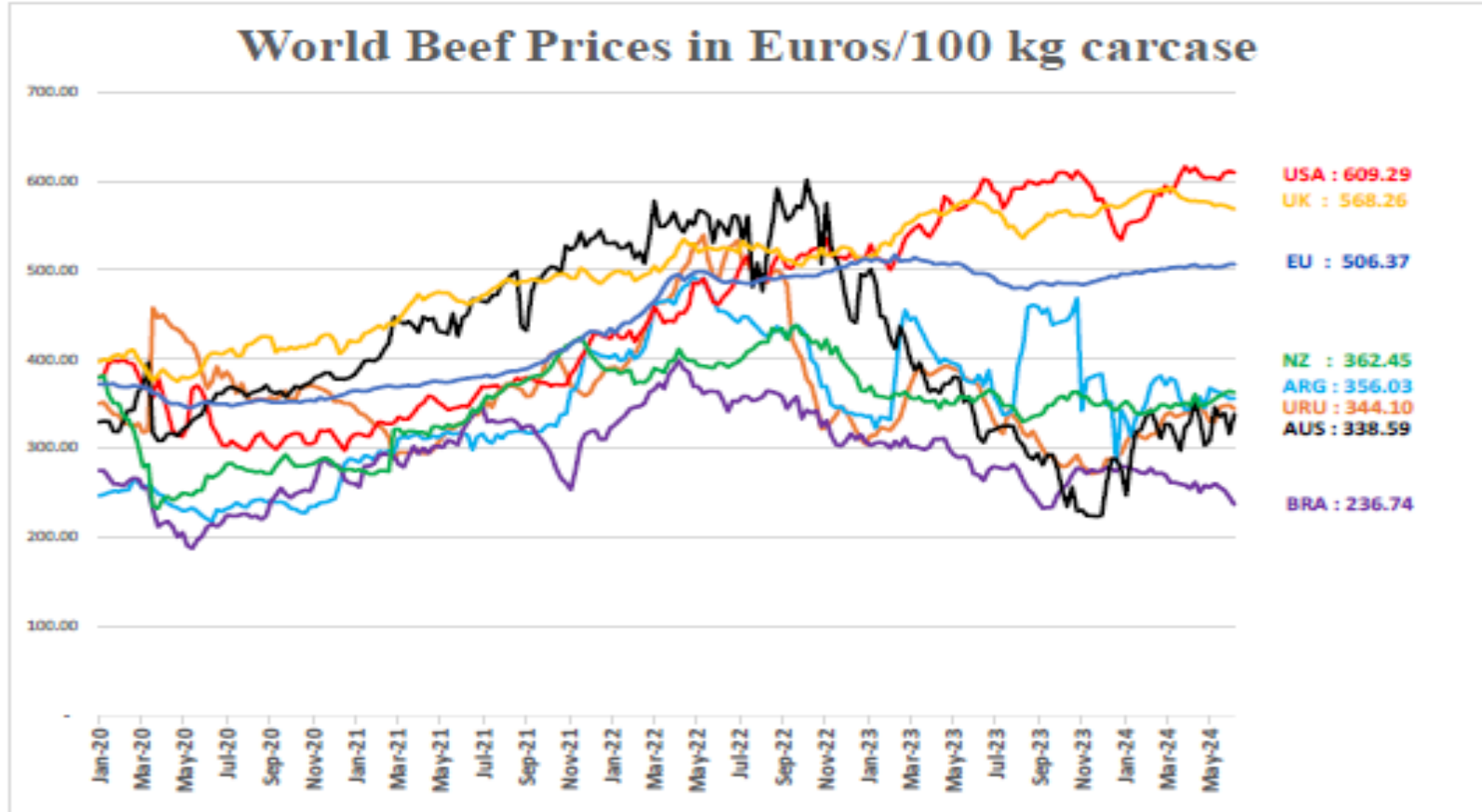


# DÜNYA SIĞIR ETİ PAZARI



European  
Commission

# Dünya Sığır Fiyatları AB, ABD, AVUSTRALYA, YENİ ZELANDA



USA, AUS, URU, ARG, NZ, BRA [World Beef Report](https://ahdb.org.uk/beef/gb-deadweight-cattle-prices-by-region)  
GB <https://ahdb.org.uk/beef/gb-deadweight-cattle-prices-by-region>  
EU [Member States Communication](#)



**Daha fazla bilgi için:**

**[https://ec.europa.eu/agriculture/market-observatory/meat\\_en](https://ec.europa.eu/agriculture/market-observatory/meat_en)**

**Ve Agri-FOOD Veri Portalı:**

**<http://agridata.ec.europa.eu>**