



BEEF & VEAL MARKET SITUATION



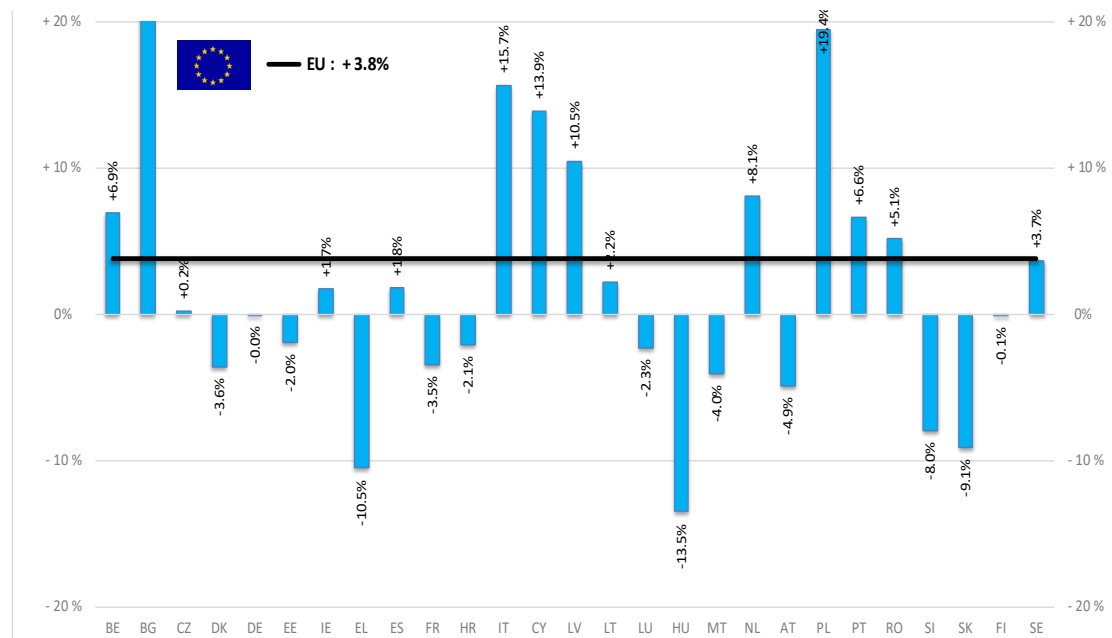
GREX 20 June 2024

PRODUCTION

% EVOLUTION HEADS

HEADS	Jan-Mar 24/23
	EU
Bull	+5.5%
Bullock	+3.0%
Cow	+4.5%
Heifer	+6.5%
Calve	idem
Young cattle	-8.0%
Meat of bovine animals	+3.8%

Estimates for last month of period :



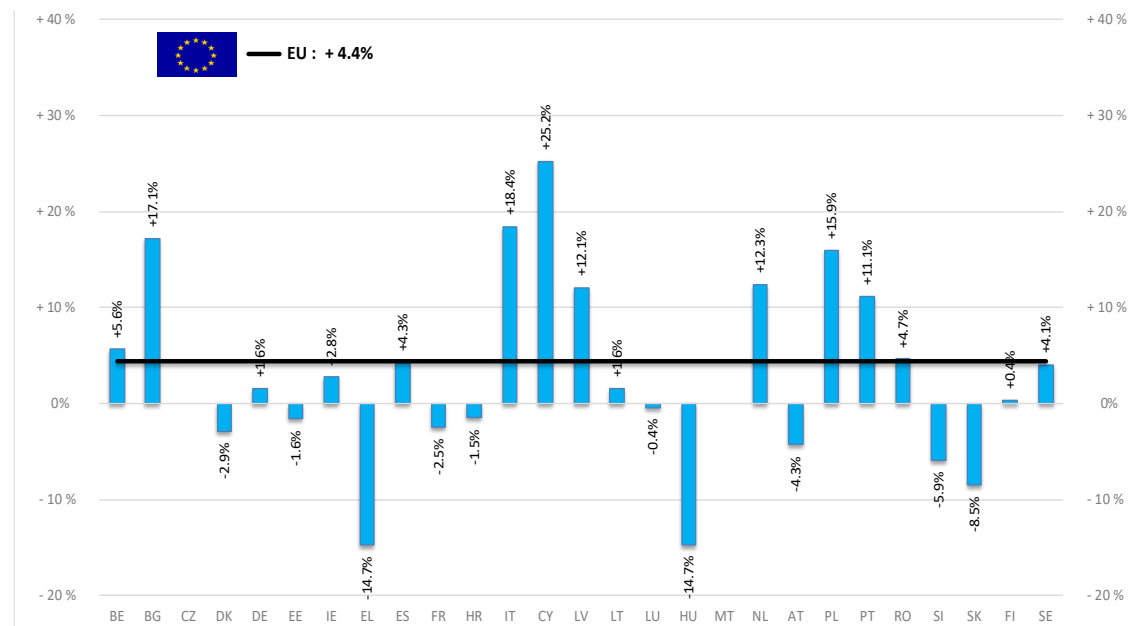
Source : EStat - Newcronos

PRODUCTION

% EVOLUTION TONNES

TONNES	Jan-Mar 24/23
	EU
Bull	+5.2%
Bullock	+2.2%
Cow	+4.5%
Heifer	+6.7%
Calve	+4.8%
Young cattle	-6.9%
Meat of bovine animals	+4.4%

Estimates for last month of period :

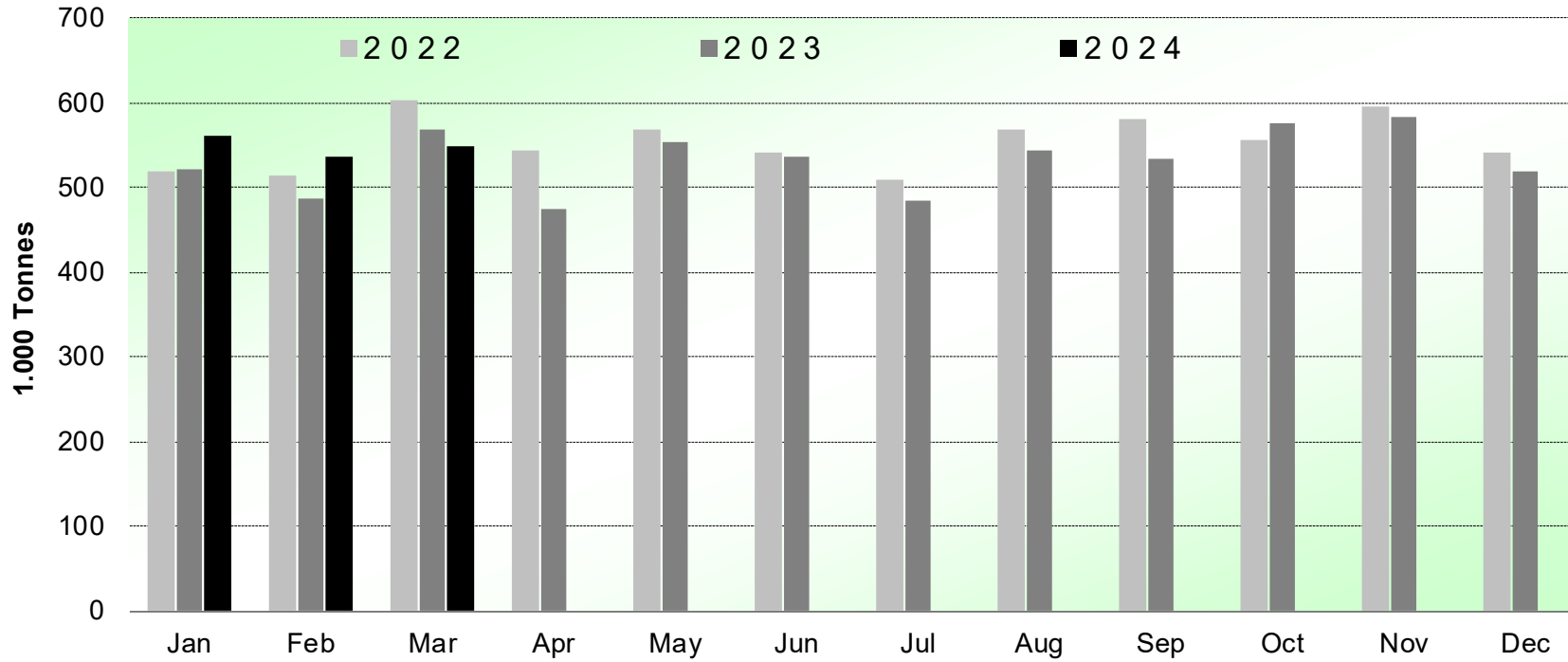


Source : EStat - Newcronos

PRODUCTION

HISTORIC TONNES

Beef & Veal Production (EU Slaughtering) - Tonnes



Source : EStat-Newcronos

PRICES CARCASSES

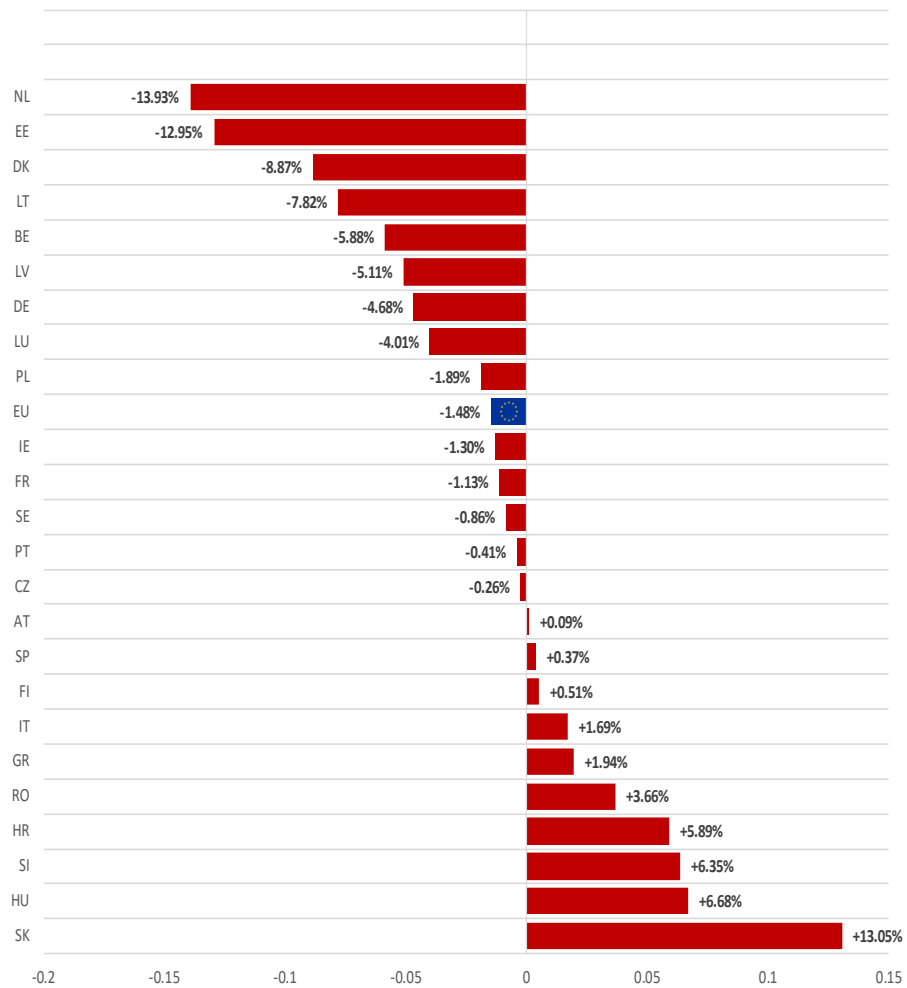
Dashboard

EU Prices week		23	Evolution since last week	Evolution since last month	Evolution since last year
Carcasse	Average A/C/Z -R3	506.3	+ 0.0%	+ 0.7%	+ 2.0%
	Young Bovines (Z)	507.9	- 0.1%	+ 0.0%	- 0.5%
	Young Bulls (A)	501.6	- 0.1%	+ 1.1%	+ 3.0%
	Steers (C)	530.8	+ 0.5%	- 0.2%	+ 0.2%
	Cows (D)	427.8	+ 0.2%	+ 1.8%	+ 0.2%
	Heifers (E)	521.2	+ 0.4%	+ 1.5%	+ 1.7%
	Calves slaughtered <8M	608.7	- 0.8%	- 0.7%	- 1.3%
Live Animals	Male Calves Dairy Type	146.1	+ 2.3%	+ 8.5%	- 2.4%
	Male Calves Beef Type	277.2	- 0.5%	+ 4.7%	- 0.9%
	Young Store Cattle	3.51	+ 1.1%	+ 1.9%	+ 5.3%
	Yearling Male Store Cattle	4.09	+ 0.1%	+ 3.0%	+ 11.4%
	Yearling Female Store Cattle	3.16	+ 2.0%	+ 4.2%	+ 7.7%

Sources : MSs notifications (Regulation (EU) 1182/2017 and 1184/2017)

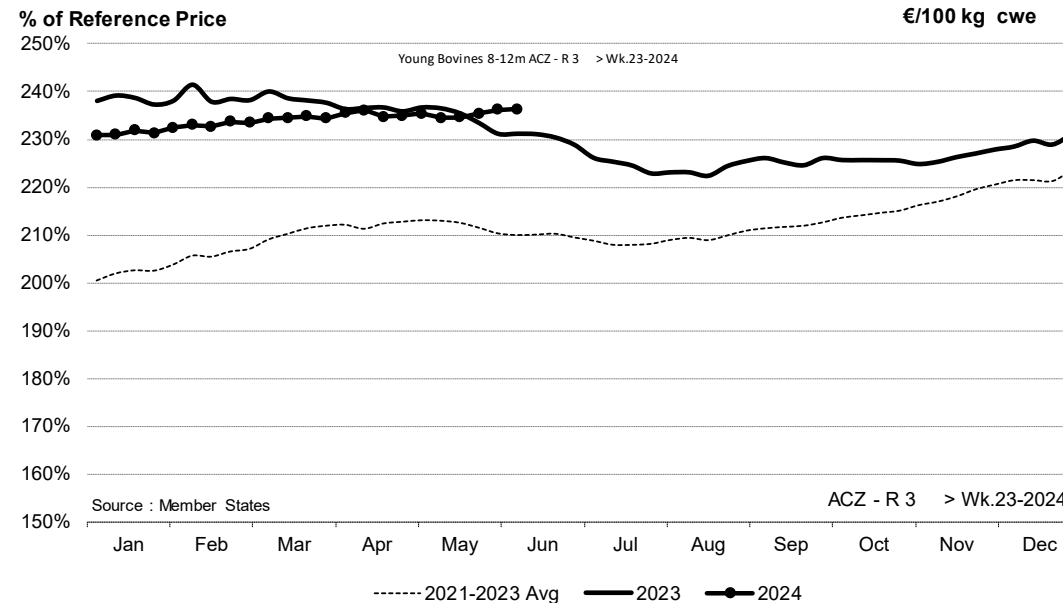
PRICES CARCASSES

EU ACZ R3 Price Comparison between average monthly price June 2023 - May 2024 compared to June 2022 - May 2023



EU EVOLUTION A/C/Z.R3

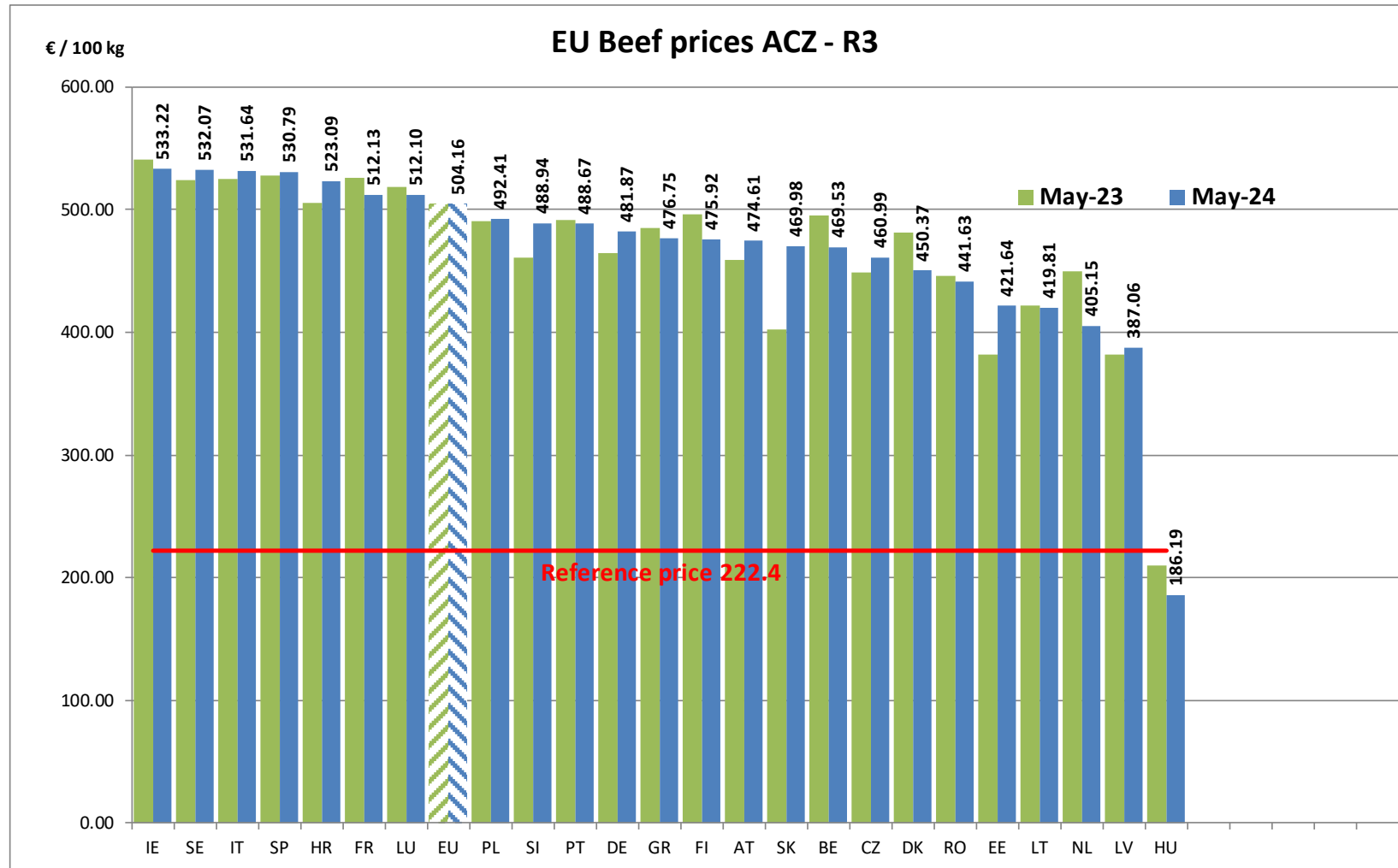
ACZ - R 3 > Wk.23-2024



Price in week 23 :	506.37	Average price in May 2024 :	504.16
% change y/y :	+ 2.04%	% change y/y :	+ 0.00%
% Ref. Price in wk 0 :	223.1%		

PRICES CARCASSES

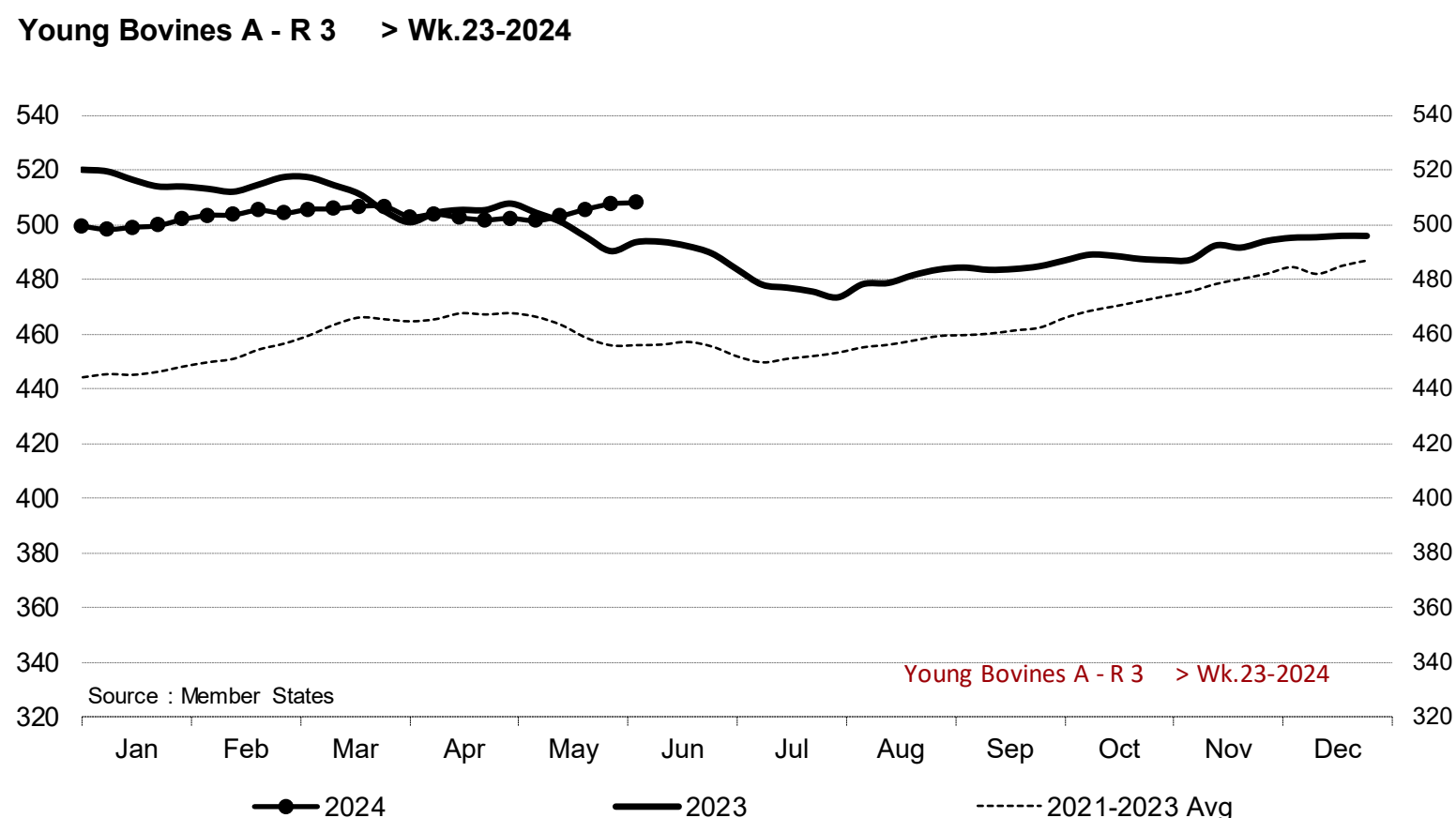
EU EVOLUTION A/C/Z.R3



PRICES CARCASSES

EU EVOLUTION YOUNG BULL – A.R3

Young Bovines A - R 3 > Wk.23-2024



Price in week 23 : **507.82**
% change y/y : **+ 2.8%**

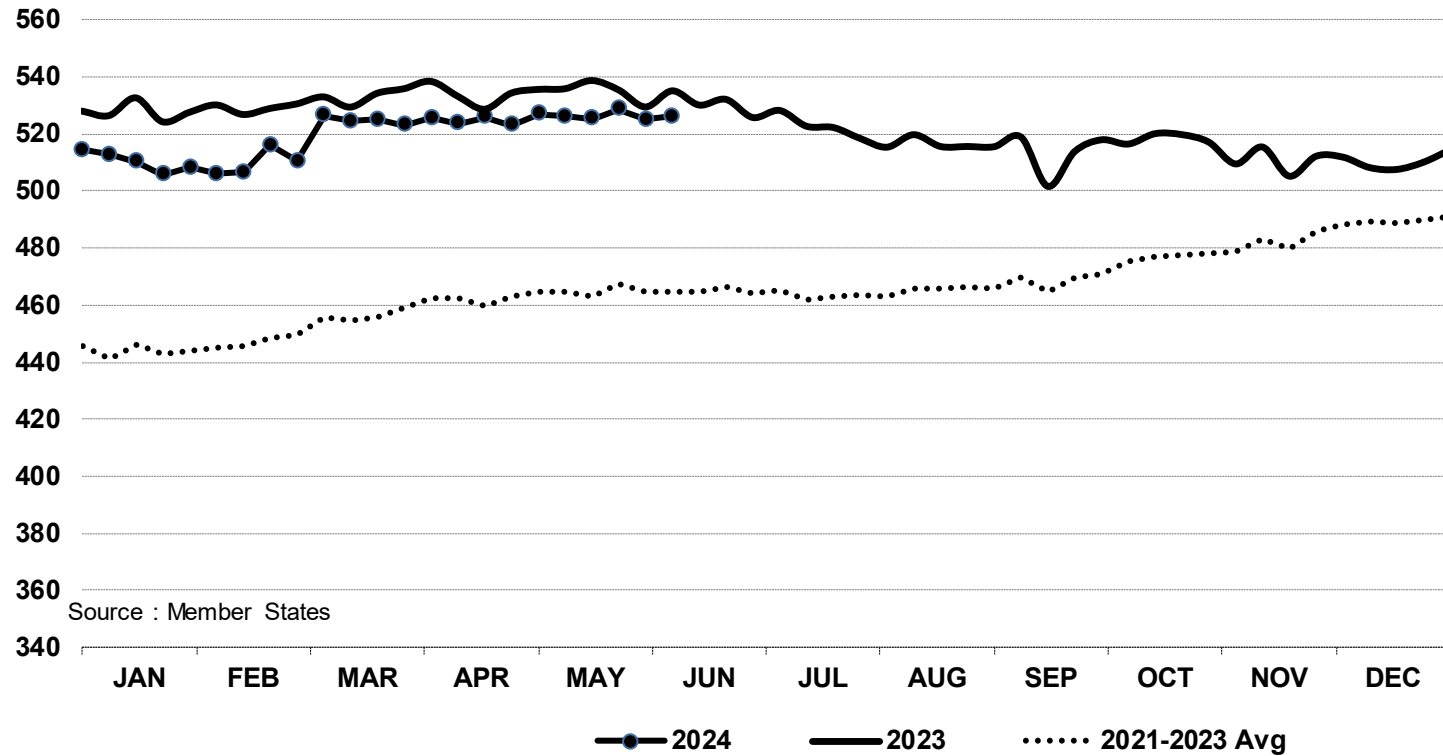
Average price in May 2024 : **503.81**
% change y/y : **+ 0.5%**

PRICES CARCASSES

E.U. EVOLUTION YOUNG BOVINE 8-12M- Z.R3

In € / 100 kg

Young Bovines 8-12m Z - R 3 > Wk.23-2024



Price in week 23 : **526.12**

09/05/2024

Average price in May 2024 : **526.54**

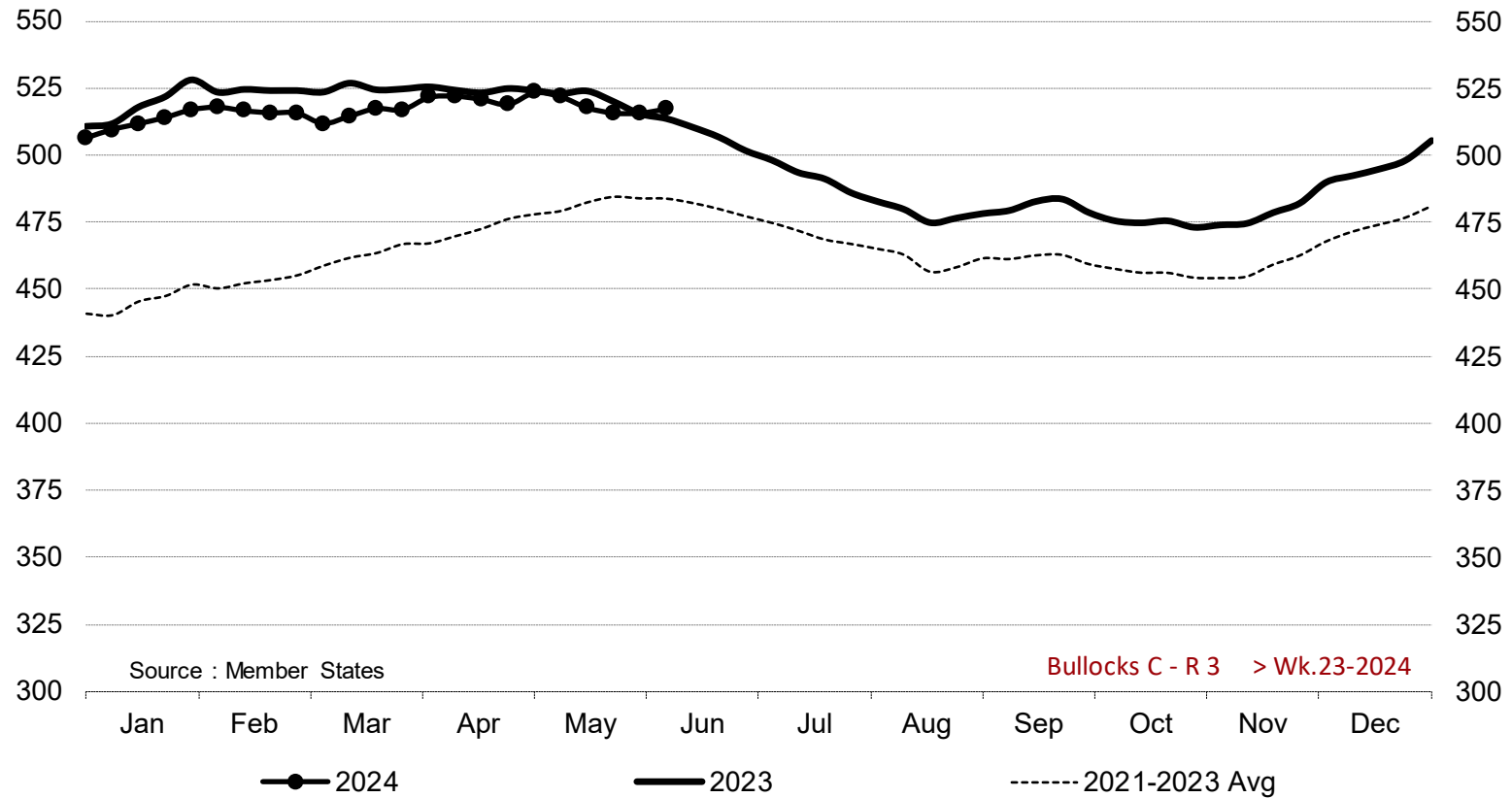
% change y/y : **- 1.7%**

% change y/y : **- 1.7%**

PRICES CARCASSES

E.U. EVOLUTION STEER – C.R3

Bullocks C - R 3 > Wk.23-2024



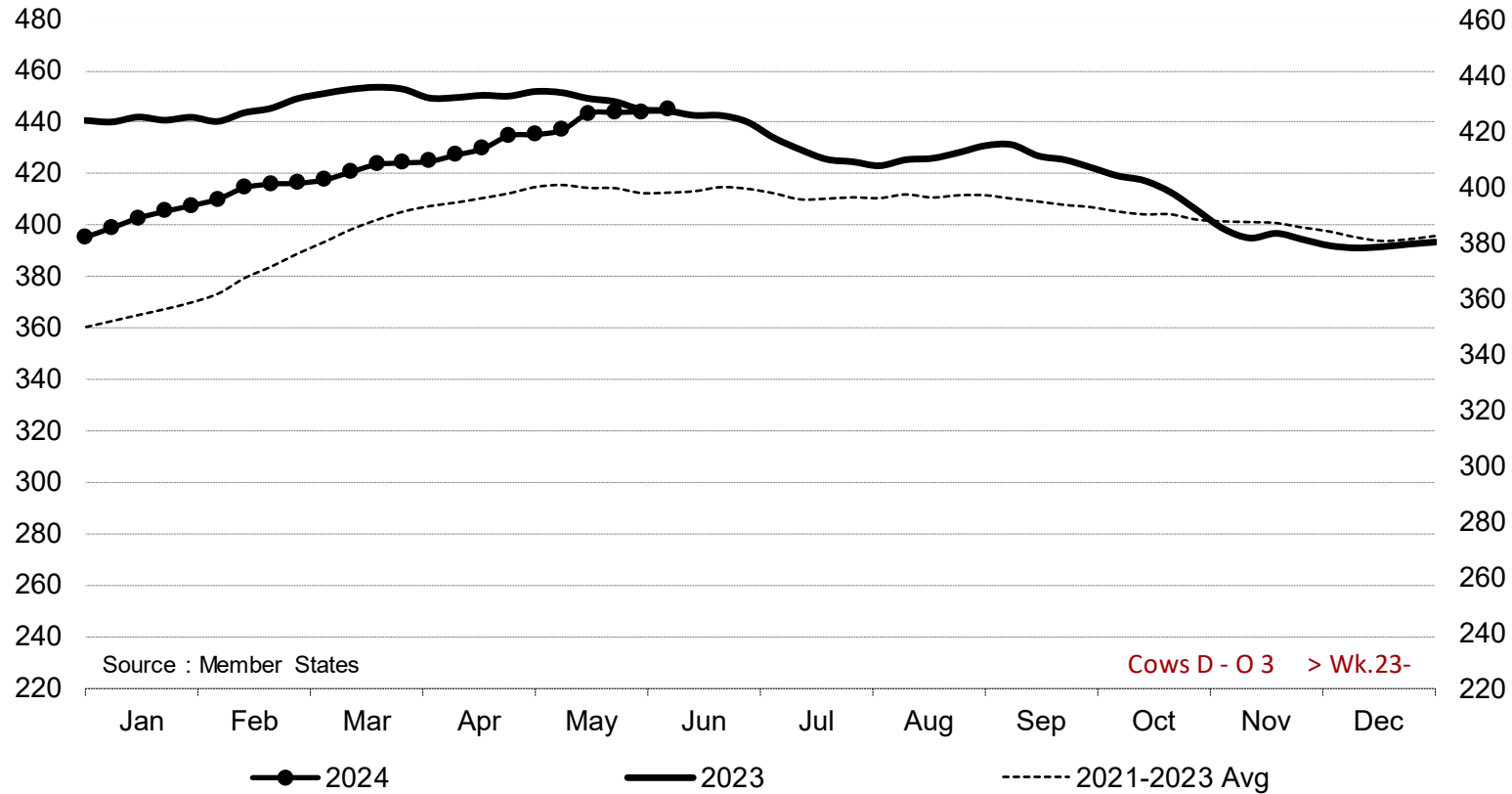
Price in week 23 : **517.30**
% change y/y : **+ 0.7%**

Average price in May 2024 : **518.85**
% change y/y : **- 0.6%**

PRICES CARCASSES

E.U. EVOLUTION COW – D.03

Cows D - O 3 > Wk.23-2024



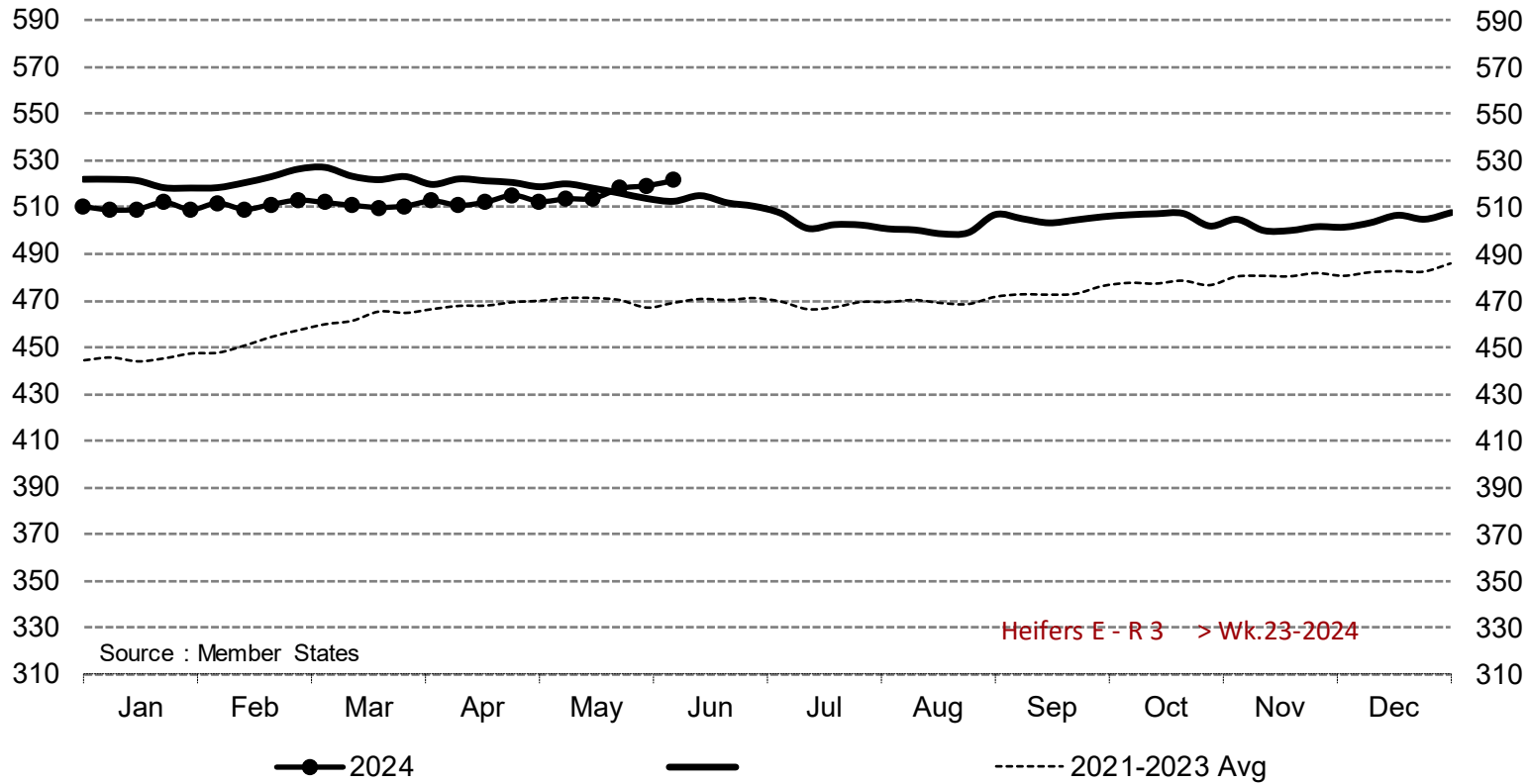
Price in week 23 : **427.80**
% change y/y : **+ 0.2%**

Average price in May 2024 : **423.88**
% change y/y : **- 1.9%**

PRICES CARCASSES

EU EVOLUTION HEIFER - E.R3

Heifers E - R 3 > Wk.23-2024

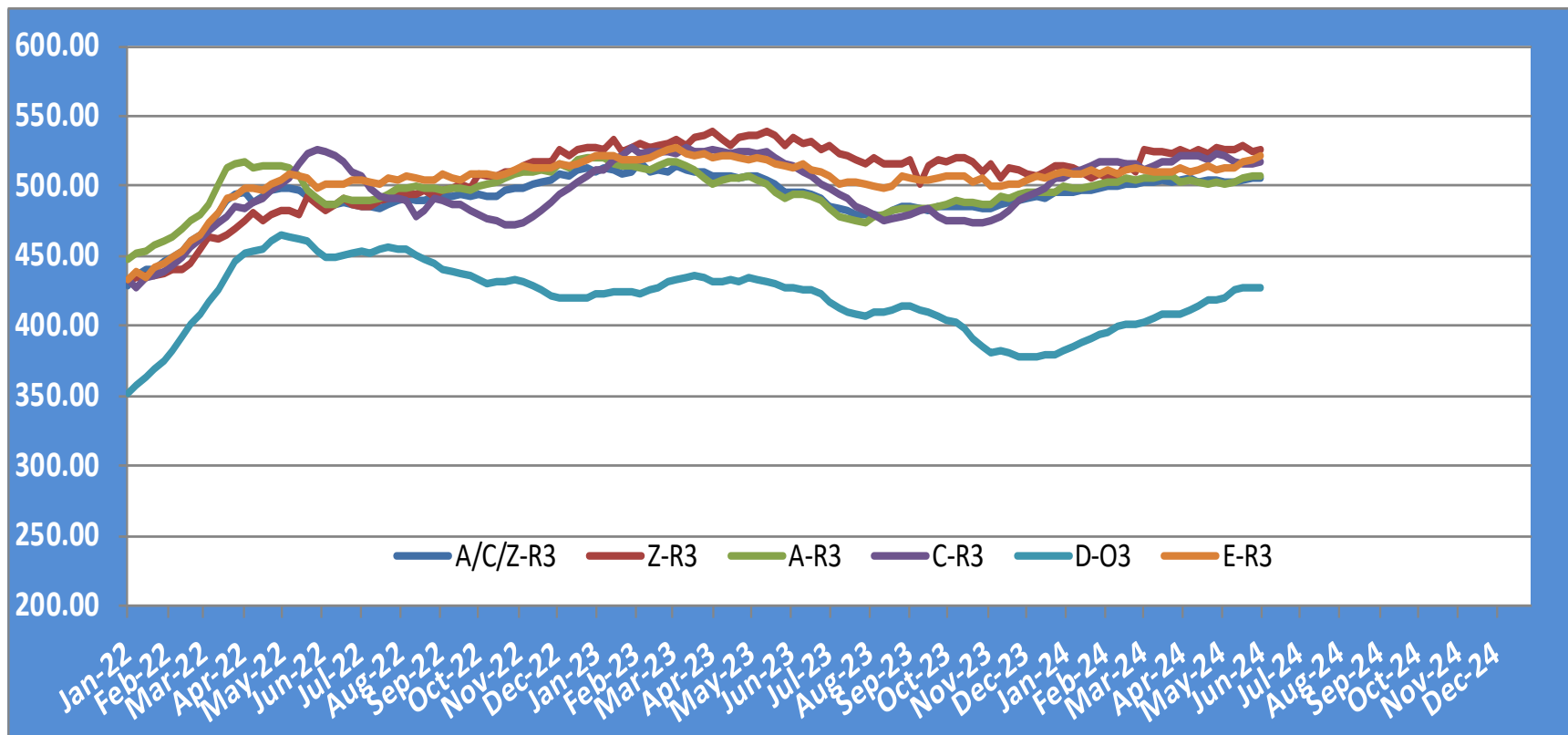


Price in week 23 : **521.20**
% change y/y : **+ 1.7%**

Average price in May 2024 : **515.07**
% change y/y : **- 0.6%**

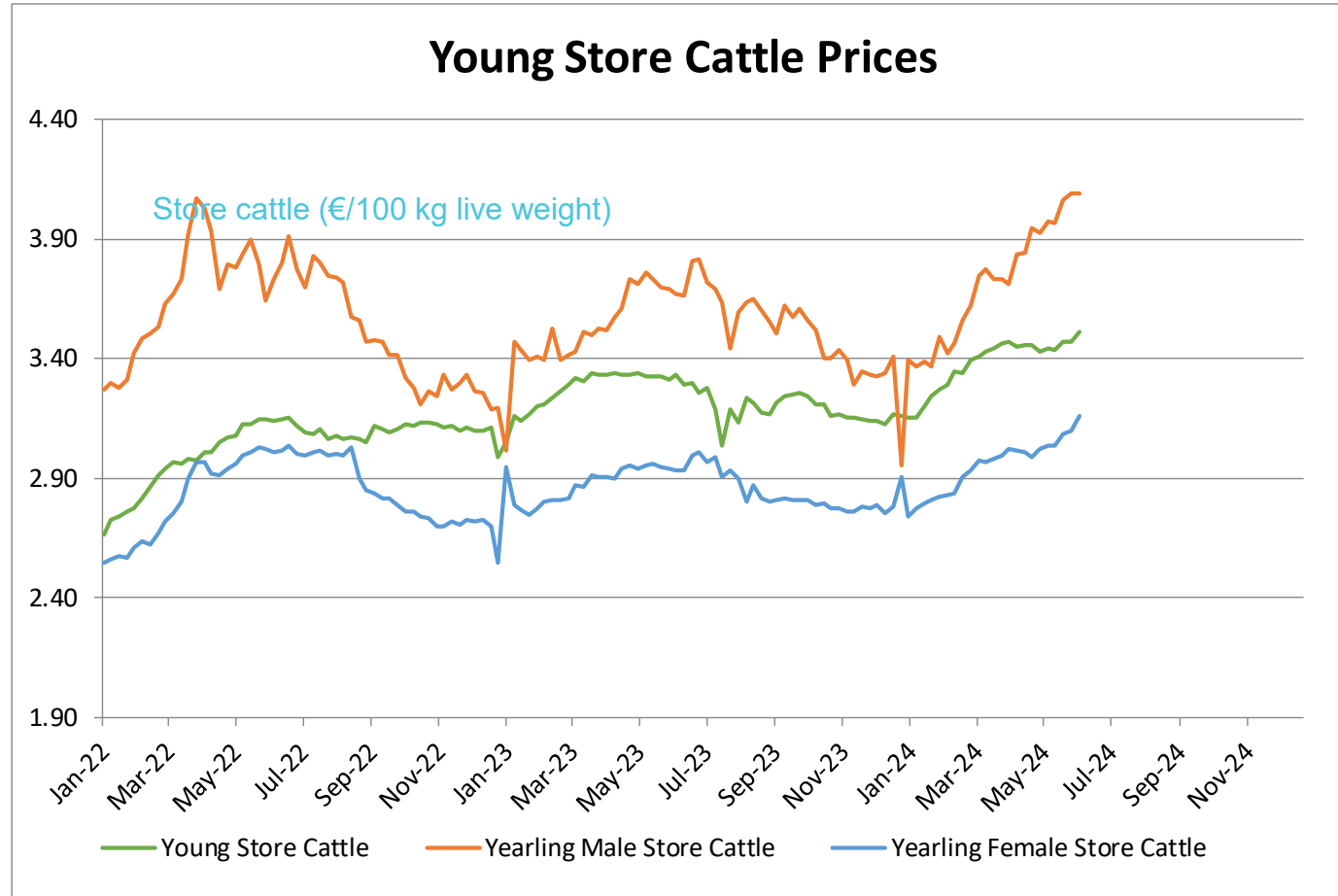
PRICES CARCASSES

EU EVOLUTION ALL CAT GLOBAL VIEW



PRICES LIVE BOVINES

EU EVOLUTION STORE CATTLE

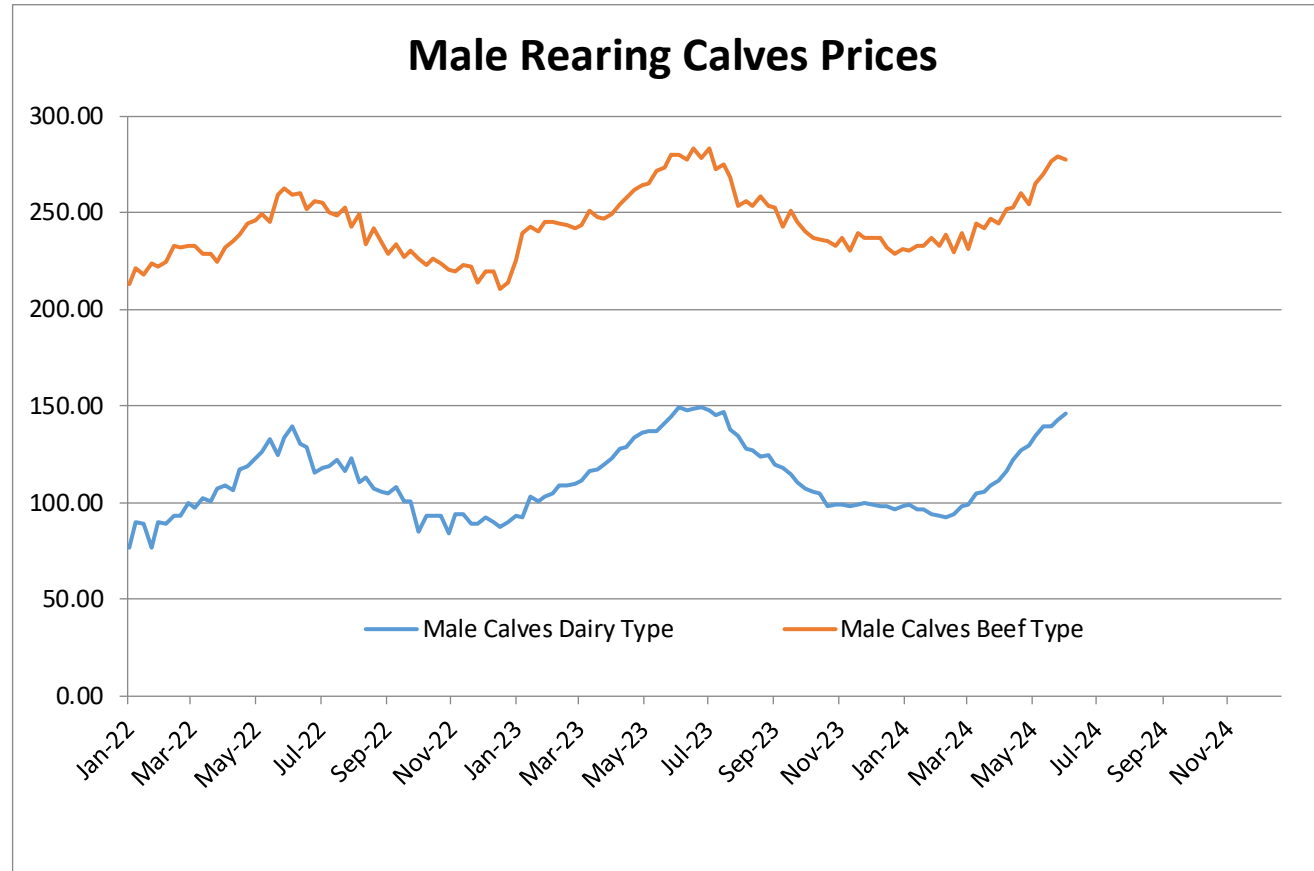


Young Store Cattle Price in	Week 23	3.51	Yearling Male Store Cattle Price	4.09
	Change y/y	+5.3%	Change y/y	+11.4%
Yearling Female Store Cattle Price		3.16		
	Change y/y	+7.7%		

PRICES LIVE BOVINES

EU EVOLUTION Male Calves – 8D4W

Male calves aged between 8 days and 4 weeks (€/head)



Male Rearing Calves Beef type

Price in Week 23 **277.29**
Change y/y **-0.9%**

Male Rearing Calves Dairy type

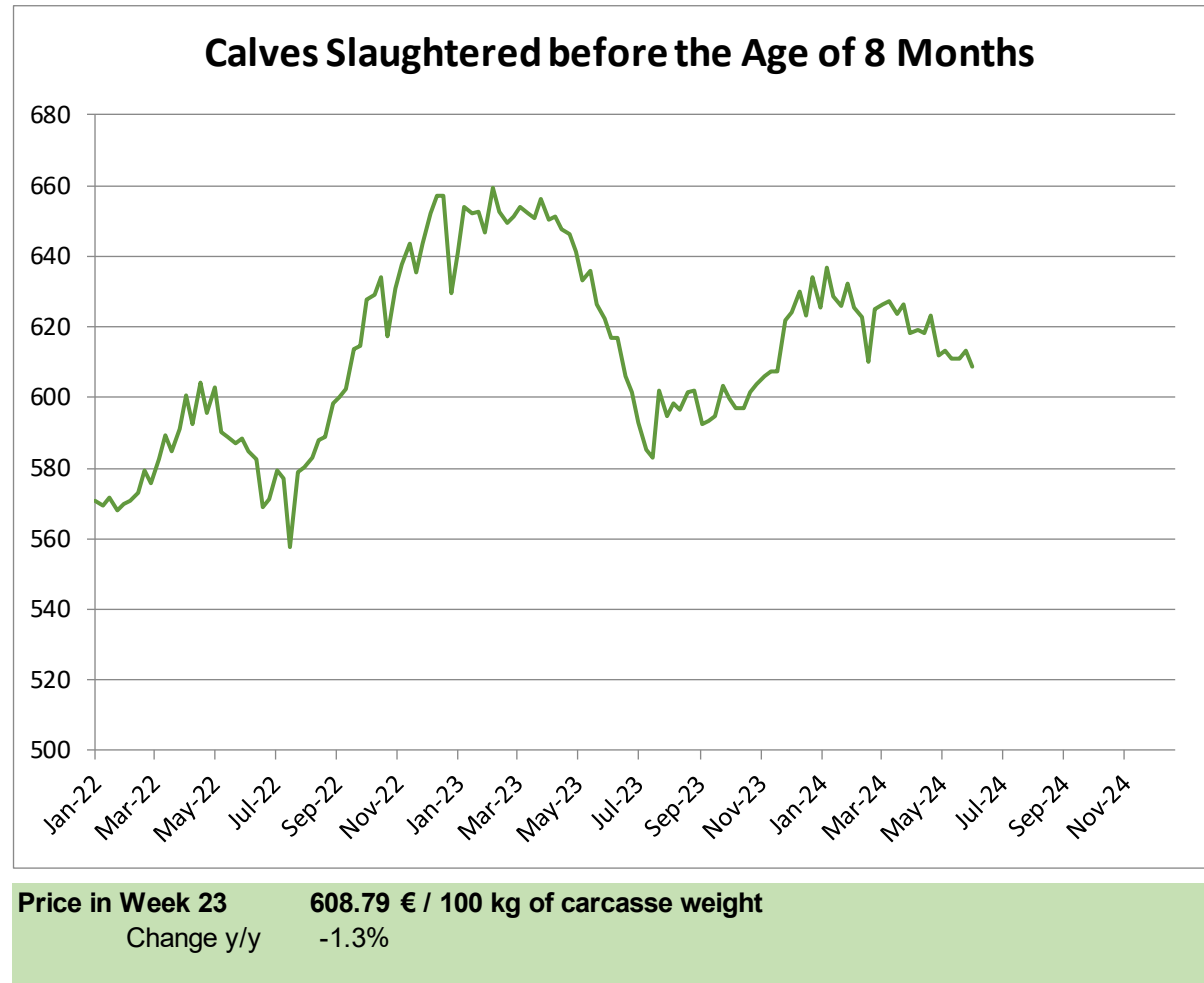
Price in Week 23 **146.18**
Change y/y **-2.4%**

20 June 2024

PRICES LIVE BOVINES

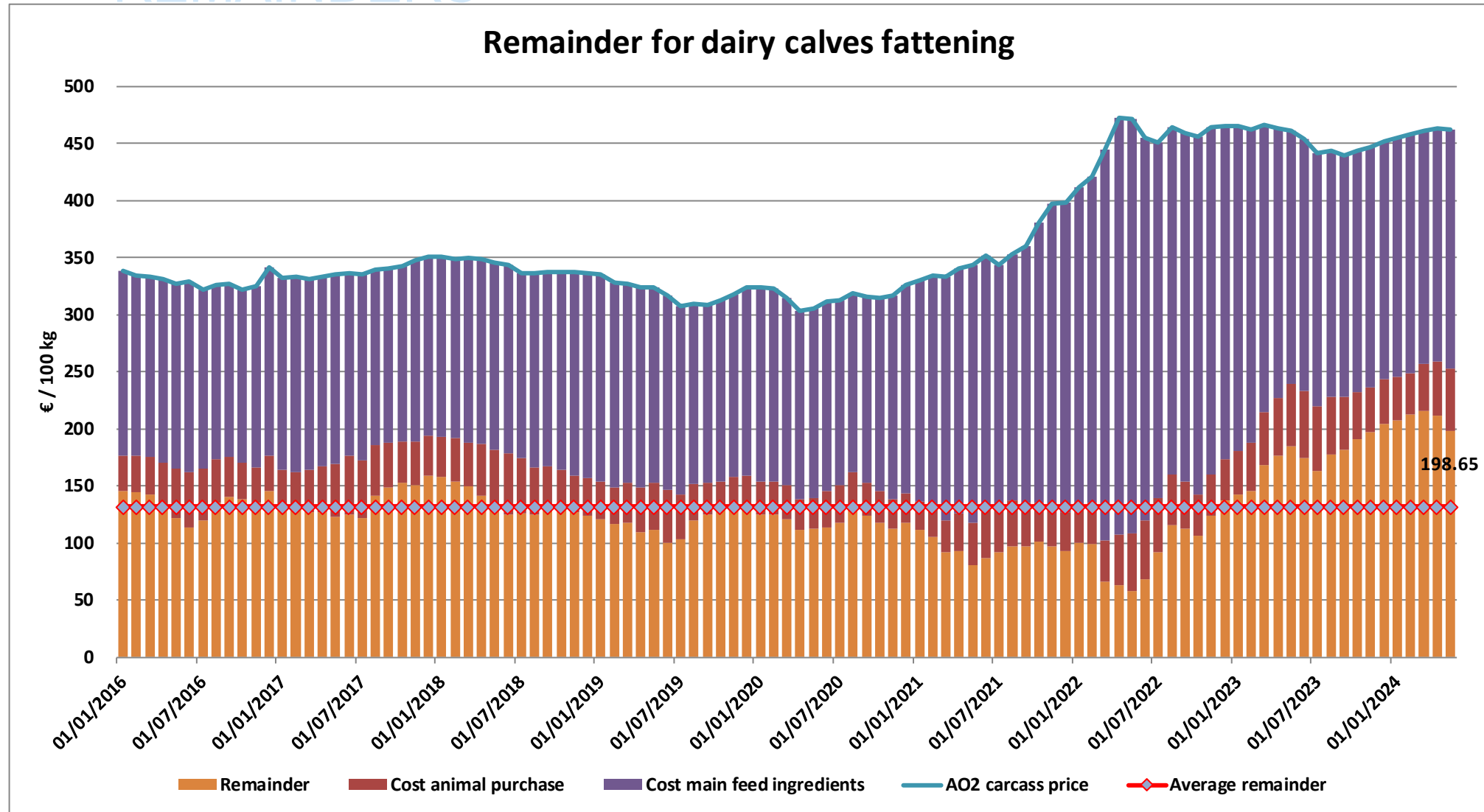
EU EVOLUTION Butcher Calves

Calves slaughtered before the age of less than 8 months
(€/100 kg cw)

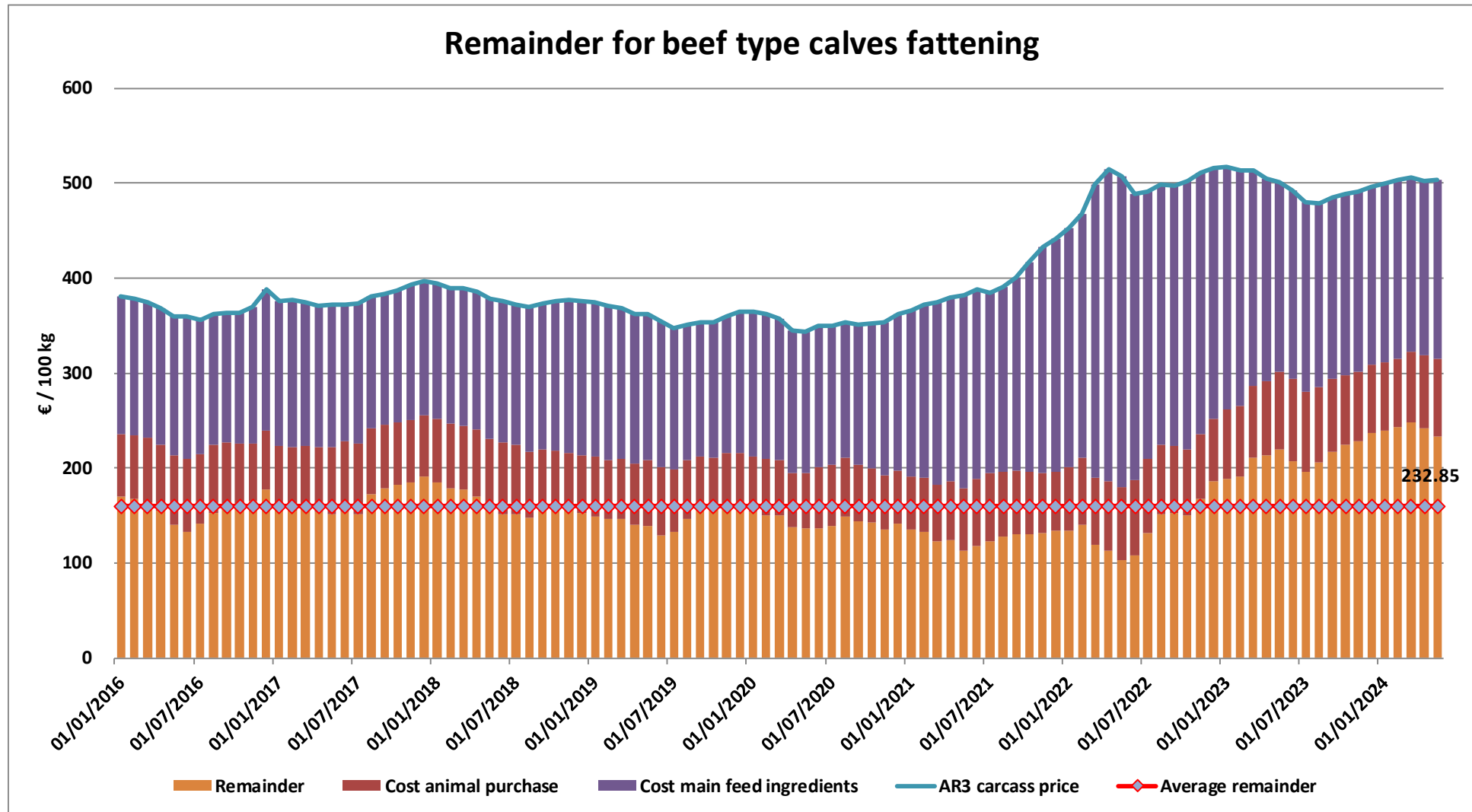


20 June 2024

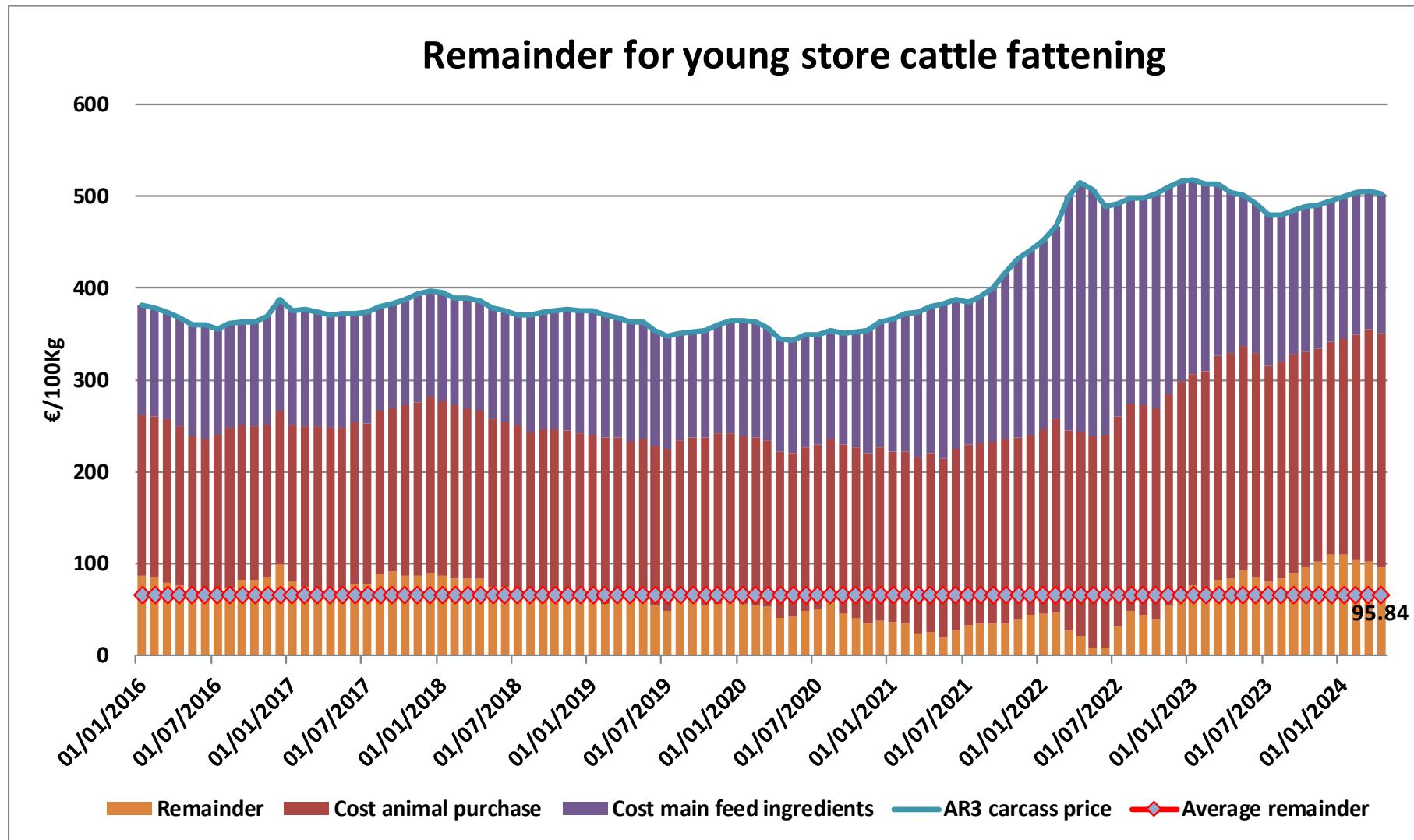
REMAINDERS



REMAINDERS



REMAINDERS



TRADE

EU EXPORTS

Beef & Live Animals

EU Exports of Beef and Live Animals (excluding fats): Trade figures (COMEXT – tonnes cwe)

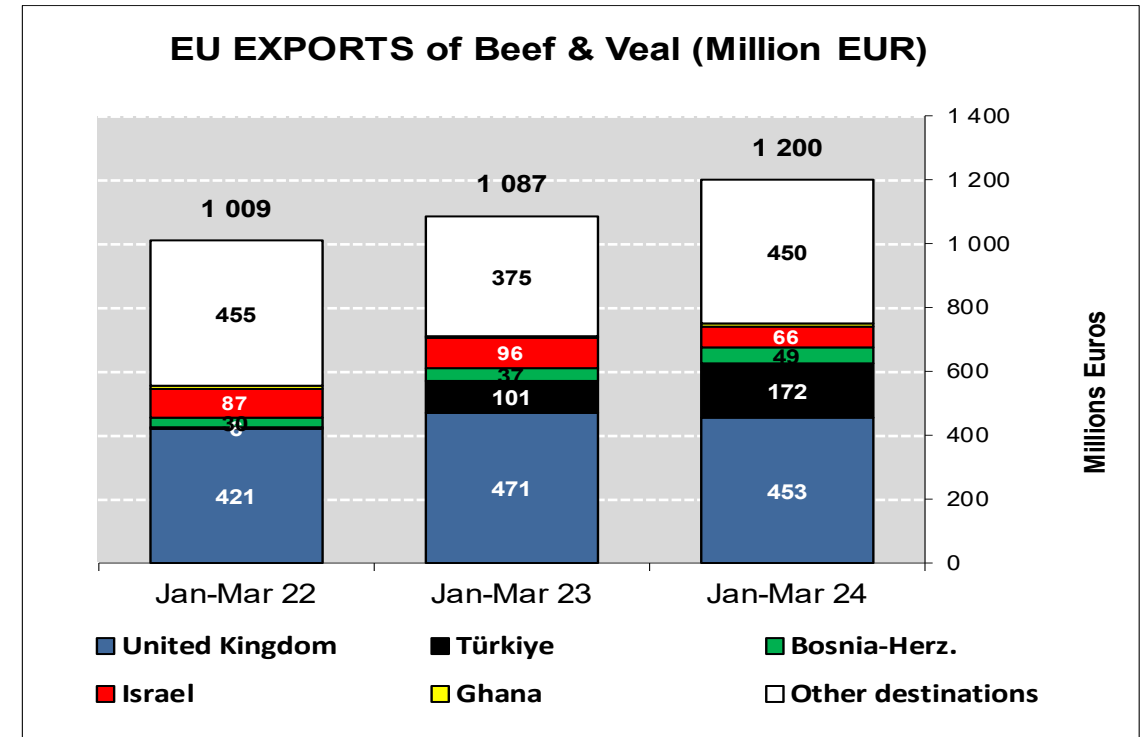
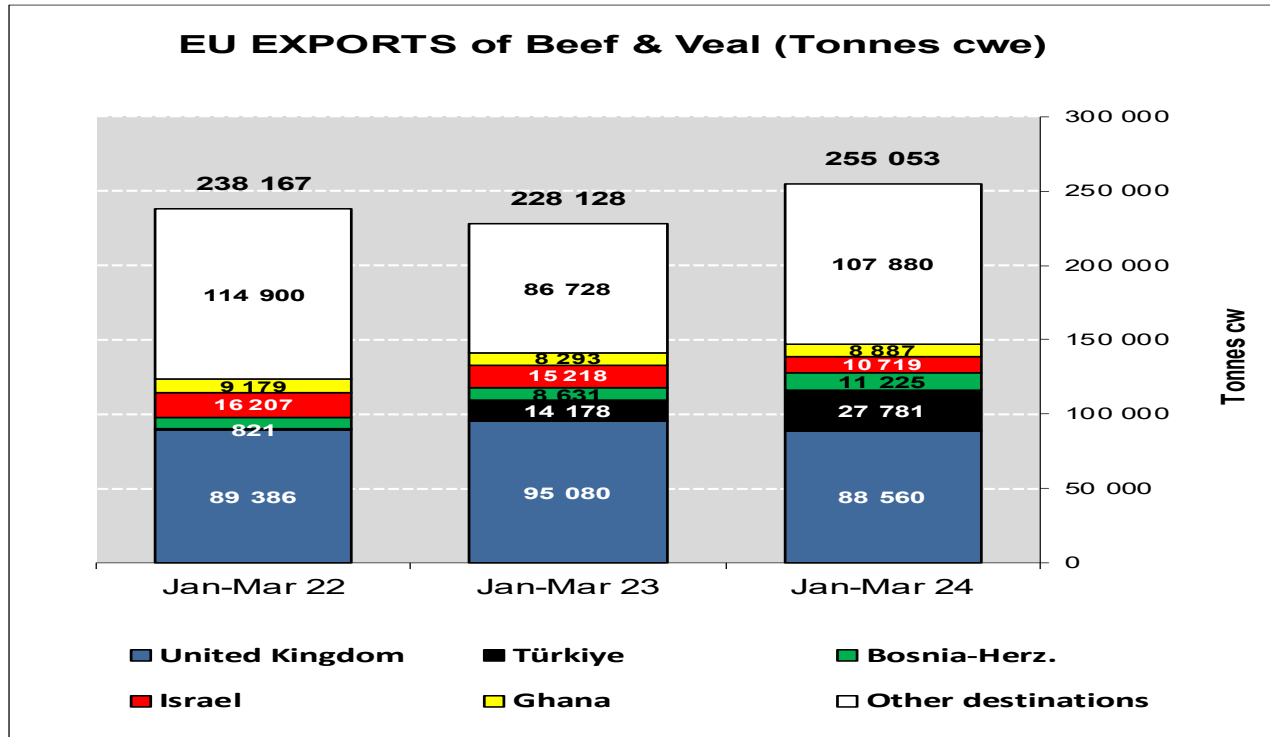
Destinations	2020		2021		2022		2023		Jan-Mar 24		Compared to Jan-Mar 23
	tonnes	%	tonnes	%	tonnes	%	tonnes	%	tonnes	%	
United Kingdom	450 514	39.5%	344 633	33.4%	366 332	38.9%	363 470	38.1%	88 560	34.7%	- 6.9%
Türkiye	22 338	2.0%	14 953	1.5%	14 168	1.5%	90 197	9.5%	27 781	10.9%	+ 95.9%
Bosnia-Herz.	34 896	3.1%	40 504	3.9%	38 796	4.1%	45 149	4.7%	11 225	4.4%	+ 30.1%
Israel	56 139	4.9%	66 022	6.4%	63 618	6.7%	45 069	4.7%	10 719	4.2%	- 29.6%
Ghana	47 344	4.2%	47 618	4.6%	32 171	3.4%	33 784	3.5%	8 887	3.5%	+ 7.2%
Algeria	39 396	3.5%	24 111	2.3%	25 459	2.7%	11 124	1.2%	7 815	3.1%	+ 91.2%
Lebanon	33 709	3.0%	19 527	1.9%	21 026	2.2%	21 402	2.2%	7 634	3.0%	+ 143.3%
Ivory Coast	32 433	2.8%	29 187	2.8%	29 882	3.2%	30 114	3.2%	6 987	2.7%	- 0.1%
Kosovo	10 391	0.9%	16 478	1.6%	17 069	1.8%	22 677	2.4%	6 445	2.5%	+ 61.5%
Hong Kong	56 713	5.0%	44 769	4.3%	10 570	1.1%	21 614	2.3%	6 351	2.5%	+ 9.7%
Philippines	33 650	3.0%	34 671	3.4%	29 922	3.2%	18 545	1.9%	5 314	2.1%	+ 71.3%
Switzerland	26 223	2.3%	28 717	2.8%	24 958	2.6%	19 355	2.0%	4 718	1.8%	- 21.6%
Morocco	10 049	0.9%	11 868	1.2%	8 273	0.9%	25 635	2.7%	4 164	1.6%	- 19.0%
Canada	20 450	1.8%	20 670	2.0%	19 928	2.1%	15 985	1.7%	4 006	1.6%	+ 32.7%
Chile	8 664	0.8%	9 915	1.0%	9 159	1.0%	10 195	1.1%	3 737	1.5%	+ 115.1%
Angola	1 737	0.2%	7 600	0.7%	8 070	0.9%	8 390	0.9%	3 065	1.2%	+ 102.7%
Other Destinations	254 804	22.4%	269 734	26.2%	223 095	23.7%	170 555	17.9%	47 644	18.7%	
Total	1 139 450		1 030 978		942 496		953 259		255 053		
% change			- 10%		- 9%		+ 1%		+ 11.8%		

TRADE

EU Exports of Beef and Live Animals:
(Excl Fats) Trade figures (COMEXT)

EU EXPORTS

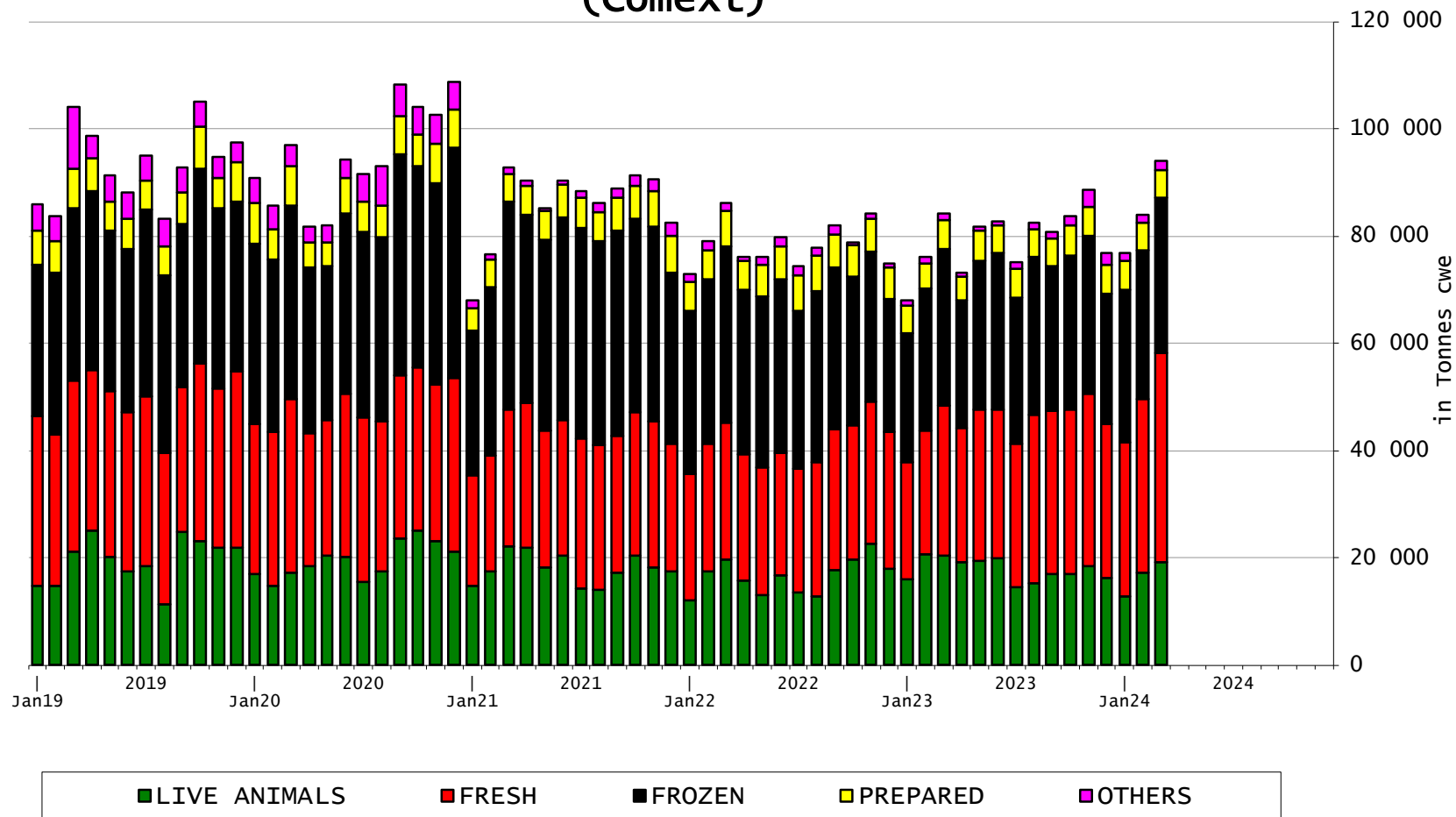
Beef & Live Animals (Excl Fats)



TRADE

EU EXPORTS Beef Products

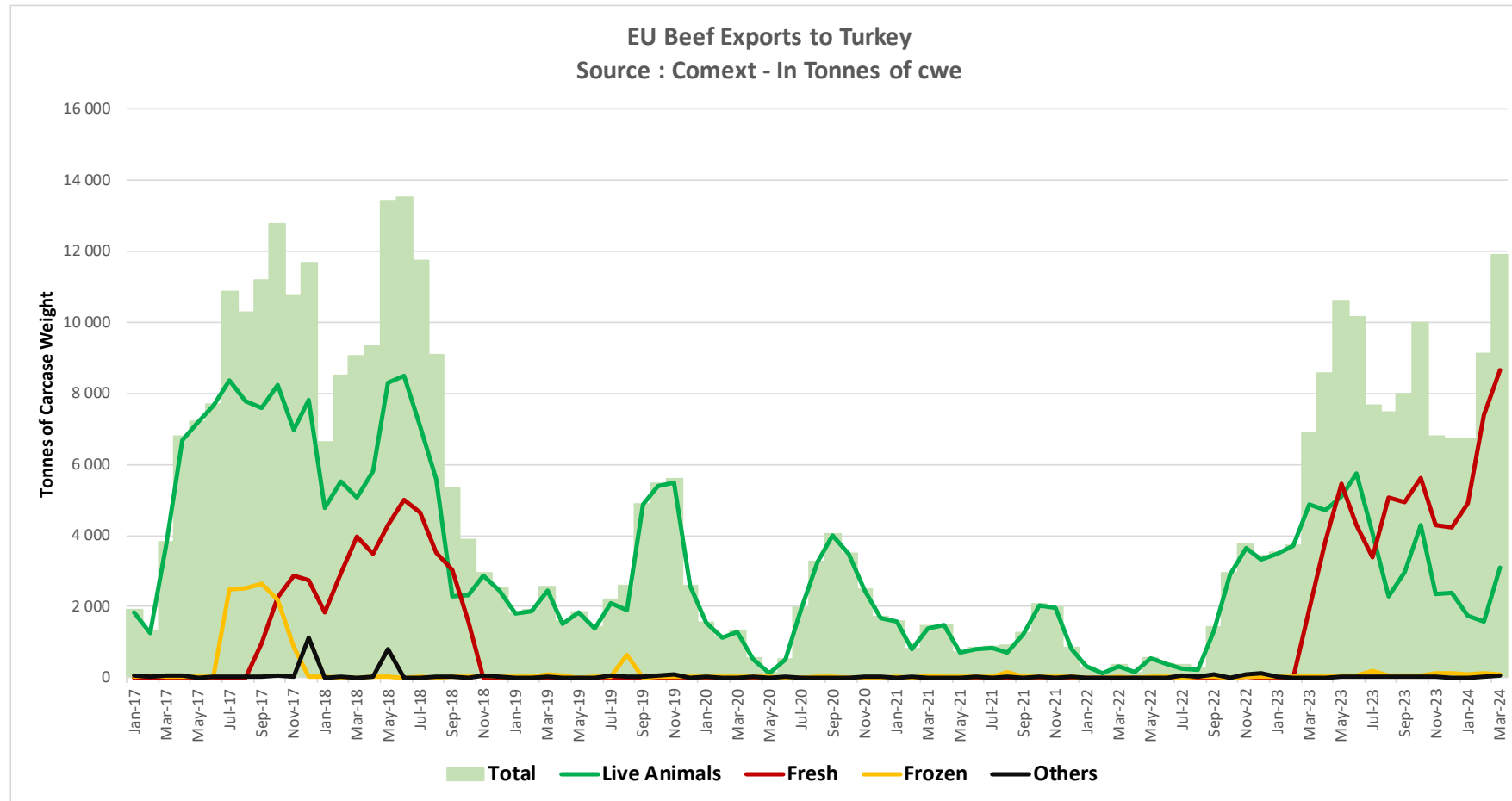
EU Exports of BEEF products (Comext)



TRADE

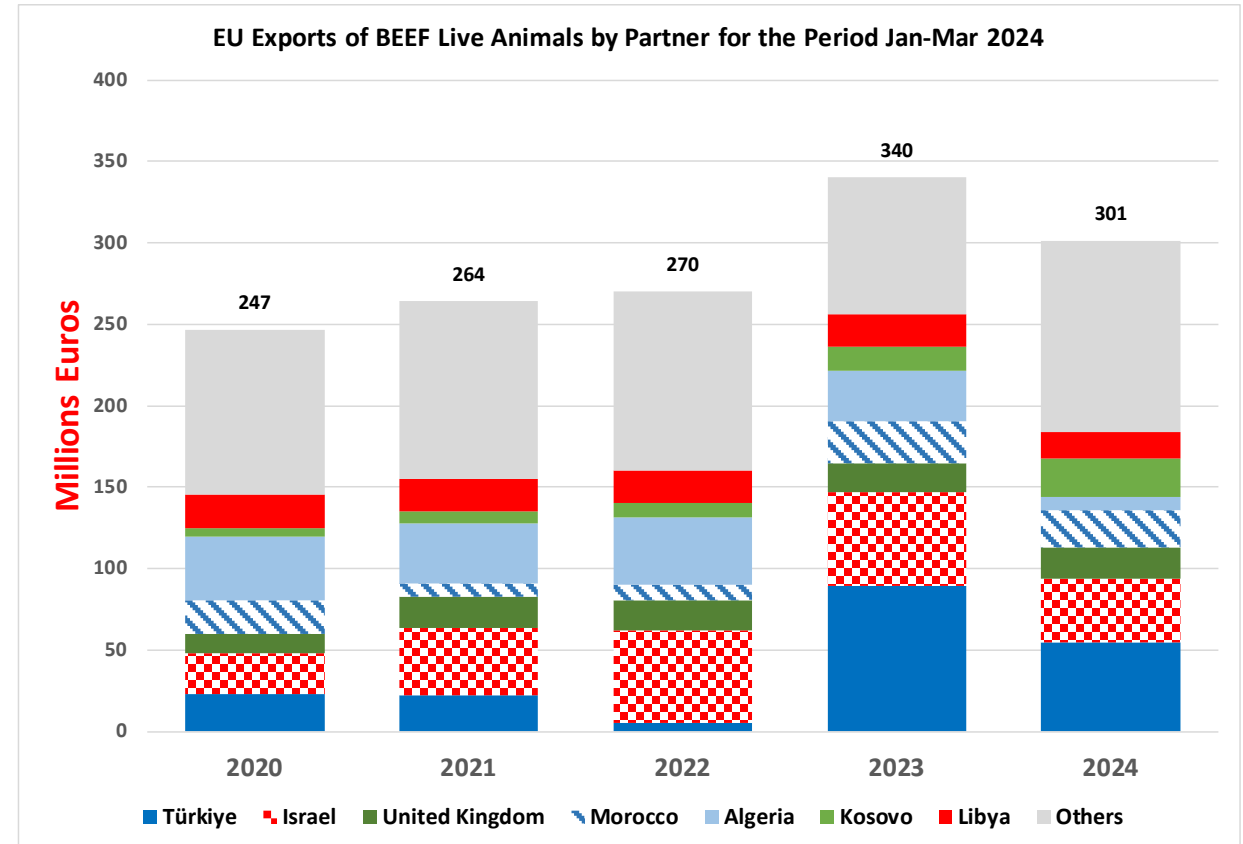
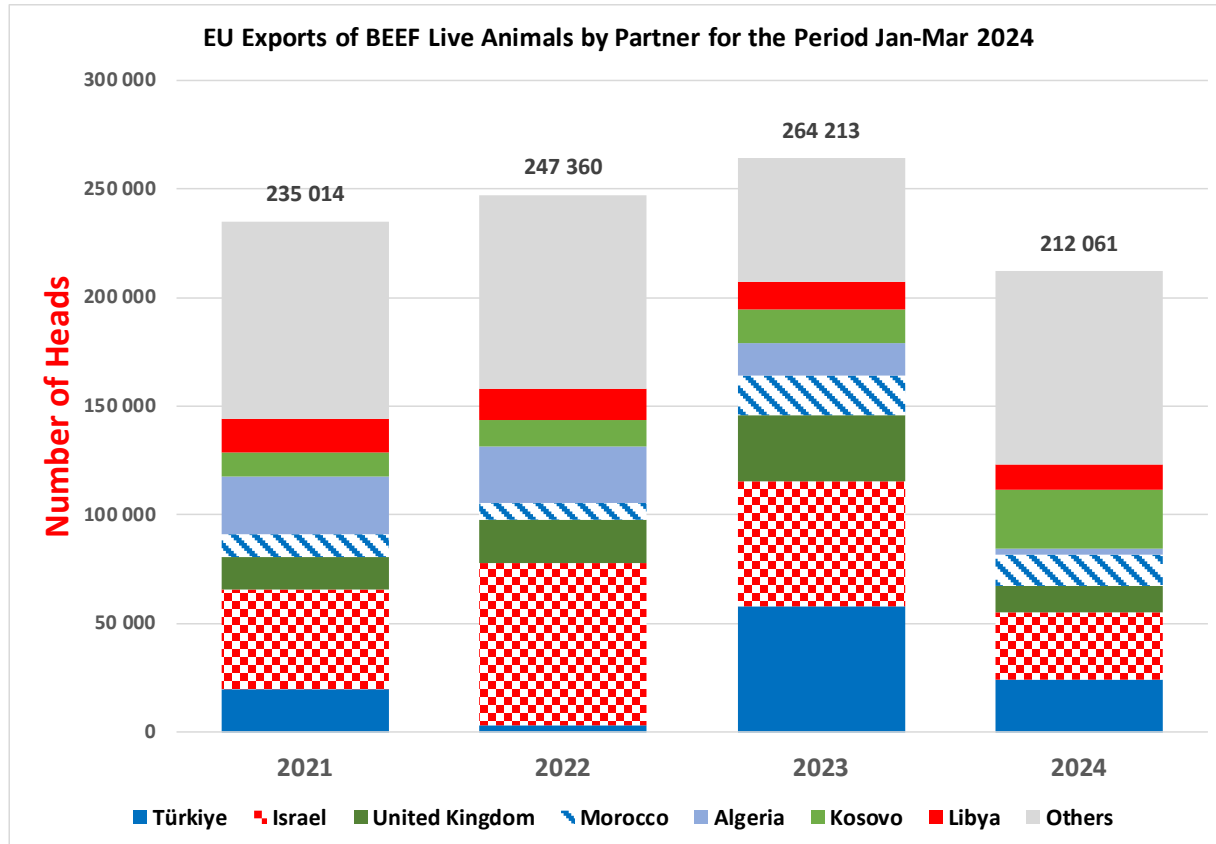
EU EXPORTS Beef to TURKEY

EU Beef Exports to TURKEY
Trade figures (COMEXT data) *tonnes cwe*



TRADE

EU EXPORTS Live Animals



TRADE

EU IMPORTS Beef & Live Animals

EU Imports of Beef and Live Animals (Excl Fats): Trade Figures (COMEXT – tonnes cwe)

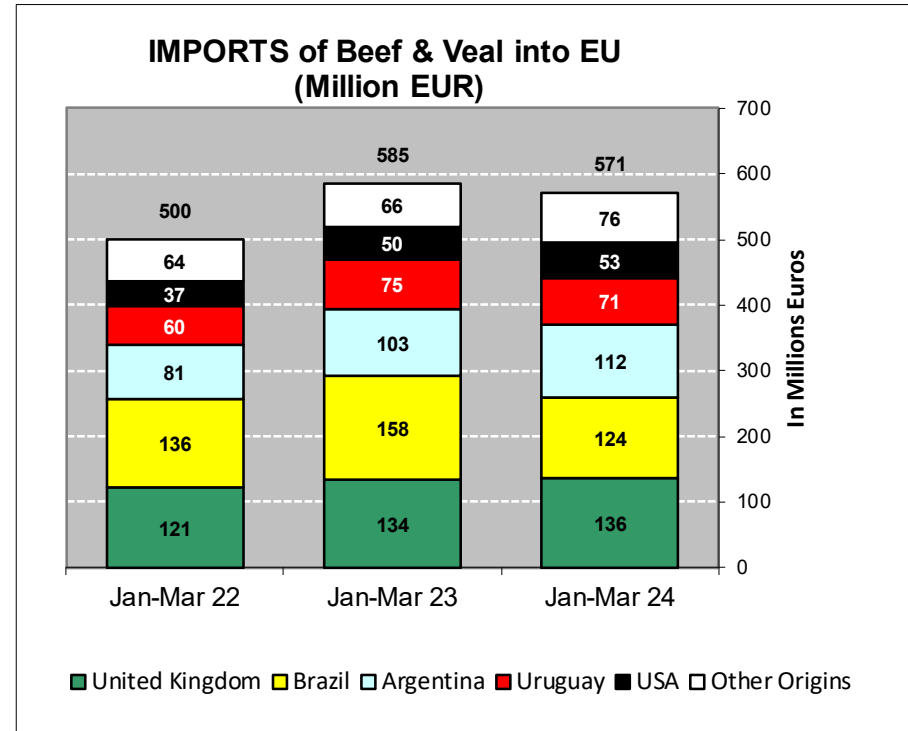
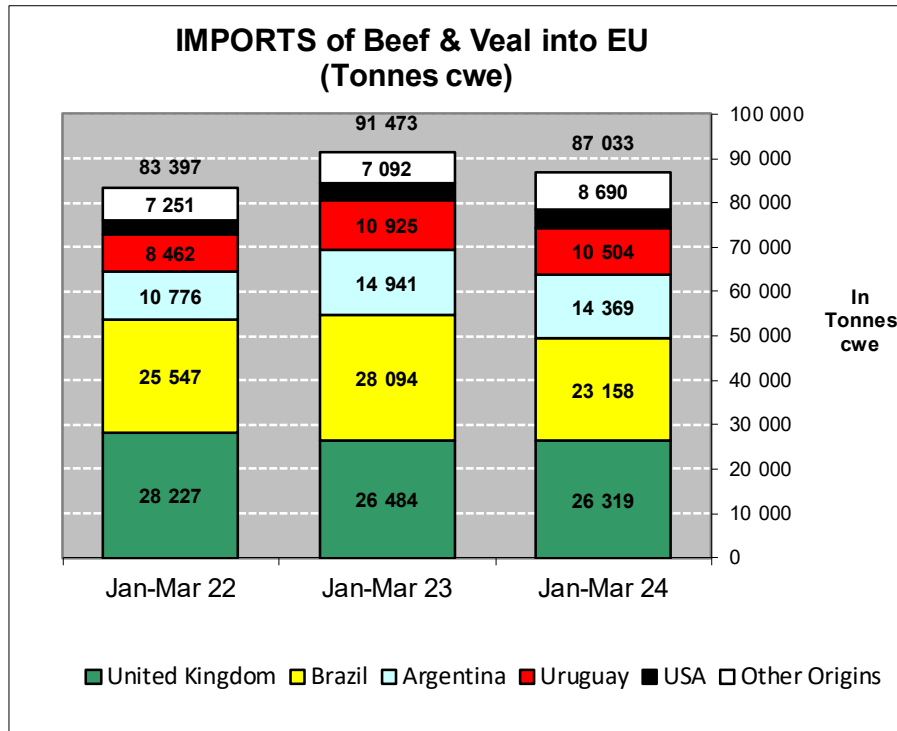
Origins	2020		2021		2022		2023		Jan-Mar 24		Compared to Jan-Mar 23
	tonnes	%	tonnes	%	tonnes	%	tonnes	%	tonnes	%	
United Kingdom	120 743	35.1%	87 596	28.3%	118 767	33.0%	106 945	30.5%	26 319	30.2%	- 0.6%
Brazil	84 139	24.4%	81 737	26.4%	86 512	24.0%	86 831	24.7%	23 158	26.6%	- 17.6%
Argentina	56 421	16.4%	52 300	16.9%	62 584	17.4%	63 079	18.0%	14 369	16.5%	- 3.8%
Uruguay	34 611	10.0%	42 669	13.8%	37 619	10.5%	41 565	11.8%	10 504	12.1%	- 3.9%
USA	16 532	4.8%	14 910	4.8%	17 269	4.8%	18 281	5.2%	3 992	4.6%	+ 1.4%
Namibia	1 445	0.4%	1 996	0.6%	5 168	1.4%	7 577	2.2%	1 800	2.1%	+ 27.7%
Australia	11 058	3.2%	8 925	2.9%	8 385	2.3%	7 727	2.2%	1 536	1.8%	+ 17.1%
Paraguay	4 234	1.2%	3 933	1.3%	5 404	1.5%	4 768	1.4%	1 423	1.6%	+ 5.4%
New Zealand	6 116	1.8%	4 380	1.4%	5 202	1.4%	4 518	1.3%	1 152	1.3%	+ 21.9%
Switzerland	4 187	1.2%	4 714	1.5%	4 730	1.3%	3 627	1.0%	960	1.1%	+ 5.1%
Botswana	788	0.2%	331	0.1%	928	0.3%	1 610	0.5%	924	1.1%	+++
Canada	1 550	0.5%	1 816	0.6%	2 172	0.6%	1 468	0.4%	329	0.4%	- 21.3%
Japan	789	0.2%	1 478	0.5%	2 143	0.6%	834	0.2%	189	0.2%	+ 38.0%
Serbia	931	0.3%	963	0.3%	1 058	0.3%	812	0.2%	136	0.2%	- 49.9%
Norway	335	0.1%	571	0.2%	704	0.2%	670	0.2%	135	0.2%	- 5.9%
Chile	168	0.0%	238	0.1%	378	0.1%	365	0.1%	46	0.1%	- 48.5%
<i>Other Destinations</i>	357	0.1%	710	0.2%	961	0.3%	352	0.1%	61	0.1%	
Total	344 403		309 267		359 985		351 030		87 033		
% change			- 10%		+ 16%		- 2%		- 4.9%		

TRADE

EU Imports of Beef and Live Animals (Excl Fats):
Trade Figures (COMEXT)

EU IMPORTS

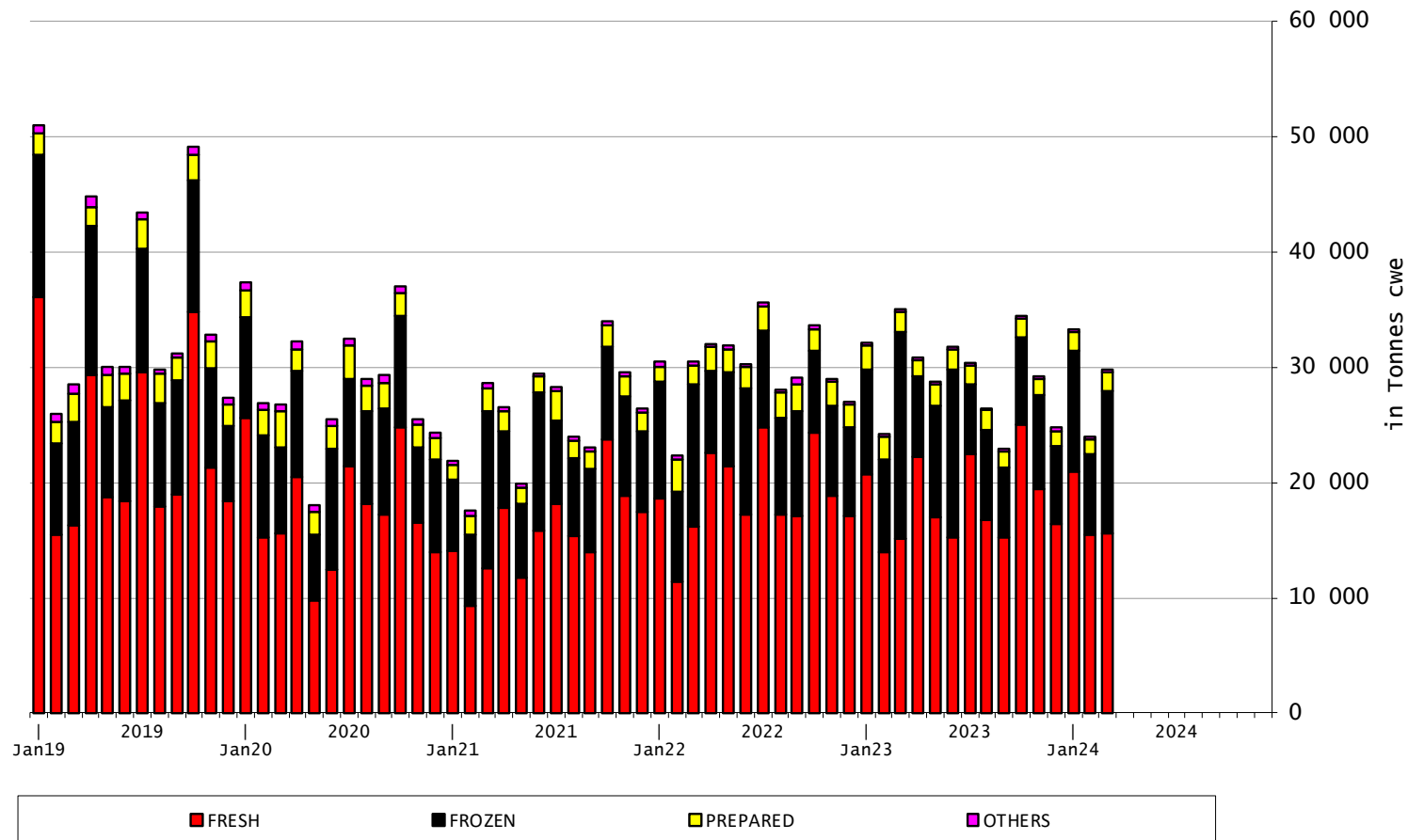
Beef & Live Animals (Excl Fats)



TRADE

EU IMPORTS Beef Products

EU Imports of BEEF products



20 June 2024

EU TRADE with UK

EU EXPORTS Beef Products

EU Export of BEEF (excluding fats) to UK by Products from Jan to Mar

In Tons of Carcase Weight

	2022			2023			2024			% 2024/2023	
	United Kingdom	Extra-EU	%	United Kingdom	Extra-EU	%	United Kingdom	Extra-EU	%	United Kingdom	Extra-EU
Live Animals	3 288	49 330	6.7%	6 797	57 132	11.9%	4 799	49 395	9.7%	-29.4%	-13.5%
Meats	86 098	188 837	45.6%	88 284	170 996	51.6%	83 761	205 658	40.7%	-5.1%	+20.3%
Fresh	46 808	70 429	66.5%	48 174	70 057	68.8%	48 410	97 764	49.5%	+0.5%	+39.5%
Frozen	23 825	57 855	41.2%	25 417	45 710	55.6%	21 436	46 494	46.1%	-15.7%	+1.7%
Salted Meat	102	650	15.7%	98	660	14.8%	95	528	18.0%	-2.5%	-20.0%
Prepared	10 451	17 194	60.8%	9 966	14 957	66.6%	8 916	15 531	57.4%	-10.5%	+3.8%
Fresh Offals	1 924	2 609	73.7%	1 718	2 676	64.2%	1 402	2 286	61.3%	-18.4%	-14.6%
Frozen Offals	2 824	35 975	7.8%	2 774	34 328	8.1%	3 415	38 548	8.9%	+23.1%	+12.3%
Salted Offals	64	3 970	1.6%	51	2 489	2.1%	37	4 421	0.8%	-28.3%	+77.6%
Prepared Offal	100	154	64.9%	87	118	73.8%	51	85	59.7%	-41.8%	-27.9%
Total Beef	89 386	238 167	37.5%	95 080	228 128	41.7%	88 560	255 053	34.7%	-6.9%	+11.8%

Source : Comext

20 June 2024

EU TRADE with UK

EU IMPORTS Beef Products

EU Import of BEEF (excluding fats) from UK by Products from Jan to Mar

In Tons of Carcase Weight

	2022			2023			2024			% 2024/2023	
	United Kingdom	Extra-EU	%	United Kingdom	Extra-EU	%	United Kingdom	Extra-EU	%	United Kingdom	Extra-EU
Live Animals	202	210	96.6%	18	56	33.1%	24	29	81.1%	+28.5%	-47.6%
Meats	28 024	83 187	33.7%	26 465	91 417	28.9%	26 296	87 004	30.2%	-0.6%	-4.8%
Fresh	18 834	44 791	42.0%	16 976	48 261	35.2%	18 349	50 393	36.4%	+8.1%	+4.4%
Frozen	5 216	29 056	18.0%	5 363	34 043	15.8%	4 271	28 651	14.9%	-20.4%	-15.8%
Salted Meat	39	848	4.6%	104	687	15.1%	67	704	9.5%	-36.0%	+2.5%
Prepared	2 083	5 903	35.3%	1 893	5 725	33.1%	1 604	4 544	35.3%	-15.3%	-20.6%
Fresh Offals	1 144	1 440	79.4%	1 267	1 580	80.2%	1 262	1 558	81.0%	-0.4%	-1.4%
Frozen Offals	696	1 099	63.3%	853	1 103	77.4%	736	1 140	64.5%	-13.8%	+3.4%
Salted Offals	8	13	60.0%	7	12	60.5%	7	12	59.8%	-1.6%	-0.4%
Prepared Offal	4	37	11.3%	1	5	15.2%	1	2	37.6%	-7.3%	-62.5%
Total Beef	28 227	83 397	33.8%	26 484	91 473	29.0%	26 319	87 033	30.2%	-0.6%	-4.9%

Source : Estat - Comext

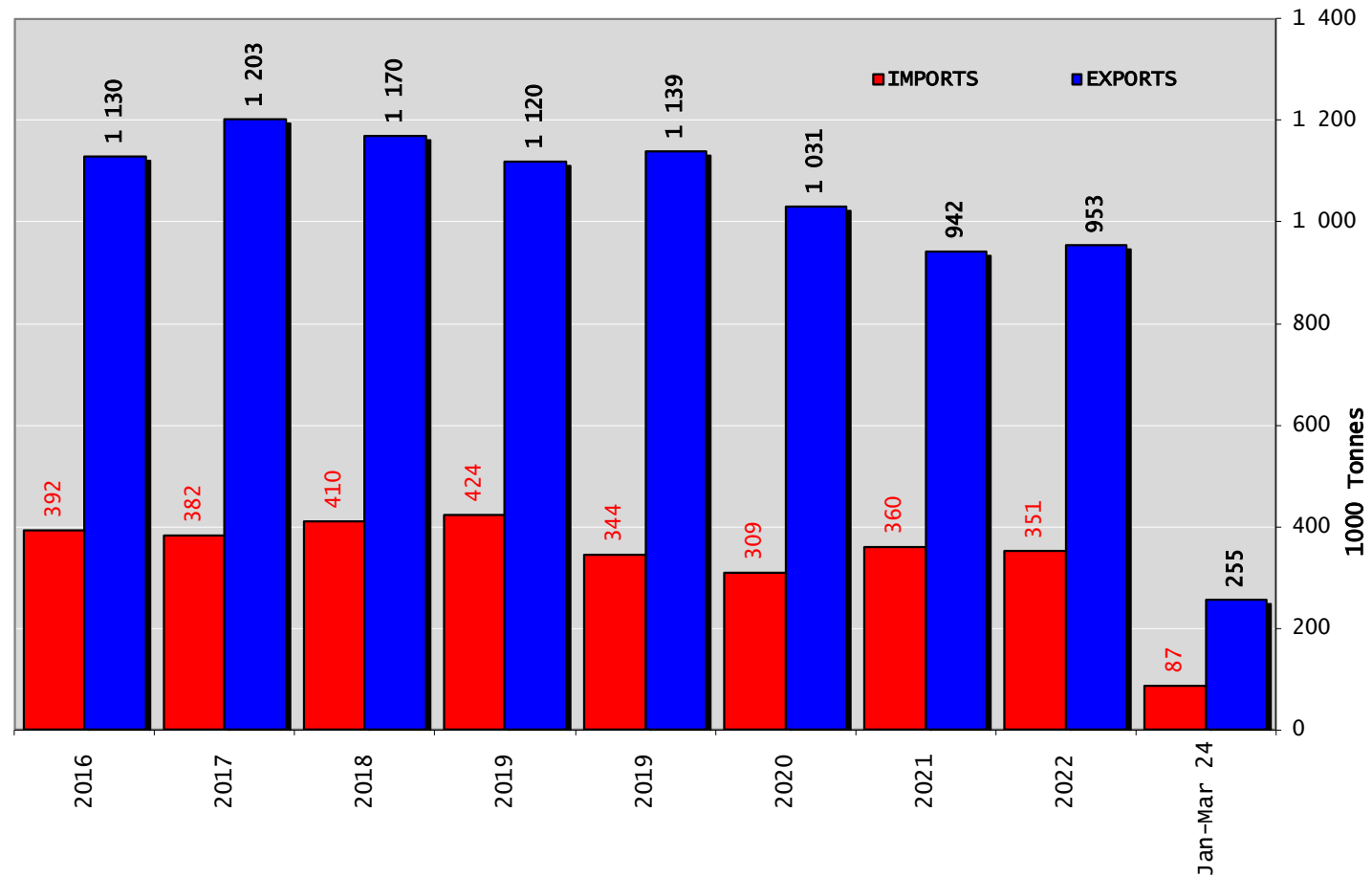
20 June 2024

TRADE

EUTRADE BALANCE

Beef & Live Animals

Trade Balance of Beef Products and Live Animals

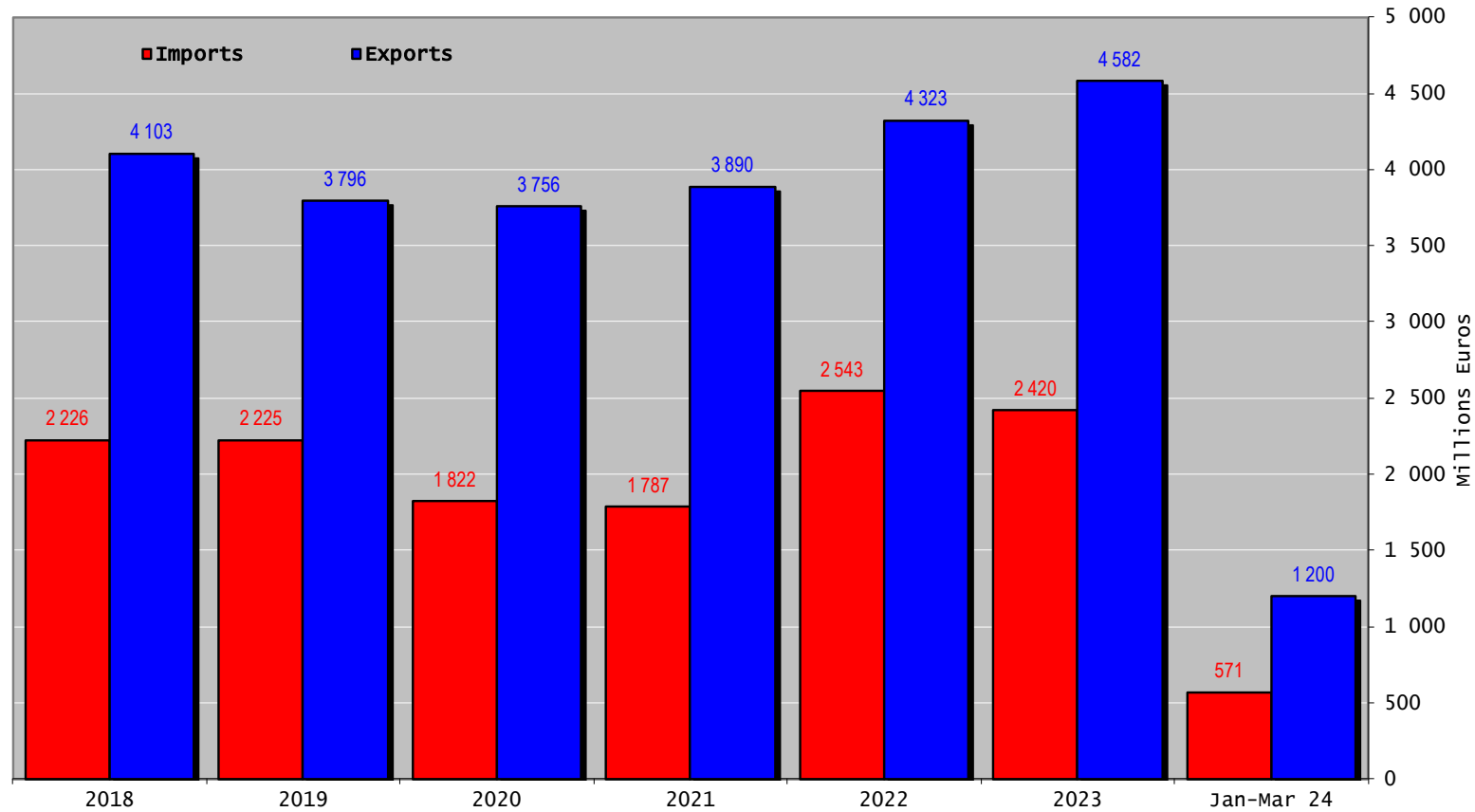


TRADE

EU TRADE BALANCE

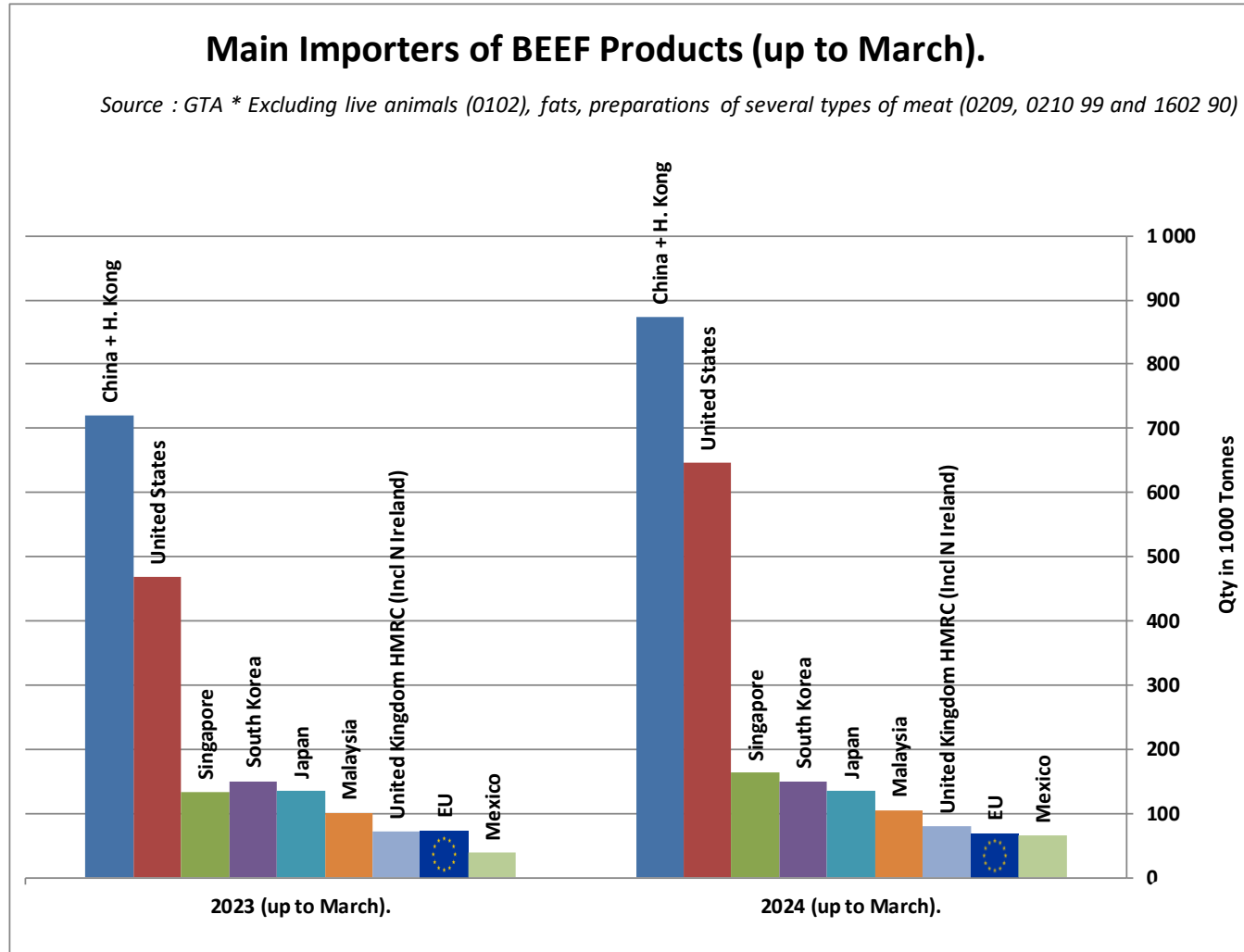
Beef & Live Animals

Trade Balance of Beef Products and Live Animals



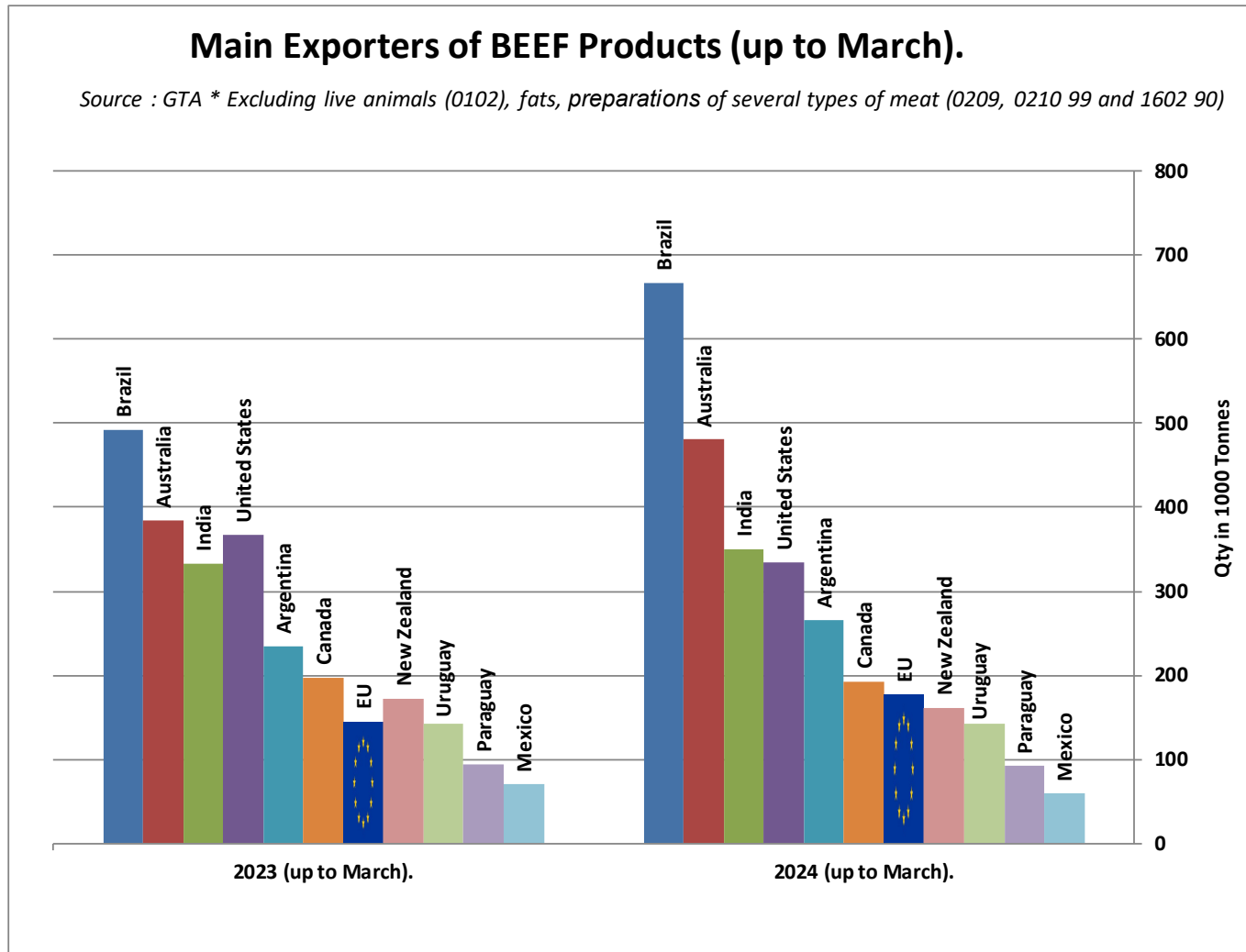
WORLD BEEF MARKET

BEEF MAIN IMPORTERS



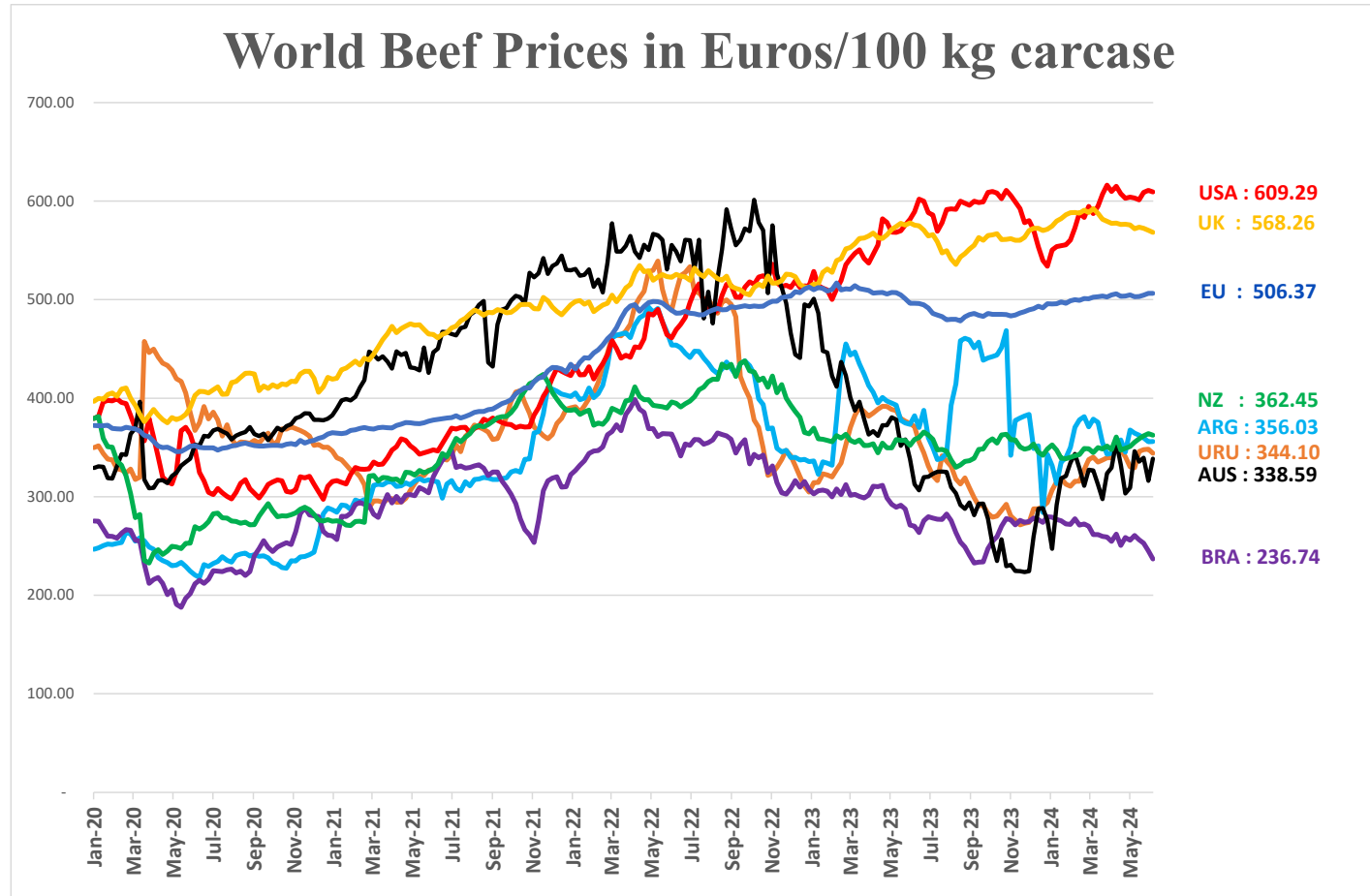
WORLD BEEF MARKET

BEEF MAIN EXPORTERS



WORLD BEEF MARKET

STEER PRICES EU, US, AUS, NZ



USA, AUS, URU, ARG, NZ, BRA [World Beef Report](#)
GB <https://ahdb.org.uk/beef/gb-deadweight-cattle-prices-by-region>
EU [Member States Communication](#)

20 June 2024

THANK YOU VERY MUCH

More Information at:

EU Market Observatory

https://ec.europa.eu/agriculture/market-observatory/meat_en

And

Agri-FOOD data portal:

<http://agridata.ec.europa.eu/>

Thank you



© European Union 2020

Unless otherwise noted the reuse of this presentation is authorised under the [CC BY 4.0](https://creativecommons.org/licenses/by/4.0/) license. For any use or reproduction of elements that are not owned by the EU, permission may need to be sought directly from the respective right holders.

Slide xx: [element concerned](#), source: [e.g. Fotolia.com](#); Slide xx: [element concerned](#), source: [e.g. iStock.com](#)

