



# BEEF & VEAL MARKET SITUATION



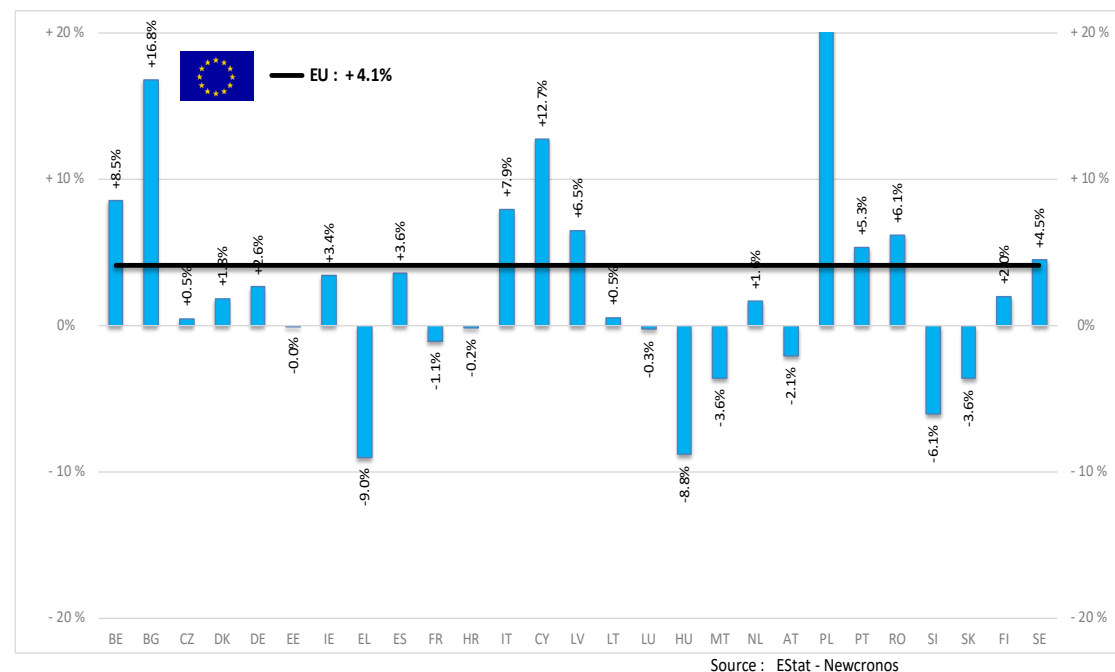
GREX 29 August 2024

# PRODUCTION

# % EVOLUTION HEADS

HEADS	Jan-May 24/23
<b>EU</b>	<b>+4.1%</b>
Bull	+6.0%
Bullock	+4.3%
Cow	+4.0%
Heifer	+7.8%
Calve	+1.8%
Young cattle	-5.7%
Meat of bovine animals	+4.1%

Estimates for last month of period : BG

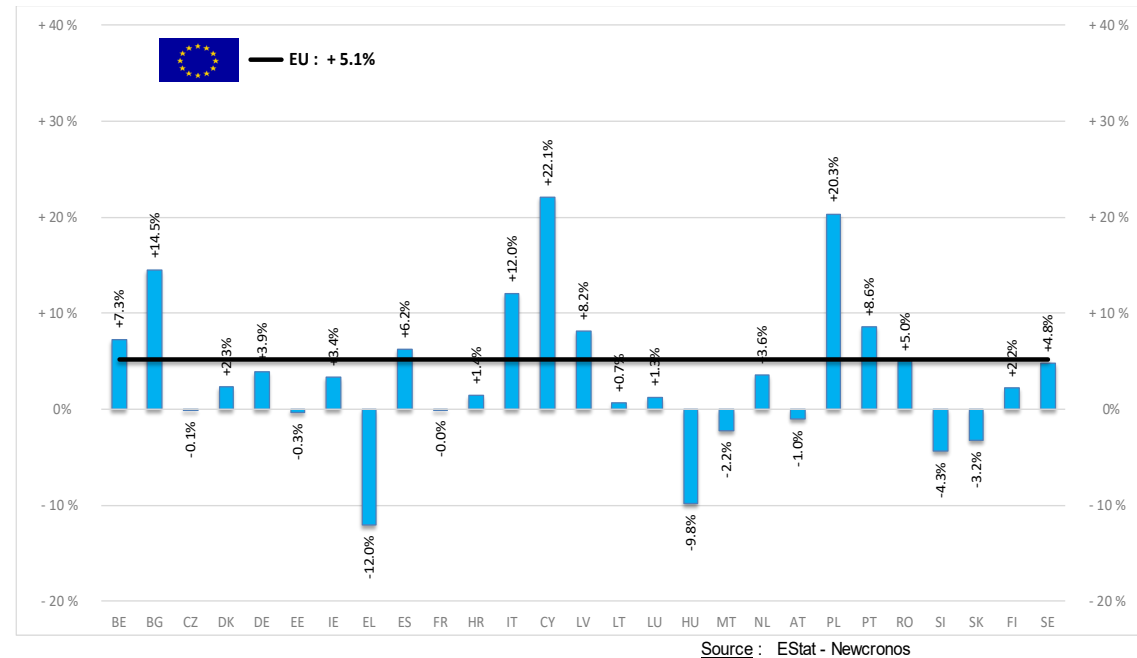


# PRODUCTION

# % EVOLUTION TONNES

TONNES	Jan-May 24/23
	<b>EU</b>
Bull	+6.0%
Bullock	+3.5%
Cow	+4.8%
Heifer	+8.3%
Calve	+3.3%
Young cattle	-4.4%
Meat of bovine animals	+5.1%

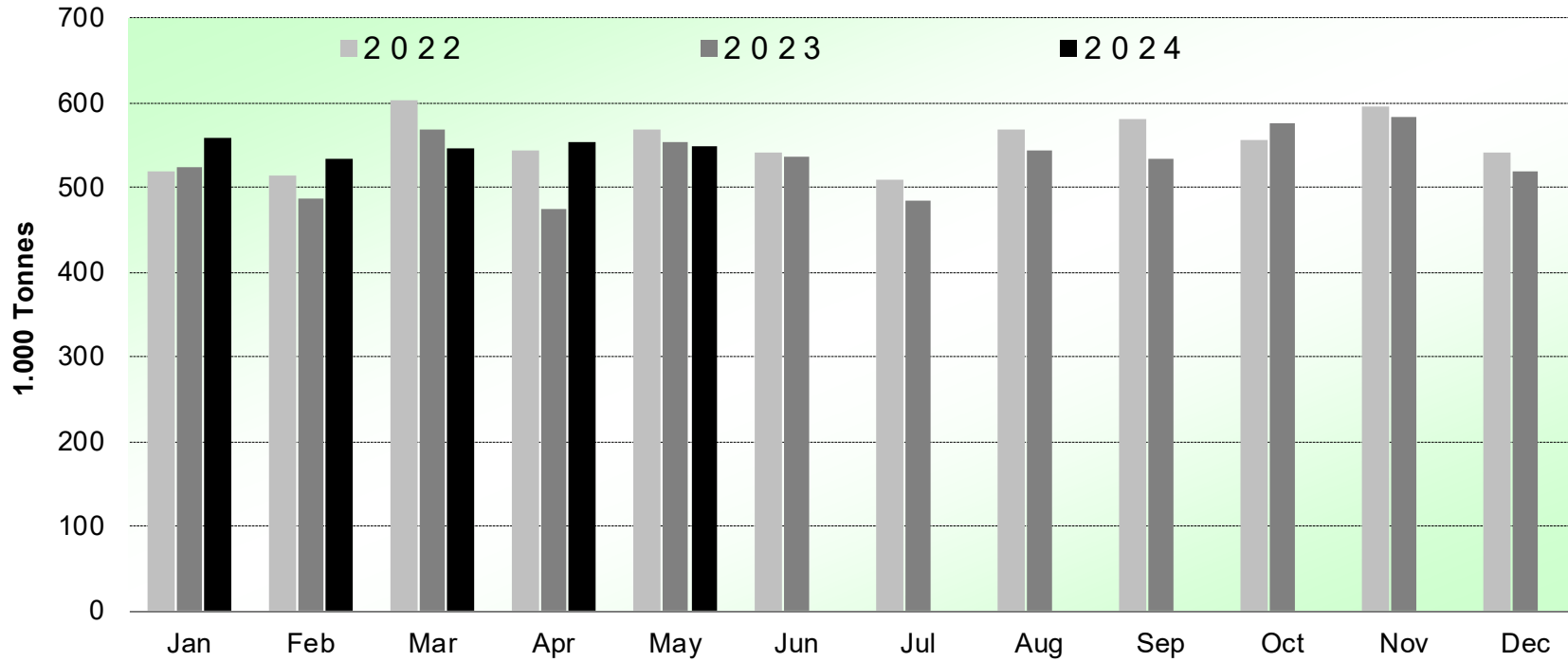
Estimates for last month of period : BG



# PRODUCTION

# HISTORIC TONNES

## Beef & Veal Production (EU Slaughtering) - Tonnes



Source : EStat-Newcronos

# PRICES CARCASSES

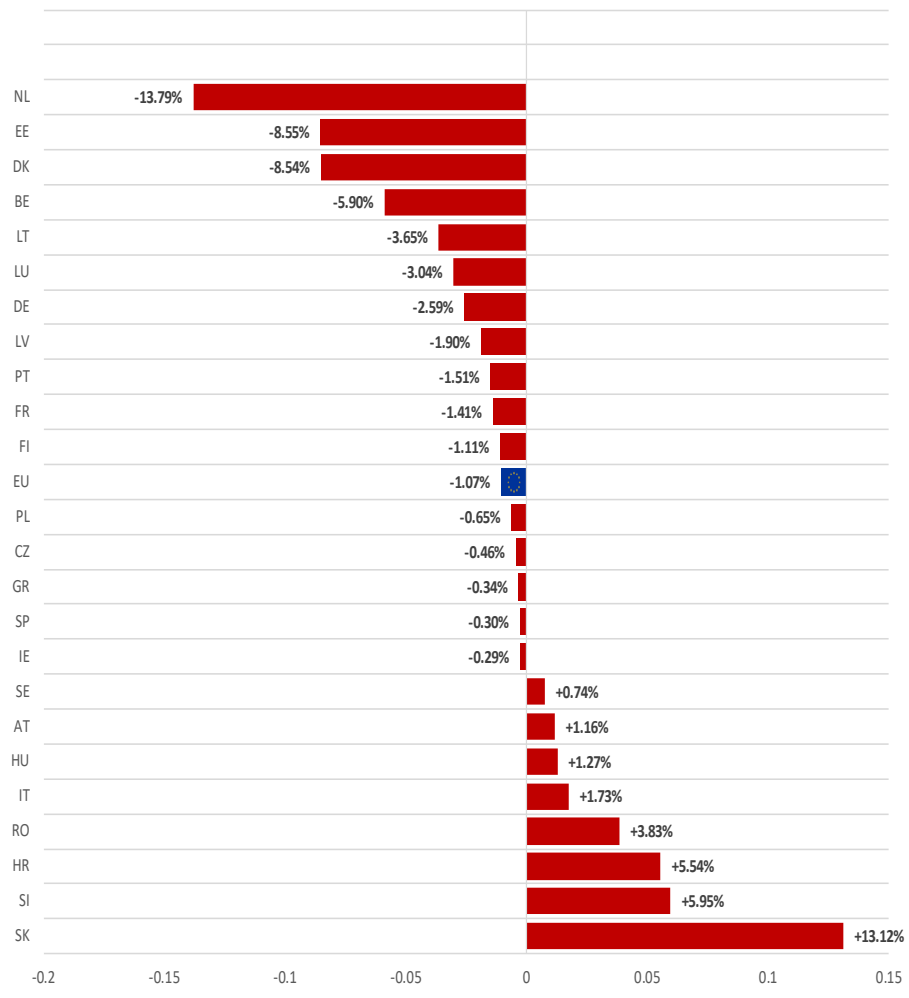
Dashboard

EU Prices week		33	Evolution since last week	Evolution since last month	Evolution since last year
Carcasse	Average A/C/Z -R3	505.6	+ 0.8%	+ 0.8%	+ 5.7%
	Young Bovines (Z)	506.9	+ 0.5%	- 0.5%	+ 2.0%
	Young Bulls (A)	503.3	+ 1.0%	+ 1.4%	+ 6.4%
	Steers (C)	516.3	+ 0.3%	- 0.4%	+ 7.3%
	Cows (D)	434.3	+ 0.3%	+ 0.7%	+ 5.9%
	Heifers (E)	517.5	+ 0.3%	- 0.6%	+ 3.7%
	Calves slaughtered <8M	617.7	+ 0.7%	+ 1.8%	+ 3.5%
Live Animals	Male Calves Dairy Type	145.7	- 3.6%	- 7.4%	+ 14.6%
	Male Calves Beef Type	283.8	- 1.2%	- 1.7%	+ 12.1%
	Young Store Cattle	3.53	+ 0.1%	+ 2.2%	+ 9.8%
	Yearling Male Store Cattle	4.18	+ 0.1%	- 0.2%	+ 14.5%
	Yearling Female Store Cattle	3.25	+ 0.3%	+ 1.6%	+ 13.4%

Sources : MSs notifications (Regulation (EU) 1182/2017 and 1184/2017)

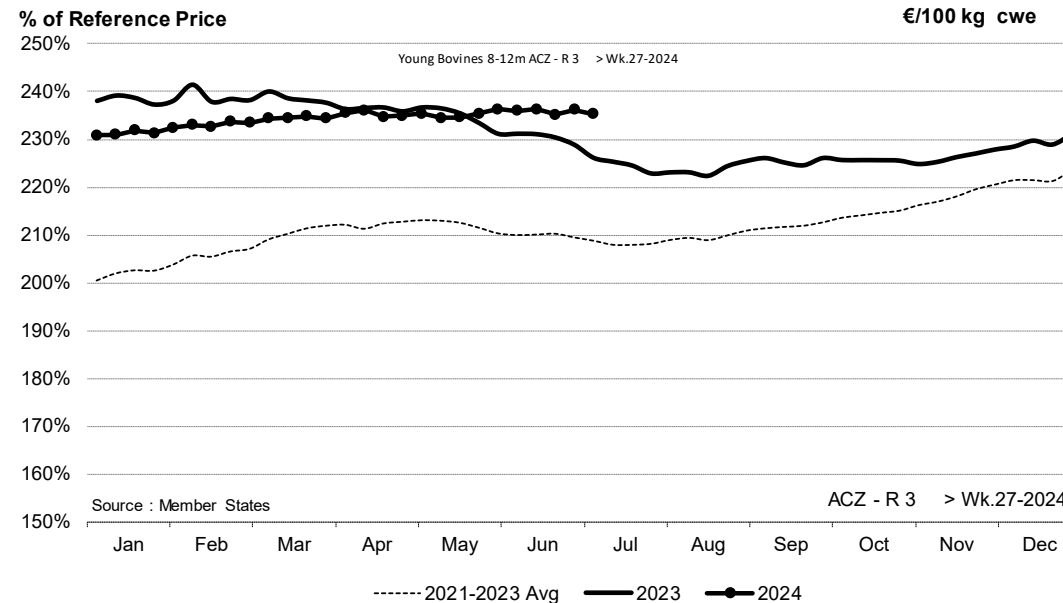
# PRICES CARCASSES

EU ACZ R3 Price Comparison between average monthly price August 2023 - July 2024 compared to August 2022 - July 2023



# EU EVOLUTION A/C/Z . R3

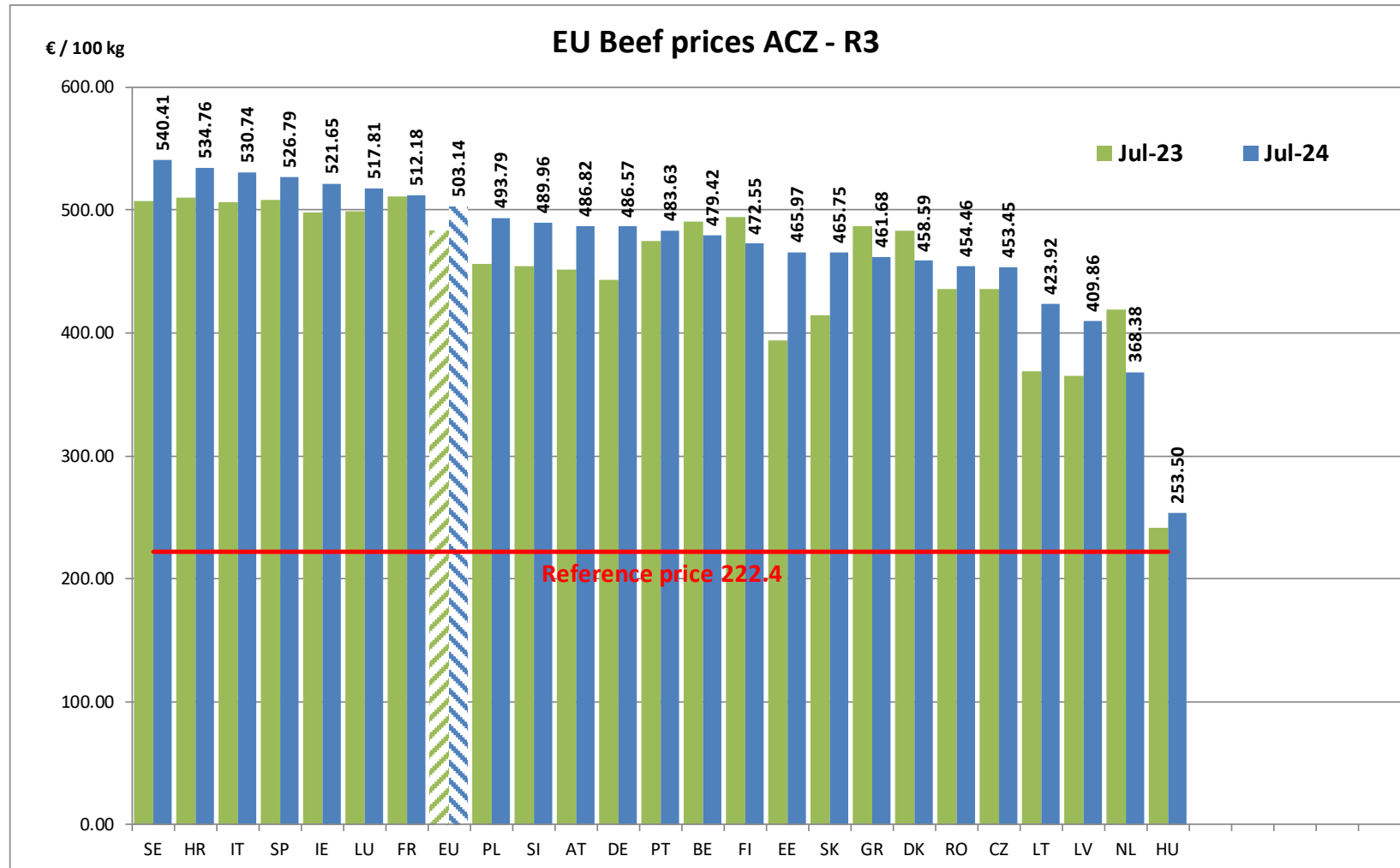
ACZ - R 3 > Wk.27-2024



Price in week 27 :	<b>504.38</b>	Average price in June 2024 :	<b>505.79</b>
% change y/y :	<b>+ 3.78%</b>	% change y/y :	<b>+ 2.17%</b>
% Ref. Price in wk 0 :	<b>218.5%</b>		

# PRICES CARCASSES

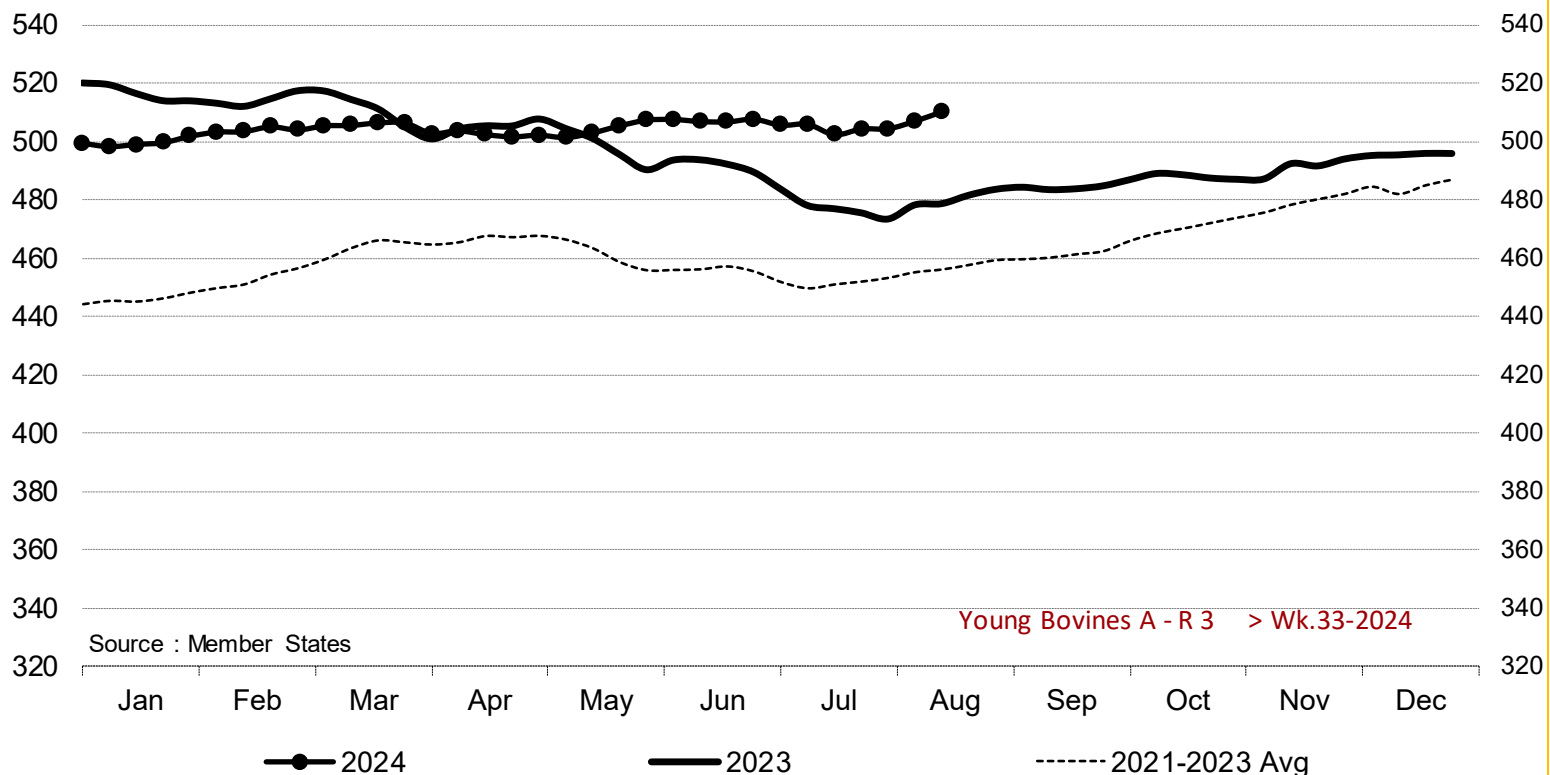
## EU EVOLUTION A/C/Z.R3



# PRICES CARCASSES

# EU EVOLUTION YOUNG BULL – A.R3

Young Bovines A - R 3 > Wk.33-2024



Price in week 33 : **510.41**  
% change y/y : **+ 6.6%**

Average price in July 2024 : **504.60**  
% change y/y : **+ 5.3%**

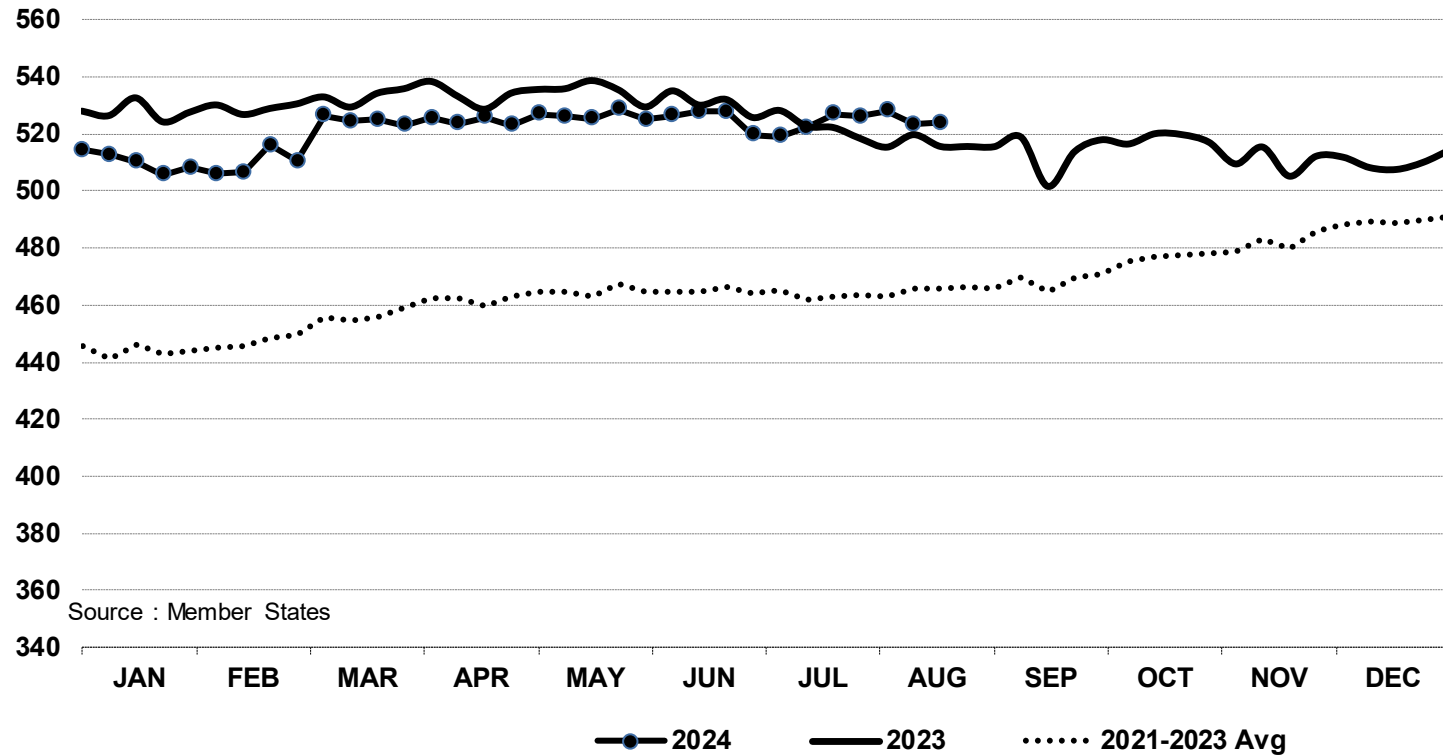


# PRICES CARCASSES

## E.U. EVOLUTION YOUNG BOVINE 8-12M- Z.R3

In € / 100 kg

Young Bovines 8-12m Z - R 3 > Wk.33-2024



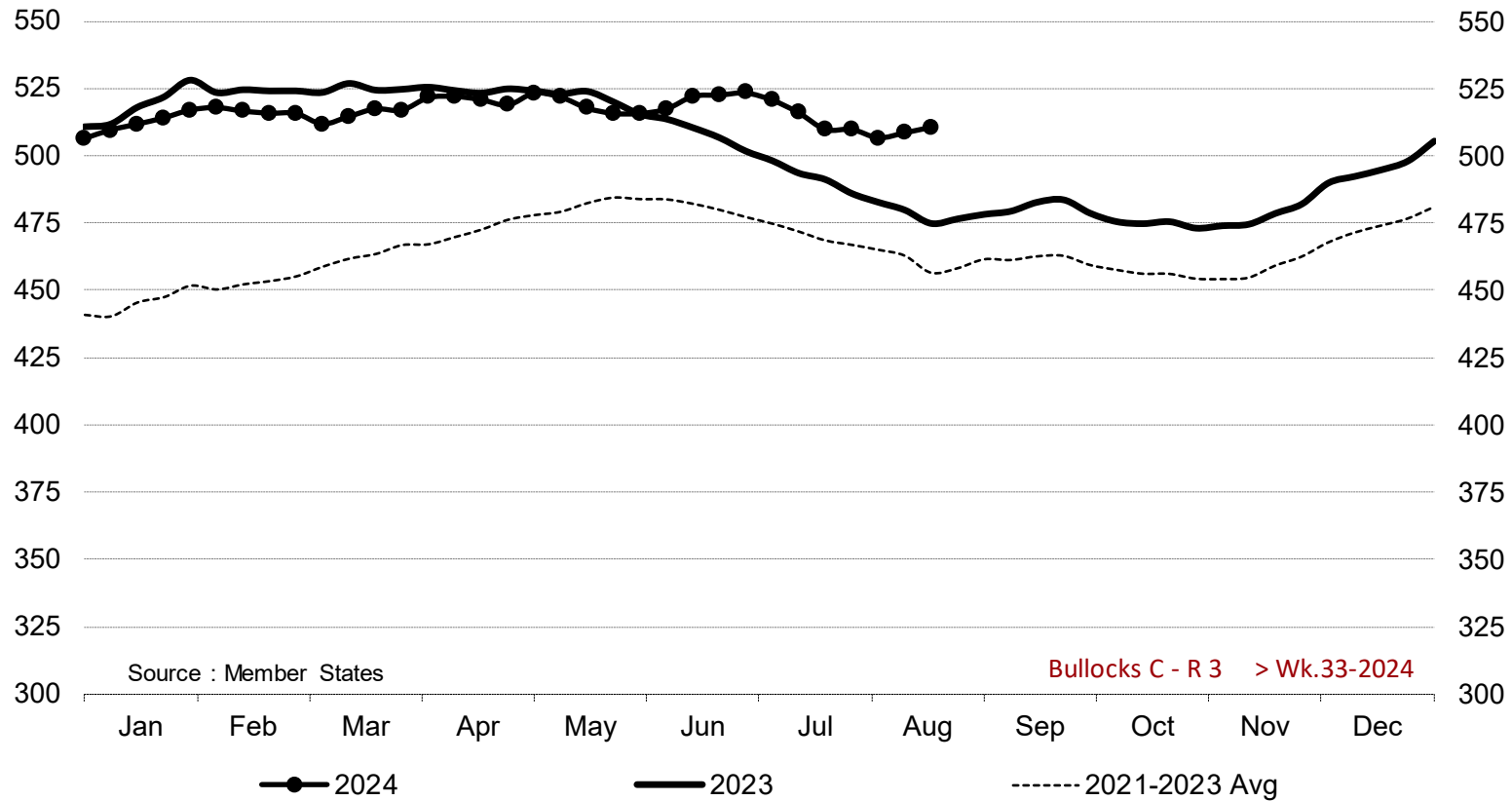
Price in week 33 : **523.87** 18/07/2024  
% change y/y : **+ 1.6%**

Average price in July 2024 : **524.13**  
% change y/y : **+ 0.2%**

# PRICES CARCASSES

## E.U. EVOLUTION STEER – C.R3

Bullocks C - R 3 > Wk.33-2024



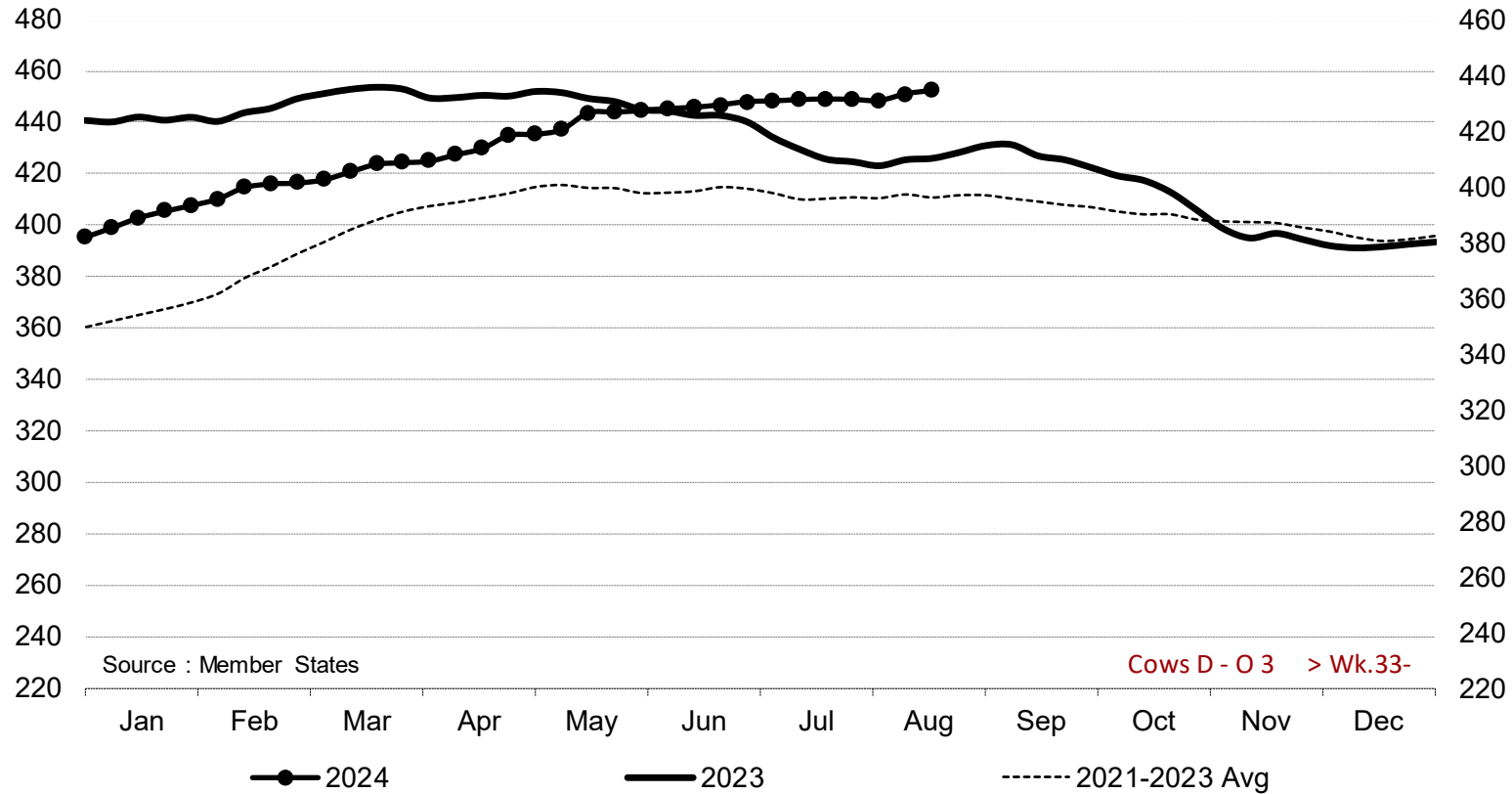
Price in week 33 : **510.57**  
% change y/y : **+ 7.5%**

Average price in July 2024 : **513.29**  
% change y/y : **+ 4.2%**

# PRICES CARCASSES

## E.U. EVOLUTION COW – D.03

Cows D - O 3 > Wk.33-2024



Source : Member States

Cows D - O 3 > Wk.33-

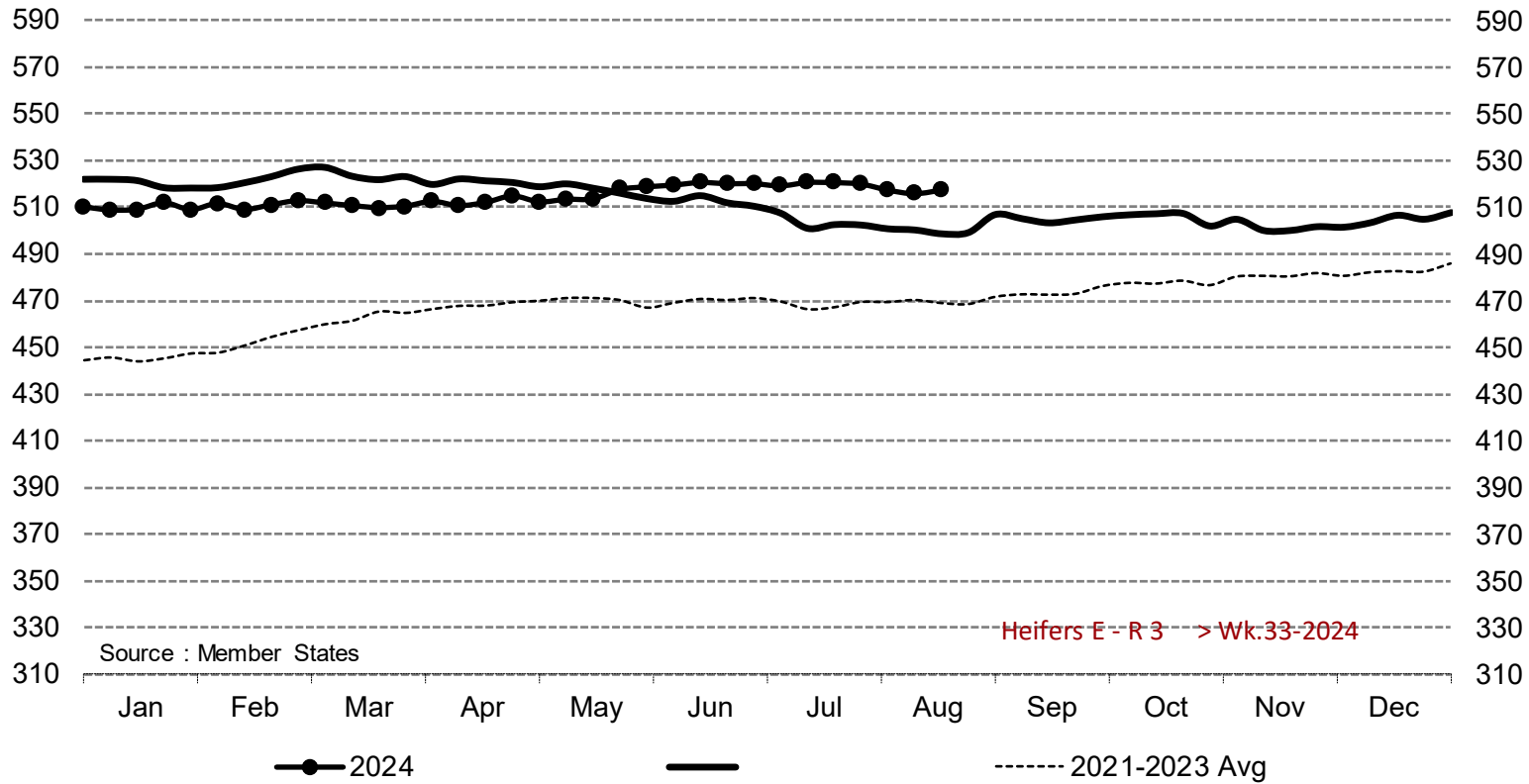
Price in week 33 : **434.35**  
% change y/y : **+ 5.9%**

Average price in July 2024 : **430.99**  
% change y/y : **+ 4.4%**

# PRICES CARCASSES

## EU EVOLUTION HEIFER - E.R3

Heifers E - R 3 > Wk.33-2024

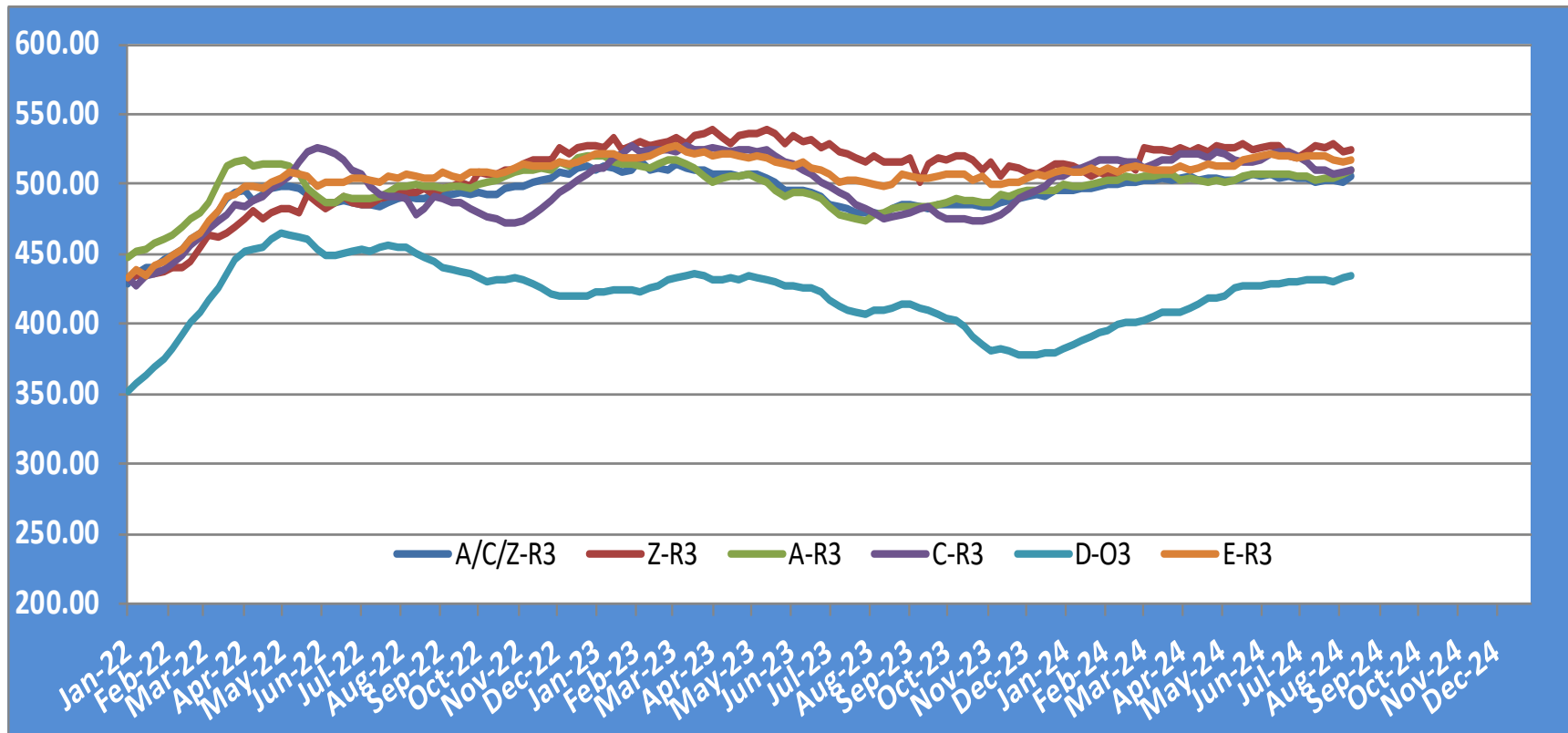


Price in week 33 : **517.54**  
% change y/y : **+ 3.7%**

Average price in July 2024 : **520.06**  
% change y/y : **+ 3.2%**

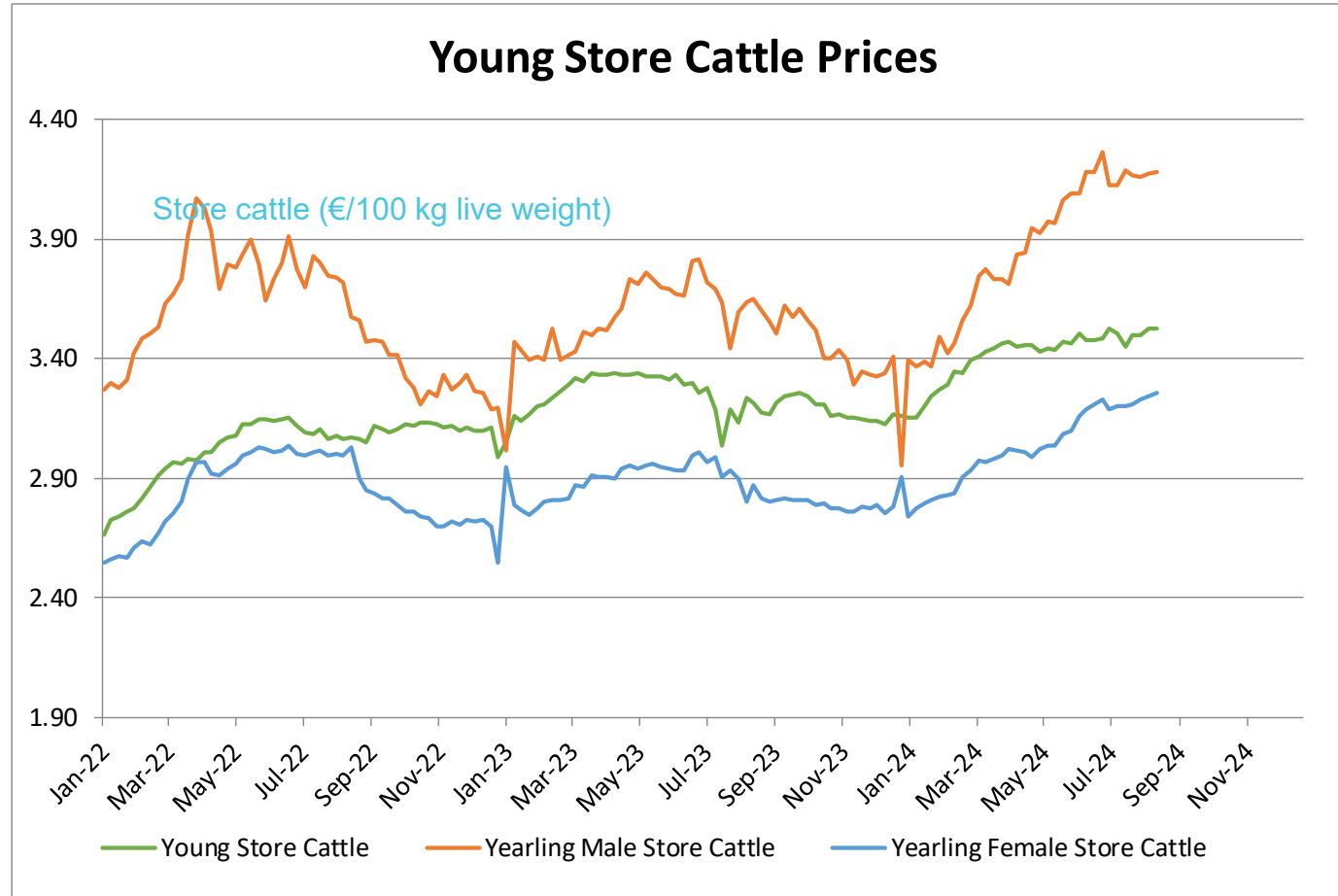
# PRICES CARCASSES

## EU EVOLUTION ALL CAT GLOBAL VIEW



# PRICES LIVE BOVINES

## EU EVOLUTION STORE CATTLE



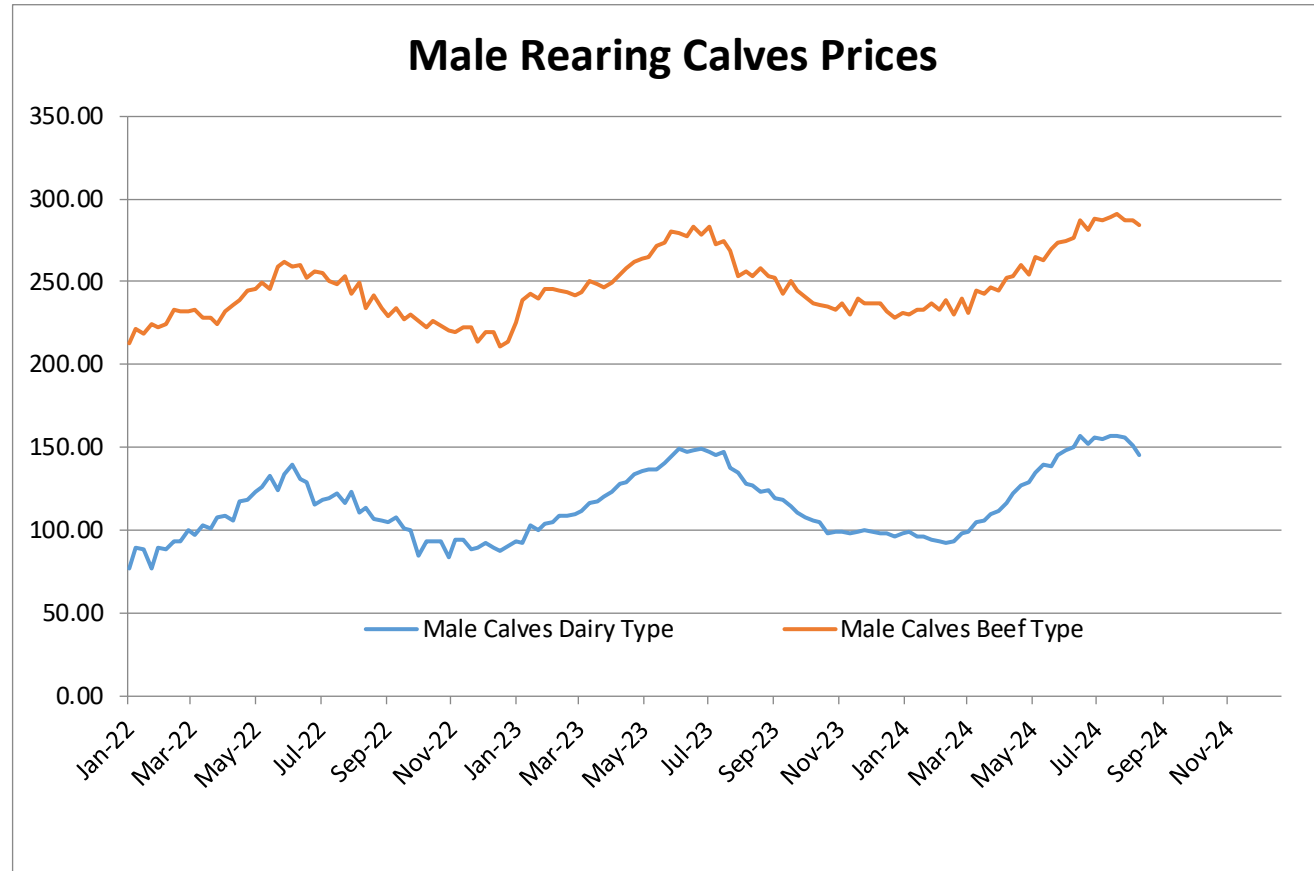
<b>Young Store Cattle Price in</b>	<b>Week 33</b>	<b>3.53</b>	<b>Yearling Male Store Cattle Price</b>	<b>4.18</b>
	Change y/y	+9.8%	Change y/y	+14.5%
<b>Yearling Female Store Cattle Price</b>		<b>3.25</b>		
	Change y/y	+13.4%		

29 August 2024

# PRICES LIVE BOVINES

## EU EVOLUTION Male Calves – 8D4W

Male calves aged between 8 days and 4 weeks (€/head)



**Male Rearing Calves Beef type**

Price in Week 33 **283.84**  
Change y/y +12.1%

**Male Rearing Calves Dairy type**

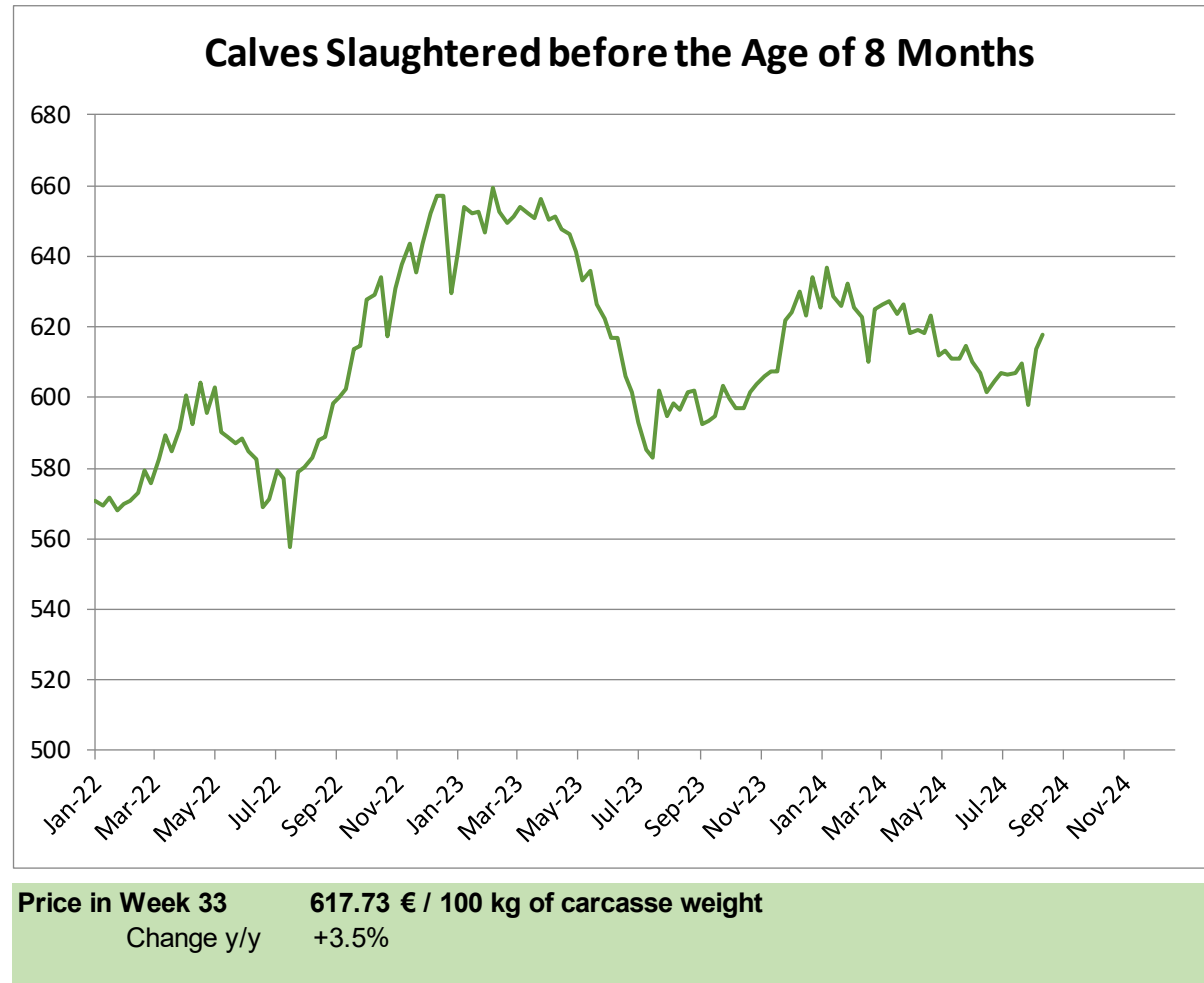
Price in Week 33 **145.73**  
Change y/y +14.6%

29 August 2024

# PRICES LIVE BOVINES

## EU EVOLUTION Butcher Calves

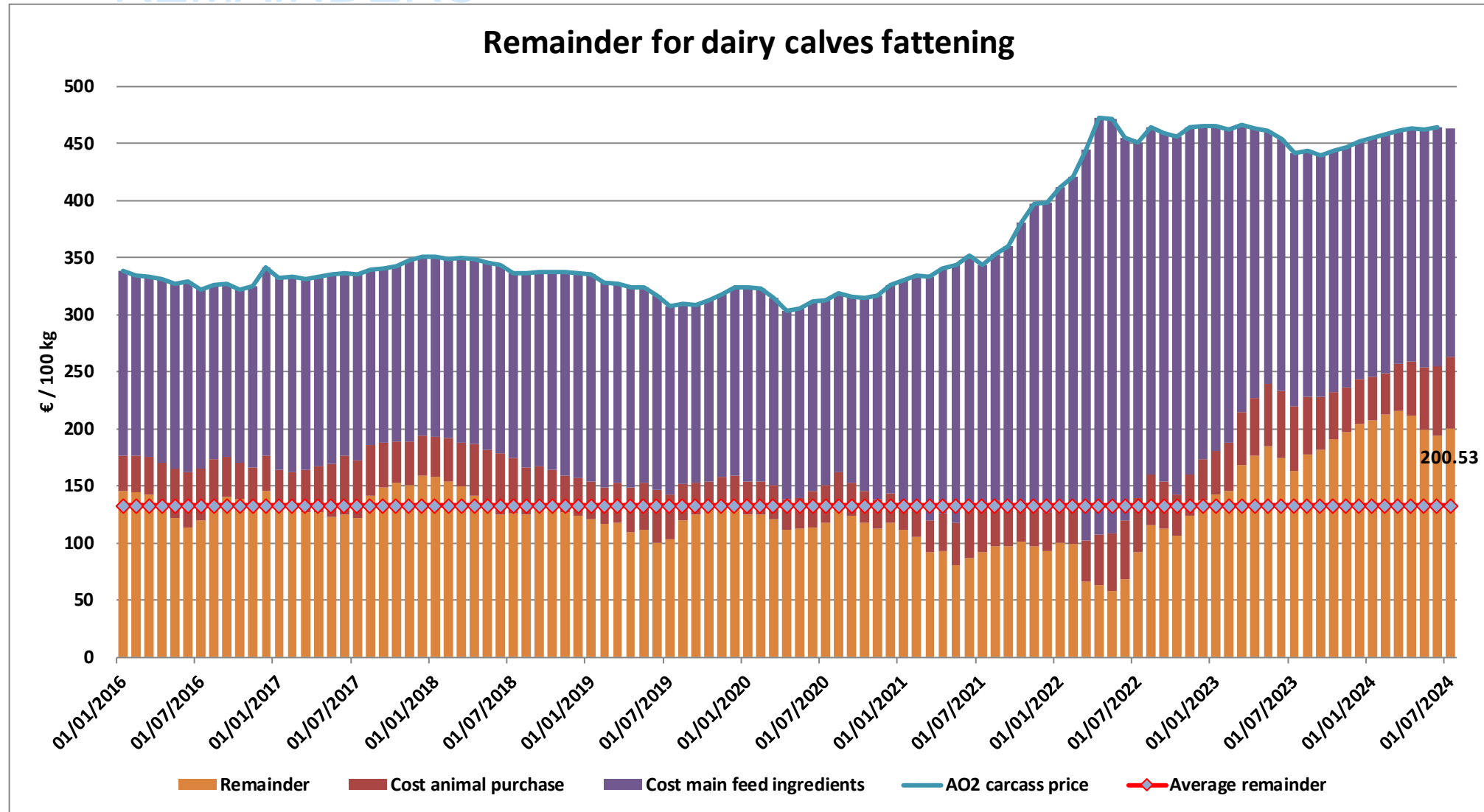
Calves slaughtered before the age of less than 8 months  
(€/100 kg cw)



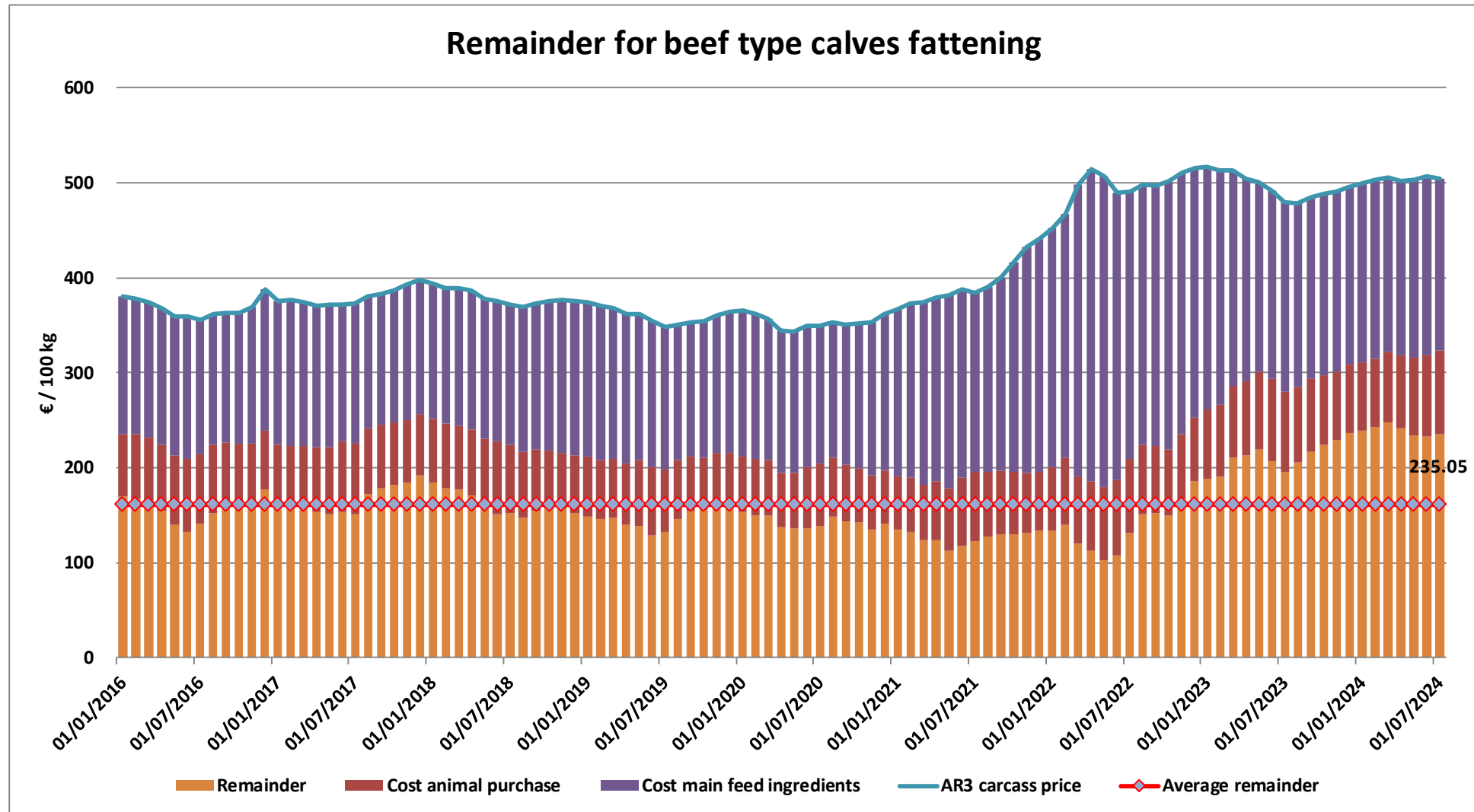
29 August 2024



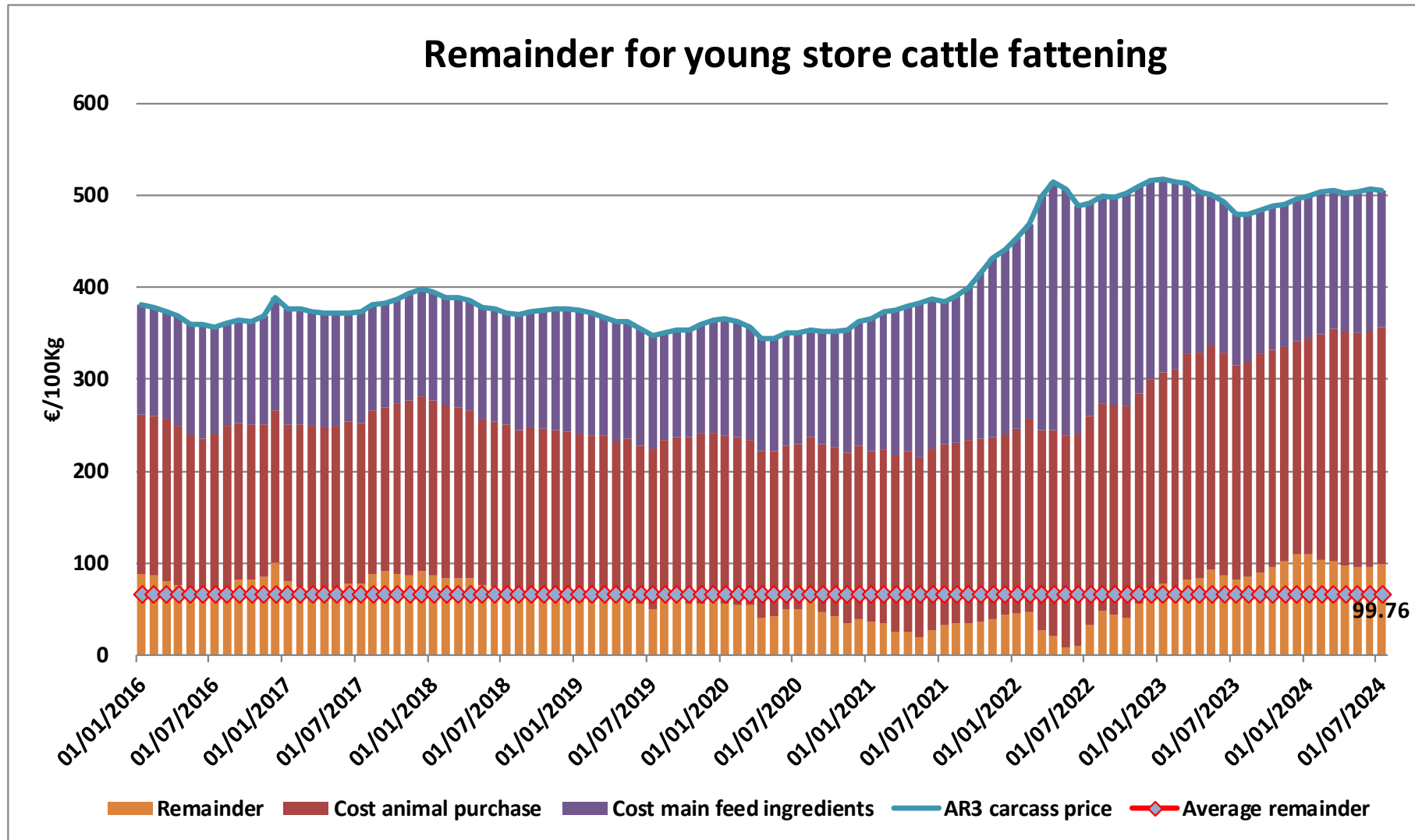
# REMAINDERS



# REMAINDERS



# REMAINDERS



# TRADE

## EU EXPORTS

### Beef & Live Animals

#### EU Exports of Beef and Live Animals (excluding fats): Trade figures (COMEXT – tonnes cwe)

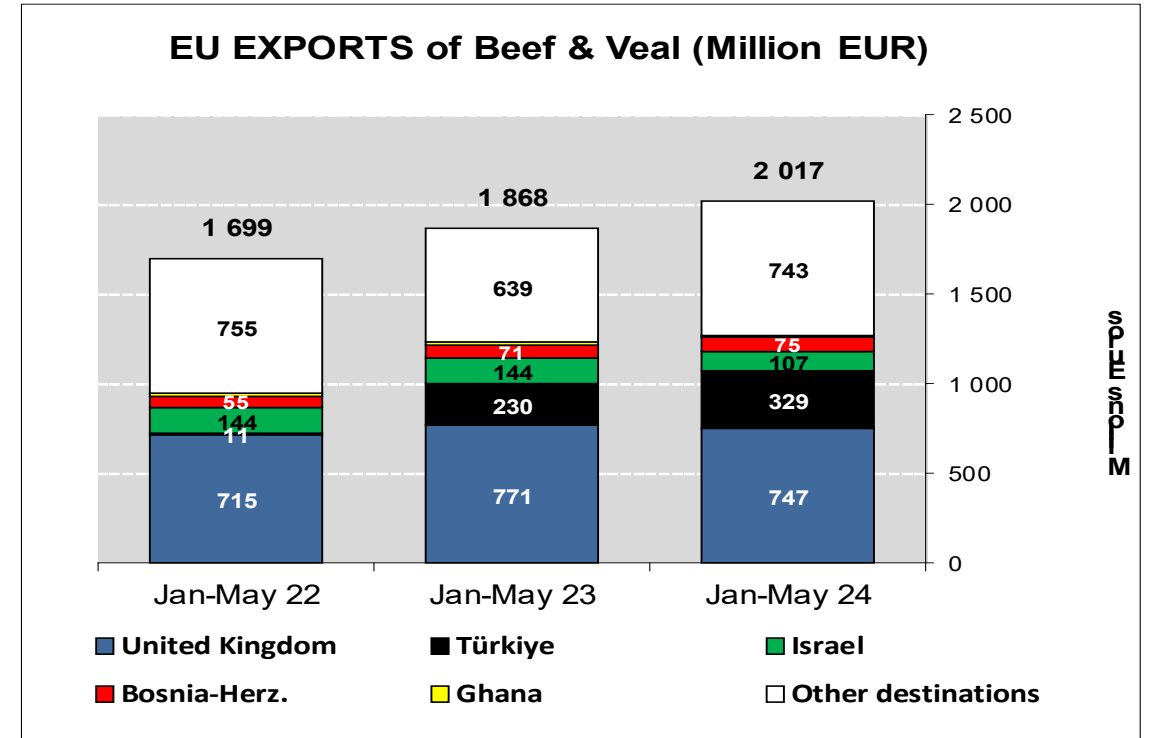
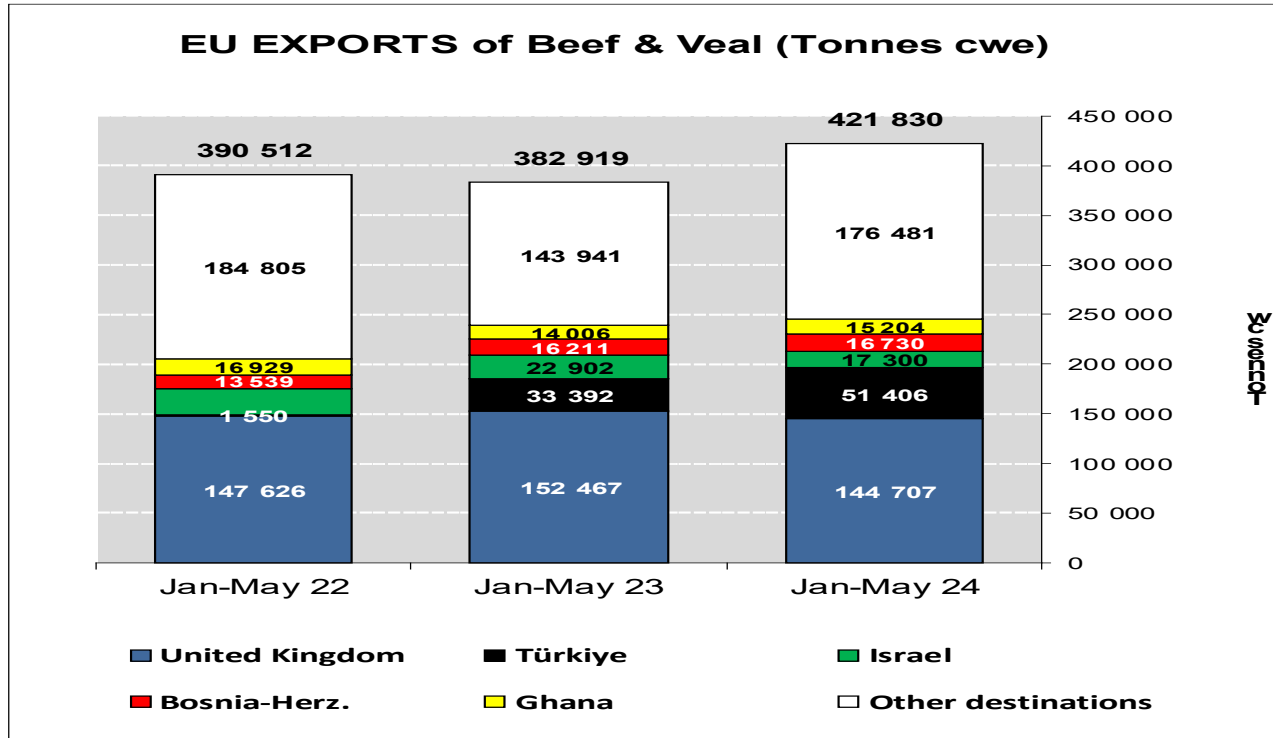
Destinations	2020		2021		2022		2023		Jan-May 24		Compared to Jan-May 23
	tonnes	%	tonnes	%	tonnes	%	tonnes	%	tonnes	%	
United Kingdom	450 514	39.5%	344 633	33.4%	366 332	38.9%	369 118	38.5%	144 707	34.3%	- 5.1%
Türkiye	22 338	2.0%	14 953	1.5%	14 168	1.5%	90 197	9.4%	51 406	12.2%	+ 53.9%
Israel	56 139	4.9%	66 022	6.4%	63 618	6.7%	45 069	4.7%	17 300	4.1%	- 24.5%
Bosnia-Herz.	34 896	3.1%	40 504	3.9%	38 796	4.1%	45 149	4.7%	16 730	4.0%	+ 3.2%
Ghana	47 344	4.2%	47 618	4.6%	32 171	3.4%	33 784	3.5%	15 204	3.6%	+ 8.6%
Algeria	39 396	3.5%	24 111	2.3%	25 459	2.7%	11 124	1.2%	12 274	2.9%	+ 93.6%
Ivory Coast	32 433	2.8%	29 187	2.8%	29 882	3.2%	30 114	3.1%	11 210	2.7%	- 4.1%
Kosovo	10 391	0.9%	16 478	1.6%	17 069	1.8%	22 677	2.4%	10 575	2.5%	+ 49.4%
Hong Kong	56 713	5.0%	44 769	4.3%	10 570	1.1%	21 614	2.3%	10 018	2.4%	+ 8.6%
Morocco	10 049	0.9%	11 868	1.2%	8 273	0.9%	25 635	2.7%	9 905	2.3%	+ 1.9%
Philippines	33 650	3.0%	34 671	3.4%	29 922	3.2%	18 444	1.9%	9 484	2.2%	+ 59.2%
Switzerland	26 223	2.3%	28 717	2.8%	24 958	2.6%	19 355	2.0%	9 220	2.2%	+ 9.2%
Lebanon	33 709	3.0%	19 527	1.9%	21 026	2.2%	21 402	2.2%	8 256	2.0%	+ 15.0%
Canada	20 450	1.8%	20 670	2.0%	19 928	2.1%	15 963	1.7%	6 575	1.6%	+ 31.7%
Chile	8 664	0.8%	9 915	1.0%	9 159	1.0%	10 195	1.1%	5 974	1.4%	+ 195.3%
Japan	2 023	0.2%	21 888	2.1%	19 948	2.1%	12 677	1.3%	5 713	1.4%	+ 16.6%
<i>Other Destinations</i>	<i>254 518</i>	<i>22.3%</i>	<i>255 446</i>	<i>24.8%</i>	<i>211 217</i>	<i>22.4%</i>	<i>166 262</i>	<i>17.3%</i>	<i>77 278</i>	<i>18.3%</i>	
<b>Total</b>	<b>1 139 450</b>		<b>1 030 978</b>		<b>942 496</b>		<b>958 779</b>		<b>421 830</b>		
% change			- 10%		- 9%		+ 2%		+ 10.2%		

# TRADE

EU Exports of Beef and Live Animals:  
(Excl Fats) Trade figures (COMEXT)

# EU EXPORTS

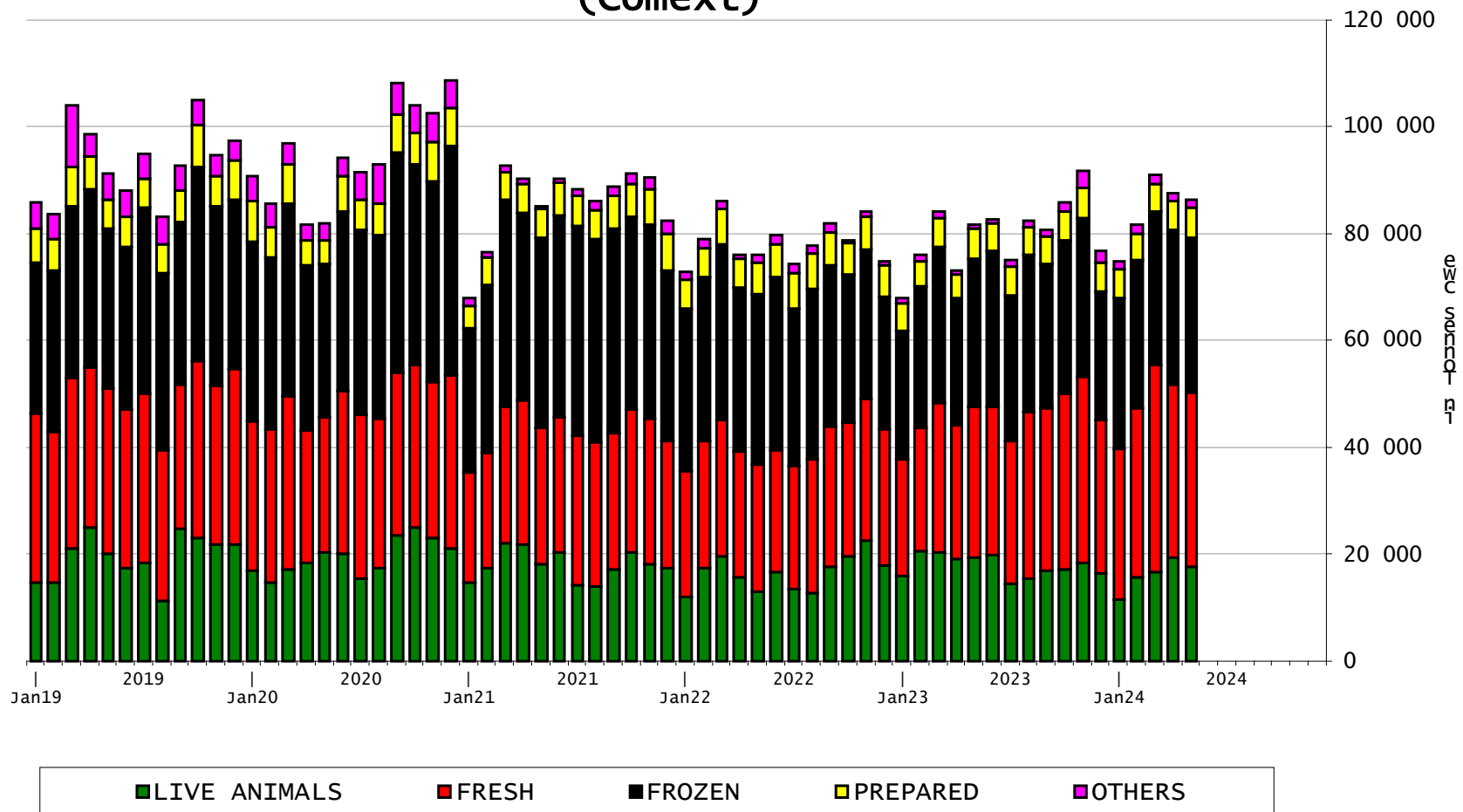
Beef & Live Animals (Excl Fats)



# TRADE

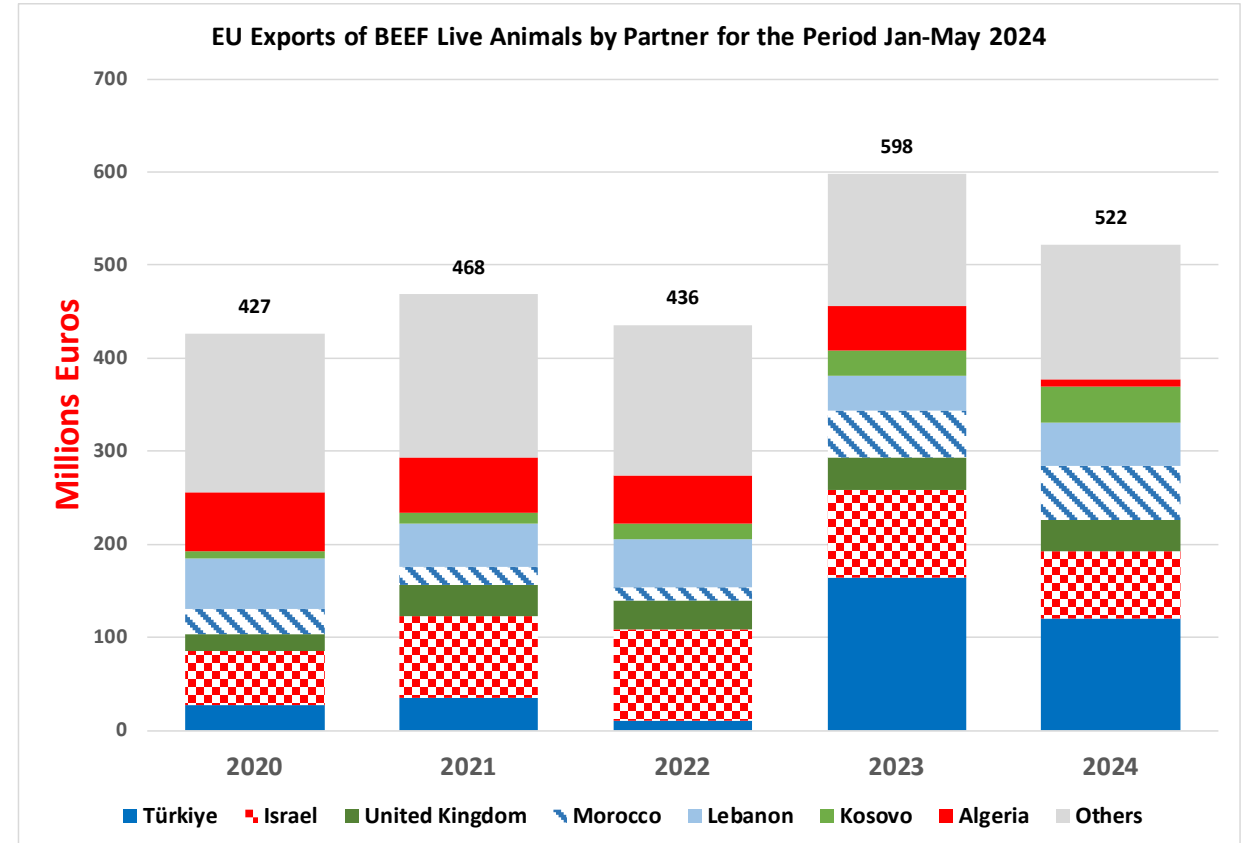
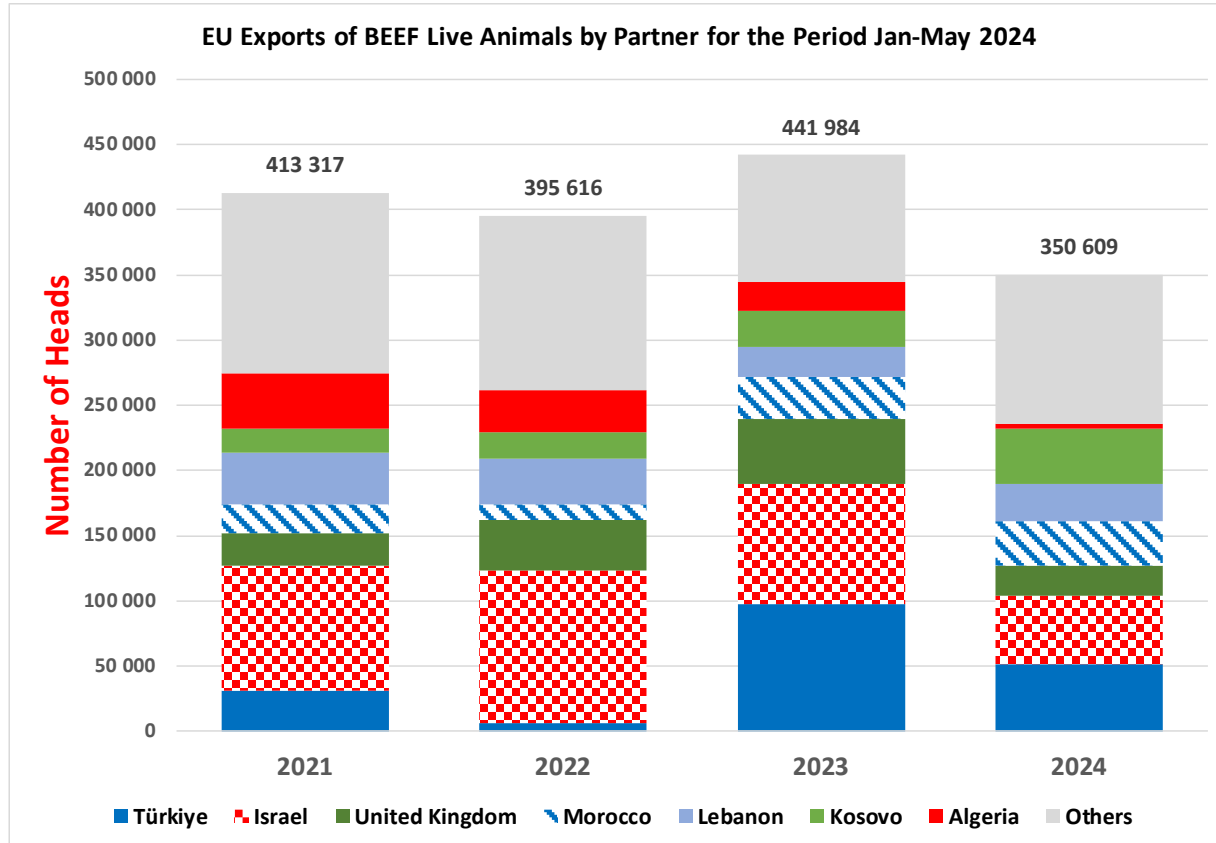
## EU EXPORTS Beef Products

### EU Exports of BEEF products (Comext)



# TRADE

# EU EXPORTS Live Animals



# TRADE

## EU IMPORTS Beef & Live Animals

### EU Imports of Beef and Live Animals (Excl Fats): Trade Figures (COMEXT – tonnes cwe)

Origins	2020		2021		2022		2023		Jan-May 24		Compared to Jan-May 23
	tonnes	%	tonnes	%	tonnes	%	tonnes	%	tonnes	%	
United Kingdom	120 743	35.1%	87 596	28.3%	118 767	33.0%	107 048	30.5%	43 767	29.7%	- 1.1%
Brazil	84 139	24.4%	81 737	26.4%	86 512	24.0%	86 831	24.7%	36 209	24.6%	- 12.4%
Argentina	56 421	16.4%	52 300	16.9%	62 584	17.4%	63 079	18.0%	26 480	18.0%	- 0.6%
Uruguay	34 611	10.0%	42 669	13.8%	37 619	10.5%	41 565	11.8%	18 351	12.5%	+ 0.3%
USA	16 532	4.8%	14 910	4.8%	17 269	4.8%	18 281	5.2%	6 599	4.5%	- 11.5%
Australia	11 058	3.2%	8 925	2.9%	8 385	2.3%	7 727	2.2%	3 431	2.3%	+ 14.1%
Namibia	1 445	0.4%	1 996	0.6%	5 168	1.4%	7 577	2.2%	3 020	2.1%	+ 22.6%
New Zealand	6 116	1.8%	4 380	1.4%	5 202	1.4%	4 518	1.3%	2 230	1.5%	+ 17.2%
Botswana	788	0.2%	331	0.1%	928	0.3%	1 610	0.5%	2 068	1.4%	+++
Paraguay	4 234	1.2%	3 933	1.3%	5 404	1.5%	4 768	1.4%	2 063	1.4%	+ 5.4%
Switzerland	4 187	1.2%	4 714	1.5%	4 730	1.3%	3 627	1.0%	1 459	1.0%	+ 5.3%
Canada	1 550	0.5%	1 816	0.6%	2 172	0.6%	1 468	0.4%	507	0.3%	- 29.3%
Japan	789	0.2%	1 478	0.5%	2 143	0.6%	834	0.2%	353	0.2%	+ 43.2%
Serbia	931	0.3%	963	0.3%	1 058	0.3%	812	0.2%	246	0.2%	- 41.2%
Norway	335	0.1%	571	0.2%	704	0.2%	670	0.2%	220	0.1%	- 20.3%
Chile	168	0.0%	238	0.1%	378	0.1%	365	0.1%	119	0.1%	- 19.9%
Other Destinations	357	0.1%	710	0.2%	961	0.3%	352	0.1%	118	0.1%	
<b>Total</b>	<b>344 403</b>		<b>309 267</b>		<b>359 985</b>		<b>351 133</b>		<b>147 239</b>		
% change			- 10%		+ 16%		- 2%		- 2.5%		



# TRADE

# EU IMPORTS

## Beef

### EU Imports of Beef (Excl Fats): Trade Figures (COMEXT – tonnes cwe)

Origins	2020		2021		2022		2023		Jan-May 24		Compared to
	tonnes	%	tonnes	%	tonnes	%	tonnes	%	tonnes	%	
United Kingdom	118 538	34.6%	86 864	28.2%	118 158	32.9%	106 982	30.5%	43 736	29.7%	- 1.1%
Brazil	84 139	24.6%	81 737	26.5%	86 512	24.1%	86 831	24.7%	36 209	24.6%	- 12.4%
Argentina	56 421	16.5%	52 300	17.0%	62 584	17.4%	63 079	18.0%	26 480	18.0%	- 0.6%
Uruguay	34 611	10.1%	42 669	13.8%	37 619	10.5%	41 565	11.8%	18 351	12.5%	+ 0.3%
USA	16 532	4.8%	14 910	4.8%	17 269	4.8%	18 281	5.2%	6 599	4.5%	- 11.5%
Australia	11 058	3.2%	8 925	2.9%	8 385	2.3%	7 727	2.2%	3 431	2.3%	+ 14.1%
Namibia	1 445	0.4%	1 996	0.6%	5 168	1.4%	7 577	2.2%	3 020	2.1%	+ 22.6%
New Zealand	6 116	1.8%	4 380	1.4%	5 202	1.4%	4 518	1.3%	2 230	1.5%	+ 17.2%
Botswana	788	0.2%	331	0.1%	928	0.3%	1 610	0.5%	2 068	1.4%	+++
Paraguay	4 234	1.2%	3 933	1.3%	5 404	1.5%	4 768	1.4%	2 063	1.4%	+ 5.4%
Switzerland	4 153	1.2%	4 680	1.5%	4 641	1.3%	3 582	1.0%	1 451	1.0%	+ 5.8%
Canada	1 550	0.5%	1 816	0.6%	2 171	0.6%	1 467	0.4%	507	0.3%	- 29.1%
Japan	789	0.2%	1 478	0.5%	2 143	0.6%	834	0.2%	353	0.2%	+ 43.2%
Serbia	931	0.3%	934	0.3%	1 047	0.3%	791	0.2%	235	0.2%	- 40.8%
Norway	335	0.1%	565	0.2%	704	0.2%	670	0.2%	220	0.1%	- 20.3%
Chile	168	0.0%	238	0.1%	378	0.1%	365	0.1%	119	0.1%	- 19.9%
<i>Other Destinations</i>	317	0.1%	659	0.2%	701	0.2%	322	0.1%	118	0.1%	
<b>Total to Third Countries</b>	<b>342 124</b>		<b>308 416</b>		<b>359 014</b>		<b>350 970</b>		<b>147 190</b>		
% change			- 10%		+ 16%		- 2%		- 2.5%		

### EU Imports of Beef Fats): Trade Figures (COMEXT – tonnes cwe)

*In Tons of Carcase Weight*

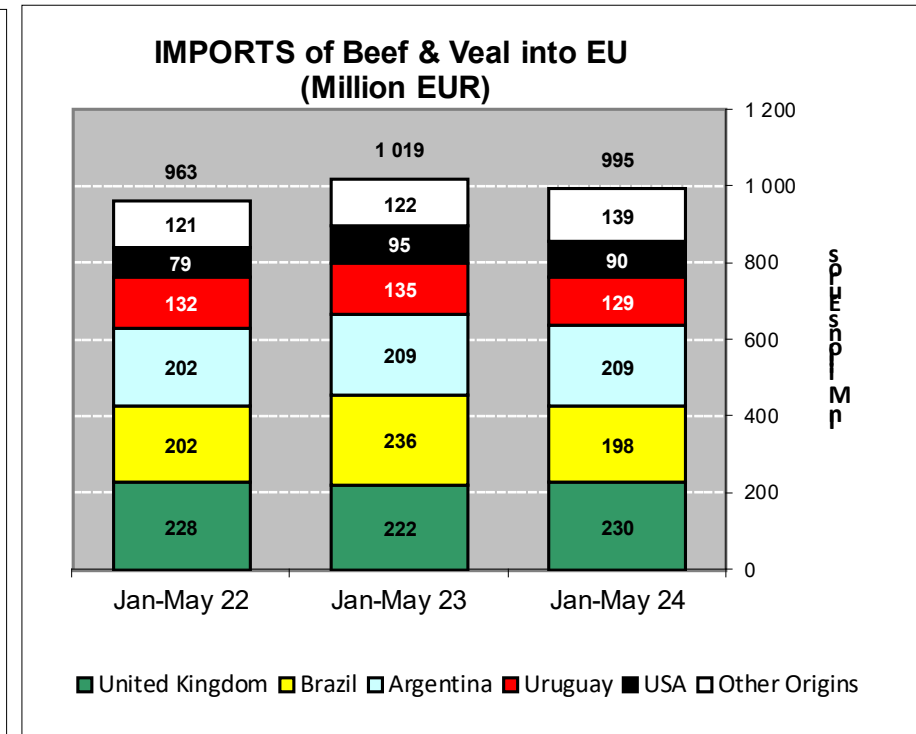
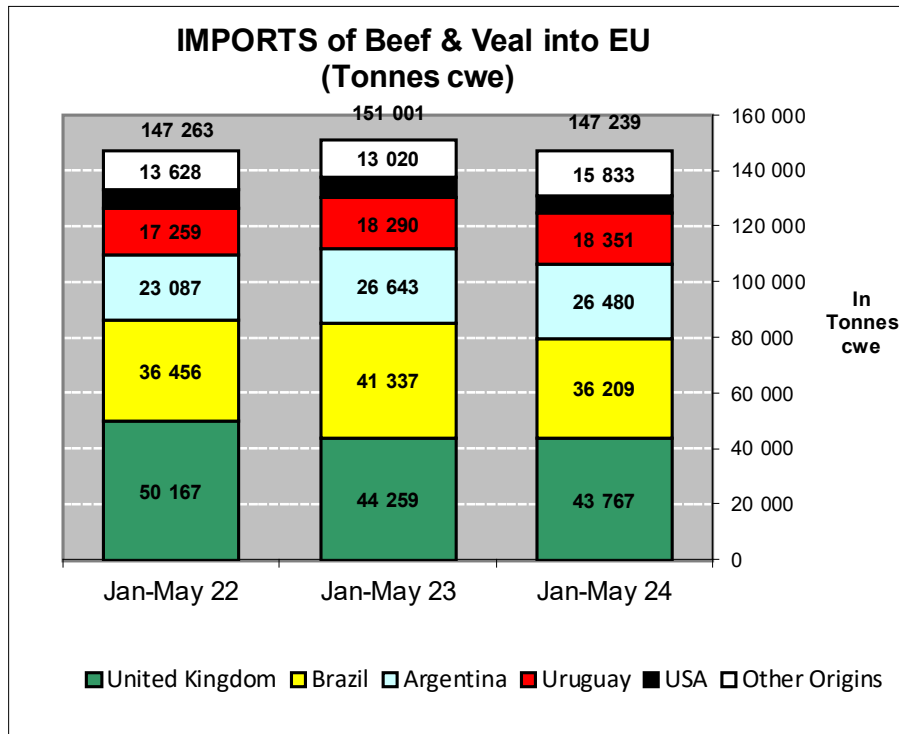
Origins	2022		2023		Jan to May 2024		Compared to Jan to May 2023
	Tons	% Extra EU	Tons	% Extra EU	Tons	% Extra EU	
United Kingdom	9 778	29.9%	8 524	88.4%	4 250	93.5%	+22.4%
Switzerland	612	1.9%	720	7.5%	207	4.6%	+37.5%
Ukraine	24	0.1%	74	0.8%	72	1.6%	+++
New Zealand	14	0.0%	14	0.1%	14	0.3%	
Australia	0	0.0%	0	0.0%	0	0.0%	+++
Türkiye	-	0.0%	-	0.0%	0	0.0%	
Brazil	0	0.0%	0	0.0%	0	0.0%	+84.8%
Norway	-	0.0%	0	0.0%	0	0.0%	+++
Iceland	18	0.1%	87	0.9%	0	0.0%	+0.0%
Other Destinations	22 286	68.1%	219	2.3%	0	0.0%	
Extra-EU	32 732		9 638		4 543		+18.4%
% Change				-70.6%			

# TRADE

EU Imports of Beef and Live Animals (Excl Fats):  
Trade Figures (COMEXT)

# EU IMPORTS

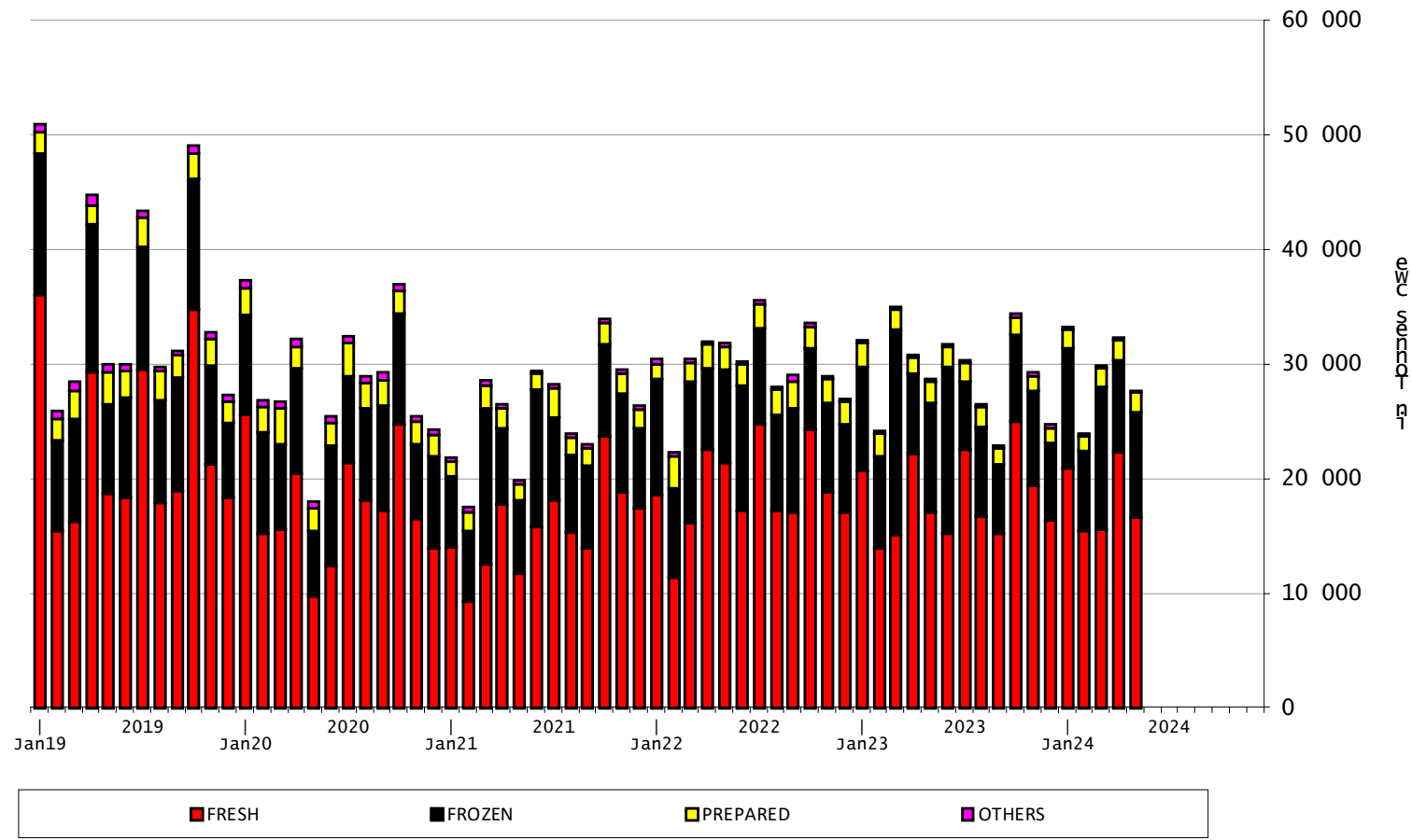
Beef & Live Animals (Excl Fats)



# TRADE

## EU IMPORTS Beef Products

### EU Imports of BEEF products



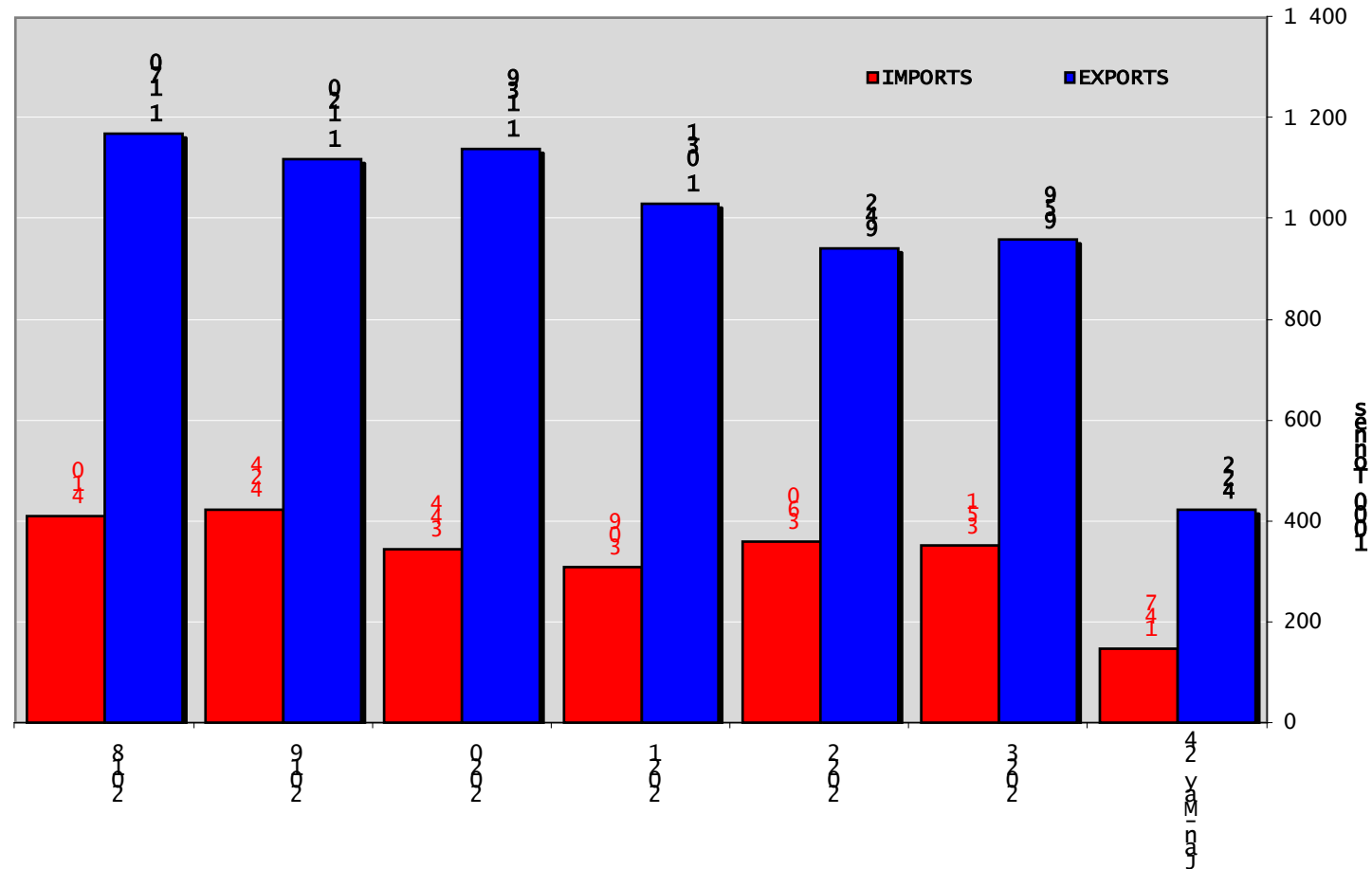
29 August 2024

# TRADE

# EUTRADE BALANCE

## Beef & Live Animals

Trade Balance of Beef Products and Live Animals

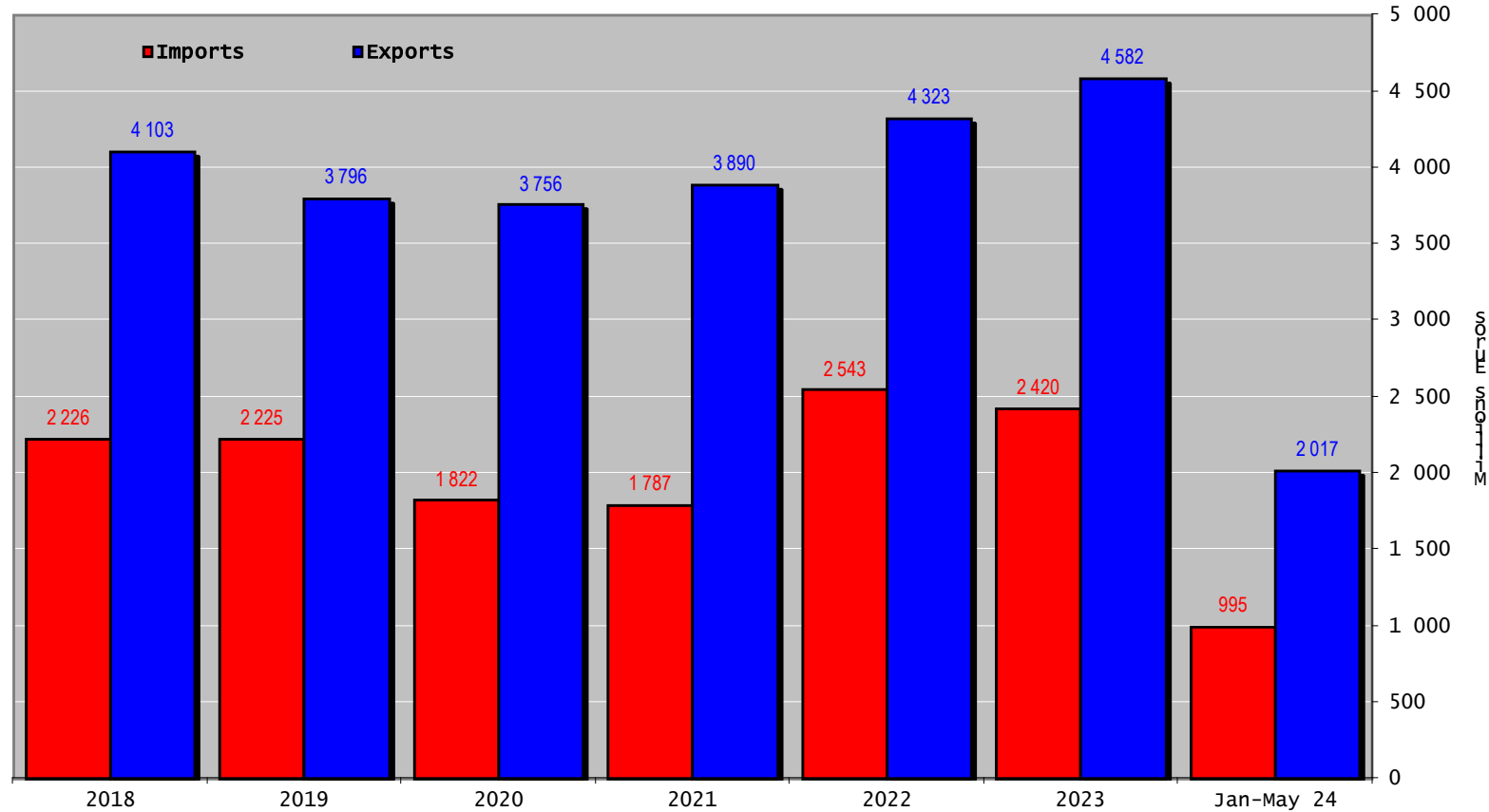


# TRADE

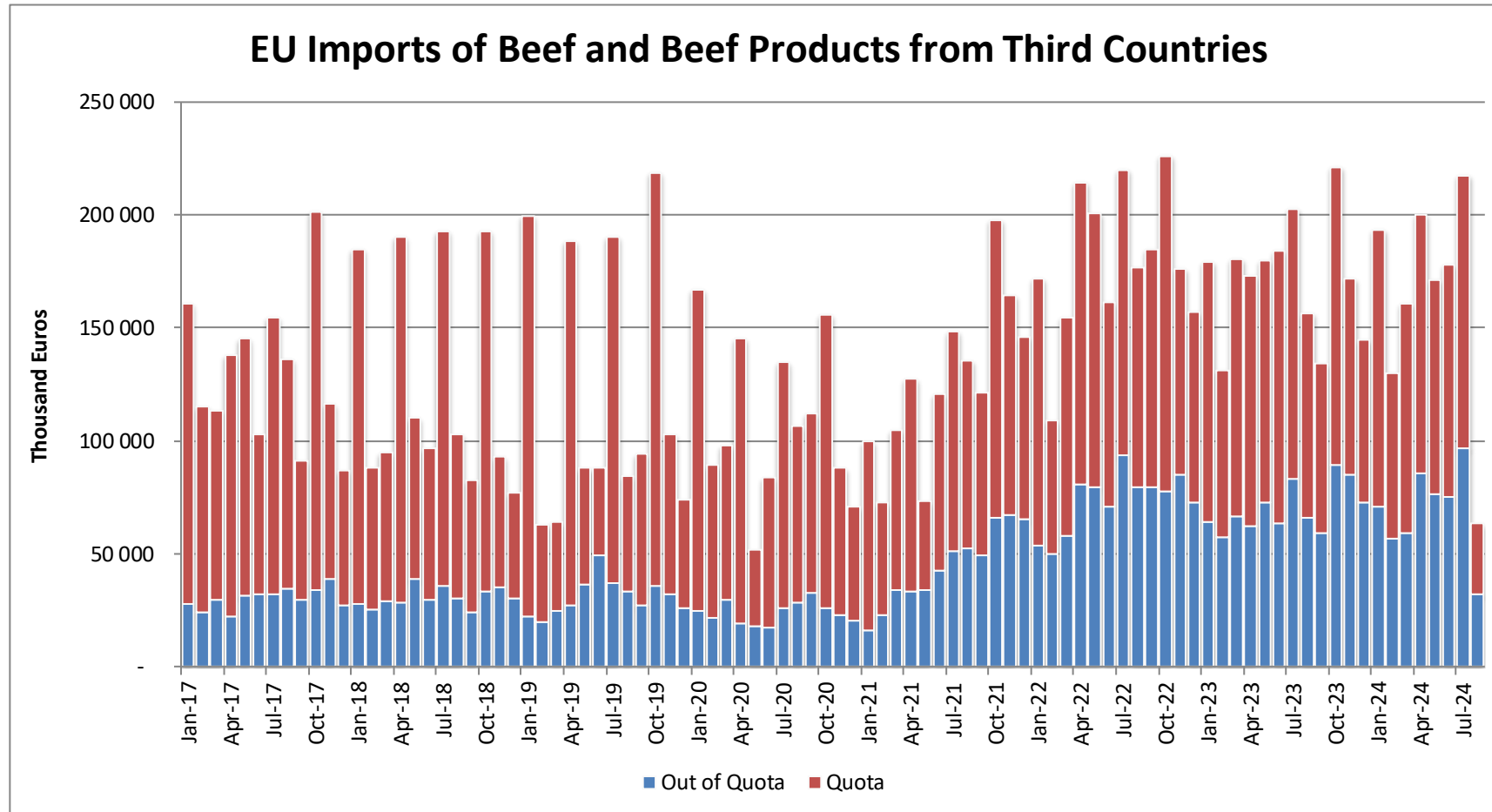
## EU TRADE BALANCE

### Beef & Live Animals

#### Trade Balance of Beef Products and Live Animals

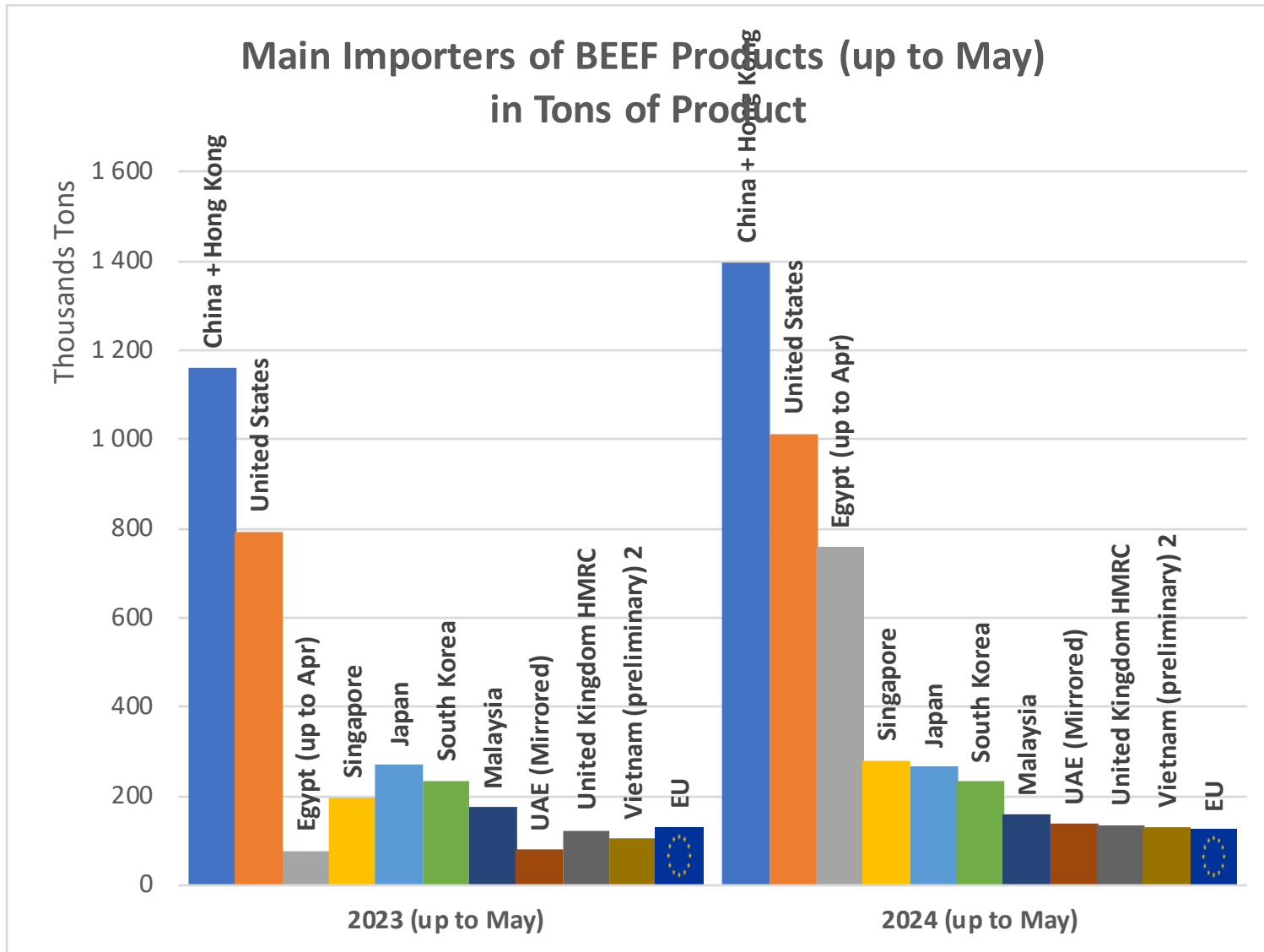


# Imports in and out of TRQs



# WORLD BEEF MARKET

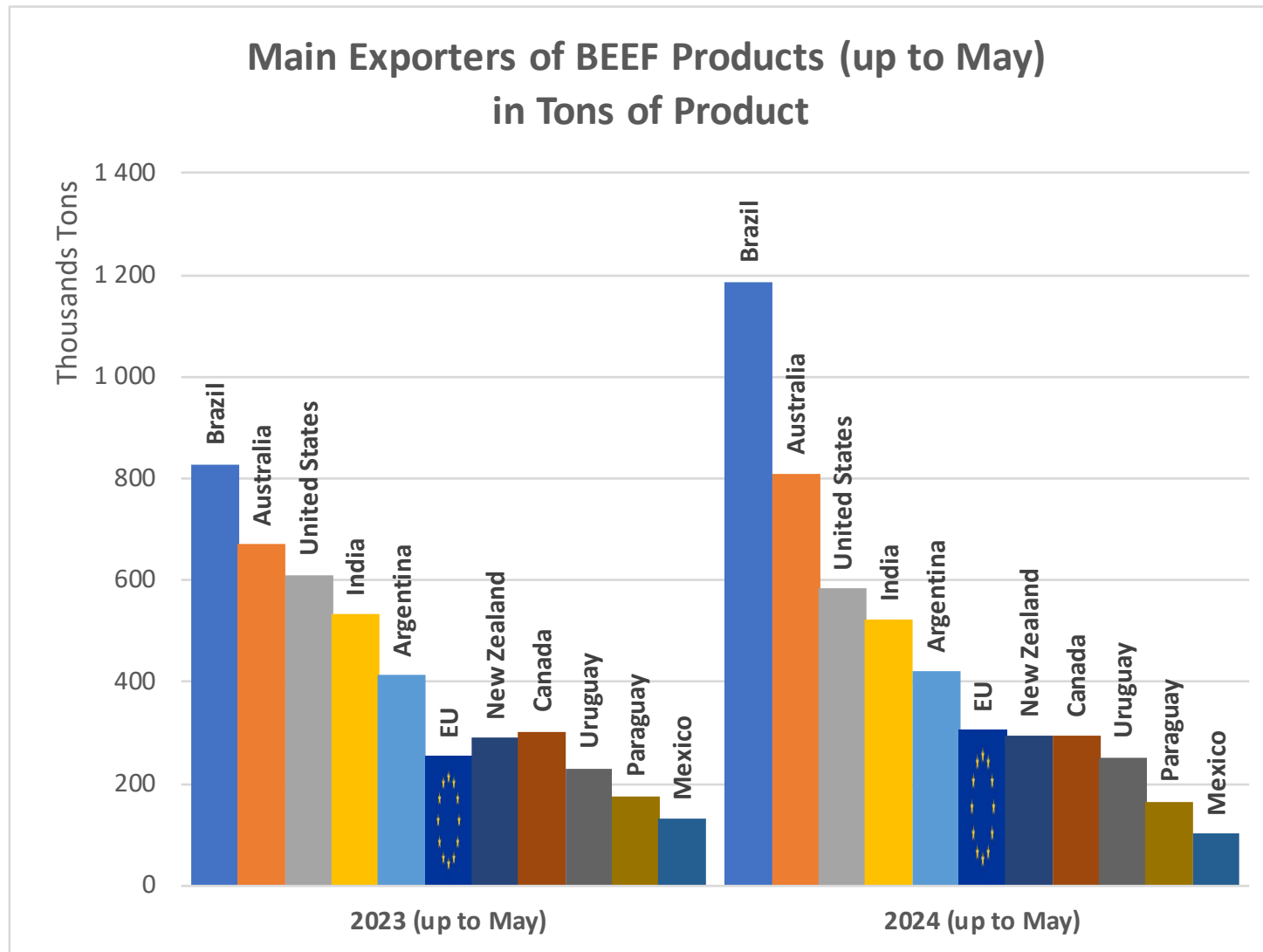
## E.U. + UK IMPORTS BEEF MAIN IMPORTERS





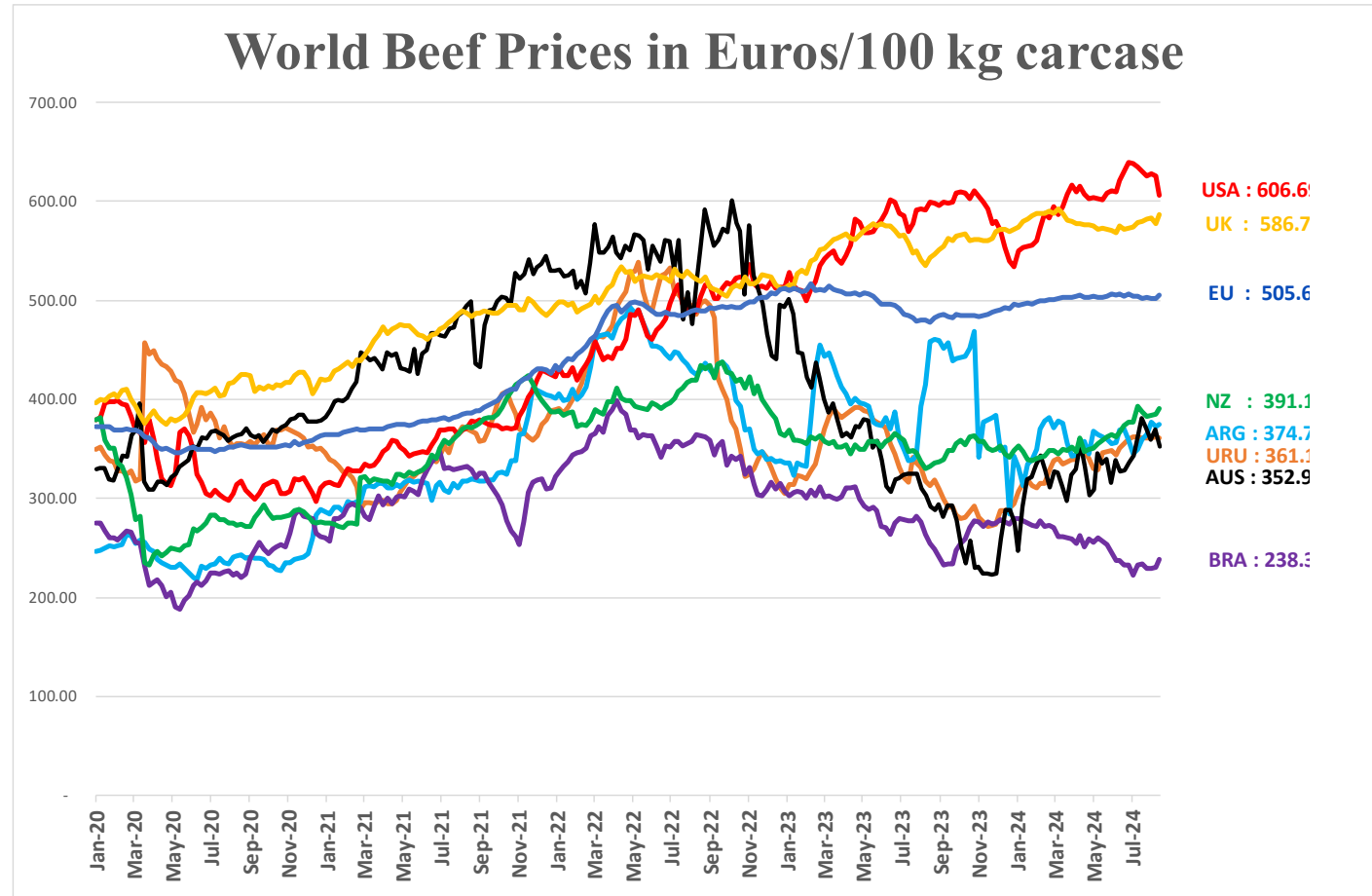
# WORLD BEEF MARKET

## E.U. + UK EXPORTS BEEF MAIN EXPORTERS



# WORLD BEEF MARKET

## STEER PRICES EU, US, AUS, NZ



USA, AUS, URU, ARG, NZ, BRA [World Beef Report](#)  
GB <https://ahdb.org.uk/beef/gb-deadweight-cattle-prices-by-region>  
EU [Member States Communication](#)

THANK YOU VERY MUCH

More Information at:

EU Market Observatory

[https://ec.europa.eu/agriculture/market-observatory/meat\\_en](https://ec.europa.eu/agriculture/market-observatory/meat_en)

And

Agri-FOOD data portal:

<http://agridata.ec.europa.eu/>

# Thank you



© European Union 2020

Unless otherwise noted the reuse of this presentation is authorised under the [CC BY 4.0](https://creativecommons.org/licenses/by/4.0/) license. For any use or reproduction of elements that are not owned by the EU, permission may need to be sought directly from the respective right holders.

Slide xx: **element concerned**, source: [e.g. Fotolia.com](https://www.fotolia.com/); Slide xx: **element concerned**, source: [e.g. iStock.com](https://www.istock.com/)

