



AB SIĞIR VE DANA ETİ PAZAR DURUMU

12 Aralık 2024

Haziran Araştırması

TOPLAM CANLI HAYVAN

BÜYÜKBAŞ HAYVAN < 1 YAŞ

BÜYÜKBAŞ HAYVAN 1 - 2 YAŞ

BÜYÜKBAŞ HAYVAN > 2 YAŞ

May/Jun 1000 Hd	TOT LIVESTOCK				%Var 2024 2023	BOVINE < 1 Year				%Var 2024 2023	BOVINE 1-2 Year				%Var 2024 2023	BOVINE > 2 Year				%Var 2024 2023	
	2021	2022	2023	2024		2021	2022	2023	2024		2021	2022	2023	2024		2021	2022	2023	2024		
BE	2 353	2 241	2 281	2 235	-2.0%	712	656	677	662	-2.2%	473	463	456	446	-2.1%	1 169	1 121	1 148	1 126	-1.9%	
BG																					
CZ																					
DK	1 503	1 484	1 454	1 423	-2.1%	517	510	498	490	-1.6%	287	290	281	273	-3.2%	699	684	674	661	-2.0%	
DE	11 176	10 986	10 937	10 627	-2.8%	3 398	3 296	3 260	3 153	-3.3%	2 591	2 620	2 595	2 496	-3.8%	5 188	5 071	5 082	4 978	-2.0%	
EE																					
IE	7 359	7 396	7 341	7 183	-2.2%	2 146	2 134	2 074	2 026	-2.3%	1 910	1 949	1 922	1 859	-3.3%	3 303	3 313	3 346	3 298	-1.4%	
EL																					
ES	6 923	6 754	6 565	6 379	-2.8%	2 634	2 569	2 427	2 321	-4.4%	973	902	928	910	-1.9%	3 316	3 283	3 211	3 148	-2.0%	
FR	17 863	17 416	17 039	16 794	-1.4%	5 134	4 949	4 838	4 736	-2.1%	3 158	3 144	3 077	3 041	-1.2%	9 571	9 323	9 125	9 017	-1.2%	
HR																					
IT	6 174	6 087	5 975	5 892	-1.4%	1 762	1 725	1 663	1 645	-1.1%	1 476	1 475	1 439	1 376	-4.4%	2 936	2 887	2 873	2 871	-0.1%	
CY																					
LV																					
LT																					
LU																					
HU																					
MT																					
NL	3 732	3 766	3 752	3 695	-1.5%	1 523	1 546	1 507	1 486	-1.4%	479	493	507	502	-0.9%	1 729	1 726	1 738	1 708	-1.7%	
AT	1 846	1 842	1 826	1 804	-1.2%	596	592	574	566	-1.4%	413	422	426	415	-2.4%	838	828	826	823	-0.5%	
PL	6 401	6 444	6 360	6 336	-0.4%	1 789	1 916	1 855	1 882	+1.4%	1 856	1 674	1 670	1 641	-1.8%	2 756	2 855	2 834	2 813	-0.7%	
PT	1 723	1 680	1 608	1 534	-4.6%	550	554	511	487	-4.5%	252	229	229	221	-3.6%	922	897	868	825	-4.9%	
RO	1 864	1 852	1 833	1 833	idem	386	379	370	358	-3.2%	207	220	224	221	-1.2%	1 271	1 254	1 239	1 254	+1.2%	
SI																					
SK																					
FI																					
SE	1 453	1 449	1 444	1 410	-2.4%	465	458	458	444	-3.2%	369	374	371	368	-0.8%	619	617	615	598	-2.7%	
EU	70 371	69 398	68 415	67 144	-1.9%	21 612	21 285	20 713	20 256	-2.2%	14 444	14 255	14 124	13 768	-2.5%	34 315	33 858	33 578	33 121	-1.4%	

Source : EStat Newcronos

EU %Var is calculated considering only countries available in 2023 AND 2024

Haziran Araştırması

May/Jun 1000 Hd	TOPLAM İNEK					SÜTÇÜ TİP İNEK					DİĞER İNEKLER				
	TOTAL COWS				%Var 2024 2023	DAIRY COWS				%Var 2024 2023	OTHER COWS				%Var 2024 2023
	2021	2022	2023	2024		2021	2022	2023	2024		2021	2022	2023	2024	
BE	937	902	918	900	-2.0%	539	527	541	534	-1.3%	399	375	377	366	-2.9%
BG															
CZ															
DK	647	634	625	614	-1.8%	565	557	553	547	-1.2%	82	77	72	67	-6.1%
DE	4 517	4 430	4 399	4 297	-2.3%	3 892	3 817	3 775	3 668	-2.8%	626	612	623	628	+0.8%
EE															
IE	2 545	2 541	2 519	2 449	-2.8%	1 605	1 627	1 647	1 624	-1.4%	940	913	872	825	-5.4%
EL															
ES	2 987	2 951	2 897	2 842	-1.9%	828	816	794	780	-1.7%	2 159	2 135	2 102	2 062	-1.9%
FR	7 315	7 159	6 960	6 845	-1.7%	3 331	3 266	3 167	3 103	-2.0%	3 984	3 893	3 793	3 742	-1.3%
HR															
IT	2 161	2 130	2 123	2 267	+6.8%	1 852	1 821	1 798	1 695	-5.7%	309	309	325	572	+76.0%
CY															
LV															
LT															
LU															
HU															
MT															
NL	1 627	1 623	1 629	1 596	-2.0%	1 571	1 571	1 577	1 545	-2.0%	56	53	52	51	-1.8%
AT	715	710	704	695	-1.3%	531	549	546	539	-1.2%	184	161	158	156	-1.4%
PL	2 388	2 208	2 338	2 336	-0.1%	2 113	2 072	2 192	2 190	-0.1%	276	136	145	146	+0.3%
PT	757	742	718	693	-3.6%	236	227	224	219	-2.4%	521	515	494	474	-4.1%
RO	1 148	1 135	1 111	1 122	+0.9%	1 133	1 119	1 091	1 093	+0.2%	15	16	20	29	+42.5%
SI															
SK															
FI															
SE	512	510	506	489	-3.3%	302	297	295	289	-1.9%	210	213	211	200	-5.2%
EU	28 256	27 674	27 446	27 144	-1.1%	18 497	18 266	18 201	17 826	-2.1%	9 760	9 409	9 245	9 318	+0.8%

Source : EStat Neworonos

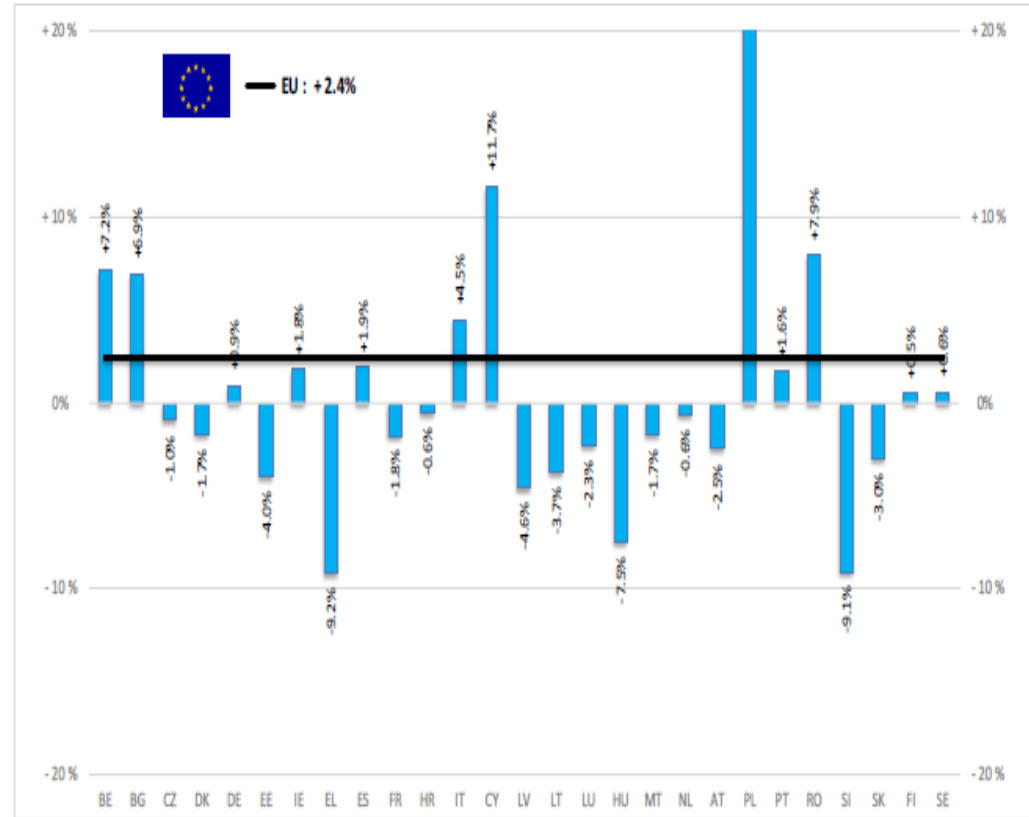
EU %Var is calculated considering only countries available in 2023 AND 2024



European
Commission

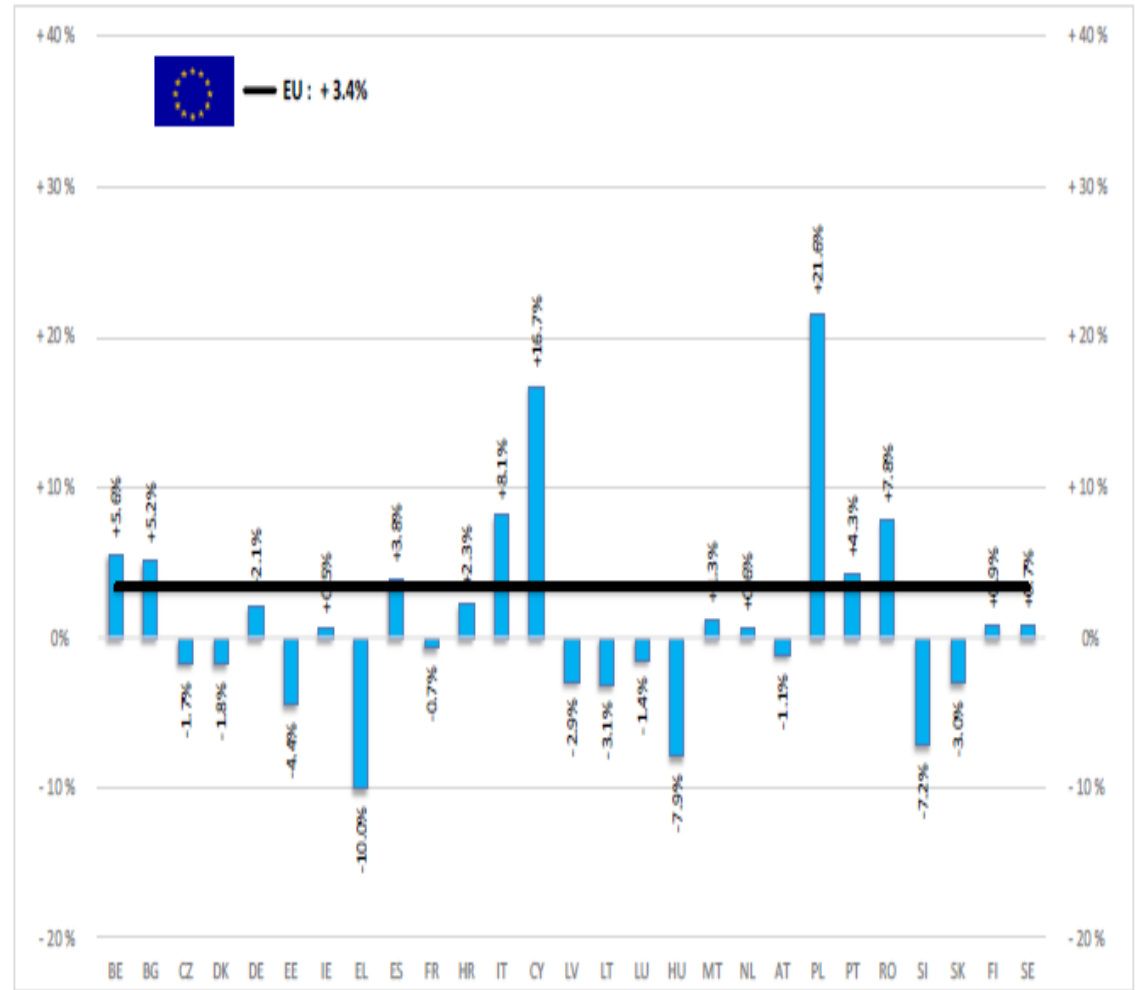
BAŞ	HEADS	Jan-Sep 24/23
		EU
BOĞA	Bull	+4.1%
ÖKÜZ	Bullock	idem
İNEK	Cow	+2.3%
DÜVE	Heifer	+5.7%
BUZAĞI	Calve	+0.1%
GENÇ SIĞIR	Young cattle	-4.5%
Büyükbaş Hayvan Eti	Meat of bovine animals	+2.4%

Estimates for last month of period :



TON	TONNES	Jan-Sep 24/23
		EU
BOĞA	Bull	+4.6%
ÖKÜZ	Bullock	-0.6%
İNEK	Cow	+3.0%
DÜVE	Heifer	+6.1%
BUZAĞI	Calve	+1.3%
GENÇ SİĞİR	Young cattle	-3.6%
Büyükbaş Hayvan Eti	Meat of bovine animals	+3.4%

Estimates for last month of period :

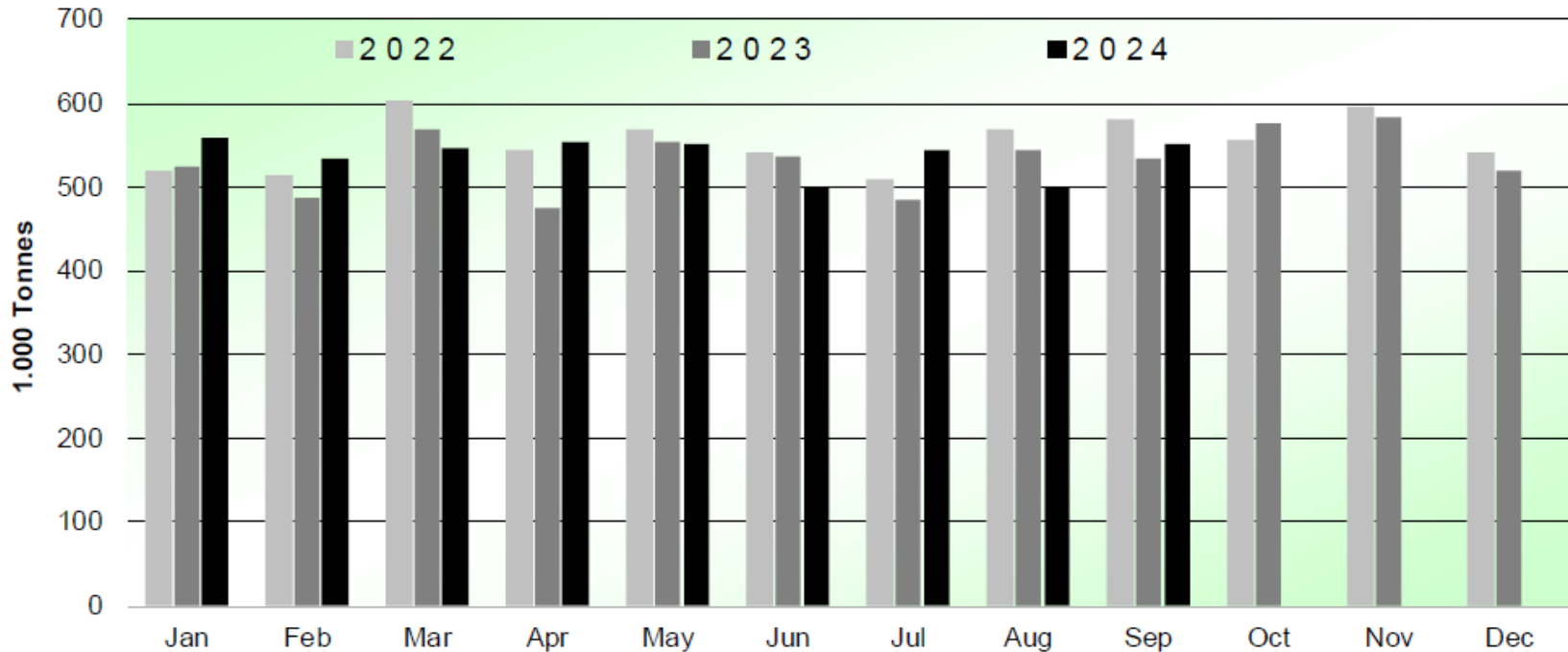


Source : EStat - Newcronos



SIĞIR VE DANA ETİ ÜRETİMİ (AB Kesimler – Ton)

Beef & Veal Production (EU Slaughtering) - Tonnes



Source : EStat-Newcronos

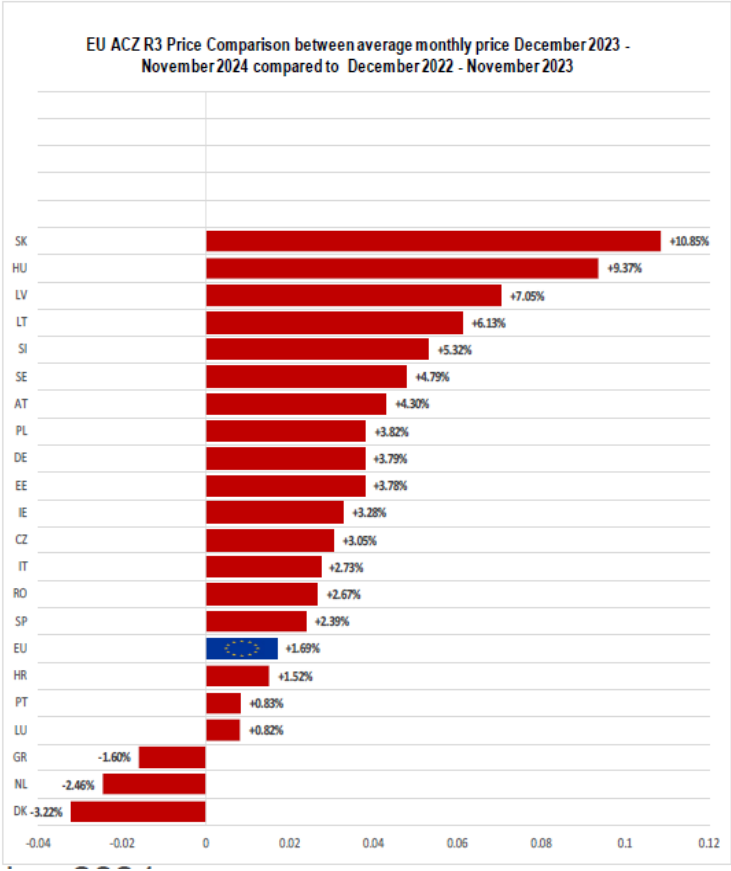


EU Prices week		48	Evolution since last week	Evolution since last month	Evolution since last year
Carcasse	Average A/C/Z-R3	544.5	+ 0.9%	+ 3.4%	+ 11.2%
	Young Bovines (Z)	523.5	+ 1.2%	+ 4.1%	+ 6.7%
	Young Bulls (A)	550.0	+ 0.7%	+ 3.0%	+ 12.4%
	Steers (C)	548.0	+ 1.3%	+ 4.7%	+ 12.0%
	Cows (D)	445.0	+ 0.7%	+ 2.0%	+ 17.6%
	Heifers (E)	549.4	+ 0.6%	+ 2.0%	+ 9.5%
	Calves slaughtered <8M	677.8	- 0.7%	+ 3.5%	+ 9.0%
Live Animals	Male Calves Dairy Type	148.2	+ 4.2%	+ 11.0%	+ 48.6%
	Male Calves Beef Type	287.8	- 1.7%	+ 5.3%	+ 21.6%
	Young Store Cattle	3.73	+ 0.3%	+ 0.7%	+ 18.7%
	Yearling Male Store Cattle	4.27	+ 1.8%	+ 3.7%	+ 28.1%
	Yearling Female Store Cattle	3.33	+ 0.8%	+ 3.4%	+ 20.0%

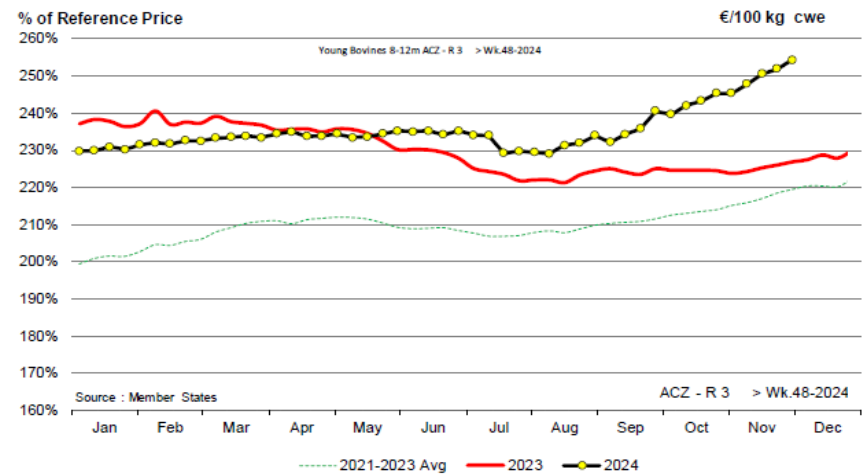
KARKAS FİYATLARI



AB DEĞİŞİM A/C/Z. R3



ACZ - R 3 > Wk.48-2024

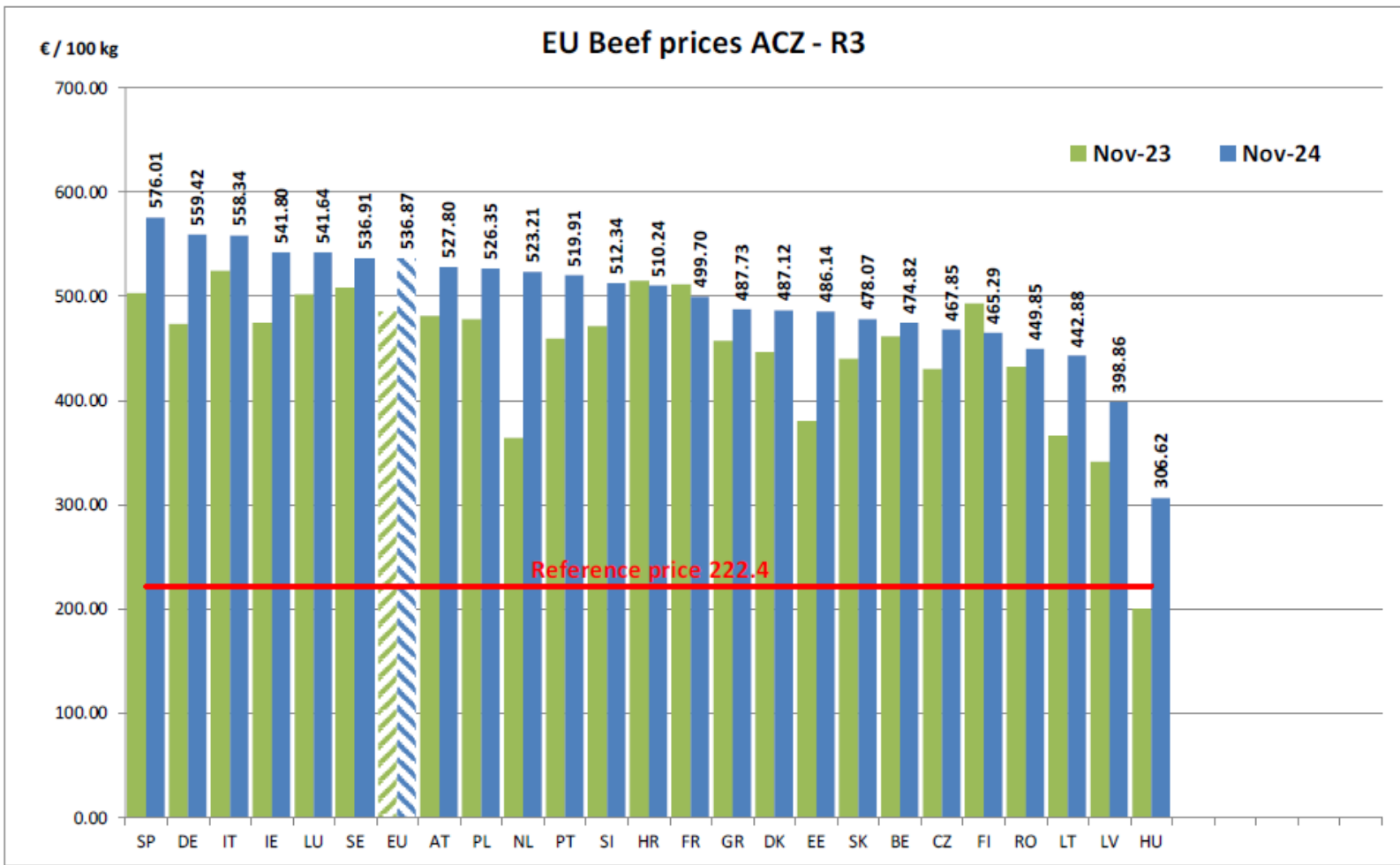


Price in week 48 :	544.57	Average price in November 2024 :	536.87
% change y/y :	+ 11.24%	% change y/y :	+ 10.43%
% Ref. Price in wk 48 :	220.1%		



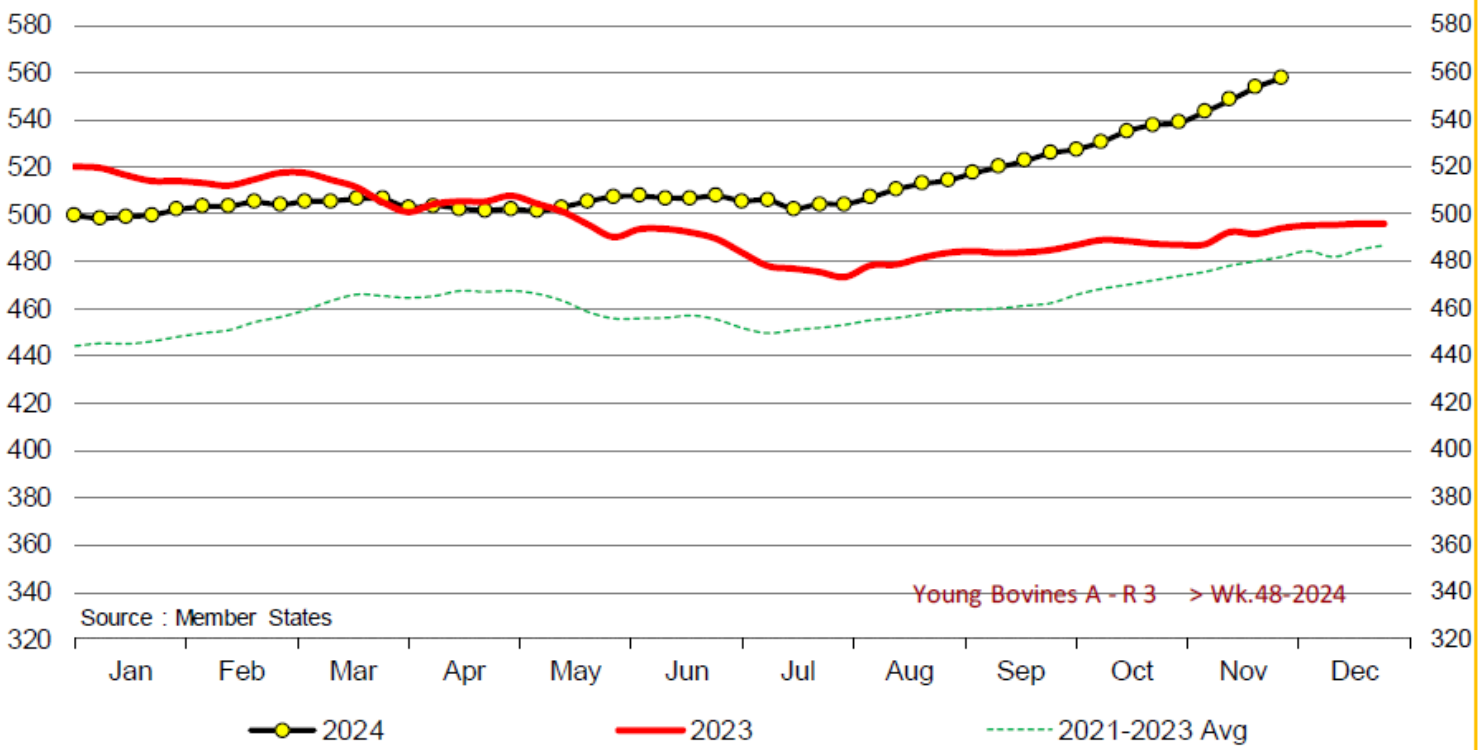


European Commission





Young Bovines A - R 3 > Wk.48-2024

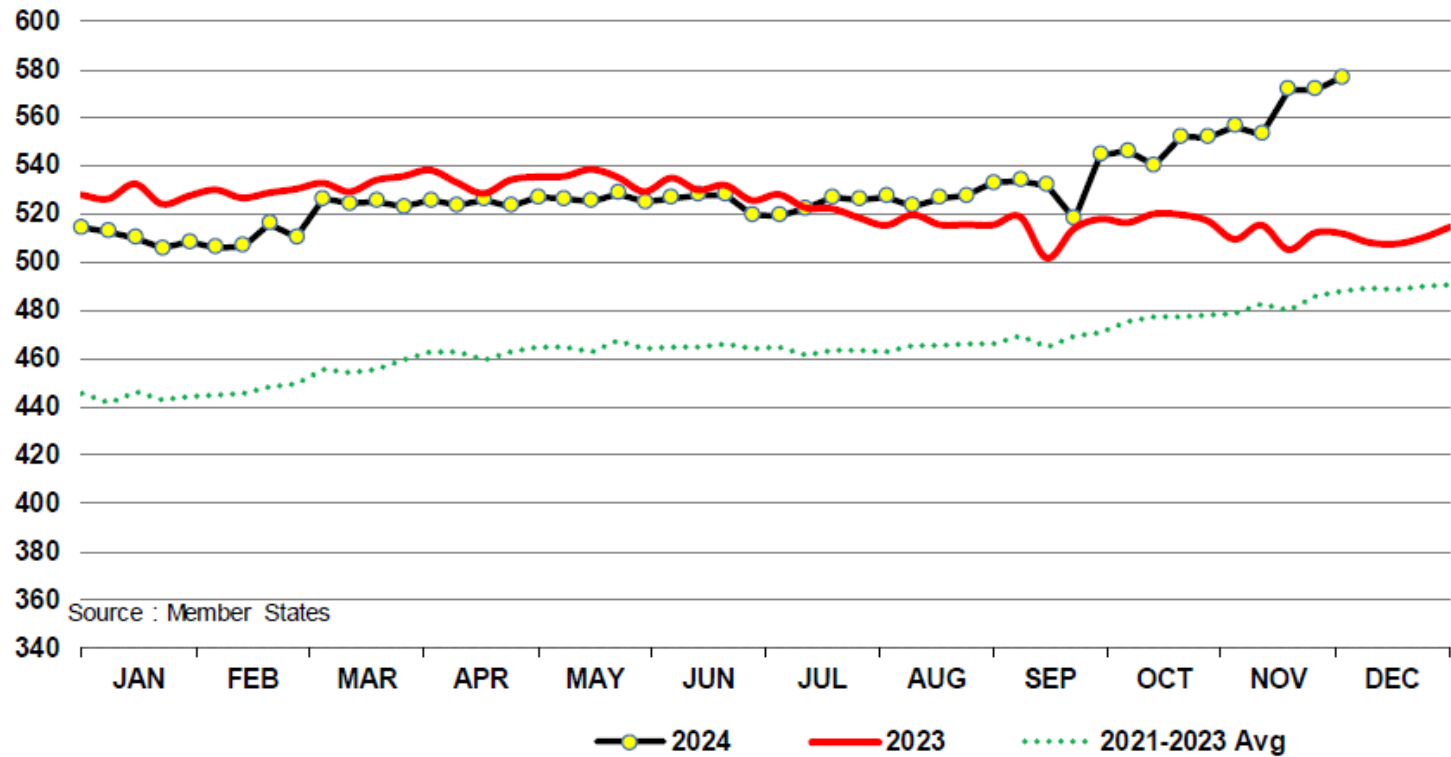


Price in week 48 : **558.10**
% change y/y : **+ 12.9%**

Average price in November 2024 : **549.63**
% change y/y : **+ 12.1%**



In € / 100 kg Young Bovines 8-12m Z - R 3 > Wk.48-2024

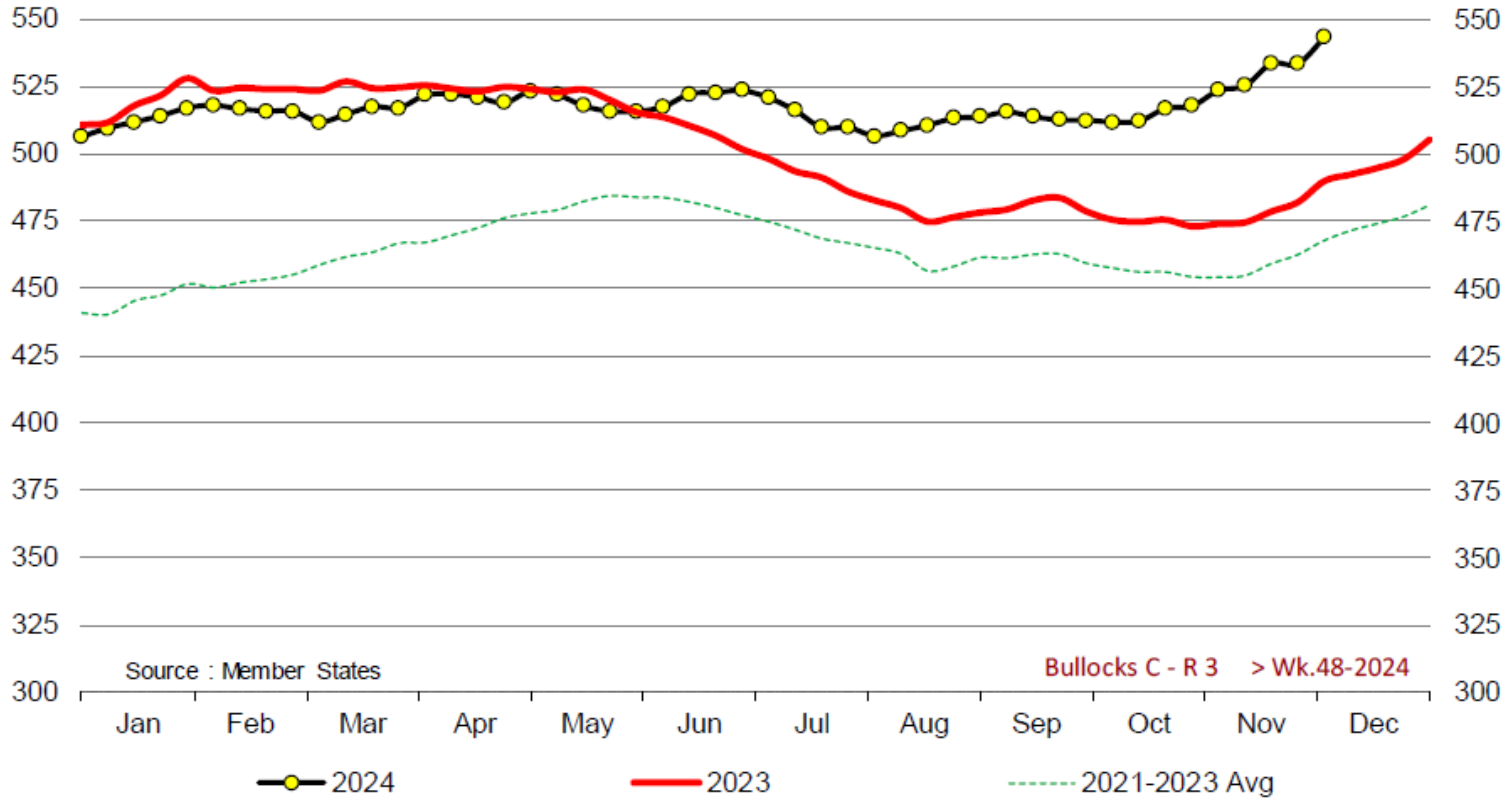


Source : Member States

Price in week 48 : 576.62	31/10/2024	Average price in November 2024 : 566.75
% change y/y : + 12.6%		% change y/y : + 10.9%



Bullocks C - R 3 > Wk.48-2024

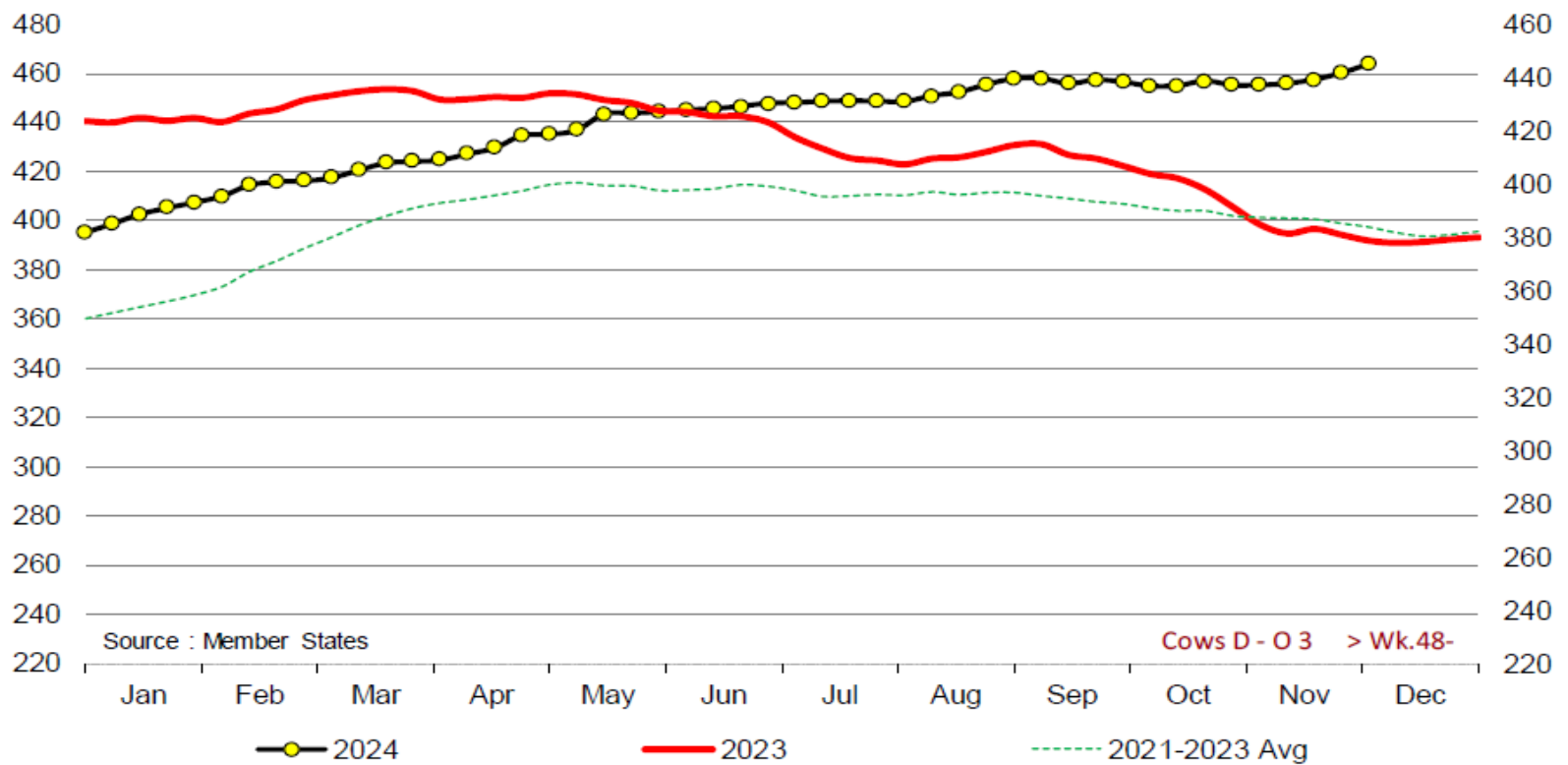


Price in week 48 : **543.48**
% change y/y : **+ 10.9%**

Average price in November 2024 : **532.58**
% change y/y : **+ 11.1%**



Cows D - O 3 > Wk.48-2024



Source : Member States

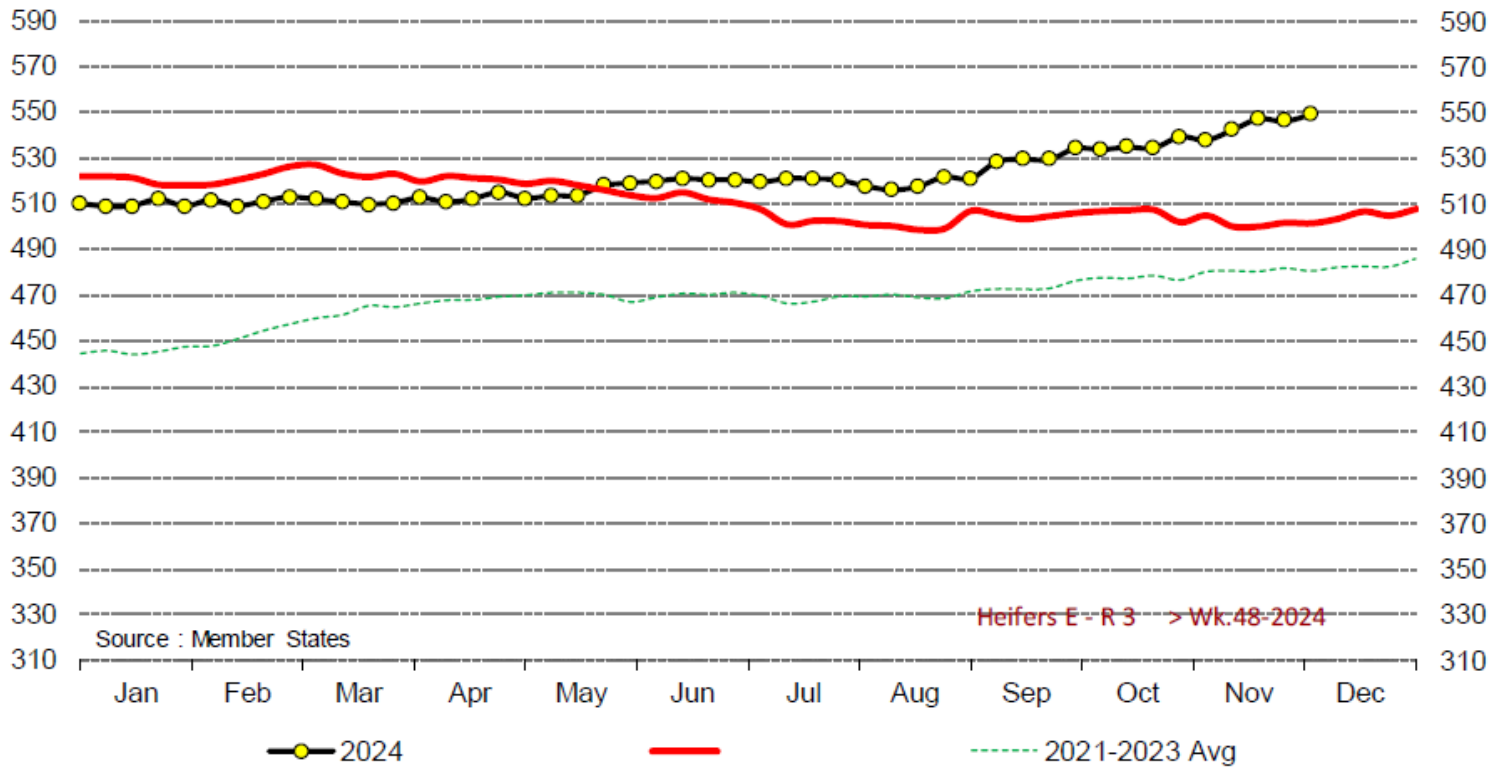
Cows D - O 3 > Wk.48-

Price in week 48 : **445.02**
% change y/y : **+ 17.6%**

Average price in November 2024 : **440.41**
% change y/y : **+ 15.4%**



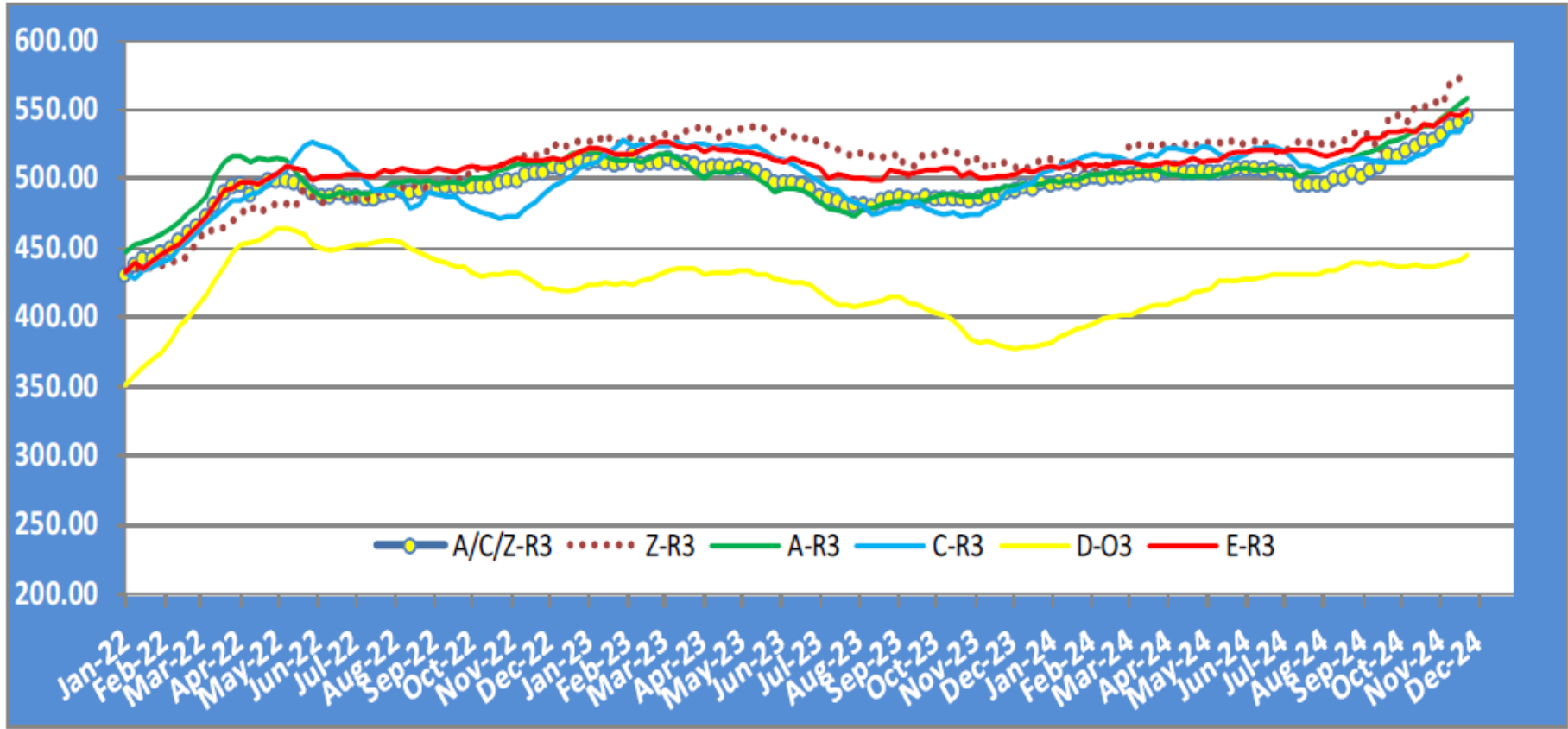
Heifers E - R 3 > Wk.48-2024



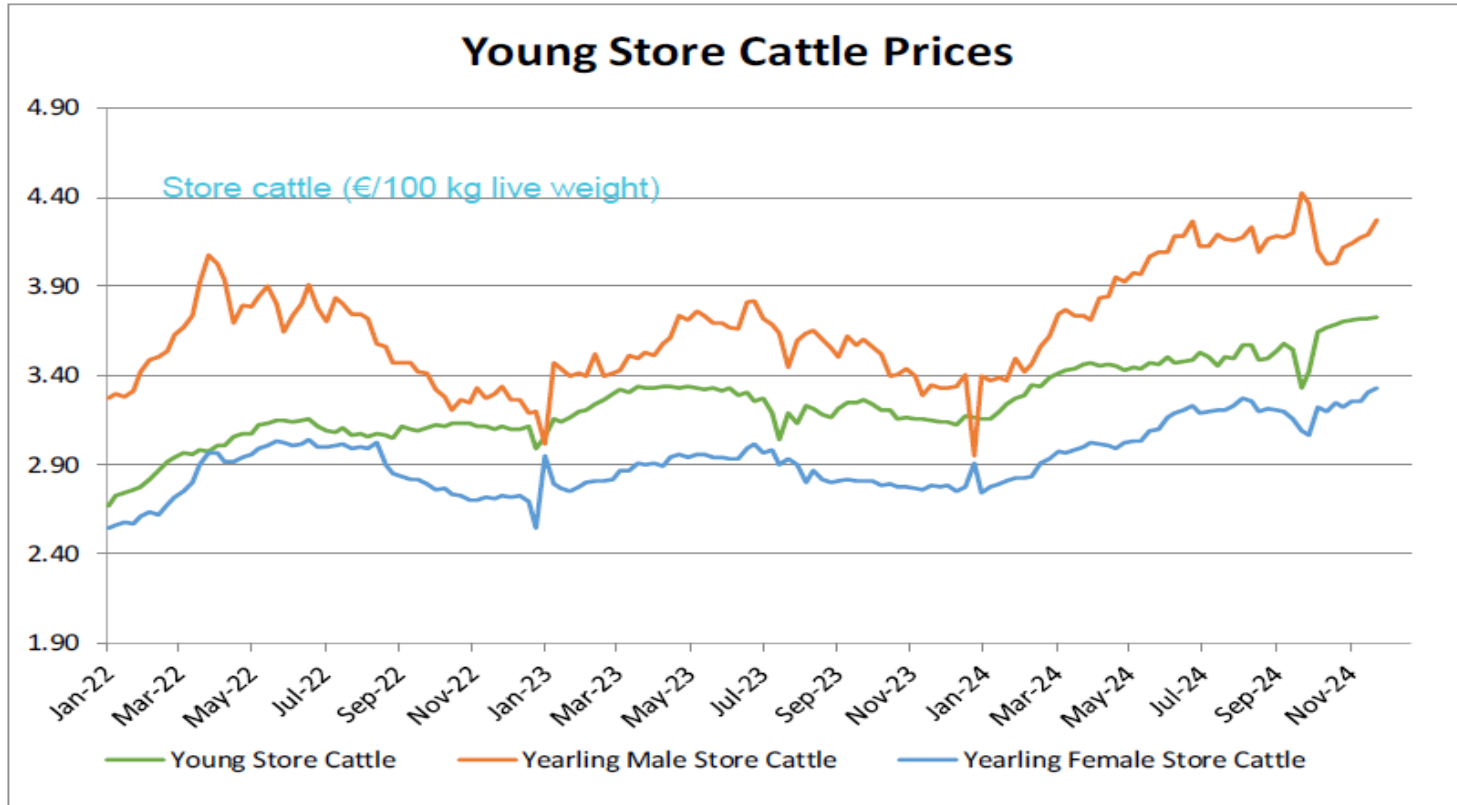
Price in week 48 : 549.41	Average price in November 2024 : 545.39
% change y/y : + 9.5%	% change y/y : + 8.7%

KARKAS FİYATLARI

AB TÜM KATEGORİLERE GLOBAL BAKIŞ

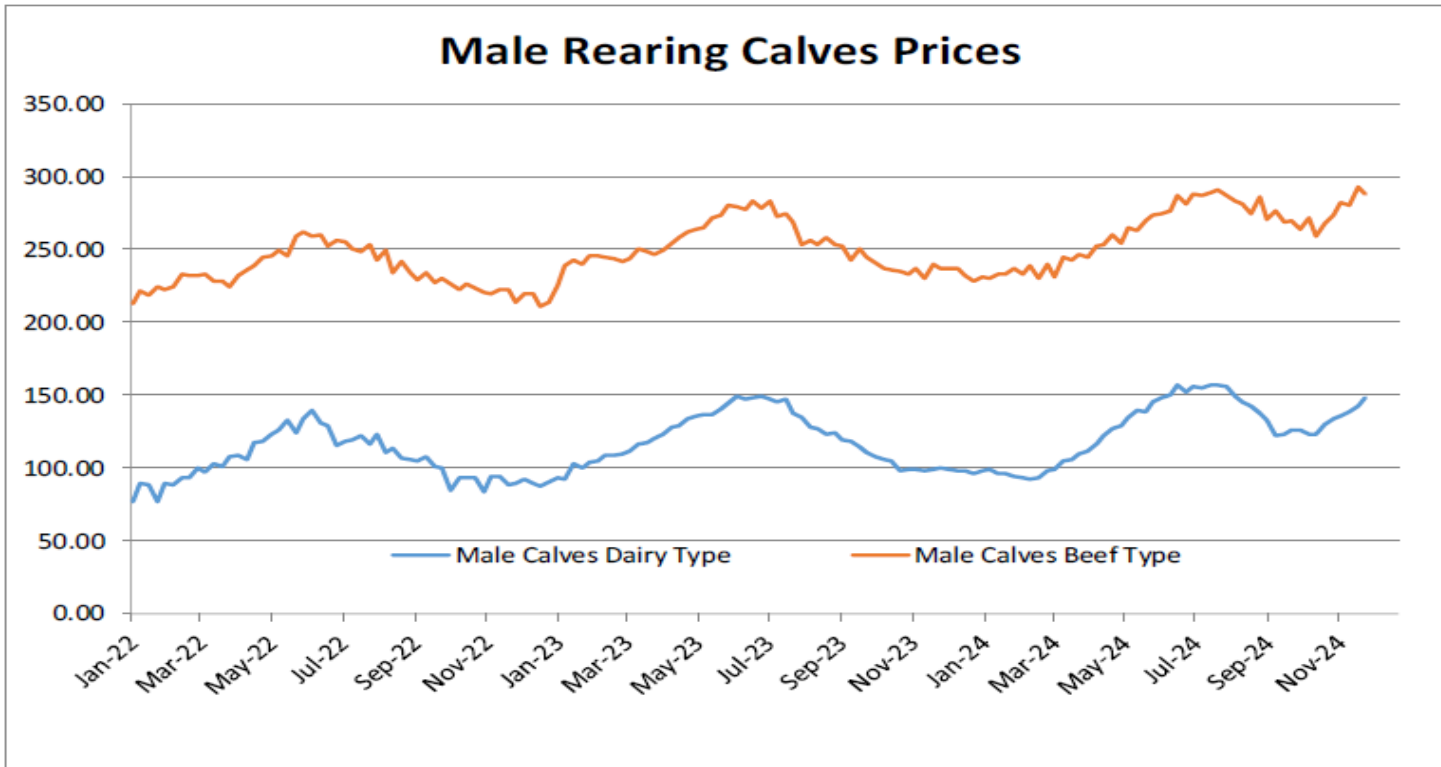


Besilik sığır (€ / 100 kg canlı ağırlık)



Young Store Cattle Price in	Week 48	3.73	Yearling Male Store Cattle Price	4.27
	Change y/y	+18.7%	Change y/y	+28.1%
Yearling Female Store Cattle Price		3.33		
	Change y/y	+20.0%		

8 gün ve 4 haftalık erkek buzağlar (€/baş)



Male Rearing Calves Beef type

Price in Week 48 **287.86**

Change y/y **+21.6%**

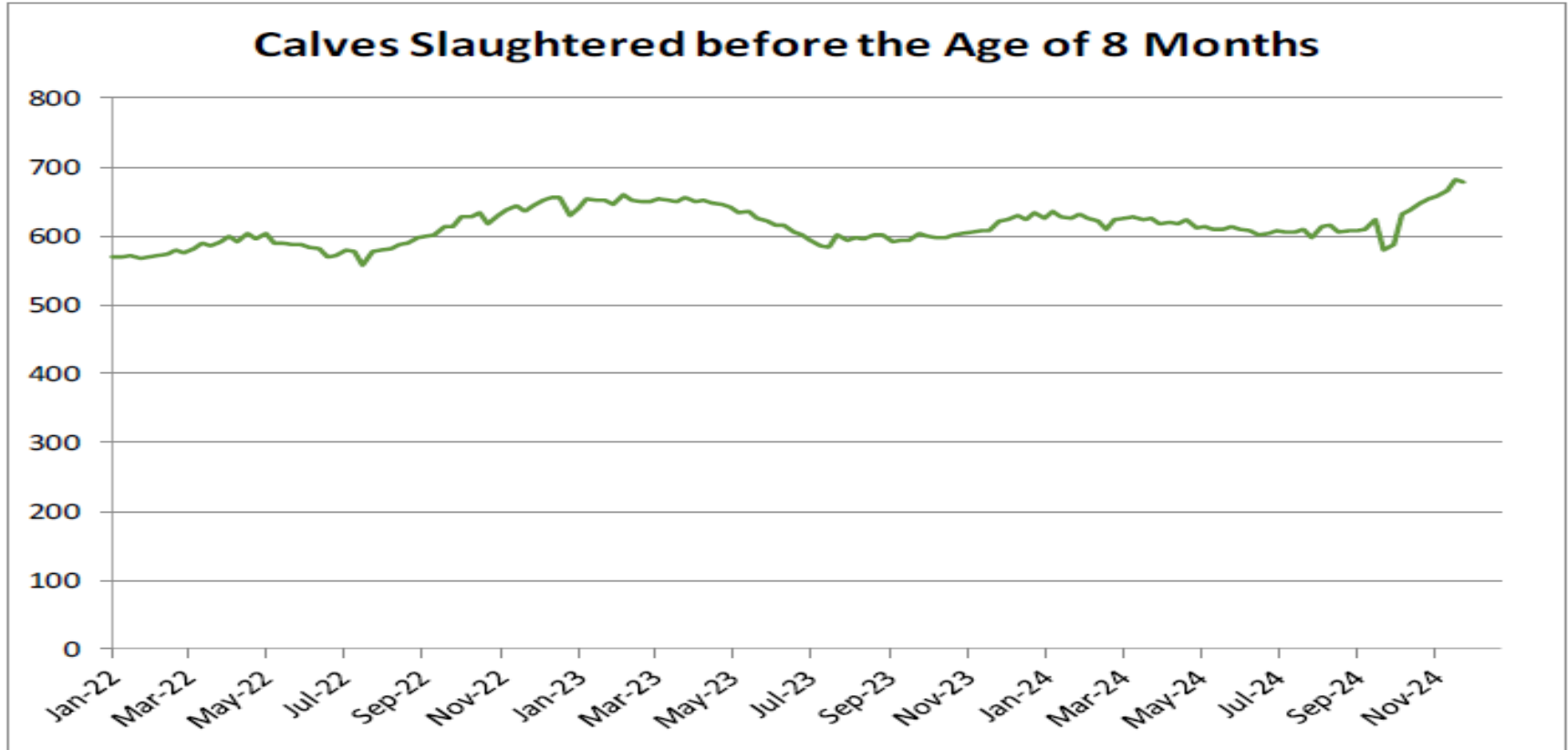
Male Rearing Calves Dairy type

Price in Week 48 **148.24**

Change y/y **+48.6%**



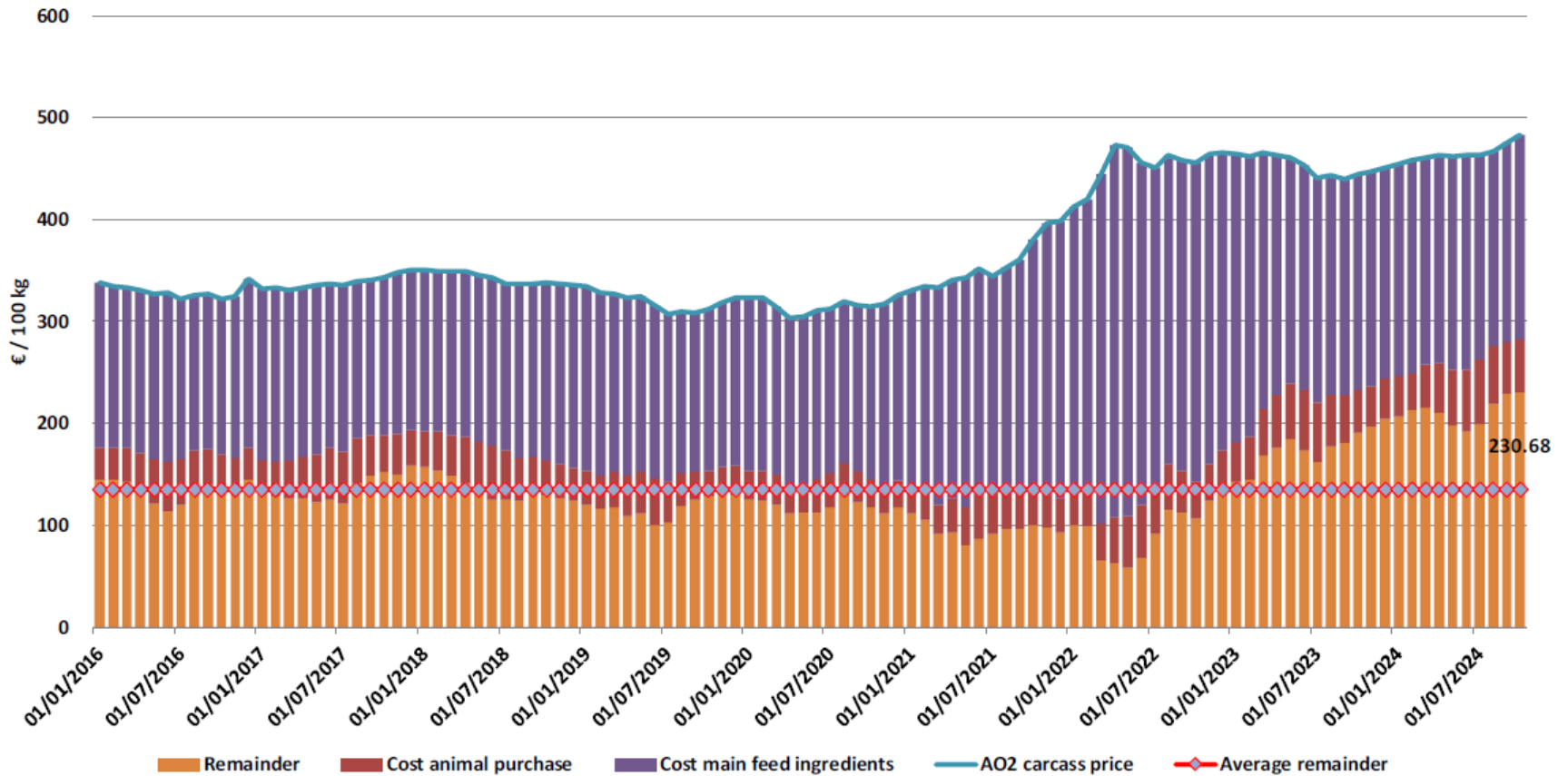
8 aylıktan küçük kesilen buzağular (€ / 100 kg canlı ağırlık)



Price in Week 48 677.82 € / 100 kg of carcasse weight
Change y/y +9.0%

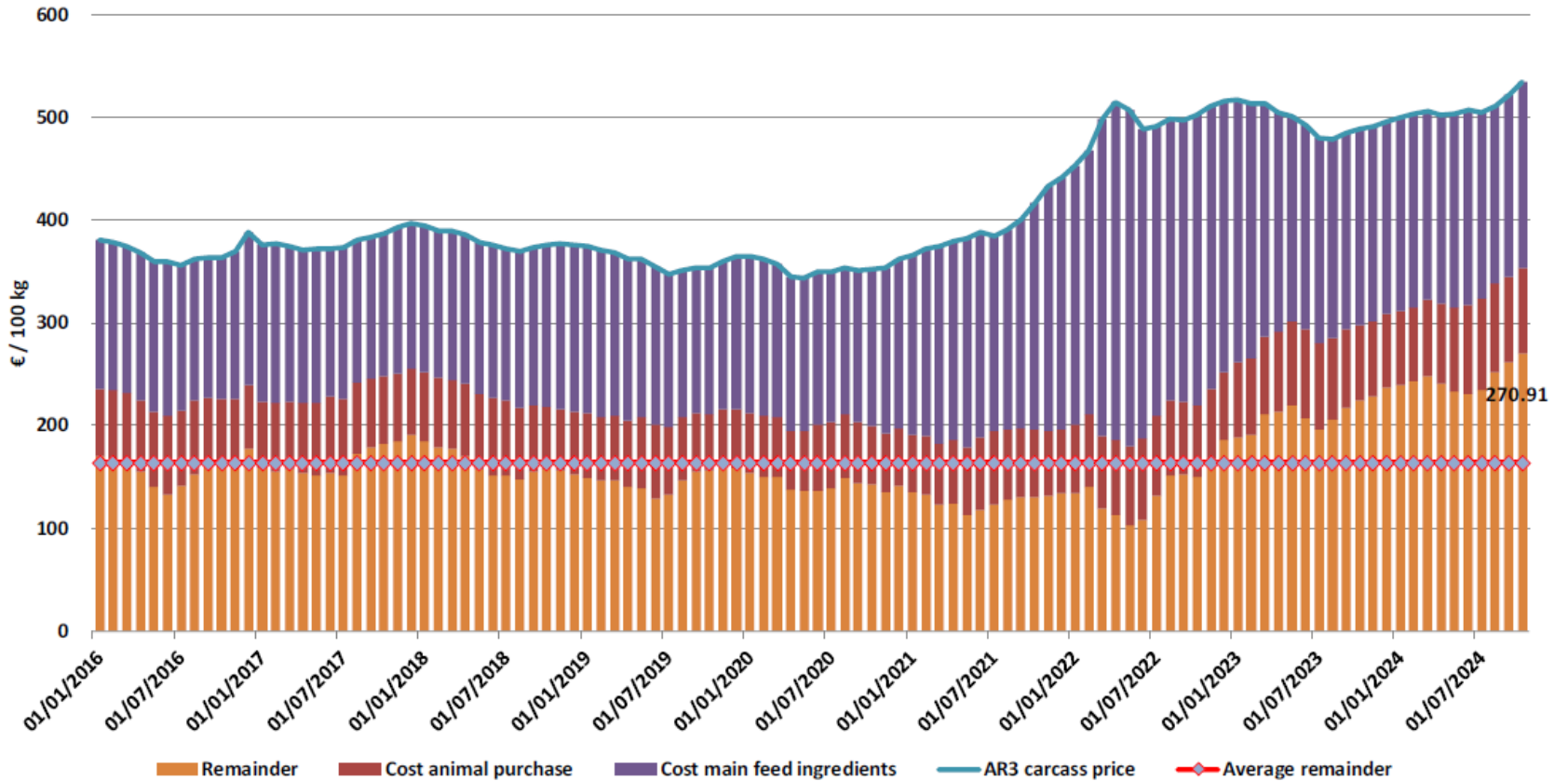
Süt Buzaklıları Besiciliği İçin Kalanlar

Remainder for dairy calves fattening



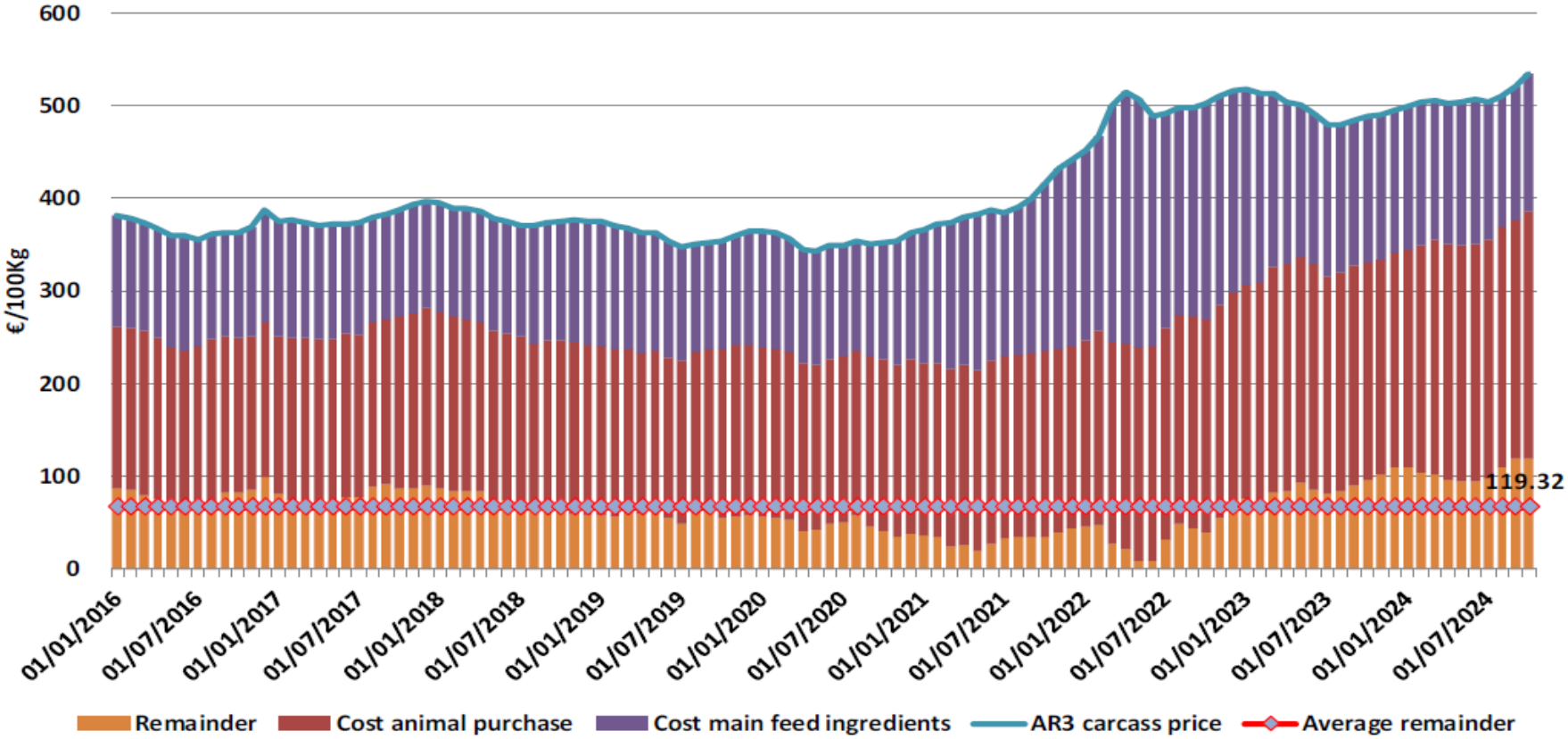
Sığır Tipi Buzağı Besiciliği İçin Kalanlar

Remainder for beef type calves fattening





Genç Besilik Sığır Besiciliği İçin Kalanlar Remainder for young store cattle fattening



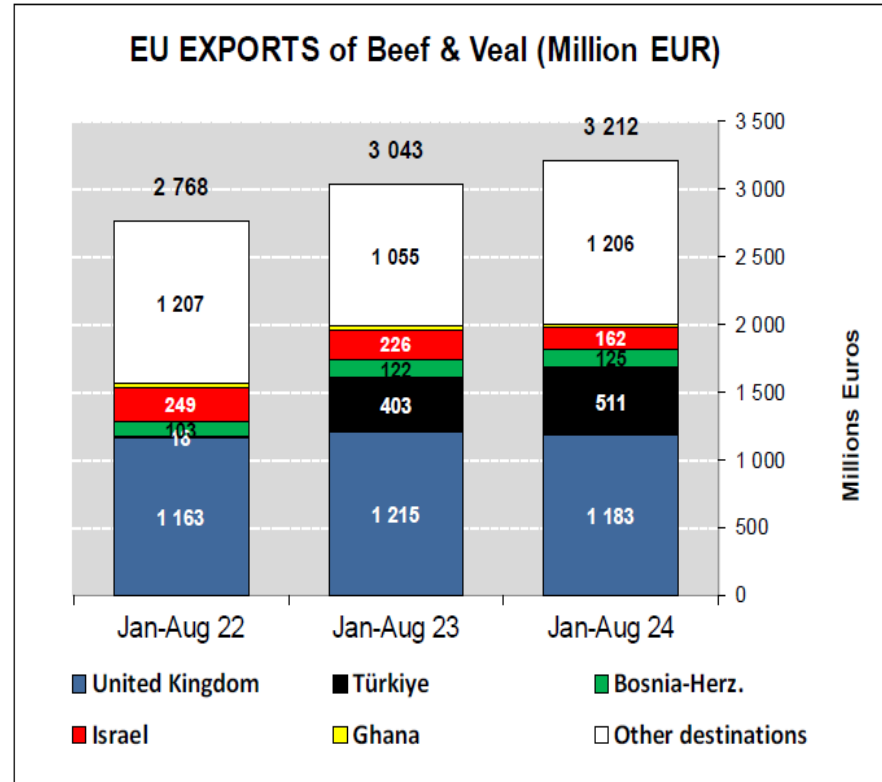
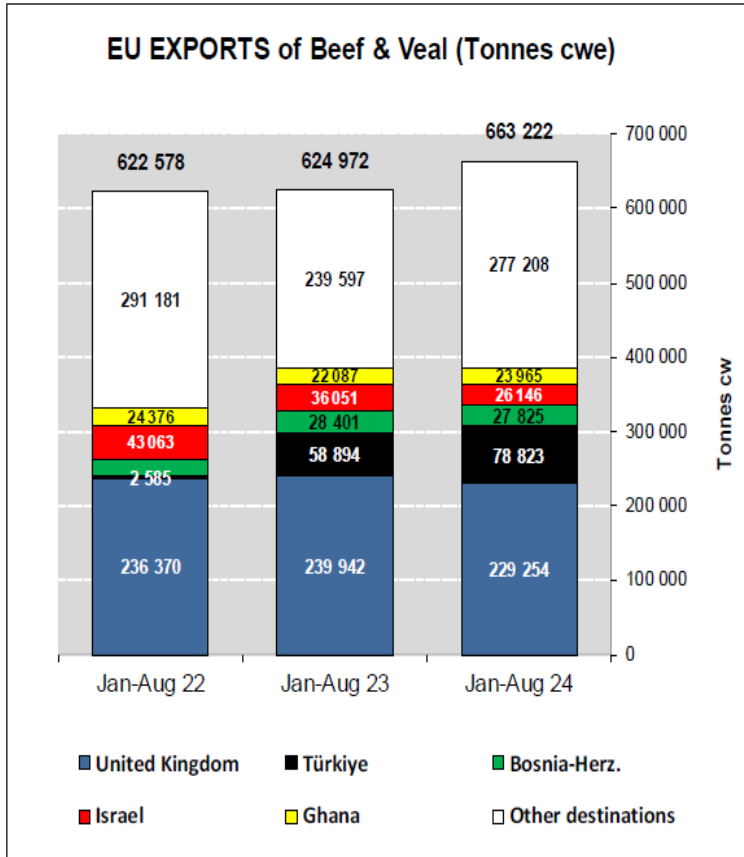
AB sığır eti ve canlı hayvan ihracatı (yağlar hariç): Pazar Rakamları (COMEXT – ton karkas ağırlık)

EU Exports of Beef and Live Animals (excluding fats):
Trade figures (COMEXT – tonnes cwe)

Destinations	2020		2021		2022		2023		Jan-Aug 24		Compared to Jan-Aug 23
	tonnes	%	tonnes	%	tonnes	%	tonnes	%	tonnes	%	
United Kingdom	450 514	39.5%	344 633	33.4%	366 332	38.9%	368 959	38.4%	229 254	34.6%	- 4.5%
Türkiye	22 338	2.0%	14 953	1.5%	14 168	1.5%	90 933	9.5%	78 823	11.9%	+ 33.8%
Bosnia-Herz.	34 896	3.1%	40 504	3.9%	38 796	4.1%	45 285	4.7%	27 825	4.2%	- 2.0%
Israel	56 139	4.9%	66 022	6.4%	63 618	6.7%	45 133	4.7%	26 146	3.9%	- 27.5%
Ghana	47 344	4.2%	47 618	4.6%	32 171	3.4%	33 889	3.5%	23 965	3.6%	+ 8.5%
Algeria	39 396	3.5%	24 111	2.3%	25 459	2.7%	11 905	1.2%	18 692	2.8%	+ 108.5%
Morocco	10 049	0.9%	11 868	1.2%	8 273	0.9%	25 612	2.7%	17 801	2.7%	+ 14.6%
Kosovo	10 391	0.9%	16 478	1.6%	17 069	1.8%	22 694	2.4%	17 588	2.7%	+ 31.6%
Ivory Coast	32 433	2.8%	29 187	2.8%	29 882	3.2%	30 205	3.1%	17 569	2.6%	- 8.3%
Switzerland	26 223	2.3%	28 717	2.8%	24 958	2.6%	19 371	2.0%	16 489	2.5%	+ 24.2%
Philippines	33 650	3.0%	34 671	3.4%	29 922	3.2%	18 333	1.9%	16 283	2.5%	+ 40.7%
Lebanon	33 709	3.0%	19 527	1.9%	21 026	2.2%	21 627	2.2%	14 317	2.2%	+ 13.9%
Hong Kong	56 713	5.0%	44 769	4.3%	10 570	1.1%	21 689	2.3%	13 108	2.0%	- 12.0%
Canada	20 450	1.8%	20 670	2.0%	19 928	2.1%	15 907	1.7%	10 934	1.6%	+ 9.6%
Japan	11 885	1.0%	21 888	2.1%	19 948	2.1%	12 677	1.3%	9 787	1.5%	+ 18.4%
North Macedonia	8 264	0.7%	12 935	1.3%	9 934	1.1%	9 975	1.0%	7 769	1.2%	+ 17.6%
Other Destinations	245 056	21.5%	252 427	24.5%	210 442	22.3%	167 034	17.4%	116 872	17.6%	
Total	1 139 450		1 030 978		942 496		961 229		663 222		
% change			- 10%		- 9%		+ 2%		+ 6.1%		

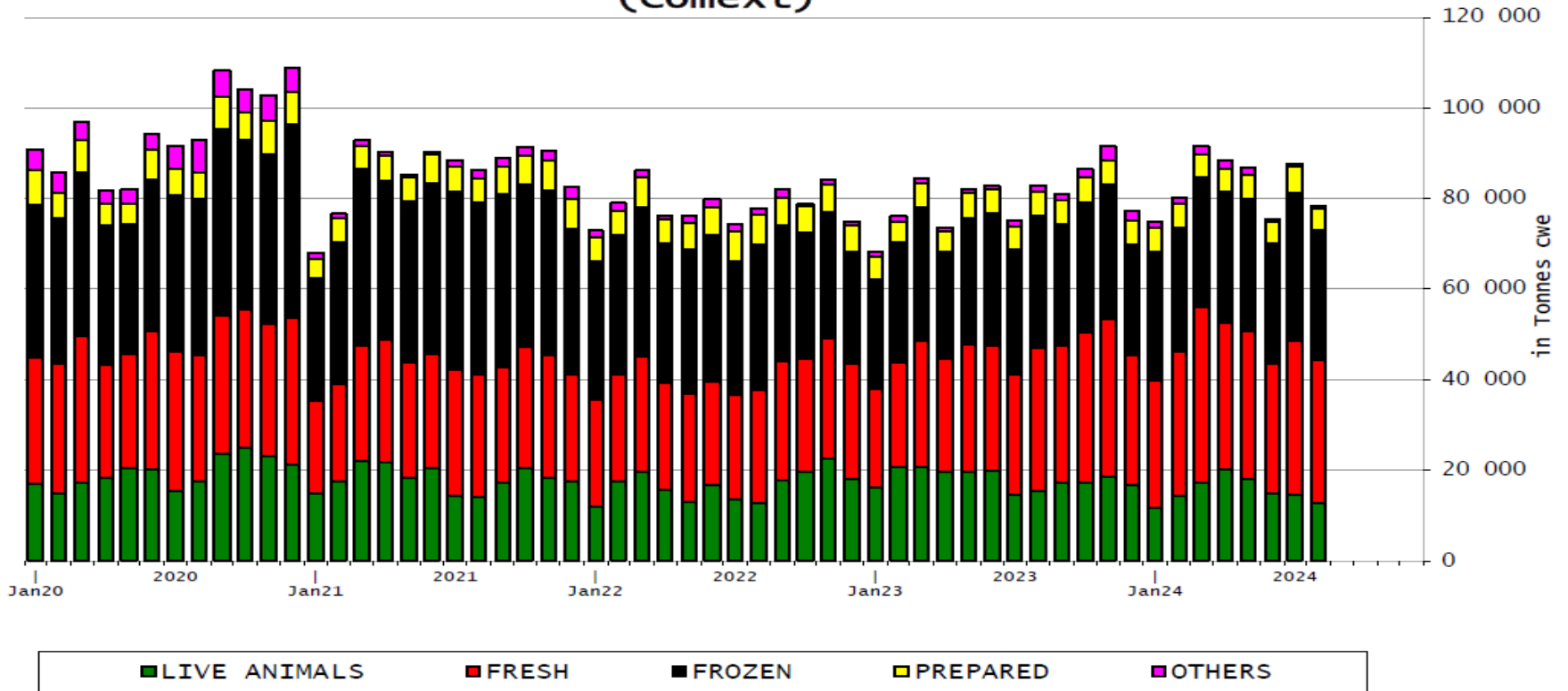


AB Sığır Eti ve Canlı Hayvan İhracatları (yağlar hariç)



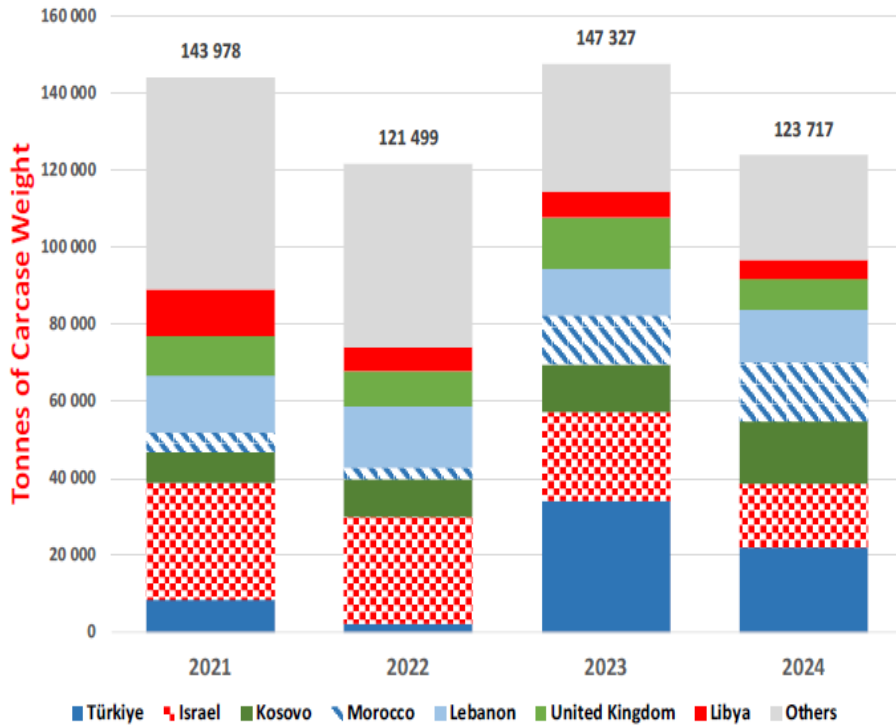
AB Sığır Eti İhracatları

EU Exports of BEEF products
(Comext)

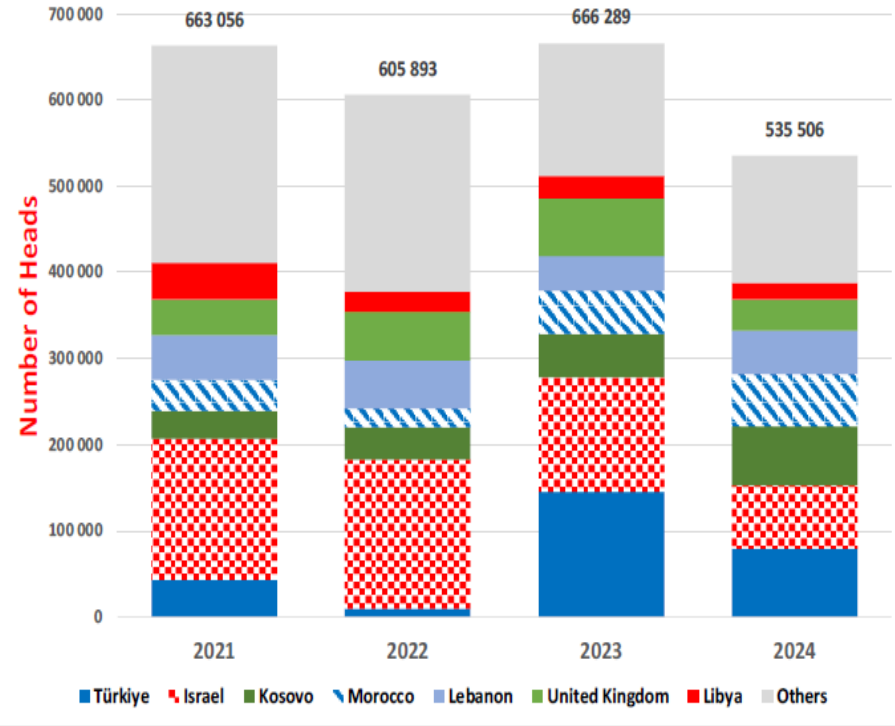


AB Canlı Hayvan İhracatları

EU Exports of BEEF Live Animals by Partner for the Period Jan-Aug 2024



EU Exports of BEEF Live Animals by Partner for the Period Jan-Aug 2024

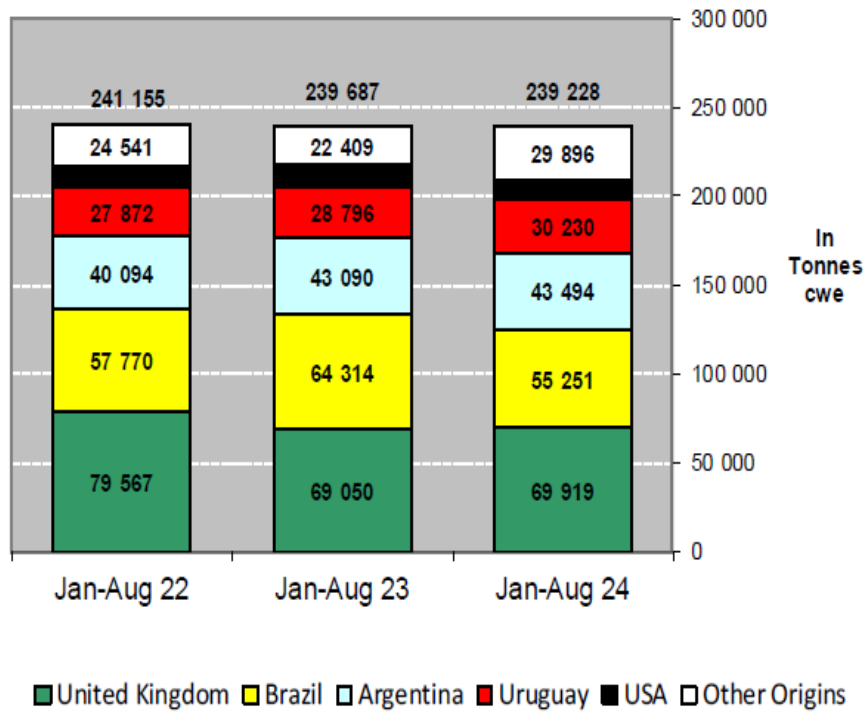


AB Canlı Hayvan ve Sığır Eti İthalatları (Yağlar hariç) (Ton)

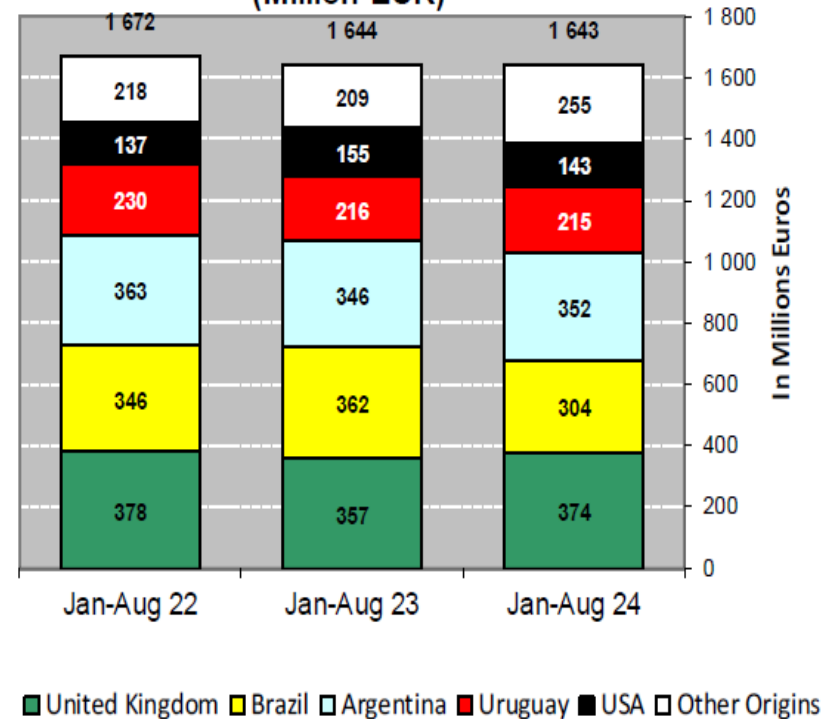
Origins	2020		2021		2022		2023		Jan-Aug 24		Compared to Jan-Aug 23
	tonnes	%	tonnes	%	tonnes	%	tonnes	%	tonnes	%	
United Kingdom	120 743	35.1%	87 596	28.3%	118 767	33.0%	107 130	30.5%	69 919	29.2%	+ 1.3%
Brazil	84 139	24.4%	81 737	26.4%	86 512	24.0%	86 862	24.7%	55 251	23.1%	- 14.1%
Argentina	56 421	16.4%	52 300	16.9%	62 584	17.4%	63 094	18.0%	43 494	18.2%	+ 0.9%
Uruguay	34 611	10.0%	42 669	13.8%	37 619	10.5%	41 544	11.8%	30 230	12.6%	+ 5.0%
USA	16 532	4.8%	14 910	4.8%	17 269	4.8%	18 275	5.2%	10 438	4.4%	- 13.2%
Namibia	1 445	0.4%	1 996	0.6%	5 168	1.4%	7 853	2.2%	8 091	3.4%	+ 80.1%
Australia	11 058	3.2%	8 925	2.9%	8 385	2.3%	7 700	2.2%	6 177	2.6%	+ 15.8%
New Zealand	6 116	1.8%	4 380	1.4%	5 202	1.4%	4 532	1.3%	3 879	1.6%	+ 26.1%
Botswana	788	0.2%	331	0.1%	928	0.3%	1 606	0.5%	3 685	1.5%	+++
Paraguay	4 234	1.2%	3 933	1.3%	5 404	1.5%	4 774	1.4%	3 293	1.4%	- 9.3%
Switzerland	4 187	1.2%	4 714	1.5%	4 730	1.3%	3 627	1.0%	2 266	0.9%	+ 5.9%
Canada	1 550	0.5%	1 816	0.6%	2 172	0.6%	1 456	0.4%	652	0.3%	- 37.8%
Japan	789	0.2%	1 478	0.5%	2 143	0.6%	834	0.2%	631	0.3%	+ 8.4%
Serbia	931	0.3%	963	0.3%	1 058	0.3%	812	0.2%	407	0.2%	- 34.7%
Norway	335	0.1%	571	0.2%	704	0.2%	637	0.2%	322	0.1%	- 27.0%
Chile	168	0.0%	238	0.1%	378	0.1%	365	0.1%	256	0.1%	- 3.5%
Other Destinations	357	0.1%	710	0.2%	961	0.3%	322	0.1%	237	0.1%	
Total	344 403		309 267		359 985		351 423		239 228		
% change			- 10%		+ 16%		- 2%		- 0.2%		

AB Sığır Eti ve Canlı Hayvan İthalatları (Yağlar hariç) (Ton)

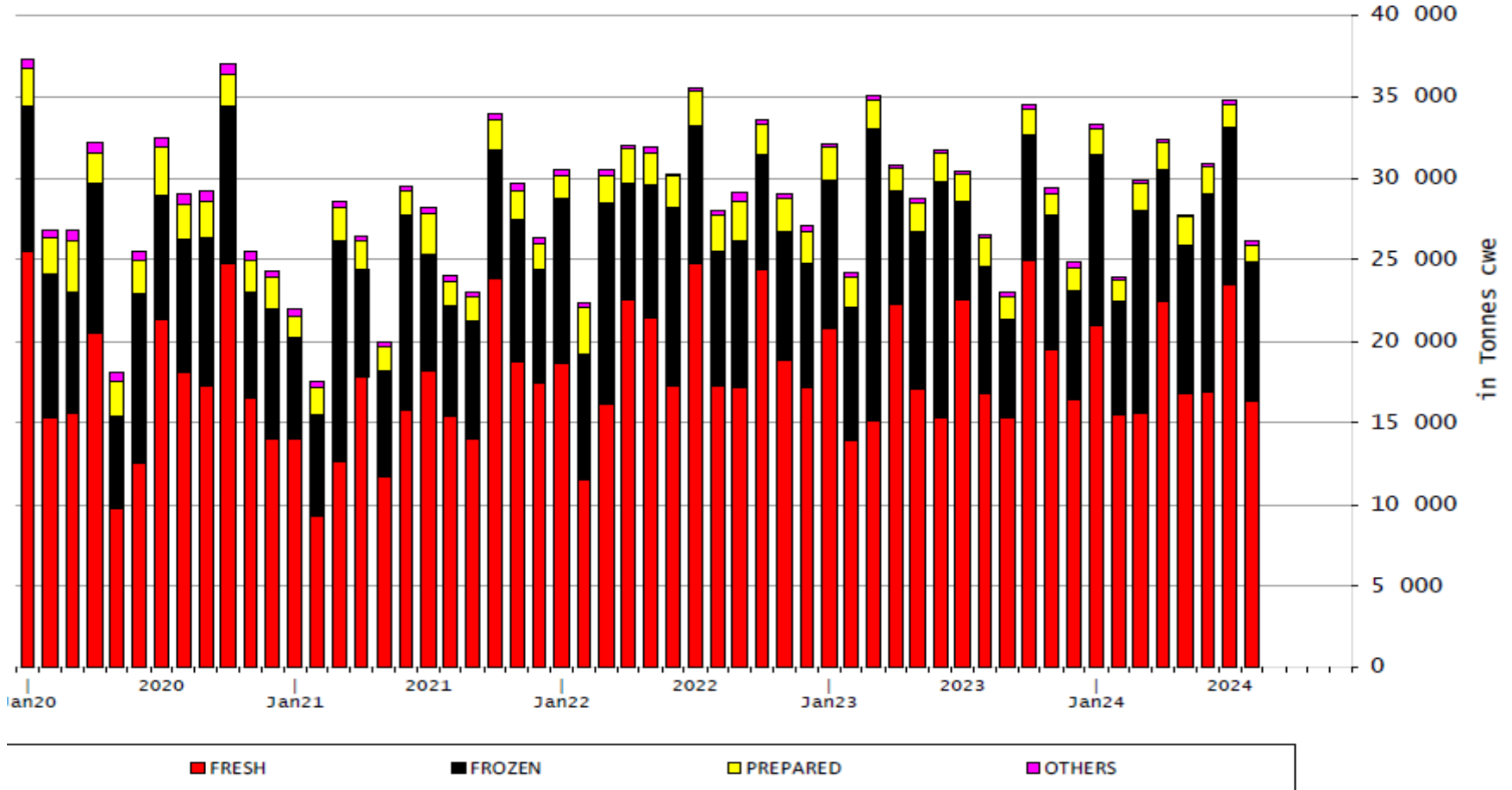
IMPORTS of Beef & Veal into EU
(Tonnes cwe)



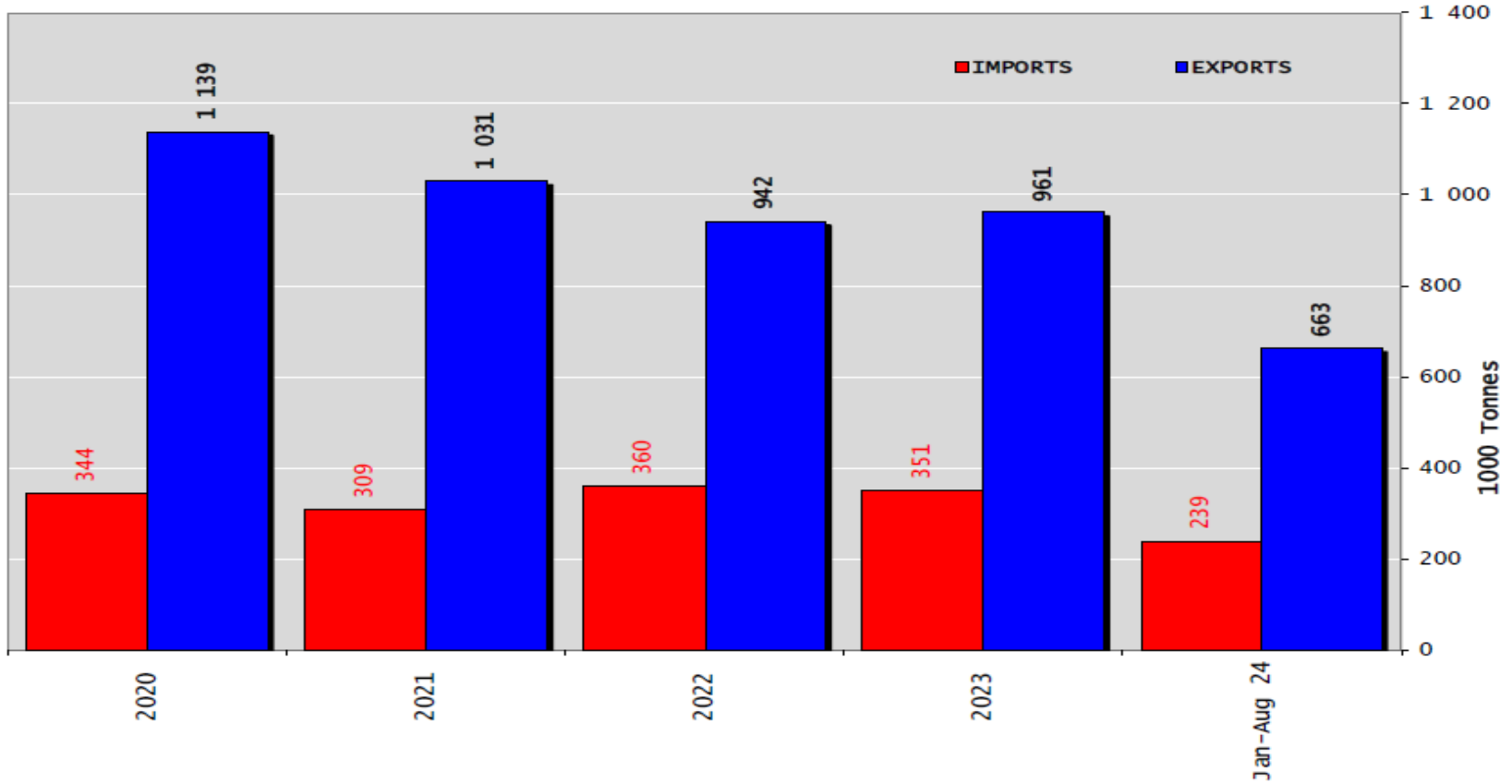
IMPORTS of Beef & Veal into EU
(Million EUR)



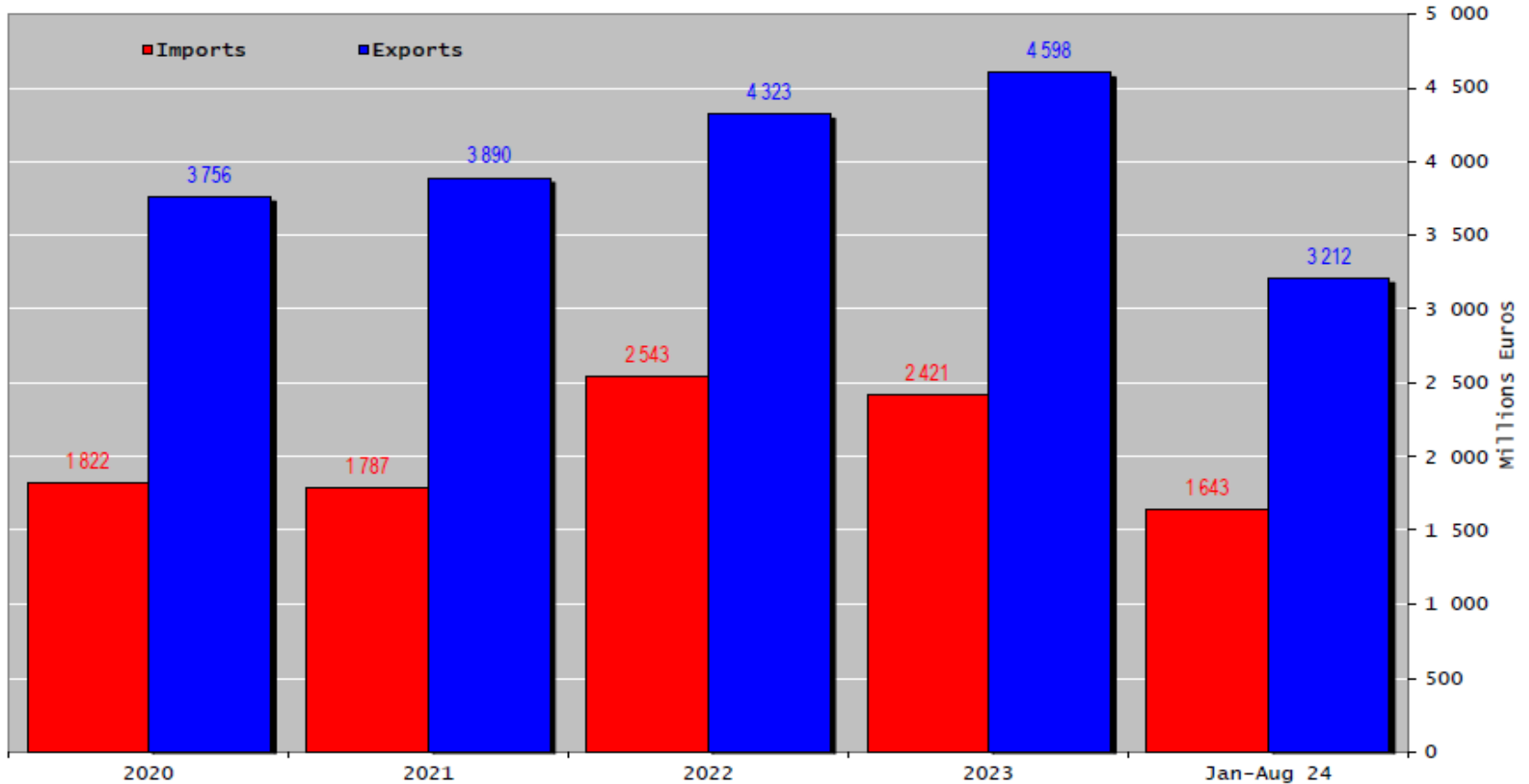
AB Sığır Eti Ürünleri İthalatları (Ton karkas ağırlık eşdeğeri)



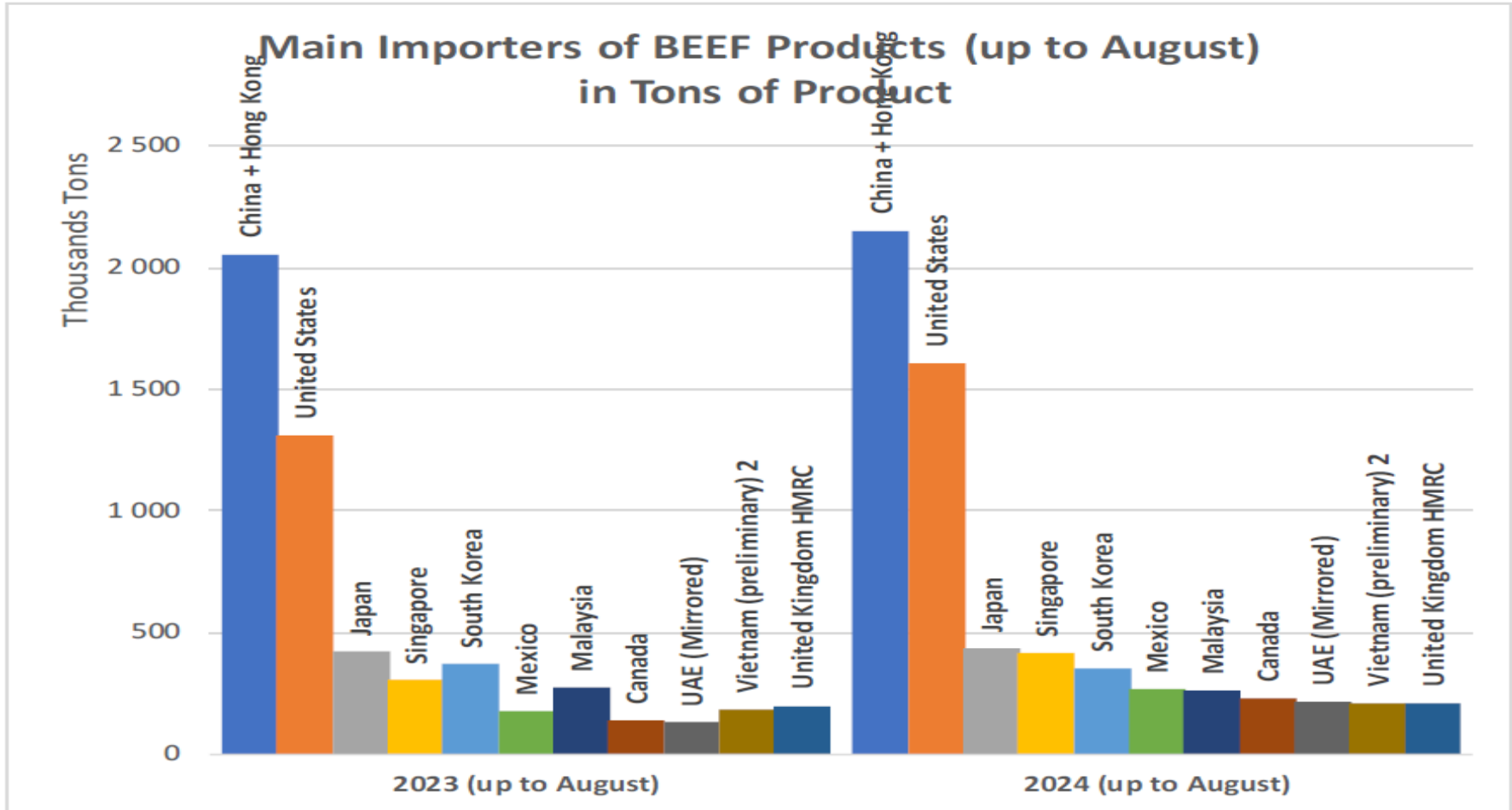
Siğır Ürünleri ve Canlı Hayvanların Ticaret Dengesi



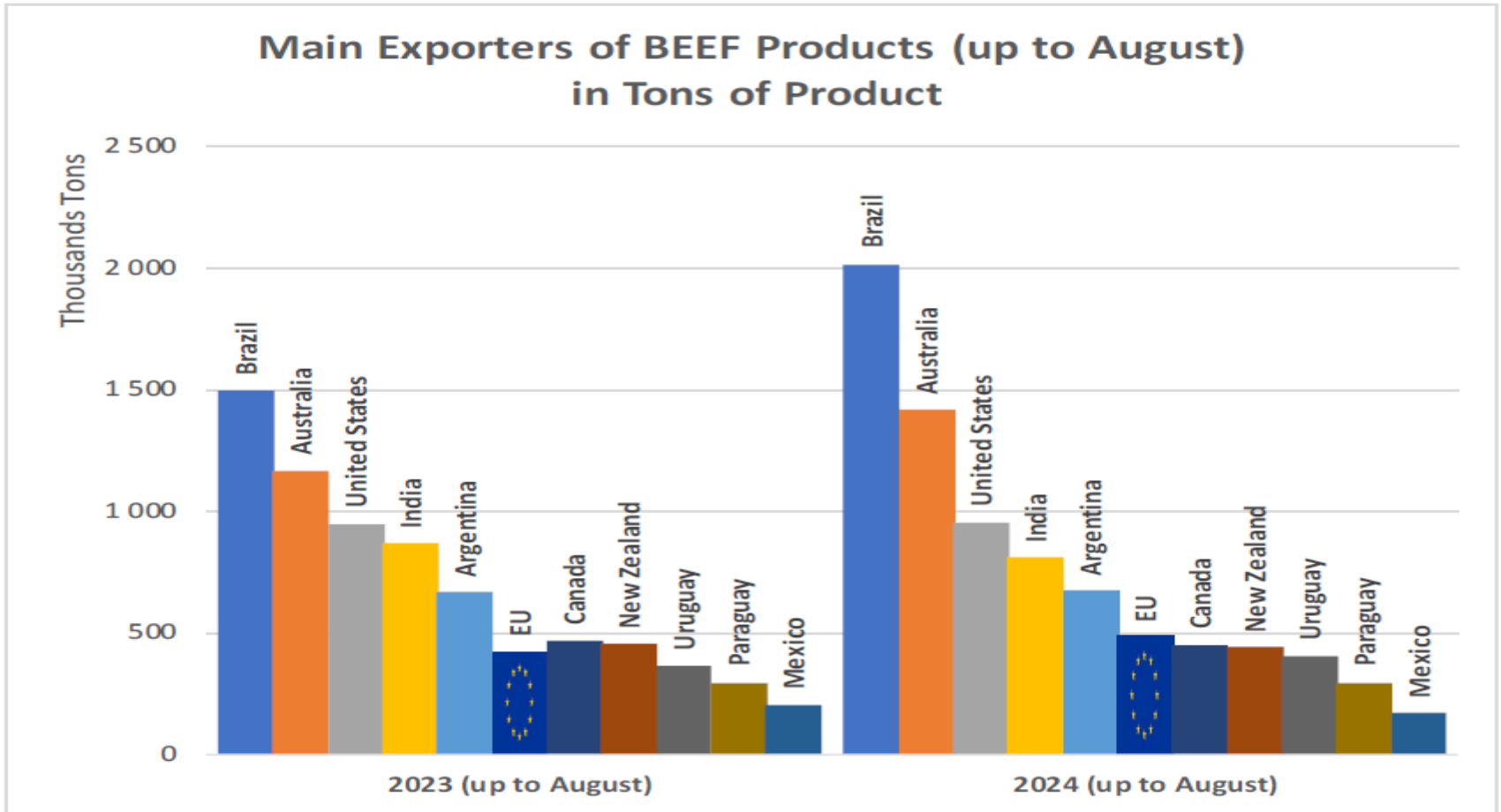
Siğır Ürünleri ve Canlı Hayvanların Ticaret Dengesi



Siğir Ürünlerinin Ana İthalatçıları (Ağustos'a Kadar) (Ton)



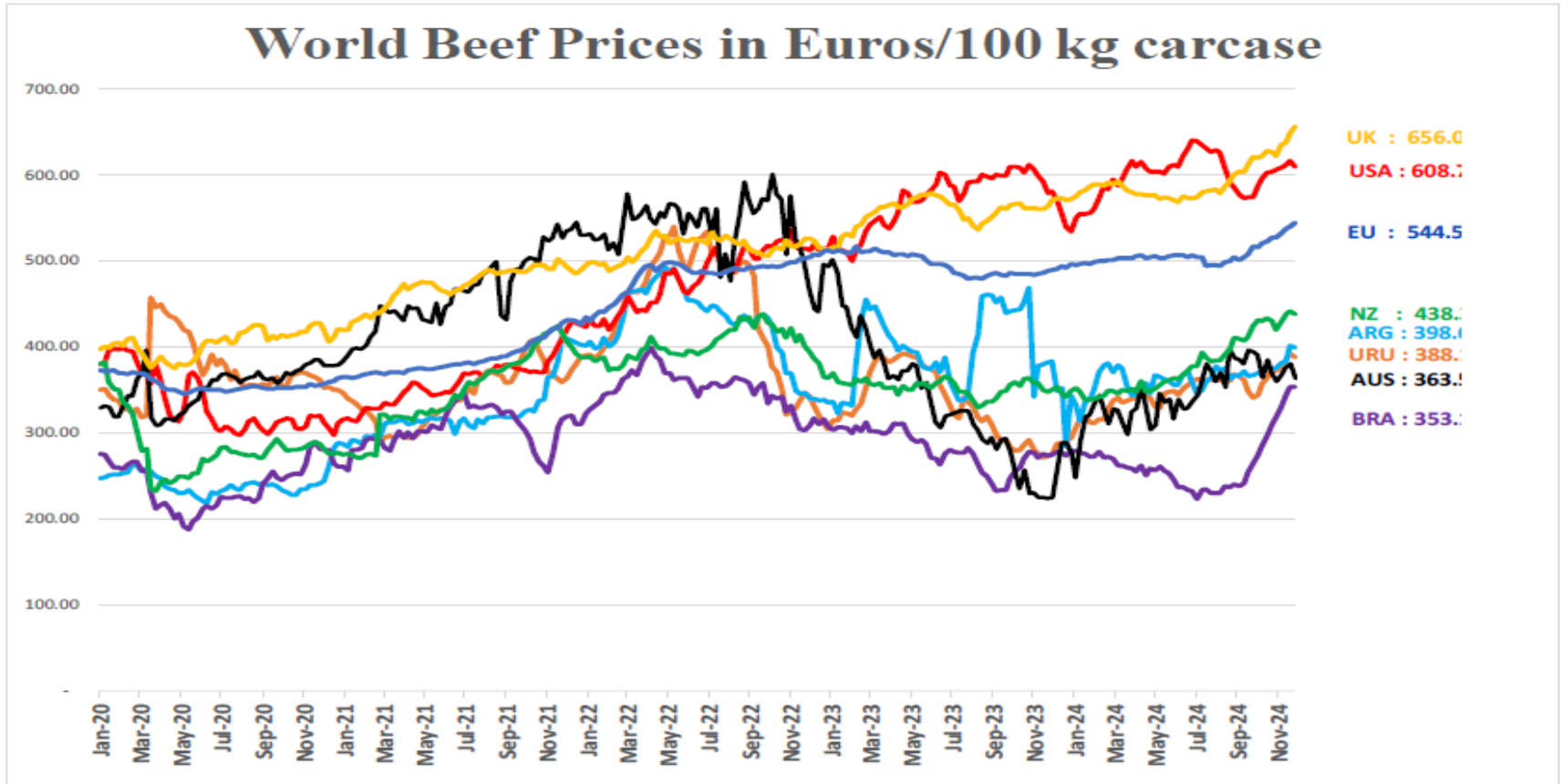
Siğir Ürünlerinin Ana İhracatçıları (Ağustos'a Kadar) (Ton)



DÜNYA SIĞIR ETİ PAZARI



Dünya Sığır Eti Fiyatları Euro / 100 kg karkas





Daha fazla bilgi için:

https://ec.europa.eu/agriculture/market-observatory/meat_en

Ve Agri-FOOD Veri Portalı:

<http://agridata.ec.europa.eu>