



AB SIĞIR VE DANA ETİ PAZAR DURUMU

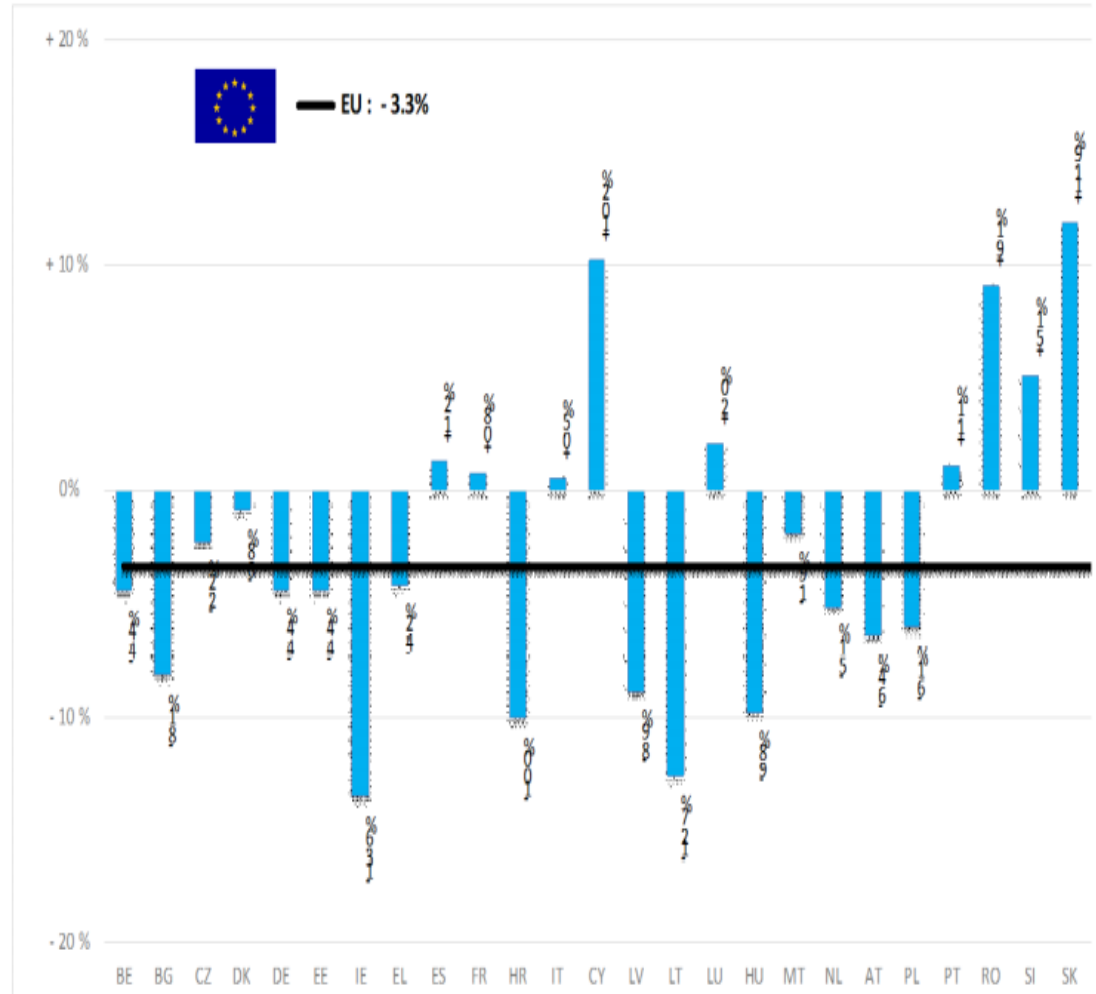
17 Haziran 2021



European
Commission

BAŞ	HEADS	Jan-Mar 21/20
		EU
BOĞA	Bull	-4.1%
ÖKÜZ	Bullock	-6.0%
İNEK	Cow	-2.1%
DÜVE	Heifer	-3.4%
BUZAĞI	Calve	-3.7%
GENÇ SİĞİR	Young cattle	-2.4%
Büyükbaş Hayvan Eti	Meat of bovine animals	-3.3%

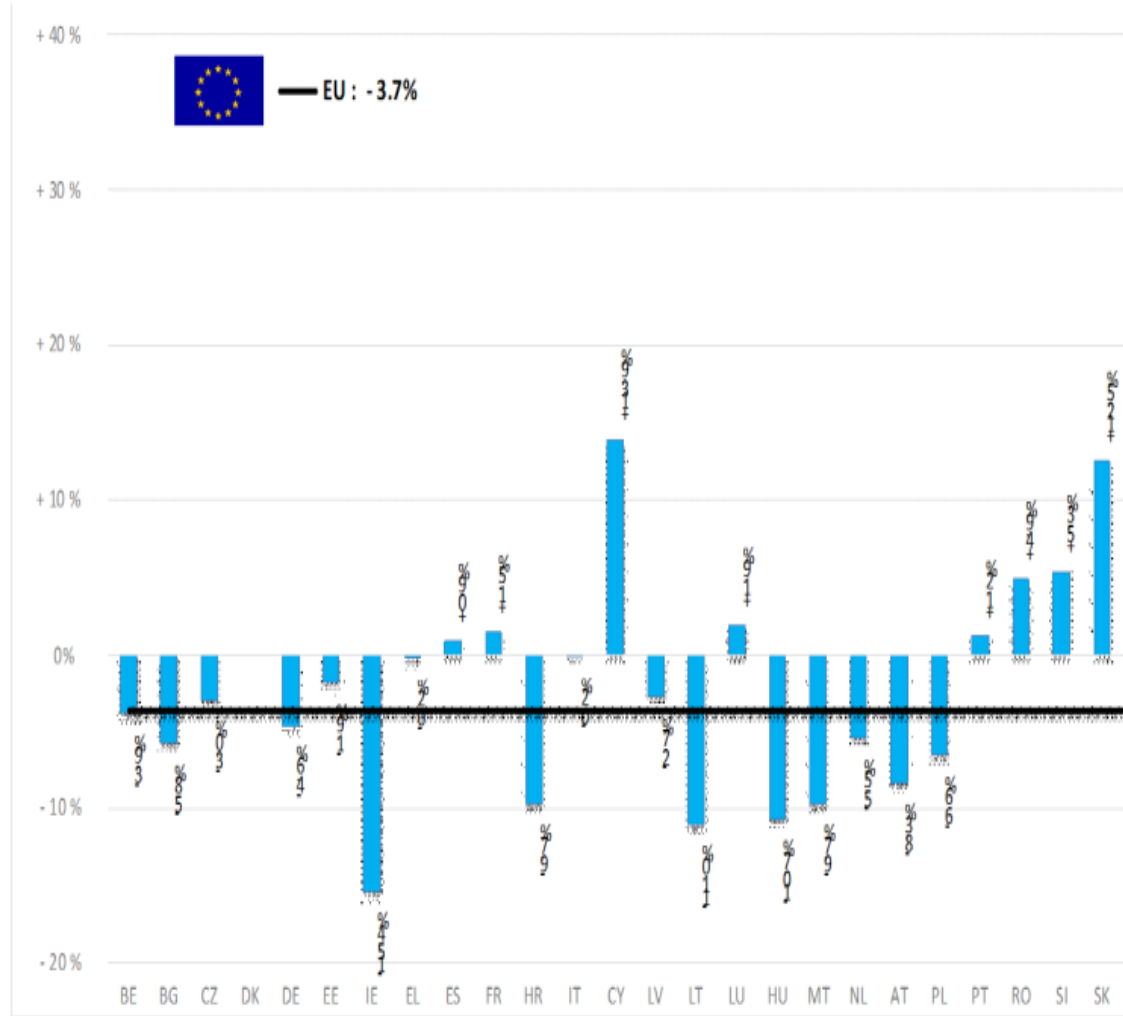
Estimates for last month of period :



Source : EStat - Newcronos

TON	TONNES	Jan-Mar 21/20
		EU
BOĞA	Bull	-5.3%
ÖKÜZ	Bullock	-6.5%
İNEK	Cow	-2.8%
DÜVE	Heifer	-2.3%
BUZAĞI	Calve	-1.4%
GENÇ SİĞİR	Young cattle	-3.9%
Büyükbaş Hayvan Eti	Meat of bovine animals	-3.7%

Estimates for last month of period :

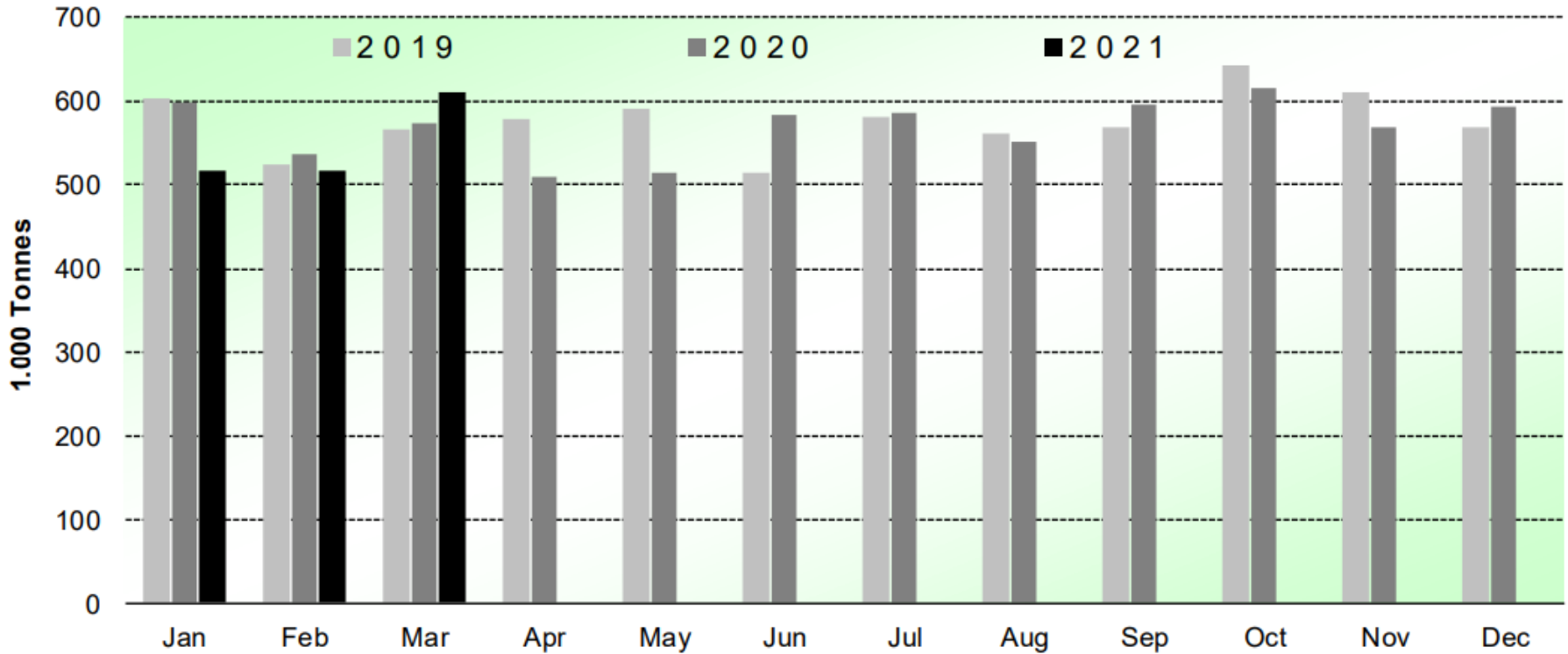


Source : EStat - Newcronos



SIĞIR VE DANA ETİ ÜRETİMİ (AB Kesimler – Ton)

Beef & Veal Production (EU Slaughtering) - Tonnes



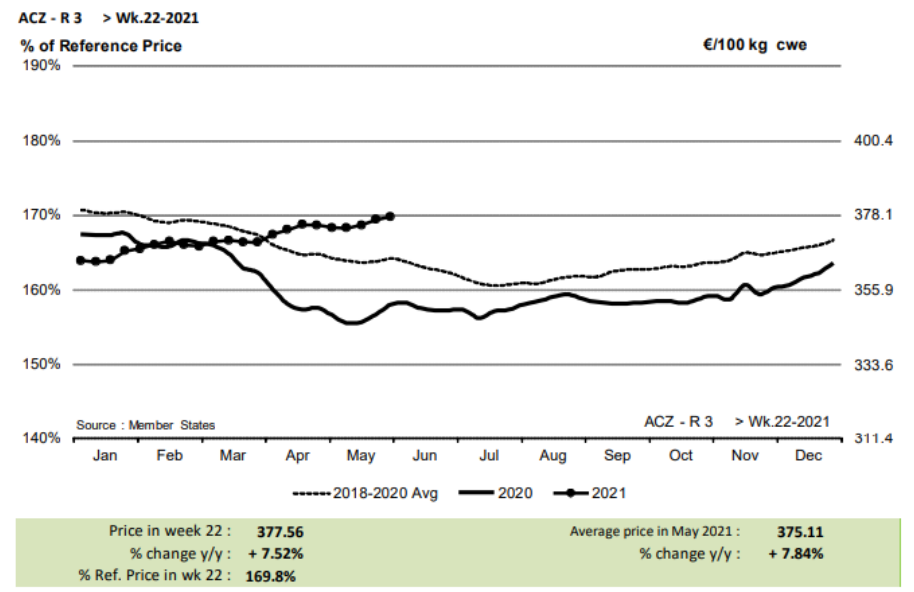
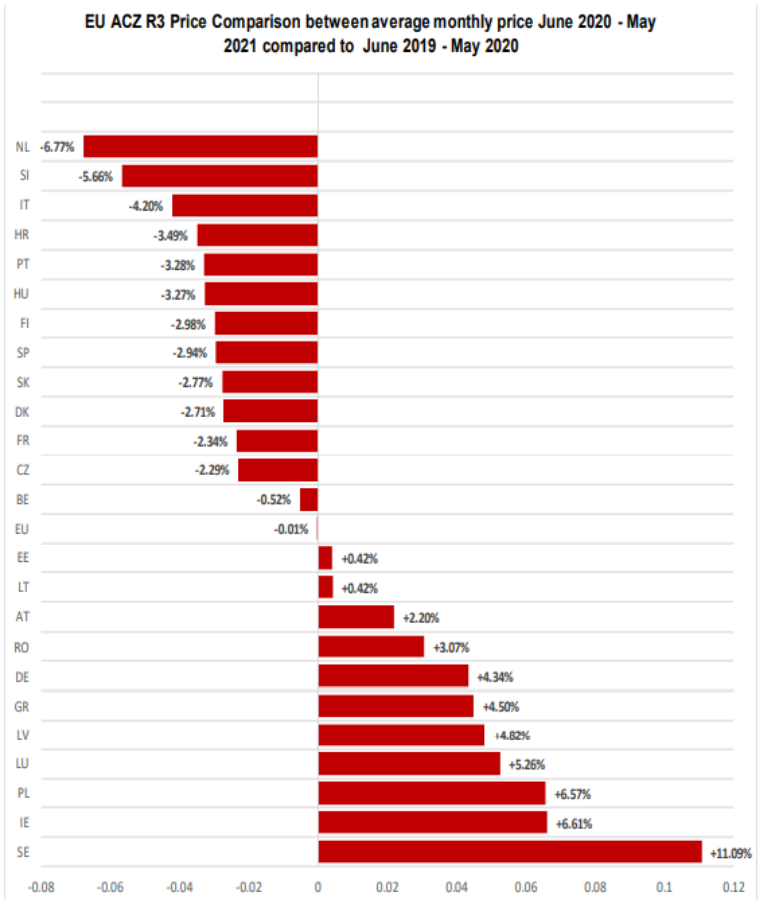
Source : EStat-Newcronos

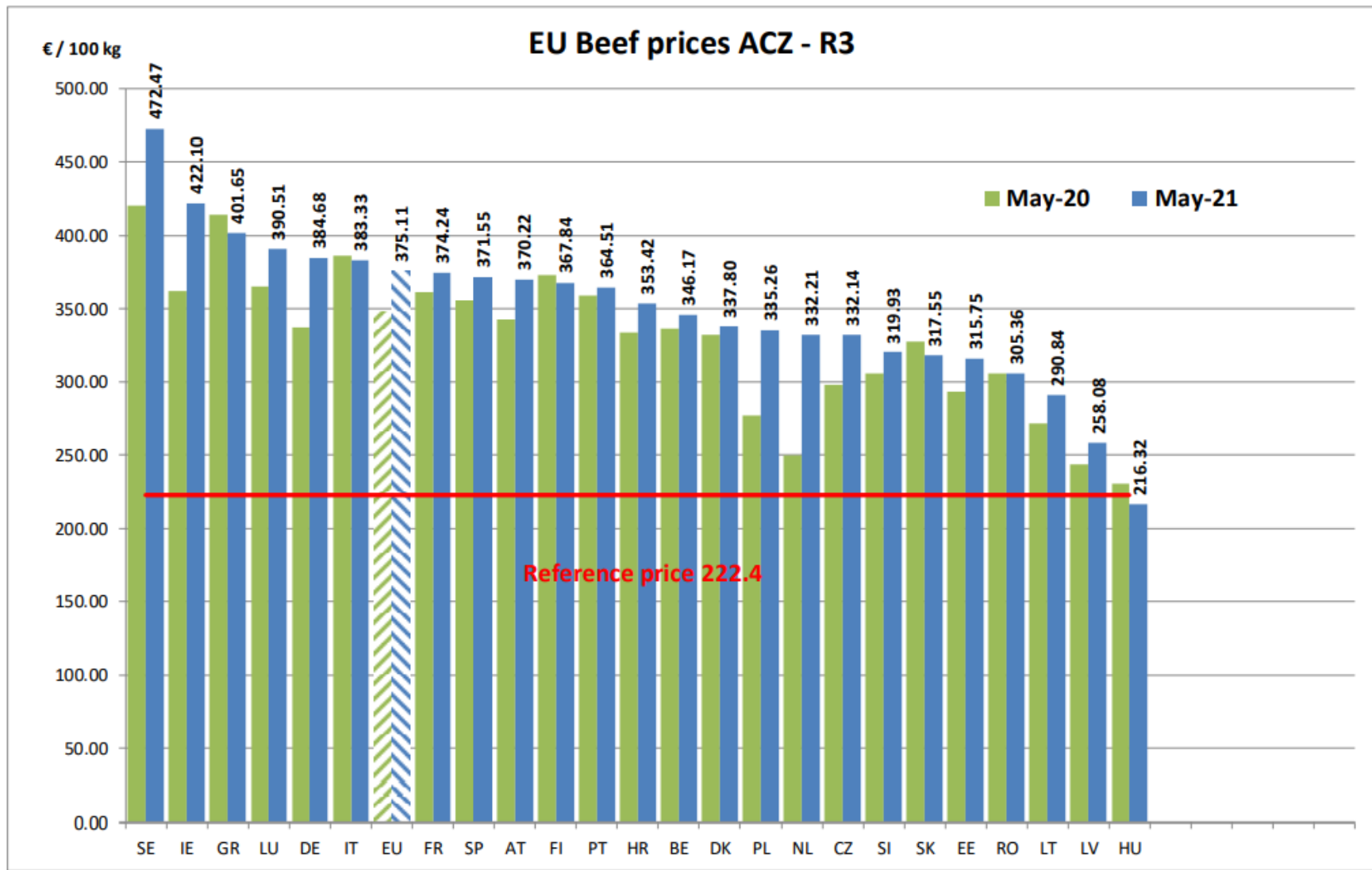


EU Prices week	22		Evolution since last week	Evolution since last month	Evolution since last year
Average A/C/Z -R3	377.5	R3 €/100kg	+ 0.2%	+ 0.9%	+ 7.5%
Young Bovines (Z)	365.3		- 0.1%	- 0.4%	- 0.1%
Young Bulls (A)	375.3		+ 0.4%	+ 1.3%	+ 7.4%
Steers (C)	411.6		+ 0.2%	+ 0.8%	+ 12.8%
Cows (D)	311.5		+ 1.5%	+ 3.8%	+ 17.2%
Heifers (E)	387.9		- 0.1%	+ 0.2%	+ 7.9%
Male Calves Dairy Type	103.7	Dairy €/100kg	+ 5.2%	+ 12.6%	+ 46.9%
Male Calves Beef Type	222.5		- 0.3%	+ 5.4%	+ 16.0%
Young Store Cattle	2.61	Store €/100kg	+ 0.2%	- 0.0%	+ 7.2%
Yearling Male Store Cattle	2.31		+ 0.0%	- 0.2%	- 0.2%
Yearling Female Store Cattle	2.49		+ 0.3%	- 0.8%	+ 5.4%
Calves slaughtered <8M	471.8		€/100	+ 0.2%	+ 0.8%

KARKAS FİYATLARI

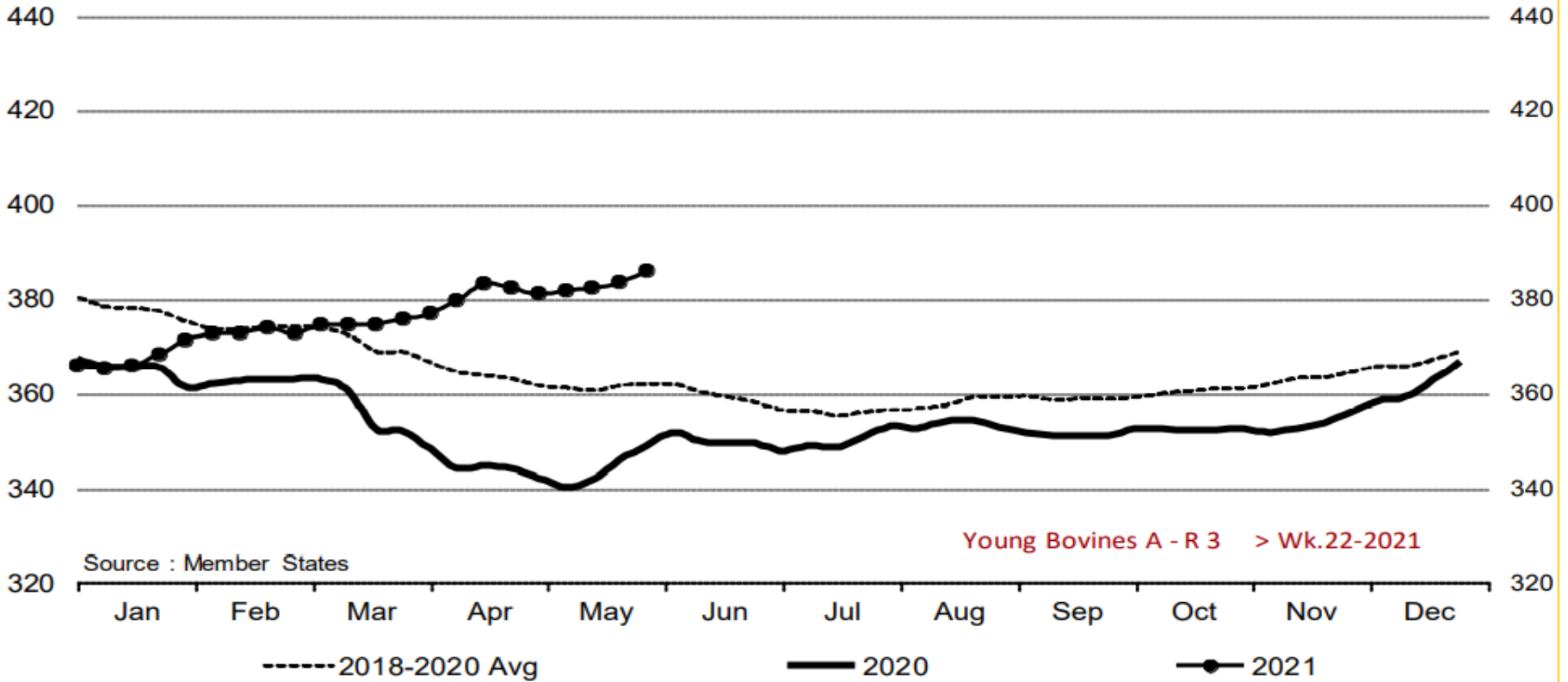
AB DEĞİŞİM A/C/Z. R3







Young Bovines A - R 3 > Wk.22-2021



Source : Member States

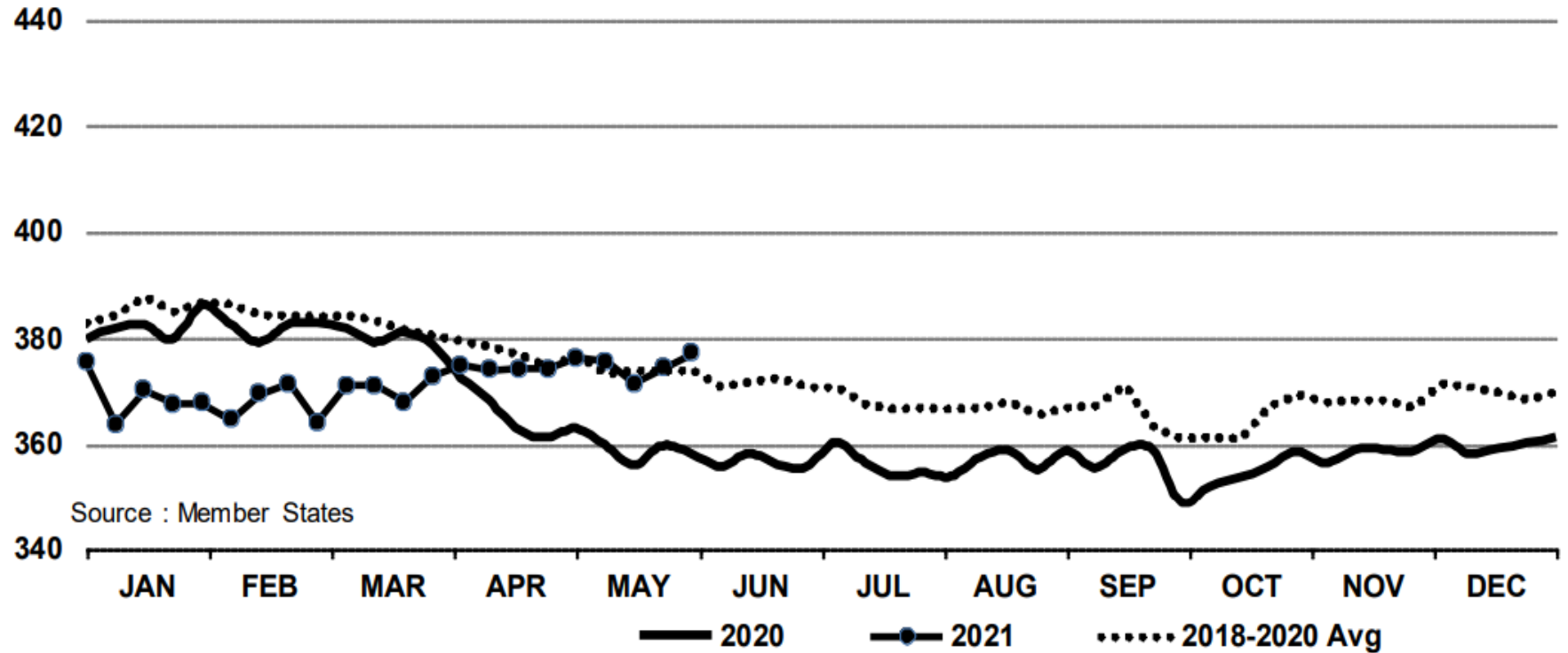
Young Bovines A - R 3 > Wk.22-2021

Price in week 22 : **385.93**
% change y/y : **+ 10.6%**

Average price in May 2021 : **382.26**
% change y/y : **+ 11.2%**

In € / 100 kg

Young Bovines 8-12m Z - R 3 > Wk.22-2021



Price in week 22 : **377.17**

06/05/2021

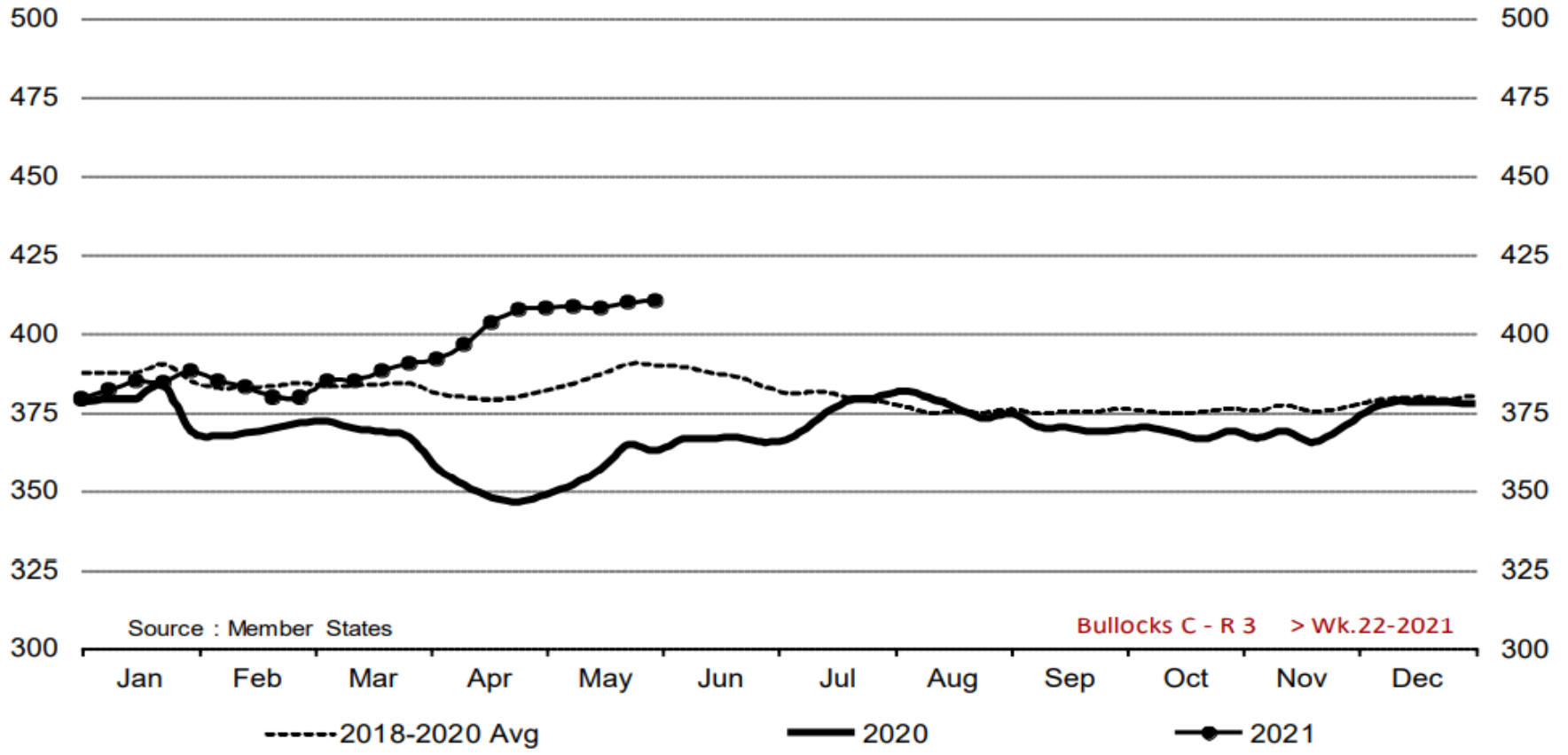
Average price in May 2021 : **374.53**

% change y/y : **+ 5.3%**

% change y/y : **+ 4.4%**



Bullocks C - R 3 > Wk.22-2021



Source : Member States

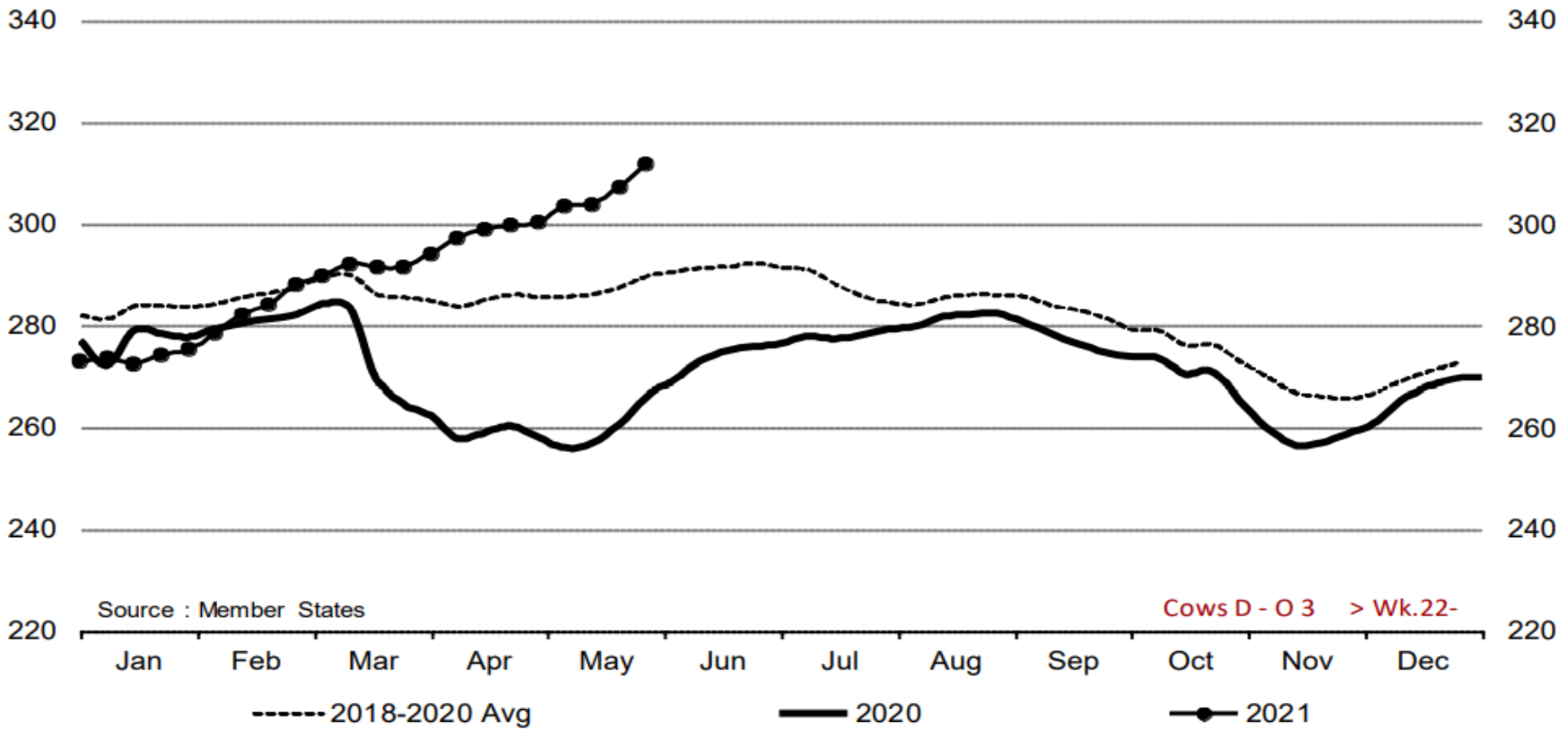
Bullocks C - R 3 > Wk.22-2021

Price in week 22 : **410.13**
% change y/y : **+ 13.1%**

Average price in May 2021 : **408.37**
% change y/y : **+ 14.0%**



Cows D - O 3 > Wk.22-2021

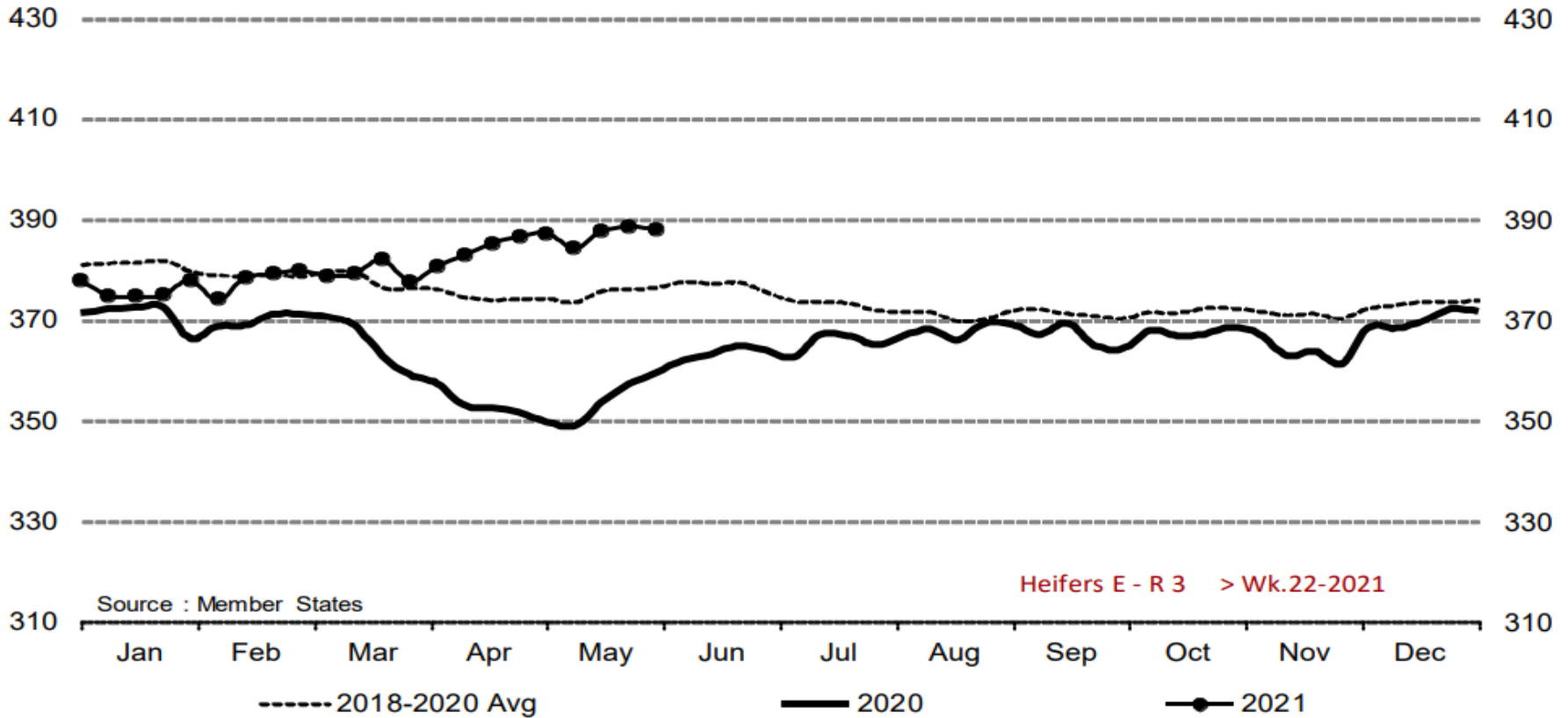


Price in week 22 : **311.59**
% change y/y : **+ 17.2%**

Average price in May 2021 : **303.64**
% change y/y : **+ 17.0%**



Heifers E - R 3 > Wk.22-2021

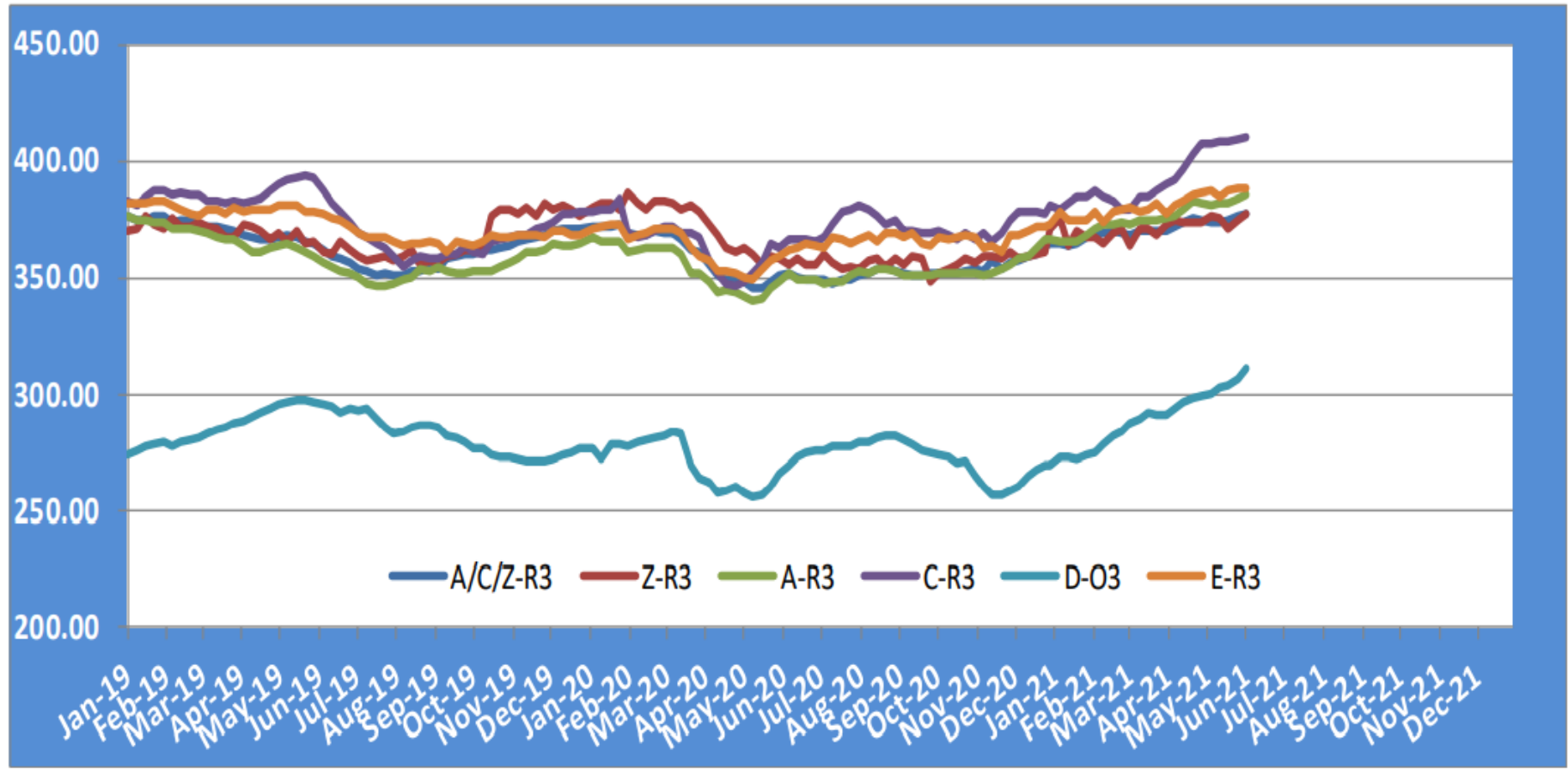


Price in week 22 : **387.92**
% change y/y : **+ 7.9%**

Average price in May 2021 : **386.93**
% change y/y : **+ 9.2%**

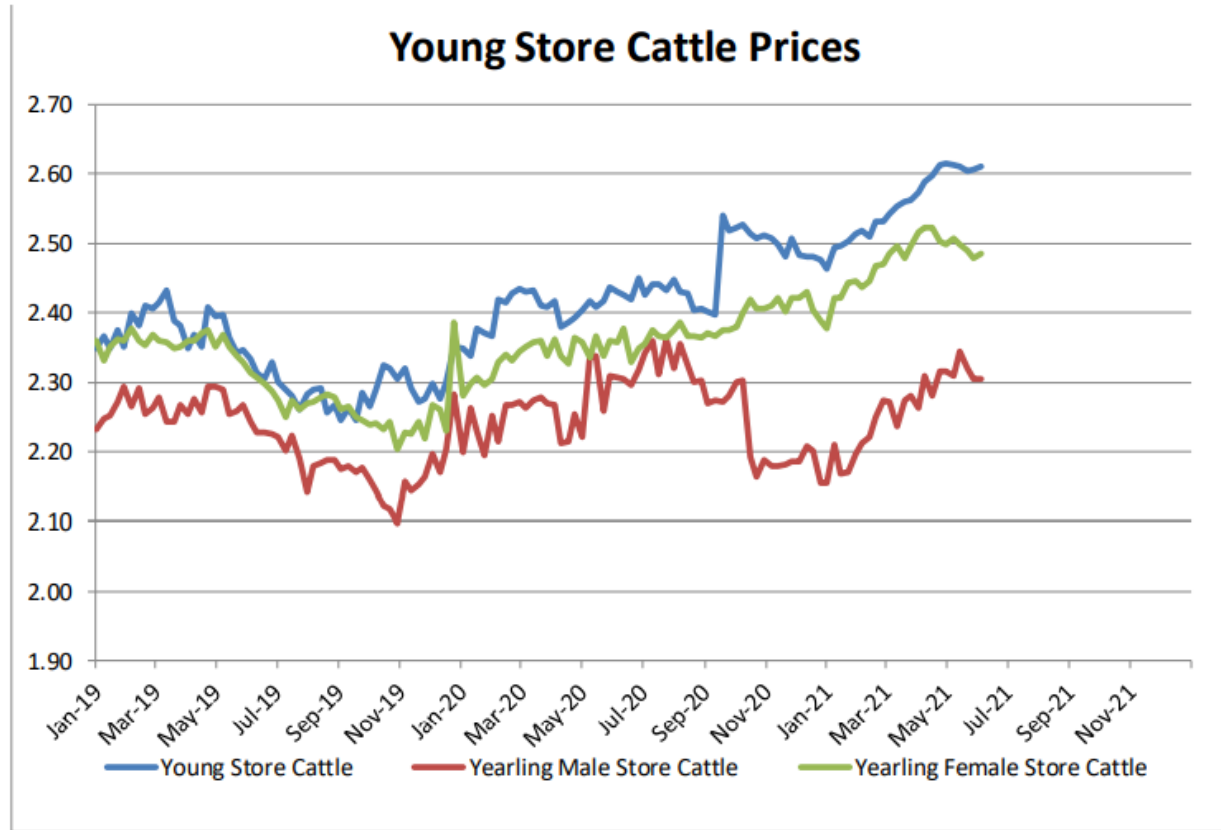
KARKAS FİYATLARI

AB TÜM KATEGORİLERE GLOBAL BAKIŞ



Besilik sığır (€ / 100 kg canlı ağırlık)

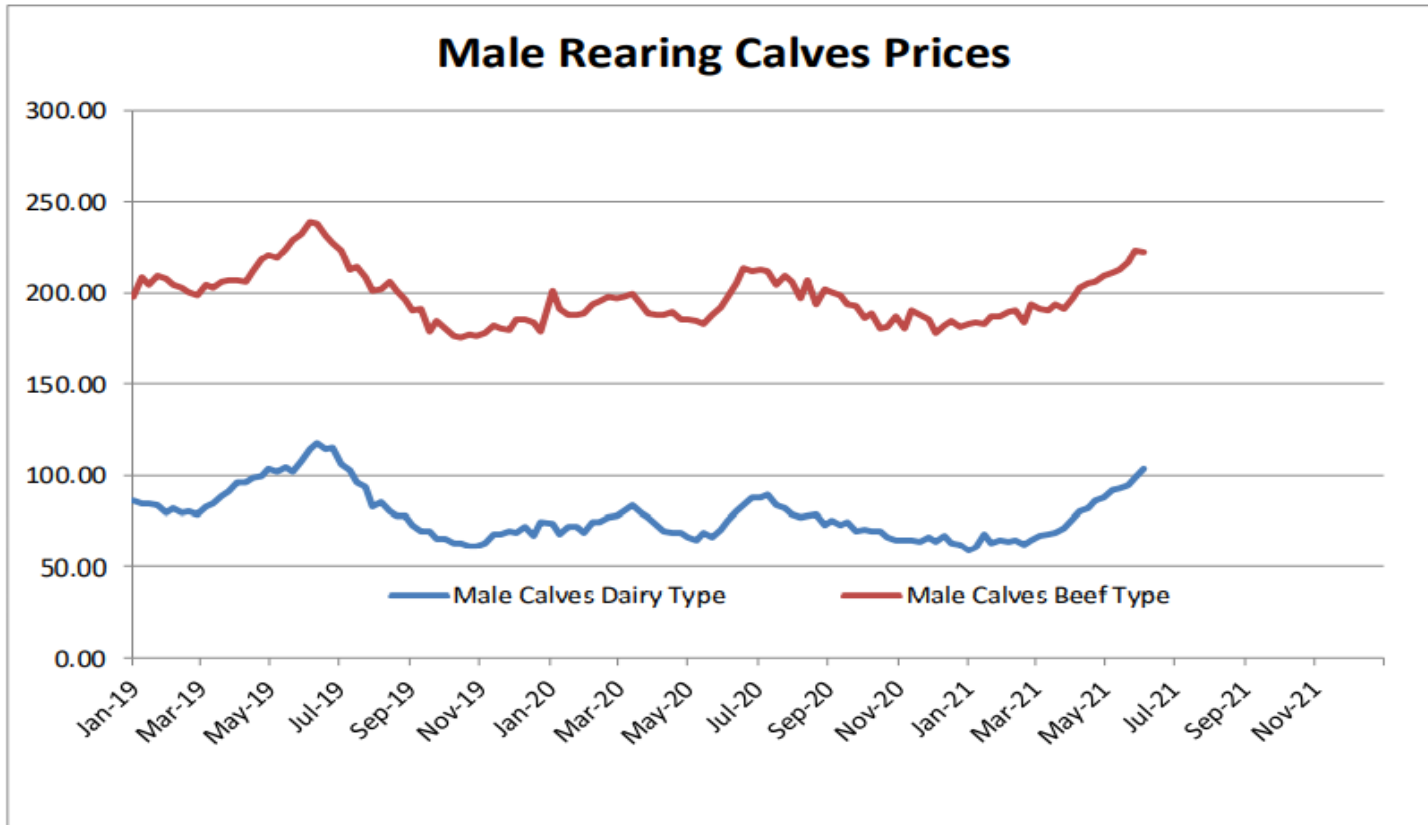
Store cattle (€/100 kg live weight)



Young Store Cattle Price in	Week 22	2.61	Yearling Male Store Cattle Price	2.31
	Change y/y	+7.19%	Change y/y	-0.17%
Yearling Female Store Cattle Price		2.49		
	Change y/y	+5.39%		

8 gün ve 4 haftalık erkek buzağlar (€/baş)

Male calves aged between 8 days and 4 weeks (€/head)



Male Rearing Calves Beef type

Price in Week 22

222.55

Change y/y

+15.97%

Male Rearing Calves Dairy type

Price in Week 22

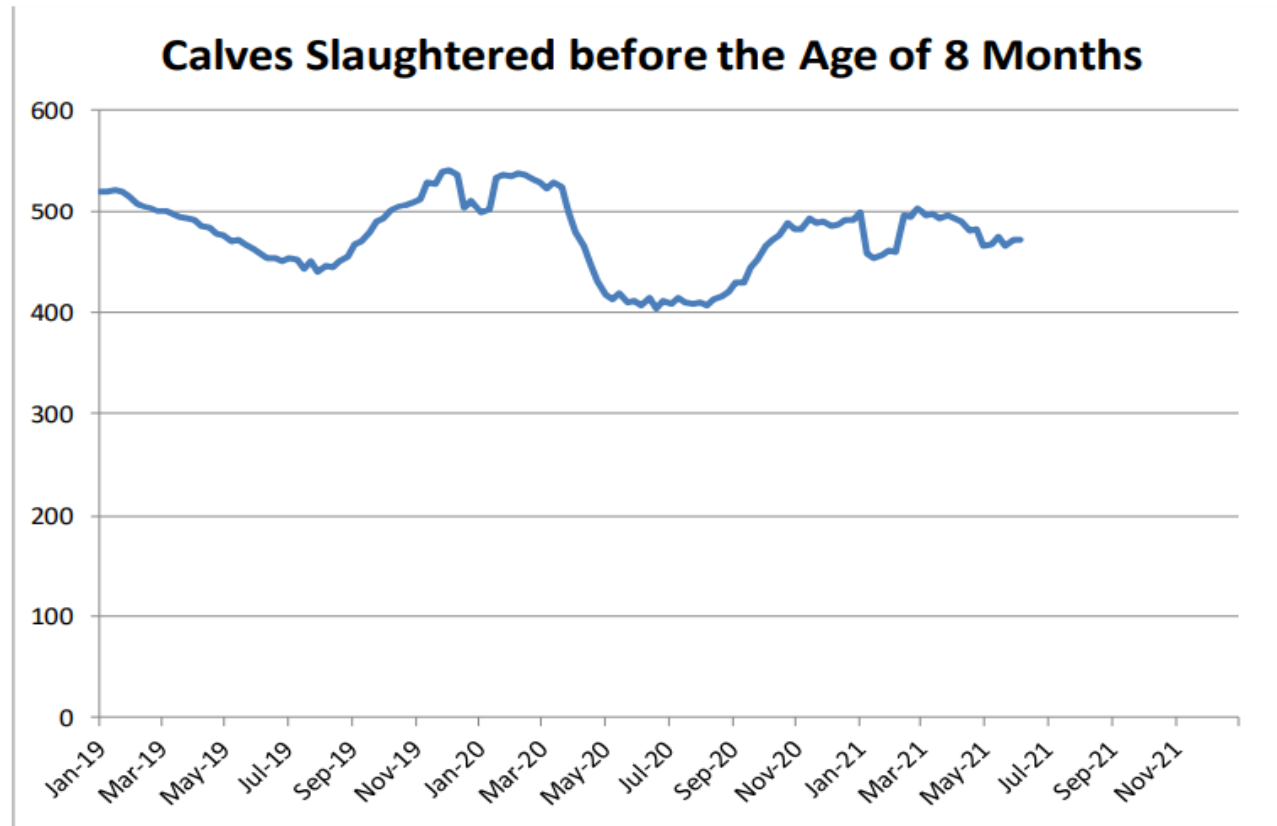
103.71

Change y/y

+46.94%

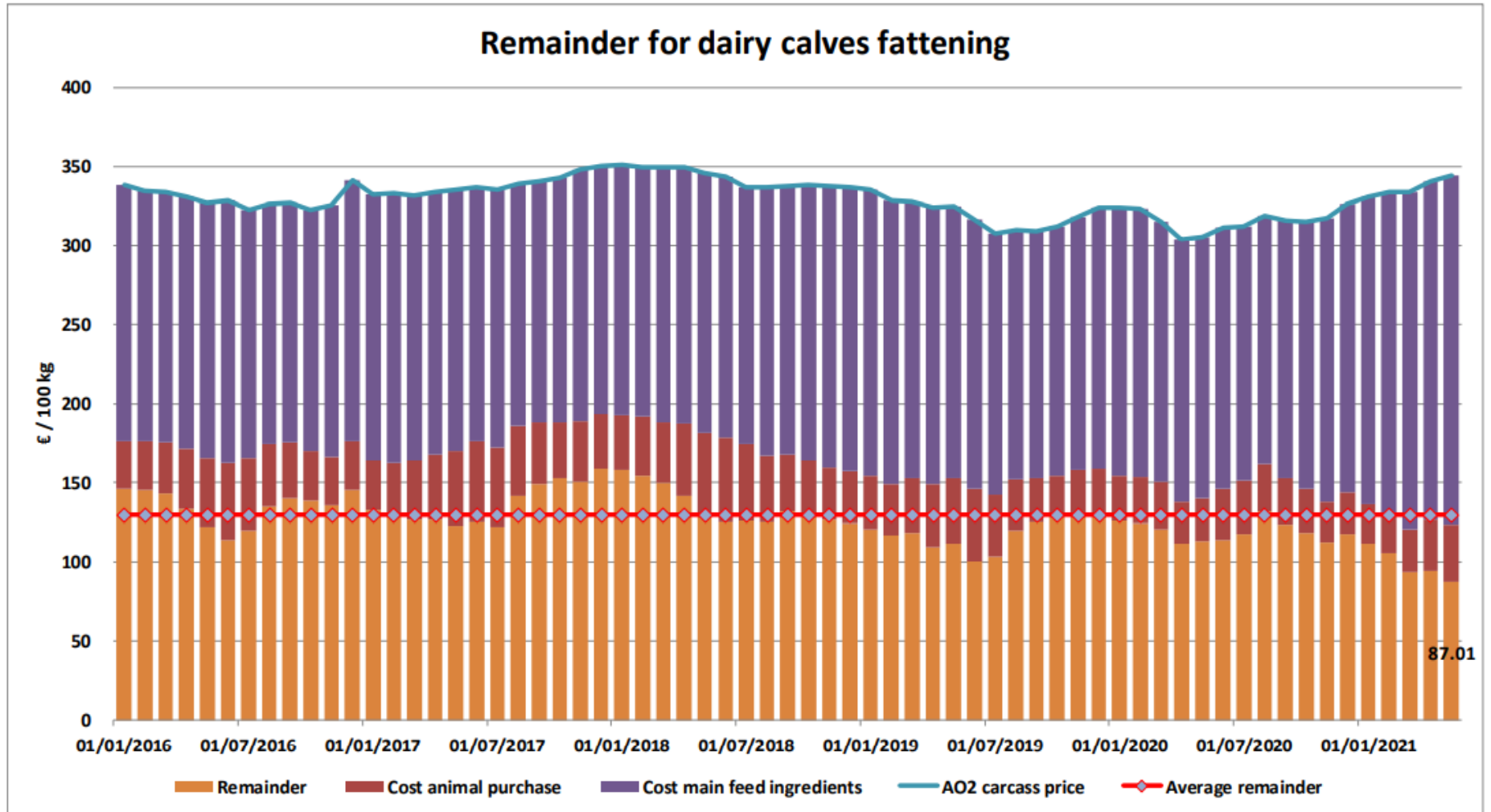
8 aylıktan küçük kesilen buzağlar (€ / 100 kg canlı ağırlık)

Calves slaughtered before the age of less than 8 months
(€/100 kg cw)



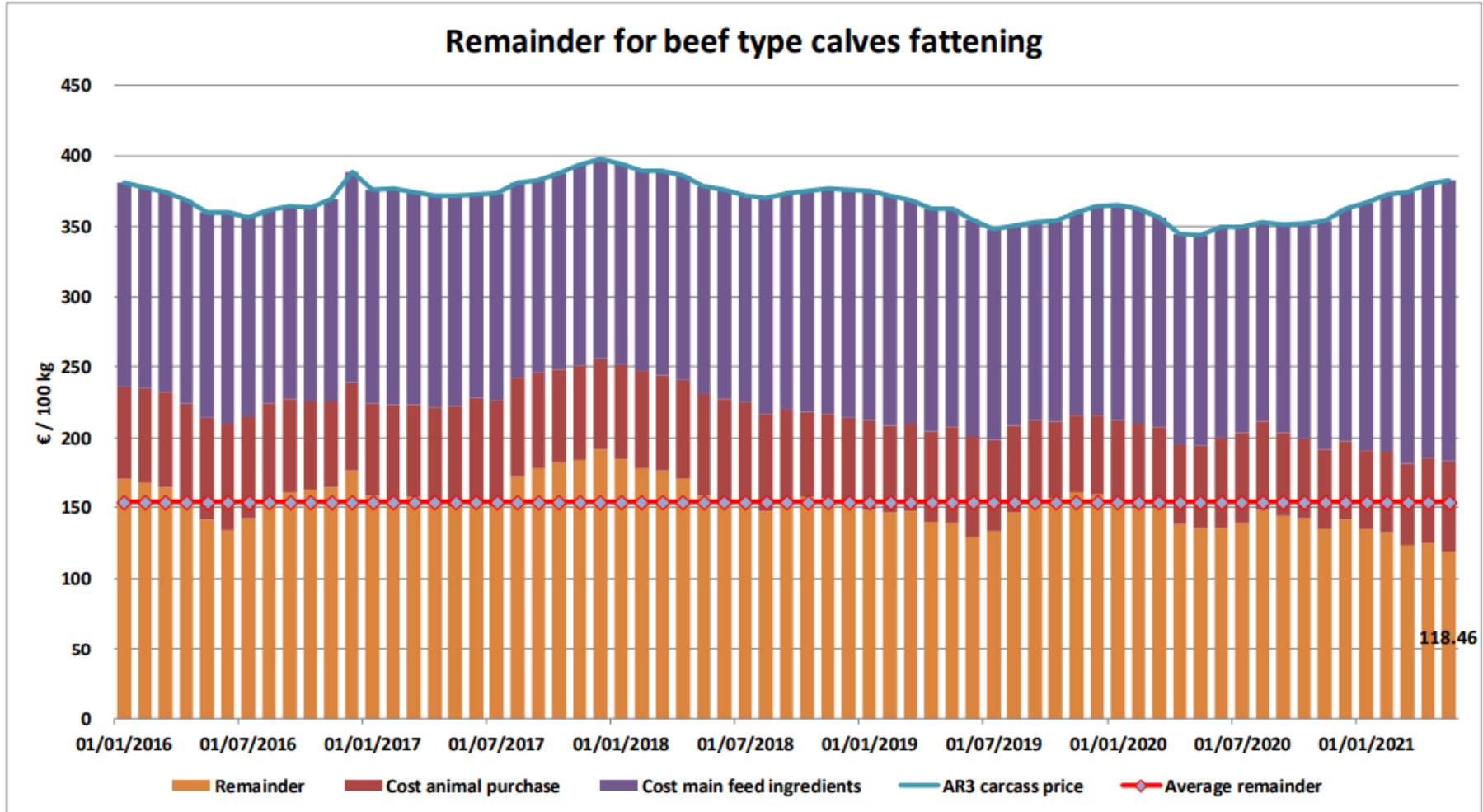
Price in Week 22 471.83 € / 100 kg of carcasse weight
Change y/y +14.74%

Süt Buzağları Besiciliği İçin Kalanlar



Sıır Tipi Buzađı Besiciliđi İcin Kalanlar

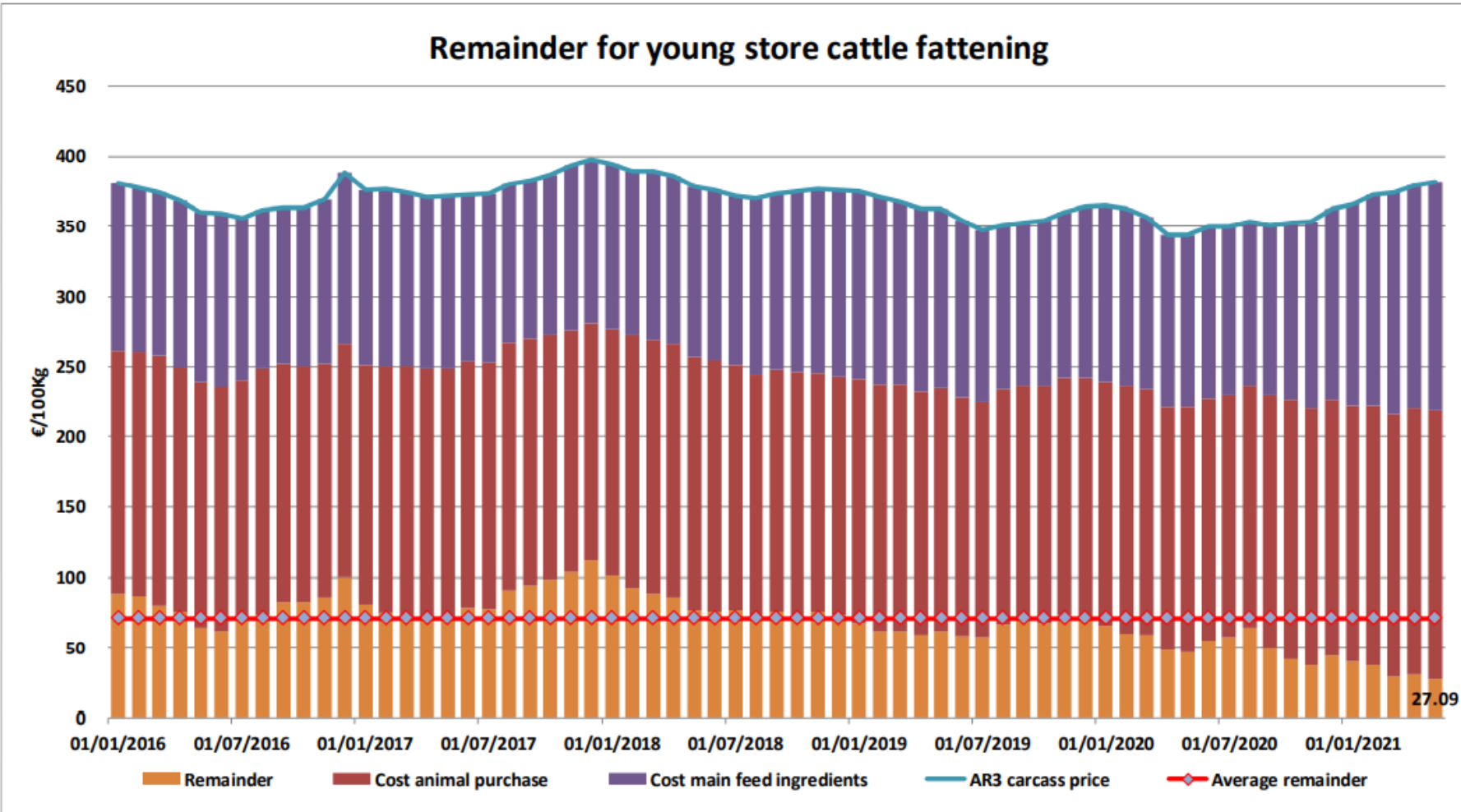
Remainder for beef type calves fattening





Genç Besilik Sığır Besiciliği İçin Kalanlar

Remainder for young store cattle fattening



AB siğir eti ve canlı hayvan ihracatı (1): Pazar Rakamları (COMEXT – ton ca)

EU Exports of Beef and Live Animals (1): Trade figures (COMEXT – tonnes cwe)

Destinations	2017		2018		2019		2020		Jan-Apr 21		Compared to
	tonnes	%	tonnes	%	tonnes	%	tonnes	%	tonnes	%	
Israel	44 196	6.1%	47 774	6.8%	49 629	7.1%	56 965	8.1%	18 883	8.0%	+ 40.4%
Hong Kong	76 086	10.4%	55 537	7.9%	46 748	6.7%	56 860	8.1%	17 197	7.3%	- 1.8%
Philippines	37 102	5.1%	28 766	4.1%	34 158	4.9%	39 920	5.7%	16 700	7.1%	+ 45.5%
Ghana	37 744	5.2%	36 766	5.2%	39 196	5.6%	47 408	6.7%	15 818	6.7%	- 0.9%
Algeria	26 305	3.6%	35 410	5.0%	57 152	8.2%	39 416	5.6%	13 027	5.5%	- 16.6%
Bosnia-Herz.	34 711	4.8%	38 762	5.5%	41 119	5.9%	35 758	5.1%	12 278	5.2%	+ 20.6%
Ivory Coast	36 038	4.9%	36 064	5.1%	33 396	4.8%	32 460	4.6%	10 700	4.5%	- 5.5%
Lebanon	38 322	5.3%	42 542	6.1%	36 393	5.2%	33 656	4.8%	9 765	4.1%	- 12.8%
Switzerland	26 708	3.7%	23 761	3.4%	25 188	3.6%	29 996	4.3%	9 657	4.1%	+ 13.7%
Norway	12 850	1.8%	7 925	1.1%	7 667	1.1%	12 936	1.8%	9 418	4.0%	+ 152.7%
Libya	27 848	3.8%	27 878	4.0%	24 541	3.5%	21 971	3.1%	7 437	3.1%	+ 0.9%
Saudi Arabia	4 691	0.6%	2 521	0.4%	2 809	0.4%	9 707	1.4%	5 462	2.3%	+ 25.9%
Ukraine	7 331	1.0%	10 465	1.5%	13 836	2.0%	15 857	2.3%	5 317	2.2%	+ 10.0%
Kosovo	6 377	0.9%	6 693	1.0%	10 279	1.5%	10 912	1.5%	5 137	2.2%	+ 62.0%
Turkey	96 413	13.2%	96 052	13.7%	34 555	4.9%	22 137	3.1%	5 128	2.2%	+ 11.1%
Canada	4 617	0.6%	2 225	0.3%	6 806	1.0%	20 475	2.9%	4 943	2.1%	- 13.4%
Other Destinations	212 178	29.1%	203 099	28.9%	237 118	33.8%	218 226	31.0%	69 965	29.5%	
Total (without UK)	729 519		702 242		700 590		704 659		236 832		
% change			- 4%		- 0%		+ 1%		+ 4.2%		



AB sığır eti ihracatı: Pazar Rakamları (COMEXT – ton ca)

EU Exports of Beef:
Trade figures (COMEXT – tonnes cwe)

Destinations

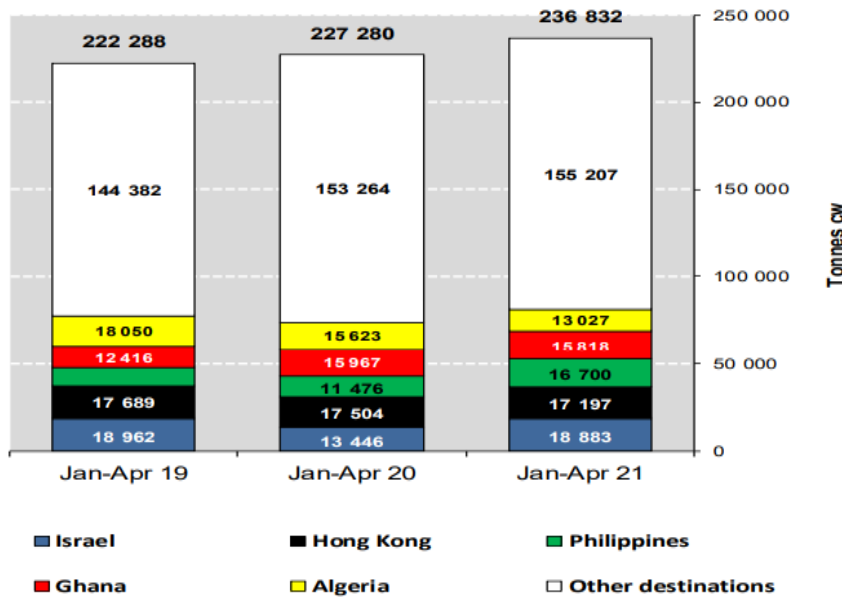
	2017		2018		2019		2020		Jan-Apr 21		Compared to
	tonnes	%	tonnes	%	tonnes	%	tonnes	%	tonnes	%	
Hong Kong	76 086	15.4%	55 537	11.9%	46 748	9.8%	56 860	11.6%	17 197	10.4%	- 1.8%
Philippines	37 102	7.5%	28 766	6.2%	34 158	7.2%	39 920	8.1%	16 700	10.1%	+ 45.5%
Ghana	37 744	7.7%	36 766	7.9%	39 196	8.2%	47 408	9.7%	15 818	9.6%	- 0.9%
Bosnia-Herz.	32 181	6.5%	36 152	7.7%	38 806	8.2%	33 459	6.8%	11 337	6.8%	+ 19.2%
Ivory Coast	36 028	7.3%	36 064	7.7%	33 396	7.0%	32 460	6.6%	10 700	6.5%	- 5.5%
Norway	12 849	2.6%	7 922	1.7%	7 667	1.6%	12 936	2.6%	9 418	5.7%	+++
Switzerland	25 570	5.2%	22 711	4.9%	24 110	5.1%	28 941	5.9%	9 098	5.5%	+ 13.1%
Israel	18 750	3.8%	22 163	4.7%	23 026	4.8%	21 967	4.5%	5 442	3.3%	- 5.8%
Ukraine	6 926	1.4%	9 887	2.1%	12 893	2.7%	14 861	3.0%	5 068	3.1%	+ 6.4%
Canada	2 424	0.5%	2 225	0.5%	6 806	1.4%	20 475	4.2%	4 943	3.0%	- 13.4%
Japan	4 281	0.9%	3 452	0.7%	8 007	1.7%	11 885	2.4%	4 689	2.8%	- 13.4%
USA	3 756	0.8%	5 458	1.2%	7 867	1.7%	12 310	2.5%	4 186	2.5%	+ 39.8%
North Macedonia	11 285	2.3%	10 002	2.1%	11 395	2.4%	10 551	2.1%	4 158	2.5%	+ 23.8%
South Africa	4 555	0.9%	7 214	1.5%	5 442	1.1%	7 743	1.6%	3 305	2.0%	+++
Vietnam	12 146	2.5%	8 163	1.7%	10 014	2.1%	6 367	1.3%	2 970	1.8%	+ 57.5%
Angola	10 982	2.2%	11 470	2.5%	8 410	1.8%	9 410	1.9%	2 480	1.5%	- 22.4%
Other Destinations	160 448	32.5%	163 231	34.9%	157 699	33.2%	123 503	25.2%	38 072	23.0%	
Total (without UK)	493 112		467 183		475 639		491 056		165 582		
% change			5%		+ 2%		+ 3%		+ 1.2%		



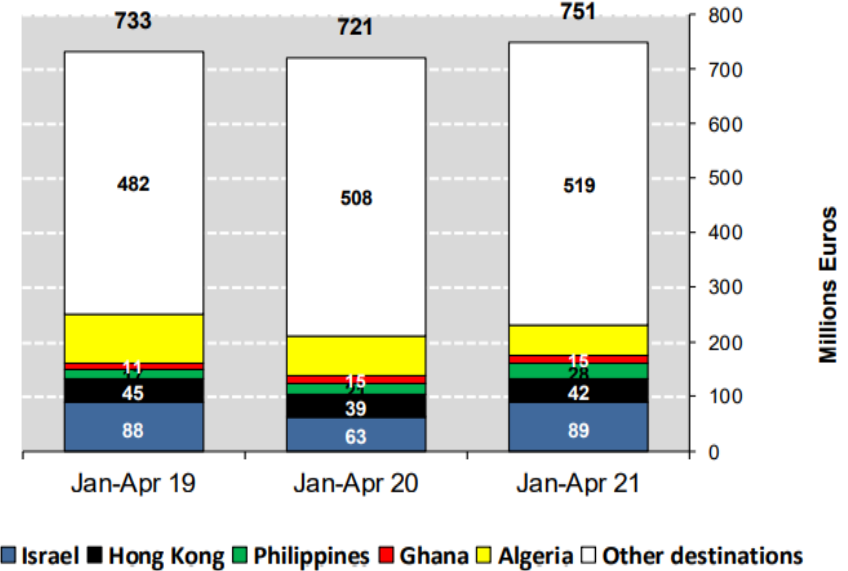
European Commission

AB siğir eti ve canlı hayvan ihracatı (COMEXT)

EU EXPORTS of Beef & Veal (Tonnes cwe) to Extra EU without UK

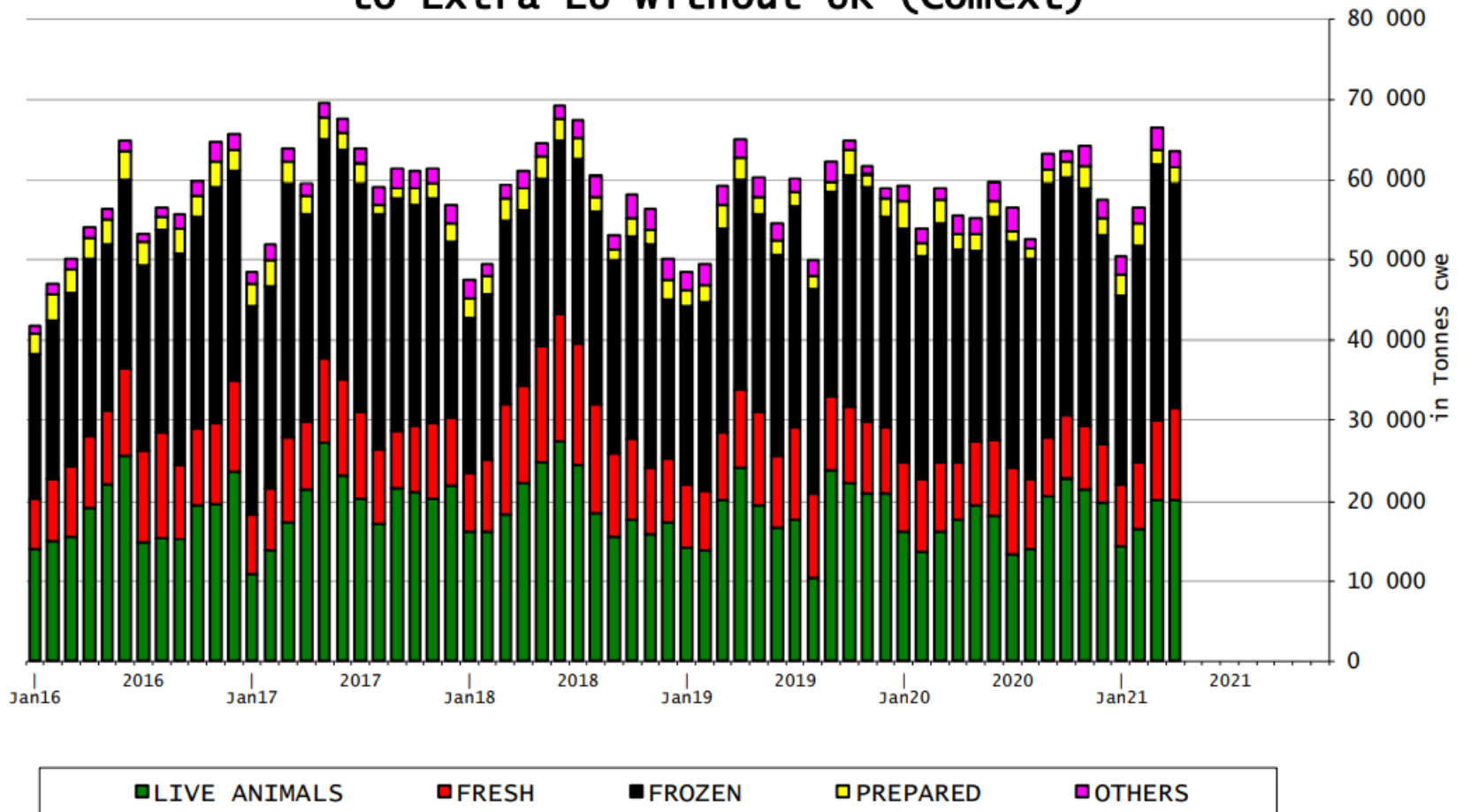


EU EXPORTS of Beef & Veal (Million EUR) to Extra EU without UK

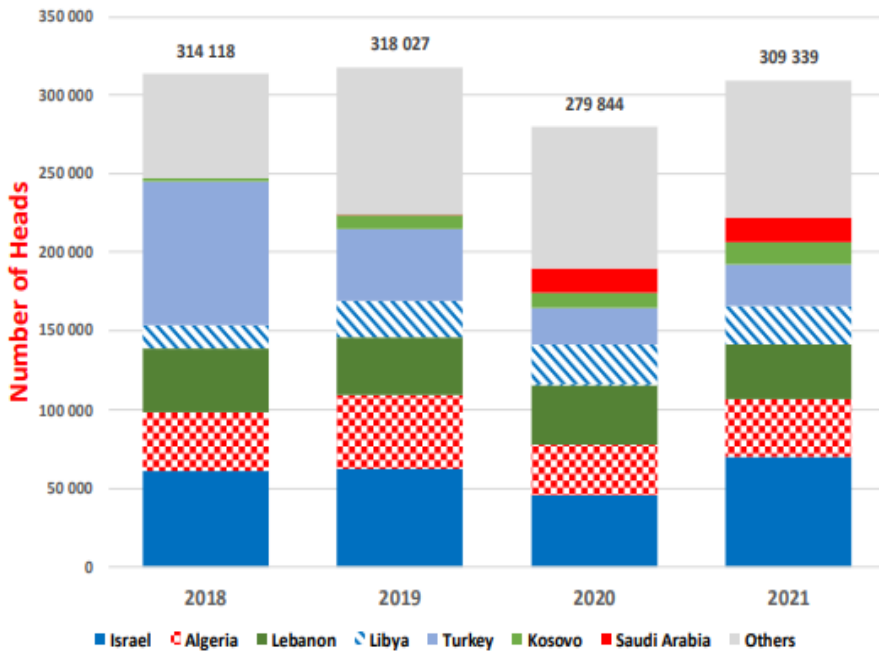


AB siğir eti ürünleri ihracatı (COMEXT)

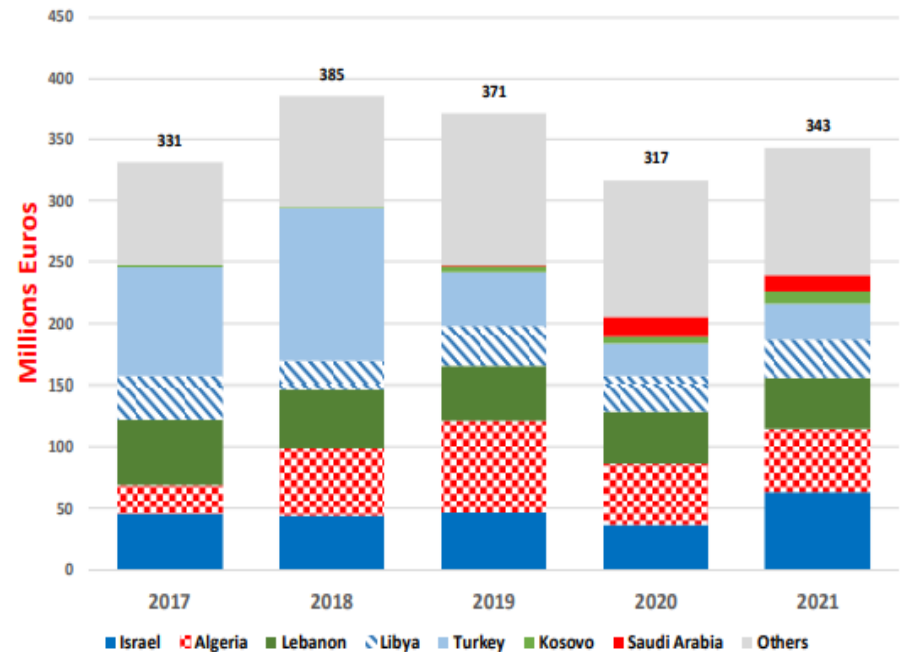
EU Exports of BEEF products
to Extra EU without UK (Comext)



EU Exports of BEEF Live Animals by Partner for the Period Jan-Apr 2021



EU Exports of BEEF Live Animals by Partner for the Period Jan-Apr 2021





AB Sığır Eti ve Canlı Hayvan İthalatları (1): Ticaret Verileri (COMEXT – ton ca)

EU Imports of Beef and Live Animals (1): Trade Figures (COMEXT – tonnes cwe)

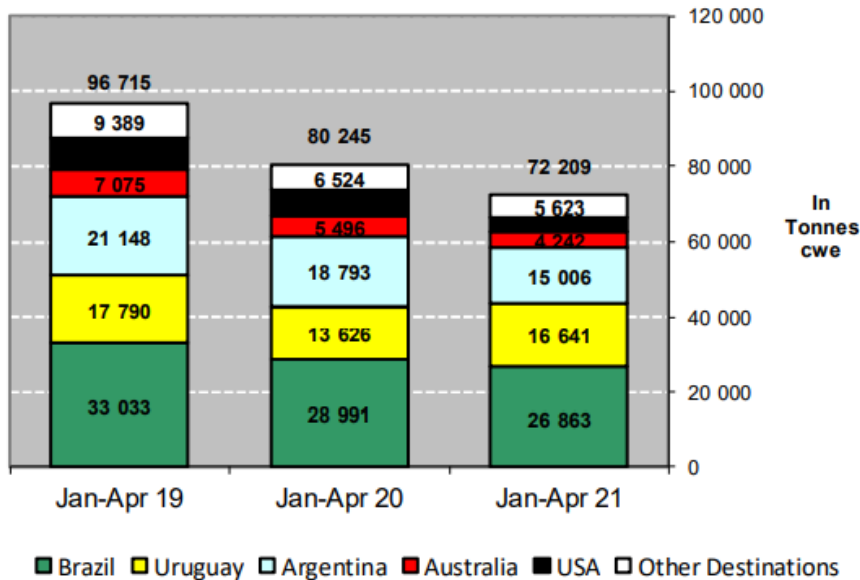
Origins	2017		2018		2019		2020		Jan-Apr 21		Compared to
	tonnes	%	tonnes	%	tonnes	%	tonnes	%	tonnes	%	
Brazil	86 927	33.9%	103 979	37.3%	99 569	36.4%	84 172	37.6%	26 863	37.2%	- 7.3%
Uruguay	52 078	20.3%	47 922	17.2%	40 483	14.8%	34 595	15.4%	16 641	23.0%	+ 22.1%
Argentina	49 259	19.2%	61 400	22.0%	65 324	23.9%	56 421	25.2%	15 006	20.8%	- 20.1%
Australia	18 193	7.1%	17 368	6.2%	16 516	6.0%	11 058	4.9%	4 242	5.9%	- 22.8%
USA	21 624	8.4%	19 268	6.9%	16 852	6.2%	16 532	7.4%	3 834	5.3%	- 43.8%
Switzerland	5 105	2.0%	5 413	1.9%	4 401	1.6%	4 197	1.9%	1 655	2.3%	+ 17.7%
New Zealand	6 806	2.7%	7 165	2.6%	6 726	2.5%	6 145	2.7%	1 221	1.7%	- 45.8%
Paraguay	5 922	2.3%	5 520	2.0%	5 203	1.9%	4 234	1.9%	659	0.9%	- 47.7%
Canada	512	0.2%	1 343	0.5%	2 518	0.9%	1 550	0.7%	628	0.9%	+++
N.det.Extra	72	0.0%	127	0.0%	196	0.1%	94	0.0%	303	0.4%	+++
Japan	645	0.3%	791	0.3%	997	0.4%	789	0.4%	260	0.4%	+ 13.3%
Namibia	5 043	2.0%	3 442	1.2%	7 706	2.8%	1 445	0.6%	241	0.3%	- 22.9%
Serbia	565	0.2%	1 134	0.4%	1 062	0.4%	931	0.4%	186	0.3%	- 50.4%
South Africa	42	0.0%	0	0.0%	74	0.0%	70	0.0%	103	0.1%	+++
Norway	388	0.2%	153	0.1%	129	0.0%	336	0.2%	101	0.1%	+++
Botswana	2 686	1.0%	3 119	1.1%	4 950	1.8%	788	0.4%	59	0.1%	- 77.6%
Other Destinations	863	0.3%	700	0.3%	701	0.3%	585	0.3%	207	0.3%	
Total (without UK)	256 731		278 843		273 408		223 942		72 209		
% change			+ 9%		- 2%		- 18%		- 10.0%		



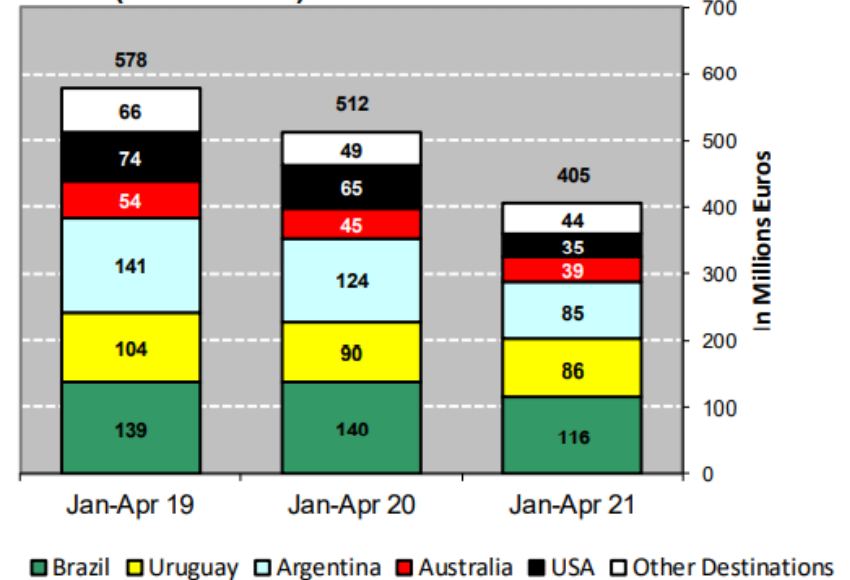
European Commission

AB Sığır Eti ve Canlı Hayvan İthalatları

IMPORTS of Beef & Veal into EU (Tonnes cwe) from Extra EU without UK

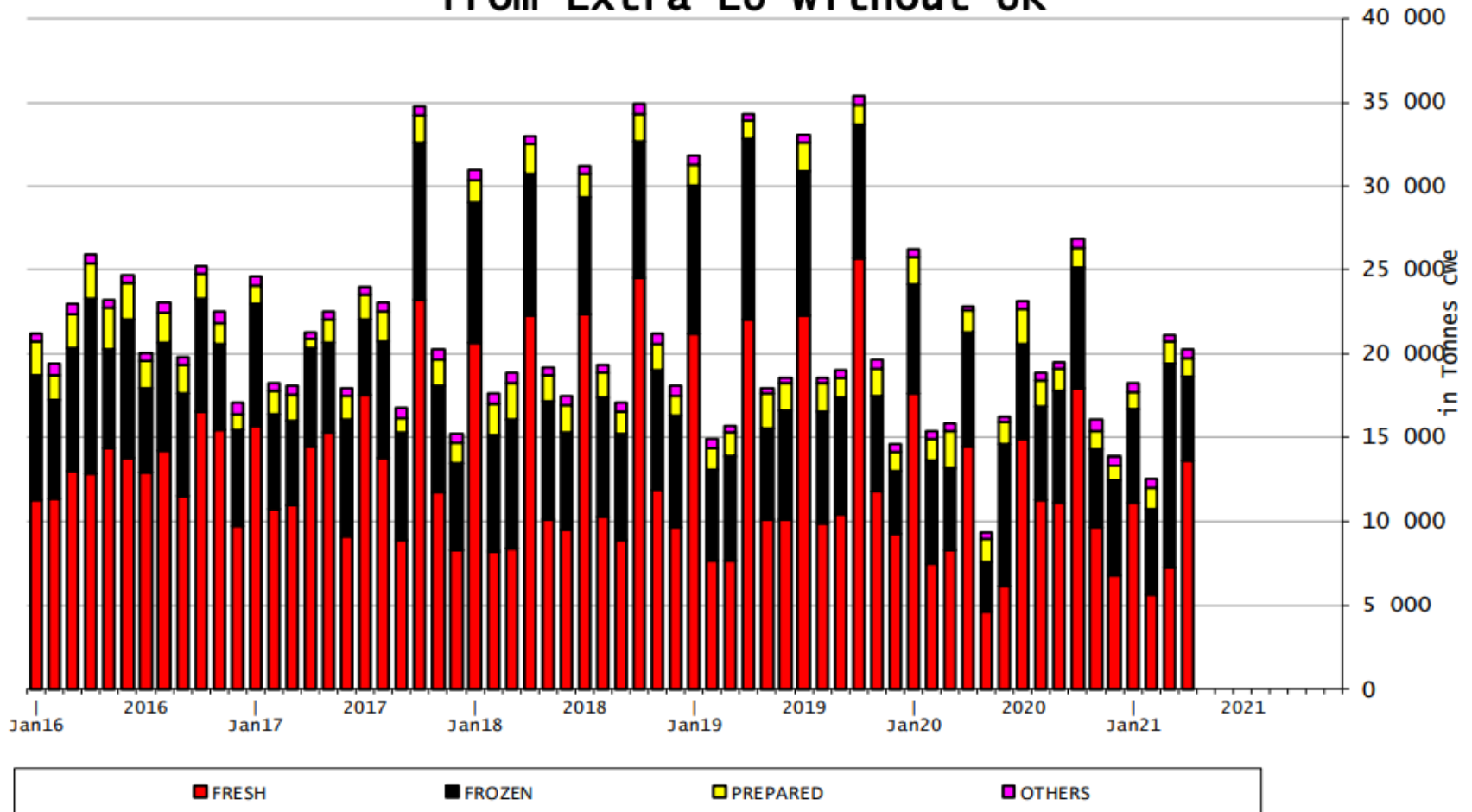


IMPORTS of Beef & Veal into EU (Million EUR) from Extra EU without UK



AB Sığır Eti İthalatları (Birleşik Krallık hariç)

EU Imports of BEEF products from Extra EU without UK



EU Export of BEEF to UK by Products from Jan to Mar

In Tons of Carcase Weight

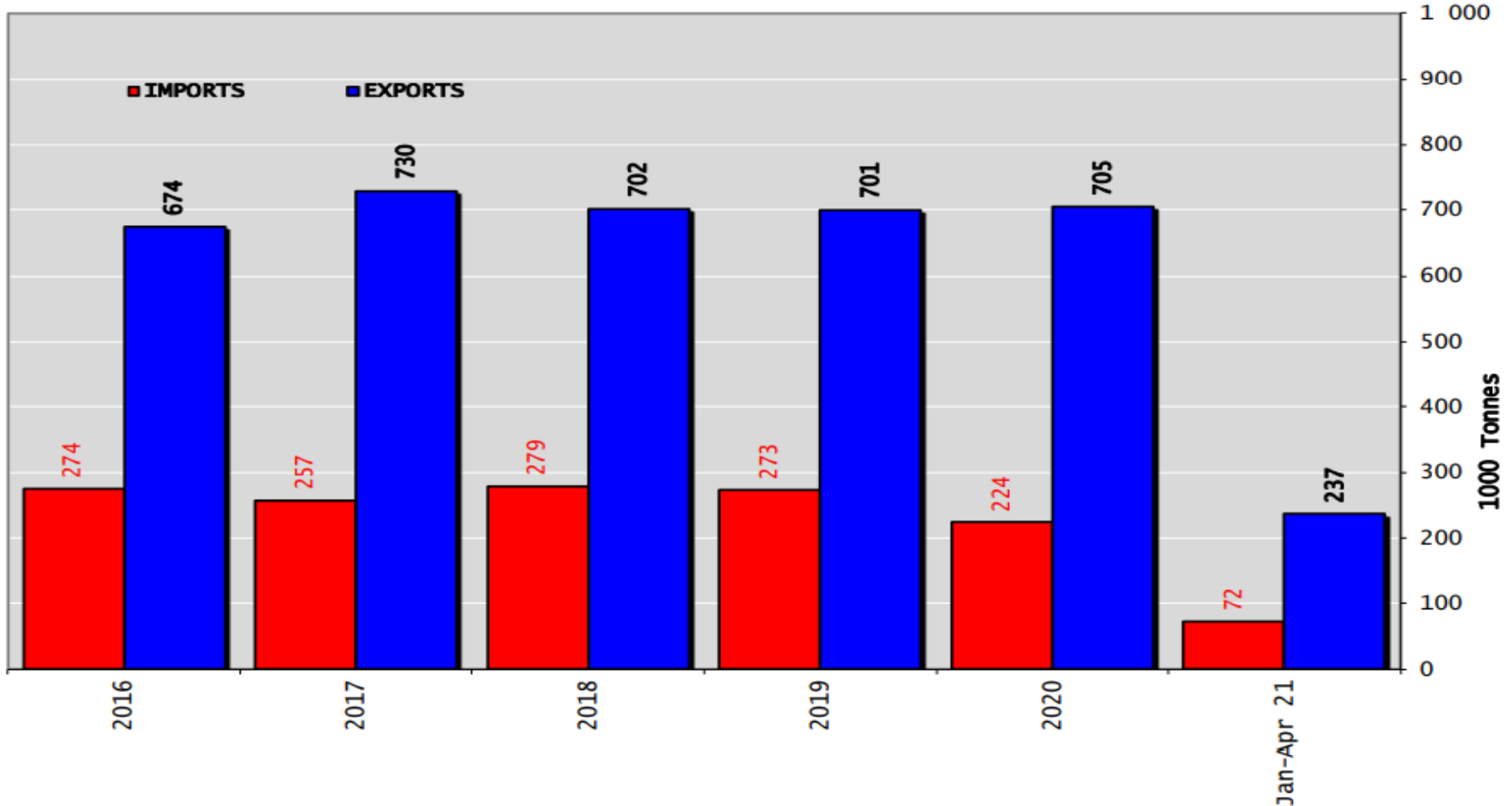
	2019			2020			2021			% 2021/2020	
	United Kingdom	Extra-EU	%	United Kingdom	Extra-EU	%	United Kingdom	Extra-EU	%	United Kingdom	Extra-EU
Live Animals	2 656	50 854	5.2%	2 237	48 323	4.6%	2 437	53 458	4.6%	+8.9%	+10.6%
Meats	116 321	225 314	51.6%	100 724	226 414	44.5%	65 830	187 860	35.0%	-34.6%	-17.0%
Fresh	61 585	84 735	72.7%	57 761	83 086	69.5%	40 570	65 705	61.7%	-29.8%	-20.9%
Frozen	15 417	46 377	33.2%	11 743	56 024	21.0%	12 358	55 529	22.3%	+5.2%	-0.9%
Salted Meat	6 179	6 503	95.0%	6 557	7 029	93.3%	126	510	24.7%	-98.1%	-92.7%
Prepared	12 519	19 541	64.1%	12 257	20 324	60.3%	7 168	14 302	50.1%	-41.5%	-29.6%
Fresh Offals	6 317	6 913	91.4%	5 236	6 038	86.7%	1 339	1 932	69.3%	-74.4%	-68.0%
Frozen Offals	4 282	44 134	9.7%	3 539	45 777	7.7%	2 320	41 224	5.6%	-34.4%	-9.9%
Salted Offals	9 469	14 424	65.6%	3 360	5 907	56.9%	55	3 096	1.8%	-98.4%	-47.6%
Prepared Offal	166	194	85.4%	93	118	78.6%	69	95	72.2%	-26.2%	-19.6%
Fat	386	2 493	15.5%	177	2 110	8.4%	1 825	5 467	33.4%	+929.8%	+159.1%
Total Beef	118 977	276 167	43.1%	102 961	274 737	37.5%	68 267	241 318	28.3%	-33.7%	-12.2%

EU Import of BEEF from UK by Products from Jan to Mar

In Tons of Carcase Weight

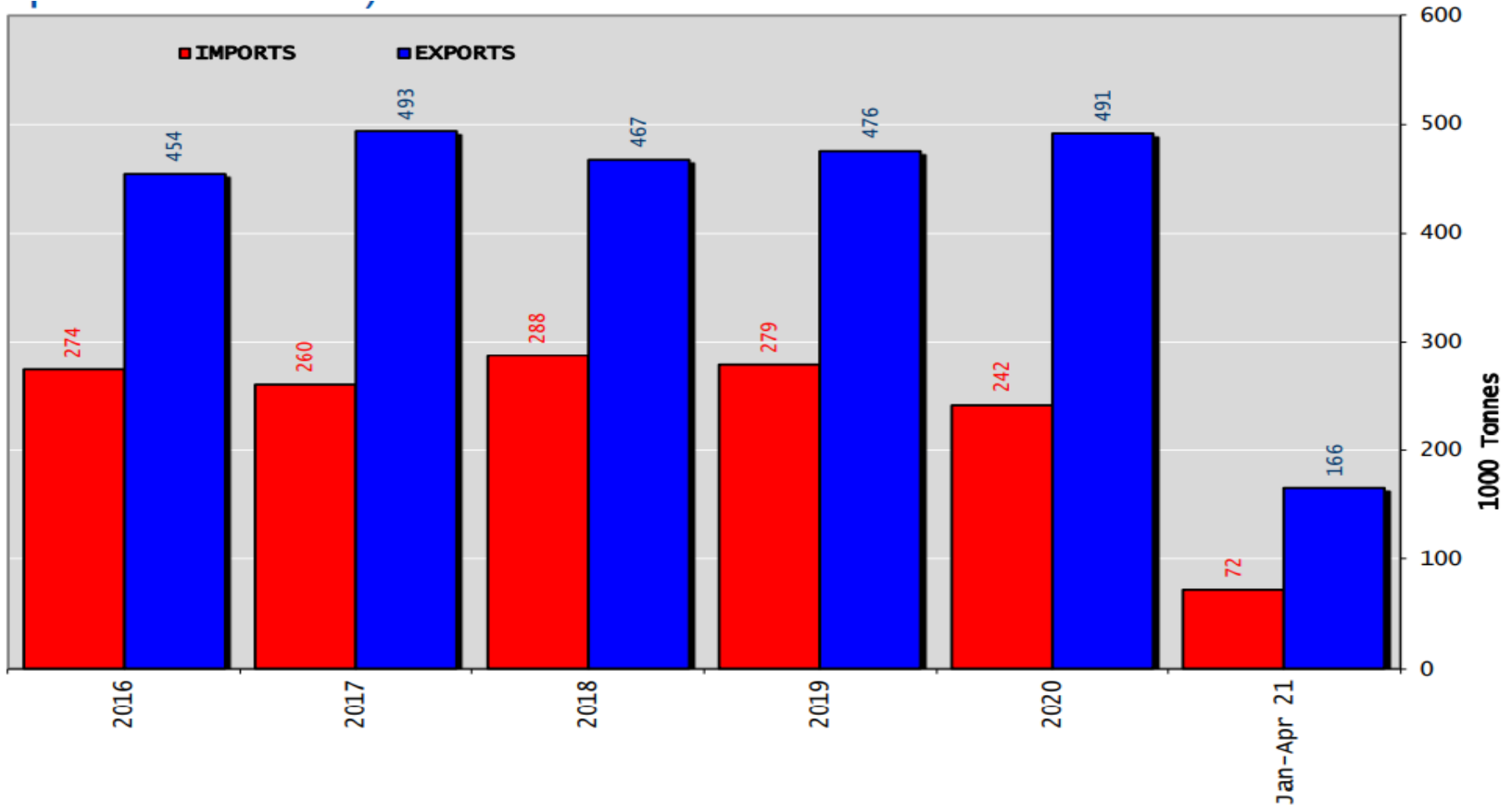
	2019			2020			2021			% 2021/2020	
	United Kingdom	Extra-EU	%	United Kingdom	Extra-EU	%	United Kingdom	Extra-EU	%	United Kingdom	Extra-EU
Live Animals	673	719	93.6%	486	532	91.4%	189	233	81.1%	-61.2%	-56.3%
Meats	42 735	105 092	40.7%	33 629	90 982	37.0%	15 881	67 784	23.4%	-52.8%	-25.5%
Fresh	29 984	66 517	45.1%	21 756	55 108	39.5%	10 628	34 616	30.7%	-51.2%	-37.2%
Frozen	7 000	27 490	25.5%	5 816	23 453	24.8%	2 759	25 470	10.8%	-52.6%	+8.6%
Salted Meat	248	1 013	24.5%	226	983	23.0%	52	968	5.4%	-77.0%	-1.5%
Prepared	2 268	6 159	36.8%	2 368	7 397	32.0%	1 052	4 773	22.0%	-55.5%	-35.5%
Fresh Offals	1 043	1 398	74.6%	1 106	1 457	75.9%	1 083	1 374	78.8%	-2.1%	-5.7%
Frozen Offals	1 410	1 639	86.0%	1 542	1 757	87.8%	78	305	25.7%	-94.9%	-82.7%
Salted Offals	437	439	99.7%	403	404	99.7%	6	7	87.9%	-98.4%	-98.2%
Prepared Offal	40	40	100.0%	18	30	61.1%	1	3	26.6%	-95.0%	-88.4%
Fat	304	396	76.7%	394	394	100.0%	221	268	82.7%	-43.8%	-32.0%
Total Beef	43 408	105 811	41.0%	34 115	91 513	37.3%	16 069	68 016	23.6%	-52.9%	-25.7%

Sığır Eti Ürünleri ve Canlı Hayvan Ticaret Dengesi (Ton) (Birleşik Krallık Hariç)

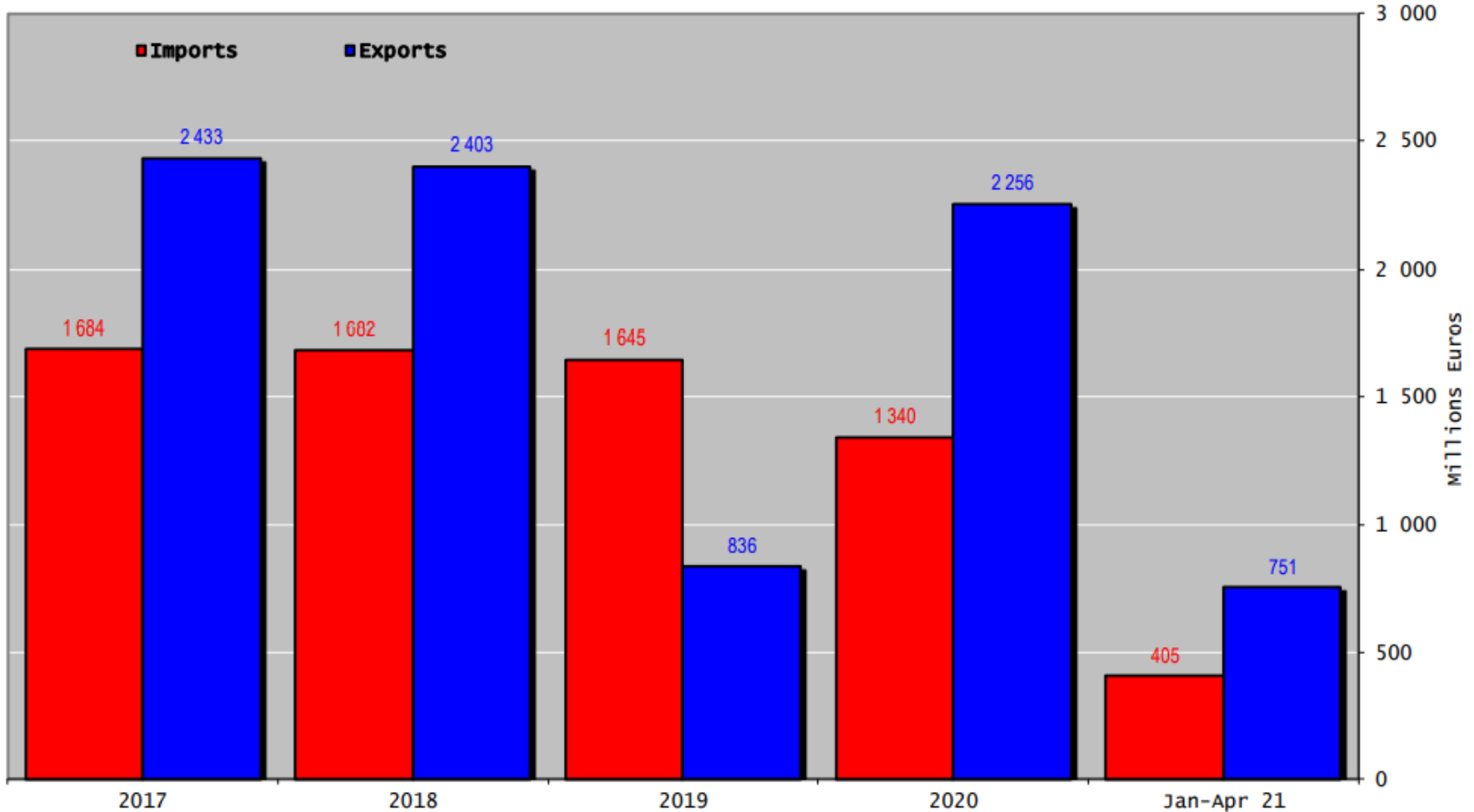




Sığır Eti Ürünleri Ticaret Dengesi (Canlı hayvanlar hariç) (Ton) (Birleşik Krallık Hariç)

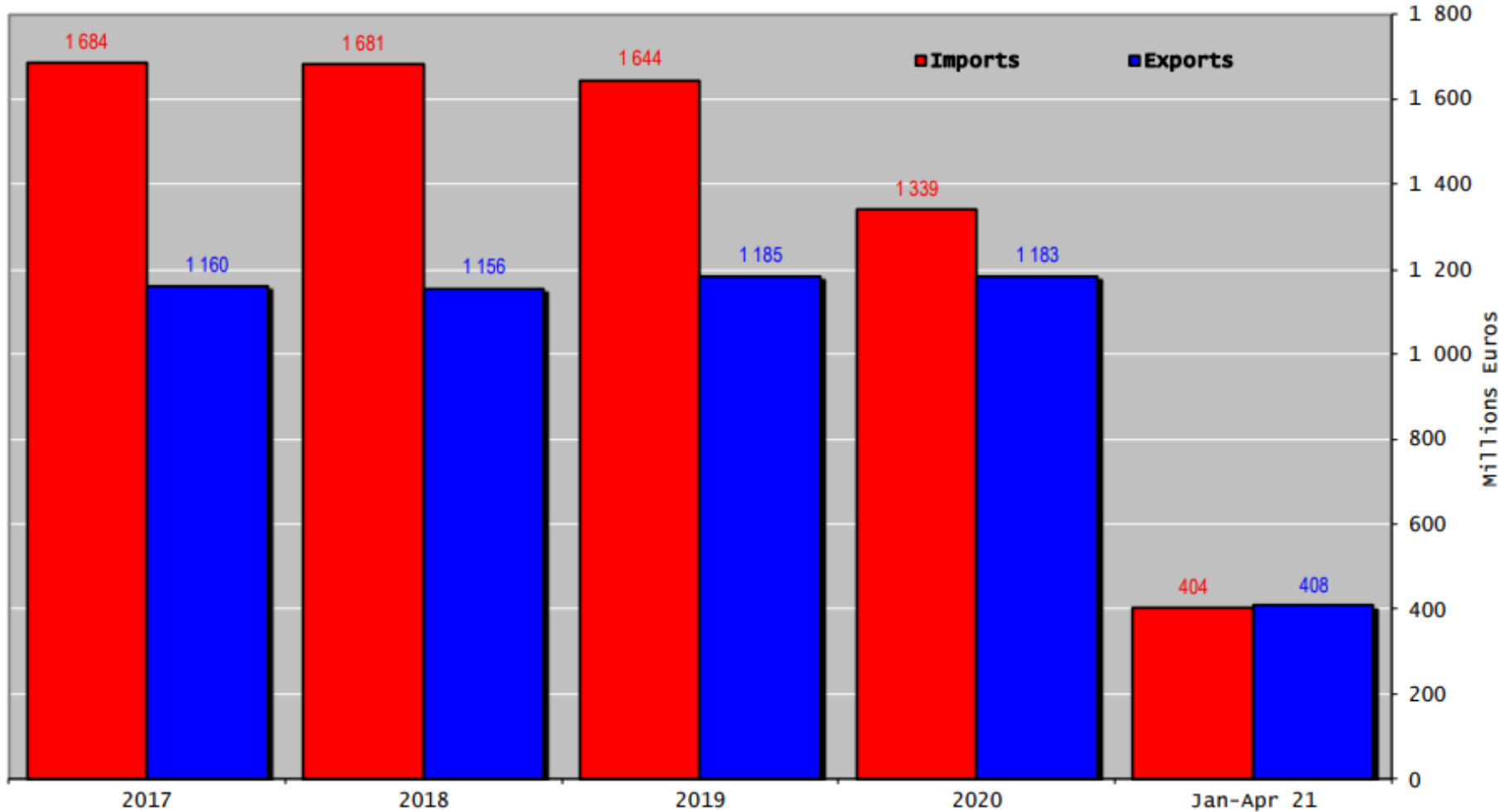


Siğir Eti Ürünleri ve Canlı Hayvan Ticaret Dengesi (Milyon Euro) (Birleşik Krallık Hariç)

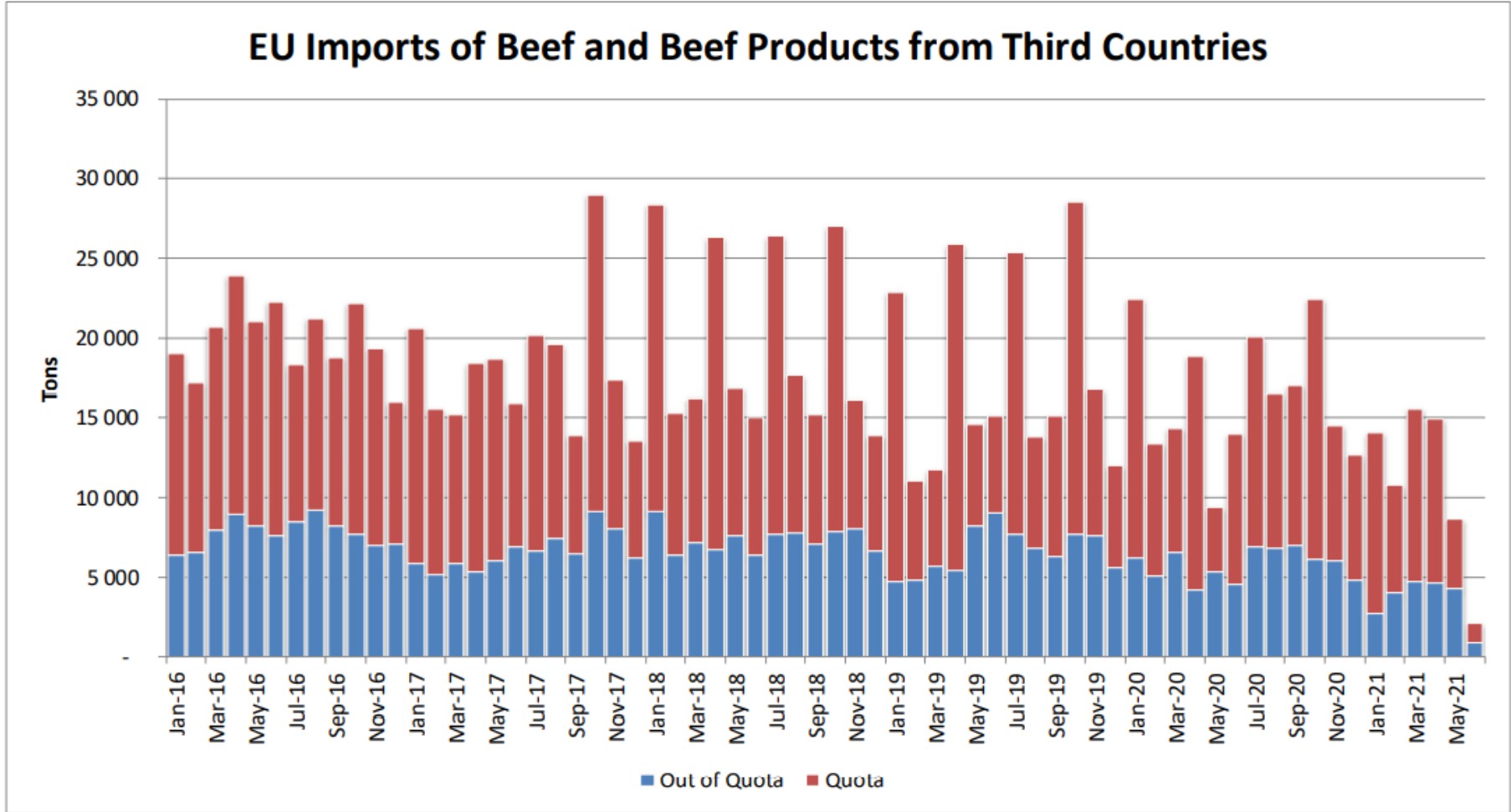




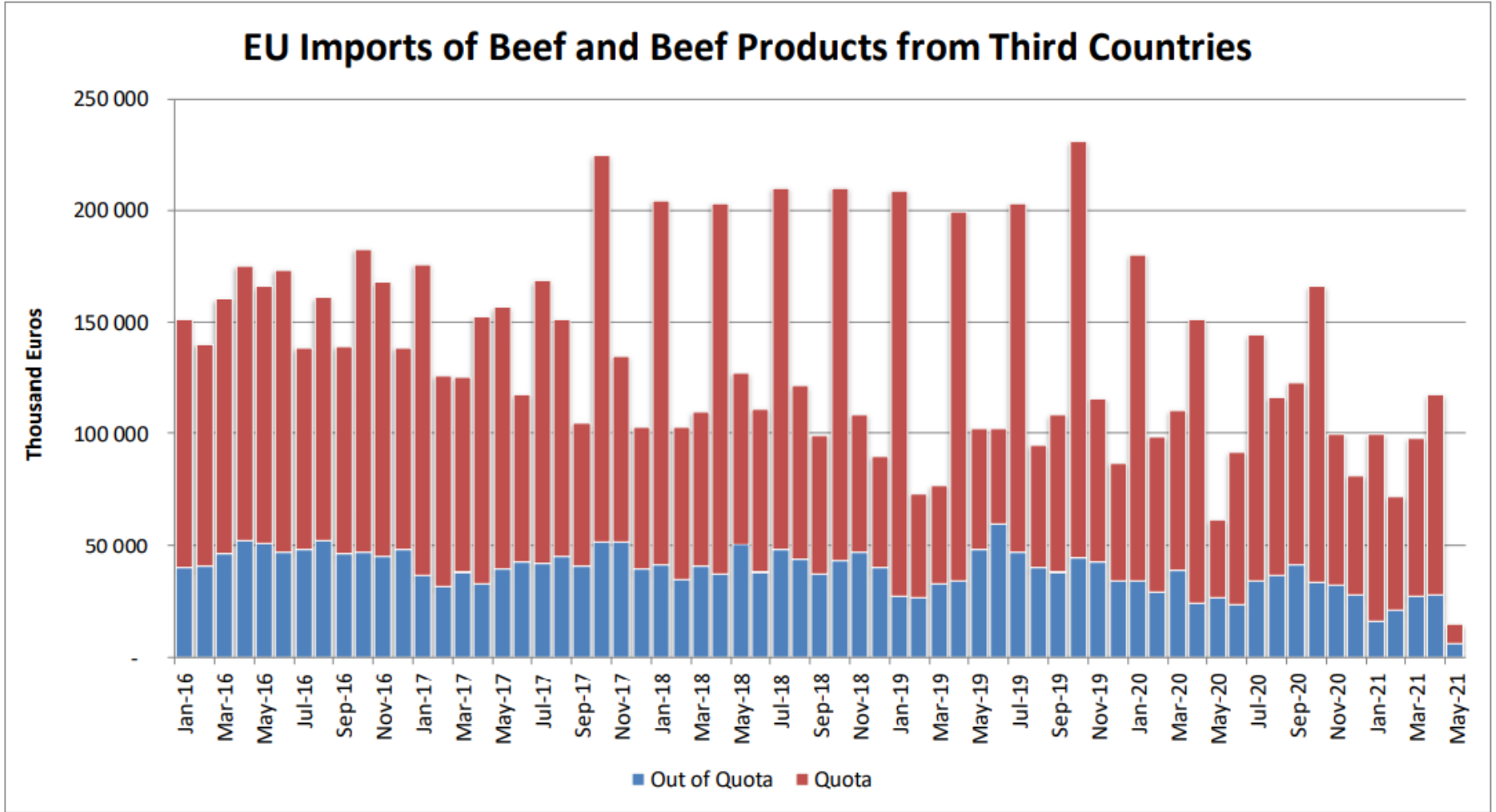
AB Sığır Eti Ürünleri Ticareti (Canlı Hayvanlar Hariç) (Milyon Euro) (Birleşik Krallık Hariç)



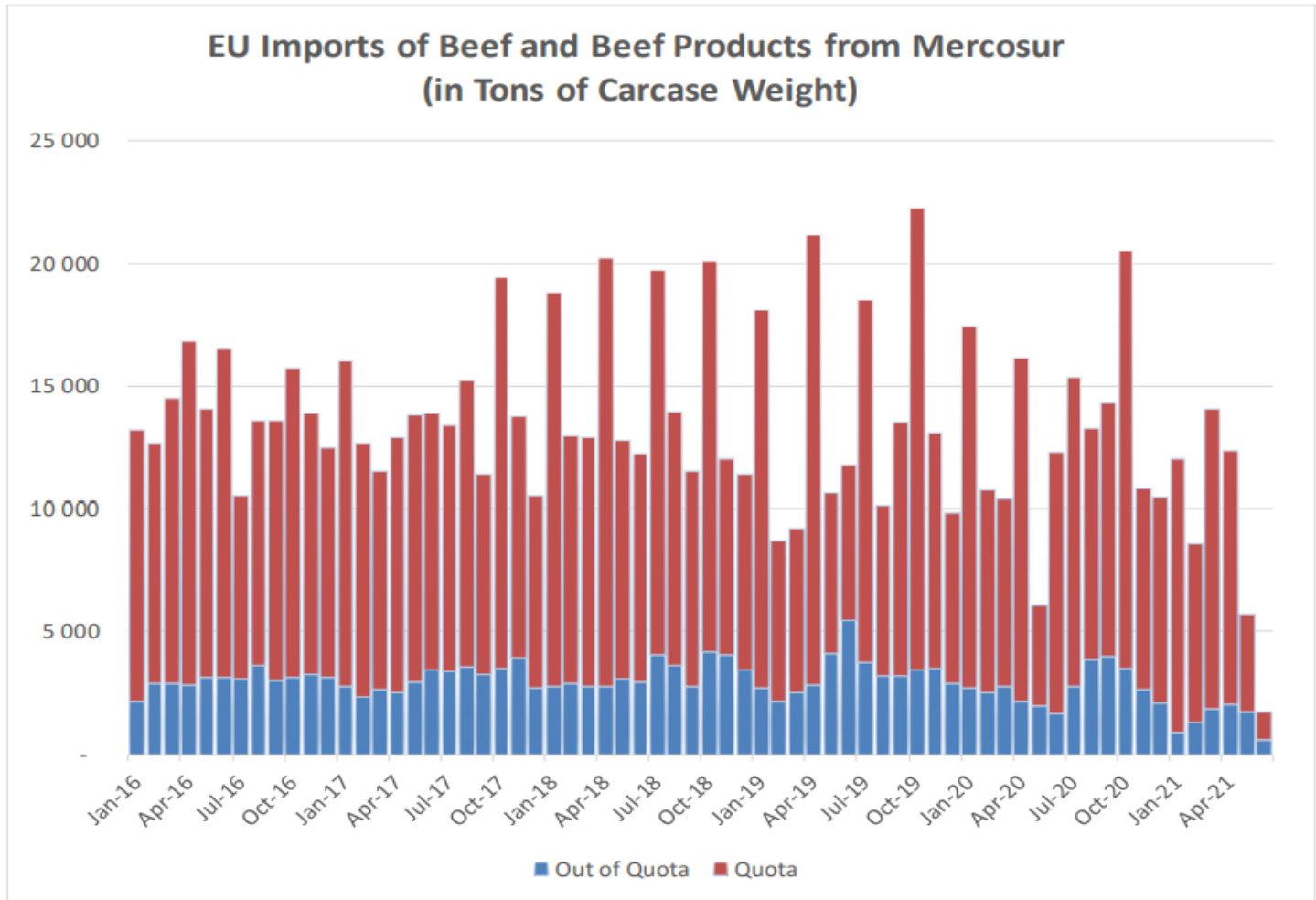
Üçüncü Ülkelerden AB ve Birleşik Krallık Sığır ve Sığır eti Ürünleri İthalatları (Ton)



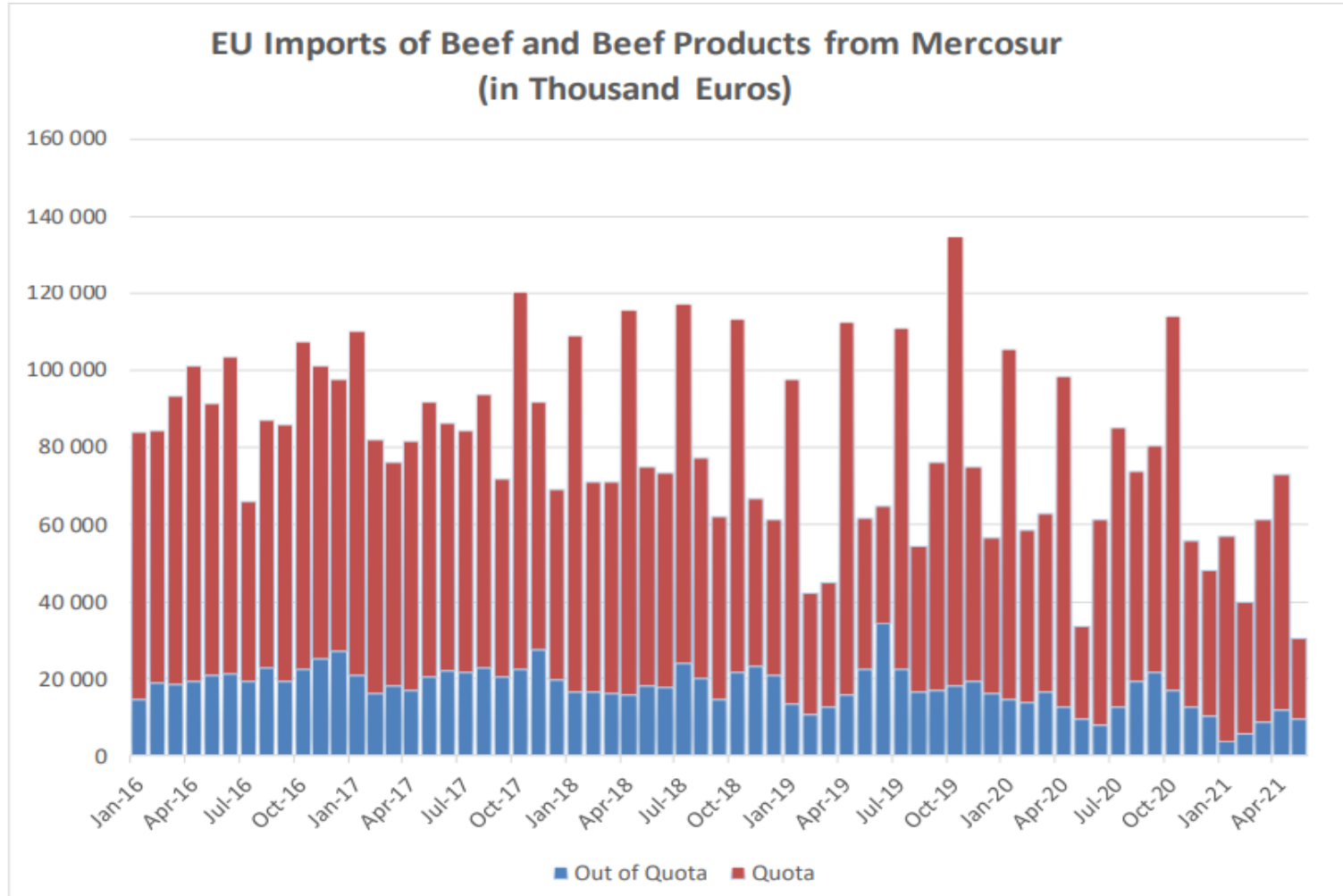
Üçüncü Ülkelerden AB ve Birleşik Krallık Sığır ve Sığır eti Ürünleri İthalatları (Bin Euro)



Mercosur Ülkelerinden Sığır ve Sığır Eti Ürünleri AB ve Birleşik Krallık İthalatları (Ton, Karkas Ağırlık)



Mercosur Ülkelerinden Sığır ve Sığır Eti Ürünleri AB ve Birleşik Krallık İthalatları (Bin Euro)



YÜKSEK KALİTE SİĞİR ETİ İTHALAT KOTALARI



European
Commission

Hilton Quota

Regulation (EU) N° 593/2013

	Quantity allocated (Tons)	2018/2019		2019/2020		2020/2021*	
		Use		Use		Use	
09.4001 Australia	2 250						
09.4004 Argentina	199	11.05	5.53%	8.34	4.17%	1.80	0.91%
09.4450 Argentina	14 189	29 491.35	99.97%	26 649.20	90.34%	5 833.05	41.11%
09.4451 Australia	1 768	4 942.02	69.12%	3 000.01	41.96%	216.11	12.22%
09.4452 Uruguay	2 465	6 363.76	99.81%	4 520.57	70.90%	1 635.72	66.37%
09.4453 Brazil	7 304	4 147.19	41.47%	2 884.79	28.85%	553.61	7.58%
09.4454 New Zealand	447	980.60	75.43%	859.15	66.09%	114.16	25.54%
09.4002 Canada/US	11 500	3 883.04	33.77%	2 703.68	23.51%	1 025.25	8.92%
09.4455 Paraguay	346	935.41	93.54%	680.40	68.04%	163.81	47.39%
Total Beef	38 018	50 743.37	75.93%	41 297.80	61.80%	9 541.71	25.10%
Total Buffalo	2 449	11.05	0.45%	8.34	0.34%	1.80	0.07%
Total	40 467	50 754.42	73.26%	41 306.14	59.63%	9 543.51	23.58%

YÜKSEK KALİTE SİĞİR ETİ İTHALAT KOTALARI



Quota erga omnes

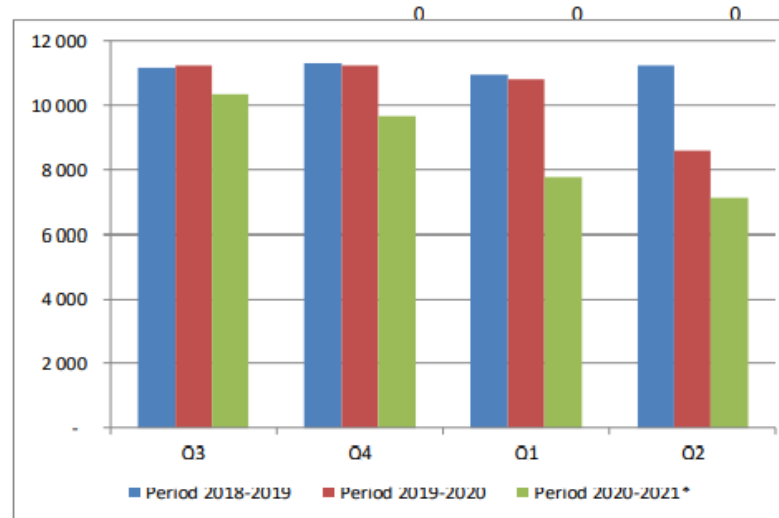
Regulation (EU) No 481/2012

	2018-Q3	2018-Q4	2019-Q1	2019-Q2	TOTAL
Period 2018-2019	11 165	11 300	10 973	11 256	44 693
Available	11 250	11 250	11 250	11 250	45 000
Use	99.24%	100.00%	97.53%	100.00%	99.32%
Available after transfer	11 250	11 335	11 200	11 527	
	99.24%	100.00%	97.53%	100.00%	

	2019-Q3	2019-Q4	2020-Q1	2020-Q2	TOTAL
Period 2019-2020	11 246	11 259	10 825	8 599	41 930
Available	11 250	11 250	11 250	11 250	45 000
Use	99.97%	100.00%	96.22%	76.44%	93.18%
Available after transfer	11 250	11 254	11 241	11 675	
	99.97%	100.00%	96.30%	73.66%	

	2020-Q3*	2020-Q4	2021-Q1	2021-Q2	TOTAL
Period 2020-2021*	10 332	9 674	7 760	7 177	34 944
Available	11 250	11 250	11 250	11 250	45 000
Use	91.84%	85.99%	68.98%	63.80%	77.65%
Available after transfer	11 250	12 168	12 826	14 740	
	91.84%	79.51%	60.51%	48.69%	

* Until 12.05.2021



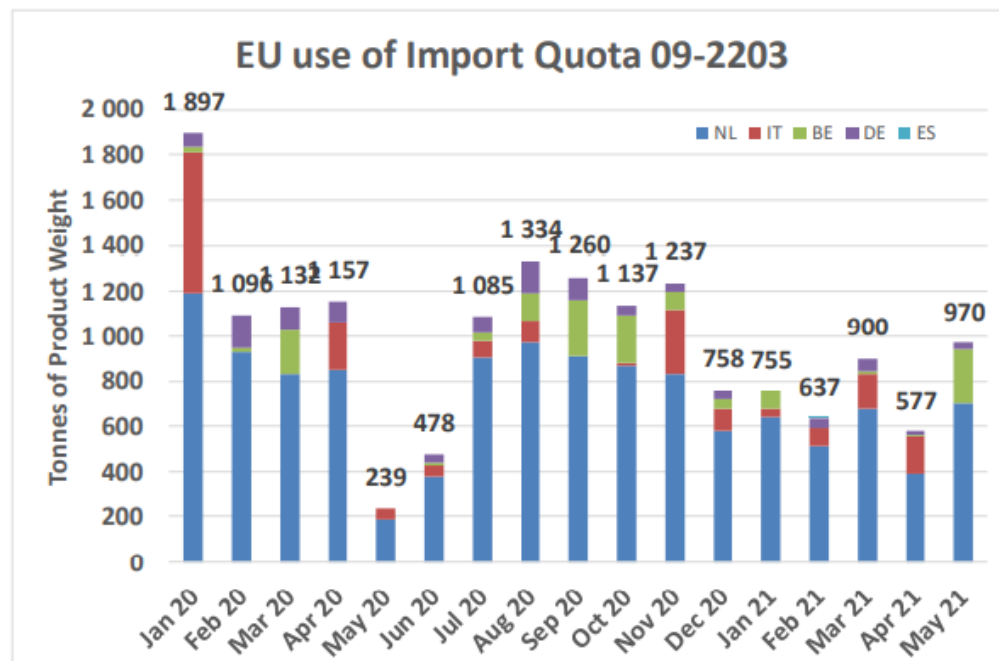
YÜKSEK KALİTE SİĞİR ETİ İTHALAT KOTALARI



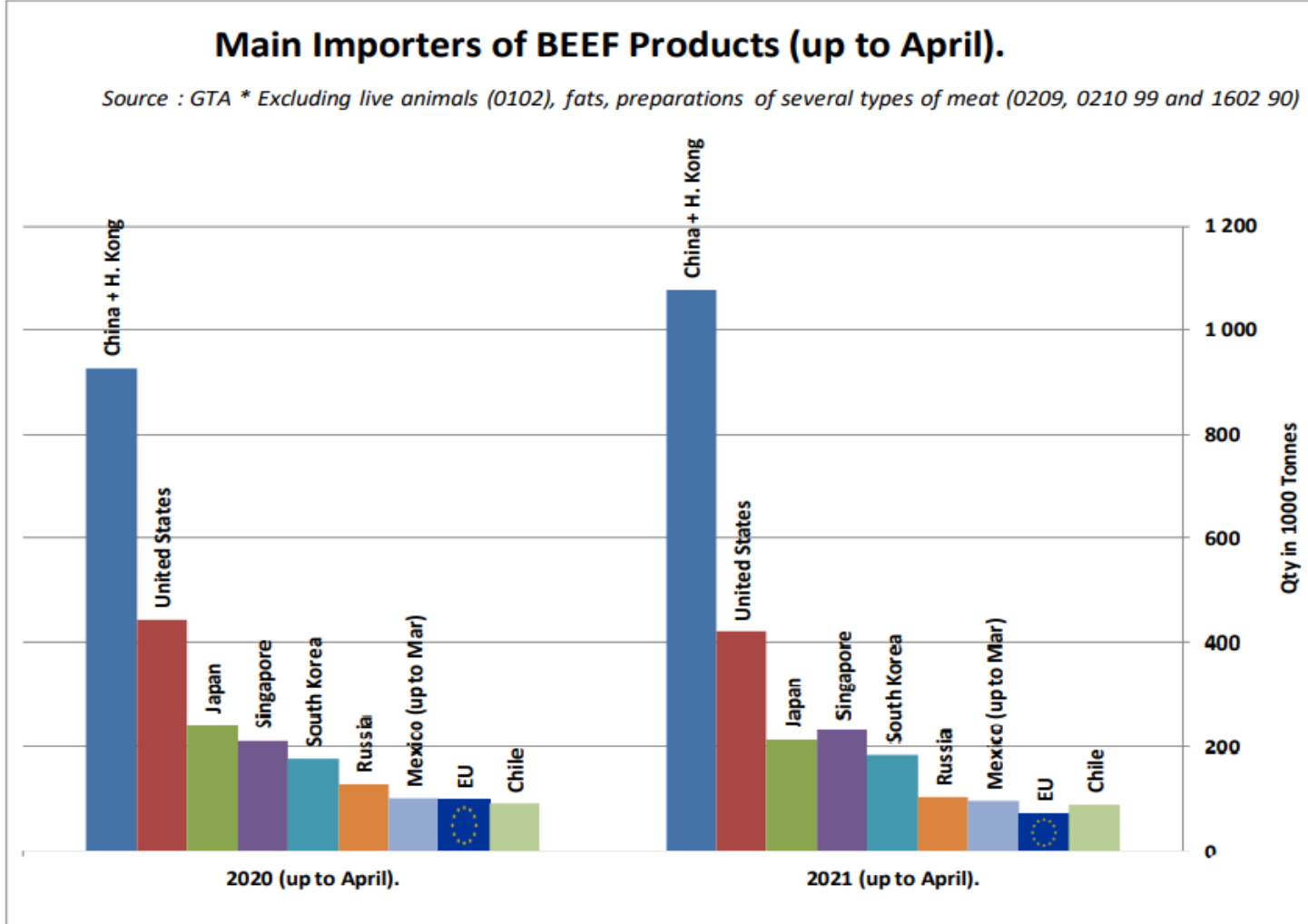
European Commission

Origin	GATT 2019-2020				
	2019-Q3	2019-Q4	2020-Q1	2020-Q2	Total
NL			2 957	1 415	4 372
IT			614	314	929
BE			241	10	251
DE			313	133	446
ES			-	-	-
Total import within Quota			4 125	1 873	5 998
Available			4 625	4 625	9 250
Use			89.19%	40.50%	64.85%
After transfer			4 625	5 125	
Use			89.19%	36.55%	

Origin	GATT 2020-2021				
	2020-Q3	2020-Q4	2021-Q1	2021-Q2	Total
NL	2 785	2 274	1 834	1 257	8 150
IT	174	404	263	164	1 005
BE	417	330	96	356	1 198
DE	305	124	98	55	581
Total import within Quota	3 680	3 132	2 291	1 832	10 935
Available	4 625	4 625	4 625	4 625	18 500
Use	79.57%	67.72%	49.52%	39.62%	59.11%
After transfer	4 625	5 570	6 118	6 959	
Use	79.57%	56.23%	37.44%	26.33%	



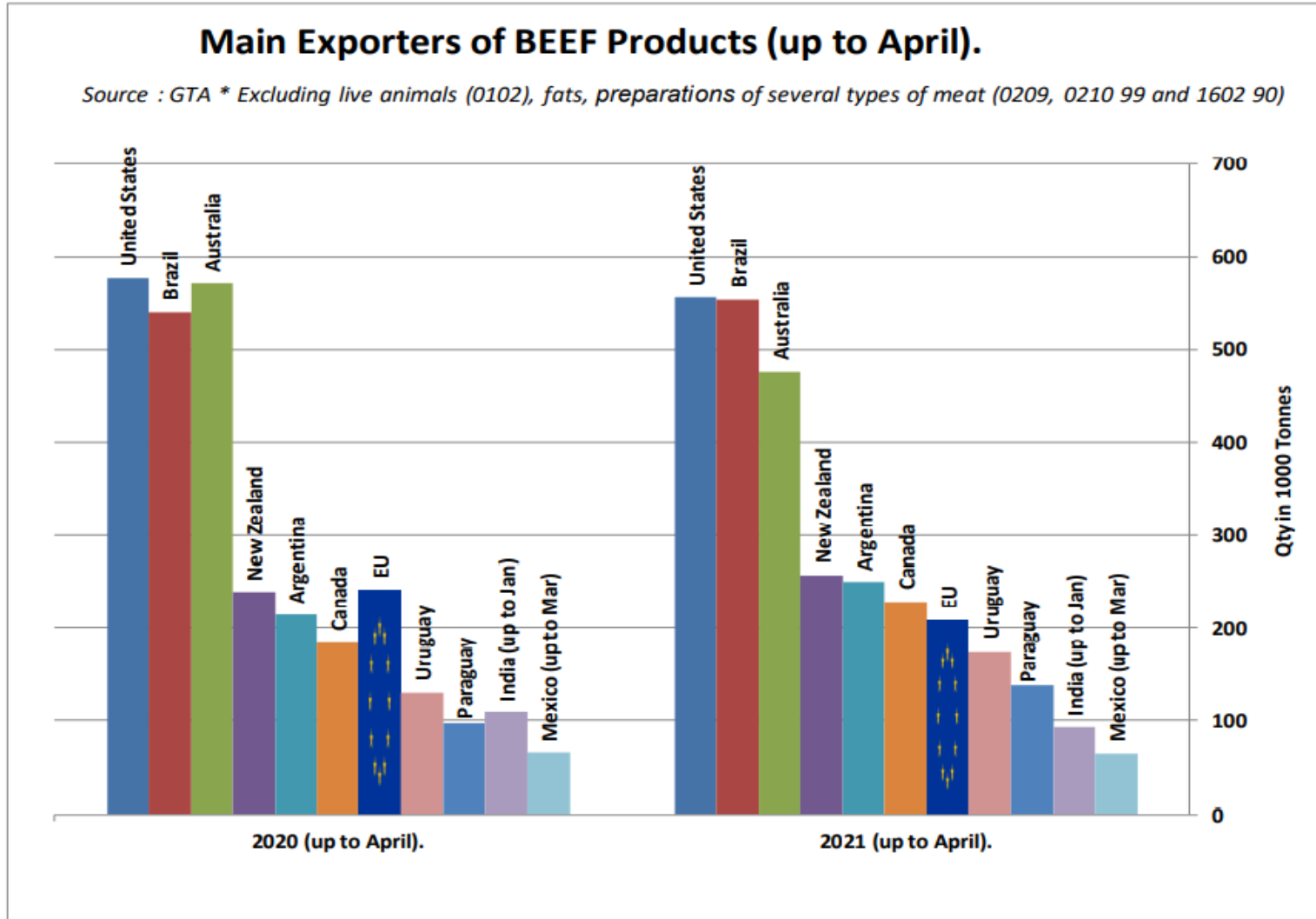
SIĞIR ETİ ÜRÜNLERİNİN NET İTHALATÇILARI (NİSAN AYINA KADAR)





European Commission

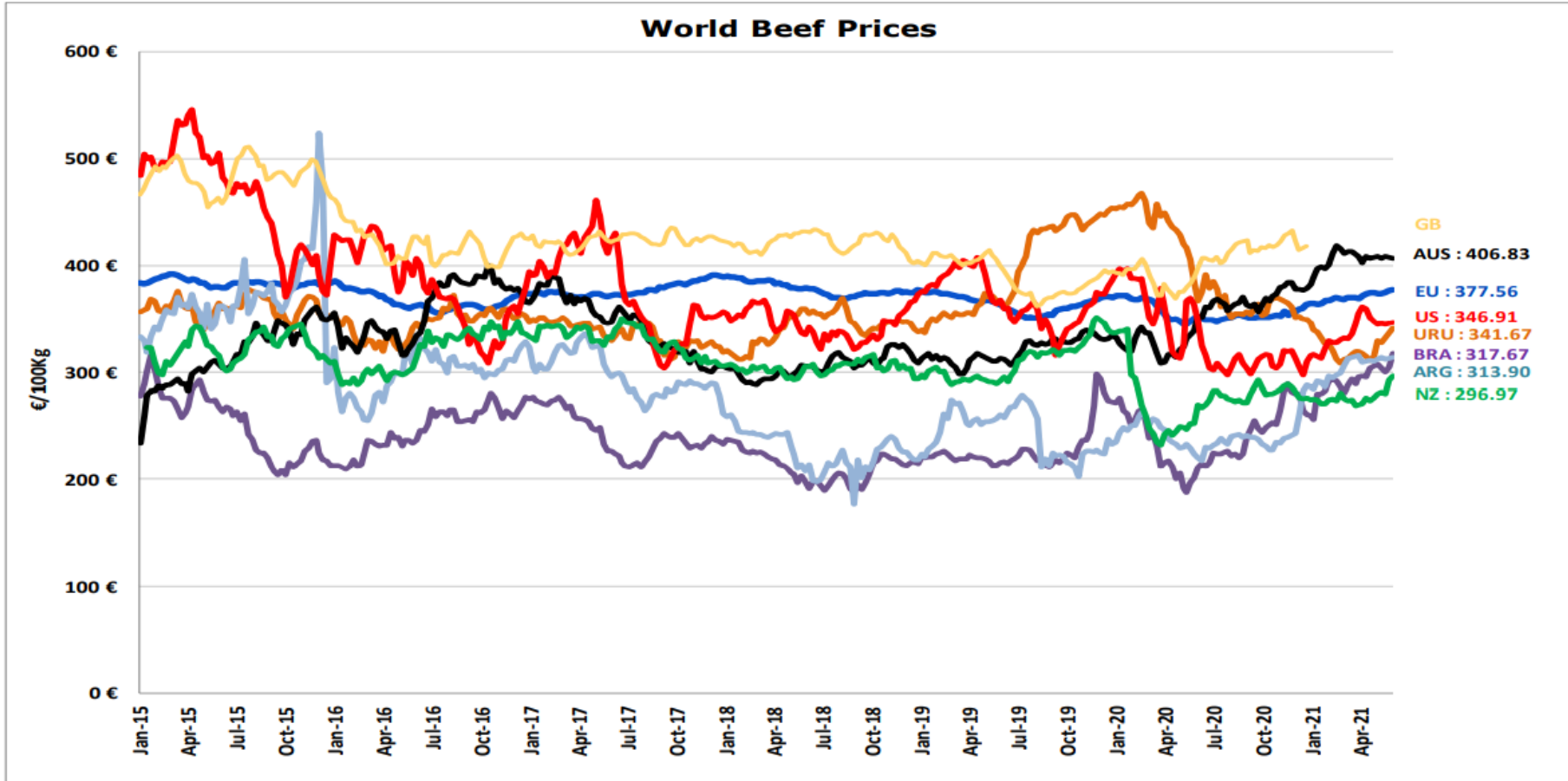
SIĞIR ETİ ÜRÜNLERİNİN NET İHRACATÇILARI (NİSAN AYINA KADAR)



DÜNYA SIĞIR ETİ PAZARI



Dünya Sığır Fiyatları AB, ABD, AVUSTURYA, YENİ ZELANDA



- ECB <http://sdw.ecb.europa.eu/browse.do?node=2018794>
- US <https://www.marketnews.usda.gov/mnp/lis-home>
- AUS <http://statistics.mla.com.au/Report/RunReport/ae59d4ac-74e4-4c56-93bd-982a044d9760>
- UY http://www.inac.gub.uy/innovaportal/v/11034/10/innova.front/indicadores_y_precios
- ARG http://www.abc-consorcio.com.ar/Estadisticas/detalle/117/precios_comparativos_del_novillo.html
- BR <http://www.pecuaria.com.br/cotacoes.php>
- NZ http://www.abc-consorcio.com.ar/Estadisticas/detalle/117/precios_comparativos_del_novillo.html



Daha fazla bilgi için:

https://ec.europa.eu/agriculture/market-observatory/meat_en

Ve Agri-FOOD Veri Portalı:

<http://agridata.ec.europa.eu>