



AB SIĞIR VE DANA ETİ PAZAR DURUMU

18 Kasım 2021

HAYVANCILIK HAZİRAN ARAŞTIRMASI



AB DEĞİŞİM TOPLAM BÜYÜKBAŞ

May/Jun 1000 Hd	TOT LIVESTOCK					%Var 2021 2020	BOVINE < 1 Year					%Var 2021 2020	BOVINE 1-2 Year					%Var 2021 2020	BOVINE > 2 Year					%Var 2021 2020
	2018	2019	2020	2021	2020		2018	2019	2020	2021	2020		2018	2019	2020	2021	2020		2018	2019	2020	2021	2020	
BE	2 450	2 406	2 388	2 342	-1.9%	710	706	716	708	-1.0%	492	475	471	471	-0.1%	1 247	1 226	1 201	1 163	-3.2%				
BG																								
CZ																								
DK	1 560	1 512	1 517	1 503	-0.9%	538	510	517	517	idem	294	292	291	287	-1.4%	729	710	709	699	-1.4%				
DE	12 093	11 763	11 423	11 176	-2.2%	3 618	3 502	3 410	3 398	-0.4%	2 848	2 788	2 683	2 591	-3.4%	5 627	5 473	5 330	5 188	-2.7%				
EE																								
IE	7 349	7 209	7 314	7 359	+0.6%	2 078	2 008	2 117	2 146	+1.4%	1 919	1 861	1 807	1 910	+5.7%	3 351	3 340	3 380	3 303	-2.6%				
EL																								
ES	6 725	6 722	6 715	6 911	+2.9%	2 504	2 507	2 488	2 626	+5.6%	990	978	930	975	+4.9%	3 230	3 237	3 297	3 310	+0.4%				
FR	18 737	18 470	18 200	17 863	-1.9%	5 125	5 227	5 144	5 134	-0.2%	3 417	3 229	3 249	3 158	-2.8%	10 195	10 014	9 808	9 571	-2.4%				
HR																								
IT	6 170	6 016	6 116	6 174	+0.9%	1 757	1 746	1 746	1 762	+0.9%	1 466	1 409	1 458	1 476	+1.2%	2 948	2 861	2 912	2 936	+0.8%				
CY																								
LV																								
LT																								
LU																								
HU																								
MT																								
NL	3 897	3 750	3 766	3 733	-0.9%	1 560	1 536	1 558	1 523	-2.2%	520	460	446	480	+7.6%	1 817	1 754	1 762	1 730	-1.8%				
AT	1 907	1 873	1 844	1 846	+0.1%	606	596	588	596	+1.4%	433	425	416	413	-0.7%	869	853	841	838	-0.4%				
PL	6 201	6 358	6 344	6 401	+0.9%	1 686	1 771	1 729	1 789	+3.5%	1 734	1 768	1 796	1 856	+3.3%	2 781	2 820	2 819	2 756	-2.2%				
PT	1 722	1 712	1 751	1 723	-1.5%	529	524	557	550	-1.4%	274	267	264	252	-4.7%	919	921	929	922	-0.8%				
RO	2 002	1 963	1 915	1 864	-2.6%	444	428	418	386	-7.7%	236	230	217	207	-4.4%	1 322	1 305	1 280	1 271	-0.7%				
SI																								
SK																								
FI																								
SE	1 507	1 466	1 453	1 453	-0.0%	475	451	462	465	+0.6%	381	380	362	369	+2.1%	651	636	629	618	-1.7%				
EU	72 320	71 220	70 747	70 348	-0.6%	21 631	21 512	21 451	21 600	+0.7%	15 003	14 559	14 389	14 444	+0.4%	35 687	35 149	34 907	34 304	-1.7%				
UK	9 891	9 739	9 615			2 908	2 857	2 878			2 479	2 448	2 412			4 504	4 434	4 324						

Source: USDA Newsroom

EU %Var is calculated considering only countries available in 2020 AND 2021

HAYVANCILIK HAZİRAN ARAŞTIRMASI



AB DEĞİŞİM İNEK

May/Jun 1000 Hd	TOTAL COWS					%Var 2021 2020	DAIRY COWS					%Var 2021 2020	OTHER COWS					%Var 2021 2020
	2018	2019	2020	2021			2018	2019	2020	2021			2018	2019	2020	2021		
BE	968	960	954	932	-2.2%	532	536	544	536	-1.5%	435	425	409	396	-3.2%			
BG																		
CZ																		
DK	667	654	653	647	-0.9%	575	567	567	565	-0.4%	91	87	86	82	-4.7%			
DE	4 830	4 720	4 609	4 517	-2.0%	4 167	4 067	3 969	3 892	-2.0%	663	653	640	626	-2.3%			
EE																		
IE	2 529	2 505	2 551	2 545	-0.2%	1 481	1 505	1 568	1 605	+2.4%	1 048	1 000	983	940	-4.4%			
EL																		
ES	2 865	2 854	2 927	2 954	+0.9%	825	815	810	819	+1.1%	2 040	2 039	2 117	2 135	+0.9%			
FR	7 652	7 546	7 442	7 315	-1.7%	3 512	3 471	3 403	3 331	-2.1%	4 141	4 075	4 039	3 984	-1.4%			
HR																		
IT	2 192	2 110	2 130	2 161	+1.4%	1 904	1 840	1 844	1 852	+0.4%	288	270	286	309	+8.0%			
CY																		
LV																		
LT																		
LU																		
HU																		
MT																		
NL	1 685	1 641	1 651	1 628	-1.4%	1 622	1 578	1 593	1 572	-1.3%	63	63	58	56	-4.5%			
AT	740	726	716	715	-0.2%	538	525	523	531	+1.6%	202	201	193	184	-5.0%			
PL	2 429	2 461	2 468	2 388	-3.2%	2 233	2 221	2 218	2 113	-4.7%	196	240	250	276	+10.4%			
PT	745	742	757	757	+0.1%	244	238	239	236	-1.2%	501	504	517	521	+0.7%			
RO	1 197	1 179	1 160	1 148	-1.0%	1 184	1 162	1 145	1 133	-1.0%	12	17	15	15	Idem			
SI																		
SK																		
FI																		
SE	534	516	510	511	+0.2%	319	306	303	300	-1.1%	214	210	207	211	+2.1%			
EU	29 034	28 612	28 528	28 219	-1.1%	19 137	18 831	18 727	18 485	-1.3%	9 896	9 782	9 801	9 735	-0.7%			
UK	3 441	3 398	3 359			1 883	1 871	1 850			1 558	1 527	1 509					

Source : EStat Newsworld

E.U. %Var is calculated considering only countries available in 2020 AND 2021

HAYVANCILIK ARALIK ARAŞTIRMASI



AB DEĞİŞİM TOPLAM BÜYÜKBAŞ

Dec 1000 Hd	TOTAL LIVESTOCK				%Var 2020 2019	BOVINE < 1 Year				%Var 2020 2019	BOVINE 1-2 Year				%Var 2020 2019	BOVINE > 2 Year				%Var 2020 2019
	2017	2018	2019	2020		2017	2018	2019	2020		2017	2018	2019	2020		2017	2018	2019	2020	
BE	2 386	2 398	2 373	2 335	-1.6%	700	724	722	712	-1.4%	484	464	464	461	-0.6%	1 202	1 210	1 188	1 163	-2.1%
BG	553	542	527	589	+11.7%	110	108	100	112	+11.9%	57	59	58	71	+22.0%	386	375	369	406	+10.0%
CZ	1 366	1 365	1 367	1 340	-2.0%	407	404	411	405	-1.5%	299	304	299	295	-1.2%	660	657	657	640	-2.6%
DK	1 558	1 530	1 500	1 500	idem	541	534	522	524	+0.4%	294	284	280	279	-0.4%	723	712	698	697	-0.1%
DE	12 281	11 949	11 640	11 302	-2.9%	3 704	3 584	3 485	3 405	-2.3%	2 904	2 829	2 751	2 639	-4.1%	5 673	5 536	5 403	5 258	-2.7%
EE	251	252	254	253	-0.3%	70	71	71	72	+1.7%	49	49	50	49	-0.8%	132	132	133	132	-1.1%
IE	6 674	6 593	6 560	6 529	-0.5%	2 087	2 000	1 962	2 057	+4.8%	1 792	1 790	1 741	1 708	-1.9%	2 795	2 804	2 856	2 765	-3.2%
EL	556	542	530	539	+1.7%	151	141	157	154	-1.9%	101	96	91	90	-1.1%	303	305	283	295	+4.2%
EŞ	6 466	6 511	6 600	6 636	+0.5%	2 492	2 484	2 529	2 541	+0.5%	822	847	857	853	-0.5%	3 151	3 170	3 214	3 242	+0.9%
FR	18 954	18 613	18 173	17 789	-2.1%	5 271	5 304	5 125	5 089	-0.7%	3 381	3 180	3 183	3 059	-3.9%	10 301	10 129	9 865	9 641	-2.3%
HR	451	414	420	423	+0.7%	156	153	151	146	-3.3%	100	96	107	111	+3.7%	195	165	162	166	+2.5%
IT	6 350	6 311	6 377	6 400	+0.4%	1 738	1 703	1 759	1 774	+0.8%	1 501	1 538	1 588	1 595	+0.5%	3 111	3 071	3 030	3 031	+0.0%
CY	67	71	74	78	+4.8%	23	24	25	25	+3.5%	11	12	12	12	+2.8%	33	35	38	40	+6.2%
LV	406	395	395	399	+0.9%	108	106	108	112	+3.0%	70	65	65	65	+1.2%	228	225	222	222	-0.2%
LT	677	654	635	630	-0.8%	180	173	167	169	+1.1%	135	133	132	129	-2.4%	362	348	336	332	-1.1%
LU	198	194	192	191	-0.7%	50	50	50	50	+0.2%	44	42	41	41	-1.1%	103	103	101	100	-1.1%
HU	870	885	909	933	+2.6%	243	251	258	266	+3.1%	179	182	193	195	+1.0%	448	451	458	472	+3.1%
MT	14	14	14	14	+0.1%	4	4	4	4	+5.3%	3	3	3	3	-8.4%	7	7	7	7	+0.9%
NL	4 030	3 690	3 721	3 691	-0.8%	1 594	1 510	1 528	1 510	-1.2%	575	465	440	465	+5.7%	1 860	1 715	1 752	1 716	-2.1%
AT	1 943	1 913	1 880	1 855	-1.3%	624	618	605	599	-1.1%	439	428	426	414	-2.8%	881	866	848	842	-0.6%
PL	6 036	6 183	6 262	6 279	+0.3%	1 713	1 709	1 748	1 735	-0.7%	1 669	1 732	1 757	1 800	+2.5%	2 654	2 742	2 758	2 744	-0.5%
PT	1 670	1 632	1 675	1 691	+1.0%	515	497	531	526	-1.1%	256	236	240	257	+6.9%	900	899	903	909	+0.6%
RO	2 011	1 977	1 923	1 911	-0.6%	432	418	400	376	-6.1%	248	241	223	233	+4.2%	1 330	1 318	1 300	1 302	+0.2%
ŞI	480	477	483	486	+0.5%	153	153	151	153	+1.4%	128	128	136	133	-1.7%	198	196	197	199	+1.4%
ŞK	440	439	432	442	+2.3%	125	123	122	126	+3.2%	84	83	83	87	+4.3%	231	232	227	229	+1.1%
FI	875	859	841	835	-0.6%	299	296	287	292	+1.5%	213	210	205	199	-2.6%	363	354	349	344	-1.3%
ŞE	1 449	1 435	1 405	1 391	-1.0%	474	468	453	464	+2.5%	342	343	339	323	-4.6%	633	625	613	603	-1.6%
EU	79 010	77 840	77 161	76 452	-0.9%	23 964	23 619	23 431	23 396	-0.2%	16 182	15 838	15 764	15 568	-1.2%	38 863	38 382	37 966	37 498	-1.2%
UK	9 787	9 610	9 459			2 956	2 869	2 860			2 413	2 405	2 335			4 417	4 336	4 264		

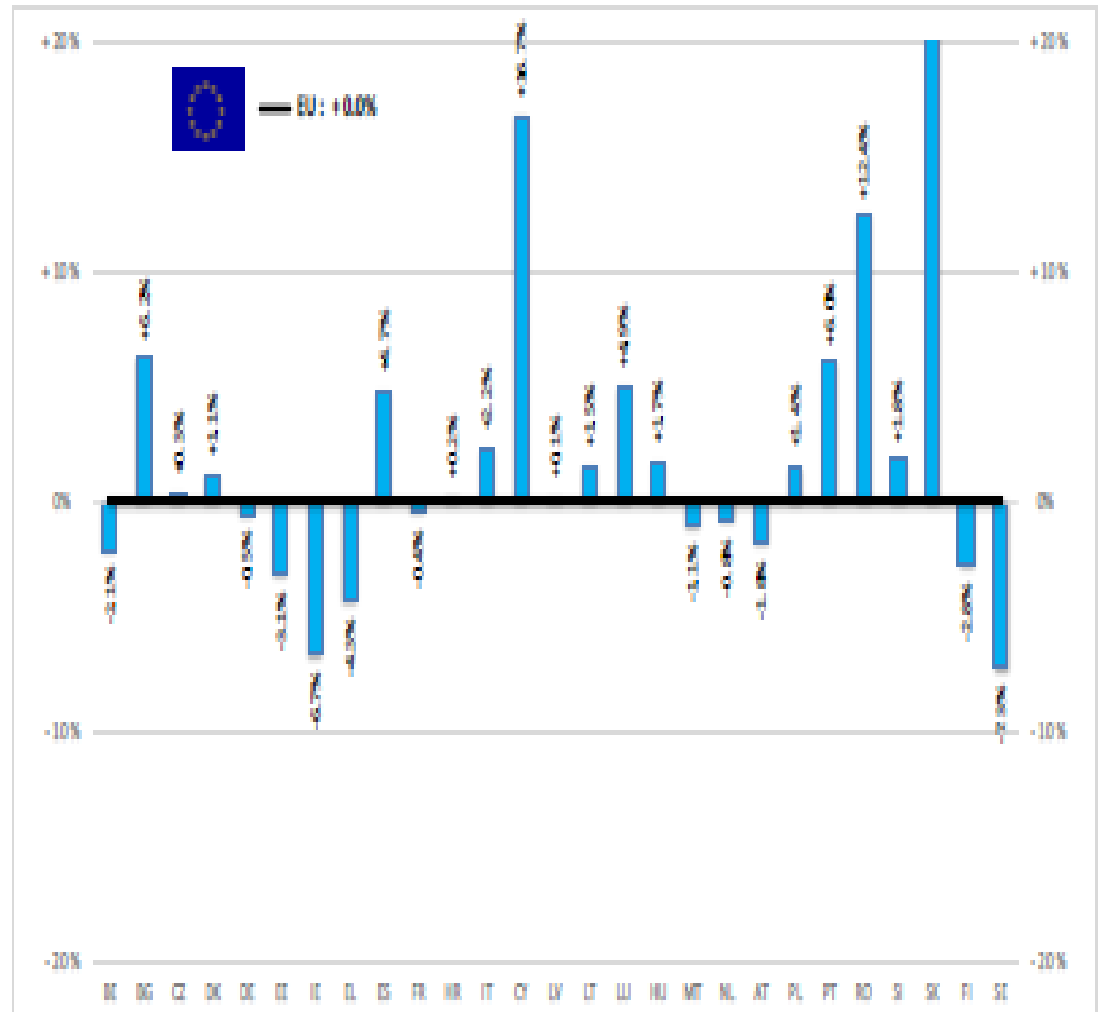
Source : ESTAT Newsroom

EU %Var is calculated considering only countries available in 2019 AND 2020

Dec	TOTAL COWS				%Var	DAIRY COWS				%Var	OTHER COWS				%Var	
	1000 Hd	2017	2018	2019	2020	2019	2017	2018	2019	2020	2019	2017	2018	2019	2020	2019
BE		938	942	939	921	-1.9%	519	529	538	538	-0.0%	419	412	401	383	-4.4%
BG		357	351	343	382	+11.3%	261	244	227	242	+6.7%	97	107	116	140	+20.2%
CZ		571	570	570	560	-1.8%	365	359	361	357	-1.2%	206	212	209	203	-2.9%
DK		664	655	645	646	+0.2%	575	570	563	565	+0.4%	89	85	83	80	-3.6%
DE		4 859	4 751	4 651	4 548	-2.2%	4 199	4 101	4 012	3 921	-2.2%	660	650	640	626	-2.1%
EE		115	116	116	116	-0.4%	86	85	85	84	-0.8%	29	30	31	32	+0.6%
IE		2 362	2 351	2 383	2 379	-0.2%	1 343	1 369	1 426	1 456	+2.1%	1 018	982	957	923	-3.6%
EL		262	269	242	258	+6.6%	97	95	86	86	Idem	165	174	156	171	+9.6%
ES		2 822	2 819	2 881	2 909	+1.0%	823	817	813	811	-0.3%	1 998	2 002	2 068	2 099	+1.5%
FR		7 751	7 650	7 505	7 475	-0.4%	3 597	3 554	3 491	3 455	-1.0%	4 154	4 095	4 014	4 020	+0.1%
HR		161	146	142	144	+1.4%	139	136	130	110	-15.4%	22	10	12	34	+183.3%
IT		2 338	2 263	2 237	2 243	+0.3%	2 040	1 939	1 876	1 871	-0.2%	298	324	362	372	+2.8%
CY		30	32	35	37	+4.8%	30	32	35	37	+4.8%	0	0	0	0	Idem
LV		199	196	195	196	+0.6%	150	144	138	136	-1.7%	49	52	56	60	+6.5%
LT		323	312	299	295	-1.4%	273	256	241	233	-3.3%	50	56	58	62	+6.4%
LU		78	78	79	78	-1.2%	52	53	54	54	+0.1%	26	25	25	24	-4.1%
HU		395	403	412	414	+0.5%	244	239	243	226	-7.0%	151	164	169	188	+11.2%
MT		6	6	6	6	+1.1%	6	6	6	6	-1.0%	0	0	0	0	+100.0%
NL		1 723	1 594	1 633	1 612	-1.3%	1 665	1 552	1 590	1 569	-1.3%	58	42	43	43	Idem
AT		750	733	720	715	-0.6%	543	533	524	525	+0.1%	207	200	195	191	-2.5%
PL		2 341	2 417	2 406	2 391	-0.6%	2 153	2 214	2 167	2 126	-1.9%	188	203	239	266	+10.9%
PT		728	723	731	739	+1.1%	239	235	234	233	-0.6%	490	487	497	507	+1.9%
RO		1 187	1 173	1 166	1 165	-0.1%	1 175	1 158	1 139	1 140	+0.1%	12	15	27	25	-7.8%
SI		169	166	166	167	+0.6%	109	103	101	99	-1.6%	60	64	65	68	+4.1%
SK		195	195	192	192	-0.2%	130	128	126	122	-3.0%	65	67	66	69	+5.3%
FI		329	322	318	316	-0.6%	271	264	259	256	-1.3%	58	58	59	61	+2.3%
SE		522	514	500	499	-0.2%	323	313	301	304	+1.0%	199	201	198	194	-2.1%
EU		32 176	31 749	31 513	31 402	-0.4%	21 409	21 029	20 766	20 562	-1.0%	10 767	10 719	10 748	10 838	+0.8%
UK		3 443	3 382	3 337			1 904	1 879	1 867			1 540	1 503	1 470		

BAŞ	HEADS	Jan-Aug 21/20
	EU	
BOĞA	Bull	+1.5%
ÖKÜZ	Bullock	-3.9%
İNEK	Cow	+1.1%
DÜVE	Heifer	-0.4%
BUZAĞI	Calve	-2.0%
GENÇ SİĞİR	Young cattle	-0.7%
Büyükbaş Hayvan Eti	Meat of bovine animals	+0.0%

Estimates for last month of period :



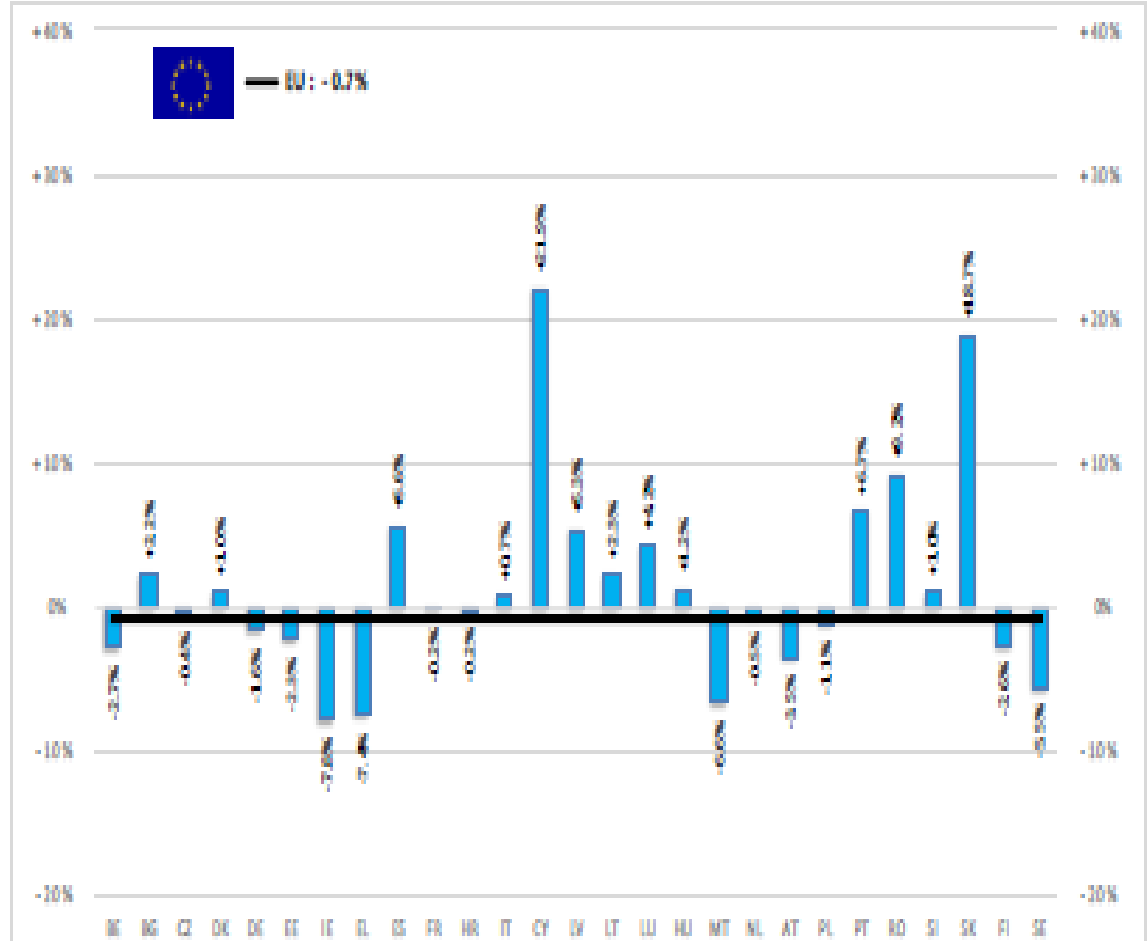
Source: EStat - Newcronis



European
Commission

TON	TONNES	Jan-Aug 21/20
		EU
BOĞA	Bull	-0.3%
ÖKÜZ	Bullock	-4.1%
İNEK	Cow	-0.2%
DÜVE	Heifer	-1.1%
BUZAĞI	Calve	-0.4%
GENÇ SIĞIR	Young cattle	-1.2%
Büyükbaş Hayvan Eti	Meat of bovine animals	-0.7%

Estimates for last month of period :

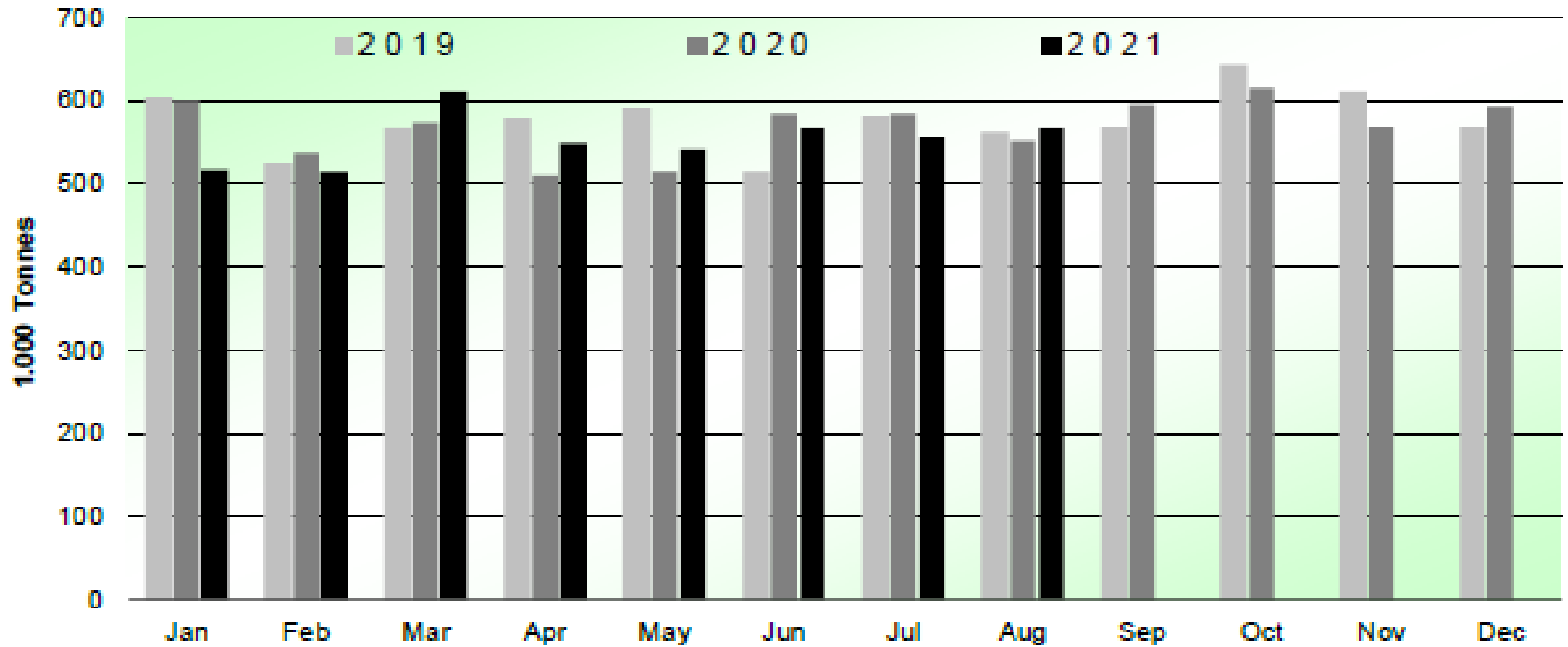


Source : EStat - Newcronos



SIĞIR VE DANA ETİ ÜRETİMİ (AB Kesimler – Ton)

Beef & Veal Production (EU Slaughtering) - Tonnes



Source : EStat-Newcronos

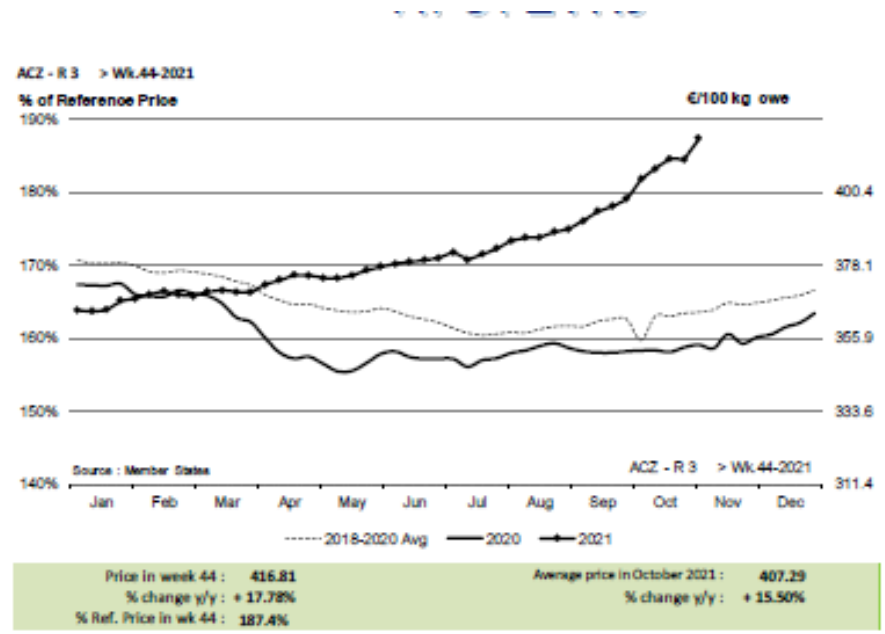
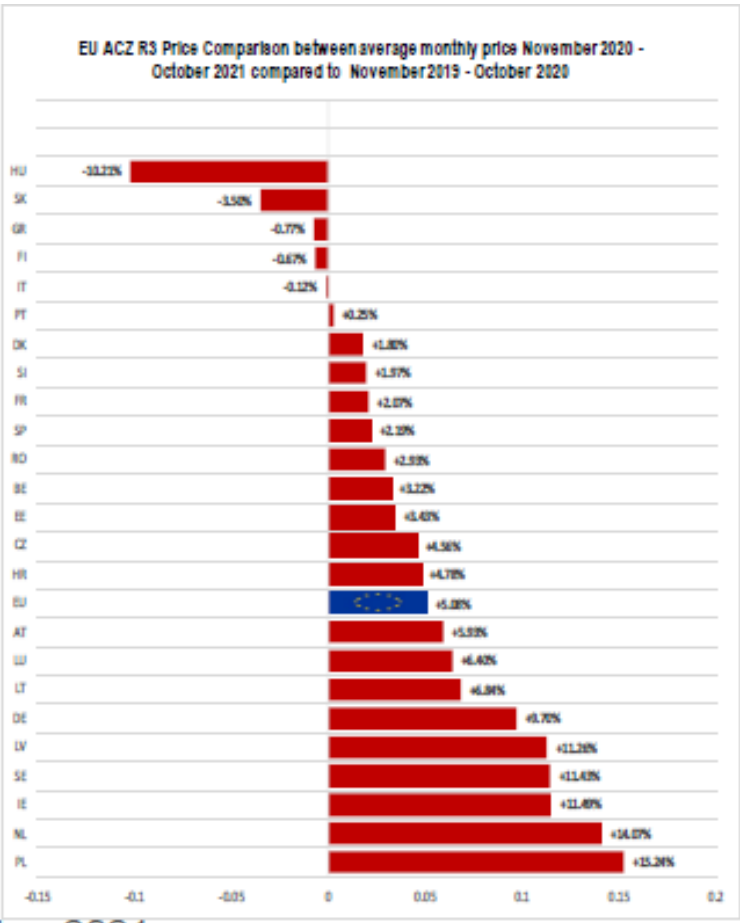


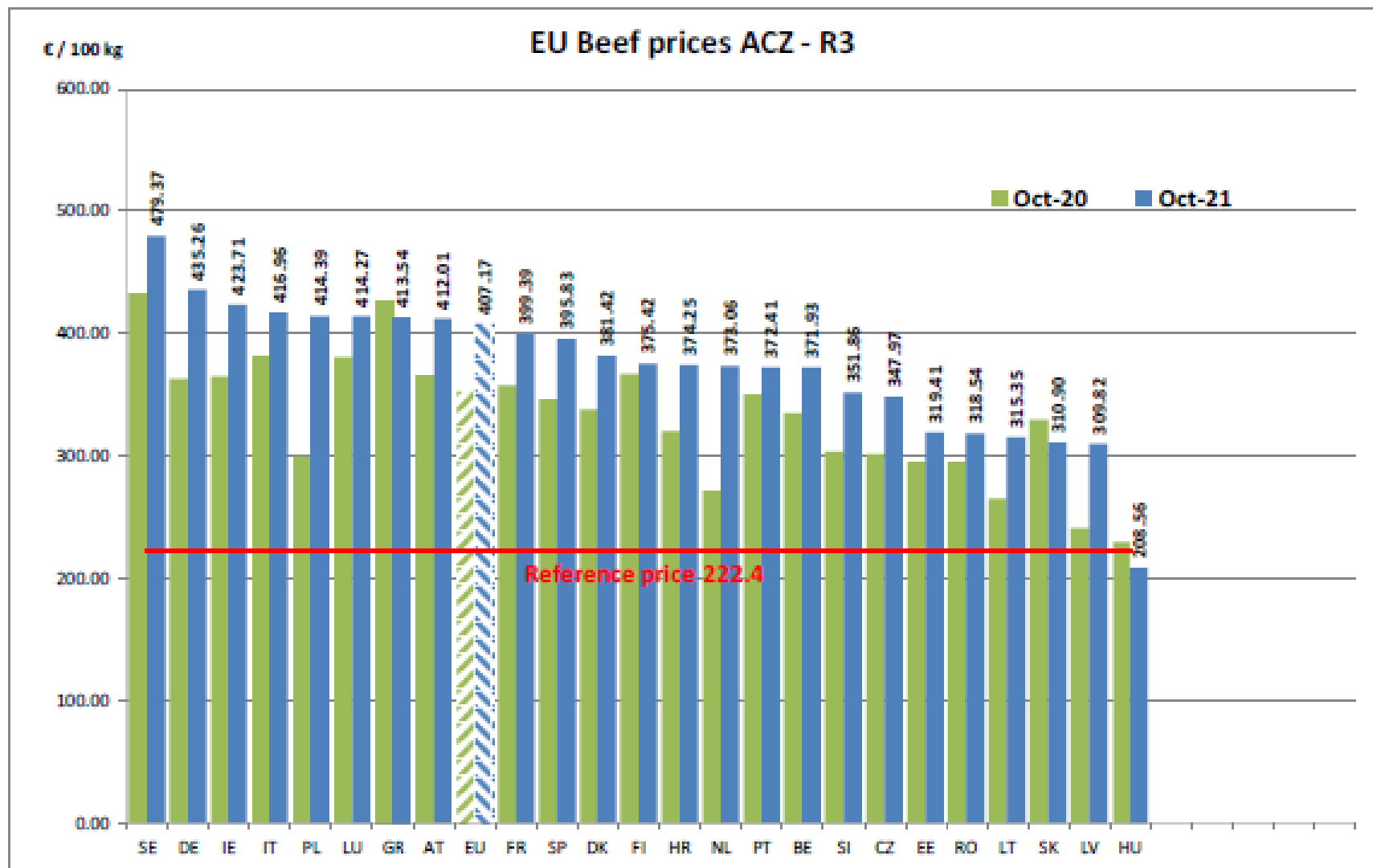
EU Prices week		44	Evolution since last week	Evolution since last month	Evolution since last year
Carcasse	Average A/C/Z-RB	416.8	+ 1.6%	+ 3.1%	+ 17.8%
	Young Bovines (Z)	406.1	+ 1.6%	+ 2.5%	+ 1.6%
	Young Bulls (A)	419.8	+ 1.8%	+ 4.0%	+ 18.8%
	Steers (C)	413.6	+ 0.5%	- 1.0%	+ 14.2%
	Cows (D)	345.3	+ 1.1%	+ 2.6%	+ 30.2%
	Heifers (E)	424.5	+ 1.3%	+ 1.9%	+ 15.6%
Live Animals	Male Calves Dairy Type	93.66	+ 6.4%	+ 12.9%	+ 44.4%
	Male Calves Beef Type	206.2	- 1.9%	- 4.3%	+ 10.5%
	Young Store Cattle	2.71	- 0.3%	+ 0.2%	+ 6.3%
	Yearling Male Store Cattle	3.27	- 0.7%	- 1.5%	+ 49.5%
	Yearling Female Store Cattle	2.54	- 0.2%	- 1.0%	+ 5.5%
	Calves slaughtered <8M	549.9	+ 1.2%	+ 2.5%	+ 13.8%

Sources : MSs notifications (Regulation (EU) 1182/2017 and 1184/2017)

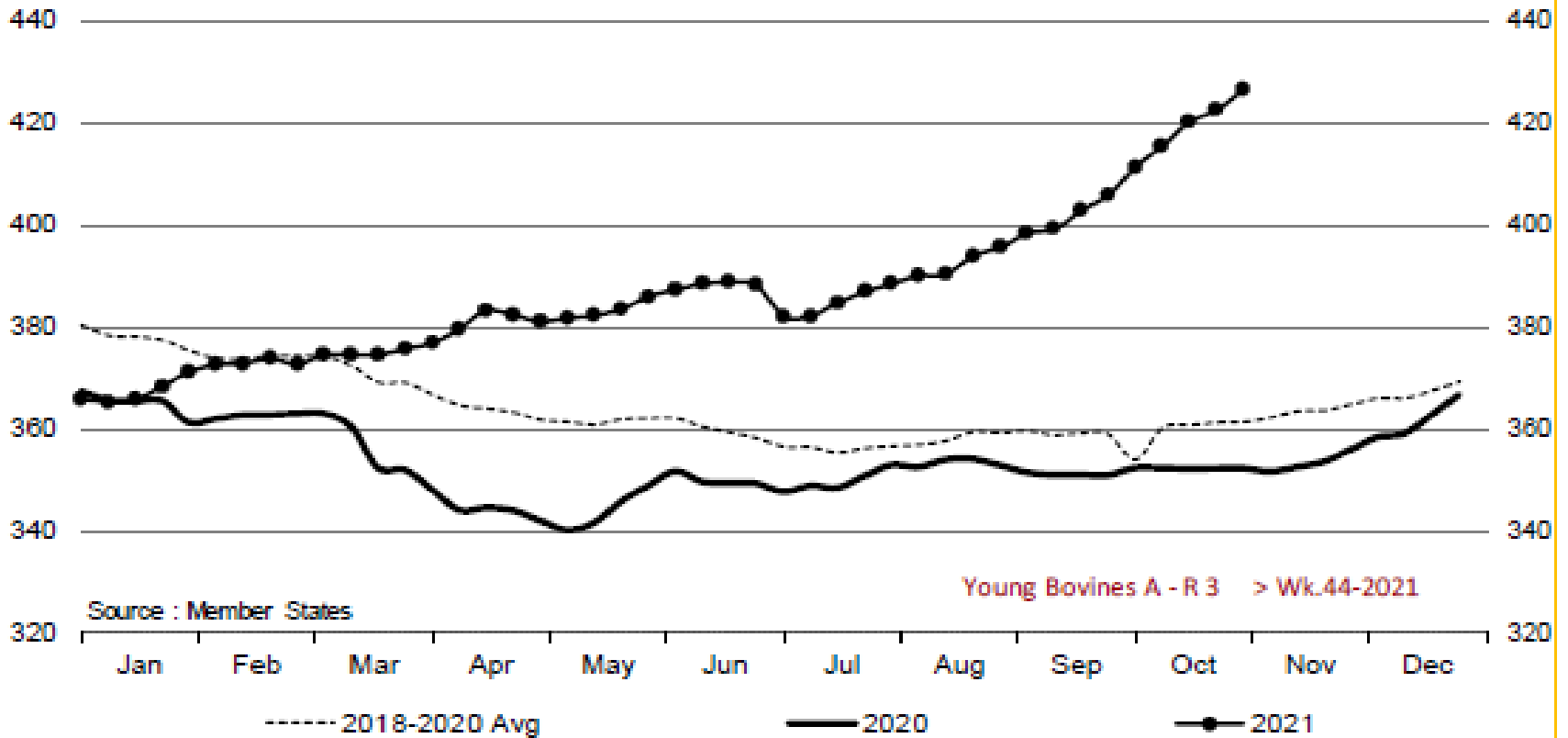
KARKAS FİYATLARI

AB DEĞİŞİM A/C/Z. R3



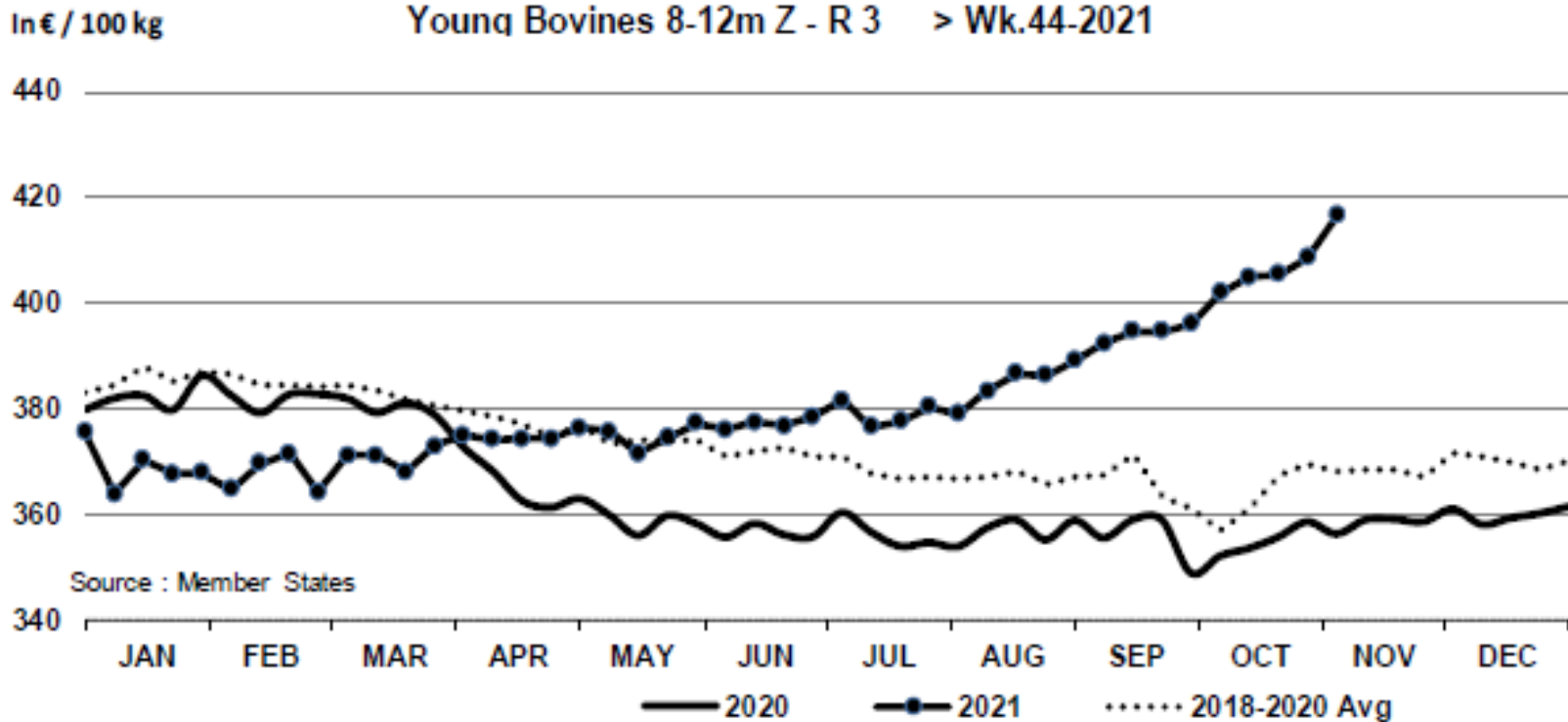


Young Bovines A - R 3 > Wk.44-2021



Price in week 44 : 426.60
% change y/y : + 21.1%

Average price in October 2021 : 416.28
% change y/y : + 18.2%



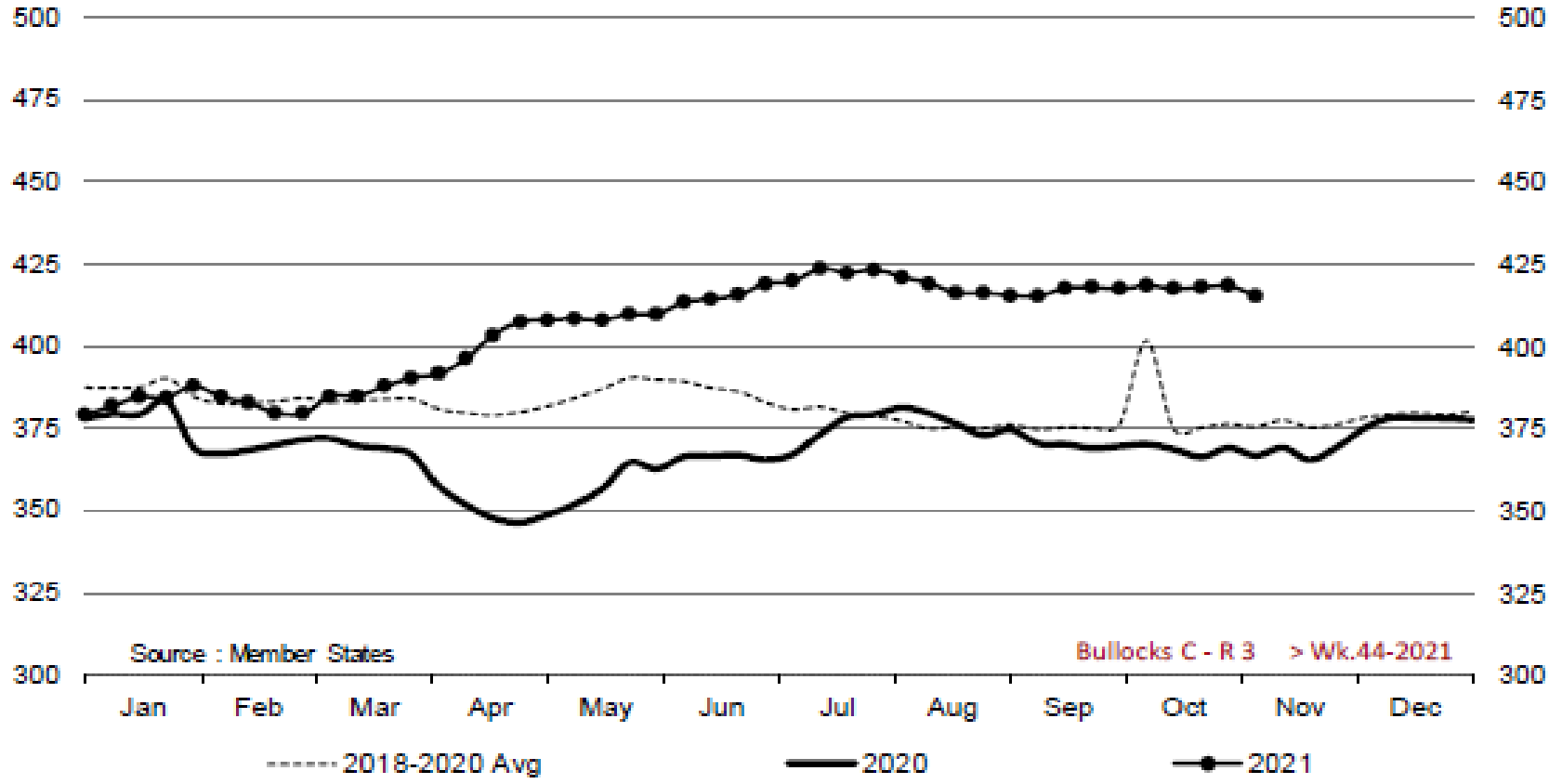
Price in week 44 : 416.45
% change y/y : + 16.9%

07/10/2021

Average price in October 2021 : 404.28
% change y/y : + 13.7%



Bullocks C - R 3 > Wk.44-2021

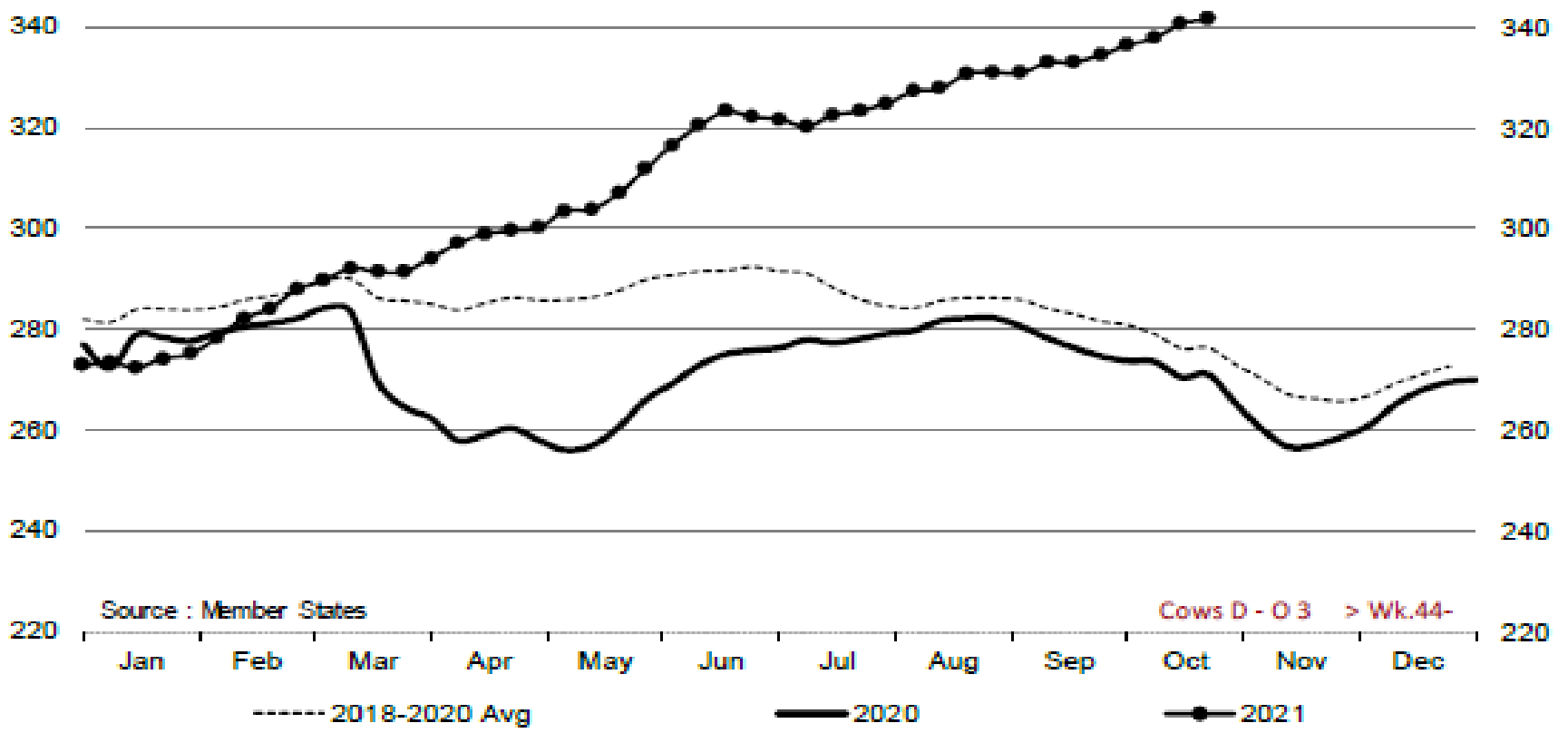


Price in week 44 : 415.32
% change y/y : + 13.2%

Average price in October 2021 : 417.82
% change y/y : + 13.5%



Cows D - O 3 > Wk.44-2021



Source : Member States

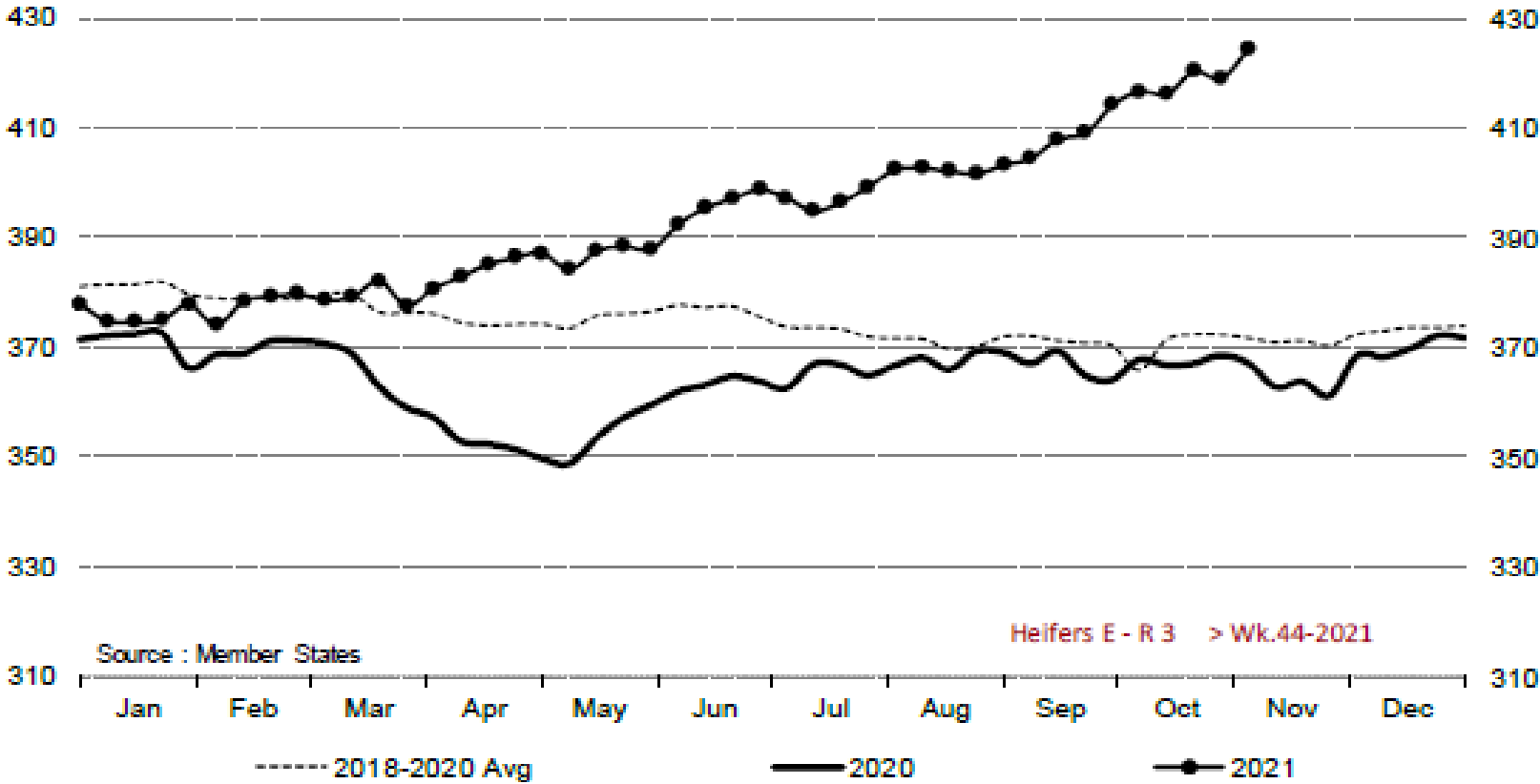
Cows D - O 3 > Wk.44-

Price in week 44 : 345.32
% change y/y : + 30.2%

Average price in October 2021 : 338.75
% change y/y : + 25.2%



Heifers E - R 3 > Wk.44-2021

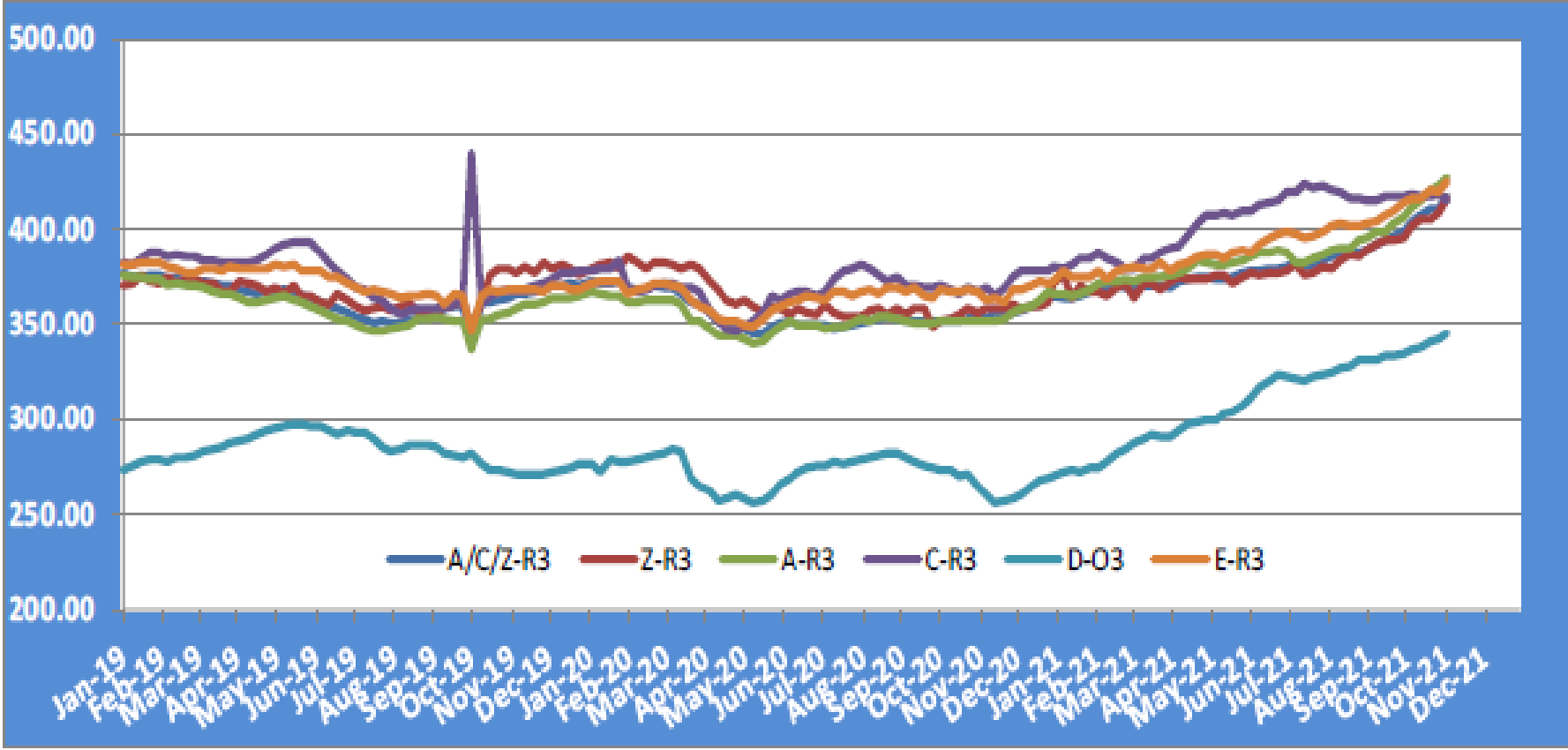


Price in week 44 : 424.53
% change y/y : + 15.6%

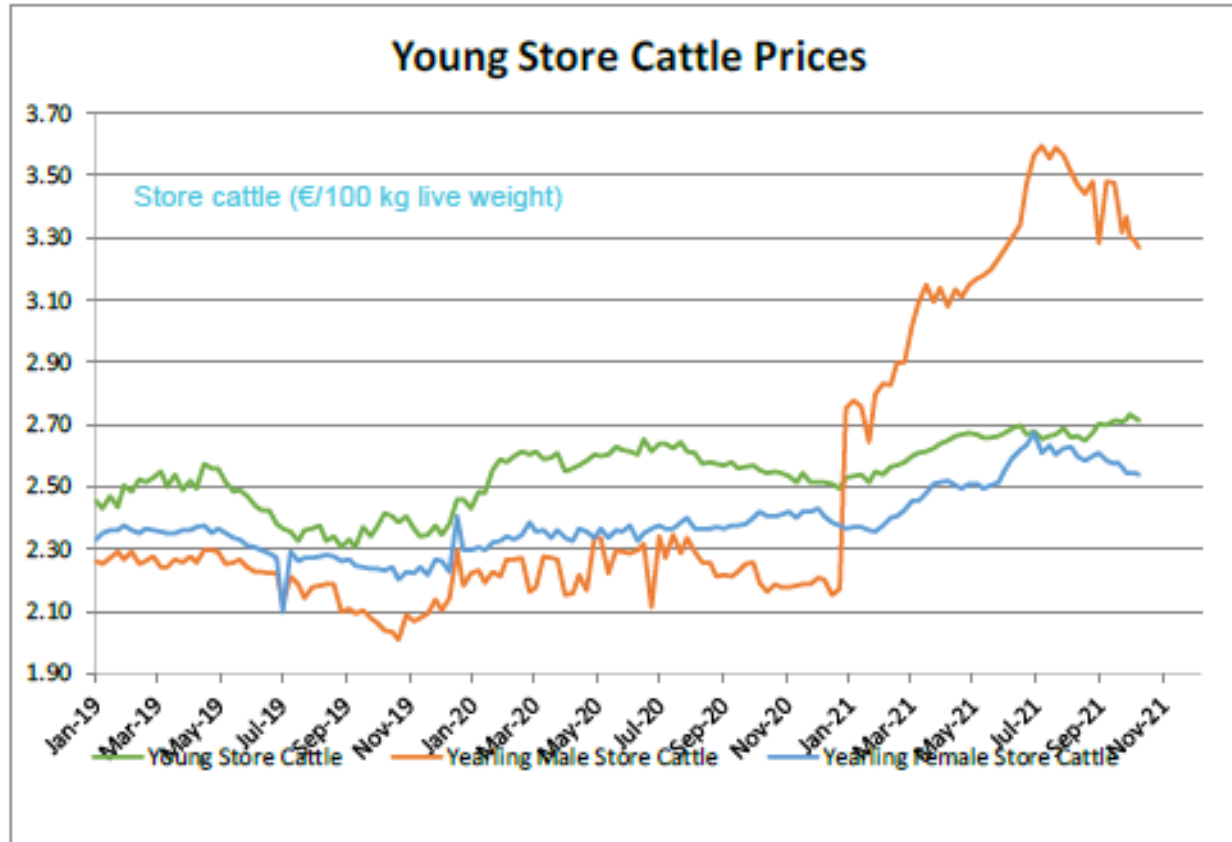
Average price in October 2021 : 417.77
% change y/y : + 13.7%

KARKAS FİYATLARI

AB TÜM KATEGORİLERE GLOBAL BAKIŞ



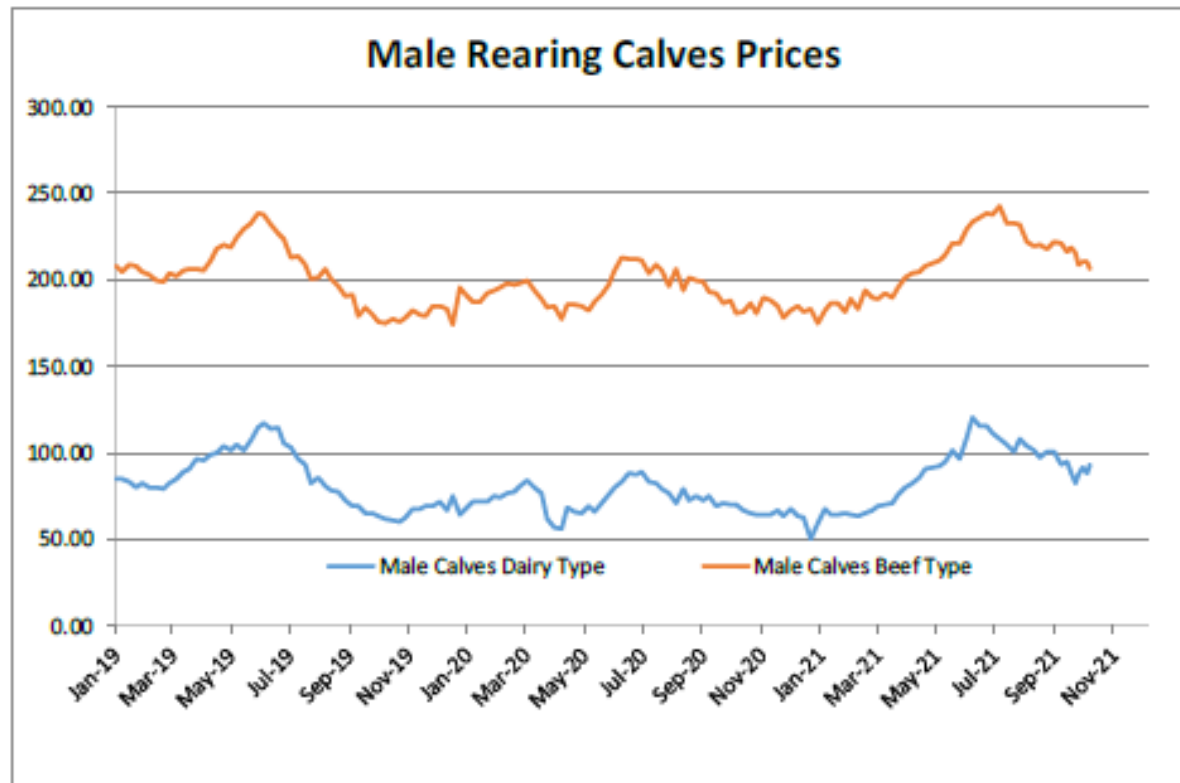
Besilik siğır (€ / 100 kg canlı ağırlık)



Young Store Cattle Price in	Week 44	2.71	Yearling Male Store Cattle Price	3.27
	Change y/y	+6.33%	Change y/y	+49.49%
Yearling Female Store Cattle Price		2.54		
	Change y/y	+5.49%		

8 gün ve 4 haftalık erkek buzağlar (€/baş)

Male calves aged between 8 days and 4 weeks (€/head)



Male Rearing Calves Beef type

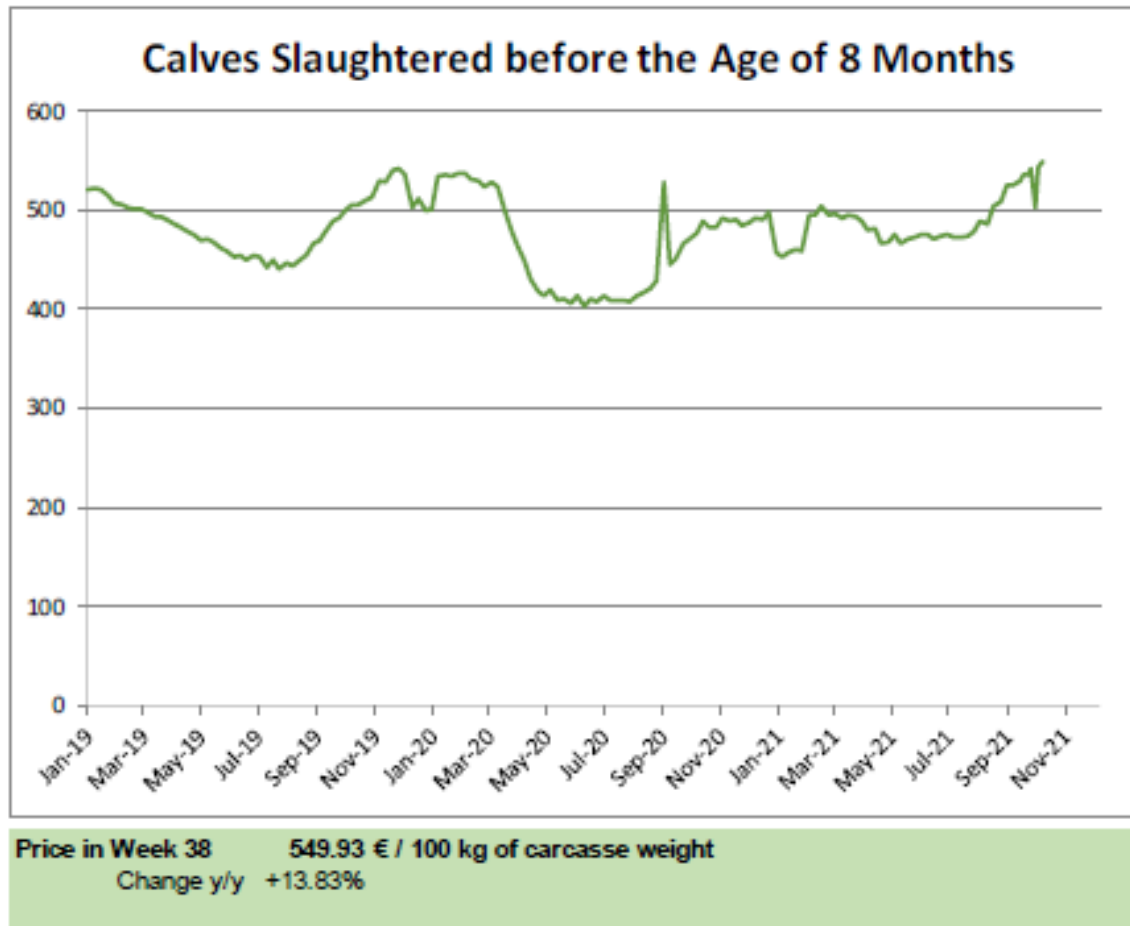
Price in Week 44 206.28
Change y/y +10.54%

Male Rearing Calves Dairy type

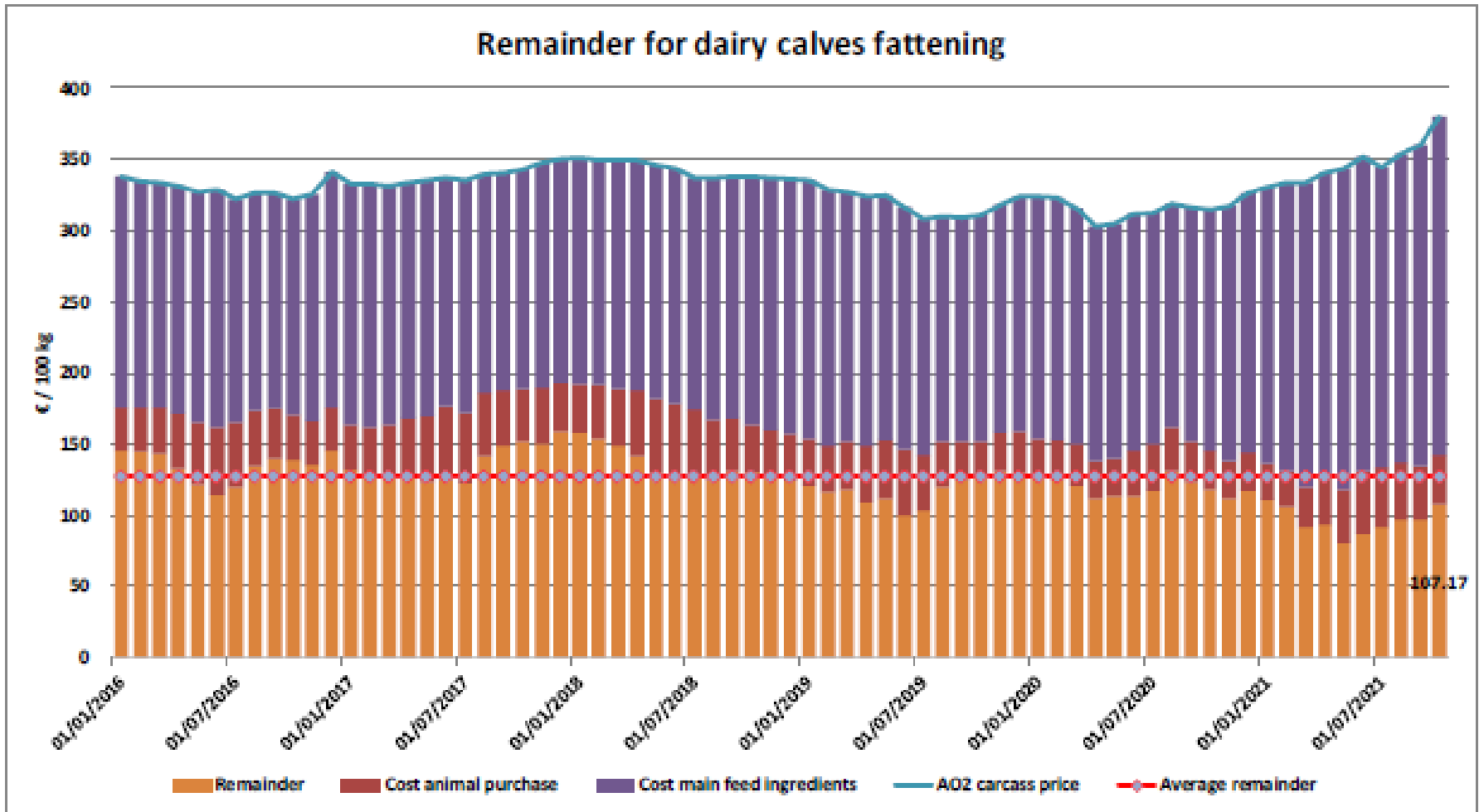
Price in Week 44 93.66
Change y/y +44.41%

8 aylıktan küçük kesilen buzağlar (€ / 100 kg canlı ağırlık)

Calves slaughtered before the age of less than 8 months
(€/100 kg cw)

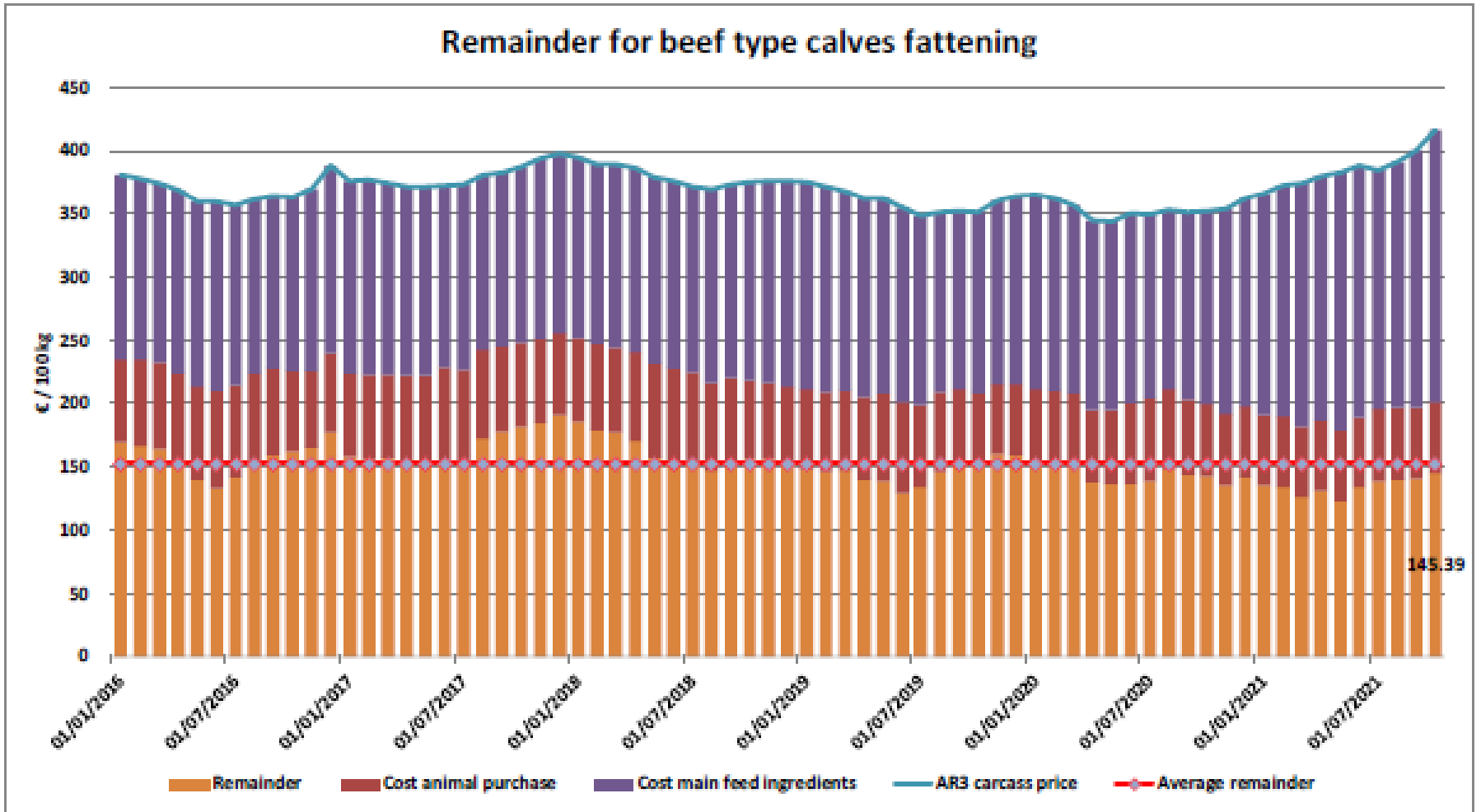


Süt Buzağları Besiciliği İçin Kalanlar

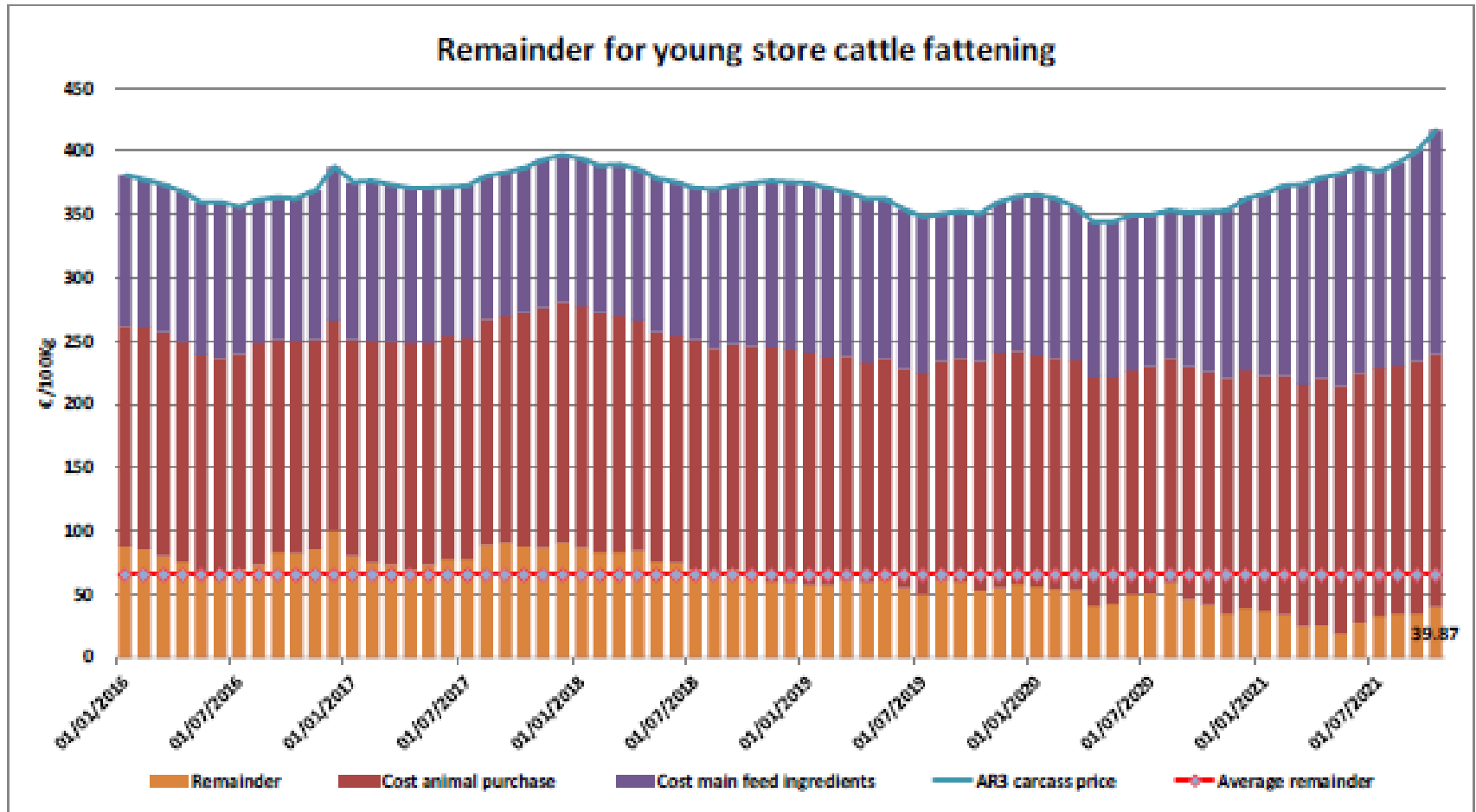


Sığır Tipi Buzağı Besiciliği İçin Kalanlar

Remainder for beef type calves fattening



Genç Besilik Sığır Besiciliği İçin Kalanlar



AB siğir eti ve canlı hayvan ihracatı (1): Pazar Rakamları (COMEXT – ton ca)

Destinations

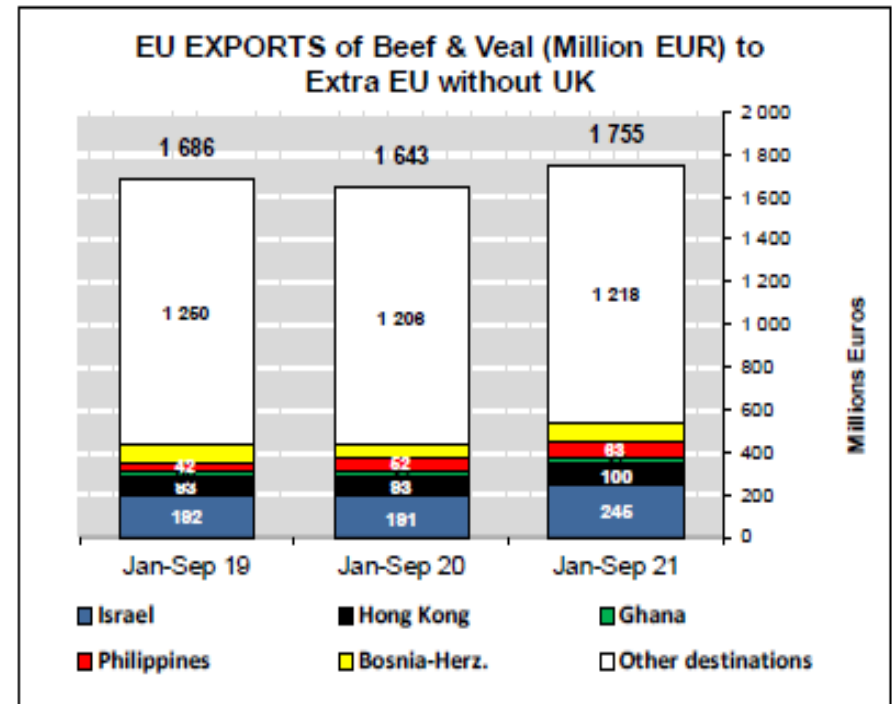
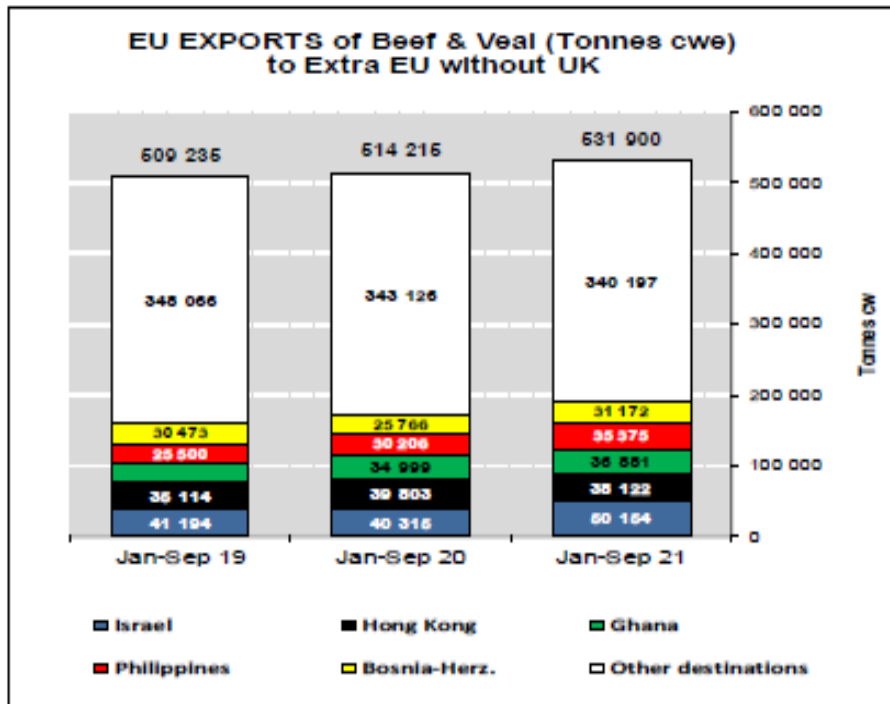
	2017		2018		2019		2020		Jan-Sep 21		Compared to
	tonnes	%	tonnes	%	tonnes	%	tonnes	%	tonnes	%	
Israel	44 196	6.1%	47 774	6.8%	49 629	7.1%	56 974	8.1%	50 154	9.4%	+ 24.4%
Hong Kong	76 086	10.5%	55 537	7.9%	46 748	6.7%	56 860	8.1%	38 122	7.2%	- 4.2%
Ghana	37 744	5.2%	36 766	5.2%	39 195	5.6%	47 358	6.7%	36 881	6.9%	+ 5.4%
Philippines	37 102	5.1%	28 766	4.1%	34 158	4.9%	39 844	5.7%	35 375	6.7%	+ 17.1%
Bosnia-Herz.	34 711	4.8%	38 762	5.5%	41 119	5.9%	35 744	5.1%	31 172	5.9%	+ 21.0%
Switzerland	26 708	3.7%	23 761	3.4%	25 188	3.6%	29 993	4.3%	24 594	4.6%	+ 11.2%
Ivory Coast	36 038	5.0%	36 064	5.1%	33 396	4.8%	32 433	4.6%	23 272	4.4%	- 6.7%
Algeria	26 305	3.6%	35 410	5.0%	57 152	8.2%	39 416	5.6%	20 675	3.9%	- 29.9%
Lebanon	38 322	5.3%	42 542	6.1%	36 393	5.2%	33 656	4.8%	15 988	3.0%	- 26.9%
Japan	4 281	0.6%	3 452	0.5%	8 007	1.1%	11 885	1.7%	15 971	3.0%	+ 71.3%
Norway	12 850	1.8%	7 925	1.1%	7 667	1.1%	12 936	1.8%	15 705	3.0%	+ 65.6%
Canada	2 424	0.3%	2 225	0.3%	6 806	1.0%	20 450	2.9%	13 956	2.6%	- 13.3%
Libya	27 848	3.8%	27 878	4.0%	24 541	3.5%	22 188	3.1%	13 940	2.6%	- 22.4%
Kosovo	6 377	0.9%	6 693	1.0%	10 279	1.5%	10 902	1.5%	12 212	2.3%	+ 72.7%
Ukraine	7 331	1.0%	10 465	1.5%	13 836	2.0%	15 837	2.2%	11 512	2.2%	+ 2.9%
North Macedonia	11 188	1.5%	10 191	1.5%	11 975	1.7%	10 686	1.5%	10 130	1.9%	+ 35.0%
Other Destinations	298 011	41.0%	287 070	41.0%	254 155	36.3%	227 217	32.3%	102 241	30.5%	
Total (without UK)	727 522		701 882		700 245		704 380		531 900		
% change			- 4%		- 0%		+ 1%		+ 3.4%		

AB sığır eti ihracatı: Pazar Rakamları (COMEXT – ton ca)

Destinations

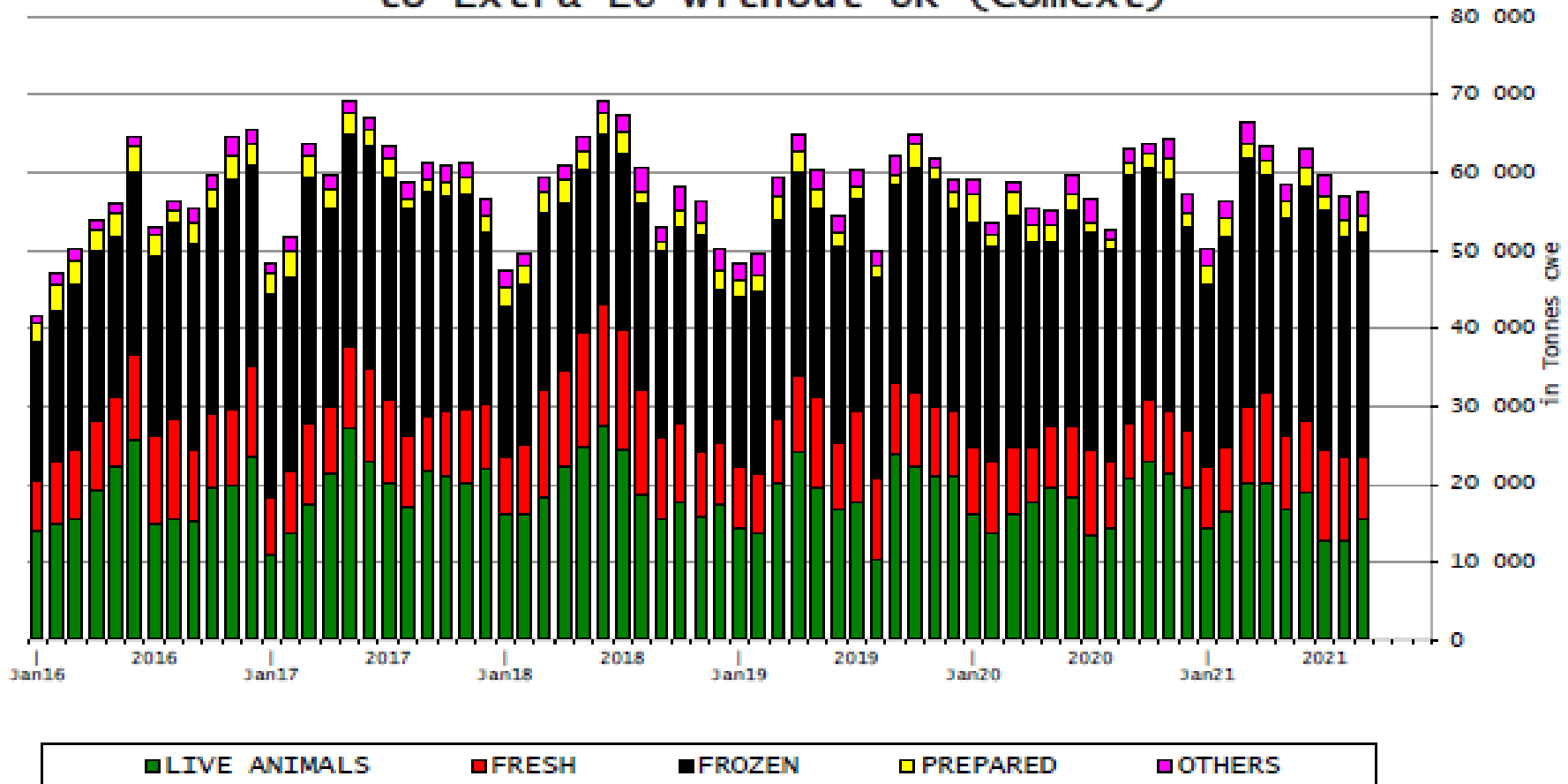
	2017		2018		2019		2020		Jan-Sep 21		Compared to
	tonnes	%	tonnes	%	tonnes	%	tonnes	%	tonnes	%	
Hong Kong	76 086	15.5%	55 537	11.9%	46 748	9.8%	56 860	11.6%	38 122	9.9%	- 4.2%
Ghana	37 744	7.7%	36 766	7.9%	39 196	8.2%	47 358	9.7%	36 881	9.6%	+ 5.4%
Philippines	37 102	7.5%	28 766	6.2%	34 158	7.2%	39 844	8.1%	35 375	9.2%	+ 17.1%
Bosnia-Herz.	32 181	6.5%	36 152	7.7%	38 806	8.2%	33 445	6.8%	29 063	7.6%	+ 20.1%
Switzerland	25 570	5.2%	22 710	4.9%	24 110	5.1%	28 940	5.9%	23 542	6.1%	+ 10.7%
Ivory Coast	36 028	7.3%	36 064	7.7%	33 396	7.0%	32 433	6.6%	23 272	6.1%	- 6.7%
Israel	18 750	3.8%	22 163	4.7%	23 026	4.8%	21 967	4.5%	16 218	4.2%	- 2.2%
Japan	4 281	0.9%	3 452	0.7%	8 007	1.7%	11 885	2.4%	15 971	4.2%	+ 71.3%
Norway	12 849	2.6%	7 922	1.7%	7 667	1.6%	12 936	2.6%	15 705	4.1%	+ 65.6%
Canada	2 424	0.5%	2 225	0.5%	6 806	1.4%	20 450	4.2%	13 956	3.6%	- 13.3%
Ukraine	6 926	1.4%	9 887	2.1%	12 893	2.7%	14 841	3.0%	10 483	2.7%	+ 1.8%
North Macedonia	11 285	2.3%	10 002	2.1%	11 395	2.4%	10 551	2.2%	10 034	2.6%	+ 36.2%
USA	3 756	0.8%	5 458	1.2%	7 867	1.7%	12 310	2.5%	9 125	2.4%	+ 3.0%
South Africa	4 555	0.9%	7 214	1.5%	5 442	1.1%	7 743	1.6%	7 910	2.1%	+ 48.7%
Vietnam	12 146	2.5%	8 163	1.7%	10 014	2.1%	6 367	1.3%	5 629	1.5%	+ 19.6%
Chile	8 961	1.8%	16 410	3.5%	12 461	2.6%	8 664	1.8%	5 335	1.4%	- 21.1%
Other Destinations	101 735	32.8%	157 032	33.8%	153 327	32.3%	124 028	25.3%	87 400	22.8%	
Total (without UK)	492 379		466 823		475 318		490 623		384 081		
% change			- 5%		+ 2%		+ 3%		+ 5.4%		

AB sığır eti ve canlı hayvan ihracatı (COMEXT)

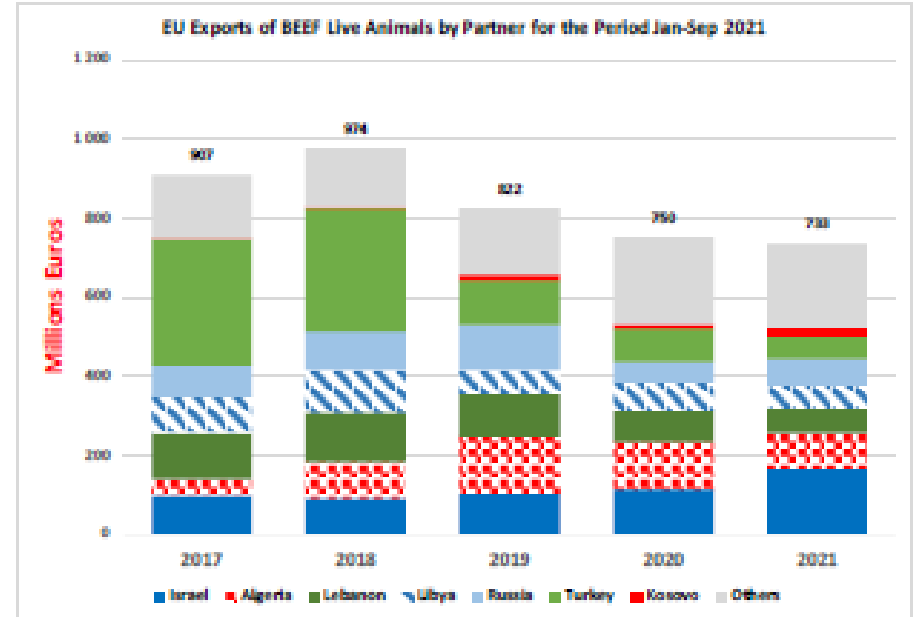
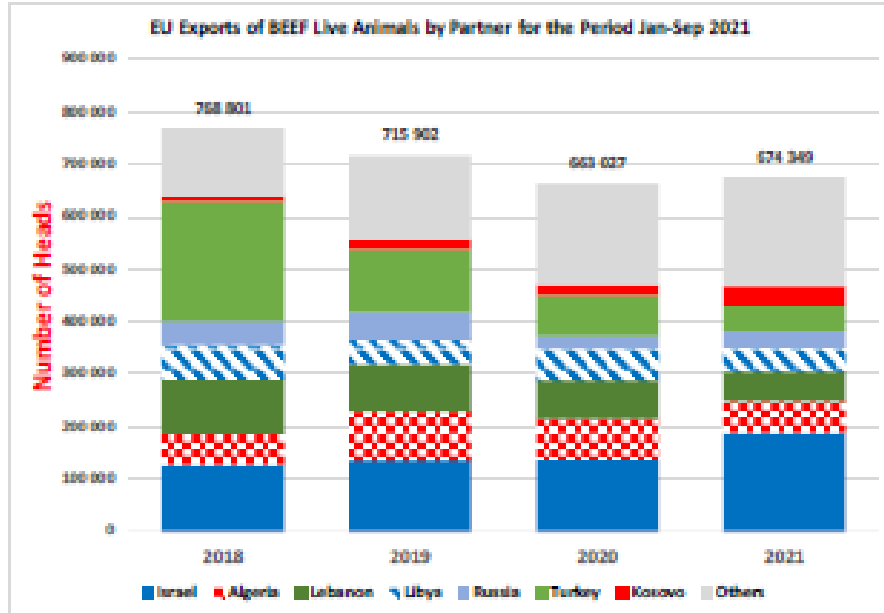


AB Sığır Eti İhracatları (Birleşik Krallık hariç)

EU Exports of BEEF products to Extra EU without UK (Comext)



AB Sığır Eti İhracatları (Birleşik Krallık hariç)

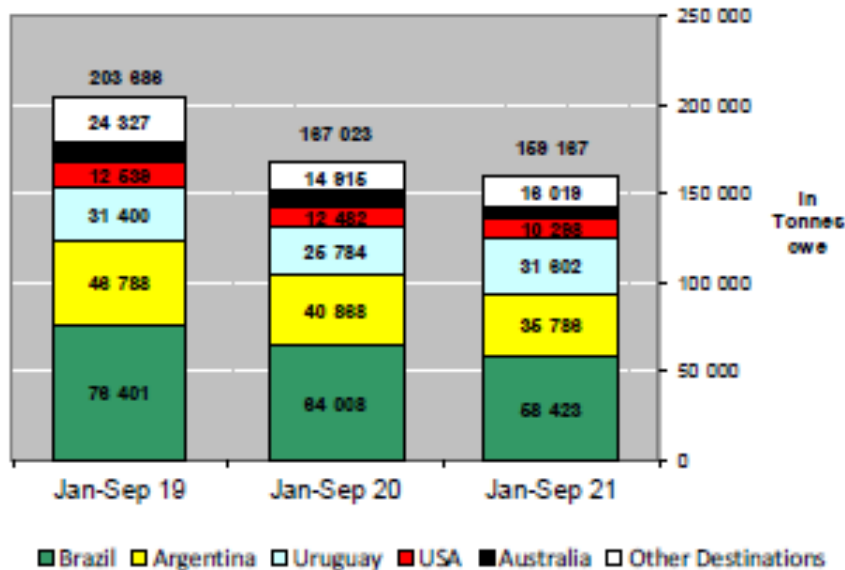


AB Sığır Eti ve Canlı Hayvan İthalatları (1): Ticaret Verileri (COMEXT – ton ca)

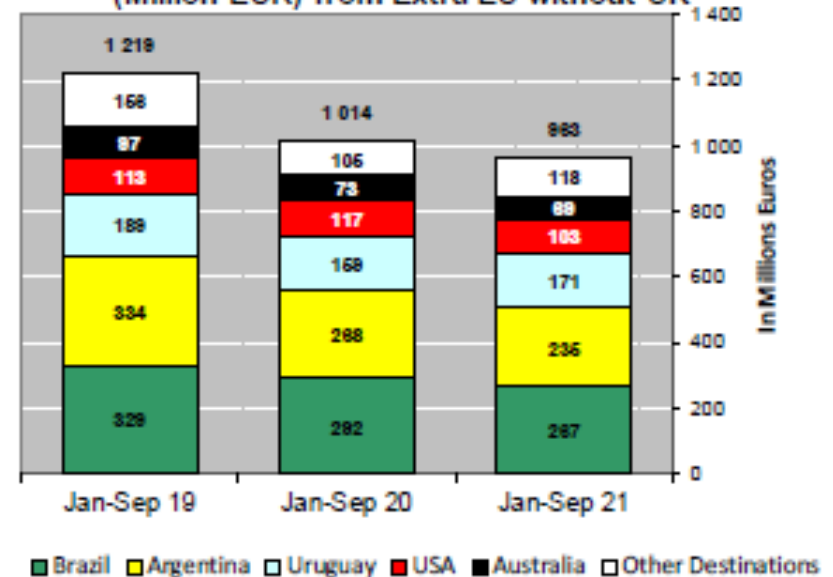
Origins	2017		2018		2019		2020		Jan-Sep 21		Compared to
	tonnes	%	tonnes	%	tonnes	%	tonnes	%	tonnes	%	
Brazil	86 927	33.9%	103 979	37.3%	99 569	36.4%	84 139	37.6%	58 423	36.7%	- 8.7%
Argentina	49 259	19.2%	61 400	22.0%	65 324	23.9%	56 421	25.2%	35 786	22.5%	- 12.4%
Uruguay	52 078	20.3%	47 922	17.2%	40 483	14.8%	34 595	15.5%	31 602	19.9%	+ 22.6%
USA	21 624	8.4%	19 268	6.9%	16 852	6.2%	16 532	7.4%	10 298	6.5%	- 17.5%
Australia	18 193	7.1%	17 368	6.2%	16 516	6.0%	11 058	4.9%	7 039	4.4%	- 21.5%
Switzerland	5 105	2.0%	5 413	1.9%	4 401	1.6%	4 197	1.9%	3 338	2.1%	+ 13.2%
New Zealand	6 806	2.7%	7 165	2.6%	6 726	2.5%	6 146	2.7%	3 311	2.1%	- 25.6%
Paraguay	5 922	2.3%	5 520	2.0%	5 203	1.9%	4 234	1.9%	2 901	1.8%	- 6.7%
N.def.Extra	72	0.0%	127	0.0%	196	0.1%	94	0.0%	1 278	0.8%	+++
Canada	512	0.2%	1 343	0.5%	2 518	0.9%	1 550	0.7%	1 246	0.8%	+ 68.4%
Namibia	5 043	2.0%	3 442	1.2%	7 706	2.8%	1 445	0.6%	1 245	0.8%	+ 5.2%
Japan	645	0.3%	791	0.3%	997	0.4%	789	0.4%	880	0.6%	+ 57.2%
Serbia	565	0.2%	1 134	0.4%	1 062	0.4%	931	0.4%	675	0.4%	- 5.7%
Norway	388	0.2%	153	0.1%	129	0.0%	336	0.2%	368	0.2%	+++
Botswana	2 686	1.0%	3 119	1.1%	4 950	1.8%	788	0.4%	249	0.2%	- 63.7%
Chile	319	0.1%	356	0.1%	392	0.1%	168	0.1%	162	0.1%	+ 30.8%
Other Destinations	579	0.2%	318	0.1%	267	0.1%	298	0.1%	366	0.2%	
Total (without UK)	256 724		278 818		273 312		223 721		159 167		
% change			+ 9%		- 2%		- 18%		- 4.7%		

AB Sığır Eti ve Canlı Hayvan İthalatları

**IMPORTS of Beef & Veal into EU
(Tonnes cwe) from Extra EU without UK**

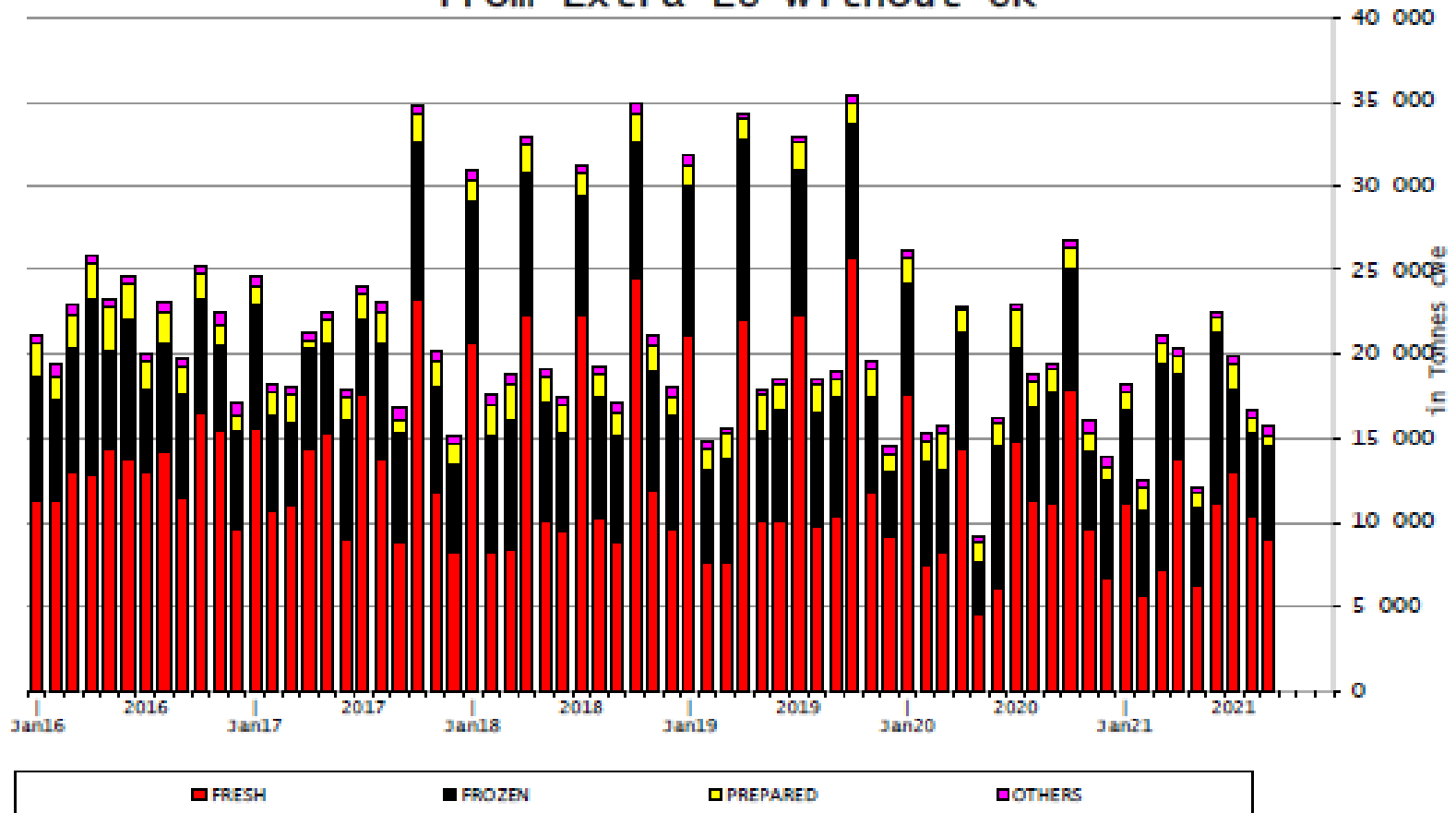


**IMPORTS of Beef & Veal into EU
(Million EUR) from Extra EU without UK**



AB Sığır Eti İthalatları (Birleşik Krallık hariç)

EU Imports of BEEF products
from Extra EU without UK



EU Export of BEEF to UK by Products from Jan to Aug

In Tons of Carcase Weight

	2019			2020			2021			% 2021/2020	
	United Kingdom	Extra-EU	%	United Kingdom	Extra-EU	%	United Kingdom	Extra-EU	%	United Kingdom	Extra-EU
Live Animals	7 000	143 730	4.9%	12 982	141 957	9.1%	9 073	141 459	6.4%	-30.1%	-0.4%
Meats	282 165	592 593	47.6%	259 739	581 778	44.6%	205 344	547 382	37.5%	-20.9%	-5.9%
Fresh	151 739	225 602	67.3%	144 284	212 256	68.0%	117 263	193 774	60.5%	-18.7%	-8.7%
Frozen	41 805	134 205	31.1%	33 944	146 701	23.1%	47 127	167 986	28.1%	+38.8%	+14.5%
Salted Meat	14 965	15 782	94.8%	13 131	14 089	93.2%	431	1 411	30.5%	-96.7%	-90.0%
Prepared	30 116	47 248	63.7%	30 775	47 632	64.6%	24 727	42 276	58.5%	-19.7%	-11.2%
Fresh Offals	14 322	16 239	88.2%	13 355	15 270	87.5%	3 334	5 132	65.0%	-75.0%	-66.4%
Frozen Offals	10 982	117 719	9.3%	10 143	117 066	8.7%	8 116	114 228	7.1%	-20.0%	-2.4%
Salted Offals	16 828	29 039	57.9%	13 138	20 678	63.5%	216	7 221	3.0%	-98.4%	-65.1%
Prepared Offal	382	466	82.1%	293	404	72.6%	216	319	67.6%	-26.4%	-21.0%
Fat	1 026	6 294	16.3%	676	7 682	8.8%	3 913	15 035	26.0%	+479.0%	+95.7%
Total Beef	289 166	736 323	39.3%	272 721	723 735	37.7%	214 416	688 840	31.1%	-21.4%	-4.8%

Source : Comext

European
Commission

EU Import of BEEF from UK by Products from Jan to Aug

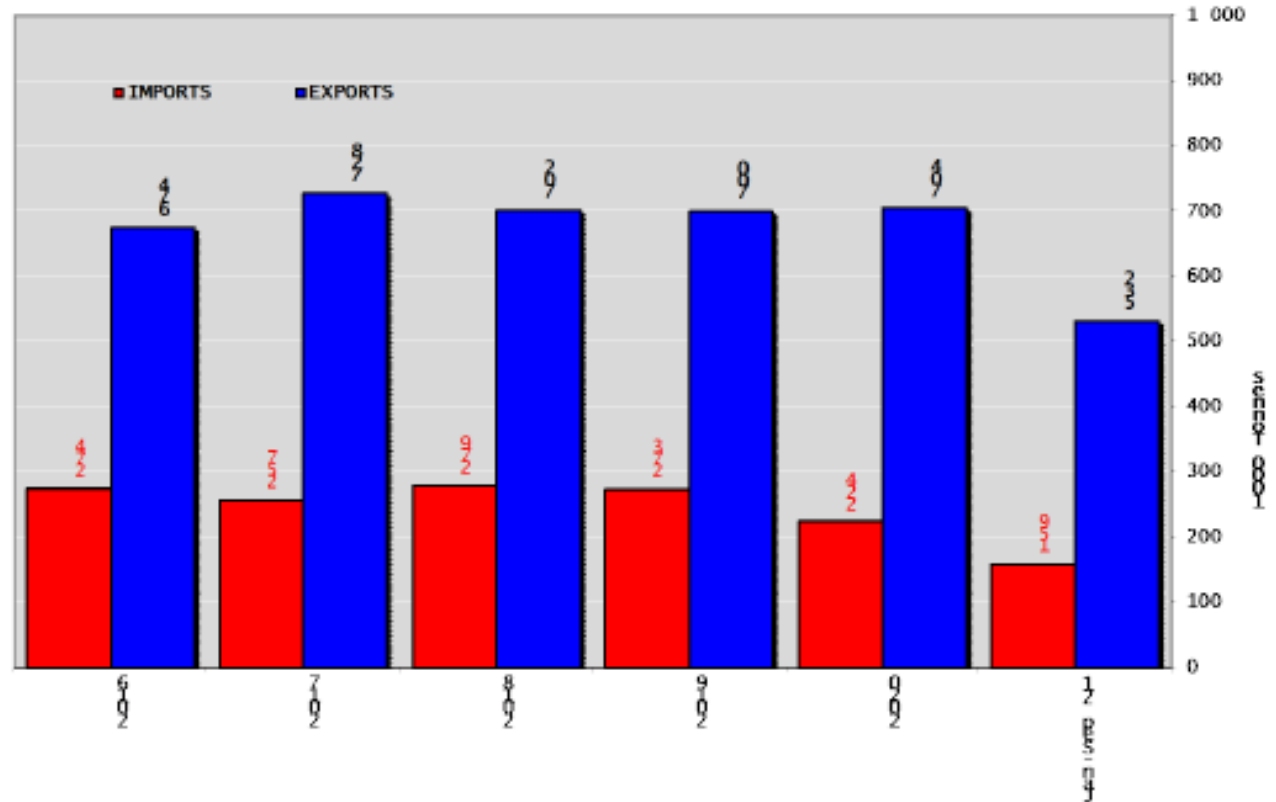
In Tons of Carcase Weight

	2019			2020			2021			% 2021/2020	
	United Kingdom	Extra-EU	%	United Kingdom	Extra-EU	%	United Kingdom	Extra-EU	%	United Kingdom	Extra-EU
Live Animals	1 722	1 841	93.5%	1 618	1 668	97.0%	593	694	85.4%	-63.3%	-58.4%
Meats	97 930	282 529	34.7%	80 065	227 559	35.2%	52 226	195 492	26.7%	-34.8%	-14.1%
Fresh	67 595	178 409	37.9%	50 692	135 255	37.5%	32 727	111 324	29.4%	-35.4%	-17.7%
Frozen	16 003	74 588	21.5%	14 002	61 119	22.9%	11 411	63 547	18.0%	-18.5%	+4.0%
Salted Meat	561	2 170	25.8%	212	1 861	11.4%	150	2 094	7.2%	-29.4%	+12.5%
Prepared	5 908	17 966	32.9%	5 917	18 546	31.9%	4 220	13 218	31.9%	-28.7%	-28.7%
Fresh Offals	2 250	3 168	71.0%	2 464	3 331	74.0%	2 470	3 296	74.9%	+0.2%	-1.0%
Frozen Offals	3 441	3 940	87.3%	4 514	5 117	88.2%	688	1 381	49.8%	-84.8%	-73.0%
Salted Offals	1 141	1 142	99.9%	1 328	1 332	99.7%	17	18	91.9%	-98.8%	-98.6%
Prepared Offal	87	105	82.6%	27	42	65.9%	7	15	46.1%	-74.6%	-63.6%
Fat	945	1 039	90.9%	909	957	95.0%	538	599	89.7%	-40.9%	-37.4%
Total Beef	99 652	284 370	35.0%	81 683	229 227	35.6%	52 820	196 187	26.9%	-35.3%	-14.4%

Source : Estat - Comext

Sığır Eti Ürünleri ve Canlı Hayvan Ticaret Dengesi (Ton) (Birleşik Krallık Hariç)

Trade Balance of Beef Products and Live Animals (without UK)

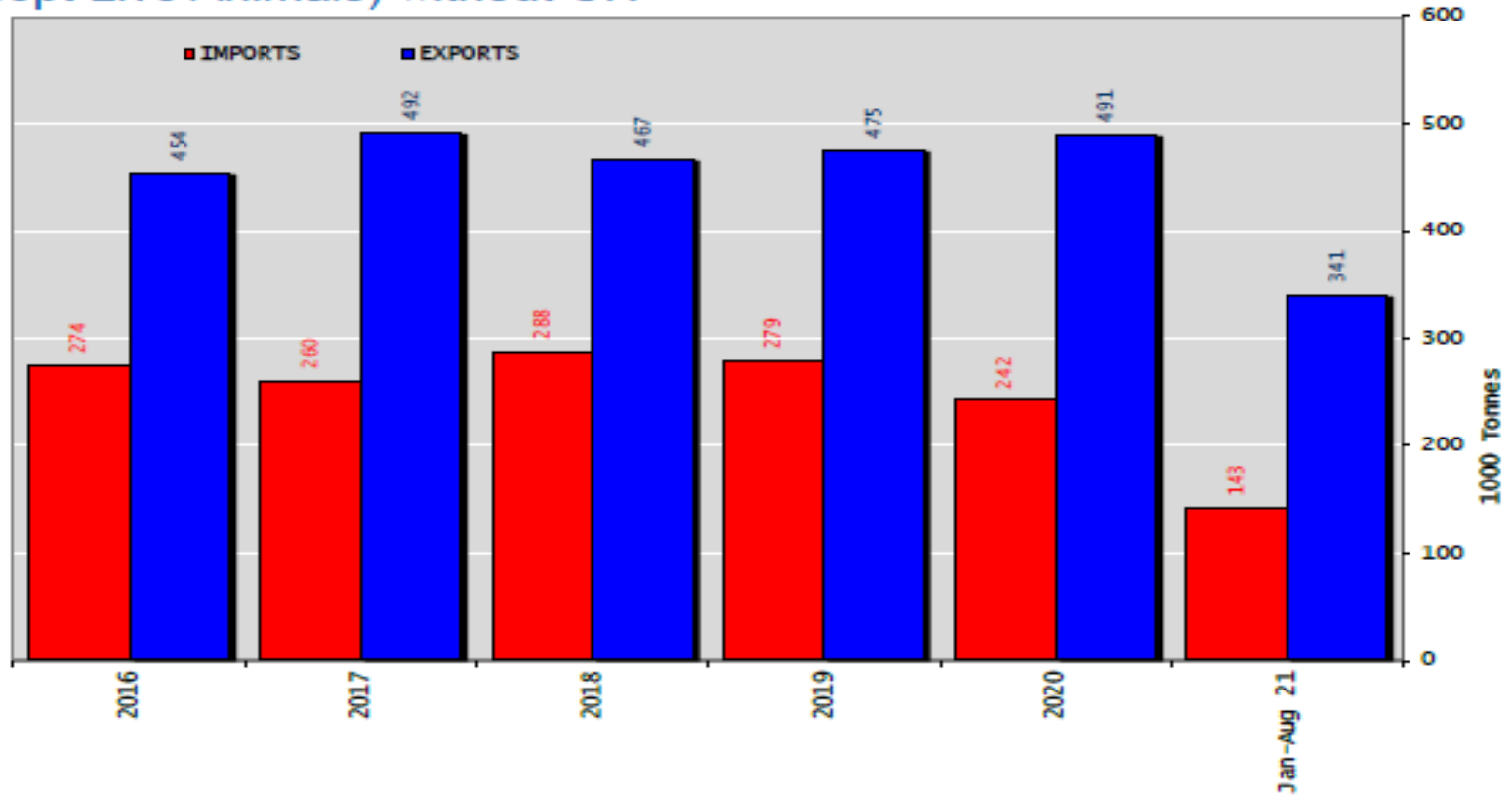




Sığır Eti Ürünleri Ticaret Dengesi (Canlı hayvanlar hariç) (Ton)

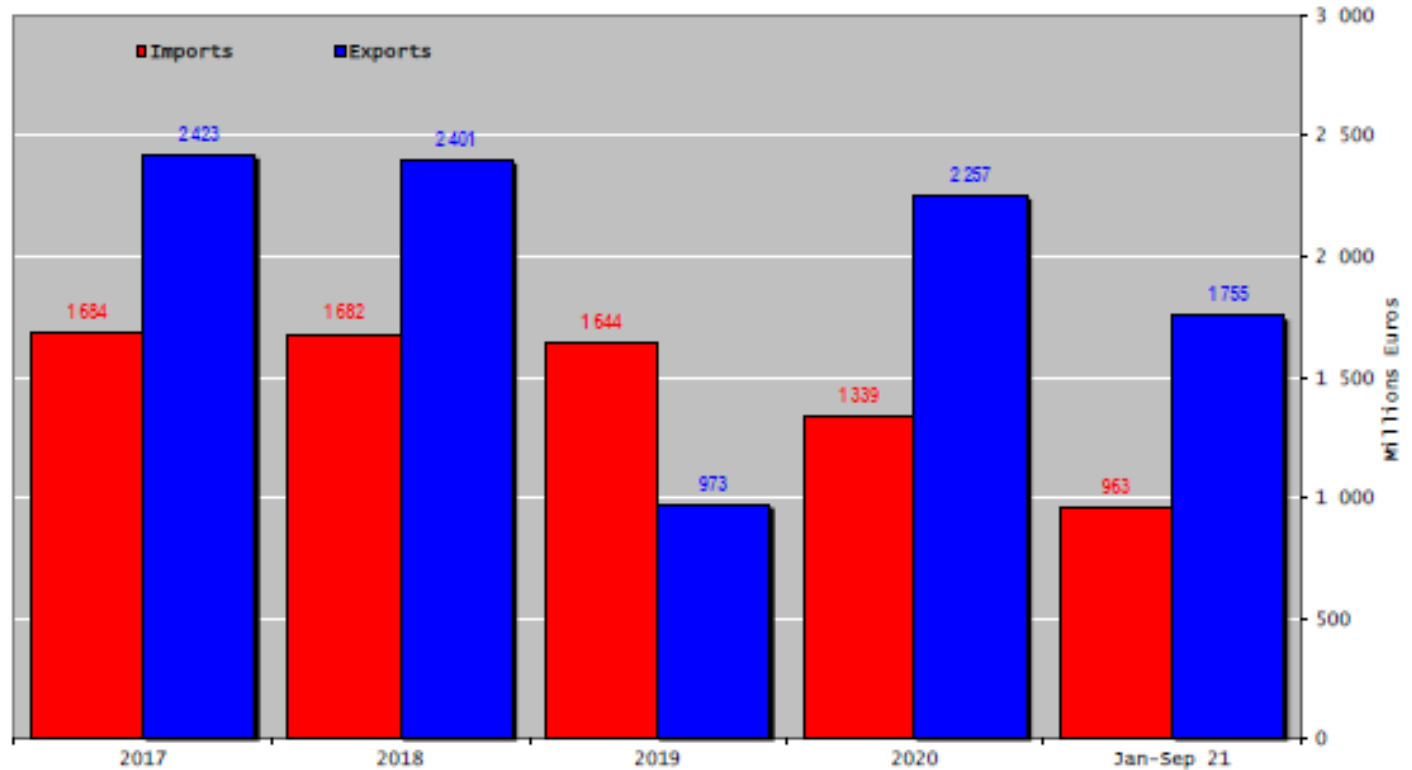
(Birleşik Krallık Hariç)

Trade Balance of Beef Products (Except Live Animals) without UK



Sığır Eti Ürünleri ve Canlı Hayvan Ticaret Dengesi (Milyon Euro) (Birleşik Krallık Hariç)

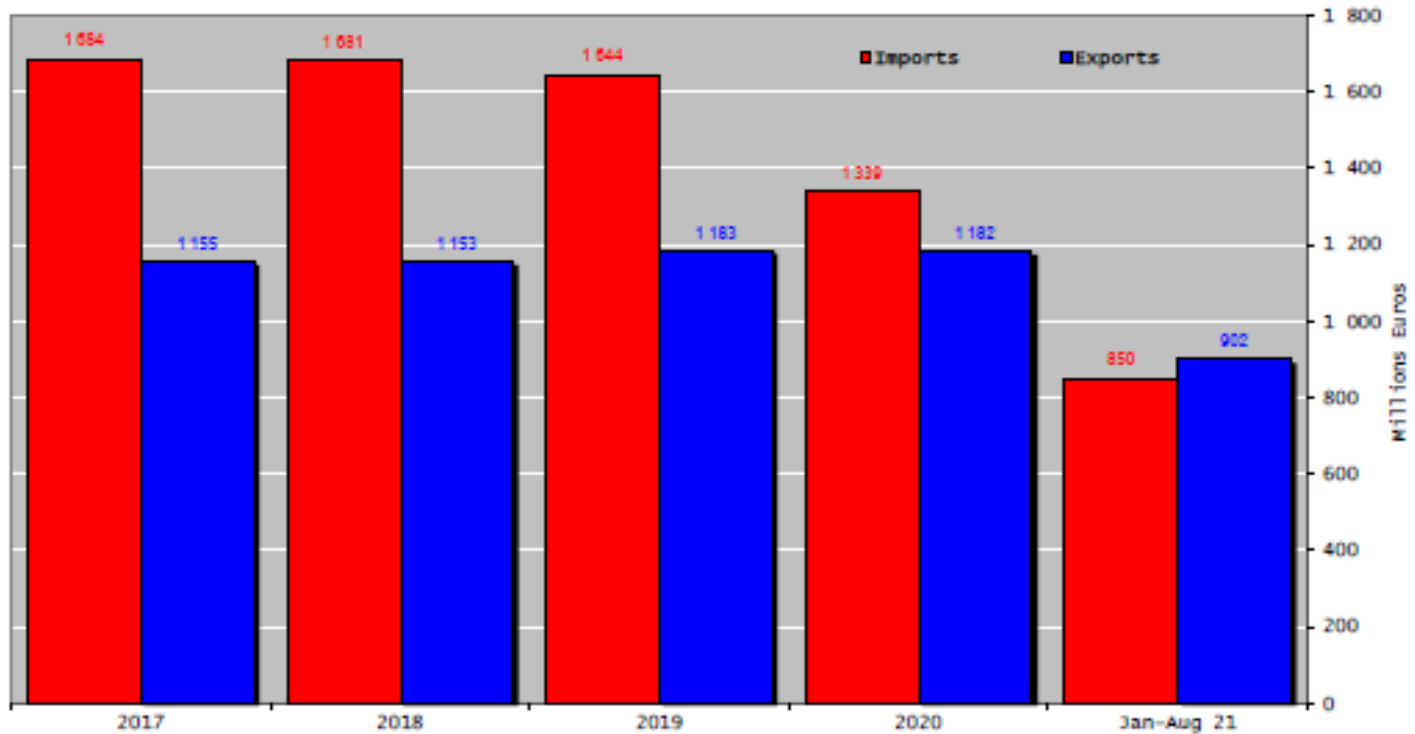
Trade Balance of Beef Products and Live Animals (without UK)



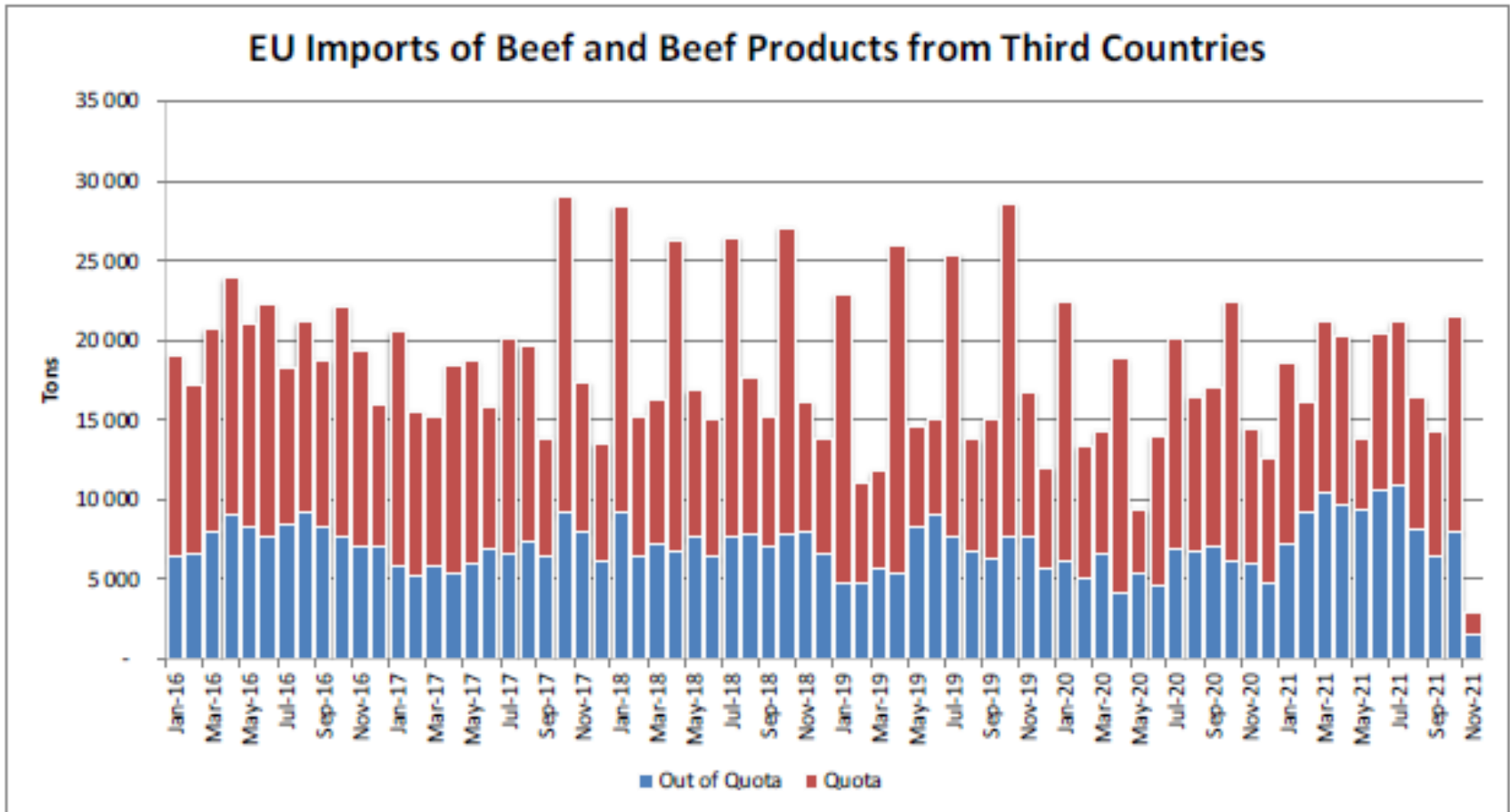


AB Sığır Eti Ürünleri Ticareti (Canlı Hayvanlar Hariç) (Milyon Euro) (Birleşik Krallık Hariç)

Trade Balance of Beef Products
(Except Live Animals) without UK

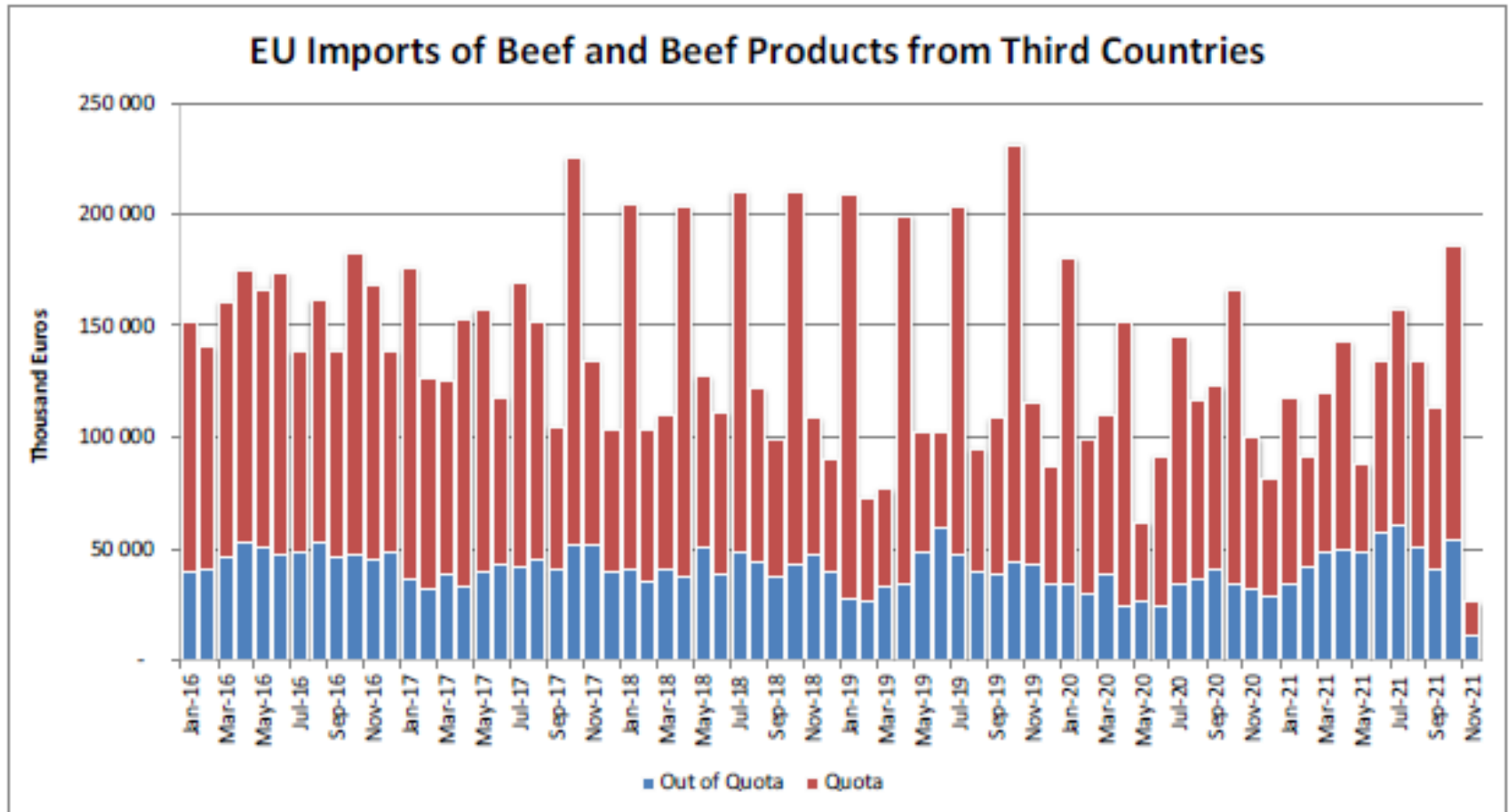


Üçüncü Ülkelerden AB Sığır ve Sığır eti Ürünleri İthalatları (Ton) Imports in and out of TRQs



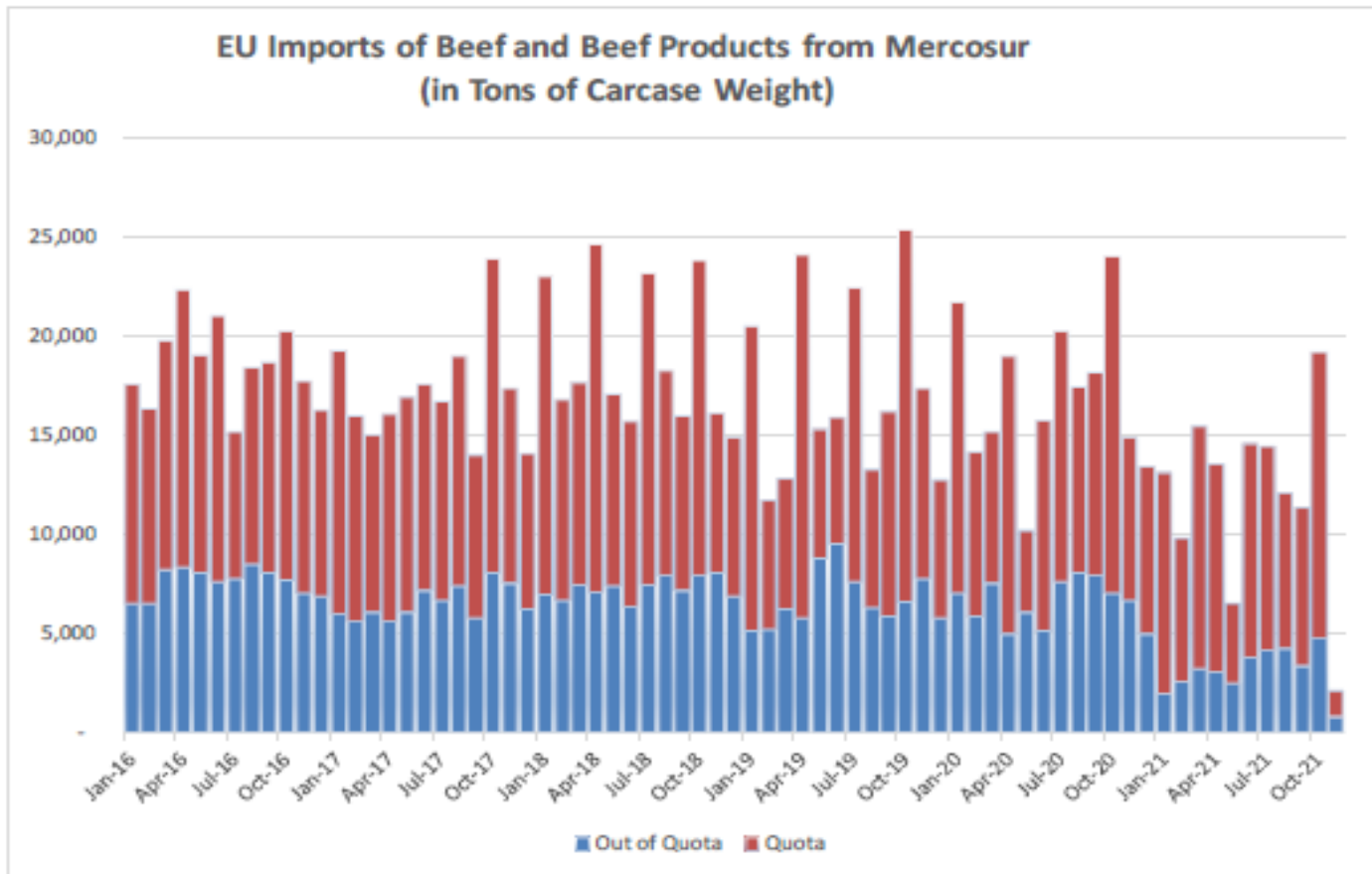
Üçüncü Ülkelerden AB Sığır ve Sığır eti Ürünleri İthalatları (Bin Euro)

Imports in and out of TRQs



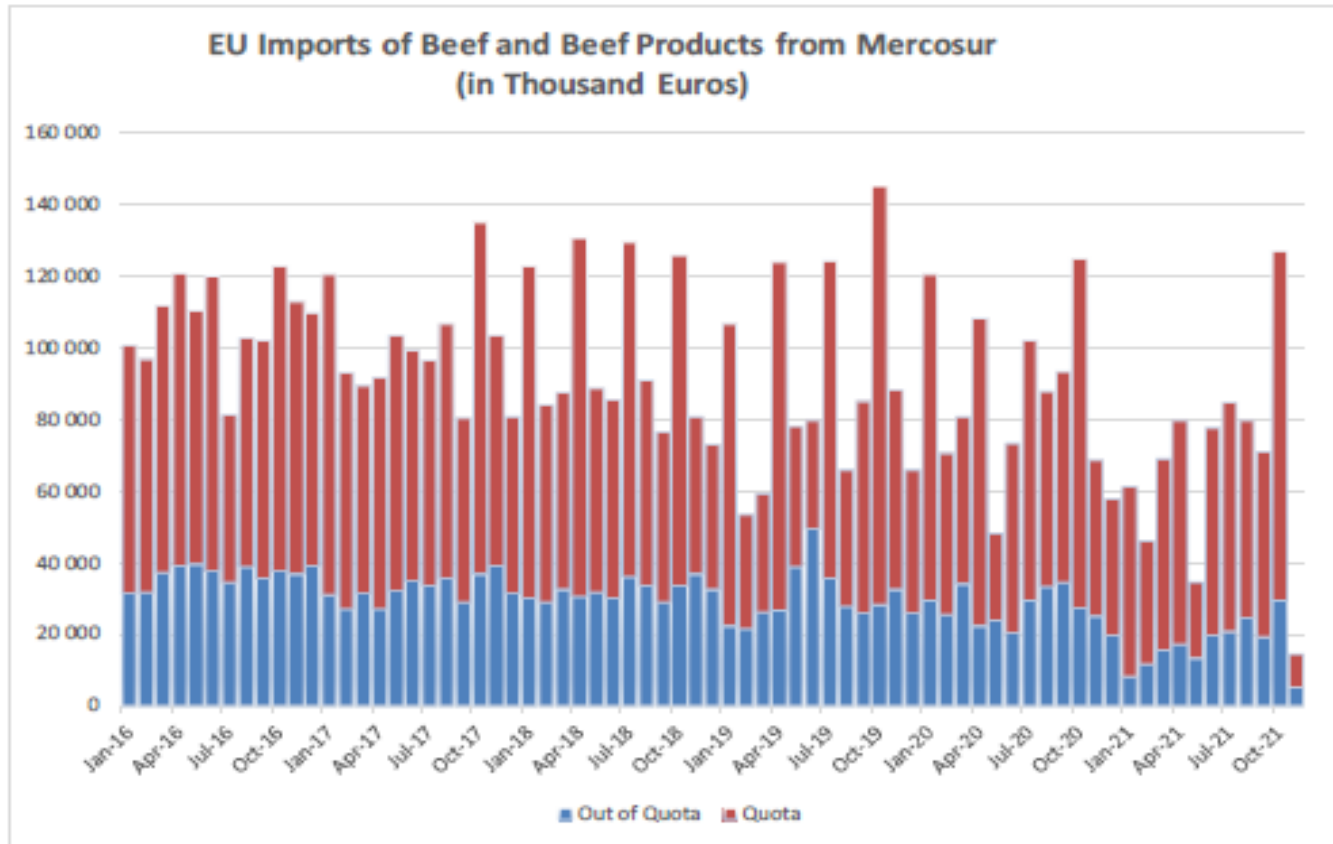
Mercosur Ülkelerinden Sığır ve Sığır Eti Ürünleri AB İthalatları (Ton, Karkas Ağırlık)

Imports in and out of TRQs



Mercosur Ülkelerinden Sığır ve Sığır Eti Ürünleri AB İthalatları (Bin Euro)

Imports in and out of TRQs



YÜKSEK KALİTE SİĞİR ETİ İTHALAT KOTALARI



European Commission

High Quality Beef Import Quotas

Quota erga omnes

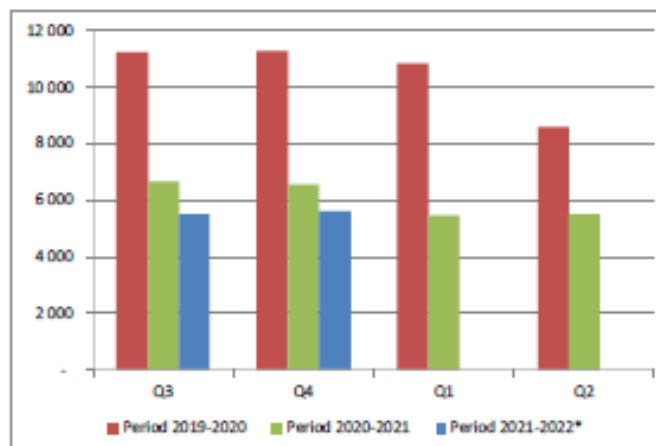
Regulation (EU) No 481/2012

	2019-Q3	2019-Q4	2020-Q1	2020-Q2	TOTAL
Period 2019-2020	11 246	11 259	10 825	8 599	41 930
Available	11 250	11 250	11 250	11 250	45 000
Use	99.97%	100.00%	96.22%	76.44%	93.18%
Available after transfer	11 250	11 254	11 241	11 675	
	99.97%	100.00%	96.30%	73.66%	

	2020-Q3*	2020-Q4	2021-Q1	2021-Q2	TOTAL
Period 2020-2021	6 652	6 542	5 467	5 500	24 162
Available	6 625	6 625	5 500	5 500	45 000
Use	100.00%	98.75%	99.41%	100.00%	53.69%
Available after transfer	11 250	6 598	5 583	5 533	
	59.13%	99.16%	97.93%	99.41%	

	2021-Q3*	2021-Q4	2022-Q1	2022-Q2	TOTAL
Period 2021-2022*	5 502	5 598	-	-	11 100
Available	5 500	5 500	4 900	4 900	45 000
Use	100.00%	100.00%	0.00%	0.00%	24.67%
Available after transfer	5 500	5 498	4 802	9 800	
	100.00%	100.00%	0.00%	0.00%	

* Until 11.11.2021



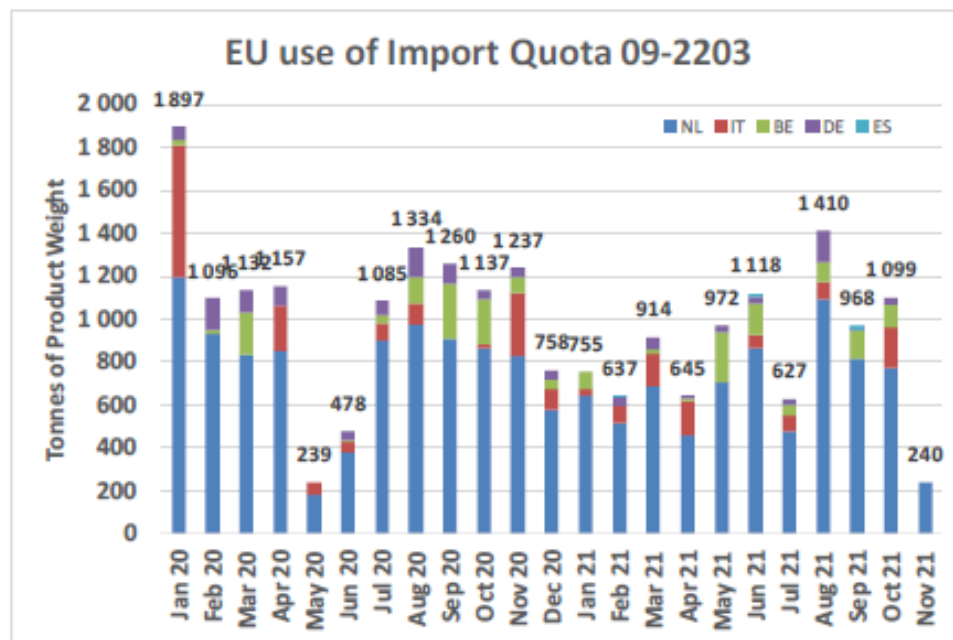
YÜKSEK KALİTE SİĞİR ETİ İTHALAT KOTALARI



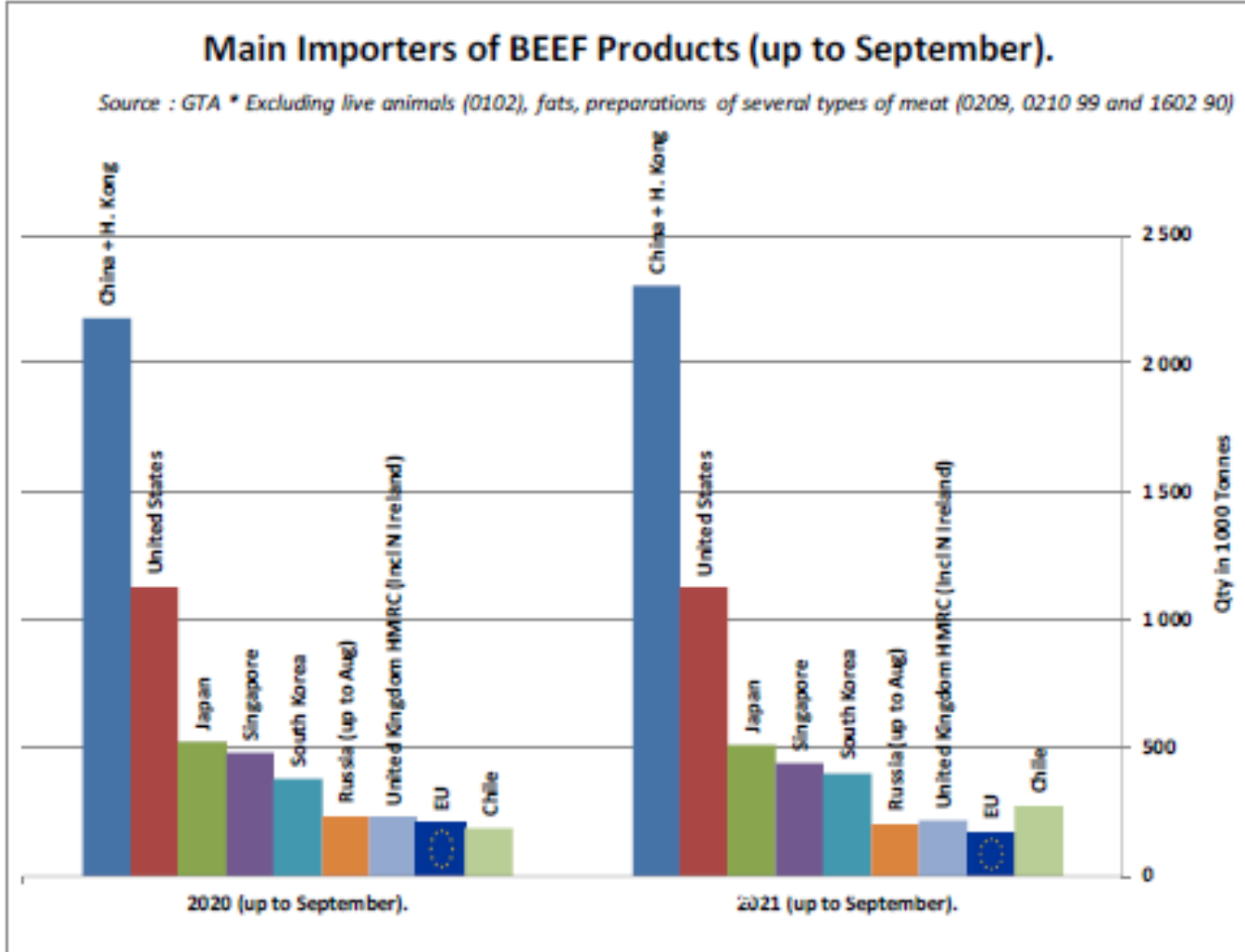
European Commission

Origin	GATT 2020-2021				Total
	2020-Q3	2020-Q4	2021-Q1	2021-Q2	
NL	2 785	2 274	1 848	2 026	8 933
IT	174	404	263	228	1 069
BE	417	330	96	394	1 237
DE	305	124	98	72	598
ES	-	-	2	15	17
Total import within Quota	3 680	3 132	2 306	2 735	11 853
Available	4 625	4 625	4 625	4 625	18 500
Use	79.57%	67.72%	49.87%	59.13%	64.07%
After transfer	4 625	5 570	6 118	6 944	
Use	79.57%	56.23%	37.70%	39.39%	

Origin	GATT 2021-2022				Total
	2021-Q3	2021-Q4	2022-Q1	2022-Q2	
NL	2 384	1 013			3 397
IT	151	191			342
BE	282	101			383
DE	173	34			207
ES	15	-			15
Total import within Quota	3 005	1 339			4 344
Available	5 750	5 750	6 350	6 350	24 200
Use	52.26%	23.28%			17.95%
After transfer	5 750	8 495			
Use	52.26%	15.76%			

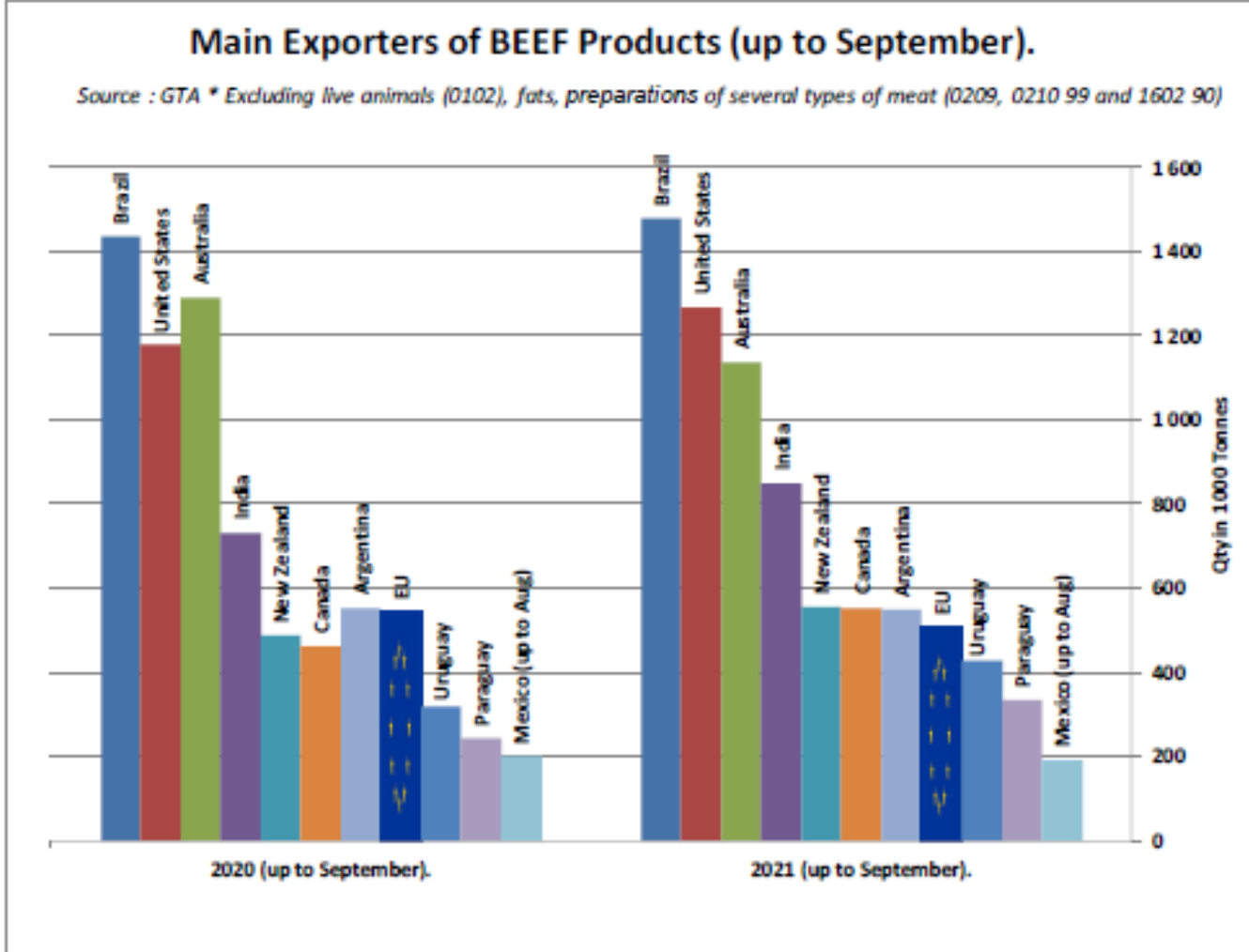


SIĞIR ETİ ÜRÜNLERİNİN NET İTHALATÇILARI (EYLÜL AYINA KADAR)





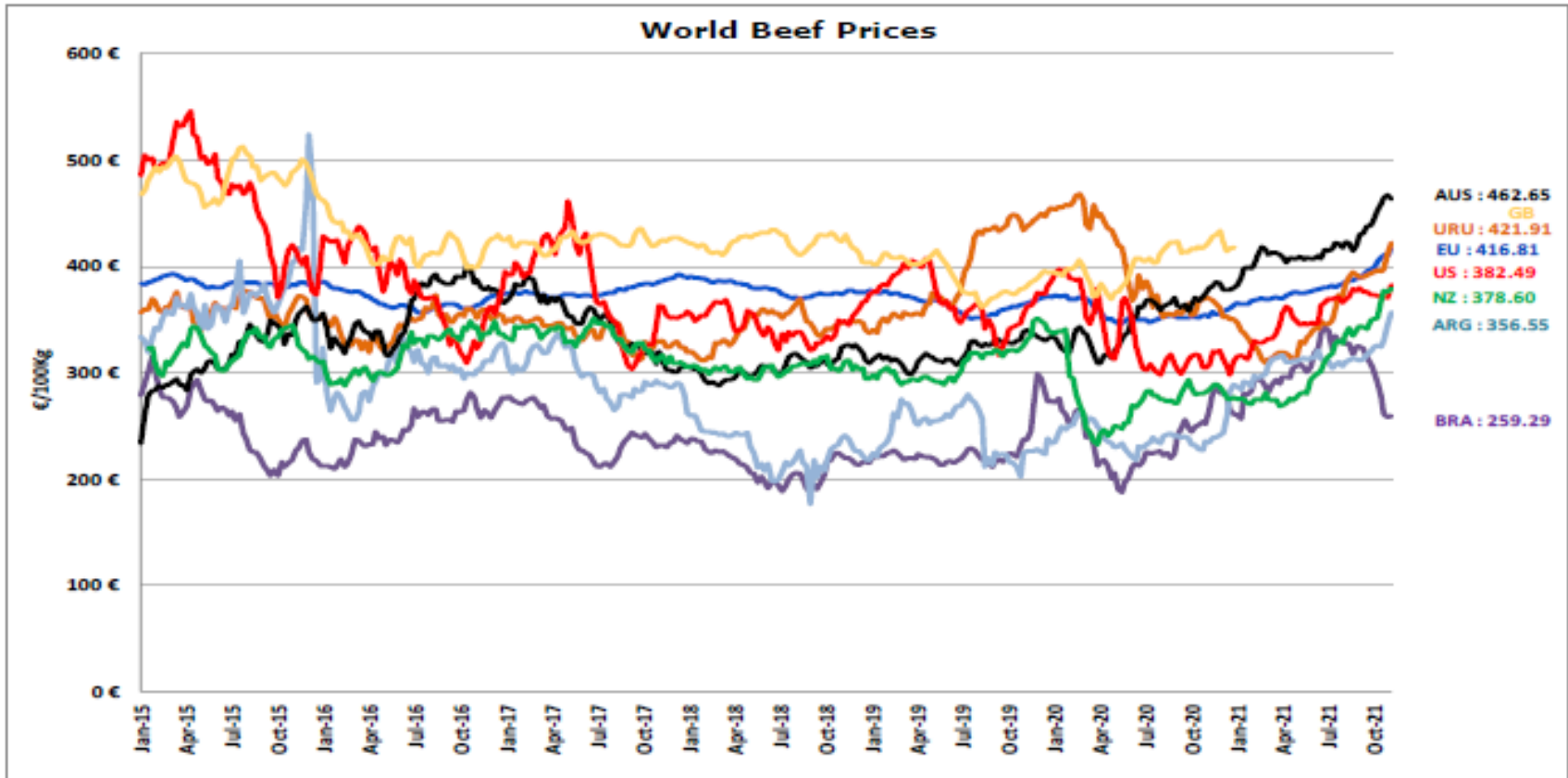
SIĞIR ETİ ÜRÜNLERİNİN NET İHRACATÇILARI (EYLÜL AYINA KADAR)



DÜNYA SIĞIR ETİ PAZARI



Dünya Sığır Fiyatları AB, ABD, AVUSTURYA, YENİ ZELANDA



- ECB <http://sdw.ecb.europa.eu/browse.do?node=2018794>
US <https://www.marketnews.usda.gov/mnp/ts-home>
AUS <http://statistics.mls.com.au/Report/RunReport/ae79d4ac-74e4-4c36-93bd-982a044d9760>
UY <http://www.inec.gub.uy/innovaportal/v/11034/10/innova.front/indicadores-y-precios>
ARG http://www.sbc-consorcio.com.ar/Estadisticas/detalle/117/precios_comparativos_del_novillo.html
BR <http://www.peqaria.com.br/cotacoes.php>
NZ http://www.sbc-consorcio.com.ar/Estadisticas/detalle/117/precios_comparativos_del_novillo.html

ber 2021





Daha fazla bilgi için:

https://ec.europa.eu/agriculture/market-observatory/meat_en

Ve Agri-FOOD Veri Portalı:

<http://agridata.ec.europa.eu>