



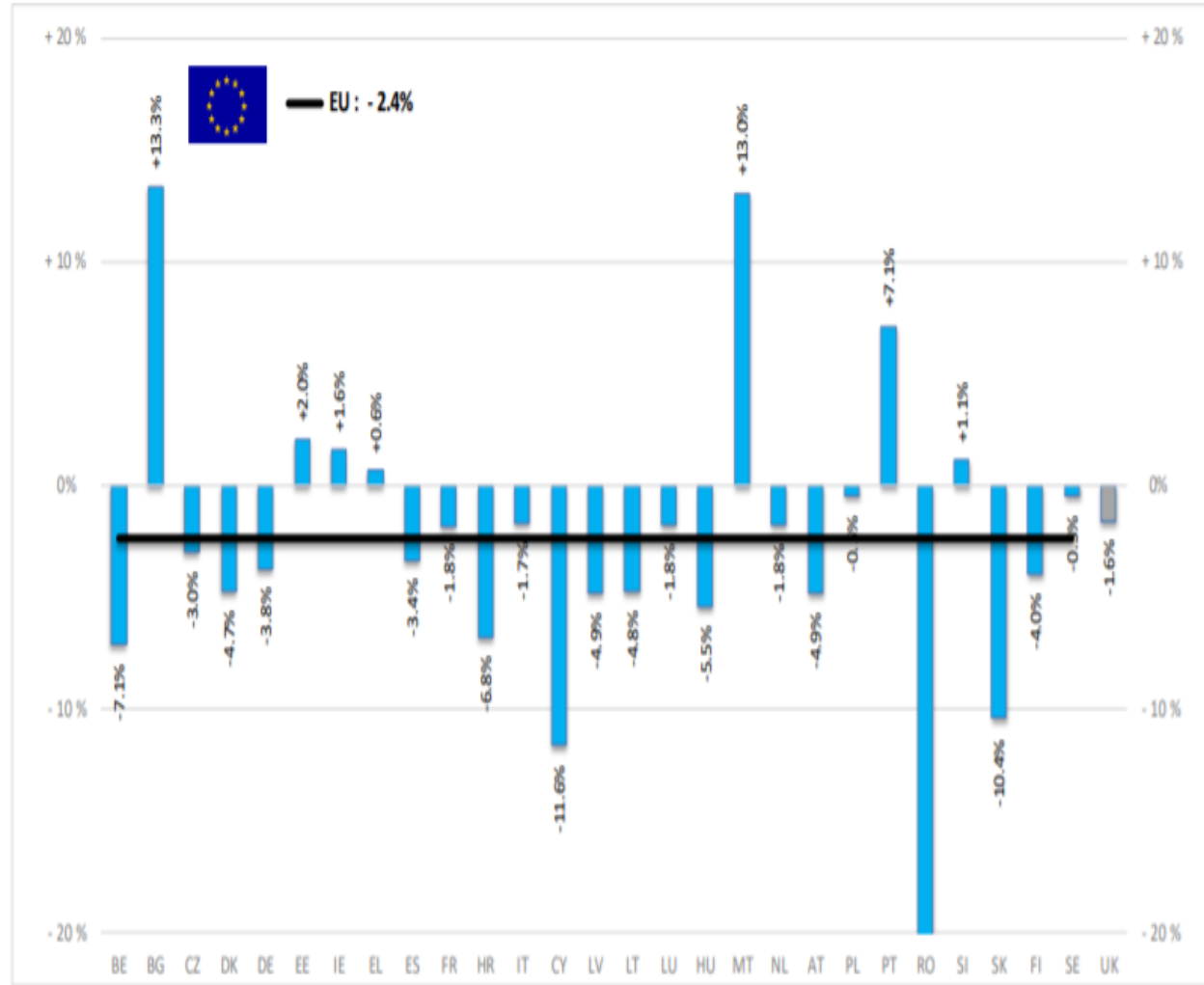
AB SIĞIR VE DANA ETİ PAZAR DURUMU

18 Şubat 2021



BAŞ	HEADS	Jan-Nov 20/19	
		EU	EU + UK
BOĞA	Bull	-2.2%	-2.3%
ÖKÜZ	Bullock	+7.3%	+3.1%
İNEK	Cow	-2.6%	-2.3%
DÜVE	Heifer	+0.4%	+0.8%
BUZAĞI	Calve	-6.3%	-7.3%
GENÇ SİĞİR	Young cattle	-3.7%	-3.8%
Büyükbaş Hayvan Eti	Meat of bovine animals	-2.4%	-2.3%

Estimates for last month of period : EL



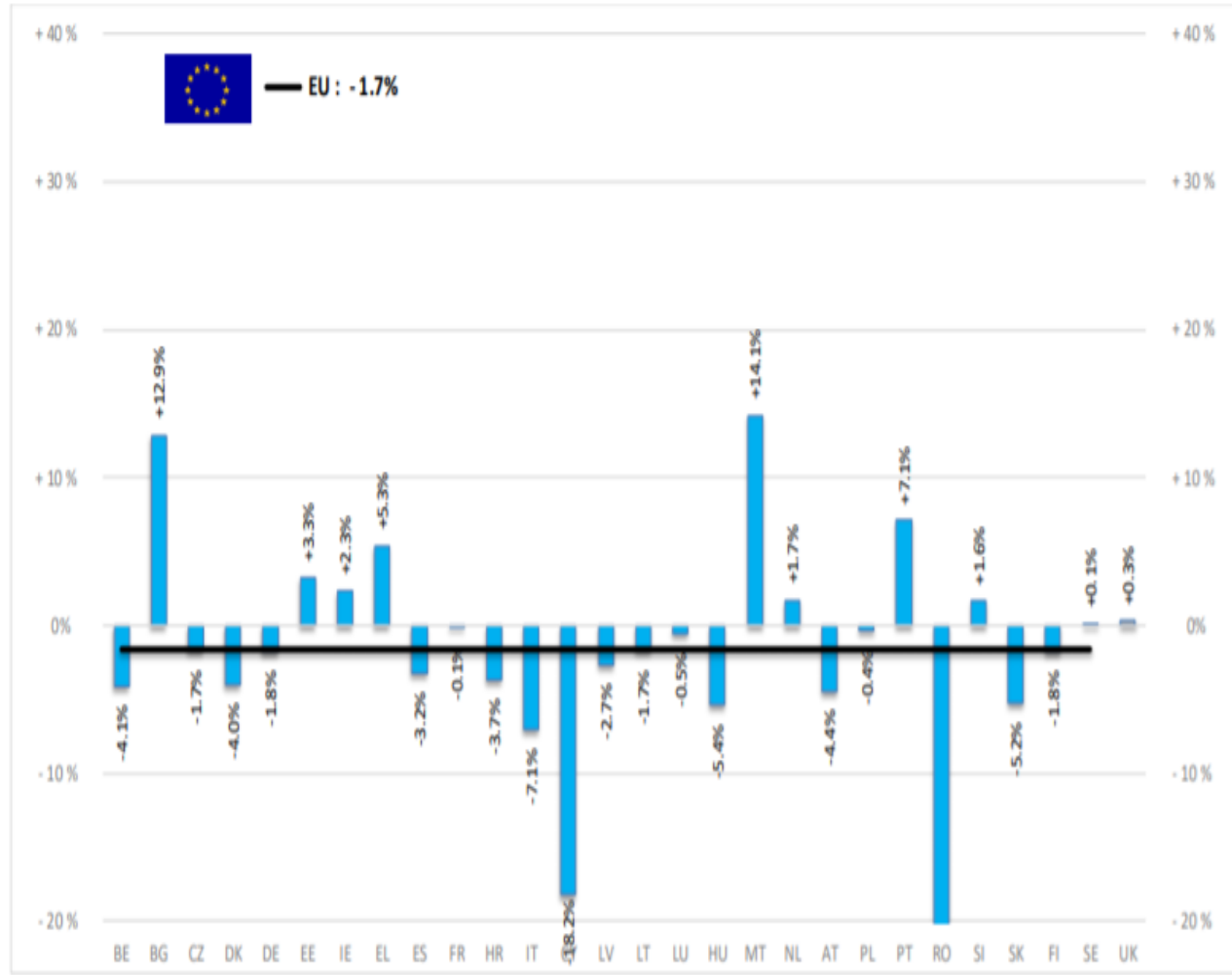
Source : EStat - Newcronos



European
Commission

TON	TONNES	Jan-Nov 20/19	
		EU	EU + UK
BOĞA	Bull	-1.9%	-2.0%
ÖKÜZ	Bullock	+9.2%	+3.8%
İNEK	Cow	-1.8%	-1.5%
DÜVE	Heifer	-0.6%	+0.2%
BUZAĞI	Calve	-7.0%	-7.1%
GENÇ SİĞİR	Young cattle	-3.4%	-3.5%
Büyükbaş Hayvan Et	Meat of bovine animals	-1.7%	-1.4%

Estimates for last month of period : EL

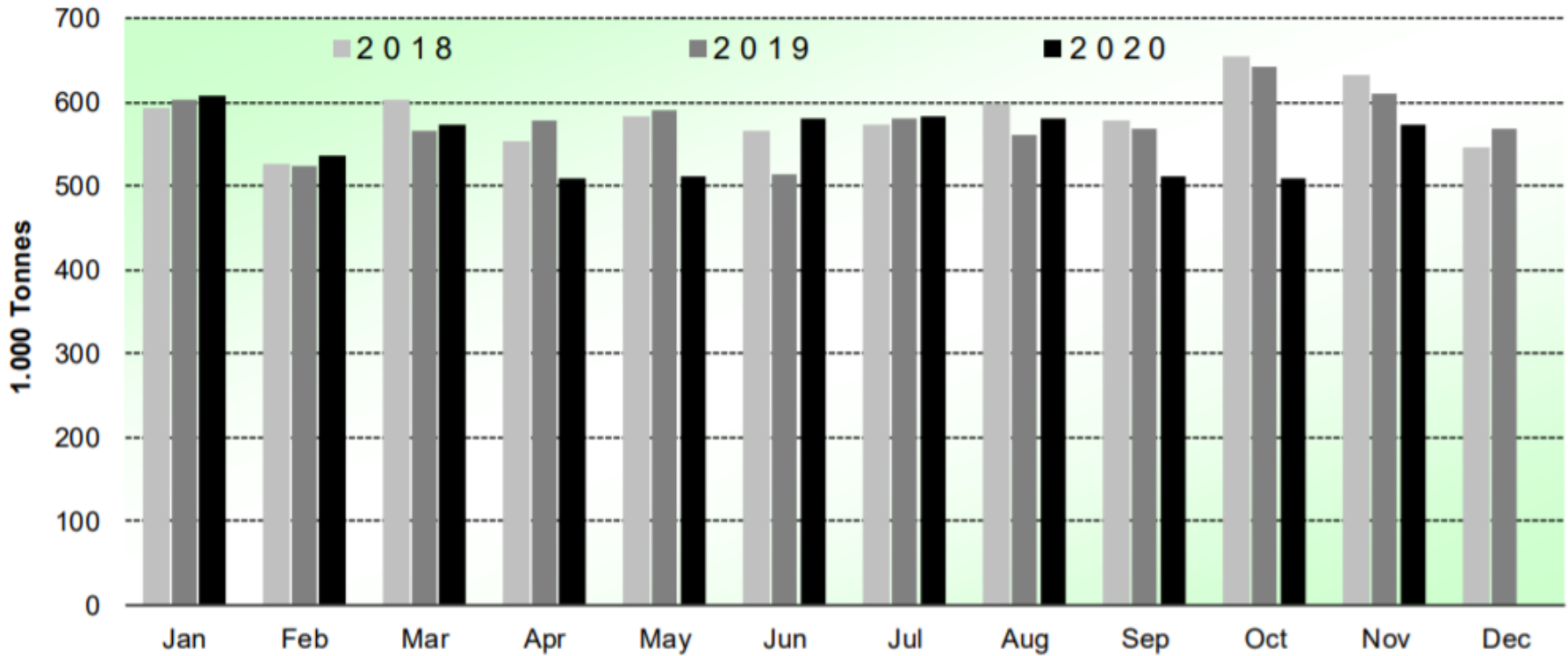


Source : EStat - Newcronos



SIĞIR VE DANA ETİ ÜRETİMİ (AB Kesimler – Ton)

Beef & Veal Production (EU Slaughtering) - Tonnes



Source : EStat-Newcronos



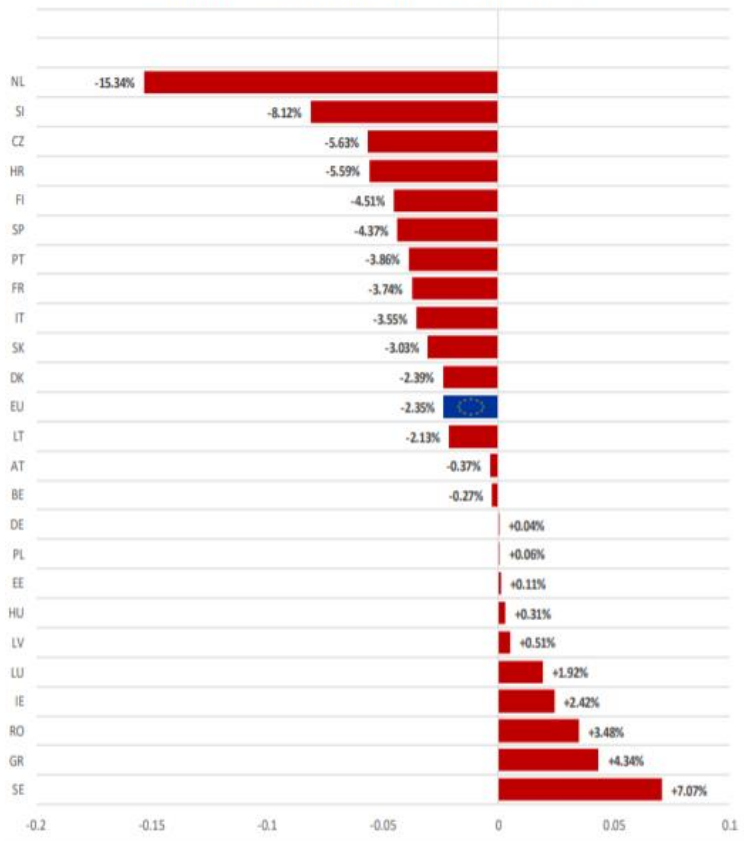
European
Commission

EU Prices week		5	Evolution since last week	Evolution since last month	Evolution since last year
Carcasse	Average A/C/Z -R3	367.9	+ 0.2%	+ 1.0%	- 0.3%
	Young Bovines (Z)	357.8	- 0.5%	+ 1.0%	- 0.5%
	Young Bulls (A)	367.8	+ 0.4%	+ 0.9%	+ 1.8%
	Steers (C)	383.4	+ 0.3%	+ 1.9%	+ 3.9%
	Cows (D)	275.0	+ 0.3%	+ 0.8%	- 0.9%
	Heifers (E)	377.7	+ 0.7%	- 0.1%	+ 3.1%
Live Animals	Male Calves Dairy Type	64.19	- 0.5%	+ 5.7%	- 10.5%
	Male Calves Beef Type	189.6	+ 1.3%	+ 3.3%	- 1.5%
	Young Store Cattle	2.39	+ 0.1%	+ 0.8%	- 0.5%
	Yearling Male Store Cattle	2.21	+ 0.7%	+ 0.1%	- 0.7%
	Yearling Female Store Cattle	2.44	- 0.4%	+ 0.6%	+ 5.1%
	Calves slaughtered <8M	459.3	- 0.4%	+ 0.3%	- 14.1%

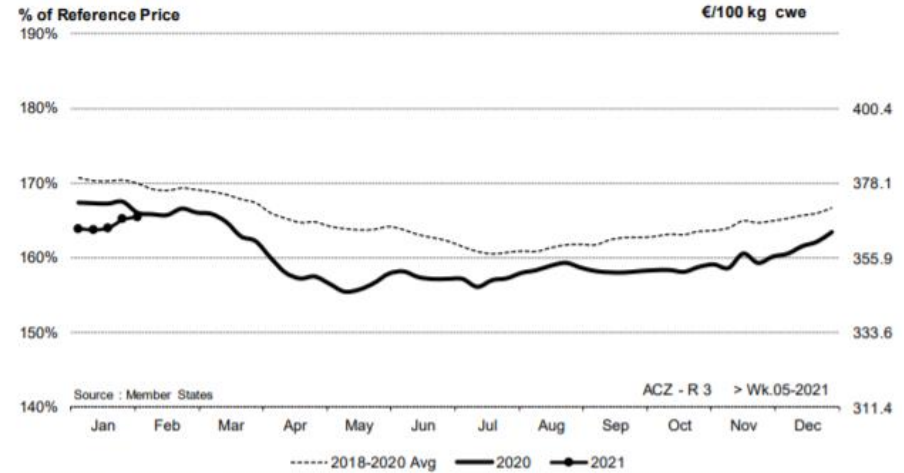
Sources : MSs notifications (Regulation (EU) 1182/2017 and 1184/2017)



EU ACZ R3 Price Comparison between average monthly price February 2020 - January 2021 compared to February 2019 - January 2020



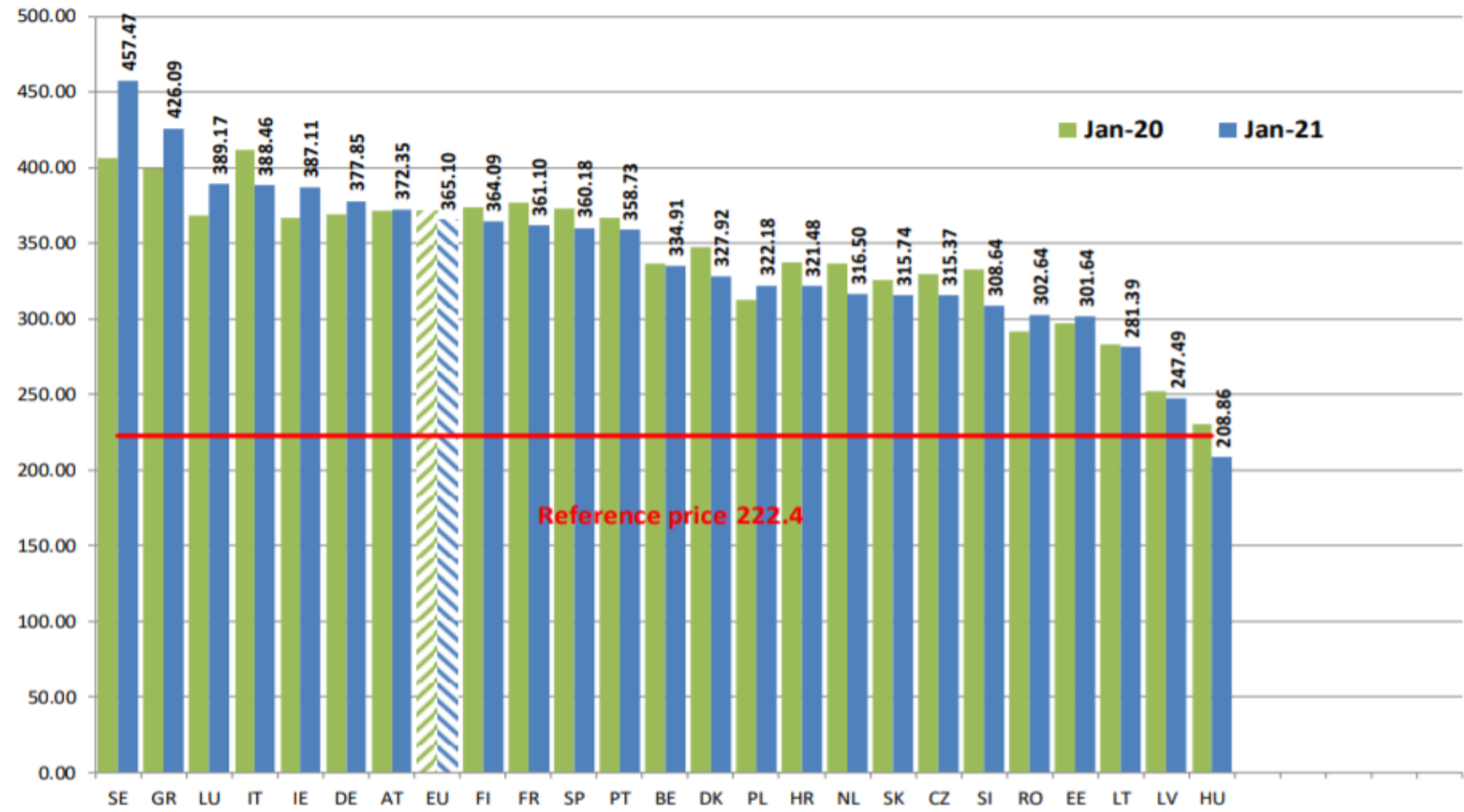
ACZ - R 3 > Wk.05-2021



Price in week 05 :	367.99	Average price in January 2021 :	365.09
% change y/y :	- 0.34%	% change y/y :	- 1.78%
% Ref. Price in wk 5 :	165.5%		

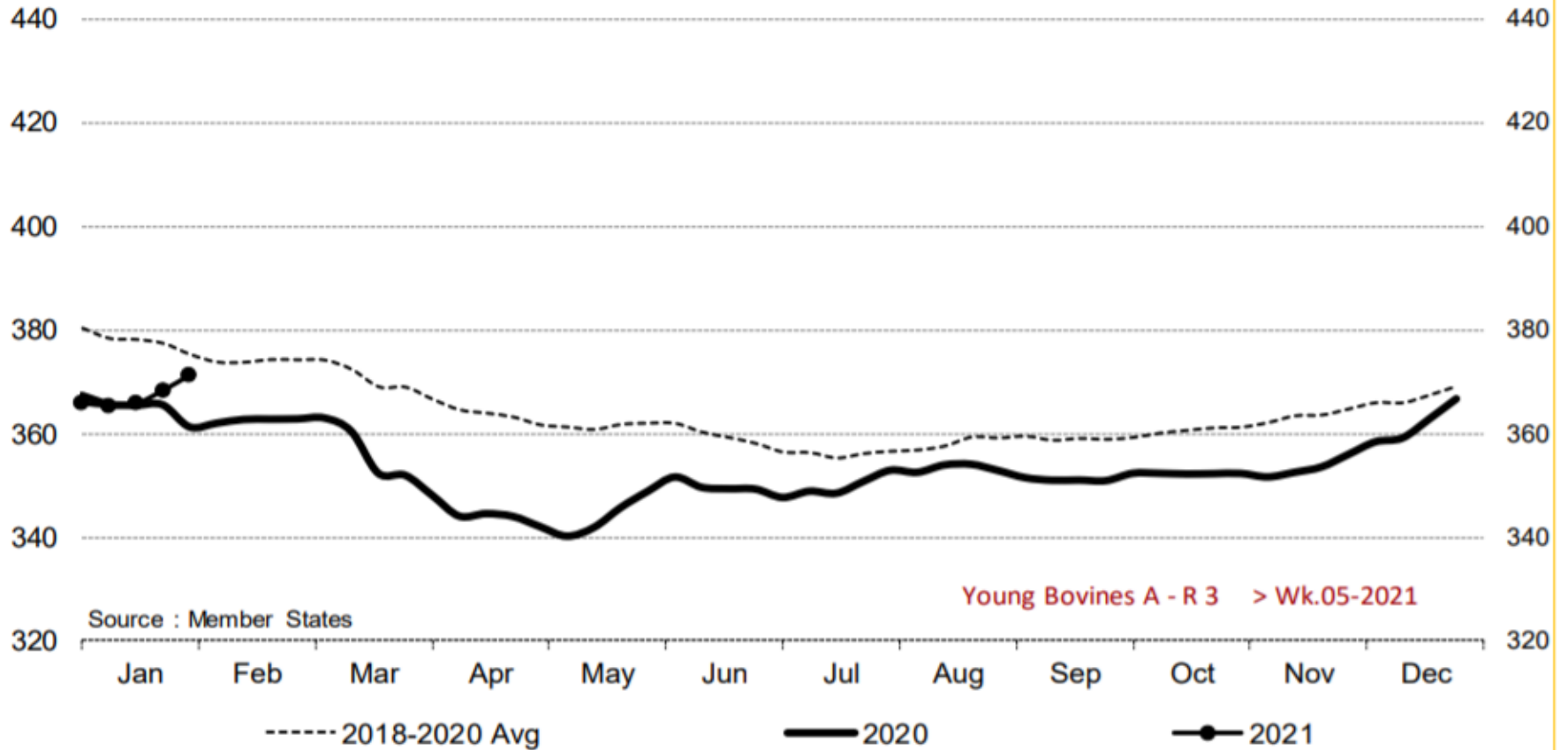


EU Beef prices ACZ - R3





Young Bovines A - R 3 > Wk.05-2021

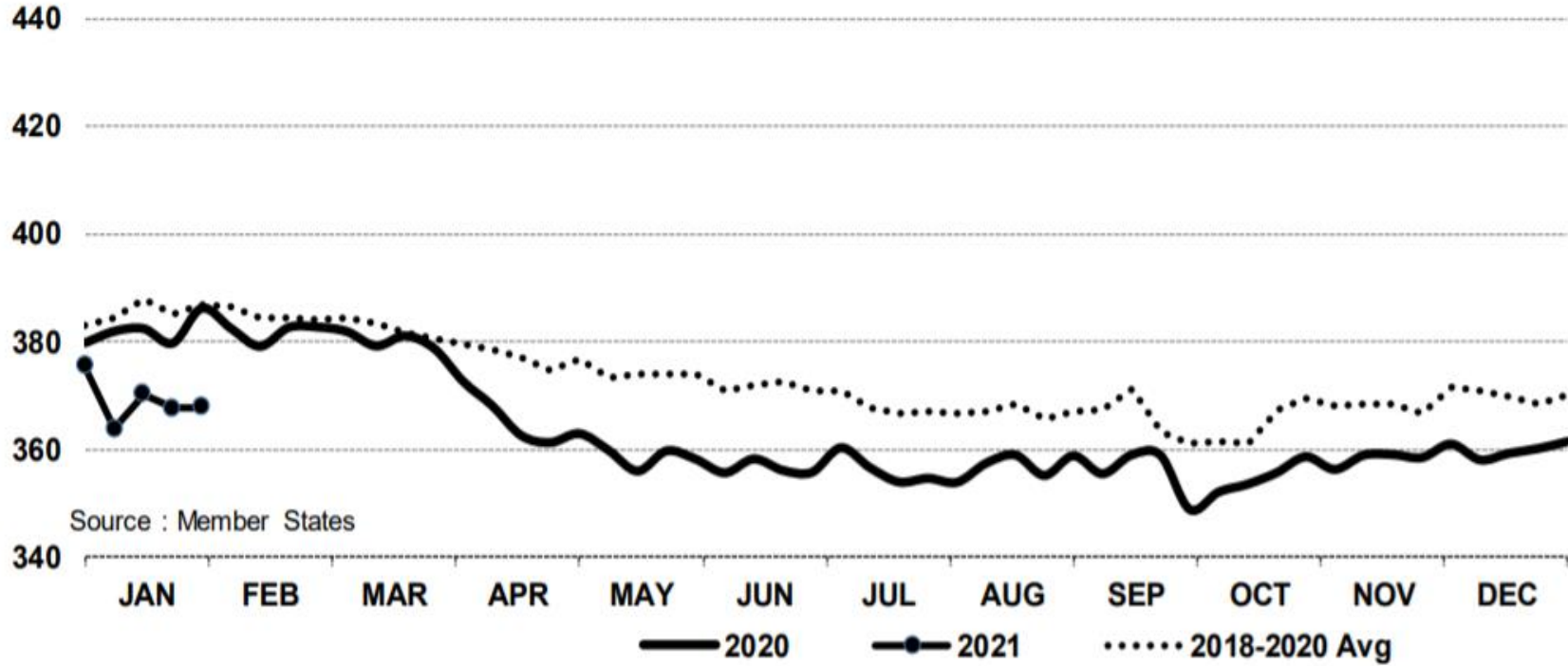


Price in week 05 : **371.24**
% change y/y : **+ 2.8%**

Average price in January 2021 : **366.31**
% change y/y : **+ 0.3%**

In € / 100 kg

Young Bovines 8-12m Z - R 3 > Wk.05-2021



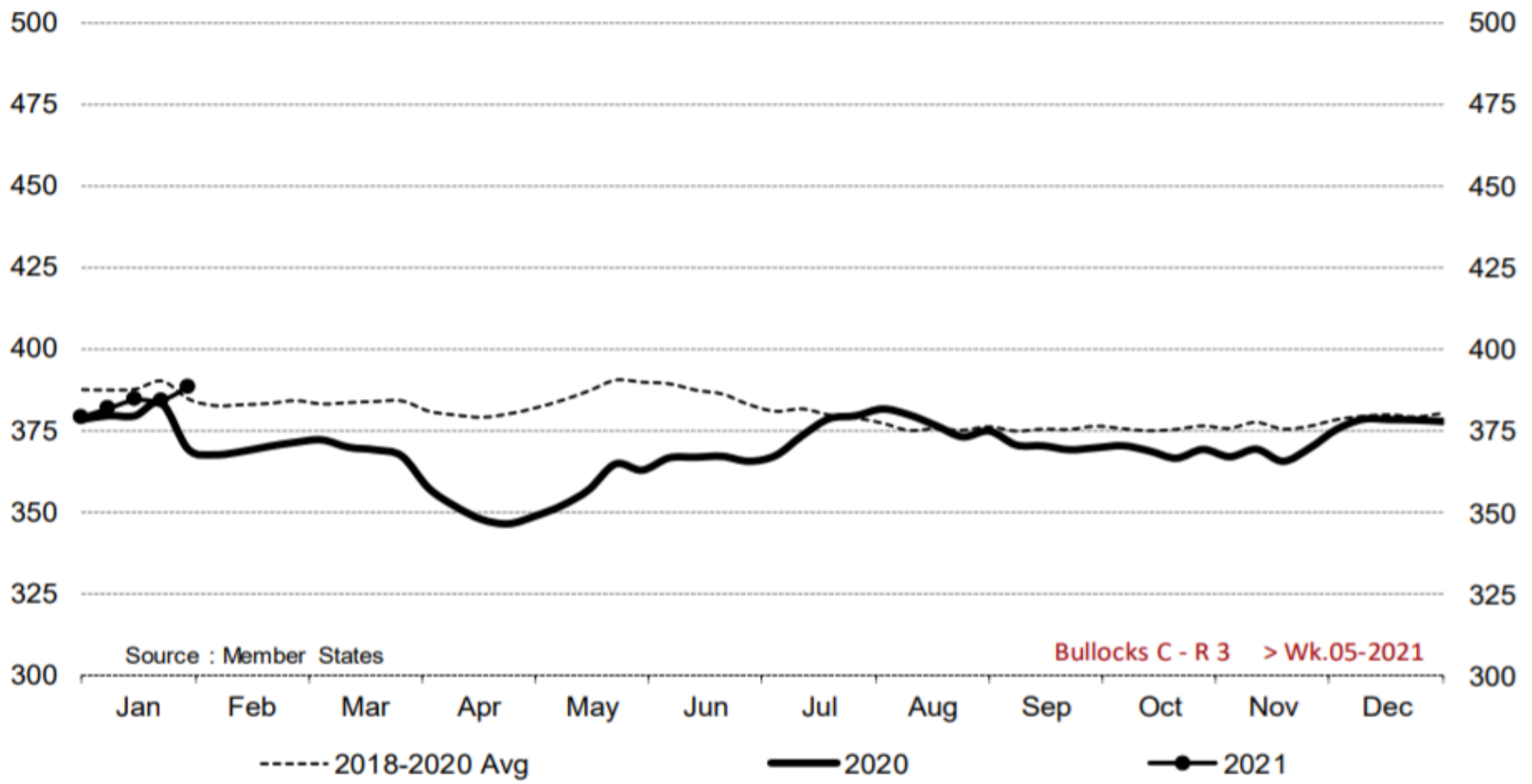
Price in week 05 : **367.75**
% change y/y : **- 4.8%**

07/01/2021

Average price in January 2021 : **369.47**
% change y/y : **- 3.2%**



Bullocks C - R 3 > Wk.05-2021

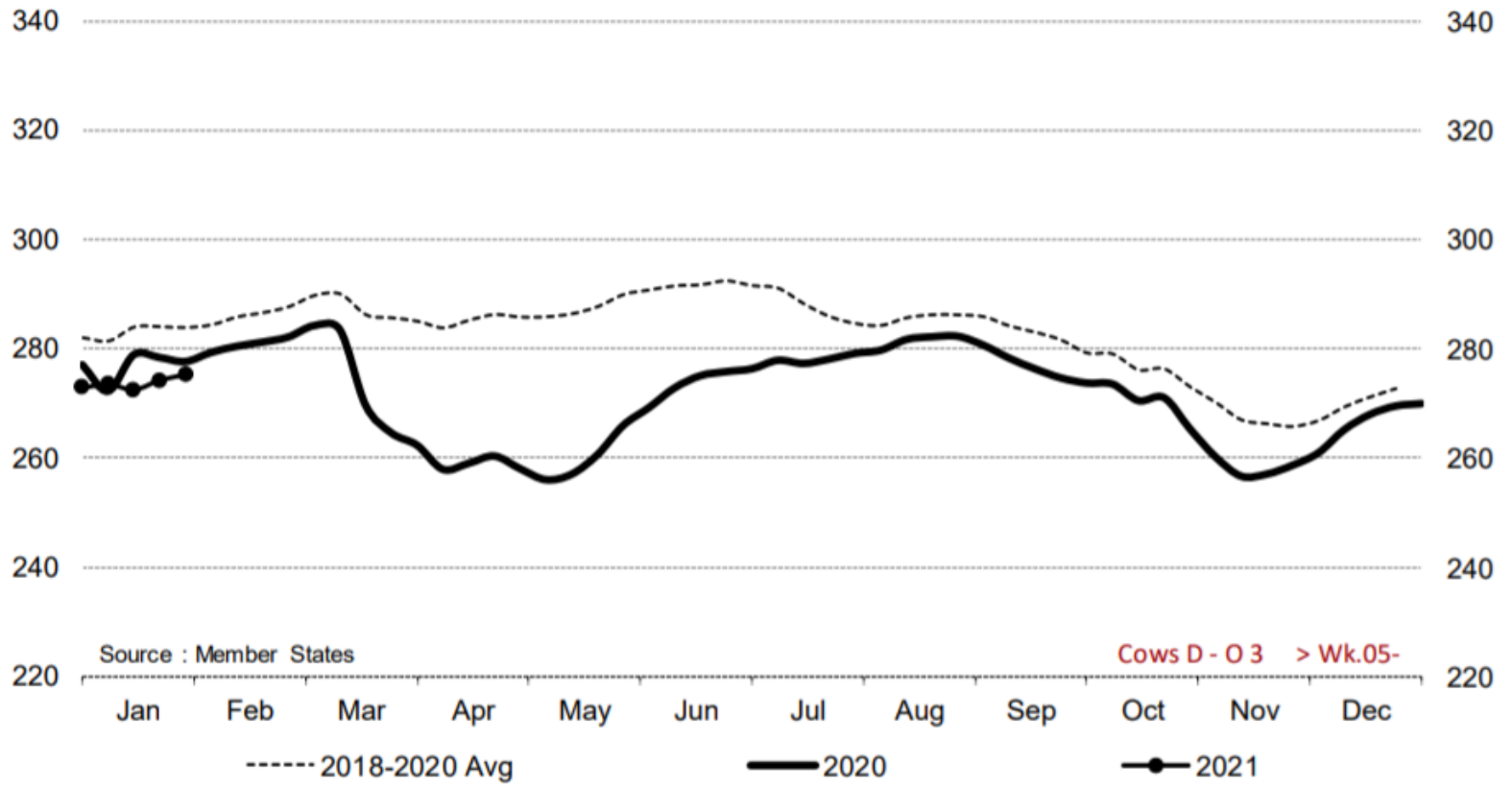


Price in week 05 : **388.45**
% change y/y : **+ 5.2%**

Average price in January 2021 : **382.19**
% change y/y : **+ 1.0%**



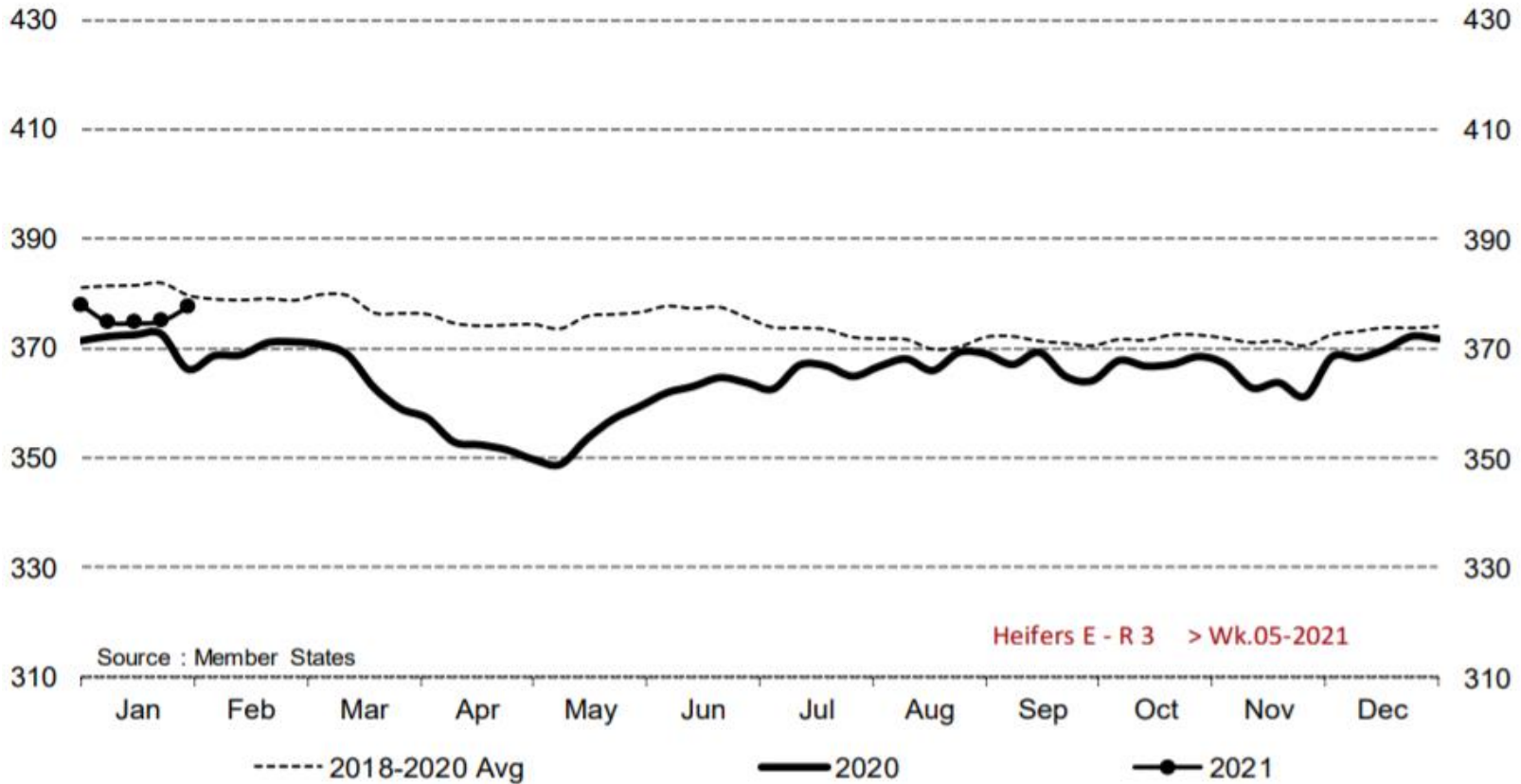
Cows D - O 3 > Wk.05-2021



Price in week 05 : **275.08** Average price in January 2021 : **272.90**
% change y/y : **- 0.9%** % change y/y : **- 1.4%**



Heifers E - R 3 > Wk.05-2021

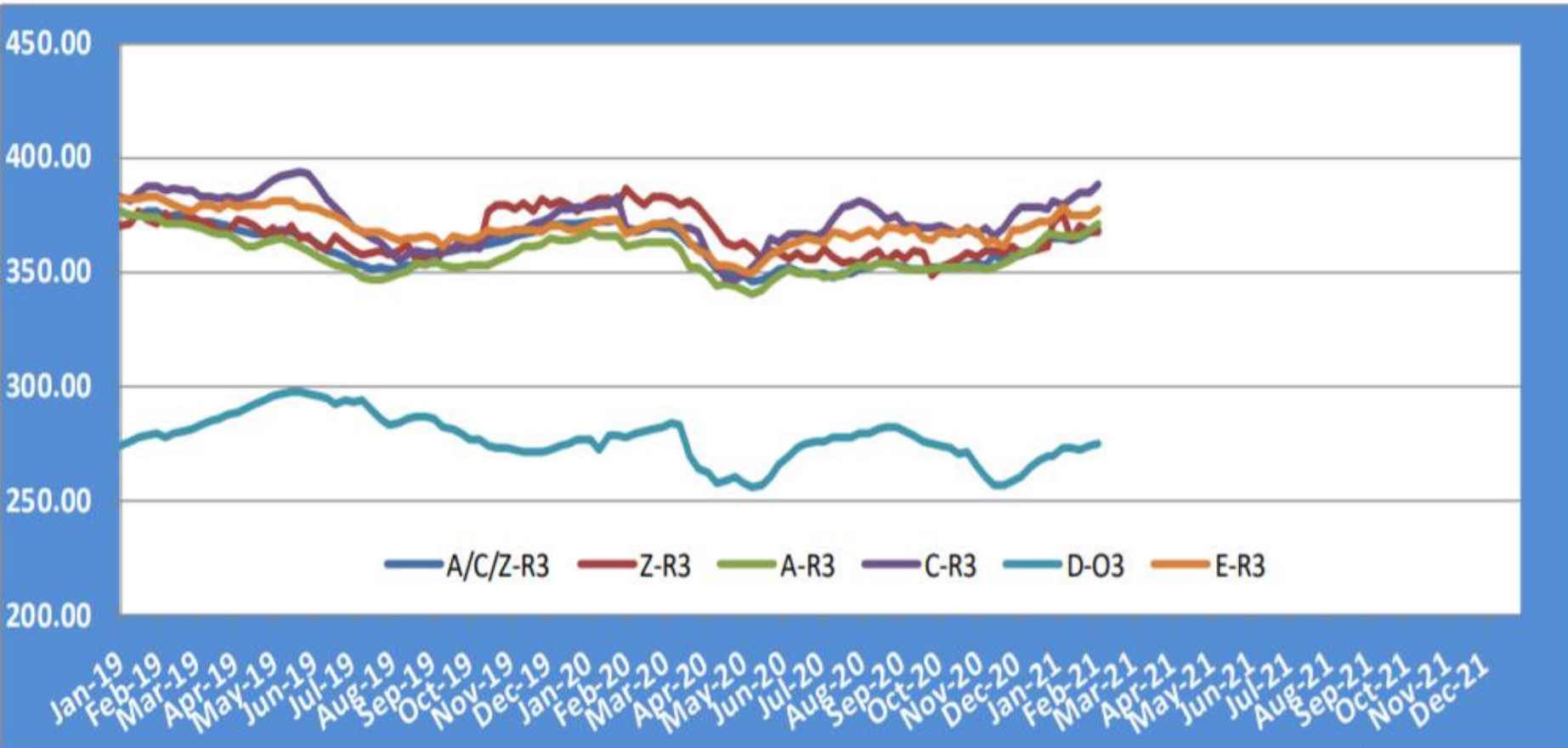


Price in week 05 : **377.72**
% change y/y : **+ 3.1%**

Average price in January 2021 : **375.39**
% change y/y : **+ 1.1%**

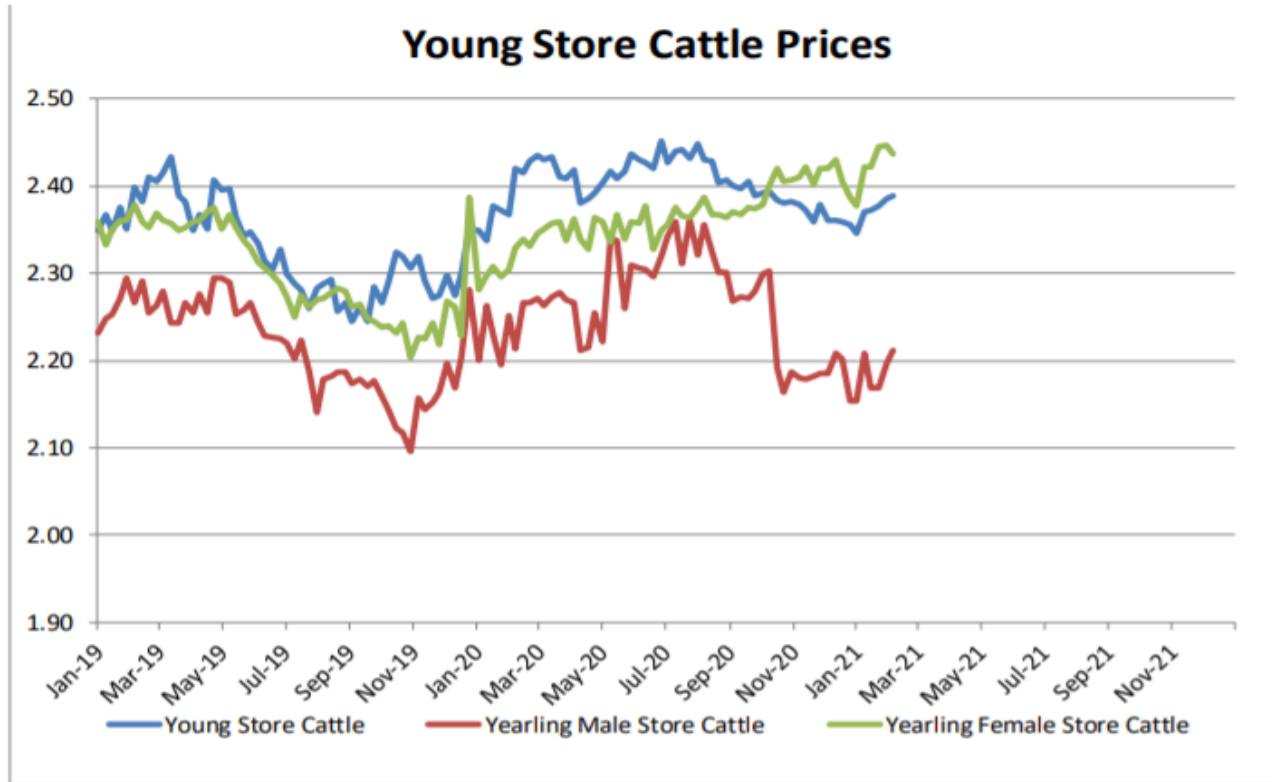
KARKAS FİYATLARI

AB TÜM KATEGORİLERE GLOBAL BAKIŞ



Besilik sığır (€ / 100 kg canlı ağırlık)

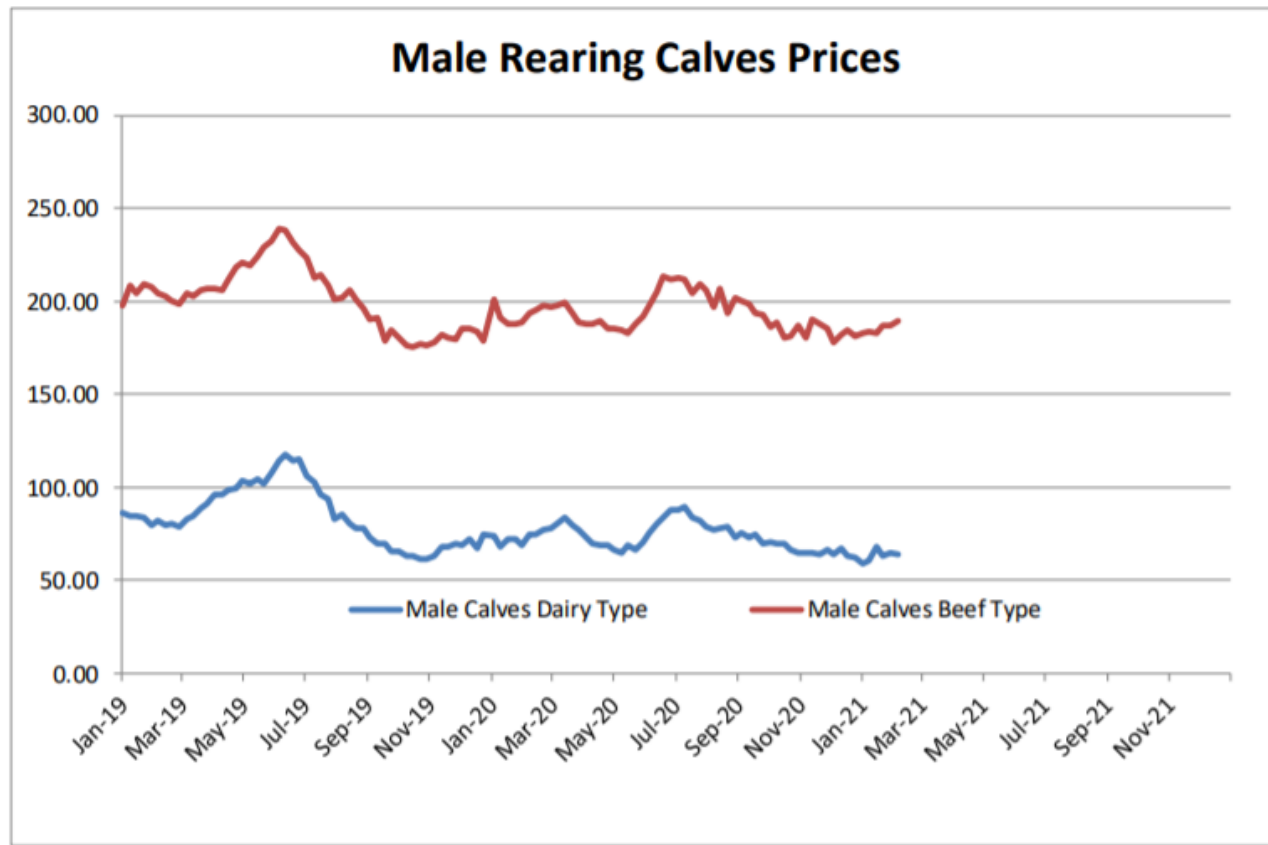
Store cattle (€/100 kg live weight)



Young Store Cattle Price in	Week 5	2.39	Yearling Male Store Cattle Price	2.21
	Change y/y	-0.45%	Change y/y	-1.76%
Yearling Female Store Cattle Price		2.44		
	Change y/y	+5.07%		

8 gün ve 4 haftalık erkek buzağlar (€/baş)

Male calves aged between 8 days and 4 weeks (€/head)



Male Rearing Calves Beef type

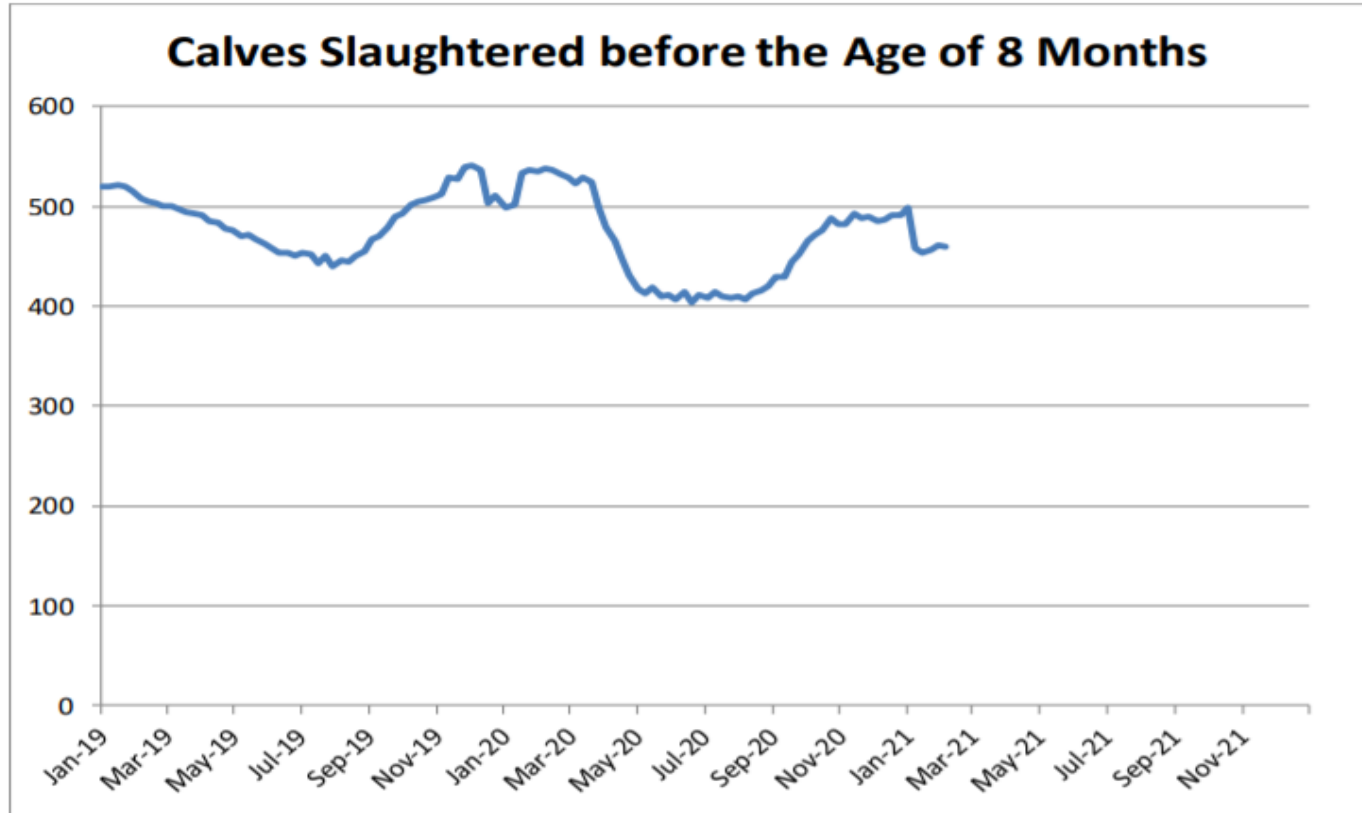
Price in Week 5 189.62
Change y/y -1.46%

Male Rearing Calves Dairy type

Price in Week 5 64.19
Change y/y -10.53%

8 aylıktan küçük kesilen buzağular (€ / 100 kg canlı ağırlık)

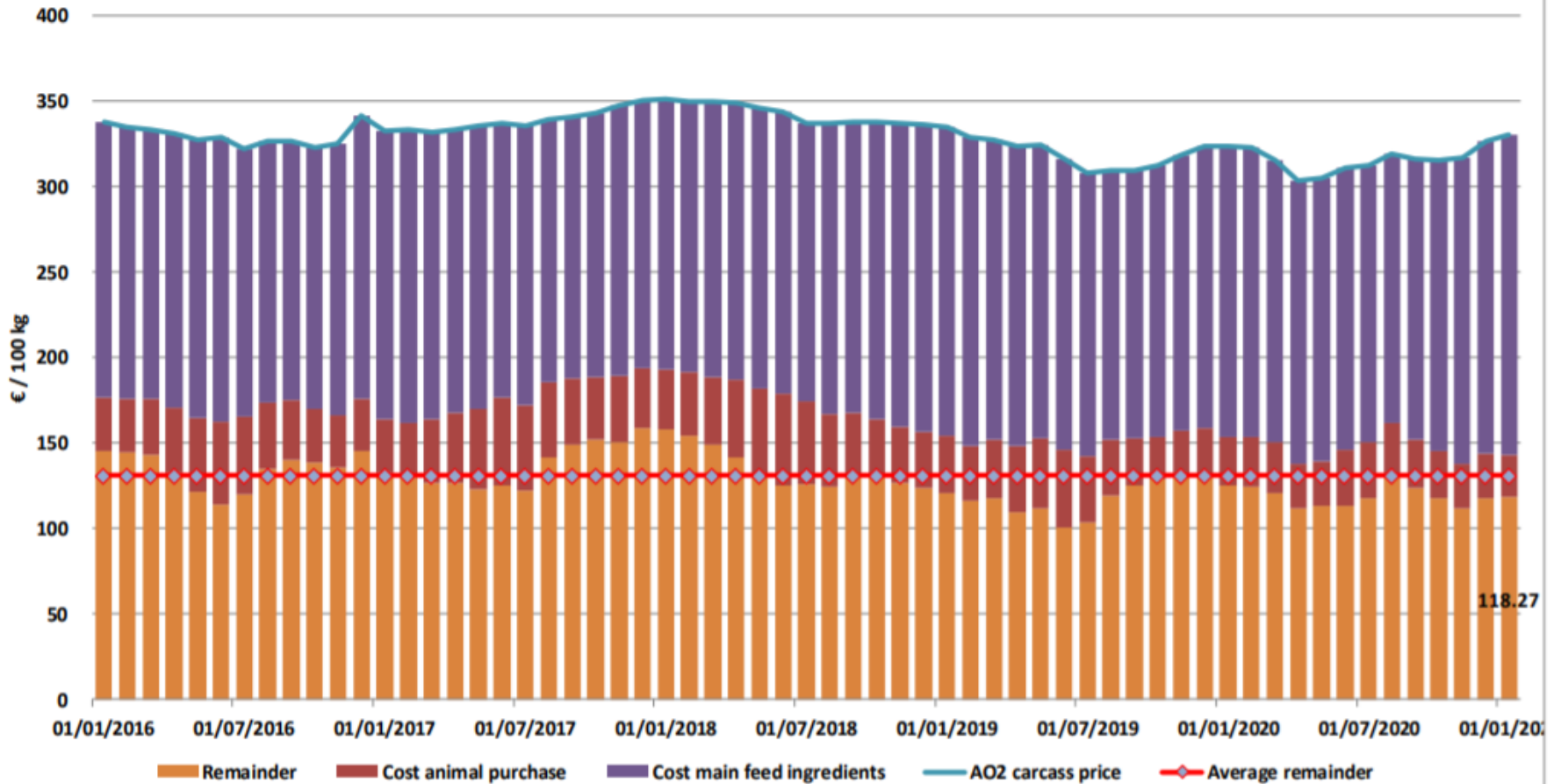
Calves slaughtered before the age of less than 8 months
(€/100 kg cw)



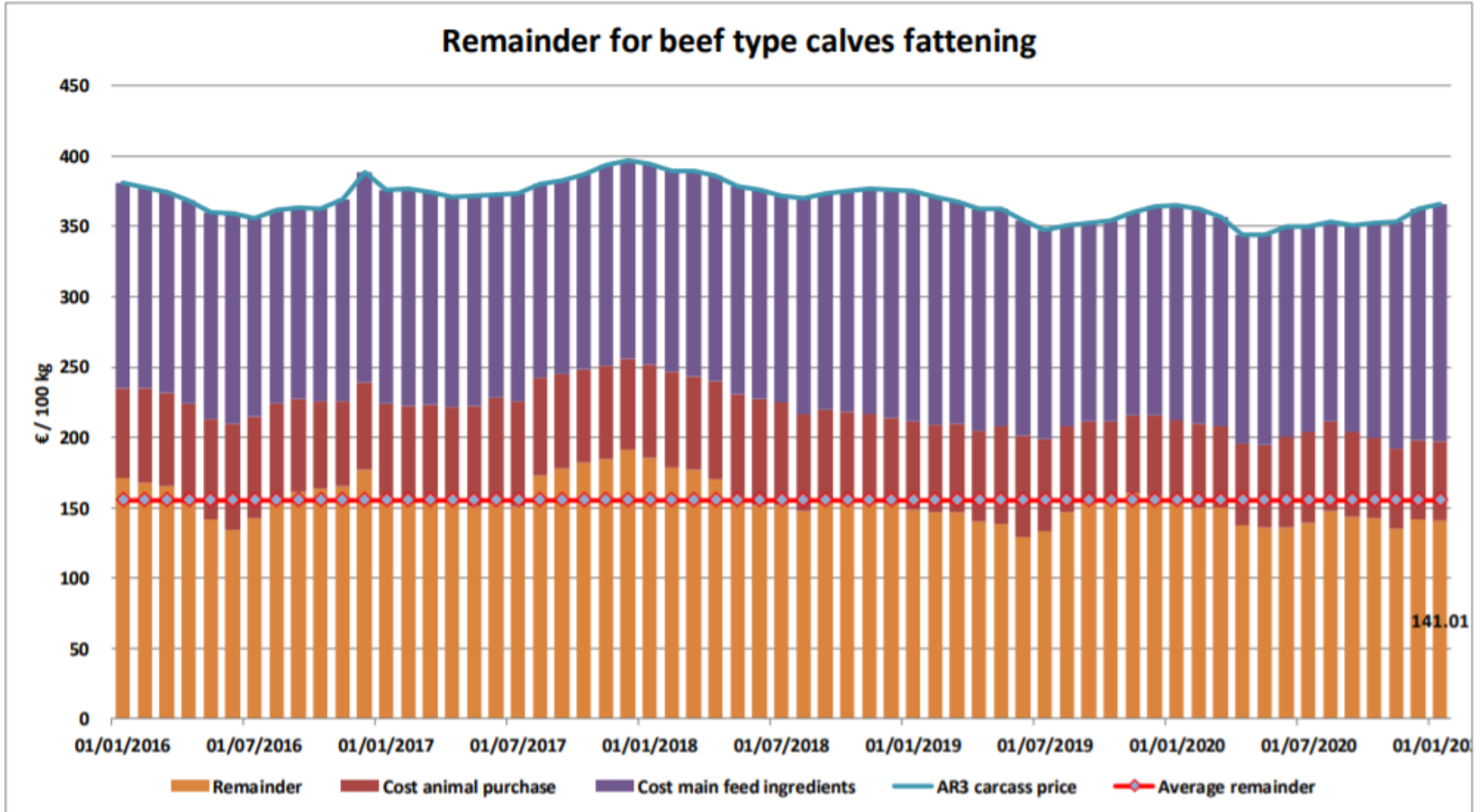
Price in Week 5 459.34 € / 100 kg of carcasse weight
Change y/y -14.07%

Süt Buzağları Besiciliği İçin Kalanlar

Remainder for dairy calves fattening

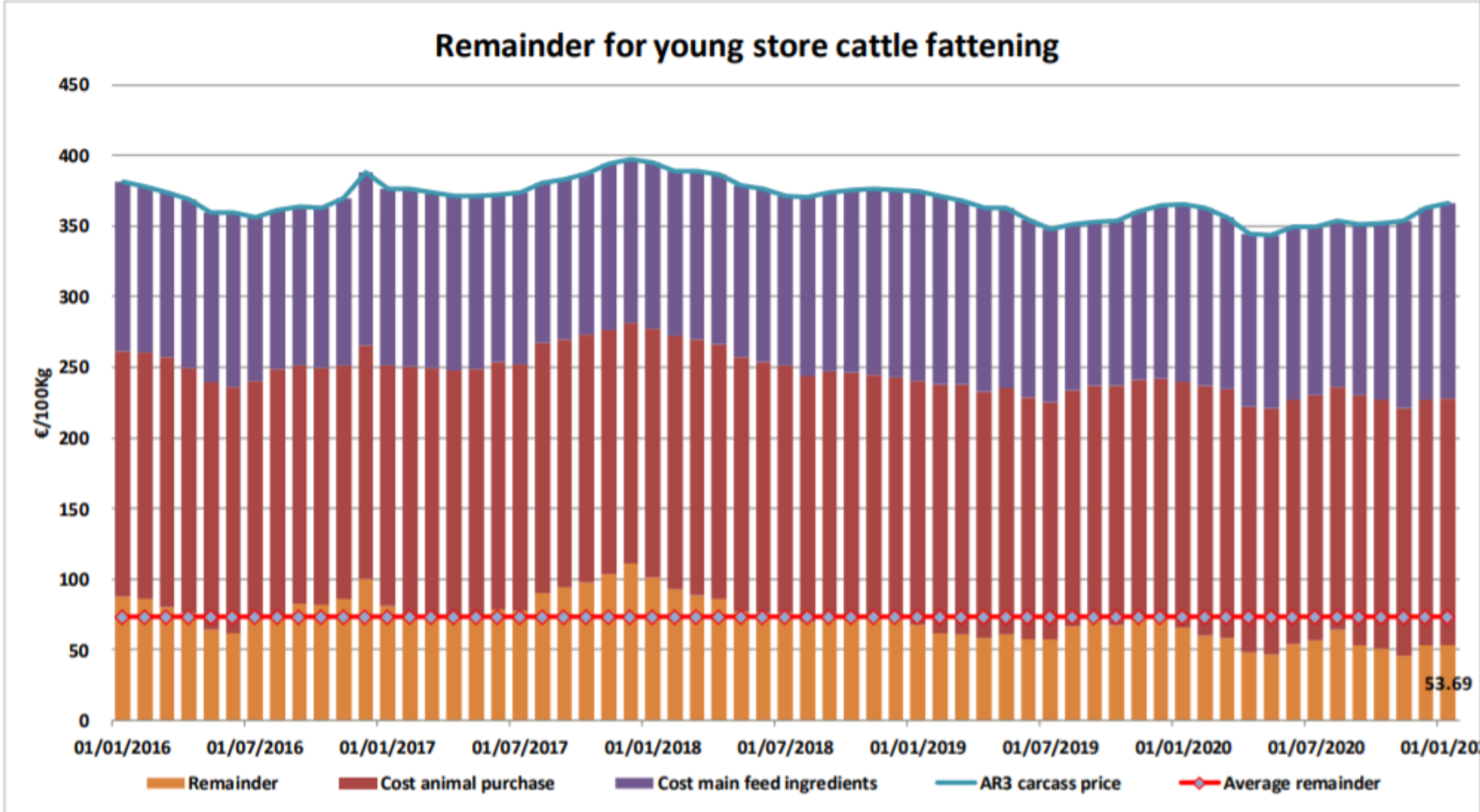


Sığır Tipi Buzağı Besiciliği İçin Kalanlar





Genç Besilik Sığır Besiciliği İçin Kalanlar



AB siğir eti ve canlı hayvan ihracatı (1): Pazar Rakamları (COMEXT – ton ca)

Destinations	2016		2017		2018		2019		Jan-Dec 20		Compared to Jan-Dec 19
	tonnes	%	tonnes	%	tonnes	%	tonnes	%	tonnes	%	
Israel	41 535	6.2%	44 196	6.1%	47 774	6.8%	49 629	7.1%	56 968	8.1%	+ 14.8%
Hong Kong	47 533	7.1%	76 086	10.5%	55 537	7.9%	46 748	6.7%	56 860	8.1%	+ 21.6%
Ghana	37 490	5.6%	37 744	5.2%	36 766	5.2%	39 196	5.6%	47 401	6.7%	+ 20.9%
Philippines	24 116	3.6%	37 102	5.1%	28 766	4.1%	34 158	4.9%	39 927	5.7%	+ 16.9%
Algeria	25 004	3.7%	26 305	3.6%	35 410	5.0%	57 152	8.2%	39 416	5.6%	- 31.0%
Bosnia-Herz.	38 875	5.8%	34 711	4.8%	38 762	5.5%	41 119	5.9%	35 758	5.1%	- 13.0%
Lebanon	47 010	7.0%	38 322	5.3%	42 542	6.1%	36 393	5.2%	33 656	4.8%	- 7.5%
Ivory Coast	35 371	5.3%	36 038	5.0%	36 064	5.1%	33 396	4.8%	32 460	4.6%	- 2.8%
Switzerland	24 873	3.7%	26 708	3.7%	23 761	3.4%	25 188	3.6%	29 996	4.3%	+ 19.1%
Turkey	71 030	10.6%	96 413	13.3%	96 052	13.7%	34 555	4.9%	22 128	3.1%	- 36.0%
Libya	29 723	4.4%	27 848	3.8%	27 878	4.0%	24 541	3.5%	21 971	3.1%	- 10.5%
Canada	862	0.1%	2 424	0.3%	2 225	0.3%	6 806	1.0%	20 475	2.9%	+++
Ukraine	7 875	1.2%	7 331	1.0%	10 465	1.5%	13 836	2.0%	15 857	2.3%	+ 14.6%
China	10 254	1.5%	5 738	0.8%	6 712	1.0%	22 318	3.2%	15 505	2.2%	- 30.5%
Norway	18 313	2.7%	12 850	1.8%	7 925	1.1%	7 667	1.1%	12 931	1.8%	+ 68.7%
USA	3 137	0.5%	3 756	0.5%	5 458	0.8%	7 867	1.1%	12 310	1.7%	+ 56.5%
Other Destinations	210 032	31.2%	213 950	29.4%	199 783	28.5%	219 676	31.4%	210 899	29.9%	
Total (without UK)	673 029		727 522		701 882		700 245		704 518		
% change			+ 8%		- 4%		- 0%		+ 0.6%		
United Kingdom	477 394		493 227		486 480		440 357		422 521 up to Nov 20		#N/A

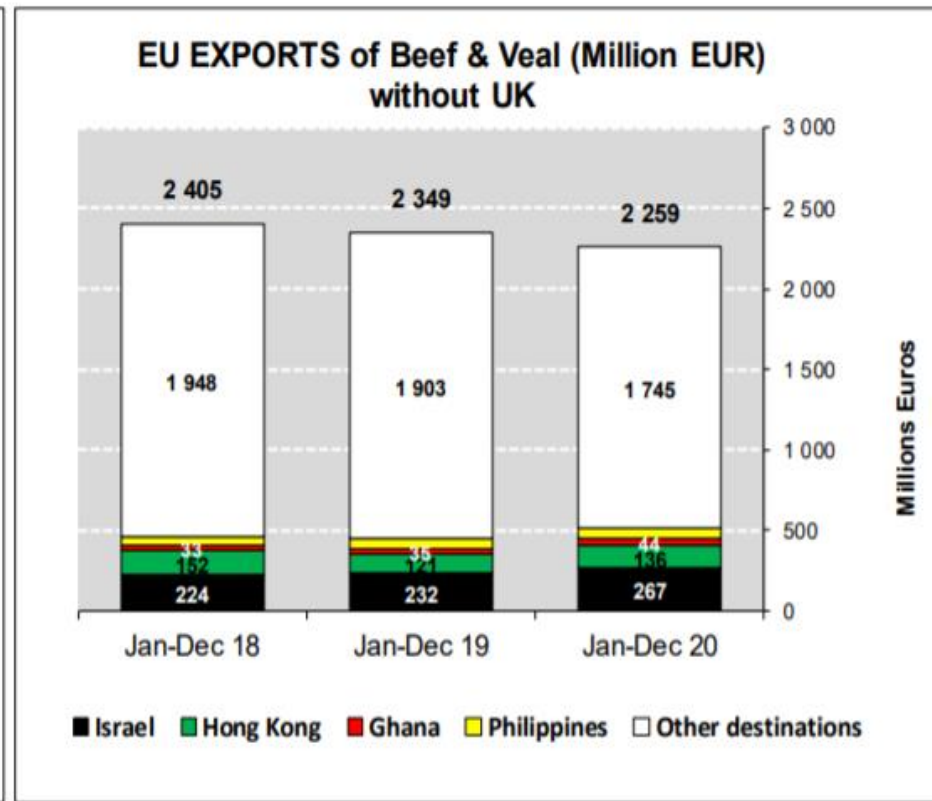
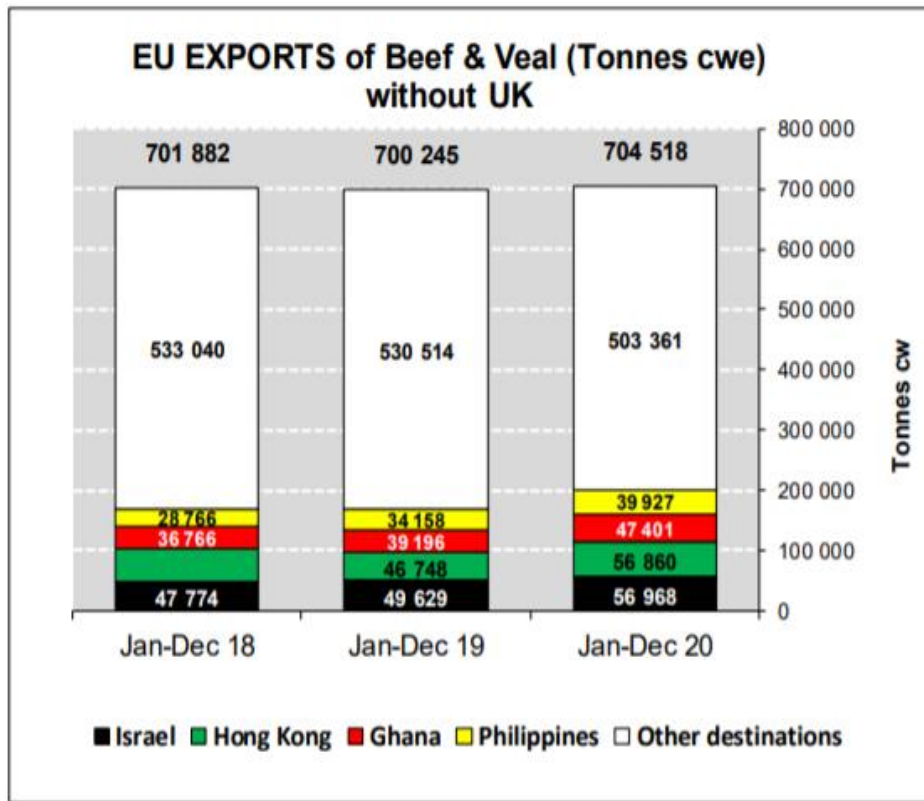


AB sığır eti ihracatı: Pazar Rakamları (COMEXT – ton ca)

Destinations	2016		2017		2018		2019		Jan-Dec 20		Compared to Jan-Dec 19
	tonnes	%	tonnes	%	tonnes	%	tonnes	%	tonnes	%	
Hong Kong	47 533	10.5%	76 086	15.5%	55 537	11.9%	46 748	9.8%	56 860	11.6%	+ 21.6%
Ghana	37 490	8.3%	37 744	7.7%	36 766	7.9%	39 196	8.2%	47 401	9.7%	+ 20.9%
Philippines	24 116	5.3%	37 102	7.5%	28 766	6.2%	34 158	7.2%	39 927	8.1%	+ 16.9%
Bosnia-Herz.	36 790	8.1%	32 181	6.5%	36 152	7.7%	38 806	8.2%	33 459	6.8%	- 13.8%
Ivory Coast	35 371	7.8%	36 028	7.3%	36 064	7.7%	33 396	7.0%	32 460	6.6%	- 2.8%
Switzerland	23 705	5.2%	25 570	5.2%	22 711	4.9%	24 110	5.1%	28 941	5.9%	+ 20.0%
Israel	15 056	3.3%	18 750	3.8%	22 163	4.7%	23 026	4.8%	21 970	4.5%	- 4.6%
Canada	862	0.2%	2 424	0.5%	2 225	0.5%	6 806	1.4%	20 475	4.2%	+++
China	10 254	2.3%	5 738	1.2%	6 712	1.4%	22 317	4.7%	15 505	3.2%	- 30.5%
Ukraine	7 094	1.6%	6 926	1.4%	9 887	2.1%	12 893	2.7%	14 861	3.0%	+ 15.3%
Norway	18 308	4.0%	12 849	2.6%	7 922	1.7%	7 667	1.6%	12 931	2.6%	+ 68.7%
USA	3 137	0.7%	3 756	0.8%	5 458	1.2%	7 867	1.7%	12 310	2.5%	+ 56.5%
Japan	3 253	0.7%	4 281	0.9%	3 452	0.7%	8 007	1.7%	11 885	2.4%	+ 48.4%
North Macedonia	11 413	2.5%	11 285	2.3%	10 002	2.1%	11 395	2.4%	10 550	2.1%	- 7.4%
Angola	13 326	2.9%	10 982	2.2%	11 470	2.5%	8 410	1.8%	9 410	1.9%	+ 11.9%
Chile	2 228	0.5%	8 961	1.8%	16 410	3.5%	12 461	2.6%	8 664	1.8%	- 30.5%
Other Destinations	163 284	36.0%	161 717	32.8%	155 126	33.2%	138 056	29.0%	113 280	23.1%	
Total (without UK)	453 219		492 379		466 824		475 318		490 890		
% change			+ 9%		- 5%		+ 2%		+ 3.3%		
United Kingdom	468 016	50.8%	482 057	49.5%	475 987	50.5%	429 663	47.5%	410 321 up to Nov 20		#N/A

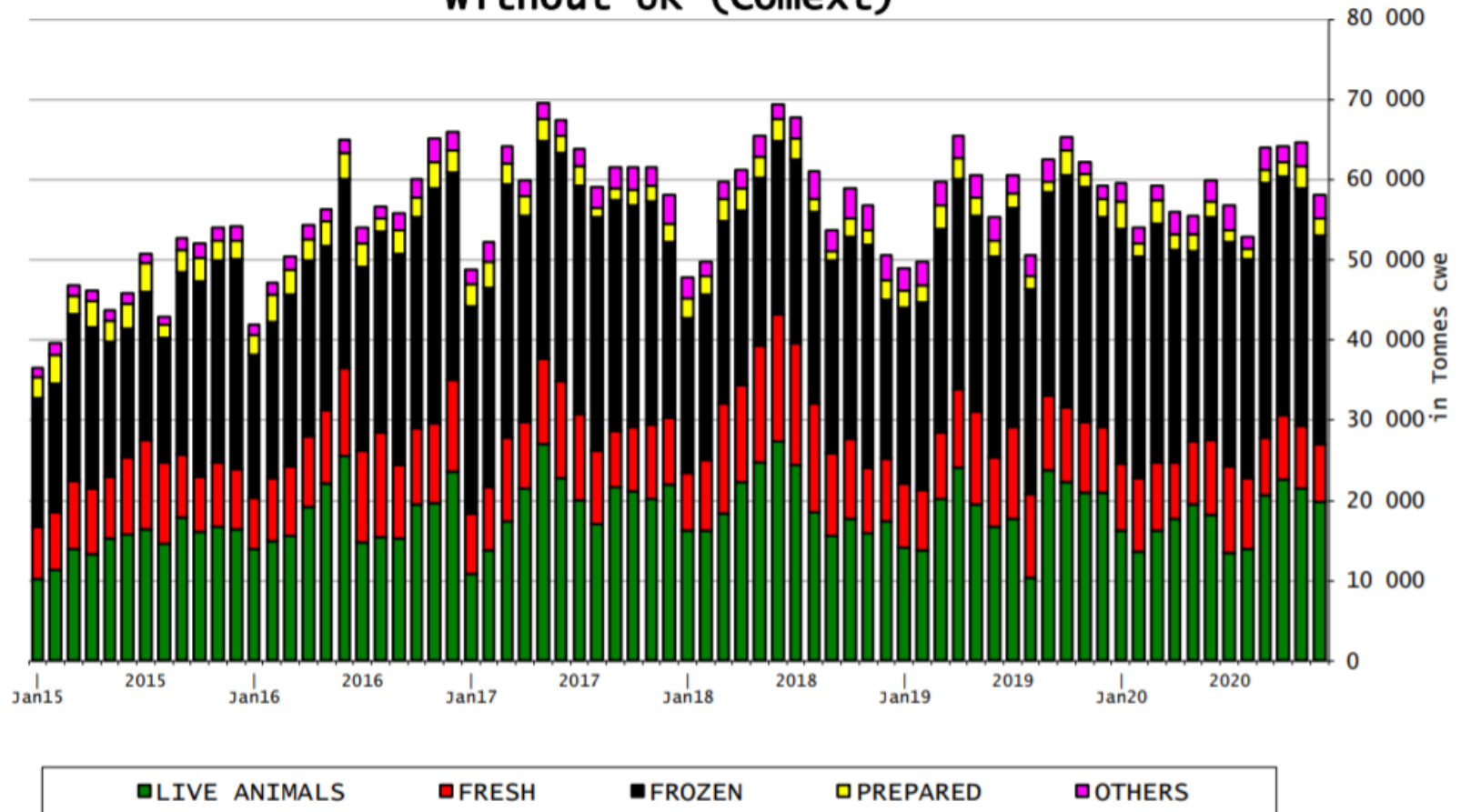


AB siğir eti ve canlı hayvan ihracatı (COMEXT)



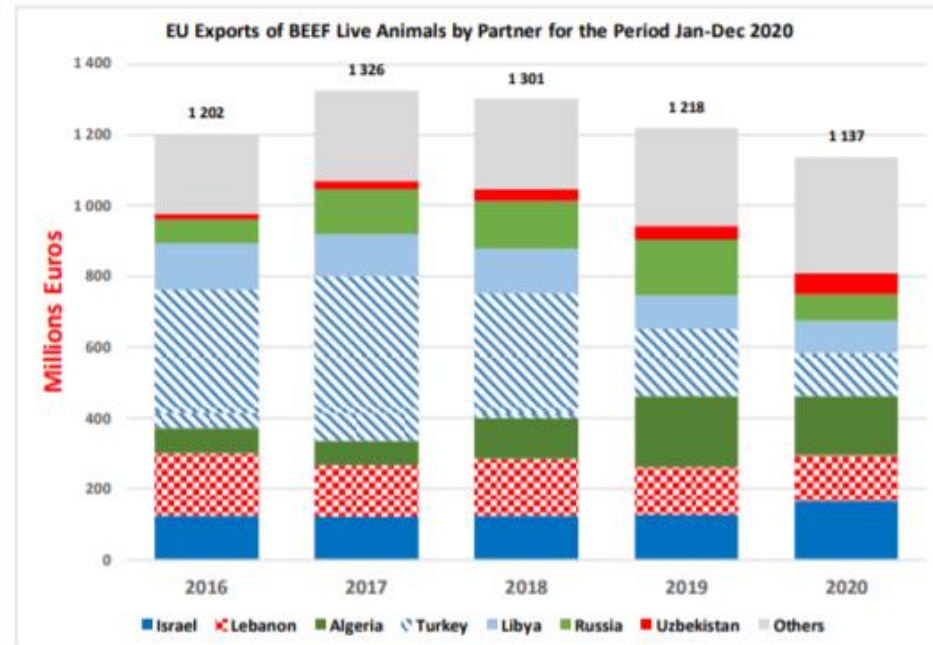
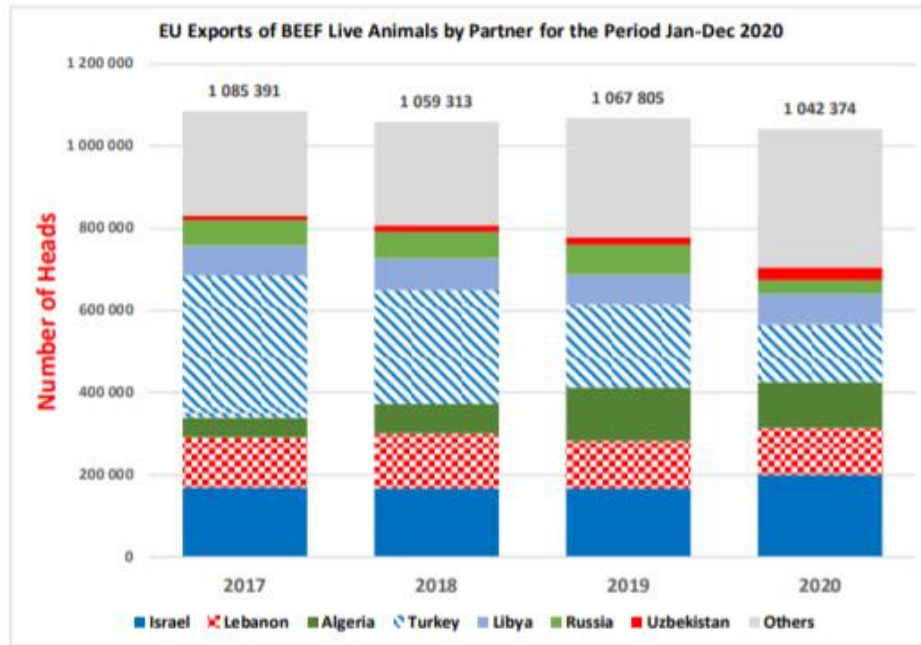
AB siğir eti ürünleri ihracatı (COMEXT)

EU Exports of BEEF products
without UK (Comext)





European
Commission





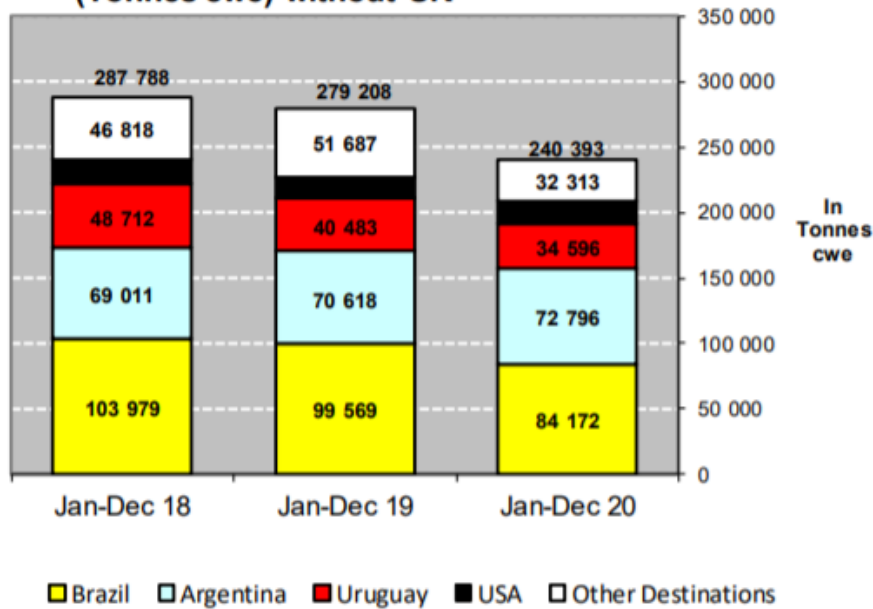
AB Sığır Eti ve Canlı Hayvan İthalatları (1): Ticaret Verileri (COMEXT – ton ca)

Origins	2016		2017		2018		2019		Jan-Dec 20		Compared to Jan-Dec 19
	tonnes	%	tonnes	%	tonnes	%	tonnes	%	tonnes	%	
Brazil	100 982	37.1%	87 157	33.5%	103 979	36.1%	99 569	35.7%	84 172	35.0%	- 15.5%
Argentina	43 112	15.8%	49 259	18.9%	69 011	24.0%	70 618	25.3%	72 796	30.3%	+ 3.1%
Uruguay	52 896	19.4%	55 212	21.2%	48 712	16.9%	40 483	14.5%	34 596	14.4%	- 14.5%
USA	20 290	7.5%	21 624	8.3%	19 268	6.7%	16 852	6.0%	16 516	6.9%	- 2.0%
Australia	21 909	8.1%	18 193	7.0%	17 368	6.0%	16 516	5.9%	10 998	4.6%	- 33.4%
New Zealand	8 275	3.0%	6 806	2.6%	7 165	2.5%	6 726	2.4%	6 101	2.5%	- 9.3%
Switzerland	5 496	2.0%	5 138	2.0%	5 437	1.9%	4 433	1.6%	4 325	1.8%	- 2.4%
Paraguay	5 309	2.0%	5 922	2.3%	5 520	1.9%	5 203	1.9%	4 234	1.8%	- 18.6%
Canada	392	0.1%	512	0.2%	1 343	0.5%	2 518	0.9%	1 550	0.6%	- 38.4%
Namibia	6 282	2.3%	5 043	1.9%	3 442	1.2%	7 706	2.8%	1 445	0.6%	- 81.3%
Serbia	557	0.2%	565	0.2%	1 134	0.4%	1 062	0.4%	971	0.4%	- 8.6%
Botswana	4 205	1.5%	2 686	1.0%	3 119	1.1%	4 950	1.8%	788	0.3%	- 84.1%
Japan	518	0.2%	645	0.2%	791	0.3%	997	0.4%	722	0.3%	- 27.6%
Norway	276	0.1%	389	0.1%	153	0.1%	129	0.0%	395	0.2%	+++
Chile	575	0.2%	319	0.1%	356	0.1%	392	0.1%	168	0.1%	- 57.1%
Ukraine	317	0.1%	374	0.1%	257	0.1%	411	0.1%	134	0.1%	- 67.4%
Other Destinations	705	0.3%	651	0.2%	733	0.3%	643	0.2%	481	0.2%	
Total (without UK)	272 094		260 496		287 788		279 208		240 393		
% change			- 4%		+ 10%		- 3%		- 13.9%		
United Kingdom	134 098		133 587		138 496		160 509		122 807 up to Nov 20		#N/A

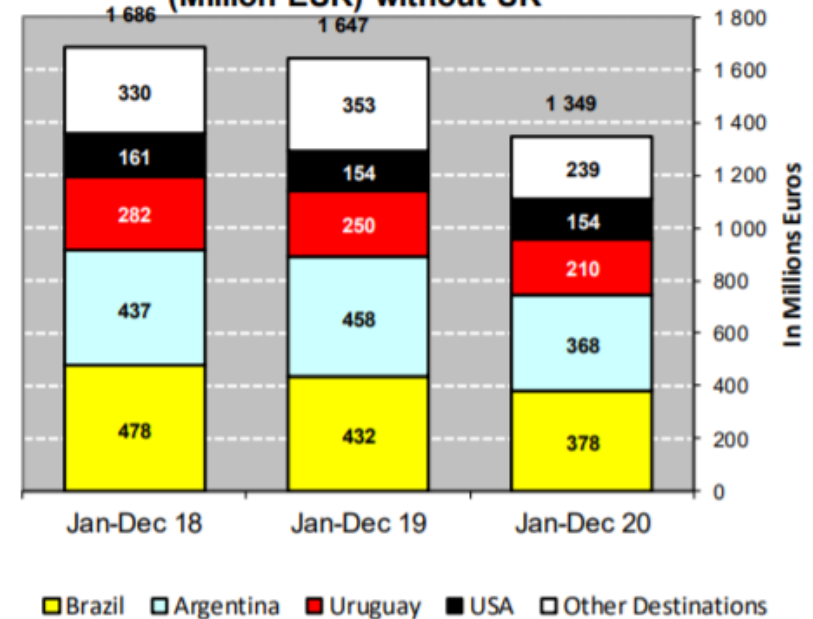


AB Sığır Eti ve Canlı Hayvan İthalatları (Birleşik Krallık hariç)

**IMPORTS of Beef & Veal into EU
(Tonnes cwe) without UK**

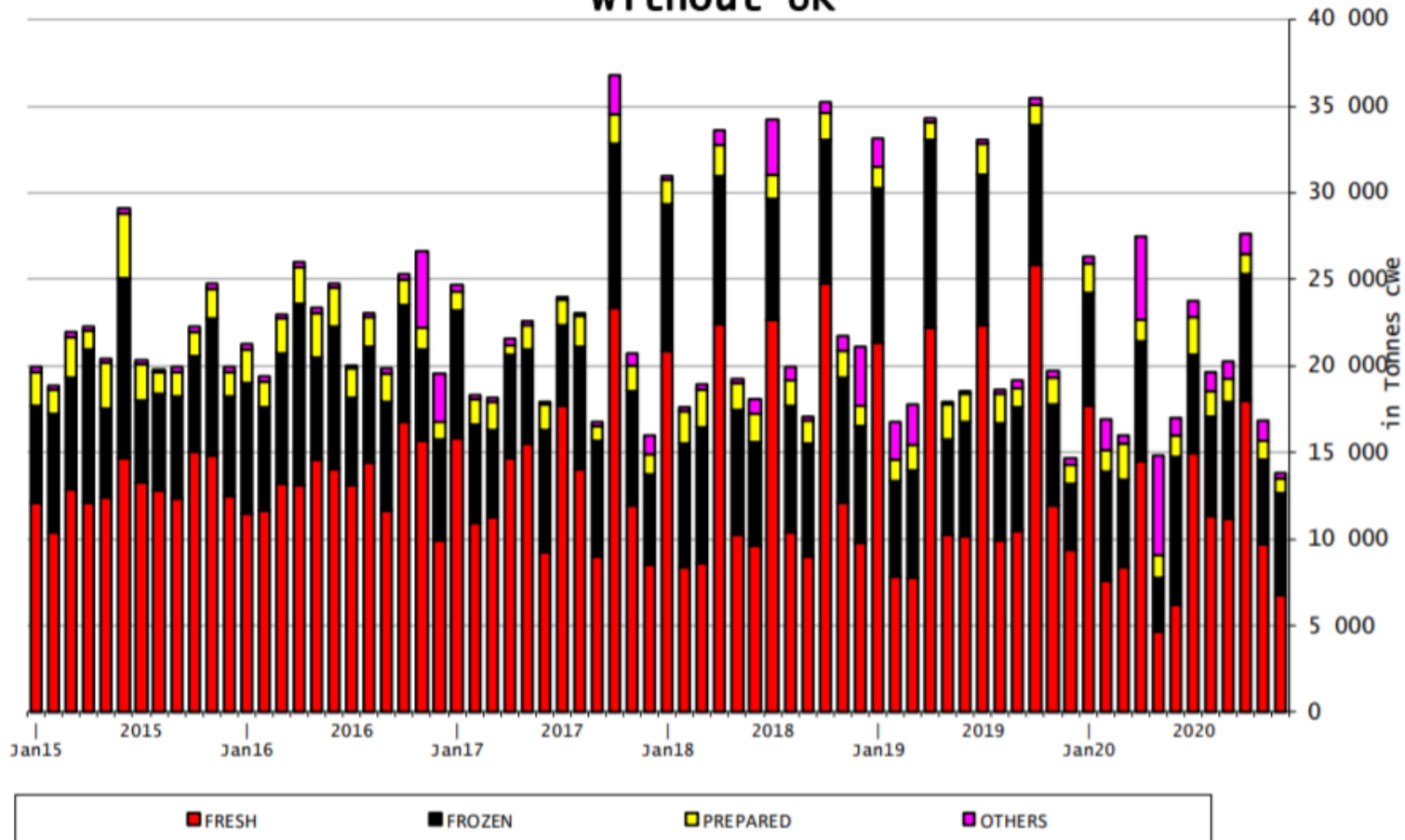


**IMPORTS of Beef & Veal into EU
(Million EUR) without UK**



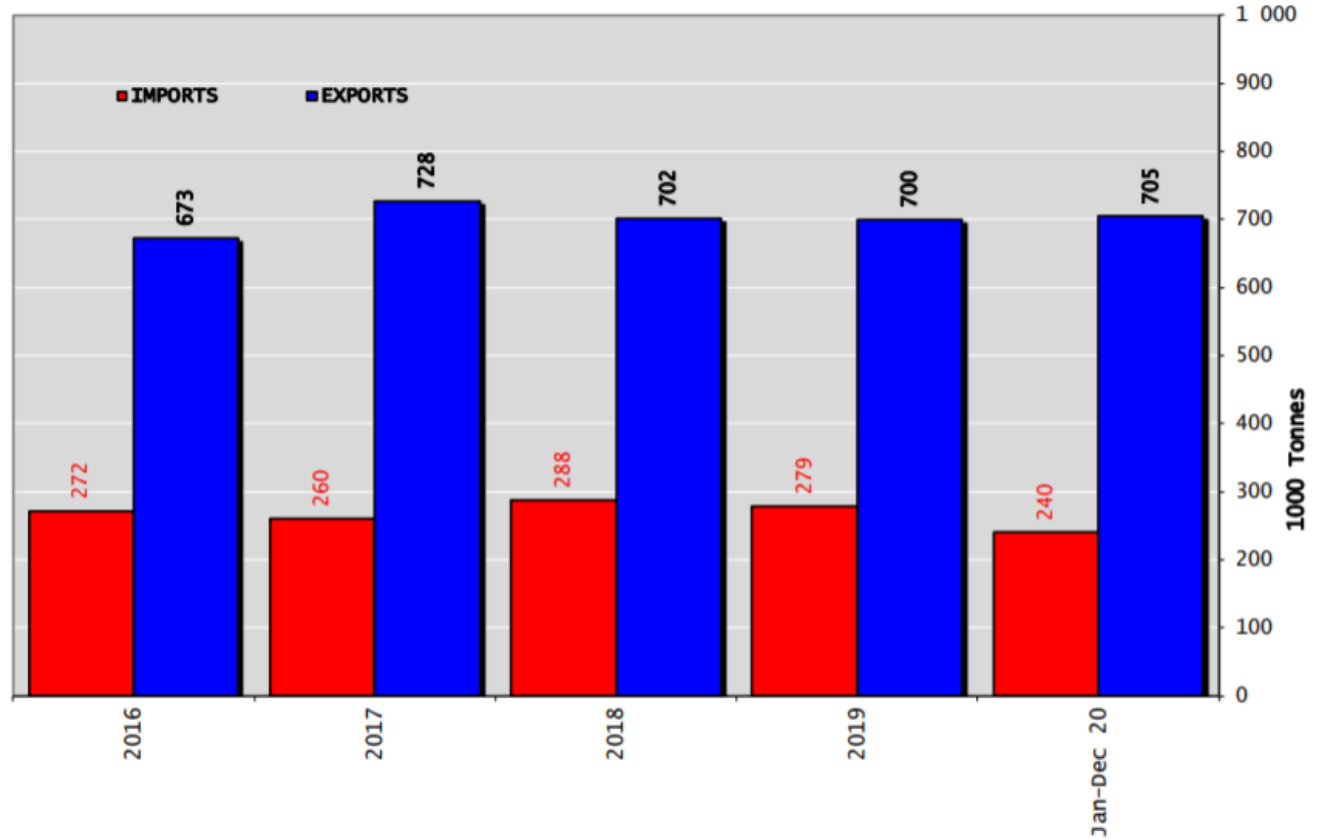
AB Sığır Eti İthalatları (Birleşik Krallık hariç)

EU Imports of BEEF products
without UK



Sığır Eti Ürünleri ve Canlı Hayvan Ticaret Dengesi (Ton) (Birleşik Krallık Hariç)

Trade Balance of Beef Products and Live Animals (without UK)

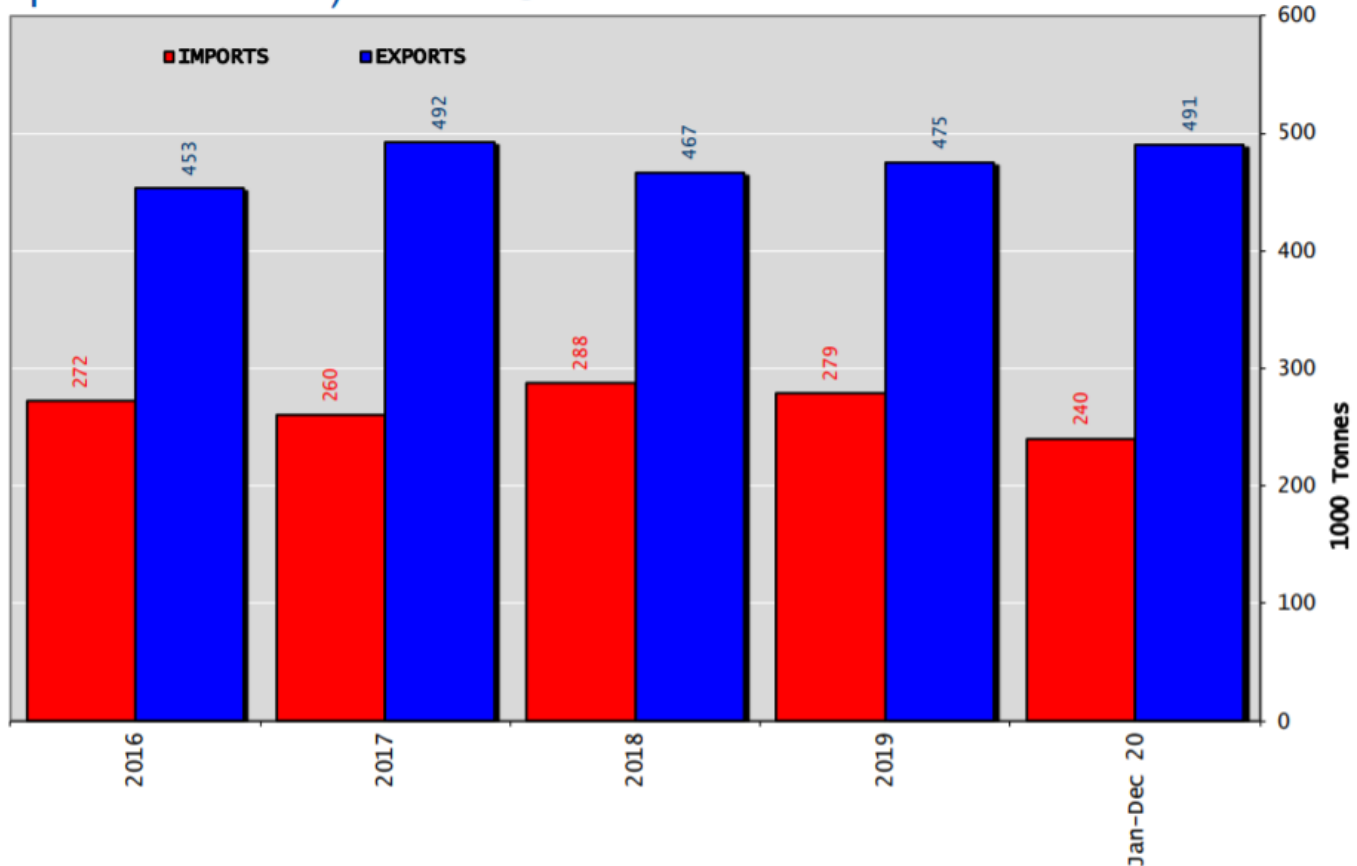




Sığır Eti Ürünleri Ticaret Dengesi (Canlı hayvanlar hariç) (Ton)

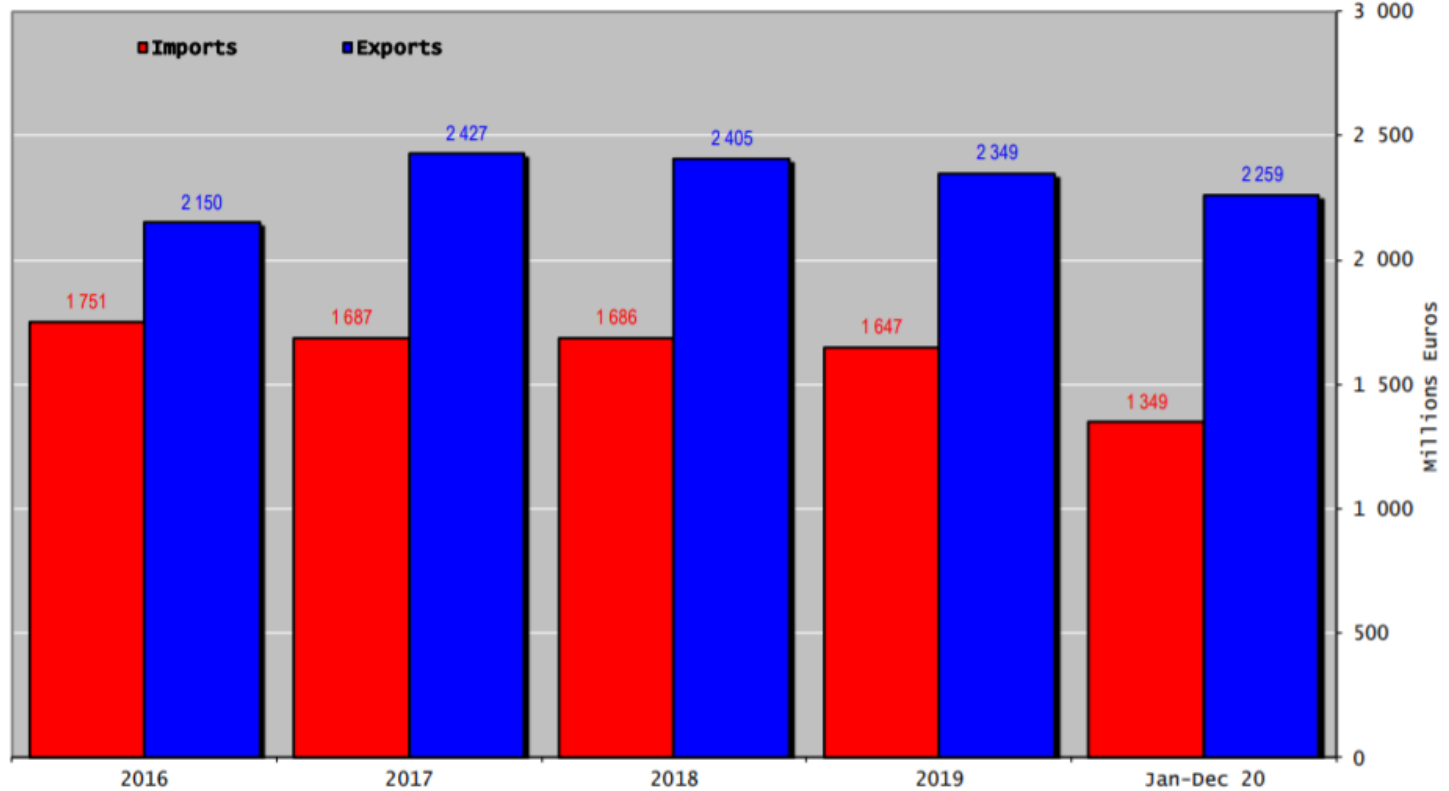
(Birleşik Krallık Hariç)

Trade Balance of Beef Products
(Except Live Animals) without UK



Sığır Eti Ürünleri ve Canlı Hayvan Ticaret Dengesi (Milyon Euro) (Birleşik Krallık Hariç)

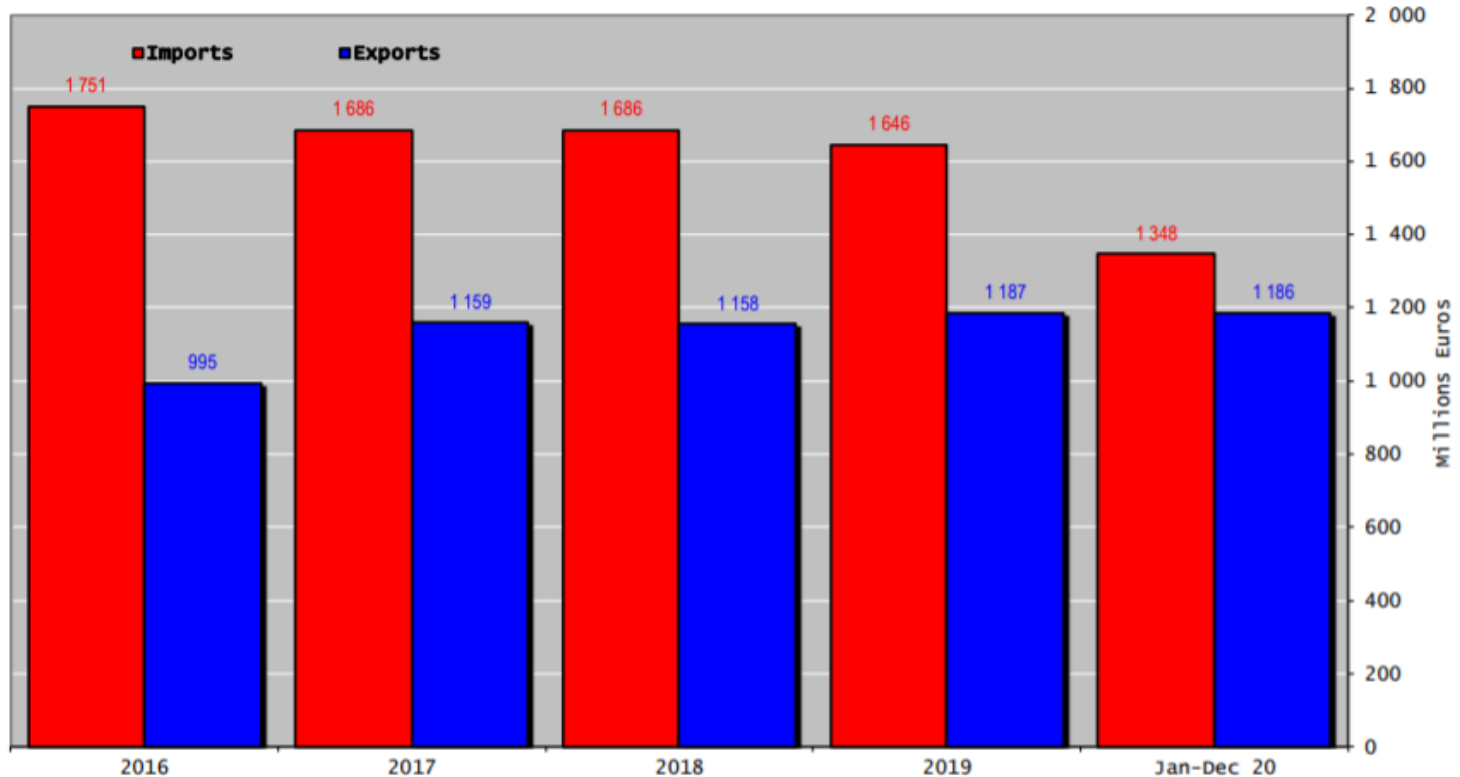
Trade Balance of Beef Products and Live Animals (without UK)



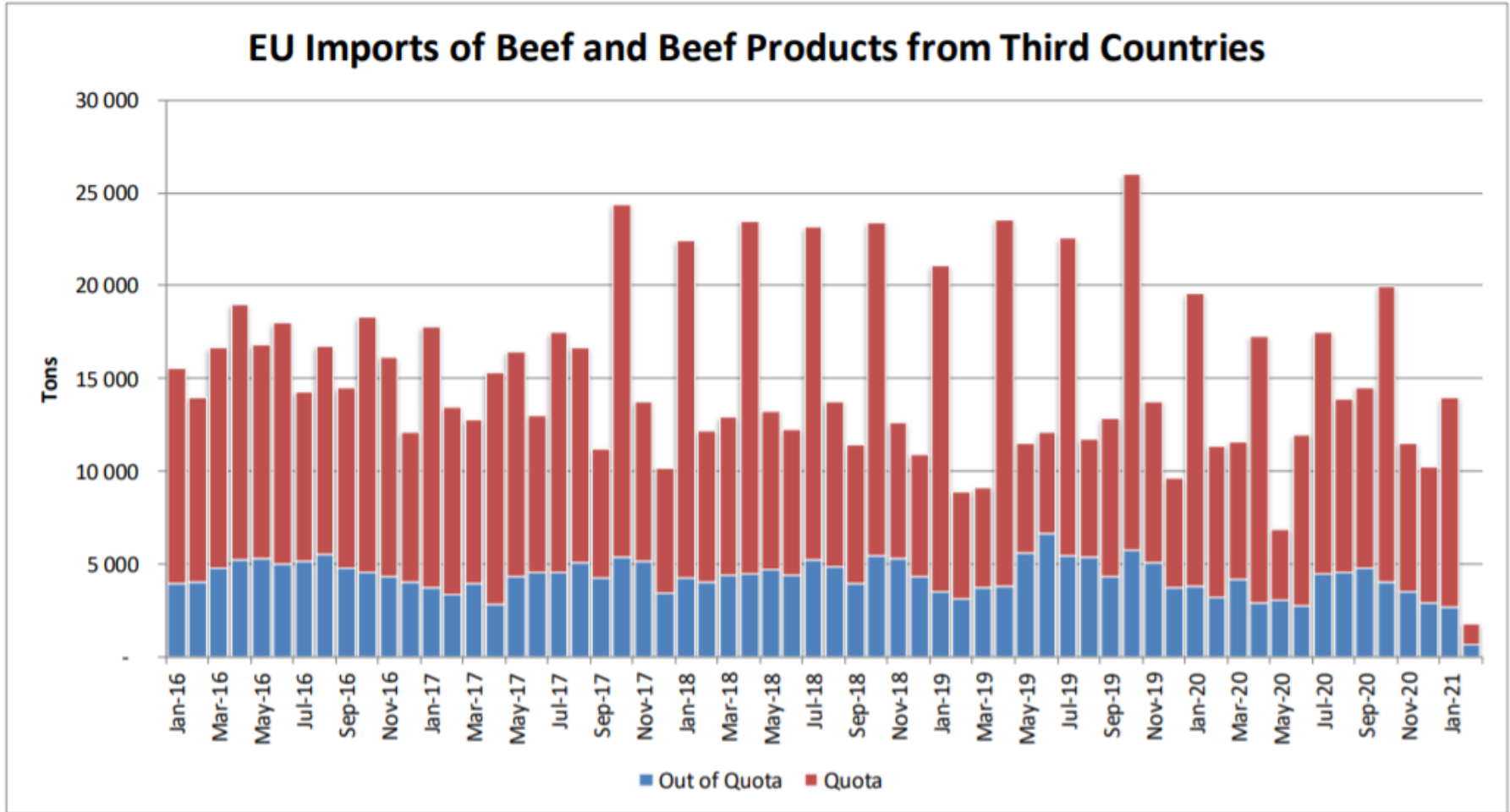


AB Sığır Eti Ürünleri Ticareti (Canlı Hayvanlar Hariç) (Milyon Euro) (Birleşik Krallık Hariç)

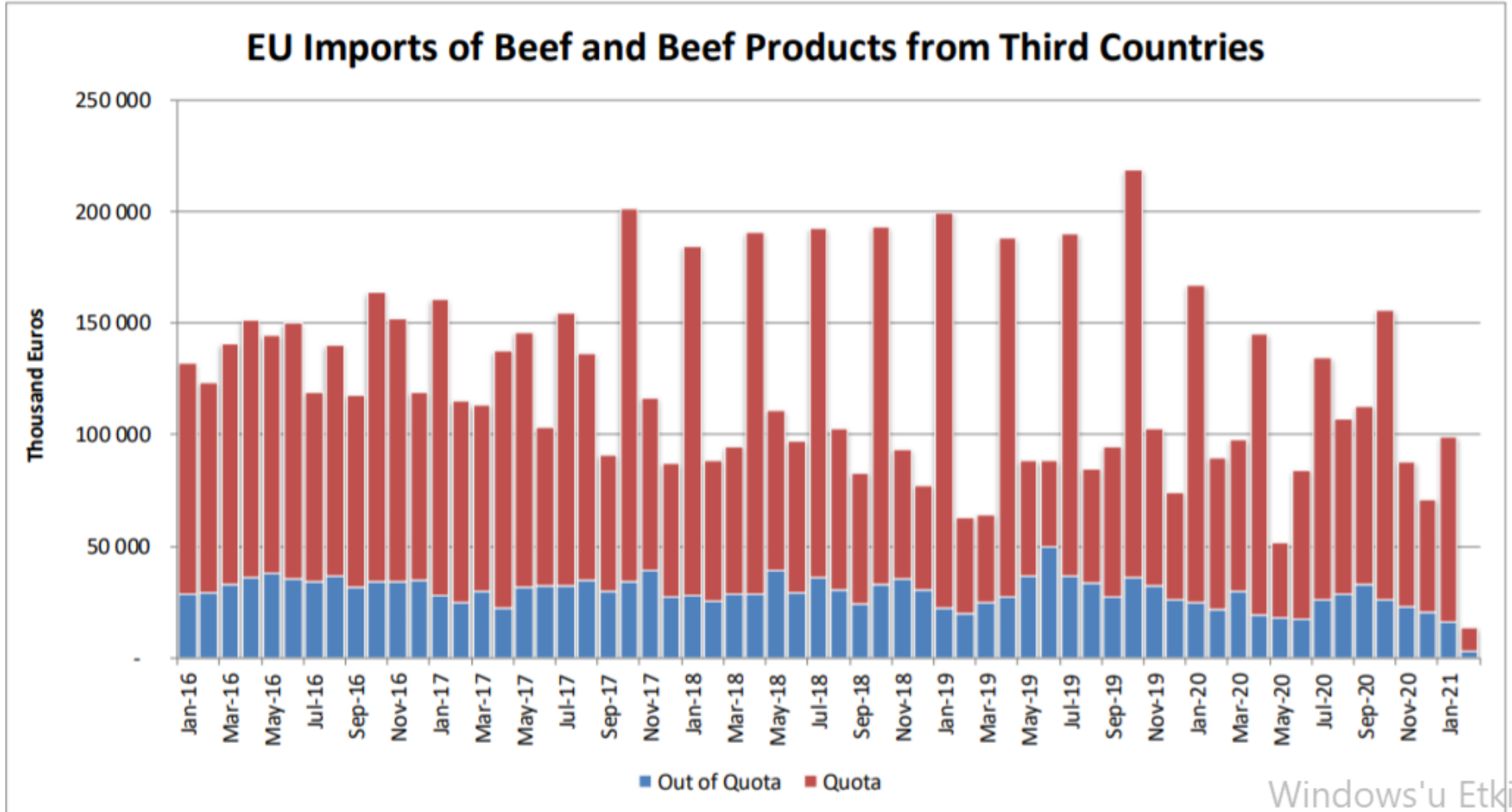
Trade Balance of Beef Products
(Except Live Animals) without UK



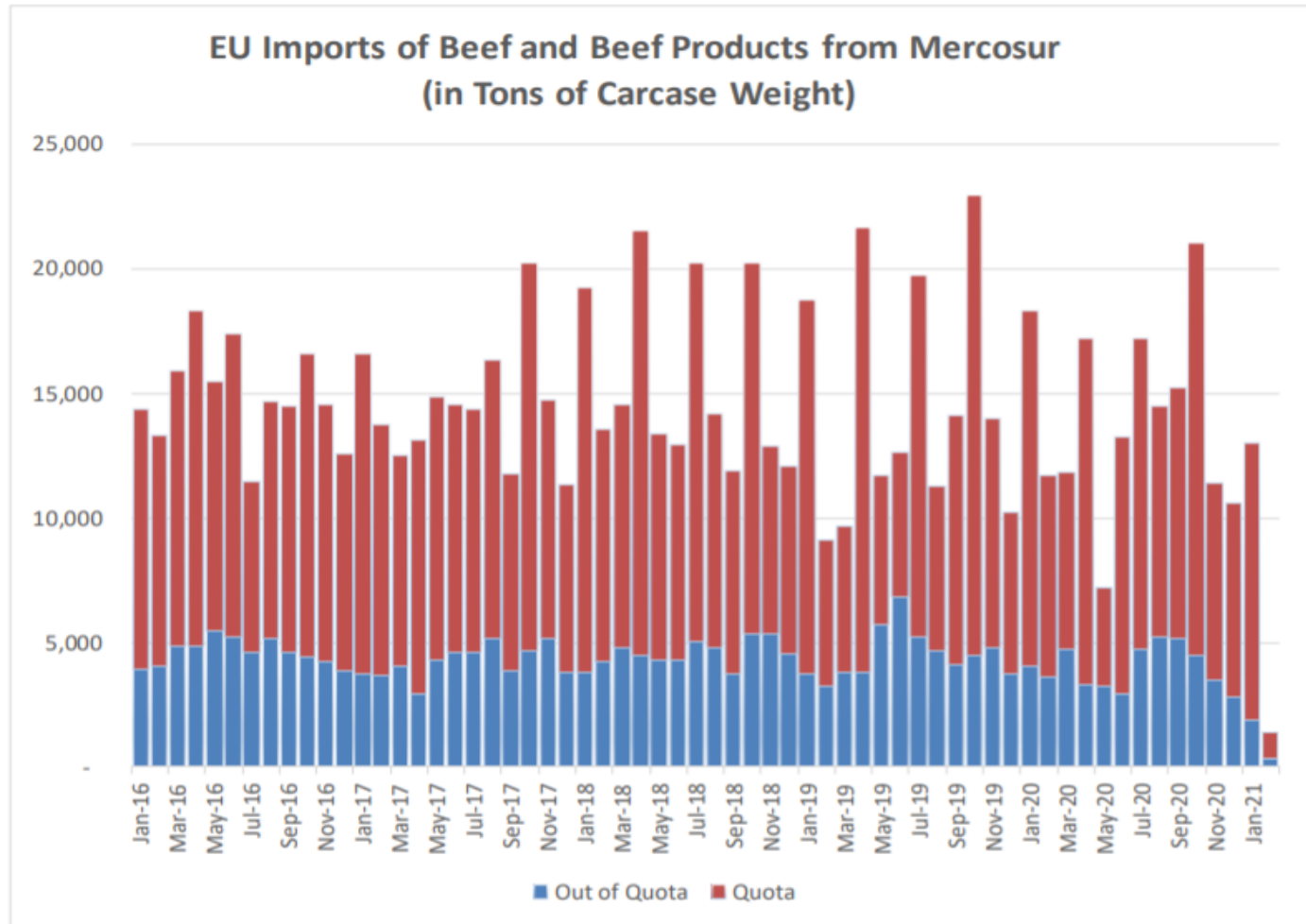
Üçüncü Ülkelerden AB Sığır ve Sığır eti Ürünleri İthalatları (Ton)



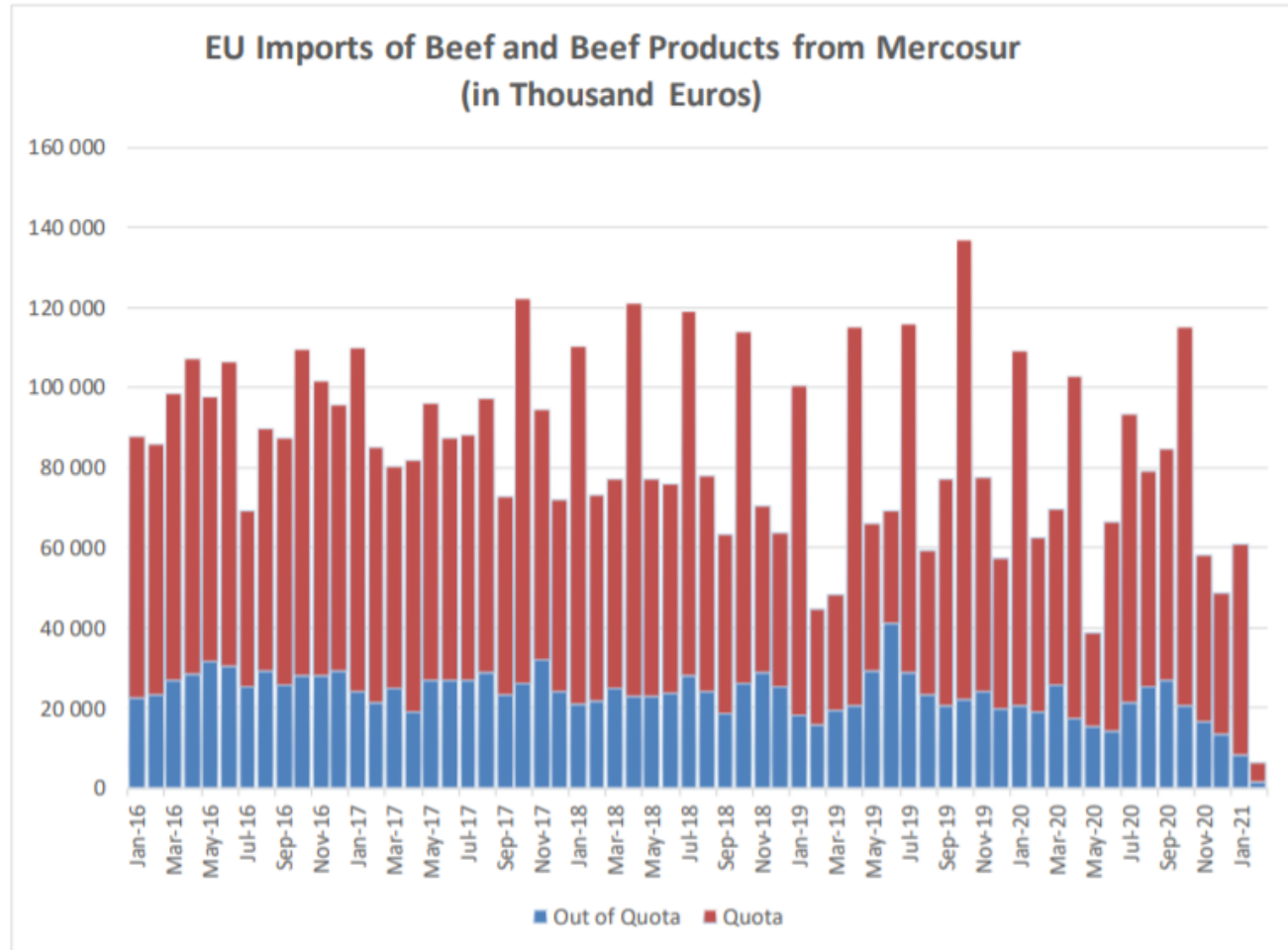
Üçüncü Ülkelerden AB Sığır ve Sığır eti Ürünleri İthalatları (Bin Euro)



Mercosur Ülkelerinden Sığır ve Sığır Eti Ürünleri AB ve Birleşik Krallık İthalatları (Ton, Karkas Ağırlık)



Mercosur Ülkelerinden Sığır ve Sığır Eti Ürünleri AB ve Birleşik Krallık İthalatları (Bin Euro)



YÜKSEK KALİTE SİĞİR ETİ İTHALAT KOTALARI



European
Commission

Hilton Quota

Regulation (EU) N° 593/2013

	Quantity allocated (Tons)	2018/2019		2019/2020		2020/2021*	
		Use		Use		Use	
09.4001 Australia	2 250						
09.4004 Argentina	200	11.05	5.53%	8.34	4.17%	1.46	0.73%
09.4450 Argentina	29 500	29 491.35	99.97%	26 649.20	90.34%	15 299.05	51.86%
09.4451 Australia	7 150	4 942.02	69.12%	3 000.01	41.96%	943.11	13.19%
09.4452 Uruguay	6 376	6 363.76	99.81%	4 520.57	70.90%	3 435.21	53.88%
09.4453 Brazil	10 000	4 147.19	41.47%	2 884.79	28.85%	1 855.63	18.56%
09.4454 New Zealand	1 300	980.60	75.43%	859.15	66.09%	429.82	33.06%
09.4002 Canada/US	11 500	3 883.04	33.77%	2 703.68	23.51%	940.25	8.18%
09.4455 Paraguay	1 000	935.41	93.54%	680.40	68.04%	365.33	36.53%
Total Beef	66 826	50 743.37	75.93%	41 297.80	61.80%	23 268.40	34.82%
Total Buffalo	2 450	11.05	0.45%	8.34	0.34%	1.46	0.06%
Total	69 276	50 754.42	73.26%	41 306.14	59.63%	23 269.86	33.59%

* up to 31/12/2020

Windows'u
Windows'u etki

YÜKSEK KALİTE SİĞİR ETİ İTHALAT KOTALARI



European
Commission

Quota erga omnes

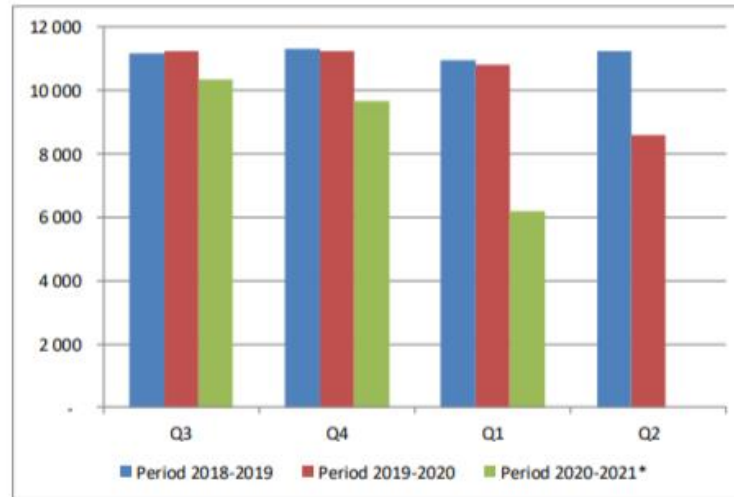
Regulation (EU) No 481/2012

	2018-Q3	2018-Q4	2019-Q1	2019-Q2	TOTAL
Period 2018-2019	11 165	11 300	10 973	11 256	44 693
Available	11 250	11 250	11 250	11 250	45 000
Use	99.24%	100.00%	97.53%	100.00%	99.32%
Available after transfer	11 250	11 335	11 200	11 527	
	99.24%	100.00%	97.53%	100.00%	

	2019-Q3	2019-Q4	2020-Q1	2020-Q2	TOTAL
Period 2019-2020	11 246	11 259	10 825	8 599	41 930
Available	11 250	11 250	11 250	11 250	45 000
Use	99.97%	100.00%	96.22%	76.44%	93.18%
Available after transfer	11 250	11 254	11 241	11 675	
	99.97%	100.00%	96.30%	73.66%	

	2020-Q3*	2020-Q4	2021-Q1	2021-Q2	TOTAL
Period 2020-2021*	10 332	9 674	6 191		26 198
Available	11 250	11 250	11 250		45 000
Use	91.84%	85.99%	55.03%		58.22%
Available after transfer	11 250	12 168	12 826		
	91.84%	79.51%	48.27%		

* Until 11.02.2021



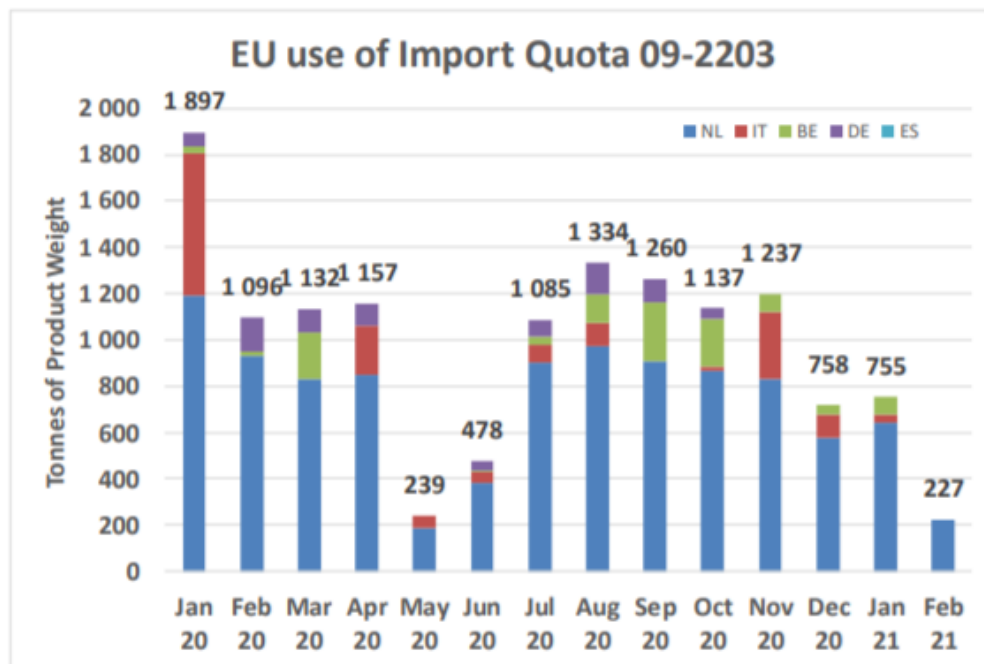
YÜKSEK KALİTE SİĞİR ETİ İTHALAT KOTALARI



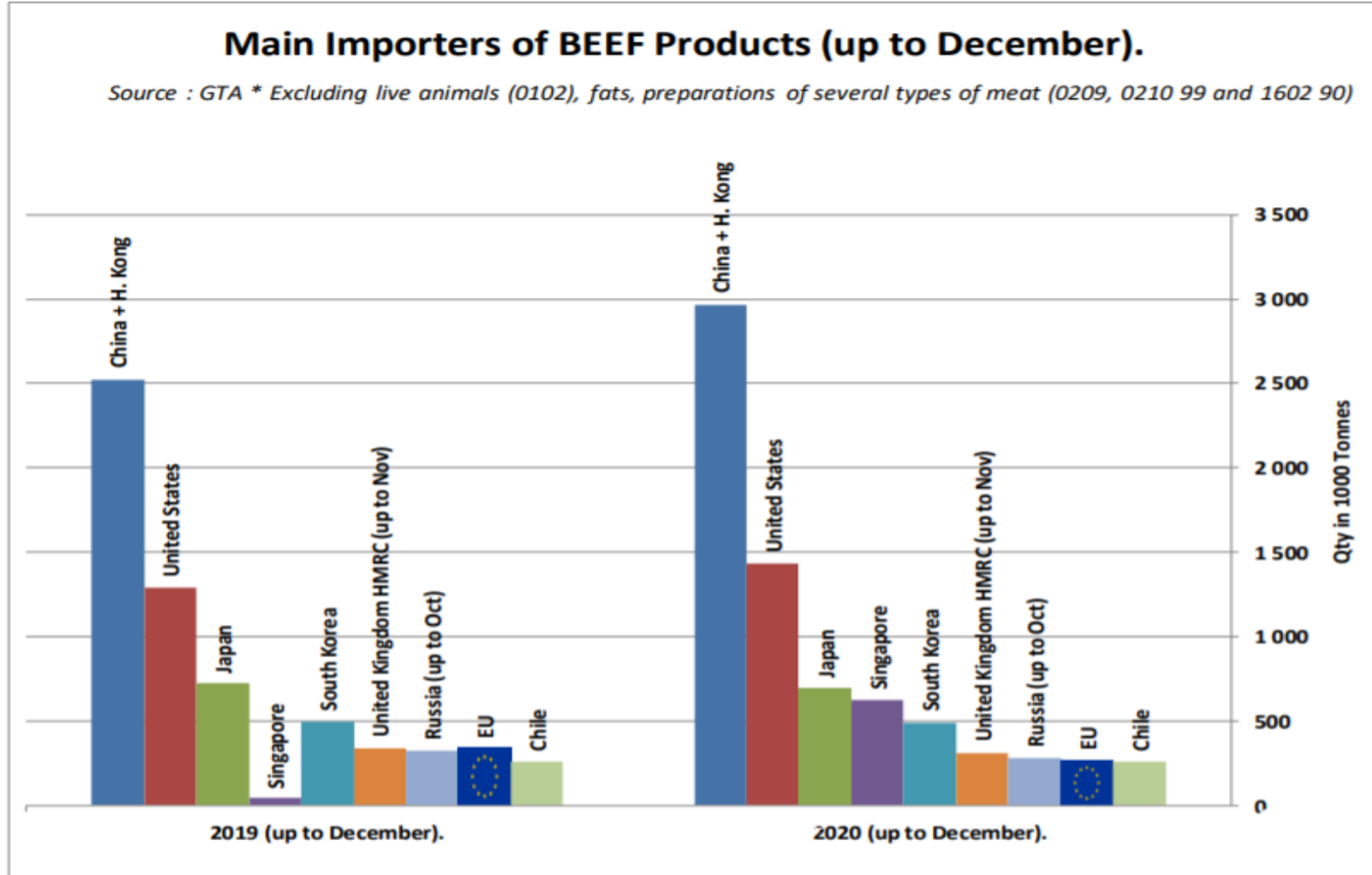
European Commission

Origin	GATT 2019-2020				Total
	2019-Q3	2019-Q4	2020-Q1	2020-Q2	
NL			2 957	1 415	4 372
IT			614	314	929
BE			241	10	251
DE			313	133	446
ES			-	-	-
Total import within Quota			4 125	1 873	5 998
Available			4 625	4 625	9 250
Use			89.19%	40.50%	64.84%
After transfer			4 625	5 125	
Use			89.19%	36.55%	

Origin	GATT 2020-2021				Total
	2020-Q3	2020-Q4	2021-Q1	2021-Q2	
NL	2 785	2 274	868		5 927
IT	174	404	31		610
BE	417	330	80		827
DE	305	124	-		428
Total import within Quota	3 680	3 132	980		7 792
Available	4 625	4 625	4 625	4 625	18 500
Use	79.57%	67.72%	21.19%		42.12%
After transfer	4 625	5 570	6 118		
Use	79.57%	56.23%	16.02%		

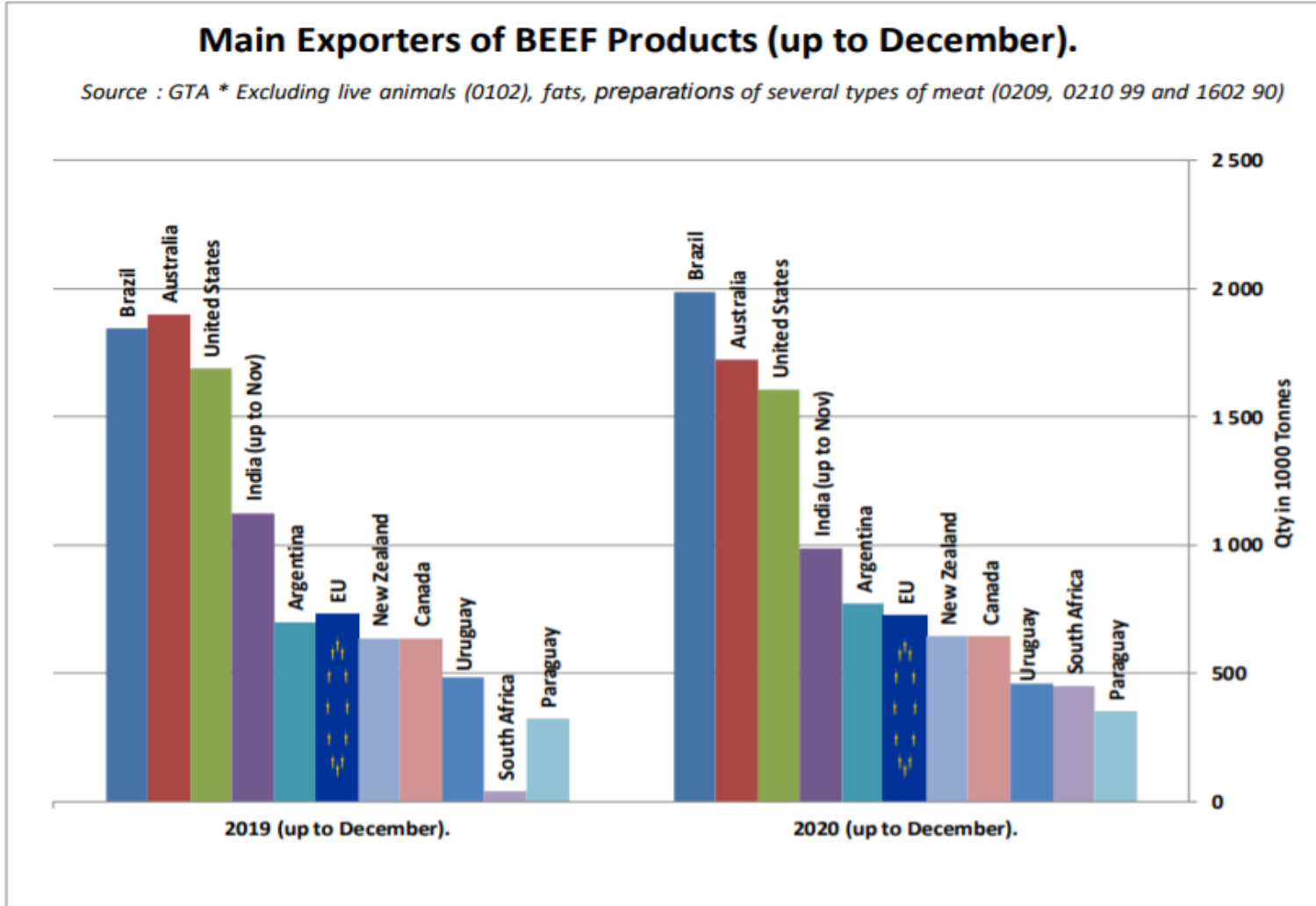


SIĞIR ETİ ÜRÜNLERİNİN NET İTHALATÇILARI (ARALIK AYINA KADAR)





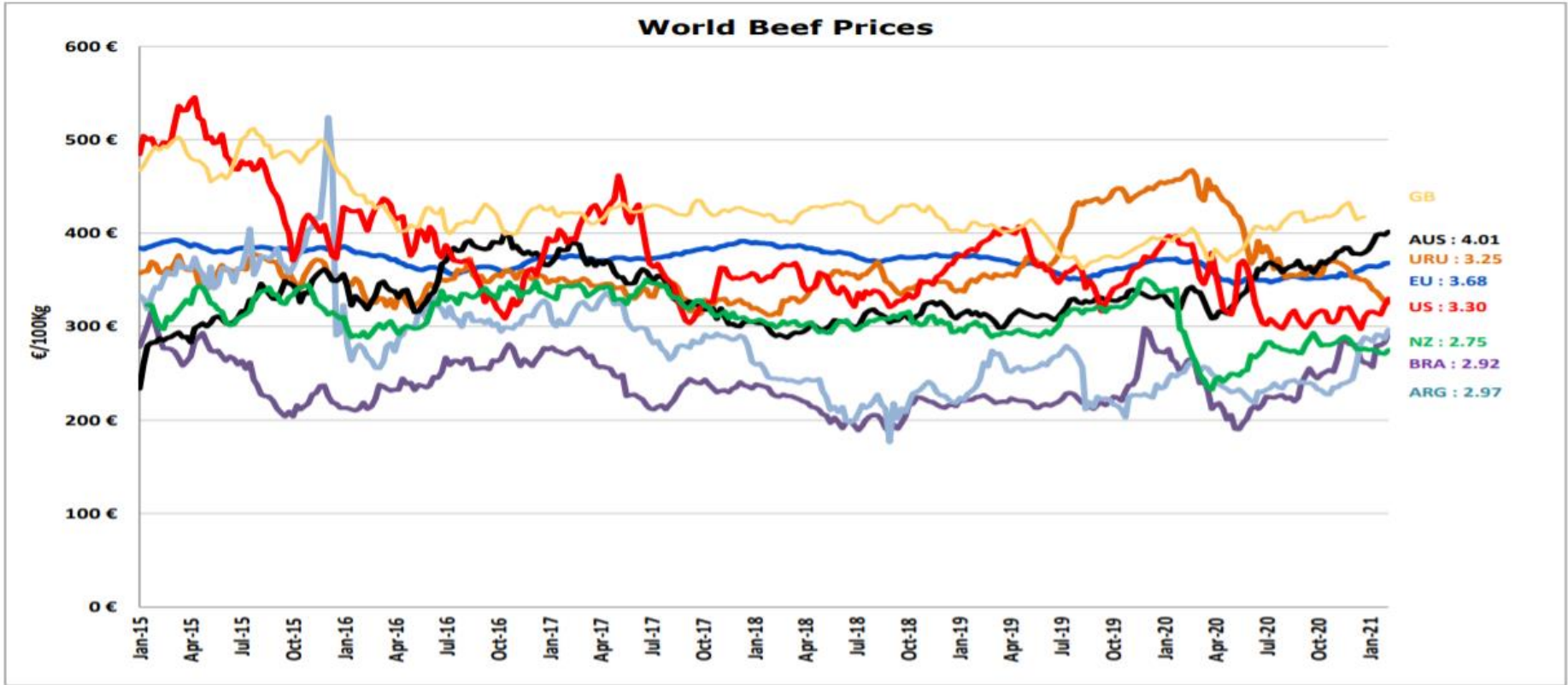
SIĞIR ETİ ÜRÜNLERİNİN NET İHRACATÇILARI (ARALIK AYINA KADAR)



DÜNYA SIĞIR ETİ PAZARI



Dünya Sığır Fiyatları AB, ABD, AVUSTURYA, YENİ ZELANDA



- ECB <http://sdw.ecb.europa.eu/browse.do?node=2018794>
US <https://www.marketnews.usda.gov/mnp/lis-home>
AUS <http://statistics.mla.com.au/Report/RunReport/ae59d4ac-74e4-4c56-93bd-982a044d9760>
UY <http://www.inac.gub.uy/innovaportal/v/11034/10/innova.front/indicadores-y-precios>
ARG http://www.abc-consorcio.com.ar/Estadisticas/detalle/117/precios_comparativos_del_novillo.html
BR <http://www.pecuaria.com.br/cotacoes.php>
NZ http://www.abc-consorcio.com.ar/Estadisticas/detalle/117/precios_comparativos_del_novillo.html

y 2021





Daha fazla bilgi için:

https://ec.europa.eu/agriculture/market-observatory/meat_en

Ve Agri-FOOD Veri Portalı:

<http://agridata.ec.europa.eu>