



# AB SIĞIR VE DANA ETİ PAZAR DURUMU

20 Haziran 2023

# LIVESTOCK

DECEMBER SURVEY

# EU EVOLUTION

## TOTAL BOVINE

Dec	TOTAL LIVESTOCK				%Var	Dec	BOVINE < 1 Year				%Var	Dec	BOVINE 1-2 Year				%Var	Dec	BOVINE > 2 Year				%Var	
	1000 Hd	2019	2020	2021	2022		2022	2021	2019	2020	2021		2022	2022	2021	2019	2020		2021	2022	2022	2021	2019	2020
BE	2 373	2 335	2 310	2 286	-1.1%	722	712	713	694	-2.7%	464	461	454	454	-0.0%	1 188	1 163	1 143	1 138	-0.5%				
BG	527	589	611	579	-5.2%	100	112	121	108	-11.3%	58	71	67	69	+3.4%	369	406	423	402	-4.8%				
CZ	1 367	1 340	1 359	1 390	+2.3%	411	405	408	407	-0.4%	299	295	296	314	+6.1%	657	640	655	669	+2.2%				
DK	1 500	1 500	1 480	1 466	-0.9%	522	524	516	510	-1.2%	280	279	280	281	+0.4%	698	697	684	675	-1.3%				
DE	11 640	11 302	11 040	10 997	-0.4%	3 485	3 405	3 355	3 308	-1.4%	2 751	2 639	2 569	2 600	+1.2%	5 403	5 258	5 116	5 089	-0.5%				
EE	254	253	251	250	-0.5%	71	72	69	69	+0.3%	50	49	51	49	-3.7%	133	132	131	132	+0.4%				
IE	6 560	6 529	6 649	6 552	-1.5%	1 962	2 057	2 108	1 995	-5.3%	1 741	1 708	1 775	1 810	+2.0%	2 856	2 765	2 766	2 746	-0.7%				
EL	530	632	614	607	-1.2%	157	162	176	170	-3.5%	91	145	114	122	+7.7%	283	325	324	314	-3.0%				
ES	6 600	6 636	6 576	6 456	-1.8%	2 529	2 541	2 319	2 487	+7.2%	857	853	1 016	786	-22.6%	3 214	3 242	3 240	3 182	-1.8%				
FR	18 173	17 816	17 330	16 986	-2.0%	5 125	5 119	4 945	4 868	-1.6%	3 183	3 063	3 021	2 992	-1.0%	9 865	9 634	9 364	9 127	-2.5%				
HR	420	423	428	422	-1.4%	151	146	156	149	-4.5%	107	111	107	112	+4.7%	162	166	165	161	-2.4%				
IT	6 377	6 400	6 280	6 049	-3.7%	1 759	1 774	1 722	1 563	-9.2%	1 588	1 595	1 562	1 520	-2.7%	3 030	3 031	2 997	2 966	-1.0%				
CY	74	83	85	81	-3.7%	25	27	27	25	-7.4%	12	14	15	15	-2.8%	38	42	43	42	-1.8%				
LV	395	399	393	391	-0.5%	108	112	107	107	+0.4%	65	65	68	66	-3.3%	222	222	219	219	-0.1%				
LT	635	630	629	642	+2.1%	167	169	166	173	+4.5%	132	129	135	130	-3.7%	336	332	328	339	+3.3%				
LU	192	191	187	186	-0.6%	50	50	49	48	-2.1%	41	41	40	41	+0.1%	101	100	98	98	-0.1%				
HU	909	933	910	894	-1.7%	258	266	269	258	-4.2%	193	195	153	159	+3.6%	458	472	487	477	-2.1%				
MT	14	14	14	14	+1.3%	4	4	4	4	+1.6%	3	3	3	3	-3.3%	7	7	7	7	+3.3%				
NL	3 721	3 691	3 705	3 751	+1.2%	1 528	1 510	1 519	1 536	+1.1%	440	465	482	496	+2.9%	1 752	1 716	1 704	1 719	+0.9%				
AT	1 880	1 855	1 870	1 861	-0.5%	605	599	611	597	-2.3%	426	414	421	430	+2.1%	848	842	838	834	-0.5%				
PL	6 262	6 279	6 379	6 448	+1.1%	1 748	1 735	1 802	1 929	+7.0%	1 757	1 800	1 915	1 699	-11.3%	2 758	2 744	2 662	2 821	+6.0%				
PT	1 675	1 691	1 641	1 617	-1.4%	531	526	528	433	-18.0%	240	257	214	266	+24.0%	903	909	899	919	+2.2%				
RO	1 923	1 875	1 827	1 825	-0.1%	400	369	347	346	-0.4%	223	225	222	222	+0.0%	1 300	1 281	1 258	1 258	-0.0%				
SI	483	486	483	465	-3.7%	151	153	157	149	-4.9%	136	133	131	130	-0.6%	197	199	195	186	-4.8%				
SK	432	442	434	426	-1.8%	122	126	125	122	-2.1%	83	87	82	82	-0.3%	227	229	228	222	-2.3%				
FI	841	835	830	822	-1.0%	287	292	287	283	-1.3%	205	199	205	203	-1.1%	349	344	338	336	-0.6%				
SE	1 405	1 391	1 390	1 391	+0.0%	453	464	460	461	+0.2%	339	323	334	333	-0.4%	613	603	596	597	+0.2%				
EU	77 161	76 551	75 705	74 856	-1.1%	23 431	23 428	23 065	22 798	-1.2%	15 764	15 621	15 732	15 382	-2.2%	37 966	37 503	36 908	36 675	-0.6%				
UK	9 459					2 860					2 335				4 264									

## LIVESTOCK

### DECEMBER SURVEY

Dec	TOTAL COWS				%Var 2022 2021	DAIRY COWS				%Var 2022 2021	OTHER COWS				%Var 2022 2021
	1000 Hd	2019	2020	2021		2022	2019	2020	2021		2022	2019	2020	2021	
BE	939	921	917	913	-0.4%	538	538	537	544	+1.2%	401	383	379	370	-2.6%
BG	343	382	397	377	-5.1%	227	242	230	213	-7.7%	116	140	166	164	-1.5%
CZ	570	560	574	579	+0.9%	361	357	362	357	-1.6%	209	203	212	223	+5.2%
DK	645	646	635	627	-1.3%	563	565	559	556	-0.6%	83	80	76	70	-7.9%
DE	4 651	4 548	4 445	4 420	-0.6%	4 012	3 921	3 833	3 810	-0.6%	640	626	612	610	-0.3%
EE	116	116	115	115	-0.4%	85	84	84	84	+0.1%	31	32	31	31	-1.6%
IE	2 383	2 379	2 395	2 372	-1.0%	1 426	1 456	1 505	1 510	+0.3%	957	923	890	862	-3.1%
EL	242	210	213	207	-3.0%	86	90	91	88	-3.6%	156	120	122	119	-2.5%
ES	2 881	2 909	2 900	2 889	-0.4%	813	811	809	810	+0.2%	2 068	2 099	2 091	2 079	-0.6%
FR	7 505	7 379	7 204	7 020	-2.6%	3 491	3 406	3 322	3 231	-2.7%	4 014	3 974	3 882	3 790	-2.4%
HR	142	144	142	138	-2.8%	130	110	102	79	-22.5%	12	34	40	59	+47.5%
IT	2 237	2 243	2 193	2 348	+7.1%	1 876	1 871	1 844	1 865	+1.1%	362	372	349	483	+38.6%
CY	35	40	40	38	-3.5%	35	39	39	38	-1.6%	0	0	1	0	-100.0%
LV	195	196	193	191	-1.0%	138	136	131	128	-2.6%	56	60	61	63	+2.4%
LT	299	295	290	291	+0.4%	241	233	225	224	-0.5%	58	62	65	67	+3.4%
LU	79	78	78	77	-0.5%	54	54	55	55	+1.4%	25	24	23	22	-4.9%
HU	412	414	423	421	-0.4%	243	247	261	278	+1.1%	169	167	142	143	+0.8%
MT	6	6	6	6	+3.4%	6	6	6	6	+4.3%	0	0	0	0	-13.6%
NL	1 633	1 612	1 599	1 614	+0.9%	1 590	1 569	1 554	1 570	+1.0%	43	43	45	44	-2.2%
AT	720	715	712	708	-0.5%	524	525	526	551	+4.6%	195	191	186	158	-15.0%
PL	2 406	2 391	2 289	2 172	-5.1%	2 167	2 126	2 035	2 037	+0.1%	239	266	254	135	-47.0%
PT	731	739	739	726	-1.8%	234	233	230	224	-2.5%	497	507	509	502	-1.4%
RO	1 166	1 145	1 116	1 115	-0.1%	1 139	1 122	1 082	1 081	-0.1%	27	23	34	34	+0.6%
SI	166	167	165	157	-4.8%	101	99	101	93	-7.6%	65	68	65	64	-0.4%
SK	192	192	191	188	-1.7%	126	122	120	116	-3.4%	66	69	71	72	+1.2%
FI	318	316	311	306	-1.4%	259	256	249	243	-2.2%	59	61	62	63	+2.0%
SE	500	499	497	496	-0.1%	301	304	300	298	-0.6%	198	194	197	199	+0.7%
EU	31 513	31 241	30 778	30 512	-0.9%	20 766	20 522	20 213	20 088	-0.6%	10 748	10 718	10 565	10 424	-1.3%
UK	3 337					1 867					1 470				

Source: EStat Newcronos

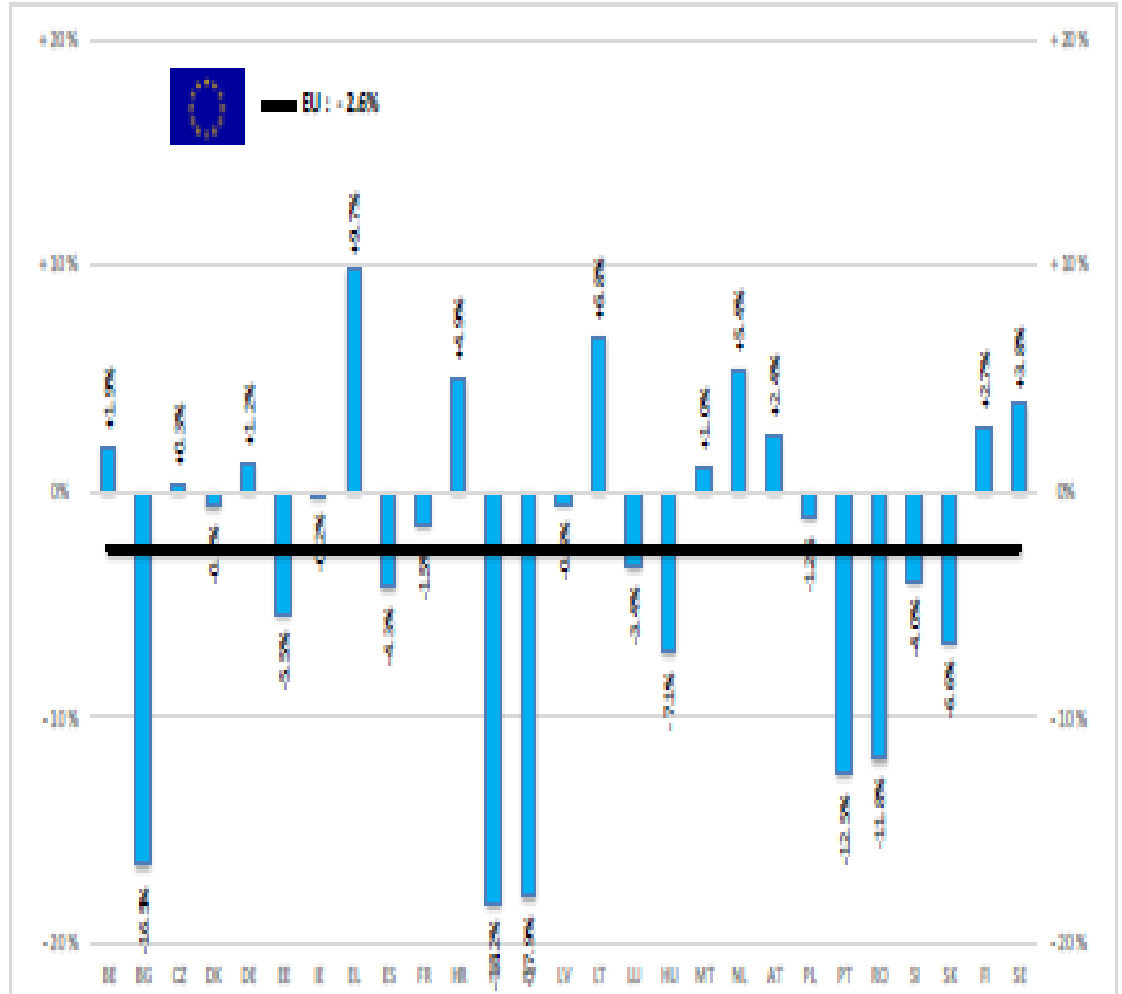
EU %Var is calculated considering only countries available in 2021 AND 2022





BAŞ	HEADS	Jan-Mar 23/22
		EU
BOĞA	Bull	-3.2%
ÖKÜZ	Bullock	-0.7%
İNEK	Cow	-1.9%
DÜVE	Heifer	-2.7%
BUZAĞI	Calve	-2.0%
GENÇ SİĞİR	Young cattle	-4.7%
Büyükbaş Hayvan Eti	Meat of bovine animals	-2.6%

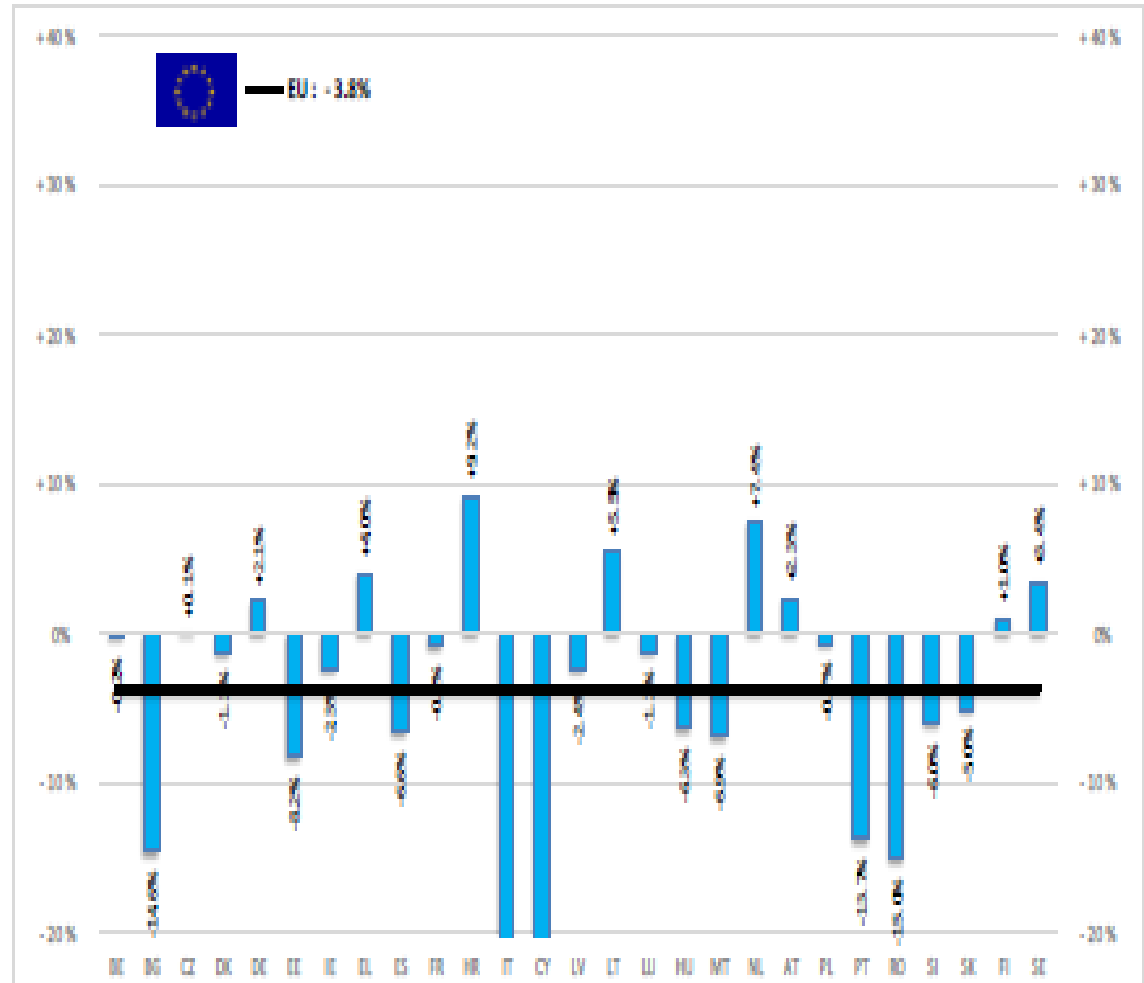
Estimates for last month of period : EU



Source : EStat - Newcronos

TON	TONNES	Jan-Mar 23/22
		EU
BOĞA	Bull	-3.7%
ÖKÜZ	Bullock	-2.2%
İNEK	Cow	-1.7%
DÜVE	Heifer	-5.9%
BUZAĞI	Calve	-5.3%
GENÇ SİĞİR	Young cattle	-7.7%
Büyükbaş Hayvan Eti	Meat of bovine animals	-3.8%

Estimates for last month of period : EU

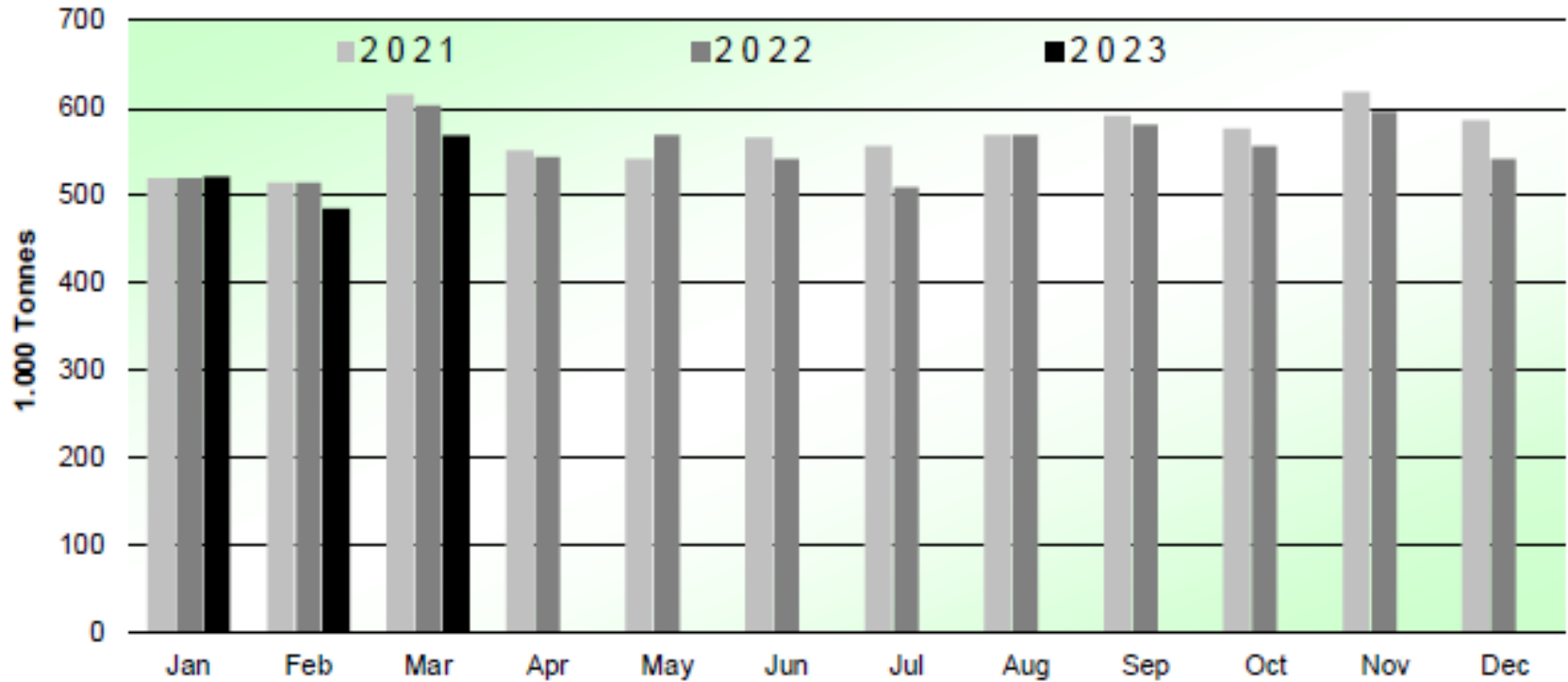


Source : EStat - Newcronos



## SIĞIR VE DANA ETİ ÜRETİMİ (AB Kesimler – Ton)

### Beef & Veal Production (EU Slaughtering) - Tonnes



Source: EStat-Newcronos

EU Prices week		23	Evolution since last week	Evolution since last month	Evolution since last year
<b>Carcasse</b>	Average A/C/Z -R3	496.6	+ 0.1%	- 2.0%	+ 2.1%
	Young Bovines (Z)	511.2	+ 0.3%	- 0.8%	+ 7.4%
	Young Bulls (A)	487.1	+ 0.3%	- 2.4%	+ 1.7%
	Steers (C)	529.4	- 0.8%	- 2.1%	- 1.5%
	Cows (D)	426.9	- 0.1%	- 1.5%	- 5.0%
	Heifers (E)	510.9	- 0.6%	- 1.8%	+ 1.8%
	Calves slaughtered <8M	617.8	- 0.8%	- 5.3%	+ 5.7%
<b>Live Animals</b>	Male Calves Dairy Type	149.1	+ 3.3%	+ 9.1%	+ 6.9%
	Male Calves Beef Type	284.1	+ 1.6%	+ 7.2%	+ 9.8%
	Young Store Cattle	3.33	+ 0.5%	+ 0.1%	+ 6.0%
	Yearling Male Store Cattle	3.67	- 0.8%	- 2.5%	- 1.8%
	Yearling Female Store Cattle	2.94	- 0.2%	- 0.6%	- 2.5%

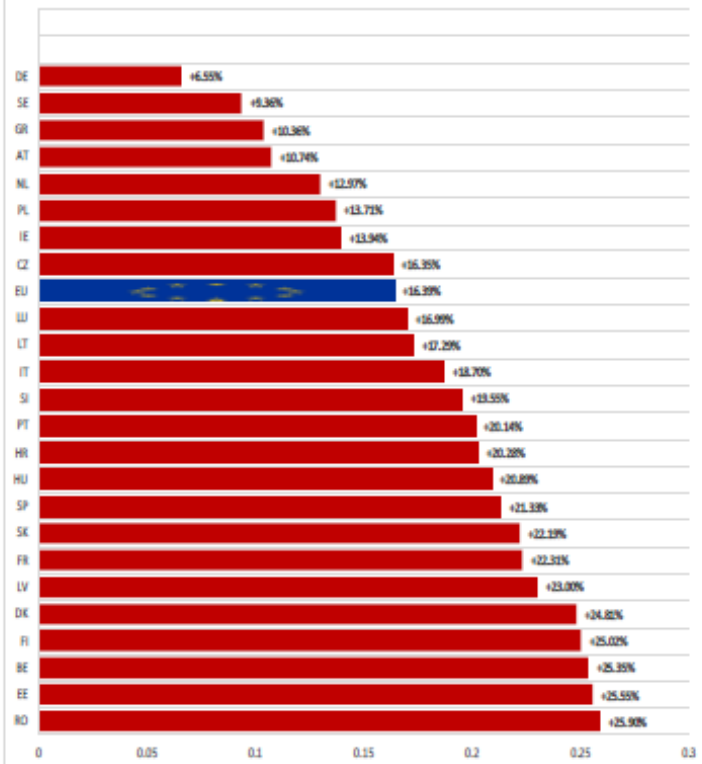
Sources : MSs notifications (Regulation (EU) 1182/2017 and 1184/2017)

# KARKAS FİYATLARI

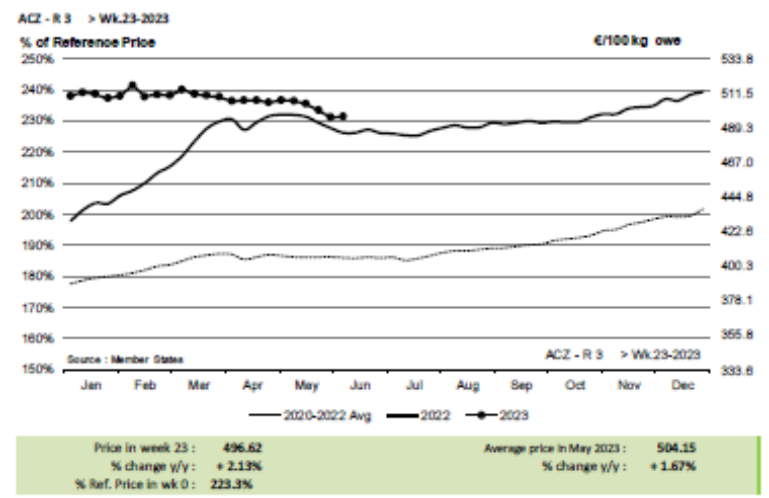
# AB DEĞİŞİM A/C/Z. R3



EU ACZ R3 Price Comparison between average monthly price June 2022 - May 2023 compared to June 2021 - May 2022



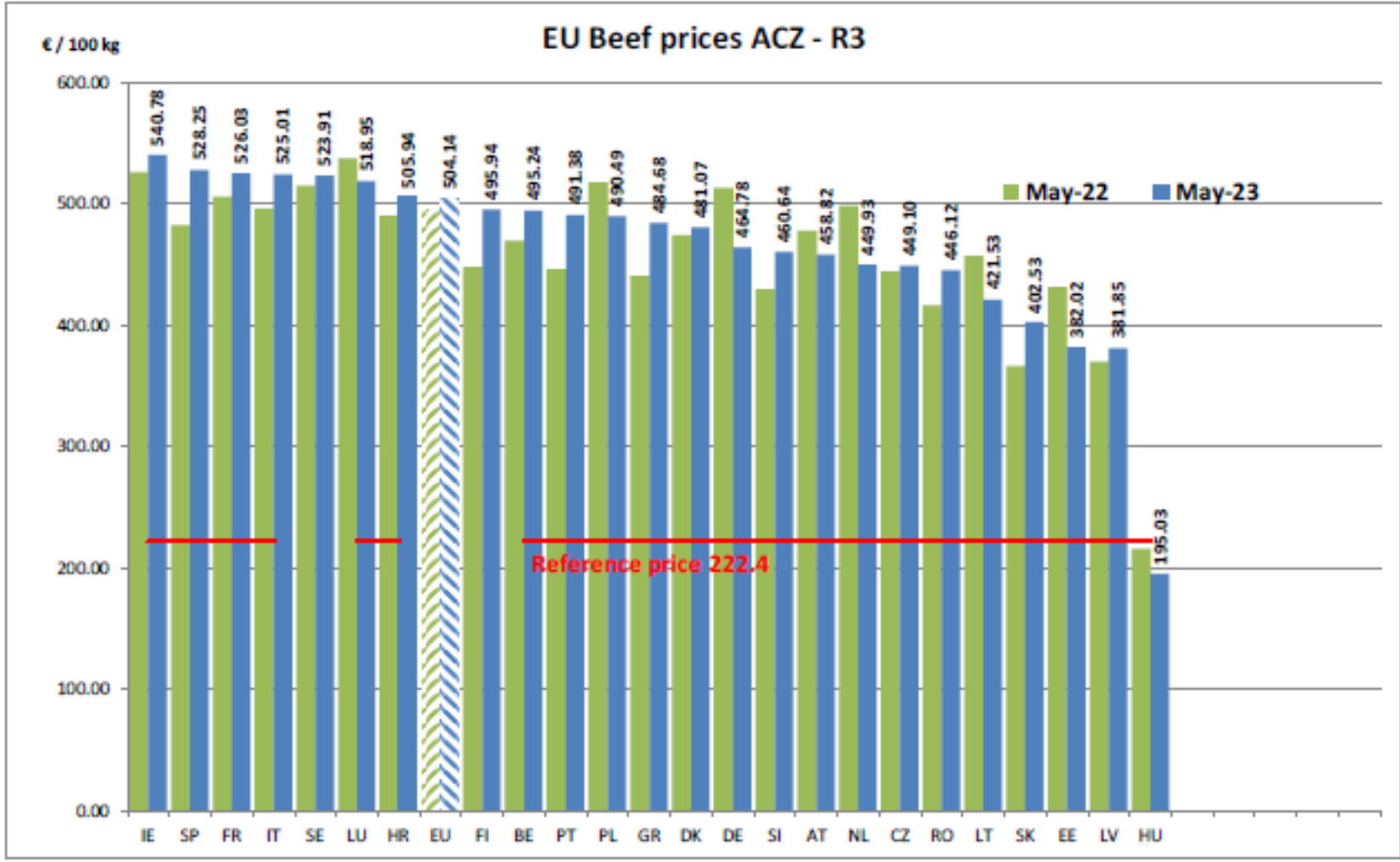
2023





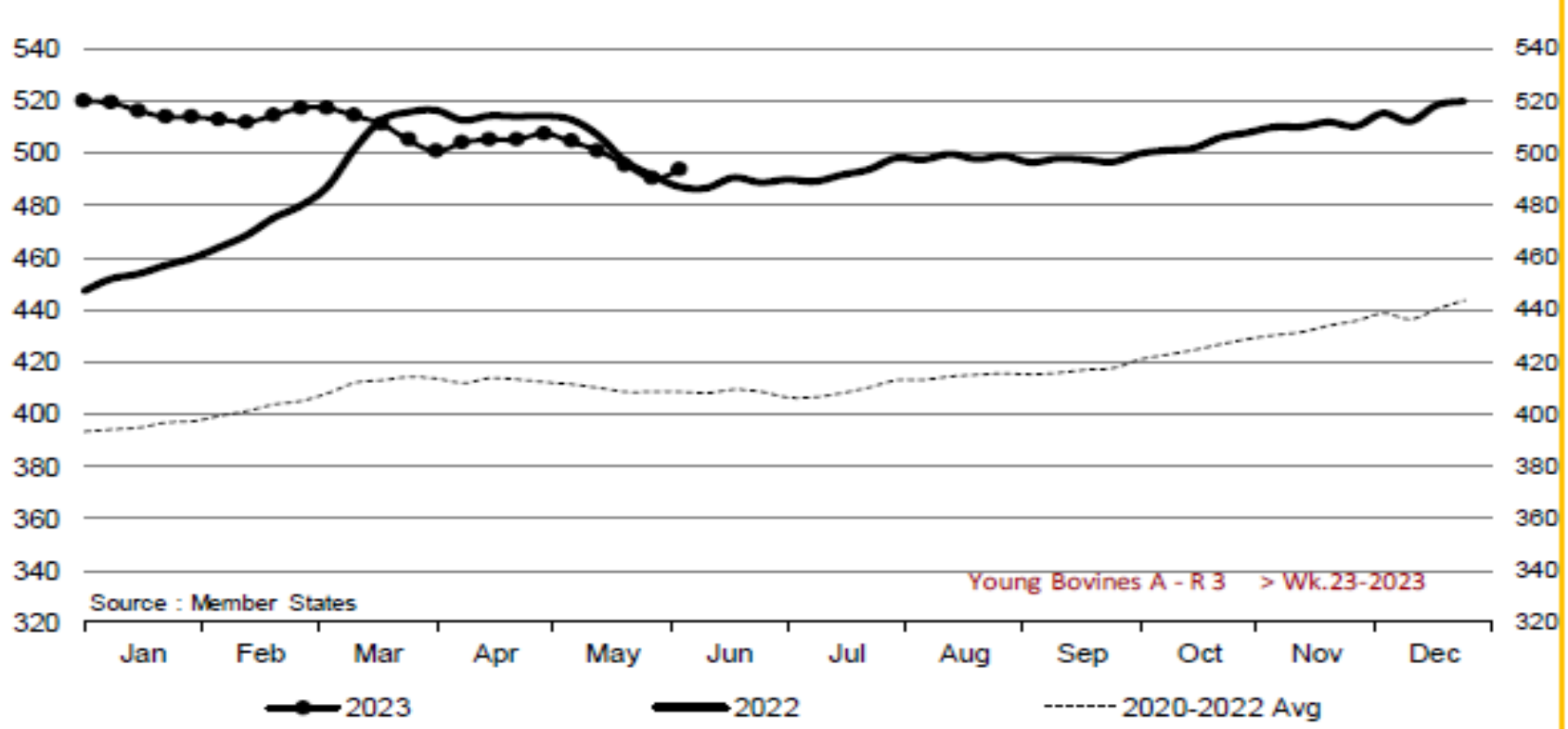
# KARKAS FİYATLARI

AB DEĞİŞİM  
A/C/Z. R3





Young Bovines A - R 3 > Wk.23-2023



Source : Member States

Young Bovines A - R 3 > Wk.23-2023

Price in week 23 :	493.82	Average price in May 2023 :	501.16
% change y/y :	+ 1.3%	% change y/y :	- 1.2%

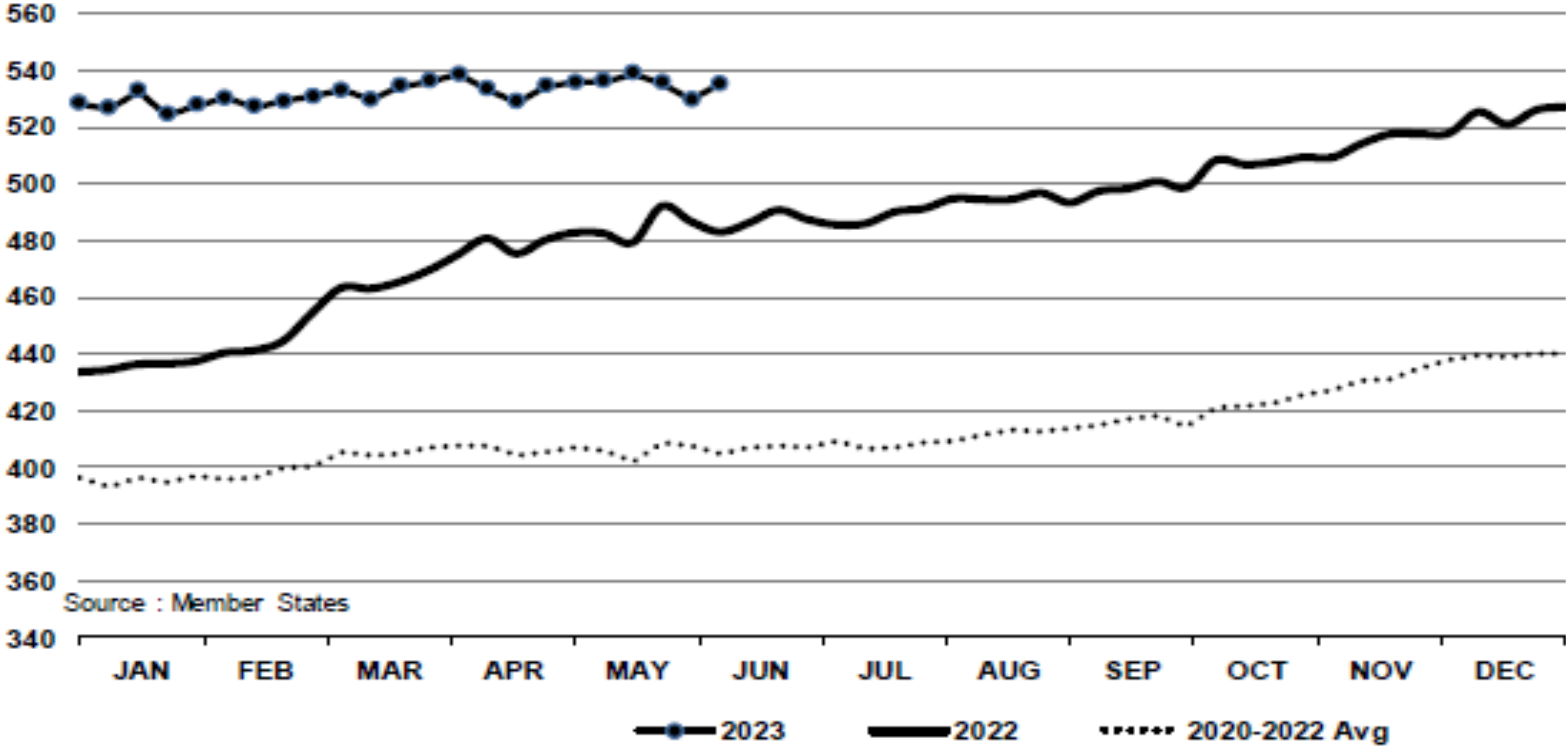
# KARKAS FİYATLARI



# AB DEĞİŞİM GENÇ SIĞIR – 8-12 M Z.R.3

In € / 100 kg

Young Bovines 8-12m Z - R 3 > Wk.23-2023

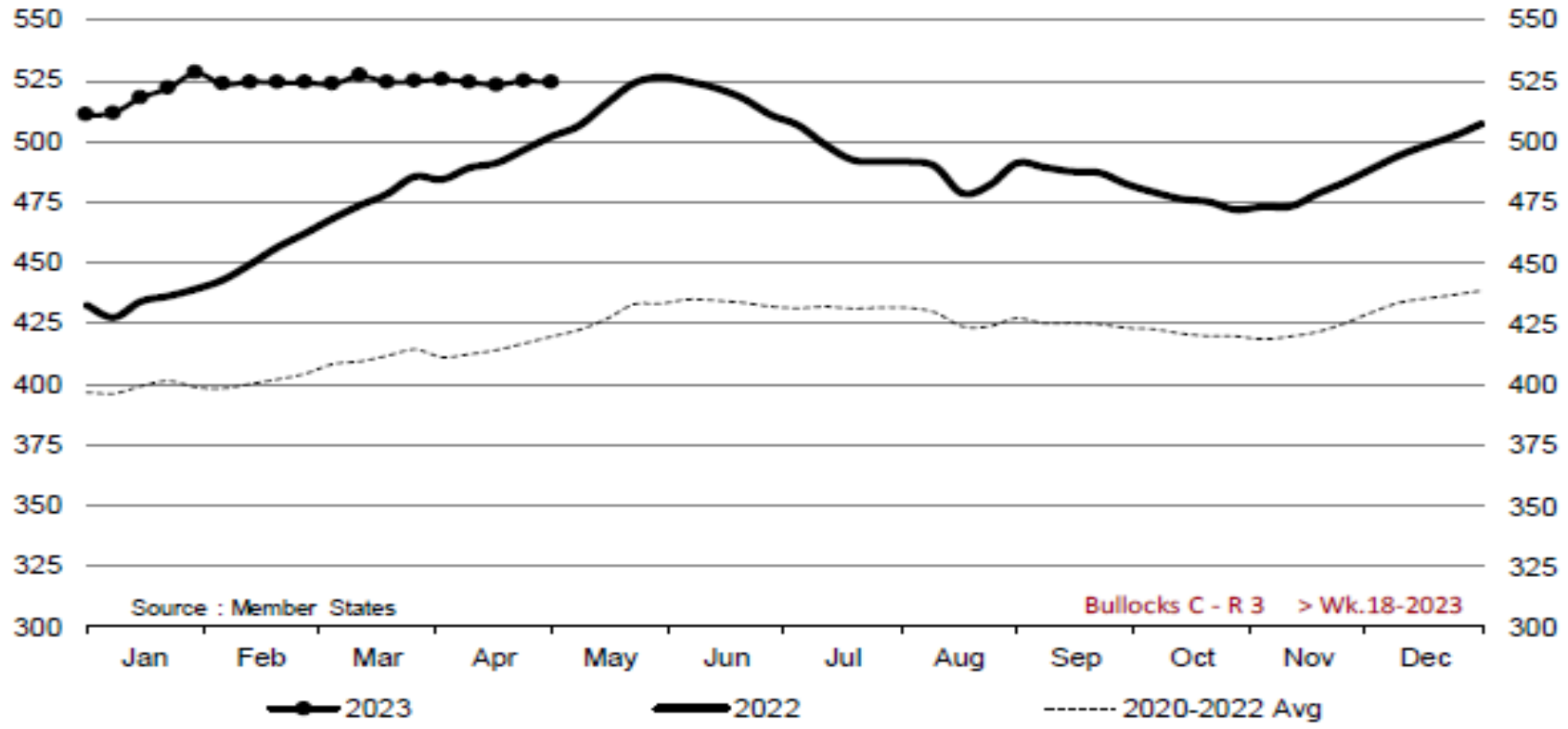


Source : Member States

Price in week 23 : 535.05      11/05/2023      Average price in May 2023 : 535.76  
% change y/y : + 10.8%      % change y/y : + 10.7%



Bullocks C - R 3 > Wk.18-2023

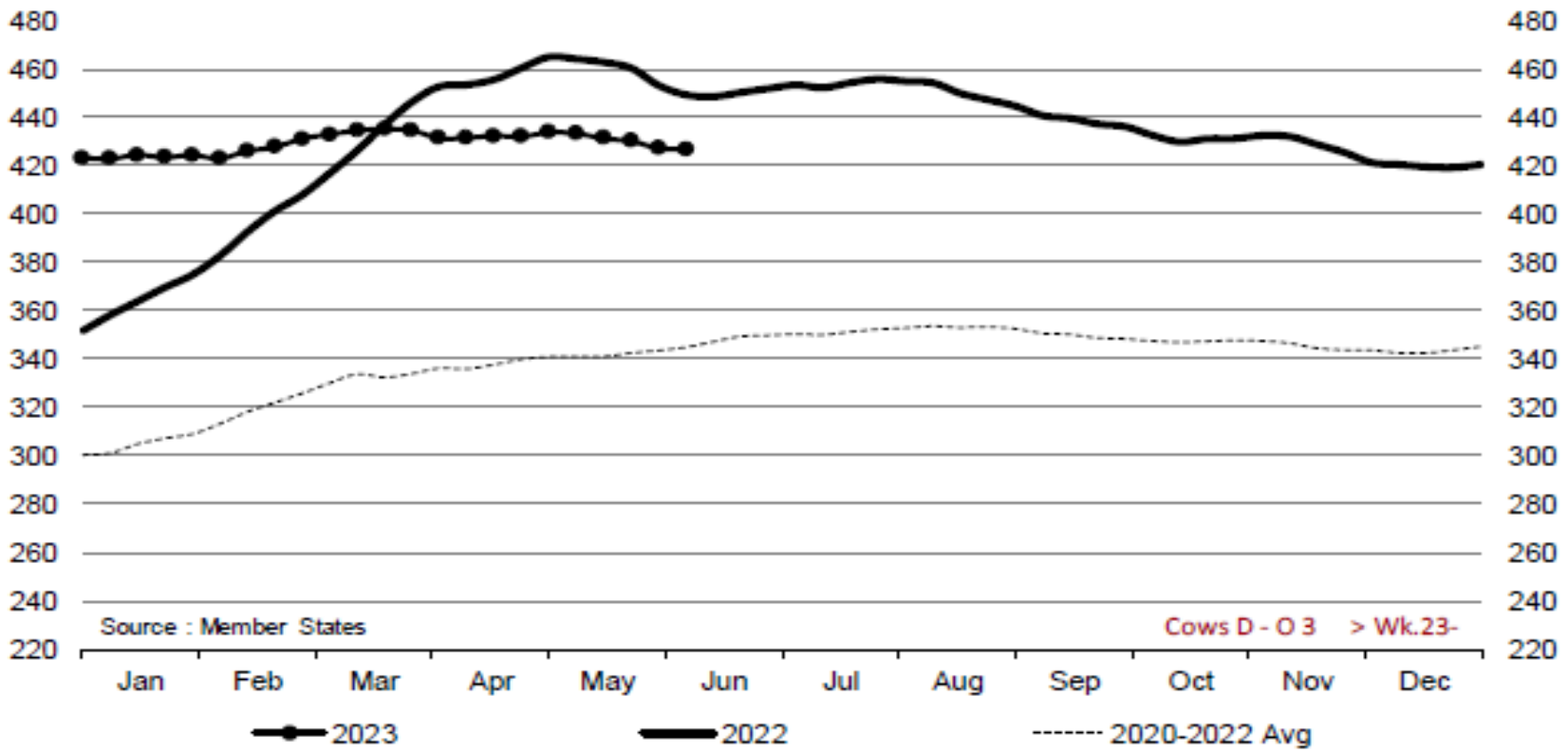


Price in week 18 : 524.12  
% change y/y : + 4.5%

Average price in April 2023 : 524.53  
% change y/y : + 7.2%



Cows D - O 3 > Wk.23-2023

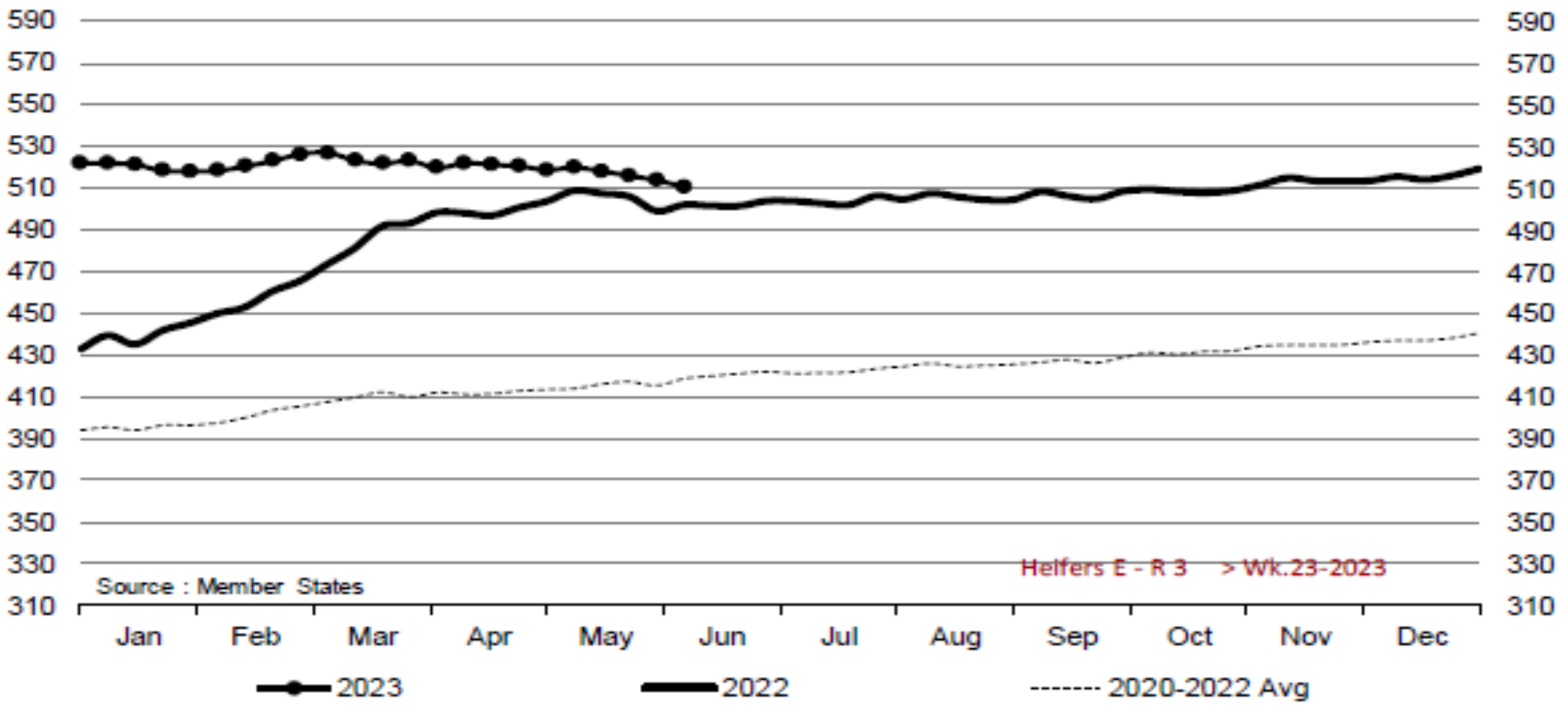


Price in week 23 : 426.98  
% change y/y : - 5.0%

Average price in May 2023 : 431.89  
% change y/y : - 6.6%



## Heifers E - R 3 > Wk.23-2023



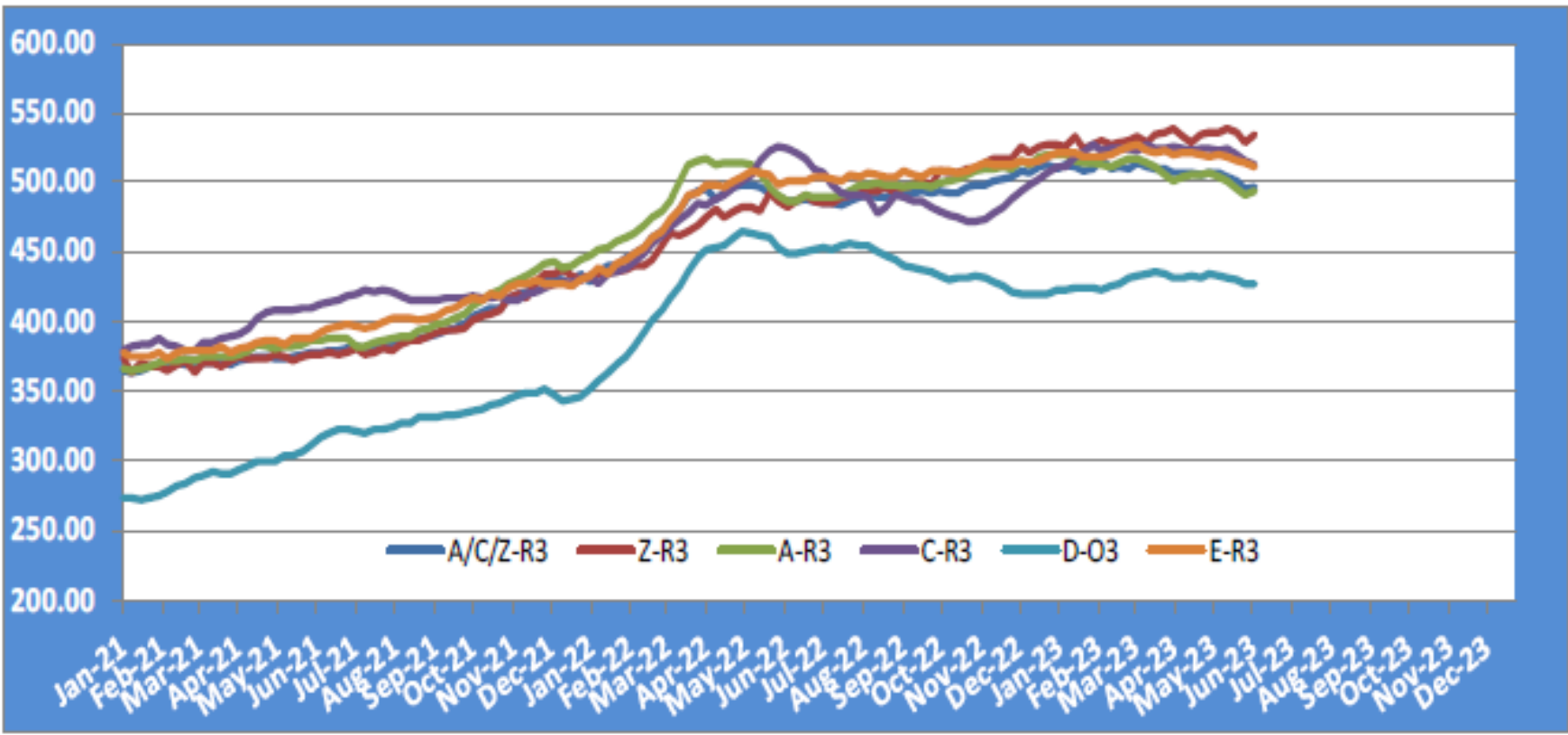
Source : Member States

Heifers E - R 3 > Wk.23-2023

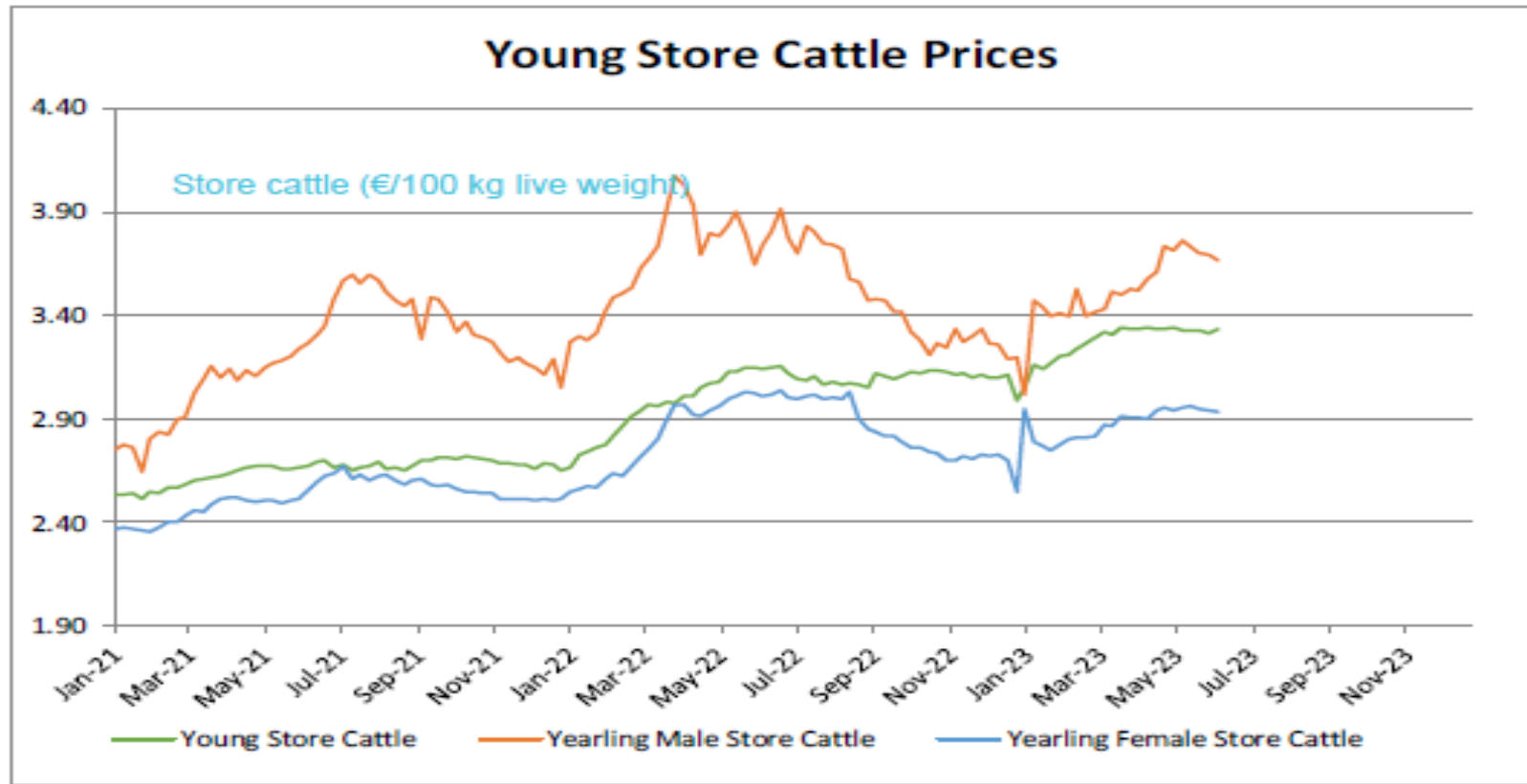
Price in week 23 :	510.90	Average price in May 2023 :	517.97
% change y/y :	+ 1.8%	% change y/y :	+ 2.4%

# KARKAS FİYATLARI

# AB TÜM KATEGORİLERE GLOBAL BAKIŞ



## Besilik sığır (€ / 100 kg canlı ağırlık)

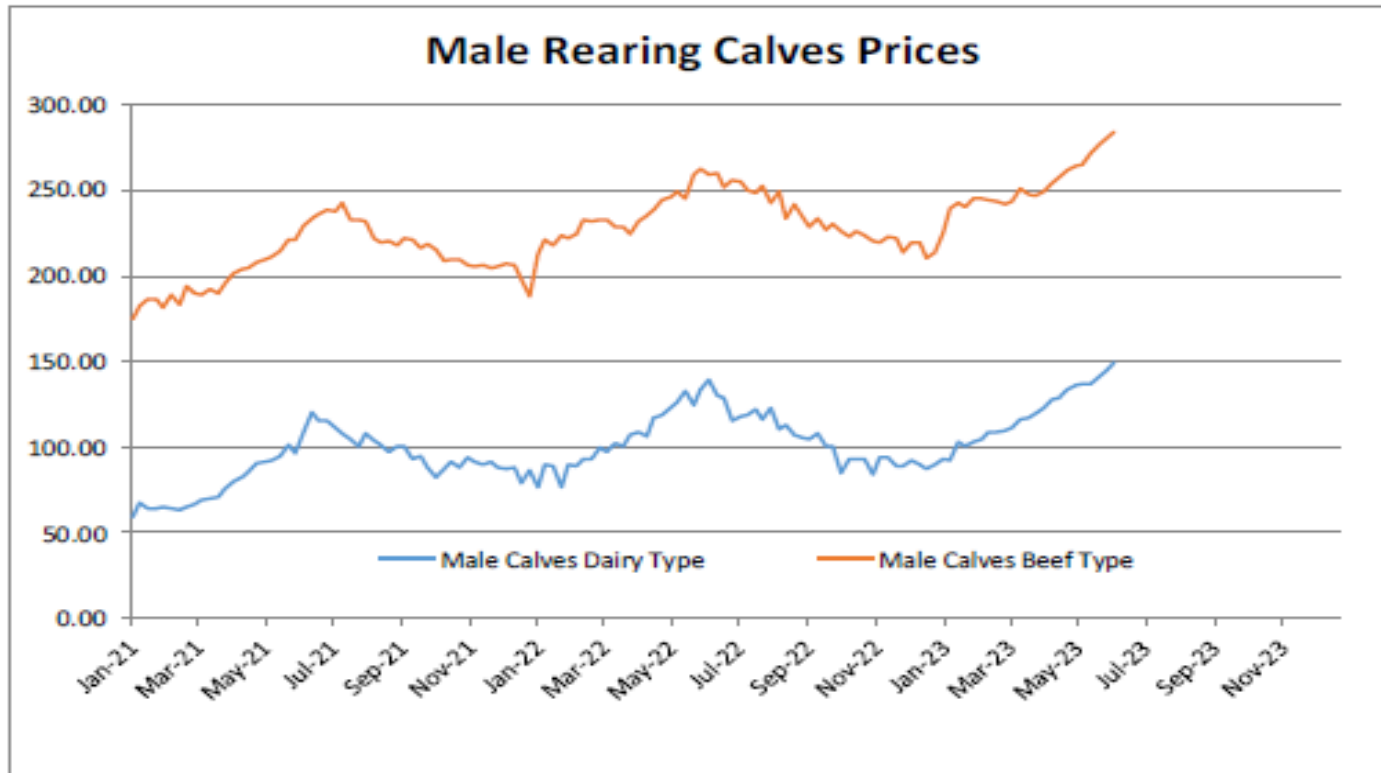


Young Store Cattle Price in	Week 23	3.33	Yearling Male Store Cattle Price	3.67
	Change y/y	+6.0%	Change y/y	-1.8%
Yearling Female Store Cattle Price		2.94		
	Change y/y	-2.5%		



### 8 gün ve 4 haftalık erkek buzağlar (€/baş)

Male calves aged between 8 days and 4 weeks (€/head)



Male Rearing Calves Beef type

Price in Week 23 284.17

Change y/y +9.8%

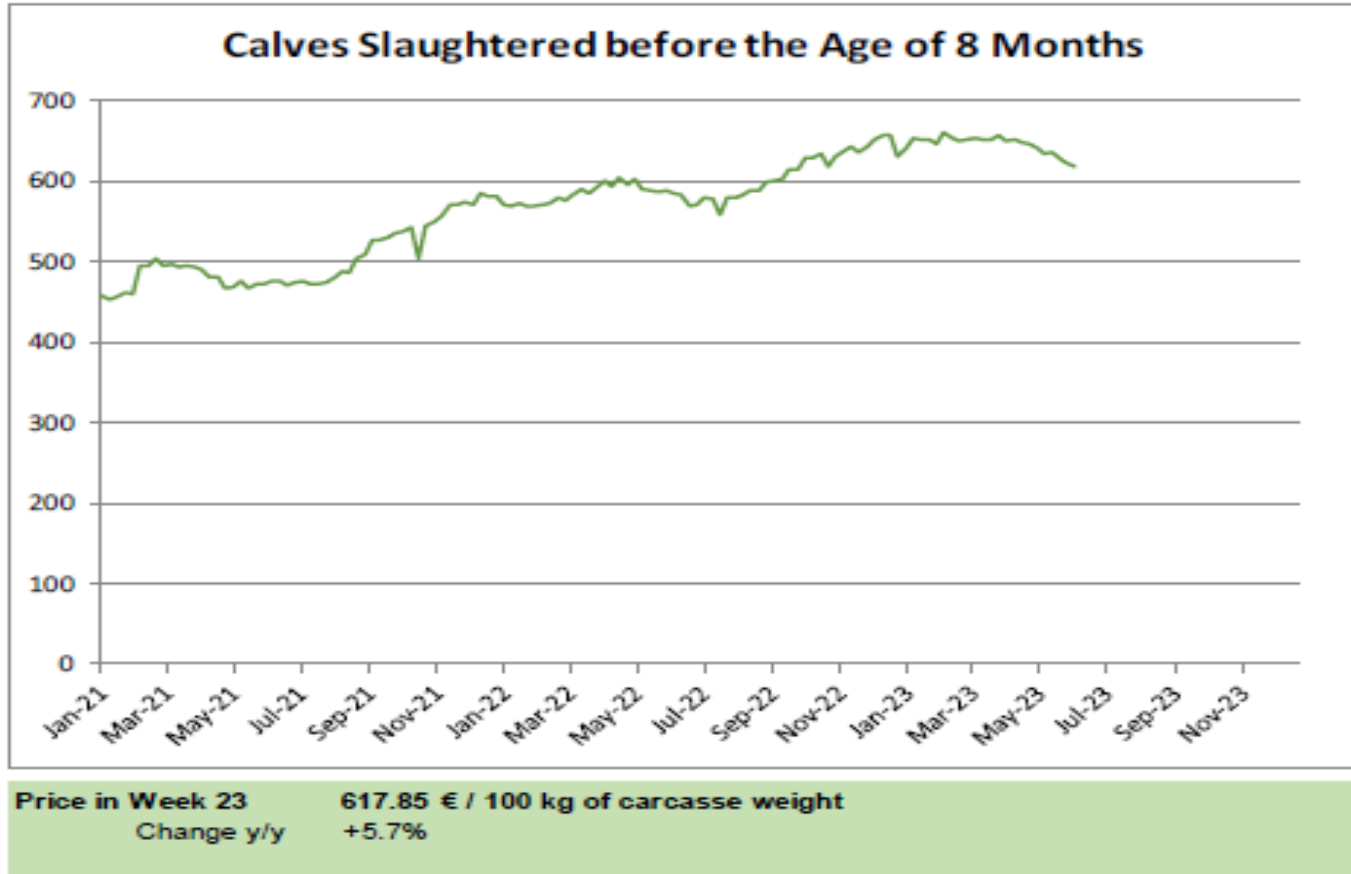
Male Rearing Calves Dairy type

Price in Week 23 149.16

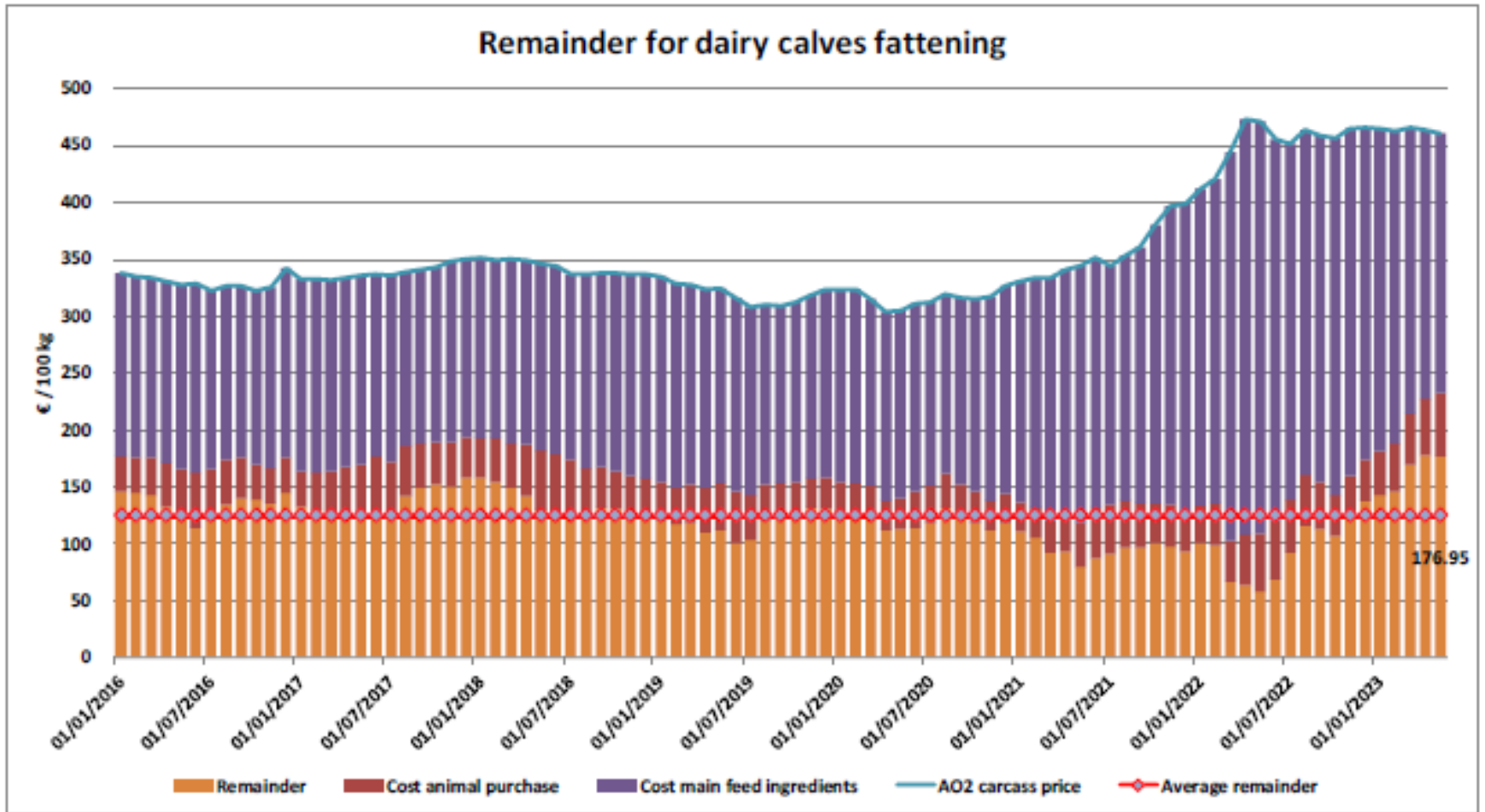
Change y/y +6.9%

### 8 aylıktan küçük kesilen buzağlar (€ / 100 kg canlı ağırlık)

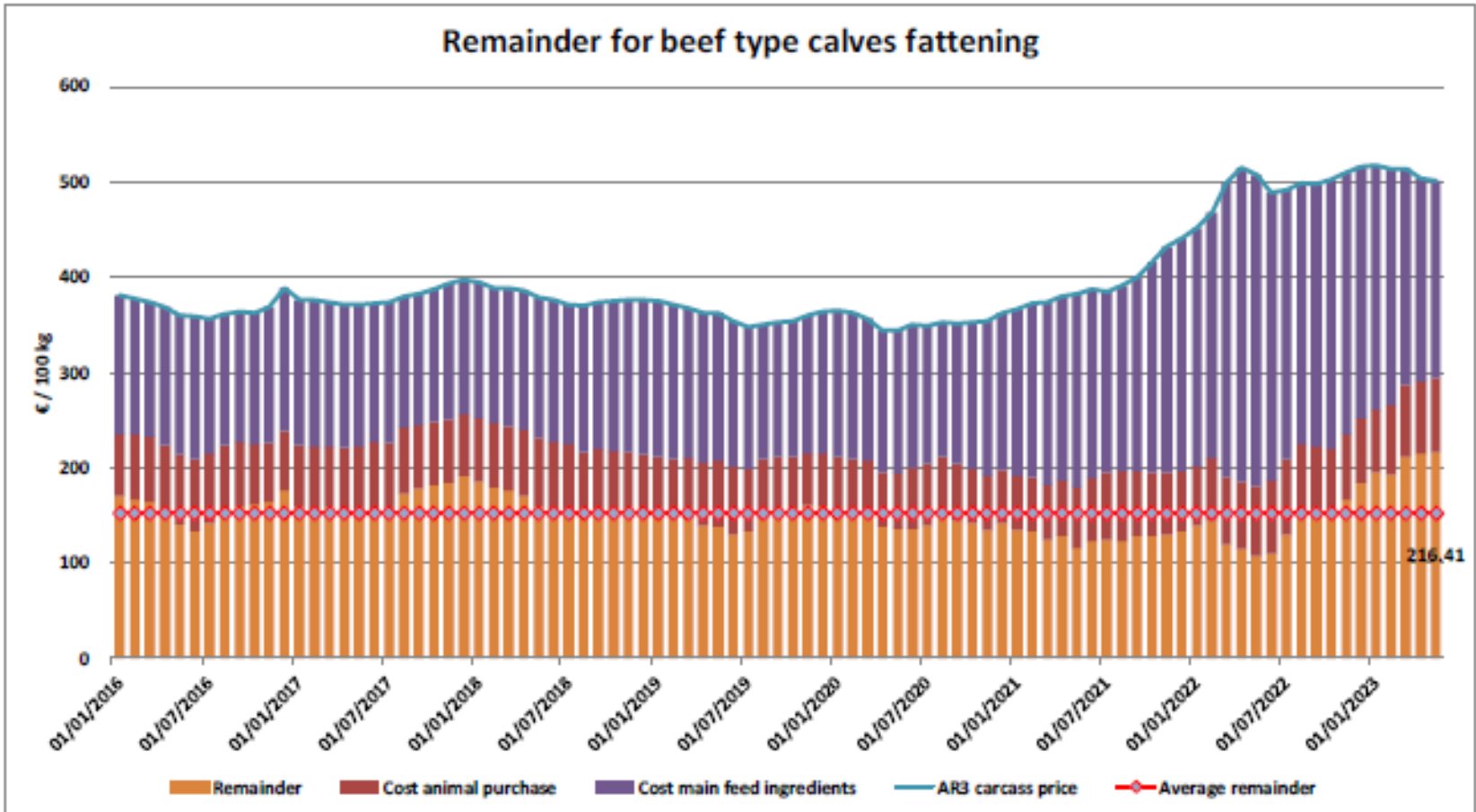
Calves slaughtered before the age of less than 8 months  
(€/100 kg cw)



## Süt Buzağları Besiciliği İçin Kalanlar

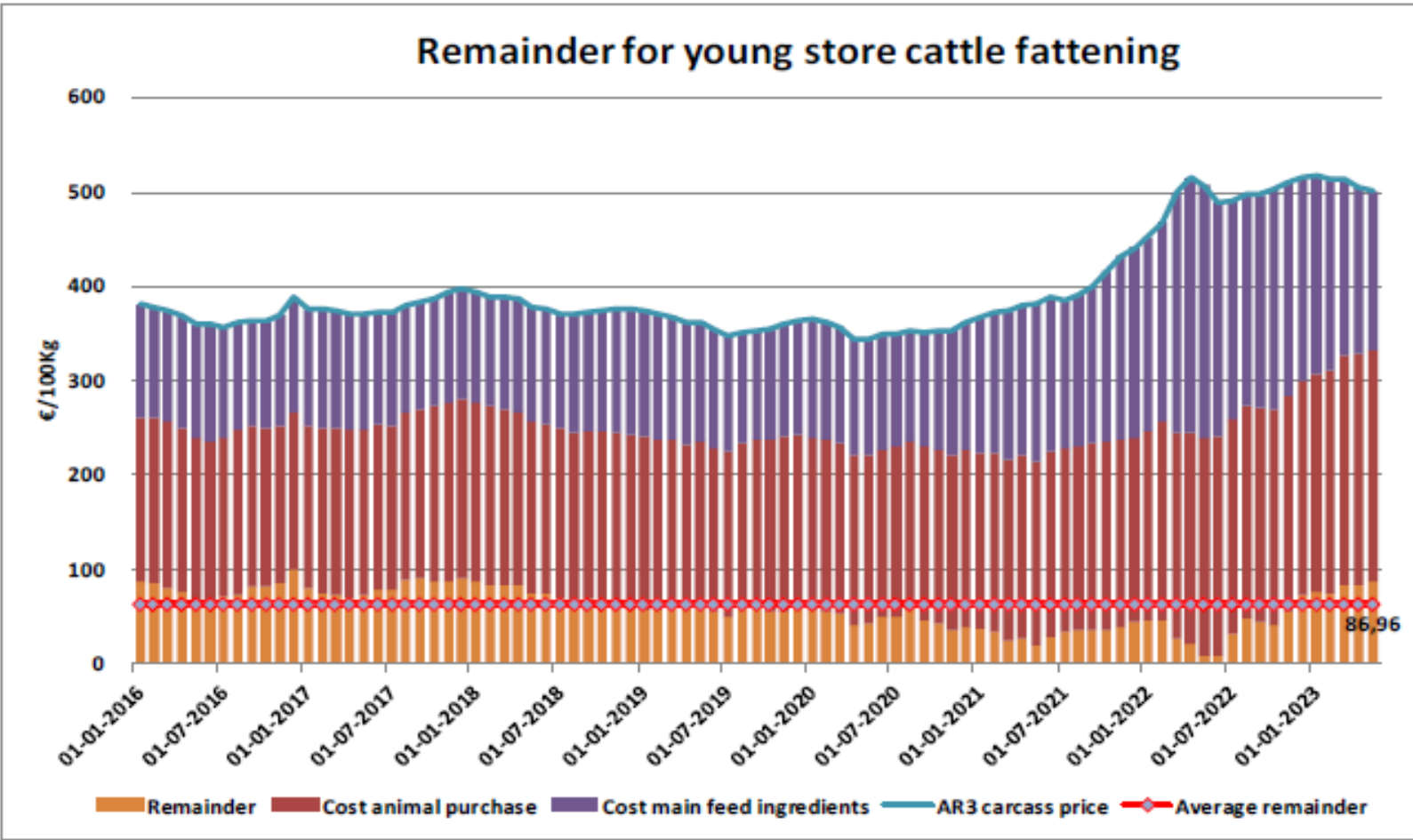


## Sığır Tipi Buzağı Besiciliği İçin Kalanlar





## Genç Besilik Sığır Besiciliği İçin Kalanlar



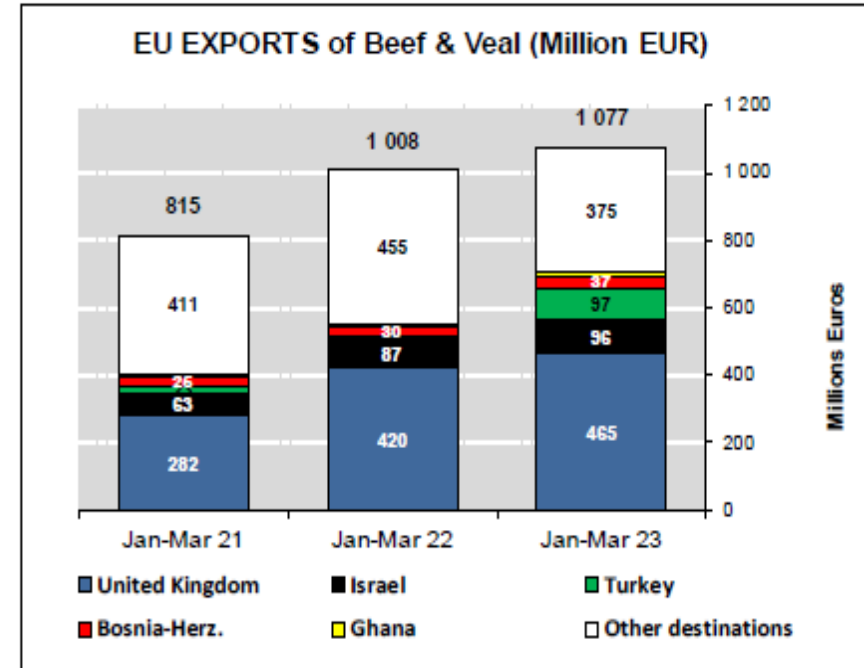
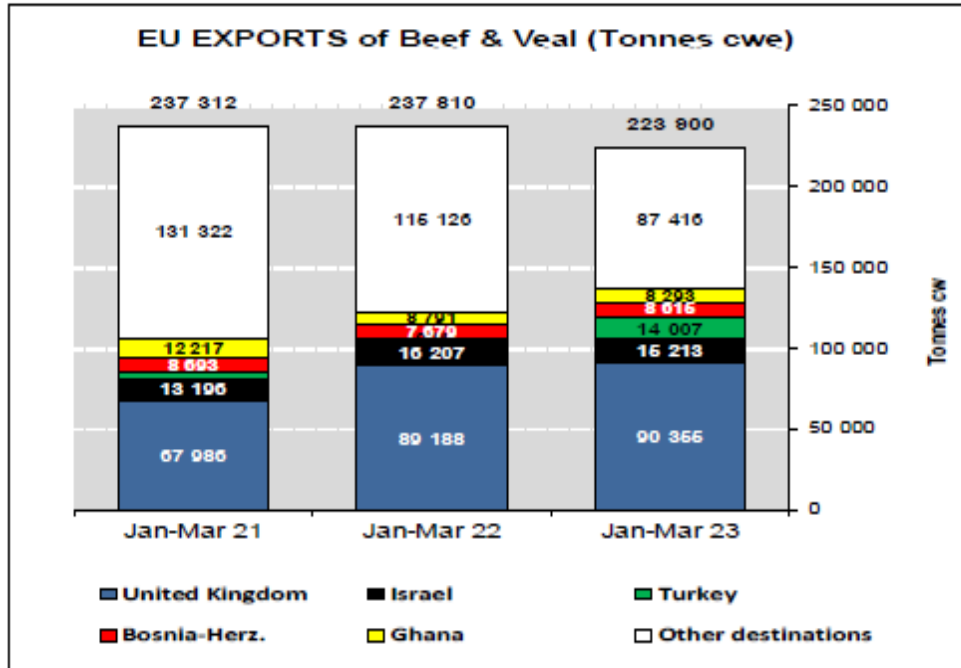
## AB sığır eti ve canlı hayvan ihracatı (yağlar hariç): Pazar Rakamları (COMEXT – ton ca)

Destinations	2019		2020		2021		2022		Jan-Mar 23		Compared to
	tonnes	%	tonnes	%	tonnes	%	tonnes	%	tonnes	%	
United Kingdom	433 401	38.7%	450 442	39.5%	344 833	33.4%	380 535	38.5%	90 355	40.4%	+ 1.3%
Israel	48 505	4.3%	56 139	4.9%	66 022	6.4%	63 598	6.8%	15 213	6.8%	- 6.1%
Turkey	34 555	3.1%	22 338	2.0%	14 953	1.5%	13 452	1.4%	14 007	6.3%	+++
Bosnia-Herz.	40 013	3.6%	34 896	3.1%	40 504	3.9%	38 801	4.1%	8 615	3.8%	+ 12.2%
Ghana	39 196	3.5%	47 344	4.2%	47 618	4.6%	31 762	3.4%	8 293	3.7%	- 5.7%
Ivory Coast	33 396	3.0%	32 433	2.8%	29 187	2.8%	29 879	3.2%	6 992	3.1%	- 9.1%
Switzerland	21 398	1.9%	26 223	2.3%	28 717	2.8%	25 000	2.7%	6 048	2.7%	- 9.1%
Hong Kong	46 639	4.2%	56 713	5.0%	44 769	4.3%	10 494	1.1%	5 811	2.6%	+ 64.8%
Morocco	12 982	1.2%	10 049	0.9%	11 868	1.2%	8 273	0.9%	5 142	2.3%	+ 162.6%
Algeria	57 152	5.1%	39 396	3.5%	24 111	2.3%	25 459	2.7%	4 087	1.8%	- 40.4%
Kosovo	9 896	0.9%	10 391	0.9%	16 478	1.6%	17 096	1.8%	4 023	1.8%	+ 20.6%
Libya	24 541	2.2%	22 352	2.0%	19 784	1.9%	10 670	1.1%	3 728	1.7%	- 3.7%
Lebanon	36 221	3.2%	33 709	3.0%	19 527	1.9%	21 042	2.2%	3 143	1.4%	- 42.3%
Philippines	31 302	2.8%	33 650	3.0%	34 666	3.4%	29 703	3.2%	3 125	1.4%	- 55.6%
Canada	6 756	0.6%	20 450	1.8%	20 670	2.0%	19 795	2.1%	3 019	1.3%	- 40.6%
Japan	5 084	0.5%	11 885	1.0%	21 888	2.1%	19 935	2.1%	2 655	1.2%	- 45.5%
Other Destinations	239 039	21.3%	230 968	20.3%	245 578	23.8%	211 570	22.6%	39 645	17.7%	
<b>Total</b>	<b>1 120 078</b>		<b>1 139 378</b>		<b>1 030 974</b>		<b>937 054</b>		<b>223 900</b>		
% change			+ 2%		- 10%		- 9%		- 5.8%		

## AB sığır eti ihracatı (Yağlar hariç): Pazar Rakamları (COMEXT – ton ca)

Destinations	2019		2020		2021		2022		Jan-Mar 23		Compared to
	tonnes	%	tonnes	%	tonnes	%	tonnes	%	tonnes	%	
United Kingdom	422 733	47.8%	429 367	47.5%	329 539	40.5%	347 165	47.0%	87 901	51.3%	+ 2.2%
Ghana	39 196	4.4%	47 344	5.2%	47 618	5.9%	31 762	4.3%	8 293	4.8%	- 5.7%
Bosnia-Herz.	37 700	4.3%	32 596	3.6%	37 581	4.6%	35 522	4.8%	7 836	4.6%	+ 11.5%
Ivory Coast	33 396	3.8%	32 433	3.6%	29 187	3.6%	29 879	4.0%	6 992	4.1%	- 9.1%
Hong Kong	46 639	5.3%	56 713	6.3%	44 769	5.5%	10 494	1.4%	5 811	3.4%	+ 64.8%
Switzerland	20 320	2.3%	25 170	2.8%	27 394	3.4%	23 776	3.2%	5 747	3.4%	- 8.6%
Israel	21 902	2.5%	21 131	2.3%	20 548	2.5%	20 876	2.8%	5 667	3.3%	+ 4.7%
Philippines	31 302	3.5%	33 650	3.7%	34 666	4.3%	29 703	4.0%	3 125	1.8%	- 55.6%
Canada	6 756	0.8%	20 450	2.3%	20 670	2.5%	19 795	2.7%	3 019	1.8%	- 40.6%
Japan	7 982	0.9%	11 885	1.3%	21 888	2.7%	19 935	2.7%	2 655	1.6%	- 45.5%
Ukraine	12 684	1.4%	13 992	1.5%	13 681	1.7%	11 525	1.6%	2 285	1.3%	- 18.1%
Turkey	1 326	0.1%	349	0.0%	608	0.1%	641	0.1%	2 114	1.2%	+++
North Macedonia	10 744	1.2%	10 034	1.1%	12 777	1.6%	9 492	1.3%	2 110	1.2%	- 6.9%
USA	7 866	0.9%	12 308	1.4%	11 430	1.4%	9 585	1.3%	2 083	1.2%	- 46.2%
Chile	12 461	1.4%	8 664	1.0%	9 915	1.2%	9 168	1.2%	1 737	1.0%	- 44.7%
Other Destinations	163 853	18.5%	135 389	15.0%	132 924	16.3%	116 444	15.8%	22 278	13.0%	
Extra-EU	884 483		904 349		813 431		738 767		171 227		
<b>Total (without UK)</b>	<b>884 483</b>		<b>904 349</b>		<b>813 431</b>		<b>738 767</b>		<b>171 227</b>		
% change			+ 2%		- 10%		- 9%		- 9.2%		

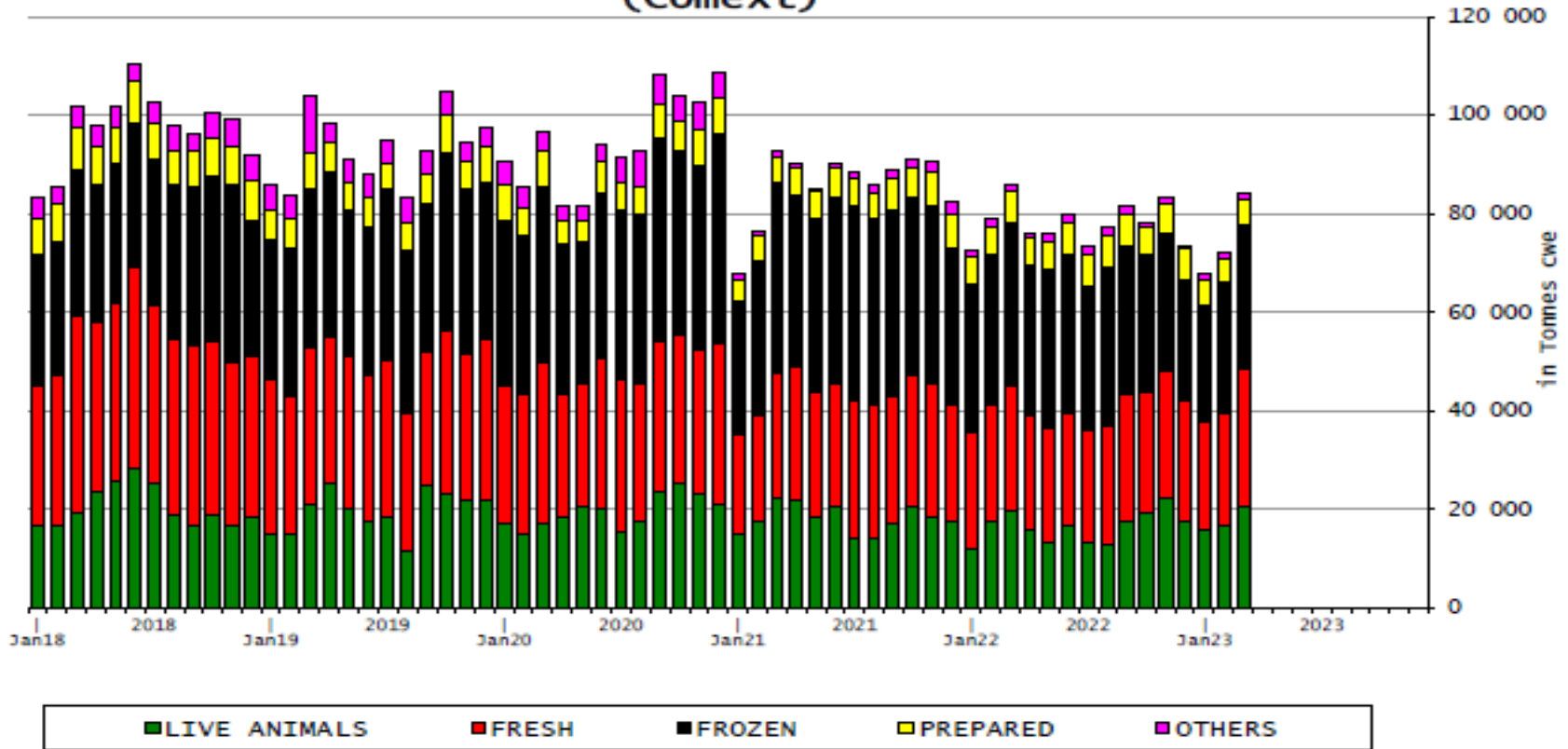
## AB Sığır Eti ve Canlı Hayvan İhracatları (yağlar hariç)



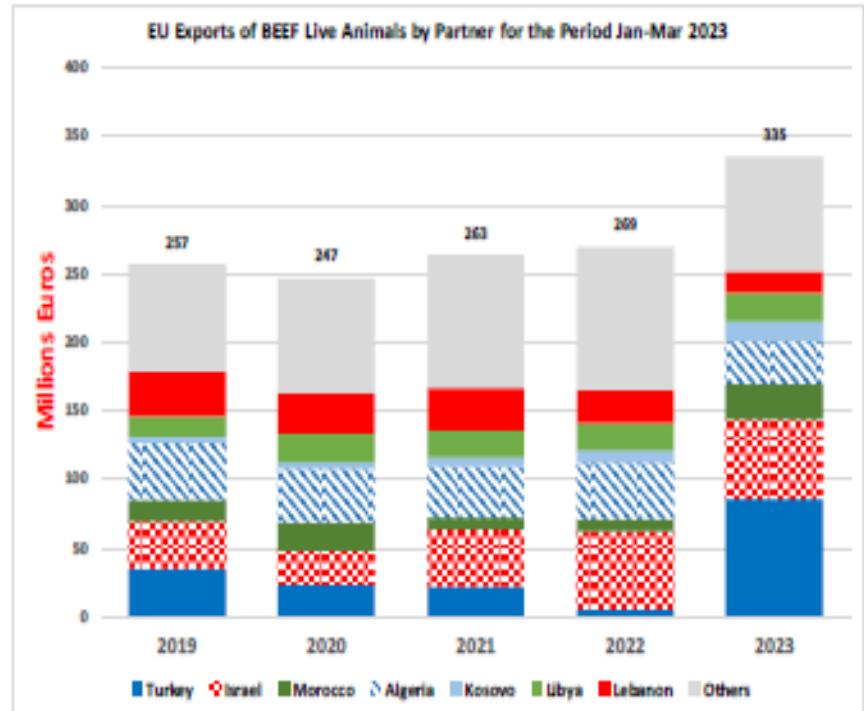
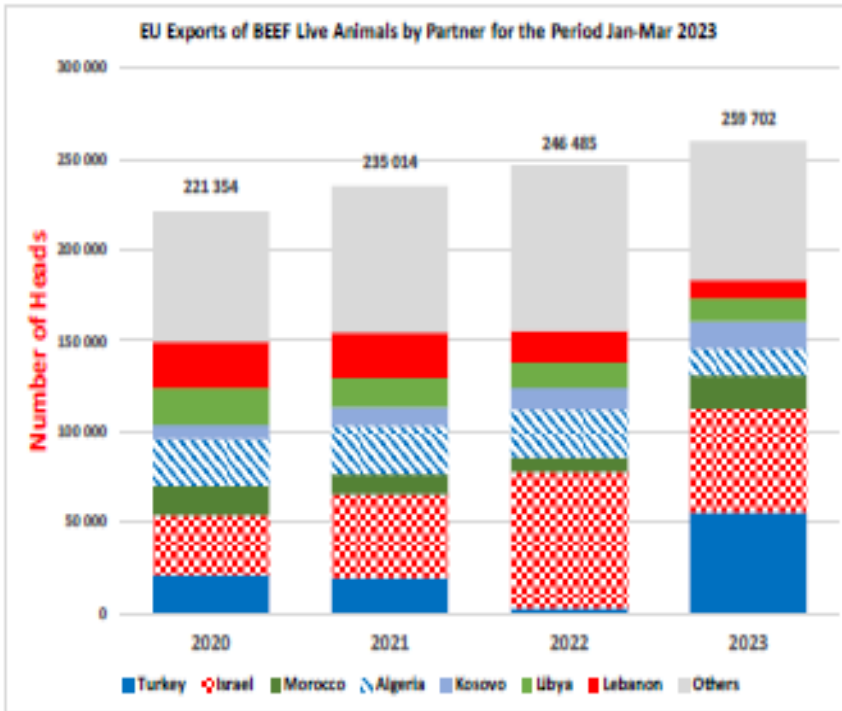


## AB Sığır Eti İhracatları

EU Exports of BEEF products  
(Comext)



## AB Canlı Hayvan İhracatları



## AB Canlı Hayvan ve Sığır Eti İthalatları (Yağlar hariç) (Ton)

### Origins

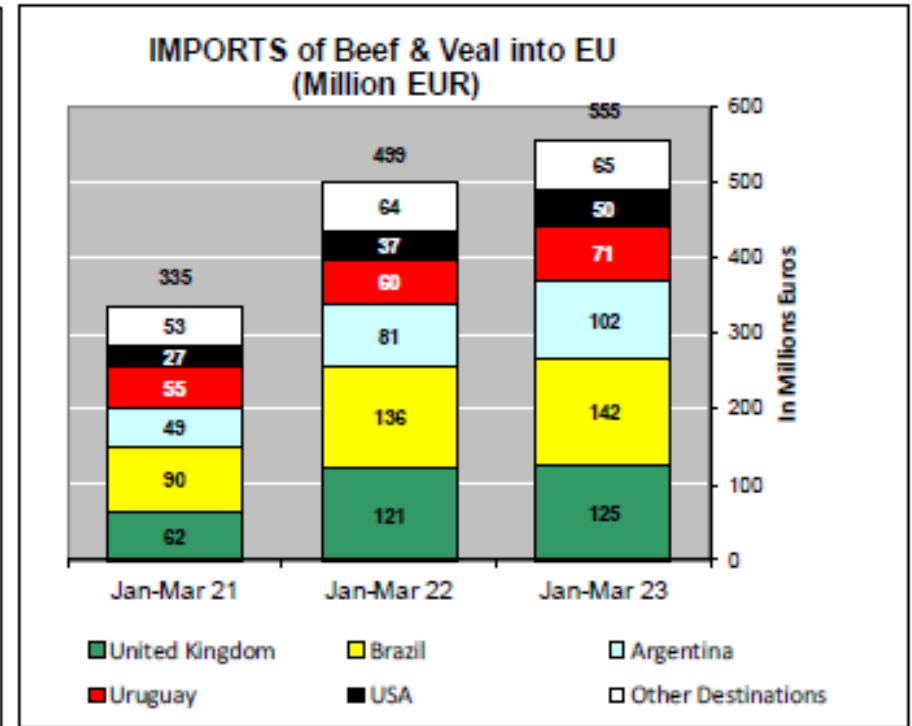
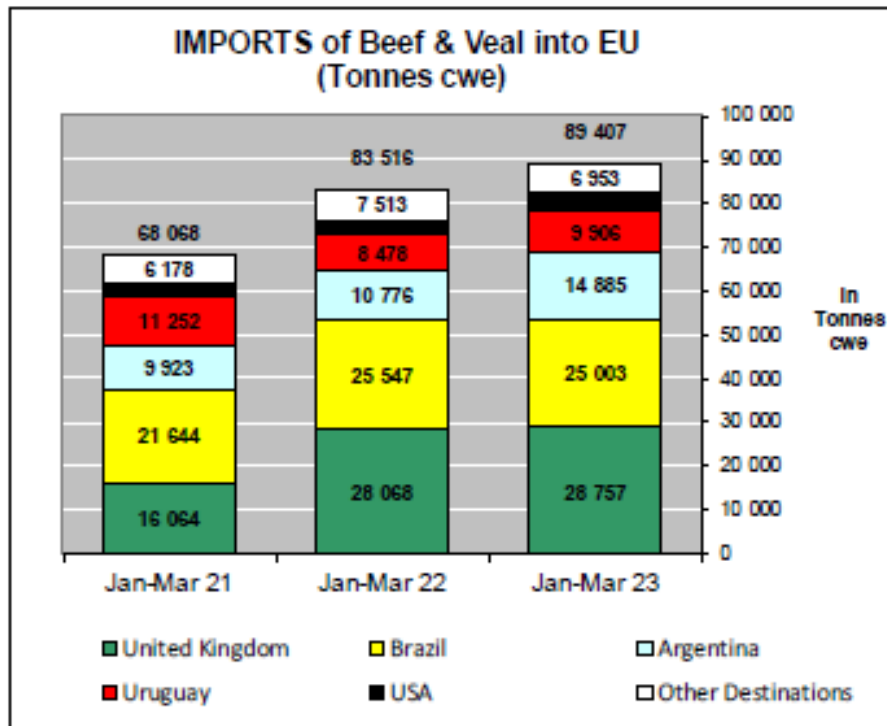
	2019		2020		2021		2022		Jan-Mar 23		Compared to
	tonnes	%	tonnes	%	tonnes	%	tonnes	%	tonnes	%	
United Kingdom	150 838	35.6%	120 733	35.1%	87 599	28.3%	142 468	37.0%	28 757	32.2%	+ 2.5%
Brazil	99 589	23.5%	84 139	24.4%	81 737	26.4%	88 551	22.5%	25 003	28.0%	- 2.1%
Argentina	65 324	15.4%	56 421	16.4%	52 300	16.9%	62 605	16.3%	14 885	16.6%	+ 38.1%
Uruguay	40 483	9.5%	34 611	10.0%	42 669	13.8%	37 669	9.8%	9 906	11.1%	+ 16.8%
USA	16 852	4.0%	16 532	4.8%	14 910	4.8%	17 269	4.5%	3 902	4.4%	+ 24.5%
Namibia	7 706	1.8%	1 445	0.4%	1 996	0.6%	5 168	1.3%	1 410	1.6%	+++
Australia	16 432	3.9%	11 058	3.2%	8 925	2.9%	8 385	2.2%	1 311	1.5%	- 30.4%
Paraguay	5 203	1.2%	4 234	1.2%	3 933	1.3%	5 404	1.4%	1 155	1.3%	+ 13.5%
New Zealand	6 712	1.6%	6 116	1.8%	4 380	1.4%	5 527	1.4%	990	1.1%	+ 9.8%
Switzerland	4 393	1.0%	4 187	1.2%	4 714	1.5%	4 729	1.2%	910	1.0%	- 18.5%
Canada	2 518	0.6%	1 550	0.5%	1 816	0.6%	2 176	0.6%	415	0.5%	+ 9.8%
Serbia	1 062	0.3%	931	0.3%	963	0.3%	1 058	0.3%	271	0.3%	- 21.1%
Japan	997	0.2%	789	0.2%	1 478	0.5%	3 114	0.8%	145	0.2%	- 77.3%
Norway	125	0.0%	335	0.1%	571	0.2%	705	0.2%	143	0.2%	+ 6.0%
Chile	392	0.1%	168	0.0%	238	0.1%	403	0.1%	96	0.1%	+ 7.3%
Botswana	4 950	1.2%	788	0.2%	331	0.1%	928	0.2%	61	0.1%	+ 18.7%
Other Destinations	483	0.1%	357	0.1%	710	0.2%	961	0.2%	44	0.0%	
<b>Total</b>	<b>424 040</b>		<b>344 393</b>		<b>309 270</b>		<b>385 121</b>		<b>89 407</b>		
% change			- 19%		- 10%		+ 25%		+ 7.1%		

## AB Sığır Eti Yağlarının İthalatları (Ton)

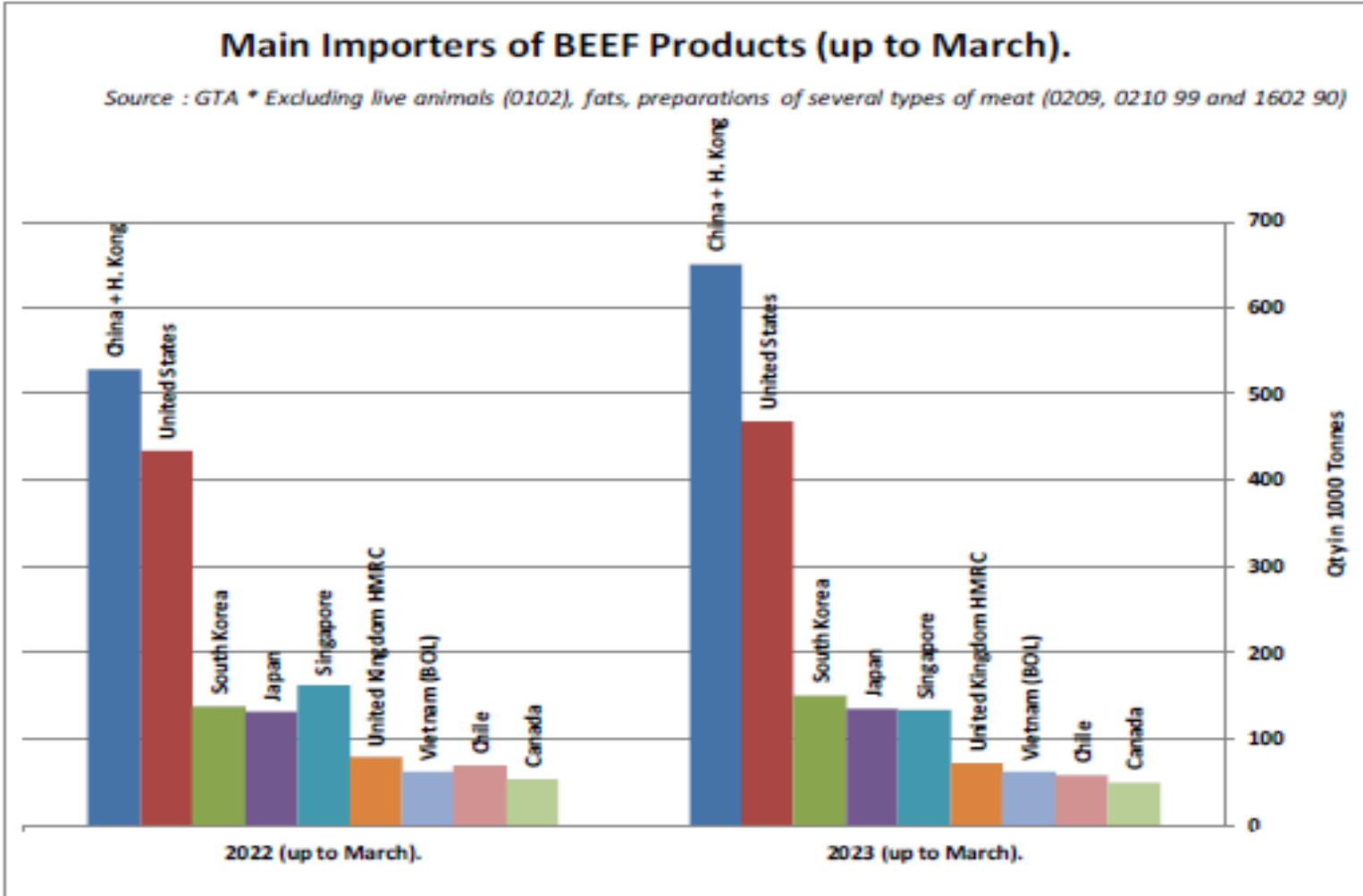
*in tons of Carcase weight*

Origins	2021		2022		Jan to Mar 2023		Compared to Jan to Mar 2022
	Tons	% Extra EU	Tons	% Extra EU	Tons	% Extra EU	
United Kingdom	11 507	21.6%	9 720	29.7%	2 147	99.2%	-8.8%
Switzerland	519	1.0%	612	1.9%	18	0.8%	-90.5%
Australia	12	0.0%	0	0.0%	0	0.0%	
Brazil	0	0.0%	0	0.0%	0	0.0%	
India	-	0.0%	0	0.0%	0	0.0%	
Ukraine	-	0.0%	24	0.1%	0	0.0%	
Singapore	-	0.0%	0	0.0%	0	0.0%	
Norway	158	0.3%	-	0.0%	0	0.0%	
USA	0	0.0%	0	0.0%	-	0.0%	
Other Destinations	41 070	77.1%	22 318	68.3%	-	0.0%	
Extra-EU	53 266		32 675		2 165		-89.3%
% Change				-38.7%			

## AB Sığır Eti ve Canlı Hayvan İthalatları (Yağlar hariç) (Ton)

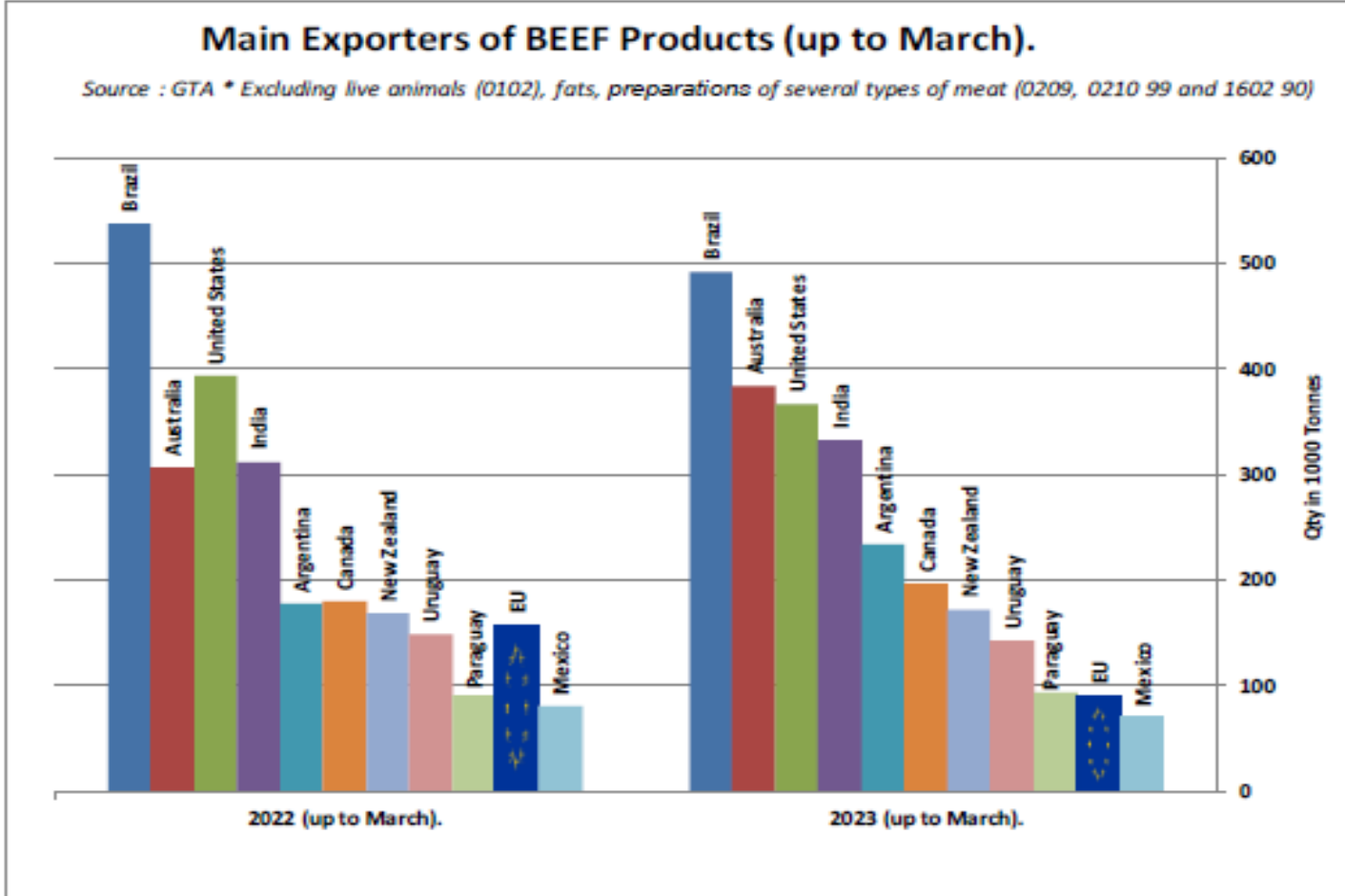


### SIĞIR ETİ ÜRÜNLERİNİN NET İTHALATÇILARI (MART)





## SIĞIR ETİ ÜRÜNLERİNİN NET İHRACATÇILARI (MART)

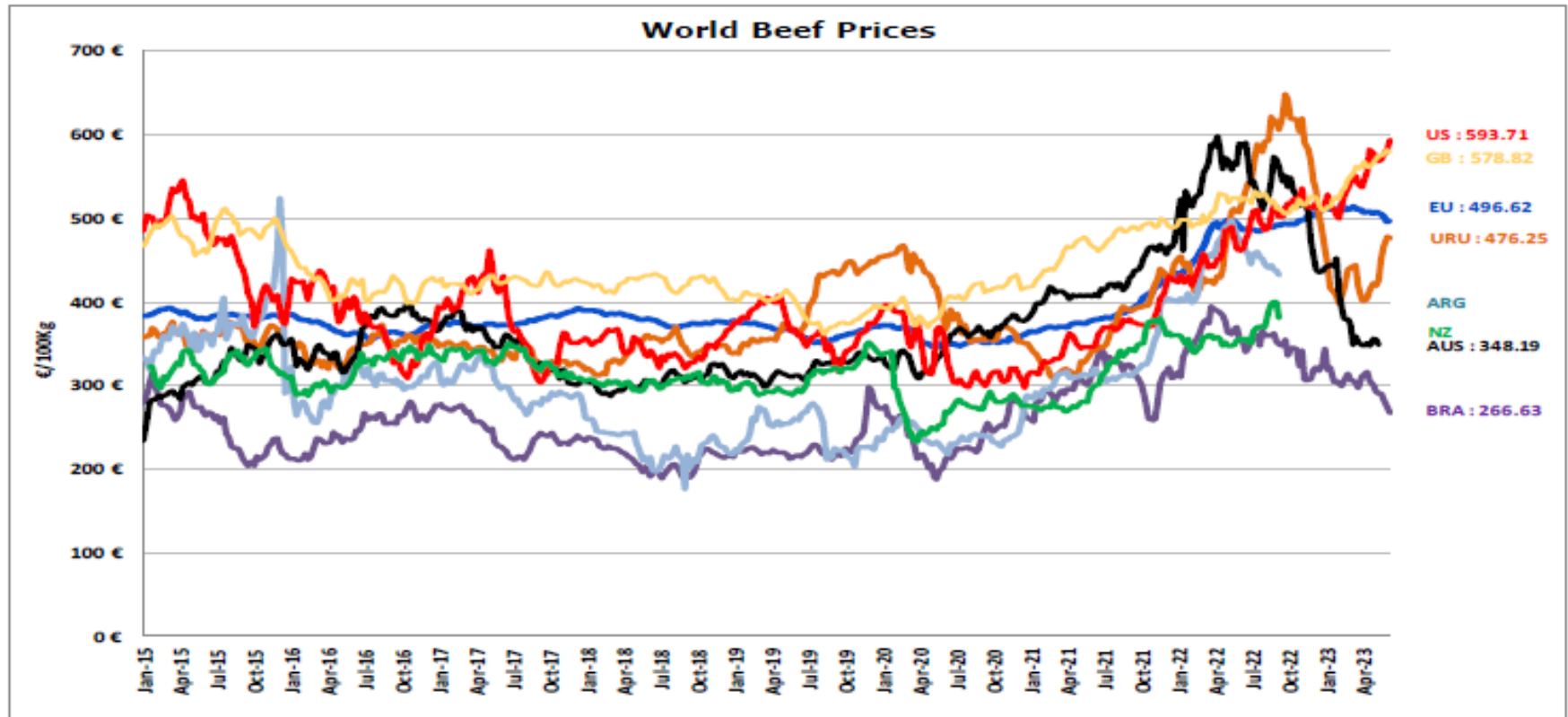


# DÜNYA SIĞIR ETİ PAZARI



European  
Commission

# Dünya Sığır Fiyatları AB, ABD, AVUSTURYA, YENİ ZELANDA



ECB <http://sdw.ecb.europa.eu/browse.do?node=2018794>  
US <https://www.marketnews.usda.gov/mnp/lx-home>  
AUS <https://www.mla.com.au/prices-markets/cattle/processor-yearling-steer/>  
UY <http://www.inac.gub.uy/innovaportal/v/11034/10/innova.front/indicadores-y-precios>  
ARG [http://www.abc-consorcio.com.ar/Estadisticas/detalle/117/precios\\_comparativos\\_del\\_novillo.html](http://www.abc-consorcio.com.ar/Estadisticas/detalle/117/precios_comparativos_del_novillo.html)  
BR <http://www.pecuaria.com.br/cotacoes.php>  
NZ [http://www.abc-consorcio.com.ar/Estadisticas/detalle/117/precios\\_comparativos\\_del\\_novillo.html](http://www.abc-consorcio.com.ar/Estadisticas/detalle/117/precios_comparativos_del_novillo.html)  
GB <https://ahdb.org.uk/beef/gb-deadweight-cattle-prices-by-region>

2023







**Daha fazla bilgi için:**

**[https://ec.europa.eu/agriculture/market-observatory/meat\\_en](https://ec.europa.eu/agriculture/market-observatory/meat_en)**

**Ve Agri-FOOD Veri Portalı:**

**<http://agridata.ec.europa.eu>**