



AB SIĞIR VE DANA ETİ PAZAR DURUMU

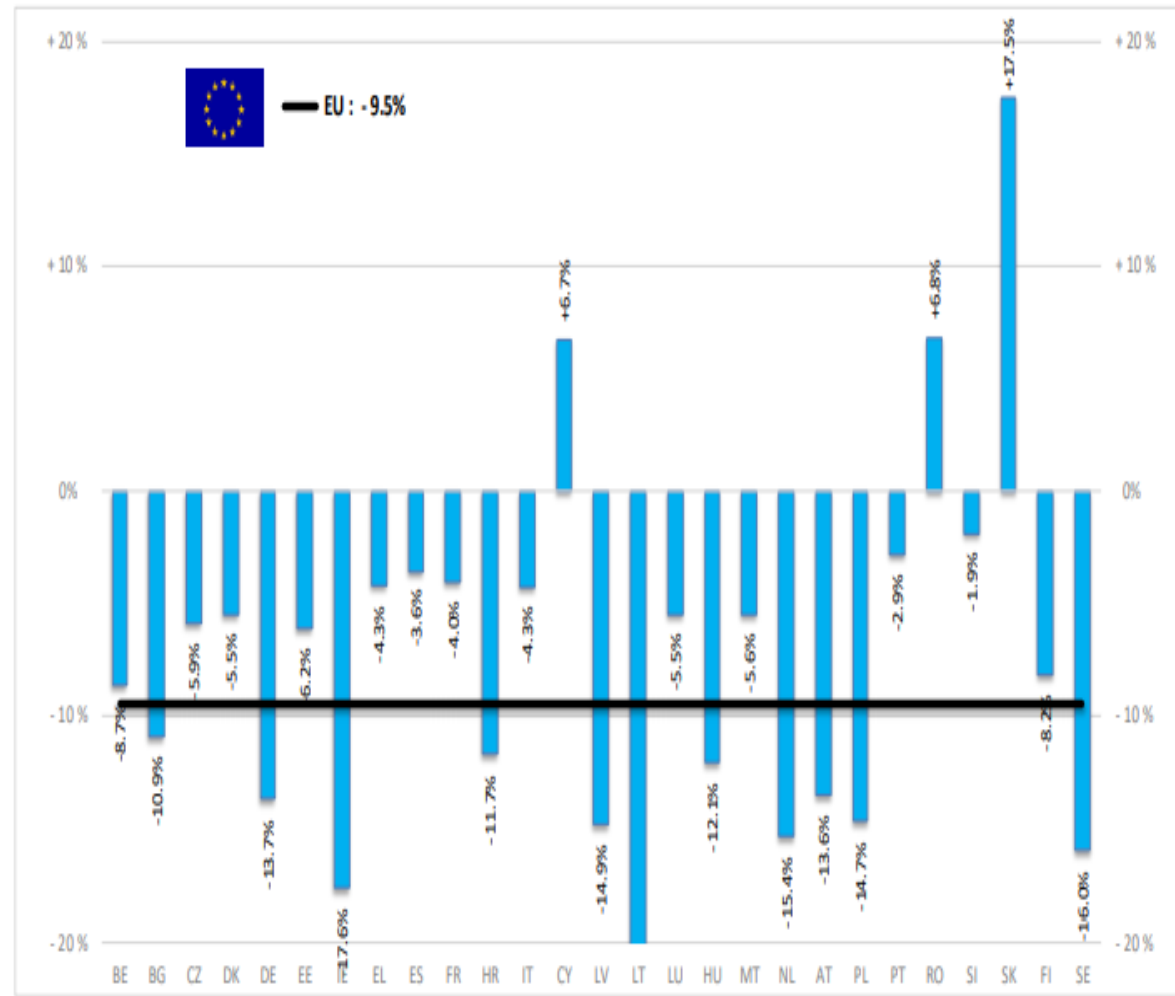
20 Mayıs 2021



European
Commission

BAŞ	HEADS	Jan-Feb 21/20
		EU
BOĞA	Bull	-7.7%
ÖKÜZ	Bullock	-12.5%
İNEK	Cow	-10.3%
DÜVE	Heifer	-9.1%
BUZAĞI	Calve	-10.8%
GENÇ SİĞİR	Young cattle	-8.3%
Büyükbaş Hayvan Eti	Meat of bovine animals	-9.5%

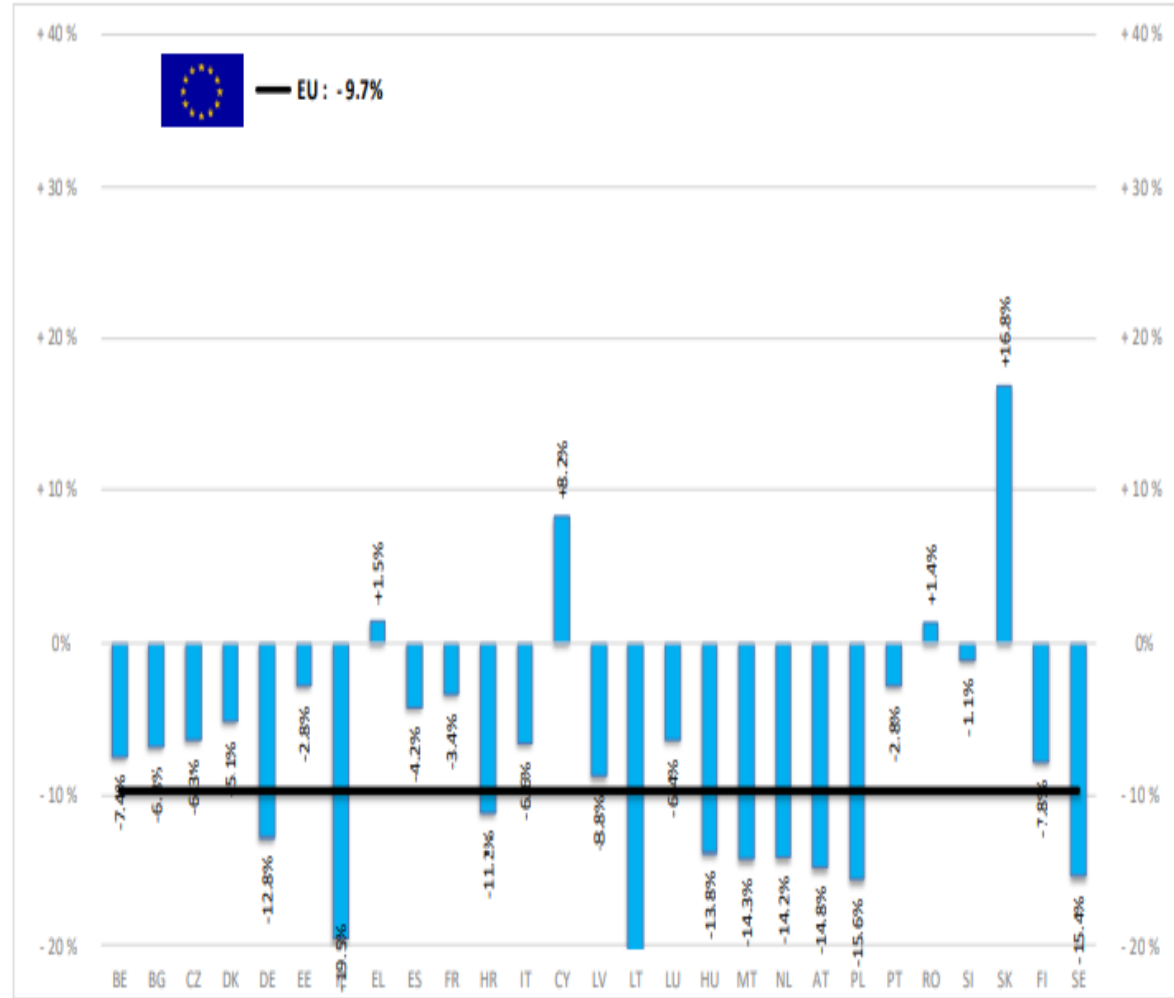
Estimates for last month of period :



Source : EStat - Newcronos

TON	TONNES	Jan-Feb 21/20
	EU	
BOĞA	Bull	-9.0%
ÖKÜZ	Bullock	-13.3%
İNEK	Cow	-11.0%
DÜVE	Heifer	-8.1%
BUZAĞI	Calve	-9.4%
GENÇ SIĞIR	Young cattle	-9.6%
Büyükbaş Hayvan Eti	Meat of bovine animals	-9.7%

Estimates for last month of period :

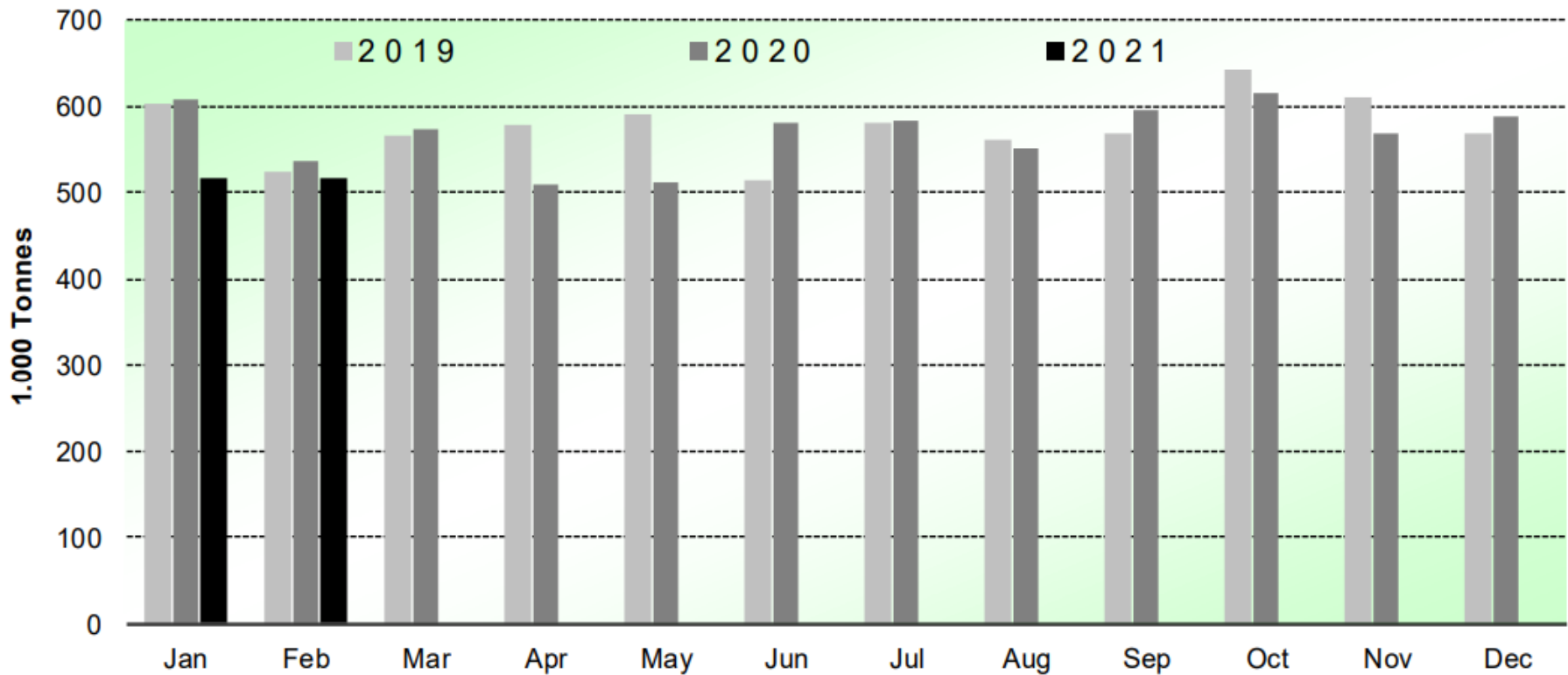


Source : EStat - Newcronos



SIĞIR VE DANA ETİ ÜRETİMİ (AB Kesimler – Ton)

Beef & Veal Production (EU Slaughtering) - Tonnes



Source : EStat-Newcronos

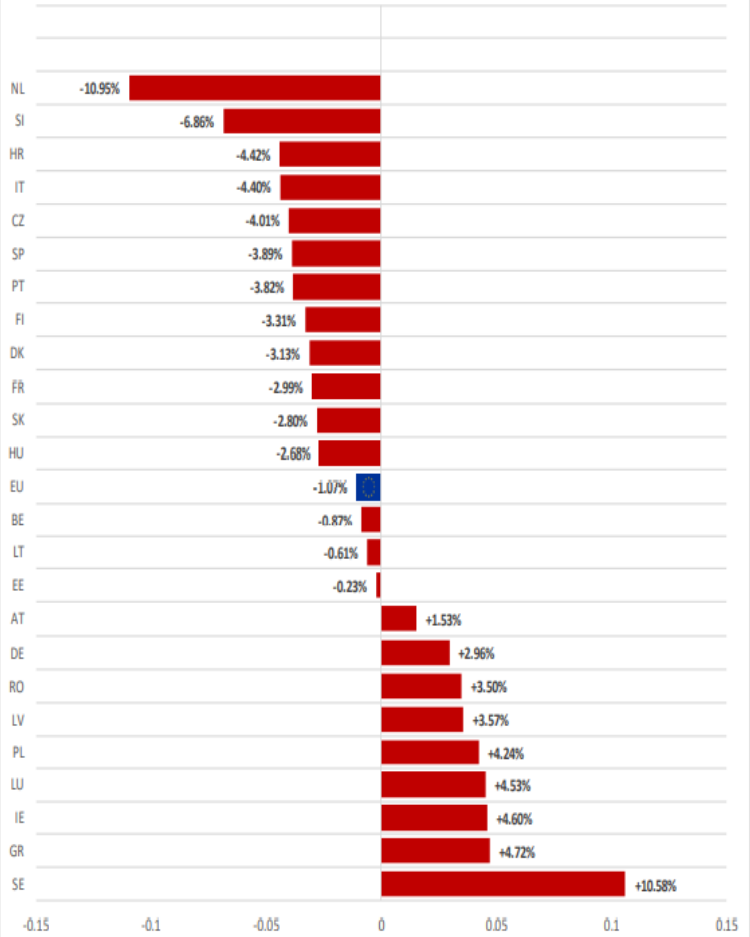


EU Prices week		18	Evolution since last week	Evolution since last month	Evolution since last year
Carcasse	Average A/C/Z -R3	374.2	- 0.2%	+ 0.5%	+ 7.5%
	Young Bovines (Z)	366.8	+ 0.1%	+ 0.3%	+ 0.1%
	Young Bulls (A)	370.6	- 0.4%	- 0.2%	+ 7.1%
	Steers (C)	408.5	+ 0.3%	+ 5.6%	+ 18.1%
	Cows (D)	300.1	+ 0.2%	+ 2.1%	+ 16.4%
	Heifers (E)	387.1	+ 0.2%	+ 1.7%	+ 10.7%
Live Animals	Male Calves Dairy Type	92.14	+ 4.4%	+ 14.6%	+ 39.0%
	Male Calves Beef Type	211.2	+ 0.9%	+ 4.1%	+ 13.9%
	Young Store Cattle	2.61	- 0.1%	+ 0.9%	+ 8.7%
	Yearling Male Store Cattle	2.31	- 0.3%	+ 0.0%	+ 3.9%
	Yearling Female Store Cattle	2.51	+ 0.3%	- 0.7%	+ 6.3%
	Calves slaughtered <8M	467.9	+ 0.4%	- 4.5%	+ 12.0%

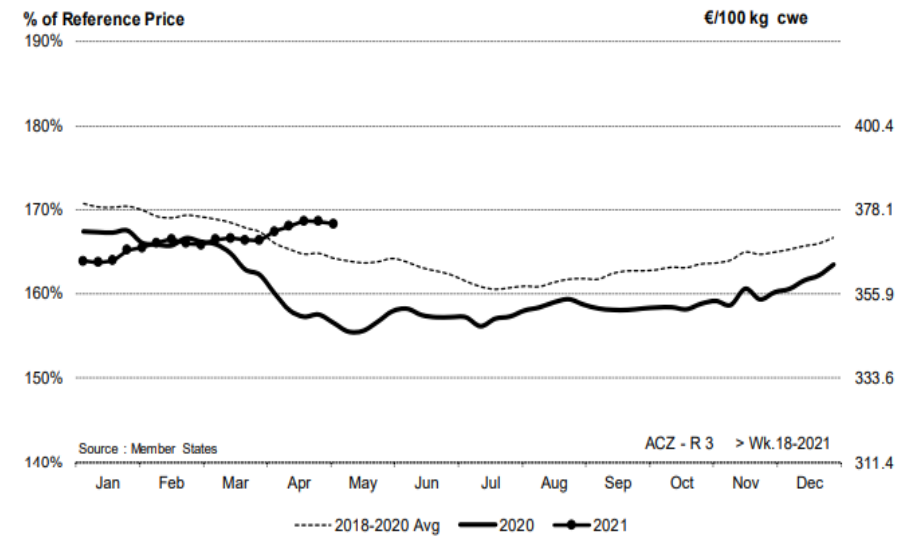
Sources : MSs notifications (Regulation (EU) 1182/2017 and 1184/2017



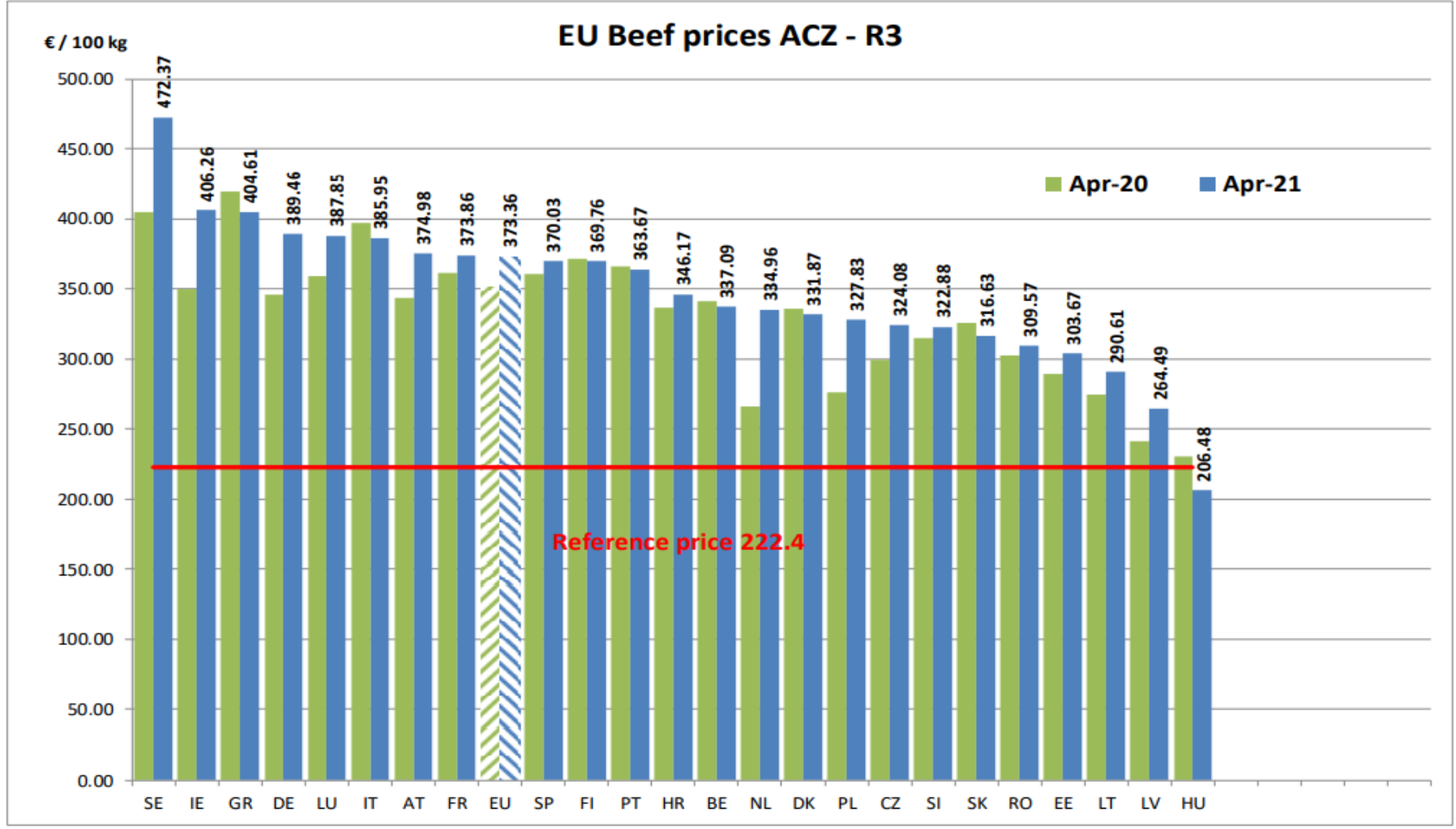
EU ACZ R3 Price Comparison between average monthly price May 2020 - April 2021 compared to May 2019 - April 2020



ACZ - R 3 > Wk.18-2021

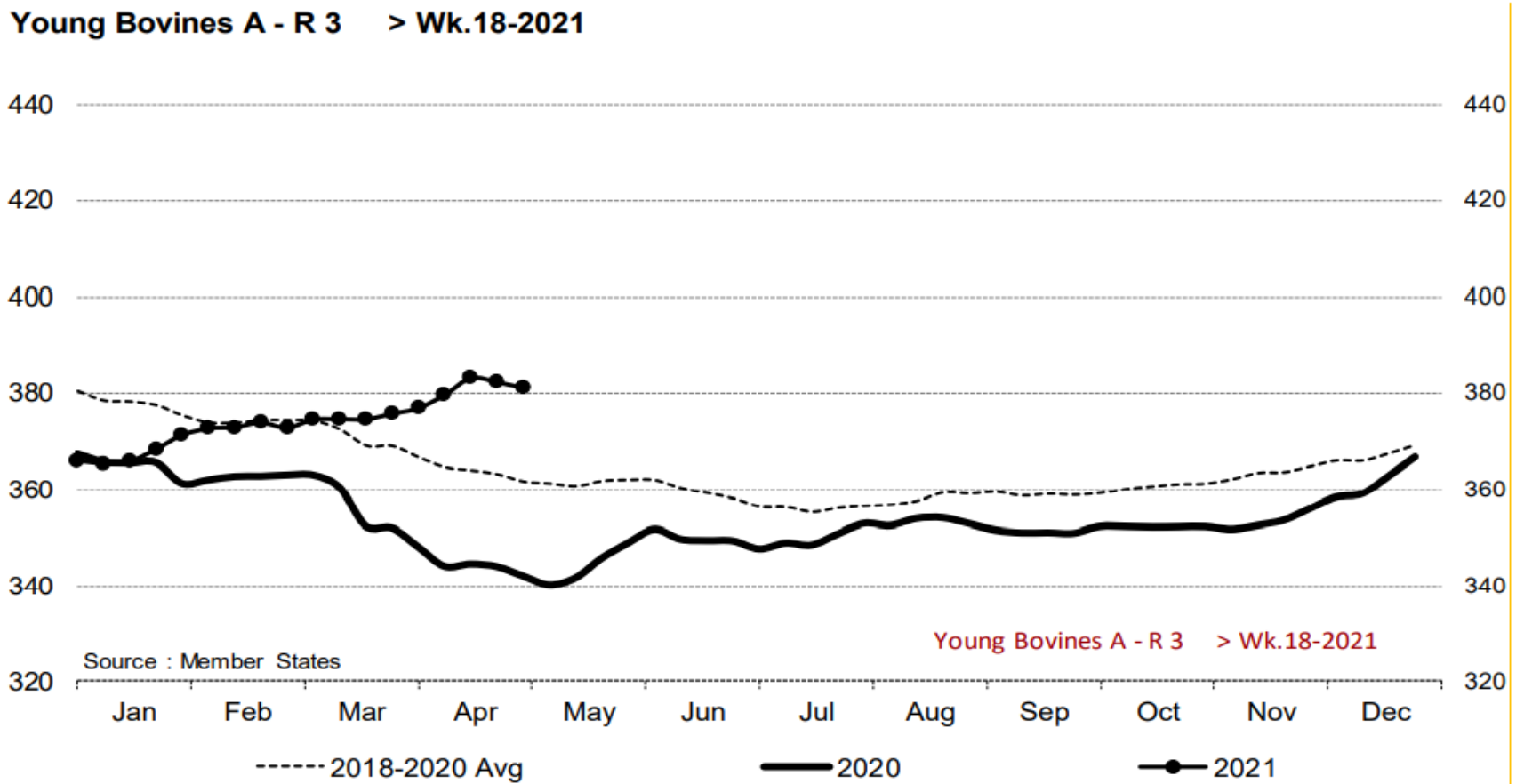


Price in week 18 :	374.27	Average price in April 2021 :	373.36
% change y/y :	+ 7.51%	% change y/y :	+ 6.35%
% Ref. Price in wk 18 :	168.3%		





Young Bovines A - R 3 > Wk.18-2021

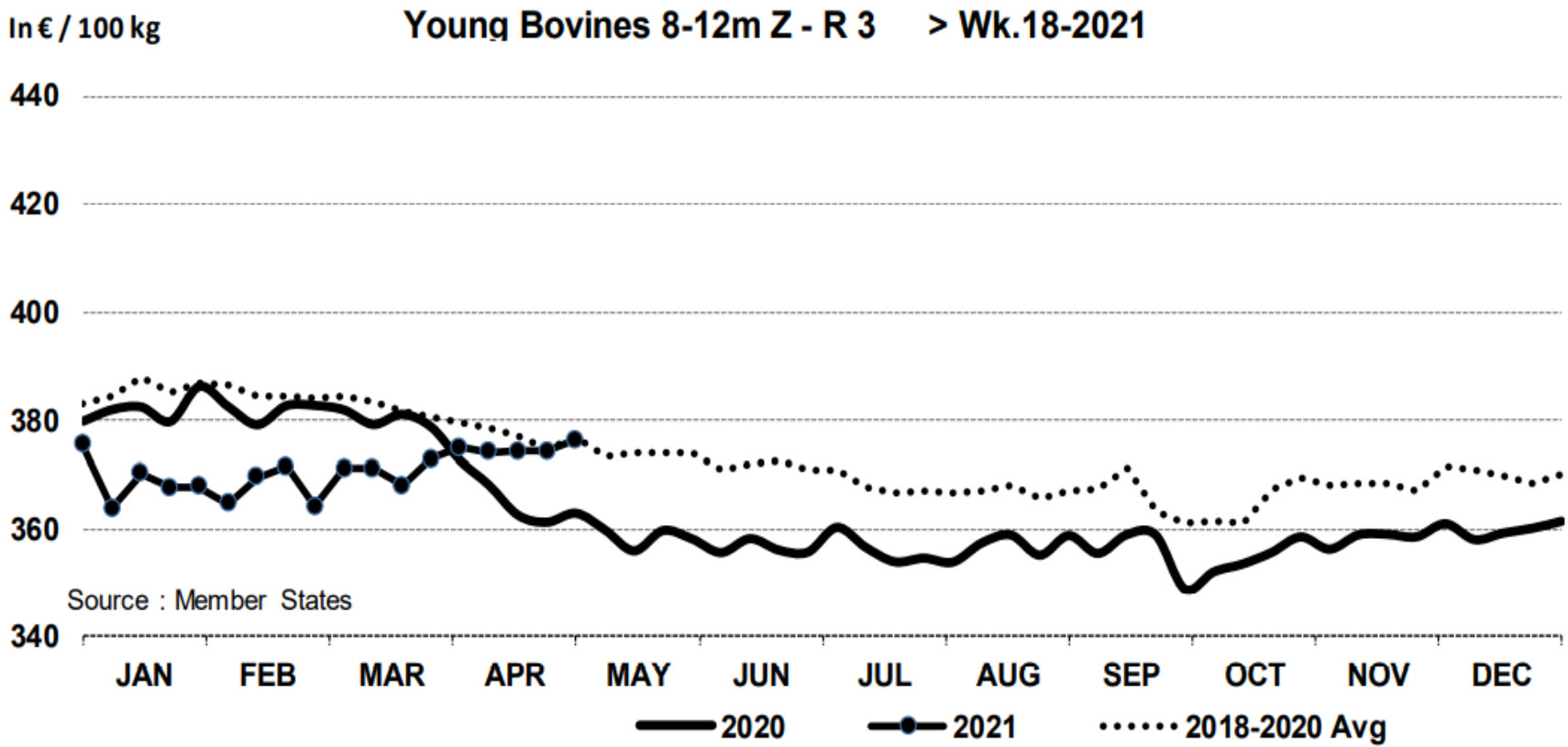


Source : Member States

Young Bovines A - R 3 > Wk.18-2021

Price in week 18 : **381.03**
% change y/y : **+ 11.4%**

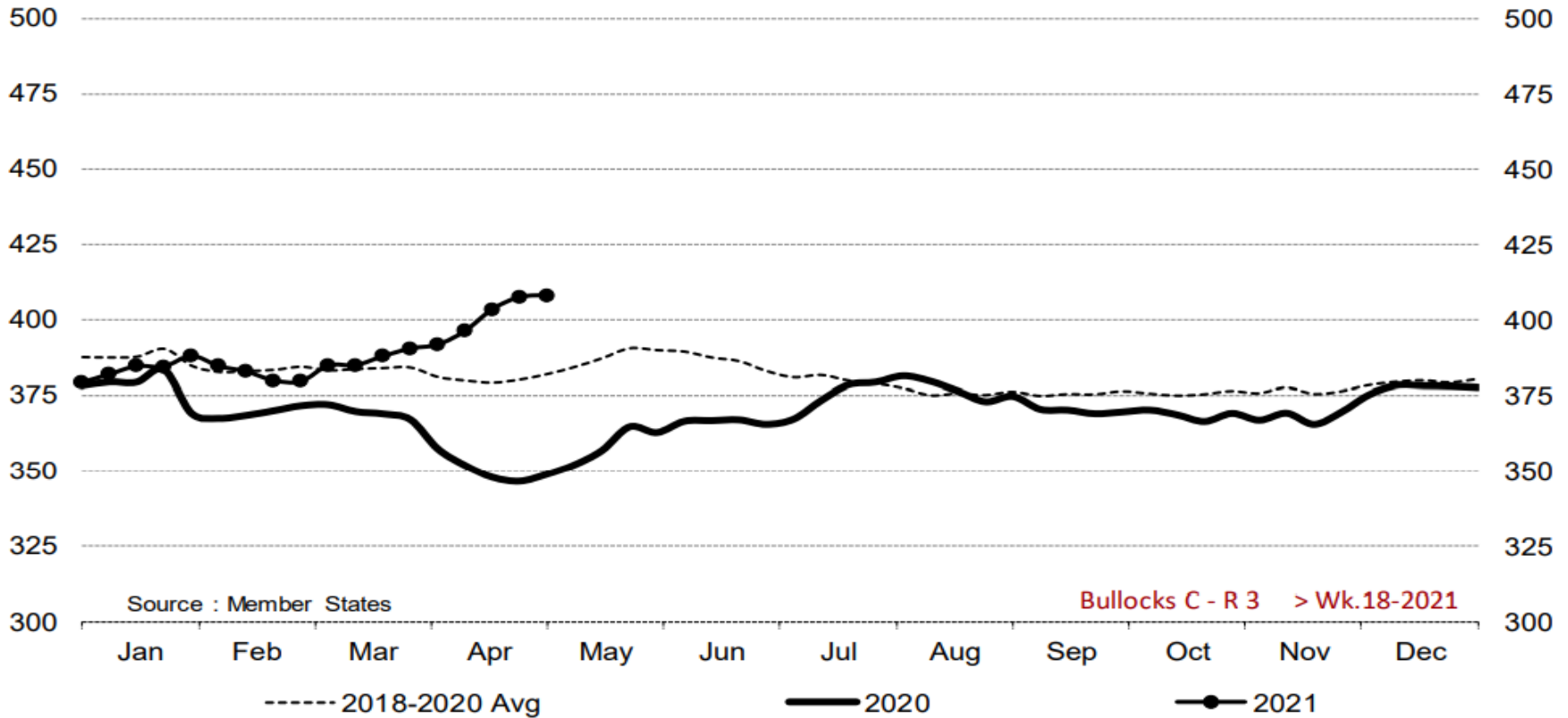
Average price in April 2021 : **379.72**
% change y/y : **+ 10.2%**



Price in week 18 :	376.25	12/04/2021	Average price in April 2021 :	374.16
% change y/y :	+ 3.7%		% change y/y :	+ 2.5%



Bullocks C - R 3 > Wk.18-2021

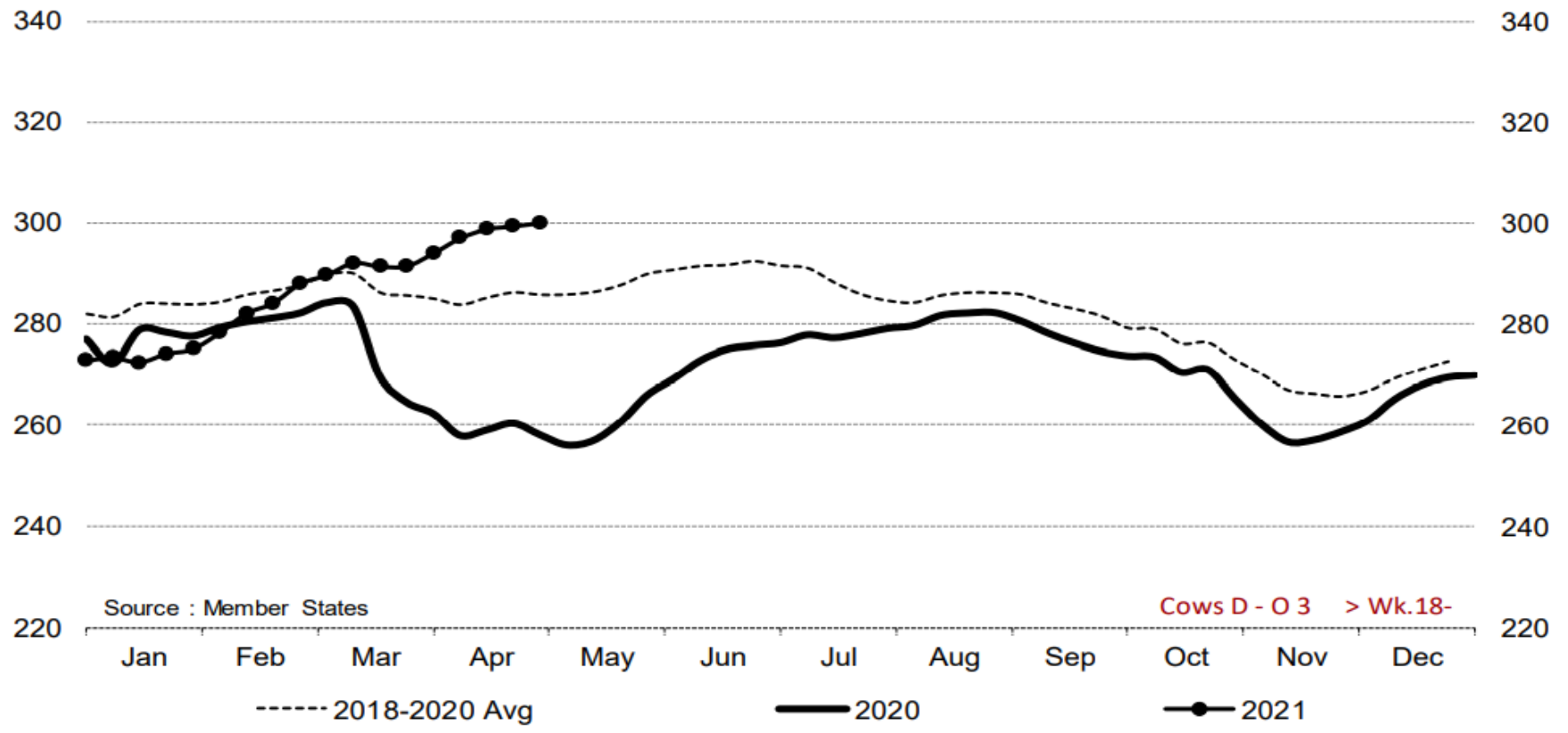


Price in week 18 : **407.88**
% change y/y : **+ 16.9%**

Average price in April 2021 : **397.78**
% change y/y : **+ 13.6%**



Cows D - O 3 > Wk.18-2021



Source : Member States

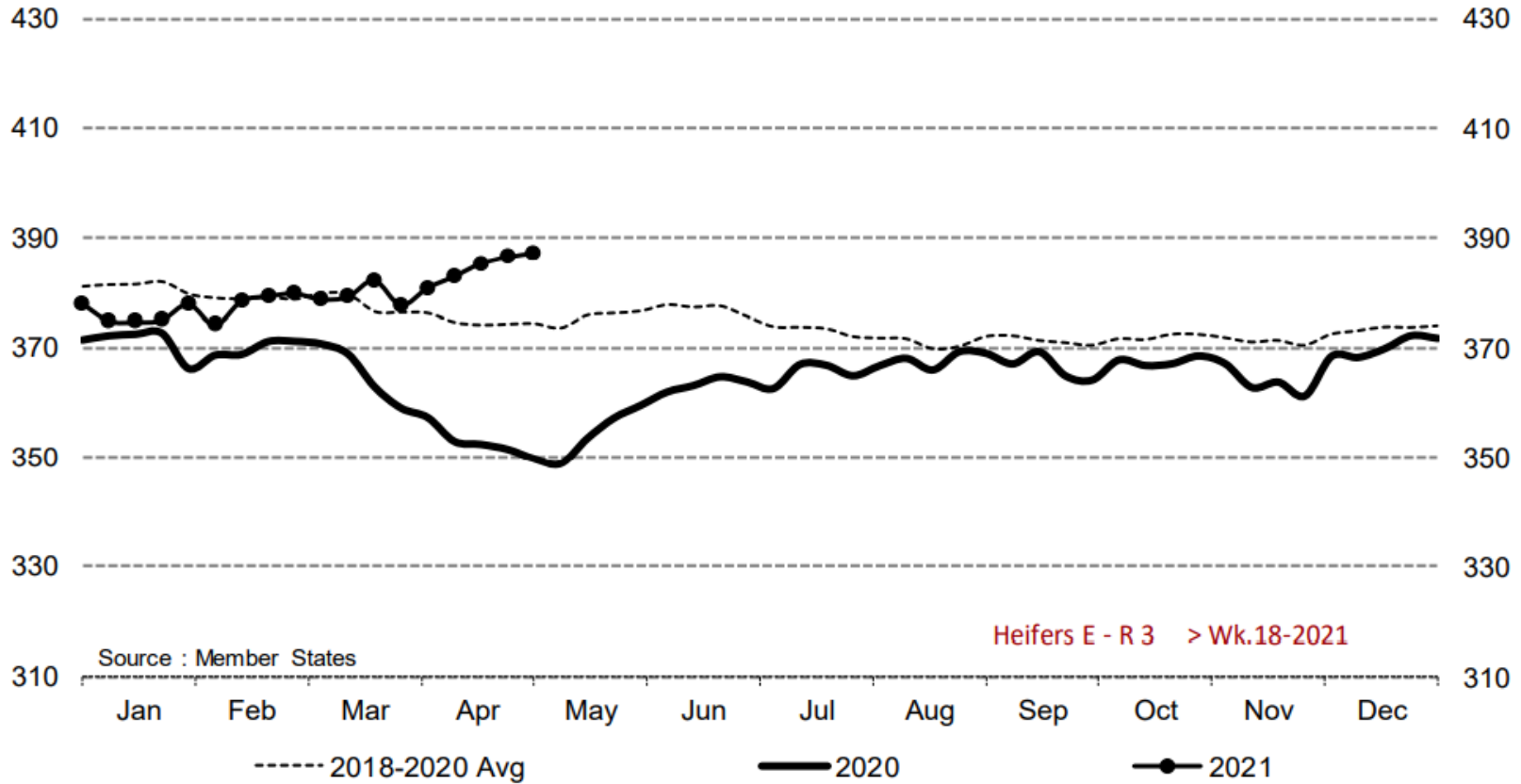
Cows D - O 3 > Wk.18-

Price in week 18 : **300.13**
% change y/y : **+ 16.4%**

Average price in April 2021 : **296.45**
% change y/y : **+ 14.3%**



Heifers E - R 3 > Wk.18-2021

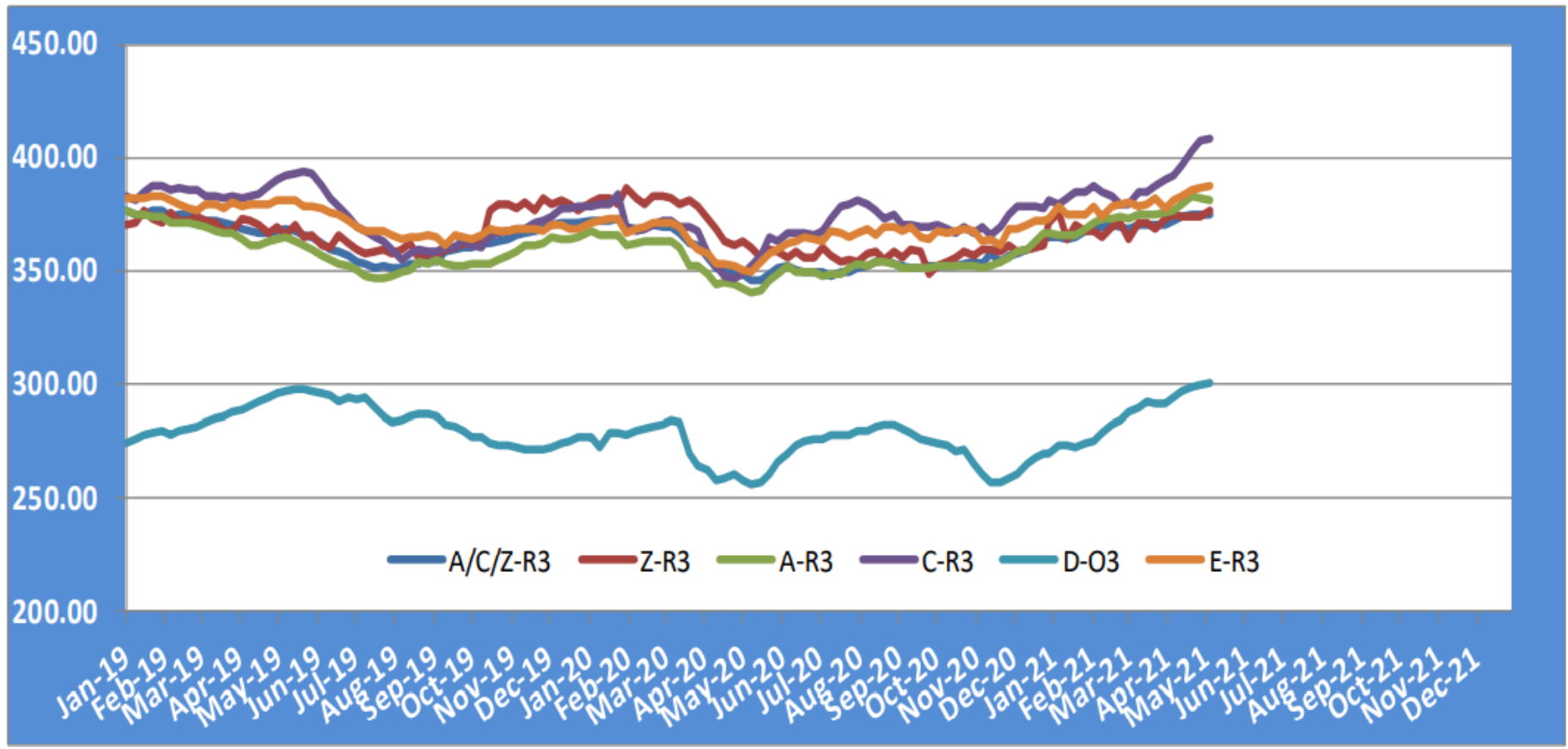


Price in week 18 : **387.14**
% change y/y : **+ 10.7%**

Average price in April 2021 : **382.88**
% change y/y : **+ 8.5%**

KARKAS FİYATLARI

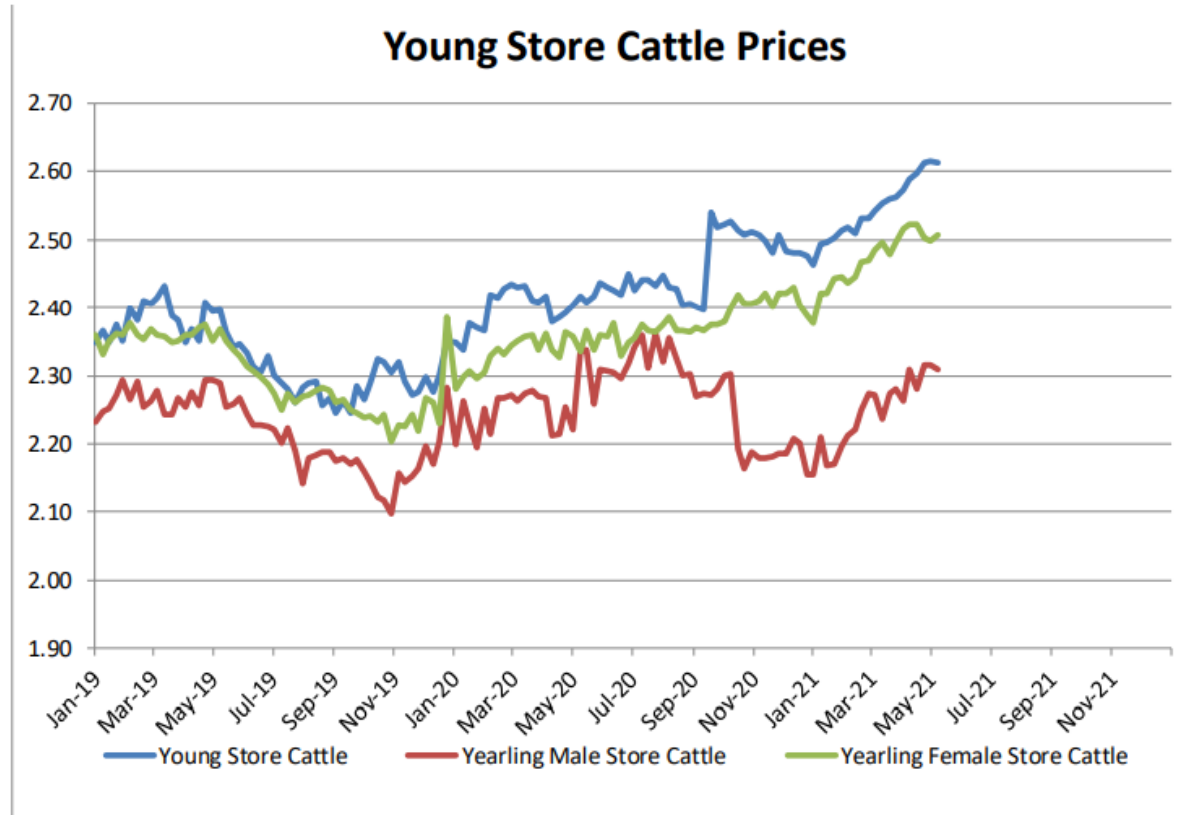
AB TÜM KATEGORİLERE GLOBAL BAKIŞ





Besilik siğır (€ / 100 kg canlı ağırlık)

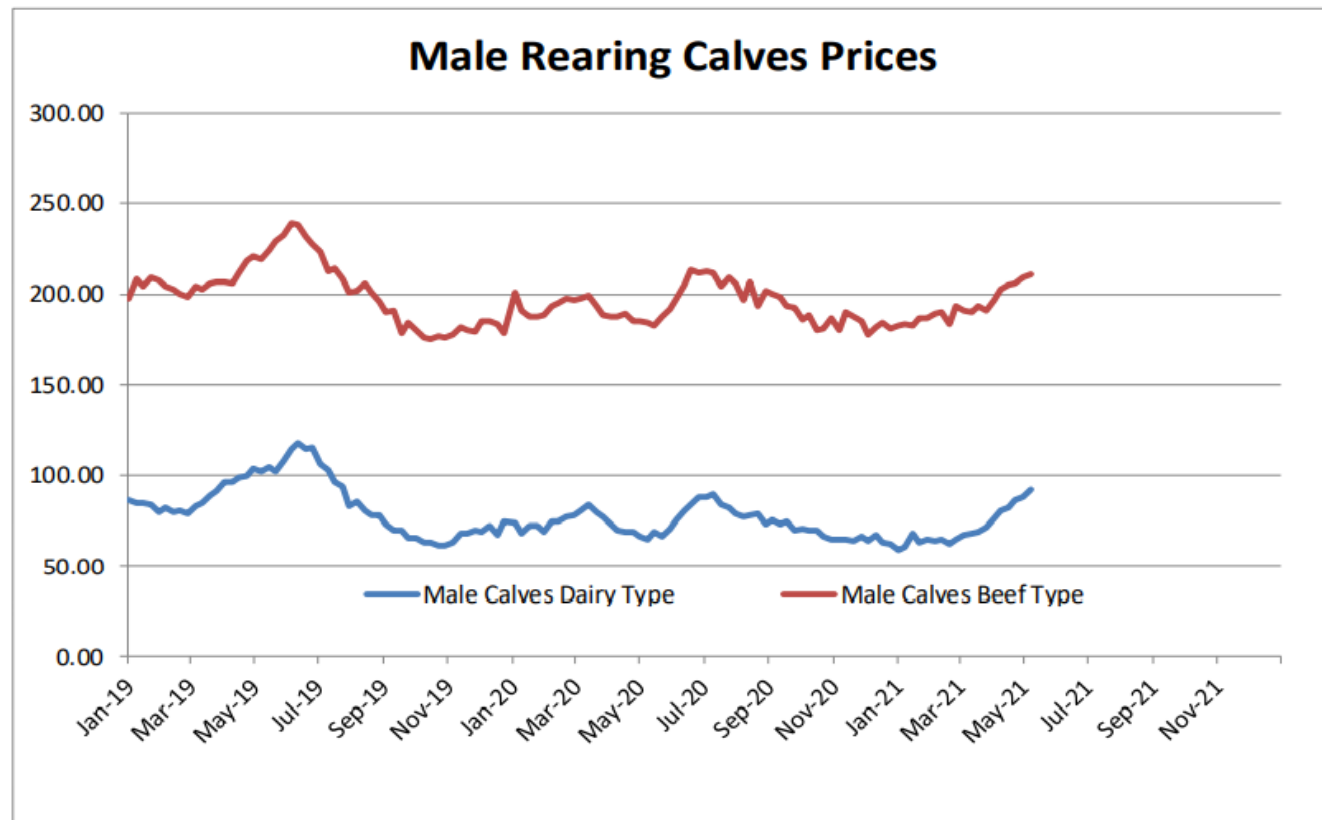
Store cattle (€/100 kg live weight)



Young Store Cattle Price in	Week 18	2.61	Yearling Male Store Cattle Price	2.31
	Change y/y	+8.69%	Change y/y	+3.93%
Yearling Female Store Cattle Price		2.51		
	Change y/y	+6.28%		

8 gün ve 4 haftalık erkek buzağlar (€/baş)

Male calves aged between 8 days and 4 weeks (€/head)



Male Rearing Calves Beef type

Price in Week 18 211.20

Change y/y +13.89%

Male Rearing Calves Dairy type

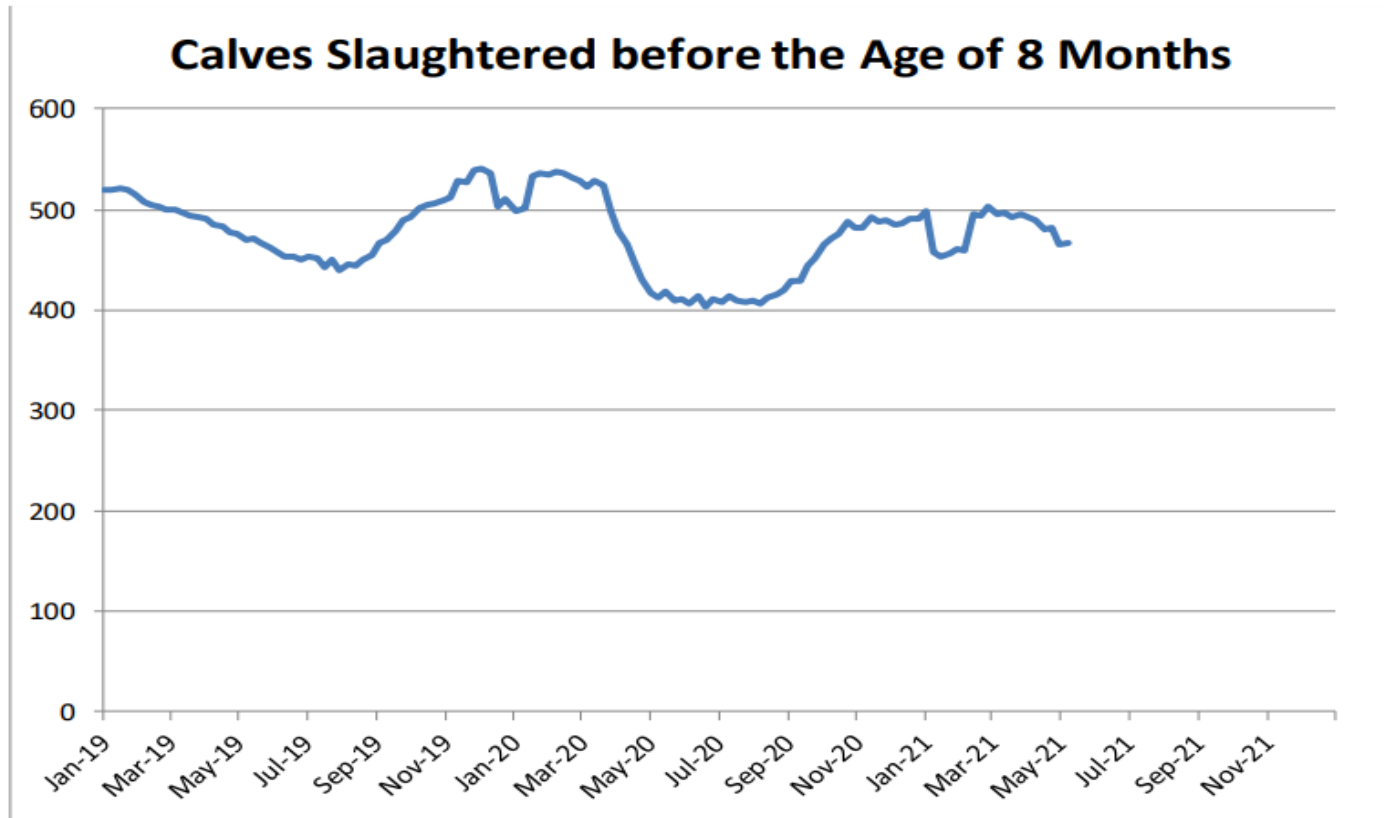
Price in Week 18 92.14

Change y/y +39.02%



8 aylıktan küçük kesilen buzağlar (€ / 100 kg canlı ağırlık)

Calves slaughtered before the age of less than 8 months
(€/100 kg cw)

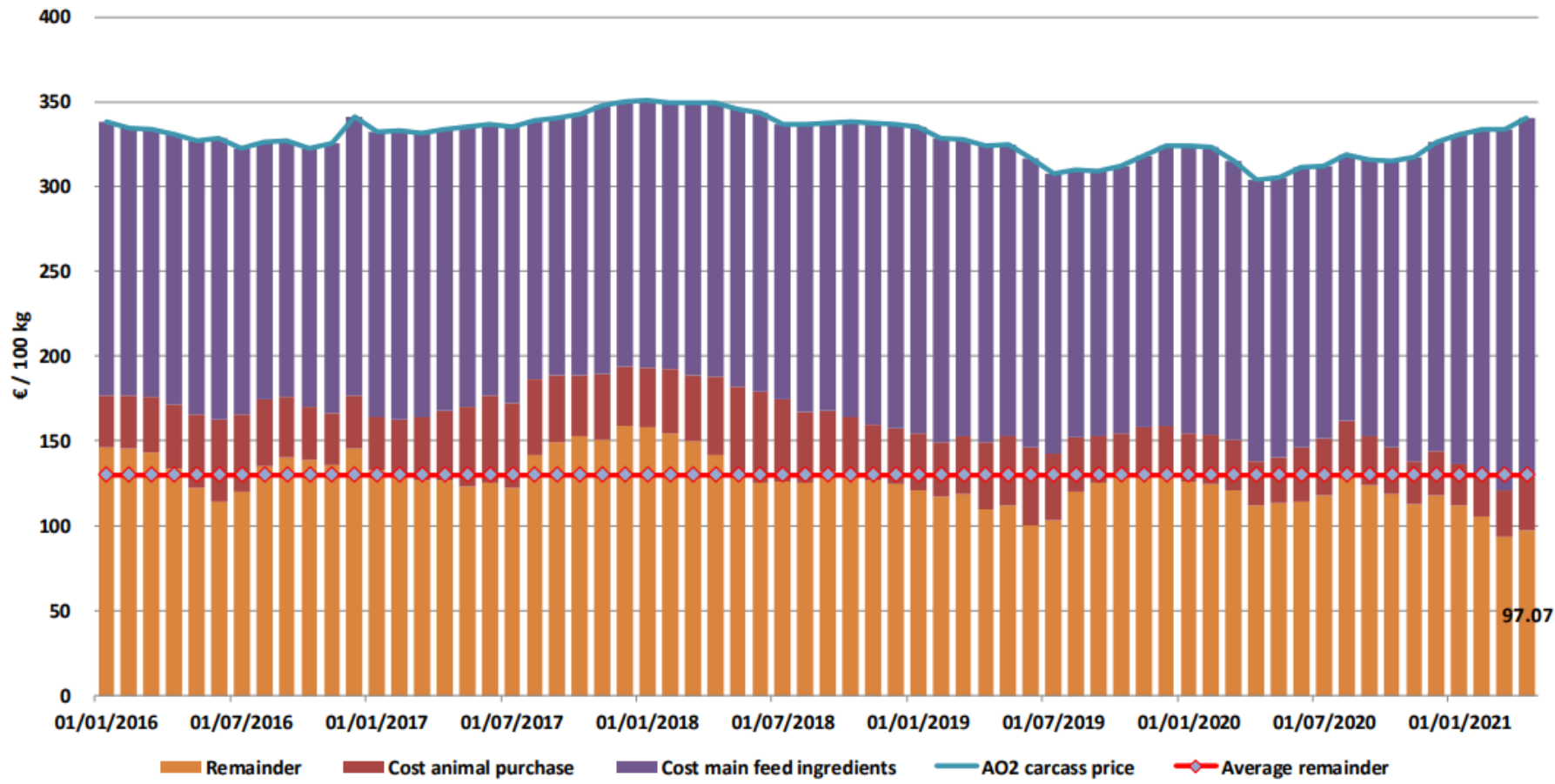


Price in Week 18 **467.99 € / 100 kg of carcasse weight**
Change y/y +11.95%

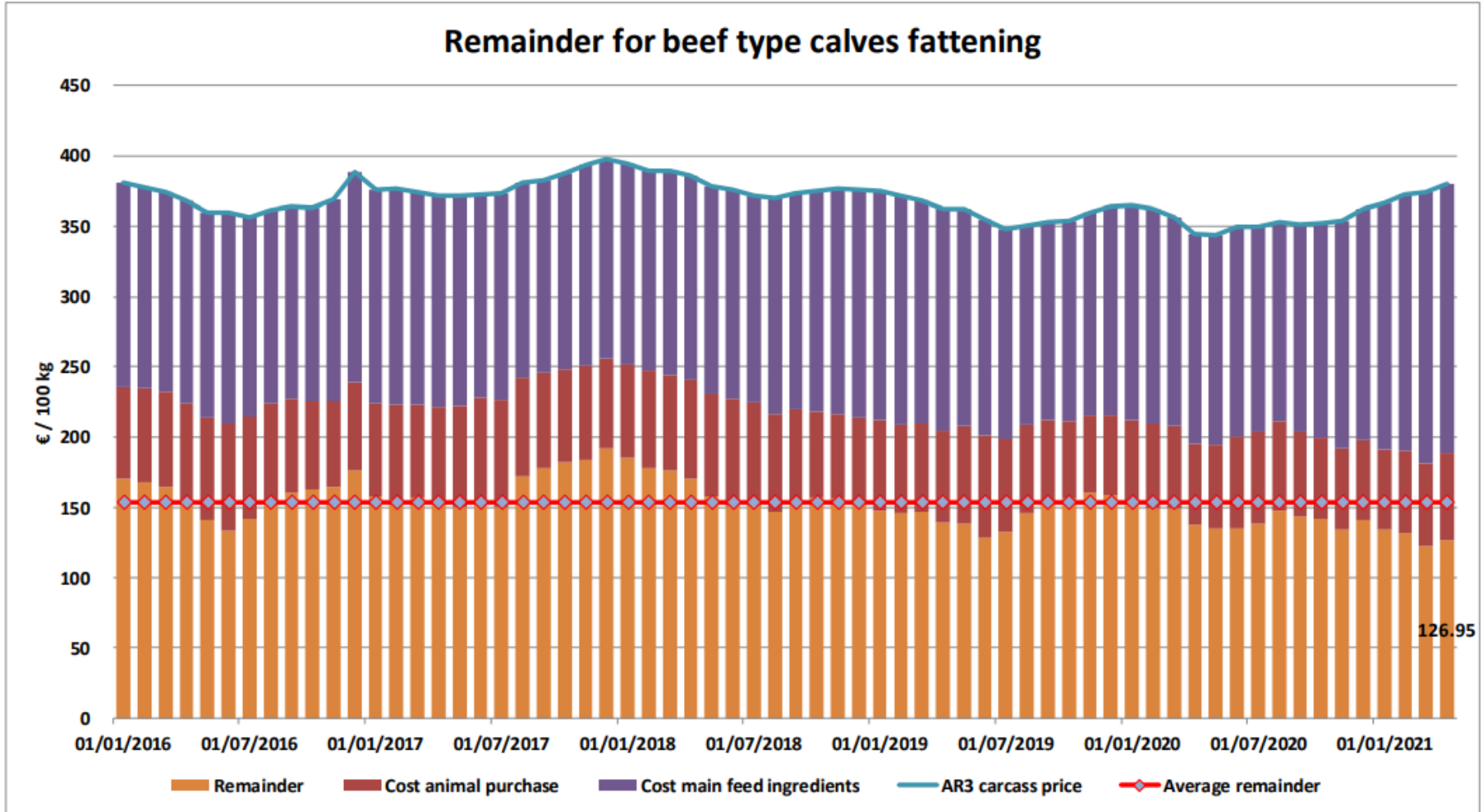


Süt Buzağları Besiciliği İçin Kalanlar

Remainder for dairy calves fattening

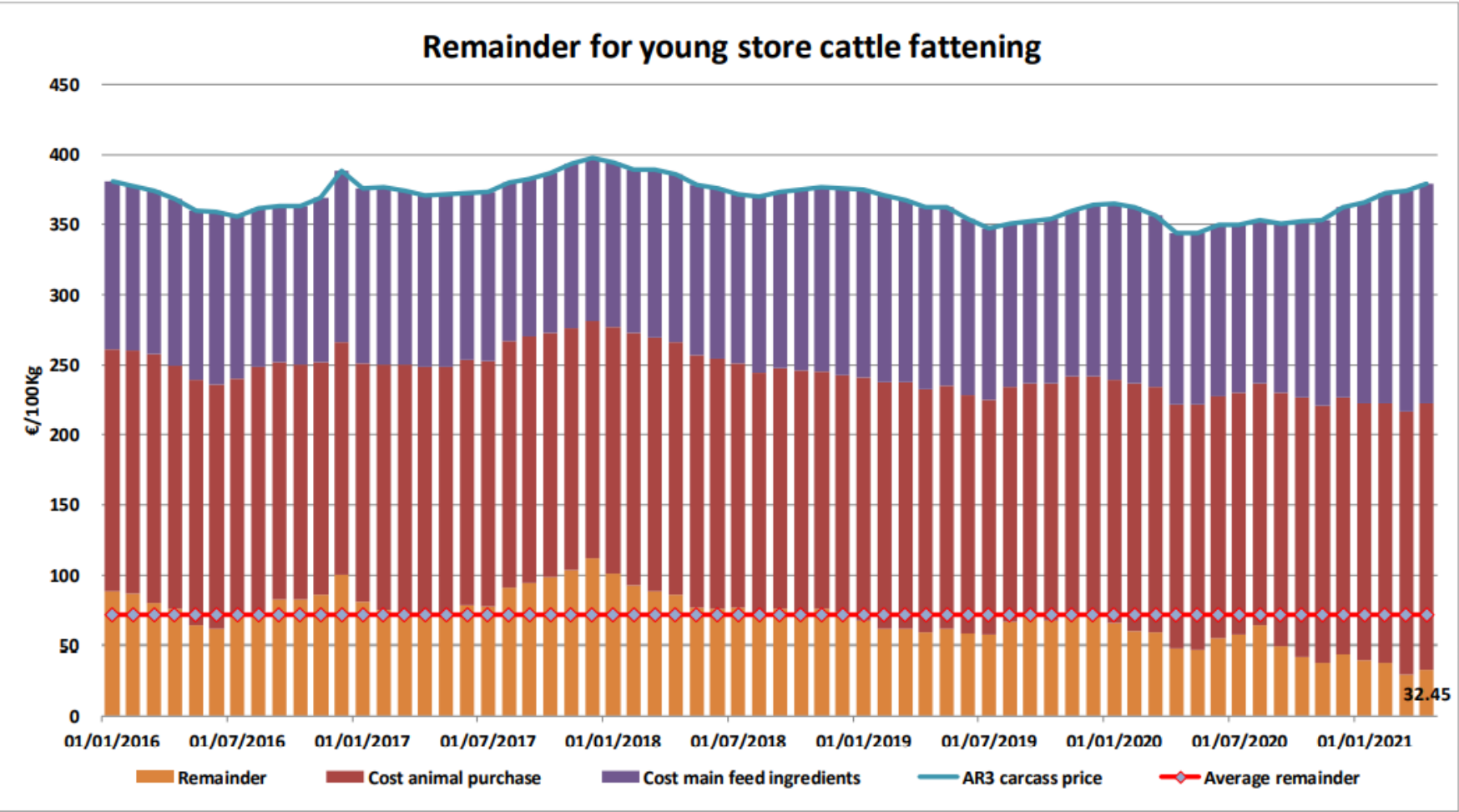


Sığır Tipi Buzağı Besiciliği İçin Kalanlar





Genç Besilik Sığır Besiciliği İçin Kalanlar



AB siğir eti ve canlı hayvan ihracatı (1): Pazar Rakamları (COMEXT – ton ca)

EU Exports of Beef and Live Animals (1):
Trade figures (COMEXT – tonnes cwe)

Destinations

Destinations	2017		2018		2019		2020		Jan-Mar 21		Compared to
	tonnes	%	tonnes	%	tonnes	%	tonnes	%	tonnes	%	
Israel	44 196	6.1%	47 774	6.8%	49 629	7.1%	56 965	8.1%	13 373	7.7%	+ 22.6%
Hong Kong	76 086	10.4%	55 537	7.9%	46 748	6.7%	56 860	8.1%	12 670	7.3%	+ 15.8%
Philippines	37 102	5.1%	28 766	4.1%	34 158	4.9%	39 920	5.7%	12 516	7.2%	+ 33.0%
Ghana	37 744	5.2%	36 766	5.2%	39 196	5.6%	47 408	6.7%	12 244	7.1%	- 2.4%
Bosnia-Herz.	34 711	4.8%	38 762	5.5%	41 119	5.9%	35 758	5.1%	8 860	5.1%	+ 12.7%
Ivory Coast	36 038	4.9%	36 064	5.1%	33 396	4.8%	32 460	4.6%	8 155	4.7%	- 9.9%
Algeria	26 305	3.6%	35 410	5.0%	57 152	8.2%	39 416	5.6%	8 134	4.7%	- 29.8%
Lebanon	38 322	5.3%	42 542	6.1%	36 393	5.2%	33 656	4.8%	7 681	4.4%	+ 0.8%
Norway	12 850	1.8%	7 925	1.1%	7 667	1.1%	12 936	1.8%	6 787	3.9%	+ 134.4%
Switzerland	26 708	3.7%	23 761	3.4%	25 188	3.6%	29 996	4.3%	6 579	3.8%	- 8.8%
Saudi Arabia	4 691	0.6%	2 521	0.4%	2 809	0.4%	9 707	1.4%	5 141	3.0%	+ 86.7%
Libya	27 848	3.8%	27 878	4.0%	24 541	3.5%	21 971	3.1%	4 945	2.9%	- 7.5%
Ukraine	7 331	1.0%	10 465	1.5%	13 836	2.0%	15 857	2.3%	3 965	2.3%	- 0.8%
Canada	2 424	0.3%	2 225	0.3%	6 806	1.0%	20 475	2.9%	3 815	2.2%	- 16.5%
Turkey	96 413	13.2%	96 052	13.7%	34 555	4.9%	22 107	3.1%	3 702	2.1%	- 8.3%
Kosovo	4 037	0.6%	6 693	1.0%	10 279	1.5%	10 912	1.5%	3 698	2.1%	+ 46.0%
Other Destinations	216 712	29.7%	203 099	28.9%	237 118	33.8%	218 229	31.0%	51 039	29.5%	
Total (without UK)	729 519		702 242		700 590		704 631		173 306		
% change			- 4%		- 0%		+ 1%		+ 0.9%		



AB sığır eti ihracatı: Pazar Rakamları (COMEXT – ton ca)

EU Exports of Beef:
Trade figures (COMEXT – tonnes cwe)

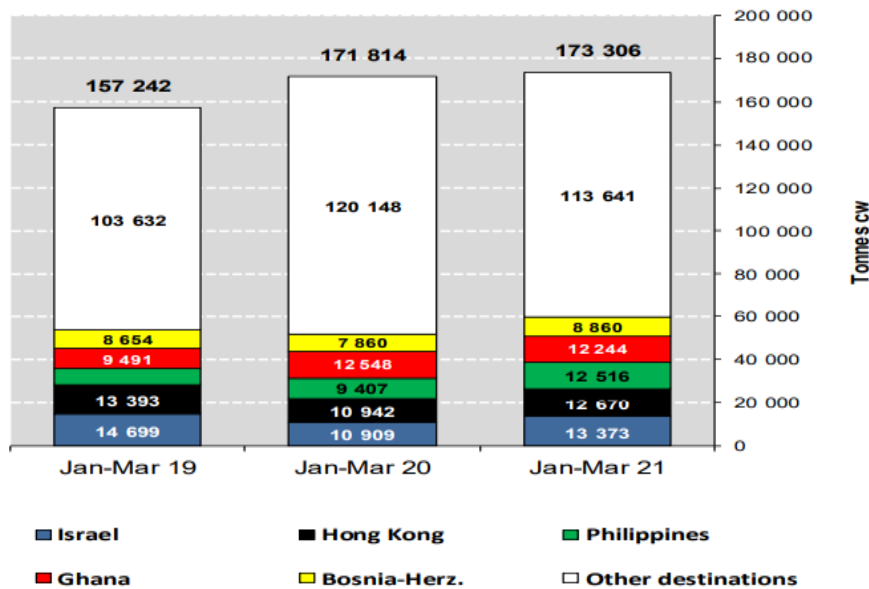
Destinations

	2017		2018		2019		2020		Jan-Mar 20		Compared to
	tonnes	%	tonnes	%	tonnes	%	tonnes	%	tonnes	%	
Ghana	37 744	7.7%	36 766	7.9%	39 196	8.2%	47 408	9.7%	12 548	10.0%	+ 32.2%
Hong Kong	76 086	15.4%	55 537	11.9%	46 748	9.8%	56 860	11.6%	10 942	8.7%	- 18.3%
Philippines	37 102	7.5%	28 766	6.2%	34 158	7.2%	39 920	8.1%	9 407	7.5%	+ 27.6%
Ivory Coast	36 028	7.3%	36 064	7.7%	33 396	7.0%	32 460	6.6%	9 047	7.2%	+ 37.6%
Bosnia-Herz.	32 181	6.5%	36 152	7.7%	38 806	8.2%	33 459	6.8%	7 357	5.8%	- 10.1%
Switzerland	25 570	5.2%	22 711	4.9%	24 110	5.1%	28 941	5.9%	6 876	5.5%	+ 47.0%
China	5 738	1.2%	6 712	1.4%	22 317	4.7%	15 505	3.2%	6 780	5.4%	+++
Israel	18 750	3.8%	22 163	4.7%	23 026	4.8%	21 967	4.5%	5 720	4.5%	- 19.8%
Canada	2 424	0.5%	2 225	0.5%	6 806	1.4%	20 475	4.2%	4 571	3.6%	+++
Algeria	12 304	2.5%	13 919	3.0%	19 142	4.0%	7 108	1.4%	4 469	3.6%	+ 47.7%
Japan	4 281	0.9%	3 452	0.7%	8 007	1.7%	11 885	2.4%	4 283	3.4%	+++
Ukraine	6 926	1.4%	9 887	2.1%	12 893	2.7%	14 861	3.0%	3 970	3.2%	+ 13.9%
Norway	12 849	2.6%	7 922	1.7%	7 667	1.6%	12 936	2.6%	2 896	2.3%	+ 37.0%
Angola	10 982	2.2%	11 470	2.5%	8 410	1.8%	9 410	1.9%	2 787	2.2%	+ 72.1%
USA	3 756	0.8%	5 458	1.2%	7 867	1.7%	12 310	2.5%	2 674	2.1%	+ 69.2%
North Macedonia	11 285	2.3%	10 002	2.1%	11 395	2.4%	10 551	2.1%	2 468	2.0%	+ 13.7%
Other Destinations	159 107	32.3%	157 976	33.8%	131 695	27.7%	115 000	23.4%	28 963	23.0%	
Total (without UK)	493 112		467 183		475 639		491 056		125 759		
% change			- 5%		+ 2%		+ 3%		+ 15.3%		

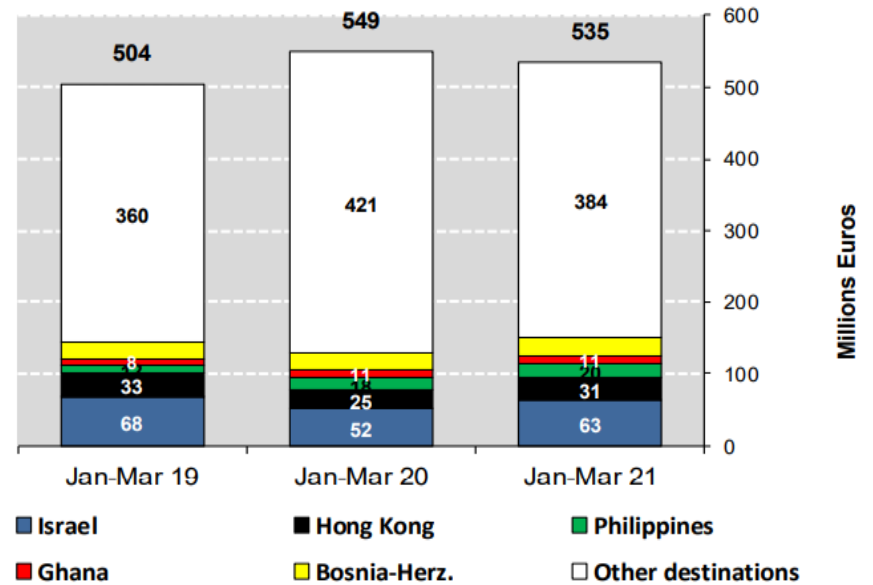


AB siğir eti ve canlı hayvan ihracatı (COMEXT)

EU EXPORTS of Beef & Veal (Tonnes cwe) to Extra EU without UK



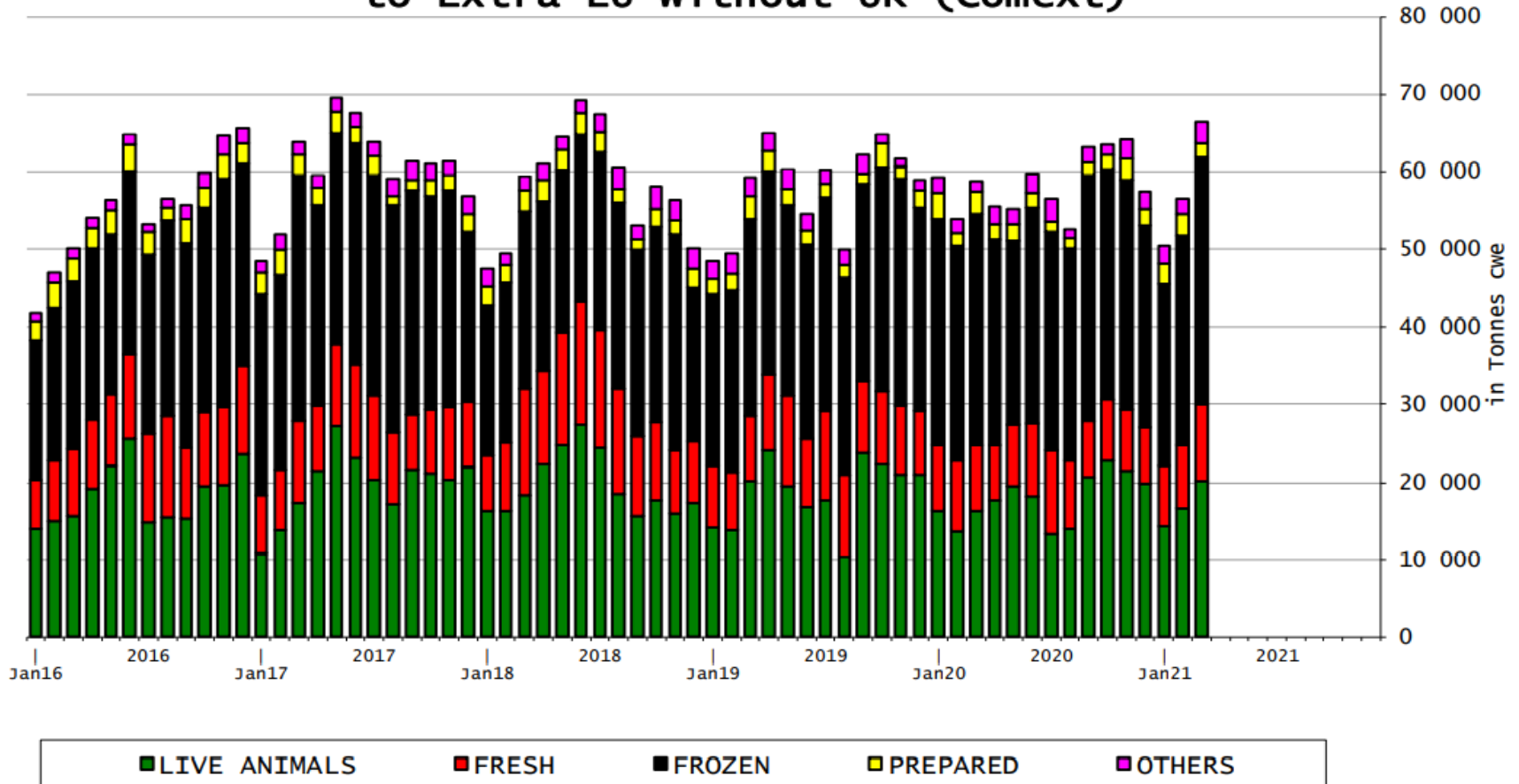
EU EXPORTS of Beef & Veal (Million EUR) to Extra EU without UK





AB siğir eti ürünleri ihracatı (COMEXT)

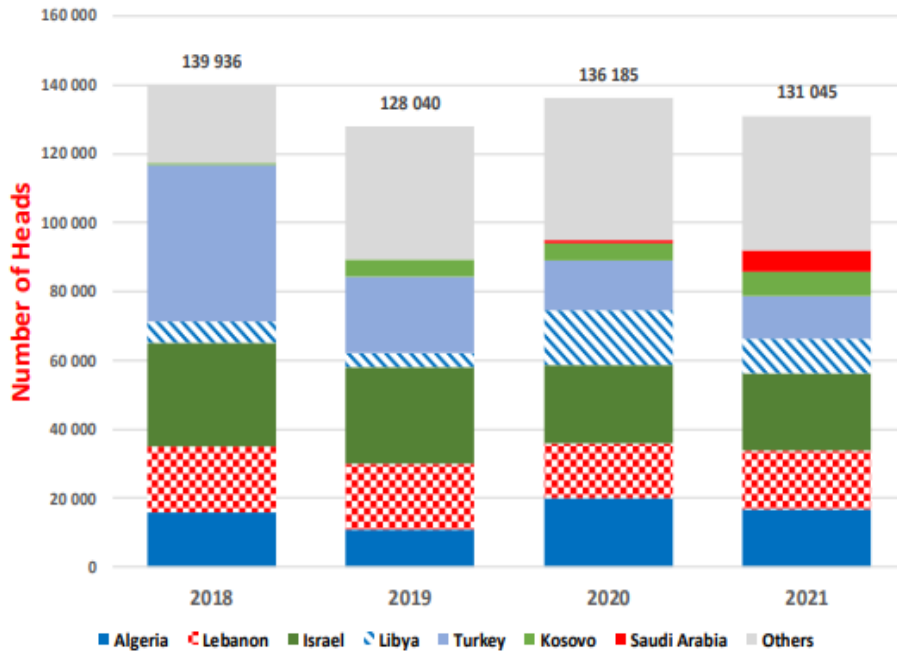
EU Exports of BEEF products
to Extra EU without UK (Comext)



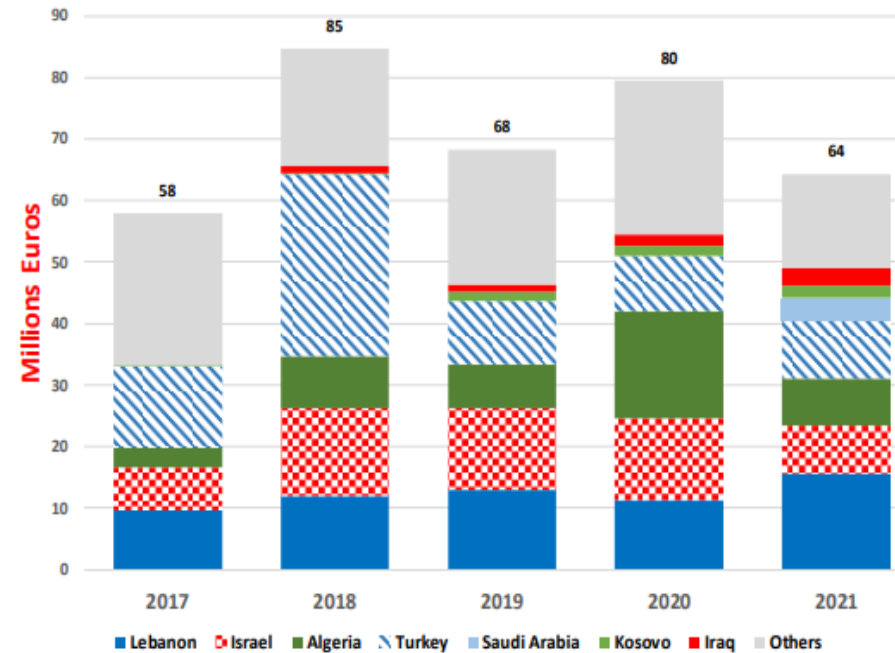


European Commission

EU Exports of BEEF Live Animals by Partner for the Period Jan-Feb 2021



EU Exports of BEEF Live Animals by Partner for the Period Jan-Jan 2021



AB Sığır Eti ve Canlı Hayvan İthalatları (1): Ticaret Verileri (COMEXT – ton ca)

EU Imports of Beef and Live Animals, excl CN 15021090 (1):
Trade Figures (COMEXT – tonnes cwe)

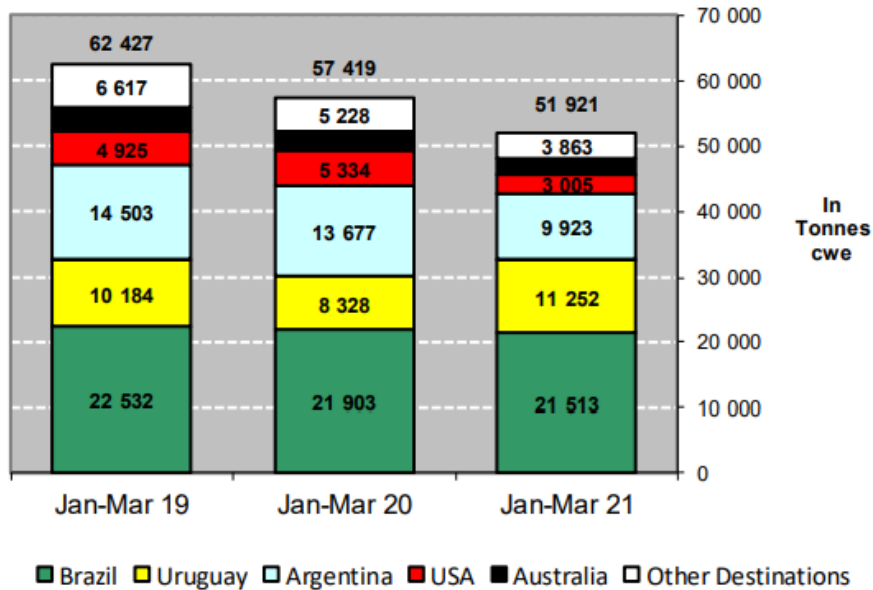
Origins

	2017		2018		2019		2020		Jan-Mar 21		Compared to
	tonnes	%	tonnes	%	tonnes	%	tonnes	%	tonnes	%	
Brazil	86 927	33.9%	103 979	37.3%	99 569	36.4%	84 172	37.6%	21 513	41.4%	- 1.8%
Uruguay	52 078	20.3%	47 922	17.2%	40 483	14.8%	34 595	15.5%	11 252	21.7%	+ 35.1%
Argentina	49 259	19.2%	61 400	22.0%	65 324	23.9%	56 421	25.2%	9 923	19.1%	- 27.4%
USA	21 624	8.4%	19 268	6.9%	16 852	6.2%	16 532	7.4%	3 005	5.8%	- 43.7%
Australia	18 193	7.1%	17 368	6.2%	16 516	6.0%	11 058	4.9%	2 365	4.6%	- 19.8%
Switzerland	5 105	2.0%	5 413	1.9%	4 401	1.6%	4 197	1.9%	1 315	2.5%	+ 11.0%
New Zealand	6 806	2.7%	7 165	2.6%	6 726	2.5%	6 116	2.7%	755	1.5%	- 54.2%
Canada	512	0.2%	1 343	0.5%	2 518	0.9%	1 550	0.7%	466	0.9%	+++
N.det.Extra	72	0.0%	127	0.0%	196	0.1%	94	0.0%	259	0.5%	+++
Paraguay	5 922	2.3%	5 520	2.0%	5 203	1.9%	4 234	1.9%	246	0.5%	- 73.2%
Namibia	5 043	2.0%	3 442	1.2%	7 706	2.8%	1 445	0.6%	210	0.4%	- 33.1%
Japan	645	0.3%	791	0.3%	997	0.4%	789	0.4%	208	0.4%	+ 5.9%
Serbia	565	0.2%	1 134	0.4%	1 062	0.4%	931	0.4%	138	0.3%	- 56.8%
Norway	388	0.2%	153	0.1%	129	0.0%	336	0.2%	74	0.1%	+++
Botswana	2 686	1.0%	3 119	1.1%	4 950	1.8%	788	0.4%	59	0.1%	- 77.6%
Chile	319	0.1%	356	0.1%	392	0.1%	168	0.1%	27	0.1%	- 68.0%
Other Destinations	586	0.2%	344	0.1%	384	0.1%	487	0.2%	107	0.2%	
Total (without UK)	256 731		278 843		273 408		223 912		51 921		
% change			+ 9%		- 2%		- 18%		- 9.6%		

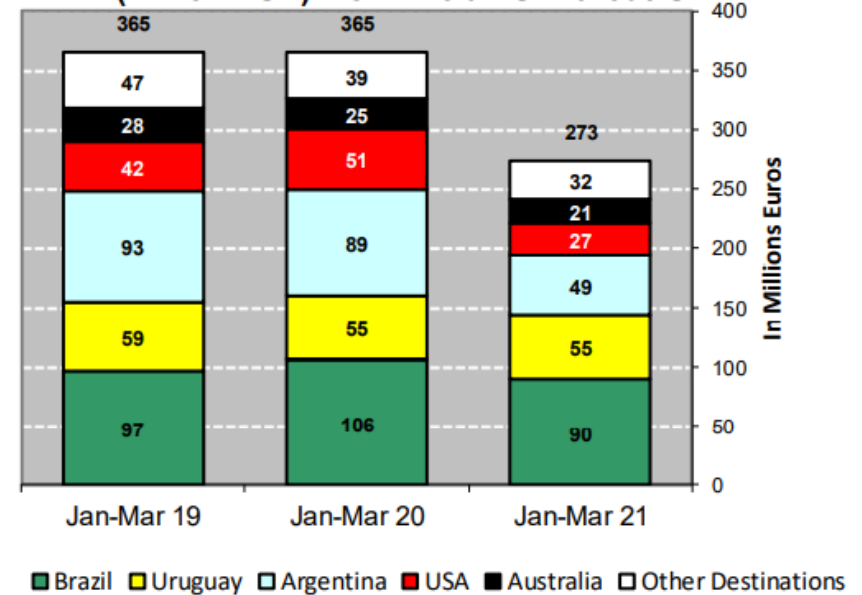


AB Sığır Eti ve Canlı Hayvan İthalatları

**IMPORTS of Beef & Veal into EU
(Tonnes cwe) from Extra EU without UK**



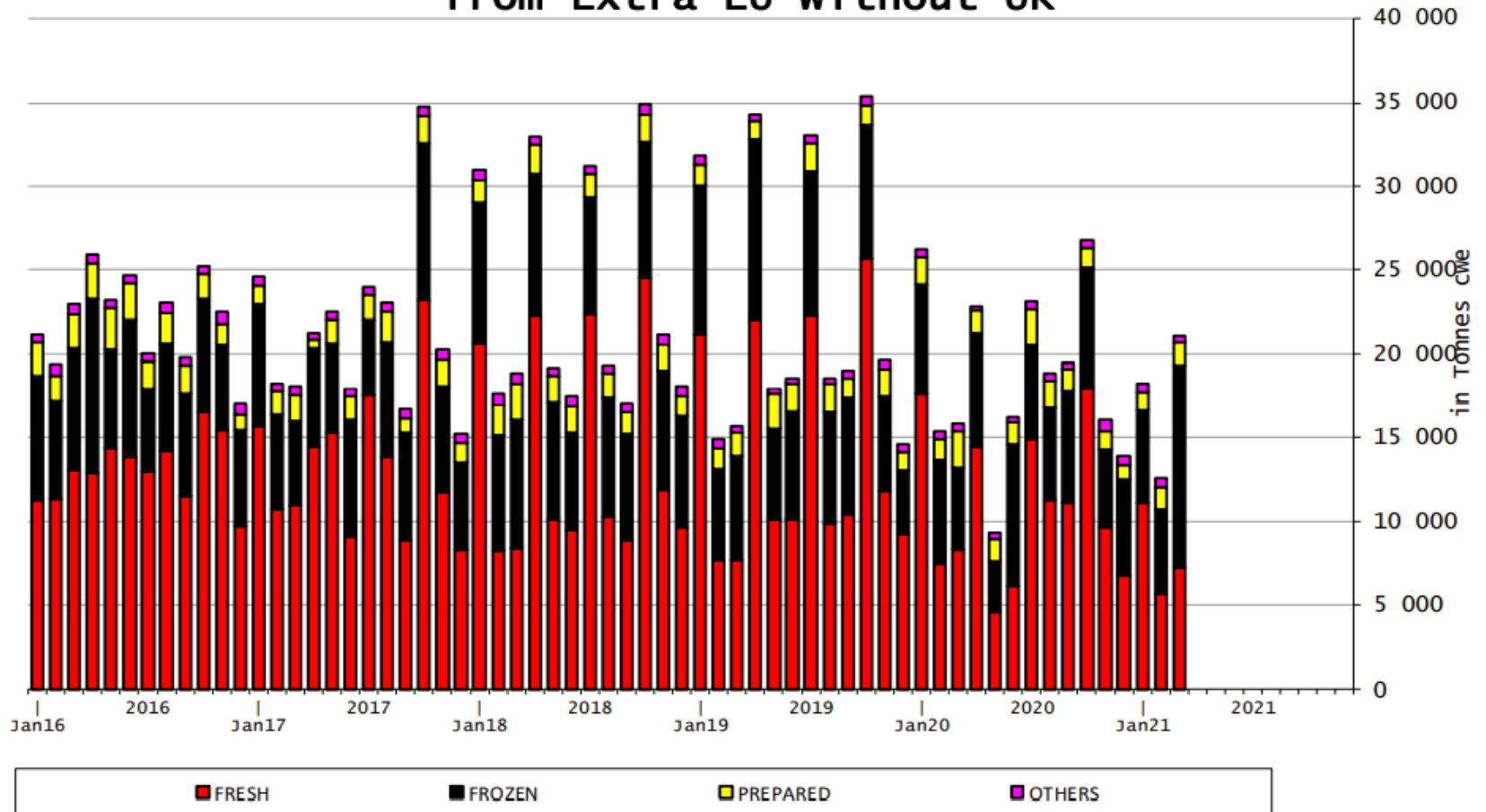
**IMPORTS of Beef & Veal into EU
(Million EUR) from Extra EU without UK**





AB Sığır Eti İthalatları (Birleşik Krallık hariç)

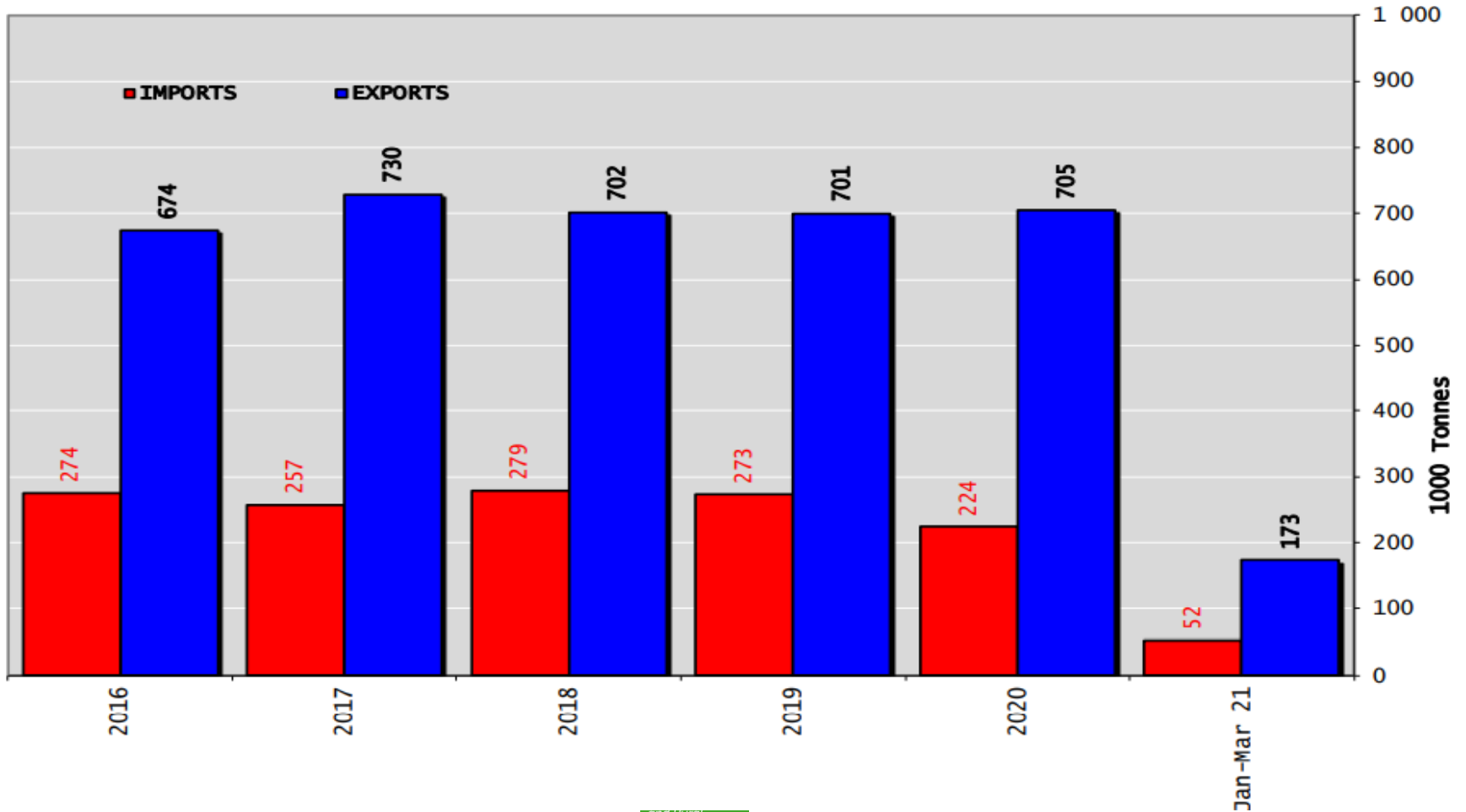
EU Imports of BEEF products from Extra EU without UK



	In Tons of Carcase Weight			
	2019	2020	2021	2021/2020
Exports	74 199	65 362	40 402	-38%
Live Animals	1 689	1 493	1 094	-27%
Meats	72 510	63 869	39 308	-38%
Imports	31 682	24 185	12 659	-48%
Live Animals	353	198	101	-49%
Meats	31 330	23 987	12 558	-48%

	In Thousand Euros			
	2019	2020	2021	2021/2020
Exports	254 399	225 322	168 248	-25%
Live Animals	9 251	7 970	8 874	11%
Meats	245 148	217 352	159 374	-27%
Imports	95 924	89 631	36 105	-60%
Live Animals	1 637	879	324	-63%
Meats	94 287	88 752	35 782	-60%

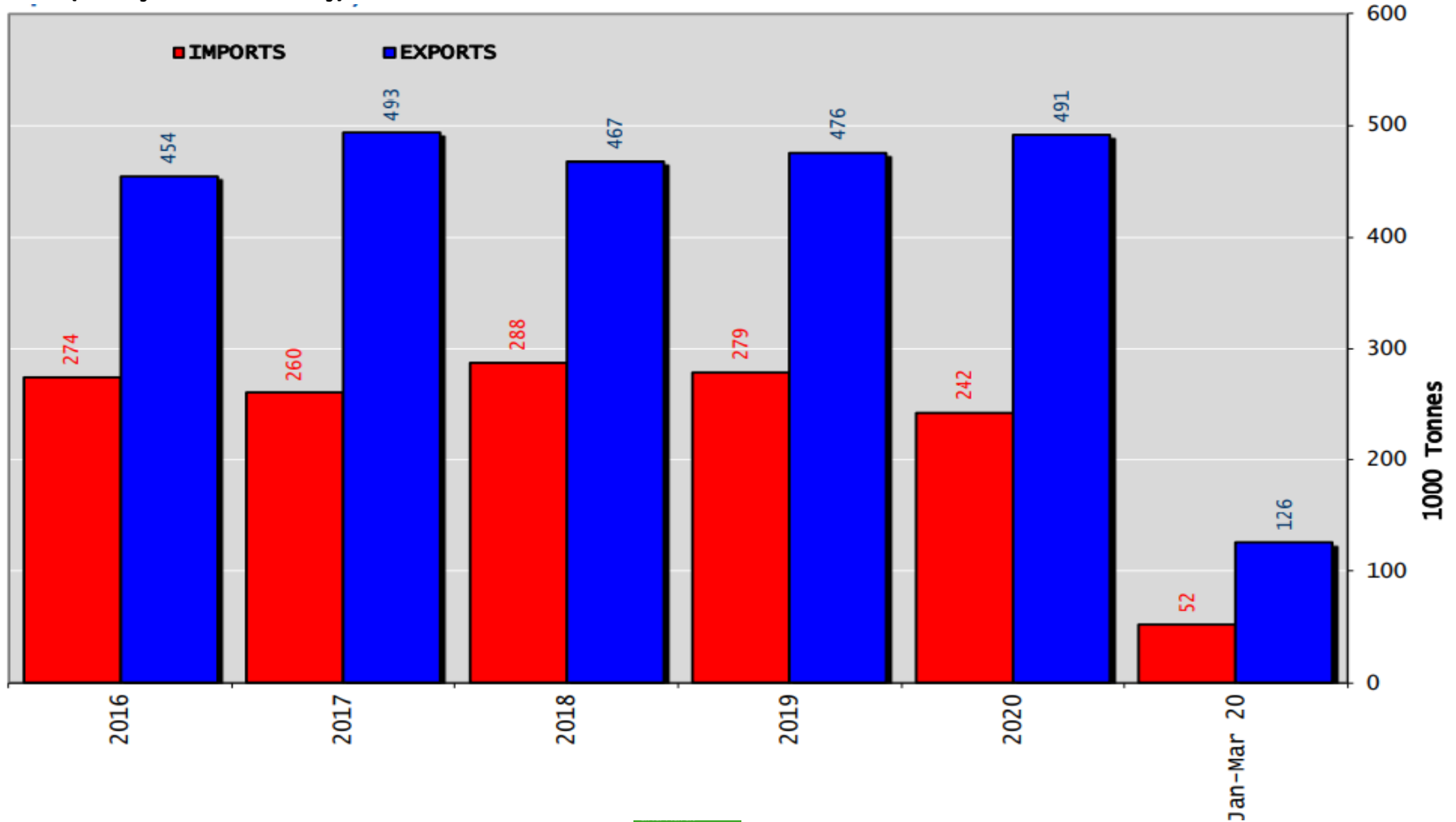
Sığır Eti Ürünleri ve Canlı Hayvan Ticaret Dengesi (Ton) (Birleşik Krallık Hariç)



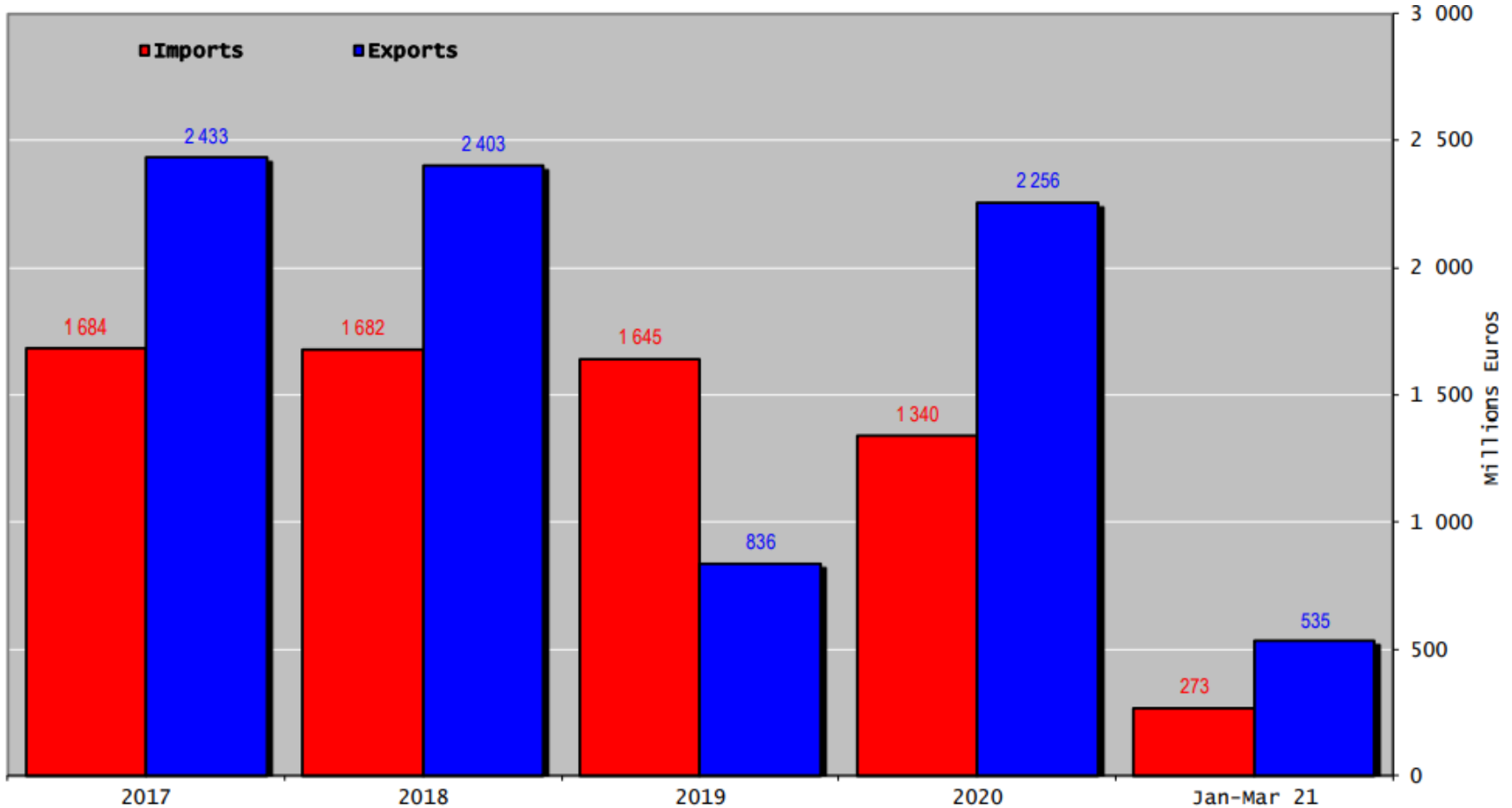


Sığır Eti Ürünleri Ticaret Dengesi (Canlı hayvanlar hariç) (Ton)

(Birleşik Krallık Hariç)

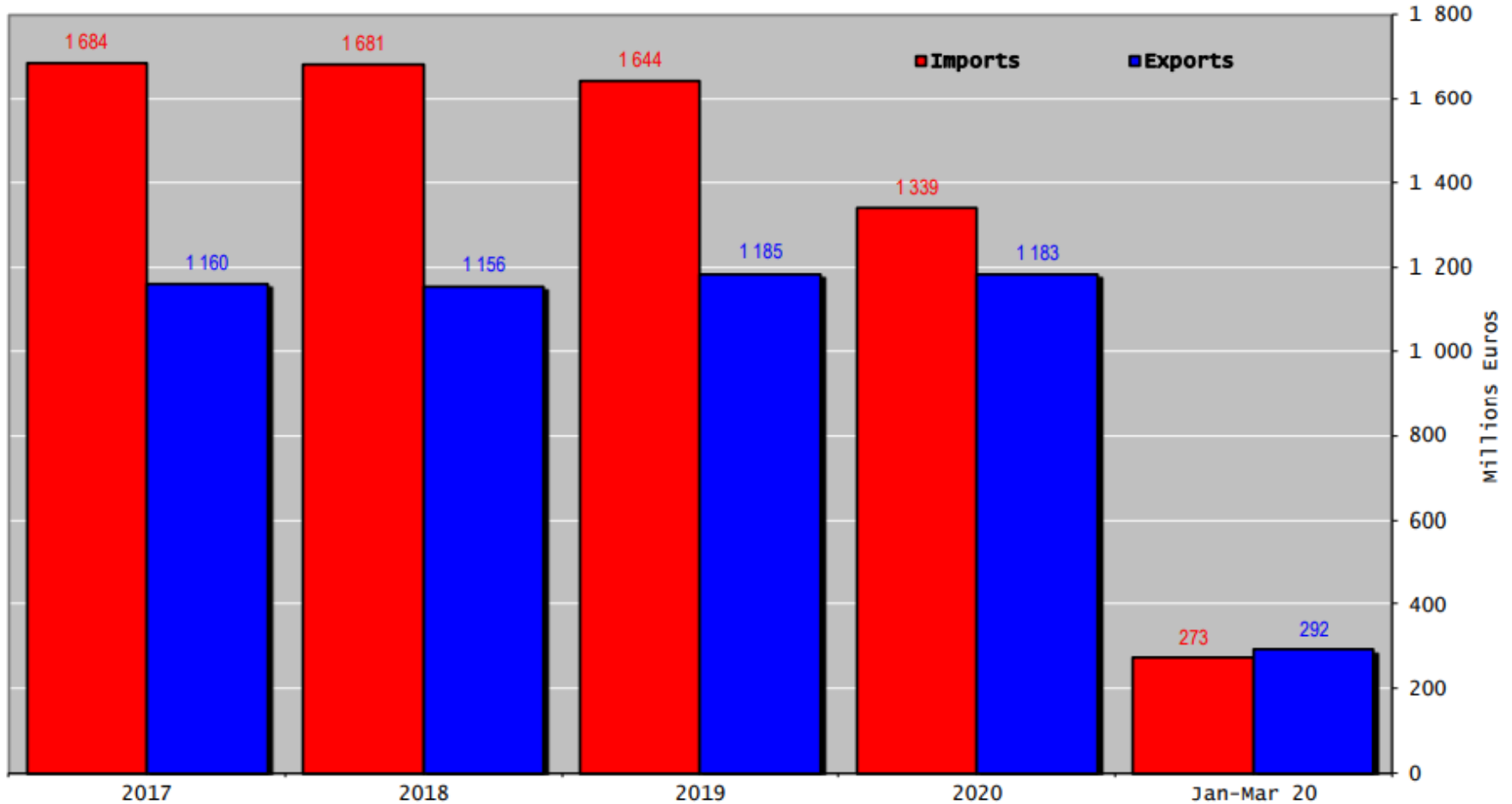


Sığır Eti Ürünleri ve Canlı Hayvan Ticaret Dengesi (Milyon Euro) (Birleşik Krallık Hariç)

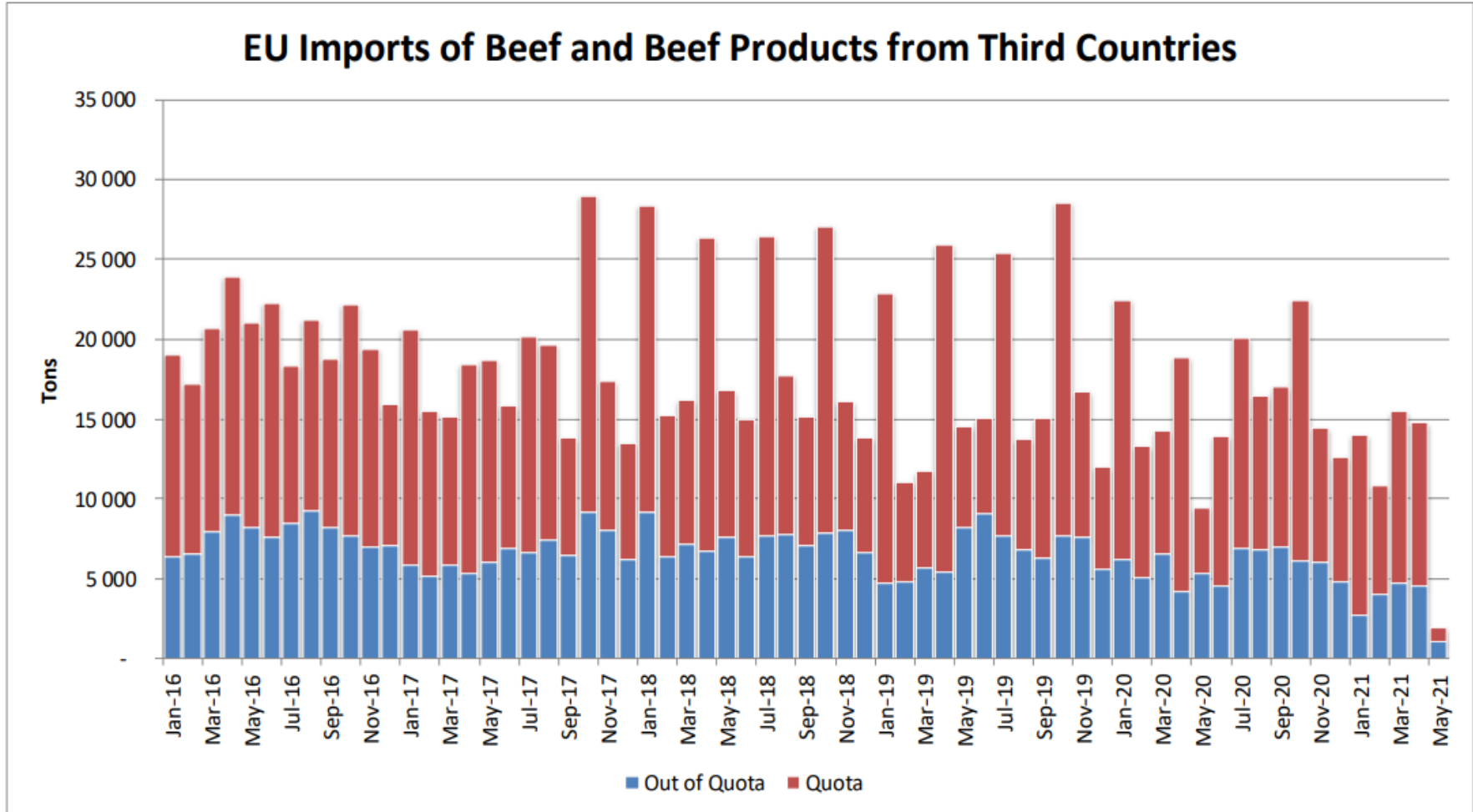




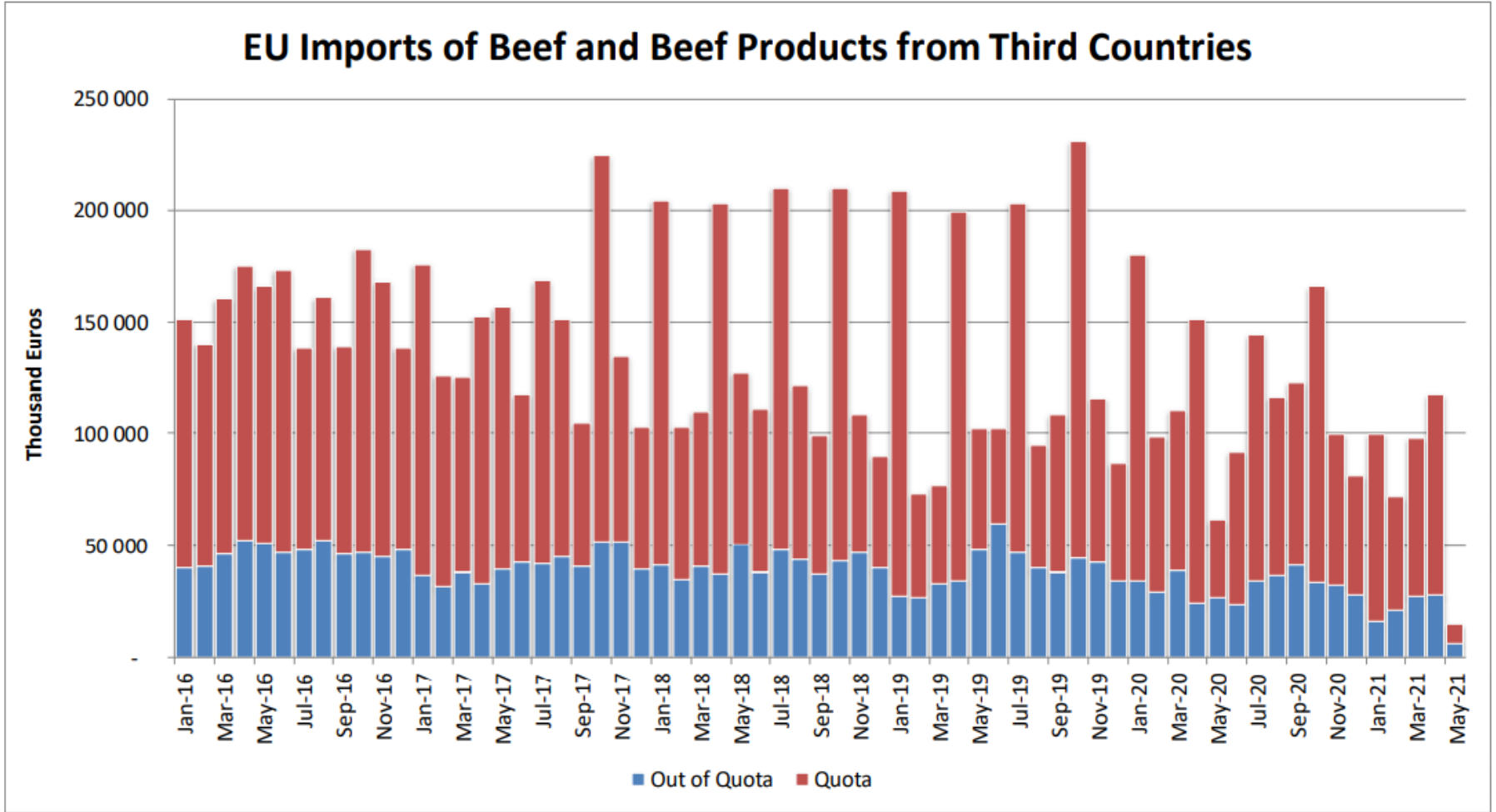
AB Sığır Eti Ürünleri Ticareti (Canlı Hayvanlar Hariç) (Milyon Euro) (Birleşik Krallık Hariç)



Üçüncü Ülkelerden AB ve Birleşik Krallık Sığır ve Sığır eti Ürünleri İthalatları (Ton)

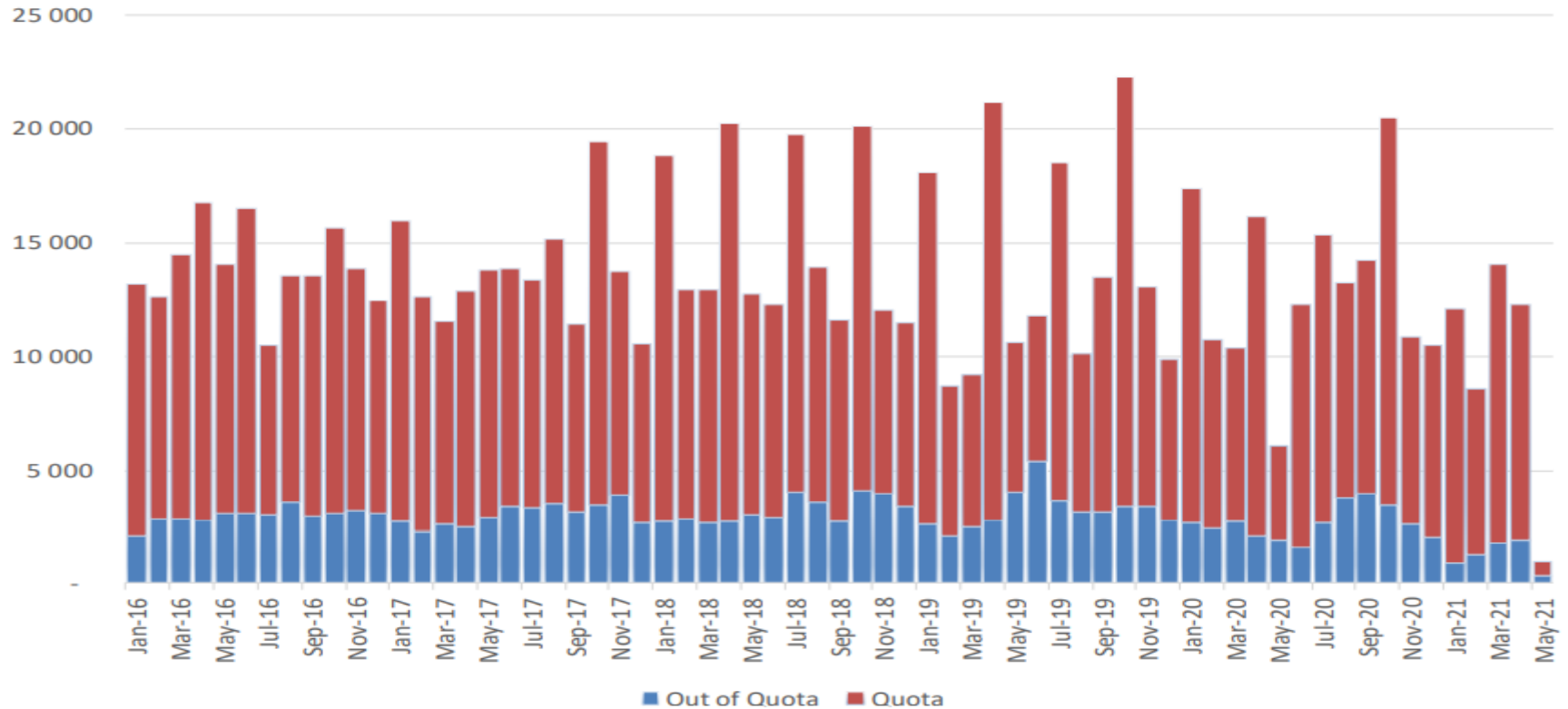


Üçüncü Ülkelerden AB ve Birleşik Krallık Sığır ve Sığır eti Ürünleri İthalatları (Bin Euro)



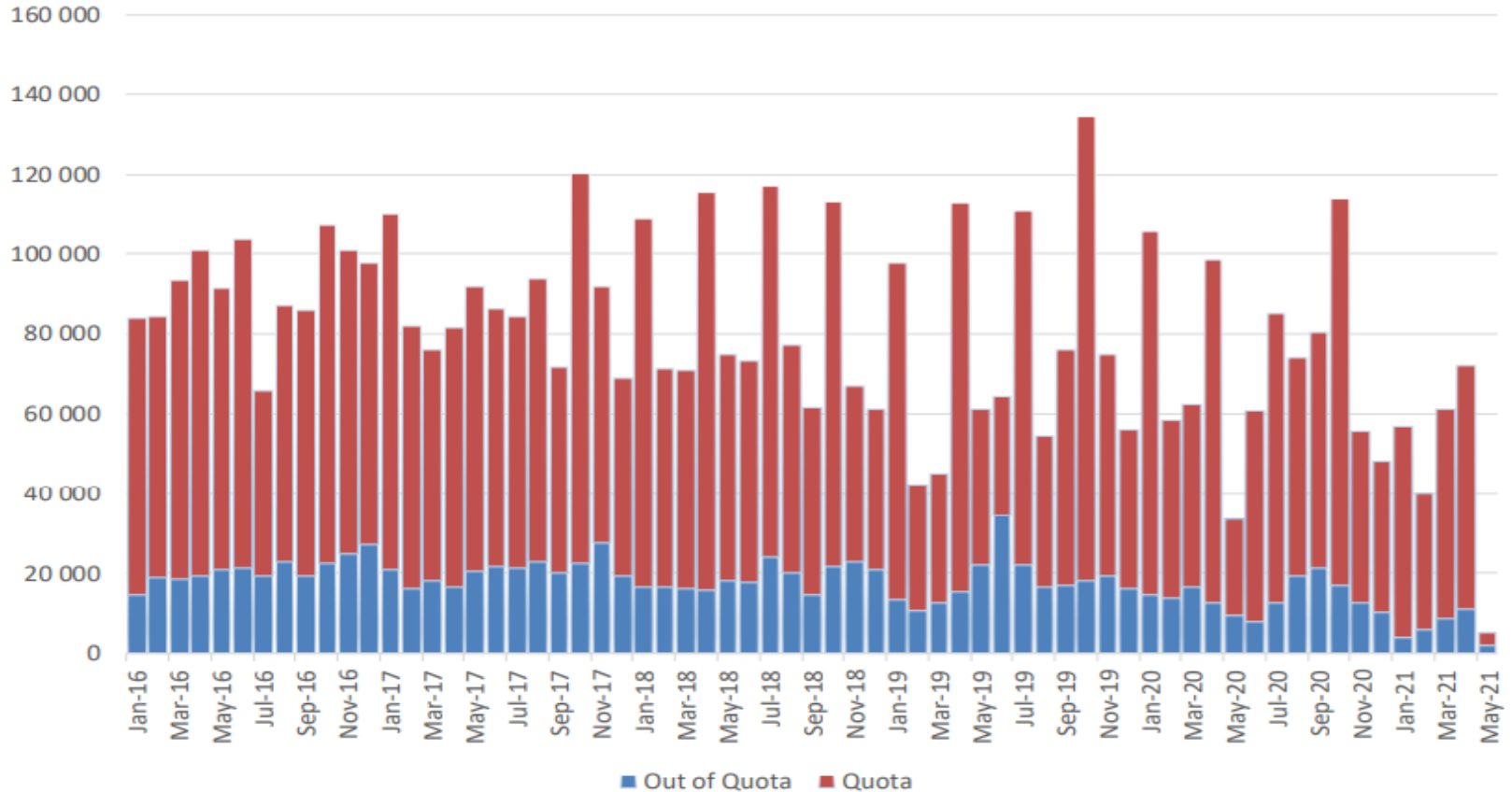
Mercosur Ülkelerinden Sığır ve Sığır Eti Ürünleri AB ve Birleşik Krallık İthalatları (Ton, Karkas Ağırlık)

EU Imports of Beef and Beef Products from Mercosur
(in Tons of Carcase Weight)



Mercosur Ülkelerinden Sığır ve Sığır Eti Ürünleri AB ve Birleşik Krallık İthalatları (Bin Euro)

EU Imports of Beef and Beef Products from Mercosur
(in Thousand Euros)



YÜKSEK KALİTE SİĞİR ETİ İTHALAT KOTALARI



European
Commission

Hilton Quota

Regulation (EU) N° 593/2013

	Quantity allocated (Tons)	2018/2019		2019/2020		2020/2021*	
		Use		Use		Use	
09.4001 Australia	2 250						
09.4004 Argentina	199	11.05	5.53%	8.34	4.17%	1.80	0.91%
09.4450 Argentina	14 189	29 491.35	99.97%	26 649.20	90.34%	5 833.05	41.11%
09.4451 Australia	1 768	4 942.02	69.12%	3 000.01	41.96%	216.11	12.22%
09.4452 Uruguay	2 465	6 363.76	99.81%	4 520.57	70.90%	1 635.72	66.37%
09.4453 Brazil	7 304	4 147.19	41.47%	2 884.79	28.85%	553.61	7.58%
09.4454 New Zealand	447	980.60	75.43%	859.15	66.09%	114.16	25.54%
09.4002 Canada/US	11 500	3 883.04	33.77%	2 703.68	23.51%	1 025.25	8.92%
09.4455 Paraguay	346	935.41	93.54%	680.40	68.04%	163.81	47.39%
Total Beef	38 018	50 743.37	75.93%	41 297.80	61.80%	9 541.71	25.10%
Total Buffalo	2 449	11.05	0.45%	8.34	0.34%	1.80	0.07%
Total	40 467	50 754.42	73.26%	41 306.14	59.63%	9 543.51	23.58%

YÜKSEK KALİTE SİĞİR ETİ İTHALAT KOTALARI



European
Commission

Quota erga omnes

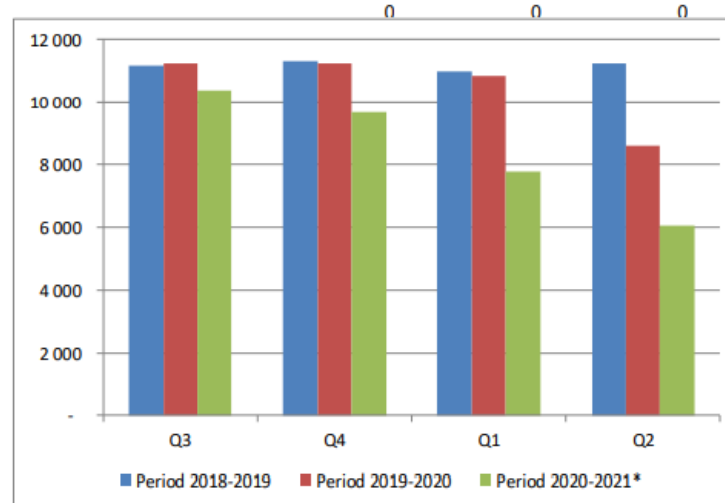
Regulation (EU) No 481/2012

	2018-Q3	2018-Q4	2019-Q1	2019-Q2	TOTAL
Period 2018-2019	11 165	11 300	10 973	11 256	44 693
Available	11 250	11 250	11 250	11 250	45 000
Use	99.24%	100.00%	97.53%	100.00%	99.32%
Available after transfer	11 250	11 335	11 200	11 527	
	99.24%	100.00%	97.53%	100.00%	

	2019-Q3	2019-Q4	2020-Q1	2020-Q2	TOTAL
Period 2019-2020	11 246	11 259	10 825	8 599	41 930
Available	11 250	11 250	11 250	11 250	45 000
Use	99.97%	100.00%	96.22%	76.44%	93.18%
Available after transfer	11 250	11 254	11 241	11 675	
	99.97%	100.00%	96.30%	73.66%	

	2020-Q3*	2020-Q4	2021-Q1	2021-Q2	TOTAL
Period 2020-2021*	10 332	9 674	7 760	6 062	33 829
Available	11 250	11 250	11 250	11 250	45 000
Use	91.84%	85.99%	68.98%	53.89%	75.18%
Available after transfer	11 250	12 168	12 826	14 740	
	91.84%	79.51%	60.51%	41.13%	

* Until 12.05.2021



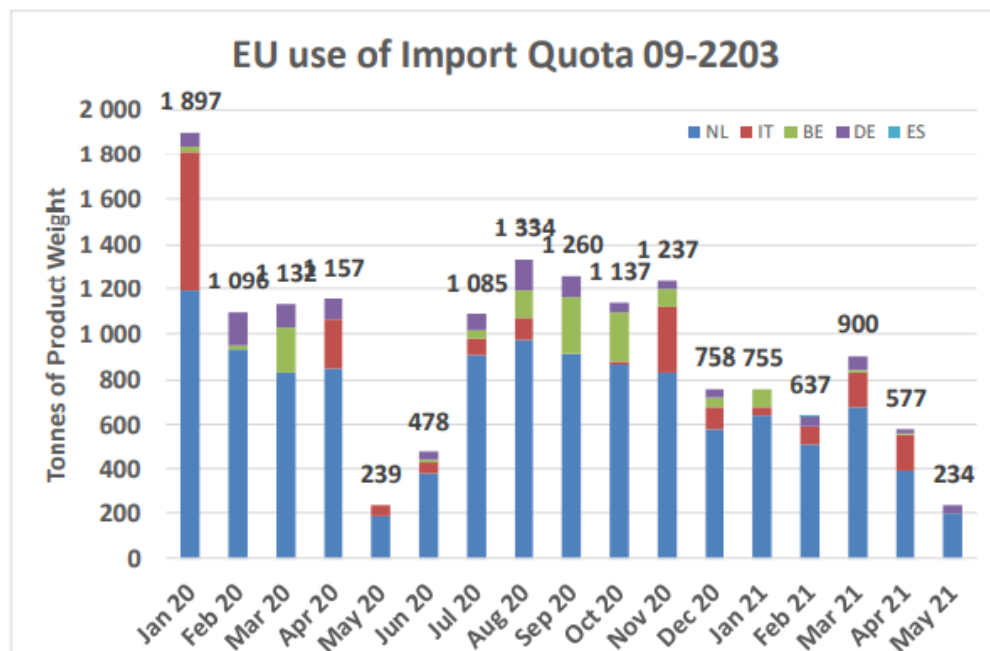
YÜKSEK KALİTE SİĞİR ETİ İTHALAT KOTALARI



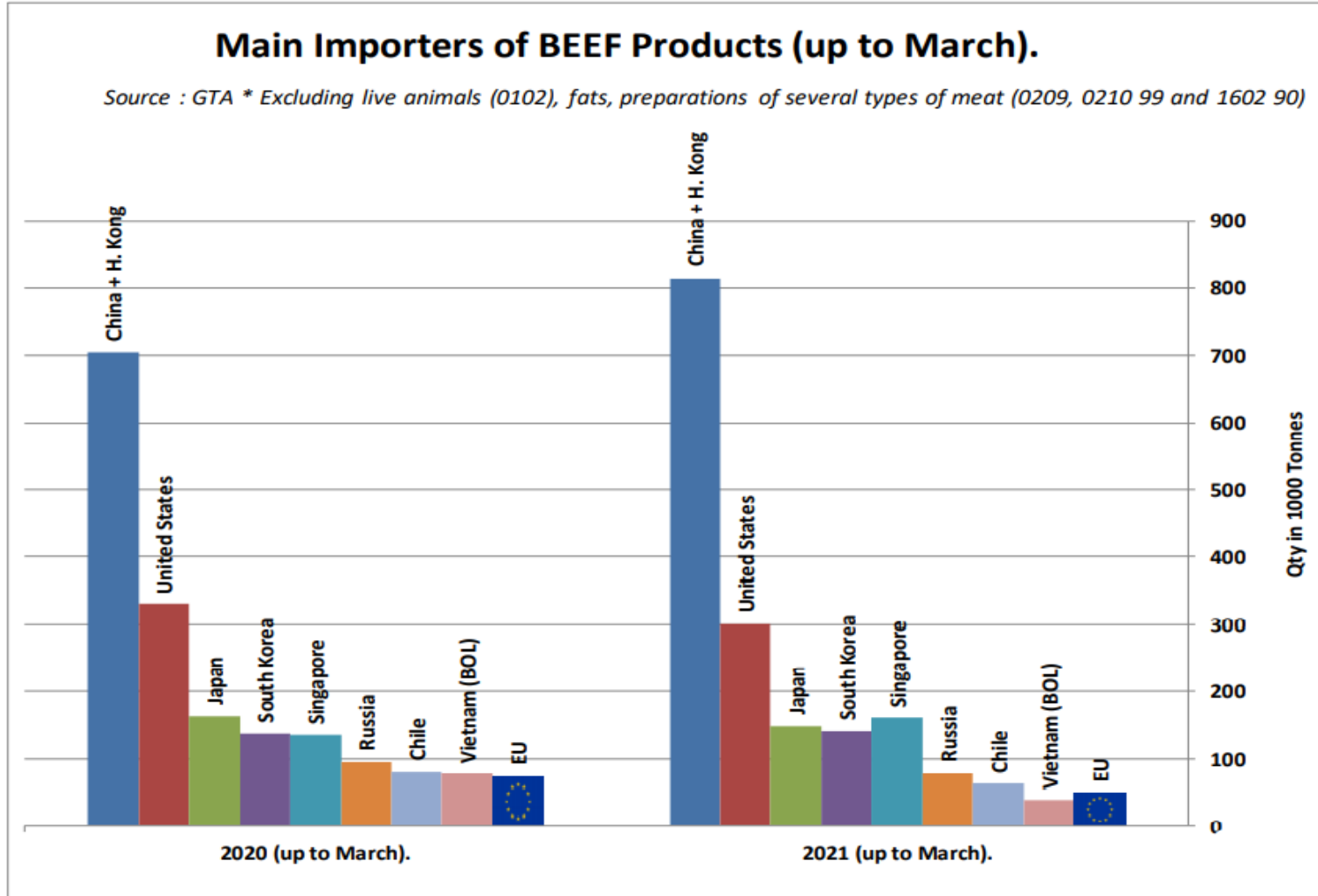
European Commission

Origin	GATT 2019-2020				
	2019-Q3	2019-Q4	2020-Q1	2020-Q2	Total
NL			2 957	1 415	4 372
IT			614	314	929
BE			241	10	251
DE			313	133	446
ES			-	-	-
Total import within Quota			4 125	1 873	5 998
Available			4 625	4 625	9 250
Use			89.19%	40.50%	64.85%
After transfer			4 625	5 125	
Use			89.19%	36.55%	

Origin	GATT 2020-2021				
	2020-Q3	2020-Q4	2021-Q1	2021-Q2	Total
NL	2 785	2 274	1 834	592	7 484
IT	174	404	263	164	1 005
BE	417	330	96	11	853
DE	305	124	98	44	570
Total import within Quota	3 680	3 132	2 291	810	9 913
Available	4 625	4 625	4 625	4 625	18 500
Use	79.57%	67.72%	49.52%	17.52%	53.58%
After transfer	4 625	5 570	6 118	6 959	
Use	79.57%	56.23%	37.44%	11.65%	



SIĞIR ETİ ÜRÜNLERİNİN NET İTHALATÇILARI (MART AYINA KADAR)

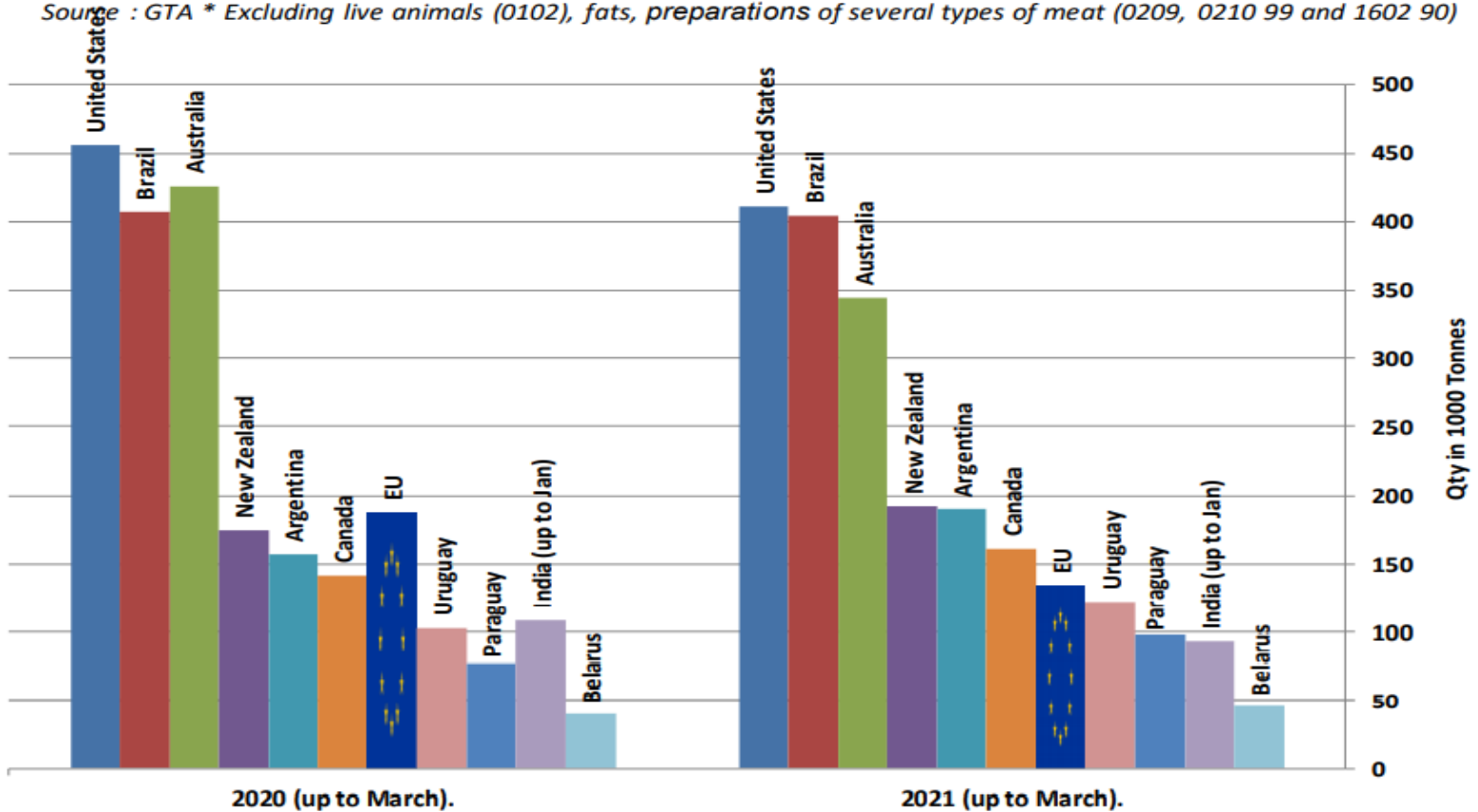




SIĞIR ETİ ÜRÜNLERİNİN NET İHRACATÇILARI (MART AYINA KADAR)

Main Exporters of BEEF Products (up to March).

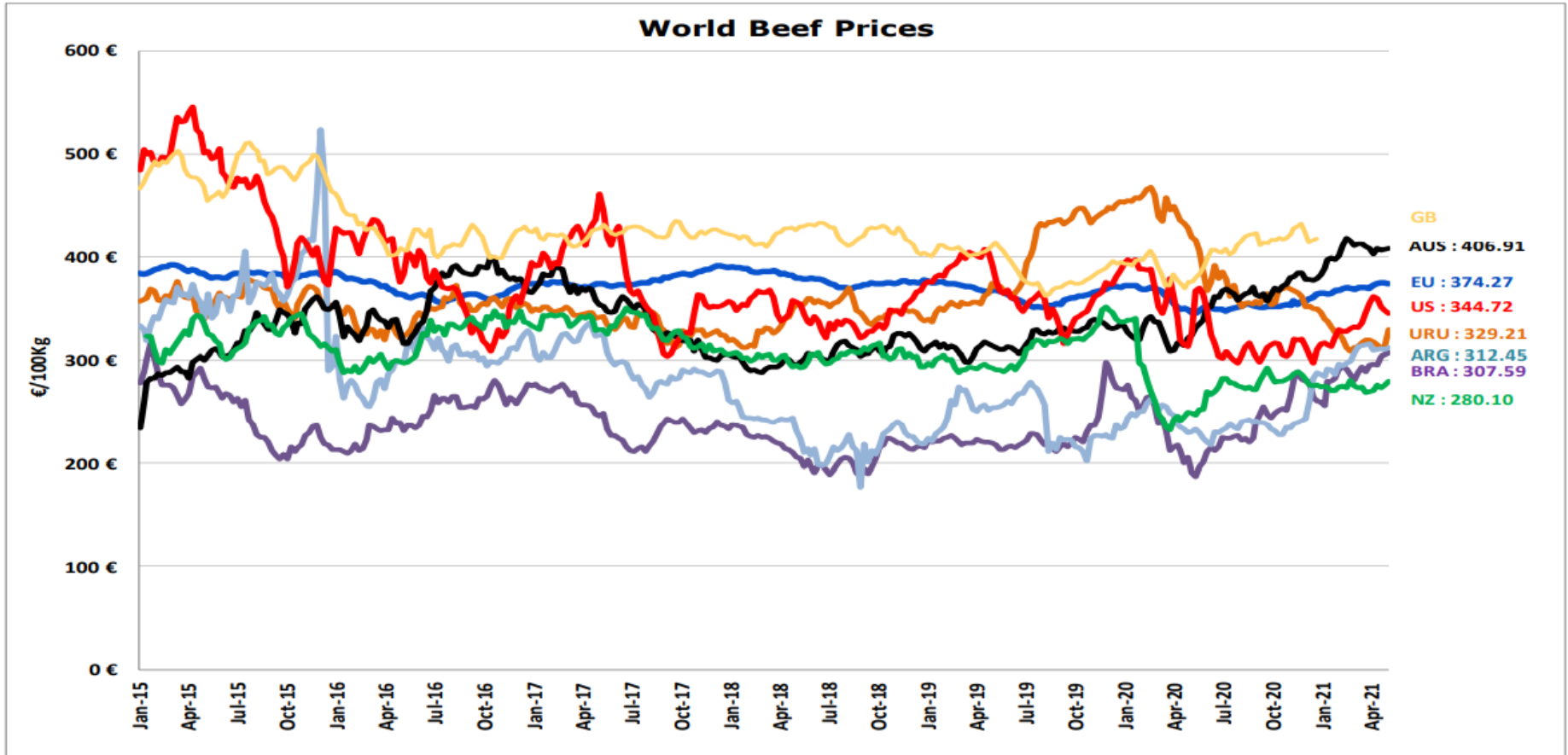
Source : GTA * Excluding live animals (0102), fats, preparations of several types of meat (0209, 0210 99 and 1602 90)



DÜNYA SIĞIR ETİ PAZARI



Dünya Sığır Fiyatları AB, ABD, AVUSTURYA, YENİ ZELANDA



- ECB <http://sdw.ecb.europa.eu/browse.do?node=2018794>
- US <https://www.marketnews.usda.gov/mnp/ls-home>
- AUS <http://statistics.mla.com.au/Report/RunReport/ae59d4ac-74e4-4c56-93bd-982a044d9760>
- UY <http://www.inac.gub.uy/innovaportal/v/11034/10/innova.front/indicadores-y-precios>
- ARG http://www.abc-consorcio.com.ar/Estadisticas/detalle/117/precios_comparativos_del_novillo.html
- BR <http://www.pecuaria.com.br/cotacoes.php>
- NZ http://www.abc-consorcio.com.ar/Estadisticas/detalle/117/precios_comparativos_del_novillo.html



Daha fazla bilgi için:

https://ec.europa.eu/agriculture/market-observatory/meat_en

Ve Agri-FOOD Veri Portalı:

<http://agridata.ec.europa.eu>