

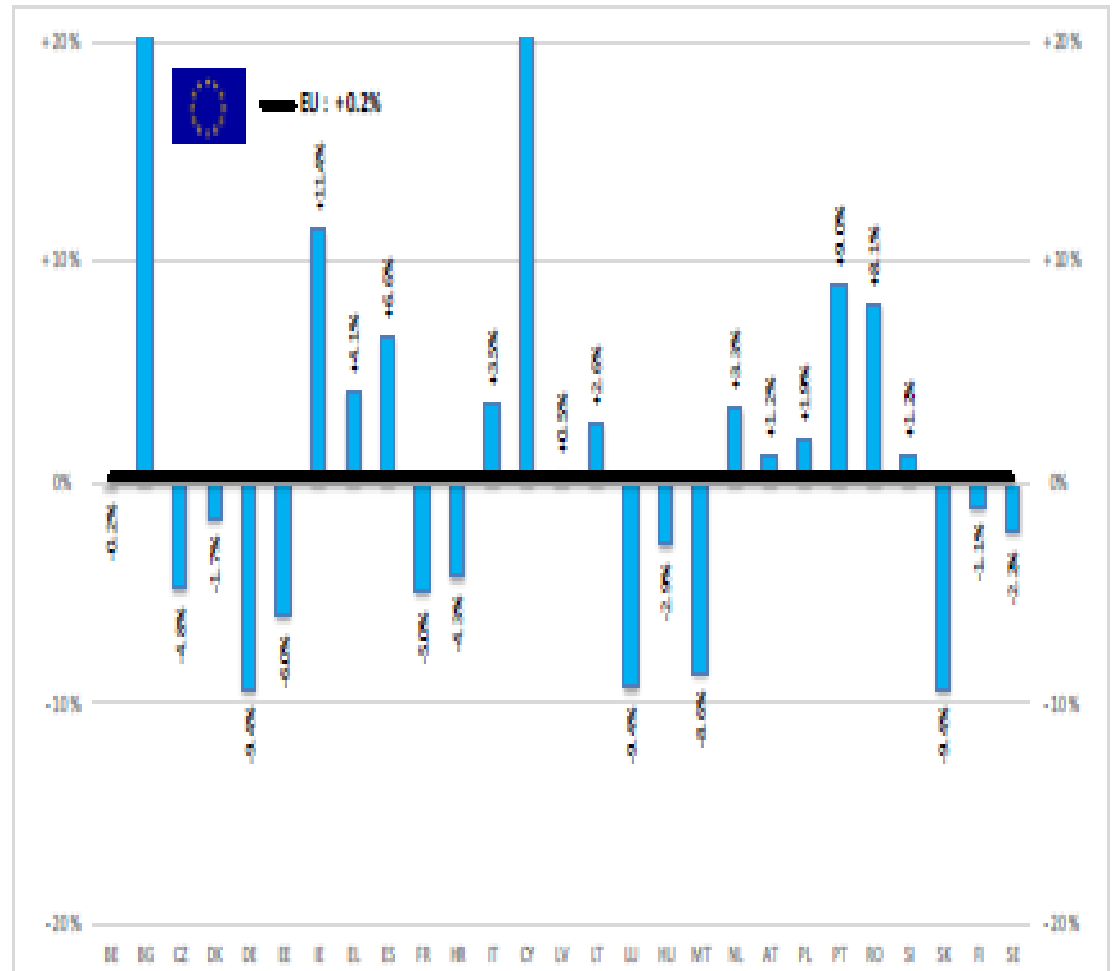


# AB SIĞIR VE DANA ETİ PAZAR DURUMU

20 Temmuz 2022

BAŞ	HEADS	Jan-Apr 22/21
		EU
BOĞA	Bull	-3.1%
ÖKÜZ	Bullock	+5.9%
İNEK	Cow	+0.1%
DÜVE	Heifer	+2.6%
BUZAĞI	Calve	+1.1%
GENÇ SİĞİR	Young cattle	+2.1%
Büyükbaş Hayvan Eti	Meat of bovine animals	+0.2%

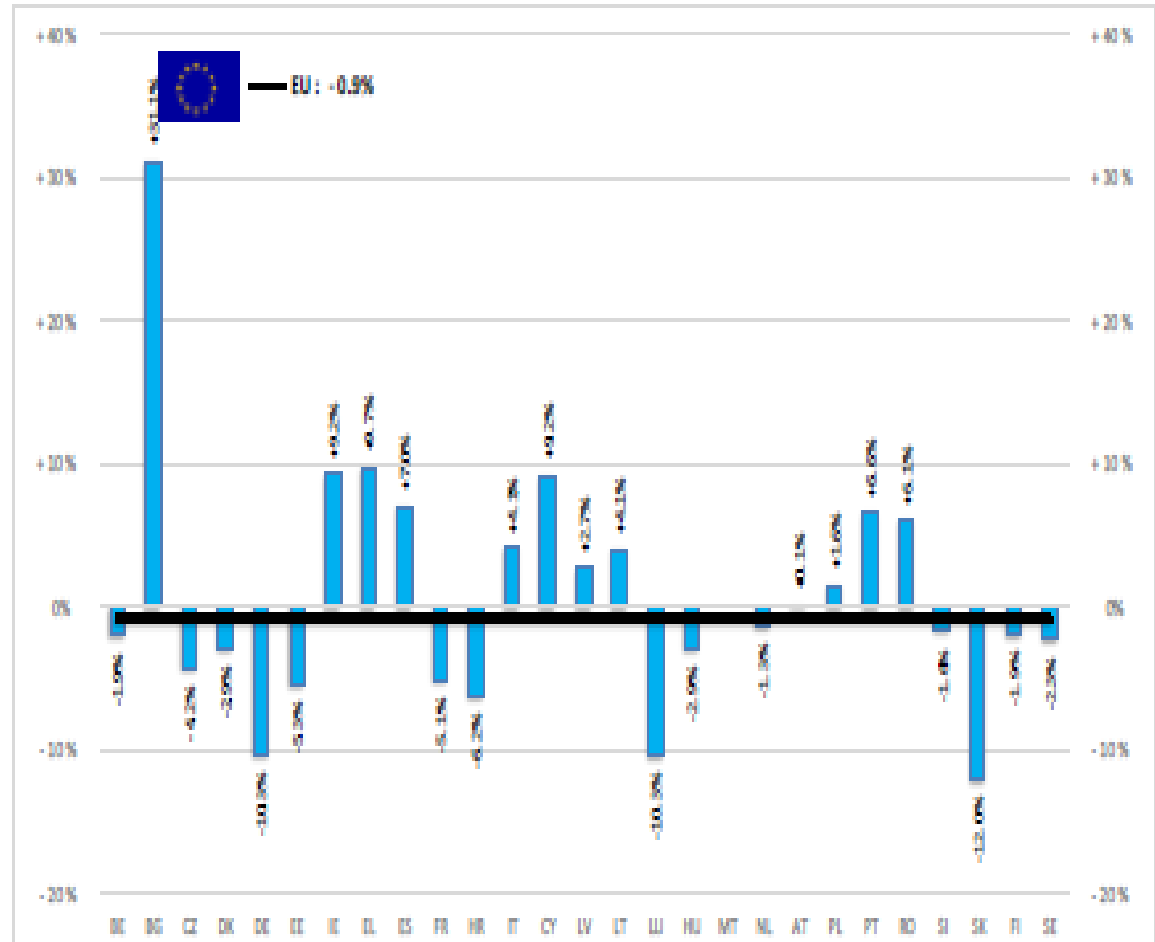
Estimates for last month of period :



Source : Euro-Newsroom

TON	TONNES	Jan-Apr 22/21
	EU	
BOĞA	Bull	-3.5%
ÖKÜZ	Bullock	+4.8%
İNEK	Cow	-1.1%
DÜVE	Heifer	+1.4%
BUZAĞI	Calve	-0.6%
	Young cattle	+3.0%
GENÇ SİĞİR	Meat of bovine animals	-0.9%

Estimates for last month of period :

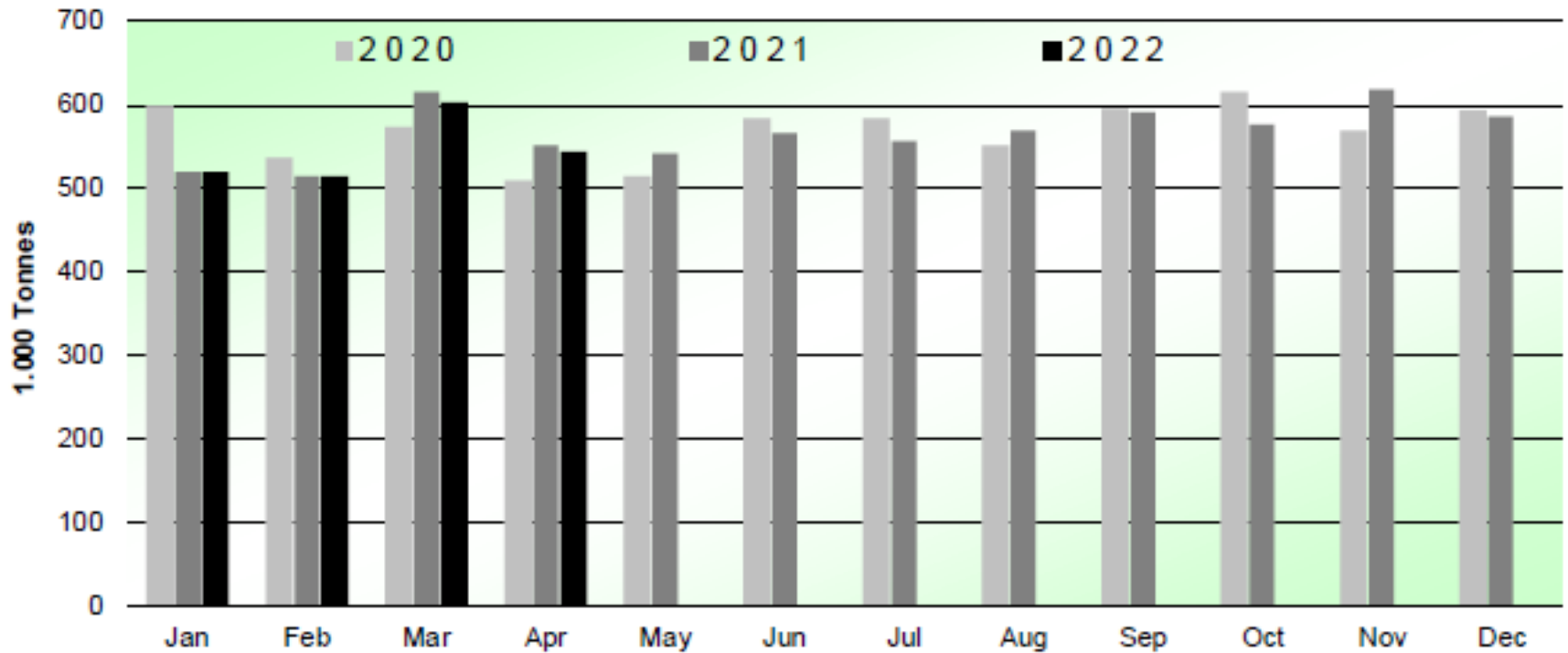


Source : EStat - Newcronos



# SIĞIR VE DANA ETİ ÜRETİMİ (AB Kesimler – Ton)

## Beef & Veal Production (EU Slaughtering) - Tonnes



Source: EStat-Newcronos



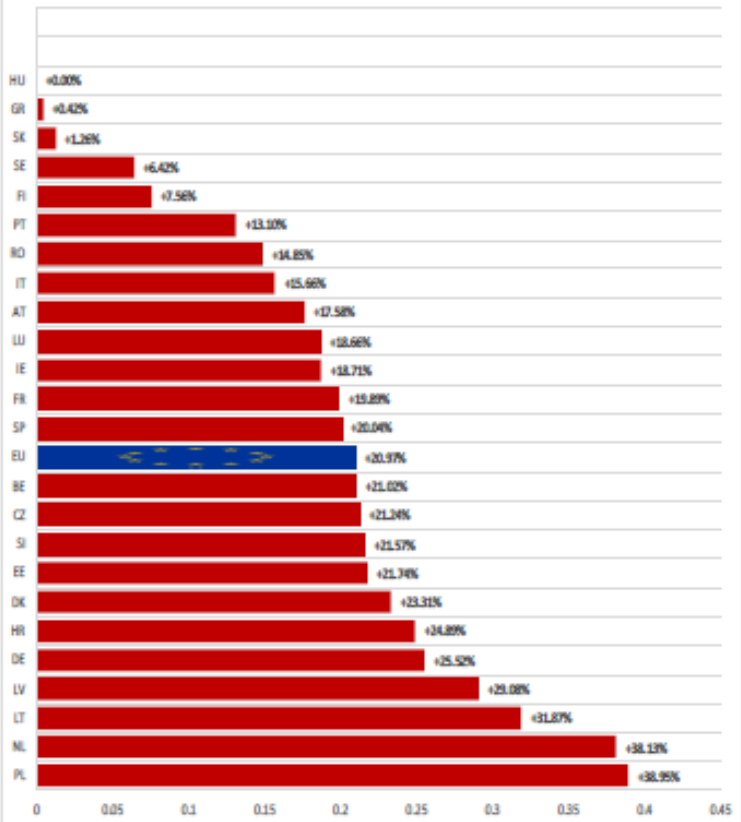
EU Prices week		27	Evolution since last week	Evolution since last month	Evolution since last year
<b>Carcasse</b>	Average A/C/Z -R3	485.8	- 0.1%	- 0.1%	+ 27.1%
	Young Bovines (Z)	481.8	+ 0.7%	+ 1.2%	+ 28.6%
	Young Bulls (A)	481.4	+ 0.0%	+ 0.5%	+ 28.0%
	Steers (C)	514.6	- 1.5%	- 4.3%	+ 22.6%
	Cows (D)	453.5	+ 0.4%	+ 0.9%	+ 41.0%
	Heifers (E)	503.6	- 0.0%	+ 0.3%	+ 26.8%
	Calves slaughtered <8M	576.0	+ 1.3%	- 1.5%	+ 21.2%
<b>Live Animals</b>	Male Calves Dairy Type	121.2	+ 3.1%	- 13.1%	+ 8.9%
	Male Calves Beef Type	252.2	- 1.1%	- 2.6%	+ 6.0%
	Young Store Cattle	3.11	- 0.7%	- 0.9%	+ 16.1%
	Yearling Male Store Cattle	3.94	+ 0.8%	+ 5.5%	+ 10.5%
	Yearling Female Store Cattle	3.04	+ 0.5%	+ 1.1%	+ 13.9%

Sources : MSs notifications (Regulation (EU) 1182/2017 and 1184/2017

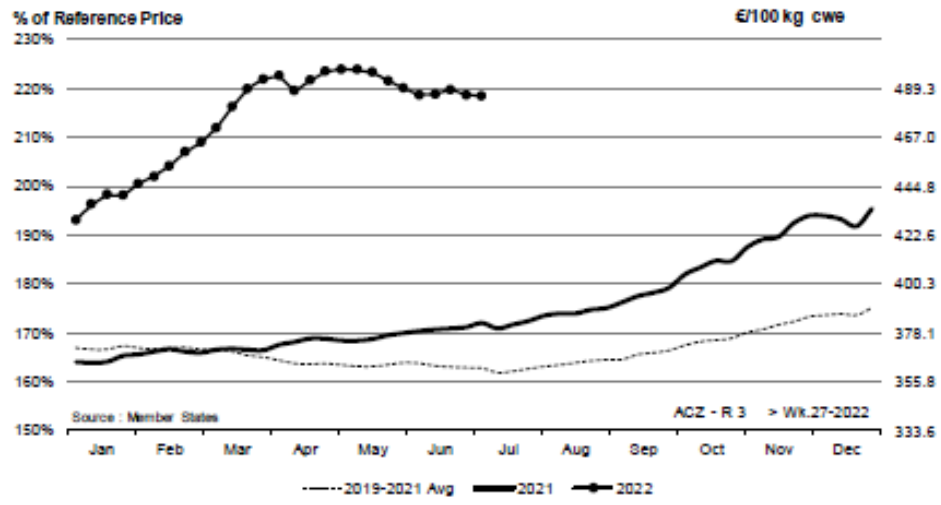


European Commission

EU ACZ R3 Price Comparison between average monthly price July 2021 - June 2022 compared to July 2020 - June 2021



ACZ - R 3 > Wk.27-2022

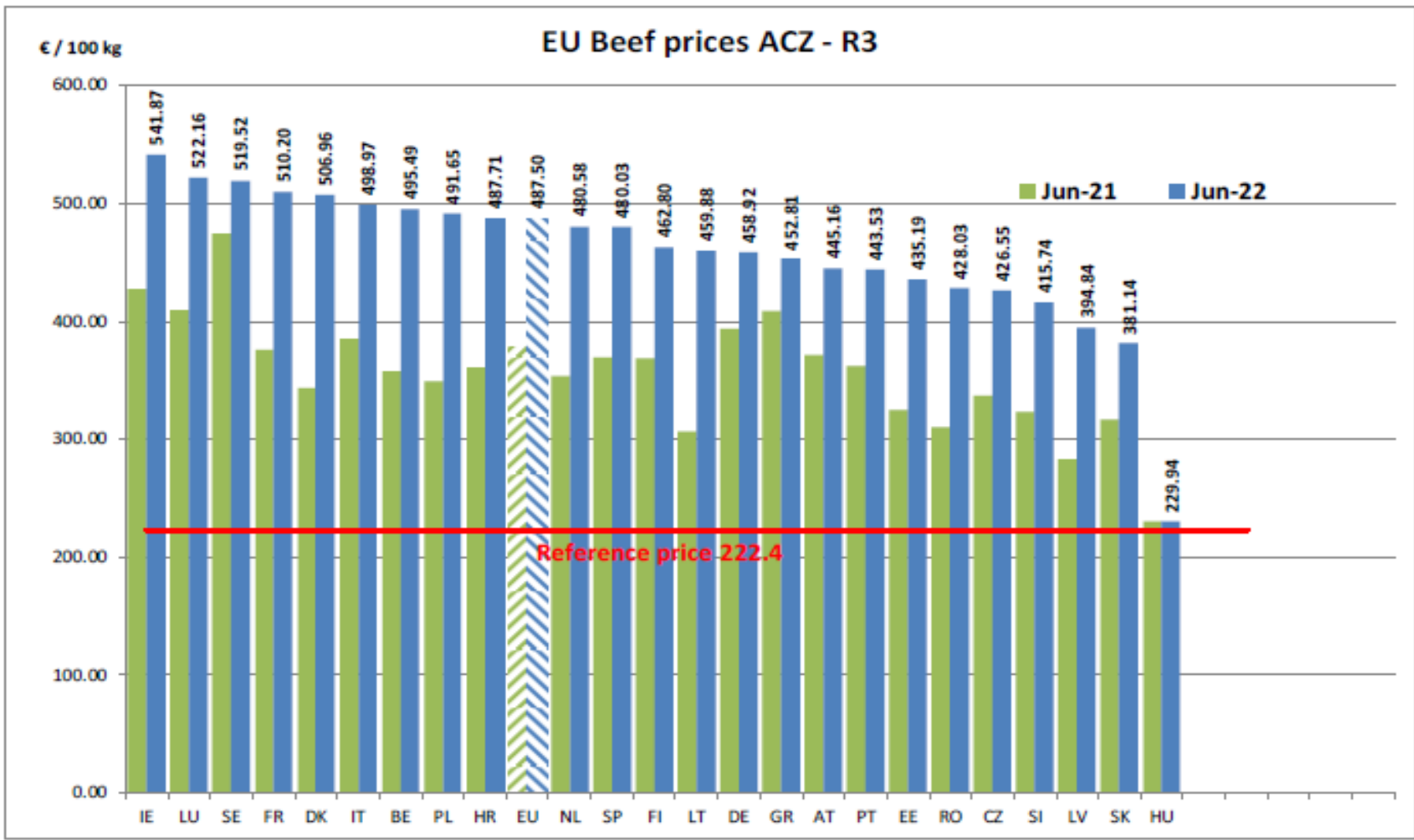


Price in week 27 :	485.84	Average price in June 2022 :	487.50
% change y/y :	+ 27.12%	% change y/y :	+ 28.63%
% Ref. Price in wk 0 :	218.5%		

# KARKAS FİYATLARI

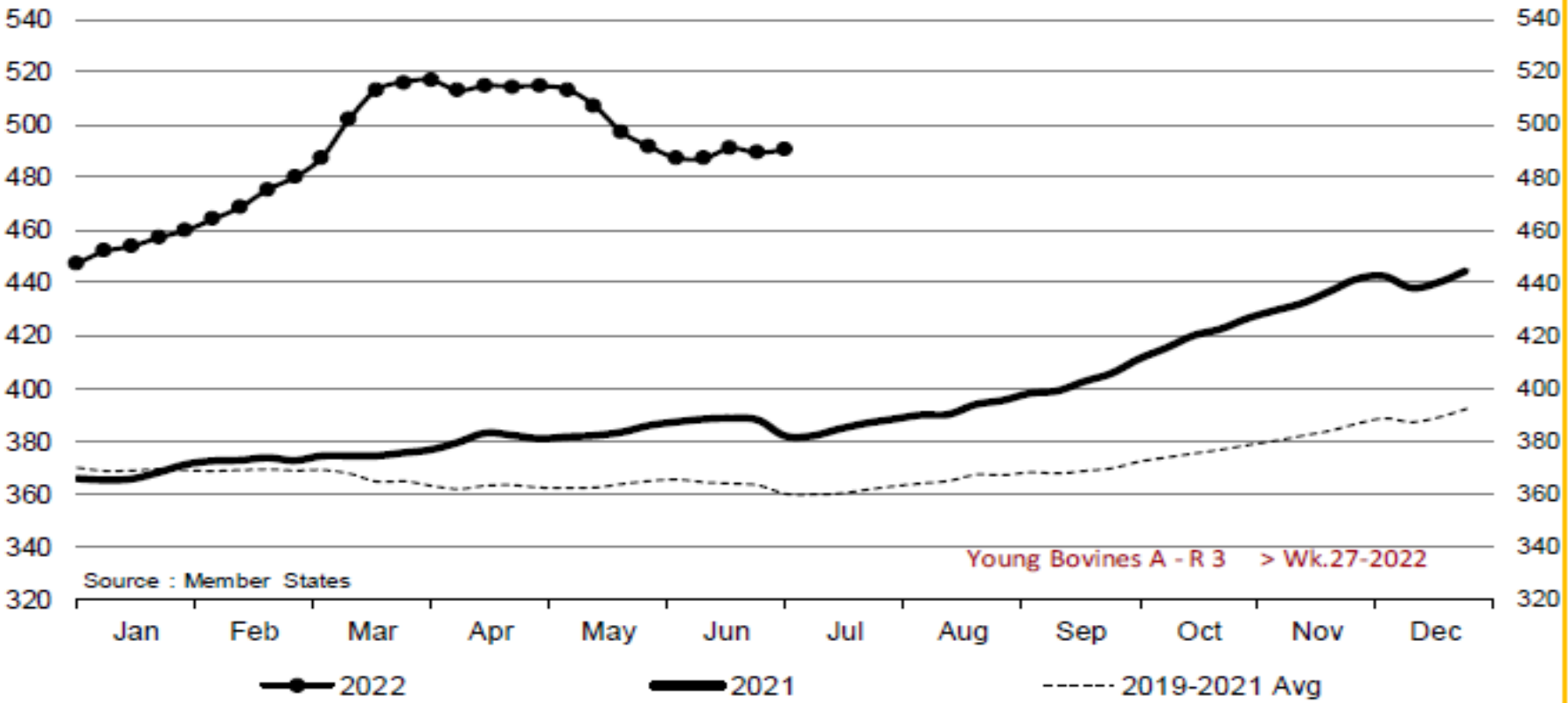


AB DEĞİŞİM  
A/C/Z. R3





## Young Bovines A - R 3 > Wk.27-2022



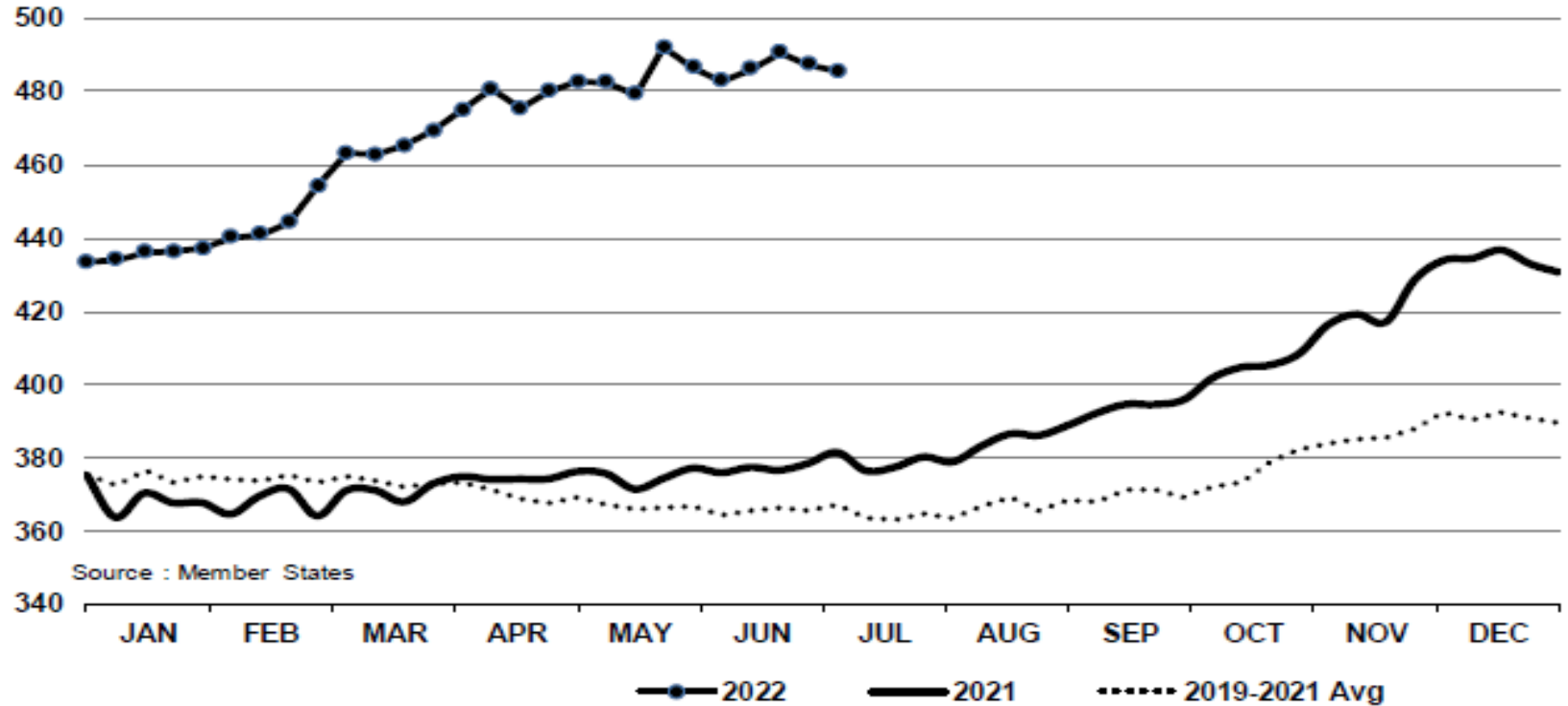
Price in week 27 : **490.48**      Average price in June 2022 : **489.14**  
% change y/y : **+ 28.4%**      % change y/y : **+ 26.2%**





In € / 100 kg

Young Bovines 8-12m Z - R 3 > Wk.27-2022

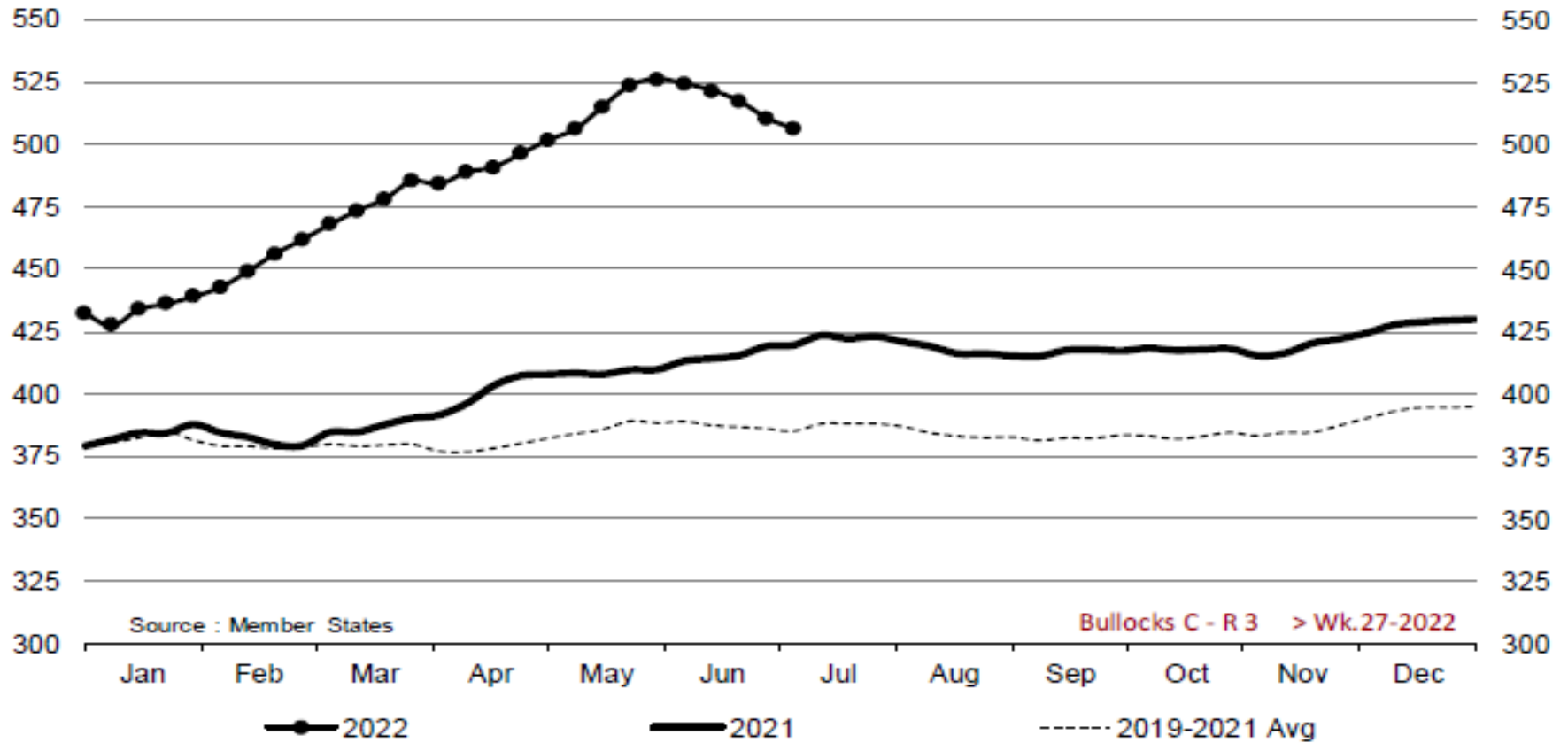


Source : Member States

Price in week 27 : **485.52**      09/08/2022      Average price in June 2022 : **486.72**  
% change y/y : **+ 27.3%**      % change y/y : **+ 29.1%**



## Bullocks C - R 3 > Wk.27-2022

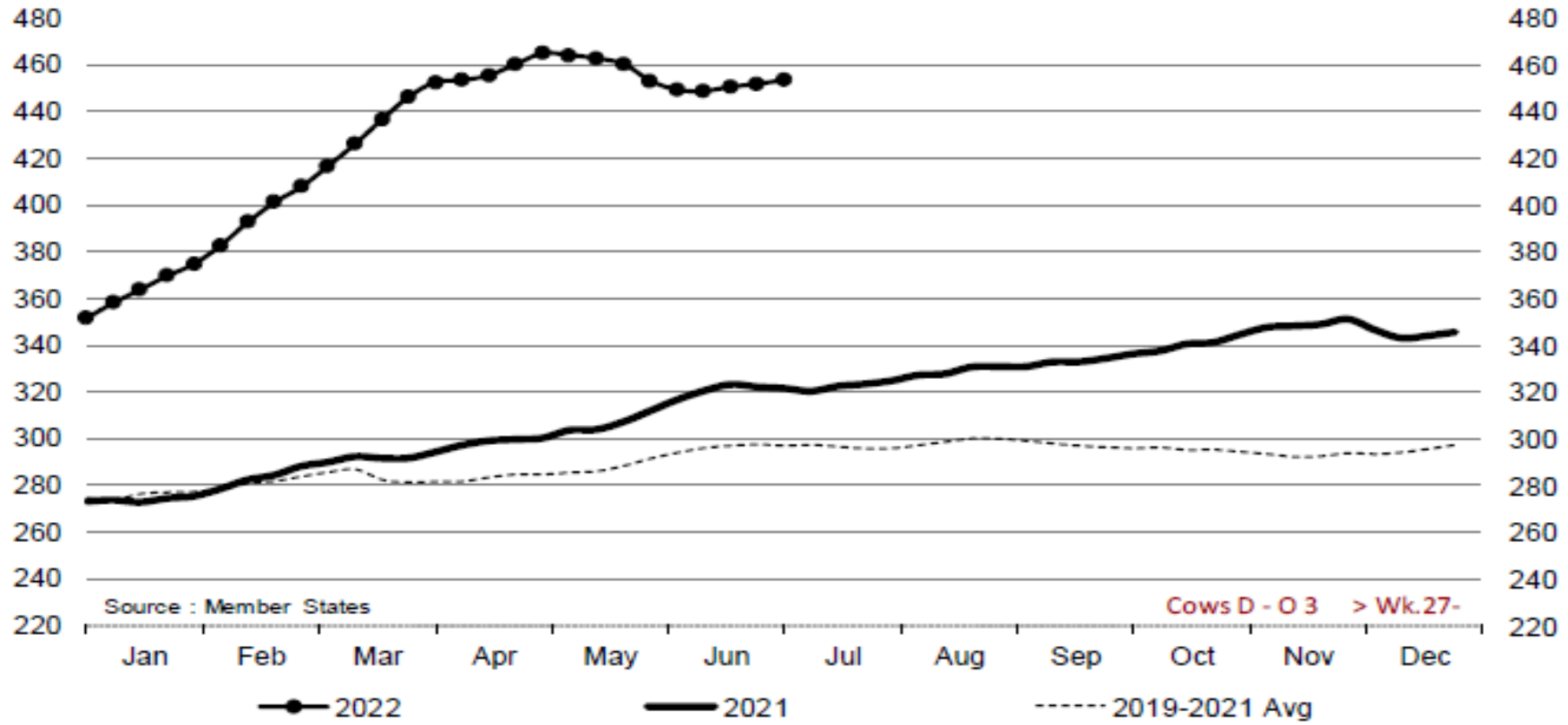


Price in week 27 : **506.36**  
% change y/y : **+ 20.7%**

Average price in June 2022 : **520.59**  
% change y/y : **+ 25.8%**



Cows D - O 3 > Wk.27-2022



Source : Member States

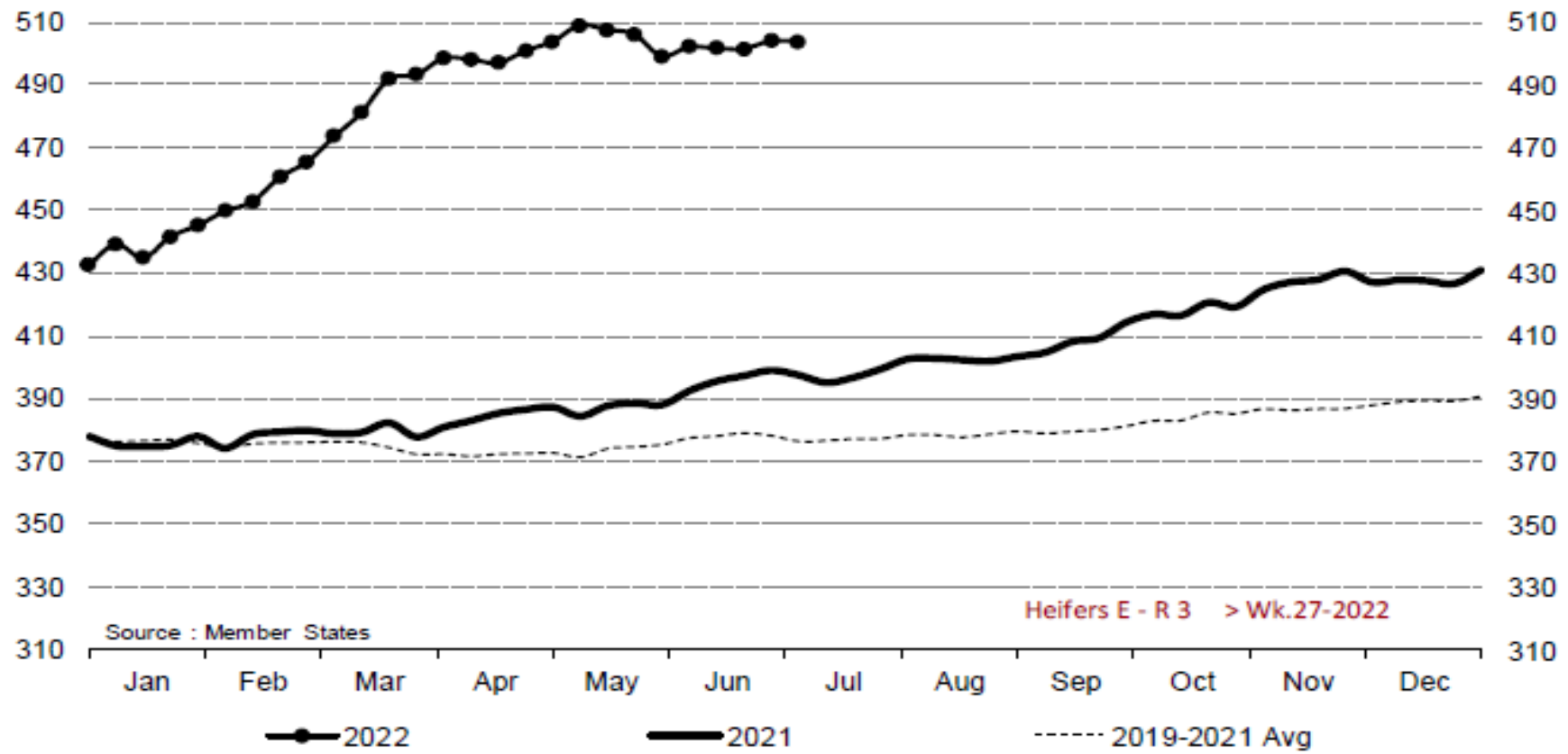
Cows D - O 3 > Wk.27-

Price in week 27 : **453.55**  
% change y/y : **+ 41.0%**

Average price in June 2022 : **450.50**  
% change y/y : **+ 41.4%**



## Heifers E - R 3 > Wk.27-2022



Source : Member States

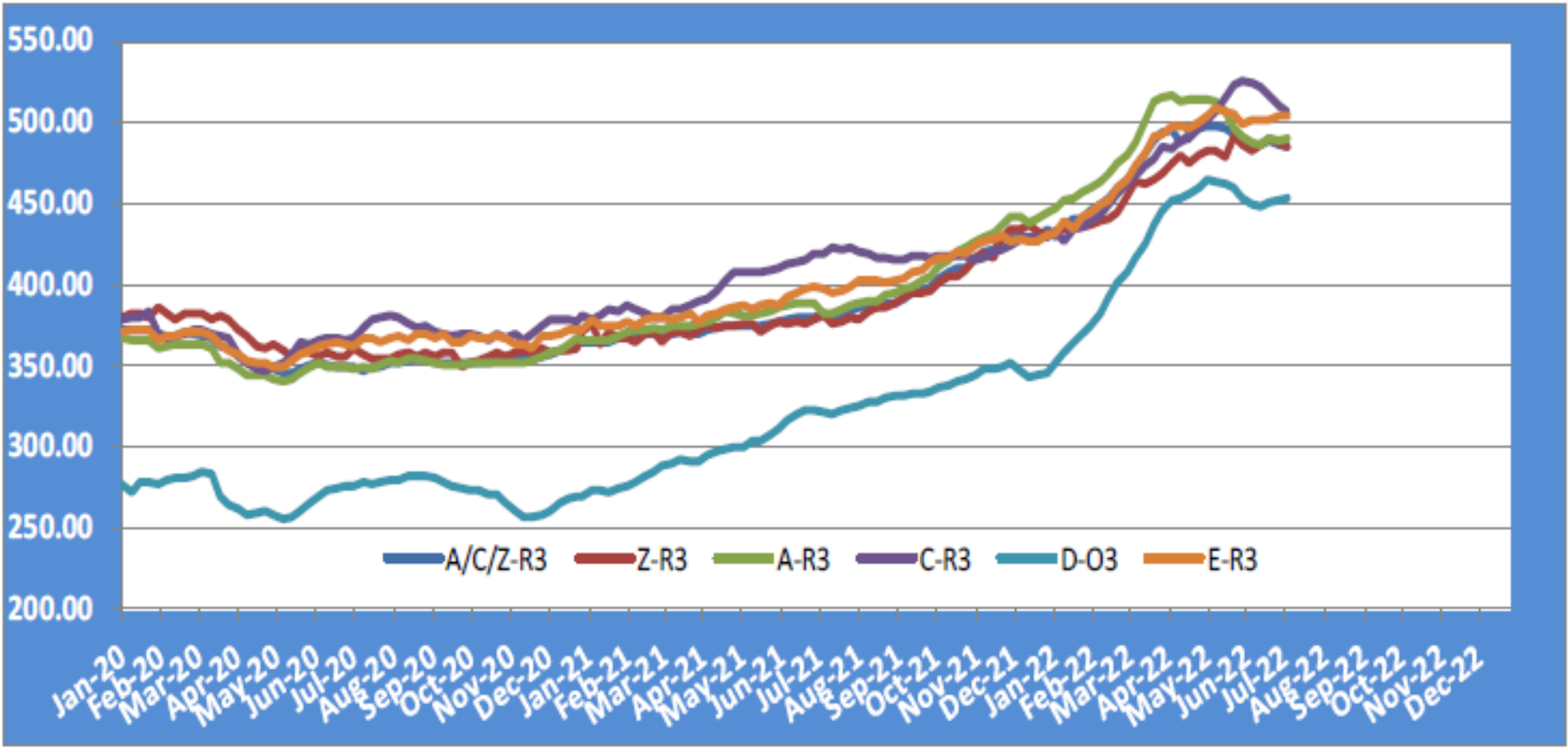
Heifers E - R 3 > Wk.27-2022

Price in week 27 : **503.69**  
% change y/y : **+ 26.8%**

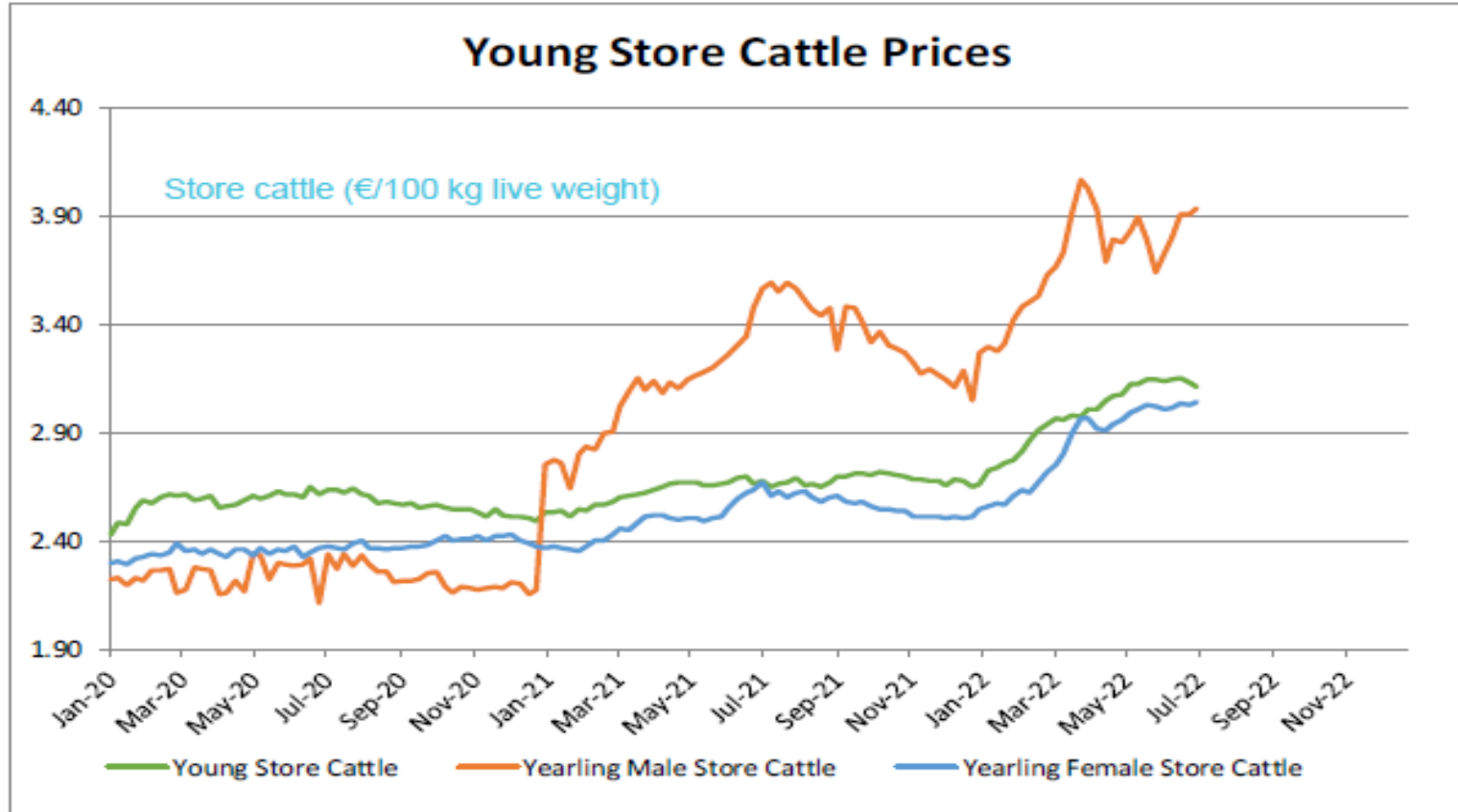
Average price in June 2022 : **501.44**  
% change y/y : **+ 27.3%**

# KARKAS FİYATLARI

# AB TÜM KATEGORİLERE GLOBAL BAKIŞ



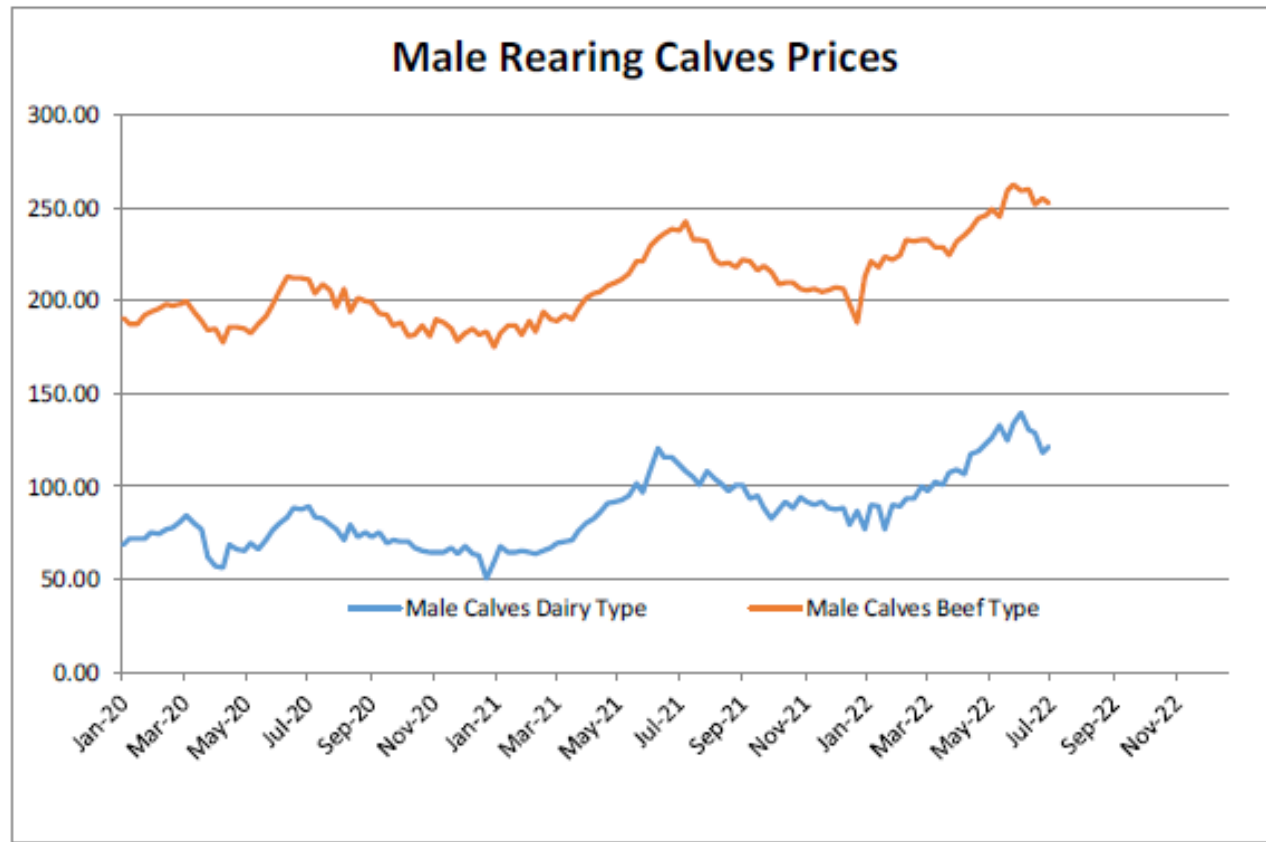
## Besilik siğır (€ / 100 kg canlı ağırlık)



Young Store Cattle Price in	Week 27	3.11	Yearling Male Store Cattle Price	3.94
Yearling Female Store Cattle Price	Change y/y	+16.1%	Change y/y	+10.5%
		3.04		
	Change y/y	+13.9%		

### 8 gün ve 4 haftalık erkek buzağlar (€/baş)

Male calves aged between 8 days and 4 weeks (€/head)



Male Rearing Calves Beef type

Price in Week 27 252.22

Change y/y +6.0%

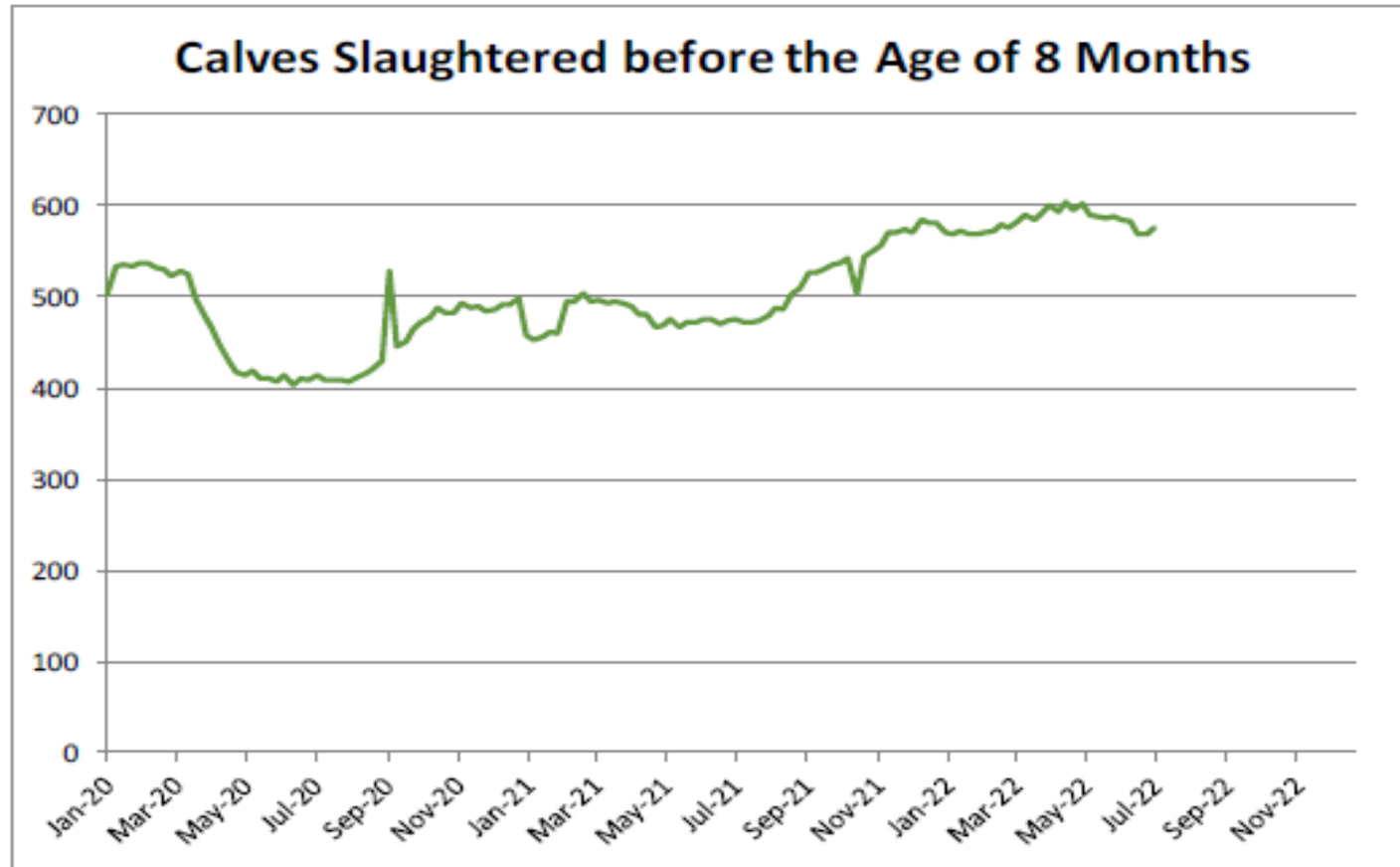
Male Rearing Calves Dairy type

Price in Week 27 121.26

Change y/y +8.9%



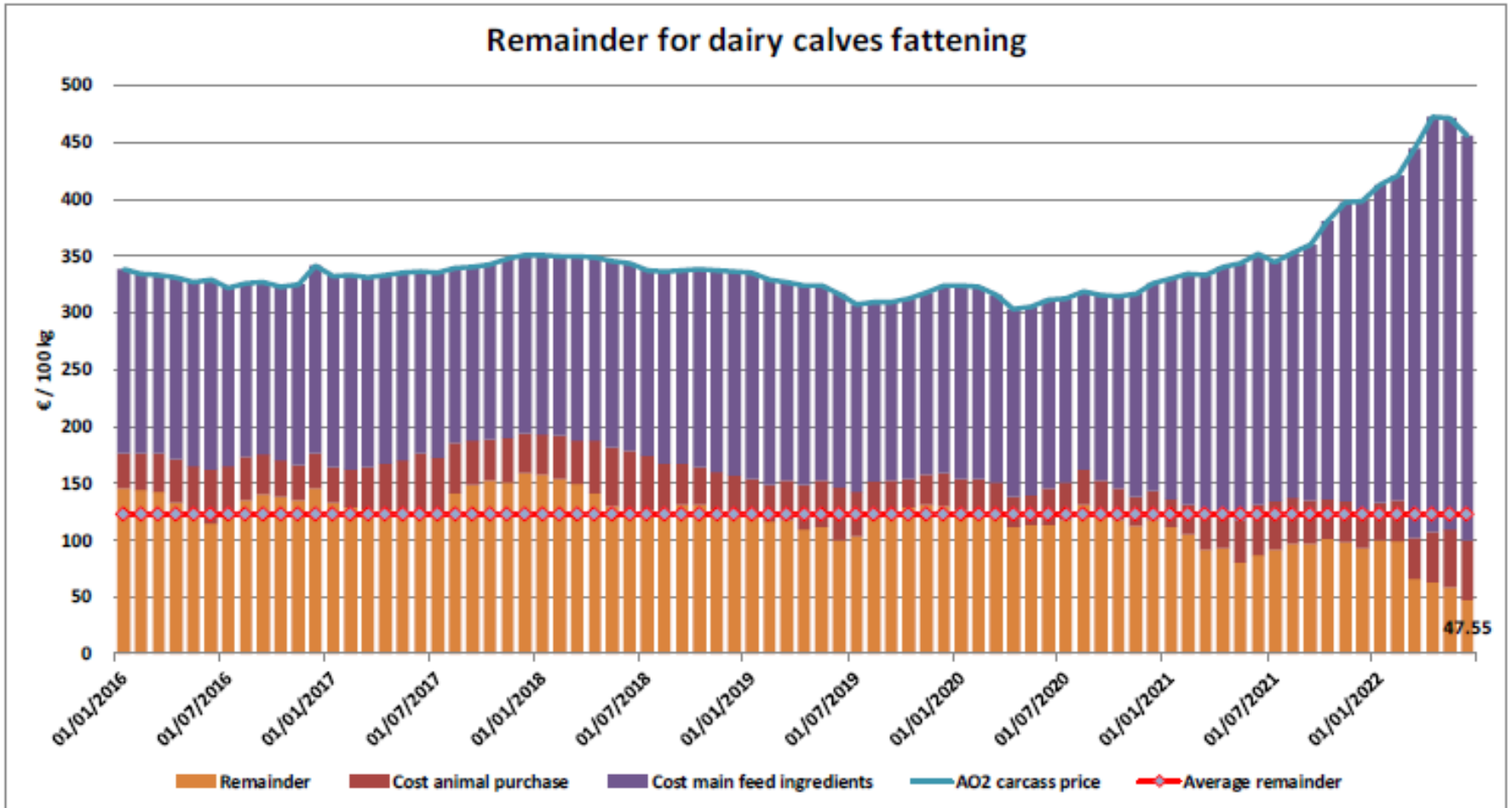
## 8 aylıktan küçük kesilen buzağular (€ / 100 kg canlı ağırlık)



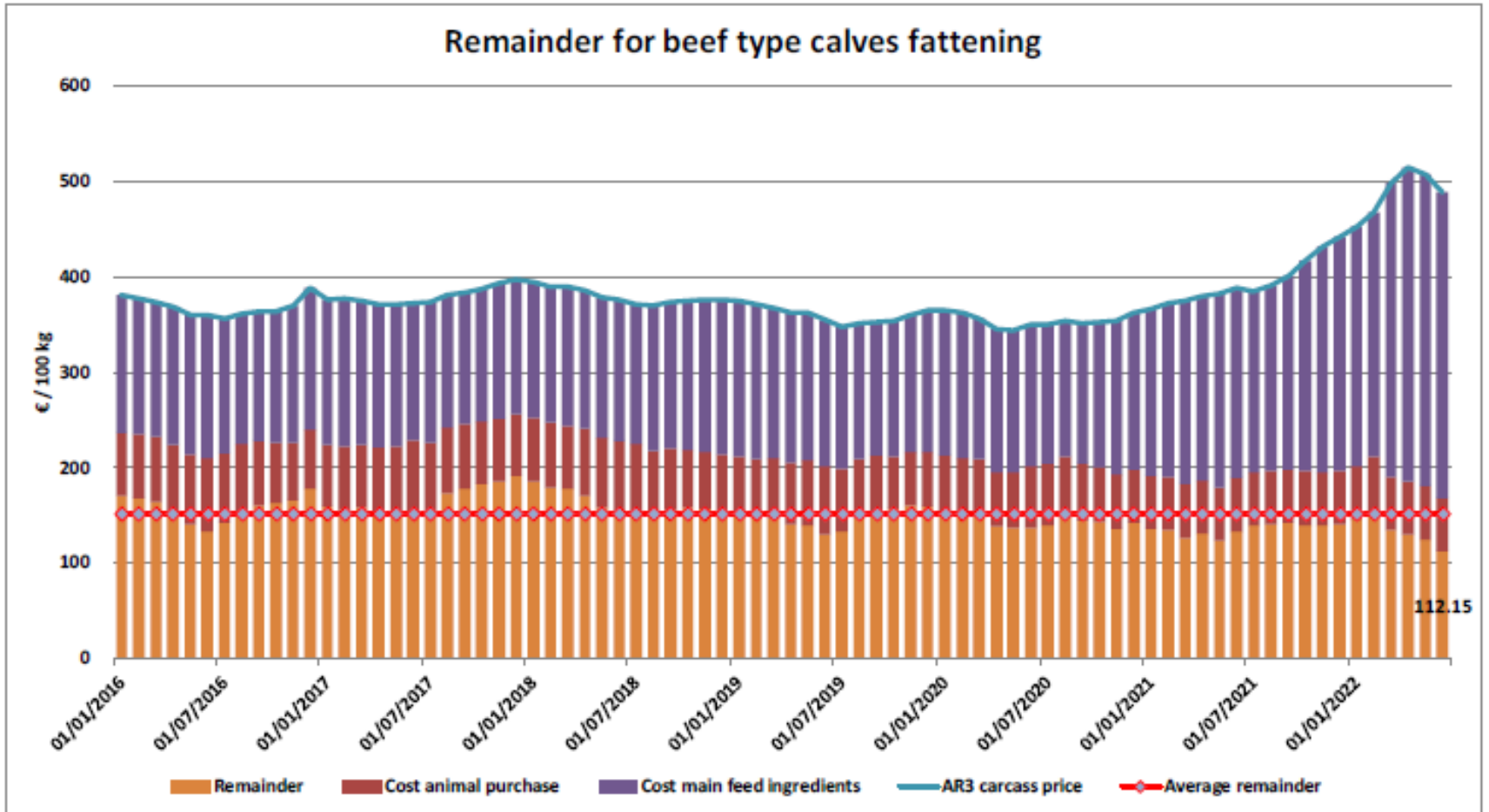
Price in Week 27 576.06 € / 100 kg of carcasse weight  
Change v/v +21.2%



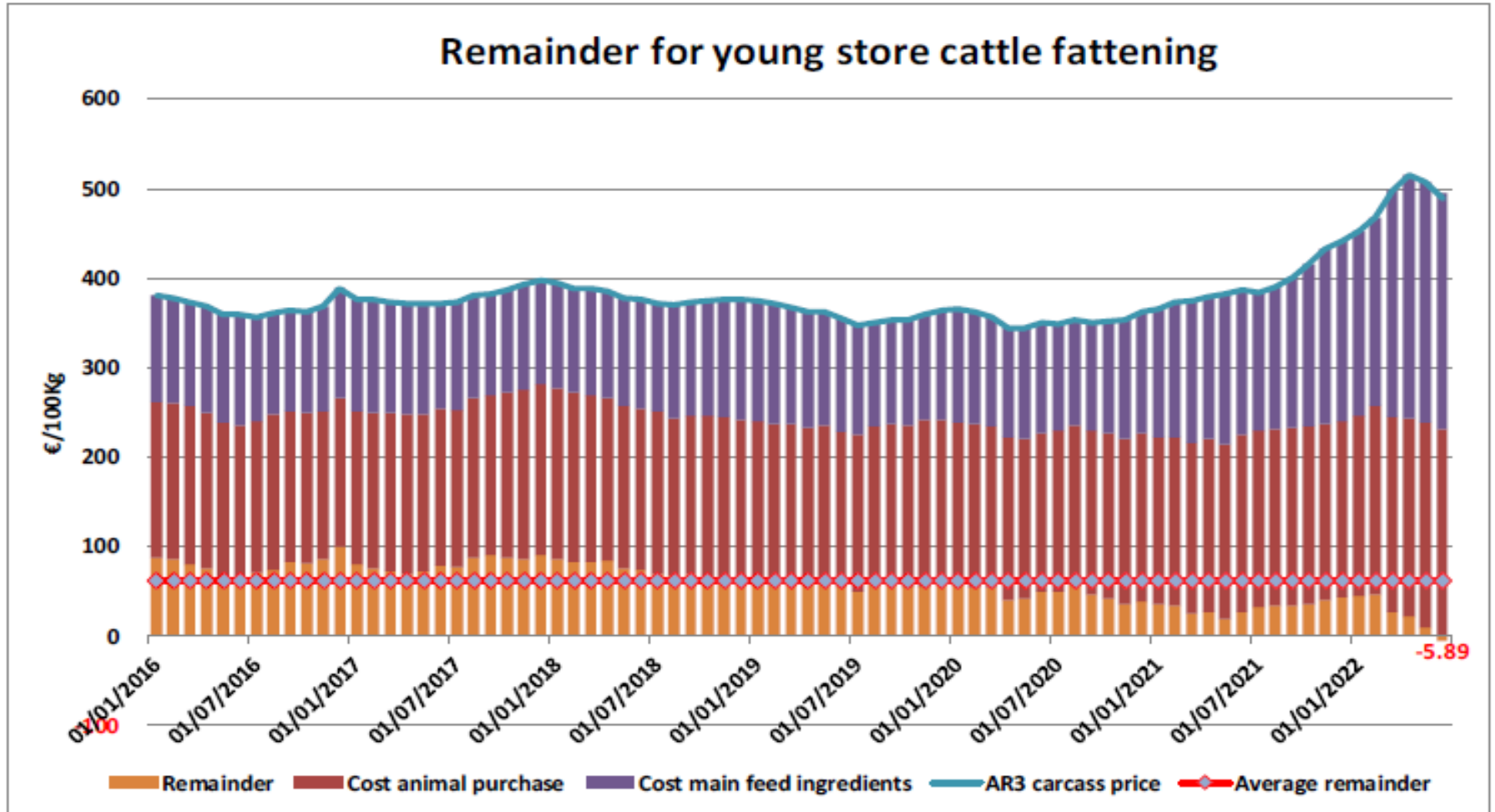
## Süt Buzağları Besiciliği İçin Kalanlar



## Sığır Tipi Buzağı Besiciliği İçin Kalanlar



## Genç Besilik Sığır Besiciliği İçin Kalanlar



## AB siğir eti ve canlı hayvan ihracatı (yağlar dahil): Pazar Rakamları (COMEXT – ton ca)

### Destinations

Destinations	2018		2019		2020		2021		Jan-May 22		Compared to
	tonnes	%	tonnes	%	tonnes	%	tonnes	%	tonnes	%	
Israel	47 774	6.8%	49 629	7.1%	58 974	8.1%	66 594	9.4%	28 220	10.5%	+ 1.9%
Ghana	36 766	5.2%	39 196	5.6%	47 358	6.7%	47 641	6.7%	16 522	6.6%	- 18.3%
Philippines	28 766	4.1%	34 158	4.9%	39 844	5.7%	45 208	6.4%	15 217	6.1%	- 26.2%
Bosnia-Herz.	38 762	5.5%	41 119	5.9%	35 744	5.1%	41 396	5.9%	13 974	5.6%	- 11.9%
Switzerland	23 761	3.4%	25 188	3.6%	29 993	4.3%	33 916	4.8%	13 753	5.5%	+ 0.1%
Ivory Coast	36 064	5.1%	33 396	4.8%	32 433	4.6%	29 236	4.1%	12 997	5.2%	- 1.7%
Lebanon	42 542	6.1%	36 393	5.2%	33 709	4.8%	19 969	2.8%	10 418	4.2%	- 10.0%
Japan	3 452	0.5%	8 007	1.1%	11 885	1.7%	21 888	3.1%	9 081	3.6%	+ 46.5%
Canada	2 225	0.3%	6 806	1.0%	20 450	2.9%	20 676	2.9%	8 865	3.6%	+ 39.4%
Norway	7 926	1.1%	7 667	1.1%	12 936	1.8%	18 254	2.6%	8 786	3.5%	- 19.8%
Algeria	35 410	5.0%	57 152	8.2%	39 396	5.6%	24 127	3.4%	8 727	3.5%	- 42.2%
Egypt	6 297	0.9%	3 375	0.5%	7 961	1.1%	10 604	1.5%	6 177	2.5%	+ 101.1%
Kosovo	6 693	1.0%	10 279	1.5%	10 902	1.5%	16 771	2.4%	5 775	2.3%	- 10.5%
Libya	27 878	4.0%	24 541	3.5%	22 352	3.2%	19 725	2.8%	5 596	2.2%	- 36.6%
Ukraine	10 465	1.5%	13 836	2.0%	15 837	2.2%	16 583	2.3%	5 317	2.1%	- 22.8%
USA	6 891	1.0%	7 867	1.1%	12 310	1.7%	11 659	1.7%	5 101	2.0%	- 3.1%
Other Destinations	340 210	48.5%	301 632	43.1%	274 491	39.0%	261 790	37.1%	76 775	30.8%	
<b>Total (without UK)</b>	<b>701 882</b>		<b>700 242</b>		<b>704 576</b>		<b>706 035</b>		<b>249 302</b>		
% change			- 0%		+ 1%		+ 0%		- 16.1%		

## AB sığır eti ihracatı (yağlar hariç): Pazar Rakamları (COMEXT – ton ca)

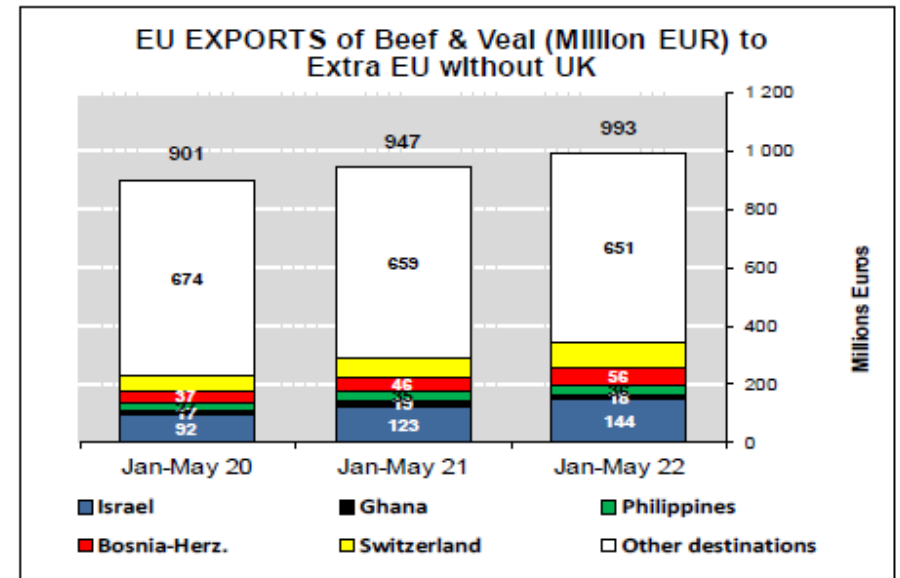
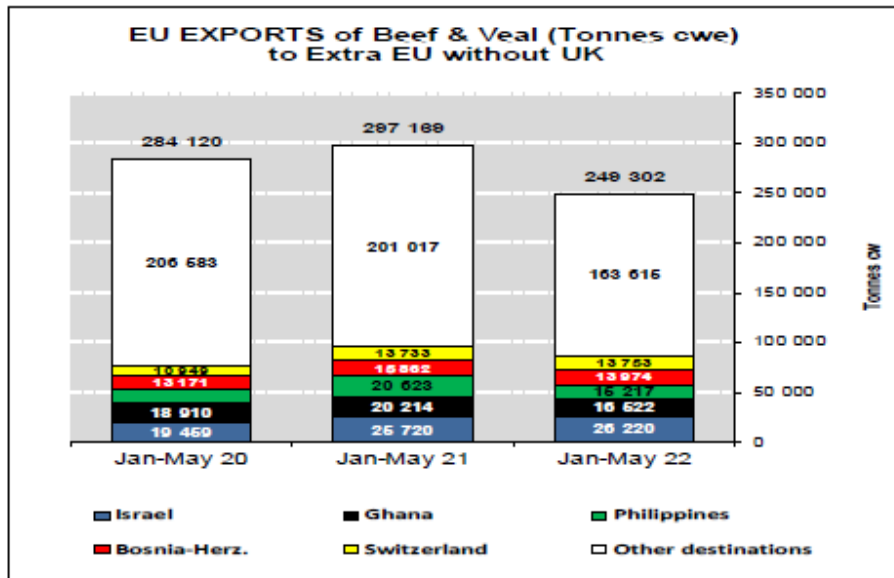
### Destinations

	2018		2019		2020		2021		Jan-May 22		Compared to
	tonnes	%	tonnes	%	tonnes	%	tonnes	%	tonnes	%	
Ghana	36 768	8.1%	39 198	8.5%	47 344	10.0%	47 640	9.8%	16 521	9.7%	- 18.3%
Ivory Coast	36 064	7.9%	33 398	7.2%	32 433	6.8%	29 238	6.0%	12 997	7.6%	- 1.7%
Bosnia-Herz.	35 064	7.7%	37 700	8.2%	32 598	6.9%	37 528	7.8%	12 405	7.3%	- 13.6%
Philippines	27 857	6.1%	31 302	6.8%	33 650	7.1%	34 668	7.2%	12 268	7.2%	- 25.7%
Switzerland	19 073	4.2%	20 320	4.4%	25 170	5.3%	27 395	5.7%	11 139	6.6%	+ 3.6%
Japan	3 452	0.8%	7 982	1.7%	11 885	2.5%	21 888	4.5%	9 081	5.3%	+ 46.5%
Canada	2 225	0.5%	6 758	1.5%	20 450	4.3%	20 678	4.3%	8 864	5.2%	+ 39.4%
Norway	7 780	1.7%	7 622	1.7%	12 873	2.7%	18 231	3.8%	8 765	5.2%	- 19.9%
Israel	21 425	4.7%	21 902	4.7%	21 131	4.4%	20 548	4.2%	7 819	4.6%	+ 8.7%
USA	5 441	1.2%	7 868	1.7%	12 308	2.6%	11 430	2.4%	5 101	3.0%	+ 0.4%
Hong Kong	55 439	12.1%	46 639	10.1%	56 713	11.9%	44 823	9.3%	5 043	3.0%	- 77.0%
Ukraine	9 868	2.2%	12 684	2.7%	13 992	2.9%	13 679	2.8%	4 910	2.9%	- 16.2%
Chile	16 410	3.6%	12 461	2.7%	8 684	1.8%	9 915	2.0%	4 400	2.6%	+ 78.5%
North Macedonia	9 483	2.1%	10 744	2.3%	10 034	2.1%	12 777	2.6%	3 977	2.3%	- 22.0%
South Africa	7 214	1.6%	5 391	1.2%	7 743	1.6%	10 237	2.1%	3 005	1.8%	- 29.9%
Senegal	4 953	1.1%	5 248	1.1%	4 627	1.0%	4 530	0.9%	2 847	1.7%	+ 35.9%
Other Destinations	157 852	34.6%	154 541	33.5%	123 368	26.0%	118 750	24.5%	40 836	24.0%	
<b>Total (without UK)</b>	<b>456 364</b>		<b>461 750</b>		<b>474 982</b>		<b>483 947</b>		<b>169 979</b>		
% change			+ 1%		+ 3%		+ 2%		- 15.1%		

## AB sığır eti yağları ihracatı: Pazar Rakamları (COMEXT – ton ca)

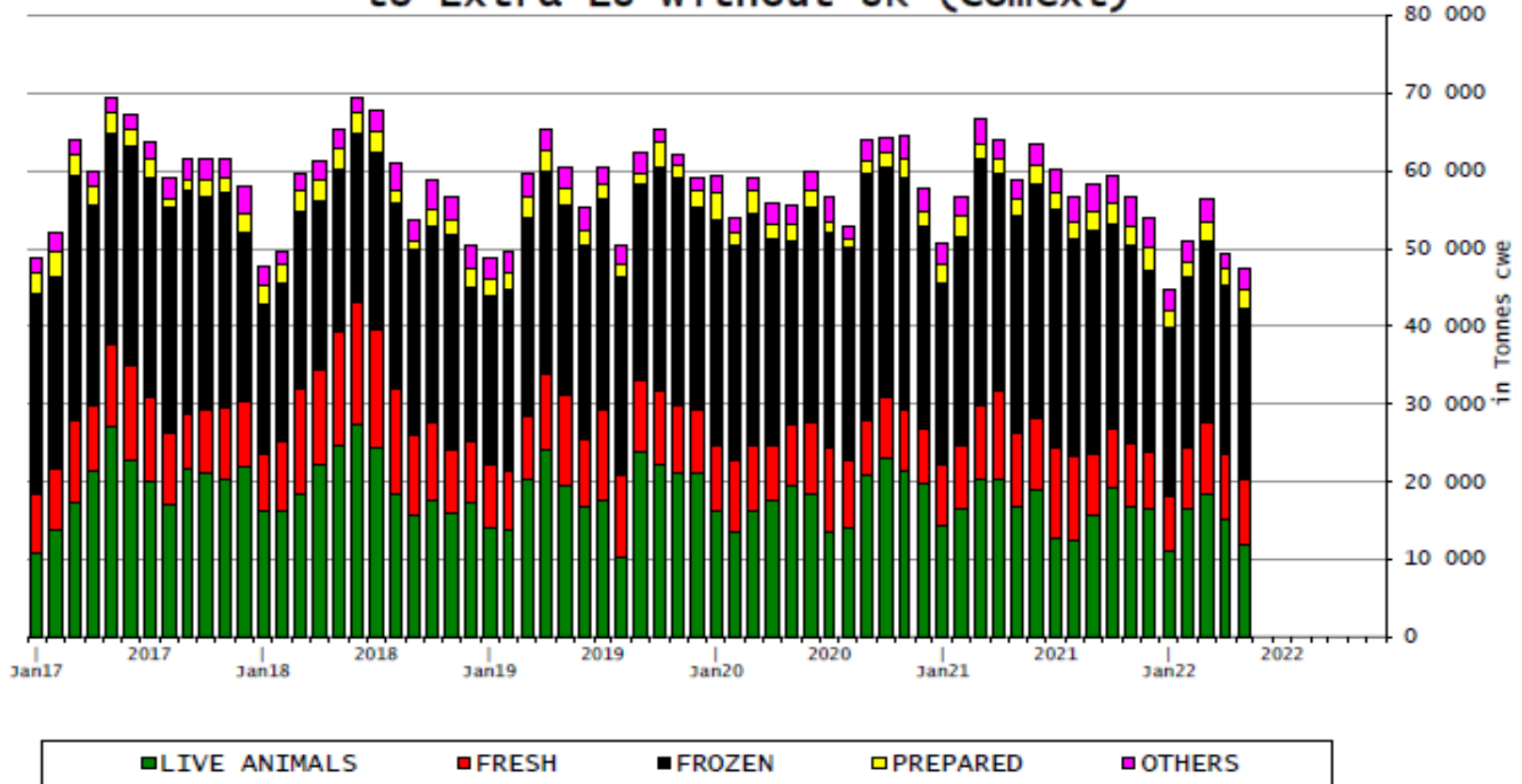
Destinations	2020		2021		Jan to Apr 2022		Compared to Jan to Apr 2021
	Tons	% Extra EU	Tons	% Extra EU	Tons	% Extra EU	
United Kingdom	6 461	29.2%	10 505	32.4%	3 146	37.6%	-3.1%
Philippines	6 194	28.0%	10 542	32.5%	2 387	28.5%	-24.5%
Switzerland	3 770	17.1%	5 198	16.0%	1 464	17.5%	-17.8%
Bosnia-Herz.	848	3.8%	947	2.9%	344	4.1%	+28.1%
North Macedonia	517	2.3%	464	1.4%	211	2.5%	+26.0%
Ukraine	849	3.8%	1 506	4.6%	202	2.4%	-66.7%
Serbia	555	2.5%	571	1.8%	185	2.2%	+++
Israel	836	3.8%	524	1.6%	121	1.4%	-35.8%
Kosovo	511	2.3%	283	0.9%	84	1.0%	-30.8%
Australia	2	0.0%	108	0.3%	52	0.6%	+++
Hong Kong	147	0.7%	283	0.9%	33	0.4%	-61.0%
Other Destinations	1 405	6.4%	1 534	4.7%	146	1.7%	-65.3%
Extra-EU	22 097		32 464		8 375		-17.3%
% Change				+46.9%			

## AB siğir eti ve canlı hayvan ihracatı (yağlar hariç):



## AB siğir eti ürünleri ihracatı (Birleşik Krallık hariç):

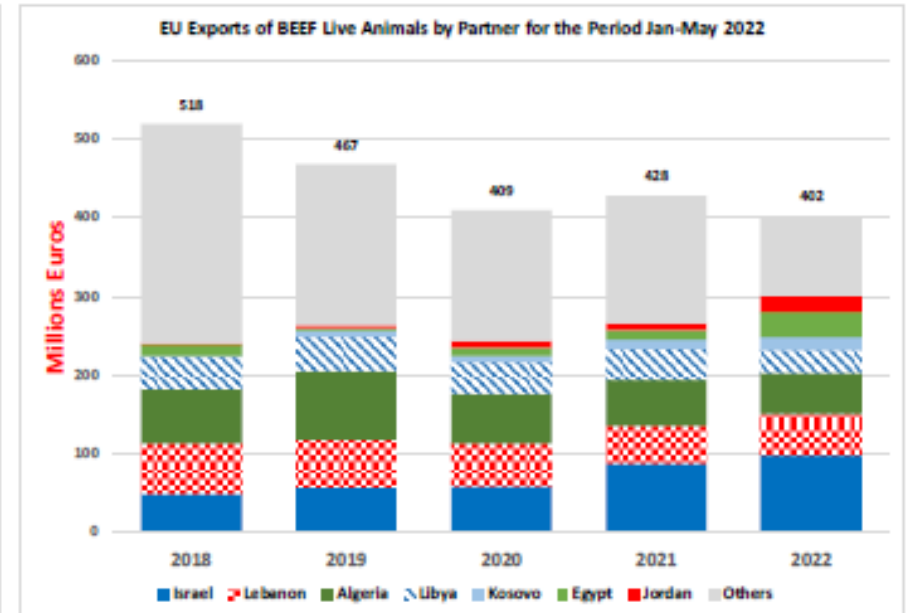
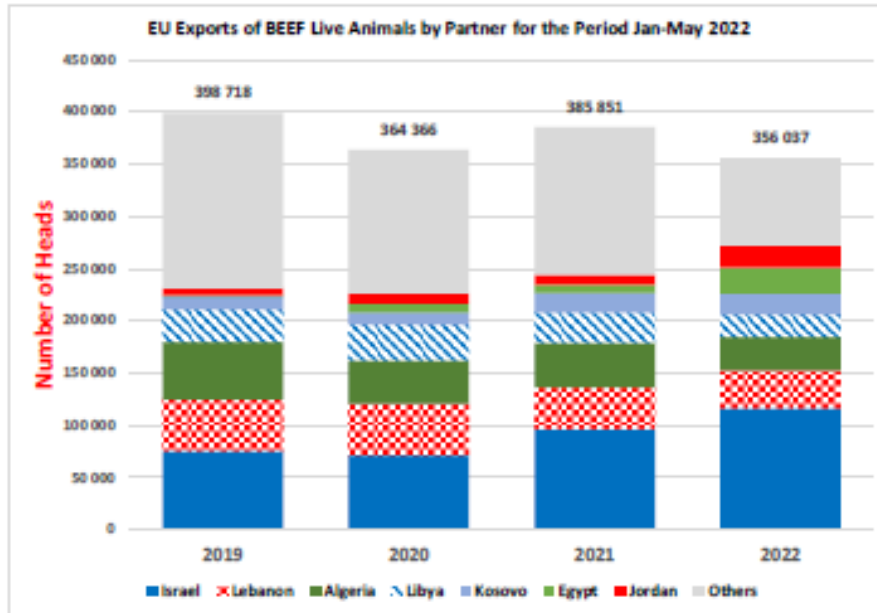
EU Exports of BEEF products  
to Extra EU without UK (Comext)







## AB canlı hayvan ihracatı:



## AB Sığır Eti ve Canlı Hayvan İthalatları (yağlar dahil):

### Origins

	2018		2019		2020		2021		Jan-May 22		Compared to
	tonnes	%	tonnes	%	tonnes	%	tonnes	%	tonnes	%	
Argentina	69.011	24,0%	70.818	25,3%	58.898	25,3%	75.579	28,7%	37.998	31,5%	+ 29,5%
Brazil	103.979	36,1%	99.569	35,7%	84.139	37,5%	81.601	28,8%	36.488	30,2%	+ 13,5%
Uruguay	48.712	16,9%	40.483	14,5%	34.612	15,4%	80.138	28,3%	24.808	20,6%	- 52,0%
USA	19.268	6,7%	18.852	6,0%	18.532	7,4%	14.828	5,2%	6.783	5,6%	+ 35,4%
Australia	17.368	6,0%	16.516	5,9%	11.058	4,9%	8.937	3,2%	3.696	3,1%	- 19,4%
New Zealand	7.165	2,5%	6.726	2,4%	6.146	2,7%	4.392	1,5%	2.092	1,7%	+ 42,0%
Switzerland	5.437	1,9%	4.433	1,6%	4.325	1,9%	5.233	1,8%	1.898	1,6%	- 9,8%
Paraguay	5.520	1,9%	5.203	1,9%	4.234	1,9%	3.933	1,4%	1.775	1,5%	+++
Japan	791	0,3%	997	0,4%	789	0,4%	1.479	0,5%	1.508	1,2%	+++
Namibia	3.442	1,2%	7.706	2,8%	1.445	0,6%	1.998	0,7%	1.347	1,1%	+++
Canada	1.343	0,5%	2.518	0,9%	1.550	0,7%	1.818	0,6%	739	0,6%	+ 4,3%
Serbia	1.134	0,4%	1.062	0,4%	949	0,4%	985	0,3%	451	0,4%	+ 64,7%
Norway	153	0,1%	129	0,0%	395	0,2%	704	0,2%	273	0,2%	+ 6,0%
Israel	0	0,0%	160	0,1%	111	0,0%	469	0,2%	219	0,2%	+++
China	30	0,0%	26	0,0%	0	0,0%	22	0,0%	166	0,1%	+++
Chile	356	0,1%	392	0,1%	168	0,1%	238	0,1%	143	0,1%	+++
Other Destinations	4.080	1,4%	5.818	2,1%	1.293	0,6%	1.063	0,4%	300	0,2%	
<b>Total (without UK)</b>	<b>287.788</b>		<b>279.208</b>		<b>224.642</b>		<b>283.409</b>		<b>120.682</b>		
% change			- 3%		- 20%		+ 26%		- 7,0%		

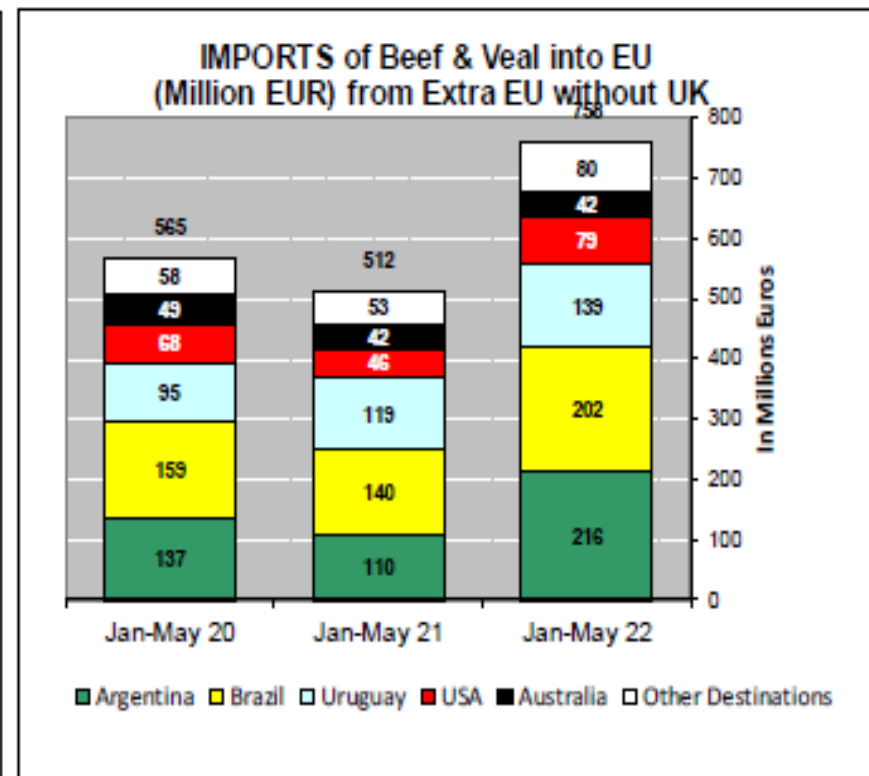
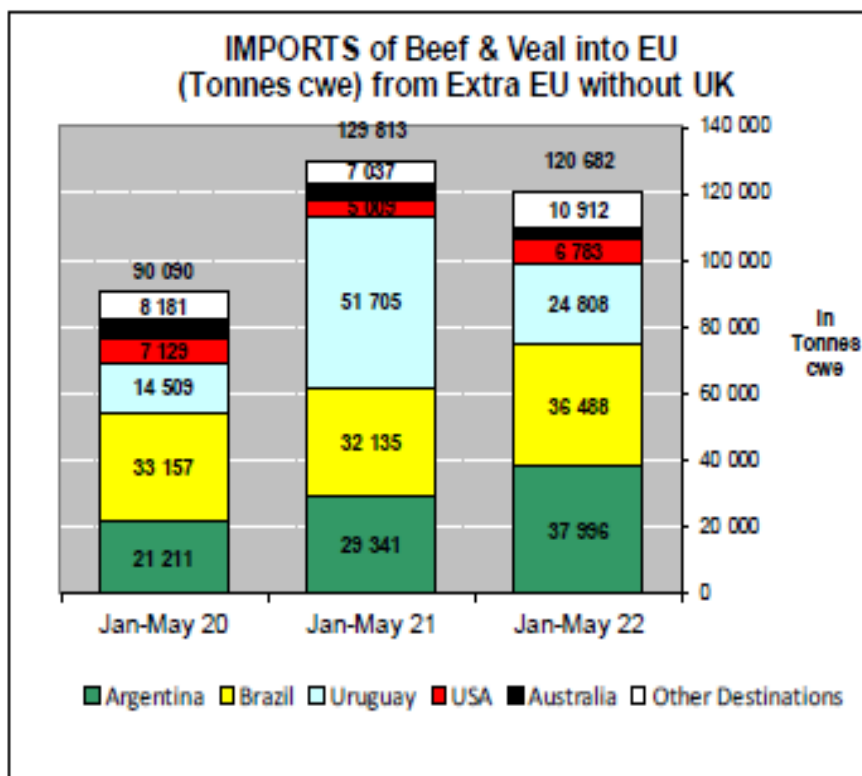
## AB Sığır Eti İthalatları (yağlar hariç):

Origins	2018		2019		2020		2021		Jan-May 22		Compared to
	tonnes	%	tonnes	%	tonnes	%	tonnes	%	tonnes	%	
Brazil	103 979	37.3%	99 589	36.5%	84 139	37.6%	81 601	36.9%	36 488	37.2%	+ 13.5%
Argentina	61 400	22.0%	65 324	23.9%	56 421	25.2%	52 288	23.6%	23 531	24.0%	+ 35.5%
Uruguay	47 922	17.2%	40 483	14.8%	34 611	15.5%	42 689	19.3%	17 296	17.6%	- 5.3%
USA	19 268	6.9%	16 852	6.2%	16 532	7.4%	14 828	6.7%	6 783	6.9%	+ 35.4%
Australia	17 354	6.2%	16 432	6.0%	11 058	4.9%	8 925	4.0%	3 696	3.8%	- 19.2%
New Zealand	7 109	2.6%	6 712	2.5%	6 116	2.7%	4 378	2.0%	2 078	2.1%	+ 41.1%
Paraguay	5 520	2.0%	5 203	1.9%	4 234	1.9%	3 933	1.8%	1 775	1.8%	+++
Switzerland	5 389	1.9%	4 353	1.6%	4 153	1.9%	4 680	2.1%	1 624	1.7%	- 14.2%
Japan	791	0.3%	997	0.4%	789	0.4%	1 478	0.7%	1 506	1.5%	+++
Namibia	3 442	1.2%	7 706	2.8%	1 445	0.6%	1 998	0.9%	1 347	1.4%	+++
Canada	1 343	0.5%	2 518	0.9%	1 550	0.7%	1 816	0.8%	739	0.8%	+ 4.2%
Serbia	1 134	0.4%	1 052	0.4%	931	0.4%	956	0.4%	451	0.5%	+ 64.7%
Norway	153	0.1%	125	0.0%	335	0.1%	540	0.2%	273	0.3%	+++
China	30	0.0%	26	0.0%	0	0.0%	22	0.0%	166	0.2%	+++
Chile	356	0.1%	392	0.1%	168	0.1%	238	0.1%	143	0.1%	+++
Botswana	3 119	1.1%	4 950	1.8%	788	0.4%	331	0.1%	108	0.1%	+ 25.9%
Other Destinations	395	0.1%	378	0.1%	317	0.1%	654	0.3%	196	0.2%	
<b>Total to Third Countries</b>	<b>278 704</b>		<b>273 073</b>		<b>223 586</b>		<b>221 328</b>		<b>98 201</b>		
% change			- 2%		- 18%		- 1%		+ 16.9%		

## AB Sığır Eti Yağları İthalatı:

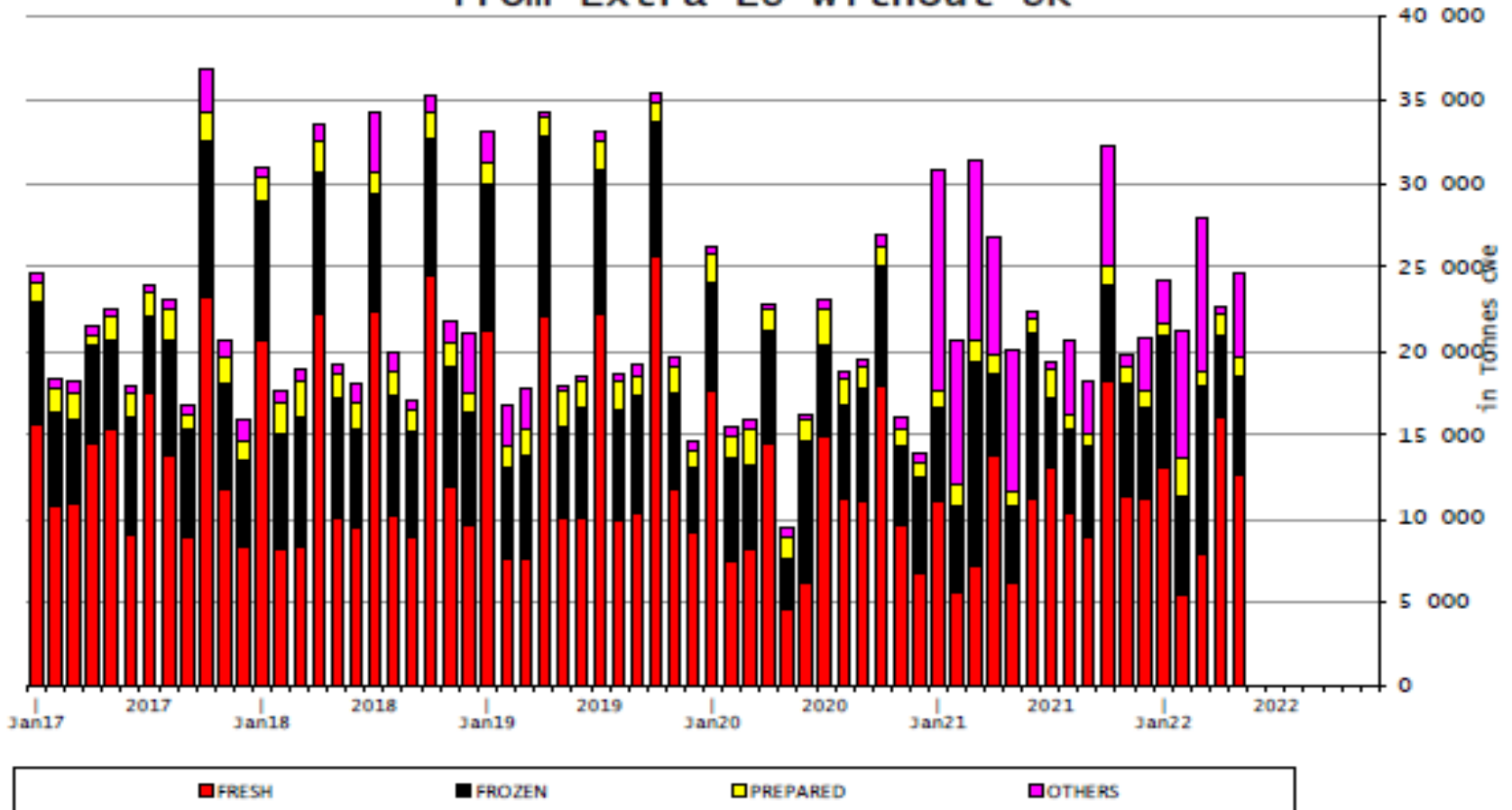
Origins	2020		2021		Jan to Apr 2022		Compared to Jan to Apr 2021
	Tons	% Extra EU	Tons	% Extra EU	Tons	% Extra EU	
Argentina	477	4.3%	23 293	31.7%	14 464	68.5%	+20.8%
United Kingdom	10 223	91.2%	11 568	15.7%	3 222	15.2%	-44.1%
Uruguay	1	0.0%	37 469	51.0%	3 005	14.2%	-88.2%
Switzerland	138	1.2%	519	0.7%	223	1.1%	+58.9%
Israel	111	1.0%	469	0.6%	198	0.9%	
Iceland	14	0.1%	27	0.0%	15	0.1%	+++
Japan	0	0.0%	1	0.0%	1	0.0%	
Brazil	-	0.0%	0	0.0%	0	0.0%	+++
South Korea	-	0.0%	0	0.0%	0	0.0%	
USA	0	0.0%	0	0.0%	0	0.0%	-50.0%
Morocco	-	0.0%	-	0.0%	0	0.0%	
Other Destinations	242	2.2%	184	0.3%	-	0.0%	-100.0%
Extra-EU	11 206		73 529		21 129		-51.3%
% Change				+556.2%			

## AB Sığır Eti ve Canlı Hayvan İthalatları



## AB Sığır Eti Ürünleri İthalatı (Birleşik Krallık hariç)

EU Imports of BEEF products  
from Extra EU without UK



## EU Export of BEEF to UK by Products from Jan to Apr

*In Tons of Carcase Weight*

	2020			2021			2022			% 2022/2021	
	United Kingdom	Extra-EU	%	United Kingdom	Extra-EU	%	United Kingdom	Extra-EU	%	United Kingdom	Extra-EU
Live Animals	4 089	67 818	6.0%	4 999	76 226	6.6%	4 112	65 057	6.3%	-17.7%	-14.7%
<b>Meats</b>	<b>126 866</b>	<b>287 398</b>	<b>44.1%</b>	<b>90 658</b>	<b>250 923</b>	<b>36.1%</b>	<b>113 698</b>	<b>249 322</b>	<b>45.6%</b>	<b>+25.4%</b>	<b>-0.6%</b>
Fresh	73 859	105 993	69.7%	55 837	92 080	60.6%	61 501	93 322	65.9%	+10.1%	+1.3%
Frozen	15 109	72 181	20.9%	18 777	76 645	24.5%	31 699	75 804	41.8%	+68.8%	-1.1%
Salted Meat	7 683	8 238	93.3%	203	736	27.6%	130	876	14.9%	-35.8%	+19.0%
Prepared	14 869	24 924	59.7%	10 638	19 751	53.9%	13 896	22 888	60.7%	+30.6%	+15.9%
Fresh Offals	6 546	7 685	85.2%	1 777	2 583	68.8%	2 560	3 501	73.1%	+44.0%	+35.6%
Frozen Offals	4 569	60 410	7.6%	3 236	55 247	5.9%	3 706	48 249	7.7%	+14.5%	-12.7%
Salted Offals	4 089	7 757	52.7%	81	3 729	2.2%	73	4 491	1.6%	-9.4%	+20.5%
Prepared Offal	142	210	67.4%	108	152	70.9%	133	190	69.8%	+23.1%	+25.1%
<b>Total Beef</b>	<b>130 955</b>	<b>355 216</b>	<b>36.9%</b>	<b>95 657</b>	<b>327 149</b>	<b>29.2%</b>	<b>117 810</b>	<b>314 379</b>	<b>37.5%</b>	<b>+23.2%</b>	<b>-3.9%</b>

Source : Comext



## EU Import of BEEF from UK by Products from Jan to Apr

In Tons of Carcase Weight

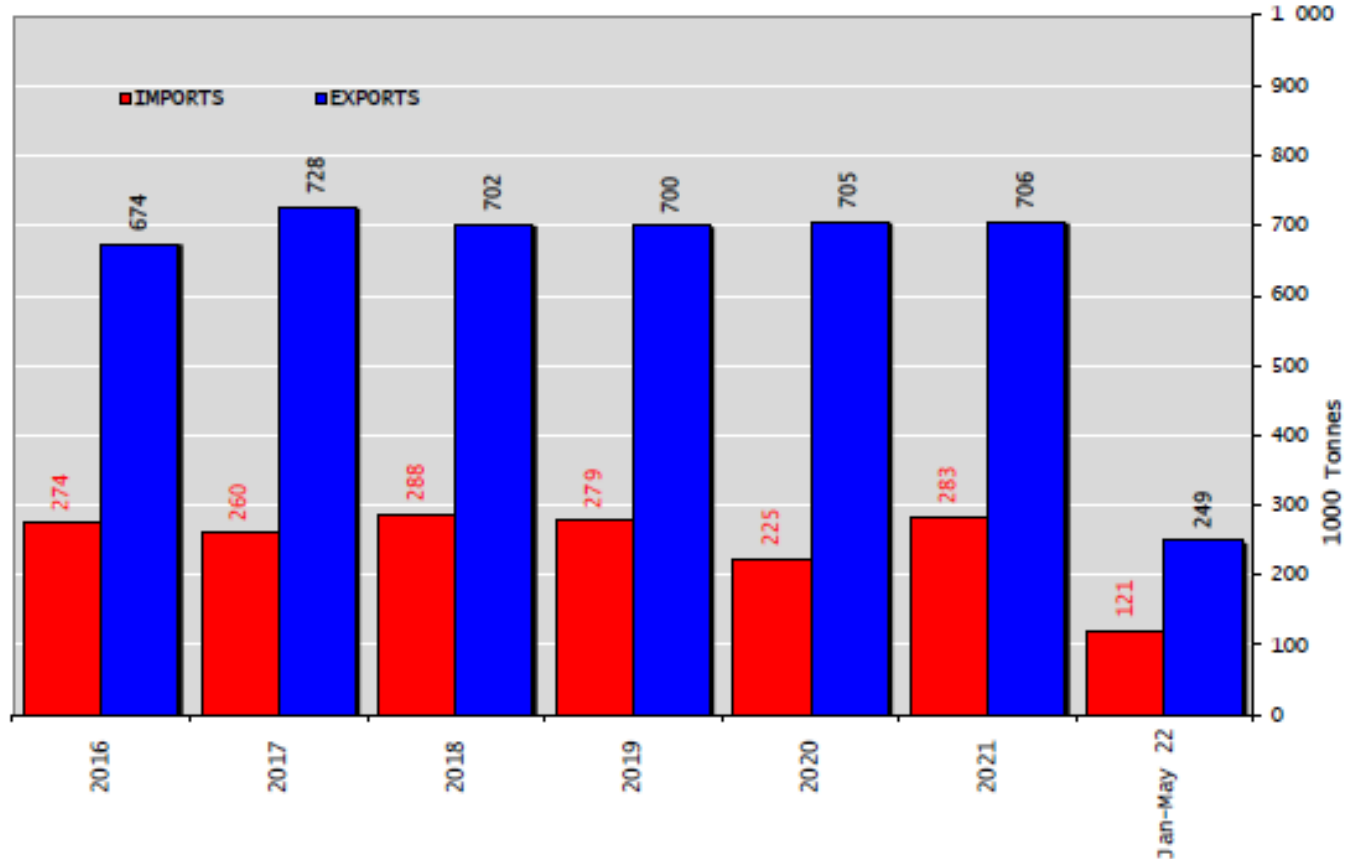
	2020			2021			2022			% 2022/2021	
	United Kingdom	Extra-EU	%	United Kingdom	Extra-EU	%	United Kingdom	Extra-EU	%	United Kingdom	Extra-EU
Live Animals	711	758	93.8%	258	318	81.1%	230	239	96.2%	-10.6%	-24.6%
<b>Meats</b>	<b>42 300</b>	<b>122 466</b>	<b>34.5%</b>	<b>21 981</b>	<b>94 097</b>	<b>23.4%</b>	<b>44 036</b>	<b>122 168</b>	<b>36.0%</b>	<b>+100.3%</b>	<b>+29.8%</b>
Fresh	27 335	75 122	36.4%	14 169	51 955	27.3%	31 418	73 910	42.5%	+121.7%	+42.3%
Frozen	7 693	32 144	23.9%	4 415	32 050	13.8%	7 373	36 063	20.4%	+67.0%	+12.5%
Salted Meat	152	1 031	14.8%	66	1 190	5.5%	69	987	7.0%	+4.6%	-17.0%
Prepared	3 052	9 376	32.6%	1 716	6 527	26.3%	2 793	7 933	35.2%	+62.8%	+21.5%
Fresh Offals	1 341	1 786	75.1%	1 412	1 805	78.3%	1 521	1 906	79.8%	+7.7%	+5.6%
Frozen Offals	1 972	2 236	88.2%	191	552	34.6%	848	1 316	64.4%	+++	+138.6%
Salted Offals	736	740	99.5%	9	10	91.0%	10	15	65.1%	+11.1%	+55.2%
Prepared Offal	19	30	62.0%	3	9	36.7%	4	37	11.5%	+27.8%	+++
<b>Total Beef</b>	<b>43 011</b>	<b>123 224</b>	<b>34.9%</b>	<b>22 239</b>	<b>94 415</b>	<b>23.6%</b>	<b>44 266</b>	<b>122 407</b>	<b>36.2%</b>	<b>+99.0%</b>	<b>+29.6%</b>

Source : Estat - Comext



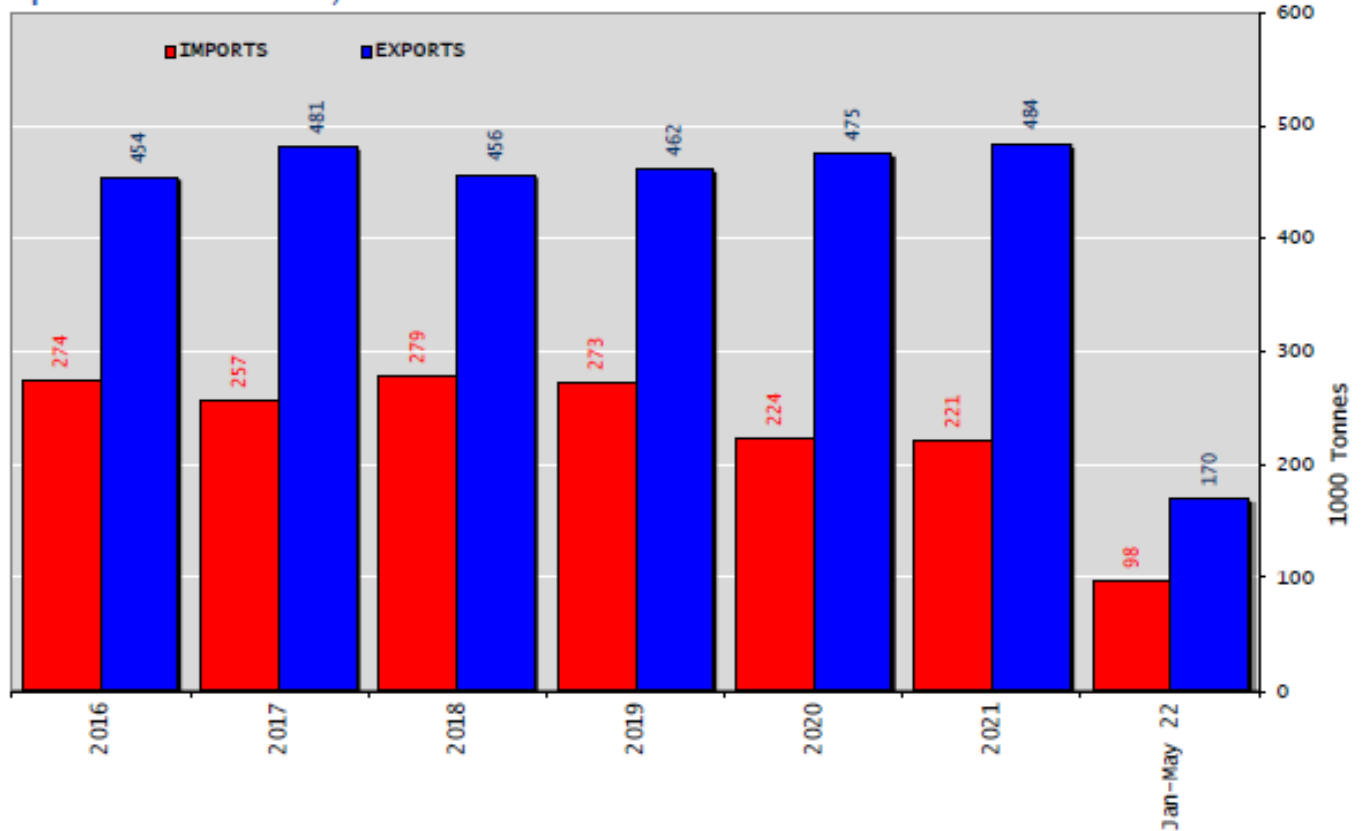
## Sığır eti ve canlı hayvan ticaret dengesi (Birleşik Krallık hariç)

### Trade Balance of Beef Products and Live Animals (without UK)



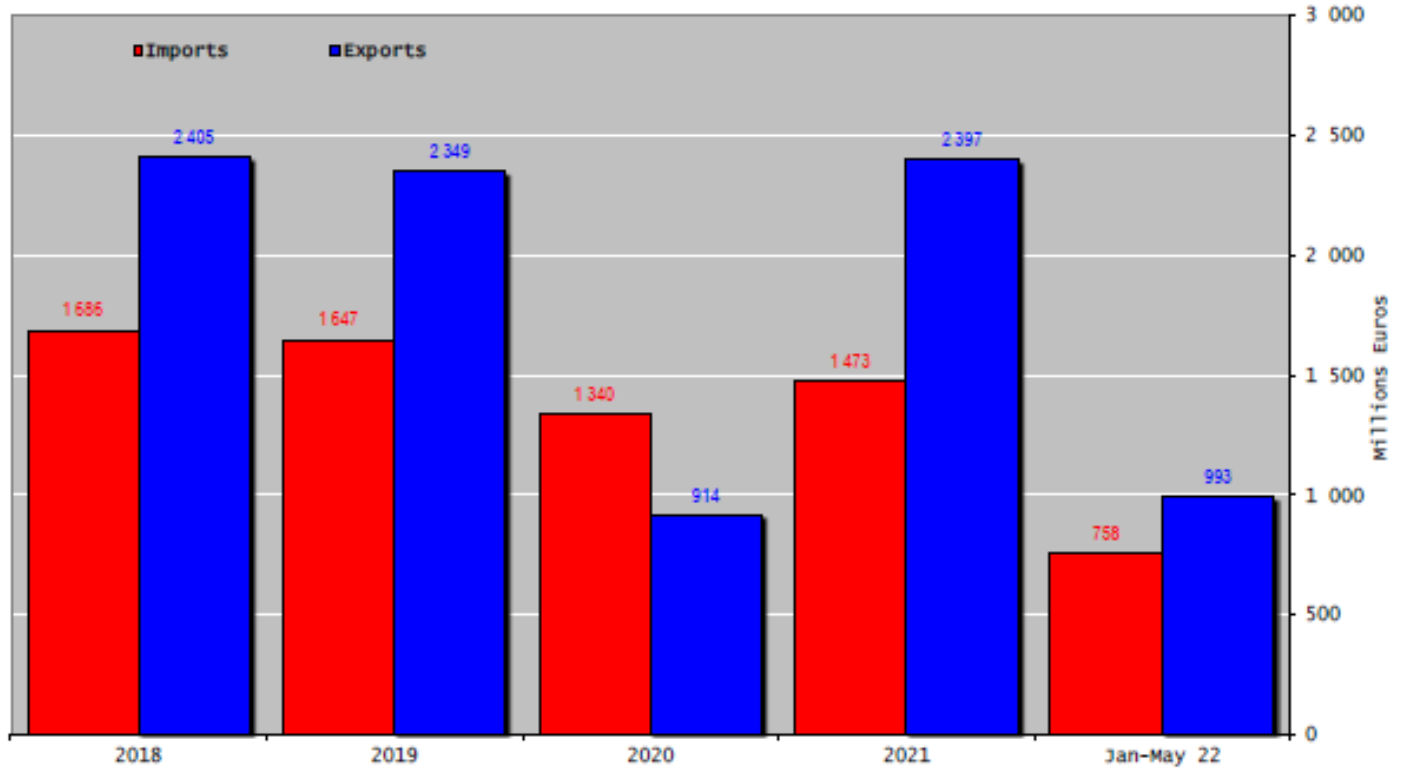
## Sığır eti ürünleri ticaret dengesi (canlı hayvan ve yağlar hariç) (Birleşik Krallık hariç)

Trade Balance of Beef Products (not including Fats)  
(Except Live Animals) without UK

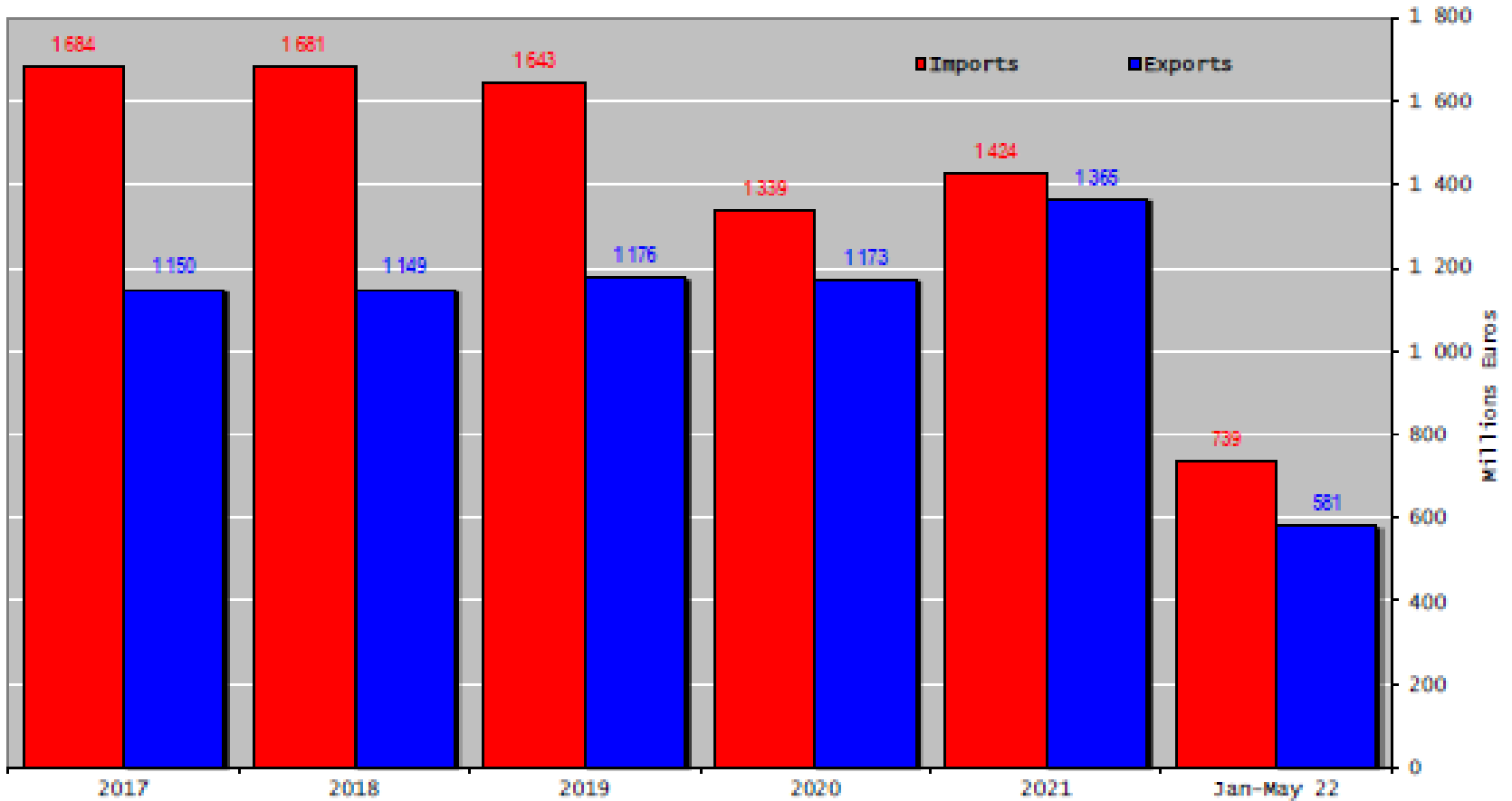


## Sığır eti ürünleri ve canlı hayvan ticaret dengesi (Birleşik Krallık hariç)

Trade Balance of Beef Products and Live Animals (without UK)

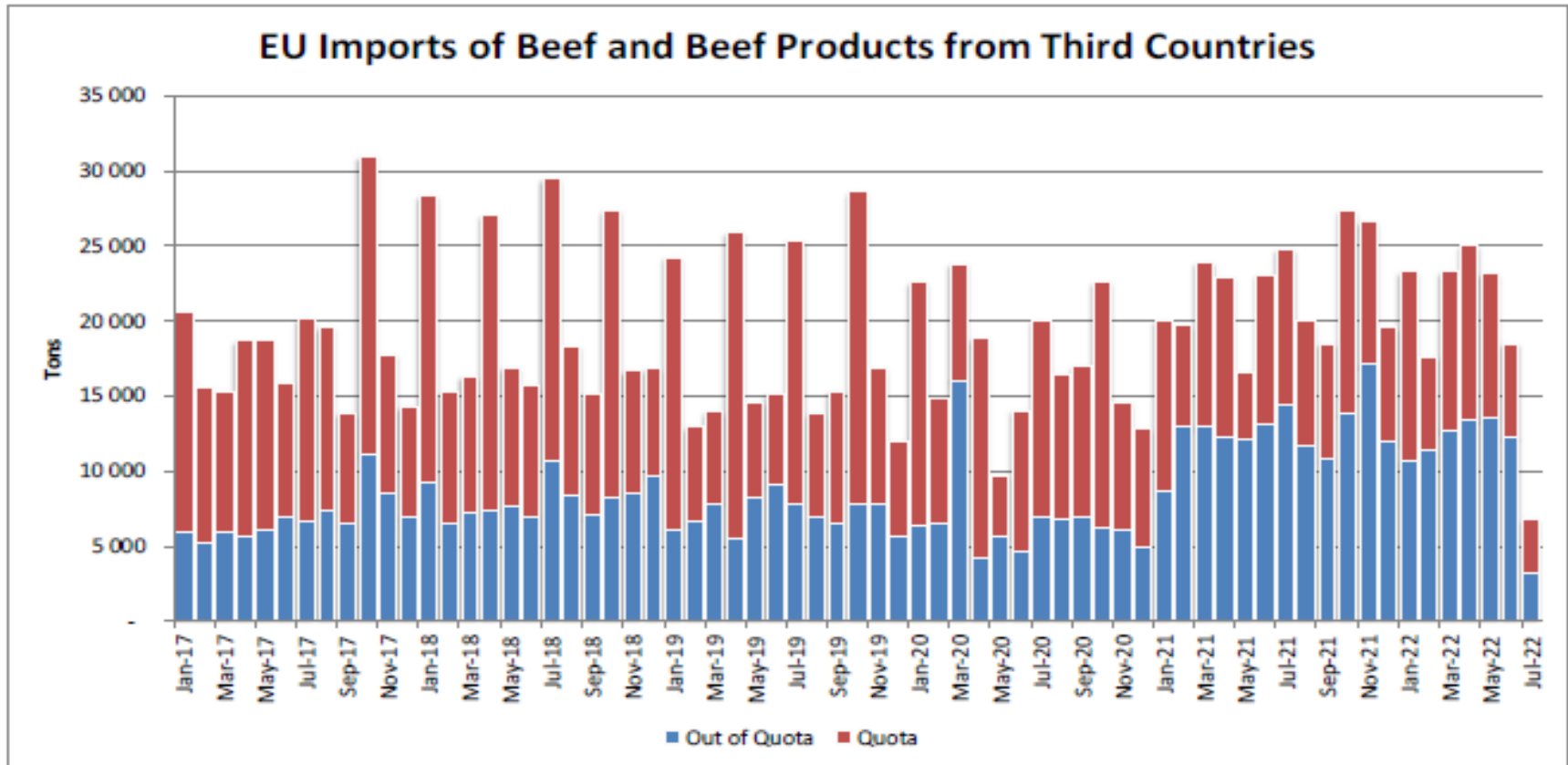


## Sığır eti ürünleri ticaret dengesi – yağlar ve canlı hayvan hariç (Birleşik Krallık hariç)



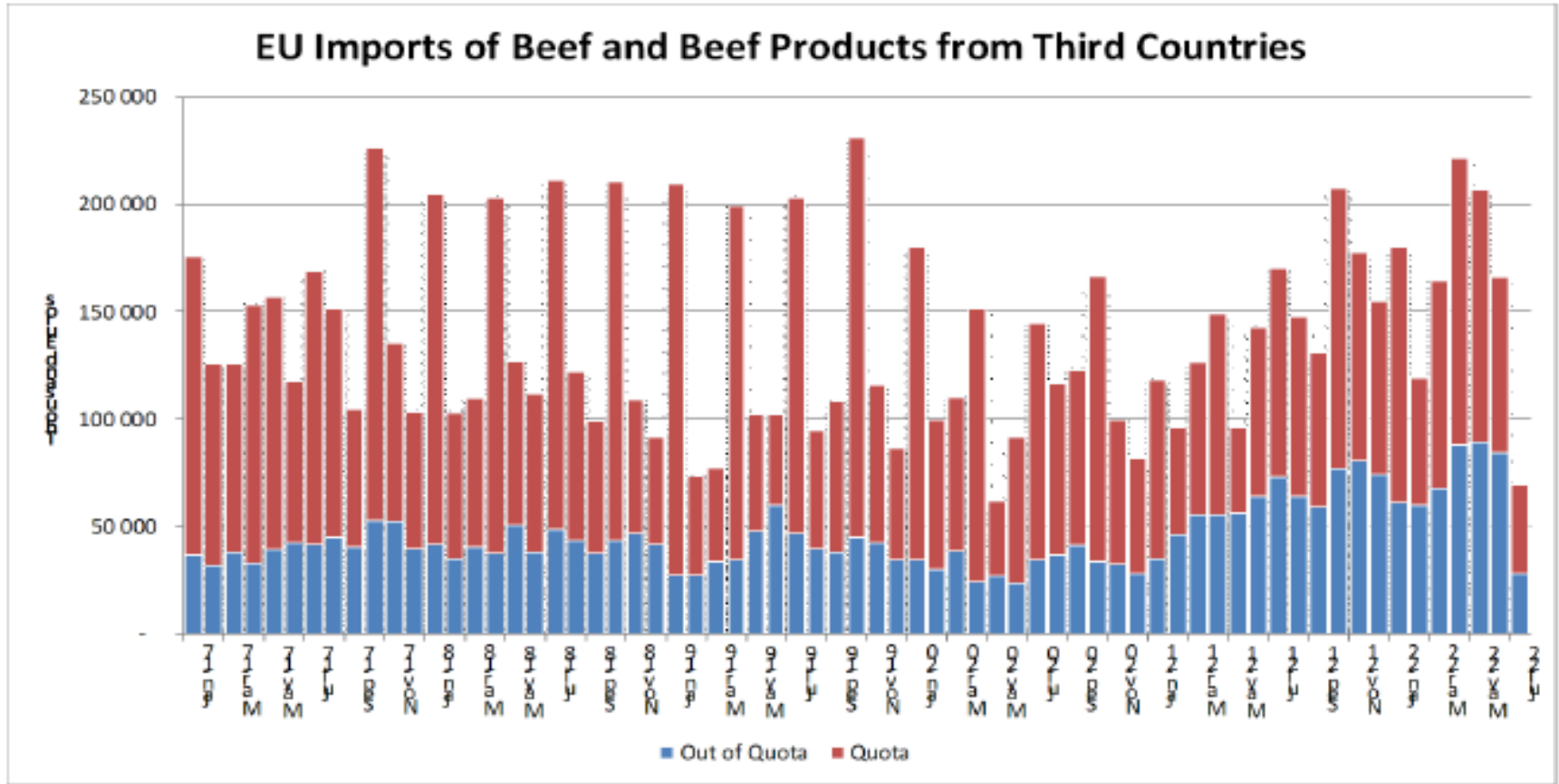
## Üçüncü Ülkelerden AB Sığır ve Sığır eti Ürünleri İthalatları (Ton)

### Imports in and out of TRQs



## Üçüncü Ülkelerden AB Sığır ve Sığır eti Ürünleri İthalatları (Bin Euro)

### Imports in and out of TRQs



# YÜKSEK KALİTE SİĞİR ETİ İTHALAT KOTALARI



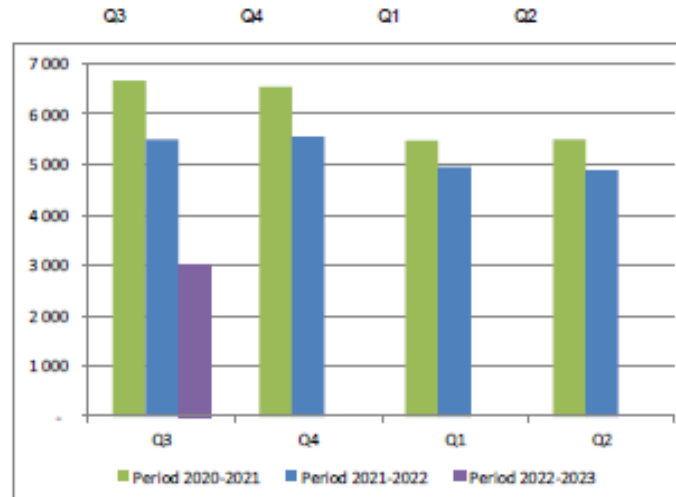
## High Quality Beef Import Quotas

Quota erga omnes

Regulation (EU) No 481/2012

	2020-Q3	2020-Q4	2021-Q1	2021-Q2	TOTAL
Period 2020-2021	6 652	6 542	5 472	5 503	24 169
Available	6 625	6 625	5 500	5 500	45 000
Use	100.00%	98.75%	99.49%	100.00%	53.71%
Available after transfer	6 625	6 598	5 583	5 528	
	100.00%	99.16%	98.02%	99.55%	
	2021-Q3	2021-Q4	2022-Q1	2022-Q2*	TOTAL
Period 2021-2022	5 502	5 564	4 953	4 889	20 908
Available	5 500	5 500	4 900	4 900	45 000
Use	100.00%	100.00%	100.00%	99.78%	46.46%
Available after transfer	5 500	5 498	4 836	4 847	
	100.00%	100.00%	100.00%	100.00%	
	2022-Q3	2022-Q4	2023-Q1	2023-Q2*	TOTAL
Period 2022-2023	2 993				2 993
Available	4 900				45 000
Use	61.09%				6.65%
Available after transfer	4 900				
	61.09%				

\* Until 14.07.2022



# YÜKSEK KALİTE SİĞİR ETİ İTHALAT KOTALARI

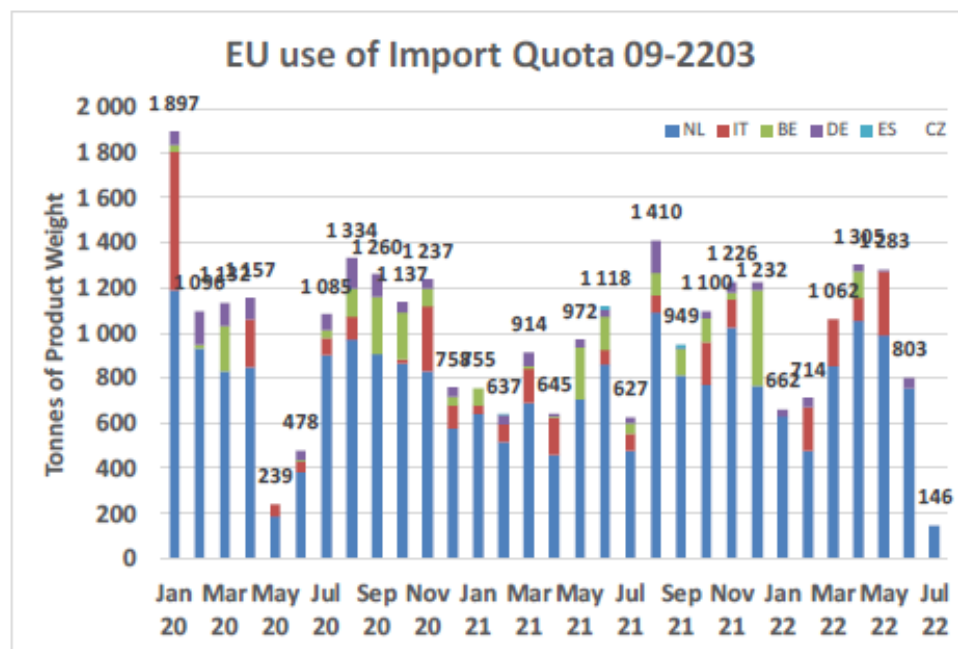


European Commission

## High Quality Beef Import Quotas

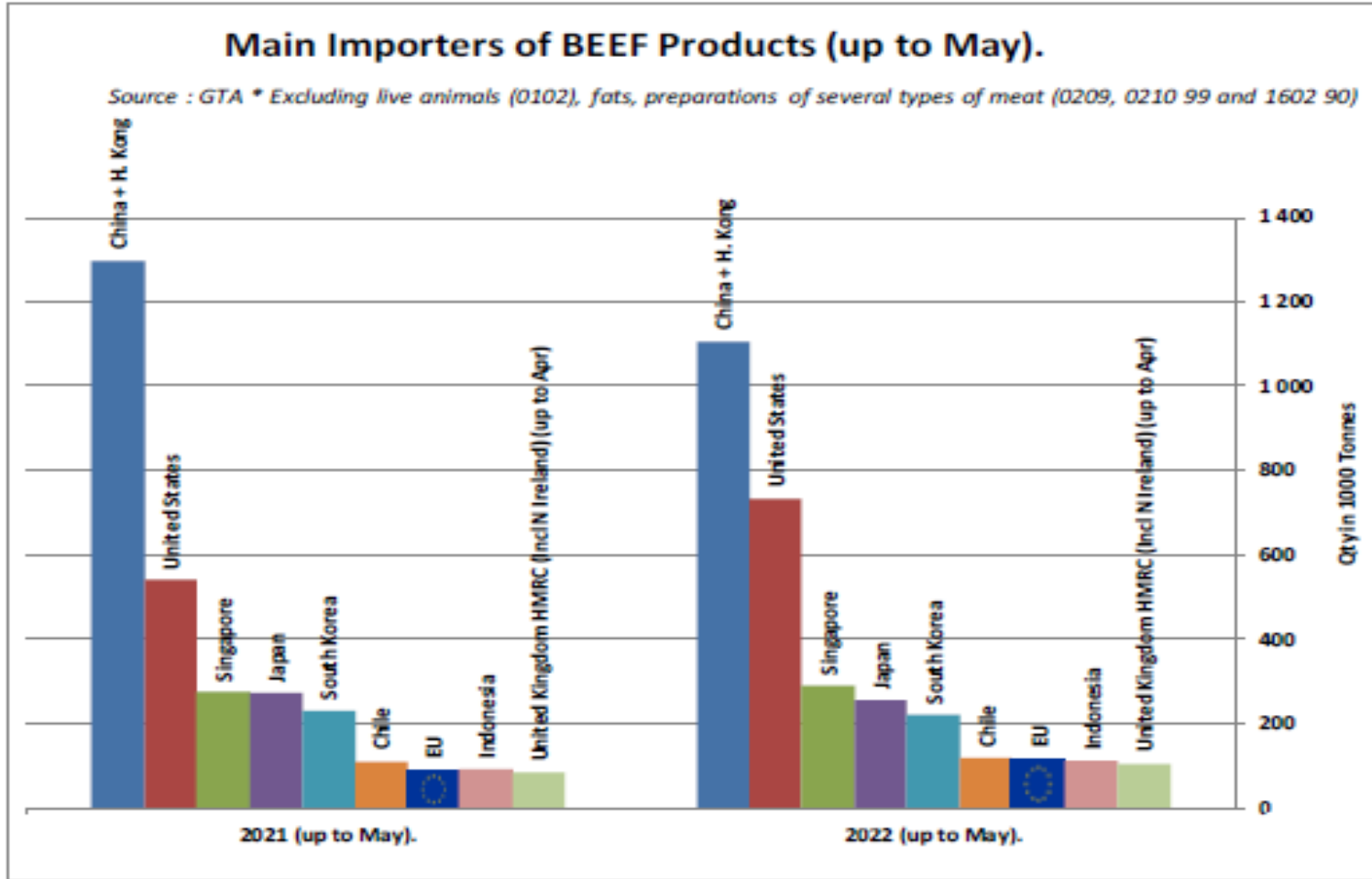
Origin	GATT 2021-2022				
	2021-Q3	2021-Q4	2022-Q1	2022-Q2	Total
NL	2 384	2 564	1 959	2 805	9 712
IT	151	313	405	380	1 249
BE	262	555	-	117	935
DE	173	122	74	89	458
ES	15	-	-	-	15
CZ	-	4	-	-	4
<b>Total import within Quota</b>	<b>2 985</b>	<b>3 559</b>	<b>2 439</b>	<b>3 390</b>	<b>12 374</b>
Available	5 750	5 750	6 350	6 350	24 200
Use	51.92%	61.90%	38.41%	53.39%	51.13%
After transfer	5 750	8 515	8 541	10 261	
Use	51.92%	41.80%	28.55%	33.04%	

Origin	GATT 2022-2023				
	2022-Q3	2022-Q4	2023-Q1	2023-Q2	Total
NL	146				146
IT	-				-
BE	-				-
DE	-				-
ES	-				-
CZ	-				-
<b>Total import within Quota</b>	<b>146</b>				<b>146</b>
Available	6 350	6 350	6 350	6 350	25 400
Use	2.30%				0.58%
After transfer					
Use					





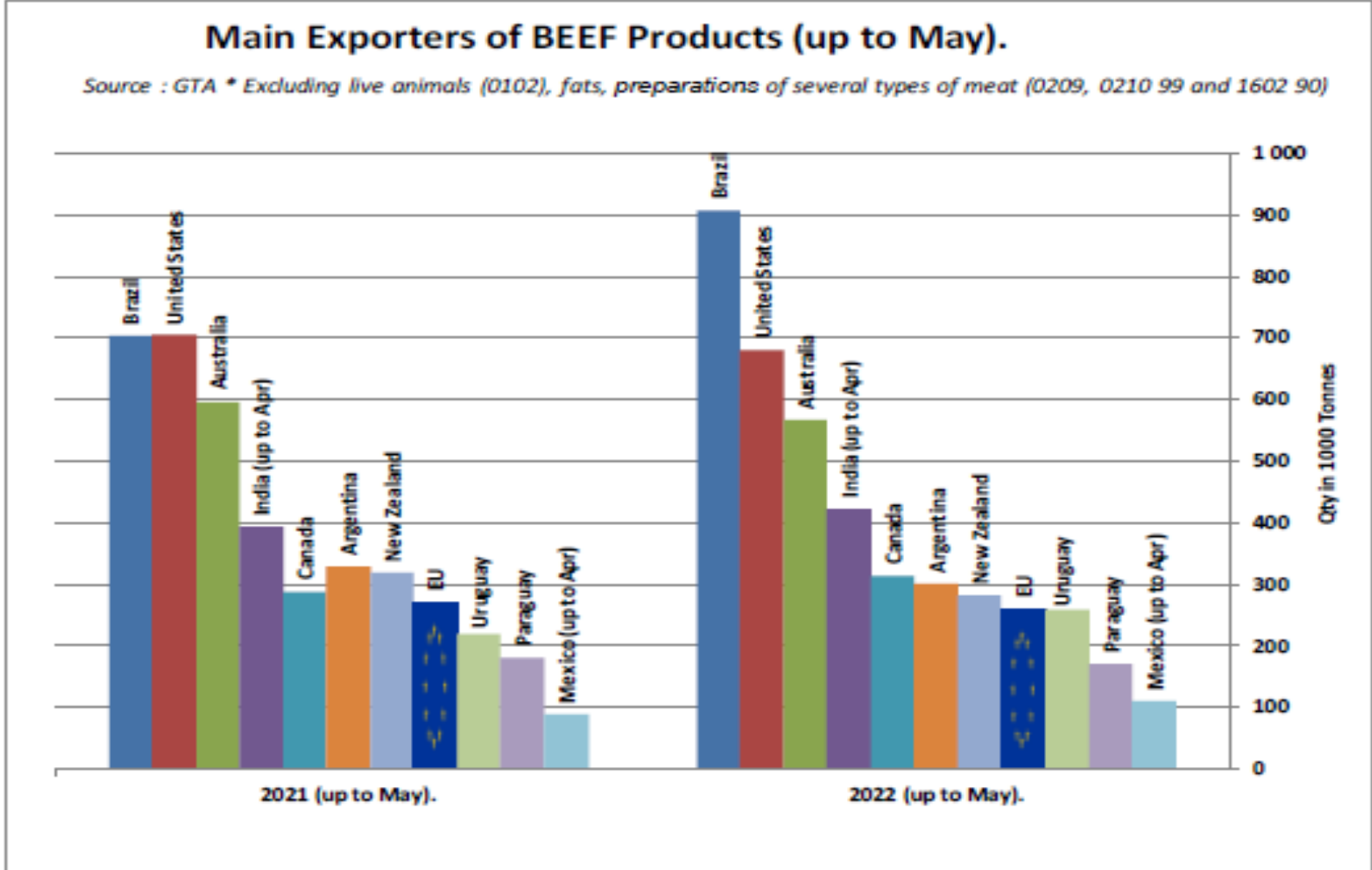
### SIĞIR ETİ ÜRÜNLERİNİN NET İTHALATÇILARI (MAYIS AYINA KADAR)





European  
Commission

### SIĞIR ETİ ÜRÜNLERİNİN NET İHRACATÇILARI (MAYIS AYINA KADAR)



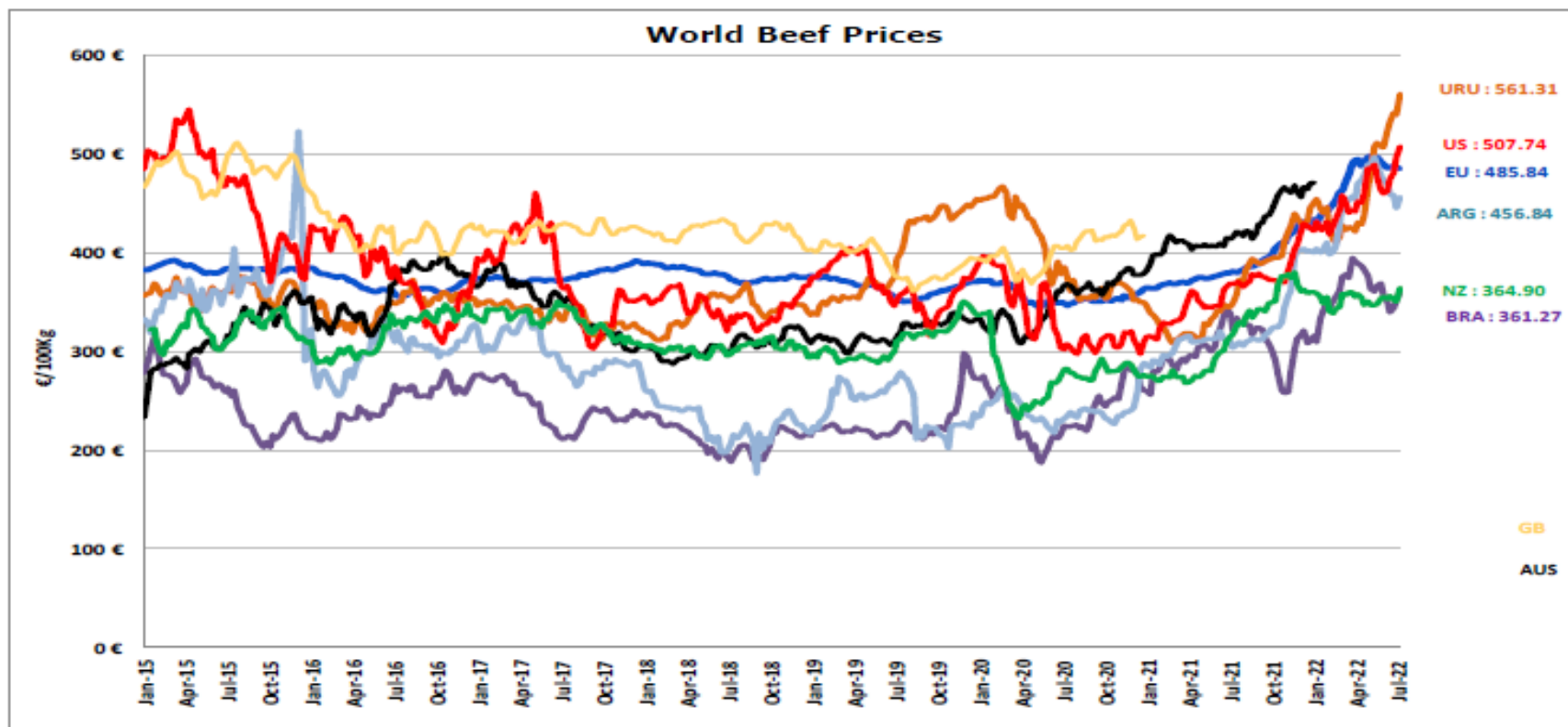
# DÜNYA SIĞIR ETİ PAZARI



# Dünya Sığır Fiyatları AB, ABD, AVUSTURYA, YENİ ZELANDA

## WORLD BEEF MARKET

## STEER PRICES EU, US, AUS, NZ



- ECB <http://sdw.ecb.europa.eu/browse.do?node=2018794>
- US <https://www.marketnews.usda.gov/mnp/lz-home>
- AUS <http://statistics.mia.com.au/Report/RunReport/ae39d4ac-74e6-4c36-93bd-982a044d9760>
- UY <http://www.inac.gub.uy/innovaportal/v/11034/10/innova.front/indicadores-y-precios>
- ARG [http://www.abc-consorcio.com.ar/Estadisticas/detalle/117/precios\\_comparativos\\_del\\_novillo.html](http://www.abc-consorcio.com.ar/Estadisticas/detalle/117/precios_comparativos_del_novillo.html)
- BR <http://www.pecuaria.com.br/cotacoes.php>
- NZ [http://www.abc-consorcio.com.ar/Estadisticas/detalle/117/precios\\_comparativos\\_del\\_novillo.html](http://www.abc-consorcio.com.ar/Estadisticas/detalle/117/precios_comparativos_del_novillo.html)





**Daha fazla bilgi için:**

**[https://ec.europa.eu/agriculture/market-observatory/meat\\_en](https://ec.europa.eu/agriculture/market-observatory/meat_en)**

**Ve Agri-FOOD Veri Portalı:**

**<http://agridata.ec.europa.eu>**