



AB SIĞIR VE DANA ETİ PAZAR DURUMU

21 Ekim 2021

May/Jun 1000 Hd	TOT LIVESTOCK				%Var 2021 2020	BOVINE < 1 Year				%Var 2021 2020	BOVINE 1-2 Year				%Var 2021 2020	BOVINE > 2 Year				%Var 2021 2020
	2018	2019	2020	2021		2018	2019	2020	2021		2018	2019	2020	2021		2018	2019	2020	2021	
BE	2 450	2 406	2 388	2 342	-1.9%	710	706	716	708	-1.0%	492	475	471	471	-0.1%	1 247	1 226	1 201	1 163	-3.2%
BG																				
CZ																				
DK	1 560	1 512	1 517	1 503	-0.9%	538	510	517	517	idem	294	292	291	287	-1.4%	729	710	709	699	-1.4%
DE	12 093	11 763	11 423	11 176	-2.2%	3 618	3 502	3 410	3 398	-0.4%	2 848	2 788	2 683	2 591	-3.4%	5 627	5 473	5 330	5 188	-2.7%
EE																				
IE	7 349	7 209	7 314	7 359	+0.6%	2 078	2 008	2 117	2 146	+1.4%	1 919	1 861	1 807	1 910	+5.7%	3 351	3 340	3 390	3 303	-2.6%
EL																				
ES	6 725	6 722	6 715	6 911	+2.9%	2 504	2 507	2 488	2 626	+5.6%	990	978	930	975	+4.9%	3 230	3 237	3 297	3 310	+0.4%
FR	18 737	18 470	18 200	17 863	-1.9%	5 125	5 227	5 144	5 134	-0.2%	3 417	3 229	3 249	3 158	-2.8%	10 195	10 014	9 808	9 571	-2.4%
HR																				
IT	6 170	6 016	6 116	6 174	+0.9%	1 757	1 746	1 746	1 762	+0.9%	1 466	1 409	1 458	1 476	+1.2%	2 948	2 861	2 912	2 936	+0.8%
CY																				
LV																				
LT																				
LU																				
HU																				
MT																				
NL	3 897	3 750	3 766	3 733	-0.9%	1 560	1 536	1 558	1 523	-2.2%	520	460	446	480	+7.6%	1 817	1 754	1 762	1 730	-1.8%
AT	1 907	1 873	1 844	1 846	+0.1%	606	596	588	596	+1.4%	433	425	416	413	-0.7%	869	853	841	838	-0.4%
PL	6 201	6 358	6 344	6 401	+0.9%	1 686	1 771	1 729	1 789	+3.5%	1 734	1 768	1 796	1 856	+3.3%	2 781	2 820	2 819	2 756	-2.2%
PT	1 722	1 712	1 751	1 723	-1.5%	529	524	557	550	-1.4%	274	267	264	252	-4.7%	919	921	929	922	-0.8%
RO	2 002	1 963	1 915	1 864	-2.6%	444	428	418	386	-7.7%	236	230	217	207	-4.4%	1 322	1 305	1 280	1 271	-0.7%
SI																				
SK																				
FI																				
SE	1 507	1 466	1 453	1 453	-0.0%	475	451	462	465	+0.6%	381	380	362	369	+2.1%	651	636	629	618	-1.7%
EU	72 320	71 220	70 747	70 348	-0.6%	21 631	21 512	21 451	21 600	+0.7%	15 003	14 559	14 389	14 444	+0.4%	35 687	35 149	34 907	34 304	-1.7%
UK	9 891	9 739	9 615			2 908	2 857	2 878			2 479	2 448	2 412			4 504	4 434	4 324		

Source: EGGal Newcomer

EU %Var is calculated considering only countries available in 2020 AND 2021

HAYVANCILIK HAZİRAN ARAŞTIRMASI



AB DEĞİŞİM İNEK

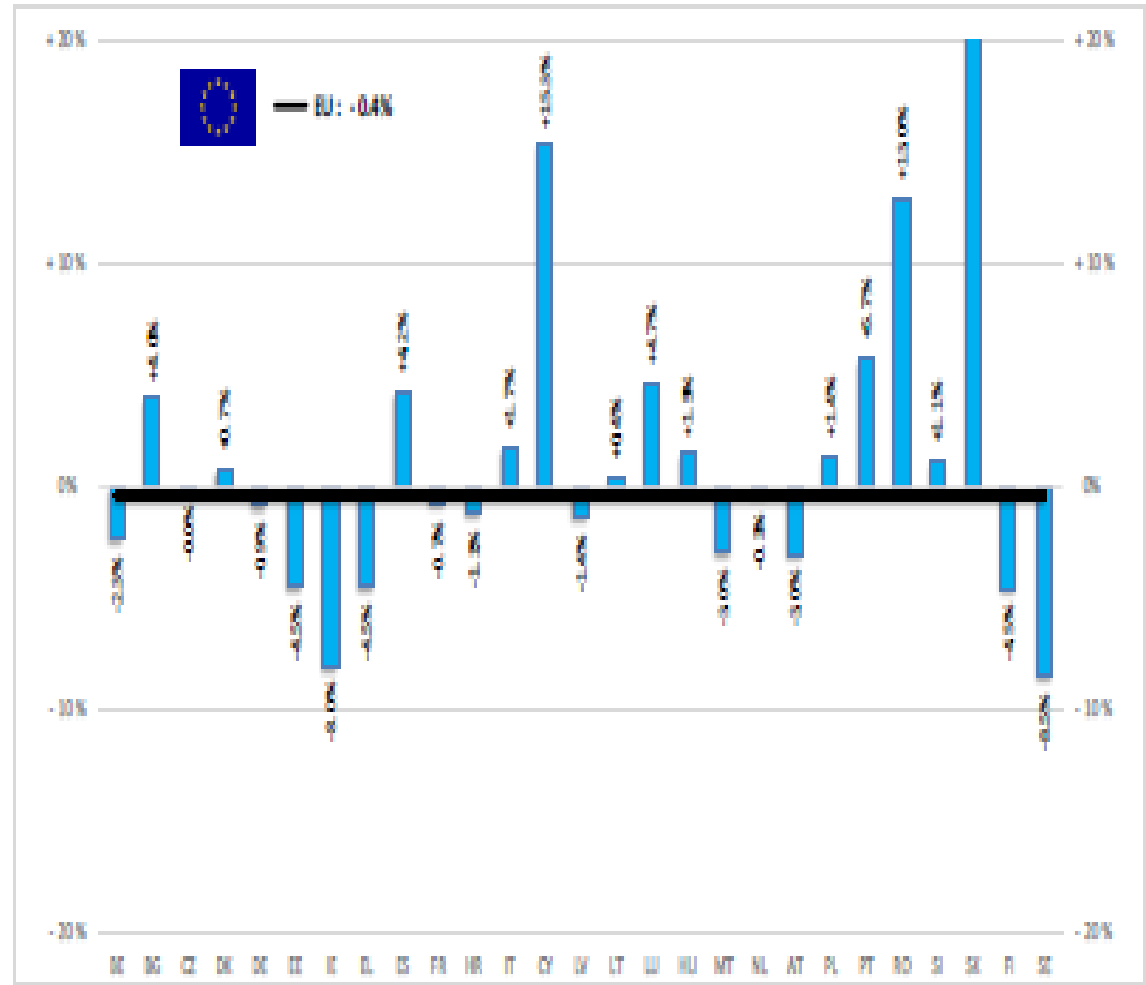
May/Jun 1000 Hd	TOTAL COWS					%Var 2021 2020	DAIRY COWS					%Var 2021 2020	OTHER COWS					%Var 2021 2020
	2018	2019	2020	2021	2018		2019	2020	2021	2018	2019		2020	2021				
BE	968	960	954	932	-2.2%	532	536	544	536	-1.5%	435	425	409	396	-3.2%			
BG																		
CZ																		
DK	667	654	653	647	-0.9%	575	567	567	565	-0.4%	91	87	86	82	-4.7%			
DE	4 830	4 720	4 609	4 517	-2.0%	4 167	4 067	3 969	3 892	-2.0%	663	653	640	626	-2.3%			
EE																		
IE	2 529	2 505	2 551	2 545	-0.2%	1 481	1 505	1 568	1 605	+2.4%	1 048	1 000	983	940	-4.4%			
EL																		
ES	2 865	2 854	2 927	2 954	+0.9%	825	815	810	819	+1.1%	2 040	2 039	2 117	2 135	+0.9%			
FR	7 652	7 546	7 442	7 315	-1.7%	3 512	3 471	3 403	3 331	-2.1%	4 141	4 075	4 039	3 984	-1.4%			
HR																		
IT	2 192	2 110	2 130	2 161	+1.4%	1 904	1 840	1 844	1 852	+0.4%	288	270	286	309	+8.0%			
CY																		
LV																		
LT																		
LU																		
HU																		
MT																		
NL	1 685	1 641	1 651	1 628	-1.4%	1 622	1 578	1 593	1 572	-1.3%	63	63	58	56	-4.5%			
AT	740	726	716	715	-0.2%	538	525	523	531	+1.6%	202	201	193	184	-5.0%			
PL	2 429	2 461	2 468	2 388	-3.2%	2 233	2 221	2 218	2 113	-4.7%	196	240	250	276	+10.4%			
PT	745	742	757	757	+0.1%	244	238	239	236	-1.2%	501	504	517	521	+0.7%			
RO	1 197	1 179	1 160	1 148	-1.0%	1 184	1 162	1 145	1 133	-1.0%	12	17	15	15	Idem			
SI																		
SK																		
FI																		
SE	534	516	510	511	+0.2%	319	306	303	300	-1.1%	214	210	207	211	+2.1%			
EU	29 034	28 612	28 528	28 219	-1.1%	19 137	18 831	18 727	18 485	-1.3%	9 896	9 782	9 801	9 735	-0.7%			
UK	3 441	3 398	3 359			1 883	1 871	1 850			1 558	1 527	1 509					

Source : EStat Newcronos

EU %Var is calculated considering only countries available in 2020 AND 2021

BAŞ	HEADS	Jan-Jul 21/20
		EU
BOĞA	Bull	+0.5%
ÖKÜZ	Bullock	-5.1%
İNEK	Cow	+0.8%
DÜVE	Heifer	-0.7%
BUZAĞI	Calve	-2.4%
GENÇ SİĞİR	Young cattle	-1.6%
Büyükbaş Hayvan Eti	Meat of bovine animals	-0.4%

Estimates for last month of period :

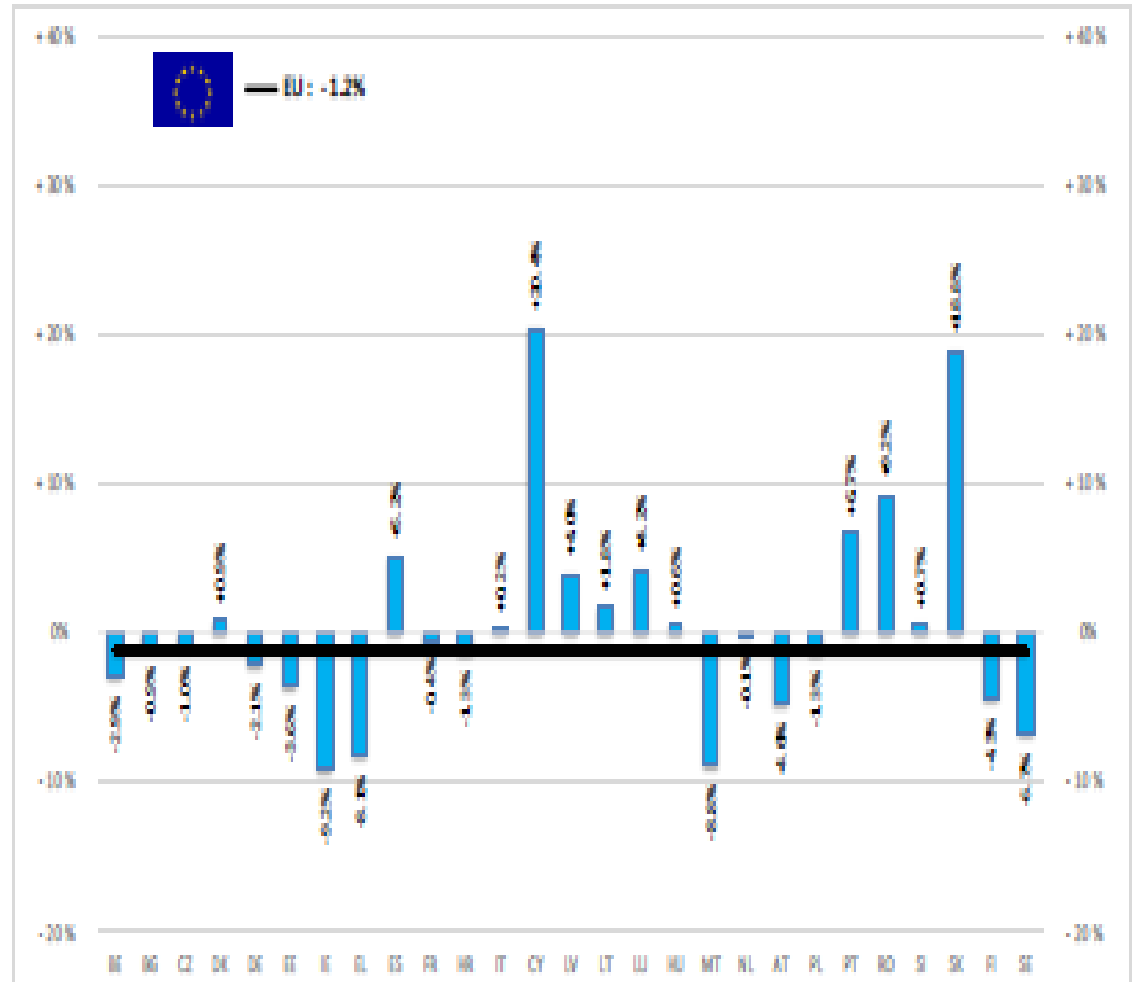




European
Commission

TON	TONNES	Jan-Jul 21/20
		EU
BOĞA	Bull	-1.1%
ÖKÜZ	Bullock	-5.3%
İNEK	Cow	-0.5%
DÜVE	Heifer	-1.1%
BUZAĞI	Calve	-0.7%
GENÇ SIĞIR	Young cattle	-2.3%
Büyükbaş Hayvan Eti	Meat of bovine animals	-1.2%

Estimates for last month of period :

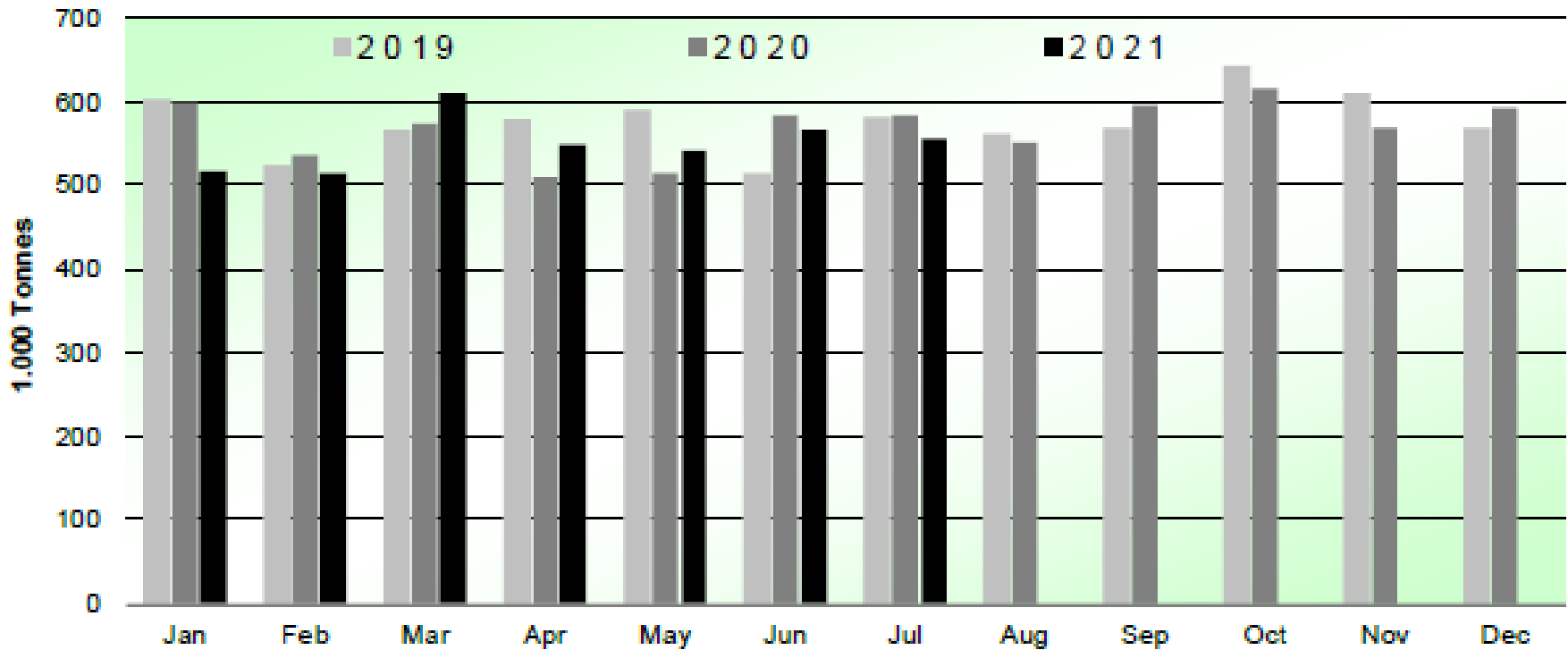


Source: EStat - Newcrona



SIĞIR VE DANA ETİ ÜRETİMİ (AB Kesimler – Ton)

Beef & Veal Production (EU Slaughtering) - Tonnes



Source : EStat-Newcronos

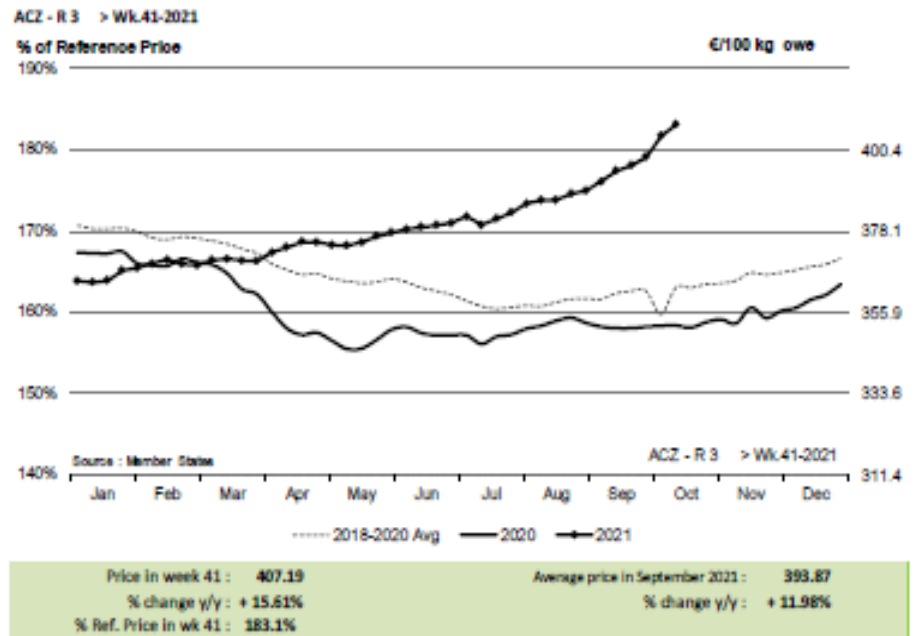
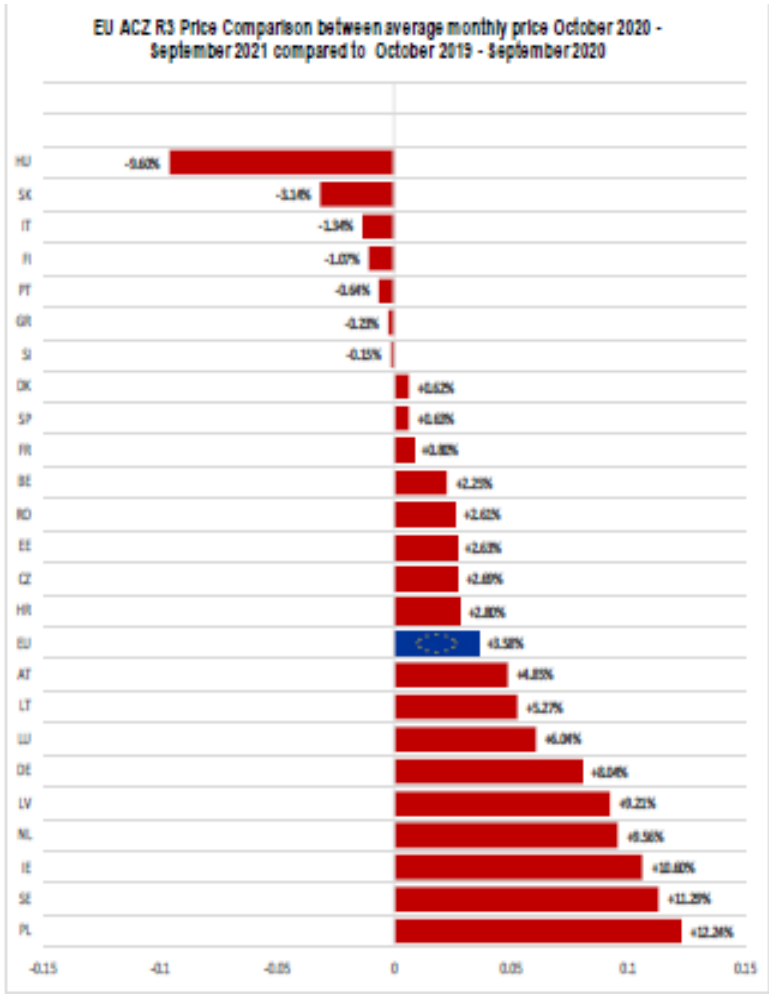


EU Prices week		40	Evolution since last week	Evolution since last month	Evolution since last year
Carcasse	Average A/C/Z-R3	403.3	+ 1.2%	+ 2.9%	+ 14.5%
	Young Bovines (Z)	395.1	+ 1.7%	+ 3.3%	+ 1.7%
	Young Bulls (A)	402.2	+ 1.3%	+ 3.3%	+ 14.6%
	Steers (C)	417.7	+ 0.7%	+ 0.9%	+ 14.7%
	Cows (D)	335.6	+ 0.3%	+ 1.4%	+ 22.6%
	Heifers (E)	416.5	+ 0.6%	+ 3.0%	+ 13.2%
Live Animals	Male Calves Dairy Type	82.92	- 6.3%	- 17.7%	+ 17.1%
	Male Calves Beef Type	215.6	- 1.3%	- 2.9%	+ 15.6%
	Young Store Cattle	2.71	- 0.3%	+ 0.1%	+ 5.5%
	Yearling Male Store Cattle	3.32	- 2.9%	+ 1.1%	+ 47.3%
	Yearling Female Store Cattle	2.56	- 0.7%	- 1.7%	+ 7.7%
	Calves slaughtered <8M	536.4	+ 0.2%	+ 2.0%	+ 15.1%

Sources : MSs notifications (Regulation (EU) 1182/2017 and 1184/2017)

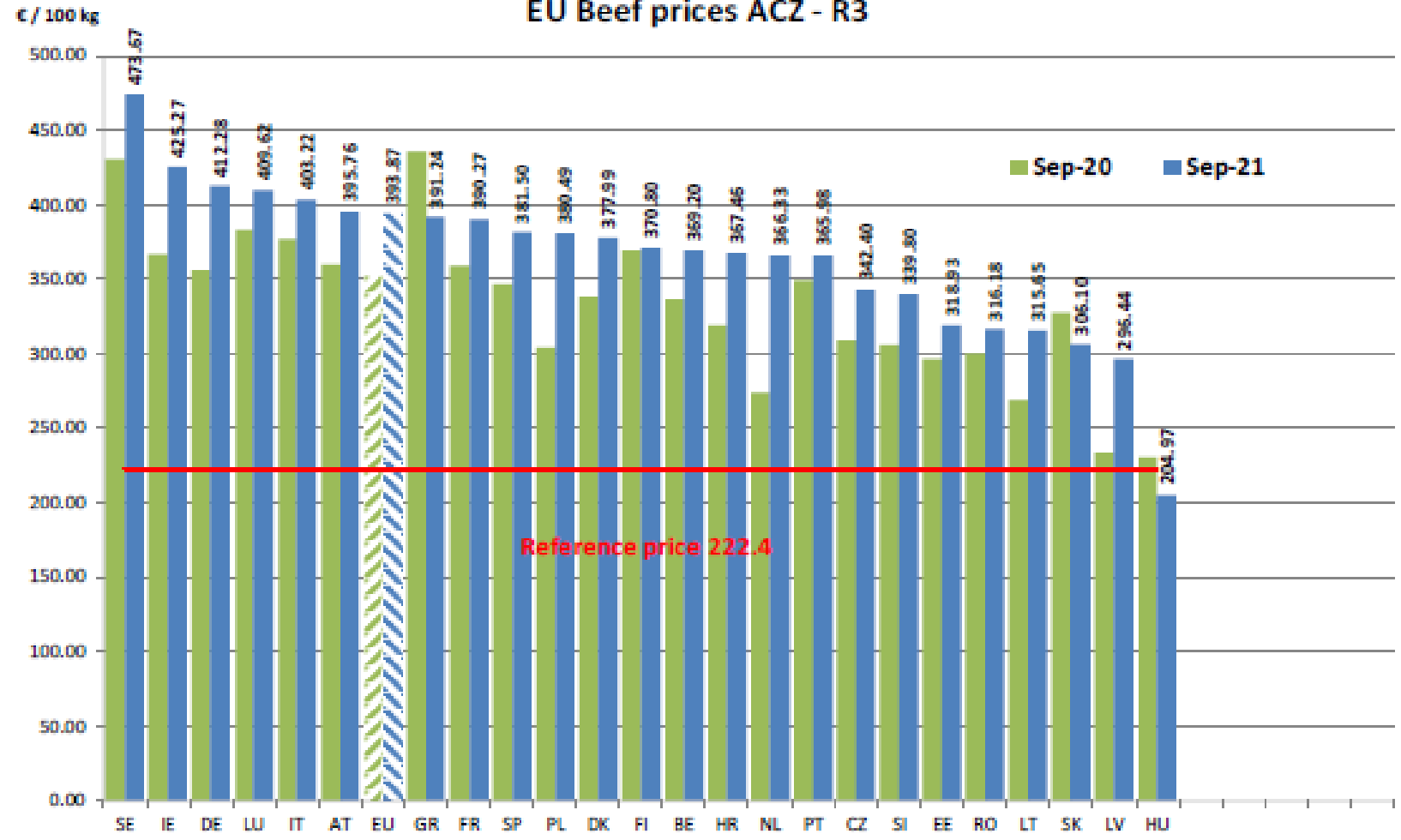
KARKAS FİYATLARI

AB DEĞİŞİM A/C/Z. R3



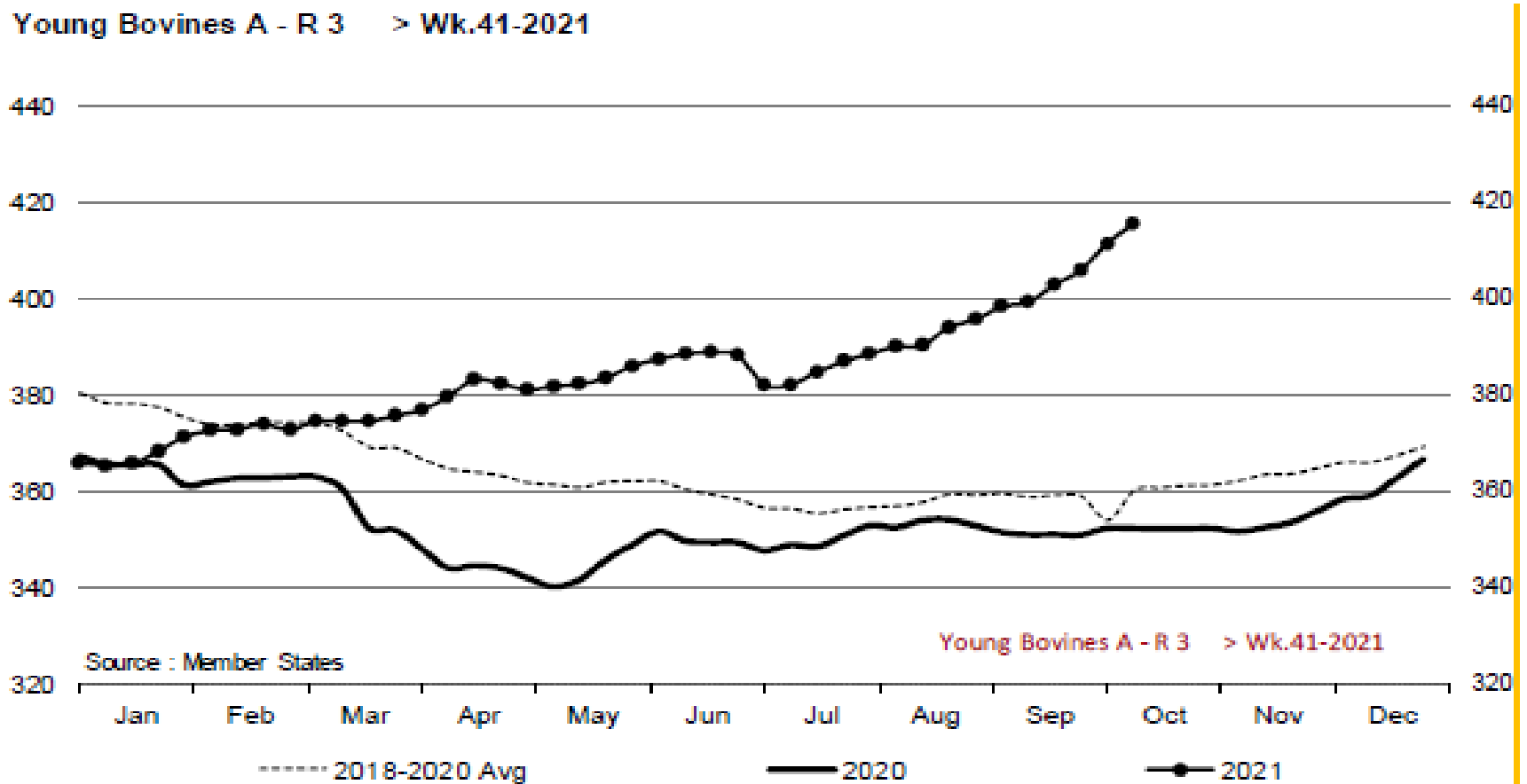


EU Beef prices ACZ - R3





Young Bovines A - R 3 > Wk.41-2021

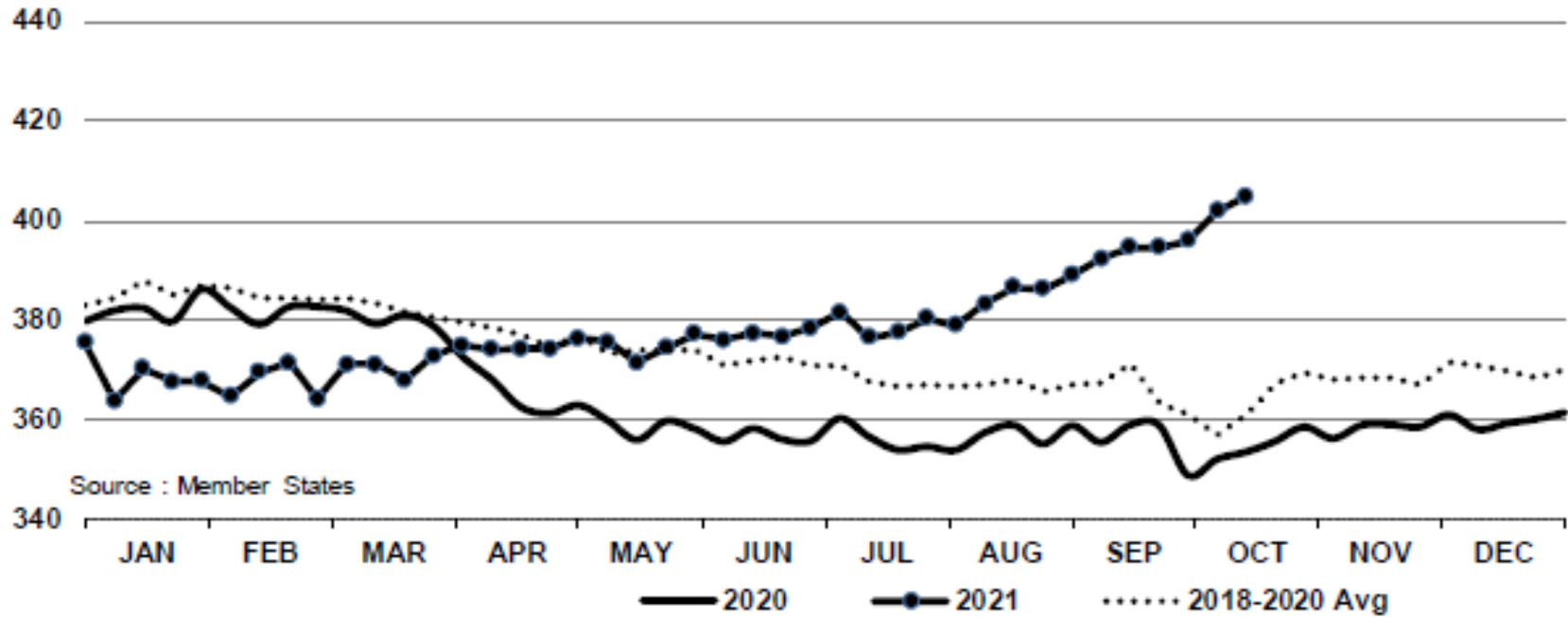


Price in week 41 : 415.44
% change y/y : + 17.9%

Average price in September 2021 : 400.10
% change y/y : + 13.9%

In € / 100 kg

Young Bovines 8-12m Z - R 3 > Wk.41-2021



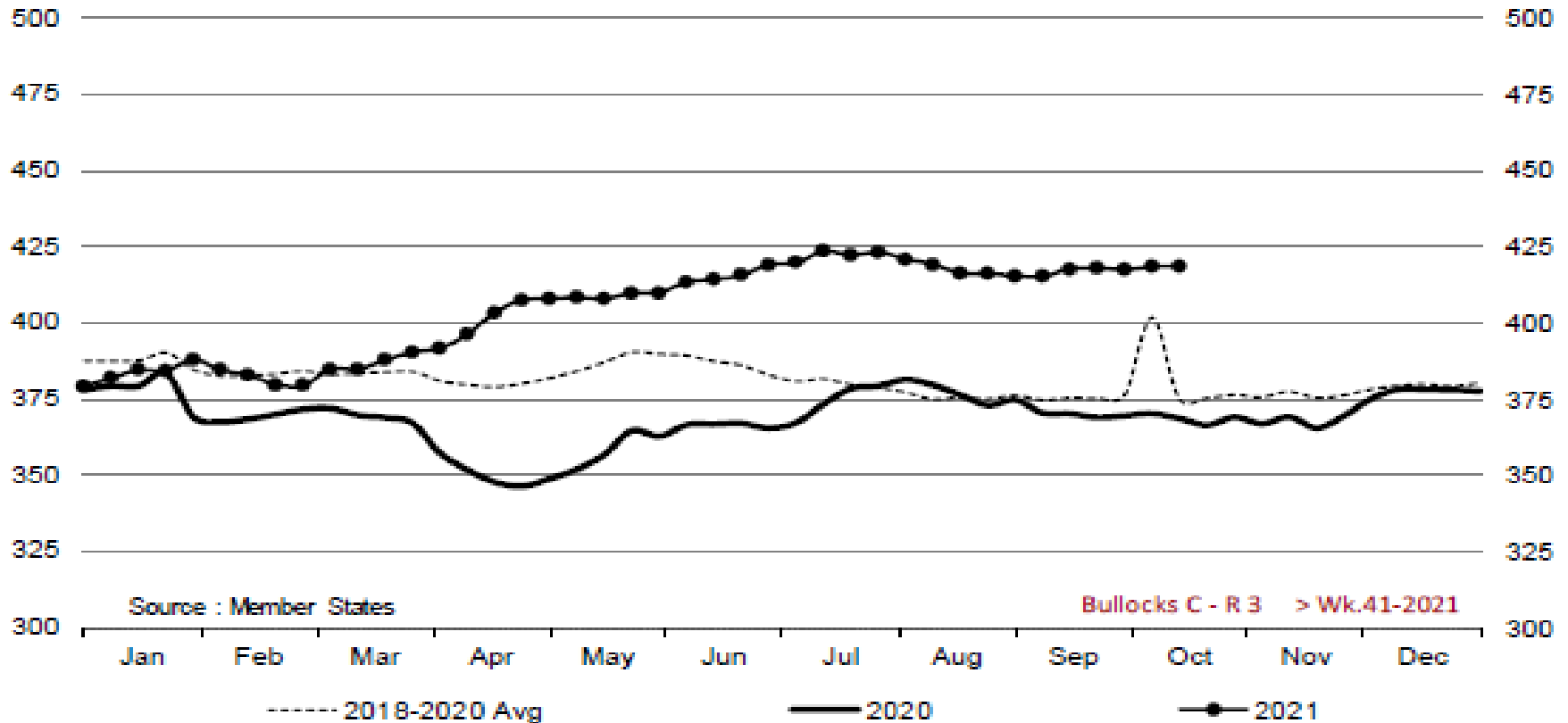
Price in week 41 : 404.80
% change y/y : + 14.5%

16/09/2021

Average price in September 2021 : 393.31
% change y/y : + 10.7%



Bullocks C - R 3 > Wk.41-2021

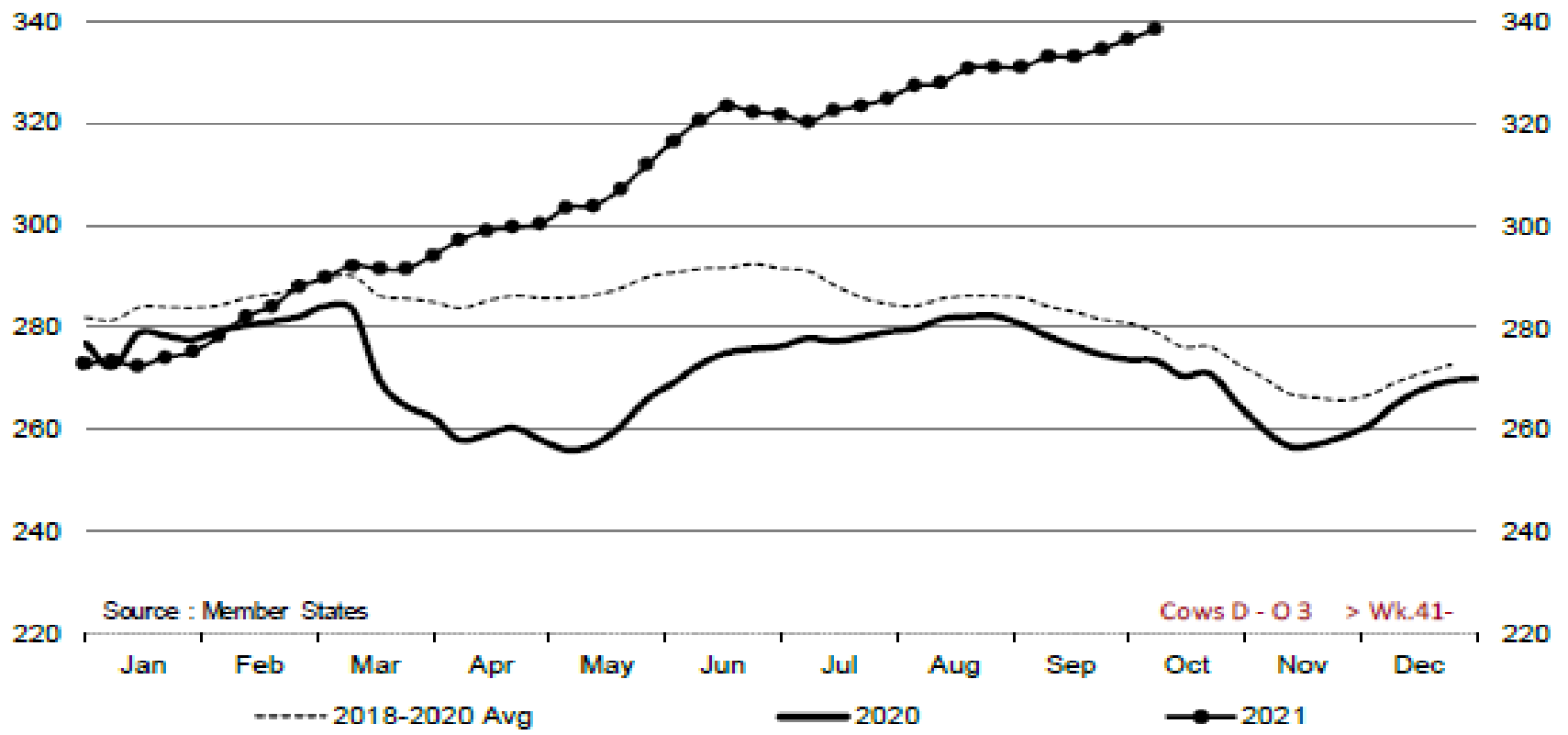


Price in week 41 : 418.37
% change y/y : + 13.5%

Average price in September 2021 : 416.61
% change y/y : + 12.7%



Cows D - O 3 > Wk.41-2021



Source : Member States

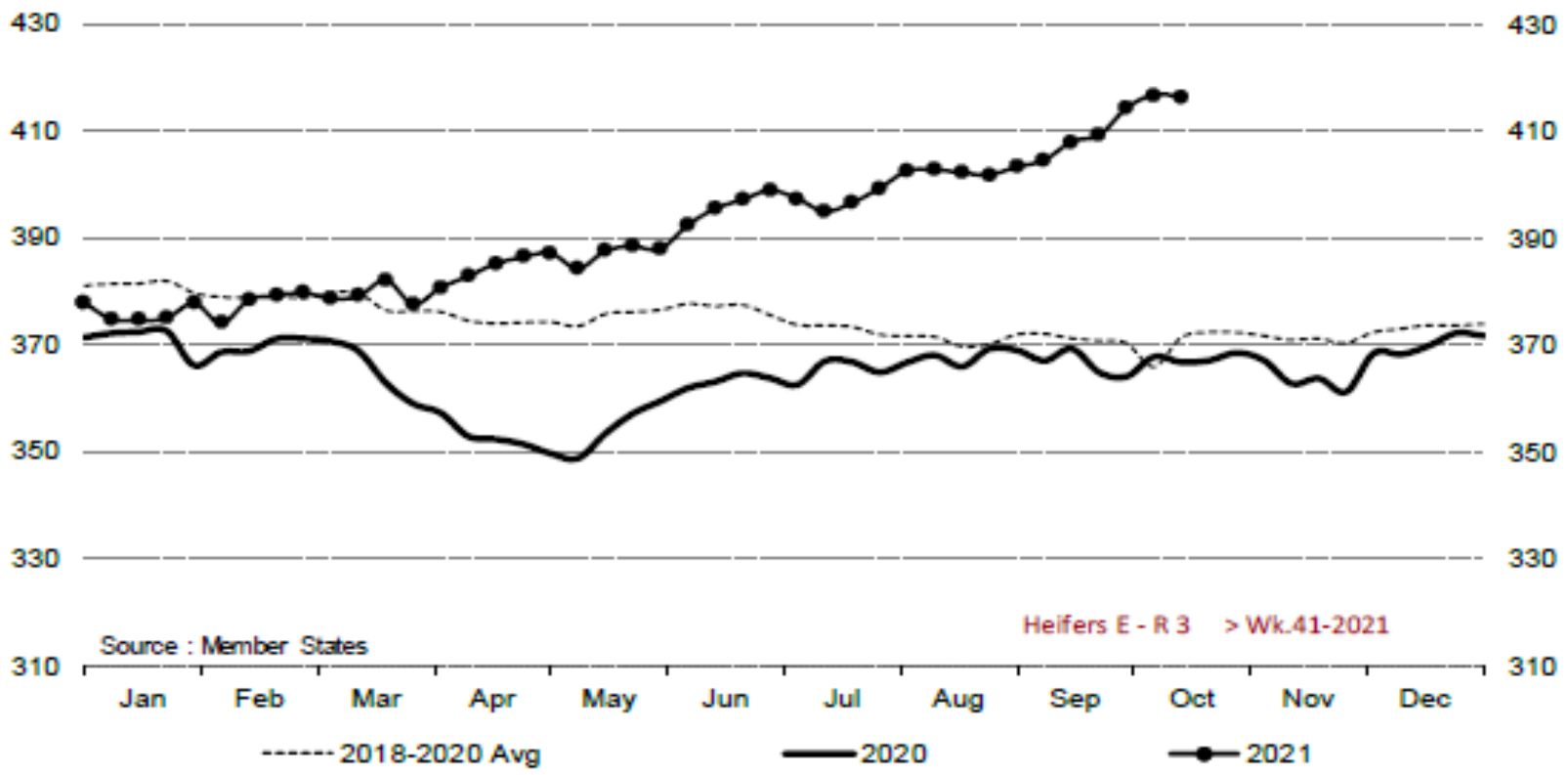
Cows D - O 3 > Wk.41-

Price in week 41 : 338.37
% change y/y : + 23.7%

Average price in September 2021 : 332.40
% change y/y : + 20.0%



Heifers E - R 3 > Wk.41-2021



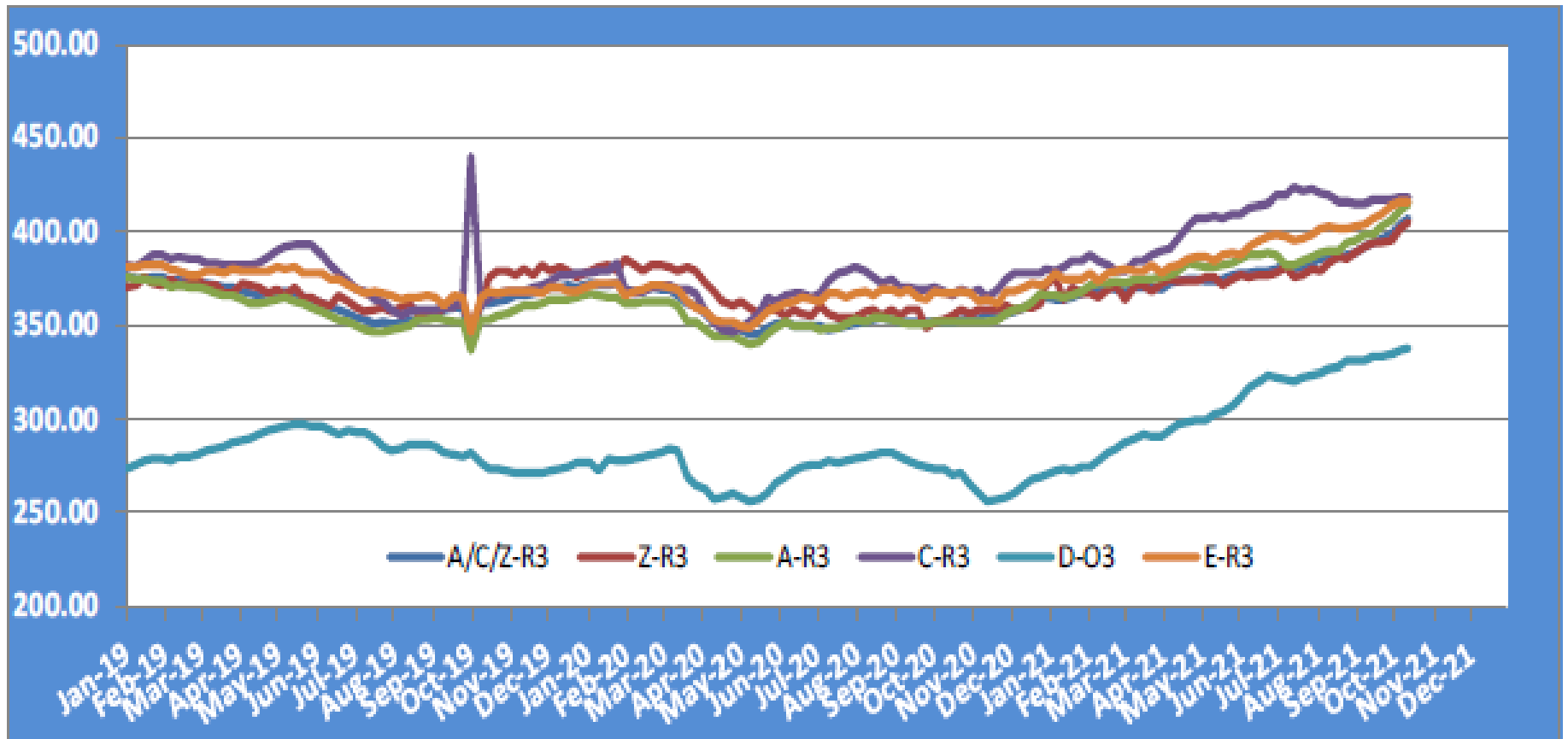
Source : Member States

Heifers E - R 3 > Wk.41-2021

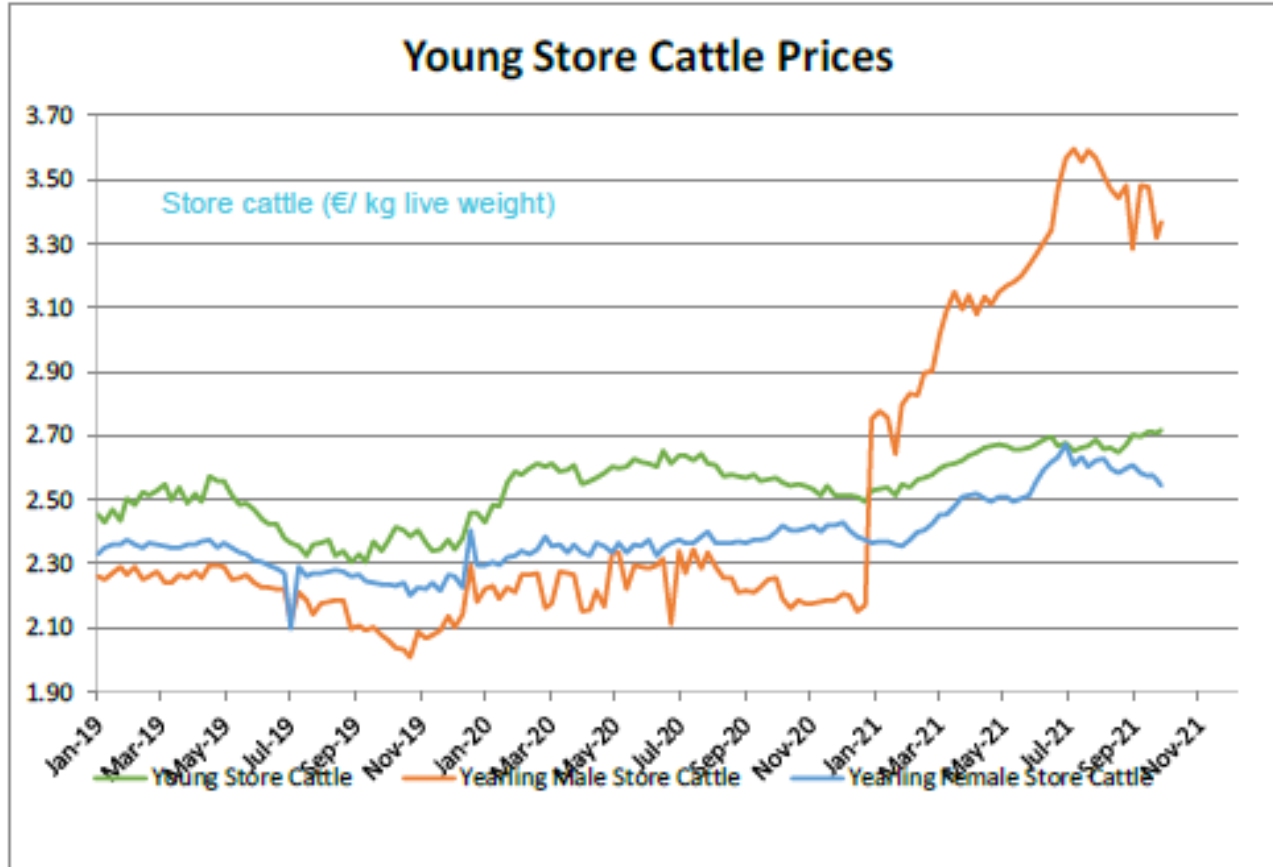
Price in week 41 : 416.34	Average price in September 2021 : 407.51
% change y/y : + 13.5%	% change y/y : + 11.2%

KARKAS FİYATLARI

AB TÜM KATEGORİLERE GLOBAL BAKIŞ

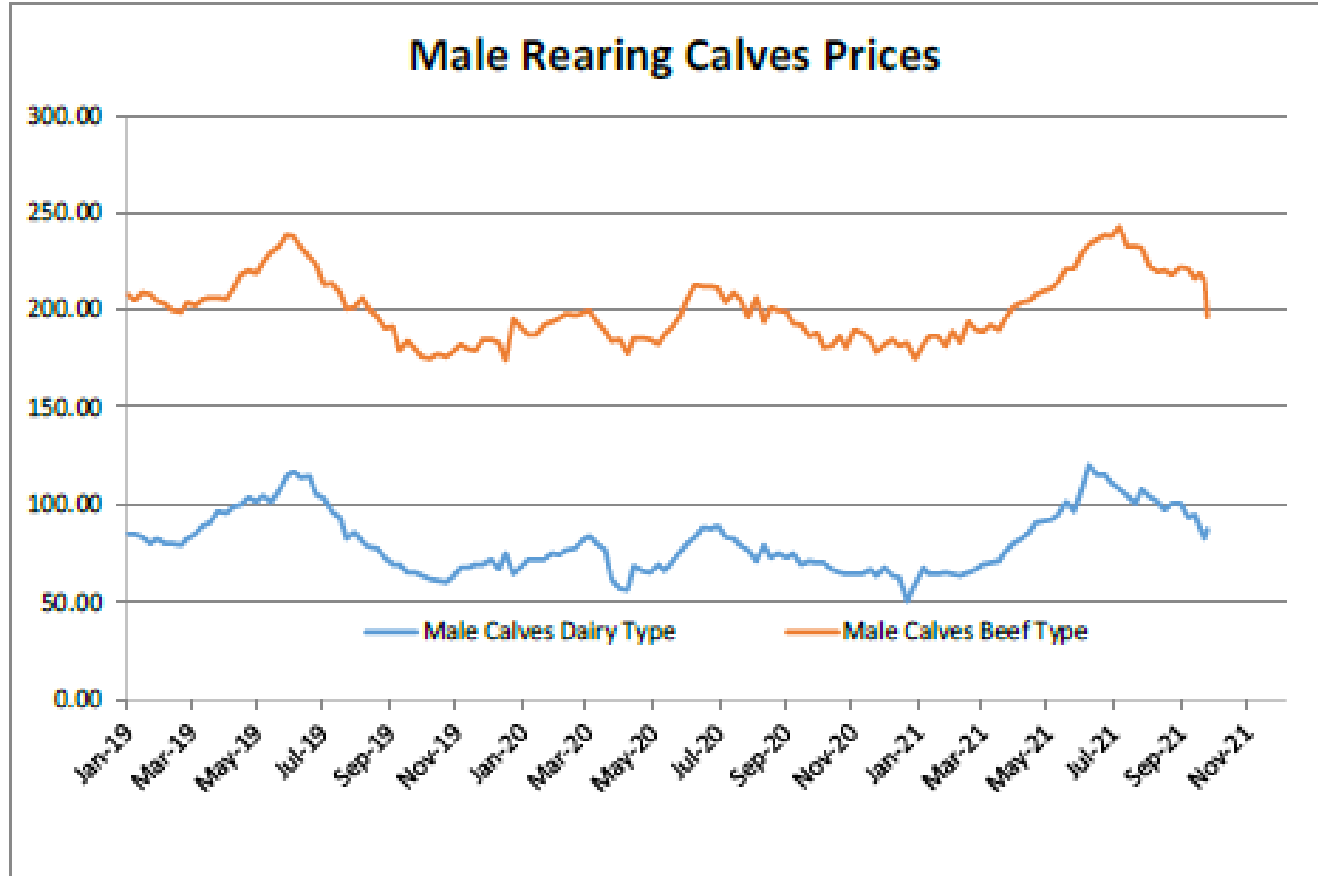


Besilik siğır (€ / 100 kg canlı ağırlık)



Young Store Cattle Price in	Week 41	2.72	Yearling Male Store Cattle Price	3.37
	Change y/y	+5.92%	Change y/y	+49.16%
Yearling Female Store Cattle Price		2.55		
	Change y/y	+8.11%		

8 gün ve 4 haftalık erkek buzağlar (€/baş)



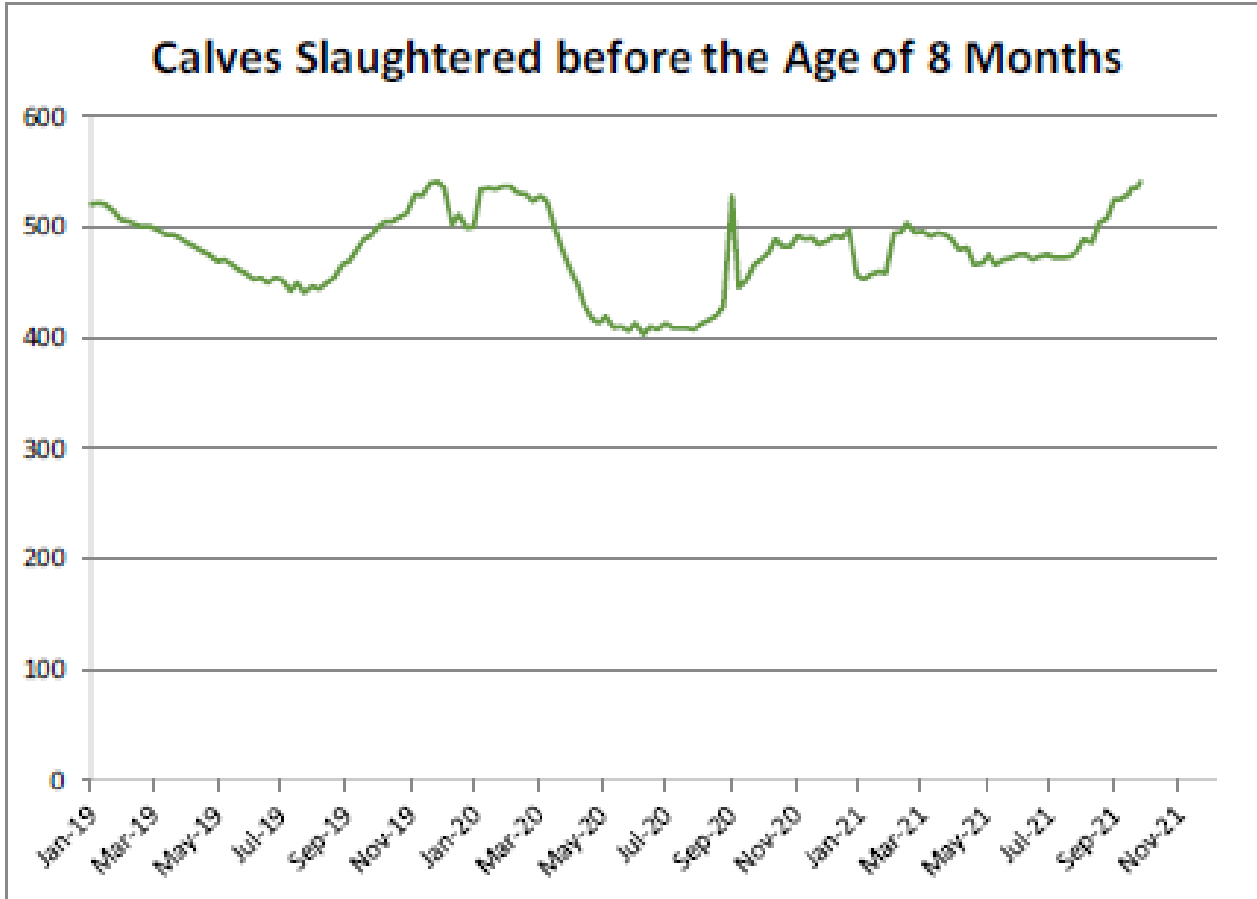
Male Rearing Calves Beef type

Price in Week 41 196.59
Change y/y +4.28%

Male Rearing Calves Dairy type

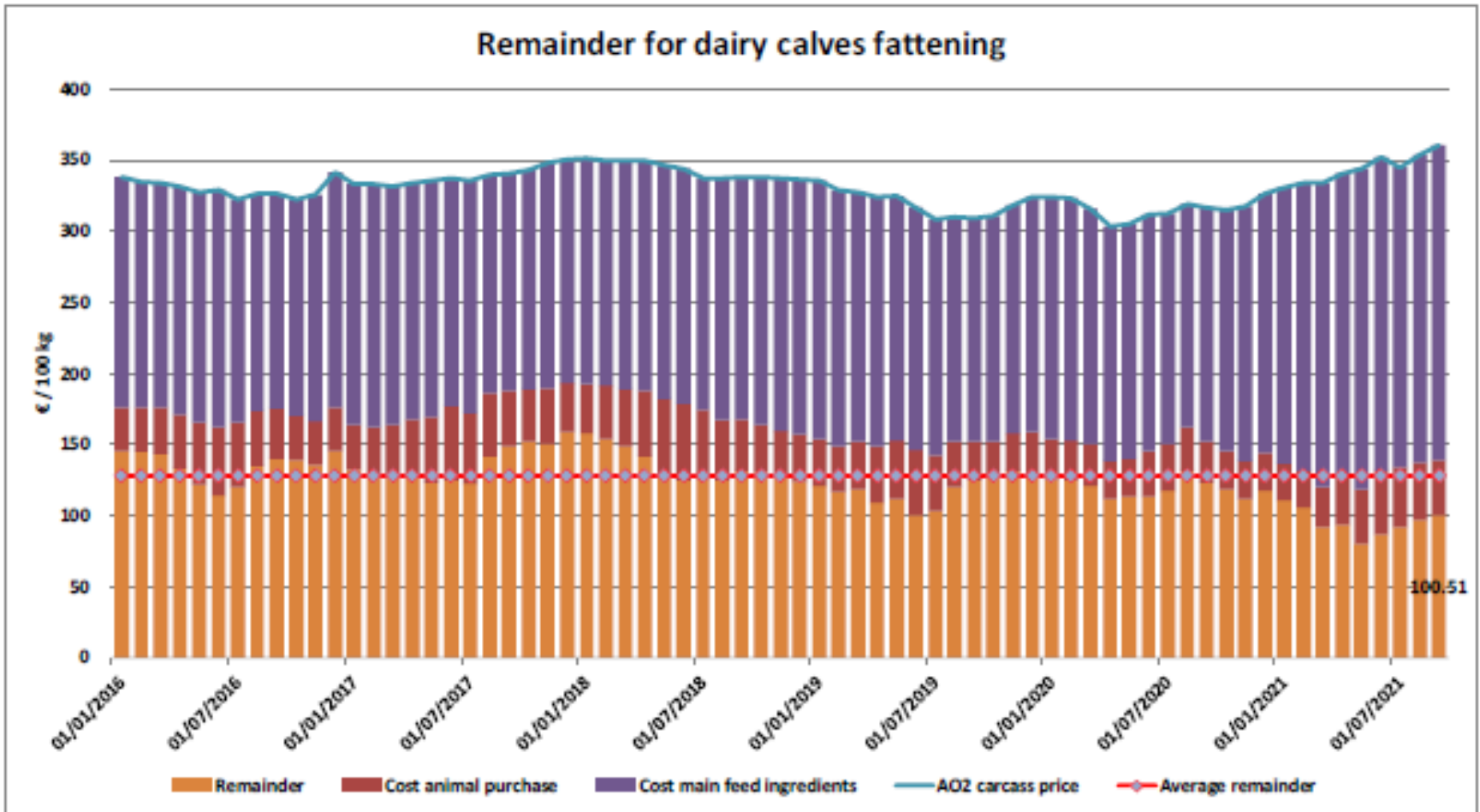
Price in Week 41 87.83
Change y/y +25.66%

8 aylıktan küçük kesilen buzağlar (€ / 100 kg canlı ağırlık)



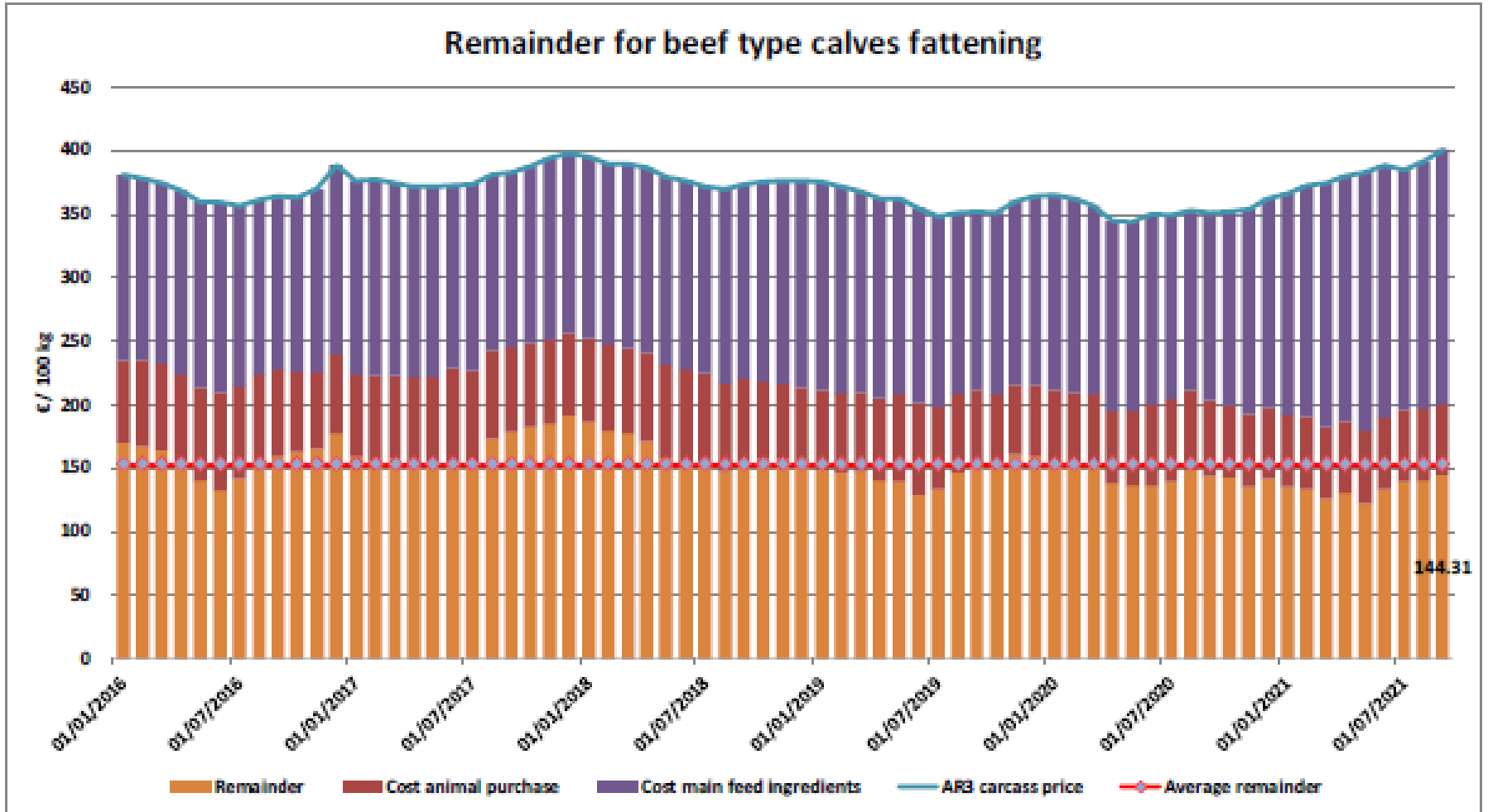
Price in Week 38 541.64 € / 100 kg of carcasse weight
Change y/y +14.85%

Süt Buzağları Besiciliği İçin Kalanlar



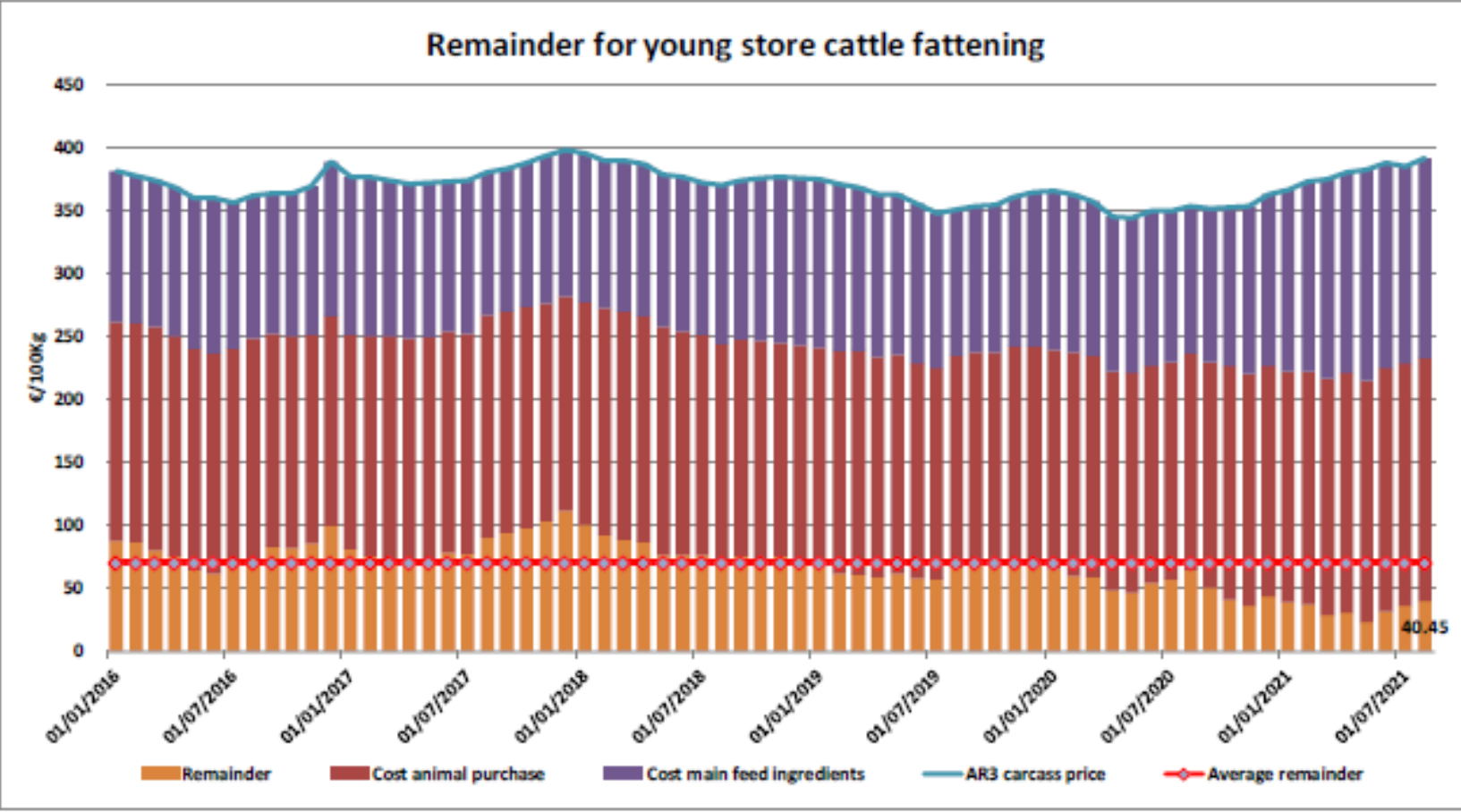
Sığır Tipi Buzağı Besiciliği İçin Kalanlar

Remainder for beef type calves fattening





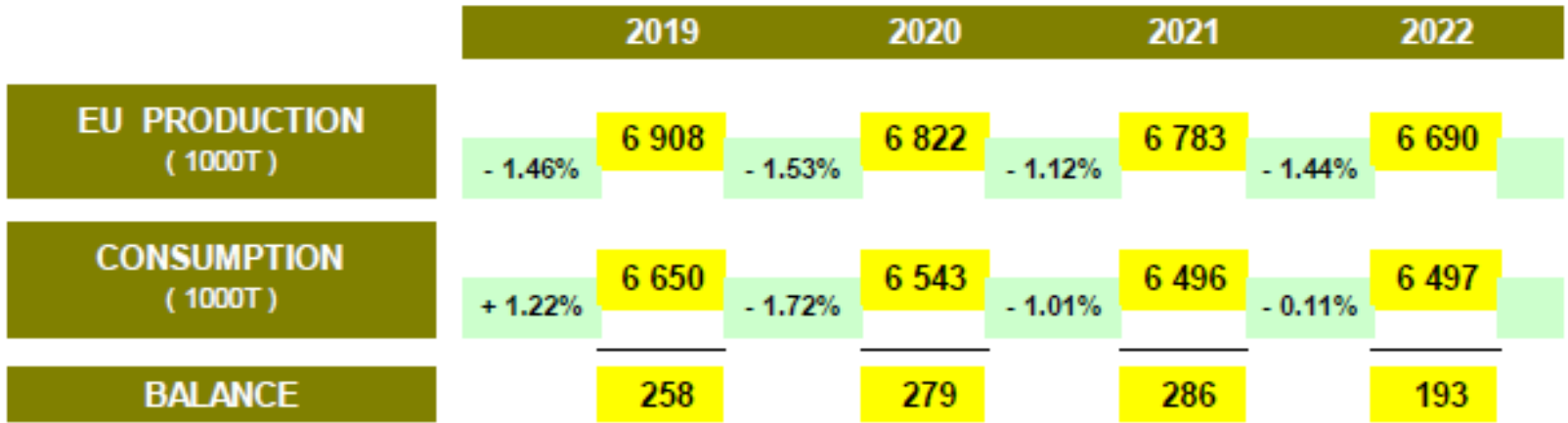
Genç Besilik Sığır Besiciliği İçin Kalanlar



ÖZET ÖNGÖRÜ



European Commission



Provisional Results of Beef Forecast Working Group - October 2021
 A. Production Figures before 2021 provided by Eurostat, All Other Figures provided by MS

NET BEEF and VEAL PRODUCTION in EU

(1000 T)	BE	BG	CZ	DK	DE	EE	GR	ES	FR	IE	HR	IT	CY	LV	LT	LU	HU	MT	NL	AT	PL	PT	RO	SI	SK	FI	SE	involve	
2017	2015	7.4	67.7	134.8	1104.0	9.8	44.1	643.9	1442.3	817.6	42.2	756.4	8.3	16.8	40.9	9.5	27.2	5.1	458.9	226.1	559.8	81.1	59.1	35.9	7.8	85.4	132.1	8899	
Var	5.2	8.8	-4.2	-8.4	-34.6	-2.4	3.8	8.8	-29.8	26.7	-2.2	-52.2	1.3	-8.8	-1.4	8.1	-3.9	8.8	29.8	-1.3	83.1	0.0	1.8	8.1	-0.5	-1.8	3.8		
Var %	+1.1%	+11.7%	-8.8%	-2.2%	-3.1%	-2.6%	+8.8%	+1.1%	-1.8%	+4.9%	-8.0%	-6.6%	+8.0%	-8.4%	-2.3%	+1.2%	-3.1%	-2.6%	+8.8%	-0.6%	+11.6%	-8.8%	+2.8%	+8.4%	-8.0%	-1.1%	+0.6%		
2018	217.3	7.2	71.6	129.2	1102.0	9.8	38.6	689.0	1460.8	822.5	43.8	698.2	5.3	15.9	40.3	9.9	28.2	5.1	458.2	233.5	564.7	83.8	49.9	34.9	8.1	86.5	136.9	7008	
Var	-4.2	-0.2	3.8	-3.2	-32.0	-0.4	-4.9	28.2	17.8	8.8	1.8	82.8	-3.8	-8.8	-0.6	8.3	1.8	-0.1	28.2	7.4	8.1	2.7	-8.2	-9.9	3.2	1.1	8.8		
Var %	-1.8%	-3.0%	+3.7%	+4.2%	-2.8%	-4.8%	-10.2%	+3.8%	+1.2%	+0.8%	+3.7%	+7.8%	-36.3%	-3.3%	-1.8%	+3.8%	+7.1%	-4.5%	+4.8%	+3.3%	+1.1%	+3.0%	-18.6%	-2.6%	+4.1%	+1.2%	+3.6%		
2019	262.8	5.5	72.9	134.8	1108.0	9.8	33.5	685.2	1438.5	819.8	45.4	779.8	5.6	14.8	42.5	10.2	28.7	5.0	424.3	229.6	580.5	82.8	43.5	35.7	8.2	87.2	139.1	8908	
Var	-15.6	-1.7	1.1	-4.8	-4.9	0.9	-6.2	28.2	-31.5	-2.1	1.7	-29.4	6.8	-1.1	2.2	8.3	8.6	8.8	-54.9	-3.8	-4.3	-1.8	-4.4	8.8	3.2	0.7	2.8		
Var %	-4.9%	-24.1%	+1.8%	-3.8%	+0.4%	+0.1%	-15.5%	+3.8%	-2.2%	-8.4%	+3.8%	-5.5%	+8.2%	-8.8%	+5.4%	+3.8%	+2.8%	-5.7%	-7.6%	-1.8%	-3.8%	-1.8%	-12.6%	+2.5%	+2.2%	+0.6%	+2.2%		
2020	254.5	6.2	72.5	131.2	1090.0	9.8	34.7	677.7	1434.8	830.4	43.4	732.5	4.0	14.5	41.7	10.5	28.1	5.1	432.6	218.4	559.4	87.8	32.2	38.5	7.8	86.5	141.0	8822	
Var	-8.2	8.8	-0.4	-3.4	-18.0	0.3	1.2	-17.4	8.1	13.8	-2.1	-47.8	-1.8	-8.2	-0.7	8.1	-0.7	8.1	8.8	-13.3	-0.1	8.8	-11.4	8.8	-0.2	-0.7	1.3		
Var %	-3.8%	+13.8%	-0.6%	-2.7%	-1.4%	+0.7%	+3.8%	-2.8%	+2.4%	+2.2%	-4.8%	-6.1%	-17.2%	-1.8%	-1.7%	+8.8%	-8.8%	+18.7%	+2.8%	-4.8%	-0.2%	+6.2%	-28.1%	+2.1%	-4.1%	-3.7%	+1.2%		
2021	248.0	6.7	71.7	123.3	1084.0		43.2	680.0	1426.8	879.8	48.0	743.0						38.0	429.3	218.0	585.8	102.4	37.3	38.8	84.4	138.0		8879	
Var	-6.5	8.3	-0.8	-6.1	-4.0		8.4	2.3	-8.8	-24.4	1.8	18.7						1.9	-1.5	-2.4	0.0	4.7							
Var %	-3.7%	+7.4%	-1.1%	+1.7%	+0.4%		+24.2%	+8.2%	-3.8%	-8.8%	+3.8%	+1.3%						+8.8%	-1.7%	-1.1%	+1.0%	+4.8%			+2.2%	+238.8%	-2.8%	-4.2%	
2022	245.0	6.9	72.0	125.8	1039.0			670.0	1385.8	815.6	41.0	748.0						32.0	408.9	212.0	580.8	80.2	37.9		83.8	137.0		8819	
Var	0.8	8.2	8.3	1.7	38.0			-19.0	-31.8	36.0	-4.0	-3.9						3.0	-15.4	-4.3	-3.8	-4.2			8.8	-0.1	2.8		
Var %	3.8%	+13.8%	+8.4%	+1.4%	-8.0%			-1.8%	-2.2%	+6.2%	-8.9%	-0.4%						+8.7%	-3.6%	-1.8%	-3.8%	-4.1%			+1.8%	-1.4%	+2.8%	+1.8%	

Source: 2010 & 2019 from Eurostat; 2014 & 2015 from Member States

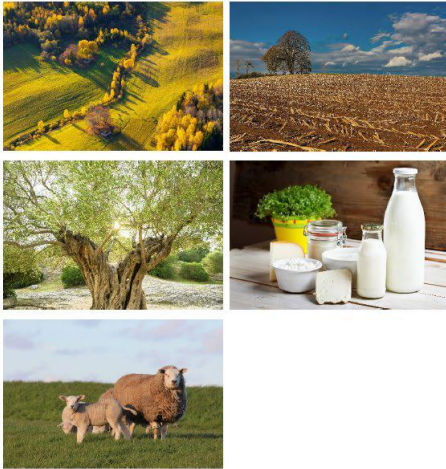
XX Member States who have communicated figures

Kısa Vadeli Görünüm – Sonbahar 2021



SHORT-TERM OUTLOOK

for EU agricultural markets
in 2021



AUTUMN 2021

Edition N° 31

Agriculture
and Rural
Development

Agriculture
and Rural
Development

- AB sığır eti üretiminin 2021'de ılımlı derecede azalması bekleniyor.
- Yüksek yem fiyatları nedeniyle, 2021'in ikinci yarısında ek kesimler beklenebilir. Ayrıca, giderek iyileşen ekonomik durum ve AB'deki mevcut uygun fiyatlar, sığır eti üretimindeki düşüşü 2021'de sadece -%0,5 ile sınırlandıracaktır.
- Görünür tüketimin azalan gelişimi, 2021'in ikinci yarısında talepte beklenen toparlanmaya rağmen 2021'de (-%0,6) devam edebilir.

AB siğir eti ve canlı hayvan ihracatı (1): Pazar Rakamları (COMEXT – ton ca)

Destinations

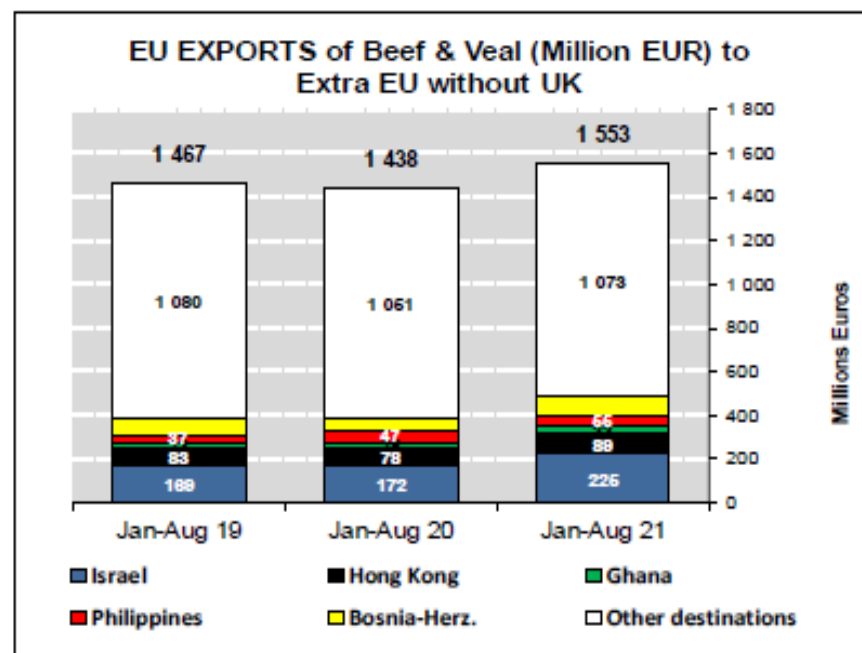
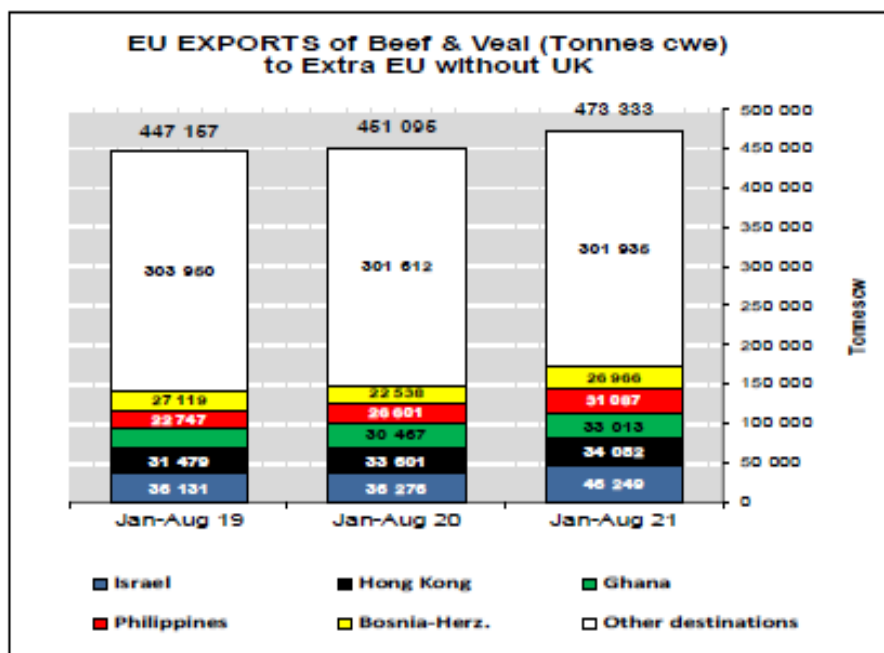
	2017		2018		2019		2020		Jan-Aug 21		Compared to
	tonnes	%	tonnes	%	tonnes	%	tonnes	%	tonnes	%	
Israel	44 196	6.1%	47 774	6.8%	49 629	7.1%	56 974	8.1%	46 249	9.8%	+ 27.5%
Hong Kong	76 086	10.5%	55 537	7.9%	46 748	6.7%	56 860	8.1%	34 082	7.2%	+ 1.4%
Ghana	37 744	5.2%	36 766	5.2%	39 196	5.6%	47 408	6.7%	33 013	7.0%	+ 8.4%
Philippines	37 102	5.1%	28 766	4.1%	34 158	4.9%	39 920	5.7%	31 087	6.6%	+ 16.9%
Bosnia-Herz.	34 711	4.8%	38 762	5.5%	41 119	5.9%	35 758	5.1%	26 966	5.7%	+ 19.6%
Switzerland	26 708	3.7%	23 761	3.4%	25 188	3.6%	29 996	4.3%	22 282	4.7%	+ 14.5%
Ivory Coast	36 038	5.0%	36 064	5.1%	33 396	4.8%	32 460	4.6%	21 276	4.5%	- 4.5%
Algeria	26 305	3.6%	35 410	5.0%	57 152	8.2%	39 416	5.6%	18 617	3.9%	- 28.6%
Lebanon	38 322	5.3%	42 542	6.1%	36 393	5.2%	33 656	4.8%	15 151	3.2%	- 18.9%
Norway	12 850	1.8%	7 925	1.1%	7 667	1.1%	12 936	1.8%	14 629	3.1%	+ 67.6%
Japan	4 281	0.6%	3 452	0.5%	8 007	1.1%	11 885	1.7%	13 614	2.9%	+ 57.6%
Libya	27 848	3.8%	27 878	4.0%	24 541	3.5%	22 188	3.1%	12 784	2.7%	- 20.4%
Canada	2 424	0.3%	2 225	0.3%	6 806	1.0%	20 475	2.9%	11 694	2.5%	- 17.7%
Kosovo	6 377	0.9%	6 693	1.0%	10 279	1.5%	10 912	1.5%	10 882	2.3%	+ 75.4%
Ukraine	7 331	1.0%	10 465	1.5%	13 836	2.0%	15 857	2.3%	9 823	2.1%	+ 2.0%
North Macedonia	9 627	1.3%	10 191	1.5%	11 975	1.7%	10 686	1.5%	9 080	1.9%	+ 34.6%
Other Destinations	209 571	41.2%	287 670	41.0%	254 155	36.3%	227 209	32.2%	142 104	30.0%	
Total (without UK)	727 522		701 882		700 245		704 596		473 333		
% change			- 4%		- 0%		+ 1%		+ 4.9%		

AB sığır eti ihracatı: Pazar Rakamları (COMEXT – ton ca)

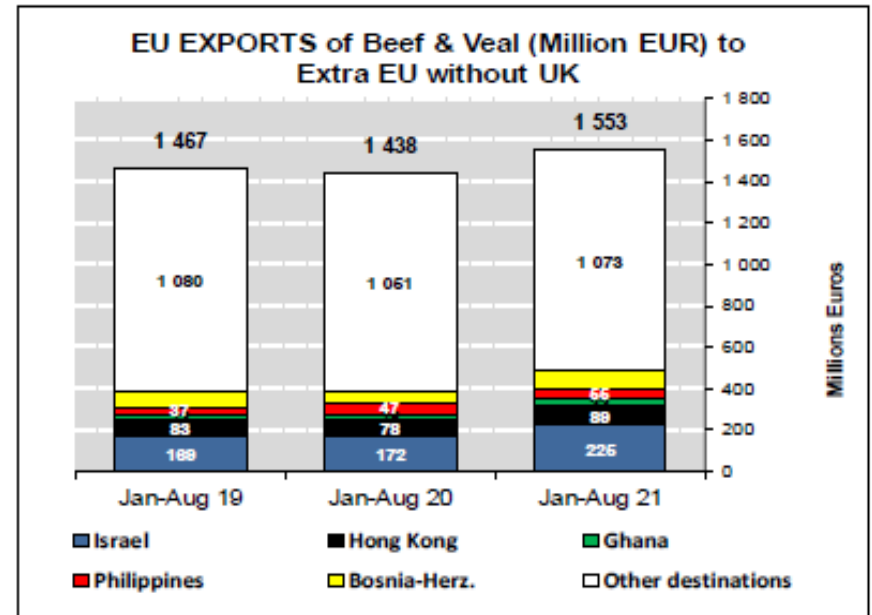
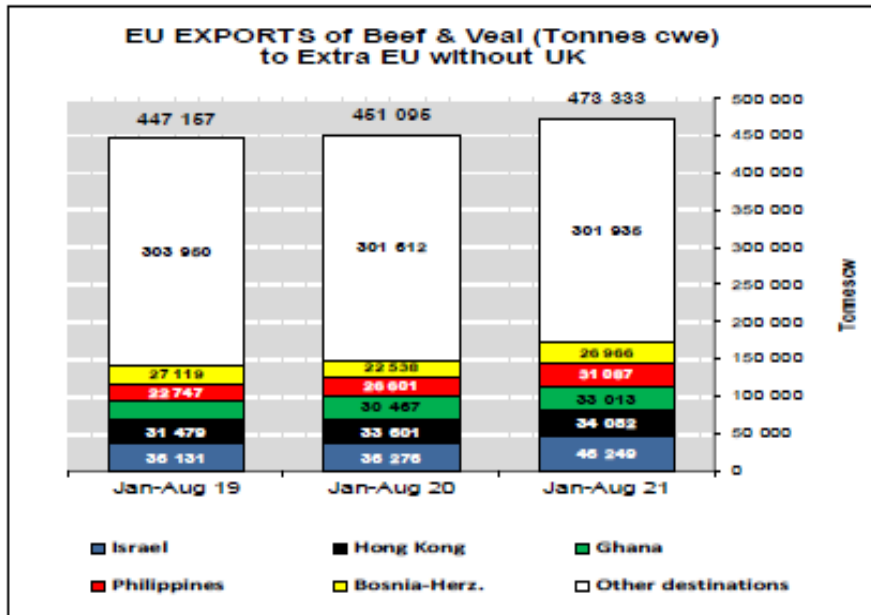
Destinations

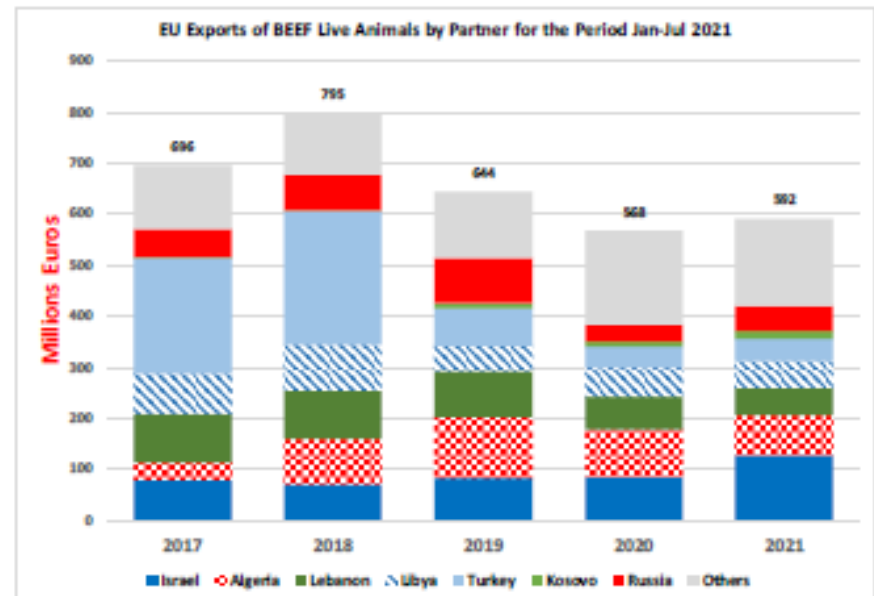
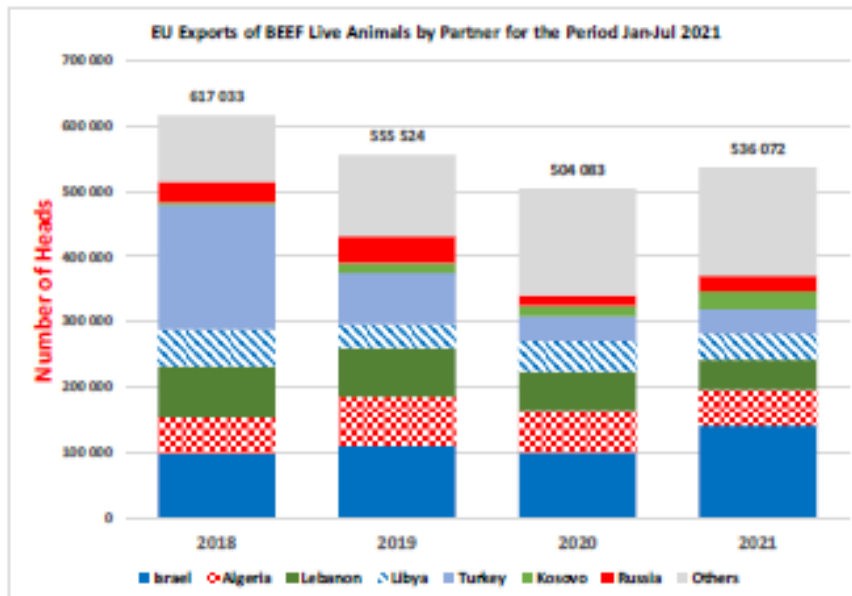
	2017		2018		2019		2020		Jan-Aug 21		Compared to
	tonnes	%	tonnes	%	tonnes	%	tonnes	%	tonnes	%	
Hong Kong	76 086	15.5%	55 537	11.9%	46 748	9.8%	56 860	11.6%	34 082	10.0%	+ 1.4%
Ghana	37 744	7.7%	36 766	7.9%	39 196	8.2%	47 408	9.7%	33 013	9.7%	+ 8.4%
Philippines	37 102	7.5%	28 766	6.2%	34 158	7.2%	39 920	8.1%	31 087	9.1%	+ 16.9%
Bosnia-Herz.	32 181	6.5%	36 152	7.7%	38 806	8.2%	33 459	6.8%	25 249	7.4%	+ 18.7%
Switzerland	25 570	5.2%	22 710	4.9%	24 110	5.1%	28 941	5.9%	21 333	6.3%	+ 14.1%
Ivory Coast	36 028	7.3%	36 054	7.7%	33 396	7.0%	32 460	6.6%	21 276	6.2%	- 4.5%
Israel	18 750	3.8%	22 163	4.7%	23 026	4.8%	21 967	4.5%	15 755	4.6%	+ 3.6%
Norway	12 849	2.6%	7 922	1.7%	7 667	1.6%	12 936	2.6%	14 629	4.3%	+ 67.6%
Japan	4 281	0.9%	3 452	0.7%	8 007	1.7%	11 885	2.4%	13 614	4.0%	+ 57.8%
Canada	2 424	0.5%	2 225	0.5%	6 806	1.4%	20 475	4.2%	11 694	3.4%	- 17.7%
Ukraine	6 926	1.4%	9 887	2.1%	12 893	2.7%	14 861	3.0%	9 173	2.7%	+ 2.0%
North Macedonia	11 285	2.3%	10 002	2.1%	11 395	2.4%	10 551	2.1%	8 995	2.6%	+ 36.1%
USA	3 756	0.8%	5 458	1.2%	7 867	1.7%	12 310	2.5%	8 152	2.4%	+ 8.0%
South Africa	4 555	0.9%	7 214	1.5%	5 442	1.1%	7 743	1.6%	7 115	2.1%	+ 70.1%
Vietnam	12 146	2.5%	8 163	1.7%	10 014	2.1%	6 367	1.3%	4 990	1.5%	+ 20.9%
Angola	10 982	2.2%	11 470	2.5%	8 410	1.8%	9 391	1.9%	4 508	1.3%	- 17.8%
Other Destinations	159 714	32.4%	162 871	34.9%	157 379	33.1%	123 328	25.1%	70 500	22.4%	
Total (without UK)	492 379		466 823		475 318		490 862		341 170		
% change			- 5%		+ 2%		+ 3%		+ 5.9%		

AB sığır eti ve canlı hayvan ihracatı (COMEXT)



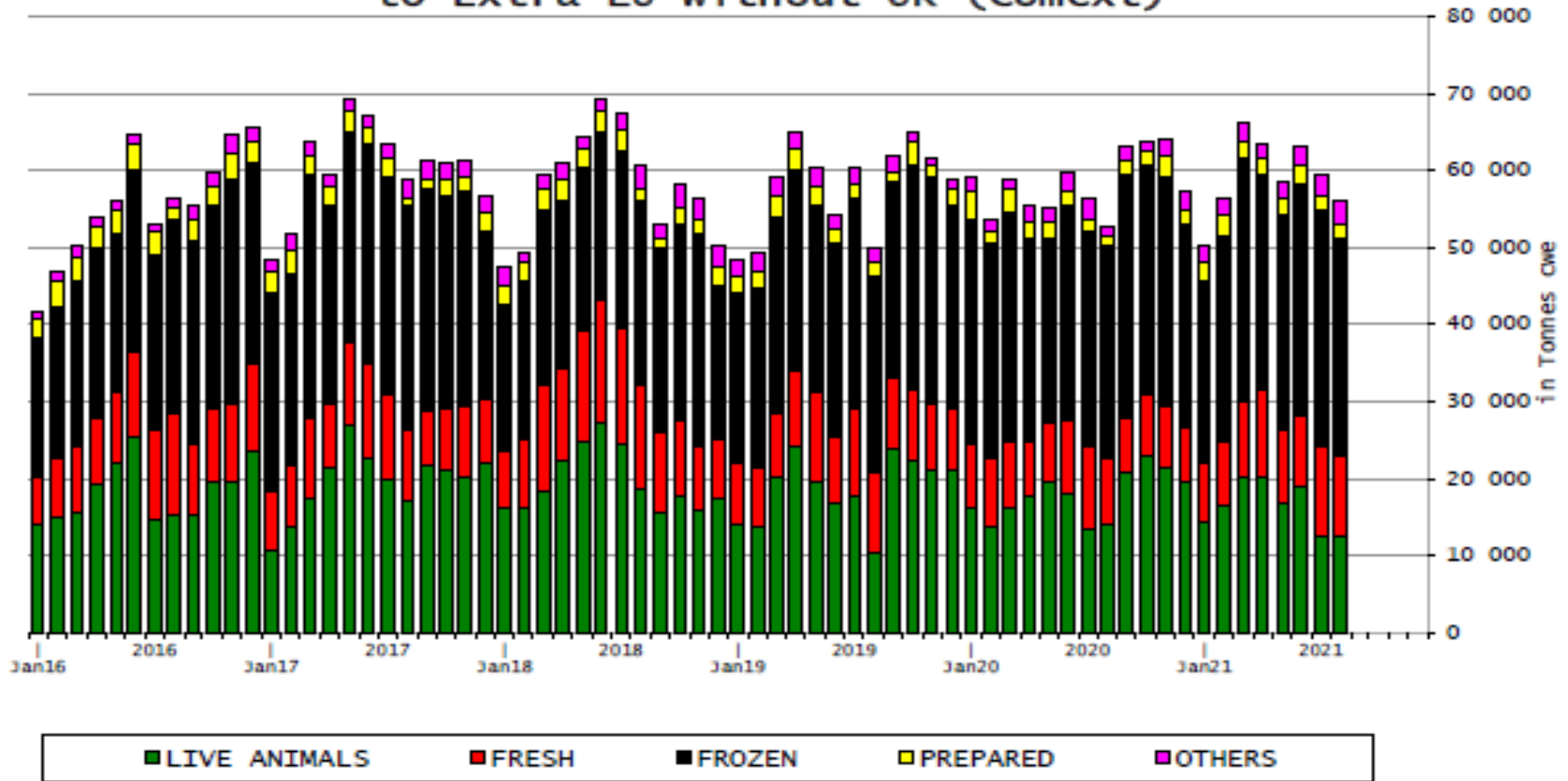
AB sığır eti ürünleri ihracatı (COMEXT)



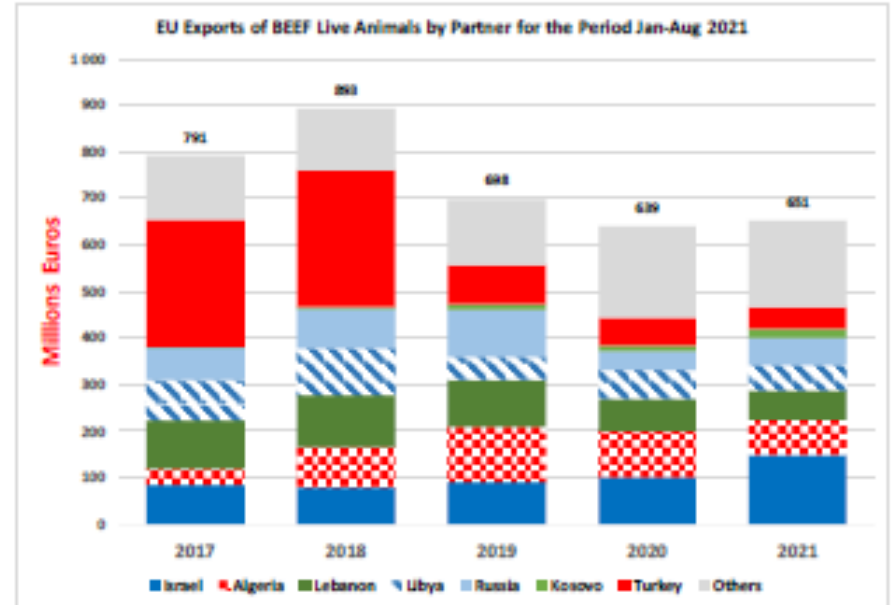
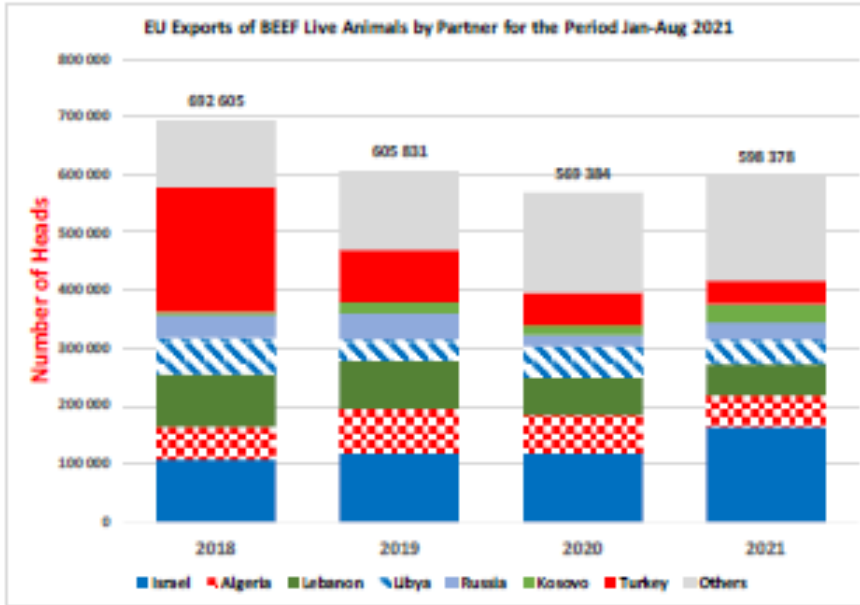


AB Sığır Eti İhracatları (Birleşik Krallık hariç)

EU Exports of BEEF products
to Extra EU without UK (Comext)



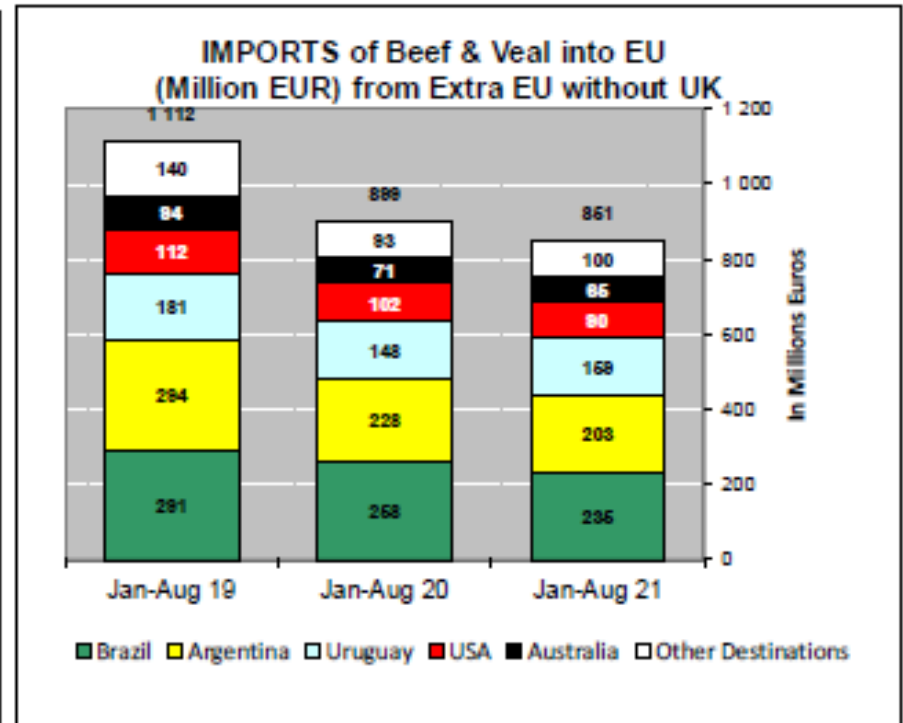
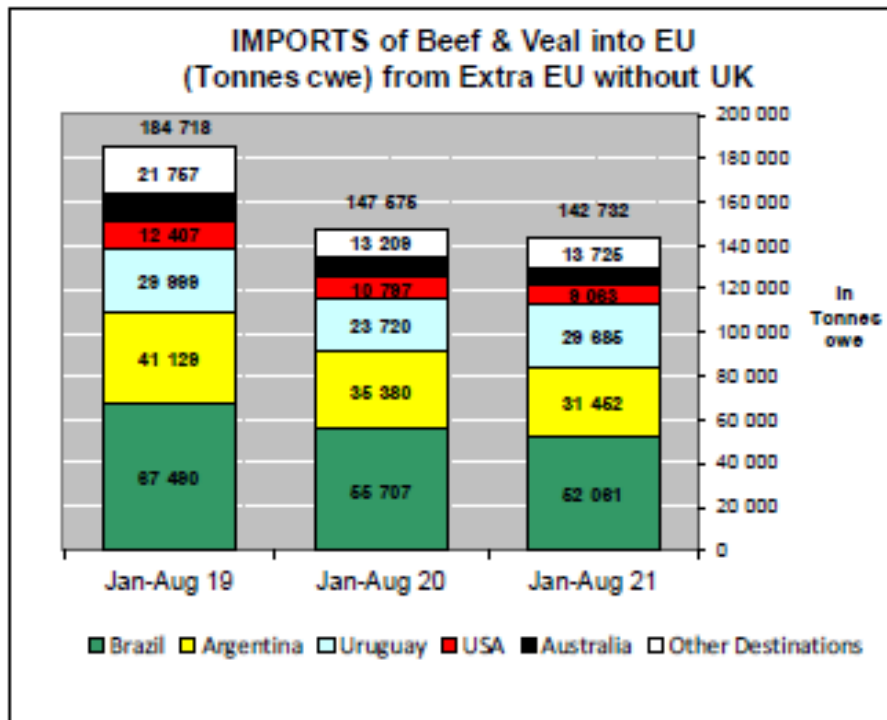
AB Sığır Eti İhracatları (Birleşik Krallık hariç)



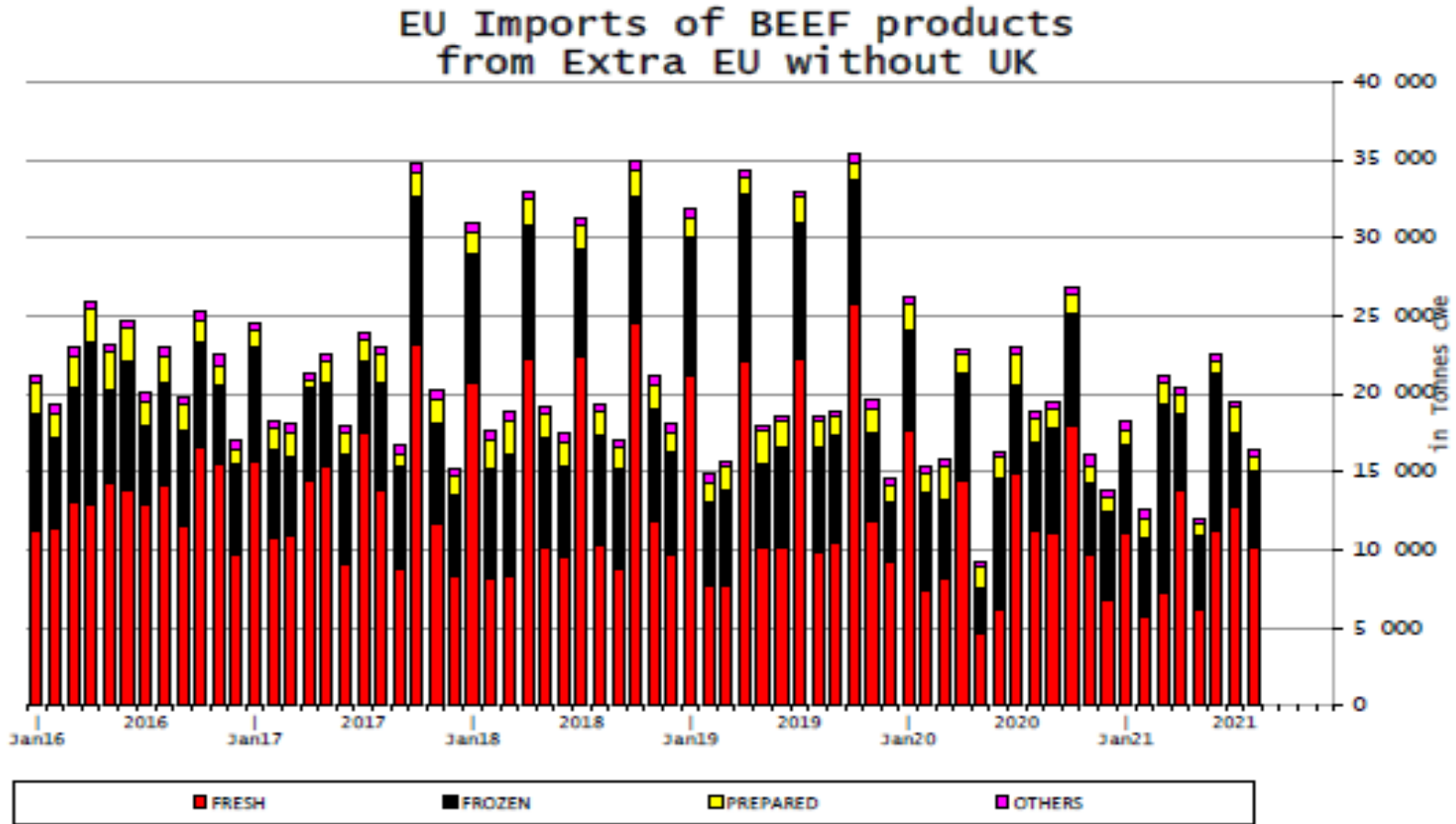
AB Sığır Eti ve Canlı Hayvan İthalatları (1): Ticaret Verileri (COMEXT – ton ca)

Origins	2017		2018		2019		2020		Jan-Aug 21		Compared to
	tonnes	%	tonnes	%	tonnes	%	tonnes	%	tonnes	%	
Brazil	86 927	33.9%	103 979	37.3%	99 569	36.4%	84 172	37.6%	52 061	36.5%	- 6.5%
Argentina	49 259	19.2%	61 400	22.0%	65 324	23.9%	56 421	25.2%	31 452	22.0%	- 11.1%
Uruguay	52 078	20.3%	47 922	17.2%	40 483	14.8%	34 595	15.5%	29 685	20.8%	+ 25.1%
USA	21 624	8.4%	19 268	6.9%	16 852	6.2%	16 532	7.4%	9 063	6.3%	- 16.1%
Australia	18 193	7.1%	17 368	6.2%	16 516	6.0%	11 058	4.9%	6 746	4.7%	- 23.0%
Switzerland	5 105	2.0%	5 413	1.9%	4 401	1.6%	4 197	1.9%	2 945	2.1%	+ 12.1%
New Zealand	6 806	2.7%	7 165	2.6%	6 726	2.5%	6 145	2.7%	2 844	2.0%	- 28.9%
Paraguay	5 922	2.3%	5 520	2.0%	5 203	1.9%	4 234	1.9%	2 419	1.7%	- 14.2%
N.det.Extra	72	0.0%	127	0.0%	196	0.1%	94	0.0%	1 339	0.9%	+++
Canada	512	0.2%	1 343	0.5%	2 518	0.9%	1 550	0.7%	1 093	0.8%	+ 80.7%
Japan	645	0.3%	791	0.3%	997	0.4%	789	0.4%	807	0.6%	+ 86.1%
Namibia	5 043	2.0%	3 442	1.2%	7 706	2.8%	1 445	0.6%	675	0.5%	- 36.4%
Serbia	565	0.2%	1 134	0.4%	1 062	0.4%	931	0.4%	607	0.4%	+ 0.6%
Norway	388	0.2%	153	0.1%	129	0.0%	336	0.2%	321	0.2%	+++
Botswana	2 686	1.0%	3 119	1.1%	4 950	1.8%	788	0.4%	249	0.2%	- 56.3%
Chile	319	0.1%	356	0.1%	392	0.1%	168	0.1%	125	0.1%	+ 10.8%
Other Destinations	570	0.2%	318	0.1%	287	0.1%	208	0.1%	302	0.2%	
Total (without UK)	256 724		278 818		273 312		223 752		142 732		
% change			+ 9%		- 2%		- 18%		- 3.3%		

AB Sığır Eti ve Canlı Hayvan İthalatları



AB Sığır Eti İthalatları (Birleşik Krallık hariç)



EU Export of BEEF to UK by Products from Jan to Jul

In Tons of Carcase Weight

	2019			2020			2021			% 2021/2020	
	United Kingdom	Extra-EU	%	United Kingdom	Extra-EU	%	United Kingdom	Extra-EU	%	United Kingdom	Extra-EU
Live Animals	6 106	132 454	4.6%	8 325	123 240	6.8%	7 665	127 153	6.0%	-7.9%	+3.2%
Meats	249 042	519 942	47.9%	221 779	505 379	43.9%	175 665	473 543	37.1%	-20.8%	-6.3%
Fresh	135 501	199 059	68.1%	127 062	186 426	68.2%	101 552	167 542	60.6%	-20.1%	-10.1%
Frozen	35 690	114 706	31.1%	28 440	127 115	22.4%	38 832	144 495	26.9%	+36.5%	+13.7%
Salted Meat	12 757	13 485	94.6%	12 103	12 978	93.3%	391	1 220	32.0%	-96.8%	-90.6%
Prepared	26 446	41 994	63.0%	25 976	41 600	62.4%	21 257	36 712	57.9%	-18.2%	-11.7%
Fresh Offals	12 663	14 360	88.2%	11 632	13 369	87.0%	2 926	4 443	65.8%	-74.8%	-66.8%
Frozen Offals	9 524	104 240	9.1%	8 509	102 272	8.3%	6 845	99 762	6.9%	-19.6%	-2.5%
Salted Offals	15 210	26 199	58.1%	7 292	14 509	50.3%	149	5 855	2.5%	-98.0%	-59.6%
Prepared Offal	339	418	81.3%	261	367	71.1%	190	291	65.4%	-27.2%	-20.8%
Fat	911	5 480	16.6%	503	6 744	7.5%	3 523	13 223	26.6%	+600.1%	+96.1%
Total Beef	255 149	652 396	39.1%	230 104	628 619	36.6%	183 330	600 695	30.5%	-20.3%	-4.4%

Source : Comext



EU Import of BEEF from UK by Products from Jan to Jul

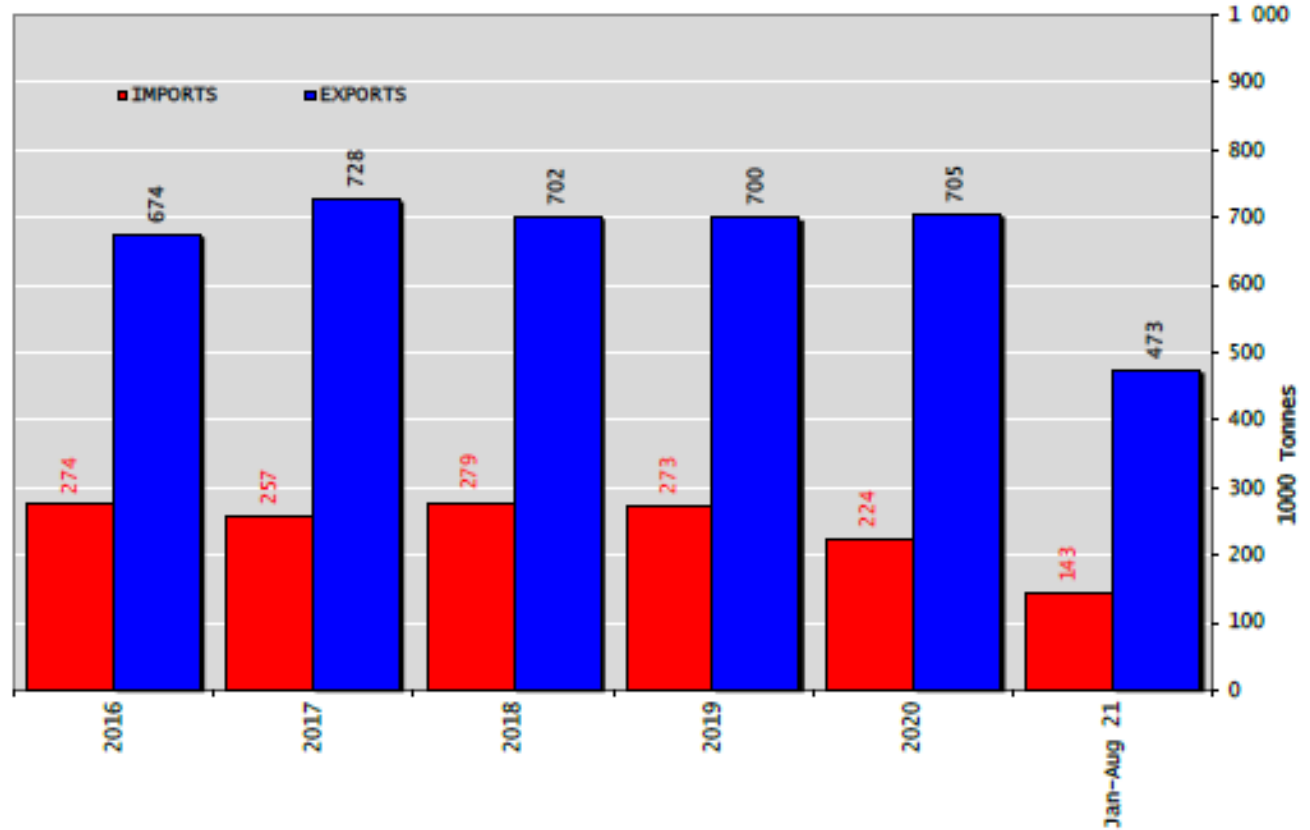
In Tons of Carcase Weight

	2019			2020			2021			% 2021/2020	
	United Kingdom	Extra-EU	%	United Kingdom	Extra-EU	%	United Kingdom	Extra-EU	%	United Kingdom	Extra-EU
Live Animals	1 664	1 782	93.4%	1 231	1 280	96.1%	534	625	85.5%	-56.6%	-51.2%
Meats	86 637	252 692	34.3%	69 875	198 543	35.2%	44 830	171 101	26.2%	-35.8%	-13.8%
Fresh	59 899	160 889	37.2%	44 287	117 631	37.6%	28 130	96 050	29.3%	-36.5%	-18.3%
Frozen	14 043	65 946	21.3%	12 492	54 001	23.1%	9 766	56 968	17.1%	-21.8%	+5.5%
Salted Meat	522	1 962	26.6%	316	1 678	18.8%	135	1 817	7.4%	-57.2%	+8.3%
Prepared	5 108	15 448	33.1%	5 135	16 255	31.6%	3 565	11 648	30.6%	-30.6%	-28.3%
Fresh Offals	2 036	2 839	71.7%	2 170	2 930	74.0%	2 185	2 904	75.2%	+0.7%	-0.9%
Frozen Offals	3 051	3 523	86.6%	3 458	3 968	87.2%	555	1 147	48.4%	-83.9%	-71.1%
Salted Offals	1 044	1 045	99.9%	1 201	1 203	99.8%	15	16	91.8%	-98.8%	-98.7%
Prepared Offal	77	90	85.9%	24	36	66.3%	6	14	42.9%	-74.7%	-60.9%
Fat	857	951	90.1%	793	840	94.3%	475	536	88.5%	-40.1%	-36.2%
Total Beef	88 301	254 474	34.7%	71 106	199 823	35.6%	45 364	171 725	26.4%	-36.2%	-14.1%

Source : Estat - Comext

Sığır Eti Ürünleri ve Canlı Hayvan Ticaret Dengesi (Ton) (Birleşik Krallık Hariç)

Trade Balance of Beef Products and Live Animals (without UK)

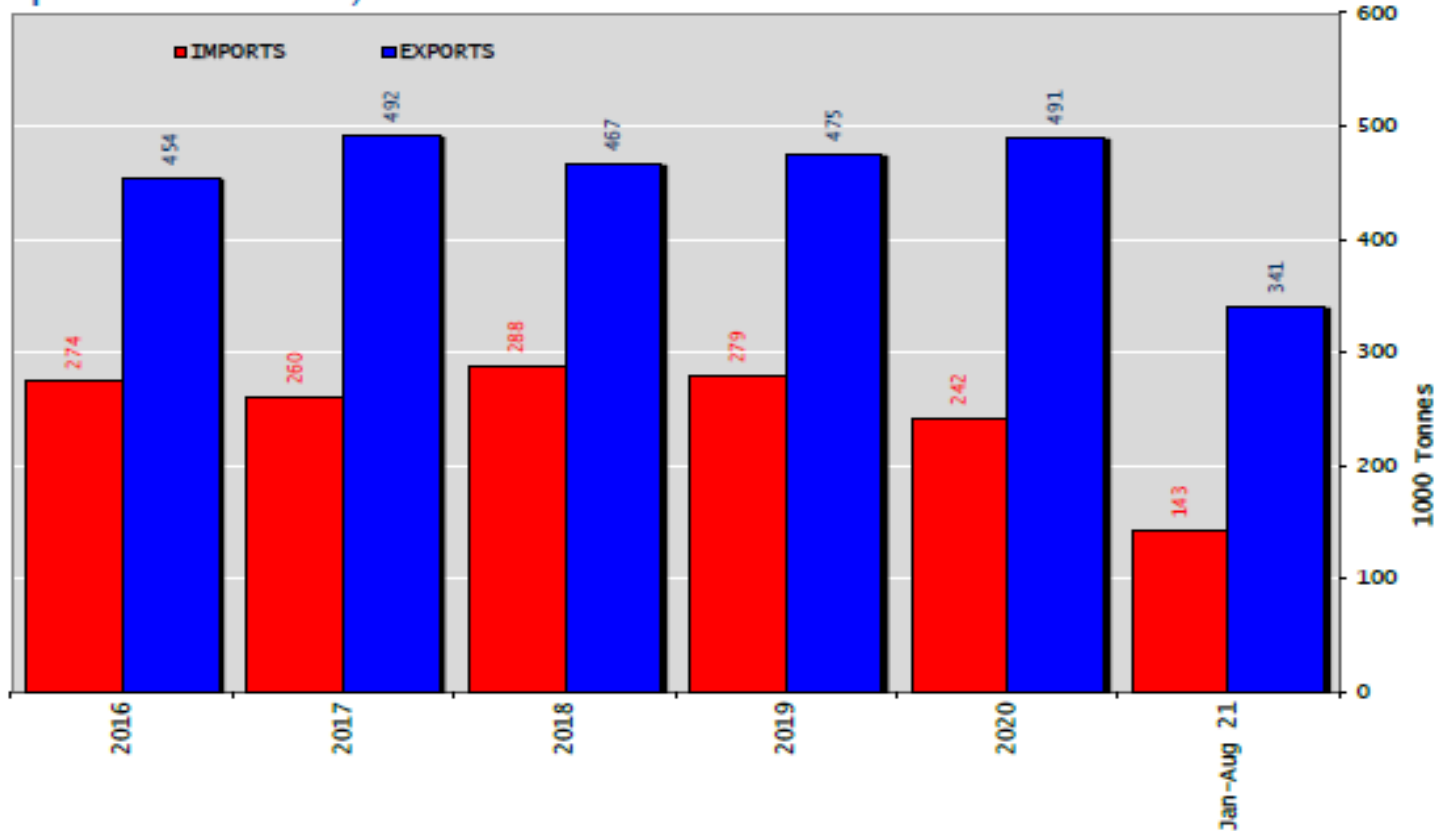




Sığır Eti Ürünleri Ticaret Dengesi (Canlı hayvanlar hariç) (Ton)

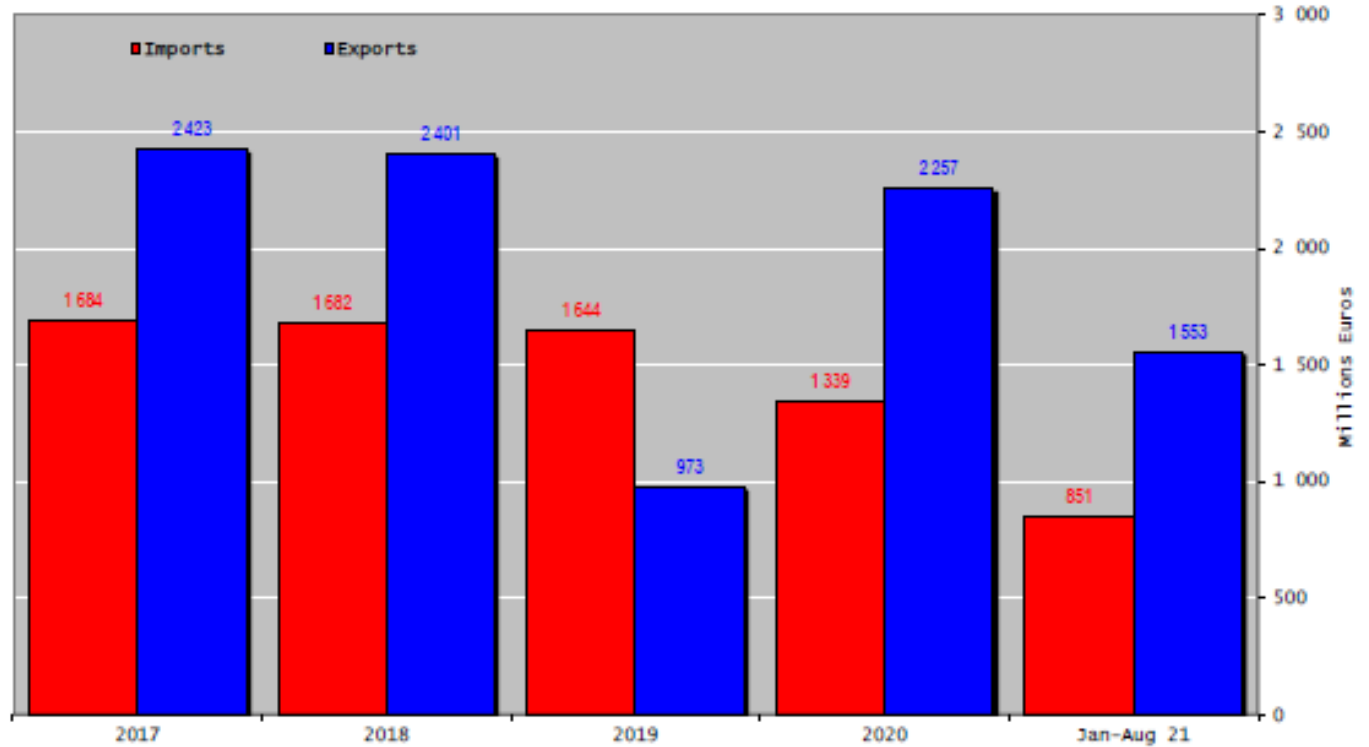
(Birleşik Krallık Hariç)

Trade Balance of Beef Products (Except Live Animals) without UK



Sığır Eti Ürünleri ve Canlı Hayvan Ticaret Dengesi (Milyon Euro) (Birleşik Krallık Hariç)

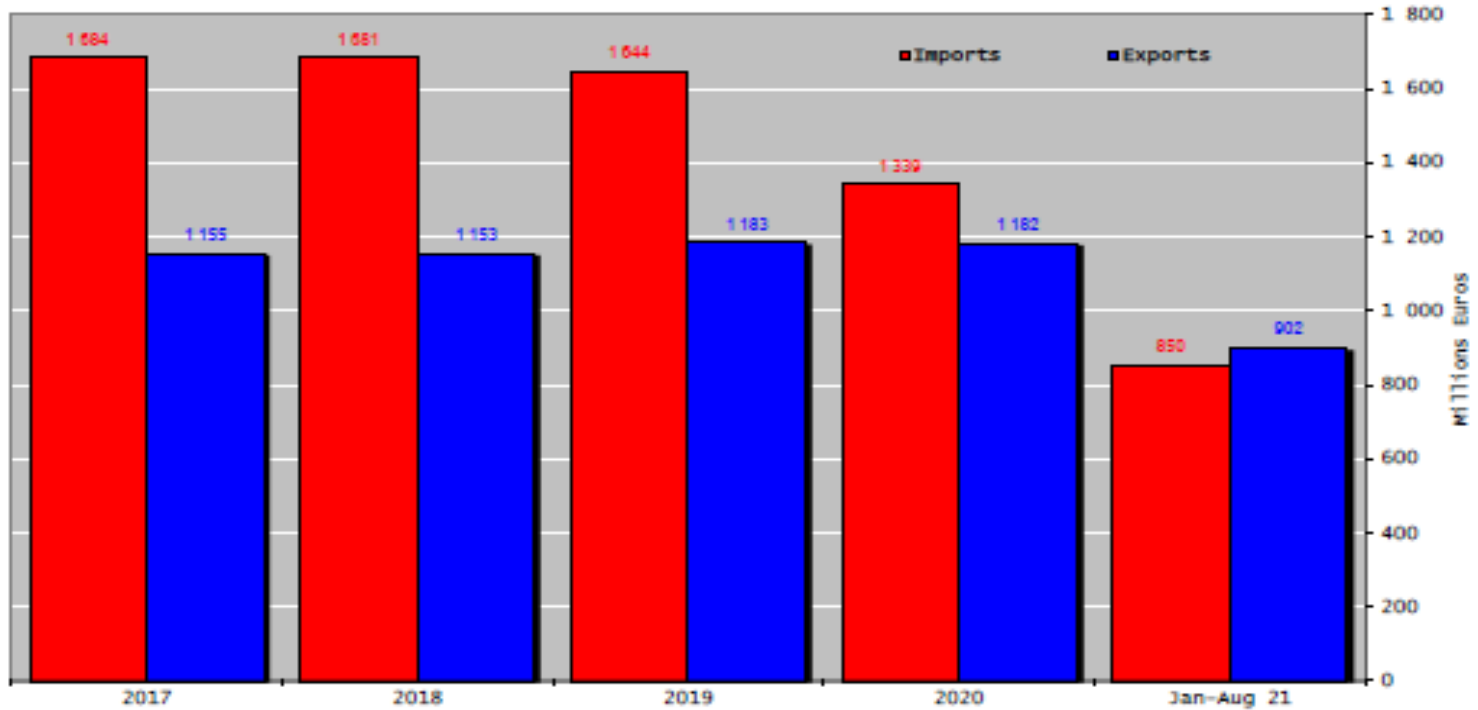
Trade Balance of Beef Products and Live Animals (without UK)





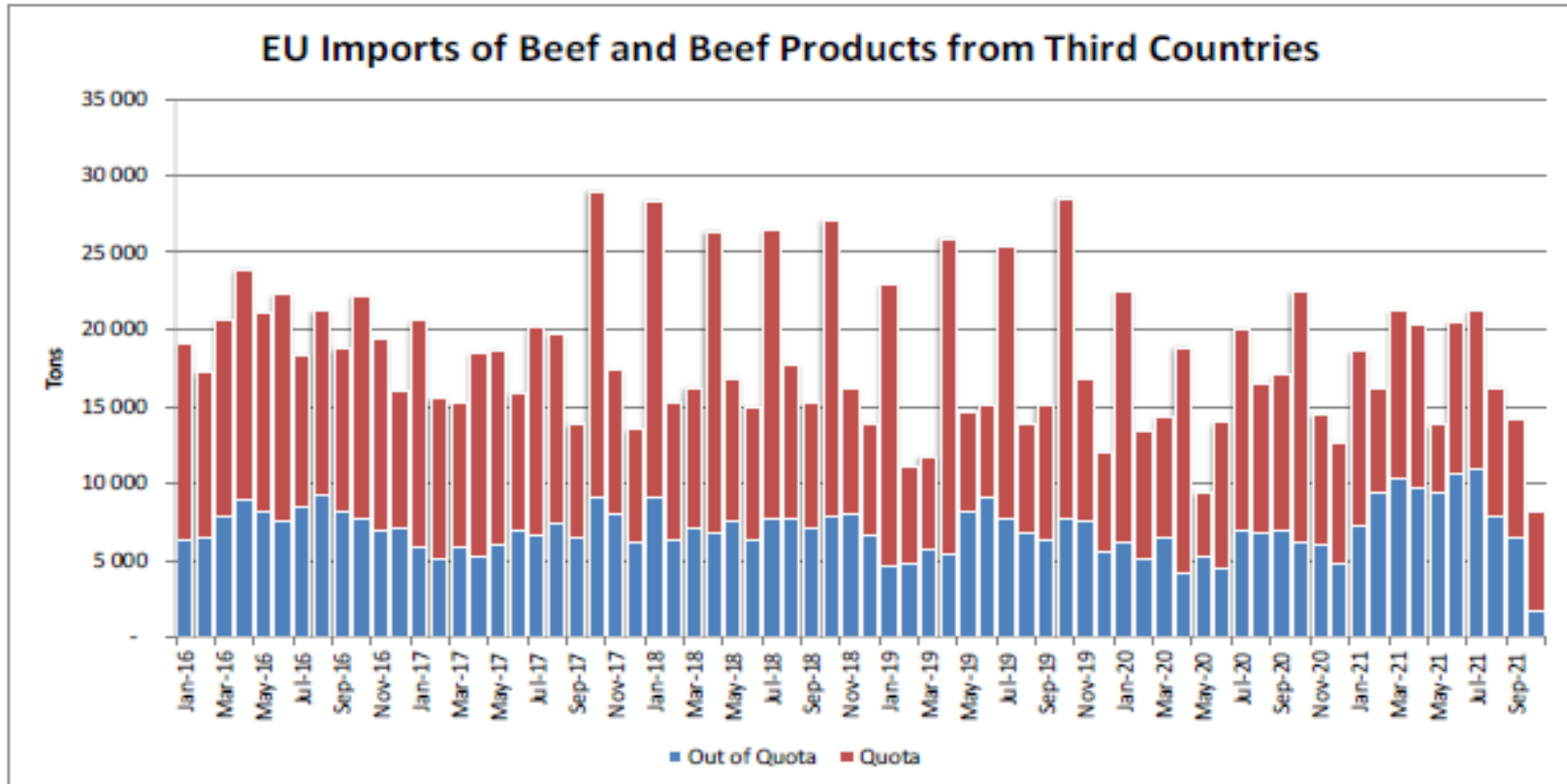
AB Sığır Eti Ürünleri Ticareti (Canlı Hayvanlar Hariç) (Milyon Euro) (Birleşik Krallık Hariç)

Trade Balance of Beef Products (Except Live Animals) without UK



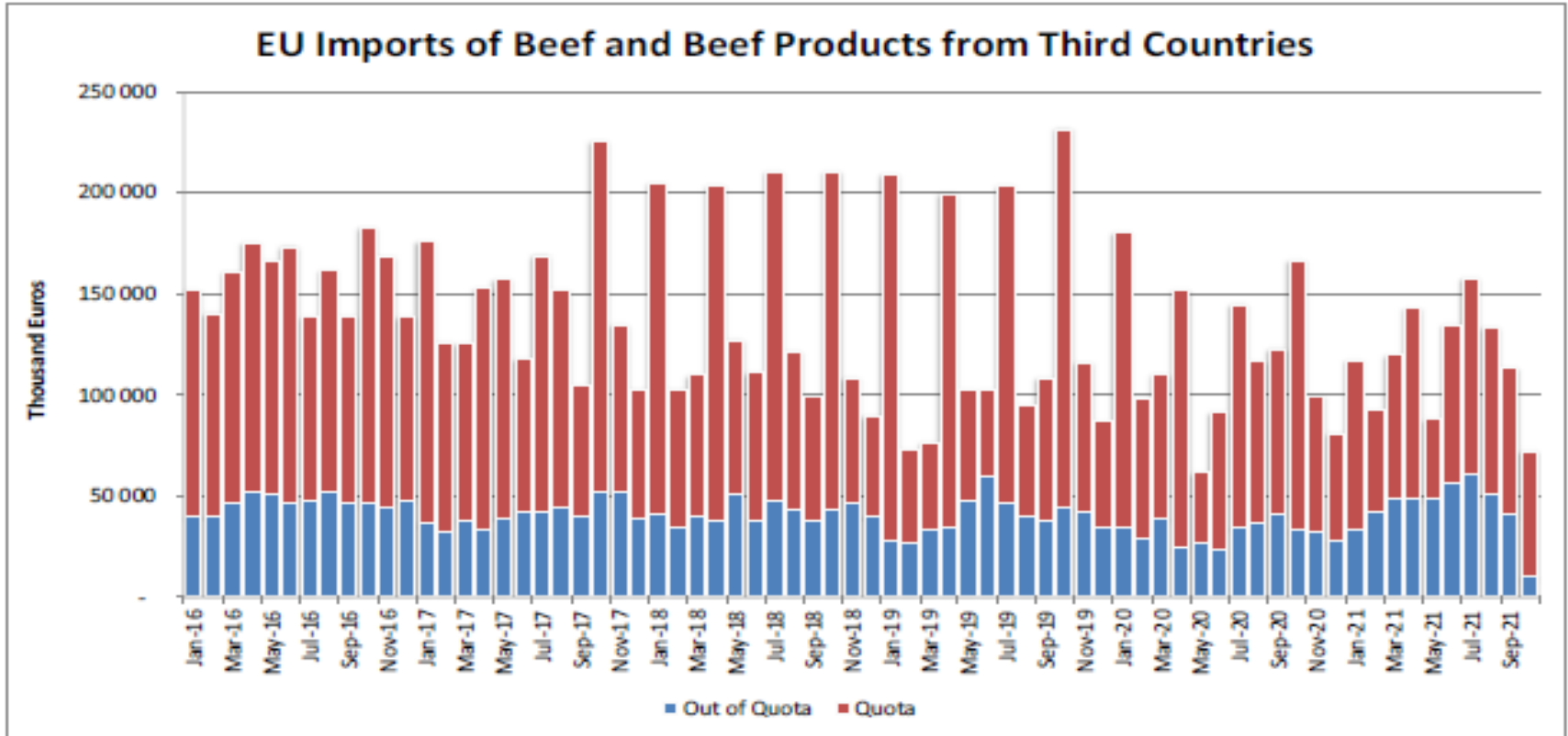
Üçüncü Ülkelerden AB ve Birleşik Krallık Sığır ve Sığır eti Ürünleri İthalatları (Ton)

Imports in and out of TRQs



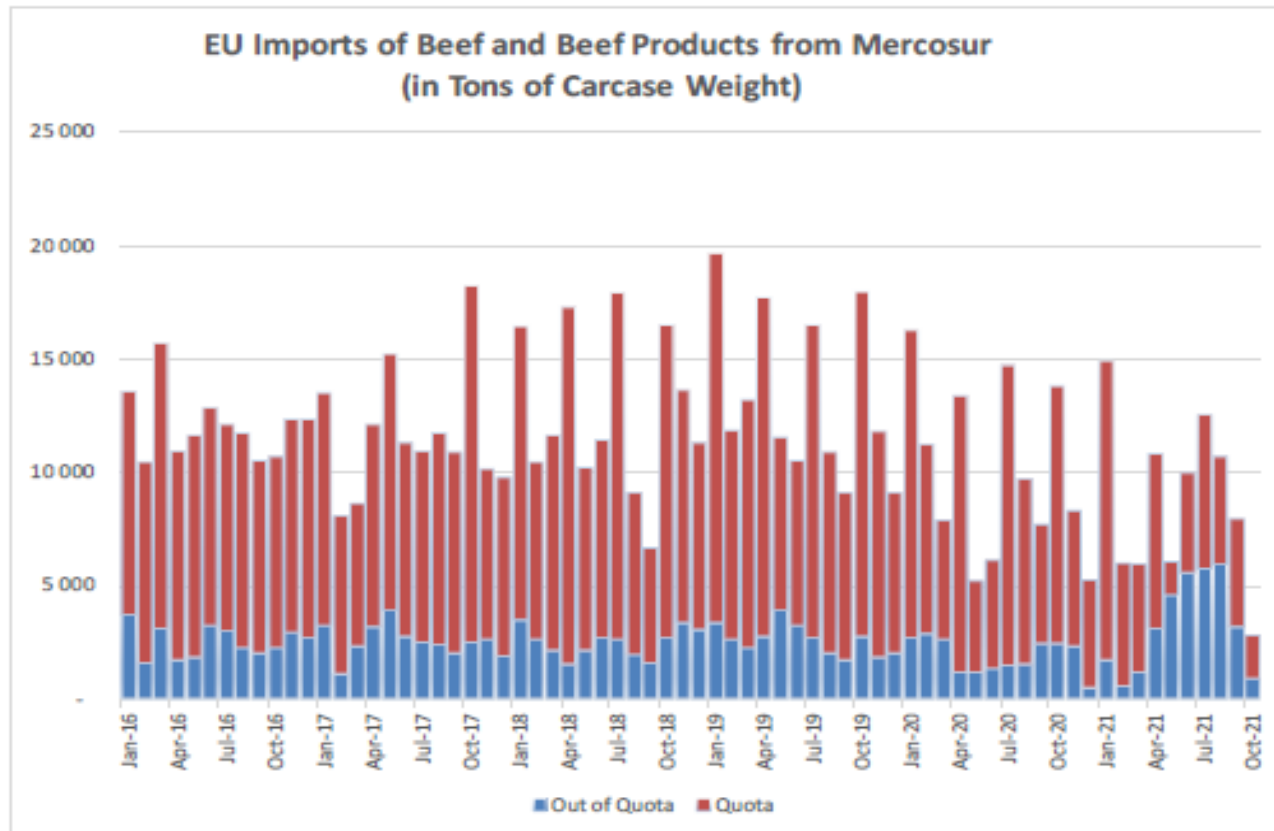
Üçüncü Ülkelerden AB ve Birleşik Krallık Sığır ve Sığır eti Ürünleri İthalatları (Bin Euro)

Imports in and out of TRQs



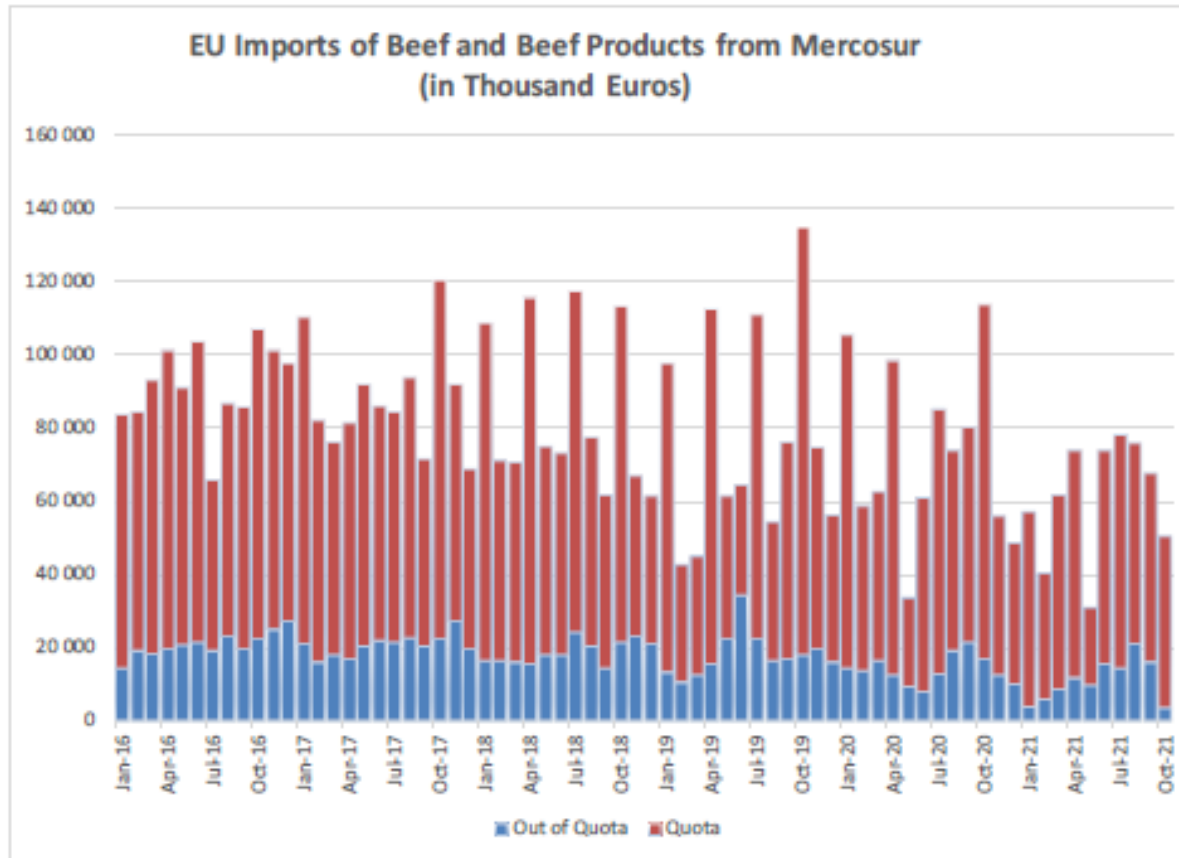
Mercosur Ülkelerinden Sığır ve Sığır Eti Ürünleri AB ve Birleşik Krallık İthalatları (Ton, Karkas Ağırlık)

Imports in and out of TRQs



Mercosur Ülkelerinden Sığır ve Sığır Eti Ürünleri AB ve Birleşik Krallık İthalatları (Bin Euro)

Imports in and out of TRQs



YÜKSEK KALİTE SİĞİR ETİ İTHALAT KOTALARI



Quota erga omnes

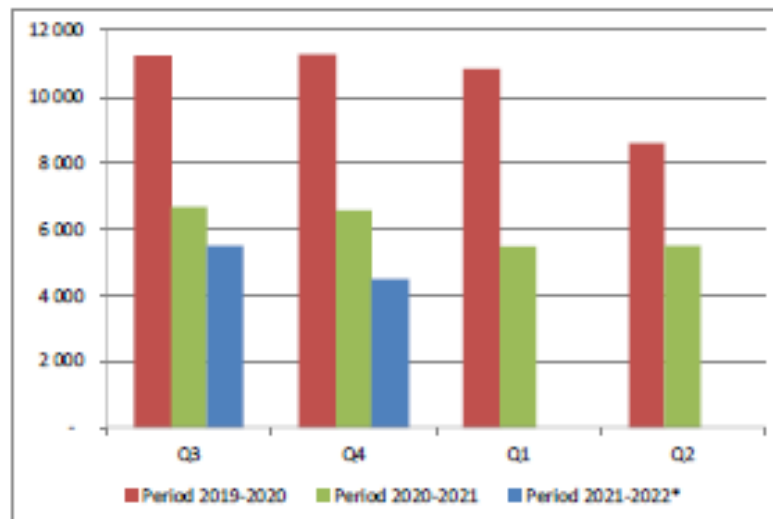
Regulation (EU) No 481/2012

	2019-Q3	2019-Q4	2020-Q1	2020-Q2	TOTAL
Period 2019-2020	11 246	11 259	10 825	8 599	41 930
Available	11 250	11 250	11 250	11 250	45 000
Use	99.97%	100.00%	96.22%	76.44%	93.18%
Available after transfer	11 250	11 254	11 241	11 675	
	99.97%	100.00%	96.30%	73.66%	

	2020-Q3*	2020-Q4	2021-Q1	2021-Q2	TOTAL
Period 2020-2021	6 652	6 542	5 467	5 500	24 162
Available	6 625	6 625	5 500	5 500	45 000
Use	100.00%	98.75%	99.41%	100.00%	53.69%
Available after transfer	11 250	6 598	5 583	5 533	
	59.13%	99.16%	97.93%	99.41%	

	2021-Q3*	2021-Q4	2022-Q1	2022-Q2	TOTAL
Period 2021-2022*	5 502	4 480	-	-	9 982
Available	5 500	5 500	4 900	4 900	45 000
Use	100.00%	81.45%	0.00%	0.00%	22.18%
Available after transfer	5 500	5 498	5 920	9 800	
	100.00%	81.48%	0.00%	0.00%	

* Until 14.10.2021



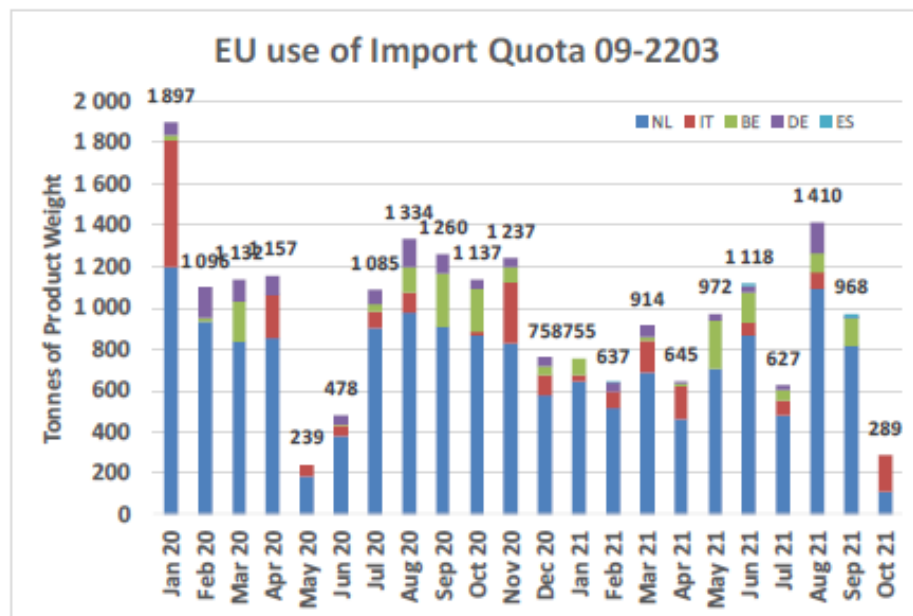
YÜKSEK KALİTE SİĞİR ETİ İTHALAT KOTALARI



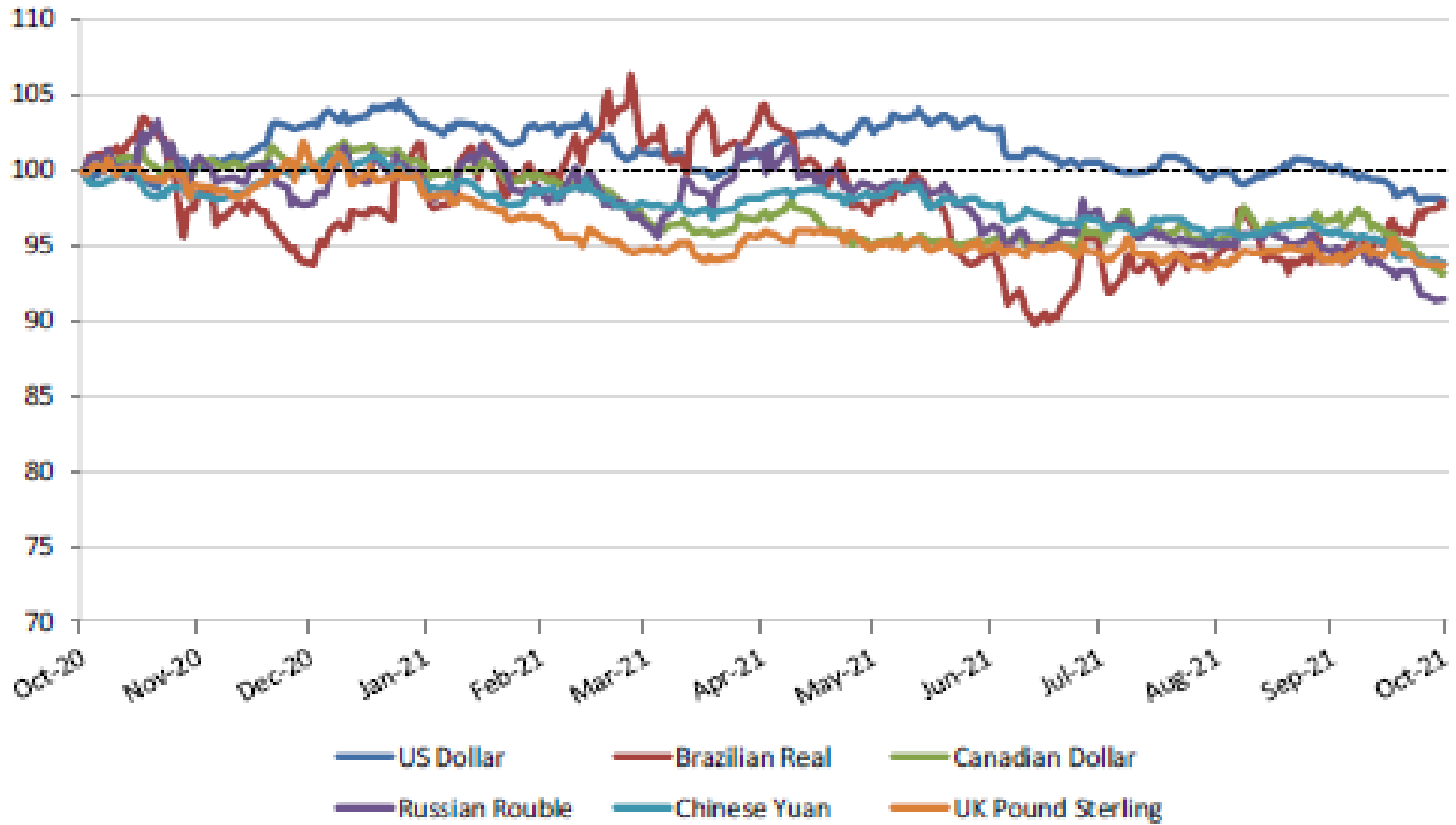
European Commission

Origin	GATT 2020-2021				
	2020-Q3	2020-Q4	2021-Q1	2021-Q2	Total
NL	2 785	2 274	1 848	2 026	8 933
IT	174	404	263	228	1 069
BE	417	330	96	394	1 237
DE	305	124	98	72	598
ES	-	-	2	15	17
Total import within Quota	3 680	3 132	2 306	2 735	11 853
Available	4 625	4 625	4 625	4 625	18 500
Use	79.57%	67.72%	49.87%	59.13%	64.07%
After transfer	4 625	5 570	6 118	6 944	
Use	79.57%	56.23%	37.70%	39.39%	

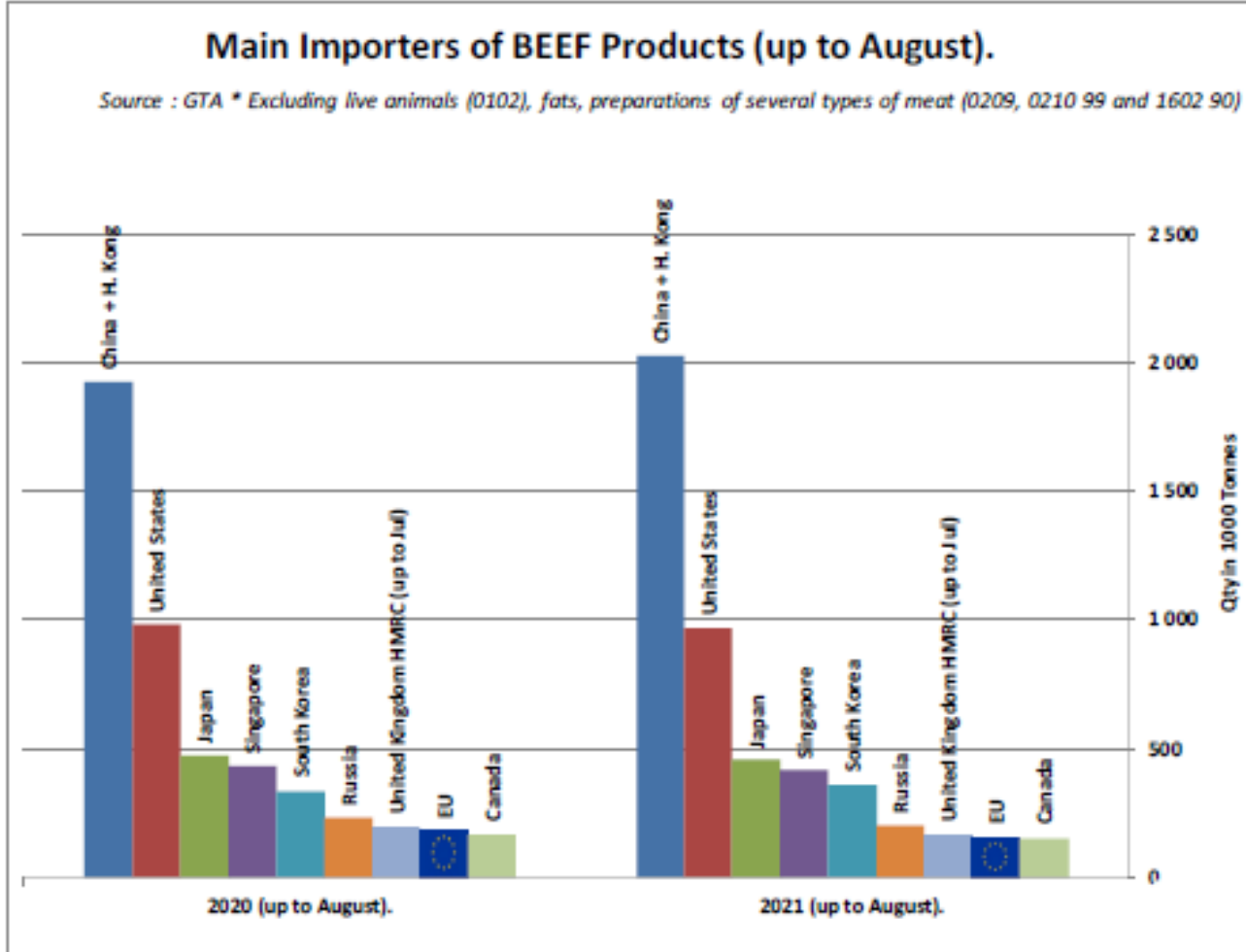
Origin	GATT 2021-2022				
	2021-Q3	2021-Q4	2022-Q1	2022-Q2	Total
NL	2 384				
IT	151				
BE	282				
DE	173				
ES	15				
Total import within Quota	3 005				
Available	5 750	5 750	6 350	6 350	24 200
Use	52.26%				
After transfer	5 750				
Use	52.26%				



Index of daily exchange rates of the main trading partners compared to the Euro



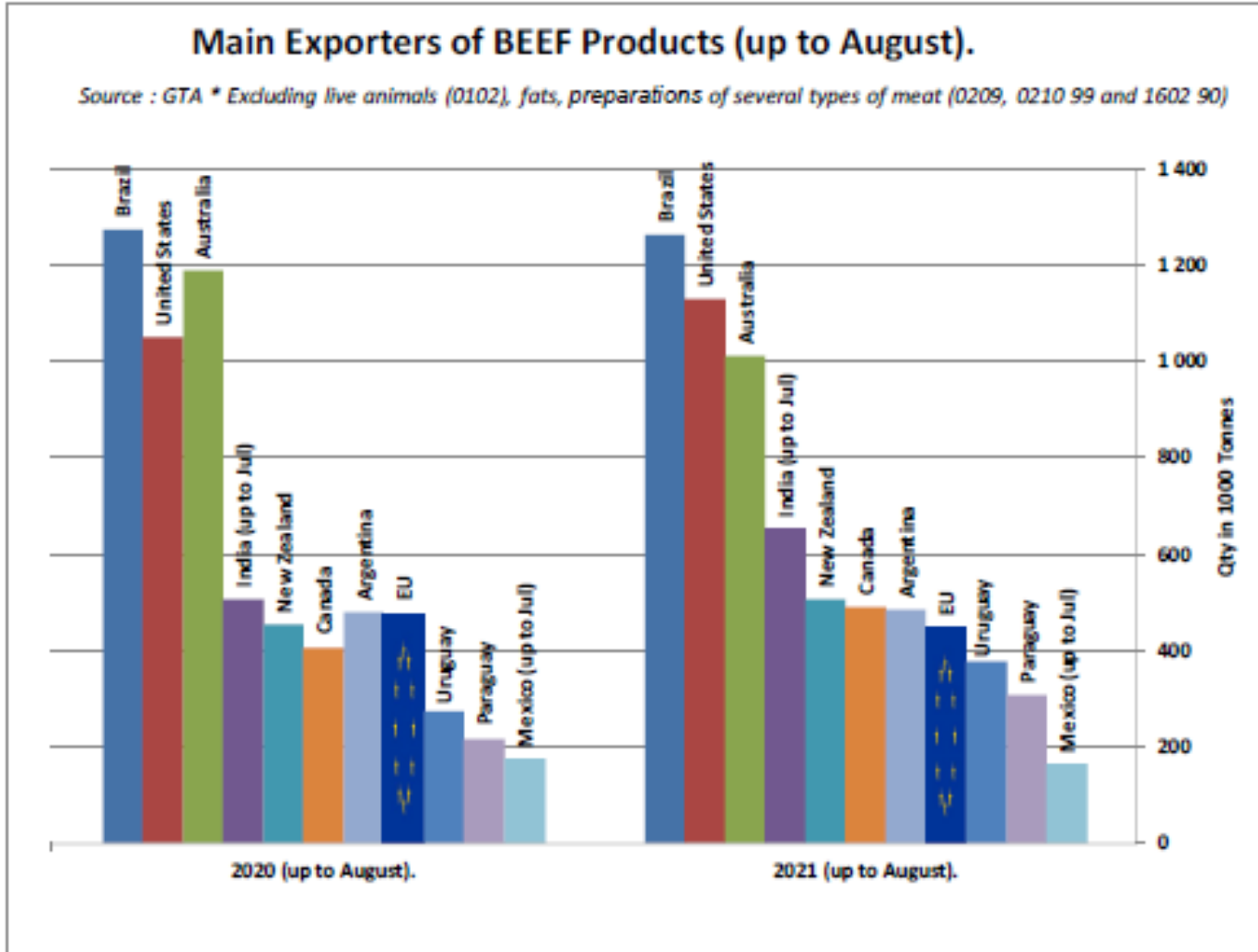
SIĞIR ETİ ÜRÜNLERİNİN NET İTHALATÇILARI (AĞUSTOS AYINA KADAR)





European
Commission

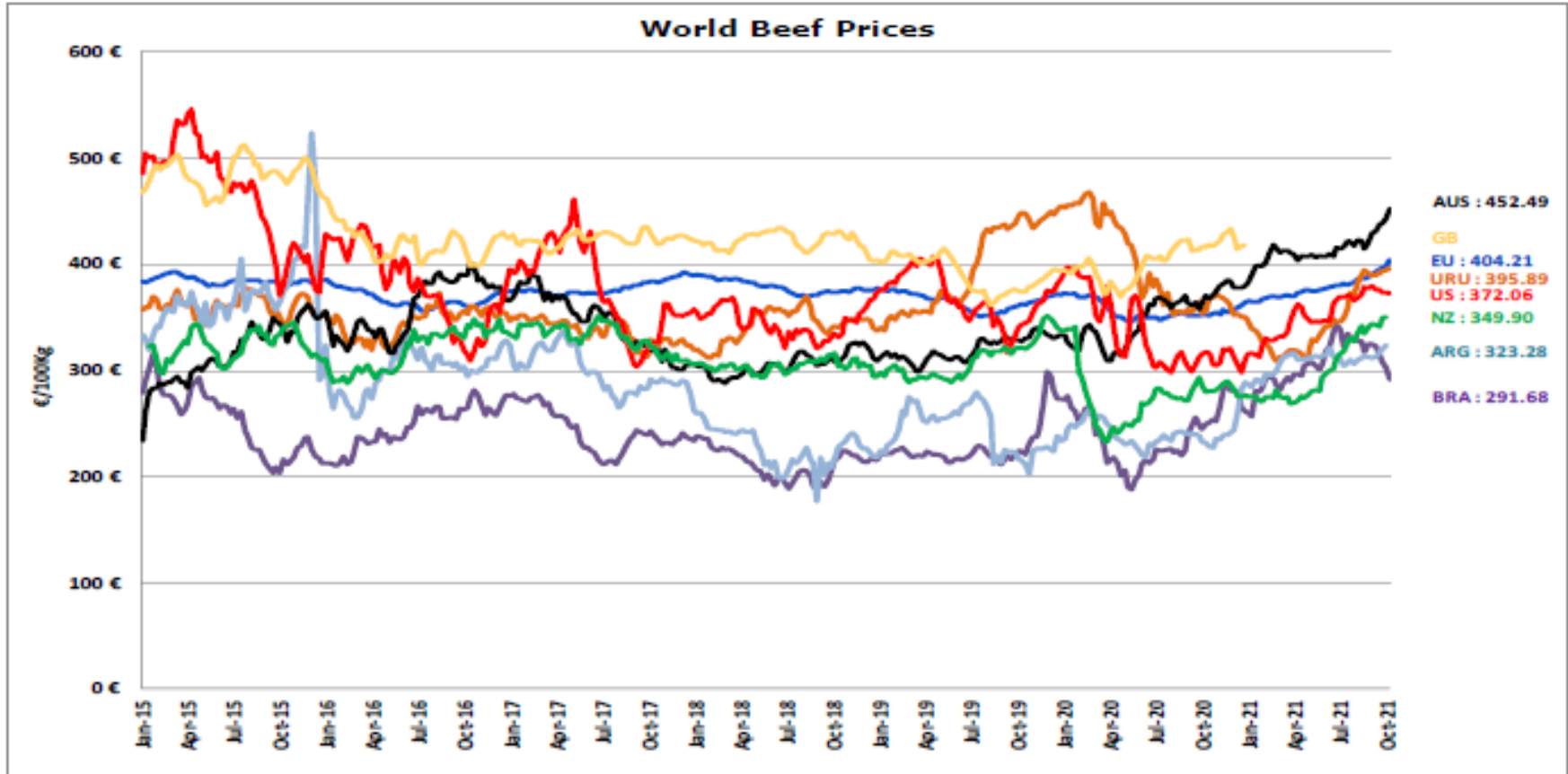
SIĞIR ETİ ÜRÜNLERİNİN NET İHRACATÇILARI (AĞUSTOS AYINA KADAR)



DÜNYA SIĞIR ETİ PAZARI



Dünya Sığır Fiyatları AB, ABD, AVUSTURYA, YENİ ZELANDA



- ECB <http://sdw.ecb.europa.eu/browse.do?node=2018794>
- US <http://www.marketnews.usda.gov/mnp/s-home>
- AUS <http://statistics.mla.com.au/Report/RunReport/ae39d4ac-74e4-4c36-93bd-962a044d9760>
- UY <http://www.inec.gub.uy/innovaportal/v/11034/10/innova.front/indicadores-y-precios>
- ARG http://www.abc-consorcio.com.ar/Estadisticas/detalle/117/precios_comparativos_del_novillo.html
- BR <http://www.pecuaria.com.br/cotacoes.php>

r 2021





Daha fazla bilgi için:

https://ec.europa.eu/agriculture/market-observatory/meat_en

Ve Agri-FOOD Veri Portalı:

<http://agridata.ec.europa.eu>