



# AB SIĞIR VE DANA ETİ PAZAR DURUMU

21 Kasım 2024

## Haziran Araştırması

May/Jun	TOPLAM CANLI HAYVAN					BÜYÜKBAŞ HAYVAN < 1 YAŞ					BÜYÜKBAŞ HAYVAN 1 - 2 YAŞ					BÜYÜKBAŞ HAYVAN > 2 YAŞ				
	TOT LIVESTOCK				%Var 2024 2023	BOVINE < 1 Year				%Var 2024 2023	BOVINE 1-2 Year				%Var 2024 2023	BOVINE > 2 Year				%Var 2024 2023
1000 Hd	2021	2022	2023	2024		2021	2022	2023	2024		2021	2022	2023	2024		2021	2022	2023	2024	
BE	2 353	2 241	2 281	2 235	-2.0%	712	656	677	662	-2.2%	473	463	456	446	-2.1%	1 169	1 121	1 148	1 126	-1.9%
BG																				
CZ																				
DK	1 503	1 484	1 454	1 423	-2.1%	517	510	498	490	-1.6%	287	290	281	273	-3.2%	699	684	674	661	-2.0%
DE	11 176	10 986	10 937	10 627	-2.8%	3 398	3 296	3 260	3 153	-3.3%	2 591	2 620	2 595	2 496	-3.8%	5 188	5 071	5 082	4 978	-2.0%
EE																				
IE	7 359	7 396	7 341	7 183	-2.2%	2 146	2 134	2 074	2 026	-2.3%	1 910	1 949	1 922	1 859	-3.3%	3 303	3 313	3 346	3 298	-1.4%
EL																				
ES	6 923	6 754	6 565	6 379	-2.8%	2 634	2 569	2 427	2 321	-4.4%	973	902	928	910	-1.9%	3 316	3 283	3 211	3 148	-2.0%
FR	17 863	17 416	17 039	16 794	-1.4%	5 134	4 949	4 838	4 736	-2.1%	3 158	3 144	3 077	3 041	-1.2%	9 571	9 323	9 125	9 017	-1.2%
HR																				
IT	6 174	6 087	5 975	5 892	-1.4%	1 762	1 725	1 663	1 645	-1.1%	1 476	1 475	1 439	1 376	-4.4%	2 936	2 887	2 873	2 871	-0.1%
CY																				
LV																				
LT																				
LU																				
HU																				
MT																				
NL	3 732	3 766	3 752	3 696	-1.5%	1 523	1 546	1 507	1 486	-1.4%	479	493	507	502	-0.9%	1 729	1 726	1 738	1 708	-1.7%
AT	1 846	1 842	1 826	1 804	-1.2%	596	592	574	566	-1.4%	413	422	426	415	-2.4%	838	828	826	823	-0.5%
PL	6 401	6 444	6 360	6 336	-0.4%	1 789	1 916	1 855	1 882	+1.4%	1 856	1 674	1 670	1 641	-1.8%	2 756	2 855	2 834	2 813	-0.7%
PT	1 723	1 680	1 608	1 534	-4.6%	550	554	511	487	-4.5%	252	229	229	221	-3.6%	922	897	868	825	-4.9%
RO	1 864	1 852	1 833	1 833	idem	386	379	370	358	-3.2%	207	220	224	221	-1.2%	1 271	1 254	1 239	1 254	+1.2%
SI																				
SK																				
FI																				
SE	1 453	1 449	1 444	1 410	-2.4%	465	458	458	444	-3.2%	369	374	371	368	-0.8%	619	617	615	598	-2.7%
EU	70 371	69 398	68 415	67 144	-1.9%	21 612	21 285	20 713	20 256	-2.2%	14 444	14 255	14 124	13 768	-2.5%	34 315	33 858	33 578	33 121	-1.4%

Source : EStat Newcronos

EU %Var is calculated considering only countries available in 2023 AND 2024

## Haziran Araştırması

May/Jun 1000 Hd	TOPLAM İNEK					SÜTÇÜ TİP İNEK					DİĞER İNEKLER				
	TOTAL COWS				%Var	DAIRY COWS				%Var	OTHER COWS				%Var
	2021	2022	2023	2024	2024 2023	2021	2022	2023	2024	2024 2023	2021	2022	2023	2024	2024 2023
BE	937	902	918	900	-2.0%	539	527	541	534	-1.3%	399	375	377	366	-2.9%
BG															
CZ															
DK	647	634	625	614	-1.8%	565	557	553	547	-1.2%	82	77	72	67	-6.1%
DE	4 517	4 430	4 399	4 297	-2.3%	3 892	3 817	3 775	3 668	-2.8%	626	612	623	628	+0.8%
EE															
IE	2 545	2 541	2 519	2 449	-2.8%	1 605	1 627	1 647	1 624	-1.4%	940	913	872	825	-5.4%
EL															
ES	2 987	2 951	2 897	2 842	-1.9%	828	816	794	780	-1.7%	2 159	2 135	2 102	2 062	-1.9%
FR	7 315	7 159	6 960	6 845	-1.7%	3 331	3 266	3 167	3 103	-2.0%	3 984	3 893	3 793	3 742	-1.3%
HR															
IT	2 161	2 130	2 123	2 267	+6.8%	1 852	1 821	1 798	1 695	-5.7%	309	309	325	572	+76.0%
CY															
LV															
LT															
LU															
HU															
MT															
NL	1 627	1 623	1 629	1 596	-2.0%	1 571	1 571	1 577	1 545	-2.0%	56	53	52	51	-1.8%
AT	715	710	704	695	-1.3%	531	549	546	539	-1.2%	184	161	158	156	-1.4%
PL	2 388	2 208	2 338	2 336	-0.1%	2 113	2 072	2 192	2 190	-0.1%	276	136	145	146	+0.3%
PT	757	742	718	693	-3.6%	236	227	224	219	-2.4%	521	515	494	474	-4.1%
RO	1 148	1 135	1 111	1 122	+0.9%	1 133	1 119	1 091	1 093	+0.2%	15	16	20	29	+42.5%
SI															
SK															
FI															
SE	512	510	506	489	-3.3%	302	297	295	289	-1.9%	210	213	211	200	-5.2%
EU	28 256	27 674	27 446	27 144	-1.1%	18 497	18 266	18 201	17 826	-2.1%	9 760	9 409	9 245	9 318	+0.8%

Source : EStat Newcronos

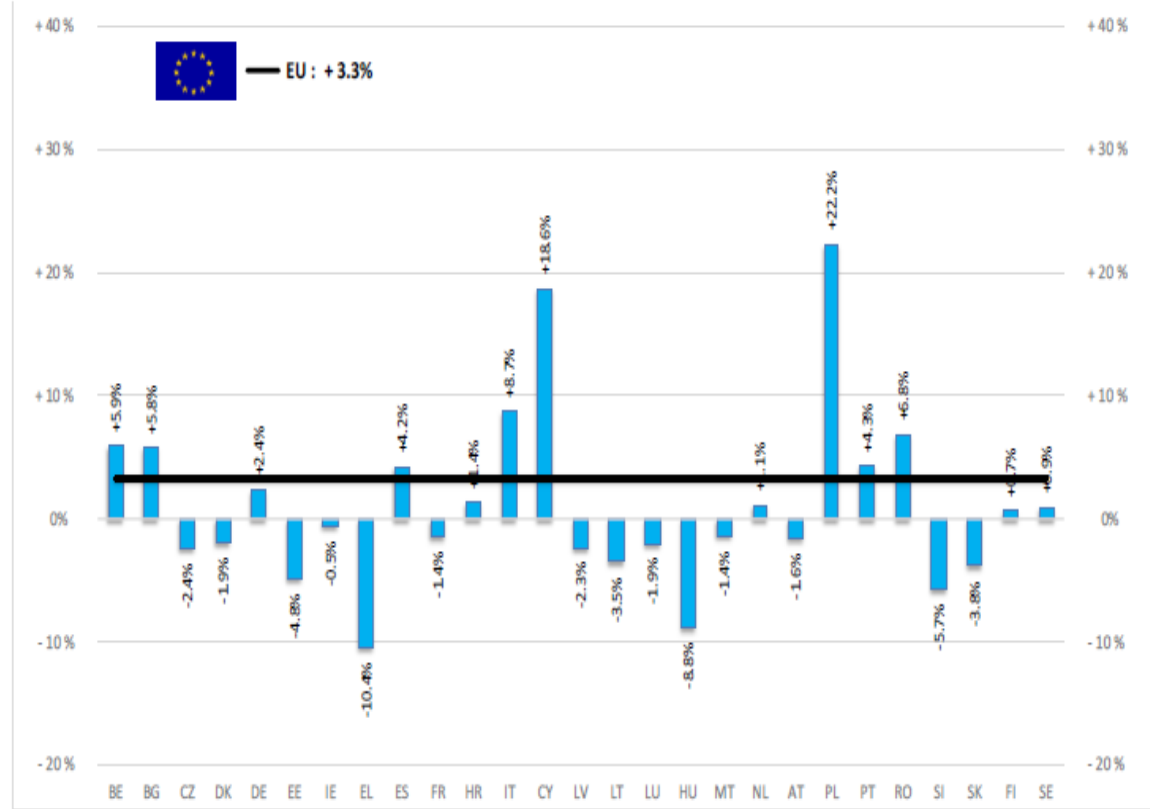
EU %Var is calculated considering only countries available in 2023 AND 2024



European  
Commission

BAŞ	TONNES	Jan-Aug 24/23
		EU
BOĞA	Bull	+4.5%
ÖKÜZ	Bullock	-1.8%
İNEK	Cow	+3.1%
DÜVE	Heifer	+6.1%
BÜZAĞI	Calve	+1.2%
GENÇ SİĞİR	Young cattle	-4.1%
Büyükbaş Hayvan Eti	Meat of bovine animals	+3.3%

Estimates for last month of period :



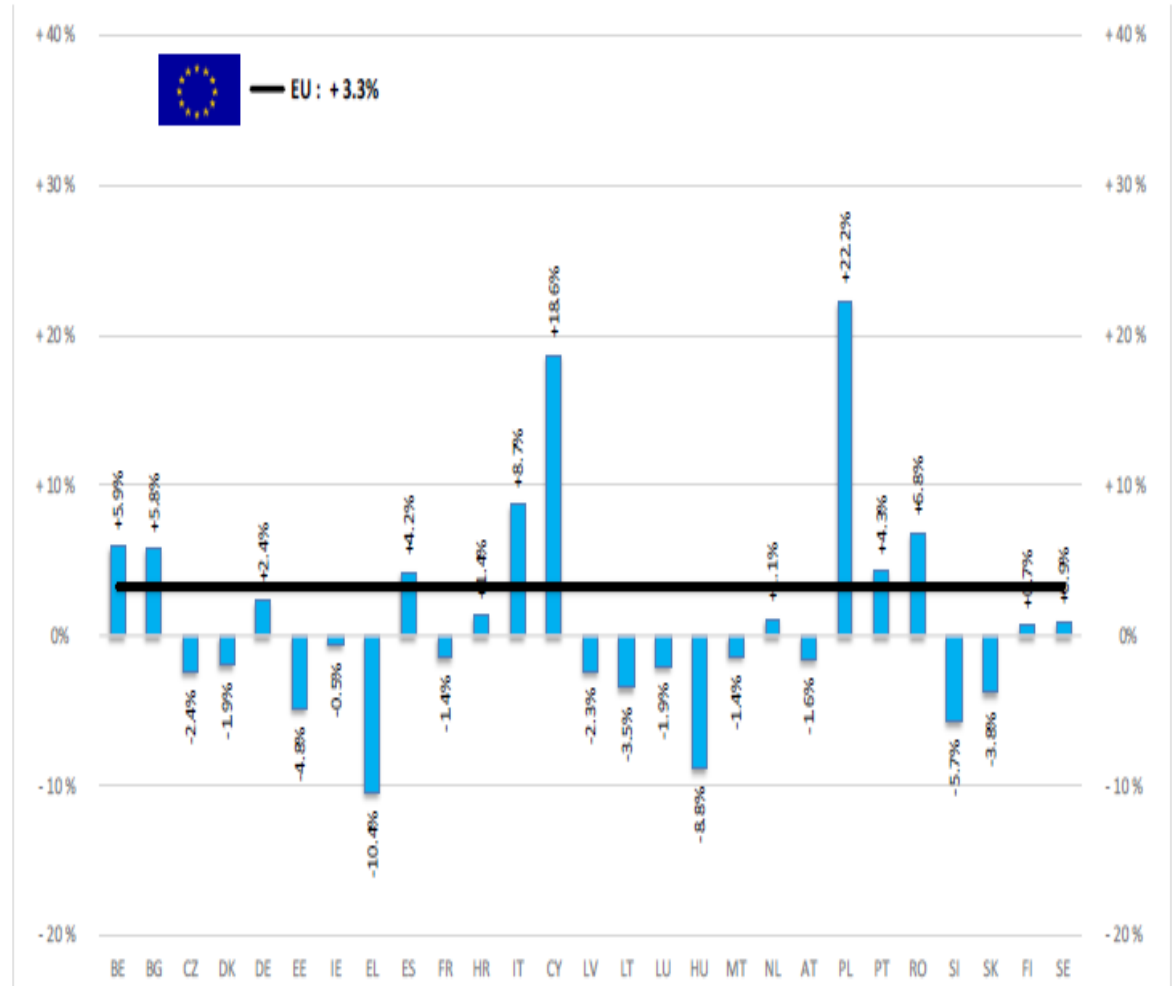
Source : EStat - Newcronos



European  
Commission

TON	TONNES	Jan-Aug 24/23
		EU
BOĞA	Bull	+4.5%
ÖKÜZ	Bullock	-1.8%
İNEK	Cow	+3.1%
DÜVE	Heifer	+6.1%
BUZAĞI	Calve	+1.2%
GENÇ SİĞİR	Young cattle	-4.1%
Büyükbaş Hayvan Eti	Meat of bovine animals	+3.3%

Estimates for last month of period :

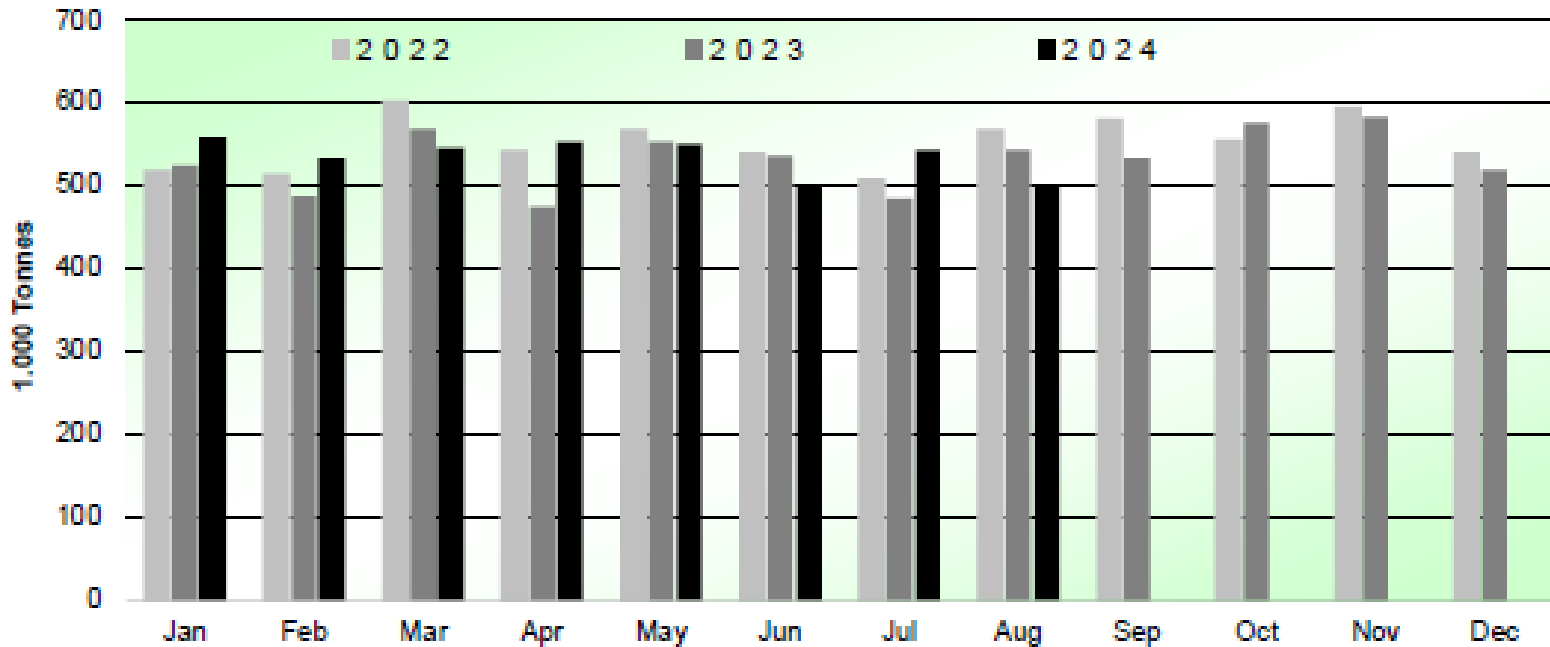


Source : EStat - Newcronos



# SIĞIR VE DANA ETİ ÜRETİMİ (AB Kesimler – Ton)

## Beef & Veal Production (EU Slaughtering) - Tonnes



Source: EStat-Newcronos

EU Prices week		45	Evolution since last week	Evolution since last month	Evolution since last year
Car case	Average A/C/Z-R3	530.5	+ 0.7%	+ 2.0%	+ 9.5%
	Young Bovines (Z)	506.6	+ 0.7%	+ 2.1%	+ 3.6%
	Young Bulls (A)	537.9	+ 0.7%	+ 1.9%	+ 11.0%
	Steers (C)	527.8	+ 0.9%	+ 2.5%	+ 11.0%
	Cows (D)	437.4	+ 0.2%	+ 0.1%	+ 14.7%
	Heifers (E)	541.9	+ 0.6%	+ 1.3%	+ 8.3%
	Calves slaughtered <8M	645.9	- 0.0%	+ 2.2%	+ 6.6%
Live Animals	Male Calves Dairy Type	132.6	+ 0.9%	+ 7.9%	+ 34.0%
	Male Calves Beef Type	280.1	+ 3.0%	+ 3.2%	+ 18.2%
	Young Store Cattle	3.71	+ 0.2%	+ 1.8%	+ 17.7%
	Yearling Male Store Cattle	4.14	+ 0.5%	+ 1.0%	+ 21.8%
	Yearling Female Store Cattle	3.26	+ 1.1%	+ 1.1%	+ 17.8%

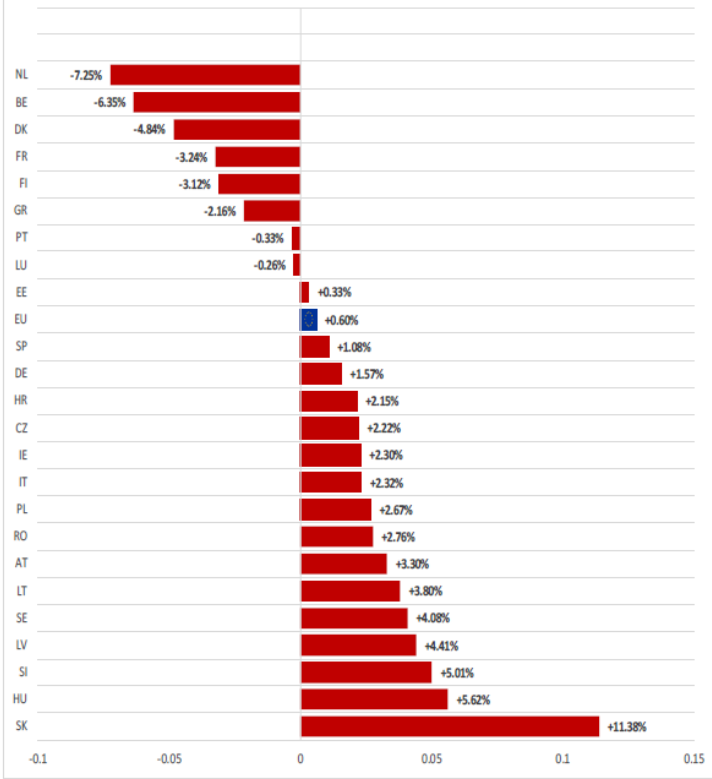
# KARKAS FİYATLARI



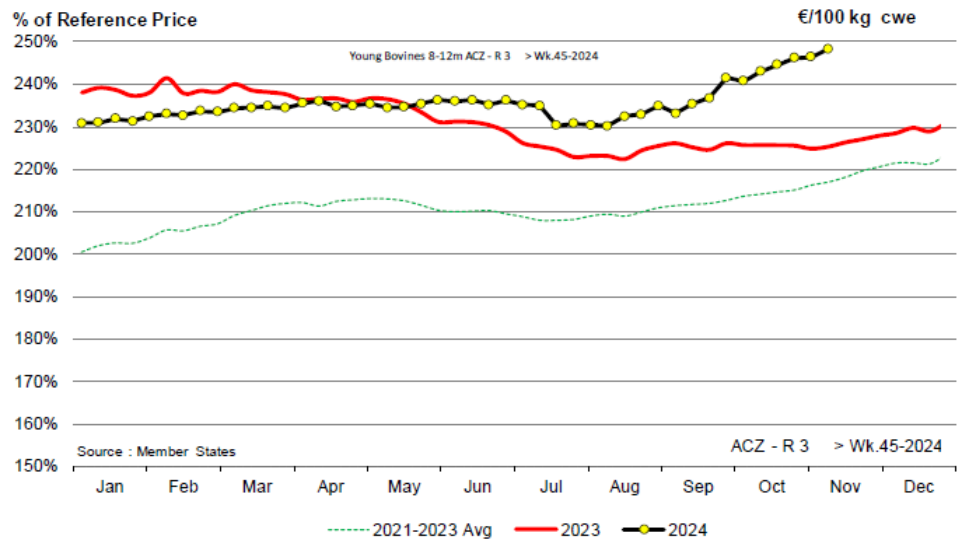
European Commission

# AB DEĞİŞİM A/C/Z. R3

EU ACZ R3 Price Comparison between average monthly price November 2023 - October 2024 compared to November 2022 - October 2023

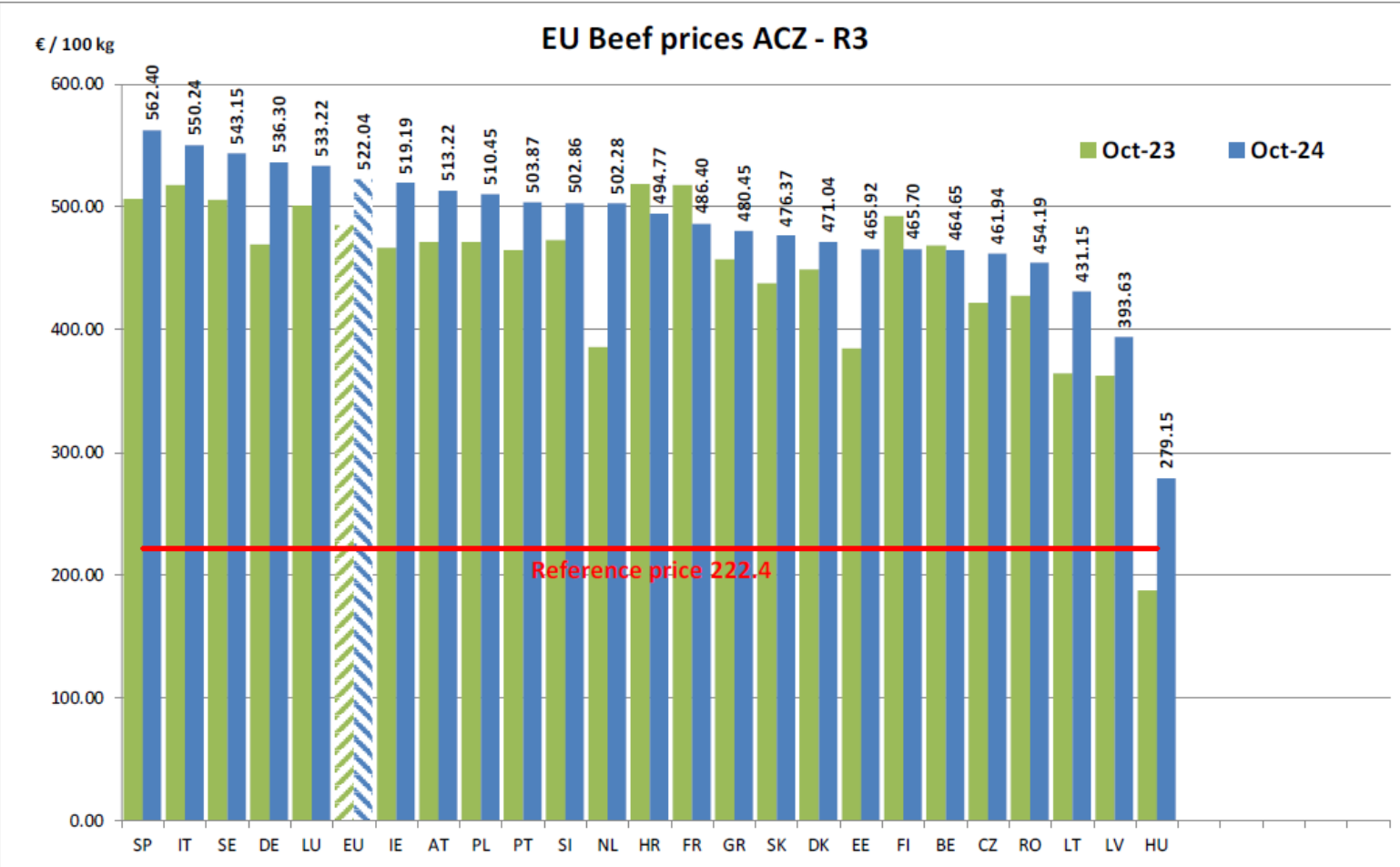


ACZ - R 3 > Wk.45-2024



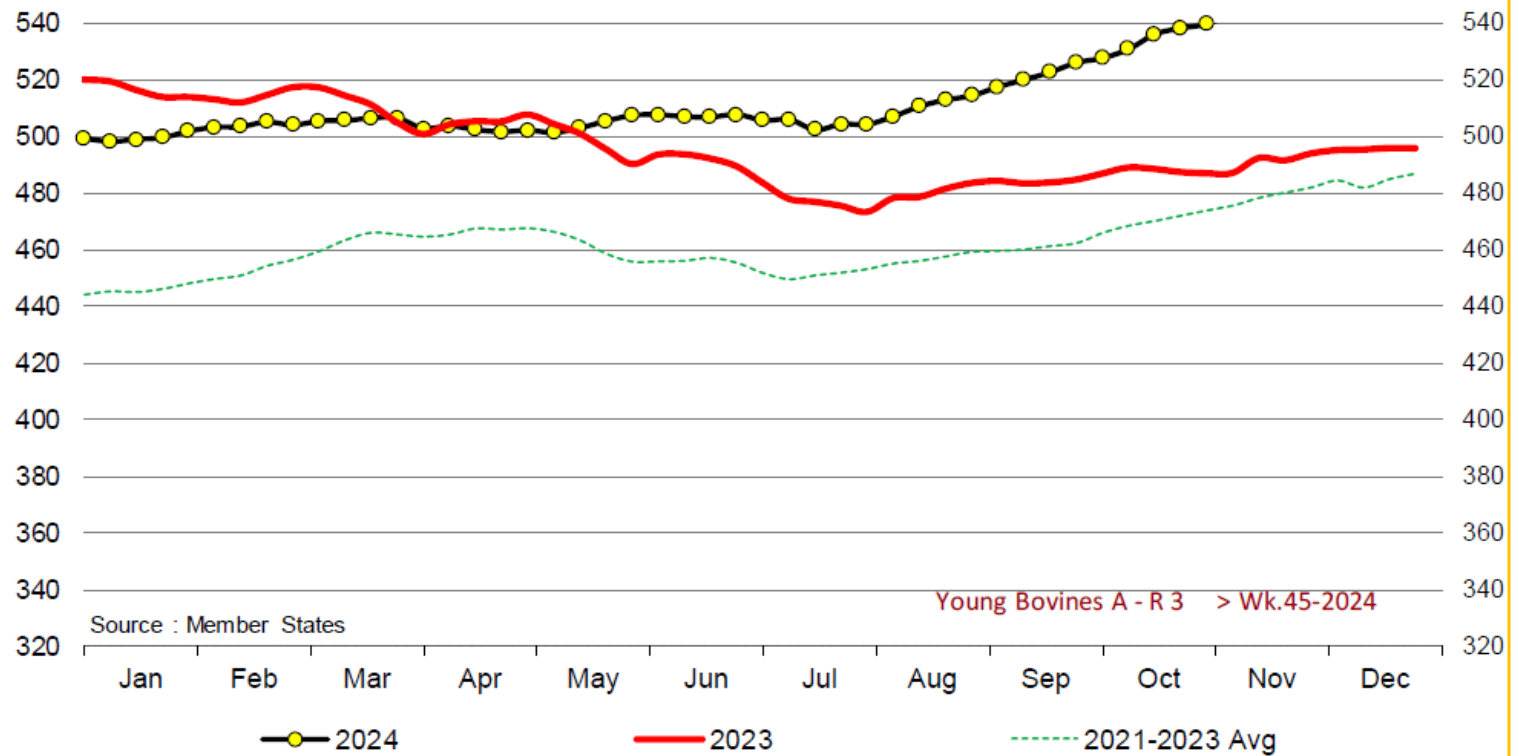
Price in week 45 :	<b>530.54</b>	Average price in October 2024 :	<b>522.04</b>
% change y/y :	<b>+ 9.54%</b>	% change y/y :	<b>+ 7.65%</b>
% Ref. Price in wk 45 :	<b>217.8%</b>		







## Young Bovines A - R 3 > Wk.45-2024

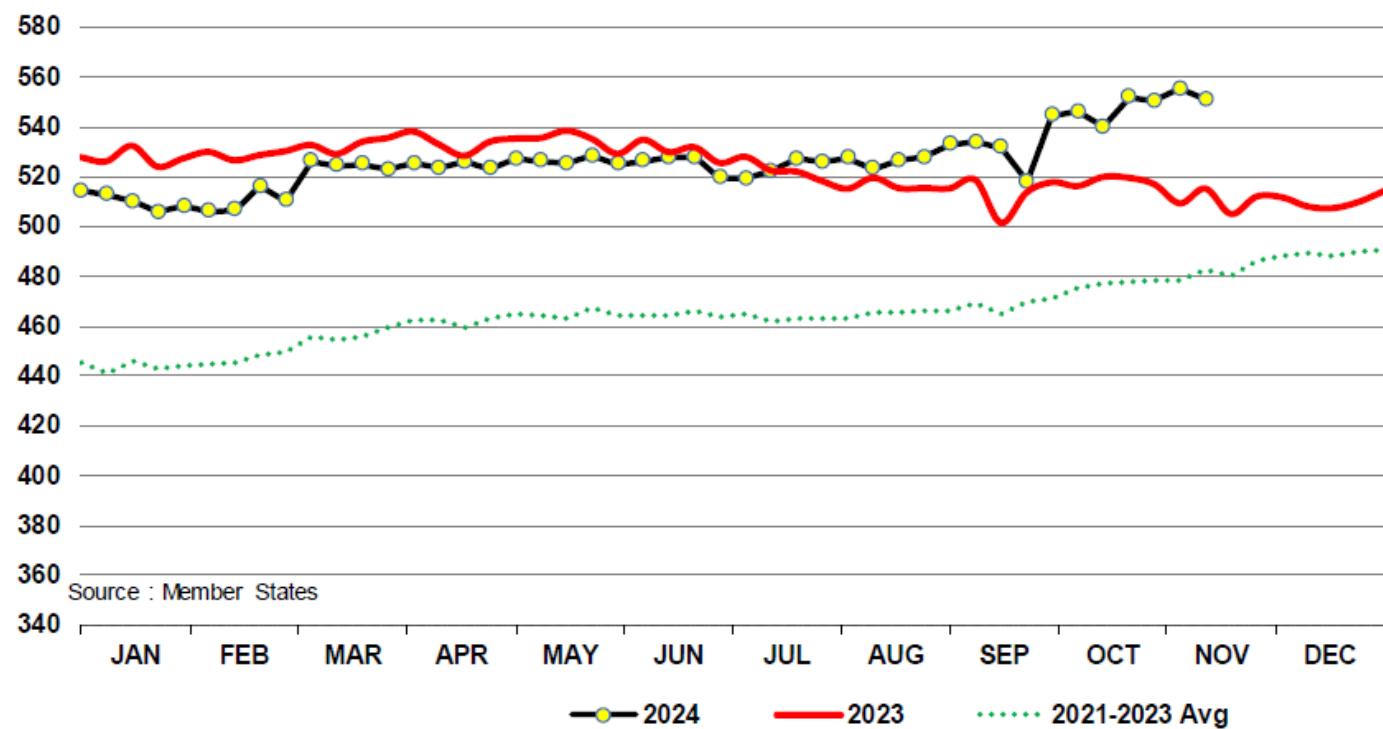


Price in week 45 : **543.55**  
% change y/y : **+ 11.5%**

Average price in October 2024 : **534.19**  
% change y/y : **+ 9.5%**



In € / 100 kg      Young Bovines 8-12m Z - R 3      > Wk.45-2024

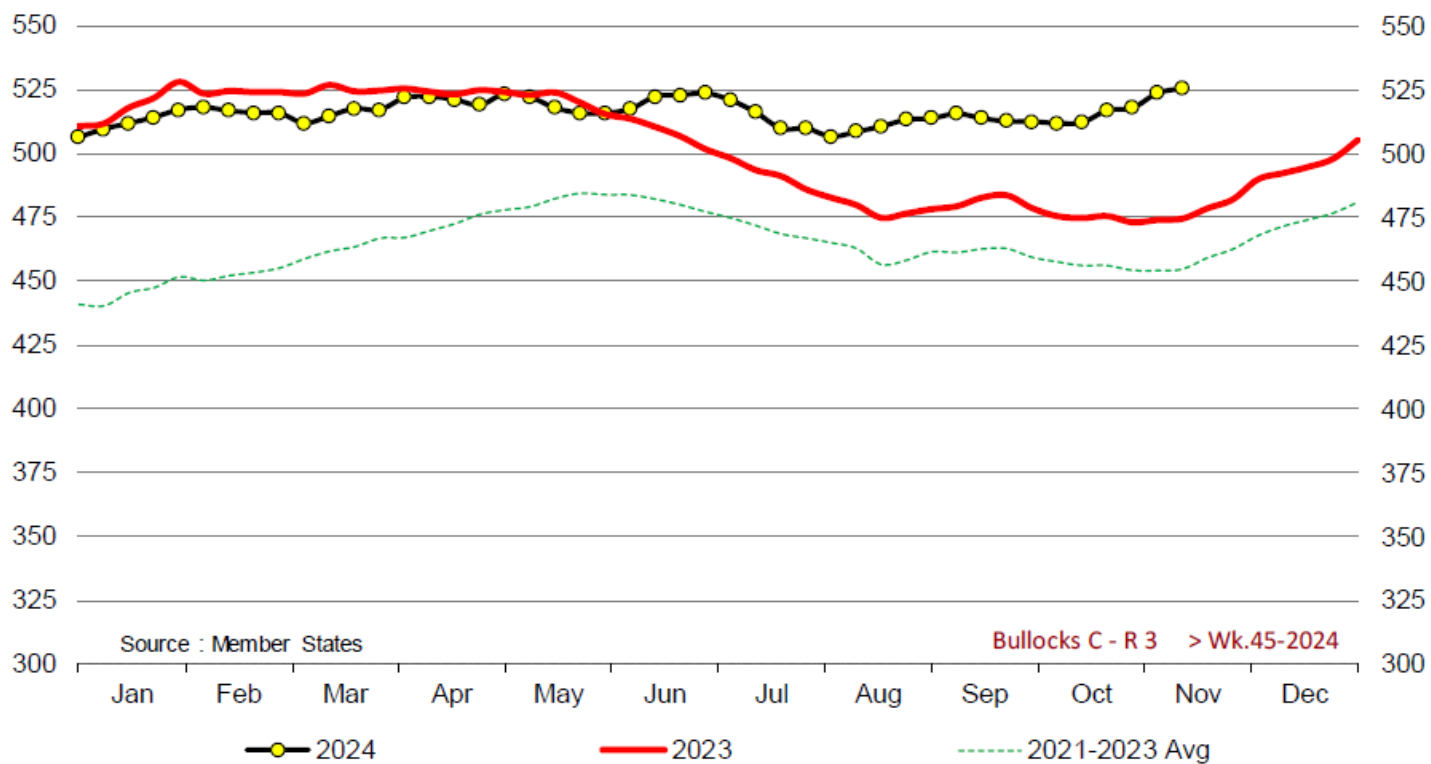


Source : Member States

Price in week 45 :	550.92	10/10/2024	Average price in October 2024 :	548.27
% change y/y :	+ 6.9%		% change y/y :	+ 5.9%



## Bullocks C - R 3 > Wk.45-2024

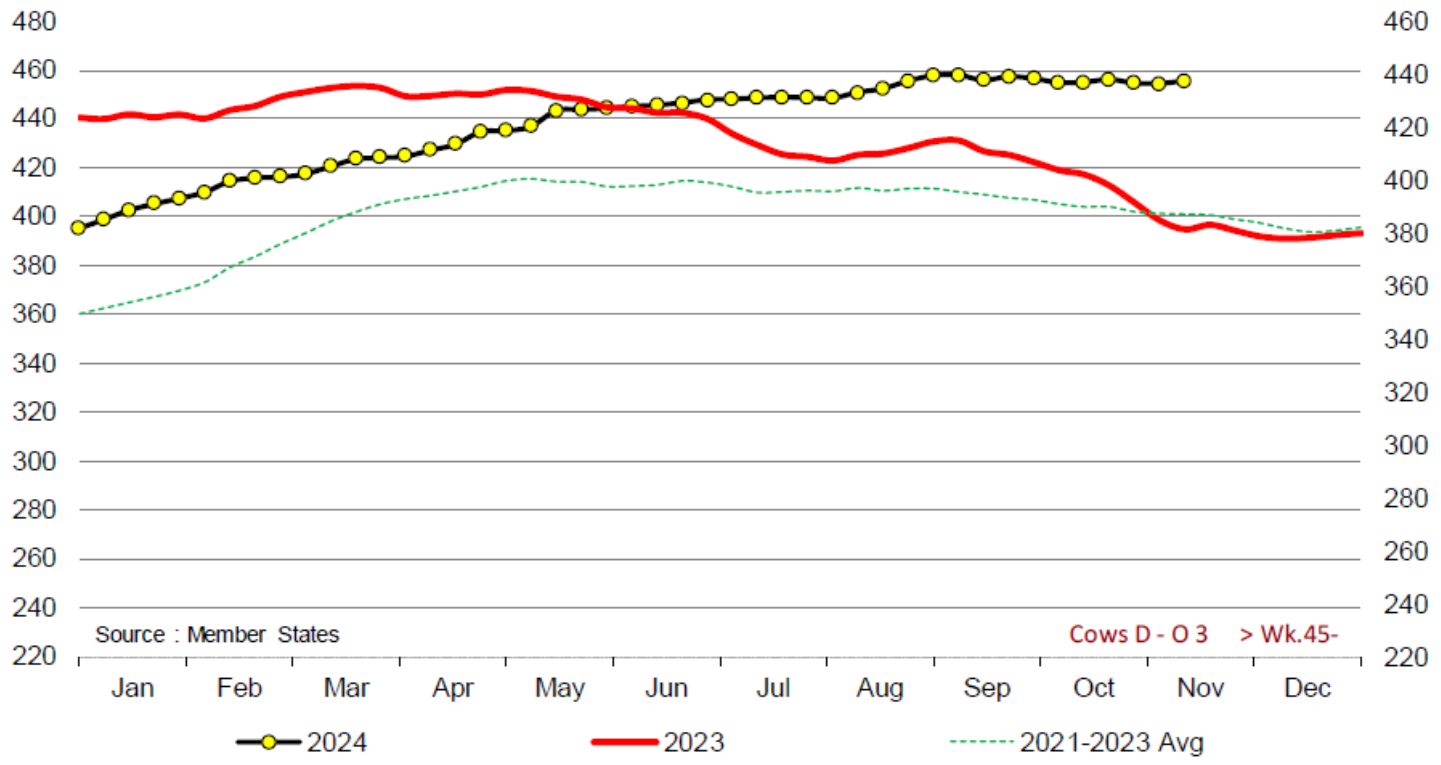


Price in week 45 : **525.30**  
% change y/y : **+ 10.7%**

Average price in October 2024 : **515.85**  
% change y/y : **+ 8.6%**



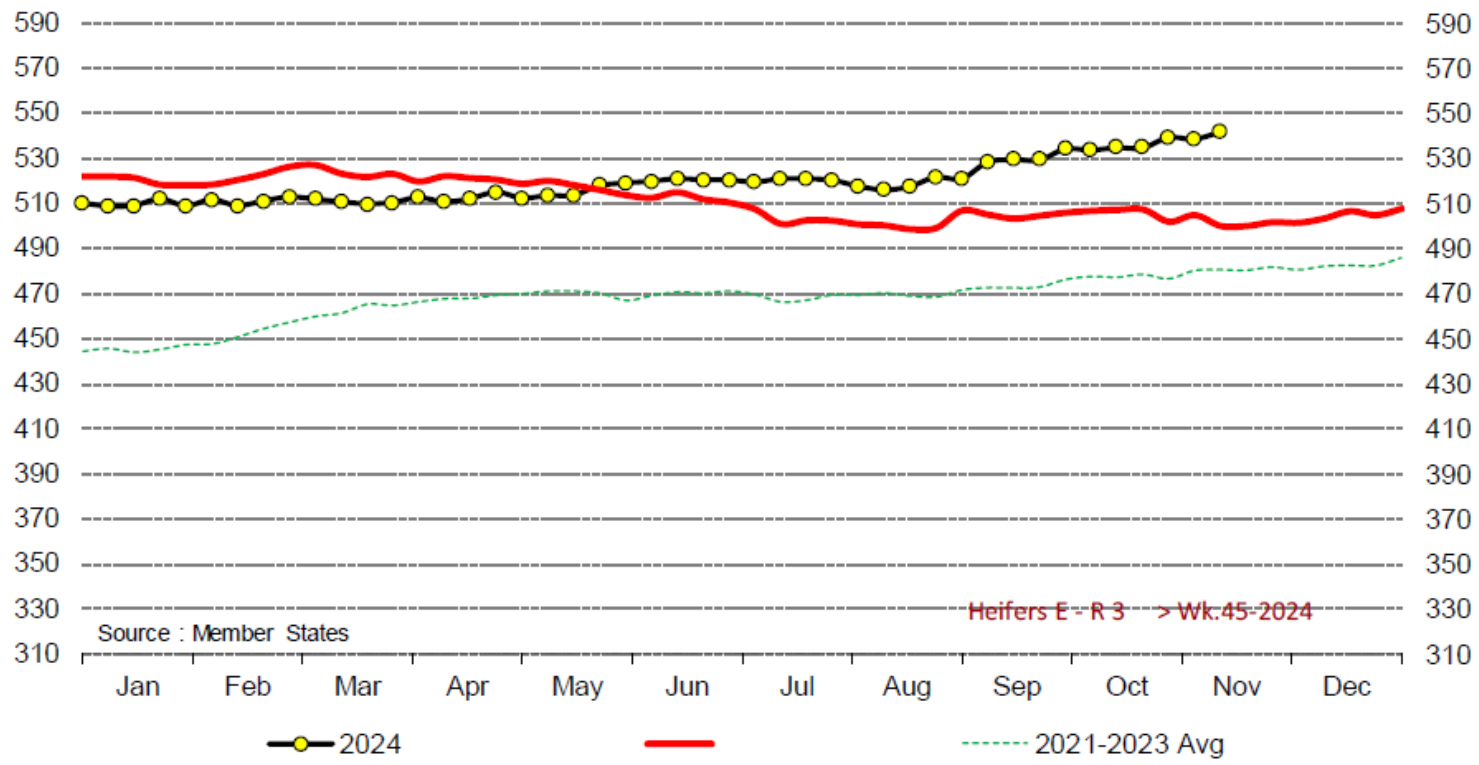
## Cows D - O 3 > Wk.45-2024



Price in week 45 : <b>437.46</b>	Average price in October 2024 : <b>437.01</b>
% change y/y : <b>+ 14.7%</b>	% change y/y : <b>+ 9.8%</b>



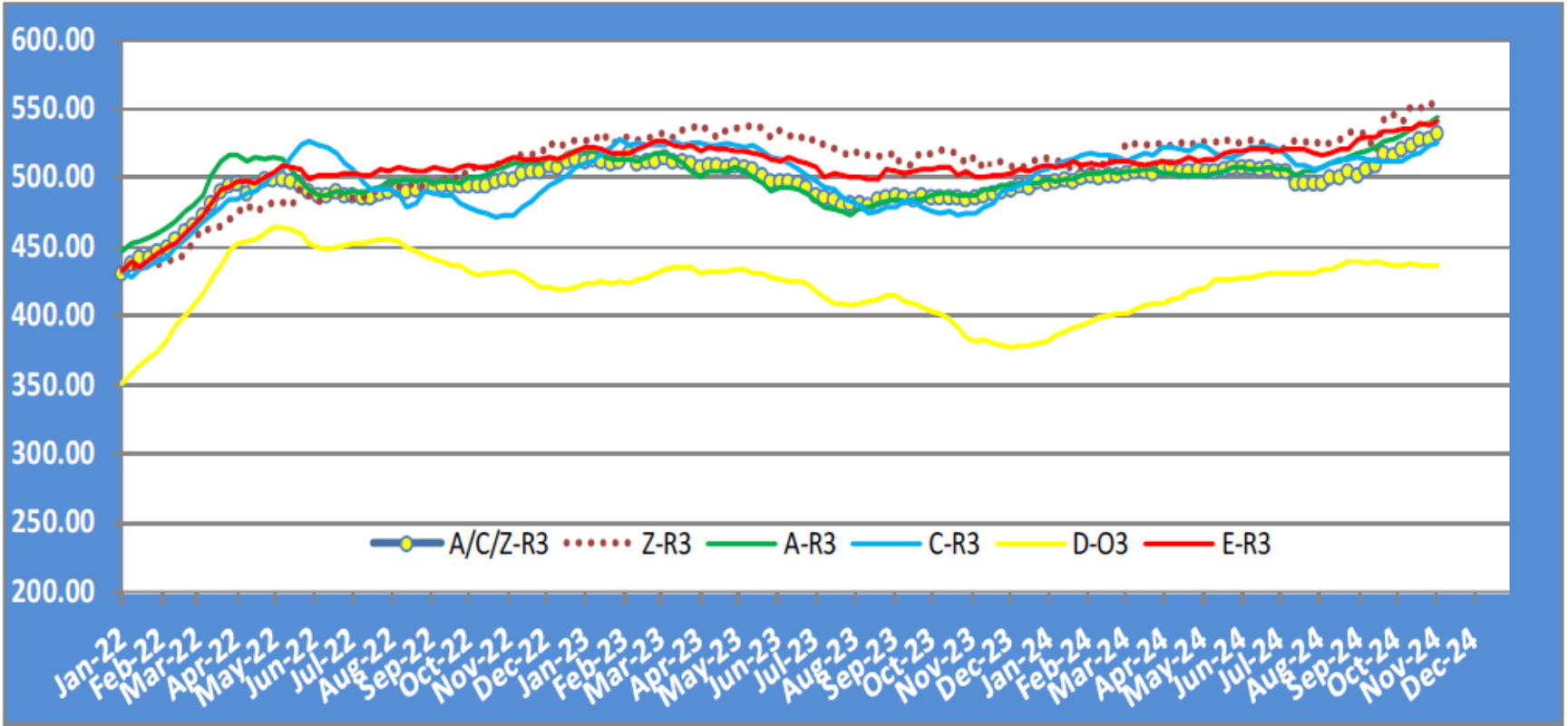
## Heifers E - R 3 > Wk.45-2024



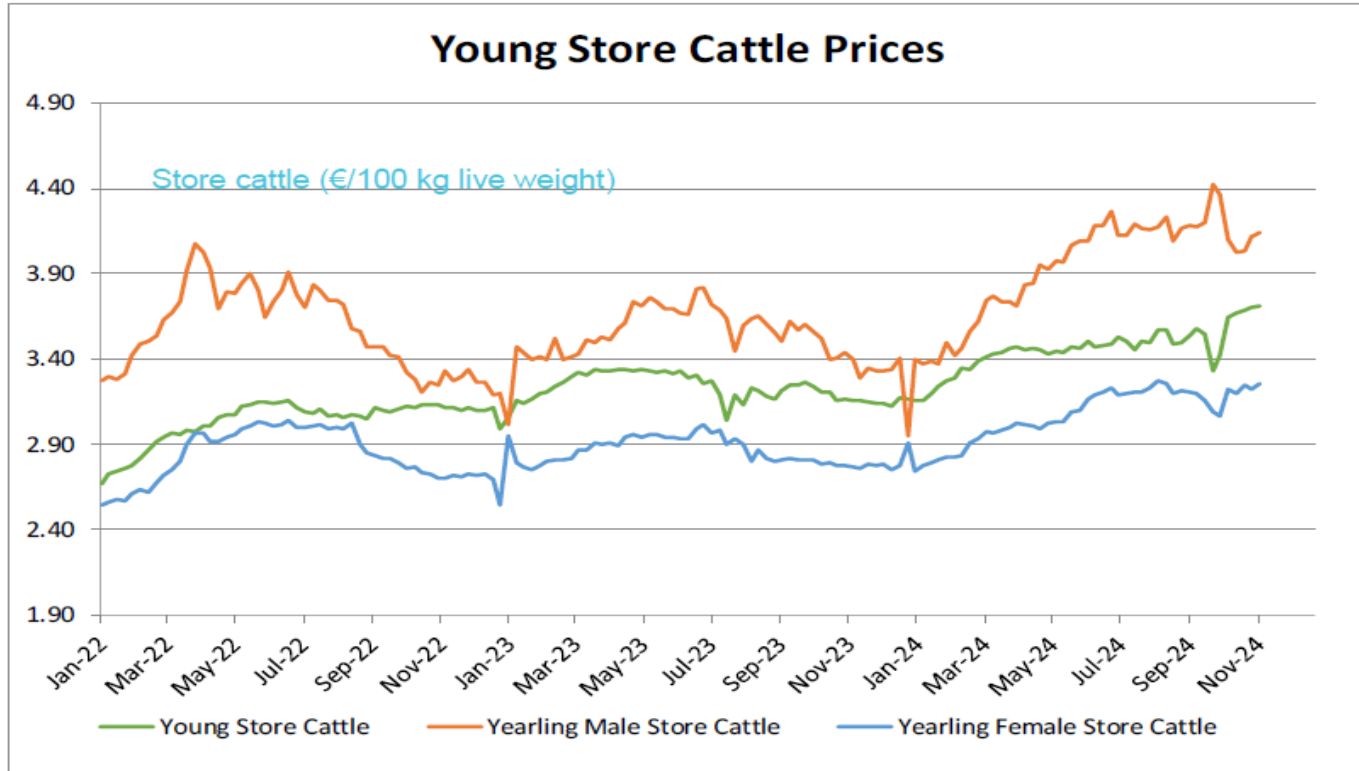
Price in week 45 :	<b>541.96</b>	Average price in October 2024 :	<b>536.12</b>
% change y/y :	<b>+ 8.3%</b>	% change y/y :	<b>+ 6.0%</b>

# KARKAS FİYATLARI

# AB TÜM KATEGORİLERE GLOBAL BAKIŞ



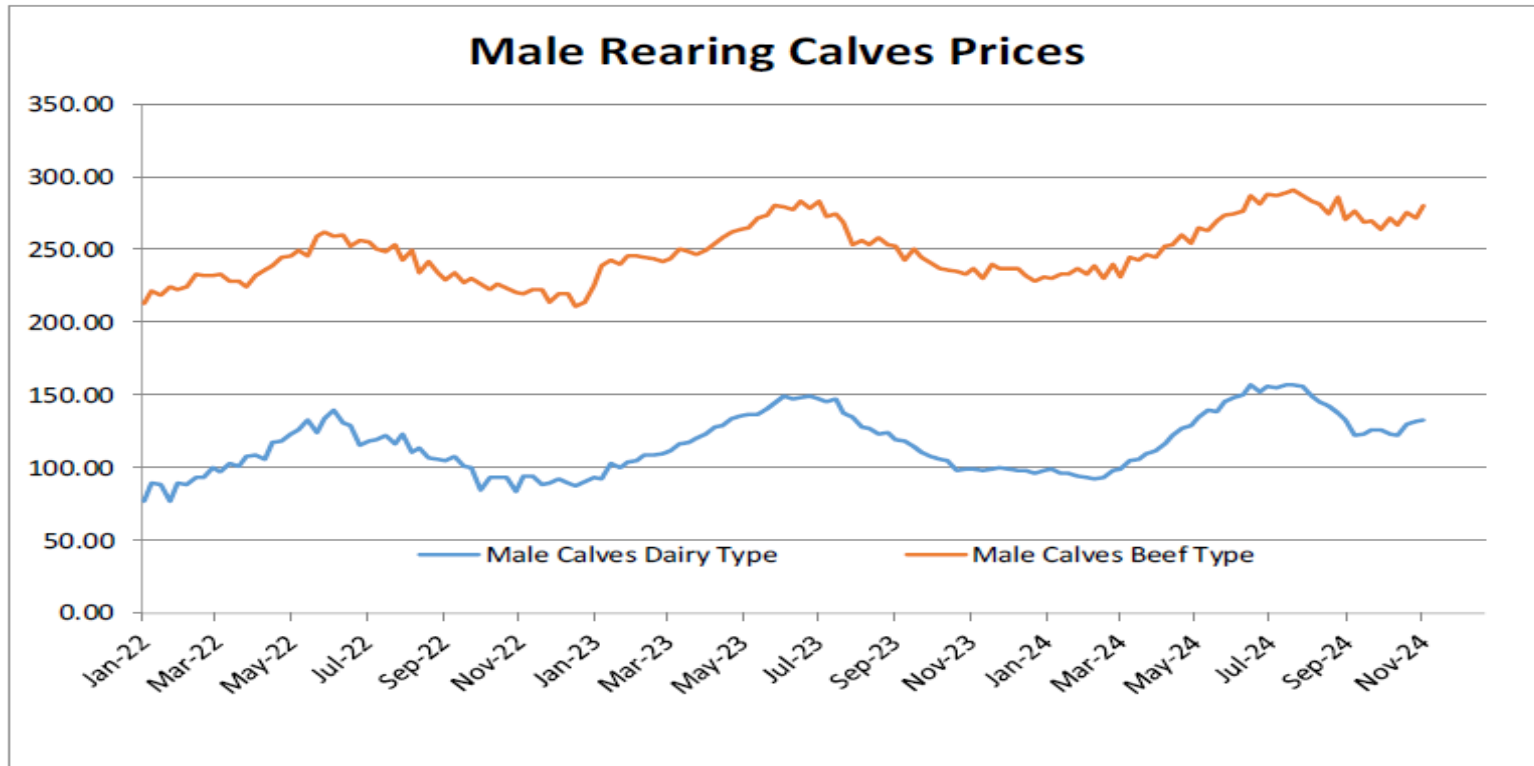
## Besilik siğır (€ / 100 kg canlı ağırlık)



<b>Young Store Cattle Price in</b>	<b>Week 45</b>	<b>3.71</b>	<b>Yearling Male Store Cattle Price</b>	<b>4.14</b>
	Change y/y	+17.7%	Change y/y	+21.8%
<b>Yearling Female Store Cattle Price</b>		<b>3.26</b>		
	Change y/y	+17.8%		



### 8 gün ve 4 haftalık erkek buzağlar (€/baş)



**Male Rearing Calves Beef type**

Price in Week 45 280.18

Change y/y +18.2%

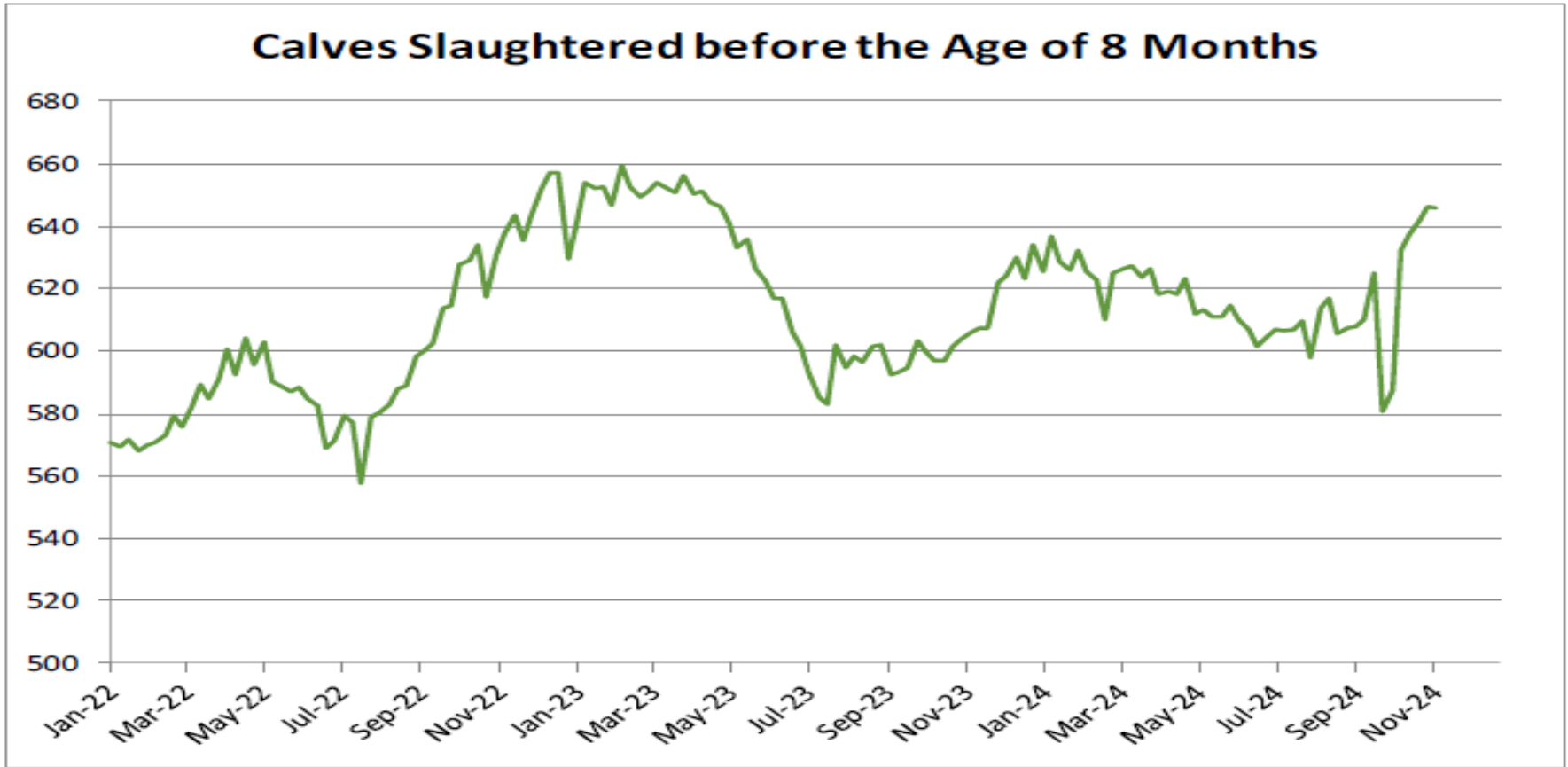
**Male Rearing Calves Dairy type**

Price in Week 45 132.68

Change y/y +34.0%

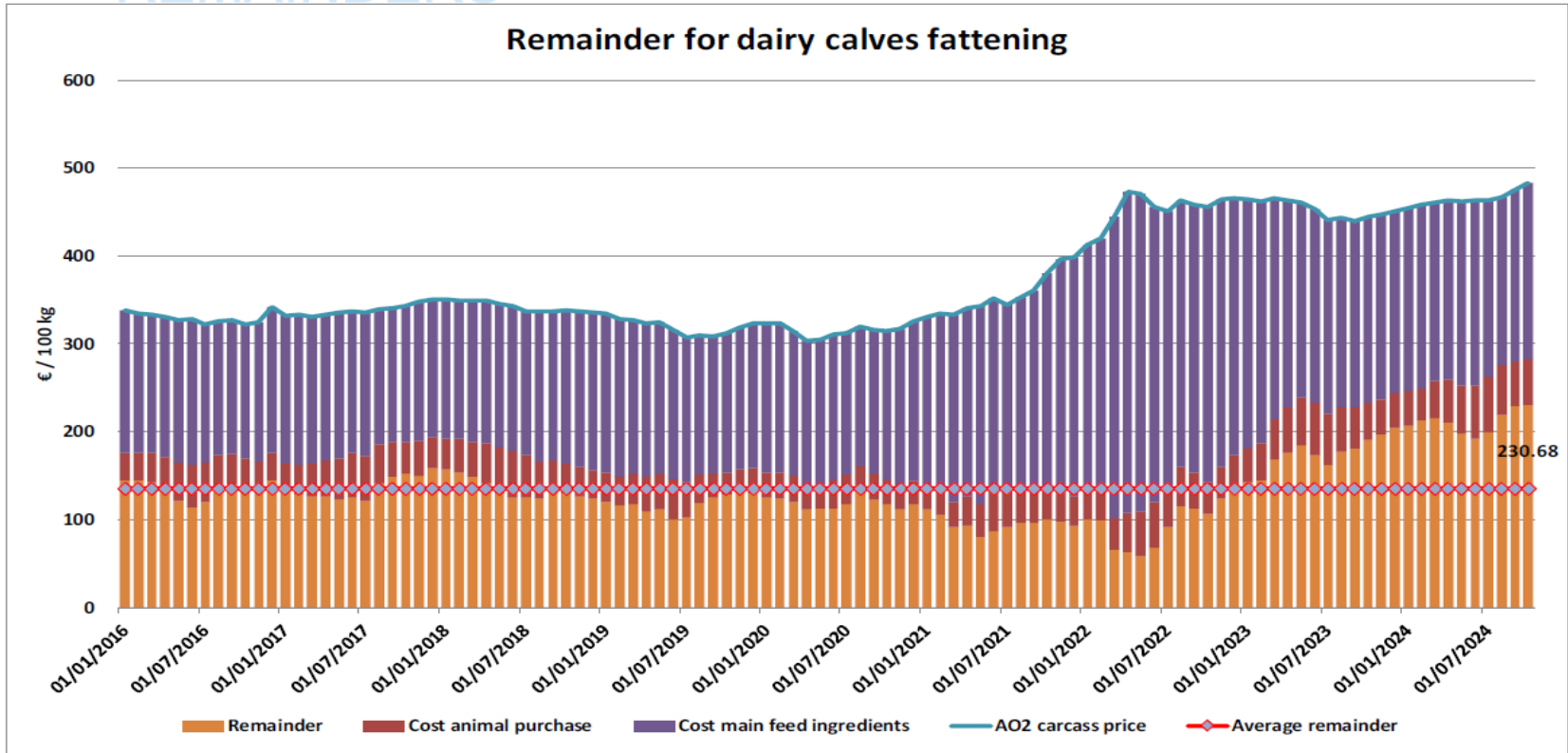


## 8 aylıktan küçük kesilen buzağular (€ / 100 kg canlı ağırlık)

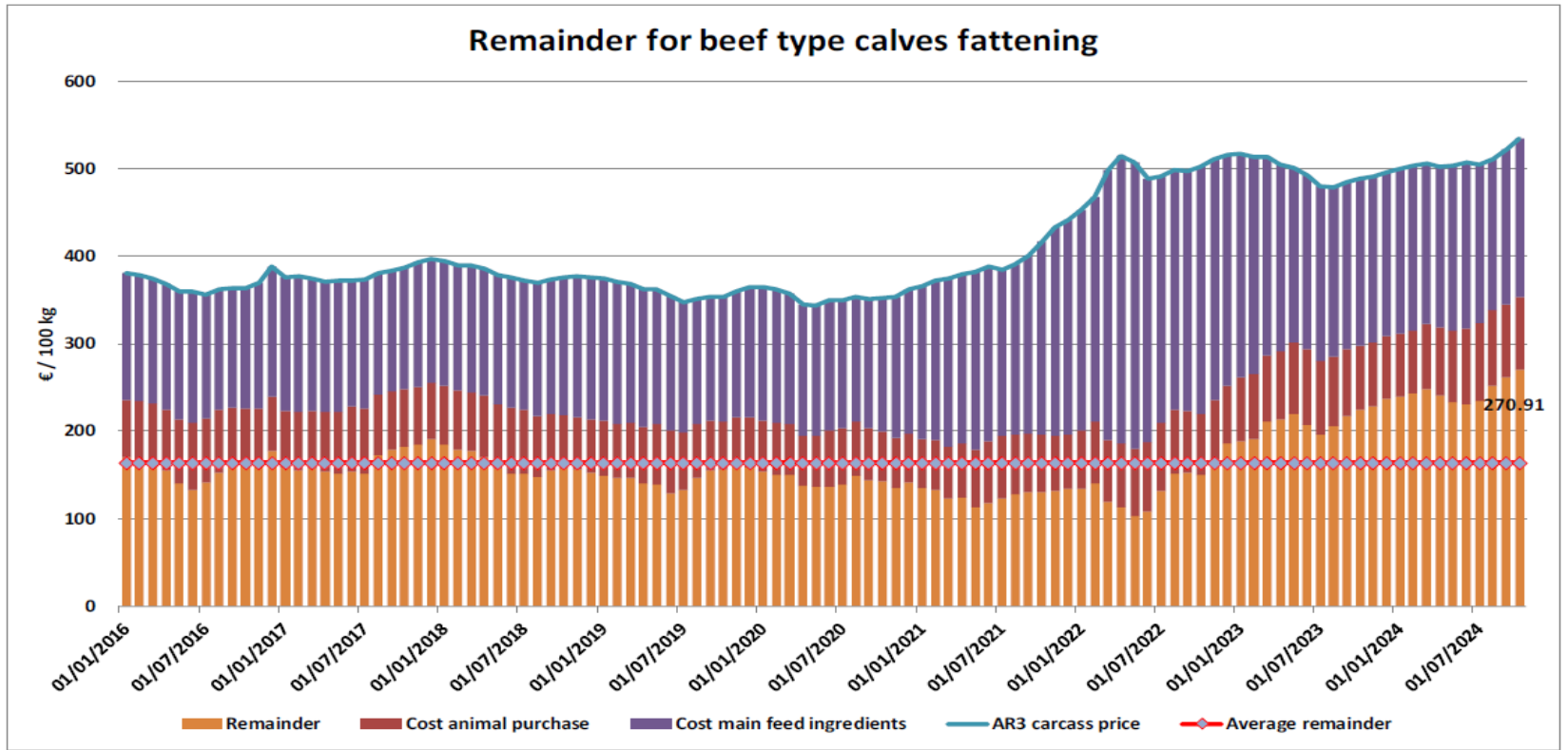


**Price in Week 45** 645.96 € / 100 kg of carcasse weight  
Change y/y +6.6%

## Süt Buzaklıları Besiciliği İçin Kalanlar



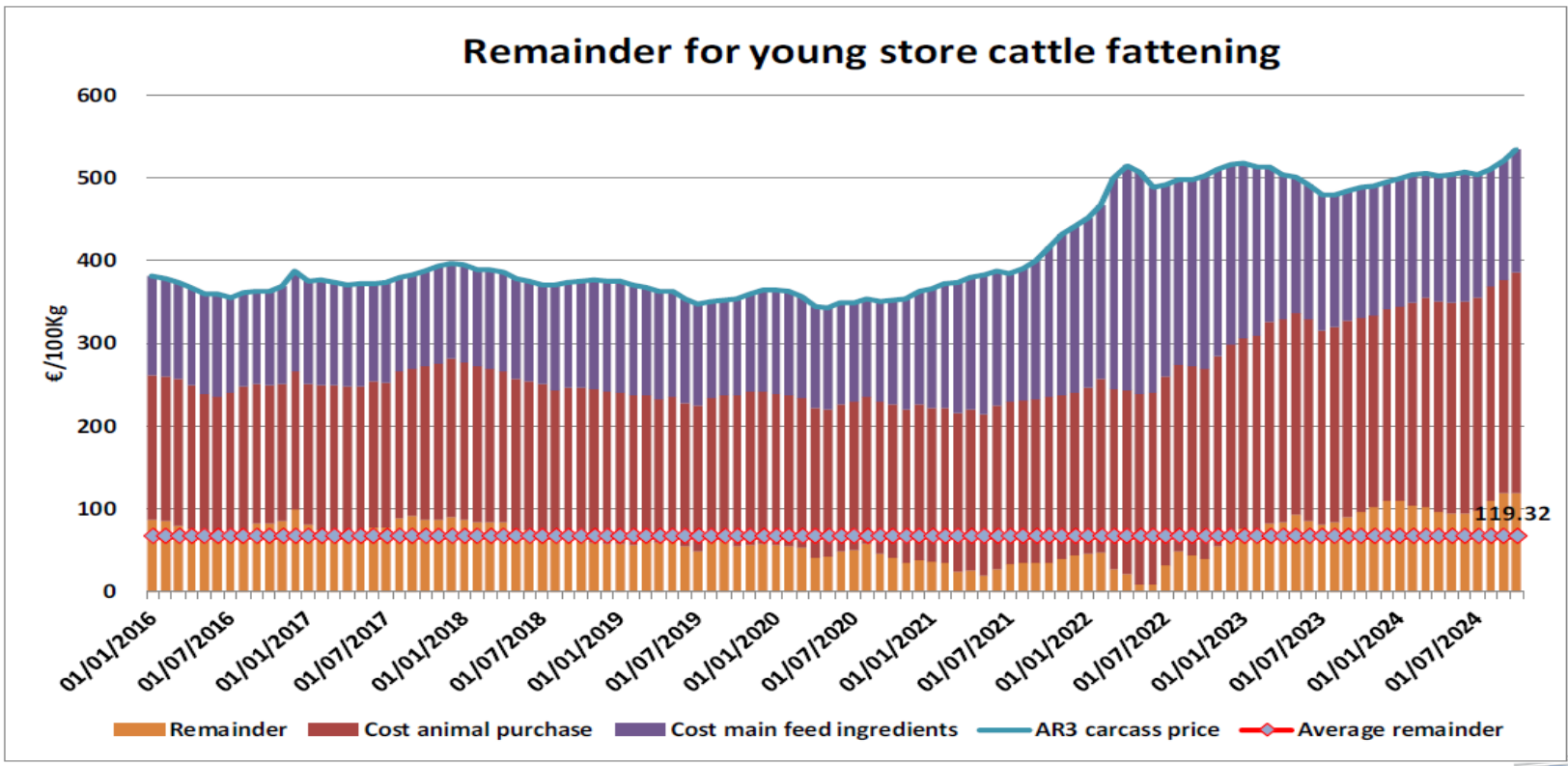
## Sığır Tipi Buzağı Besiciliği İçin Kalanlar





European Commission

## Genç Besilik Sığır Besiciliği İçin Kalanlar

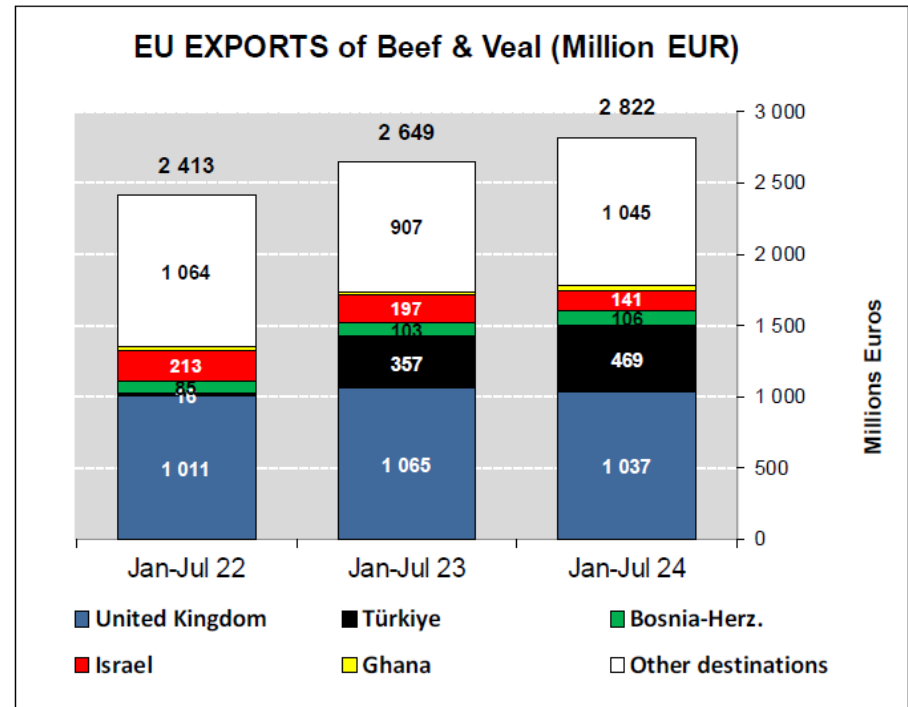
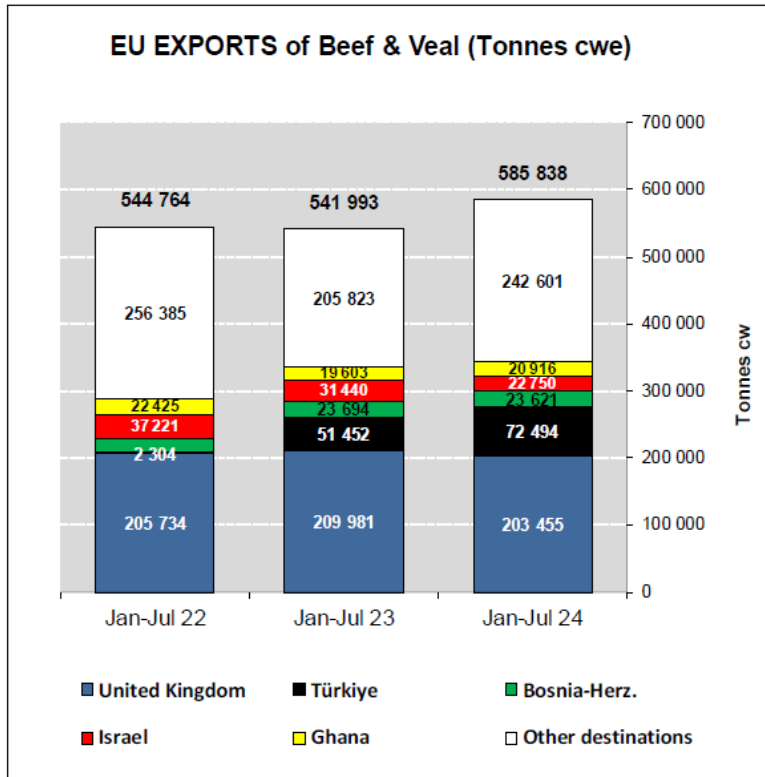


## AB sığır eti ve canlı hayvan ihracatı (yağlar hariç): Pazar Rakamları (COMEXT – ton ca)

Destinations	2020		2021		2022		2023		Jan-Jul 24		Compared to Jan-Jul 23
	tonnes	%	tonnes	%	tonnes	%	tonnes	%	tonnes	%	
United Kingdom	450 514	39.5%	344 633	33.4%	366 332	38.9%	368 889	38.4%	203 455	34.7%	- 3.1%
Türkiye	22 338	2.0%	14 953	1.5%	14 168	1.5%	90 953	9.5%	72 494	12.4%	+ 40.9%
Bosnia-Herz.	34 896	3.1%	40 504	3.9%	38 796	4.1%	45 149	4.7%	23 621	4.0%	- 0.3%
Israel	56 139	4.9%	66 022	6.4%	63 618	6.7%	45 132	4.7%	22 750	3.9%	- 27.6%
Ghana	47 344	4.2%	47 618	4.6%	32 171	3.4%	33 894	3.5%	20 916	3.6%	+ 6.7%
Morocco	10 049	0.9%	11 868	1.2%	8 273	0.9%	25 635	2.7%	15 412	2.6%	+ 10.2%
Algeria	39 396	3.5%	24 111	2.3%	25 459	2.7%	11 543	1.2%	15 375	2.6%	+ 81.6%
Ivory Coast	32 433	2.8%	29 187	2.8%	29 882	3.2%	30 176	3.1%	15 366	2.6%	- 8.1%
Kosovo	10 391	0.9%	16 478	1.6%	17 069	1.8%	22 677	2.4%	15 067	2.6%	+ 36.3%
Switzerland	26 223	2.3%	28 717	2.8%	24 958	2.6%	19 352	2.0%	14 302	2.4%	+ 24.6%
Philippines	33 650	3.0%	34 671	3.4%	29 922	3.2%	18 479	1.9%	14 156	2.4%	+ 53.0%
Lebanon	33 709	3.0%	19 527	1.9%	21 026	2.2%	21 627	2.3%	12 591	2.1%	+ 22.5%
Hong Kong	56 713	5.0%	44 769	4.3%	10 570	1.1%	21 702	2.3%	12 253	2.1%	- 4.1%
Canada	20 450	1.8%	20 670	2.0%	19 928	2.1%	15 941	1.7%	8 882	1.5%	+ 13.9%
Japan	11 885	1.0%	21 888	2.1%	19 948	2.1%	12 677	1.3%	8 355	1.4%	+ 16.3%
North Macedonia	7 182	0.6%	12 935	1.3%	9 934	1.1%	9 971	1.0%	6 589	1.1%	+ 16.1%
Other Destinations	246 138	21.6%	252 427	24.5%	210 442	22.3%	166 599	17.3%	104 252	17.8%	
<b>Total</b>	<b>1 139 450</b>		<b>1 030 978</b>		<b>942 496</b>		<b>960 394</b>		<b>585 838</b>		
% change			- 10%		- 9%		+ 2%		+ 8.1%		

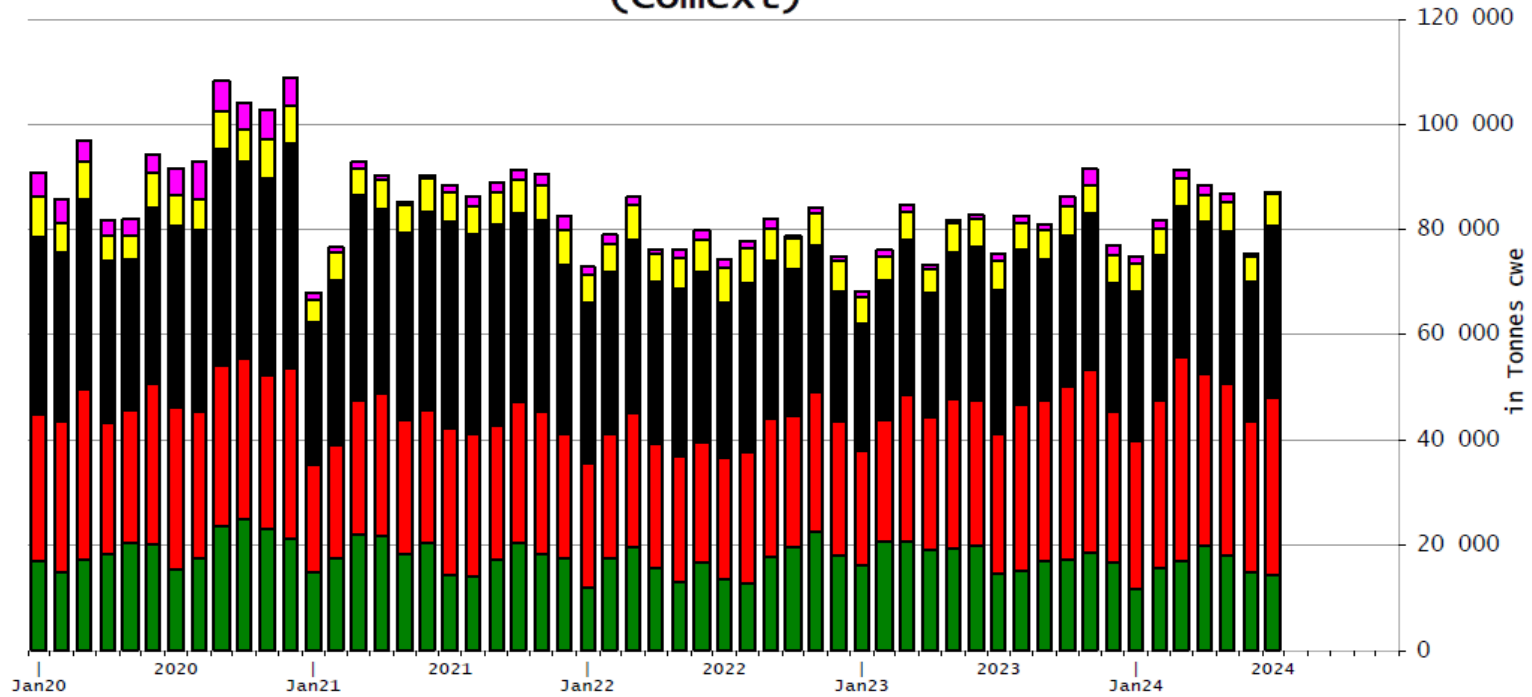


## AB Sığır Eti ve Canlı Hayvan İhracatları (yağlar hariç)



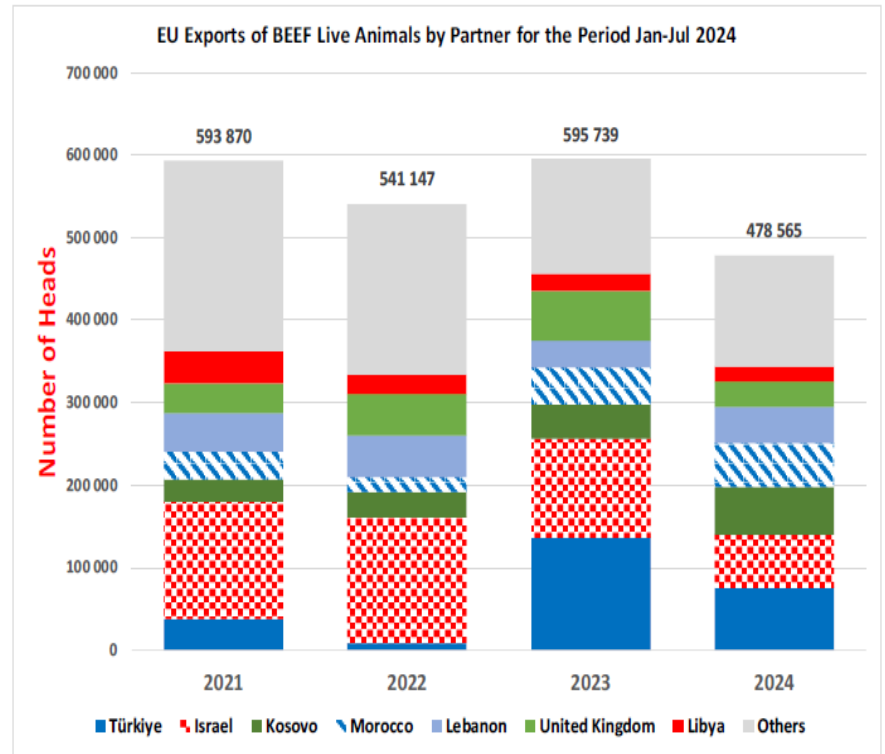
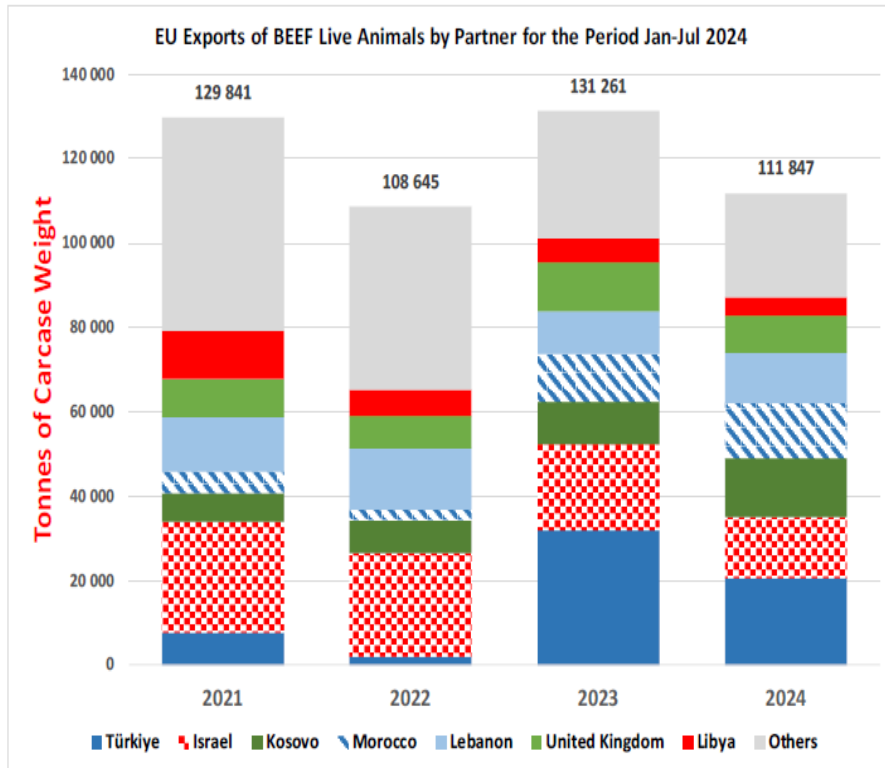
## AB Sığır Eti İhracatları

EU Exports of BEEF products  
(Comext)





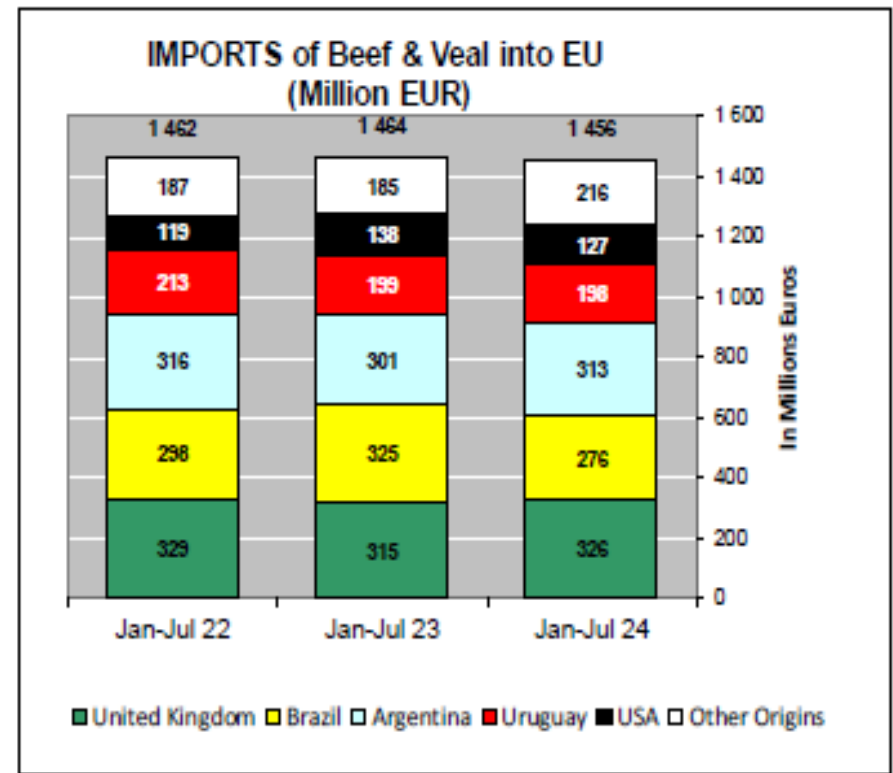
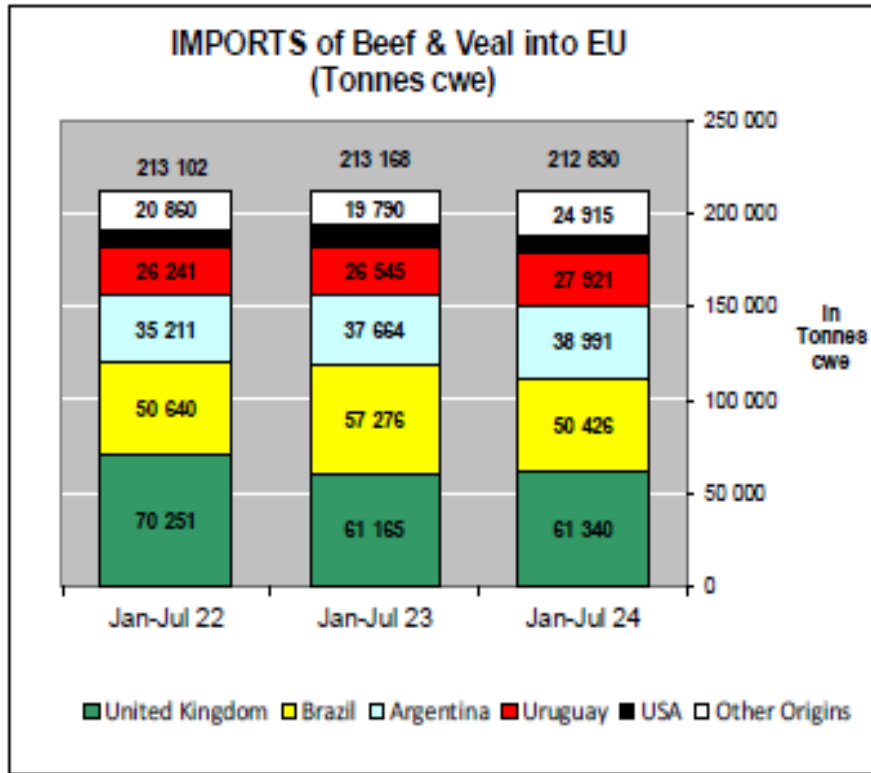
## AB Canlı Hayvan İhracatları



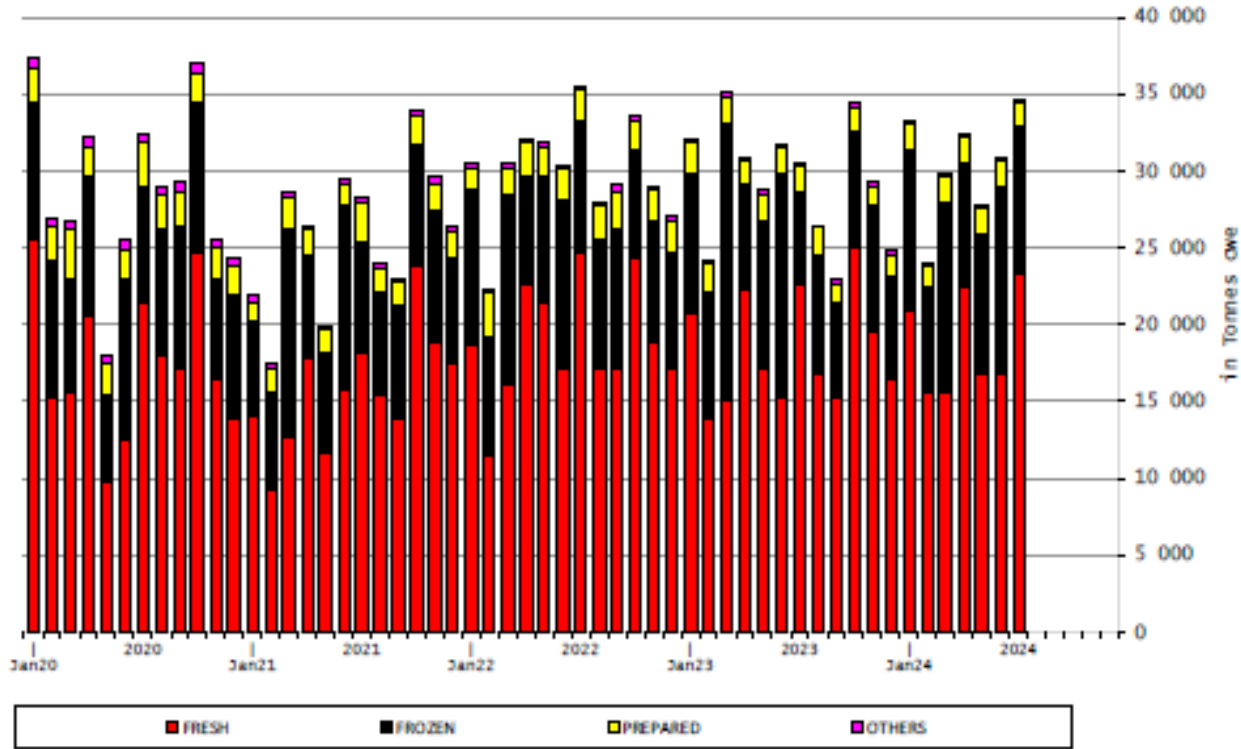
## AB Canlı Hayvan ve Sığır Eti İthalatları (Yağlar hariç) (Ton)

Origins	2020		2021		2022		2023		Jan-Jul 24		Compared to Jan-Jul 23
	tonnes	%	tonnes	%	tonnes	%	tonnes	%	tonnes	%	
United Kingdom	120 743	35.1%	87 596	28.3%	118 767	33.0%	107 089	30.5%	61 340	28.8%	+ 0.3%
Brazil	84 139	24.4%	81 737	26.4%	86 512	24.0%	86 831	24.7%	50 426	23.7%	- 12.0%
Argentina	56 421	16.4%	52 300	16.9%	62 584	17.4%	63 107	18.0%	38 991	18.3%	+ 3.5%
Uruguay	34 611	10.0%	42 669	13.8%	37 619	10.5%	41 591	11.8%	27 921	13.1%	+ 5.2%
USA	16 532	4.8%	14 910	4.8%	17 269	4.8%	18 281	5.2%	9 237	4.3%	- 13.9%
Namibia	1 445	0.4%	1 996	0.6%	5 168	1.4%	7 577	2.2%	6 182	2.9%	+ 64.3%
Australia	11 058	3.2%	8 925	2.9%	8 385	2.3%	7 727	2.2%	5 488	2.6%	+ 13.9%
New Zealand	6 116	1.8%	4 380	1.4%	5 202	1.4%	4 518	1.3%	3 362	1.6%	+ 25.4%
Botswana	788	0.2%	331	0.1%	928	0.3%	1 610	0.5%	2 988	1.4%	+++
Paraguay	4 234	1.2%	3 933	1.3%	5 404	1.5%	4 768	1.4%	2 817	1.3%	- 16.3%
Switzerland	4 187	1.2%	4 714	1.5%	4 730	1.3%	3 627	1.0%	1 945	0.9%	+ 3.9%
Canada	1 550	0.5%	1 816	0.6%	2 172	0.6%	1 468	0.4%	591	0.3%	- 37.4%
Japan	789	0.2%	1 478	0.5%	2 143	0.6%	834	0.2%	533	0.3%	+ 9.3%
Serbia	931	0.3%	963	0.3%	1 058	0.3%	812	0.2%	365	0.2%	- 34.0%
Norway	335	0.1%	571	0.2%	704	0.2%	670	0.2%	287	0.1%	- 26.2%
Chile	168	0.0%	238	0.1%	378	0.1%	365	0.1%	199	0.1%	- 8.6%
Other Destinations	357	0.1%	710	0.2%	961	0.3%	352	0.1%	157	0.1%	
<b>Total</b>	<b>344 403</b>		<b>309 267</b>		<b>359 985</b>		<b>351 228</b>		<b>212 830</b>		
% change			- 10%		+ 16%		- 2%		- 0.2%		

## AB Sığır Eti ve Canlı Hayvan İthalatları (Yağlar hariç) (Ton)



## AB Sığır Eti Ürünleri İthalatları (Ton karkas ağırlık eşdeğeri)

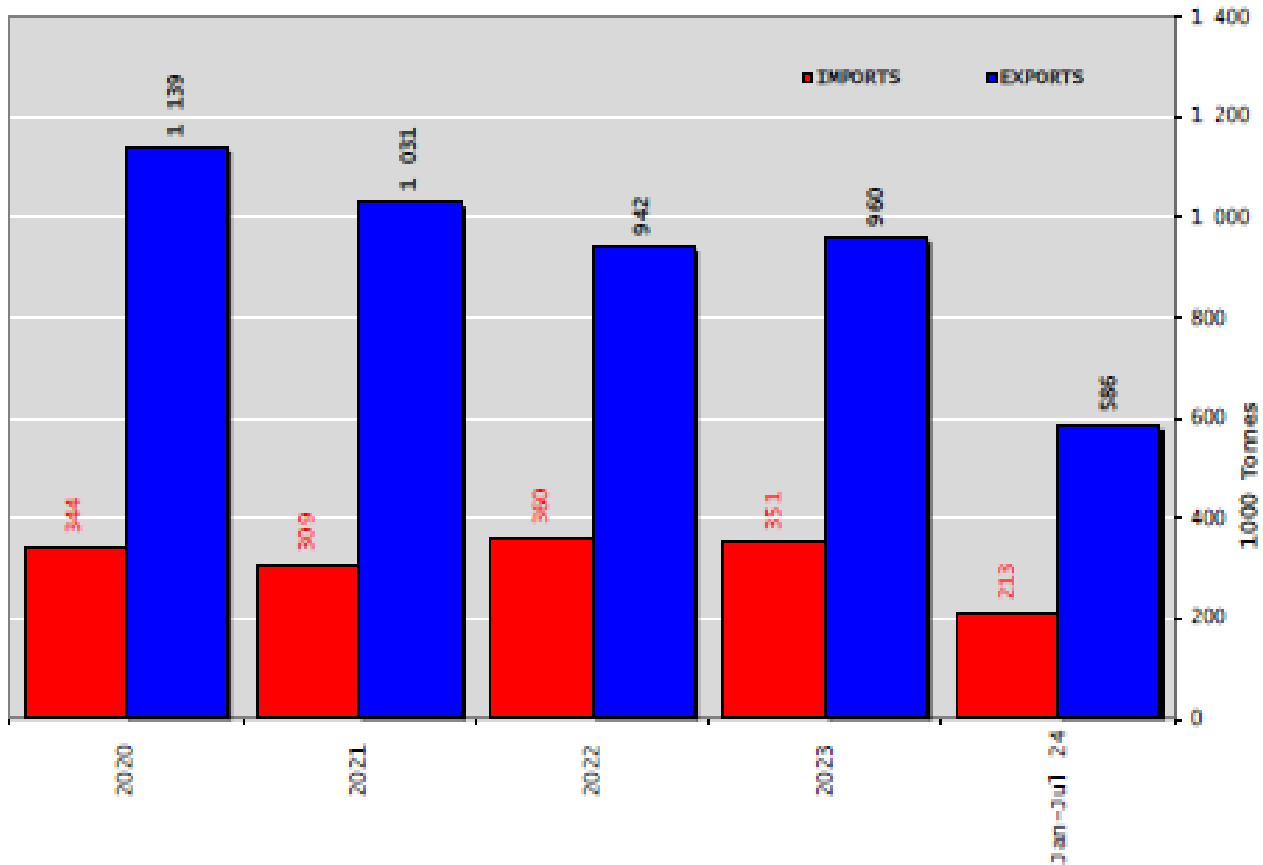


### AB'nin Birleşik Krallık'tan Sığır Eti İthalatı (yağlar hariç) Ürünlere Göre

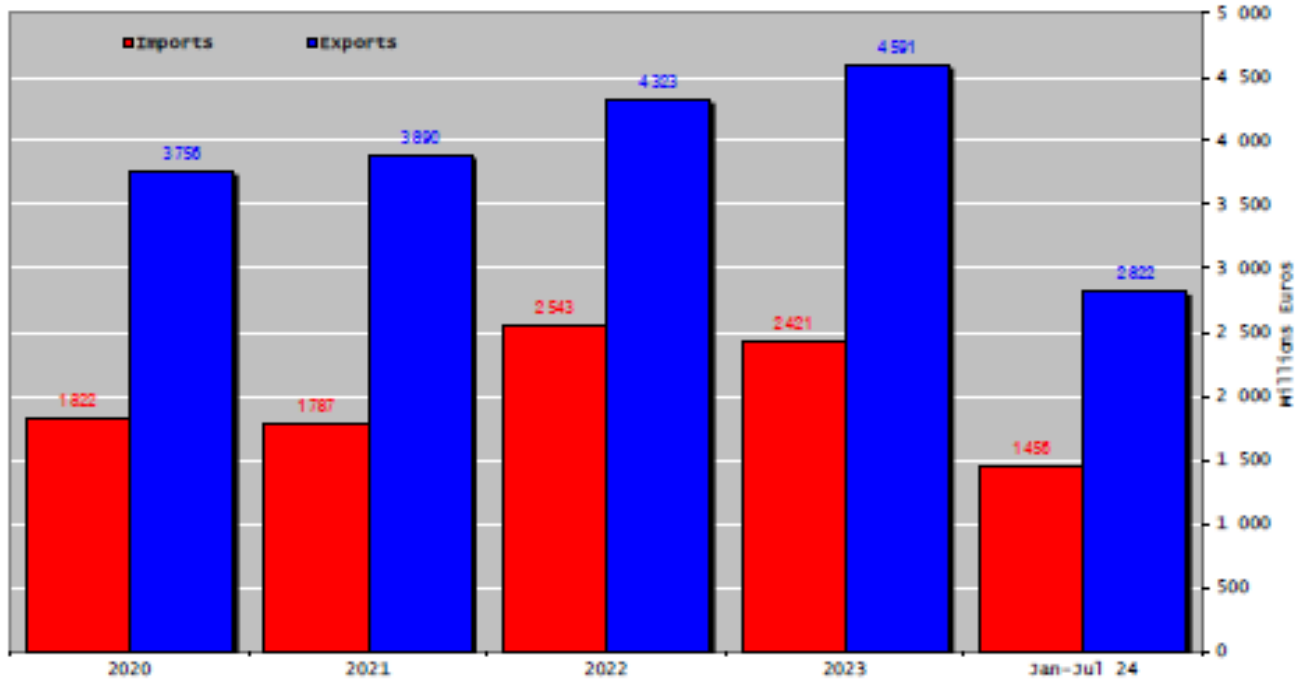
	Jan-Jul 22			Jan-Jul 23			Jan-Jul 24			% Jan-Jul 24/Jan-Jul 23	
	United Kingdom	Extra-EU	%	United Kingdom	Extra-EU	%	United Kingdom	Extra-EU	%	United Kingdom	Extra-EU
Live Animals	414	466	88.8%	51	114	44.9%	51	91	55.7%	-0.7%	-19.9%
Meats	69 837	212 636	32.8%	61 114	213 055	28.7%	61 290	212 739	28.8%	+0.3%	-0.1%
Fresh	47 565	129 015	36.9%	39 628	123 659	32.0%	41 151	127 997	32.1%	+3.8%	+3.5%
Frozen	12 628	62 405	20.2%	12 698	69 677	18.2%	11 686	66 452	17.6%	-8.0%	-4.6%
Salted Meat	164	1 539	10.7%	206	1 306	15.7%	108	1 300	8.3%	-47.7%	-0.5%
Prepared	5 248	13 933	37.7%	4 129	12 412	33.3%	4 112	11 096	37.1%	-0.4%	-10.6%
Fresh Offals	2 532	3 220	78.6%	2 663	3 392	78.5%	2 626	3 321	79.1%	-1.4%	-2.1%
Frozen Offals	1 672	2 459	68.0%	1 767	2 552	69.2%	1 579	2 528	62.4%	-10.6%	-0.9%
Salted Offals	18	24	76.6%	21	44	48.0%	23	37	61.8%	+10.2%	-14.3%
Prepared Offal	9	42	20.5%	3	13	22.4%	6	8	74.3%	+87.9%	-43.4%
<b>Total Beef</b>	<b>70 251</b>	<b>213 102</b>	<b>33.0%</b>	<b>61 165</b>	<b>213 168</b>	<b>28.7%</b>	<b>61 340</b>	<b>212 830</b>	<b>28.8%</b>	<b>+0.3%</b>	<b>-0.2%</b>

Source : Estat - Comext

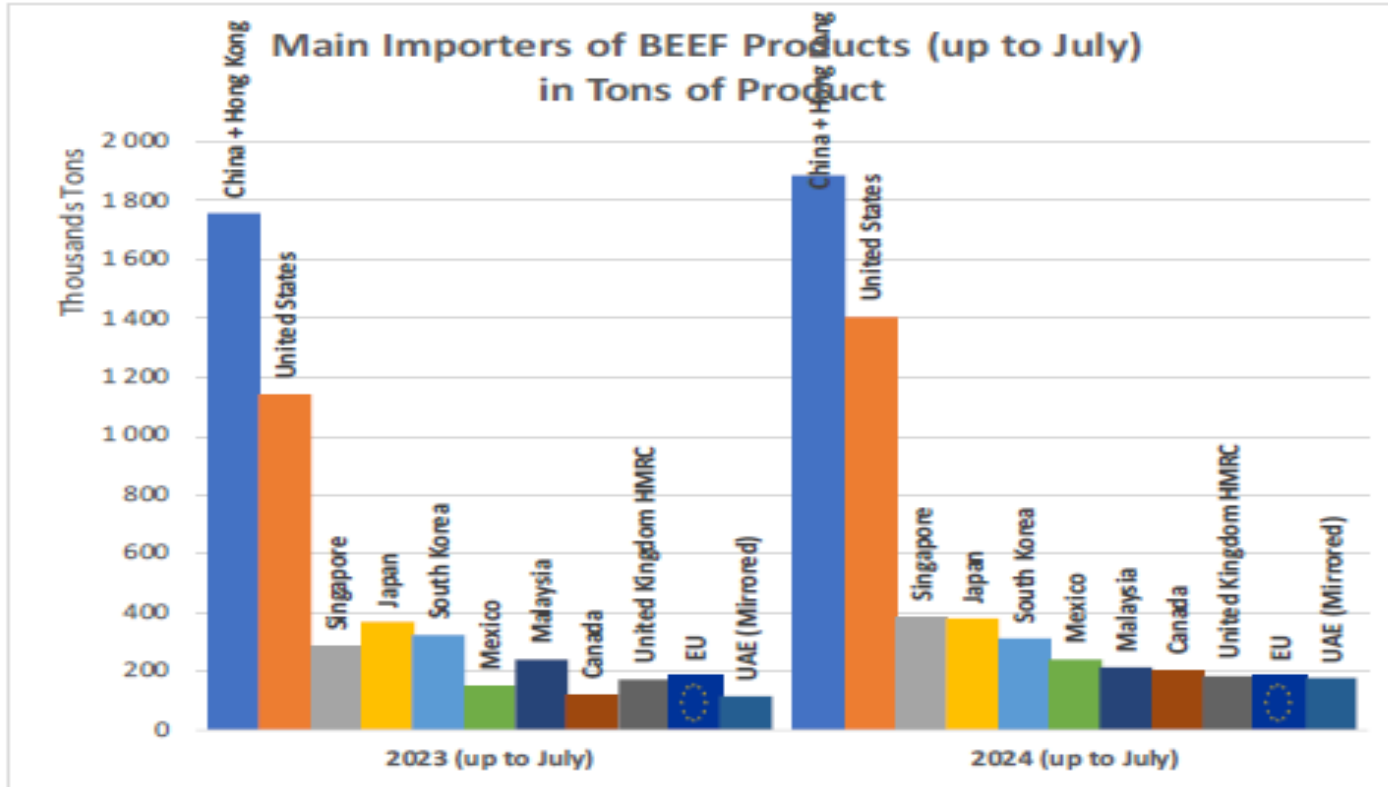
## Siğır Ürünleri ve Canlı Hayvanların Ticaret Dengesi



## Siğır Ürünleri ve Canlı Hayvanların Ticaret Dengesi

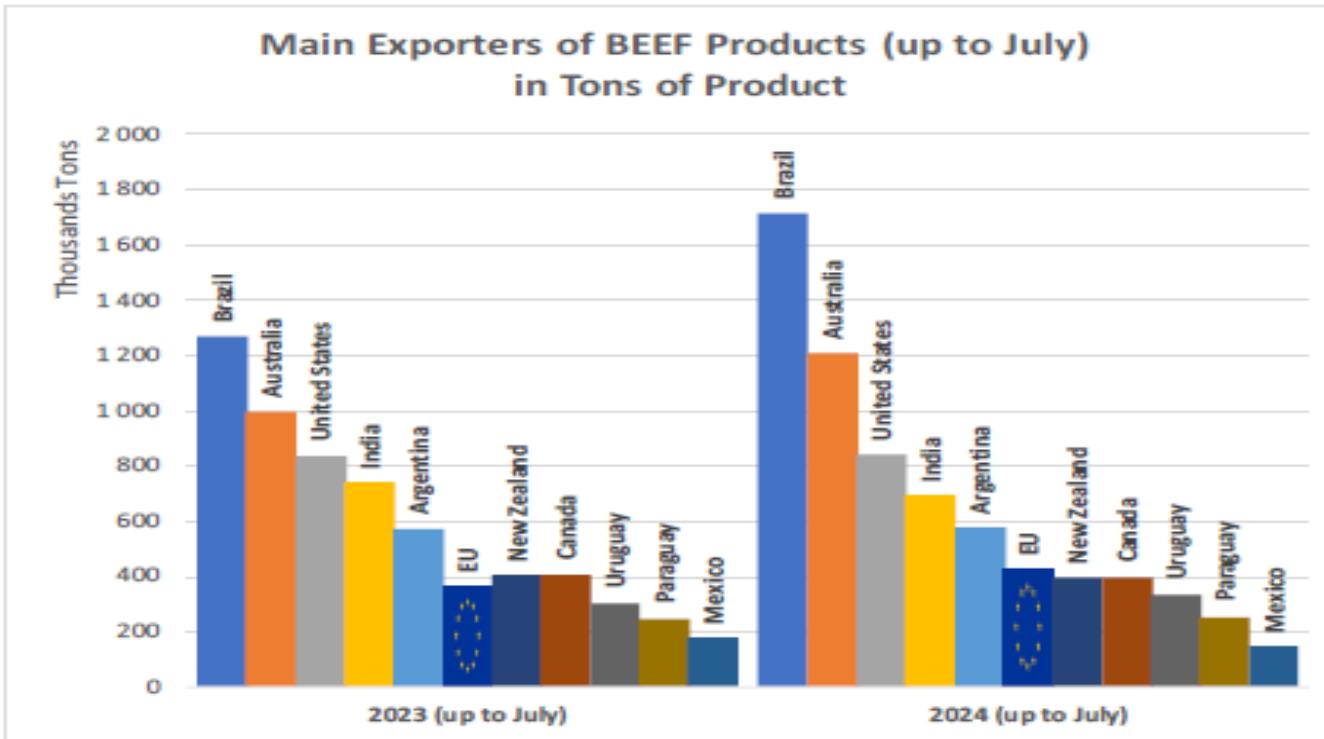


### Siğir Ürünlerinin Ana İthalatçıları (Temmuz'a Kadar) (Ton)

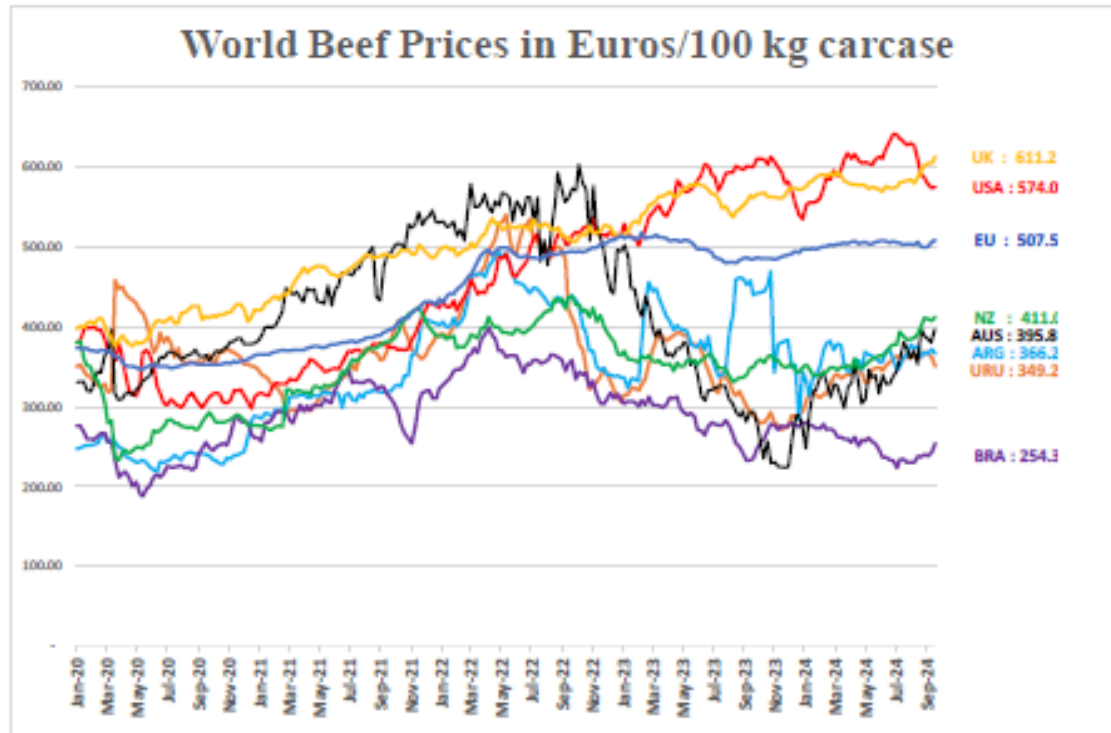




### Siğir Ürünlerinin Ana İthalatçıları (Temmuz'a Kadar) (Ton)



### Dünya Sığır Eti Fiyatları Euro / 100 kg karkas



USA, AUS, URU, ARG, NZ, BRA [World Beef Report](#)  
GB <https://ahdb.org.uk/beef/gh-deadweight-cattle-prices-by-region>  
EU [Member States Communication](#)





**Daha fazla bilgi için:**

**[https://ec.europa.eu/agriculture/market-observatory/meat\\_en](https://ec.europa.eu/agriculture/market-observatory/meat_en)**

**Ve Agri-FOOD Veri Portalı:**

**<http://agridata.ec.europa.eu>**