



AB SIĞIR VE DANA ETİ PAZAR DURUMU

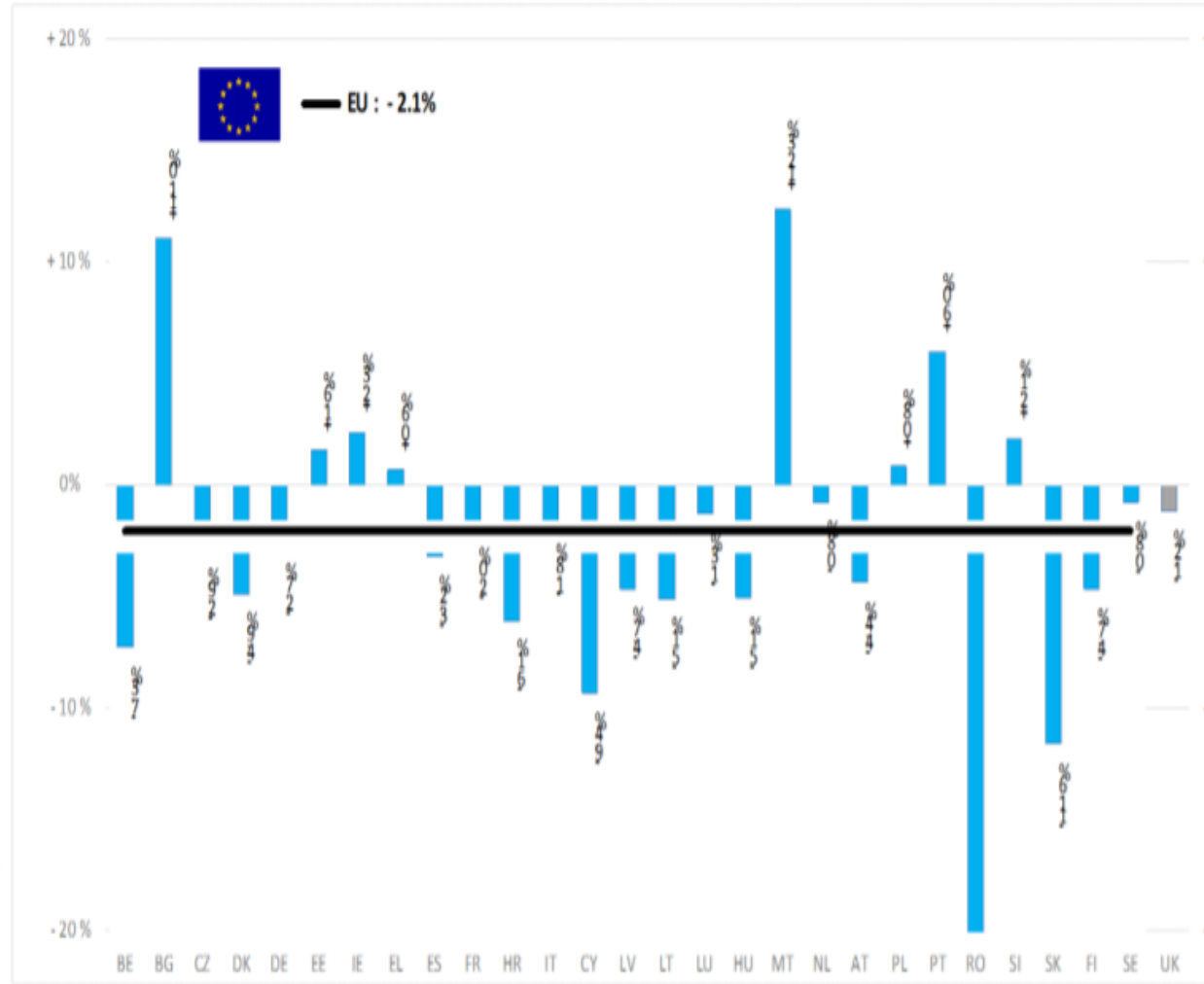
21 Ocak 2021



European
Commission

BAŞ	HEADS	Jan-Oct 20/19	
		EU	EU + UK
BOĞA	Bull	-2.3%	-2.4%
ÖKÜZ	Bullock	+9.1%	+4.1%
İNEK	Cow	-1.9%	-1.6%
DÜVE	Heifer	+0.8%	+1.3%
BUZAĞI	Calve	-6.2%	-7.1%
GENÇ SİĞİR	Young cattle	-3.6%	-3.7%
Büyükbaş Hayvan Eti	Meat of bovine animals	-2.1%	-2.0%

Estimates for last month of period :

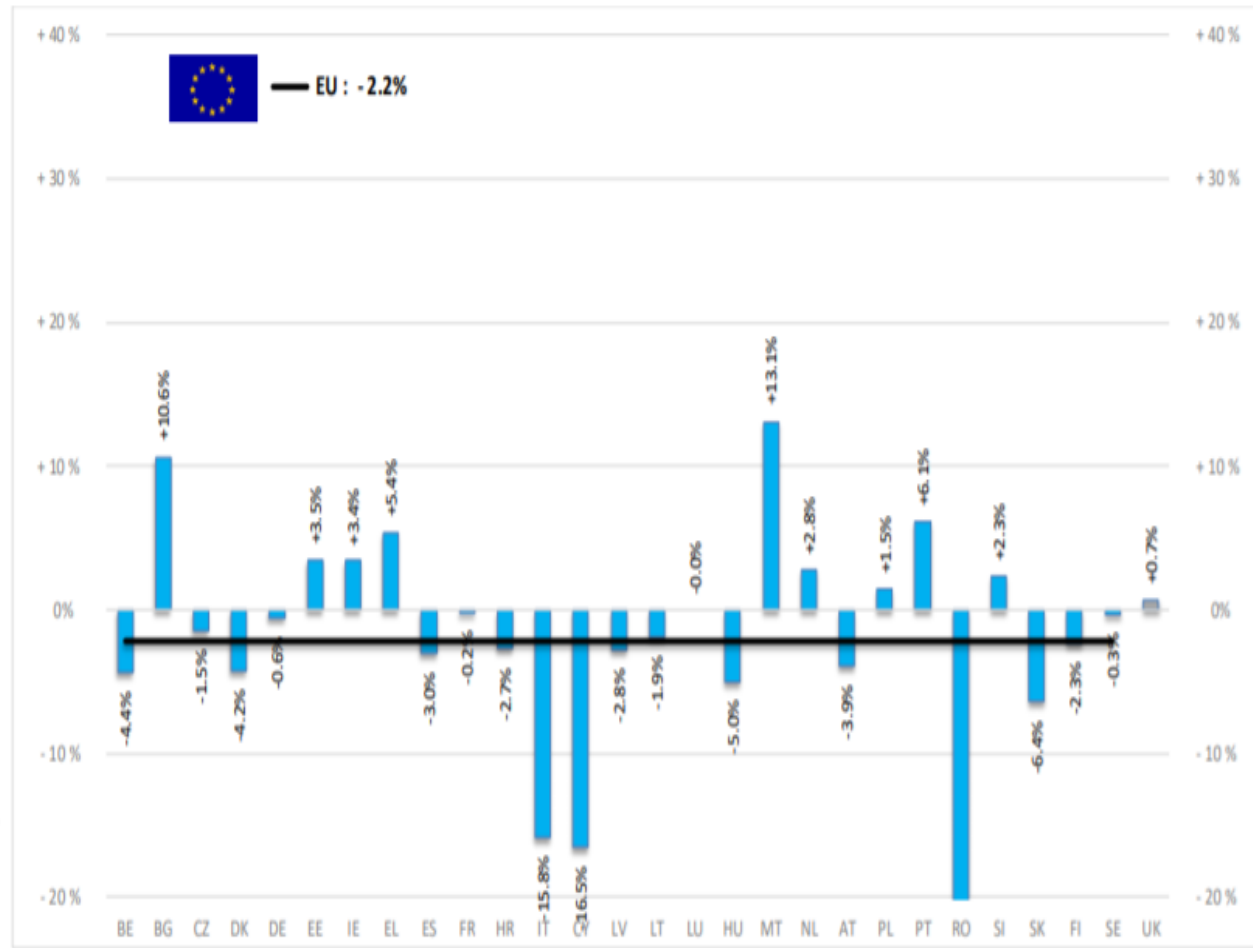




European
Commission

TON	TONNES	Jan-Oct 20/19	
		EU	EU + UK
BOĞA	Bull	-2.8%	-2.8%
ÖKÜZ	Bullock	+11.3%	+4.9%
İNEK	Cow	-2.1%	-1.8%
DÜVE	Heifer	-1.9%	-0.7%
BUZAĞI	Calve	-6.9%	-7.1%
GENÇ SIĞIR	Young cattle	-3.1%	-3.2%
Büyükbaş Hayvan Eti	Meat of bovine animals	-2.2%	-1.8%

Estimates for last month of period :

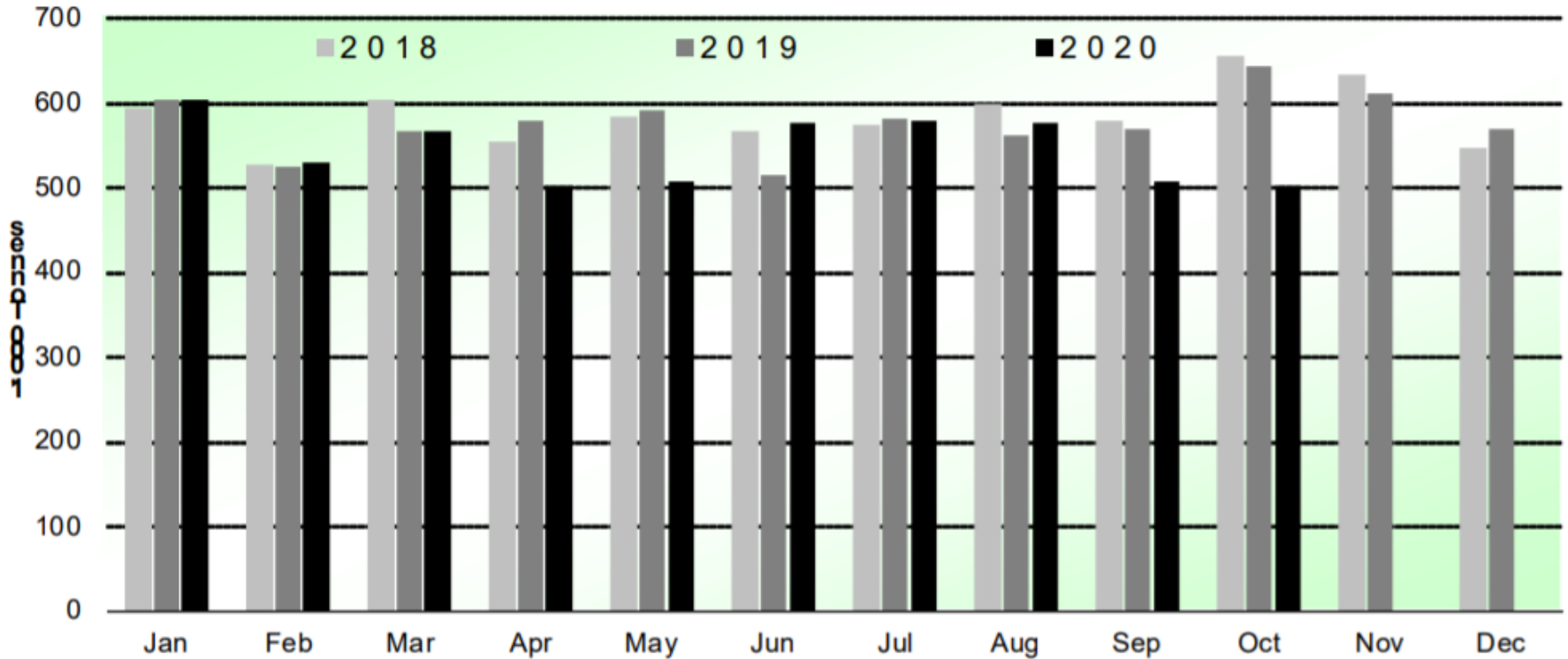


Source : EStat - Newcronos



SIĞIR VE DANA ETİ ÜRETİMİ (AB Kesimler – Ton)

Beef & Veal Production (EU Slaughtering) - Tonnes



Source : EStat-Newcronos



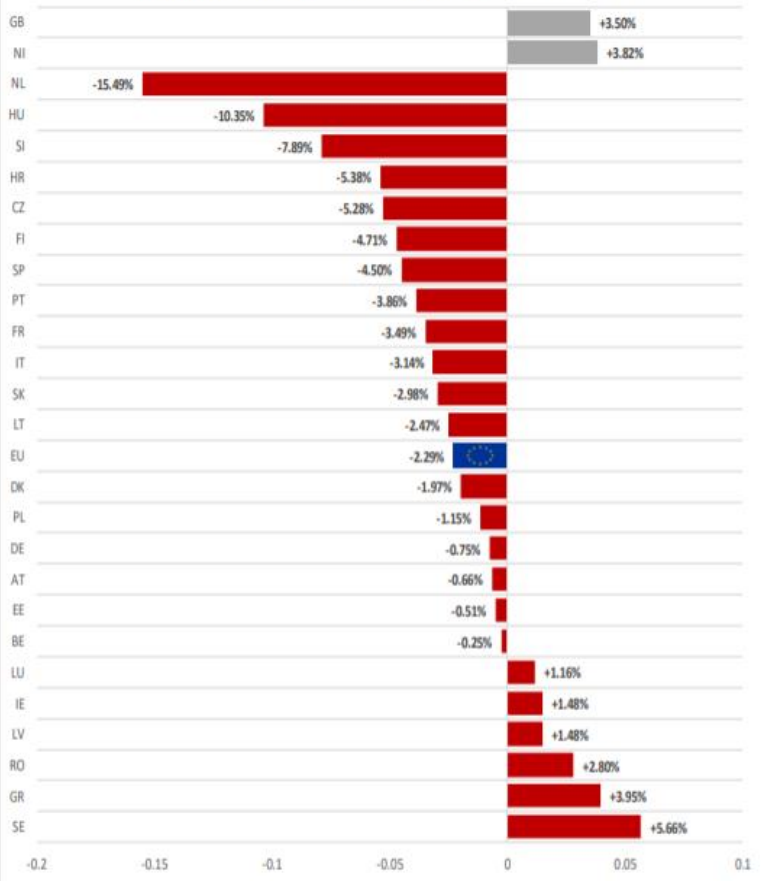
EU Prices week		1	Evolution since last week	Evolution since last month	Evolution since last year
Carcasse	Average A/C/Z -R3	364.4	- 0.1%	+ 1.4%	- 1.1%
	Young Bovines (Z)	354.3	- 0.5%	+ 1.5%	- 0.5%
	Young Bulls (A)	364.6	+ 0.1%	+ 1.6%	- 1.2%
	Steers (C)	376.2	- 0.6%	+ 0.2%	- 1.6%
	Cows (D)	272.6	+ 1.0%	+ 2.9%	- 1.6%
	Heifers (E)	377.8	+ 1.4%	+ 2.1%	+ 1.7%
Live Animals	Male Calves Dairy Type	60.74	+ 3.0%	- 19.9%	- 21.7%
	Male Calves Beef Type	183.3	+ 0.4%	- 2.8%	- 10.6%
	Young Store Cattle	2.37	+ 1.0%	+ 0.0%	+ 0.5%
	Yearling Male Store Cattle	2.21	+ 2.5%	+ 0.9%	+ 0.8%
	Yearling Female Store Cattle	2.42	+ 1.8%	+ 5.4%	+ 6.0%
	Calves slaughtered <8M	457.9	- 8.2%	- 14.6%	- 8.3%

KARKAS FİYATLARI

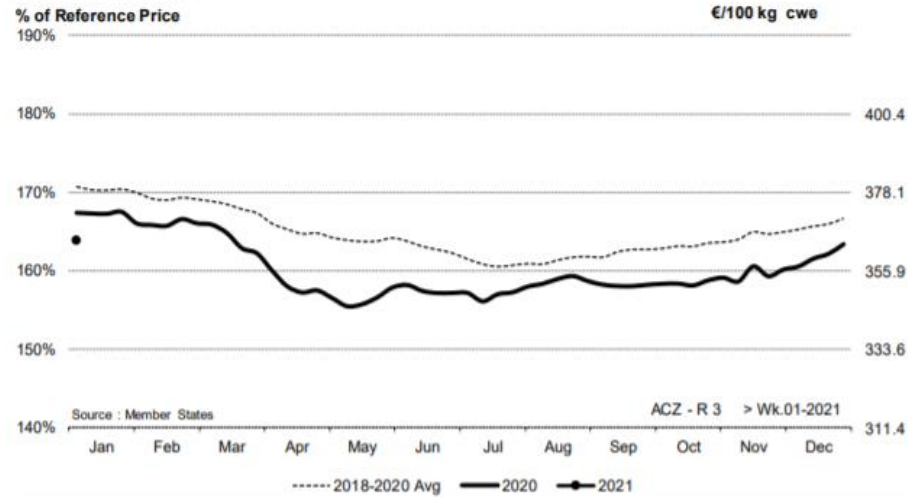
AB DEĞİŞİM A/C/Z. R3



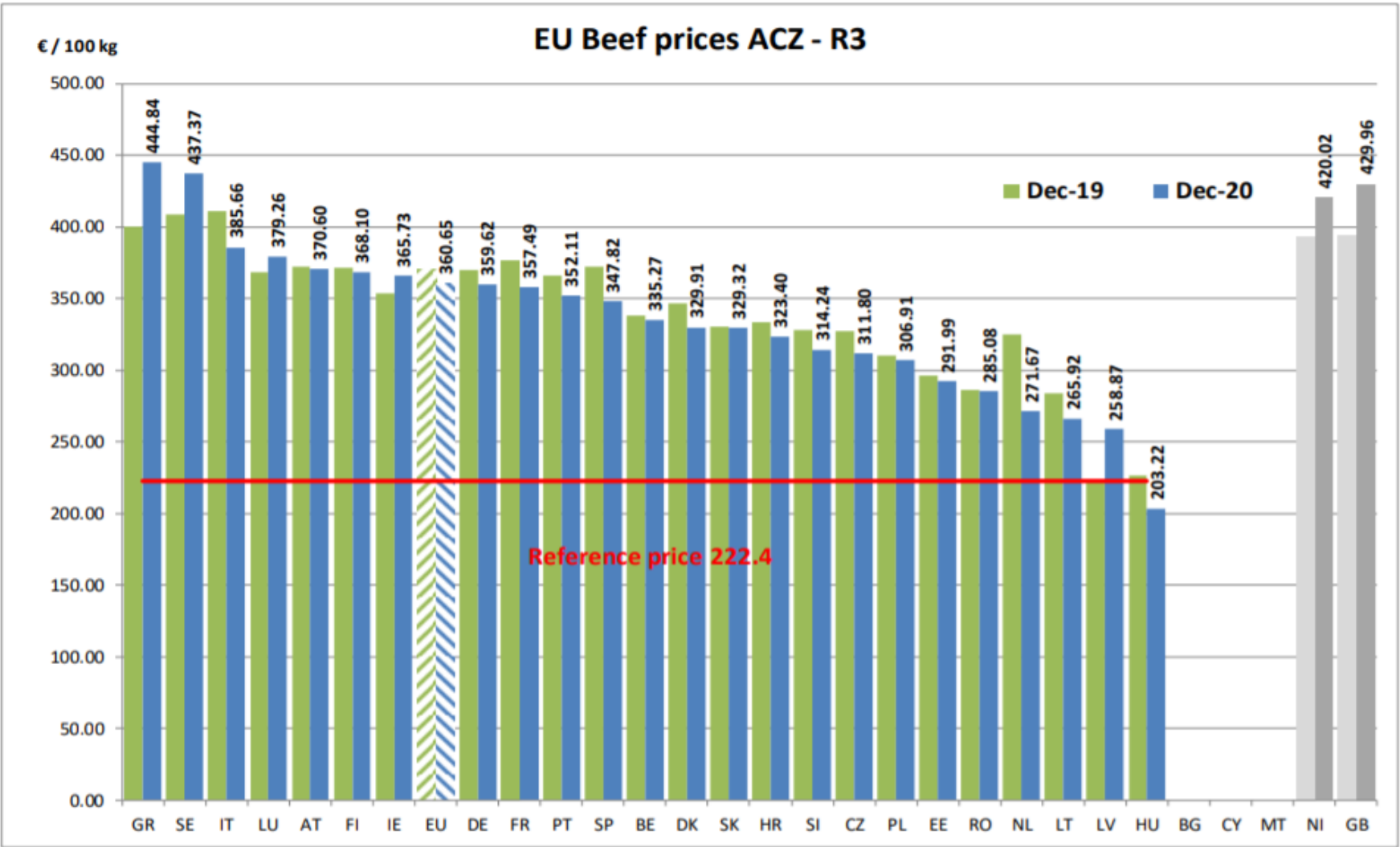
EU ACZ R3 Price Comparison between average monthly price January 2020 - December 2020 compared to January 2019 - December 2019



ACZ - R 3 > Wk.01-2021

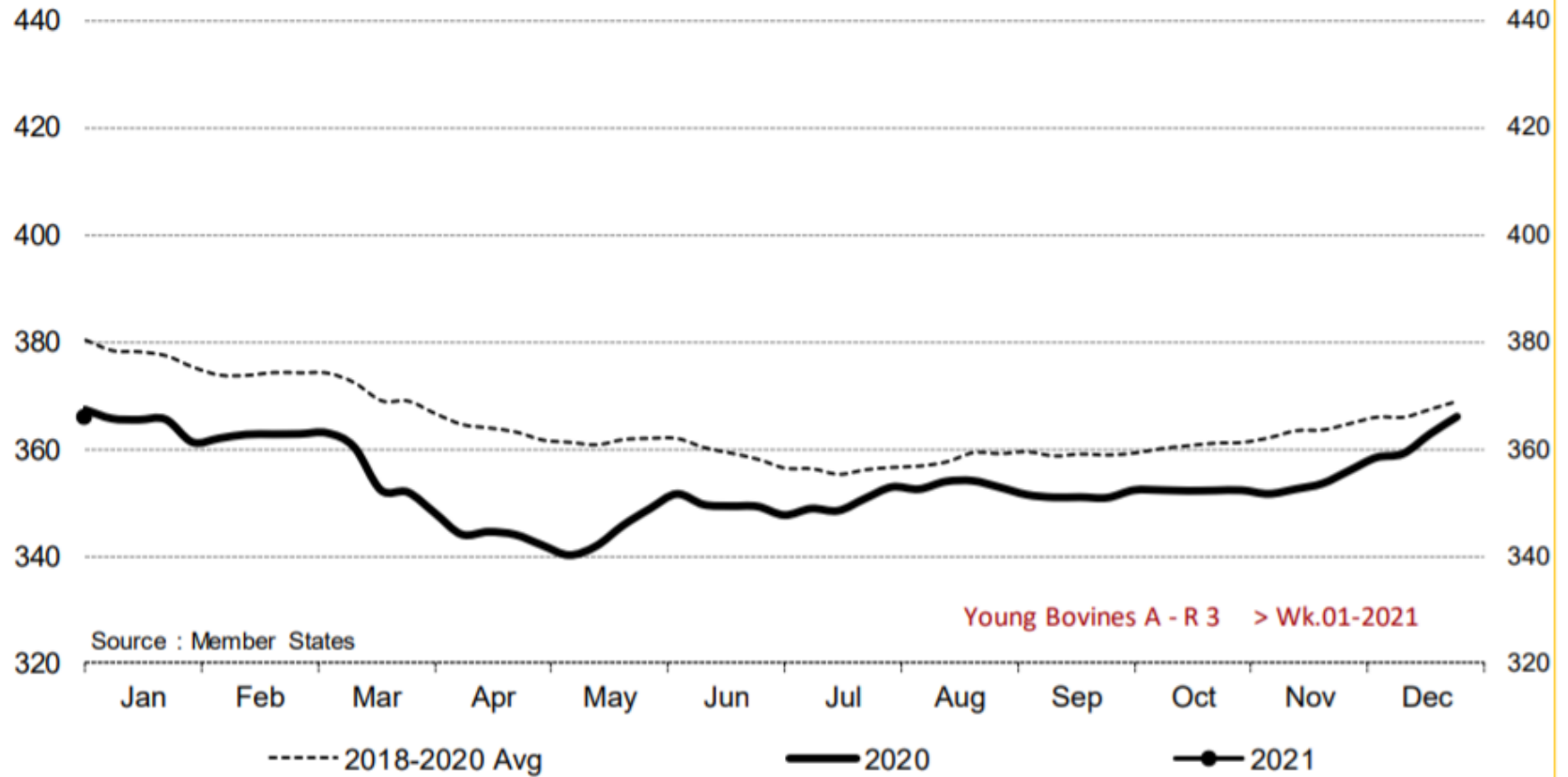


Price in week 01 :	364.44	Average price in December 2020 :	360.81
% change y/y :	- 2.1%	% change y/y :	- 2.7%
% Ref. Price in wk 1 :	163.9%		





Young Bovines A - R 3 > Wk.01-2021

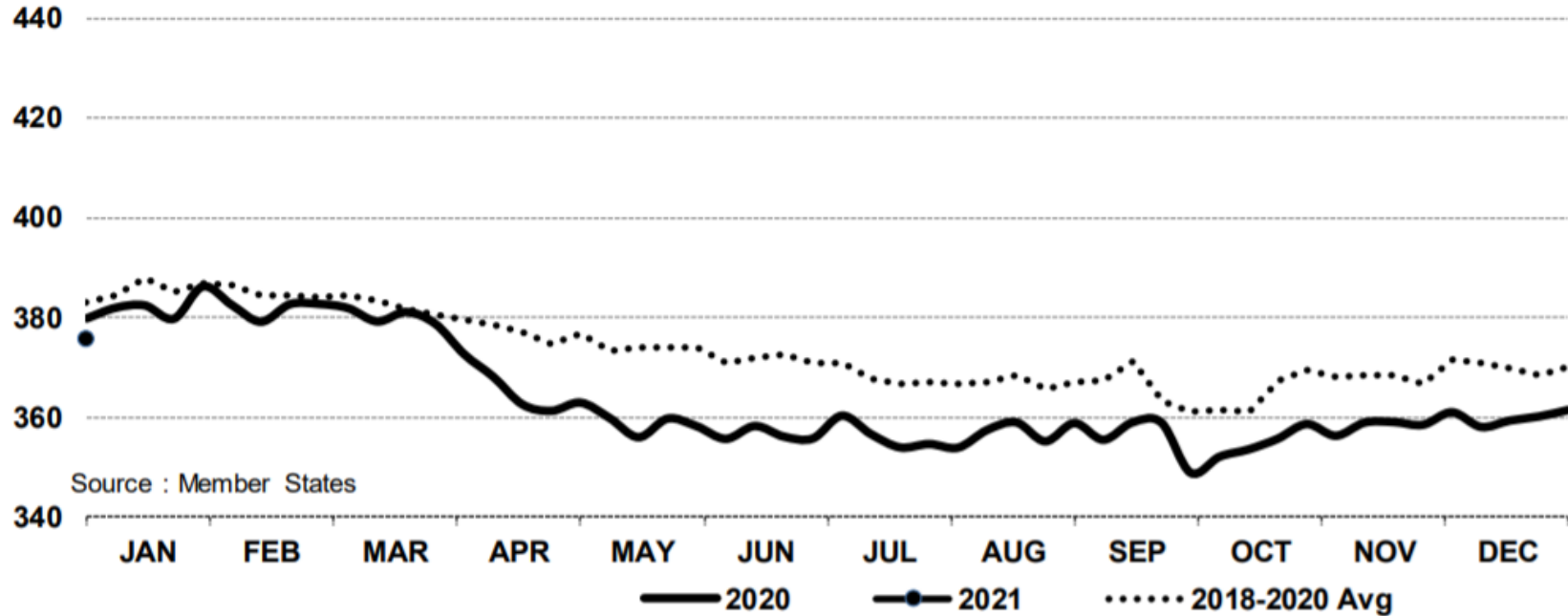


Price in week 01 : **365.83**
% change y/y : **- 0.4%**

Average price in December 2020 : **362.32**
% change y/y : **- 0.6%**

In € / 100 kg

Young Bovines 8-12m Z - R 3 > Wk.01-2021



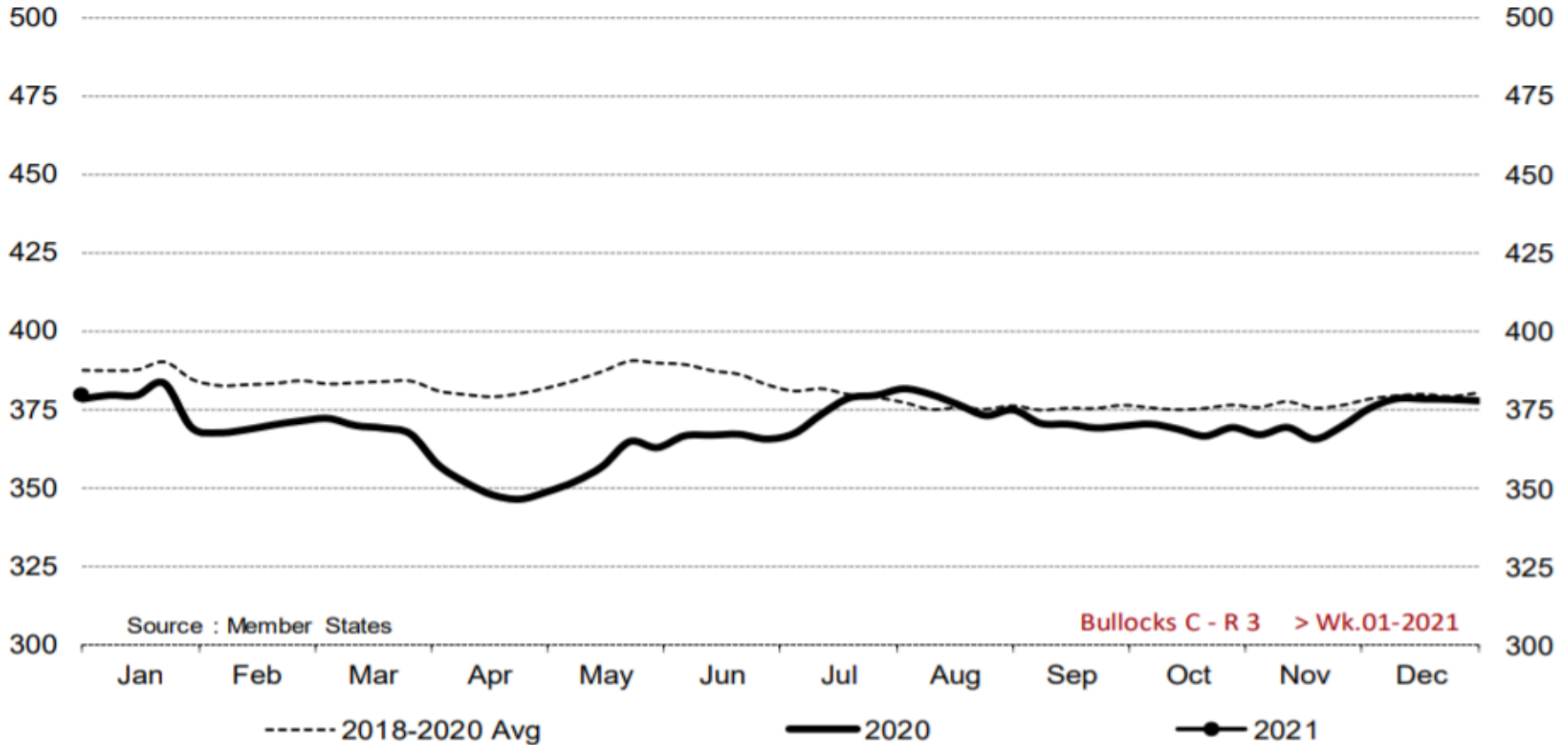
Price in week 01 : **375.45**
% change y/y : **- 1.1%**

10/12/2020

Average price in December 2020 : **361.18**
% change y/y : **- 4.7%**



Bullocks C - R 3 > Wk.01-2021

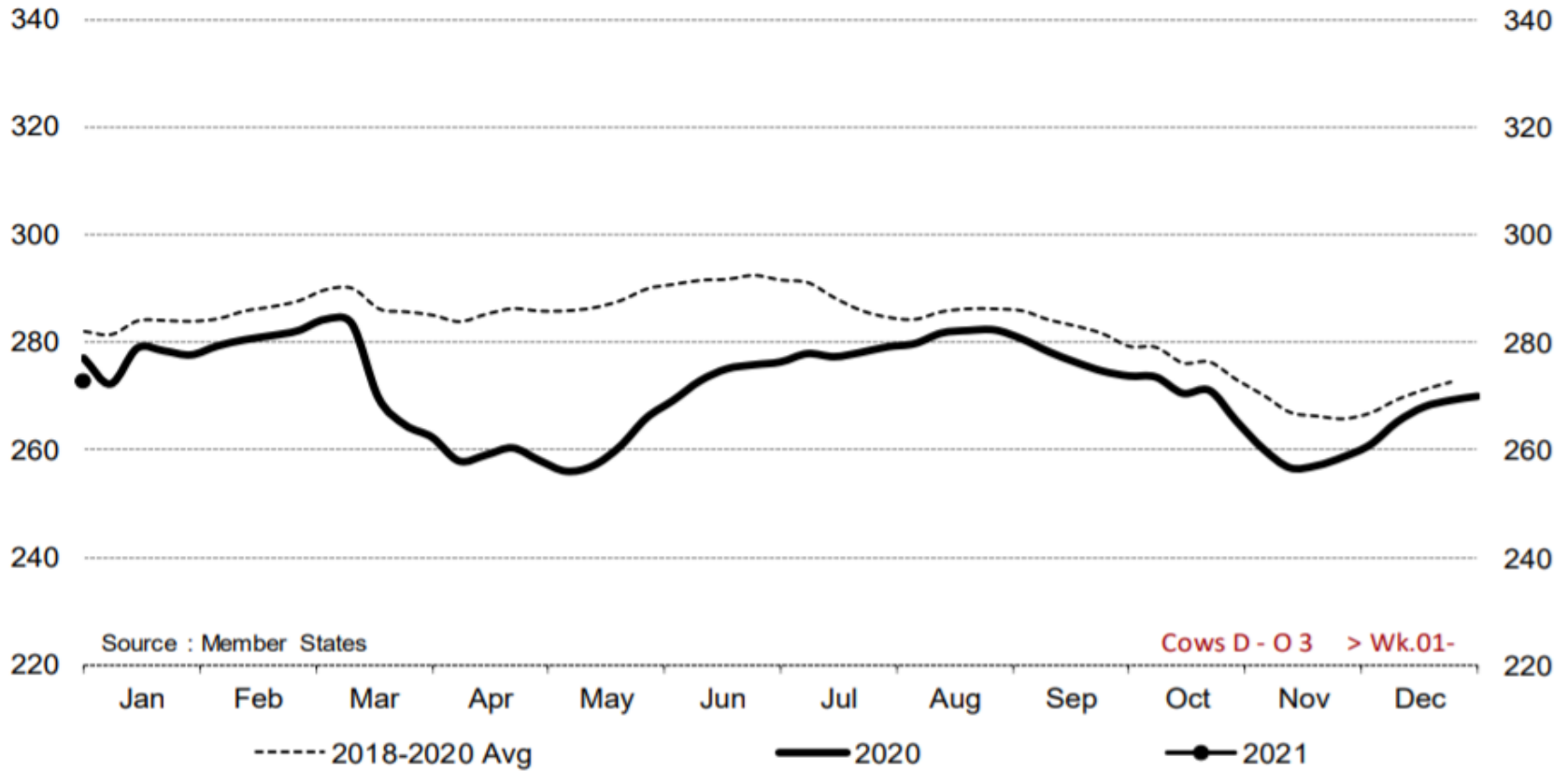


Price in week 01 : **379.33**
% change y/y : **+ 0.3%**

Average price in December 2020 : **378.34**
% change y/y : **+ 0.5%**



Cows D - O 3 > Wk.01-2021

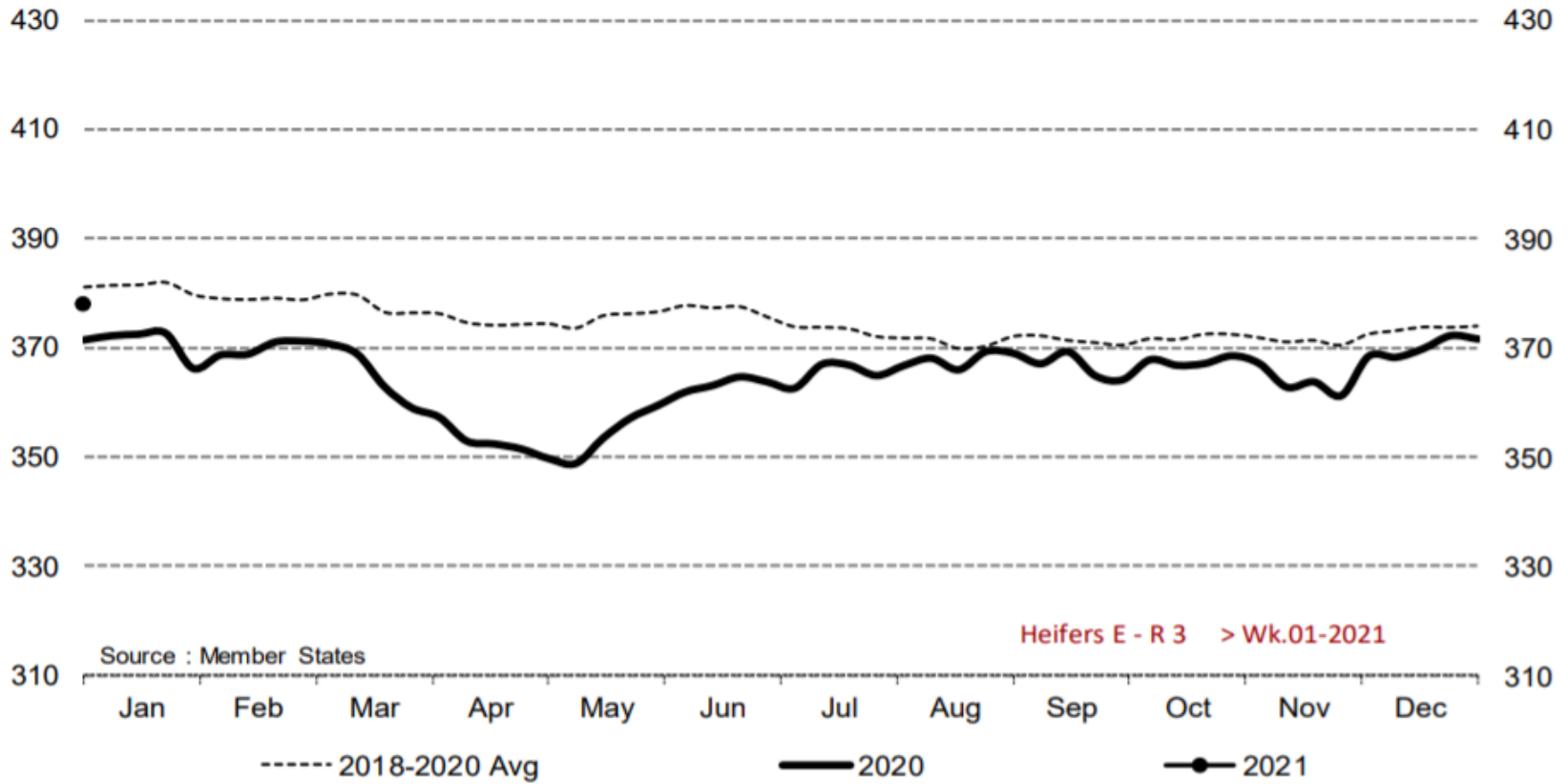


Price in week 01 : **272.67**
% change y/y : **- 1.6%**

Average price in December 2020 : **266.43**
% change y/y : **- 2.9%**



Heifers E - R 3 > Wk.01-2021

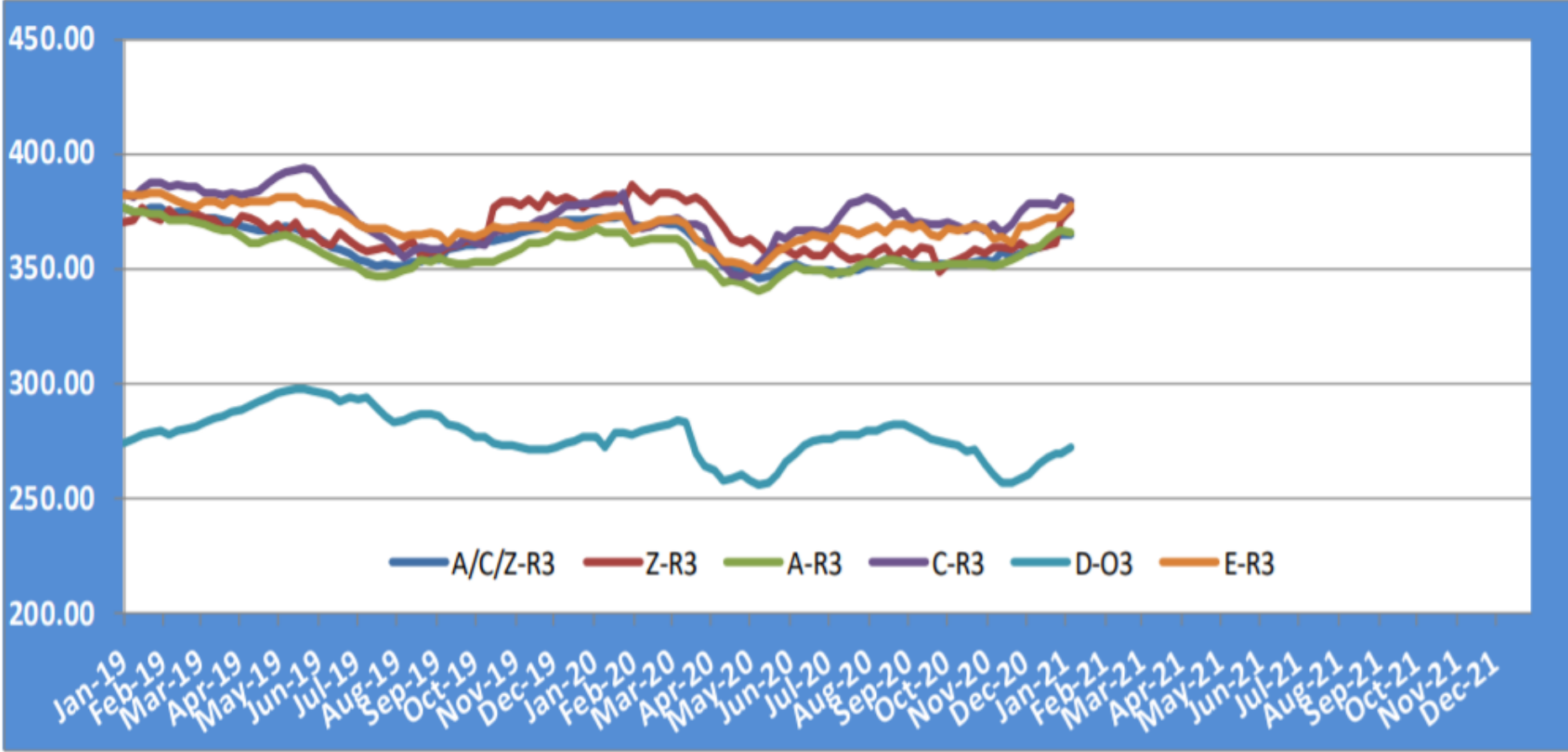


Price in week 01 : **377.82**
% change y/y : **+ 1.7%**

Average price in December 2020 : **370.93**
% change y/y : **+ 0.4%**

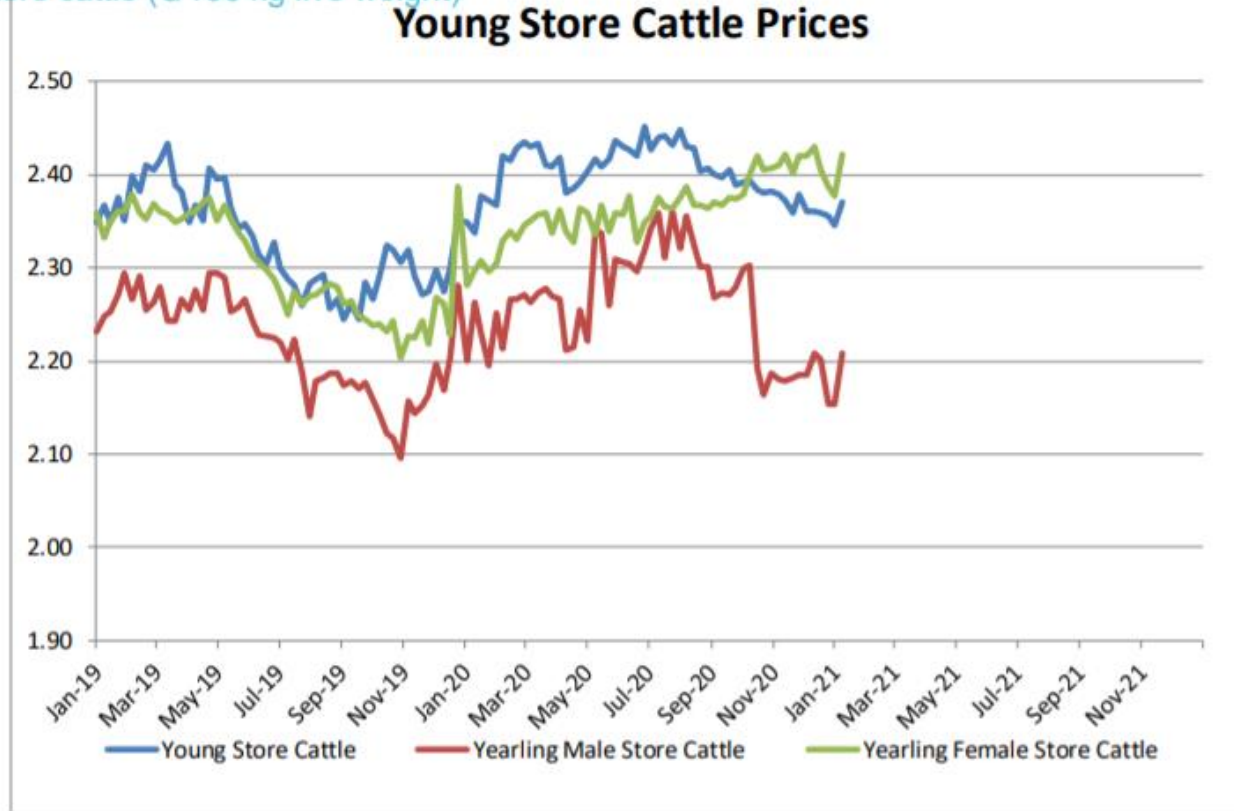
KARKAS FİYATLARI

AB TÜM KATEGORİLERE GLOBAL BAKIŞ



Besilik sığır (€ / 100 kg canlı ağırlık)

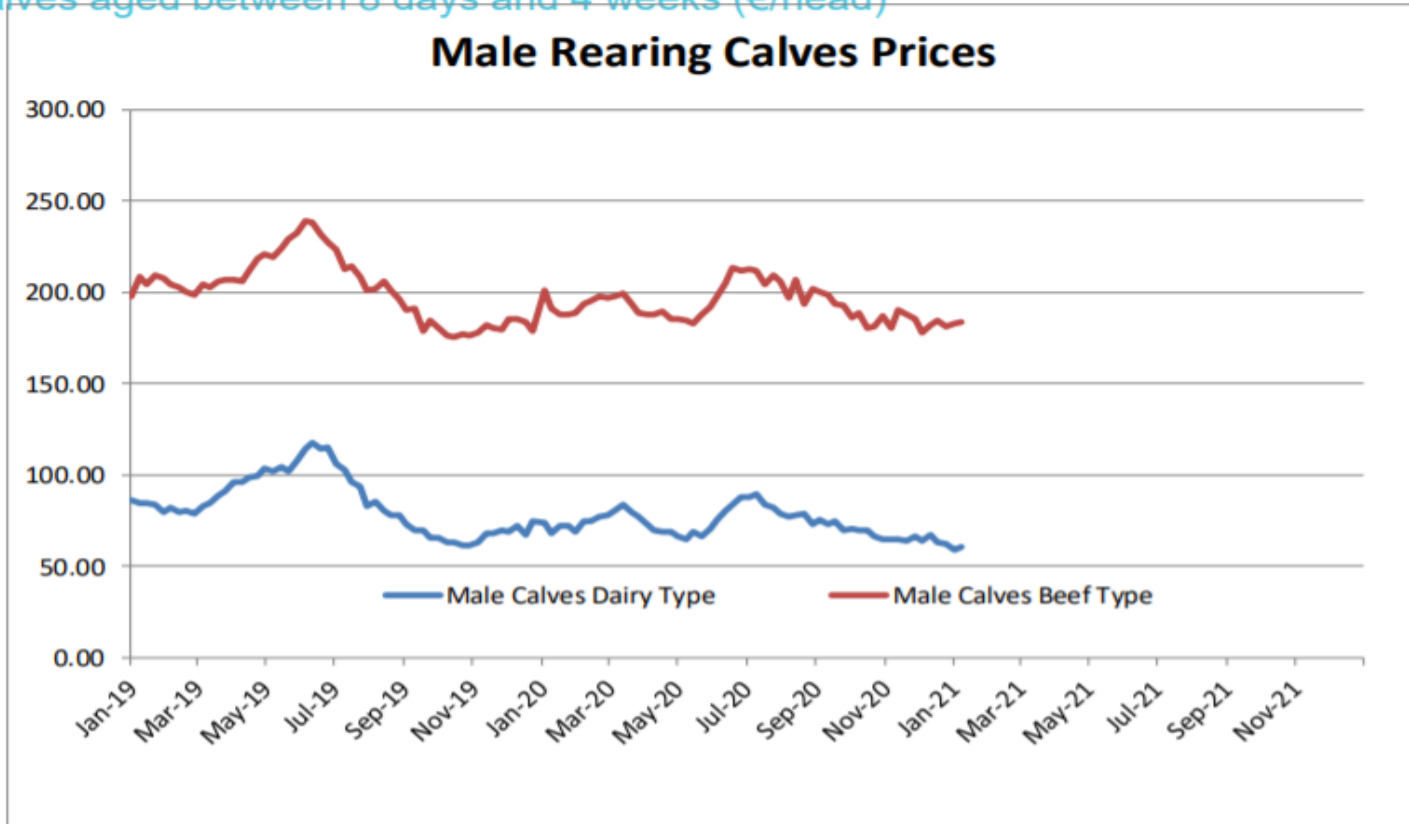
Store cattle (€/100 kg live weight)



Young Store Cattle Price in	Week 1	2.37	Yearling Male Store Cattle Price	2.21
	Change y/y	+0.55%	Change y/y	+0.42%
Yearling Female Store Cattle Price		2.42		
	Change y/y	+6.04%		

8 gün ve 4 haftalık erkek buzağlar (€/baş)

Male calves aged between 8 days and 4 weeks (€/head)



Male Rearing Calves Beef type

Price in Week 1 **183.39**
Change y/y **-10.61%**

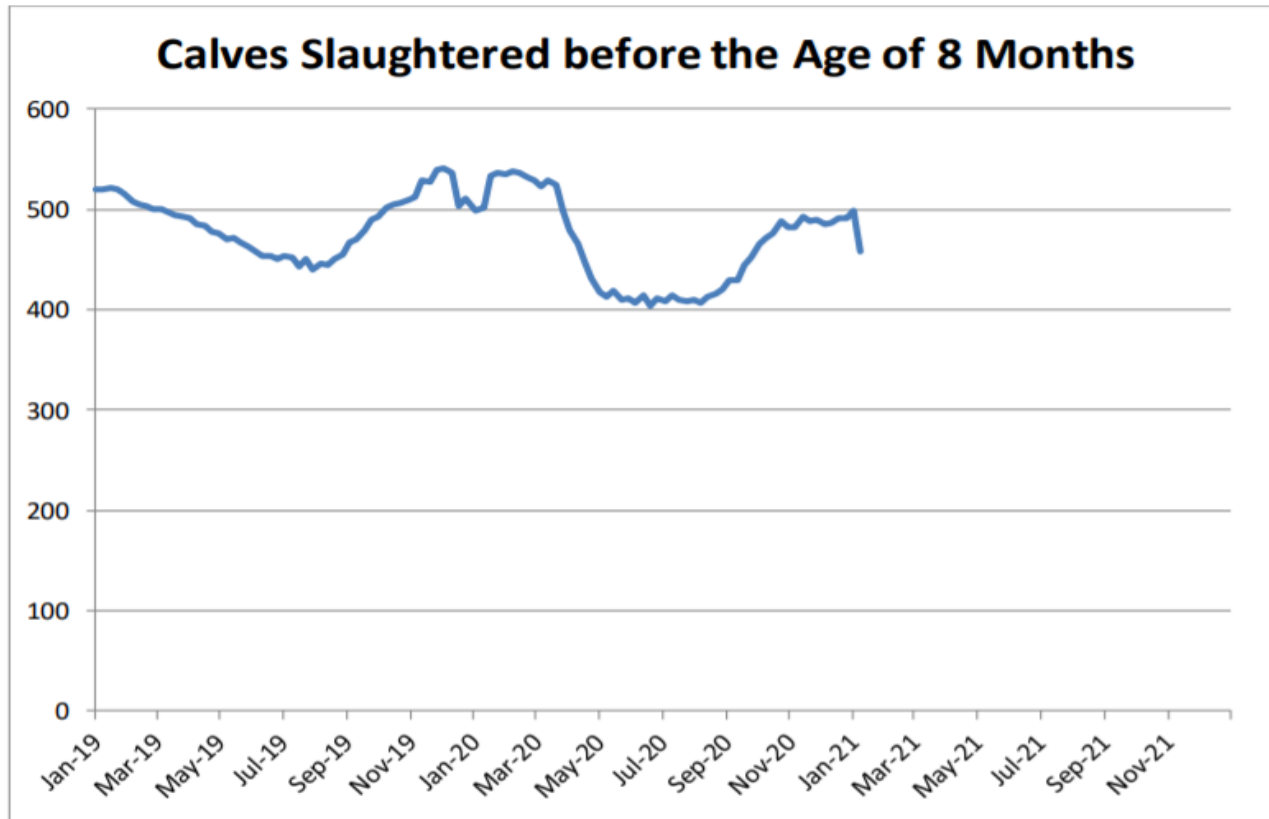
Male Rearing Calves Dairy type

Price in Week 1 **60.74**
Change y/y **-21.66%**



8 aylıktan küçük kesilen buzağlar (€ / 100 kg canlı ağırlık)

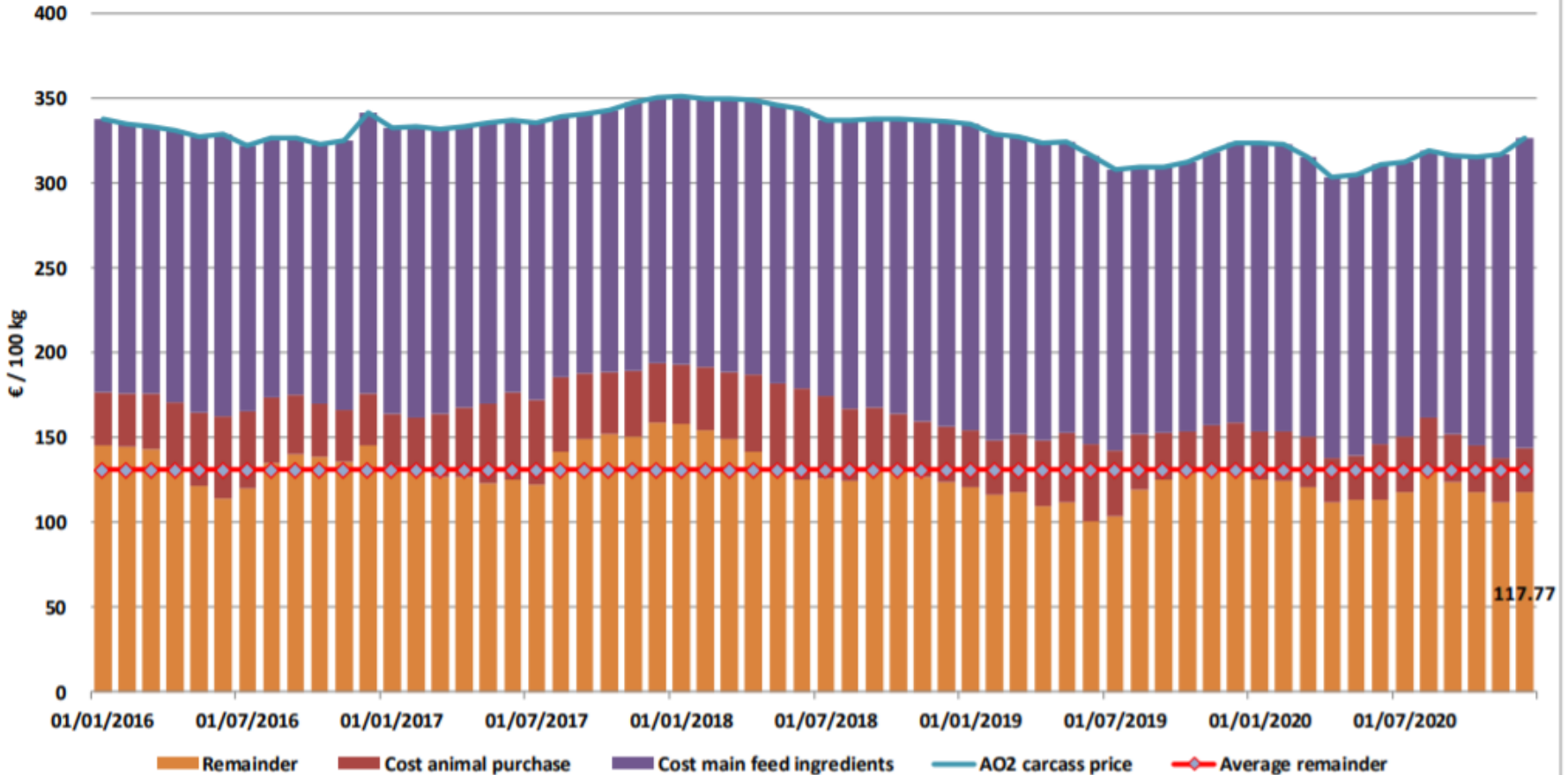
Calves slaughtered before the age of less than 8 months
(€/100 kg cw)



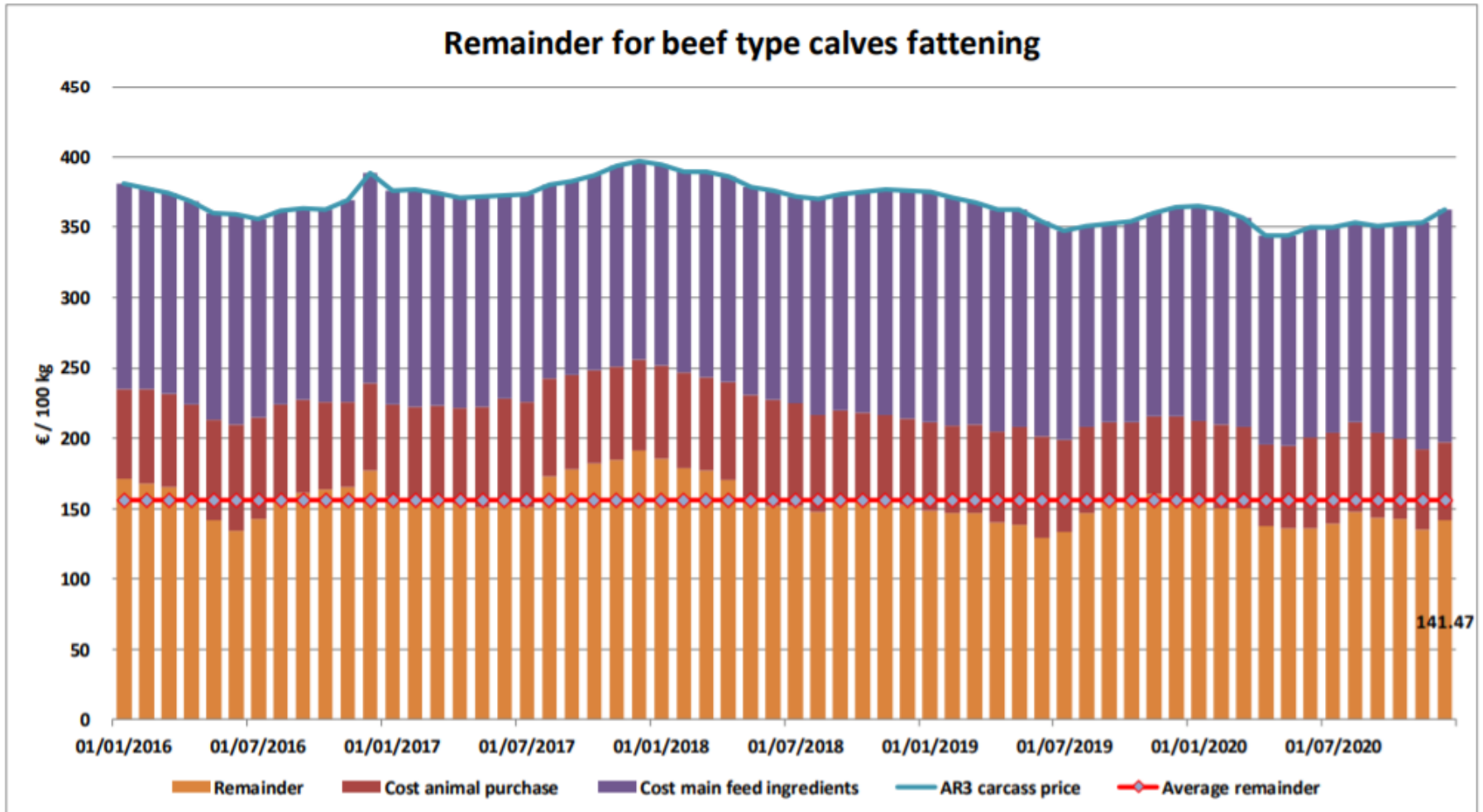
Price in Week 1 **457.96 € / 100 kg of carcasse weight**
Change y/y **-8.32%**

Süt Buzağları Besiciliği İçin Kalanlar

Remainder for dairy calves fattening



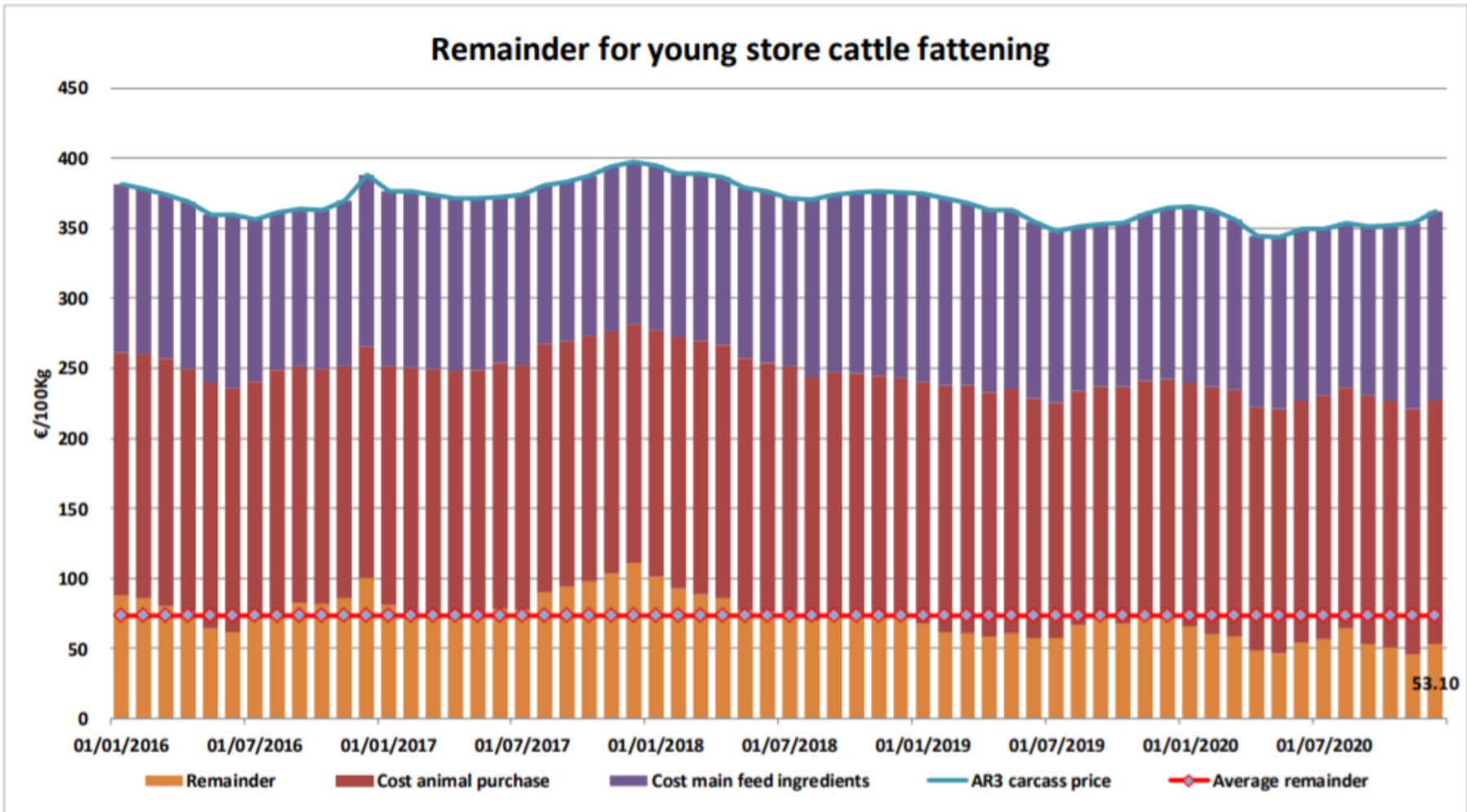
Sığır Tipi Buzağı Besiciliği İçin Kalanlar





Genç Besilik Sığır Besiciliği İçin Kalanlar

Remainder for young store cattle fattening



AB siğir eti ve canlı hayvan ihracatı (1): Pazar Rakamları (COMEXT – ton ca)

Destinations	2016		2017		2018		2019		Jan-Nov 20		Compared to Jan-Nov 19
	tonnes	%	tonnes	%	tonnes	%	tonnes	%	tonnes	%	
Hong Kong	47 532	7.1%	76 085	10.5%	55 538	7.9%	46 748	6.7%	53 248	8.2%	+ 19.3%
Israel	41 534	6.2%	44 196	6.1%	47 774	6.8%	49 629	7.1%	51 017	7.9%	+ 12.5%
Ghana	37 490	5.6%	37 744	5.2%	36 766	5.2%	39 196	5.6%	43 527	6.7%	+ 22.6%
Philippines	24 116	3.6%	37 103	5.1%	28 766	4.1%	34 158	4.9%	36 266	5.6%	+ 16.7%
Algeria	25 003	3.7%	26 305	3.6%	35 410	5.0%	57 152	8.2%	35 978	5.6%	- 32.0%
Bosnia-Herz.	38 875	5.8%	34 710	4.8%	38 762	5.5%	41 118	5.9%	32 422	5.0%	- 14.7%
Lebanon	47 010	7.0%	38 323	5.3%	42 542	6.1%	36 393	5.2%	30 266	4.7%	- 10.8%
Ivory Coast	35 371	5.3%	36 038	5.0%	36 063	5.1%	33 396	4.8%	29 983	4.6%	- 2.7%
Switzerland	24 872	3.7%	26 707	3.7%	23 762	3.4%	25 188	3.6%	28 016	4.3%	+ 18.9%
Libya	29 723	4.4%	27 848	3.8%	27 878	4.0%	24 541	3.5%	21 247	3.3%	+ 2.9%
Turkey	71 030	10.6%	96 414	13.3%	96 052	13.7%	34 555	4.9%	20 416	3.2%	- 36.1%
Canada	862	0.1%	2 424	0.3%	2 225	0.3%	6 806	1.0%	18 818	2.9%	+++
China	10 253	1.5%	5 738	0.8%	6 713	1.0%	22 317	3.2%	15 146	2.3%	- 21.7%
Ukraine	7 875	1.2%	7 331	1.0%	10 466	1.5%	13 835	2.0%	14 616	2.3%	+ 18.6%
Norway	18 312	2.7%	12 849	1.8%	7 925	1.1%	7 667	1.1%	12 291	1.9%	+ 66.5%
USA	3 137	0.5%	3 756	0.5%	5 458	0.8%	7 867	1.1%	11 570	1.8%	+ 61.7%
Other Destinations	210 034	31.2%	213 951	29.4%	199 783	28.5%	219 680	31.4%	191 619	29.6%	
Total (without UK)	673 028		727 522		701 882		700 246		646 446		
% change			+ 8%		- 4%		- 0%		+ 0.8%		
United Kingdom	477 394		493 227		486 480		440 357		378 136 up to Oct 20		#N/A

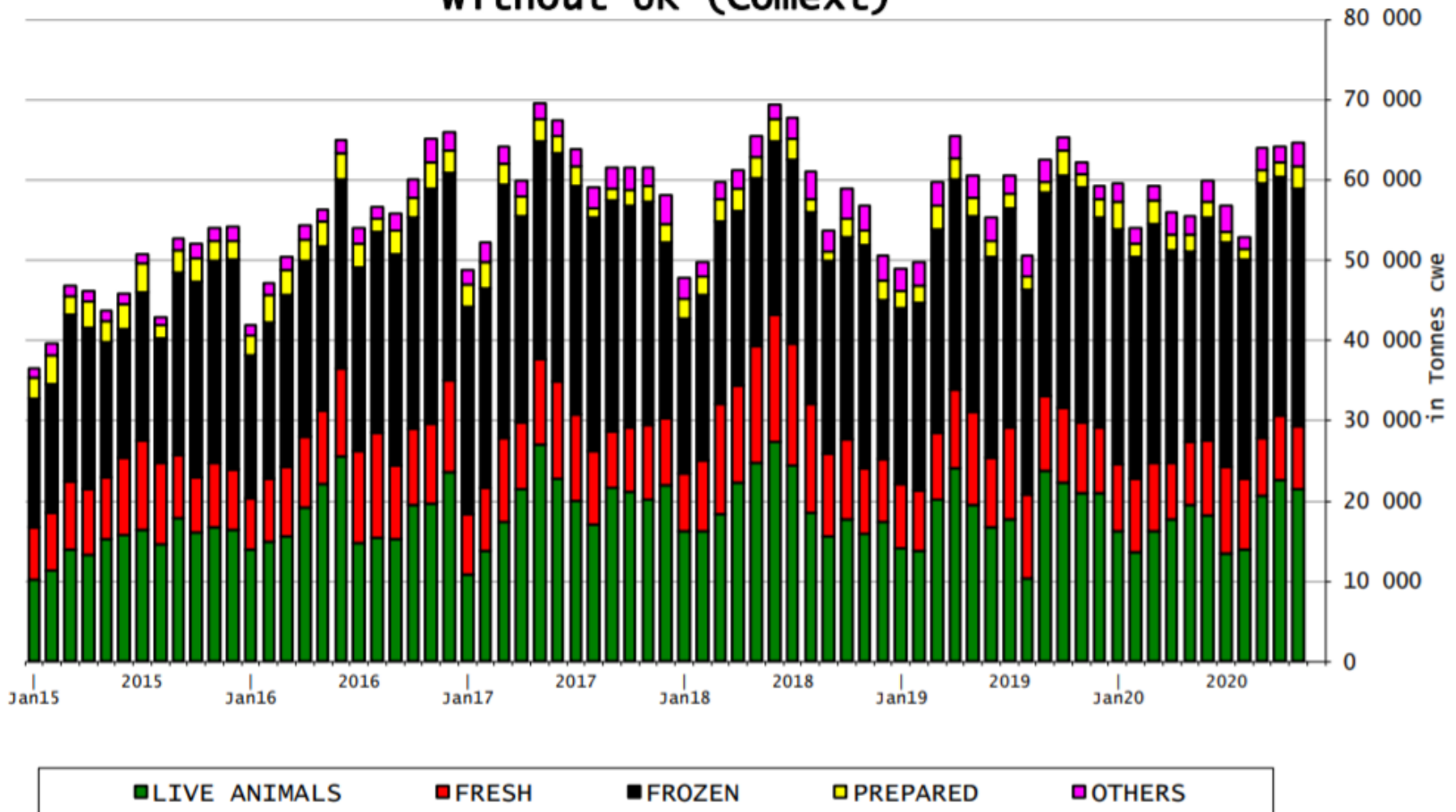


AB siğir eti ihracatı: Pazar Rakamları (COMEXT – ton ca)

Destinations	2016		2017		2018		2019		Jan-Nov 20		Compared to Jan-Nov 19
	tonnes	%	tonnes	%	tonnes	%	tonnes	%	tonnes	%	
Hong Kong	47 532	10.5%	76 085	15.5%	55 538	11.9%	46 748	9.8%	53 248	11.8%	+ 19.3%
Ghana	37 490	8.3%	37 744	7.7%	36 766	7.9%	39 196	8.2%	43 527	9.6%	+ 22.6%
Philippines	24 116	5.3%	37 103	7.5%	28 766	6.2%	34 158	7.2%	36 266	8.0%	+ 16.7%
Bosnia-Herz.	36 790	8.1%	32 180	6.5%	36 151	7.7%	38 805	8.2%	30 304	6.7%	- 15.5%
Ivory Coast	35 371	7.8%	36 028	7.3%	36 063	7.7%	33 396	7.0%	29 983	6.6%	- 2.7%
Switzerland	23 704	5.2%	25 569	5.2%	22 712	4.9%	24 110	5.1%	27 001	6.0%	+ 19.7%
Israel	15 055	3.3%	18 749	3.8%	22 163	4.7%	23 026	4.8%	19 372	4.3%	- 6.5%
Canada	862	0.2%	2 424	0.5%	2 225	0.5%	6 806	1.4%	18 818	4.2%	+++
China	10 253	2.3%	5 738	1.2%	6 713	1.4%	22 317	4.7%	15 146	3.3%	- 21.7%
Ukraine	7 094	1.6%	6 926	1.4%	9 887	2.1%	12 893	2.7%	13 647	3.0%	+ 17.8%
Norway	18 307	4.0%	12 848	2.6%	7 922	1.7%	7 667	1.6%	12 291	2.7%	+ 66.5%
USA	3 137	0.7%	3 756	0.8%	5 458	1.2%	7 867	1.7%	11 570	2.6%	+ 61.7%
Japan	3 254	0.7%	4 281	0.9%	3 453	0.7%	8 007	1.7%	11 078	2.4%	+ 59.8%
North Macedonia	11 413	2.5%	11 285	2.3%	10 002	2.1%	11 395	2.4%	9 560	2.1%	- 8.3%
Angola	13 326	2.9%	10 982	2.2%	11 469	2.5%	8 410	1.8%	8 579	1.9%	+ 12.4%
Chile	2 228	0.5%	8 961	1.8%	16 410	3.5%	12 461	2.6%	8 092	1.8%	- 33.3%
Other Destinations	163 287	36.0%	161 719	32.8%	155 126	33.2%	138 059	29.0%	104 141	23.0%	
Total (without UK)	453 217		492 379		466 824		475 319		452 623		
% change			+ 9%		- 5%		+ 2%		+ 3.5%		
United Kingdom	468 017	50.8%	482 057	49.5%	475 987	50.5%	429 662	47.5%	366 544 up to Oct 20		#N/A

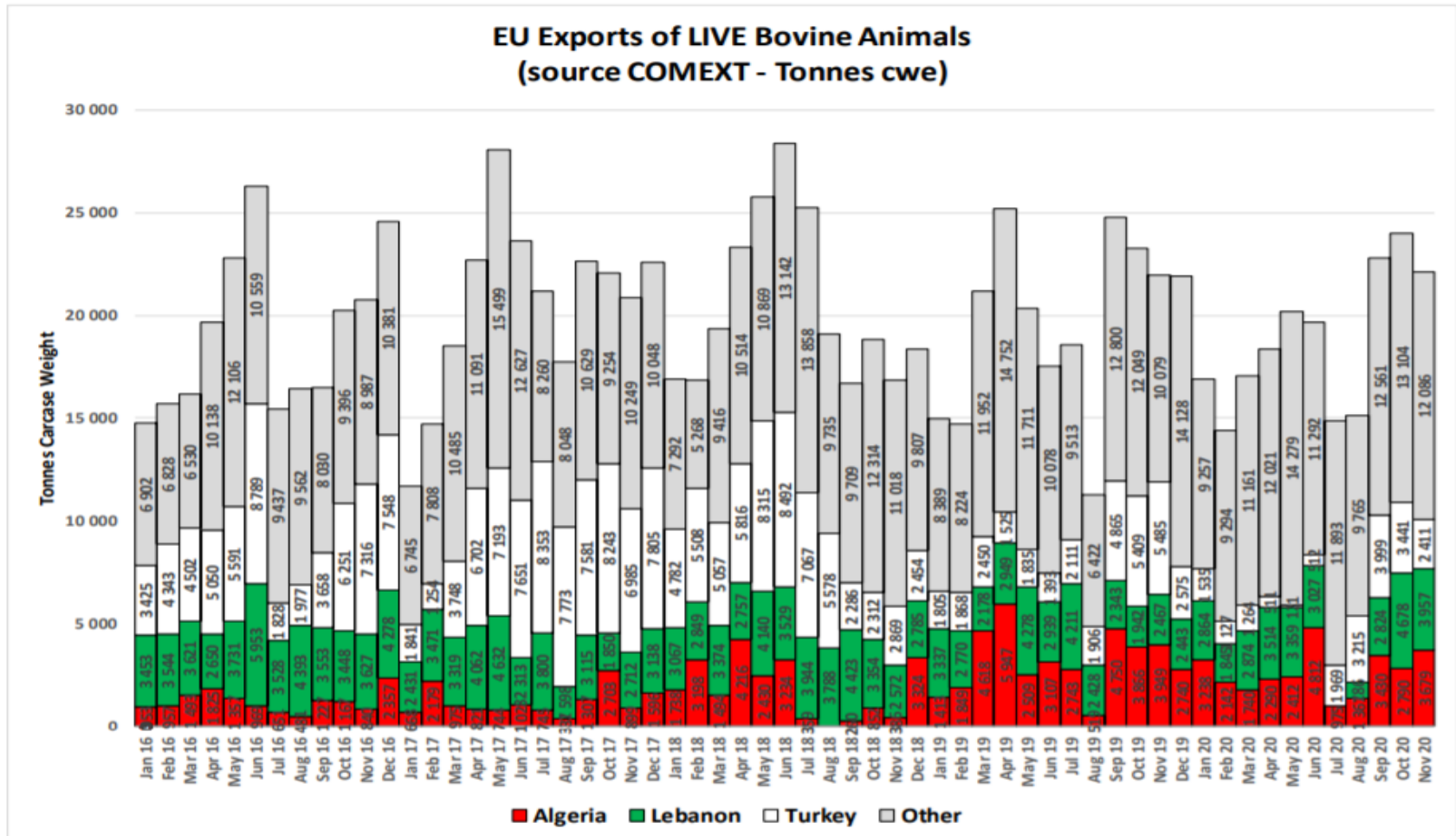
AB siğir eti ürünleri ihracatı (COMEXT)

EU Exports of BEEF products
without UK (Comext)



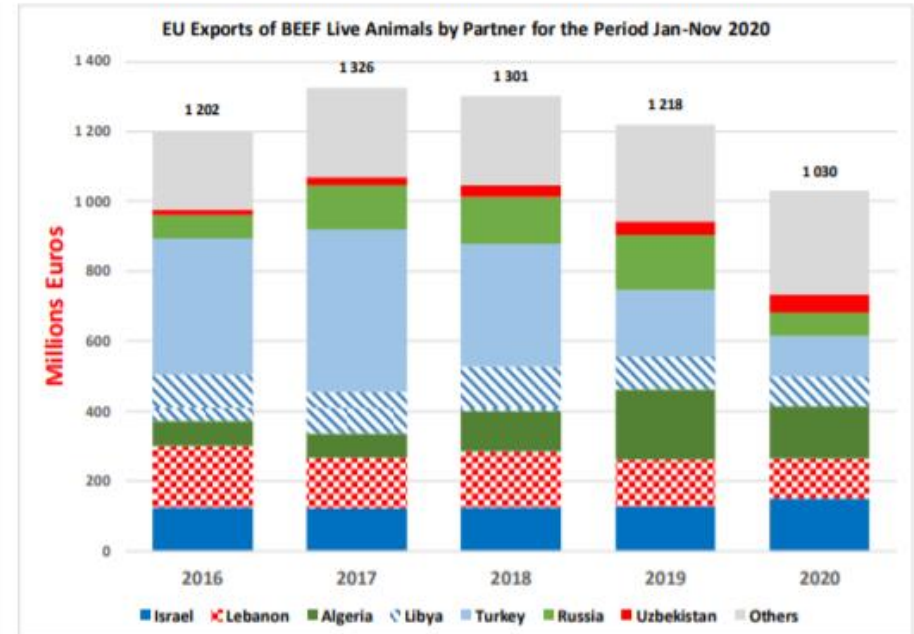
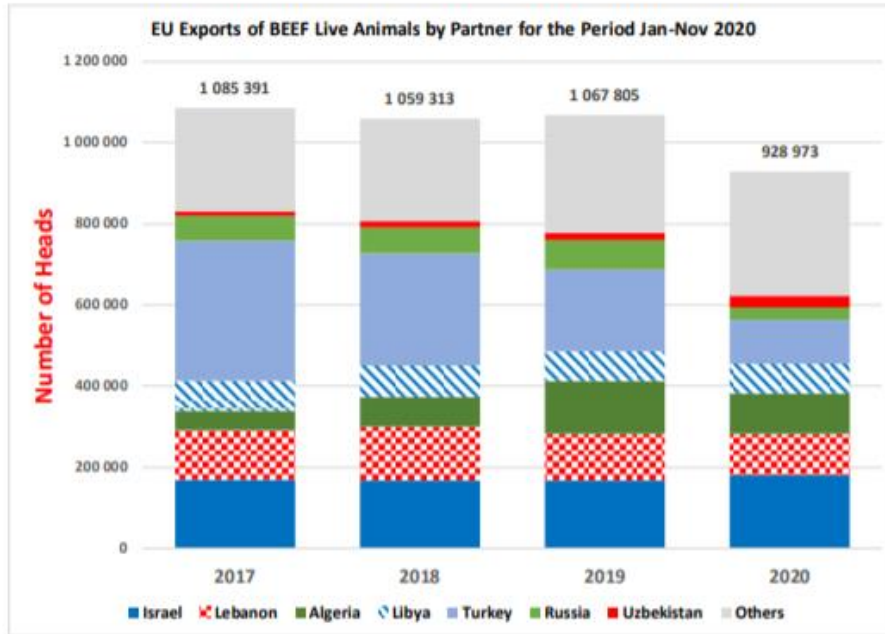


AB canlı büyükbaş ihracatı, karkas ağırlık eşdeğeri (COMEXT)





European Commission



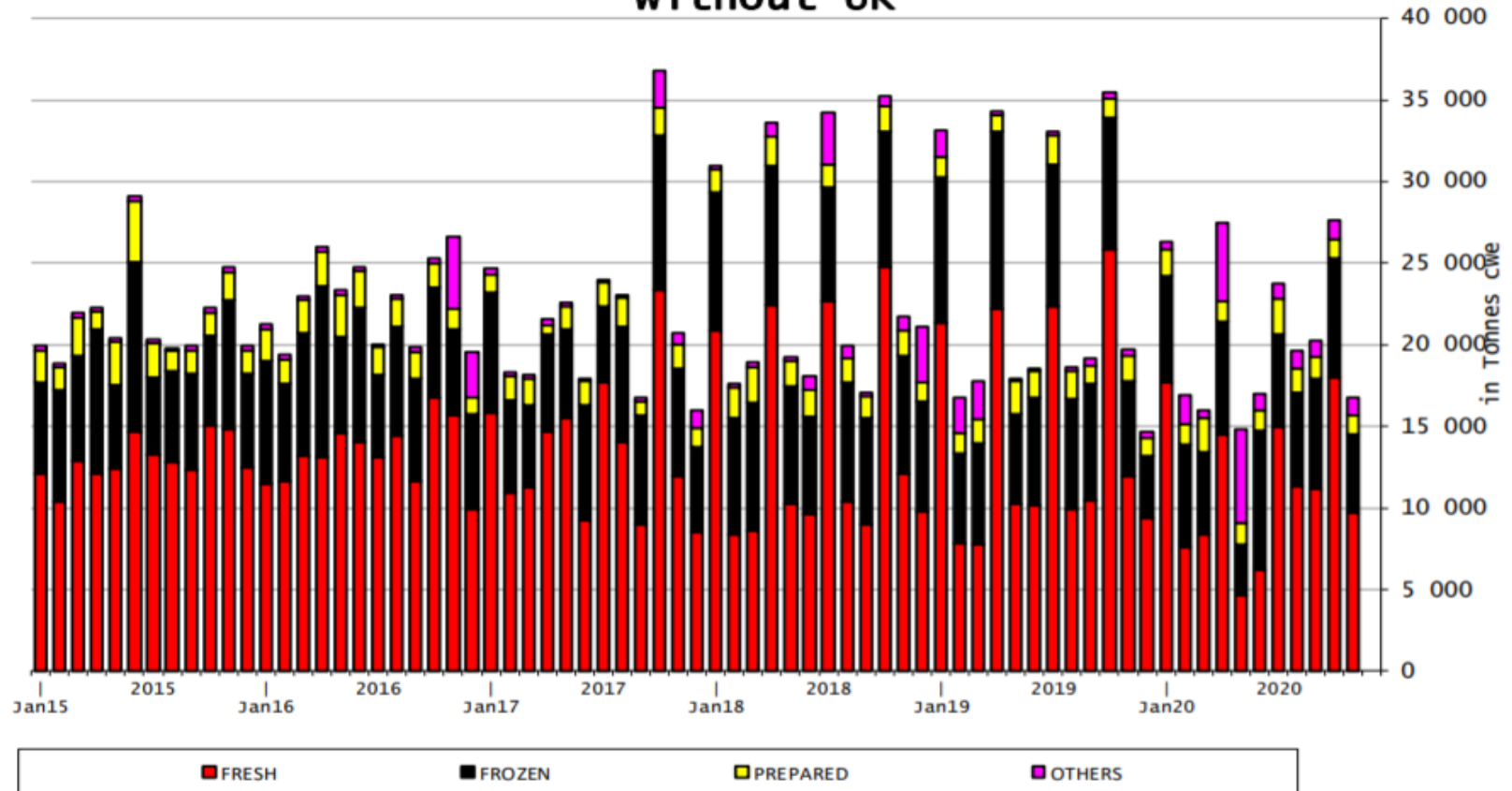
AB Sığır Eti ve Canlı Hayvan İthalatları (1): Ticaret Verileri (COMEXT – ton ca)

Origins	2016		2017		2018		2019		Jan-Nov 20		Compared to Jan-Nov 19
	tonnes	%	tonnes	%	tonnes	%	tonnes	%	tonnes	%	
Brazil	100 982	37.1%	87 156	33.5%	103 979	36.1%	99 568	35.7%	77 847	34.4%	- 17.0%
Argentina	43 111	15.8%	49 260	18.9%	69 011	24.0%	70 617	25.3%	69 424	30.7%	+ 5.3%
Uruguay	52 896	19.4%	55 212	21.2%	48 712	16.9%	40 483	14.5%	33 417	14.8%	- 15.2%
USA	20 290	7.5%	21 624	8.3%	19 268	6.7%	16 852	6.0%	15 540	6.9%	- 6.3%
Australia	21 909	8.1%	18 193	7.0%	17 368	6.0%	16 516	5.9%	10 759	4.8%	- 33.8%
New Zealand	8 274	3.0%	6 806	2.6%	7 164	2.5%	6 726	2.4%	5 624	2.5%	- 11.6%
Paraguay	5 309	2.0%	5 922	2.3%	5 520	1.9%	5 204	1.9%	3 970	1.8%	- 17.2%
Switzerland	5 496	2.0%	5 138	2.0%	5 437	1.9%	4 432	1.6%	3 874	1.7%	- 3.3%
Canada	392	0.1%	512	0.2%	1 343	0.5%	2 518	0.9%	1 382	0.6%	- 38.1%
Namibia	6 281	2.3%	5 043	1.9%	3 442	1.2%	7 706	2.8%	1 290	0.6%	- 82.0%
Serbia	557	0.2%	565	0.2%	1 134	0.4%	1 062	0.4%	883	0.4%	- 7.0%
Botswana	4 204	1.5%	2 686	1.0%	3 119	1.1%	4 950	1.8%	788	0.3%	- 83.5%
Japan	518	0.2%	646	0.2%	791	0.3%	998	0.4%	656	0.3%	- 24.9%
Norway	276	0.1%	388	0.1%	153	0.1%	128	0.0%	350	0.2%	+++
Chile	575	0.2%	319	0.1%	356	0.1%	392	0.1%	141	0.1%	- 62.7%
Ukraine	317	0.1%	374	0.1%	257	0.1%	410	0.1%	134	0.1%	- 65.6%
Other Destinations	705	0.3%	651	0.2%	735	0.3%	646	0.2%	408	0.2%	
Total (without UK)	272 093		260 496		287 788		279 209		226 489		
% change			- 4%		+ 10%		- 3%		- 14.4%		
United Kingdom	134 098		133 588		138 496		160 509		110 774 up to Oct 20		#N/A



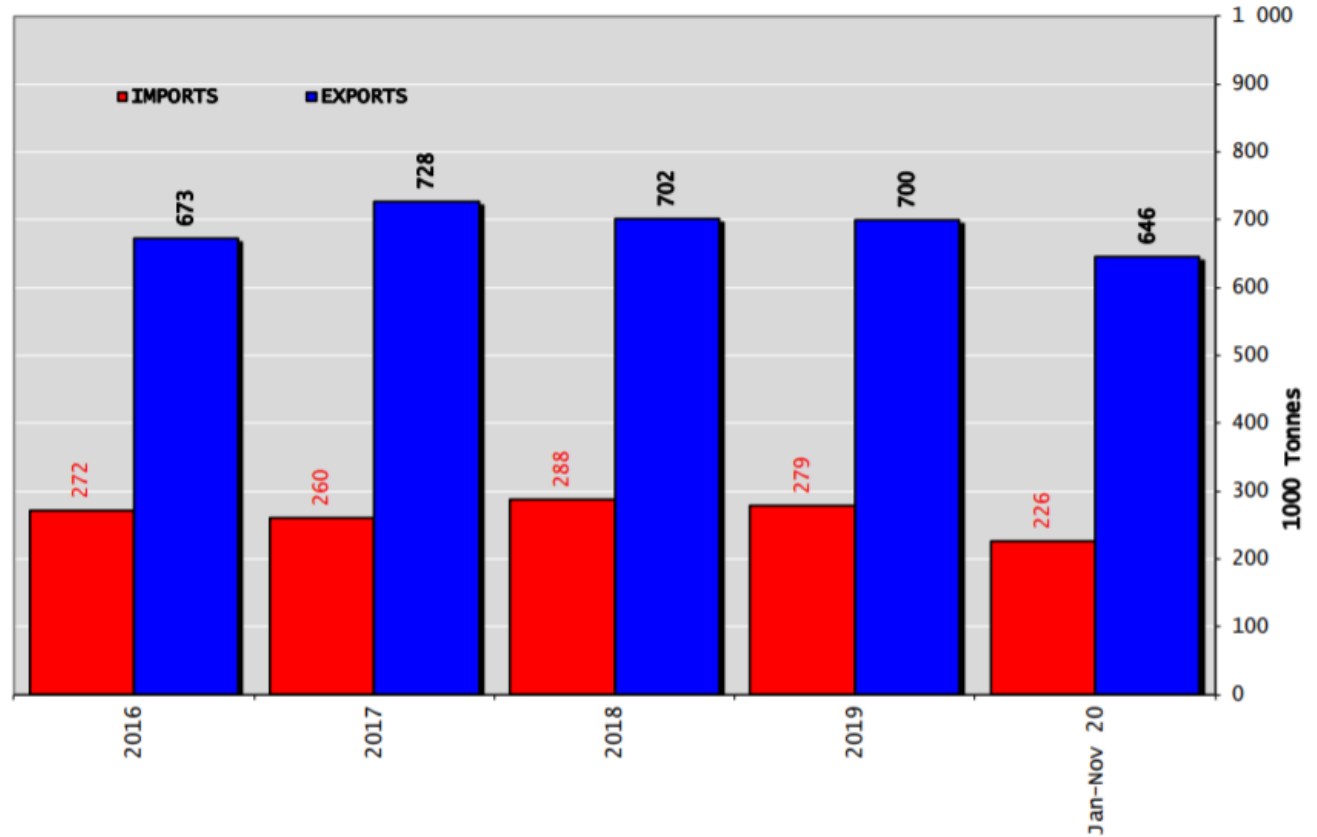
AB Sığır Eti İthalatları (Birleşik Krallık hariç)

EU Imports of BEEF products
without UK



Sığır Eti Ürünleri ve Canlı Hayvan Ticaret Dengesi (Ton) (Birleşik Krallık Hariç)

Trade Balance of Beef Products and Live Animals (without UK)

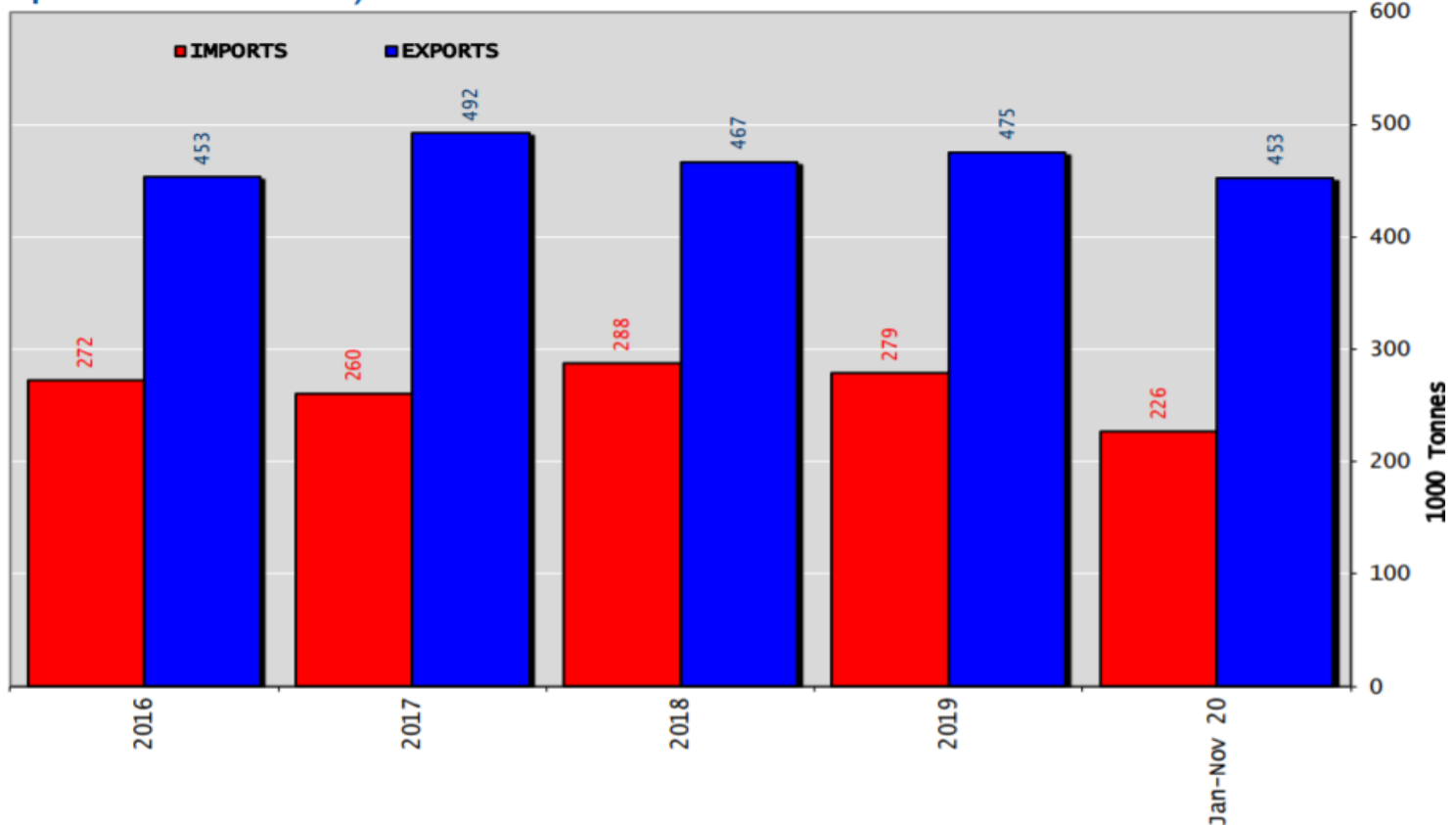




Sığır Eti Ürünleri Ticaret Dengesi (Canlı hayvanlar hariç) (Ton)

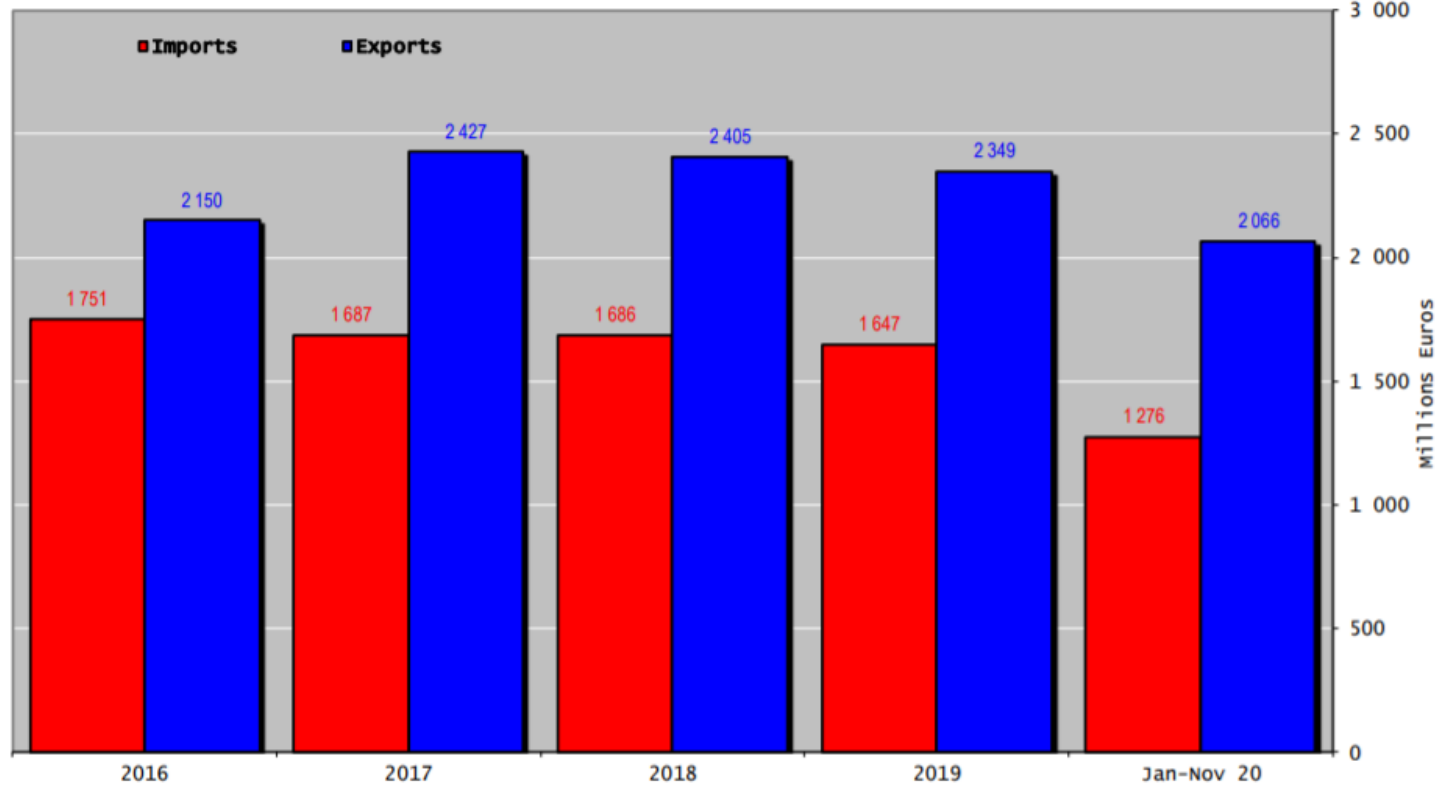
(Birleşik Krallık Hariç)

Trade Balance of Beef Products
(Except Live Animals) without UK



Sığır Eti Ürünleri ve Canlı Hayvan Ticaret Dengesi (Milyon Euro) (Birleşik Krallık Hariç)

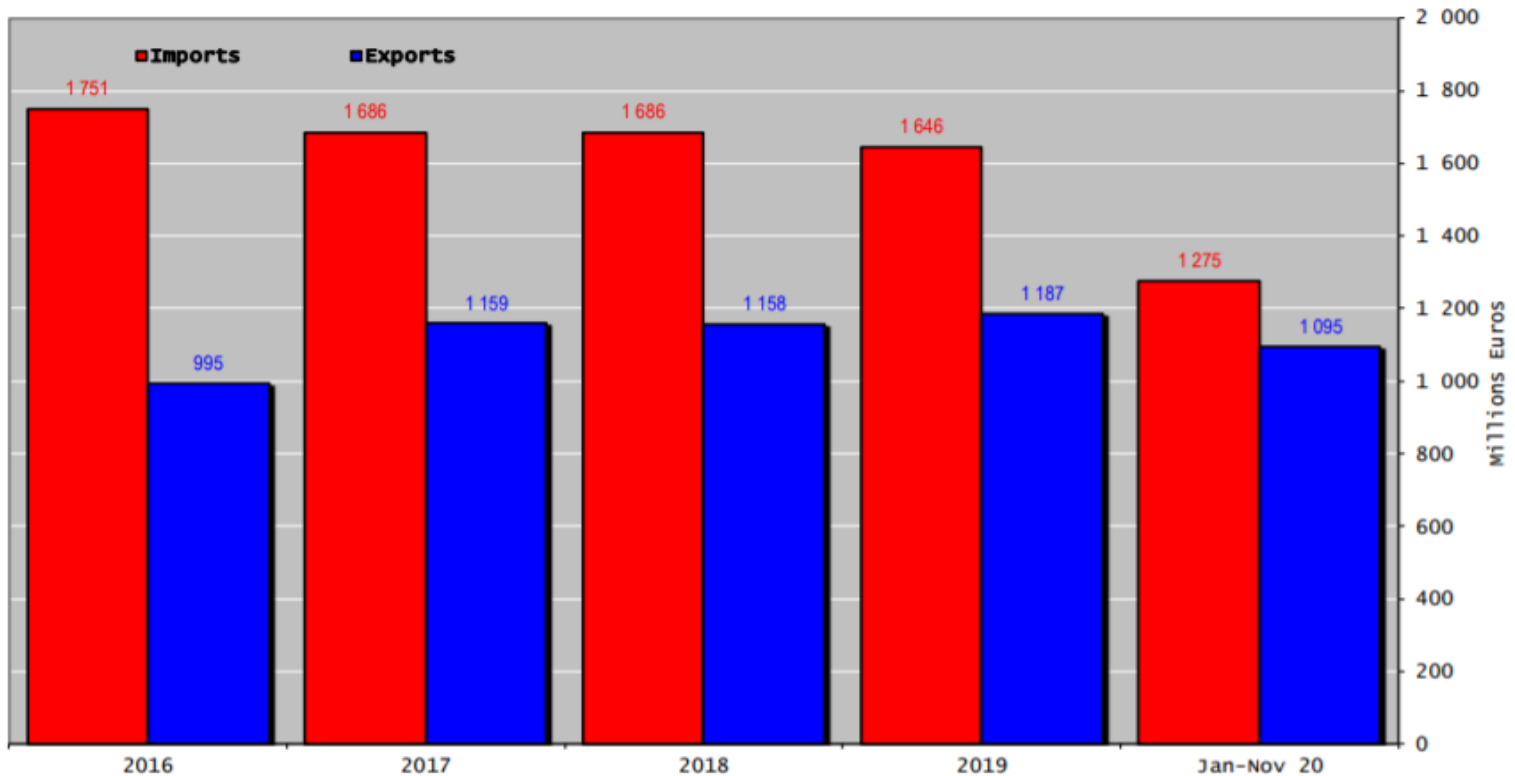
Trade Balance of Beef Products and Live Animals (without UK)



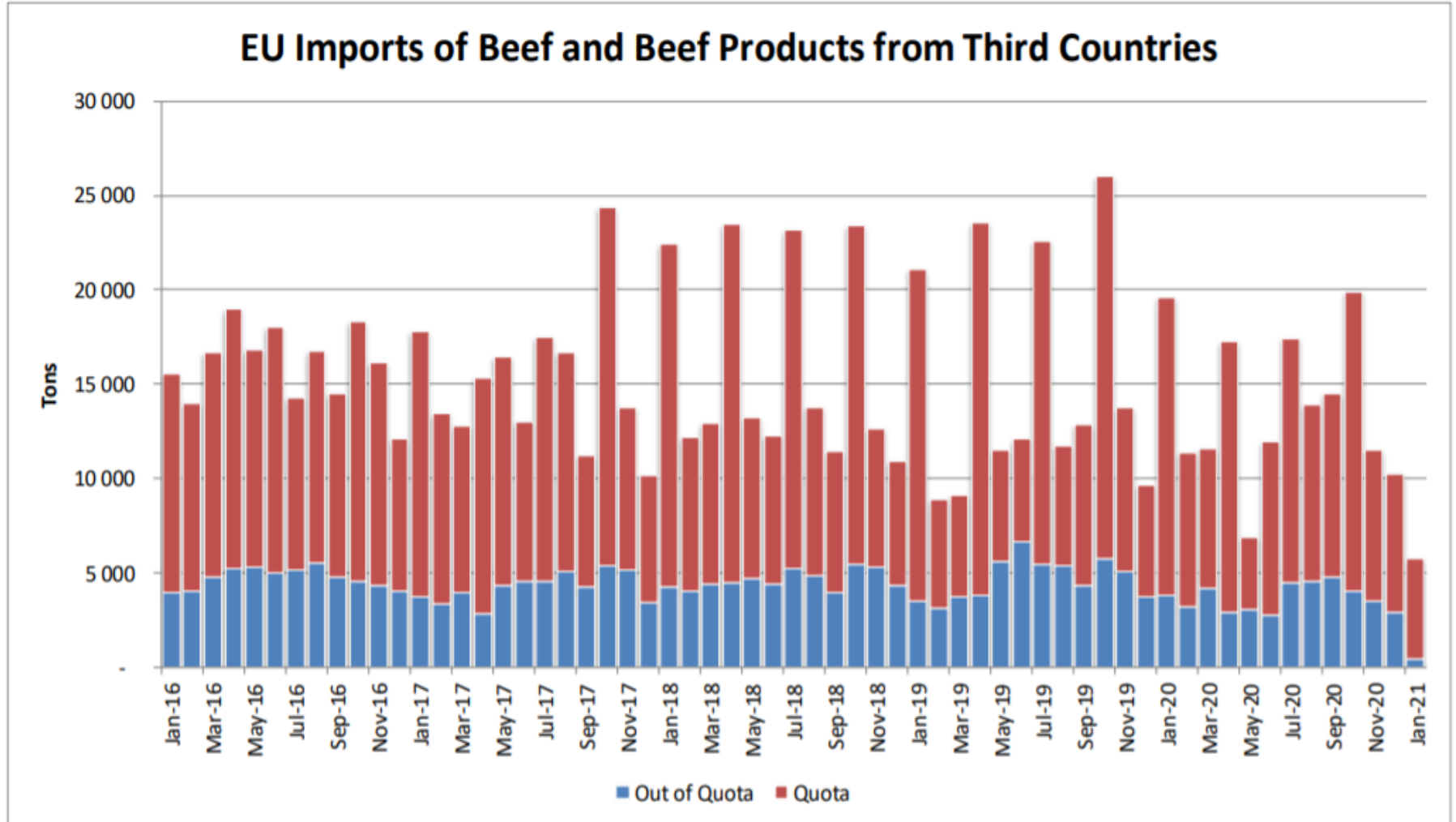


AB Sığır Eti Ürünleri Ticareti (Canlı Hayvanlar Hariç) (Milyon Euro) (Birleşik Krallık Hariç)

Trade Balance of Beef Products
(Except Live Animals) without UK

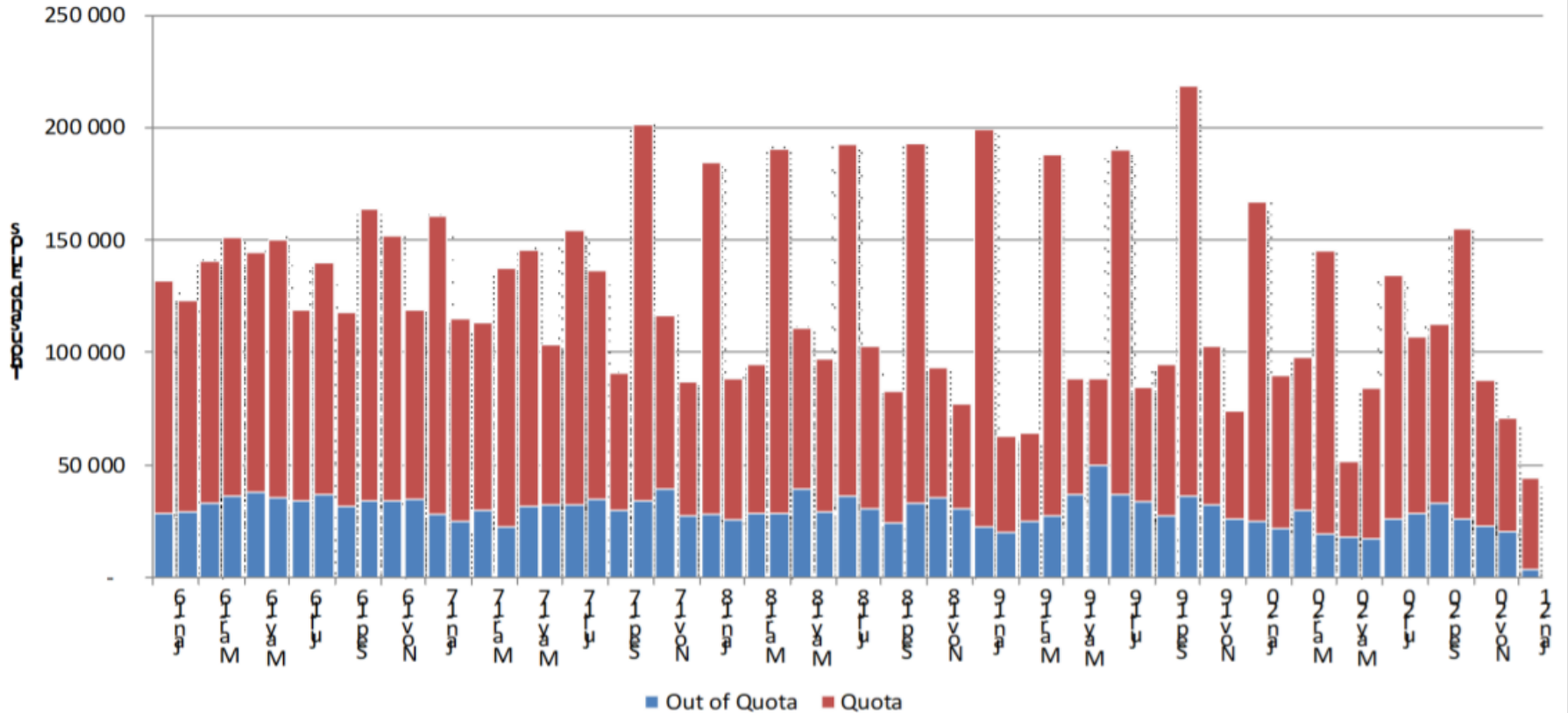


Üçüncü Ülkelerden AB Sığır ve Sığır eti Ürünleri İthalatları (Ton)

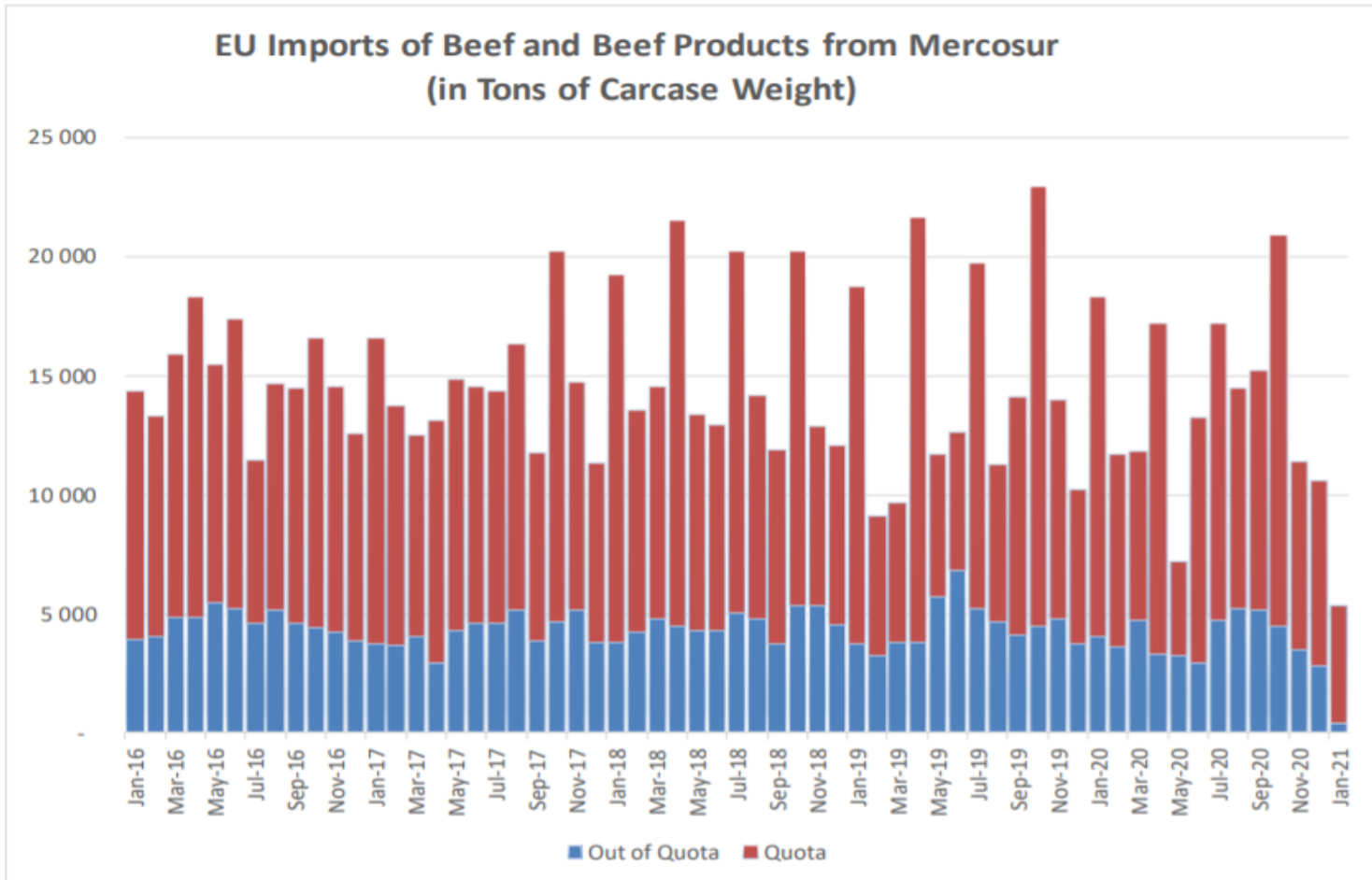


Üçüncü Ülkelerden AB Sığır ve Sığır eti Ürünleri İthalatları (Bin Euro)

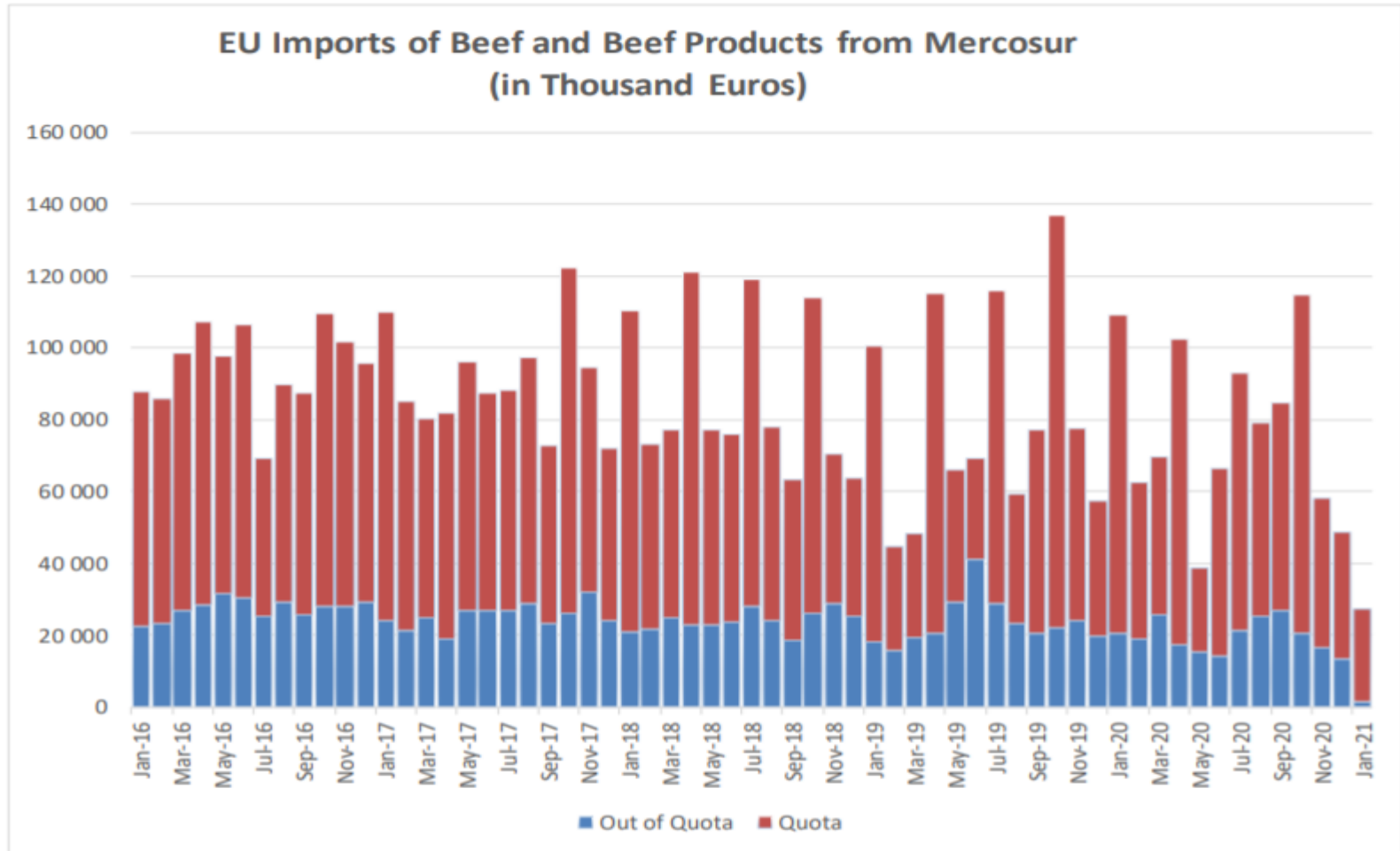
EU Imports of Beef and Beef Products from Third Countries



Mercosur Ülkelerinden Sığır ve Sığır Eti Ürünleri AB ve Birleşik Krallık İthalatları (Ton, Karkas Ağırlık)



Mercosur Ülkelerinden Sığır ve Sığır Eti Ürünleri AB ve Birleşik Krallık İthalatları (Bin Euro)



YÜKSEK KALİTE SİĞİR ETİ İTHALAT KOTALARI



European
Commission

Hilton Quota

Regulation (EU) N° 593/2013

	Quantity allocated (Tons)	2018/2019		2019/2020		2020/2021*	
		Use		Use		Use	
09.4001 Australia	2 250						
09.4004 Argentina	200	11.05	5.53%	8.34	4.17%	-	0.00%
09.4450 Argentina	29 500	29 491.35	99.97%	26 649.20	90.34%	13 995.94	47.44%
09.4451 Australia	7 150	4 942.02	69.12%	3 000.01	41.96%	781.46	10.93%
09.4452 Uruguay	6 376	6 363.76	99.81%	4 520.57	70.90%	3 256.80	51.08%
09.4453 Brazil	10 000	4 147.19	41.47%	2 884.79	28.85%	1 597.24	15.97%
09.4454 New Zealand	1 300	980.60	75.43%	859.15	66.09%	415.81	31.99%
09.4002 Canada/US	11 500	3 883.04	33.77%	2 703.68	23.51%	784.25	6.82%
09.4455 Paraguay	1 000	935.41	93.54%	680.40	68.04%	365.33	36.53%
Total Beef	66 826	50 743.37	75.93%	41 297.80	61.80%	21 196.83	31.72%
Total Buffalo	2 450	11.05	0.45%	8.34	0.34%	-	0.00%
Total	69 276	50 754.42	73.26%	41 306.14	59.63%	21 196.83	30.60%

* up to 30/11/2020

YÜKSEK KALİTE SİĞİR ETİ İTHALAT KOTALARI



European
Commission

Quota erga omnes

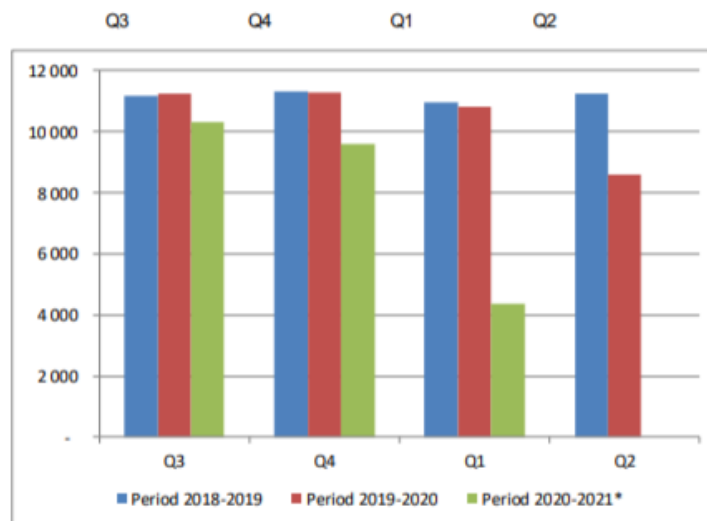
Regulation (EU) No 481/2012

	2018-Q3	2018-Q4	2019-Q1	2019-Q2	TOTAL
Period 2018-2019	11 165	11 319	10 973	11 256	44 712
Available	11 250	11 250	11 250	11 250	45 000
Use	99.24%	100.61%	97.53%	100.05%	99.36%
Available after transfer	11 250	11 335	11 181	11 527	
	99.24%	100.00%	97.53%	100.00%	

	2019-Q3	2019-Q4	2020-Q1	2020-Q2	TOTAL
Period 2019-2020	11 246	11 261	10 825	8 581	41 914
Available	11 250	11 250	11 250	11 250	45 000
Use	99.97%	100.10%	96.22%	76.28%	93.14%
Available after transfer	11 250	11 254	11 239	11 675	
	99.97%	100.00%	96.22%	76.28%	

	2020-Q3*	2020-Q4	2021-Q1	2021-Q2	TOTAL
Period 2020-2021*	10 305	9 588	4 379		24 272
Available	11 250	11 250	11 250		45 000
Use	91.60%	85.22%	38.92%		53.94%
Available after transfer	11 250	12 195	12 912		
	91.60%	78.62%	33.91%		

* Until 15.01.2021



YÜKSEK KALİTE SİĞİR ETİ İTHALAT KOTALARI

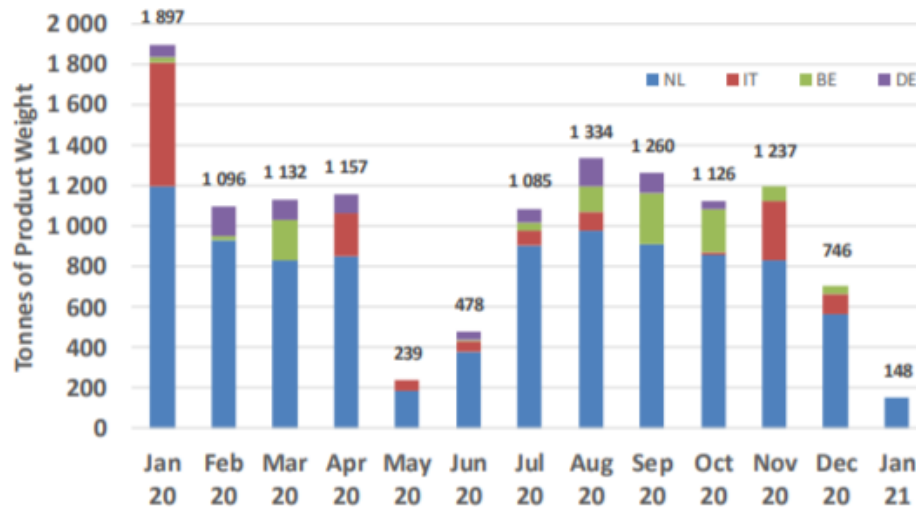


European Commission

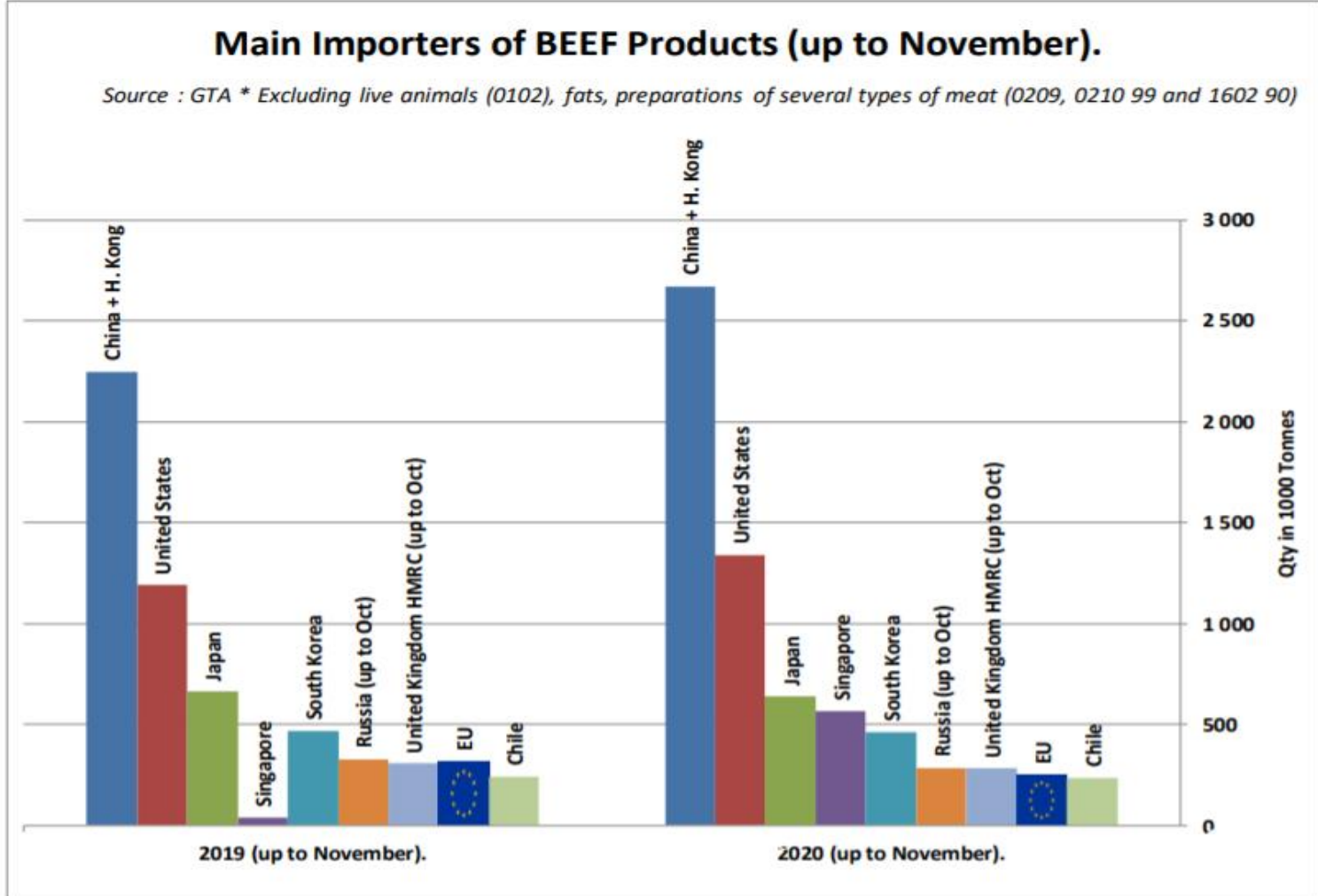
Origin	GATT 2019-2020				Total
	2019-Q3	2019-Q4	2020-Q1	2020-Q2	
NL			2 957	1 415	4 372
IT			614	314	929
BE			241	10	251
DE			313	133	446
Grand Total			4 125	1 873	5 998
Total import within Quota			4 125	1 873	5 998
Available			4 625	4 625	9 250
Use			89.19%	40.50%	64.84%
After transfer			4 625	5 125	
Use			89.19%	36.55%	

Origin	GATT 2020-2021				Total
	2020-Q3	2020-Q4	2021-Q1	2021-Q2	
NL	2 785	2 251	148		5 184
IT	174	404	-		578
BE	417	330	-		747
DE	305	124	-		428
Total import within Quota	3 680	3 109	148		6 937
Available	4 625	4 625	4 625		13 875
Use	79.57%	67.22%	3.20%		
After transfer	4 625	5 570	6 141		
Use	79.57%	55.82%	2.41%		

EU use of Import Quota 09-2203

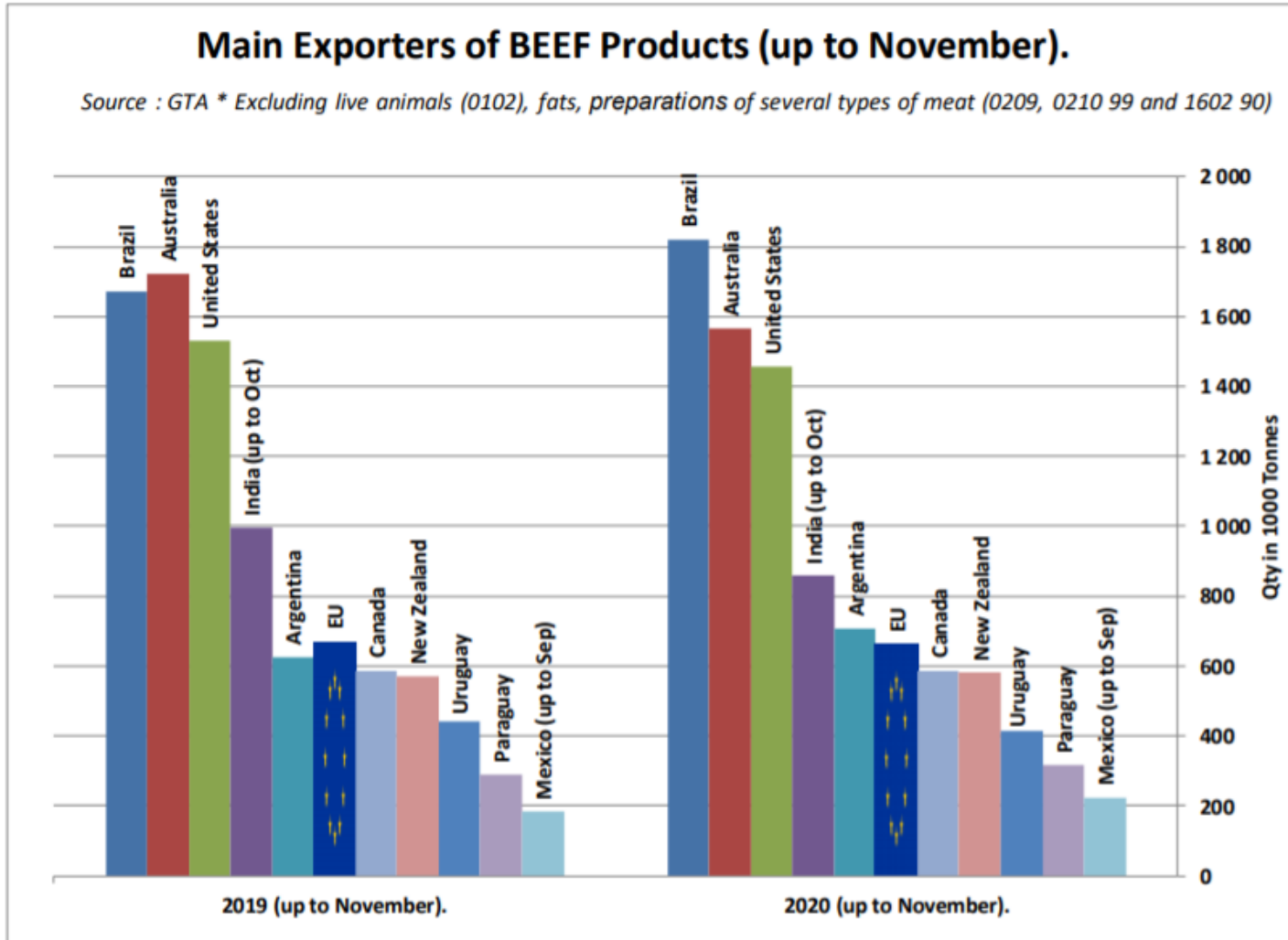


SIĞIR ETİ ÜRÜNLERİNİN NET İTHALATÇILARI (KASIM AYINA KADAR)





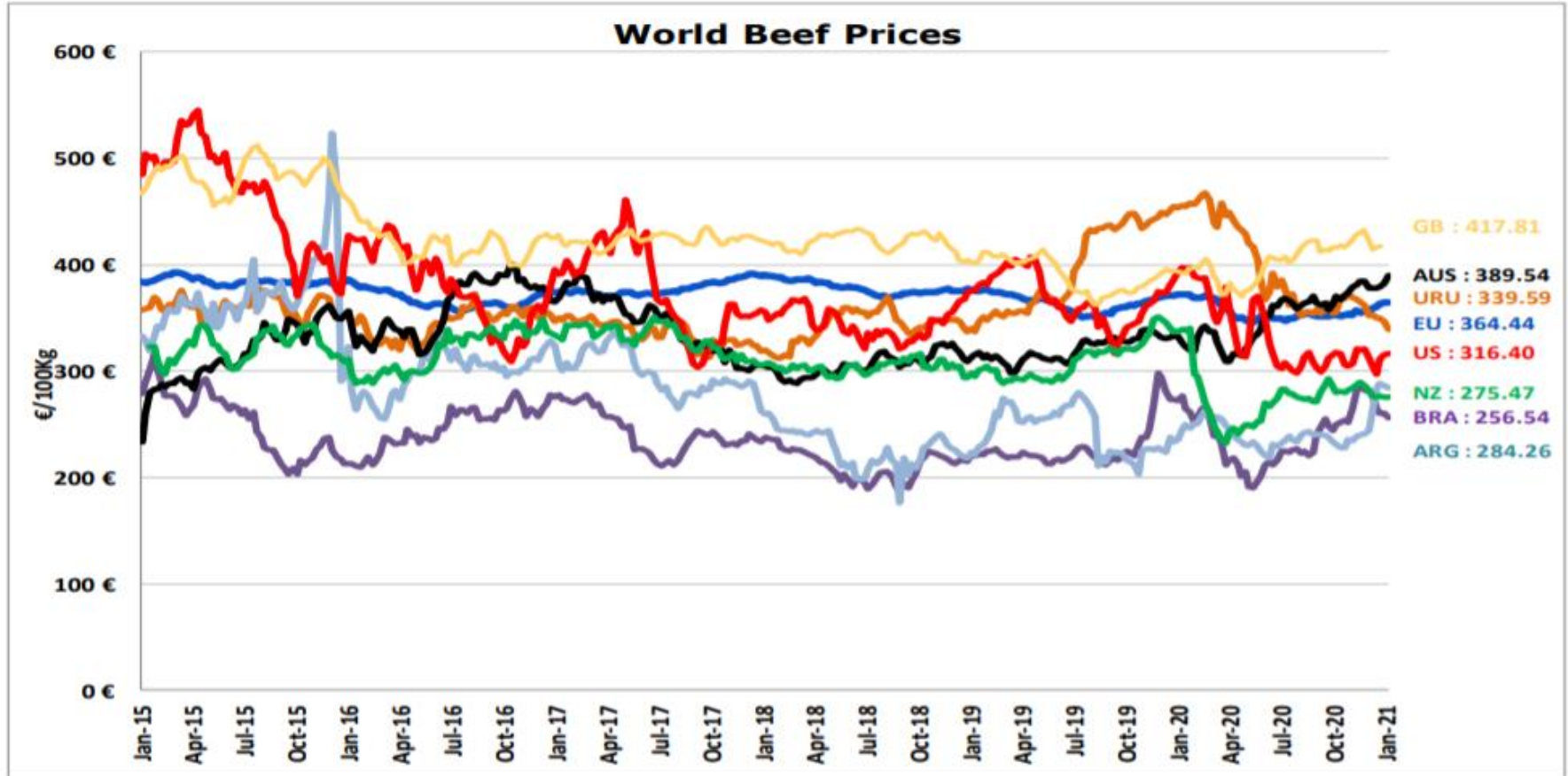
SIĞIR ETİ ÜRÜNLERİNİN NET İHRACATÇILARI (KASIM AYINA KADAR)



DÜNYA SIĞIR ETİ PAZARI



Dünya Sığır Fiyatları AB, ABD, AVUSTURYA, YENİ ZELANDA



- ECB <http://sdw.ecb.europa.eu/browse.do?node=2018794>
US <https://www.marketnews.usda.gov/mnp/ls-home>
AUS <http://statistics.mla.com.au/Report/RunReport/ae59d4ac-74e4-4c56-93bd-982a044d9760>
UY <http://www.inac.gub.uy/innovaportal/v/11034/10/innova.front/indicadores-y-precios>
ARG http://www.abc-consorcio.com.ar/Estadisticas/detalle/117/precios_comparativos_del_novillo.html
BR <http://www.pecuaria.com.br/cotacoes.php>
NZ http://www.abc-consorcio.com.ar/Estadisticas/detalle/117/precios_comparativos_del_novillo.html



Daha fazla bilgi için:

https://ec.europa.eu/agriculture/market-observatory/meat_en

Ve Agri-FOOD Veri Portalı:

<http://agridata.ec.europa.eu>