



AB SIĞIR VE DANA ETİ PAZAR DURUMU

22 Ekim 2020

BÜYÜKBAŞ

HAZİRAN ARAŞTIRMASI



European
Commission

DEĞİŞİM

TOPLAM BÜYÜKBAŞ

May/Jun 1000 Hd	TOT LIVESTOCK				%Var 2020 2019	BOVINE < 1 Year				%Var 2020 2019	BOVINE 1-2 Year				%Var 2020 2019	BOVINE > 2 Year				%Var 2020 2019
	2017	2018	2019	2020		2017	2018	2019	2020		2017	2018	2019	2020		2017	2018	2019	2020	
BE	2 454	2 450	2 406	2 388	-0.8%	717	710	706	716	+1.4%	500	492	475	471	-0.8%	1 237	1 247	1 226	1 201	-2.0%
BG																				
CZ																				
DK	1 565	1 560	1 512	1 517	+0.3%	527	538	510	517	+1.4%	311	294	292	291	-0.3%	727	729	710	709	-0.1%
DE	12 366	12 093	11 763	11 423	-2.9%	3 723	3 618	3 502	3 410	-2.6%	2 948	2 848	2 788	2 683	-3.8%	5 694	5 627	5 473	5 330	-2.6%
EE																				
IE	7 364	7 349	7 209	7 314	+1.5%	2 131	2 078	2 008	2 117	+5.4%	1 914	1 919	1 861	1 807	-2.9%	3 319	3 351	3 340	3 390	+1.5%
EL																				
ES	6 588	6 725	6 722	6 735	+0.2%	2 480	2 504	2 507	2 499	-0.3%	927	990	978	947	-3.2%	3 181	3 230	3 237	3 290	+1.6%
FR	19 433	18 737	18 470	18 200	-1.5%	5 542	5 125	5 227	5 144	-1.6%	3 523	3 417	3 229	3 249	+0.6%	10 367	10 195	10 014	9 808	-2.1%
HR																				
IT	6 118	6 170	6 016	6 116	+1.7%	1 723	1 757	1 746	1 746	-0.0%	1 472	1 466	1 409	1 458	+3.5%	2 923	2 948	2 861	2 912	+1.8%
CY																				
LV																				
LT																				
LU																				
HU																				
MT																				
NL	4 096	3 897	3 750	3 766	+0.4%	1 602	1 560	1 536	1 558	+1.4%	600	520	460	446	-3.1%	1 893	1 817	1 754	1 762	+0.5%
AT	1 938	1 907	1 873	1 844	-1.5%	620	606	596	588	-1.4%	431	433	425	416	-2.1%	888	869	853	841	-1.4%
PL	6 143	6 201	6 358	6 328	-0.5%	1 721	1 686	1 771	1 694	-4.3%	1 701	1 734	1 768	1 796	+1.6%	2 721	2 781	2 820	2 838	+0.6%
PT	1 722	1 722	1 712	1 751	+2.3%	537	529	524	557	+6.4%	281	274	267	264	-0.9%	904	919	921	929	+0.8%
RO	2 012	2 002	1 963	1 915	-2.4%	454	444	428	418	-2.3%	229	236	230	217	-5.7%	1 329	1 322	1 305	1 280	-1.9%
SI																				
SK																				
FI																				
SE	1 501	1 507	1 466	1 454	-0.8%	472	475	451	462	+2.6%	385	381	380	362	-4.6%	644	651	636	630	-1.0%
EU	73 301	72 320	71 220	70 752	-0.7%	22 250	21 631	21 512	21 427	-0.4%	15 224	15 003	14 559	14 406	-1.1%	35 827	35 687	35 149	34 919	-0.7%
UK	10 004	9 891	9 739	9 616	-1.3%	2 940	2 908	2 857	2 861	+0.1%	2 516	2 479	2 448	2 414	-1.4%	4 548	4 504	4 434	4 342	-2.1%

Source : EStat Newcronos

EU %Var is calculated considering only countries available in 2019 AND 2020

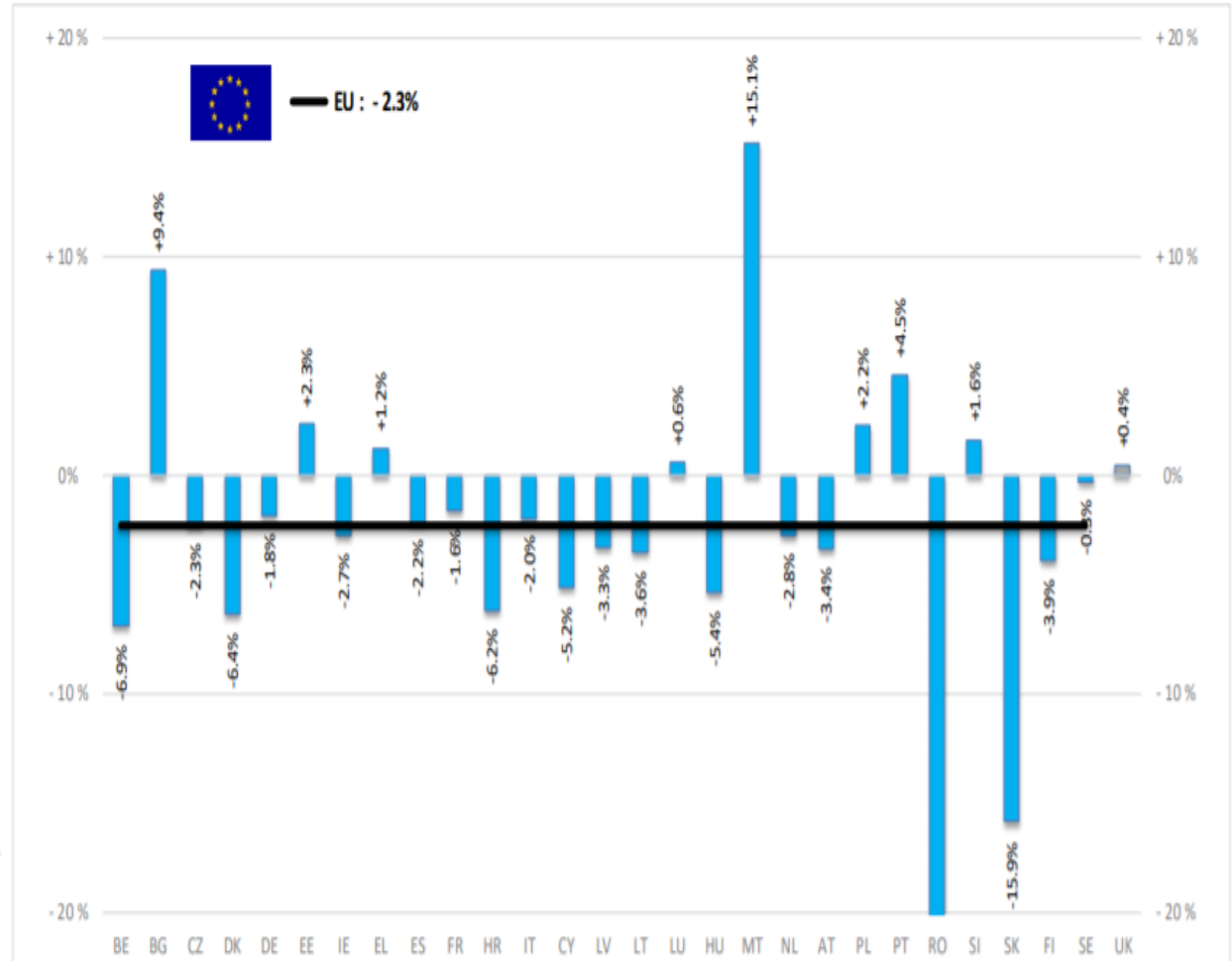
May/Jun 1000 Hd	TOTAL COWS				%Var 2020 2019	DAIRY COWS				%Var 2020 2019	OTHER COWS				%Var 2020 2019
	2017	2018	2019	2020		2017	2018	2019	2020		2017	2018	2019	2020	
BE	970	968	960	954	-0.7%	521	532	536	544	+1.6%	449	435	425	409	-3.6%
BG															
CZ															
DK	665	667	654	653	-0.2%	570	575	567	567	idem	95	91	87	86	-1.1%
DE	4 885	4 830	4 720	4 609	-2.3%	4 214	4 167	4 067	3 969	-2.4%	670	663	653	640	-1.9%
EE															
IE	2 514	2 529	2 505	2 551	+1.9%	1 433	1 481	1 505	1 568	+4.2%	1 081	1 048	1 000	983	-1.6%
EL															
ES	2 832	2 865	2 854	2 921	+2.4%	825	825	815	807	-1.0%	2 007	2 040	2 039	2 115	+3.7%
FR	7 811	7 652	7 546	7 442	-1.4%	3 552	3 512	3 471	3 403	-1.9%	4 259	4 141	4 075	4 039	-0.9%
HR															
IT	2 187	2 192	2 110	2 130	+1.0%	1 907	1 904	1 840	1 844	+0.2%	280	288	270	286	+6.1%
CY															
LV															
LT															
LU															
HU															
MT															
NL	1 753	1 685	1 641	1 651	+0.6%	1 694	1 622	1 578	1 593	+0.9%	59	63	63	58	-7.4%
AT	755	740	726	716	-1.3%	540	538	525	523	-0.4%	215	202	201	193	-3.8%
PL	2 374	2 429	2 461	2 487	+1.1%	2 154	2 233	2 221	2 225	+0.2%	220	196	240	263	+9.6%
PT	747	745	742	757	+1.9%	244	244	238	239	+0.4%	504	501	504	517	+2.7%
RO	1 199	1 197	1 179	1 160	-1.6%	1 184	1 184	1 162	1 145	-1.5%	15	12	17	15	-9.6%
SI															
SK															
FI															
SE	530	534	516	511	-0.9%	322	319	306	302	-1.3%	208	214	210	209	-0.4%
EU	29 221	29 034	28 612	28 542	-0.2%	19 159	19 137	18 831	18 729	-0.5%	10 062	9 896	9 782	9 814	+0.3%
UK	3 481	3 441	3 398	3 362	-1.1%	1 891	1 883	1 871	1 851	-1.1%	1 589	1 558	1 527	1 512	-1.0%



European
Commission

BAŞ	HEADS	Jan-Jul 20/19	
		EU	EU + UK
BOĞA	Bull	-2.2%	-2.2%
ÖKÜZ	Bullock	+6.3%	+3.3%
İNEK	Cow	-2.3%	-1.9%
DÜVE	Heifer	+1.2%	+2.0%
BUZAĞI	Calve	-6.6%	-7.3%
GENÇ SİĞİR	Young cattle	-3.3%	-3.3%
Büyükbaş Hayvan Eti	Meat of bovine animals	-2.3%	-2.0%

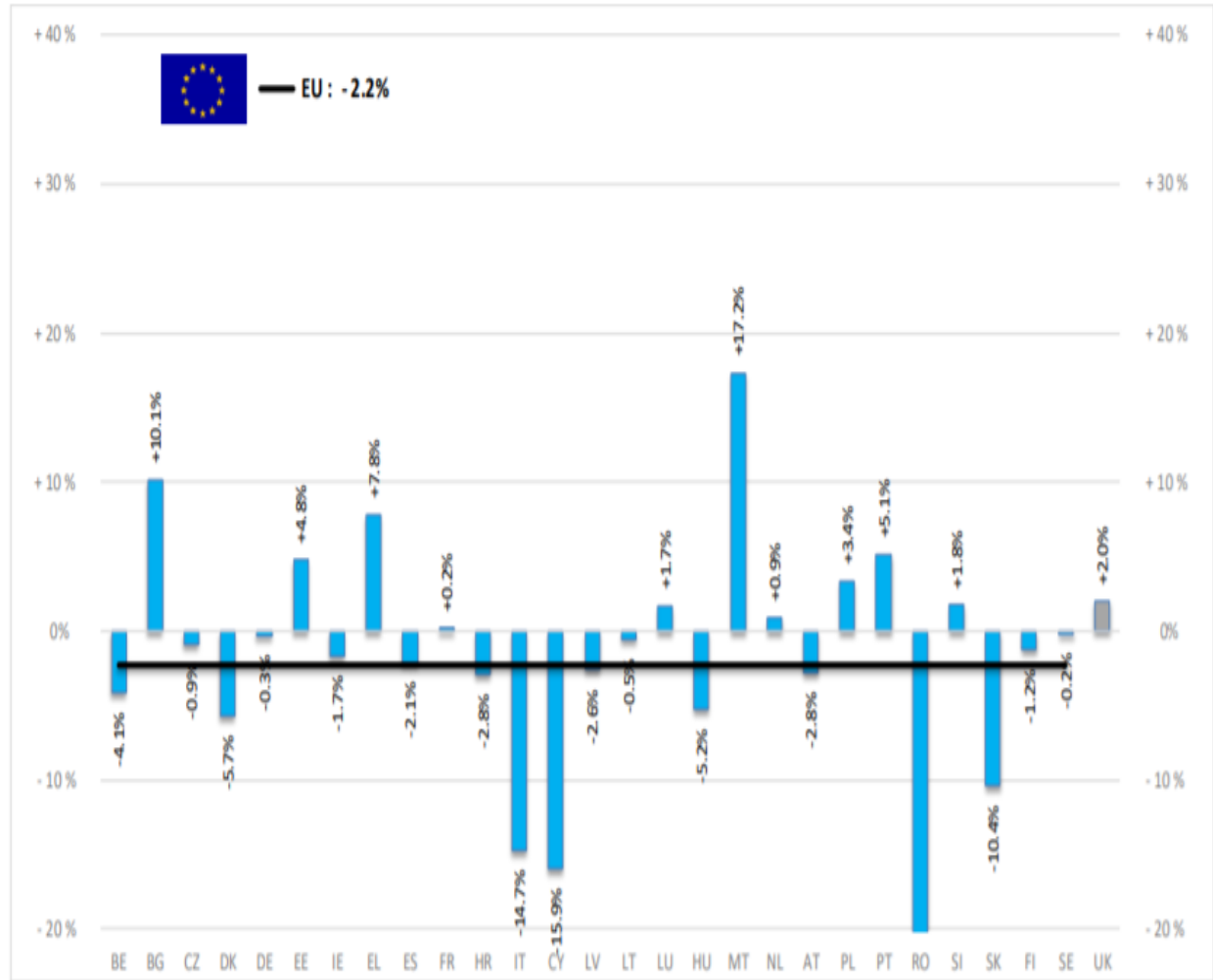
Estimates for last month of period :



Source : EStat - Newcronos

TON	TONNES	Jan-Jul 20/19	
		EU	EU + UK
BOĞA	Bull	-2.4%	-2.4%
ÖKÜZ	Bullock	+8.5%	+4.1%
İNEK	Cow	-2.6%	-2.2%
DÜVE	Heifer	-1.1%	+0.2%
BUZAĞI	Calve	-7.7%	-7.8%
GENÇ SİĞİR	Young cattle	-1.8%	-1.8%
Büyükbaş Hayvan Eti	Meat of bovine animals	-2.2%	-1.7%

Estimates for last month of period :

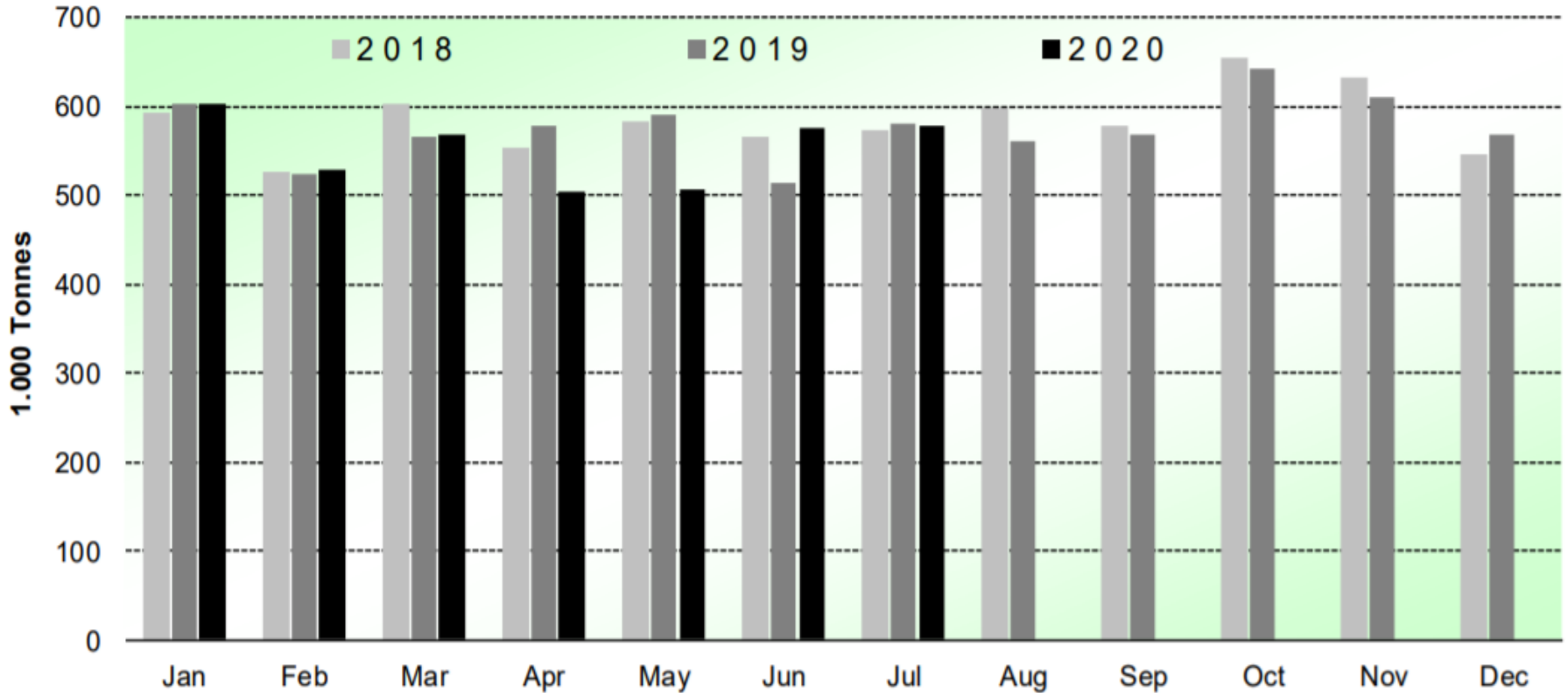


Source : EStat - Newcronos



SIĞIR VE DANA ETİ ÜRETİMİ (AB Kesimler – Ton)

Beef & Veal Production (EU Slaughtering) - Tonnes



Source : EStat-Newcronos



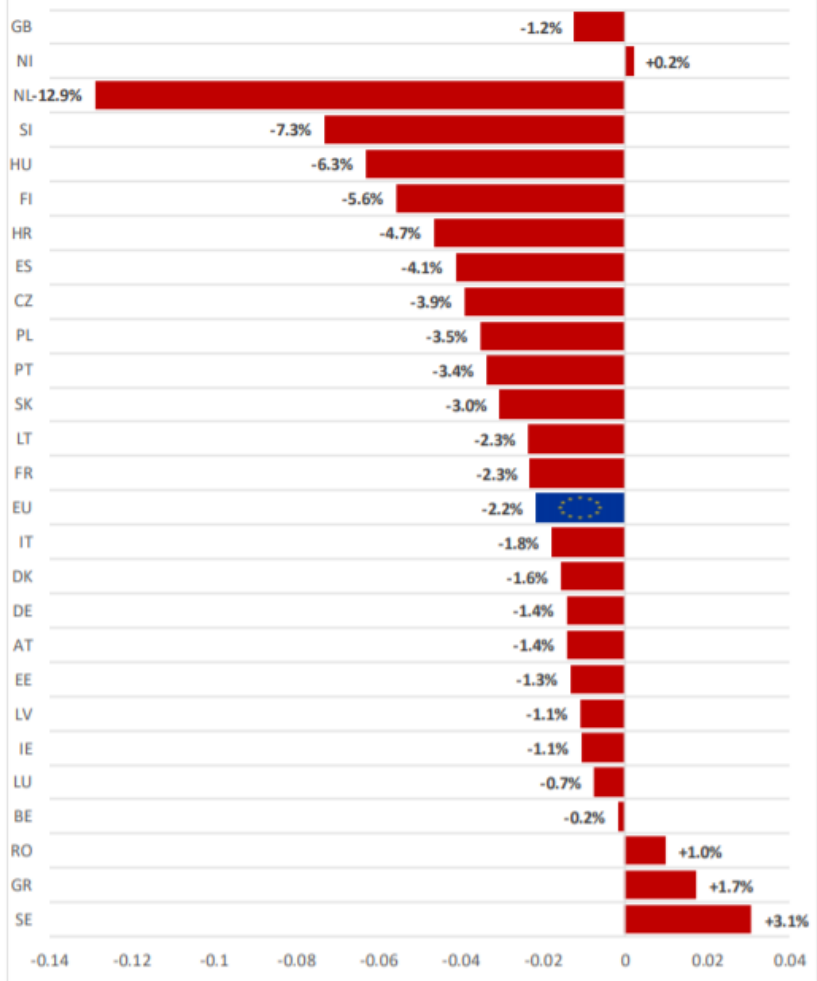
EU Prices week		41	Evolution since last week	Evolution since last month	Evolution since last year
Carcasse	Average A/C/Z -R3	352.2	+ 0.0%	+ 0.2%	- 1.9%
	Young Bovines (Z)	346.2	- 0.6%	+ 0.1%	- 0.6%
	Young Bulls (A)	351.7	+ 0.2%	+ 0.6%	- 2.6%
	Steers (C)	363.8	- 0.1%	- 0.4%	+ 0.8%
	Cows (D)	273.6	- 0.1%	- 1.6%	- 1.2%
	Heifers (E)	367.0	- 0.2%	- 0.6%	+ 0.4%
Live Animals	Male Calves Dairy Type	68.67	- 1.6%	- 4.5%	+ 2.9%
	Male Calves Beef Type	188.5	+ 1.1%	- 5.2%	+ 4.3%
	Young Store Cattle	2.40	- 0.1%	- 0.1%	+ 1.0%
	Yearling Male Store Cattle	2.30	- 0.0%	+ 1.1%	+ 3.2%
	Yearling Female Store Cattle	2.39	+ 0.5%	+ 1.0%	+ 2.2%
	Calves slaughtered <8M	471.6	+ 1.2%	+ 9.9%	- 6.0%

Sources : MSs notifications (Regulation (EU) 1182/2017 and 1184/2017

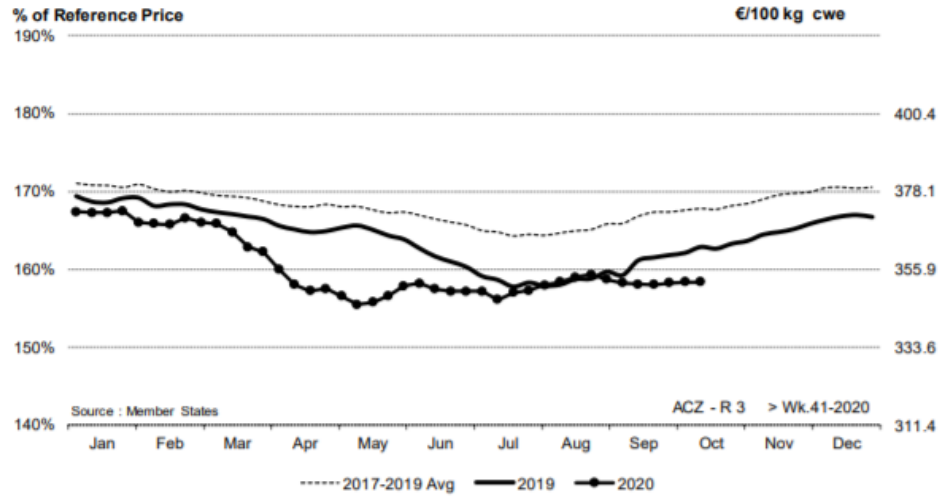


European Commission

EU ACZ R3 Price Comparison between average monthly price October 2019 - September 2020 compared to October 2018 -

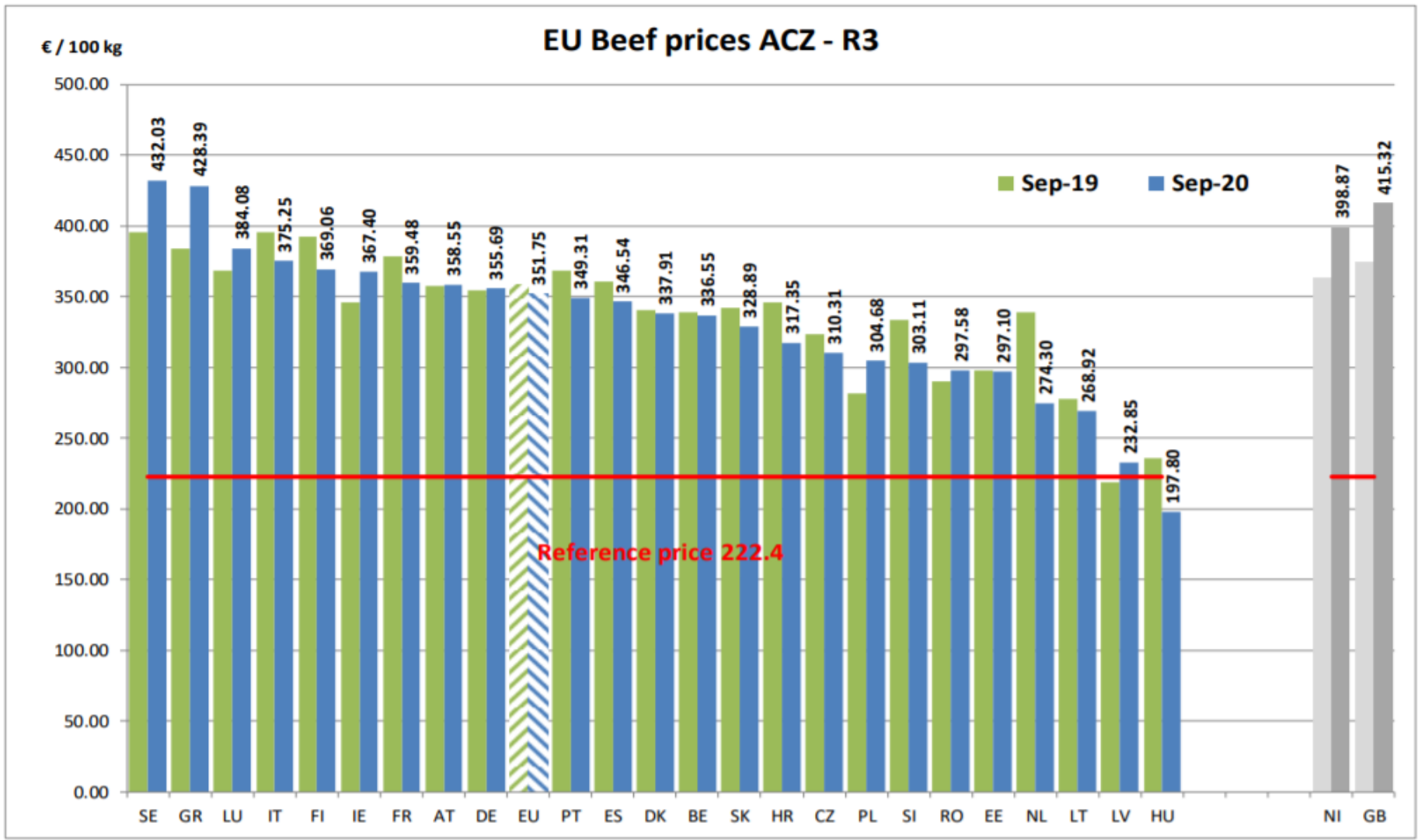


ACZ - R 3 > Wk.41-2020



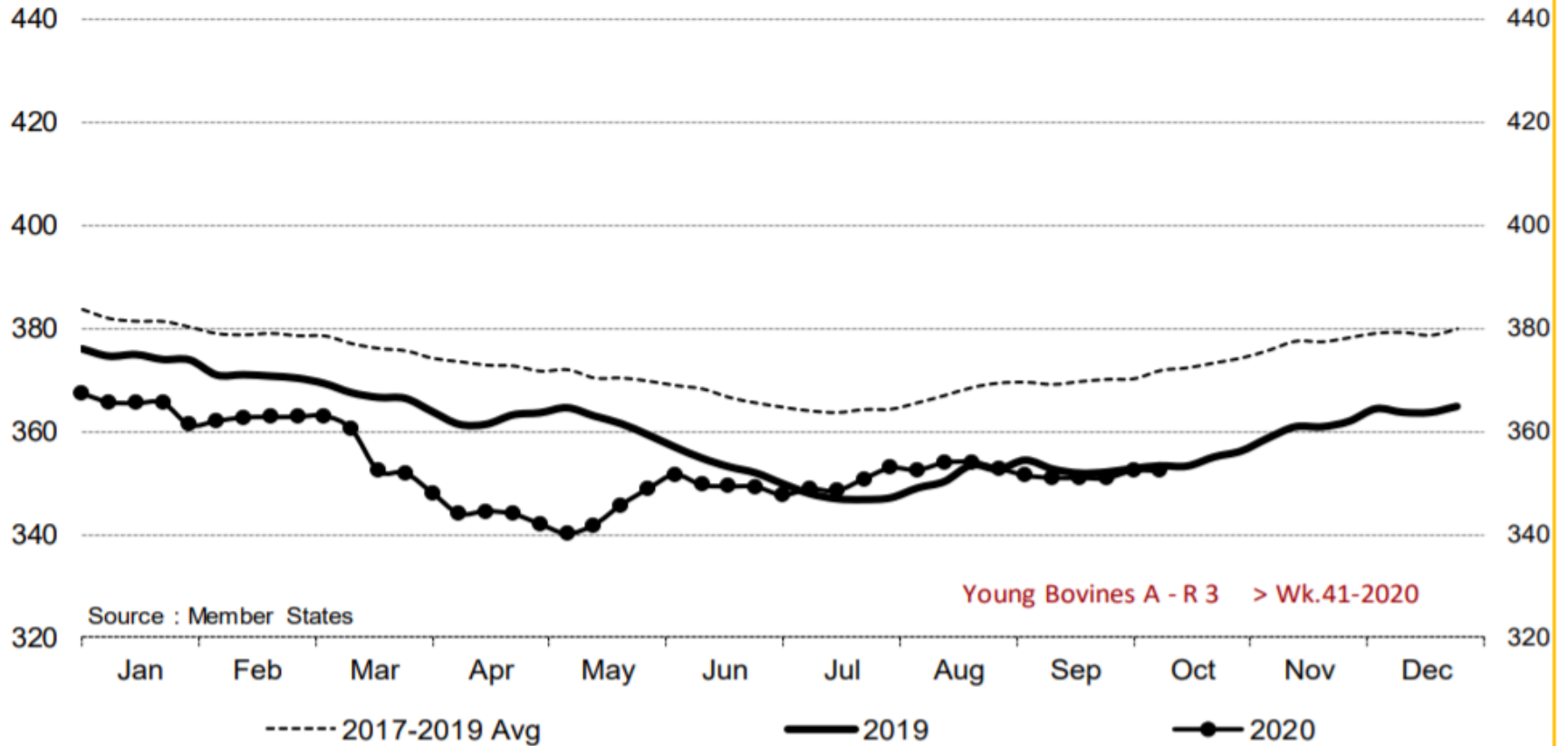
Price in week 41 :	352.26	Average price in September 2020 :	351.75
% change y/y :	- 2.7%	% change y/y :	- 1.7%
% Ref. Price in wk 41 :	158.4%		







Young Bovines A - R 3 > Wk.41-2020

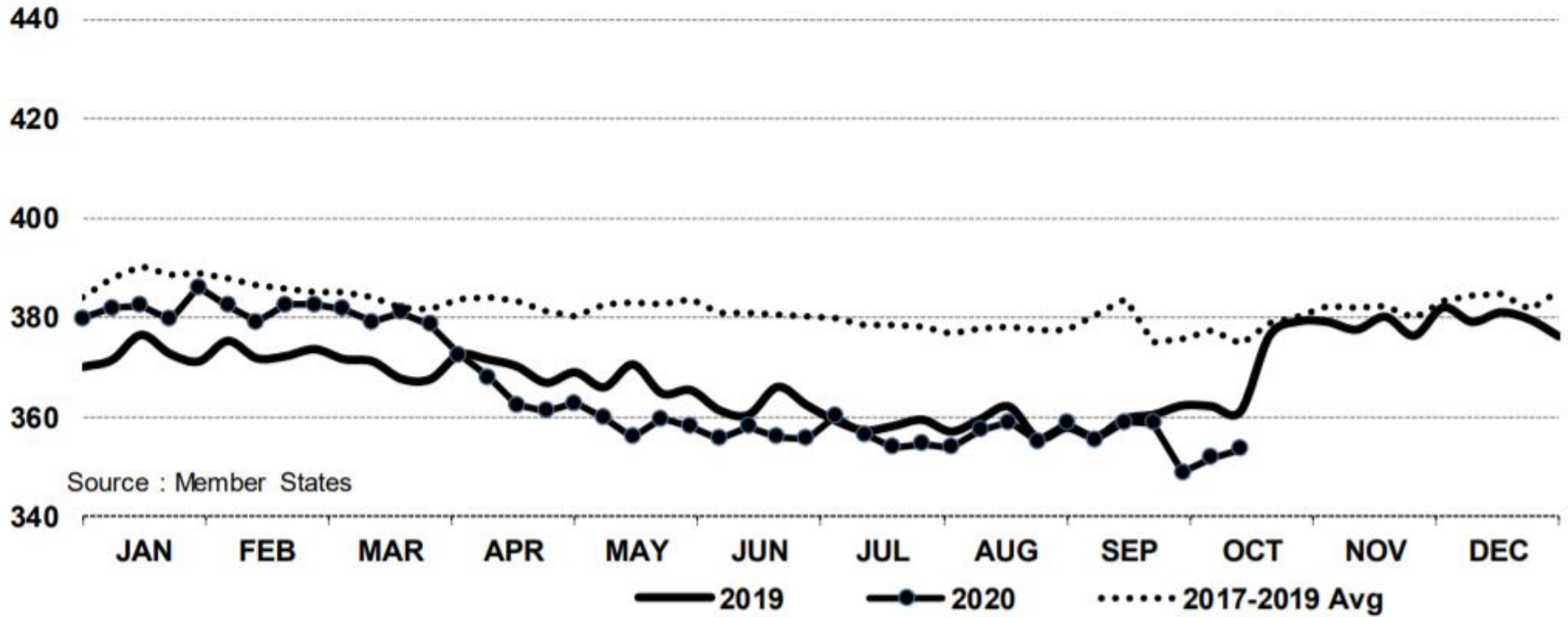


Price in week 41 : **352.29**
% change y/y : **- 0.3%**

Average price in September 2020 : **351.16**
% change y/y : **- 0.5%**

In € / 100 kg

Young Bovines 8-12m Z - R 3 > Wk.41-2020



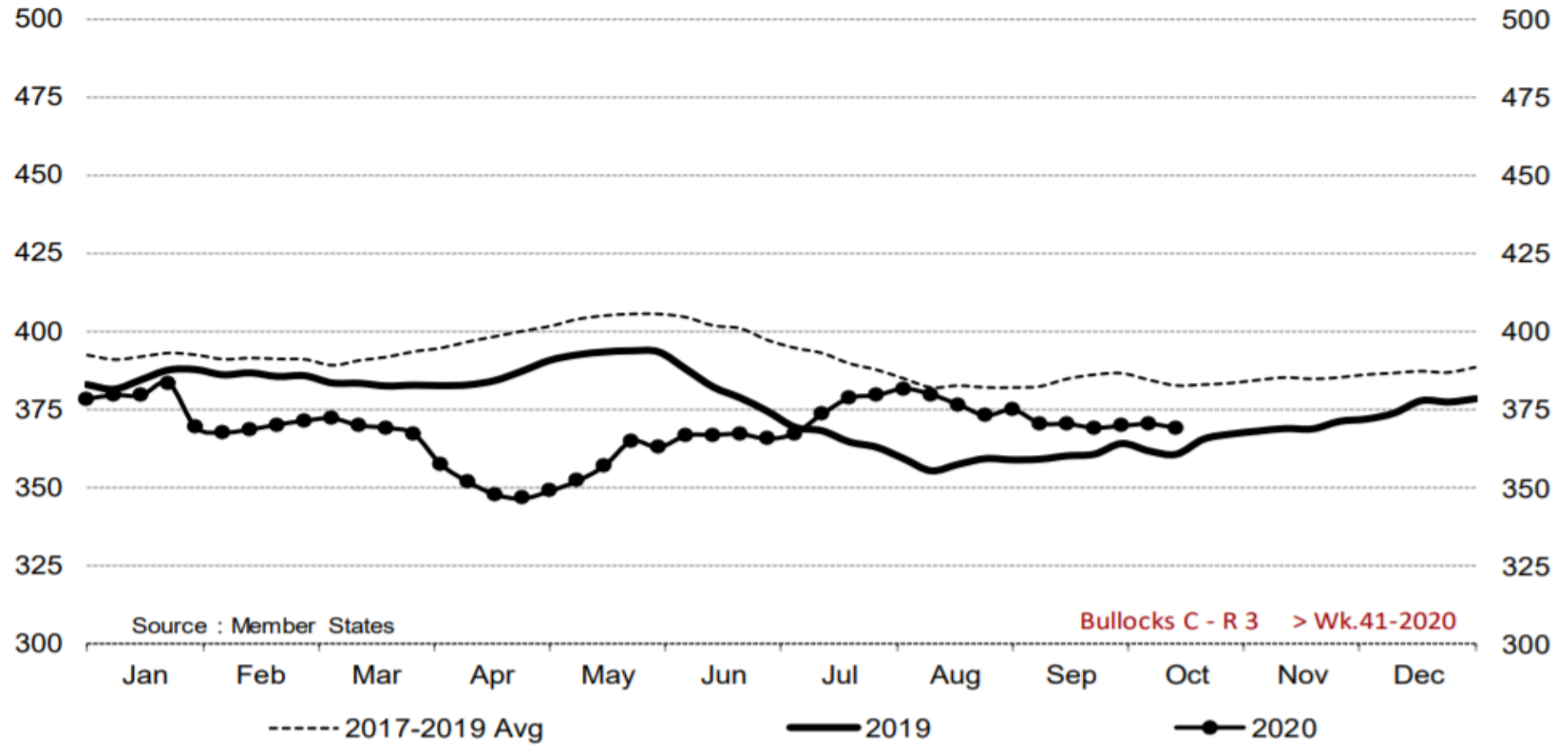
Price in week 41 : **353.46**
% change y/y : **- 2.1%**

10/09/2020

Average price in September 2020 : **355.12**
% change y/y : **- 1.3%**



Bullocks C - R 3 > Wk.41-2020

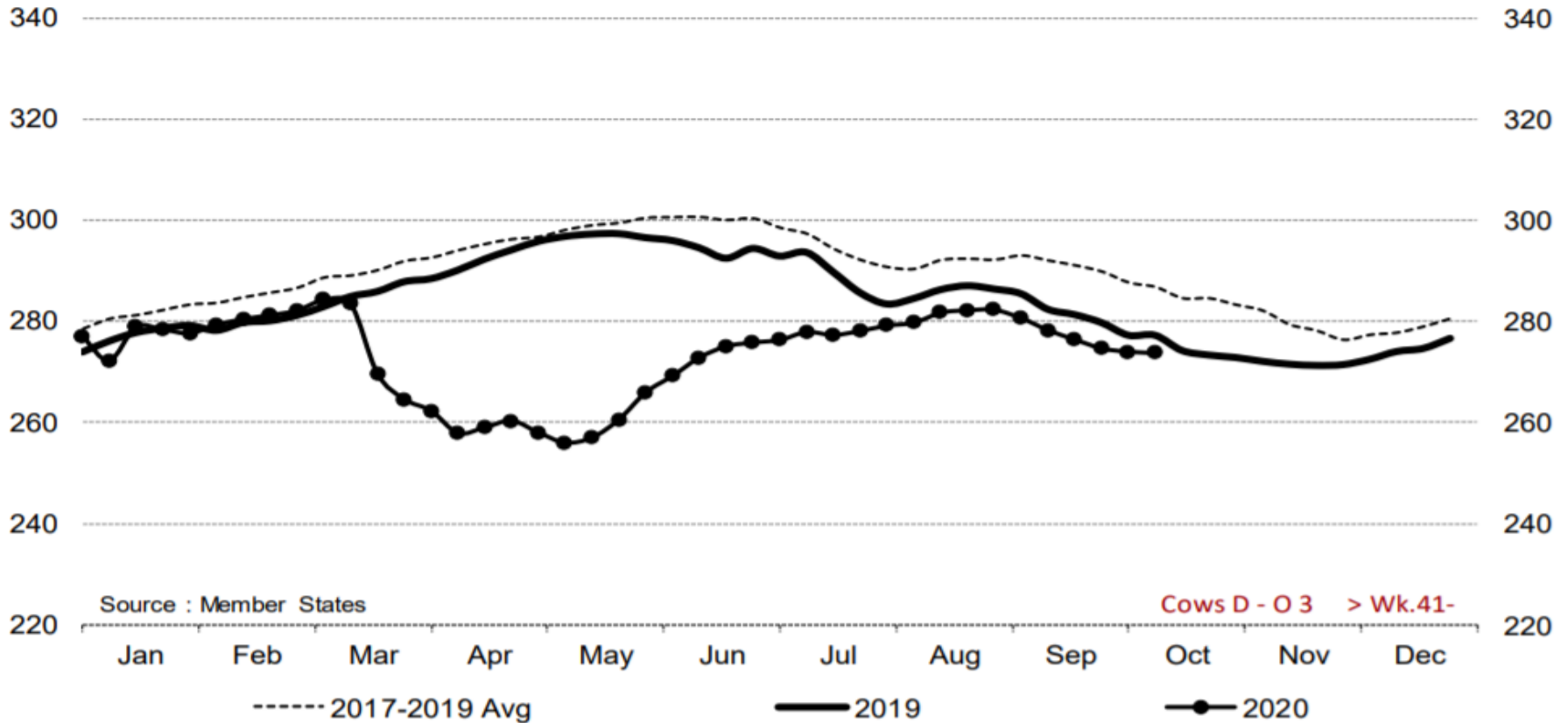


Price in week 41 : **368.92**
% change y/y : **+ 2.4%**

Average price in September 2020 : **369.80**
% change y/y : **+ 2.5%**



Cows D - O 3 > Wk.41-2020

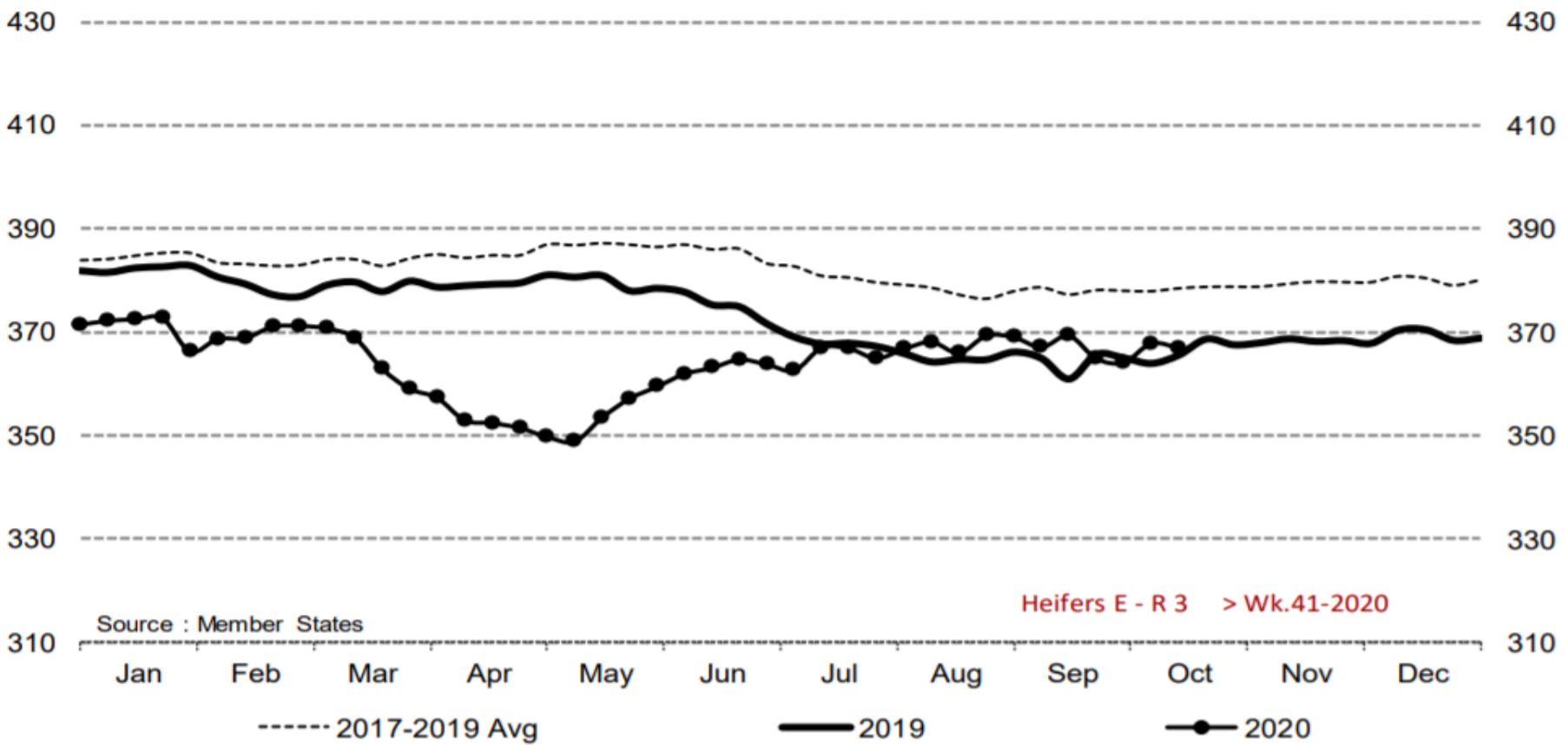


Price in week 41 : **273.68**
% change y/y : **- 1.2%**

Average price in September 2020 : **276.96**
% change y/y : **- 1.8%**



Heifers E - R 3 > Wk.41-2020



Source : Member States

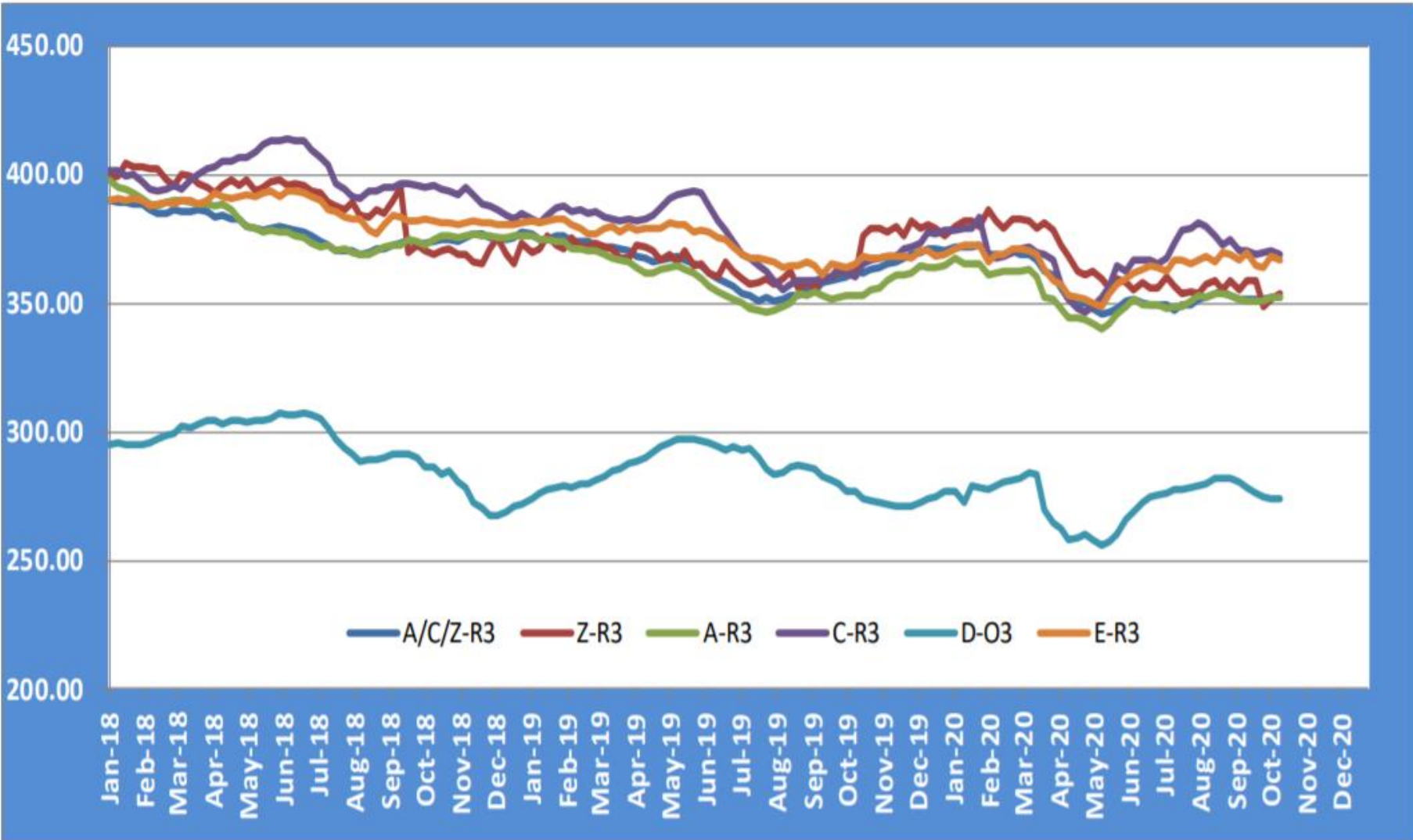
Heifers E - R 3 > Wk.41-2020

----- 2017-2019 Avg — 2019 —●— 2020

Price in week 41 : **367.03** Average price in September 2020 : **366.58**
% change y/y : **+ 0.4%** % change y/y : **+ 0.7%**

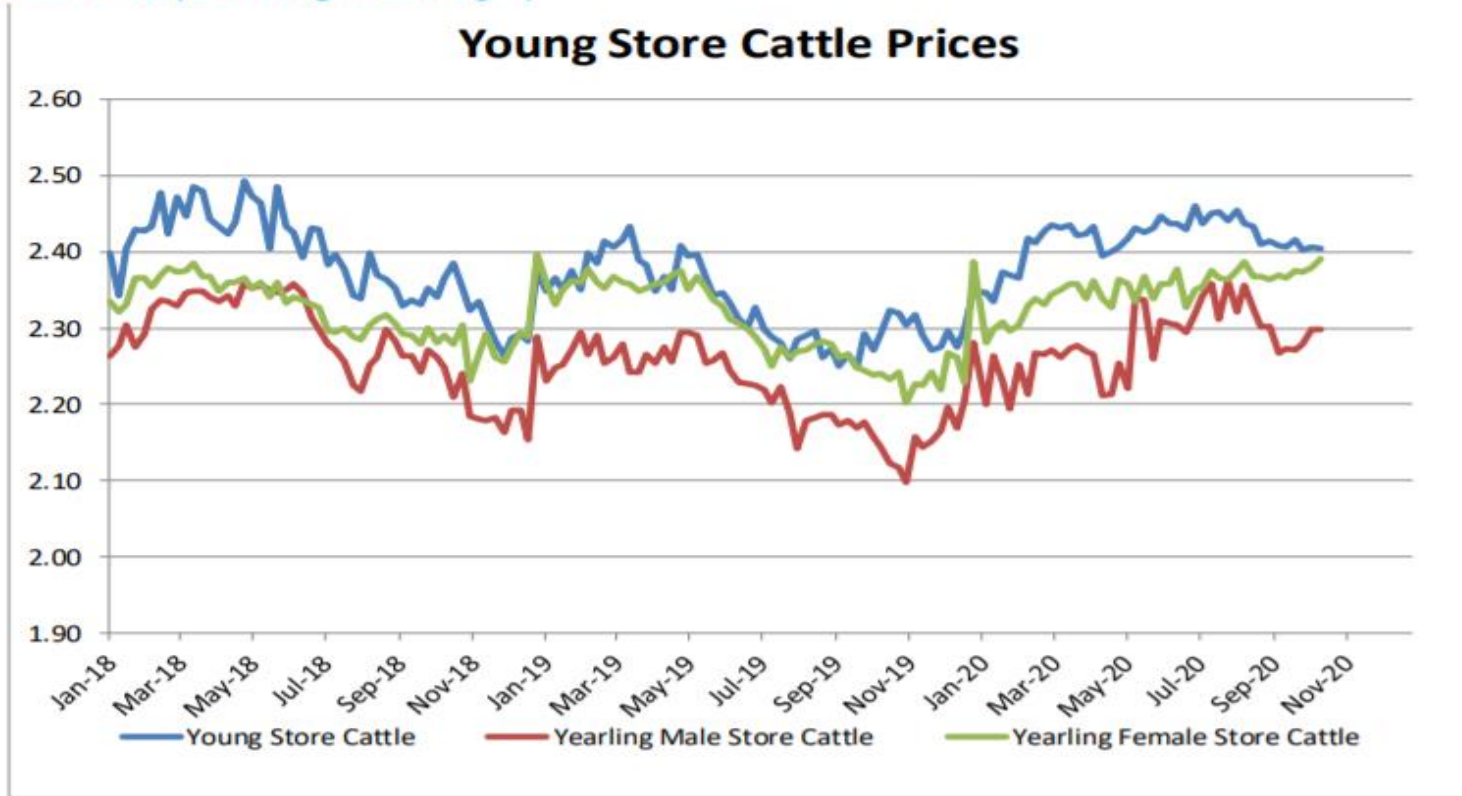
KARKAS FİYATLARI

AB TÜM KATEGORİLERE GLOBAL BAKIŞ



Besilik sığır (€ / 100 kg canlı ağırlık)

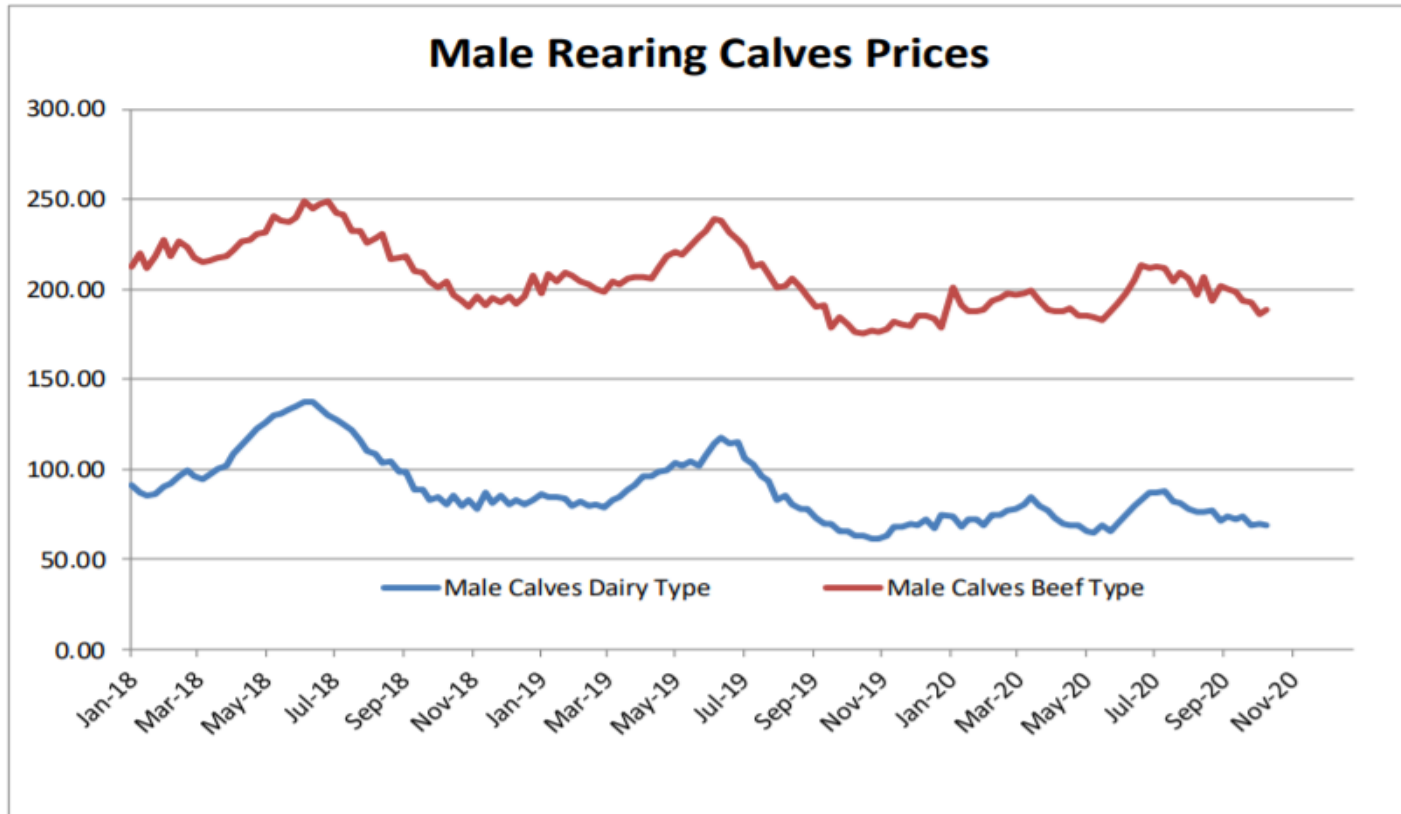
Store cattle (€/100 kg live weight)



Young Store Cattle Price in	Week 41	2.40	Yearling Male Store Cattle Price	2.30
	Change y/y	+1.02%	Change y/y	+7.22%
Yearling Female Store Cattle Price		2.39		
	Change y/y	+2.18%		

8 gün ve 4 haftalık erkek buzağlar (€/baş)

Male calves aged between 8 days and 4 weeks (€/head)



Male Rearing Calves Beef type

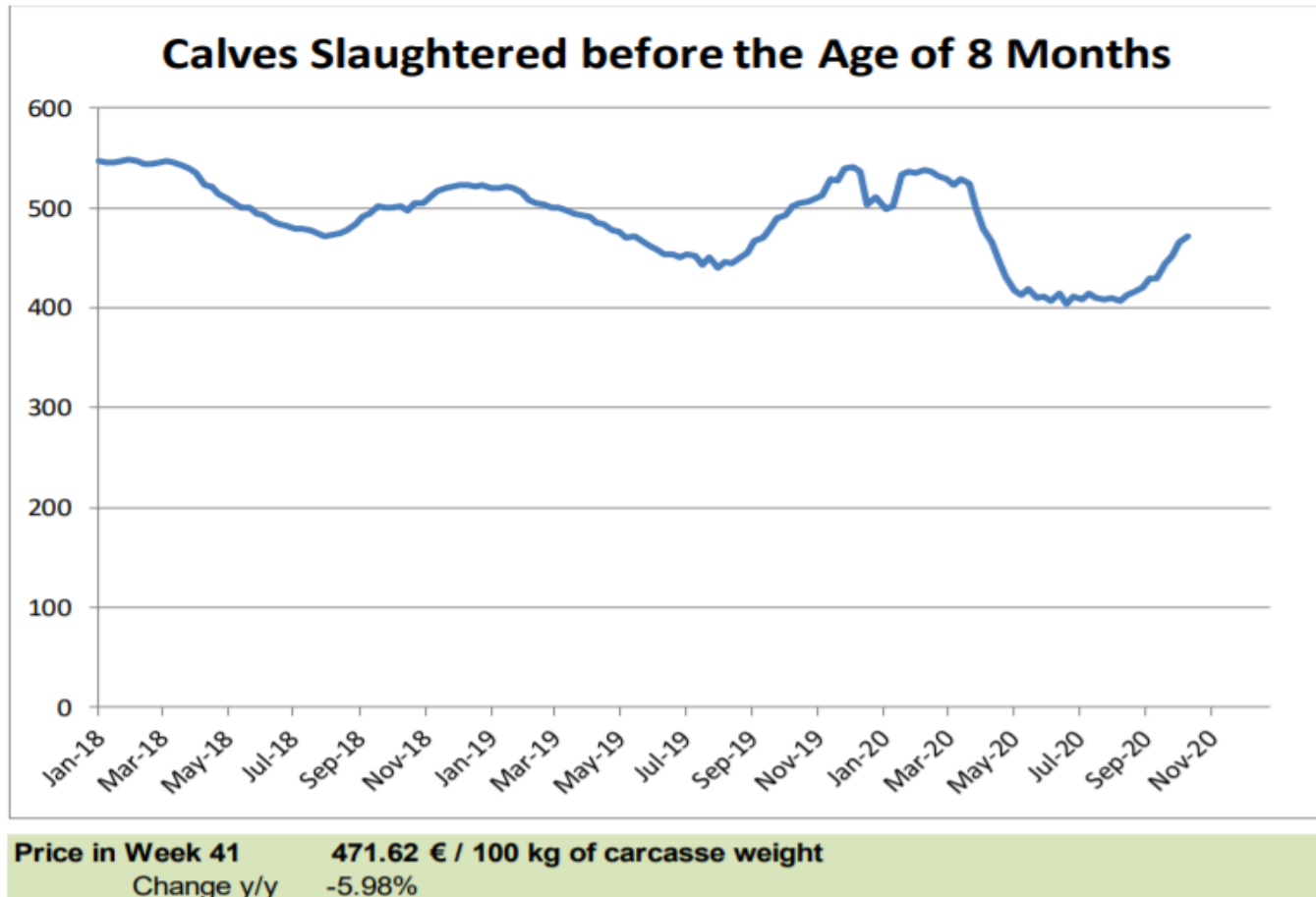
Price in Week 41 **188.54**
Change y/y **+4.33%**

Male Rearing Calves Dairy type

Price in Week 41 **68.67**
Change y/y **+2.94%**

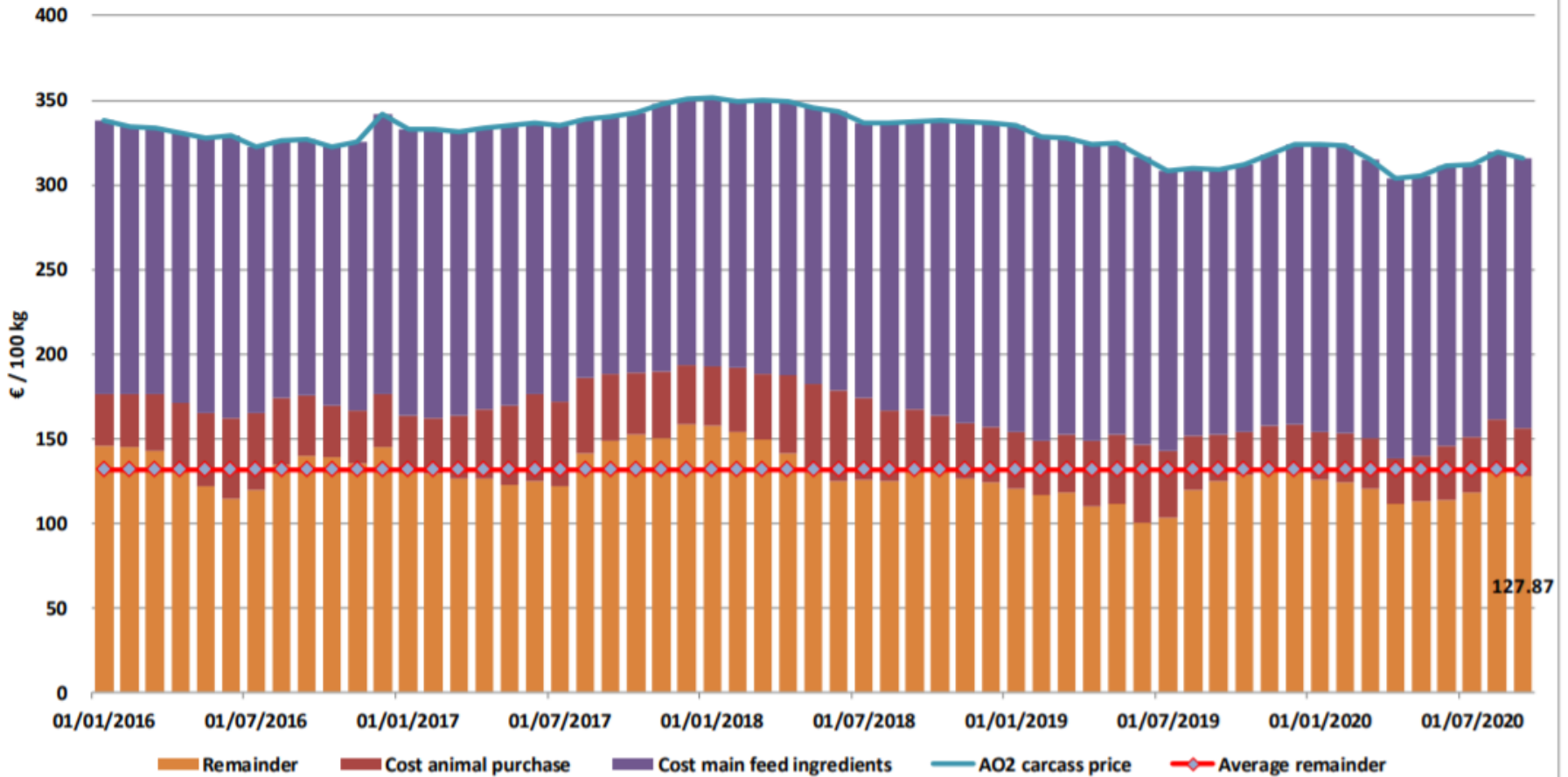
8 aylıktan küçük kesilen buzağlar (€ / 100 kg canlı ağırlık)

Calves slaughtered before the age of less than 8 months
(€/100 kg cw)

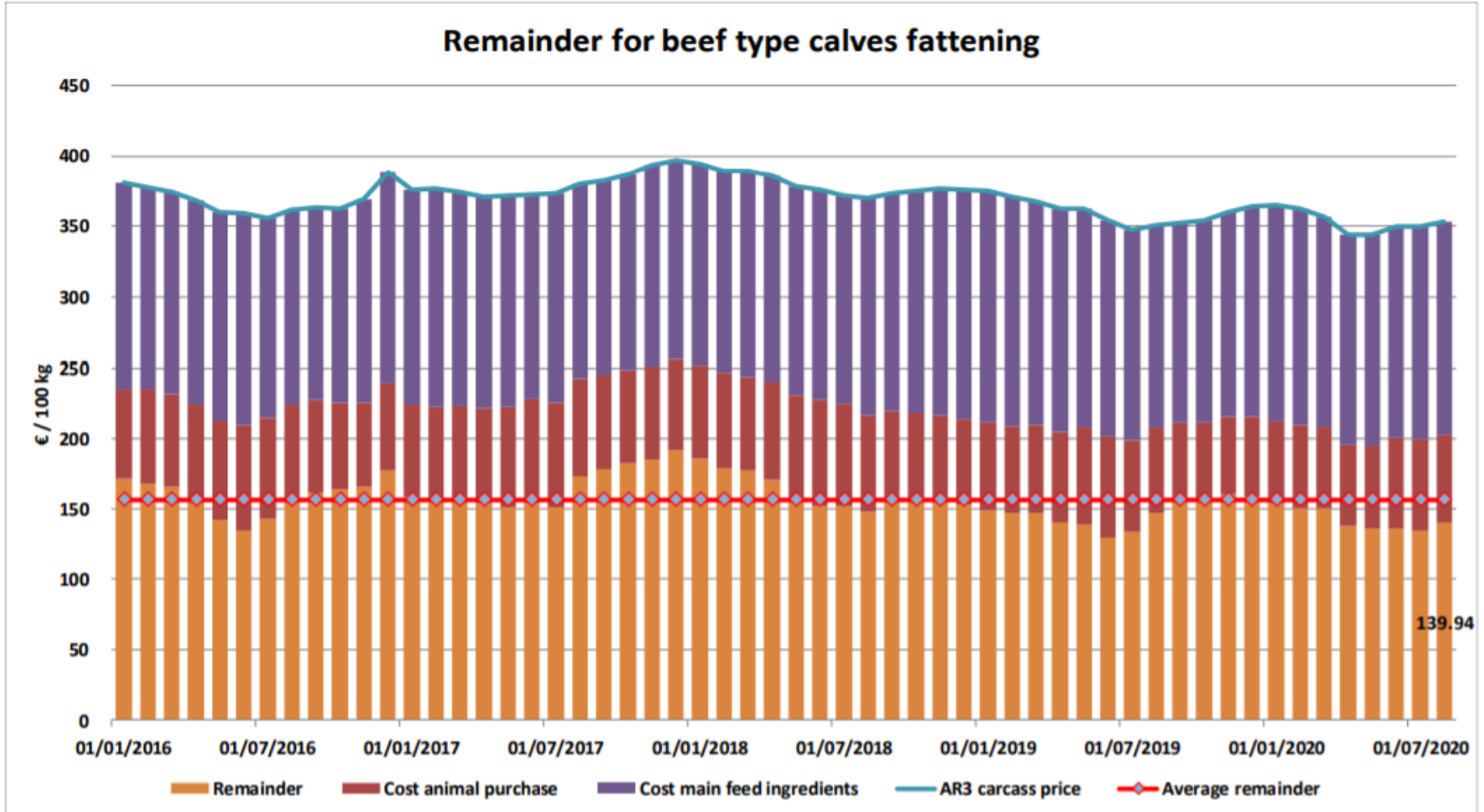


Süt Buzağları Besiciliği İçin Kalanlar

Remainder for dairy calves fattening

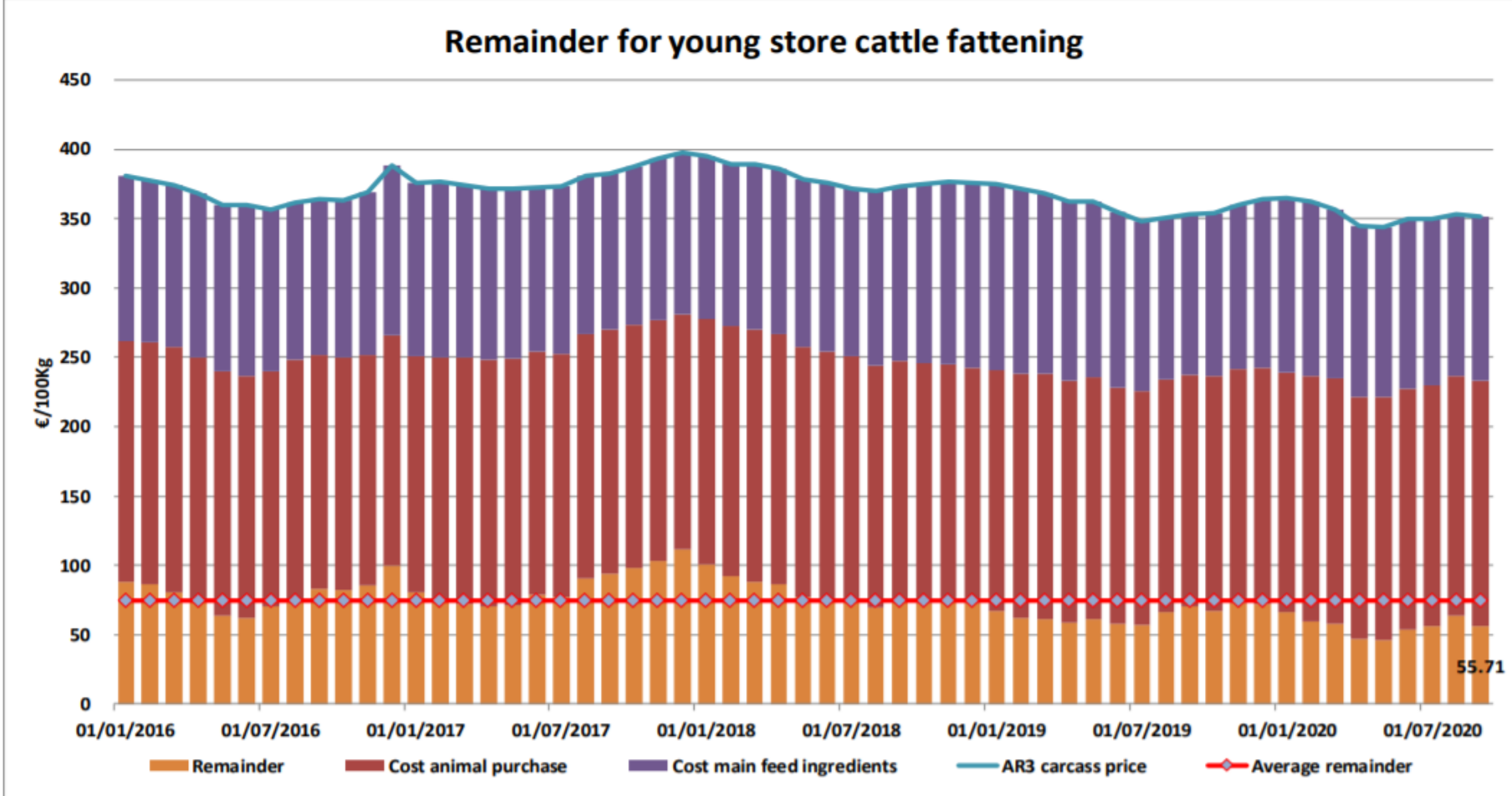


Sığır Tipi Buzağı Besiciliği İçin Kalanlar





Genç Besilik Sığır Besiciliği İçin Kalanlar



AB siğir eti ve canlı hayvan ihracatı (1): Pazar Rakamları (COMEXT – ton ca)

EU Exports of Beef and Live Animals (1): Trade figures (COMEXT – tonnes cwe)

Destinations	2016		2017		2018		2019		Jan-Aug 20		Compared to Jan-Aug 19
	tonnes	%	tonnes	%	tonnes	%	tonnes	%	tonnes	%	
Israel	41 534	6.2%	44 196	6.1%	47 774	6.8%	49 676	7.1%	36 306	8.0%	+ 0.3%
Hong Kong	47 532	7.1%	76 085	10.5%	55 538	7.9%	46 748	6.7%	33 621	7.4%	+ 6.7%
Ghana	37 490	5.6%	37 744	5.2%	36 766	5.2%	39 222	5.6%	30 585	6.7%	+ 18.9%
Philippines	24 116	3.6%	37 103	5.1%	28 766	4.1%	34 158	4.9%	26 897	5.9%	+ 18.2%
Algeria	25 003	3.7%	26 305	3.6%	35 410	5.0%	57 152	8.2%	26 079	5.7%	- 23.8%
Bosnia-Herz.	38 875	5.8%	34 710	4.8%	38 762	5.5%	41 145	5.9%	22 702	5.0%	- 17.1%
Ivory Coast	35 371	5.3%	36 038	5.0%	36 063	5.1%	33 428	4.8%	22 285	4.9%	+ 1.9%
Switzerland	24 872	3.7%	26 707	3.7%	23 762	3.4%	25 188	3.6%	20 280	4.5%	+ 19.5%
Lebanon	47 010	7.0%	38 323	5.3%	42 542	6.1%	36 393	5.2%	18 679	4.1%	- 30.6%
Libya	29 723	4.4%	27 848	3.8%	27 878	4.0%	24 541	3.5%	16 057	3.5%	+ 26.0%
Canada	862	0.1%	2 424	0.3%	2 225	0.3%	6 806	1.0%	14 208	3.1%	+++
China	10 253	1.5%	5 738	0.8%	6 713	1.0%	22 317	3.2%	13 408	3.0%	+ 14.0%
Turkey	71 030	10.6%	96 414	13.3%	96 052	13.7%	34 518	4.9%	10 429	2.3%	- 34.6%
Ukraine	7 875	1.2%	7 331	1.0%	10 466	1.5%	13 835	2.0%	9 734	2.1%	+ 19.6%
Norway	18 312	2.7%	12 849	1.8%	7 925	1.1%	7 667	1.1%	8 695	1.9%	+ 41.7%
Japan	3 254	0.5%	4 281	0.6%	3 453	0.5%	8 038	1.1%	8 625	1.9%	+ 86.6%
Other Destinations	209 917	31.2%	213 426	29.3%	201 789	28.7%	219 593	31.4%	135 310	29.8%	
Total (without UK)	673 028		727 522		701 882		700 425		453 900		
% change			+ 8%		- 4%		- 0%		+ 0.6%		

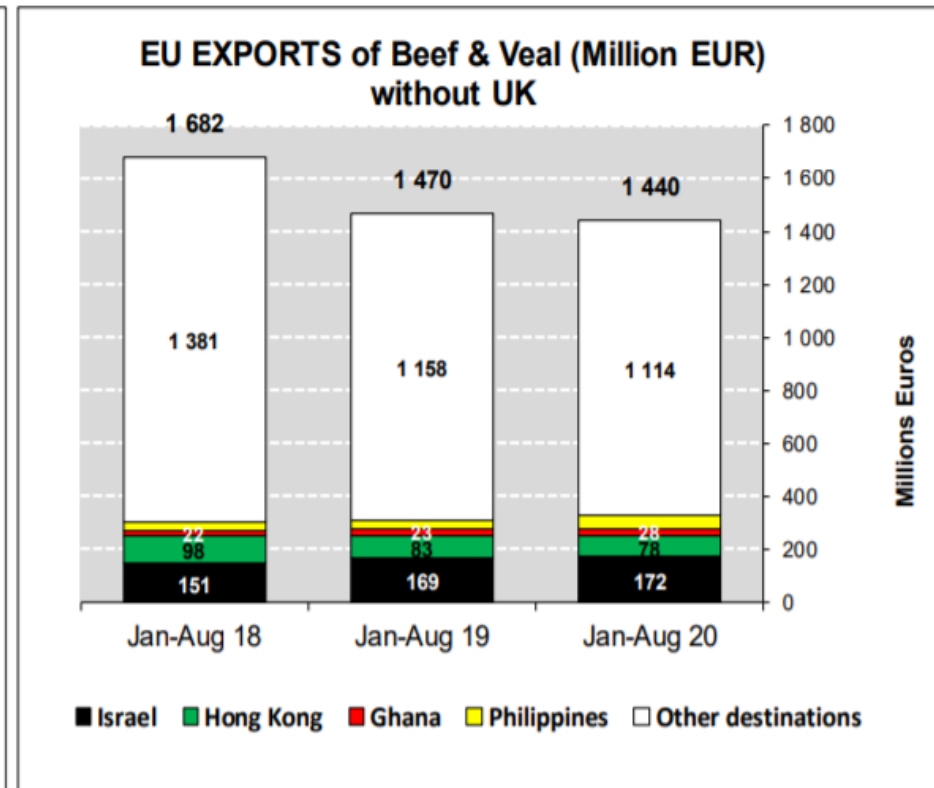
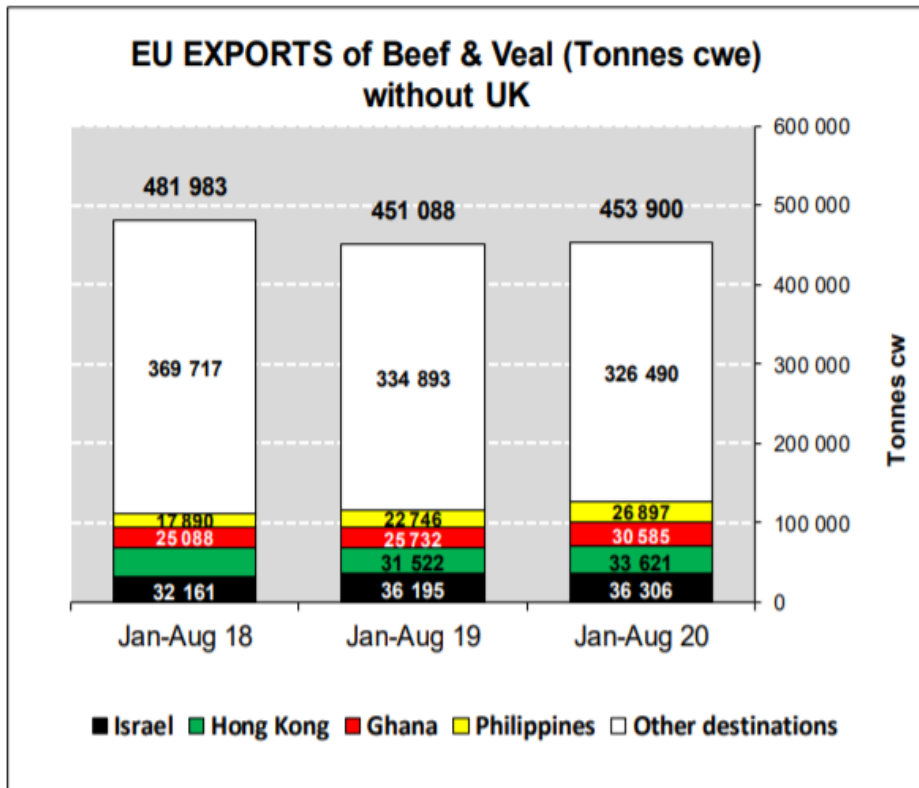


AB sığır eti ihracatı: Pazar Rakamları (COMEXT – ton ca)

EU Exports of Beef: Trade figures (COMEXT – tonnes cwe)

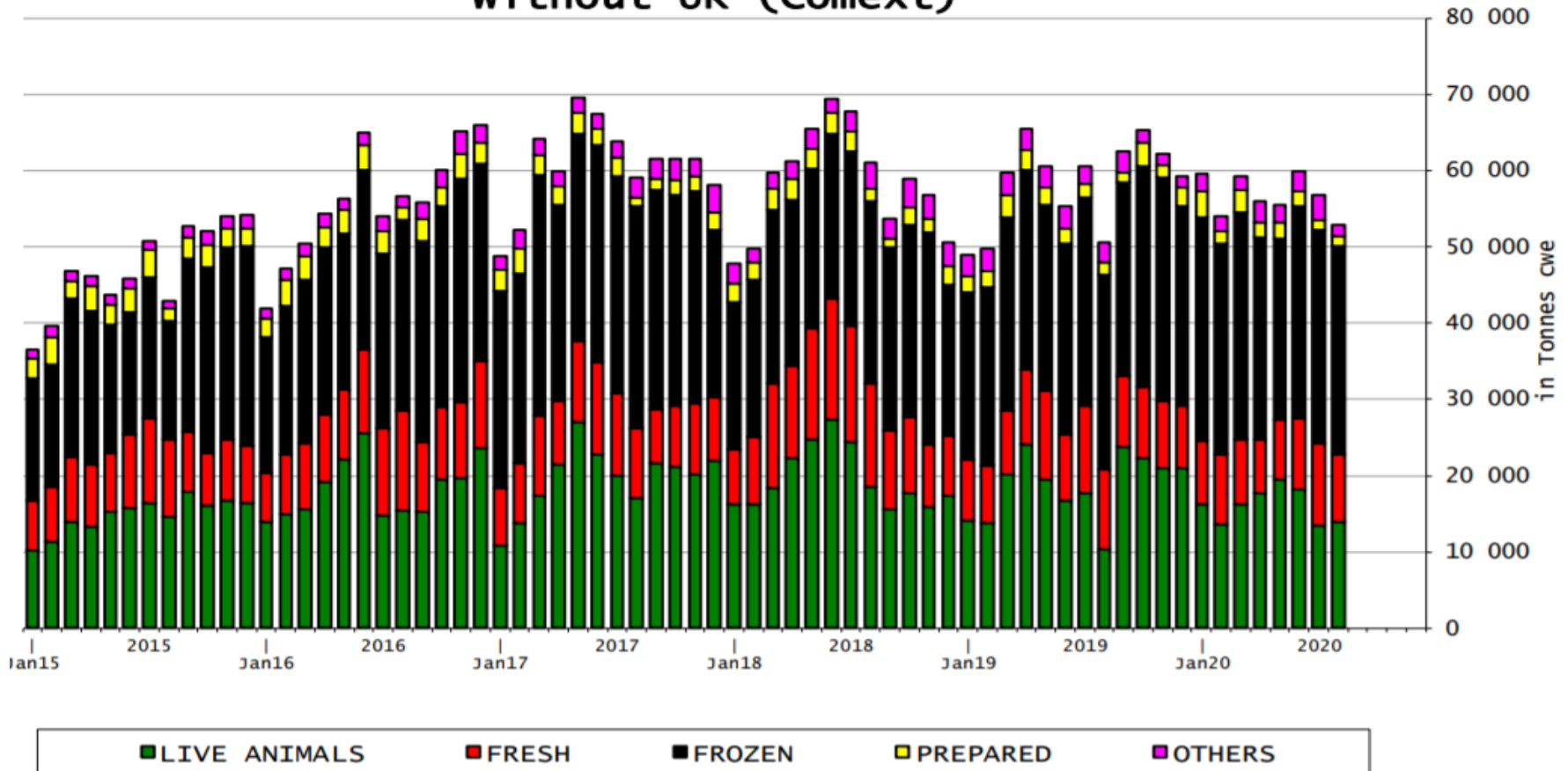
Destinations	2016		2017		2018		2019		Jan-Aug 20		Compared to Jan-Aug 19
	tonnes	%	tonnes	%	tonnes	%	tonnes	%	tonnes	%	
Hong Kong	47 532	10.5%	76 085	15.5%	55 538	11.9%	46 748	9.8%	33 621	10.3%	+ 6.7%
Ghana	37 490	8.3%	37 744	7.7%	36 766	7.9%	39 222	8.2%	30 585	9.4%	+ 18.9%
Philippines	24 116	5.3%	37 103	7.5%	28 766	6.2%	34 158	7.2%	26 897	8.3%	+ 18.2%
Ivory Coast	35 371	7.8%	36 028	7.3%	36 063	7.7%	33 428	7.0%	22 285	6.9%	+ 1.9%
Bosnia-Herz.	36 790	8.1%	32 180	6.5%	36 151	7.7%	38 832	8.2%	21 431	6.6%	- 17.4%
Switzerland	23 704	5.2%	25 569	5.2%	22 712	4.9%	24 110	5.1%	19 515	6.0%	+ 19.9%
Israel	15 055	3.3%	18 749	3.8%	22 163	4.7%	23 073	4.9%	15 252	4.7%	- 10.8%
Canada	862	0.2%	2 424	0.5%	2 225	0.5%	6 806	1.4%	14 208	4.4%	+++
China	10 253	2.3%	5 738	1.2%	6 713	1.4%	22 317	4.7%	13 408	4.1%	+ 14.0%
Ukraine	7 094	1.6%	6 926	1.4%	9 887	2.1%	12 893	2.7%	9 098	2.8%	+ 17.6%
Norway	18 307	4.0%	12 848	2.6%	7 922	1.7%	7 667	1.6%	8 695	2.7%	+ 41.7%
Japan	3 254	0.7%	4 281	0.9%	3 453	0.7%	8 038	1.7%	8 625	2.7%	+ 86.6%
USA	3 137	0.7%	3 756	0.8%	5 458	1.2%	7 867	1.7%	7 552	2.3%	+ 47.5%
Algeria	10 726	2.4%	12 304	2.5%	13 919	3.0%	19 142	4.0%	7 108	2.2%	- 38.4%
North Macedonia	11 413	2.5%	11 285	2.3%	10 002	2.1%	11 395	2.4%	6 862	2.1%	- 8.8%
Chile	2 228	0.5%	8 961	1.8%	16 410	3.5%	12 461	2.6%	5 842	1.8%	- 45.1%
Other Destinations	165 886	36.6%	160 398	32.6%	152 677	32.7%	127 389	26.8%	74 018	22.8%	
Total (without UK)	453 217		492 379		466 824		475 546		325 003		
% change			+ 9%		- 5%		+ 2%		+ 3.4%		

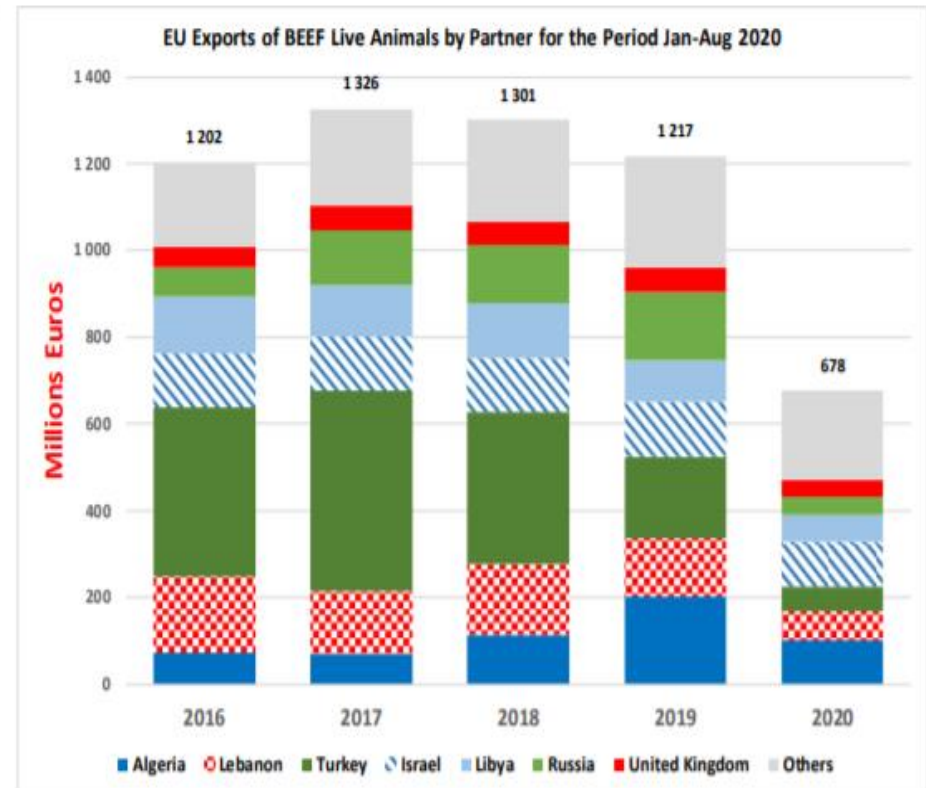
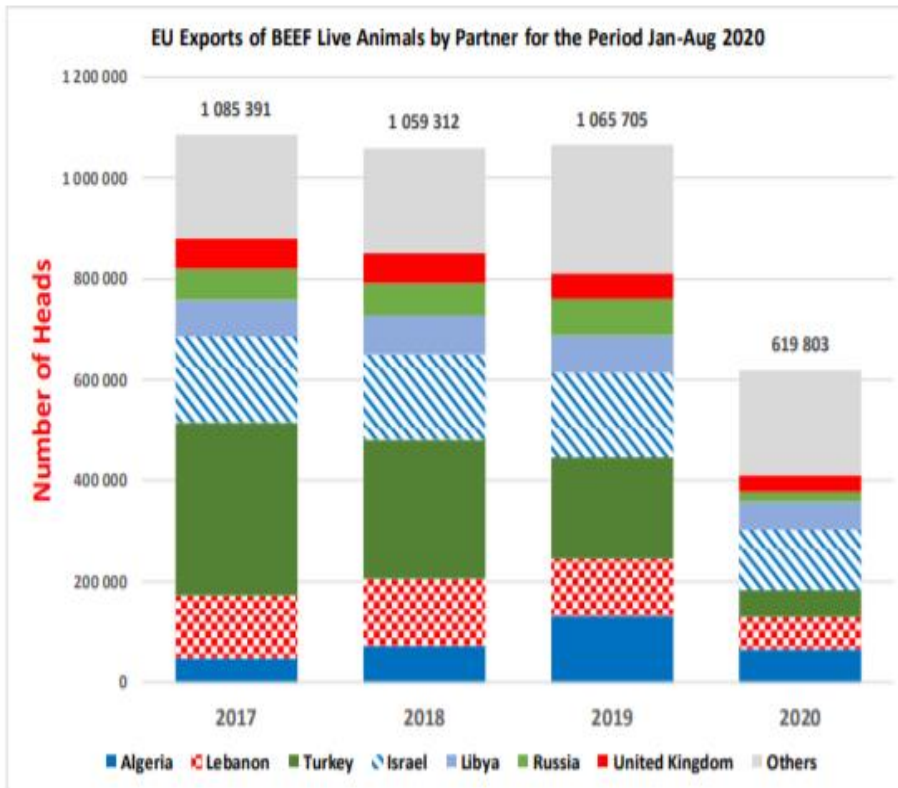
AB sığır eti ve canlı hayvan ihracatı Ticaret Verileri (COMEXT)



AB siğir eti ürünleri ihracatı (COMEXT)

EU Exports of BEEF products
without UK (Comext)







AB Sığır Eti ve Canlı Hayvan İthalatları (1): Ticaret Verileri (COMEXT – ton ca)

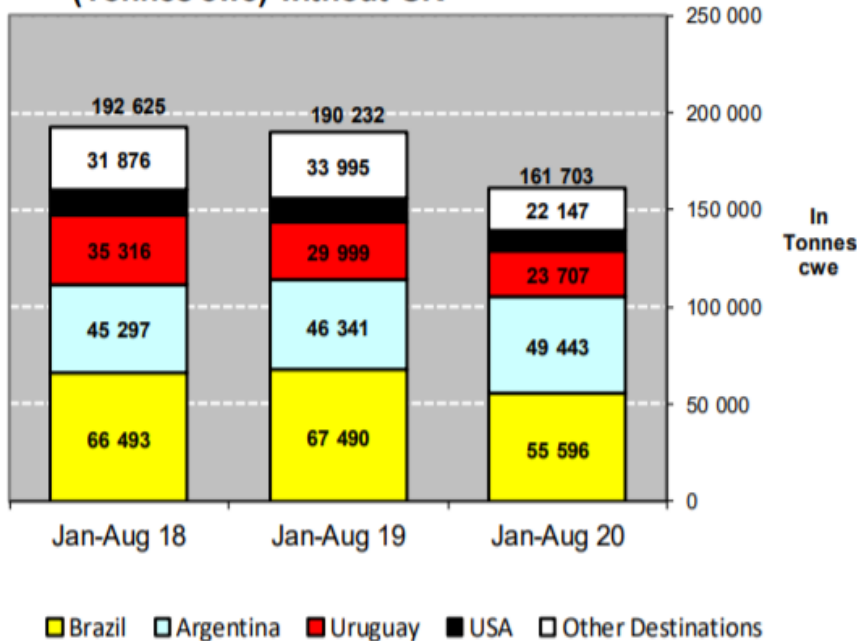
EU Imports of Beef and Live Animals (1): Trade Figures (COMEXT – tonnes cwe)

Origins	2016		2017		2018		2019		Jan-Aug 20		Compared to Jan-Aug 19
	tonnes	%	tonnes	%	tonnes	%	tonnes	%	tonnes	%	
Brazil	100 982	37.1%	87 156	33.5%	103 979	36.1%	99 568	35.7%	55 596	34.4%	- 17.6%
Argentina	43 111	15.8%	49 260	18.9%	69 011	24.0%	70 617	25.3%	49 443	30.6%	+ 6.7%
Uruguay	52 896	19.4%	55 212	21.2%	48 712	16.9%	40 483	14.5%	23 707	14.7%	- 21.0%
USA	20 290	7.5%	21 624	8.3%	19 268	6.7%	16 852	6.0%	10 812	6.7%	- 12.9%
Australia	21 909	8.1%	18 193	7.0%	17 368	6.0%	16 516	5.9%	8 703	5.4%	- 27.1%
New Zealand	8 274	3.0%	6 806	2.6%	7 164	2.5%	6 724	2.4%	3 998	2.5%	- 15.4%
Paraguay	5 309	2.0%	5 922	2.3%	5 520	1.9%	5 204	1.9%	2 819	1.7%	- 17.8%
Switzerland	5 496	2.0%	5 138	2.0%	5 437	1.9%	4 432	1.6%	2 641	1.6%	- 3.4%
Namibia	6 281	2.3%	5 043	1.9%	3 442	1.2%	7 734	2.8%	1 062	0.7%	- 78.4%
Serbia	557	0.2%	565	0.2%	1 134	0.4%	1 062	0.4%	622	0.4%	- 5.6%
Canada	392	0.1%	512	0.2%	1 343	0.5%	2 518	0.9%	605	0.4%	- 60.3%
Botswana	4 204	1.5%	2 686	1.0%	3 119	1.1%	4 950	1.8%	571	0.4%	- 77.3%
Japan	518	0.2%	646	0.2%	791	0.3%	998	0.4%	354	0.2%	- 40.0%
Norway	276	0.1%	388	0.1%	153	0.1%	128	0.0%	215	0.1%	+++
Ukraine	317	0.1%	374	0.1%	257	0.1%	410	0.1%	134	0.1%	- 38.3%
Chile	575	0.2%	319	0.1%	356	0.1%	392	0.1%	113	0.1%	- 57.4%
Other Destinations	705	0.3%	651	0.2%	735	0.3%	646	0.2%	311	0.2%	
Total (without UK)	272 093		260 496		287 788		279 234		161 703		
% change			- 4%		+ 10%		- 3%		- 15.0%		

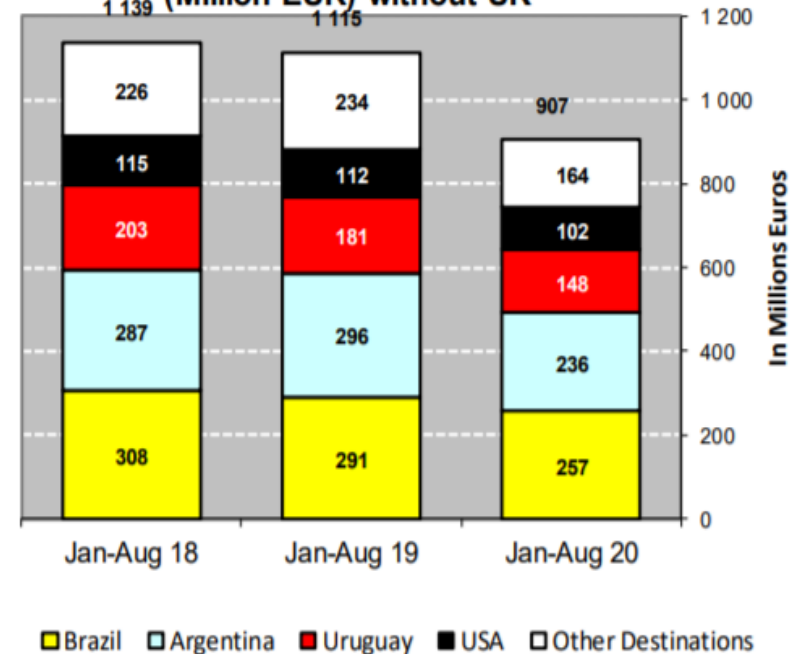


AB Sığır Eti ve Canlı Hayvan İthalatları (2): Ticaret Verileri (COMEXT – ton ca)

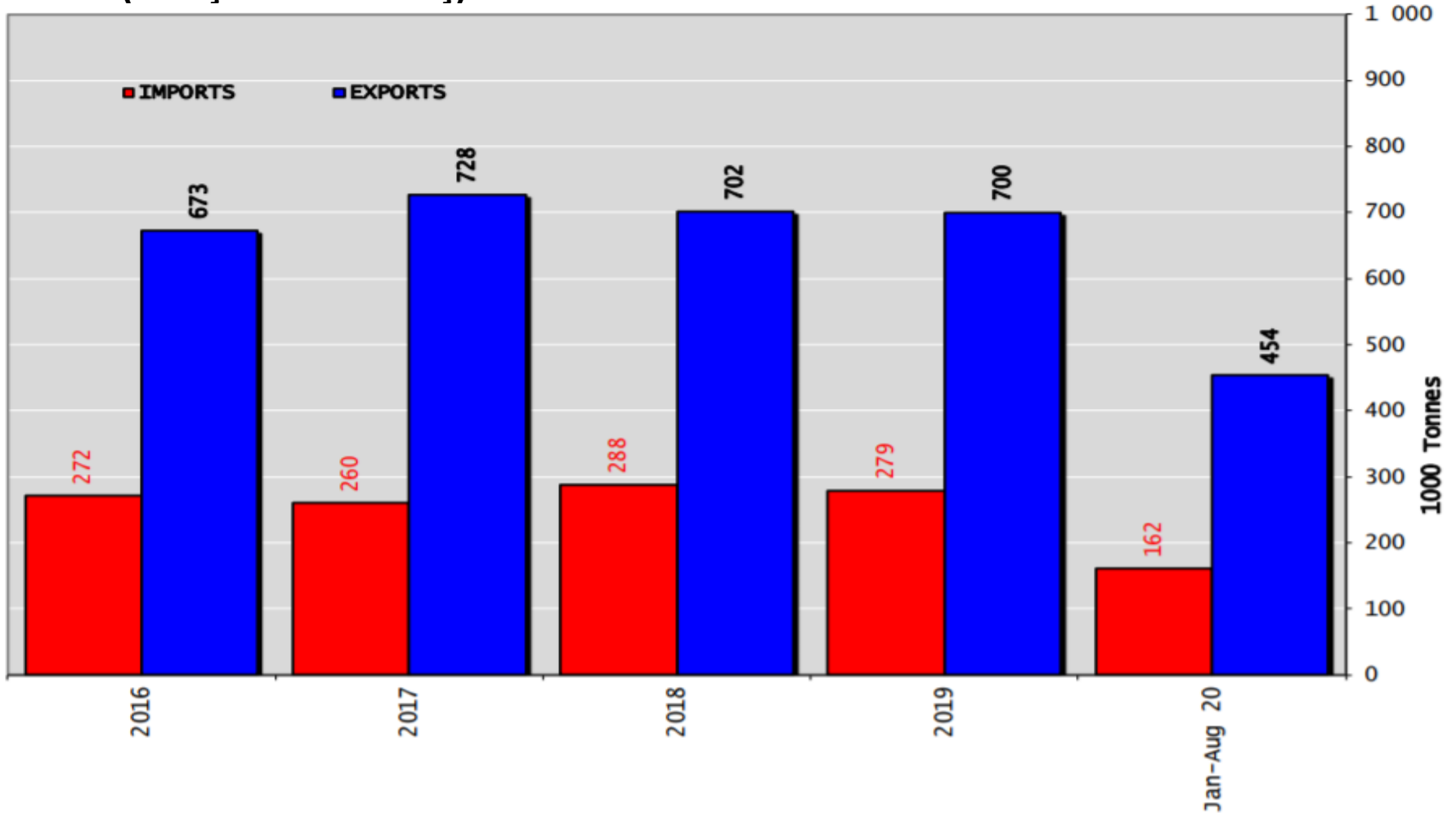
**IMPORTS of Beef & Veal into EU
(Tonnes cwe) without UK**



**IMPORTS of Beef & Veal into EU
(Million EUR) without UK**



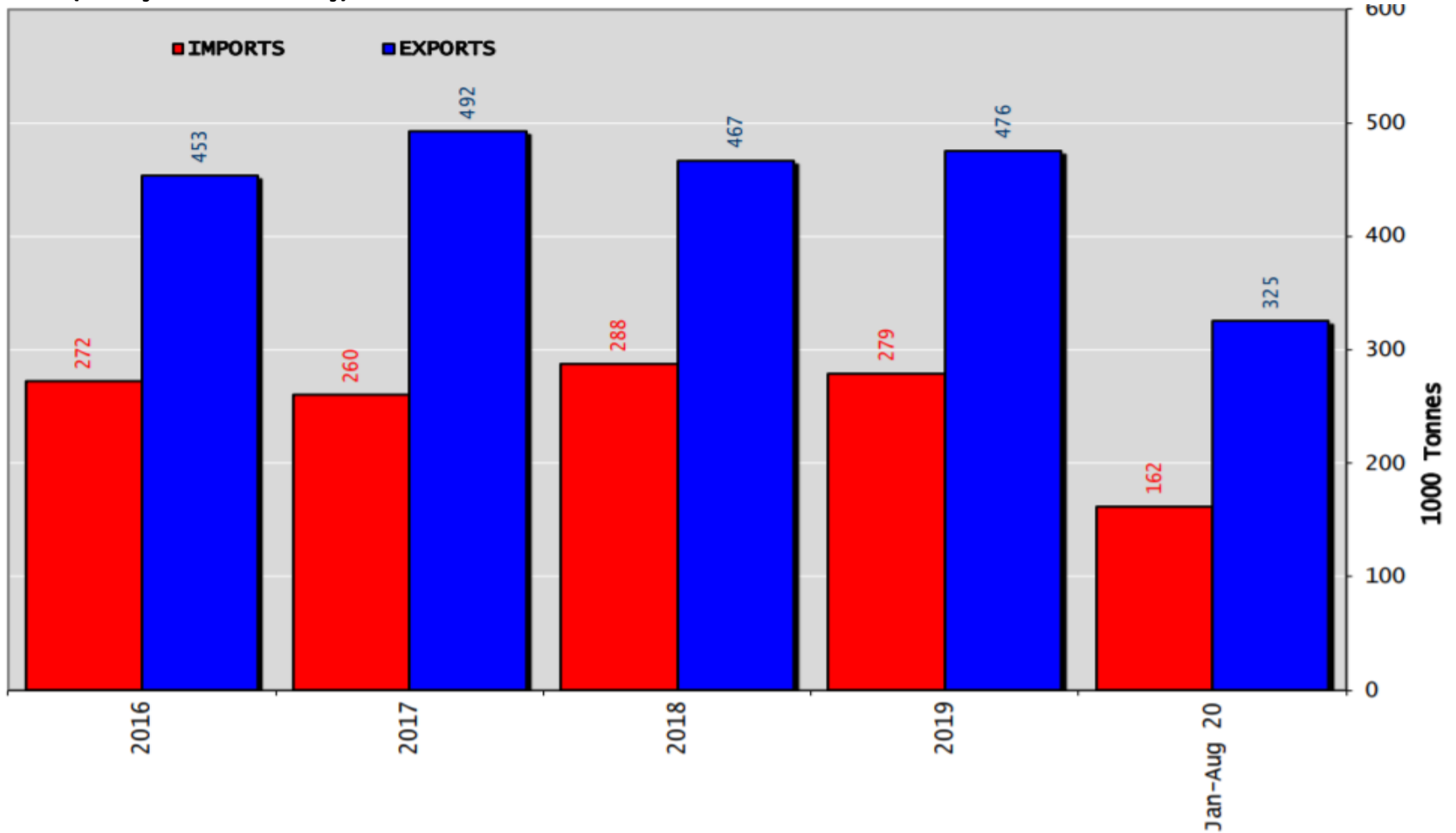
Sığır Eti Ürünleri ve Canlı Hayvan Ticaret Dengesi (Ton) (Birleşik Krallık Hariç)



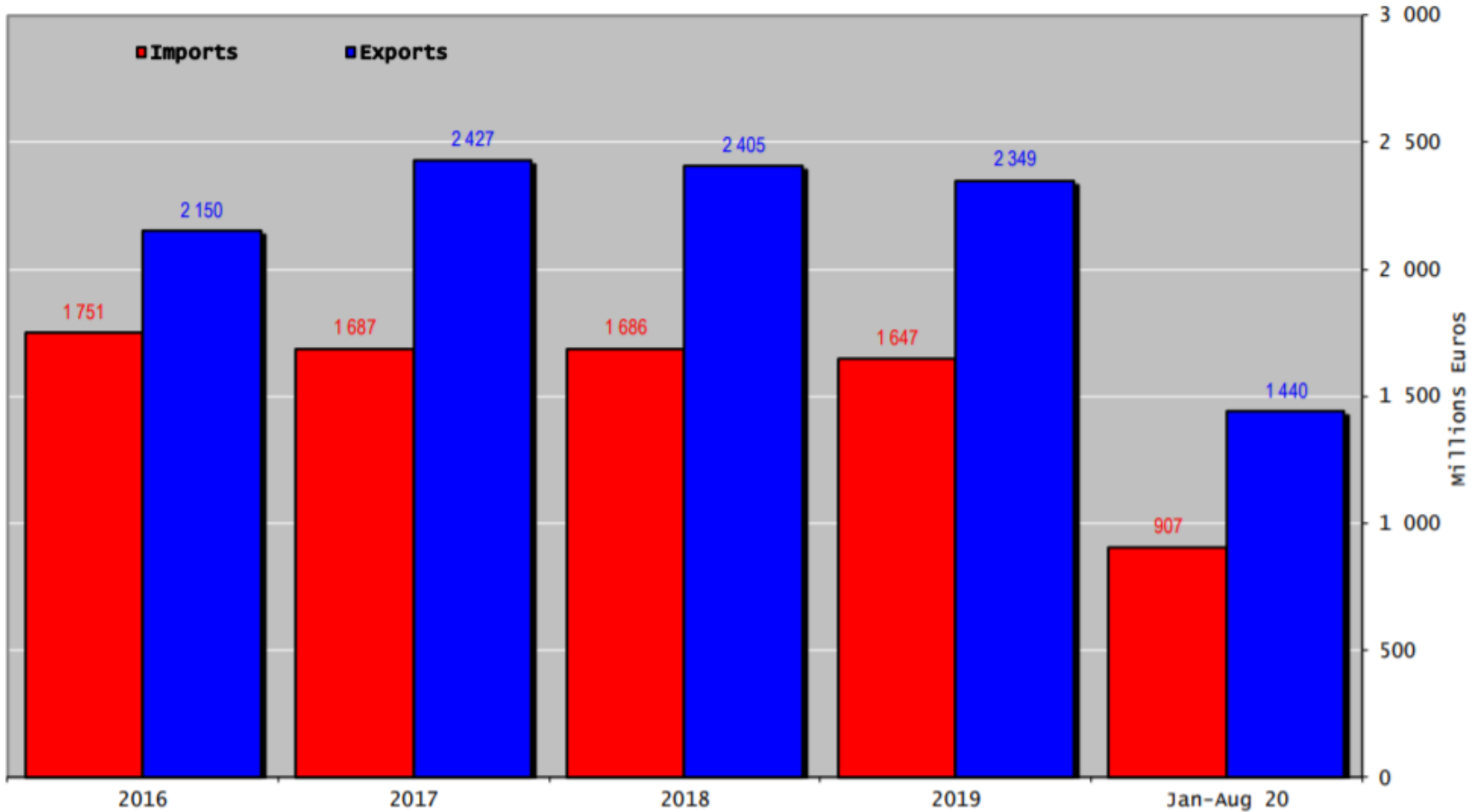


Sığır Eti Ürünleri Ticaret Dengesi (Canlı hayvanlar hariç) (Ton)

(Birleşik Krallık Hariç)

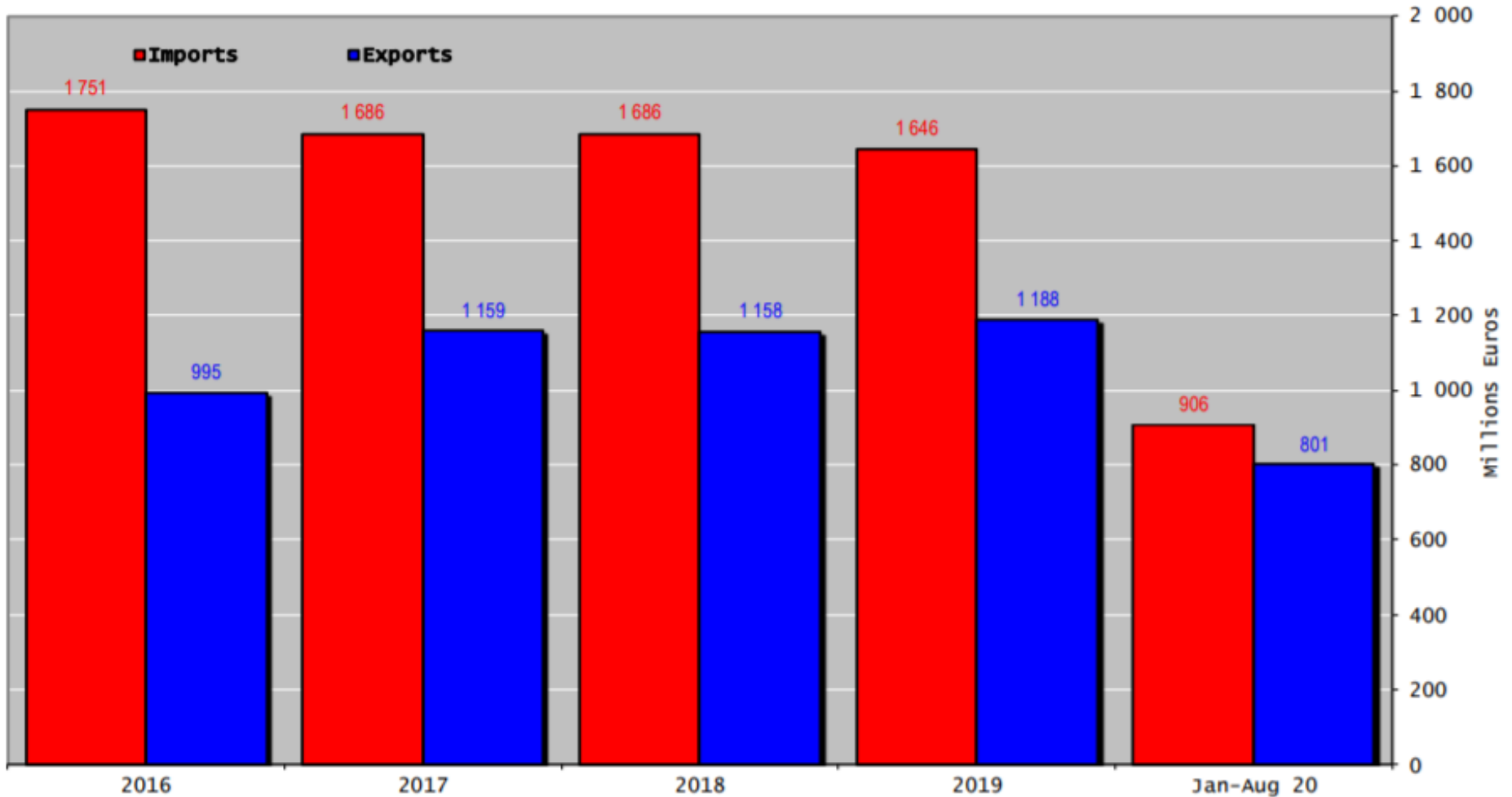


Sığır Eti Ürünleri ve Canlı Hayvan Ticaret Dengesi (Milyon Euro) (Birleşik Krallık Hariç)

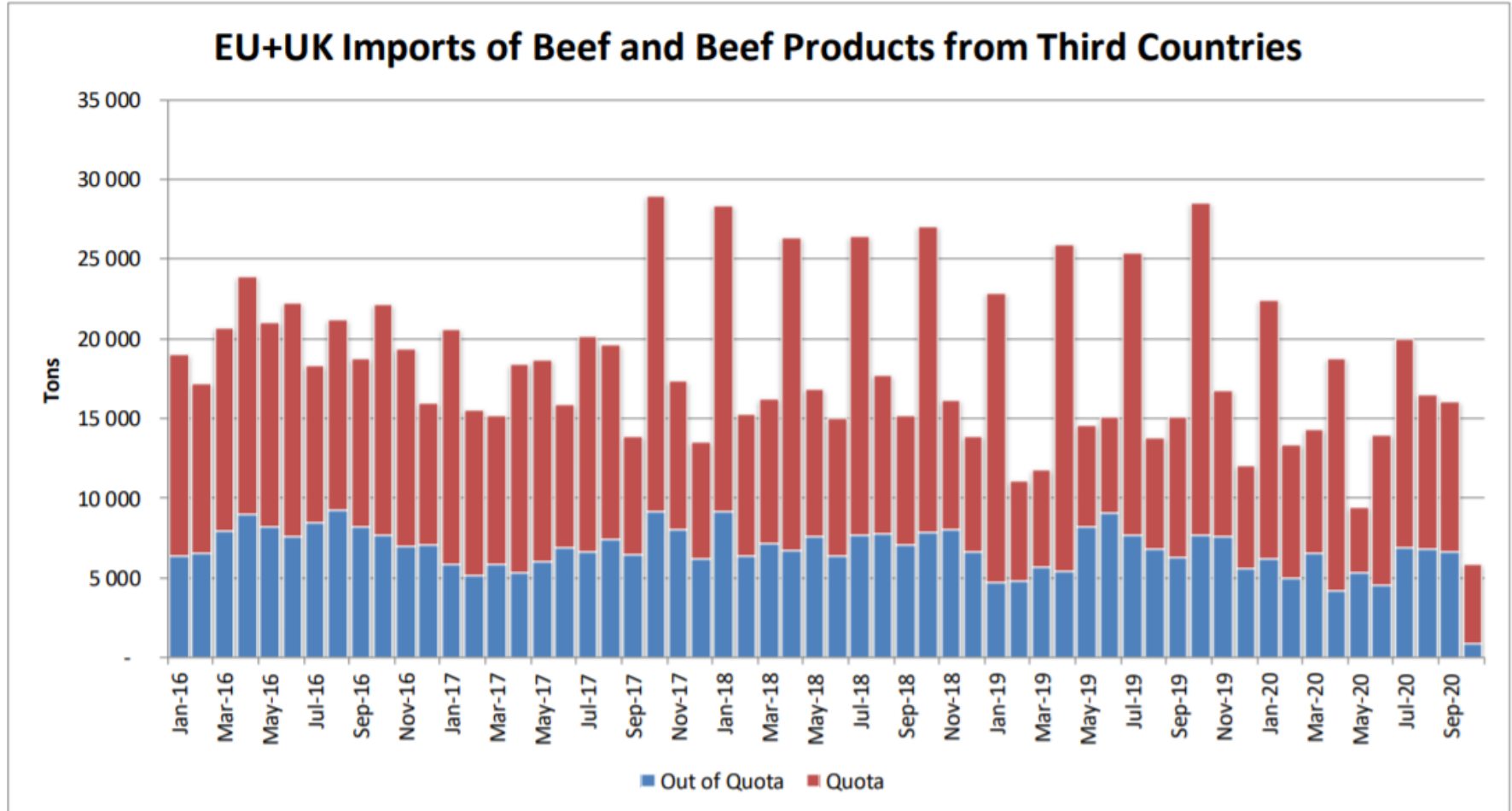




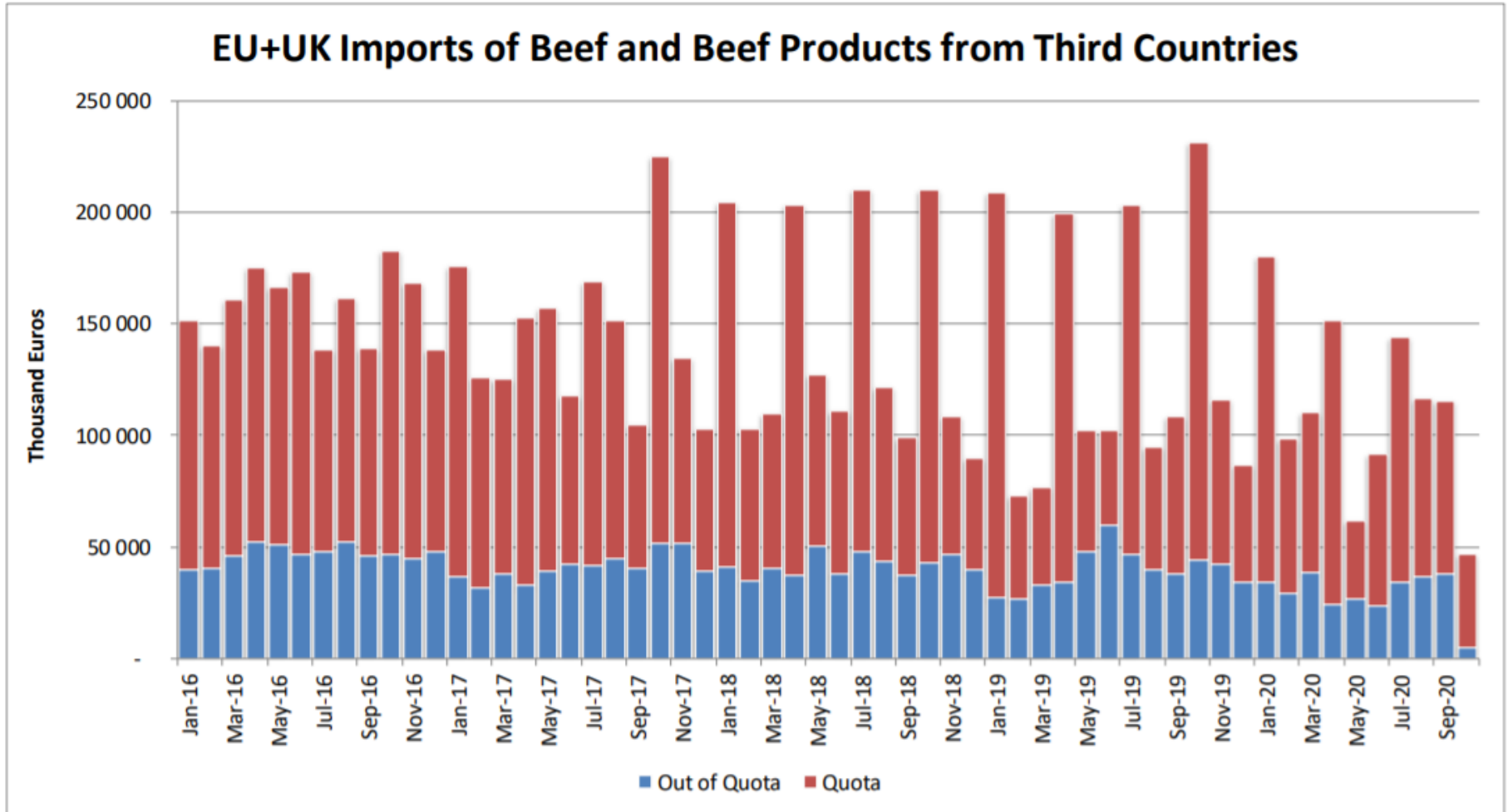
AB Sığır Eti Ürünleri Ticareti (Canlı Hayvanlar Hariç) (Milyon Euro) (Birleşik Krallık Haric)



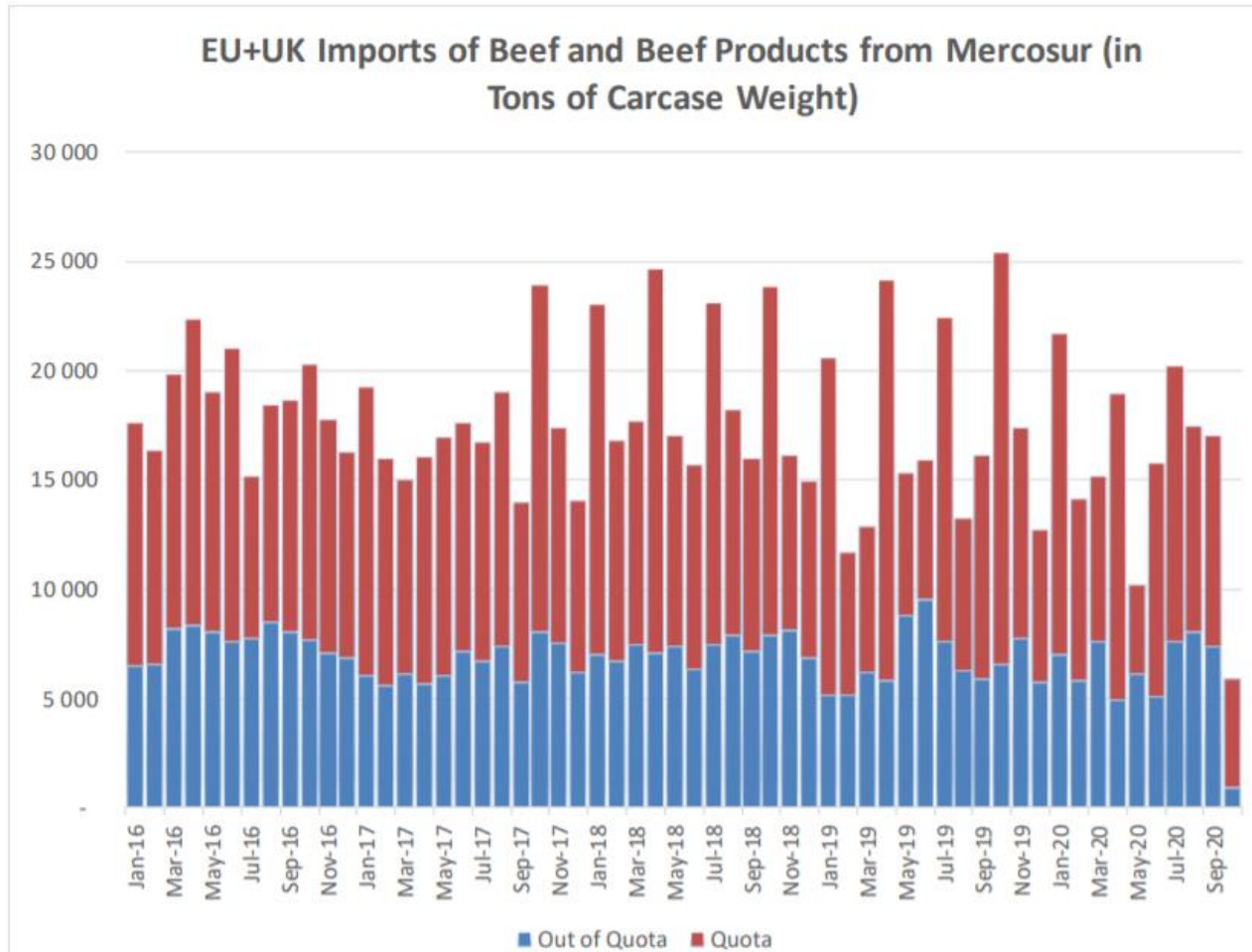
Üçüncü Ülkelerden AB ve Birleşik Krallık Sığır ve Sığır eti Ürünleri İthalatları (Ton)



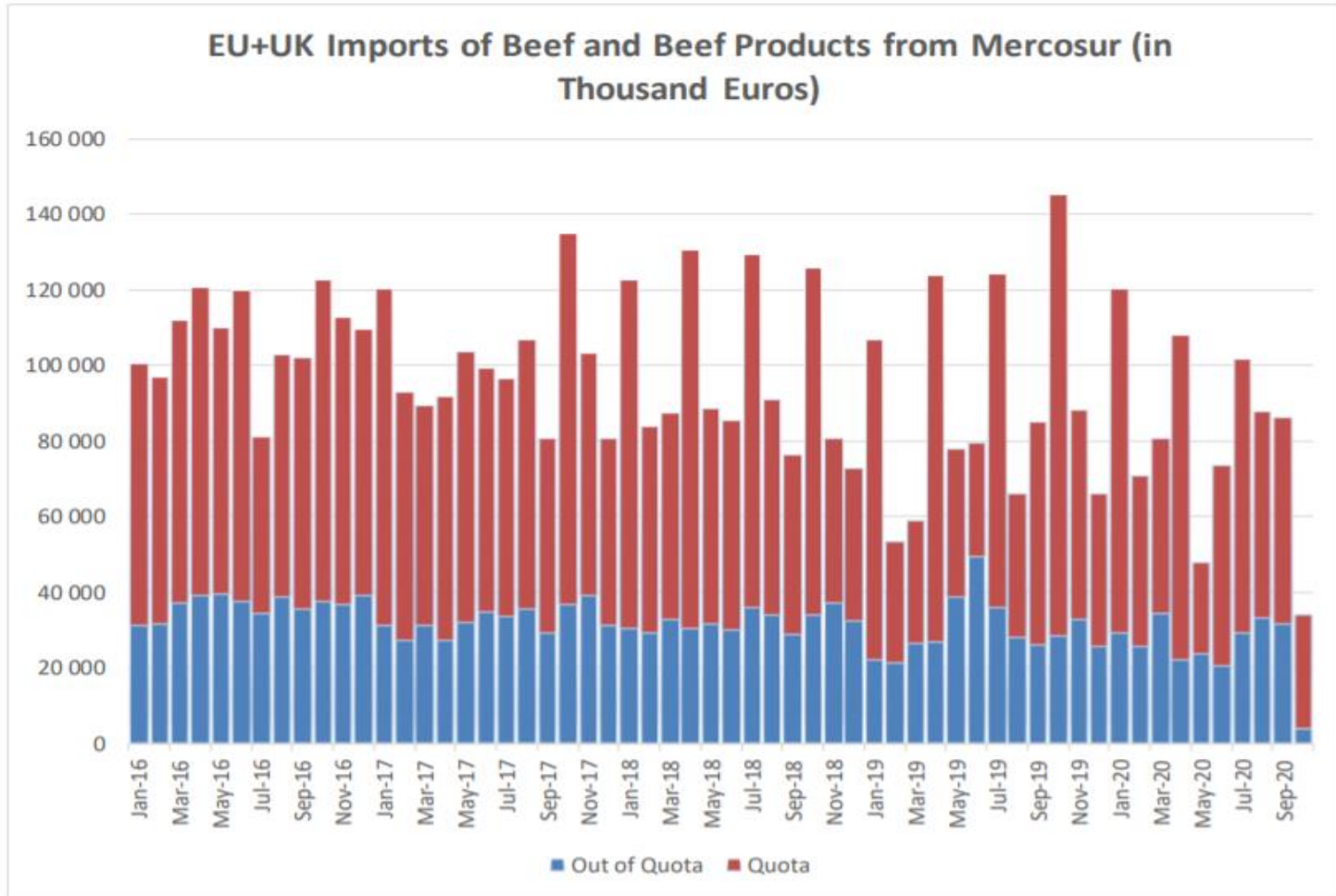
Üçüncü Ülkelerden AB ve Birleşik Krallık Sığır ve Sığır eti Ürünleri İthalatları (Bin Euro)



Mercosur Ülkelerinden Sığır ve Sığır Eti Ürünleri AB ve Birleşik Krallık İthalatları (Ton, Karkas Ağırlık)



Mercosur Ülkelerinden Sığır ve Sığır Eti Ürünleri AB ve Birleşik Krallık İthalatları (Bin Euro)



YÜKSEK KALİTE SIĞIR ETİ İTHALAT KOTALARI



European
Commission

Hilton Quota

Regulation (EU) N° 593/2013

	Quantity allocated (Tons)	2018/2019		2019/2020		2020/2021*	
		Use		Use		Use	
09.4001 Australia	2 250						
09.4004 Argentina	200	11.05	5.53%	8.34	4.17%	0.00%	
09.4450 Argentina	29 500	29 491.35	99.97%	26 649.20	90.34%	5 916.14	20.05%
09.4451 Australia	7 150	4 942.02	69.12%	3 000.01	41.96%	352.66	4.93%
09.4452 Uruguay	6 376	6 363.76	99.81%	4 520.57	70.90%	1 740.69	27.30%
09.4453 Brazil	10 000	4 147.19	41.47%	2 884.79	28.85%	510.43	5.10%
09.4454 New Zealand	1 300	980.60	75.43%	859.15	66.09%	224.77	17.29%
09.4002 Canada/US	11 500	3 883.04	33.77%	2 703.68	23.51%	400.60	3.48%
09.4455 Paraguay	1 000	935.41	93.54%	680.40	68.04%	155.42	15.54%
Total Beef	66 826	50 743.37	75.93%	41 297.80	61.80%	9 300.71	13.92%
Total Buffalo	2 450	11.05	0.45%	8.34	0.34%	-	0.00%
Total	69 276	50 754.42	73.26%	41 306.14	59.63%	9 300.71	13.43%

* up to 31/08/2020

YÜKSEK KALİTE SİĞİR ETİ İTHALAT KOTALARI



European
Commission

Quota erga omnes

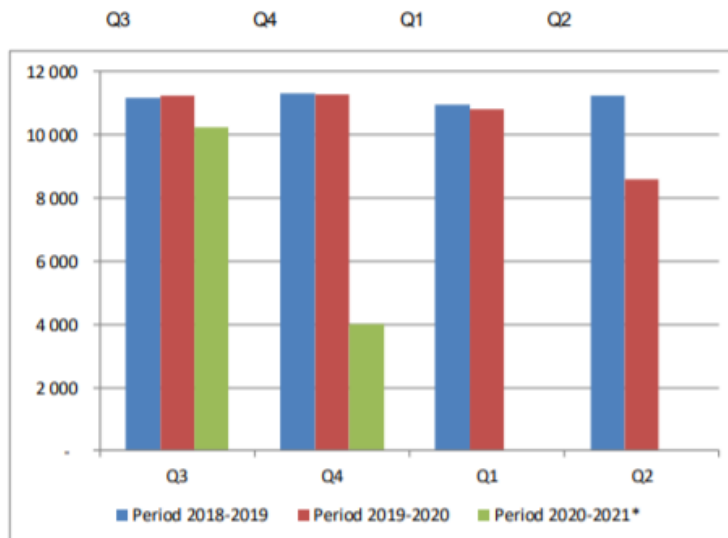
Regulation (EU) No 481/2012

	2018-Q3	2018-Q4	2019-Q1	2019-Q2	TOTAL
Period 2018-2019	11 165	11 319	10 973	11 256	44 712
Available	11 250	11 250	11 250	11 250	45 000
Use	99.24%	100.61%	97.53%	100.05%	99.36%
Available after transfer	11 250	11 335	11 181	11 527	
	99.24%	100.00%	97.53%	100.00%	

	2019-Q3	2019-Q4	2020-Q1	2020-Q2	TOTAL
Period 2019-2020	11 246	11 261	10 825	8 581	41 914
Available	11 250	11 250	11 250	11 250	45 000
Use	99.97%	100.10%	96.22%	76.28%	93.14%
Available after transfer	11 250	11 254	11 239	11 675	
	99.97%	100.00%	96.22%	76.28%	

	2020-Q3*	2020-Q4	2021-Q1	2021-Q2	TOTAL
Period 2020-2021*	10 237	4 021			14 258
Available	11 250	11 250			45 000
Use	91.00%	35.74%			31.68%
Available after transfer	11 250	12 263			
	91.00%	32.79%			

* Until 15.10.2020



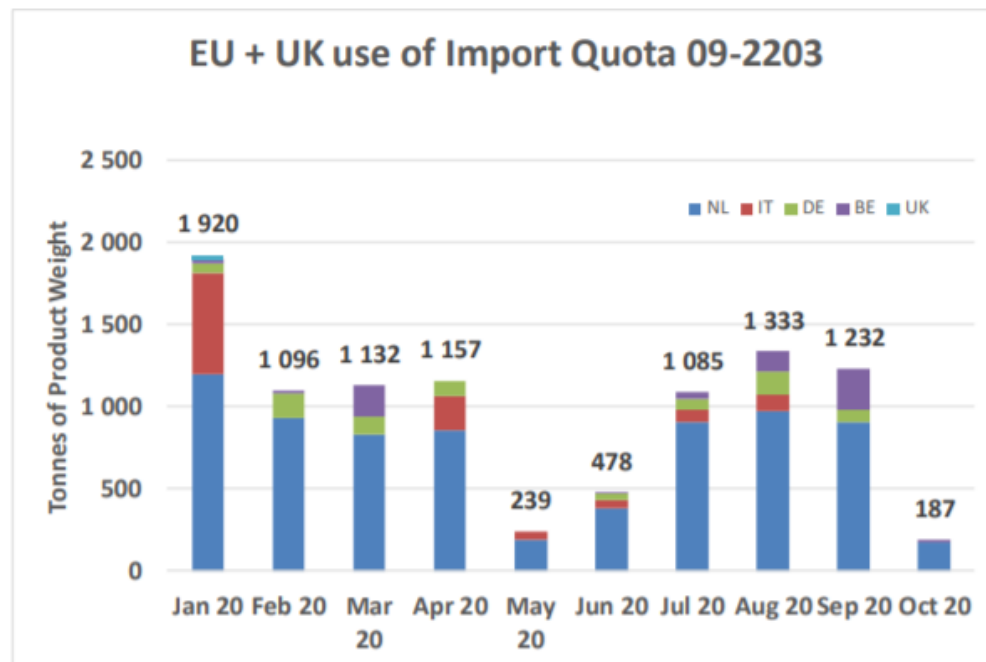
YÜKSEK KALİTE SİĞİR ETİ İTHALAT KOTALARI



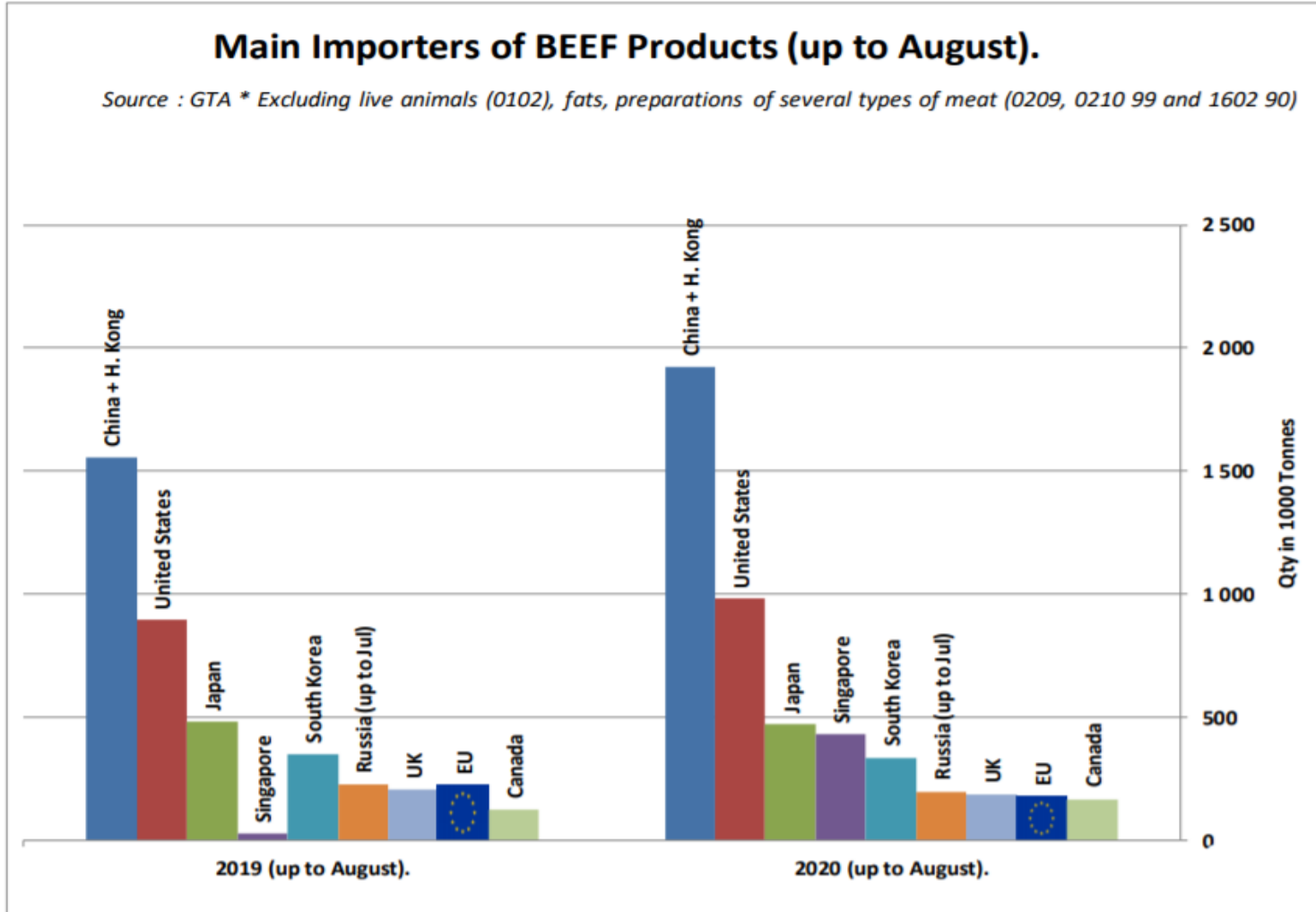
European Commission

Origin	GATT 2019-2020				Total
	2019-Q3	2019-Q4	2020-Q1	2020-Q2	
NL			2 957	1 415	4 372
IT			614	314	929
DE			313	133	446
BE			241	10	251
UK			23	-	23
Total import within Quota			4 125	1 873	5 998
Available			4 625	4 625	9 250
Use			89.19%	40.50%	64.84%
After transfer			4 625	5 125	
Use			89.19%	36.55%	

Origin	GATT 2020-2021				Total
	2020-Q3	2020-Q4	2021-Q1	2021-Q2	
NL	2 784	170			2 954
IT	174	-			174
DE	277	-			277
BE	417	17			433
Total import within Quota	3 651	187			3 838
Available	4 625	4 625			9 250
Use	78.94%	4.03%			
After transfer	4 625	5 599			
Use	78.94%	3.33%			

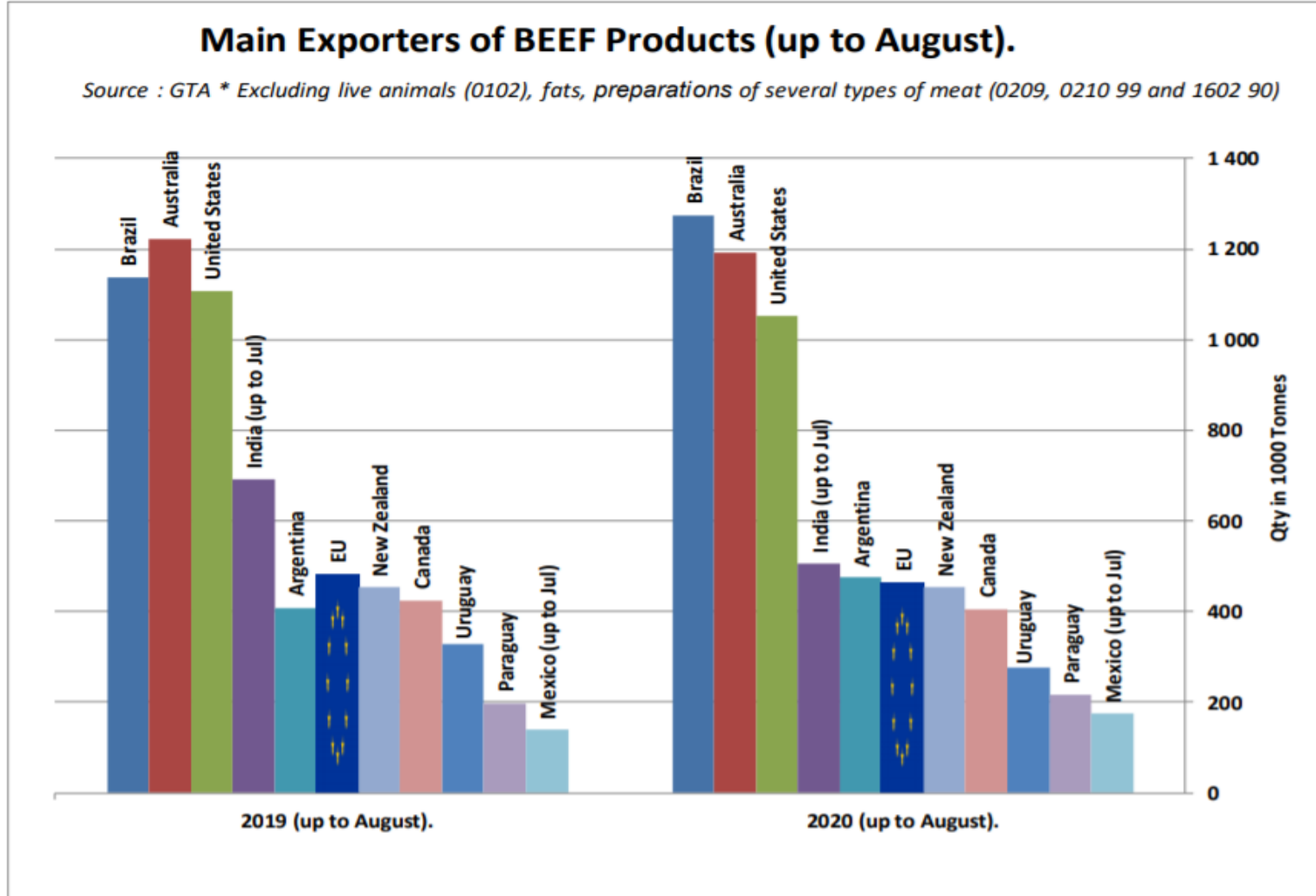


SIĞIR ETİ ÜRÜNLERİNİN NET İTHALATÇILARI (AĞUSTOS AYINA KADAR)





SIĞIR ETİ ÜRÜNLERİNİN NET İHRACATÇILARI (AĞUSTOS AYINA KADAR)

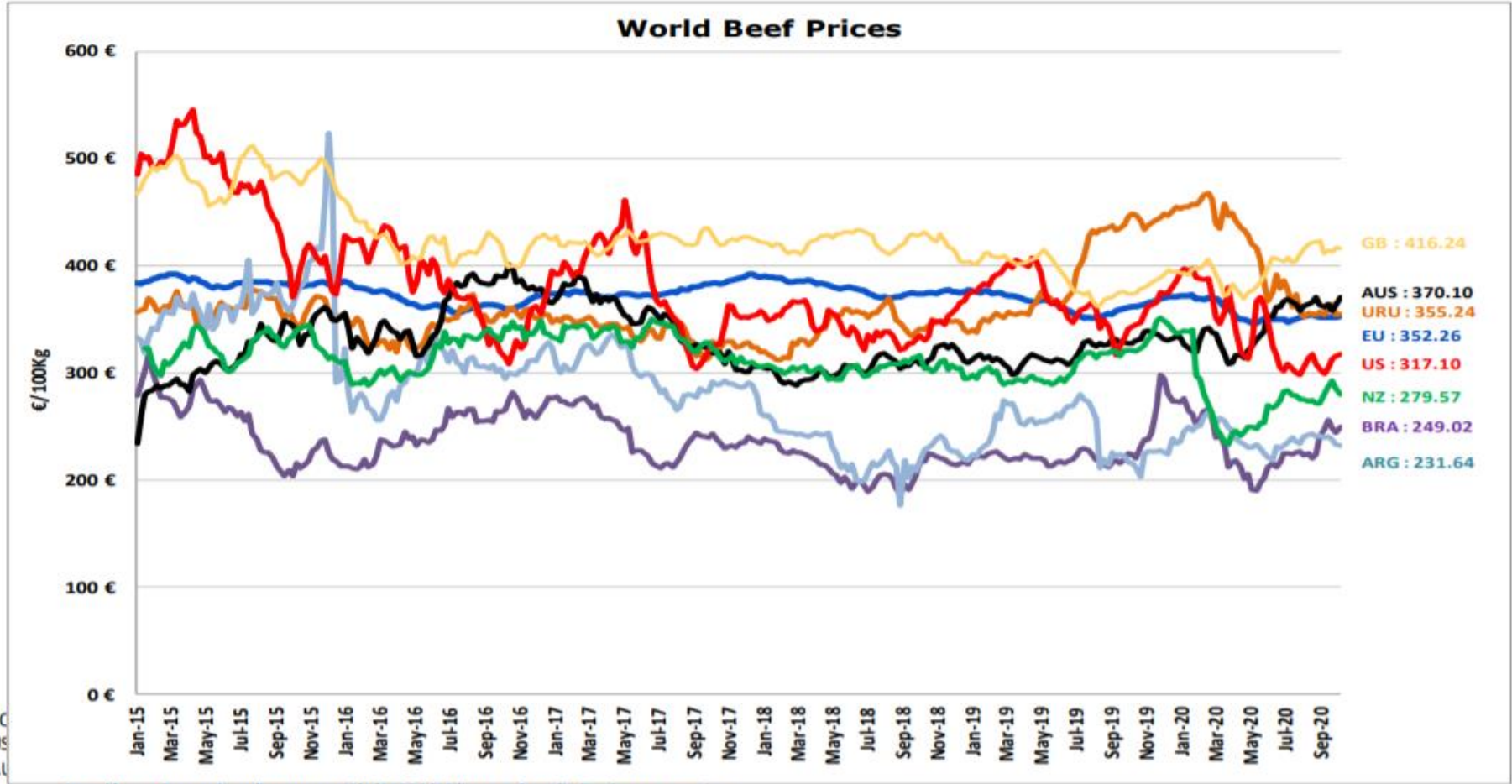


DÜNYA SIĞIR ETİ PAZARI



European
Commission

Dünya Sığır Fiyatları AB, ABD, AVUSTURYA, YENİ ZELANDA



EC
US
AU
UY
ARG
BR
NZ

<http://www.inac.gub.uy/innovaportal/v/11034/10/innova.front/indicadores-y-precios>

http://www.abc-consorcio.com.ar/Estadisticas/detalle/117/precios_comparativos_de_l_novillo.html

<http://www.pecuaria.com.br/cotacoes.php>

http://www.abc-consorcio.com.ar/Estadisticas/detalle/117/precios_comparativos_de_l_novillo.html



Daha fazla bilgi için:

https://ec.europa.eu/agriculture/market-observatory/meat_en

Ve Agri-FOOD Veri Portalı:

<http://agridata.ec.europa.eu>