

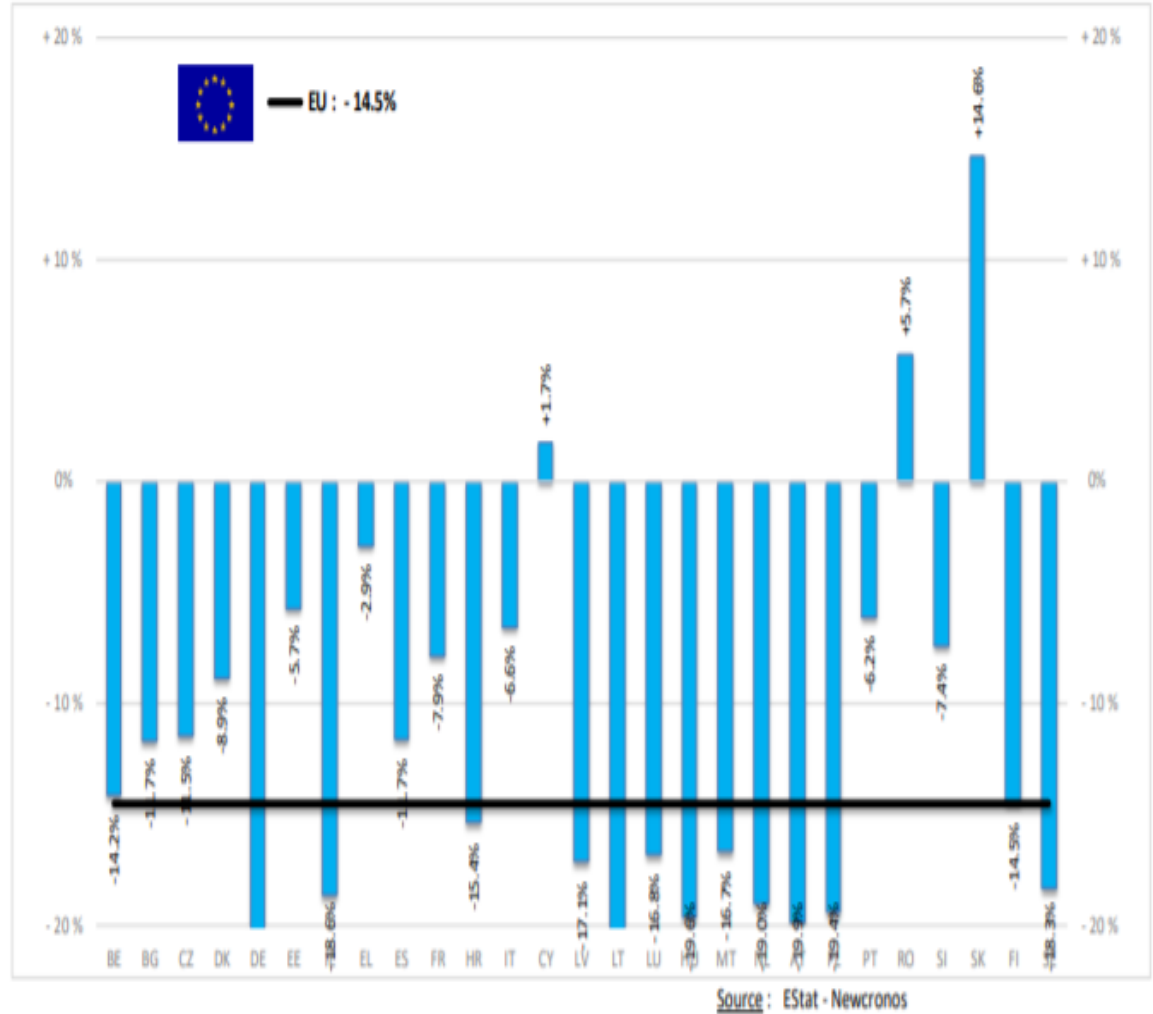


AB SIĞIR VE DANA ETİ PAZAR DURUMU

22 Nisan 2021

BAŞ	HEADS	Jan-Jan 21/20
		EU
BOĞA	Bull	-13.3%
ÖKÜZ	Bullock	-14.0%
İNEK	Cow	-16.4%
DÜVE	Heifer	-12.3%
BUZAĞI	Calve	-14.1%
GENÇ SİĞİR	Young cattle	-17.3%
Büyükbaş Hayvan Eti	Meat of bovine animals	-14.5%

Estimates for last month of period :

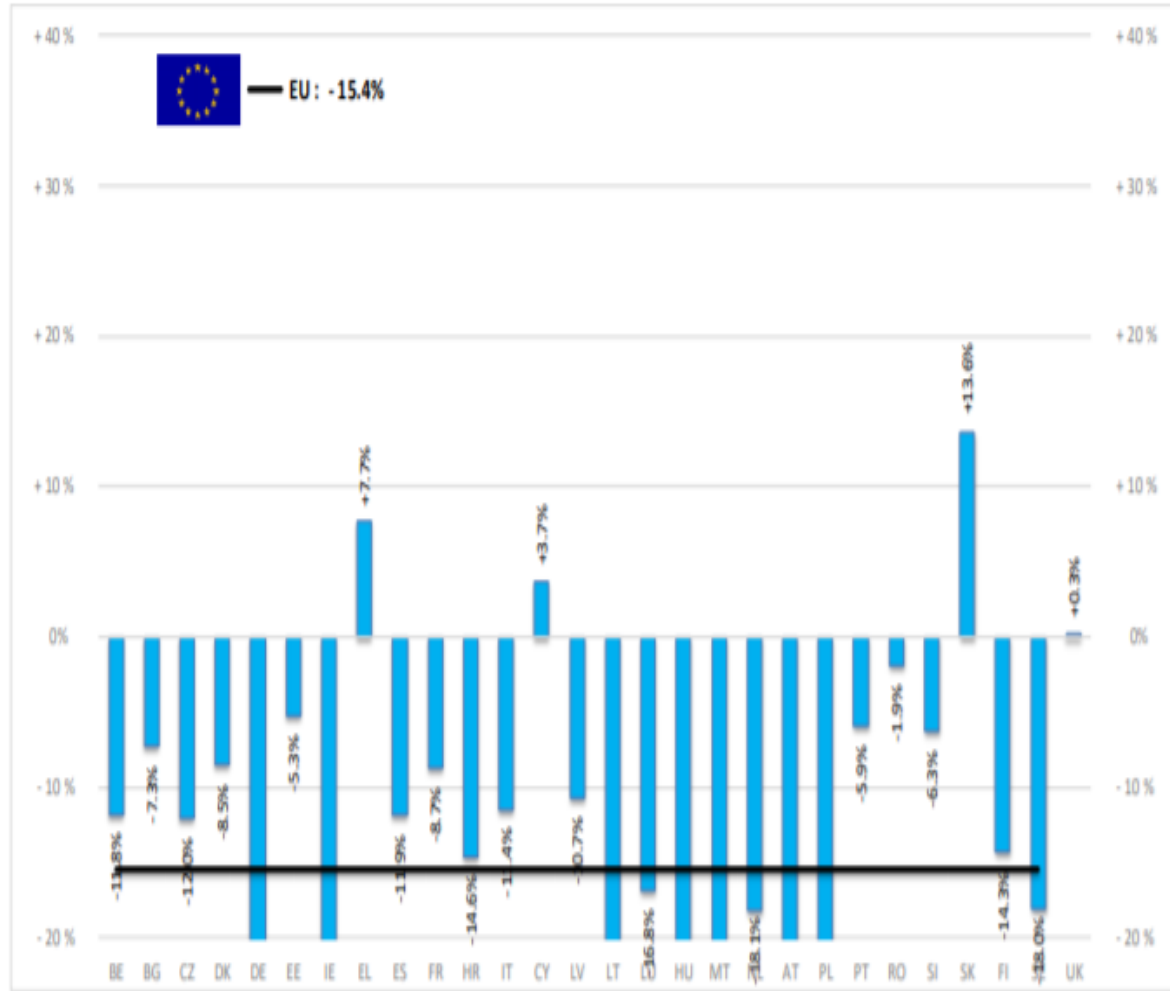




European
Commission

TON	TONNES	Jan-Jan 21/20
		EU
BOĞA	Bull	-14.7%
ÖKÜZ	Bullock	-15.2%
İNEK	Cow	-17.0%
DÜVE	Heifer	-14.2%
BUZAĞI	Calve	-14.9%
GENÇ SIĞIR	Young cattle	-18.0%
Büyükbaş Hayvan Eti	Meat of bovine animals	-15.4%

Estimates for last month of period :

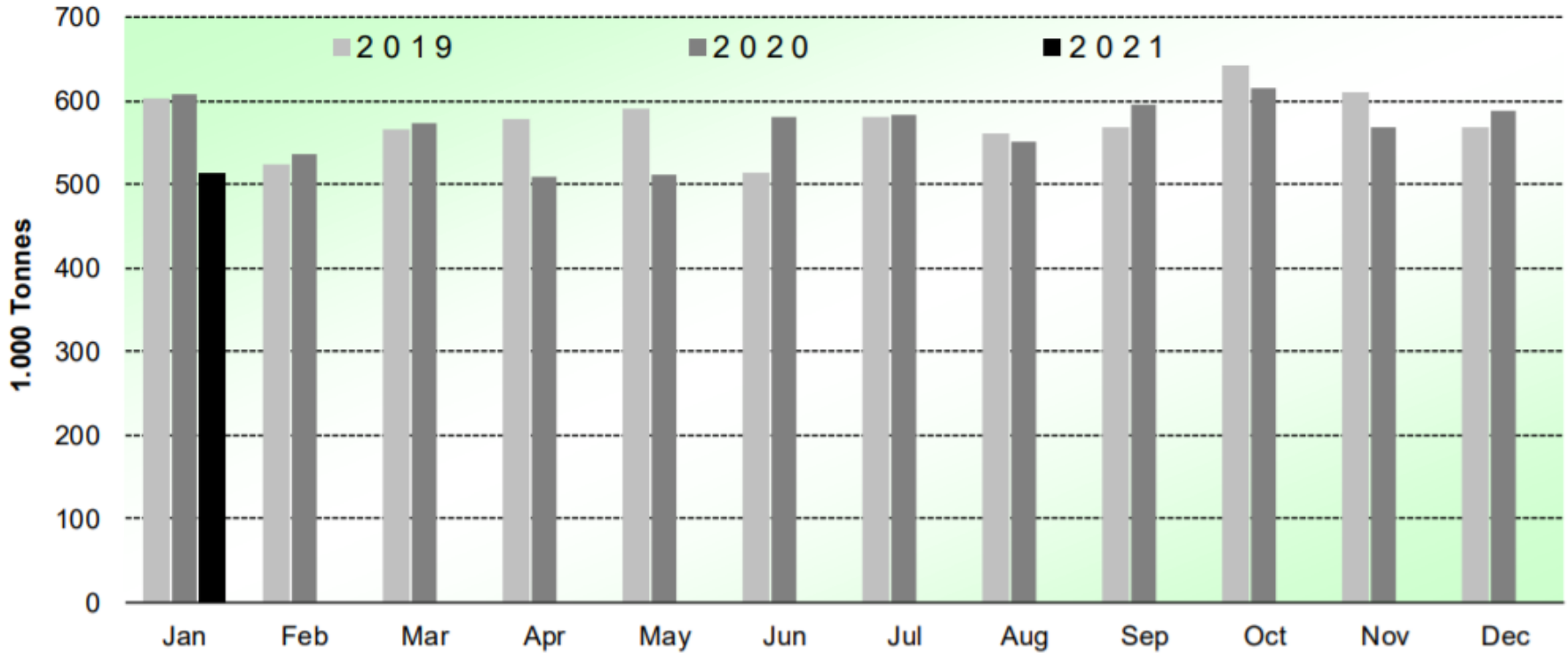


Source : EStat - Newcronos



SIĞIR VE DANA ETİ ÜRETİMİ (AB Kesimler – Ton)

Beef & Veal Production (EU Slaughtering) - Tonnes



Source : EStat-Newcronos

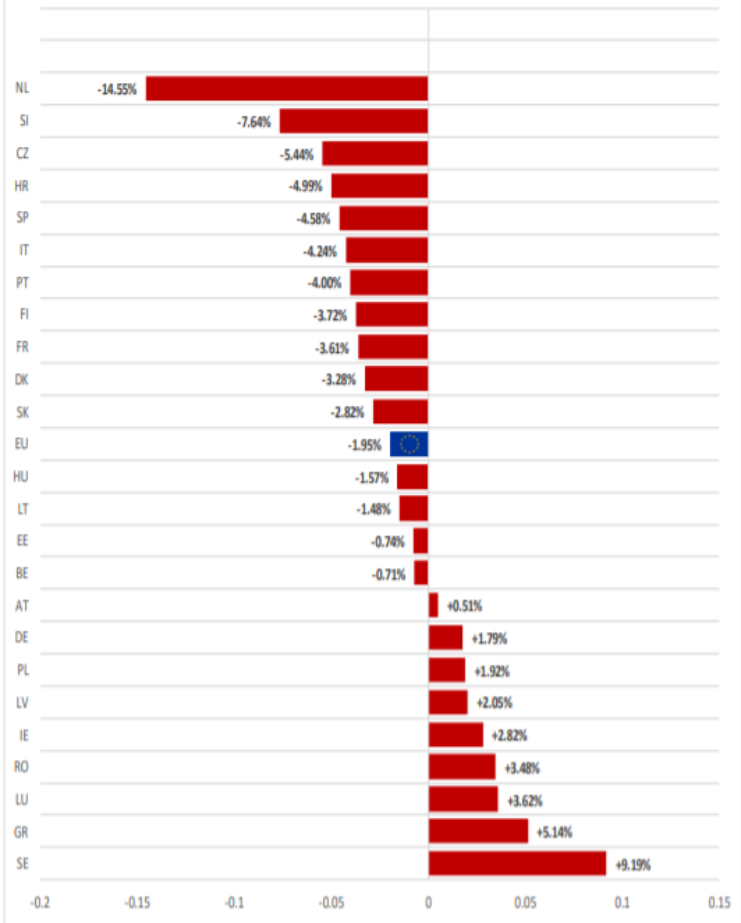


EU Prices week		14	Evolution since last week	Evolution since last month	Evolution since last year
Carcasse	Average A/C/Z -R3	372.2	+ 0.7%	+ 0.6%	+ 4.6%
	Young Bovines (Z)	365.6	+ 0.5%	+ 0.3%	+ 0.5%
	Young Bulls (A)	371.3	+ 0.7%	+ 0.4%	+ 4.9%
	Steers (C)	386.8	+ 0.8%	+ 1.9%	+ 8.6%
	Cows (D)	294.0	+ 0.9%	+ 1.5%	+ 12.2%
	Heifers (E)	380.8	+ 0.8%	+ 0.5%	+ 6.6%
Live Animals	Male Calves Dairy Type	82.52	+ 6.0%	+ 21.3%	+ 12.9%
	Male Calves Beef Type	202.8	+ 2.9%	+ 6.8%	+ 8.1%
	Young Store Cattle	2.44	+ 0.5%	+ 1.1%	+ 1.0%
	Yearling Male Store Cattle	2.31	+ 2.0%	+ 3.3%	+ 1.9%
	Yearling Female Store Cattle	2.52	+ 0.3%	+ 1.1%	+ 6.8%
	Calves slaughtered <8M	489.9	- 0.7%	- 1.6%	+ 2.1%

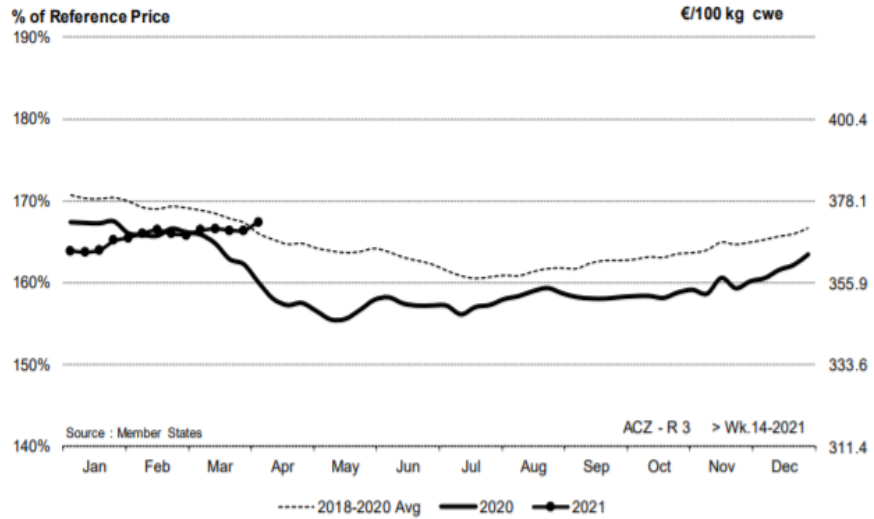
: MSs notifications (Regulation (EU) 1182/2017 and 1184/2017



EU ACZ R3 Price Comparison between average monthly price April 2020 - March 2021 compared to April 2019 - March 2020



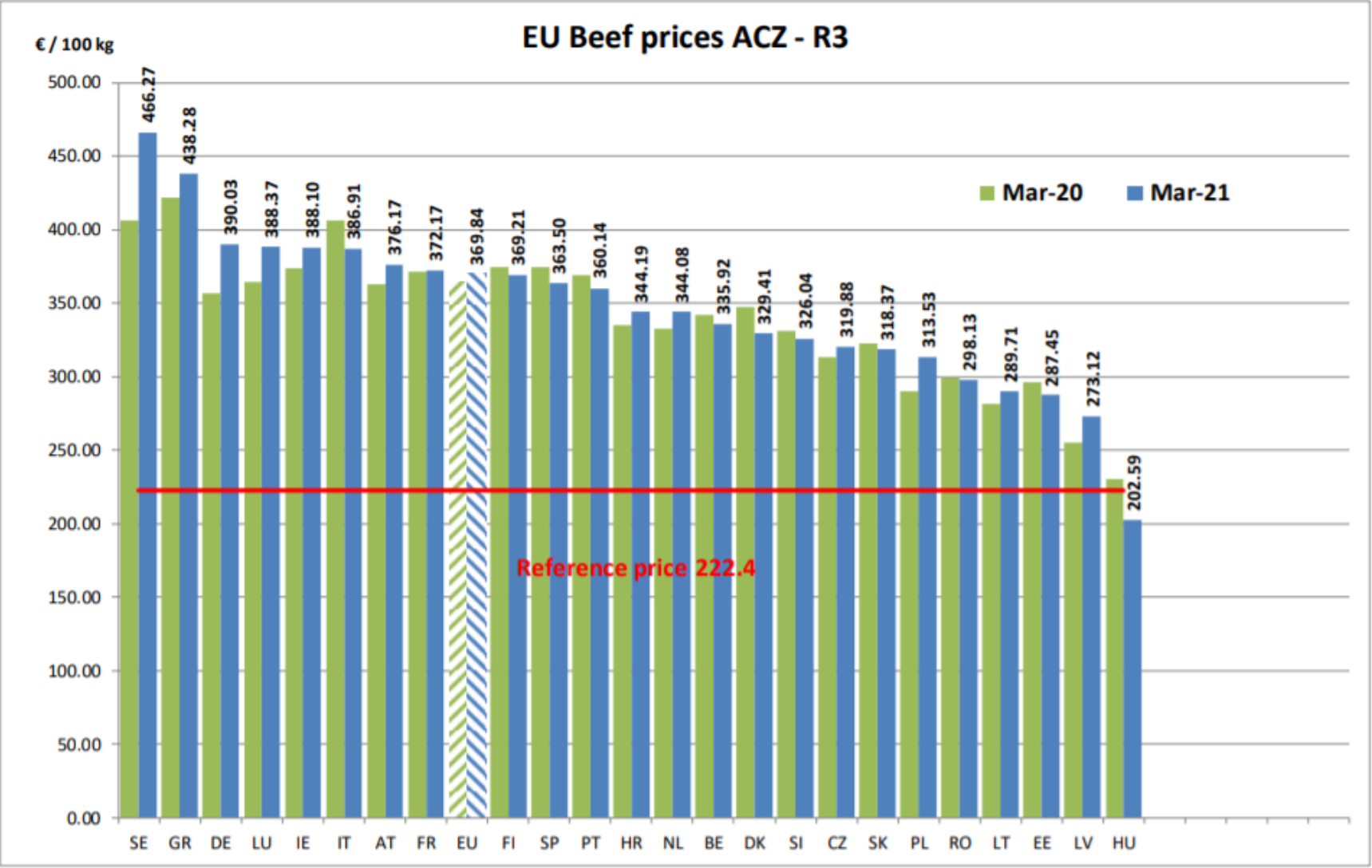
ACZ - R 3 > Wk.14-2021



Price in week 14 :	372.27	Average price in March 2021 :	369.83
% change y/y :	+ 4.60%	% change y/y :	+ 1.55%
% Ref. Price in wk 14 :	167.4%		

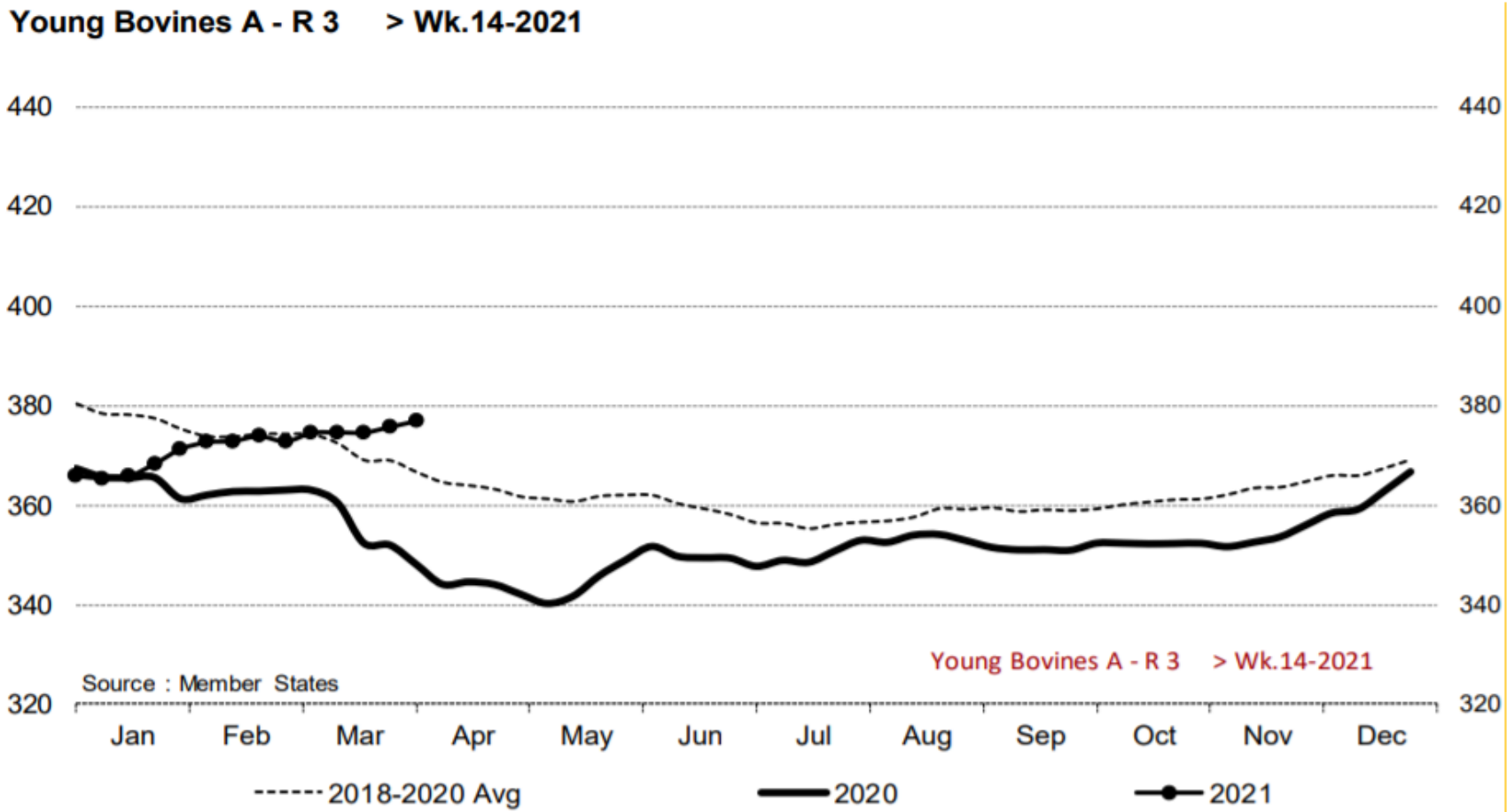


EU Beef prices ACZ - R3





Young Bovines A - R 3 > Wk.14-2021



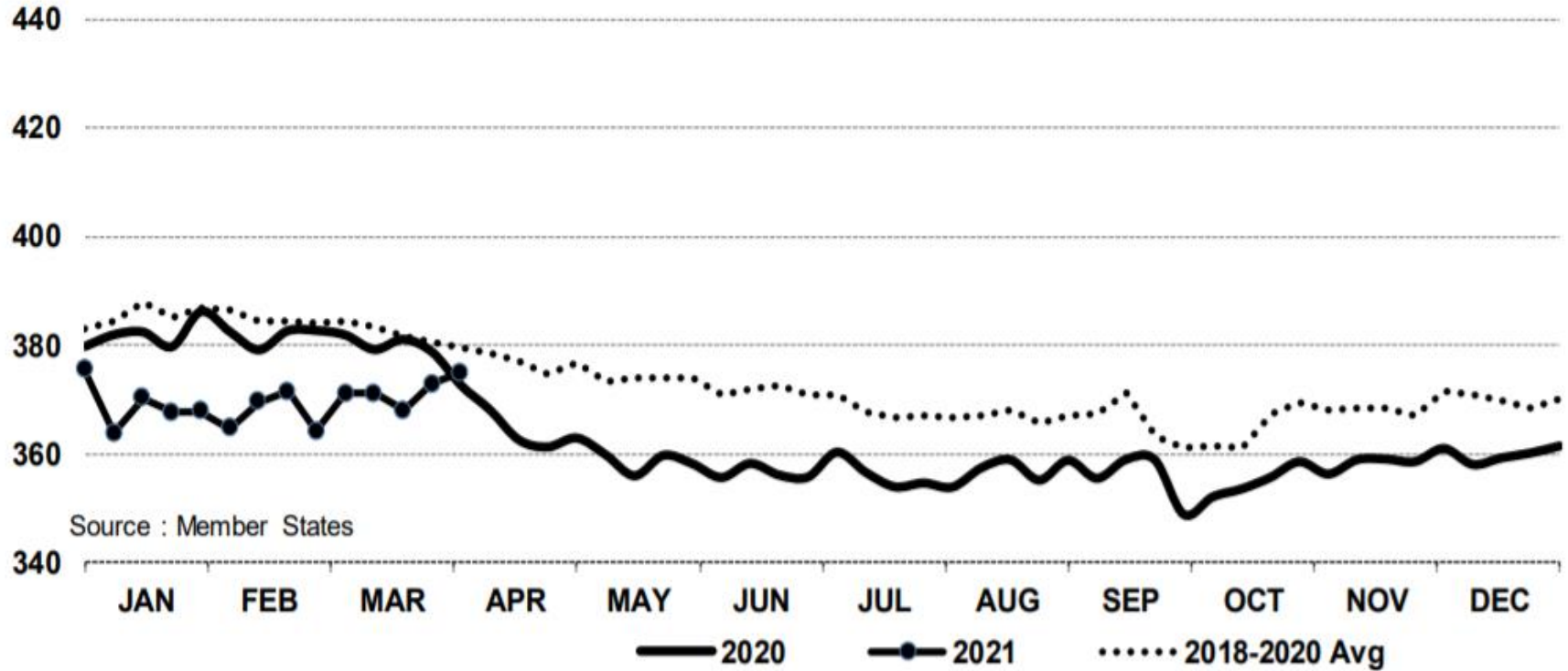
Source : Member States

Young Bovines A - R 3 > Wk.14-2021

Price in week 14 : 376.87	Average price in March 2021 : 374.23
% change y/y : + 8.3%	% change y/y : + 5.0%

In € / 100 kg

Young Bovines 8-12m Z - R 3 > Wk.14-2021



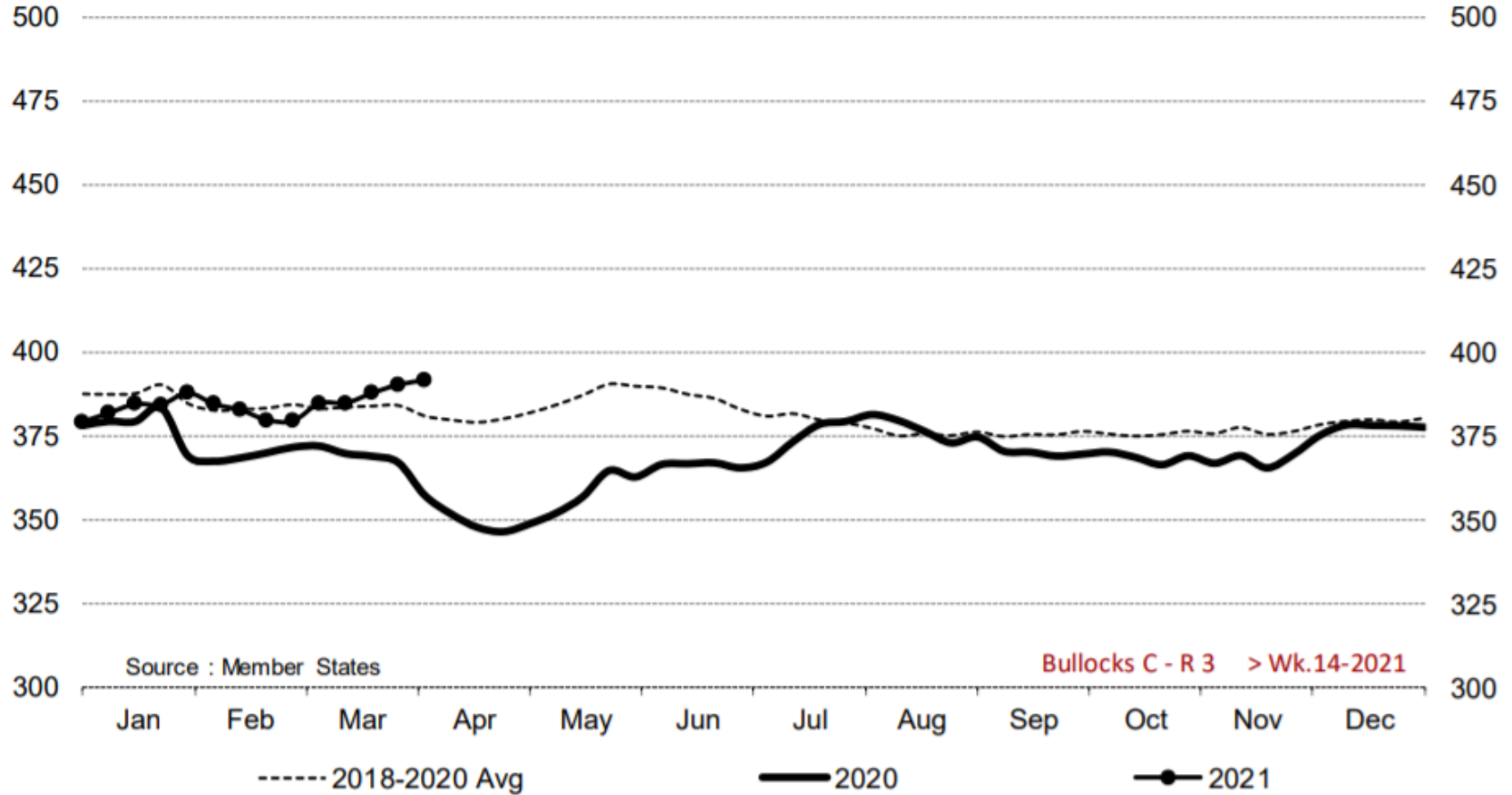
Price in week 14 : **374.86**
% change y/y : **+ 0.6%**

10/03/2021

Average price in March 2021 : **368.98**
% change y/y : **- 2.8%**



Bullocks C - R 3 > Wk.14-2021

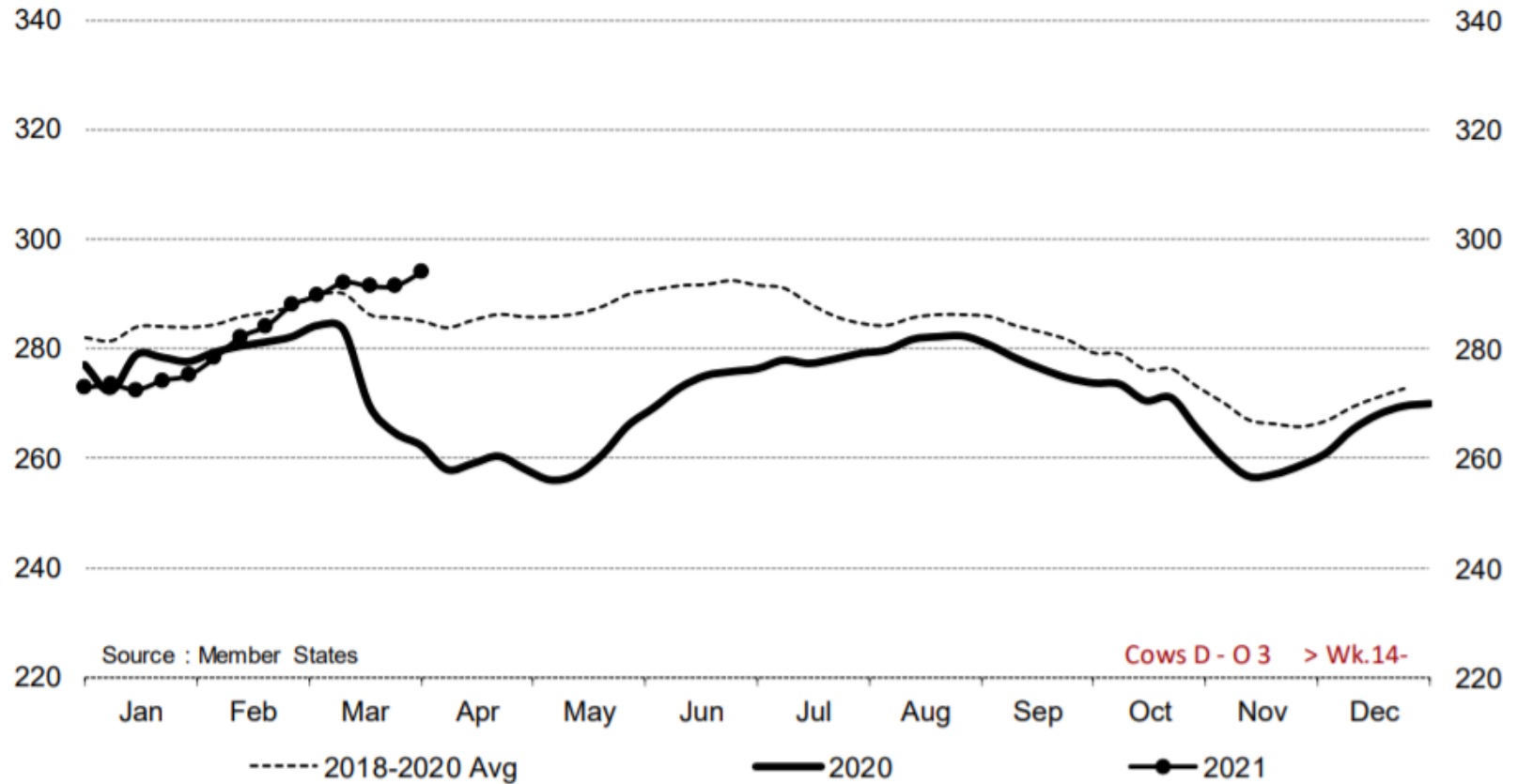


Price in week 14 : **391.53**
% change y/y : **+ 9.6%**

Average price in March 2021 : **384.68**
% change y/y : **+ 4.3%**



Cows D - O 3 > Wk.14-2021

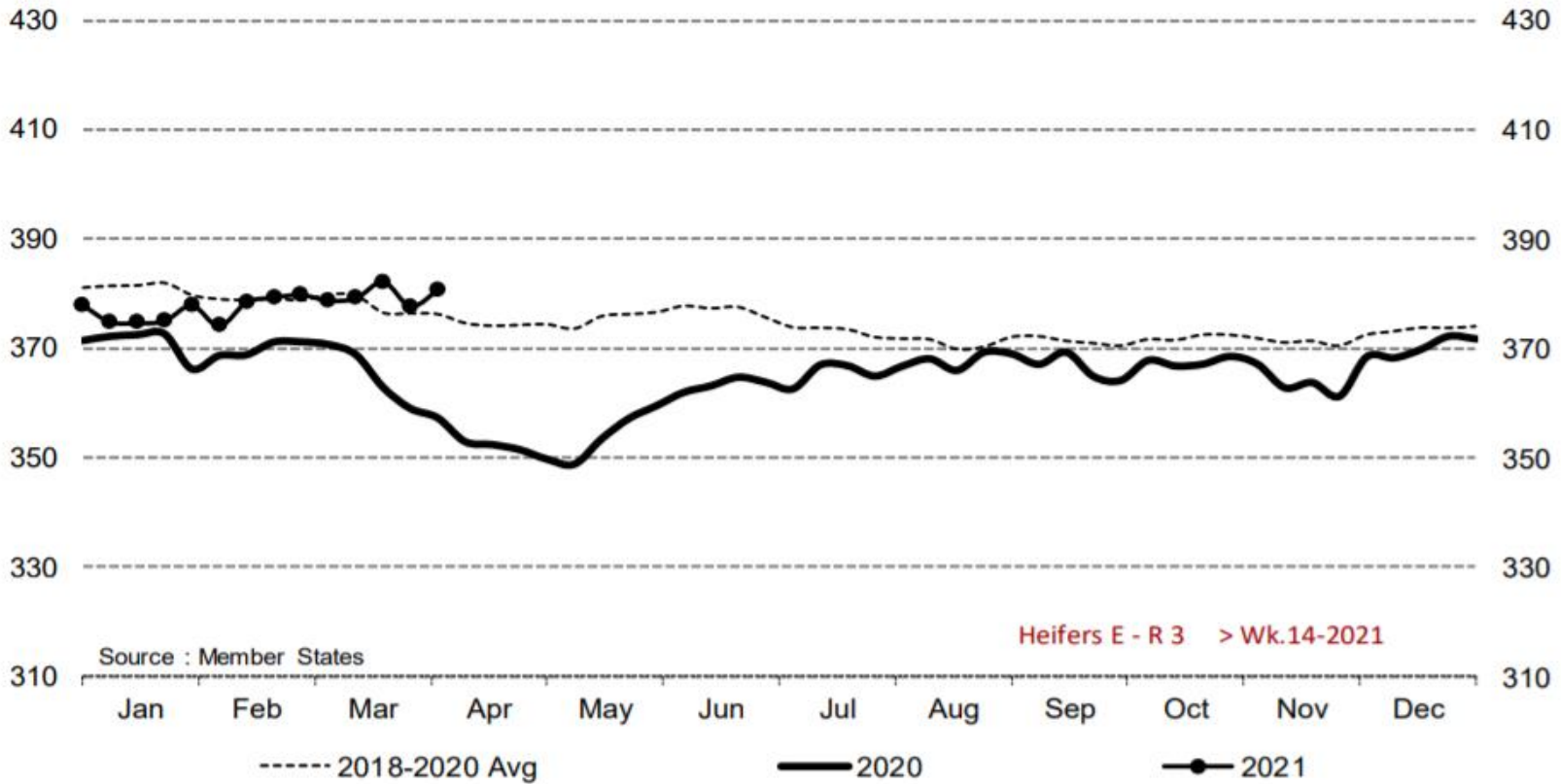


Price in week 14 : **294.08**
% change y/y : **+ 12.2%**

Average price in March 2021 : **290.44**
% change y/y : **+ 5.7%**



Heifers E - R 3 > Wk.14-2021

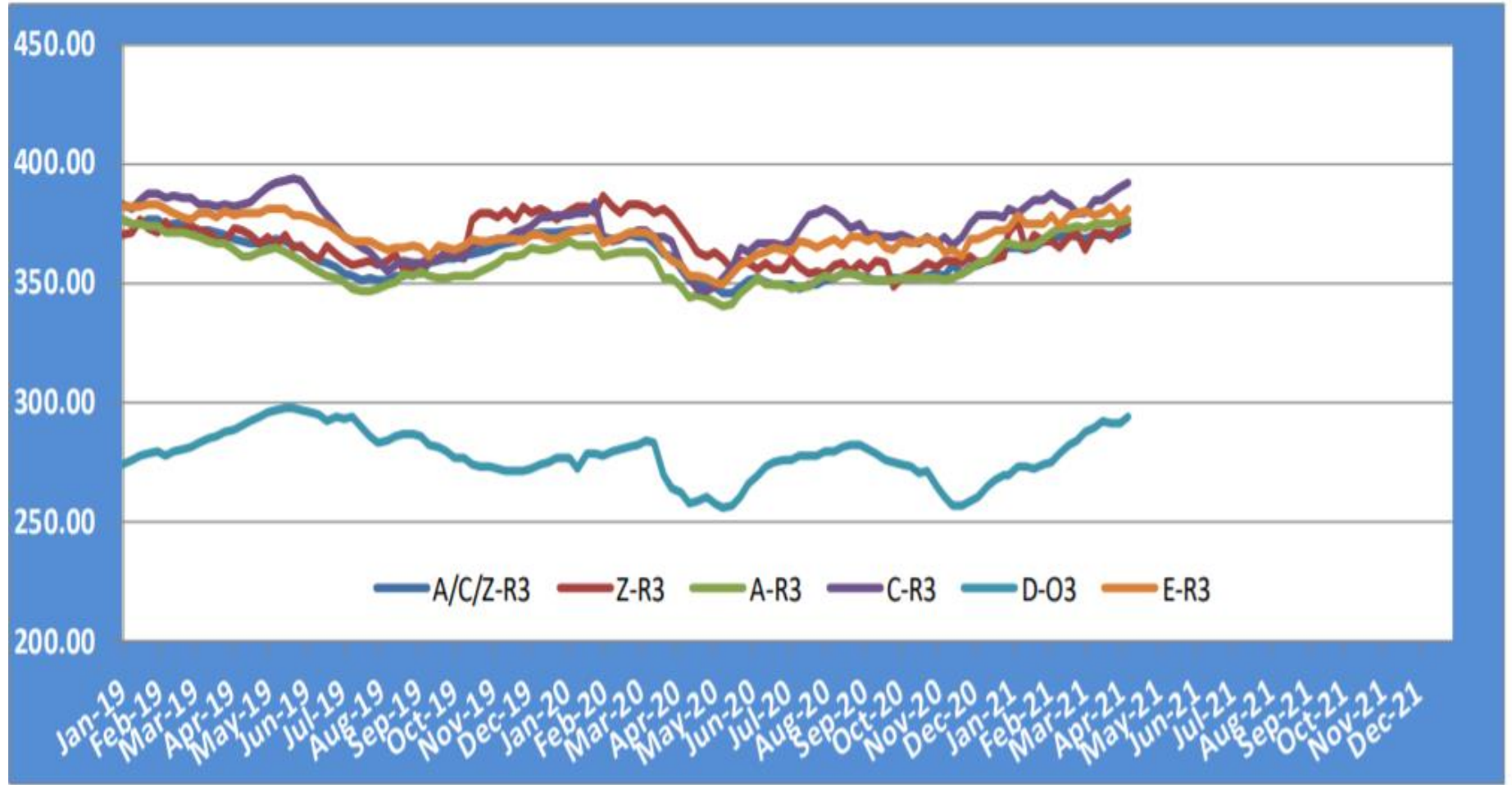


Price in week 14 : **380.83**
% change y/y : **+ 6.6%**

Average price in March 2021 : **379.78**
% change y/y : **+ 4.0%**

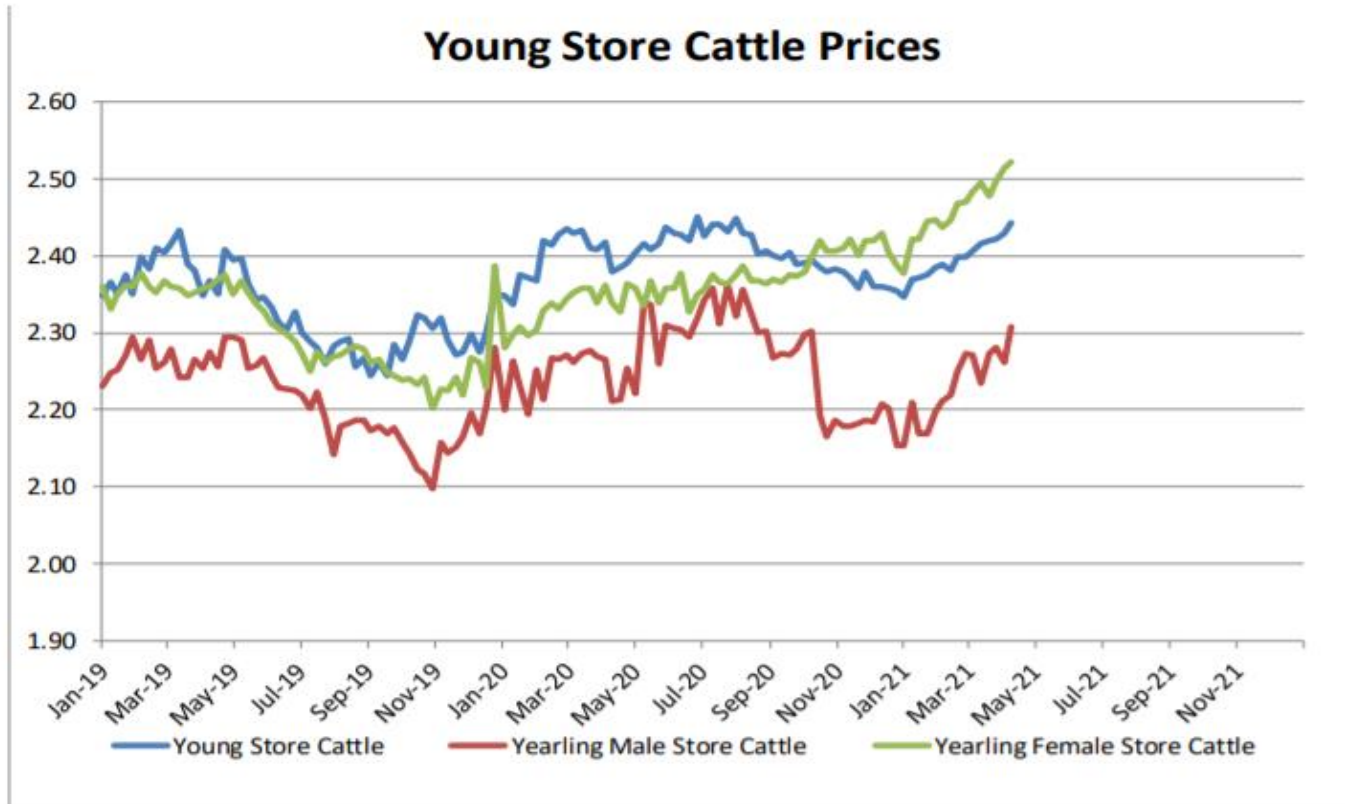
KARKAS FİYATLARI

AB TÜM KATEGORİLERE GLOBAL BAKIŞ



Besilik sığır (€ / 100 kg canlı ağırlık)

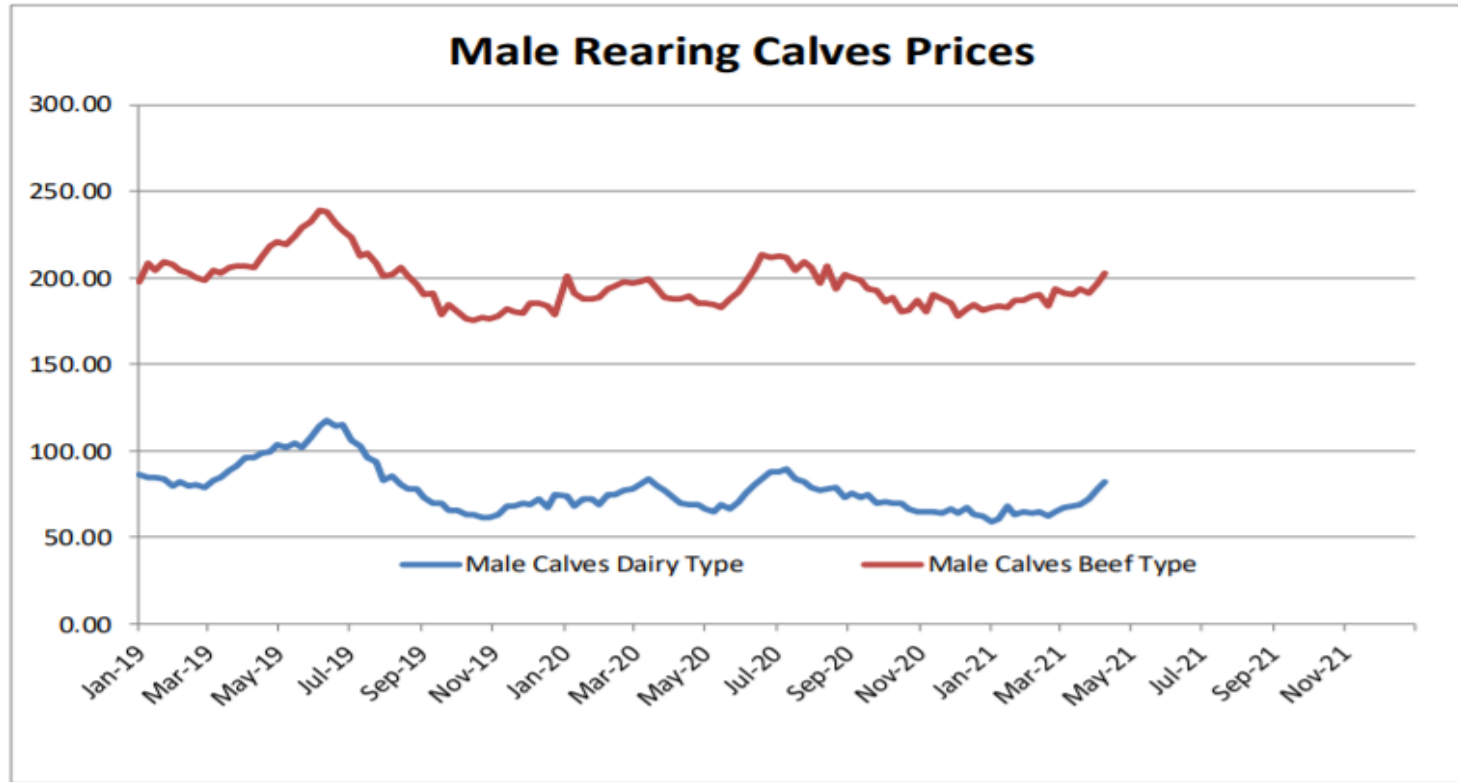
Store cattle (€/100 kg live weight)



Young Store Cattle Price in	Week 14	2.44	Yearling Male Store Cattle Price	2.31
	Change y/y	+1.03%	Change y/y	+1.87%
Yearling Female Store Cattle Price		2.52		
	Change y/y	+6.84%		

8 gün ve 4 haftalık erkek buzağlar (€/baş)

Male calves aged between 8 days and 4 weeks (€/head)



Male Rearing Calves Beef type

Price in Week 14 **202.80**

Change y/y **+8.11%**

Male Rearing Calves Dairy type

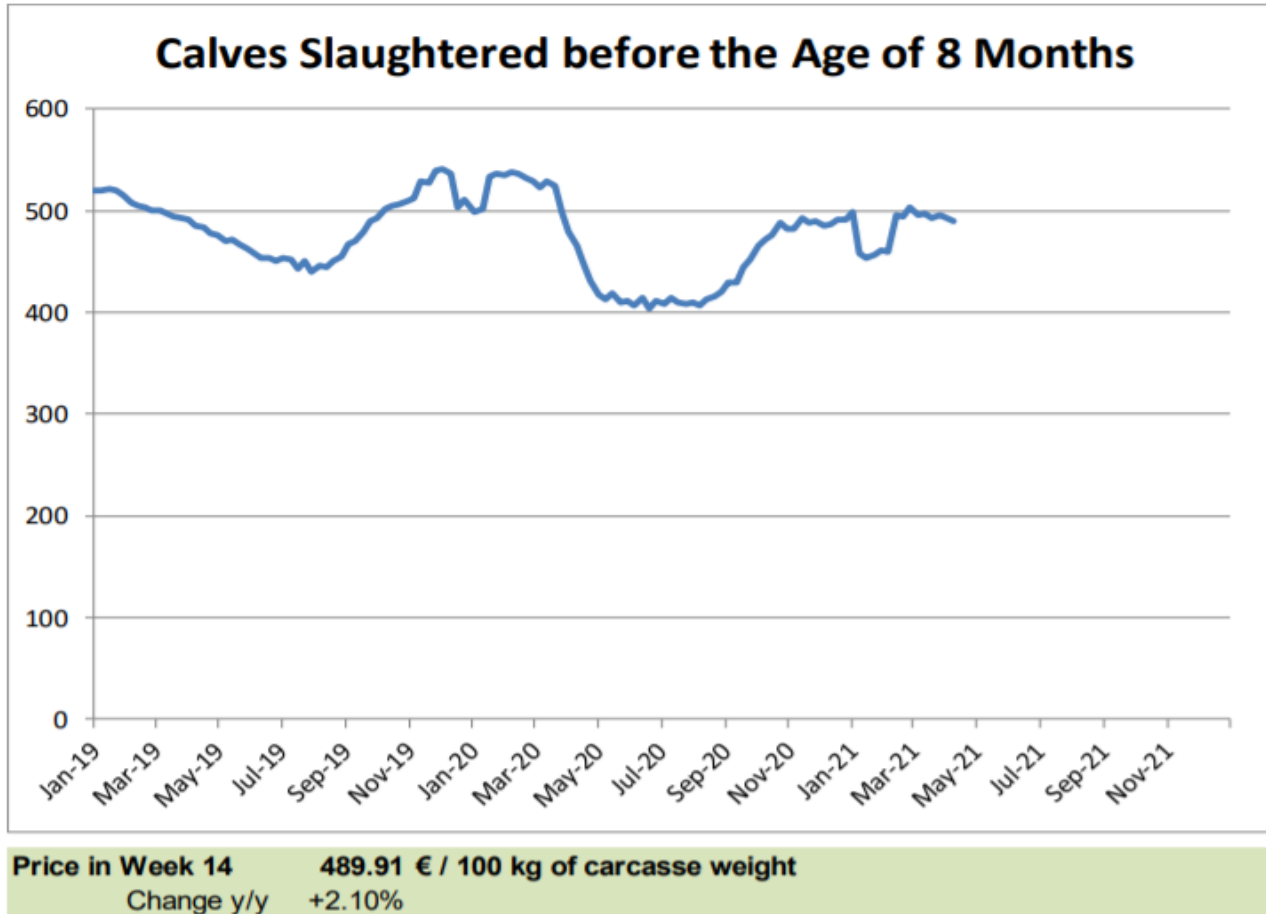
Price in Week 14 **82.52**

Change y/y **+12.91%**



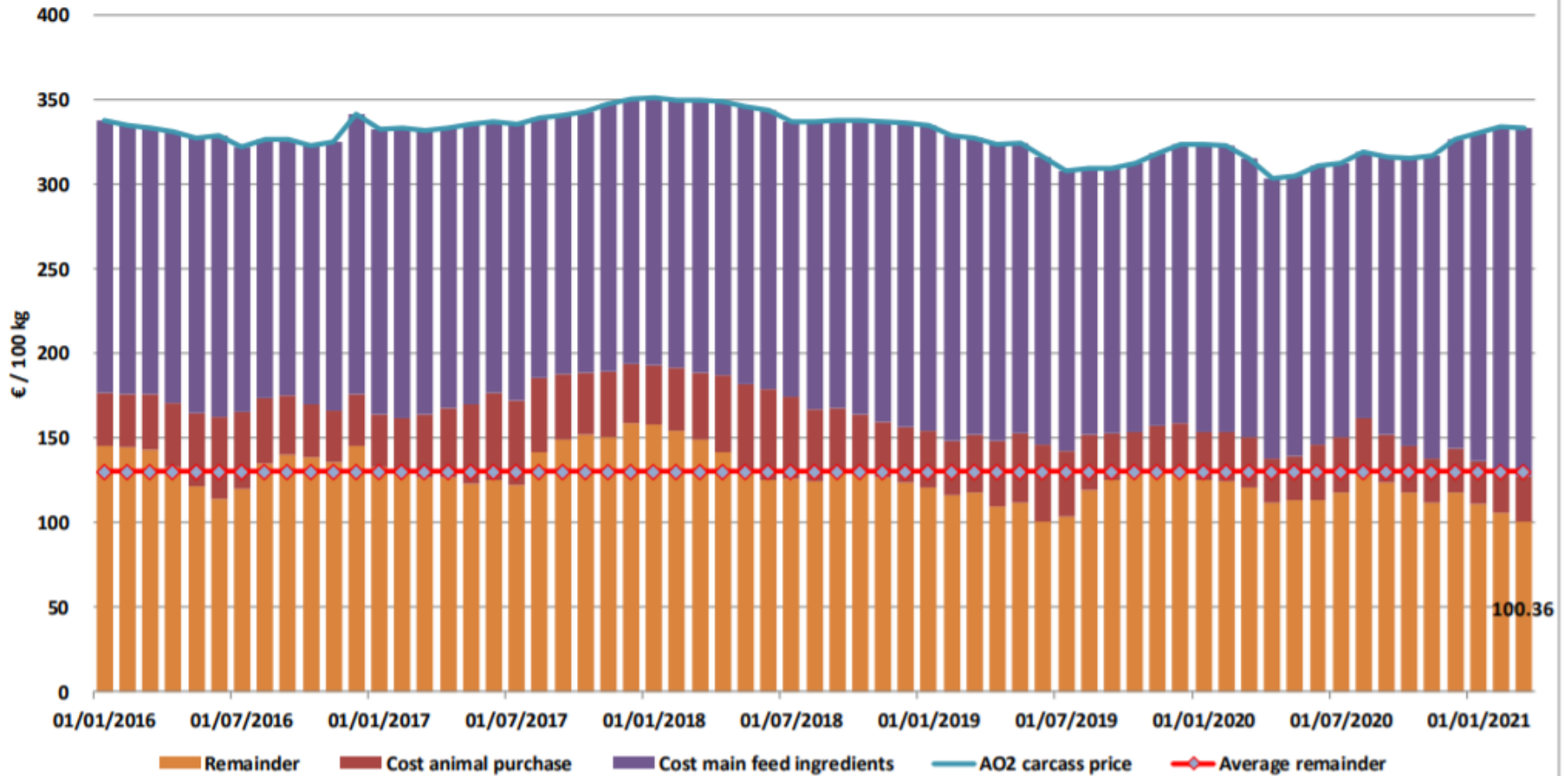
8 aylıktan küçük kesilen buzağlar (€ / 100 kg canlı ağırlık)

Calves slaughtered before the age of less than 8 months
(€/100 kg cw)

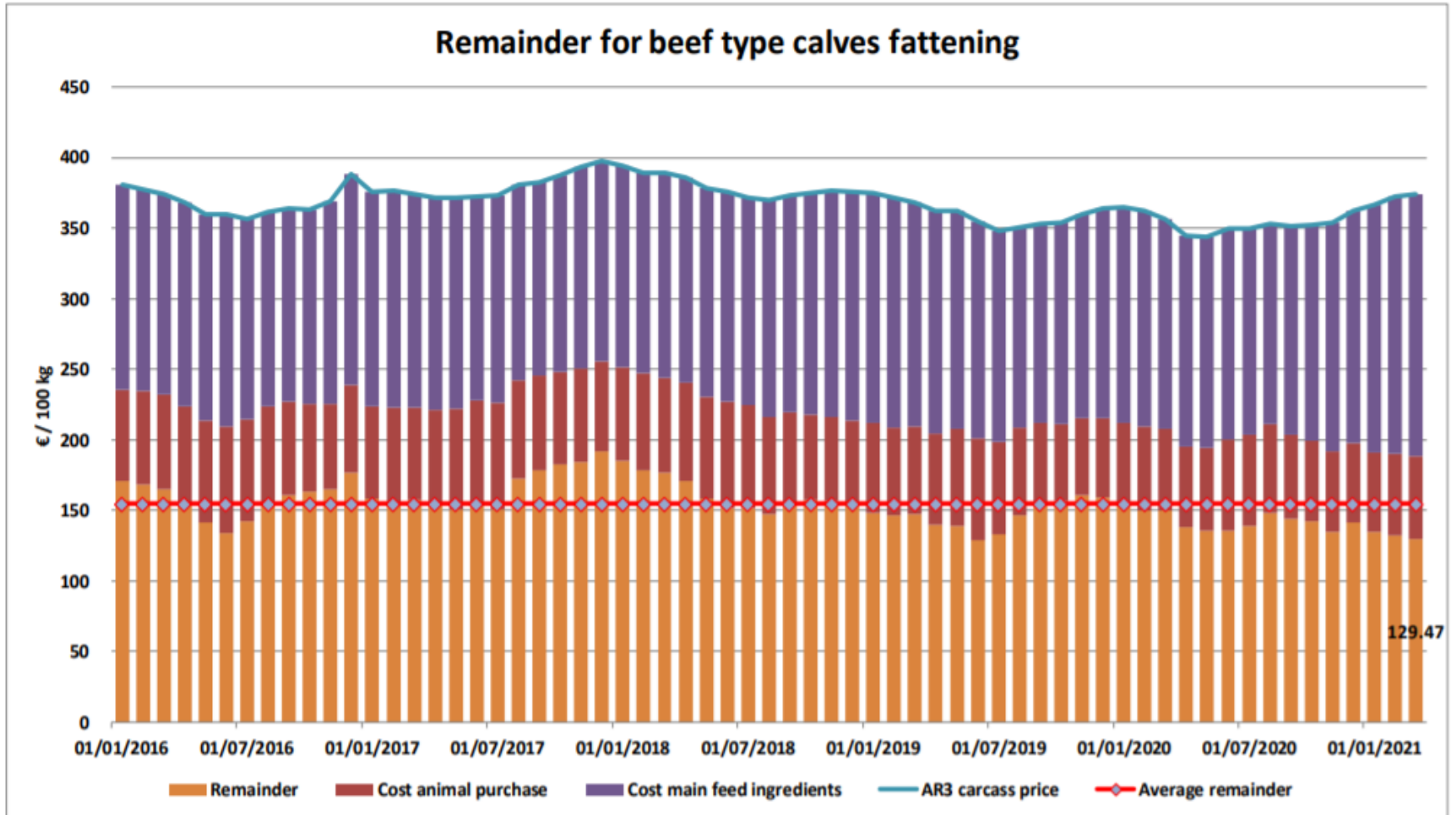


Süt Buzağları Besiciliği İçin Kalanlar

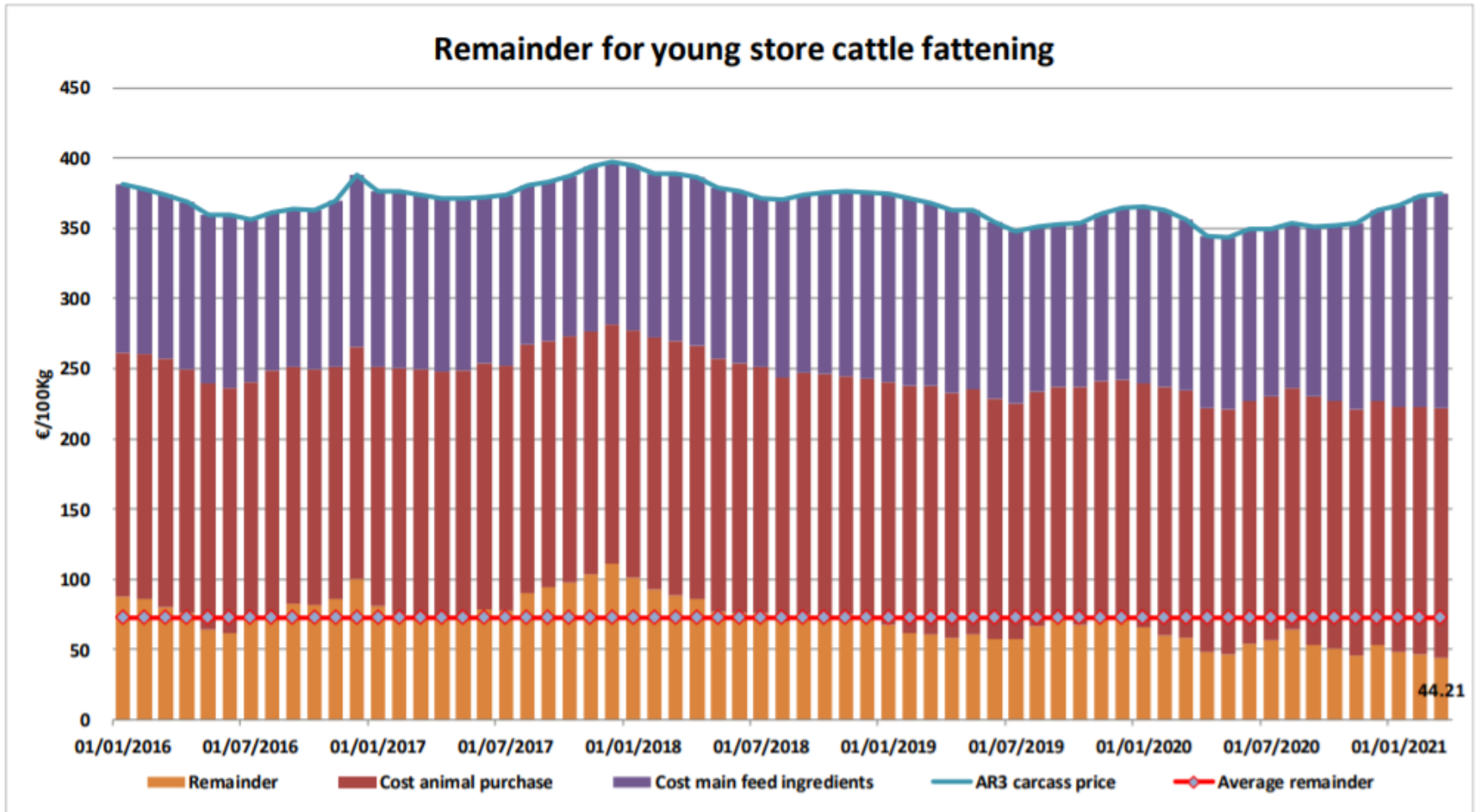
Remainder for dairy calves fattening



Sığır Tipi Buzağı Besiciliği İçin Kalanlar



Genç Besilik Sığır Besiciliği İçin Kalanlar



AB siğir eti ve canlı hayvan ihracatı (1): Pazar Rakamları (COMEXT – ton ca)

Destinations	2017		2018		2019		2020		Jan-Feb 21		Compared to Jan-Feb 20
	tonnes	%	tonnes	%	tonnes	%	tonnes	%	tonnes	%	
Israel	44 196	6.1%	47 774	6.8%	49 629	7.1%	56 965	8.1%	7 563	7.0%	- 1.0%
Ghana	37 744	5.2%	36 766	5.2%	39 196	5.6%	47 408	6.7%	7 364	6.9%	- 9.7%
Philippines	37 102	5.1%	28 766	4.1%	34 158	4.9%	39 920	5.7%	7 020	6.5%	+ 4.8%
Hong Kong	76 086	10.4%	55 537	7.9%	46 748	6.7%	56 860	8.1%	6 838	6.4%	+ 12.2%
Bosnia-Herz.	34 711	4.8%	38 762	5.5%	41 119	5.9%	35 758	5.1%	5 517	5.1%	+ 7.8%
Ivory Coast	36 038	4.9%	36 064	5.1%	33 396	4.8%	32 460	4.6%	5 364	5.0%	- 11.8%
Algeria	26 305	3.6%	35 410	5.0%	57 152	8.2%	39 416	5.6%	5 071	4.7%	- 43.1%
Lebanon	38 322	5.3%	42 542	6.1%	36 393	5.2%	33 656	4.8%	5 046	4.7%	+ 6.6%
Norway	12 850	1.8%	7 925	1.1%	7 667	1.1%	12 931	1.8%	4 052	3.8%	+ 147.5%
Switzerland	26 708	3.7%	23 761	3.4%	25 188	3.6%	29 996	4.3%	4 013	3.7%	- 16.4%
Libya	27 848	3.8%	27 878	4.0%	24 541	3.5%	21 971	3.1%	3 230	3.0%	- 12.1%
Saudi Arabia	4 691	0.6%	2 521	0.4%	2 809	0.4%	9 707	1.4%	2 894	2.7%	+++
Canada	2 424	0.3%	2 225	0.3%	6 806	1.0%	20 475	2.9%	2 525	2.4%	- 27.6%
Ukraine	7 331	1.0%	10 465	1.5%	13 836	2.0%	15 857	2.3%	2 488	2.3%	- 4.8%
Turkey	96 413	13.2%	96 052	13.7%	34 555	4.9%	22 107	3.1%	2 423	2.3%	- 11.7%
Kosovo	1 699	0.2%	6 693	1.0%	10 279	1.5%	10 912	1.5%	2 342	2.2%	+ 37.8%
Other Destinations	219 050	30.0%	203 099	28.9%	237 118	33.8%	218 234	31.0%	33 629	31.3%	
Total (without UK)	729 519		702 242		700 590		704 633		107 379		
% change			- 4%		- 0%		+ 1%		- 5.4%		



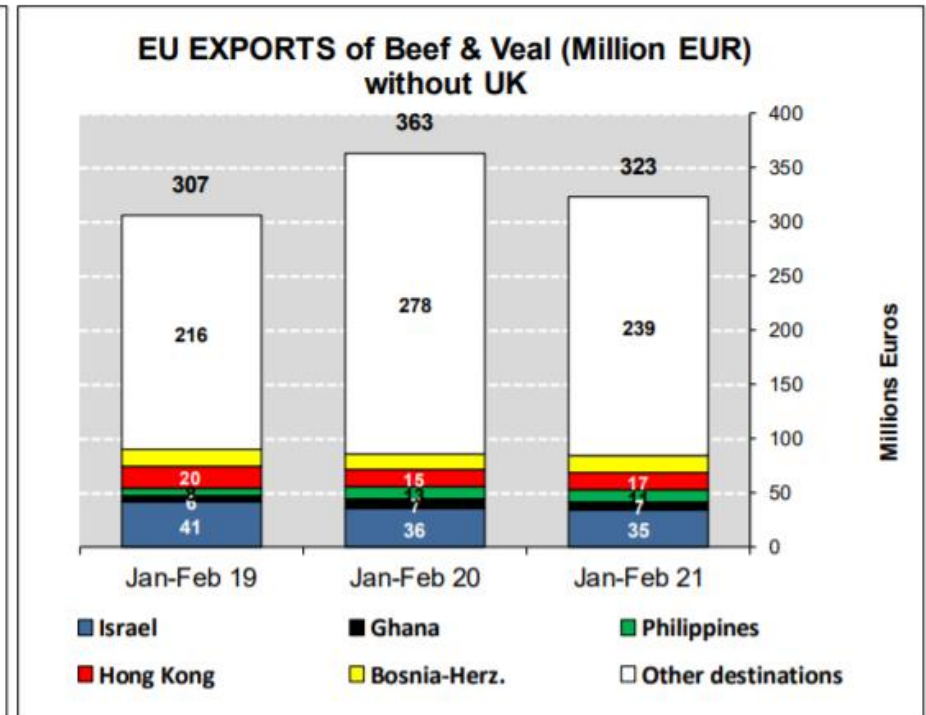
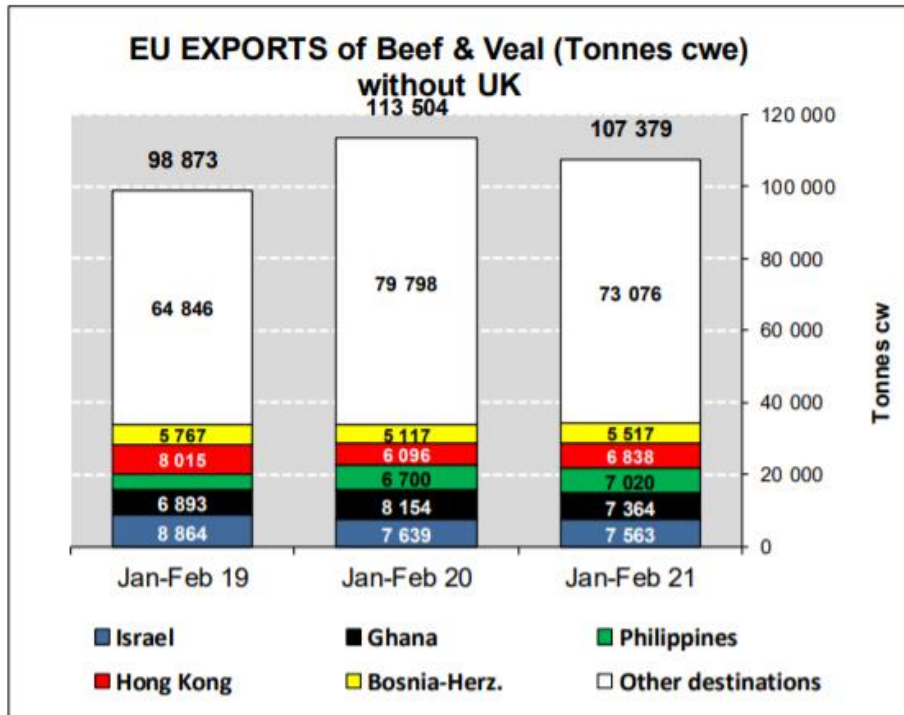
AB sığır eti ihracatı: Pazar Rakamları (COMEXT – ton ca)

Destinations

	2017		2018		2019		2020		Jan-Feb 21		Compared to Jan-Feb 20
	tonnes	%	tonnes	%	tonnes	%	tonnes	%	tonnes	%	
Ghana	37 744	7.7%	36 766	7.9%	39 196	8.2%	47 408	9.7%	7 364	9.6%	- 9.7%
Philippines	37 102	7.5%	28 766	6.2%	34 158	7.2%	39 920	8.1%	7 020	9.1%	+ 4.8%
Hong Kong	76 086	15.4%	55 537	11.9%	46 748	9.8%	56 860	11.6%	6 838	8.9%	+ 12.2%
Ivory Coast	36 028	7.3%	36 064	7.7%	33 396	7.0%	32 460	6.6%	5 364	7.0%	- 11.8%
Bosnia-Herz.	32 181	6.5%	36 152	7.7%	38 806	8.2%	33 459	6.8%	5 123	6.7%	+ 7.2%
Norway	12 849	2.6%	7 922	1.7%	7 667	1.6%	12 931	2.6%	4 052	5.3%	+++
Switzerland	25 570	5.2%	22 711	4.9%	24 110	5.1%	28 941	5.9%	3 781	4.9%	- 17.0%
Israel	18 750	3.8%	22 163	4.7%	23 026	4.8%	21 967	4.5%	3 394	4.4%	- 14.4%
Canada	2 424	0.5%	2 225	0.5%	6 806	1.4%	20 475	4.2%	2 525	3.3%	- 27.6%
Ukraine	6 926	1.4%	9 887	2.1%	12 893	2.7%	14 861	3.0%	2 450	3.2%	- 5.9%
USA	3 756	0.8%	5 458	1.2%	7 867	1.7%	12 310	2.5%	2 148	2.8%	+ 10.6%
North Macedonia	11 285	2.3%	10 002	2.1%	11 395	2.4%	10 551	2.1%	1 938	2.5%	+ 5.6%
Japan	4 281	0.9%	3 452	0.7%	8 007	1.7%	11 885	2.4%	1 761	2.3%	- 43.0%
Cuba	2 040	0.4%	2 202	0.5%	1 702	0.4%	3 548	0.7%	1 724	2.2%	+ 66.3%
Angola	10 982	2.2%	11 470	2.5%	8 410	1.8%	9 410	1.9%	1 610	2.1%	- 28.8%
Chile	8 961	1.8%	16 410	3.5%	12 461	2.6%	8 664	1.8%	1 566	2.0%	+ 7.0%
Other Destinations	166 148	33.7%	159 996	34.2%	158 992	33.4%	125 401	25.5%	18 272	23.8%	
Total to Third Countries	493 112		467 183		475 639		491 052		76 931		
% change			- 5%		+ 2%		+ 3%		- 8.1%		

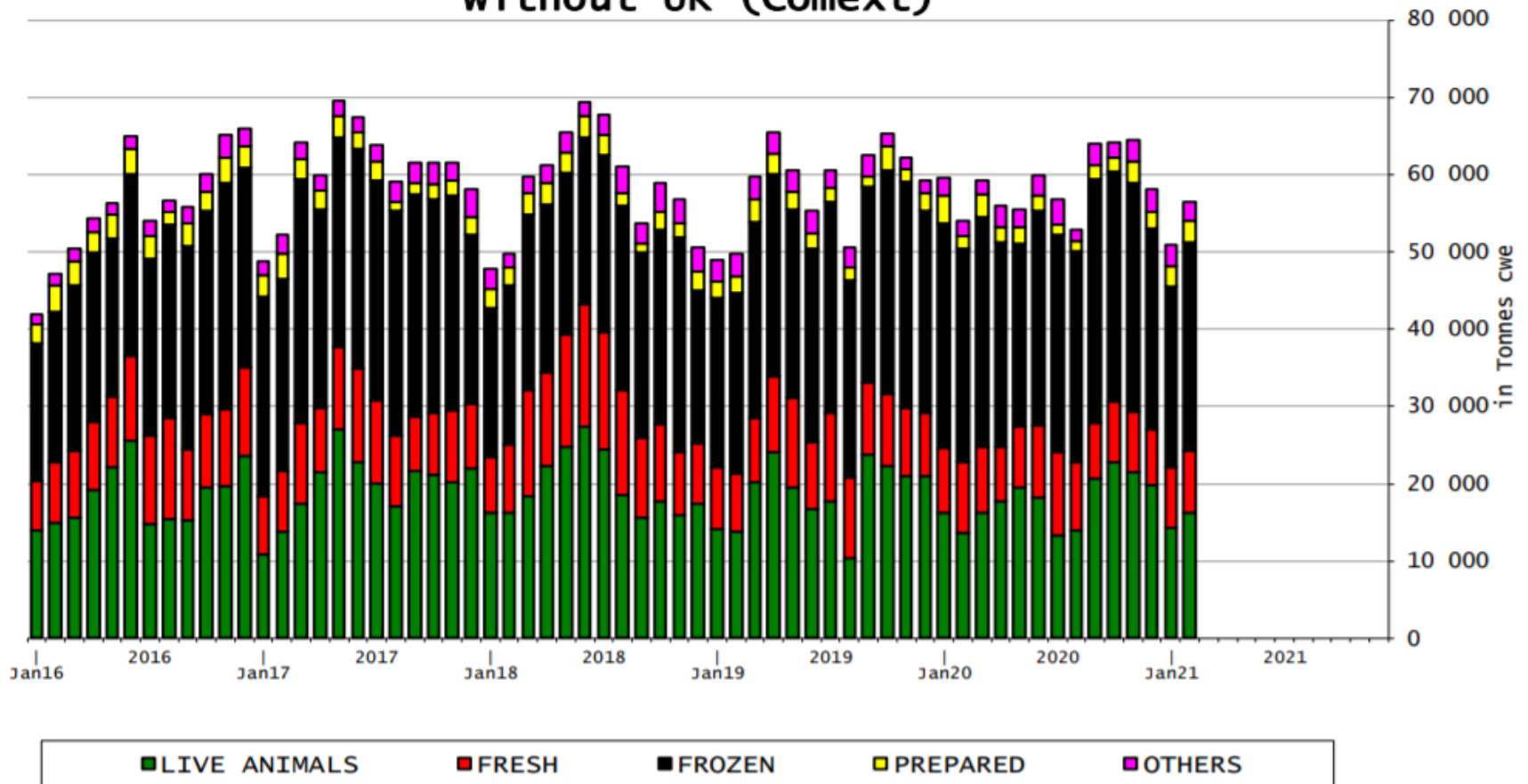


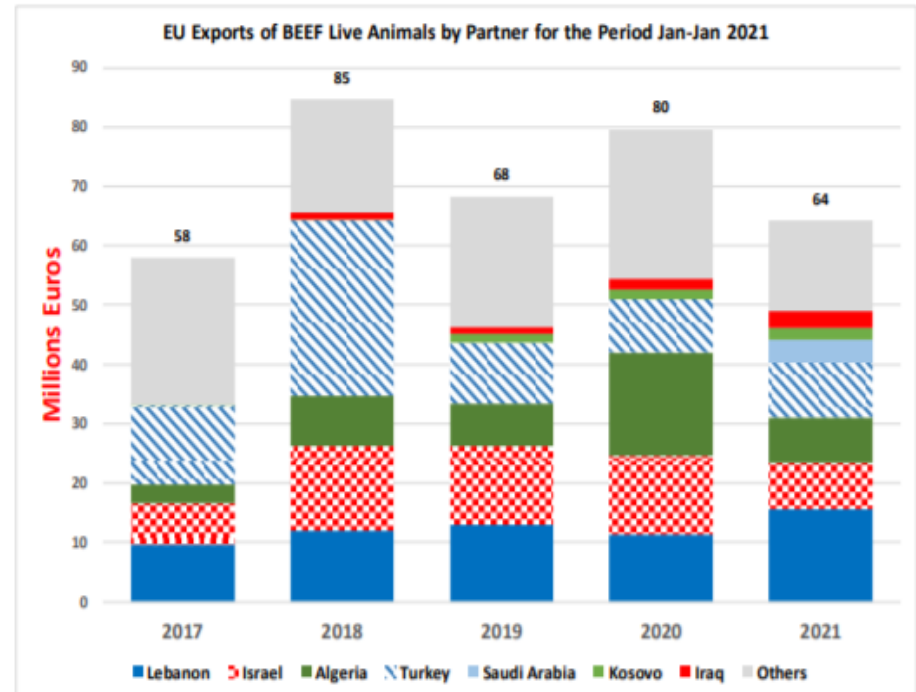
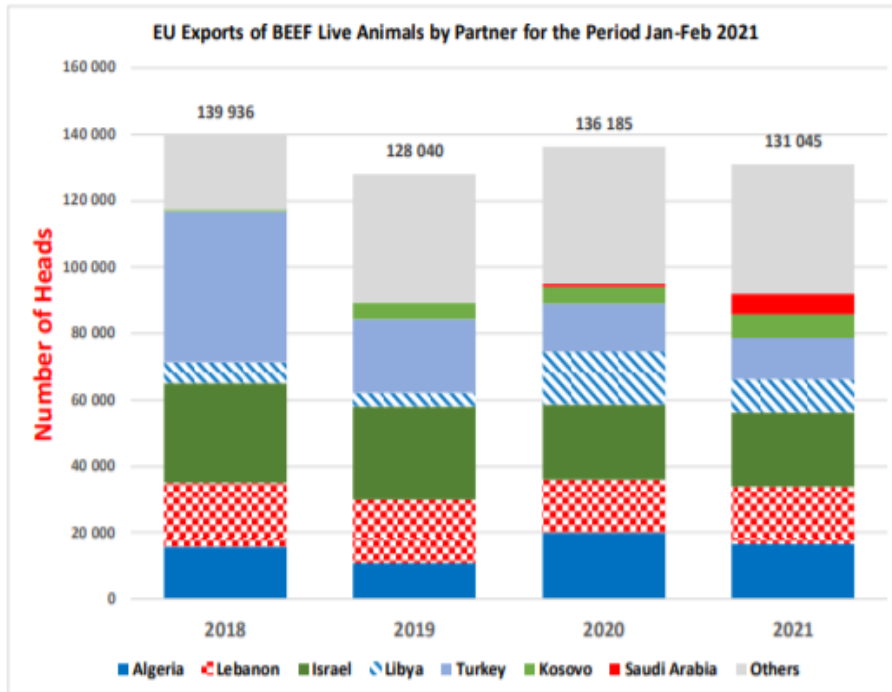
AB siğir eti ve canlı hayvan ihracatı (COMEXT)



AB siğir eti ürünleri ihracatı (COMEXT)

EU Exports of BEEF products without UK (Comext)







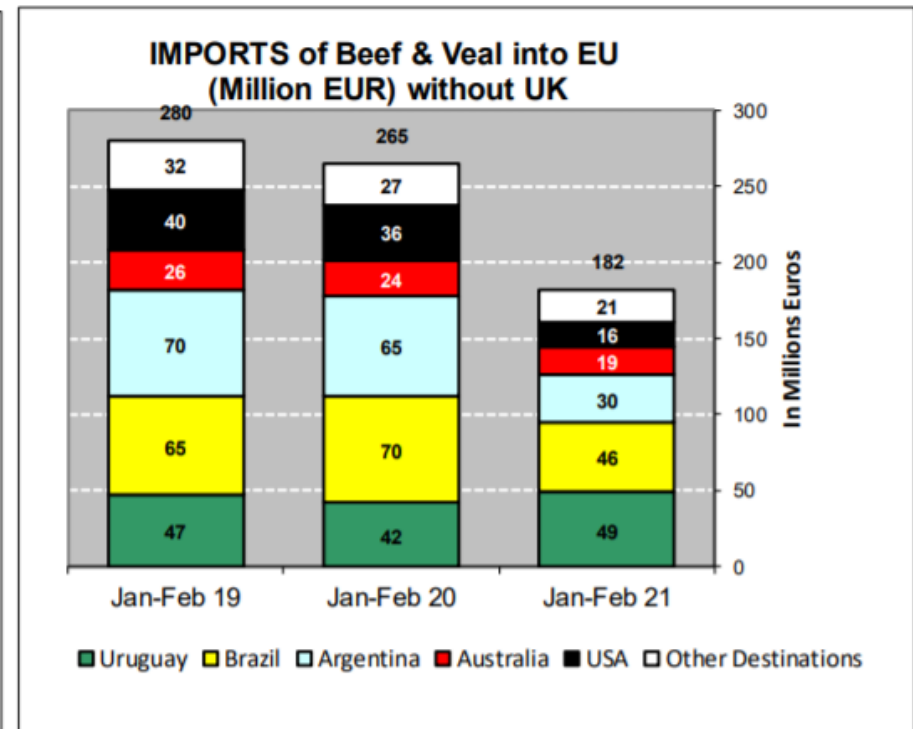
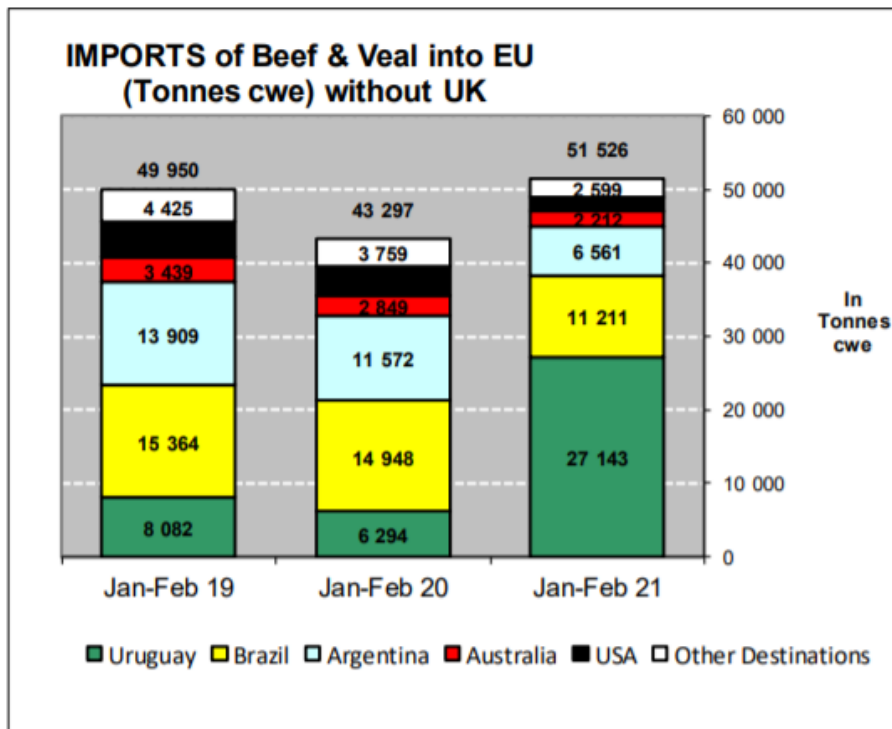
AB Sığır Eti ve Canlı Hayvan İthalatları (1): Ticaret Verileri (COMEXT – ton ca)

Origins

	2017		2018		2019		2020		Jan-Feb 21		Compared to Jan-Feb 20
	tonnes	%	tonnes	%	tonnes	%	tonnes	%	tonnes	%	
Uruguay	55 212	21.2%	48 712	16.9%	40 483	14.5%	50 864	20.8%	27 143	52.7%	+++
Brazil	87 157	33.5%	103 979	36.1%	99 569	35.6%	84 172	34.4%	11 211	21.8%	- 25.0%
Argentina	49 259	18.9%	69 011	24.0%	70 618	25.3%	60 613	24.8%	6 561	12.7%	- 43.3%
Australia	18 193	7.0%	17 368	6.0%	16 516	5.9%	11 007	4.5%	2 212	4.3%	- 22.4%
USA	21 624	8.3%	19 268	6.7%	16 852	6.0%	16 532	6.8%	1 799	3.5%	- 53.6%
Switzerland	5 138	2.0%	5 437	1.9%	4 433	1.6%	4 325	1.8%	987	1.9%	+ 17.8%
New Zealand	6 806	2.6%	7 165	2.5%	6 726	2.4%	6 101	2.5%	484	0.9%	- 56.2%
Canada	512	0.2%	1 343	0.5%	2 518	0.9%	1 550	0.6%	340	0.7%	+++
Namibia	5 043	1.9%	3 442	1.2%	7 706	2.8%	1 445	0.6%	187	0.4%	- 27.8%
N.det.Extra	72	0.0%	127	0.0%	196	0.1%	94	0.0%	120	0.2%	+++
Paraguay	5 922	2.3%	5 520	1.9%	5 203	1.9%	4 234	1.7%	115	0.2%	- 81.9%
Serbia	565	0.2%	1 134	0.4%	1 062	0.4%	949	0.4%	98	0.2%	- 61.5%
Norway	389	0.1%	153	0.1%	129	0.0%	395	0.2%	95	0.2%	+++
Japan	645	0.2%	791	0.3%	997	0.4%	789	0.3%	59	0.1%	- 52.2%
Botswana	2 686	1.0%	3 119	1.1%	4 950	1.8%	788	0.3%	31	0.1%	- 84.6%
Chile	319	0.1%	356	0.1%	392	0.1%	168	0.1%	18	0.0%	- 71.2%
Other Destinations	960	0.4%	890	0.3%	954	0.3%	706	0.3%	66	0.1%	
Total (without UK)	260 503		287 814		279 304		244 732		51 526		
% change			+ 10%		- 3%		- 12%		+ 19.0%		



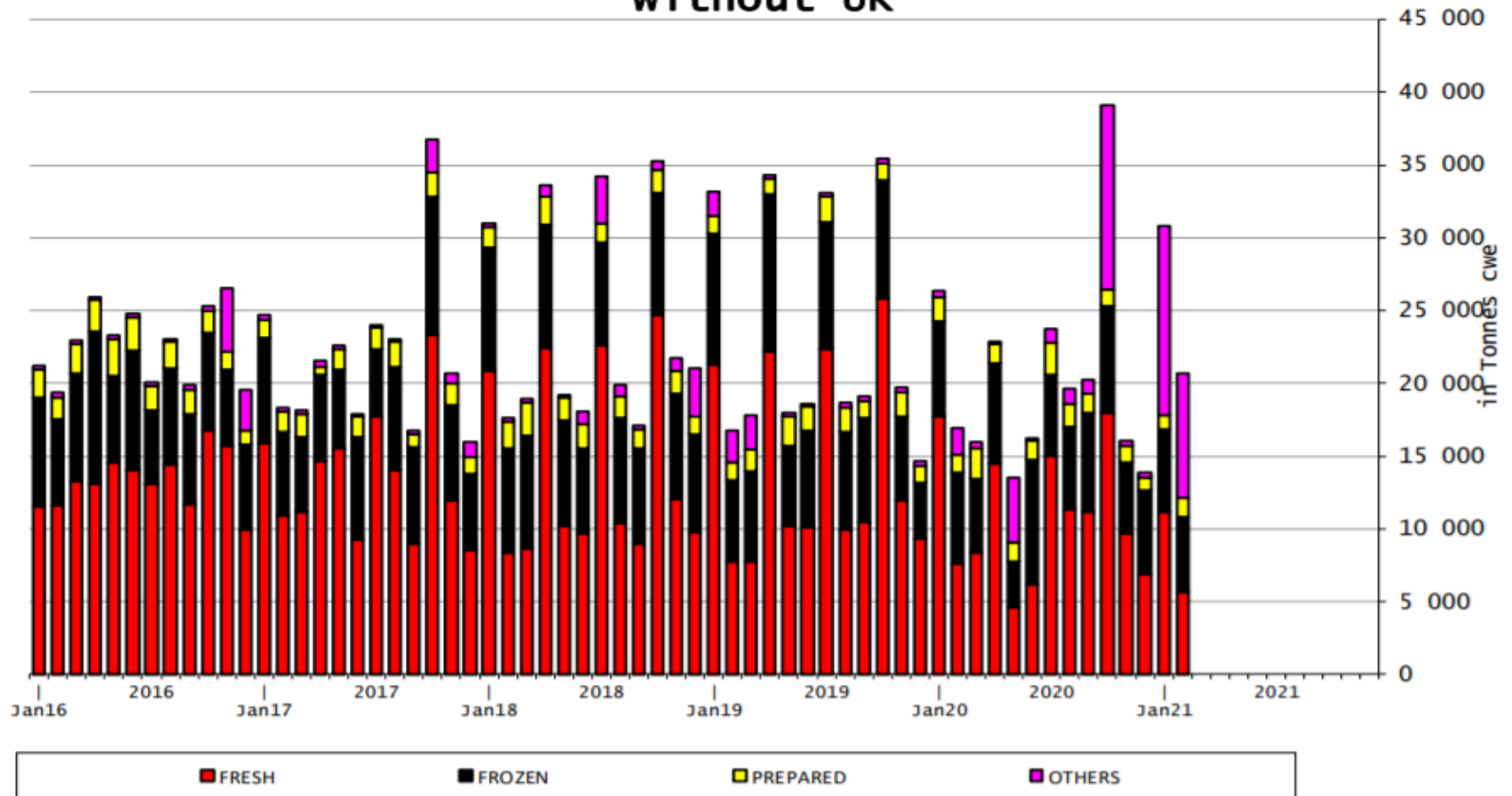
AB Sığır Eti ve Canlı Hayvan İthalatları



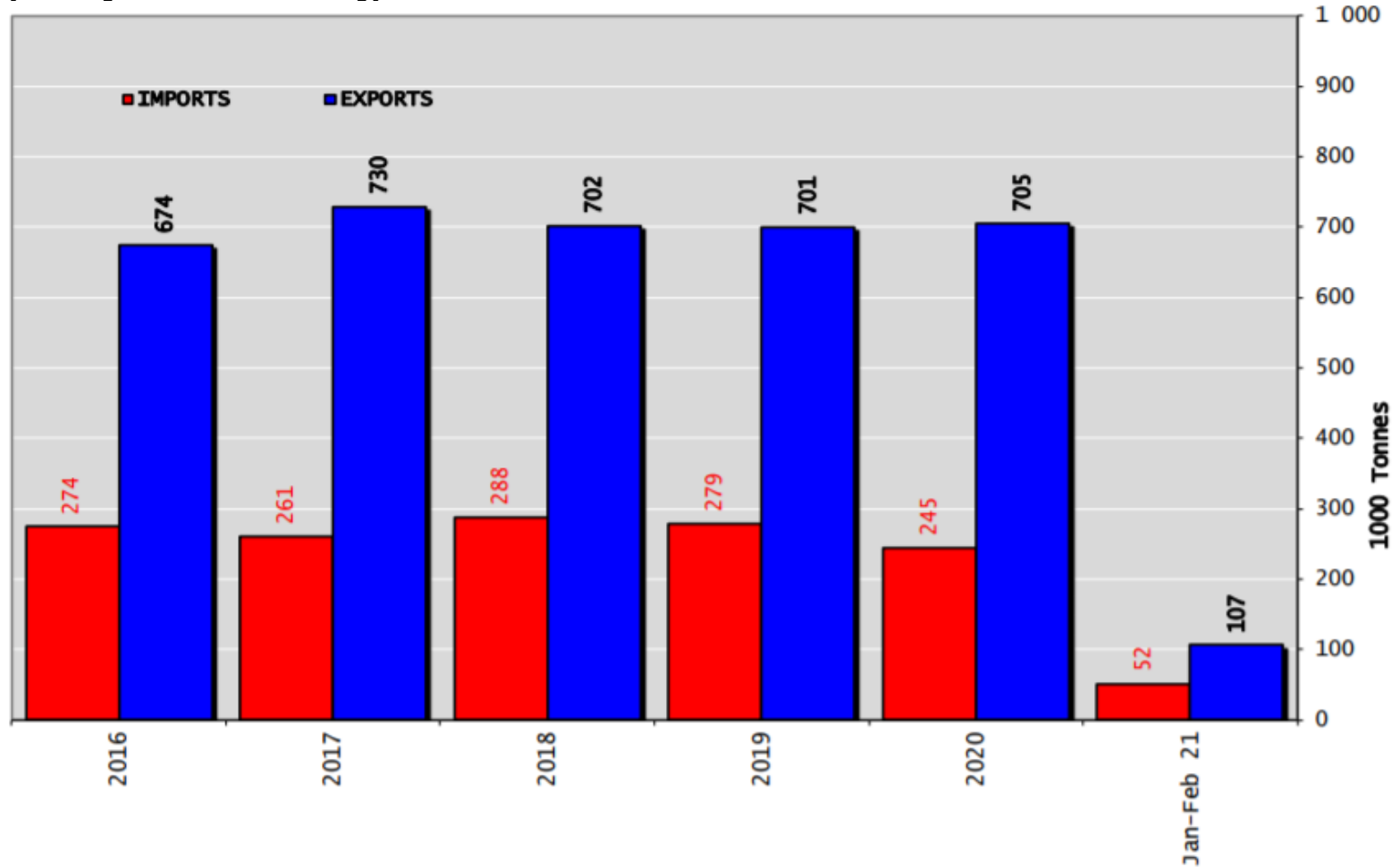


AB Sığır Eti İthalatları (Birleşik Krallık hariç)

EU Imports of BEEF products without UK



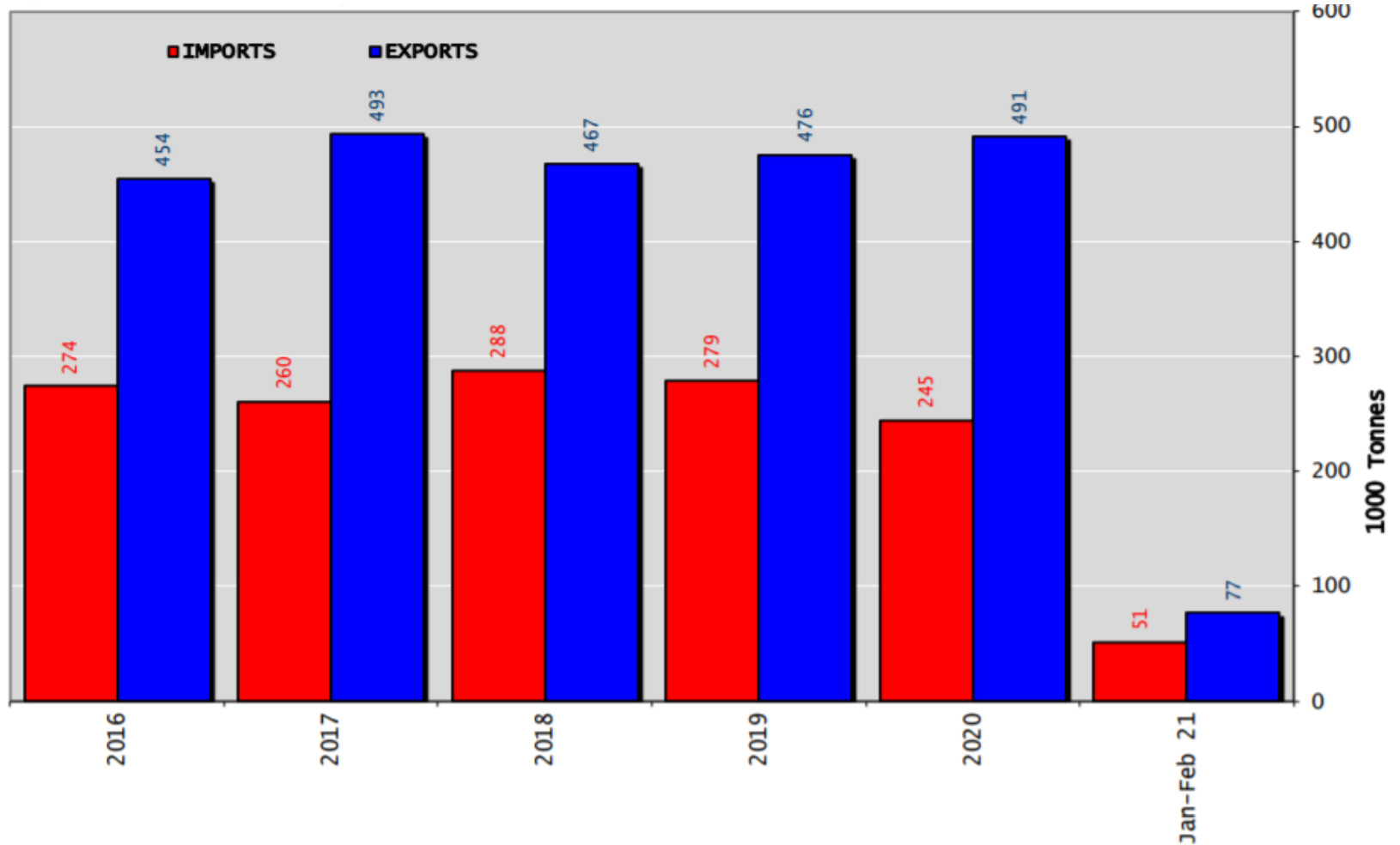
Sığır Eti Ürünleri ve Canlı Hayvan Ticaret Dengesi (Ton) (Birleşik Krallık Hariç)



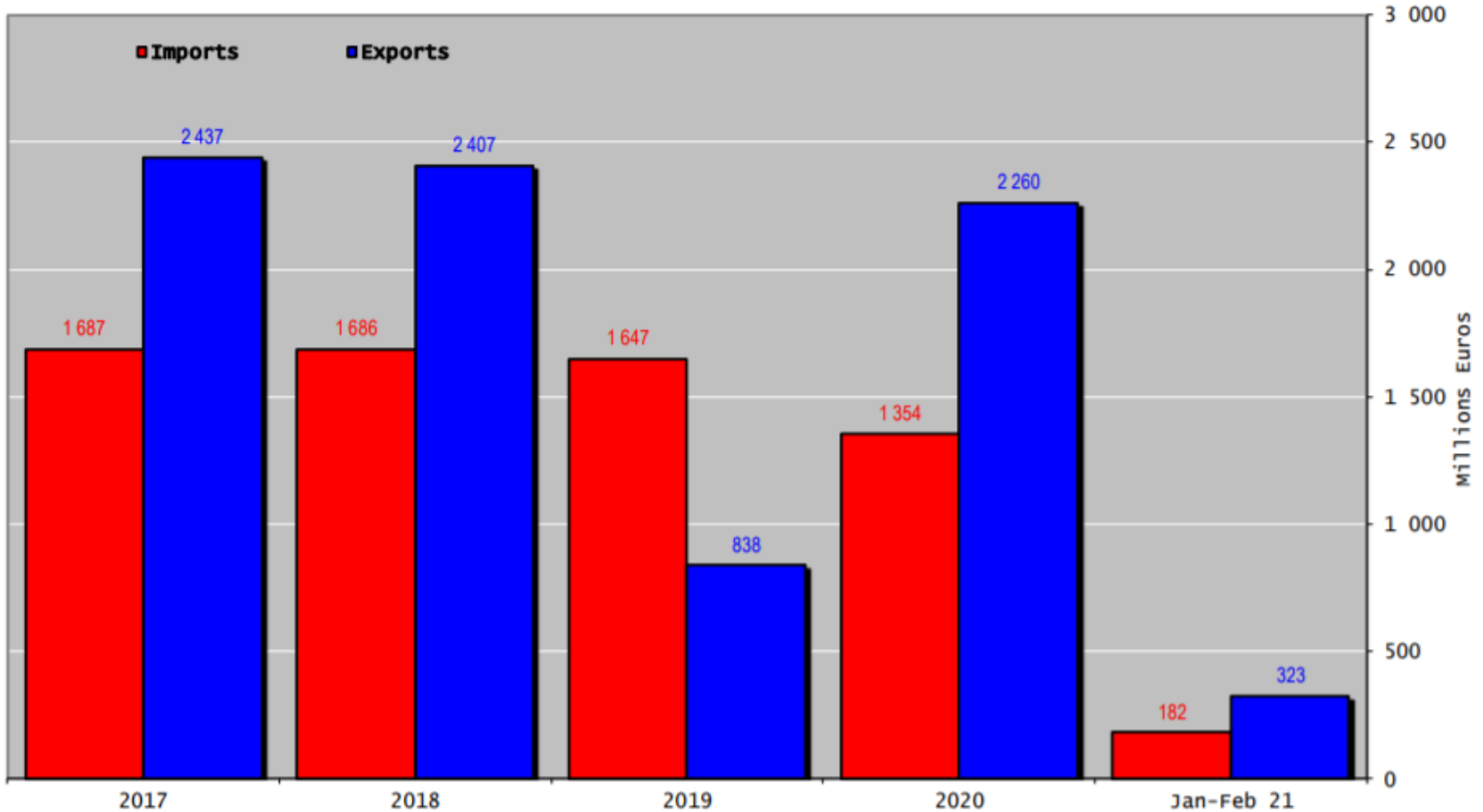


Sığır Eti Ürünleri Ticaret Dengesi (Canlı hayvanlar hariç) (Ton)

(Birleşik Krallık Hariç)

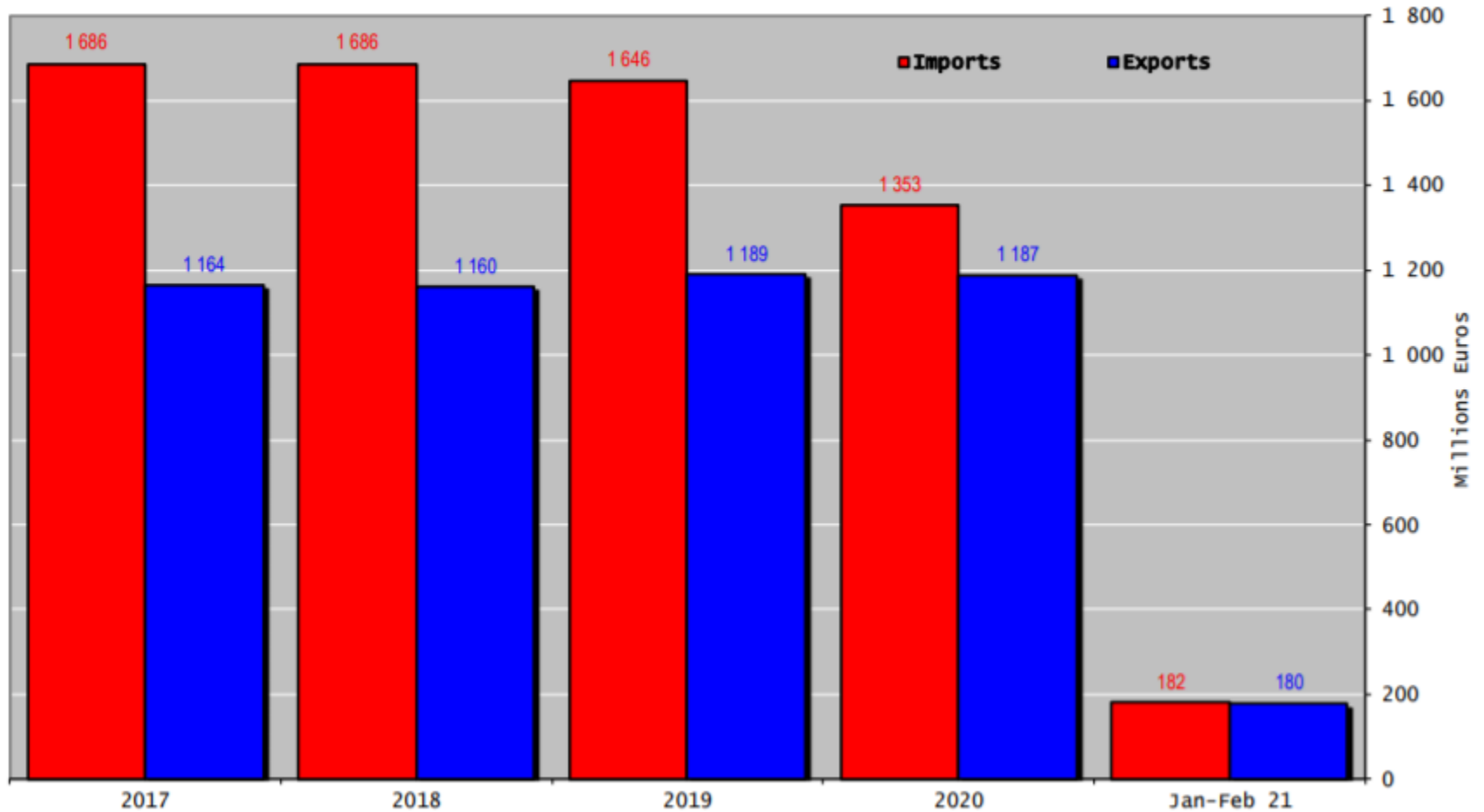


Sığır Eti Ürünleri ve Canlı Hayvan Ticaret Dengesi (Milyon Euro) (Birleşik Krallık Hariç)





AB Sığır Eti Ürünleri Ticareti (Canlı Hayvanlar Hariç) (Milyon Euro) (Birleşik Krallık Hariç)



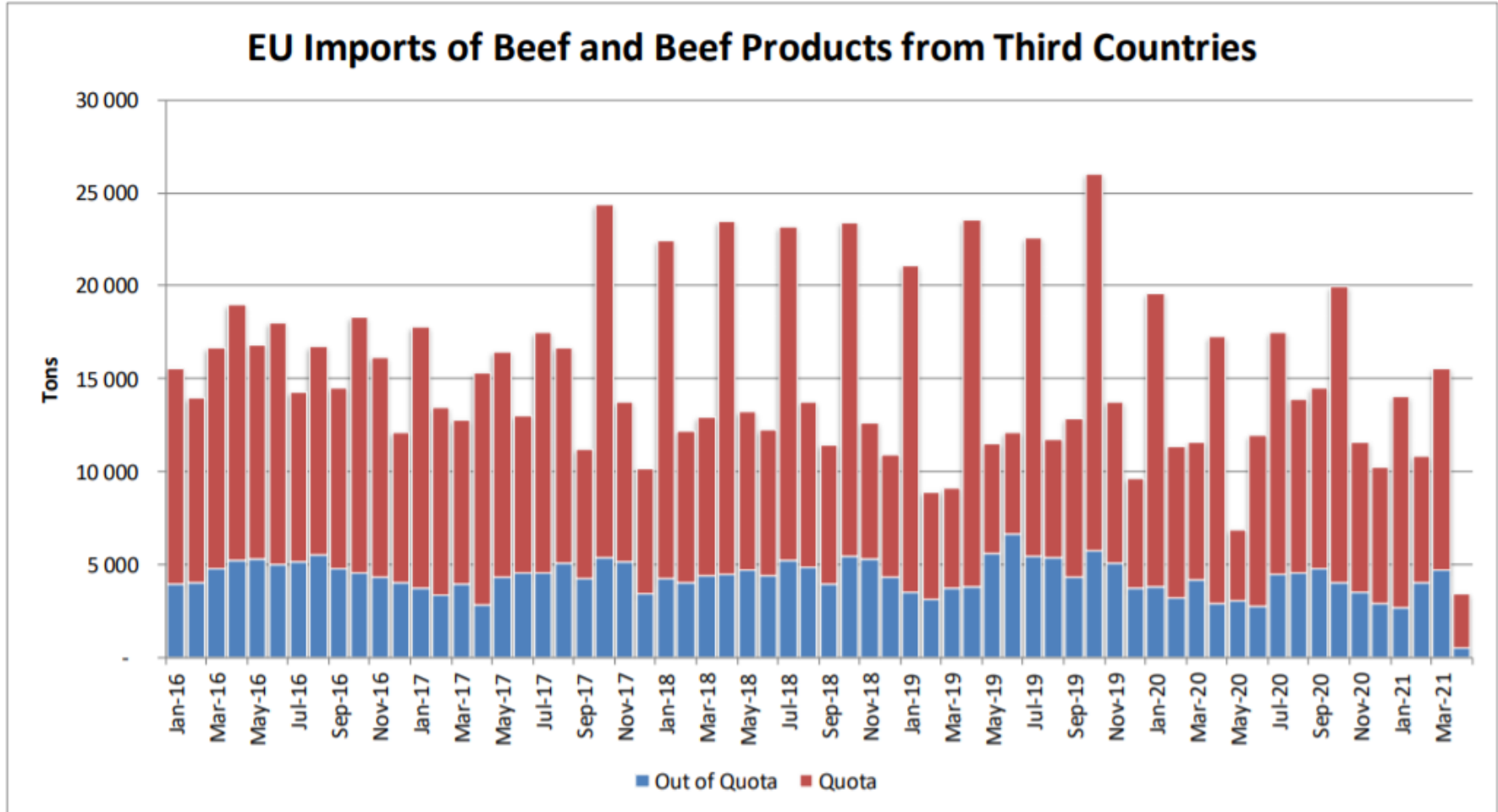


Ocak Ayında AB'den İngiltere'ye ve İngiltere'den AB'ne Yapılan Sığır Eti ve Canlı Hayvan Ticareti (COMEXT)

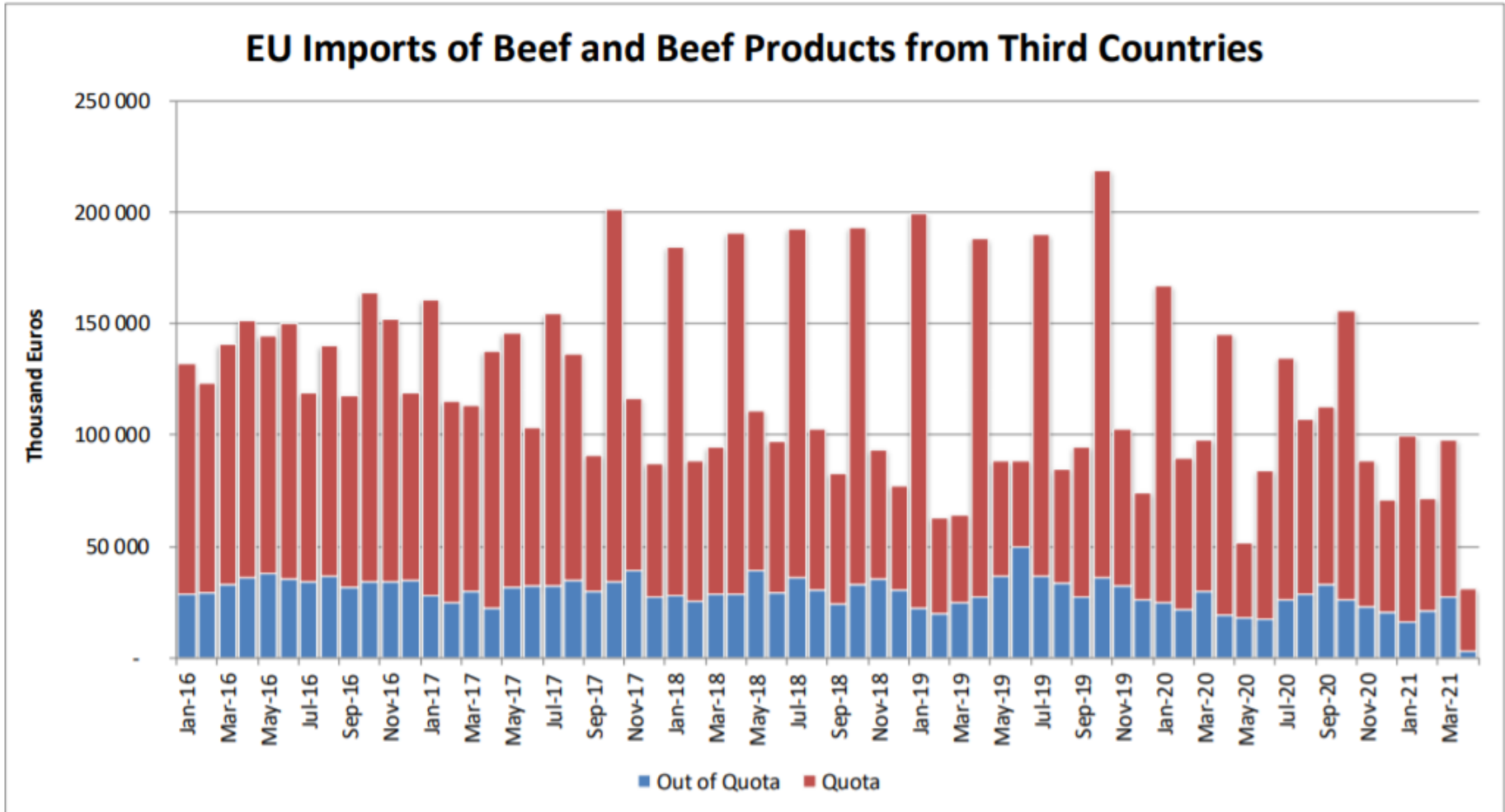
In Tons of Carcase Weight				
	2019	2020	2021	2021/2020
Exports	38 592	32 852	19 032	-42%
Live Animals	854	693	335	-52%
Meats	37 738	32 159	18 697	-42%
Imports	19 802	12 034	4 726	-61%
Live Animals	132	108	52	-52%
Meats	19 670	11 925	4 674	-61%
In Percentage of Total EU trade				2021/2020
Exports	44,05	35,57	27,22	- 8,35
Live Animals	5,72	4,10	2,31	- 1,80
Meats	51,93	42,62	33,77	- 8,84
Imports	37,39	31,36	13,29	- 18,07
Live Animals	87,46	97,75	71,87	- 25,88
Meats	37,25	31,16	13,17	- 18,00

In Thousand Euros				
	2019	2020	2021	2021/2020
Exports	129 765	112 244	77 825	-31%
Live Animals	4 795	3 582	3 436	-4%
Meats	124 970	108 662	74 390	-32%
Imports	51 643	46 243	14 971	-68%
Live Animals	581	425	157	-63%
Meats	51 062	45 818	14 814	-68%
In Percentage of Total EU trade				2021/2020
Exports	45,87	37,29	34,25	- 3,04
Live Animals	6,57	4,31	5,00	0,69
Meats	59,55	49,87	46,92	- 2,95
Imports	20,76	21,28	12,14	- 9,14
Live Animals	90,82	91,77	64,17	- 27,60
Meats	20,58	21,13	12,03	- 9,10

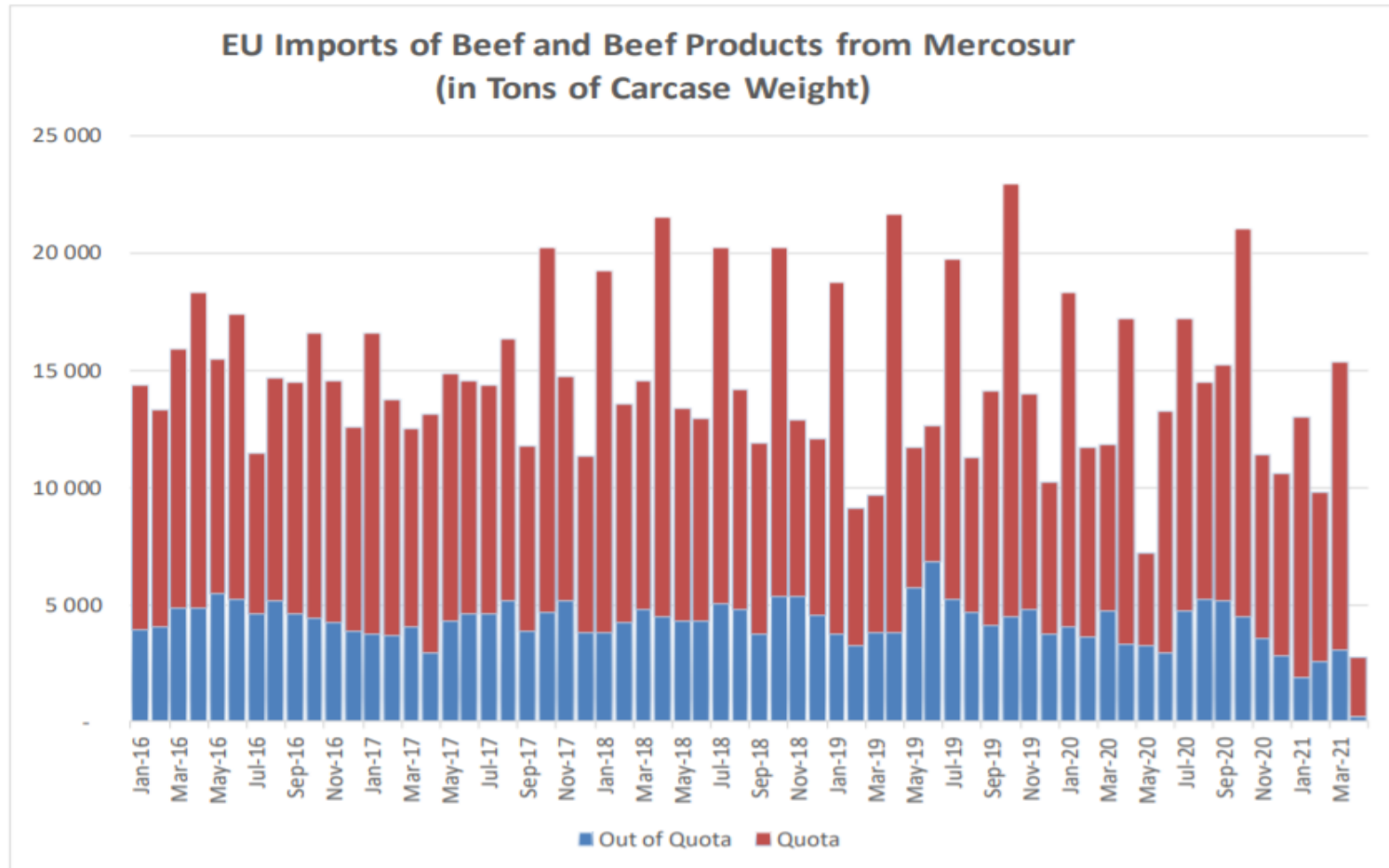
Üçüncü Ülkelerden AB ve Birleşik Krallık Sığır ve Sığır eti Ürünleri İthalatları (Ton)



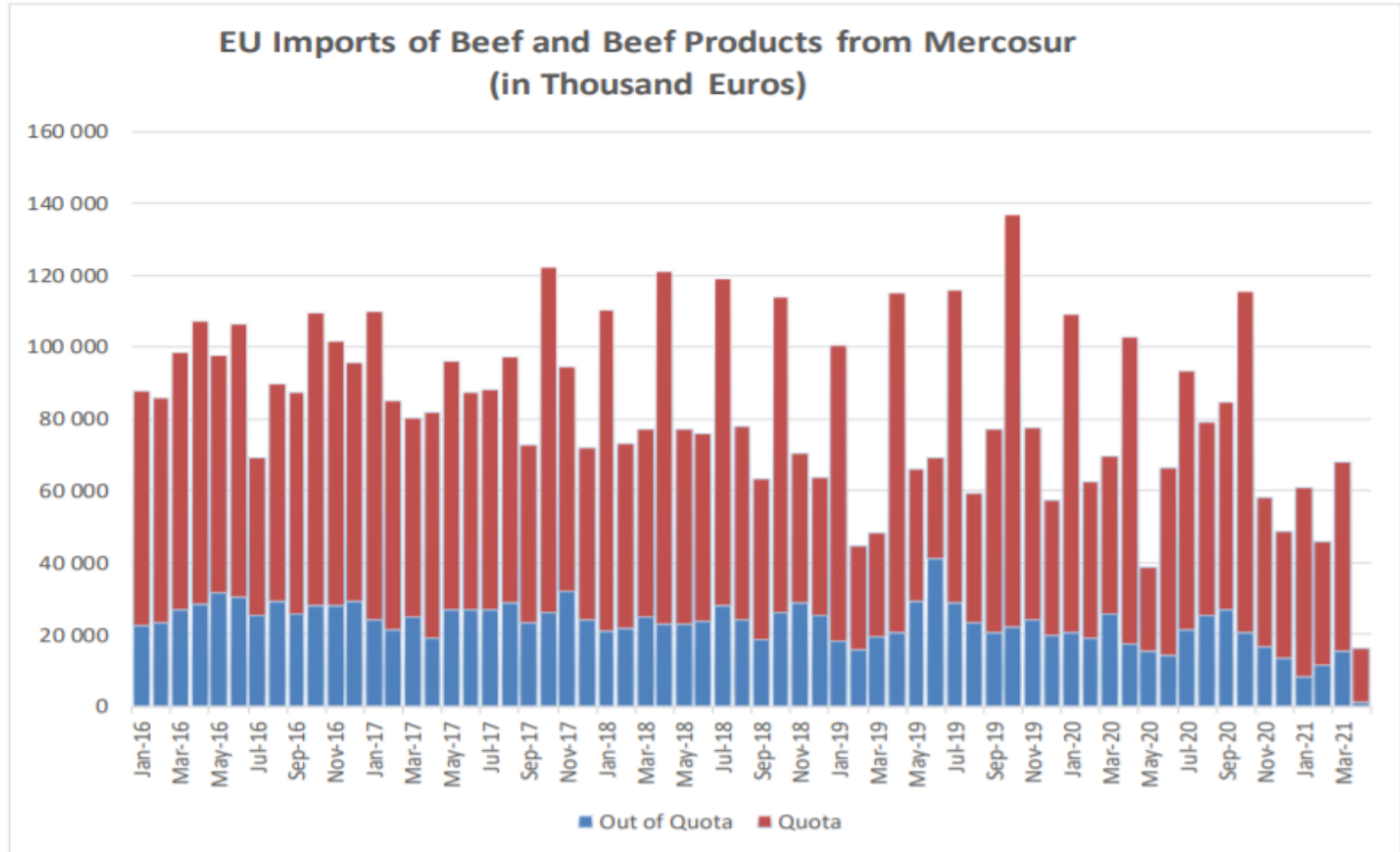
Üçüncü Ülkelerden AB ve Birleşik Krallık Sığır ve Sığır eti Ürünleri İthalatları (Bin Euro)



Mercosur Ülkelerinden Sığır ve Sığır Eti Ürünleri AB ve Birleşik Krallık İthalatları (Ton, Karkas Ağırlık)



Mercosur Ülkelerinden Sığır ve Sığır Eti Ürünleri AB ve Birleşik Krallık İthalatları (Bin Euro)



YÜKSEK KALİTE SİĞİR ETİ İTHALAT KOTALARI



European
Commission

Hilton Quota

Regulation (EU) N° 593/2013

	Quantity allocated (Tons)	2018/2019		2019/2020		2020/2021*	
		Use		Use		Use	
09.4001 Australia	2 250						
09.4004 Argentina	200	11.05	5.53%	8.34	4.17%	1.46	0.73%
09.4450 Argentina	29 500	29 491.35	99.97%	26 649.20	90.34%	17 001.35	57.63%
09.4451 Australia	7 150	4 942.02	69.12%	3 000.01	41.96%	978.76	13.69%
09.4452 Uruguay	6 376	6 363.76	99.81%	4 520.57	70.90%	3 863.99	60.60%
09.4453 Brazil	10 000	4 147.19	41.47%	2 884.79	28.85%	2 022.59	20.23%
09.4454 New Zealand	1 300	980.60	75.43%	859.15	66.09%	444.55	34.20%
09.4002 Canada/US	11 500	3 883.04	33.77%	2 703.68	23.51%	963.25	8.38%
09.4455 Paraguay	1 000	935.41	93.54%	680.40	68.04%	371.78	37.18%
Total Beef	66 826	50 743.37	75.93%	41 297.80	61.80%	25 646.27	38.38%
Total Buffalo	2 450	11.05	0.45%	8.34	0.34%	1.46	0.06%
Total	69 276	50 754.42	73.26%	41 306.14	59.63%	25 647.73	37.02%

* up to 31/01/2021

YÜKSEK KALİTE SİĞİR ETİ İTHALAT KOTALARI



European
Commission

Quota erga omnes

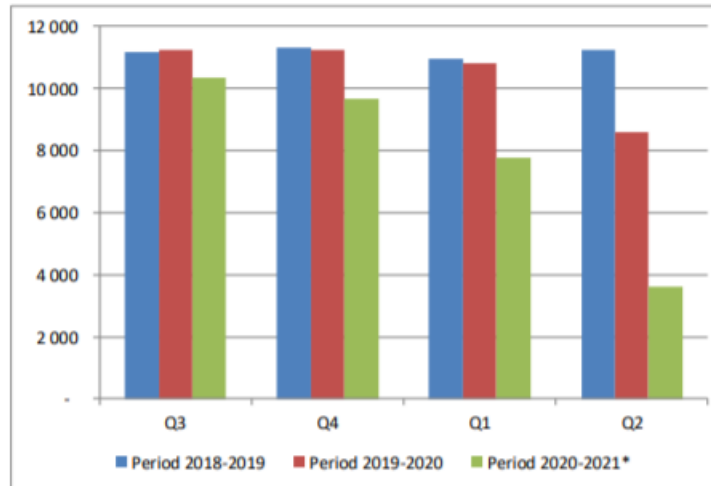
Regulation (EU) No 481/2012

	2018-Q3	2018-Q4	2019-Q1	2019-Q2	TOTAL
Period 2018-2019	11 165	11 300	10 973	11 256	44 693
Available	11 250	11 250	11 250	11 250	45 000
Use	99.24%	100.00%	97.53%	100.00%	99.32%
Available after transfer	11 250	11 335	11 200	11 527	
	99.24%	100.00%	97.53%	100.00%	

	2019-Q3	2019-Q4	2020-Q1	2020-Q2	TOTAL
Period 2019-2020	11 246	11 259	10 825	8 599	41 930
Available	11 250	11 250	11 250	11 250	45 000
Use	99.97%	100.00%	96.22%	76.44%	93.18%
Available after transfer	11 250	11 254	11 241	11 675	
	99.97%	100.00%	96.30%	73.66%	

	2020-Q3*	2020-Q4	2021-Q1	2021-Q2	TOTAL
Period 2020-2021*	10 332	9 674	7 760	3 603	31 370
Available	11 250	11 250	11 250	11 251	45 000
Use	91.84%	85.99%	68.98%	32.03%	69.71%
Available after transfer	11 250	12 168	12 826	14 741	
	91.84%	79.51%	60.50%	24.44%	

* Until 15.04.2021



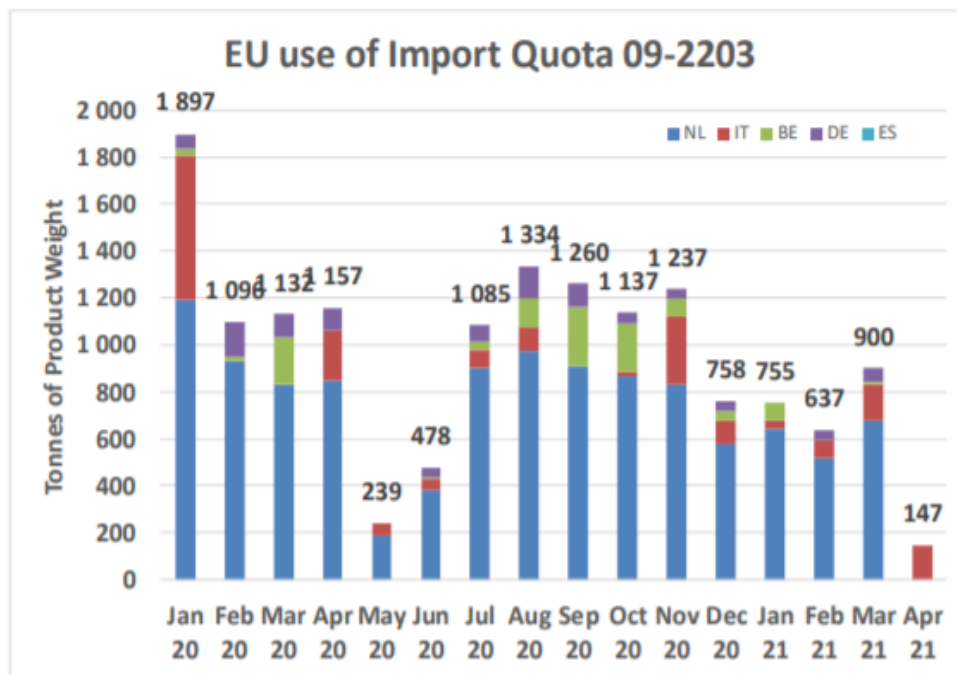
YÜKSEK KALİTE SİĞİR ETİ İTHALAT KOTALARI



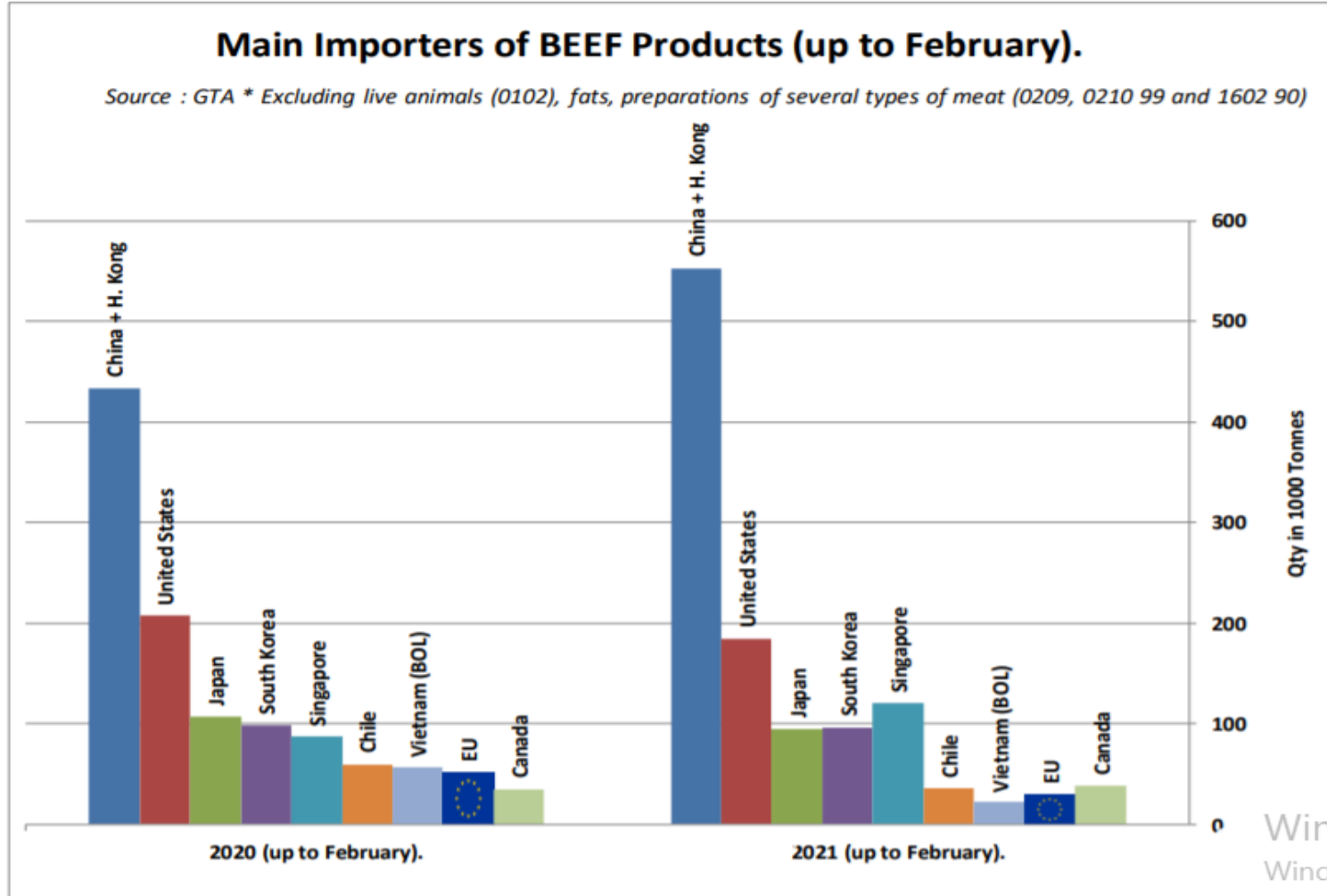
European Commission

Origin	GATT 2019-2020				Total
	2019-Q3	2019-Q4	2020-Q1	2020-Q2	
NL			2 957	1 415	4 372
IT			614	314	929
BE			241	10	251
DE			313	133	446
ES			-	-	-
Total import within Quota			4 125	1 873	5 998
Available			4 625	4 625	9 250
Use			89.19%	40.50%	64.84%
After transfer			4 625	5 125	
Use			89.19%	36.55%	

Origin	GATT 2020-2021				Total
	2020-Q3	2020-Q4	2021-Q1	2021-Q2	
NL	2 785	2 274	1 834	-	6 893
IT	174	404	263	147	988
BE	417	330	96	-	843
DE	305	124	98	-	526
Total import within Quota	3 680	3 132	2 291	147	9 250
Available	4 625	4 625	4 625	4 625	18 500
Use	79.57%	67.72%	49.52%	3.18%	50.00%
After transfer	4 625	5 570	6 118	6 959	
Use	79.57%	56.23%	37.44%	2.11%	



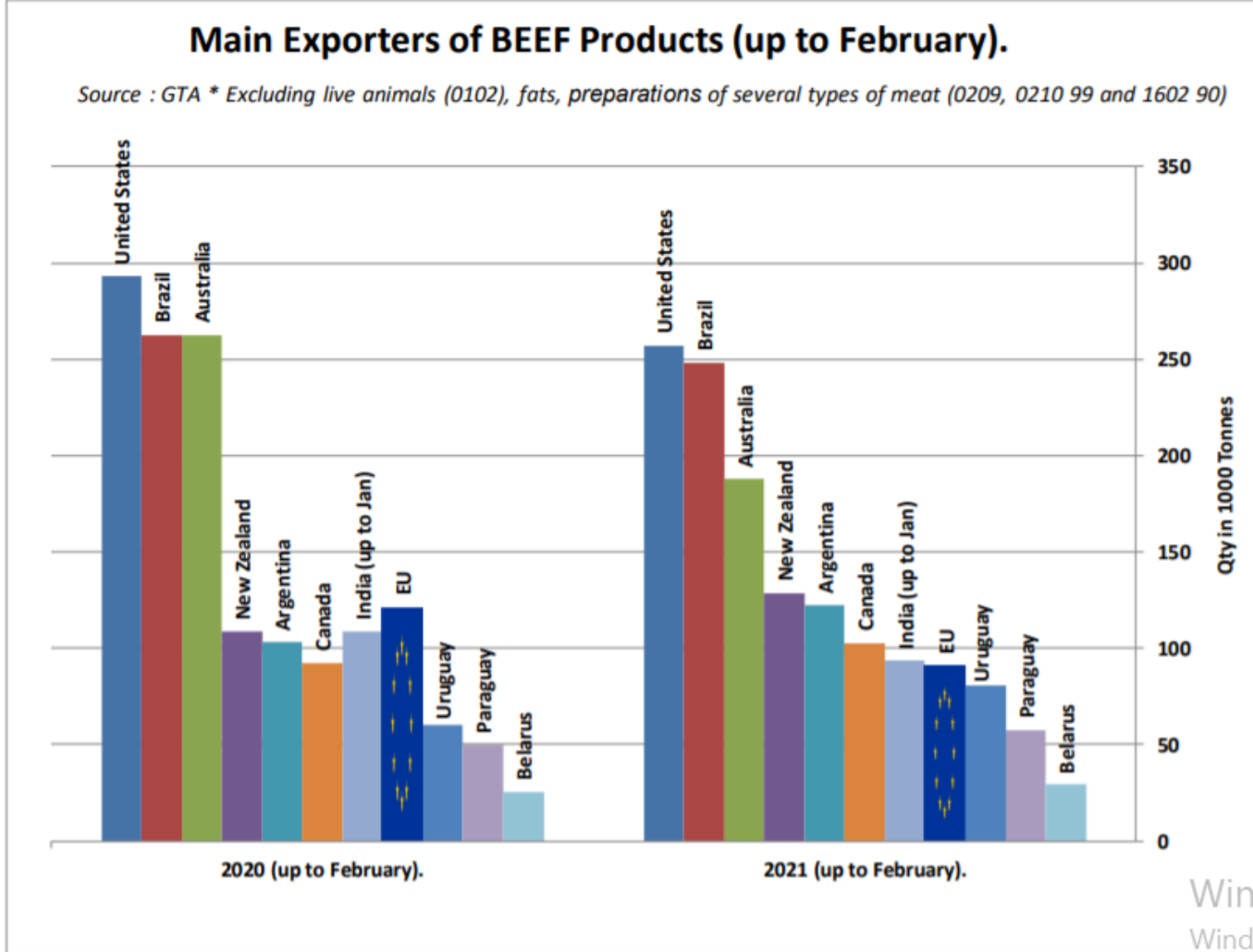
SIĞIR ETİ ÜRÜNLERİNİN NET İTHALATÇILARI (ŞUBAT AYINA KADAR)

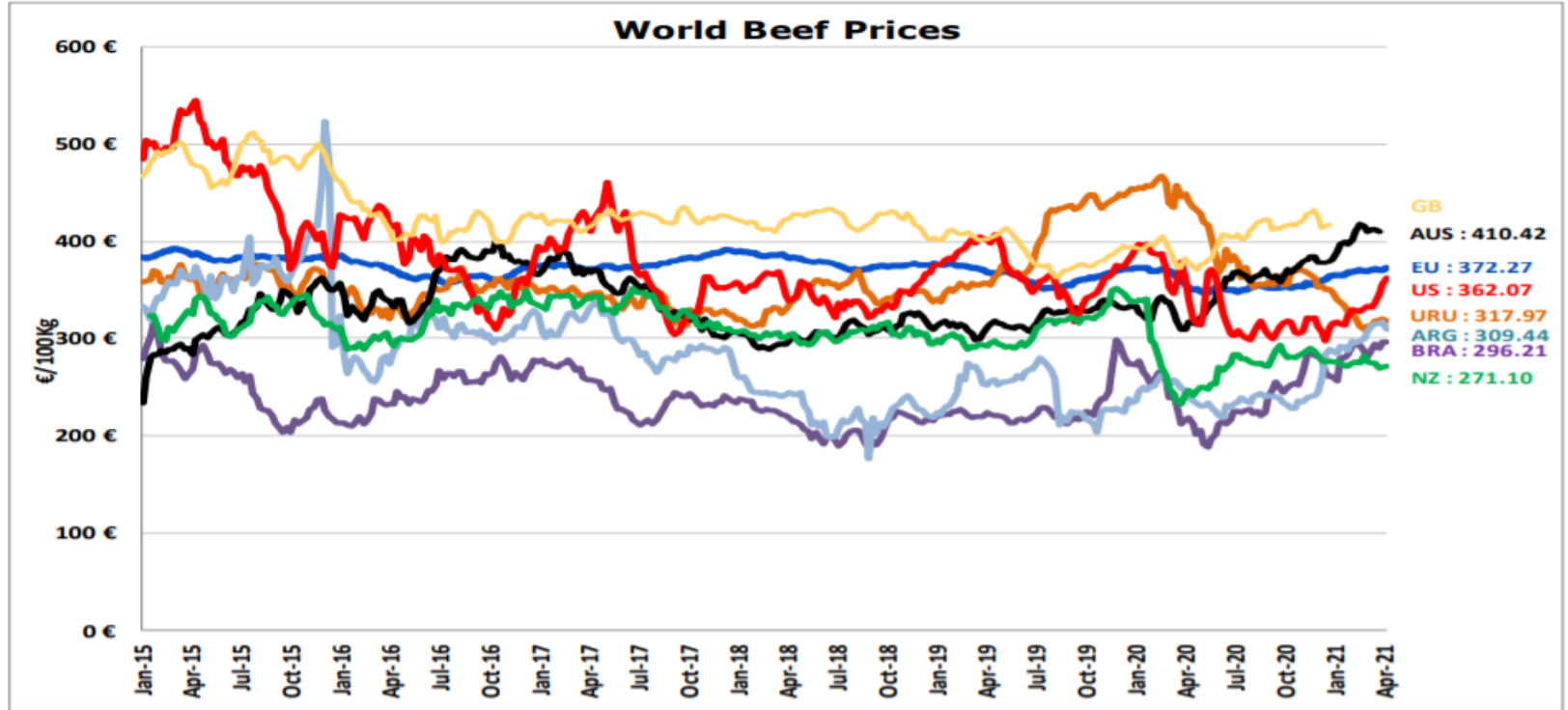




European
Commission

SIĞIR ETİ ÜRÜNLERİNİN NET İHRACATÇILARI (ŞUBAT AYINA KADAR)





- ECB <http://sdw.ecb.europa.eu/browse.do?node=2018794>
US <https://www.marketnews.usda.gov/mnp/lis-home>
AUS <http://statistics.mla.com.au/Report/RunReport/ae59d4ac-74e4-4c56-93bd-982a044d9760>
UY http://www.inac.gub.uy/innovaportal/v/11034/10/innova_front/indicadores-y-precios
ARG http://www.abc-consorcio.com.ar/Estadisticas/detalle/117/precios_comparativos_del_novillo.html
BR <http://www.pecuaria.com.br/cotacoes.php>
NZ http://www.abc-consorcio.com.ar/Estadisticas/detalle/117/precios_comparativos_del_novillo.html



Daha fazla bilgi için:

https://ec.europa.eu/agriculture/market-observatory/meat_en

Ve Agri-FOOD Veri Portalı:

<http://agridata.ec.europa.eu>