



# AB SIĞIR VE DANA ETİ PAZAR DURUMU

23 Eylül 2021

# HAYVANCILIK HAZİRAN ARAŞTIRMASI



# AB DEĞİŞİM TOPLAM BÜYÜKBAŞ

May/Jun 1000 Hd	TOT LIVESTOCK				%Var 2021 2020	BOVINE < 1 Year				%Var 2021 2020	BOVINE 1-2 Year				%Var 2021 2020	BOVINE > 2 Year				%Var 2021 2020	
	2018	2019	2020	2021		2018	2019	2020	2021		2018	2019	2020	2021		2018	2019	2020	2021		
BE	2 450	2 406	2 388			710	705	716			492	475	471			1 247	1 226	1 201			
BG																					
CZ																					
DK	1 560	1 512	1 517	1 503	-0.9%	538	510	517	517	idem	294	292	291	287	-1.4%	729	710	709	699	-1.4%	
DE	12 093	11 763	11 423	11 176	-2.2%	3 618	3 502	3 410	3 398	-0.4%	2 848	2 788	2 683	2 591	-3.4%	5 627	5 473	5 330	5 188	-2.7%	
EE																					
IE	7 349	7 209	7 314			2 078	2 008	2 117			1 919	1 861	1 807			3 351	3 340	3 390			
EL																					
ES	6 725	6 722	6 715	6 911	+2.9%	2 504	2 507	2 488	2 626	+5.6%	990	978	930	975	+4.9%	3 230	3 237	3 297	3 310	+0.4%	
FR	18 737	18 470	18 200	17 863	-1.9%	5 125	5 227	5 144	5 134	-0.2%	3 417	3 229	3 249	3 158	-2.8%	10 195	10 014	9 808	9 571	-2.4%	
HR																					
IT	6 170	6 016	6 116	6 174	+0.9%	1 757	1 746	1 746	1 762	+0.9%	1 466	1 409	1 458	1 476	+1.2%	2 948	2 861	2 912	2 936	+0.8%	
CY																					
LV																					
LT																					
LU																					
HU																					
MT																					
NL	3 897	3 750	3 766	3 733	-0.9%	1 560	1 536	1 558	1 523	-2.2%	520	460	446	480	+7.6%	1 817	1 754	1 762	1 730	-1.8%	
AT	1 907	1 873	1 844	1 846	+0.1%	606	596	588	596	+1.4%	433	425	416	413	-0.7%	869	853	841	838	-0.4%	
PL	6 201	6 358	6 344			1 686	1 771	1 729			1 734	1 768	1 796			2 781	2 820	2 819			
PT	1 722	1 712	1 751			529	524	557			274	267	264			919	921	929			
RO	2 002	1 963	1 915			444	428	418			236	230	217			1 322	1 305	1 280			
SI																					
SK																					
FI																					
SE	1 507	1 466	1 454			475	451	462			381	380	362			651	636	630			
EU	72 320	71 220	70 748	49 206	-0.8%	21 631	21 512	21 451	15 556	+0.7%	15 003	14 559	14 389	9 379	-1.0%	35 687	35 149	34 908	24 271	-1.6%	
UK	9 891	9 739	9 615			2 908	2 857	2 878			2 479	2 448	2 412			4 504	4 434	4 324			

Source : E-Stat Newsroom

EU %Var is calculated considering only countries available in 2020 AND 2021

# HAYVANCILIK HAZİRAN ARAŞTIRMASI



# AB DEĞİŞİM İNEK

May/Jun 1000 Hd	TOTAL COWS				%Var 2021 2020	DAIRY COWS				%Var 2021 2020	OTHER COWS				%Var 2021 2020
	2018	2019	2020	2021		2018	2019	2020	2021		2018	2019	2020	2021	
BE	958	960	954			532	536	544			435	425	409		
BG															
CZ															
DK	667	654	653	647	-0.9%	575	567	567	565	-0.4%	91	87	86	82	-4.7%
DE	4 830	4 720	4 609	4 517	-2.0%	4 167	4 067	3 969	3 892	-2.0%	663	653	640	626	-2.3%
EE															
IE	2 529	2 505	2 551			1 481	1 505	1 568			1 048	1 000	983		
EL															
ES	2 865	2 854	2 927	2 964	+0.9%	825	815	810	819	+1.1%	2 040	2 039	2 117	2 135	+0.9%
FR	7 652	7 546	7 442	7 315	-1.7%	3 512	3 471	3 403	3 331	-2.1%	4 141	4 075	4 039	3 984	-1.4%
HR															
IT	2 192	2 110	2 130	2 161	+1.4%	1 904	1 840	1 844	1 852	+0.4%	288	270	286	309	+8.0%
CY															
LV															
LT															
LU															
HU															
MT															
NL	1 685	1 641	1 651	1 628	-1.4%	1 622	1 578	1 593	1 572	-1.3%	63	63	58	56	-4.5%
AT	740	726	716	715	-0.2%	538	525	523	531	+1.6%	202	201	193	184	-5.0%
PL	2 429	2 461	2 468			2 233	2 221	2 218			196	240	250		
PT	745	742	757			244	238	239			501	504	517		
RO	1 197	1 179	1 160			1 184	1 162	1 145			12	17	15		
SI															
SK															
FI															
SE	534	516	511			319	306	302			214	210	209		
EU	29 034	28 612	28 529	19 936	-1.0%	19 137	18 831	18 725	12 562	-1.2%	9 896	9 782	9 804	7 375	-0.6%
UK	3 441	3 398	3 359			1 883	1 871	1 850			1 558	1 527	1 509		

Source : EStat Newcronos

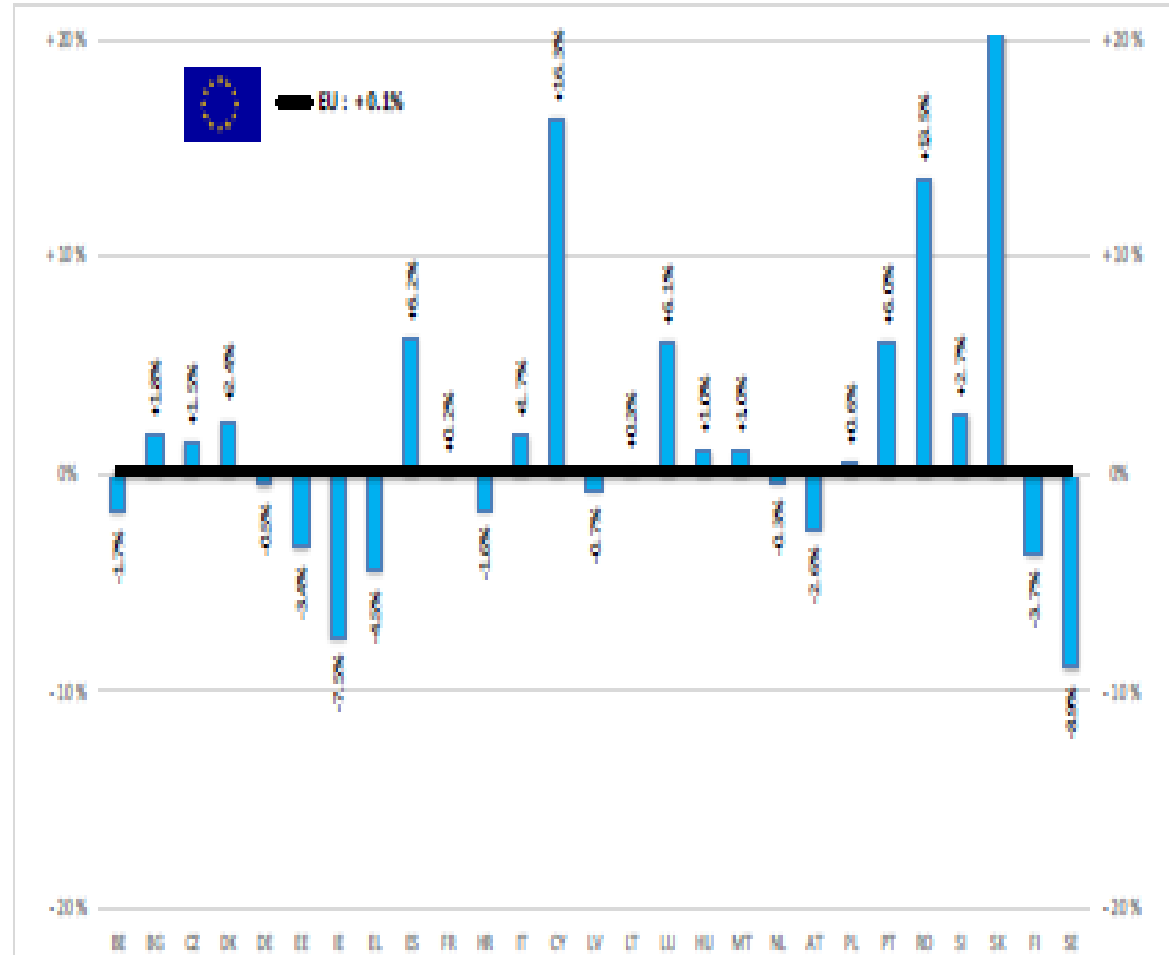
EU %Var is calculated considering only countries available in 2020 AND 2021



European  
Commission

BAŞ	HEADS	Jan-Jun 21/20
		EU
BOĞA	Bull	+0.9%
ÖKÜZ	Bullock	-4.2%
İNEK	Cow	+1.5%
DÜVE	Heifer	+0.2%
BUZAĞI	Calve	-2.2%
GENÇ SİĞİR	Young cattle	+0.3%
Büyükbaş Hayvan Eti	Meat of bovine animals	+0.1%

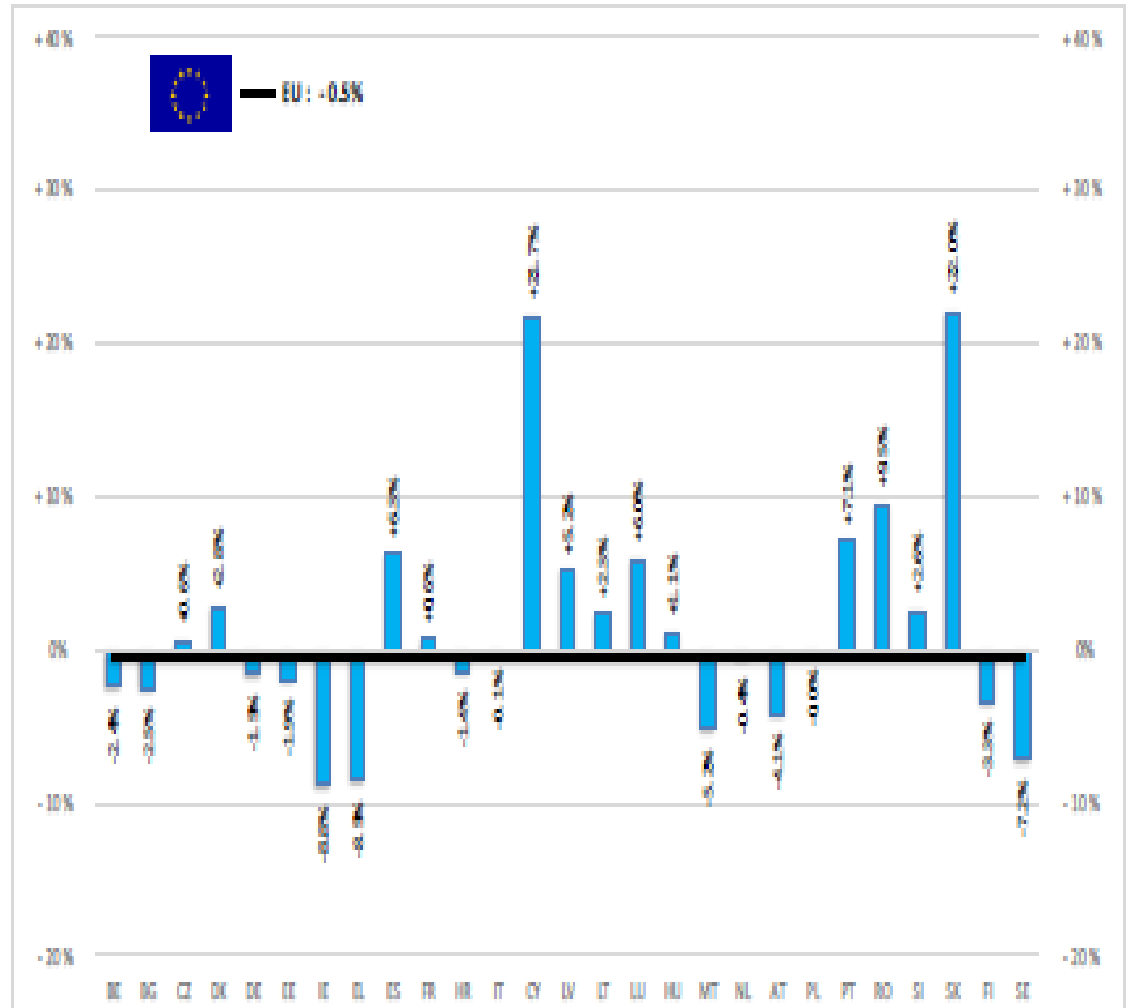
Estimates for last month of period :



Source : Eurostat - Newcronos

TON	TONNES	Jan-Jun 21/20
		EU
BOĞA	Bull	-0.7%
ÖKÜZ	Bullock	-4.5%
İNEK	Cow	+0.1%
DÜVE	Heifer	-0.2%
BUZAĞI	Calve	-0.2%
GENÇ SIĞIR	Young cattle	-0.8%
Büyükbaş Hayvan Eti	Meat of bovine animals	-0.5%

Estimates for last month of period :

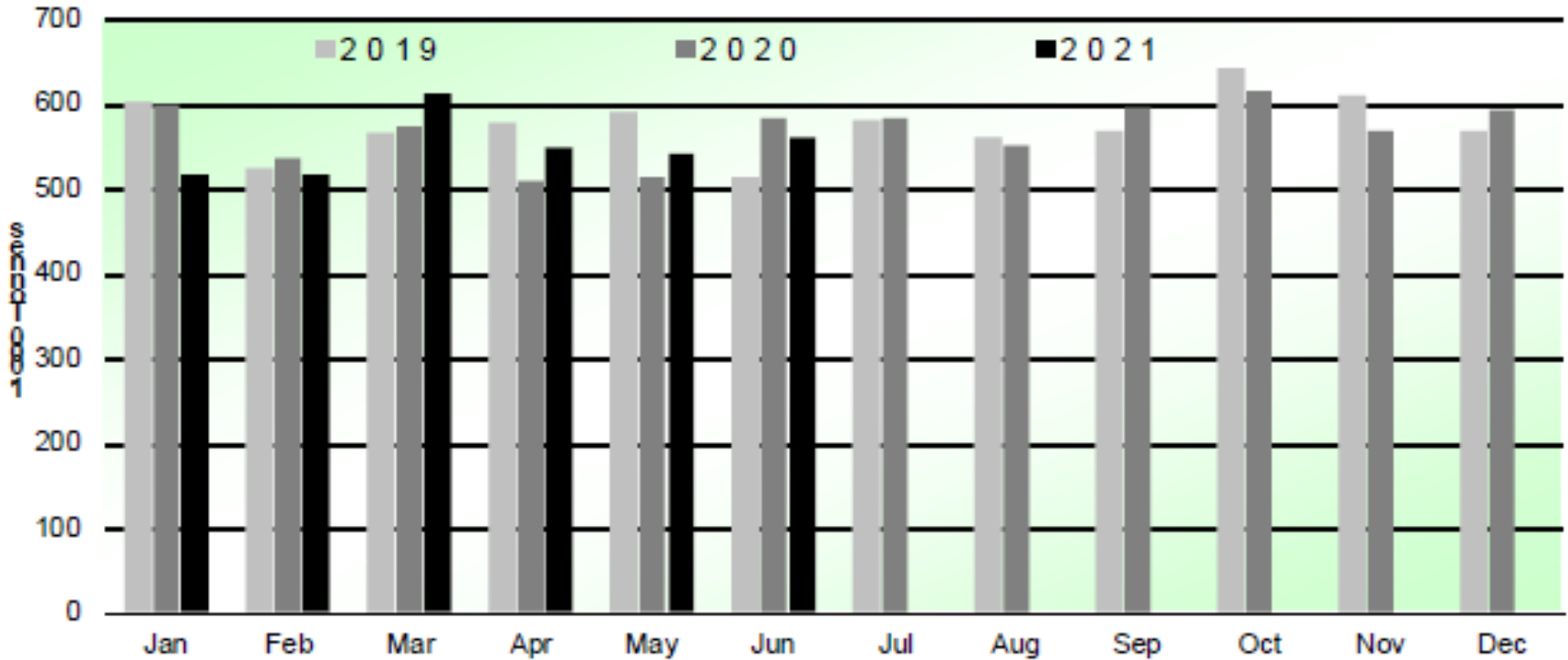


Source: EStat - Newcronos



## SIĞIR VE DANA ETİ ÜRETİMİ (AB Kesimler – Ton)

### Beef & Veal Production (EU Slaughtering) - Tonnes



Source : EStat-Newcronos

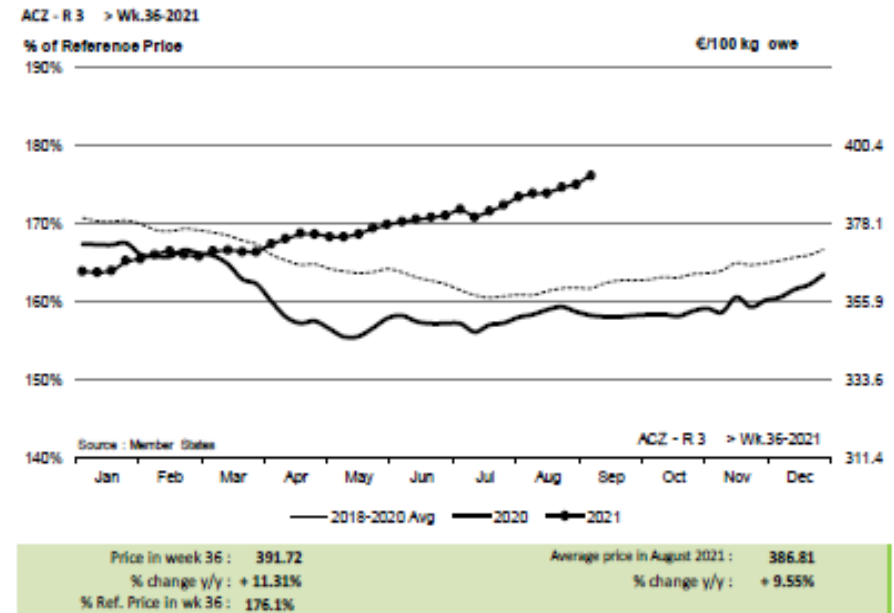
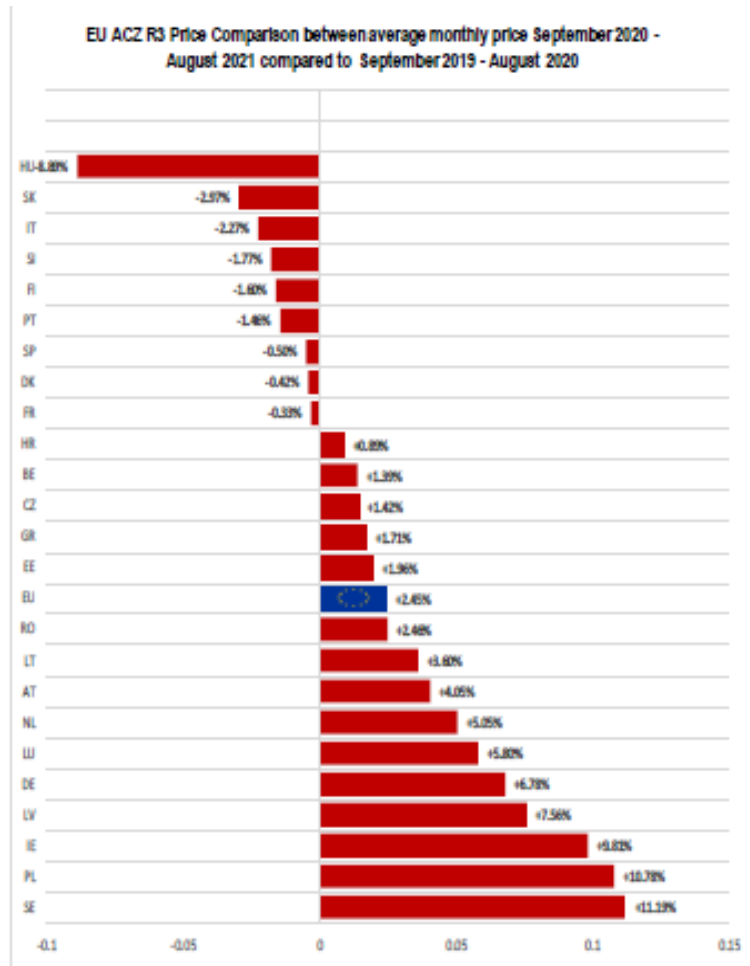


EU Prices week		36	Evolution since last week	Evolution since last month	Evolution since last year
<b>Carcasse</b>	Average A/C/Z -R3	391.7	+ 0.7%	+ 1.3%	+ 11.3%
	Young Bovines (Z)	382.6	+ 0.6%	+ 1.5%	+ 0.6%
	Young Bulls (A)	389.2	+ 0.8%	+ 2.0%	+ 11.2%
	Steers (C)	414.1	+ 0.3%	- 1.5%	+ 13.3%
	Cows (D)	330.8	- 0.0%	+ 1.1%	+ 17.9%
	Heifers (E)	404.6	+ 0.3%	+ 0.5%	+ 10.2%
<b>Live Animals</b>	Male Calves Dairy Type	97.92	- 2.7%	- 2.8%	+ 30.1%
	Male Calves Beef Type	224.0	+ 2.1%	- 0.1%	+ 12.1%
	Young Store Cattle	2.65	+ 1.0%	+ 1.6%	+ 10.2%
	Yearling Male Store Cattle	2.51	+ 6.2%	+ 7.3%	+ 10.9%
	Yearling Female Store Cattle	2.53	+ 1.2%	+ 1.8%	+ 6.9%
	Calves slaughtered <8M	526.3	+ 3.4%	+ 7.6%	+ 22.6%

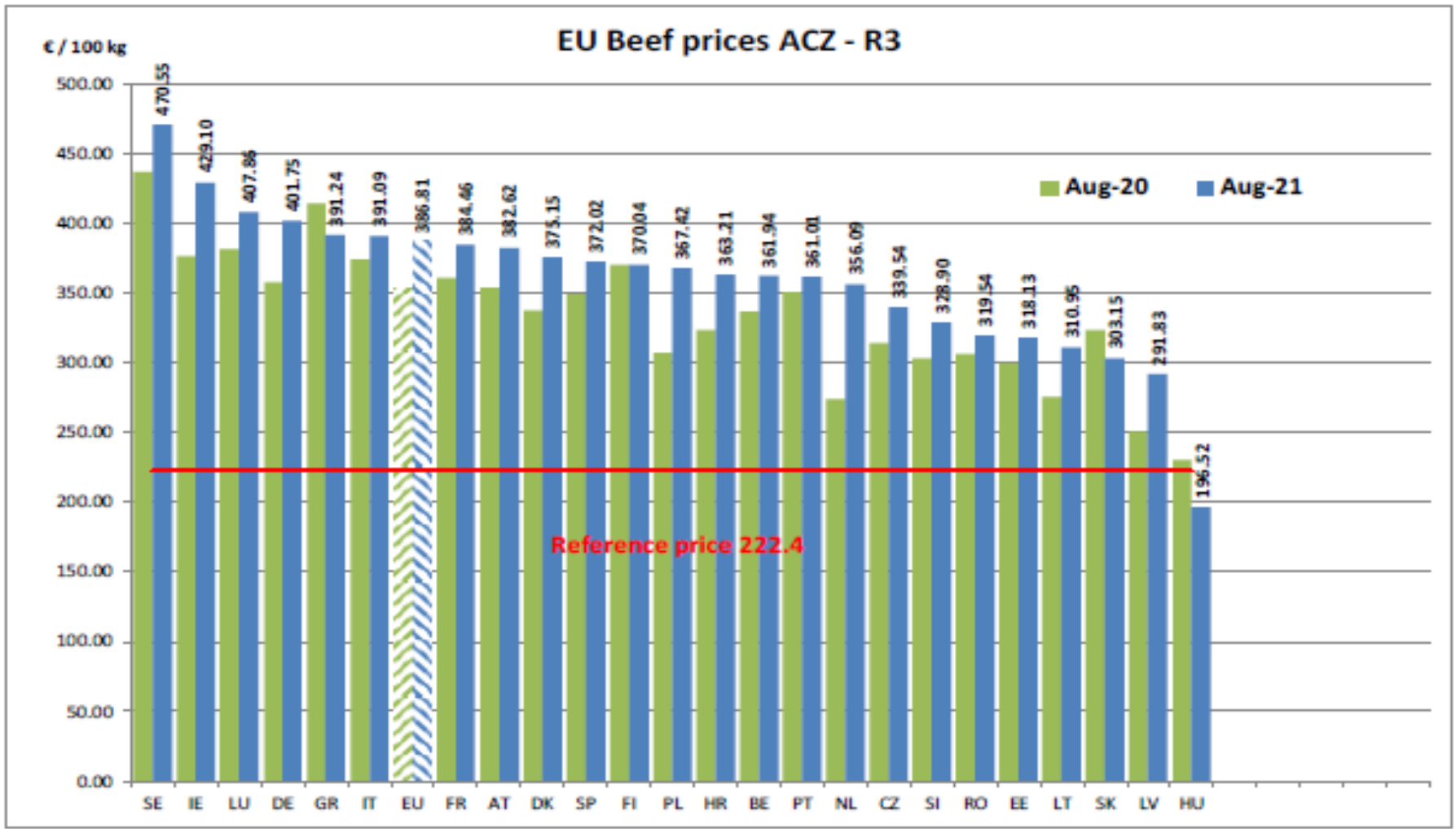
Sources : MSs notifications (Regulation (EU) 1182/2017 and 1184/2017)

# KARKAS FİYATLARI

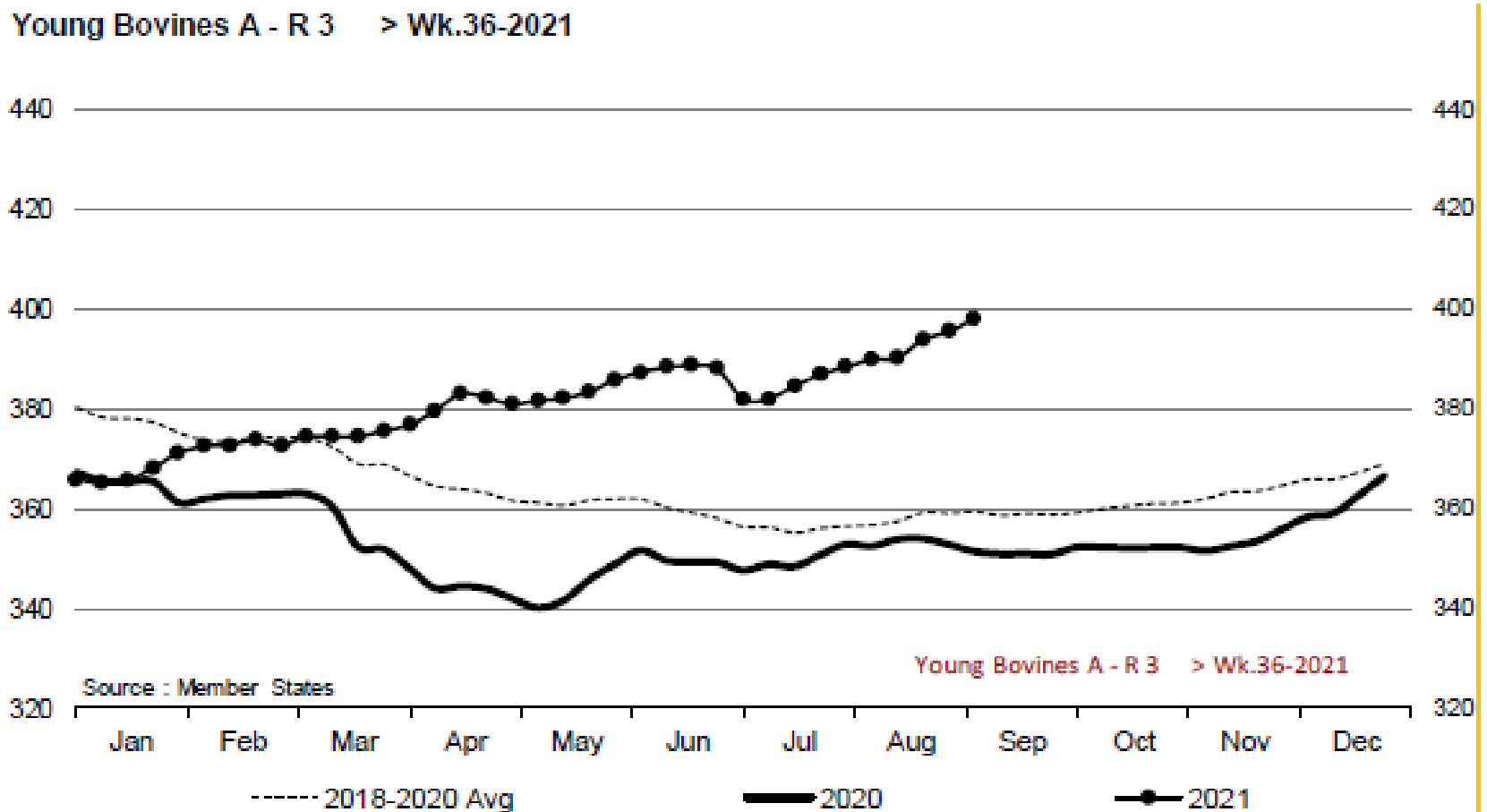
# AB DEĞİŞİM A/C/Z. R3





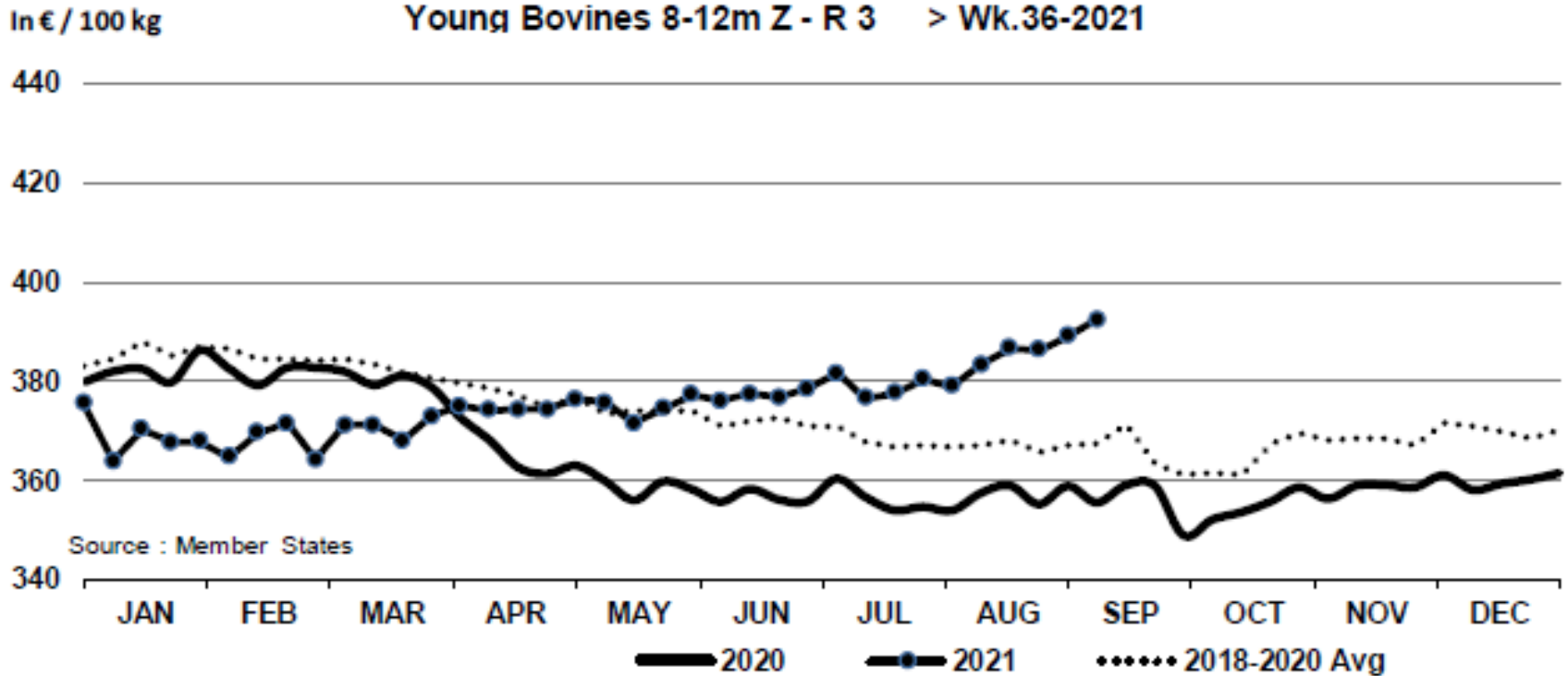


## Young Bovines A - R 3 > Wk.36-2021



Price in week 36 : 398.19  
% change y/y : + 13.3%

Average price in August 2021 : 390.88  
% change y/y : + 10.7%



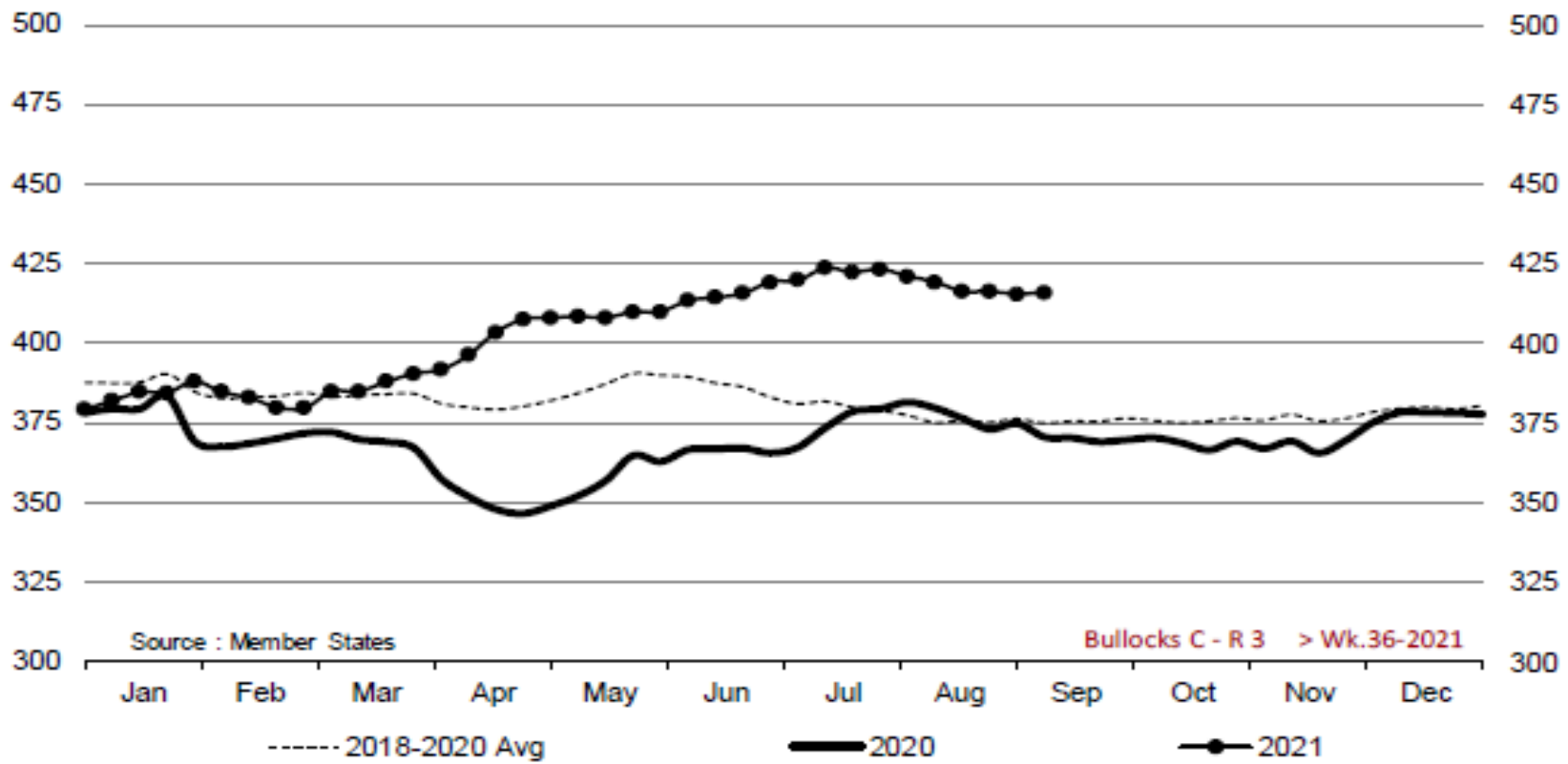
Price in week 36 : **392.29**  
% change y/y : **+ 10.4%**

12/08/2021

Average price in August 2021 : **383.95**  
% change y/y : **+ 7.5%**



Bullocks C - R 3 > Wk.36-2021

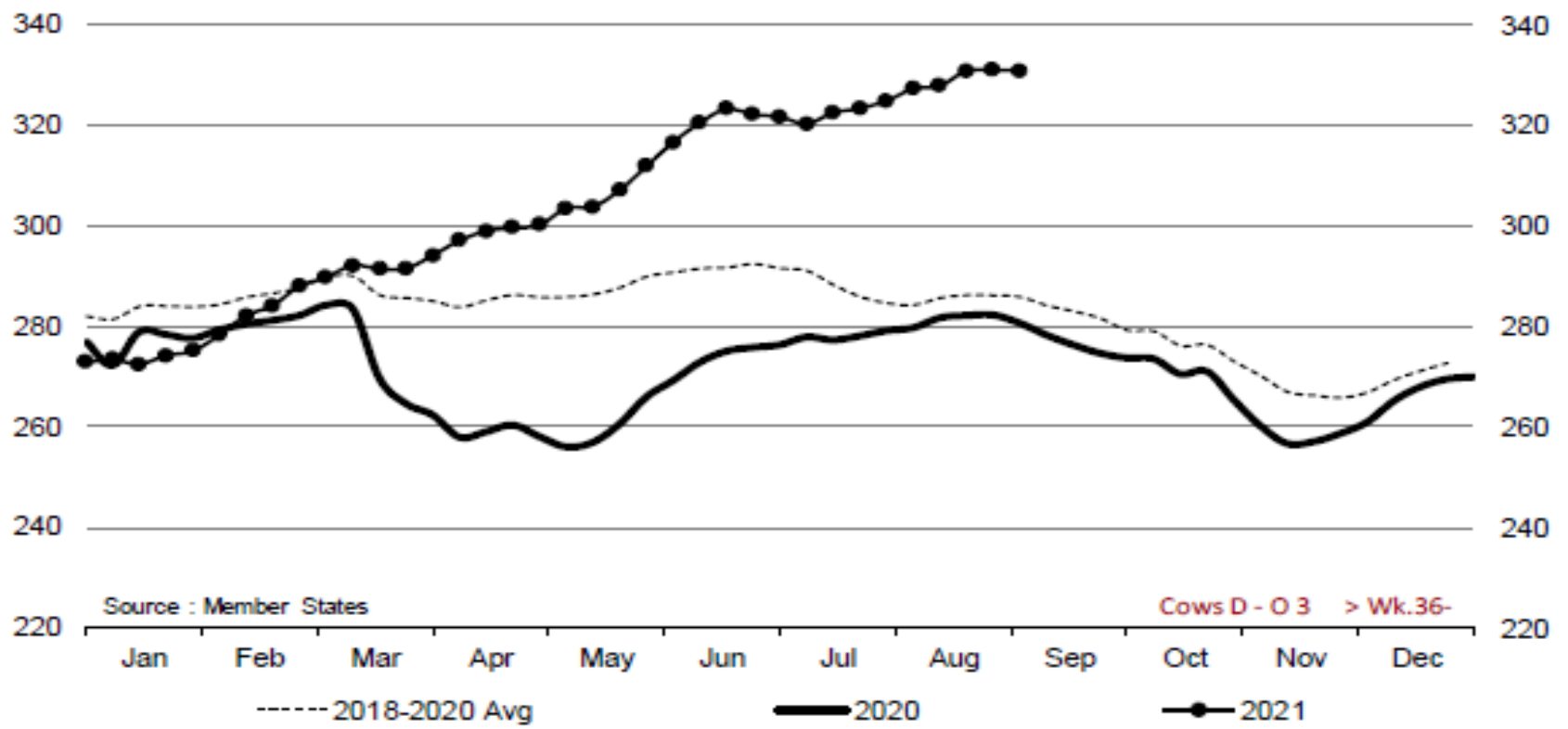


Price in week 36 : 415.75  
% change y/y : + 12.2%

Average price in August 2021 : 418.01  
% change y/y : + 11.2%



Cows D - O 3 > Wk.36-2021



Source : Member States

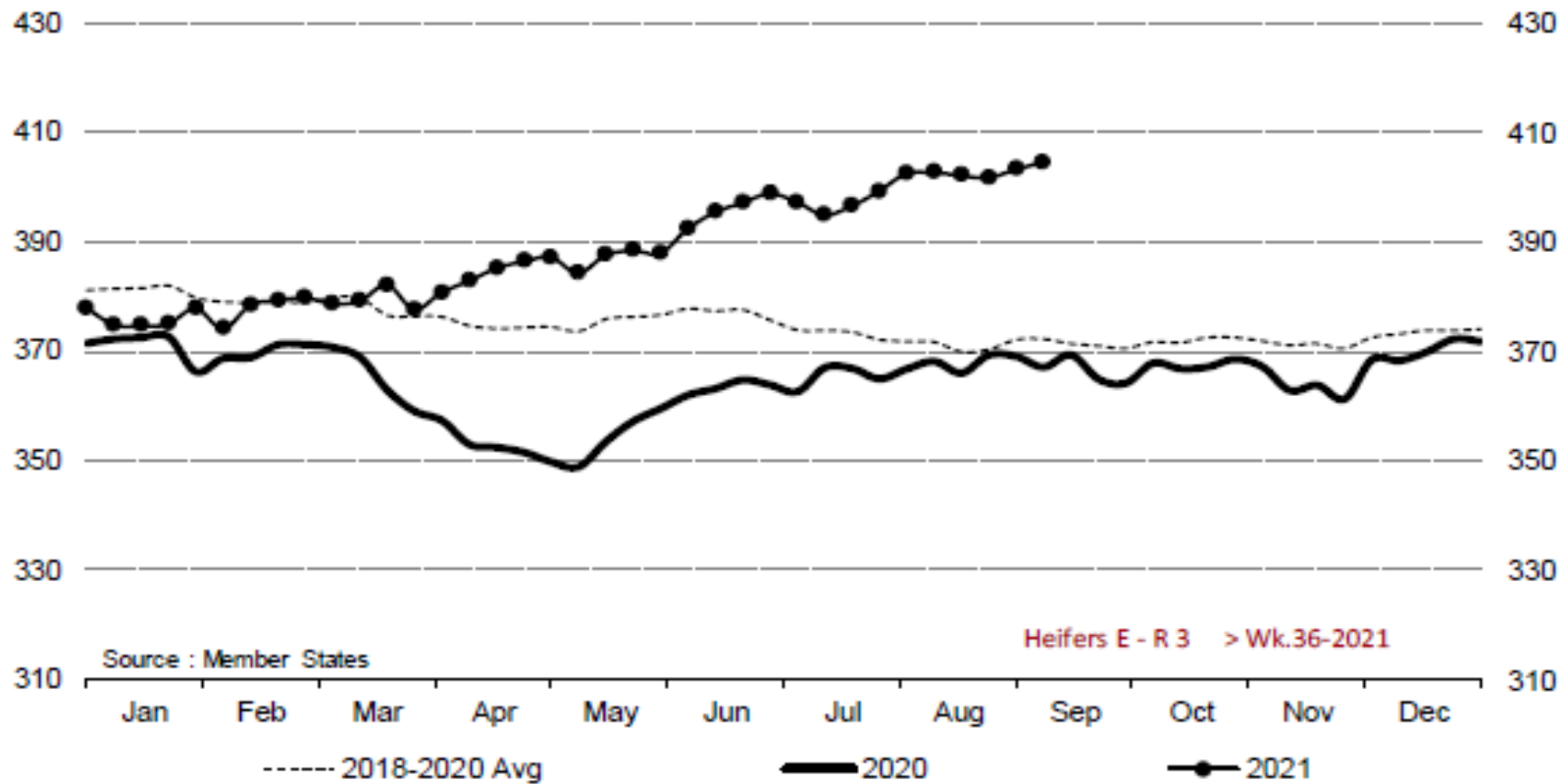
Cows D - O 3 > Wk.36-

Price in week 36 : 330.89  
% change y/y : + 17.9%

Average price in August 2021 : 327.78  
% change y/y : + 16.5%



Heifers E - R 3 > Wk.36-2021



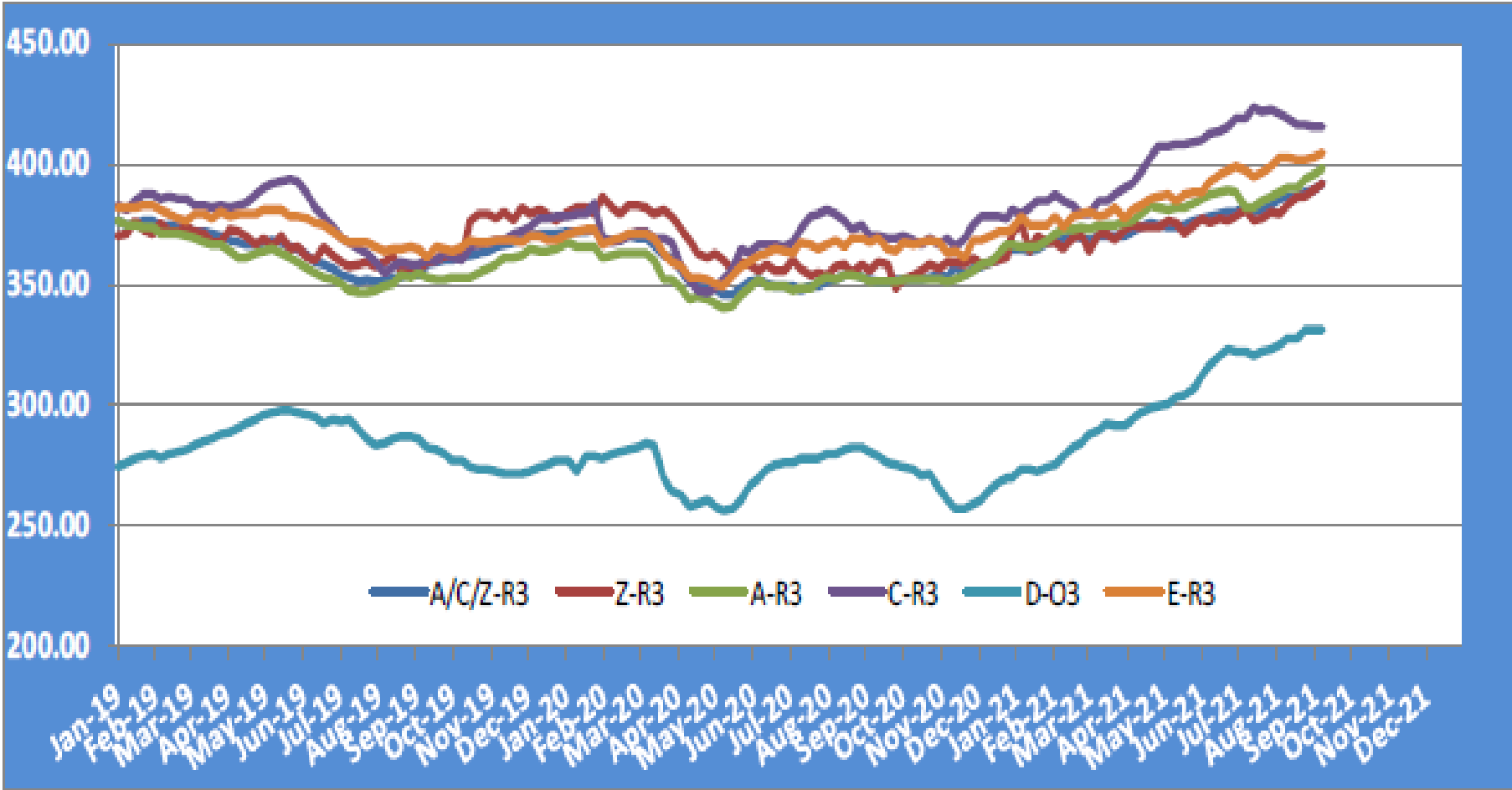
Price in week 36 : 404.62  
% change y/y : + 10.2%

Average price in August 2021 : 402.27  
% change y/y : + 9.3%

# KARKAS FİYATLARI

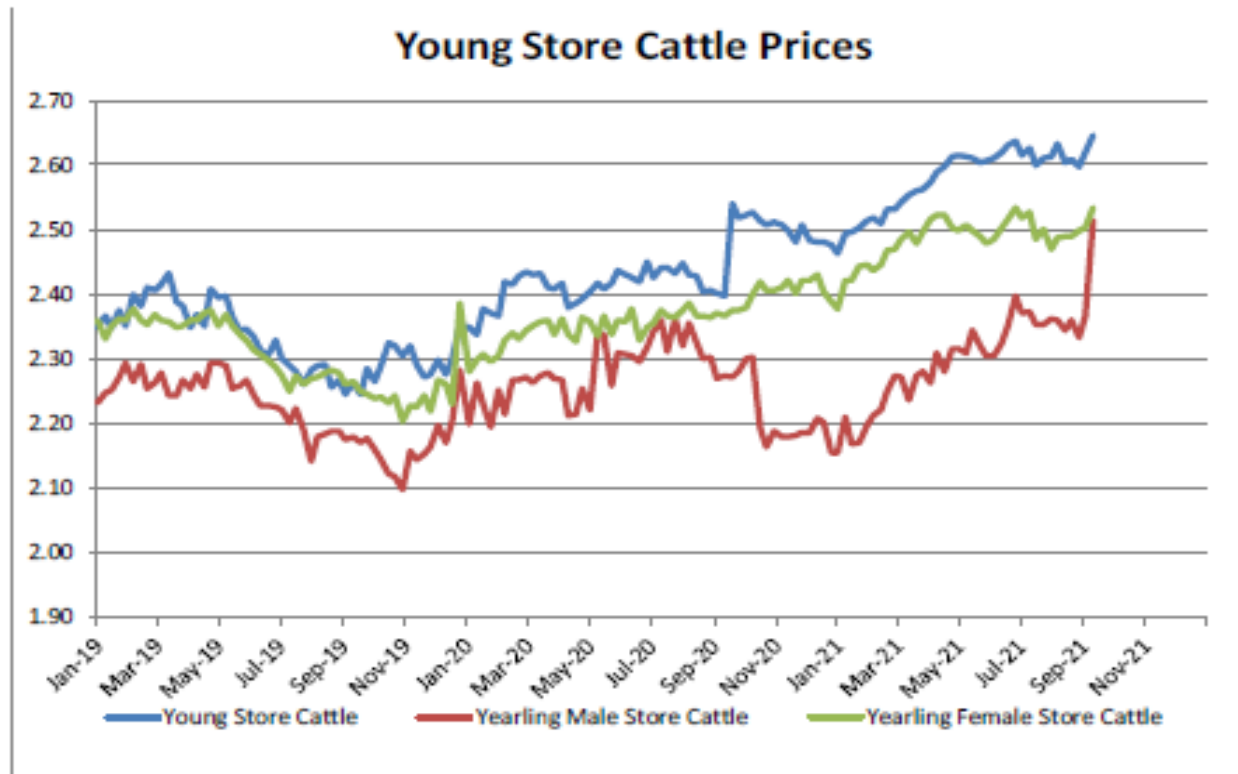


# AB TÜM KATEGORİLERE GLOBAL BAKIŞ



## Besilik siğır (€ / 100 kg canlı ağırlık)

Store cattle (€/100 kg live weight)

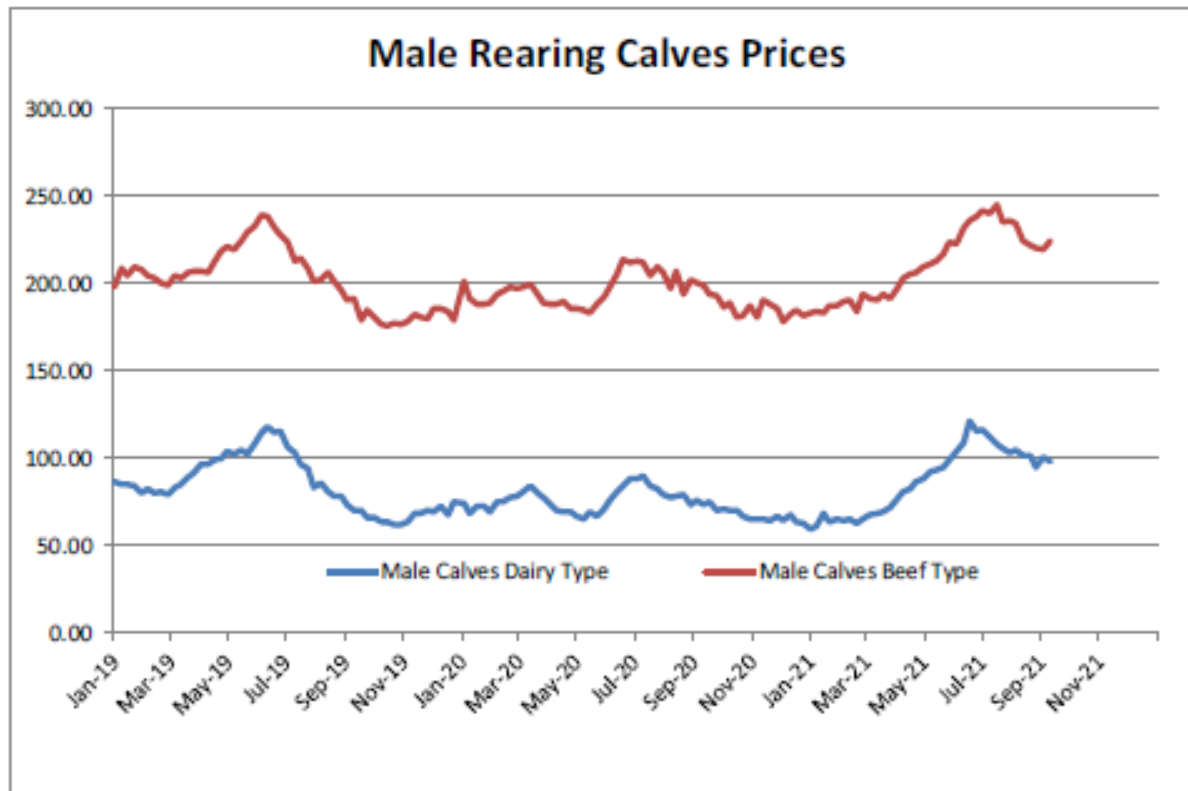


Young Store Cattle Price in	Week 36	2.65	Yearling Male Store Cattle Price	2.51
	Change y/y	#####	Change y/y	+10.85%
Yearling Female Store Cattle Price		2.53		
	Change y/y	+6.92%		



### 8 gün ve 4 haftalık erkek buzağlar (€/baş)

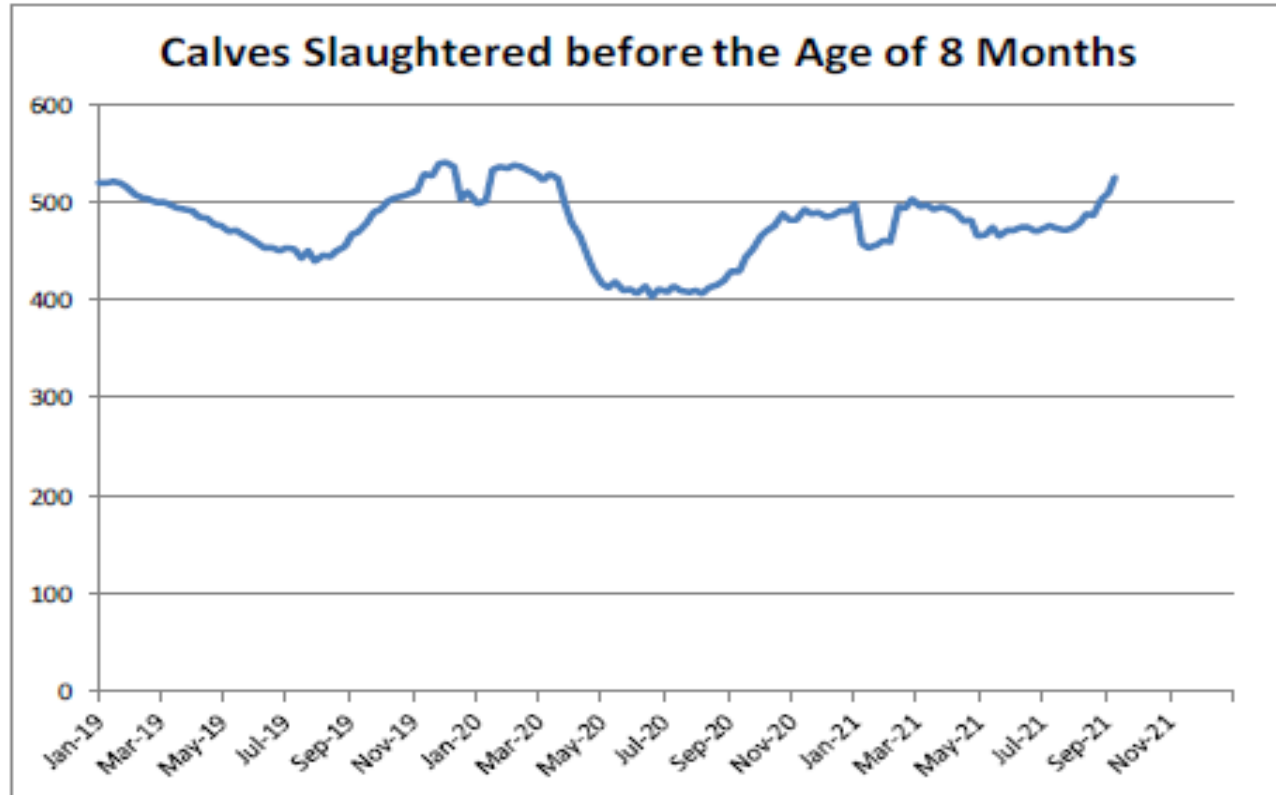
Male calves aged between 8 days and 4 weeks (€/head)



Male Rearing Calves Beef type		Male Rearing Calves Dairy type	
Price in Week 36	224.07	Price in Week 36	97.92
Change y/y	+12.06%	Change y/y	+30.13%

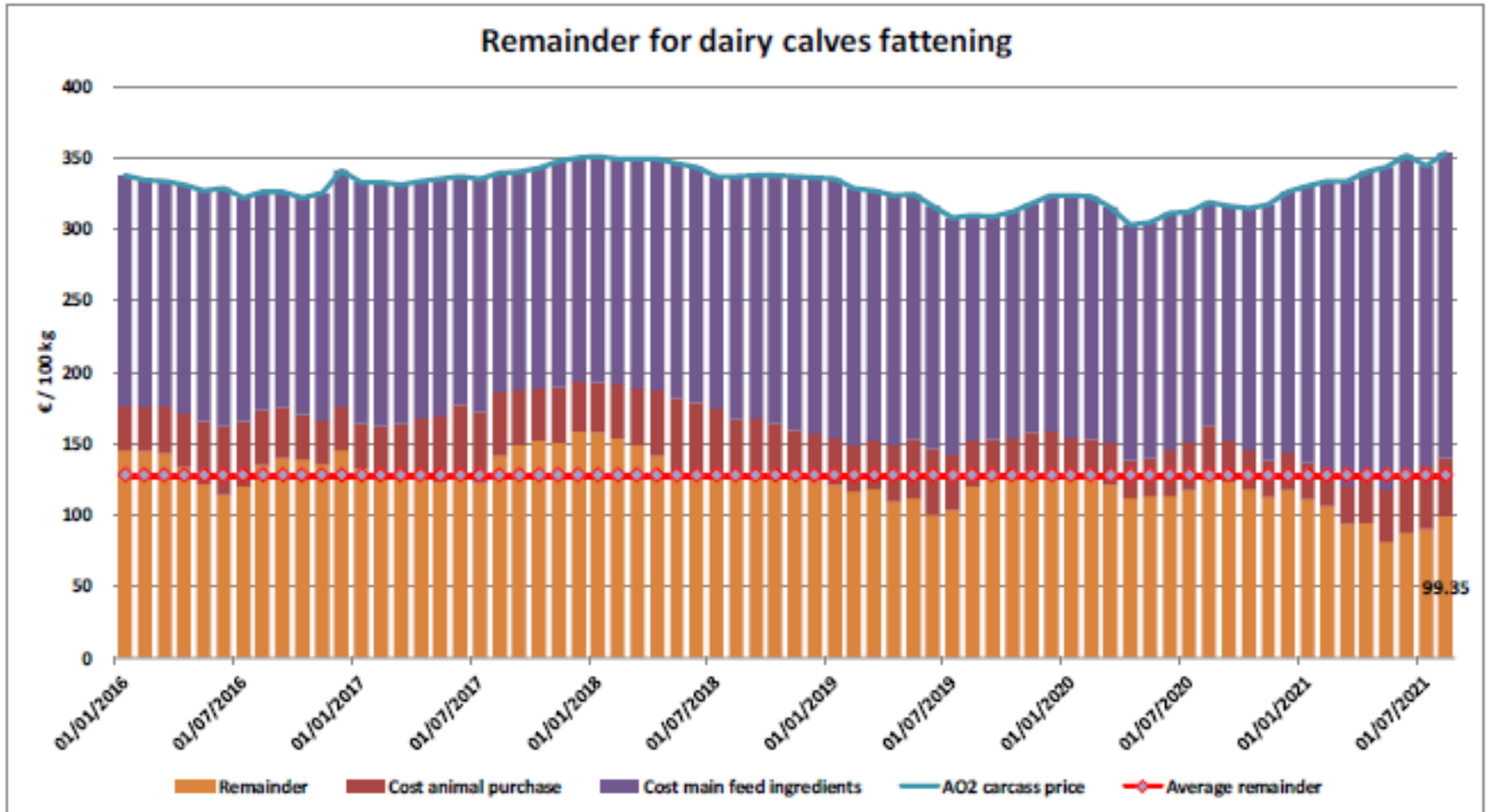
### 8 aylıktan küçük kesilen buzağlar (€ / 100 kg canlı ağırlık)

Calves slaughtered before the age of less than 8 months  
(€/100 kg cw)

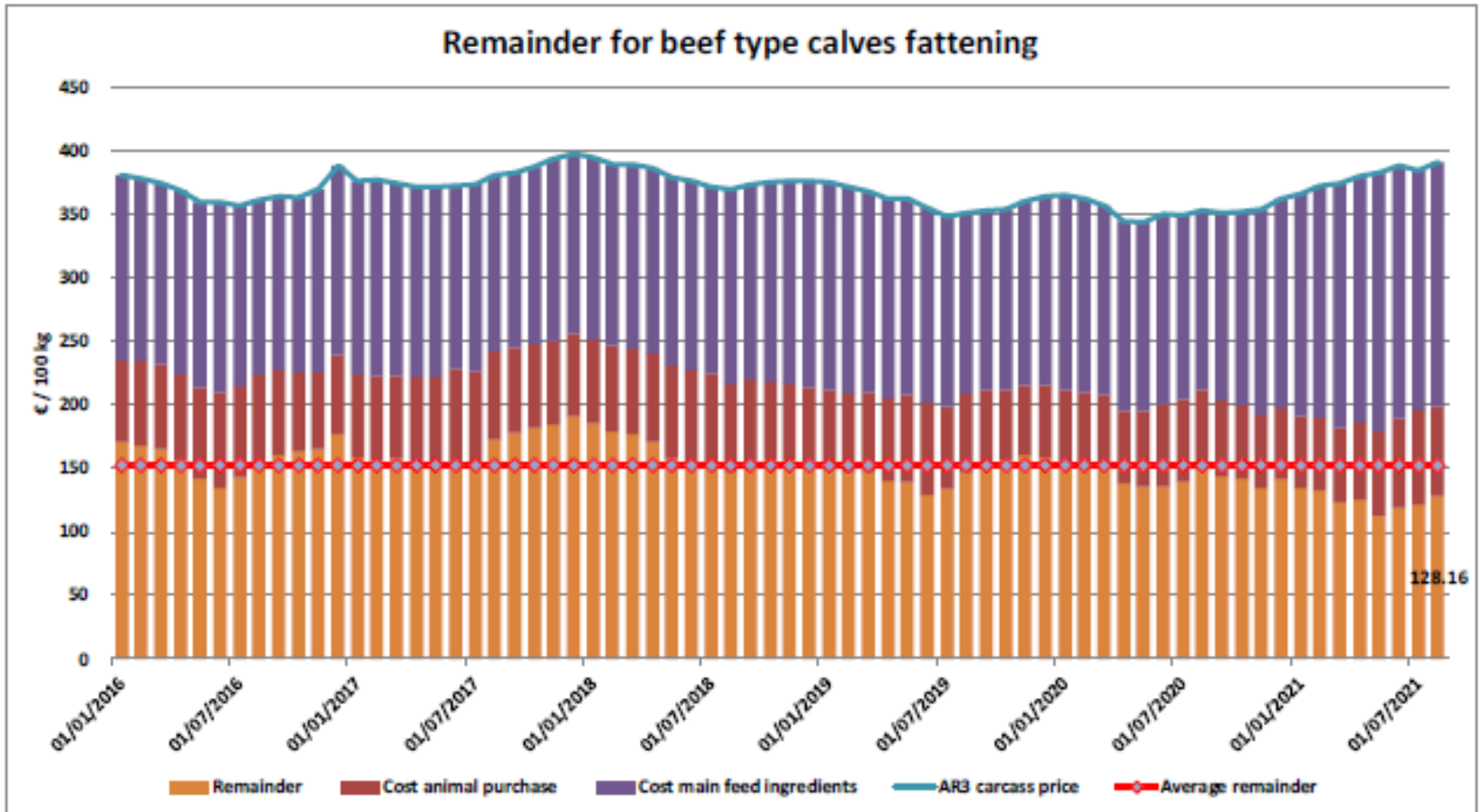


Price in Week 36 526.37 € / 100 kg of carcasse weight  
Change y/y +22.58%

## Süt Buzağları Besiciliği İçin Kalanlar

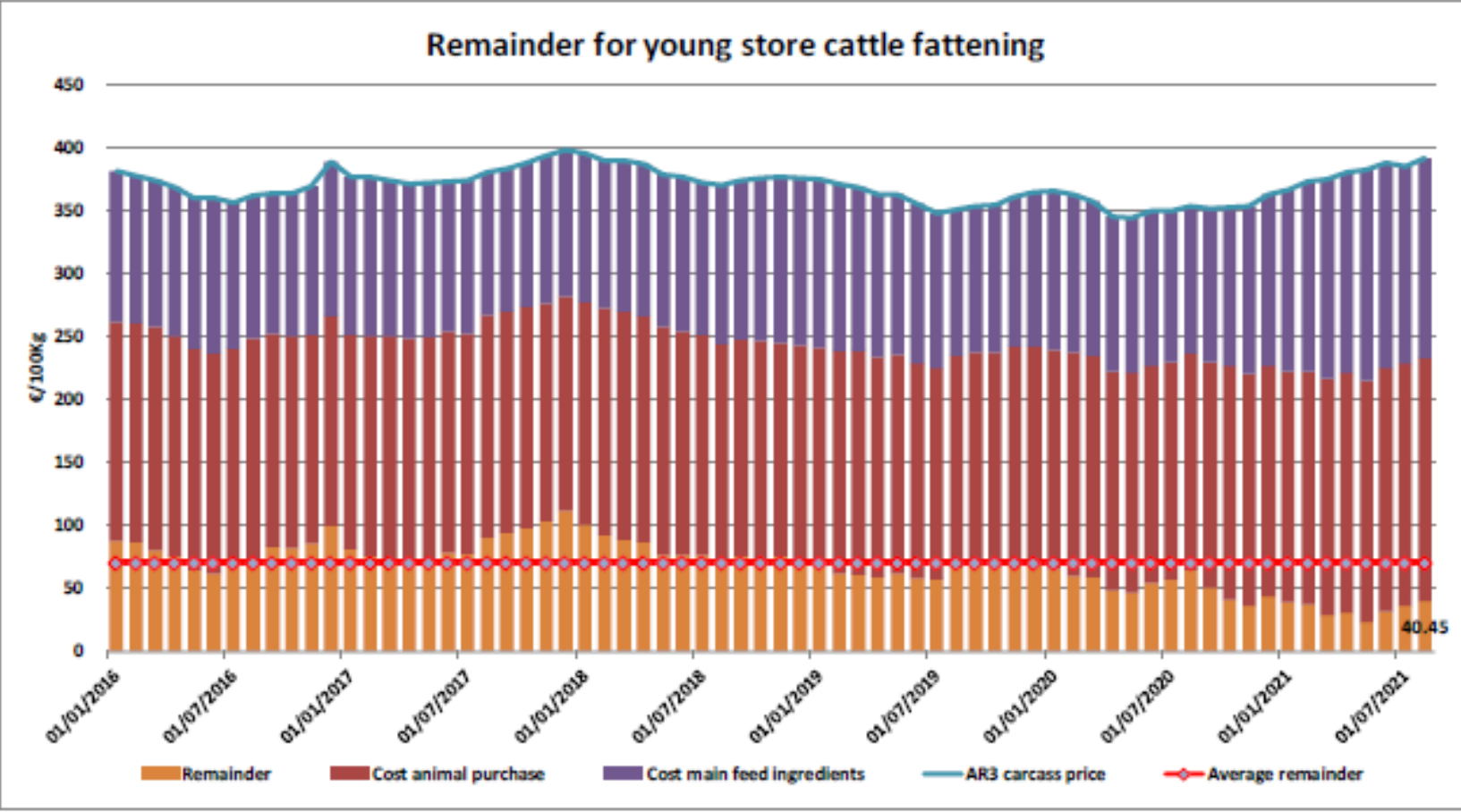


## Sığır Tipi Buzağı Besiciliği İçin Kalanlar





## Genç Besilik Sığır Besiciliği İçin Kalanlar



## AB siğir eti ve canlı hayvan ihracatı (1): Pazar Rakamları (COMEXT – ton ca)

### Destinations

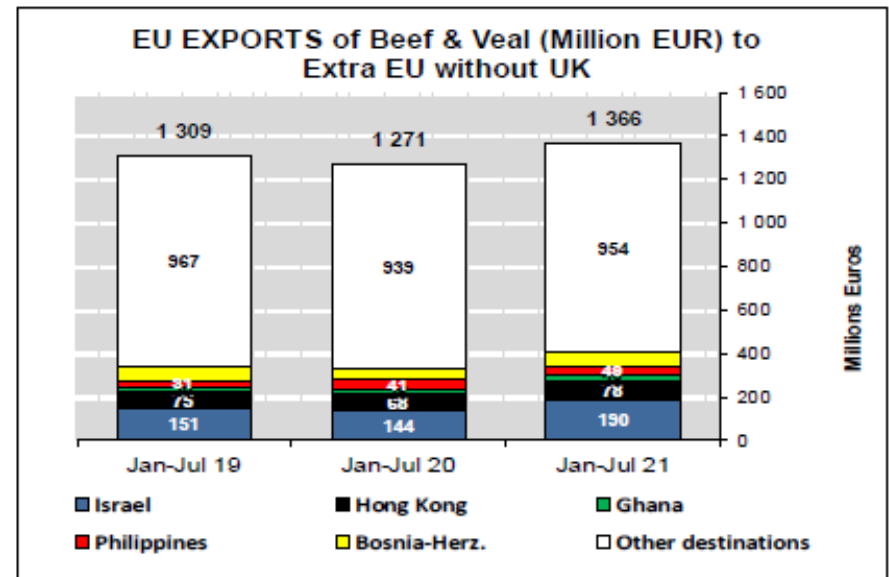
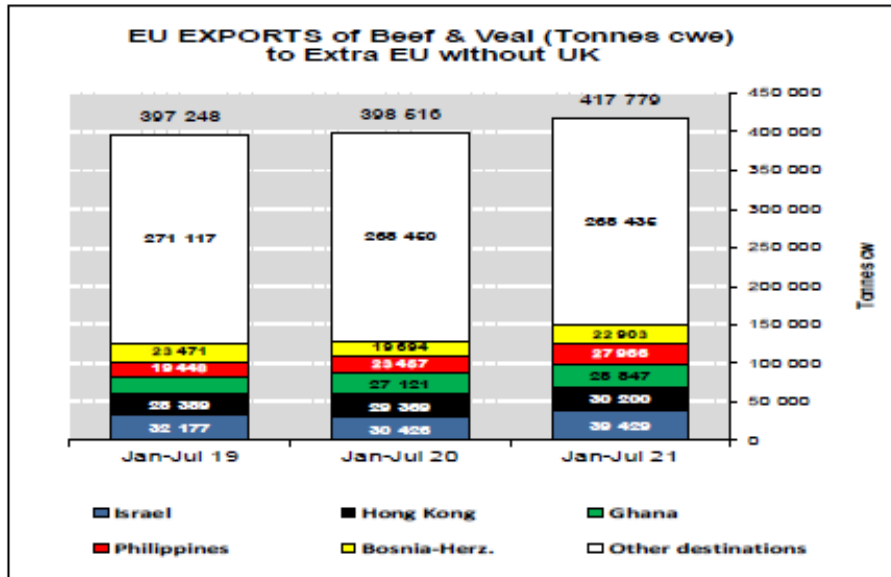
	2017		2018		2019		2020		Jan-Jul 21		Compared to
	tonnes	%	tonnes	%	tonnes	%	tonnes	%	tonnes	%	
Israel	44 196	6.1%	47 774	6.8%	49 629	7.1%	56 965	8.1%	39 429	9.4%	+ 29.6%
Hong Kong	76 086	10.5%	55 537	7.9%	46 748	6.7%	56 860	8.1%	30 200	7.2%	+ 2.8%
Ghana	37 744	5.2%	36 766	5.2%	39 196	5.6%	47 408	6.7%	28 847	6.9%	+ 6.4%
Philippines	37 102	5.1%	28 766	4.1%	34 158	4.9%	39 920	5.7%	27 966	6.7%	+ 19.2%
Bosnia-Herz.	34 711	4.8%	38 762	5.5%	41 119	5.9%	35 758	5.1%	22 903	5.5%	+ 16.3%
Switzerland	26 708	3.7%	23 761	3.4%	25 188	3.6%	29 996	4.3%	19 409	4.6%	+ 19.2%
Ivory Coast	36 038	5.0%	36 064	5.1%	33 396	4.8%	32 460	4.6%	18 852	4.5%	- 3.9%
Algeria	26 305	3.6%	35 410	5.0%	57 152	8.2%	39 416	5.6%	18 617	4.5%	- 24.7%
Lebanon	38 322	5.3%	42 542	6.1%	36 393	5.2%	33 656	4.8%	13 479	3.2%	- 24.5%
Norway	12 850	1.8%	7 925	1.1%	7 667	1.1%	12 936	1.8%	13 305	3.2%	+ 77.1%
Libya	27 848	3.8%	27 878	4.0%	24 541	3.5%	21 971	3.1%	12 096	2.9%	- 14.6%
Japan	4 281	0.6%	3 452	0.5%	8 007	1.1%	11 885	1.7%	11 125	2.7%	+ 39.4%
Canada	2 424	0.3%	2 225	0.3%	6 806	1.0%	20 475	2.9%	9 863	2.4%	- 21.0%
Kosovo	6 377	0.9%	6 693	1.0%	10 279	1.5%	10 912	1.5%	9 482	2.3%	+ 74.1%
Ukraine	7 331	1.0%	10 465	1.5%	13 836	2.0%	15 857	2.3%	8 739	2.1%	+ 5.8%
North Macedonia	8 257	1.1%	10 191	1.5%	11 975	1.7%	10 686	1.5%	7 934	1.9%	+ 31.3%
Other Destinations	300 941	41.4%	287 670	41.0%	254 155	36.3%	227 218	32.3%	125 534	30.0%	
<b>Total (without UK)</b>	<b>727 522</b>		<b>701 882</b>		<b>700 245</b>		<b>704 379</b>		<b>417 779</b>		
% change			-4%		-0%		+1%		+4.8%		

## AB sığır eti ihracatı: Pazar Rakamları (COMEXT – ton ca)

### Destinations

	2017		2018		2019		2020		Jan-Jul 21		Compared to
	tonnes	%	tonnes	%	tonnes	%	tonnes	%	tonnes	%	
Hong Kong	76 086	15.5%	55 537	11.9%	46 748	9.8%	56 860	11.6%	30 200	10.1%	+ 2.8%
Ghana	37 744	7.7%	36 766	7.9%	39 196	8.2%	47 408	9.7%	28 847	9.7%	+ 6.4%
Philippines	37 102	7.5%	28 766	6.2%	34 158	7.2%	39 920	8.1%	27 966	9.4%	+ 19.2%
Bosnia-Herz.	32 181	6.5%	36 152	7.7%	38 806	8.2%	33 459	6.8%	21 428	7.2%	+ 15.3%
Ivory Coast	36 028	7.3%	36 064	7.7%	33 396	7.0%	32 460	6.6%	18 852	6.3%	- 3.9%
Switzerland	25 570	5.2%	22 711	4.9%	24 110	5.1%	28 941	5.9%	18 543	6.2%	+ 18.9%
Norway	12 849	2.6%	7 922	1.7%	7 667	1.6%	12 936	2.6%	13 305	4.5%	+ 77.1%
Israel	18 750	3.8%	22 163	4.7%	23 026	4.8%	21 967	4.5%	13 024	4.4%	+ 1.9%
Japan	4 281	0.9%	3 452	0.7%	8 007	1.7%	11 885	2.4%	11 125	3.7%	+ 39.4%
Canada	2 424	0.5%	2 225	0.5%	6 806	1.4%	20 475	4.2%	9 863	3.3%	- 21.0%
Ukraine	6 926	1.4%	9 887	2.1%	12 893	2.7%	14 861	3.0%	8 107	2.7%	+ 5.3%
North Macedonia	11 285	2.3%	10 002	2.1%	11 395	2.4%	10 551	2.1%	7 858	2.6%	+ 33.0%
USA	3 756	0.8%	5 458	1.2%	7 867	1.7%	12 310	2.5%	7 217	2.4%	+ 8.1%
South Africa	4 555	0.9%	7 214	1.5%	5 442	1.1%	7 743	1.6%	6 649	2.2%	+++
Vietnam	12 146	2.5%	8 163	1.7%	10 014	2.1%	6 367	1.3%	4 762	1.6%	+ 36.5%
Angola	10 982	2.2%	11 470	2.5%	8 410	1.8%	9 410	1.9%	3 932	1.3%	- 16.2%
Other Destinations	150 714	32.4%	162 871	34.0%	157 370	33.1%	123 328	25.1%	66 227	22.2%	
<b>Total (without UK)</b>	<b>492 379</b>		<b>466 824</b>		<b>475 318</b>		<b>490 881</b>		<b>297 905</b>		
<b>% change</b>			<b>- 5%</b>		<b>+ 2%</b>		<b>+ 3%</b>		<b>+ 5.0%</b>		

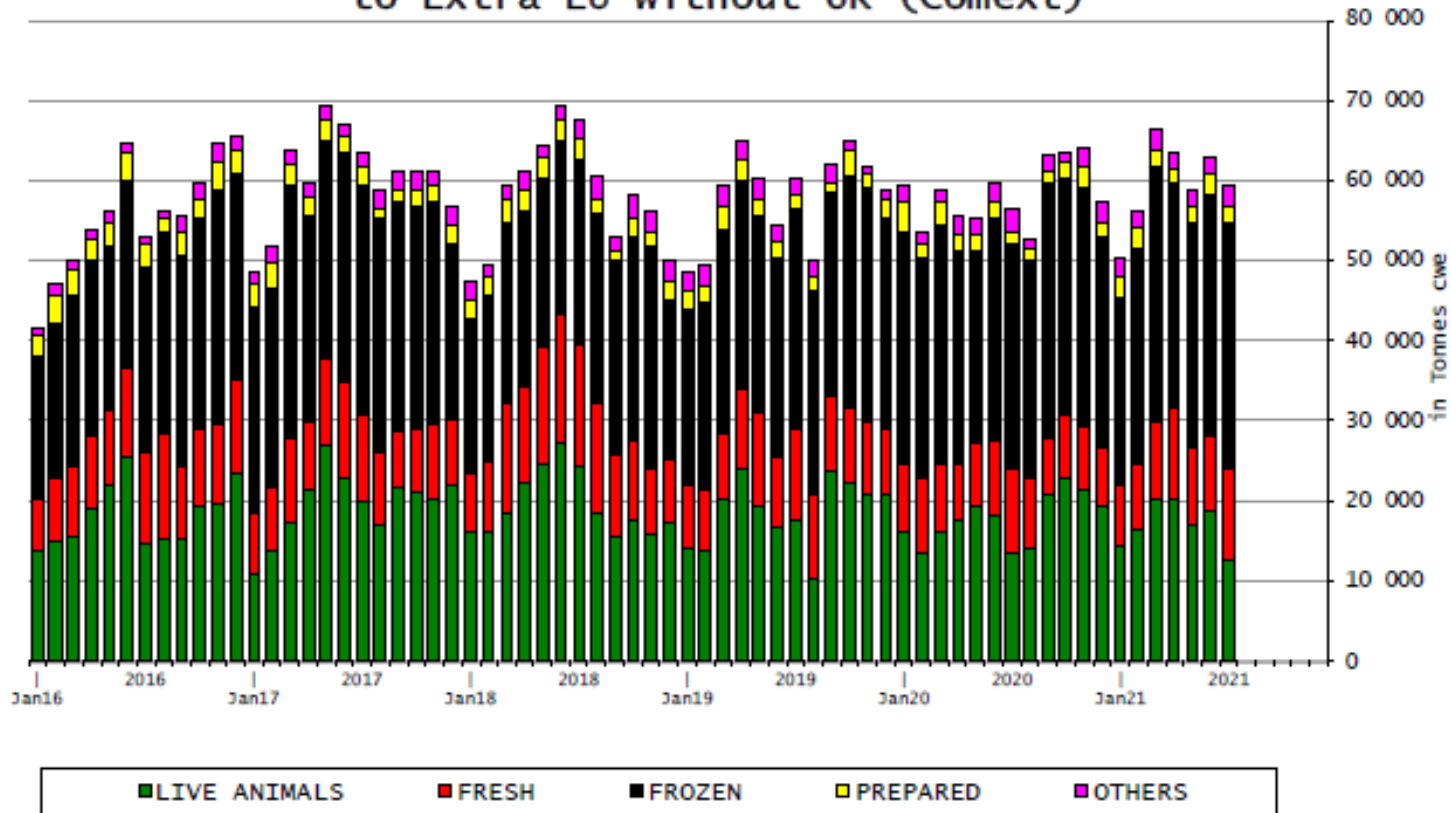
## AB siğir eti ve canlı hayvan ihracatı (COMEXT)

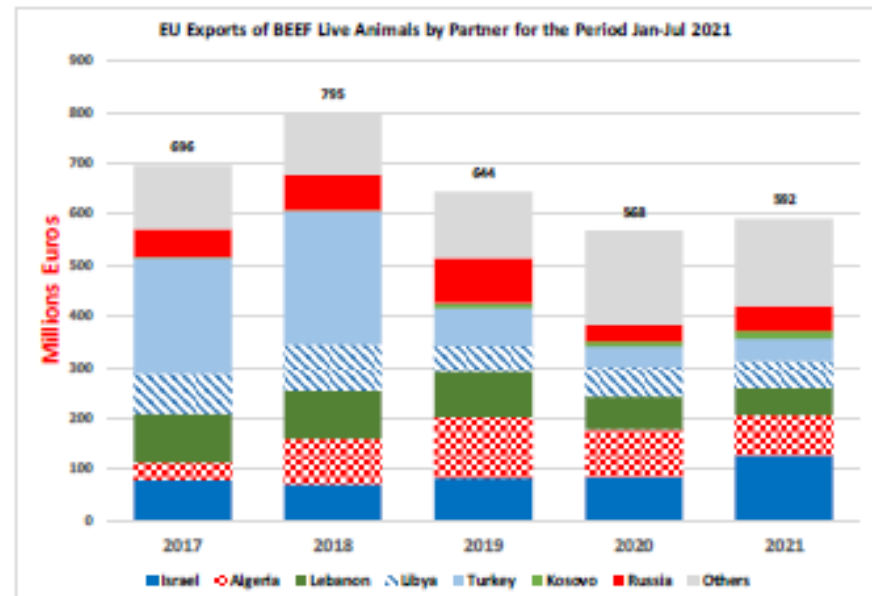
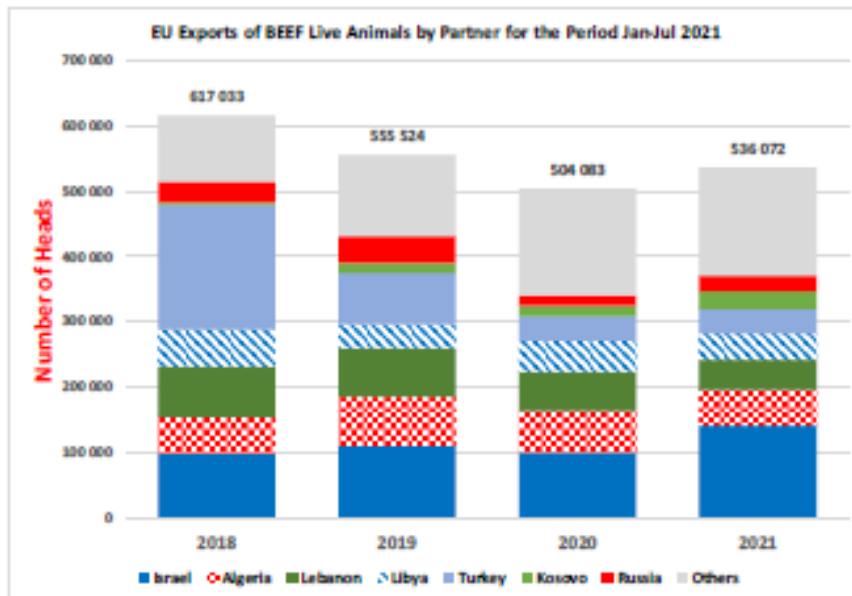




## AB siğir eti ürünleri ihracatı (COMEXT)

EU Exports of BEEF products  
to Extra EU without UK (Comext)





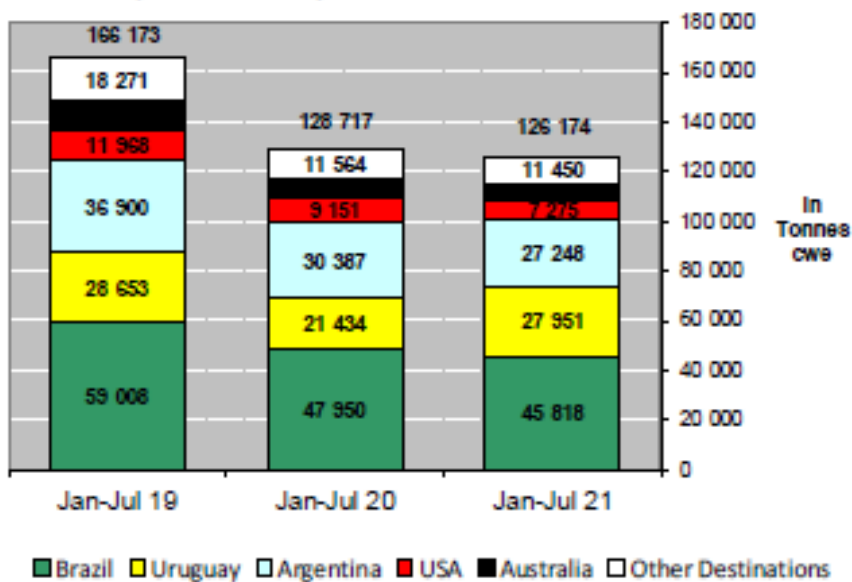
## AB Sığır Eti ve Canlı Hayvan İthalatları (1): Ticaret Verileri (COMEXT – ton ca)

### Origins

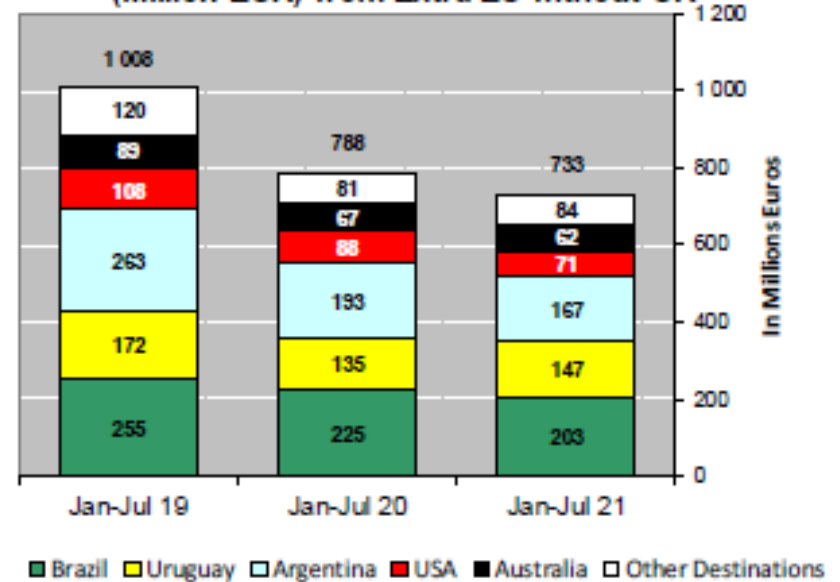
	2017		2018		2019		2020		Jan-Jul 21		Compared to
	tonnes	%	tonnes	%	tonnes	%	tonnes	%	tonnes	%	
Brazil	88 927	33.9%	103 979	37.3%	99 569	36.4%	84 172	37.6%	45 818	36.3%	- 4.4%
Uruguay	52 078	20.3%	47 922	17.2%	40 483	14.8%	34 595	15.5%	27 951	22.2%	+ 30.4%
Argentina	49 259	19.2%	61 400	22.0%	65 324	23.9%	56 421	25.2%	27 248	21.6%	- 10.3%
USA	21 624	8.4%	19 268	6.9%	16 852	6.2%	16 532	7.4%	7 275	5.8%	- 20.5%
Australia	18 193	7.1%	17 368	6.2%	16 516	6.0%	11 058	4.9%	6 433	5.1%	- 21.8%
Switzerland	5 105	2.0%	5 413	1.9%	4 401	1.6%	4 197	1.9%	2 568	2.0%	+ 15.1%
New Zealand	6 806	2.7%	7 165	2.6%	6 726	2.5%	6 145	2.7%	2 306	1.8%	- 36.0%
Paraguay	5 922	2.3%	5 520	2.0%	5 203	1.9%	4 234	1.9%	1 935	1.5%	- 21.9%
N.det.Extra	72	0.0%	127	0.0%	196	0.1%	94	0.0%	1 302	1.0%	+++
Canada	512	0.2%	1 343	0.5%	2 518	0.9%	1 550	0.7%	998	0.8%	+ 95.8%
Japan	645	0.3%	791	0.3%	997	0.4%	789	0.4%	627	0.5%	+ 80.3%
Serbia	565	0.2%	1 134	0.4%	1 062	0.4%	931	0.4%	471	0.4%	- 12.3%
Namibia	5 043	2.0%	3 442	1.2%	7 706	2.8%	1 445	0.6%	450	0.4%	- 56.5%
Norway	388	0.2%	153	0.1%	129	0.0%	336	0.2%	269	0.2%	+++
Botswana	2 686	1.0%	3 119	1.1%	4 950	1.8%	788	0.4%	141	0.1%	- 65.2%
Chile	319	0.1%	356	0.1%	392	0.1%	168	0.1%	107	0.1%	- 4.5%
Other Destinations	579	0.2%	318	0.1%	287	0.1%	298	0.1%	277	0.2%	
<b>Total (without UK)</b>	<b>256 724</b>		<b>278 818</b>		<b>273 312</b>		<b>223 752</b>		<b>126 174</b>		
% change			+ 9%		- 2%		- 18%		- 2.0%		

## AB Sığır Eti ve Canlı Hayvan İthalatları

**IMPORTS of Beef & Veal into EU  
(Tonnes cwe) from Extra EU without UK**

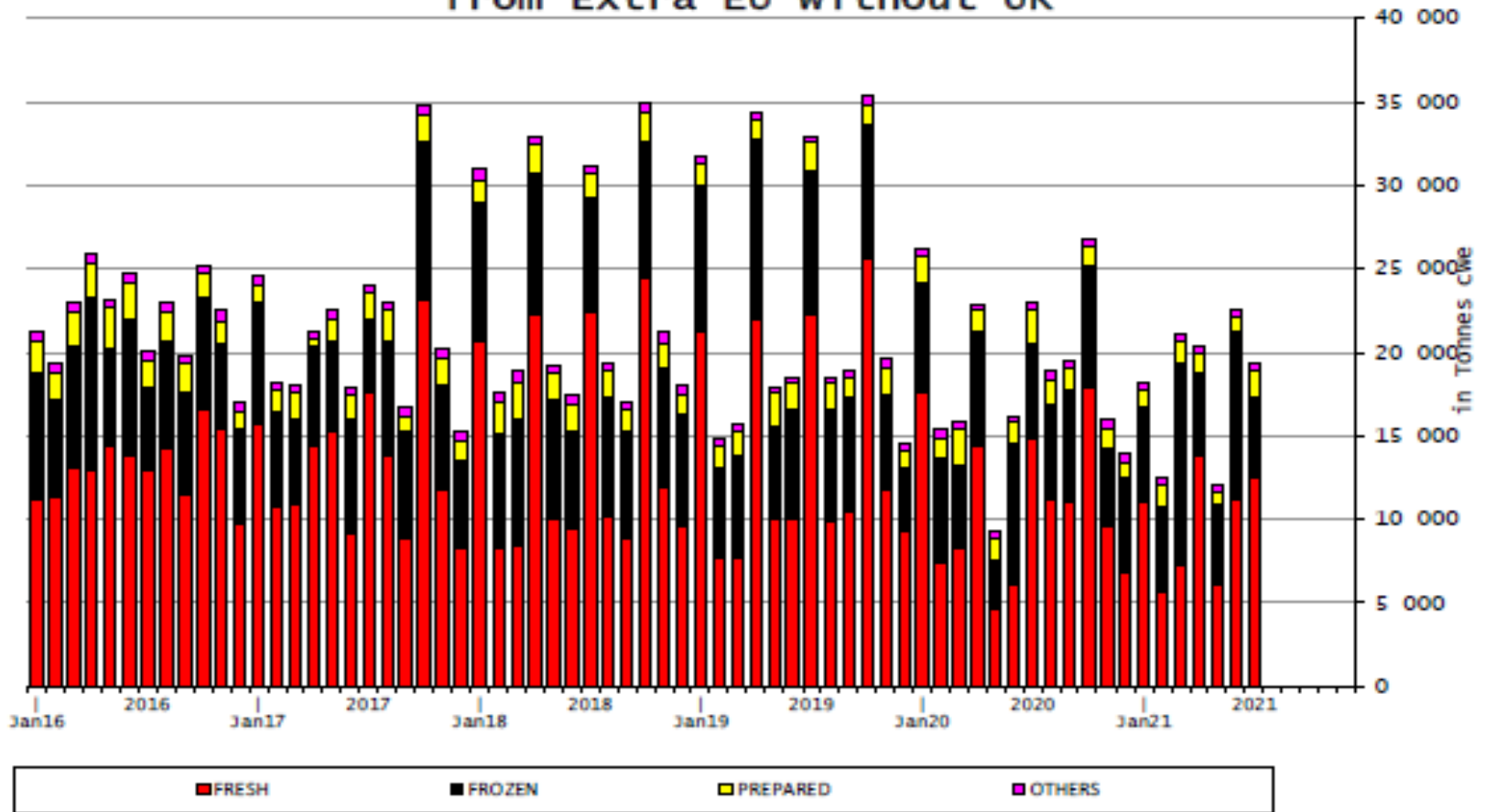


**IMPORTS of Beef & Veal into EU  
(Million EUR) from Extra EU without UK**



## AB Sığır Eti İthalatları (Birleşik Krallık hariç)

EU Imports of BEEF products  
from Extra EU without UK



## EU Export of BEEF to UK by Products from Jan to Jun

*In Tons of Carcase Weight*

	2019			2020			2021			% 2021/2020	
	United Kingdom	Extra-EU	%	United Kingdom	Extra-EU	%	United Kingdom	Extra-EU	%	United Kingdom	Extra-EU
<b>Live Animals</b>	5 334	113 877	4.7%	6 099	107 581	5.7%	6 064	113 275	5.4%	-0.6%	+5.3%
<b>Meats</b>	214 455	442 926	48.4%	187 768	428 331	43.8%	147 173	398 277	37.0%	-21.6%	-7.0%
Fresh	116 964	169 323	69.1%	109 430	158 214	69.2%	85 879	140 665	61.1%	-21.5%	-11.1%
Frozen	29 346	94 570	31.0%	23 343	107 390	21.7%	31 994	120 161	26.6%	+37.1%	+11.9%
Salted Meat	11 128	11 748	94.7%	10 342	11 083	93.3%	326	1 061	30.8%	-96.8%	-90.4%
Prepared	22 861	36 609	62.4%	21 614	35 878	60.2%	17 485	31 094	56.2%	-19.1%	-13.3%
Fresh Offals	11 110	12 598	88.2%	9 837	11 385	86.4%	2 489	3 800	65.5%	-74.7%	-66.6%
Frozen Offals	8 287	89 491	9.3%	7 104	87 461	8.1%	5 570	85 206	6.5%	-21.6%	-2.6%
Salted Offals	13 713	23 409	58.6%	5 464	11 329	48.2%	121	4 647	2.6%	-97.8%	-59.0%
Prepared Offal	296	368	80.4%	228	328	69.7%	161	219	73.6%	-29.6%	-33.3%
Fat	750	4 810	15.6%	406	5 264	7.7%	3 149	11 424	27.6%	+674.8%	+117.0%
<b>Total Beef</b>	<b>219 788</b>	<b>556 803</b>	<b>39.5%</b>	<b>193 867</b>	<b>535 912</b>	<b>36.2%</b>	<b>153 237</b>	<b>511 552</b>	<b>30.0%</b>	<b>-21.0%</b>	<b>-4.5%</b>

Source : Comext

## EU Import of BEEF from UK by Products from Jan to Jun

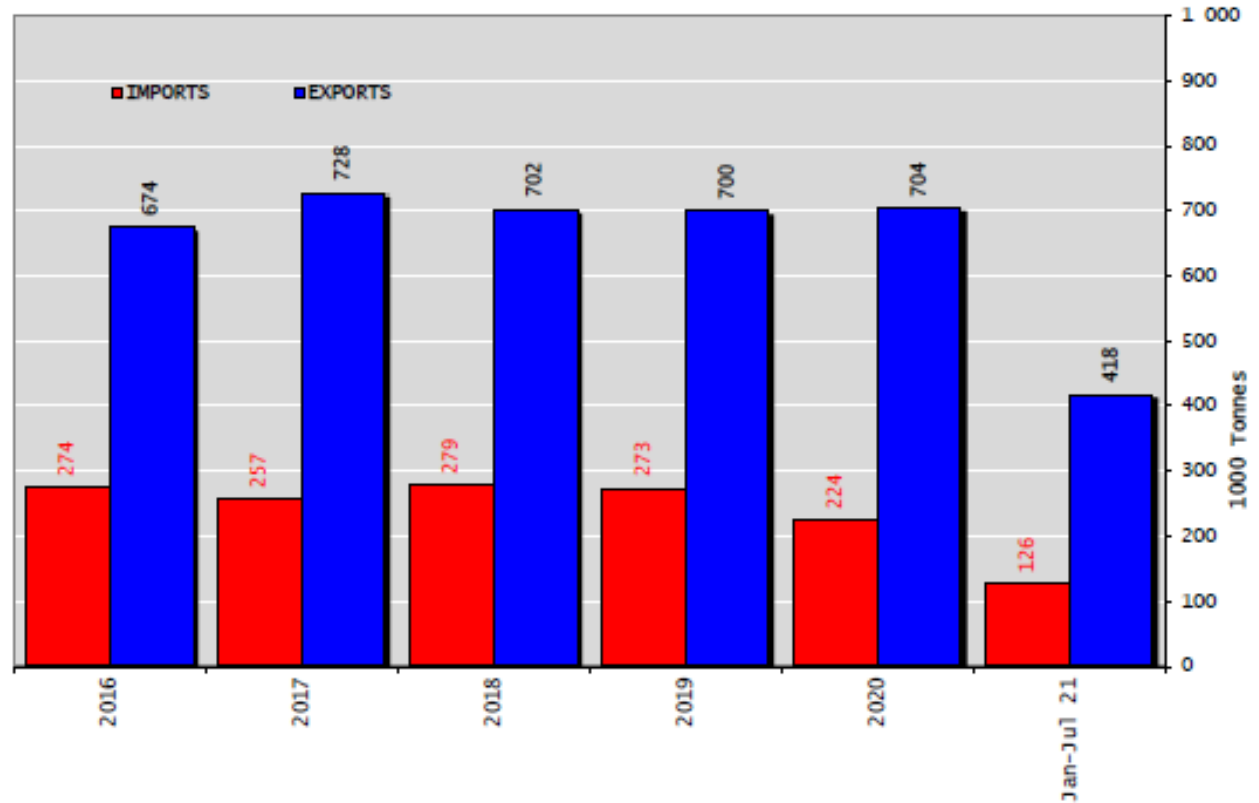
*In Tons of Carcase Weight*

	2019			2020			2021			% 2021/2020	
	United Kingdom	Extra-EU	%	United Kingdom	Extra-EU	%	United Kingdom	Extra-EU	%	United Kingdom	Extra-EU
Live Animals	1 516	1 592	95.2%	954	1 002	95.2%	420	506	83.1%	-56.0%	-49.5%
<b>Meats</b>	<b>76 330</b>	<b>209 417</b>	<b>36.4%</b>	<b>60 977</b>	<b>166 624</b>	<b>36.6%</b>	<b>36 706</b>	<b>143 404</b>	<b>25.6%</b>	<b>-39.8%</b>	<b>-13.9%</b>
Fresh	53 035	131 778	40.2%	38 670	97 134	39.8%	23 427	78 562	29.8%	-39.4%	-19.1%
Frozen	12 369	55 639	22.2%	11 175	47 104	23.7%	7 573	50 020	15.1%	-32.2%	+6.2%
Salted Meat	483	1 746	27.7%	302	1 491	20.3%	111	1 601	6.9%	-63.2%	+7.4%
Prepared	4 282	12 899	33.2%	4 387	13 357	32.8%	2 772	9 236	30.0%	-36.8%	-30.9%
Fresh Offals	1 806	2 482	72.8%	1 806	2 439	74.1%	1 947	2 561	76.0%	+7.8%	+5.0%
Frozen Offals	2 602	3 011	86.4%	2 798	3 198	87.5%	415	893	46.5%	-85.2%	-72.1%
Salted Offals	931	933	99.9%	1 129	1 131	99.8%	13	14	90.6%	-98.9%	-98.8%
Prepared Offal	72	83	85.8%	21	33	63.7%	5	13	42.4%	-74.0%	-60.9%
Fat	751	845	88.9%	688	736	93.5%	442	504	87.8%	-35.7%	-31.6%
<b>Total Beef</b>	<b>77 846</b>	<b>211 009</b>	<b>36.9%</b>	<b>61 931</b>	<b>167 626</b>	<b>36.9%</b>	<b>37 126</b>	<b>143 910</b>	<b>25.8%</b>	<b>-40.1%</b>	<b>-14.1%</b>

Source : Estat - Comext

## Sığır Eti Ürünleri ve Canlı Hayvan Ticaret Dengesi (Ton) (Birleşik Krallık Hariç)

### Trade Balance of Beef Products and Live Animals (without UK)



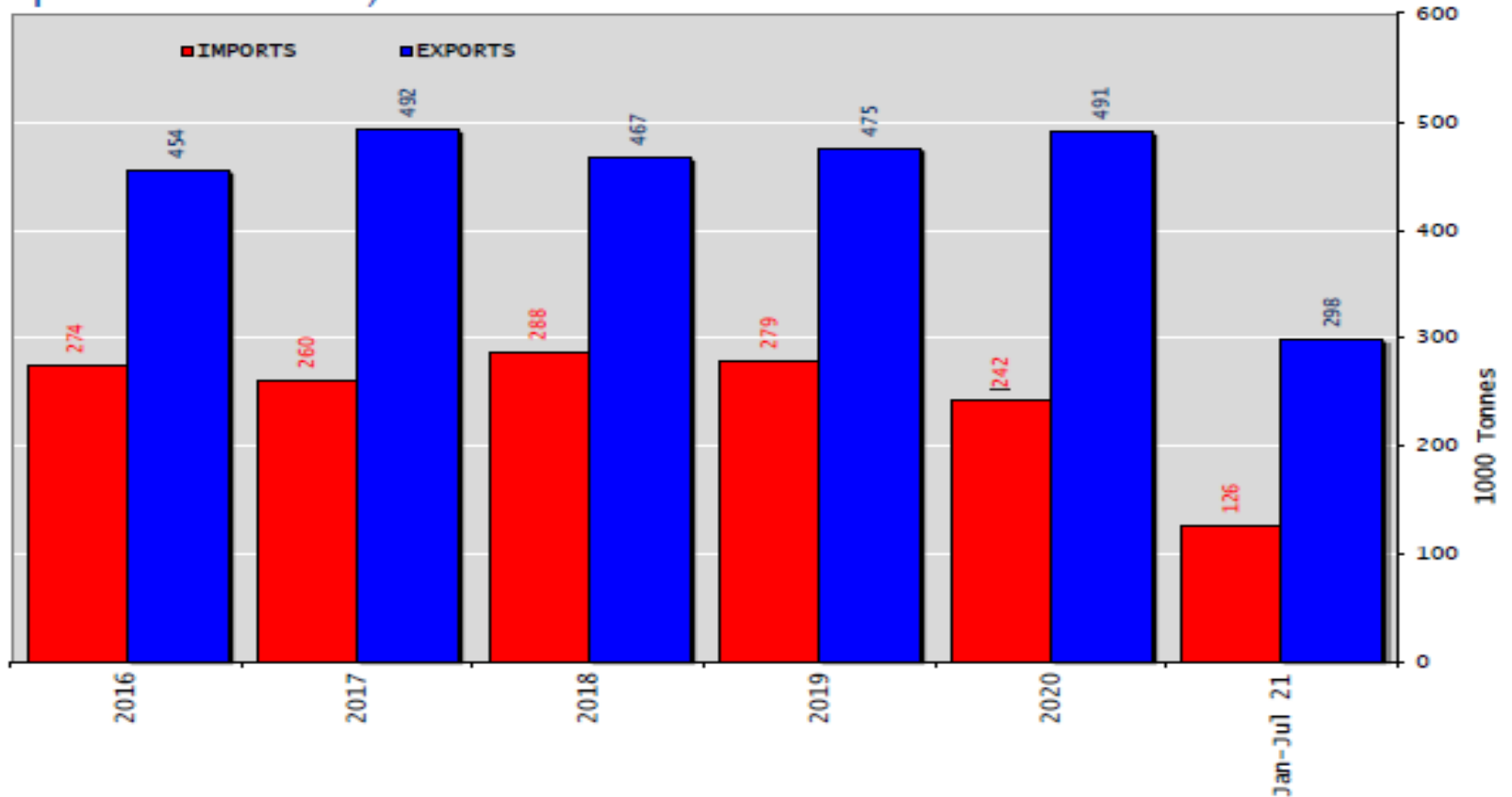




## Sığır Eti Ürünleri Ticaret Dengesi (Canlı hayvanlar hariç) (Ton)

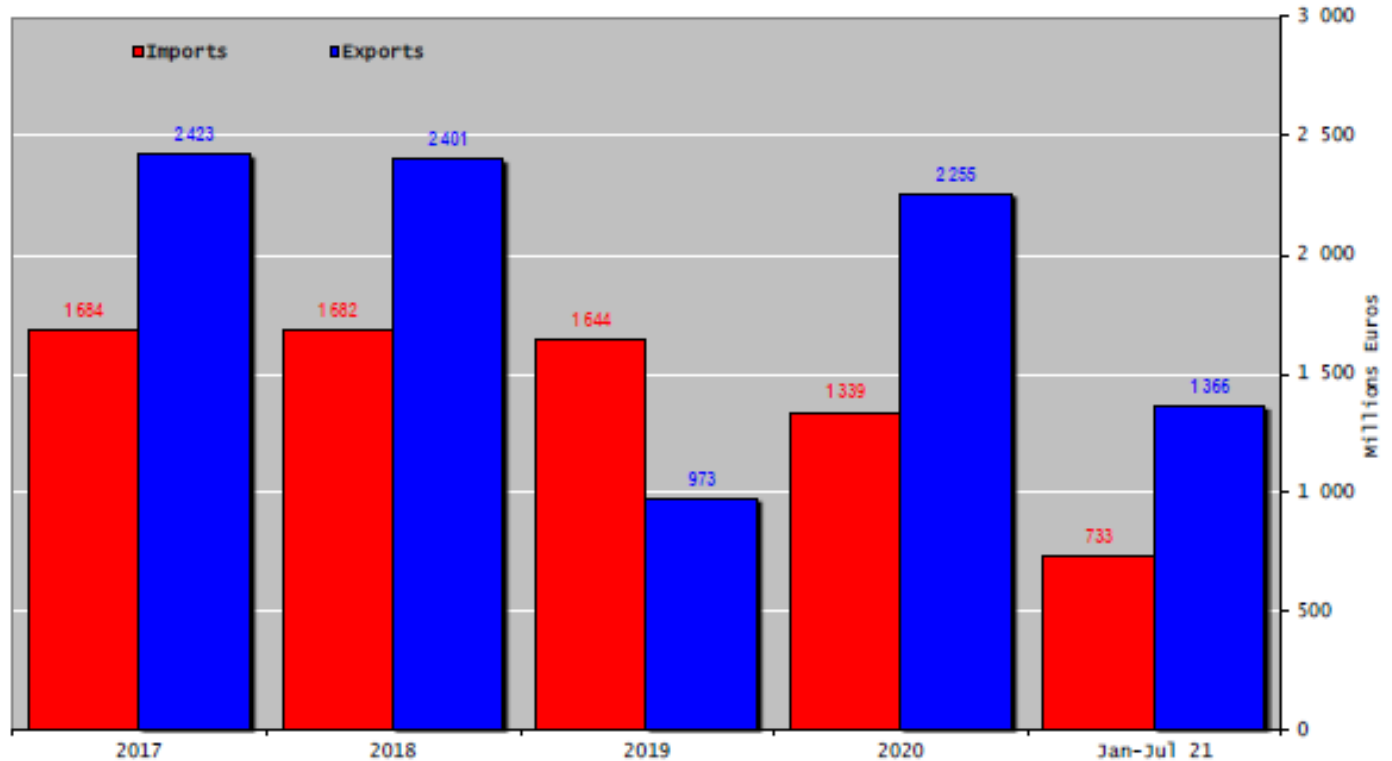
(Birleşik Krallık Hariç)

### Trade Balance of Beef Products (Except Live Animals) without UK



## Sığır Eti Ürünleri ve Canlı Hayvan Ticaret Dengesi (Milyon Euro) (Birleşik Krallık Hariç)

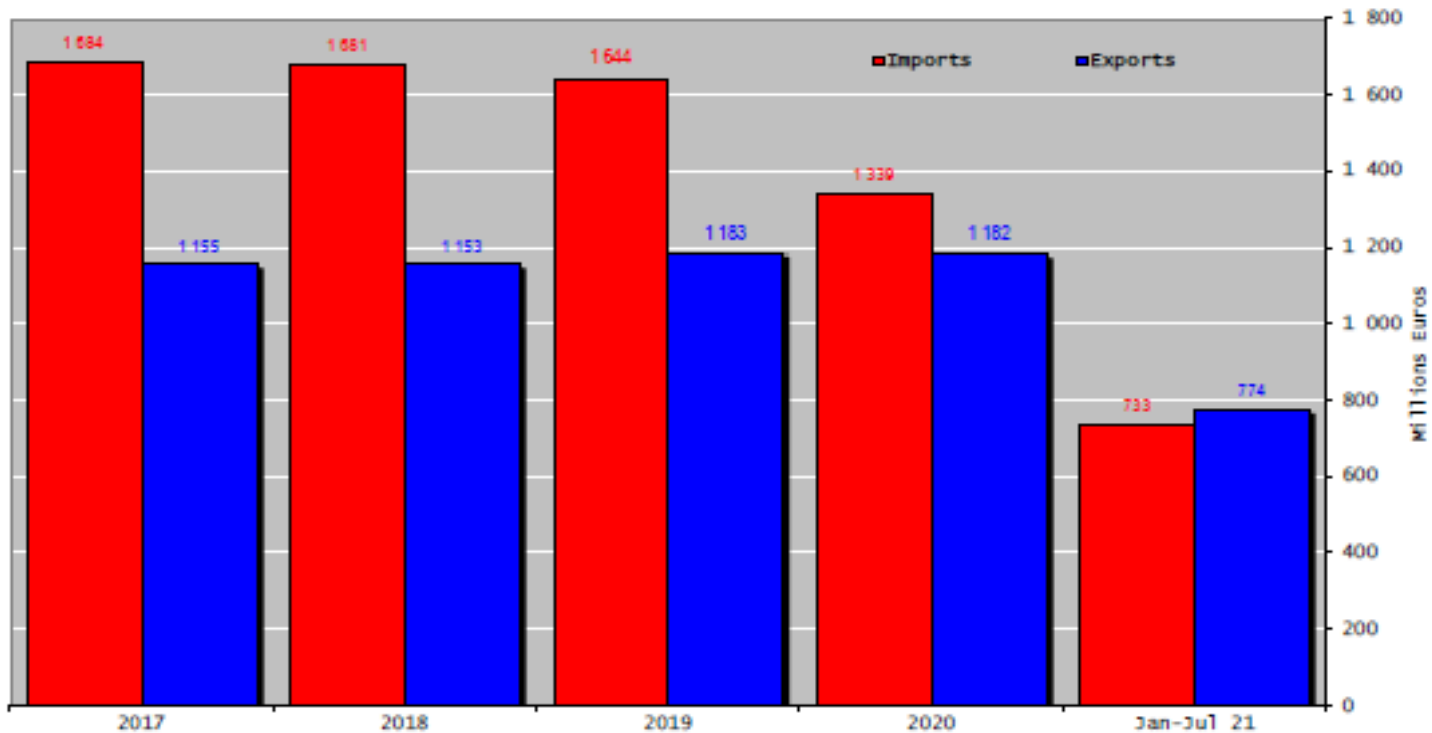
Trade Balance of Beef Products and Live Animals (without UK)





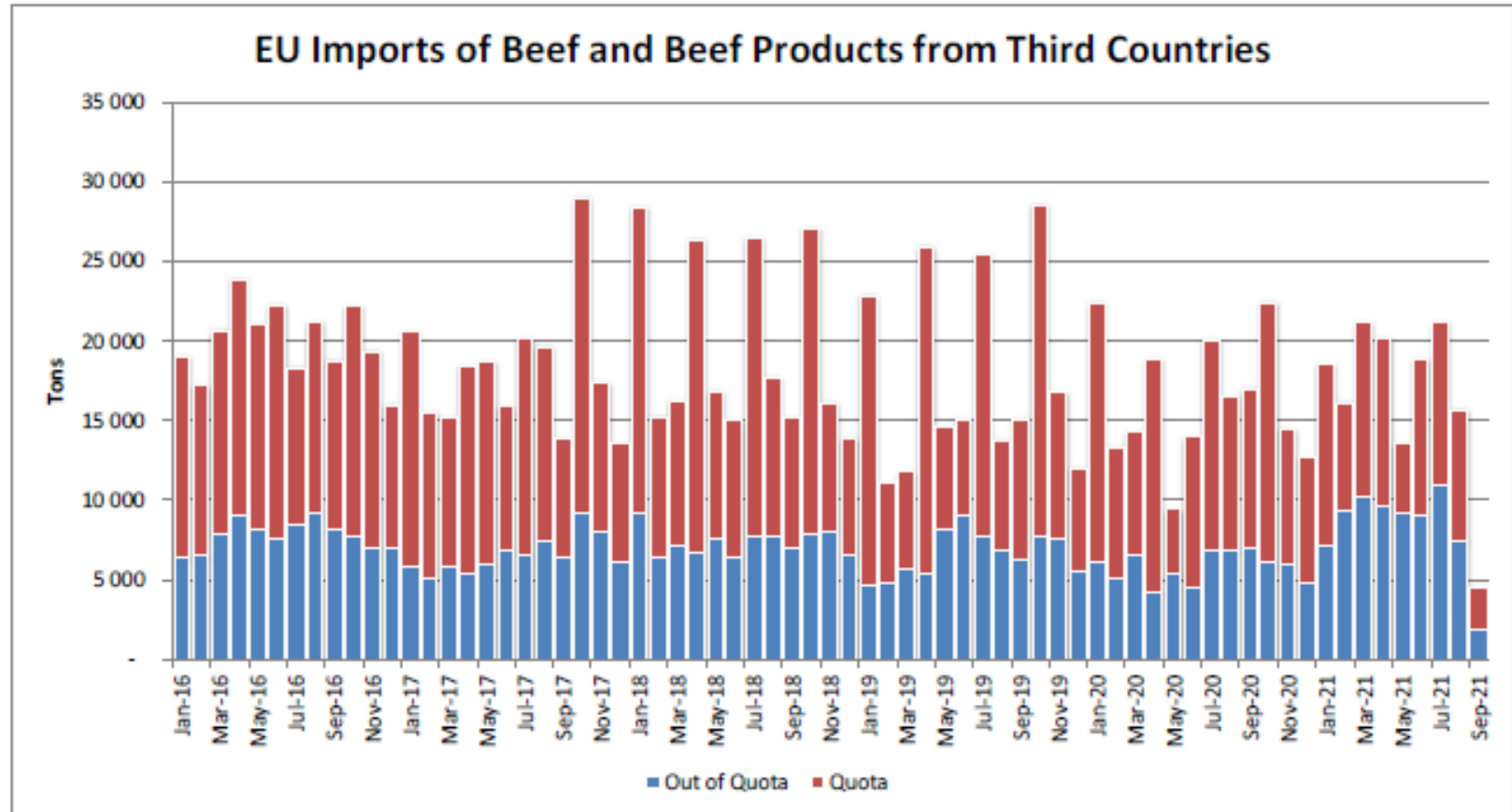
## AB Sığır Eti Ürünleri Ticareti (Canlı Hayvanlar Hariç) (Milyon Euro) (Birleşik Krallık Hariç)

Trade Balance of Beef Products  
(Except Live Animals) without UK



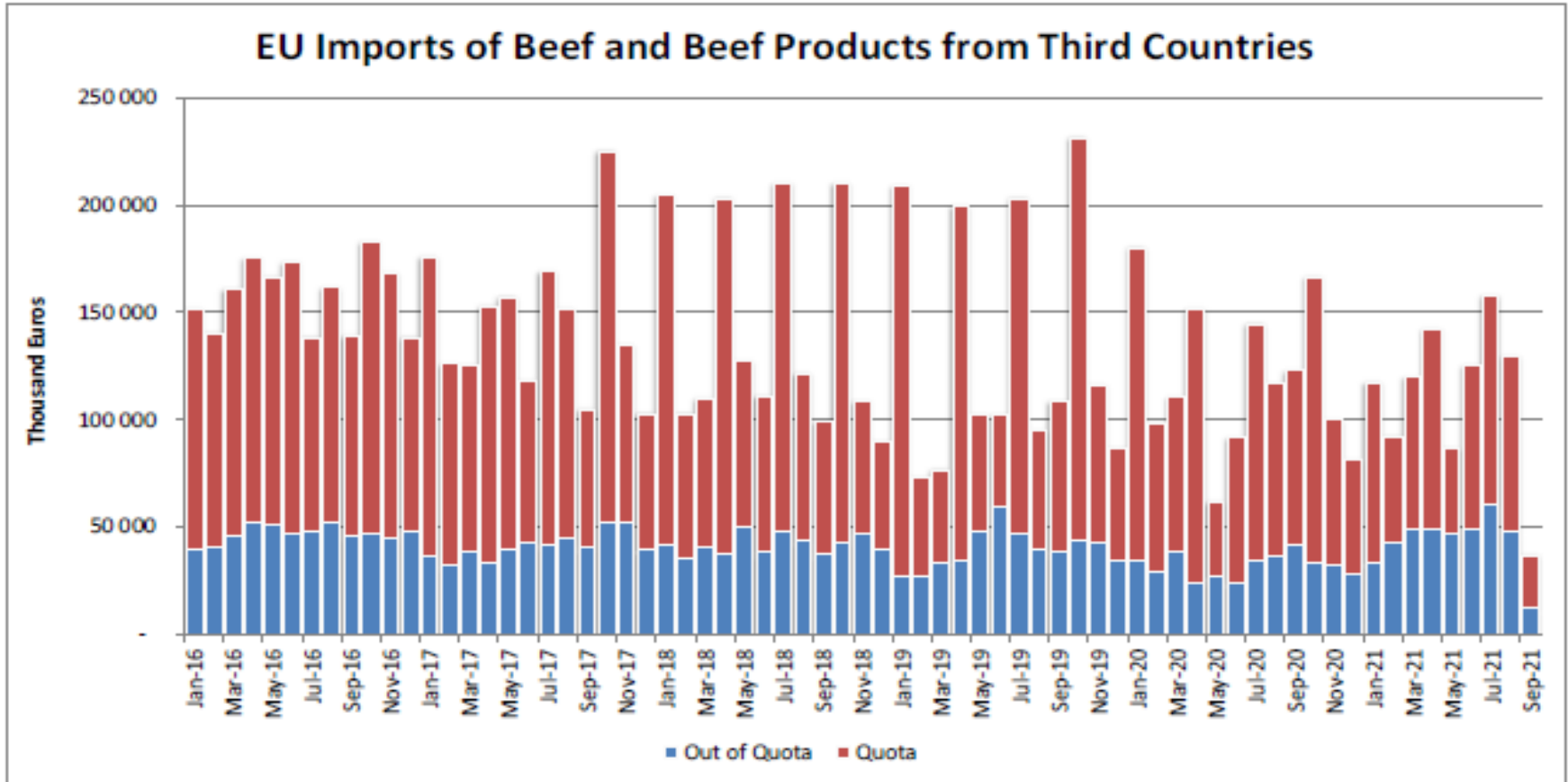
## Üçüncü Ülkelerden AB ve Birleşik Krallık Sığır ve Sığır eti Ürünleri İthalatları (Ton)

### Imports in and out of TRQs



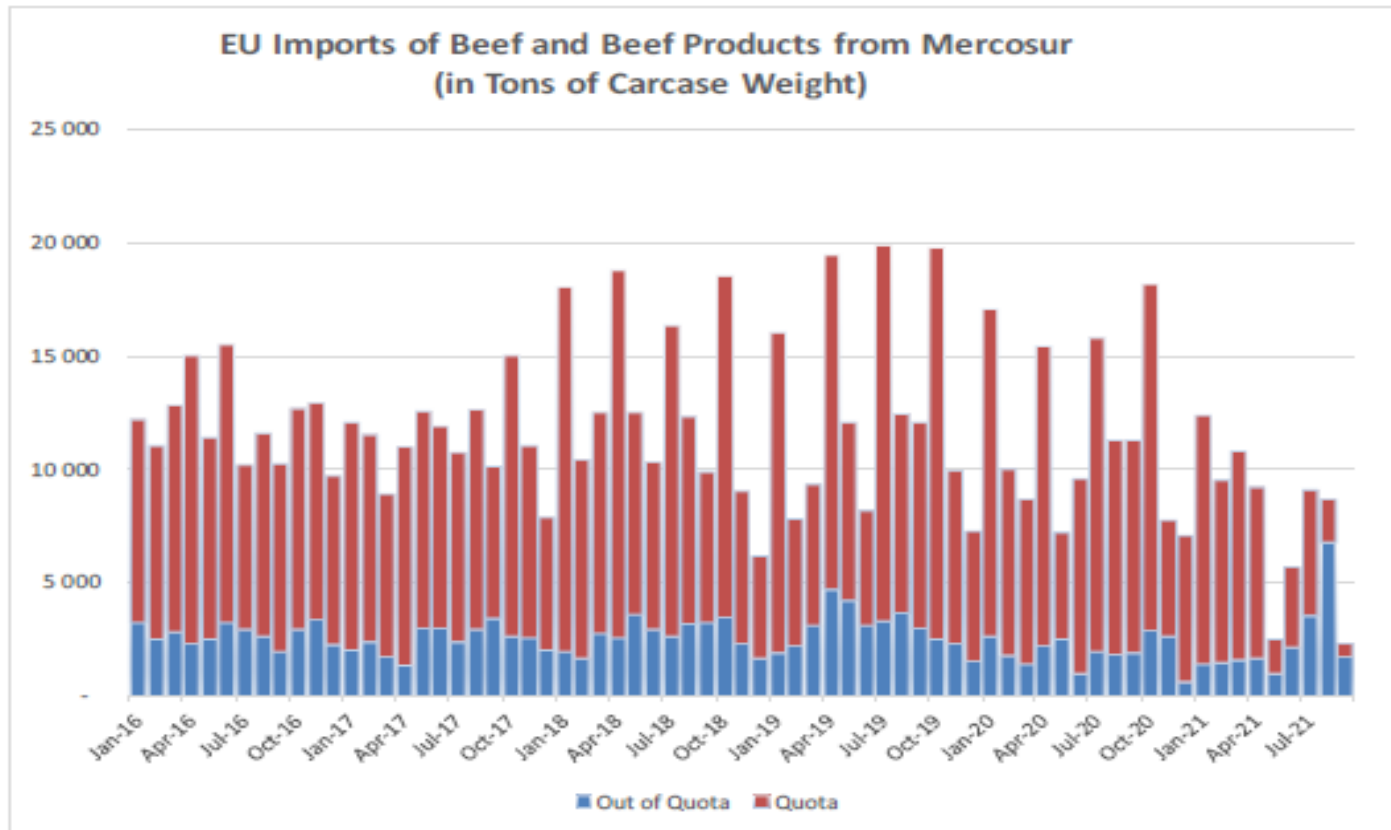
## Üçüncü Ülkelerden AB ve Birleşik Krallık Sığır ve Sığır eti Ürünleri İthalatları (Bin Euro)

### Imports in and out of TRQs



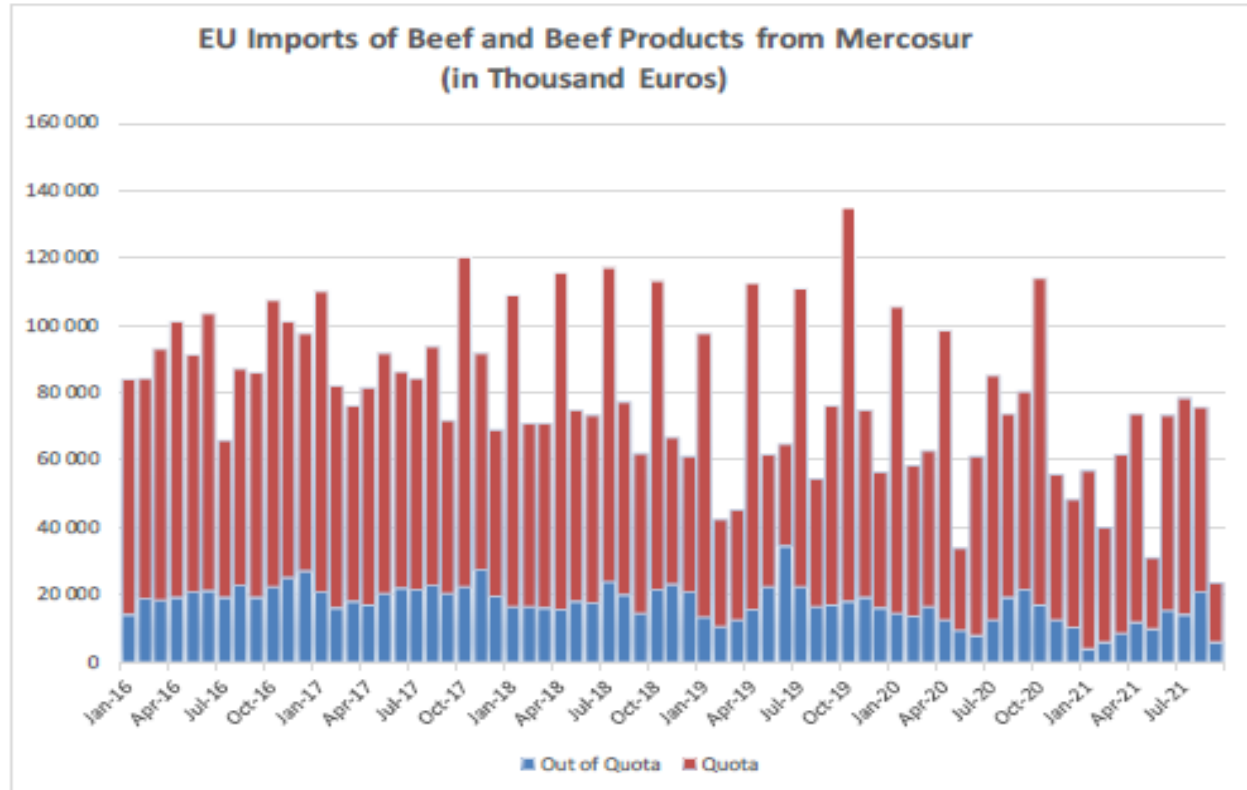
## Mercosur Ülkelerinden Sığır ve Sığır Eti Ürünleri AB ve Birleşik Krallık İthalatları (Ton, Karkas Ağırlık)

### Imports in and out of TRQs



## Mercosur Ülkelerinden Sığır ve Sığır Eti Ürünleri AB ve Birleşik Krallık İthalatları (Bin Euro)

### Imports in and out of TRQs



# YÜKSEK KALİTE SİĞİR ETİ İTHALAT KOTALARI



European  
Commission

## High Quality Beef Import Quotas

Quota erga omnes

Regulation (EU) No 481/2012

	2019-Q3	2019-Q4	2020-Q1	2020-Q2	TOTAL
Period 2019-2020	11 246	11 259	10 825	8 599	41 930
Available	11 250	11 250	11 250	11 250	45 000
Use	99.97%	100.00%	96.22%	76.44%	93.18%
Available after transfer	11 250	11 254	11 241	11 675	
	99.97%	100.00%	96.30%	73.66%	

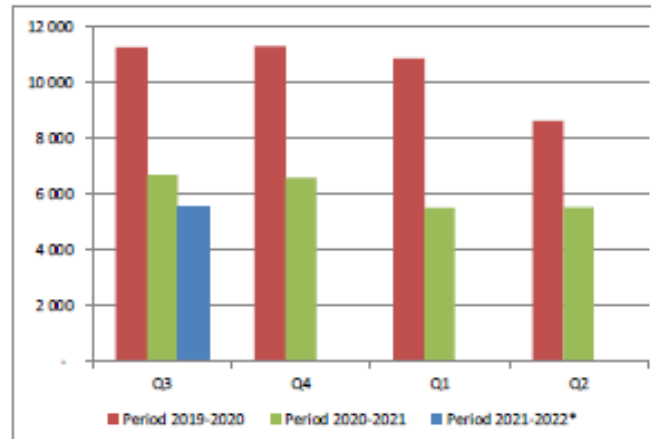
  

	2020-Q3*	2020-Q4	2021-Q1	2021-Q2	TOTAL
Period 2020-2021	6 652	6 542	5 467	5 500	24 162
Available	6 625	6 625	5 500	5 500	45 000
Use	100.00%	98.75%	99.41%	100.00%	53.69%
Available after transfer	11 250	6 598	5 583	5 533	
	59.13%	99.16%	97.93%	99.41%	

	2021-Q3*	2021-Q4	2022-Q1	2022-Q2	TOTAL
Period 2021-2022*	5 502	-	-	-	5 502
Available	5 500	5 500	4 900	4 900	45 000
Use	100.00%	0.00%	0.00%	0.00%	12.23%
Available after transfer	5 500	5 498	10 400	9 800	
	100.00%	0.00%	0.00%	0.00%	

\* Until 14.09.2021





# YÜKSEK KALİTE SİĞİR ETİ İTHALAT KOTALARI

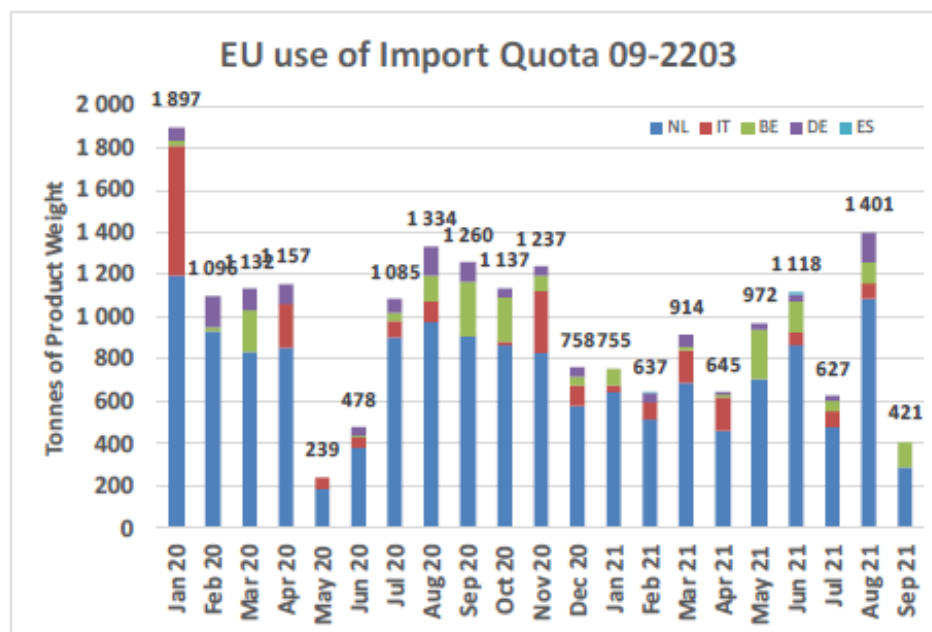


European Commission

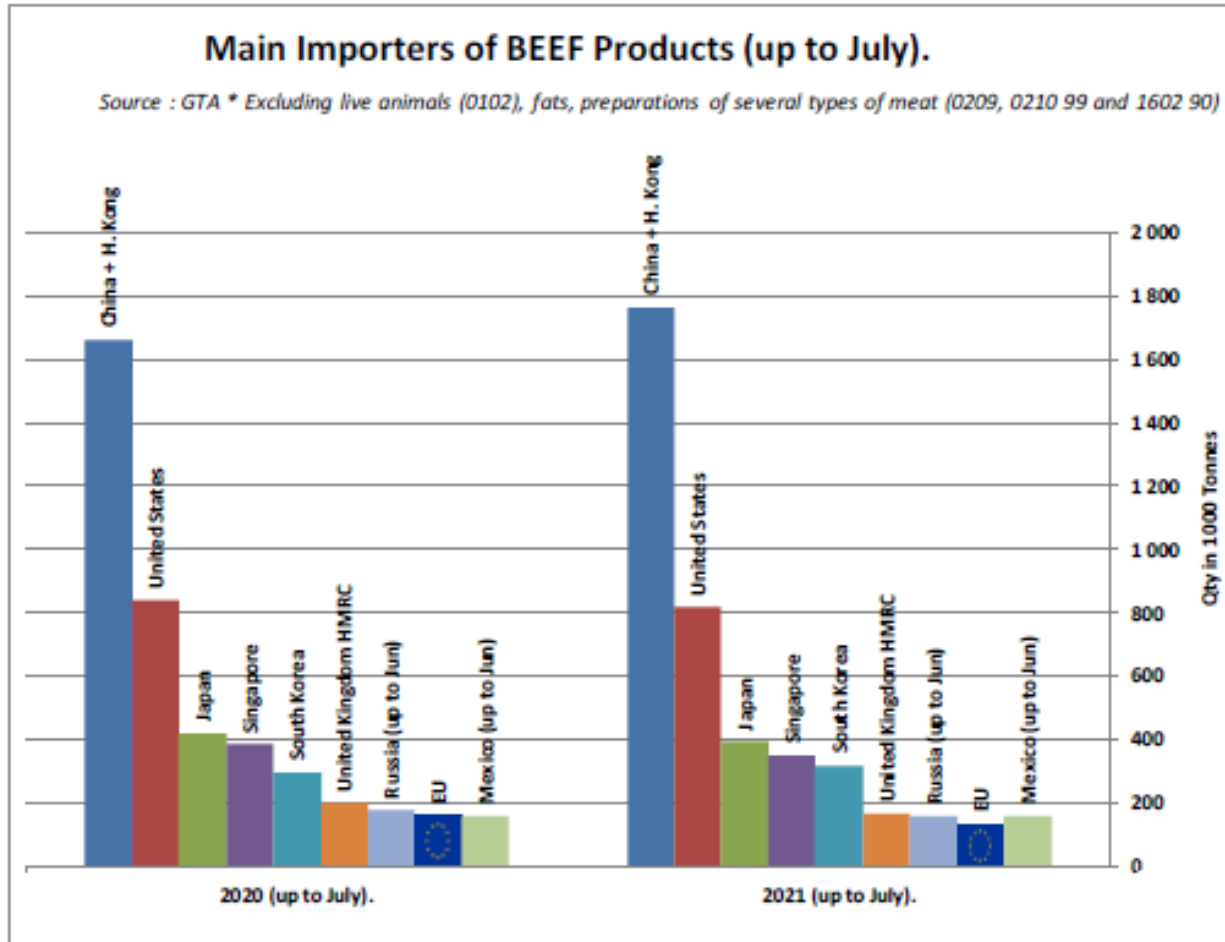
## High Quality Beef Import Quotas

Origin	GATT 2020-2021				
	2020-Q3	2020-Q4	2021-Q1	2021-Q2	Total
NL	2 785	2 274	1 848	2 026	8 933
IT	174	404	263	228	1 069
BE	417	330	96	394	1 237
DE	305	124	98	72	598
ES	-	-	2	15	17
<b>Total import within Quota</b>	<b>3 680</b>	<b>3 132</b>	<b>2 306</b>	<b>2 735</b>	<b>11 853</b>
Available	4 625	4 625	4 625	4 625	18 500
Use	79.57%	67.72%	49.87%	59.13%	64.07%
After transfer	4 625	5 570	6 118	6 944	
Use	79.57%	56.23%	37.70%	39.39%	

Origin	GATT 2021-2022				
	2021-Q3	2021-Q4	2022-Q1	2022-Q2	Total
NL	1 851				
IT	151				
BE	262				
DE	169				
ES	15				
<b>Total import within Quota</b>	<b>2 449</b>				
Available	5 750	5 750	6 350	6 350	24 200
Use	42.59%				
After transfer	5 750				
Use	42.59%				



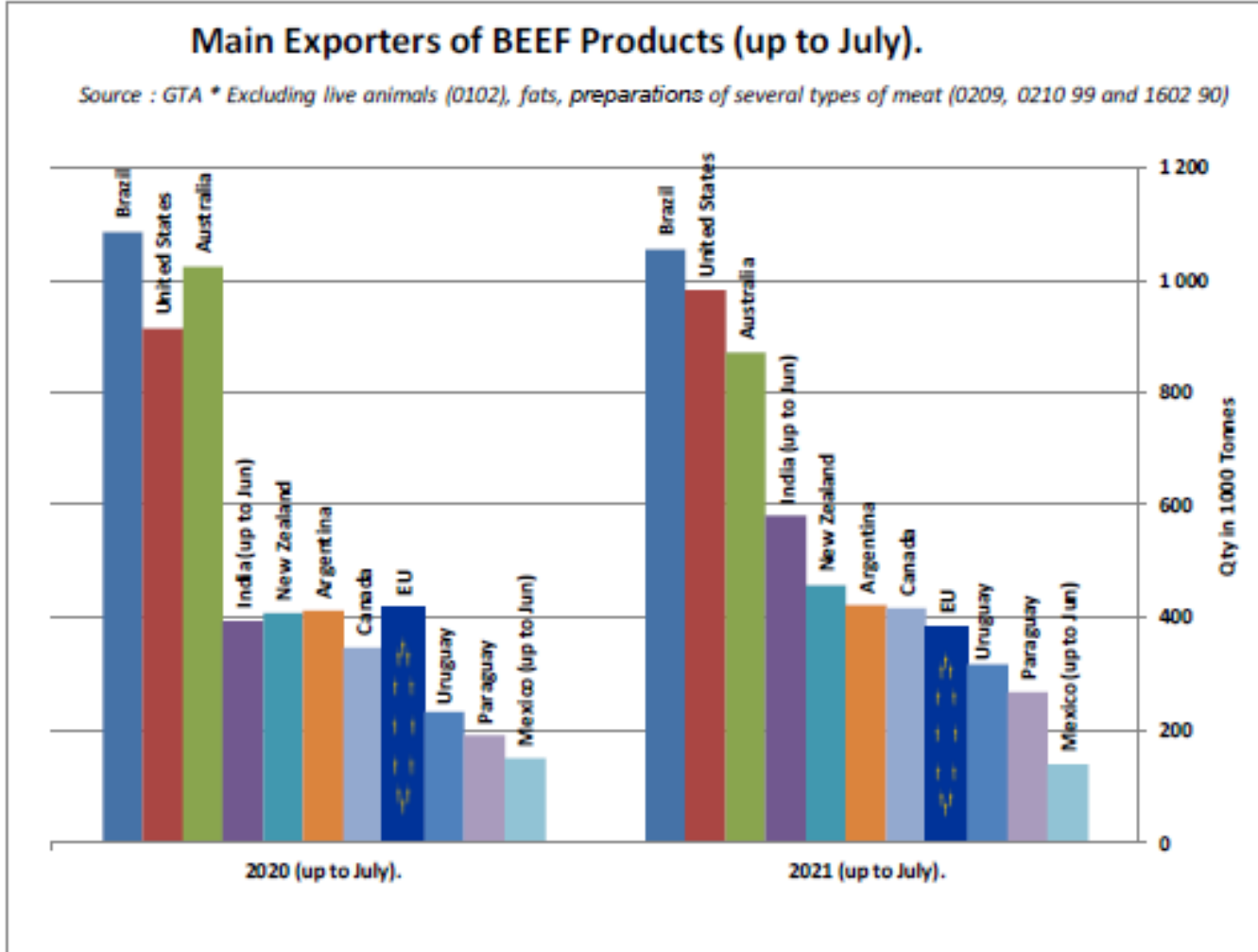
### SIĞIR ETİ ÜRÜNLERİNİN NET İTHALATÇILARI (TEMMUZ AYINA KADAR)





European  
Commission

## SIĞIR ETİ ÜRÜNLERİNİN NET İHRACATÇILARI (TEMMUZ AYINA KADAR)

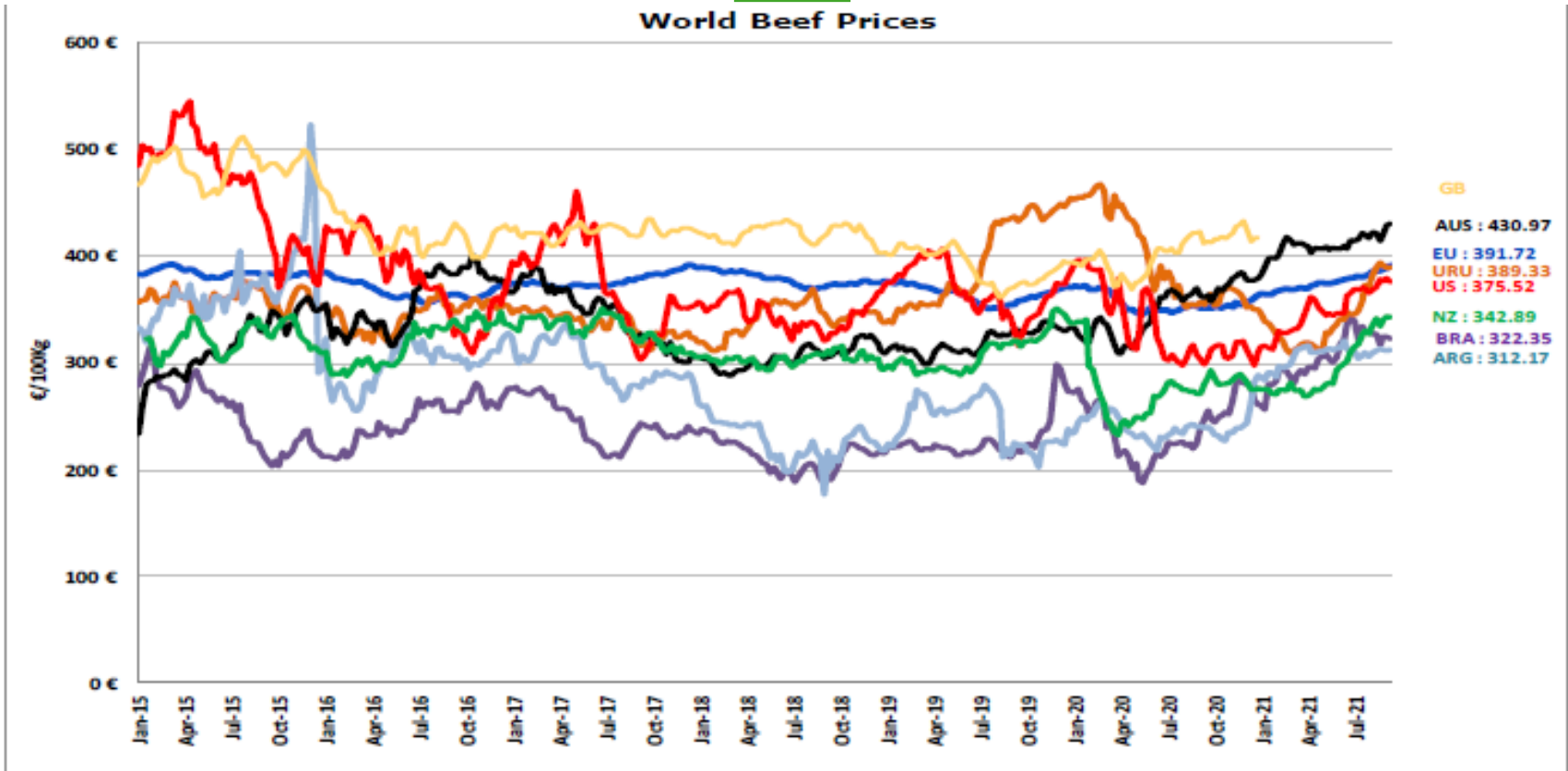


# DÜNYA SIĞIR ETİ PAZARI



# Dünya Sığır Fiyatları AB, ABD, AVUSTURYA, YENİ ZELANDA

World Beef Prices



- ECB <http://sdw.ecb.europa.eu/browse.do?node=2018794>
- US <https://www.marketnews.usda.gov/mnp/ts-home>
- AUS <http://statistics.mia.com.au/Report/RunReport/ae39d4ec-74e4-4c36-93bd-982a044d9760>
- UY <http://www.inac.gub.uy/innovaportal/v/11034/10/innova.front/indicadores-y-precios>
- ARG [http://www.abc-consorcio.com.ar/Estadisticas/detalle/117/precios\\_comparativos\\_del\\_novillo.html](http://www.abc-consorcio.com.ar/Estadisticas/detalle/117/precios_comparativos_del_novillo.html)
- BR <http://www.pecuaria.com.br/cotacoes.php>
- NZ [http://www.abc-consorcio.com.ar/Estadisticas/detalle/117/precios\\_comparativos\\_del\\_novillo.html](http://www.abc-consorcio.com.ar/Estadisticas/detalle/117/precios_comparativos_del_novillo.html)

ber





**Daha fazla bilgi için:**

**[https://ec.europa.eu/agriculture/market-observatory/meat\\_en](https://ec.europa.eu/agriculture/market-observatory/meat_en)**

**Ve Agri-FOOD Veri Portalı:**

**<http://agridata.ec.europa.eu>**