



# AB SIĞIR VE DANA ETİ PAZAR DURUMU

23 Haziran 2022

# HAYVANCILIK ARALIK ARAŞTIRMASI



European  
Commission

# AB DEĞİŞİM TOPLAM BÜYÜKBAŞ

Dec 1000 Hd	TOTAL LIVESTOCK				%Var 2021 2020	BOVINE < 1 Year				%Var 2021 2020	BOVINE 1-2 Year				%Var 2021 2020	BOVINE > 2 Year				%Var 2021 2020
	2018	2019	2020	2021		2018	2019	2020	2021		2018	2019	2020	2021		2018	2019	2020	2021	
BE	2 398	2 373	2 335	2 310	-1.1%	724	722	712	713	+0.1%	464	464	461	454	-1.4%	1 210	1 188	1 163	1 143	-1.7%
BG	542	527	589	610	+3.6%	108	100	112	121	+8.5%	59	58	71	67	-6.1%	375	369	405	422	+4.0%
CZ	1 365	1 367	1 340	1 369	+1.4%	404	411	405	408	+0.9%	304	299	295	296	+0.3%	657	657	640	655	+2.3%
DK	1 530	1 500	1 500	1 480	-1.3%	534	522	524	516	-1.5%	284	280	279	280	+0.4%	712	698	697	684	-1.9%
DE	11 949	11 640	11 302	11 040	-2.3%	3 584	3 485	3 405	3 355	-1.5%	2 829	2 751	2 639	2 569	-2.7%	5 536	5 403	5 258	5 116	-2.7%
EE	252	254	253	251	-1.0%	71	71	72	69	-4.7%	49	50	49	51	+3.0%	132	133	132	131	-0.6%
IE	6 593	6 560	6 529	6 549	+1.8%	2 000	1 962	2 057	2 108	+2.5%	1 790	1 741	1 708	1 775	+3.9%	2 804	2 856	2 765	2 766	+0.1%
EL	542	530	539	566	+5.0%	141	157	154	150	-2.6%	96	91	90	128	+42.2%	305	283	295	288	-2.4%
ES	6 511	6 600	6 636	6 576	-0.9%	2 494	2 529	2 541	2 319	-8.7%	847	857	853	1 016	+19.2%	3 170	3 214	3 242	3 240	-0.1%
FR	18 613	18 173	17 816	17 330	-2.7%	5 304	5 125	5 119	4 945	-3.4%	3 180	3 183	3 063	3 021	-1.4%	10 129	9 865	9 634	9 364	-2.8%
HR	414	420	423	428	+1.2%	153	151	146	156	+6.8%	96	107	111	107	-3.6%	165	162	166	165	-0.6%
IT	6 311	6 377	6 400	6 280	-1.9%	1 703	1 759	1 774	1 722	-2.9%	1 538	1 588	1 596	1 562	-2.1%	3 071	3 030	3 031	2 997	-1.1%
CY	71	74	83	88	+5.4%	24	25	27	28	+4.1%	12	12	14	15	+6.2%	35	38	42	45	+6.0%
LV	395	395	399	393	-1.4%	105	108	112	107	-4.3%	65	65	65	68	+3.8%	225	222	222	219	-1.4%
LT	654	635	630	629	-0.1%	173	167	169	166	-1.7%	133	132	129	135	+4.7%	348	336	332	329	-1.2%
LU	194	192	191	187	-1.8%	50	50	50	49	-2.5%	42	41	41	40	-0.6%	103	101	100	98	-2.0%
HU	885	909	933	902	-3.3%	251	258	266	268	+0.6%	182	193	195	152	-22.2%	451	458	472	483	+2.4%
MT	14	14	14	14	-1.9%	4	4	4	4	-2.1%	3	3	3	3	+3.4%	7	7	7	7	-4.0%
NL	3 690	3 721	3 691	3 705	+0.4%	1 510	1 528	1 510	1 519	+0.6%	465	440	465	482	+3.7%	1 715	1 752	1 716	1 704	-0.7%
AT	1 913	1 880	1 855	1 870	+0.8%	618	605	599	611	+2.1%	428	426	414	421	+1.6%	866	848	842	838	-0.5%
PL	6 183	6 262	6 279	6 372	+1.5%	1 709	1 748	1 735	1 800	+3.8%	1 732	1 757	1 800	1 909	+6.1%	2 742	2 758	2 744	2 662	-3.0%
PT	1 632	1 675	1 691	1 641	-3.0%	497	531	526	528	+0.4%	236	240	257	214	-16.6%	899	903	909	899	-1.1%
RO	1 977	1 923	1 911	1 833	-4.1%	418	400	376	369	-4.5%	241	223	233	220	-5.3%	1 318	1 300	1 302	1 253	-3.8%
SI	477	483	486	482	-0.7%	153	151	153	156	+2.2%	128	136	133	131	-1.9%	196	197	199	195	-2.0%
SK	439	432	442	435	-1.7%	123	122	126	125	-1.1%	83	83	87	82	-5.4%	232	227	229	228	-0.6%
FI	859	841	835	830	-0.6%	296	287	292	287	-1.6%	210	205	199	205	+2.9%	354	349	344	338	-1.9%
SE	1 435	1 405	1 391	1 390	-0.1%	468	453	464	460	-0.9%	343	339	323	334	+3.3%	625	613	603	596	-1.2%
EU	77 840	77 161	76 494	75 660	-1.1%	23 619	23 431	23 427	23 048	-1.6%	15 838	15 764	15 574	15 739	+1.1%	38 382	37 966	37 494	36 864	-1.7%
UK	9 610	9 459				2 869	2 860				2 405	2 335				4 336	4 264			

Source : E-Stat Newcronos

EU %Var is calculated considering only countries available in 2020 AND 2021

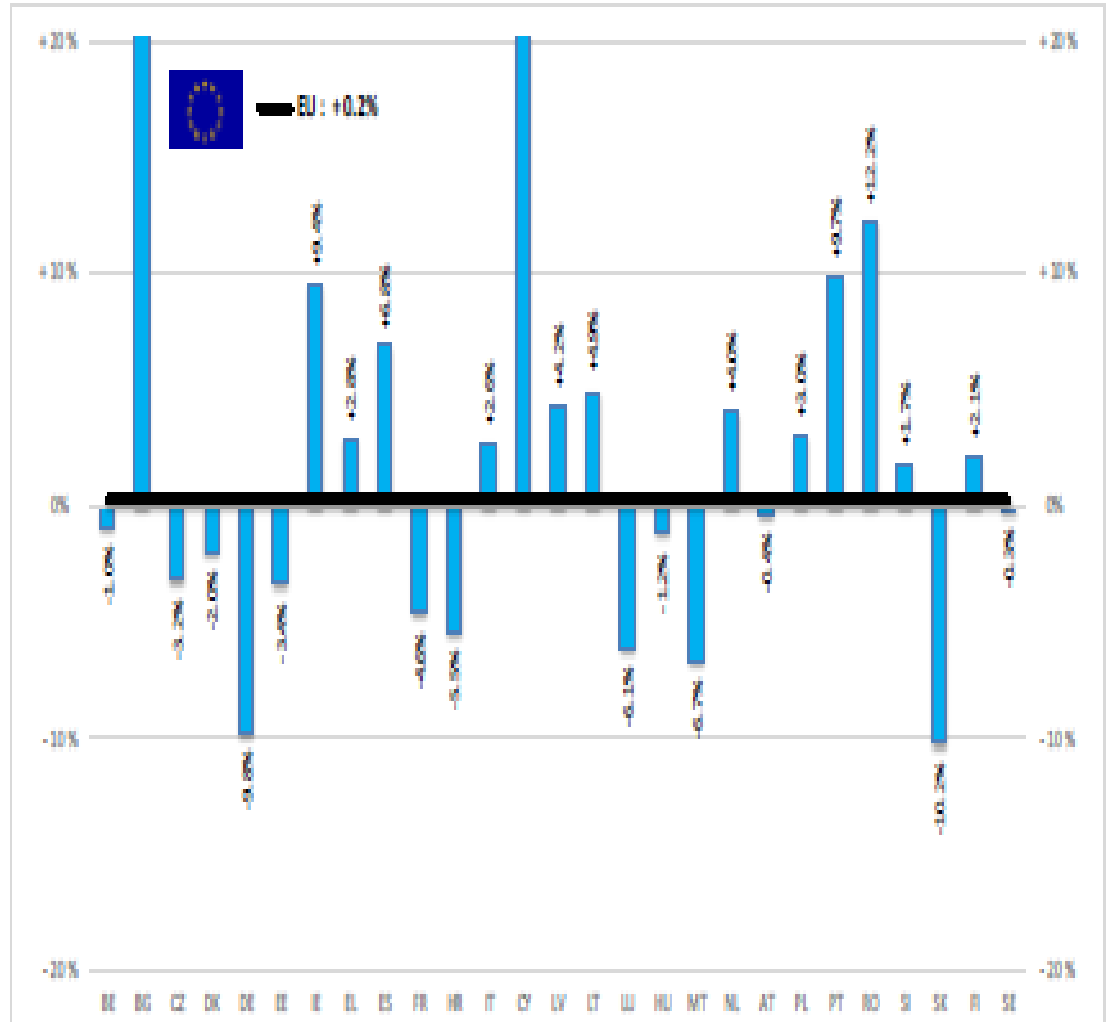


European  
Commission

Dec 1000 Hd	TOTAL COWS				%Var 2021 2020	DAIRY COWS				%Var 2021 2020	OTHER COWS				%Var 2021 2020
	2018	2019	2020	2021		2018	2019	2020	2021		2018	2019	2020	2021	
BE	942	939	921	917	-0.5%	529	538	538	537	-0.1%	412	401	383	379	-1.0%
BG	351	343	382	396	+3.8%	244	227	242	230	-4.9%	107	116	140	166	+18.8%
CZ	570	570	560	574	+2.6%	359	361	357	362	+1.5%	212	209	203	212	+4.4%
DK	655	645	646	635	-1.7%	570	563	565	559	-1.1%	85	83	80	76	-5.0%
DE	4 751	4 651	4 548	4 445	-2.3%	4 101	4 012	3 921	3 833	-2.3%	650	640	626	612	-2.3%
EE	116	116	116	115	-0.9%	85	85	84	84	-0.8%	30	31	32	31	-0.9%
IE	2 351	2 383	2 379	2 395	+0.7%	1 369	1 428	1 456	1 505	+3.4%	982	957	923	890	-3.6%
EL	289	242	258	178	-31.0%	95	86	86	80	-7.0%	174	156	171	98	-42.7%
ES	2 819	2 881	2 909	2 900	-0.3%	817	813	811	809	-0.2%	2 002	2 068	2 099	2 091	-0.4%
FR	7 650	7 505	7 379	7 204	-2.4%	3 554	3 491	3 406	3 322	-2.5%	4 095	4 014	3 974	3 882	-2.3%
HR	146	142	144	142	-1.4%	136	130	110	102	-7.3%	10	12	34	40	+17.6%
IT	2 263	2 237	2 243	2 193	-2.2%	1 939	1 876	1 871	1 844	-1.4%	324	362	372	349	-6.2%
CY	32	35	40	42	+6.4%	32	35	39	42	+6.5%	0	0	0	0	idem
LV	196	195	196	193	-1.7%	144	138	136	131	-3.6%	52	56	60	61	+2.4%
LT	312	299	295	290	-1.5%	256	241	233	225	-3.3%	56	58	62	65	+5.2%
LU	78	79	78	78	-0.6%	53	54	54	55	+0.6%	25	25	24	23	-3.4%
HU	403	412	414	420	+1.5%	239	243	247	281	+13.9%	164	169	167	139	-16.7%
MT	6	6	6	6	-4.1%	6	6	6	6	-3.1%	0	0	0	0	-26.7%
NL	1 594	1 633	1 612	1 599	-0.8%	1 552	1 590	1 569	1 554	-1.0%	42	43	43	45	+4.7%
AT	733	720	715	712	-0.5%	533	524	525	526	+0.3%	200	195	191	186	-2.6%
PL	2 417	2 406	2 391	2 289	-4.3%	2 214	2 167	2 126	2 035	-4.3%	203	239	266	254	-4.4%
PT	723	731	739	739	-0.1%	235	234	233	230	-1.2%	487	497	507	509	+0.4%
RO	1 173	1 166	1 165	1 120	-3.9%	1 158	1 139	1 140	1 097	-3.8%	15	27	25	23	-7.7%
SI	166	166	167	165	-0.9%	103	101	99	101	+1.7%	64	65	68	65	-4.8%
SK	195	192	192	192	+0.0%	128	126	122	120	-1.6%	67	66	69	71	+2.8%
FI	322	318	316	311	-1.9%	264	259	256	249	-2.8%	58	59	61	62	+2.0%
SE	514	500	499	497	-0.3%	313	301	304	300	-1.6%	201	198	194	197	+1.6%
EU	31 749	31 513	31 309	30 745	-1.8%	21 029	20 766	20 536	20 219	-1.5%	10 719	10 748	10 771	10 526	-2.3%
UK	3 382	3 337				1 879	1 867				1 503	1 470			

BAŞ	HEADS	Jan-Mar 22/21
	EU	
BOĞA	Bull	-3.0%
ÖKÜZ	Bullock	+5.0%
İNEK	Cow	+0.1%
DÜVE	Heifer	+2.2%
BUZAĞI	Calve	+0.6%
GENÇ SİĞİR	Young cattle	+4.4%
Büyükbaş Hayvan Eti	Meat of bovine animals	+0.2%

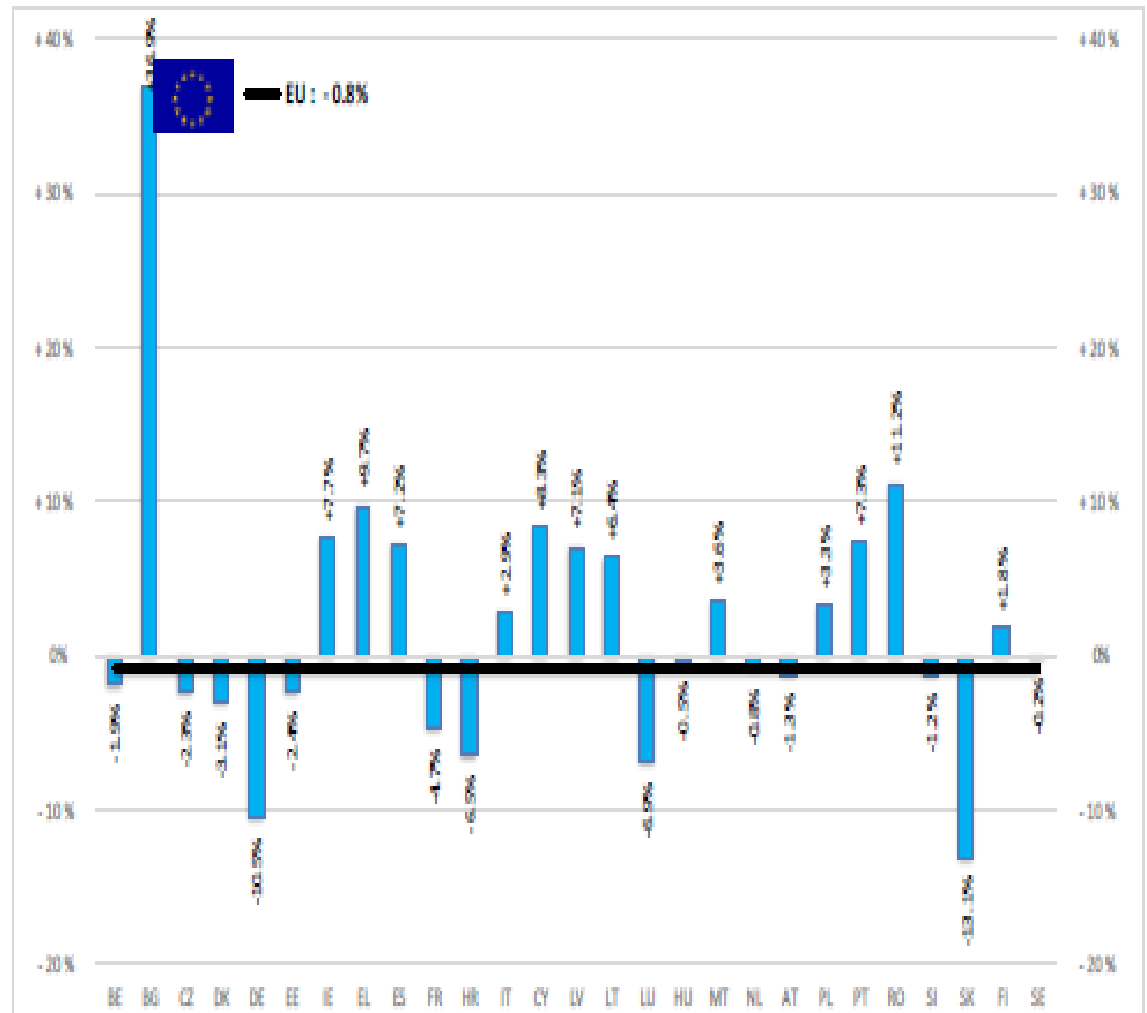
Estimates for last month of period :



Source : EStat - Newcronis

TON	TONNES	Jan-Mar 22/21
		EU
BOĞA	Bull	-3.2%
ÖKÜZ	Bullock	+4.0%
İNEK	Cow	-1.3%
DÜVE	Heifer	+1.0%
BUZAĞI	Calve	-0.7%
GENÇ SİĞİR	Young cattle	+6.3%
Büyükbaş Hayvan Et	Meat of bovine animals	-0.8%

Estimates for last month of period :

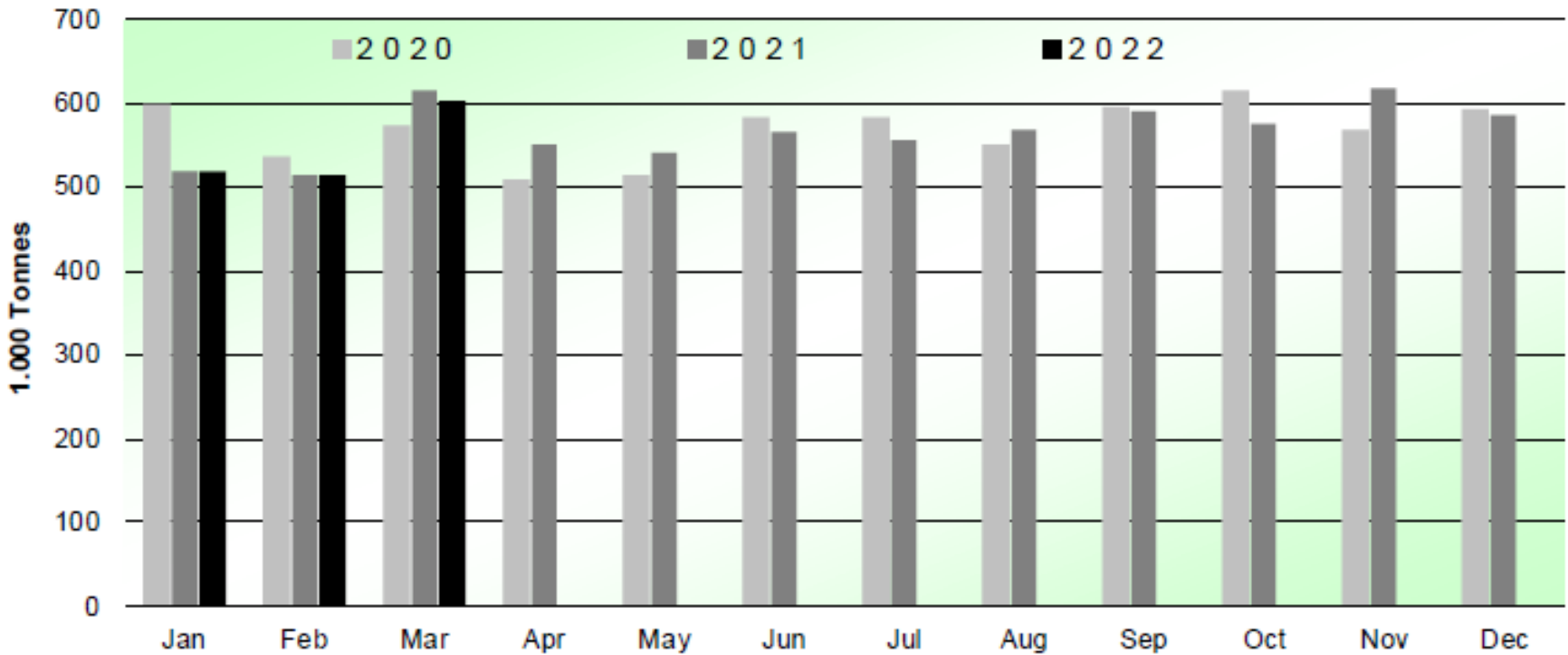


Source : EStat - Newcronos



# SIĞIR VE DANA ETİ ÜRETİMİ (AB Kesimler – Ton)

## Beef & Veal Production (EU Slaughtering) - Tonnes



Source : EStat-Newcronos



EU Prices week		23	Evolution since last week	Evolution since last month	Evolution since last year
<b>Carcasse</b>	Average A/C/Z-R3	486.2	- 0.6%	- 2.3%	+ 28.4%
	Young Bovines (Z)	475.9	+ 0.0%	- 0.0%	+ 30.0%
	Young Bulls (A)	479.1	- 0.8%	- 4.2%	+ 27.3%
	Steers (C)	537.5	- 1.0%	+ 4.3%	+ 30.2%
	Cows (D)	449.2	- 0.9%	- 3.2%	+ 41.9%
	Heifers (E)	501.9	+ 0.6%	- 1.3%	+ 27.9%
	Calves slaughtered <8M	577.3	- 1.8%	- 2.2%	+ 21.4%
<b>Live Animals</b>	Male Calves Dairy Type	140.0	+ 4.9%	+ 11.2%	+ 28.9%
	Male Calves Beef Type	254.6	- 2.9%	+ 2.2%	+ 10.8%
	Young Store Cattle	3.05	- 3.1%	- 2.4%	+ 14.1%
	Yearling Male Store Cattle	3.71	+ 1.7%	- 3.5%	+ 13.5%
	Yearling Female Store Cattle	3.00	- 0.9%	+ 0.1%	+ 17.3%

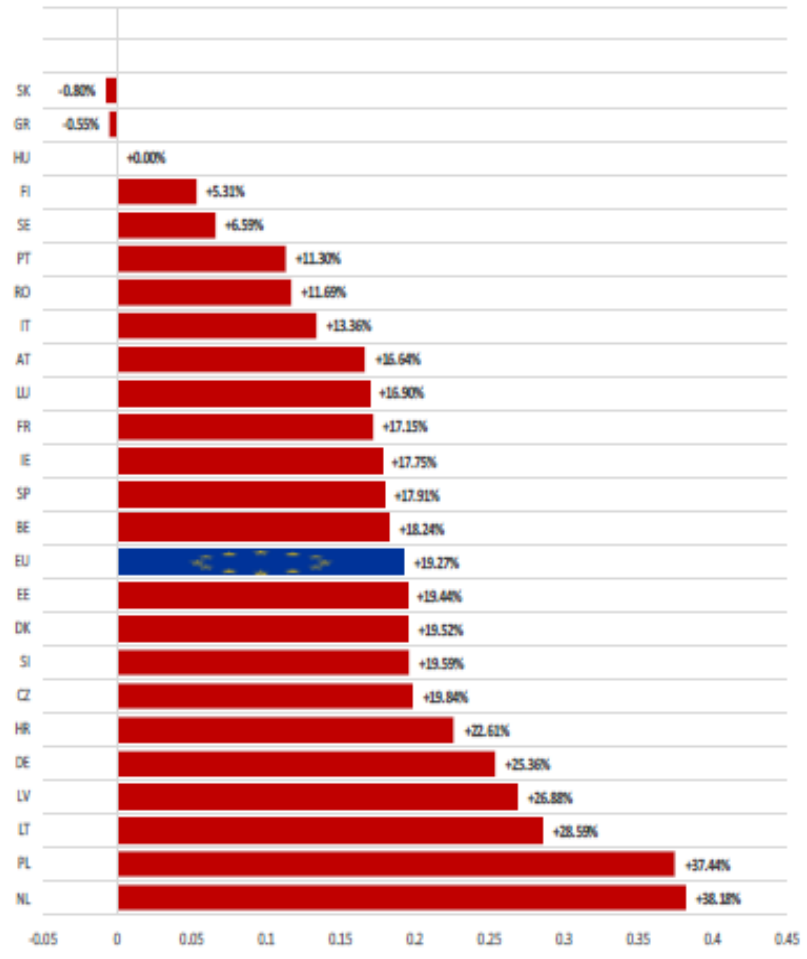
Sources : MSs notifications (Regulation (EU) 1182/2017 and 1184/2017)

# KARKAS FİYATLARI

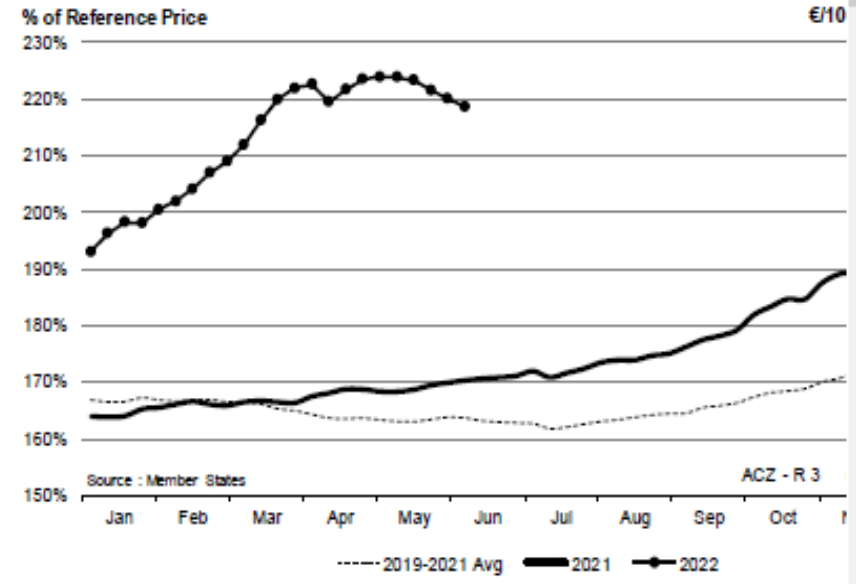
# AB DEĞİŞİM A/C/Z. R3



EU ACZ R3 Price Comparison between average monthly price June 2021 - May 2022 compared to June 2020 - May 2021



ACZ - R 3 > Wk.23-2022



Price in week 23 : 486.27  
 % change y/y : + 28.45%  
 % Ref. Price in wk 0 : 218.6%

Average price in May 2022  
 % change y/y



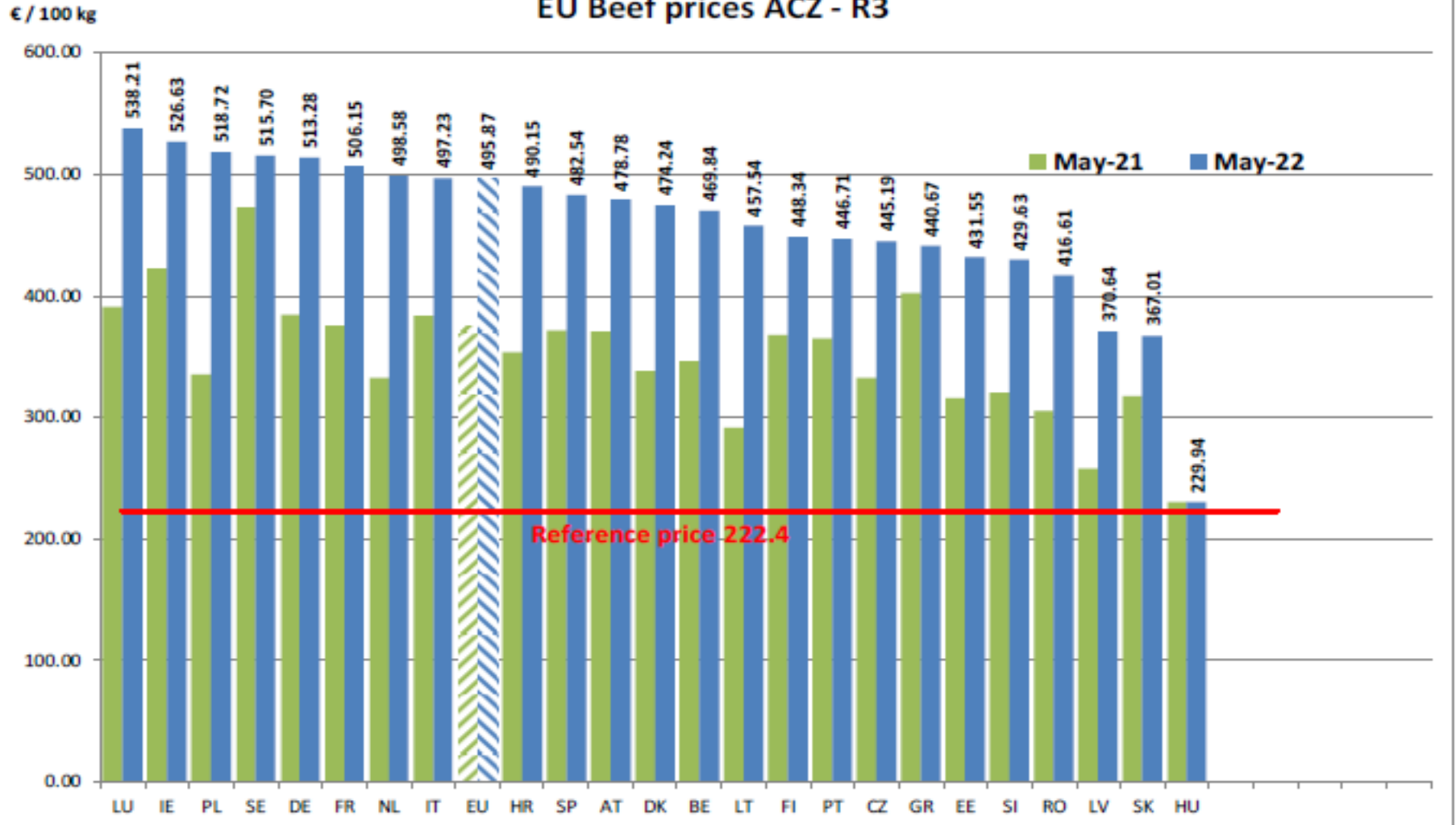


# KARKAS FİYATLARI

AB DEĞİŞİM  
A/C/Z. R3

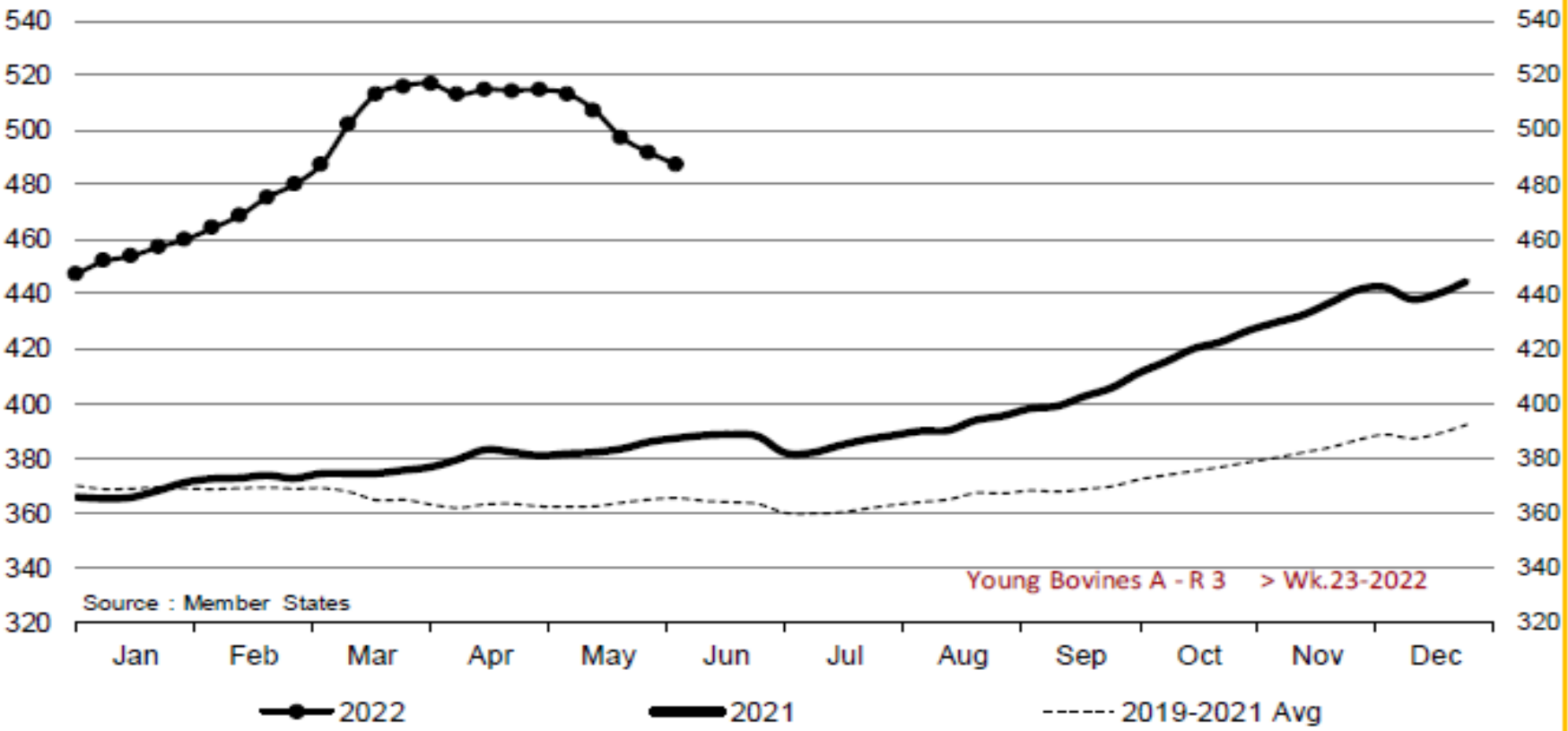


EU Beef prices ACZ - R3





Young Bovines A - R 3 > Wk.23-2022

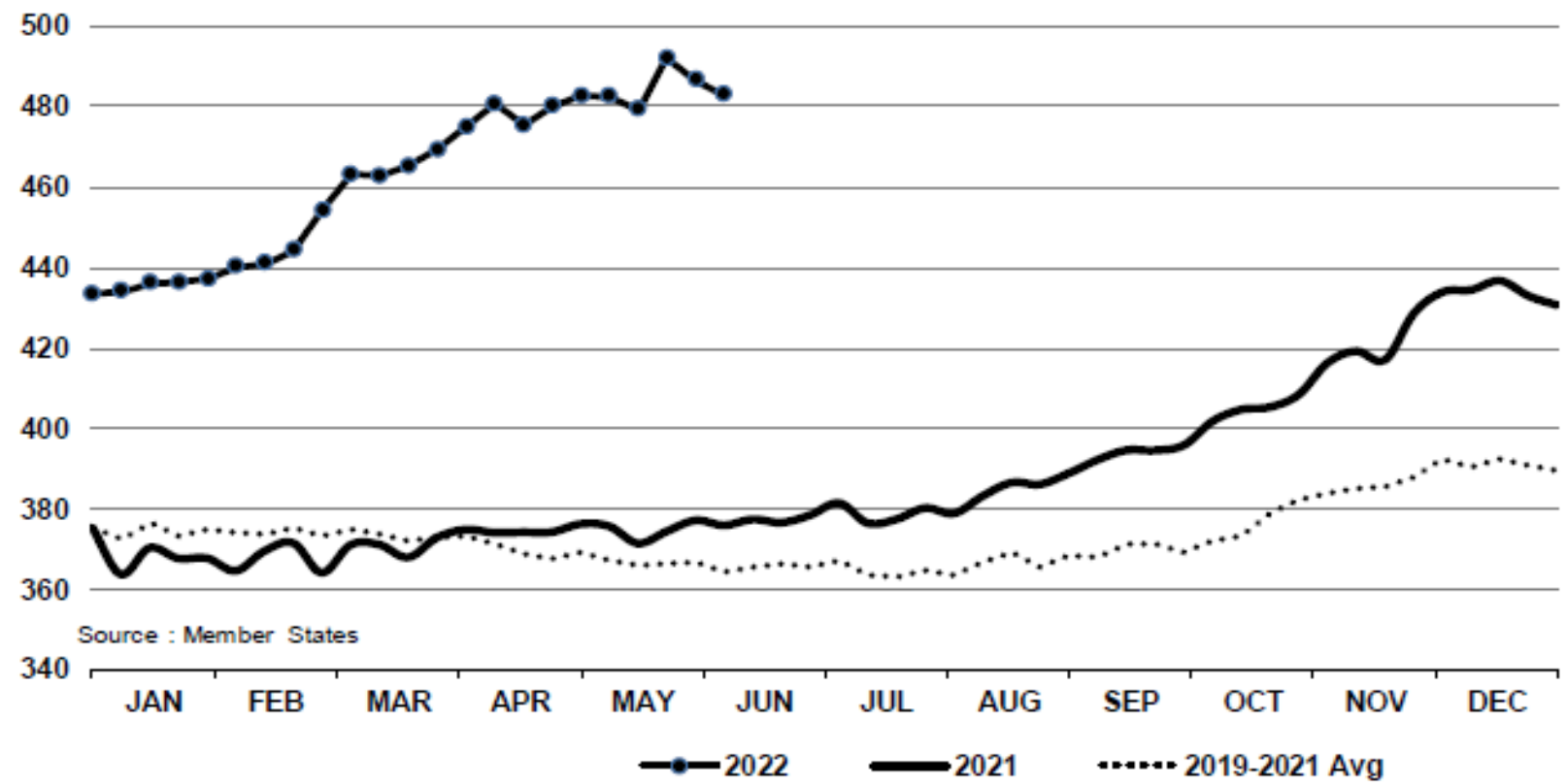


Price in week 23 : **487.40**      Average price in May 2022 : **507.10**  
% change y/y : **+ 25.8%**      % change y/y : **+ 32.7%**

# KARKAS FİYATLARI



In € / 100 kg      Young Bovines 8-12m Z - R 3      > Wk.23-2022

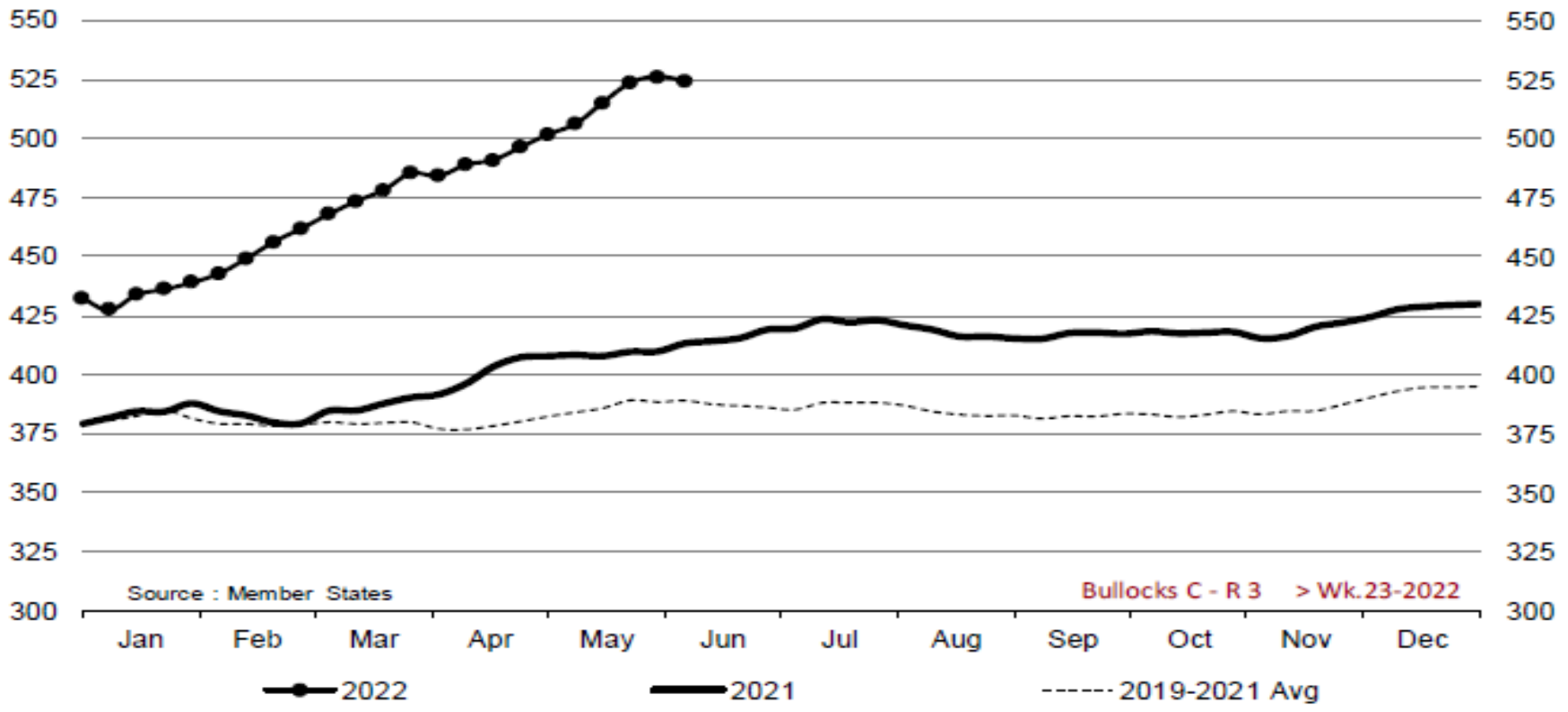


Source : Member States

Price in week 23 : **482.96**      12/05/2022      Average price in May 2022 : **484.13**  
 % change y/y : **+ 28.5%**      % change y/y : **+ 29.3%**



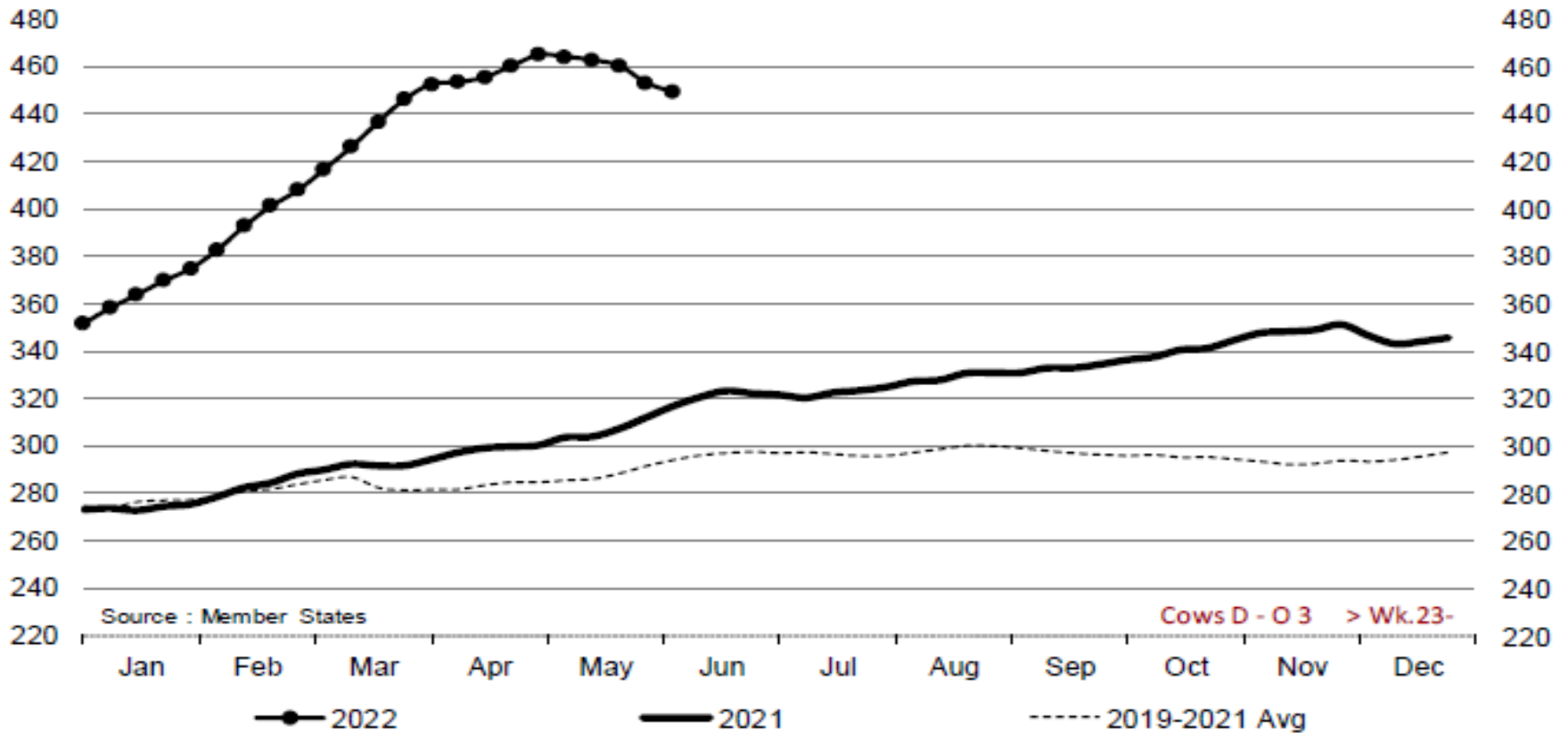
## Bullocks C - R 3 > Wk.23-2022



Price in week 23 : **524.26**  
% change y/y : **+ 26.9%**

Average price in May 2022 : **512.14**  
% change y/y : **+ 25.4%**

### Cows D - O 3 > Wk.23-2022

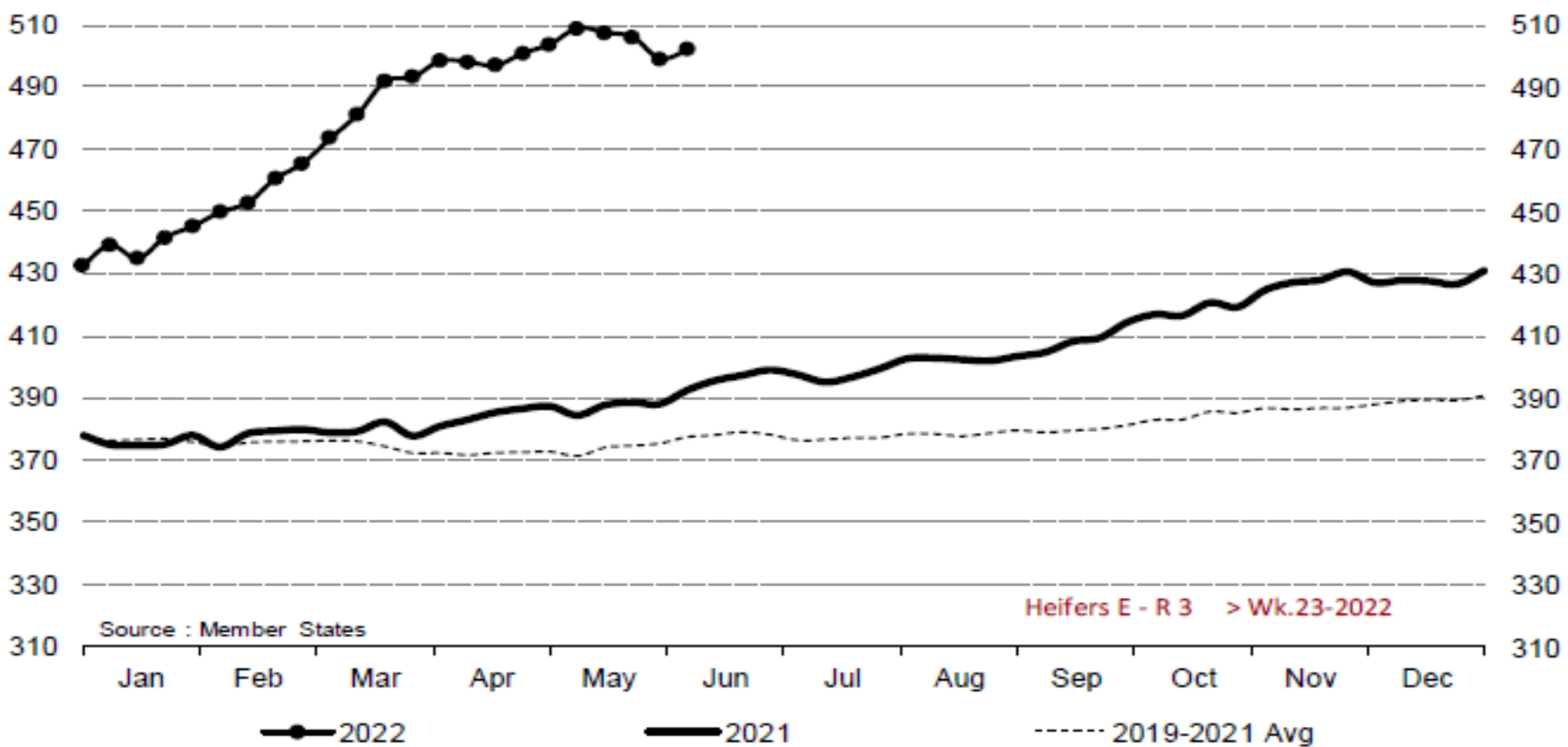


Price in week 23 : **449.26**  
% change y/y : **+ 41.9%**

Average price in May 2022 : **462.31**  
% change y/y : **+ 52.3%**



## Heifers E - R 3 > Wk.23-2022

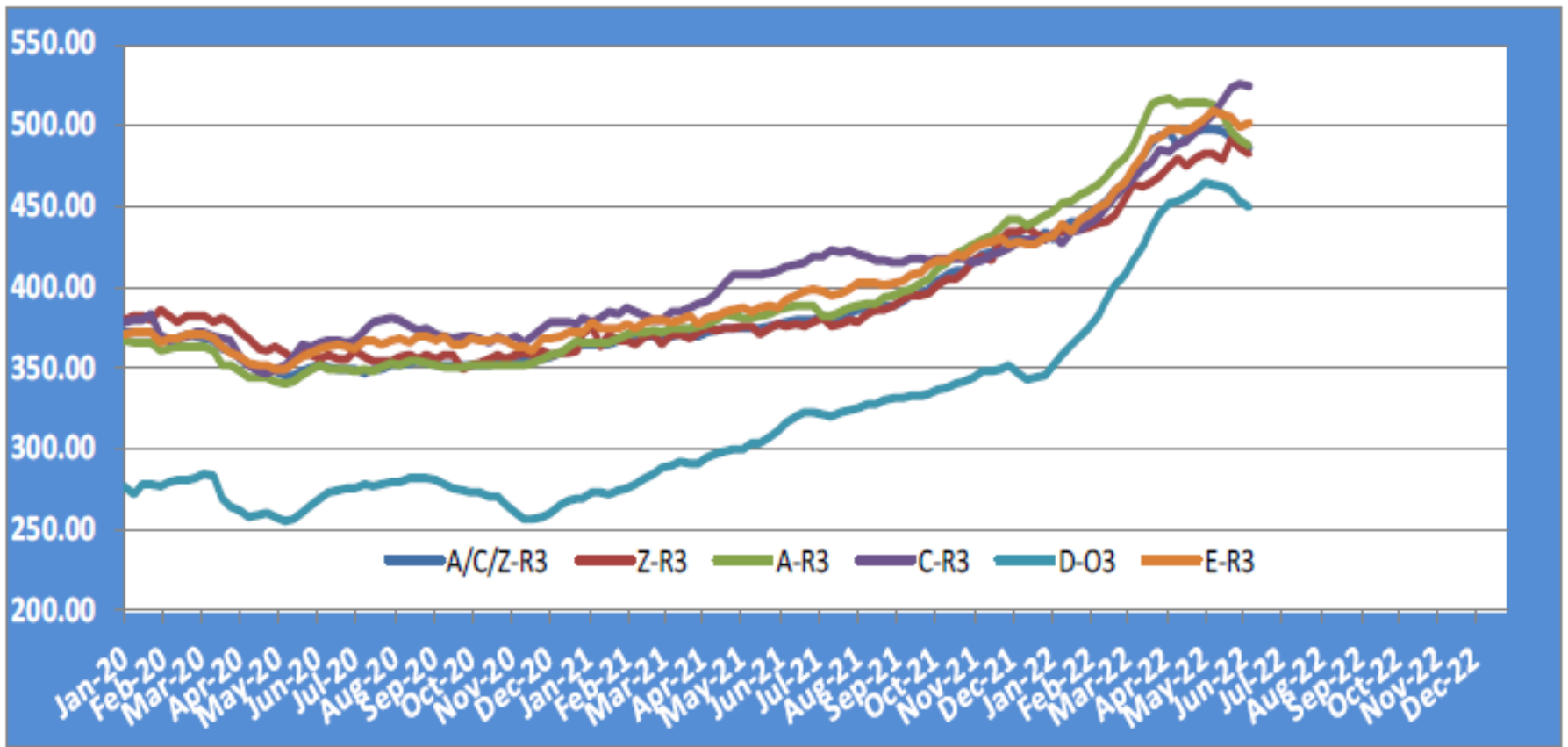


Price in week 23 : **501.92**  
% change y/y : **+ 27.9%**

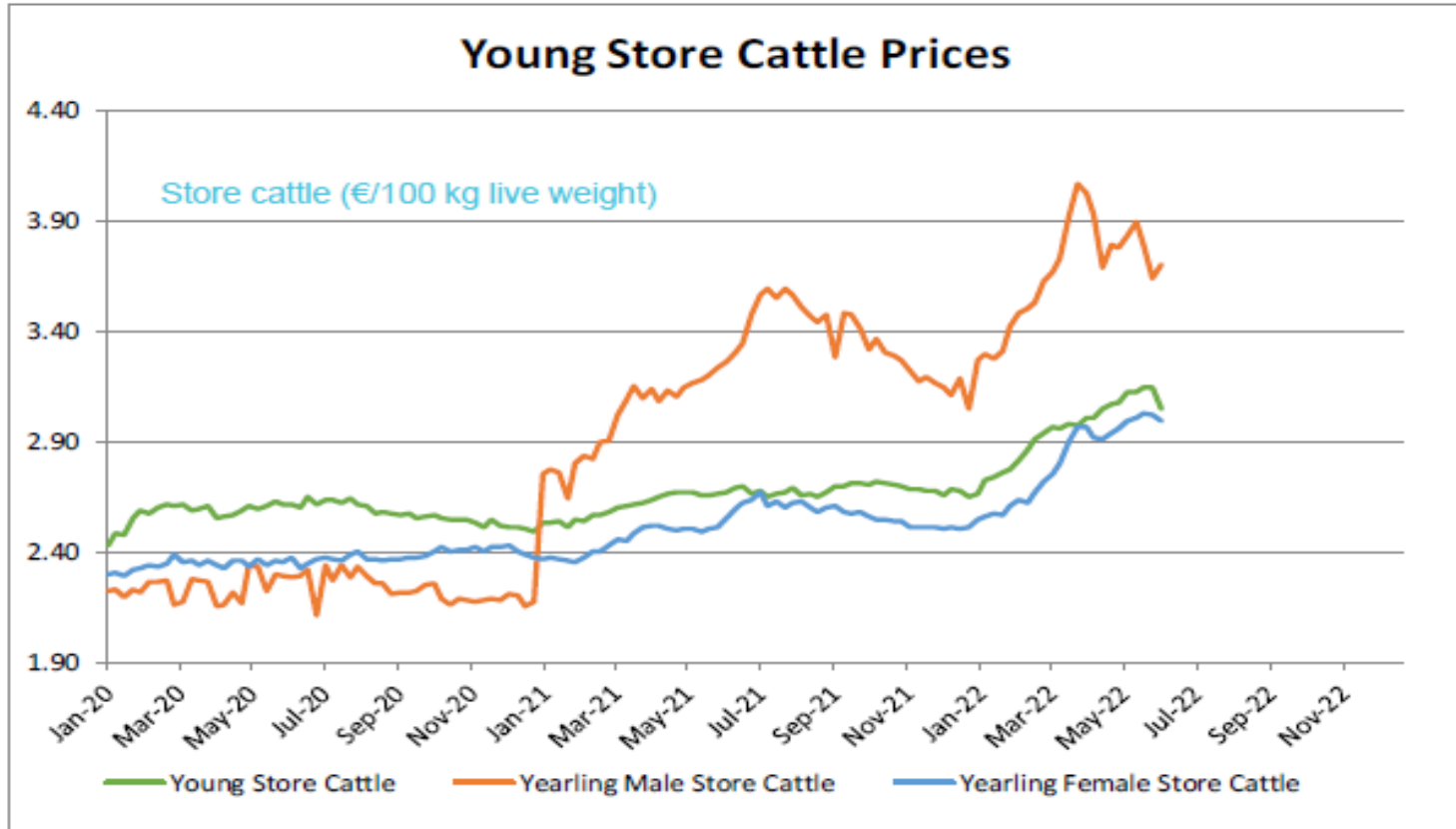
Average price in May 2022 : **505.77**  
% change y/y : **+ 30.7%**

# KARKAS FİYATLARI

# AB TÜM KATEGORİLERE GLOBAL BAKIŞ



## Besilik siğır (€ / 100 kg canlı ağırlık)

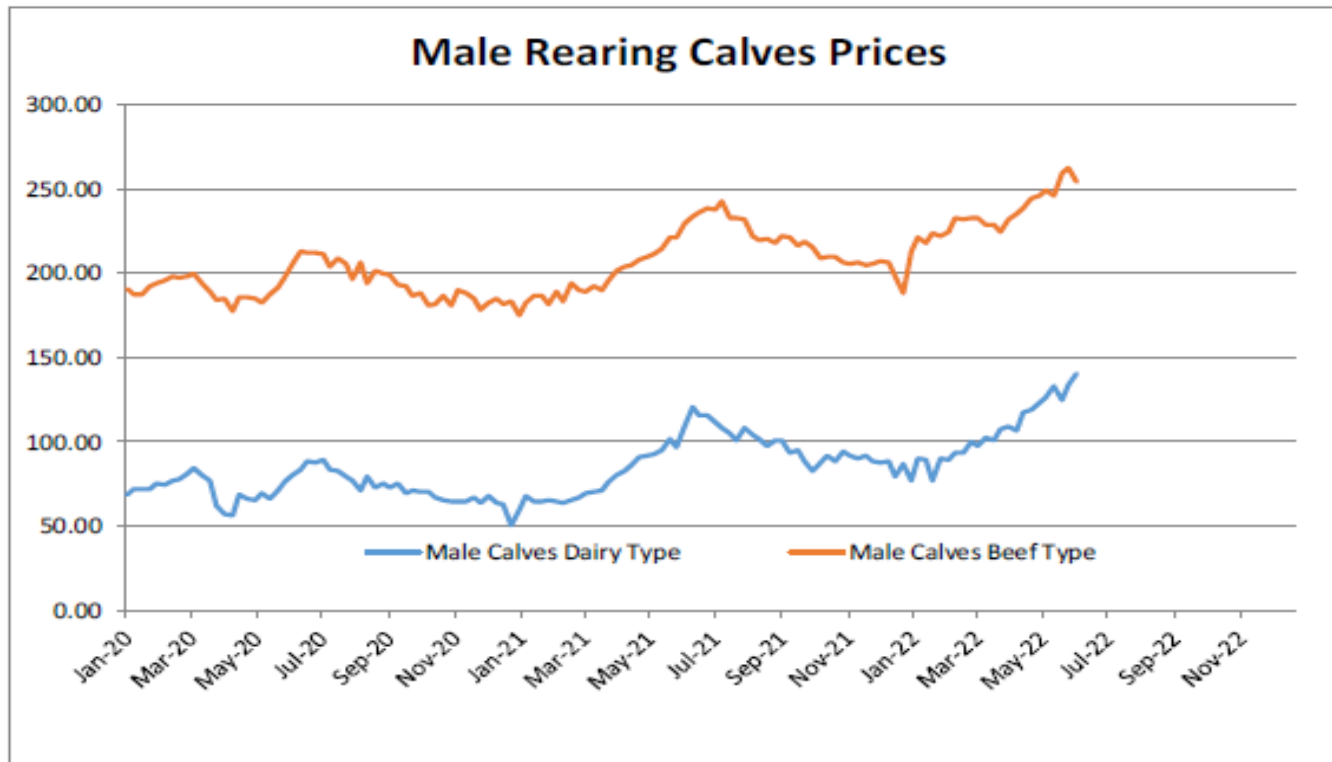


Young Store Cattle Price in	Week 23	3.05	Yearling Male Store Cattle Price	3.71
	Change y/y	+14.13%	Change y/y	+13.50%
Yearling Female Store Cattle Price		3.00		
	Change y/y	+17.30%		



### 8 gün ve 4 haftalık erkek buzağlar (€/baş)

Male calves aged between 8 days and 4 weeks (€/head)



Male Rearing Calves Beef type

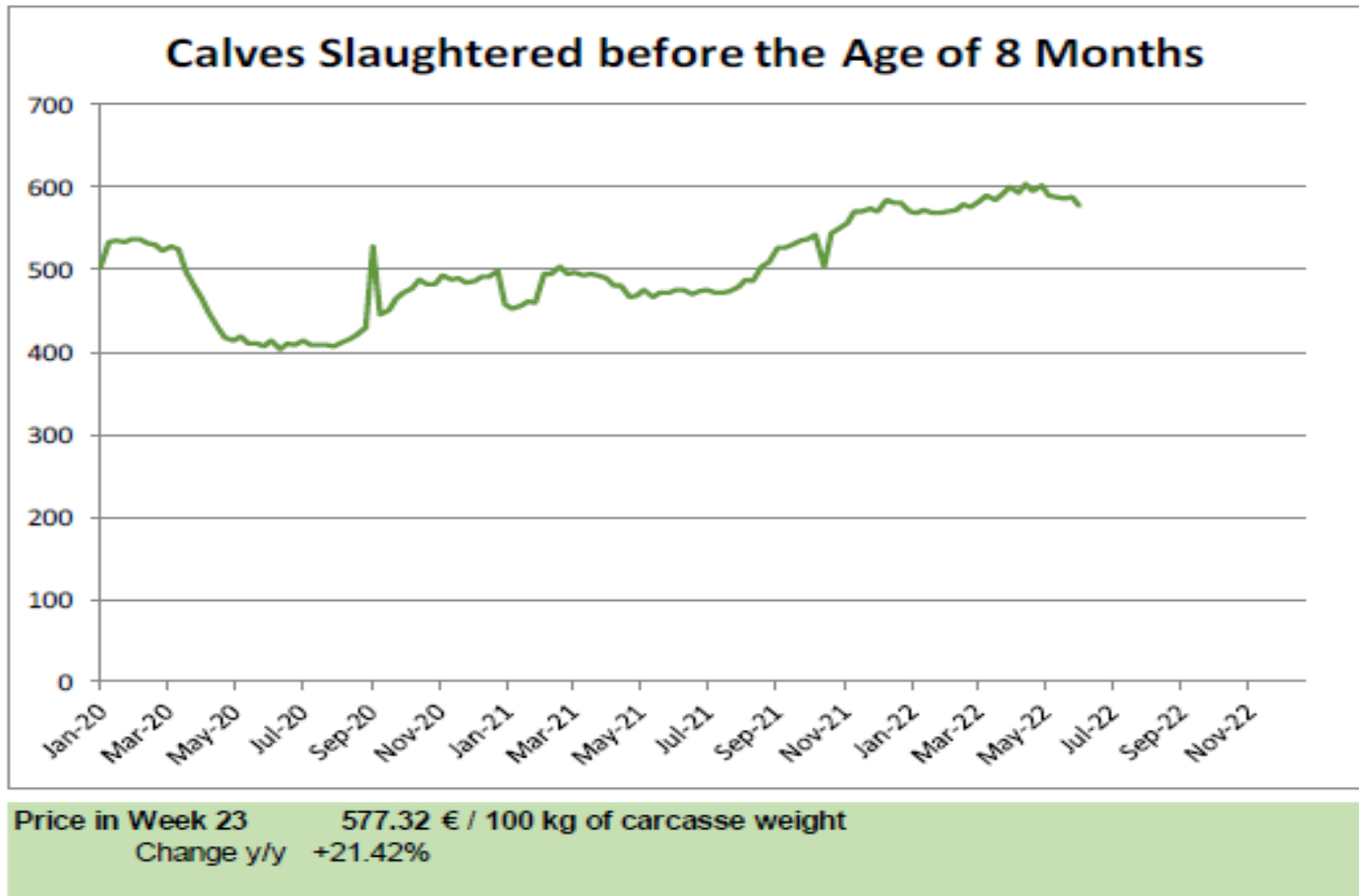
Price in Week 23 254.66  
Change y/y +10.78%

Male Rearing Calves Dairy type

Price in Week 23 140.00  
Change y/y +28.87%

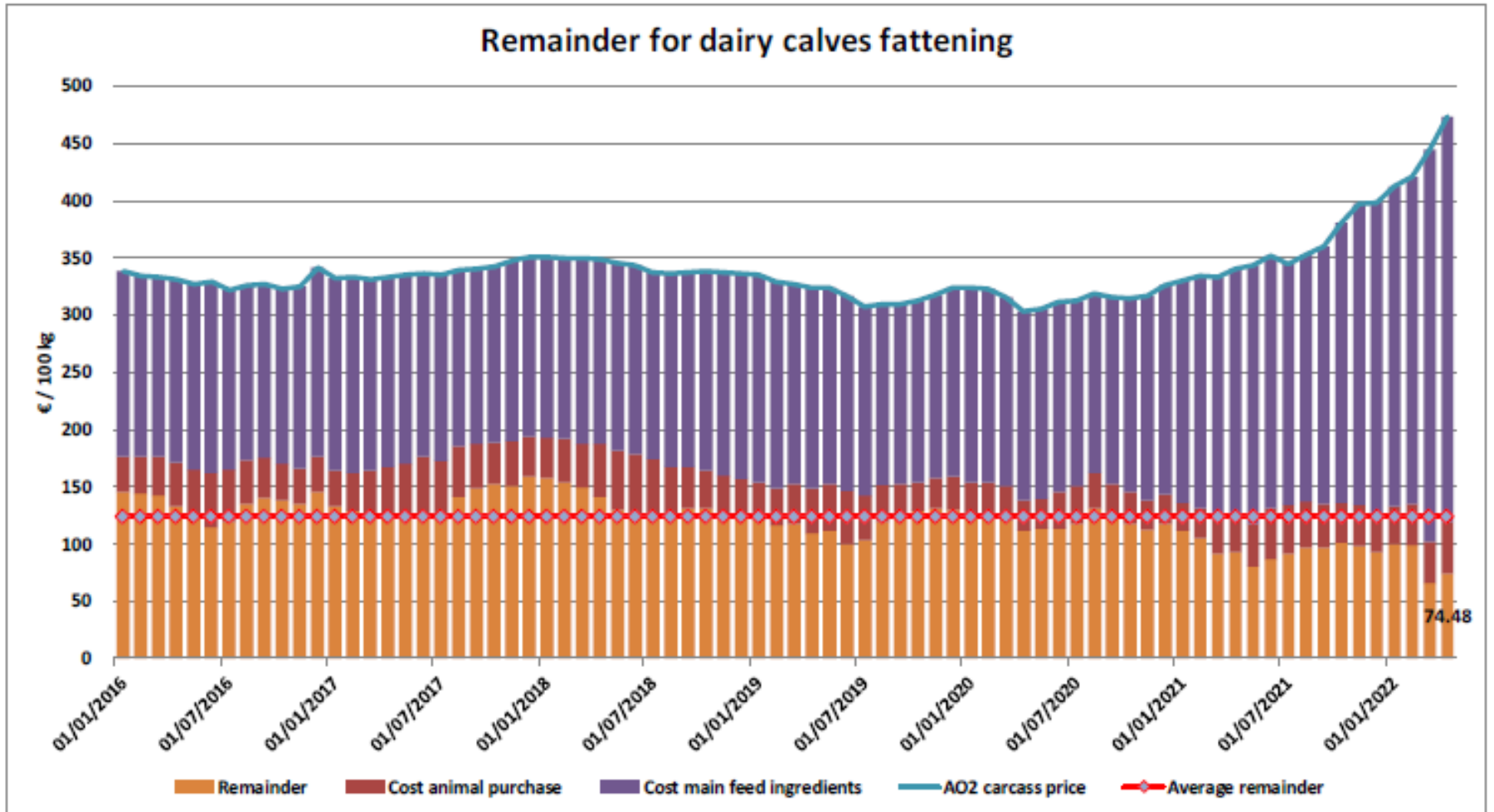
### 8 aylıktan küçük kesilen buzağılar (€ / 100 kg canlı ağırlık)

Calves slaughtered before the age of less than 8 months  
(€/100 kg cw)

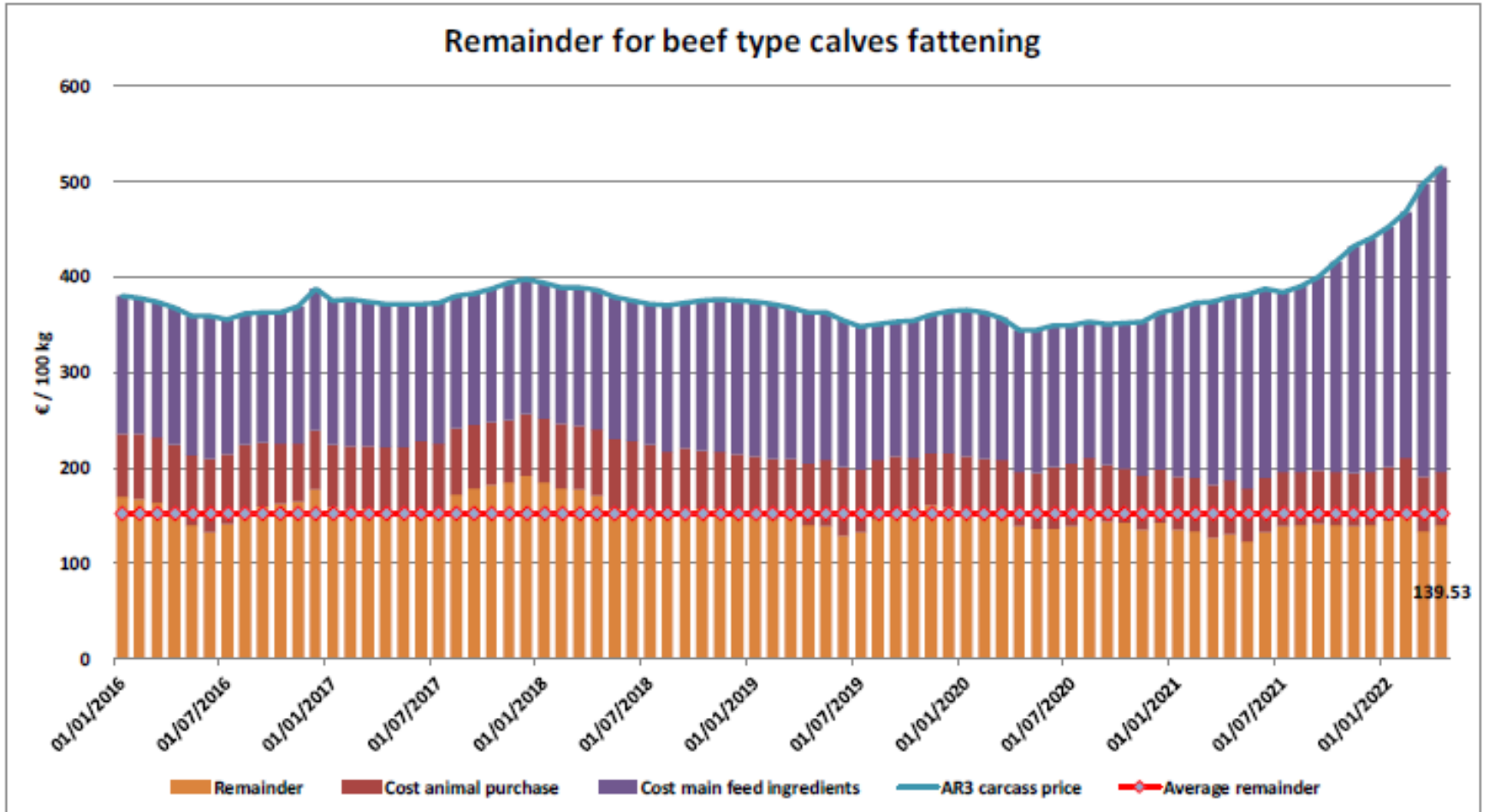


## Süt Buzağları Besiciliği İçin Kalanlar

Remainder for dairy calves fattening

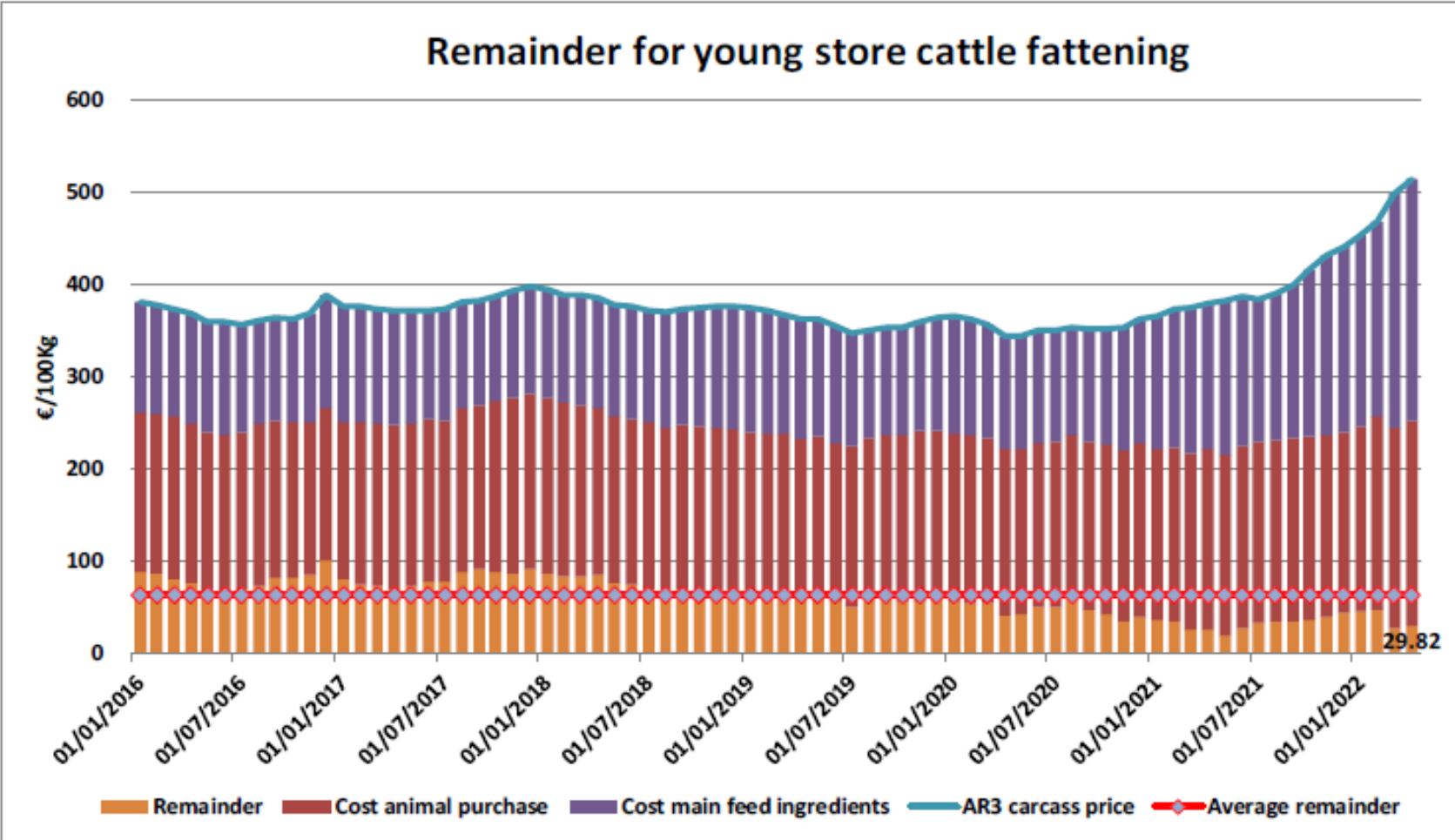


## Sığır Tipi Buzağı Besiciliği İçin Kalanlar





## Genç Besilik Sığır Besiciliği İçin Kalanlar



## AB siğir eti ve canlı hayvan ihracatı (1): Pazar Rakamları (COMEXT – ton ca)

Destinations	2018		2019		2020		2021		Jan-Apr 22		Compared to
	tonnes	%	tonnes	%	tonnes	%	tonnes	%	tonnes	%	
Israel	47 774	6.8%	49 629	7.1%	56 974	8.1%	66 594	9.4%	20 663	10.2%	+ 9.4%
Ghana	36 766	5.2%	39 196	5.6%	47 358	6.7%	47 641	6.7%	12 519	6.2%	- 20.7%
Philippines	28 766	4.1%	34 158	4.9%	39 844	5.7%	45 208	6.4%	12 013	5.9%	- 28.7%
Bosnia-Herz.	38 762	5.5%	41 119	5.9%	35 744	5.1%	41 396	5.9%	11 159	5.5%	- 9.5%
Switzerland	23 761	3.4%	25 188	3.6%	29 993	4.3%	33 916	4.8%	10 901	5.4%	+ 4.6%
Ivory Coast	36 064	5.1%	33 396	4.8%	32 433	4.6%	29 236	4.1%	10 473	5.2%	- 2.1%
Lebanon	42 542	6.1%	36 393	5.2%	33 709	4.8%	19 969	2.8%	9 100	4.5%	- 6.8%
Algeria	35 410	5.0%	57 152	8.2%	39 396	5.6%	24 127	3.4%	8 468	4.2%	- 35.0%
Canada	2 225	0.3%	6 806	1.0%	20 450	2.9%	20 676	2.9%	7 117	3.5%	+ 44.0%
Norway	7 926	1.1%	7 667	1.1%	12 936	1.8%	18 254	2.6%	7 051	3.5%	- 25.2%
Japan	3 452	0.5%	8 007	1.1%	11 885	1.7%	21 888	3.1%	6 511	3.2%	+ 38.8%
Egypt	6 297	0.9%	3 375	0.5%	7 961	1.1%	10 604	1.5%	5 560	2.8%	+++
Kosovo	6 693	1.0%	10 279	1.5%	10 902	1.5%	16 771	2.4%	4 688	2.3%	- 9.5%
Libya	27 878	4.0%	24 541	3.5%	22 352	3.2%	19 725	2.8%	4 616	2.3%	- 37.9%
USA	5 458	0.8%	7 867	1.1%	12 310	1.7%	11 698	1.7%	4 462	2.2%	+ 6.6%
Ukraine	4 186	0.6%	13 836	2.0%	15 837	2.2%	16 583	2.3%	4 263	2.1%	- 26.1%
Other Destinations	347 921	49.6%	301 632	43.1%	274 491	39.0%	261 790	37.1%	62 586	31.0%	
<b>Total (without UK)</b>	<b>701 882</b>		<b>700 242</b>		<b>704 576</b>		<b>706 074</b>		<b>202 180</b>		
% change			- 0%		+ 1%		+ 0%		- 15.2%		

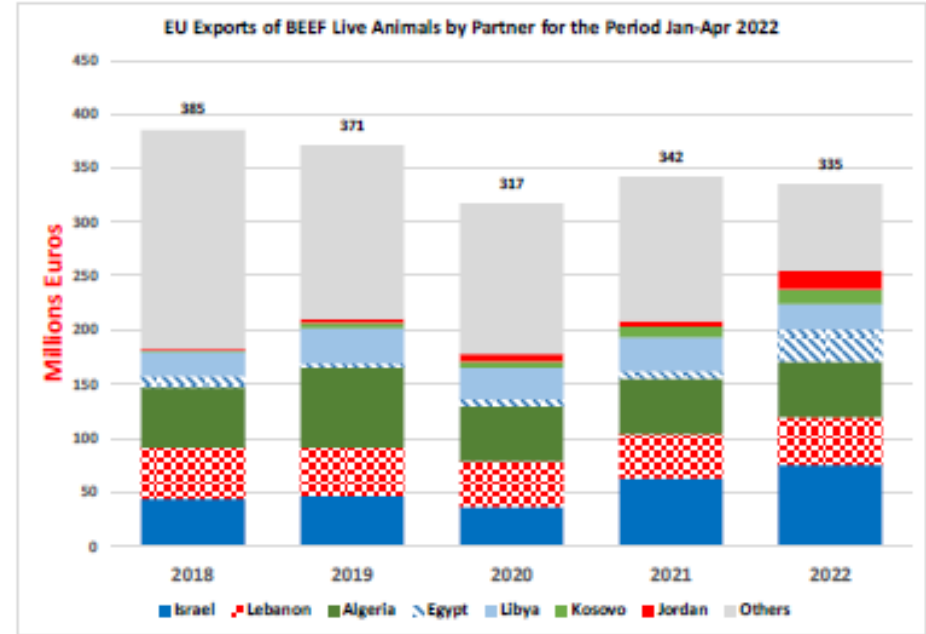
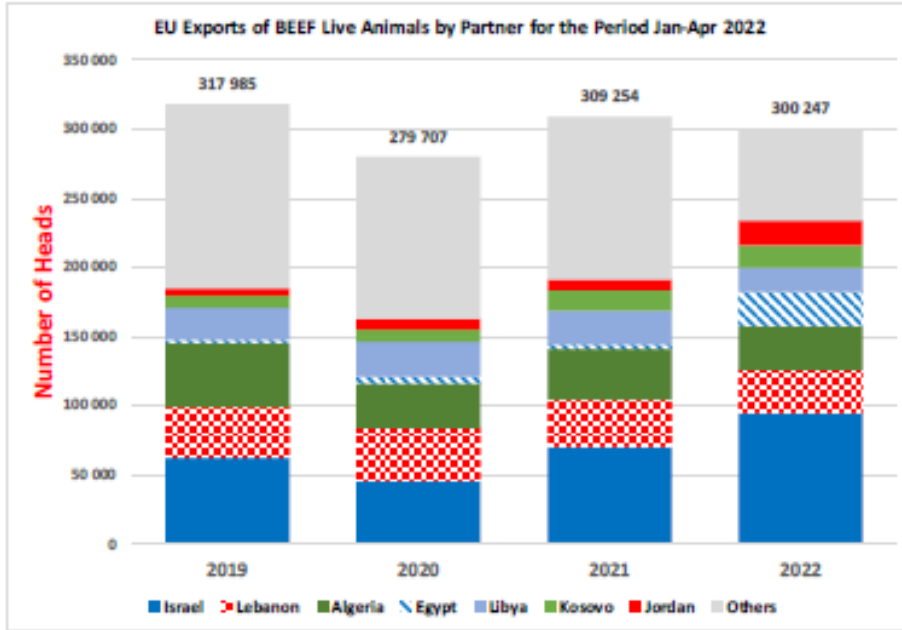
## AB sığır eti ihracatı: Pazar Rakamları (COMEXT – ton ca)

### Destinations

	2018		2019		2020		2021		Jan-Apr 22		Compared to
	tonnes	%	tonnes	%	tonnes	%	tonnes	%	tonnes	%	
Ghana	36 766	8.1%	39 196	8.5%	47 344	10.0%	47 640	9.8%	12 518	9.2%	- 20.7%
Ivory Coast	36 064	7.9%	33 396	7.2%	32 433	6.8%	29 236	6.0%	10 473	7.7%	- 2.1%
Bosnia-Herz.	35 064	7.7%	37 700	8.2%	32 596	6.9%	37 526	7.8%	9 913	7.3%	- 10.9%
Philippines	27 857	6.1%	31 302	6.8%	33 650	7.1%	34 666	7.2%	9 625	7.1%	- 29.6%
Switzerland	19 073	4.2%	20 320	4.4%	25 170	5.3%	27 395	5.7%	8 907	6.6%	+ 10.2%
Canada	2 225	0.5%	6 756	1.5%	20 450	4.3%	20 676	4.3%	7 117	5.2%	+ 44.0%
Norway	7 780	1.7%	7 622	1.7%	12 873	2.7%	18 231	3.8%	7 051	5.2%	- 25.2%
Japan	3 452	0.8%	7 982	1.7%	11 885	2.5%	21 888	4.5%	6 511	4.8%	+ 38.8%
Israel	21 425	4.7%	21 902	4.7%	21 131	4.4%	20 548	4.2%	6 297	4.6%	+ 19.8%
USA	5 441	1.2%	7 866	1.7%	12 308	2.6%	11 469	2.4%	4 462	3.3%	+ 7.9%
Hong Kong	55 439	12.1%	46 639	10.1%	56 713	11.9%	44 823	9.3%	4 222	3.1%	- 75.5%
Ukraine	9 866	2.2%	12 684	2.7%	13 992	2.9%	13 679	2.8%	3 856	2.8%	- 21.5%
Chile	16 410	3.6%	12 461	2.7%	8 664	1.8%	9 915	2.0%	3 492	2.6%	+ 47.3%
North Macedonia	9 483	2.1%	10 744	2.3%	10 034	2.1%	12 777	2.6%	3 229	2.4%	- 21.7%
South Africa	7 214	1.6%	5 391	1.2%	7 743	1.6%	10 237	2.1%	2 489	1.8%	- 23.9%
Senegal	4 953	1.1%	5 248	1.1%	4 627	1.0%	4 530	0.9%	2 443	1.8%	+ 43.8%
Other Destinations	157 852	34.6%	154 541	33.5%	123 368	26.0%	118 750	24.5%	33 055	24.4%	
<b>Total (without UK)</b>	<b>456 364</b>		<b>461 750</b>		<b>474 982</b>		<b>483 987</b>		<b>135 660</b>		
% change			+ 1%		+ 3%		+ 2%		- 15.4%		



## AB sığır eti ve canlı hayvan ihracatı (COMEXT)

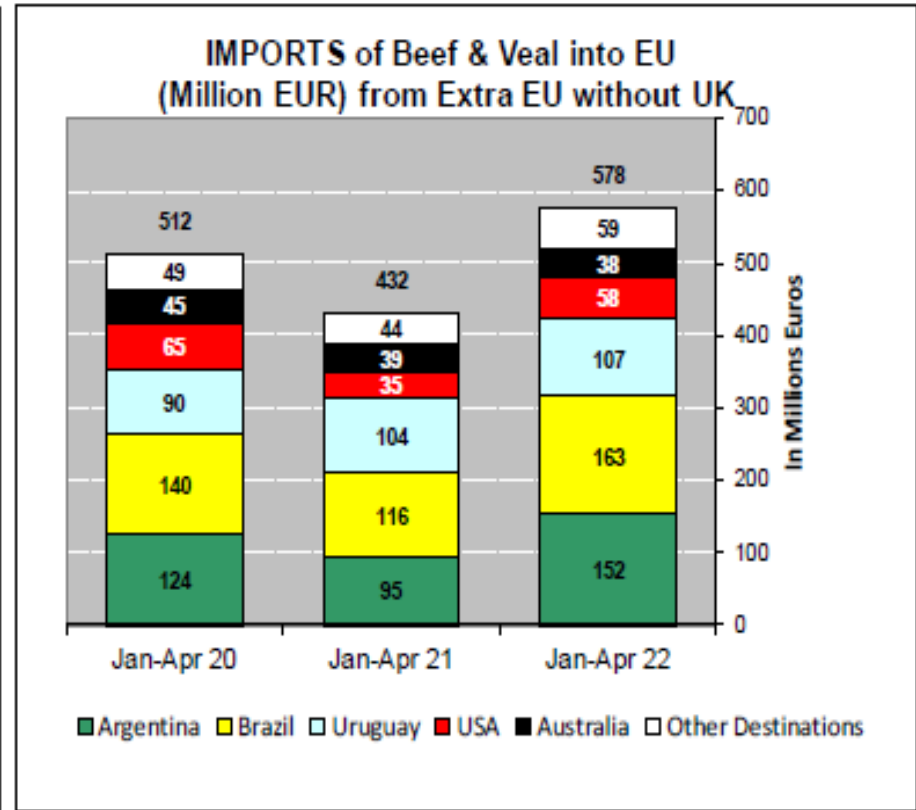
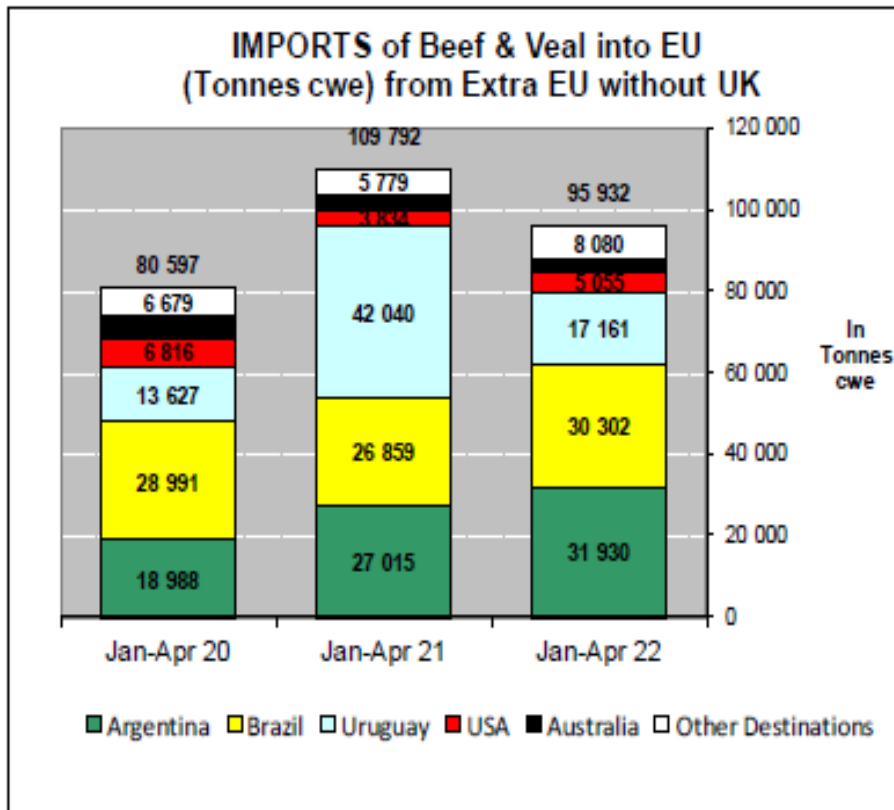




## AB Sığır Eti İthalatı (Yağlar Hariç): Ticaret Verileri (COMEXT – ton ca)

Origins	2018		2019		2020		2021		Jan-Apr 22		Compared to
	tonnes	%	tonnes	%	tonnes	%	tonnes	%	tonnes	%	
Brazil	103 979	37.3%	99 569	36.5%	84 139	37.6%	81 601	36.9%	30 302	38.8%	+ 12.8%
Argentina	61 400	22.0%	65 324	23.9%	56 421	25.2%	52 286	23.6%	17 465	22.4%	+ 16.1%
Uruguay	47 922	17.2%	40 483	14.8%	34 611	15.5%	42 660	19.3%	14 156	18.1%	- 15.0%
USA	19 268	6.9%	16 852	6.2%	16 532	7.4%	14 826	6.7%	5 055	6.5%	+ 31.9%
Australia	17 354	6.2%	16 432	6.0%	11 058	4.9%	8 925	4.0%	3 404	4.4%	- 20.2%
New Zealand	7 109	2.6%	6 712	2.5%	6 116	2.7%	4 378	2.0%	1 447	1.9%	+ 18.5%
Paraguay	5 520	2.0%	5 203	1.9%	4 234	1.9%	3 933	1.8%	1 330	1.7%	+++
Switzerland	5 389	1.9%	4 353	1.6%	4 153	1.9%	4 680	2.1%	1 329	1.7%	- 16.7%
Japan	791	0.3%	997	0.4%	789	0.4%	1 478	0.7%	1 070	1.4%	+++
Namibia	3 442	1.2%	7 706	2.8%	1 445	0.6%	1 996	0.9%	823	1.1%	+++
Canada	1 343	0.5%	2 518	0.9%	1 550	0.7%	1 816	0.8%	545	0.7%	- 13.1%
Serbia	1 134	0.4%	1 052	0.4%	931	0.4%	956	0.4%	412	0.5%	+++
Norway	153	0.1%	125	0.0%	335	0.1%	540	0.2%	176	0.2%	+ 74.1%
China	30	0.0%	26	0.0%	0	0.0%	22	0.0%	166	0.2%	+++
Chile	356	0.1%	392	0.1%	168	0.1%	238	0.1%	105	0.1%	+++
Hong Kong	70	0.0%	0	0.0%	25	0.0%	0	0.0%	101	0.1%	+++
Other Destinations	3 445	1.2%	5 329	2.0%	1 080	0.5%	985	0.4%	129	0.2%	
<b>Total to Third Countries</b>	<b>278 704</b>		<b>273 073</b>		<b>223 586</b>		<b>221 319</b>		<b>78 016</b>		
% change			-2%		-18%		-1%		+ 8.2%		

## AB Sığır Eti ve Canlı Hayvan İthalatları



### EU Export of BEEF to UK by Products from Jan to Mar

*In Tons of Carcase Weight*

	2020			2021			2022			% 2022/2021
	United Kingdom	Extra-EU	%	United Kingdom	Extra-EU	%	United Kingdom	Extra-EU	%	
<b>Live Animals</b>	3 240	49 317	6.6%	3 572	54 565	6.5%	3 207	49 380	6.5%	-10.2%
<b>Meats</b>	100 385	224 102	44.8%	64 328	182 565	35.2%	86 064	188 674	45.6%	+33.8%
Fresh	57 511	82 836	69.4%	40 714	65 833	61.8%	46 730	70 444	66.3%	+14.8%
Frozen	11 799	56 087	21.0%	12 398	55 536	22.3%	23 744	57 509	41.3%	+91.5%
Salted Meat	6 547	7 019	93.3%	126	510	24.7%	101	651	15.6%	-19.6%
Prepared	12 256	20 324	60.3%	7 299	14 434	50.6%	10 588	17 333	61.1%	+45.1%
Fresh Offals	5 253	6 056	86.8%	1 339	1 932	69.3%	1 925	2 618	73.5%	+43.8%
Frozen Offals	3 565	45 754	7.8%	2 328	41 129	5.7%	2 812	35 997	7.8%	+20.8%
Salted Offals	3 360	5 907	56.9%	55	3 095	1.8%	64	3 969	1.6%	+16.6%
Prepared Offal	93	118	78.6%	69	95	72.2%	99	153	64.5%	+43.4%
<b>Total Beef</b>	<b>103 625</b>	<b>273 419</b>	<b>37.9%</b>	<b>67 900</b>	<b>237 130</b>	<b>28.6%</b>	<b>89 271</b>	<b>238 053</b>	<b>37.5%</b>	<b>+31.5%</b>

Source : Comext

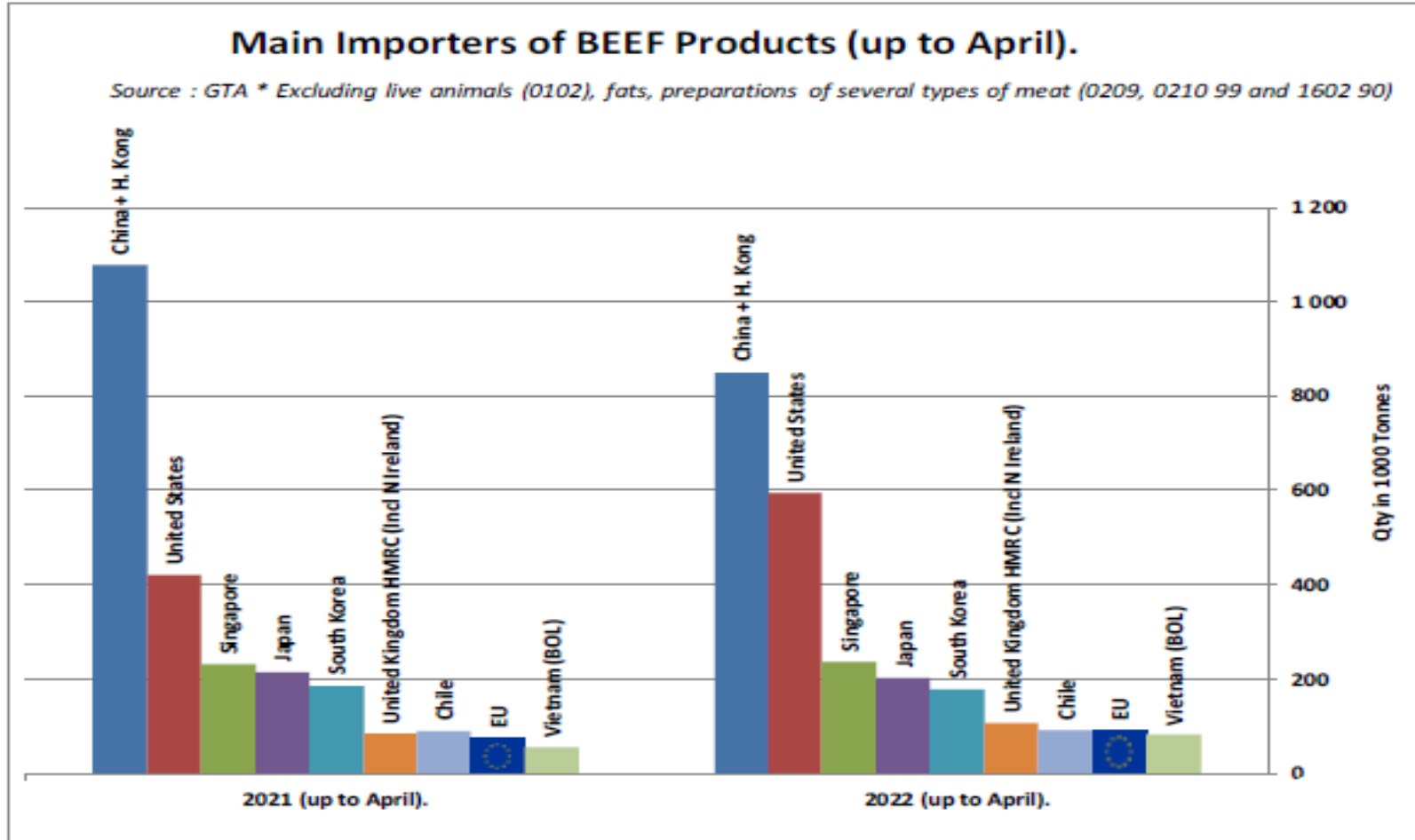
### EU Import of BEEF from UK by Products from Jan to Mar

*In Tons of Carcase Weight*

	2020			2021			2022			% 2022/2021
	United Kingdom	Extra-EU	%	United Kingdom	Extra-EU	%	United Kingdom	Extra-EU	%	
Live Animals	569	614	92.6%	189	233	81.1%	175	182	96.1%	-7.4%
<b>Meats</b>	<b>33 072</b>	<b>90 425</b>	<b>36.6%</b>	<b>15 853</b>	<b>67 712</b>	<b>23.4%</b>	<b>31 770</b>	<b>87 356</b>	<b>36.4%</b>	<b>+100.4%</b>
Fresh	21 543	54 894	39.2%	10 621	34 612	30.7%	22 754	49 165	46.3%	+114.2%
Frozen	5 811	23 447	24.8%	2 908	25 620	11.4%	5 088	28 982	17.6%	+75.0%
Salted Meat	98	855	11.5%	52	968	5.4%	39	848	4.6%	-25.8%
Prepared	2 483	7 512	33.0%	1 103	4 824	22.9%	2 114	5 847	36.1%	+91.6%
Fresh Offals	1 129	1 481	76.3%	1 081	1 372	78.8%	1 102	1 398	78.8%	+1.9%
Frozen Offals	1 591	1 805	88.1%	78	305	25.7%	662	1 066	62.1%	+++ ++
Salted Offals	400	402	99.7%	6	7	87.9%	8	13	60.9%	+28.4%
Prepared Offal	18	30	61.0%	2	4	38.1%	4	37	10.6%	+150.8% ++
<b>Total Beef</b>	<b>33 641</b>	<b>91 039</b>	<b>37.0%</b>	<b>16 041</b>	<b>67 945</b>	<b>23.6%</b>	<b>31 945</b>	<b>87 538</b>	<b>36.5%</b>	<b>+99.1%</b>

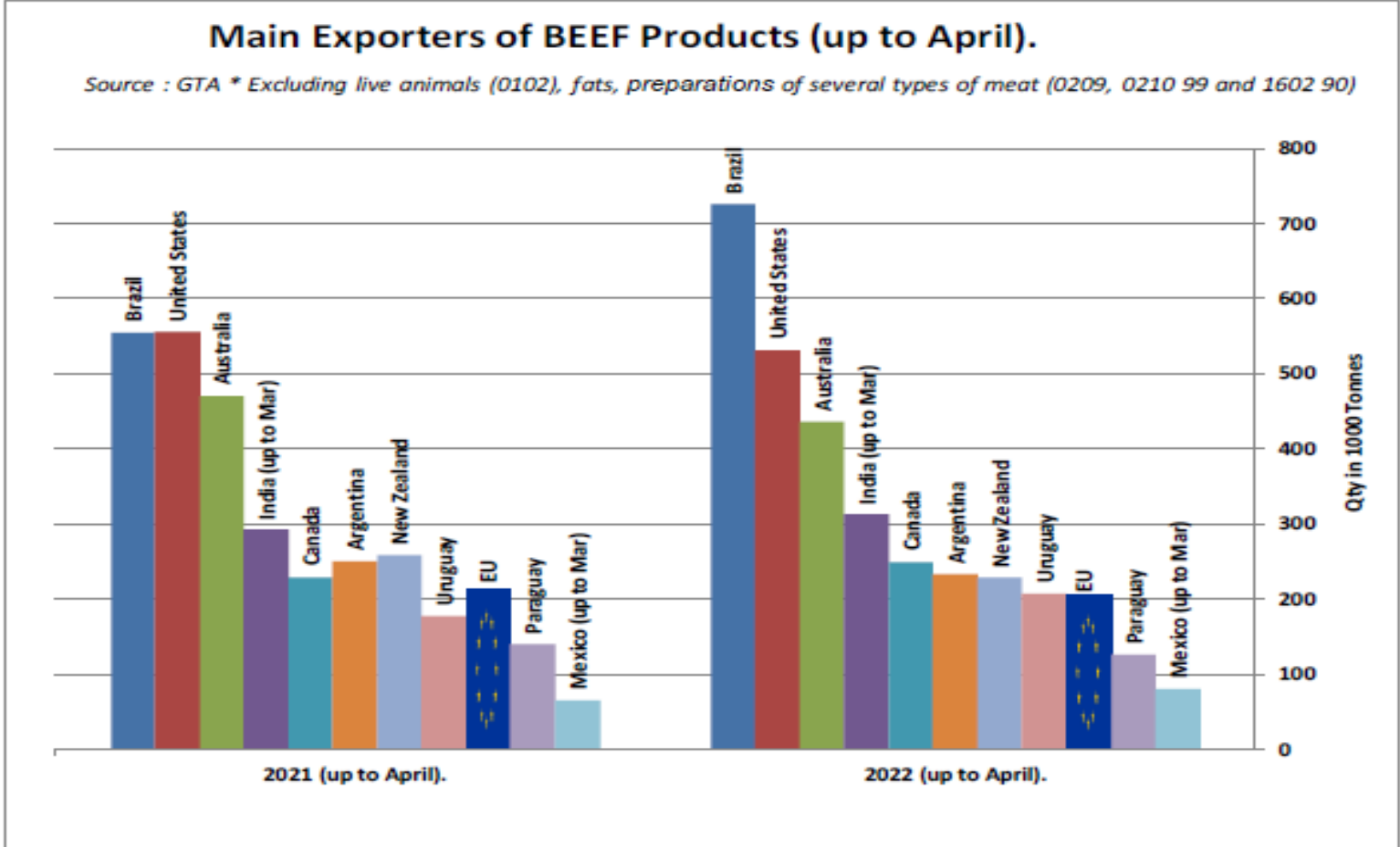
Source : Estat - Comext

### SIĞIR ETİ ÜRÜNLERİNİN NET İTHALATÇILARI (NİSAN AYINA KADAR)





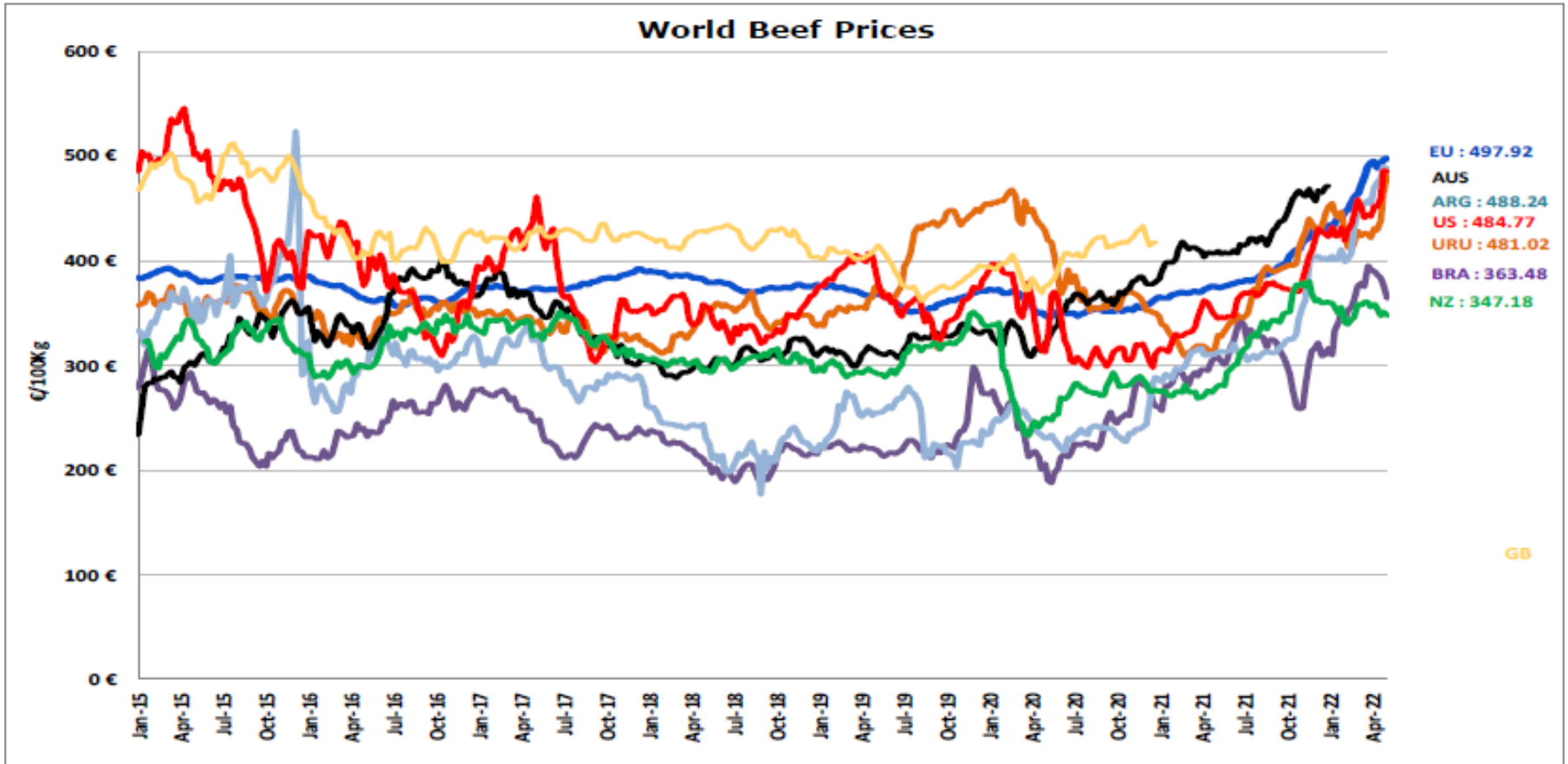
## SIĞIR ETİ ÜRÜNLERİNİN NET İHRACATÇILARI (NİSAN AYINA KADAR)



# DÜNYA SIĞIR ETİ PAZARI



# Dünya Sığır Fiyatları AB, ABD, AVUSTURYA, YENİ ZELANDA



- ECB <http://sdw.ecb.europa.eu/browse.do?node=2018794>
- US <https://www.marketnews.usda.gov/mnp/ls-home>
- AUS <http://statistics.mla.com.au/Report/RunReport/ae59d4ac-74e4-4c56-93bd-982a044d9760>
- UY <http://www.inac.gub.uy/innovaportal/v/11034/10/innova.front/indicadores-y-precios>
- ARG [http://www.abc-consorcio.com.ar/Estadisticas/detalle/117/precios\\_comparativos\\_del\\_novillo.html](http://www.abc-consorcio.com.ar/Estadisticas/detalle/117/precios_comparativos_del_novillo.html)
- BR <http://www.pecuaria.com.br/cotacoes.php>
- NZ [http://www.abc-consorcio.com.ar/Estadisticas/detalle/117/precios\\_comparativos\\_del\\_novillo.html](http://www.abc-consorcio.com.ar/Estadisticas/detalle/117/precios_comparativos_del_novillo.html)





**Daha fazla bilgi için:**

**[https://ec.europa.eu/agriculture/market-observatory/meat\\_en](https://ec.europa.eu/agriculture/market-observatory/meat_en)**

**Ve Agri-FOOD Veri Portalı:**

**<http://agridata.ec.europa.eu>**