



AB SIĞIR VE DANA ETİ PAZAR DURUMU

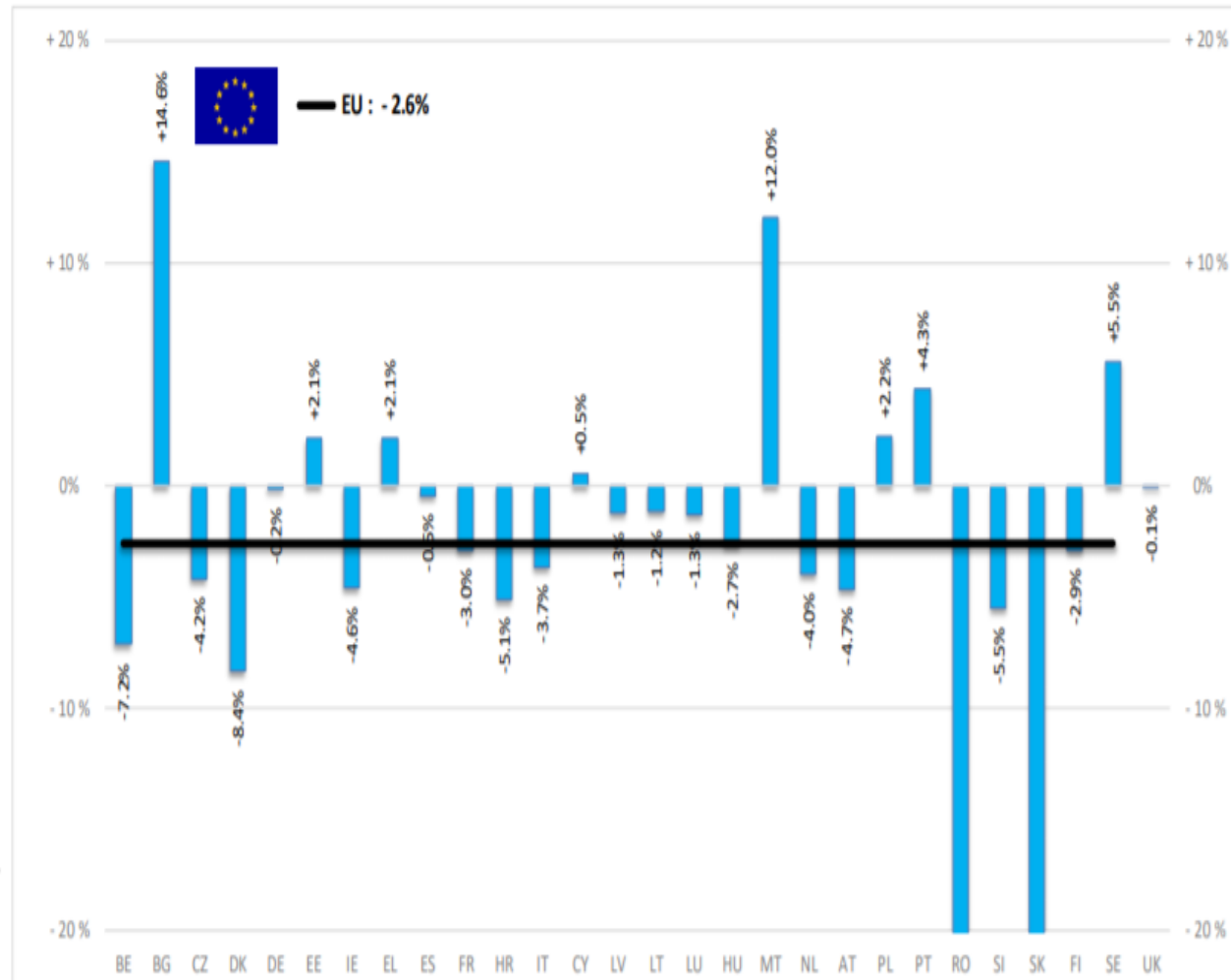
23 Temmuz 2020



European
Commission

BAŞ	HEADS	Jan-Apr 20/19	
		EU	EU + UK
BOĞA	Bull	-1.7%	-1.7%
ÖKÜZ	Bullock	+2.2%	+1.3%
İNEK	Cow	-2.4%	-2.3%
DÜVE	Heifer	-0.1%	+0.8%
BUZAĞI	Calve	-7.0%	-7.6%
GENÇ SİĞİR	Young cattle	-3.3%	-3.1%
Büyükbaş Hayvan Eti	Meat of bovine animals	-2.6%	-2.4%

Estimates for last month of period :



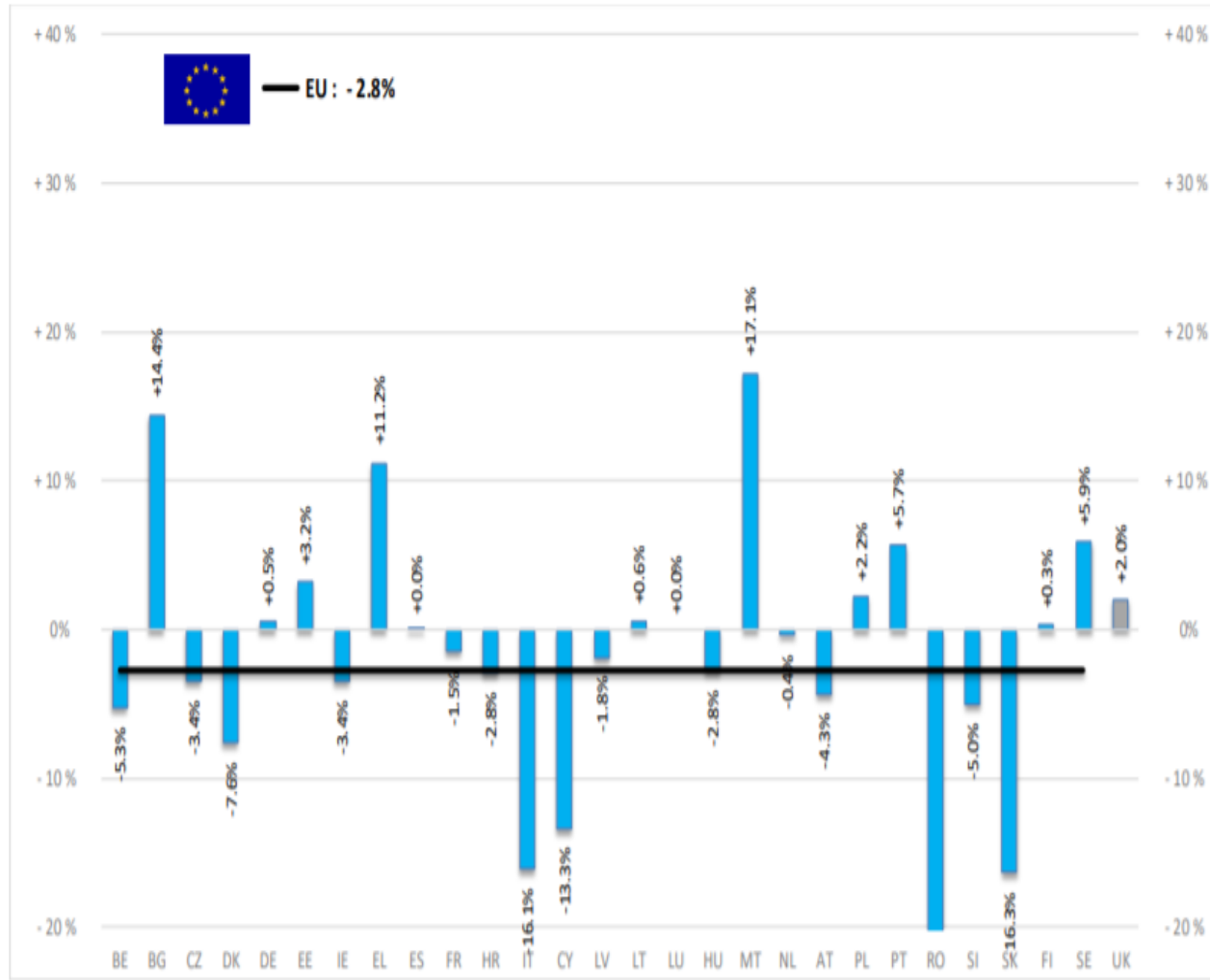
Source : EStat - Newcronos



European
Commission

TON	TONNES	Jan-Apr 20/19	
		EU	EU + UK
BOĞA	Bull	-2.1%	-2.1%
ÖKÜZ	Bullock	+3.5%	+2.1%
İNEK	Cow	-3.2%	-2.9%
DÜVE	Heifer	-2.5%	-0.9%
BUZAĞI	Calve	-8.7%	-8.8%
GENÇ SIĞIR	Young cattle	-0.7%	-0.5%
Büyükbaş Hayvan Eti	Meat of bovine animals	-2.8%	-2.2%

Estimates for last month of period :

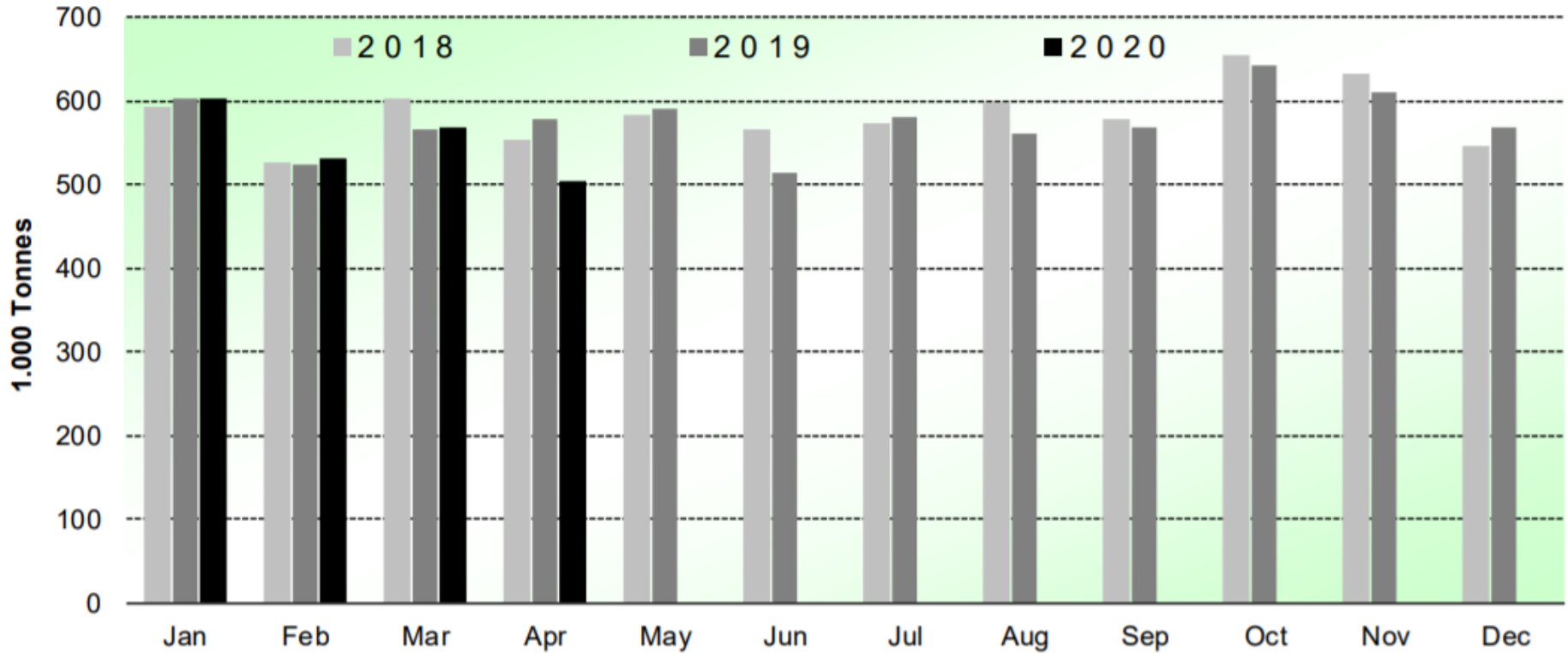


Source : EStat - Newcronos



SIĞIR VE DANA ETİ ÜRETİMİ (AB Kesimler – Ton)

Beef & Veal Production (EU Slaughtering) - Tonnes

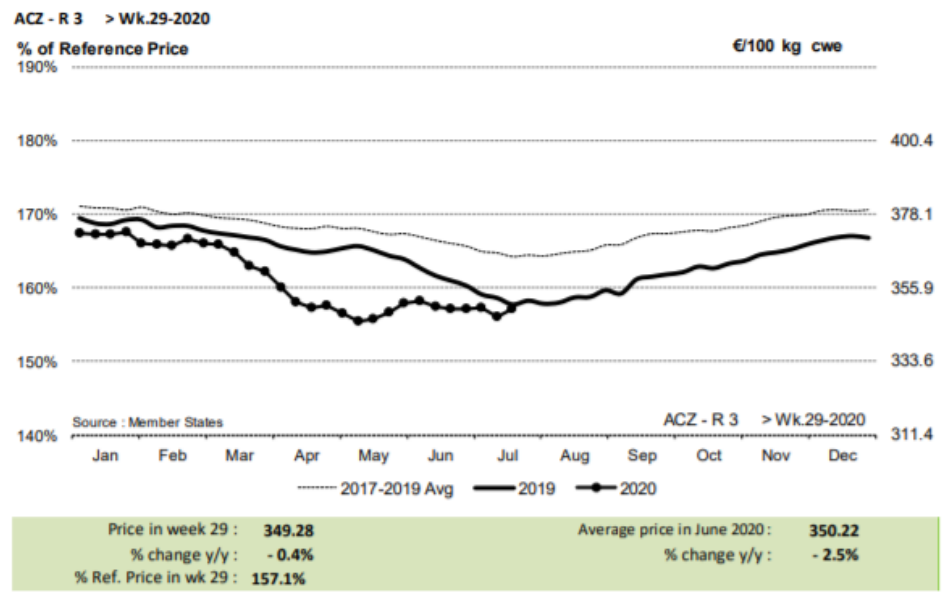
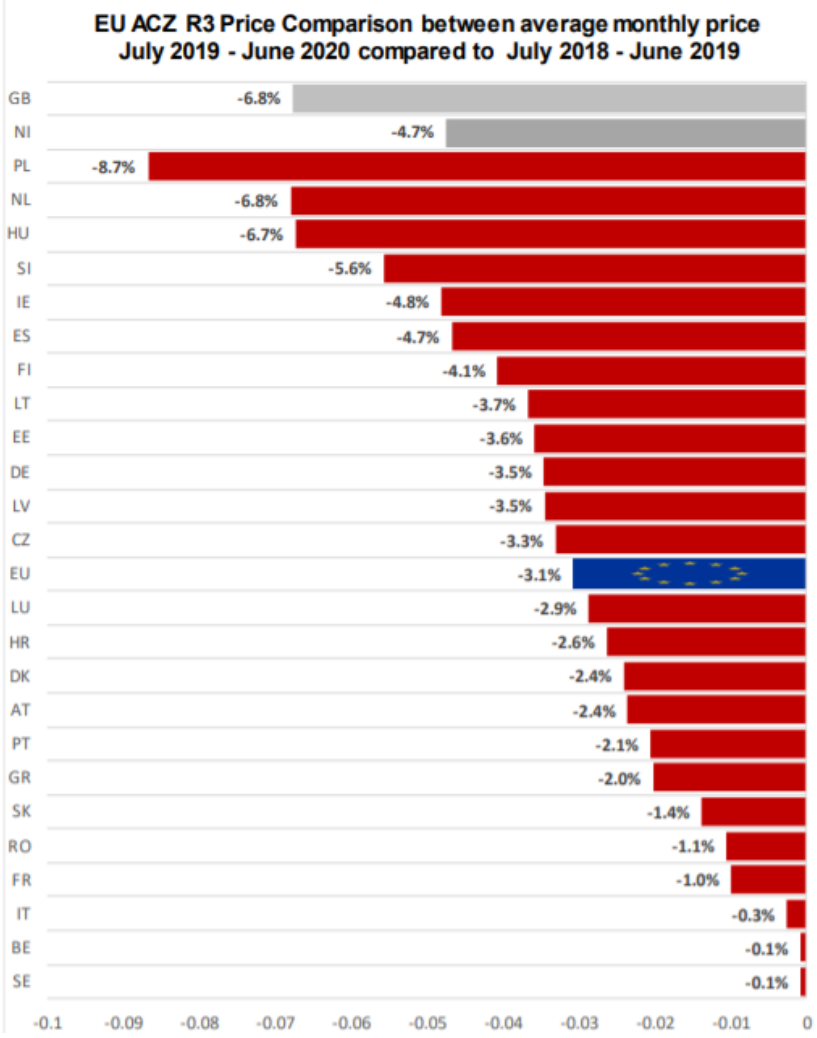


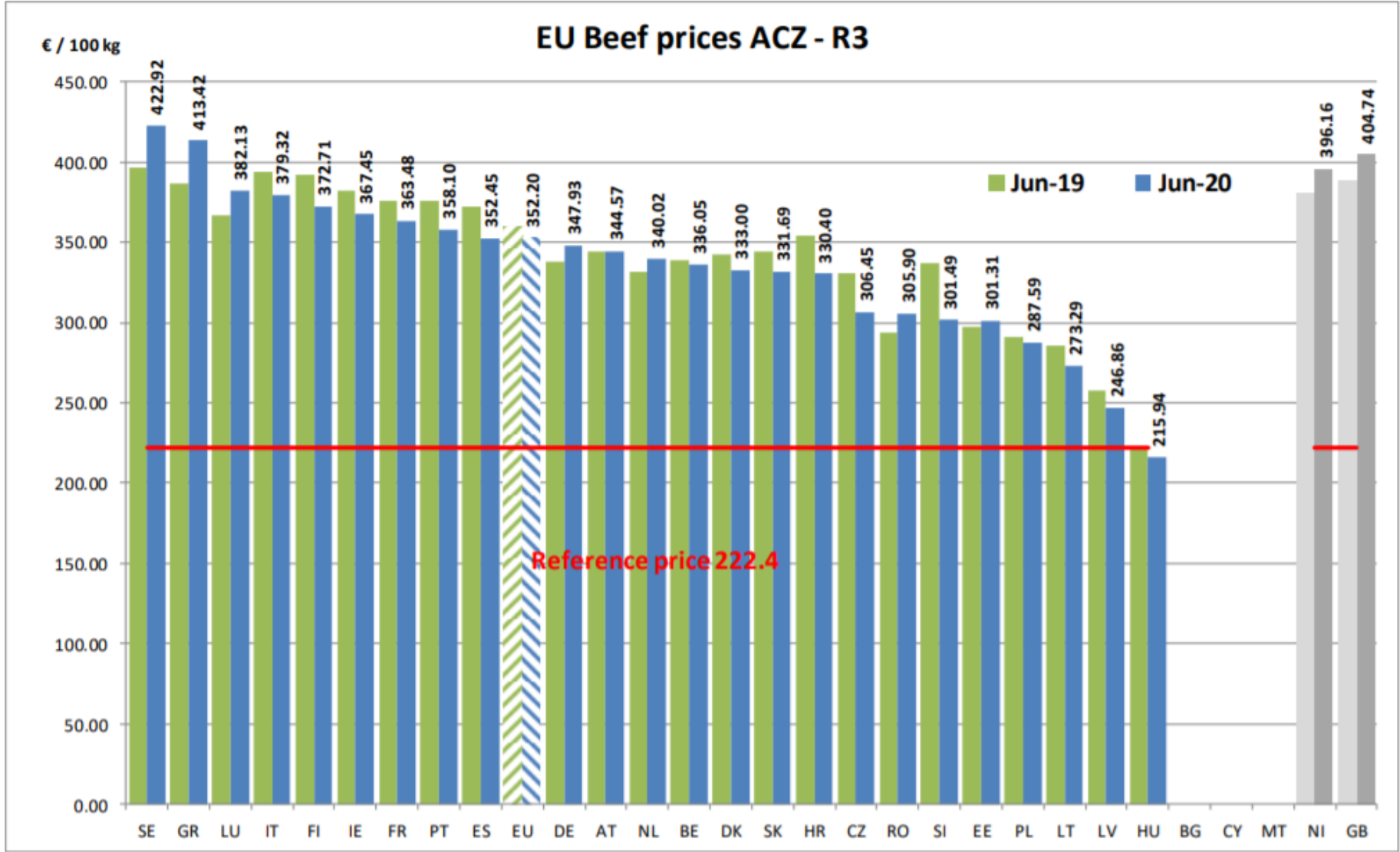
Source : EStat-Newcronos



EU Prices week		29	Evolution since last week	Evolution since last month	Evolution since last year
Carcasse	Average A/C/Z -R3	349.2	+ 0.6%	- 0.1%	- 1.5%
	Young Bovines (Z)	344.1	- 0.5%	- 0.0%	- 0.5%
	Young Bulls (A)	345.8	+ 0.8%	- 0.5%	- 0.9%
	Steers (C)	374.1	+ 1.2%	+ 2.7%	+ 2.3%
	Cows (D)	277.2	- 0.1%	+ 0.8%	- 4.3%
	Heifers (E)	366.9	- 0.0%	+ 0.6%	- 0.2%
Live Animals	Male Calves Dairy Type	82.21	- 6.9%	- 1.0%	- 18.7%
	Male Calves Beef Type	204.1	- 3.4%	- 4.3%	- 6.7%
	Young Store Cattle	2.45	+ 0.1%	+ 1.0%	+ 1.4%
	Yearling Male Store Cattle	2.31	- 2.0%	+ 0.7%	- 1.2%
	Yearling Female Store Cattle	2.37	- 0.4%	+ 1.6%	- 0.6%
	Calves slaughtered <8M	409.5	- 1.0%	+ 1.4%	- 7.6%

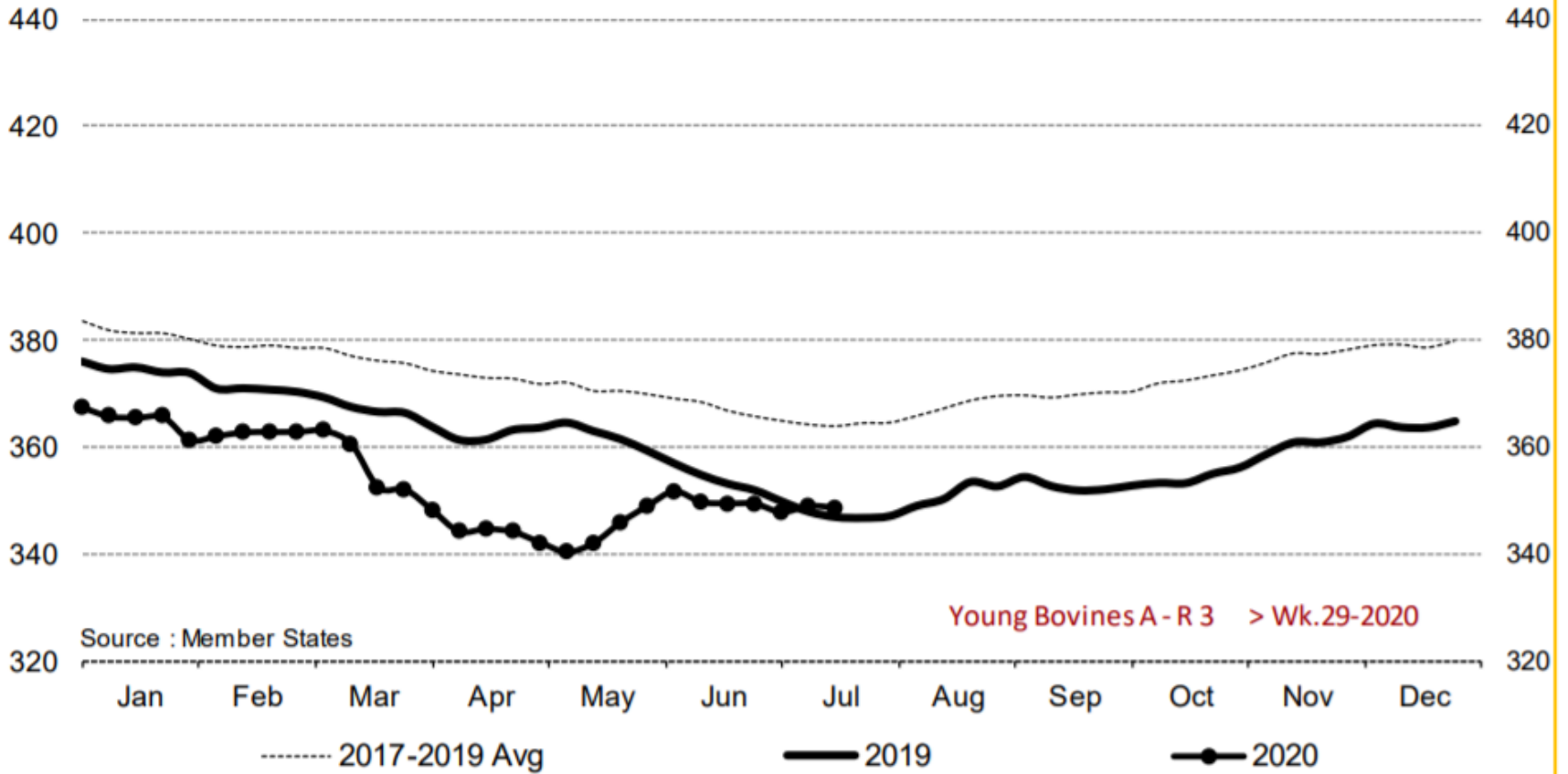
Sources : MSs notifications (Regulation (EU) 1182/2017 and 1184/2017







Young Bovines A - R 3 > Wk.29-2020



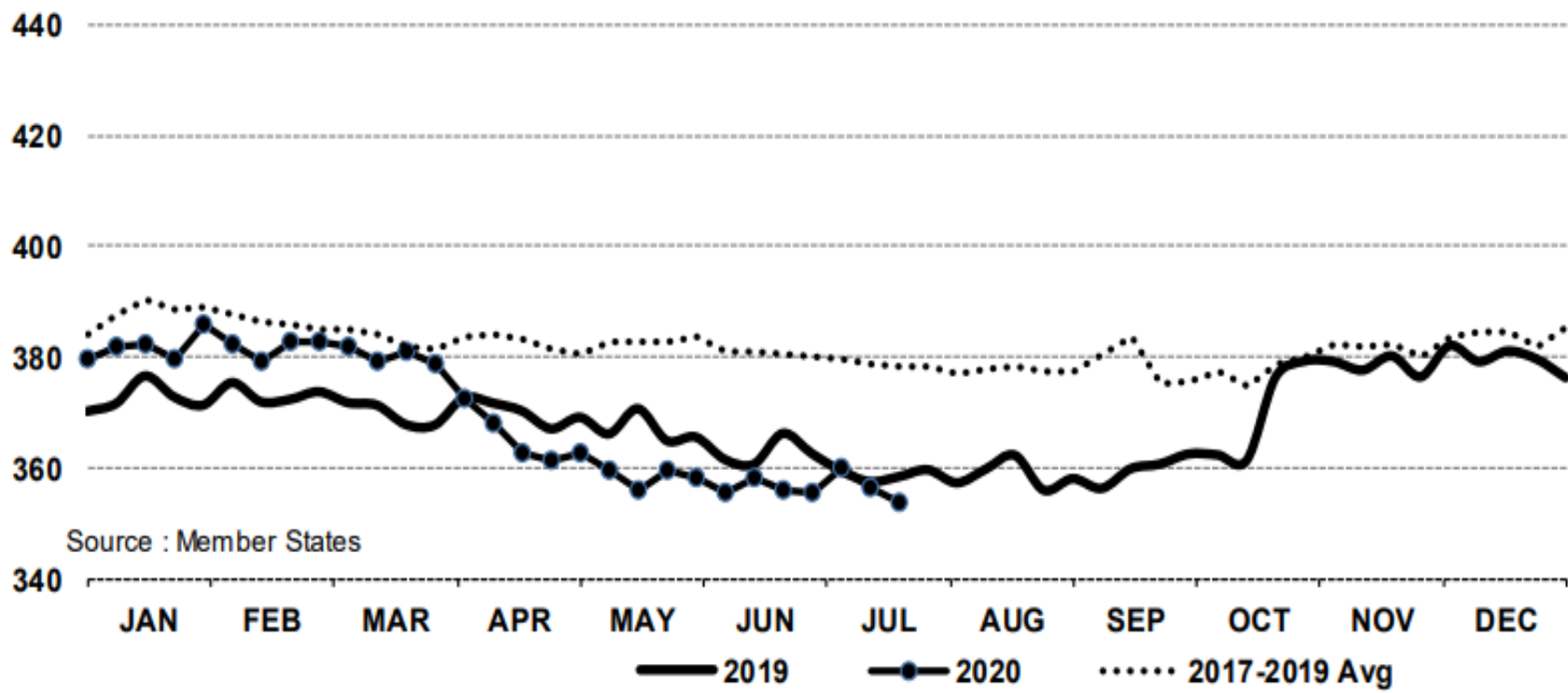
Price in week 29 : **348.49**
% change y/y : **+ 0.4%**

Average price in June 2020 : **349.76**
% change y/y : **- 1.4%**



In € / 100 kg

Young Bovines 8-12m Z - R 3 > Wk.29-2020

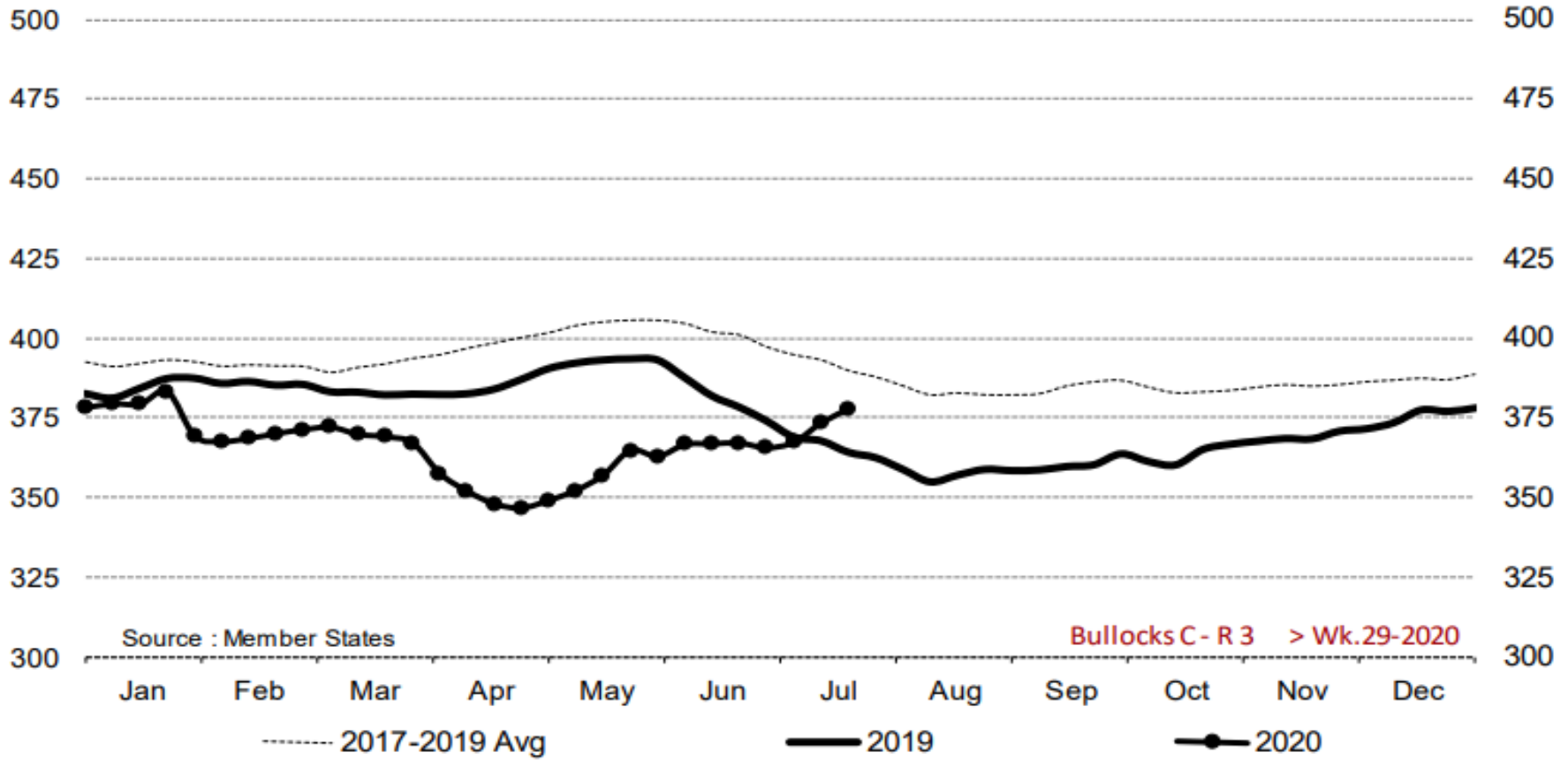


Source : Member States

Price in week 29 :	353.86	18/06/2020	Average price in June 2020 :	356.61
% change y/y :	- 1.2%		% change y/y :	- 1.7%



Bullocks C - R 3 > Wk.29-2020

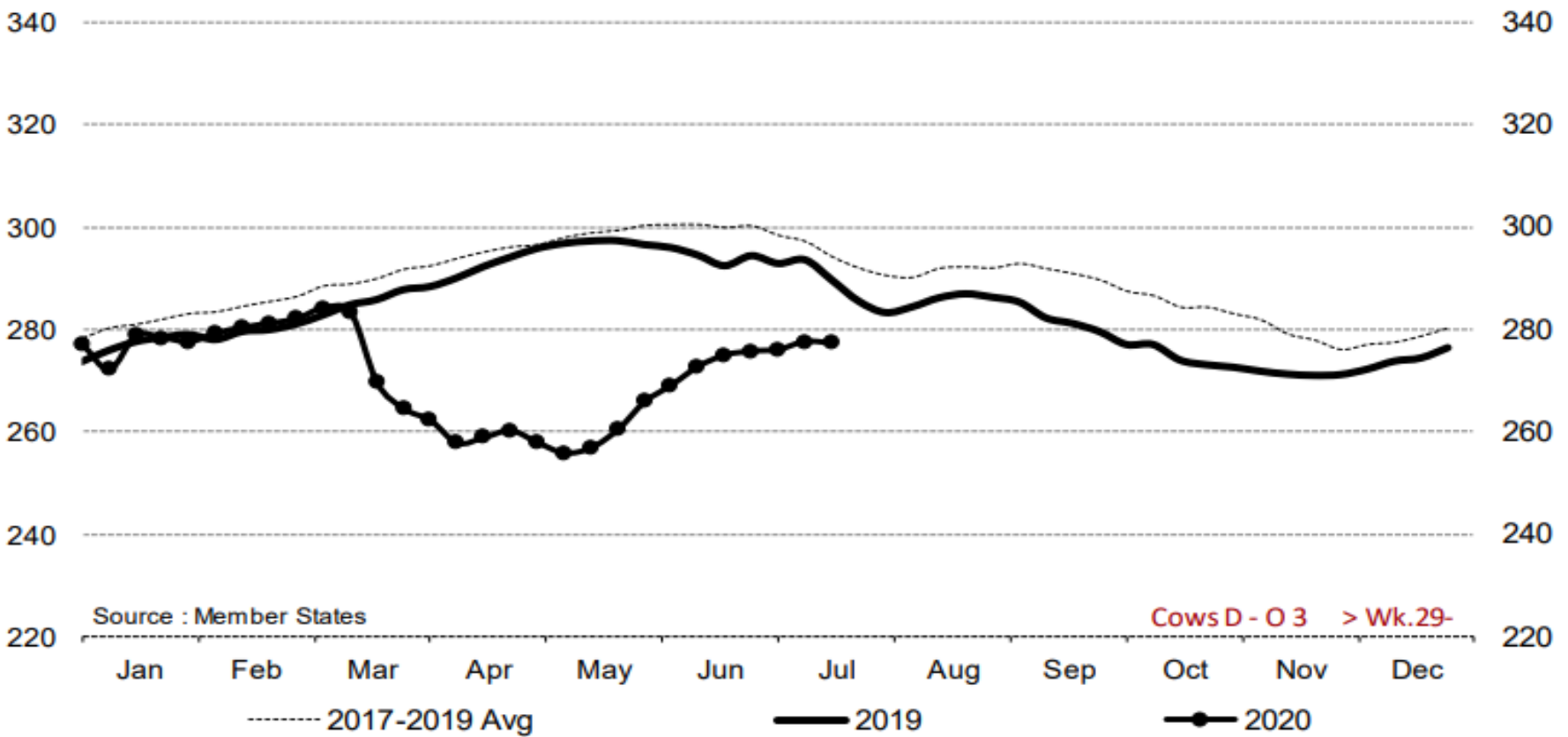


Price in week 29 : **377.66**
% change y/y : **+ 3.7%**

Average price in June 2020 : **366.46**
% change y/y : **- 3.9%**



Cows D - O 3 > Wk.29-2020



Source : Member States

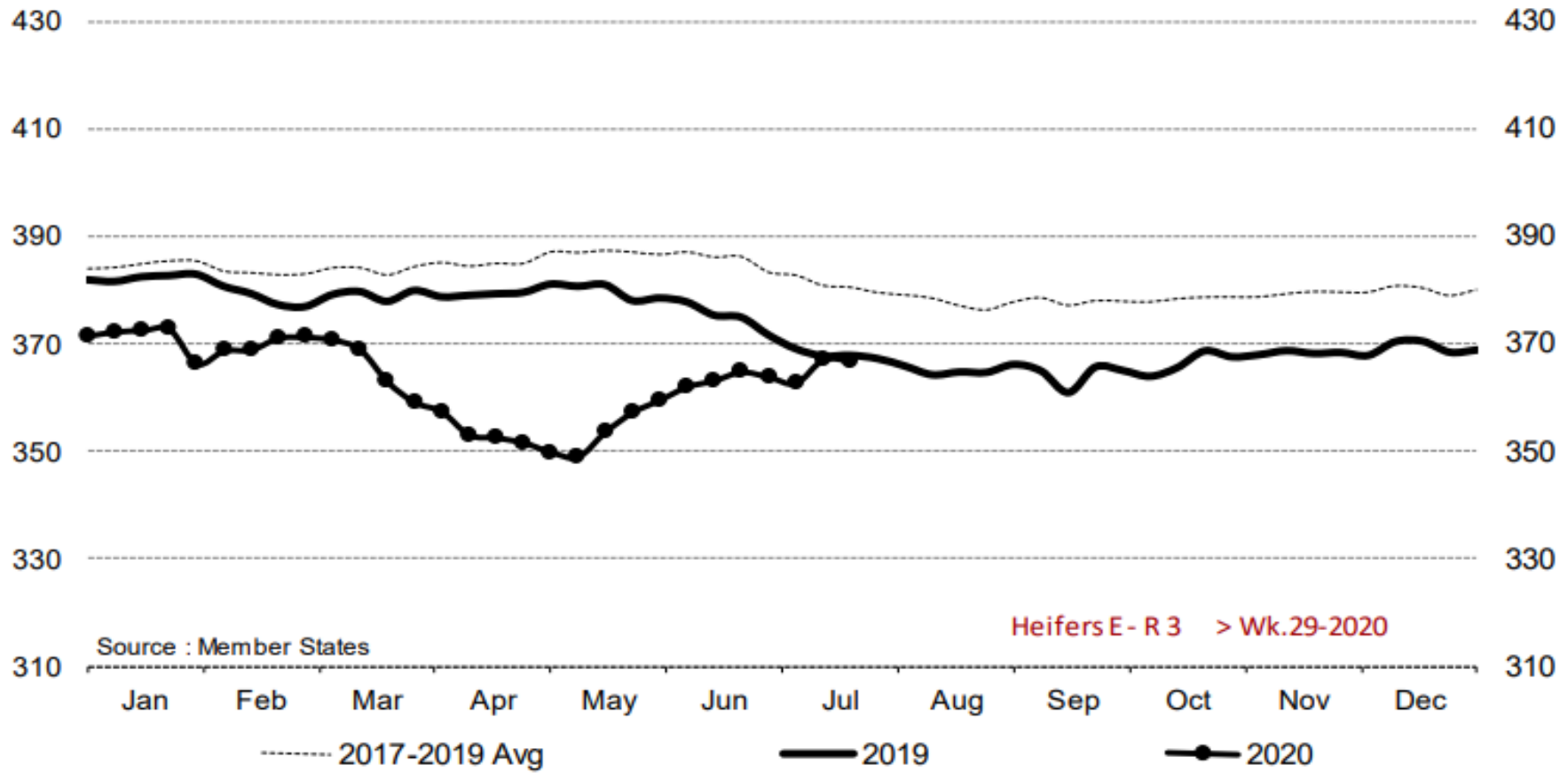
Cows D - O 3 > Wk.29-

Price in week 29 : **277.29**
% change y/y : **-4.3%**

Average price in June 2020 : **273.35**
% change y/y : **-7.2%**



Heifers E - R 3 > Wk.29-2020



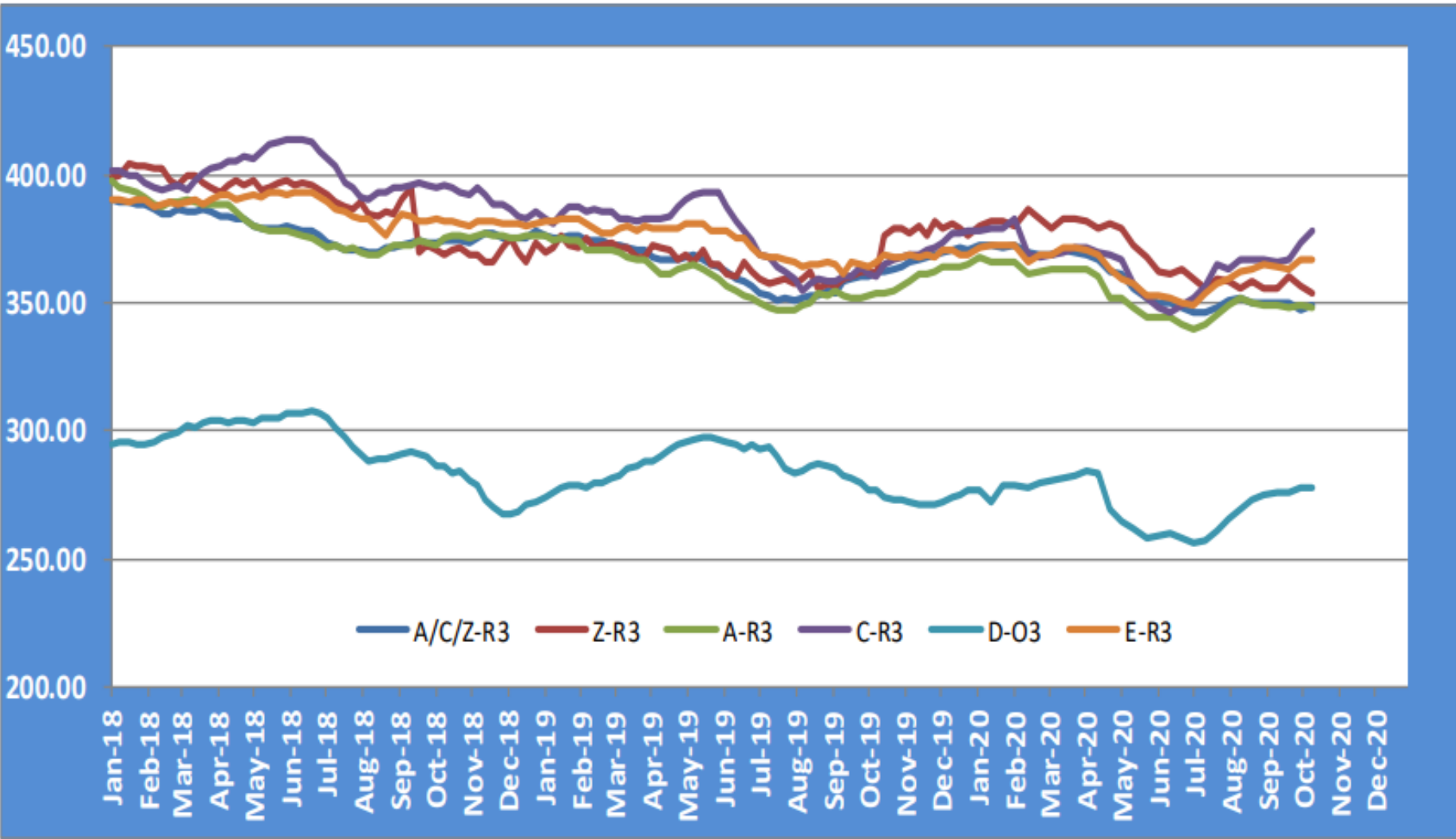
Source : Member States

Heifers E - R 3 > Wk.29-2020

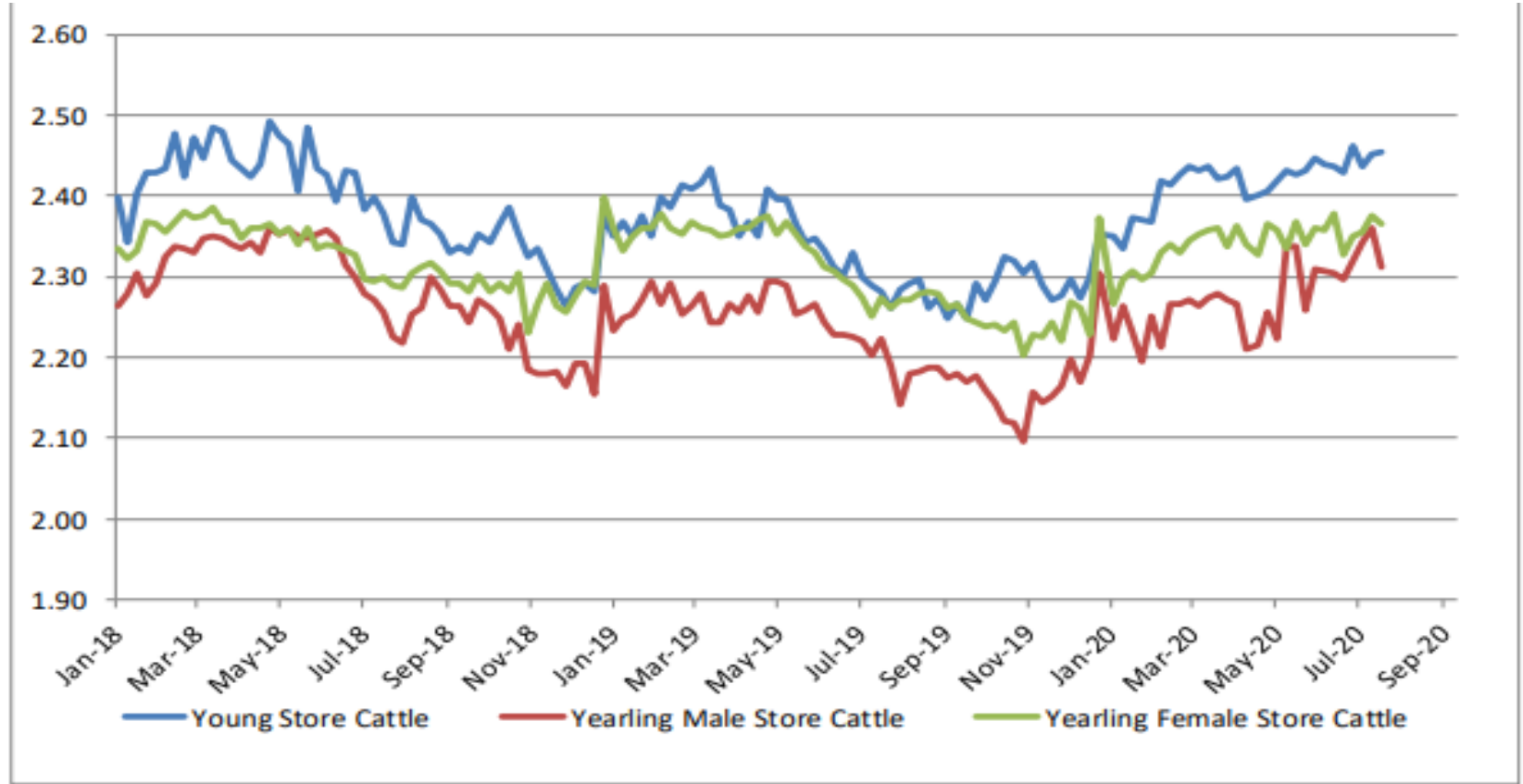
Price in week 29 : 366.90	Average price in June 2020 : 363.41
% change y/y : -0.2%	% change y/y : -3.1%

KARKAS FİYATLARI

AB TÜM KATEGORİLERE GLOBAL BAKIŞ



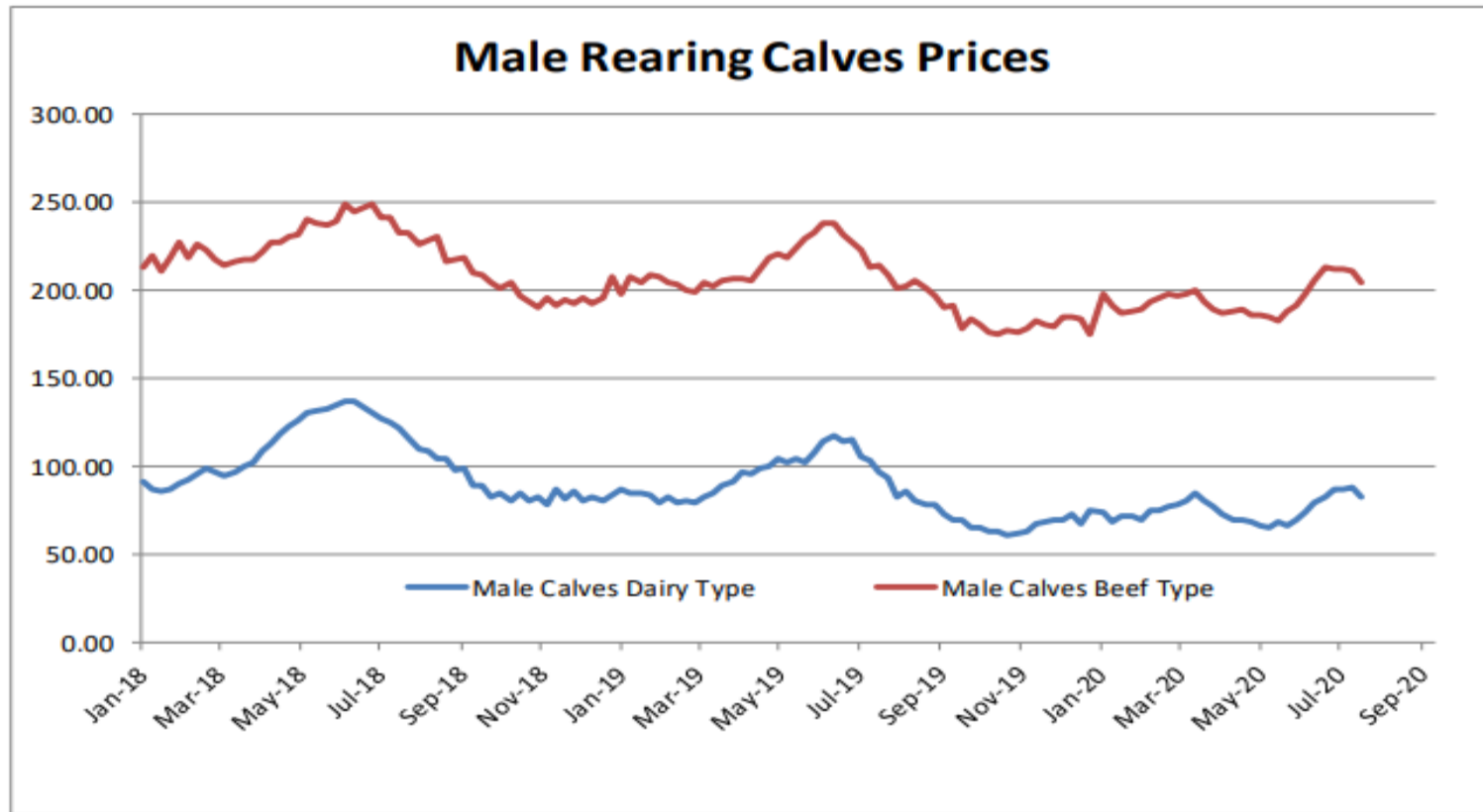
Besilik sığır (€ / 100 kg canlı ağırlık)



Young Store Cattle Price in	Week 29	2.45	Yearling Male Store Cattle Price	2.31
	Change y/y	+1.41%	Change y/y	+3.97%
Yearling Female Store Cattle Price		2.37		
	Change y/y	-0.59%		

8 gün ve 4 haftalık erkek buzağlar (€ / baş)

Male calves aged between 8 days and 4 weeks (€/head)



Male Rearing Calves Beef type

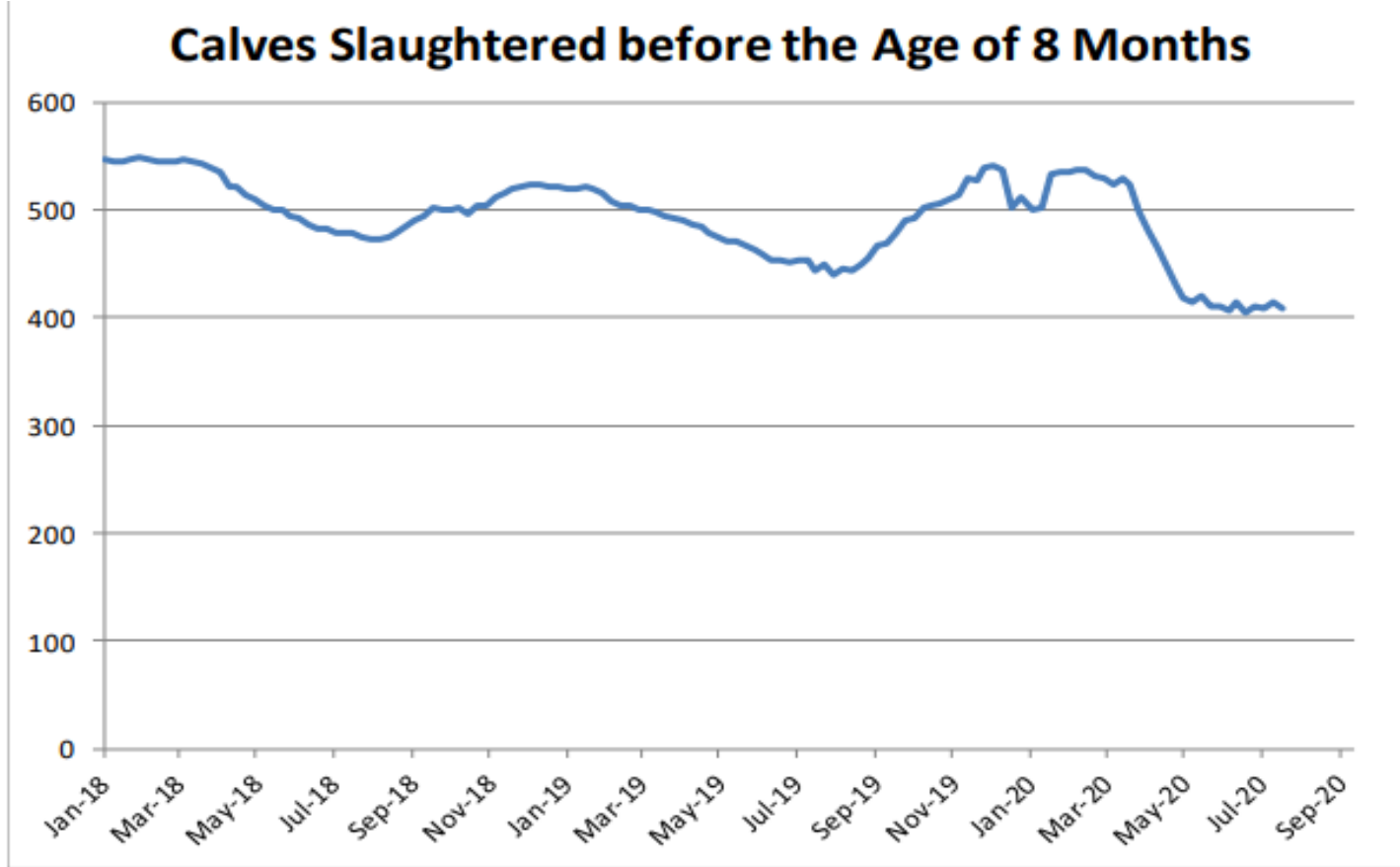
Price in Week 29 **204.11**
Change y/y **-6.65%**

Male Rearing Calves Dairy type

Price in Week 29 **82.21**
Change y/y **-18.66%**

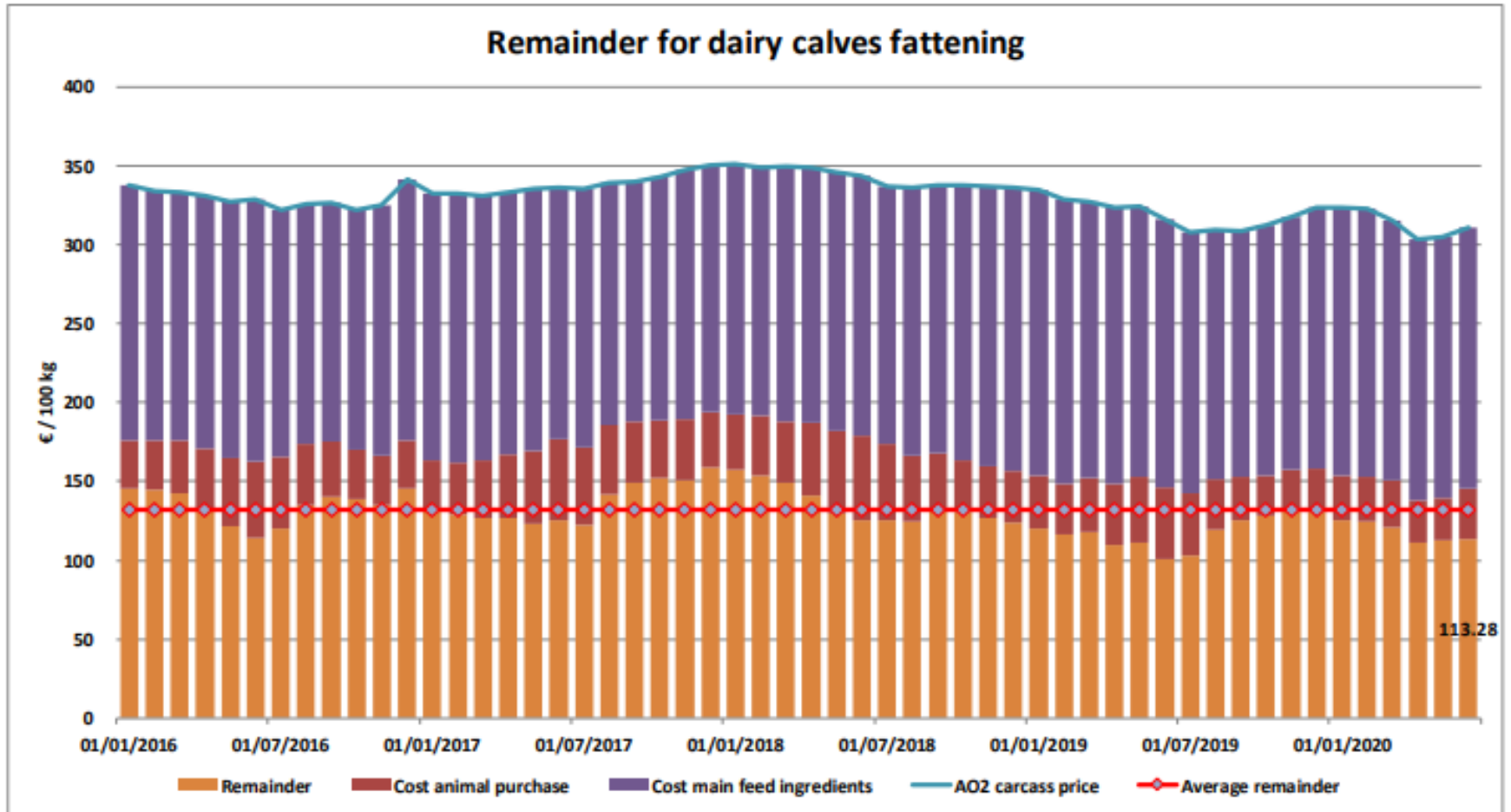


8 aylıktan küçük kesilen buzağlar (€ / 100 kg canlı ağırlık)

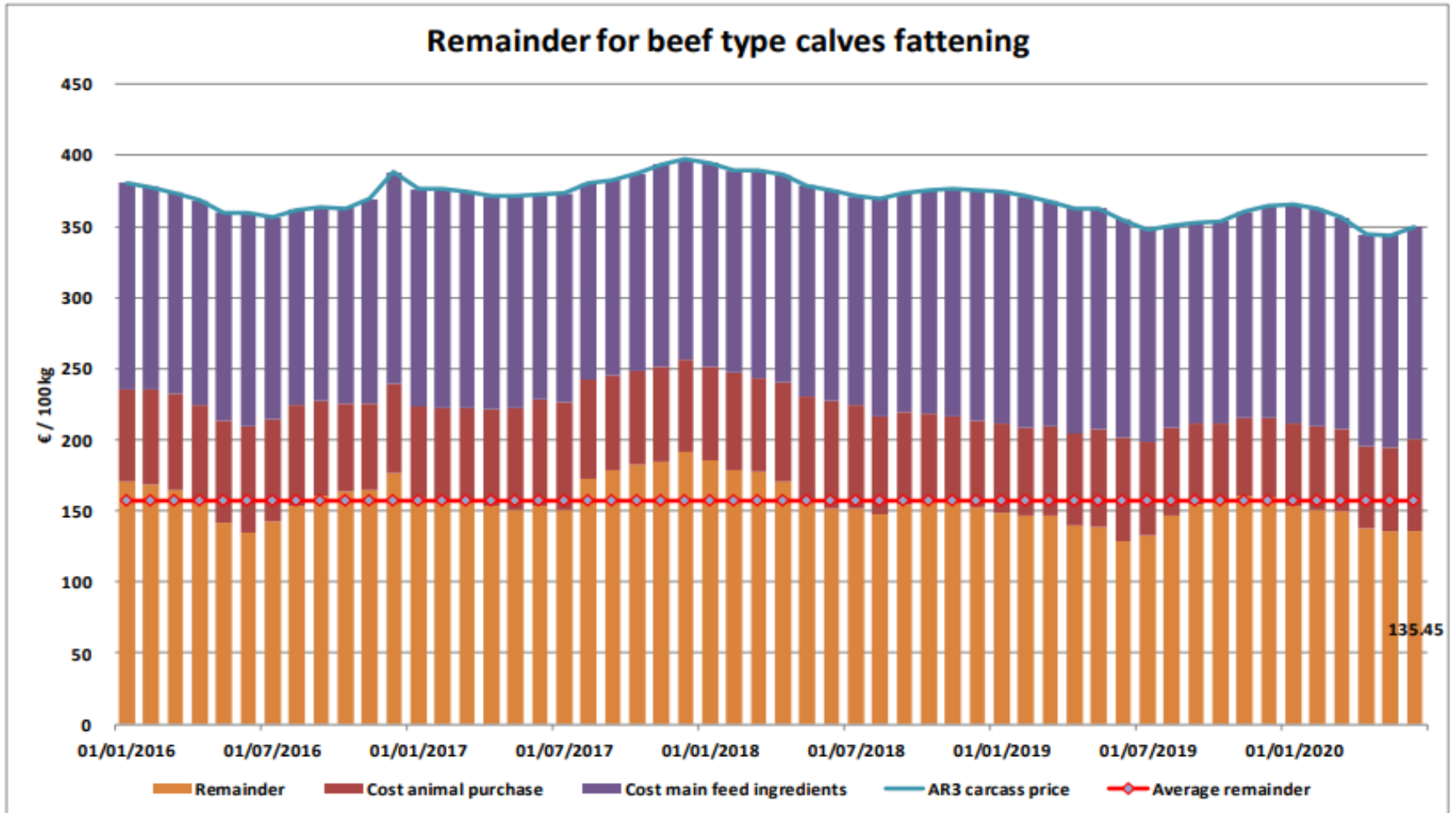


Price in Week 29 409.52 € / 100 kg of carcasse weight
Change y/y -7.55%

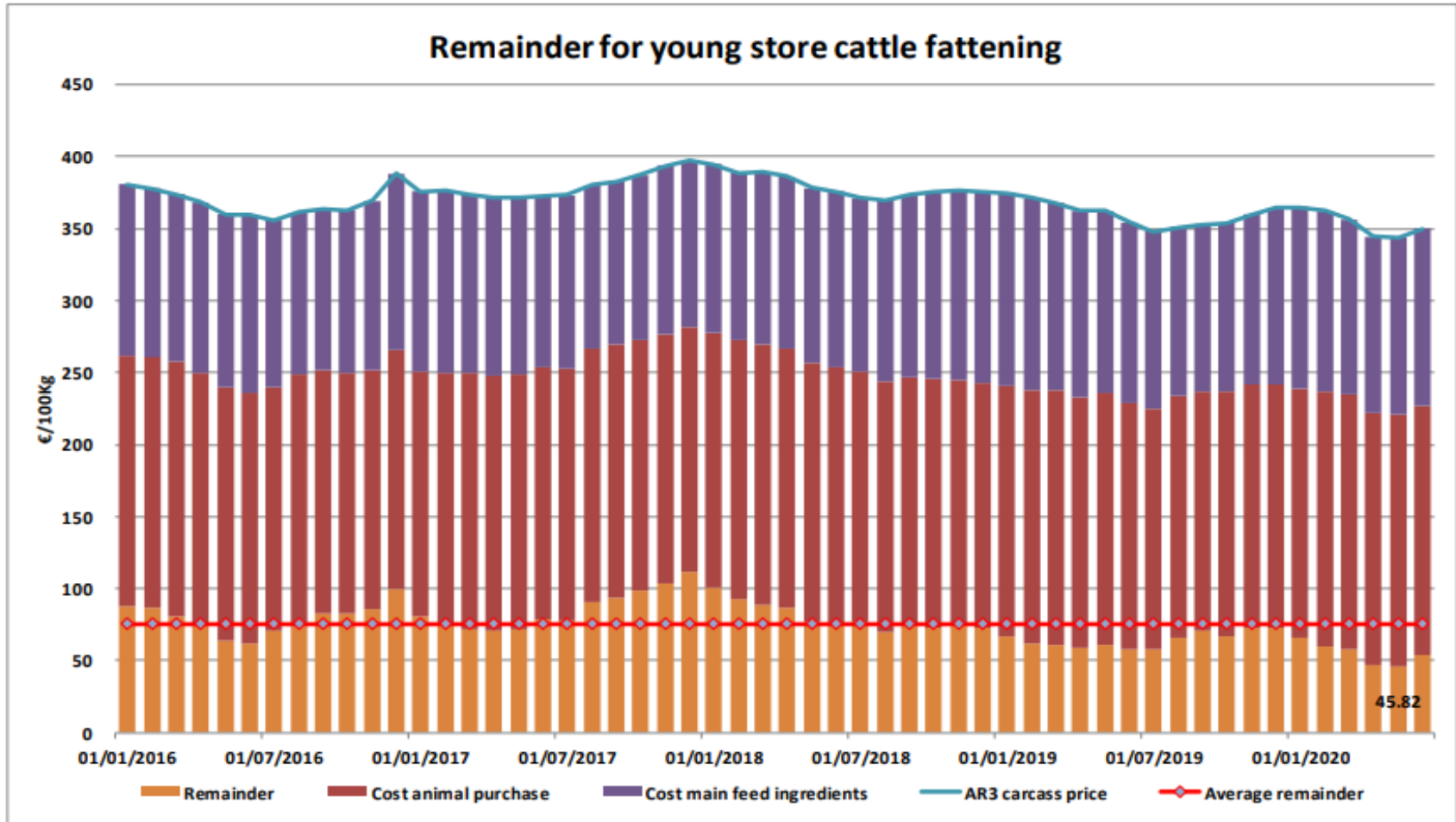
Süt Buzağları Besiciliği İçin Kalanlar



Sığır Tipi Buzağı Besiciliği İçin Kalanlar



Genç Besilik Sığır Besiciliği İçin Kalanlar



AB siğir eti ve canlı hayvan ihracatı (1): Pazar Rakamları (COMEXT – ton ca)

Destinations

	2016		2017		2018		2019		Jan-May 20		Compared to Jan-May 19
	tonnes	%	tonnes	%	tonnes	%	tonnes	%	tonnes	%	
United Kingdom up to Apr 20	477 394	41.5%	493 228	40.4%	486 482	40.9%	439 720	38.6%	145 591	33.9%	#N/A
Hong Kong	47 532	4.1%	76 085	6.2%	55 538	4.7%	46 748	4.1%	21 877	5.1%	+ 1.8%
Israel	41 534	3.6%	44 196	3.6%	47 774	4.0%	49 685	4.4%	19 459	4.5%	- 11.7%
Ghana	37 490	3.3%	37 744	3.1%	36 766	3.1%	39 222	3.4%	19 017	4.4%	+ 20.5%
Algeria	25 003	2.2%	26 305	2.2%	35 410	3.0%	57 152	5.0%	18 930	4.4%	- 20.5%
Philippines	24 116	2.1%	37 103	3.0%	28 766	2.4%	34 158	3.0%	15 029	3.5%	+ 13.3%
Lebanon	47 010	4.1%	38 323	3.1%	42 542	3.6%	36 393	3.2%	14 574	3.4%	- 13.1%
Ivory Coast	35 371	3.1%	36 038	3.0%	36 063	3.0%	33 428	2.9%	13 785	3.2%	+ 8.6%
Bosnia-Herz.	38 875	3.4%	34 710	2.8%	38 762	3.3%	41 145	3.6%	13 186	3.1%	- 19.5%
China	10 253	0.9%	5 738	0.5%	6 713	0.6%	22 348	2.0%	12 219	2.8%	+ 110.8%
Switzerland	24 872	2.2%	26 707	2.2%	23 762	2.0%	25 188	2.2%	10 948	2.5%	- 1.0%
Libya	29 723	2.6%	27 848	2.3%	27 878	2.3%	24 524	2.2%	10 175	2.4%	- 3.9%
Canada	862	0.1%	2 424	0.2%	2 225	0.2%	6 806	0.6%	7 120	1.7%	+++
Japan	3 254	0.3%	4 281	0.4%	3 453	0.3%	8 038	0.7%	6 253	1.5%	+ 155.7%
Ukraine	7 875	0.7%	7 331	0.6%	10 466	0.9%	13 835	1.2%	5 726	1.3%	+ 3.6%
Morocco	7 517	0.7%	10 005	0.8%	11 429	1.0%	12 982	1.1%	5 336	1.2%	- 0.4%
Saudi Arabia	1 456	0.1%	4 691	0.4%	2 522	0.2%	2 809	0.2%	5 286	1.2%	+++
Other Destinations	290 286	25.2%	307 993	25.2%	291 814	24.6%	245 888	21.6%	85 460	19.9%	
Total to Third Countries	1 150 422		1 220 750		1 188 364		1 140 071		429 970		
% change			+ 6%		- 3%		- 4%		- 9.0%		
Total (without UK)	673 028		727 522		701 882		700 350		284 379		
% change			+ 8%		- 4%		- 0%		- 0.1%		



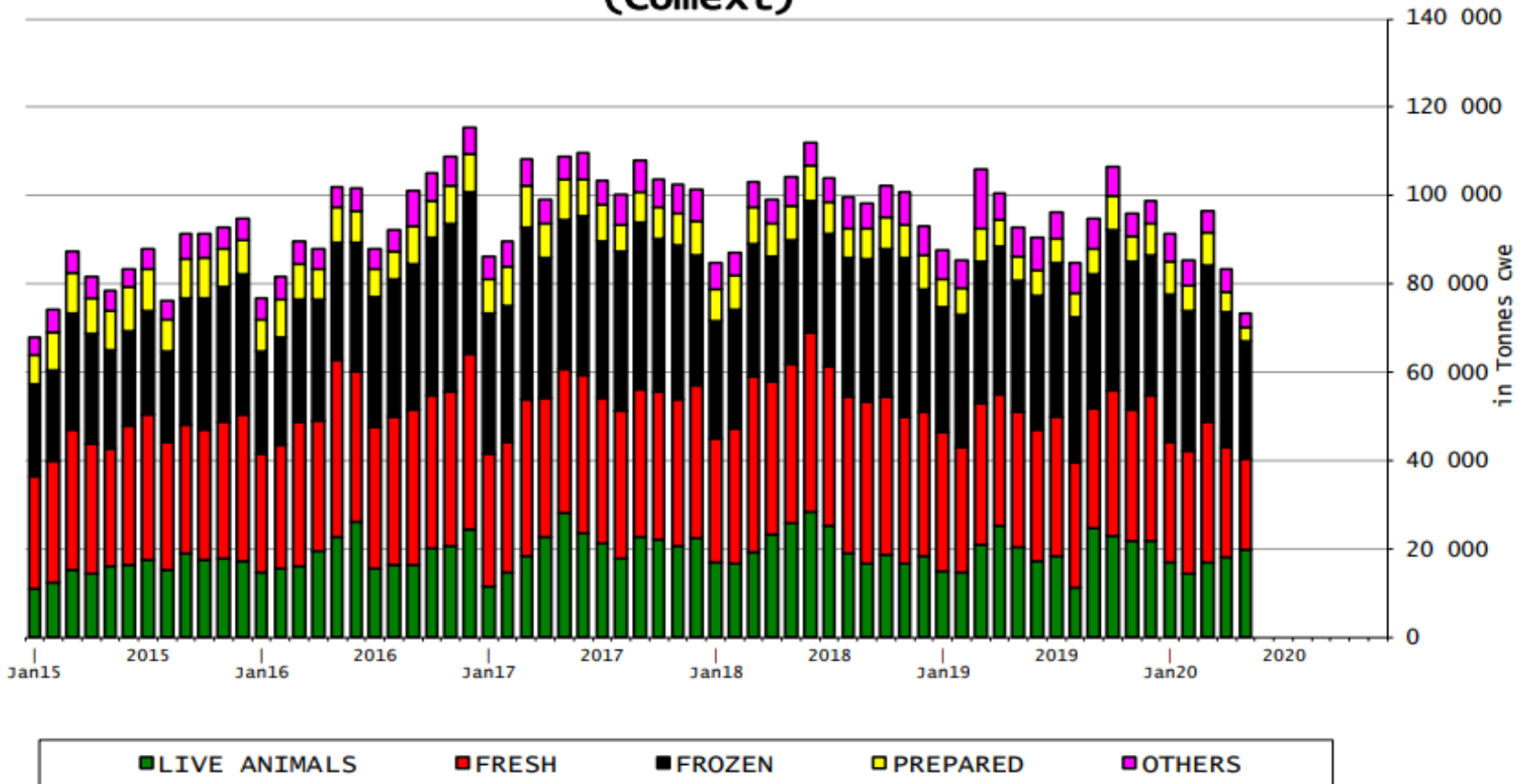
AB sığır eti ihracatı: Pazar Rakamları (COMEXT – ton ca)

Destinations	2016		2017		2018		2019		Jan-May 20		Compared to Jan-May 19
	tonnes	%	tonnes	%	tonnes	%	tonnes	%	tonnes	%	
United Kingdom up to Apr 20	468 017	50.8%	482 057	49.5%	475 989	50.5%	429 488	47.5%	142 683	41.5%	#N/A
Hong Kong	47 532	5.2%	76 085	7.8%	55 538	5.9%	46 748	5.2%	21 877	6.4%	+ 1.8%
Ghana	37 490	4.1%	37 744	3.9%	36 766	3.9%	39 222	4.3%	19 017	5.5%	+ 20.5%
Philippines	24 116	2.6%	37 103	3.8%	28 766	3.1%	34 158	3.8%	15 029	4.4%	+ 13.3%
Ivory Coast	35 371	3.8%	36 028	3.7%	36 063	3.8%	33 428	3.7%	13 785	4.0%	+ 8.6%
Bosnia-Herz.	36 790	4.0%	32 180	3.3%	36 151	3.8%	38 832	4.3%	12 338	3.6%	- 20.0%
China	10 253	1.1%	5 738	0.6%	6 713	0.7%	22 348	2.5%	12 219	3.6%	+++
Switzerland	23 704	2.6%	25 569	2.6%	22 712	2.4%	24 110	2.7%	10 373	3.0%	- 1.4%
Israel	15 055	1.6%	18 749	1.9%	22 163	2.4%	23 073	2.5%	7 183	2.1%	- 26.1%
Canada	862	0.1%	2 424	0.2%	2 225	0.2%	6 806	0.8%	7 120	2.1%	+++
Algeria	10 726	1.2%	12 304	1.3%	13 919	1.5%	19 142	2.1%	7 108	2.1%	- 4.8%
Japan	3 254	0.4%	4 281	0.4%	3 453	0.4%	8 038	0.9%	6 253	1.8%	+++
Ukraine	7 094	0.8%	6 926	0.7%	9 887	1.0%	12 893	1.4%	5 641	1.6%	+ 5.4%
North Macedonia	11 413	1.2%	11 285	1.2%	10 002	1.1%	11 395	1.3%	4 219	1.2%	- 3.0%
Norway	18 307	2.0%	12 848	1.3%	7 922	0.8%	7 667	0.8%	4 216	1.2%	+ 8.9%
Angola	13 326	1.4%	10 982	1.1%	11 469	1.2%	8 454	0.9%	3 884	1.1%	+ 29.5%
USA	3 137	0.3%	3 756	0.4%	5 458	0.6%	7 867	0.9%	3 867	1.1%	+ 44.9%
Other Destinations	154 788	16.8%	158 376	16.3%	157 617	16.7%	131 398	14.5%	47 107	13.7%	
Total to Third Countries	921 234		974 437		942 813		905 067		343 919		
% change			+ 6%		- 3%		- 4%		- 8.6%		
Total (without UK)	453 217		492 379		466 824		475 579		201 235		
% change			+ 9%		- 5%		+ 2%		+ 4.4%		



AB siğir eti ürünleri ihracatı (COMEXT)

EU Exports of BEEF products (Comext)

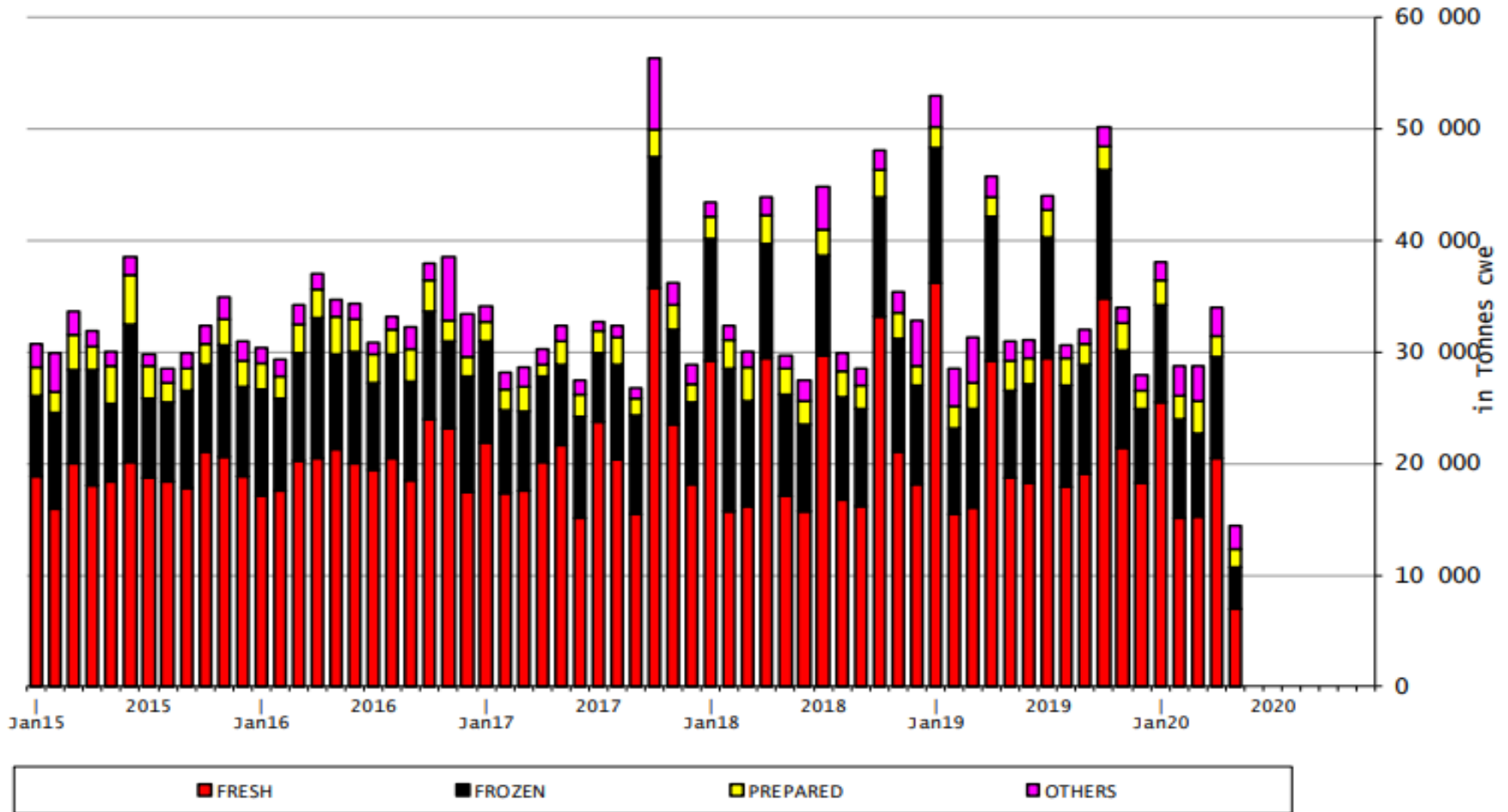




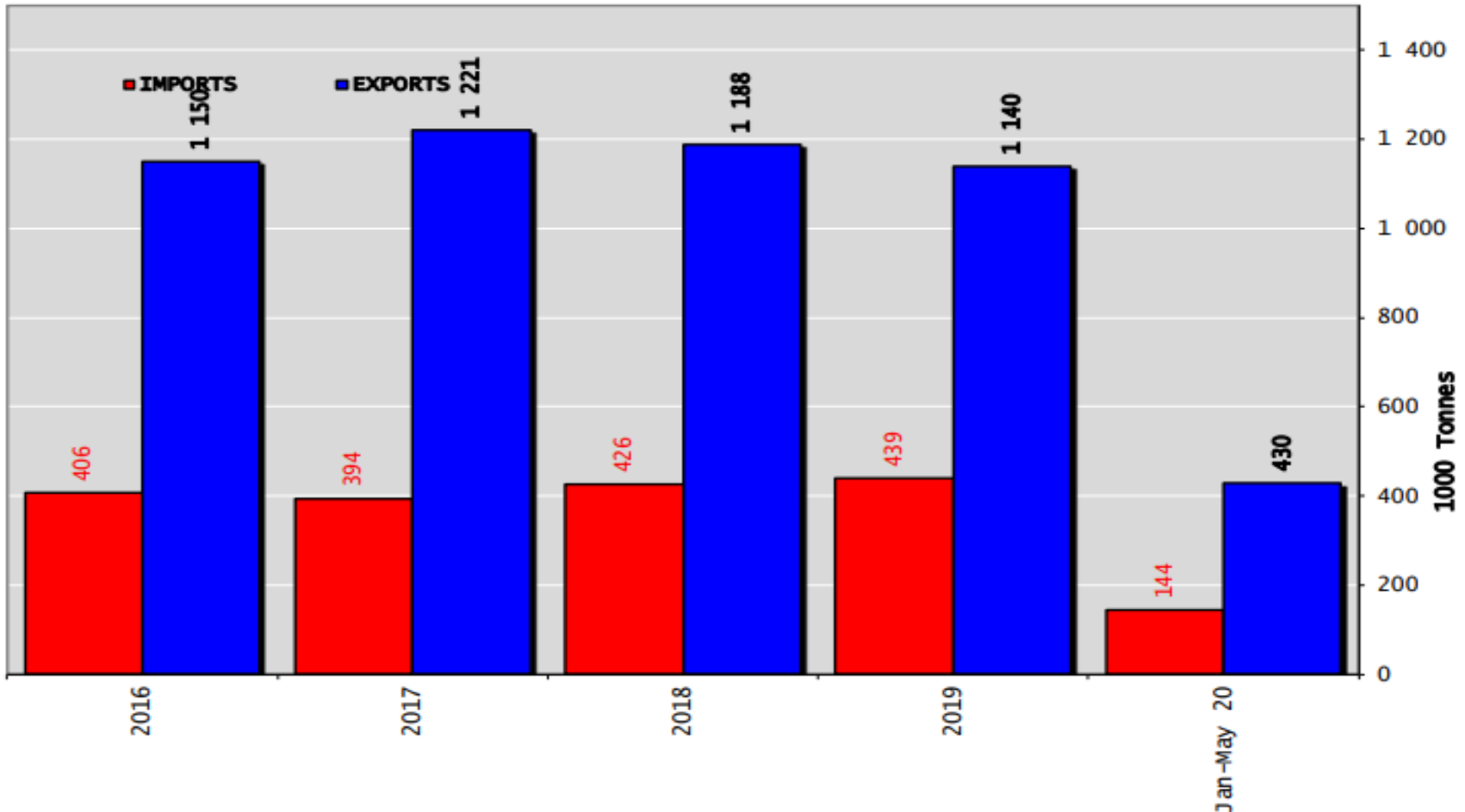
AB Sığır Eti ve Canlı Hayvan İthalatları (1): Ticaret Verileri (COMEXT – ton ca)

Origins	2016		2017		2018		2019		Jan-May 20		Compared to Jan-May 19
	tonnes	%	tonnes	%	tonnes	%	tonnes	%	tonnes	%	
United Kingdom up to Apr 20	134 098	33.0%	133 588	33.9%	138 485	32.5%	159 962	36.4%	48 061	33.4%	#N/A
Brazil	100 982	24.9%	87 156	22.1%	103 979	24.4%	99 547	22.7%	33 156	23.0%	- 18.8%
Argentina	43 111	10.6%	49 260	12.5%	69 011	16.2%	70 617	16.1%	27 154	18.8%	- 11.0%
Uruguay	52 896	13.0%	55 212	14.0%	48 712	11.4%	40 462	9.2%	14 494	10.1%	- 28.4%
USA	20 290	5.0%	21 624	5.5%	19 268	4.5%	16 852	3.8%	7 129	4.9%	- 16.3%
Australia	21 909	5.4%	18 193	4.6%	17 368	4.1%	16 516	3.8%	5 896	4.1%	- 23.5%
New Zealand	8 274	2.0%	6 806	1.7%	7 164	1.7%	6 724	1.5%	2 554	1.8%	- 6.9%
Paraguay	5 309	1.3%	5 922	1.5%	5 520	1.3%	5 204	1.2%	1 706	1.2%	- 17.4%
Switzerland	5 496	1.4%	5 138	1.3%	5 437	1.3%	4 432	1.0%	1 678	1.2%	- 10.7%
Namibia	6 281	1.5%	5 043	1.3%	3 442	0.8%	7 734	1.8%	550	0.4%	- 72.4%
Serbia	557	0.1%	565	0.1%	1 134	0.3%	1 062	0.2%	431	0.3%	+ 13.9%
Botswana	4 204	1.0%	2 686	0.7%	3 119	0.7%	4 950	1.1%	294	0.2%	- 74.1%
Canada	392	0.1%	512	0.1%	1 343	0.3%	2 518	0.6%	266	0.2%	- 72.7%
Japan	518	0.1%	646	0.2%	791	0.2%	998	0.2%	230	0.2%	- 42.4%
Ukraine	317	0.1%	374	0.1%	257	0.1%	410	0.1%	134	0.1%	+ 4.7%
Chile	575	0.1%	319	0.1%	356	0.1%	392	0.1%	107	0.1%	- 46.4%
Israel	0	0.0%	20	0.0%	0	0.0%	160	0.0%	67	0.0%	+++
Other Destinations	981	0.2%	1 020	0.3%	888	0.2%	613	0.1%	162	0.1%	
Total to Third Countries	406 191		394 085		426 272		439 154		144 068		
% change			- 3%		+ 8%		+ 3%		- 24.0%		
Total (without UK)	272 093		260 496		287 788		279 192		96 008		
% change			- 4%		+ 10%		- 3%		- 20.0%		

AB Sığır Eti Ürünleri İthalatları

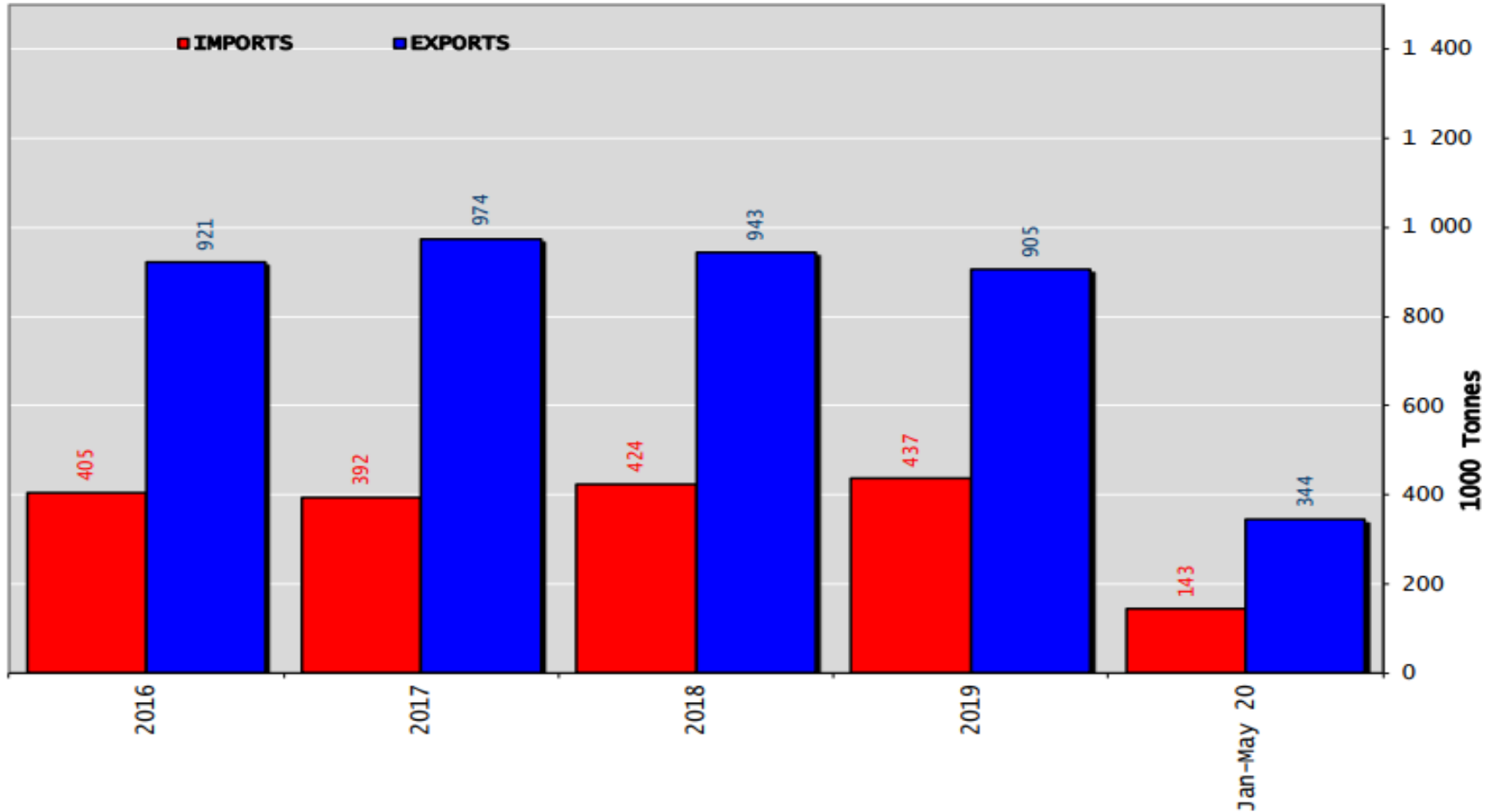


Siğır Eti Ürünleri ve Canlı Hayvan Ticaret Dengesi (Ton)

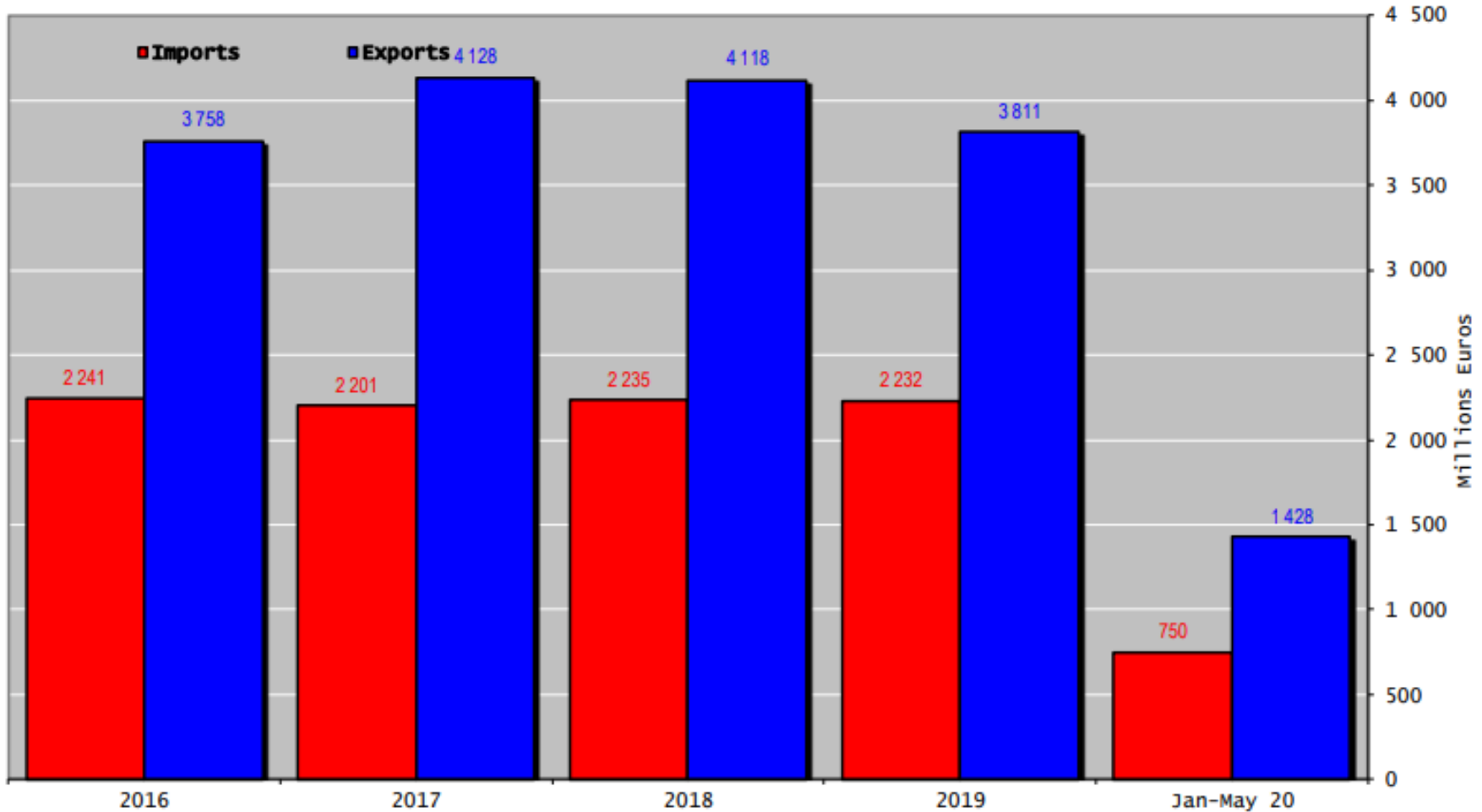




Sığır Eti Ürünleri Ticaret Dengesi (Canlı hayvanlar hariç) (Ton)

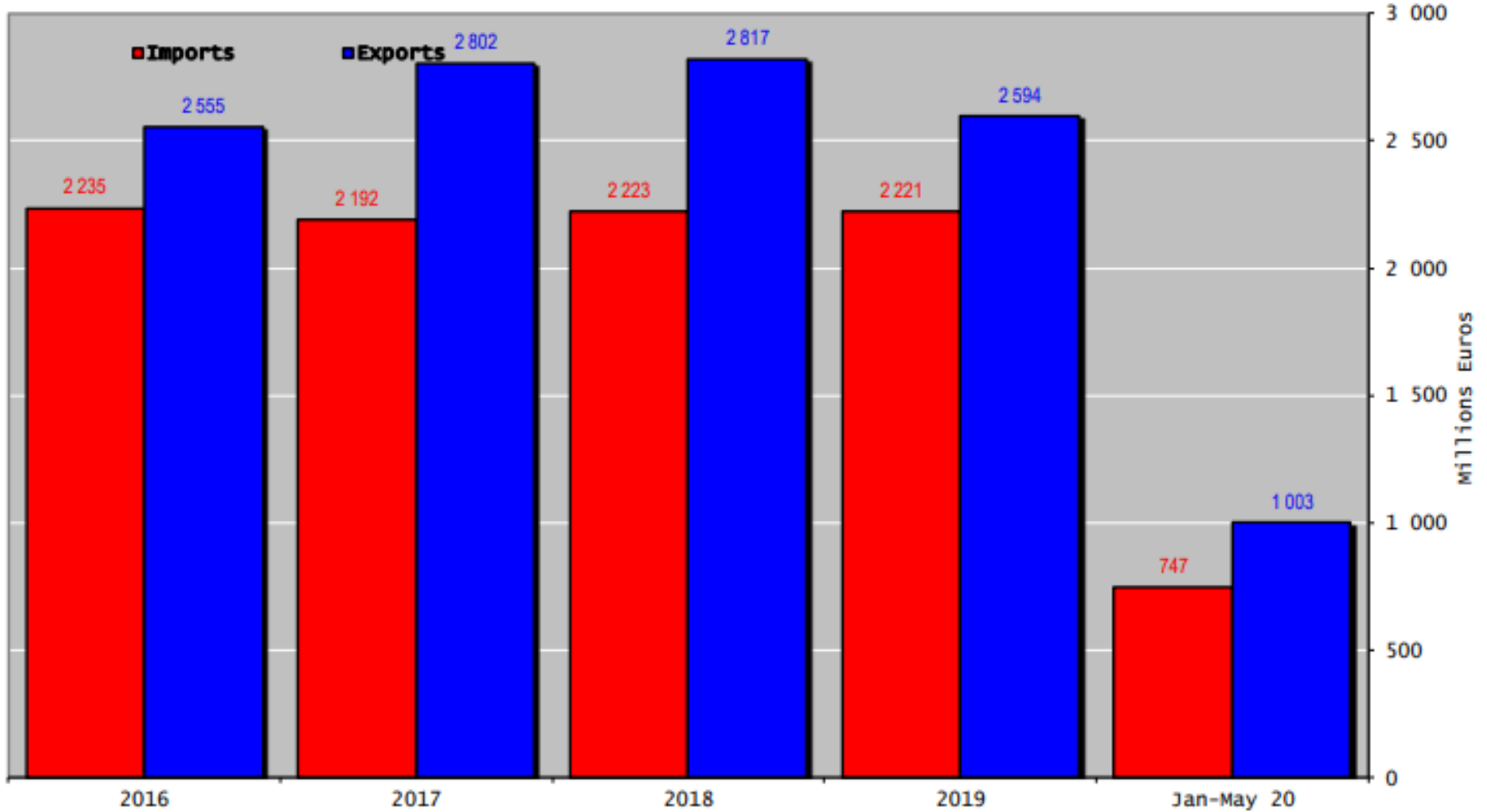


Siğir Eti Ürünleri ve Canlı Hayvan Ticaret Dengesi (Milyon Euro)





AB Sığır Eti Ürünleri Ticareti (Canlı Hayvanlar Hariç) (Milyon Euro)



YÜKSEK KALİTE SİĞİR ETİ İTHALAT KOTALARI



European
Commission

Hilton Quota

Regulation (EU) N° 593/2013

	Quantity allocated (Tons)	2017/2018		2018/2019		2019/2020*	
		Use		Use		Use	
09.4001 Australia	2 250						
09.4004 Argentina	200	14.67	7.34%	11.05	5.53%	8.34	4.17%
09.4450 Argentina	29 500	28 091.29	95.22%	29 491.35	99.97%	26 649.20	90.34%
09.4451 Australia	7 150	5 333.48	74.59%	4 942.02	69.12%	3 000.01	41.96%
09.4452 Uruguay	6 376	6 363.24	99.80%	6 363.76	99.81%	4 520.57	70.90%
09.4453 Brazil	10 000	5 057.27	50.57%	4 147.19	41.47%	2 884.79	28.85%
09.4454 New Zealand	1 300	1 122.25	86.33%	980.60	75.43%	859.15	66.09%
09.4002 Canada/US	11 500	2 351.37	20.45%	3 883.04	33.77%	2 703.68	23.51%
09.4455 Paraguay	1 000	962.21	96.22%	935.41	93.54%	680.40	68.04%
Total Beef	66 826	49 281.11	73.75%	50 743.37	75.93%	41 297.80	61.80%
Total Buffalo	2 450	14.67	0.60%	11.05	0.45%	8.34	0.34%
Total	69 276	49 295.78	71.16%	50 754.42	73.26%	10 810.50	15.60%

* up to 31/05/2020

YÜKSEK KALİTE SİĞİR ETİ İTHALAT KOTALARI



European
Commission

Quota erga omnes

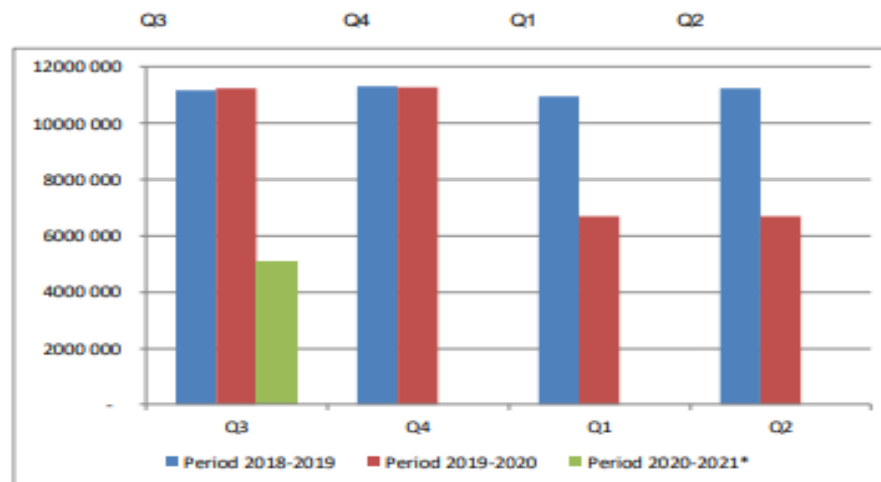
Regulation (EU) No 481/2012

	2018-Q3	2018-Q4	2019-Q1	2019-Q2	TOTAL
Period 2018-2019	11 164 832	11 319 134	10 972 635	11 255 802	44 712 403
Available	11 250 000	11 250 000	11 250 000	11 250 000	45 000 000
Use	99.24%	100.00%	97.53%	100.00%	99.36%
Available after transfer	11 250 000 99.24%	11 335 168 99.86%	11 180 866 98.14%	11 527 365 97.64%	

	2019-Q3	2019-Q4	2020-Q1	2020-Q2	TOTAL
Period 2019-2020	11 246 417	11 261 455	6 676 711	6 708 044	35 892 628
Available	11 250 000	11 250 000	11 250 000	11 250 000	45 000 000
Use	99.97%	100.00%	59.35%	59.63%	79.76%
Available after transfer	11 250 000 99.97%	11 250 000 100.00%	11 250 000 59.35%	11 250 000 59.63%	

	2020-Q3	2020-Q4	2021-Q1	2021-Q2	TOTAL
Period 2020-2021*	5 040 959	-	-	-	5 040 959
Available	11 250 000	11 250 000	11 250 000	11 250 000	45 000 000
Use	44.81%	0.00%	0.00%	0.00%	11.20%
Available after transfer	11 250 000 44.81%	11 250 000 0.00%	11 250 000 0.00%	11 250 000 0.00%	

* Until 14.07.2020



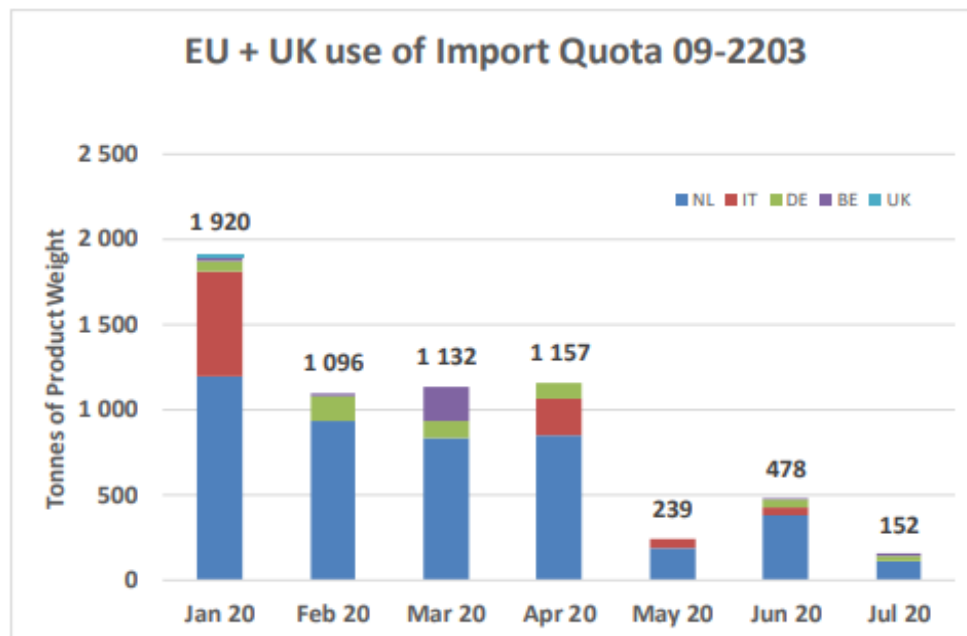
YÜKSEK KALİTE SİĞİR ETİ İTHALAT KOTALARI



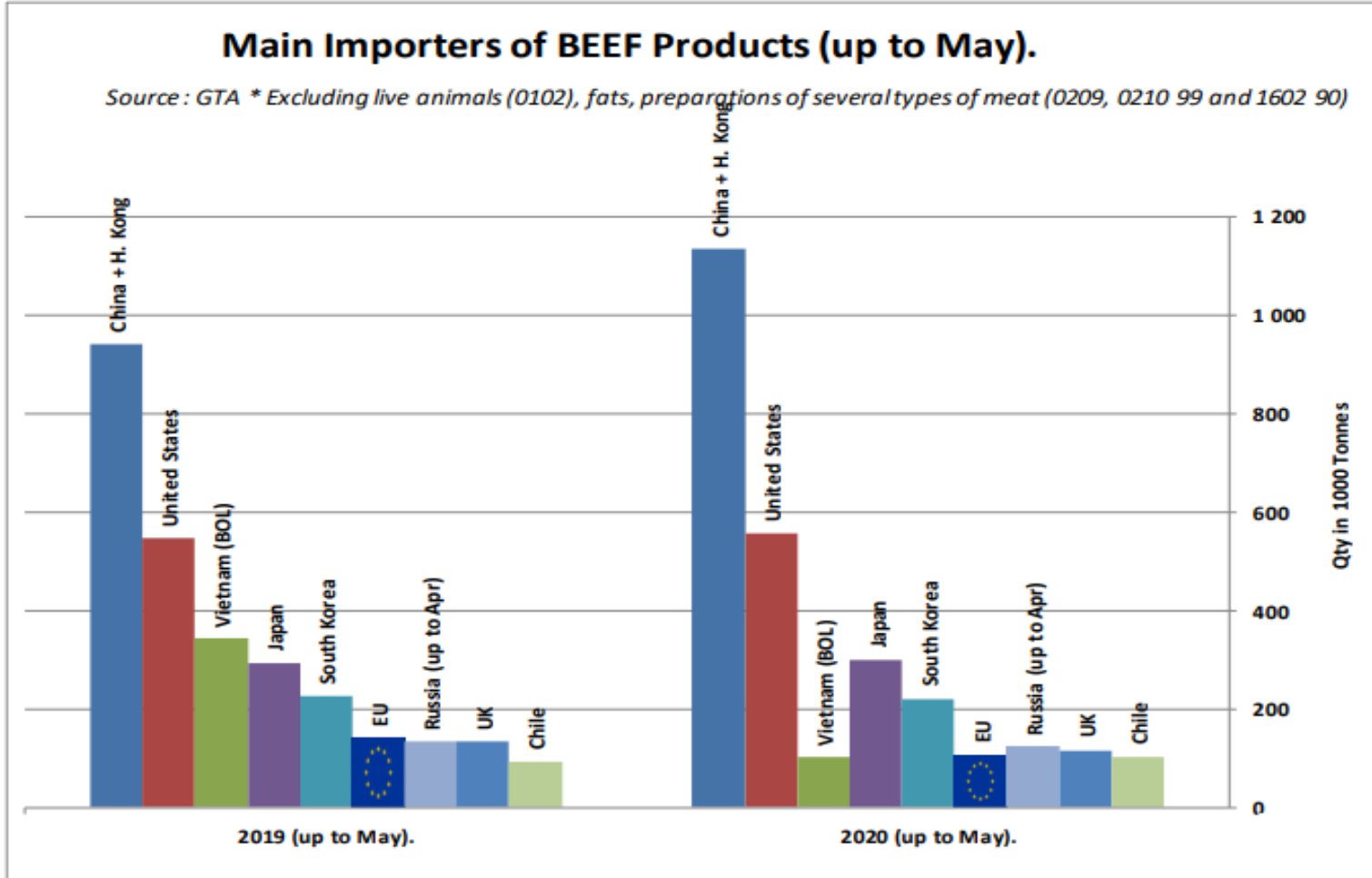
European Commission

Origin	GATT 2019-2020				Total
	2019-Q3	2019-Q4	2020-Q1	2020-Q2	
NL			2 957	1 415	4 372
IT			614	314	929
DE			313	133	446
BE			241	10	251
UK			23	-	23
Total import within Quota			4 125	1 873	5 998
Available			4 625	4 625	9 250
Use			89.19%	40.50%	64.85%
After transfer			4 625	5 125	
Use			89.19%	36.55%	

Origin	GATT 2020-2021				Total
	2020-Q3	2020-Q4	2021-Q1	2021-Q2	
NL	109				109
IT	-				-
DE	30				30
BE	13				13
Total import within Quota	152				152
Available	4 625				4 625
Use	3.29%				
After transfer	4 625				
Use	3.29%				

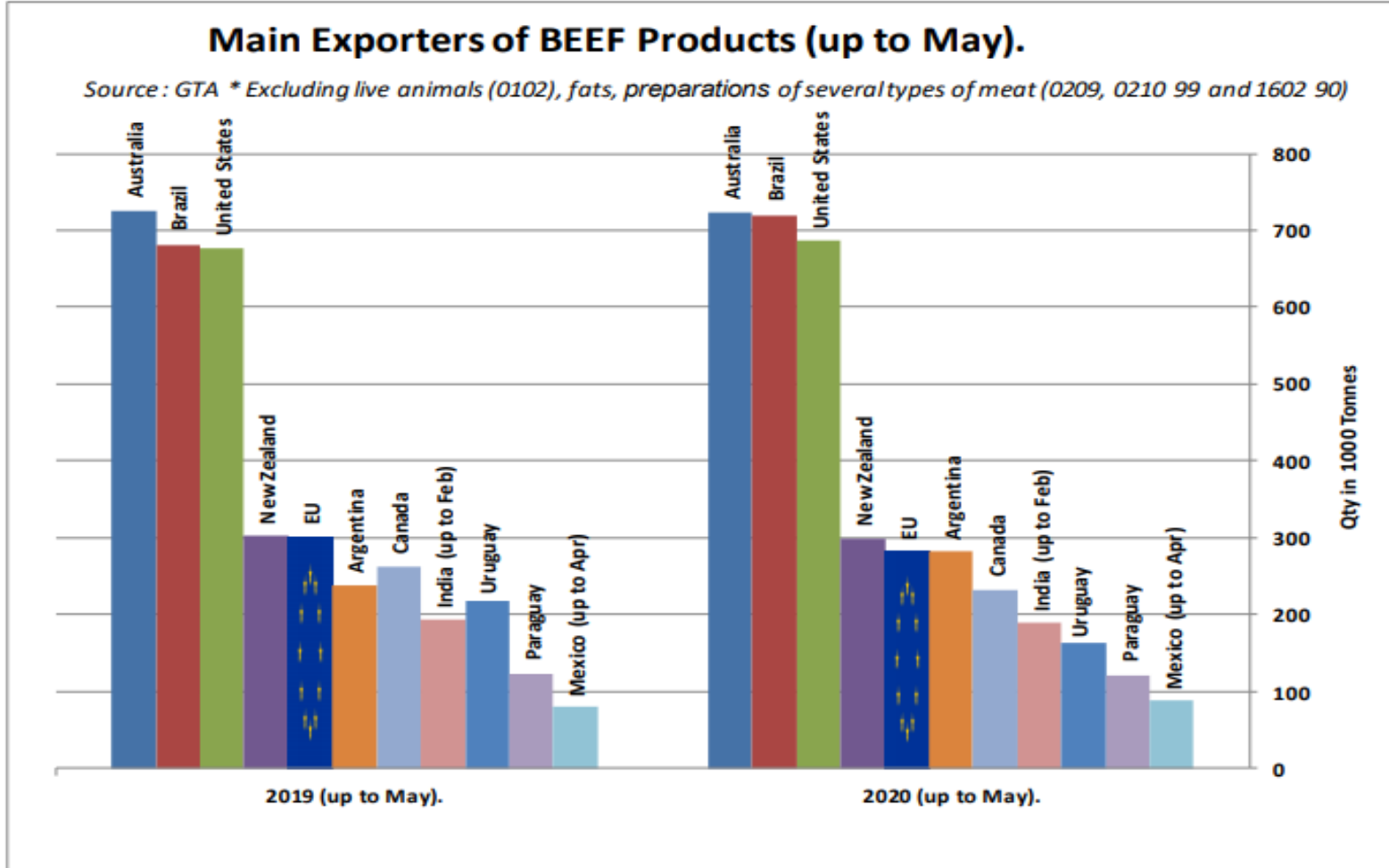


SIĞIR ETİ ÜRÜNLERİNİN NET İTHALATÇILARI (MAYIS AYINA KADAR)





SIĞIR ETİ ÜRÜNLERİNİN NET İHRACATÇILARI (MAYIS AYINA KADAR)

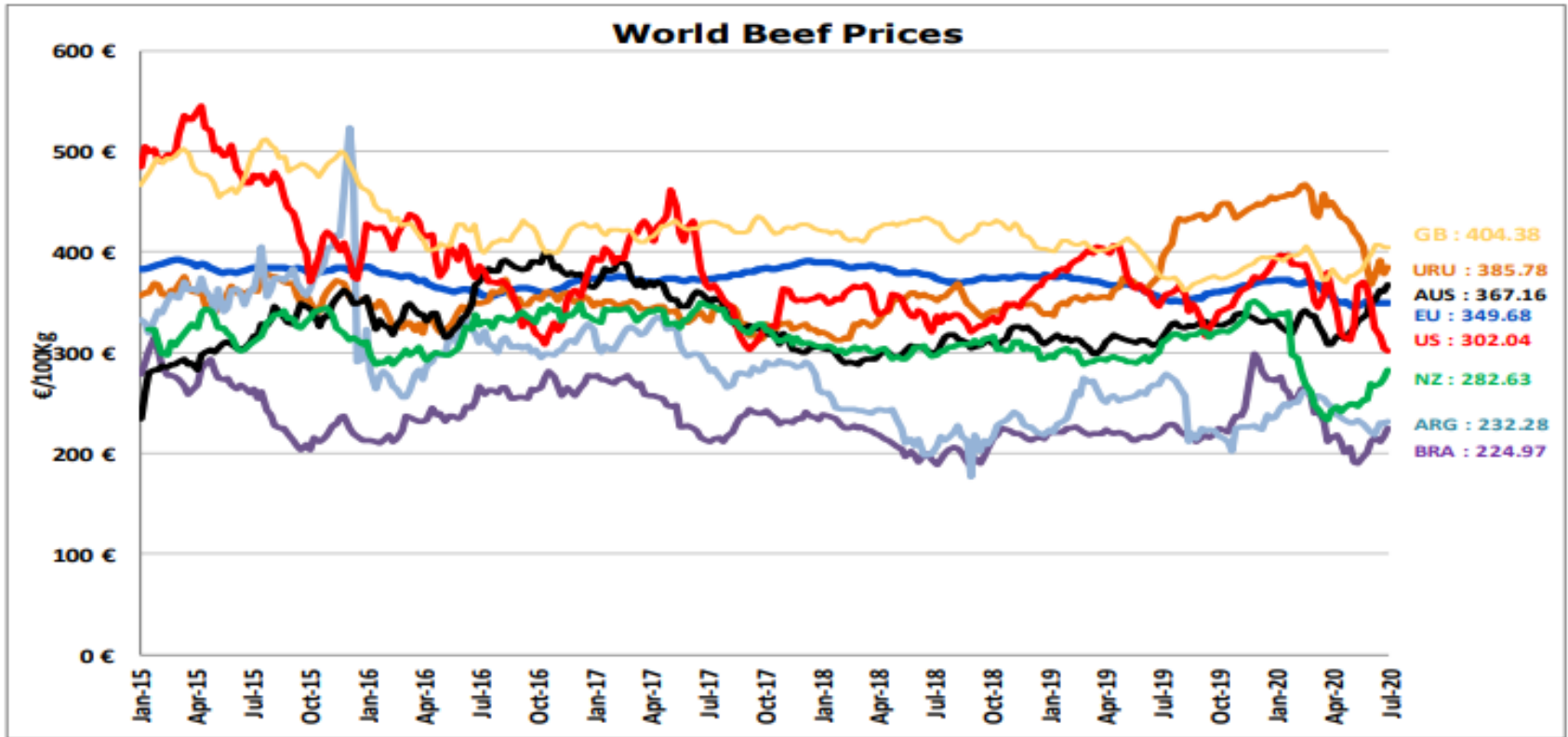


DÜNYA SIĞIR ETİ PAZARI



European
Commission

Dünya Sığır Fiyatları AB, ABD, AVUSTURYA, YENİ ZELANDA



ECB	http://sdw.ecb.europa.eu/browse.do?node=2018794
US	https://www.marketnews.usda.gov/mnp/lis-home
AUS	http://statistics.mla.com.au/Report/RunReport/ae59d4ac-74e4-4c56-93bd-982a044d9760
UY	http://www.inac.gub.uy/innovaportal/v/11034/10/innova.front/indicadores-y-precios
ARG	http://www.abc-consorcio.com.ar/Estadisticas/detalle/117/precios_comparativos_del_novillo.html
BR	http://www.pecuaria.com.br/cotacoes.php
NZ	http://www.abc-consorcio.com.ar/Estadisticas/detalle/117/precios_comparativos_del_novillo.html



Daha fazla bilgi için:

https://ec.europa.eu/agriculture/market-observatory/meat_en

Ve Agri-FOOD Veri Portalı:

<http://agridata.ec.europa.eu>