



AB SIĐIR VE DANA ETİ PAZAR DURUMU

26 Ađustos 2021

HAYVANCILIK HAZİRAN ARAŞTIRMASI



European
Commission



AB DEĞİŞİM TOPLAM BÜYÜKBAŞ

May/Jun 1000 Hd	TOT LIVESTOCK				%Var 2020 2019	BOVINE < 1 Year				%Var 2020 2019	BOVINE 1-2 Year				%Var 2020 2019	BOVINE > 2 Year				%Var 2020 2019	
	2017	2018	2019	2020		2017	2018	2019	2020		2017	2018	2019	2020		2017	2018	2019	2020		
BE	2 454	2 450	2 406	2 388	-0.8%	717	710	706	716	+1.4%	500	492	475	471	-0.8%	1 237	1 247	1 236	1 201	-2.0%	
BG																					
CZ																					
DK	1 565	1 560	1 512	1 517	+0.3%	527	538	510	517	+1.4%	311	294	292	291	-0.3%	727	729	710	709	-0.1%	
DE	12 366	12 093	11 763	11 423	-2.9%	3 723	3 618	3 502	3 410	-2.6%	2 948	2 848	2 788	2 683	-3.8%	5 694	5 627	5 473	5 330	-2.6%	
EE																					
IE	7 364	7 349	7 209	7 314	+1.5%	2 131	2 078	2 008	2 117	+5.4%	1 914	1 919	1 861	1 807	-2.9%	3 319	3 351	3 340	3 390	+1.5%	
EL																					
ES	6 588	6 725	6 722	6 715	-0.1%	2 480	2 504	2 507	2 488	-0.8%	927	990	978	930	-4.9%	3 181	3 230	3 237	3 297	+1.9%	
FR	19 433	18 737	18 470	18 200	-1.5%	5 542	5 125	5 227	5 144	-1.6%	3 523	3 417	3 229	3 249	+0.6%	10 367	10 195	10 014	9 808	-2.1%	
HR																					
IT	6 118	6 170	6 016	6 116	+1.7%	1 723	1 757	1 746	1 746	-0.0%	1 472	1 466	1 409	1 458	+3.5%	2 923	2 948	2 861	2 912	+1.8%	
CY																					
LV																					
LT																					
LU																					
HU																					
MT																					
NL	4 096	3 897	3 750	3 766	+0.4%	1 602	1 580	1 536	1 558	+1.4%	600	520	460	446	-3.1%	1 893	1 817	1 754	1 762	+0.5%	
AT	1 938	1 907	1 873	1 844	-1.5%	620	606	596	588	-1.4%	431	433	425	416	-2.1%	888	889	853	841	-1.4%	
PL	6 143	6 201	6 358	6 344	-0.2%	1 721	1 686	1 771	1 729	-2.4%	1 701	1 734	1 768	1 796	+1.6%	2 721	2 781	2 820	2 819	-0.0%	
PT	1 722	1 722	1 712	1 751	+2.3%	537	529	524	557	+6.4%	281	274	267	264	-0.9%	904	919	921	929	+0.8%	
RO	2 012	2 002	1 963	1 915	-2.4%	454	444	428	418	-2.3%	229	236	230	217	-5.7%	1 329	1 322	1 305	1 280	-1.9%	
SI																					
SK																					
FI																					
SE	1 501	1 507	1 466	1 454	-0.8%	472	475	451	462	+2.6%	385	381	380	362	-4.6%	644	651	636	630	-1.0%	
EU	73 301	72 320	71 220	70 748	-0.7%	22 250	21 631	21 512	21 451	-0.3%	15 234	15 003	14 559	14 389	-1.2%	35 827	35 687	35 149	34 908	-0.7%	
UK	10 004	9 891	9 739	9 615	-1.3%	2 940	2 908	2 857	2 878	+0.7%	2 516	2 479	2 448	2 412	-1.5%	4 548	4 504	4 434	4 324	-2.5%	

Source : Eurostat Newsroom

EU %Var is calculated considering only countries available in 2019 AND 2020

HAYVANCILIK HAZİRAN ARAŞTIRMASI



AB DEĞİŞİM İNEK

May/Jun 1000 Hd	TOTAL COWS				%Var 2020 2019	DAIRY COWS				%Var 2020 2019	OTHER COWS				%Var 2020 2019
	2017	2018	2019	2020	2017	2018	2019	2020	2017	2018	2019	2020			
BE	970	968	960	954	-0.7%	521	532	536	544	+1.6%	449	435	425	409	-3.6%
BG															
CZ															
DK	665	667	654	653	-0.2%	570	575	567	567	İstem	95	91	87	86	-1.1%
DE	4 885	4 830	4 720	4 609	-2.3%	4 214	4 167	4 067	3 969	-2.4%	670	663	653	640	-1.9%
EE															
IE	2 514	2 529	2 505	2 551	+1.9%	1 433	1 481	1 505	1 568	+4.2%	1 081	1 048	1 000	983	-1.6%
EL															
ES	2 832	2 865	2 854	2 927	+2.5%	825	825	815	810	-0.6%	2 007	2 040	2 039	2 117	+3.8%
FR	7 811	7 652	7 546	7 442	-1.4%	3 552	3 512	3 471	3 403	-1.9%	4 259	4 141	4 075	4 039	-0.9%
HR															
IT	2 187	2 192	2 110	2 130	+1.0%	1 907	1 904	1 840	1 844	+0.2%	280	288	270	286	+6.1%
CY															
LV															
LT															
LU															
HU															
MT															
NL	1 753	1 685	1 641	1 651	+0.6%	1 694	1 622	1 578	1 593	+0.9%	59	63	63	58	-6.8%
AT	755	740	726	716	-1.3%	540	538	525	523	-0.4%	215	202	201	193	-3.8%
PL	2 374	2 429	2 461	2 468	+0.3%	2 154	2 233	2 221	2 218	-0.1%	220	196	240	250	+4.2%
PT	747	745	742	757	+1.9%	244	244	238	239	+0.4%	504	501	504	517	+2.7%
RO	1 199	1 197	1 179	1 160	-1.6%	1 184	1 184	1 162	1 145	-1.5%	15	12	17	15	-9.6%
SI															
SK															
FI															
SE	530	534	516	511	-0.9%	322	319	305	302	-1.3%	208	214	210	209	-0.4%
EU	29 221	29 034	28 612	28 529	-0.3%	19 159	19 137	18 831	18 725	-0.6%	10 062	9 896	9 782	9 803	+0.2%
UK	3 481	3 441	3 398	3 359	-1.1%	1 891	1 883	1 871	1 850	-1.1%	1 589	1 558	1 527	1 509	-1.2%

Source : Eurostat Newcomer

EU %Var is calculated considering only countries available in 2019 AND 2020



European
Commission



Dcc	TOTAL LIVESTOCK				%Var	BOVINE < 1 Year				%Var	BOVINE 1-2 Year				%Var	BOVINE > 2 Year				%Var
	2017	2018	2019	2020	2020 2019	2017	2018	2019	2020	2020 2019	2017	2018	2019	2020	2020 2019	2017	2018	2019	2020	2020 2019
BE	2 388	2 308	2 373	2 334	-1.6%	700	724	722	711	-1.5%	484	484	484	481	-0.6%	1 202	1 210	1 188	1 163	-2.1%
BG	553	542	527	589	+11.6%	110	108	100	112	+11.9%	57	59	58	71	+22.0%	388	375	369	406	+9.0%
CZ	1 366	1 365	1 367	1 340	-2.0%	407	404	411	405	-1.5%	299	304	299	295	-1.2%	660	657	657	640	-2.6%
DK	1 558	1 530	1 500	1 500	idem	541	534	522	524	+0.4%	294	284	280	279	-0.4%	723	712	698	697	-0.1%
DE	12 281	11 949	11 640	11 302	-2.9%	3 704	3 584	3 485	3 405	-2.3%	2 904	2 829	2 751	2 639	-4.1%	5 673	5 536	5 403	5 258	-2.7%
EE	251	252	254	253	-0.3%	70	71	71	72	+1.6%	49	49	50	50	-0.6%	132	132	133	132	-1.1%
IE	6 674	6 593	6 560	6 529	-0.6%	2 087	2 000	1 962	2 057	+4.8%	1 792	1 790	1 741	1 708	-1.9%	2 795	2 804	2 856	2 765	-3.2%
EL	558	542	530	539	+1.7%	151	141	157	154	-1.9%	101	98	91	90	-1.1%	303	305	283	295	+4.2%
ES	6 468	6 511	6 600	6 636	+0.5%	2 492	2 494	2 529	2 541	+0.5%	822	847	857	853	-0.5%	3 151	3 170	3 214	3 242	+0.9%
FR	18 954	18 613	18 173	17 591	-3.2%	5 271	5 304	5 125	4 865	-5.1%	3 381	3 180	3 183	3 064	-3.8%	10 301	10 129	9 865	9 663	-2.0%
HR	451	414	420	423	+0.7%	158	153	151	148	-3.3%	100	98	107	111	+3.7%	195	185	182	188	+2.5%
IT	6 350	6 311	6 377	6 400	+0.4%	1 738	1 703	1 759	1 774	+0.8%	1 501	1 538	1 588	1 595	+0.5%	3 111	3 071	3 030	3 031	+0.0%
CY	67	71	74	78	+4.8%	23	24	25	25	+3.5%	11	12	12	12	+2.8%	33	35	38	40	+6.2%
LV	408	395	395	399	+0.9%	108	106	108	112	+3.0%	70	65	65	65	+1.2%	228	225	222	222	-0.2%
LT	677	654	635	630	-0.8%	180	173	167	169	+1.2%	135	133	132	128	-2.5%	362	348	336	332	-1.1%
LU	198	194	192	191	-0.7%	50	50	50	50	+0.2%	44	42	41	41	-1.1%	103	103	101	100	-1.1%
HU	870	885	909	933	+2.6%	243	251	258	266	+3.1%	179	182	193	195	+1.0%	448	451	458	472	+3.1%
MT	14	14	14	14	+0.1%	4	4	4	4	+5.3%	3	3	3	3	-8.4%	7	7	7	7	+0.0%
NL	4 030	3 690	3 721	3 691	-0.8%	1 594	1 510	1 528	1 510	-1.2%	575	485	440	485	+5.7%	1 880	1 715	1 752	1 718	-2.1%
AT	1 943	1 913	1 880	1 855	-1.3%	624	618	605	599	-1.1%	439	428	426	414	-2.8%	881	866	848	842	-0.6%
PL	6 036	6 183	6 262	6 279	+0.3%	1 713	1 709	1 748	1 735	-0.7%	1 669	1 732	1 757	1 800	+2.5%	2 654	2 742	2 758	2 744	-0.5%
PT	1 670	1 632	1 675	1 691	+1.0%	515	497	531	526	-1.1%	258	238	240	257	+6.9%	900	899	903	909	+0.6%
RO	2 011	1 977	1 923	1 894	-1.6%	432	418	400	394	-1.7%	248	241	223	220	-1.3%	1 330	1 318	1 300	1 280	-1.5%
SI	480	477	483	485	+0.5%	153	153	151	153	+1.3%	128	128	136	133	-1.7%	198	196	197	199	+1.4%
SK	440	439	432	442	+2.3%	125	123	122	126	+3.0%	84	83	83	87	+4.1%	231	232	227	229	+1.0%
FI	875	859	841	835	-0.6%	299	296	287	292	+1.5%	213	210	205	199	-2.6%	363	354	349	344	-1.3%
SE	1 449	1 435	1 405	1 391	-1.0%	474	468	453	464	+2.5%	342	343	339	323	-4.6%	633	625	613	603	-1.6%
EU	79 010	77 840	77 161	76 245	-1.2%	23 964	23 619	23 431	23 187	-1.0%	16 182	15 838	15 764	15 559	-1.3%	38 663	38 382	37 966	37 499	-1.2%
UK	9 787	9 610	9 459			2 956	2 889	2 860			2 413	2 405	2 335			4 417	4 336	4 264		

Source: E-Stat Newcomer

EU %Var is calculated considering only countries available in 2016 AND 2020

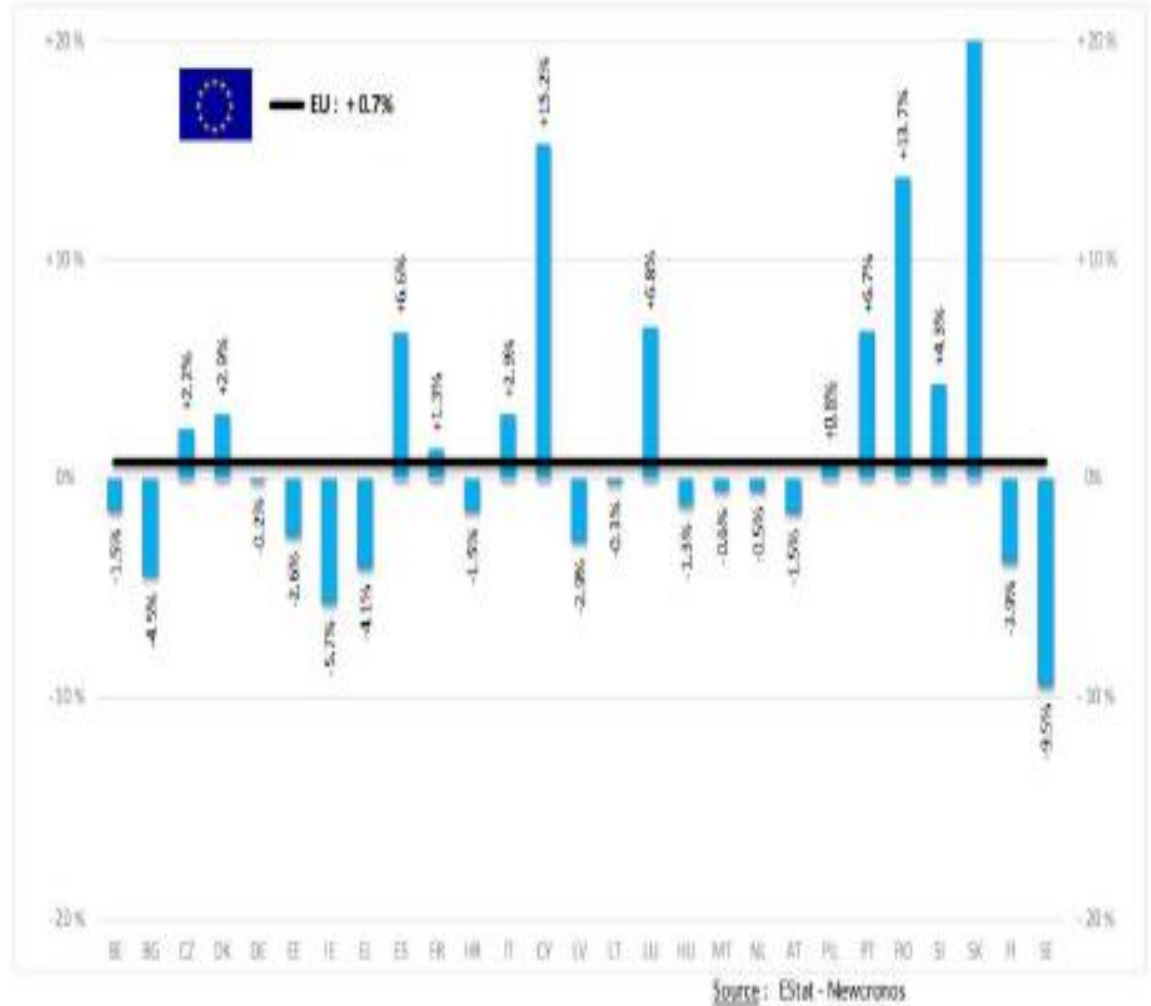
Dec	TOTAL COWS					%Var 2020 2019	DAIRY COWS					%Var 2020 2019	OTHER COWS					%Var 2020 2019
	1000 Hd	2017	2018	2019	2020		2017	2018	2019	2020	2017		2018	2019	2020			
BE		938	942	939	922	-1.8%	519	529	538	541	+0.6%	419	412	401	381	-5.0%		
BG		357	351	343	381	+11.2%	261	244	227	242	+6.8%	97	107	116	139	+20.0%		
CZ		571	570	570	560	-1.8%	365	359	361	357	-1.2%	206	212	209	203	-2.9%		
DK		664	655	645	646	+0.2%	575	570	563	565	+0.4%	89	85	83	80	-3.6%		
DE		4 859	4 751	4 651	4 548	-2.2%	4 199	4 101	4 012	3 921	-2.2%	660	650	640	626	-2.1%		
EE		115	116	116	116	-0.4%	86	85	85	84	-0.8%	29	30	31	32	+0.6%		
IE		2 362	2 351	2 383	2 379	-0.2%	1 343	1 369	1 426	1 456	+2.1%	1 018	982	957	923	-3.6%		
EL		262	269	242	258	+6.6%	97	95	86	86	Idem	165	174	156	171	+9.6%		
ES		2 822	2 819	2 881	2 909	+1.0%	823	817	813	811	-0.3%	1 998	2 002	2 068	2 099	+1.5%		
FR		7 751	7 650	7 505	7 432	-1.0%	3 597	3 554	3 491	3 434	-1.6%	4 154	4 096	4 014	3 998	-0.4%		
HR		161	146	142	144	+1.4%	139	136	130	129	-0.8%	22	10	12	15	+25.0%		
IT		2 338	2 263	2 237	2 243	+0.3%	2 040	1 939	1 876	1 871	-0.2%	298	324	362	372	+2.8%		
CY		30	32	35	37	+4.8%	30	32	35	37	+4.8%	0	0	0	0	Idem		
LV		199	196	195	196	+0.6%	150	144	138	136	-1.7%	49	52	56	60	+6.5%		
LT		323	312	299	295	-1.4%	273	256	241	233	-3.3%	50	56	58	62	+6.4%		
LU		78	78	79	78	-1.2%	52	53	54	54	+0.1%	26	25	25	24	-4.1%		
HU		395	403	412	414	+0.5%	244	239	243	226	-7.0%	151	164	169	188	+11.2%		
MT		6	6	6	6	+1.1%	6	6	6	6	-1.0%	0	0	0	0	+100.0%		
NL		1 723	1 594	1 633	1 612	-1.3%	1 665	1 552	1 590	1 569	-1.3%	58	42	43	43	Idem		
AT		750	733	720	715	-0.6%	543	533	524	525	+0.1%	207	200	195	191	-2.5%		
PL		2 341	2 417	2 406	2 391	-0.6%	2 153	2 214	2 167	2 126	-1.9%	188	203	239	266	+10.9%		
PT		728	723	731	739	+1.1%	239	235	234	233	-0.6%	490	487	497	507	+1.9%		
RO		1 187	1 173	1 166	1 148	-1.5%	1 175	1 158	1 139	1 122	-1.5%	12	15	27	26	-3.0%		
SI		169	166	166	167	+0.6%	109	103	101	99	-1.8%	60	64	65	68	+4.3%		
SK		195	195	192	191	-0.3%	130	126	126	122	-3.2%	65	67	66	69	+5.3%		
FI		329	322	318	316	-0.6%	271	264	259	256	-1.3%	58	58	59	61	+2.3%		
SE		522	514	500	499	-0.2%	323	313	301	304	+1.0%	199	201	198	194	-2.1%		
EU		32 176	31 749	31 513	31 344	-0.5%	21 409	21 029	20 766	20 545	-1.1%	10 767	10 719	10 748	10 796	+0.4%		
UK		3 443	3 382	3 337			1 904	1 879	1 867			1 540	1 503	1 470				



European
Commission

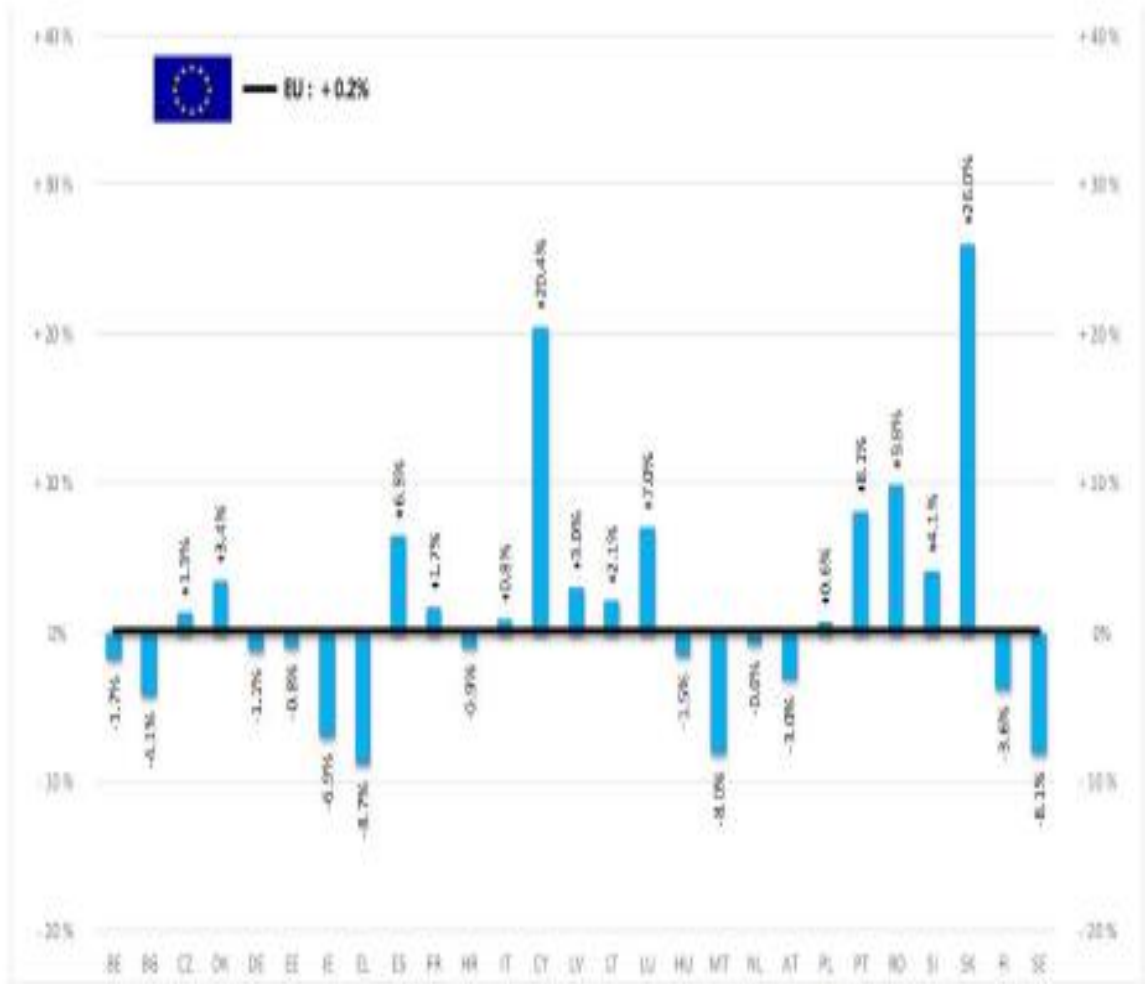
BAŞ	HEADS	Jan-May 21/20
	EU	
BOĞA	Bull	+1.0%
ÖKÜZ	Bullock	-1.8%
İNEK	Cow	+2.1%
DÜVE	Heifer	+1.5%
BUZAĞ	Calve	-1.8%
GENÇ SİĞİR	Young cattle	+0.9%
Büyükba Hayvan Eti	Meat of bovine animals	+0.7%

Estimates for last month of period :



TON	TONNES	Jan-May 21/20
		EU
BOĞA	Bull	-0.7%
ÖKÜZ	Bullock	-2.1%
İNEK	Cow	+0.9%
DÜVE	Heifer	+1.4%
BUZAĞI	Calve	+0.4%
GENÇ SİĞİR	Young cattle	-0.6%
Büyükbaş Hayvan Eti	Meat of bovine animals	+0.2%

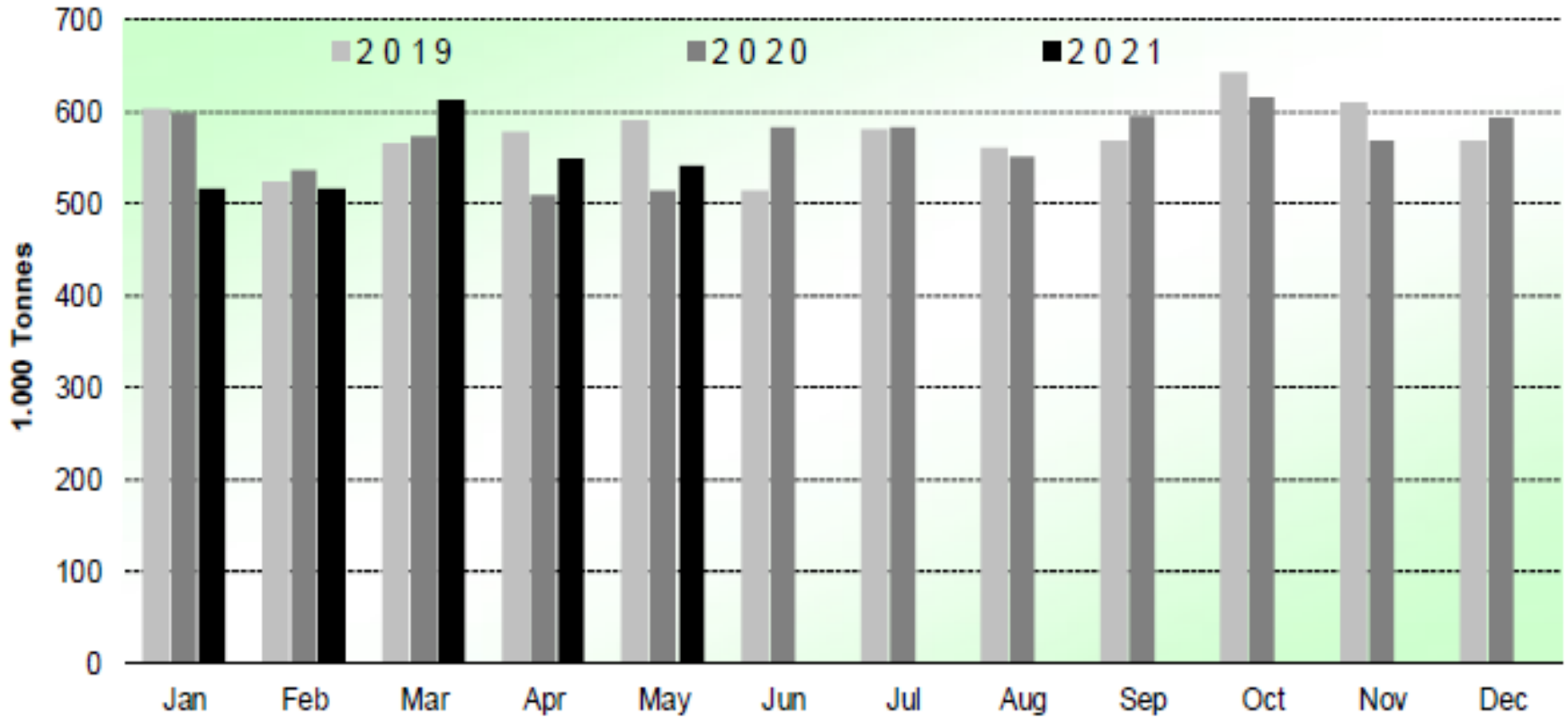
Estimates for last month of period :



Source : EStat - Newcronos



SIĞIR VE DANA ETİ ÜRETİMİ (AB Kesimler – Ton)



Source : EStat-Newcronos



EU Prices week		32	Evolution since last week	Evolution since last month	Evolution since last year
Carcasse	Average A/C/Z-R3	386.6	+ 0.2%	+ 1.8%	+ 9.8%
	Young Bovines (Z)	376.4	+ 0.9%	+ 1.1%	+ 0.9%
	Young Bulls (A)	382.7	+ 0.2%	+ 2.4%	+ 9.6%
	Steers (C)	419.9	- 0.5%	- 0.0%	+ 11.7%
	Cows (D)	327.4	+ 0.8%	+ 2.2%	+ 17.1%
	Heifers (E)	402.8	+ 0.1%	+ 2.0%	+ 9.4%
Live Animals	Male Calves Dairy Type	99.75	- 3.2%	- 7.7%	+ 29.4%
	Male Calves Beef Type	219.0	- 5.3%	- 9.7%	+ 11.4%
	Young Store Cattle	2.60	- 1.1%	+ 0.2%	+ 7.2%
	Yearling Male Store Cattle	2.34	- 1.0%	- 0.7%	- 0.8%
	Yearling Female Store Cattle	2.47	- 0.7%	- 0.6%	+ 3.5%
	Calves slaughtered <8M	489.0	+ 2.2%	+ 3.4%	+ 20.0%

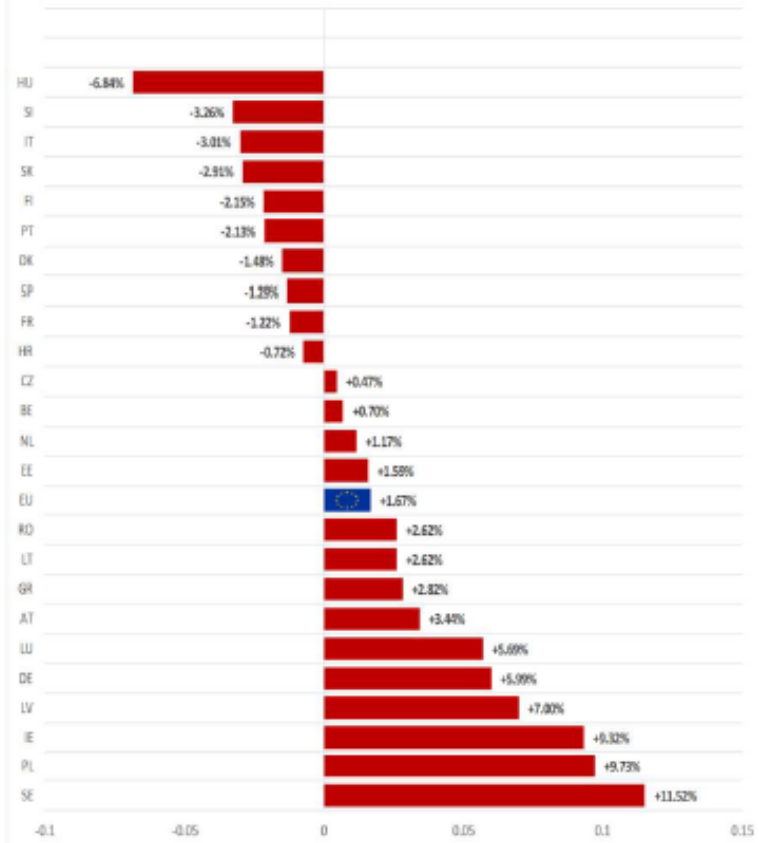
Sources : MSs notifications (Regulation (EU) 1182/2017 and 1184/2017)

KARKAS FİYATLARI

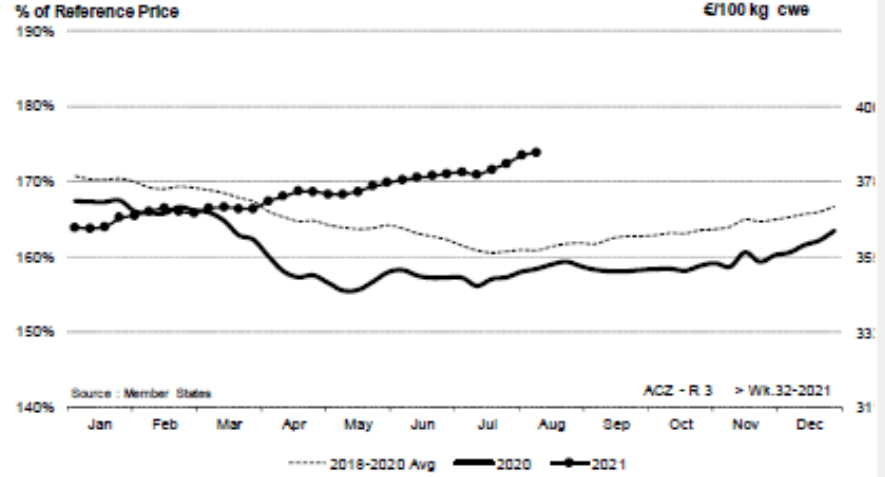
AB DEĞİŞİM
A/C/Z. R3

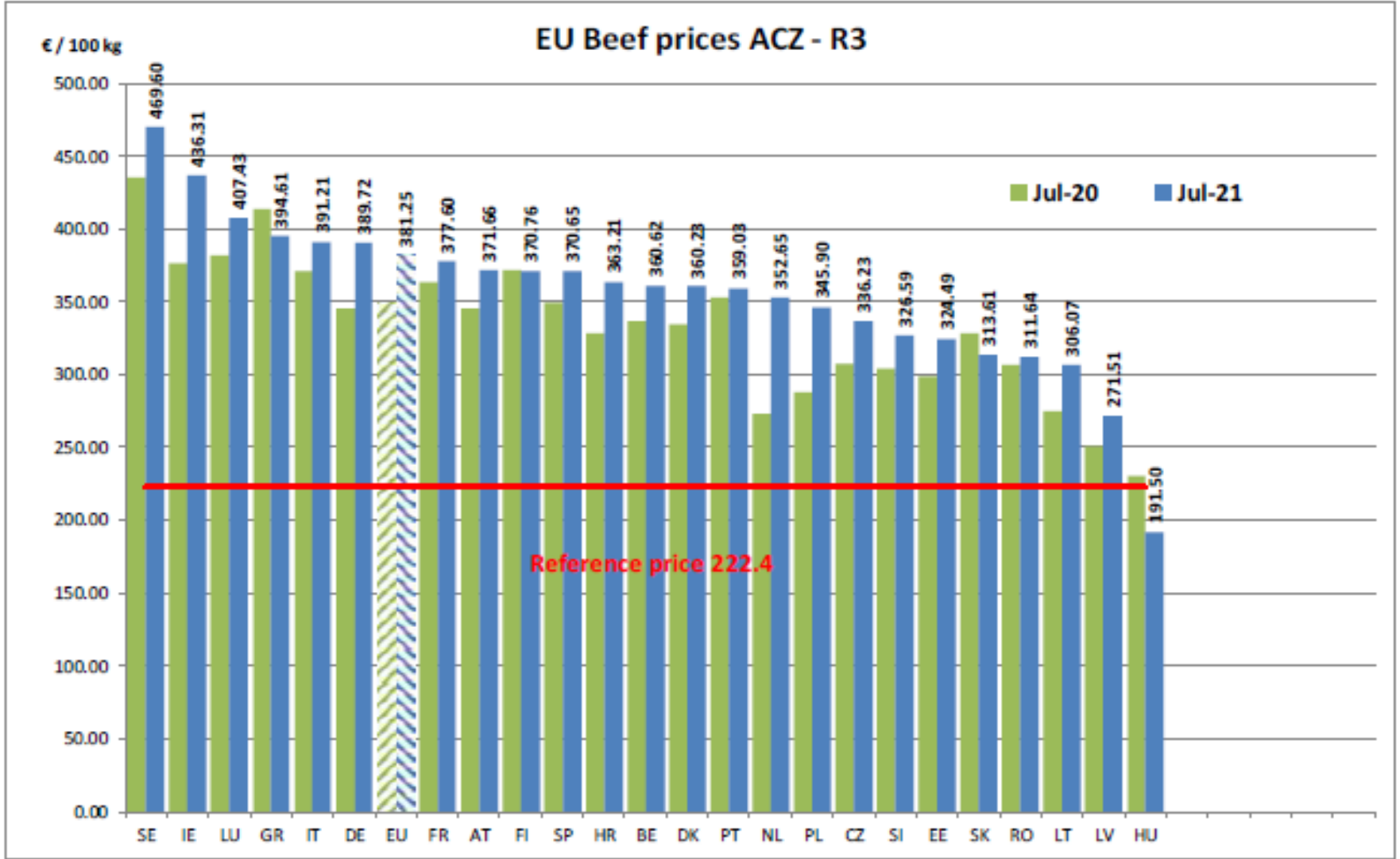


EU ACZ R3 Price Comparison between average monthly price August 2020 - July 2021 compared to August 2019 - July 2020



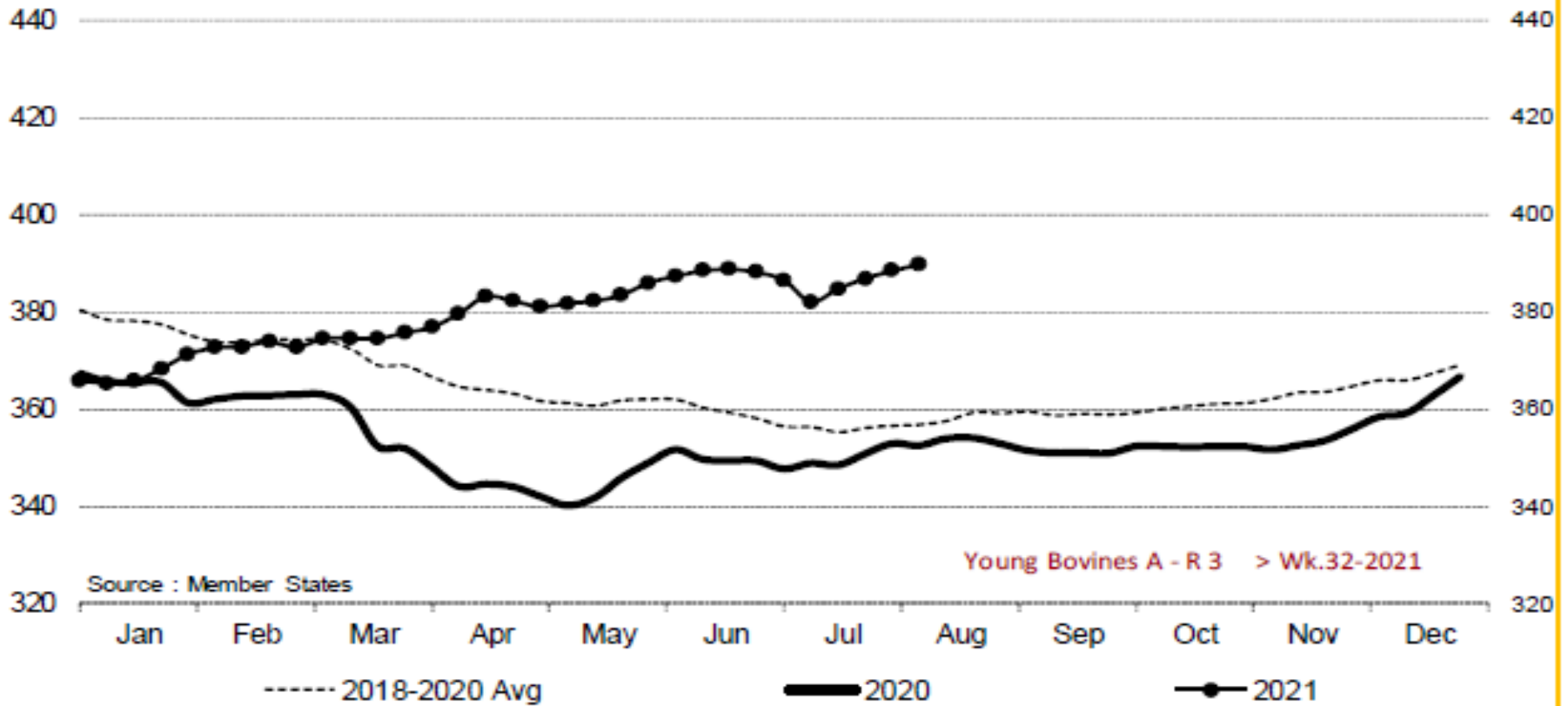
ACZ - R 3 > Wk.32-2021





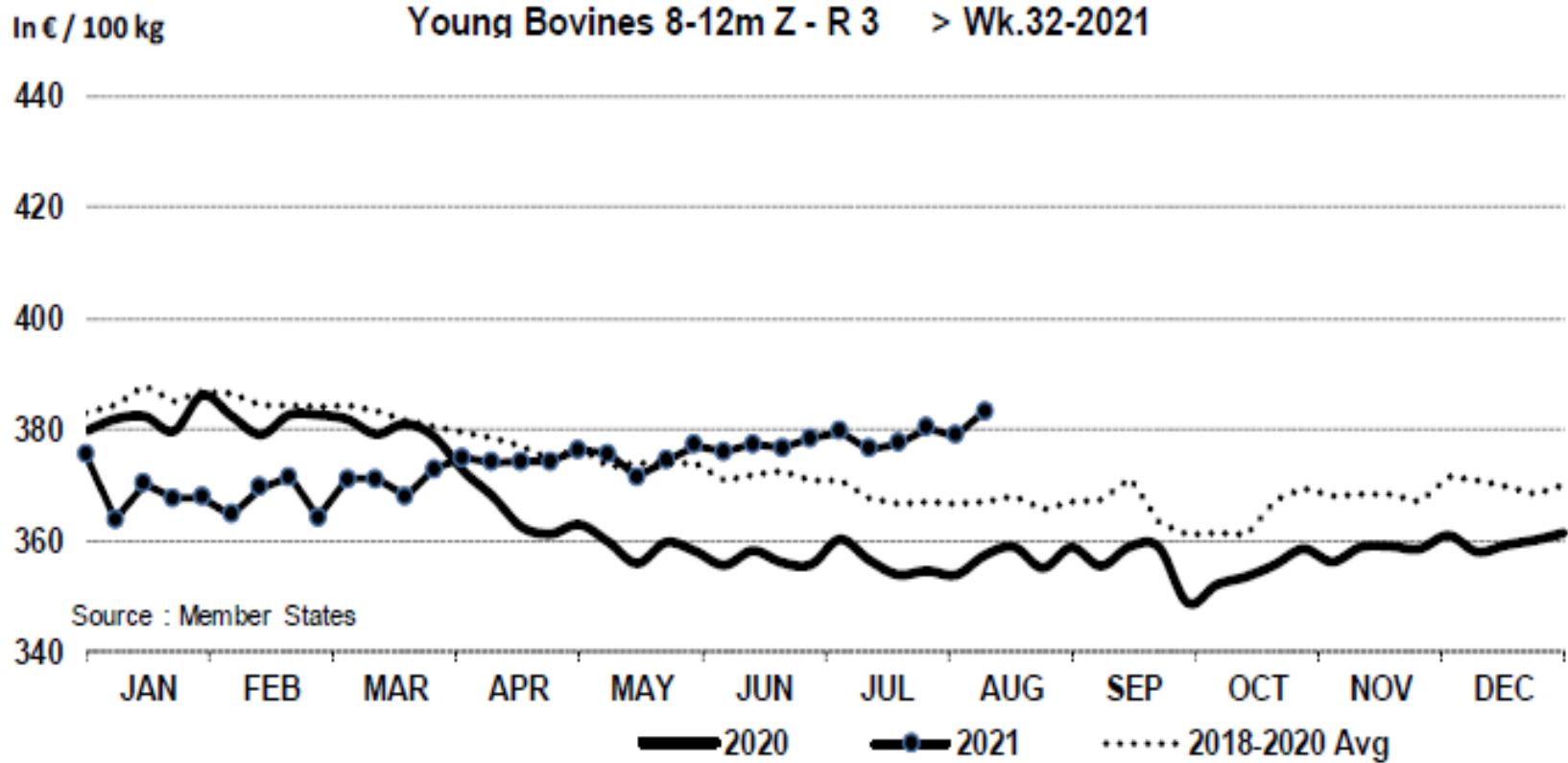


Young Bovines A - R 3 > Wk.32-2021



Price in week 32 : 389.78
% change y/y : + 10.6%

Average price in July 2021 : 385.40
% change y/y : + 10.2%



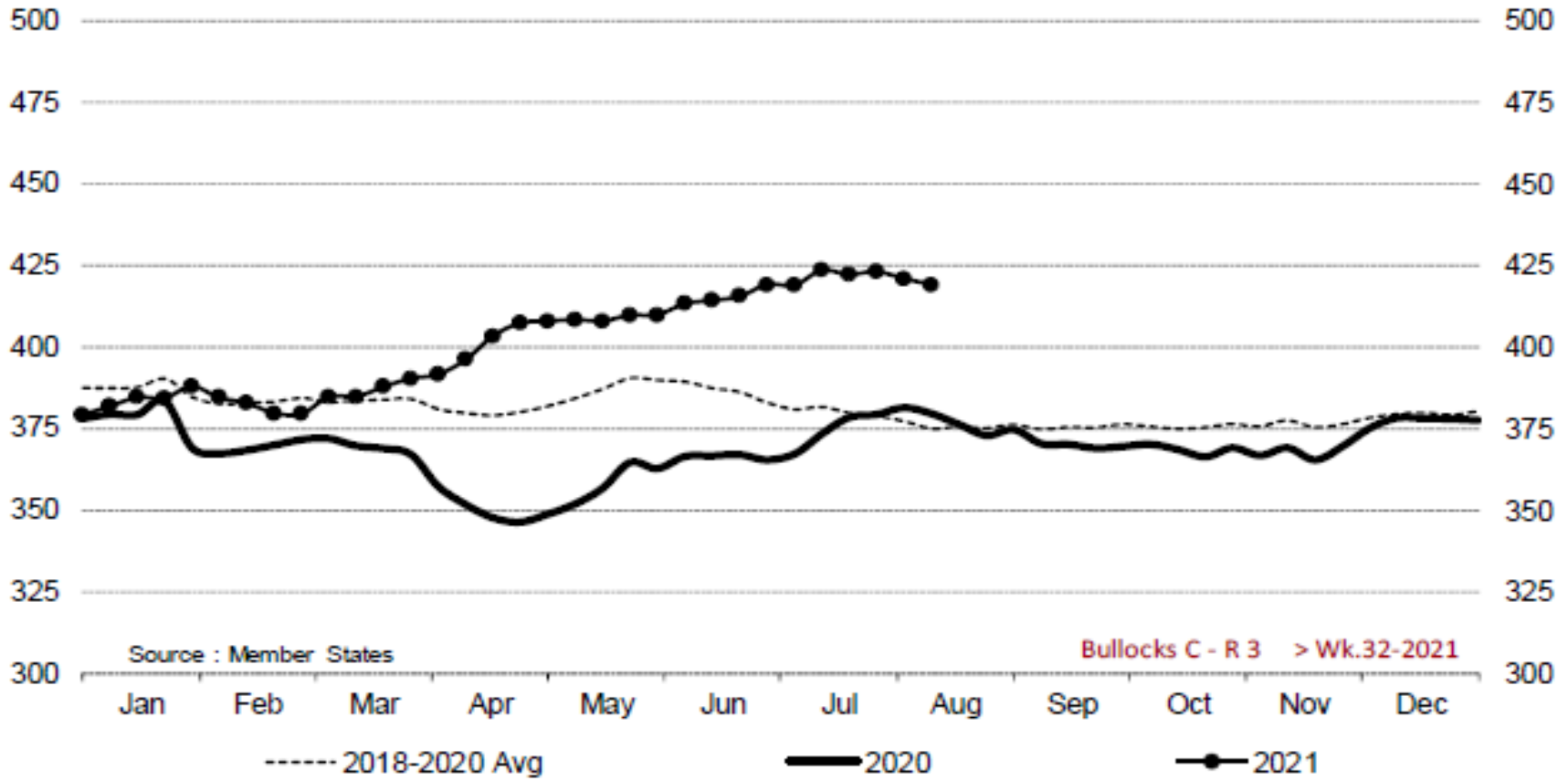
Price in week 32 : **383.20**
% change y/y : **+ 7.2%**

15/07/2021

Average price in July 2021 : **378.40**
% change y/y : **+ 6.4%**



Bullocks C - R 3 > Wk.32-2021

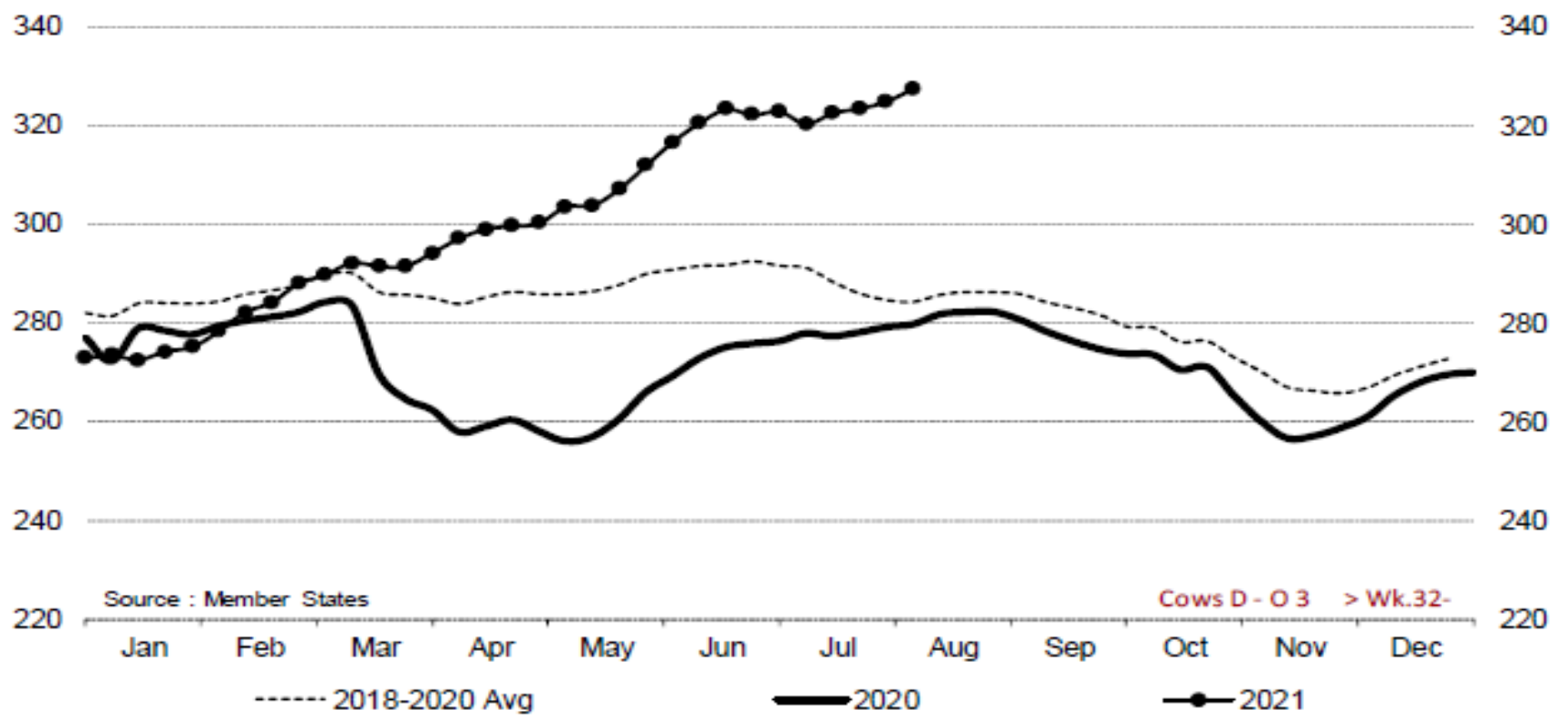


Price in week 32 : 419.05
% change y/y : + 10.4%

Average price in July 2021 : 421.47
% change y/y : + 12.0%



Cows D - O 3 > Wk.32-2021



Source : Member States

----- 2018-2020 Avg ——— 2020 —●— 2021

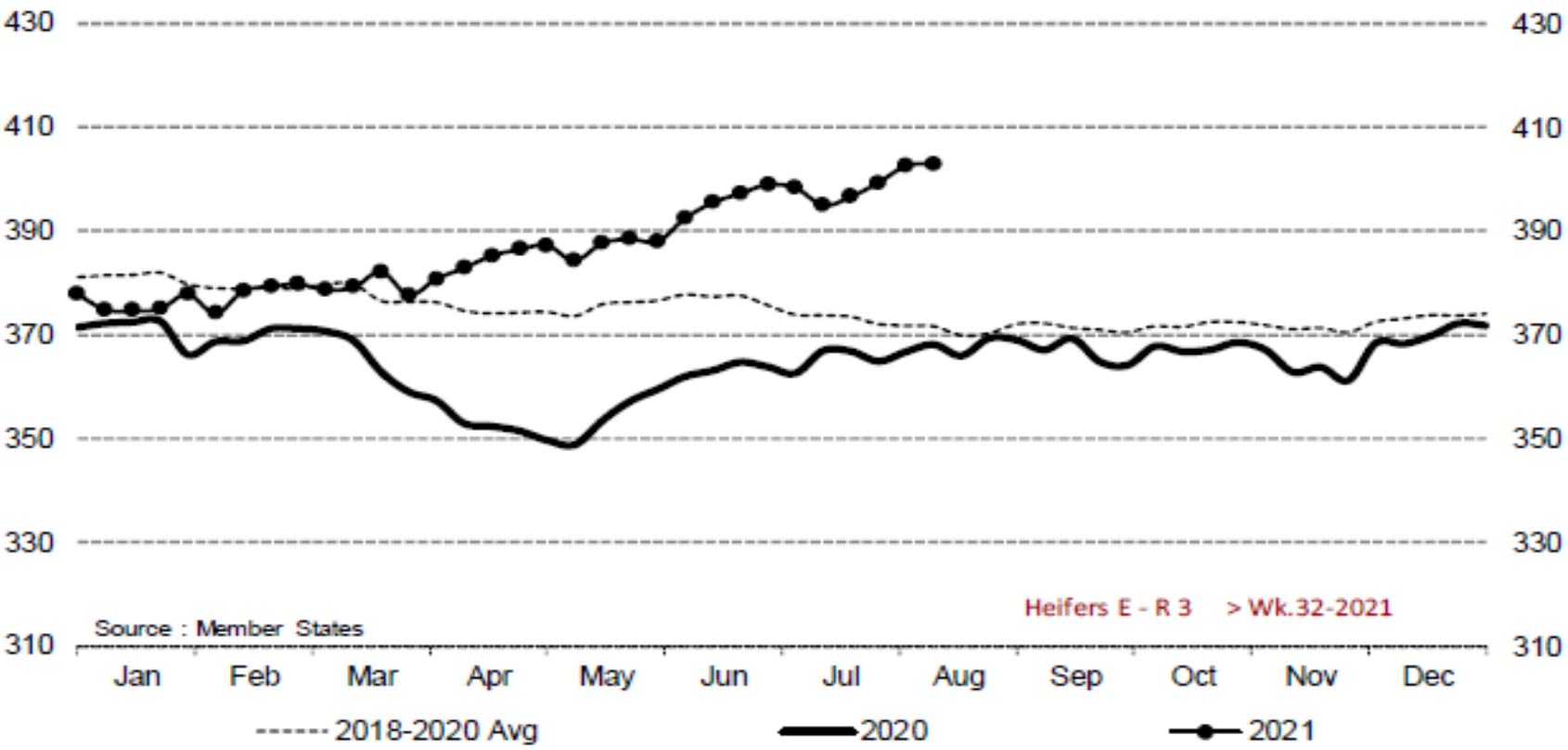
Cows D - O 3 > Wk.32-

Price in week 32 : 327.44
% change y/y : + 17.1%

Average price in July 2021 : 322.21
% change y/y : + 16.0%



Heifers E - R 3 > Wk.32-2021



Source : Member States

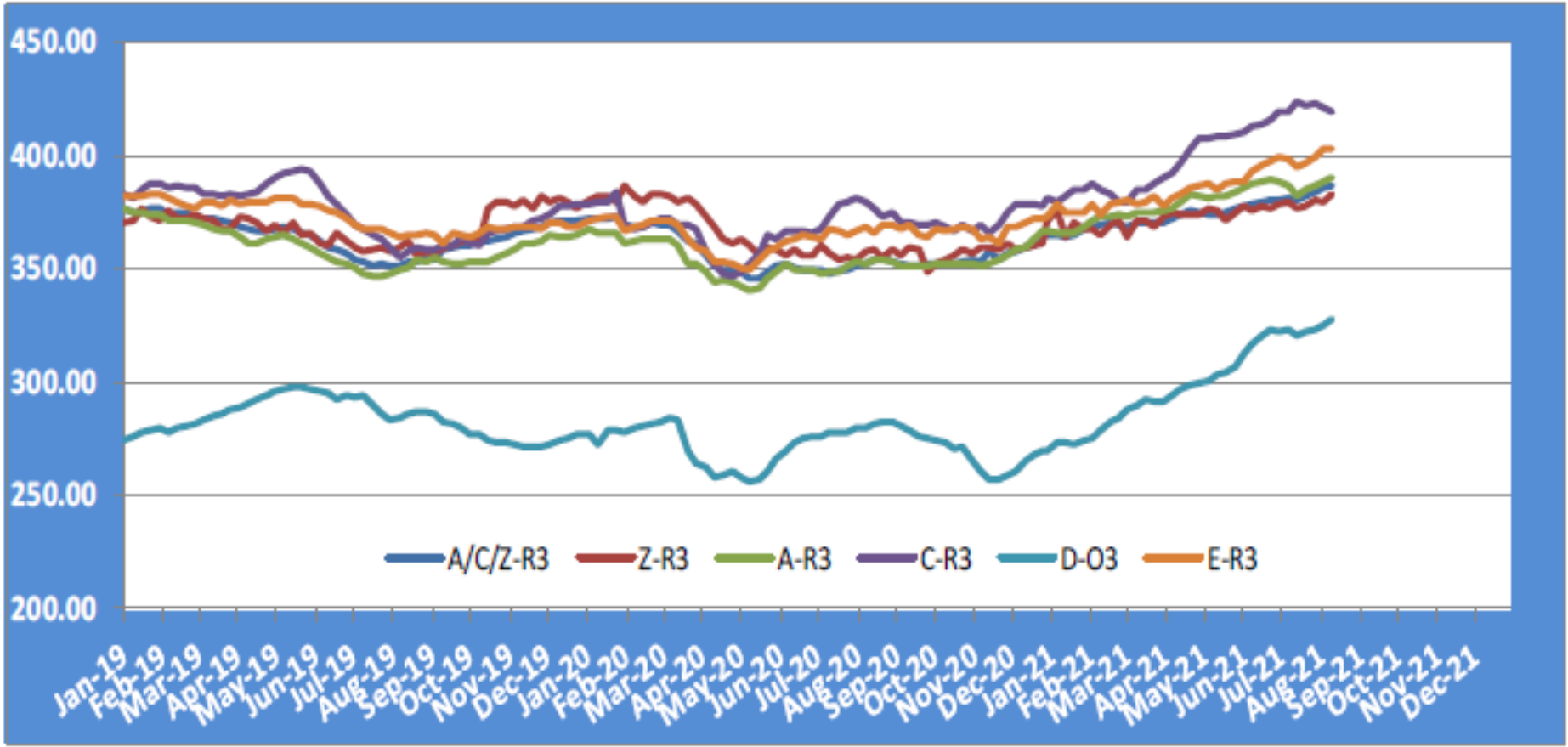
Heifers E - R 3 > Wk.32-2021

Price in week 32 : 402.87
% change y/y : + 9.4%

Average price in July 2021 : 397.39
% change y/y : + 8.6%

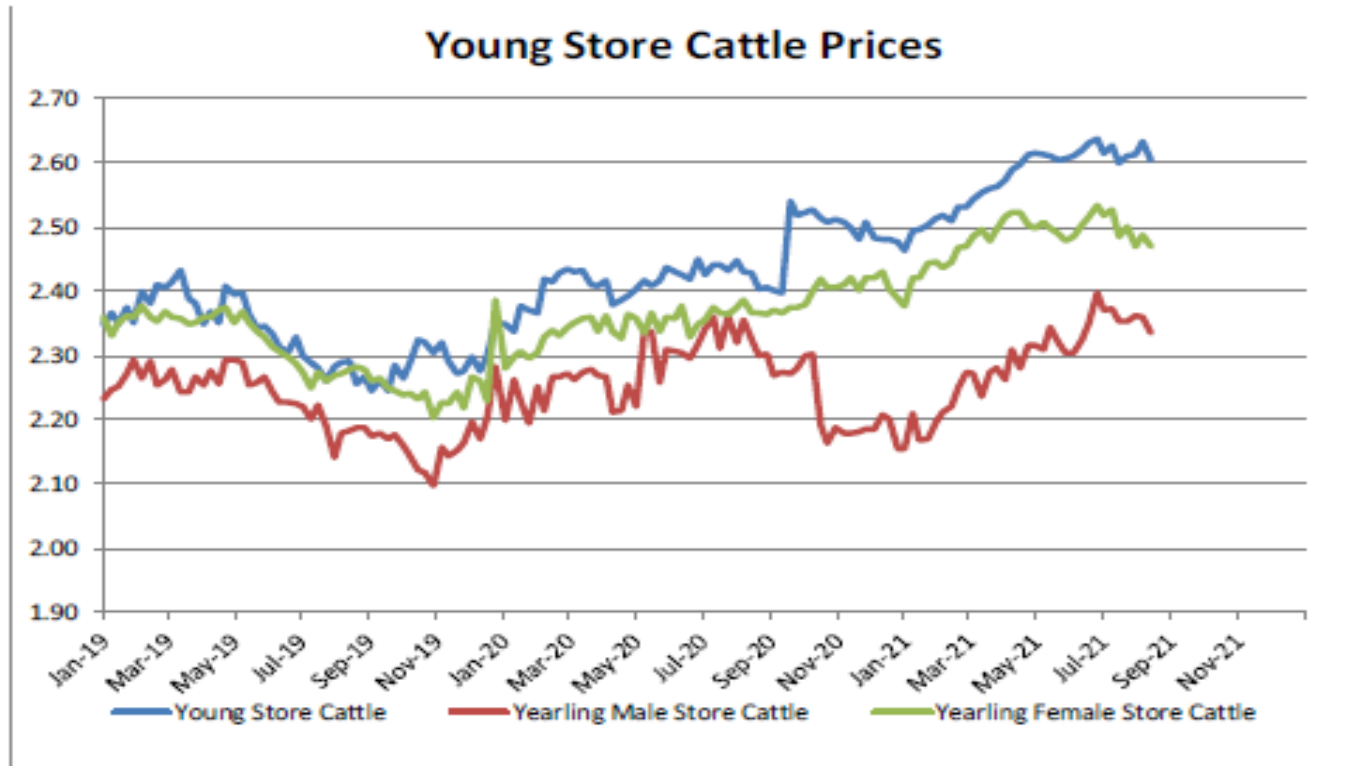
KARKAS FİYATLARI

AB TÜM KATEGORİLERE GLOBAL BAKIŞ



Besilik sığır (€ / 100 kg canlı ağırlık)

Store cattle (€/100 kg live weight)

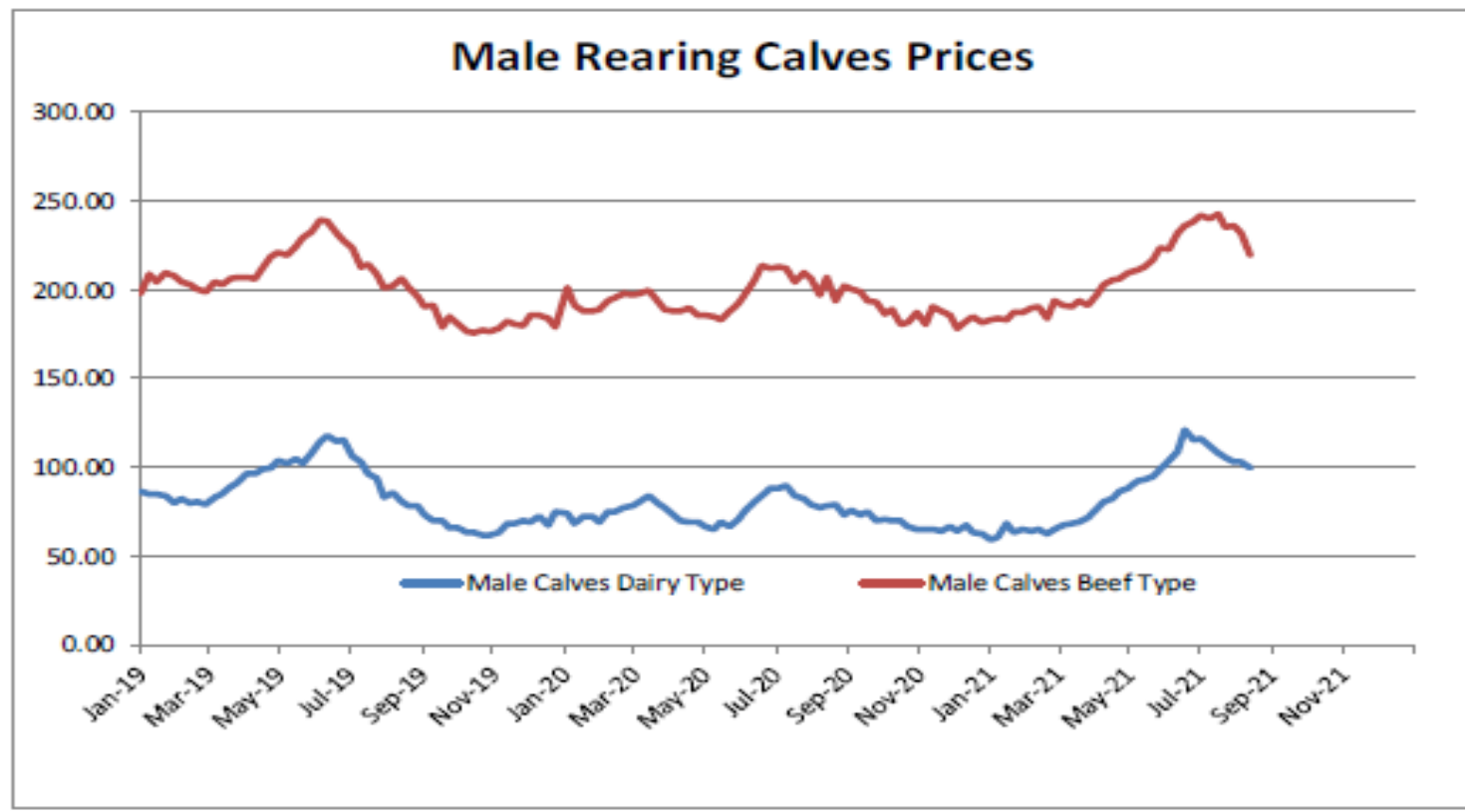


Young Store Cattle Price in	Week 32	2.60	Yearling Male Store Cattle Price	2.34
	Change y/y	+7.18%	Change y/y	-0.82%
Yearling Female Store Cattle Price		2.47		
	Change y/y	+3.46%		



8 gün ve 4 haftalık erkek buzağlar (€/baş)

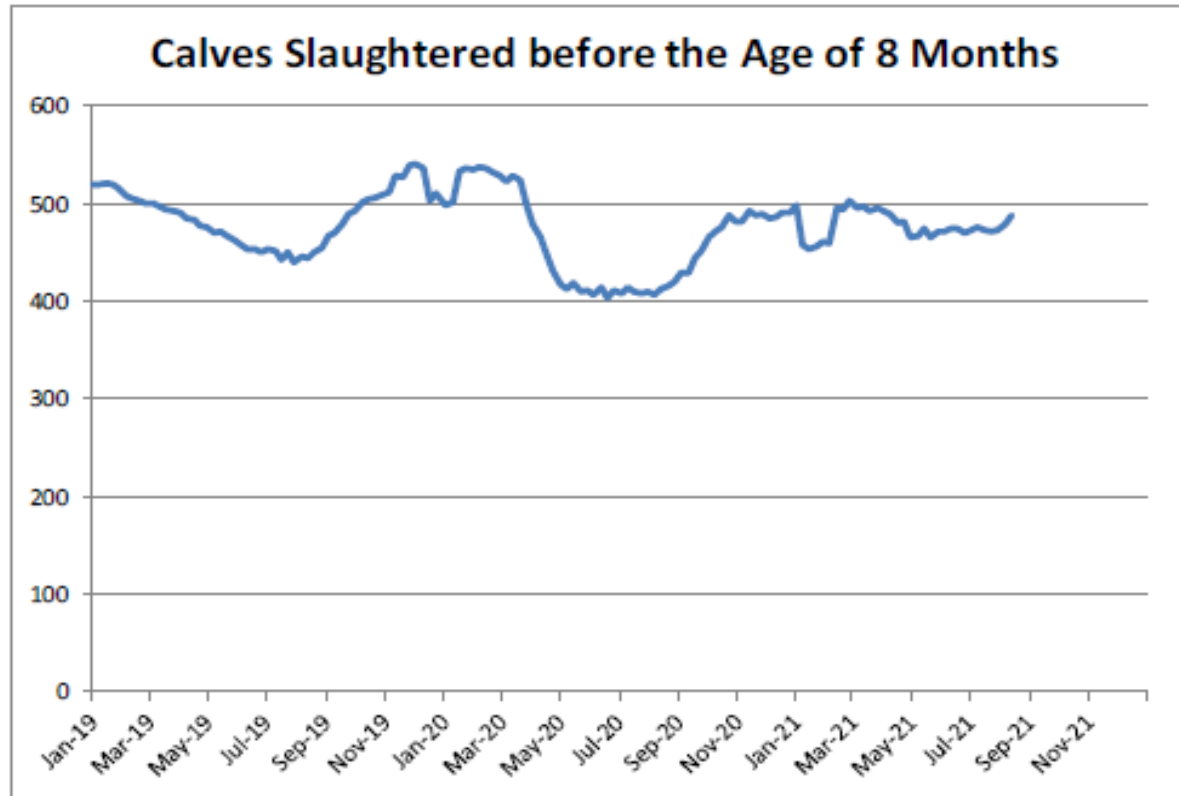
Male calves aged between 8 days and 4 weeks (€/head)



Male Rearing Calves Beef type			Male Rearing Calves Dairy type		
Price in	Week 32	219.04	Price in	Week 32	99.75
Change y/y		+11.38%	Change y/y		+29.37%

8 aylıktan küçük kesilen buzağlar (€ / 100 kg canlı ağırlık)

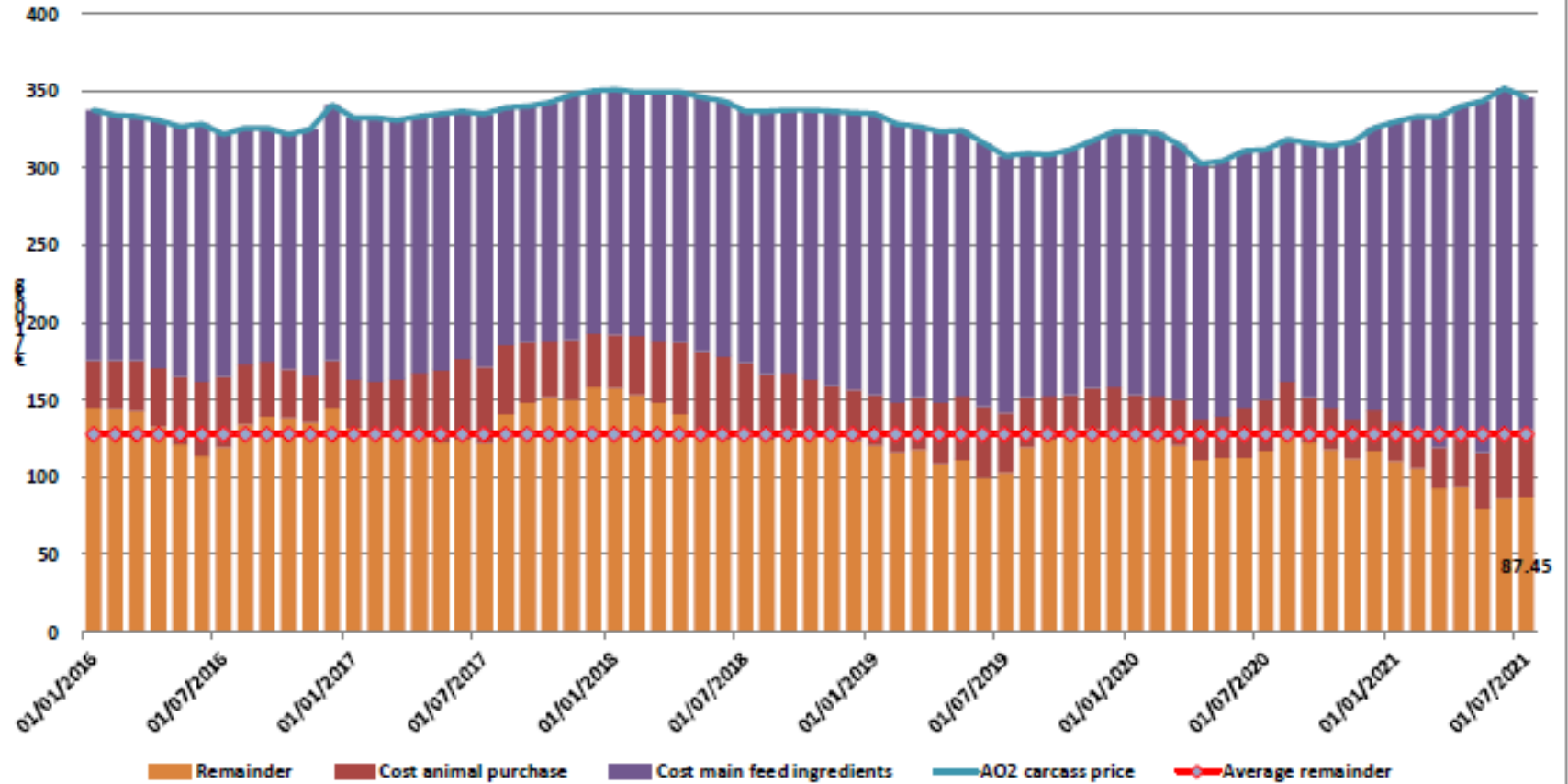
Calves slaughtered before the age of less than 8 months
(€/100 kg cw)



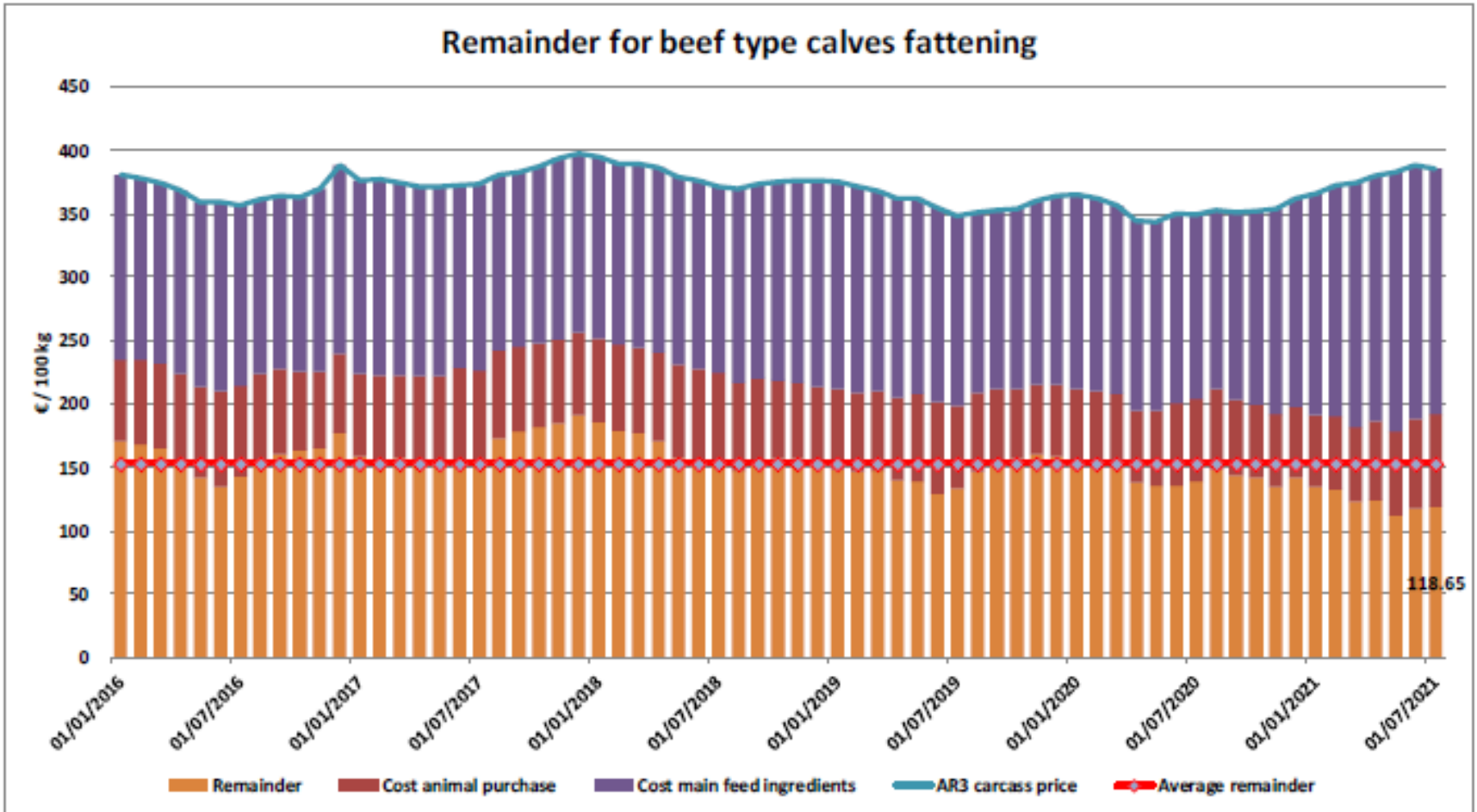
Price in Week 32 489.03 € / 100 kg of carcasse weight
Change y/y +19.96%

Süt Buzağları Besiciliği İçin Kalanlar

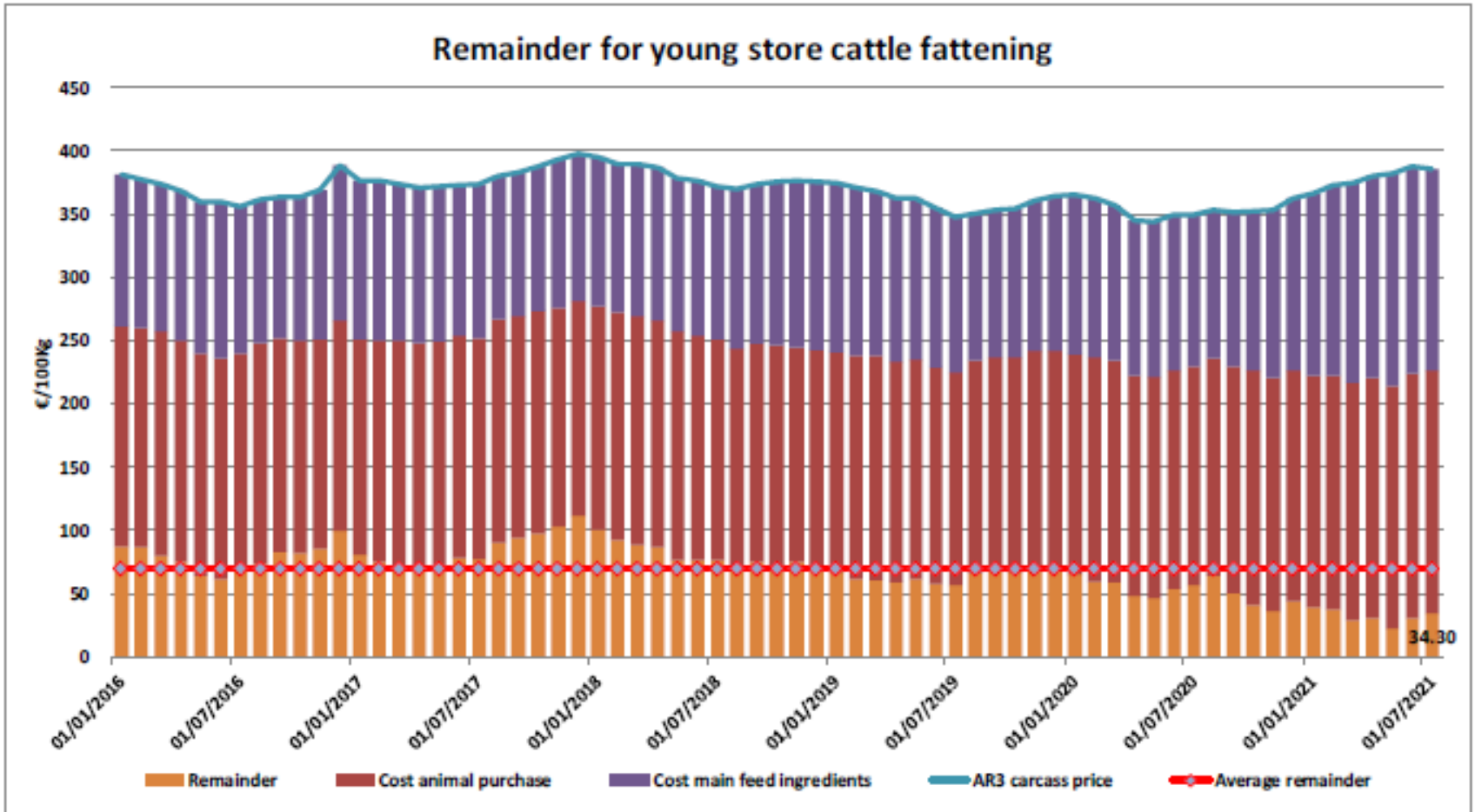
Remainder for dairy calves fattening



Sığır Tipi Buzağı Besiciliği İçin Kalanlar



Genç Besilik Sığır Besiciliği İçin Kalanlar



AB siğir eti ve canlı hayvan ihracatı (1): Pazar Rakamları (COMEXT – ton ca)

Destinations

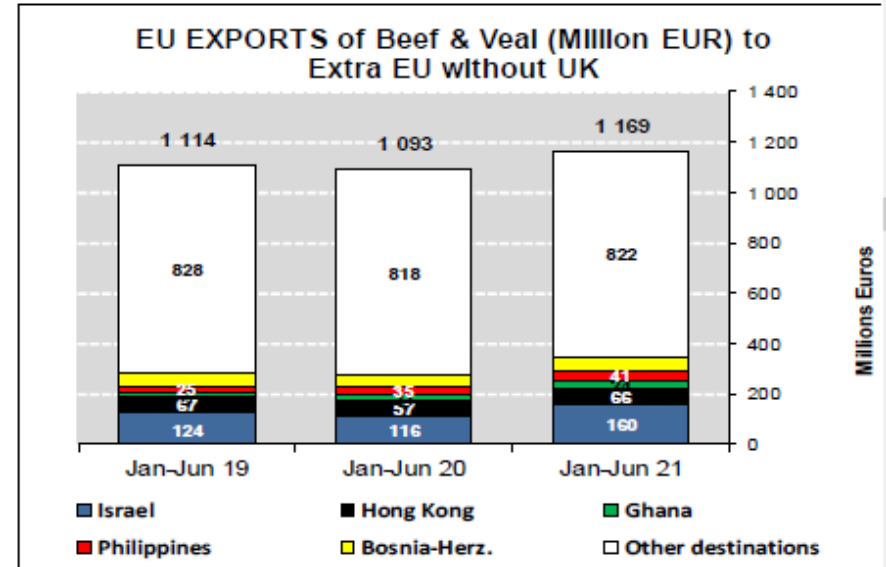
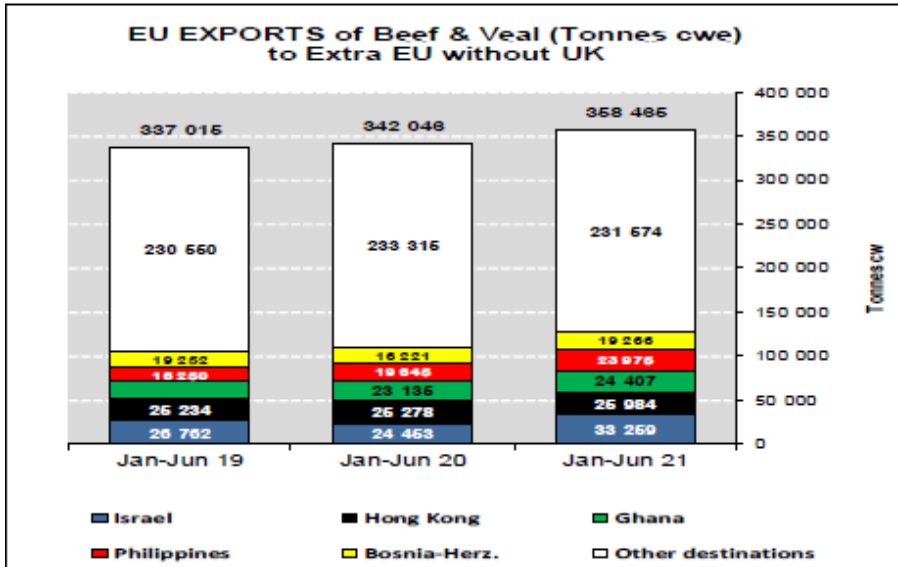
	2017		2018		2019		2020		Jan-Jun 21		Compared to
	tonnes	%	tonnes	%	tonnes	%	tonnes	%	tonnes	%	
Israel	44 196	6.1%	47 774	6.8%	49 629	7.1%	56 965	8.1%	33 259	9.3%	+ 36.0%
Hong Kong	76 086	10.5%	55 537	7.9%	46 748	6.7%	56 860	8.1%	25 984	7.2%	+ 2.8%
Ghana	37 744	5.2%	36 766	5.2%	39 196	5.6%	47 408	6.7%	24 407	6.8%	+ 5.5%
Philippines	37 102	5.1%	28 766	4.1%	34 158	4.9%	39 920	5.7%	23 975	6.7%	+ 22.0%
Bosnia-Herz.	34 711	4.8%	38 762	5.5%	41 119	5.9%	35 758	5.1%	19 266	5.4%	+ 18.8%
Algeria	26 305	3.6%	35 410	5.0%	57 152	8.2%	39 416	5.6%	17 673	4.9%	- 25.6%
Ivory Coast	36 038	5.0%	36 064	5.1%	33 396	4.8%	32 460	4.6%	16 307	4.5%	- 1.7%
Switzerland	26 708	3.7%	23 761	3.4%	25 188	3.6%	29 996	4.3%	16 228	4.5%	+ 23.4%
Lebanon	38 322	5.3%	42 542	6.1%	36 393	5.2%	33 656	4.8%	12 912	3.6%	- 27.6%
Norway	12 850	1.8%	7 925	1.1%	7 667	1.1%	12 936	1.8%	11 679	3.3%	+ 111.6%
Libya	27 848	3.8%	27 878	4.0%	24 541	3.5%	21 971	3.1%	11 491	3.2%	+ 2.2%
Japan	4 281	0.6%	3 452	0.5%	8 007	1.1%	11 885	1.7%	8 613	2.4%	+ 23.2%
Canada	2 424	0.3%	2 225	0.3%	6 806	1.0%	20 475	2.9%	7 819	2.2%	- 21.4%
Kosovo	6 377	0.9%	6 693	1.0%	10 279	1.5%	10 912	1.5%	7 705	2.1%	+ 66.7%
Ukraine	7 331	1.0%	10 465	1.5%	13 836	2.0%	15 857	2.3%	7 494	2.1%	+ 10.5%
Turkey	6 783	0.9%	96 052	13.7%	34 555	4.9%	22 158	3.1%	6 567	1.8%	+ 24.1%
Other Destinations	302 415	41.6%	201 808	28.8%	231 574	33.1%	215 868	30.6%	107 087	29.9%	
Total (without UK)	727 522		701 882		700 245		704 500		358 465		
% change			- 4%		- 0%		+ 1%		+ 4.8%		

AB sığır eti ihracatı: Pazar Rakamları (COMEXT – ton ca)

Destinations

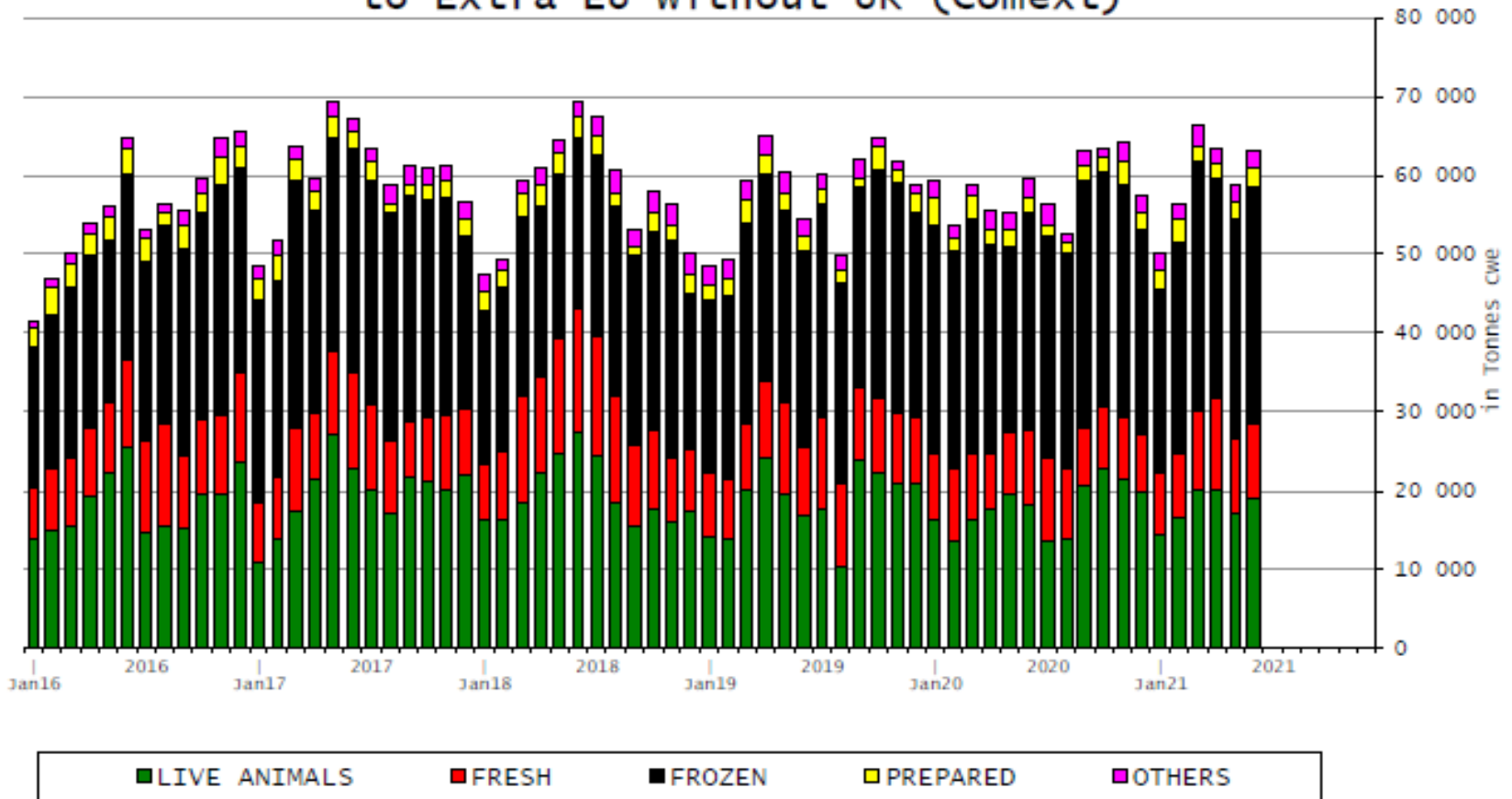
	2017		2018		2019		2020		Jan-Jun 21		Compared to
	tonnes	%	tonnes	%	tonnes	%	tonnes	%	tonnes	%	
Hong Kong	76 086	15.5%	55 537	11.9%	46 748	9.8%	56 880	11.6%	25 984	10.3%	+ 2.8%
Ghana	37 744	7.7%	36 766	7.9%	39 196	8.2%	47 408	9.7%	24 407	9.7%	+ 5.5%
Philippines	37 102	7.5%	28 766	6.2%	34 158	7.2%	39 920	8.1%	23 975	9.5%	+ 22.0%
Bosnia-Herz.	32 181	6.5%	36 152	7.7%	38 806	8.2%	33 459	6.8%	17 939	7.1%	+ 17.9%
Ivory Coast	36 028	7.3%	36 064	7.7%	33 396	7.0%	32 460	6.6%	16 307	6.5%	- 1.7%
Switzerland	25 570	5.2%	22 711	4.9%	24 110	5.1%	28 941	5.9%	15 424	6.1%	+ 23.5%
Norway	12 849	2.6%	7 922	1.7%	7 667	1.6%	12 936	2.6%	11 679	4.6%	+++
Israel	18 750	3.8%	22 163	4.7%	23 026	4.8%	21 967	4.5%	10 081	4.0%	+ 2.4%
Japan	4 281	0.9%	3 452	0.7%	8 007	1.7%	11 885	2.4%	8 613	3.4%	+ 23.2%
Canada	2 424	0.5%	2 225	0.5%	6 806	1.4%	20 475	4.2%	7 819	3.1%	- 21.4%
Ukraine	6 926	1.4%	9 887	2.1%	12 893	2.7%	14 861	3.0%	7 103	2.8%	+ 7.5%
North Macedonia	11 285	2.3%	10 002	2.1%	11 395	2.4%	10 551	2.1%	6 316	2.5%	+ 30.9%
USA	3 756	0.8%	5 458	1.2%	7 867	1.7%	12 310	2.5%	6 233	2.5%	+ 20.8%
South Africa	4 555	0.9%	7 214	1.5%	5 442	1.1%	7 743	1.6%	5 600	2.2%	+++
Vietnam	12 146	2.5%	8 163	1.7%	10 014	2.1%	6 367	1.3%	4 374	1.7%	+ 49.0%
Angola	10 982	2.2%	11 470	2.5%	8 410	1.8%	9 410	1.9%	3 423	1.4%	- 25.2%
Other Destinations	159 714	32.4%	162 871	34.9%	157 379	33.1%	123 328	25.1%	55 891	22.3%	
Total (without UK)	492 379		466 824		475 318		490 881		251 168		
% change			- 5%		+ 2%		+ 3%		+ 4.4%		

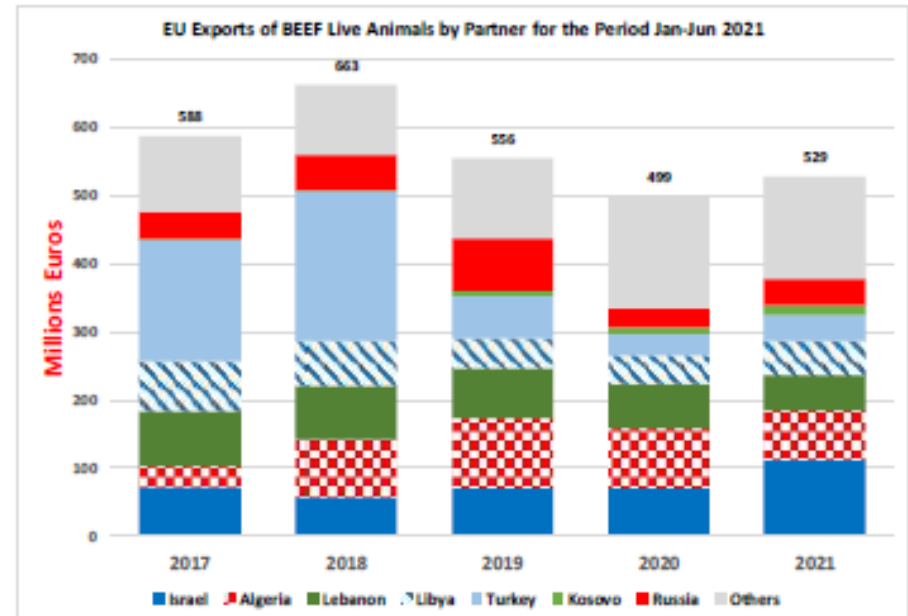
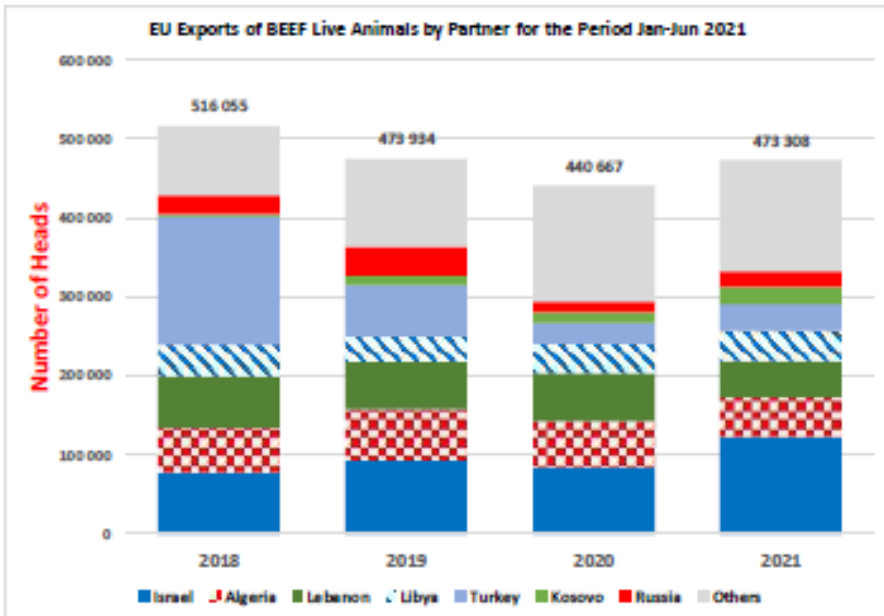
AB siğir eti ve canlı hayvan ihracatı (COMEXT)



AB siğir eti ürünleri ihracatı (COMEXT)

EU Exports of BEEF products
to Extra EU without UK (Comext)

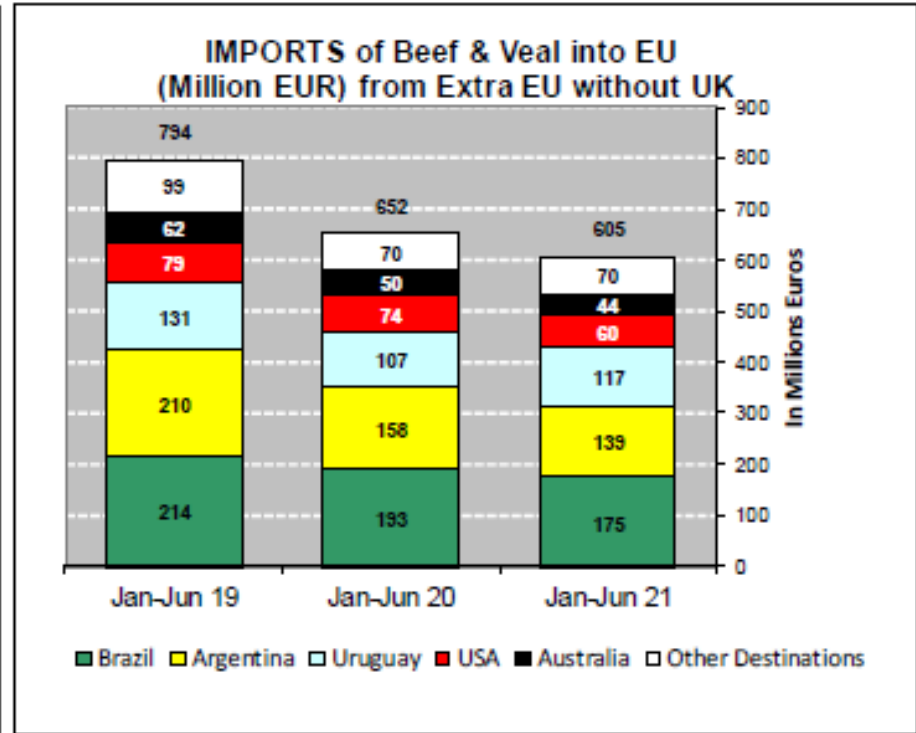
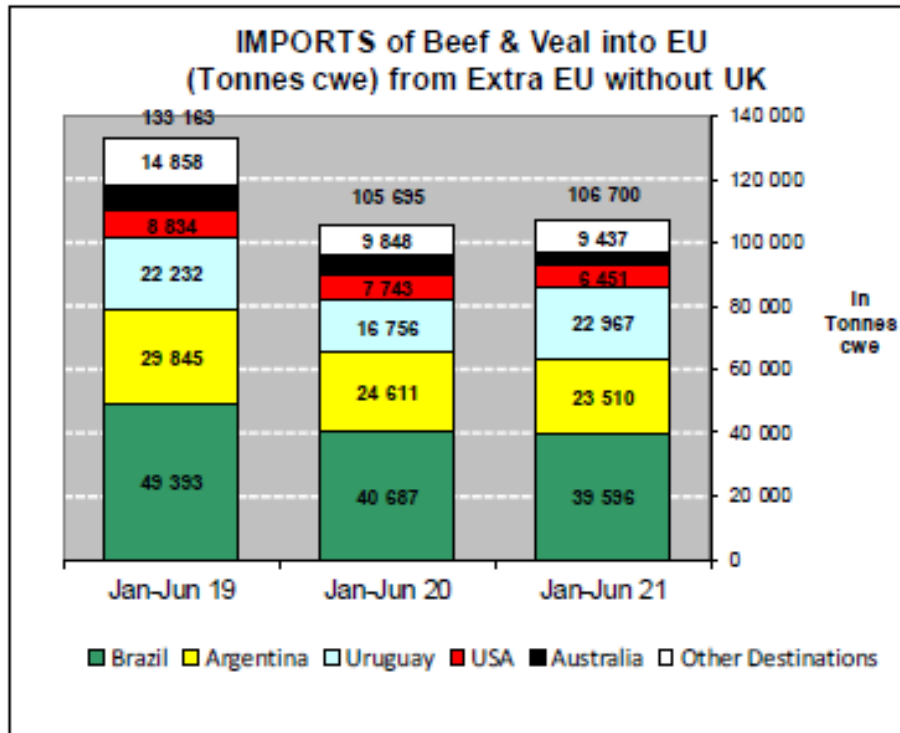




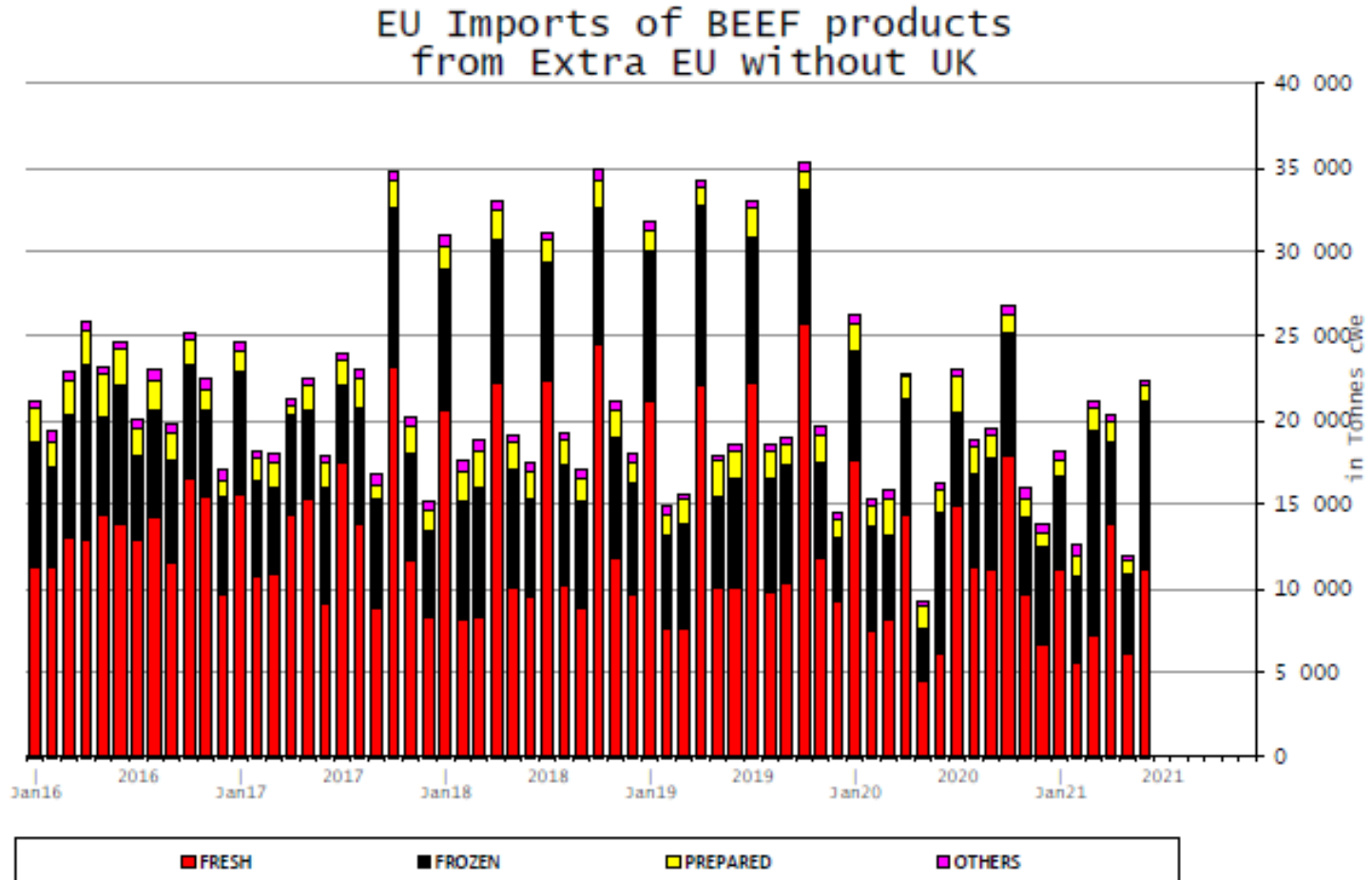
AB Sığır Eti ve Canlı Hayvan İthalatları (1): Ticaret Verileri (COMEXT – ton ca)

Origins	2017		2018		2019		2020		Jan-Jun 21		Compared to
	tonnes	%	tonnes	%	tonnes	%	tonnes	%	tonnes	%	
Brazil	86 927	33.9%	103 979	37.3%	99 569	36.4%	84 172	37.6%	39 598	37.1%	- 2.7%
Argentina	49 259	19.2%	61 400	22.0%	65 324	23.9%	56 421	25.2%	23 510	22.0%	- 4.5%
Uruguay	52 078	20.3%	47 922	17.2%	40 483	14.8%	34 595	15.5%	22 967	21.5%	+ 37.1%
USA	21 624	8.4%	19 268	6.9%	16 852	6.2%	16 532	7.4%	6 451	6.0%	- 16.7%
Australia	18 193	7.1%	17 368	6.2%	16 516	6.0%	11 058	4.9%	4 740	4.4%	- 21.7%
Switzerland	5 105	2.0%	5 413	1.9%	4 401	1.6%	4 197	1.9%	2 242	2.1%	+ 16.5%
New Zealand	6 806	2.7%	7 165	2.6%	6 726	2.5%	6 145	2.7%	2 012	1.9%	- 36.5%
Paraguay	5 922	2.3%	5 520	2.0%	5 203	1.9%	4 234	1.9%	1 638	1.5%	- 26.5%
Canada	512	0.2%	1 343	0.5%	2 518	0.9%	1 550	0.7%	884	0.8%	+++
N.det.Extra	72	0.0%	127	0.0%	196	0.1%	94	0.0%	661	0.6%	+++
Japan	645	0.3%	791	0.3%	997	0.4%	789	0.4%	547	0.5%	+ 99.5%
Namibia	5 043	2.0%	3 442	1.2%	7 706	2.8%	1 445	0.6%	419	0.4%	- 45.3%
Serbia	565	0.2%	1 134	0.4%	1 062	0.4%	931	0.4%	396	0.4%	- 15.8%
Norway	388	0.2%	153	0.1%	129	0.0%	336	0.2%	179	0.2%	+++
Botswana	2 686	1.0%	3 119	1.1%	4 950	1.8%	788	0.4%	111	0.1%	- 65.7%
South Africa	42	0.0%	0	0.0%	74	0.0%	70	0.0%	103	0.1%	+++
Other Destinations	856	0.3%	674	0.2%	605	0.2%	396	0.2%	245	0.2%	
Total (without UK)	256 724		278 818		273 312		223 752		106 700		
% change			+ 9%		- 2%		- 18%		+ 1.0%		

AB Sığır Eti ve Canlı Hayvan İthalatları



AB Sığır Eti İthalatları (Birleşik Krallık hariç)



EU Export of BEEF to UK by Products from Jan to May

In Tons of Carcase Weight

	2019			2020			2021			% 2021/2020	
	United Kingdom	Extra-EU	%	United Kingdom	Extra-EU	%	United Kingdom	Extra-EU	%	United Kingdom	Extra-EU
Live Animals	4 522	96 359	4.7%	4 230	87 443	4.8%	4 684	93 055	5.0%	+10.7%	+6.4%
Meats	180 685	371 446	48.6%	153 975	353 153	43.6%	119 228	326 154	36.6%	-22.6%	-7.6%
Fresh	97 877	141 758	69.0%	90 124	129 965	69.3%	70 551	116 144	60.7%	-21.7%	-10.6%
Frozen	25 223	78 550	32.1%	18 841	87 430	21.6%	25 132	97 642	25.7%	+33.4%	+11.7%
Salted Meat	9 626	10 168	94.7%	8 988	9 612	93.5%	270	897	30.1%	-97.0%	-90.7%
Prepared	19 099	30 981	61.6%	17 109	29 299	58.4%	13 727	24 885	55.2%	-19.8%	-15.1%
Fresh Offals	9 361	10 553	88.7%	7 876	9 155	86.0%	2 125	3 190	66.6%	-73.0%	-65.2%
Frozen Offals	7 051	75 155	9.4%	5 744	73 780	7.8%	4 525	69 856	6.5%	-21.2%	-5.3%
Salted Offals	11 547	19 937	57.9%	4 753	9 412	50.5%	100	4 075	2.5%	-97.9%	-56.7%
Prepared Offal	246	311	79.1%	196	291	67.6%	133	188	70.7%	-32.5%	-35.4%
Fat	655	4 034	16.2%	343	4 209	8.1%	2 665	9 277	28.7%	+677.2%	+120.4%
Total Beef	185 207	467 805	39.6%	158 205	440 596	35.9%	123 912	419 209	29.6%	-21.7%	-4.9%

Source : Comext

EU Import of BEEF from UK by Products from Jan to May

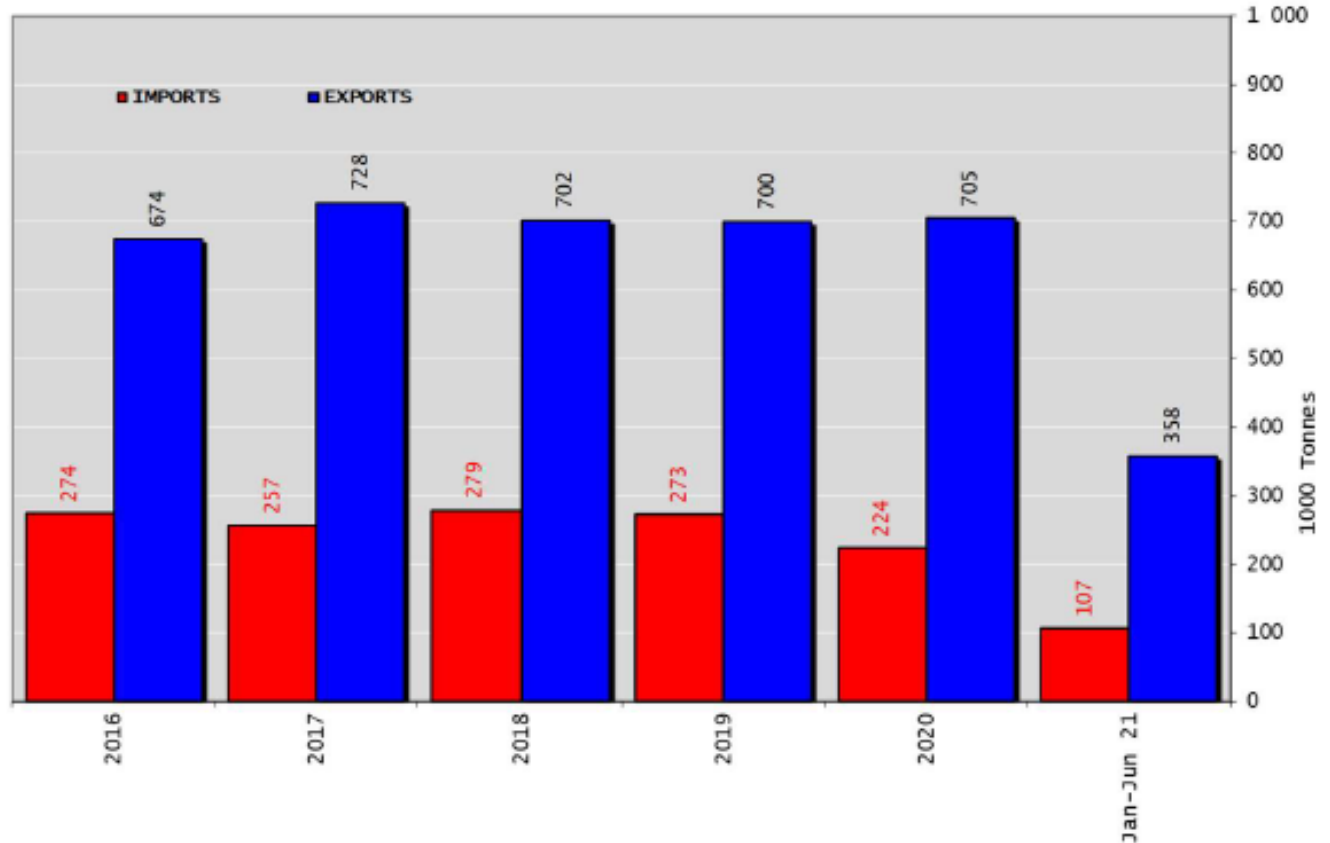
In Tons of Carcase Weight

	2019			2020			2021			% 2021/2020	
	United Kingdom	Extra-EU	%	United Kingdom	Extra-EU	%	United Kingdom	Extra-EU	%	United Kingdom	Extra-EU
Live Animals	1 305	1 361	95.9%	738	785	94.0%	354	420	84.3%	-52.0%	-46.5%
Meats	64 922	179 499	36.2%	51 787	141 222	36.7%	29 716	113 938	26.1%	-42.6%	-19.3%
Fresh	45 073	113 756	39.6%	32 647	84 982	38.4%	19 155	63 083	30.4%	-41.3%	-25.8%
Frozen	10 614	47 357	22.4%	9 726	37 222	26.1%	5 832	38 207	15.3%	-40.0%	+2.6%
Salted Meat	467	1 607	29.1%	292	1 329	22.0%	87	1 406	6.2%	-70.3%	+5.8%
Prepared	3 575	10 551	33.9%	3 651	11 309	32.3%	2 238	7 879	28.4%	-38.7%	-30.3%
Fresh Offals	1 574	2 166	72.7%	1 569	2 099	74.8%	1 745	2 226	78.4%	+11.2%	+6.1%
Frozen Offals	2 184	2 520	86.7%	2 329	2 683	86.8%	297	706	42.0%	-87.3%	-73.7%
Salted Offals	765	767	99.8%	960	962	99.8%	10	11	91.7%	-98.9%	-98.8%
Prepared Offal	60	70	85.0%	20	31	63.0%	5	11	45.2%	-75.7%	-66.2%
Fat	611	705	86.6%	593	605	98.0%	348	408	85.3%	-41.3%	-32.6%
Total Beef	66 228	180 861	36.6%	52 525	142 007	37.0%	30 070	114 358	26.3%	-42.8%	-19.5%

Source : Estat - Comext

Sığır Eti Ürünleri ve Canlı Hayvan Ticaret Dengesi (Ton) (Birleşik Krallık Hariç)

Trade Balance of Beef Products and Live Animals (without UK)

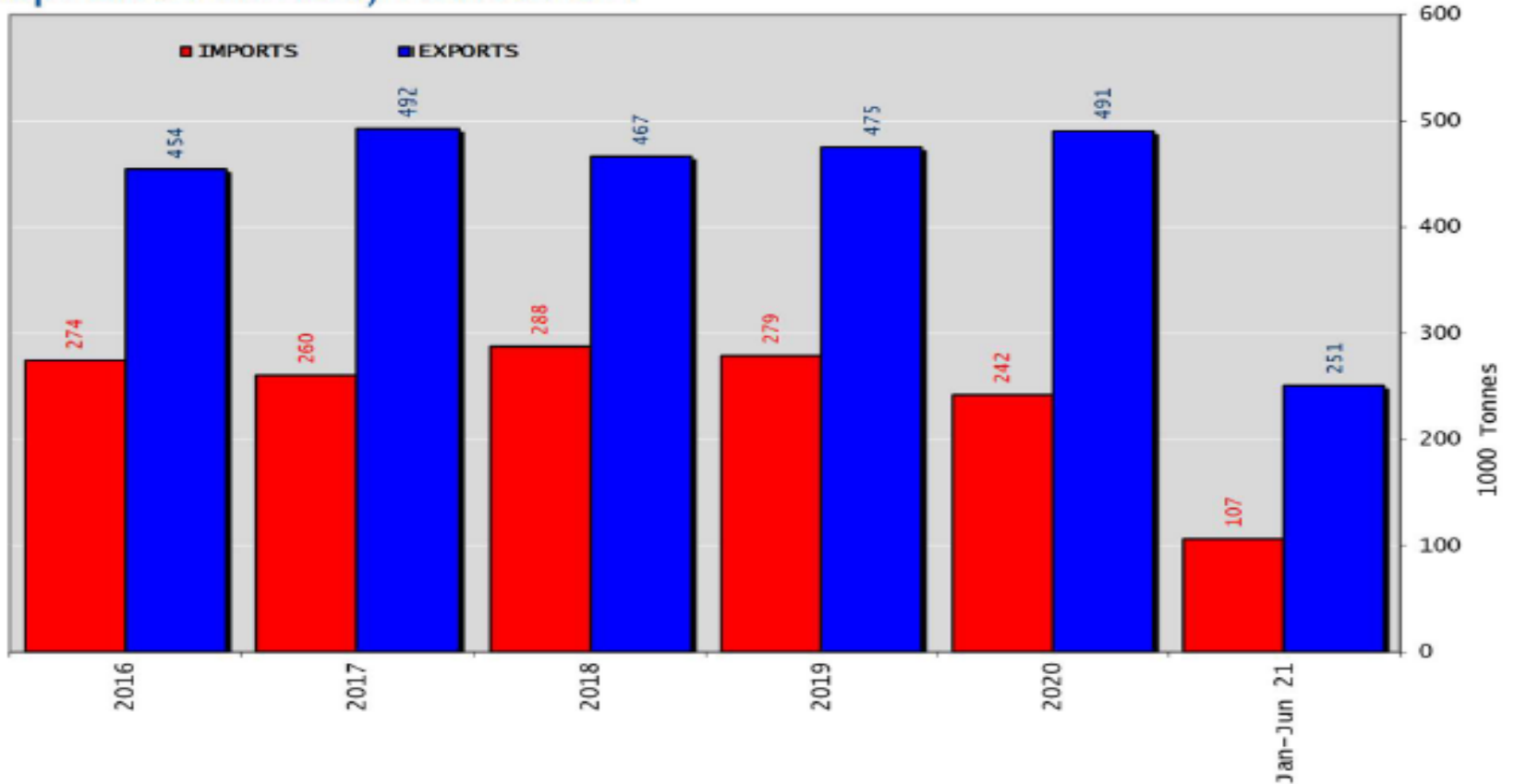




Sığır Eti Ürünleri Ticaret Dengesi (Canlı hayvanlar hariç) (Ton)

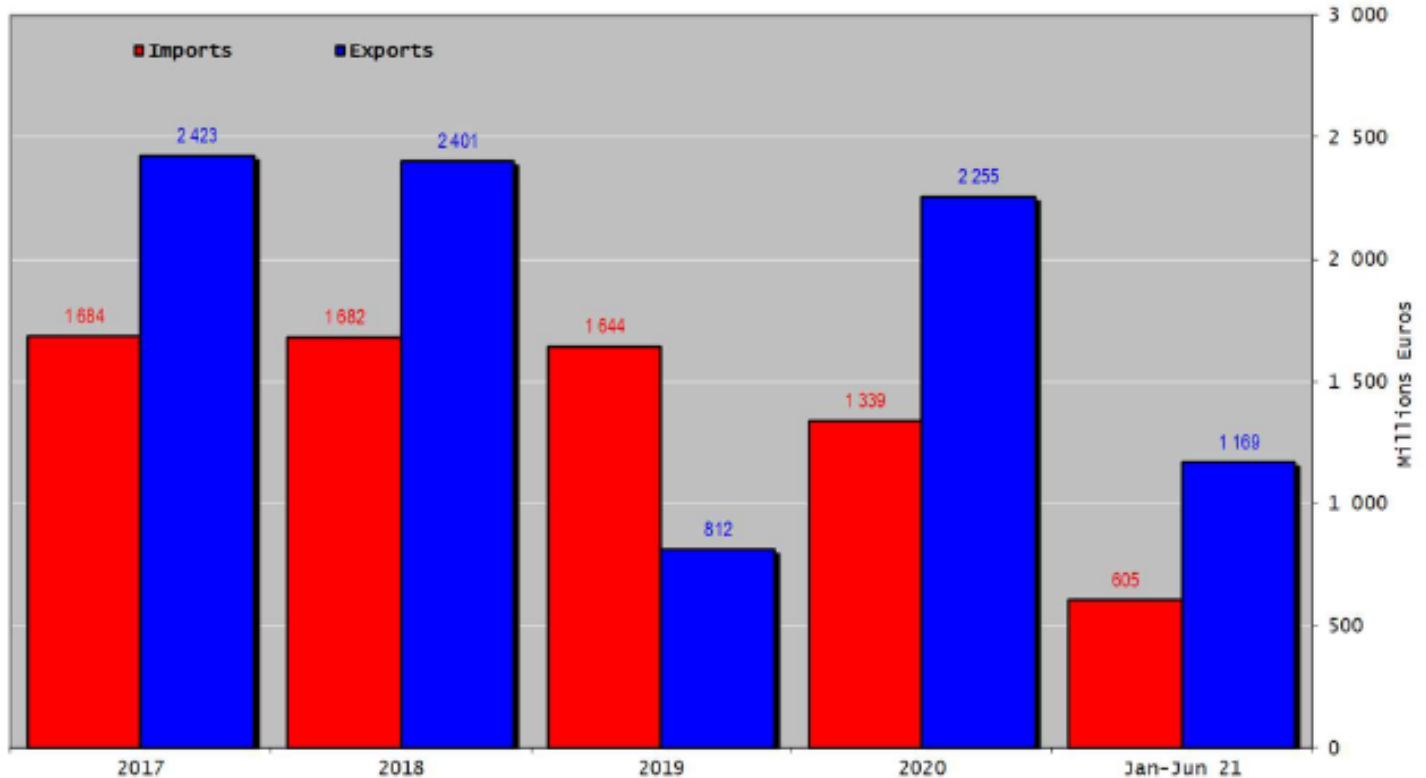
(Birleşik Krallık Hariç)

Trade Balance of Beef Products
(Except Live Animals) without UK



Sığır Eti Ürünleri ve Canlı Hayvan Ticaret Dengesi (Milyon Euro) (Birleşik Krallık Hariç)

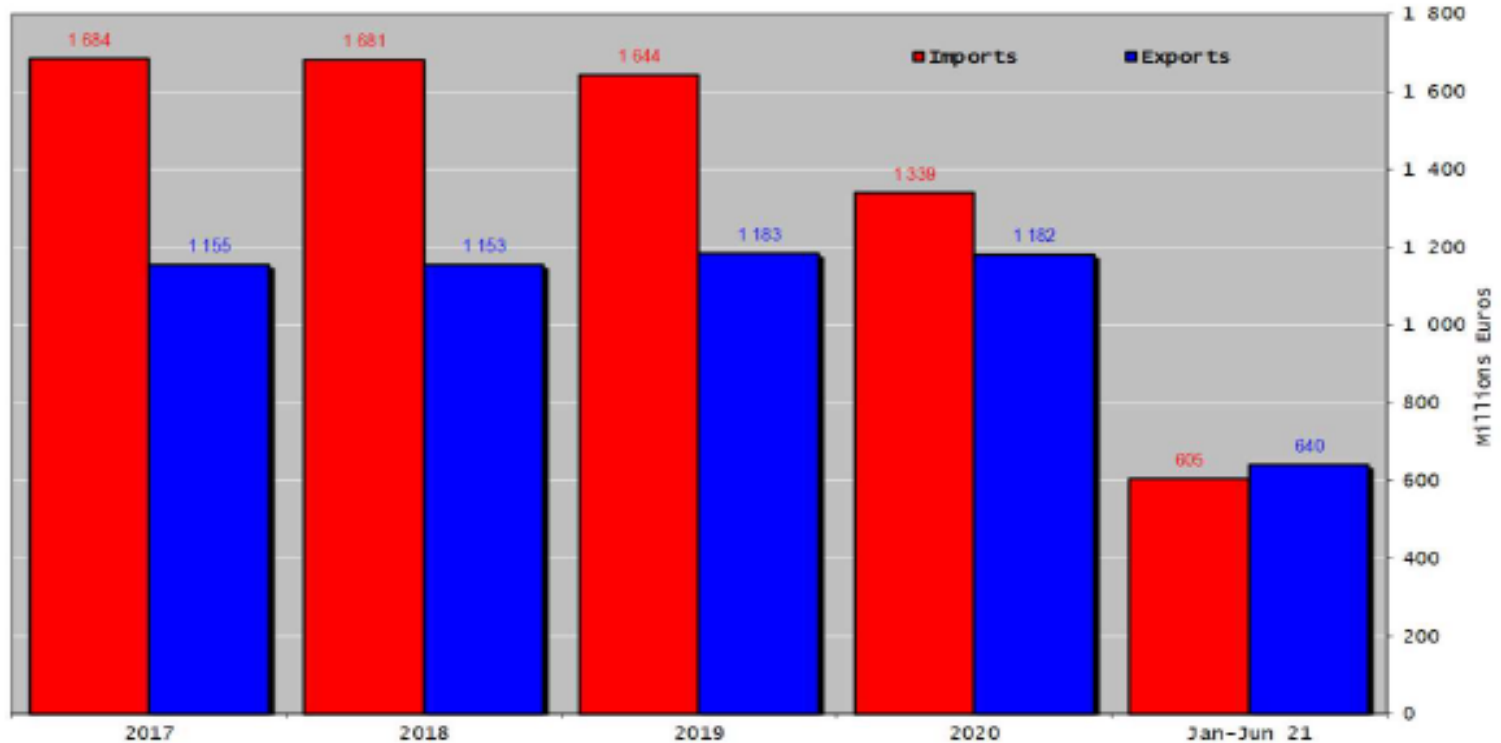
Trade Balance of Beef Products and Live Animals (without UK)





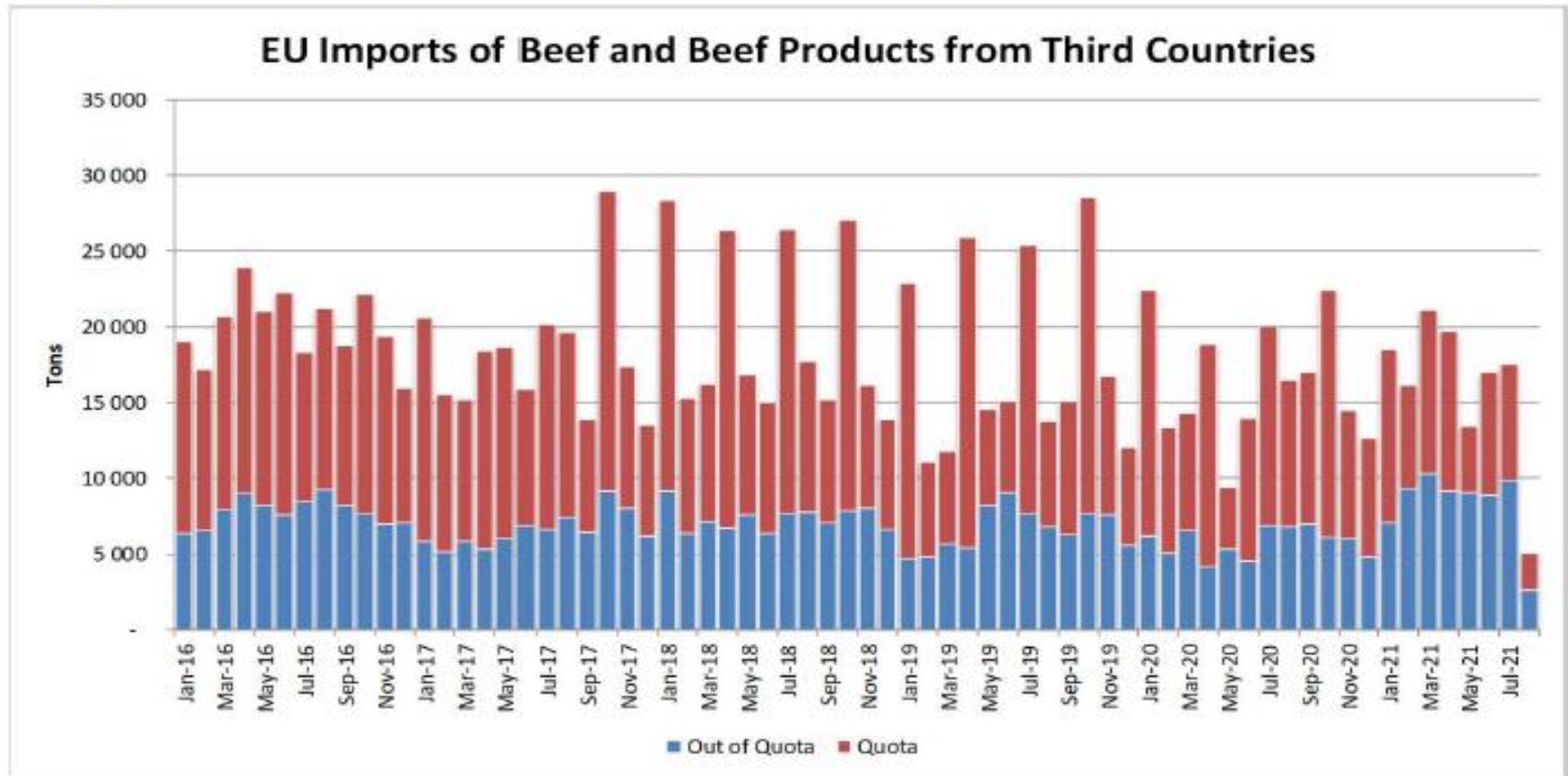
AB Sığır Eti Ürünleri Ticareti (Canlı Hayvanlar Hariç) (Milyon Euro) (Birleşik Krallık Hariç)

Trade Balance of Beef Products
(Except Live Animals) without UK



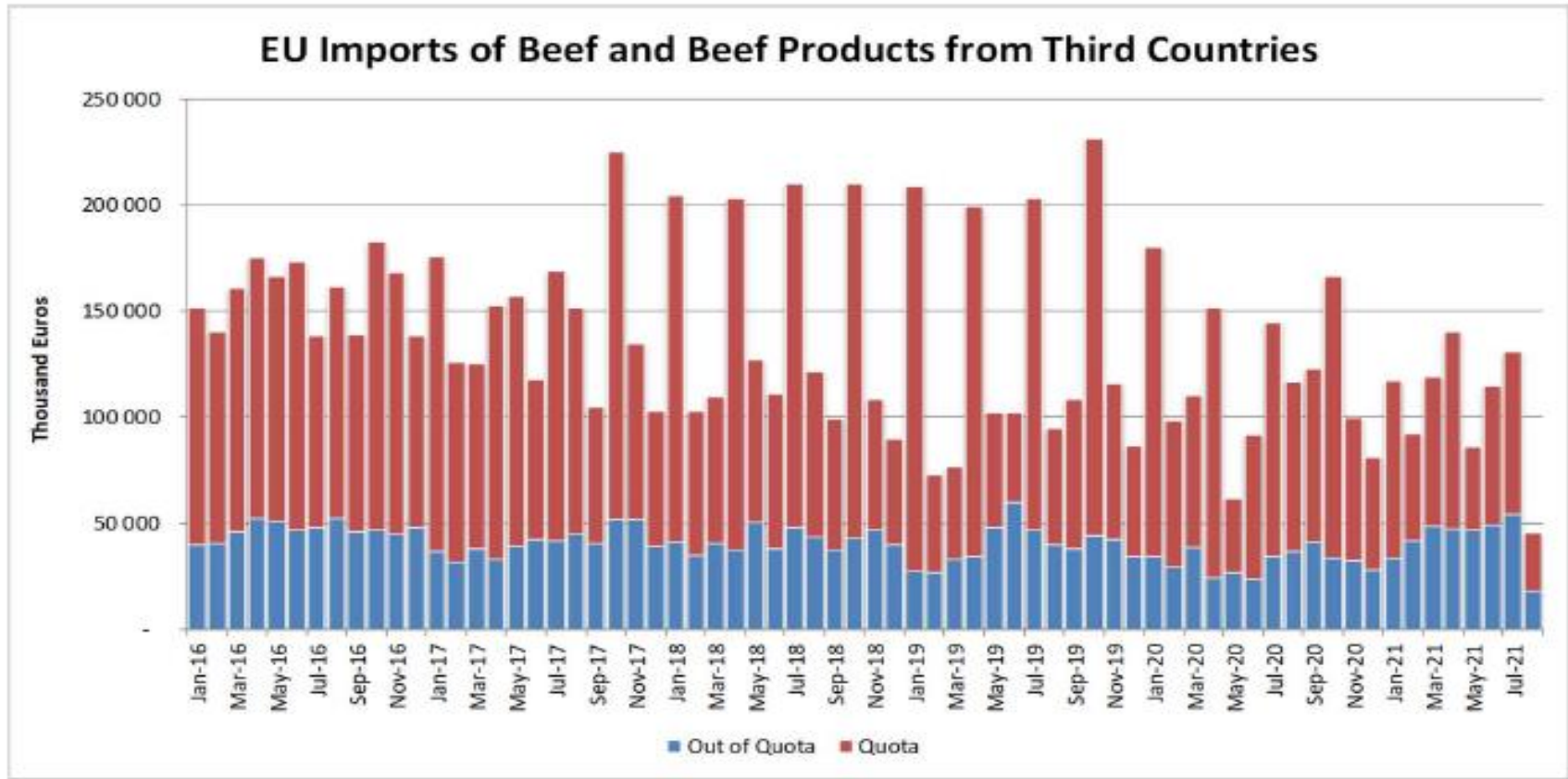
Üçüncü Ülkelerden AB ve Birleşik Krallık Sığır ve Sığır eti Ürünleri İthalatları (Ton)

Imports in and out of TRQs



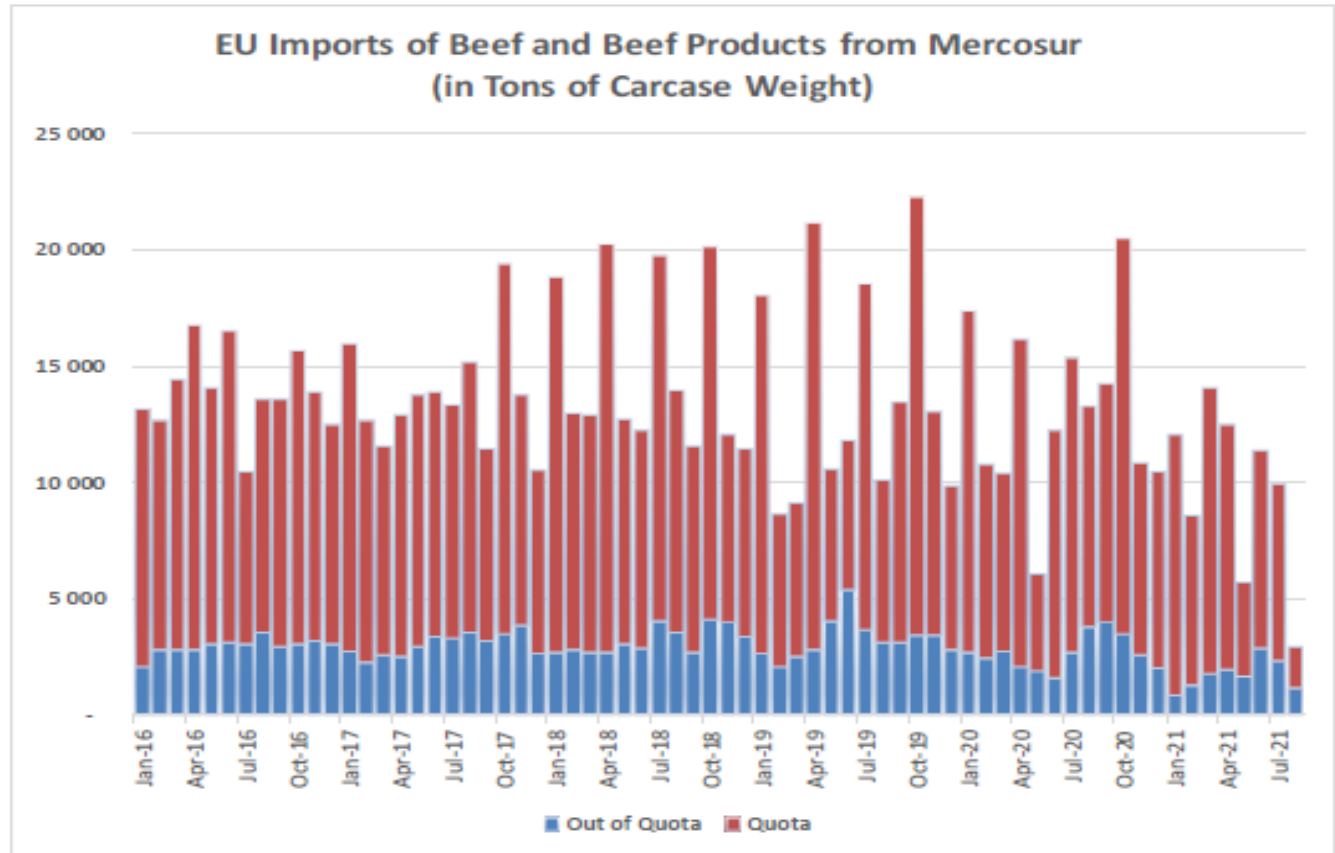
Üçüncü Ülkelerden AB ve Birleşik Krallık Sığır ve Sığır eti Ürünleri İthalatları (Bin Euro)

Imports in and out of TRQs



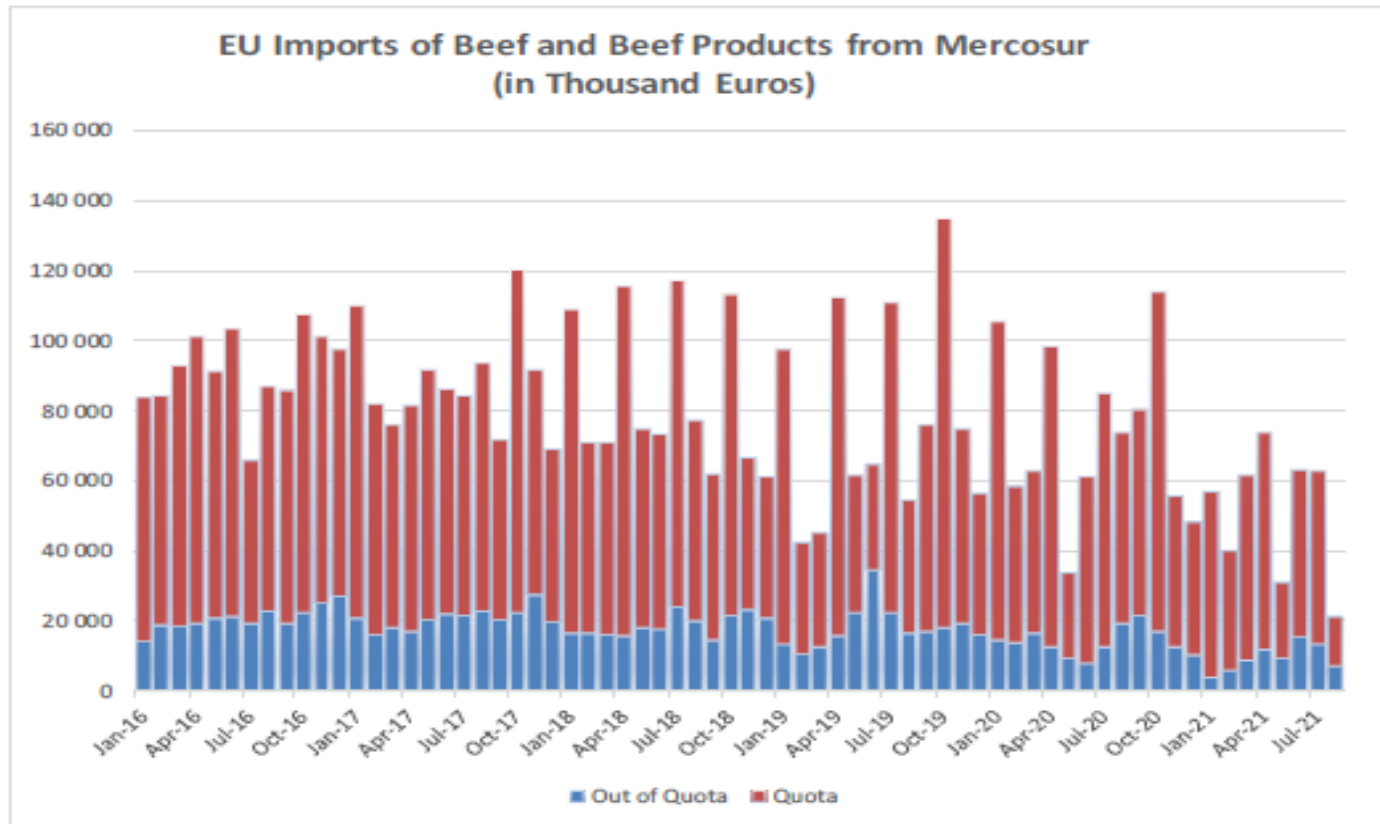
Mercosur Ülkelerinden Sığır ve Sığır Eti Ürünleri AB ve Birleşik Krallık İthalatları (Ton, Karkas Ağırlık)

Imports in and out of TRQs



Mercosur Ülkelerinden Sığır ve Sığır Eti Ürünleri AB ve Birleşik Krallık İthalatları (Bin Euro)

Imports in and out of TRQs



YÜKSEK KALİTE SİĞİR ETİ İTHALAT KOTALARI



European
Commission

Quota arrangements

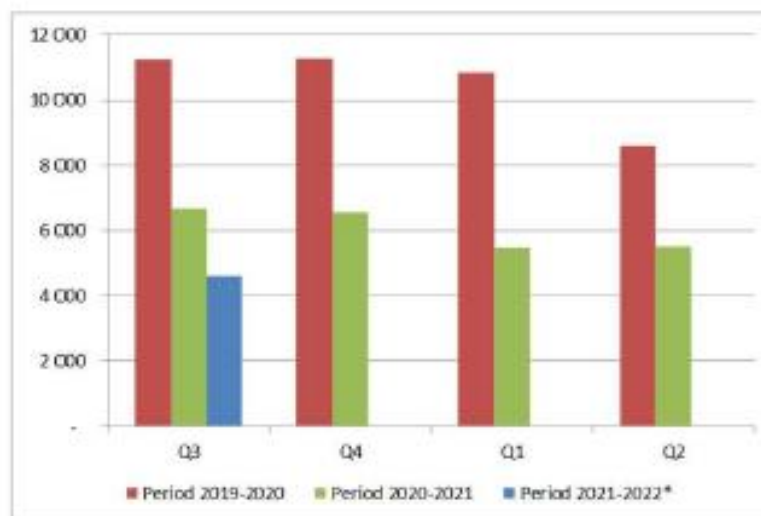
Regulation (EU) No 481/2012

	2019-Q3	2019-Q4	2020-Q1	2020-Q2	TOTAL
Period 2019-2020	11 246	11 259	10 825	8 599	41 930
Available	11 250	11 250	11 250	11 250	45 000
Use	99.97%	100.00%	96.22%	76.44%	93.18%
Available after transfer	11 250	11 254	11 241	11 675	
	99.97%	100.00%	96.30%	73.66%	

	2020-Q3*	2020-Q4	2021-Q1	2021-Q2	TOTAL
Period 2020-2021	6 652	6 542	5 467	5 500	24 162
Available	6 625	6 625	5 500	5 500	45 000
Use	100.00%	98.75%	99.41%	100.00%	53.69%
Available after transfer	11 250	6 598	5 583	5 533	
	59.13%	99.16%	97.93%	99.41%	

	2020-Q3*	2020-Q4	2021-Q1	2021-Q2	TOTAL
Period 2021-2022*	4 617	-	-	-	4 617
Available	5 500	5 500	4 900	4 900	45 000
Use	83.94%	0.00%	0.00%	0.00%	10.26%
Available after transfer	5 500	6 383	10 400	9 800	
	83.94%	0.00%	0.00%	0.00%	

* Until 16.08.2021



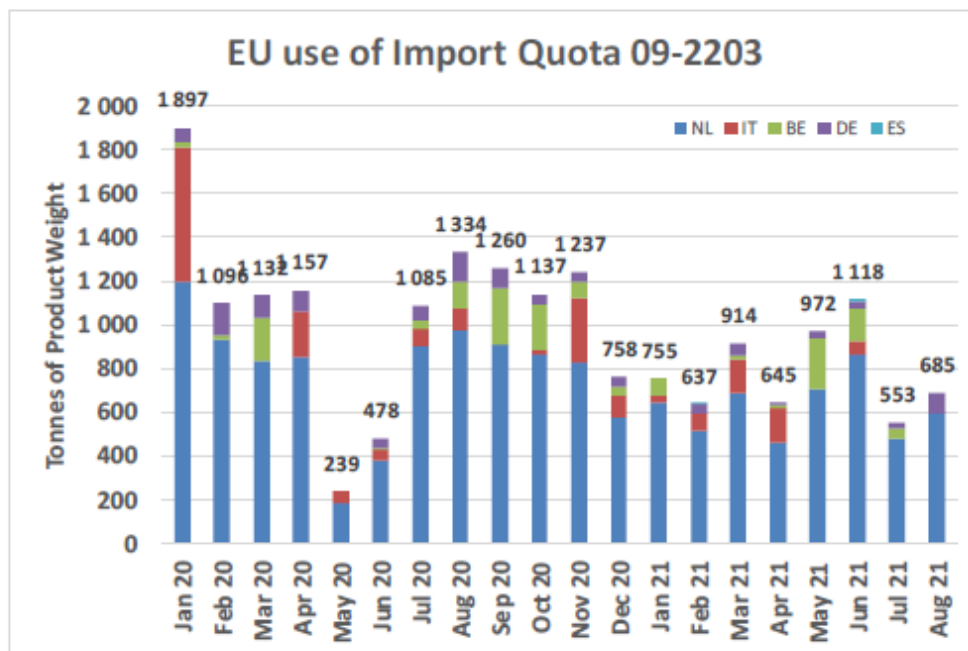
YÜKSEK KALİTE SİĞİR ETİ İTHALAT KOTALARI



European Commission

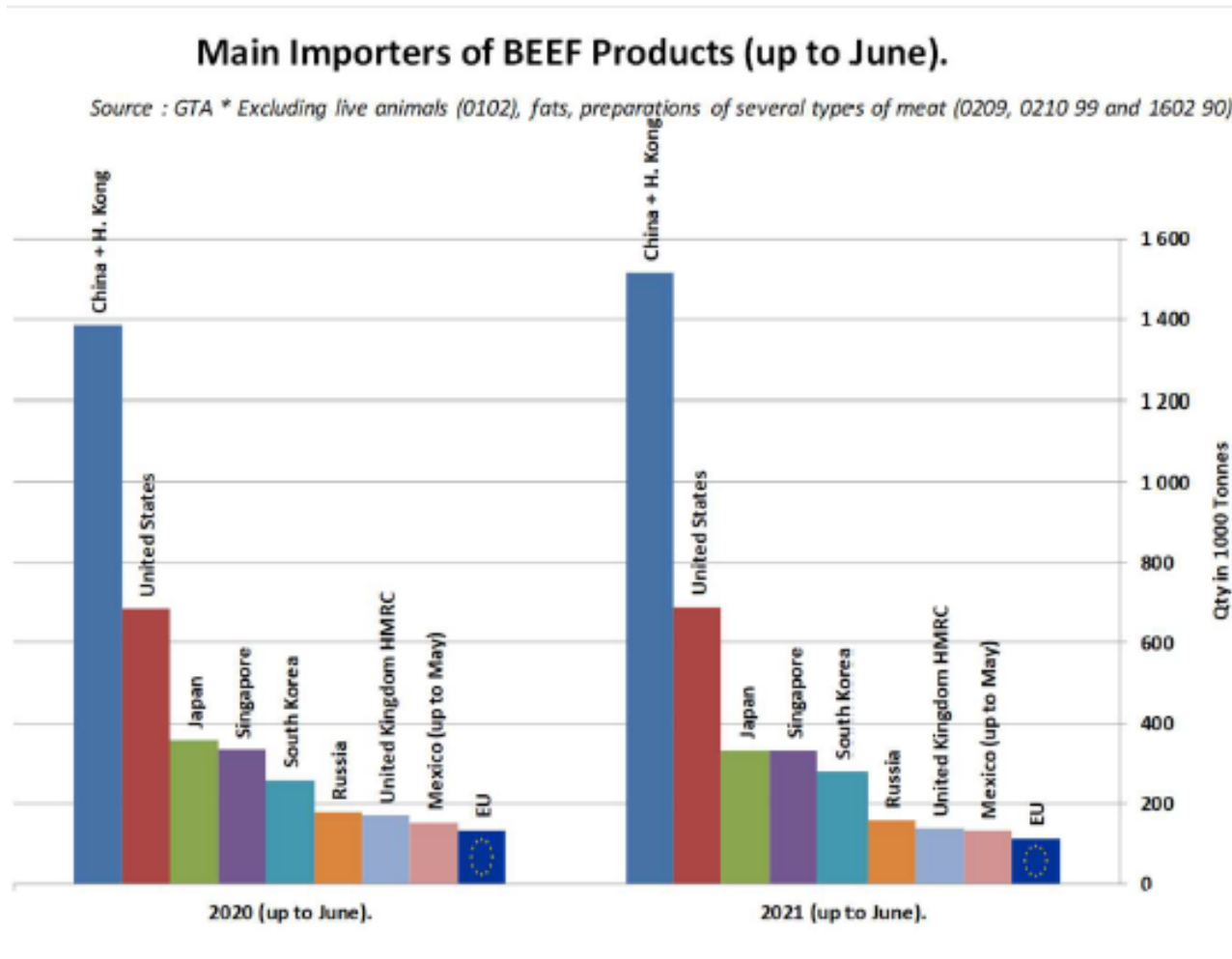
Origin	GATT 2020-2021				Total
	2020-Q3	2020-Q4	2021-Q1	2021-Q2	
NL	2 785	2 274	1 848	2 026	8 933
IT	174	404	263	228	1 069
BE	417	330	96	394	1 237
DE	305	124	98	72	598
ES	-	-	2	15	17
Total import within Quota	3 680	3 132	2 306	2 735	11 853
Available	4 625	4 625	4 625	4 625	18 500
Use	79.57%	67.72%	49.87%	59.13%	64.07%
After transfer	4 625	5 570	6 118	6 944	
Use	79.57%	56.23%	37.70%	39.39%	

Origin	GATT 2021-2022				Total
	2021-Q3	2021-Q4	2022-Q1	2022-Q2	
NL	1 069				
IT	-				
BE	51				
DE	118				
ES	-				
Total import within Quota	1 238				
Available	5 750	5 750	6 350	6 350	24 200
Use	21.53%				
After transfer	5 750				
Use	21.53%				





SIĞIR ETİ ÜRÜNLERİNİN NET İTHALATÇILARI (HAZİRAN AYINA KADAR)



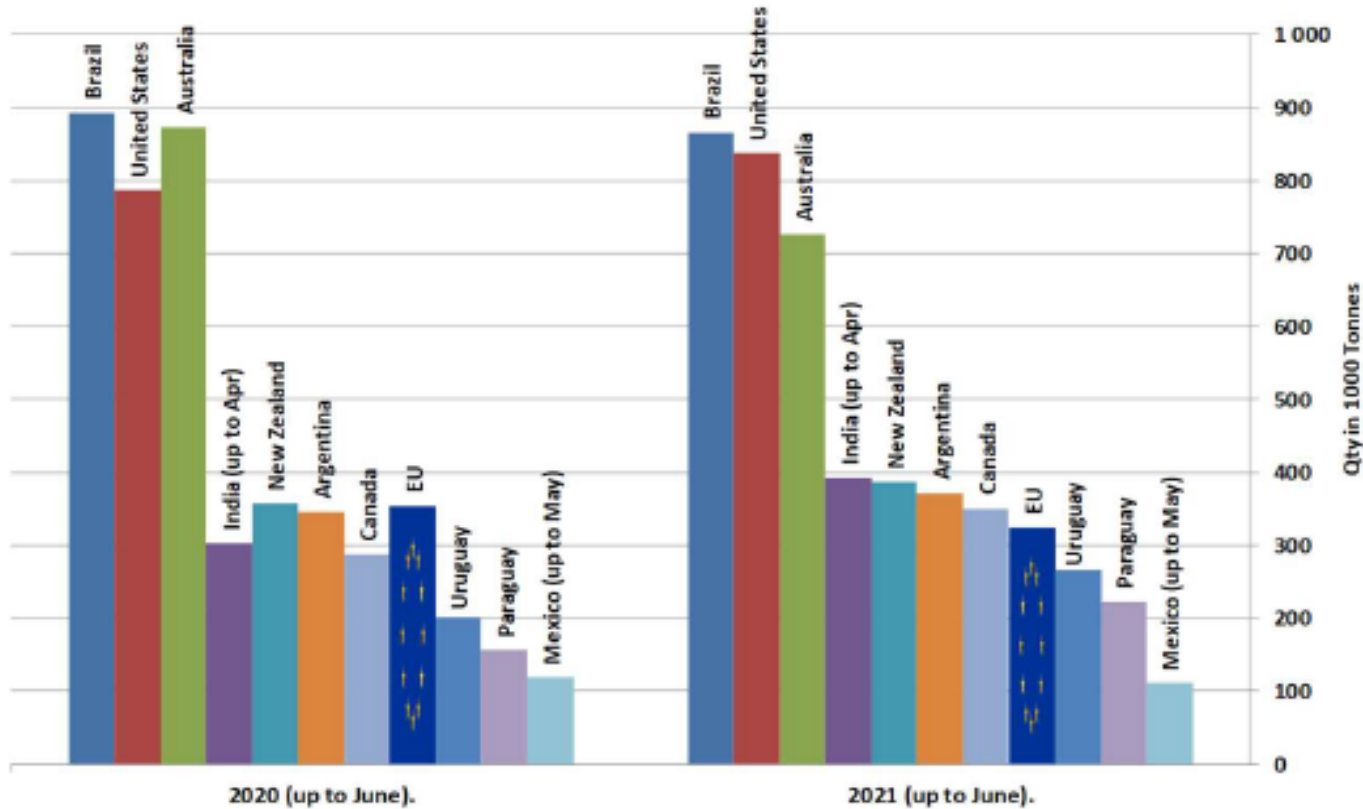


European
Commission

SIĞIR ETİ ÜRÜNLERİNİN NET İHRACATÇILARI (HAZİRAN AYINA KADAR)

Main Exporters of BEEF Products (up to June).

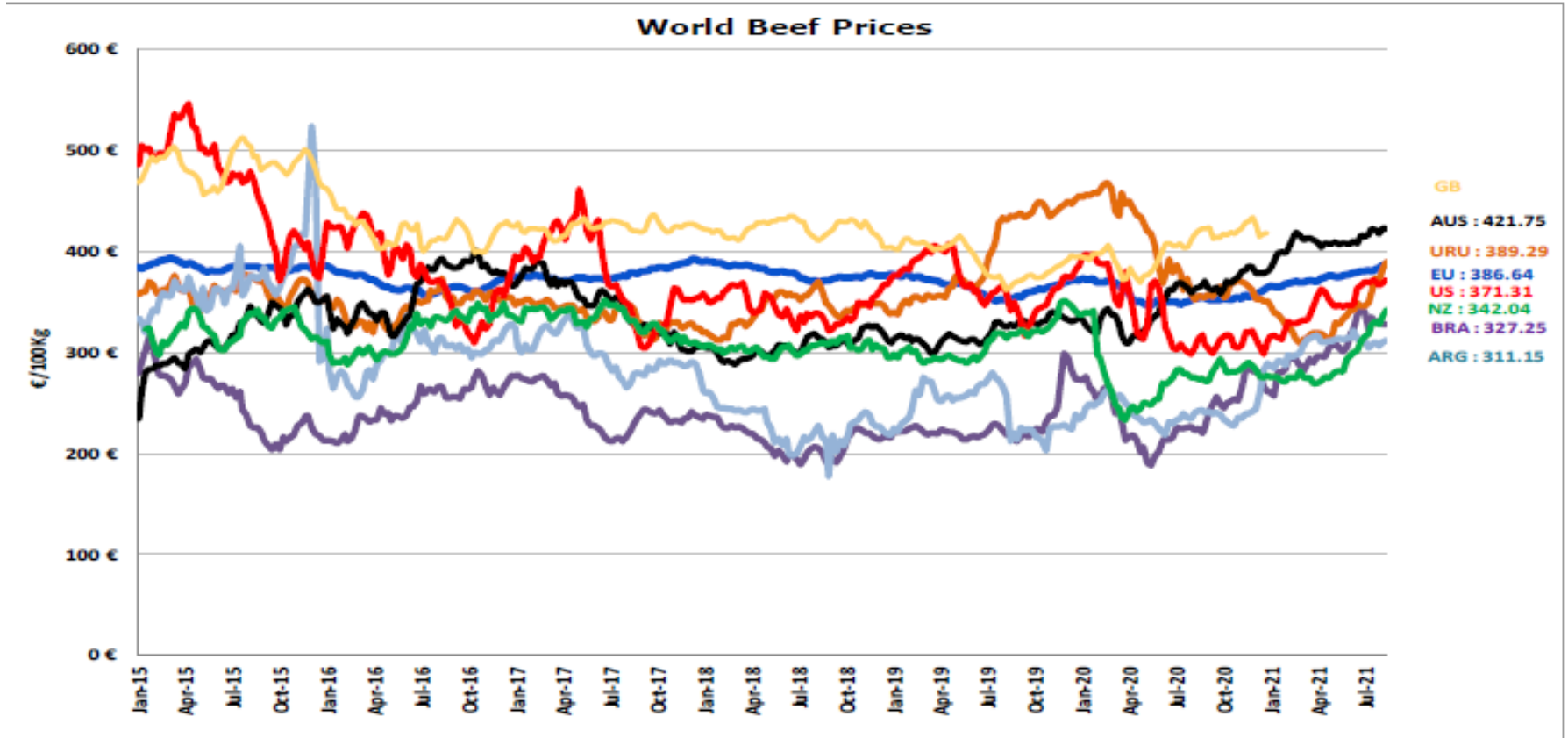
Source : GTA * Excluding live animals (0102), fats, preparations of several types of meat (0209, 0210 99 and 1602 90)



DÜNYA SIĞIR ETİ PAZARI



Dünya Sığır Fiyatları AB, ABD, AVUSTURYA, YENİ ZELANDA



ECB <http://sdw.ecb.europa.eu/browse.do?node=2018794>
US <https://www.marketnews.usda.gov/mnp/ls-home>
AUS <http://statistics.mla.com.au/Report/RunReport/ae59d4ac-74e4-4c56-93bd-982a044d9760>
UY <http://www.inac.gub.uy/innovaportal/v/11034/10/innova.front/indicadores-y-precios>
ARG http://www.abc-consorcio.com.ar/Estadisticas/detalle/117/precios_comparativos_del_novillo.html
BR <http://www.pecuaria.com.br/cotacoes.php>
NZ http://www.abc-consorcio.com.ar/Estadisticas/detalle/117/precios_comparativos_del_novillo.html

2021





Çiftlik Yapısı Araştırması

LSU olarak kısaltılan (bazen ise LU olarak) hayvancılık birimi, başlangıçta her tür hayvanın beslenme ya da yem ihtiyacına dayanarak oluşturulan spesifik katsayıların kullanılmasıyla, konvansiyonel olarak hayvan türlerinin çeşitli tür ve yaşlardan toplanmasını kolaylaştıran bir referans birimidir. Çoğunlukla kullanılan katsayıların yer aldığı özet tablo aşağıdadır.

Hayvancılık birimlerinin hesaplanmasında kullanılan referans birimi, ek konsantre gıda maddeleri olmadan, yıllık 3.000 kg süt üreten bir yetişkin süt ineğinin otlatma eşdeğeridir.

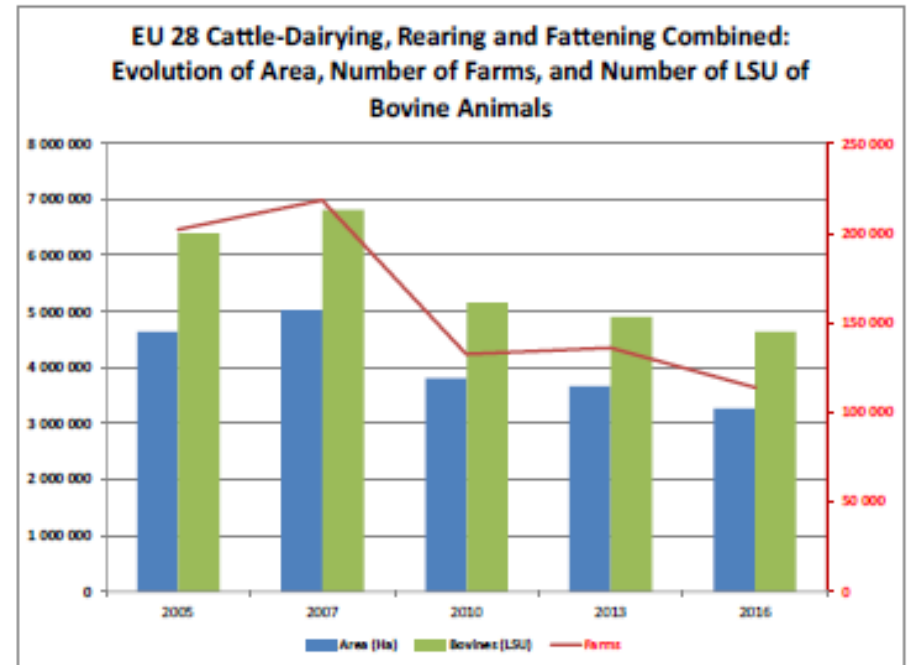
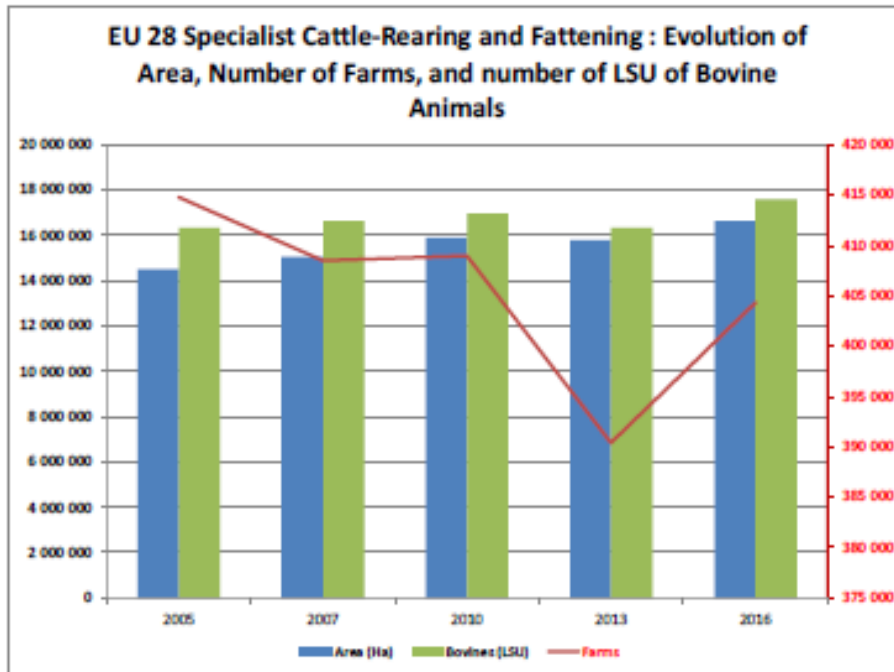
Hayvancılık birim katsayıları

Büyükbaş	1 yaşın altında	0,400
	1 ancak 2 yaşından küçük	0,700
	Erkek, 2 yaşında ve daha büyük	1,000
	Düve, 2 yaşında ve daha büyük	0,800
	Süt inekleri	1,000
	Diğer inekler, 2 yaşında ve daha büyük	0,800



European
Commission

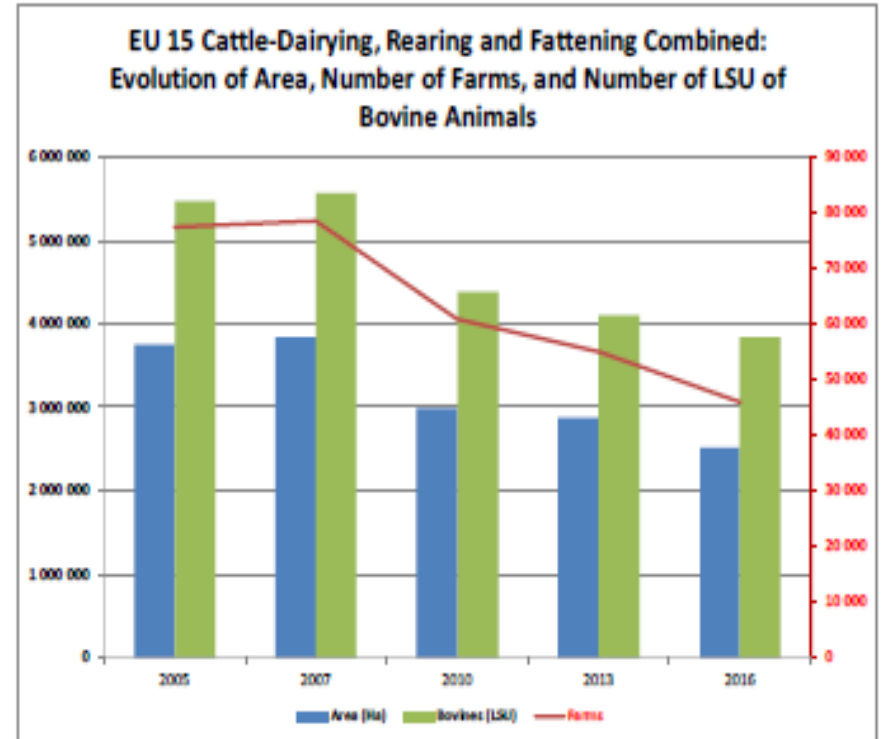
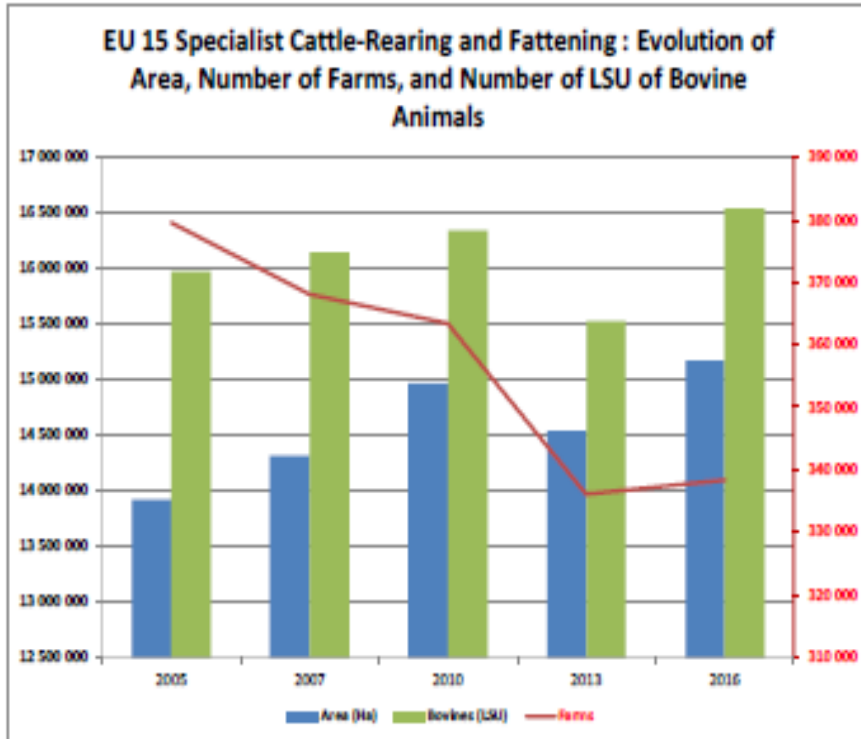
Çiftlik Yapısı Araştırması



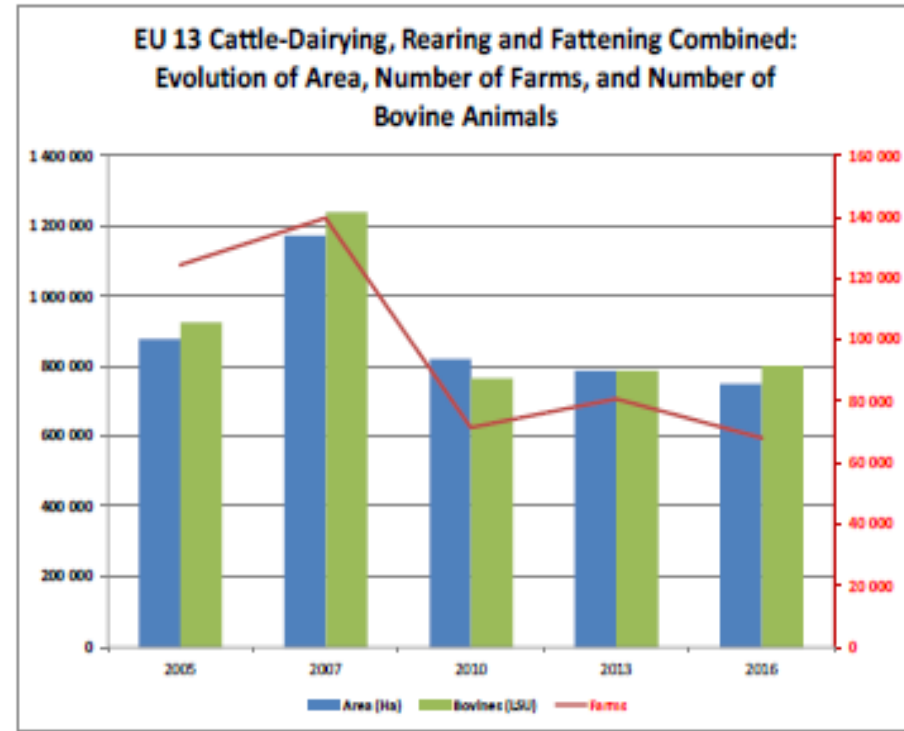
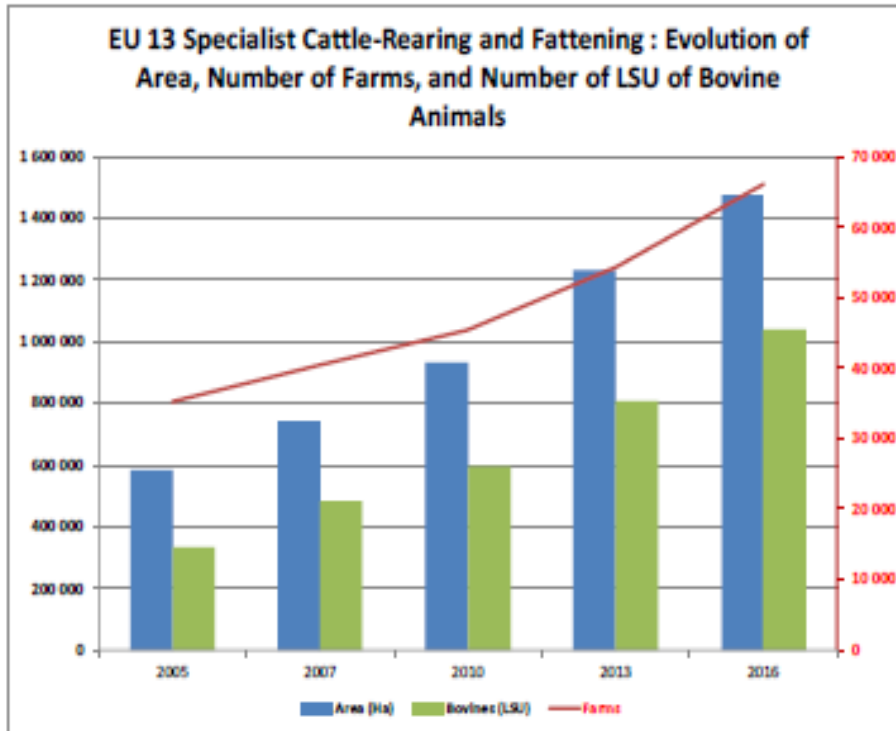


European
Commission

Çiftlik Yapısı Araştırması



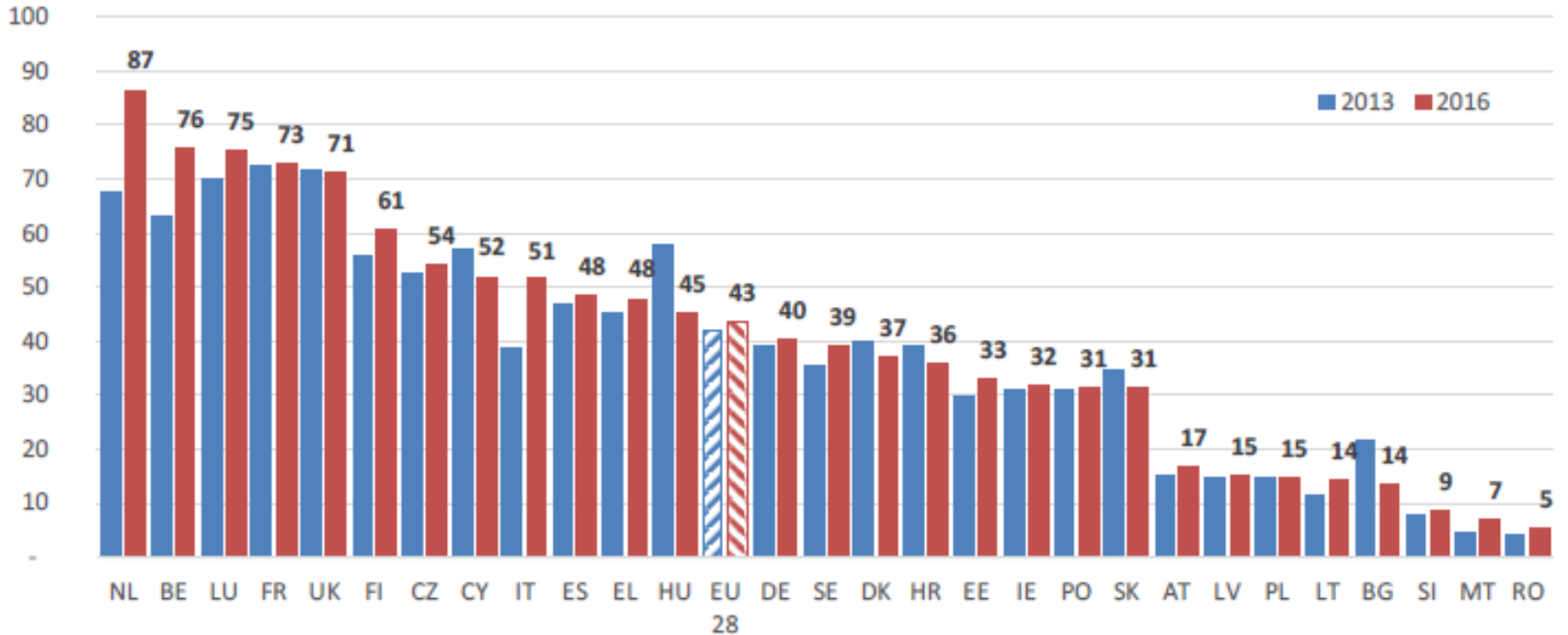
Çiftlik Yapısı Araştırması



Çiftlik Yapısı Araştırması

AB Uzman Büyükbaş Hayvan Yetiştirme ve Besi Yetiştiriciliğinde Ortalama LSU / Çiftlik Sayısı

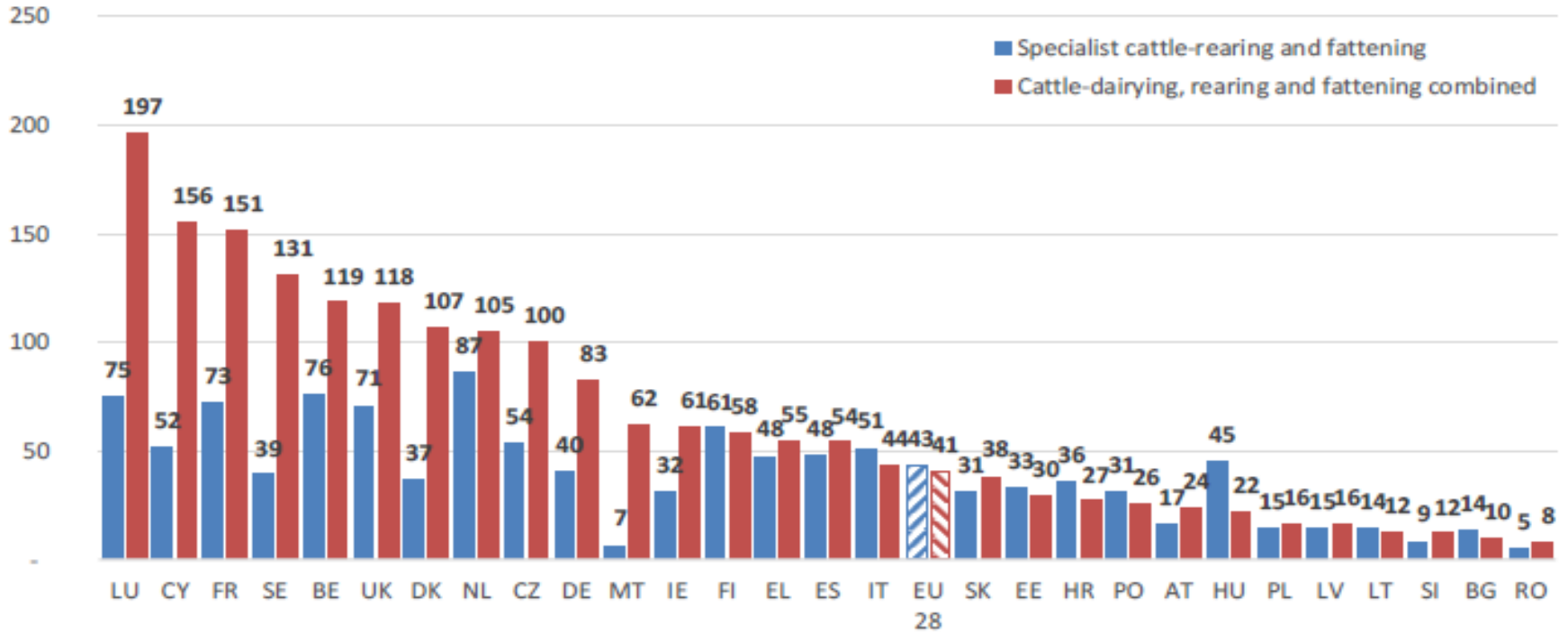
Average Number of LSU/Farm in
EU Specialist Cattle-Rearing and Fattening



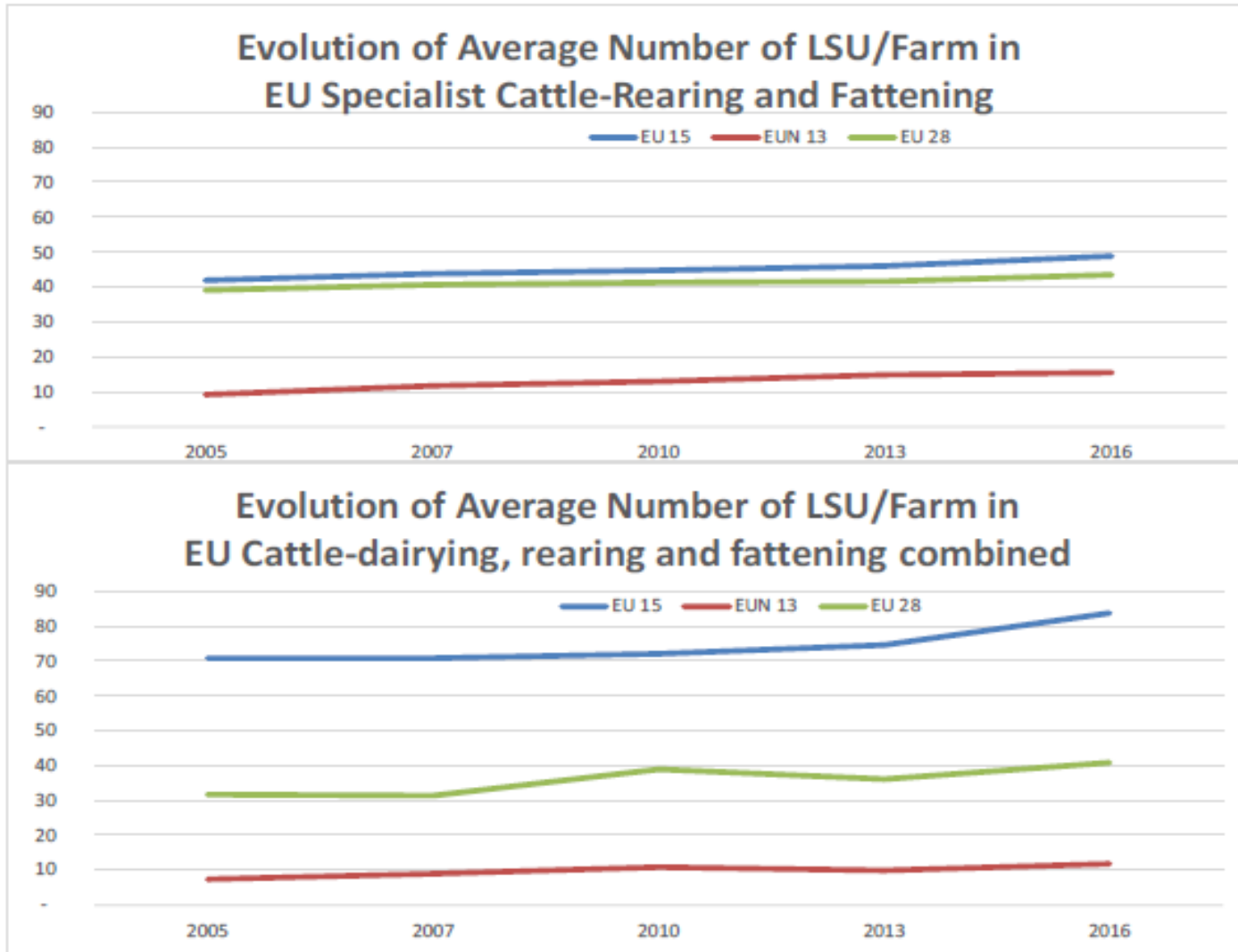
Çiftlik Yapısı Araştırması

2016 yılında AB'de Ortalama LSU / Çiftlik Sayısı

Average Number of LSU/Farm in EU in 2016



Çiftlik Yapısı Arastırması





Daha fazla bilgi için:

https://ec.europa.eu/agriculture/market-observatory/meat_en

Ve Agri-FOOD Veri Portalı:

<http://agridata.ec.europa.eu>