



AB SIĐIR VE DANA ETİ PAZAR DURUMU

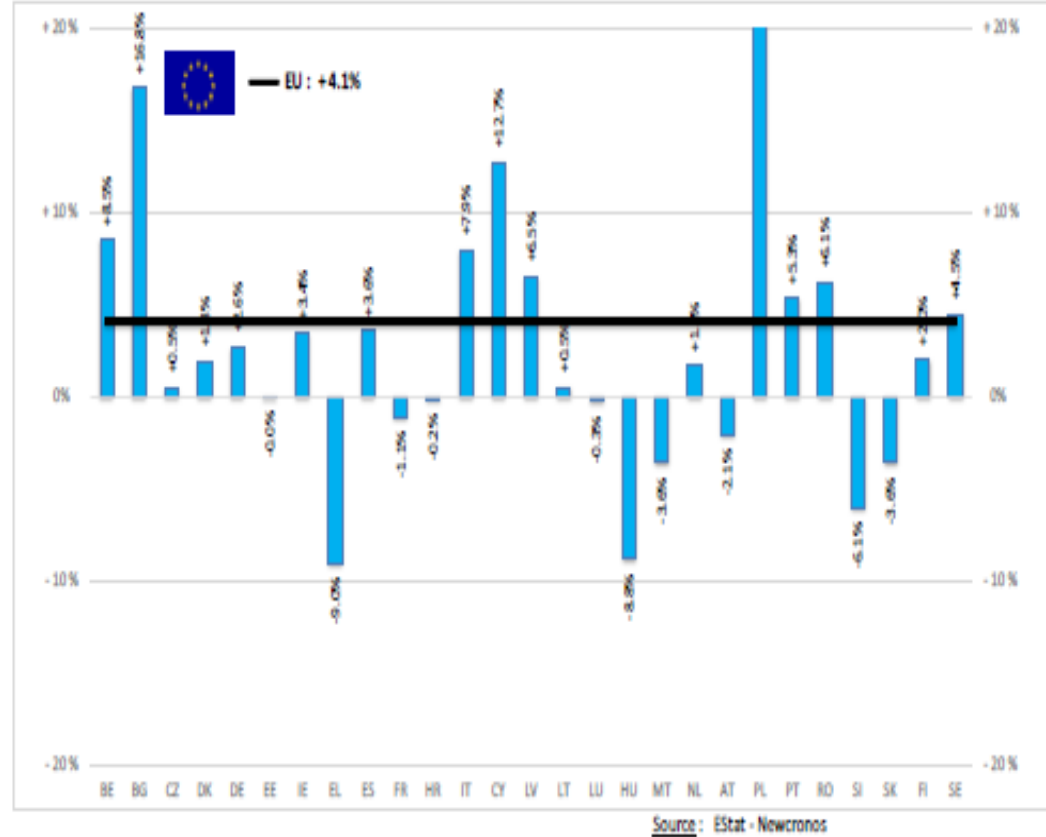
29 Ađustos 2024



European
Commission

BAŞ	HEADS	Jan-May 24/23
		EU
BOĞA	Bull	+6.0%
ÖKÜZ	Bullock	+4.3%
İNEK	Cow	+4.0%
DÜVE	Heifer	+7.8%
BÜZAĞI	Calve	+1.8%
GENÇ SİĞİR	Young cattle	-5.7%
Büyükbaş Hayvan Eti	Meat of bovine animals	+4.1%

Estimates for last month of period : BG

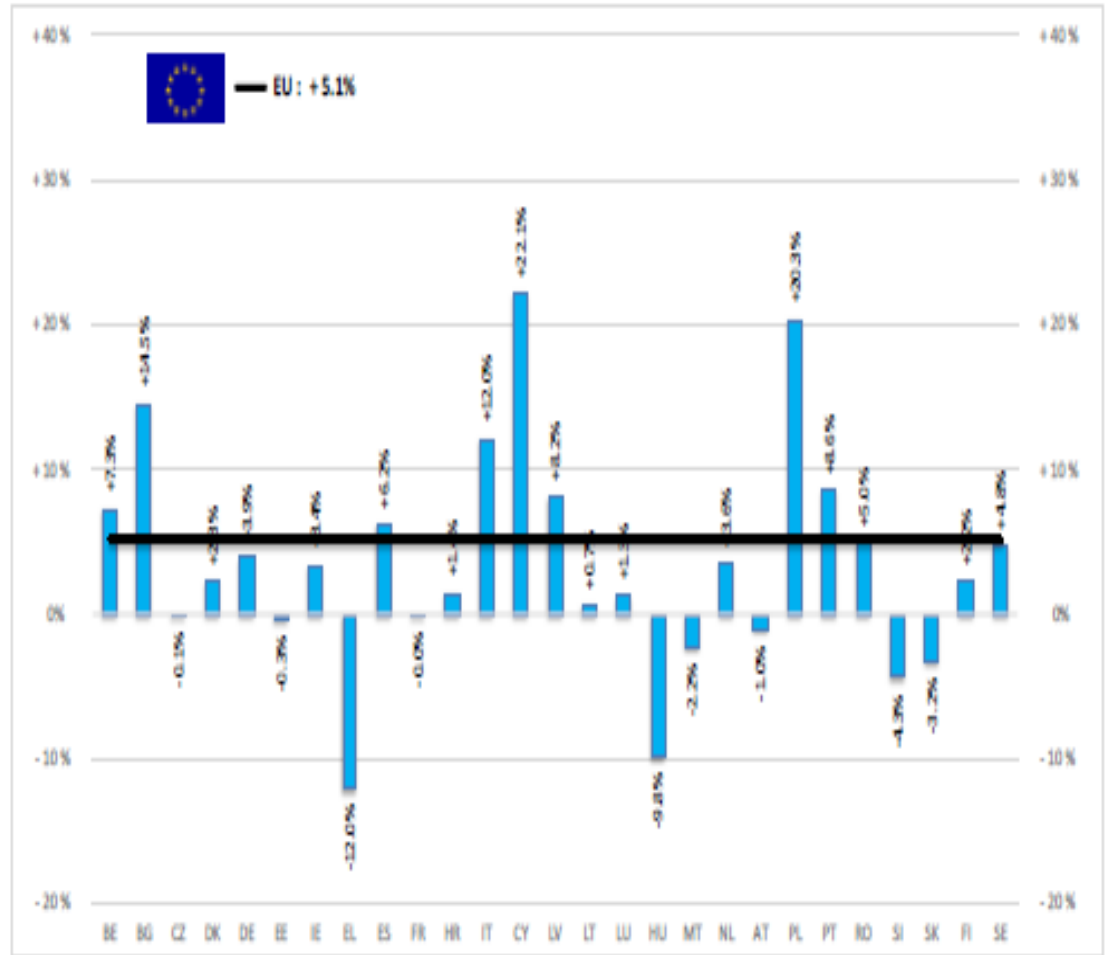




European
Commission

TON	TONNES	Jan-May 24/23
		EU
BOĞA	Bull	+6.0%
ÖKÜZ	Bullock	+3.5%
İNEK	Cow	+4.8%
DÜVE	Heifer	+8.3%
BUZAĞI	Calve	+3.3%
GENÇ SİĞİR	Young cattle	-4.4%
Büyükbaş Hayvan Eti	Meat of bovine animals	+5.1%

Estimates for last month of period : BG

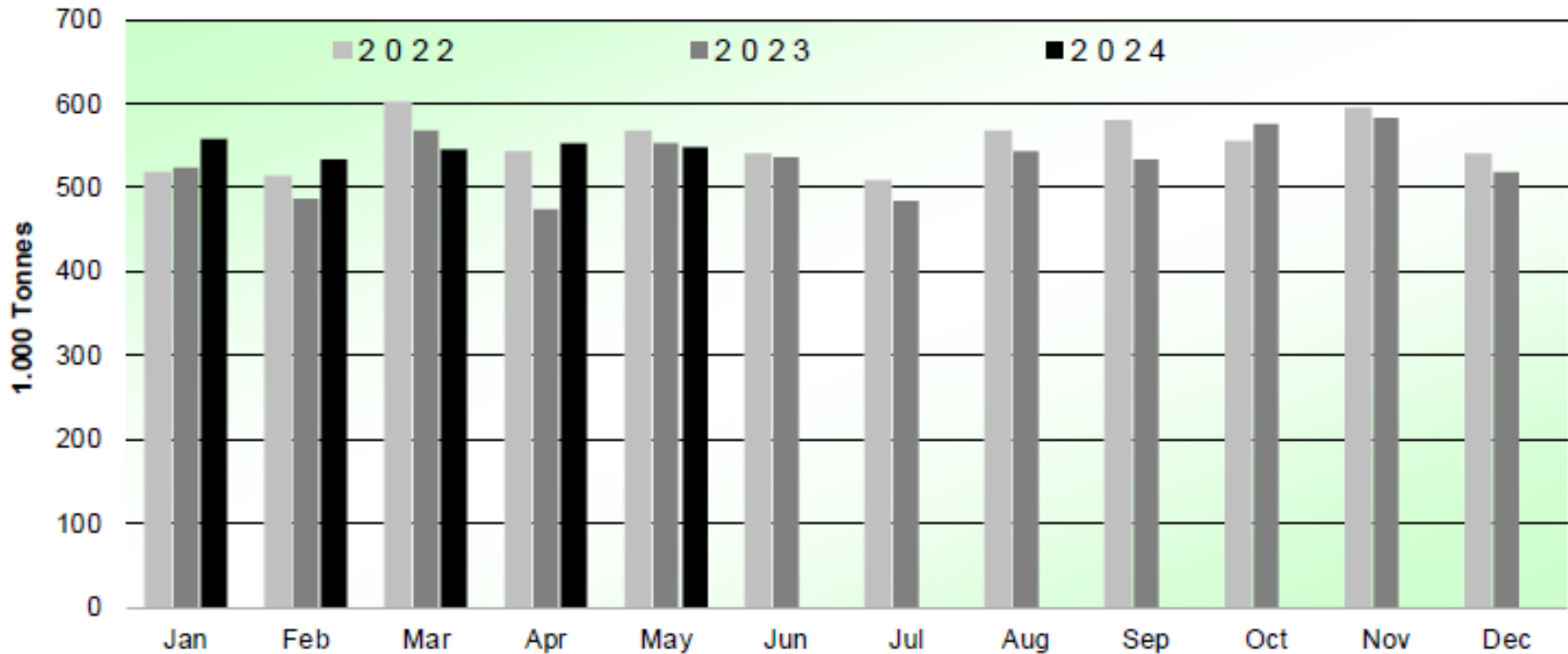


Source : EStat - Newcronos



SIĞIR VE DANA ETİ ÜRETİMİ (AB Kesimler – Ton)

Beef & Veal Production (EU Slaughtering) - Tonnes



Source : EStat-Newcronos



EU Prices week		33	Evolution since last week	Evolution since last month	Evolution since last year		
Carcasse	Average A/C/Z-R3	505.6	€/100 kg	+ 0.8%	+ 0.8%	+ 5.7%	
	Young Bovines (Z)	506.9		+ 0.5%	- 0.5%	+ 2.0%	
	Young Bulls (A)	503.3		+ 1.0%	+ 1.4%	+ 6.4%	
	Steers (C)	516.3		+ 0.3%	- 0.4%	+ 7.3%	
	Cows (D)	434.3		+ 0.3%	+ 0.7%	+ 5.9%	
	Heifers (E)	517.5		+ 0.3%	- 0.6%	+ 3.7%	
	Calves slaughtered <8M	617.7		+ 0.7%	+ 1.8%	+ 3.5%	
Live Animals	Male Calves Dairy Type	145.7	€/head	- 3.6%	- 7.4%	+ 14.6%	
	Male Calves Beef Type	283.8		- 1.2%	- 1.7%	+ 12.1%	
	Young Store Cattle	3.53		+ 0.1%	+ 2.2%	+ 9.8%	
	Yearling Male Store Cattle	4.18		€/kg	+ 0.1%	- 0.2%	+ 14.5%
	Yearling Female Store Cattle	3.25			+ 0.3%	+ 1.6%	+ 13.4%

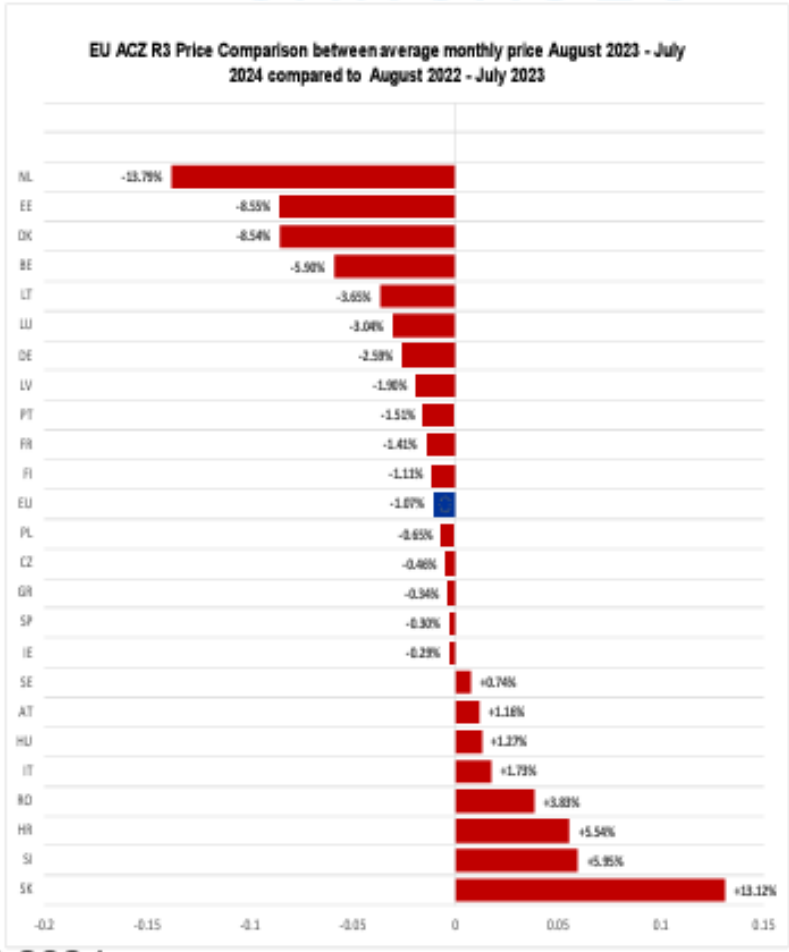
Sources : MSs notifications (Regulation (EU) 1182/2017 and 1184/2017)

KARKAS FİYATLARI

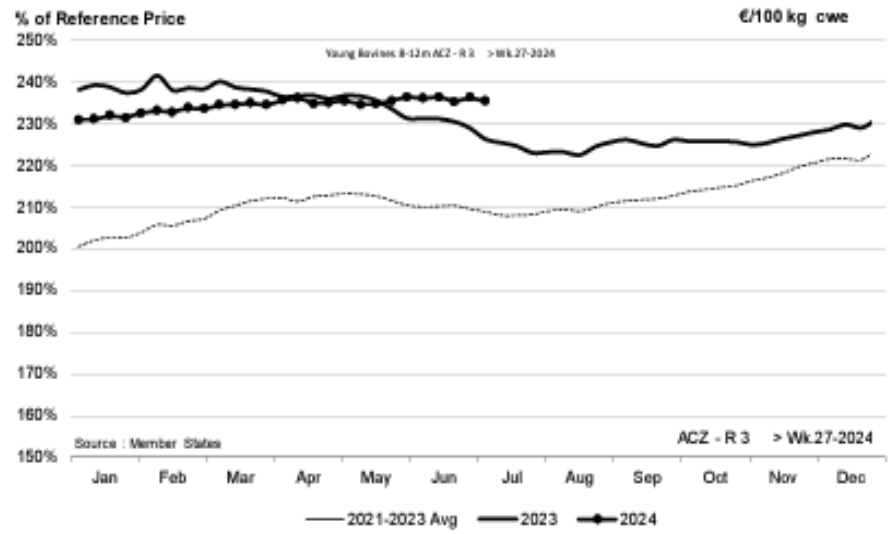


European Commission

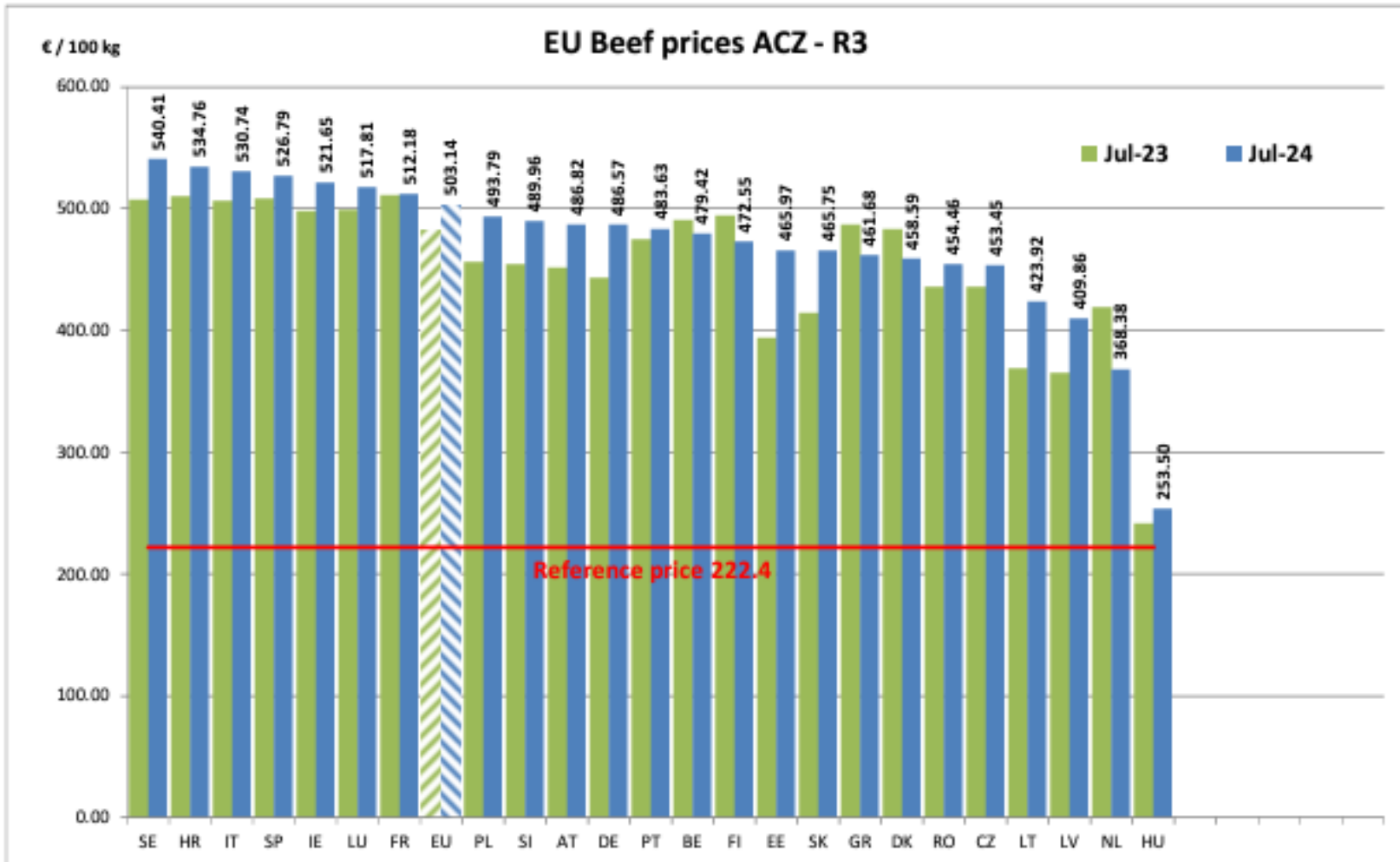
AB DEĞİŞİM A/C/Z. R3



ACZ - R 3 > Wk.27-2024

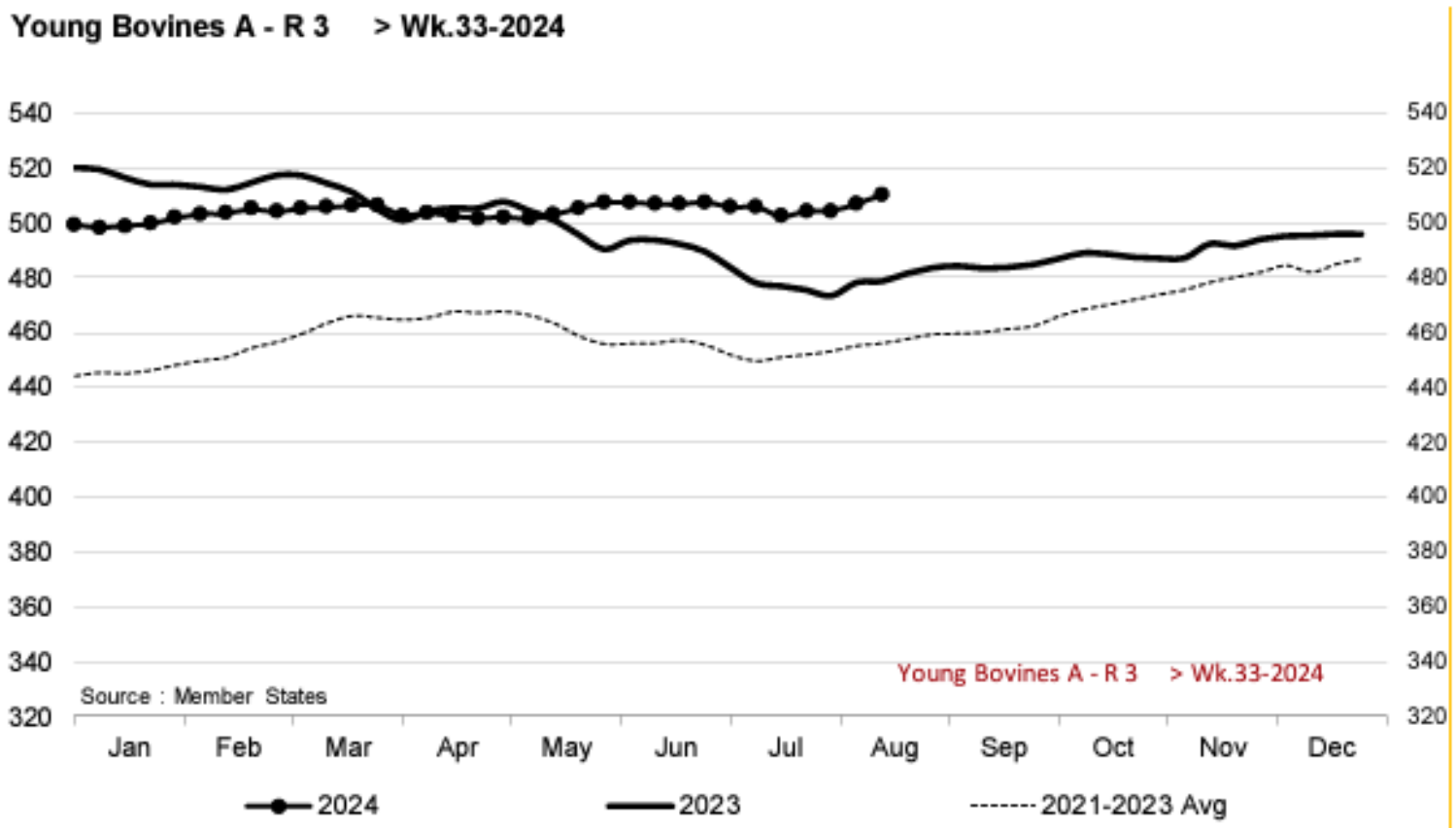


Price in week 27 :	504.38	Average price in June 2024 :	505.79
% change y/y :	+ 3.78%	% change y/y :	+ 2.17%
% Ref. Price in wk 0 :	218.5%		





Young Bovines A - R 3 > Wk.33-2024



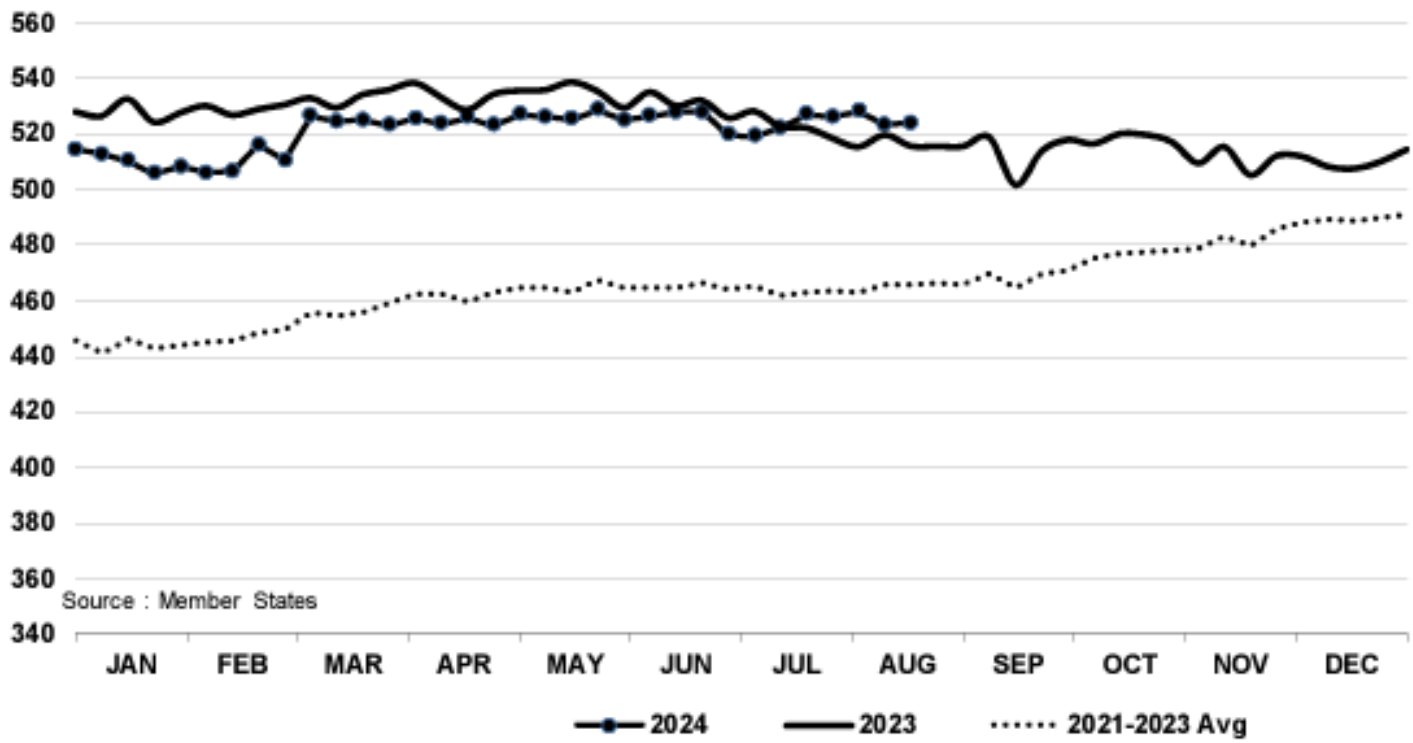
Source : Member States

Young Bovines A - R 3 > Wk.33-2024

Price in week 33 : 510.41	Average price in July 2024 : 504.60
% change y/y : + 6.6%	% change y/y : + 5.3%



In € / 100 kg Young Bovines 8-12m Z - R 3 > Wk.33-2024

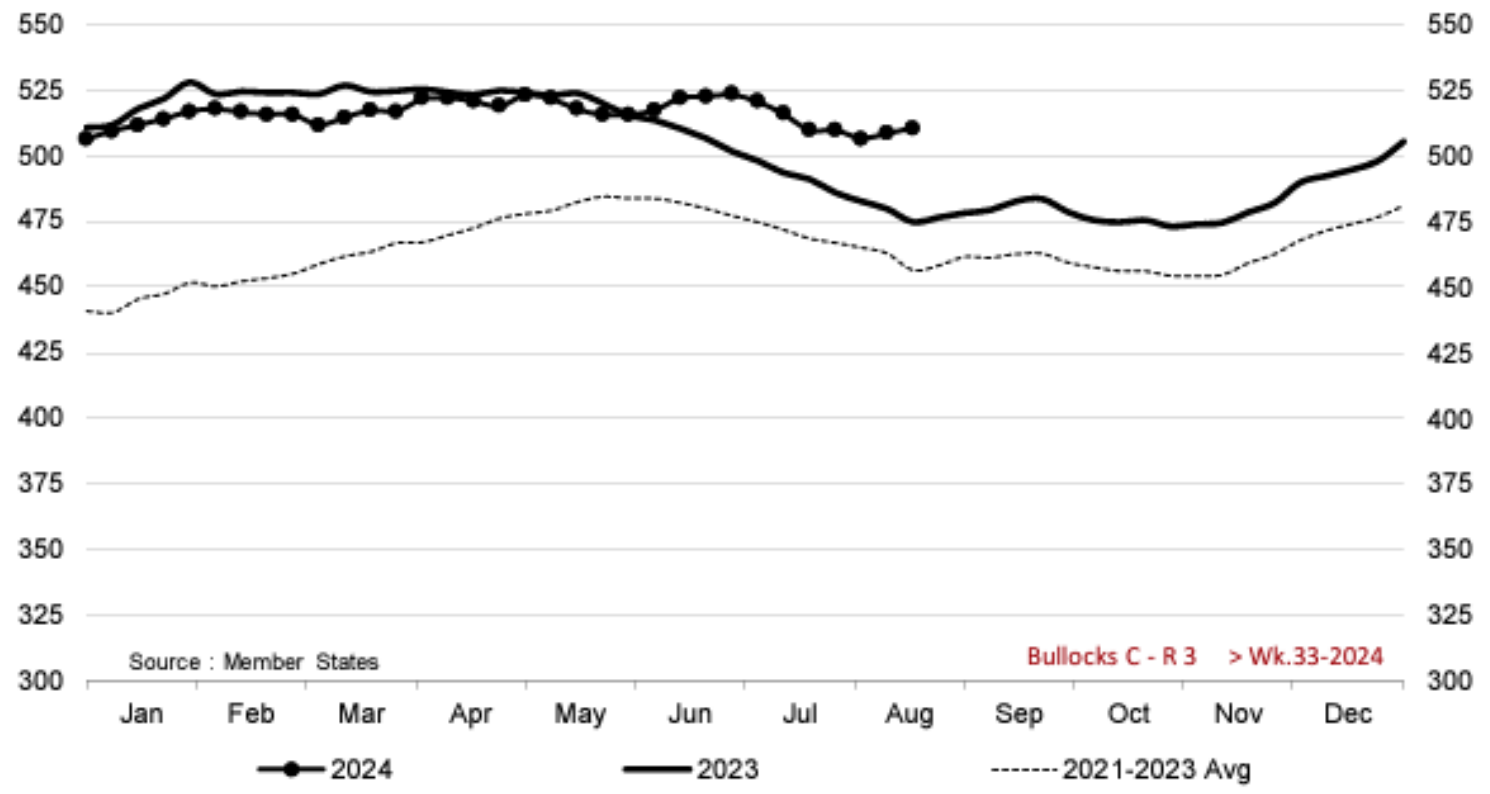


Source : Member States

Price in week 33 : **523.87** 18/07/2024 Average price in July 2024 : **524.13**
% change y/y : **+ 1.6%** % change y/y : **+ 0.2%**



Bullocks C - R 3 > Wk.33-2024

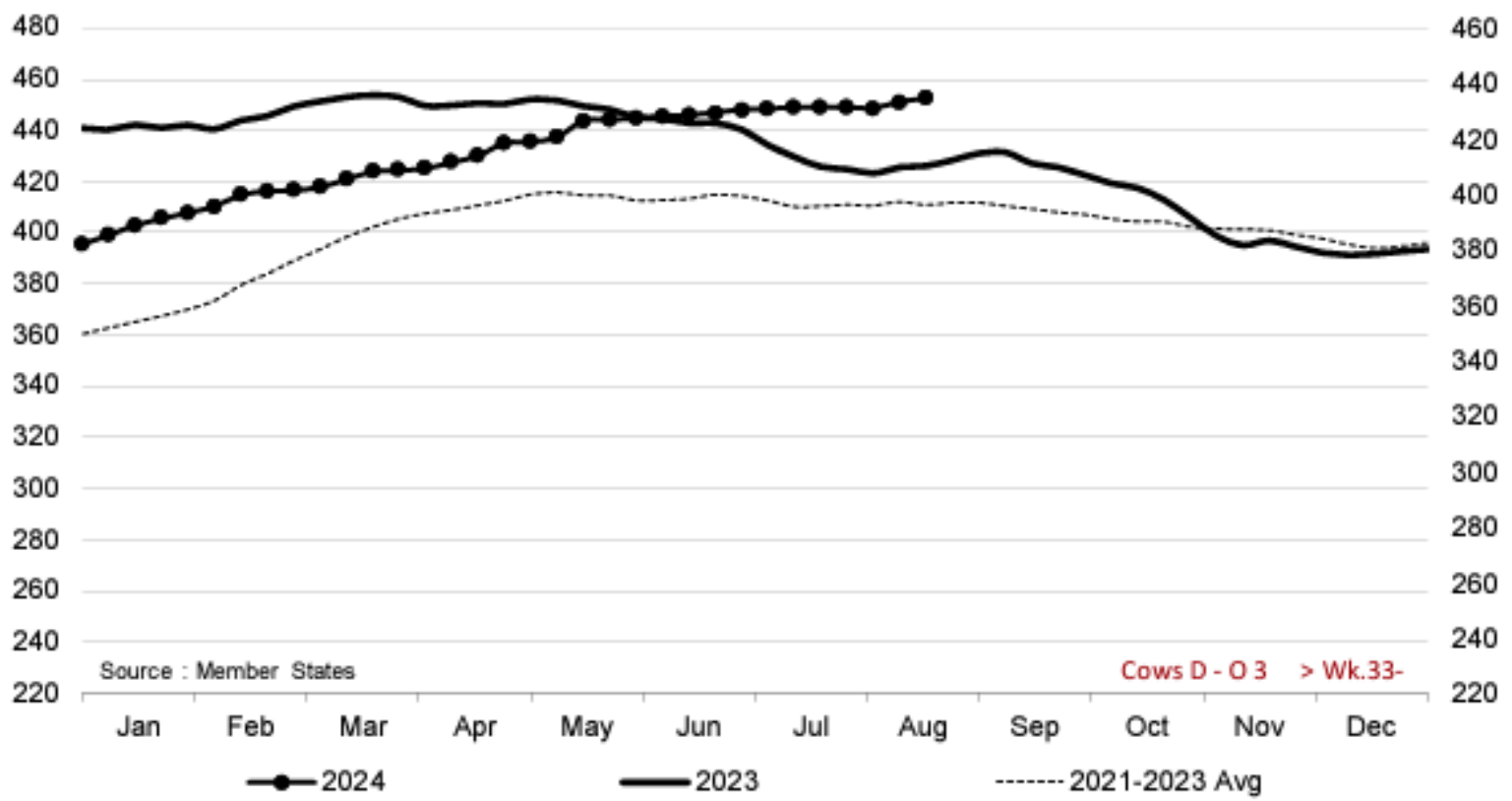


Price in week 33 : **510.57**
% change y/y : **+ 7.5%**

Average price in July 2024 : **513.29**
% change y/y : **+ 4.2%**



Cows D - O 3 > Wk.33-2024

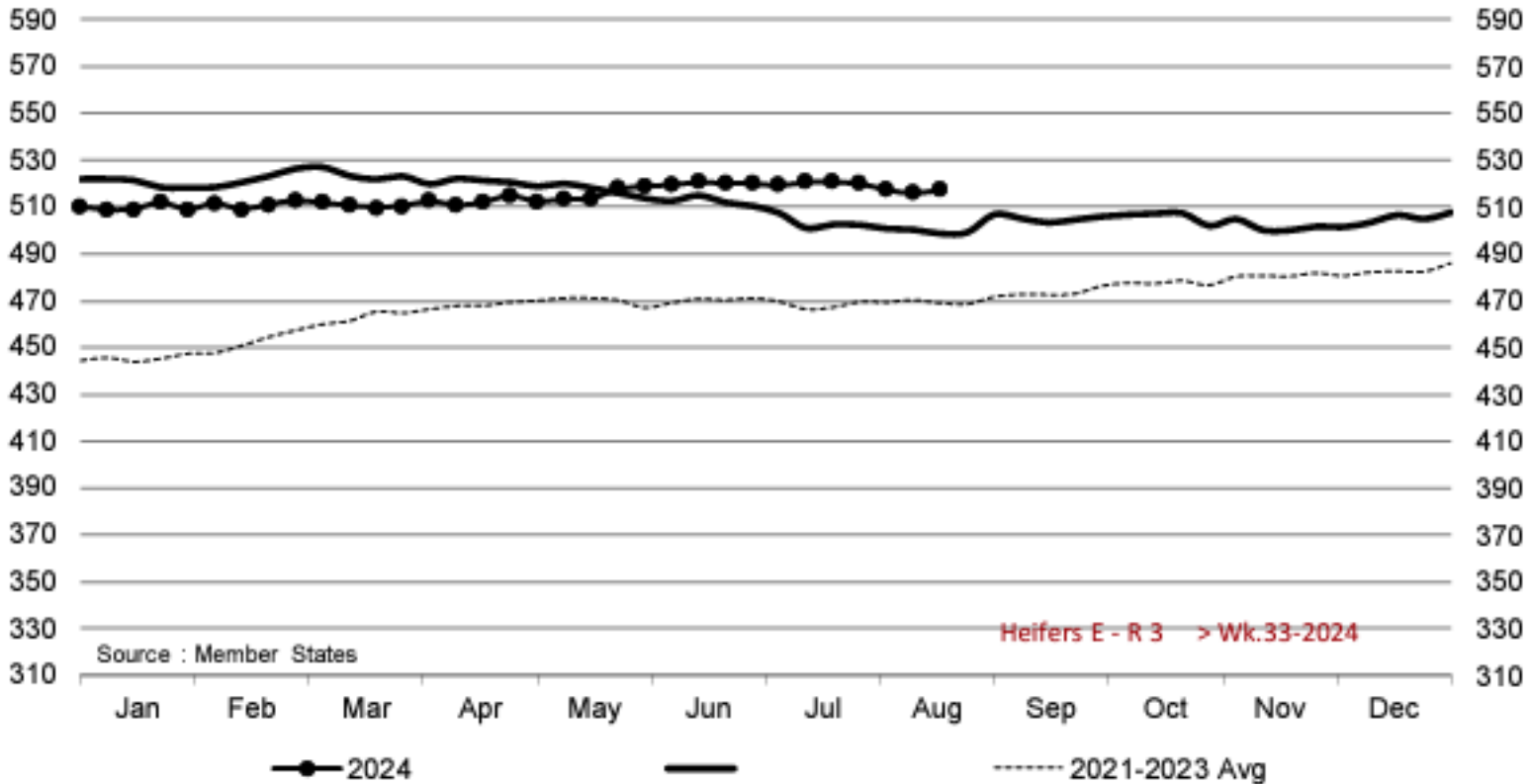


Price in week 33 : **434.35**
% change y/y : **+ 5.9%**

Average price in July 2024 : **430.99**
% change y/y : **+ 4.4%**



Heifers E - R 3 > Wk.33-2024



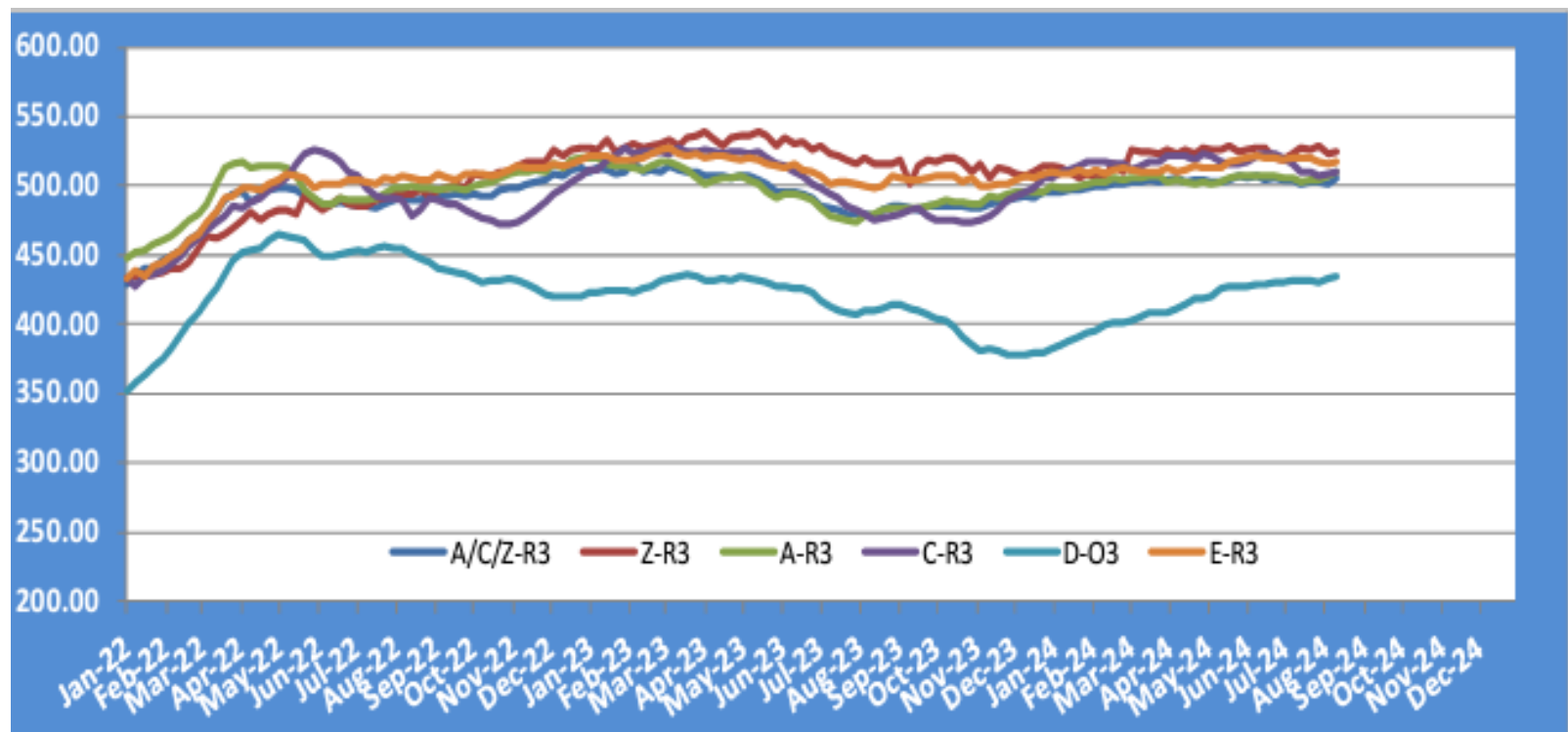
Source : Member States

Heifers E - R 3 > Wk.33-2024

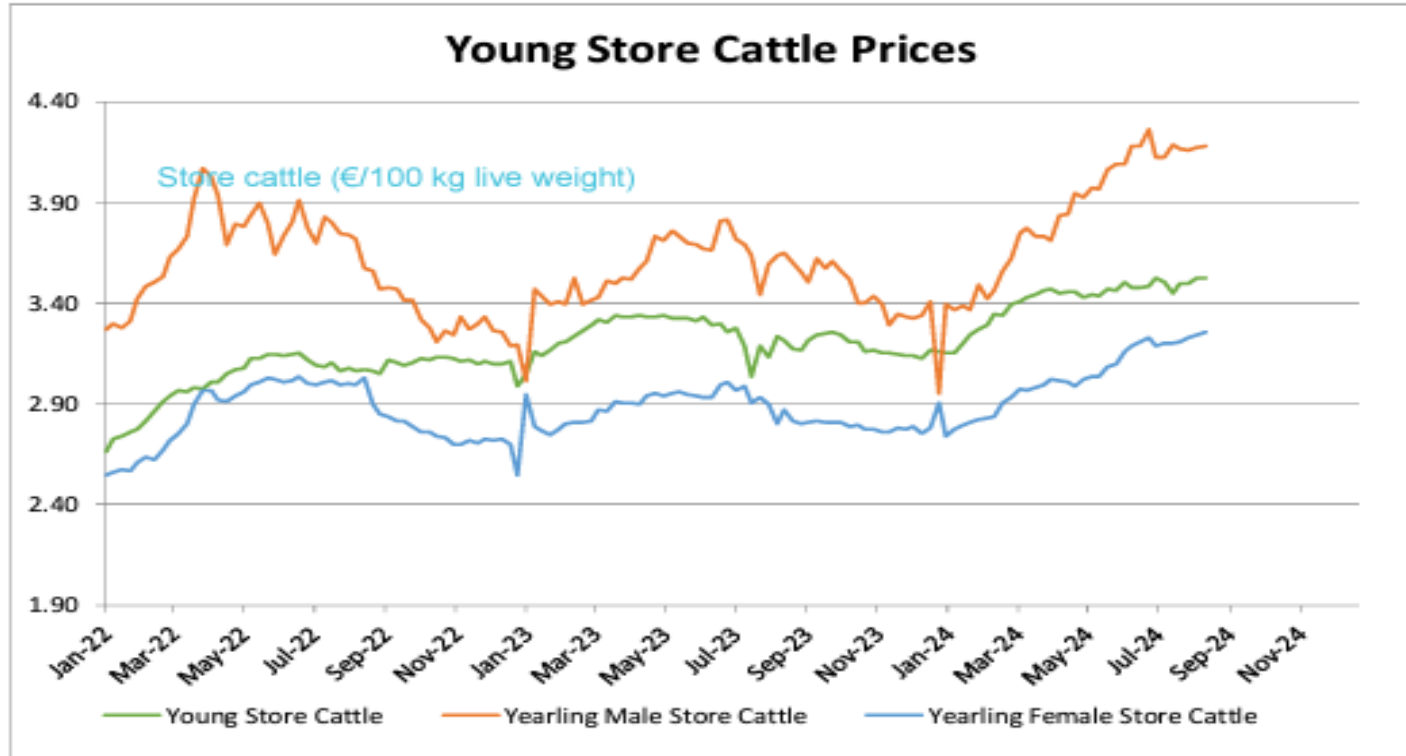
Price in week 33 : 517.54	Average price in July 2024 : 520.06
% change y/y : + 3.7%	% change y/y : + 3.2%

KARKAS FİYATLARI

AB TÜM KATEGORİLERE GLOBAL BAKIŞ



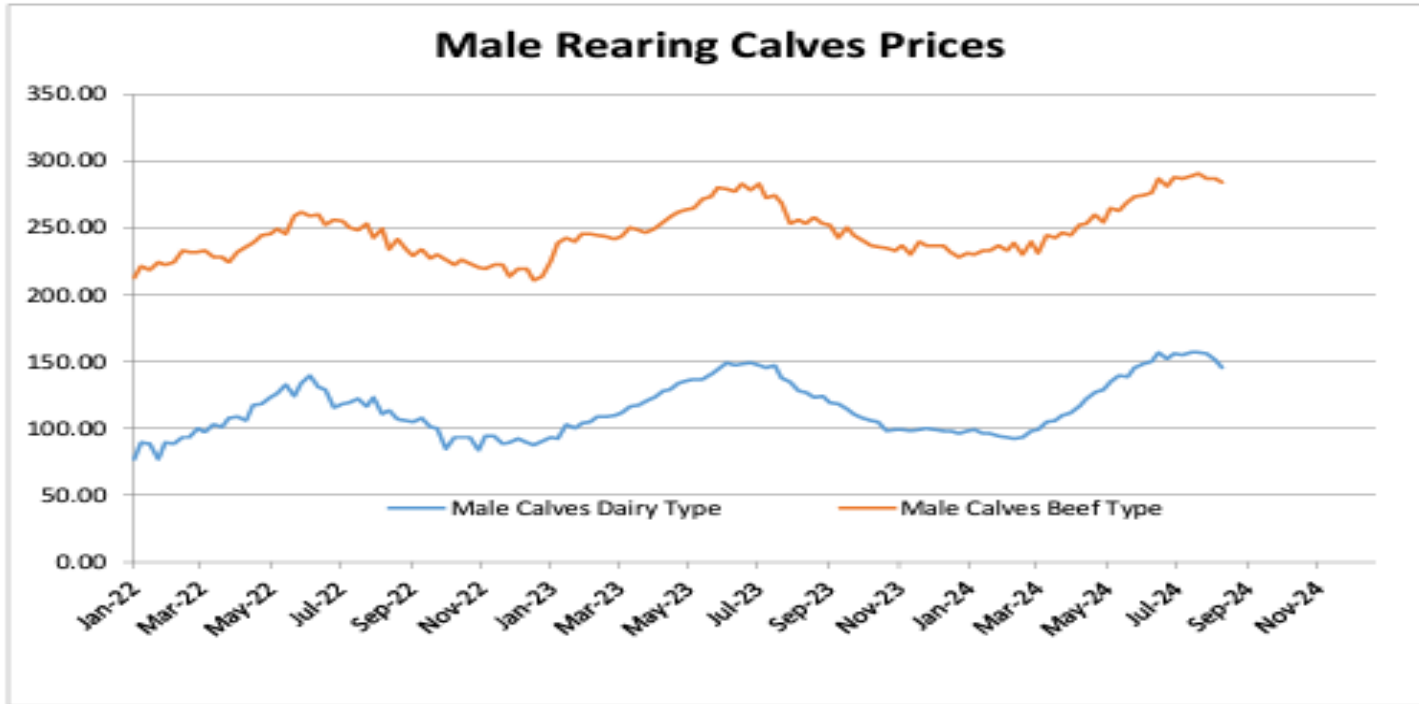
Besilik siğır (€ / 100 kg canlı ağırlık)



Young Store Cattle Price in	Week 33	3.53	Yearling Male Store Cattle Price	4.18
	Change y/y	+9.8%	Change y/y	+14.5%
Yearling Female Store Cattle Price		3.25		
	Change y/y	+13.4%		

8 gün ve 4 haftalık erkek buzağlar (€/baş)

Male calves aged between 8 days and 4 weeks (€/head)



Male Rearing Calves Beef type

Price in Week 33 283.84

Change y/y +12.1%

Male Rearing Calves Dairy type

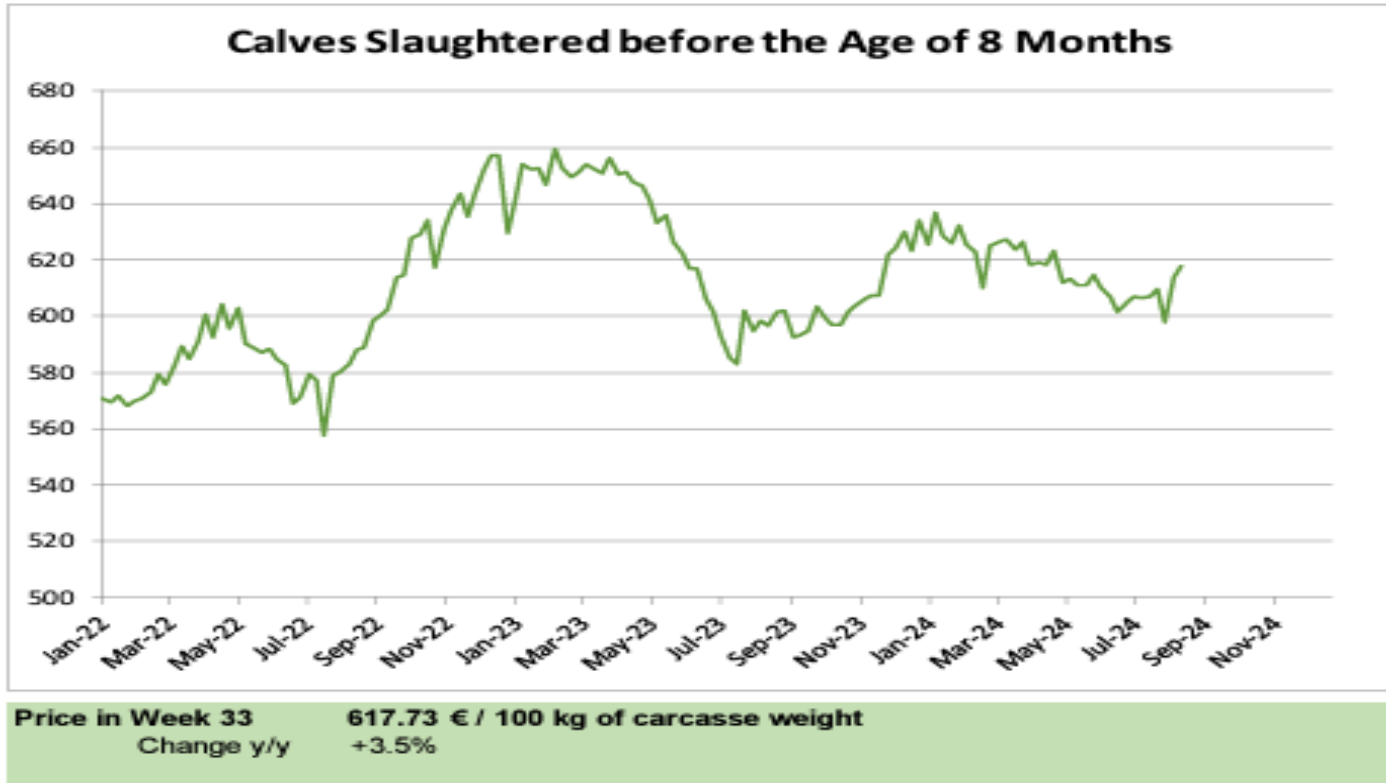
Price in Week 33 145.73

Change y/y +14.6%

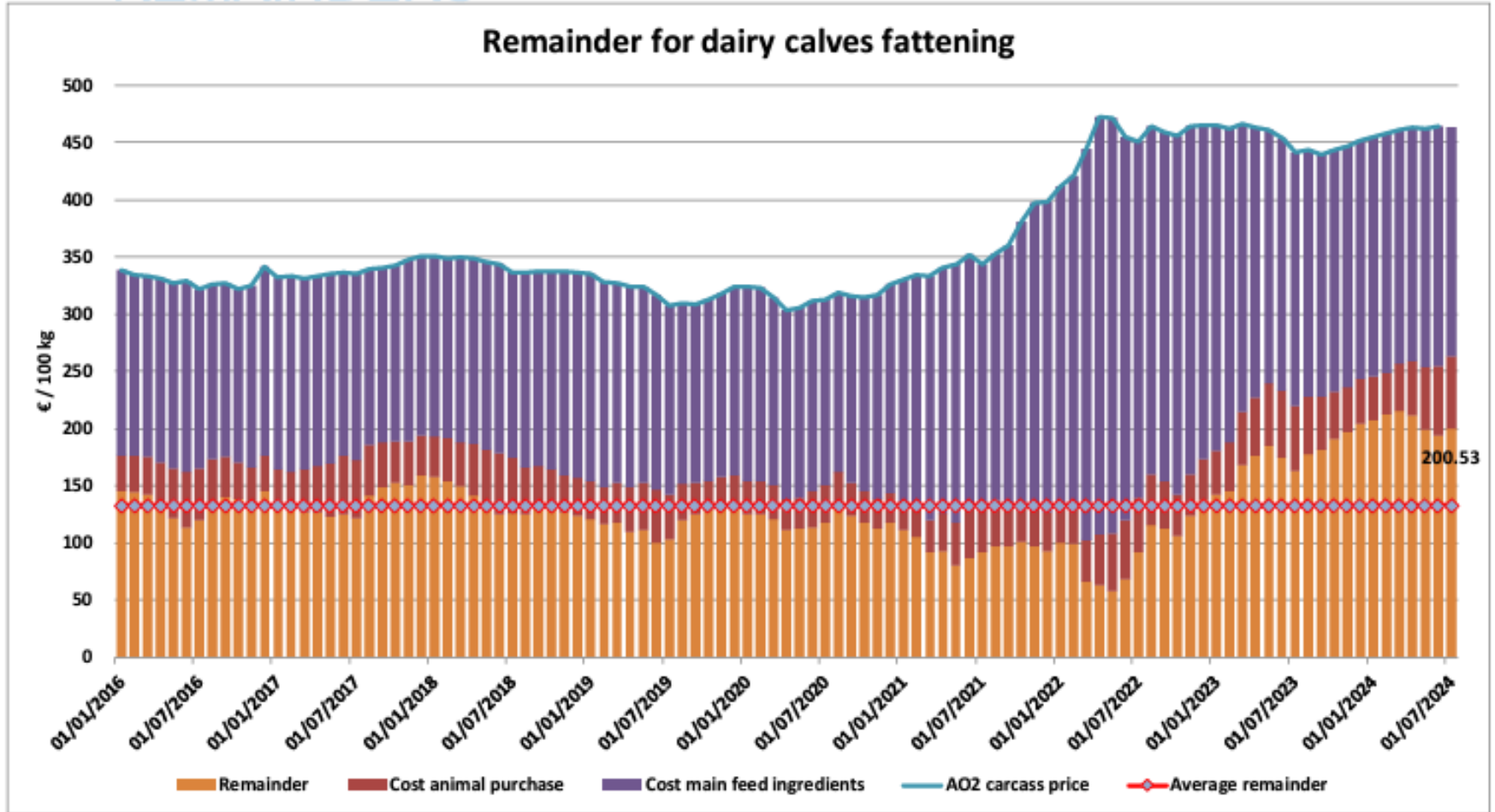


8 aylıktan küçük kesilen buzağlar (€ / 100 kg canlı ağırlık)

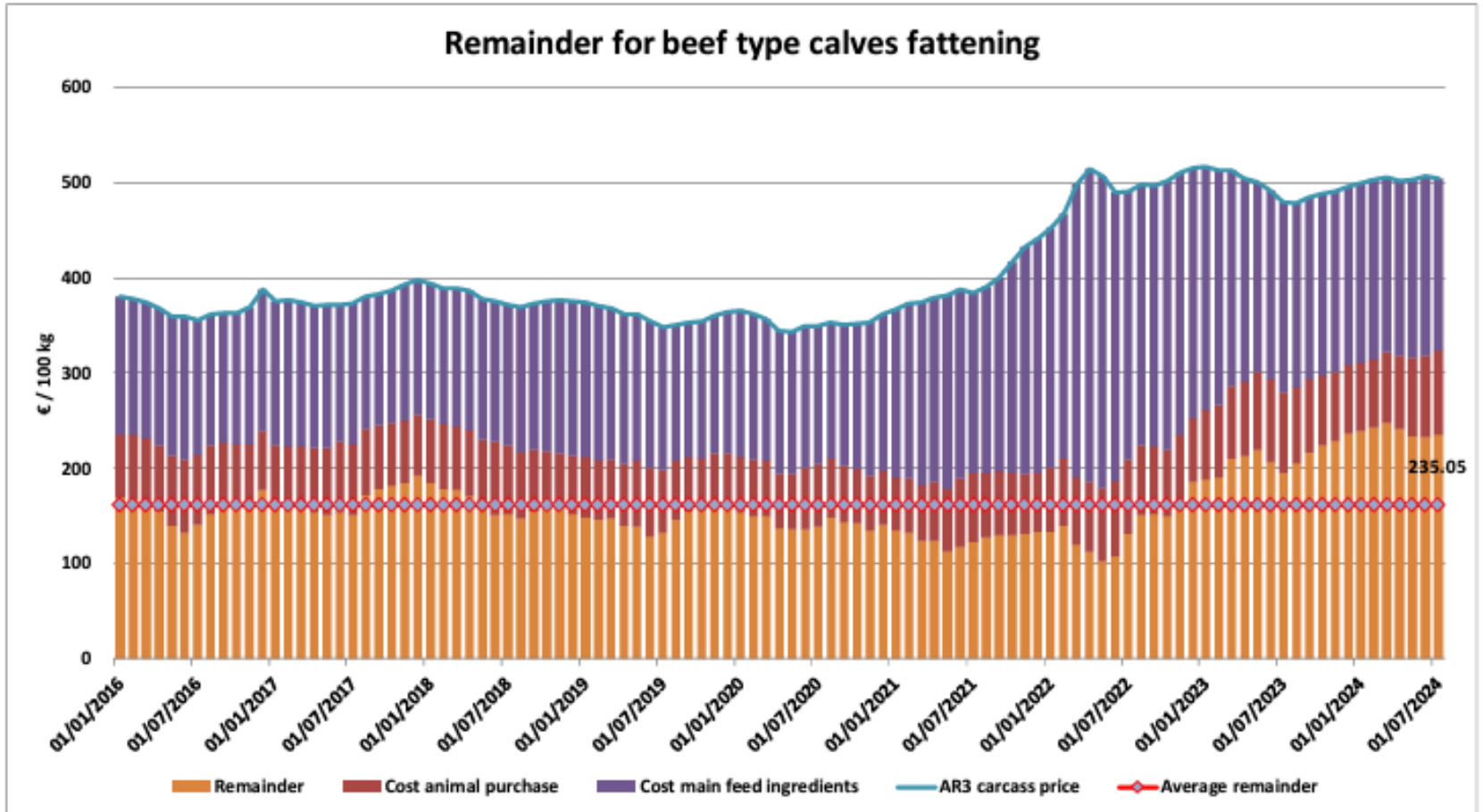
Calves slaughtered before the age of less than 8 months
(€/100 kg cw)



Süt Buzakıları Besiciliği İçin Kalanlar

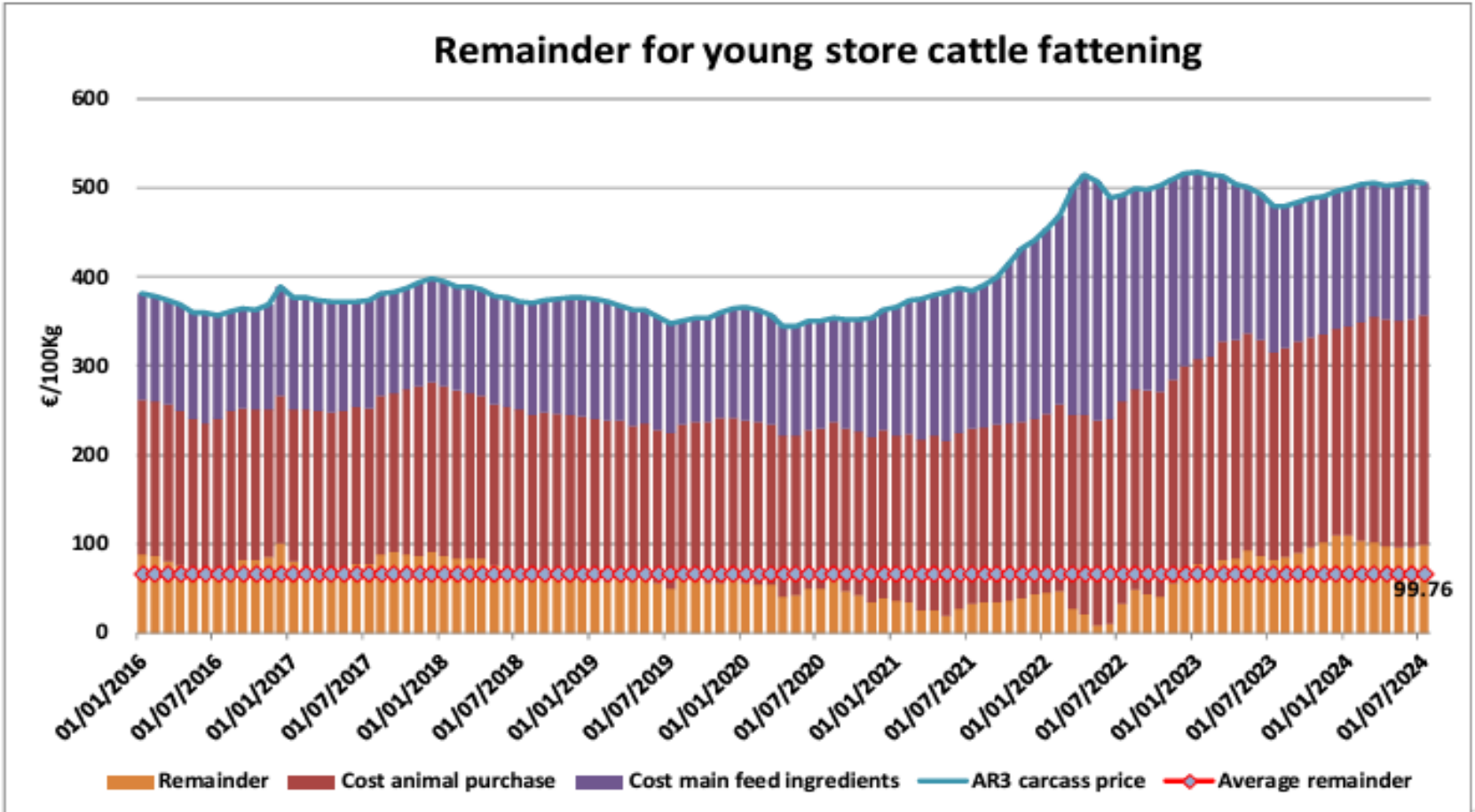


Sığır Tipi Buzağı Besiciliği İçin Kalanlar





Genç Besilik Sığır Besiciliği İçin Kalanlar

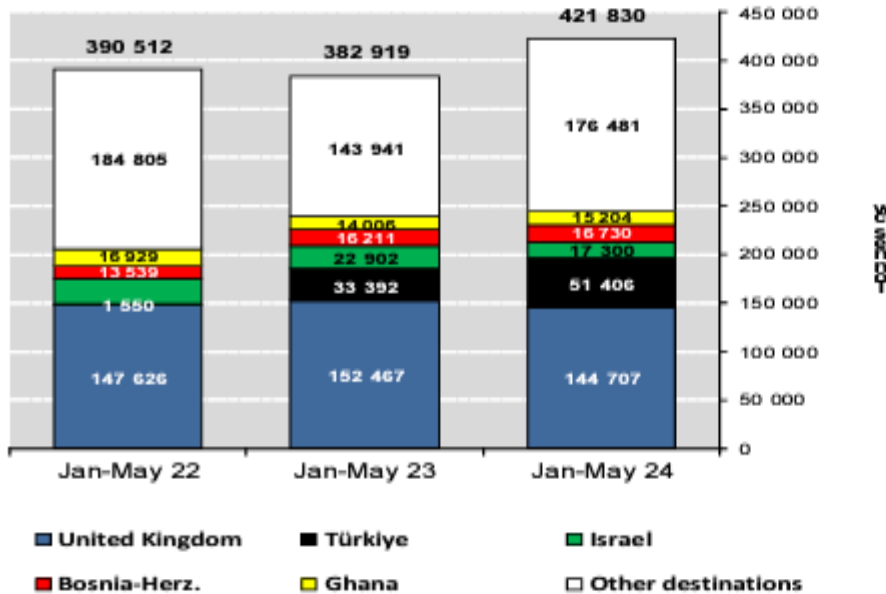


AB sığır eti ve canlı hayvan ihracatı (yağlar hariç): Pazar Rakamları (COMEXT – ton ca)

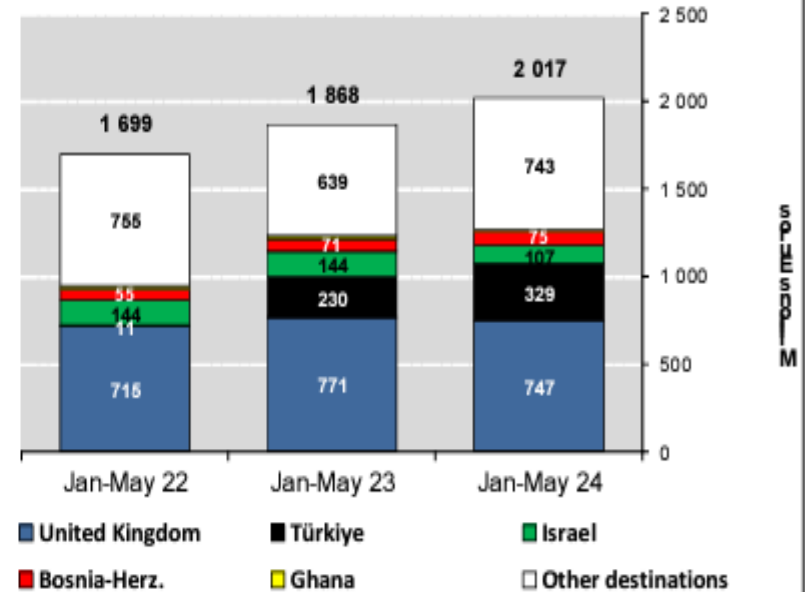
Destinations	2020		2021		2022		2023		Jan-May 24		Compared to Jan-May 23
	tonnes	%	tonnes	%	tonnes	%	tonnes	%	tonnes	%	
United Kingdom	450 514	39.5%	344 633	33.4%	366 332	38.9%	369 118	38.5%	144 707	34.3%	- 5.1%
Türkiye	22 338	2.0%	14 953	1.5%	14 168	1.5%	90 197	9.4%	51 406	12.2%	+ 53.9%
Israel	56 139	4.9%	66 022	6.4%	63 618	6.7%	45 069	4.7%	17 300	4.1%	- 24.5%
Bosnia-Herz.	34 896	3.1%	40 504	3.9%	38 796	4.1%	45 149	4.7%	16 730	4.0%	+ 3.2%
Ghana	47 344	4.2%	47 618	4.6%	32 171	3.4%	33 784	3.5%	15 204	3.6%	+ 8.6%
Algeria	39 396	3.5%	24 111	2.3%	25 459	2.7%	11 124	1.2%	12 274	2.9%	+ 93.6%
Ivory Coast	32 433	2.8%	29 187	2.8%	29 882	3.2%	30 114	3.1%	11 210	2.7%	- 4.1%
Kosovo	10 391	0.9%	16 478	1.6%	17 069	1.8%	22 677	2.4%	10 575	2.5%	+ 49.4%
Hong Kong	56 713	5.0%	44 769	4.3%	10 570	1.1%	21 614	2.3%	10 018	2.4%	+ 8.6%
Morocco	10 049	0.9%	11 868	1.2%	8 273	0.9%	25 635	2.7%	9 905	2.3%	+ 1.9%
Philippines	33 650	3.0%	34 671	3.4%	29 922	3.2%	18 444	1.9%	9 484	2.2%	+ 59.2%
Switzerland	26 223	2.3%	28 717	2.8%	24 958	2.6%	19 355	2.0%	9 220	2.2%	+ 9.2%
Lebanon	33 709	3.0%	19 527	1.9%	21 026	2.2%	21 402	2.2%	8 256	2.0%	+ 15.0%
Canada	20 450	1.8%	20 670	2.0%	19 928	2.1%	15 963	1.7%	6 575	1.6%	+ 31.7%
Chile	8 664	0.8%	9 915	1.0%	9 159	1.0%	10 195	1.1%	5 974	1.4%	+ 195.3%
Japan	2 023	0.2%	21 888	2.1%	19 948	2.1%	12 677	1.3%	5 713	1.4%	+ 16.6%
Other Destinations	254 518	22.3%	255 446	24.8%	211 217	22.4%	166 262	17.3%	77 278	18.3%	
Total	1 139 450		1 030 978		942 496		958 779		421 830		
% change			- 10%		- 9%		+ 2%		+ 10.2%		

AB Sığır Eti ve Canlı Hayvan İhracatları (yağlar hariç)

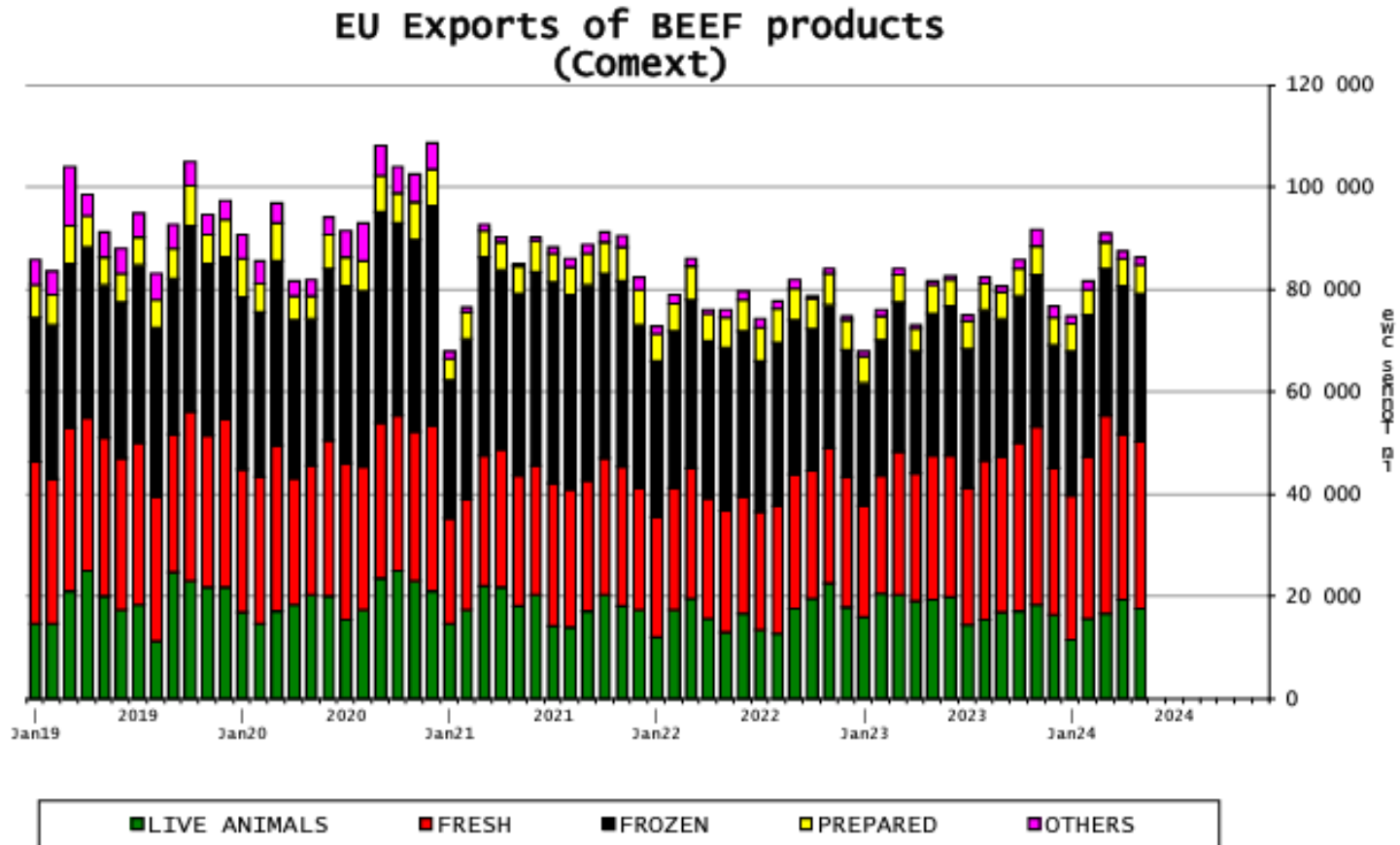
EU EXPORTS of Beef & Veal (Tonnes cwe)



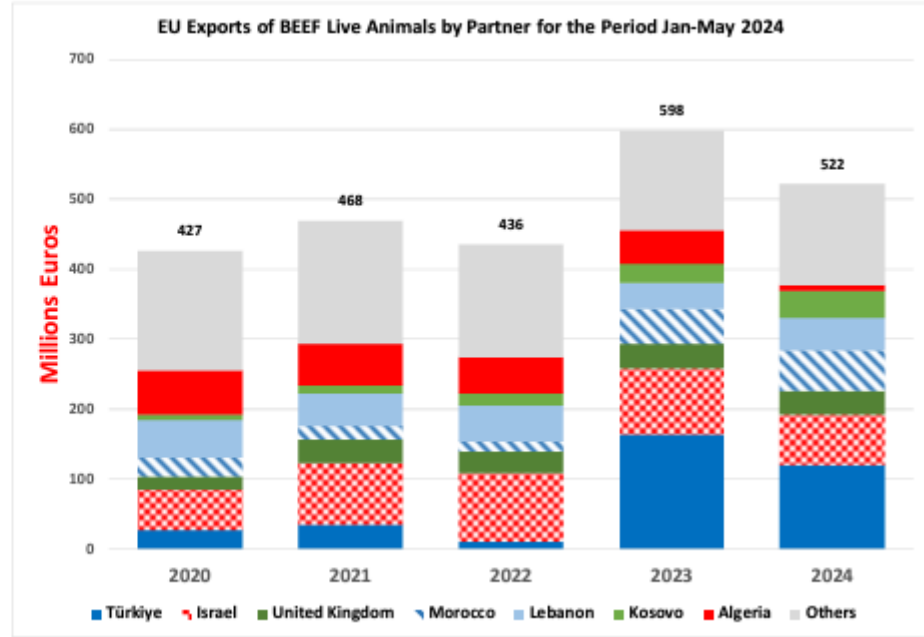
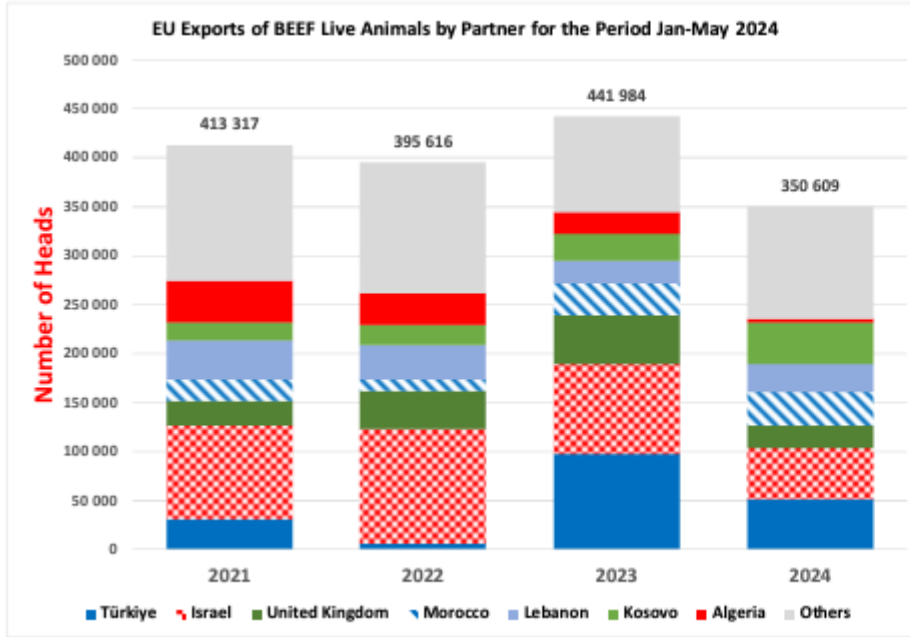
EU EXPORTS of Beef & Veal (Million EUR)



AB Sığır Eti İhracatları



AB Canlı Hayvan İhracatları



AB Canlı Hayvan ve Sığır Eti İthalatları (Yağlar hariç) (Ton)

Origins	2020		2021		2022		2023		Jan-May 24		Compared to Jan-May 23
	tonnes	%	tonnes	%	tonnes	%	tonnes	%	tonnes	%	
United Kingdom	120 743	35.1%	87 596	28.3%	118 767	33.0%	107 048	30.5%	43 767	29.7%	- 1.1%
Brazil	84 139	24.4%	81 737	26.4%	86 512	24.0%	86 831	24.7%	36 209	24.6%	- 12.4%
Argentina	56 421	16.4%	52 300	16.9%	62 584	17.4%	63 079	18.0%	26 480	18.0%	- 0.6%
Uruguay	34 611	10.0%	42 669	13.8%	37 619	10.5%	41 565	11.8%	18 351	12.5%	+ 0.3%
USA	16 532	4.8%	14 910	4.8%	17 269	4.8%	18 281	5.2%	6 599	4.5%	- 11.5%
Australia	11 058	3.2%	8 925	2.9%	8 385	2.3%	7 727	2.2%	3 431	2.3%	+ 14.1%
Namibia	1 445	0.4%	1 996	0.6%	5 168	1.4%	7 577	2.2%	3 020	2.1%	+ 22.6%
New Zealand	6 116	1.8%	4 380	1.4%	5 202	1.4%	4 518	1.3%	2 230	1.5%	+ 17.2%
Botswana	788	0.2%	331	0.1%	928	0.3%	1 610	0.5%	2 088	1.4%	+++
Paraguay	4 234	1.2%	3 933	1.3%	5 404	1.5%	4 768	1.4%	2 063	1.4%	+ 5.4%
Switzerland	4 187	1.2%	4 714	1.5%	4 730	1.3%	3 627	1.0%	1 459	1.0%	+ 5.3%
Canada	1 550	0.5%	1 816	0.6%	2 172	0.6%	1 468	0.4%	507	0.3%	- 29.3%
Japan	789	0.2%	1 478	0.5%	2 143	0.6%	834	0.2%	353	0.2%	+ 43.2%
Serbia	931	0.3%	963	0.3%	1 058	0.3%	812	0.2%	246	0.2%	- 41.2%
Norway	335	0.1%	571	0.2%	704	0.2%	670	0.2%	220	0.1%	- 20.3%
Chile	168	0.0%	238	0.1%	378	0.1%	365	0.1%	119	0.1%	- 19.9%
Other Destinations	357	0.1%	710	0.2%	961	0.3%	352	0.1%	118	0.1%	
Total	344 403		309 267		359 985		351 133		147 239		
% change			- 10%		+ 16%		- 2%		- 2.5%		

AB Sığır Eti İthalatı (Yağlar hariç) (Ton)

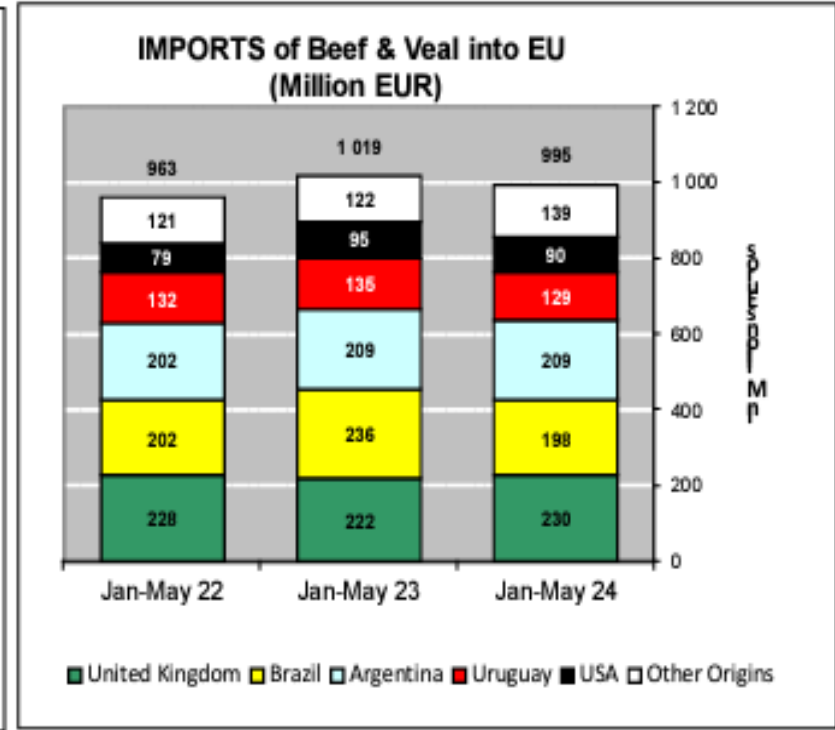
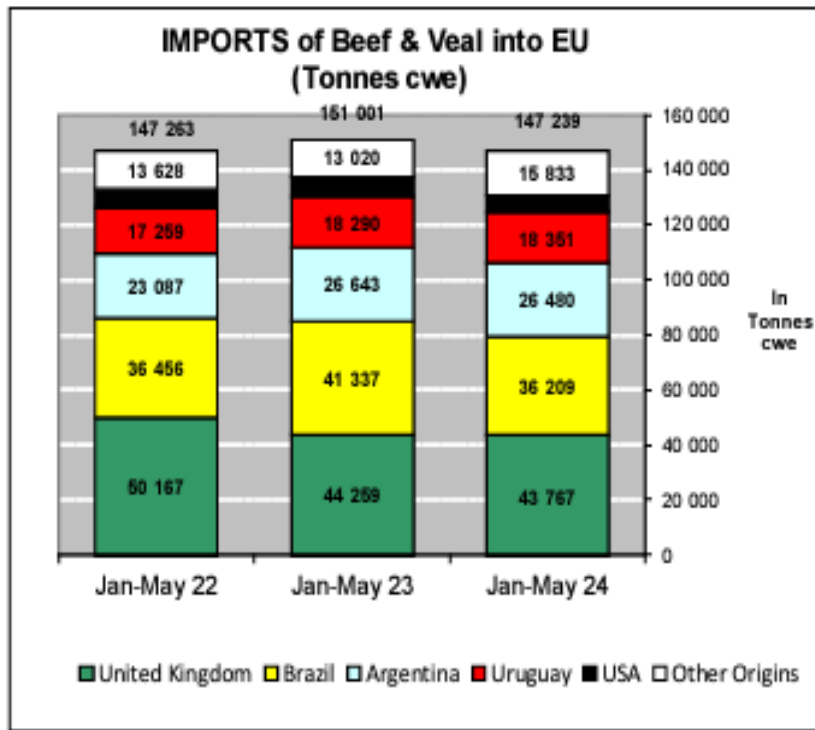
Origins	2020		2021		2022		2023		Jan-May 24		Compared to
	tonnes	%	tonnes	%	tonnes	%	tonnes	%	tonnes	%	
United Kingdom	118 538	34.6%	86 864	28.2%	118 158	32.9%	106 982	30.5%	43 736	29.7%	- 1.1%
Brazil	84 139	24.6%	81 737	26.5%	86 512	24.1%	86 831	24.7%	36 209	24.6%	- 12.4%
Argentina	56 421	16.5%	52 300	17.0%	62 584	17.4%	63 079	18.0%	26 480	18.0%	- 0.6%
Uruguay	34 611	10.1%	42 669	13.8%	37 619	10.5%	41 565	11.8%	18 351	12.5%	+ 0.3%
USA	16 532	4.8%	14 910	4.8%	17 269	4.8%	18 281	5.2%	6 599	4.5%	- 11.5%
Australia	11 058	3.2%	8 925	2.9%	8 385	2.3%	7 727	2.2%	3 431	2.3%	+ 14.1%
Namibia	1 445	0.4%	1 996	0.6%	5 168	1.4%	7 577	2.2%	3 020	2.1%	+ 22.6%
New Zealand	6 116	1.8%	4 380	1.4%	5 202	1.4%	4 518	1.3%	2 230	1.5%	+ 17.2%
Botswana	788	0.2%	331	0.1%	928	0.3%	1 610	0.5%	2 068	1.4%	+++
Paraguay	4 234	1.2%	3 933	1.3%	5 404	1.5%	4 768	1.4%	2 063	1.4%	+ 5.4%
Switzerland	4 153	1.2%	4 680	1.5%	4 641	1.3%	3 582	1.0%	1 451	1.0%	+ 5.8%
Canada	1 550	0.5%	1 816	0.6%	2 171	0.6%	1 467	0.4%	507	0.3%	- 29.1%
Japan	789	0.2%	1 478	0.5%	2 143	0.6%	834	0.2%	353	0.2%	+ 43.2%
Serbia	931	0.3%	934	0.3%	1 047	0.3%	791	0.2%	235	0.2%	- 40.8%
Norway	335	0.1%	565	0.2%	704	0.2%	670	0.2%	220	0.1%	- 20.3%
Chile	168	0.0%	238	0.1%	378	0.1%	365	0.1%	119	0.1%	- 19.9%
Other Destinations	317	0.1%	659	0.2%	701	0.2%	322	0.1%	118	0.1%	
Total to Third Countries	342 124		308 416		359 014		350 970		147 190		
% change			- 10%		+ 16%		- 2%		- 2.5%		

AB Sığır Yağı İthalatı (Ton)

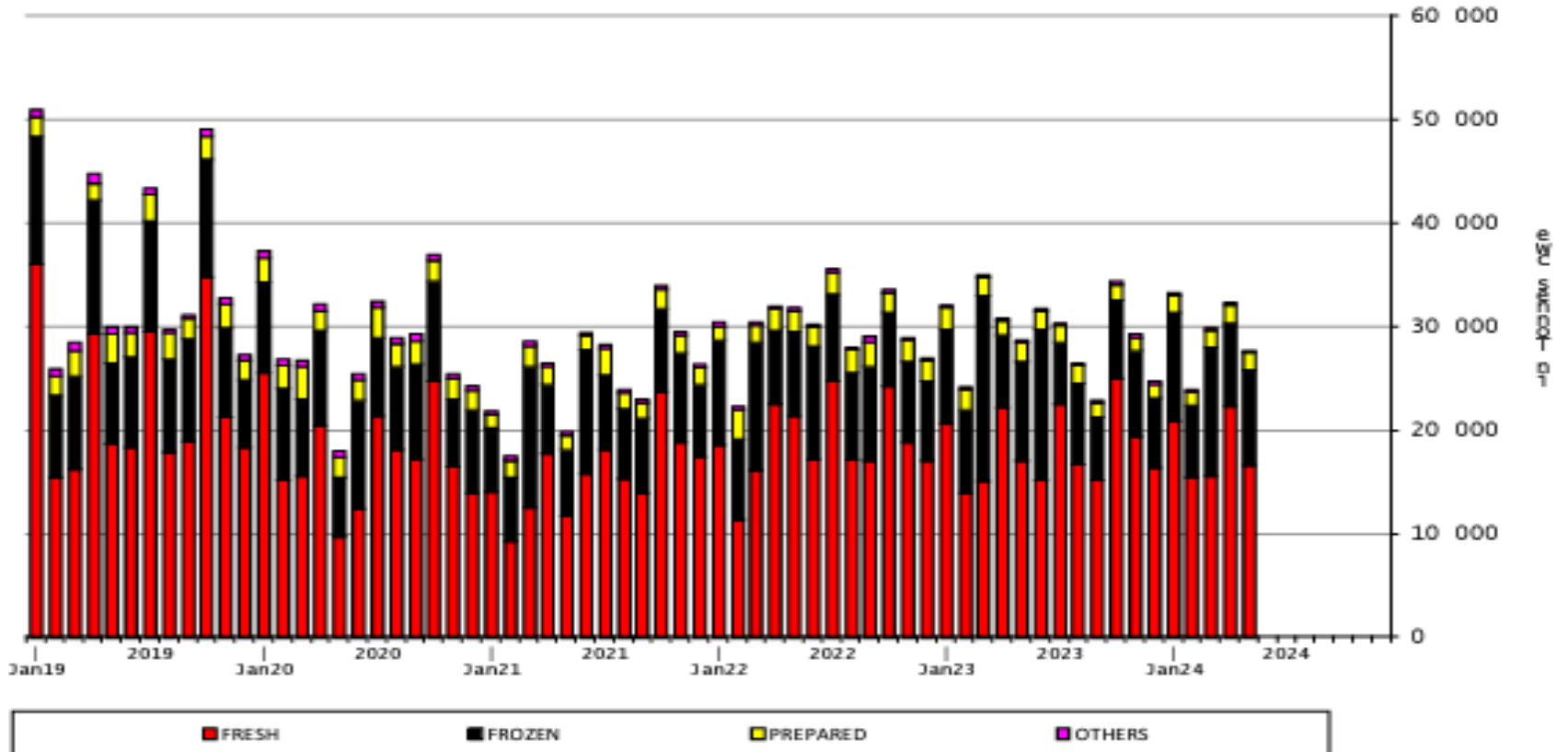
In Tons of Carcase Weight

Origins	2022		2023		Jan to May 2024		Compared to Jan to May 2023
	Tons	% Extra EU	Tons	% Extra EU	Tons	% Extra EU	
United Kingdom	9 778	29.9%	8 524	88.4%	4 250	93.5%	+22.4%
Switzerland	612	1.9%	720	7.5%	207	4.6%	+37.5%
Ukraine	24	0.1%	74	0.8%	72	1.6%	+++
New Zealand	14	0.0%	14	0.1%	14	0.3%	
Australia	0	0.0%	0	0.0%	0	0.0%	+++
Türkiye	-	0.0%	-	0.0%	0	0.0%	
Brazil	0	0.0%	0	0.0%	0	0.0%	+84.8%
Norway	-	0.0%	0	0.0%	0	0.0%	+++
Iceland	18	0.1%	87	0.9%	0	0.0%	+0.0%
Other Destinations	22 286	68.1%	219	2.3%	0	0.0%	
Extra-EU	32 732		9 638		4 543		+18.4%
% Change				-70.6%			

AB Sığır Eti ve Canlı Hayvan İthalatları (Yağlar hariç) (Ton)

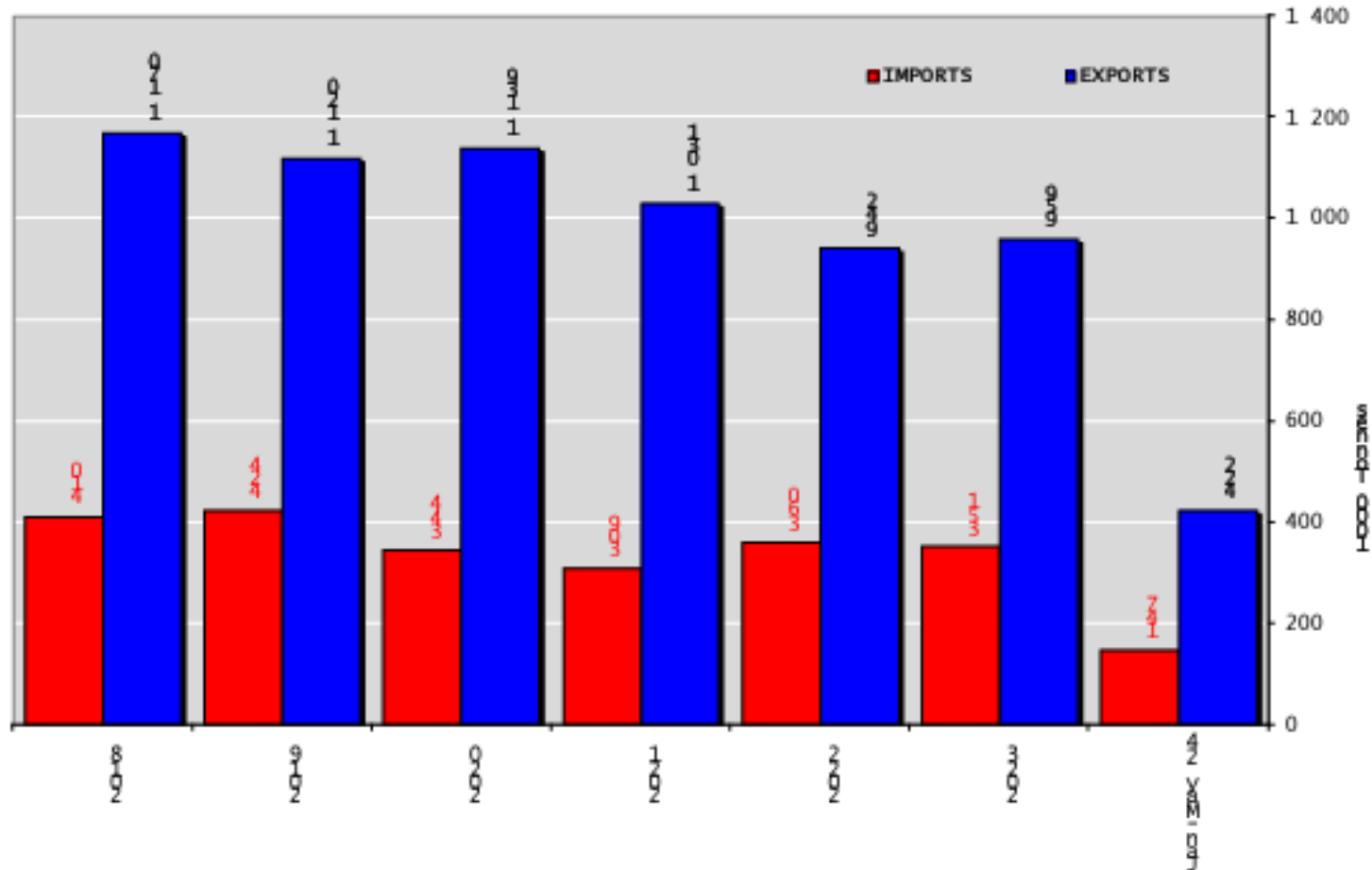


AB Sığır Eti Ürünleri İthalatları (Ton karkas ağırlık eşdeğeri) EU Imports of BEEF products

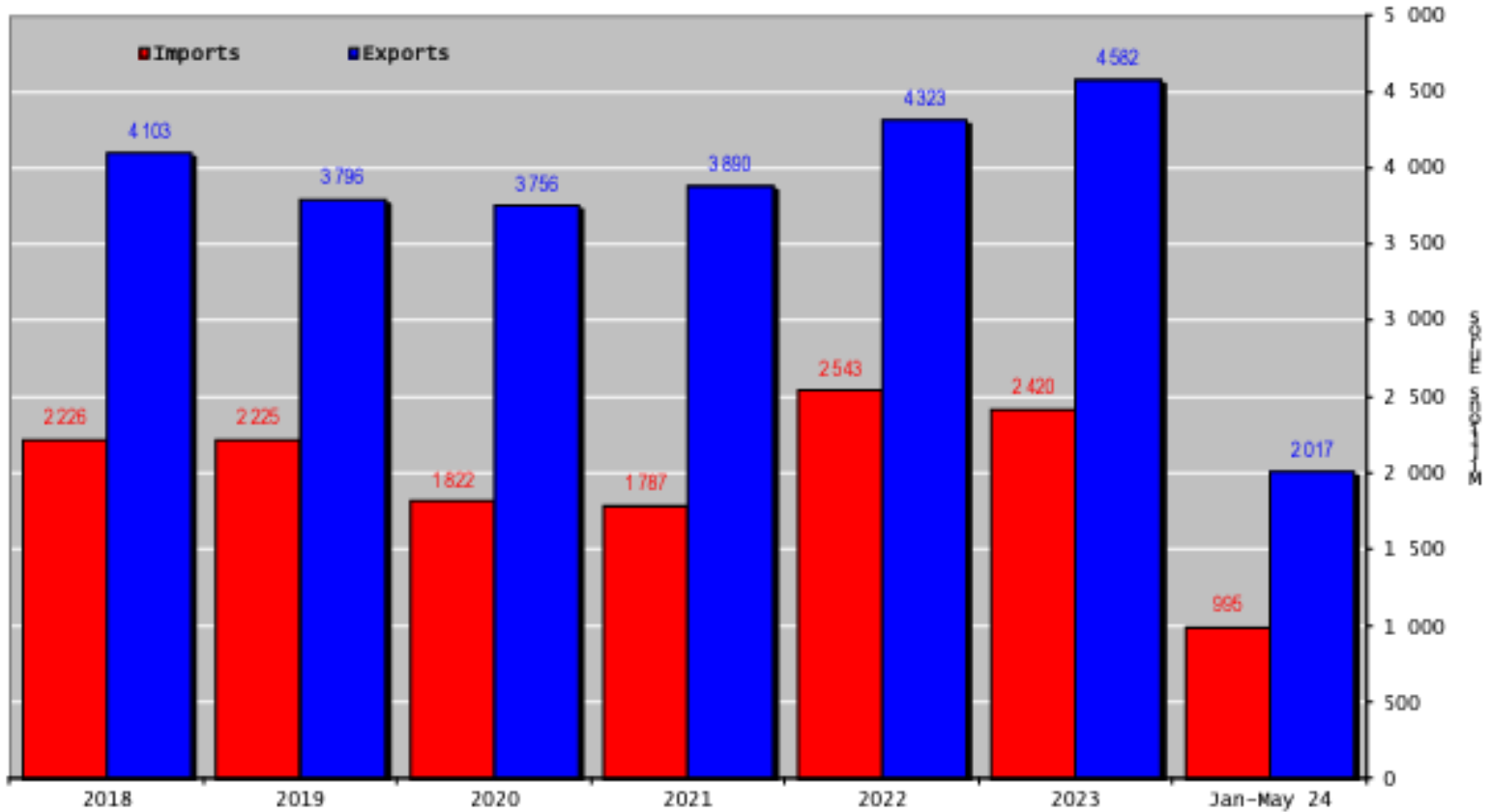




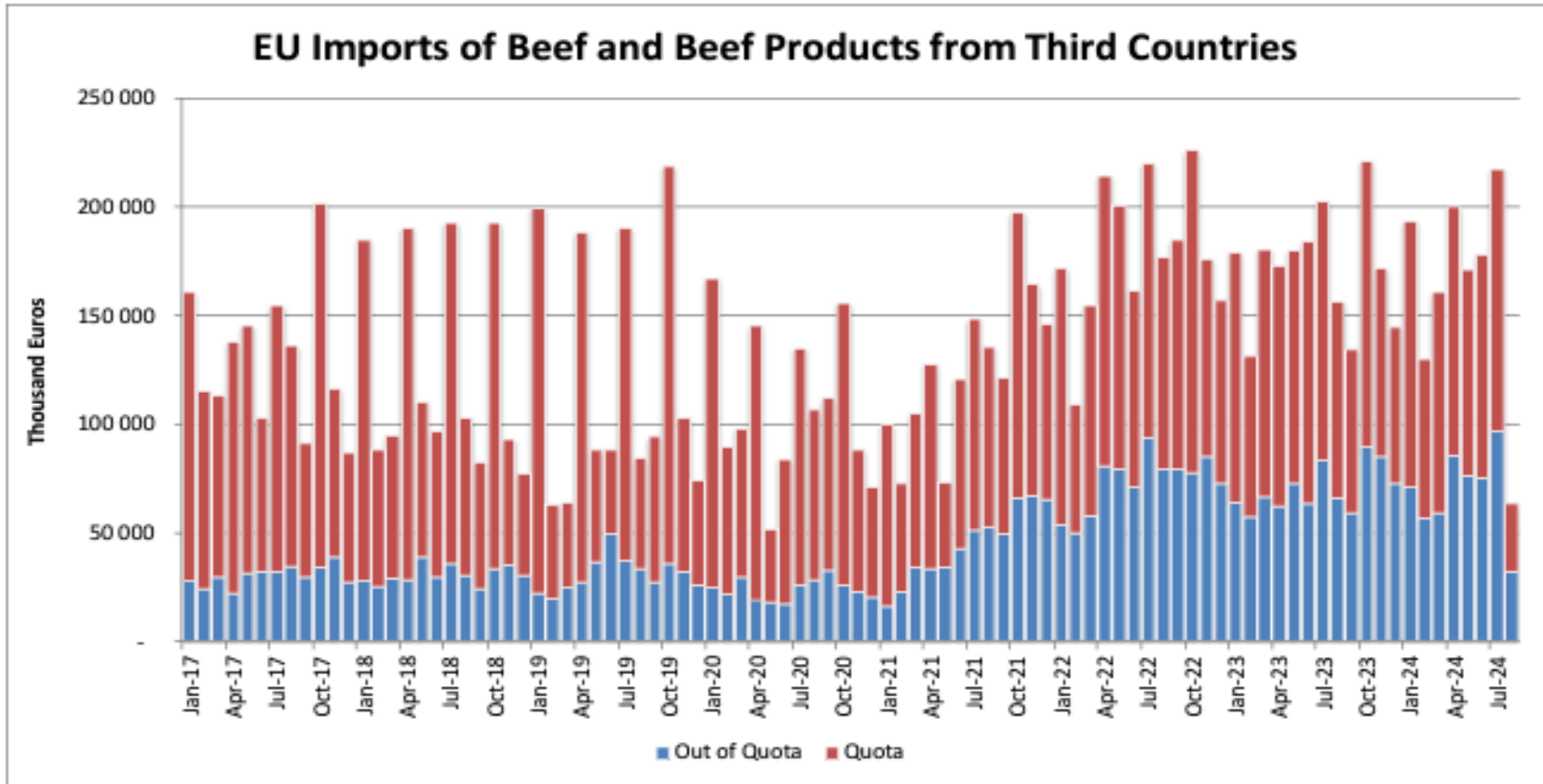
Sığır Ürünleri ve Canlı Hayvanların Ticaret Dengesi



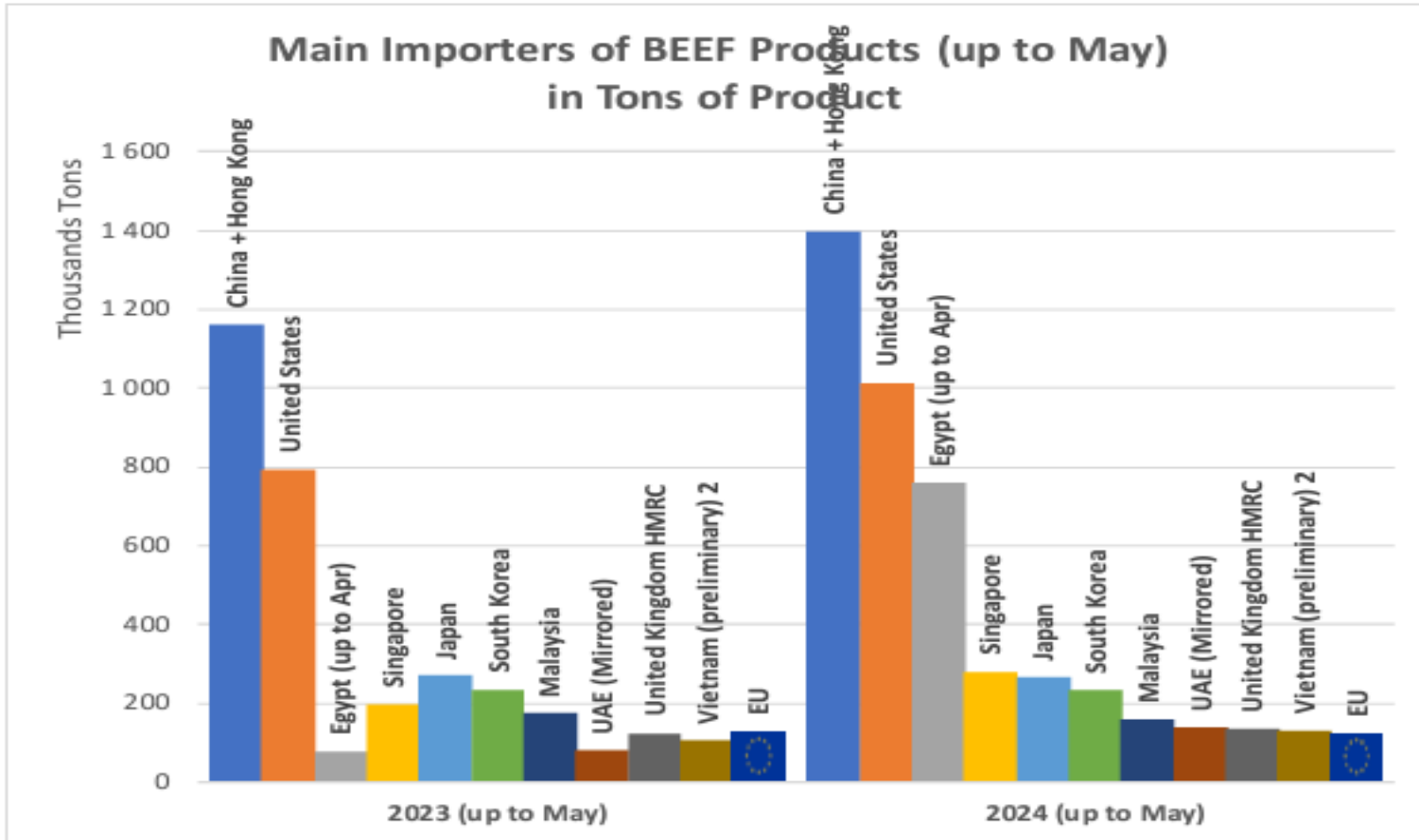
Siğır Ürünleri ve Canlı Hayvanların Ticaret Dengesi



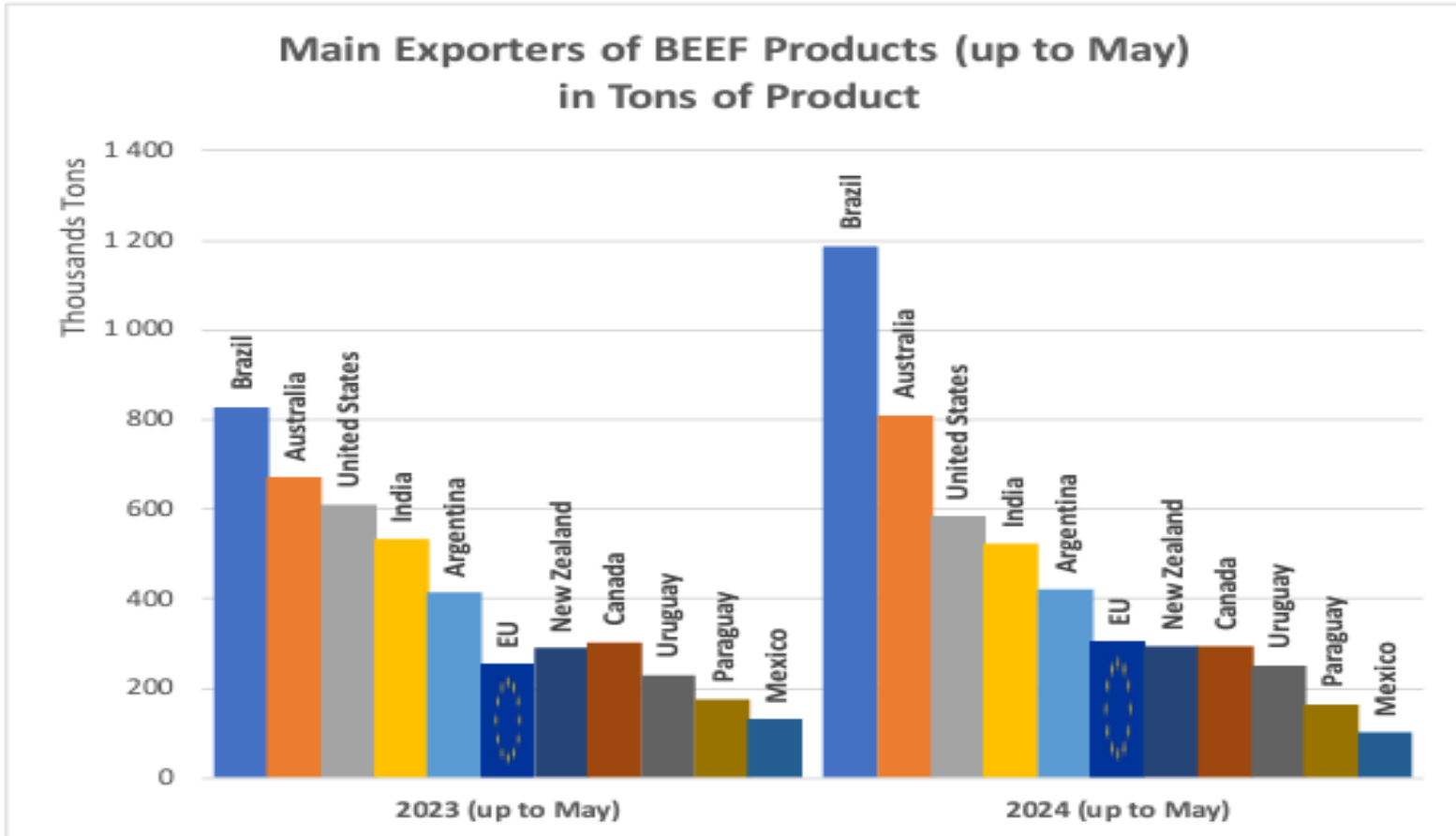
Gümrük Tarife Kotası İçinde ve Dışında İthalatlar



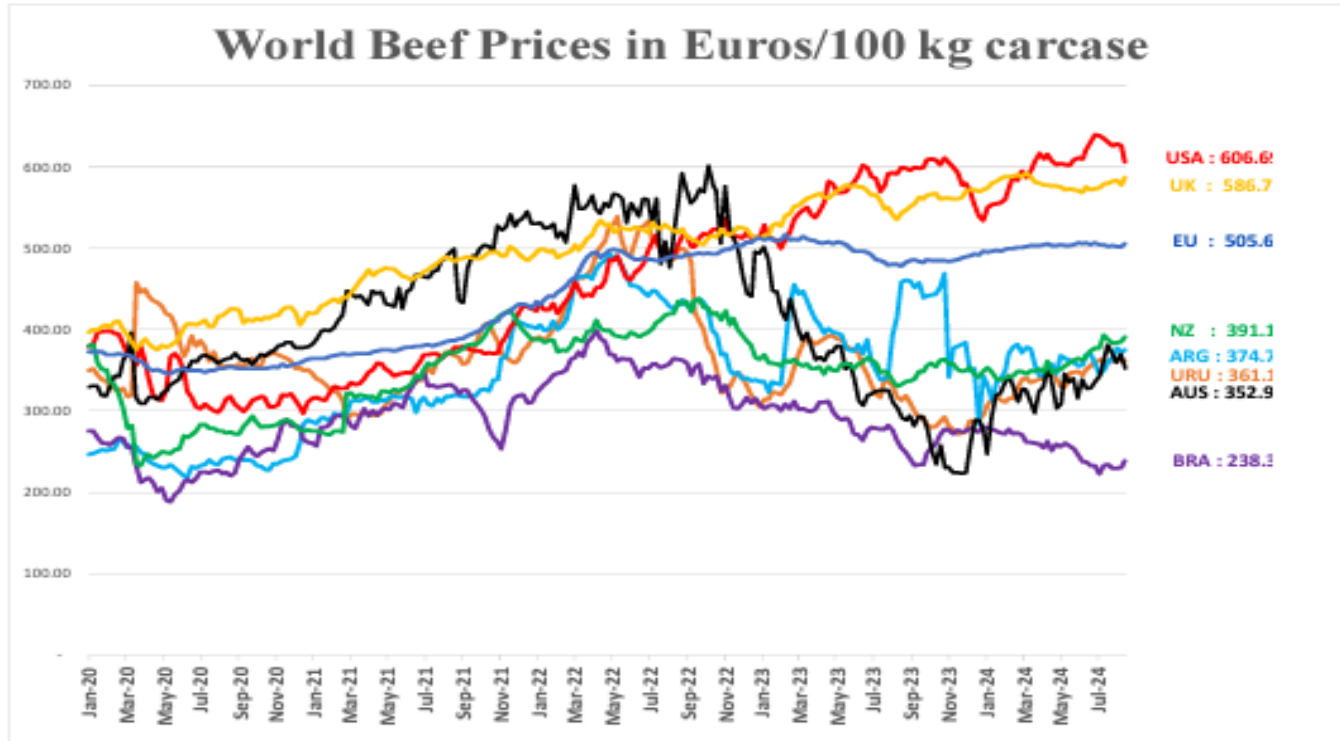
Siğir Ürünlerinin Ana İthalatçıları (Mayıs) (Ton)



Siğir Ürünlerinin Ana İthalatçıları (Mayıs'a Kadar) (Ton)



Dünya Sığır Eti Fiyatları Euro / 100 kg karkas



USA, AUS, URU, ARG, NZ, BRA [World Beef Report](#)
GB <https://ahdb.org.uk/beef/gb-deadweight-cattle-prices-by-region>
EU [Member States Communication](#)



Daha fazla bilgi için:

https://ec.europa.eu/agriculture/market-observatory/meat_en

Ve Agri-FOOD Veri Portalı:

<http://agridata.ec.europa.eu>