



# BEEF & VEAL MARKET SITUATION



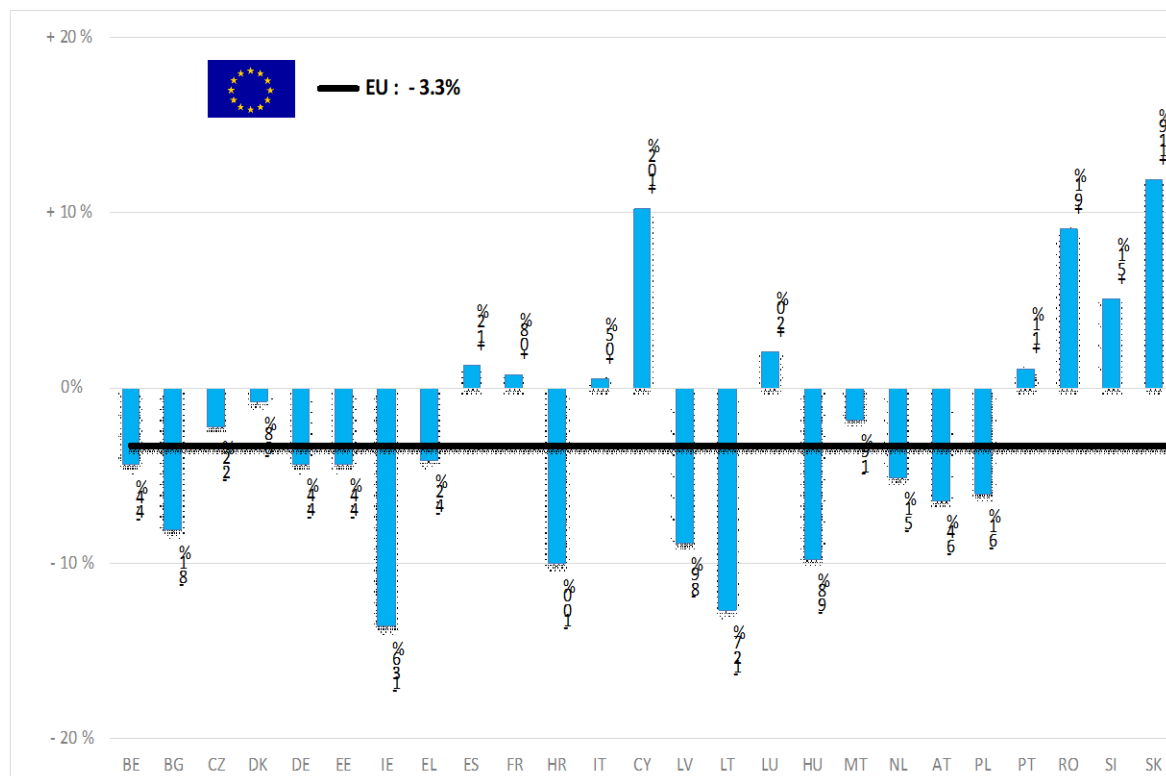
Beef CMO 17 June 2021

# PRODUCTION

# % EVOLUTION HEADS

HEADS	Jan-Mar 21/20
	EU
Bull	-4.1%
Bullock	-6.0%
Cow	-2.1%
Heifer	-3.4%
Calve	-3.7%
Young cattle	-2.4%
Meat of bovine animals	-3.3%

Estimates for last month of period :



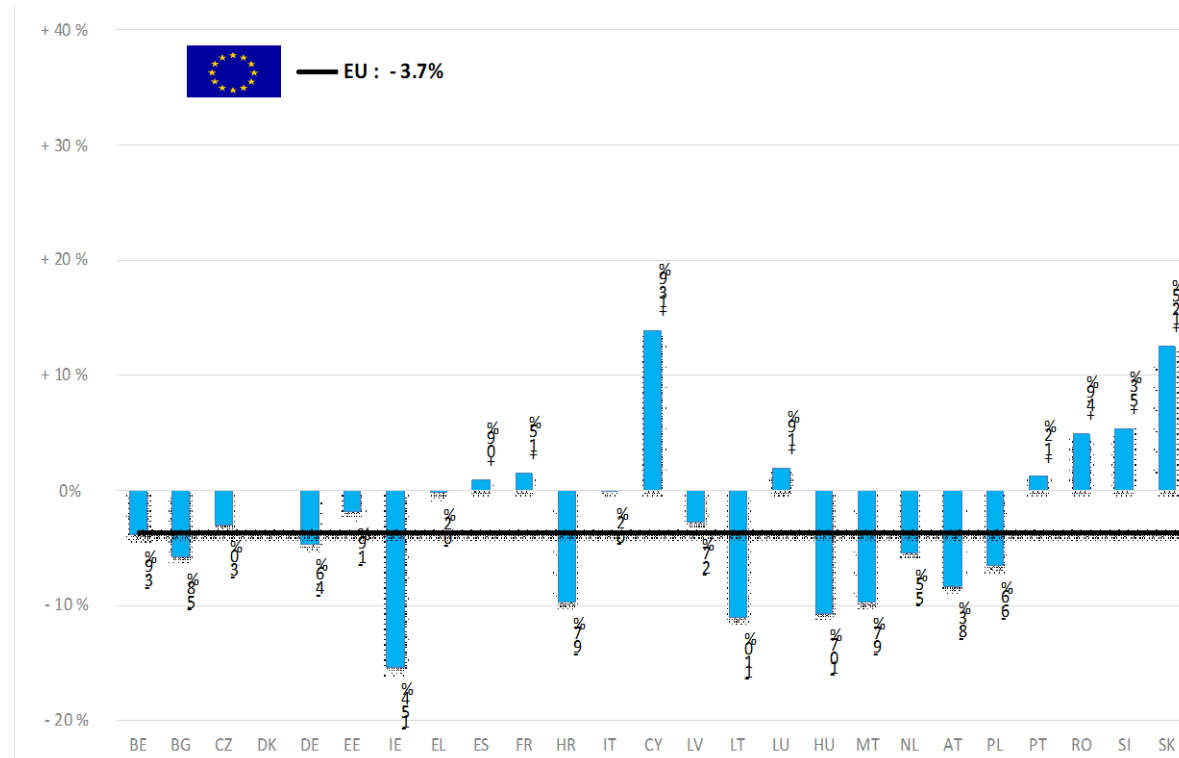
Source : EStat - Newcronos

# PRODUCTION

# % EVOLUTION TONNES

TONNES	Jan-Mar 21/20
	<b>EU</b>
Bull	-5.3%
Bullock	-6.5%
Cow	-2.8%
Heifer	-2.3%
Calve	-1.4%
Young cattle	-3.9%
Meat of bovine animals	-3.7%

Estimates for last month of period :

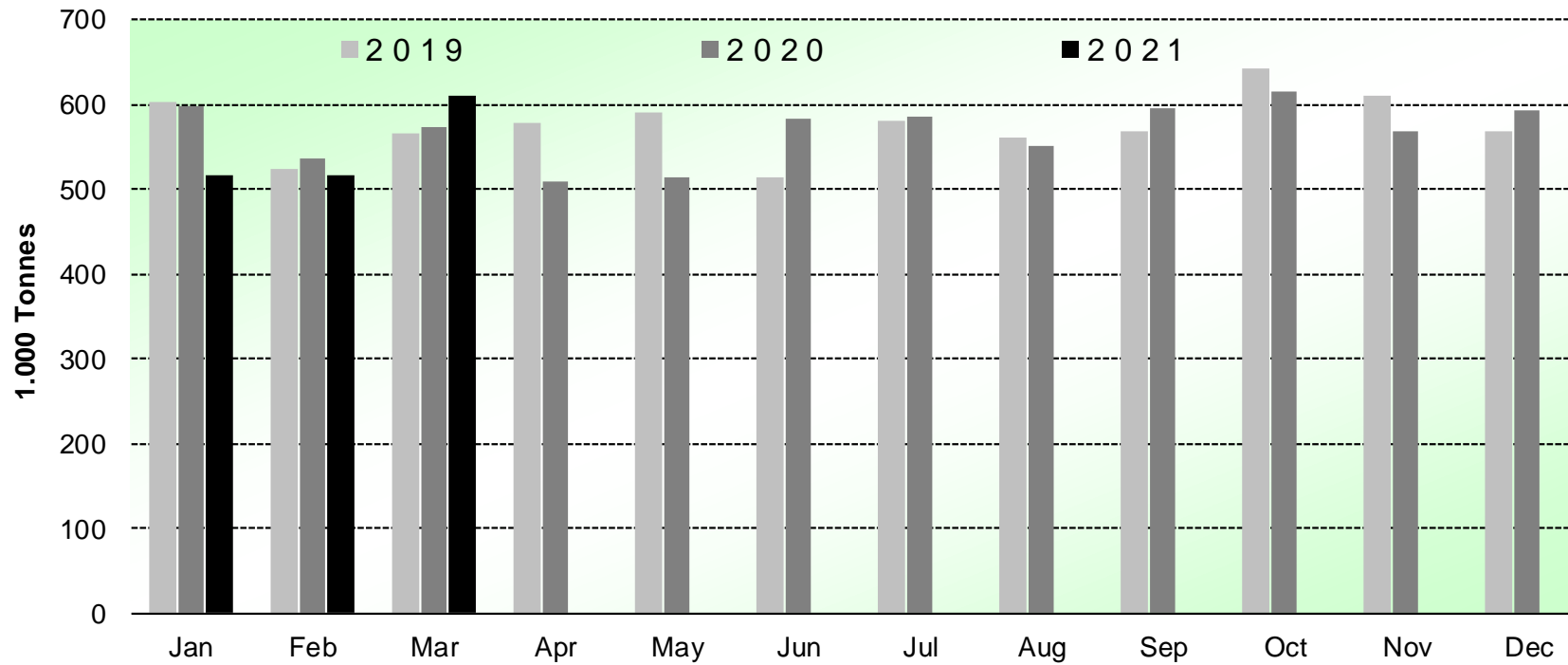


Source : EStat - Newcronos

# PRODUCTION

HISTORIC  
TONNES



## Beef & Veal Production (EU Slaughtering) - Tonnes



Source: EStat-Newcronos

# PRICES CARCASSES

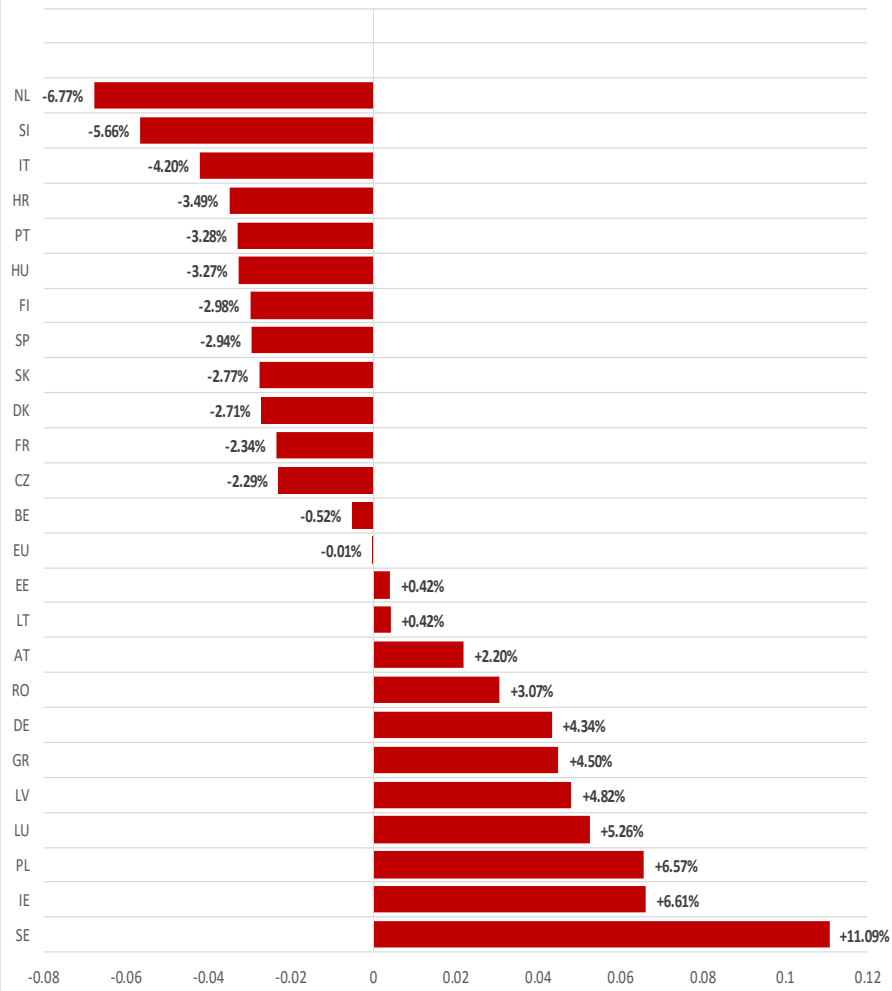
Dashboard

EU Prices week		22	Evolution since last week	Evolution since last month	Evolution since last year
	Average A/C/Z-R3	377.5	+ 0.2%	+ 0.9%	+ 7.5%
	Young Bovines (Z)	365.3	- 0.1%	- 0.4%	- 0.1%
	Young Bulls (A)	375.3	+ 0.4%	+ 1.3%	+ 7.4%
	Steers (C)	411.6	+ 0.2%	+ 0.8%	+ 12.8%
	Cows (D)	311.5	+ 1.5%	+ 3.8%	+ 17.2%
	Heifers (E)	387.9	- 0.1%	+ 0.2%	+ 7.9%
	Male Calves Dairy Type	103.7	+ 5.2%	+ 12.6%	+ 46.9%
	Male Calves Beef Type	222.5	- 0.3%	+ 5.4%	+ 16.0%
	Young Store Cattle	2.61	+ 0.2%	- 0.0%	+ 7.2%
	Yearling Male Store Cattle	2.31	+ 0.0%	- 0.2%	- 0.2%
	Yearling Female Store Cattle	2.49	+ 0.3%	- 0.8%	+ 5.4%
	Calves slaughtered <8M	471.8	€/100	+ 0.2%	+ 0.8%

Sources : MSs notifications (Regulation (EU) 1182/2017 and 1184/2017)

# PRICES CARCASSES

EU ACZ R3 Price Comparison between average monthly price June 2020 - May 2021 compared to June 2019 - May 2020

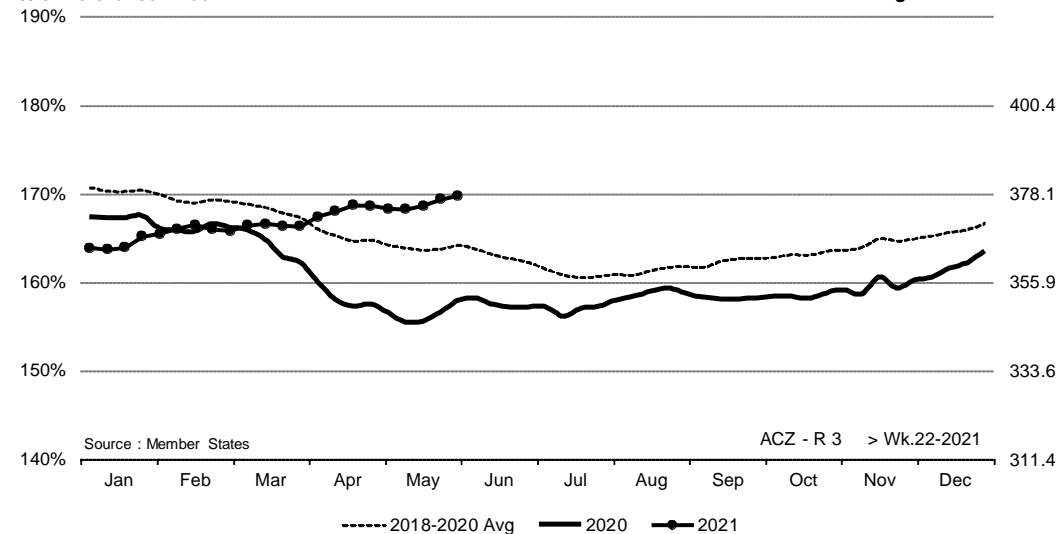


# EU EVOLUTION A/C/Z.R3

ACZ - R 3 > Wk.22-2021

% of Reference Price

€/100 kg cwe



Price in week 22 : **377.56**

Average price in May 2021 : **375.11**

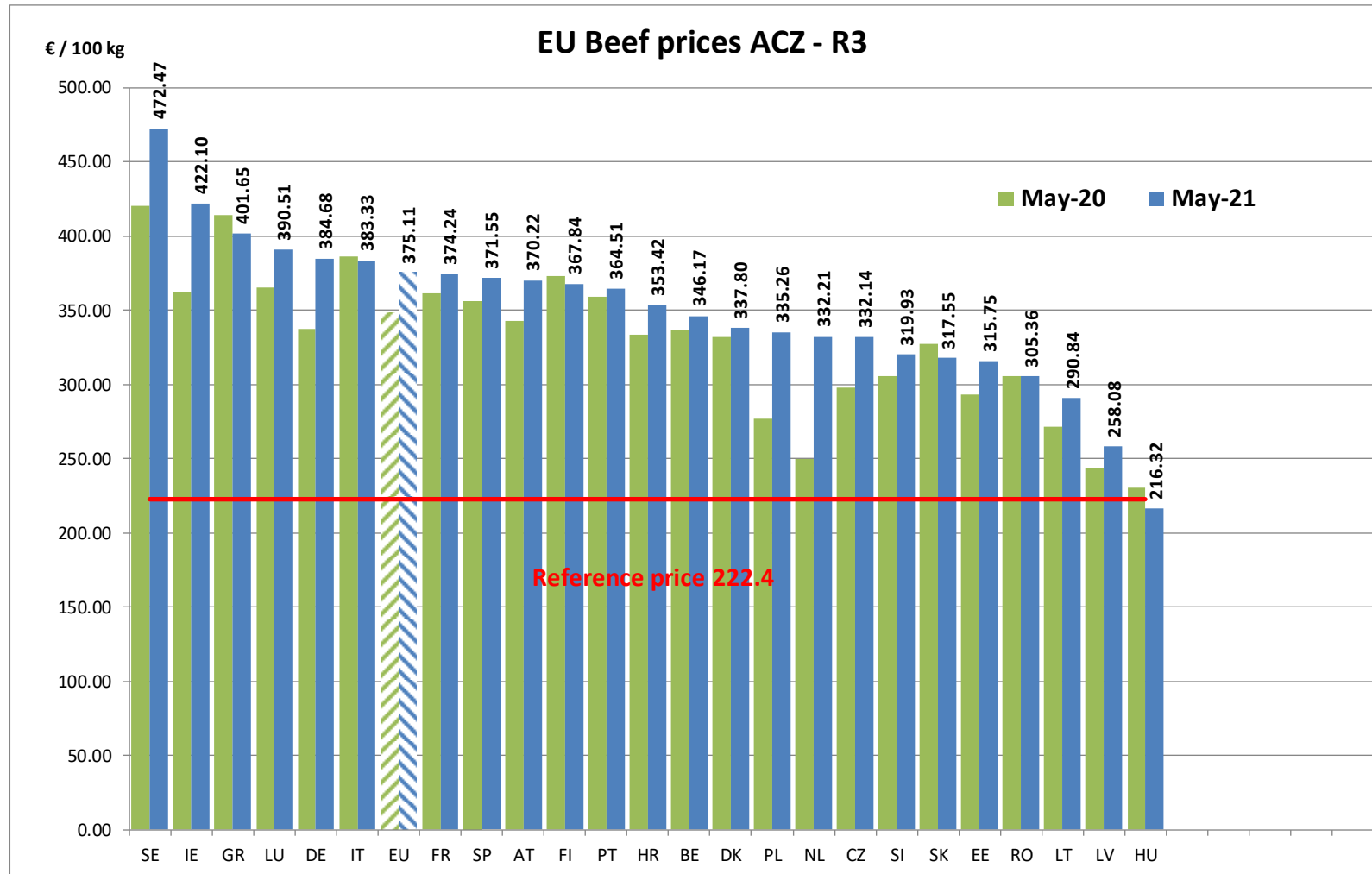
% change y/y : **+ 7.52%**

% change y/y : **+ 7.84%**

% Ref. Price in wk 22 : **169.8%**

# PRICES CARCASSES

EU EVOLUTION  
A/C/Z.R3

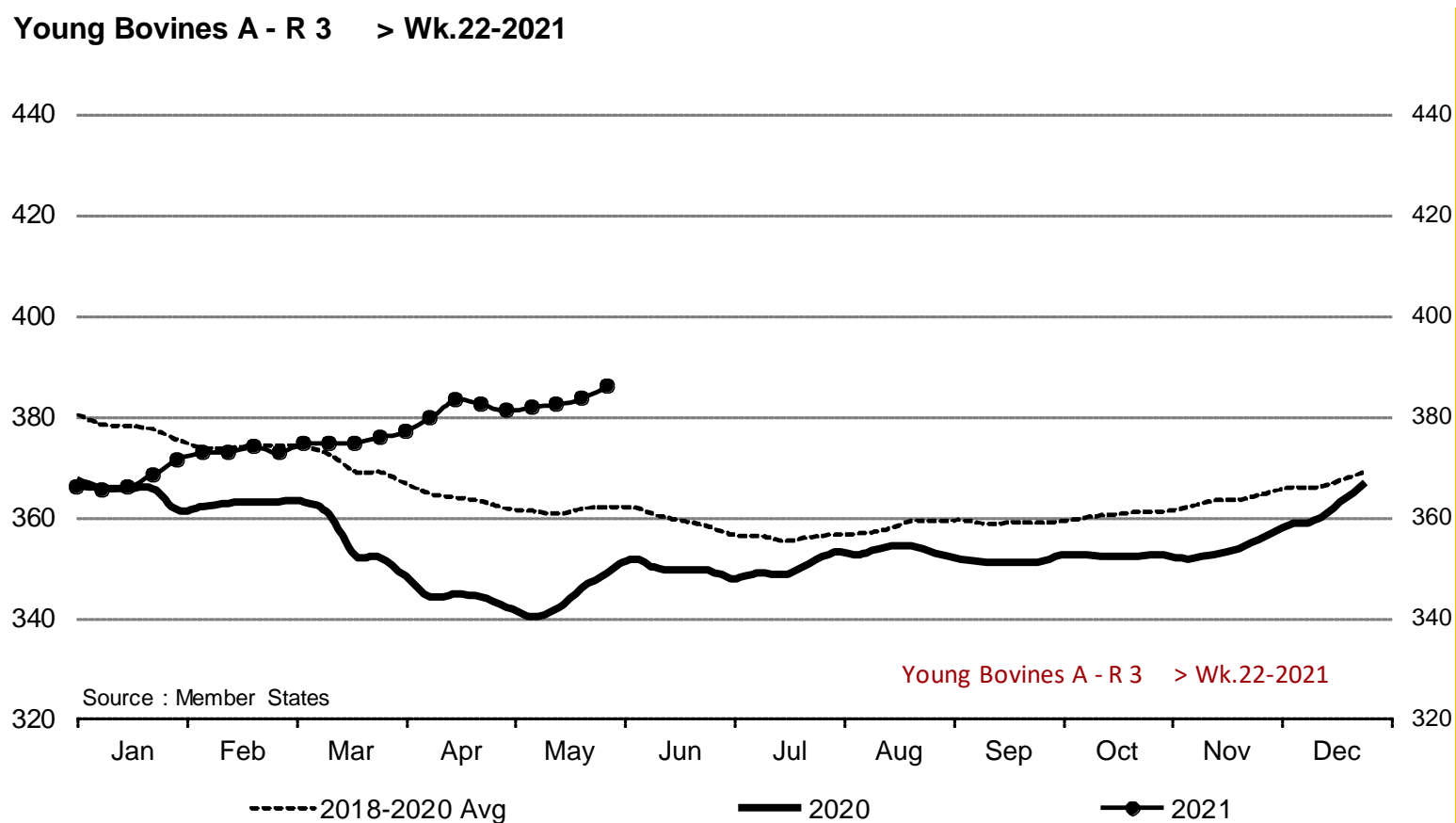


17 June 2021

# PRICES CARCASSES

# EU EVOLUTION YOUNG BULL – A.R3

Young Bovines A - R 3 > Wk.22-2021



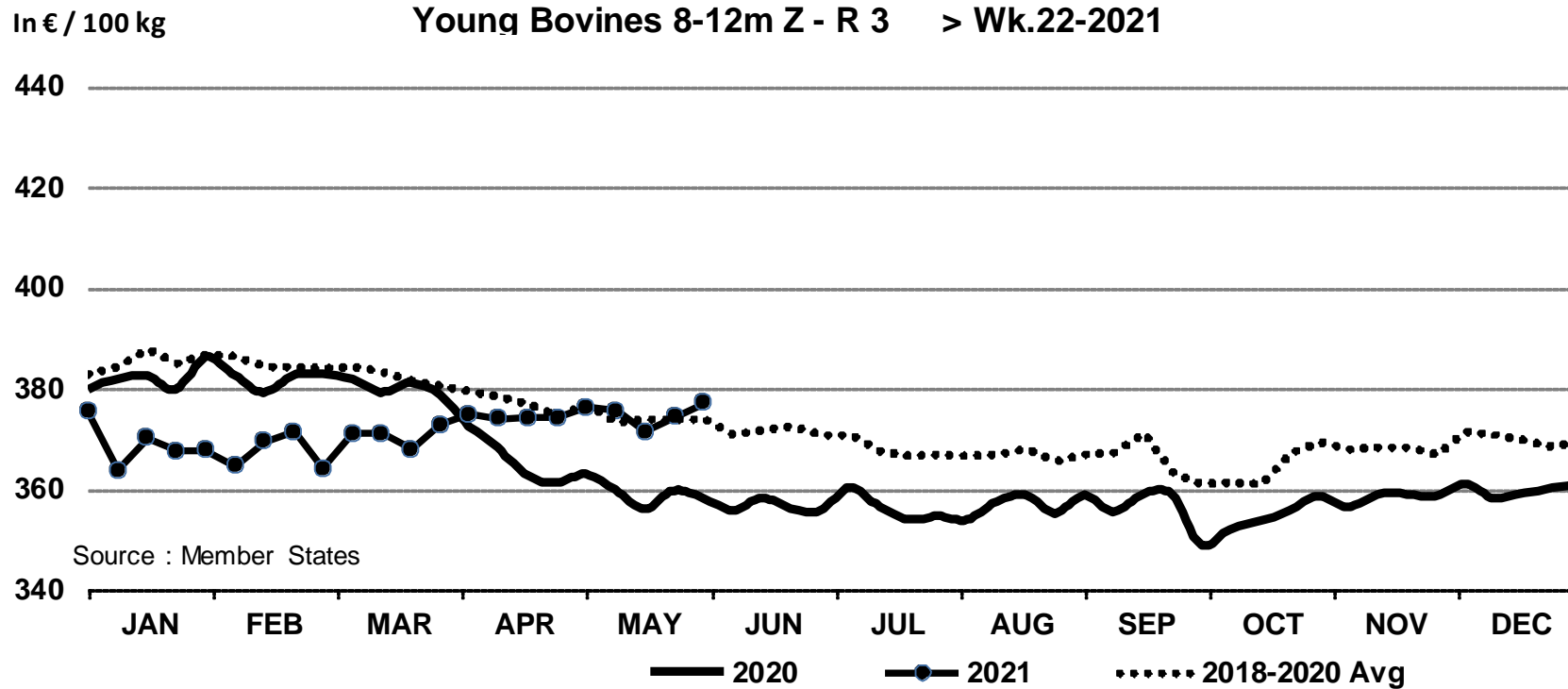
Price in week 22 : **385.93**  
% change y/y : **+ 10.6%**

Average price in May 2021 : **382.26**  
% change y/y : **+ 11.2%**



# PRICES CARCASSES

## E.U. EVOLUTION YOUNG BOVINE 8-12M- Z.R3



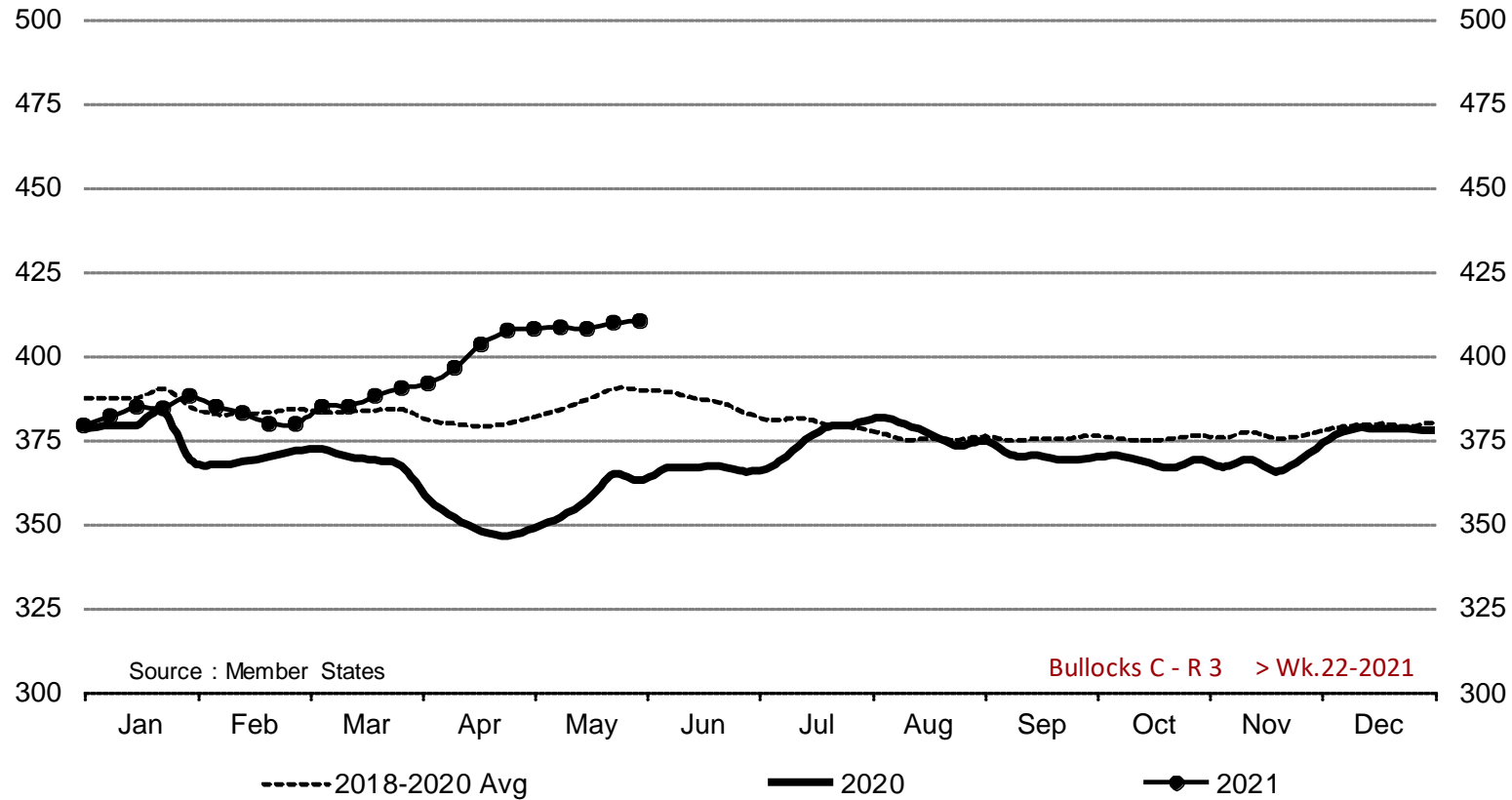
Price in week 22 : **377.17**      06/05/2021  
 % change y/y : **+ 5.3%**

Average price in May 2021 : **374.53**  
 % change y/y : **+ 4.4%**

# PRICES CARCASSES

## E.U. EVOLUTION STEER – C.R3

Bullocks C - R 3 > Wk.22-2021



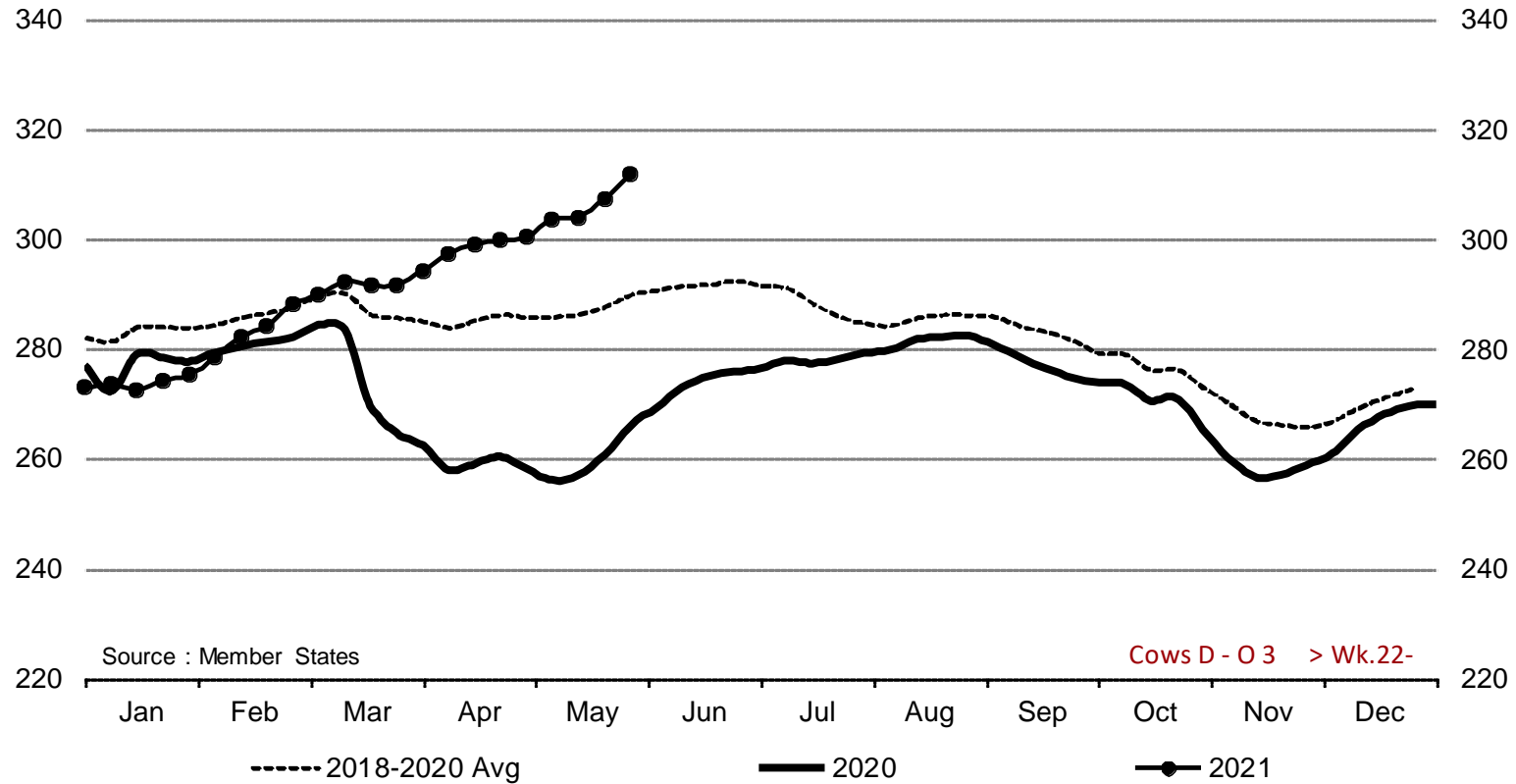
Price in week 22 : **410.13**  
% change y/y : **+ 13.1%**

Average price in May 2021 : **408.37**  
% change y/y : **+ 14.0%**

# PRICES CARCASSES

E.U. EVOLUTION  
COW – D.03

Cows D - O 3 > Wk.22-2021



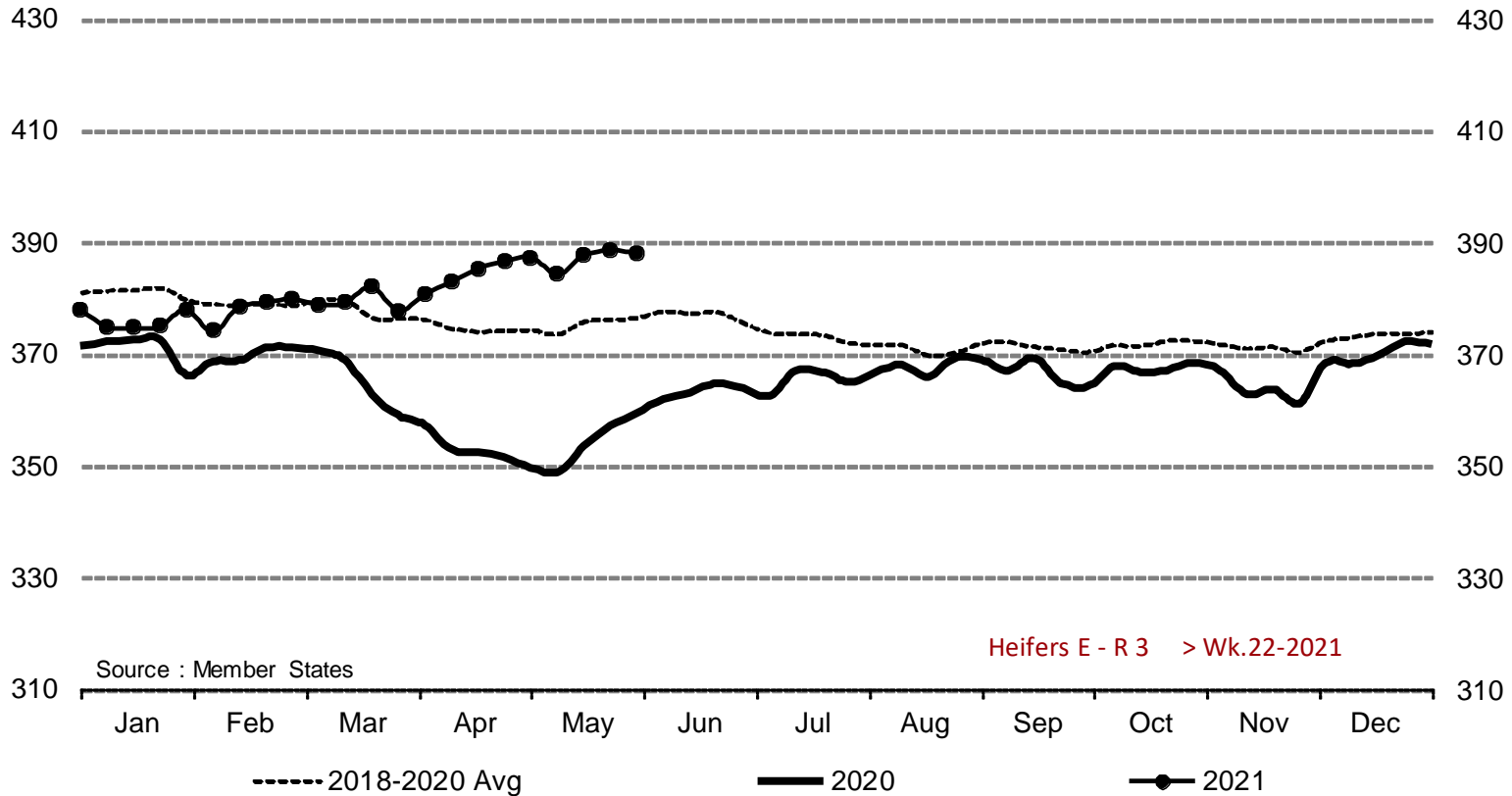
Price in week 22 : **311.59**  
% change y/y : **+ 17.2%**

Average price in May 2021 : **303.64**  
% change y/y : **+ 17.0%**

# PRICES CARCASSES

## EU EVOLUTION HEIFER - E.R3

Heifers E - R 3 > Wk.22-2021

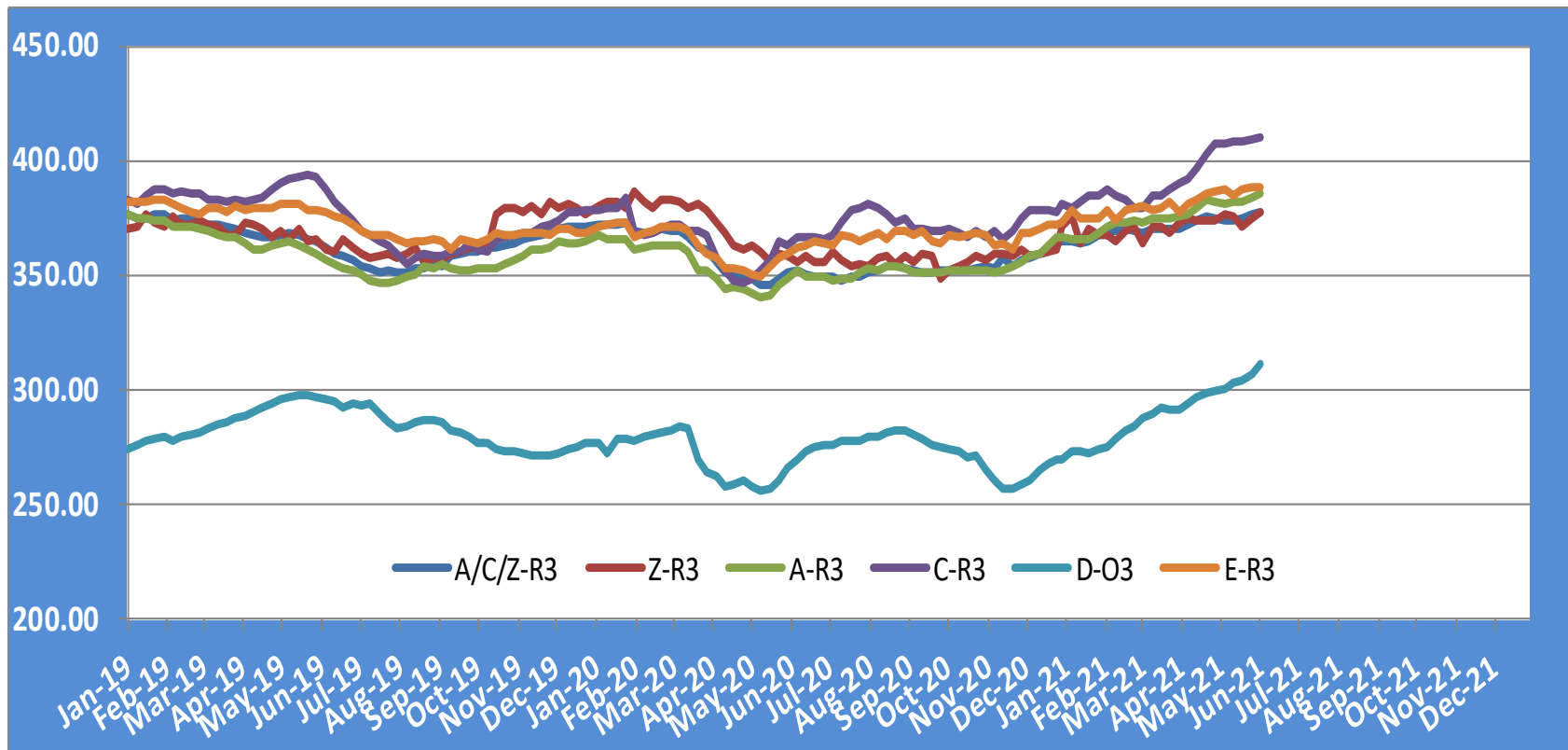


Price in week 22 : **387.92**  
% change y/y : **+ 7.9%**

Average price in May 2021 : **386.93**  
% change y/y : **+ 9.2%**

# PRICES CARCASSES

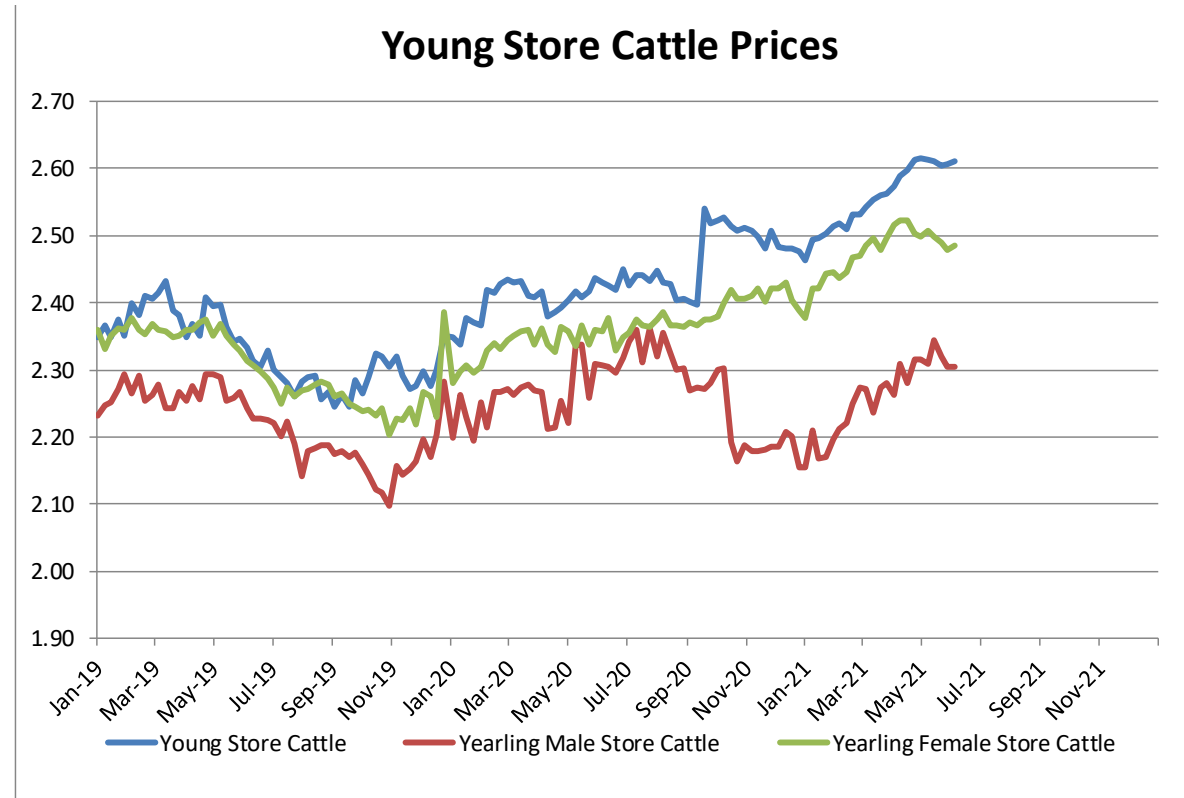
## EU EVOLUTION ALL CAT GLOBAL VIEW



# PRICES LIVE BOVINES

## EU EVOLUTION STORE CATTLE

Store cattle (€/100 kg live weight)



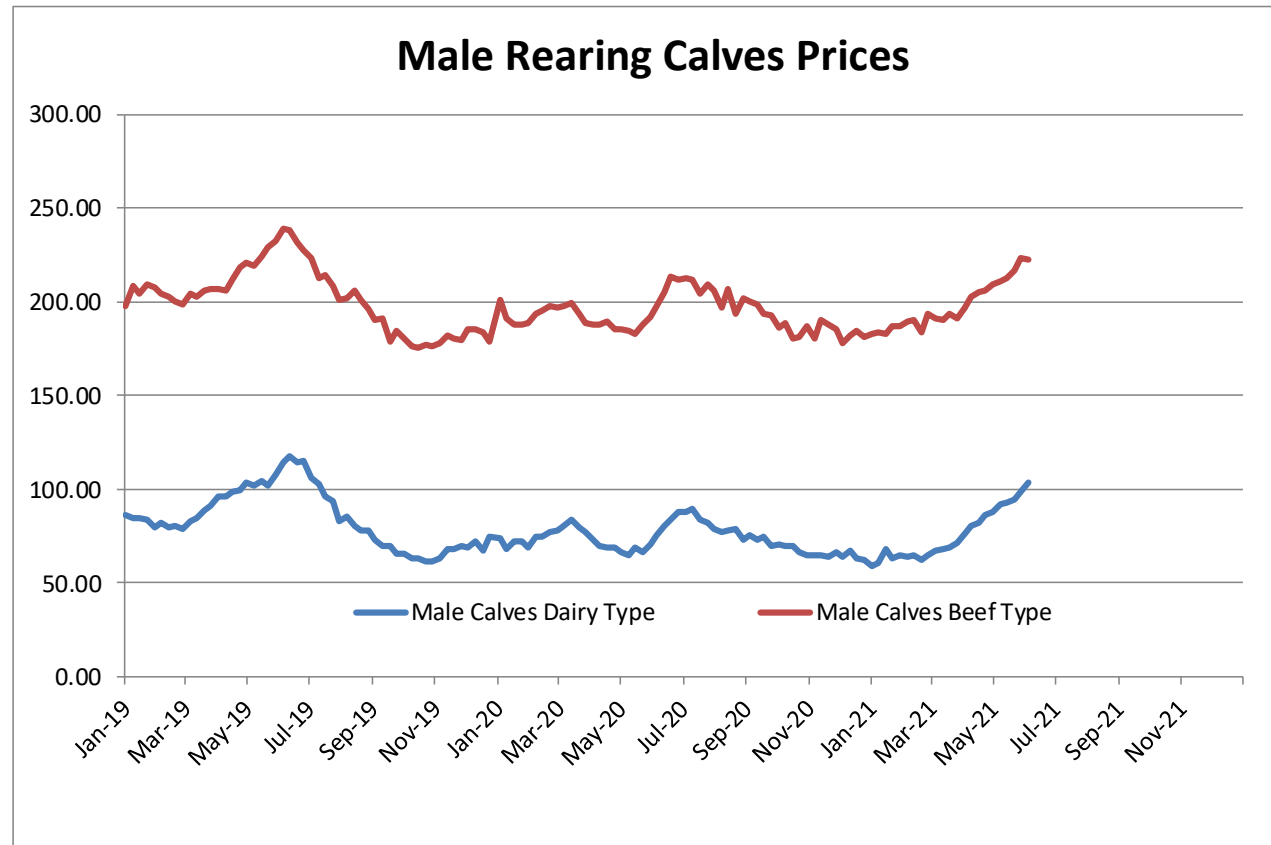
<b>Young Store Cattle Price in</b>	<b>Week 22</b>	<b>2.61</b>	<b>Yearling Male Store Cattle Price</b>	<b>2.31</b>
	Change y/y	+7.19%	Change y/y	-0.17%
<b>Yearling Female Store Cattle Price</b>		<b>2.49</b>		
	Change y/y	+5.39%		

17 June 2021

# PRICES LIVE BOVINES

## EU EVOLUTION Male Calves – 8D4W

Male calves aged between 8 days and 4 weeks (€/head)

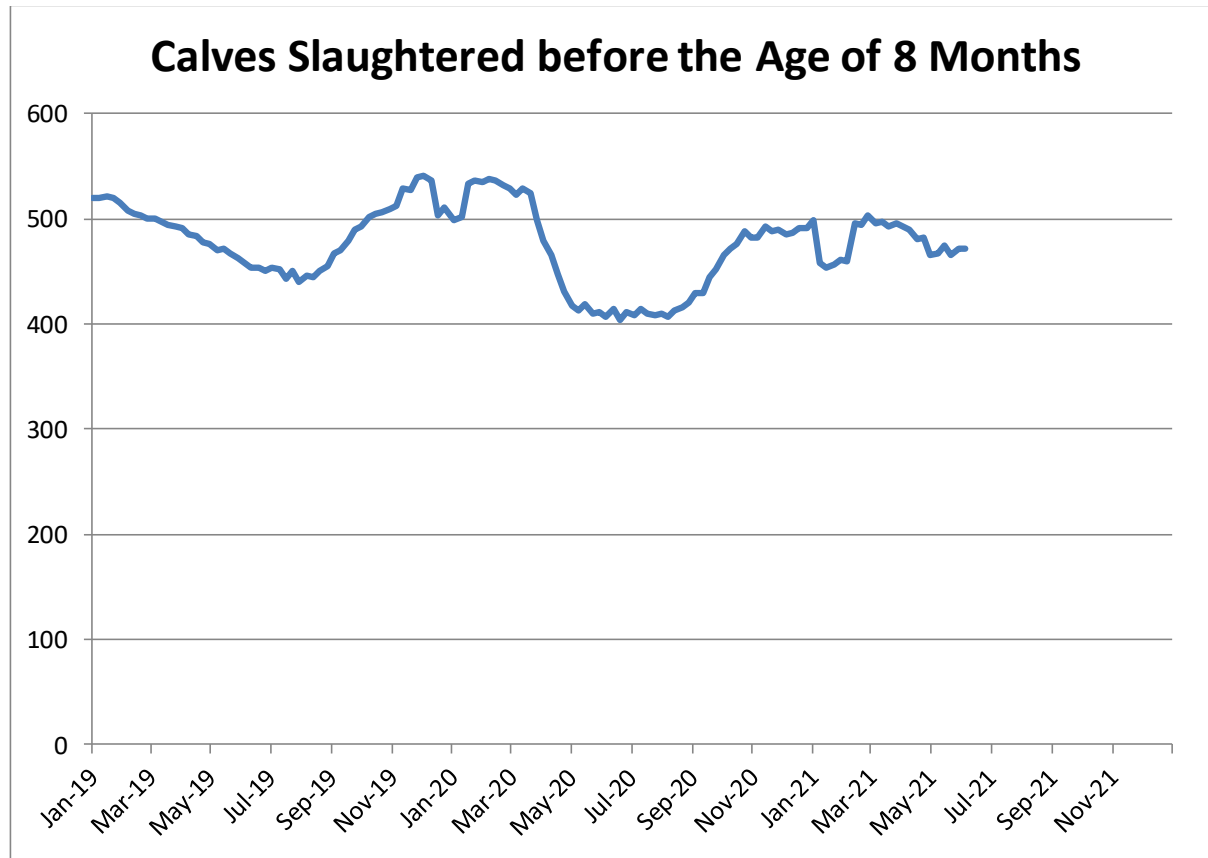


Male Rearing Calves Beef type		Male Rearing Calves Dairy type	
Price in Week 22	222.55	Price in Week 22	103.71
Change y/y	+15.97%	Change y/y	+46.94%

# PRICES LIVE BOVINES

## EU EVOLUTION Butcher Calves

Calves slaughtered before the age of less than 8 months  
(€/100 kg cw)

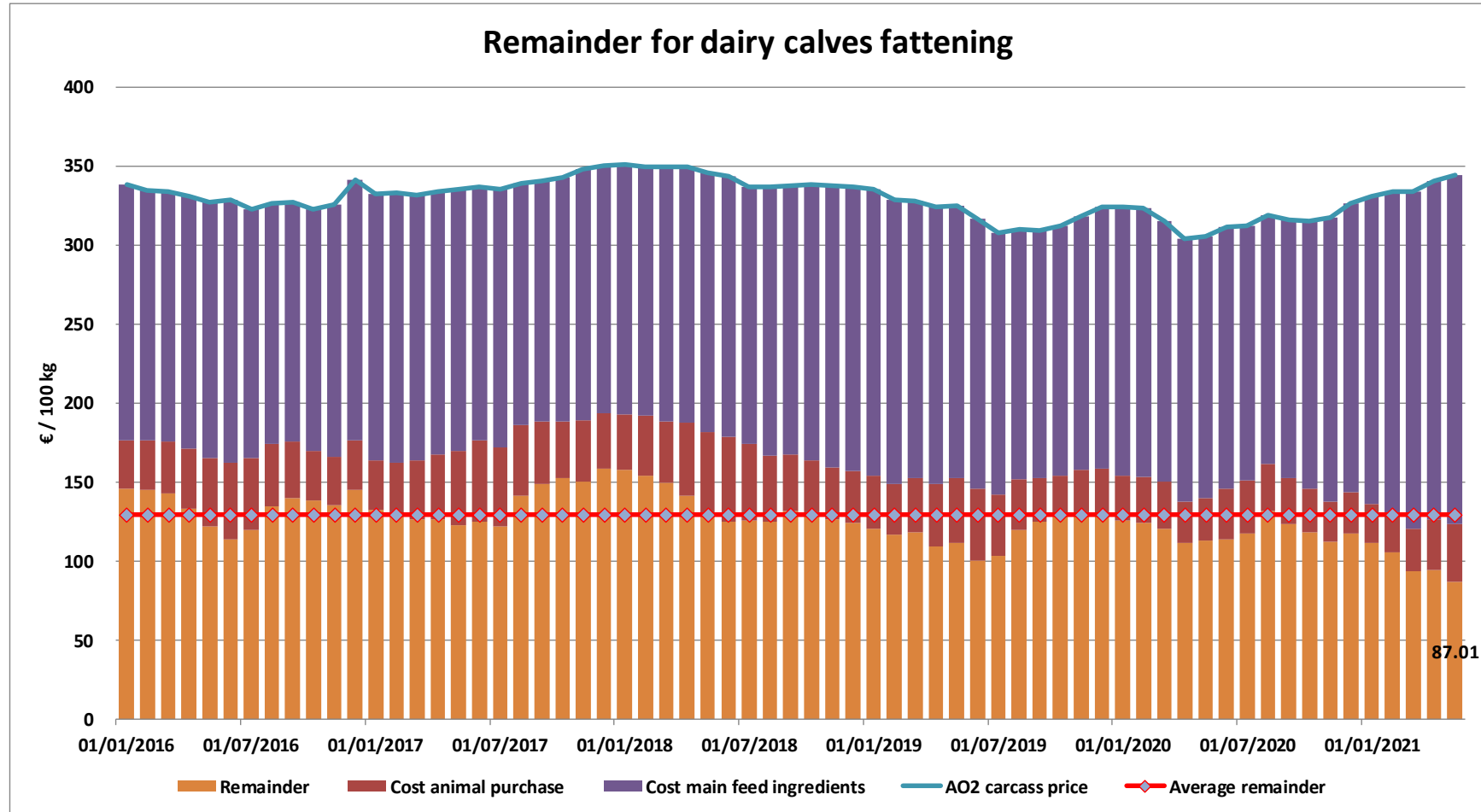


Price in Week 22 **471.83 € / 100 kg of carcasse weight**  
Change y/y **+14.74%**

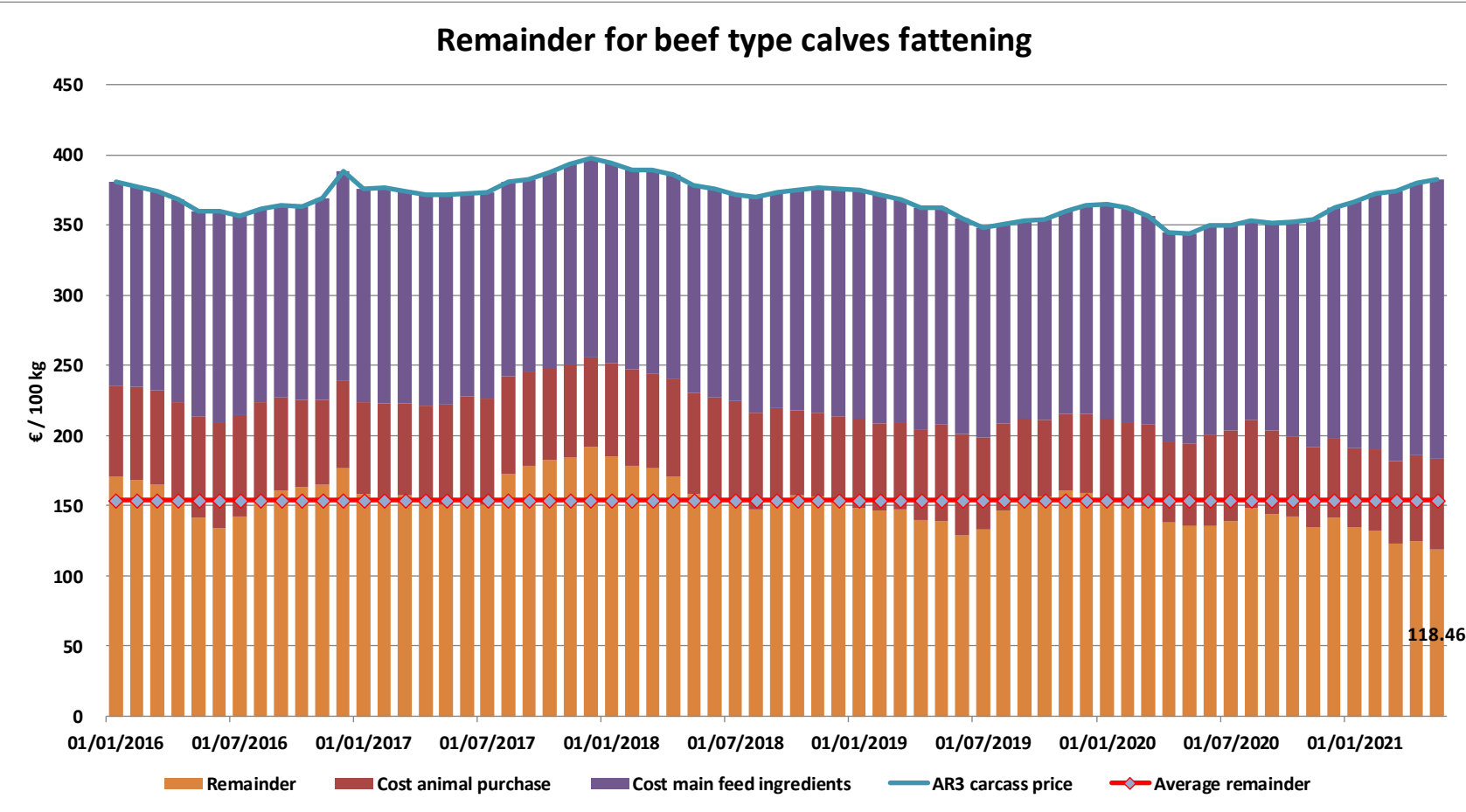
17 June 2021



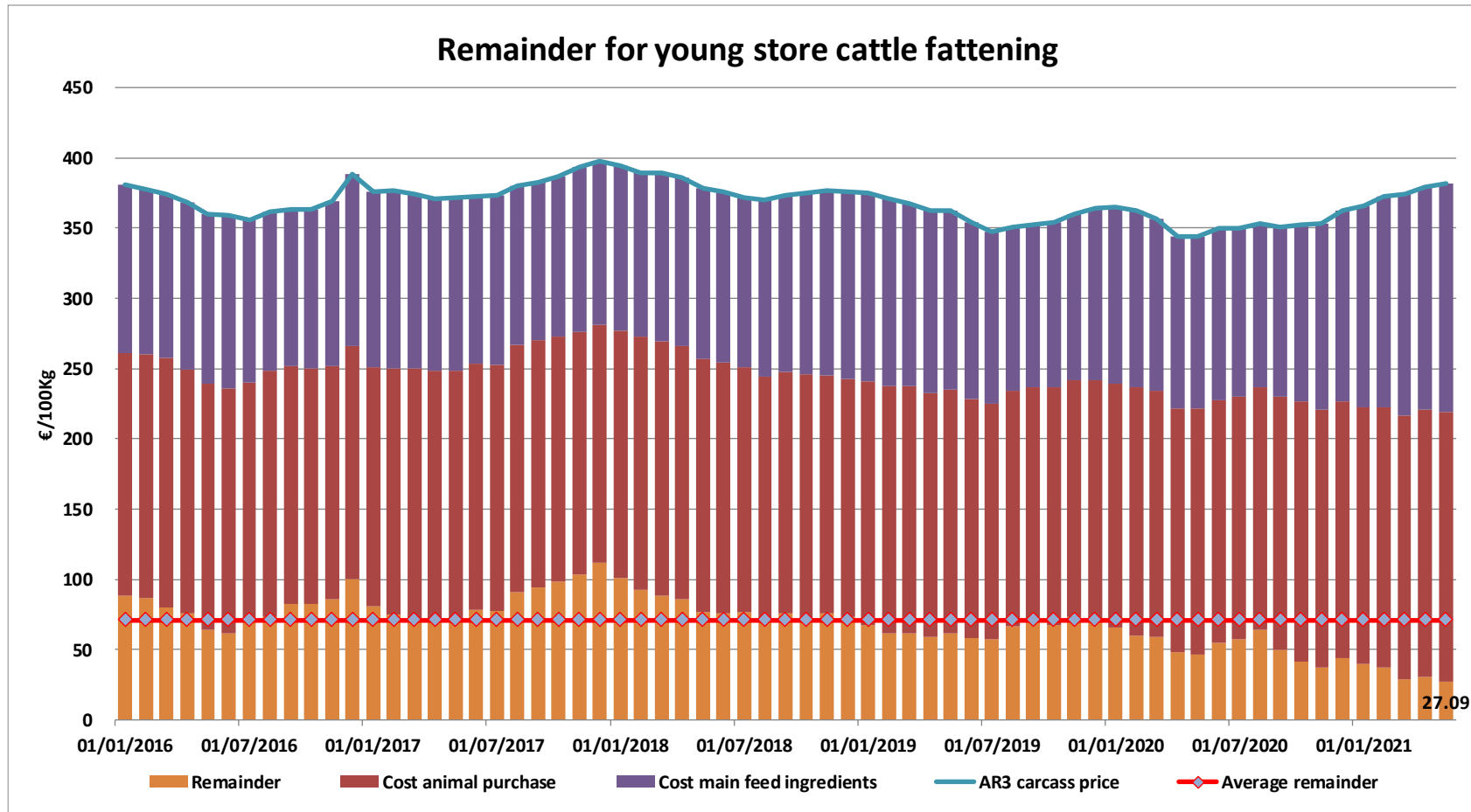
# REMAINDERS



# REMAINDERS



# REMAINDERS



# TRADE

# EU EXPORTS

## Beef & Live Animals

### EU Exports of Beef and Live Animals (1): Trade figures (COMEXT – tonnes cwe)

Destinations	2017		2018		2019		2020		Jan-Apr 21		Compared to
	tonnes	%	tonnes	%	tonnes	%	tonnes	%	tonnes	%	
Israel	44 196	6.1%	47 774	6.8%	49 629	7.1%	56 965	8.1%	18 883	8.0%	+ 40.4%
Hong Kong	76 086	10.4%	55 537	7.9%	46 748	6.7%	56 860	8.1%	17 197	7.3%	- 1.8%
Philippines	37 102	5.1%	28 766	4.1%	34 158	4.9%	39 920	5.7%	16 700	7.1%	+ 45.5%
Ghana	37 744	5.2%	36 766	5.2%	39 196	5.6%	47 408	6.7%	15 818	6.7%	- 0.9%
Algeria	26 305	3.6%	35 410	5.0%	57 152	8.2%	39 416	5.6%	13 027	5.5%	- 16.6%
Bosnia-Herz.	34 711	4.8%	38 762	5.5%	41 119	5.9%	35 758	5.1%	12 278	5.2%	+ 20.6%
Ivory Coast	36 038	4.9%	36 064	5.1%	33 396	4.8%	32 460	4.6%	10 700	4.5%	- 5.5%
Lebanon	38 322	5.3%	42 542	6.1%	36 393	5.2%	33 656	4.8%	9 765	4.1%	- 12.8%
Switzerland	26 708	3.7%	23 761	3.4%	25 188	3.6%	29 996	4.3%	9 657	4.1%	+ 13.7%
Norway	12 850	1.8%	7 925	1.1%	7 667	1.1%	12 936	1.8%	9 418	4.0%	+ 152.7%
Libya	27 848	3.8%	27 878	4.0%	24 541	3.5%	21 971	3.1%	7 437	3.1%	+ 0.9%
Saudi Arabia	4 691	0.6%	2 521	0.4%	2 809	0.4%	9 707	1.4%	5 462	2.3%	+ 25.9%
Ukraine	7 331	1.0%	10 465	1.5%	13 836	2.0%	15 857	2.3%	5 317	2.2%	+ 10.0%
Kosovo	6 377	0.9%	6 693	1.0%	10 279	1.5%	10 912	1.5%	5 137	2.2%	+ 62.0%
Turkey	96 413	13.2%	96 052	13.7%	34 555	4.9%	22 137	3.1%	5 128	2.2%	+ 11.1%
Canada	4 617	0.6%	2 225	0.3%	6 806	1.0%	20 475	2.9%	4 943	2.1%	- 13.4%
<i>Other Destinations</i>	<i>212 178</i>	<i>29.1%</i>	<i>203 099</i>	<i>28.9%</i>	<i>237 118</i>	<i>33.8%</i>	<i>218 226</i>	<i>31.0%</i>	<i>69 965</i>	<i>29.5%</i>	
<b>Total (without UK)</b>	<b>729 519</b>		<b>702 242</b>		<b>700 590</b>		<b>704 659</b>		<b>236 832</b>		
% change			- 4%		- 0%		+ 1%		+ 4.2%		

# TRADE

# EU EXPORTS

## Beef

### EU Exports of Beef: Trade figures (COMEXT – tonnes cwe)

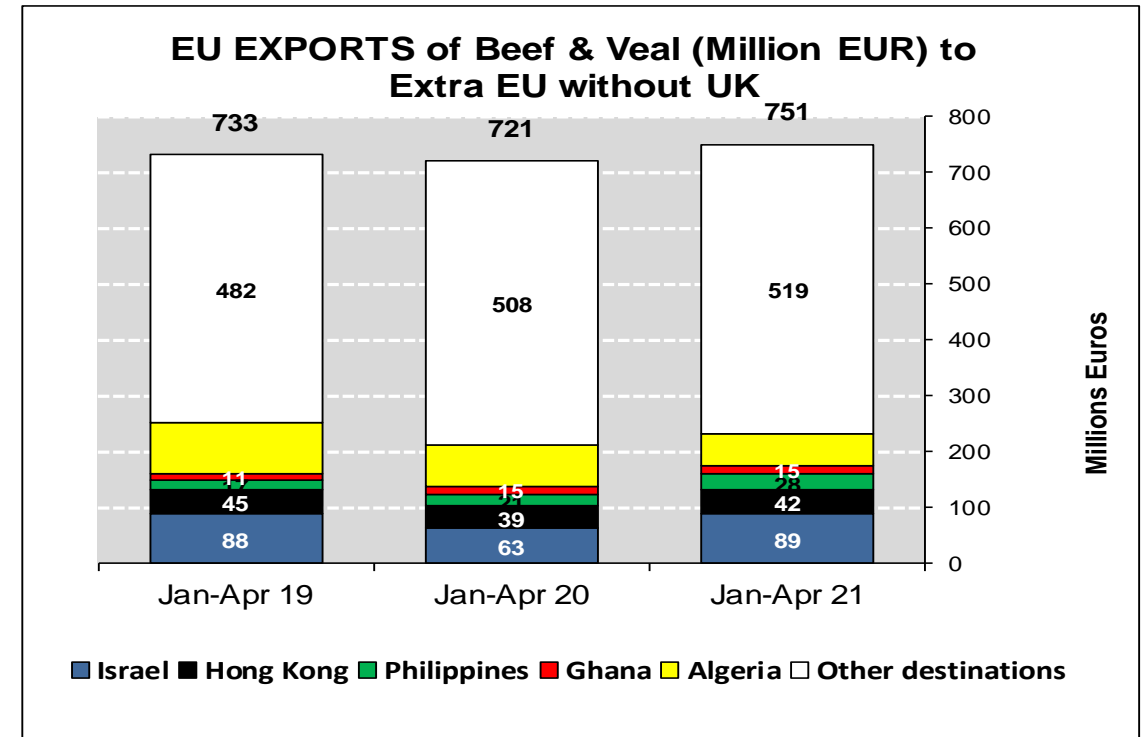
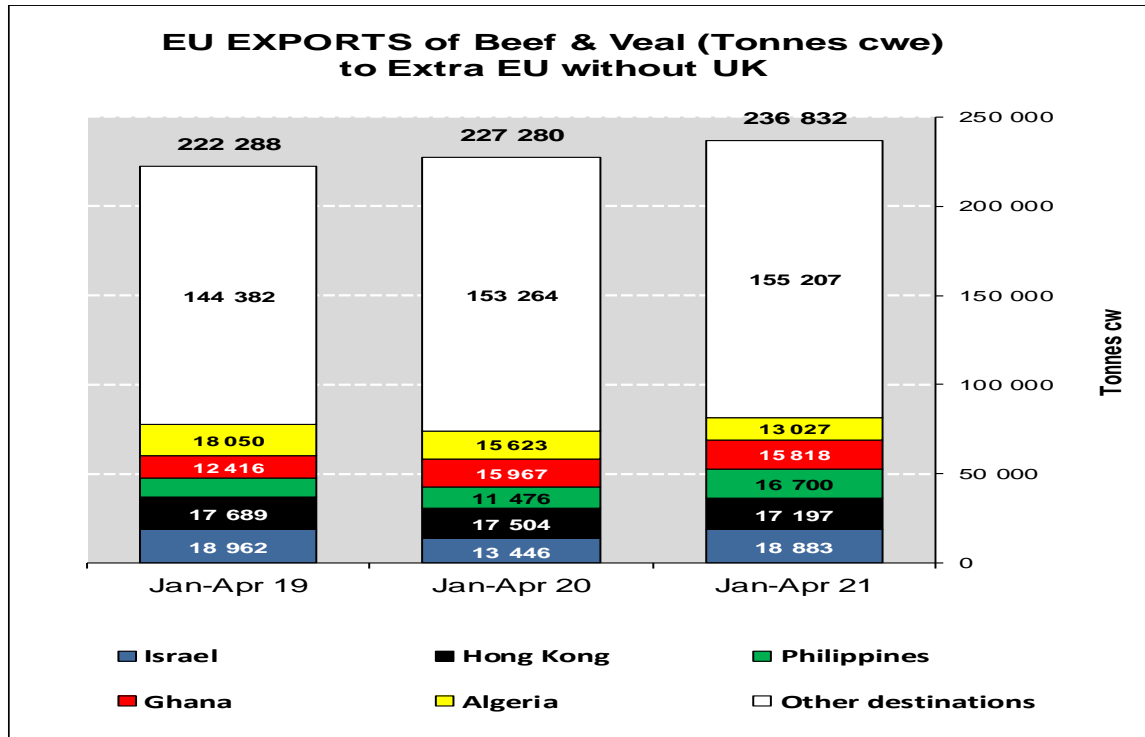
Destinations	2017		2018		2019		2020		Jan-Apr 21		Compared to
	tonnes	%	tonnes	%	tonnes	%	tonnes	%	tonnes	%	
Hong Kong	76 086	15.4%	55 537	11.9%	46 748	9.8%	56 860	11.6%	17 197	10.4%	- 1.8%
Philippines	37 102	7.5%	28 766	6.2%	34 158	7.2%	39 920	8.1%	16 700	10.1%	+ 45.5%
Ghana	37 744	7.7%	36 766	7.9%	39 196	8.2%	47 408	9.7%	15 818	9.6%	- 0.9%
Bosnia-Herz.	32 181	6.5%	36 152	7.7%	38 806	8.2%	33 459	6.8%	11 337	6.8%	+ 19.2%
Ivory Coast	36 028	7.3%	36 064	7.7%	33 396	7.0%	32 460	6.6%	10 700	6.5%	- 5.5%
Norway	12 849	2.6%	7 922	1.7%	7 667	1.6%	12 936	2.6%	9 418	5.7%	+++
Switzerland	25 570	5.2%	22 711	4.9%	24 110	5.1%	28 941	5.9%	9 098	5.5%	+ 13.1%
Israel	18 750	3.8%	22 163	4.7%	23 026	4.8%	21 967	4.5%	5 442	3.3%	- 5.8%
Ukraine	6 926	1.4%	9 887	2.1%	12 893	2.7%	14 861	3.0%	5 068	3.1%	+ 6.4%
Canada	2 424	0.5%	2 225	0.5%	6 806	1.4%	20 475	4.2%	4 943	3.0%	- 13.4%
Japan	4 281	0.9%	3 452	0.7%	8 007	1.7%	11 885	2.4%	4 689	2.8%	- 13.4%
USA	3 756	0.8%	5 458	1.2%	7 867	1.7%	12 310	2.5%	4 186	2.5%	+ 39.8%
North Macedonia	11 285	2.3%	10 002	2.1%	11 395	2.4%	10 551	2.1%	4 158	2.5%	+ 23.8%
South Africa	4 555	0.9%	7 214	1.5%	5 442	1.1%	7 743	1.6%	3 305	2.0%	+++
Vietnam	12 146	2.5%	8 163	1.7%	10 014	2.1%	6 367	1.3%	2 970	1.8%	+ 57.5%
Angola	10 982	2.2%	11 470	2.5%	8 410	1.8%	9 410	1.9%	2 480	1.5%	- 22.4%
<i>Other Destinations</i>	<i>160 448</i>	<i>32.5%</i>	<i>163 231</i>	<i>34.9%</i>	<i>157 699</i>	<i>33.2%</i>	<i>123 503</i>	<i>25.2%</i>	<i>38 072</i>	<i>23.0%</i>	
<b>Total (without UK)</b>	<b>493 112</b>		<b>467 183</b>		<b>475 639</b>		<b>491 056</b>		<b>165 582</b>		
% change			- 5%		+ 2%		+ 3%		+ 1.3%		

# TRADE

## EU Exports of Beef and Live Animals: Trade figures (COMEXT)

# EU EXPORTS

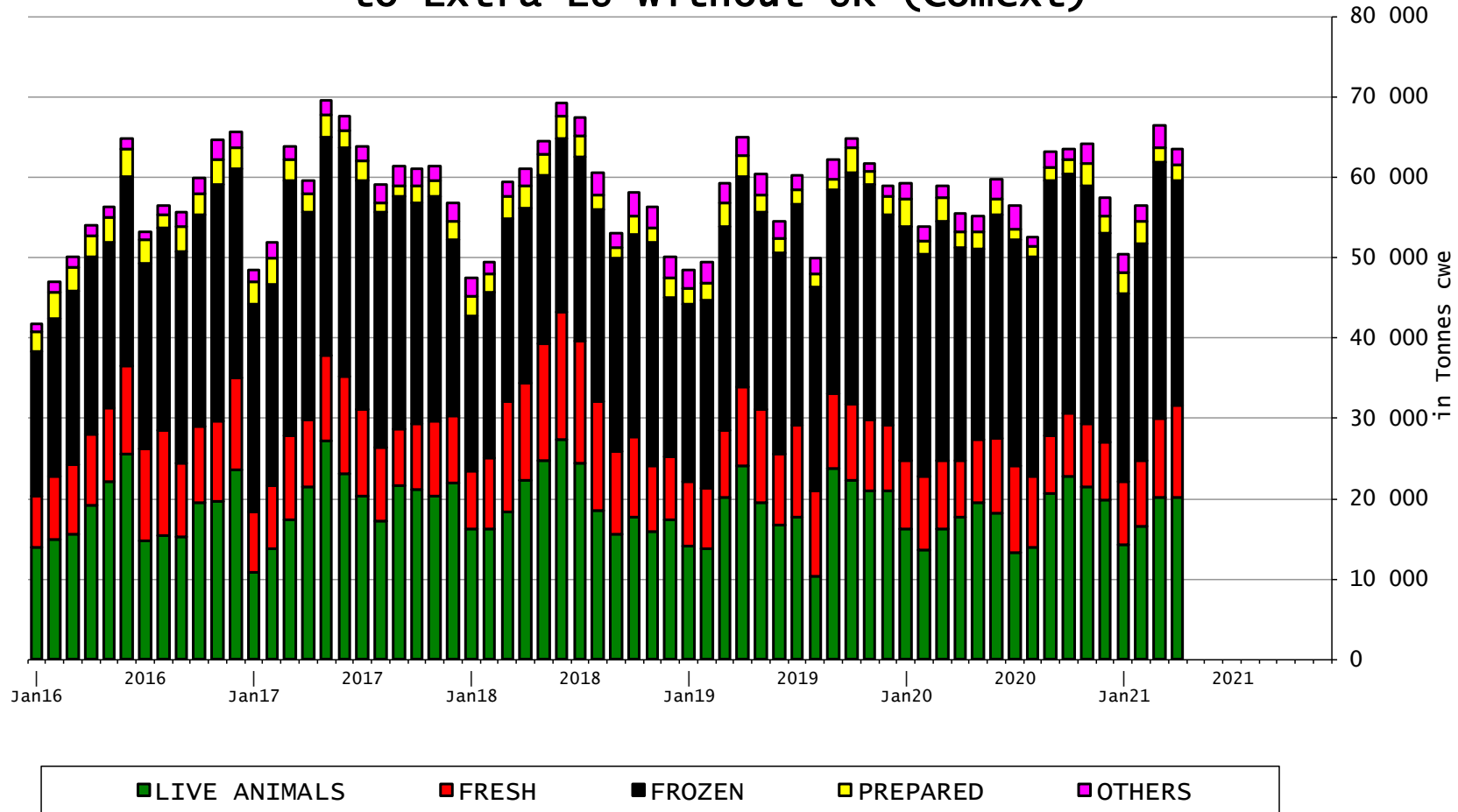
## Beef & Live Animals



# TRADE

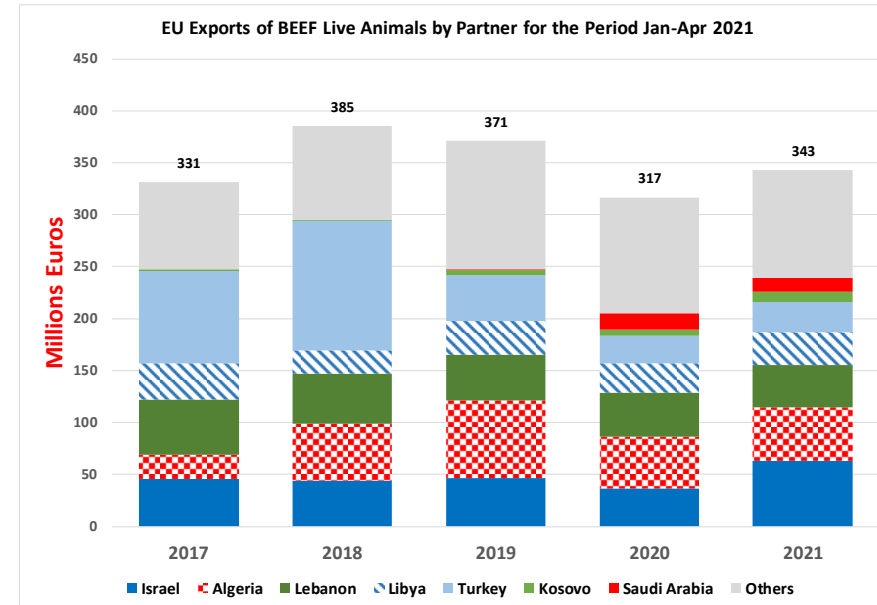
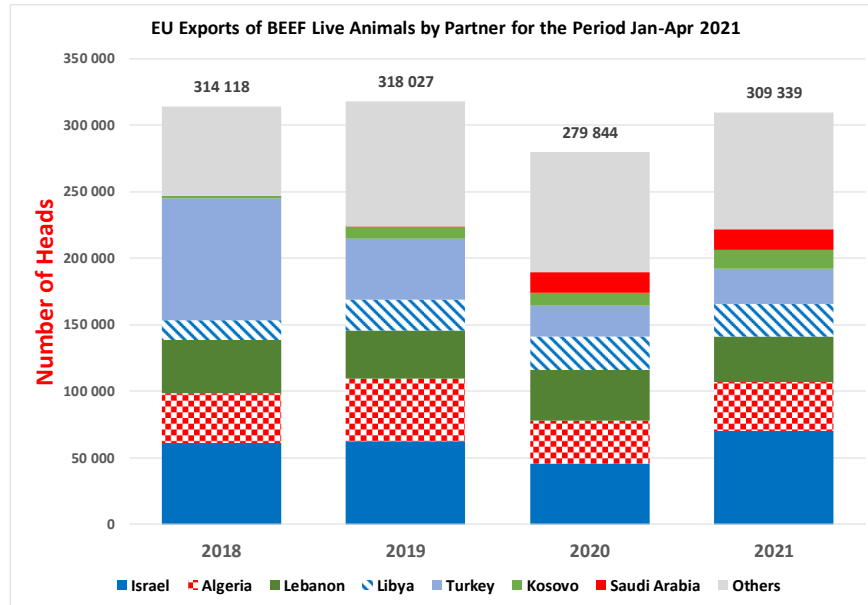
## EU EXPORTS Beef Products

EU Exports of BEEF products  
to Extra EU without UK (Comext)



# TRADE

## EU EXPORTS Live Animals





# TRADE

## EU IMPORTS Beef & Live Animals

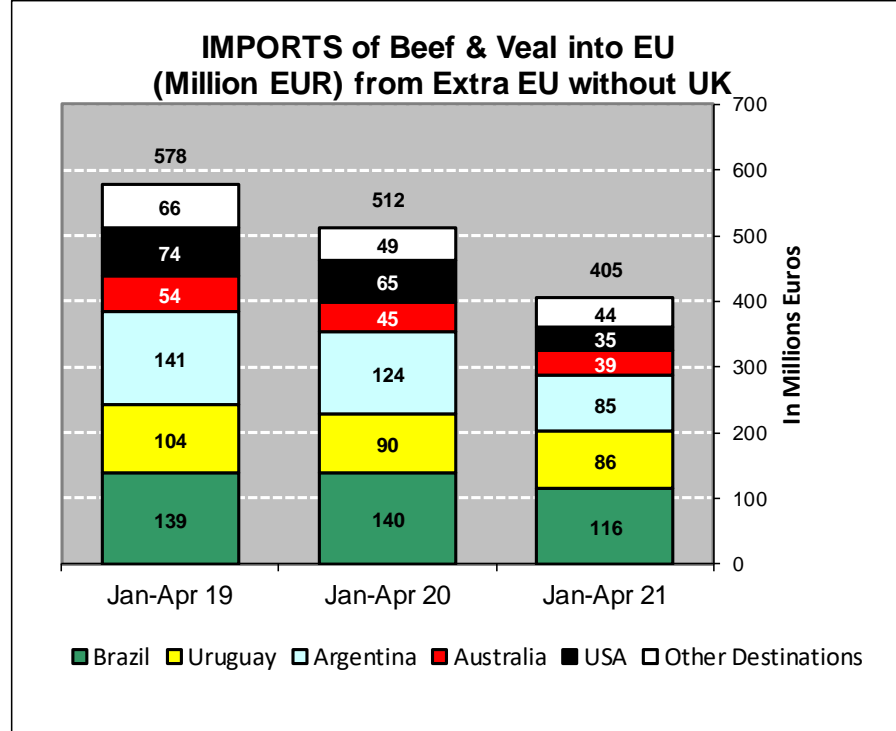
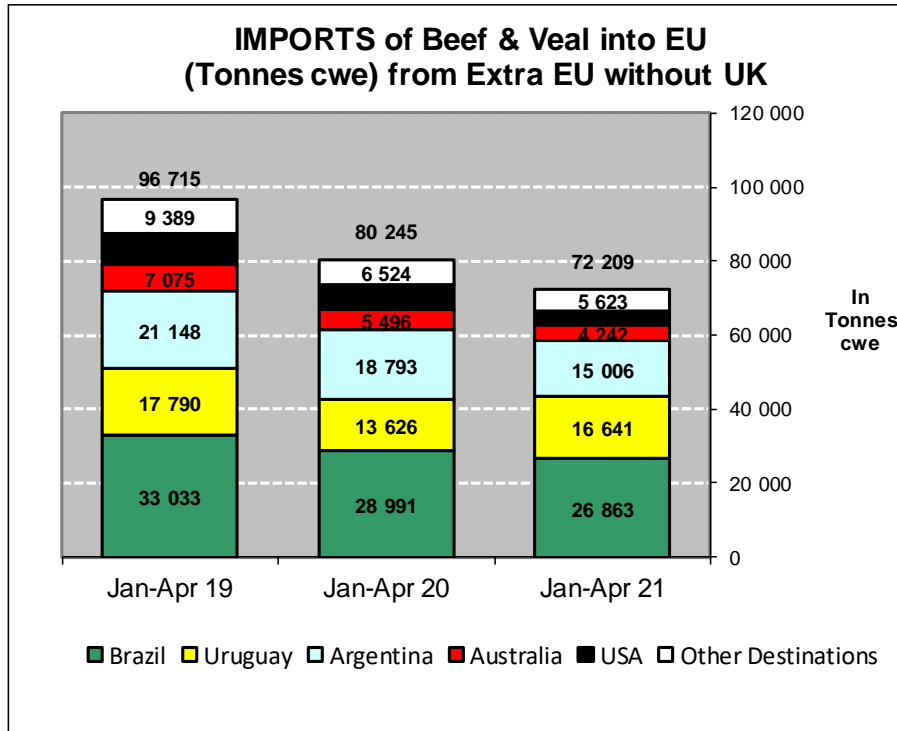
### EU Imports of Beef and Live Animals (1): Trade Figures (COMEXT – tonnes cwe)

Origins	2017		2018		2019		2020		Jan-Apr 21		Compared to
	tonnes	%	tonnes	%	tonnes	%	tonnes	%	tonnes	%	
Brazil	86 927	33.9%	103 979	37.3%	99 569	36.4%	84 172	37.6%	26 863	37.2%	- 7.3%
Uruguay	52 078	20.3%	47 922	17.2%	40 483	14.8%	34 595	15.4%	16 641	23.0%	+ 22.1%
Argentina	49 259	19.2%	61 400	22.0%	65 324	23.9%	56 421	25.2%	15 006	20.8%	- 20.1%
Australia	18 193	7.1%	17 368	6.2%	16 516	6.0%	11 058	4.9%	4 242	5.9%	- 22.8%
USA	21 624	8.4%	19 268	6.9%	16 852	6.2%	16 532	7.4%	3 834	5.3%	- 43.8%
Switzerland	5 105	2.0%	5 413	1.9%	4 401	1.6%	4 197	1.9%	1 655	2.3%	+ 17.7%
New Zealand	6 806	2.7%	7 165	2.6%	6 726	2.5%	6 145	2.7%	1 221	1.7%	- 45.8%
Paraguay	5 922	2.3%	5 520	2.0%	5 203	1.9%	4 234	1.9%	659	0.9%	- 47.7%
Canada	512	0.2%	1 343	0.5%	2 518	0.9%	1 550	0.7%	628	0.9%	+++
N.det.Extra	72	0.0%	127	0.0%	196	0.1%	94	0.0%	303	0.4%	+++
Japan	645	0.3%	791	0.3%	997	0.4%	789	0.4%	260	0.4%	+ 13.3%
Namibia	5 043	2.0%	3 442	1.2%	7 706	2.8%	1 445	0.6%	241	0.3%	- 22.9%
Serbia	565	0.2%	1 134	0.4%	1 062	0.4%	931	0.4%	186	0.3%	- 50.4%
South Africa	42	0.0%	0	0.0%	74	0.0%	70	0.0%	103	0.1%	+++
Norway	388	0.2%	153	0.1%	129	0.0%	336	0.2%	101	0.1%	+++
Botswana	2 686	1.0%	3 119	1.1%	4 950	1.8%	788	0.4%	59	0.1%	- 77.6%
<i>Other Destinations</i>	863	0.3%	700	0.3%	701	0.3%	585	0.3%	207	0.3%	
<b>Total (without UK)</b>	<b>256 731</b>		<b>278 843</b>		<b>273 408</b>		<b>223 942</b>		<b>72 209</b>		
% change			+ 9%		- 2%		- 18%		- 10.0%		

# TRADE

## EU Imports of Beef and Live Animals (2): Trade Figures (COMEXT)

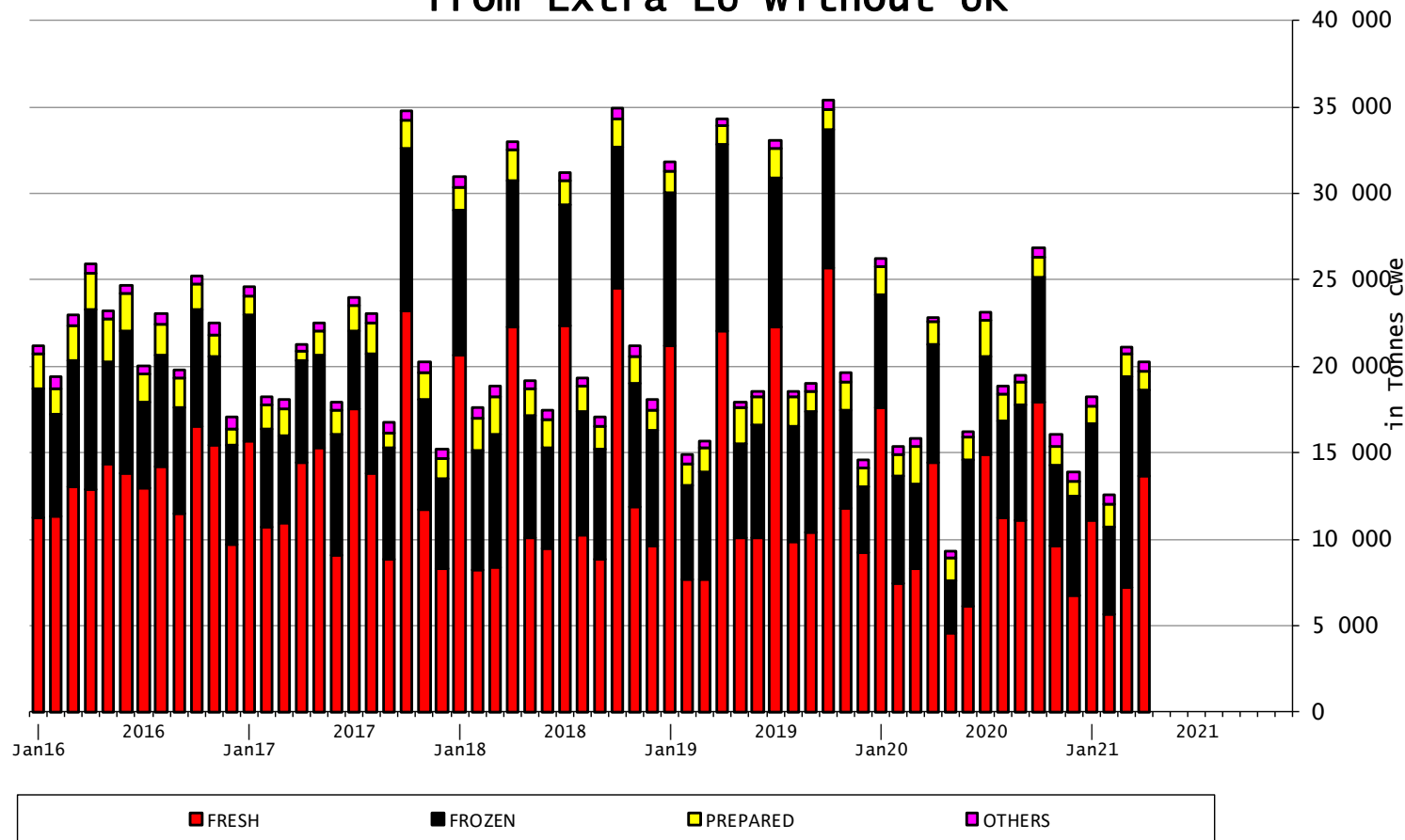
## EU IMPORTS Beef & Live Animals



# TRADE

## EU IMPORTS Beef Products

### EU Imports of BEEF products from Extra EU without UK



17 June 2021

# EU TRADE with UK

## EU EXPORTS Beef Products

### EU Export of BEEF to UK by Products from Jan to Mar

*In Tons of Carcase Weight*

	2019			2020			2021			% 2021/2020	
	United Kingdom	Extra-EU	%	United Kingdom	Extra-EU	%	United Kingdom	Extra-EU	%	United Kingdom	Extra-EU
<b>Live Animals</b>	<b>2 656</b>	<b>50 854</b>	<b>5.2%</b>	<b>2 237</b>	<b>48 323</b>	<b>4.6%</b>	<b>2 437</b>	<b>53 458</b>	<b>4.6%</b>	<b>+8.9%</b>	<b>+10.6%</b>
<b>Meats</b>	<b>116 321</b>	<b>225 314</b>	<b>51.6%</b>	<b>100 724</b>	<b>226 414</b>	<b>44.5%</b>	<b>65 830</b>	<b>187 860</b>	<b>35.0%</b>	<b>-34.6%</b>	<b>-17.0%</b>
Fresh	61 585	84 735	72.7%	57 761	83 086	69.5%	40 570	65 705	61.7%	-29.8%	-20.9%
Frozen	15 417	46 377	33.2%	11 743	56 024	21.0%	12 358	55 529	22.3%	+5.2%	-0.9%
Salted Meat	6 179	6 503	95.0%	6 557	7 029	93.3%	126	510	24.7%	-98.1%	-92.7%
Prepared	12 519	19 541	64.1%	12 257	20 324	60.3%	7 168	14 302	50.1%	-41.5%	-29.6%
Fresh Offals	6 317	6 913	91.4%	5 236	6 038	86.7%	1 339	1 932	69.3%	-74.4%	-68.0%
Frozen Offals	4 282	44 134	9.7%	3 539	45 777	7.7%	2 320	41 224	5.6%	-34.4%	-9.9%
Salted Offals	9 469	14 424	65.6%	3 360	5 907	56.9%	55	3 096	1.8%	-98.4%	-47.6%
Prepared Offal	166	194	85.4%	93	118	78.6%	69	95	72.2%	-26.2%	-19.6%
Fat	386	2 493	15.5%	177	2 110	8.4%	1 825	5 467	33.4%	+929.8%	+159.1%
<b>Total Beef</b>	<b>118 977</b>	<b>276 167</b>	<b>43.1%</b>	<b>102 961</b>	<b>274 737</b>	<b>37.5%</b>	<b>68 267</b>	<b>241 318</b>	<b>28.3%</b>	<b>-33.7%</b>	<b>-12.2%</b>

Source : Comext

17 June 2021

# EU TRADE with UK

# EU IMPORTS Beef Products

## EU Import of BEEF from UK by Products from Jan to Mar

*In Tons of Carcase Weight*

	2019			2020			2021			% 2021/2020	
	United Kingdom	Extra-EU	%	United Kingdom	Extra-EU	%	United Kingdom	Extra-EU	%	United Kingdom	Extra-EU
<b>Live Animals</b>	<b>673</b>	<b>719</b>	<b>93.6%</b>	<b>486</b>	<b>532</b>	<b>91.4%</b>	<b>189</b>	<b>233</b>	<b>81.1%</b>	<b>-61.2%</b>	<b>-56.3%</b>
<b>Meats</b>	<b>42 735</b>	<b>105 092</b>	<b>40.7%</b>	<b>33 629</b>	<b>90 982</b>	<b>37.0%</b>	<b>15 881</b>	<b>67 784</b>	<b>23.4%</b>	<b>-52.8%</b>	<b>-25.5%</b>
Fresh	29 984	66 517	45.1%	21 756	55 108	39.5%	10 628	34 616	30.7%	-51.2%	-37.2%
Frozen	7 000	27 490	25.5%	5 816	23 453	24.8%	2 759	25 470	10.8%	-52.6%	+8.6%
Salted Meat	248	1 013	24.5%	226	983	23.0%	52	968	5.4%	-77.0%	-1.5%
Prepared	2 268	6 159	36.8%	2 368	7 397	32.0%	1 052	4 773	22.0%	-55.5%	-35.5%
Fresh Offals	1 043	1 398	74.6%	1 106	1 457	75.9%	1 083	1 374	78.8%	-2.1%	-5.7%
Frozen Offals	1 410	1 639	86.0%	1 542	1 757	87.8%	78	305	25.7%	-94.9%	-82.7%
Salted Offals	437	439	99.7%	403	404	99.7%	6	7	87.9%	-98.4%	-98.2%
Prepared Offal	40	40	100.0%	18	30	61.1%	1	3	26.6%	-95.0%	-88.4%
Fat	304	396	76.7%	394	394	100.0%	221	268	82.7%	-43.8%	-32.0%
<b>Total Beef</b>	<b>43 408</b>	<b>105 811</b>	<b>41.0%</b>	<b>34 115</b>	<b>91 513</b>	<b>37.3%</b>	<b>16 069</b>	<b>68 016</b>	<b>23.6%</b>	<b>-52.9%</b>	<b>-25.7%</b>

Source : Comext

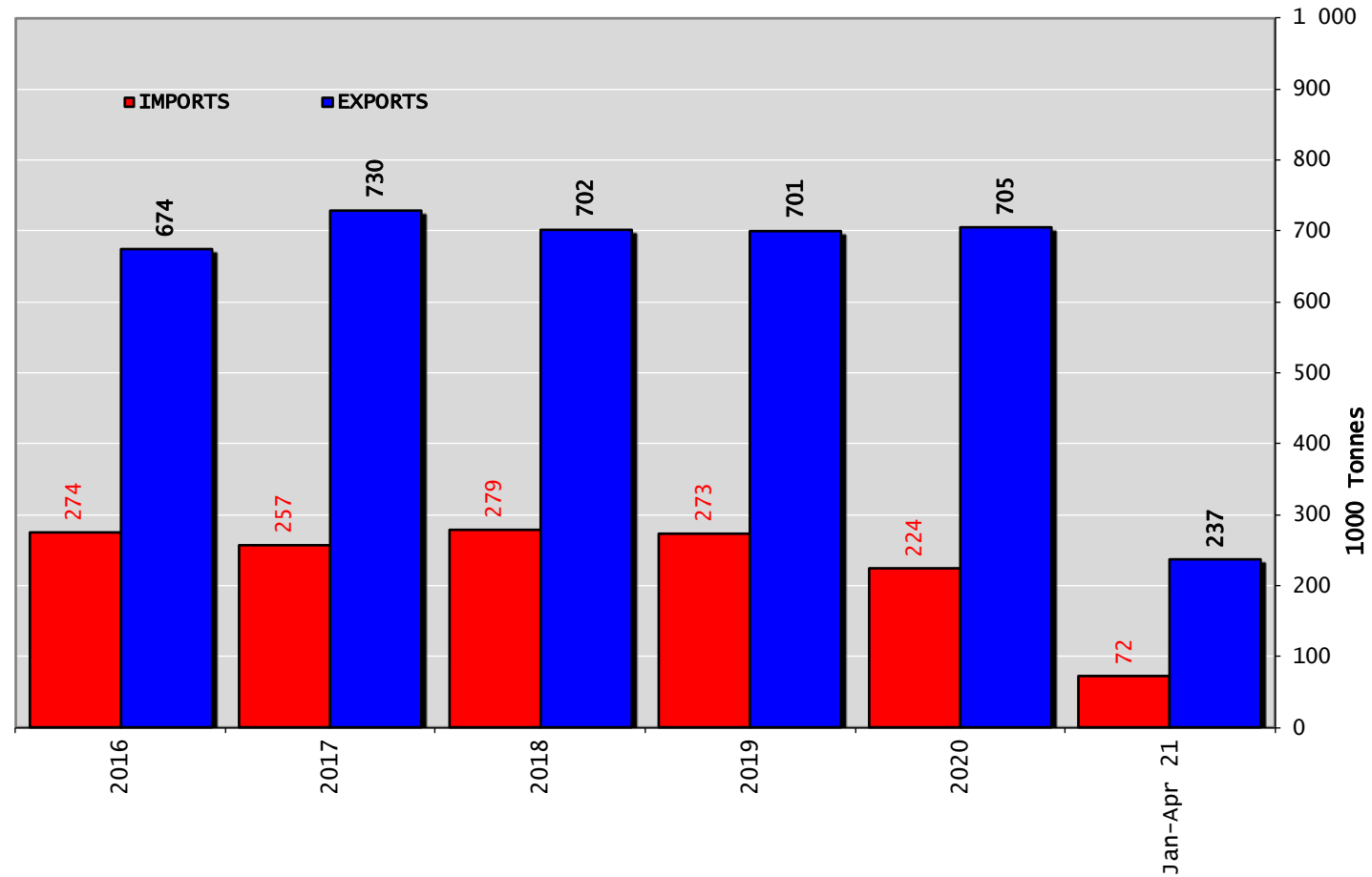
17 June 2021

# TRADE

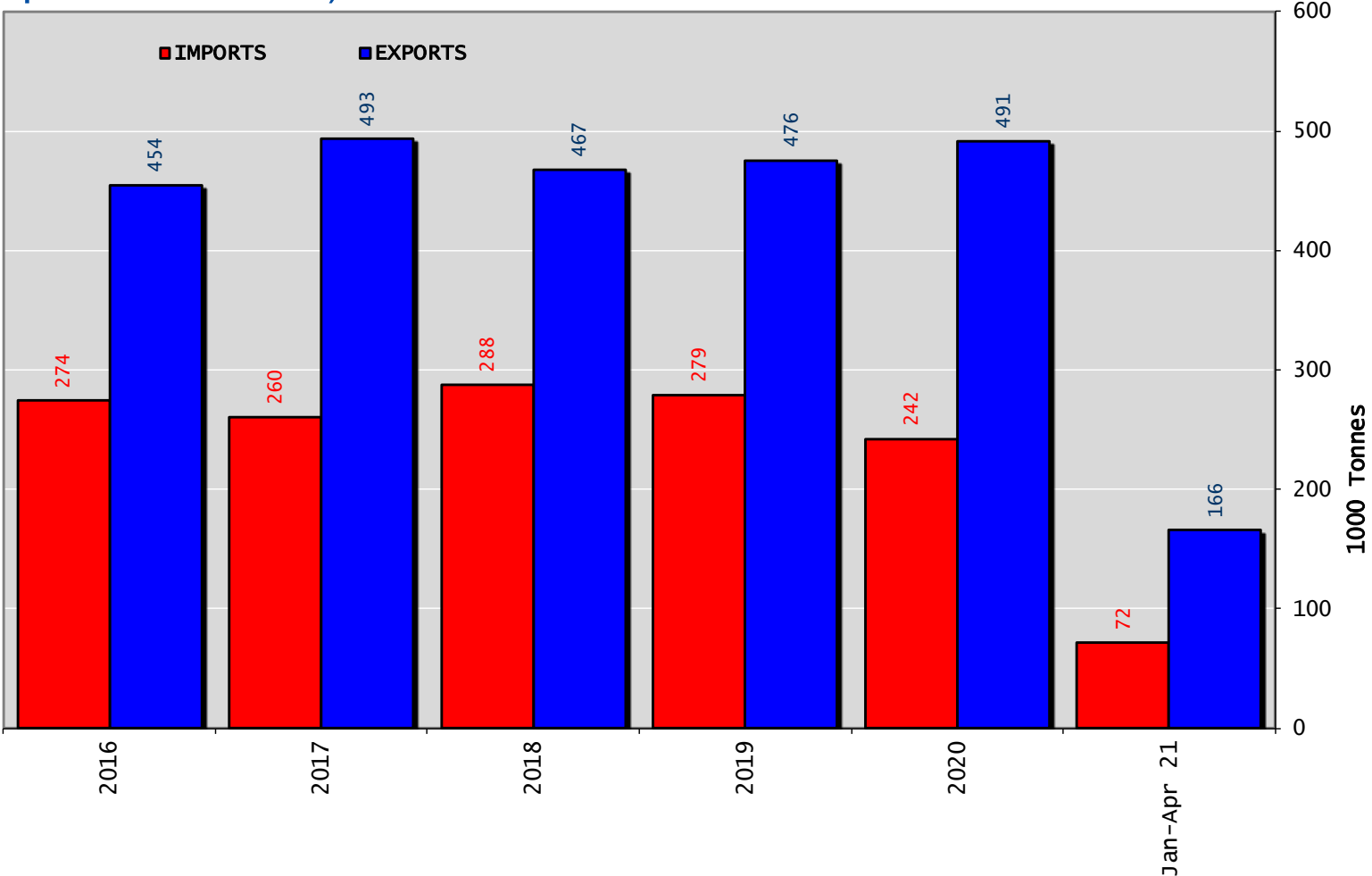
# EUTRADE BALANCE

## Beef & Live Animals

Trade Balance of Beef Products and Live Animals (without UK)



# Trade Balance of Beef Products (Except Live Animals) without UK

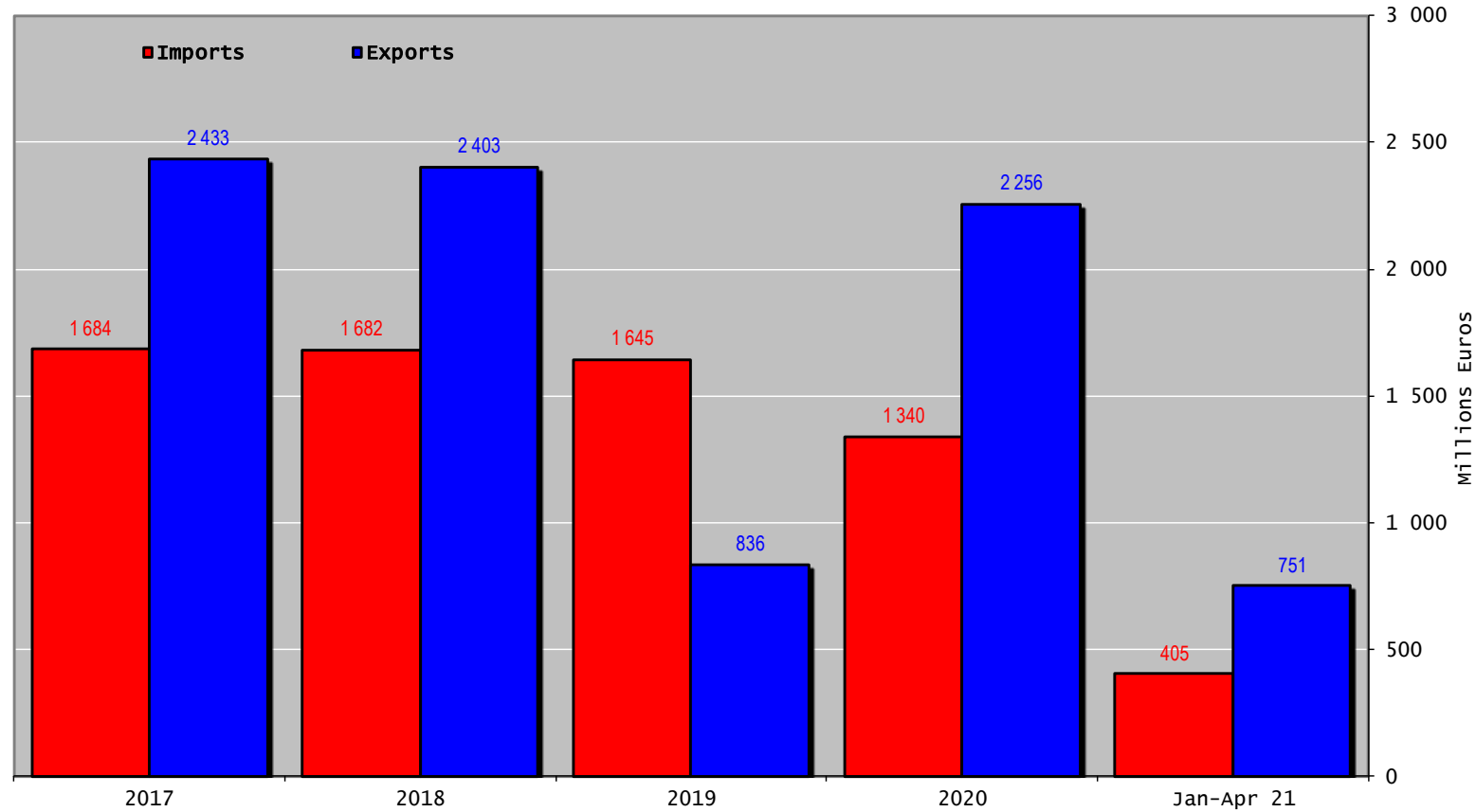


# TRADE

## EU TRADE BALANCE

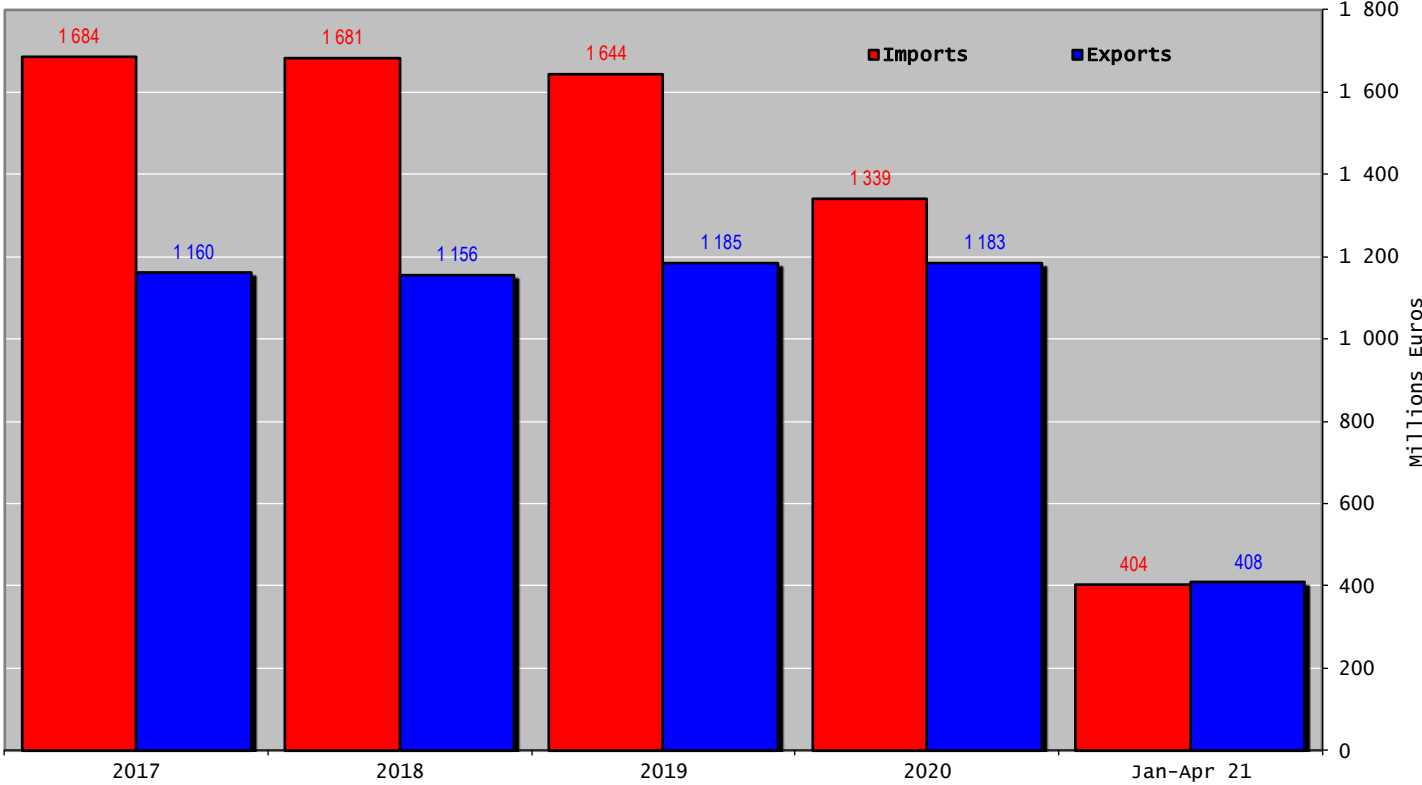
### Beef & Live Animals

Trade Balance of Beef Products and Live Animals (without UK)

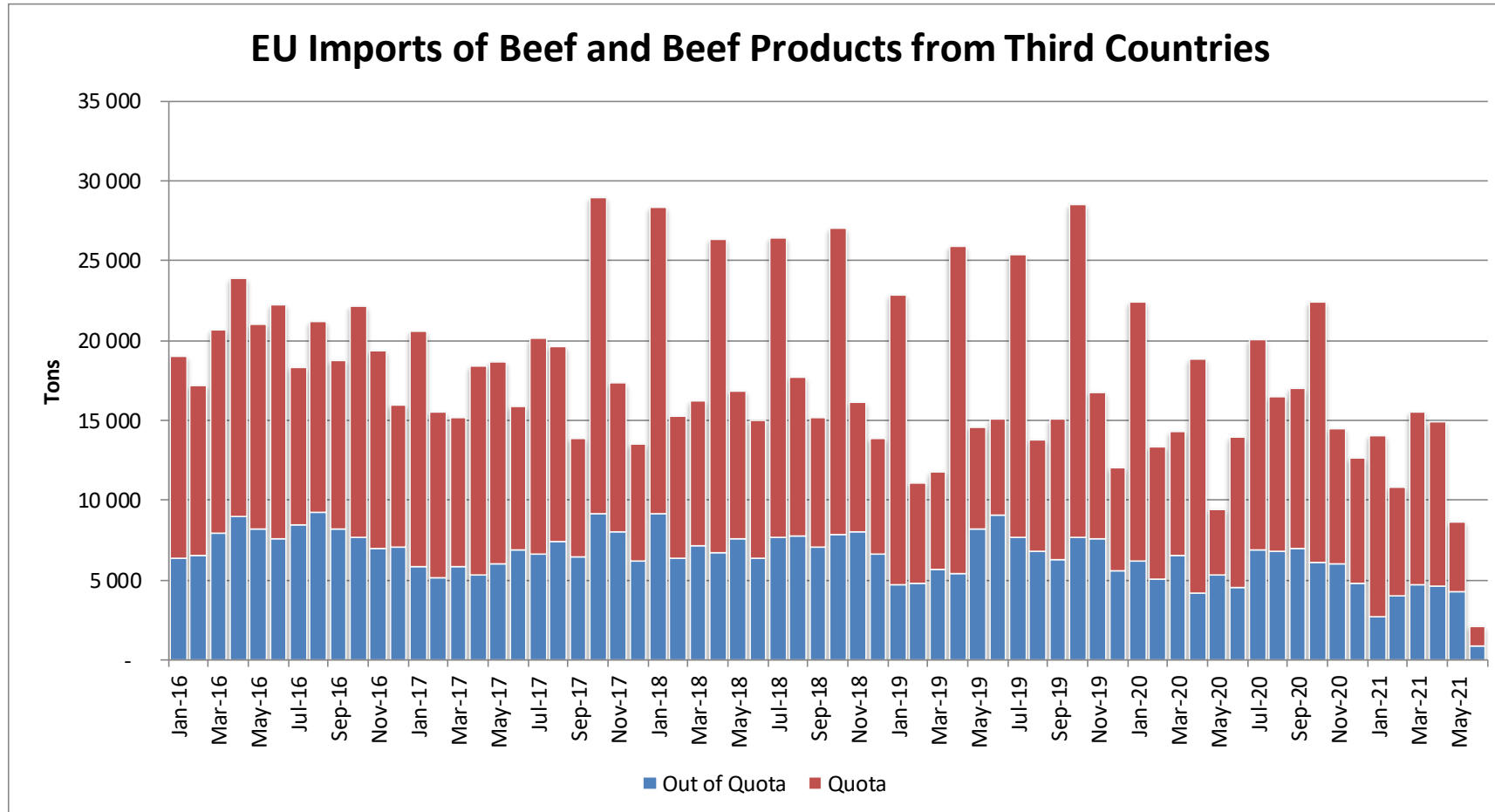




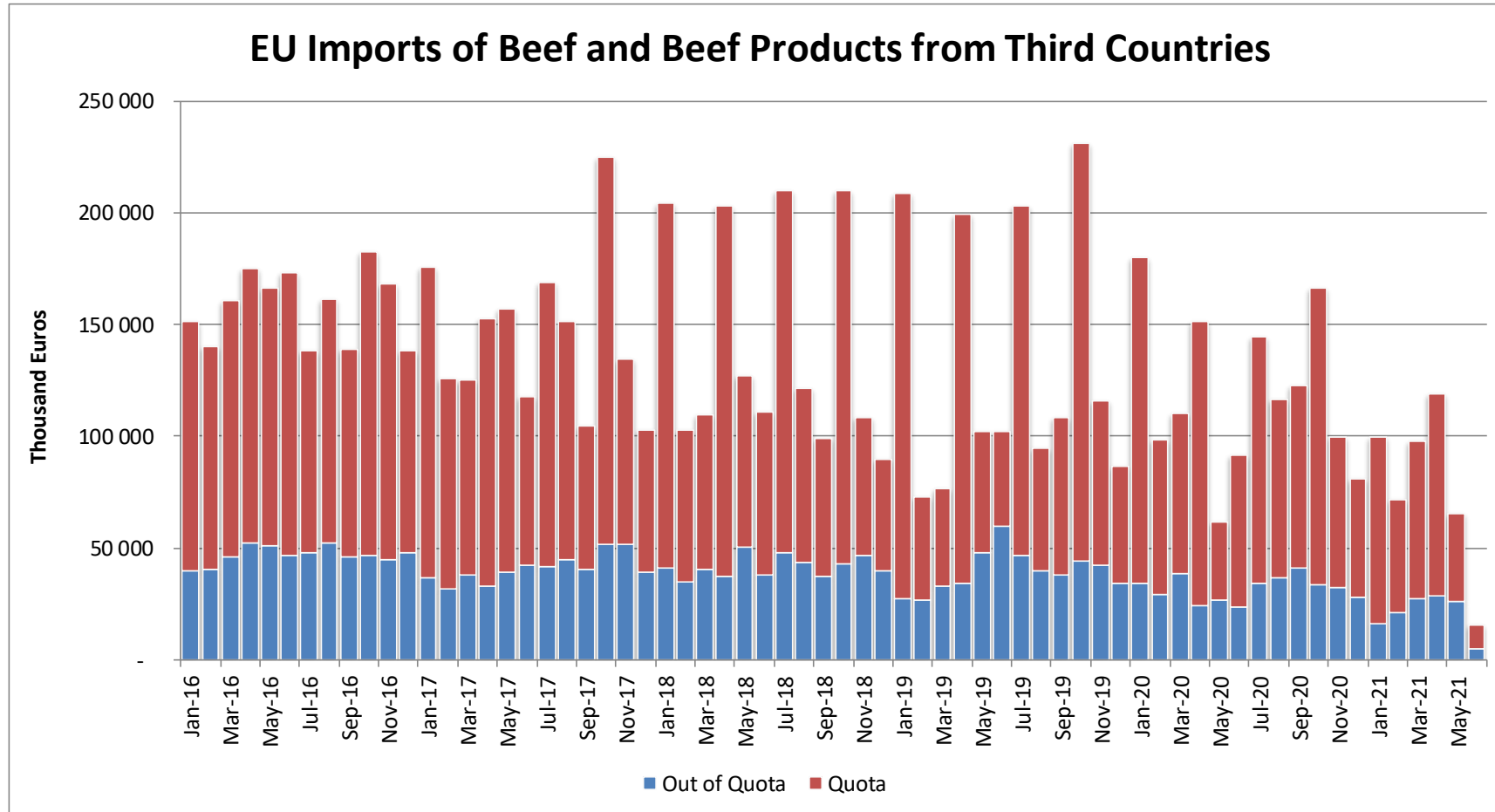
# Trade Balance of Beef Products (Except Live Animals) without UK



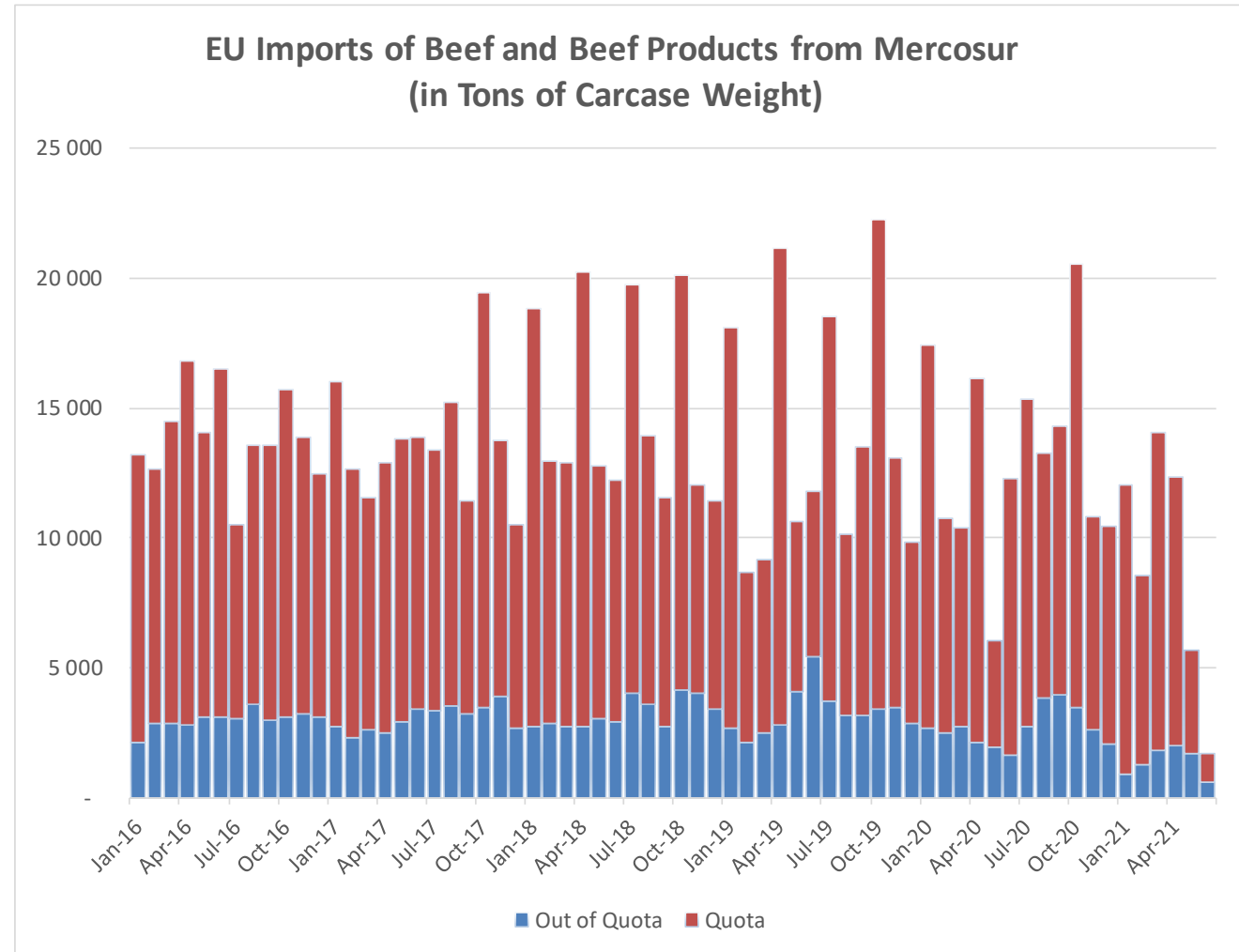
# Imports in and out of TRQs



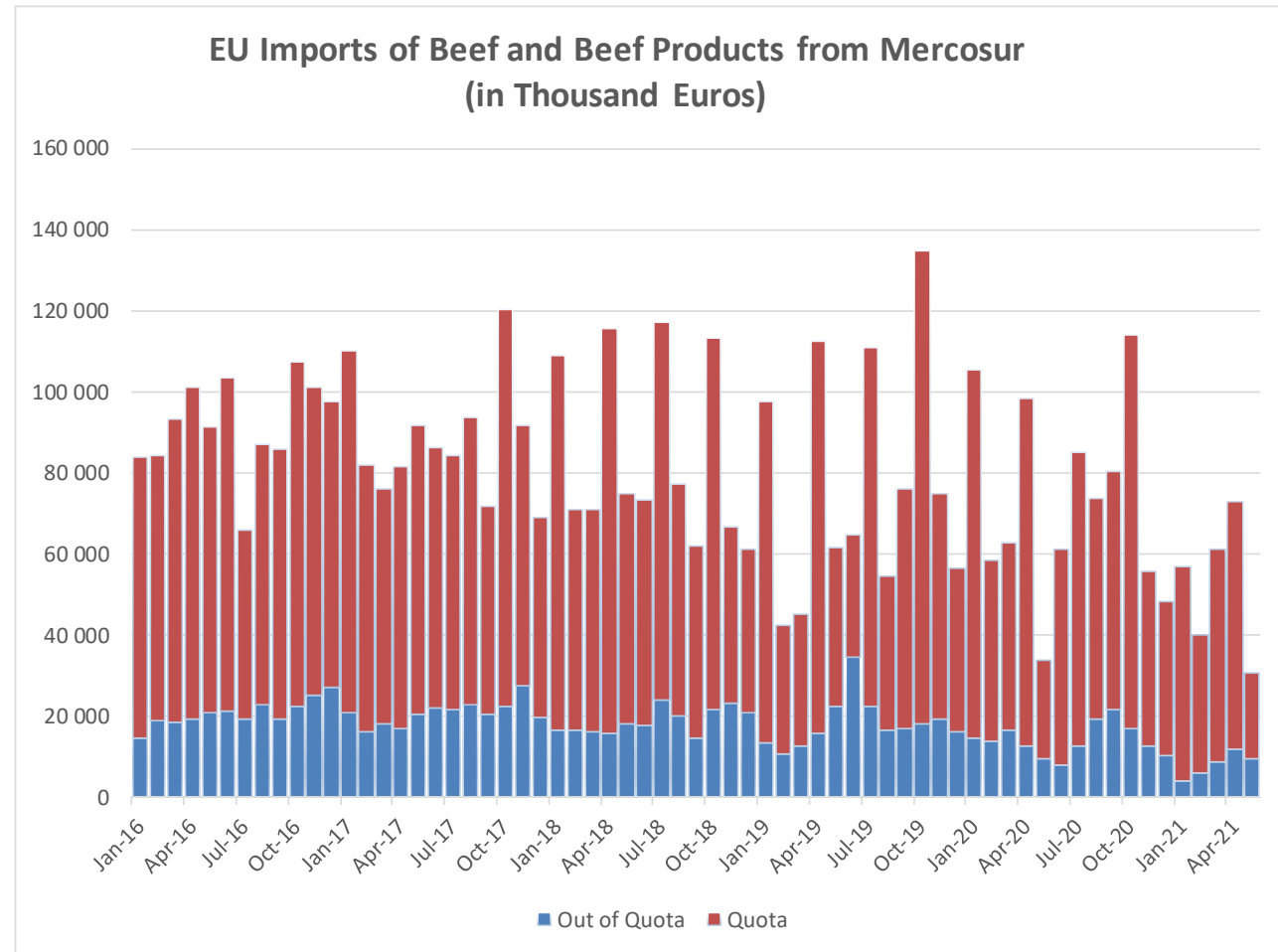
# Imports in and out of TRQs



# Imports in and out of TRQs



# Imports in and out of TRQs



# High Quality Beef Import Quotas

Hilton Quota		Regulation (EU) N° 593/2013						
		Quantity allocated (Tons)	2018/2019		2019/2020		2020/2021*	
			Use		Use		Use	
09.4001	Australia	2 250						
09.4004	Argentina	199	11.05	5.53%	8.34	4.17%	1.80	0.91%
09.4450	Argentina	14 189	29 491.35	99.97%	26 649.20	90.34%	5 833.05	41.11%
09.4451	Australia	1 768	4 942.02	69.12%	3 000.01	41.96%	216.11	12.22%
09.4452	Uruguay	2 465	6 363.76	99.81%	4 520.57	70.90%	1 635.72	66.37%
09.4453	Brazil	7 304	4 147.19	41.47%	2 884.79	28.85%	553.61	7.58%
09.4454	New Zealand	447	980.60	75.43%	859.15	66.09%	114.16	25.54%
09.4002	Canada/US	11 500	3 883.04	33.77%	2 703.68	23.51%	1 025.25	8.92%
09.4455	Paraguay	346	935.41	93.54%	680.40	68.04%	163.81	47.39%
Total Beef		38 018	50 743.37	75.93%	41 297.80	61.80%	9 541.71	25.10%
Total Buffalo		2 449	11.05	0.45%	8.34	0.34%	1.80	0.07%
Total		40 467	50 754.42	73.26%	41 306.14	59.63%	9 543.51	23.58%

30.04.2021

17 June 2021

# High Quality Beef Import Quotas

Quota erga omnes

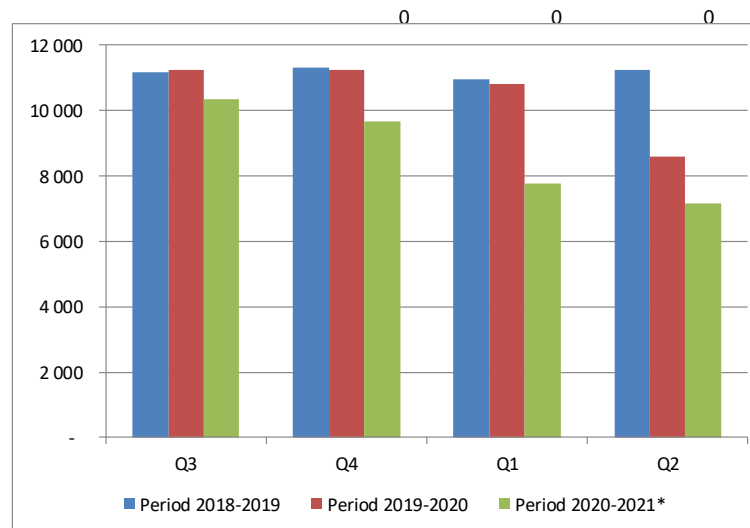
Regulation (EU) No 481/2012

	2018-Q3	2018-Q4	2019-Q1	2019-Q2	TOTAL
Period 2018-2019	11 165	11 300	10 973	11 256	44 693
Available	11 250	11 250	11 250	11 250	45 000
Use	99.24%	100.00%	97.53%	100.00%	99.32%
Available after transfer	11 250	11 335	11 200	11 527	
	99.24%	100.00%	97.53%	100.00%	

	2019-Q3	2019-Q4	2020-Q1	2020-Q2	TOTAL
Period 2019-2020	11 246	11 259	10 825	8 599	41 930
Available	11 250	11 250	11 250	11 250	45 000
Use	99.97%	100.00%	96.22%	76.44%	93.18%
Available after transfer	11 250	11 254	11 241	11 675	
	99.97%	100.00%	96.30%	73.66%	

	2020-Q3*	2020-Q4	2021-Q1	2021-Q2	TOTAL
Period 2020-2021*	10 332	9 674	7 760	7 177	34 944
Available	11 250	11 250	11 250	11 250	45 000
Use	91.84%	85.99%	68.98%	63.80%	77.65%
Available after transfer	11 250	12 168	12 826	14 740	
	91.84%	79.51%	60.51%	48.69%	

\* Until 12.05.2021

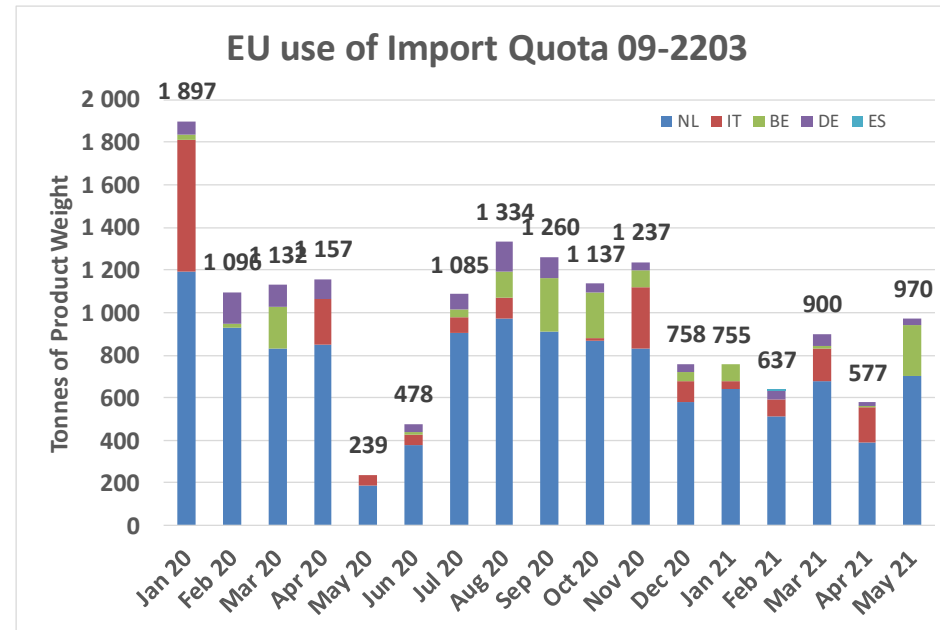


# High Quality Beef Import Quotas

Origin	GATT 2019-2020				
	2019-Q3	2019-Q4	2020-Q1	2020-Q2	Total
NL			2 957	1 415	4 372
IT			614	314	929
BE			241	10	251
DE			313	133	446
ES			-	-	-
<b>Total import within Quota</b>			<b>4 125</b>	<b>1 873</b>	<b>5 998</b>
Available			4 625	4 625	9 250
Use			89.19%	40.50%	64.85%
After transfer			4 625	5 125	
Use			89.19%	36.55%	

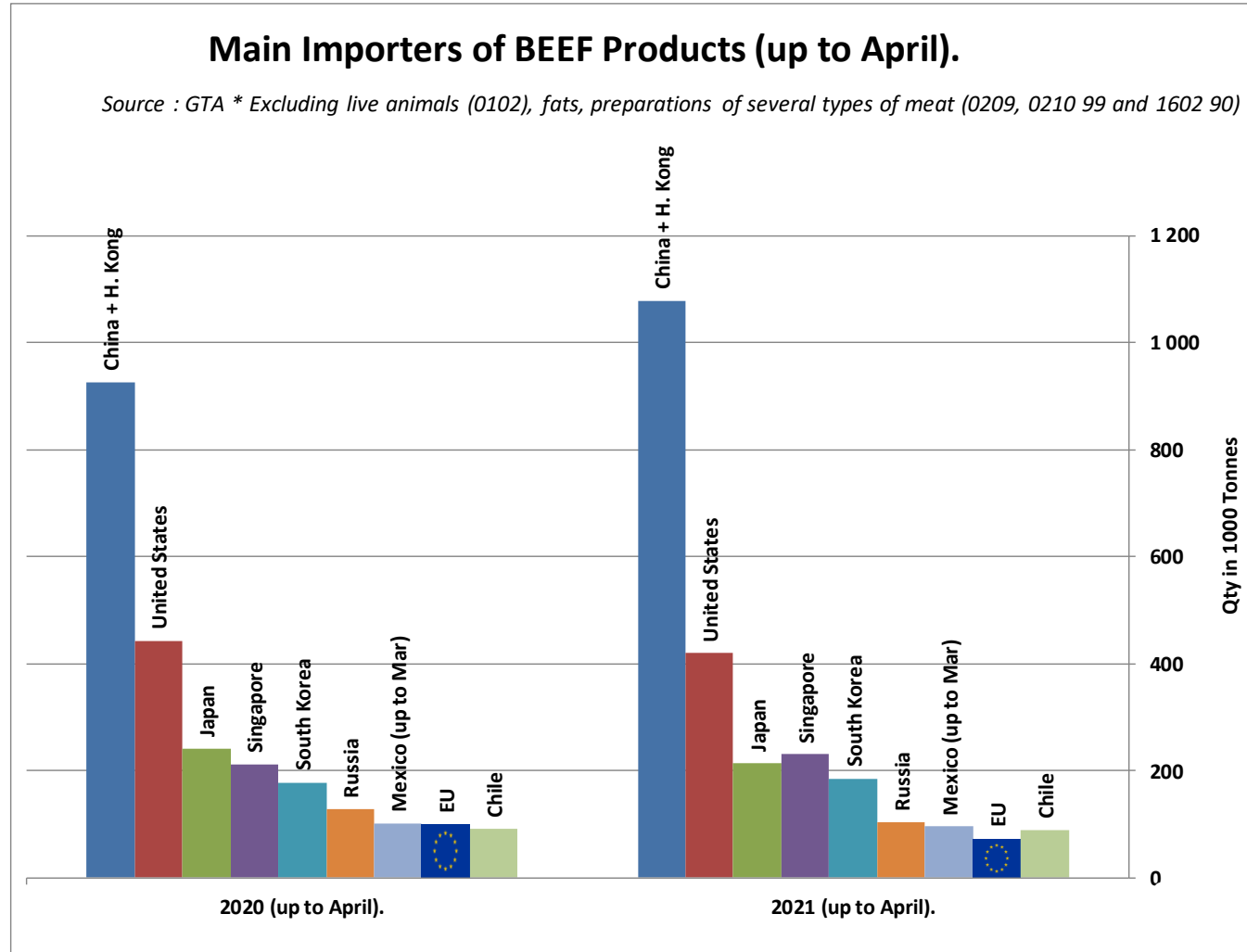
Origin	GATT 2020-2021				
	2020-Q3	2020-Q4	2021-Q1	2021-Q2	Total
NL	2 785	2 274	1 834	1 257	8 150
IT	174	404	263	164	1 005
BE	417	330	96	356	1 198
DE	305	124	98	55	581
<b>Total import within Quota</b>	<b>3 680</b>	<b>3 132</b>	<b>2 291</b>	<b>1 832</b>	<b>10 935</b>
Available	4 625	4 625	4 625	4 625	18 500
Use	79.57%	67.72%	49.52%	39.62%	59.11%
After transfer	4 625	5 570	6 118	6 959	
Use	79.57%	56.23%	37.44%	26.33%	





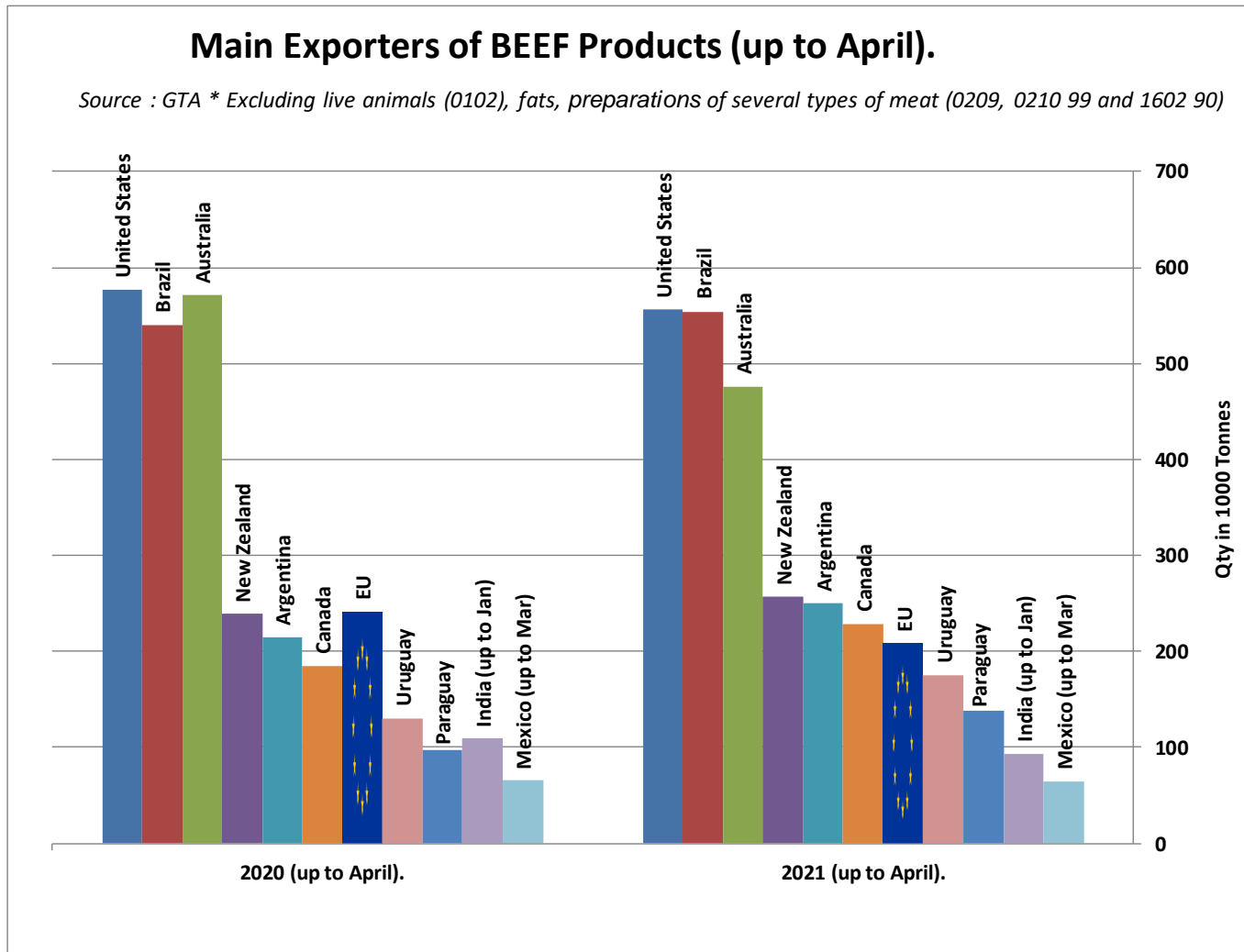
# WORLD BEEF MARKET

## E.U. + UK IMPORTS BEEF MAIN IMPORTERS



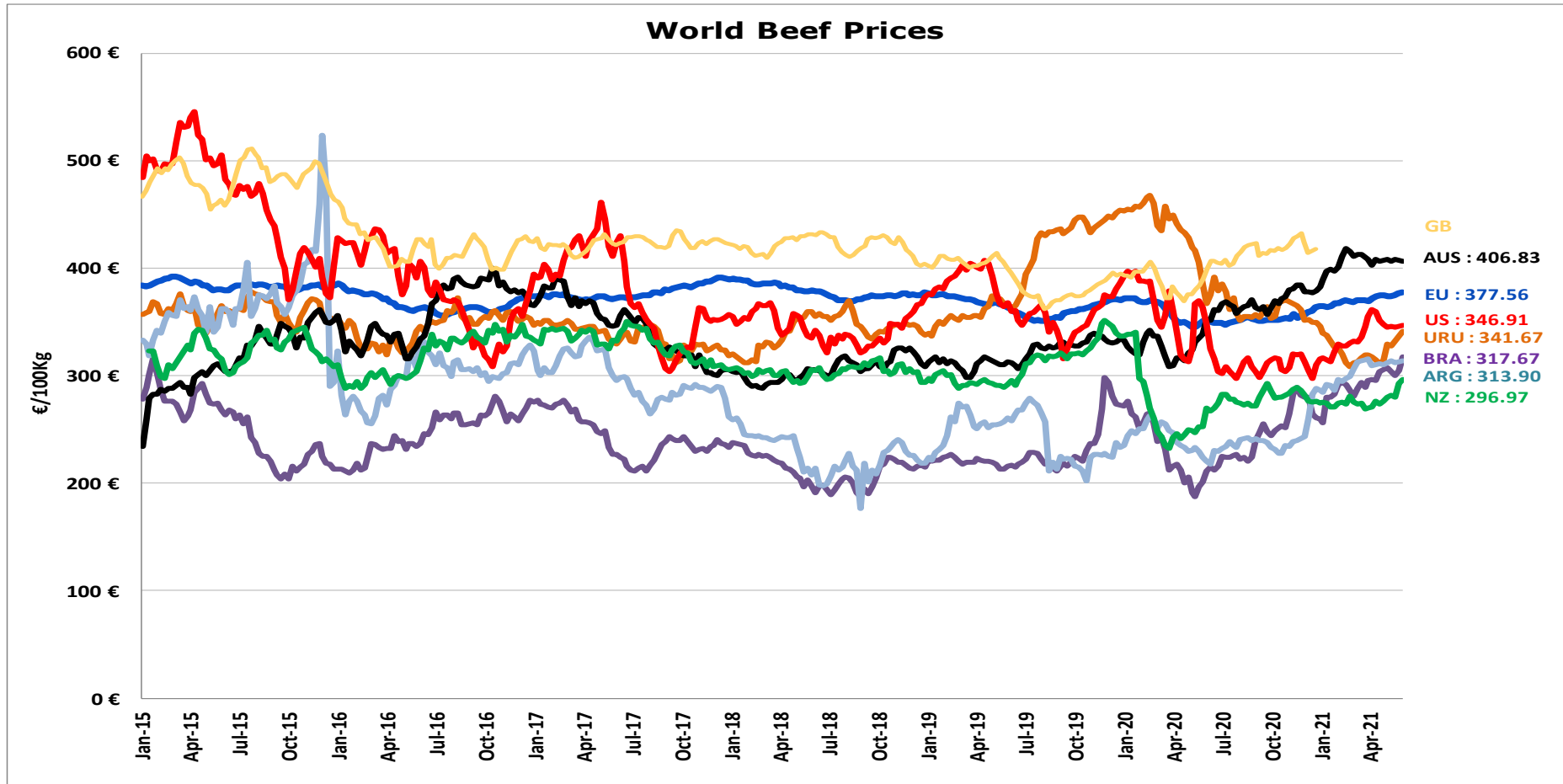
# WORLD BEEF MARKET

## E.U. + UK EXPORTS BEEF MAIN EXPORTERS



# WORLD BEEF MARKET

## STEER PRICES EU, US, AUS, NZ



- ECB <http://sdw.ecb.europa.eu/browse.do?node=2018794>
- US <https://www.marketnews.usda.gov/mnp/ls-home>
- AUS <http://statistics.mla.com.au/Report/RunReport/ae59d4ac-74e4-4c56-93bd-982a044d9760>
- UY <http://www.inac.gub.uy/innovaportal/v/11034/10/innova.front/indicadores-y-precios>
- ARG [http://www.abc-consorcio.com.ar/Estadisticas/detalle/117/precios\\_comparativos\\_del\\_novillo.html](http://www.abc-consorcio.com.ar/Estadisticas/detalle/117/precios_comparativos_del_novillo.html)
- BR <http://www.pecuaria.com.br/cotacoes.php>
- NZ [http://www.abc-consorcio.com.ar/Estadisticas/detalle/117/precios\\_comparativos\\_del\\_novillo.html](http://www.abc-consorcio.com.ar/Estadisticas/detalle/117/precios_comparativos_del_novillo.html)

17 June 2021

THANK YOU VERY MUCH

More Information at:

EU Market Observatory

[https://ec.europa.eu/agriculture/market-observatory/meat\\_en](https://ec.europa.eu/agriculture/market-observatory/meat_en)

And

Agri-FOOD data portal:

<http://agridata.ec.europa.eu/>

# Thank you



© European Union 2020

Unless otherwise noted the reuse of this presentation is authorised under the [CC BY 4.0](https://creativecommons.org/licenses/by/4.0/) license. For any use or reproduction of elements that are not owned by the EU, permission may need to be sought directly from the respective right holders.

Slide xx: **element concerned**, source: e.g. [Fotolia.com](https://www.fotolia.com/); Slide xx: **element concerned**, source: e.g. [iStock.com](https://www.istock.com/)

