



BEEF & VEAL MARKET SITUATION



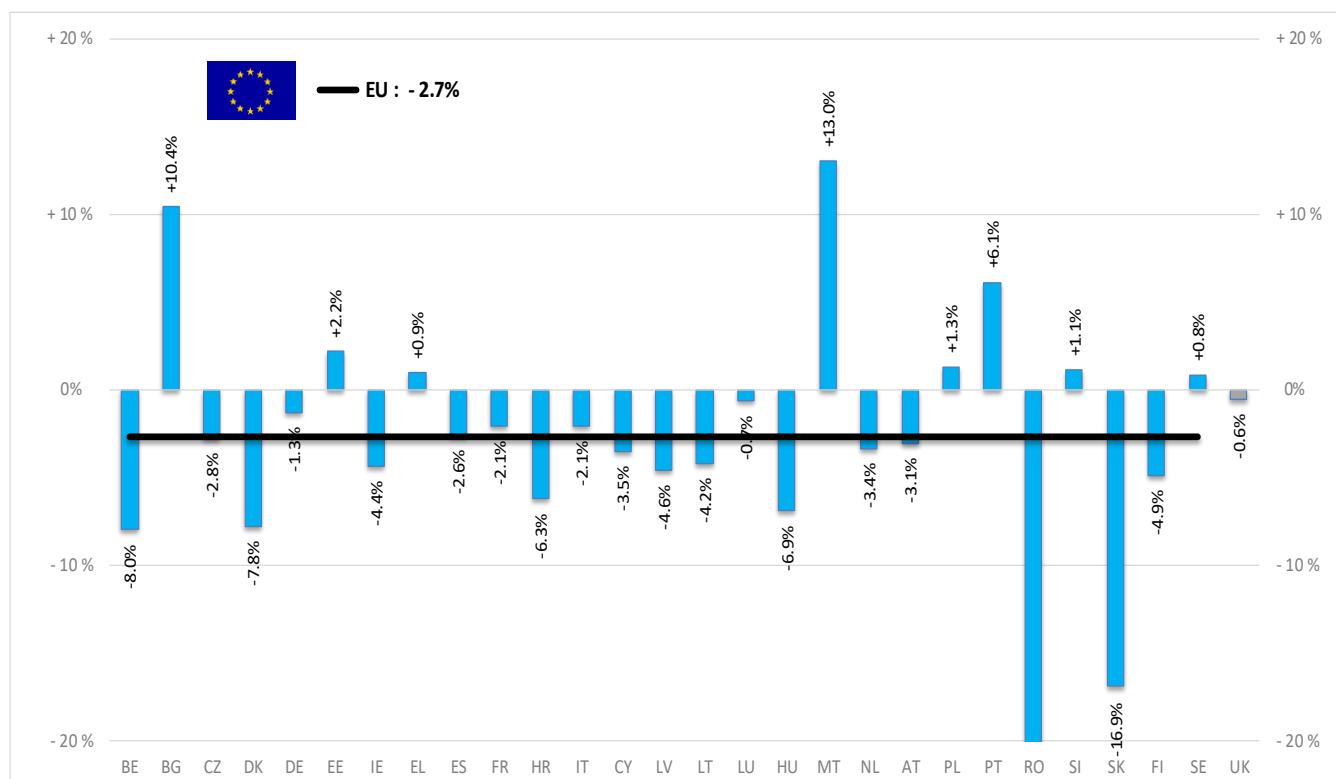
Beef CMO 17 September 2020

PRODUCTION

% EVOLUTION HEADS

HEADS	Jan-Jun 20/19	
	EU	EU + UK
Bull	-2.1%	-2.1%
Bullock	+4.7%	+1.7%
Cow	-3.0%	-2.8%
Heifer	+0.7%	+1.4%
Calve	-6.8%	-7.5%
Young cattle	-3.9%	-3.7%
Meat of bovine animals	-2.7%	-2.5%

Estimates for last month of period : EL



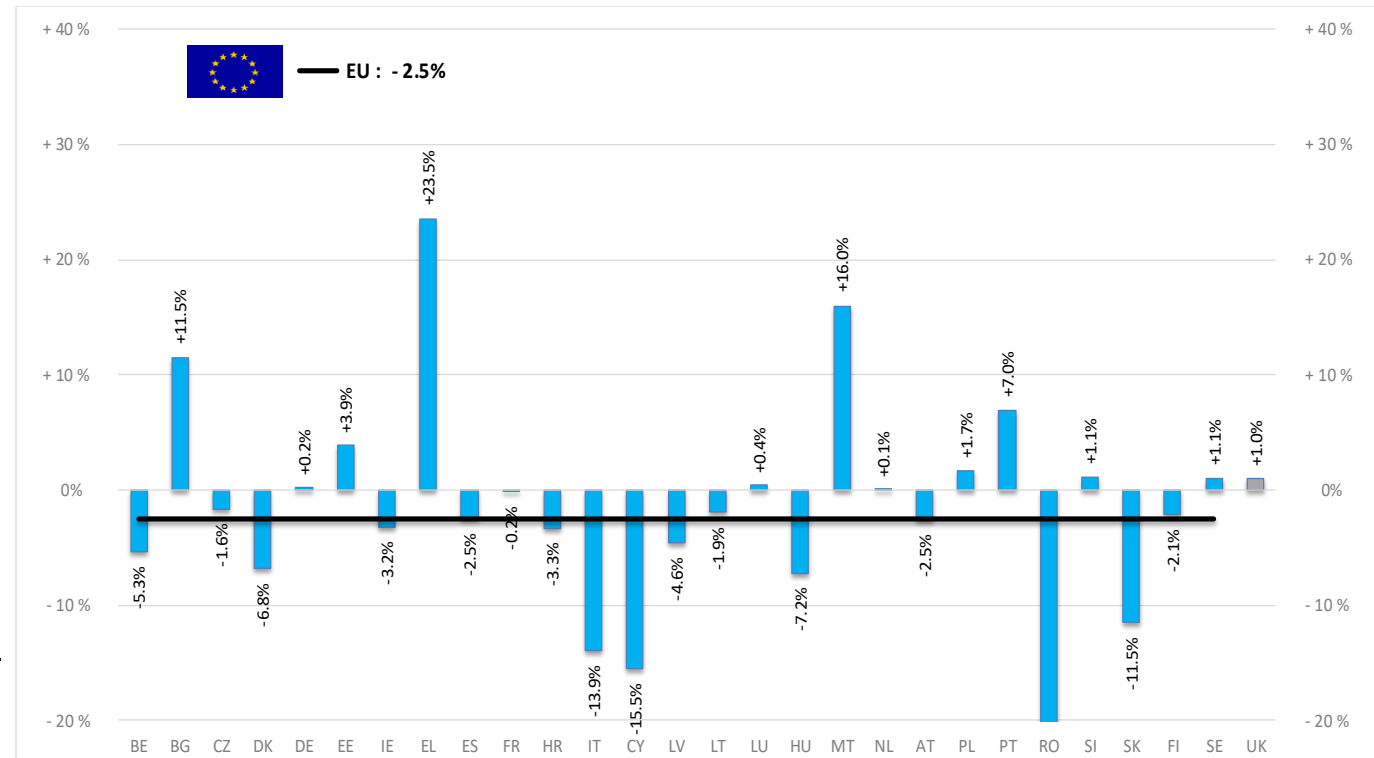
Source : EStat - Newcronos

PRODUCTION

% EVOLUTION TONNES

TONNES	Jan-Jun 20/19	
	EU	EU + UK
Bull	-2.3%	-2.3%
Bullock	+6.7%	+2.5%
Cow	-3.3%	-2.9%
Heifer	-1.5%	-0.2%
Calve	-8.0%	-8.2%
Young cattle	-1.9%	-1.8%
Meat of bovine animals	-2.5%	-2.1%

Estimates for last month of period : EL

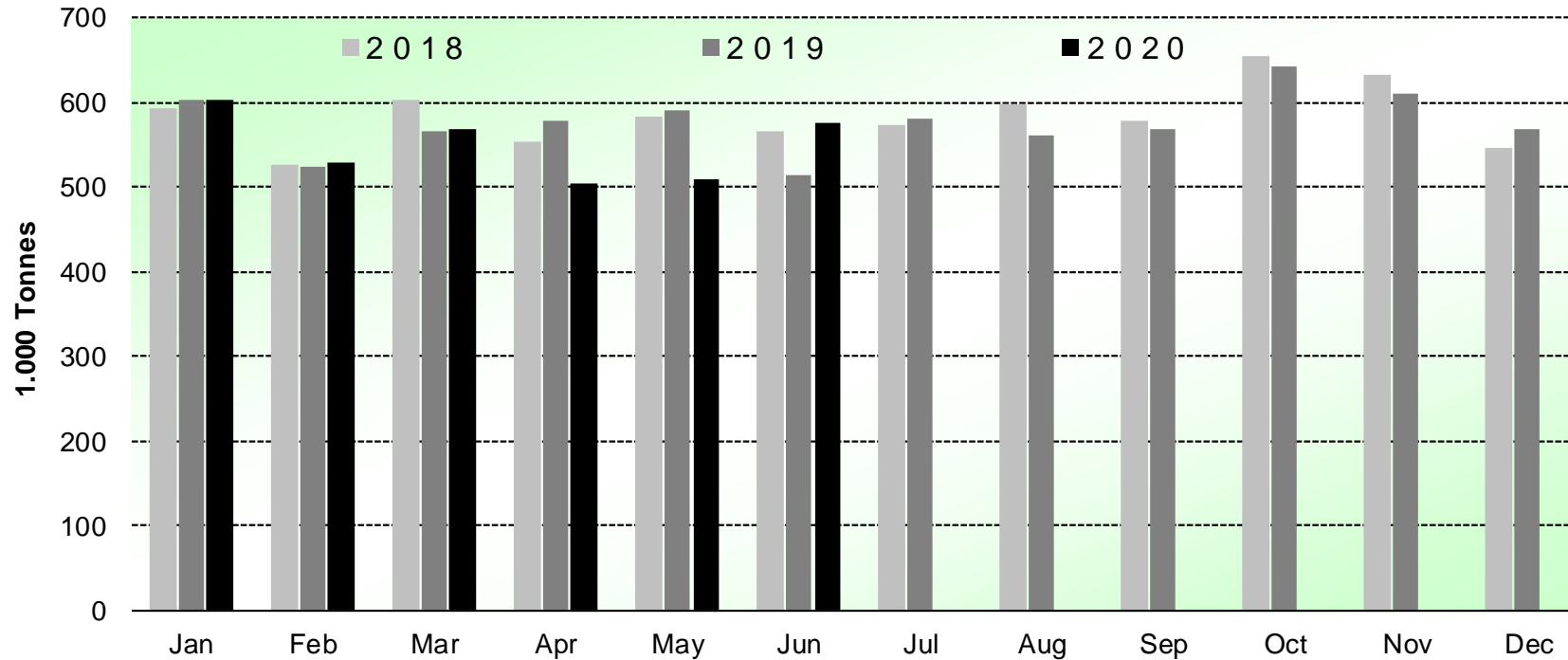


Source : EStat - Newcronos

PRODUCTION

HISTORIC
TONNES

Beef & Veal Production (EU Slaughtering) - Tonnes



Source : EStat-Newcronos

PRICES CARCASSES

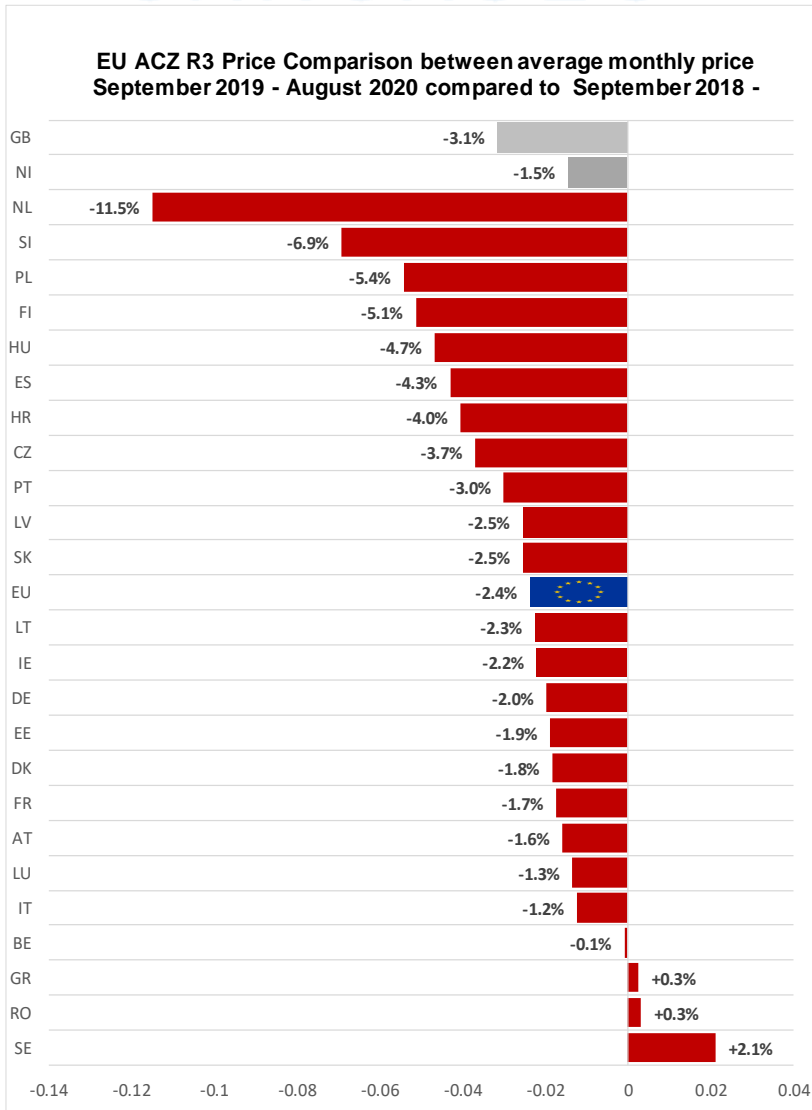
Dashboard

EU Prices week		36	Evolution since last week	Evolution since last month	Evolution since last year
Carcasse	Average A/C/Z -R3	351.7	- 0.3%	- 0.1%	- 1.7%
	Young Bovines (Z)	346.8	+ 0.4%	+ 0.2%	+ 0.4%
	Young Bulls (A)	349.9	- 0.5%	+ 0.2%	- 1.9%
	Steers (C)	365.5	- 0.7%	- 2.8%	+ 1.7%
	Cows (D)	280.6	- 0.6%	+ 0.3%	- 1.7%
	Heifers (E)	367.1	- 0.5%	- 0.3%	+ 0.6%
Live Animals	Male Calves Dairy Type	73.86	+ 3.8%	- 2.8%	- 2.8%
	Male Calves Beef Type	200.0	- 0.8%	+ 1.7%	+ 3.6%
	Young Store Cattle	2.41	- 0.2%	- 1.2%	+ 0.2%
	Yearling Male Store Cattle	2.27	- 1.5%	- 3.7%	+ 0.5%
	Yearling Female Store Cattle	2.37	+ 0.2%	- 0.7%	+ 0.0%
	Calves slaughtered <8M	429.4	+ 2.0%	+ 5.3%	- 8.1%

Sources : MSs notifications (Regulation (EU) 1182/2017 and 1184/2017)

PRICES CARCASSES

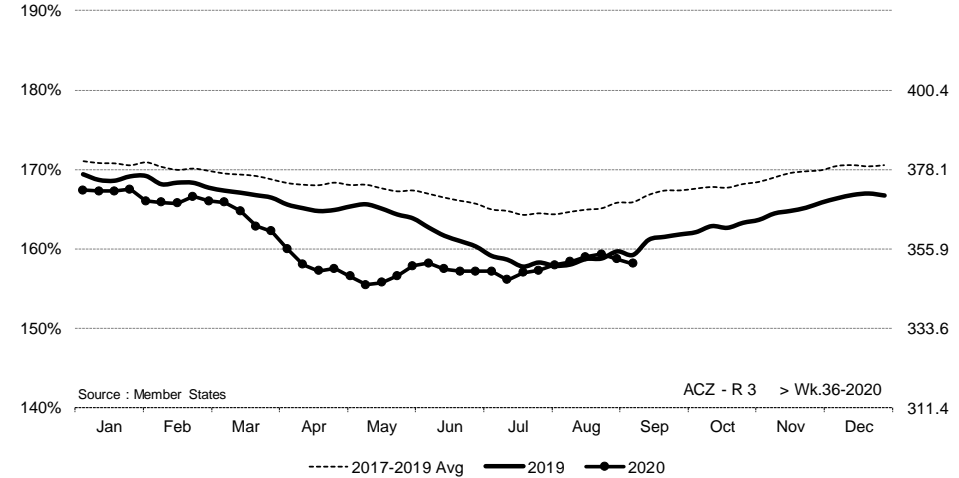
EU EVOLUTION A/C/Z.R3



ACZ - R 3 > Wk.36-2020

% of Reference Price

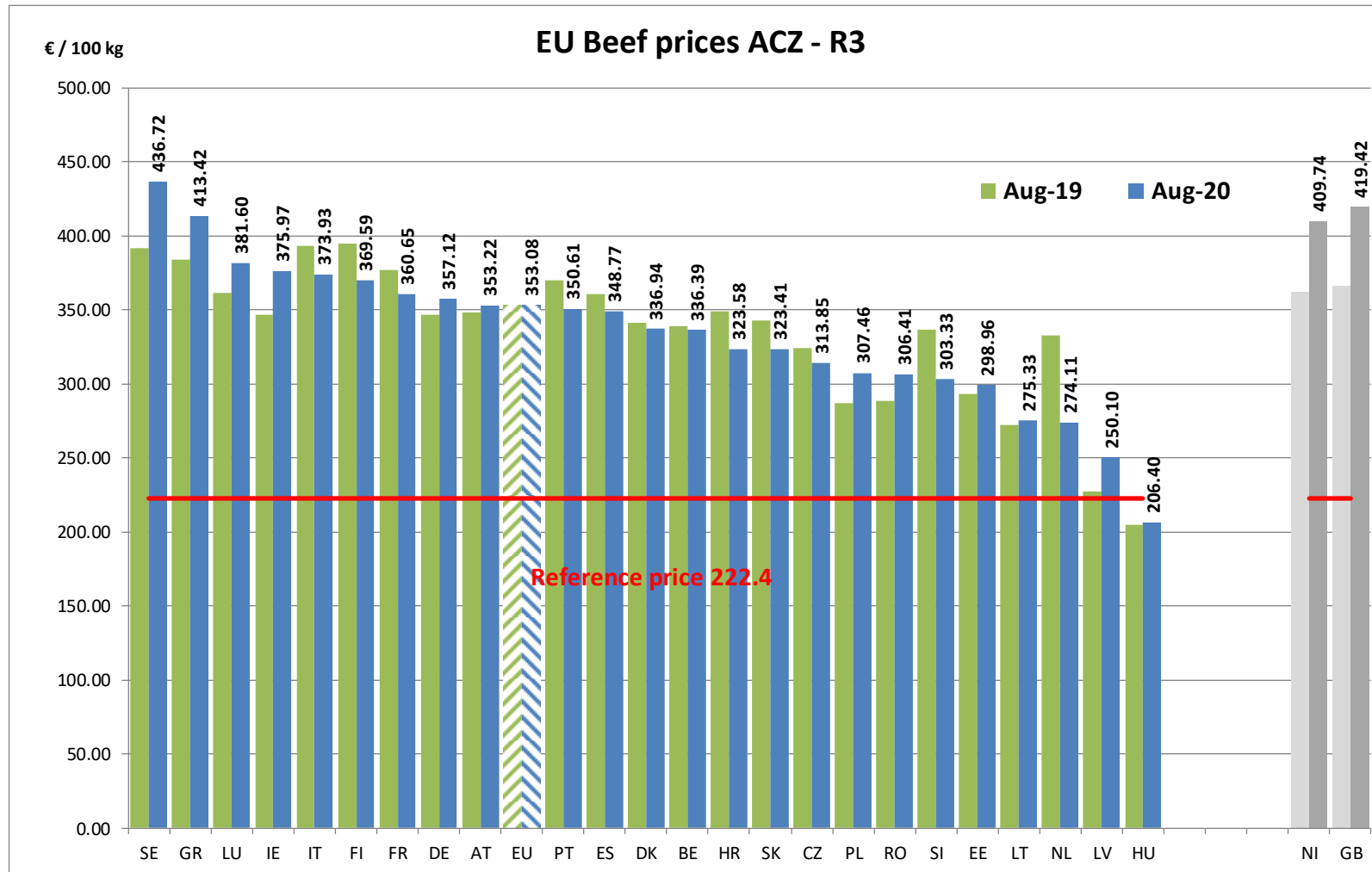
€/100 kg cwe



Price in week 36 :	351.72	Average price in August 2020 :	353.08
% change y/y :	-0.7%	% change y/y :	+0.1%
% Ref. Price in wk 36 :	158.1%		

PRICES CARCASSES

EU EVOLUTION
A/C/Z.R3

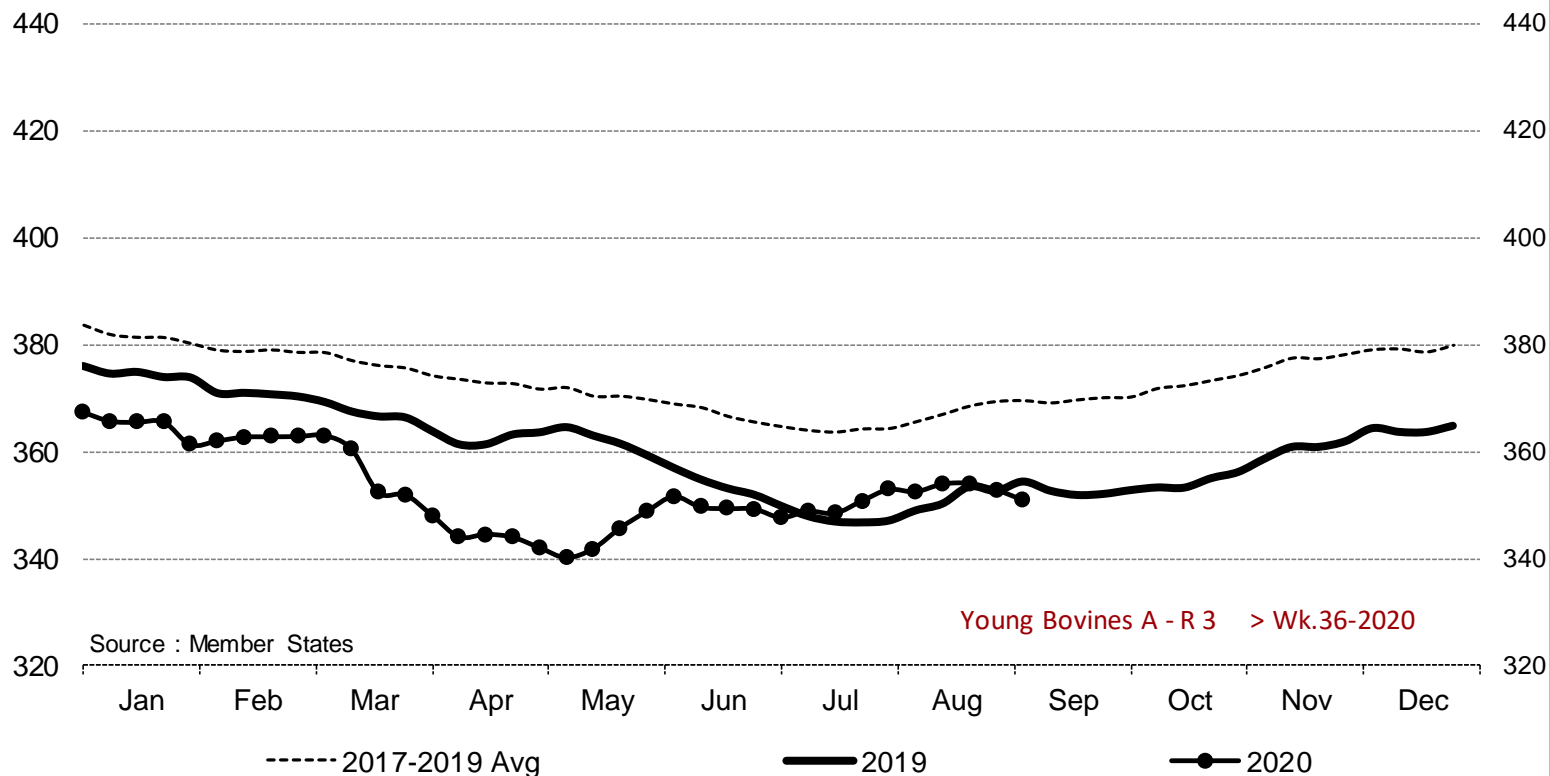


17 September 2020

PRICES CARCASSES

EU EVOLUTION YOUNG BULL – A.R3

Young Bovines A - R 3 > Wk.36-2020



Price in week 36 : **350.90**
% change y/y : **- 1.0%**

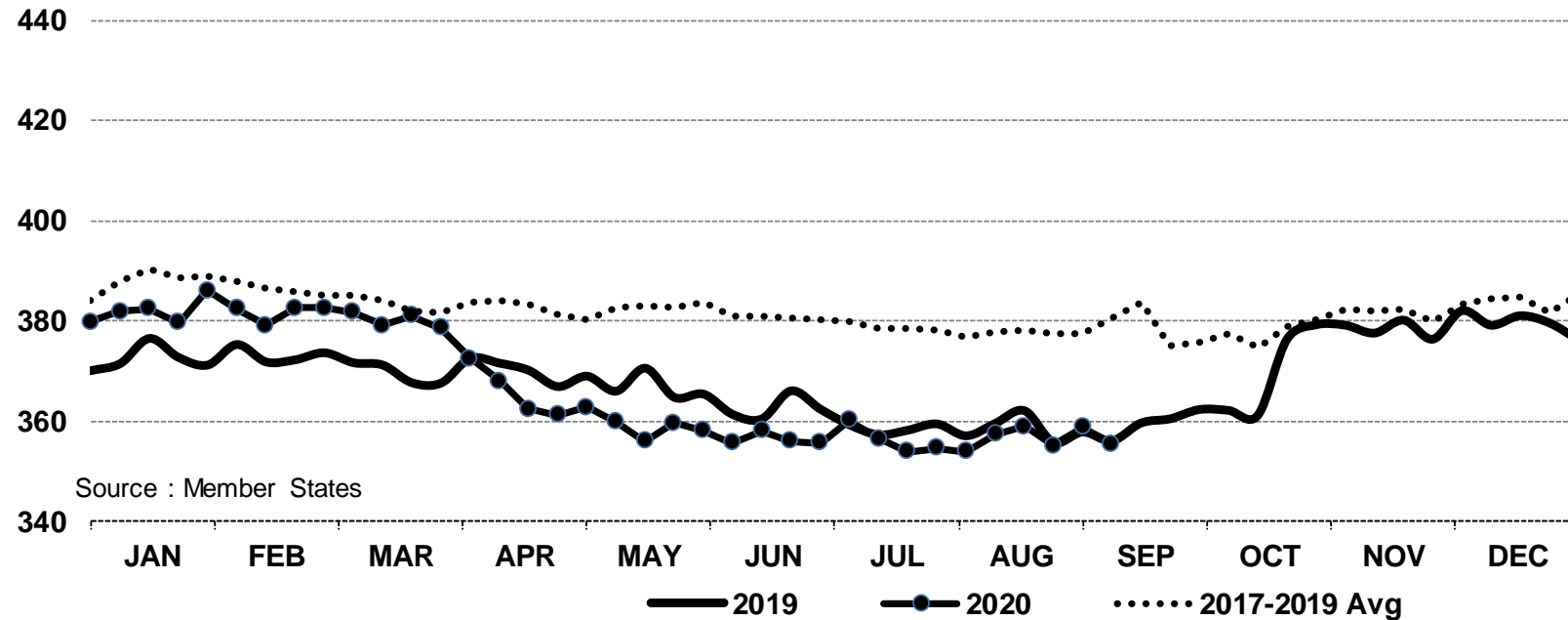
Average price in August 2020 : **353.20**
% change y/y : **+ 0.7%**

PRICES CARCASSES

E.U. EVOLUTION YOUNG BOVINE 8-12M- Z.R3

In € / 100 kg

Young Bovines 8-12m Z - R 3 > Wk.36-2020



Price in week 36 : **355.40**
% change y/y : **- 0.2%**

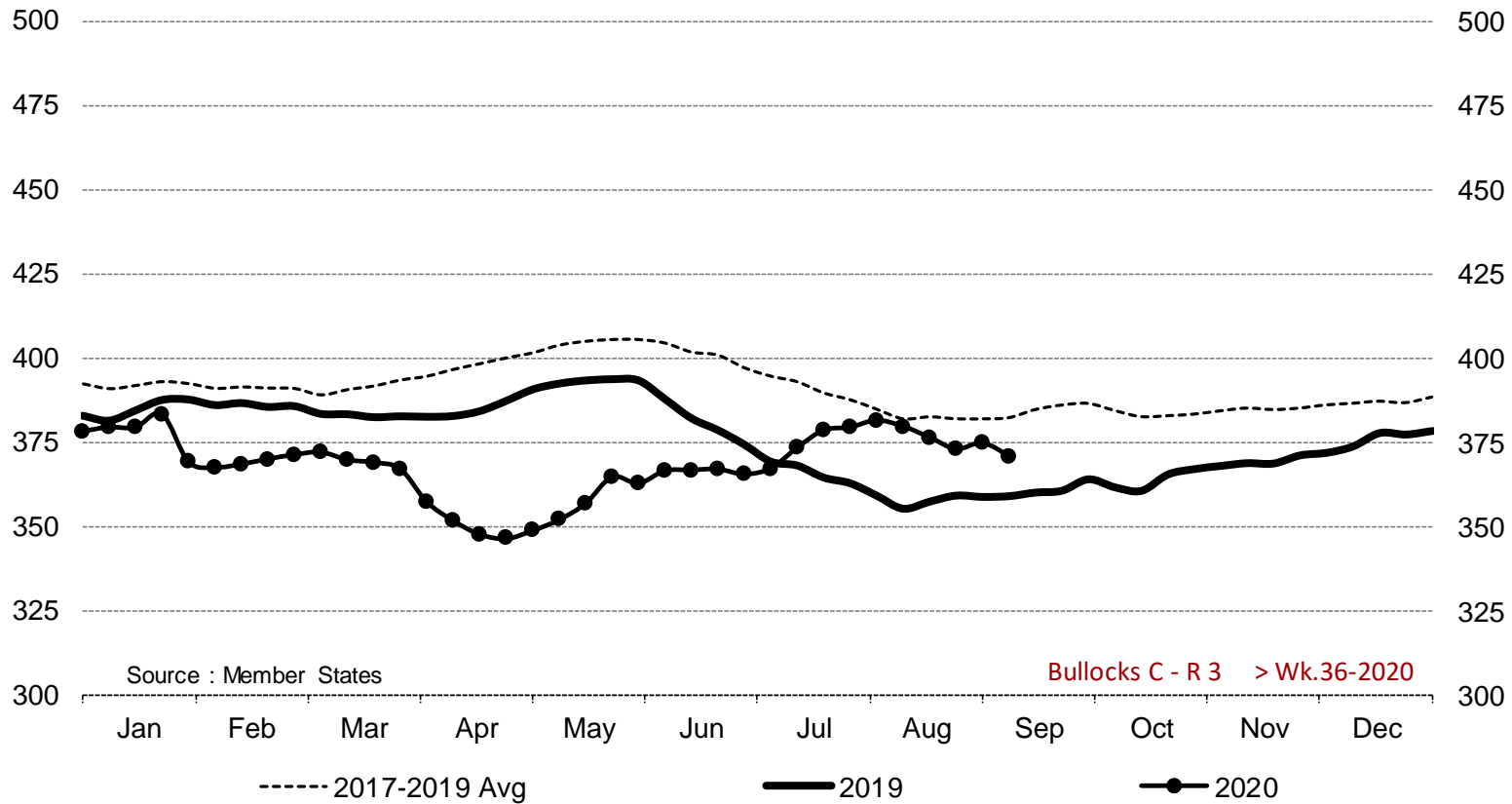
06/08/2020

Average price in August 2020 : **357.21**
% change y/y : **- 0.4%**

PRICES CARCASSES

E.U. EVOLUTION STEER – C.R3

Bullocks C - R 3 > Wk.36-2020



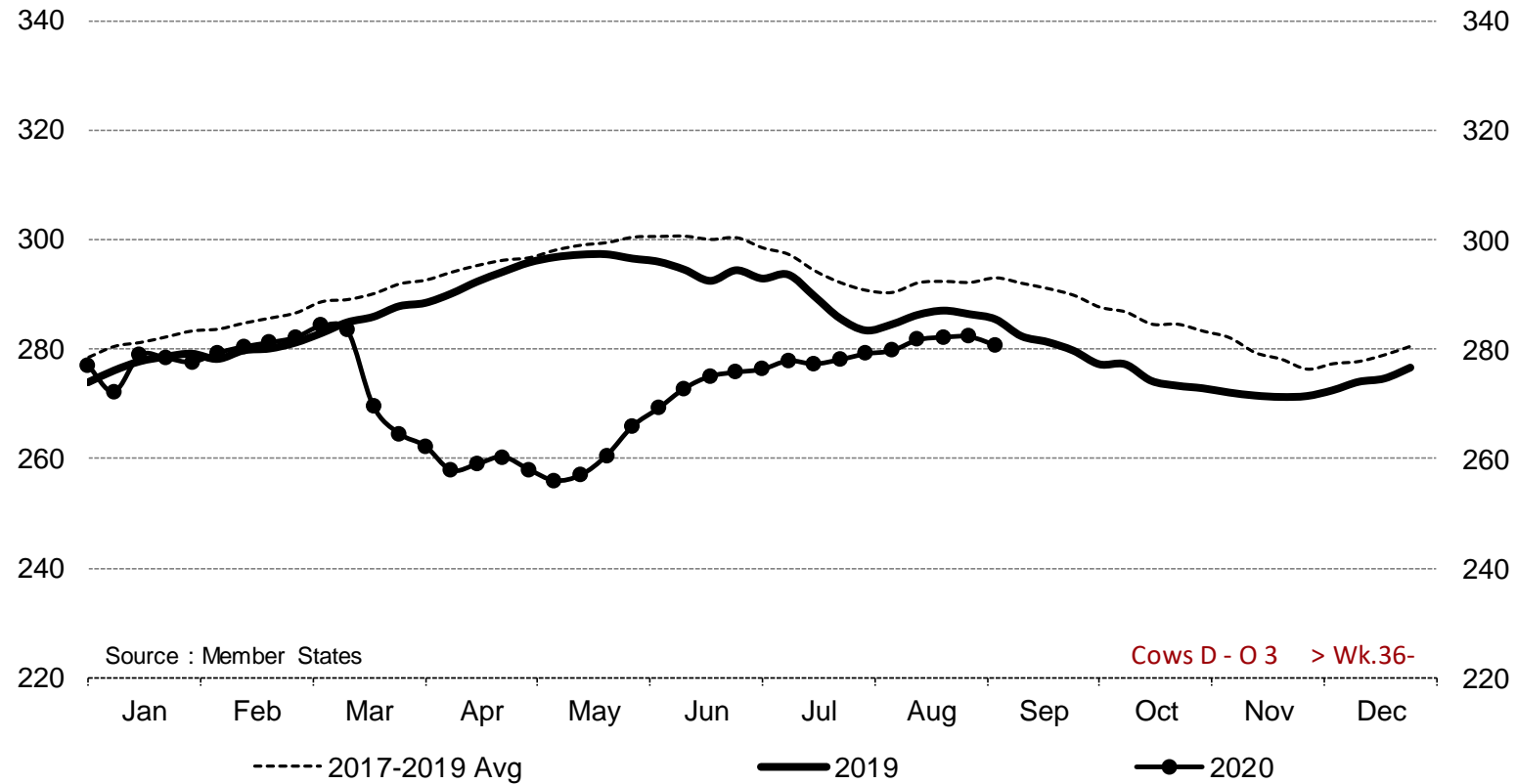
Price in week 36 : **370.83**
% change y/y : **+ 3.4%**

Average price in August 2020 : **376.07**
% change y/y : **+ 5.2%**

PRICES CARCASSES

E.U. EVOLUTION
COW – D.O3

Cows D - O 3 > Wk.36-2020



Price in week 36 : **280.64**
% change y/y : **- 1.7%**

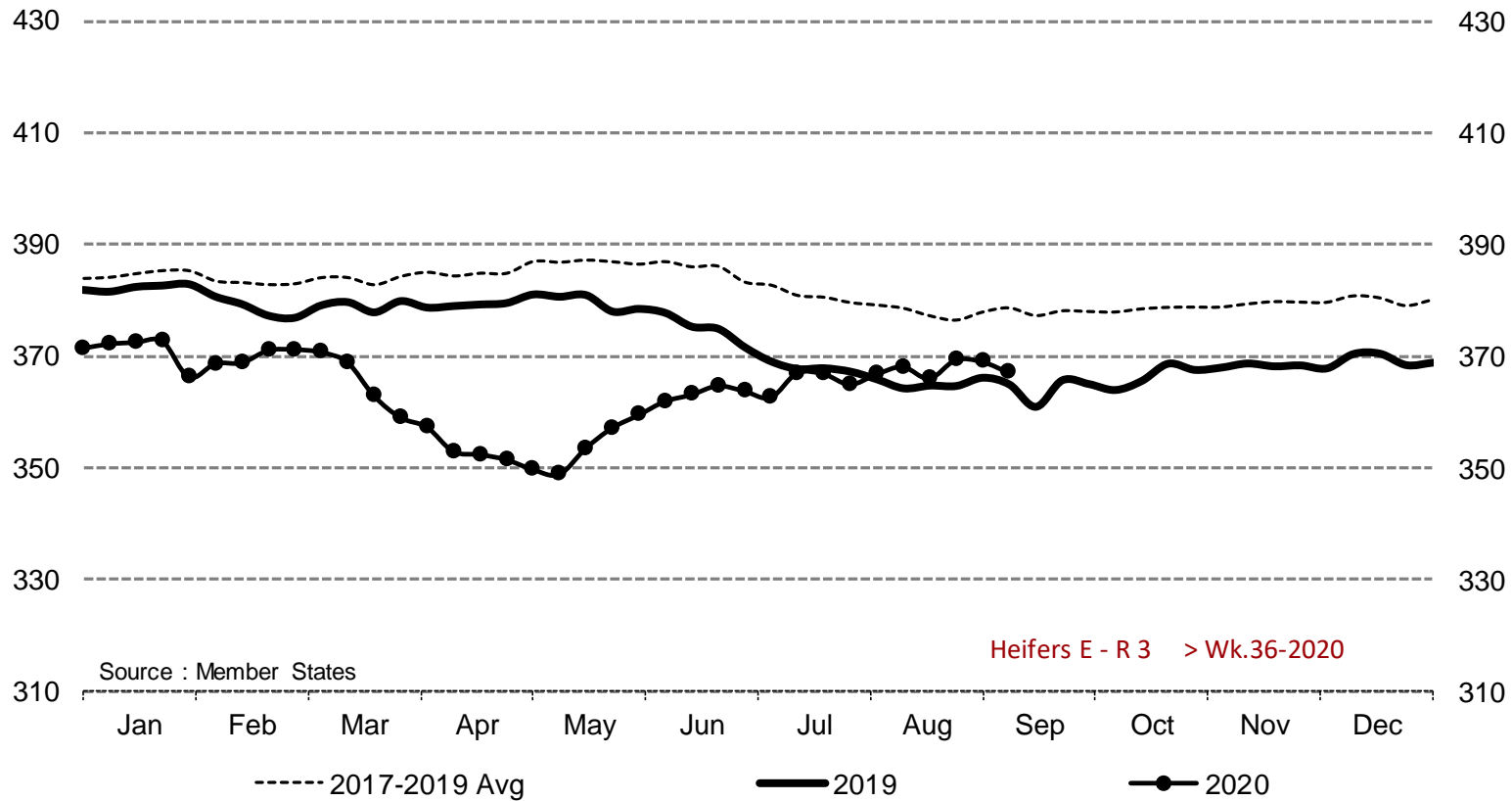
Average price in August 2020 : **281.25**
% change y/y : **- 1.5%**

17 September 2020

PRICES CARCASSES

EU EVOLUTION HEIFER - E.R3

Heifers E - R 3 > Wk.36-2020

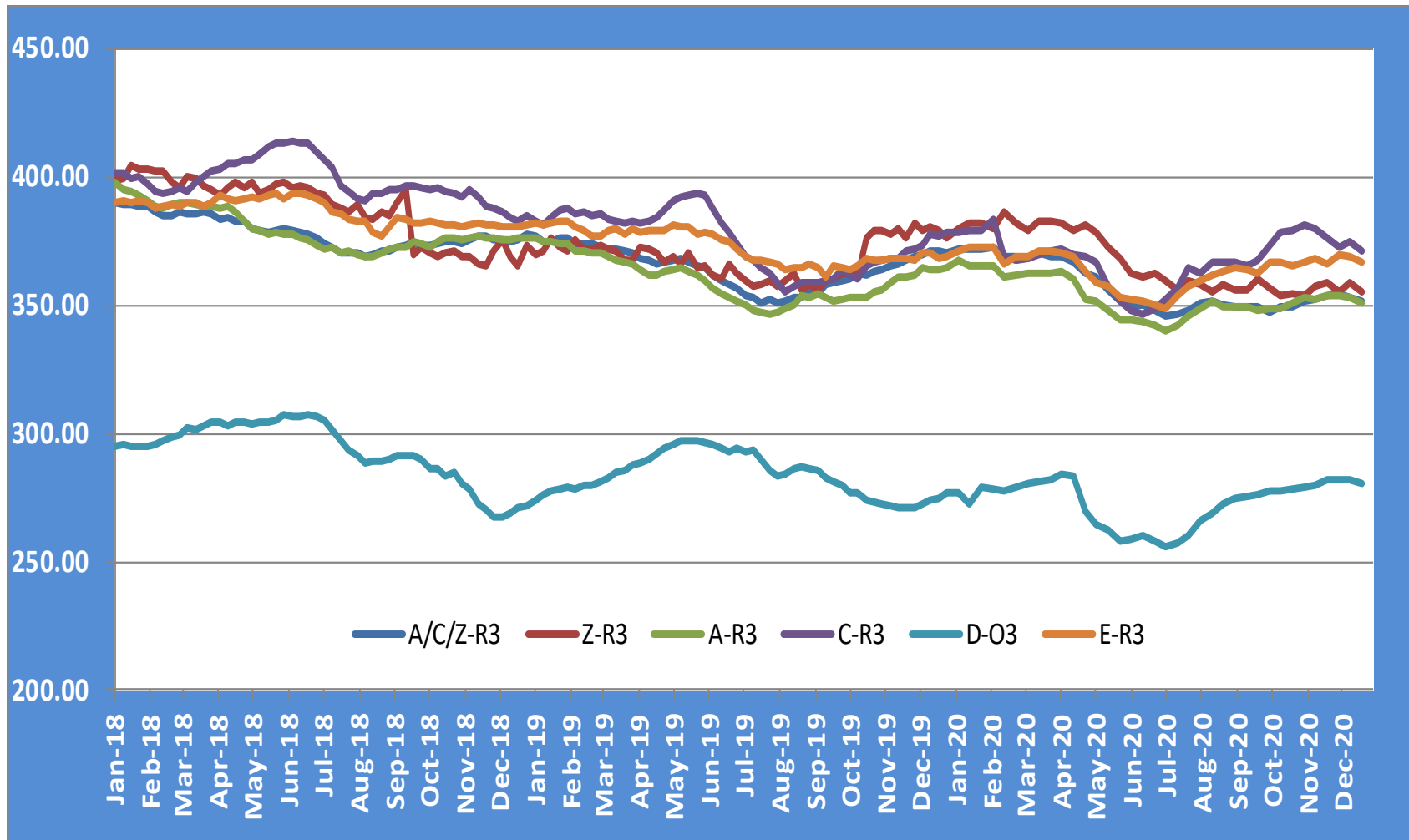


Price in week 36 : **367.14**
% change y/y : **+ 0.6%**

Average price in August 2020 : **368.08**
% change y/y : **+ 0.9%**

PRICES CARCASSES

EU EVOLUTION ALL CAT GLOBAL VIEW



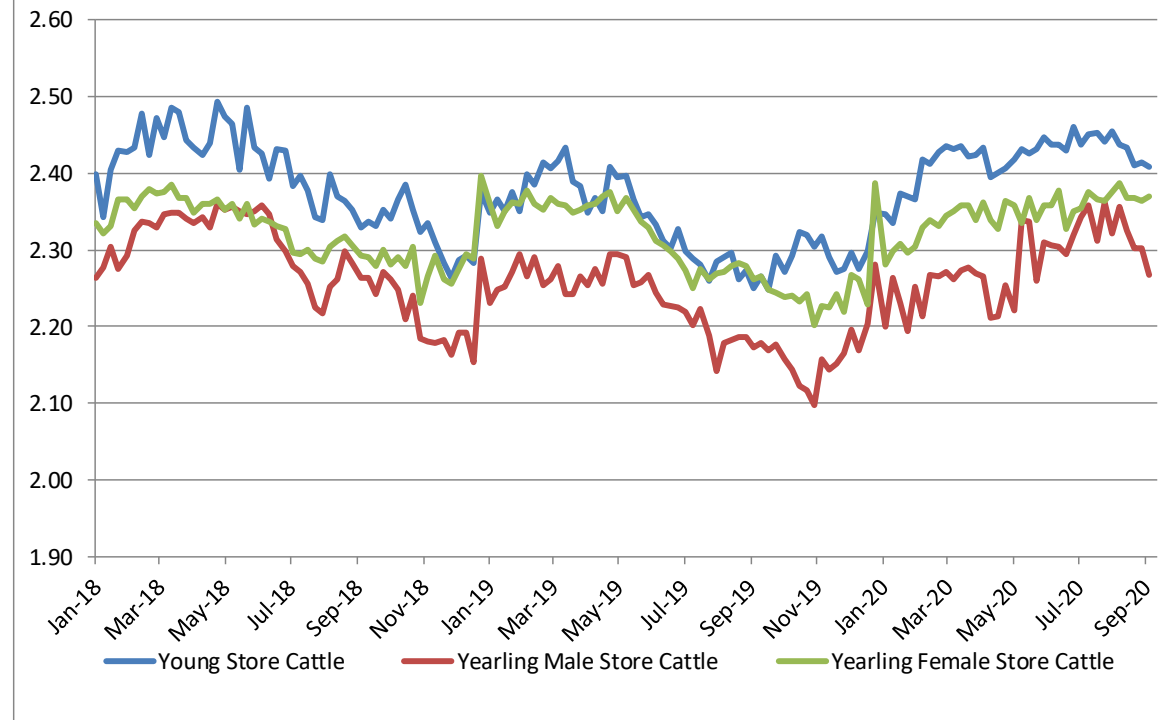
17 September 2020

PRICES LIVE BOVINES

EU EVOLUTION STORE CATTLE

Store cattle (€/100 kg live weight)

Young Store Cattle Prices



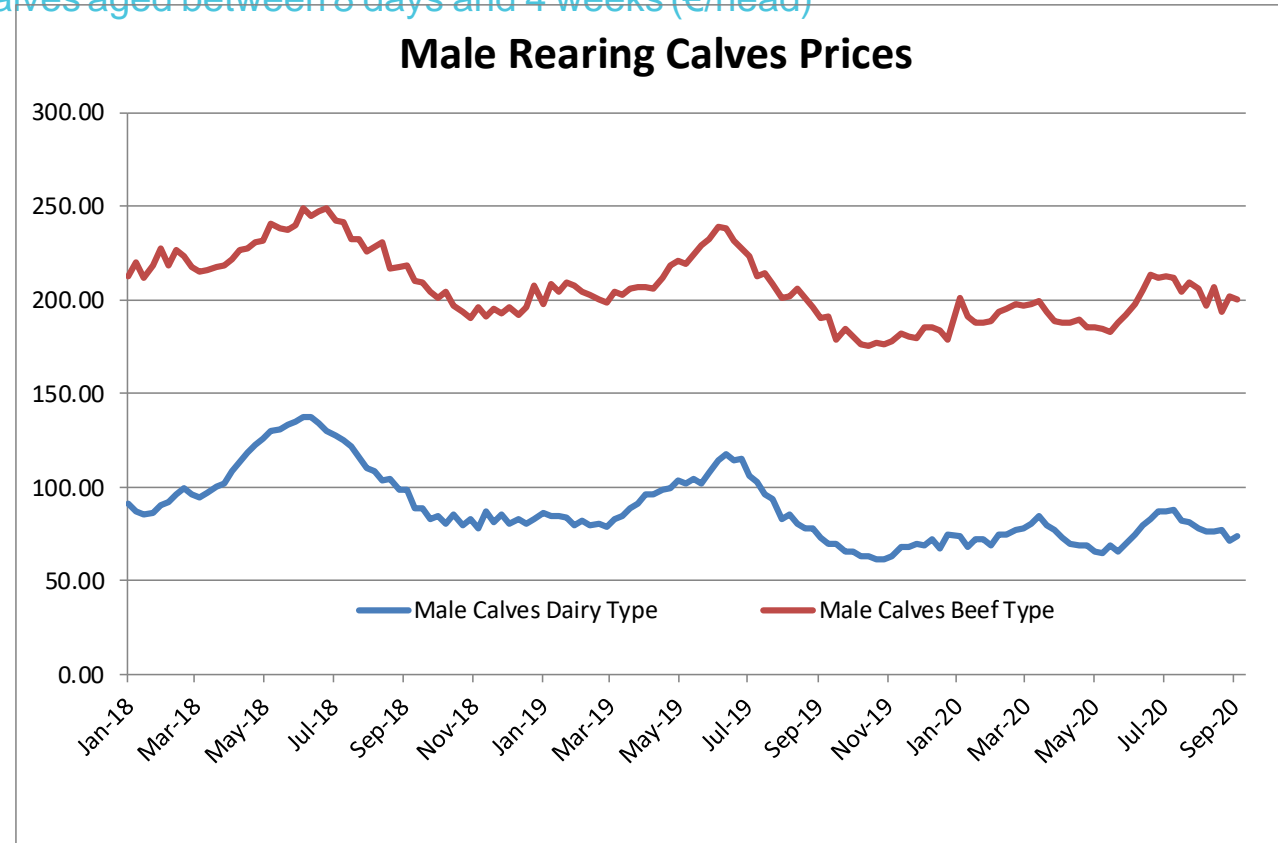
Young Store Cattle Price in	Week 36	2.41	Yearling Male Store Cattle Price	2.27
	Change y/y	+0.17%	Change y/y	+4.35%
Yearling Female Store Cattle Price		2.37		
	Change y/y	+0.01%		

17 September 2020

PRICES LIVE BOVINES

EU EVOLUTION Male Calves – 8D4W

Male calves aged between 8 days and 4 weeks (€/head)

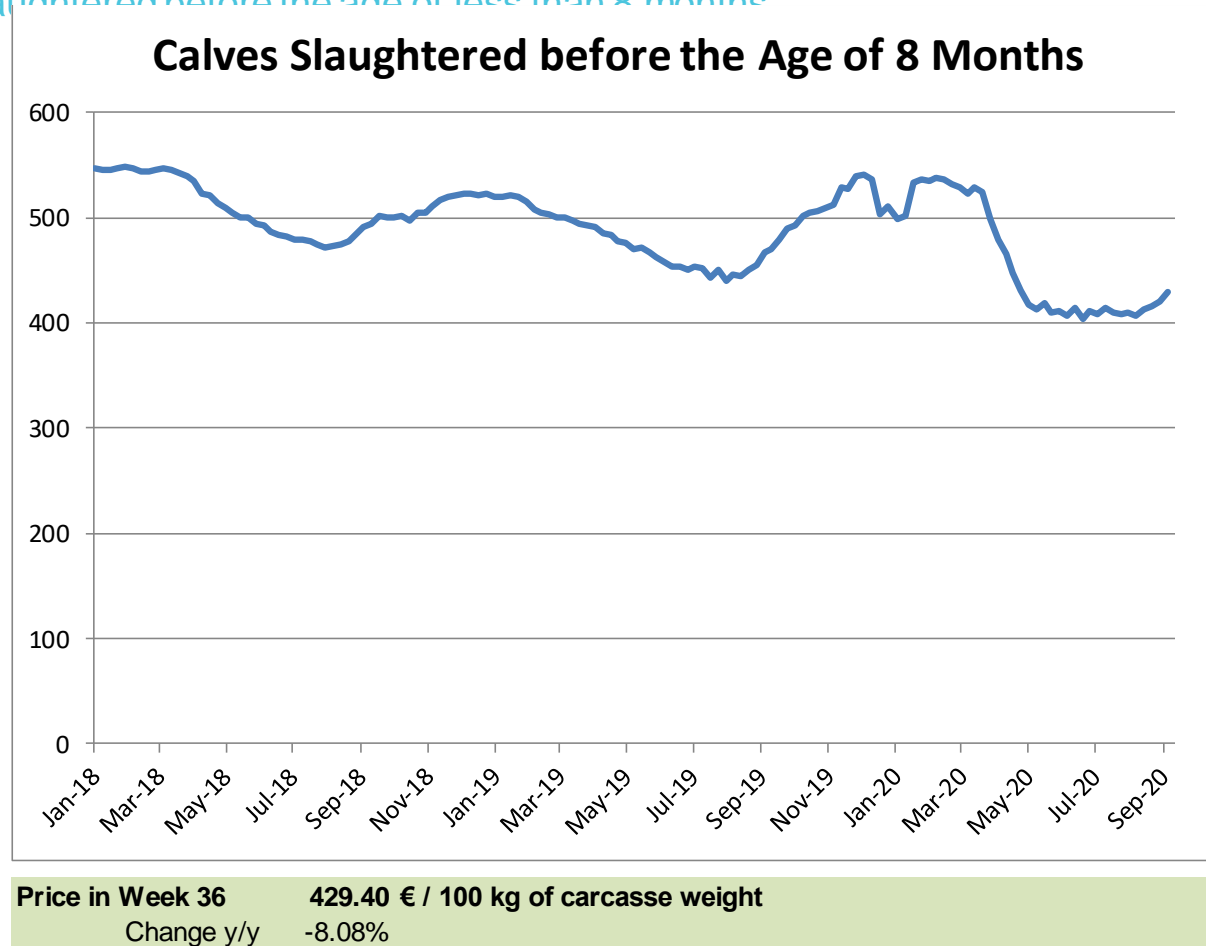


Male Rearing Calves Beef type		Male Rearing Calves Dairy type	
Price in	Week 36	200.09	73.86
Change y/y		+3.64%	-2.83%

PRICES LIVE BOVINES

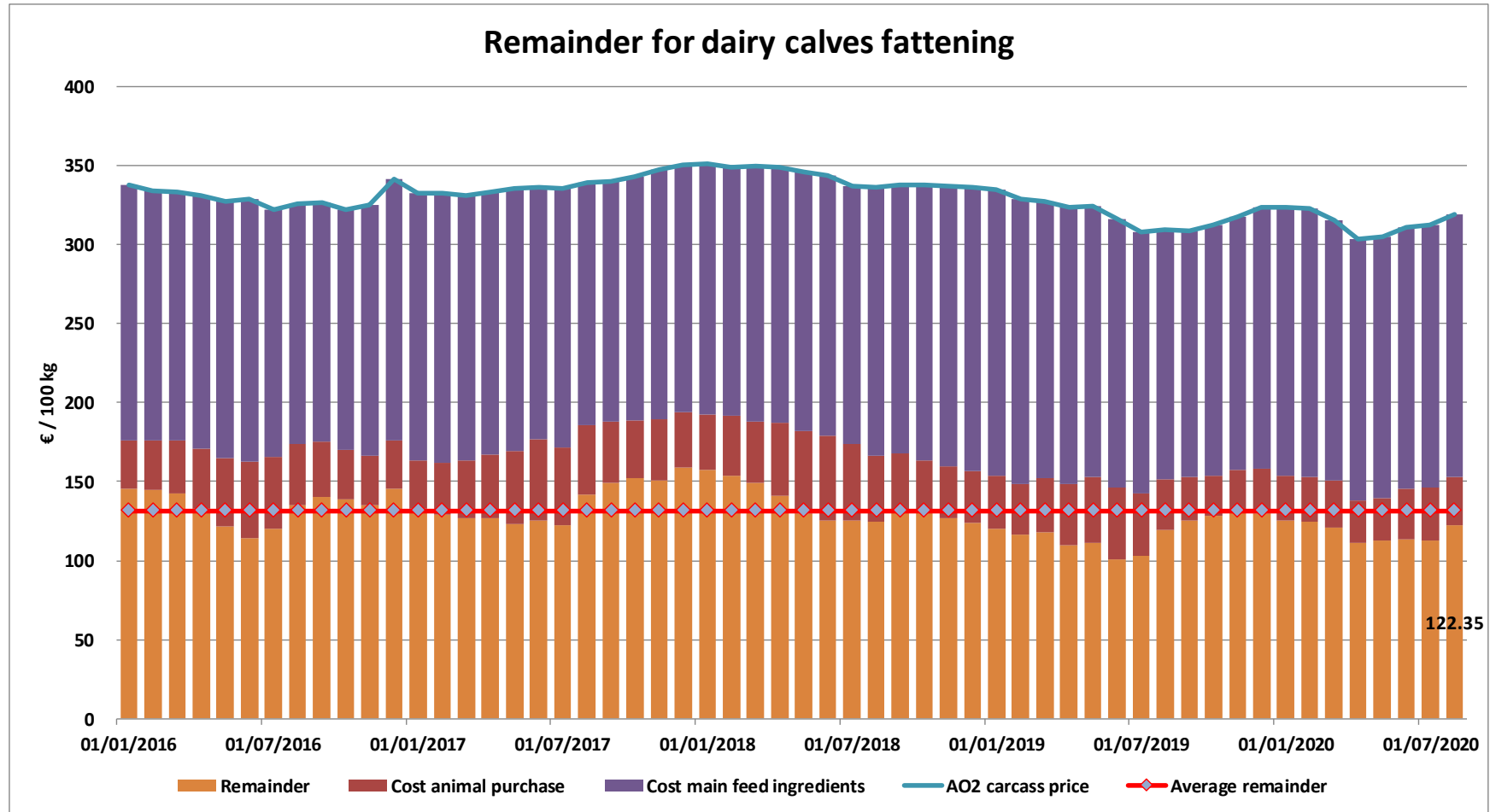
EU EVOLUTION Butcher Calves

Calves slaughtered before the age of less than 8 months

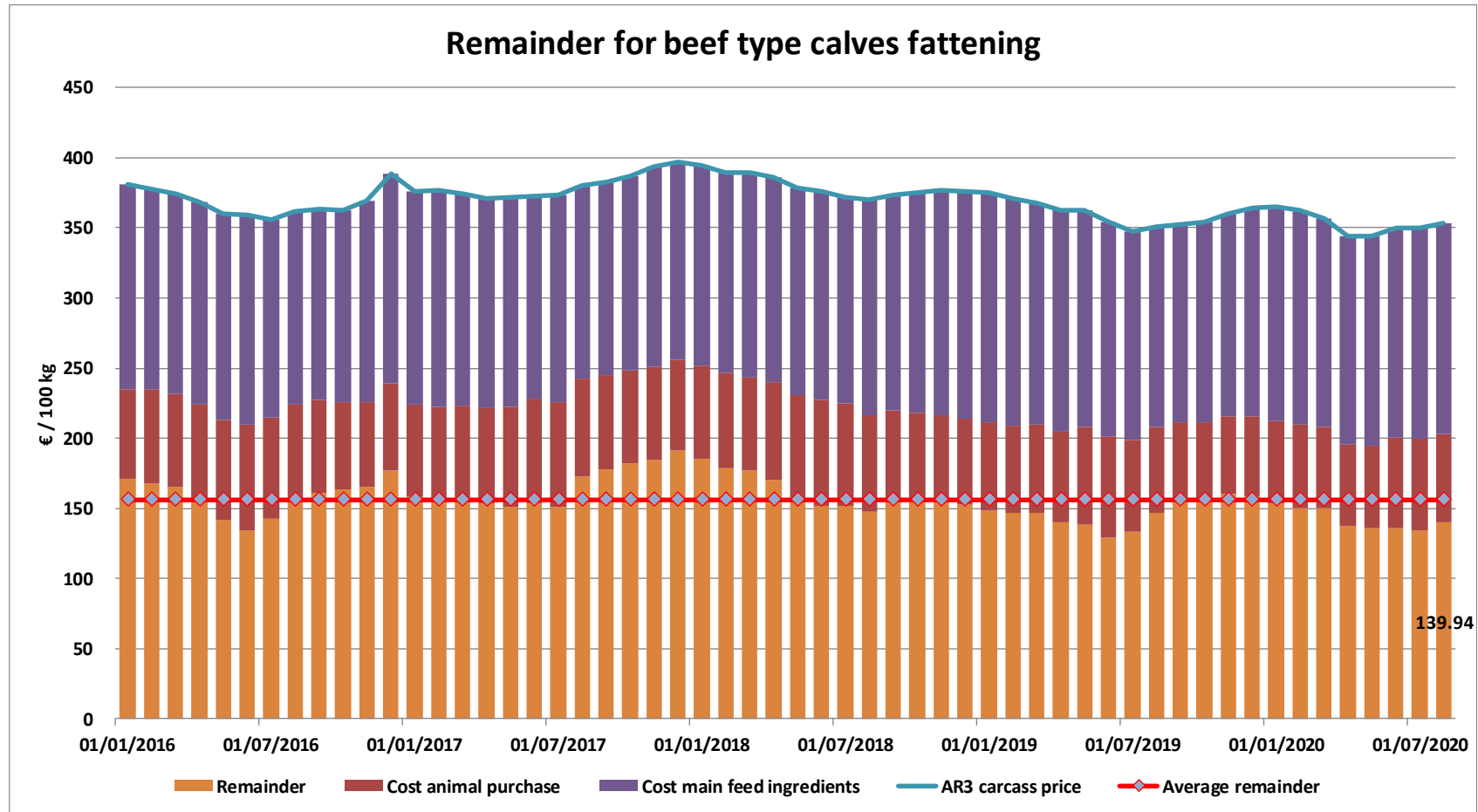


17 September 2020

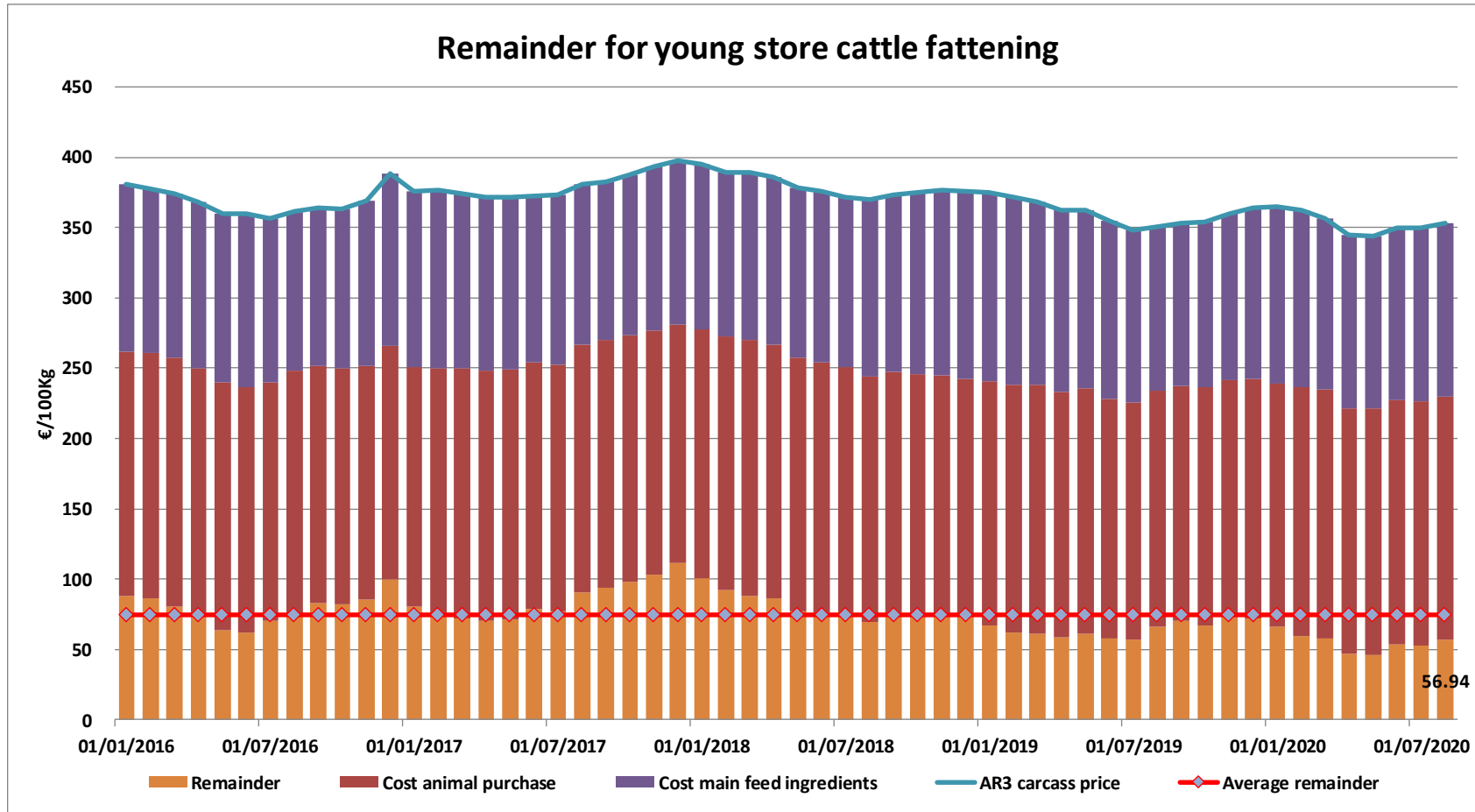
REMAINDERS



REMAINDERS



REMAINDERS



TRADE

EU EXPORTS

Beef & Live Animals

EU Exports of Beef and Live Animals (1): Trade figures (COMEXT – tonnes cwe)

Destinations	2016		2017		2018		2019		Jan-Jul 20		Compared to Jan-Jul 19
	tonnes	%	tonnes	%	tonnes	%	tonnes	%	tonnes	%	
United Kingdom up to Jun 20	477 394	41.5%	493 228	40.4%	486 482	40.9%	439 668	38.6%	214 185	34.8%	#N/A
Israel	41 534	3.6%	44 196	3.6%	47 774	4.0%	49 685	4.4%	30 528	5.0%	- 5.3%
Hong Kong	47 532	4.1%	76 085	6.2%	55 538	4.7%	46 748	4.1%	29 381	4.8%	+ 3.4%
Ghana	37 490	3.3%	37 744	3.1%	36 766	3.1%	39 222	3.4%	27 159	4.4%	+ 19.9%
Algeria	25 003	2.2%	26 305	2.2%	35 410	3.0%	57 152	5.0%	24 717	4.0%	- 24.3%
Philippines	24 116	2.1%	37 103	3.0%	28 766	2.4%	34 158	3.0%	23 645	3.8%	+ 21.6%
Bosnia-Herz.	38 875	3.4%	34 710	2.8%	38 762	3.3%	41 145	3.6%	19 839	3.2%	- 16.3%
Ivory Coast	35 371	3.1%	36 038	3.0%	36 063	3.0%	33 428	2.9%	19 626	3.2%	+ 1.2%
Lebanon	47 010	4.1%	38 323	3.1%	42 542	3.6%	36 393	3.2%	17 857	2.9%	- 26.6%
Switzerland	24 872	2.2%	26 707	2.2%	23 762	2.0%	25 188	2.2%	17 074	2.8%	+ 12.1%
Libya	29 723	2.6%	27 848	2.3%	27 878	2.3%	24 541	2.2%	14 160	2.3%	+ 12.9%
China	10 253	0.9%	5 738	0.5%	6 713	0.6%	22 317	2.0%	12 904	2.1%	+ 36.6%
Canada	862	0.1%	2 424	0.2%	2 225	0.2%	6 806	0.6%	12 518	2.0%	+++
Ukraine	7 875	0.7%	7 331	0.6%	10 466	0.9%	13 835	1.2%	8 368	1.4%	+ 15.8%
Japan	3 254	0.3%	4 281	0.4%	3 453	0.3%	8 038	0.7%	8 012	1.3%	+ 100.7%
Norway	18 312	1.6%	12 849	1.1%	7 925	0.7%	7 667	0.7%	7 510	1.2%	+ 55.0%
Morocco	7 517	0.7%	10 005	0.8%	11 429	1.0%	12 982	1.1%	7 353	1.2%	+ 0.8%
<i>Other Destinations</i>	<i>273 430</i>	<i>23.8%</i>	<i>299 835</i>	<i>24.6%</i>	<i>286 411</i>	<i>24.1%</i>	<i>241 117</i>	<i>21.1%</i>	<i>120 507</i>	<i>19.6%</i>	
Total to Third Countries	1 150 422		1 220 750		1 188 364		1 140 090		615 344		
% change			+ 6%		- 3%		- 4%		- 6.6%		
Total (without UK)	673 028		727 522		701 882		700 422		401 159		
% change			+ 8%		- 4%		- 0%		+ 0.1%		

TRADE

EU EXPORTS

Beef

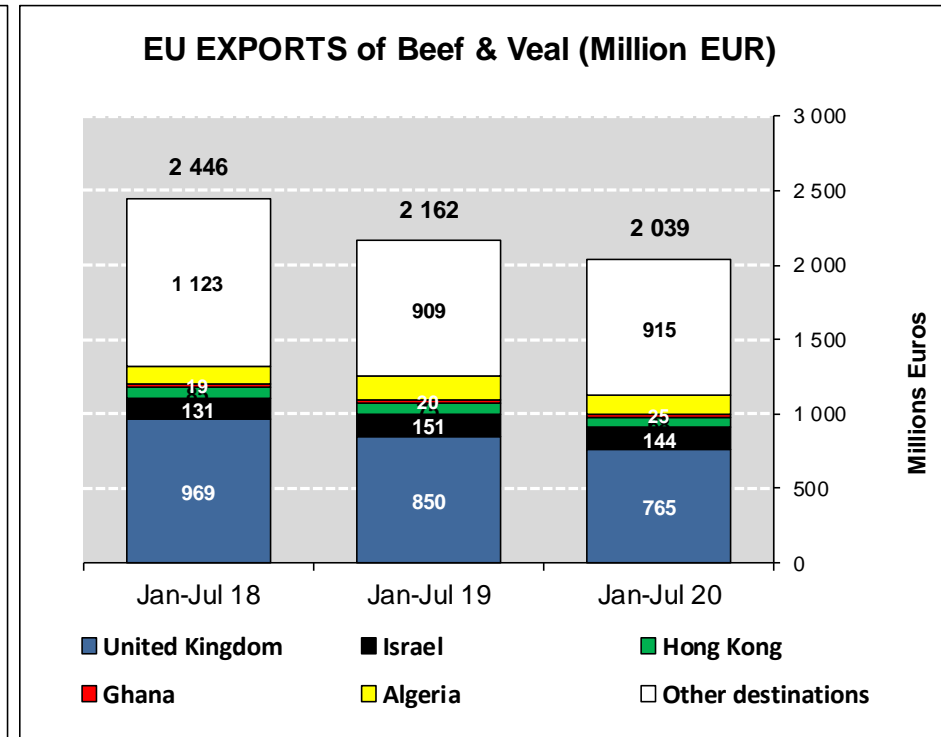
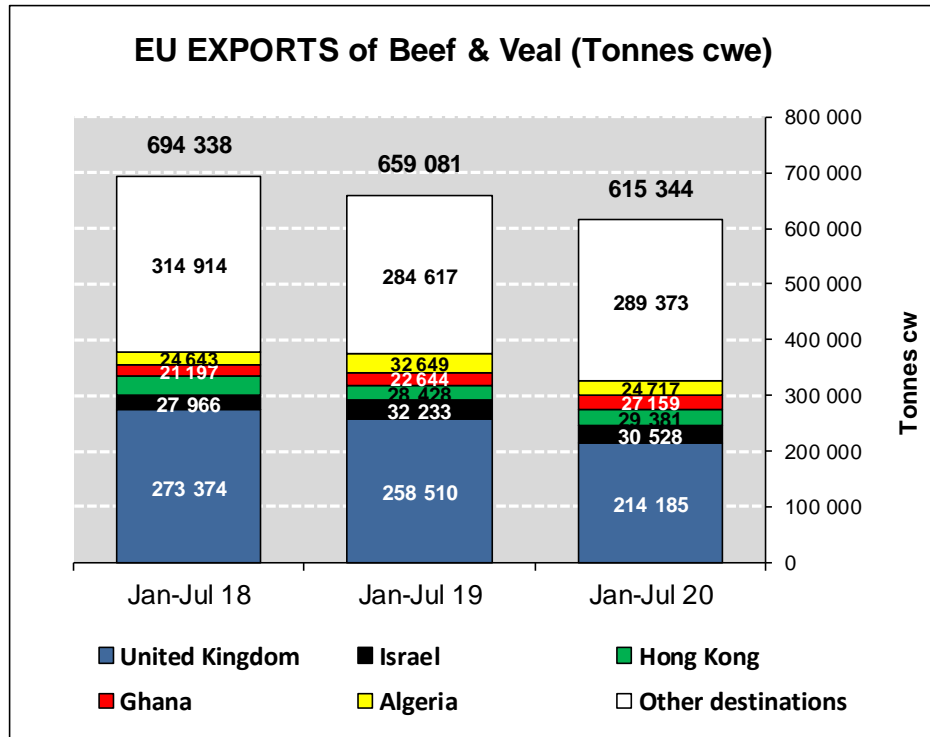
EU Exports of Beef: Trade figures (COMEXT – tonnes cwe)

Destinations	2016		2017		2018		2019		Jan-Jul 20		Compared to Jan-Jul 19
	tonnes	%	tonnes	%	tonnes	%	tonnes	%	tonnes	%	
United Kingdom up to Jun 20	468 017	50.8%	482 057	49.5%	475 989	50.5%	429 436	47.5%	209 022	42.2%	#N/A
Hong Kong	47 532	5.2%	76 085	7.8%	55 538	5.9%	46 748	5.2%	29 381	5.9%	+ 3.4%
Ghana	37 490	4.1%	37 744	3.9%	36 766	3.9%	39 222	4.3%	27 159	5.5%	+ 19.9%
Philippines	24 116	2.6%	37 103	3.8%	28 766	3.1%	34 158	3.8%	23 645	4.8%	+ 21.6%
Ivory Coast	35 371	3.8%	36 028	3.7%	36 063	3.8%	33 428	3.7%	19 626	4.0%	+ 1.2%
Bosnia-Herz.	36 790	4.0%	32 180	3.3%	36 151	3.8%	38 832	4.3%	18 730	3.8%	- 16.5%
Switzerland	23 704	2.6%	25 569	2.6%	22 712	2.4%	24 110	2.7%	16 385	3.3%	+ 12.3%
China	10 253	1.1%	5 738	0.6%	6 713	0.7%	22 317	2.5%	12 904	2.6%	+ 36.6%
Israel	15 055	1.6%	18 749	1.9%	22 163	2.4%	23 073	2.5%	12 811	2.6%	- 11.1%
Canada	862	0.1%	2 424	0.2%	2 225	0.2%	6 806	0.8%	12 518	2.5%	+++
Japan	3 254	0.4%	4 281	0.4%	3 453	0.4%	8 038	0.9%	8 012	1.6%	+++
Ukraine	7 094	0.8%	6 926	0.7%	9 887	1.0%	12 893	1.4%	7 807	1.6%	+ 11.6%
Norway	18 307	2.0%	12 848	1.3%	7 922	0.8%	7 667	0.8%	7 510	1.5%	+ 55.0%
Algeria	10 726	1.2%	12 304	1.3%	13 919	1.5%	19 142	2.1%	7 108	1.4%	- 32.1%
USA	3 137	0.3%	3 756	0.4%	5 458	0.6%	7 867	0.9%	6 680	1.3%	+ 55.9%
North Macedonia	11 413	1.2%	11 285	1.2%	10 002	1.1%	11 395	1.3%	6 139	1.2%	- 3.2%
Chile	2 228	0.2%	8 961	0.9%	16 410	1.7%	12 461	1.4%	5 677	1.1%	- 40.2%
<i>Other Destinations</i>	165 886	18.0%	160 398	16.5%	152 677	16.2%	127 389	14.1%	64 118	12.9%	
Total to Third Countries	921 234		974 437		942 813		904 981		495 232		
% change			+ 6%		- 3%		- 4%		- 6.0%		
Total (without UK)	453 217		492 379		466 824		475 546		286 210		
% change			+ 9%		- 5%		+ 2%		+ 4.4%		

TRADE

EU Exports of Beef and Live Animals: Trade figures (COMEXT)

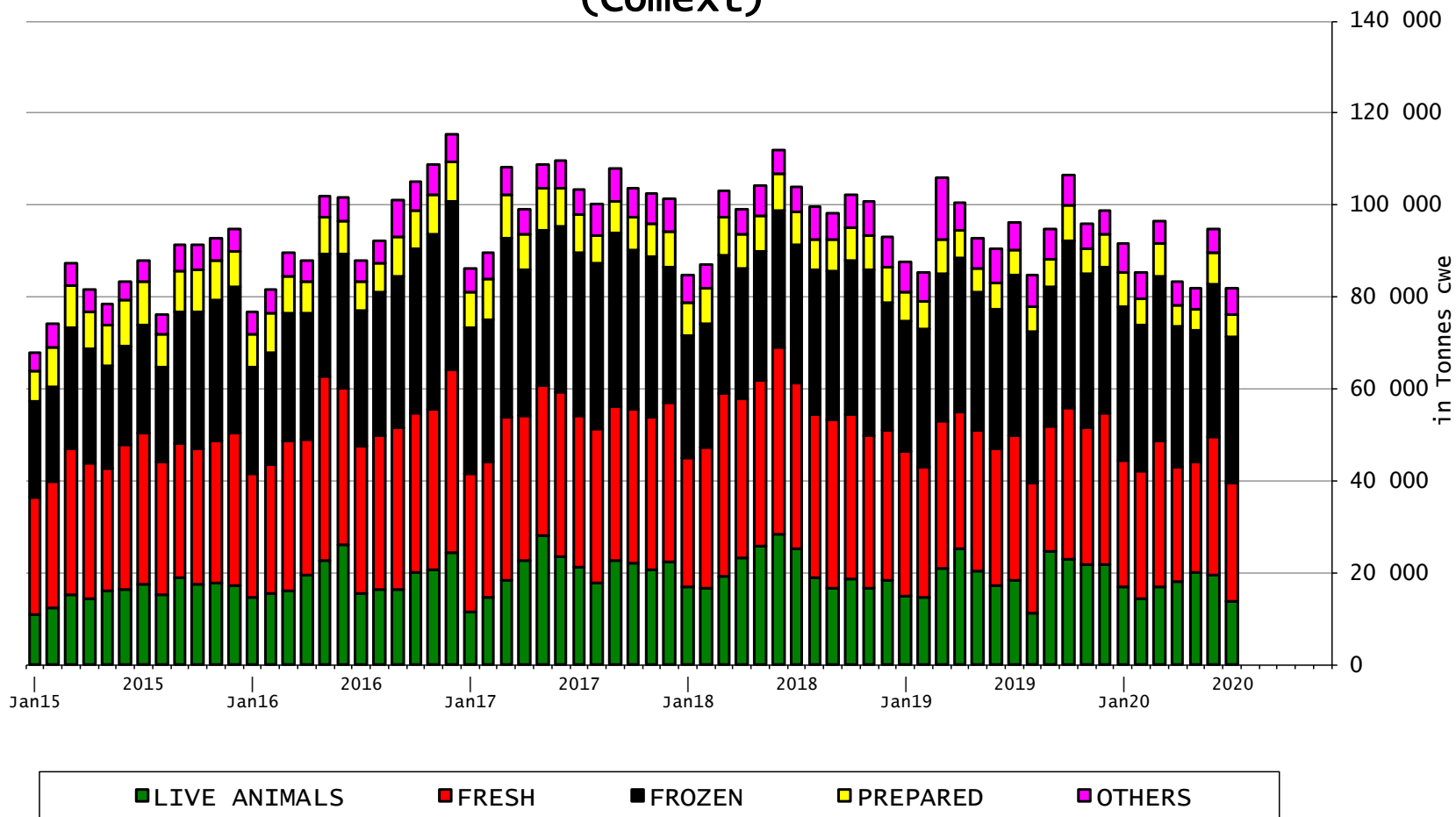
EU EXPORTS Beef & Live Animals



TRADE

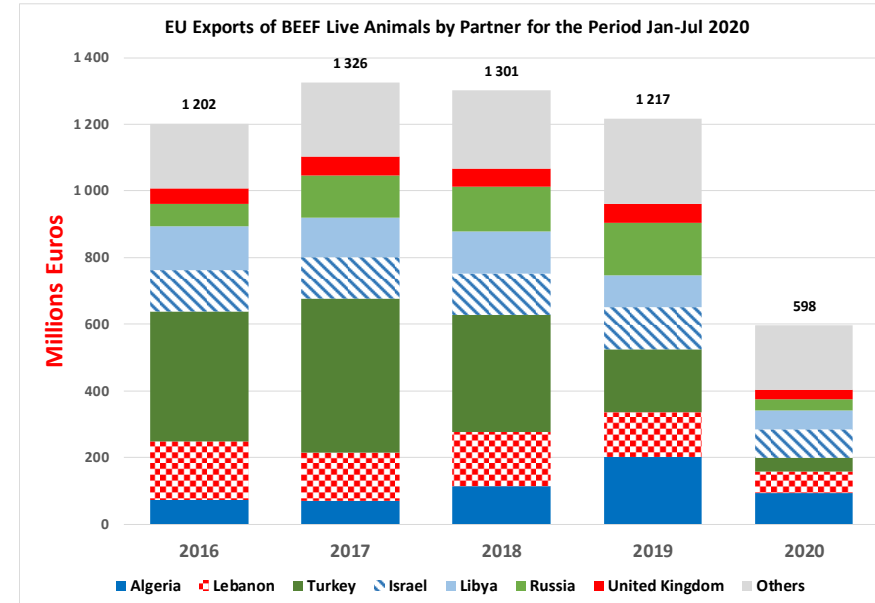
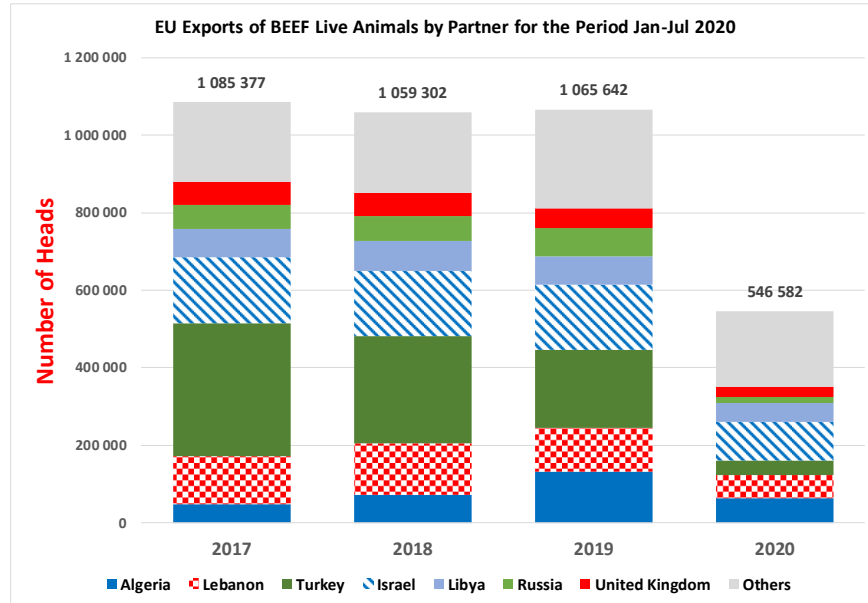
EU EXPORTS Beef Products

EU Exports of BEEF products (Comext)



TRADE

EU EXPORTS Live Animals



TRADE

EU IMPORTS Beef & Live Animals

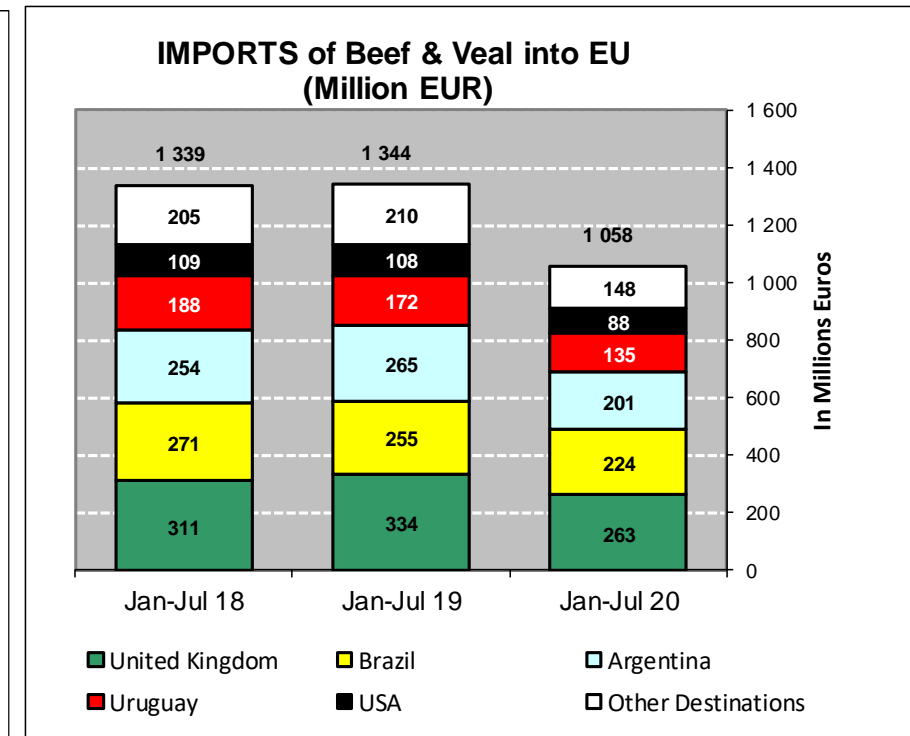
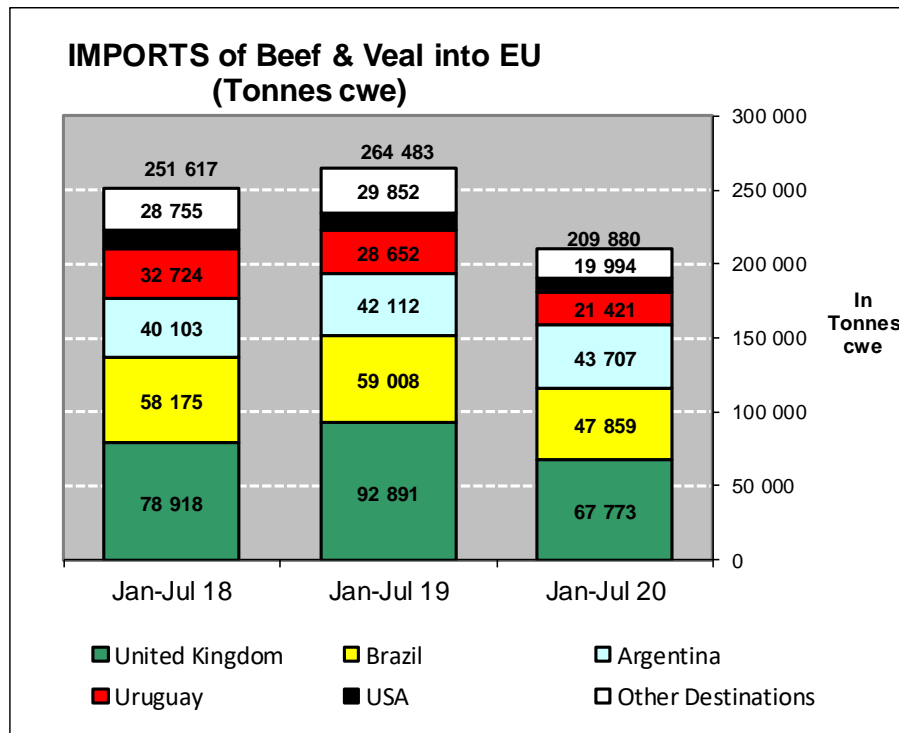
EU Imports of Beef and Live Animals (1): Trade Figures (COMEXT – tonnes cwe)

Origins	2016		2017		2018		2019		Jan-Jul 20		Compared to Jan-Jul 19
	tonnes	%	tonnes	%	tonnes	%	tonnes	%	tonnes	%	
United Kingdom up to Jun 20	134 098	33.0%	133 588	33.9%	138 485	32.5%	160 122	36.4%	67 773	32.3%	#N/A
Brazil	100 982	24.9%	87 156	22.1%	103 979	24.4%	99 568	22.7%	47 859	22.8%	- 18.9%
Argentina	43 111	10.6%	49 260	12.5%	69 011	16.2%	70 617	16.1%	43 707	20.8%	+ 3.8%
Uruguay	52 896	13.0%	55 212	14.0%	48 712	11.4%	40 483	9.2%	21 421	10.2%	- 25.2%
USA	20 290	5.0%	21 624	5.5%	19 268	4.5%	16 852	3.8%	9 126	4.3%	- 23.7%
Australia	21 909	5.4%	18 193	4.6%	17 368	4.1%	16 516	3.8%	8 173	3.9%	- 28.2%
New Zealand	8 274	2.0%	6 806	1.7%	7 164	1.7%	6 724	1.5%	3 605	1.7%	- 15.9%
Paraguay	5 309	1.3%	5 922	1.5%	5 520	1.3%	5 204	1.2%	2 476	1.2%	- 15.9%
Switzerland	5 496	1.4%	5 138	1.3%	5 437	1.3%	4 432	1.0%	2 245	1.1%	- 6.9%
Namibia	6 281	1.5%	5 043	1.3%	3 442	0.8%	7 734	1.8%	1 035	0.5%	- 71.7%
Serbia	557	0.1%	565	0.1%	1 134	0.3%	1 062	0.2%	555	0.3%	- 3.0%
Canada	392	0.1%	512	0.1%	1 343	0.3%	2 518	0.6%	510	0.2%	- 60.9%
Botswana	4 204	1.0%	2 686	0.7%	3 119	0.7%	4 950	1.1%	406	0.2%	- 79.2%
Japan	518	0.1%	646	0.2%	791	0.2%	998	0.2%	291	0.1%	- 47.1%
Norway	276	0.1%	388	0.1%	153	0.0%	128	0.0%	149	0.1%	+++
Ukraine	317	0.1%	374	0.1%	257	0.1%	410	0.1%	134	0.1%	- 22.9%
Chile	575	0.1%	319	0.1%	356	0.1%	392	0.1%	113	0.1%	- 54.7%
Other Destinations	705	0.2%	652	0.2%	735	0.2%	645	0.1%	303	0.1%	
Total to Third Countries	406 191		394 085		426 272		439 355		209 880		
% change			- 3%		+ 8%		+ 3%		- 20.6%		
Total (without UK)	272 093		260 496		287 788		279 233		142 107		
% change			- 4%		+ 10%		- 3%		- 17.2%		

TRADE

EU Imports of Beef and Live Animals (2): Trade Figures (COMEXT)

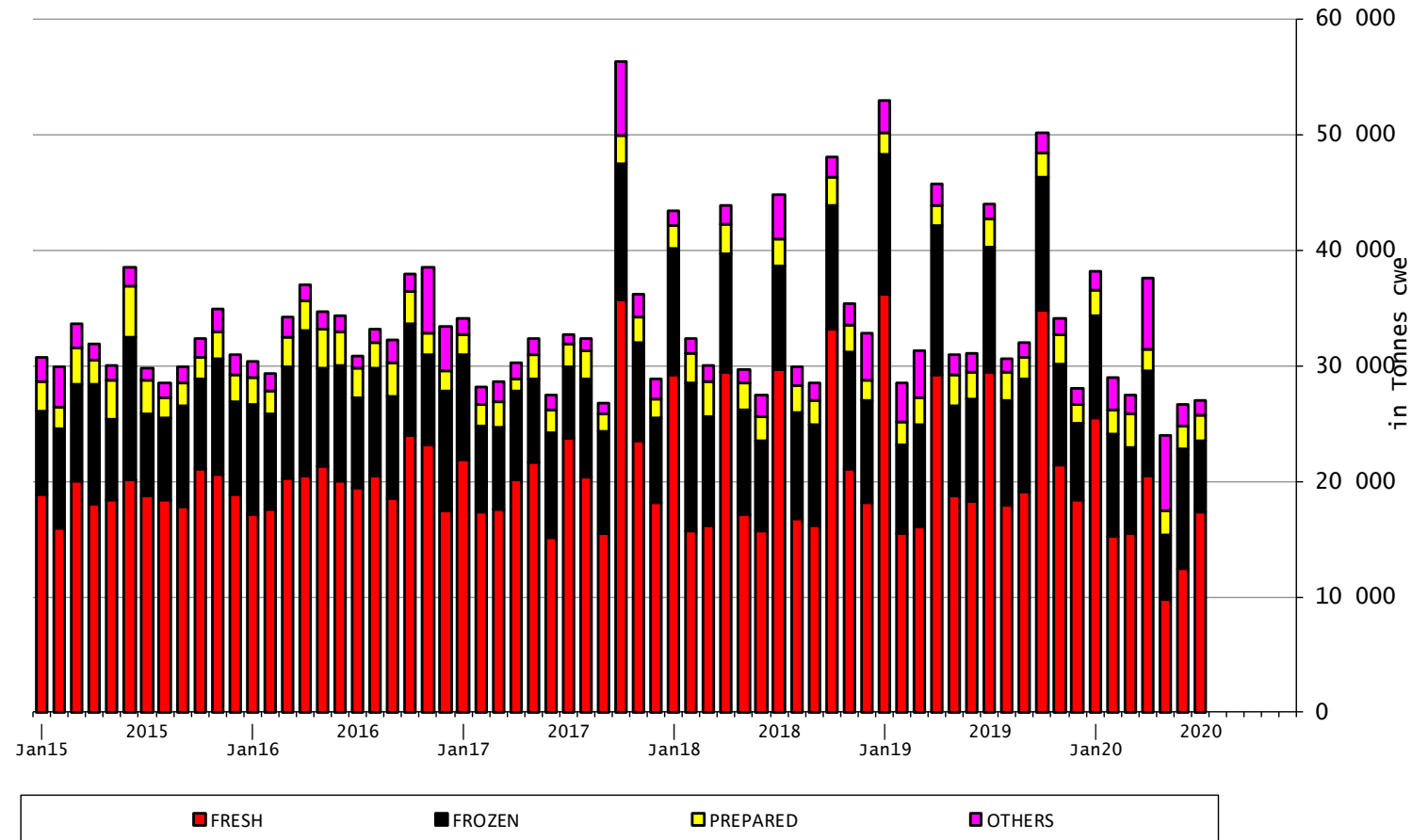
EU IMPORTS Beef & Live Animals



TRADE

EU IMPORTS Beef Products

EU Imports of BEEF products



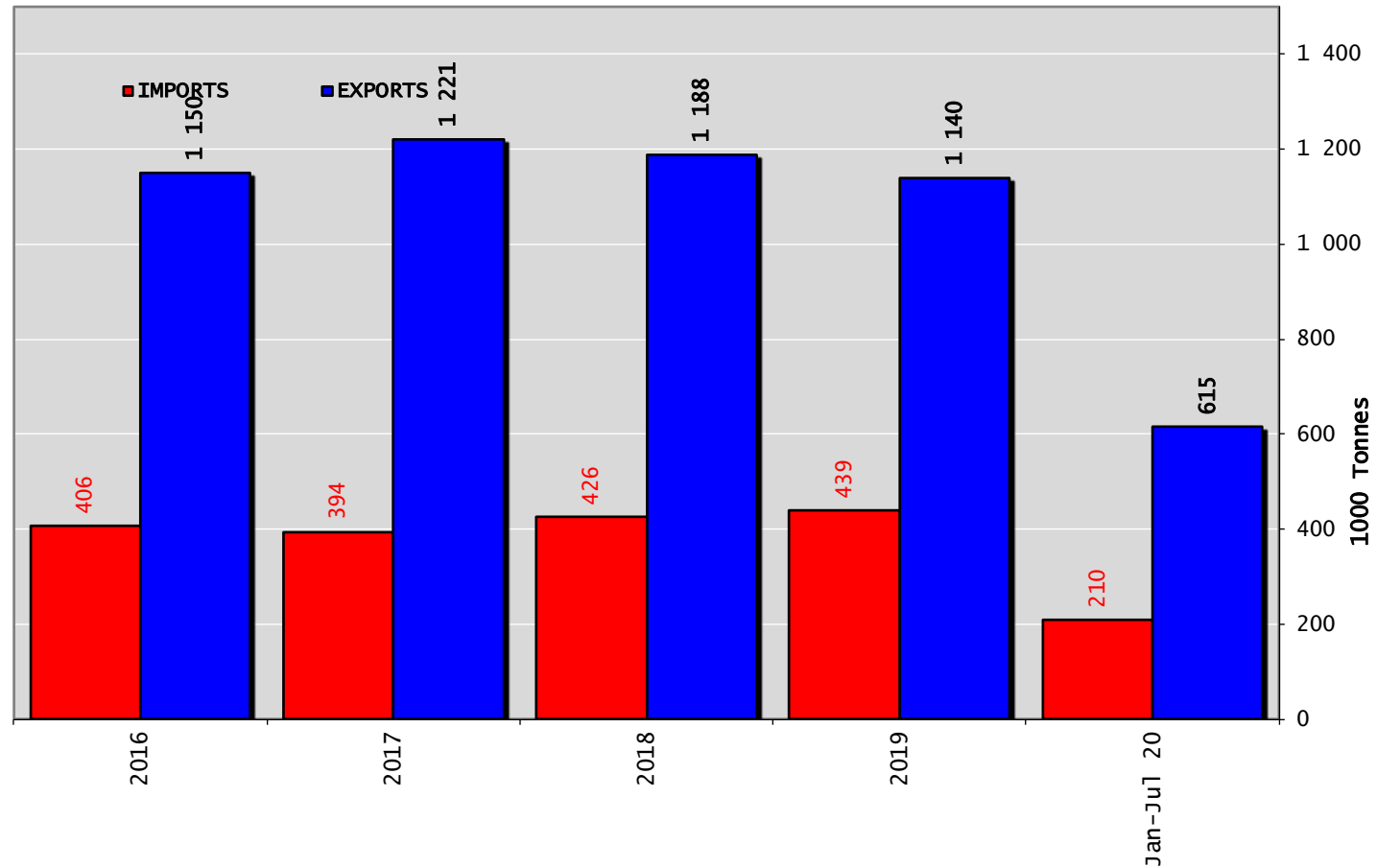
17 September 2020

TRADE

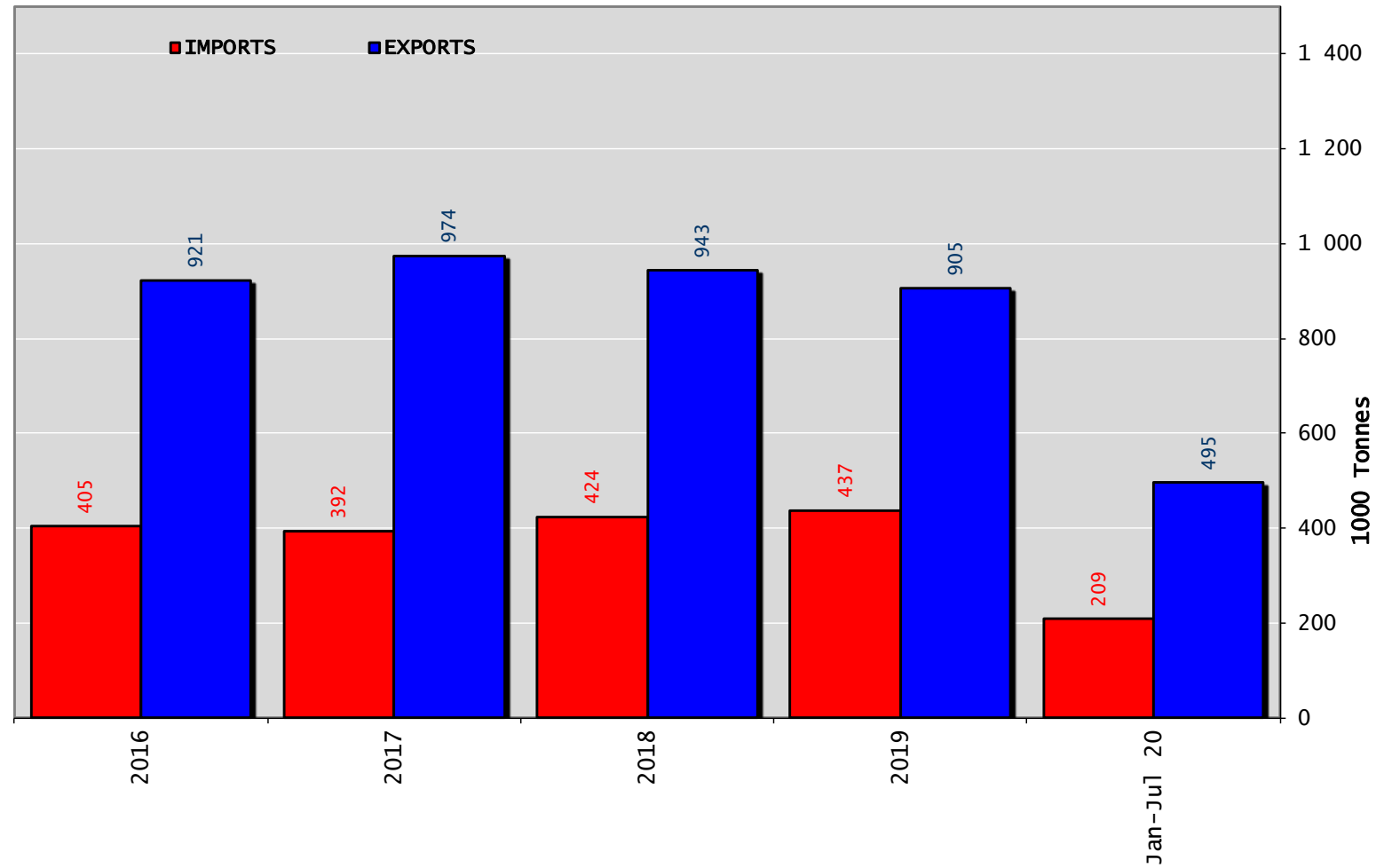
EUTRADE BALANCE

Beef & Live Animals

Trade Balance of Beef Products and Live Animals



Trade Balance of Beef Products (Except Live Animals)

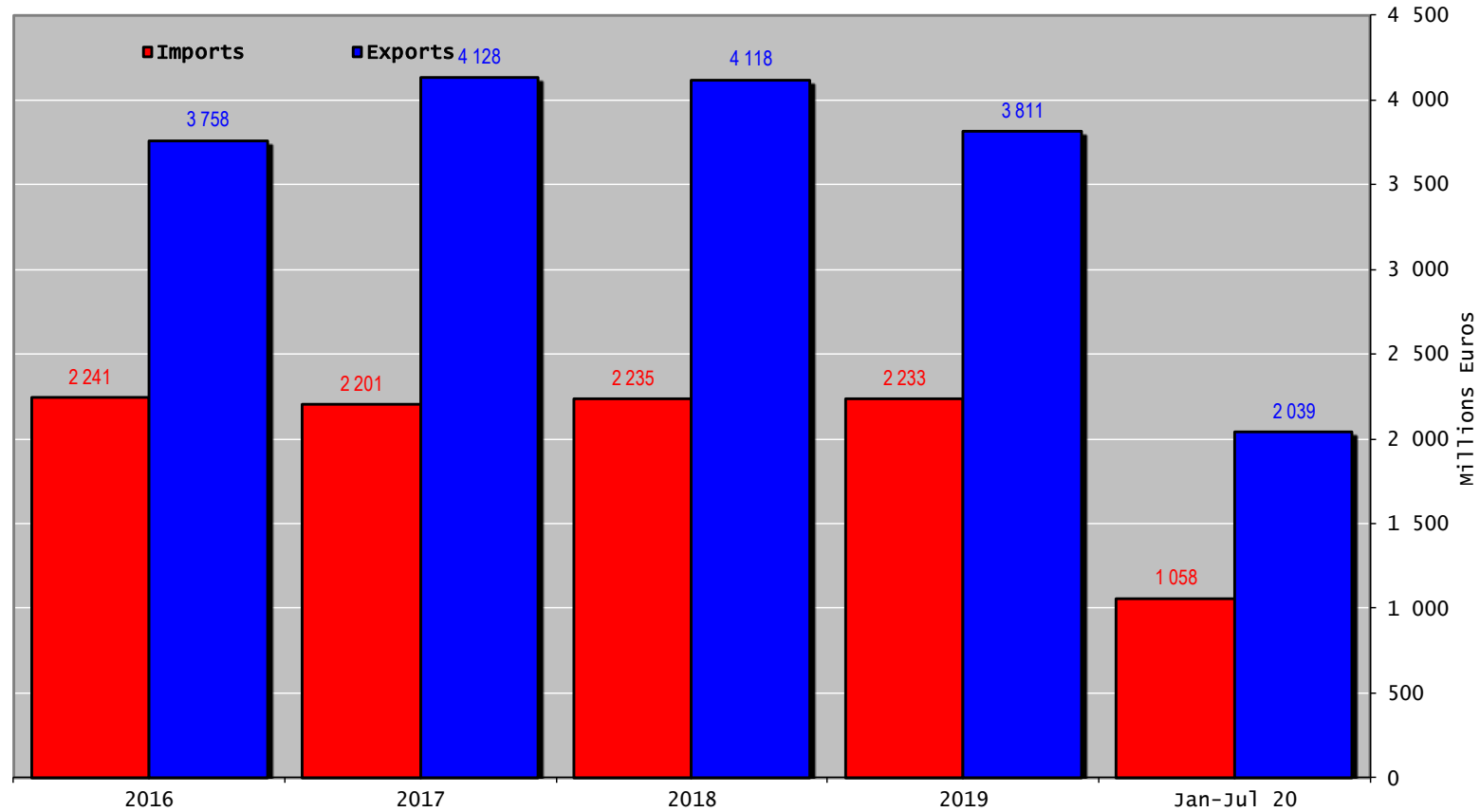


TRADE

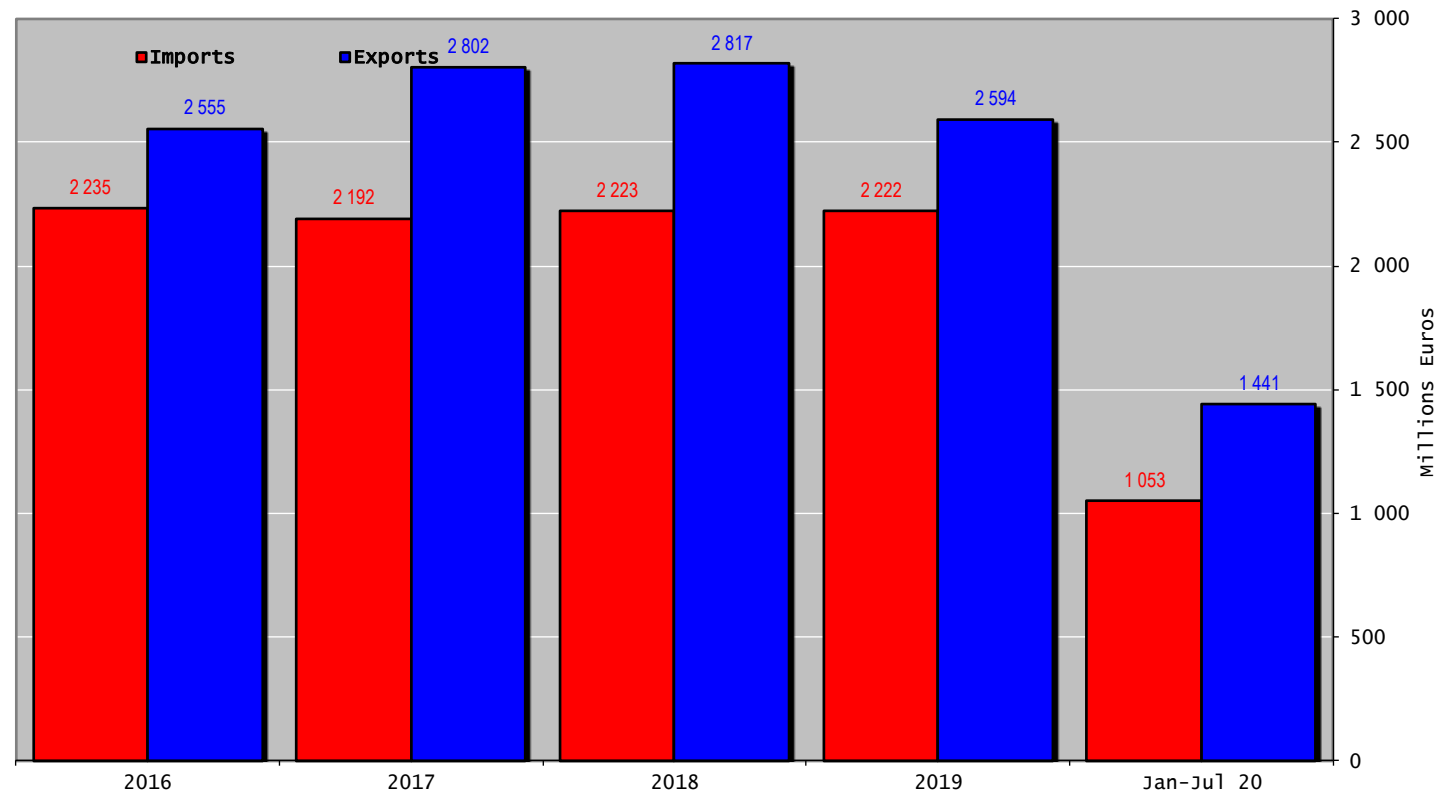
EU TRADE BALANCE

Beef & Live Animals

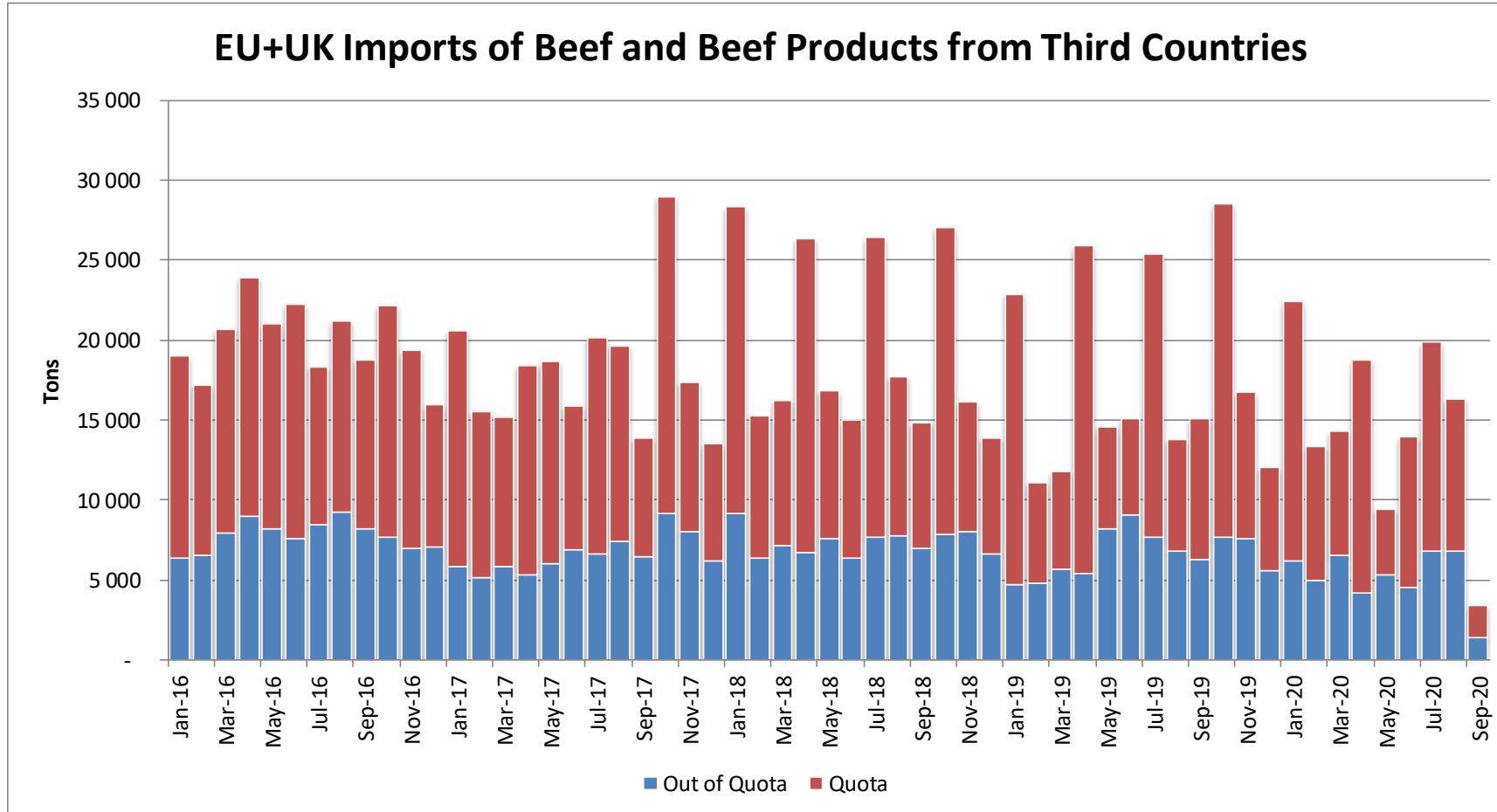
Trade Bal



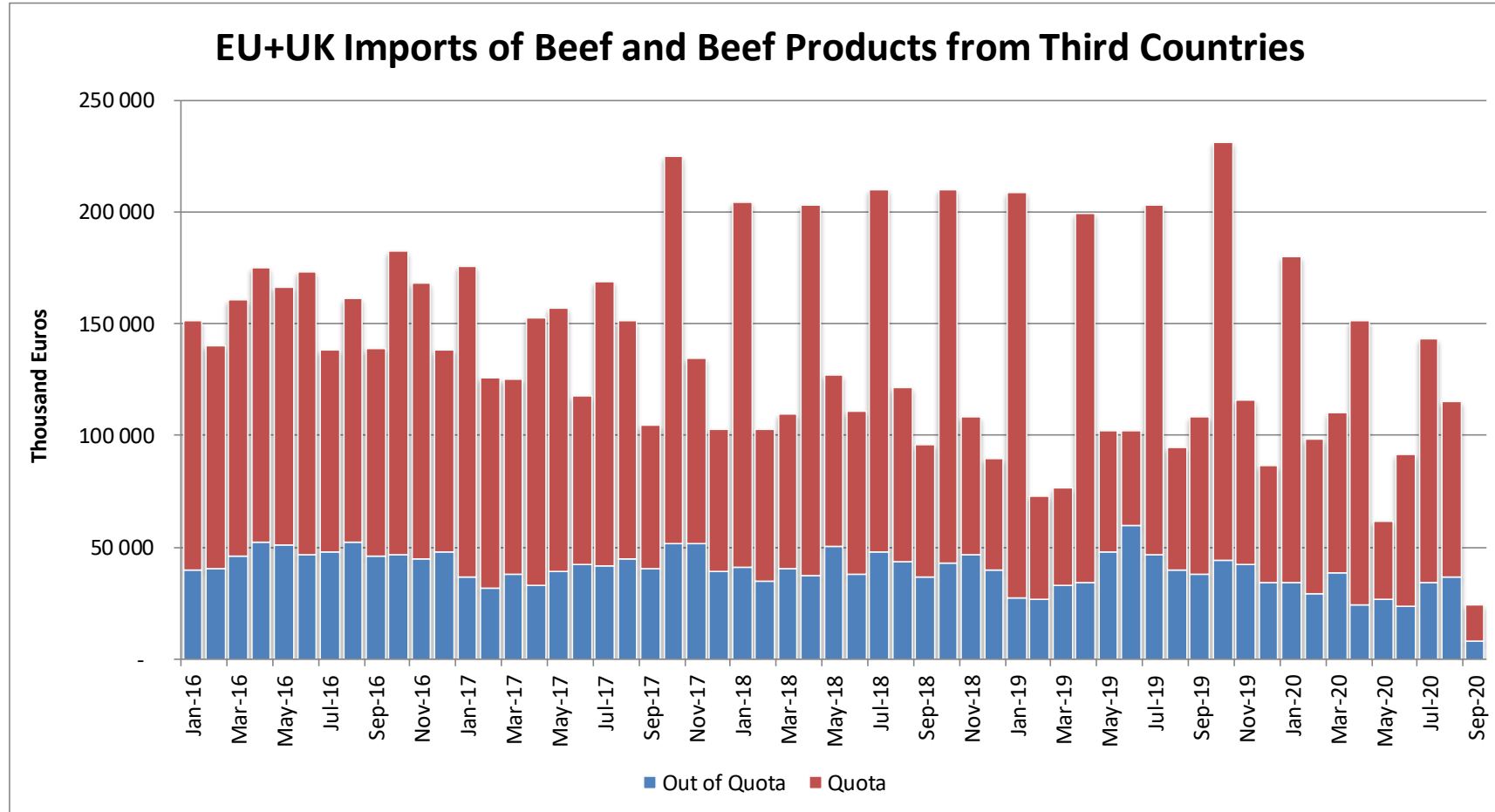
Trade Balance of Beef Products (Except Live Animals)



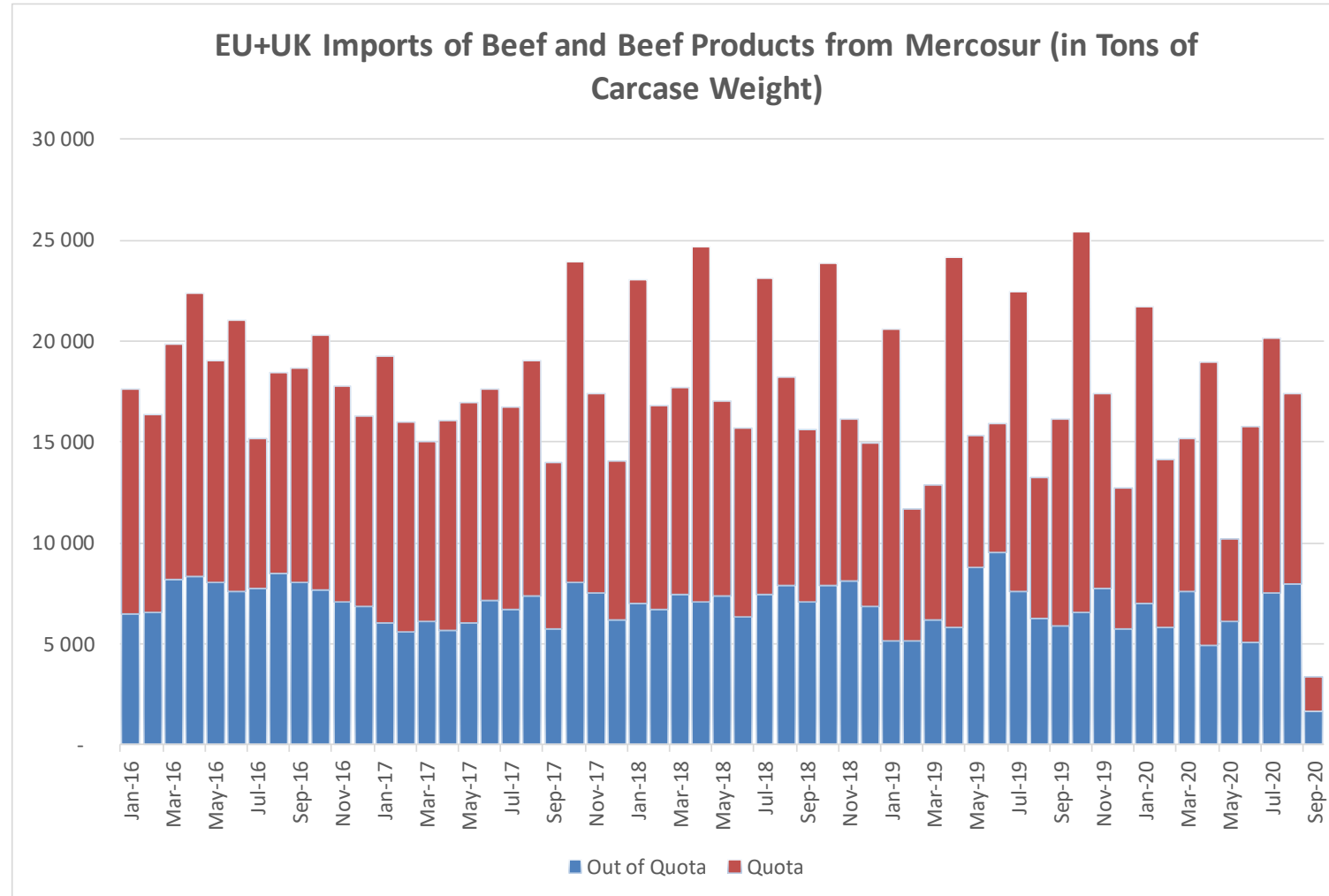
Imports in and out of TRQs



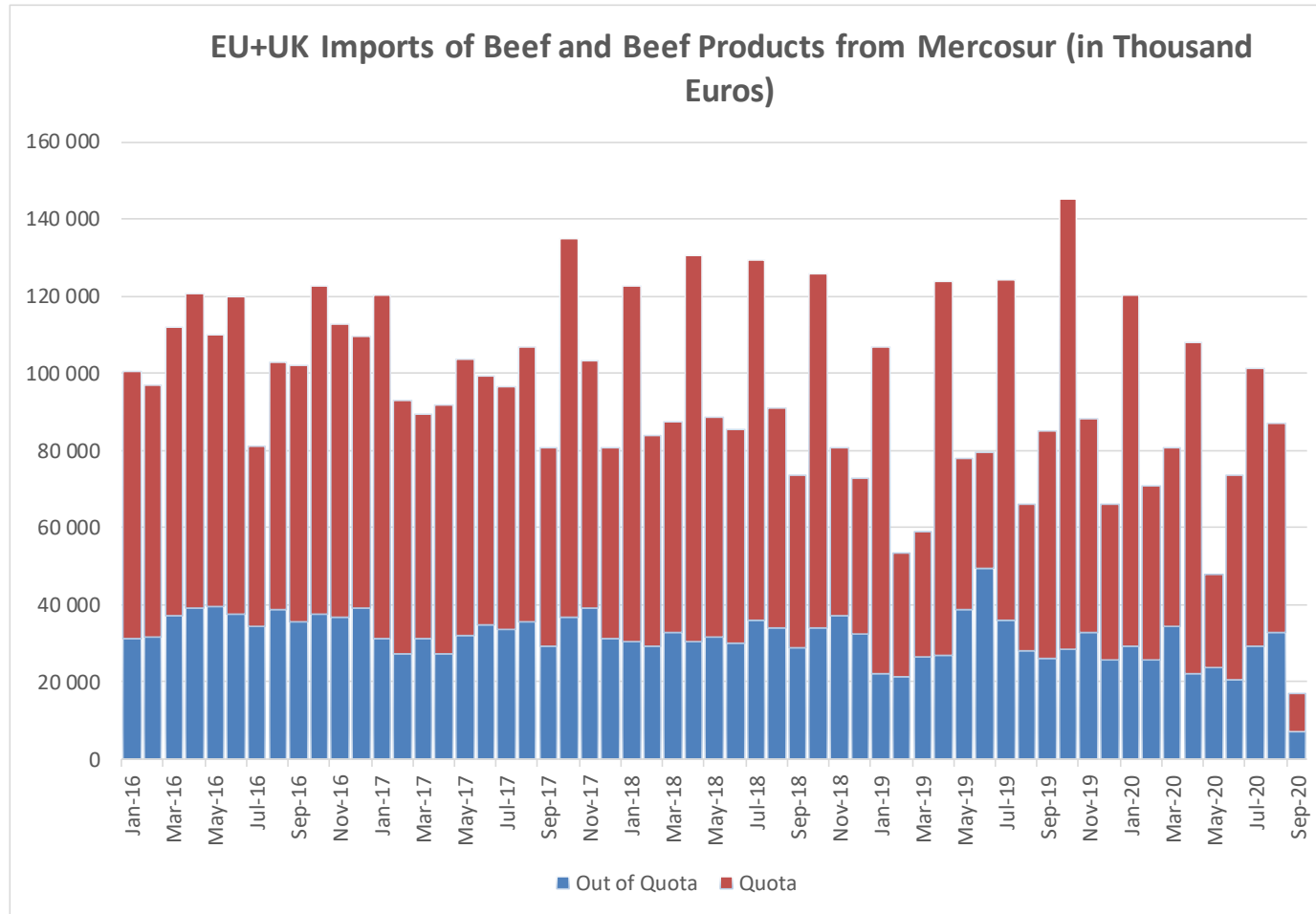
Imports in and out of TRQs



Imports in and out of TRQs



Imports in and out of TRQs



High Quality Beef Import Quotas

Hilton Quota		Regulation (EU) N° 593/2013						
		Quantity allocated (Tons)	2018/2019		2019/2020		2020/2021*	
			Use		Use		Use	
09.4001	Australia	2 250						
09.4004	Argentina	200	11.05	5.53%	8.34	4.17%		0.00%
09.4450	Argentina	29 500	29 491.35	99.97%	26 649.20	90.34%	3 623.25	12.28%
09.4451	Australia	7 150	4 942.02	69.12%	3 000.01	41.96%	318.91	4.46%
09.4452	Uruguay	6 376	6 363.76	99.81%	4 520.57	70.90%	1 123.38	17.62%
09.4453	Brazil	10 000	4 147.19	41.47%	2 884.79	28.85%	156.47	1.56%
09.4454	New Zealand	1 300	980.60	75.43%	859.15	66.09%	170.56	13.12%
09.4002	Canada/US	11 500	3 883.04	33.77%	2 703.68	23.51%	172.00	1.50%
09.4455	Paraguay	1 000	935.41	93.54%	680.40	68.04%	89.43	8.94%
Total Beef		66 826	50 743.37	75.93%	41 297.80	61.80%	5 654.00	8.46%
Total Buffalo		2 450	11.05	0.45%	8.34	0.34%	-	0.00%
Total		69 276	50 754.42	73.26%	41 306.14	59.63%	5 654.00	8.16%

* up to 31/07/2020

High Quality Beef Import Quotas

Quota erga omnes

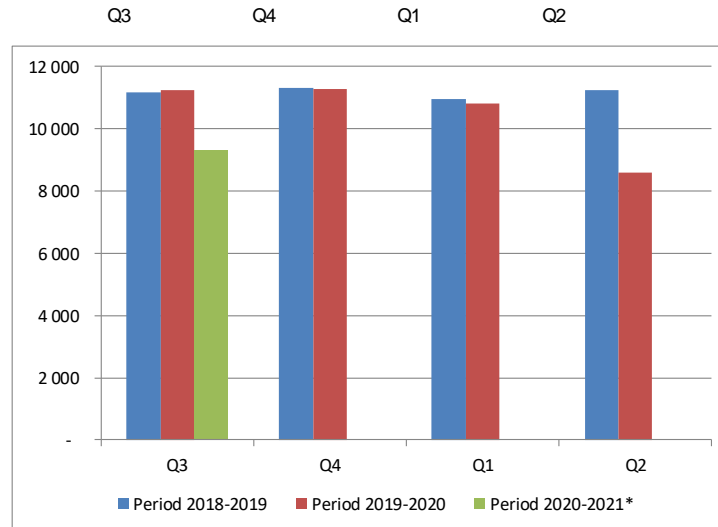
Regulation (EU) No 481/2012

	2018-Q3	2018-Q4	2019-Q1	2019-Q2	TOTAL
Period 2018-2019	11 165	11 319	10 973	11 256	44 712
Available	11 250	11 250	11 250	11 250	45 000
Use	99.24%	100.61%	97.53%	100.05%	99.36%
Available after transfer	11 250	11 335	11 181	11 527	
	99.24%	100.00%	97.53%	100.00%	

	2019-Q3	2019-Q4	2020-Q1	2020-Q2	TOTAL
Period 2019-2020	11 246	11 261	10 825	8 581	41 914
Available	11 250	11 250	11 250	11 250	45 000
Use	99.97%	100.10%	96.22%	76.28%	93.14%
Available after transfer	11 250	11 254	11 239	11 675	
	99.97%	100.00%	96.22%	76.28%	

	2020-Q3*	2020-Q4	2021-Q1	2021-Q2	TOTAL
Period 2020-2021*	9 313				9 313
Available	11 250				45 000
Use	82.78%				20.70%
Available after transfer	11 250				
	82.78%				

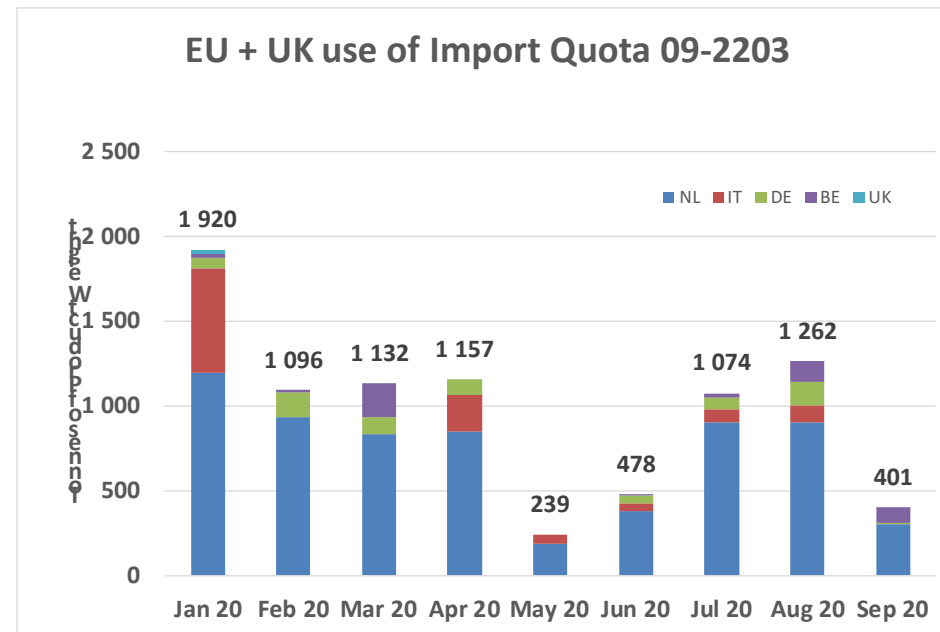
* Until 10.09.2020



High Quality Beef Import Quotas

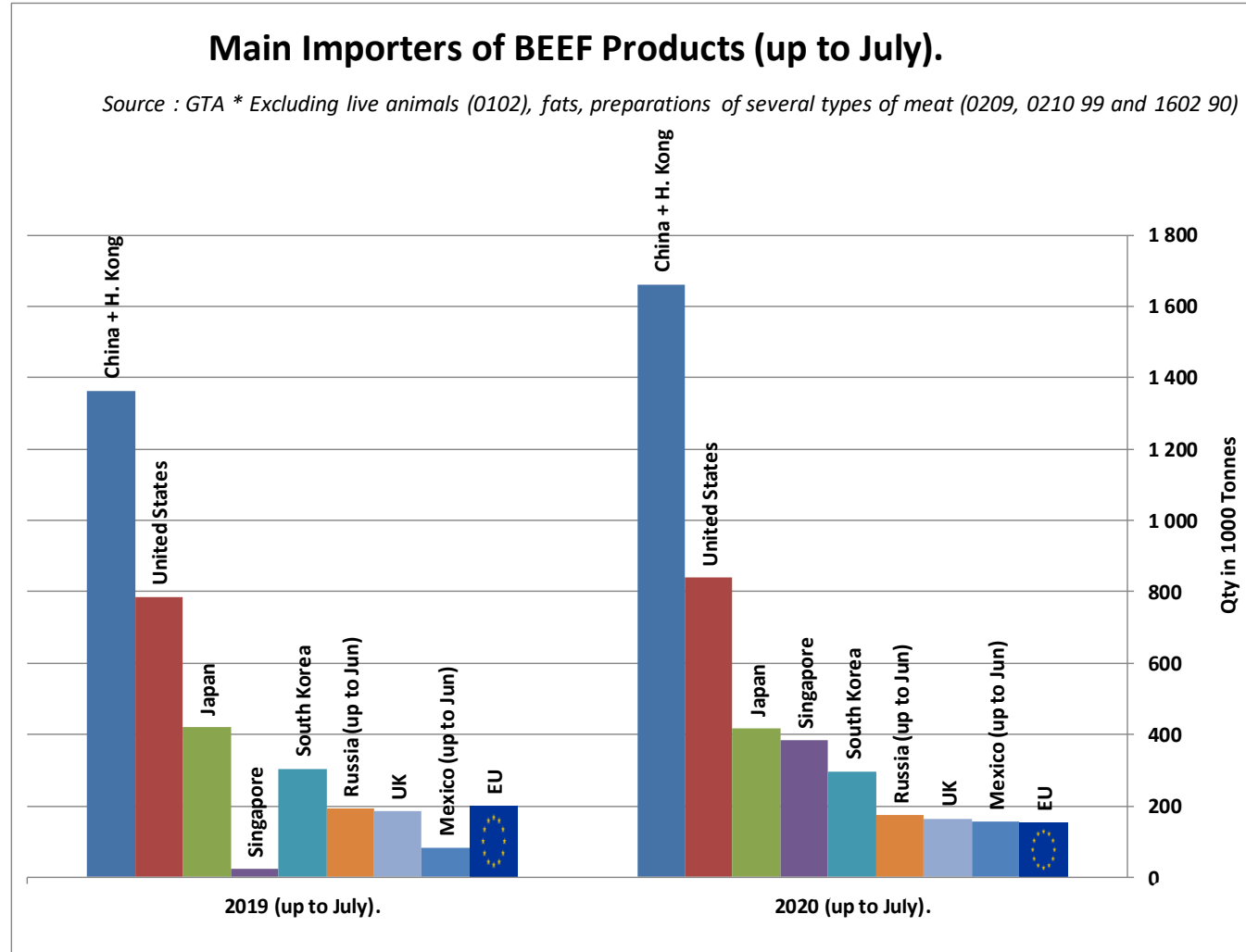
Origin	GATT 2019-2020				
	2019-Q3	2019-Q4	2020-Q1	2020-Q2	Total
NL			2 957	1 415	4 372
IT			614	314	929
DE			313	133	446
BE			241	10	251
UK			23	-	23
Total import within Quota			4 125	1 873	5 998
Available			4 625	4 625	9 250
Use			89.19%	40.50%	64.85%
After transfer			4 625	5 125	
Use			89.19%	36.55%	

Origin	GATT 2020-2021				
	2020-Q3	2020-Q4	2021-Q1	2021-Q2	Total
NL	2 105				2 105
IT	174				174
DE	218				218
BE	241				241
Total import within Quota	2 737				2 737
Available	4 625				4 625
Use	59.18%				
After transfer	4 625				
Use	59.18%				



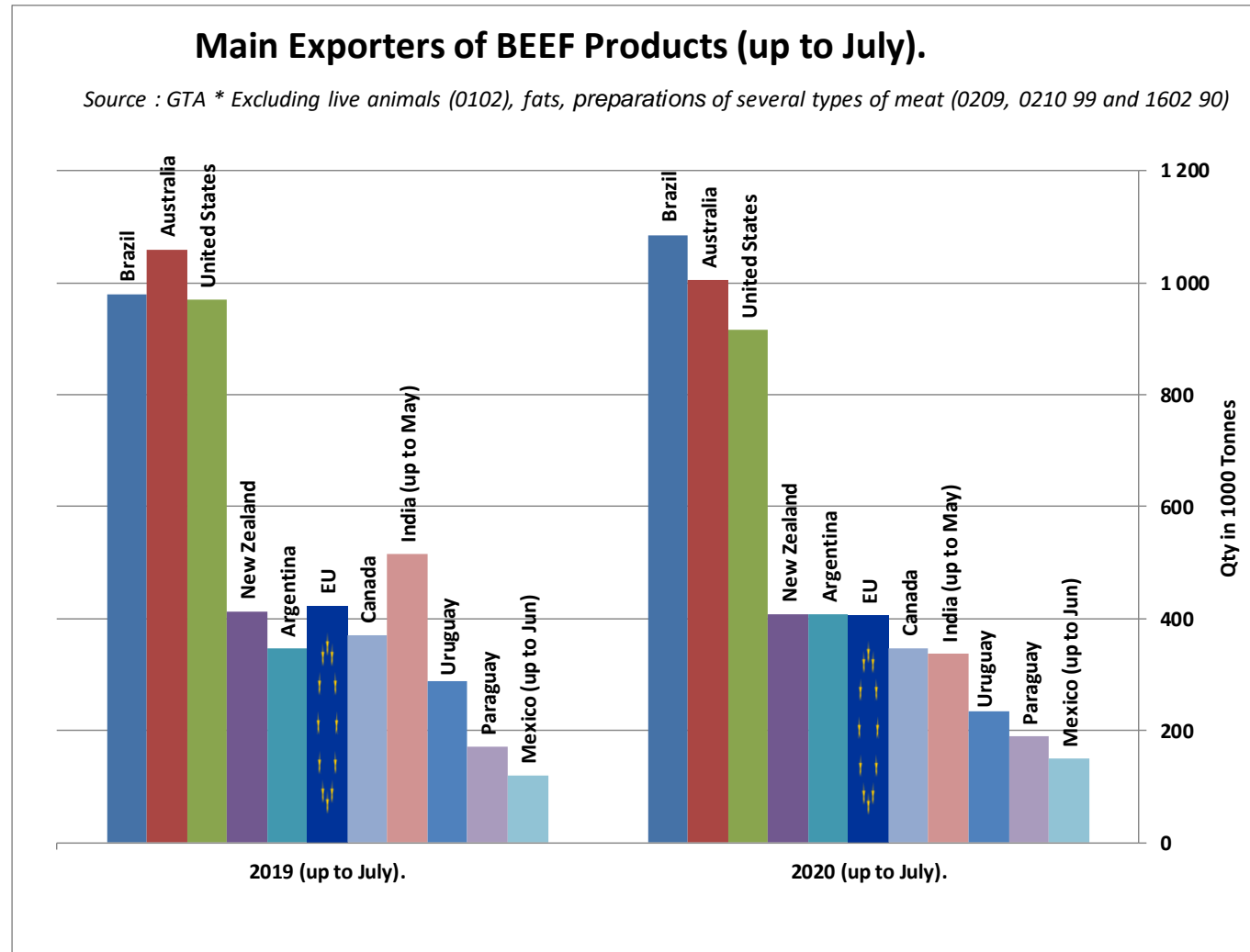
WORLD BEEF MARKET

E.U. + UK IMPORTS BEEF MAIN IMPORTERS



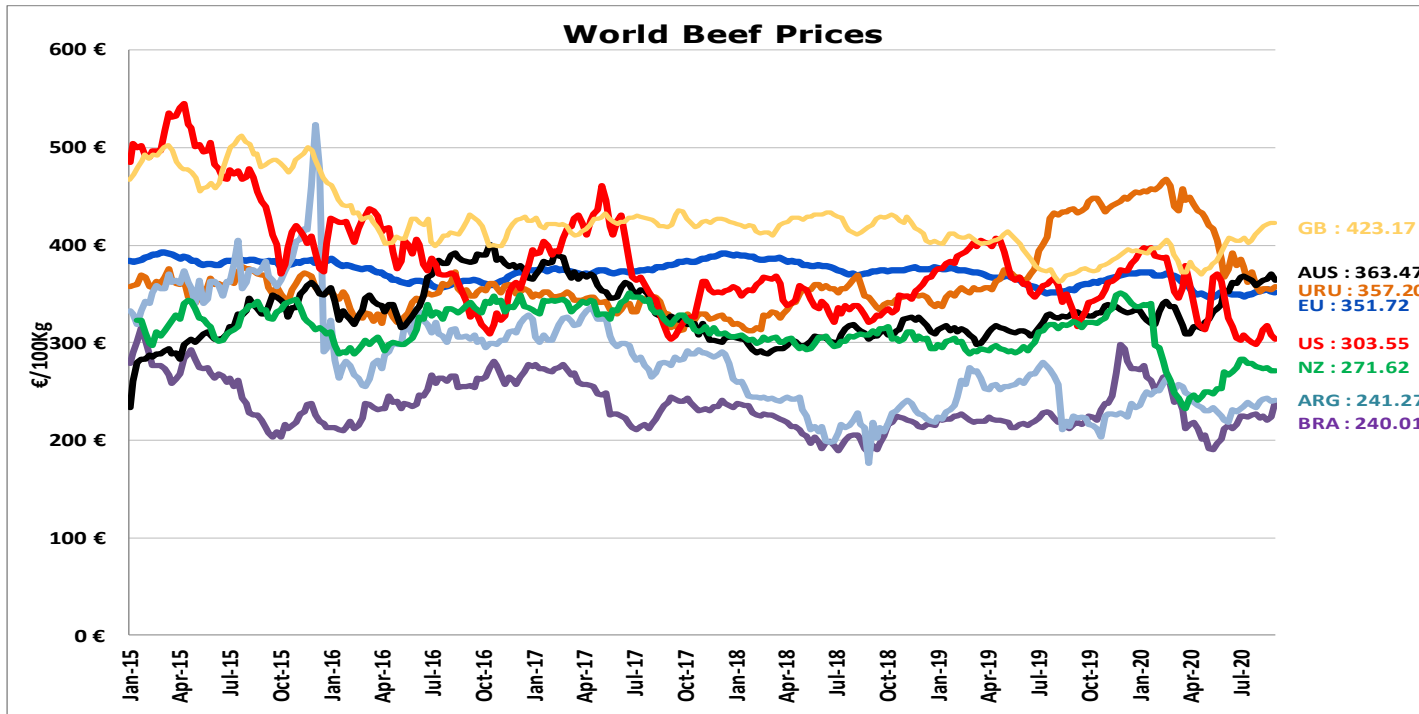
WORLD BEEF MARKET

E.U. + UK EXPORTS BEEF MAIN EXPORTERS



WORLD BEEF MARKET

STEER PRICES EU, US, AUS, NZ



ECB <http://sdw.ecb.europa.eu/browse.do?node=2018794>
US <https://www.marketnews.usda.gov/mnp/lis-home>
AUS <http://statistics.mla.com.au/Report/RunReport/ae59d4ac-74e4-4c56-93bd-982a044d9760>
UY <http://www.inac.gub.uy/innovaportal/v/11034/10/innova.front/indicadores-y-precios>
ARG http://www.abc-consorcio.com.ar/Estadisticas/detalle/117/precios_comparativos_del_novillo.html
BR <http://www.pecuaria.com.br/cotacoes.php>
NZ http://www.abc-consorcio.com.ar/Estadisticas/detalle/117/precios_comparativos_del_novillo.html

THANK YOU VERY MUCH

More Information at:

EU Market Observatory

https://ec.europa.eu/agriculture/market-observatory/meat_en

And

Agri-FOOD data portal:

<http://agridata.ec.europa.eu/>

Thank you



© European Union 2020

Unless otherwise noted the reuse of this presentation is authorised under the [CC BY 4.0](https://creativecommons.org/licenses/by/4.0/) license. For any use or reproduction of elements that are not owned by the EU, permission may need to be sought directly from the respective right holders.

Slide xx: [element concerned](#), source: [e.g. Fotolia.com](#); Slide xx: [element concerned](#), source: [e.g. iStock.com](#)

