



BEEF & VEAL MARKET SITUATION



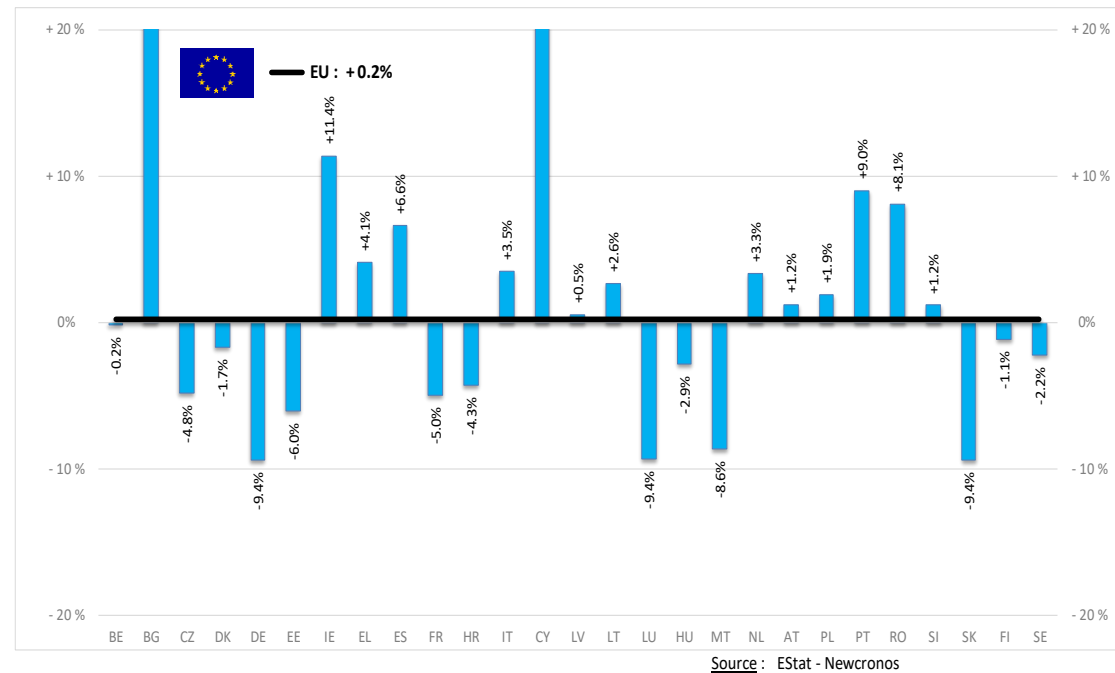
Beef CMO 20 July 2022

PRODUCTION

% EVOLUTION HEADS

HEADS	Jan-Apr 22/21
EU	EU
Bull	-3.1%
Bullock	+5.9%
Cow	+0.1%
Heifer	+2.6%
Calve	+1.1%
Young cattle	+2.1%
Meat of bovine animals	+0.2%

Estimates for last month of period :

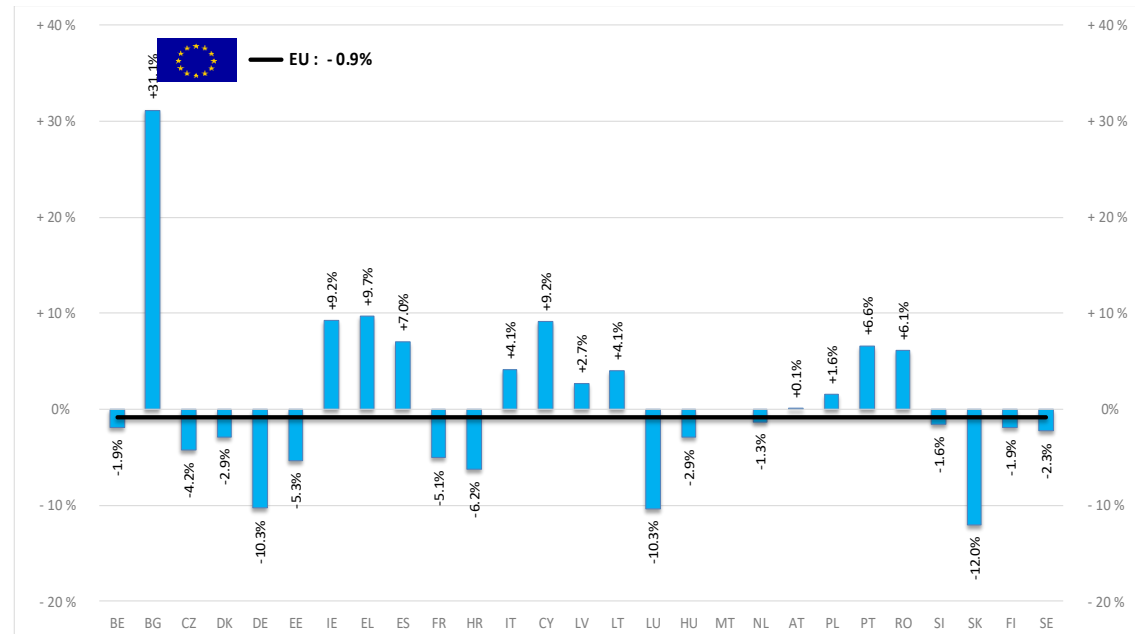


PRODUCTION

% EVOLUTION TONNES

TONNES	Jan-Apr 22/21
	EU
Bull	-3.5%
Bullock	+4.8%
Cow	-1.1%
Heifer	+1.4%
Calve	-0.6%
Young cattle	+3.0%
Meat of bovine animals	-0.9%

Estimates for last month of period :

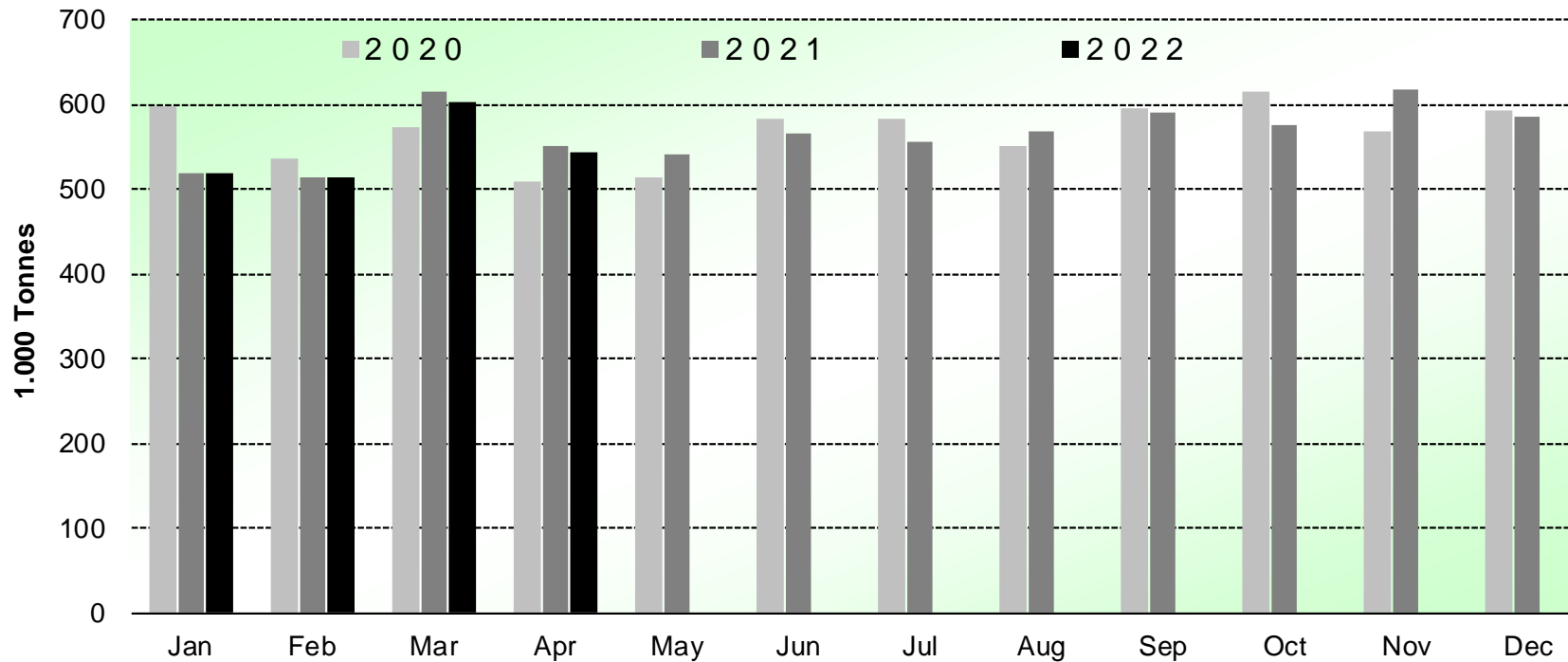


Source : EStat - Newcronos

PRODUCTION

HISTORIC TONNES

Beef & Veal Production (EU Slaughtering) - Tonnes



Source: EStat-Newcronos

PRICES CARCASSES

Dashboard

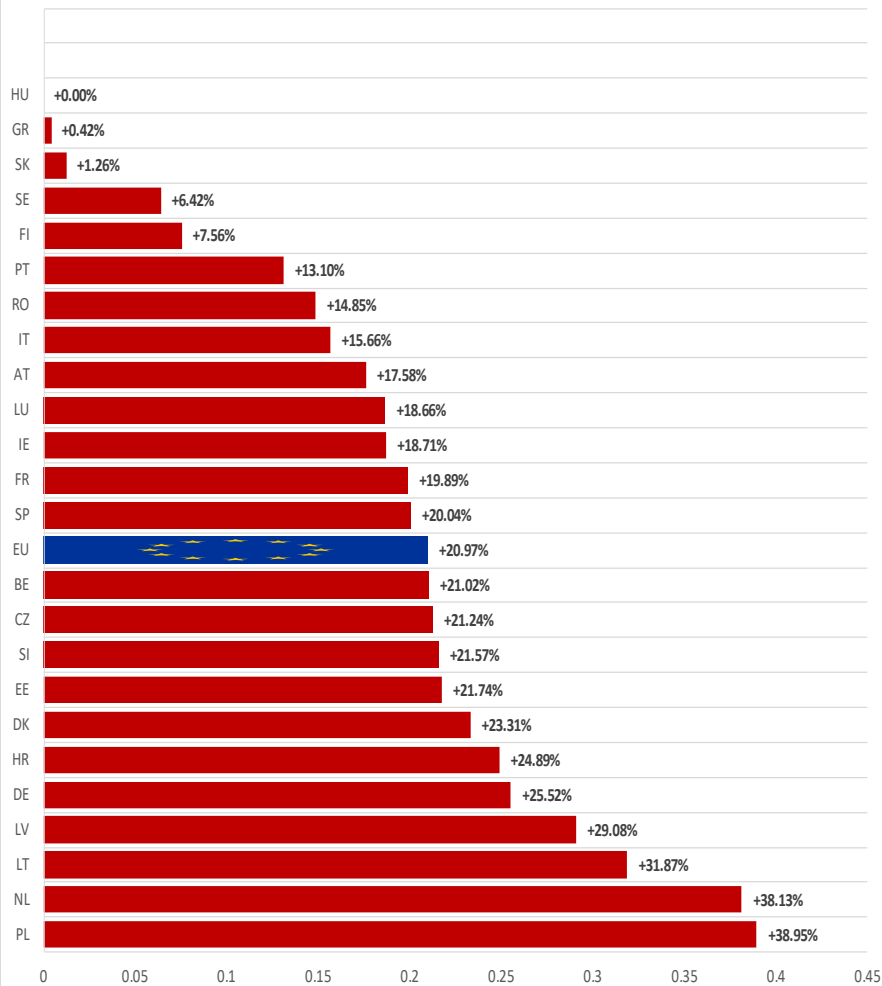
EU Prices week		27	Evolution since last week	Evolution since last month	Evolution since last year
Carcasse	Average A/C/Z -R3	485.8	- 0.1%	- 0.1%	+ 27.1%
	Young Bovines (Z)	481.8	+ 0.7%	+ 1.2%	+ 28.6%
	Young Bulls (A)	481.4	+ 0.0%	+ 0.5%	+ 28.0%
	Steers (C)	514.6	- 1.5%	- 4.3%	+ 22.6%
	Cows (D)	453.5	+ 0.4%	+ 0.9%	+ 41.0%
	Heifers (E)	503.6	- 0.0%	+ 0.3%	+ 26.8%
	Calves slaughtered <8M	576.0	+ 1.3%	- 1.5%	+ 21.2%
Live Animals	Male Calves Dairy Type	121.2	+ 3.1%	- 13.1%	+ 8.9%
	Male Calves Beef Type	252.2	- 1.1%	- 2.6%	+ 6.0%
	Young Store Cattle	3.11	- 0.7%	- 0.9%	+ 16.1%
	Yearling Male Store Cattle	3.94	+ 0.8%	+ 5.5%	+ 10.5%
	Yearling Female Store Cattle	3.04	+ 0.5%	+ 1.1%	+ 13.9%

Sources : MSs notifications (Regulation (EU) 1182/2017 and 1184/2017)

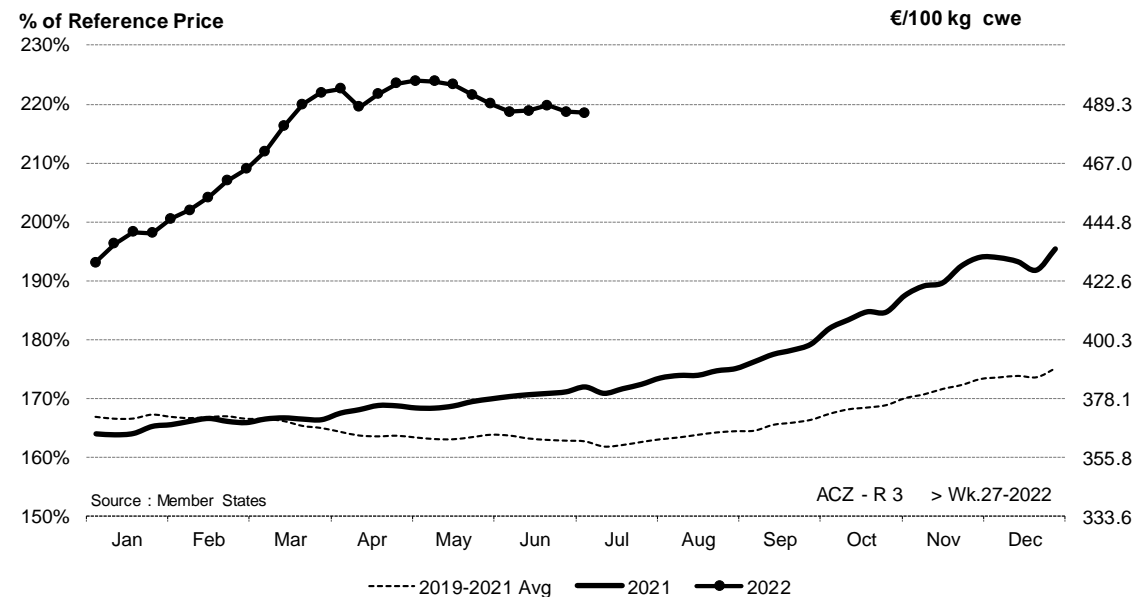
PRICES CARCASSES

EU EVOLUTION A/C/Z.R3

EU ACZ R3 Price Comparison between average monthly price July 2021 - June 2022 compared to July 2020 - June 2021



ACZ - R 3 > Wk.27-2022



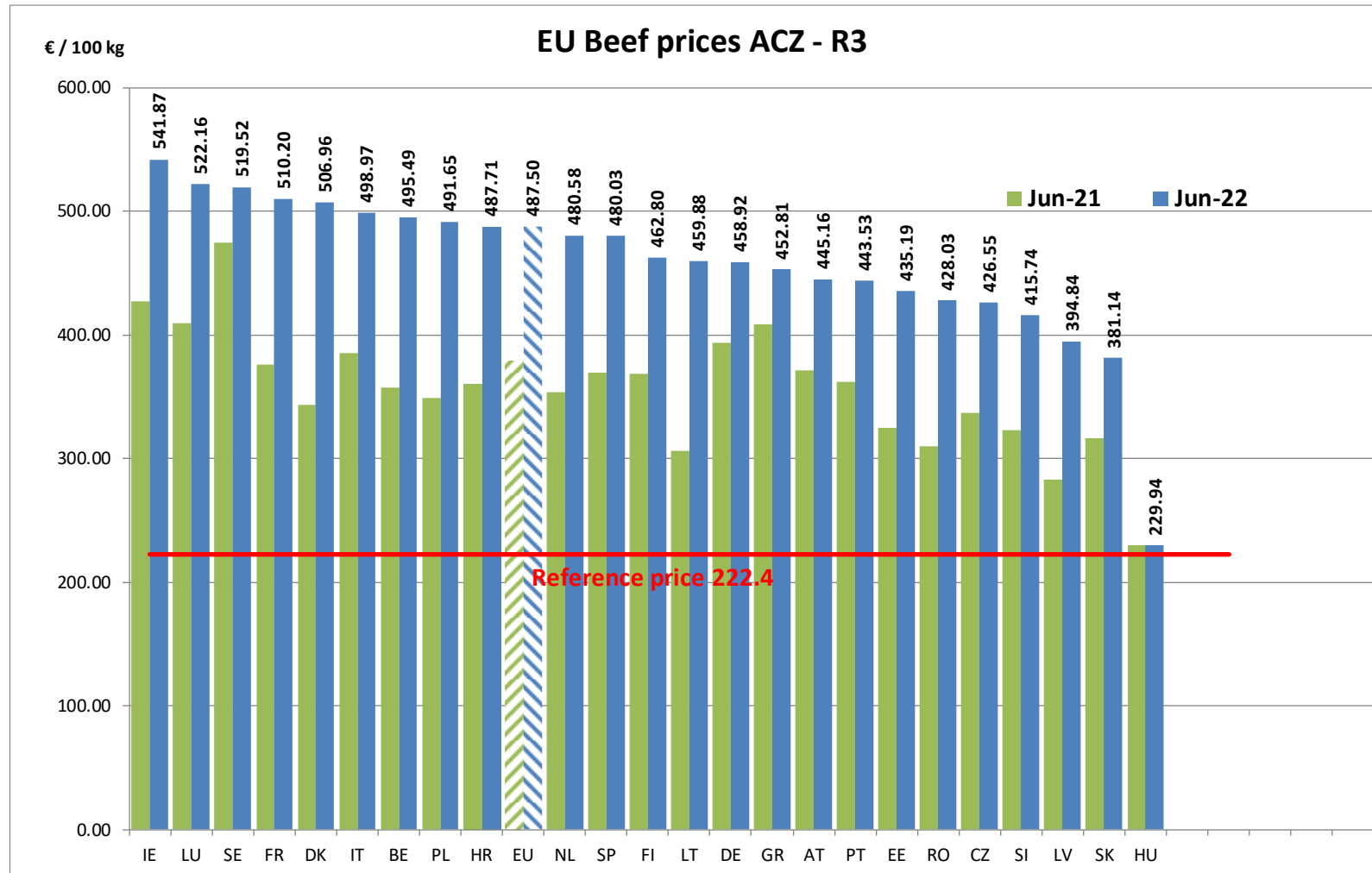
Price in week 27 : **485.84**
 % change y/y : **+ 27.12%**
 % Ref. Price in wk 0 : **218.5%**

Average price in June 2022 : **487.50**
 % change y/y : **+ 28.63%**

20 July 2022

PRICES CARCASSES

EU EVOLUTION A/C/Z.R3

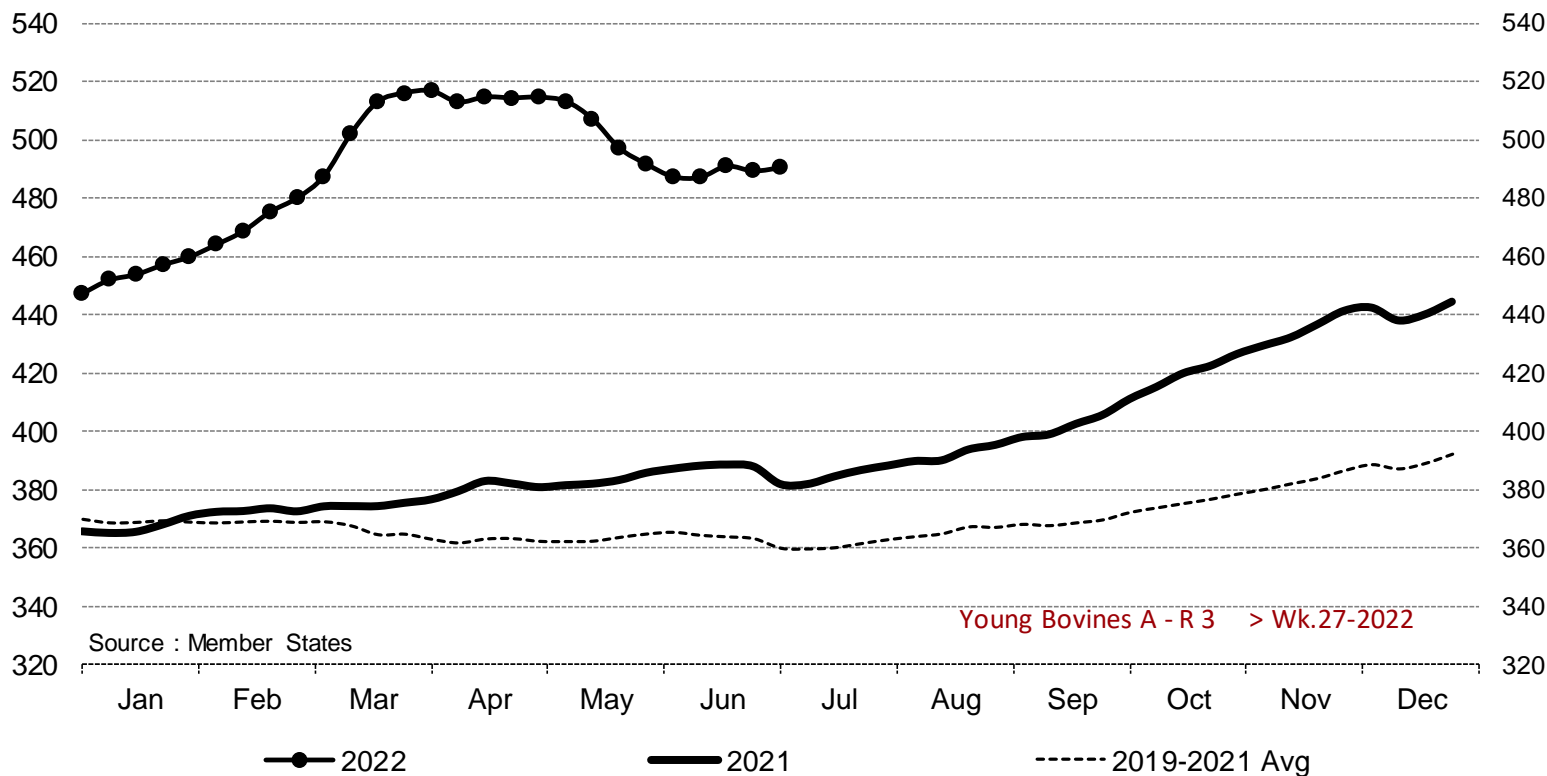


20 July 2022

PRICES CARCASSES

EU EVOLUTION YOUNG BULL – A.R3

Young Bovines A - R 3 > Wk.27-2022



Source : Member States

Young Bovines A - R 3 > Wk.27-2022

Price in week 27 : **490.48**
% change y/y : **+ 28.4%**

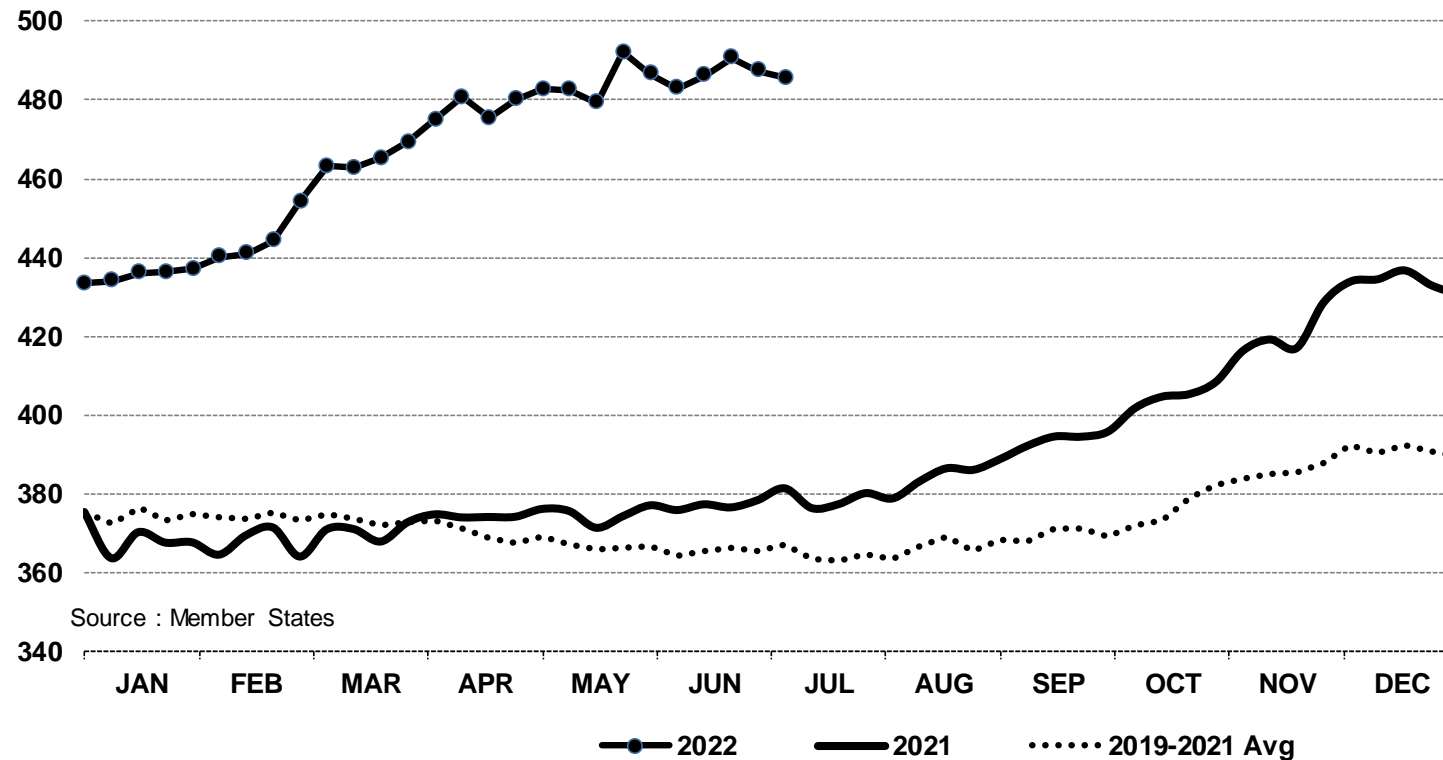
Average price in June 2022 : **489.14**
% change y/y : **+ 26.2%**

PRICES CARCASSES

E.U. EVOLUTION YOUNG BOVINE 8-12M- Z.R3

In € / 100 kg

Young Bovines 8-12m Z - R 3 > Wk.27-2022



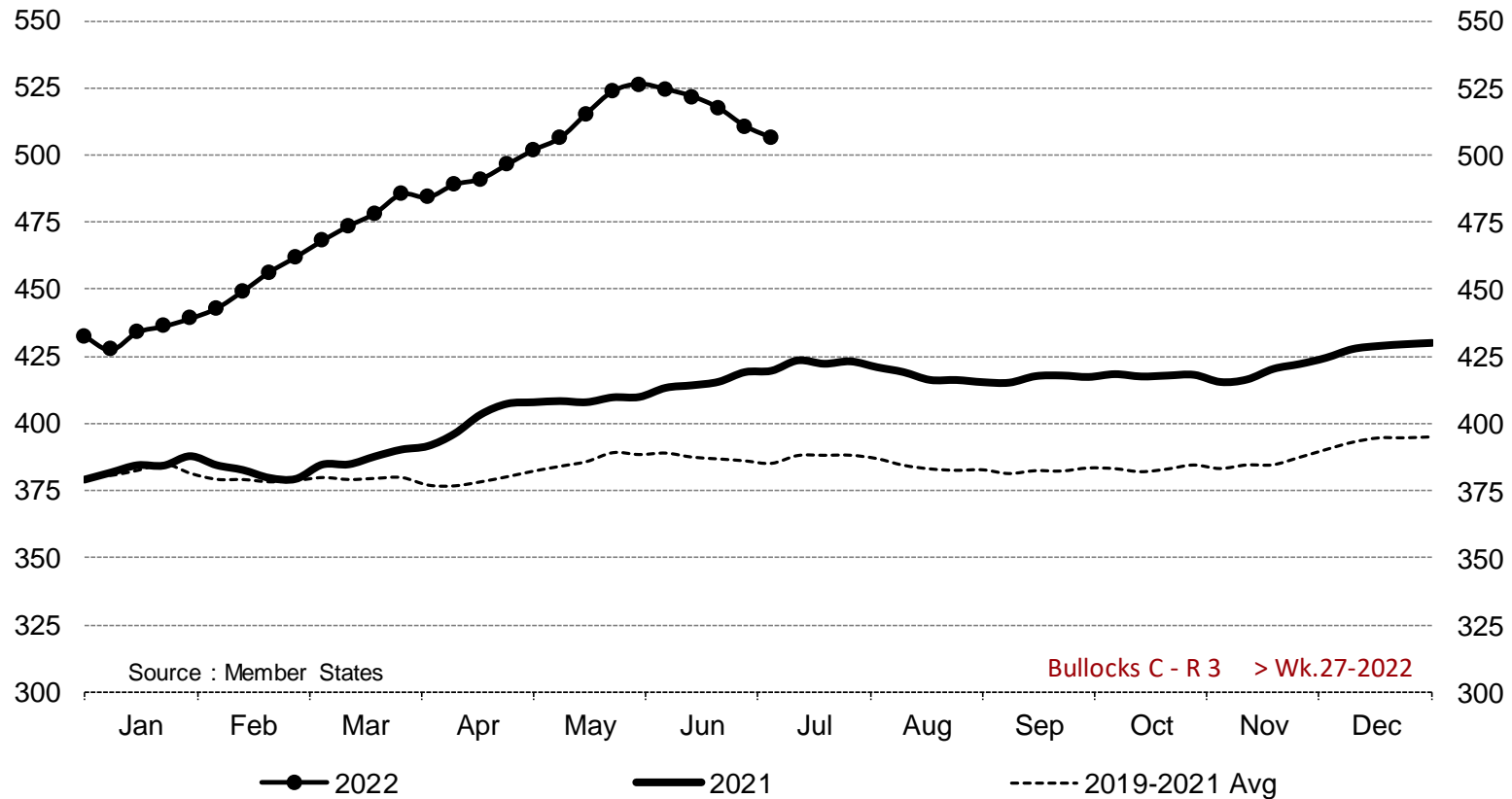
Source : Member States

Price in week 27 :	485.52	09/06/2022	Average price in June 2022 :	486.72
% change y/y :	+ 27.3%		% change y/y :	+ 29.1%

PRICES CARCASSES

E.U. EVOLUTION STEER – C.R3

Bullocks C - R 3 > Wk.27-2022



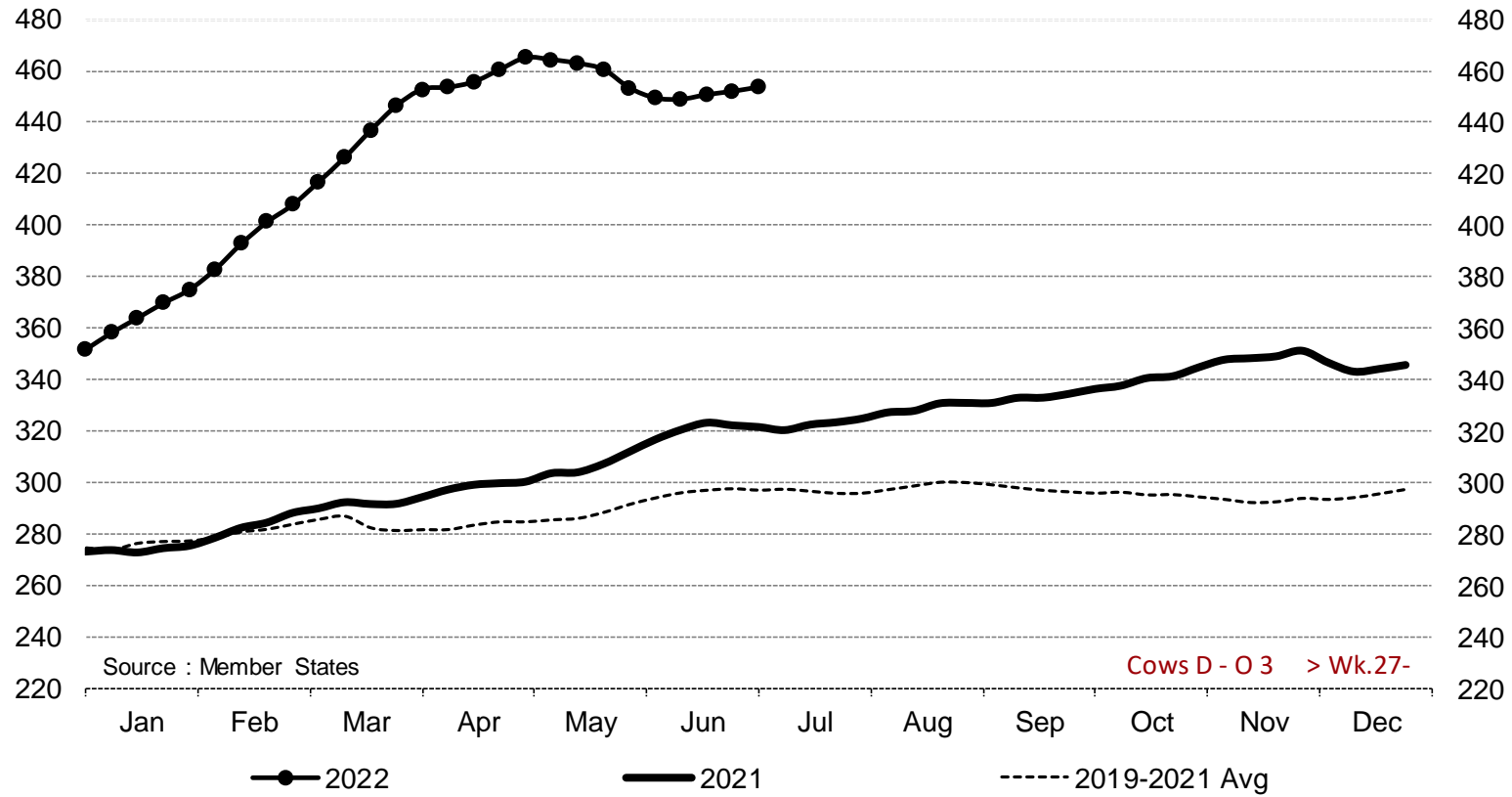
Price in week 27 : **506.36**
% change y/y : **+ 20.7%**

Average price in June 2022 : **520.59**
% change y/y : **+ 25.8%**

PRICES CARCASSES

E.U. EVOLUTION
COW – D.03

Cows D - O 3 > Wk.27-2022



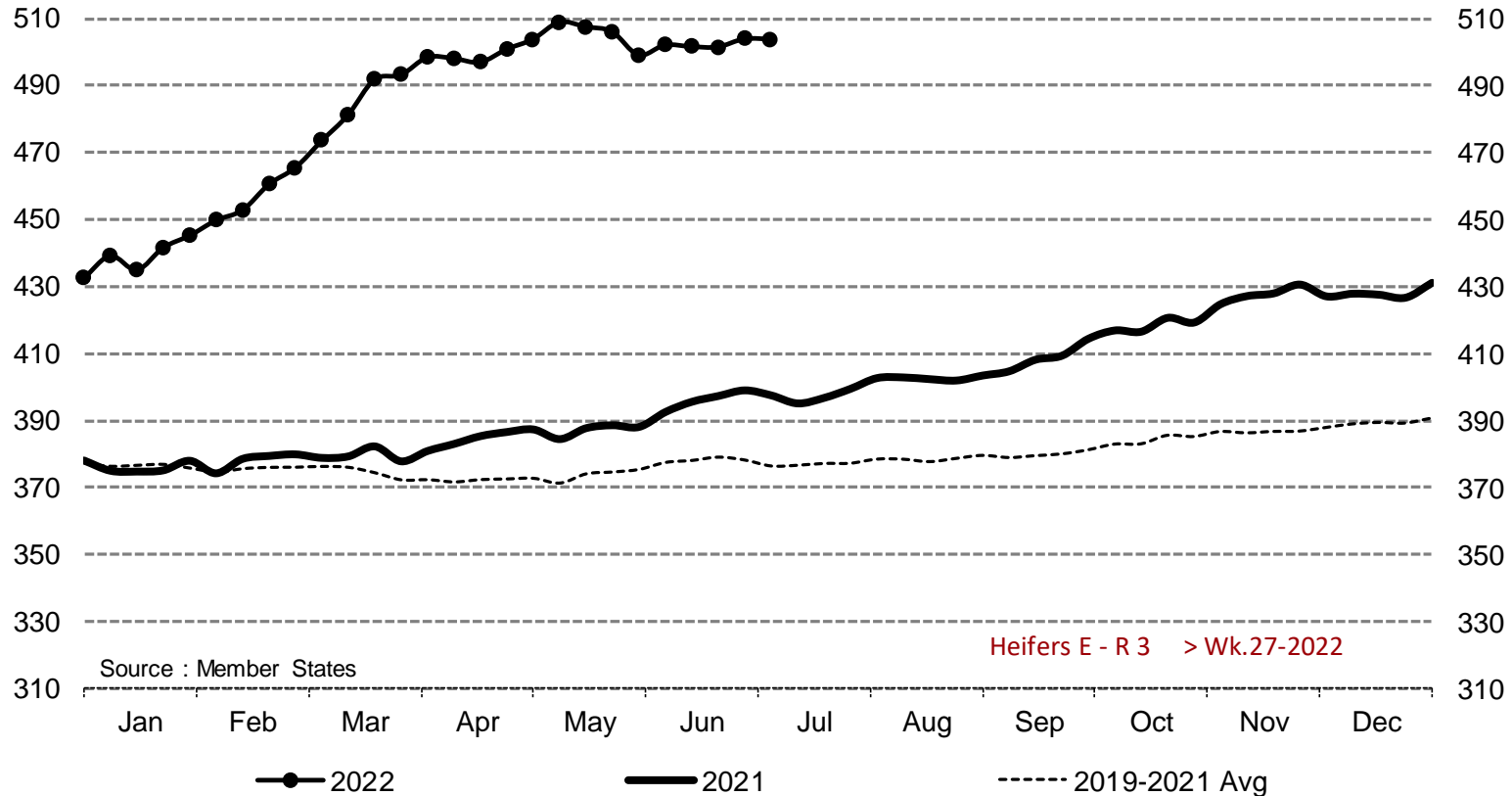
Price in week 27 : **453.55**
% change y/y : **+ 41.0%**

Average price in June 2022 : **450.50**
% change y/y : **+ 41.4%**

PRICES CARCASSES

EU EVOLUTION HEIFER - E.R3

Heifers E - R 3 > Wk.27-2022

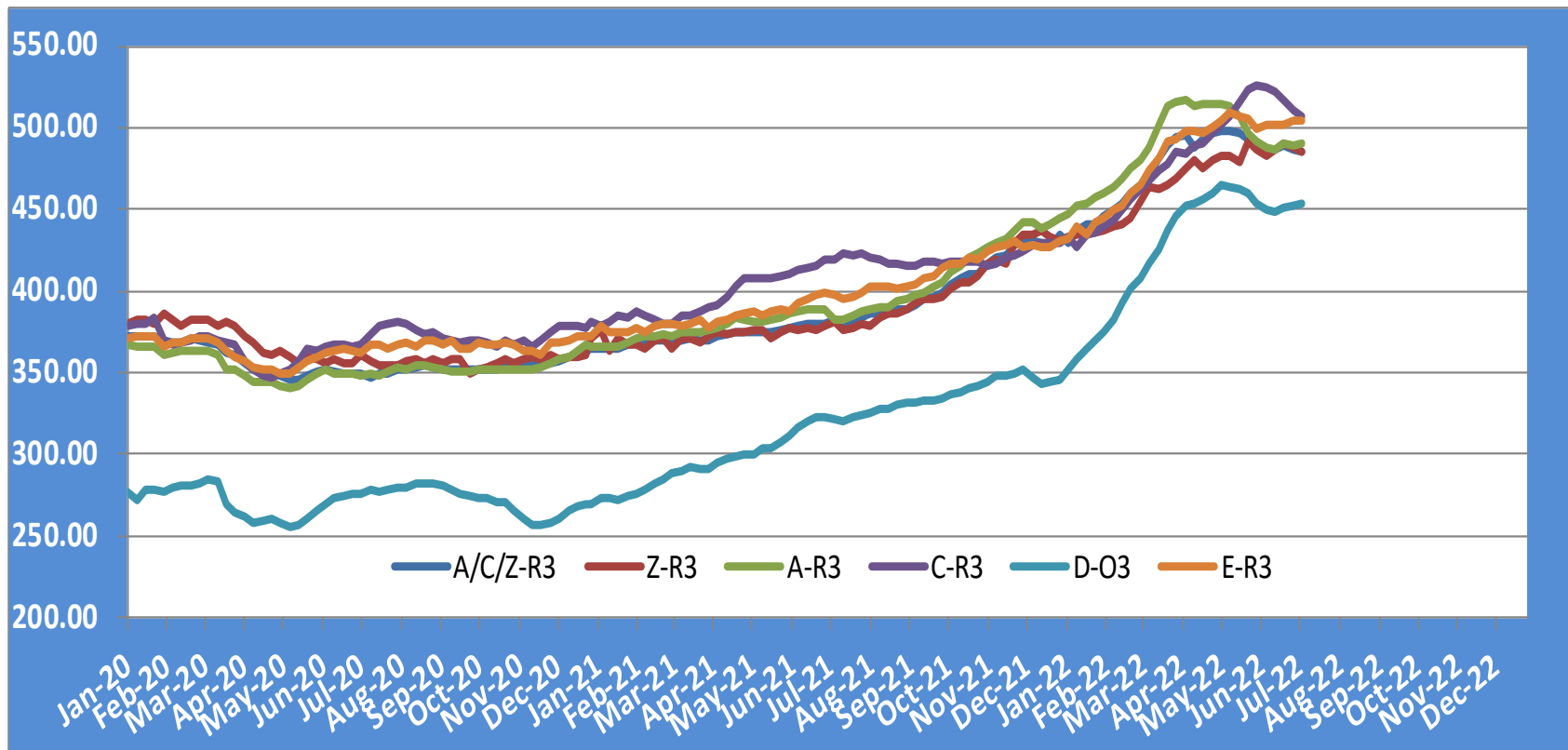


Price in week 27 : **503.69**
% change y/y : **+ 26.8%**

Average price in June 2022 : **501.44**
% change y/y : **+ 27.3%**

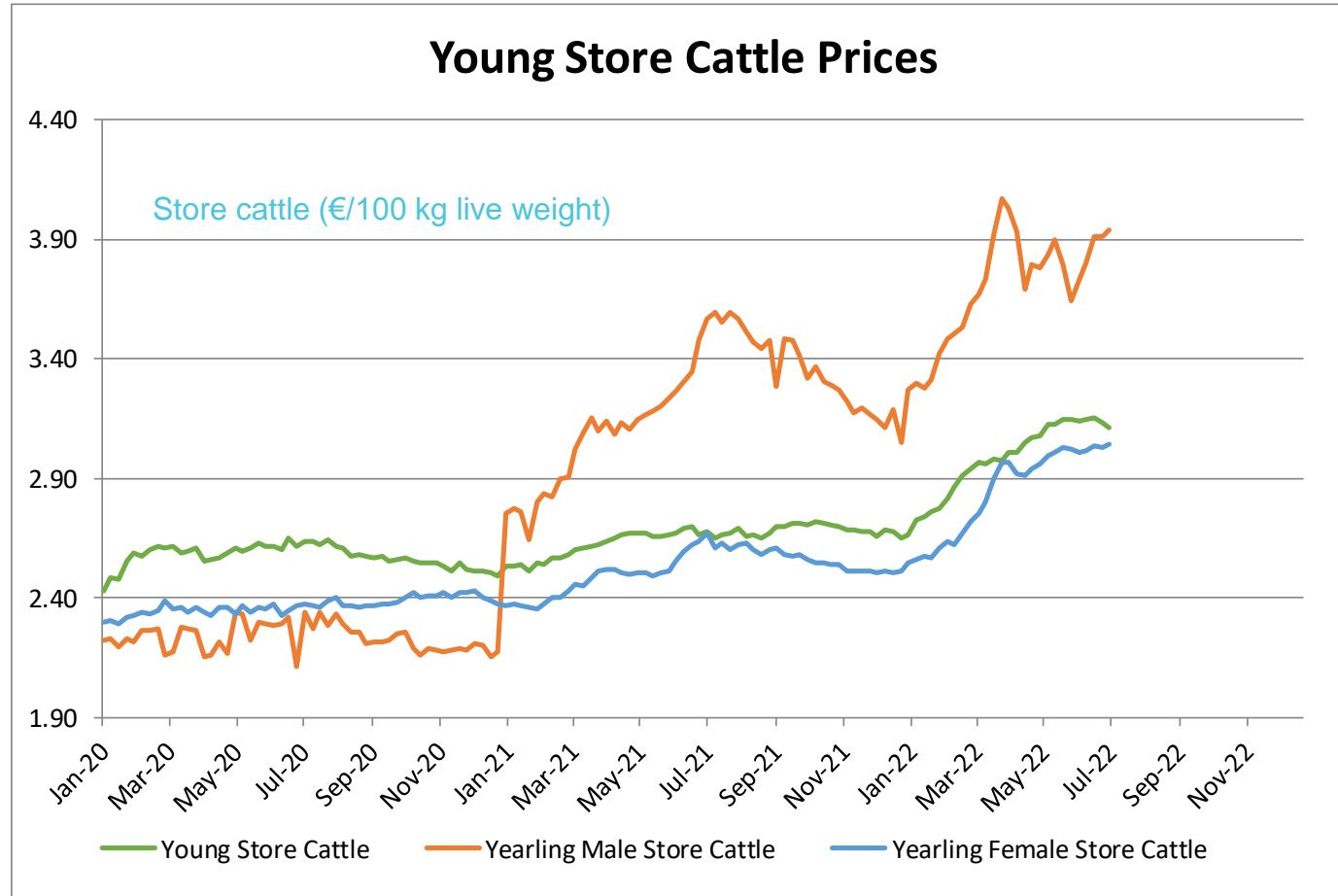
PRICES CARCASSES

EU EVOLUTION ALL CAT GLOBAL VIEW



PRICES LIVE BOVINES

EU EVOLUTION STORE CATTLE



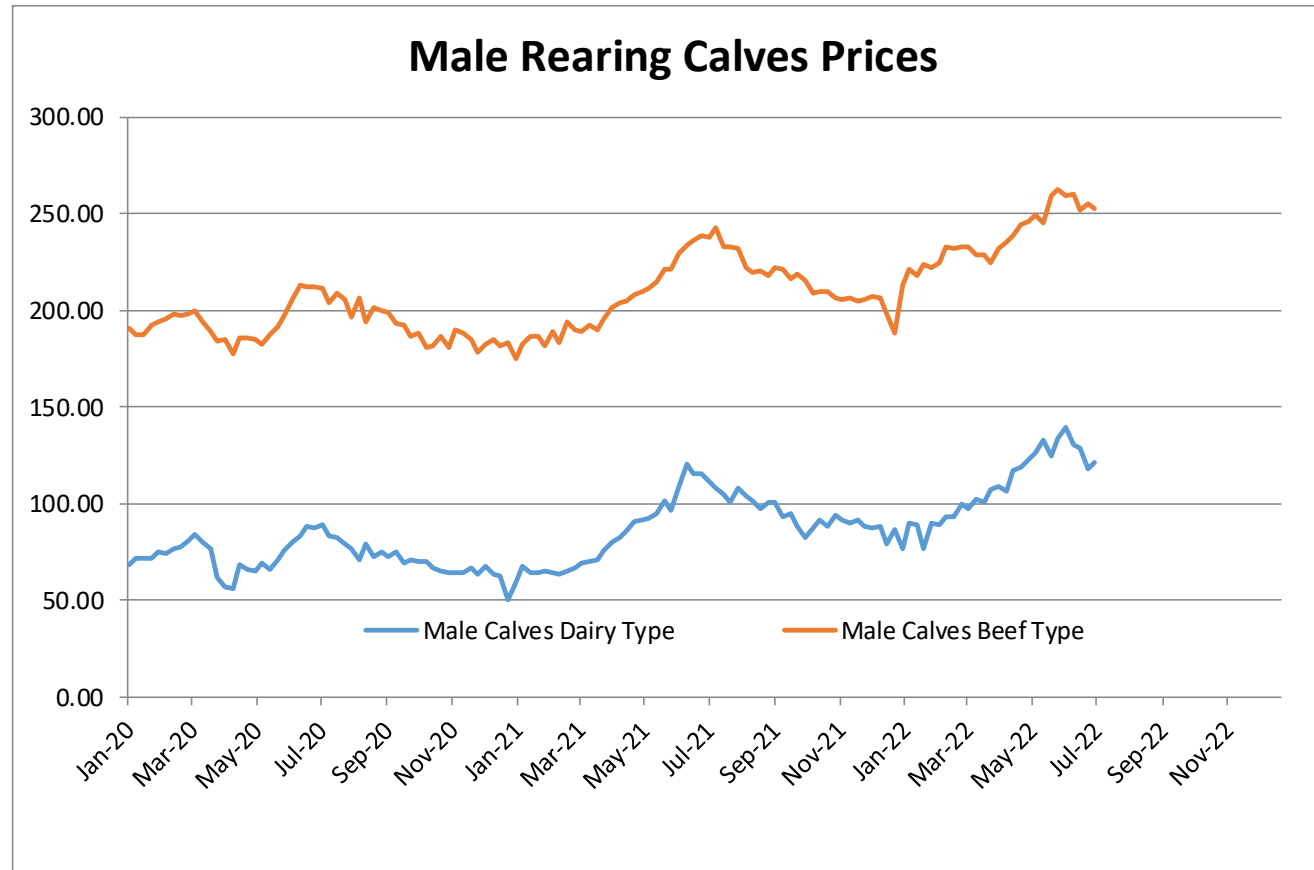
Young Store Cattle Price in	Week 27	3.11	Yearling Male Store Cattle Price	3.94
	Change y/y	+16.1%	Change y/y	+10.5%
Yearling Female Store Cattle Price		3.04		
	Change y/y	+13.9%		

20 July 2022

PRICES LIVE BOVINES

EU EVOLUTION Male Calves – 8D4W

Male calves aged between 8 days and 4 weeks (€/head)



Male Rearing Calves Beef type

Price in Week 27 **252.22**
Change y/y **+6.0%**

Male Rearing Calves Dairy type

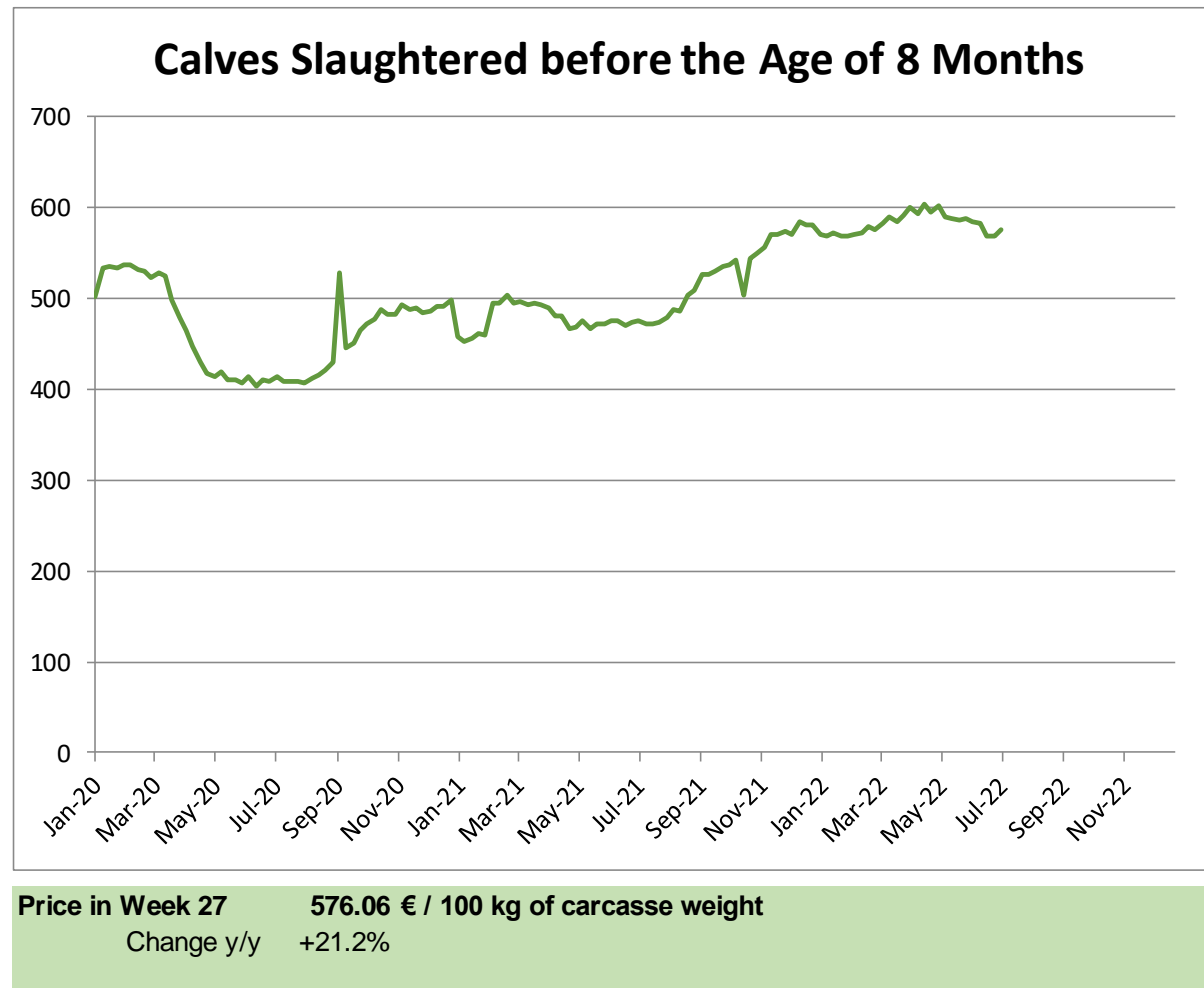
Price in Week 27 **121.26**
Change y/y **+8.9%**

20 July 2022

PRICES LIVE BOVINES

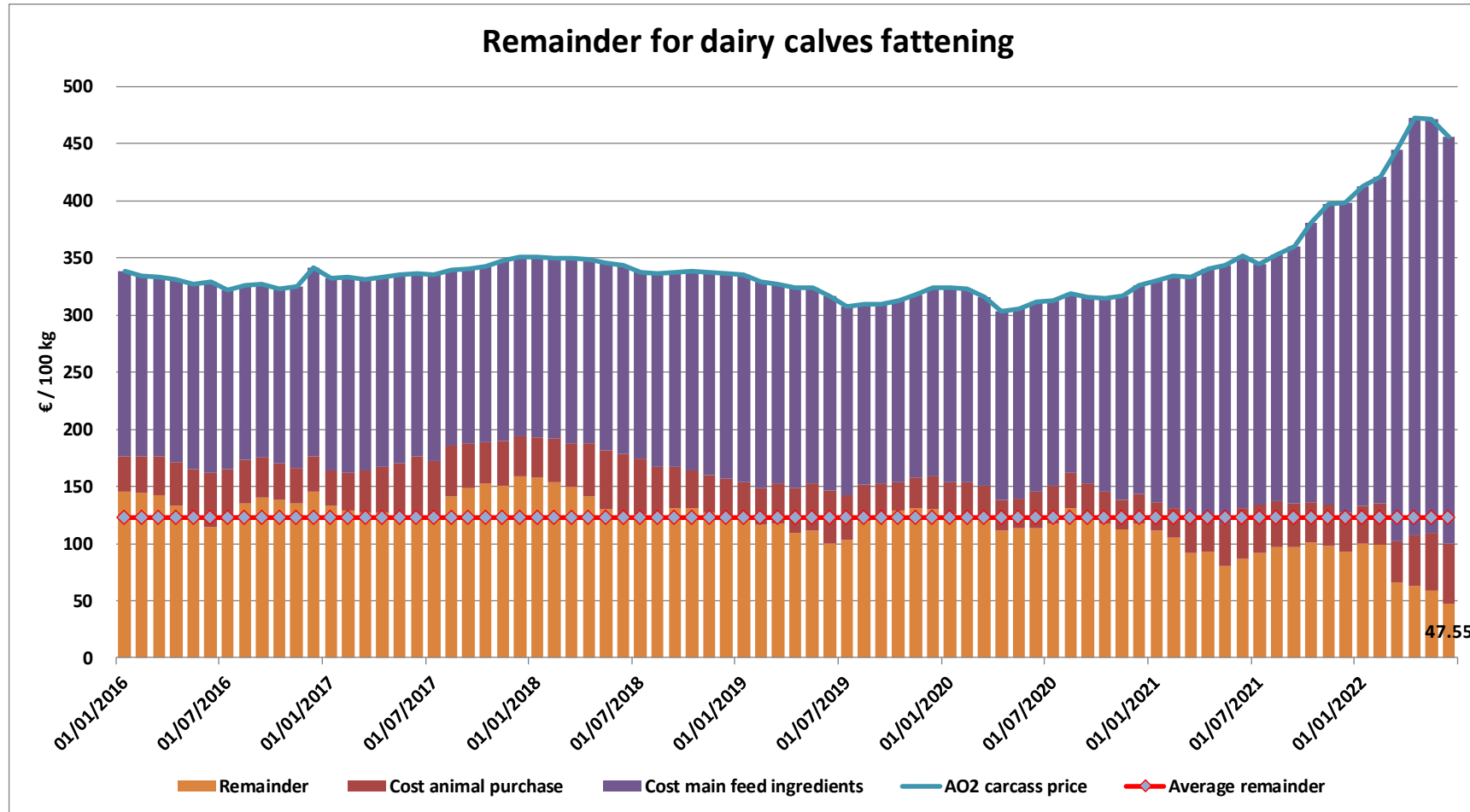
EU EVOLUTION Butcher Calves

Calves slaughtered before the age of less than 8 months
(€/100 kg cw)

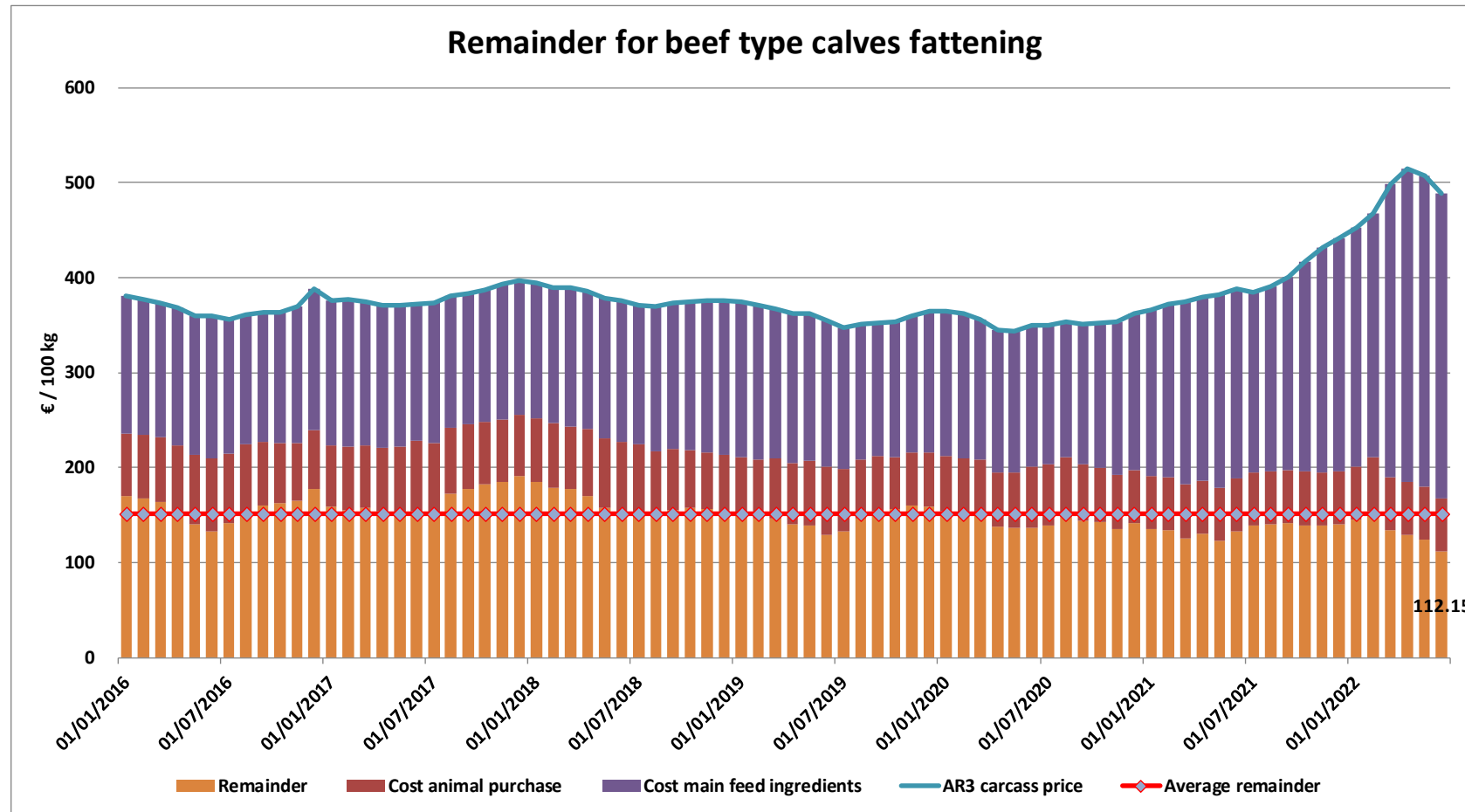


20 July 2022

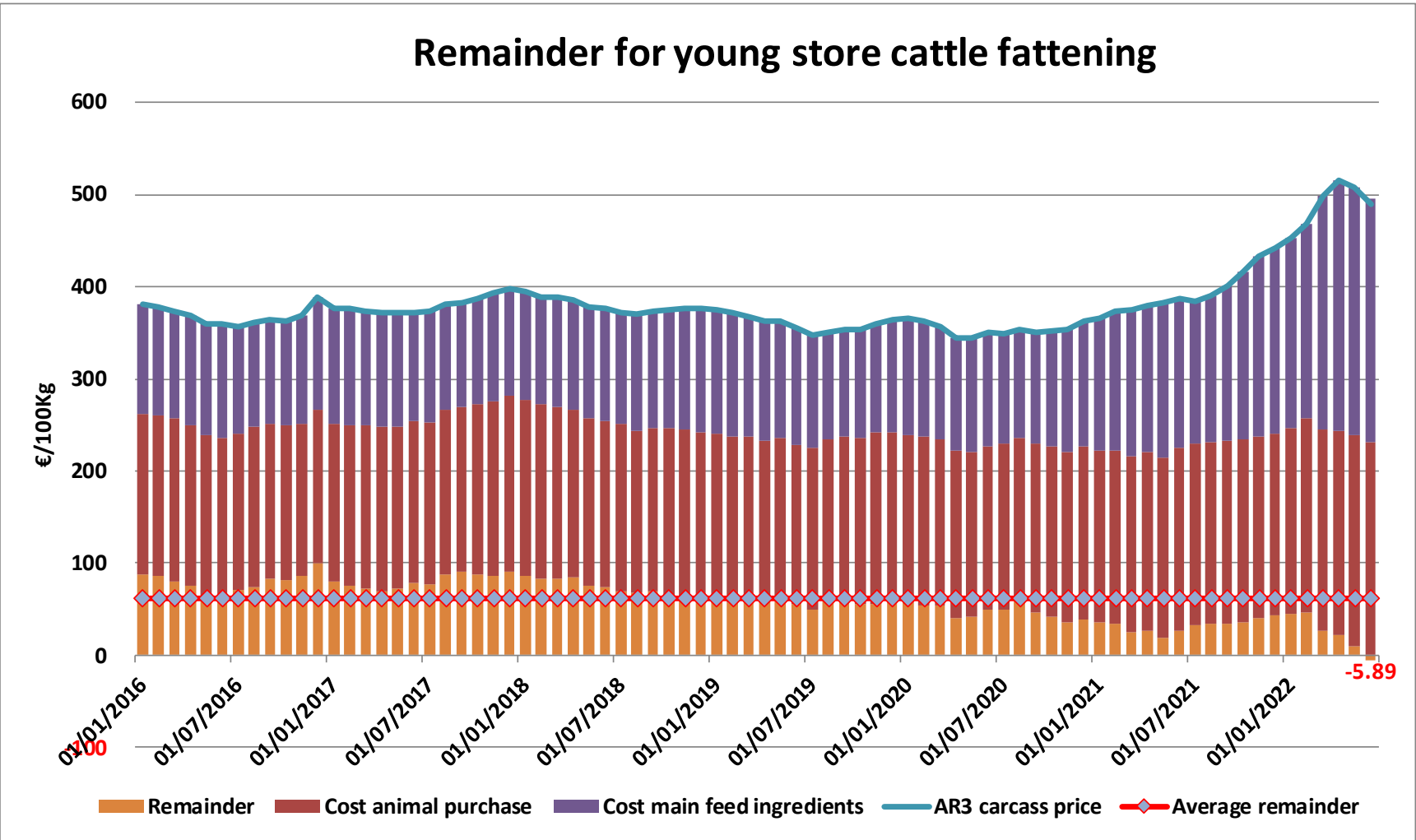
REMAINDERS



REMAINDERS



REMAINDERS



TRADE

EU EXPORTS

Beef & Live Animals

EU Exports of Beef and Live Animals (including fats): Trade figures (COMEXT – tonnes cwe)

Destinations	2018		2019		2020		2021		Jan-May 22		Compared to
	tonnes	%	tonnes	%	tonnes	%	tonnes	%	tonnes	%	
Israel	47 774	6.8%	49 629	7.1%	56 974	8.1%	66 594	9.4%	26 220	10.5%	+ 1.9%
Ghana	36 766	5.2%	39 196	5.6%	47 358	6.7%	47 641	6.7%	16 522	6.6%	- 18.3%
Philippines	28 766	4.1%	34 158	4.9%	39 844	5.7%	45 208	6.4%	15 217	6.1%	- 26.2%
Bosnia-Herz.	38 762	5.5%	41 119	5.9%	35 744	5.1%	41 396	5.9%	13 974	5.6%	- 11.9%
Switzerland	23 761	3.4%	25 188	3.6%	29 993	4.3%	33 916	4.8%	13 753	5.5%	+ 0.1%
Ivory Coast	36 064	5.1%	33 396	4.8%	32 433	4.6%	29 236	4.1%	12 997	5.2%	- 1.7%
Lebanon	42 542	6.1%	36 393	5.2%	33 709	4.8%	19 969	2.8%	10 418	4.2%	- 10.0%
Japan	3 452	0.5%	8 007	1.1%	11 885	1.7%	21 888	3.1%	9 081	3.6%	+ 46.5%
Canada	2 225	0.3%	6 806	1.0%	20 450	2.9%	20 676	2.9%	8 865	3.6%	+ 39.4%
Norway	7 926	1.1%	7 667	1.1%	12 936	1.8%	18 254	2.6%	8 786	3.5%	- 19.8%
Algeria	35 410	5.0%	57 152	8.2%	39 396	5.6%	24 127	3.4%	8 727	3.5%	- 42.2%
Egypt	6 297	0.9%	3 375	0.5%	7 961	1.1%	10 604	1.5%	6 177	2.5%	+ 101.1%
Kosovo	6 693	1.0%	10 279	1.5%	10 902	1.5%	16 771	2.4%	5 775	2.3%	- 10.5%
Libya	27 878	4.0%	24 541	3.5%	22 352	3.2%	19 725	2.8%	5 596	2.2%	- 36.6%
Ukraine	10 465	1.5%	13 836	2.0%	15 837	2.2%	16 583	2.3%	5 317	2.1%	- 22.8%
USA	6 891	1.0%	7 867	1.1%	12 310	1.7%	11 659	1.7%	5 101	2.0%	- 3.1%
Other Destinations	340 210	48.5%	301 632	43.1%	274 491	39.0%	261 790	37.1%	76 775	30.8%	
Total (without UK)	701 882		700 242		704 576		706 035		249 302		
% change			- 0%		+ 1%		+ 0%		- 16.1%		

TRADE

EU EXPORTS

Beef

EU Exports of Beef (excluding fats): Trade figures (COMEXT – tonnes cwe)

Destinations	2018		2019		2020		2021		Jan-May 22		Compared to
	tonnes	%	tonnes	%	tonnes	%	tonnes	%	tonnes	%	
Ghana	36 766	8.1%	39 196	8.5%	47 344	10.0%	47 640	9.8%	16 521	9.7%	- 18.3%
Ivory Coast	36 064	7.9%	33 396	7.2%	32 433	6.8%	29 236	6.0%	12 997	7.6%	- 1.7%
Bosnia-Herz.	35 064	7.7%	37 700	8.2%	32 596	6.9%	37 526	7.8%	12 405	7.3%	- 13.6%
Philippines	27 857	6.1%	31 302	6.8%	33 650	7.1%	34 666	7.2%	12 268	7.2%	- 25.7%
Switzerland	19 073	4.2%	20 320	4.4%	25 170	5.3%	27 395	5.7%	11 139	6.6%	+ 3.6%
Japan	3 452	0.8%	7 982	1.7%	11 885	2.5%	21 888	4.5%	9 081	5.3%	+ 46.5%
Canada	2 225	0.5%	6 756	1.5%	20 450	4.3%	20 676	4.3%	8 864	5.2%	+ 39.4%
Norway	7 780	1.7%	7 622	1.7%	12 873	2.7%	18 231	3.8%	8 765	5.2%	- 19.9%
Israel	21 425	4.7%	21 902	4.7%	21 131	4.4%	20 548	4.2%	7 819	4.6%	+ 8.7%
USA	5 441	1.2%	7 866	1.7%	12 308	2.6%	11 430	2.4%	5 101	3.0%	+ 0.4%
Hong Kong	55 439	12.1%	46 639	10.1%	56 713	11.9%	44 823	9.3%	5 043	3.0%	- 77.0%
Ukraine	9 866	2.2%	12 684	2.7%	13 992	2.9%	13 679	2.8%	4 910	2.9%	- 16.2%
Chile	16 410	3.6%	12 461	2.7%	8 664	1.8%	9 915	2.0%	4 400	2.6%	+ 78.5%
North Macedonia	9 483	2.1%	10 744	2.3%	10 034	2.1%	12 777	2.6%	3 977	2.3%	- 22.0%
South Africa	7 214	1.6%	5 391	1.2%	7 743	1.6%	10 237	2.1%	3 005	1.8%	- 29.9%
Senegal	4 953	1.1%	5 248	1.1%	4 627	1.0%	4 530	0.9%	2 847	1.7%	+ 35.9%
Other Destinations	157 852	34.6%	154 541	33.5%	123 368	26.0%	118 750	24.5%	40 836	24.0%	
Total (without UK)	456 364		461 750		474 982		483 947		169 979		
% change			+ 1%		+ 3%		+ 2%		- 15.1%		

TRADE

EU EXPORTS

Beef

EU Exports of Beef Fats: Trade figures (COMEXT – tonnes cwe)

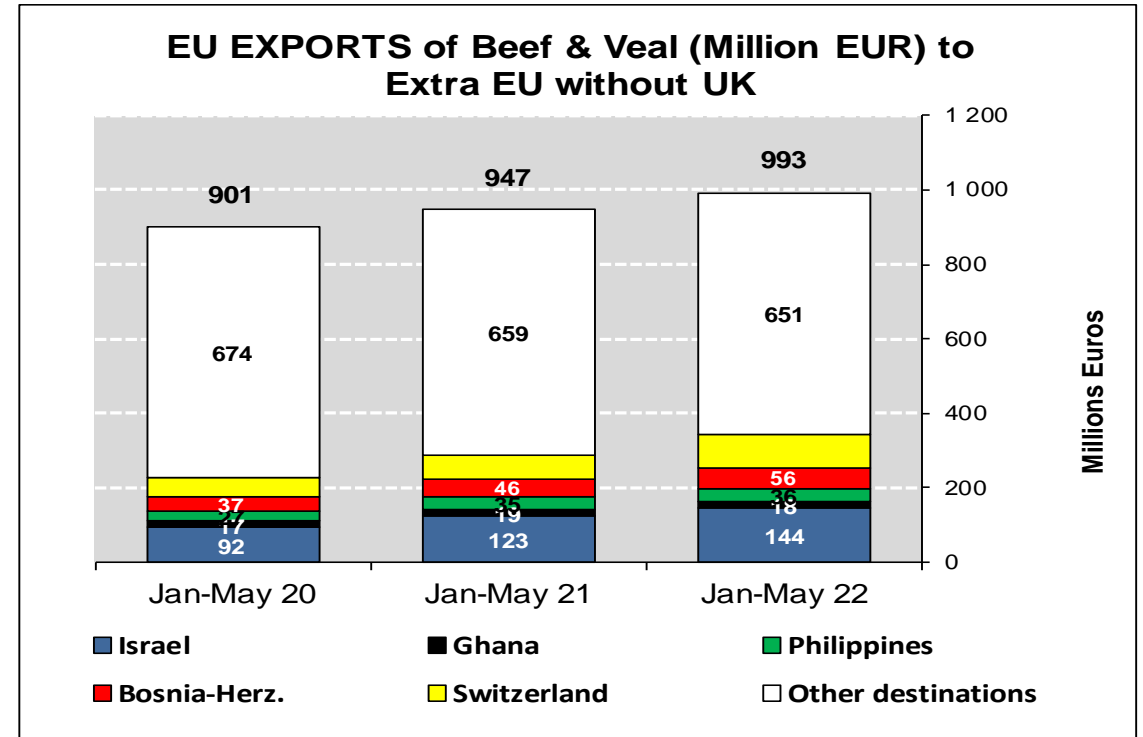
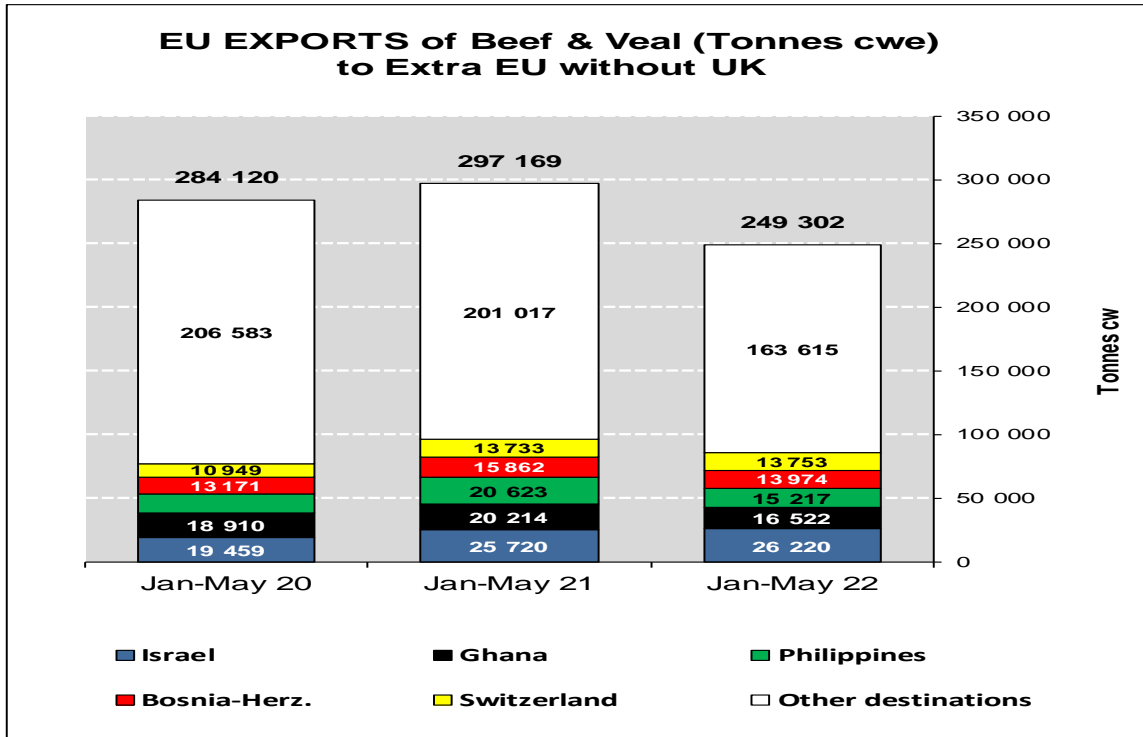
Destinations	2020		2021		Jan to Apr 2022		Compared to Jan to Apr 2021
	Tons	% Extra EU	Tons	% Extra EU	Tons	% Extra EU	
United Kingdom	6 461	29.2%	10 505	32.4%	3 146	37.6%	-3.1%
Philippines	6 194	28.0%	10 542	32.5%	2 387	28.5%	-24.5%
Switzerland	3 770	17.1%	5 198	16.0%	1 464	17.5%	-17.8%
Bosnia-Herz.	848	3.8%	947	2.9%	344	4.1%	+28.1%
North Macedonia	517	2.3%	464	1.4%	211	2.5%	+26.0%
Ukraine	849	3.8%	1 506	4.6%	202	2.4%	-66.7%
Serbia	555	2.5%	571	1.8%	185	2.2%	+++
Israel	836	3.8%	524	1.6%	121	1.4%	-35.8%
Kosovo	511	2.3%	283	0.9%	84	1.0%	-30.8%
Australia	2	0.0%	108	0.3%	52	0.6%	+++
Hong Kong	147	0.7%	283	0.9%	33	0.4%	-61.0%
Other Destinations	1 405	6.4%	1 534	4.7%	146	1.7%	-65.3%
Extra-EU	22 097		32 464		8 375		-17.3%
% Change				+46.9%			

TRADE

EU Exports of Beef and Live Animals:
(Excl Fats) Trade figures (COMEXT)

EU EXPORTS

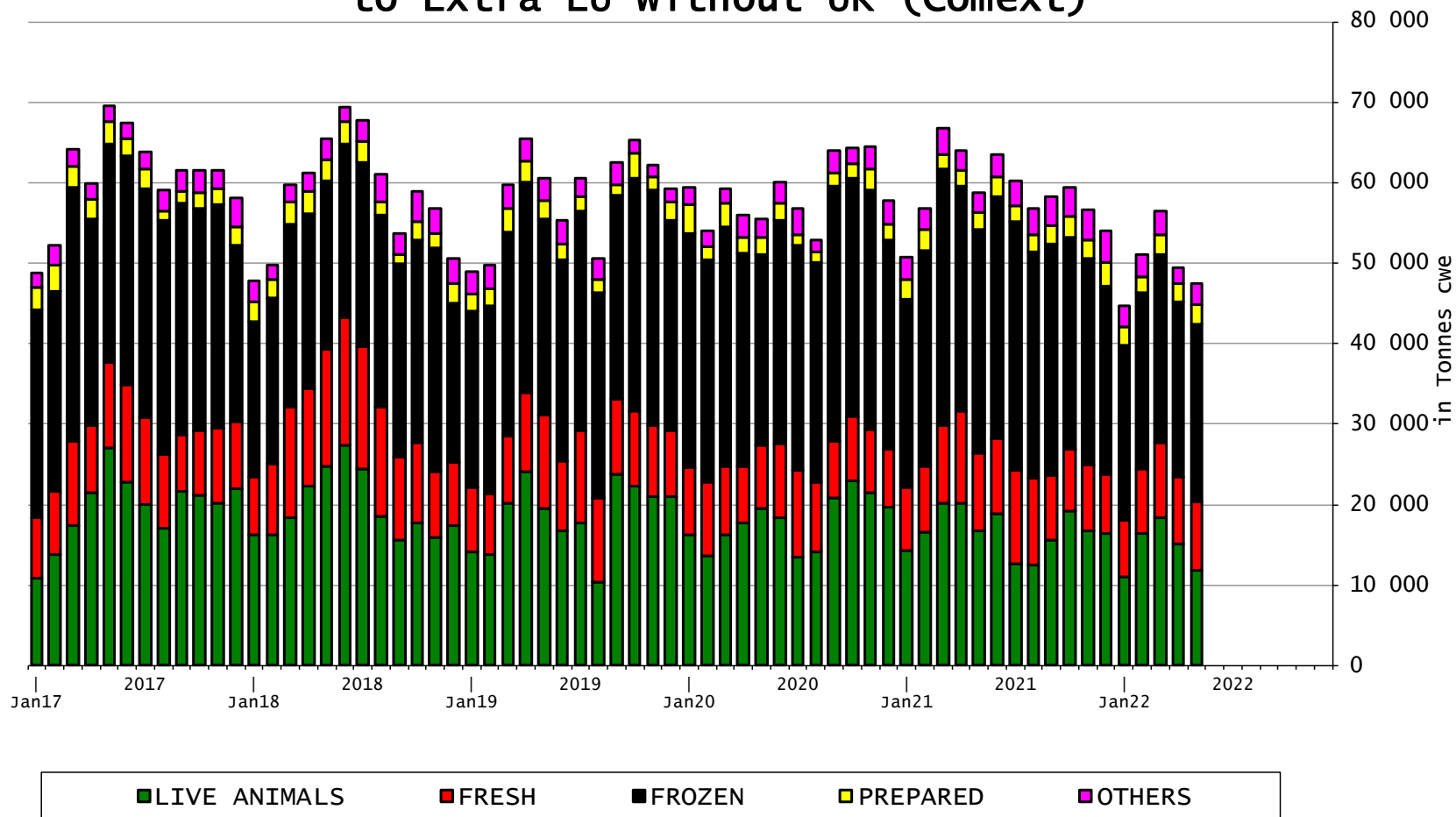
Beef & Live Animals (Excl Fats)



TRADE

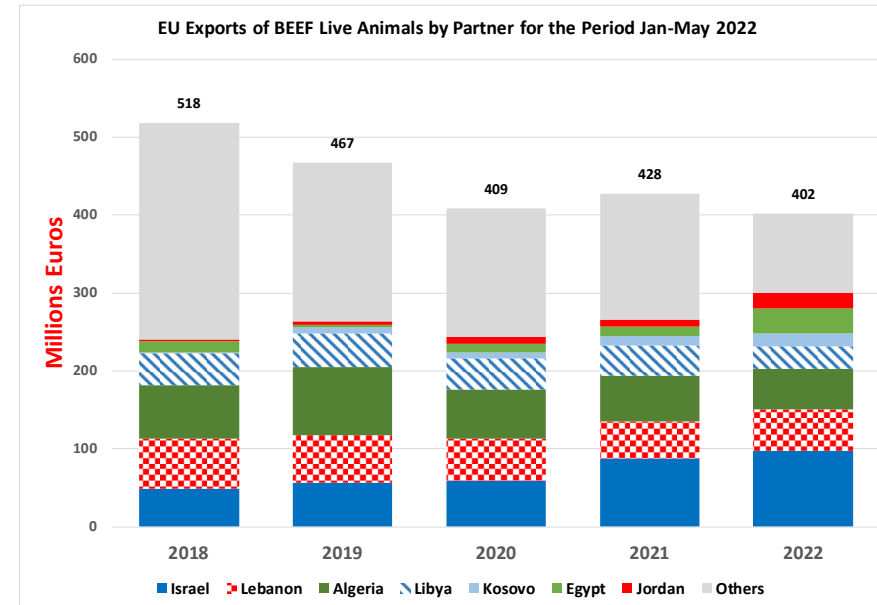
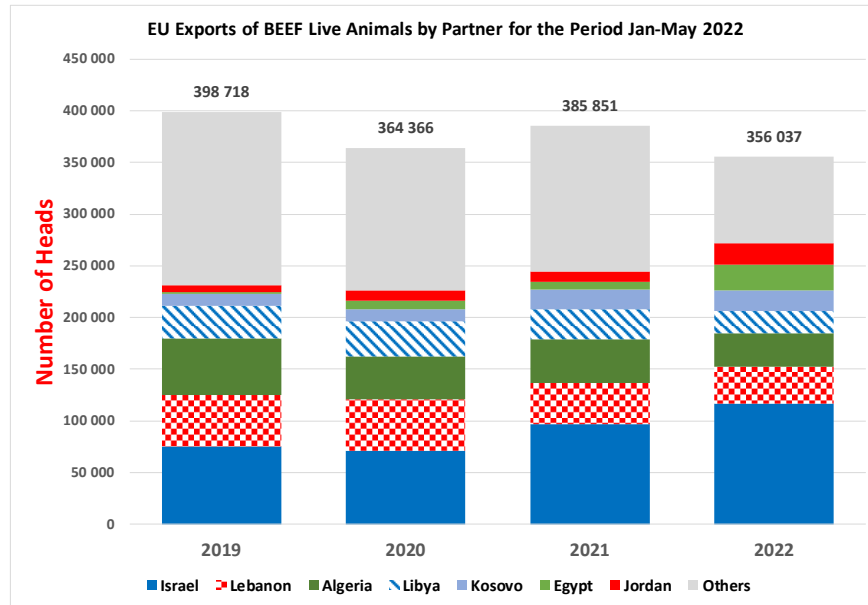
EU EXPORTS Beef Products

EU Exports of BEEF products to Extra EU without UK (Comext)



TRADE

EU EXPORTS Live Animals



TRADE

EU IMPORTS Beef & Live Animals

EU Imports of Beef and Live Animals (incl. fats): Trade Figures (COMEXT – tonnes cwe)

Origins

	2018		2019		2020		2021		Jan-May 22		Compared to
	tonnes	%	tonnes	%	tonnes	%	tonnes	%	tonnes	%	
Argentina	69.011	24,0%	70.618	25,3%	56.898	25,3%	75.579	26,7%	37.996	31,5%	+ 29,5%
Brazil	103.979	36,1%	99.569	35,7%	84.139	37,5%	81.601	28,8%	36.488	30,2%	+ 13,5%
Uruguay	48.712	16,9%	40.483	14,5%	34.612	15,4%	80.138	28,3%	24.808	20,6%	- 52,0%
USA	19.268	6,7%	16.852	6,0%	16.532	7,4%	14.826	5,2%	6.783	5,6%	+ 35,4%
Australia	17.368	6,0%	16.516	5,9%	11.058	4,9%	8.937	3,2%	3.696	3,1%	- 19,4%
New Zealand	7.165	2,5%	6.726	2,4%	6.146	2,7%	4.392	1,5%	2.092	1,7%	+ 42,0%
Switzerland	5.437	1,9%	4.433	1,6%	4.325	1,9%	5.233	1,8%	1.898	1,6%	- 9,8%
Paraguay	5.520	1,9%	5.203	1,9%	4.234	1,9%	3.933	1,4%	1.775	1,5%	+++
Japan	791	0,3%	997	0,4%	789	0,4%	1.479	0,5%	1.508	1,2%	+++
Namibia	3.442	1,2%	7.706	2,8%	1.445	0,6%	1.996	0,7%	1.347	1,1%	+++
Canada	1.343	0,5%	2.518	0,9%	1.550	0,7%	1.816	0,6%	739	0,6%	+ 4,3%
Serbia	1.134	0,4%	1.062	0,4%	949	0,4%	985	0,3%	451	0,4%	+ 64,7%
Norway	153	0,1%	129	0,0%	395	0,2%	704	0,2%	273	0,2%	+ 6,0%
Israel	0	0,0%	160	0,1%	111	0,0%	469	0,2%	219	0,2%	+++
China	30	0,0%	26	0,0%	0	0,0%	22	0,0%	166	0,1%	+++
Chile	356	0,1%	392	0,1%	168	0,1%	238	0,1%	143	0,1%	+++
Other Destinations	4.080	1,4%	5.818	2,1%	1.293	0,6%	1.063	0,4%	300	0,2%	
Total (without UK)	287.788		279.208		224.642		283.409		120.682		
% change			- 3%		- 20%		+ 26%		- 7,0%		

TRADE

EU IMPORTS

Beef

EU Imports of Beef (excl. fats): Trade Figures (COMEXT – tonnes cwe)

Origins	2018		2019		2020		2021		Jan-May 22		Compared to
	tonnes	%	tonnes	%	tonnes	%	tonnes	%	tonnes	%	
Brazil	103 979	37.3%	99 569	36.5%	84 139	37.6%	81 601	36.9%	36 488	37.2%	+ 13.5%
Argentina	61 400	22.0%	65 324	23.9%	56 421	25.2%	52 286	23.6%	23 531	24.0%	+ 35.5%
Uruguay	47 922	17.2%	40 483	14.8%	34 611	15.5%	42 669	19.3%	17 296	17.6%	- 5.3%
USA	19 268	6.9%	16 852	6.2%	16 532	7.4%	14 826	6.7%	6 783	6.9%	+ 35.4%
Australia	17 354	6.2%	16 432	6.0%	11 058	4.9%	8 925	4.0%	3 696	3.8%	- 19.2%
New Zealand	7 109	2.6%	6 712	2.5%	6 116	2.7%	4 378	2.0%	2 078	2.1%	+ 41.1%
Paraguay	5 520	2.0%	5 203	1.9%	4 234	1.9%	3 933	1.8%	1 775	1.8%	+++
Switzerland	5 389	1.9%	4 353	1.6%	4 153	1.9%	4 680	2.1%	1 624	1.7%	- 14.2%
Japan	791	0.3%	997	0.4%	789	0.4%	1 478	0.7%	1 506	1.5%	+++
Namibia	3 442	1.2%	7 706	2.8%	1 445	0.6%	1 996	0.9%	1 347	1.4%	+++
Canada	1 343	0.5%	2 518	0.9%	1 550	0.7%	1 816	0.8%	739	0.8%	+ 4.2%
Serbia	1 134	0.4%	1 052	0.4%	931	0.4%	956	0.4%	451	0.5%	+ 64.7%
Norway	153	0.1%	125	0.0%	335	0.1%	540	0.2%	273	0.3%	+++
China	30	0.0%	26	0.0%	0	0.0%	22	0.0%	166	0.2%	+++
Chile	356	0.1%	392	0.1%	168	0.1%	238	0.1%	143	0.1%	+++
Botswana	3 119	1.1%	4 950	1.8%	788	0.4%	331	0.1%	108	0.1%	+ 25.9%
<i>Other Destinations</i>	395	0.1%	378	0.1%	317	0.1%	654	0.3%	196	0.2%	
Total to Third Countries	278 704		273 073		223 586		221 328		98 201		
% change			- 2%		- 18%		- 1%		+ 16.9%		

TRADE

EU IMPORTS

Beef

EU Imports of Beef Fats): Trade Figures (COMEXT – tonnes cwe)

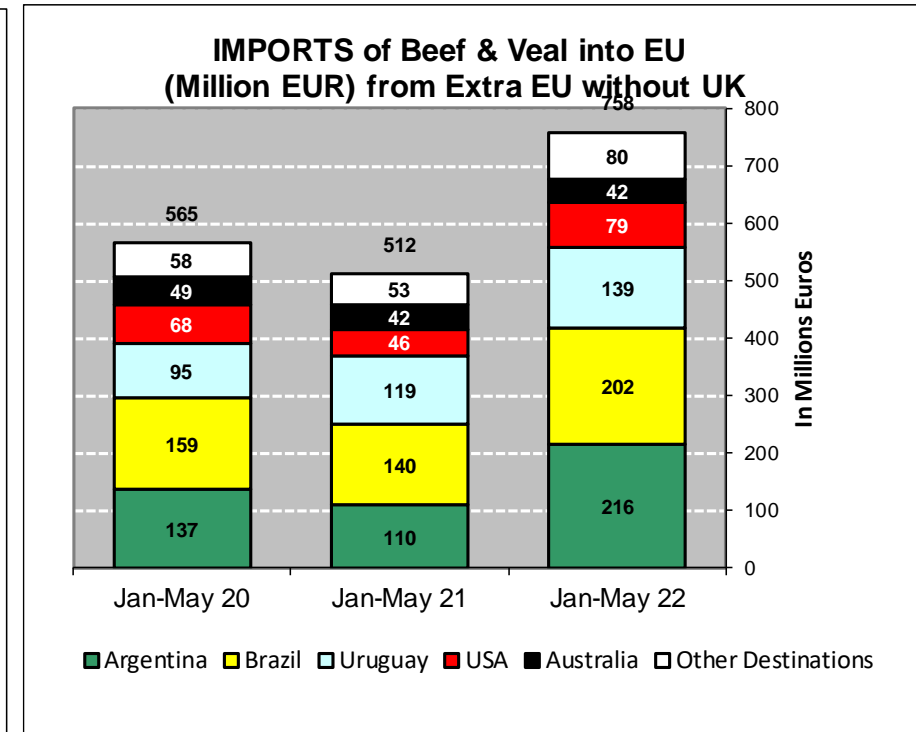
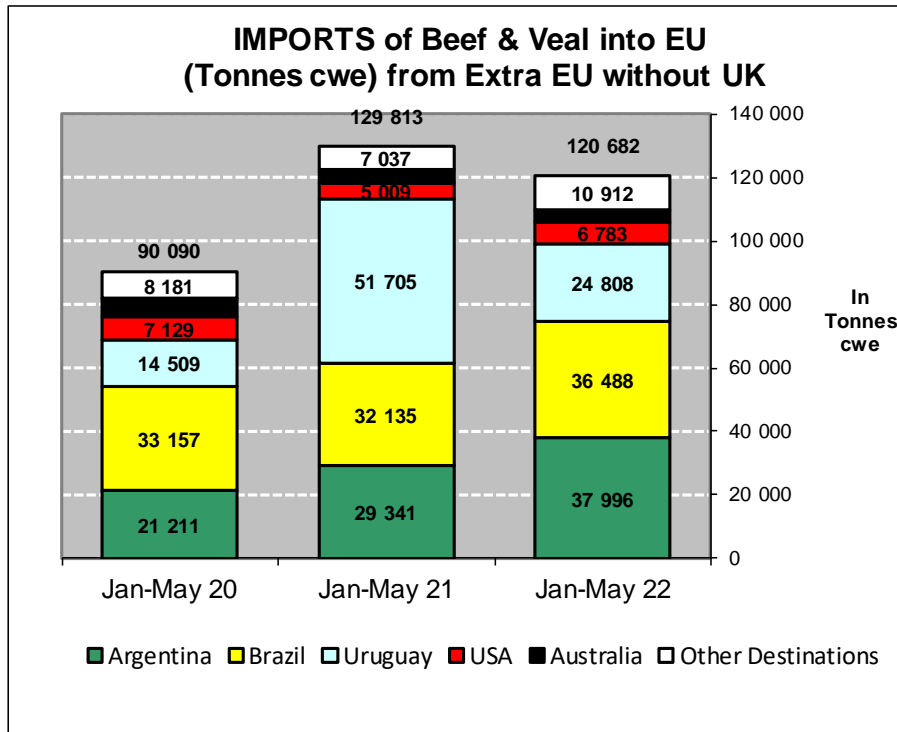
Origins	2020		2021		Jan to Apr 2022		Compared to Jan to Apr 2021
	Tons	% Extra EU	Tons	% Extra EU	Tons	% Extra EU	
Argentina	477	4.3%	23 293	31.7%	14 464	68.5%	+20.8%
United Kingdom	10 223	91.2%	11 568	15.7%	3 222	15.2%	-44.1%
Uruguay	1	0.0%	37 469	51.0%	3 005	14.2%	-88.2%
Switzerland	138	1.2%	519	0.7%	223	1.1%	+58.9%
Israel	111	1.0%	469	0.6%	198	0.9%	
Iceland	14	0.1%	27	0.0%	15	0.1%	+++
Japan	0	0.0%	1	0.0%	1	0.0%	
Brazil	-	0.0%	0	0.0%	0	0.0%	+++
South Korea	-	0.0%	0	0.0%	0	0.0%	
USA	0	0.0%	0	0.0%	0	0.0%	-50.0%
Morocco	-	0.0%	-	0.0%	0	0.0%	
Other Destinations	242	2.2%	184	0.3%	-	0.0%	-100.0%
Extra-EU	11 206		73 529		21 129		-51.3%
% Change				+556.2%			

TRADE

EU Imports of Beef and Live Animals (Excl Fats):
Trade Figures (COMEXT)

EU IMPORTS

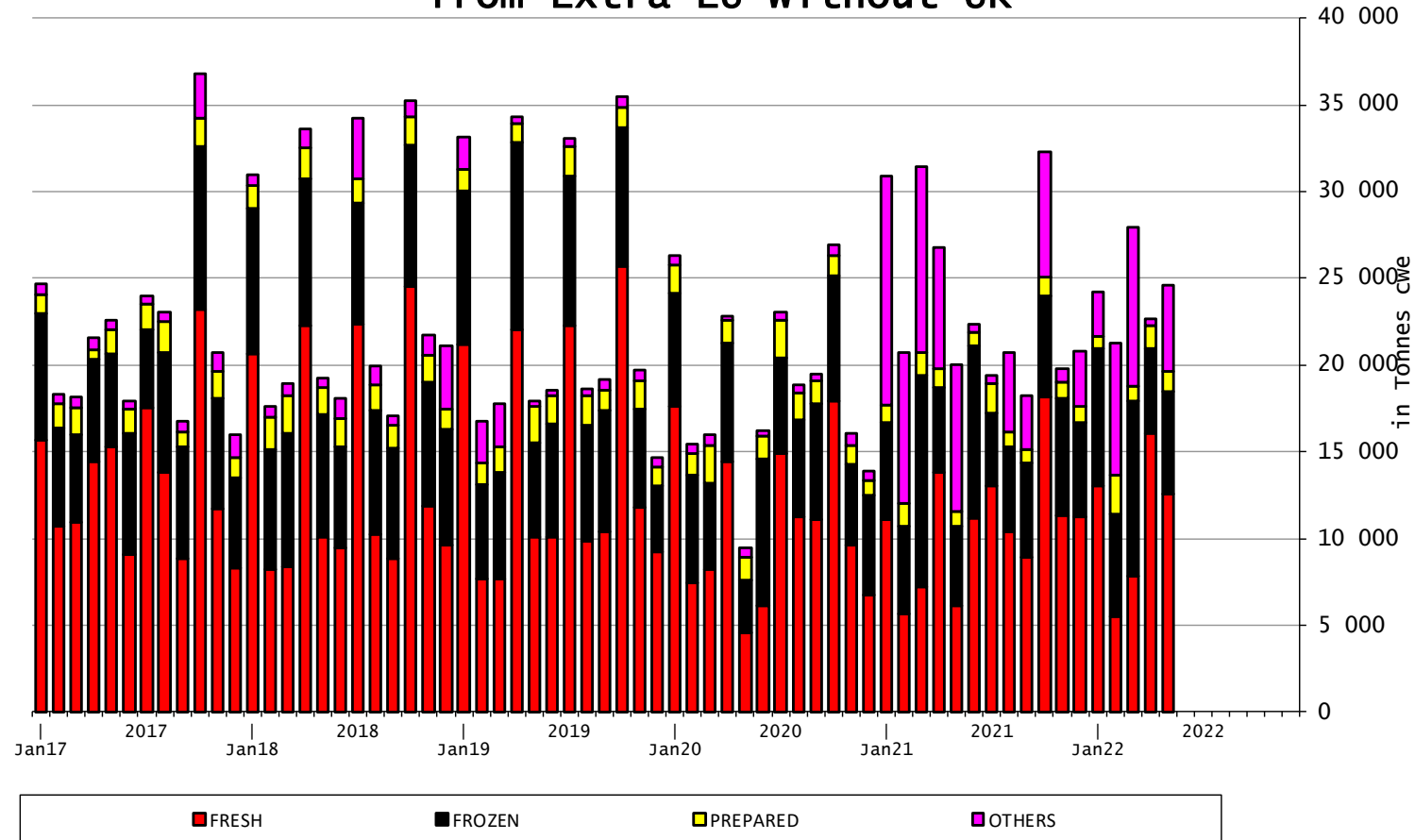
Beef & Live Animals (Excl Fats)



TRADE

EU IMPORTS Beef Products

EU Imports of BEEF products from Extra EU without UK



20 July 2022

EU TRADE with UK

EU EXPORTS Beef Products

EU Export of BEEF to UK by Products from Jan to Apr

In Tons of Carcase Weight

	2020			2021			2022			% 2022/2021	
	United Kingdom	Extra-EU	%	United Kingdom	Extra-EU	%	United Kingdom	Extra-EU	%	United Kingdom	Extra-EU
Live Animals	4 089	67 818	6.0%	4 999	76 226	6.6%	4 112	65 057	6.3%	-17.7%	-14.7%
Meats	126 866	287 398	44.1%	90 658	250 923	36.1%	113 698	249 322	45.6%	+25.4%	-0.6%
Fresh	73 859	105 993	69.7%	55 837	92 080	60.6%	61 501	93 322	65.9%	+10.1%	+1.3%
Frozen	15 109	72 181	20.9%	18 777	76 645	24.5%	31 699	75 804	41.8%	+68.8%	-1.1%
Salted Meat	7 683	8 238	93.3%	203	736	27.6%	130	876	14.9%	-35.8%	+19.0%
Prepared	14 869	24 924	59.7%	10 638	19 751	53.9%	13 896	22 888	60.7%	+30.6%	+15.9%
Fresh Offals	6 546	7 685	85.2%	1 777	2 583	68.8%	2 560	3 501	73.1%	+44.0%	+35.6%
Frozen Offals	4 569	60 410	7.6%	3 236	55 247	5.9%	3 706	48 249	7.7%	+14.5%	-12.7%
Salted Offals	4 089	7 757	52.7%	81	3 729	2.2%	73	4 491	1.6%	-9.4%	+20.5%
Prepared Offal	142	210	67.4%	108	152	70.9%	133	190	69.8%	+23.1%	+25.1%
Total Beef	130 955	355 216	36.9%	95 657	327 149	29.2%	117 810	314 379	37.5%	+23.2%	-3.9%

Source : Comext

20 July 2022

EU TRADE with UK

EU IMPORTS Beef Products

EU Import of BEEF from UK by Products from Jan to Apr

In Tons of Carcase Weight

	2020			2021			2022			% 2022/2021	
	United Kingdom	Extra-EU	%	United Kingdom	Extra-EU	%	United Kingdom	Extra-EU	%	United Kingdom	Extra-EU
Live Animals	711	758	93.8%	258	318	81.1%	230	239	96.2%	-10.6%	-24.6%
Meats	42 300	122 466	34.5%	21 981	94 097	23.4%	44 036	122 168	36.0%	+100.3%	+29.8%
Fresh	27 335	75 122	36.4%	14 169	51 955	27.3%	31 418	73 910	42.5%	+121.7%	+42.3%
Frozen	7 693	32 144	23.9%	4 415	32 050	13.8%	7 373	36 063	20.4%	+67.0%	+12.5%
Salted Meat	152	1 031	14.8%	66	1 190	5.5%	69	987	7.0%	+4.6%	-17.0%
Prepared	3 052	9 376	32.6%	1 716	6 527	26.3%	2 793	7 933	35.2%	+62.8%	+21.5%
Fresh Offals	1 341	1 786	75.1%	1 412	1 805	78.3%	1 521	1 906	79.8%	+7.7%	+5.6%
Frozen Offals	1 972	2 236	88.2%	191	552	34.6%	848	1 316	64.4%	+++	+138.6%
Salted Offals	736	740	99.5%	9	10	91.0%	10	15	65.1%	+11.1%	+55.2%
Prepared Offal	19	30	62.0%	3	9	36.7%	4	37	11.5%	+27.8%	+++
Total Beef	43 011	123 224	34.9%	22 239	94 415	23.6%	44 266	122 407	36.2%	+99.0%	+29.6%

Source : Estat - Comext

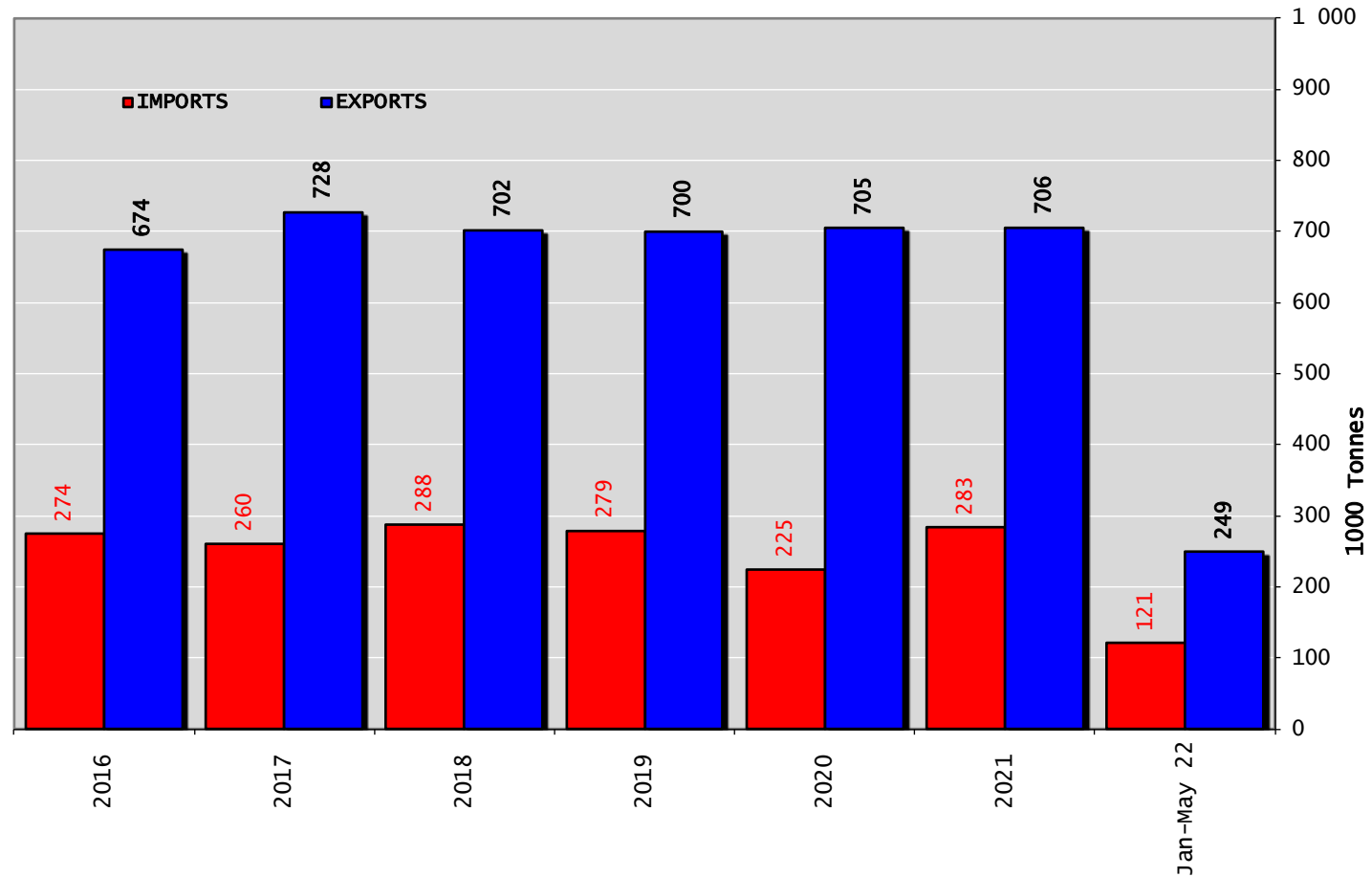
20 July 2022

TRADE

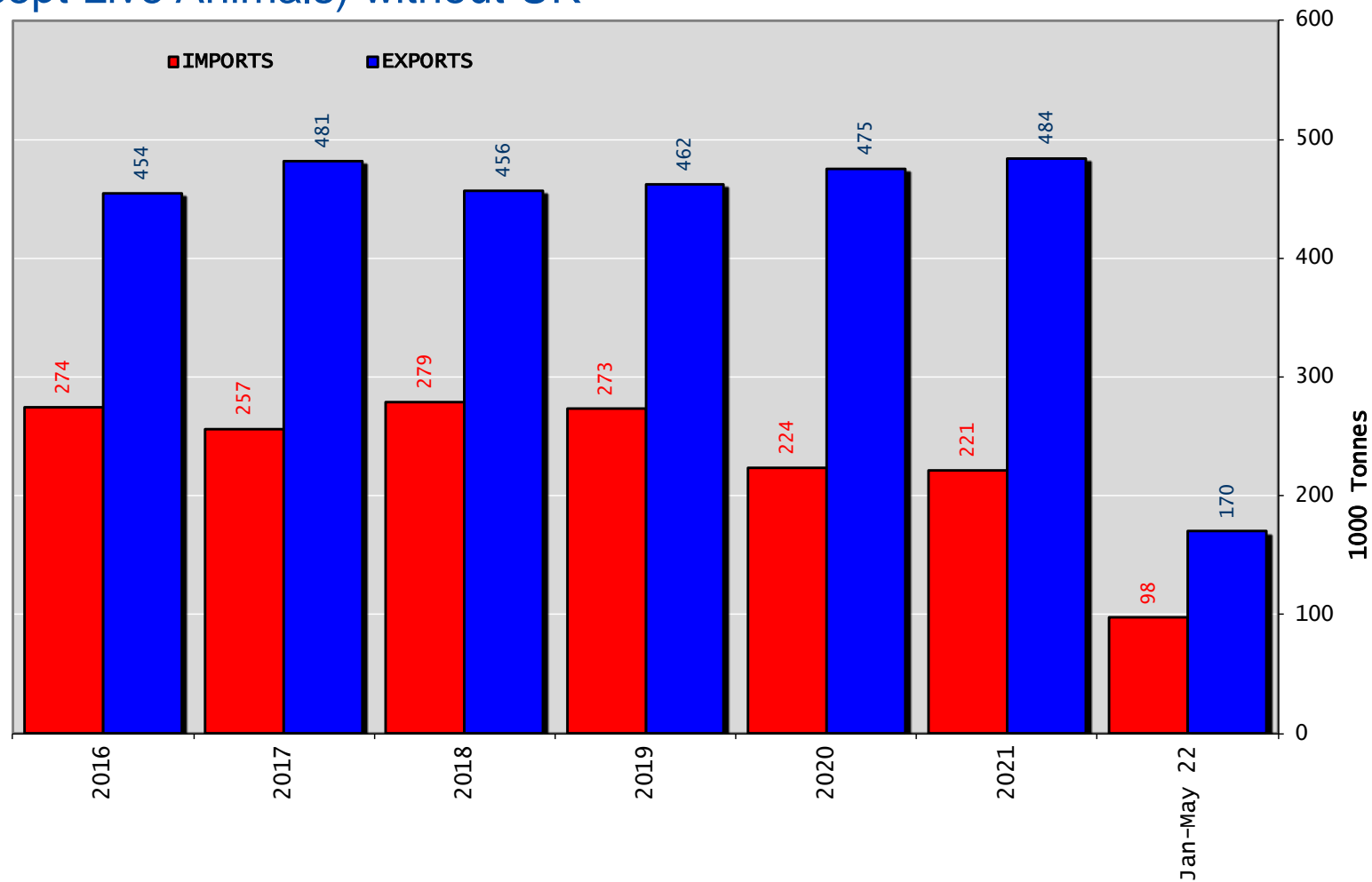
EUTRADE BALANCE

Beef & Live Animals

Trade Balance of Beef Products and Live Animals (without UK)



Trade Balance of Beef Products (not including Fats) (Except Live Animals) without UK

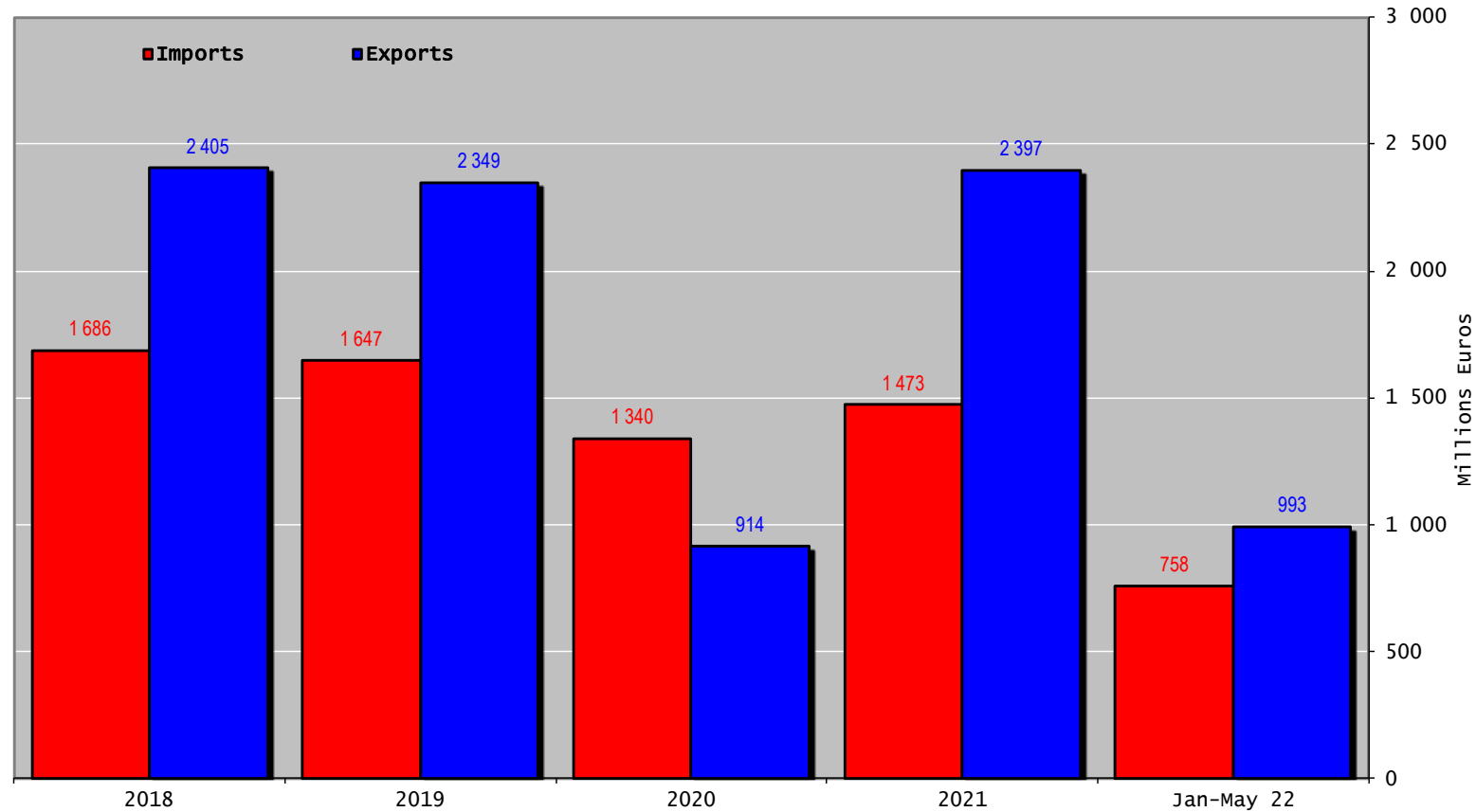


TRADE

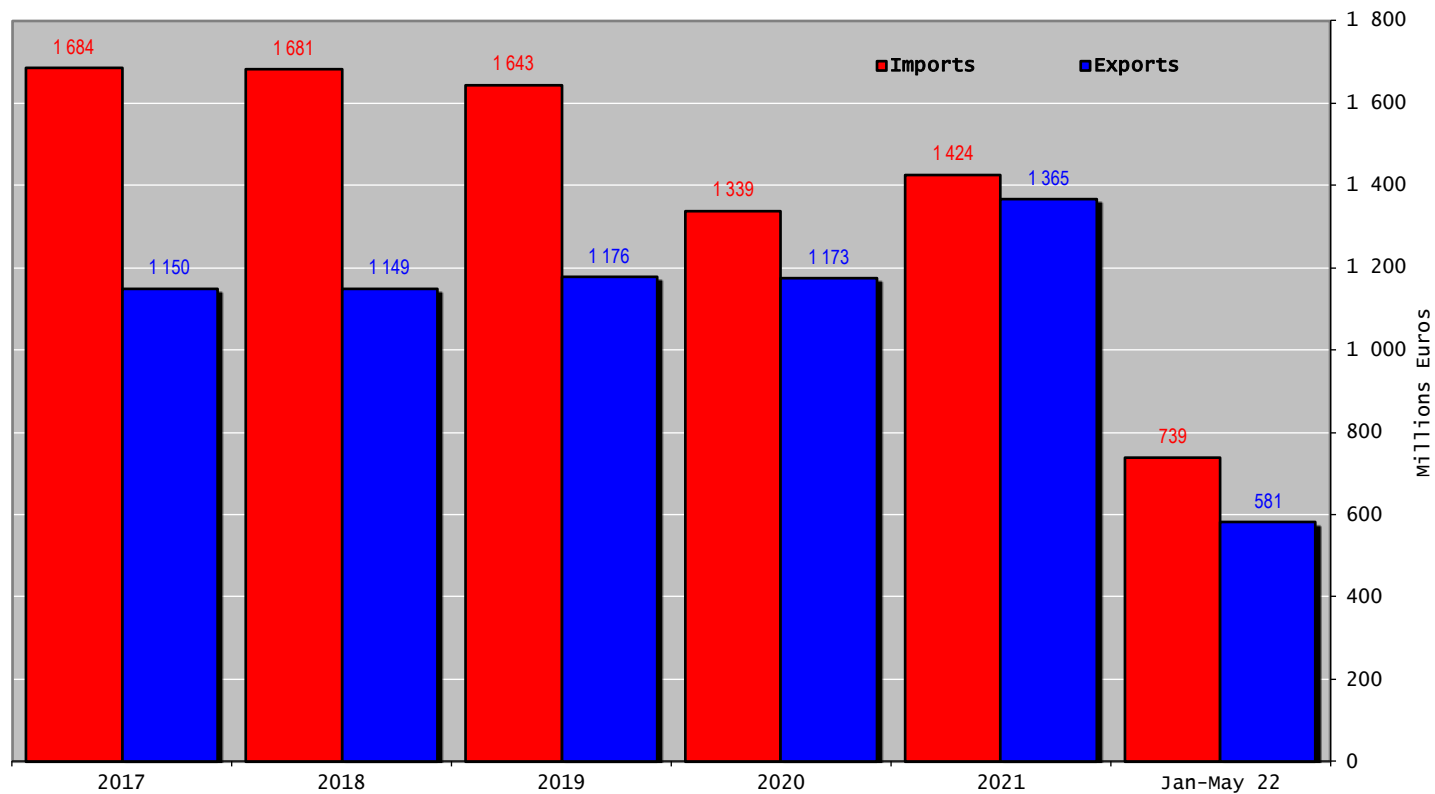
EU TRADE BALANCE

Beef & Live Animals

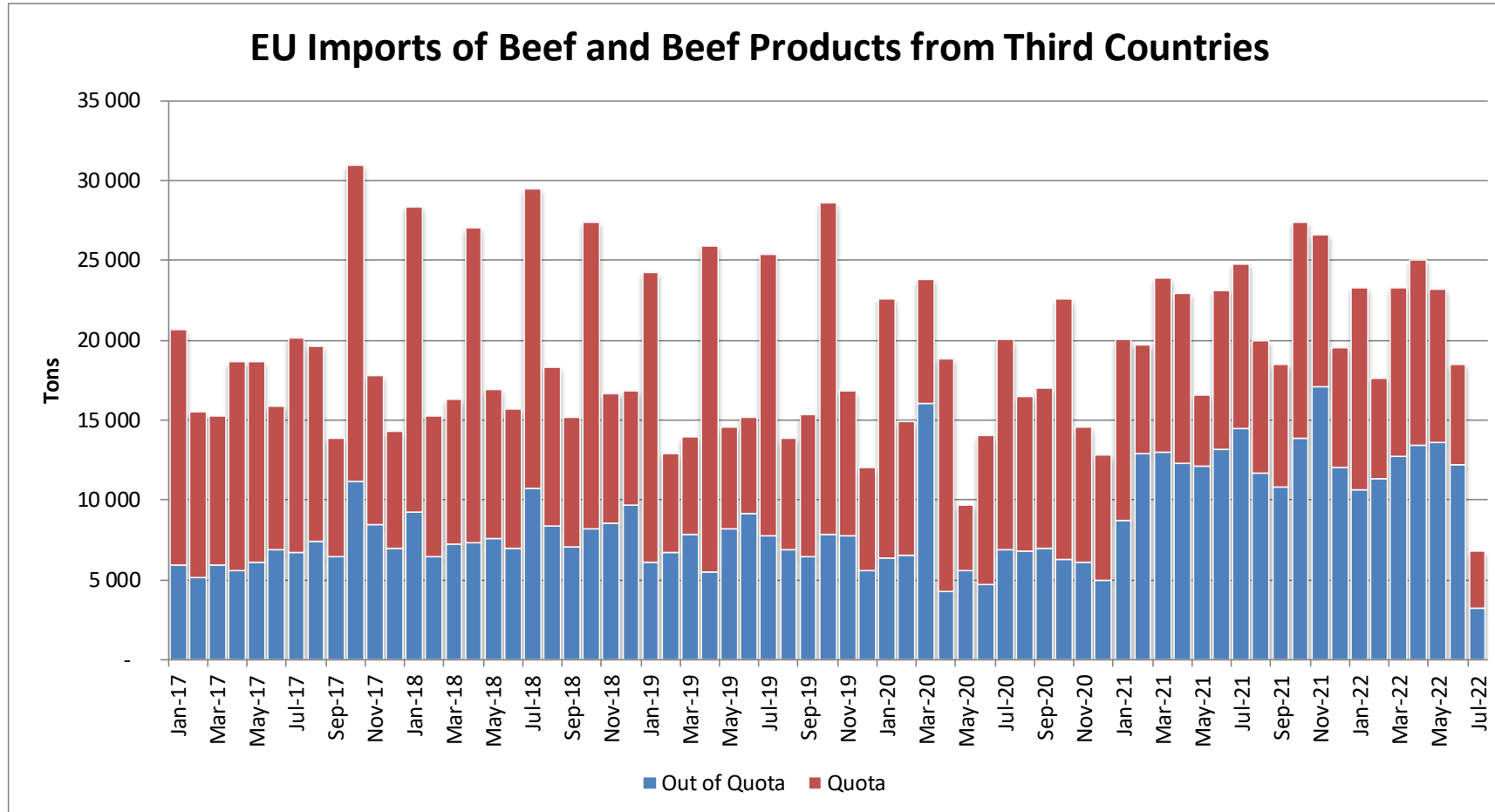
Trade Balance of Beef Products and Live Animals (without UK)



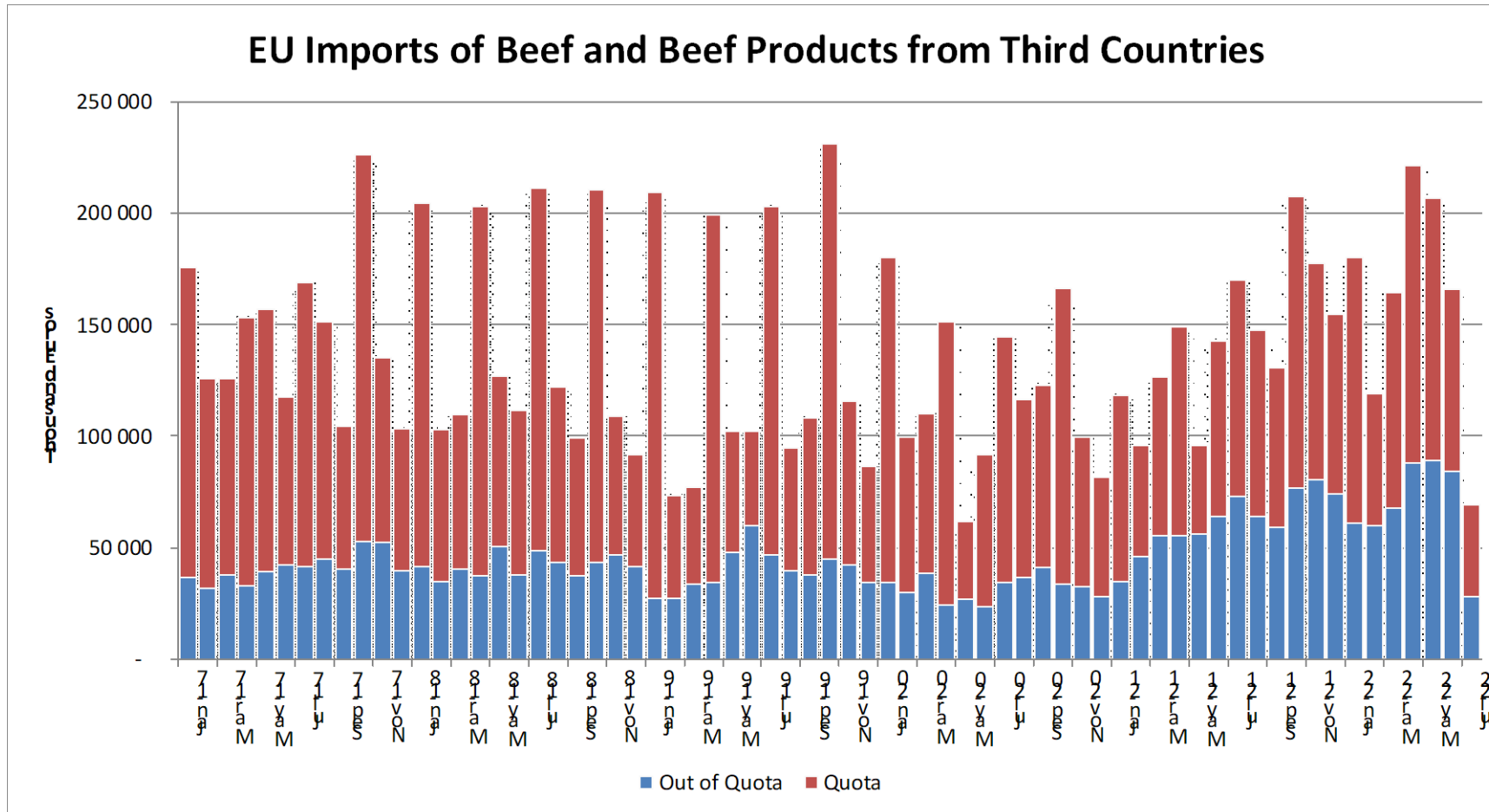
Trade Balance of Beef Products (not including Fats) (Except Live Animals) without UK



Imports in and out of TRQs



Imports in and out of TRQs



High Quality Beef Import Quotas

Quota erga omnes

Regulation (EU) No 481/2012

	2020-Q3	2020-Q4	2021-Q1	2021-Q2	TOTAL
Period 2020-2021	6 652	6 542	5 472	5 503	24 169
Available	6 625	6 625	5 500	5 500	45 000
Use	100.00%	98.75%	99.49%	100.00%	53.71%

Available after transfer	6 625	6 598	5 583	5 528	
	100.00%	99.16%	98.02%	99.55%	

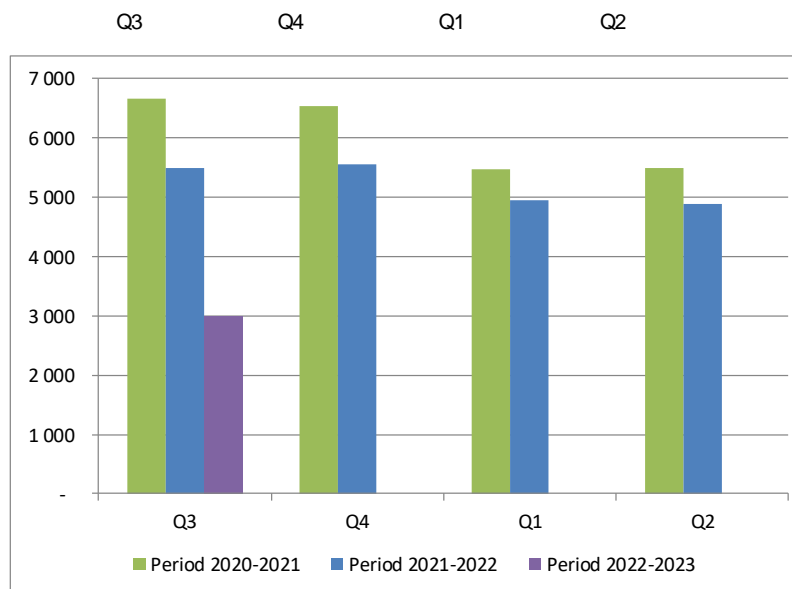
	2021-Q3	2021-Q4	2022-Q1	2022-Q2*	TOTAL
Period 2021-2022	5 502	5 564	4 953	4 889	20 908
Available	5 500	5 500	4 900	4 900	45 000
Use	100.00%	100.00%	100.00%	99.78%	46.46%

Available after transfer	5 500	5 498	4 836	4 847	
	100.00%	100.00%	100.00%	100.00%	

	2022-Q3	2022-Q4	2023-Q1	2023-Q2*	TOTAL
Period 2022-2023	2 993				2 993
Available	4 900				45 000
Use	61.09%				6.65%

Available after transfer	4 900				
	61.09%				

* Until 14.07.2022

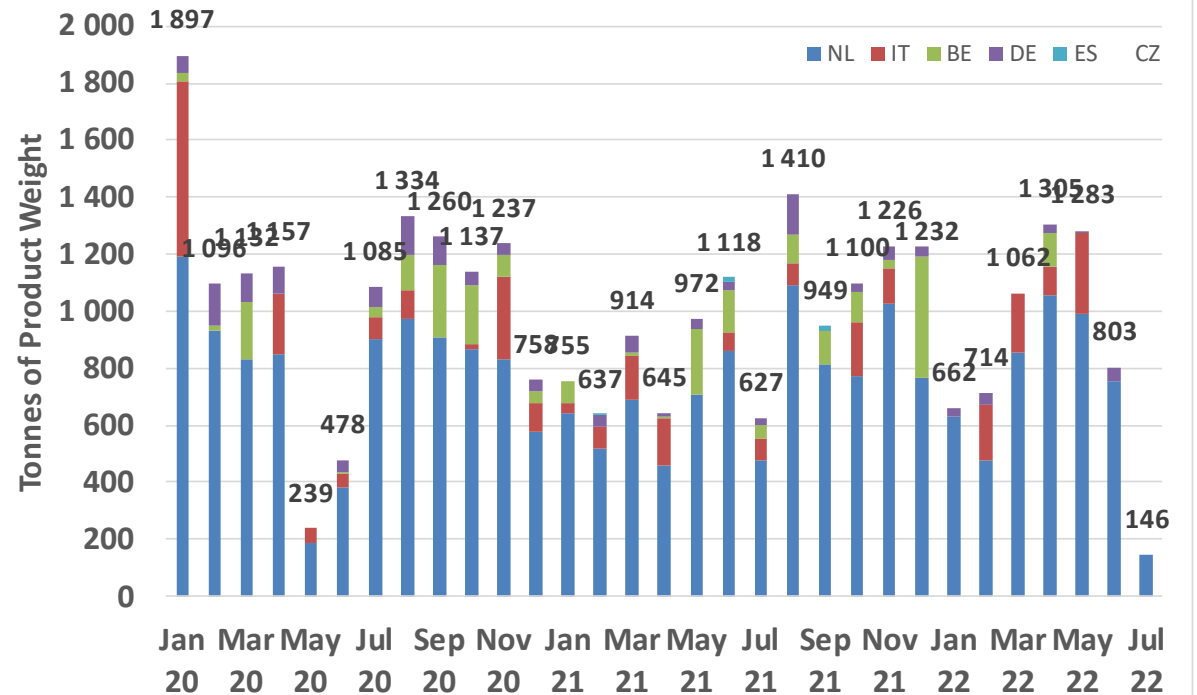


High Quality Beef Import Quotas

Origin	GATT 2021-2022				Total
	2021-Q3	2021-Q4	2022-Q1	2022-Q2	
NL	2 384	2 564	1 959	2 805	9 712
IT	151	313	405	380	1 249
BE	262	555	-	117	935
DE	173	122	74	89	458
ES	15	-	-	-	15
CZ	-	4	-	-	4
Total import within Quota	2 985	3 559	2 439	3 390	12 374
Available	5 750	5 750	6 350	6 350	24 200
Use	51.92%	61.90%	38.41%	53.39%	51.13%
After transfer	5 750	8 515	8 541	10 261	
Use	51.92%	41.80%	28.55%	33.04%	

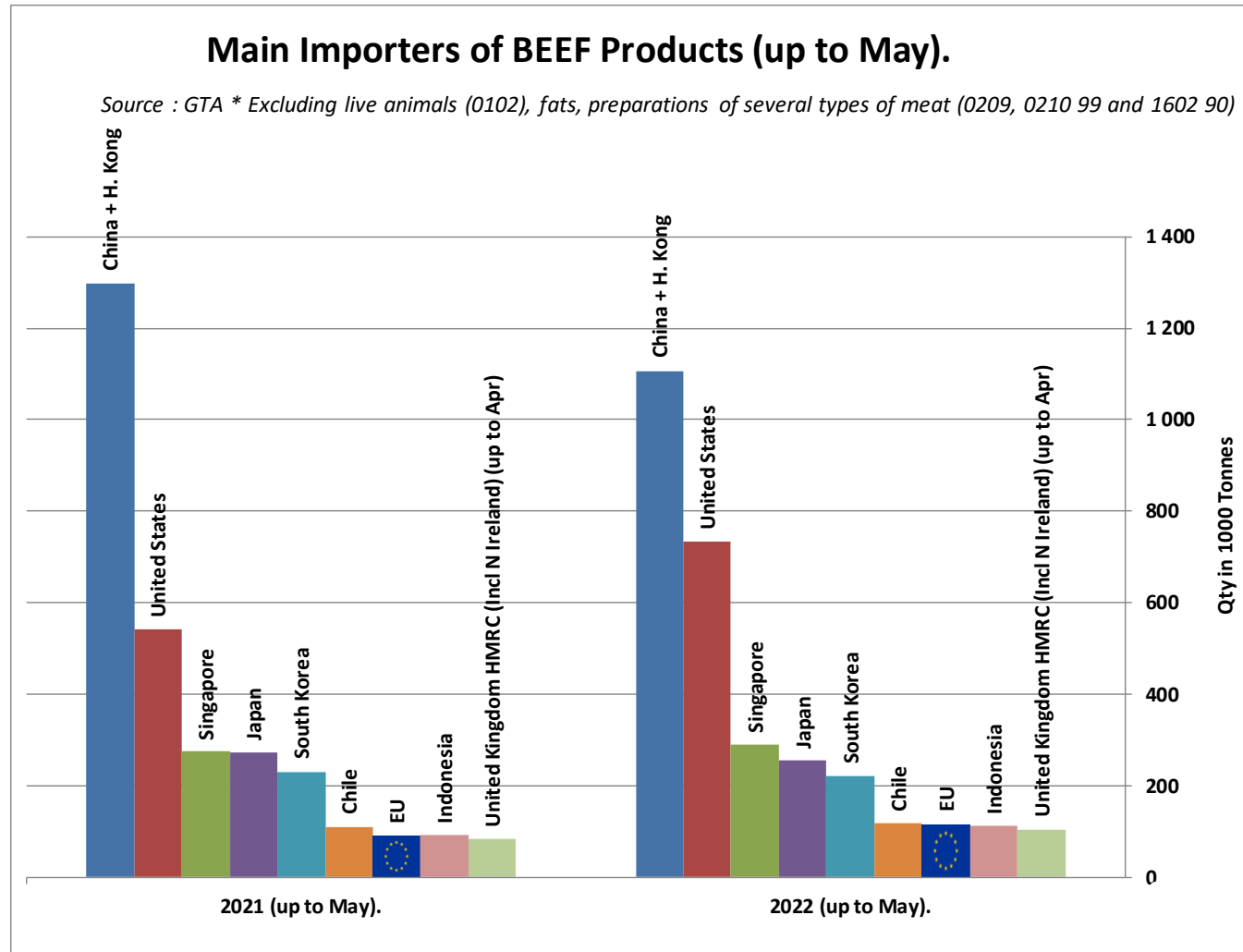
Origin	GATT 2022-2023				Total
	2022-Q3	2022-Q4	2023-Q1	2023-Q2	
NL	146				146
IT	-				-
BE	-				-
DE	-				-
ES	-				-
CZ	-				-
Total import within Quota	146				146
Available	6 350	6 350	6 350	6 350	25 400
Use	2.30%				0.58%
After transfer					
Use					

EU use of Import Quota 09-2203



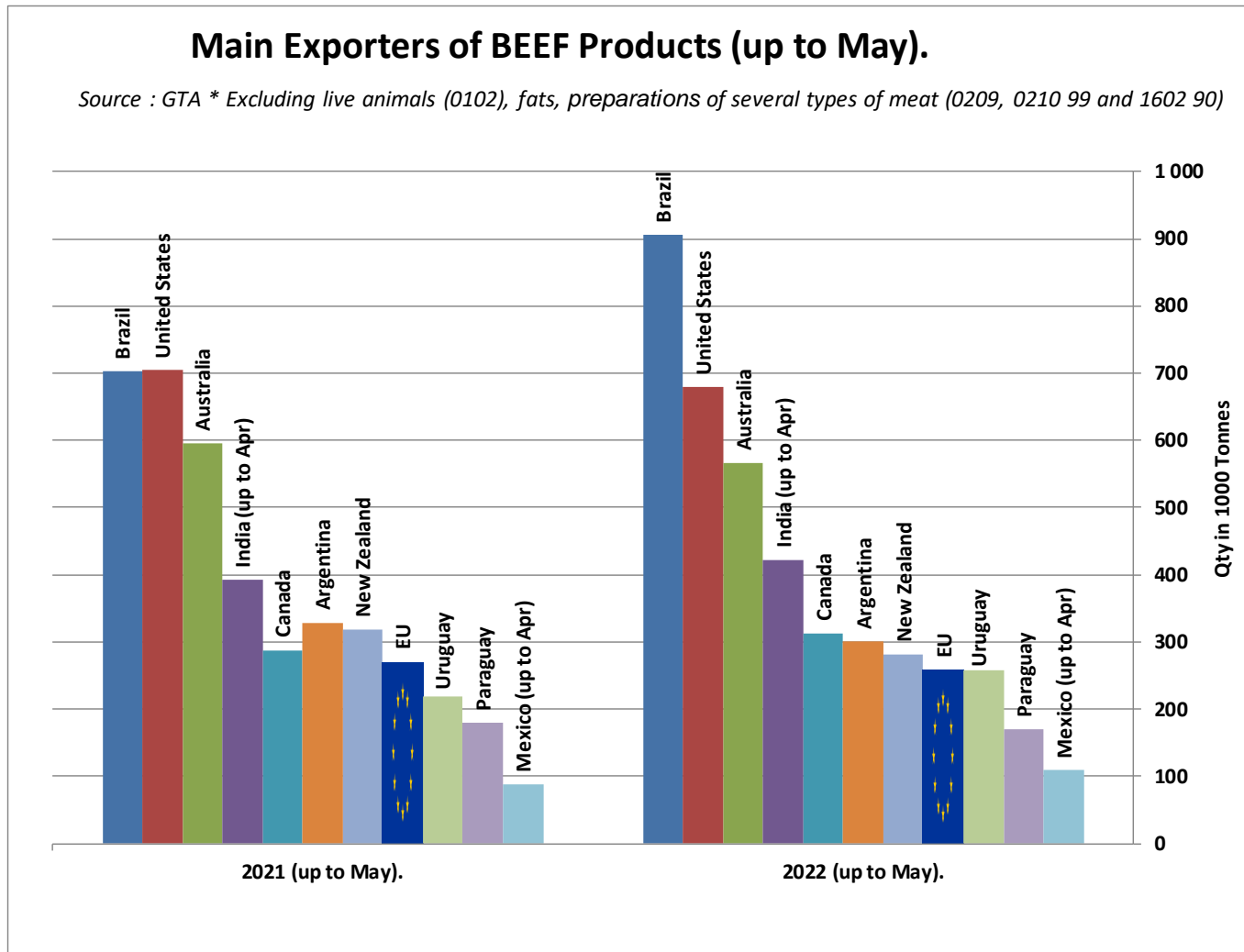
WORLD BEEF MARKET

E.U. + UK IMPORTS BEEF MAIN IMPORTERS



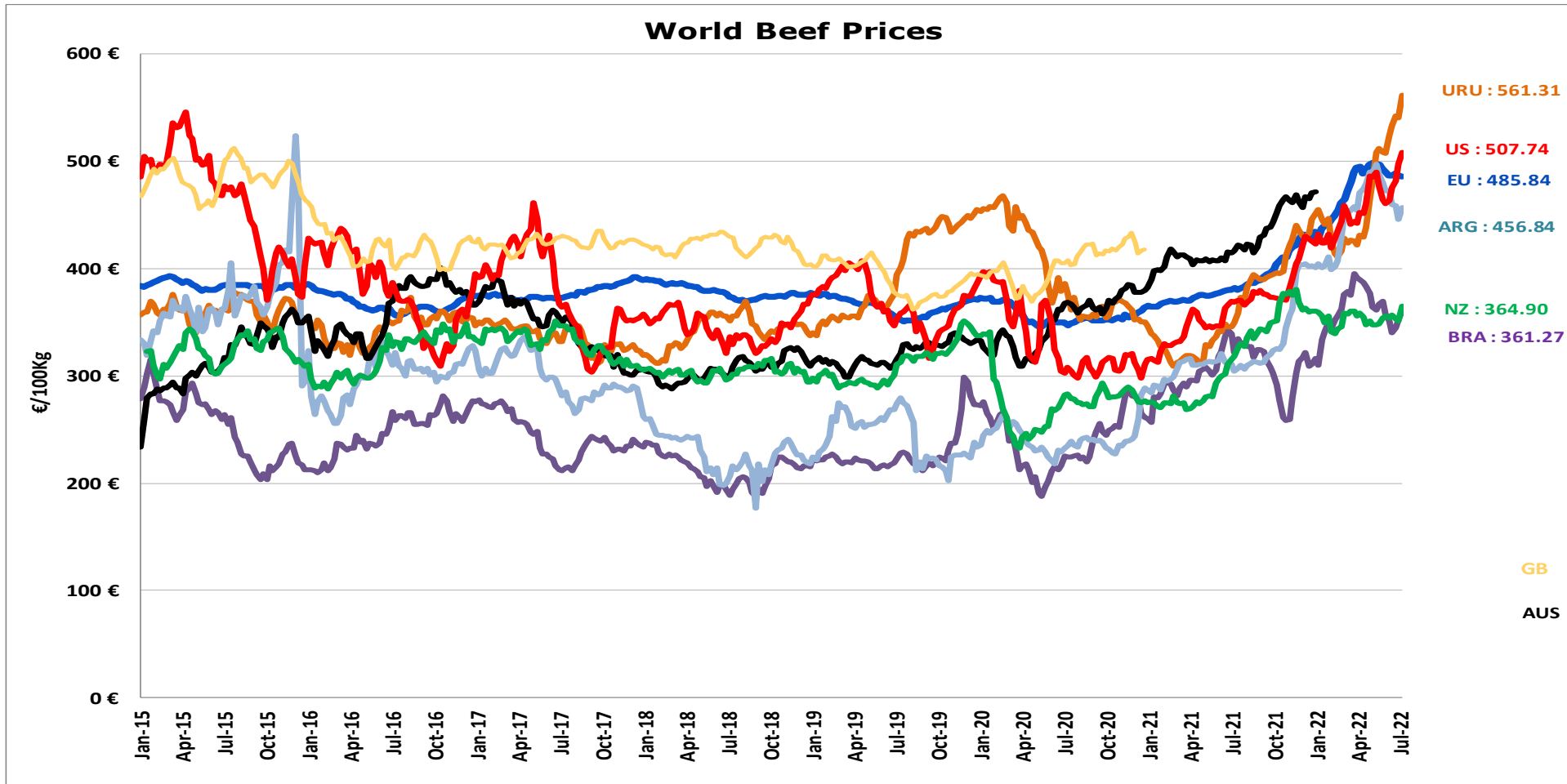
WORLD BEEF MARKET

E.U. + UK EXPORTS BEEF MAIN EXPORTERS



WORLD BEEF MARKET

STEER PRICES EU, US, AUS, NZ



- ECB <http://sdw.ecb.europa.eu/browse.do?node=2018794>
- US <https://www.marketnews.usda.gov/mnp/ls-home>
- AUS <http://statistics.mla.com.au/Report/RunReport/ae59d4ac-74e4-4c56-93bd-982a044d9760>
- UY <http://www.inac.gub.uy/innovaportal/v/11034/10/innova.front/indicadores-y-precios>
- ARG http://www.abc-consorcio.com.ar/Estadisticas/detalle/117/precios_comparativos_del_novillo.html
- BR <http://www.pecuaria.com.br/cotacoes.php>
- NZ http://www.abc-consorcio.com.ar/Estadisticas/detalle/117/precios_comparativos_del_novillo.html

THANK YOU VERY MUCH

More Information at:

EU Market Observatory

https://ec.europa.eu/agriculture/market-observatory/meat_en

And

Agri-FOOD data portal:

<http://agridata.ec.europa.eu/>

Thank you



© European Union 2020

Unless otherwise noted the reuse of this presentation is authorised under the [CC BY 4.0](https://creativecommons.org/licenses/by/4.0/) license. For any use or reproduction of elements that are not owned by the EU, permission may need to be sought directly from the respective right holders.

Slide xx: **element concerned**, source: e.g. [Fotolia.com](https://www.fotolia.com/); Slide xx: **element concerned**, source: e.g. [iStock.com](https://www.istock.com/)

