



BEEF & VEAL MARKET SITUATION



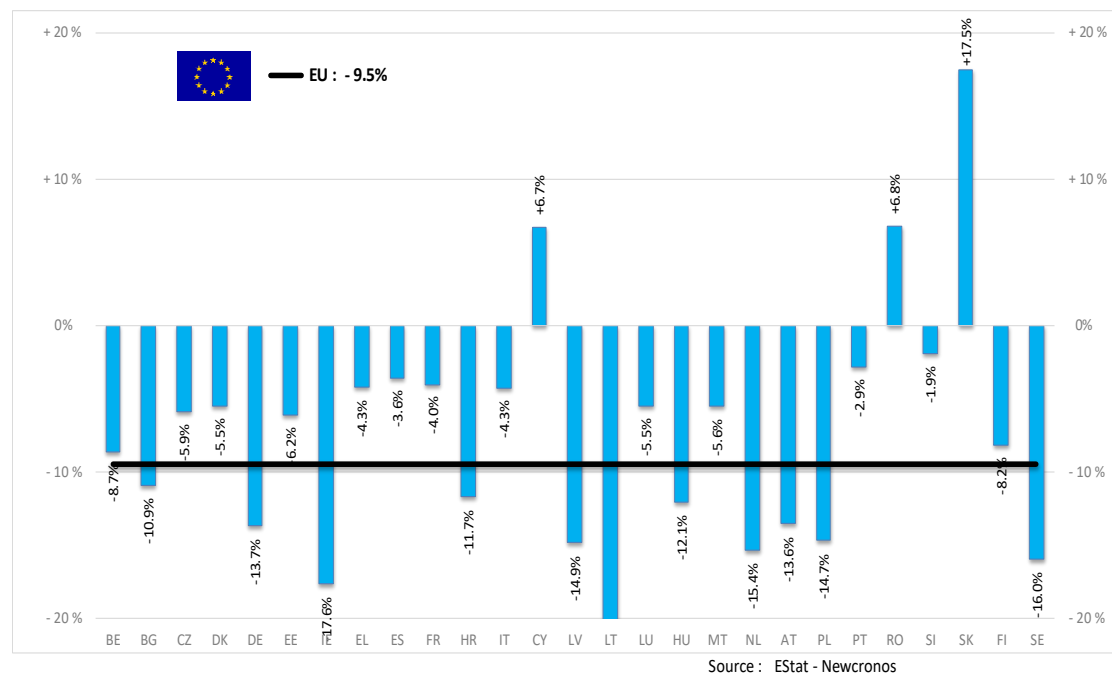
Beef CMO 20 May 2021

PRODUCTION

% EVOLUTION HEADS

HEADS	Jan-Feb 21/20
	EU
Bull	-7.7%
Bullock	-12.5%
Cow	-10.3%
Heifer	-9.1%
Calve	-10.8%
Young cattle	-8.3%
Meat of bovine animals	-9.5%

Estimates for last month of period :

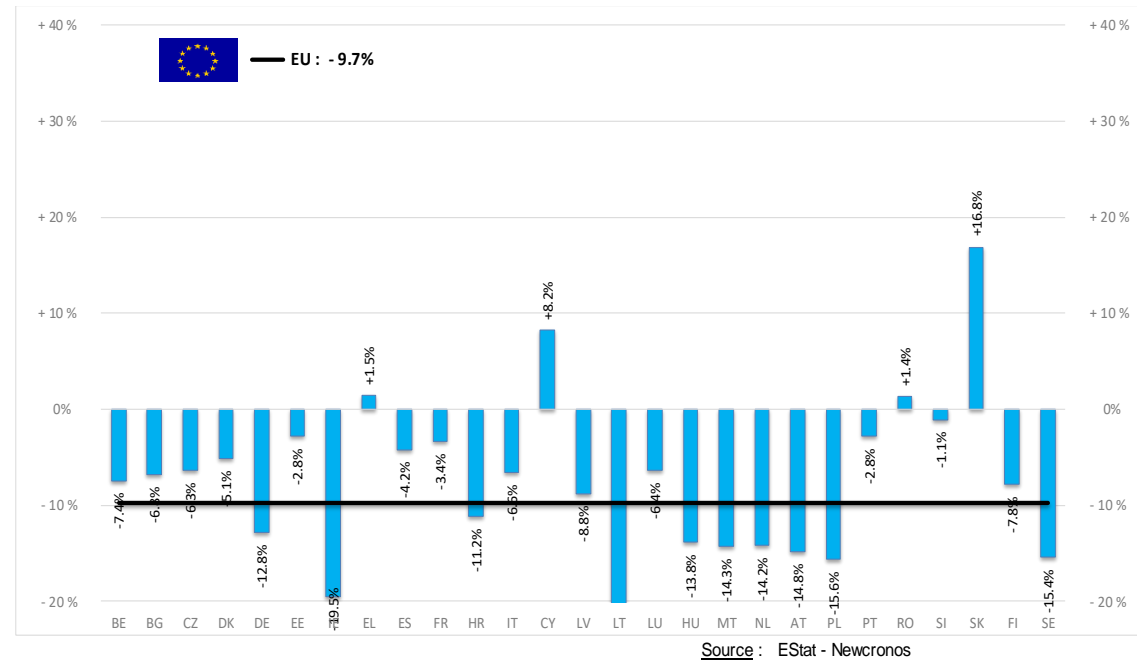


PRODUCTION

% EVOLUTION TONNES

TONNES	Jan-Feb 21/20
	EU
Bull	-9.0%
Bullock	-13.3%
Cow	-11.0%
Heifer	-8.1%
Calve	-9.4%
Young cattle	-9.6%
Meat of bovine animals	-9.7%

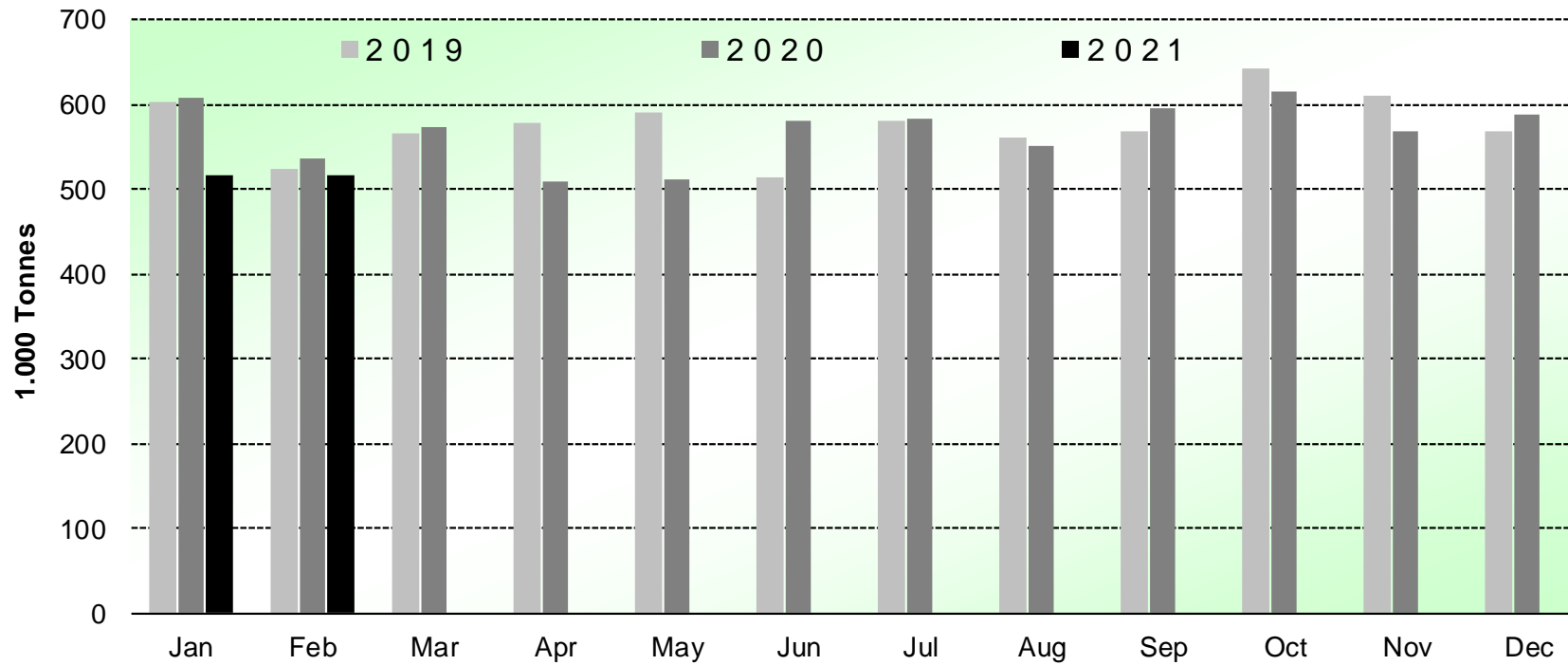
Estimates for last month of period :



PRODUCTION

HISTORIC
TONNES

Beef & Veal Production (EU Slaughtering) - Tonnes



Source: EStat-Newcronos

PRICES CARCASSES

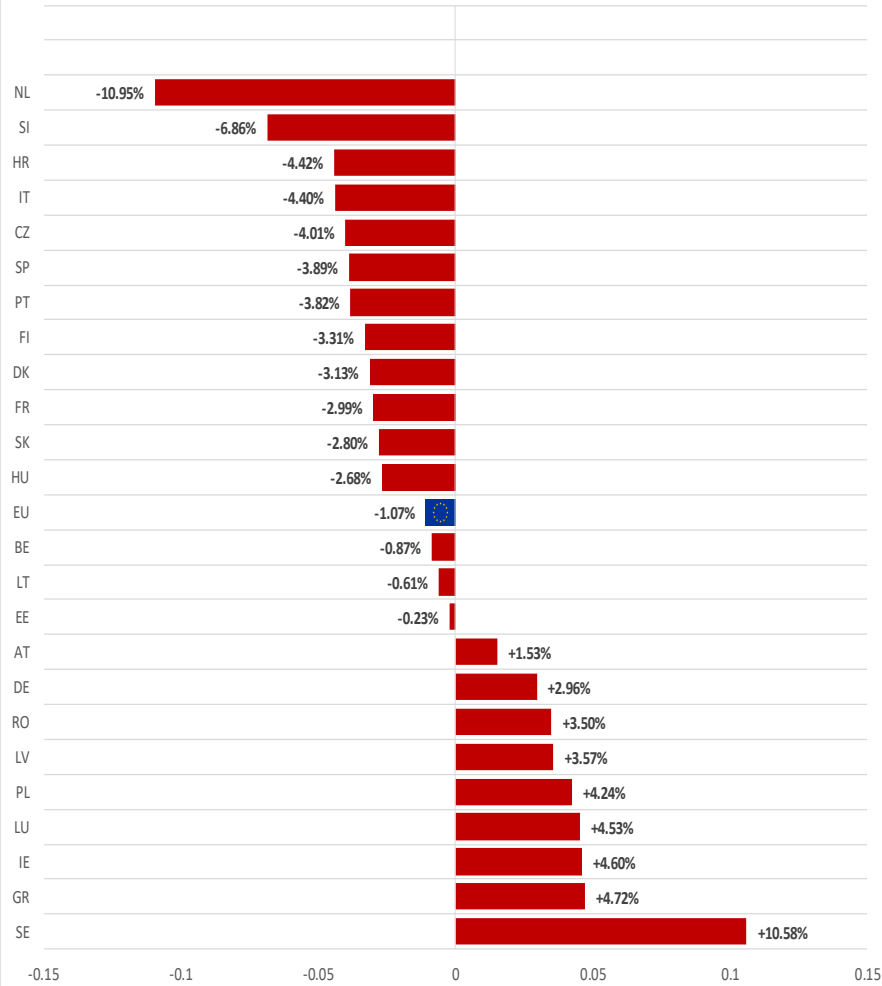
Dashboard

EU Prices week		18	Evolution since last week	Evolution since last month	Evolution since last year
Carcasse	Average A/C/Z -R3	374.2	- 0.2%	+ 0.5%	+ 7.5%
	Young Bovines (Z)	366.8	+ 0.1%	+ 0.3%	+ 0.1%
	Young Bulls (A)	370.6	- 0.4%	- 0.2%	+ 7.1%
	Steers (C)	408.5	+ 0.3%	+ 5.6%	+ 18.1%
	Cows (D)	300.1	+ 0.2%	+ 2.1%	+ 16.4%
	Heifers (E)	387.1	+ 0.2%	+ 1.7%	+ 10.7%
Live Animals	Male Calves Dairy Type	92.14	+ 4.4%	+ 14.6%	+ 39.0%
	Male Calves Beef Type	211.2	+ 0.9%	+ 4.1%	+ 13.9%
	Young Store Cattle	2.61	- 0.1%	+ 0.9%	+ 8.7%
	Yearling Male Store Cattle	2.31	- 0.3%	+ 0.0%	+ 3.9%
	Yearling Female Store Cattle	2.51	+ 0.3%	- 0.7%	+ 6.3%
	Calves slaughtered <8M	467.9	+ 0.4%	- 4.5%	+ 12.0%

Sources : MSs notifications (Regulation (EU) 1182/2017 and 1184/2017)

PRICES CARCASSES

EU ACZ R3 Price Comparison between average monthly price May 2020 - April 2021 compared to May 2019 - April 2020

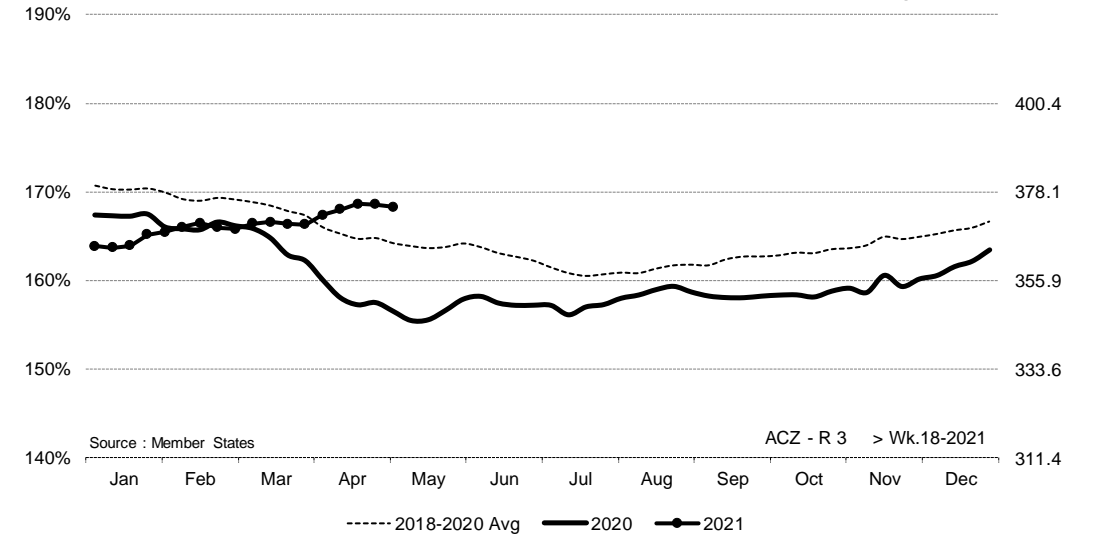


EU EVOLUTION A/C/Z.R3

ACZ - R 3 > Wk.18-2021

% of Reference Price

€/100 kg cwe



Price in week 18 : **374.27**

Average price in April 2021 : **373.36**

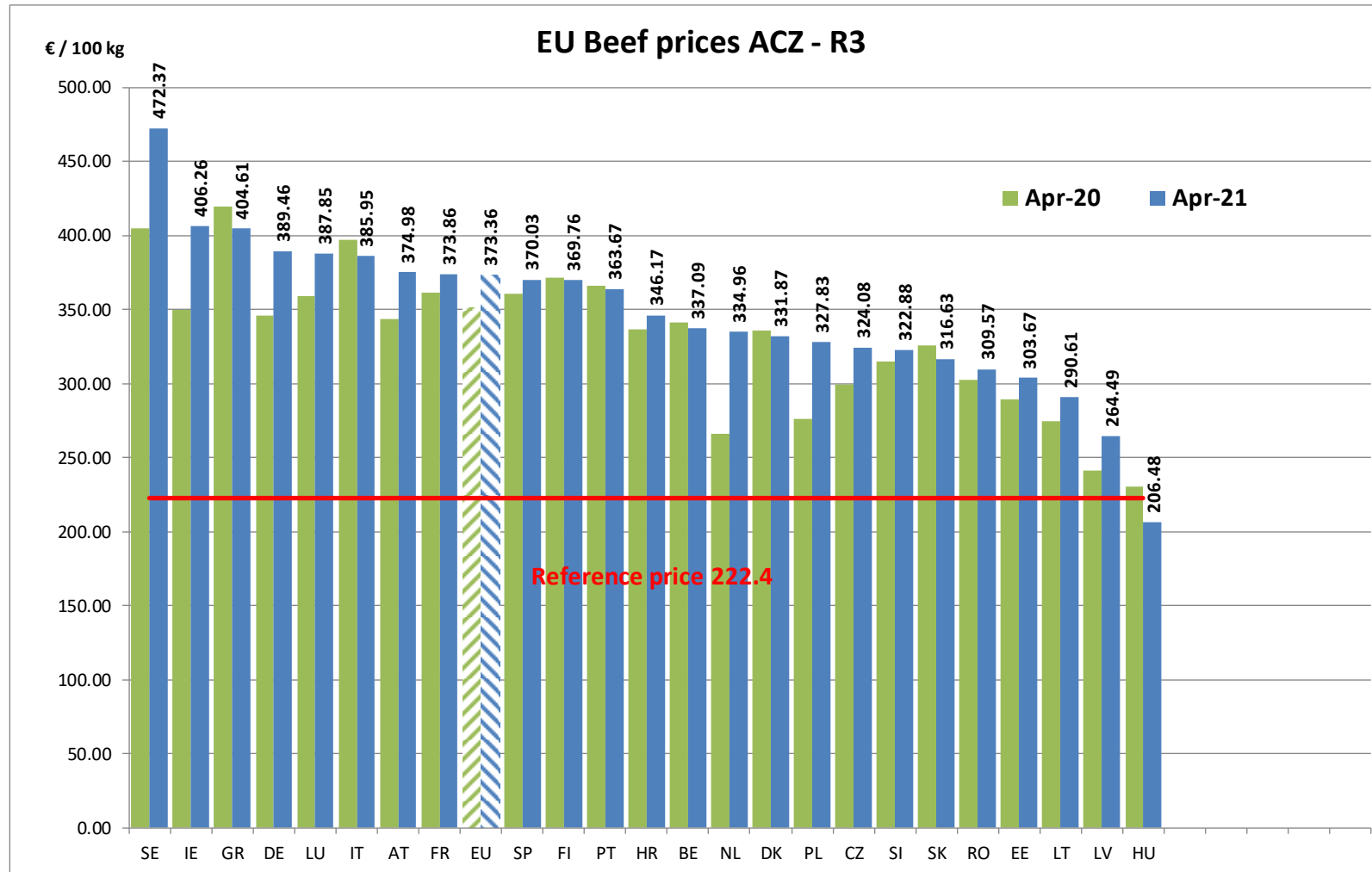
% change y/y : **+ 7.51%**

% change y/y : **+ 6.35%**

% Ref. Price in wk 18 : **168.3%**

PRICES CARCASSES

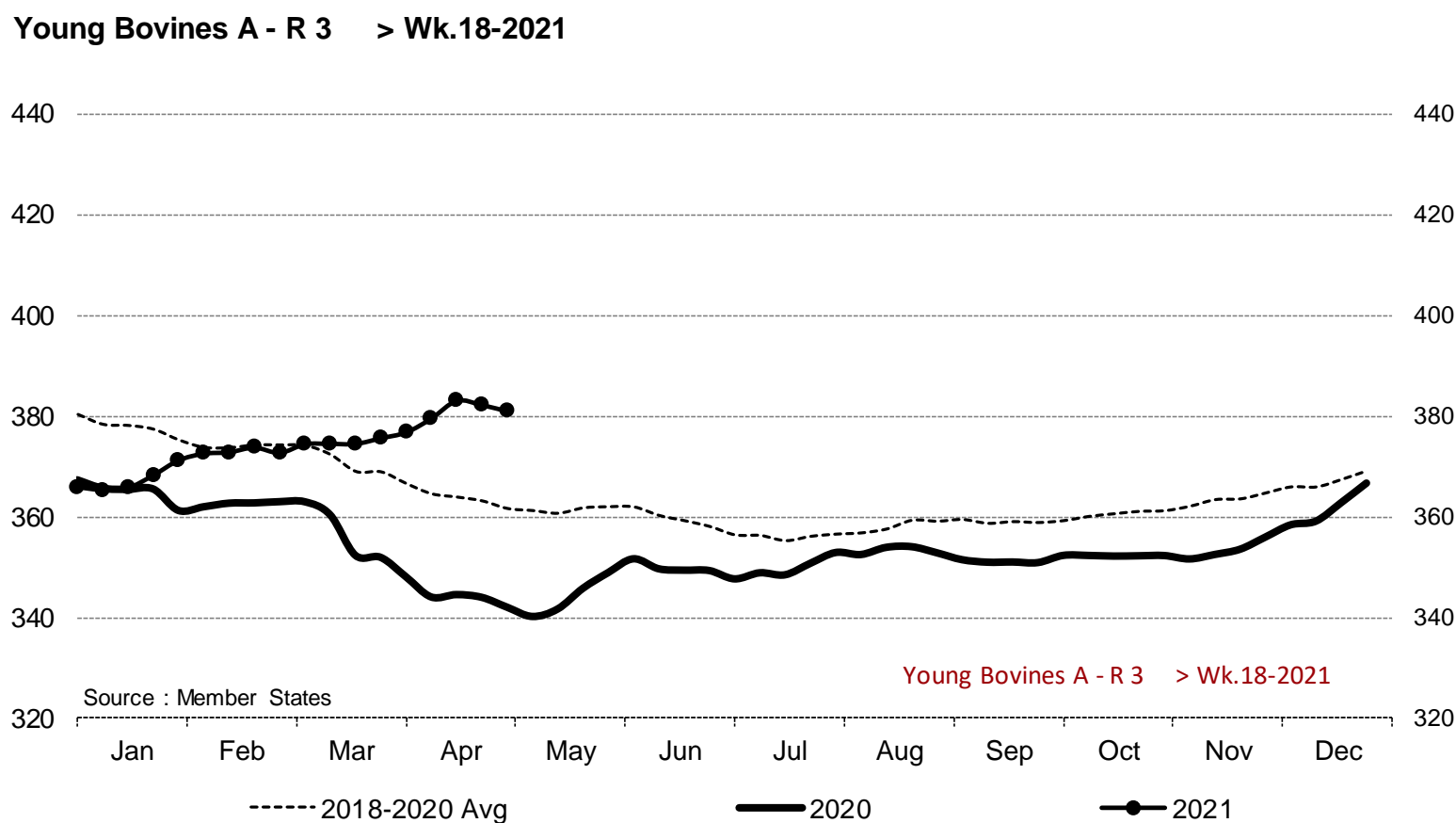
EU EVOLUTION A/C/Z.R3



PRICES CARCASSES

EU EVOLUTION YOUNG BULL – A.R3

Young Bovines A - R 3 > Wk.18-2021

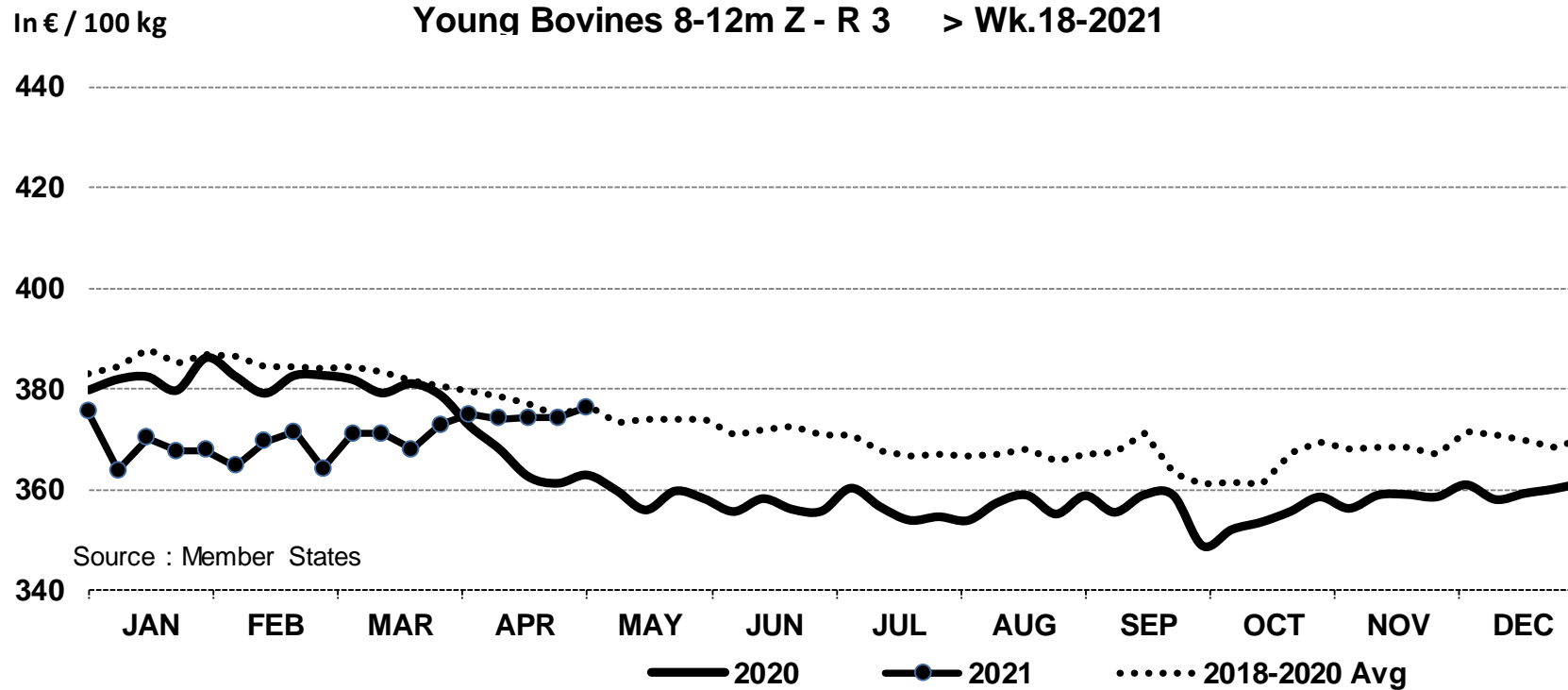


Price in week 18 : **381.03**
% change y/y : **+ 11.4%**

Average price in April 2021 : **379.72**
% change y/y : **+ 10.2%**

PRICES CARCASSES

E.U. EVOLUTION YOUNG BOVINE 8-12M- Z.R3



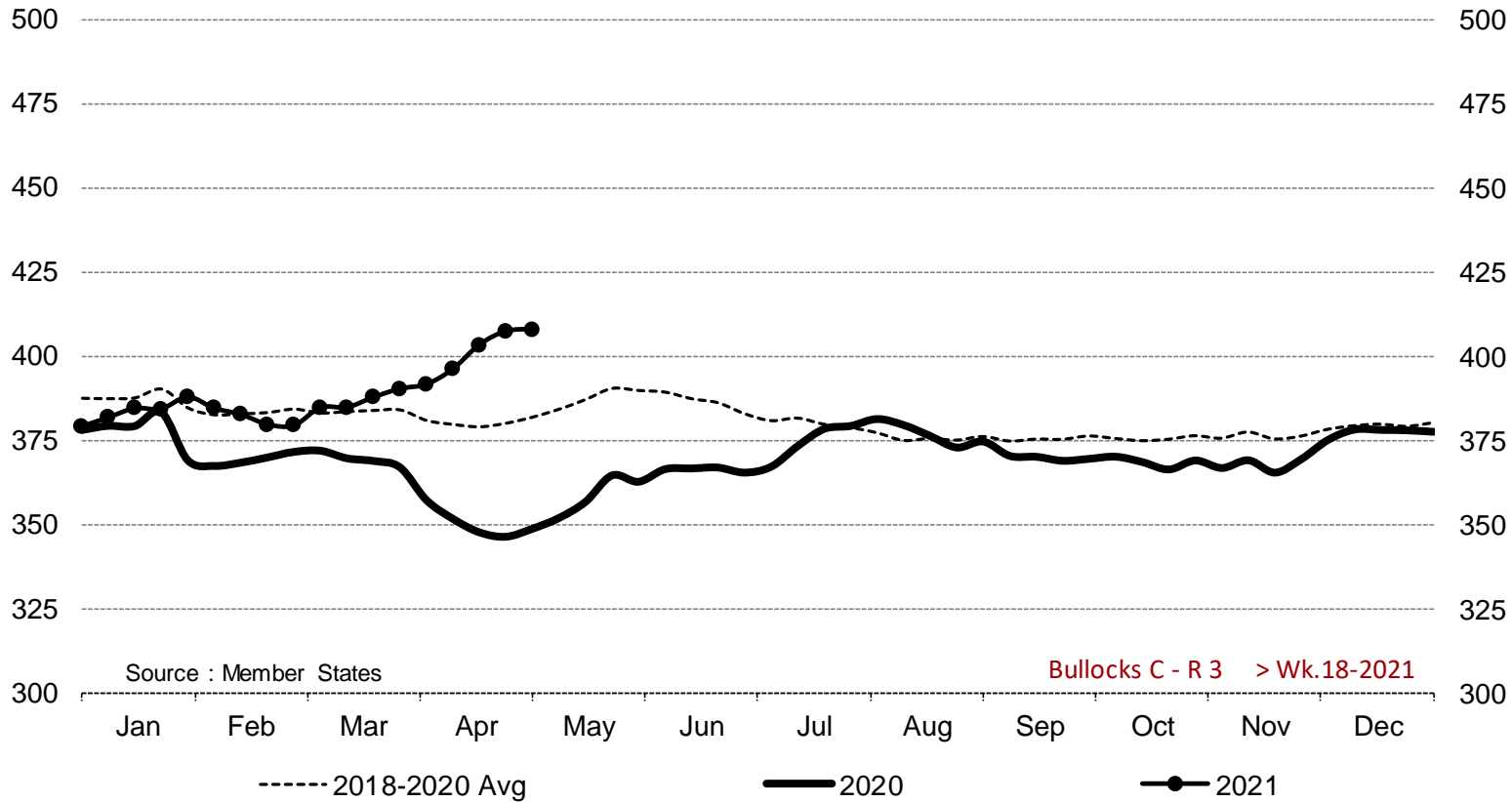
Price in week 18 : **376.25** 12/04/2021
 % change y/y : **+ 3.7%**

Average price in April 2021 : **374.16**
 % change y/y : **+ 2.5%**

PRICES CARCASSES

E.U. EVOLUTION STEER – C.R3

Bullocks C - R 3 > Wk.18-2021



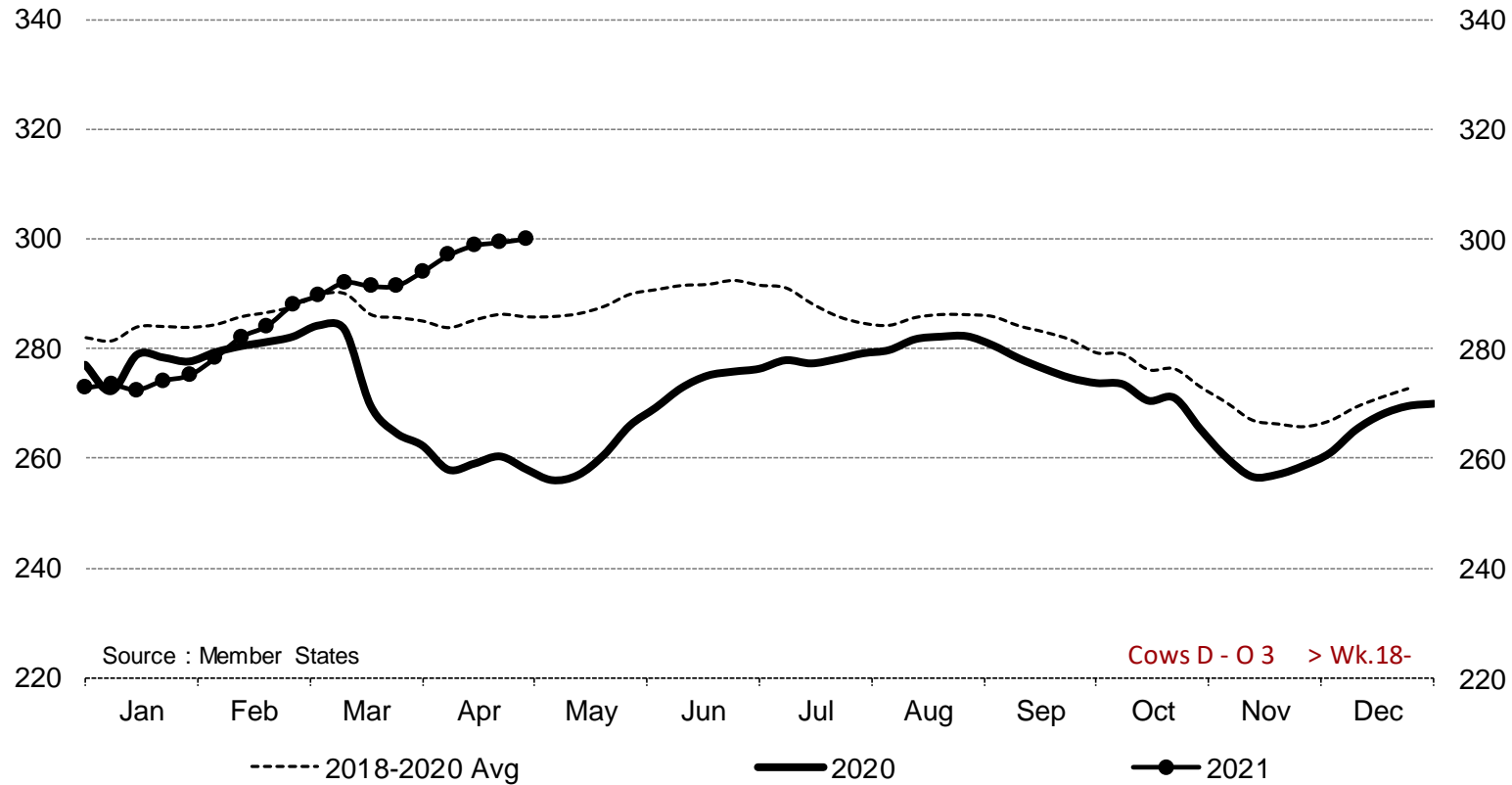
Price in week 18 : **407.88**
% change y/y : **+ 16.9%**

Average price in April 2021 : **397.78**
% change y/y : **+ 13.6%**

PRICES CARCASSES

E.U. EVOLUTION
COW – D.03

Cows D - O 3 > Wk.18-2021



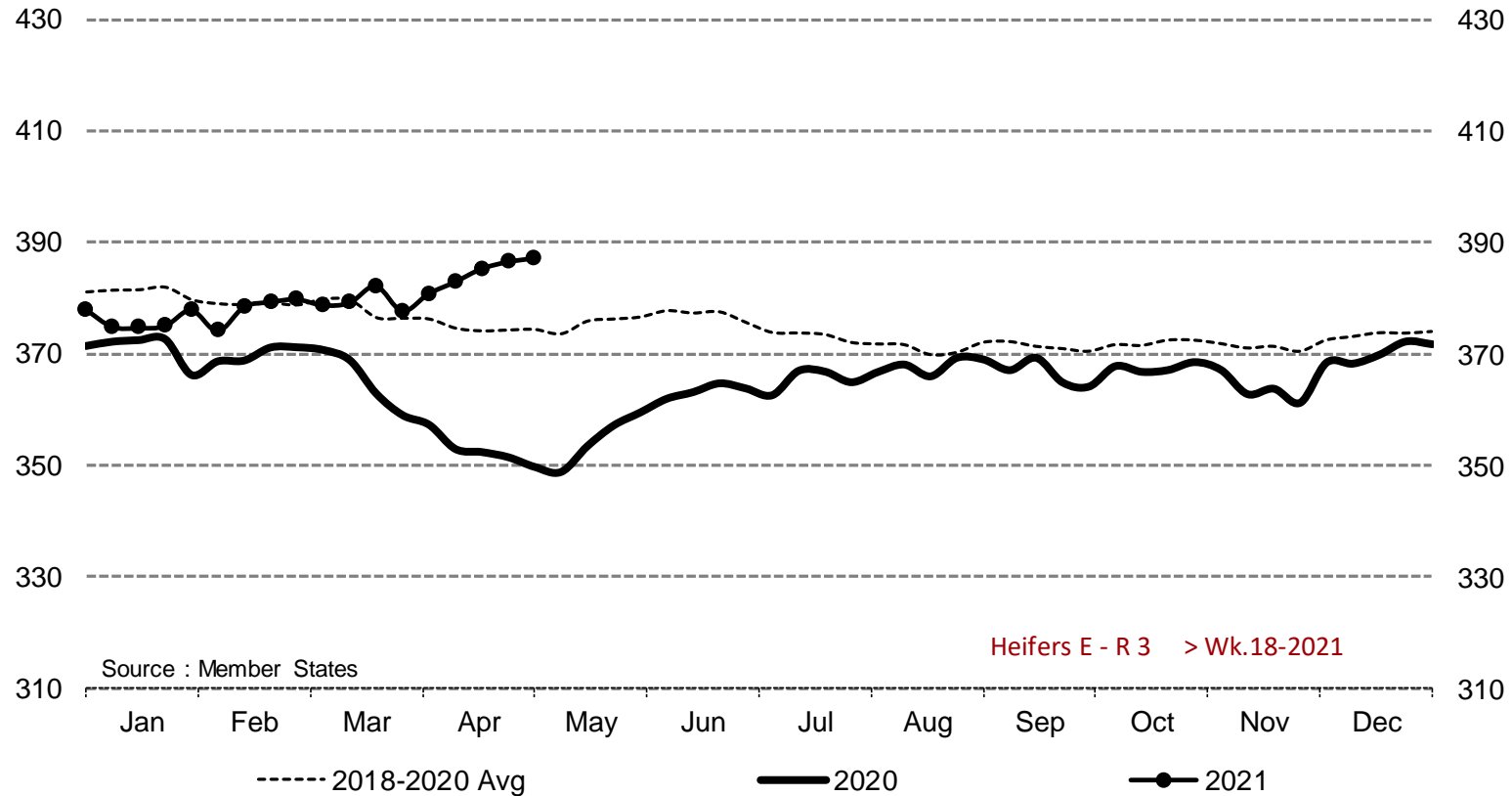
Price in week 18 : **300.13**
% change y/y : **+ 16.4%**

Average price in April 2021 : **296.45**
% change y/y : **+ 14.3%**

PRICES CARCASSES

EU EVOLUTION HEIFER - E.R3

Heifers E - R 3 > Wk.18-2021

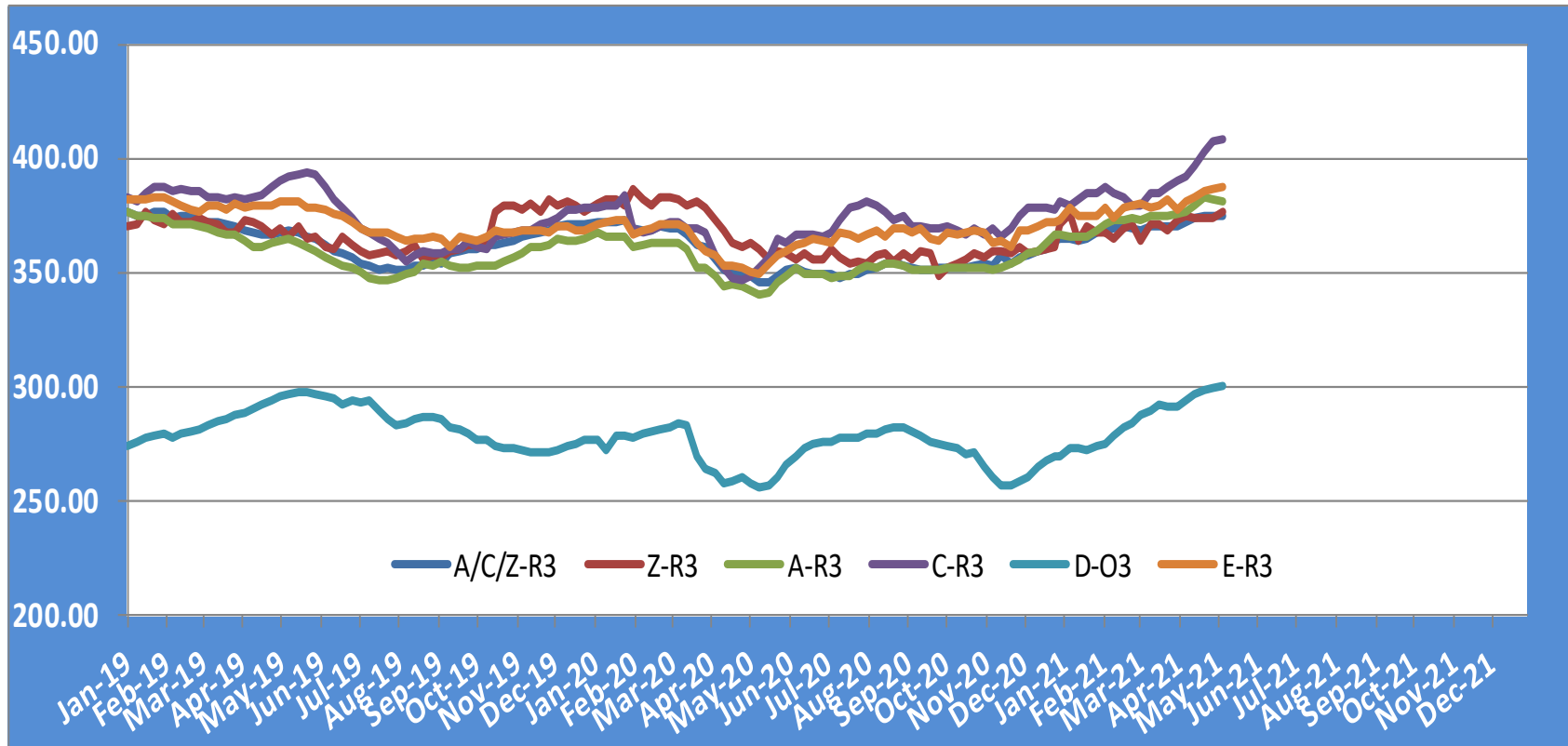


Price in week 18 : **387.14**
% change y/y : **+ 10.7%**

Average price in April 2021 : **382.88**
% change y/y : **+ 8.5%**

PRICES CARCASSES

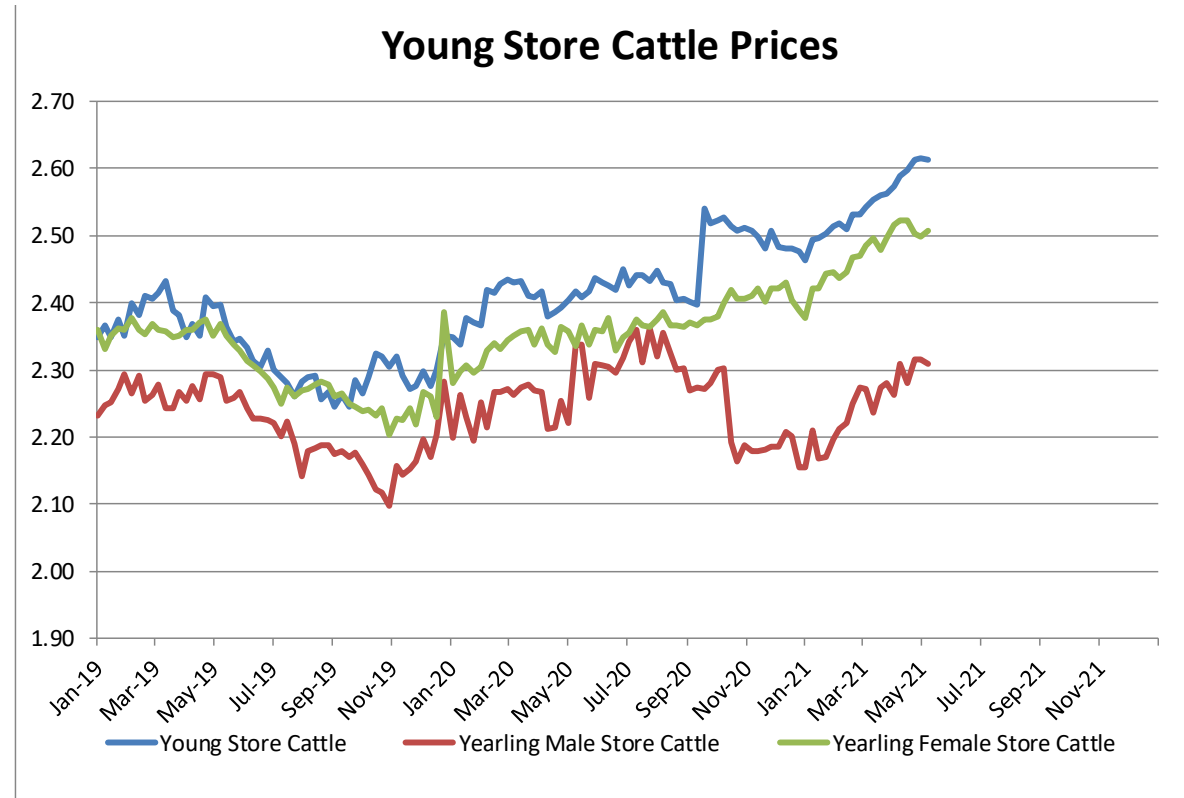
EU EVOLUTION ALL CAT GLOBAL VIEW



PRICES LIVE BOVINES

EU EVOLUTION STORE CATTLE

Store cattle (€/100 kg live weight)



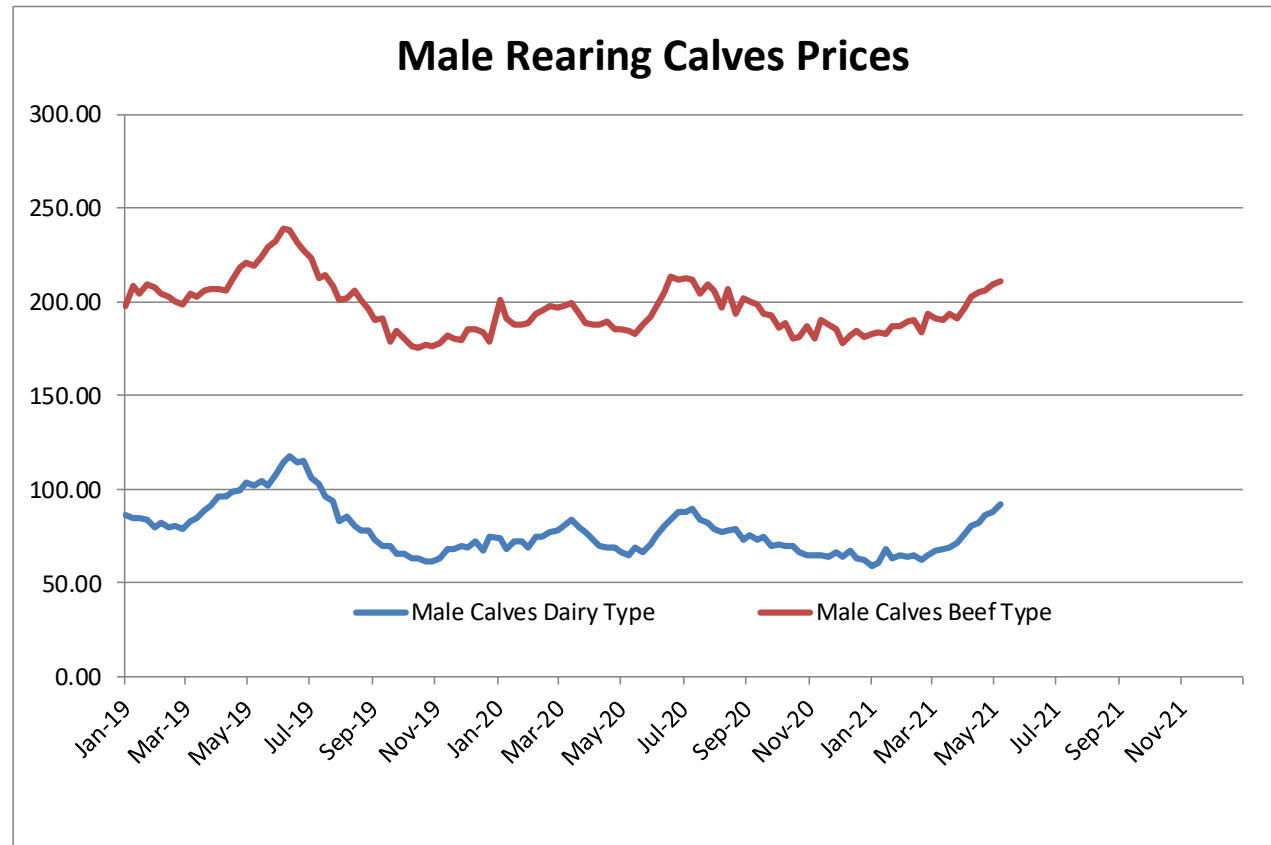
Young Store Cattle Price in	Week 18	2.61	Yearling Male Store Cattle Price	2.31
	Change y/y	+8.69%	Change y/y	+3.93%
Yearling Female Store Cattle Price		2.51		
	Change y/y	+6.28%		

20 May 2021

PRICES LIVE BOVINES

EU EVOLUTION Male Calves – 8D4W

Male calves aged between 8 days and 4 weeks (€/head)



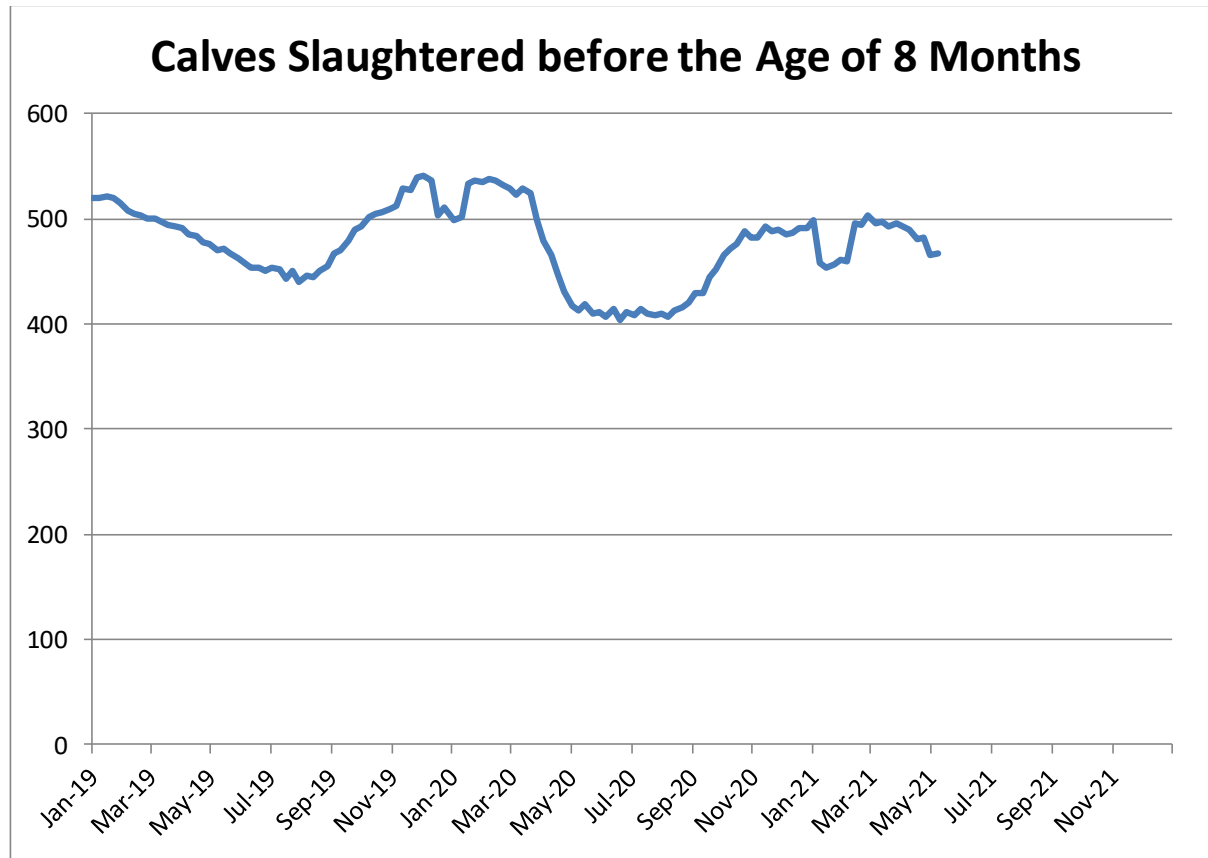
Male Rearing Calves Beef type		Male Rearing Calves Dairy type	
Price in Week 18	211.20	Price in Week 18	92.14
Change y/y	+13.89%	Change y/y	+39.02%

20 May 2021

PRICES LIVE BOVINES

EU EVOLUTION Butcher Calves

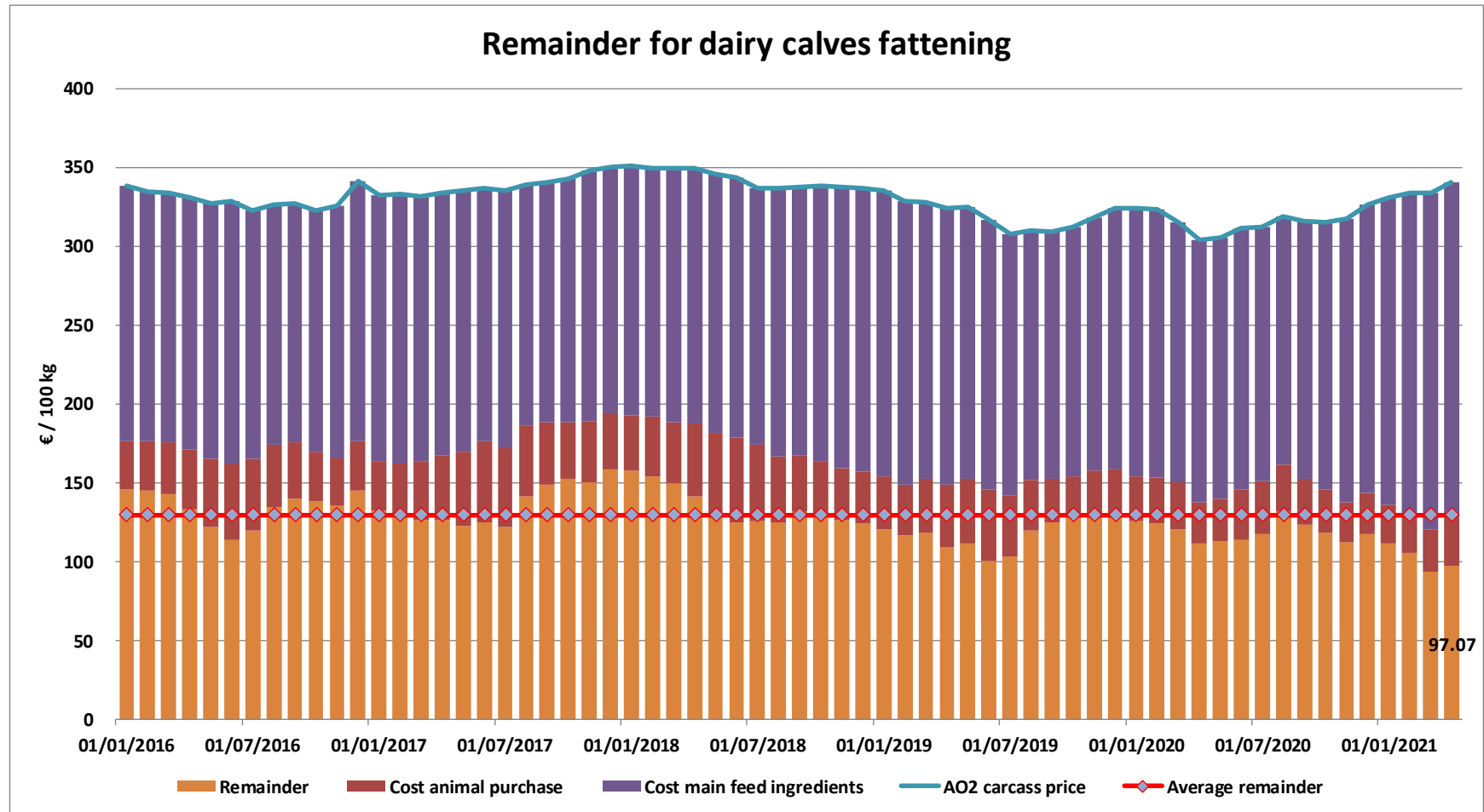
Calves slaughtered before the age of less than 8 months
(€/100 kg cw)



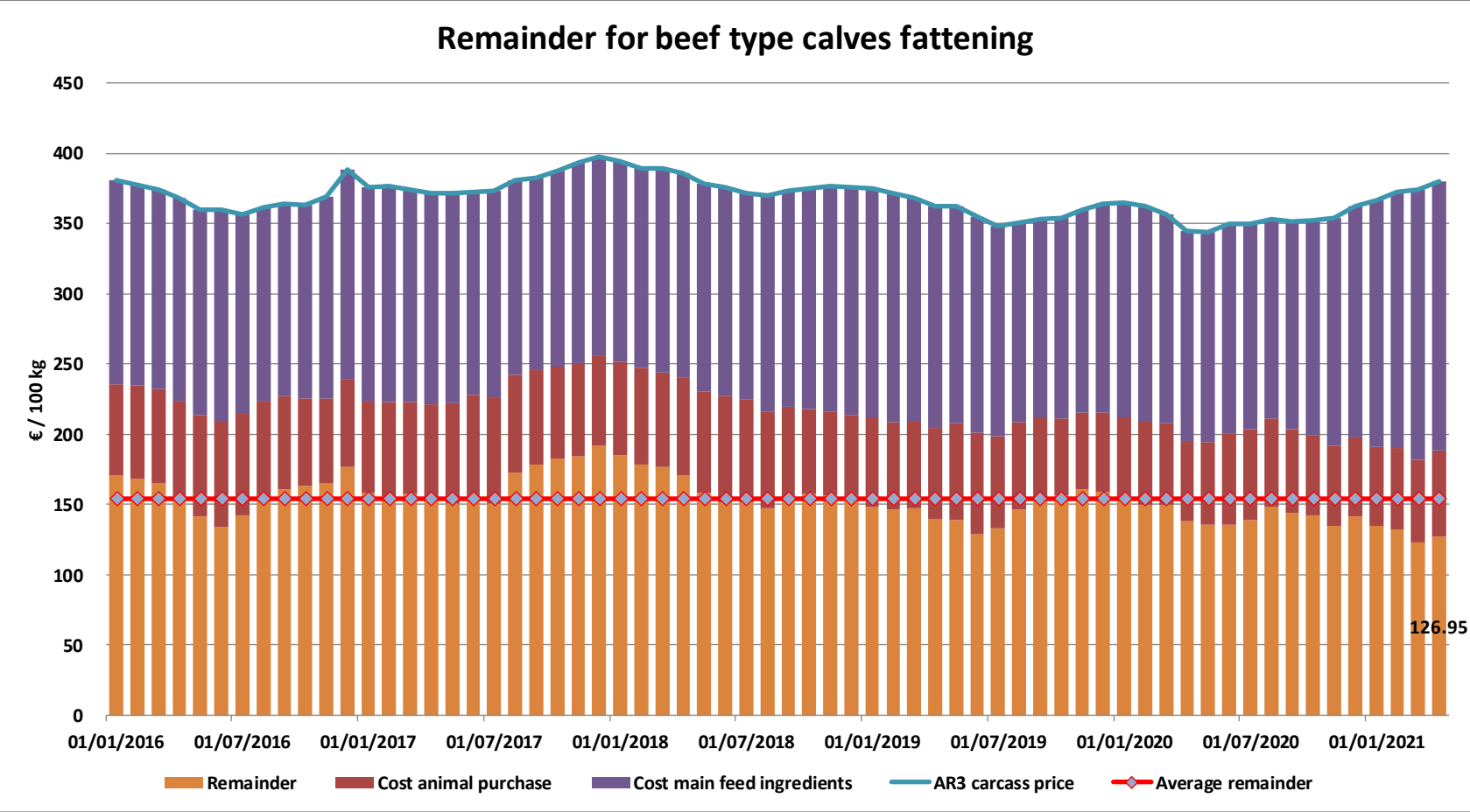
Price in Week 18 467.99 € / 100 kg of carcasse weight
Change y/y +11.95%

20 May 2021

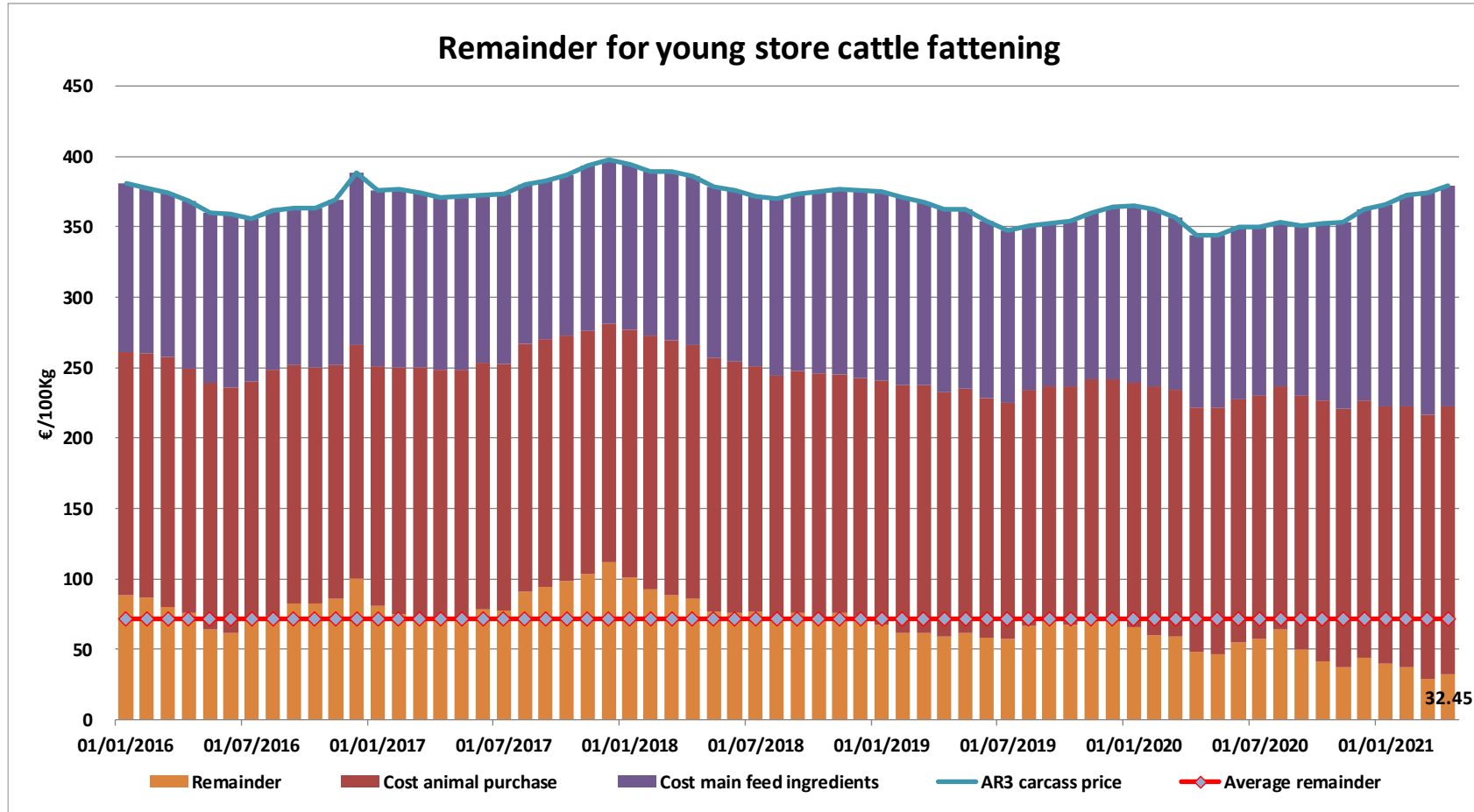
REMAINDERS



REMAINDERS



REMAINDERS



TRADE

EU EXPORTS

Beef & Live Animals

EU Exports of Beef and Live Animals (1): Trade figures (COMEXT – tonnes cwe)

Destinations	2017		2018		2019		2020		Jan-Mar 21		Compared to
	tonnes	%	tonnes	%	tonnes	%	tonnes	%	tonnes	%	
Israel	44 196	6.1%	47 774	6.8%	49 629	7.1%	56 965	8.1%	13 373	7.7%	+ 22.6%
Hong Kong	76 086	10.4%	55 537	7.9%	46 748	6.7%	56 860	8.1%	12 670	7.3%	+ 15.8%
Philippines	37 102	5.1%	28 766	4.1%	34 158	4.9%	39 920	5.7%	12 516	7.2%	+ 33.0%
Ghana	37 744	5.2%	36 766	5.2%	39 196	5.6%	47 408	6.7%	12 244	7.1%	- 2.4%
Bosnia-Herz.	34 711	4.8%	38 762	5.5%	41 119	5.9%	35 758	5.1%	8 860	5.1%	+ 12.7%
Ivory Coast	36 038	4.9%	36 064	5.1%	33 396	4.8%	32 460	4.6%	8 155	4.7%	- 9.9%
Algeria	26 305	3.6%	35 410	5.0%	57 152	8.2%	39 416	5.6%	8 134	4.7%	- 29.8%
Lebanon	38 322	5.3%	42 542	6.1%	36 393	5.2%	33 656	4.8%	7 681	4.4%	+ 0.8%
Norway	12 850	1.8%	7 925	1.1%	7 667	1.1%	12 936	1.8%	6 787	3.9%	+ 134.4%
Switzerland	26 708	3.7%	23 761	3.4%	25 188	3.6%	29 996	4.3%	6 579	3.8%	- 8.8%
Saudi Arabia	4 691	0.6%	2 521	0.4%	2 809	0.4%	9 707	1.4%	5 141	3.0%	+ 86.7%
Libya	27 848	3.8%	27 878	4.0%	24 541	3.5%	21 971	3.1%	4 945	2.9%	- 7.5%
Ukraine	7 331	1.0%	10 465	1.5%	13 836	2.0%	15 857	2.3%	3 965	2.3%	- 0.8%
Canada	2 424	0.3%	2 225	0.3%	6 806	1.0%	20 475	2.9%	3 815	2.2%	- 16.5%
Turkey	96 413	13.2%	96 052	13.7%	34 555	4.9%	22 107	3.1%	3 702	2.1%	- 8.3%
Kosovo	4 037	0.6%	6 693	1.0%	10 279	1.5%	10 912	1.5%	3 698	2.1%	+ 46.0%
<i>Other Destinations</i>	216 712	29.7%	203 099	28.9%	237 118	33.8%	218 229	31.0%	51 039	29.5%	
Total (without UK)	729 519		702 242		700 590		704 631		173 306		
% change			- 4%		- 0%		+ 1%		+ 0.9%		

TRADE

EU EXPORTS

Beef

EU Exports of Beef: Trade figures (COMEXT – tonnes cwe)

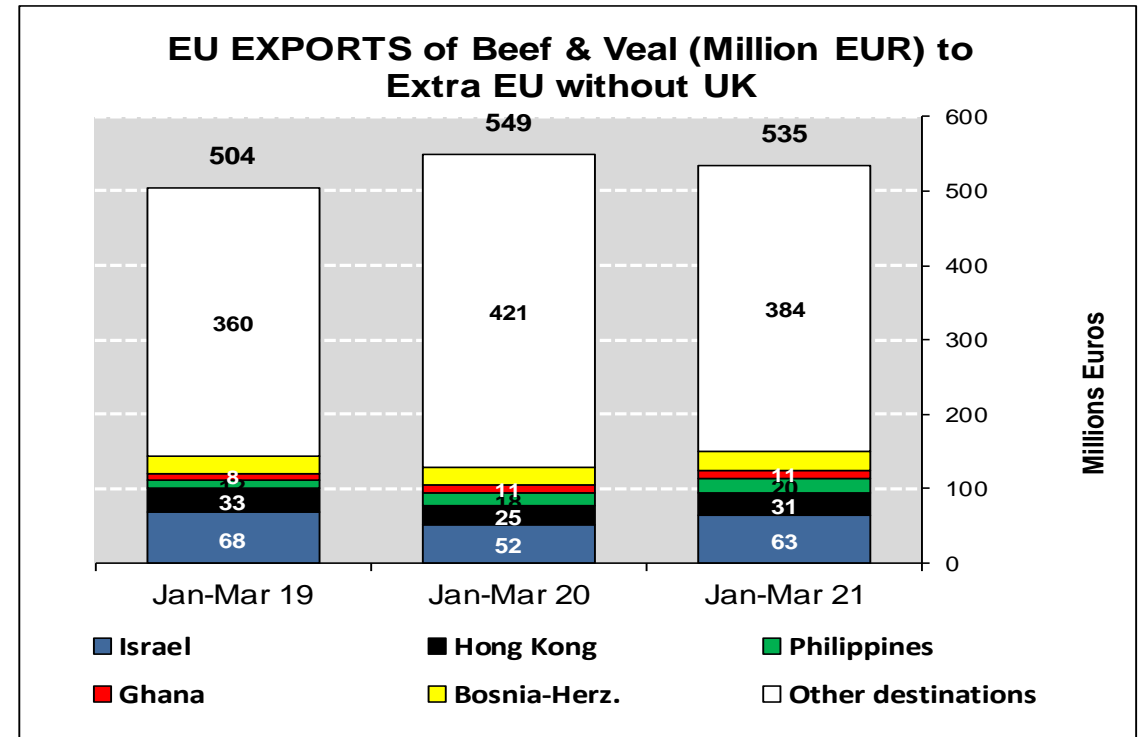
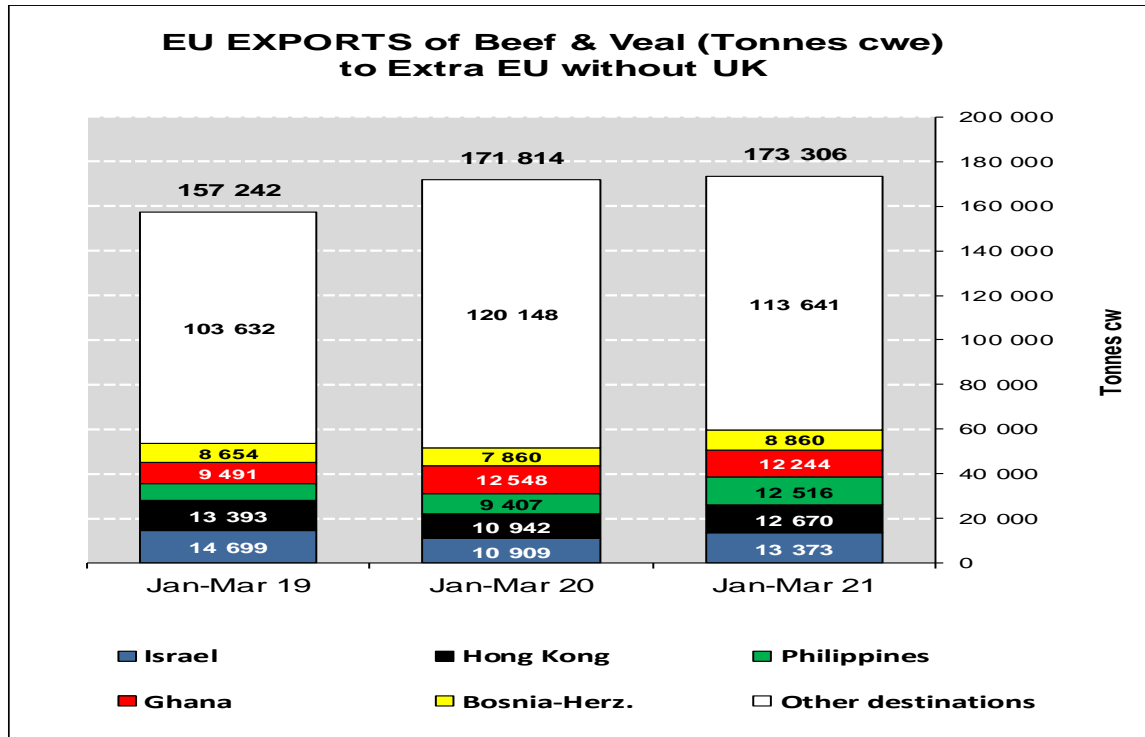
Destinations	2017		2018		2019		2020		Jan-Mar 20		Compared to
	tonnes	%	tonnes	%	tonnes	%	tonnes	%	tonnes	%	
Ghana	37 744	7.7%	36 766	7.9%	39 196	8.2%	47 408	9.7%	12 548	10.0%	+ 32.2%
Hong Kong	76 086	15.4%	55 537	11.9%	46 748	9.8%	56 860	11.6%	10 942	8.7%	- 18.3%
Philippines	37 102	7.5%	28 766	6.2%	34 158	7.2%	39 920	8.1%	9 407	7.5%	+ 27.6%
Ivory Coast	36 028	7.3%	36 064	7.7%	33 396	7.0%	32 460	6.6%	9 047	7.2%	+ 37.6%
Bosnia-Herz.	32 181	6.5%	36 152	7.7%	38 806	8.2%	33 459	6.8%	7 357	5.8%	- 10.1%
Switzerland	25 570	5.2%	22 711	4.9%	24 110	5.1%	28 941	5.9%	6 876	5.5%	+ 47.0%
China	5 738	1.2%	6 712	1.4%	22 317	4.7%	15 505	3.2%	6 780	5.4%	+++
Israel	18 750	3.8%	22 163	4.7%	23 026	4.8%	21 967	4.5%	5 720	4.5%	- 19.8%
Canada	2 424	0.5%	2 225	0.5%	6 806	1.4%	20 475	4.2%	4 571	3.6%	+++
Algeria	12 304	2.5%	13 919	3.0%	19 142	4.0%	7 108	1.4%	4 469	3.6%	+ 47.7%
Japan	4 281	0.9%	3 452	0.7%	8 007	1.7%	11 885	2.4%	4 283	3.4%	+++
Ukraine	6 926	1.4%	9 887	2.1%	12 893	2.7%	14 861	3.0%	3 970	3.2%	+ 13.9%
Norway	12 849	2.6%	7 922	1.7%	7 667	1.6%	12 936	2.6%	2 896	2.3%	+ 37.0%
Angola	10 982	2.2%	11 470	2.5%	8 410	1.8%	9 410	1.9%	2 787	2.2%	+ 72.1%
USA	3 756	0.8%	5 458	1.2%	7 867	1.7%	12 310	2.5%	2 674	2.1%	+ 69.2%
North Macedonia	11 285	2.3%	10 002	2.1%	11 395	2.4%	10 551	2.1%	2 468	2.0%	+ 13.7%
<i>Other Destinations</i>	<i>159 107</i>	<i>32.3%</i>	<i>157 976</i>	<i>33.8%</i>	<i>131 695</i>	<i>27.7%</i>	<i>115 000</i>	<i>23.4%</i>	<i>28 963</i>	<i>23.0%</i>	
Total (without UK)	493 112		467 183		475 639		491 056		125 759		
% change			- 5%		+ 2%		+ 3%		+ 15.3%		

TRADE

EU Exports of Beef and Live Animals:
Trade figures (COMEXT)

EU EXPORTS

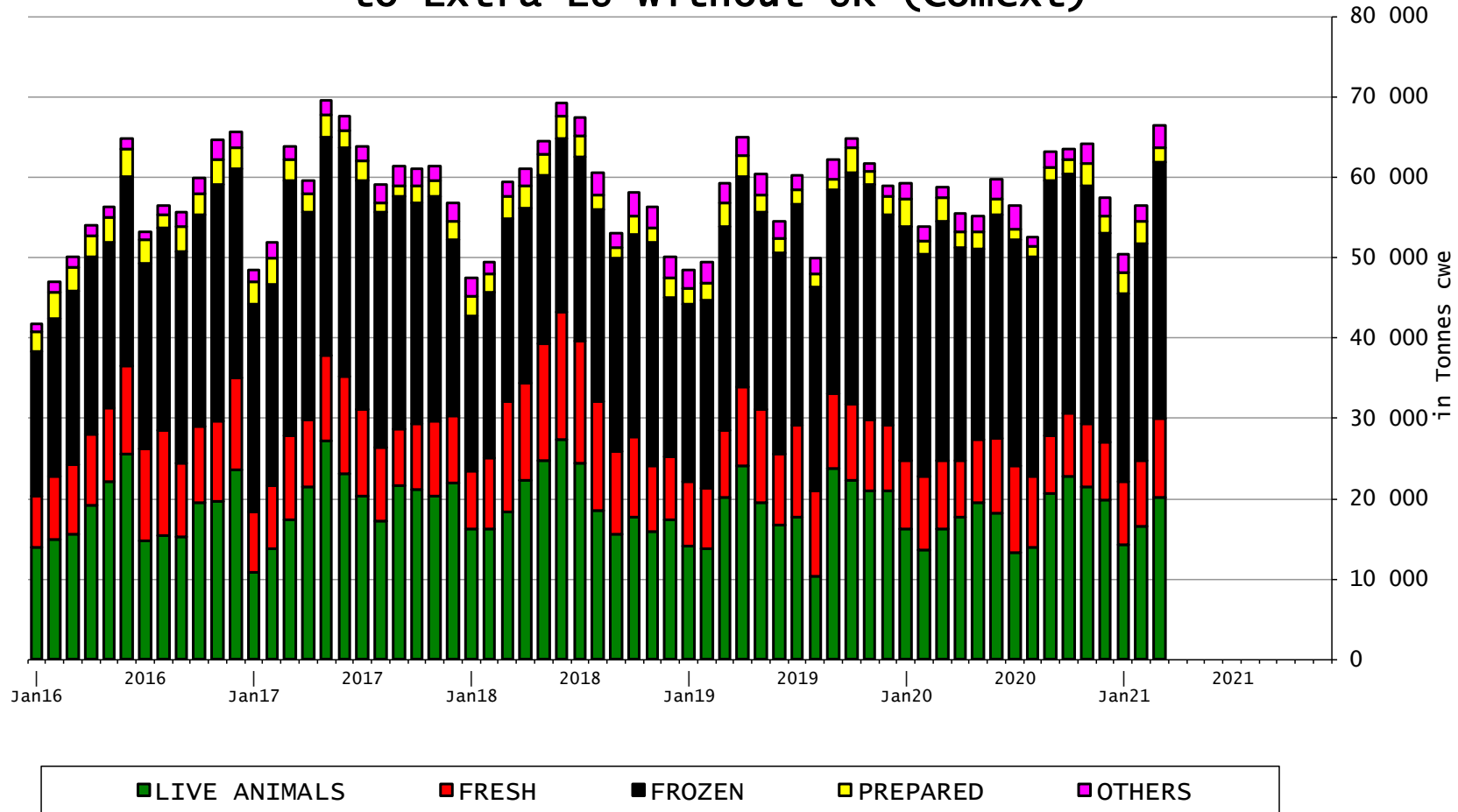
Beef & Live Animals



TRADE

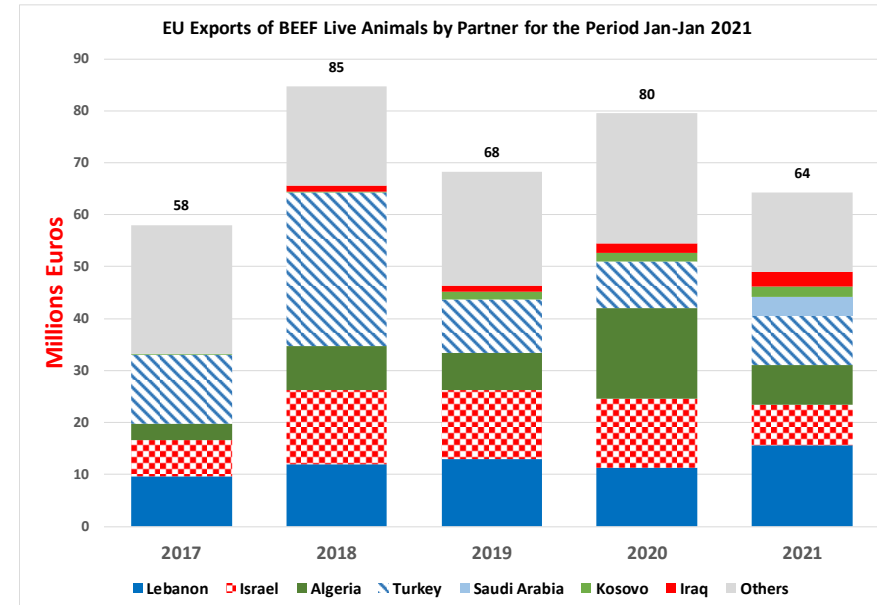
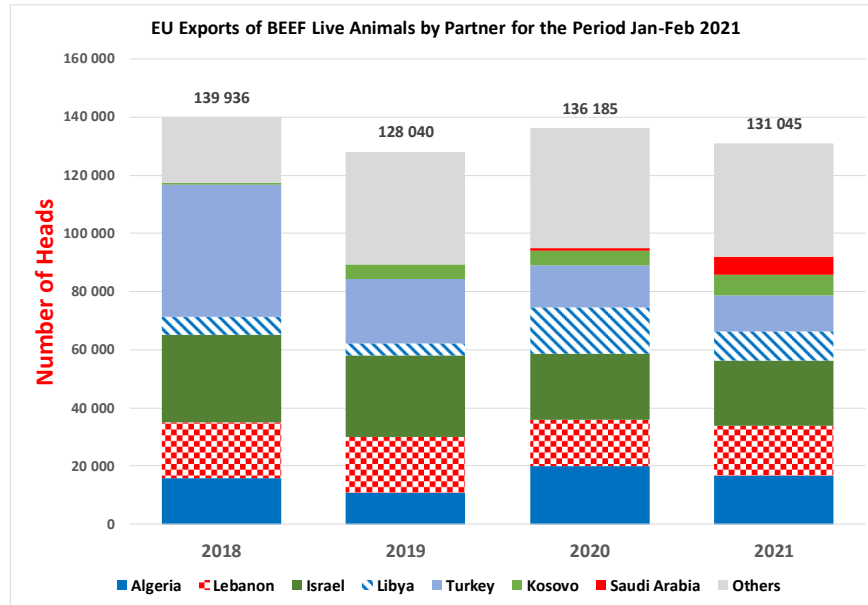
EU EXPORTS Beef Products

EU Exports of BEEF products
to Extra EU without UK (Comext)



TRADE

EU EXPORTS Live Animals



TRADE

EU IMPORTS Beef & Live Animals

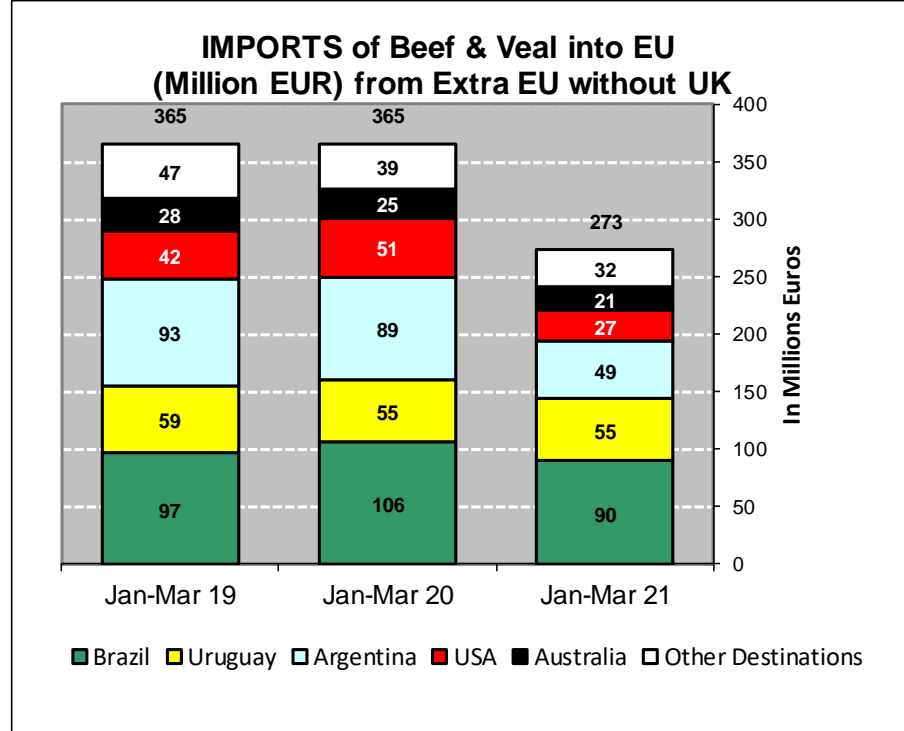
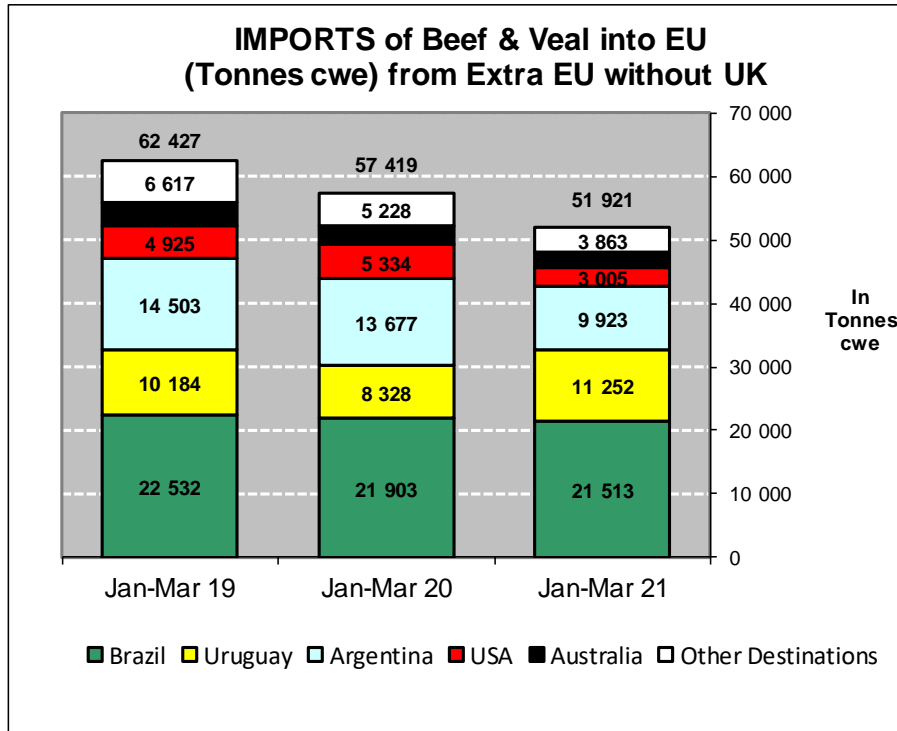
EU Imports of Beef and Live Animals, excl CN 15021090 (1): Trade Figures (COMEXT – tonnes cwe)

Origins	2017		2018		2019		2020		Jan-Mar 21		Compared to
	tonnes	%	tonnes	%	tonnes	%	tonnes	%	tonnes	%	
Brazil	86 927	33.9%	103 979	37.3%	99 569	36.4%	84 172	37.6%	21 513	41.4%	- 1.8%
Uruguay	52 078	20.3%	47 922	17.2%	40 483	14.8%	34 595	15.5%	11 252	21.7%	+ 35.1%
Argentina	49 259	19.2%	61 400	22.0%	65 324	23.9%	56 421	25.2%	9 923	19.1%	- 27.4%
USA	21 624	8.4%	19 268	6.9%	16 852	6.2%	16 532	7.4%	3 005	5.8%	- 43.7%
Australia	18 193	7.1%	17 368	6.2%	16 516	6.0%	11 058	4.9%	2 365	4.6%	- 19.8%
Switzerland	5 105	2.0%	5 413	1.9%	4 401	1.6%	4 197	1.9%	1 315	2.5%	+ 11.0%
New Zealand	6 806	2.7%	7 165	2.6%	6 726	2.5%	6 116	2.7%	755	1.5%	- 54.2%
Canada	512	0.2%	1 343	0.5%	2 518	0.9%	1 550	0.7%	466	0.9%	+++
N.det.Extra	72	0.0%	127	0.0%	196	0.1%	94	0.0%	259	0.5%	+++
Paraguay	5 922	2.3%	5 520	2.0%	5 203	1.9%	4 234	1.9%	246	0.5%	- 73.2%
Namibia	5 043	2.0%	3 442	1.2%	7 706	2.8%	1 445	0.6%	210	0.4%	- 33.1%
Japan	645	0.3%	791	0.3%	997	0.4%	789	0.4%	208	0.4%	+ 5.9%
Serbia	565	0.2%	1 134	0.4%	1 062	0.4%	931	0.4%	138	0.3%	- 56.8%
Norway	388	0.2%	153	0.1%	129	0.0%	336	0.2%	74	0.1%	+++
Botswana	2 686	1.0%	3 119	1.1%	4 950	1.8%	788	0.4%	59	0.1%	- 77.6%
Chile	319	0.1%	356	0.1%	392	0.1%	168	0.1%	27	0.1%	- 68.0%
<i>Other Destinations</i>	586	0.2%	344	0.1%	384	0.1%	487	0.2%	107	0.2%	
Total (without UK)	256 731		278 843		273 408		223 912		51 921		
% change			+ 9%		- 2%		- 18%		- 9.6%		

TRADE

EU Imports of Beef and Live Animals (2): Trade Figures (COMEXT)

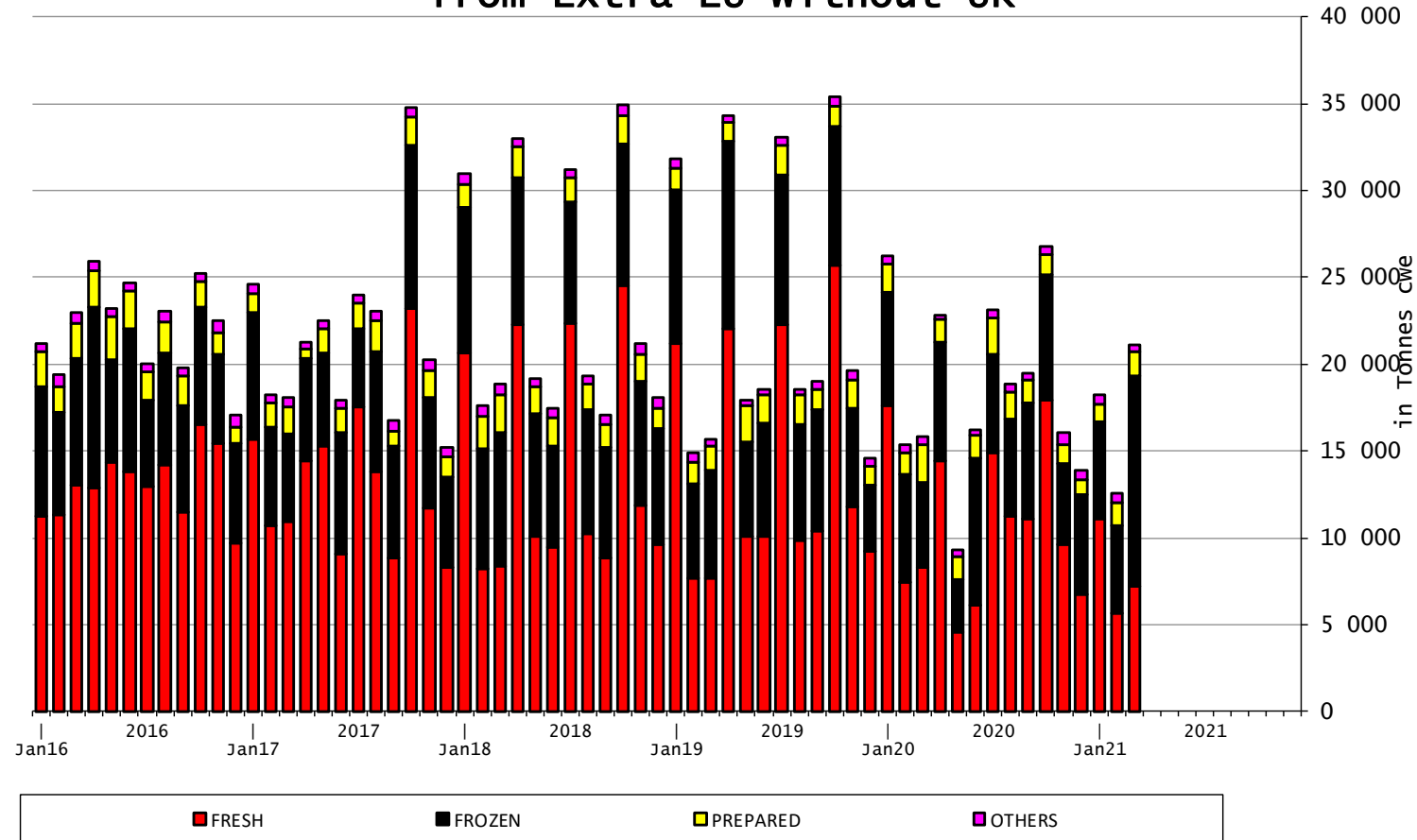
EU IMPORTS Beef & Live Animals



TRADE

EU IMPORTS Beef Products

EU Imports of BEEF products from Extra EU without UK



20 May 2021

TRADE

EU-UK

January-February 2021

In Tons of Carcase Weight				
	2019	2020	2021	2021/2020
Exports	74 199	65 362	40 402	-38%
Live Animals	1 689	1 493	1 094	-27%
Meats	72 510	63 869	39 308	-38%
Imports	31 682	24 185	12 659	-48%
Live Animals	353	198	101	-49%
Meats	31 330	23 987	12 558	-48%

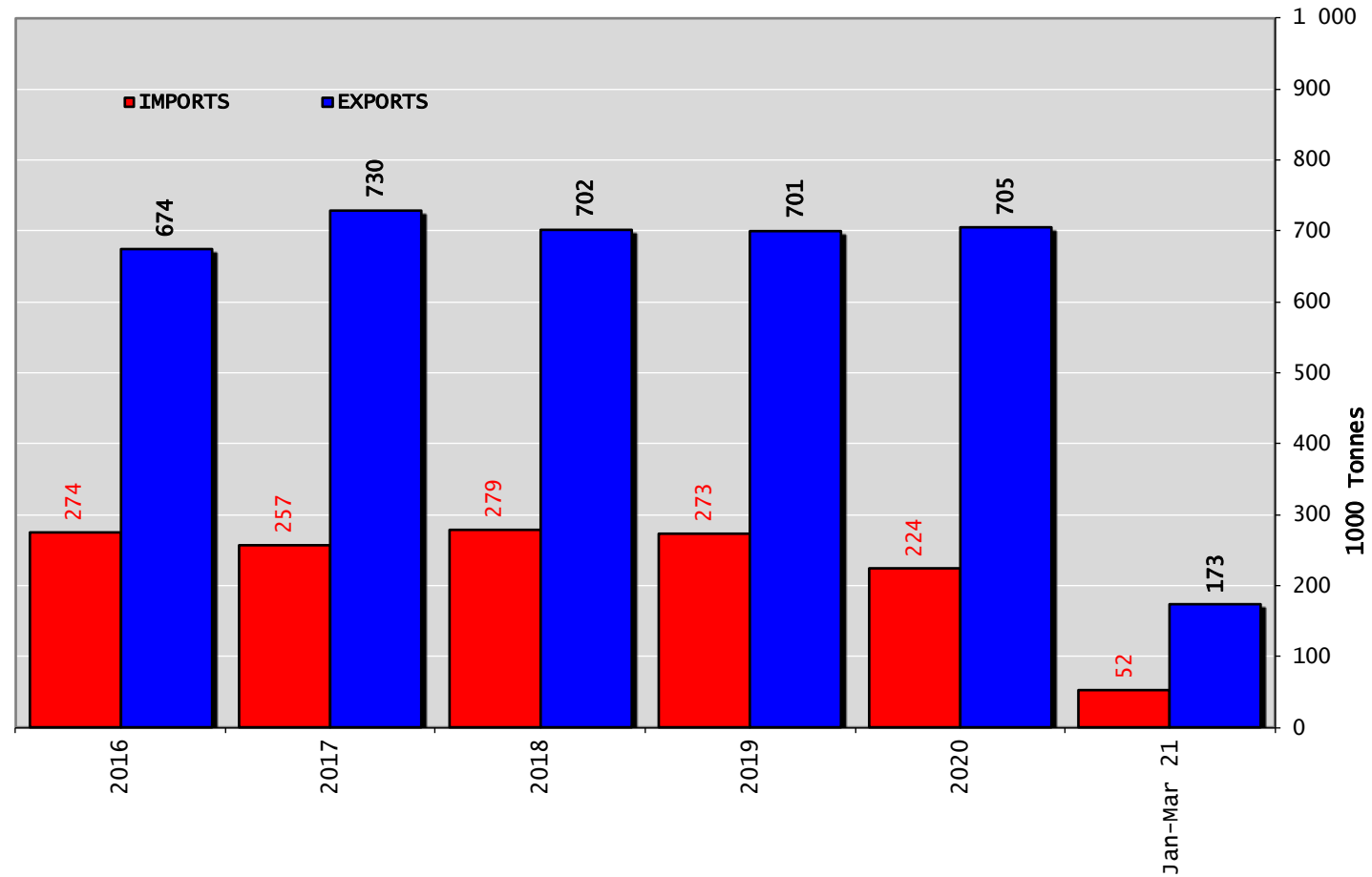
In Thousand Euros				
	2019	2020	2021	2021/2020
Exports	254 399	225 322	168 248	-25%
Live Animals	9 251	7 970	8 874	11%
Meats	245 148	217 352	159 374	-27%
Imports	95 924	89 631	36 105	-60%
Live Animals	1 637	879	324	-63%
Meats	94 287	88 752	35 782	-60%

TRADE

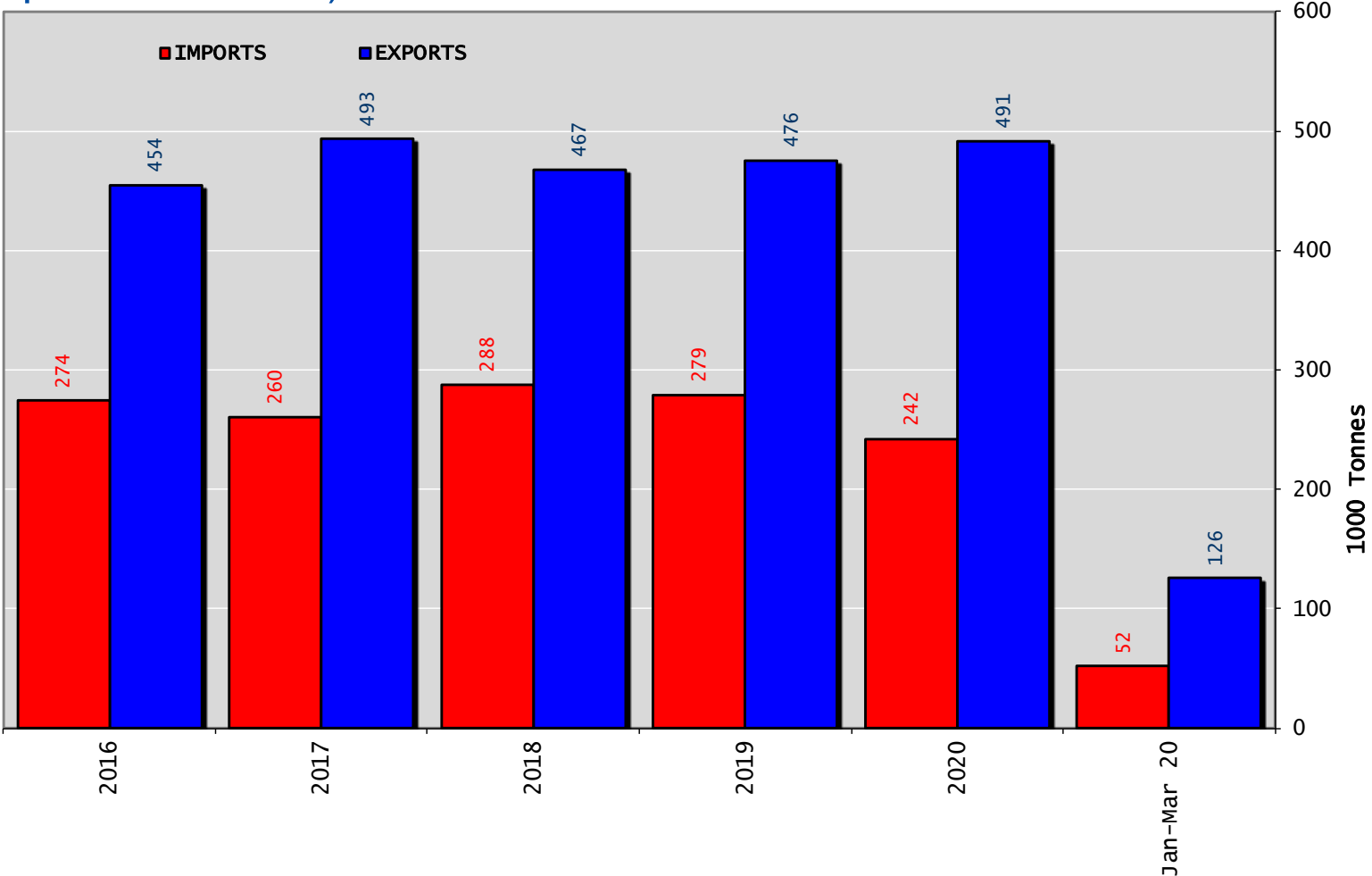
EUTRADE BALANCE

Beef & Live Animals

Trade Balance of Beef Products and Live Animals (without UK)



Trade Balance of Beef Products (Except Live Animals) without UK

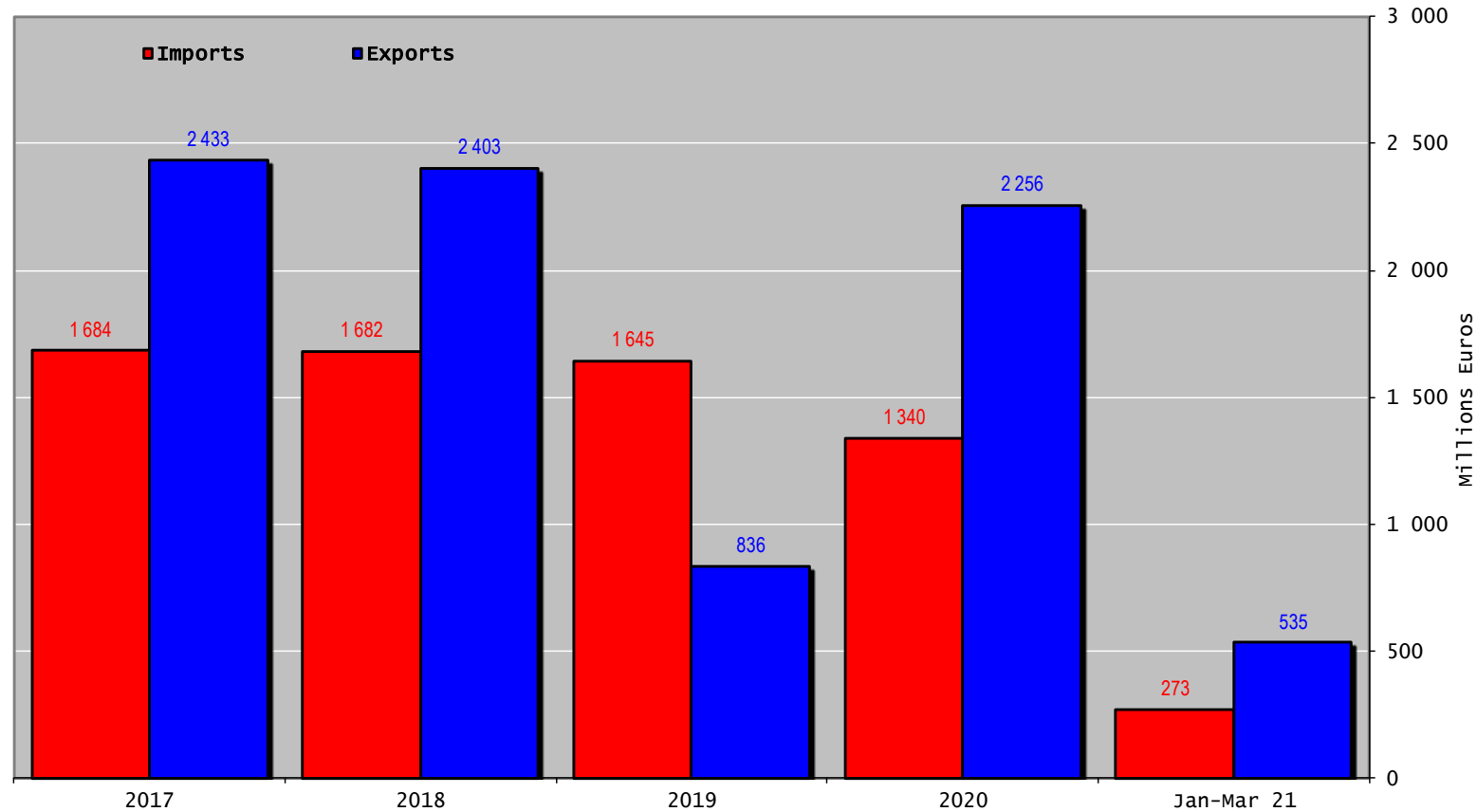


TRADE

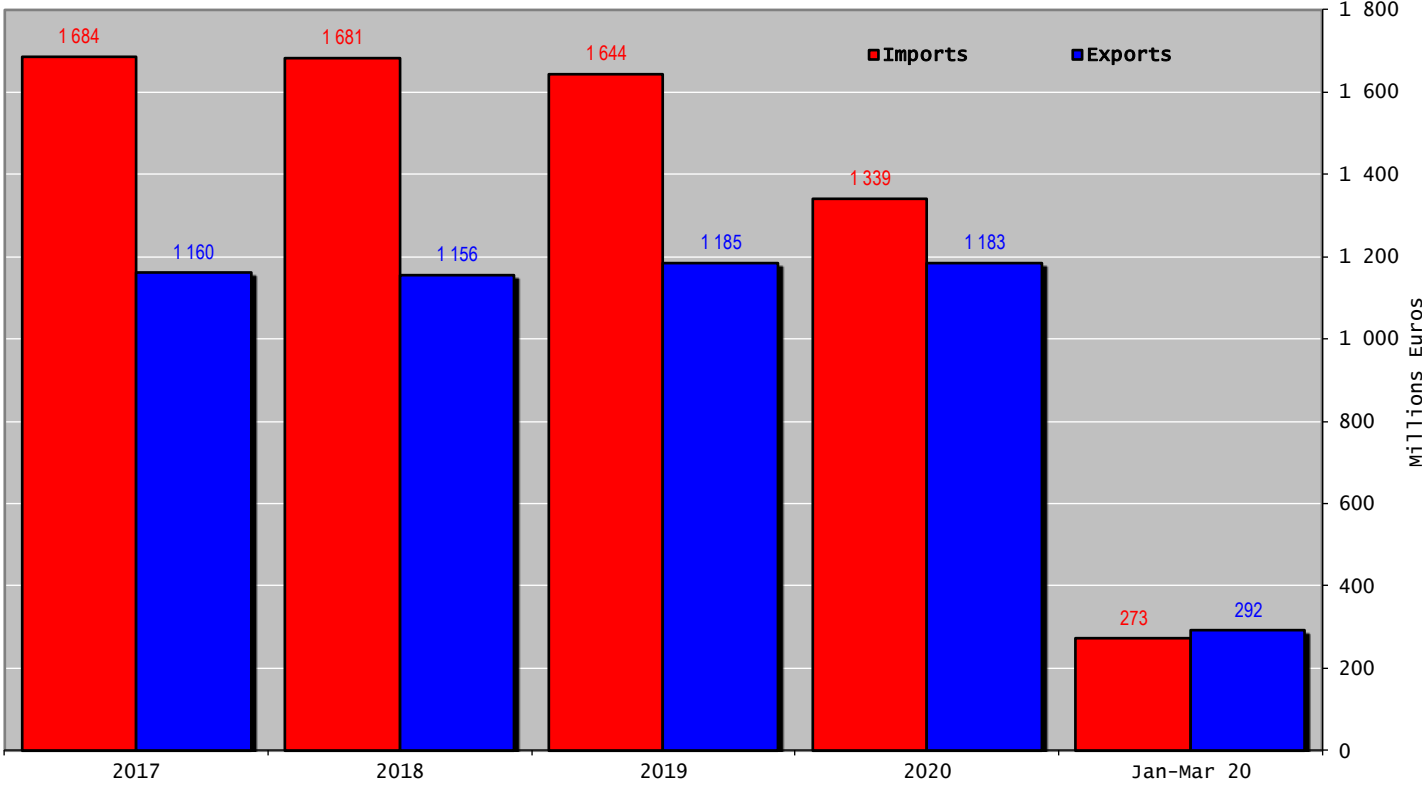
EU TRADE BALANCE

Beef & Live Animals

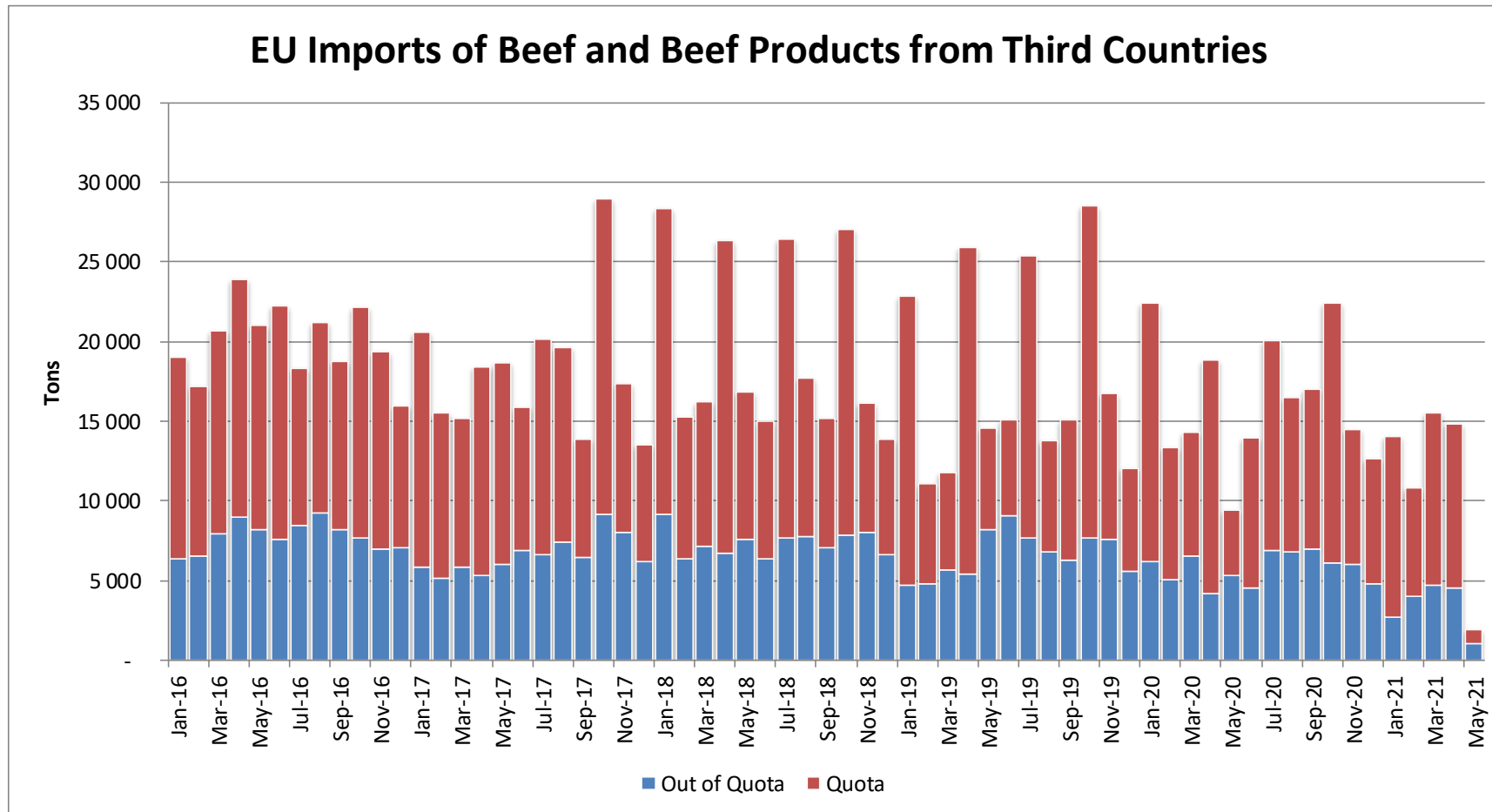
Trade Balance of Beef Products and Live Animals (without UK)



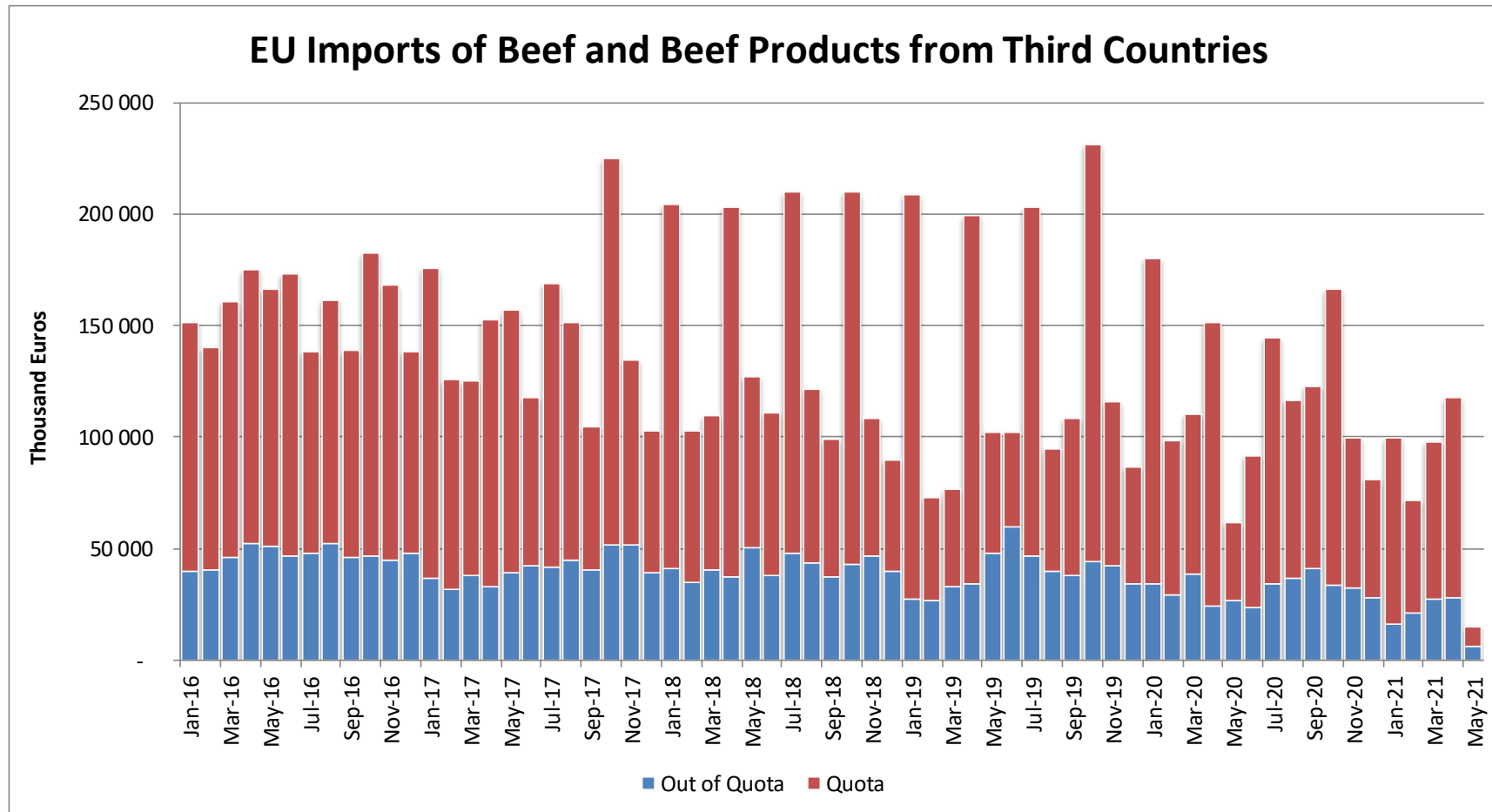
Trade Balance of Beef Products (Except Live Animals) without UK



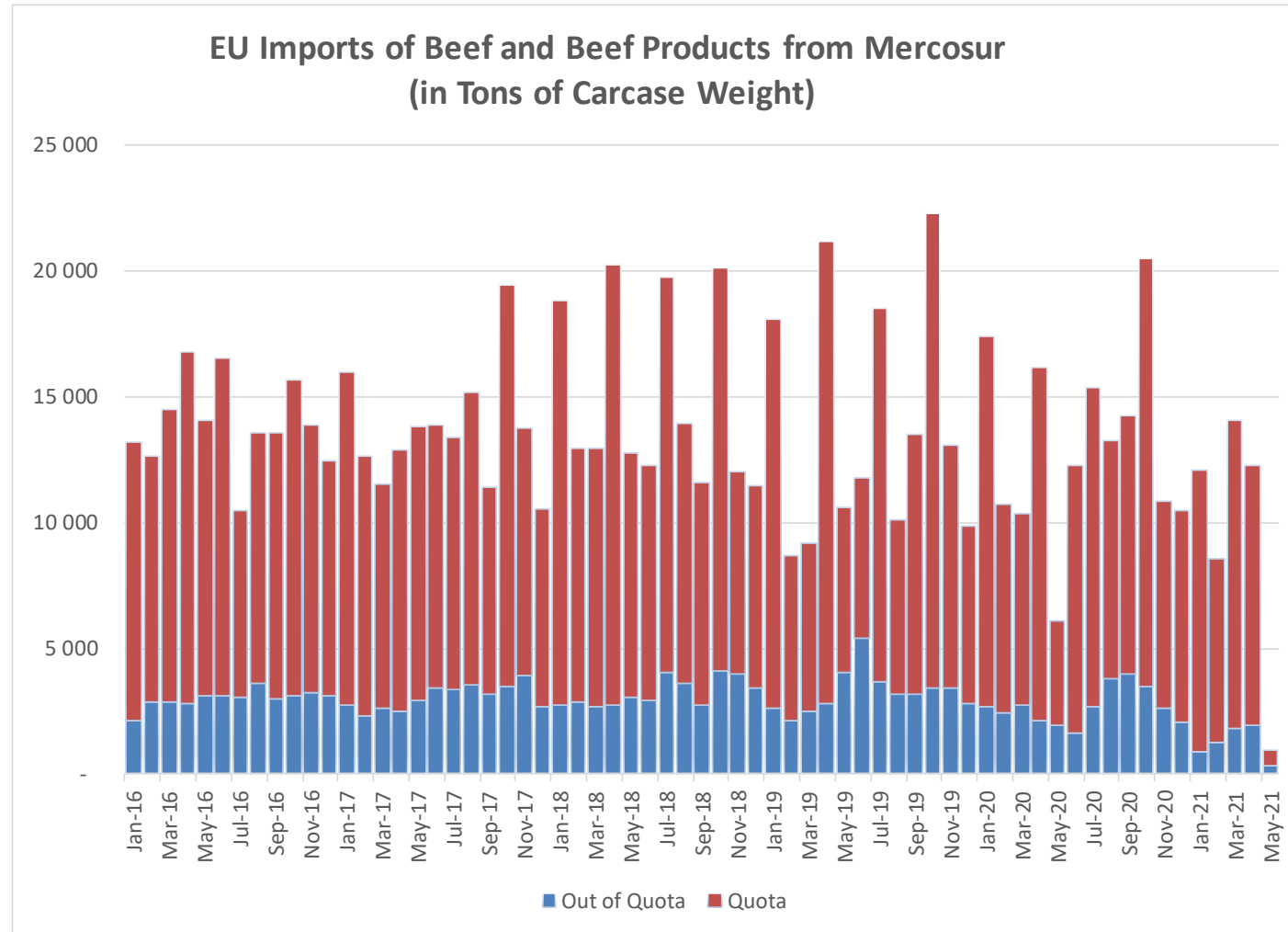
Imports in and out of TRQs



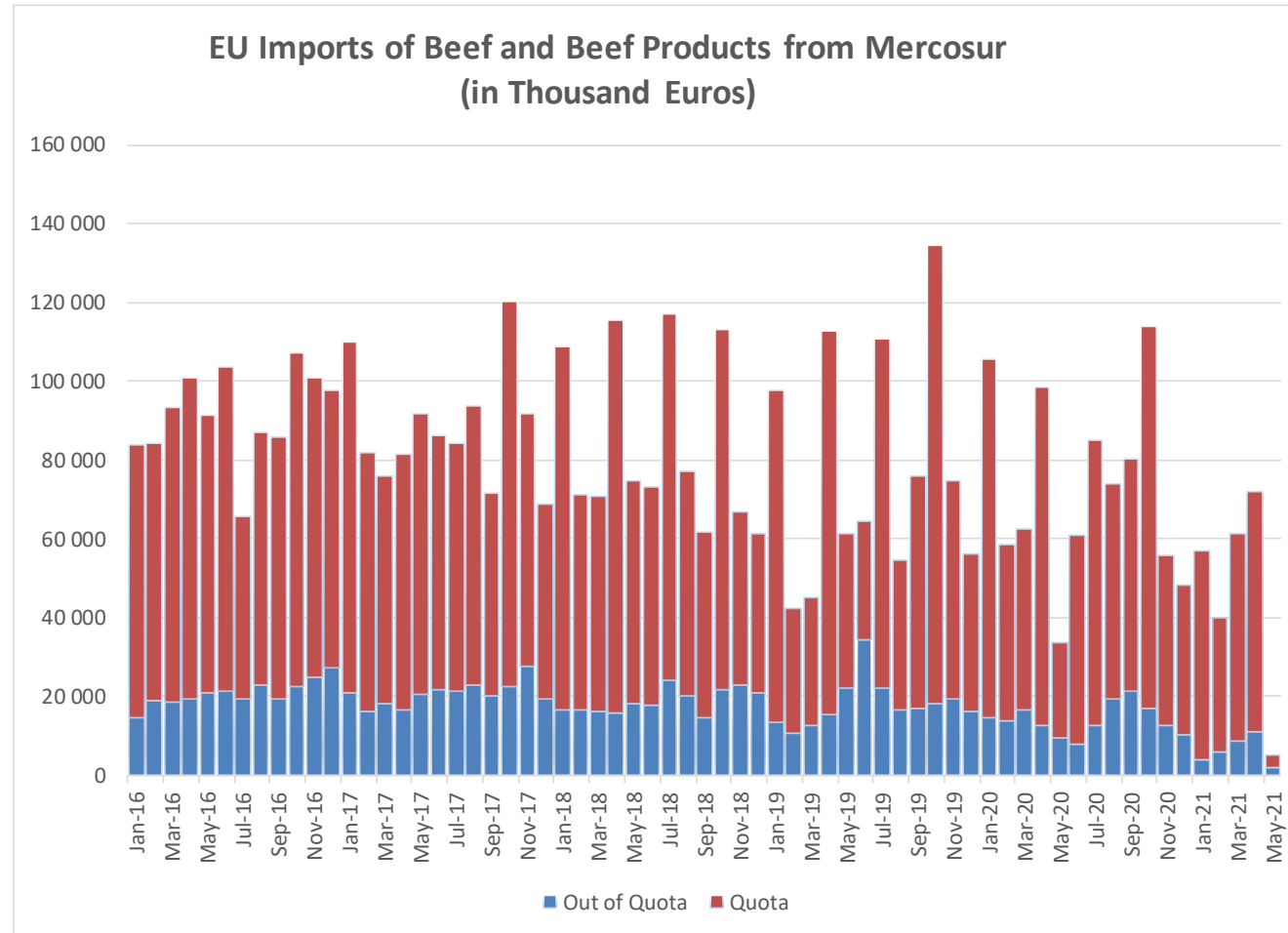
Imports in and out of TRQs



Imports in and out of TRQs



Imports in and out of TRQs



High Quality Beef Import Quotas

Hilton Quota		Regulation (EU) N° 593/2013						
		Quantity allocated (Tons)	2018/2019		2019/2020		2020/2021*	
			Use		Use		Use	
09.4001	Australia	2 250						
09.4004	Argentina	199	11.05	5.53%	8.34	4.17%	1.80	0.91%
09.4450	Argentina	14 189	29 491.35	99.97%	26 649.20	90.34%	5 833.05	41.11%
09.4451	Australia	1 768	4 942.02	69.12%	3 000.01	41.96%	216.11	12.22%
09.4452	Uruguay	2 465	6 363.76	99.81%	4 520.57	70.90%	1 635.72	66.37%
09.4453	Brazil	7 304	4 147.19	41.47%	2 884.79	28.85%	553.61	7.58%
09.4454	New Zealand	447	980.60	75.43%	859.15	66.09%	114.16	25.54%
09.4002	Canada/US	11 500	3 883.04	33.77%	2 703.68	23.51%	1 025.25	8.92%
09.4455	Paraguay	346	935.41	93.54%	680.40	68.04%	163.81	47.39%
Total Beef		38 018	50 743.37	75.93%	41 297.80	61.80%	9 541.71	25.10%
Total Buffalo		2 449	11.05	0.45%	8.34	0.34%	1.80	0.07%
Total		40 467	50 754.42	73.26%	41 306.14	59.63%	9 543.51	23.58%

30.04.2021

High Quality Beef Import Quotas

Quota erga omnes

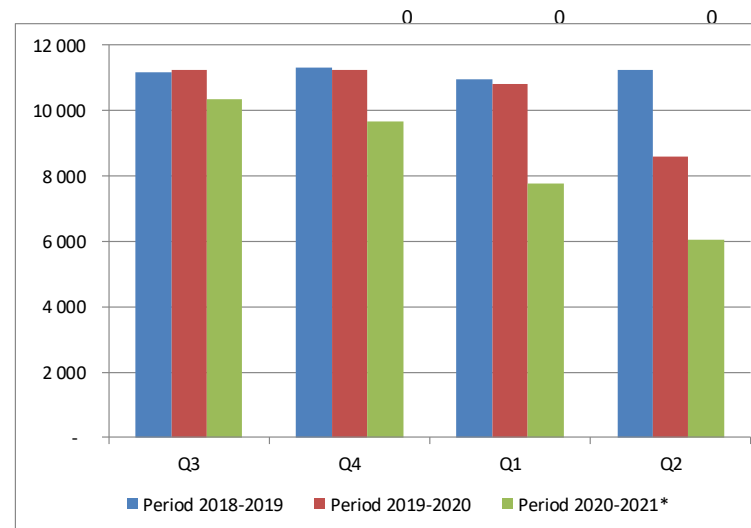
Regulation (EU) No 481/2012

	2018-Q3	2018-Q4	2019-Q1	2019-Q2	TOTAL
Period 2018-2019	11 165	11 300	10 973	11 256	44 693
Available	11 250	11 250	11 250	11 250	45 000
Use	99.24%	100.00%	97.53%	100.00%	99.32%
Available after transfer	11 250	11 335	11 200	11 527	
	99.24%	100.00%	97.53%	100.00%	

	2019-Q3	2019-Q4	2020-Q1	2020-Q2	TOTAL
Period 2019-2020	11 246	11 259	10 825	8 599	41 930
Available	11 250	11 250	11 250	11 250	45 000
Use	99.97%	100.00%	96.22%	76.44%	93.18%
Available after transfer	11 250	11 254	11 241	11 675	
	99.97%	100.00%	96.30%	73.66%	

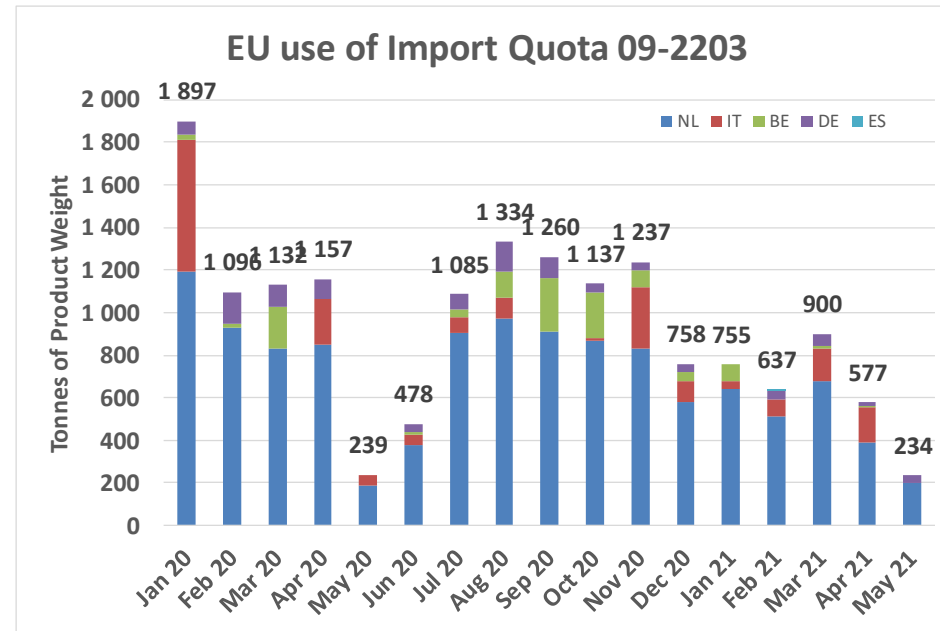
	2020-Q3*	2020-Q4	2021-Q1	2021-Q2	TOTAL
Period 2020-2021*	10 332	9 674	7 760	6 062	33 829
Available	11 250	11 250	11 250	11 250	45 000
Use	91.84%	85.99%	68.98%	53.89%	75.18%
Available after transfer	11 250	12 168	12 826	14 740	
	91.84%	79.51%	60.51%	41.13%	

* Until 12.05.2021



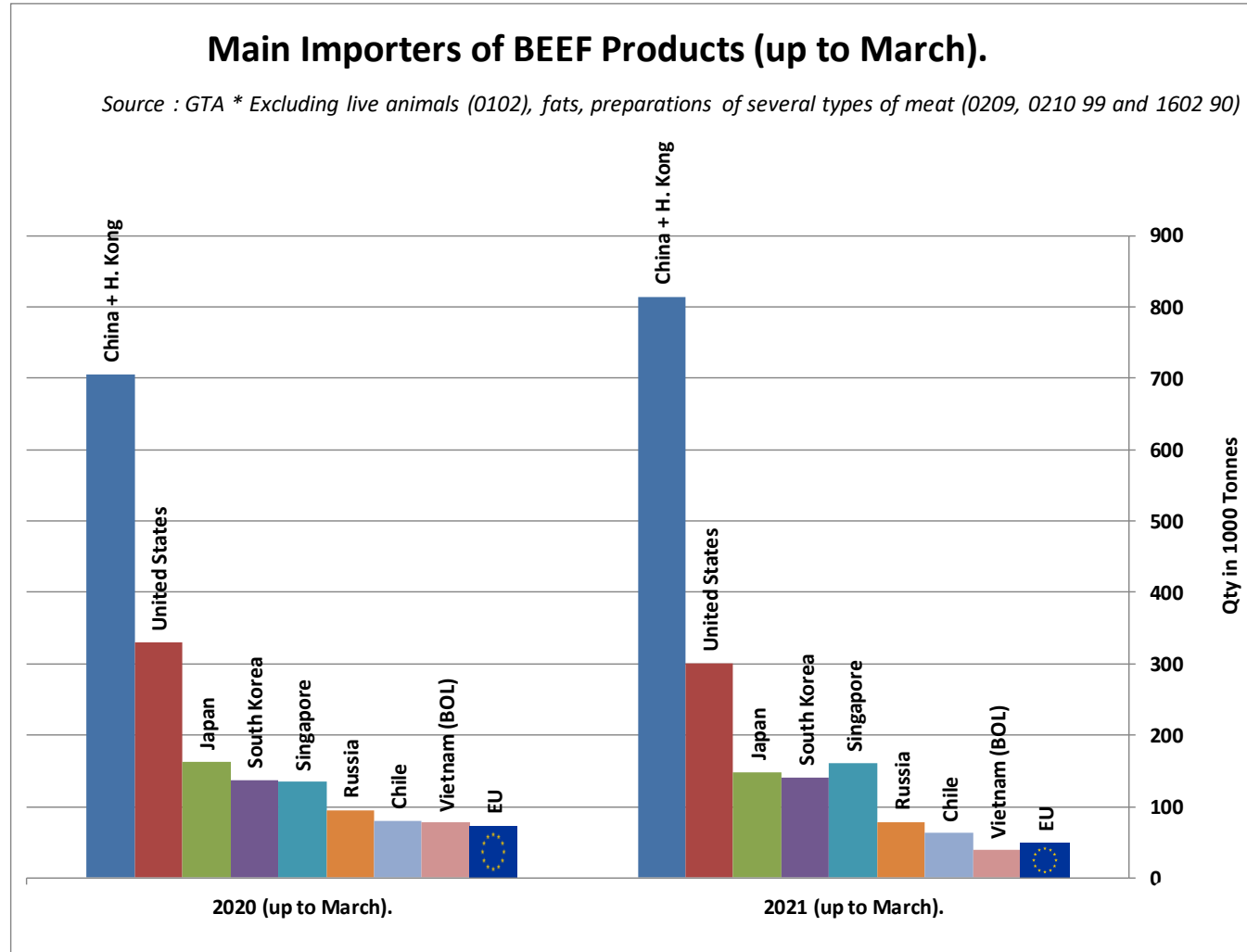
High Quality Beef Import Quotas

Origin	GATT 2019-2020				
	2019-Q3	2019-Q4	2020-Q1	2020-Q2	Total
NL			2 957	1 415	4 372
IT			614	314	929
BE			241	10	251
DE			313	133	446
ES			-	-	-
Total import within Quota			4 125	1 873	5 998
Available			4 625	4 625	9 250
Use			89.19%	40.50%	64.85%
After transfer			4 625	5 125	
Use			89.19%	36.55%	
Origin	GATT 2020-2021				
	2020-Q3	2020-Q4	2021-Q1	2021-Q2	Total
NL	2 785	2 274	1 834	592	7 484
IT	174	404	263	164	1 005
BE	417	330	96	11	853
DE	305	124	98	44	570
Total import within Quota	3 680	3 132	2 291	810	9 913
Available	4 625	4 625	4 625	4 625	18 500
Use	79.57%	67.72%	49.52%	17.52%	53.58%
After transfer	4 625	5 570	6 118	6 959	
Use	79.57%	56.23%	37.44%	11.65%	



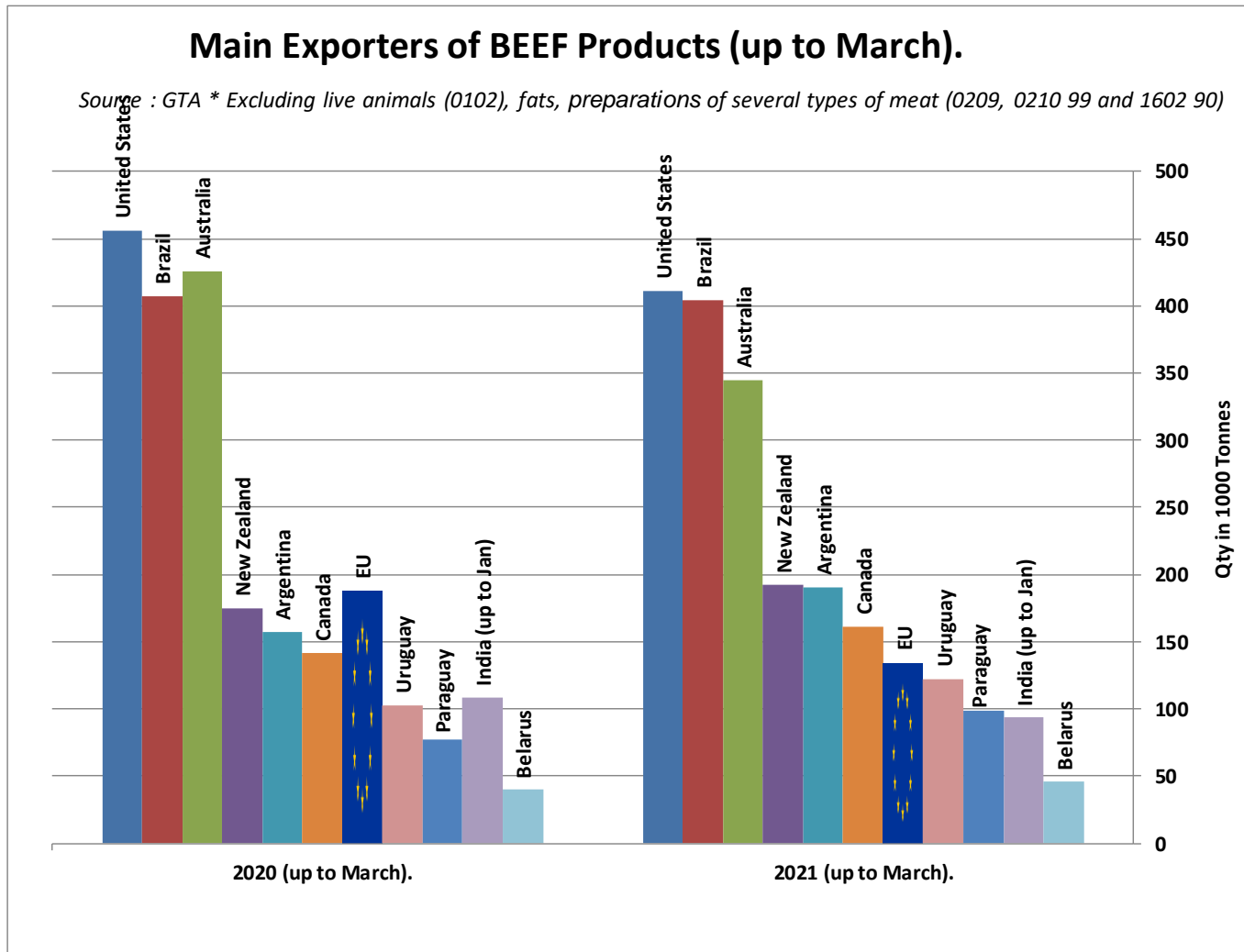
WORLD BEEF MARKET

E.U. + UK IMPORTS BEEF MAIN IMPORTERS



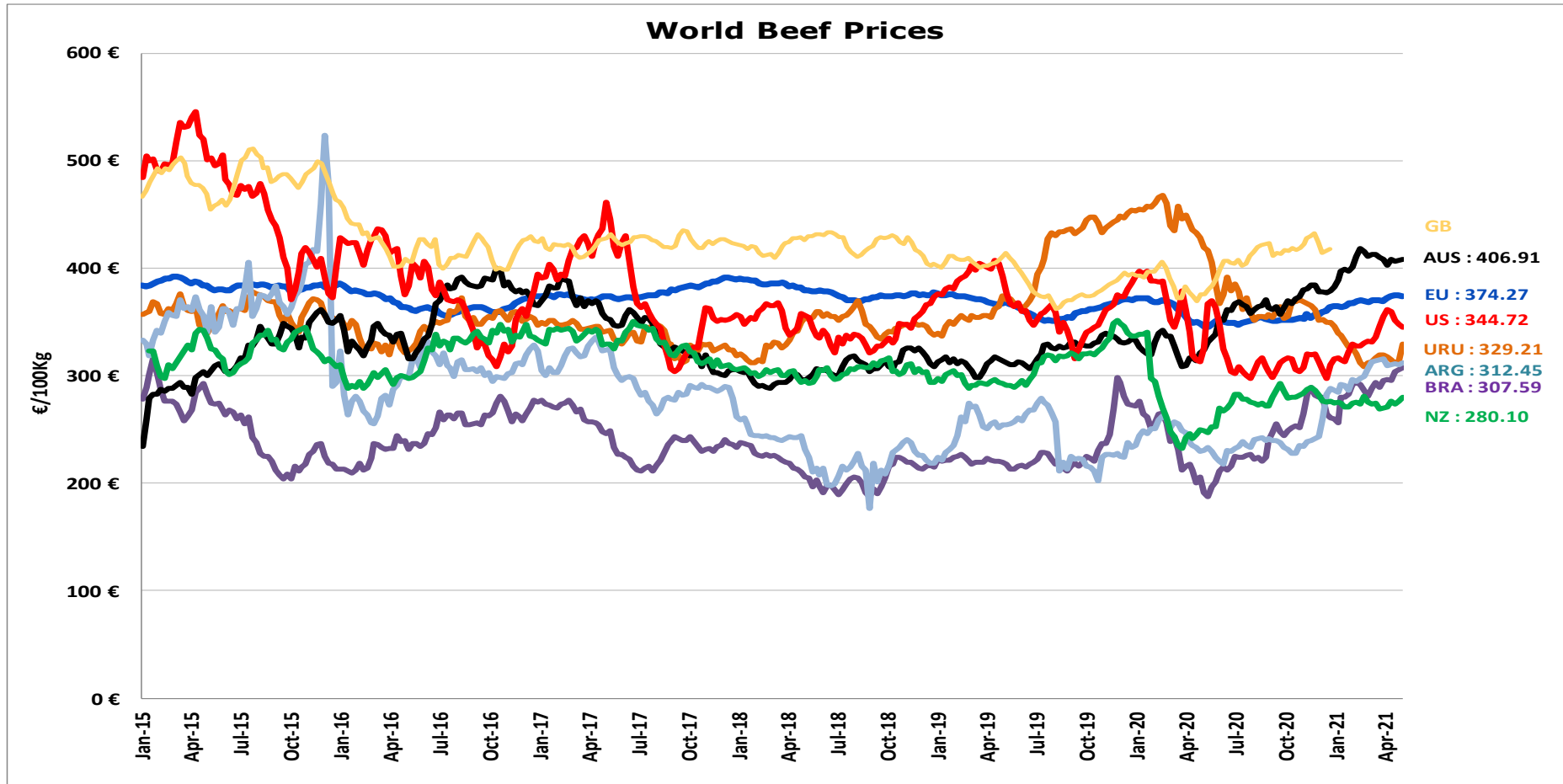
WORLD BEEF MARKET

E.U. + UK EXPORTS BEEF MAIN EXPORTERS



WORLD BEEF MARKET

STEER PRICES EU, US, AUS, NZ



- ECB <http://sdw.ecb.europa.eu/browse.do?node=2018794>
- US <https://www.marketnews.usda.gov/mnp/ls-home>
- AUS <http://statistics.mla.com.au/Report/RunReport/ae59d4ac-74e4-4c56-93bd-982a044d9760>
- UY <http://www.inac.gub.uy/innovaportal/v/11034/10/innova.front/indicadores-y-precios>
- ARG http://www.abc-consorcio.com.ar/Estadisticas/detalle/117/precios_comparativos_del_novillo.html
- BR <http://www.pecuaria.com.br/cotacoes.php>
- NZ http://www.abc-consorcio.com.ar/Estadisticas/detalle/117/precios_comparativos_del_novillo.html

20 May 2021

THANK YOU VERY MUCH

More Information at:

EU Market Observatory

https://ec.europa.eu/agriculture/market-observatory/meat_en

And

Agri-FOOD data portal:

<http://agridata.ec.europa.eu/>

Thank you



© European Union 2020

Unless otherwise noted the reuse of this presentation is authorised under the [CC BY 4.0](https://creativecommons.org/licenses/by/4.0/) license. For any use or reproduction of elements that are not owned by the EU, permission may need to be sought directly from the respective right holders.

Slide xx: **element concerned**, source: [e.g. Fotolia.com](https://www.fotolia.com/); Slide xx: **element concerned**, source: [e.g. iStock.com](https://www.istock.com/)

