



# BEEF & VEAL MARKET SITUATION



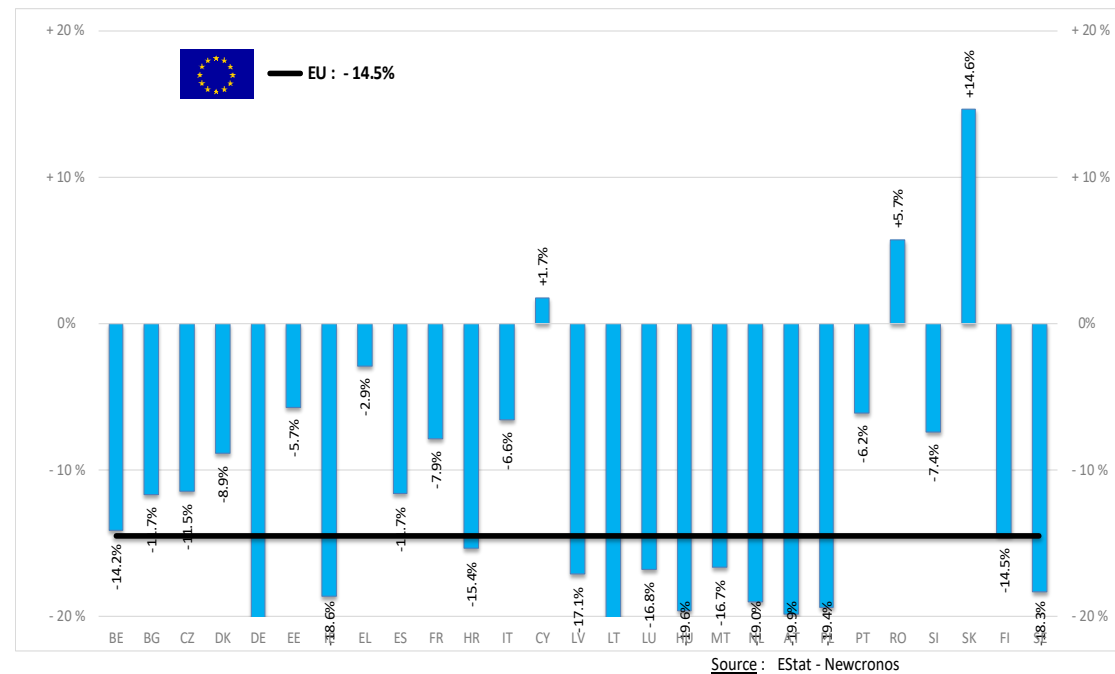
Beef CMO 22 April 2021

# PRODUCTION

# % EVOLUTION HEADS

HEADS	Jan-Jan 21/20
<b>EU</b>	<b>-14.5%</b>
Bull	-13.3%
Bullock	-14.0%
Cow	-16.4%
Heifer	-12.3%
Calve	-14.1%
Young cattle	-17.3%
Meat of bovine animals	-14.5%

Estimates for last month of period :

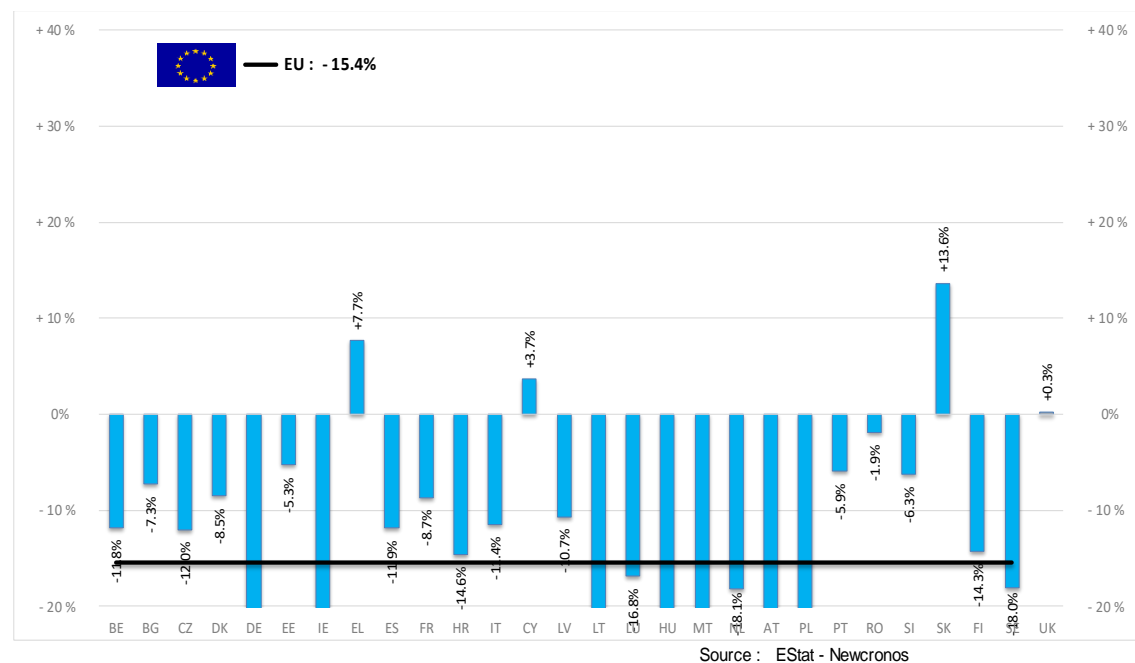


# PRODUCTION

# % EVOLUTION TONNES

TONNES	Jan-Jan 21/20
<b>EU</b>	<b>-15.4%</b>
Bull	-14.7%
Bullock	-15.2%
Cow	-17.0%
Heifer	-14.2%
Calve	-14.9%
Young cattle	-18.0%
<b>Meat of bovine animals</b>	<b>-15.4%</b>

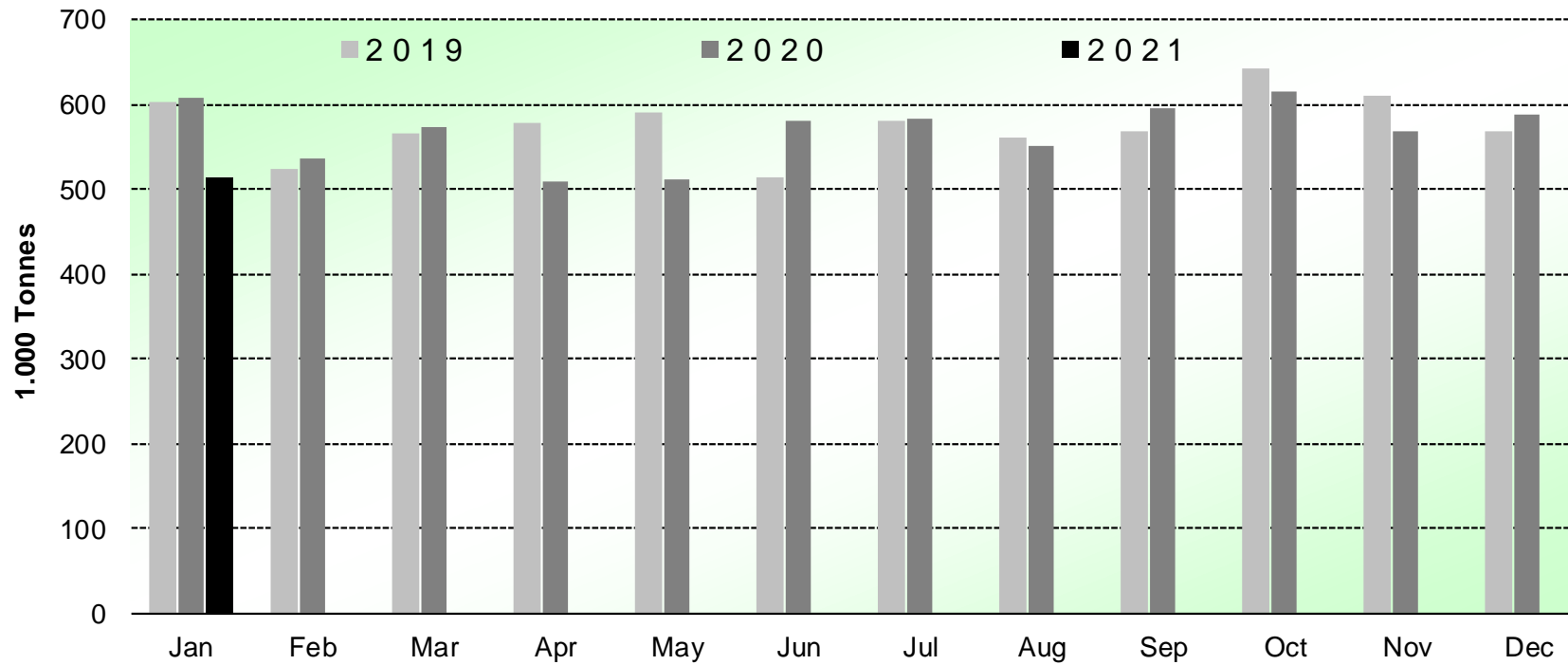
Estimates for last month of period :



# PRODUCTION

HISTORIC  
TONNES

## Beef & Veal Production (EU Slaughtering) - Tonnes



Source: EStat-Newcronos

# PRICES CARCASSES

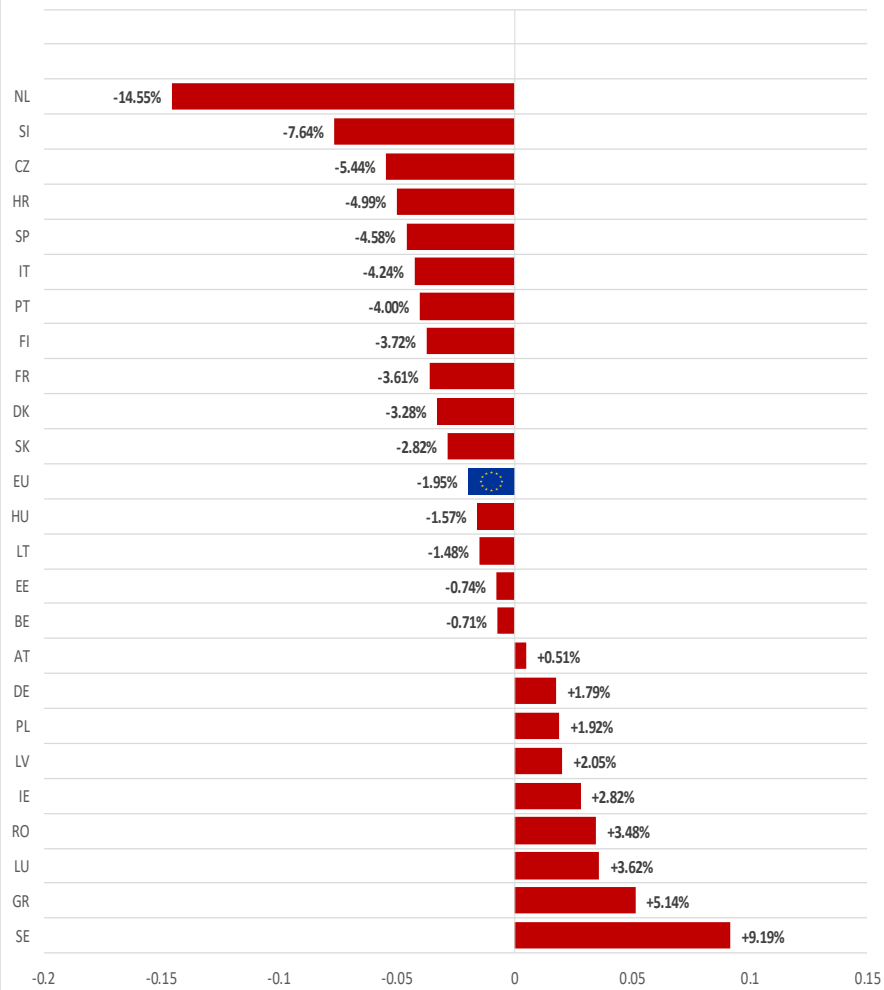
Dashboard

EU Prices week		14	Evolution since last week	Evolution since last month	Evolution since last year
Carcasse	Average A/C/Z -R3	372.2	+ 0.7%	+ 0.6%	+ 4.6%
	Young Bovines (Z)	365.6	+ 0.5%	+ 0.3%	+ 0.5%
	Young Bulls (A)	371.3	+ 0.7%	+ 0.4%	+ 4.9%
	Steers (C)	386.8	+ 0.8%	+ 1.9%	+ 8.6%
	Cows (D)	294.0	+ 0.9%	+ 1.5%	+ 12.2%
	Heifers (E)	380.8	+ 0.8%	+ 0.5%	+ 6.6%
Live Animals	Male Calves Dairy Type	82.52	+ 6.0%	+ 21.3%	+ 12.9%
	Male Calves Beef Type	202.8	+ 2.9%	+ 6.8%	+ 8.1%
	Young Store Cattle	2.44	+ 0.5%	+ 1.1%	+ 1.0%
	Yearling Male Store Cattle	2.31	+ 2.0%	+ 3.3%	+ 1.9%
	Yearling Female Store Cattle	2.52	+ 0.3%	+ 1.1%	+ 6.8%
	Calves slaughtered <8M	489.9	- 0.7%	- 1.6%	+ 2.1%

Sources : MSs notifications (Regulation (EU) 1182/2017 and 1184/2017)

# PRICES CARCASSES

EU ACZ R3 Price Comparison between average monthly price April 2020 - March 2021 compared to April 2019 - March 2020

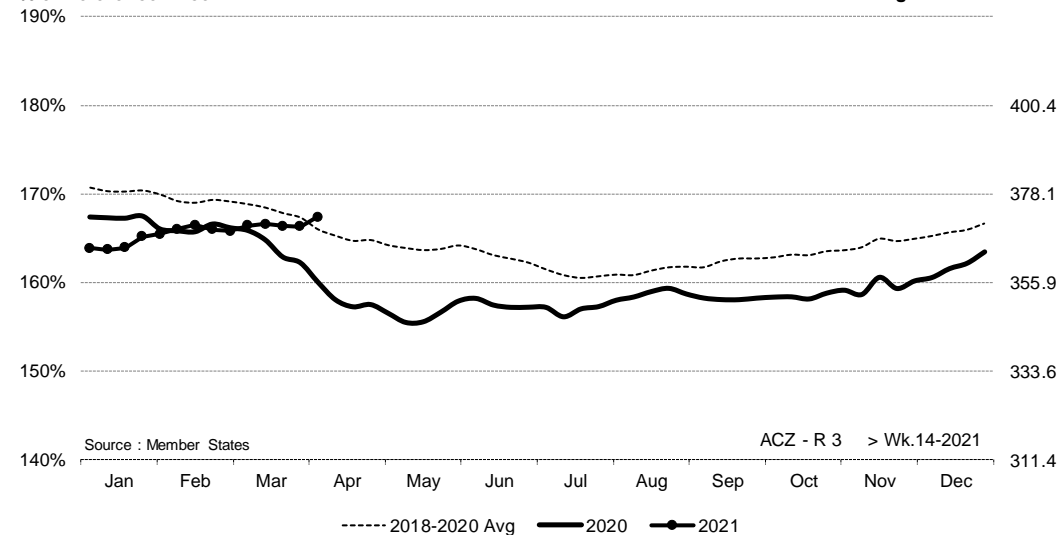


# EU EVOLUTION A/C/Z . R3

ACZ - R 3 > Wk.14-2021

% of Reference Price

€/100 kg cwe

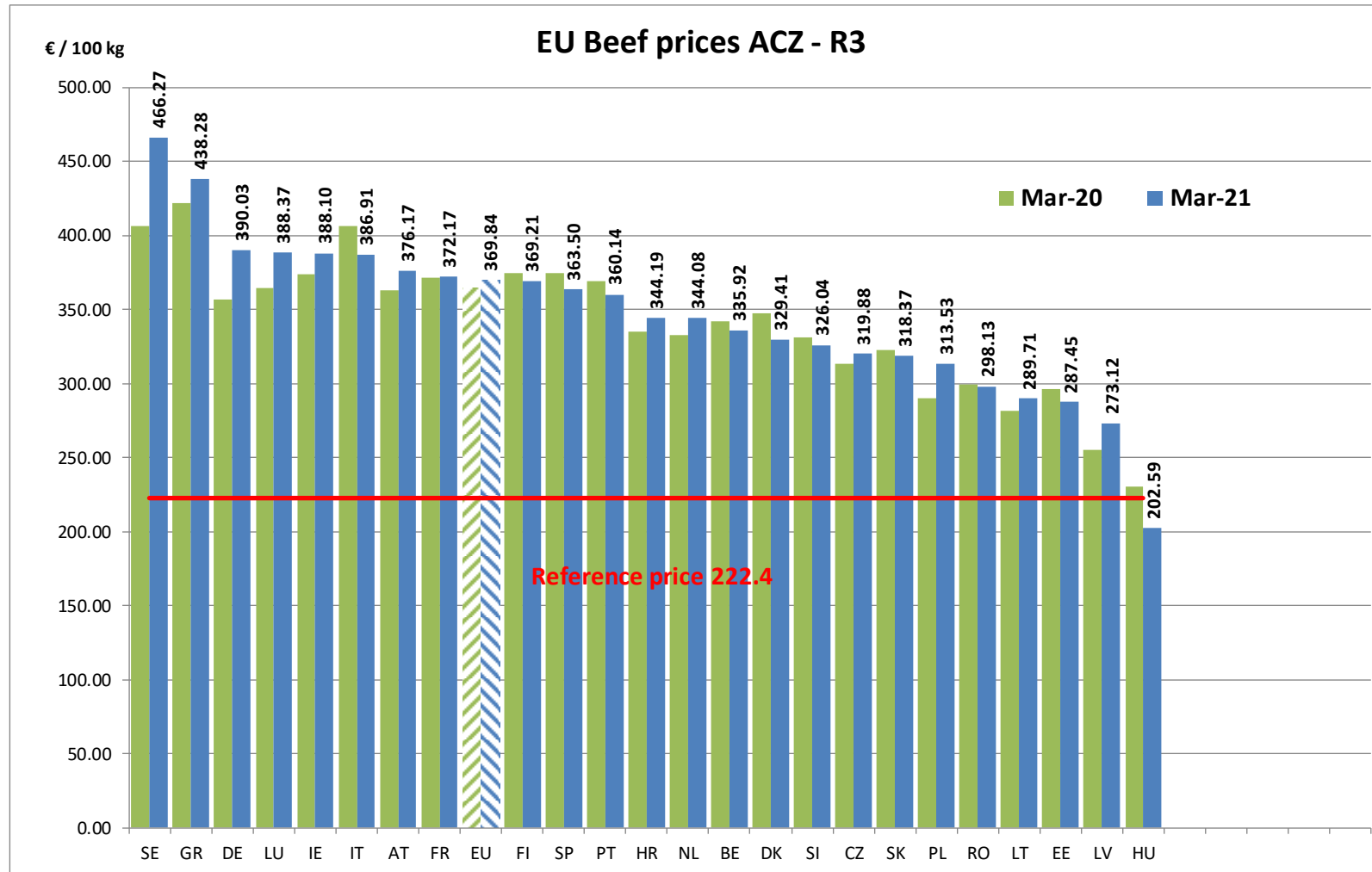


Price in week 14 : **372.27**  
 % change y/y : **+ 4.60%**  
 % Ref. Price in wk 14 : **167.4%**

Average price in March 2021 : **369.83**  
 % change y/y : **+ 1.55%**

# PRICES CARCASSES

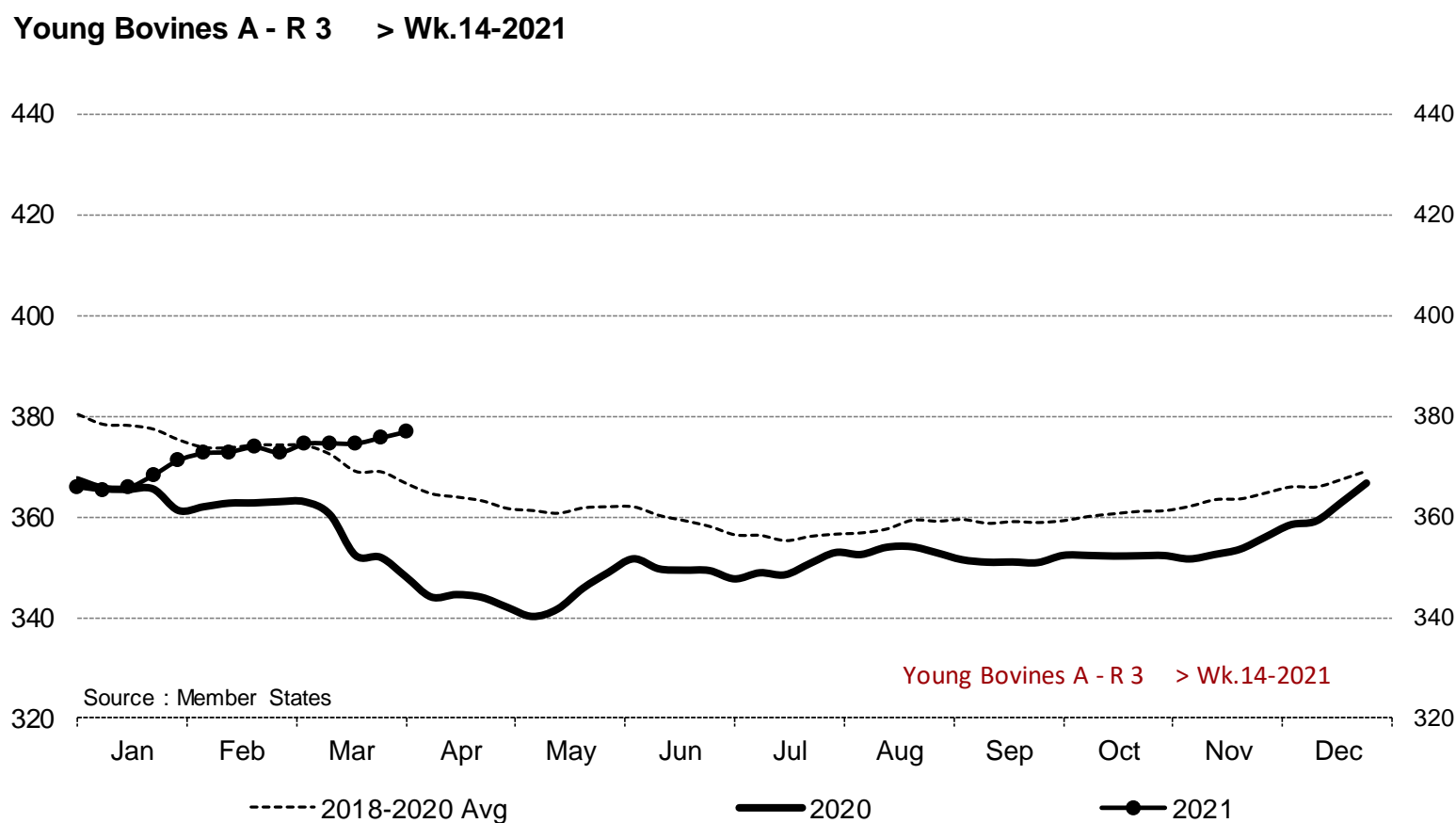
## EU EVOLUTION A/C/Z.R3



# PRICES CARCASSES

# EU EVOLUTION YOUNG BULL – A.R3

Young Bovines A - R 3 > Wk.14-2021



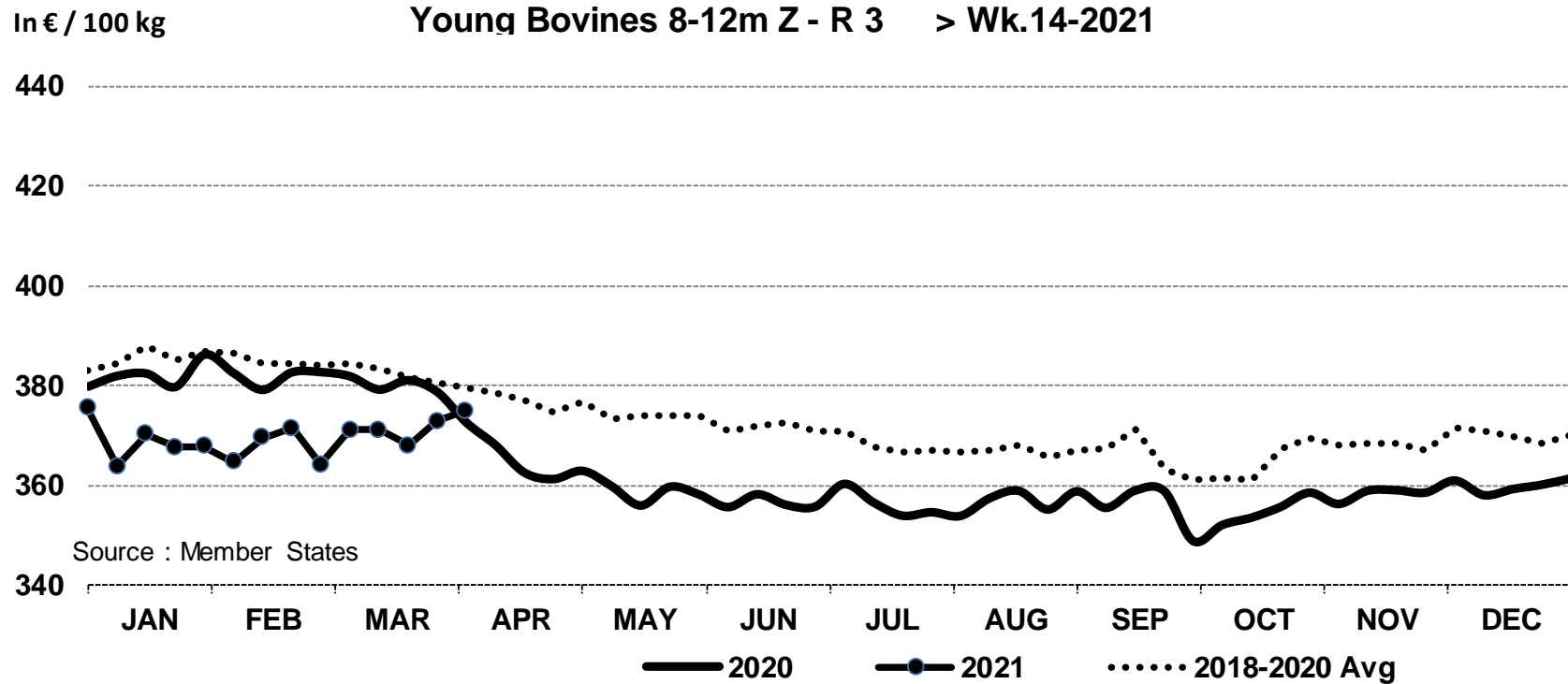
Price in week 14 : **376.87**  
% change y/y : **+ 8.3%**

Average price in March 2021 : **374.23**  
% change y/y : **+ 5.0%**



# PRICES CARCASSES

## E.U. EVOLUTION YOUNG BOVINE 8-12M- Z.R3



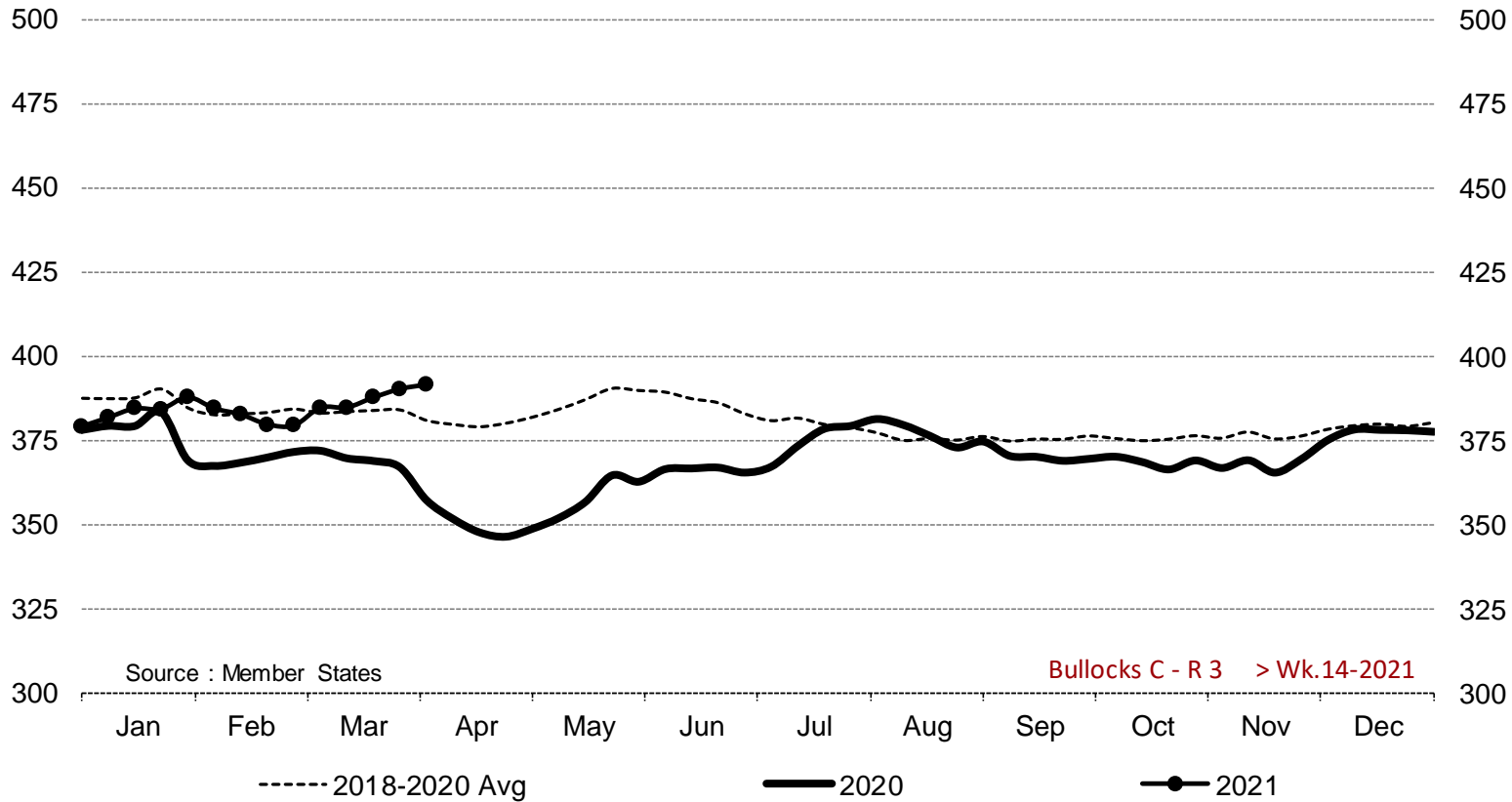
Price in week 14 : **374.86**      10/03/2021  
 % change y/y : **+ 0.6%**

Average price in March 2021 : **368.98**  
 % change y/y : **- 2.8%**

# PRICES CARCASSES

## E.U. EVOLUTION STEER – C.R3

Bullocks C - R 3 > Wk.14-2021



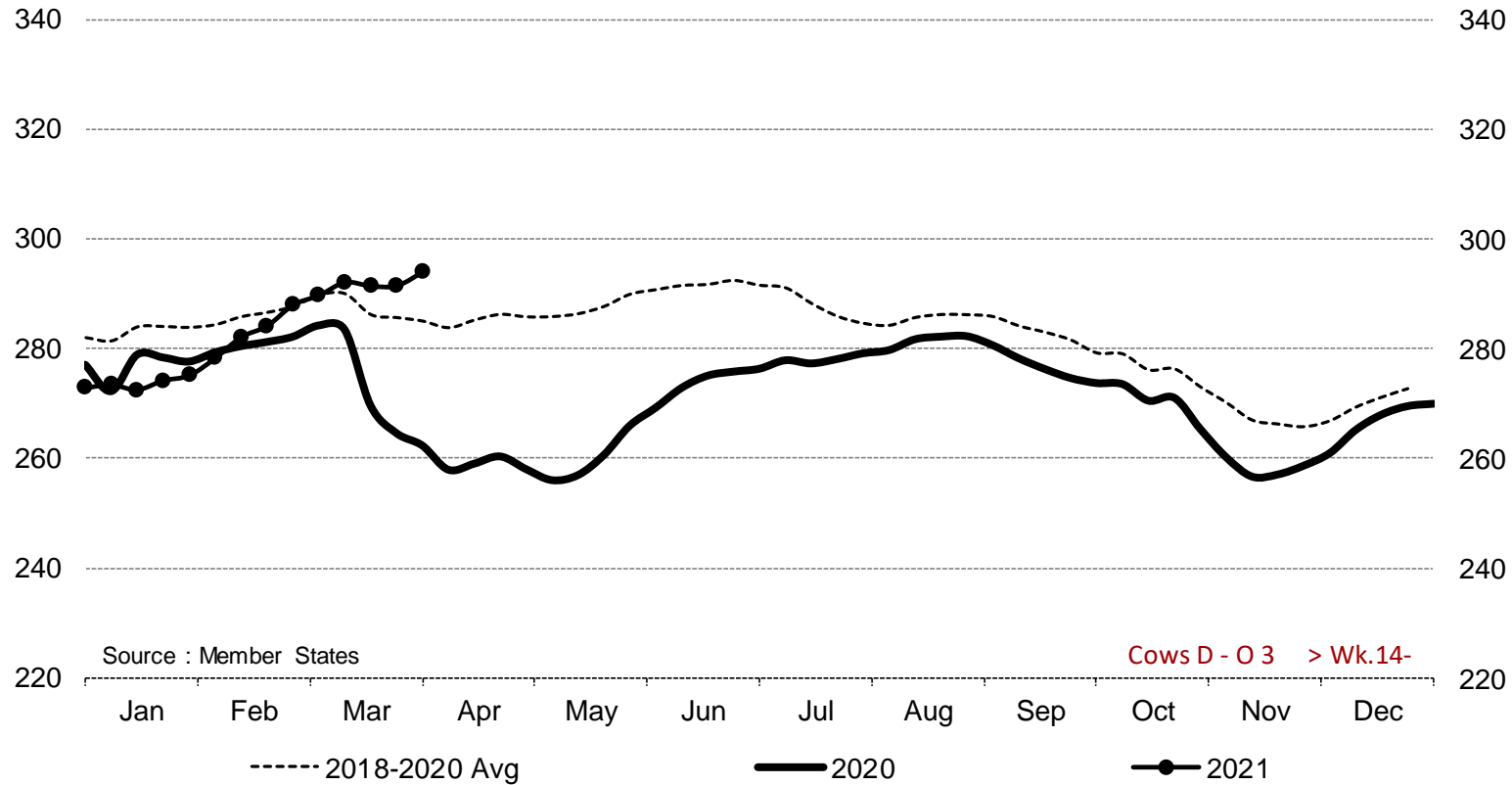
Price in week 14 : **391.53**  
% change y/y : **+ 9.6%**

Average price in March 2021 : **384.68**  
% change y/y : **+ 4.3%**

# PRICES CARCASSES

E.U. EVOLUTION  
COW – D.03

Cows D - O 3 > Wk.14-2021



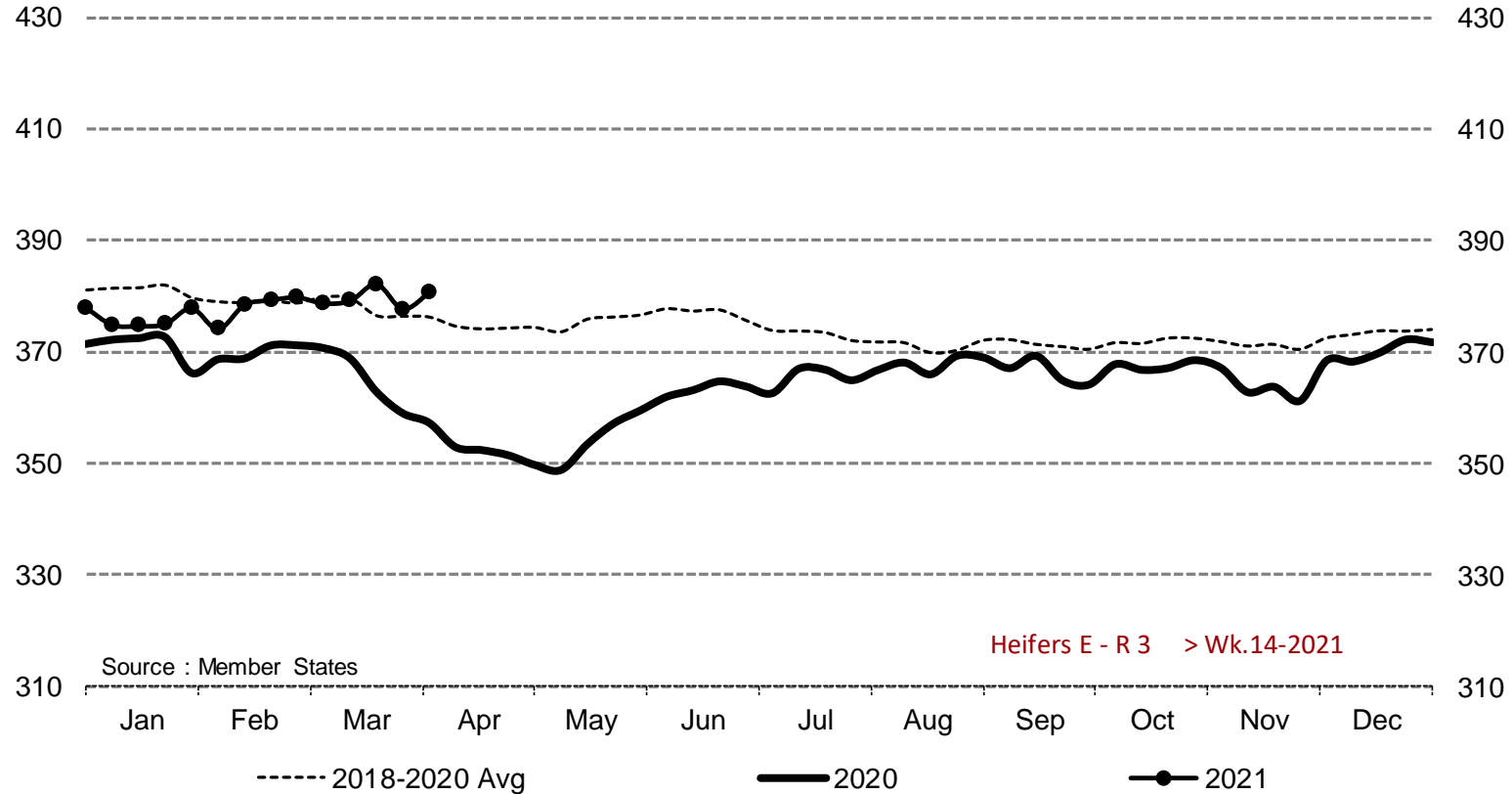
Price in week 14 : **294.08**  
% change y/y : **+ 12.2%**

Average price in March 2021 : **290.44**  
% change y/y : **+ 5.7%**

# PRICES CARCASSES

## EU EVOLUTION HEIFER - E.R3

Heifers E - R 3 > Wk.14-2021

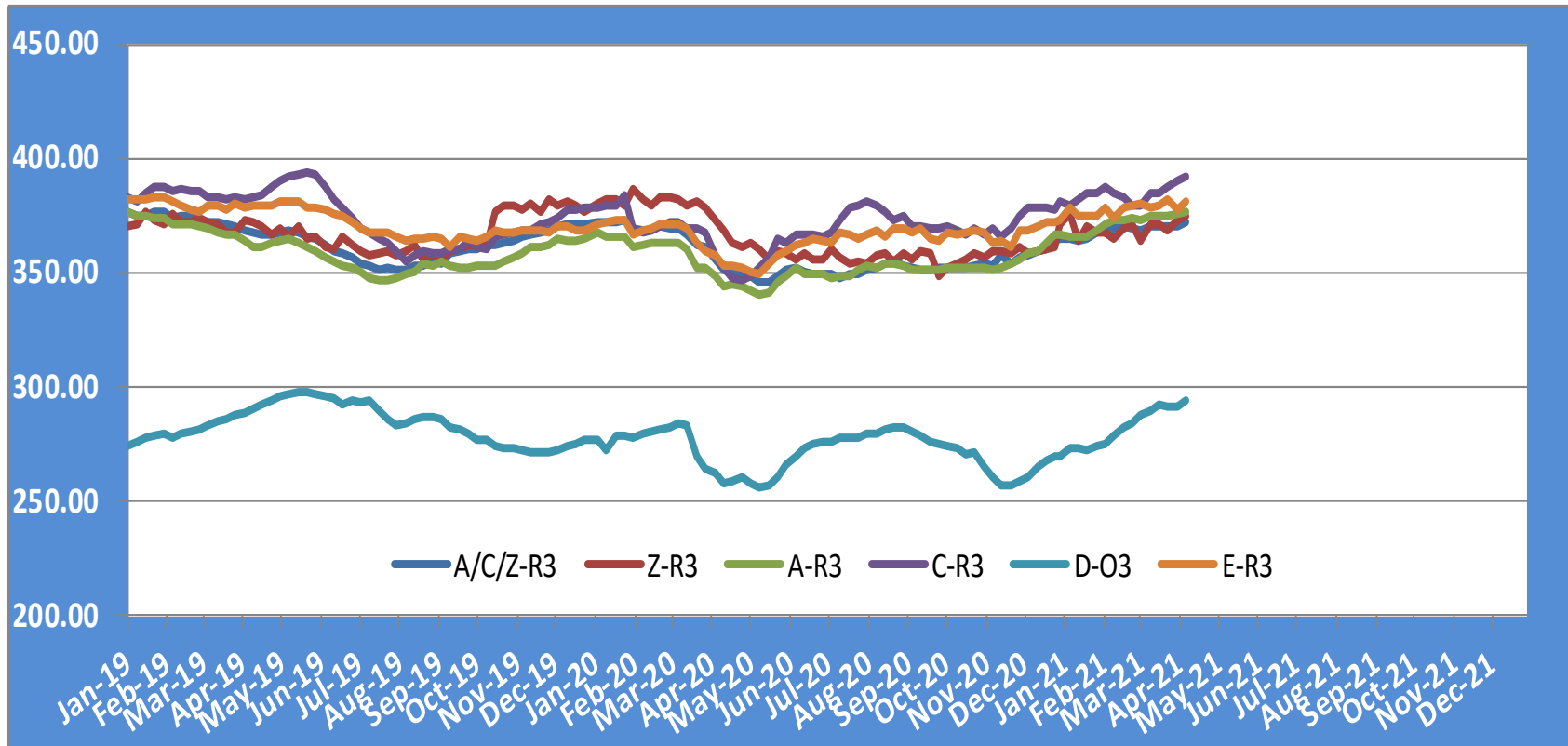


Price in week 14 : **380.83**  
% change y/y : **+ 6.6%**

Average price in March 2021 : **379.78**  
% change y/y : **+ 4.0%**

# PRICES CARCASSES

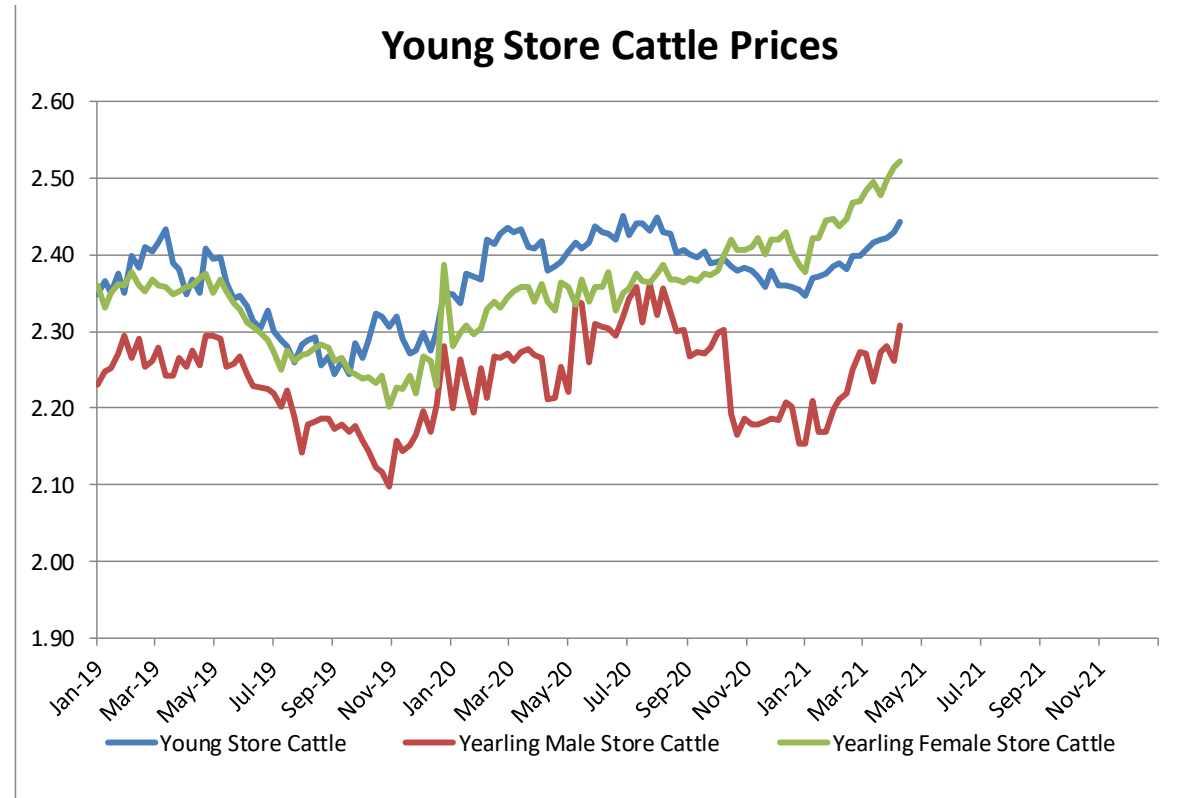
## EU EVOLUTION ALL CAT GLOBAL VIEW



# PRICES LIVE BOVINES

## EU EVOLUTION STORE CATTLE

Store cattle (€/100 kg live weight)



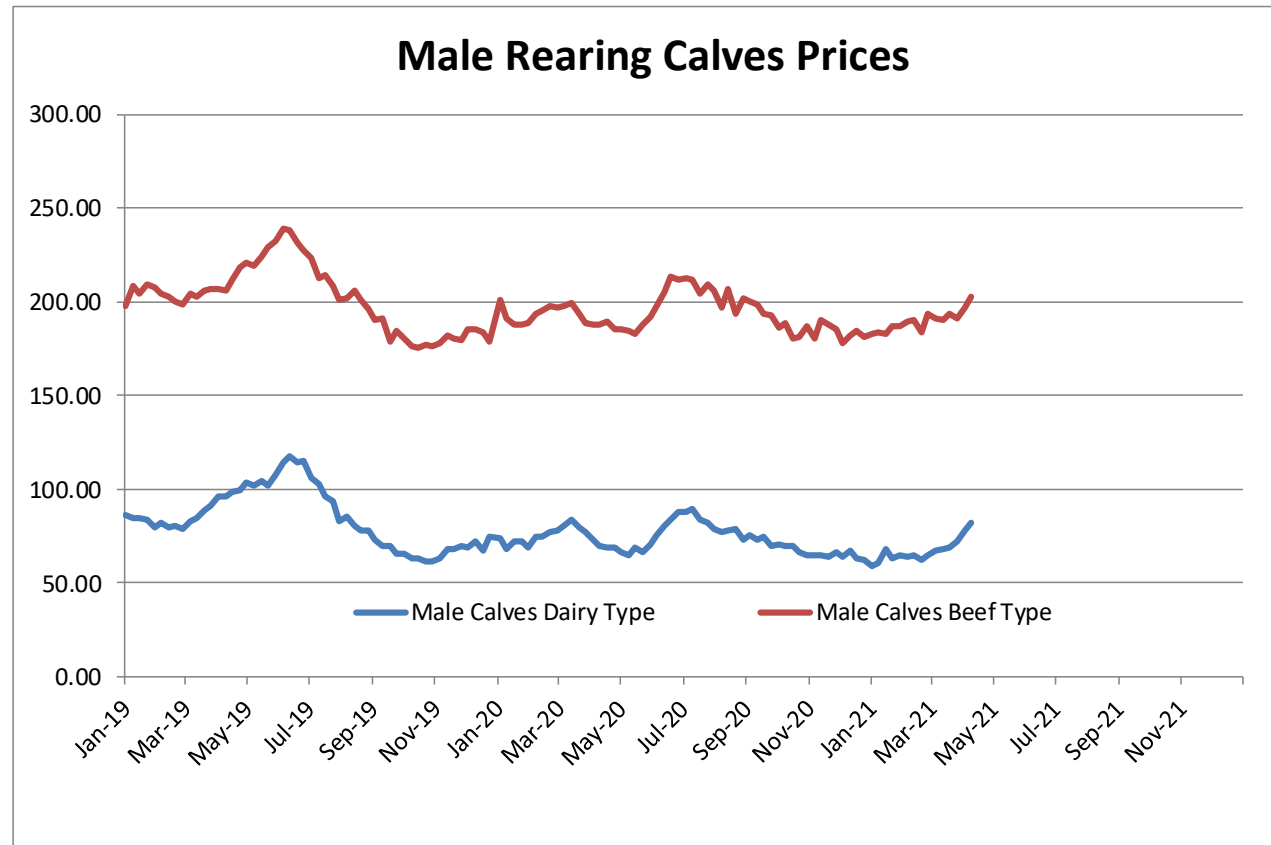
<b>Young Store Cattle Price in</b>	<b>Week 14</b>	<b>2.44</b>	<b>Yearling Male Store Cattle Price</b>	<b>2.31</b>
	Change y/y	+1.03%	Change y/y	+1.87%
<b>Yearling Female Store Cattle Price</b>		<b>2.52</b>		
	Change y/y	+6.84%		

22 April 2021

# PRICES LIVE BOVINES

## EU EVOLUTION Male Calves – 8D4W

Male calves aged between 8 days and 4 weeks (€/head)

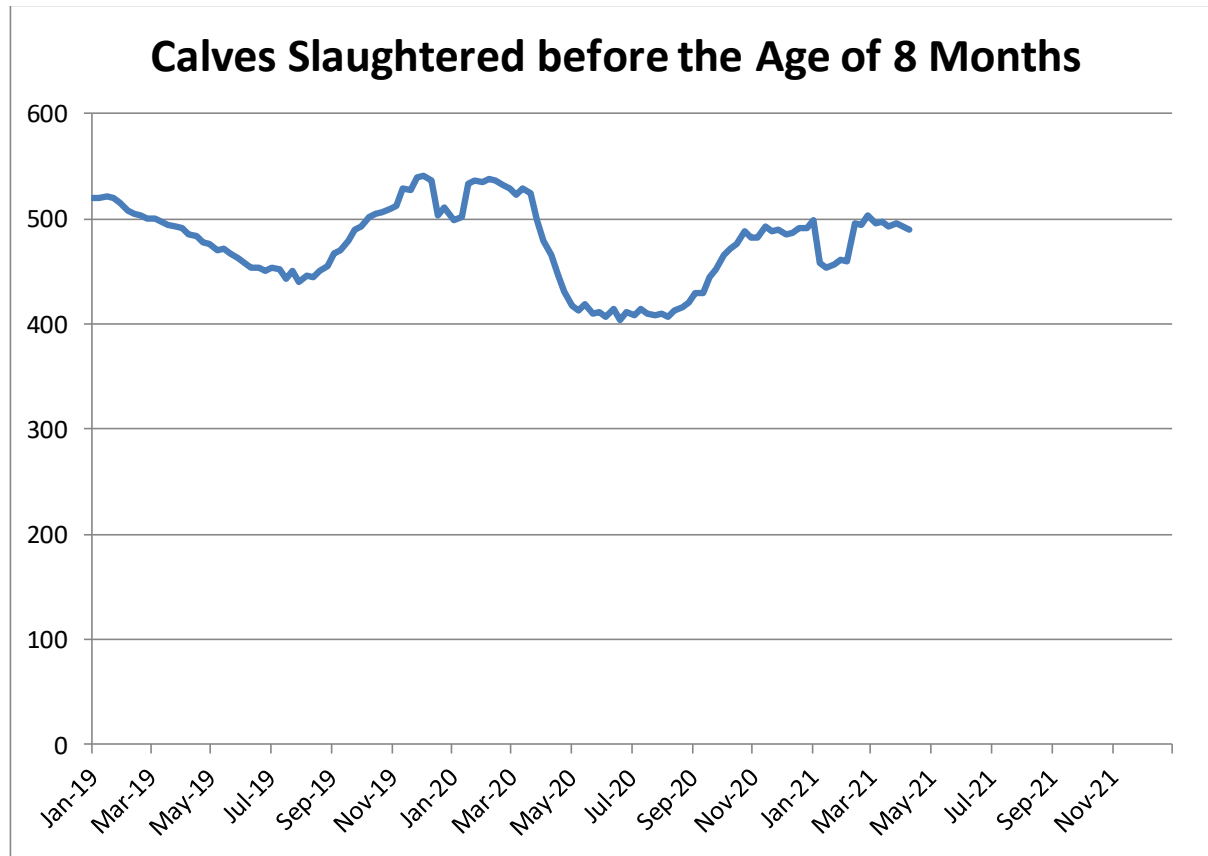


Male Rearing Calves Beef type		Male Rearing Calves Dairy type	
Price in Week 14	202.80	Price in Week 14	82.52
Change y/y	+8.11%	Change y/y	+12.91%

# PRICES LIVE BOVINES

## EU EVOLUTION Butcher Calves

Calves slaughtered before the age of less than 8 months  
(€/100 kg cw)

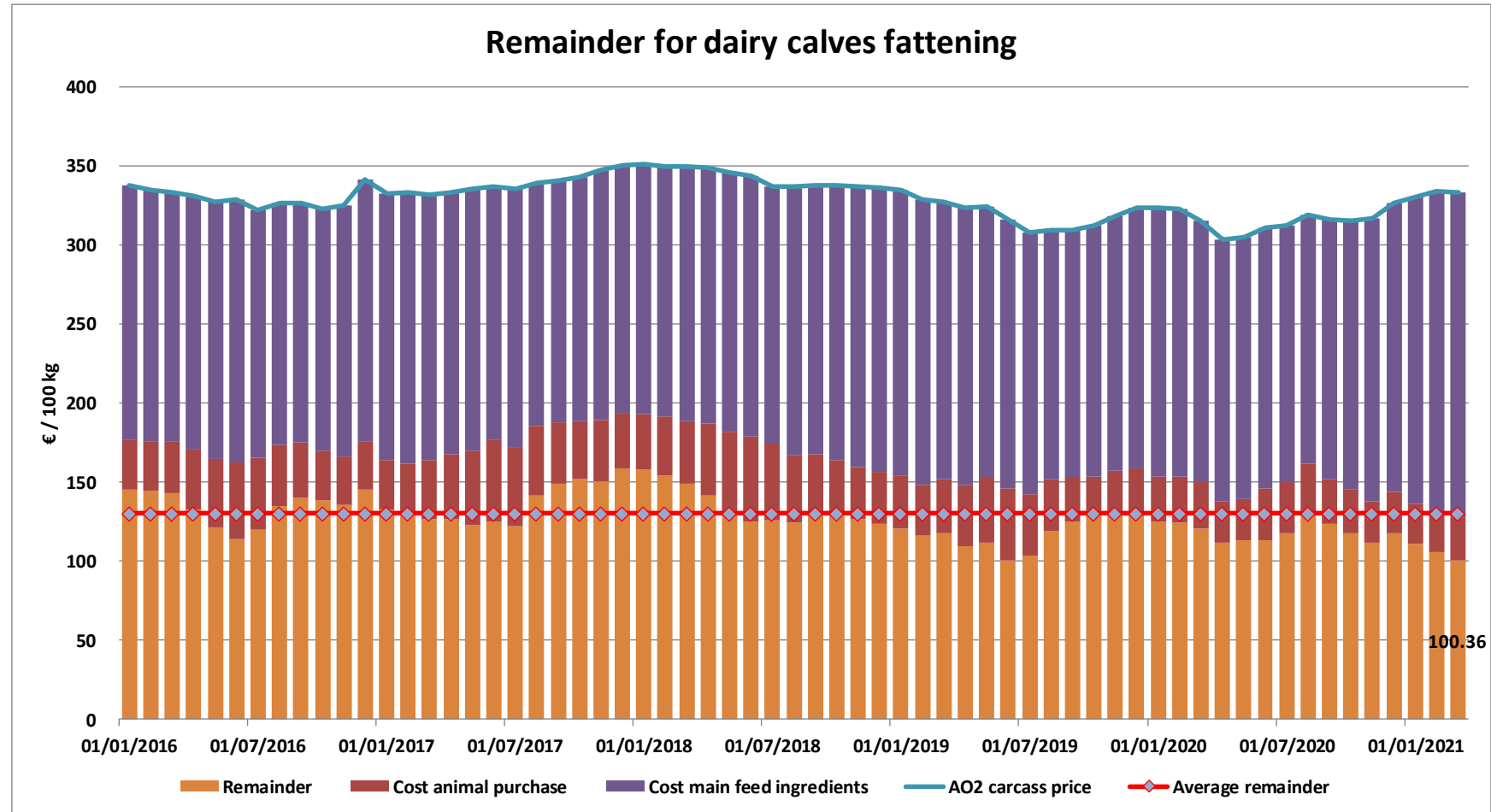


Price in Week 14      489.91 € / 100 kg of carcasse weight  
Change y/y      +2.10%

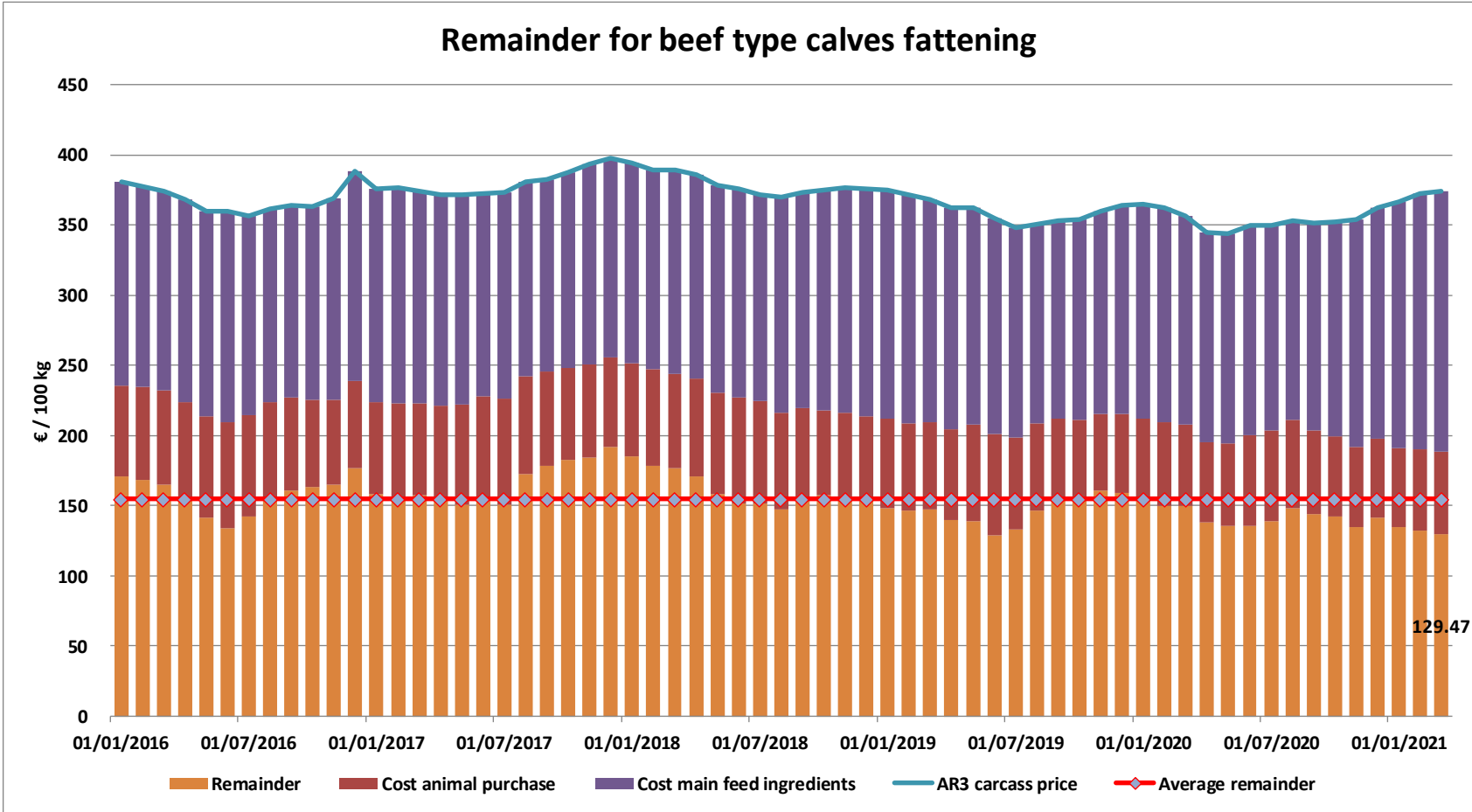
22 April 2021



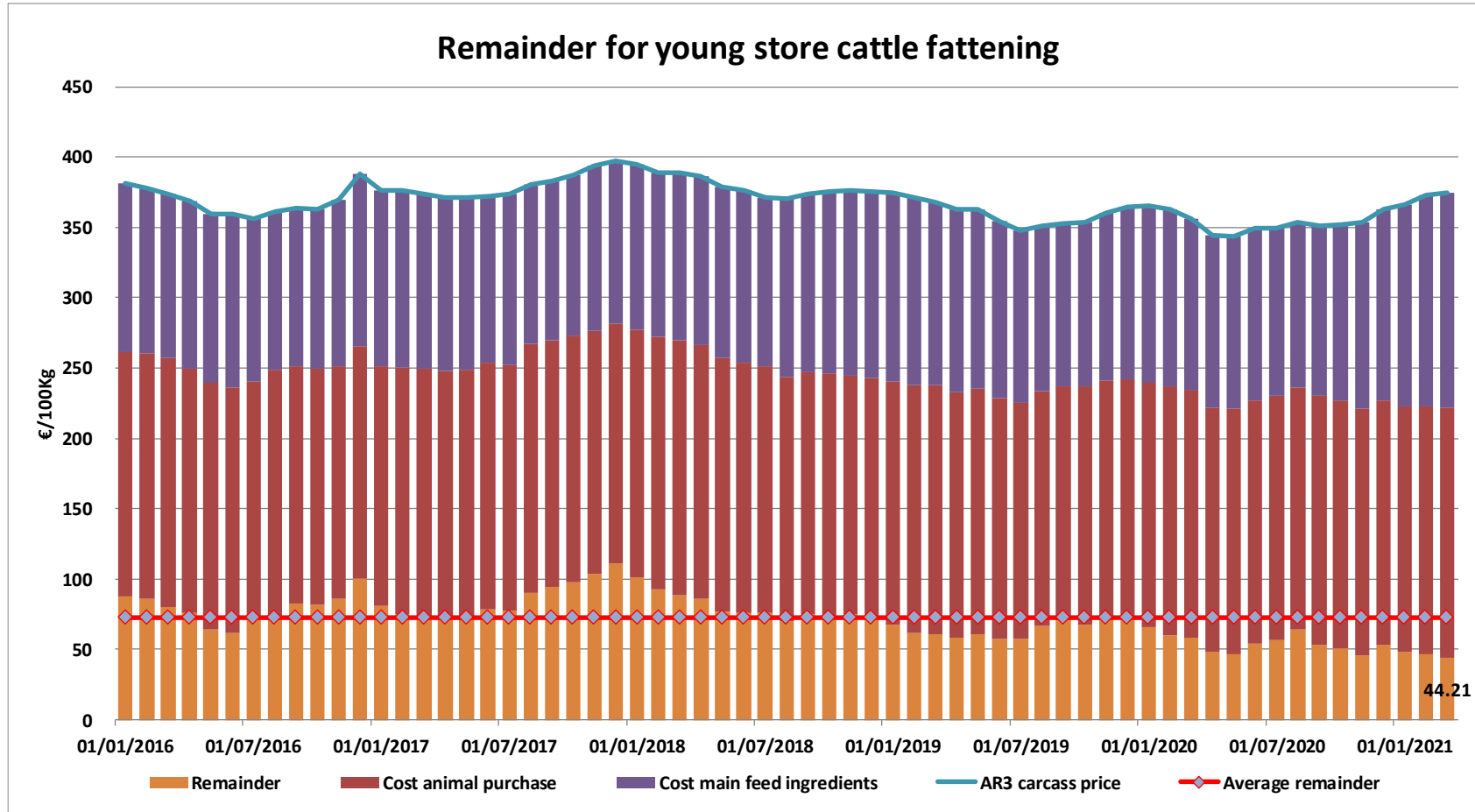
# REMAINDERS



# REMAINDERS



# REMAINDERS



# TRADE

## EU EXPORTS

### Beef & Live Animals

#### EU Exports of Beef and Live Animals (1): Trade figures (COMEXT – tonnes cwe)

Destinations	2017		2018		2019		2020		Jan-Feb 21		Compared to Jan-Feb 20
	tonnes	%	tonnes	%	tonnes	%	tonnes	%	tonnes	%	
Israel	44 196	6.1%	47 774	6.8%	49 629	7.1%	56 965	8.1%	7 563	7.0%	- 1.0%
Ghana	37 744	5.2%	36 766	5.2%	39 196	5.6%	47 408	6.7%	7 364	6.9%	- 9.7%
Philippines	37 102	5.1%	28 766	4.1%	34 158	4.9%	39 920	5.7%	7 020	6.5%	+ 4.8%
Hong Kong	76 086	10.4%	55 537	7.9%	46 748	6.7%	56 860	8.1%	6 838	6.4%	+ 12.2%
Bosnia-Herz.	34 711	4.8%	38 762	5.5%	41 119	5.9%	35 758	5.1%	5 517	5.1%	+ 7.8%
Ivory Coast	36 038	4.9%	36 064	5.1%	33 396	4.8%	32 460	4.6%	5 364	5.0%	- 11.8%
Algeria	26 305	3.6%	35 410	5.0%	57 152	8.2%	39 416	5.6%	5 071	4.7%	- 43.1%
Lebanon	38 322	5.3%	42 542	6.1%	36 393	5.2%	33 656	4.8%	5 046	4.7%	+ 6.6%
Norway	12 850	1.8%	7 925	1.1%	7 667	1.1%	12 931	1.8%	4 052	3.8%	+ 147.5%
Switzerland	26 708	3.7%	23 761	3.4%	25 188	3.6%	29 996	4.3%	4 013	3.7%	- 16.4%
Libya	27 848	3.8%	27 878	4.0%	24 541	3.5%	21 971	3.1%	3 230	3.0%	- 12.1%
Saudi Arabia	4 691	0.6%	2 521	0.4%	2 809	0.4%	9 707	1.4%	2 894	2.7%	+++
Canada	2 424	0.3%	2 225	0.3%	6 806	1.0%	20 475	2.9%	2 525	2.4%	- 27.6%
Ukraine	7 331	1.0%	10 465	1.5%	13 836	2.0%	15 857	2.3%	2 488	2.3%	- 4.8%
Turkey	96 413	13.2%	96 052	13.7%	34 555	4.9%	22 107	3.1%	2 423	2.3%	- 11.7%
Kosovo	1 699	0.2%	6 693	1.0%	10 279	1.5%	10 912	1.5%	2 342	2.2%	+ 37.8%
<i>Other Destinations</i>	<i>219 050</i>	<i>30.0%</i>	<i>203 099</i>	<i>28.9%</i>	<i>237 118</i>	<i>33.8%</i>	<i>218 234</i>	<i>31.0%</i>	<i>33 629</i>	<i>31.3%</i>	
<b>Total (without UK)</b>	<b>729 519</b>		<b>702 242</b>		<b>700 590</b>		<b>704 633</b>		<b>107 379</b>		
% change			- 4%		- 0%		+ 1%		- 5.4%		

# TRADE

# EU EXPORTS

## Beef

### EU Exports of Beef: Trade figures (COMEXT – tonnes cwe)

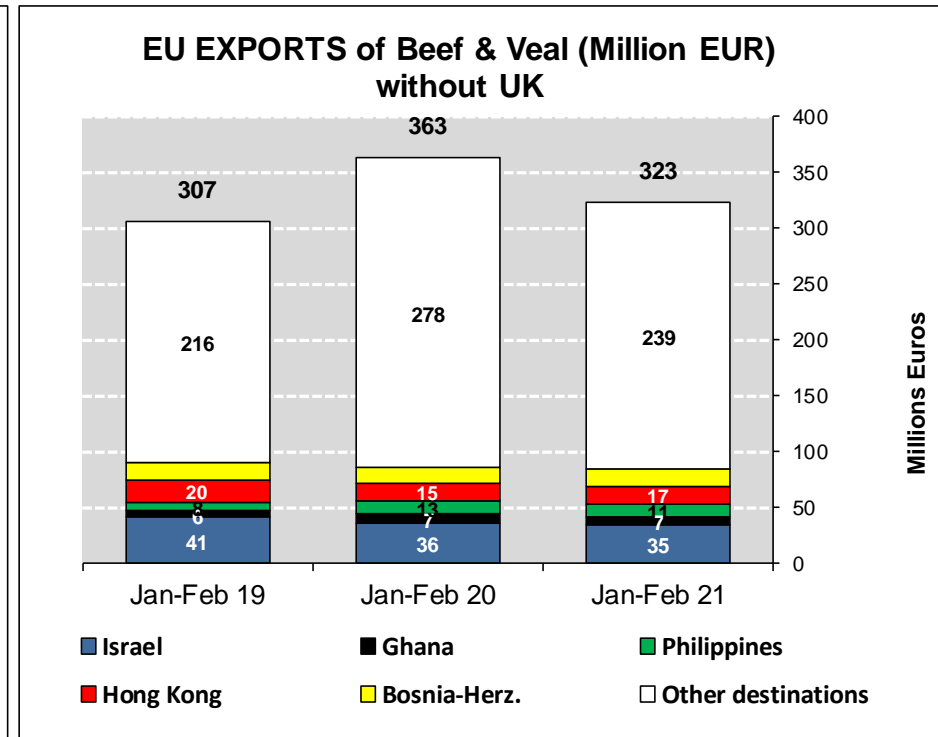
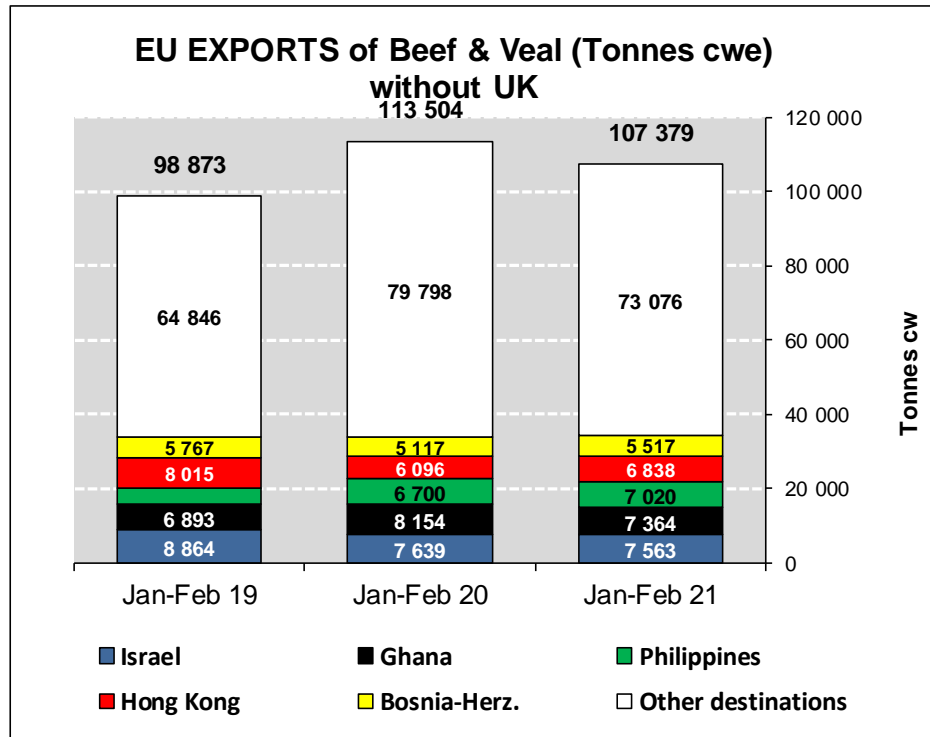
Destinations	2017		2018		2019		2020		Jan-Feb 21		Compared to Jan-Feb 20
	tonnes	%	tonnes	%	tonnes	%	tonnes	%	tonnes	%	
Ghana	37 744	7.7%	36 766	7.9%	39 196	8.2%	47 408	9.7%	7 364	9.6%	- 9.7%
Philippines	37 102	7.5%	28 766	6.2%	34 158	7.2%	39 920	8.1%	7 020	9.1%	+ 4.8%
Hong Kong	76 086	15.4%	55 537	11.9%	46 748	9.8%	56 860	11.6%	6 838	8.9%	+ 12.2%
Ivory Coast	36 028	7.3%	36 064	7.7%	33 396	7.0%	32 460	6.6%	5 364	7.0%	- 11.8%
Bosnia-Herz.	32 181	6.5%	36 152	7.7%	38 806	8.2%	33 459	6.8%	5 123	6.7%	+ 7.2%
Norway	12 849	2.6%	7 922	1.7%	7 667	1.6%	12 931	2.6%	4 052	5.3%	+++
Switzerland	25 570	5.2%	22 711	4.9%	24 110	5.1%	28 941	5.9%	3 781	4.9%	- 17.0%
Israel	18 750	3.8%	22 163	4.7%	23 026	4.8%	21 967	4.5%	3 394	4.4%	- 14.4%
Canada	2 424	0.5%	2 225	0.5%	6 806	1.4%	20 475	4.2%	2 525	3.3%	- 27.6%
Ukraine	6 926	1.4%	9 887	2.1%	12 893	2.7%	14 861	3.0%	2 450	3.2%	- 5.9%
USA	3 756	0.8%	5 458	1.2%	7 867	1.7%	12 310	2.5%	2 148	2.8%	+ 10.6%
North Macedonia	11 285	2.3%	10 002	2.1%	11 395	2.4%	10 551	2.1%	1 938	2.5%	+ 5.6%
Japan	4 281	0.9%	3 452	0.7%	8 007	1.7%	11 885	2.4%	1 761	2.3%	- 43.0%
Cuba	2 040	0.4%	2 202	0.5%	1 702	0.4%	3 548	0.7%	1 724	2.2%	+ 66.3%
Angola	10 982	2.2%	11 470	2.5%	8 410	1.8%	9 410	1.9%	1 610	2.1%	- 28.8%
Chile	8 961	1.8%	16 410	3.5%	12 461	2.6%	8 664	1.8%	1 566	2.0%	+ 7.0%
<i>Other Destinations</i>	<i>166 148</i>	<i>33.7%</i>	<i>159 996</i>	<i>34.2%</i>	<i>158 992</i>	<i>33.4%</i>	<i>125 401</i>	<i>25.5%</i>	<i>18 272</i>	<i>23.8%</i>	
<b>Total to Third Countries</b>	<b>493 112</b>		<b>467 183</b>		<b>475 639</b>		<b>491 052</b>		<b>76 931</b>		
% change			- 5%		+ 2%		+ 3%		- 8.1%		

# TRADE

## EU Exports of Beef and Live Animals: Trade figures (COMEXT)

# EU EXPORTS

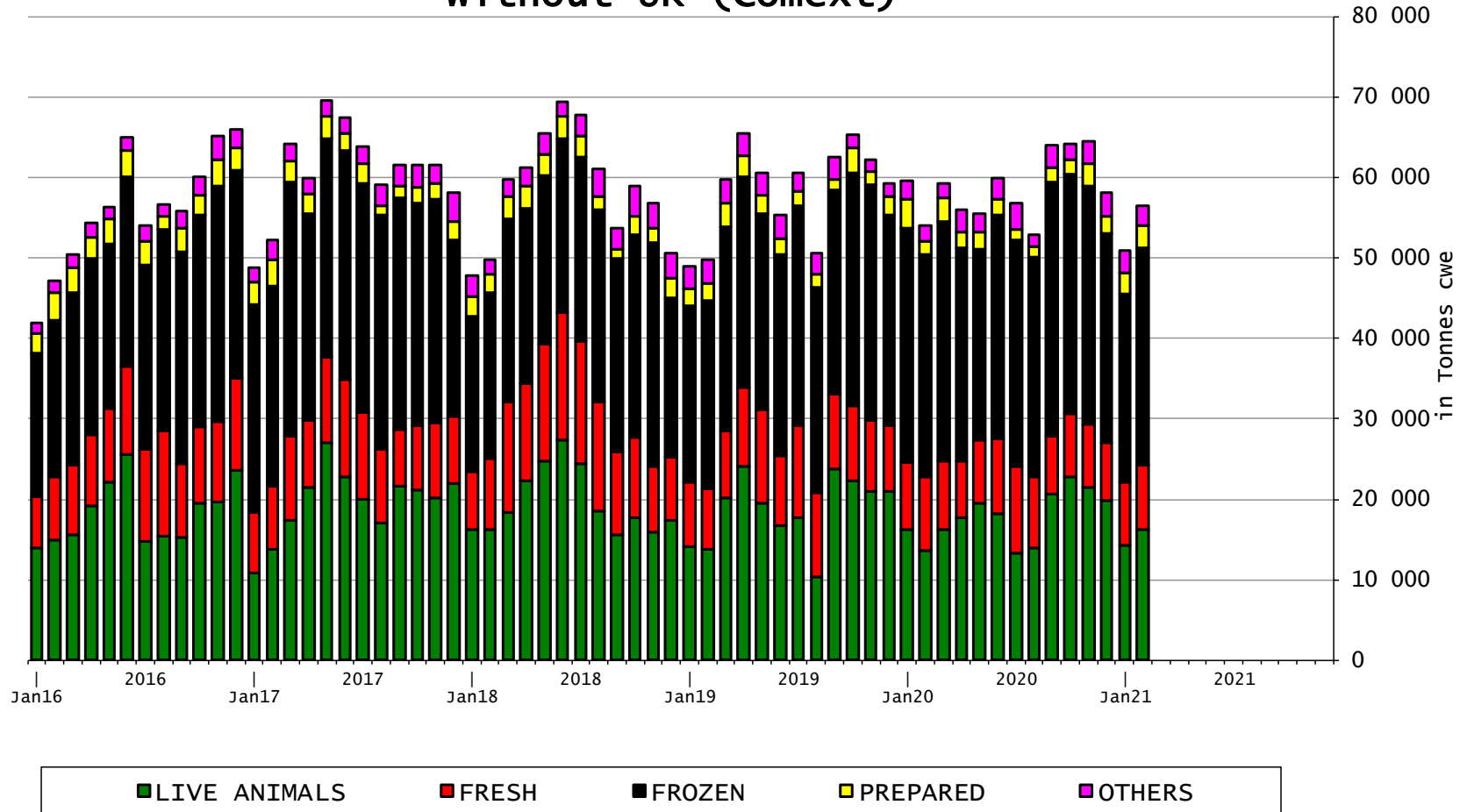
## Beef & Live Animals



# TRADE

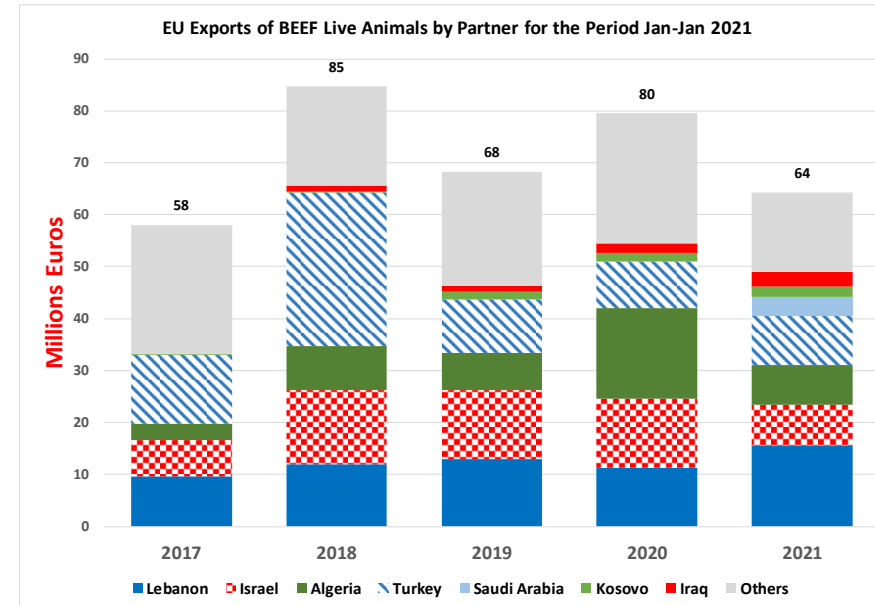
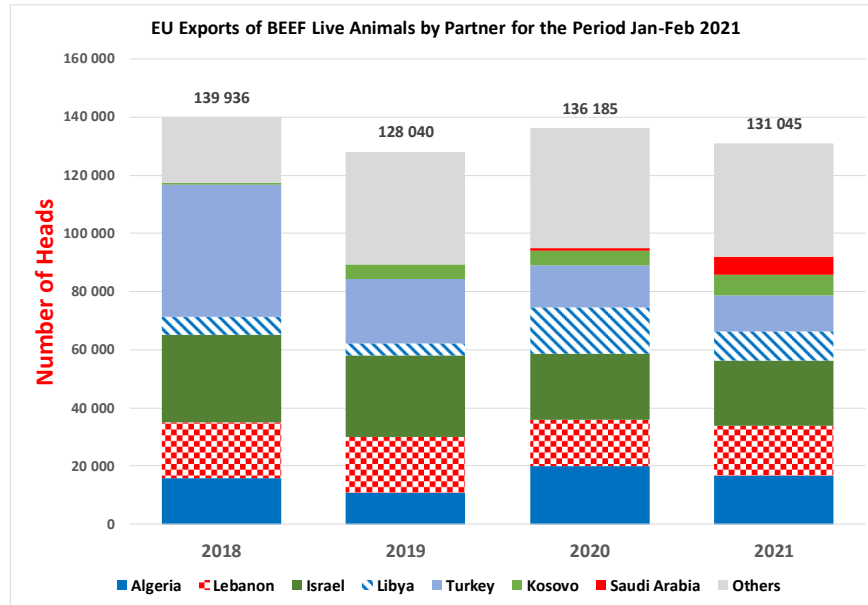
## EU EXPORTS Beef Products

### EU Exports of BEEF products without UK (Comext)



# TRADE

# EU EXPORTS Live Animals





# TRADE

## EU IMPORTS Beef & Live Animals

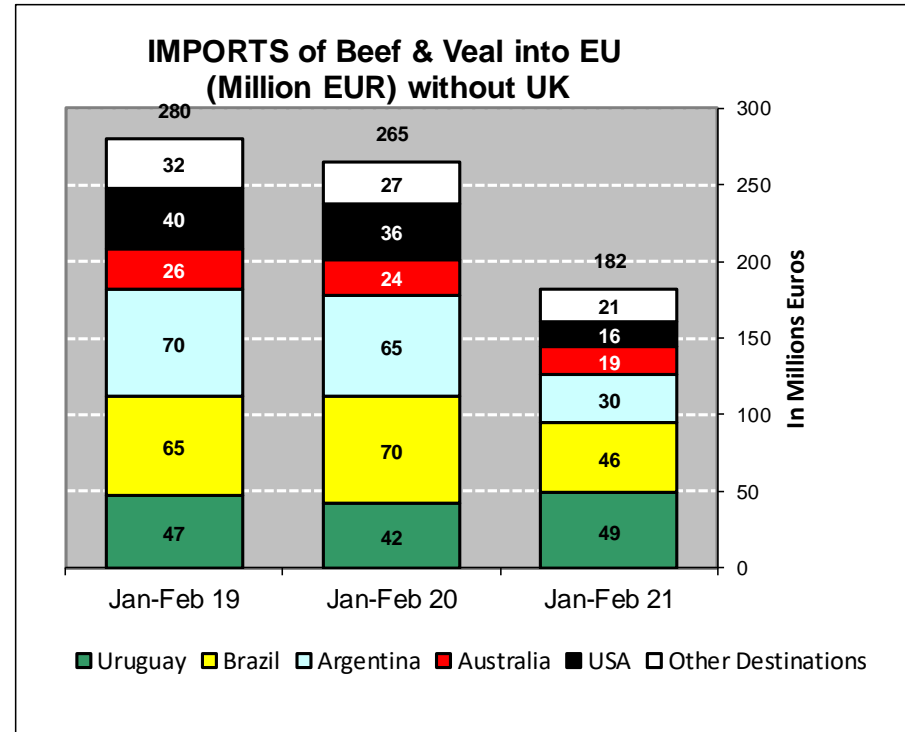
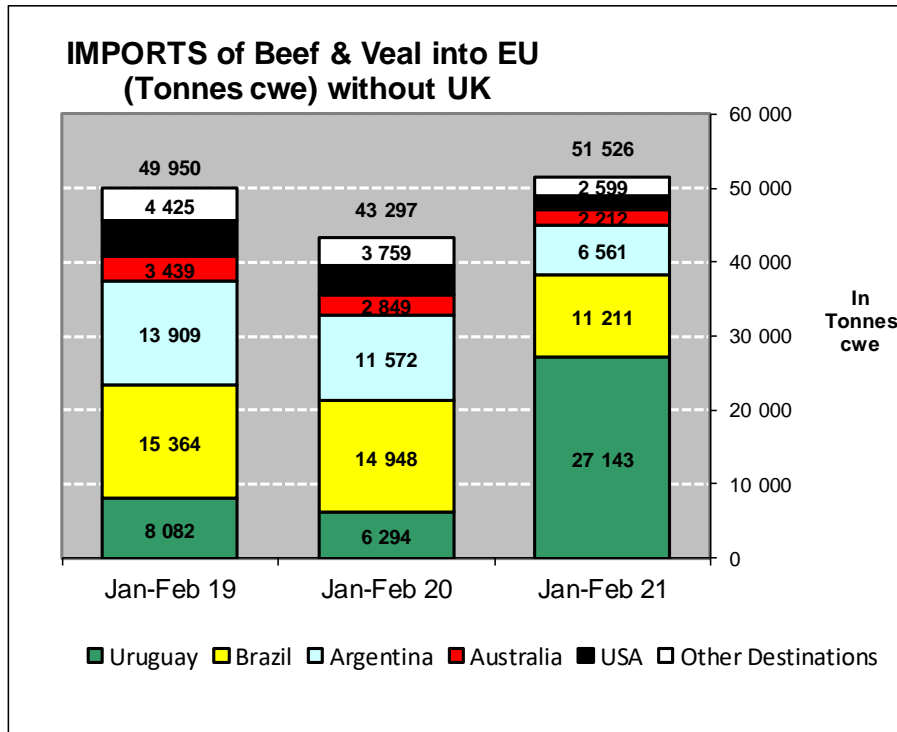
### EU Imports of Beef and Live Animals (1): Trade Figures (COMEXT – tonnes cwe)

Origins	2017		2018		2019		2020		Jan-Feb 21		Compared to Jan-Feb 20
	tonnes	%	tonnes	%	tonnes	%	tonnes	%	tonnes	%	
Uruguay	55 212	21.2%	48 712	16.9%	40 483	14.5%	50 864	20.8%	27 143	52.7%	+++
Brazil	87 157	33.5%	103 979	36.1%	99 569	35.6%	84 172	34.4%	11 211	21.8%	- 25.0%
Argentina	49 259	18.9%	69 011	24.0%	70 618	25.3%	60 613	24.8%	6 561	12.7%	- 43.3%
Australia	18 193	7.0%	17 368	6.0%	16 516	5.9%	11 007	4.5%	2 212	4.3%	- 22.4%
USA	21 624	8.3%	19 268	6.7%	16 852	6.0%	16 532	6.8%	1 799	3.5%	- 53.6%
Switzerland	5 138	2.0%	5 437	1.9%	4 433	1.6%	4 325	1.8%	987	1.9%	+ 17.8%
New Zealand	6 806	2.6%	7 165	2.5%	6 726	2.4%	6 101	2.5%	484	0.9%	- 56.2%
Canada	512	0.2%	1 343	0.5%	2 518	0.9%	1 550	0.6%	340	0.7%	+++
Namibia	5 043	1.9%	3 442	1.2%	7 706	2.8%	1 445	0.6%	187	0.4%	- 27.8%
N.det.Extra	72	0.0%	127	0.0%	196	0.1%	94	0.0%	120	0.2%	+++
Paraguay	5 922	2.3%	5 520	1.9%	5 203	1.9%	4 234	1.7%	115	0.2%	- 81.9%
Serbia	565	0.2%	1 134	0.4%	1 062	0.4%	949	0.4%	98	0.2%	- 61.5%
Norway	389	0.1%	153	0.1%	129	0.0%	395	0.2%	95	0.2%	+++
Japan	645	0.2%	791	0.3%	997	0.4%	789	0.3%	59	0.1%	- 52.2%
Botswana	2 686	1.0%	3 119	1.1%	4 950	1.8%	788	0.3%	31	0.1%	- 84.6%
Chile	319	0.1%	356	0.1%	392	0.1%	168	0.1%	18	0.0%	- 71.2%
<i>Other Destinations</i>	960	0.4%	890	0.3%	954	0.3%	706	0.3%	66	0.1%	
<b>Total (without UK)</b>	<b>260 503</b>		<b>287 814</b>		<b>279 304</b>		<b>244 732</b>		<b>51 526</b>		
% change			+ 10%		- 3%		- 12%		+ 19.0%		

# TRADE

## EU Imports of Beef and Live Animals (2): Trade Figures (COMEXT)

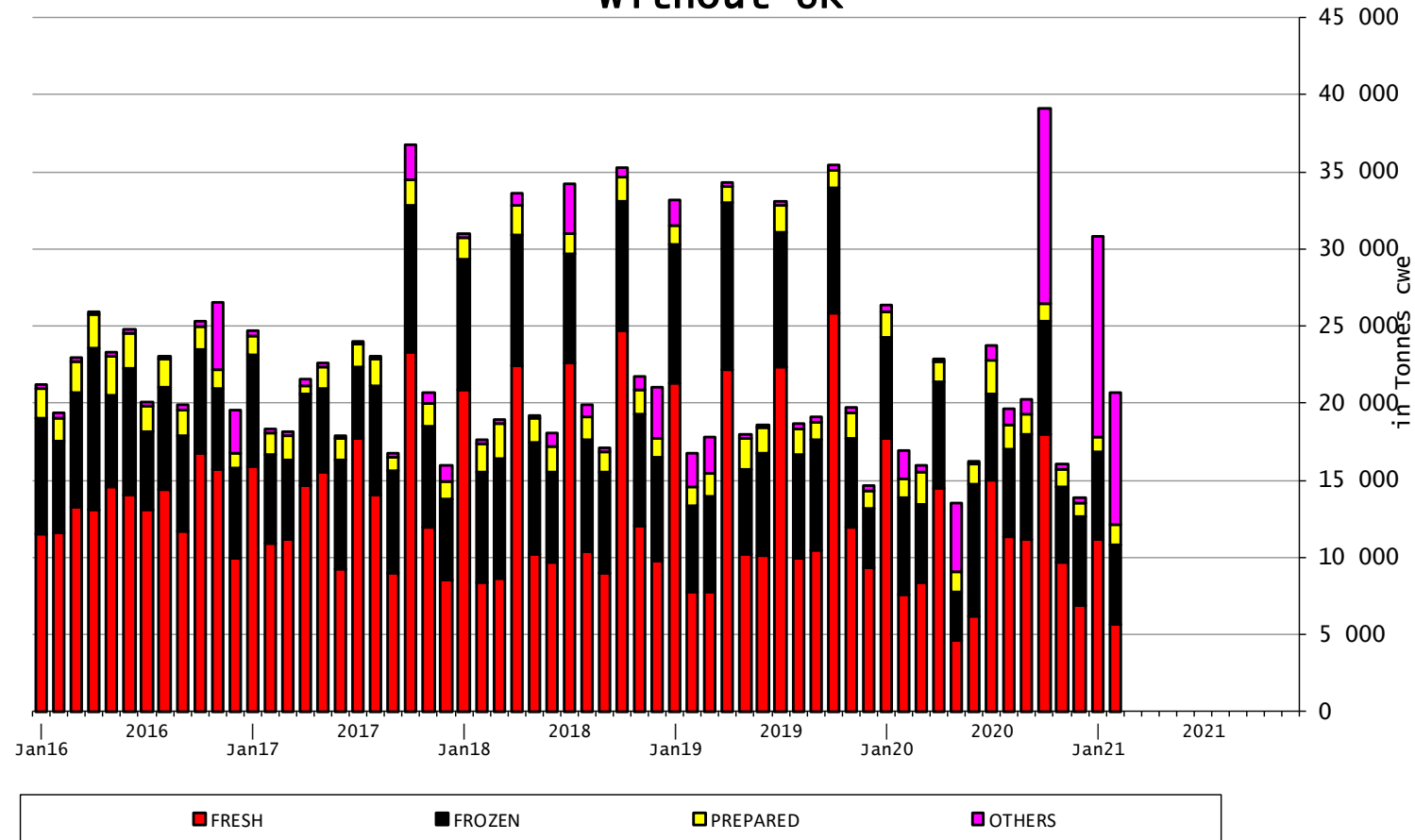
## EU IMPORTS Beef & Live Animals



# TRADE

## EU IMPORTS Beef Products

### EU Imports of BEEF products without UK



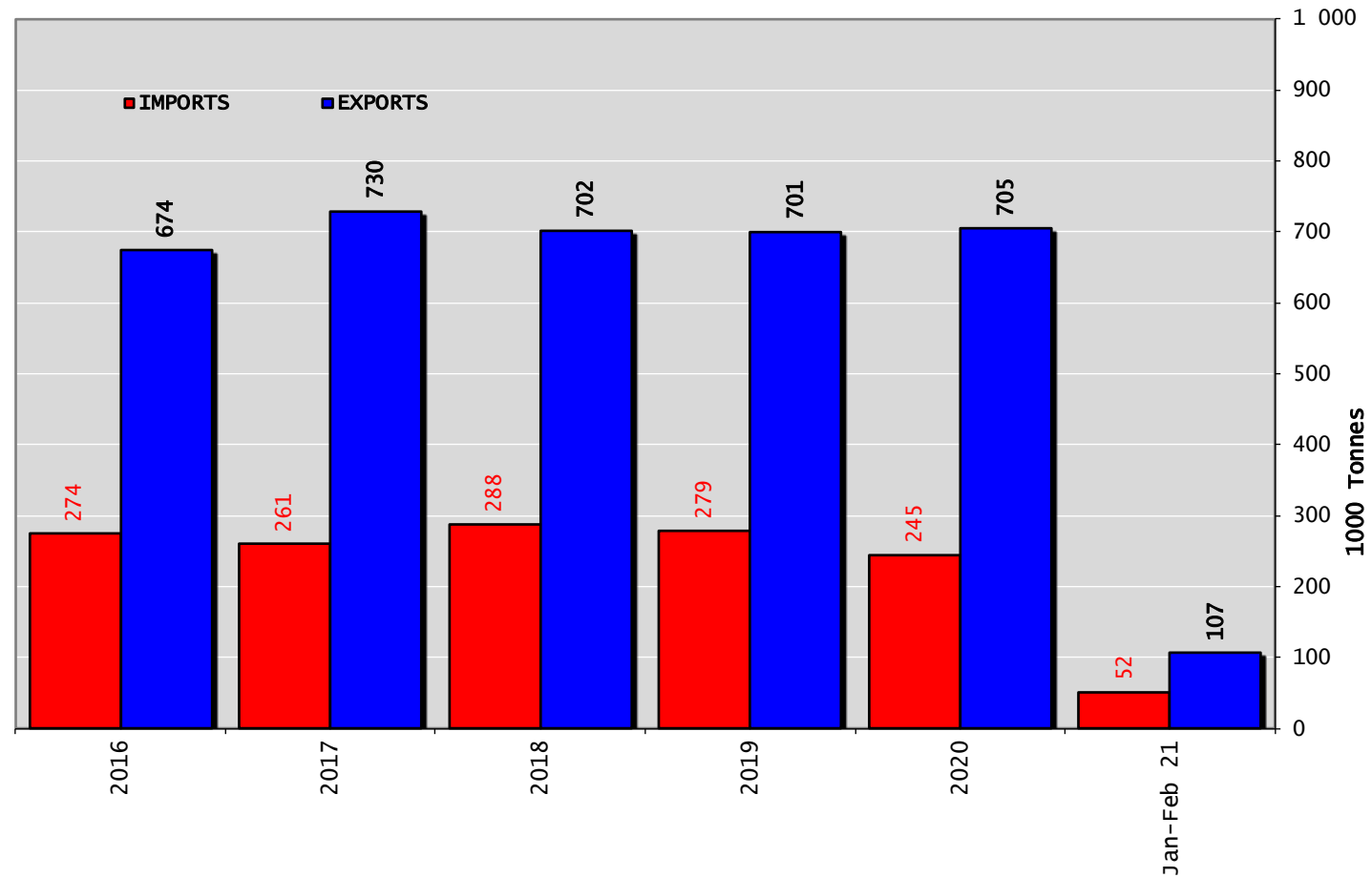
22 April 2021

# TRADE

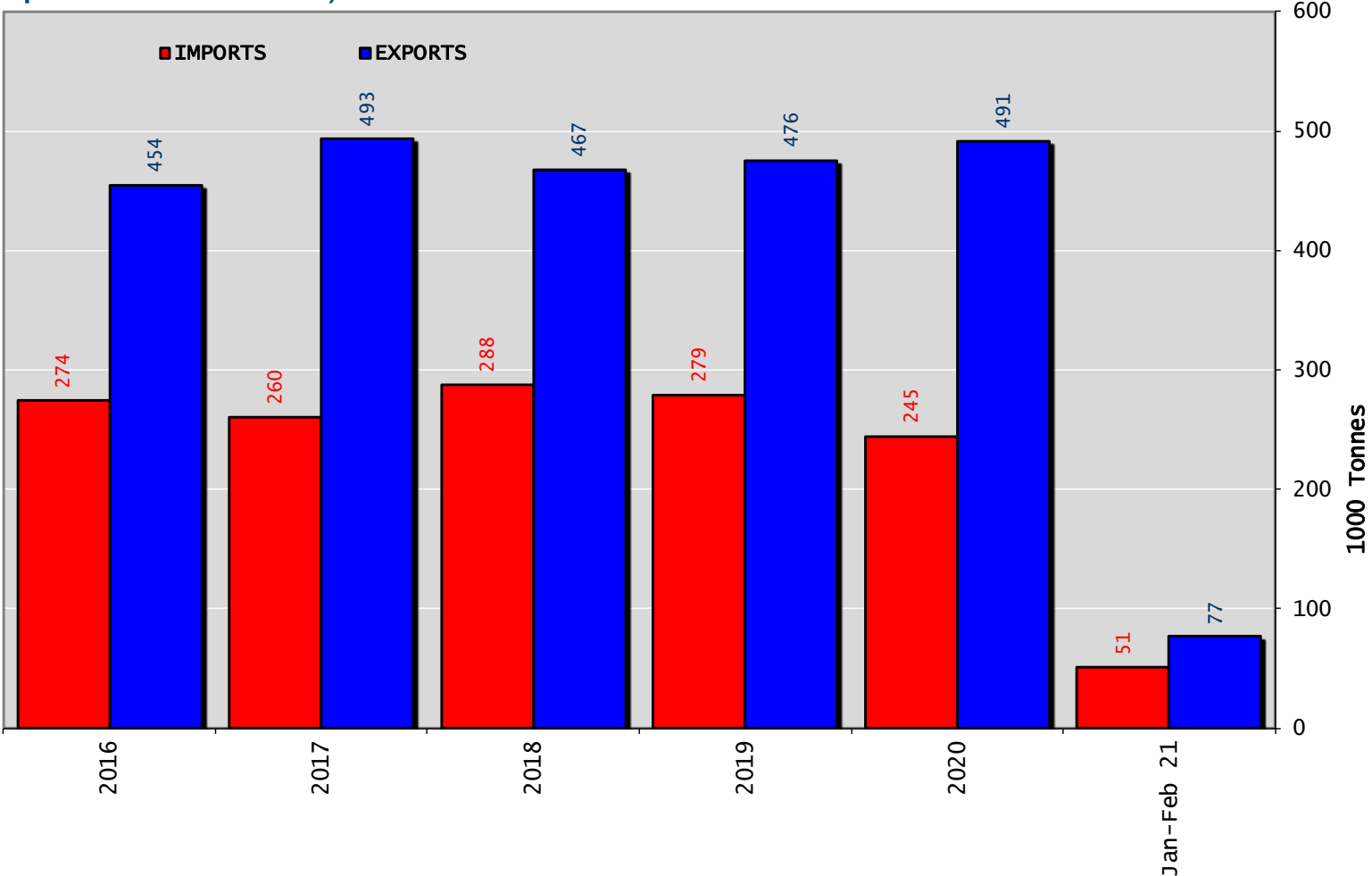
# EUTRADE BALANCE

## Beef & Live Animals

Trade Balance of Beef Products and Live Animals (without UK)



# Trade Balance of Beef Products (Except Live Animals) without UK

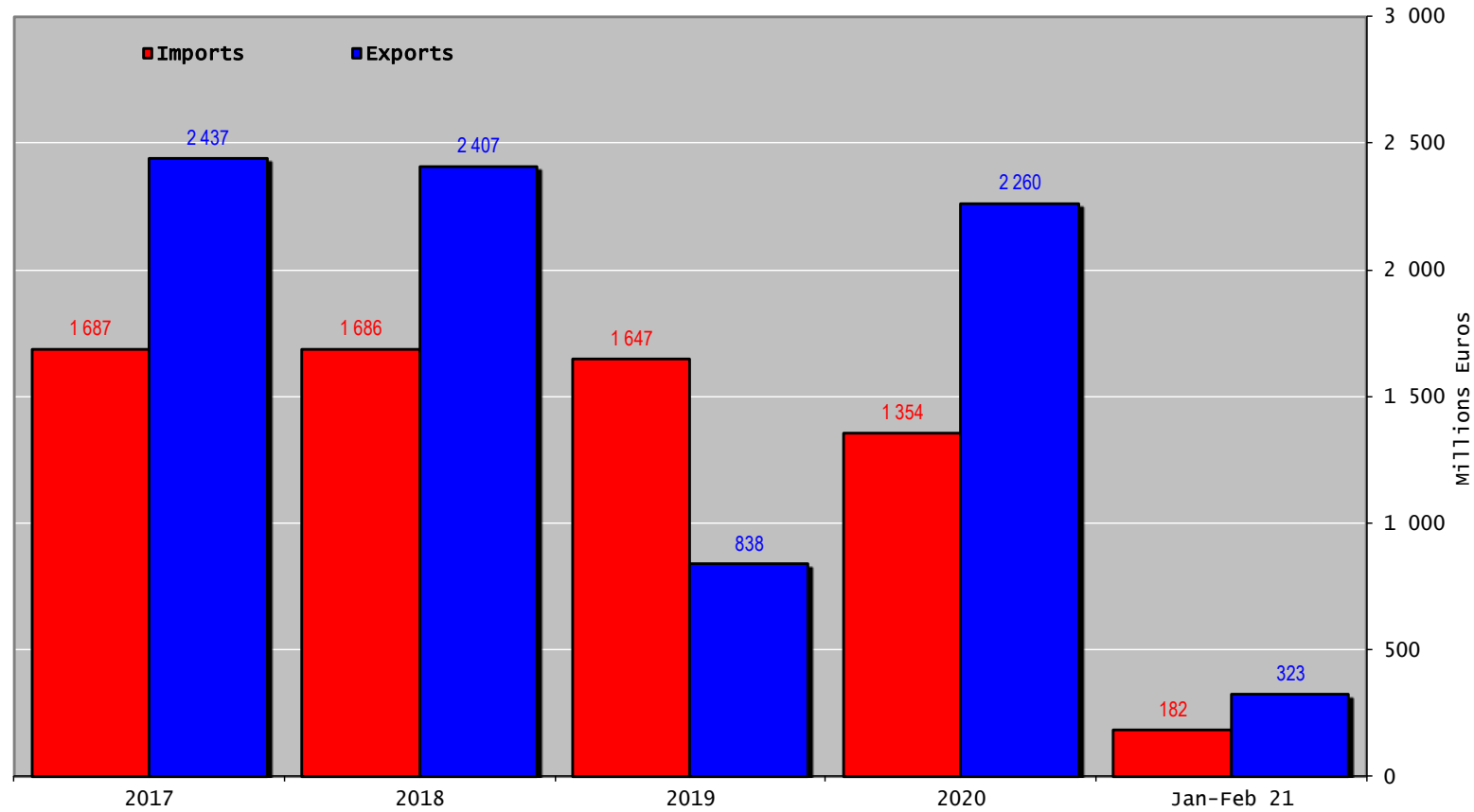


# TRADE

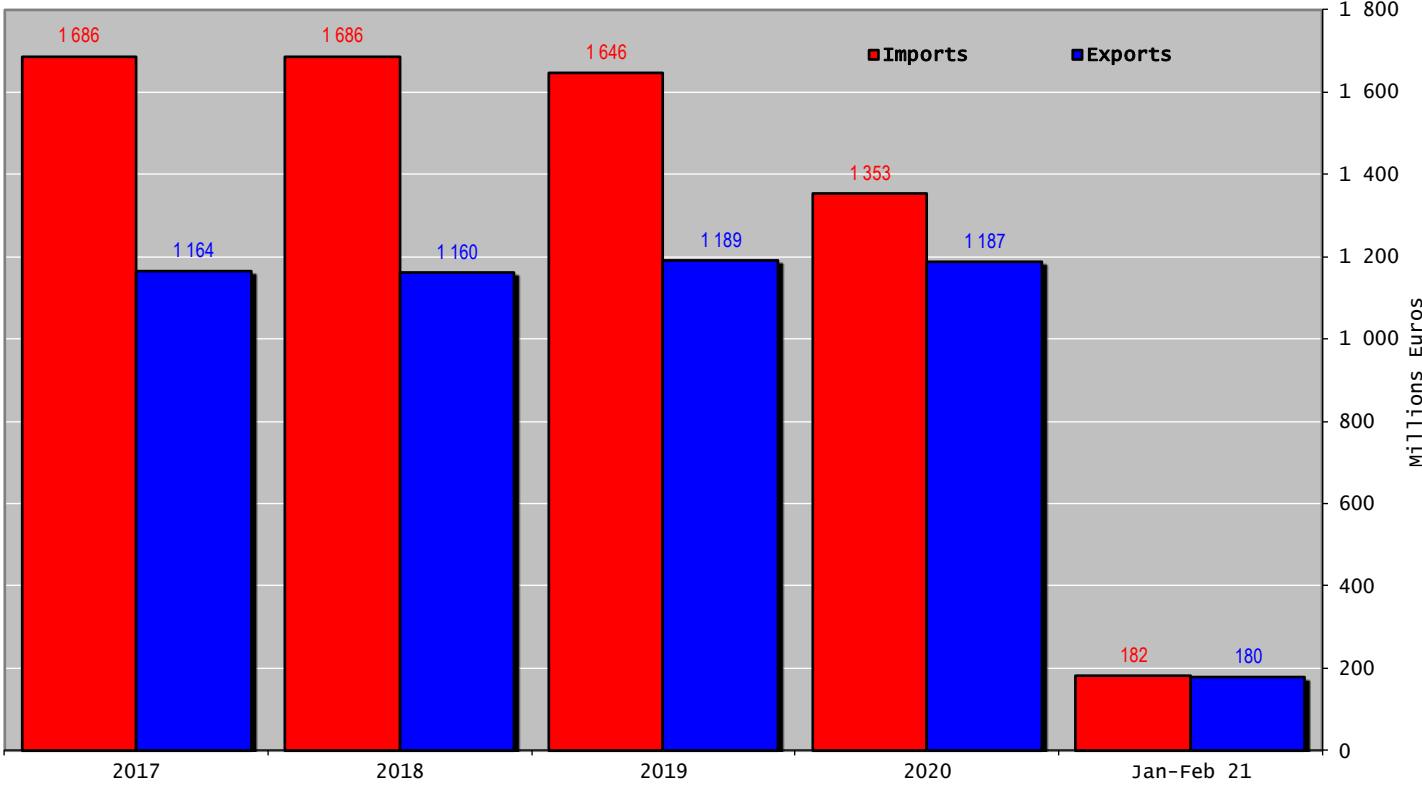
## EU TRADE BALANCE

### Beef & Live Animals

Trade Balance of Beef Products and Live Animals (without UK)



# Trade Balance of Beef Products (Except Live Animals) without UK



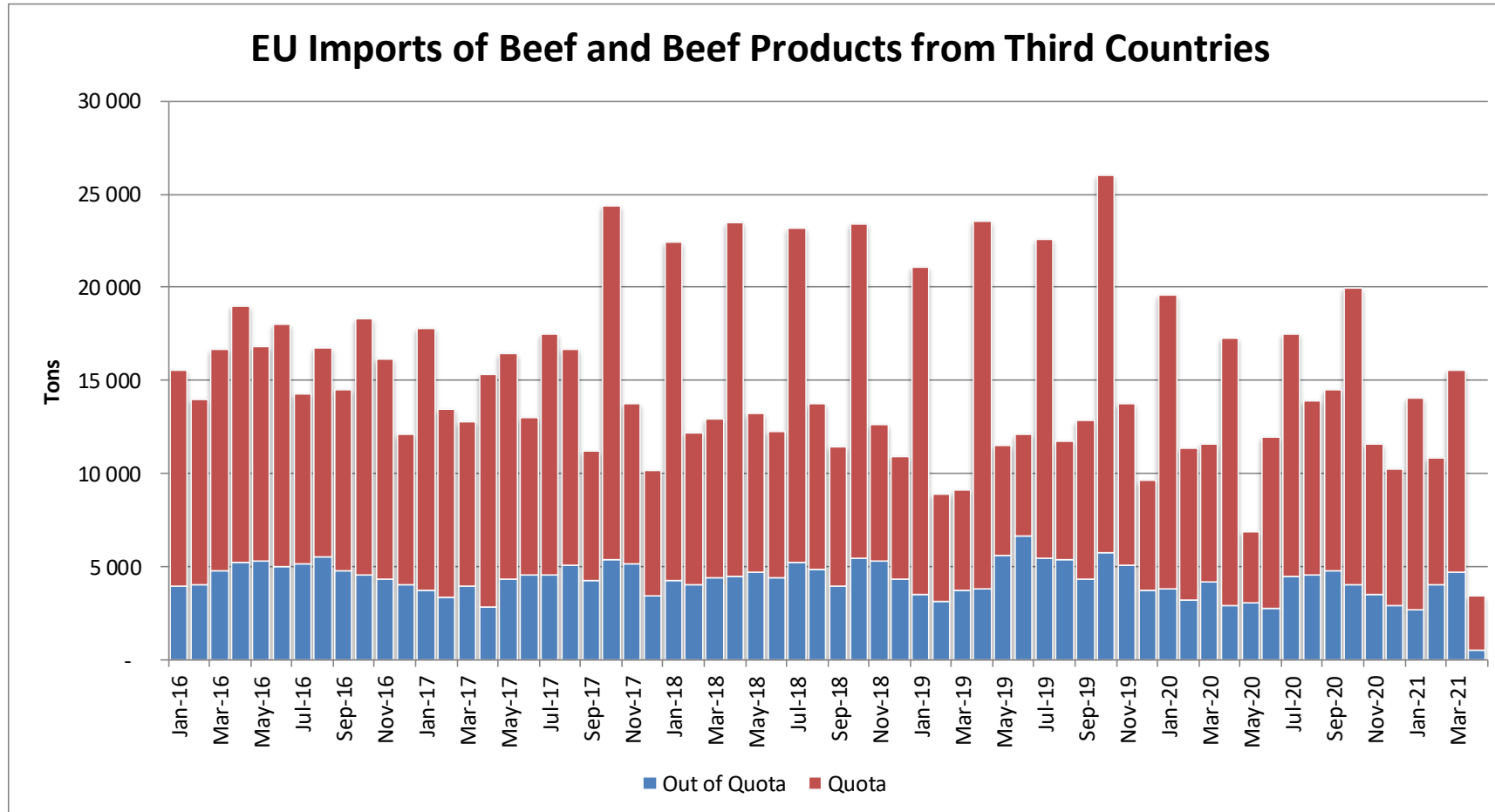
# EU Exports/Import of Beef and Live Animals into/from UK in January 2021 (COMEXT)

In Tons of Carcase Weight				
	2019	2020	2021	2021/2020
Exports	38 592	32 852	19 032	-42%
Live Animals	854	693	335	-52%
Meats	37 738	32 159	18 697	-42%
Imports	19 802	12 034	4 726	-61%
Live Animals	132	108	52	-52%
Meats	19 670	11 925	4 674	-61%
In Percentage of Total EU trade				2021/2020
Exports	44,05	35,57	27,22	- 8,35
Live Animals	5,72	4,10	2,31	- 1,80
Meats	51,93	42,62	33,77	- 8,84
Imports	37,39	31,36	13,29	- 18,07
Live Animals	87,46	97,75	71,87	- 25,88
Meats	37,25	31,16	13,17	- 18,00

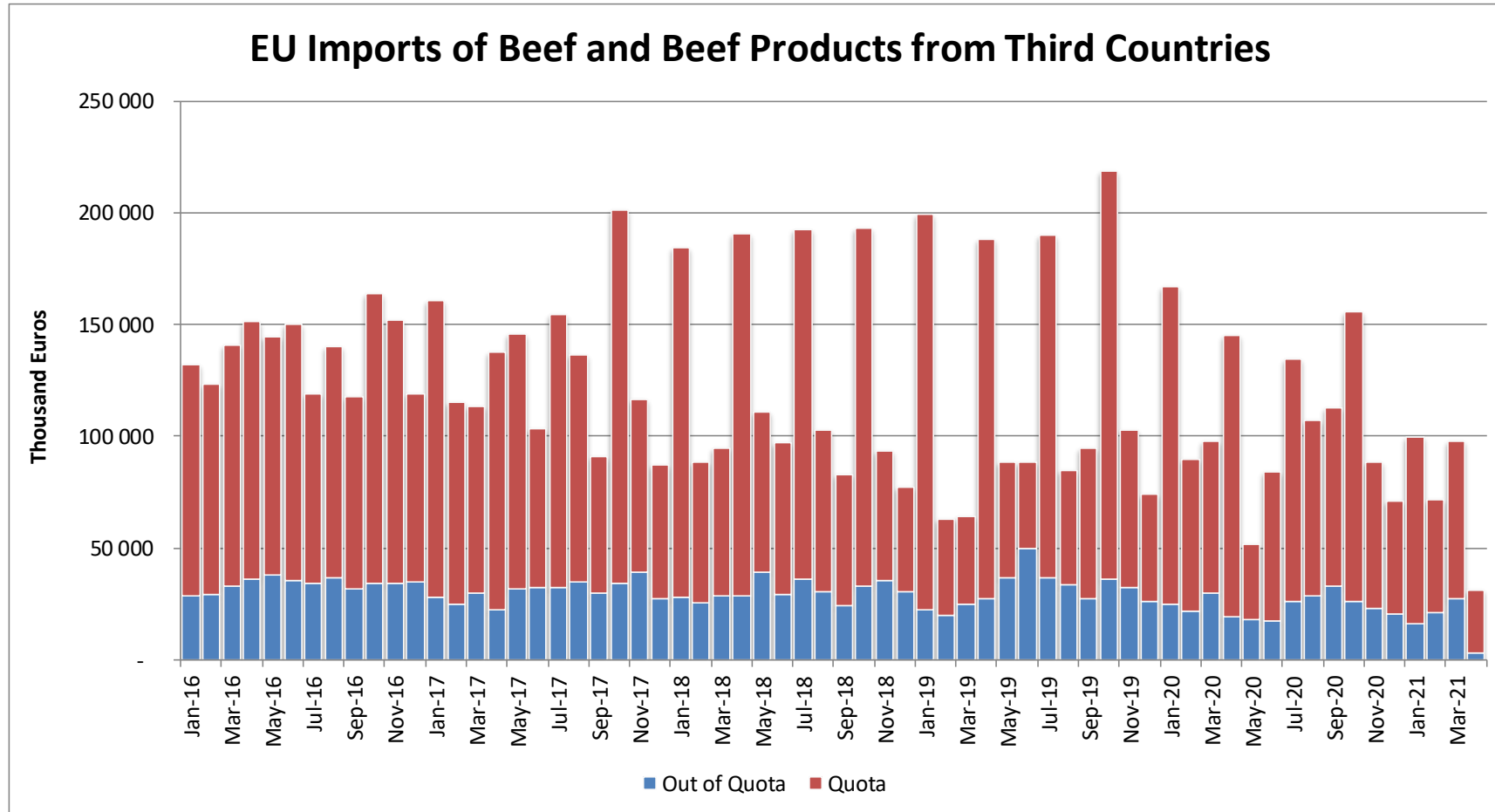
In Thousand Euros				
	2019	2020	2021	2021/2020
Exports	129 765	112 244	77 825	-31%
Live Animals	4 795	3 582	3 436	-4%
Meats	124 970	108 662	74 390	-32%
Imports	51 643	46 243	14 971	-68%
Live Animals	581	425	157	-63%
Meats	51 062	45 818	14 814	-68%
In Percentage of Total EU trade				2021/2020
Exports	45,87	37,29	34,25	- 3,04
Live Animals	6,57	4,31	5,00	0,69
Meats	59,55	49,87	46,92	- 2,95
Imports	20,76	21,28	12,14	- 9,14
Live Animals	90,82	91,77	64,17	- 27,60
Meats	20,58	21,13	12,03	- 9,10



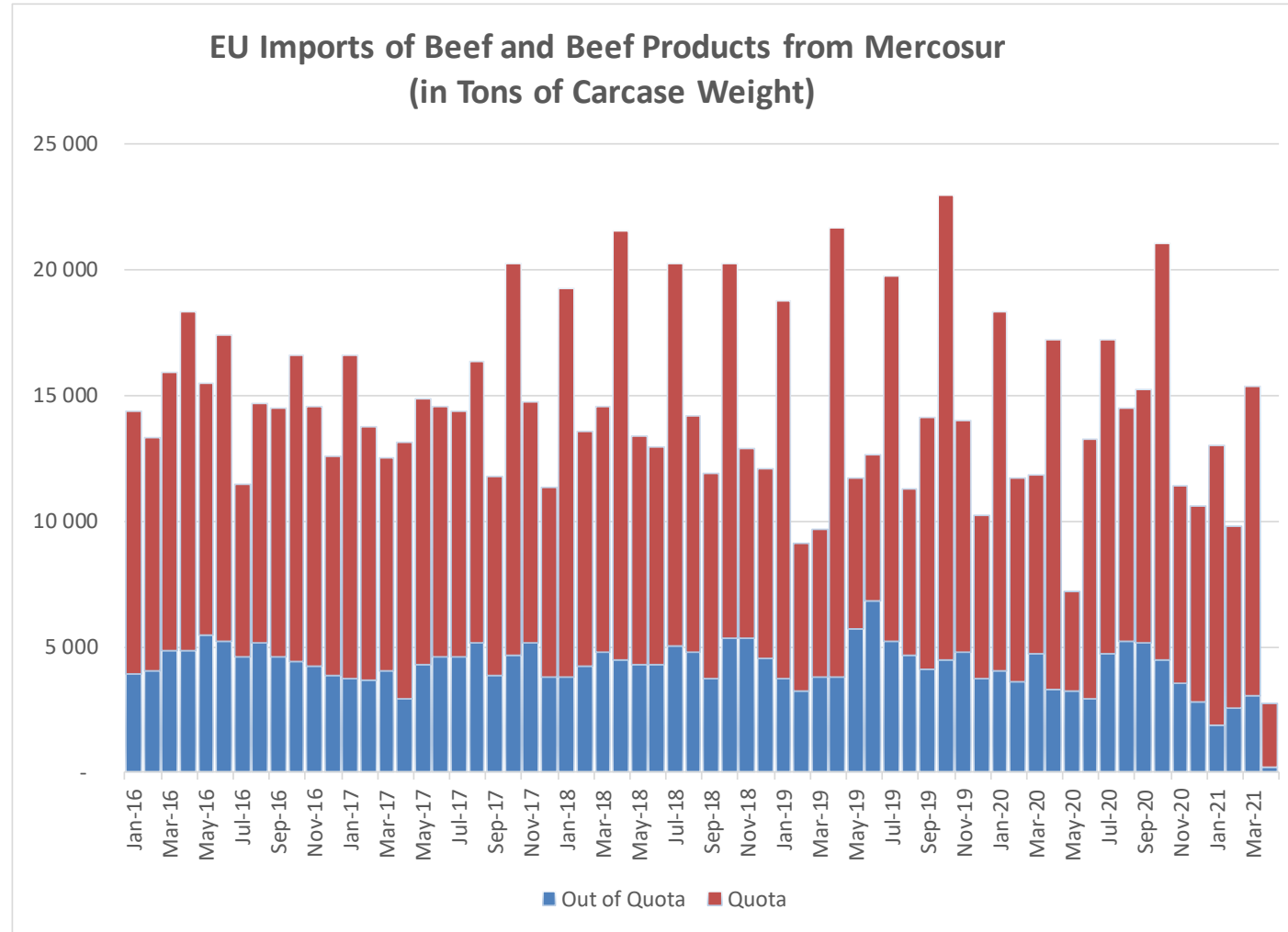
# Imports in and out of TRQs



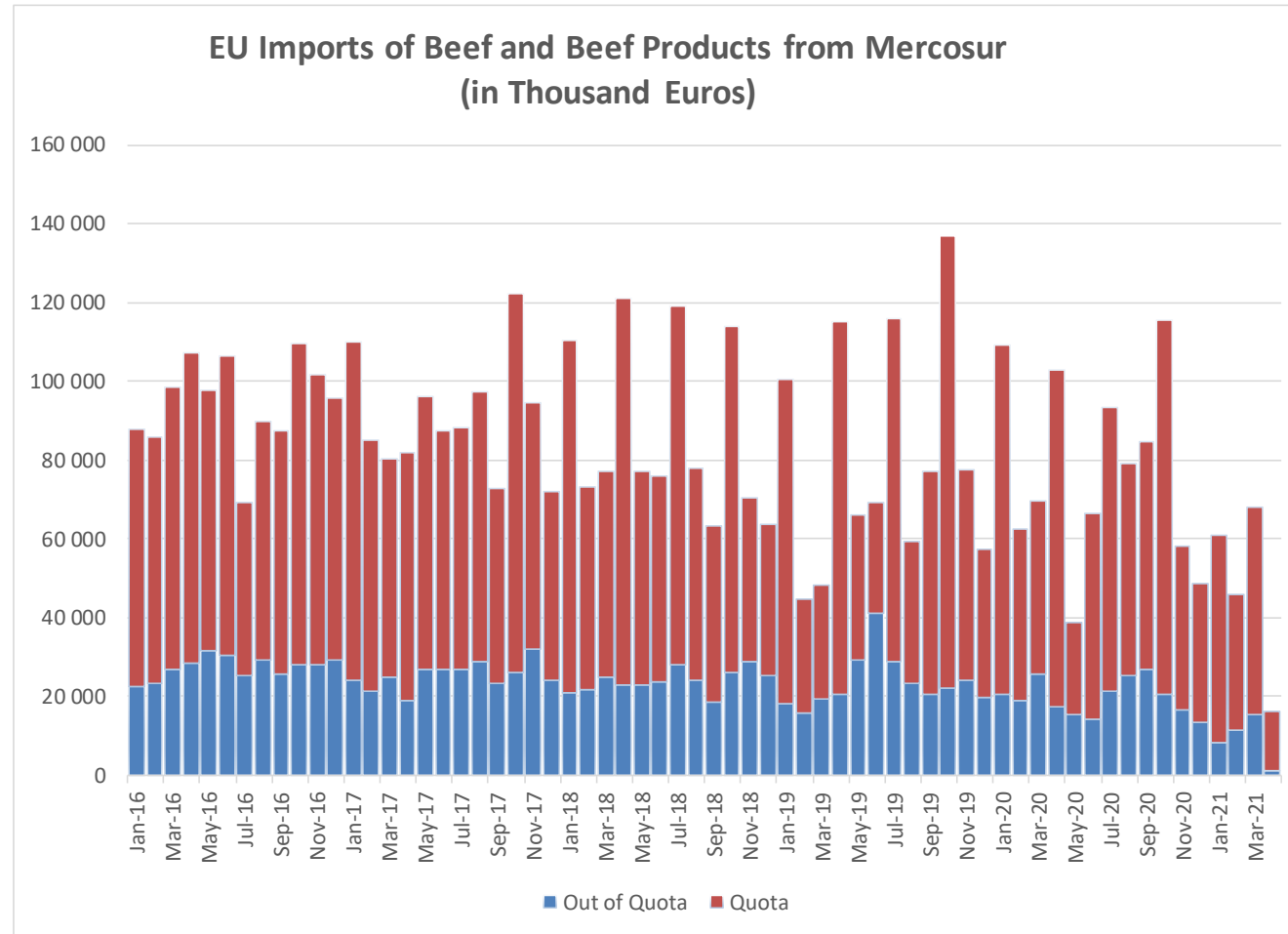
# Imports in and out of TRQs



# Imports in and out of TRQs



# Imports in and out of TRQs



# High Quality Beef Import Quotas

Hilton Quota		Regulation (EU) N° 593/2013						
		Quantity allocated (Tons)	2018/2019		2019/2020		2020/2021*	
			Use		Use		Use	
09.4001	Australia	2 250						
09.4004	Argentina	200	11.05	5.53%	8.34	4.17%	1.46	0.73%
09.4450	Argentina	29 500	29 491.35	99.97%	26 649.20	90.34%	17 001.35	57.63%
09.4451	Australia	7 150	4 942.02	69.12%	3 000.01	41.96%	978.76	13.69%
09.4452	Uruguay	6 376	6 363.76	99.81%	4 520.57	70.90%	3 863.99	60.60%
09.4453	Brazil	10 000	4 147.19	41.47%	2 884.79	28.85%	2 022.59	20.23%
09.4454	New Zealand	1 300	980.60	75.43%	859.15	66.09%	444.55	34.20%
09.4002	Canada/US	11 500	3 883.04	33.77%	2 703.68	23.51%	963.25	8.38%
09.4455	Paraguay	1 000	935.41	93.54%	680.40	68.04%	371.78	37.18%
Total Beef		66 826	50 743.37	75.93%	41 297.80	61.80%	25 646.27	38.38%
Total Buffalo		2 450	11.05	0.45%	8.34	0.34%	1.46	0.06%
Total		69 276	50 754.42	73.26%	41 306.14	59.63%	25 647.73	37.02%

\* up to 31/01/2021

# High Quality Beef Import Quotas

Quota erga omnes

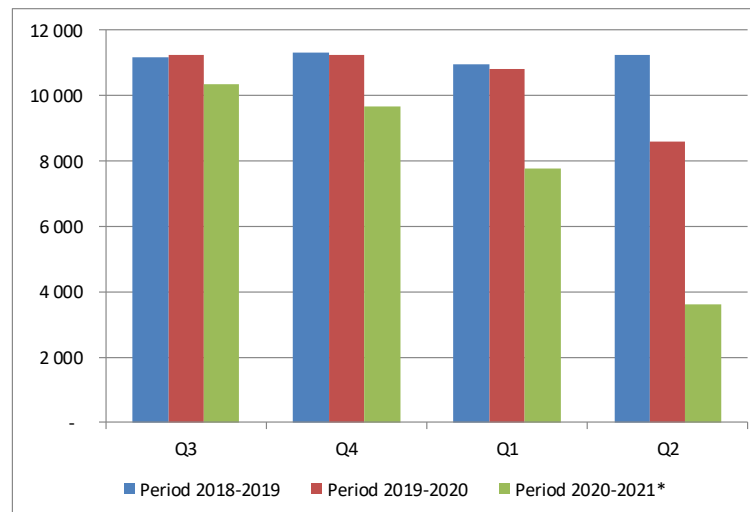
Regulation (EU) No 481/2012

	2018-Q3	2018-Q4	2019-Q1	2019-Q2	TOTAL
Period 2018-2019	11 165	11 300	10 973	11 256	44 693
Available	11 250	11 250	11 250	11 250	45 000
Use	99.24%	100.00%	97.53%	100.00%	99.32%
Available after transfer	11 250	11 335	11 200	11 527	
	99.24%	100.00%	97.53%	100.00%	

	2019-Q3	2019-Q4	2020-Q1	2020-Q2	TOTAL
Period 2019-2020	11 246	11 259	10 825	8 599	41 930
Available	11 250	11 250	11 250	11 250	45 000
Use	99.97%	100.00%	96.22%	76.44%	93.18%
Available after transfer	11 250	11 254	11 241	11 675	
	99.97%	100.00%	96.30%	73.66%	

	2020-Q3*	2020-Q4	2021-Q1	2021-Q2	TOTAL
Period 2020-2021*	10 332	9 674	7 760	3 603	31 370
Available	11 250	11 250	11 250	11 251	45 000
Use	91.84%	85.99%	68.98%	32.03%	69.71%
Available after transfer	11 250	12 168	12 826	14 741	
	91.84%	79.51%	60.50%	24.44%	

\* Until 15.04.2021

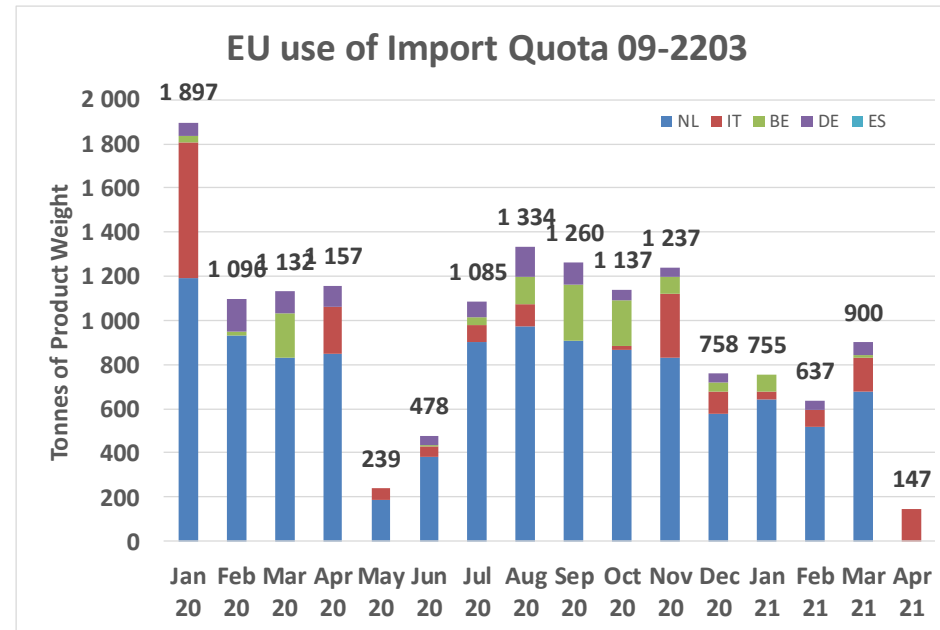


# High Quality Beef Import Quotas

Origin	GATT 2019-2020				
	2019-Q3	2019-Q4	2020-Q1	2020-Q2	Total
NL			2 957	1 415	4 372
IT			614	314	929
BE			241	10	251
DE			313	133	446
ES			-	-	-
<b>Total import within Quota</b>			<b>4 125</b>	<b>1 873</b>	<b>5 998</b>
Available			4 625	4 625	9 250
Use			89.19%	40.50%	64.84%
After transfer			4 625	5 125	
Use			89.19%	36.55%	

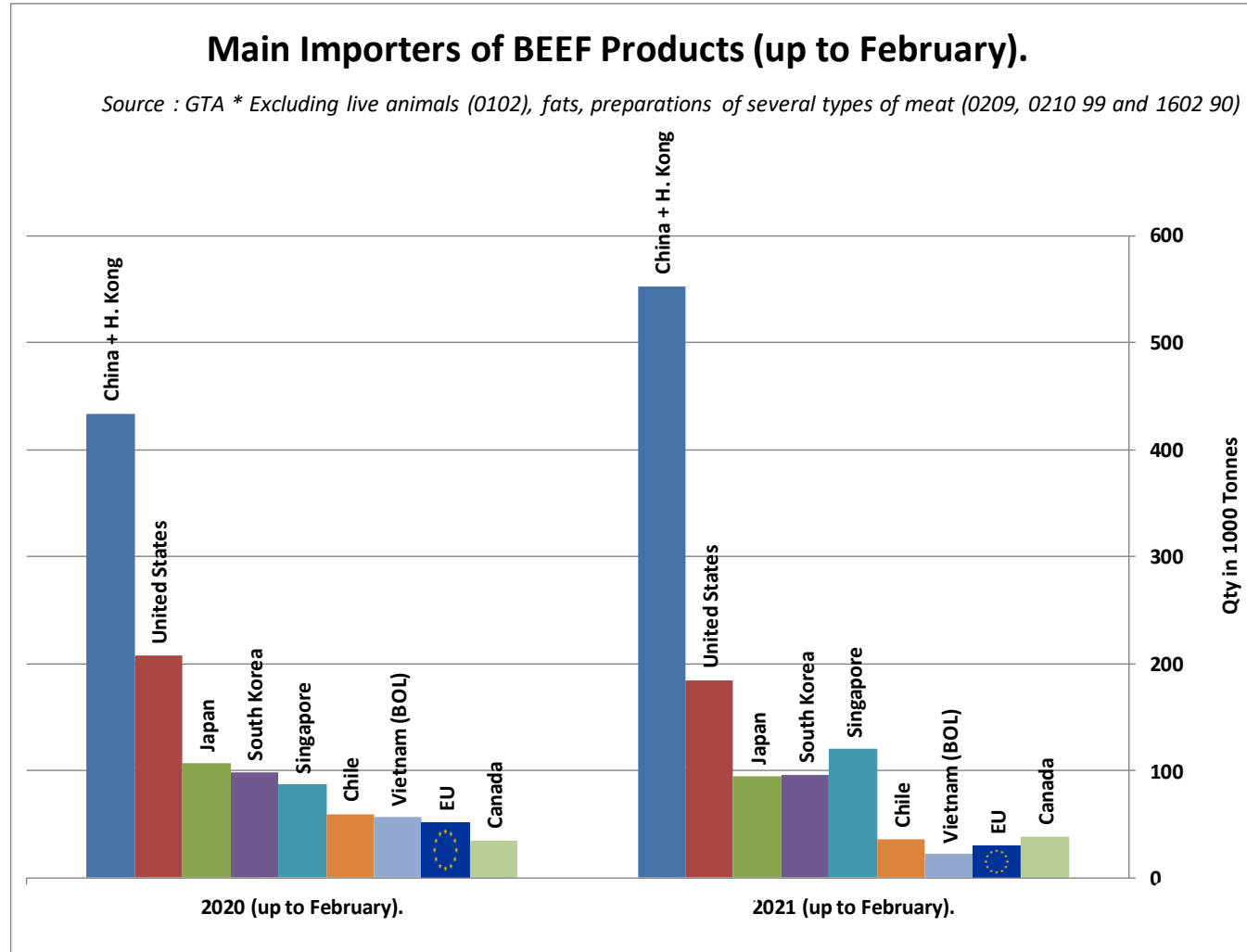
  

Origin	GATT 2020-2021				
	2020-Q3	2020-Q4	2021-Q1	2021-Q2	Total
NL	2 785	2 274	1 834	-	6 893
IT	174	404	263	147	988
BE	417	330	96	-	843
DE	305	124	98	-	526
<b>Total import within Quota</b>	<b>3 680</b>	<b>3 132</b>	<b>2 291</b>	<b>147</b>	<b>9 250</b>
Available	4 625	4 625	4 625	4 625	18 500
Use	79.57%	67.72%	49.52%	3.18%	50.00%
After transfer	4 625	5 570	6 118	6 959	
Use	79.57%	56.23%	37.44%	2.11%	



# WORLD BEEF MARKET

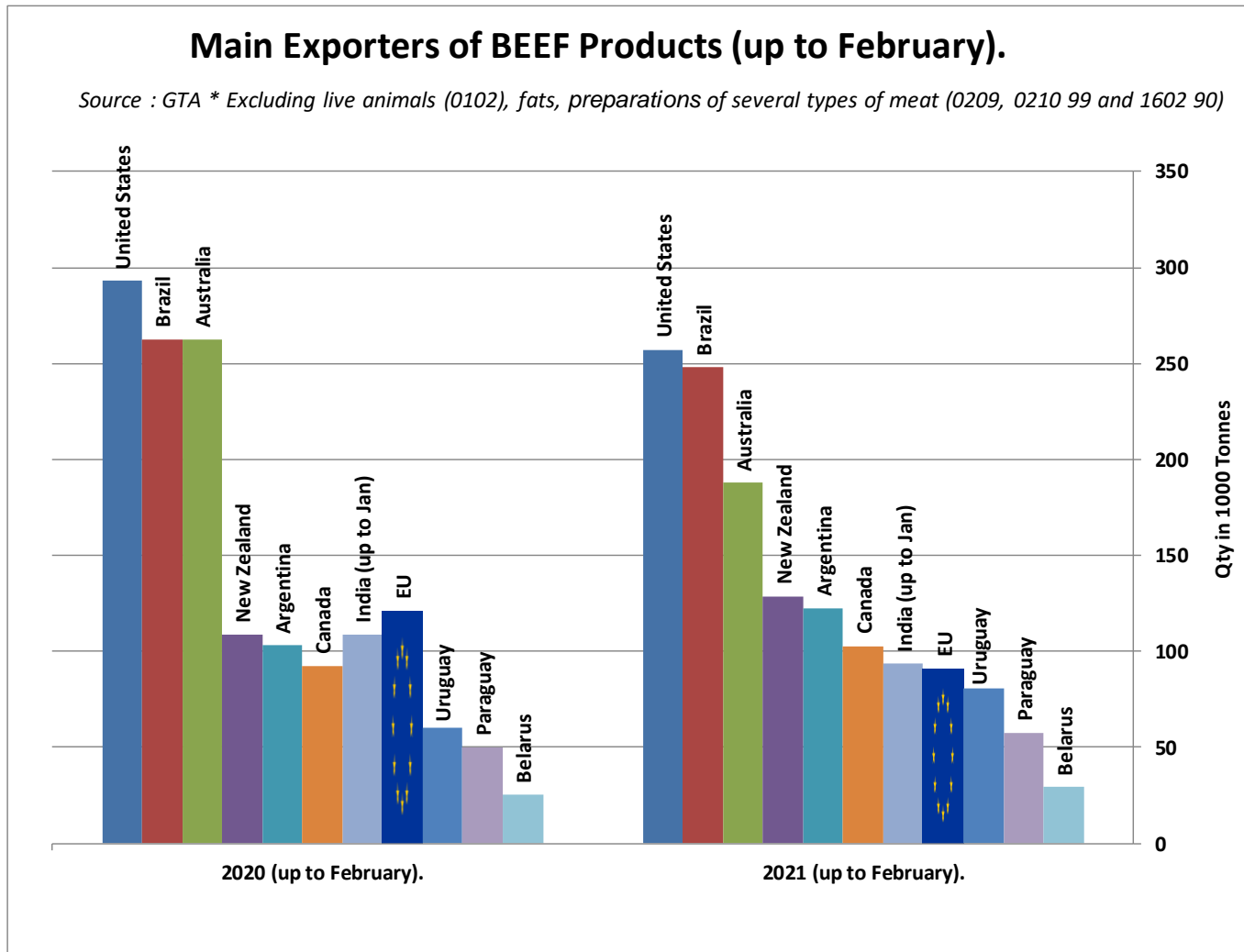
## E.U. + UK IMPORTS BEEF MAIN IMPORTERS





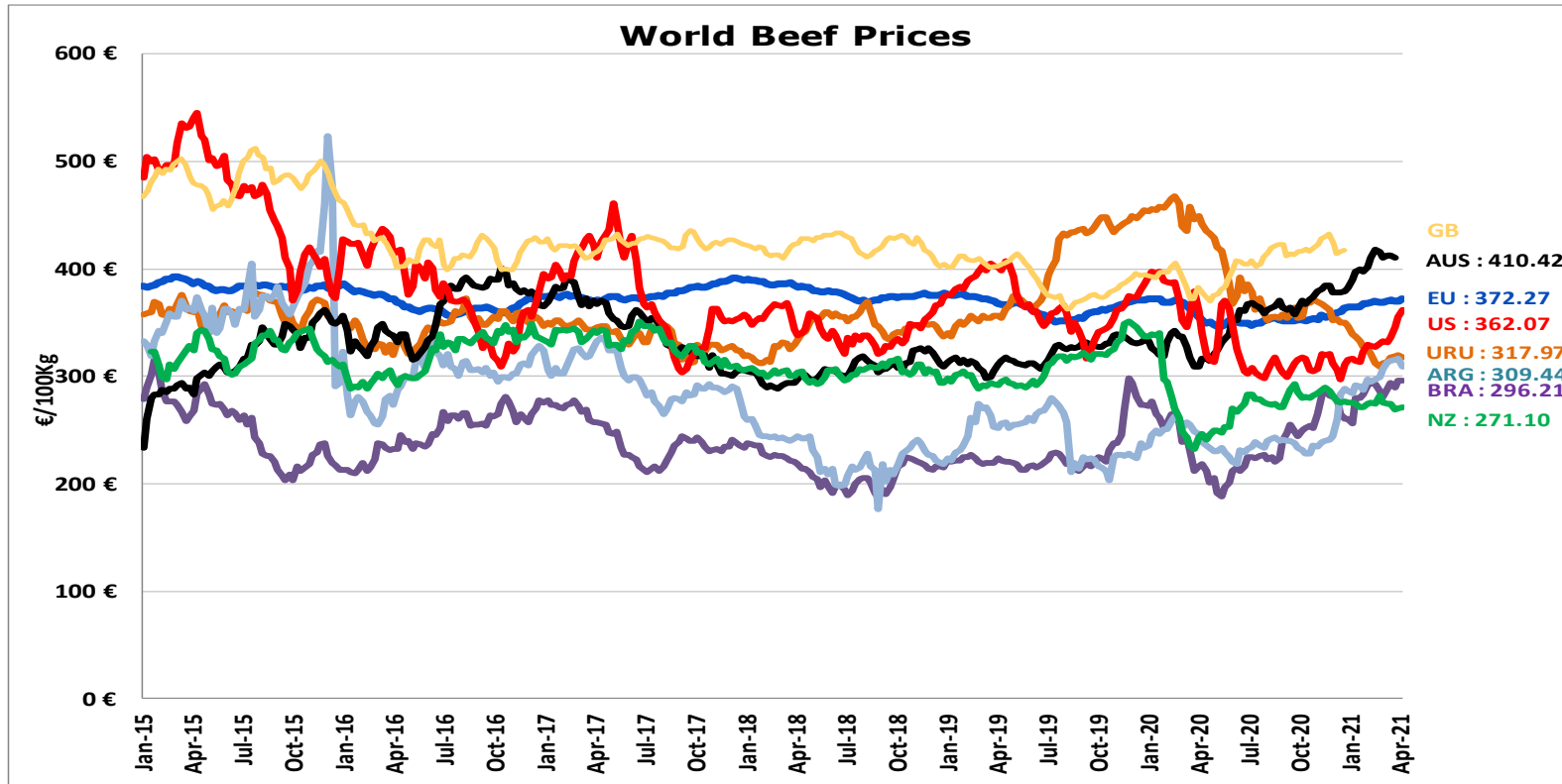
# WORLD BEEF MARKET

## E.U. + UK EXPORTS BEEF MAIN EXPORTERS



# WORLD BEEF MARKET

## STEER PRICES EU, US, AUS, NZ



ECB <http://sdw.ecb.europa.eu/browse.do?node=2018794>  
US <https://www.marketnews.usda.gov/mnp/ls-home>  
AUS <http://statistics.mla.com.au/Report/RunReport/ae59d4ac-74e4-4c56-93bd-982a044d9760>  
UY <http://www.inac.gub.uy/innovaportal/v/11034/10/innova.front/indicadores-y-precios>  
ARG [http://www.abc-consorcio.com.ar/Estadisticas/detalle/117/precios\\_comparativos\\_del\\_novillo.html](http://www.abc-consorcio.com.ar/Estadisticas/detalle/117/precios_comparativos_del_novillo.html)  
BR <http://www.pecuaria.com.br/cotacoes.php>  
NZ [http://www.abc-consorcio.com.ar/Estadisticas/detalle/117/precios\\_comparativos\\_del\\_novillo.html](http://www.abc-consorcio.com.ar/Estadisticas/detalle/117/precios_comparativos_del_novillo.html)

22 April 2021

THANK YOU VERY MUCH

More Information at:

EU Market Observatory

[https://ec.europa.eu/agriculture/market-observatory/meat\\_en](https://ec.europa.eu/agriculture/market-observatory/meat_en)

And

Agri-FOOD data portal:

<http://agridata.ec.europa.eu/>

# Thank you



© European Union 2020

Unless otherwise noted the reuse of this presentation is authorised under the [CC BY 4.0](https://creativecommons.org/licenses/by/4.0/) license. For any use or reproduction of elements that are not owned by the EU, permission may need to be sought directly from the respective right holders.

Slide xx: **element concerned**, source: e.g. [Fotolia.com](https://www.fotolia.com/); Slide xx: **element concerned**, source: e.g. [iStock.com](https://www.istock.com/)

