



# BEEF & VEAL MARKET SITUATION



Beef CMO 22 July 2021

# LIVESTOCK

## DECEMBER SURVEY

# EU EVOLUTION TOTAL BOVINE

Dec 1000 Hd	TOTAL LIVESTOCK				%Var 2020 2019	BOVINE < 1 Year				%Var 2020 2019	BOVINE 1-2 Year				%Var 2020 2019	BOVINE > 2 Year				%Var 2020 2019
	2017	2018	2019	2020		2017	2018	2019	2020		2017	2018	2019	2020		2017	2018	2019	2020	
BE	2 386	2 398	2 373	2 334	-1.6%	700	724	722	711	-1.5%	484	464	464	461	-0.6%	1 202	1 210	1 188	1 163	-2.1%
BG	553	542	527	589	+11.6%	110	108	100	112	+11.9%	57	59	58	71	+22.0%	386	375	369	406	+9.9%
CZ	1 366	1 365	1 367	1 340	-2.0%	407	404	411	405	-1.5%	299	304	299	295	-1.2%	660	657	657	640	-2.6%
DK	1 558	1 530	1 500	1 500	idem	541	534	522	524	+0.4%	294	284	280	279	-0.4%	723	712	698	697	-0.1%
DE	12 281	11 949	11 640	11 302	-2.9%	3 704	3 584	3 485	3 405	-2.3%	2 904	2 829	2 751	2 639	-4.1%	5 673	5 536	5 403	5 258	-2.7%
EE	251	252	254	253	-0.3%	70	71	71	72	+1.6%	49	49	50	50	-0.6%	132	132	133	132	-1.1%
IE	6 674	6 593	6 560	6 529	-0.5%	2 087	2 000	1 962	2 057	+4.8%	1 792	1 790	1 741	1 708	-1.9%	2 795	2 804	2 856	2 765	-3.2%
EL	556	542	530	539	+1.7%	151	141	157	154	-1.9%	101	96	91	90	-1.1%	303	305	283	295	+4.2%
ES	6 466	6 511	6 600	6 636	+0.5%	2 492	2 494	2 529	2 541	+0.5%	822	847	857	853	-0.5%	3 151	3 170	3 214	3 242	+0.9%
FR	18 954	18 613	18 173	17 591	-3.2%	5 271	5 304	5 125	4 865	-5.1%	3 381	3 180	3 183	3 064	-3.8%	10 301	10 129	9 865	9 663	-2.0%
HR	451	414	420	423	+0.7%	156	153	151	146	-3.3%	100	96	107	111	+3.7%	195	165	162	166	+2.5%
IT	6 350	6 311	6 377	6 400	+0.4%	1 738	1 703	1 759	1 774	+0.8%	1 501	1 538	1 588	1 595	+0.5%	3 111	3 071	3 030	3 031	+0.0%
CY	67	71	74	78	+4.8%	23	24	25	25	+3.5%	11	12	12	12	+2.8%	33	35	38	40	+6.2%
LV	406	395	395	399	+0.9%	108	106	108	112	+3.0%	70	65	65	65	+1.2%	228	225	222	222	-0.2%
LT	677	654	635	630	-0.8%	180	173	167	169	+1.2%	135	133	132	128	-2.5%	362	348	336	332	-1.1%
LU	198	194	192	191	-0.7%	50	50	50	50	+0.2%	44	42	41	41	-1.1%	103	103	101	100	-1.1%
HU	870	885	909	933	+2.6%	243	251	258	266	+3.1%	179	182	193	195	+1.0%	448	451	458	472	+3.1%
MT	14	14	14	14	+0.1%	4	4	4	4	+5.3%	3	3	3	3	-8.4%	7	7	7	7	+0.9%
NL	4 030	3 690	3 721	3 691	-0.8%	1 594	1 510	1 528	1 510	-1.2%	575	465	440	465	+5.7%	1 860	1 715	1 752	1 716	-2.1%
AT	1 943	1 913	1 880	1 855	-1.3%	624	618	605	599	-1.1%	439	428	426	414	-2.8%	881	866	848	842	-0.6%
PL	6 036	6 183	6 262	6 279	+0.3%	1 713	1 709	1 748	1 735	-0.7%	1 669	1 732	1 757	1 800	+2.5%	2 654	2 742	2 758	2 744	-0.5%
PT	1 670	1 632	1 675	1 691	+1.0%	515	497	531	526	-1.1%	256	236	240	257	+6.9%	900	899	903	909	+0.6%
RO	2 011	1 977	1 923	1 894	-1.5%	432	418	400	394	-1.7%	248	241	223	220	-1.3%	1 330	1 318	1 300	1 280	-1.5%
SI	480	477	483	485	+0.5%	153	153	151	153	+1.3%	128	128	136	133	-1.7%	198	196	197	199	+1.4%
SK	440	439	432	442	+2.2%	125	123	122	126	+3.0%	84	83	83	87	+4.1%	231	232	227	229	+1.0%
FI	875	859	841	835	-0.6%	299	296	287	292	+1.5%	213	210	205	199	-2.6%	363	354	349	344	-1.3%
SE	1 449	1 435	1 405	1 391	-1.0%	474	468	453	464	+2.5%	342	343	339	323	-4.6%	633	625	613	603	-1.6%
EU	79 010	77 840	77 161	76 245	-1.2%	23 964	23 619	23 431	23 187	-1.0%	16 182	15 838	15 764	15 559	-1.3%	38 863	38 382	37 966	37 499	-1.2%
UK	9 787	9 610	9 459			2 956	2 869	2 860			2 413	2 405	2 335			4 417	4 336	4 264		

Source : EStat Newcronos

EU %Var is calculated considering only countries available in 2019 AND 2020

# LIVESTOCK

## DECEMBER SURVEY

# EU EVOLUTION COWS

Dec 1000 Hd	TOTAL COWS				%Var 2020 2019	DAIRY COWS				%Var 2020 2019	OTHER COWS				%Var 2020 2019
	2017	2018	2019	2020		2017	2018	2019	2020		2017	2018	2019	2020	
BE	938	942	939	922	-1.8%	519	529	538	541	+0.6%	419	412	401	381	-5.0%
BG	357	351	343	381	+11.2%	261	244	227	242	+6.8%	97	107	116	139	+20.0%
CZ	571	570	570	560	-1.8%	365	359	361	357	-1.2%	206	212	209	203	-2.9%
DK	664	655	645	646	+0.2%	575	570	563	565	+0.4%	89	85	83	80	-3.6%
DE	4 859	4 751	4 651	4 548	-2.2%	4 199	4 101	4 012	3 921	-2.2%	660	650	640	626	-2.1%
EE	115	116	116	116	-0.4%	86	85	85	84	-0.8%	29	30	31	32	+0.6%
IE	2 362	2 351	2 383	2 379	-0.2%	1 343	1 369	1 426	1 456	+2.1%	1 018	982	957	923	-3.6%
EL	262	269	242	258	+6.6%	97	95	86	86	idem	165	174	156	171	+9.6%
ES	2 822	2 819	2 881	2 909	+1.0%	823	817	813	811	-0.3%	1 998	2 002	2 068	2 099	+1.5%
FR	7 751	7 650	7 505	7 432	-1.0%	3 597	3 554	3 491	3 434	-1.6%	4 154	4 095	4 014	3 998	-0.4%
HR	161	146	142	144	+1.4%	139	136	130	129	-0.8%	22	10	12	15	+25.0%
IT	2 338	2 263	2 237	2 243	+0.3%	2 040	1 939	1 876	1 871	-0.2%	298	324	362	372	+2.8%
CY	30	32	35	37	+4.8%	30	32	35	37	+4.8%	0	0	0	0	idem
LV	199	196	195	196	+0.6%	150	144	138	136	-1.7%	49	52	56	60	+6.5%
LT	323	312	299	295	-1.4%	273	256	241	233	-3.3%	50	56	58	62	+6.4%
LU	78	78	79	78	-1.2%	52	53	54	54	+0.1%	26	25	25	24	-4.1%
HU	395	403	412	414	+0.5%	244	239	243	226	-7.0%	151	164	169	188	+11.2%
MT	6	6	6	6	+1.1%	6	6	6	6	-1.0%	0	0	0	0	+100.0%
NL	1 723	1 594	1 633	1 612	-1.3%	1 665	1 552	1 590	1 569	-1.3%	58	42	43	43	idem
AT	750	733	720	715	-0.6%	543	533	524	525	+0.1%	207	200	195	191	-2.5%
PL	2 341	2 417	2 406	2 391	-0.6%	2 153	2 214	2 167	2 126	-1.9%	188	203	239	266	+10.9%
PT	728	723	731	739	+1.1%	239	235	234	233	-0.6%	490	487	497	507	+1.9%
RO	1 187	1 173	1 166	1 148	-1.5%	1 175	1 158	1 139	1 122	-1.5%	12	15	27	26	-3.0%
SI	169	166	166	167	+0.6%	109	103	101	99	-1.8%	60	64	65	68	+4.3%
SK	195	195	192	191	-0.3%	130	128	126	122	-3.2%	65	67	66	69	+5.3%
FI	329	322	318	316	-0.6%	271	264	259	256	-1.3%	58	58	59	61	+2.3%
SE	522	514	500	499	-0.2%	323	313	301	304	+1.0%	199	201	198	194	-2.1%
EU	32 176	31 749	31 513	31 344	-0.5%	21 409	21 029	20 766	20 545	-1.1%	10 767	10 719	10 748	10 796	+0.4%
UK	3 443	3 382	3 337			1 904	1 879	1 867			1 540	1 503	1 470		

Source : EStat Newcronos

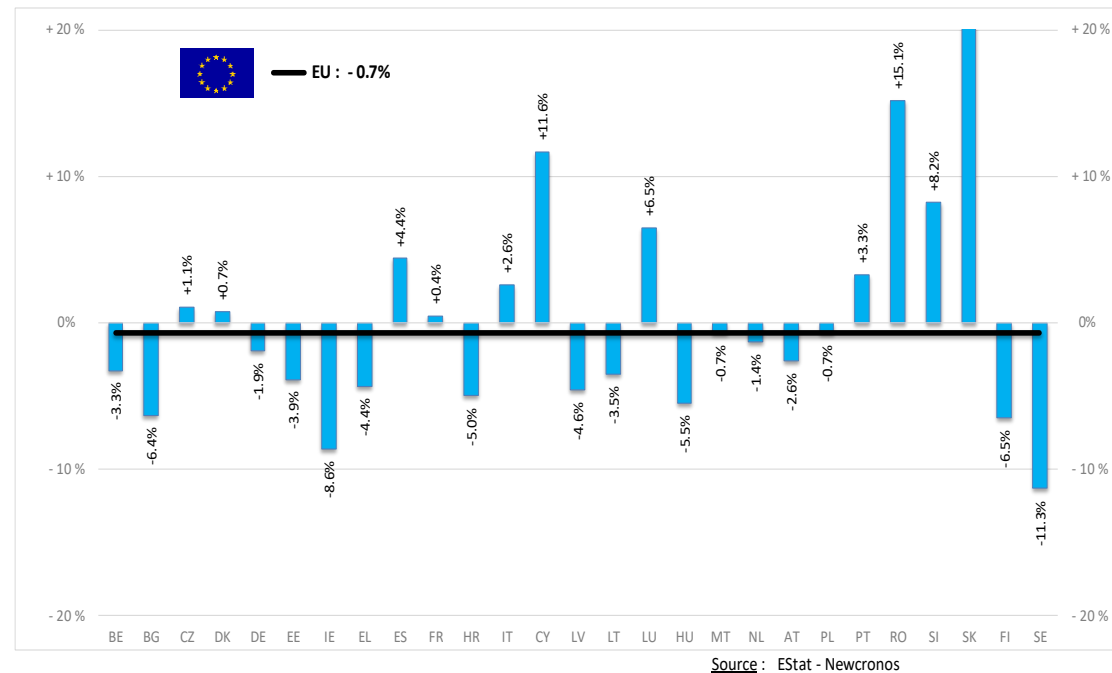
EU %Var is calculated considering only countries available in 2019 AND 2020

# PRODUCTION

# % EVOLUTION HEADS

HEADS	Jan-Apr 21/20
	<b>EU</b>
Bull	-0.6%
Bullock	-2.9%
Cow	+0.3%
Heifer	+0.1%
Calve	-2.7%
Young cattle	-0.6%
Meat of bovine animals	-0.7%

Estimates for last month of period :

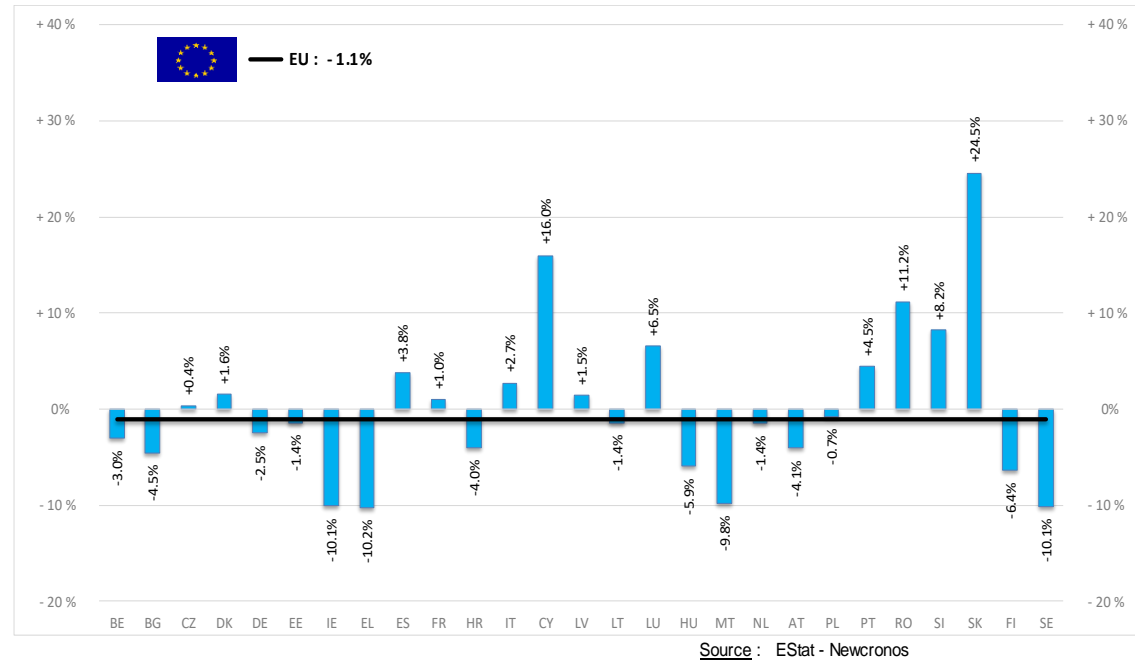


# PRODUCTION

# % EVOLUTION TONNES

TONNES	Jan-Apr 21/20
<b>EU</b>	<b>-1.1%</b>
Bull	-2.1%
Bullock	-3.5%
Cow	-0.6%
Heifer	+0.8%
Calve	-0.0%
Young cattle	-2.6%
Meat of bovine animals	-1.1%

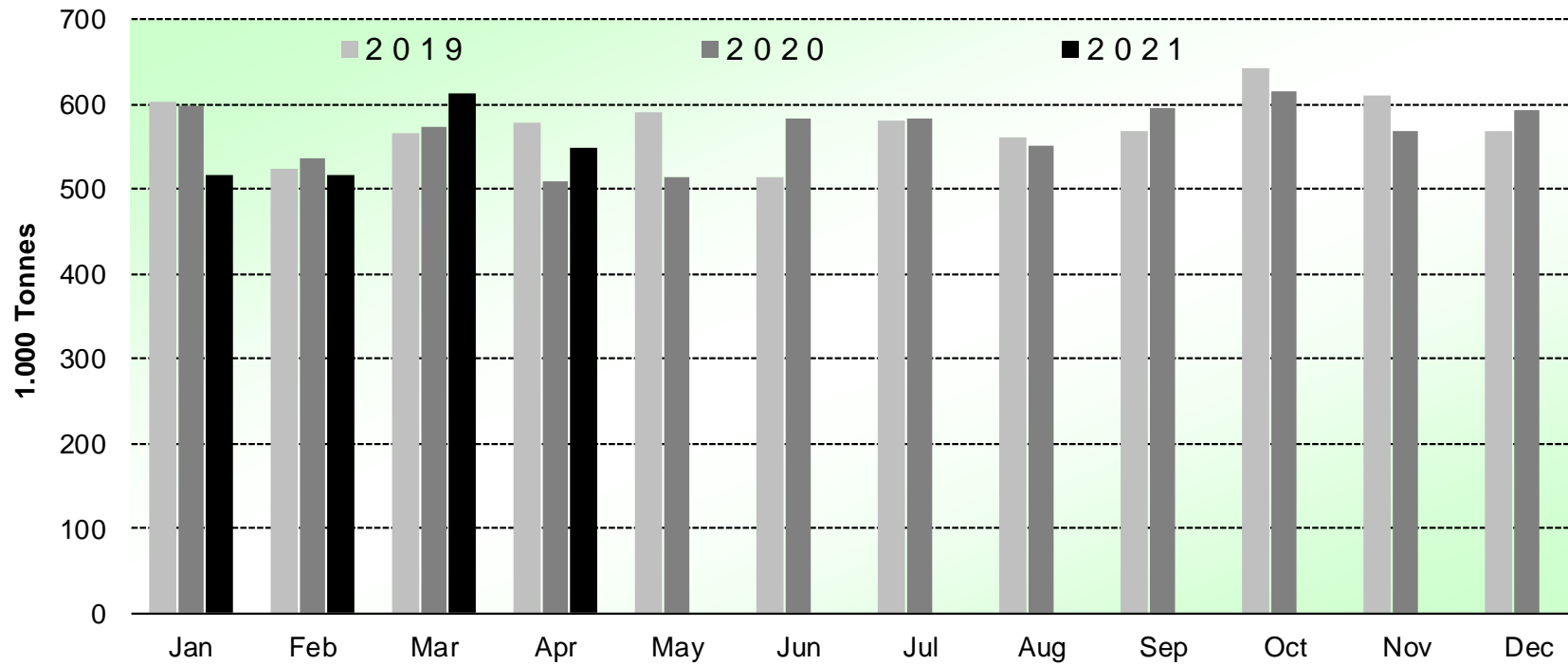
Estimates for last month of period :



# PRODUCTION

HISTORIC  
TONNES

## Beef & Veal Production (EU Slaughtering) - Tonnes



Source: EStat-Newcronos

# PRICES CARCASSES

Dashboard

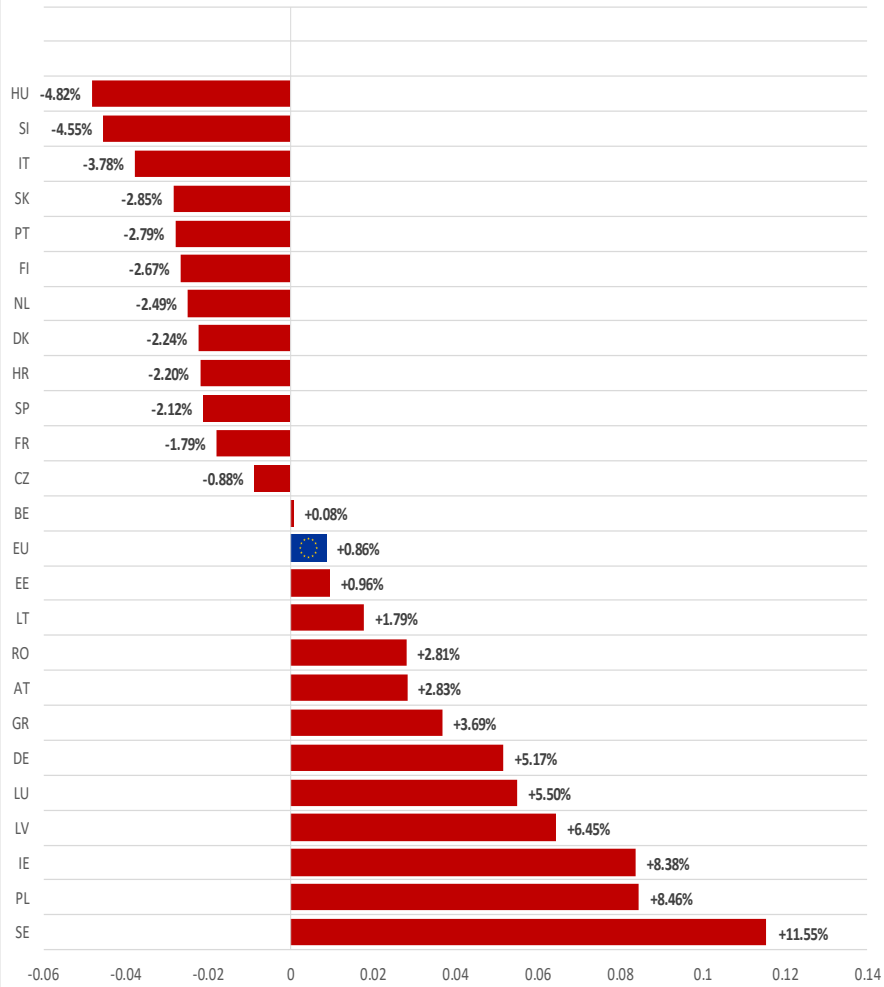
EU Prices week		27	Evolution since last week	Evolution since last month	Evolution since last year
Carcasse	Average A/C/Z-R3	380.8	+ 0.1%	+ 0.6%	+ 8.9%
	Young Bovines (Z)	374.1	+ 1.3%	+ 2.2%	+ 1.3%
	Young Bulls (A)	376.8	+ 0.0%	+ 0.1%	+ 8.9%
	Steers (C)	418.5	- 0.8%	+ 1.4%	+ 14.5%
	Cows (D)	322.5	+ 0.1%	+ 1.9%	+ 16.8%
	Heifers (E)	398.1	- 0.2%	+ 1.5%	+ 9.8%
Live Animals	Male Calves Dairy Type	111.4	- 3.7%	+ 2.5%	+ 27.1%
	Male Calves Beef Type	240.1	- 0.4%	+ 3.6%	+ 13.1%
	Young Store Cattle	2.62	+ 0.2%	- 0.0%	+ 8.0%
	Yearling Male Store Cattle	2.38	+ 0.3%	+ 2.3%	+ 1.5%
	Yearling Female Store Cattle	2.53	+ 0.3%	+ 1.0%	+ 7.3%
	Calves slaughtered <8M	475.7	+ 0.4%	+ 0.1%	+ 16.5%

Sources : MSs notifications (Regulation (EU) 1182/2017 and 1184/2017)

# PRICES CARCASSES

# EU EVOLUTION A/C/Z.R3

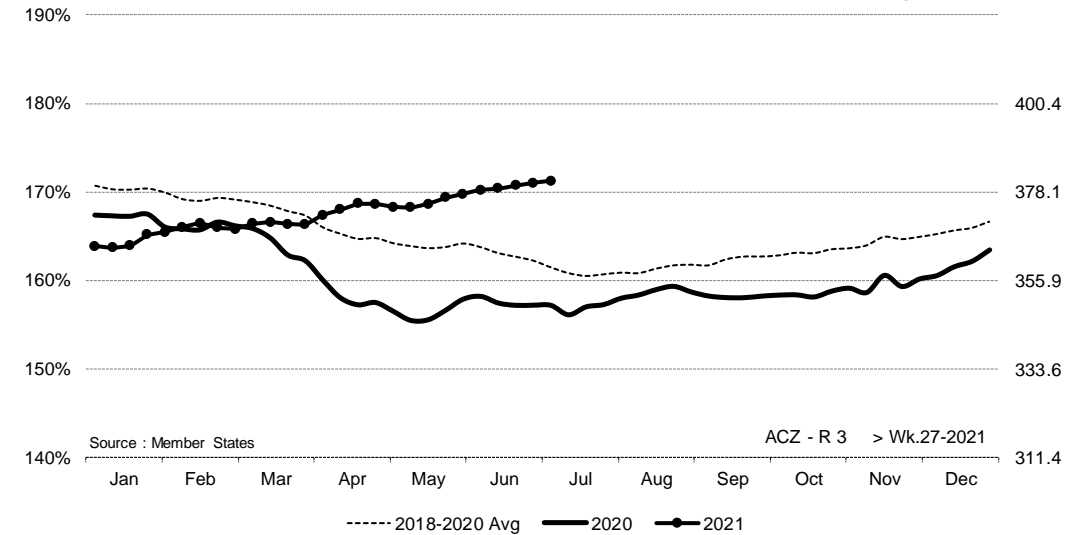
EU ACZ R3 Price Comparison between average monthly price July 2020 - June 2021 compared to July 2019 - June 2020



ACZ - R 3 > Wk.27-2021

% of Reference Price

€/100 kg cwe



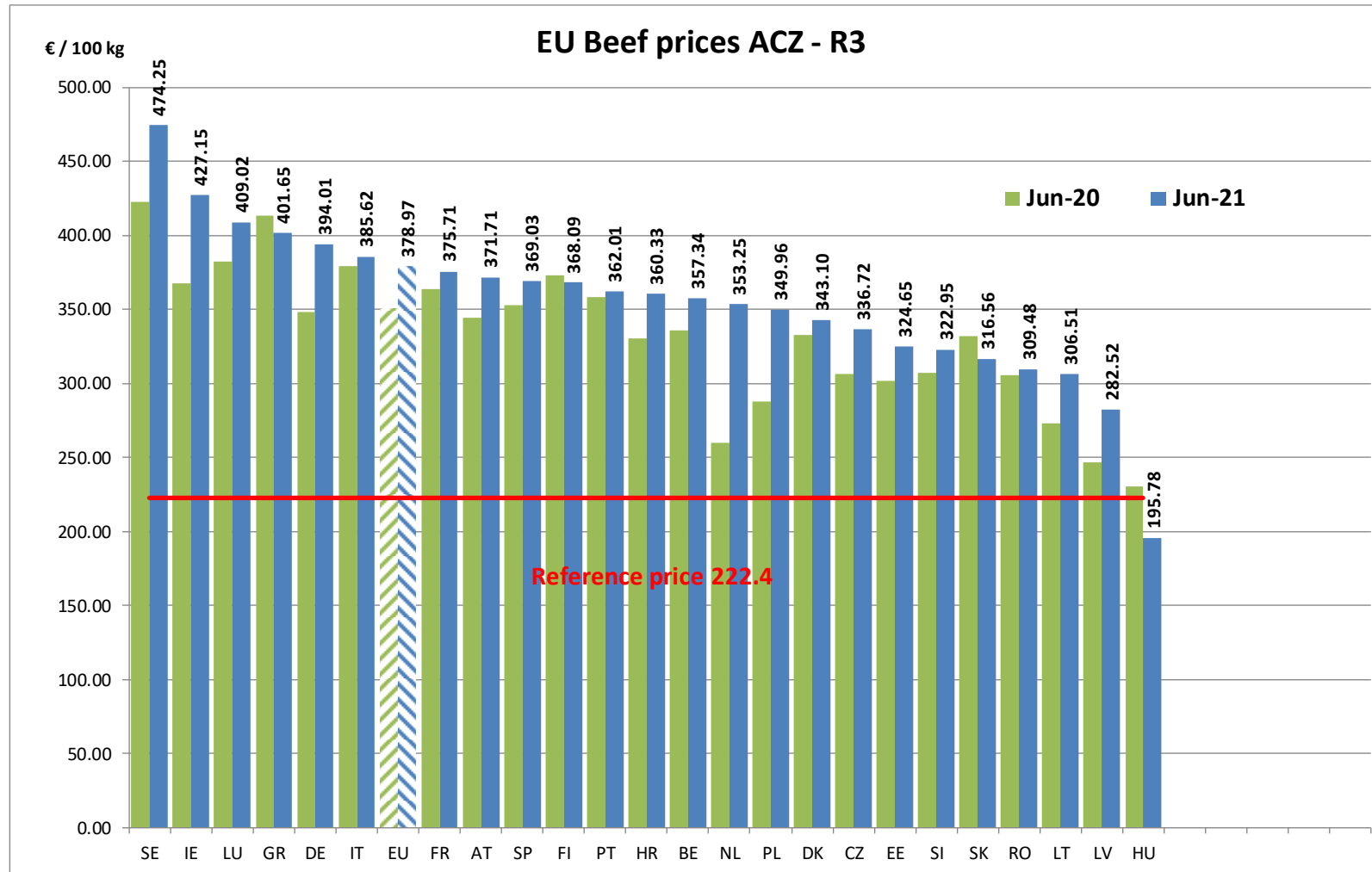
Price in week 27 : **380.85**  
% change y/y : **+ 8.95%**  
% Ref. Price in wk 27 : **171.2%**

Average price in June 2021 : **378.92**  
% change y/y : **+ 8.19%**



# PRICES CARCASSES

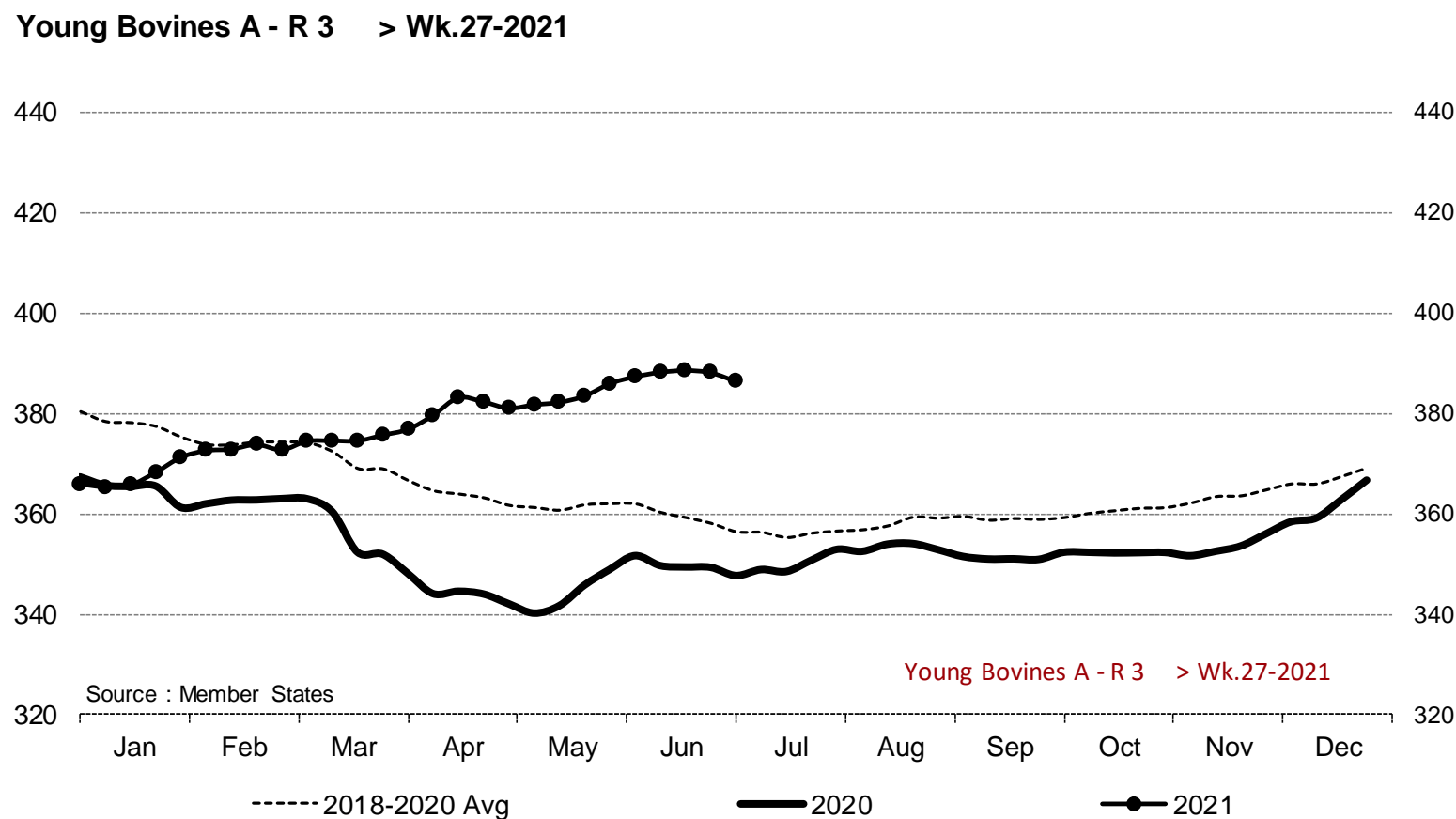
## EU EVOLUTION A/C/Z.R3



# PRICES CARCASSES

# EU EVOLUTION YOUNG BULL – A.R3

Young Bovines A - R 3 > Wk.27-2021

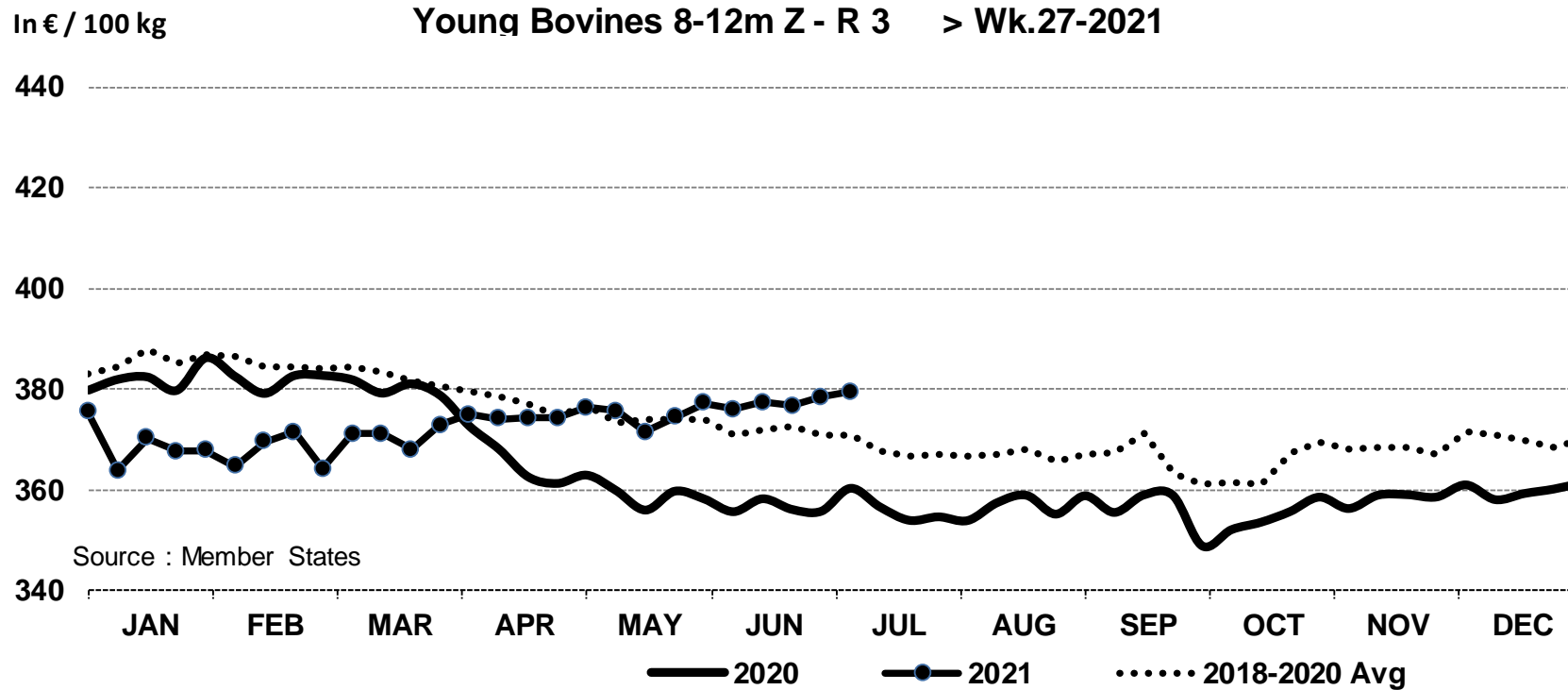


Price in week 27 : **386.37**  
% change y/y : **+ 11.1%**

Average price in June 2021 : **387.63**  
% change y/y : **+ 10.8%**

# PRICES CARCASSES

## E.U. EVOLUTION YOUNG BOVINE 8-12M- Z.R3



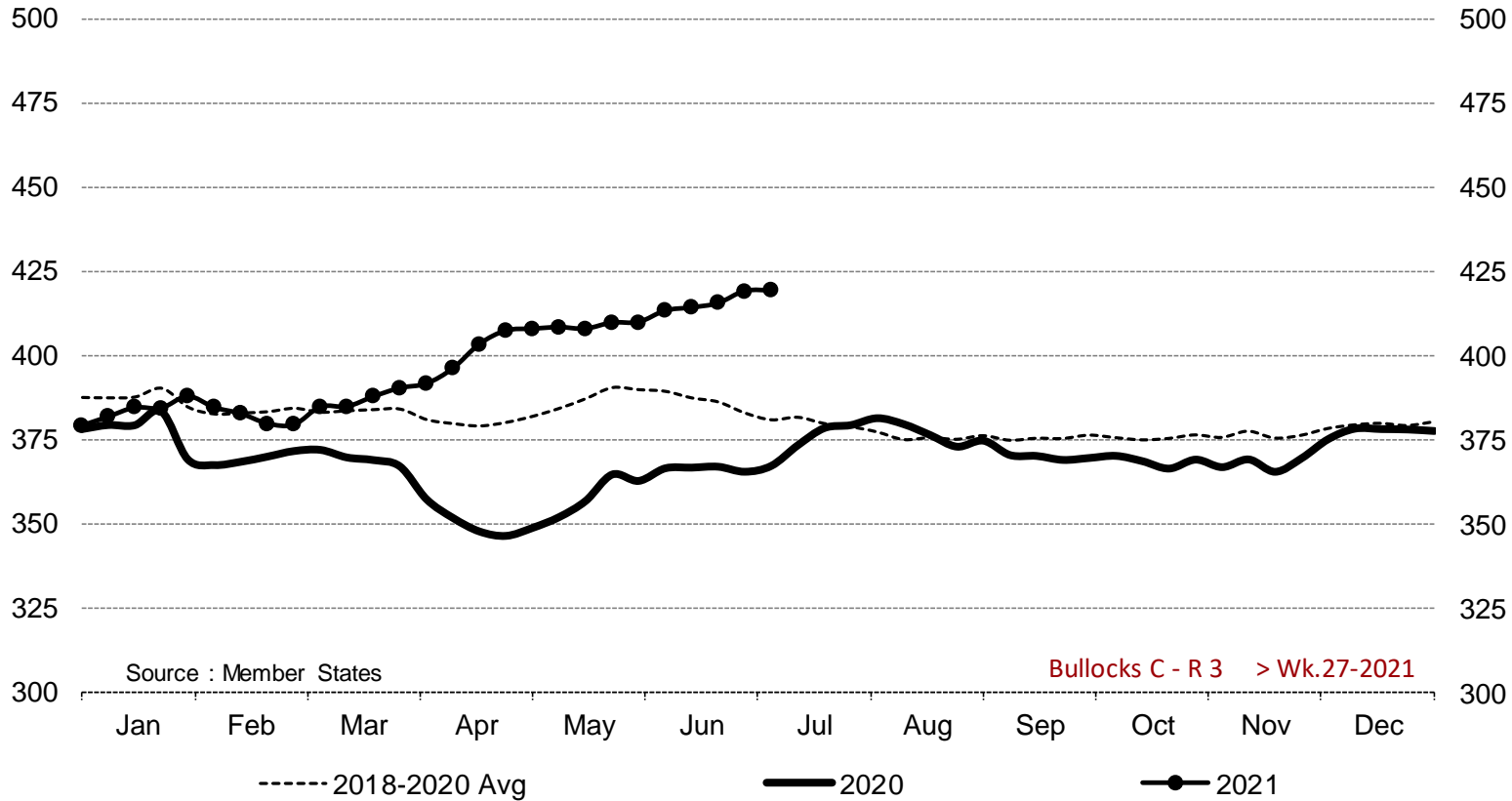
Price in week 27 : **379.55**      09/06/2021  
% change y/y : **+ 5.4%**

Average price in June 2021 : **376.95**  
% change y/y : **+ 5.7%**

# PRICES CARCASSES

## E.U. EVOLUTION STEER – C.R3

Bullocks C - R 3 > Wk.27-2021



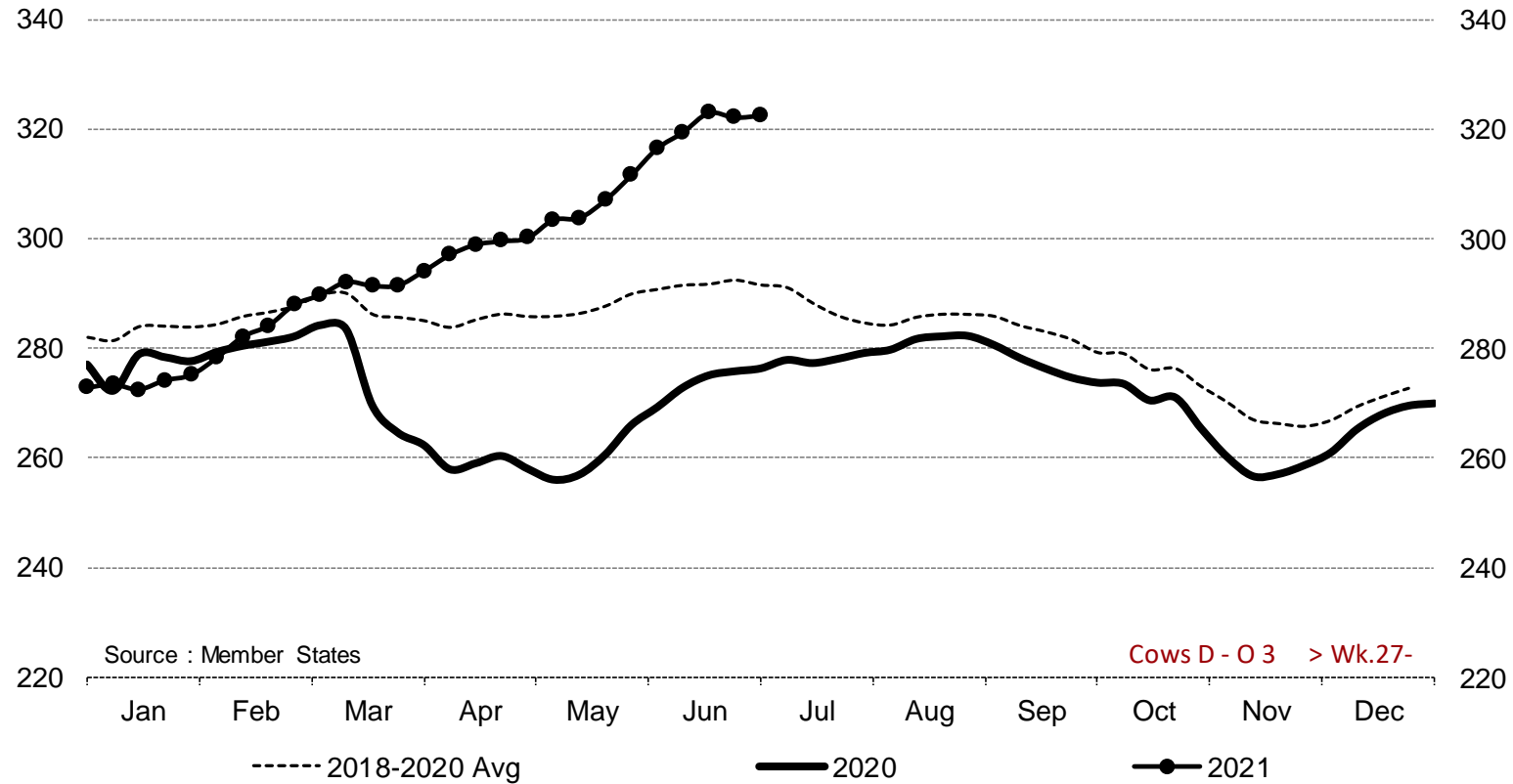
Price in week 27 : **419.15**  
% change y/y : **+ 14.1%**

Average price in June 2021 : **413.83**  
% change y/y : **+ 12.9%**

# PRICES CARCASSES

E.U. EVOLUTION  
COW – D.03

Cows D - O 3 > Wk.27-2021



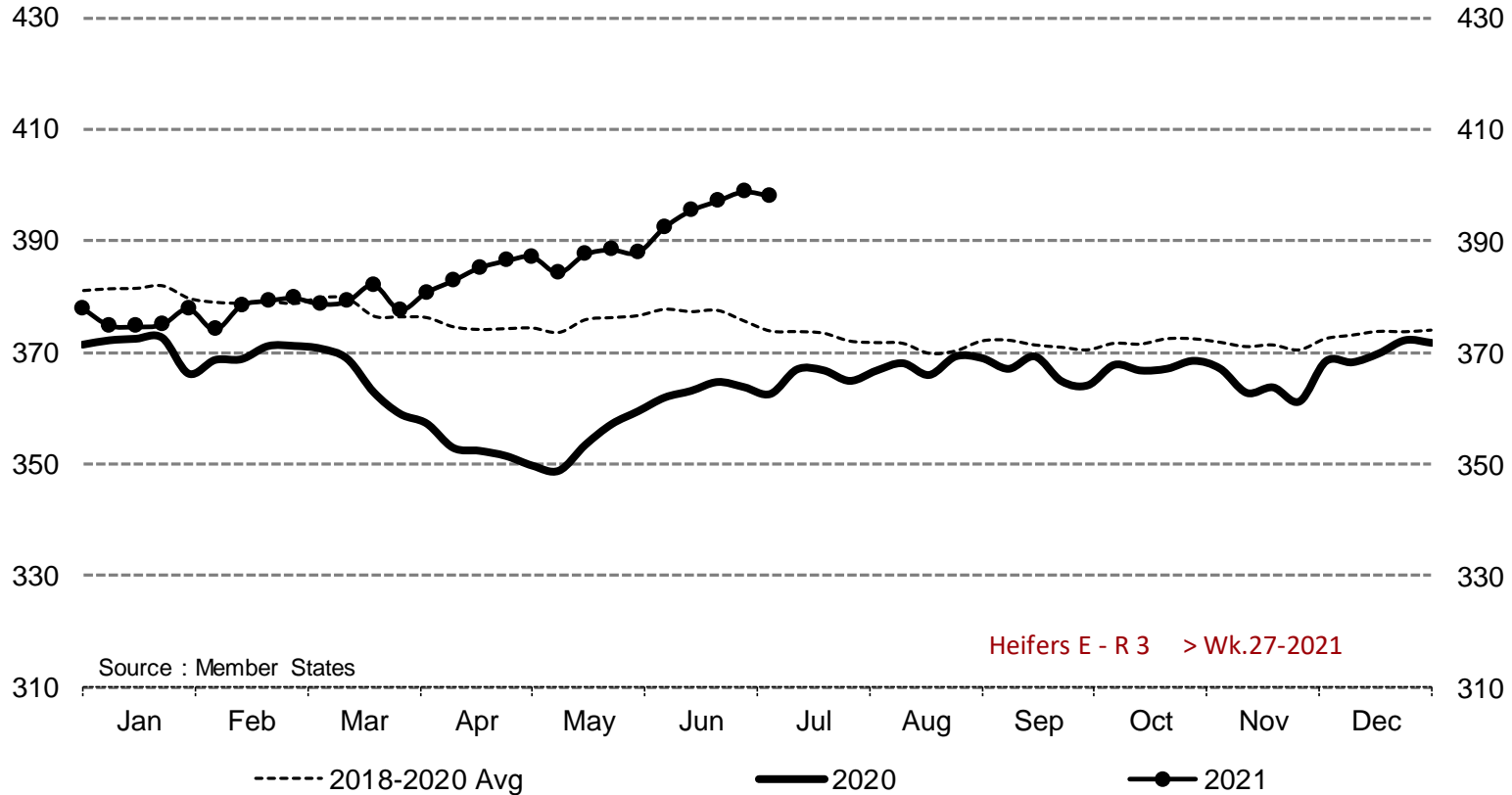
Price in week 27 : **322.57**  
% change y/y : **+ 16.8%**

Average price in June 2021 : **318.32**  
% change y/y : **+ 16.4%**

# PRICES CARCASSES

## EU EVOLUTION HEIFER - E.R3

Heifers E - R 3 > Wk.27-2021

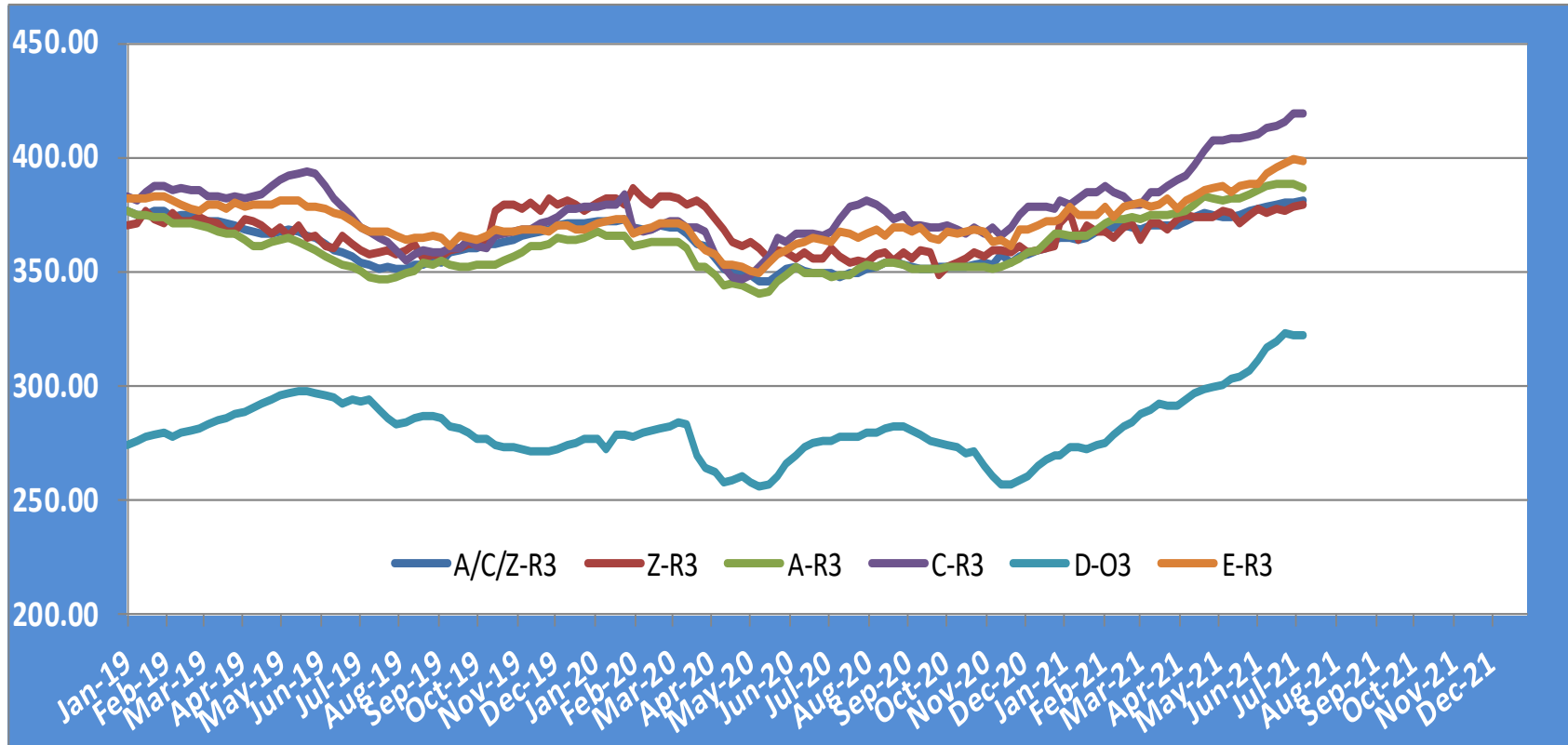


Price in week 27 : **398.12**  
% change y/y : **+ 9.8%**

Average price in June 2021 : **394.00**  
% change y/y : **+ 8.4%**

# PRICES CARCASSES

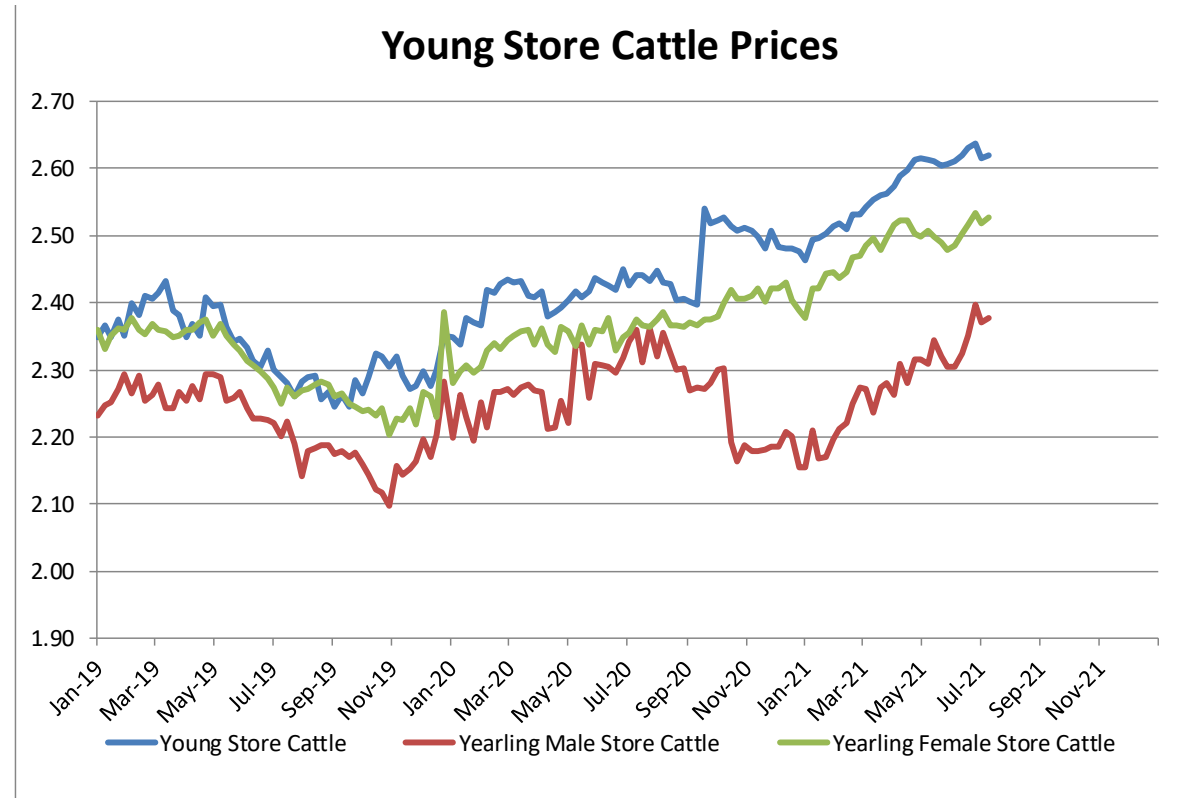
## EU EVOLUTION All CAT GLOBAL VIEW



# PRICES LIVE BOVINES

## EU EVOLUTION STORE CATTLE

Store cattle (€/100 kg live weight)



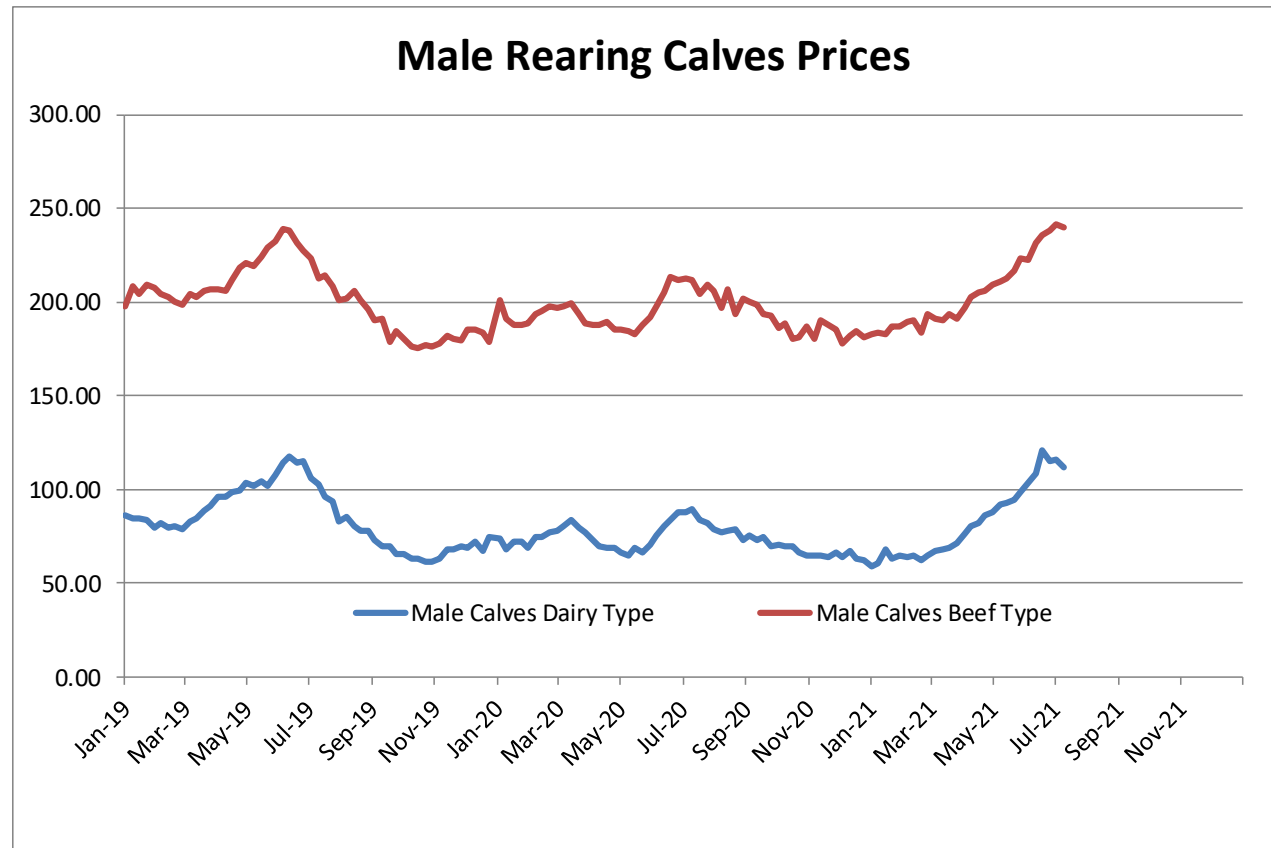
<b>Young Store Cattle Price in</b>	<b>Week 27</b>	<b>2.62</b>	<b>Yearling Male Store Cattle Price</b>	<b>2.38</b>
	Change y/y	+7.98%	Change y/y	+1.52%
<b>Yearling Female Store Cattle Price</b>		<b>2.53</b>		
	Change y/y	+7.27%		



# PRICES LIVE BOVINES

## EU EVOLUTION Male Calves – 8D4W

Male calves aged between 8 days and 4 weeks (€/head)

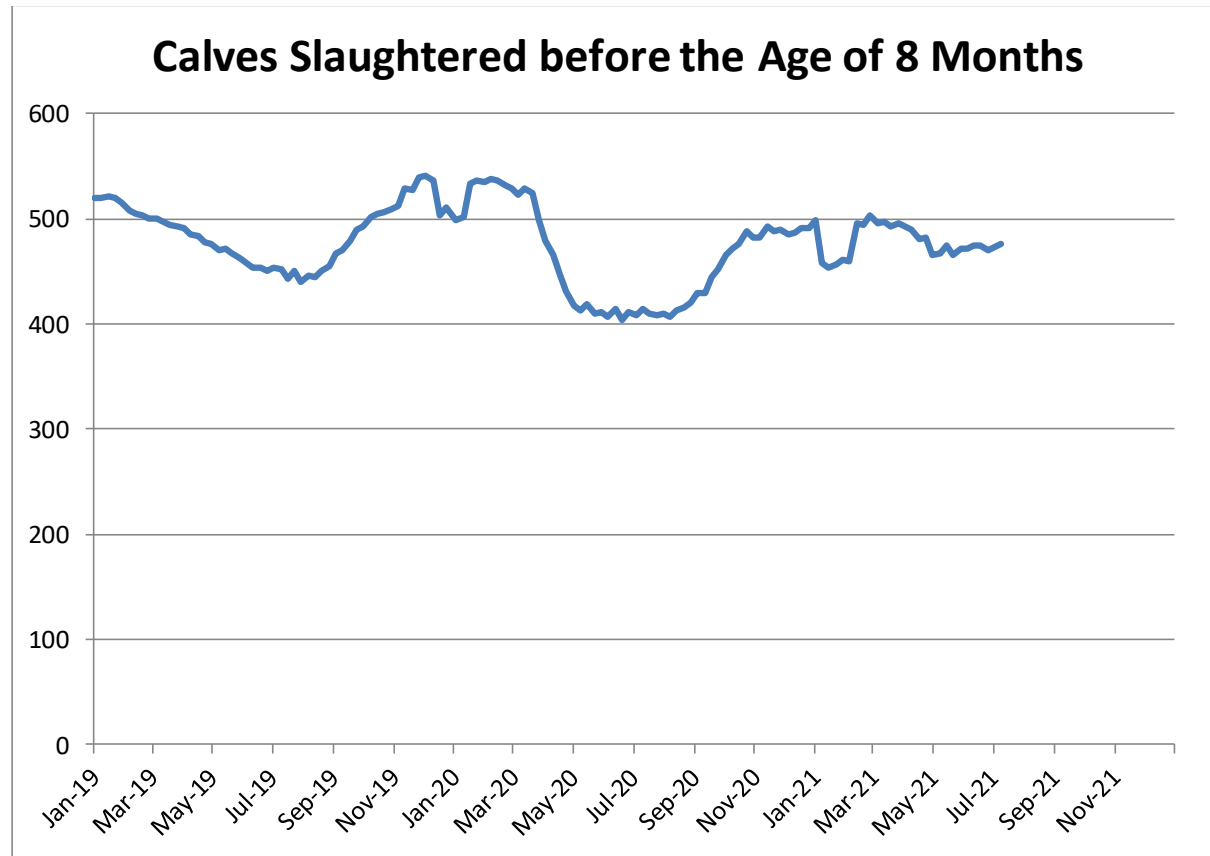


Male Rearing Calves Beef type		Male Rearing Calves Dairy type	
Price in Week 27	240.14	Price in Week 27	111.48
Change y/y	+13.07%	Change y/y	+27.06%

# PRICES LIVE BOVINES

## EU EVOLUTION Butcher Calves

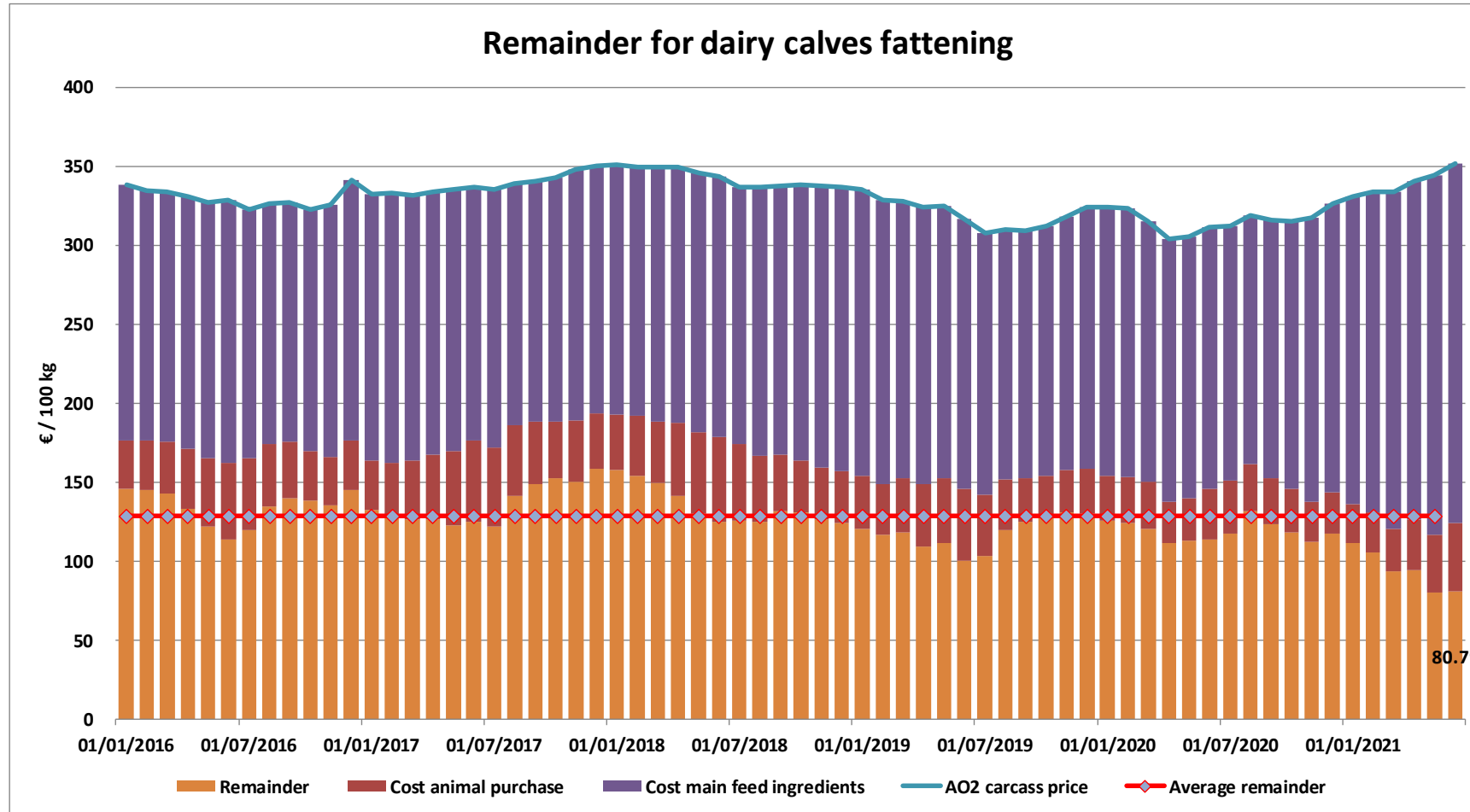
Calves slaughtered before the age of less than 8 months  
(€/100 kg cw)



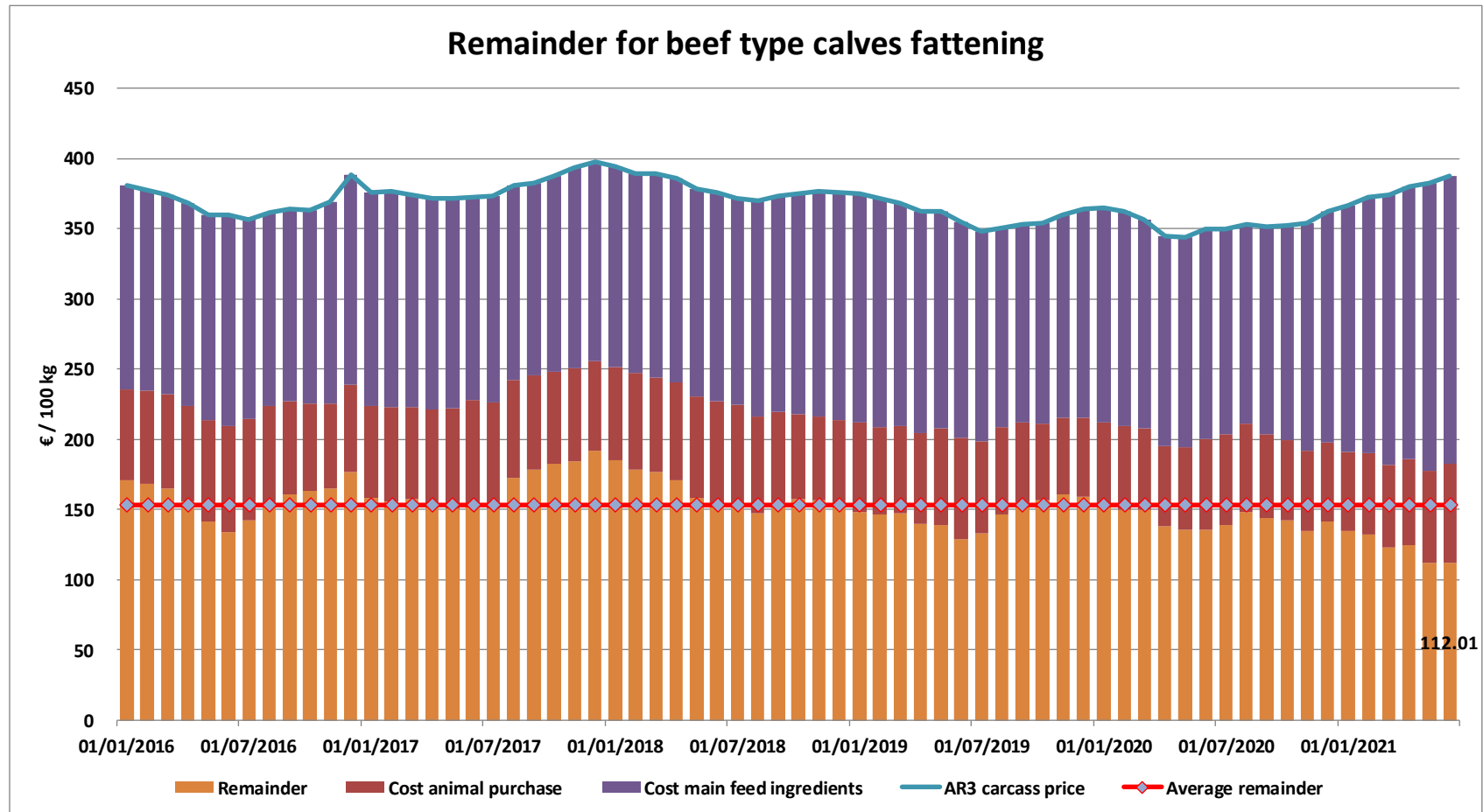
Price in Week 27 **475.70 € / 100 kg of carcasse weight**  
Change y/y +16.53%

22 July 2021

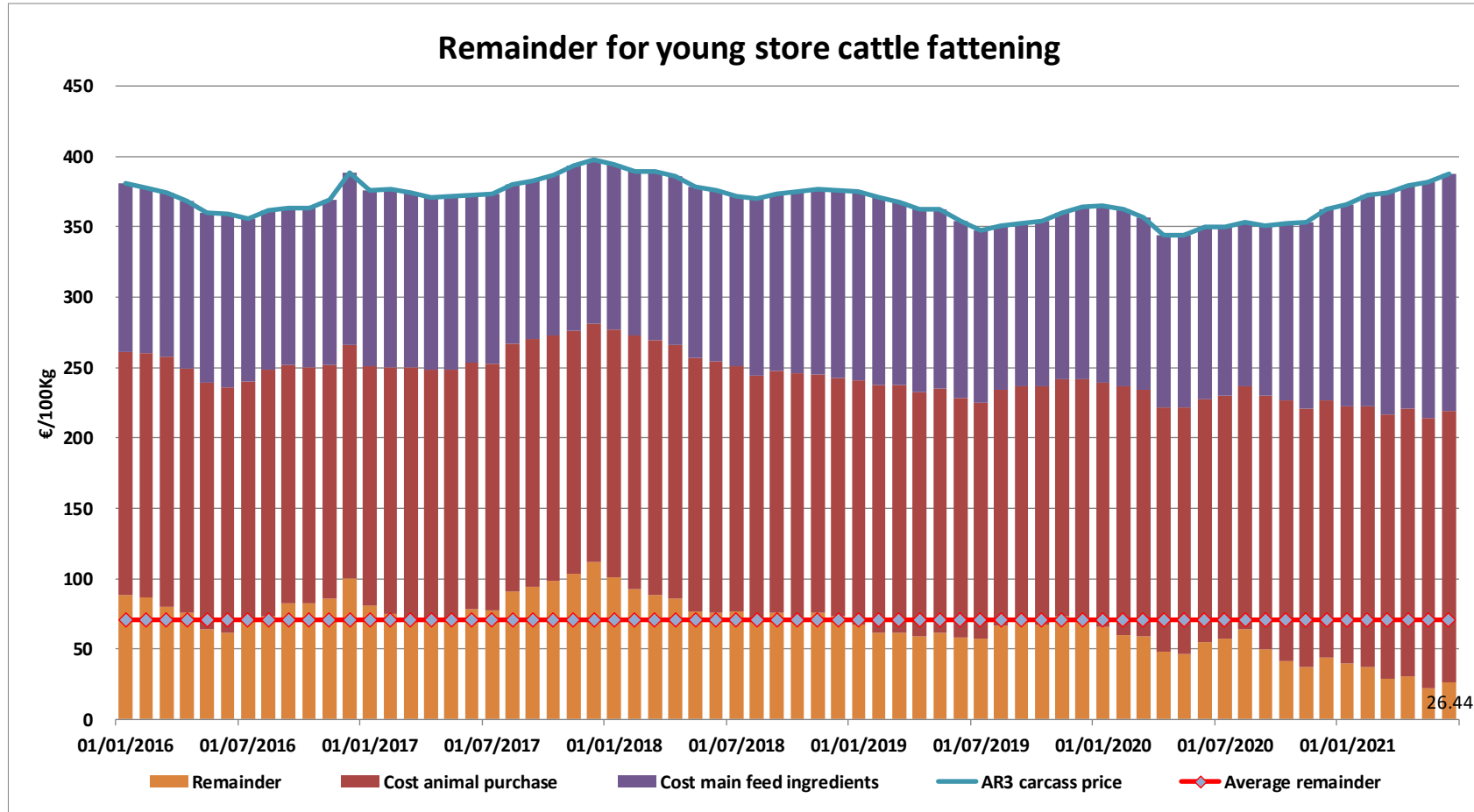
# REMAINDERS



# REMAINDERS



# REMAINDERS



# TRADE

# EU EXPORTS

## Beef & Live Animals

### EU Exports of Beef and Live Animals (1): Trade figures (COMEXT – tonnes cwe)

Destinations	2017		2018		2019		2020		Jan-May 21		Compared to
	tonnes	%	tonnes	%	tonnes	%	tonnes	%	tonnes	%	
Israel	44 196	6.1%	47 774	6.8%	49 629	7.1%	56 965	8.1%	25 723	8.7%	+ 32.3%
Hong Kong	76 086	10.4%	55 537	7.9%	46 748	6.7%	56 860	8.1%	21 989	7.4%	+ 0.6%
Philippines	37 102	5.1%	28 766	4.1%	34 158	4.9%	39 920	5.7%	20 491	6.9%	+ 37.5%
Ghana	37 744	5.2%	36 766	5.2%	39 196	5.6%	47 408	6.7%	20 244	6.8%	+ 6.8%
Bosnia-Herz.	34 711	4.8%	38 762	5.5%	41 119	5.9%	35 758	5.1%	15 777	5.3%	+ 20.7%
Algeria	26 305	3.6%	35 410	5.0%	57 152	8.2%	39 416	5.6%	15 107	5.1%	- 20.2%
Ivory Coast	36 038	4.9%	36 064	5.1%	33 396	4.8%	32 460	4.6%	13 245	4.5%	- 3.9%
Switzerland	26 708	3.7%	23 761	3.4%	25 188	3.6%	29 996	4.3%	12 775	4.3%	+ 23.2%
Lebanon	38 322	5.3%	42 542	6.1%	36 393	5.2%	33 656	4.8%	11 577	3.9%	- 20.6%
Norway	12 850	1.8%	7 925	1.1%	7 667	1.1%	12 936	1.8%	10 957	3.7%	+ 159.7%
Libya	27 848	3.8%	27 878	4.0%	24 541	3.5%	21 971	3.1%	9 221	3.1%	- 9.4%
Kosovo	6 377	0.9%	6 693	1.0%	10 279	1.5%	10 912	1.5%	6 421	2.2%	+ 66.0%
Ukraine	7 331	1.0%	10 465	1.5%	13 836	2.0%	15 857	2.3%	6 417	2.2%	+ 13.2%
Canada	2 424	0.3%	2 225	0.3%	6 806	1.0%	20 475	2.9%	6 360	2.1%	- 10.7%
Japan	4 281	0.6%	3 452	0.5%	8 007	1.1%	11 885	1.7%	6 200	2.1%	- 0.8%
Saudi Arabia	6 253	0.9%	2 521	0.4%	2 809	0.4%	9 707	1.4%	6 031	2.0%	+ 14.1%
<i>Other Destinations</i>	<i>304 942</i>	<i>41.8%</i>	<i>295 699</i>	<i>42.1%</i>	<i>263 666</i>	<i>37.6%</i>	<i>228 478</i>	<i>32.4%</i>	<i>87 301</i>	<i>29.5%</i>	
<b>Total (without UK)</b>	<b>729 519</b>		<b>702 242</b>		<b>700 590</b>		<b>704 659</b>		<b>295 836</b>		
% change			- 4%		- 0%		+ 1%		+ 4.7%		

# TRADE

# EU EXPORTS

## Beef

### EU Exports of Beef: Trade figures (COMEXT – tonnes cwe)

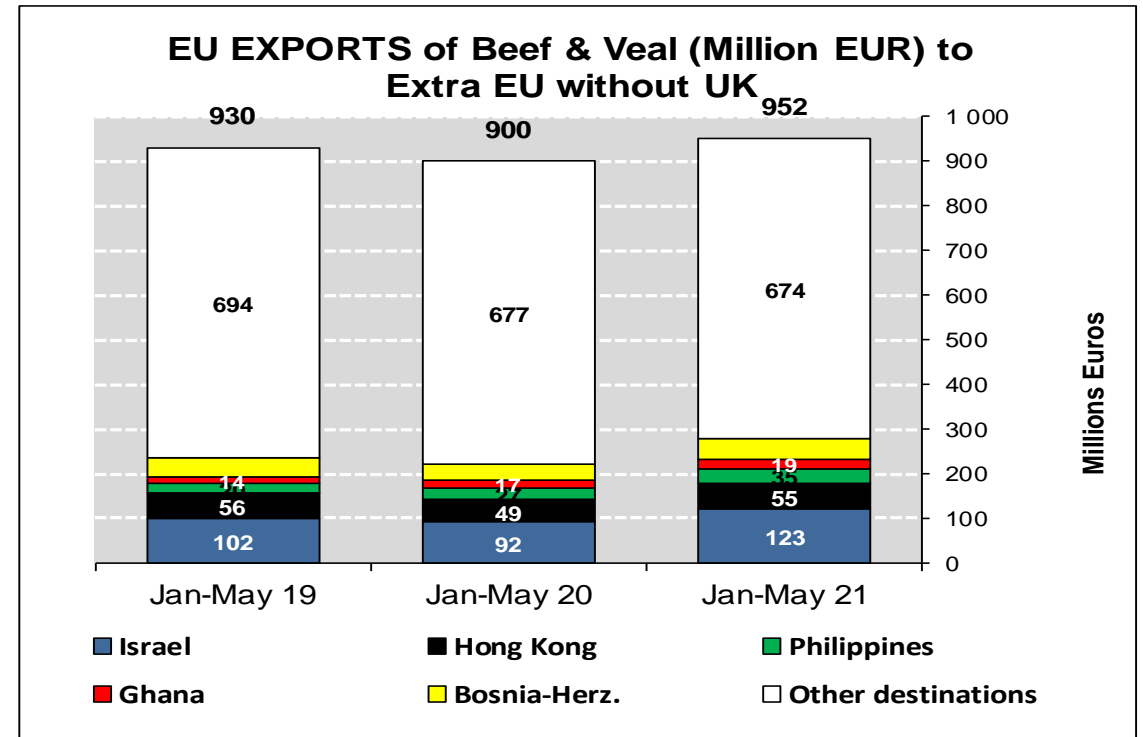
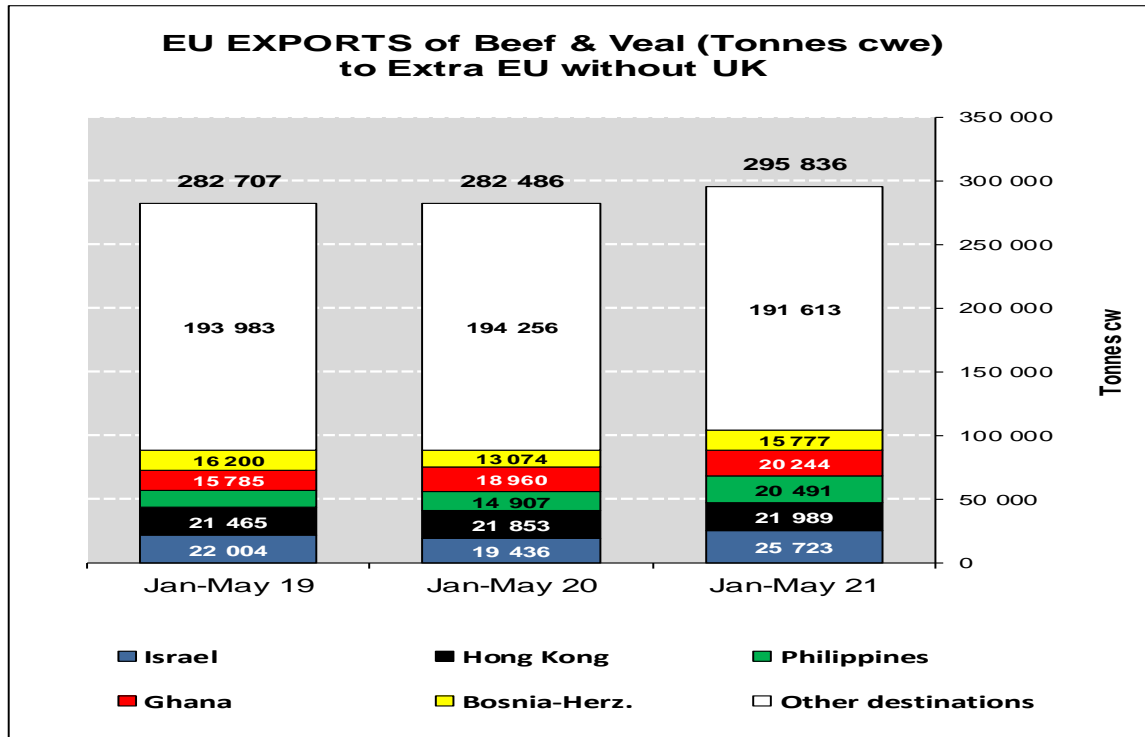
Destinations	2017		2018		2019		2020		Jan-May 21		Compared to
	tonnes	%	tonnes	%	tonnes	%	tonnes	%	tonnes	%	
Hong Kong	76 086	15.4%	55 537	11.9%	46 748	9.8%	56 860	11.6%	21 989	10.6%	+ 0.6%
Philippines	37 102	7.5%	28 766	6.2%	34 158	7.2%	39 920	8.1%	20 491	9.9%	+ 37.5%
Ghana	37 744	7.7%	36 766	7.9%	39 196	8.2%	47 408	9.7%	20 244	9.8%	+ 6.8%
Bosnia-Herz.	32 181	6.5%	36 152	7.7%	38 806	8.2%	33 459	6.8%	14 632	7.1%	+ 19.7%
Ivory Coast	36 028	7.3%	36 064	7.7%	33 396	7.0%	32 460	6.6%	13 245	6.4%	- 3.9%
Switzerland	25 570	5.2%	22 711	4.9%	24 110	5.1%	28 941	5.9%	12 067	5.8%	+ 23.2%
Norway	12 849	2.6%	7 922	1.7%	7 667	1.6%	12 936	2.6%	10 957	5.3%	+++
Israel	18 750	3.8%	22 163	4.7%	23 026	4.8%	21 967	4.5%	7 414	3.6%	+ 3.6%
Canada	2 424	0.5%	2 225	0.5%	6 806	1.4%	20 475	4.2%	6 360	3.1%	- 10.7%
Japan	4 281	0.9%	3 452	0.7%	8 007	1.7%	11 885	2.4%	6 200	3.0%	- 0.8%
Ukraine	6 926	1.4%	9 887	2.1%	12 893	2.7%	14 861	3.0%	6 072	2.9%	+ 8.8%
USA	3 756	0.8%	5 458	1.2%	7 867	1.7%	12 310	2.5%	5 262	2.5%	+ 36.1%
North Macedonia	11 285	2.3%	10 002	2.1%	11 395	2.4%	10 551	2.1%	5 135	2.5%	+ 27.1%
South Africa	4 555	0.9%	7 214	1.5%	5 442	1.1%	7 743	1.6%	4 346	2.1%	+++
Vietnam	12 146	2.5%	8 163	1.7%	10 014	2.1%	6 367	1.3%	3 816	1.8%	+ 56.7%
Angola	10 982	2.2%	11 470	2.5%	8 410	1.8%	9 410	1.9%	2 897	1.4%	- 25.4%
<i>Other Destinations</i>	<i>160 448</i>	<i>32.5%</i>	<i>163 231</i>	<i>34.9%</i>	<i>157 699</i>	<i>33.2%</i>	<i>123 503</i>	<i>25.2%</i>	<i>46 303</i>	<i>22.3%</i>	
<b>Total (without UK)</b>	<b>493 112</b>		<b>467 183</b>		<b>475 639</b>		<b>491 056</b>		<b>207 430</b>		
% change			- 5%		+ 2%		+ 3%		+ 4.1%		

# TRADE

## EU Exports of Beef and Live Animals: Trade figures (COMEXT)

# EU EXPORTS

## Beef & Live Animals

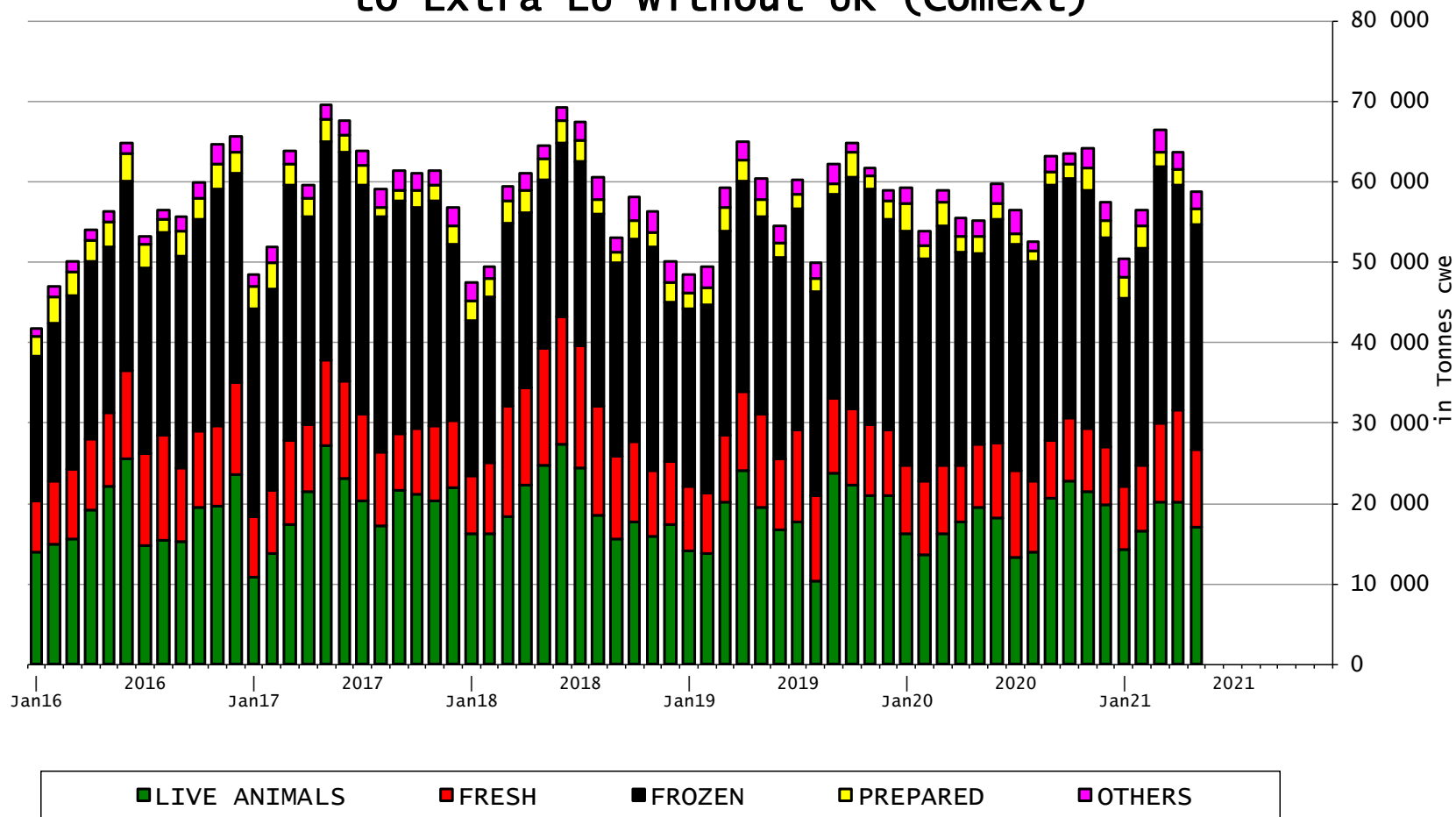




# TRADE

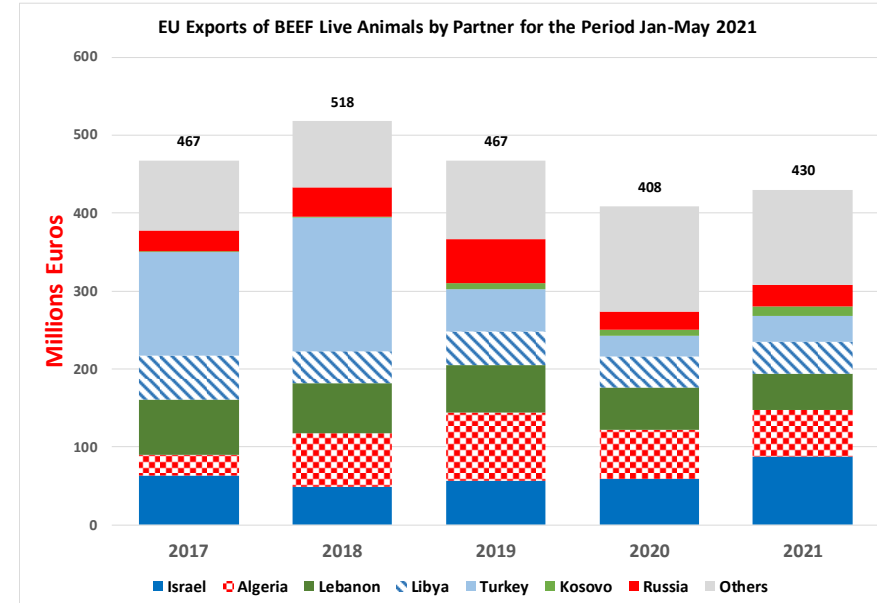
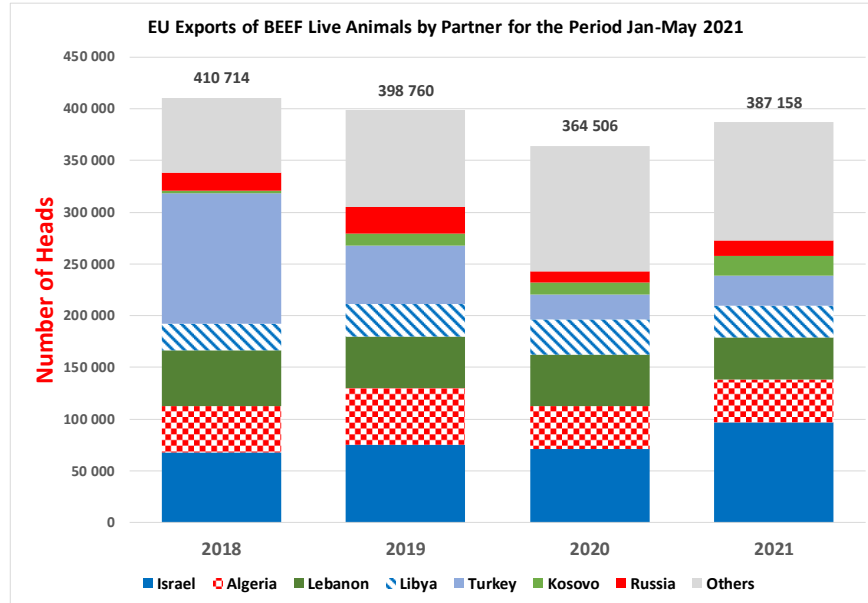
## EU EXPORTS Beef Products

EU Exports of BEEF products  
to Extra EU without UK (Comext)



# TRADE

# EU EXPORTS Live Animals



# TRADE

## EU IMPORTS Beef & Live Animals

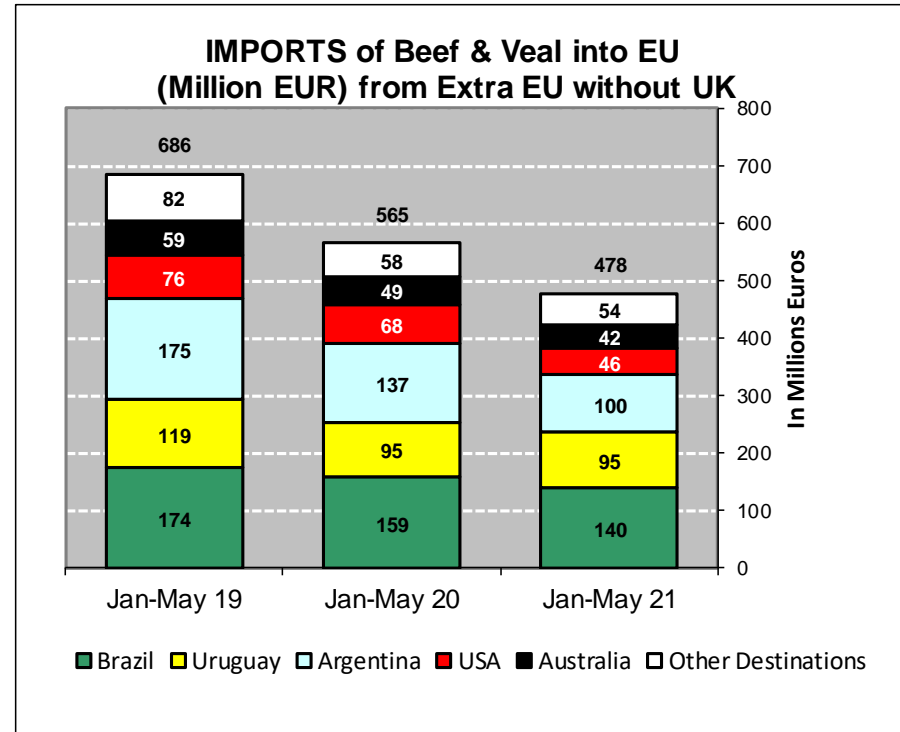
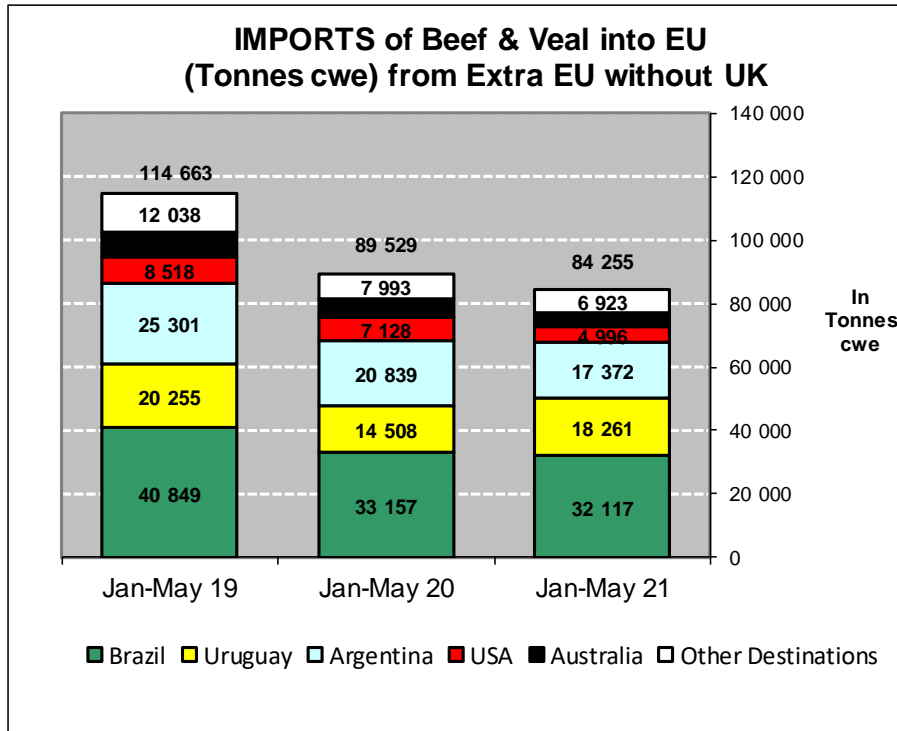
### EU Imports of Beef and Live Animals (1): Trade Figures (COMEXT – tonnes cwe)

Origins	2017		2018		2019		2020		Jan-May 21		Compared to
	tonnes	%	tonnes	%	tonnes	%	tonnes	%	tonnes	%	
Brazil	86 927	33.9%	103 979	37.3%	99 569	36.4%	84 172	37.6%	32 117	38.1%	- 3.1%
Uruguay	52 078	20.3%	47 922	17.2%	40 483	14.8%	34 595	15.4%	18 261	21.7%	+ 25.9%
Argentina	49 259	19.2%	61 400	22.0%	65 324	23.9%	56 421	25.2%	17 372	20.6%	- 16.6%
USA	21 624	8.4%	19 268	6.9%	16 852	6.2%	16 532	7.4%	4 996	5.9%	- 29.9%
Australia	18 193	7.1%	17 368	6.2%	16 516	6.0%	11 058	4.9%	4 586	5.4%	- 22.3%
Switzerland	5 105	2.0%	5 413	1.9%	4 401	1.6%	4 197	1.9%	1 952	2.3%	+ 17.3%
New Zealand	6 806	2.7%	7 165	2.6%	6 726	2.5%	6 145	2.7%	1 473	1.7%	- 42.3%
Paraguay	5 922	2.3%	5 520	2.0%	5 203	1.9%	4 234	1.9%	876	1.0%	- 48.6%
Canada	512	0.2%	1 343	0.5%	2 518	0.9%	1 550	0.7%	709	0.8%	+++
N.det.Extra	72	0.0%	127	0.0%	196	0.1%	94	0.0%	454	0.5%	+++
Japan	645	0.3%	791	0.3%	997	0.4%	789	0.4%	341	0.4%	+ 48.0%
Serbia	565	0.2%	1 134	0.4%	1 062	0.4%	931	0.4%	274	0.3%	- 33.6%
Namibia	5 043	2.0%	3 442	1.2%	7 706	2.8%	1 445	0.6%	265	0.3%	- 51.8%
Norway	388	0.2%	153	0.1%	129	0.0%	336	0.2%	130	0.2%	+++
South Africa	42	0.0%	0	0.0%	74	0.0%	70	0.0%	103	0.1%	+++
Botswana	2 686	1.0%	3 119	1.1%	4 950	1.8%	788	0.4%	85	0.1%	- 70.9%
<i>Other Destinations</i>	863	0.3%	700	0.3%	701	0.3%	585	0.3%	261	0.3%	
<b>Total (without UK)</b>	<b>256 731</b>		<b>278 843</b>		<b>273 408</b>		<b>223 942</b>		<b>84 255</b>		
% change			+ 9%		- 2%		- 18%		- 5.9%		

# TRADE

## EU Imports of Beef and Live Animals (2): Trade Figures (COMEXT)

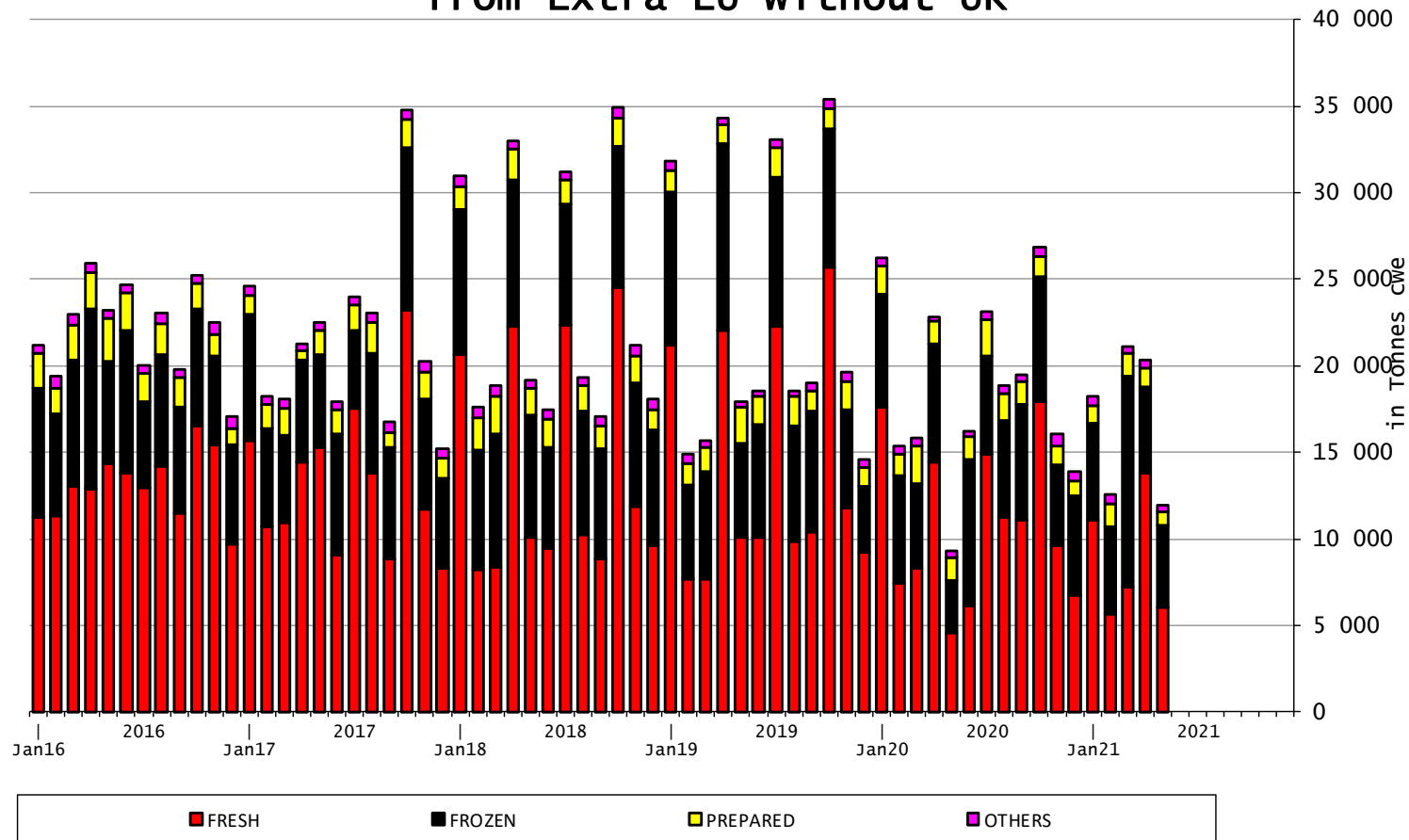
## EU IMPORTS Beef & Live Animals



# TRADE

## EU IMPORTS Beef Products

### EU Imports of BEEF products from Extra EU without UK



22 July 2021

# EU TRADE with UK

## EU EXPORTS Beef Products

### EU Export of BEEF to UK by Products from Jan to Apr

*In Tons of Carcase Weight*

	2019			2020			2021			% 2021/2020	
	United Kingdom	Extra-EU	%	United Kingdom	Extra-EU	%	United Kingdom	Extra-EU	%	United Kingdom	Extra-EU
<b>Live Animals</b>	<b>3 741</b>	<b>76 026</b>	<b>4.9%</b>	<b>3 095</b>	<b>66 841</b>	<b>4.6%</b>	<b>3 590</b>	<b>74 854</b>	<b>4.8%</b>	<b>+16.0%</b>	<b>+12.0%</b>
<b>Meats</b>	<b>149 615</b>	<b>299 551</b>	<b>49.9%</b>	<b>127 334</b>	<b>290 787</b>	<b>43.8%</b>	<b>92 109</b>	<b>257 473</b>	<b>35.8%</b>	<b>-27.7%</b>	<b>-11.5%</b>
Fresh	80 095	112 763	71.0%	74 212	106 347	69.8%	55 396	91 654	60.4%	-25.4%	-13.8%
Frozen	21 389	64 364	33.2%	15 066	72 131	20.9%	18 738	76 638	24.4%	+24.4%	+6.2%
Salted Meat	7 552	7 990	94.5%	7 691	8 246	93.3%	203	736	27.6%	-97.4%	-91.1%
Prepared	15 875	25 558	62.1%	14 870	24 925	59.7%	10 373	19 486	53.2%	-30.2%	-21.8%
Fresh Offals	7 821	8 716	89.7%	6 514	7 653	85.1%	1 778	2 583	68.8%	-72.7%	-66.2%
Frozen Offals	5 616	59 571	9.4%	4 480	60 314	7.4%	3 229	55 352	5.8%	-27.9%	-8.2%
Salted Offals	10 557	17 102	61.7%	4 090	7 757	52.7%	81	3 729	2.2%	-98.0%	-51.9%
Prepared Offal	205	265	77.6%	142	210	67.4%	108	152	70.9%	-24.0%	-27.8%
Fat	505	3 221	15.7%	269	3 205	8.4%	2 205	7 143	30.9%	+718.1%	+122.9%
<b>Total Beef</b>	<b>153 355</b>	<b>375 577</b>	<b>40.8%</b>	<b>130 429</b>	<b>357 628</b>	<b>36.5%</b>	<b>95 699</b>	<b>332 327</b>	<b>28.8%</b>	<b>-26.6%</b>	<b>-7.1%</b>

Source : Comext

22 July 2021

# EU TRADE with UK

# EU IMPORTS Beef Products

## EU Import of BEEF from UK by Products from Jan to Apr

*In Tons of Carcase Weight*

	2019			2020			2021			% 2021/2020	
	United Kingdom	Extra-EU	%	United Kingdom	Extra-EU	%	United Kingdom	Extra-EU	%	United Kingdom	Extra-EU
<b>Live Animals</b>	<b>1 015</b>	<b>1 061</b>	<b>95.6%</b>	<b>608</b>	<b>655</b>	<b>92.8%</b>	<b>257</b>	<b>317</b>	<b>81.1%</b>	<b>-57.8%</b>	<b>-51.7%</b>
<b>Meats</b>	<b>52 991</b>	<b>149 633</b>	<b>35.4%</b>	<b>43 025</b>	<b>123 191</b>	<b>34.9%</b>	<b>21 837</b>	<b>94 033</b>	<b>23.2%</b>	<b>-49.2%</b>	<b>-23.7%</b>
Fresh	36 758	95 328	38.6%	27 641	75 428	36.6%	14 124	51 898	27.2%	-48.9%	-31.2%
Frozen	8 728	40 033	21.8%	7 727	32 179	24.0%	4 158	31 837	13.1%	-46.2%	-1.1%
Salted Meat	414	1 378	30.0%	280	1 159	24.1%	63	1 187	5.3%	-77.5%	+2.4%
Prepared	2 868	7 812	36.7%	2 937	9 260	31.7%	1 621	6 434	25.2%	-44.8%	-30.5%
Fresh Offals	1 365	1 843	74.0%	1 316	1 762	74.7%	1 412	1 804	78.2%	+7.3%	+2.4%
Frozen Offals	1 796	2 082	86.3%	1 851	2 115	87.5%	191	552	34.6%	-89.7%	-73.9%
Salted Offals	579	580	99.8%	741	743	99.7%	9	10	91.0%	-98.8%	-98.7%
Prepared Offal	45	45	100.0%	19	31	62.0%	3	9	31.9%	-85.6%	-72.1%
Fat	437	532	82.3%	514	515	99.7%	257	304	84.5%	-50.0%	-41.0%
<b>Total Beef</b>	<b>54 005</b>	<b>150 694</b>	<b>35.8%</b>	<b>43 633</b>	<b>123 846</b>	<b>35.2%</b>	<b>22 094</b>	<b>94 349</b>	<b>23.4%</b>	<b>-49.4%</b>	<b>-23.8%</b>

Source : Estat - Comext

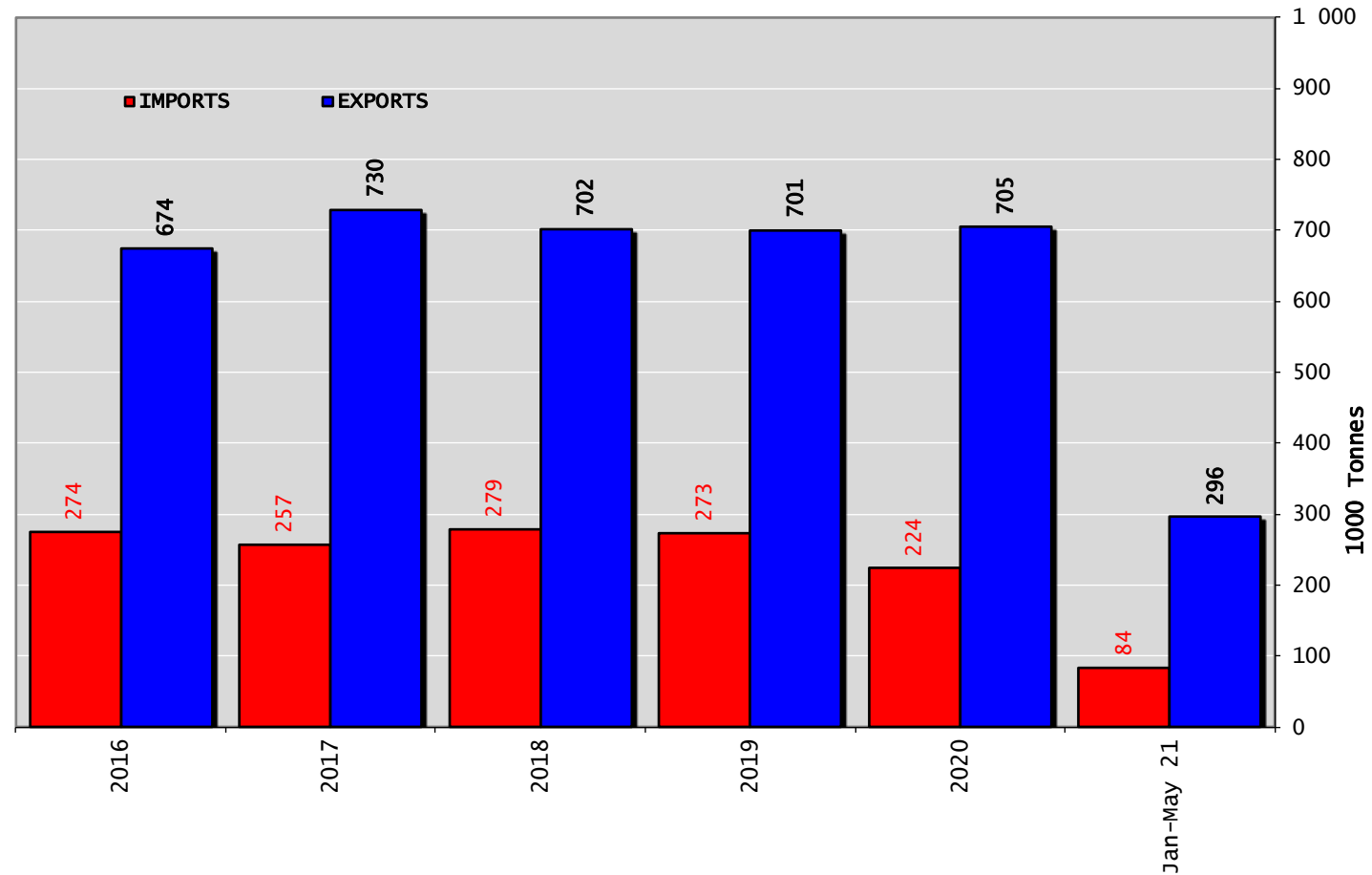
22 July 2021

# TRADE

# EUTRADE BALANCE

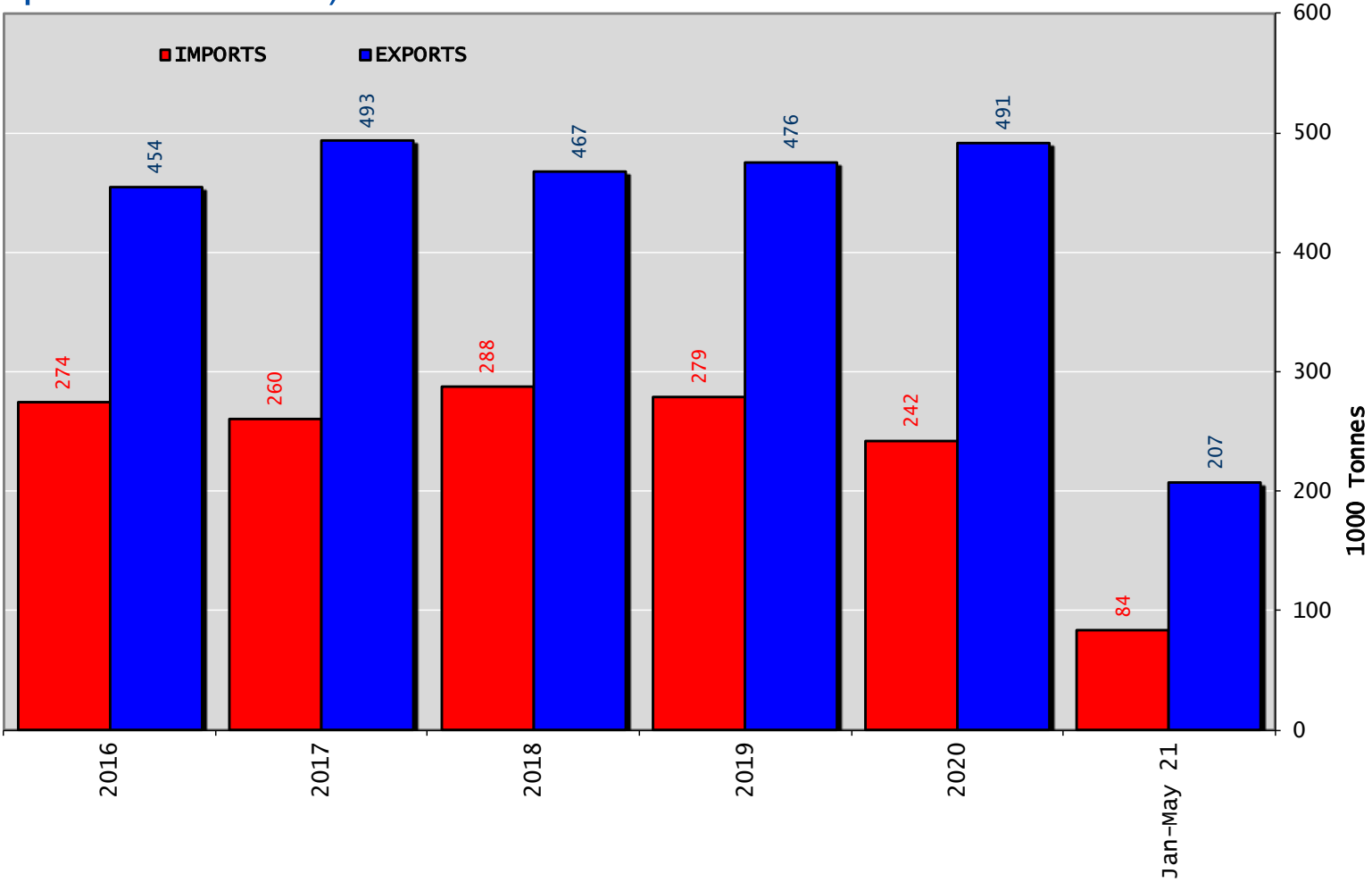
## Beef & Live Animals

Trade Balance of Beef Products and Live Animals (without UK)





# Trade Balance of Beef Products (Except Live Animals) without UK

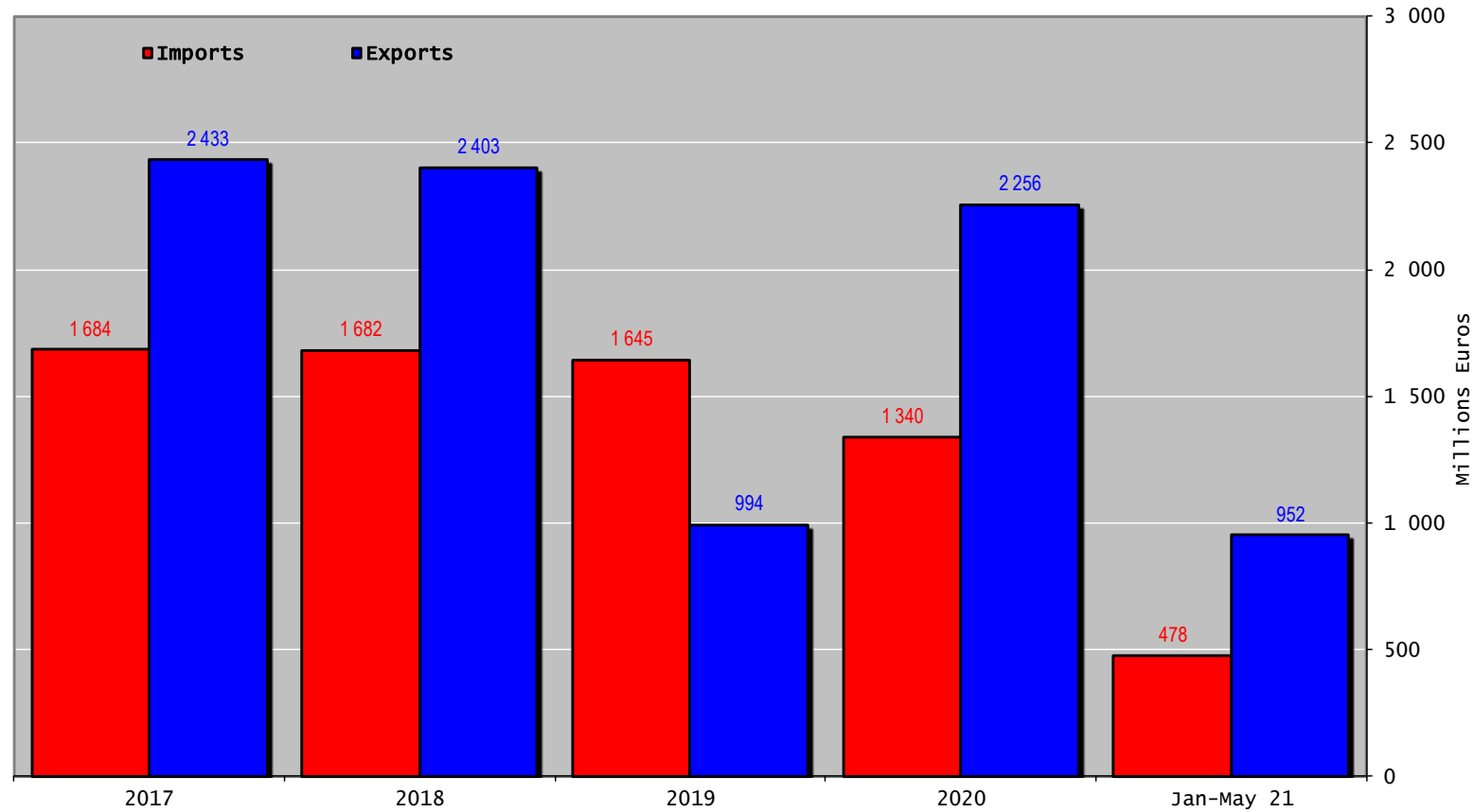


# TRADE

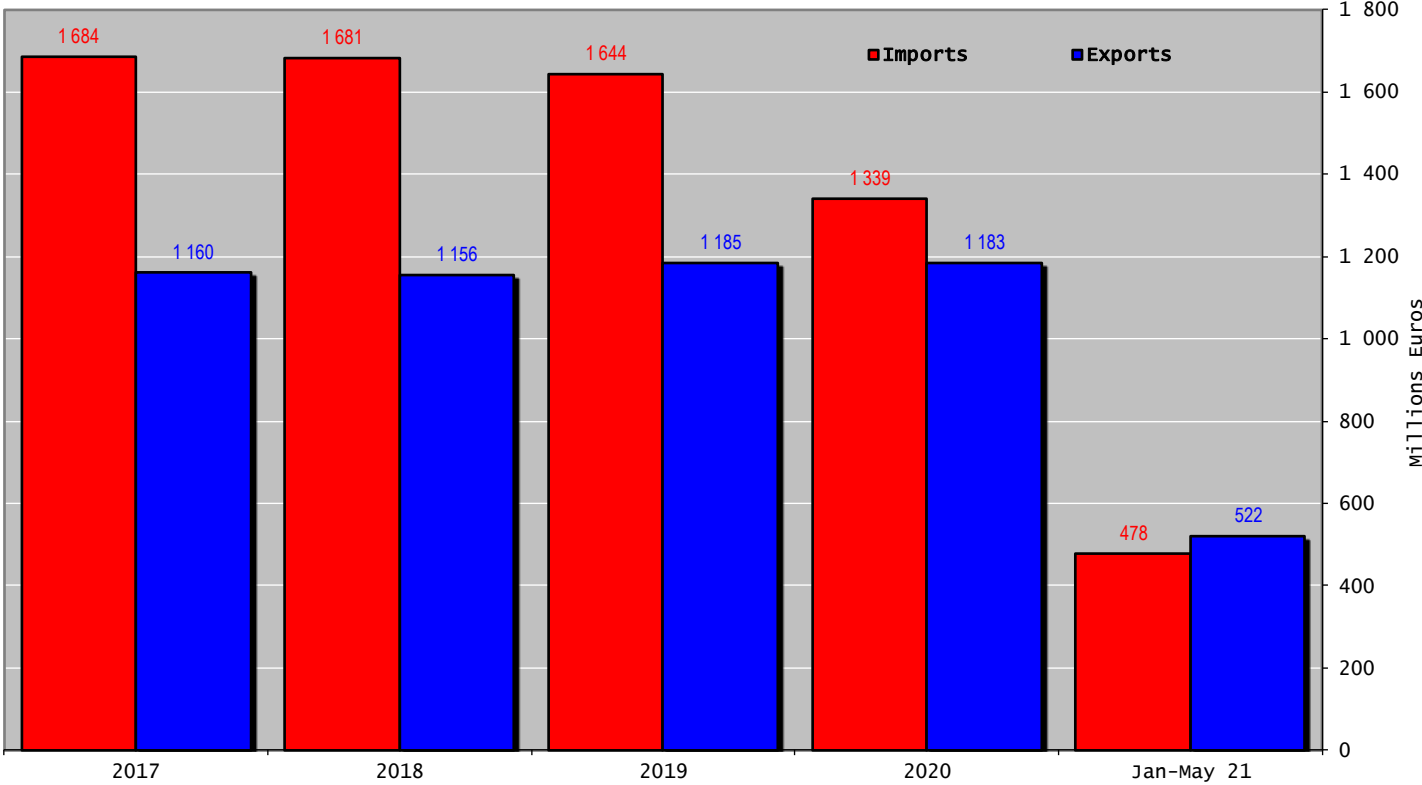
## EU TRADE BALANCE

### Beef & Live Animals

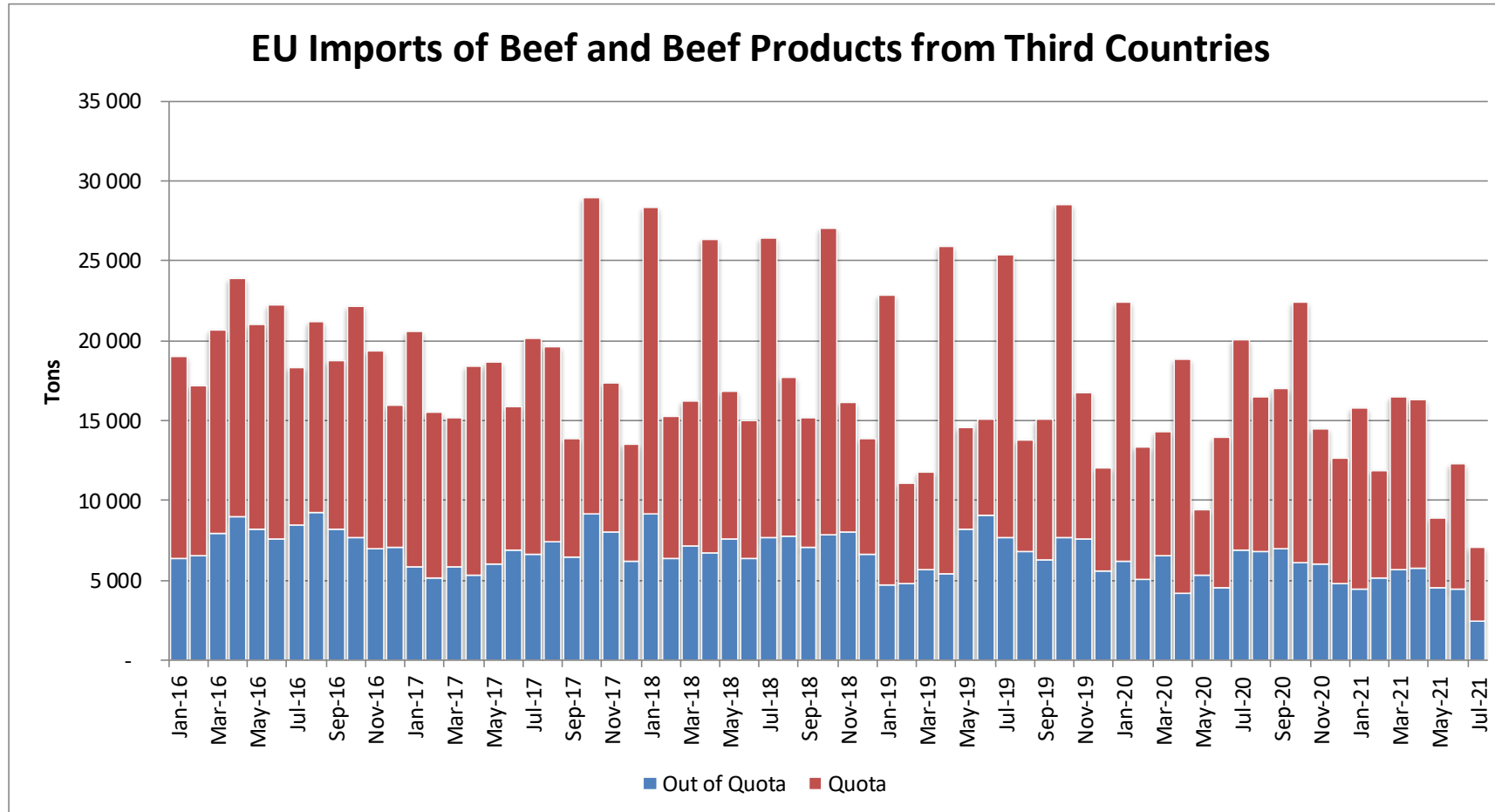
Trade Balance of Beef Products and Live Animals (without UK)



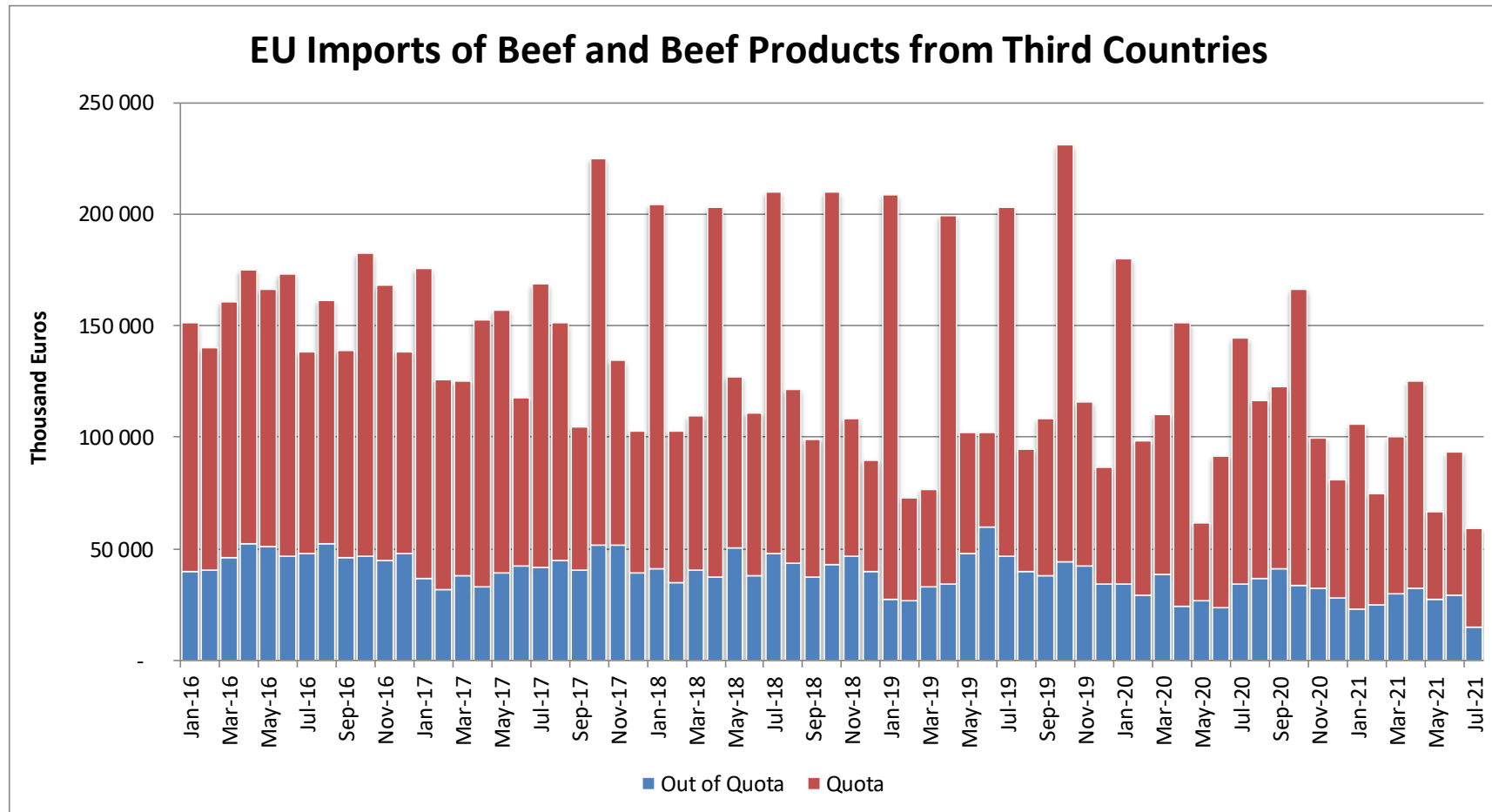
# Trade Balance of Beef Products (Except Live Animals) without UK



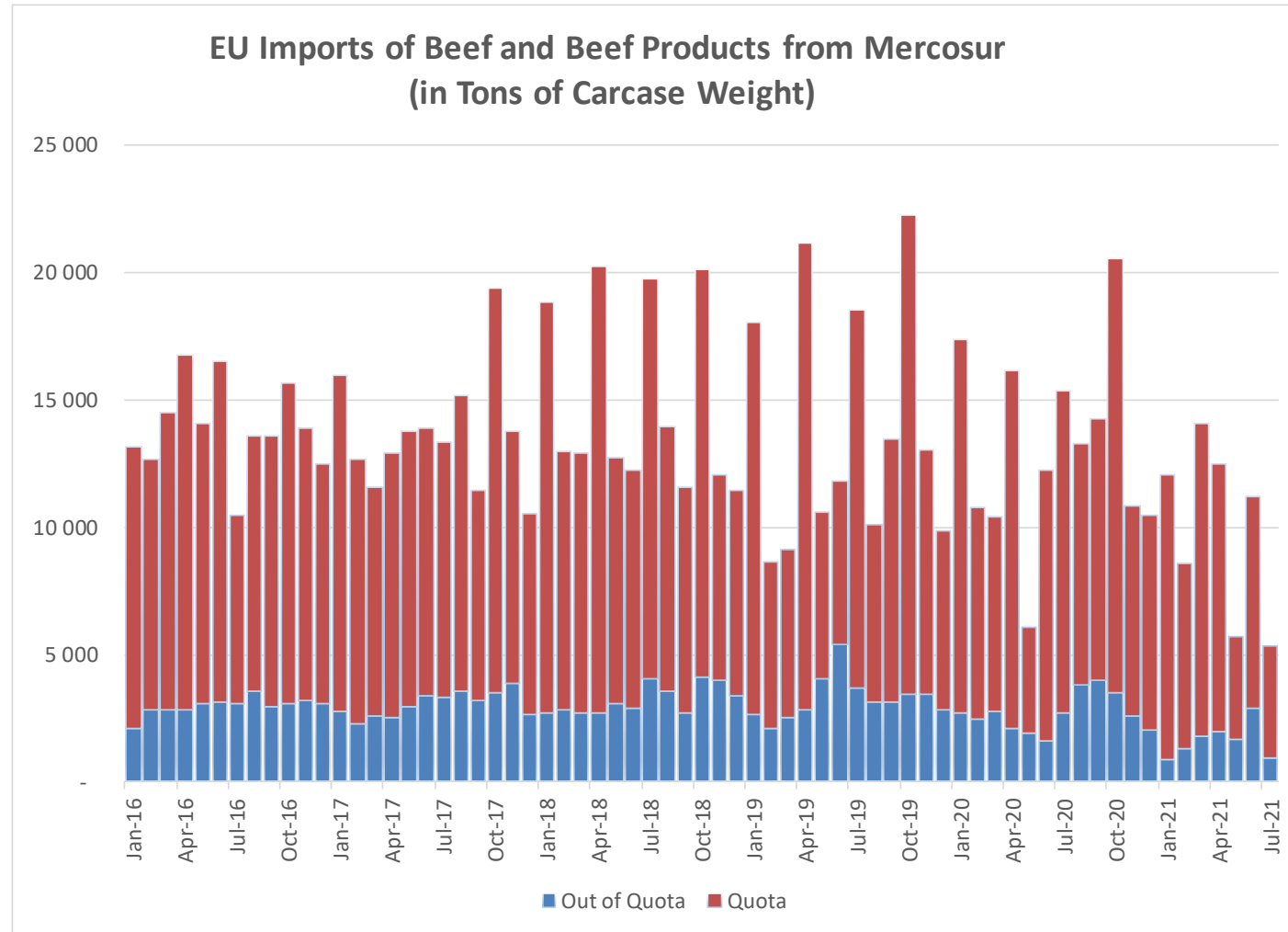
# Imports in and out of TRQs



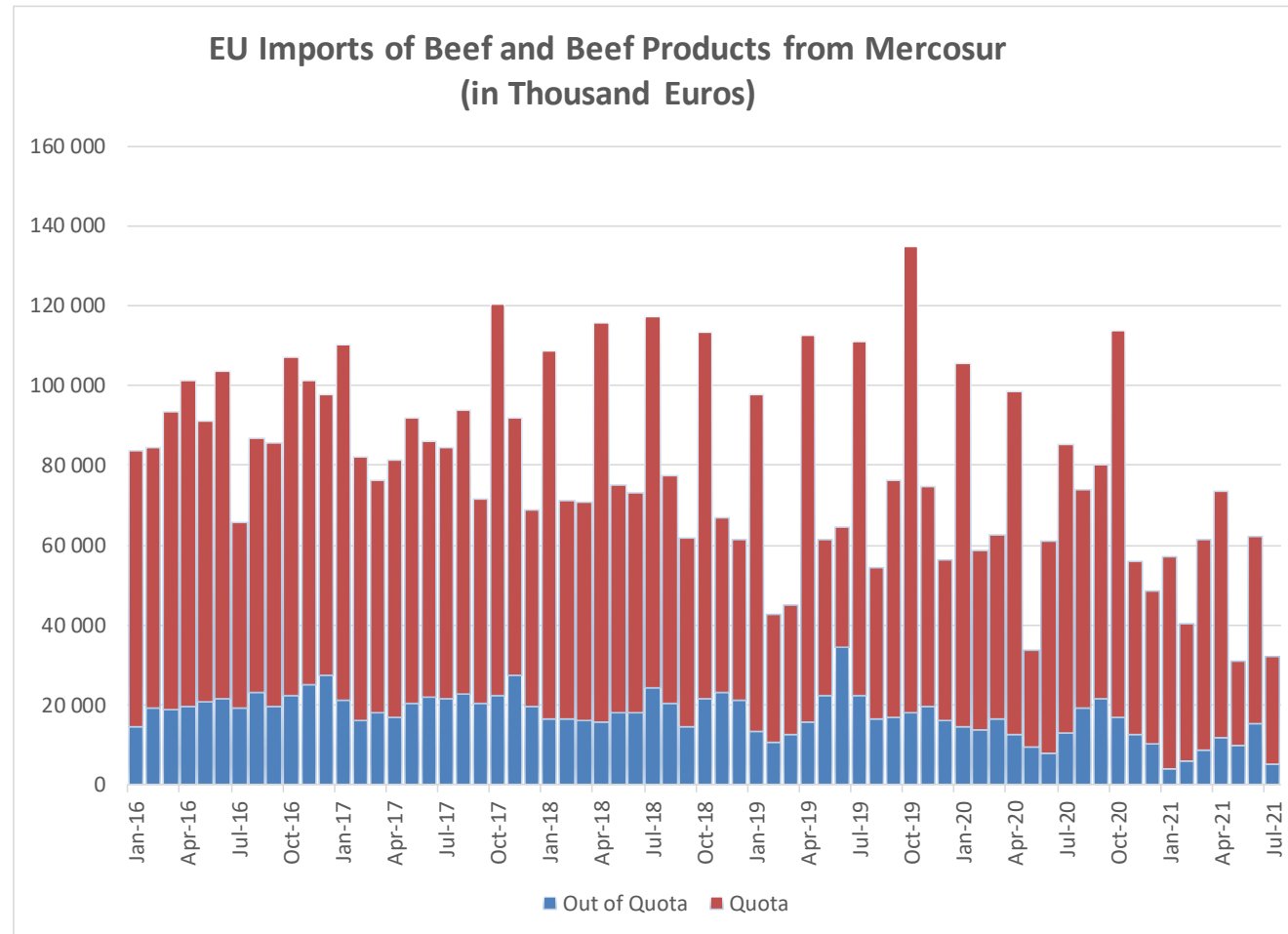
# Imports in and out of TRQs



# Imports in and out of TRQs



# Imports in and out of TRQs



# High Quality Beef Import Quotas

Quota erga omnes

Regulation (EU) No 481/2012

	2019-Q3	2019-Q4	2020-Q1	2020-Q2	TOTAL
Period 2019-2020	11 246	11 259	10 825	8 599	41 930
Available	11 250	11 250	11 250	11 250	45 000
Use	99.97%	100.00%	96.22%	76.44%	93.18%

Available after transfer	11 250	11 254	11 241	11 675
	99.97%	100.00%	96.30%	73.66%

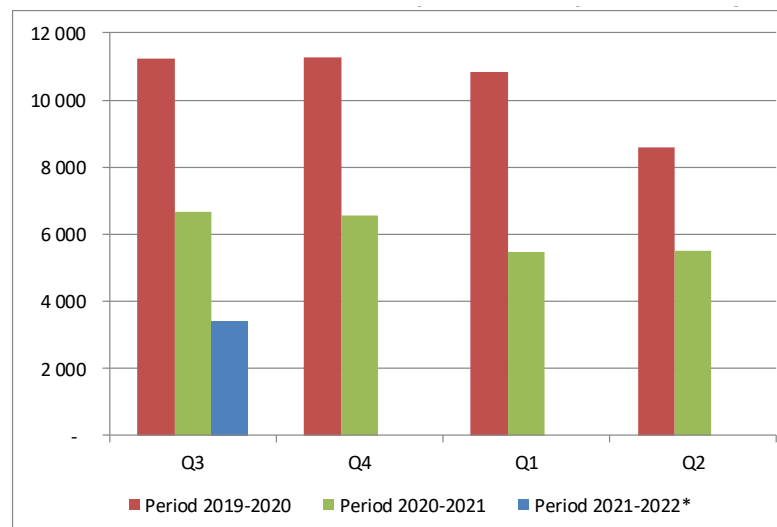
	2020-Q3*	2020-Q4	2021-Q1	2021-Q2	TOTAL
Period 2020-2021	6 652	6 542	5 467	5 500	24 162
Available	6 625	6 625	5 500	5 500	45 000
Use	100.00%	98.75%	99.41%	100.00%	53.69%

Available after transfer	11 250	6 598	5 583	5 533
	59.13%	99.16%	97.93%	99.41%

	2020-Q3*	2020-Q4	2021-Q1	2021-Q2	TOTAL
Period 2021-2022*	3 403	-	-	-	3 403
Available	5 500	5 500	4 900	4 900	45 000
Use	61.88%	0.00%	0.00%	0.00%	7.56%

Available after transfer	5 500	7 597	10 400	9 800
	61.88%	0.00%	0.00%	0.00%

\* Until 14.07.2021



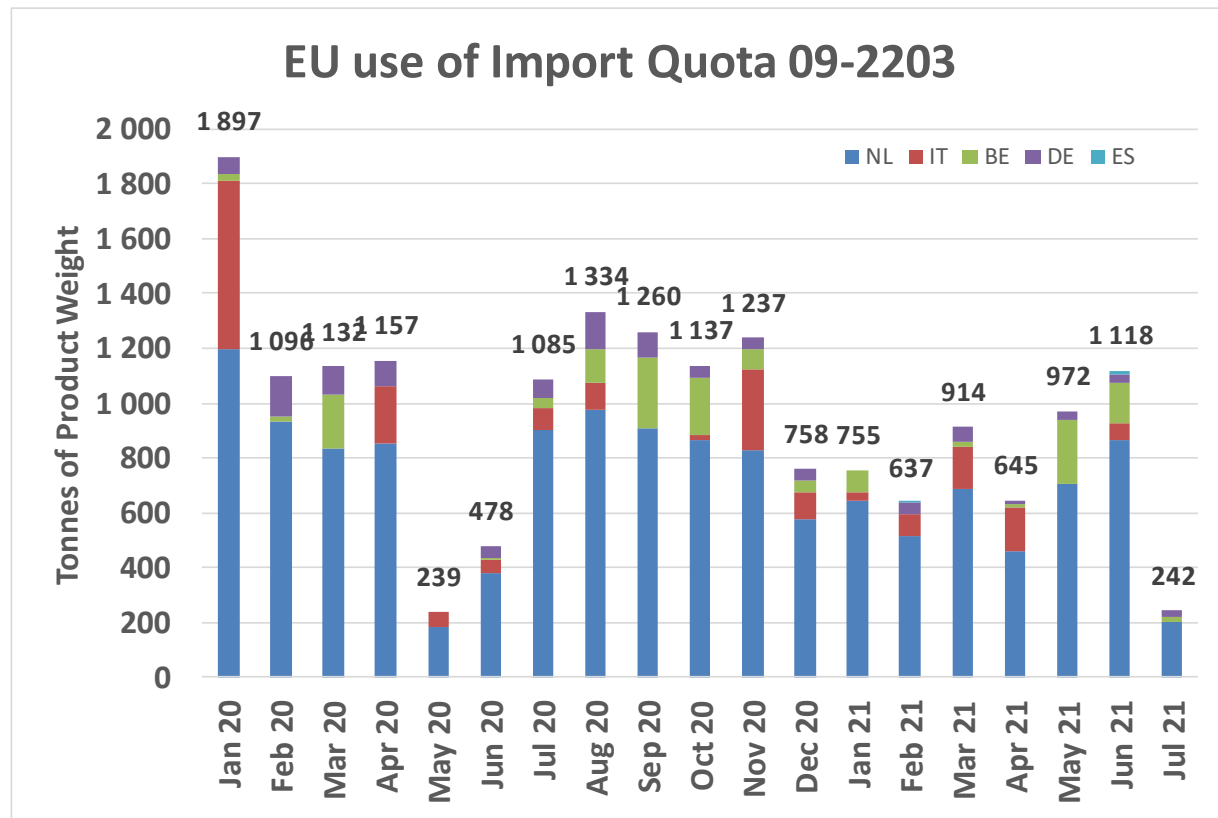


# High Quality Beef Import Quotas

Origin	GATT 2020-2021				Total
	2020-Q3	2020-Q4	2021-Q1	2021-Q2	
NL	2 785	2 274	1 848	2 026	8 933
IT	174	404	263	228	1 069
BE	417	330	96	394	1 237
DE	305	124	98	72	598
ES	-	-	2	15	17
<b>Total import within Quota</b>	<b>3 680</b>	<b>3 132</b>	<b>2 306</b>	<b>2 735</b>	<b>11 853</b>
Available	4 625	4 625	4 625	4 625	18 500
Use	79.57%	67.72%	49.87%	59.13%	64.07%
After transfer	4 625	5 570	6 118	6 944	
Use	79.57%	56.23%	37.70%	39.39%	

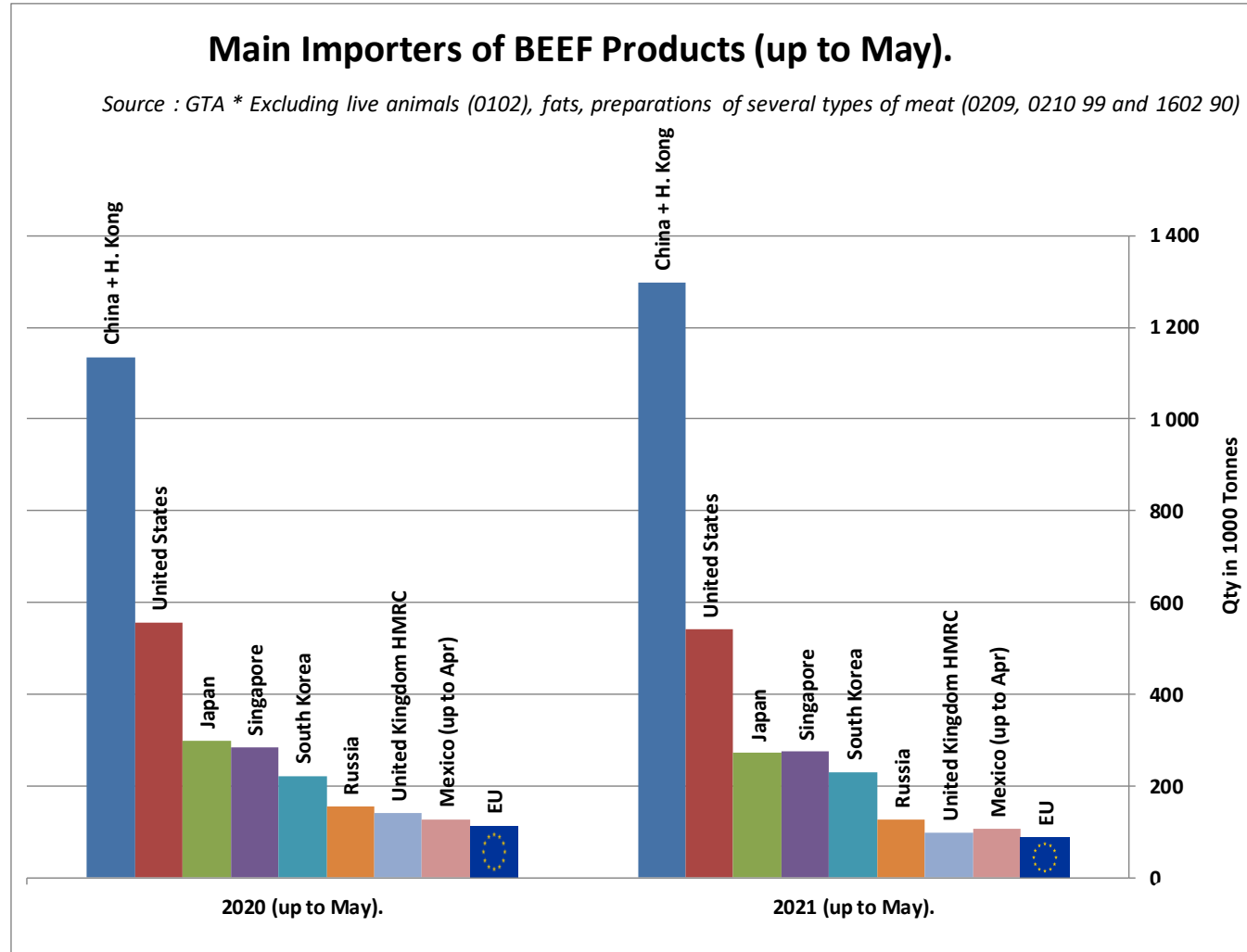
Origin	GATT 2021-2022				Total
	2021-Q3	2021-Q4	2022-Q1	2022-Q2	
NL	203				
IT	-				
BE	14				
DE	25				
ES	-				
<b>Total import within Quota</b>	<b>242</b>				
Available	5 750	5 750	6 350	6 350	24 200
Use	4.21%				
After transfer	5 750				
Use	4.21%				

## EU use of Import Quota 09-2203



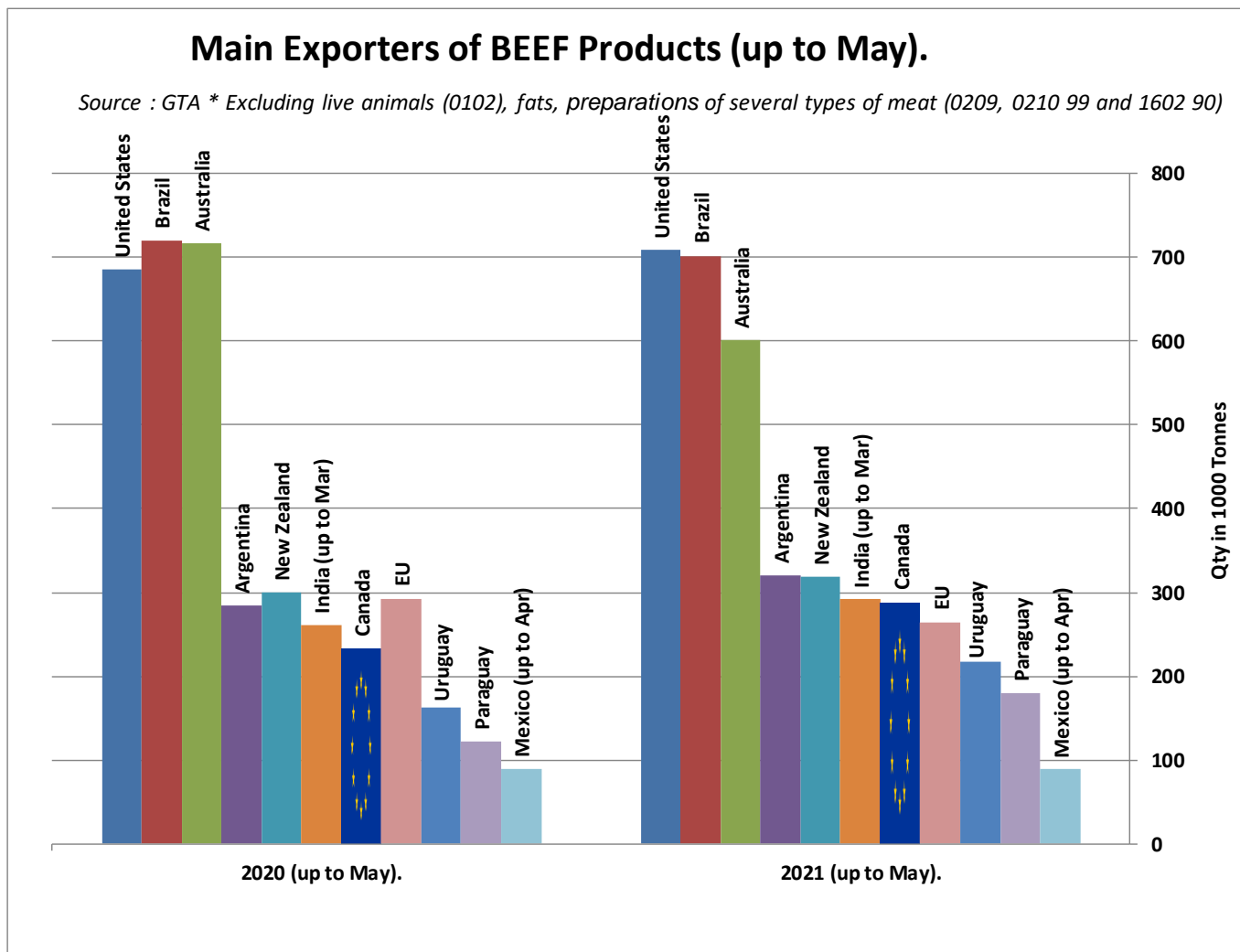
# WORLD BEEF MARKET

## E.U. + UK IMPORTS BEEF MAIN IMPORTERS



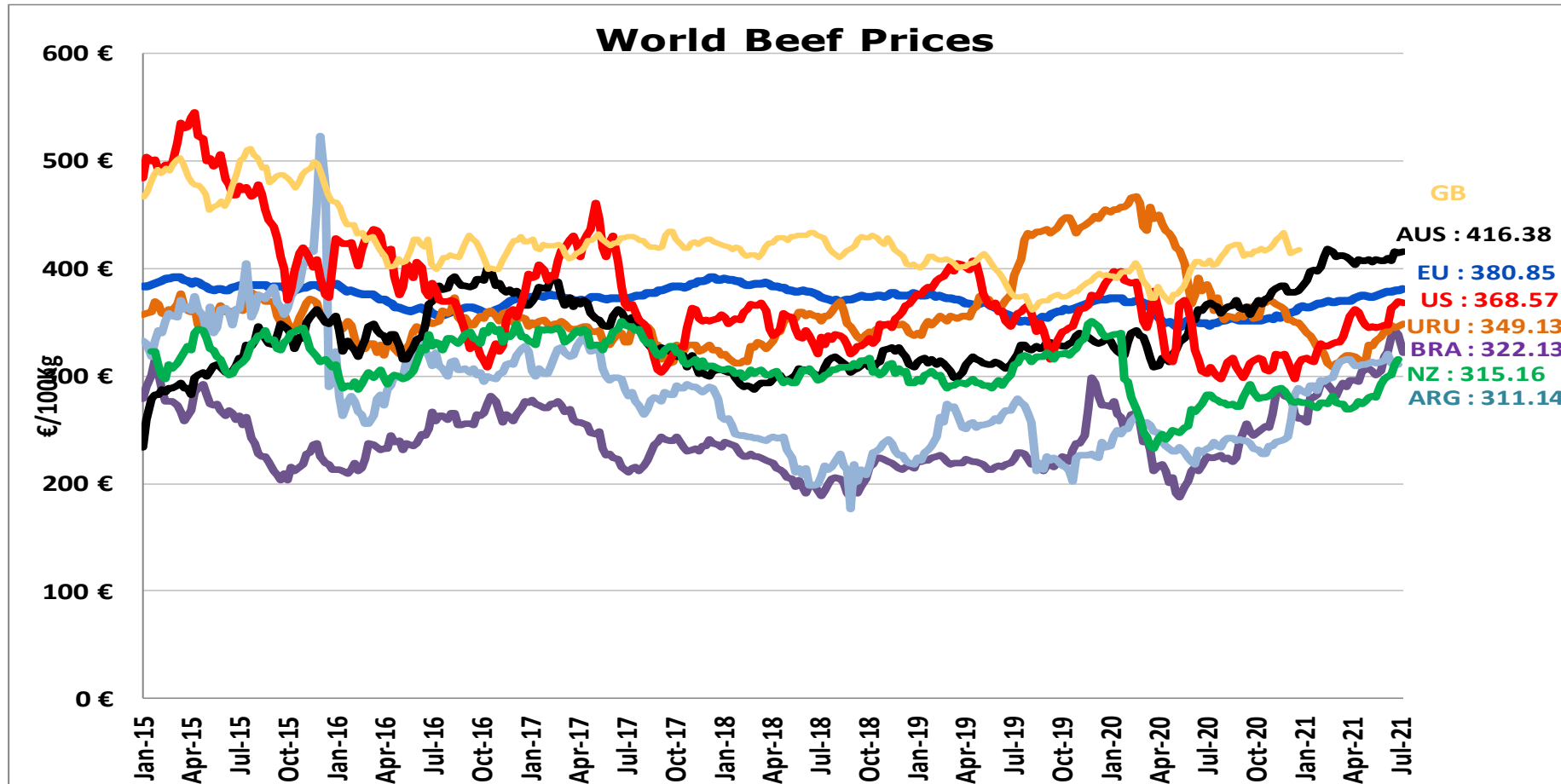
# WORLD BEEF MARKET

## E.U. + UK EXPORTS BEEF MAIN EXPORTERS



# WORLD BEEF MARKET

STEER PRICES  
EU, US, AUS, NZ



- ECB <http://sdw.ecb.europa.eu/browse.do?node=2018794>
- US <https://www.marketnews.usda.gov/mnp/lis-home>
- AUS <http://statistics.mla.com.au/Report/RunReport/ae59d4ac-74e4-4c56-93bd-982a044d9760>
- UY <http://www.inac.gub.uy/innovaportal/v/11034/10/innova.front/indicadores-y-precios>
- ARG [http://www.abc-consorcio.com.ar/Estadisticas/detalle/117/precios\\_comparativos\\_del\\_novillo.html](http://www.abc-consorcio.com.ar/Estadisticas/detalle/117/precios_comparativos_del_novillo.html)
- BR <http://www.pecuaria.com.br/cotacoes.php>
- NZ [http://www.abc-consorcio.com.ar/Estadisticas/detalle/117/precios\\_comparativos\\_del\\_novillo.html](http://www.abc-consorcio.com.ar/Estadisticas/detalle/117/precios_comparativos_del_novillo.html)



# Farm Structure Survey

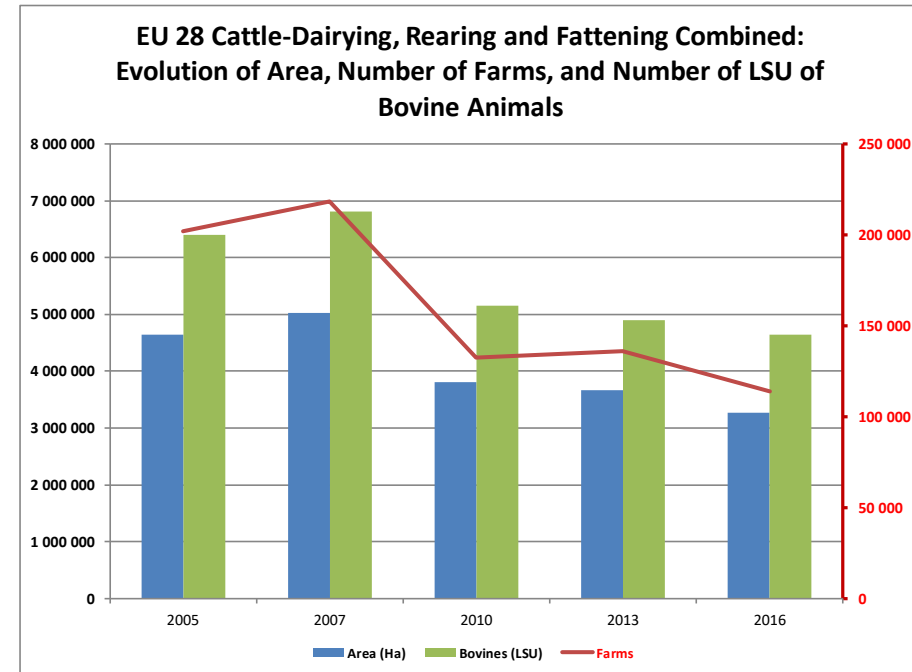
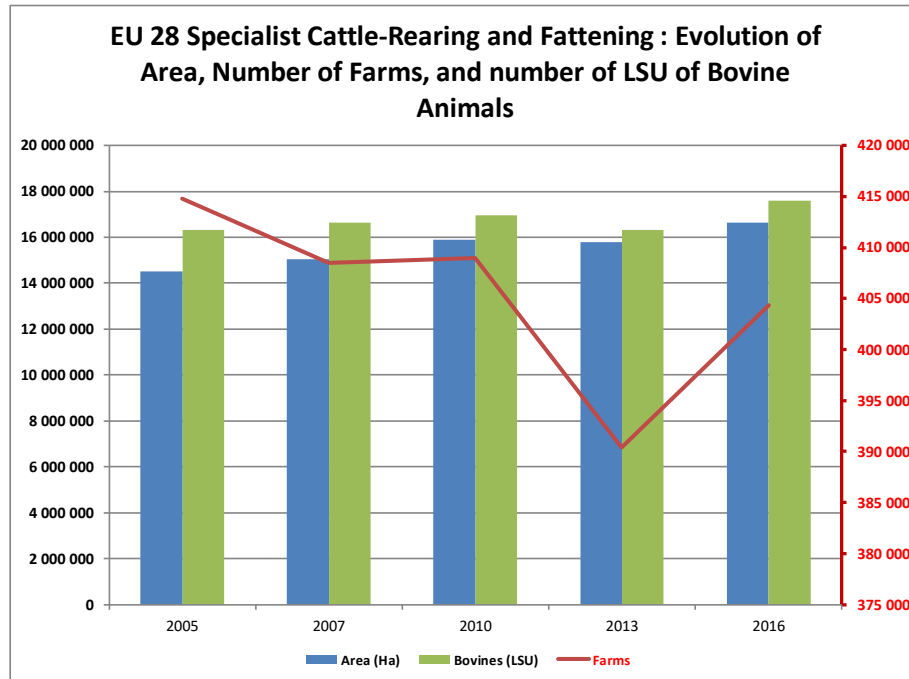
The **livestock unit**, abbreviated as **LSU** (or sometimes as **LU**), is a reference unit which facilitates the aggregation of livestock from various species and age as per convention, via the use of specific coefficients established initially on the basis of the nutritional or feed requirement of each type of animal (see table below for an overview of the most commonly used coefficients).

The reference unit used for the calculation of livestock units (=1 LSU) is the grazing equivalent of one adult **dairy cow** producing 3 000 kg of milk annually, without additional concentrated foodstuffs.

## Livestock unit coefficients

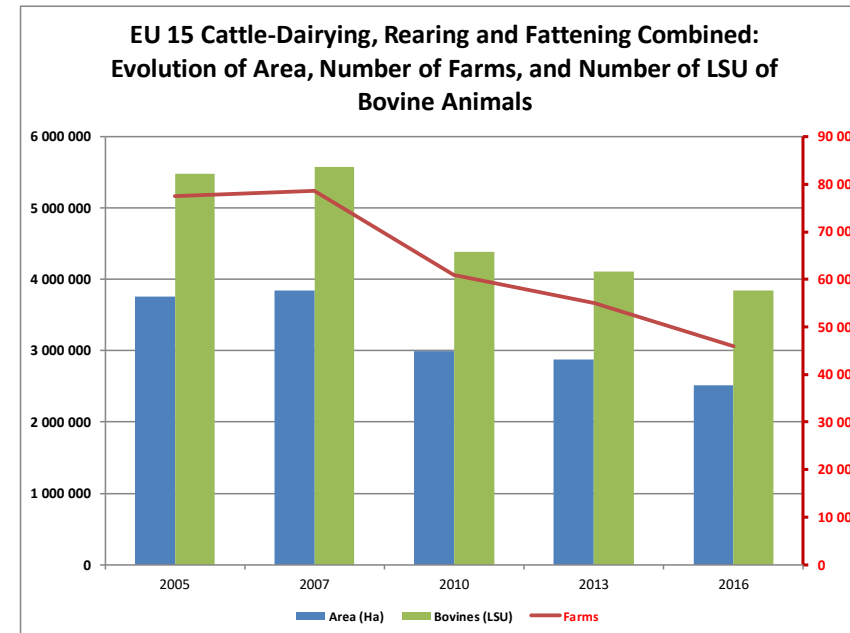
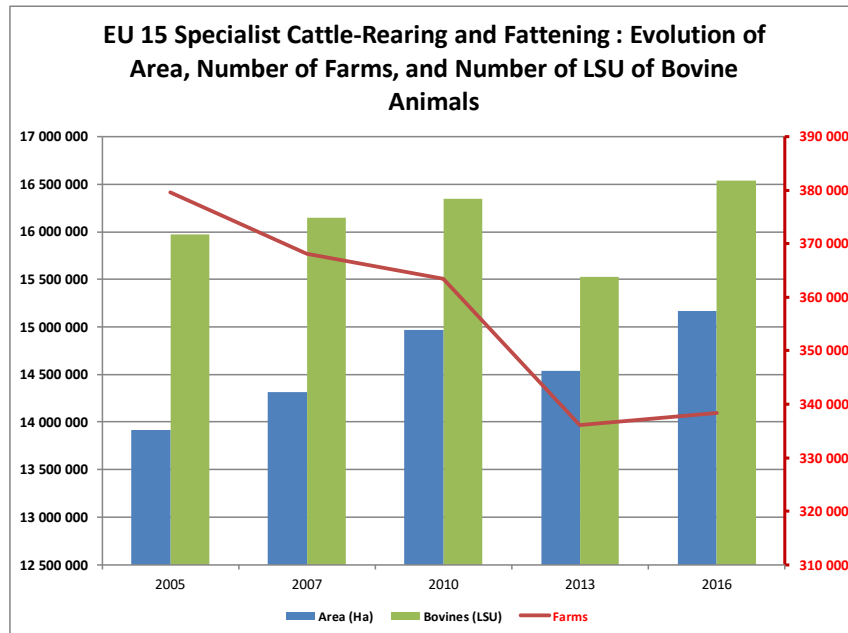
<b>Bovine animals</b>	Under 1 year old	0,400
	1 but less than 2 years old	0,700
	Male, 2 years old and over	1,000
	<b>Heifers</b> , 2 years old and over	0,800
	<b>Dairy cows</b>	<b>1,000</b>
	Other cows, 2 years old and over	0,800

# Farm Structure Survey



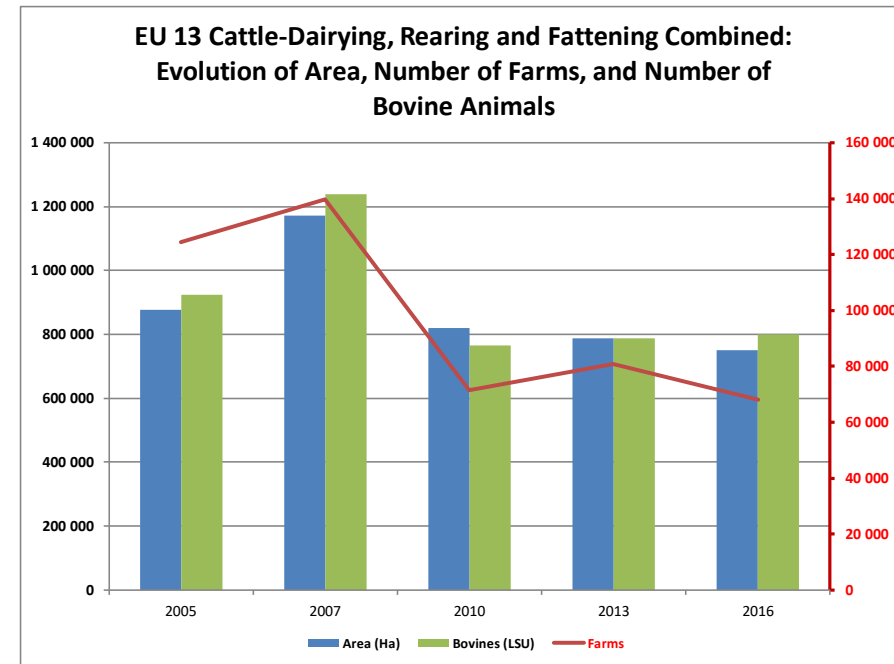
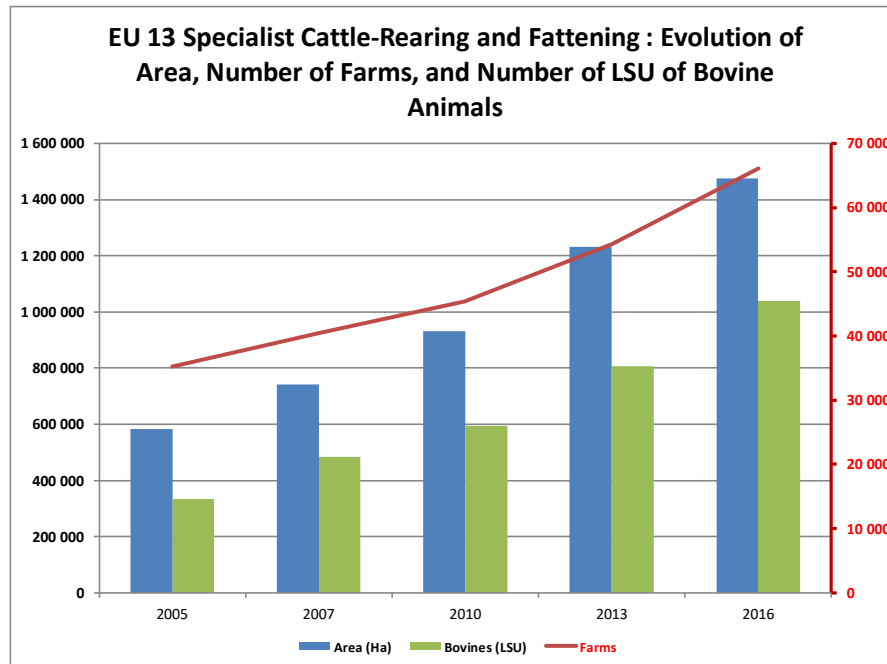
22 July 2021

# Farm Structure Survey



22 July 2021

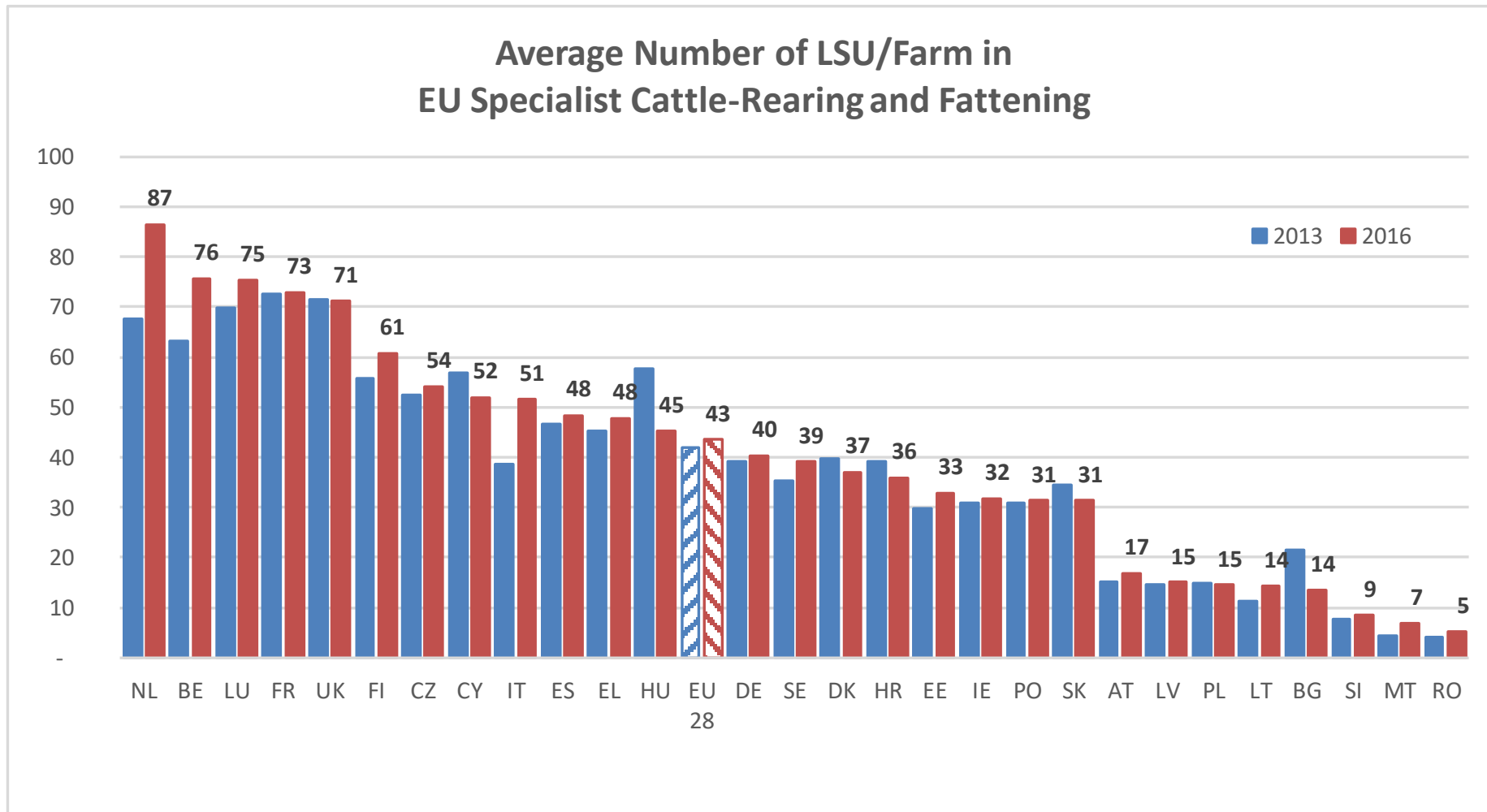
# Farm Structure Survey



22 July 2021

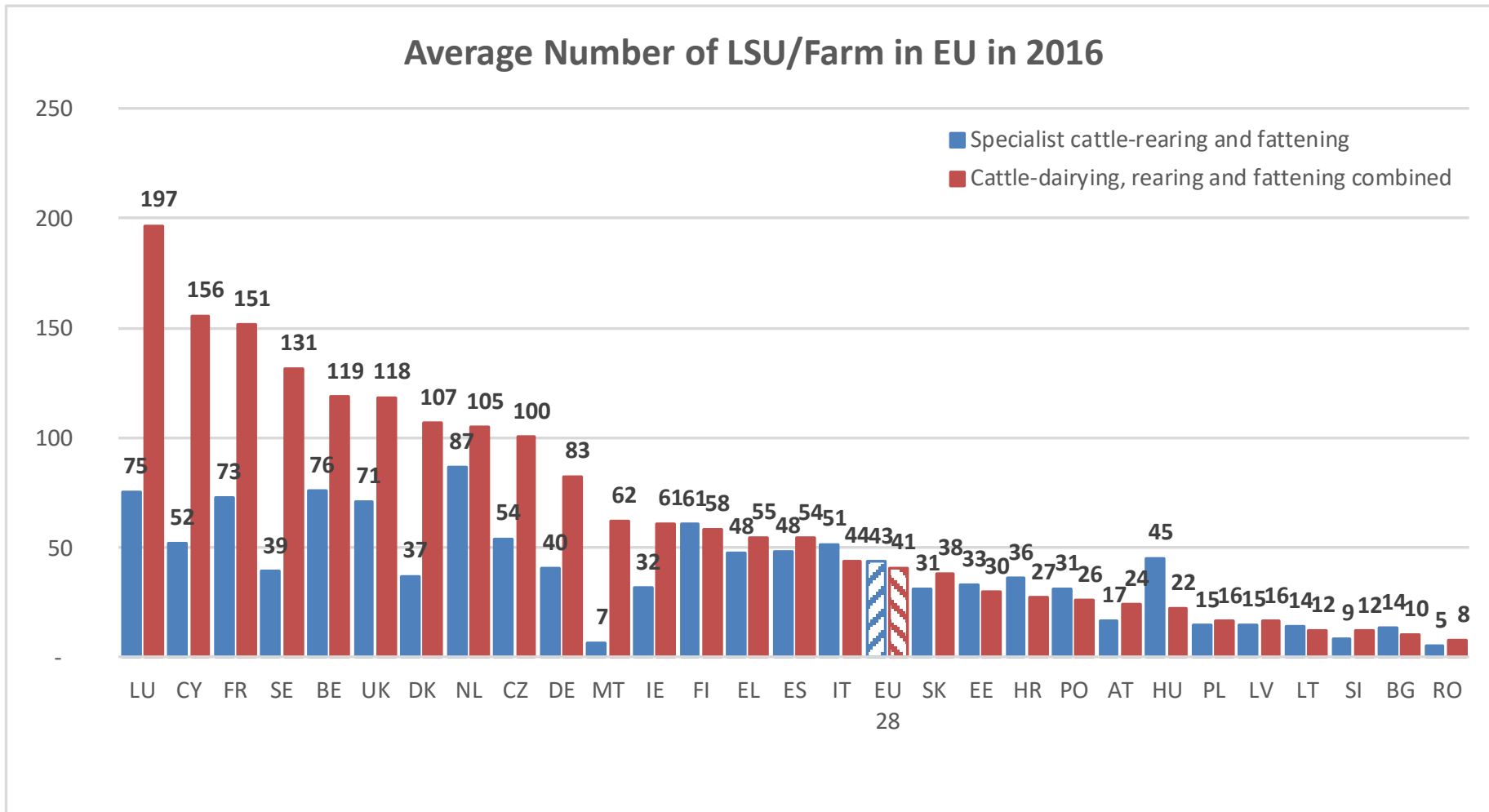


# Farm Structure Survey



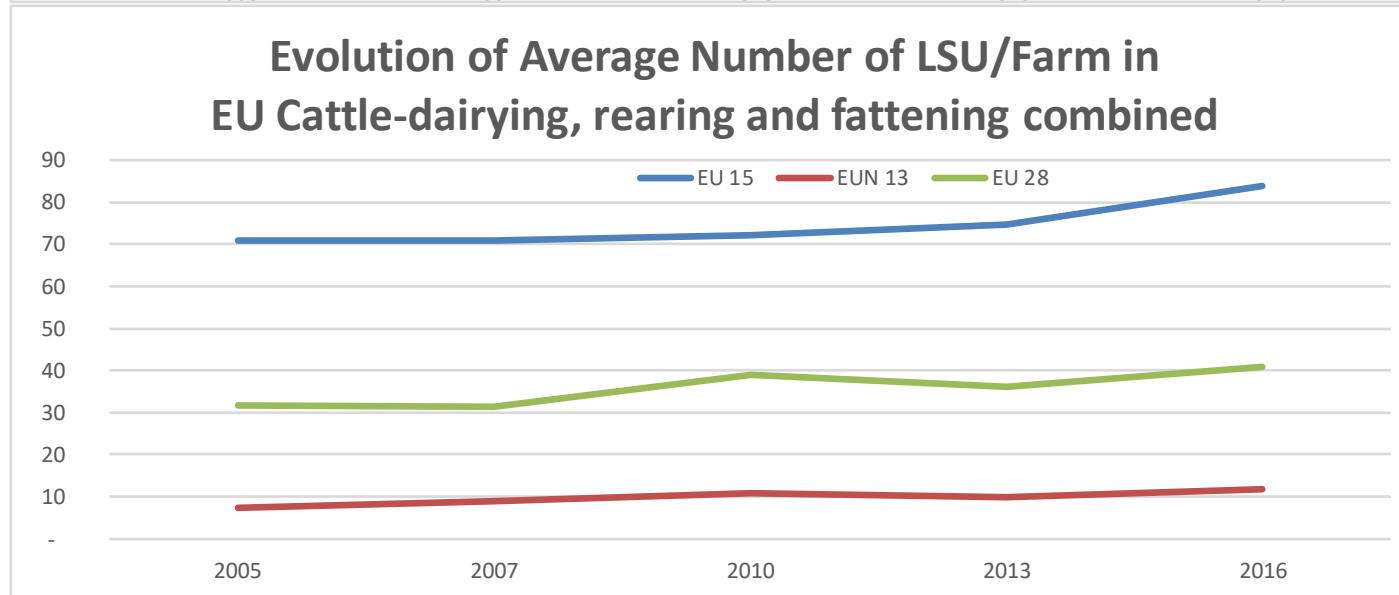
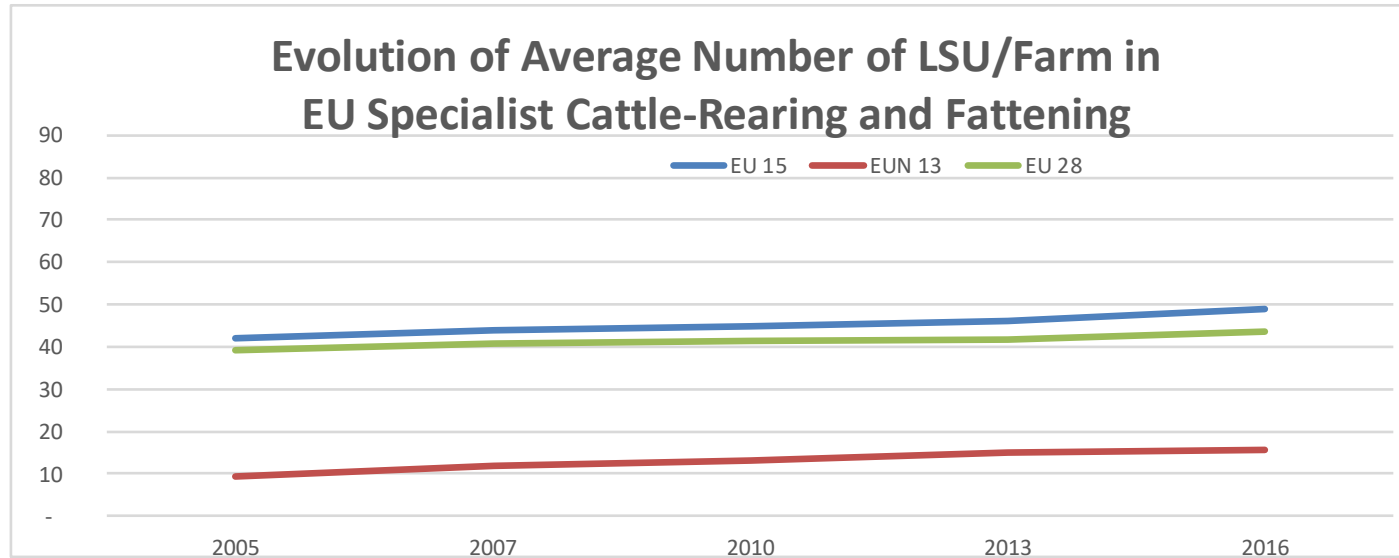
22 July 2021

# Farm Structure Survey



22 July 2021

# Farm Structure Survey



22 July 2021

THANK YOU VERY MUCH

More Information at:

EU Market Observatory

[https://ec.europa.eu/agriculture/market-observatory/meat\\_en](https://ec.europa.eu/agriculture/market-observatory/meat_en)

And

Agri-FOOD data portal:

<http://agridata.ec.europa.eu/>

# Thank you



© European Union 2020

Unless otherwise noted the reuse of this presentation is authorised under the [CC BY 4.0](https://creativecommons.org/licenses/by/4.0/) license. For any use or reproduction of elements that are not owned by the EU, permission may need to be sought directly from the respective right holders.

Slide xx: [element concerned](#), source: [e.g. Fotolia.com](#); Slide xx: [element concerned](#), source: [e.g. iStock.com](#)

