



BEEF & VEAL MARKET SITUATION



Beef CMO 23 June 2022

LIVESTOCK

DECEMBER SURVEY

EU EVOLUTION TOTAL BOVINE

Dec 1000 Hd	TOTAL LIVESTOCK				%Var 2021 2020	BOVINE < 1 Year				%Var 2021 2020	BOVINE 1-2 Year				%Var 2021 2020	BOVINE > 2 Year				%Var 2021 2020
	2018	2019	2020	2021		2018	2019	2020	2021		2018	2019	2020	2021		2018	2019	2020	2021	
BE	2 398	2 373	2 335	2 310	-1.1%	724	722	712	713	+0.1%	464	464	461	454	-1.4%	1 210	1 188	1 163	1 143	-1.7%
BG	542	527	589	610	+3.6%	108	100	112	121	+8.5%	59	58	71	67	-6.1%	375	369	406	422	+4.0%
CZ	1 365	1 367	1 340	1 359	+1.4%	404	411	405	408	+0.9%	304	299	295	296	+0.3%	657	657	640	655	+2.3%
DK	1 530	1 500	1 500	1 480	-1.3%	534	522	524	516	-1.5%	284	280	279	280	+0.4%	712	698	697	684	-1.9%
DE	11 949	11 640	11 302	11 040	-2.3%	3 584	3 485	3 405	3 355	-1.5%	2 829	2 751	2 639	2 569	-2.7%	5 536	5 403	5 258	5 116	-2.7%
EE	252	254	253	251	-1.0%	71	71	72	69	-4.7%	49	50	49	51	+3.0%	132	133	132	131	-0.5%
IE	6 593	6 560	6 529	6 649	+1.8%	2 000	1 962	2 057	2 108	+2.5%	1 790	1 741	1 708	1 775	+3.9%	2 804	2 856	2 765	2 766	+0.1%
EL	542	530	539	566	+5.0%	141	157	154	150	-2.6%	96	91	90	128	+42.2%	305	283	295	288	-2.4%
ES	6 511	6 600	6 636	6 576	-0.9%	2 494	2 529	2 541	2 319	-8.7%	847	857	853	1 016	+19.2%	3 170	3 214	3 242	3 240	-0.1%
FR	18 613	18 173	17 816	17 330	-2.7%	5 304	5 125	5 119	4 945	-3.4%	3 180	3 183	3 063	3 021	-1.4%	10 129	9 865	9 634	9 364	-2.8%
HR	414	420	423	428	+1.2%	153	151	146	156	+6.8%	96	107	111	107	-3.6%	165	162	166	165	-0.6%
IT	6 311	6 377	6 400	6 280	-1.9%	1 703	1 759	1 774	1 722	-2.9%	1 538	1 588	1 595	1 562	-2.1%	3 071	3 030	3 031	2 997	-1.1%
CY	71	74	83	88	+5.4%	24	25	27	28	+4.1%	12	12	14	15	+6.2%	35	38	42	45	+6.0%
LV	395	395	399	393	-1.4%	106	108	112	107	-4.3%	65	65	65	68	+3.8%	225	222	222	219	-1.4%
LT	654	635	630	629	-0.1%	173	167	169	166	-1.7%	133	132	129	135	+4.7%	348	336	332	329	-1.2%
LU	194	192	191	187	-1.8%	50	50	50	49	-2.5%	42	41	41	40	-0.6%	103	101	100	98	-2.0%
HU	885	909	933	902	-3.3%	251	258	266	268	+0.6%	182	193	195	152	-22.2%	451	458	472	483	+2.4%
MT	14	14	14	14	-1.9%	4	4	4	4	-2.1%	3	3	3	3	+3.4%	7	7	7	7	-4.0%
NL	3 690	3 721	3 691	3 705	+0.4%	1 510	1 528	1 510	1 519	+0.6%	465	440	465	482	+3.7%	1 715	1 752	1 716	1 704	-0.7%
AT	1 913	1 880	1 855	1 870	+0.8%	618	605	599	611	+2.1%	428	426	414	421	+1.6%	866	848	842	838	-0.5%
PL	6 183	6 262	6 279	6 372	+1.5%	1 709	1 748	1 735	1 800	+3.8%	1 732	1 757	1 800	1 909	+6.1%	2 742	2 758	2 744	2 662	-3.0%
PT	1 632	1 675	1 691	1 641	-3.0%	497	531	526	528	+0.4%	236	240	257	214	-16.6%	899	903	909	899	-1.1%
RO	1 977	1 923	1 911	1 833	-4.1%	418	400	376	359	-4.5%	241	223	233	220	-5.3%	1 318	1 300	1 302	1 253	-3.8%
SI	477	483	486	482	-0.7%	153	151	153	156	+2.2%	128	136	133	131	-1.9%	196	197	199	195	-2.0%
SK	439	432	442	435	-1.7%	123	122	126	125	-1.1%	83	83	87	82	-5.4%	232	227	229	228	-0.6%
FI	859	841	835	830	-0.6%	296	287	292	287	-1.6%	210	205	199	205	+2.9%	354	349	344	338	-1.9%
SE	1 435	1 405	1 391	1 390	-0.1%	468	453	464	460	-0.9%	343	339	323	334	+3.3%	625	613	603	596	-1.2%
EU	77 840	77 161	76 494	75 650	-1.1%	23 619	23 431	23 427	23 048	-1.6%	15 838	15 764	15 574	15 739	+1.1%	38 382	37 966	37 494	36 864	-1.7%
UK	9 610	9 459				2 869	2 860				2 405	2 335				4 336	4 264			

Source : EStat Newcronos

EU %Var is calculated considering only countries available in 2020 AND 2021

LIVESTOCK

DECEMBER SURVEY

EU EVOLUTION COWS

Dec 1000 Hd	TOTAL COWS				%Var 2021 2020	DAIRY COWS				%Var 2021 2020	OTHER COWS				%Var 2021 2020
	2018	2019	2020	2021		2018	2019	2020	2021		2018	2019	2020	2021	
BE	942	939	921	917	-0.5%	529	538	538	537	-0.1%	412	401	383	379	-1.0%
BG	351	343	382	396	+3.8%	244	227	242	230	-4.9%	107	116	140	166	+18.8%
CZ	570	570	560	574	+2.6%	359	361	357	362	+1.5%	212	209	203	212	+4.4%
DK	655	645	646	635	-1.7%	570	563	565	559	-1.1%	85	83	80	76	-5.0%
DE	4 751	4 651	4 548	4 445	-2.3%	4 101	4 012	3 921	3 833	-2.3%	650	640	626	612	-2.3%
EE	116	116	116	115	-0.9%	85	85	84	84	-0.8%	30	31	32	31	-0.9%
IE	2 351	2 383	2 379	2 395	+0.7%	1 369	1 426	1 456	1 505	+3.4%	982	957	923	890	-3.6%
EL	269	242	258	178	-31.0%	95	86	86	80	-7.0%	174	156	171	98	-42.7%
ES	2 819	2 881	2 909	2 900	-0.3%	817	813	811	809	-0.2%	2 002	2 068	2 099	2 091	-0.4%
FR	7 650	7 505	7 379	7 204	-2.4%	3 554	3 491	3 406	3 322	-2.5%	4 095	4 014	3 974	3 882	-2.3%
HR	146	142	144	142	-1.4%	136	130	110	102	-7.3%	10	12	34	40	+17.6%
IT	2 263	2 237	2 243	2 193	-2.2%	1 939	1 876	1 871	1 844	-1.4%	324	362	372	349	-6.2%
CY	32	35	40	42	+6.4%	32	35	39	42	+6.5%	0	0	0	0	idem
LV	196	195	196	193	-1.7%	144	138	136	131	-3.6%	52	56	60	61	+2.4%
LT	312	299	295	290	-1.5%	256	241	233	225	-3.3%	56	58	62	65	+5.2%
LU	78	79	78	78	-0.6%	53	54	54	55	+0.6%	25	25	24	23	-3.4%
HU	403	412	414	420	+1.5%	239	243	247	281	+13.9%	164	169	167	139	-16.7%
MT	6	6	6	6	-4.1%	6	6	6	6	-3.1%	0	0	0	0	-26.7%
NL	1 594	1 633	1 612	1 599	-0.8%	1 552	1 590	1 569	1 554	-1.0%	42	43	43	45	+4.7%
AT	733	720	715	712	-0.5%	533	524	525	526	+0.3%	200	195	191	186	-2.6%
PL	2 417	2 406	2 391	2 289	-4.3%	2 214	2 167	2 126	2 035	-4.3%	203	239	266	254	-4.4%
PT	723	731	739	739	-0.1%	235	234	233	230	-1.2%	487	497	507	509	+0.4%
RO	1 173	1 166	1 165	1 120	-3.9%	1 158	1 139	1 140	1 097	-3.8%	15	27	25	23	-7.7%
SI	166	166	167	165	-0.9%	103	101	99	101	+1.7%	64	65	68	65	-4.8%
SK	195	192	192	192	+0.0%	128	126	122	120	-1.6%	67	66	69	71	+2.8%
FI	322	318	316	311	-1.9%	264	259	256	249	-2.8%	58	59	61	62	+2.0%
SE	514	500	499	497	-0.3%	313	301	304	300	-1.6%	201	198	194	197	+1.6%
EU	31 749	31 513	31 309	30 745	-1.8%	21 029	20 766	20 536	20 219	-1.5%	10 719	10 748	10 771	10 526	-2.3%
UK	3 382	3 337				1 879	1 867				1 503	1 470			

Source : EStat Newcronos

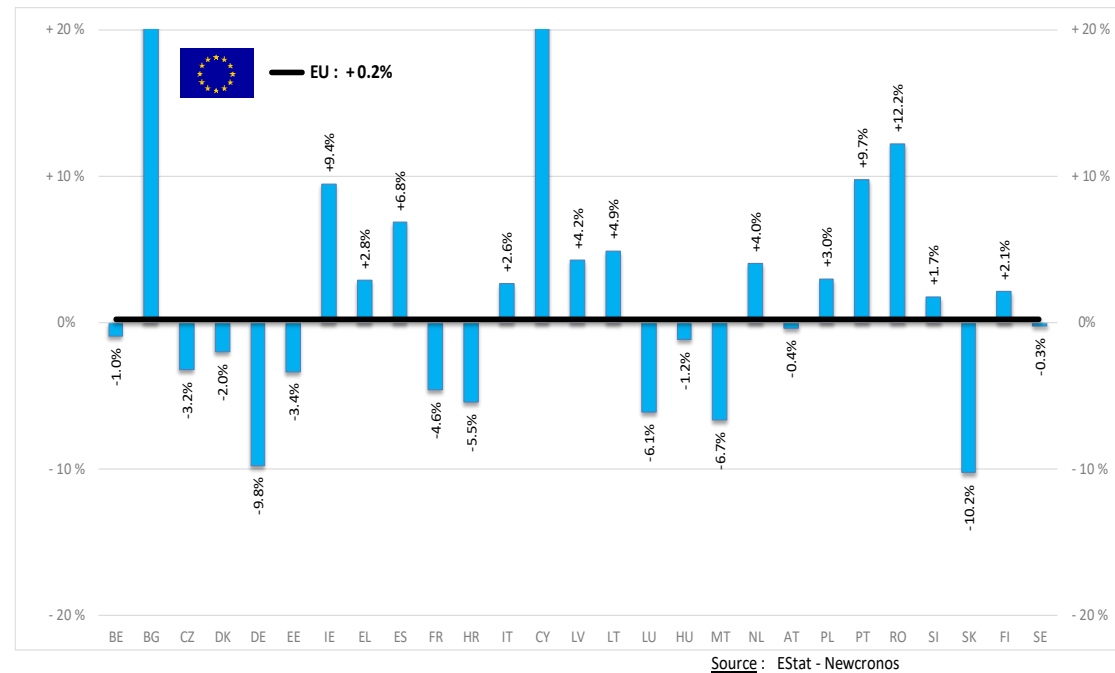
EU %Var is calculated considering only countries available in 2020 AND 2021

PRODUCTION

% EVOLUTION HEADS

HEADS	Jan-Mar 22/21
EU	EU
Bull	-3.0%
Bullock	+5.0%
Cow	+0.1%
Heifer	+2.2%
Calve	+0.6%
Young cattle	+4.4%
Meat of bovine animals	+0.2%

Estimates for last month of period :

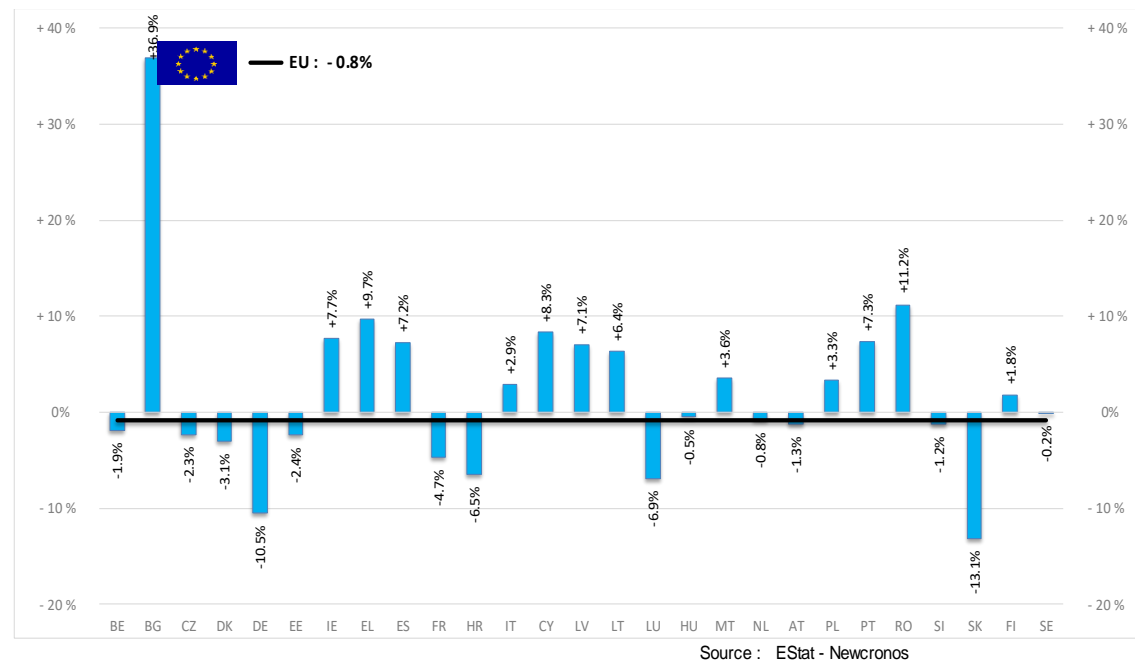


PRODUCTION

% EVOLUTION TONNES

TONNES	Jan-Mar 22/21
	EU
Bull	-3.2%
Bullock	+4.0%
Cow	-1.3%
Heifer	+1.0%
Calve	-0.7%
Young cattle	+6.3%
Meat of bovine animals	-0.8%

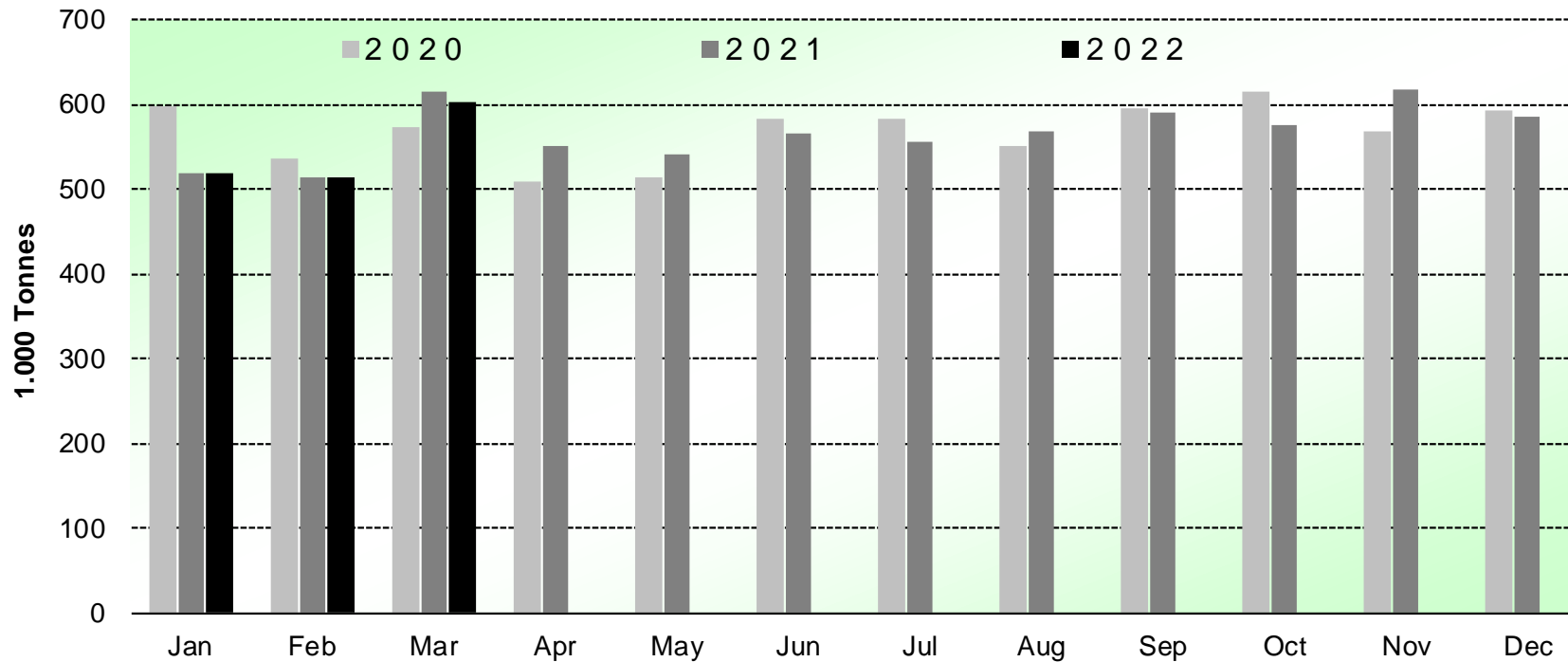
Estimates for last month of period :



PRODUCTION

HISTORIC
TONNES

Beef & Veal Production (EU Slaughtering) - Tonnes



Source: EStat-Newcronos

PRICES CARCASSES

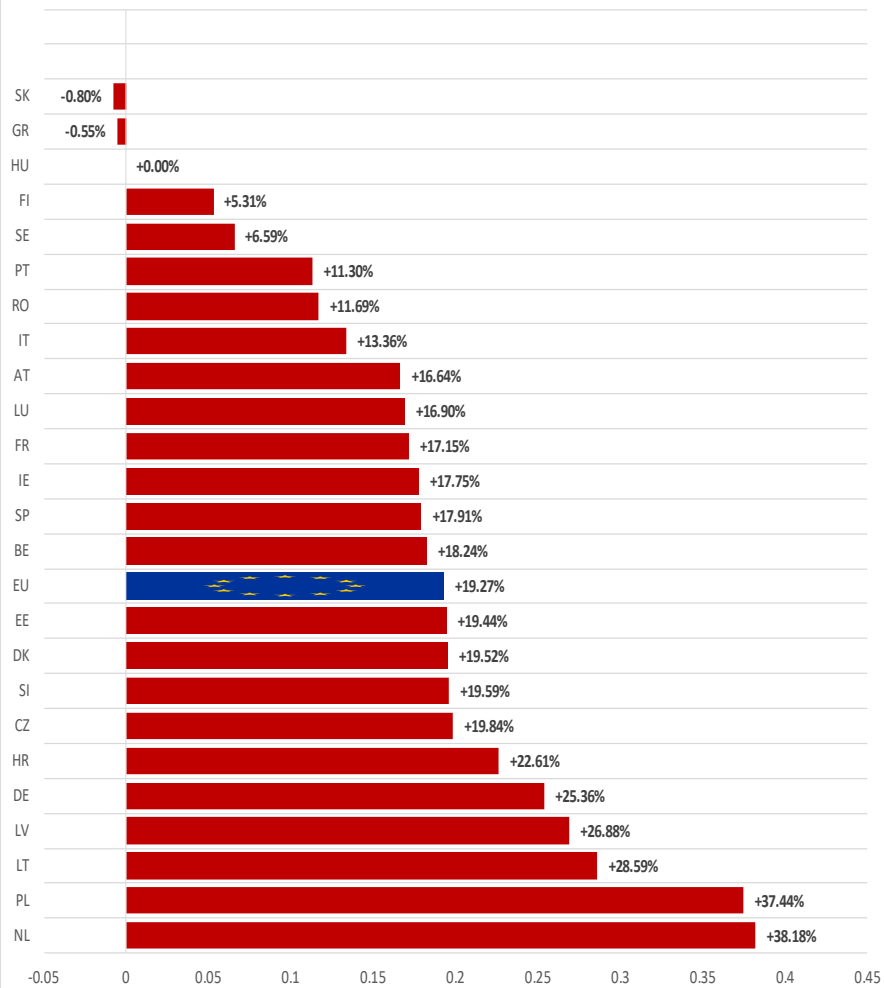
Dashboard

EU Prices week		23	Evolution since last week	Evolution since last month	Evolution since last year	
Carcasse	Average A/C/Z -R3	486.2	€/100 kg	- 0.6%	- 2.3%	+ 28.4%
	Young Bovines (Z)	475.9		+ 0.0%	- 0.0%	+ 30.0%
	Young Bulls (A)	479.1		- 0.8%	- 4.2%	+ 27.3%
	Steers (C)	537.5		- 1.0%	+ 4.3%	+ 30.2%
	Cows (D)	449.2		- 0.9%	- 3.2%	+ 41.9%
	Heifers (E)	501.9		+ 0.6%	- 1.3%	+ 27.9%
	Calves slaughtered <8M	577.3		- 1.8%	- 2.2%	+ 21.4%
Live Animals	Male Calves Dairy Type	140.0	€/head	+ 4.9%	+ 11.2%	+ 28.9%
	Male Calves Beef Type	254.6		- 2.9%	+ 2.2%	+ 10.8%
	Young Store Cattle	3.05		- 3.1%	- 2.4%	+ 14.1%
	Yearling Male Store Cattle	3.71	€/kg	+ 1.7%	- 3.5%	+ 13.5%
	Yearling Female Store Cattle	3.00		- 0.9%	+ 0.1%	+ 17.3%

Sources : MSs notifications (Regulation (EU) 1182/2017 and 1184/2017)

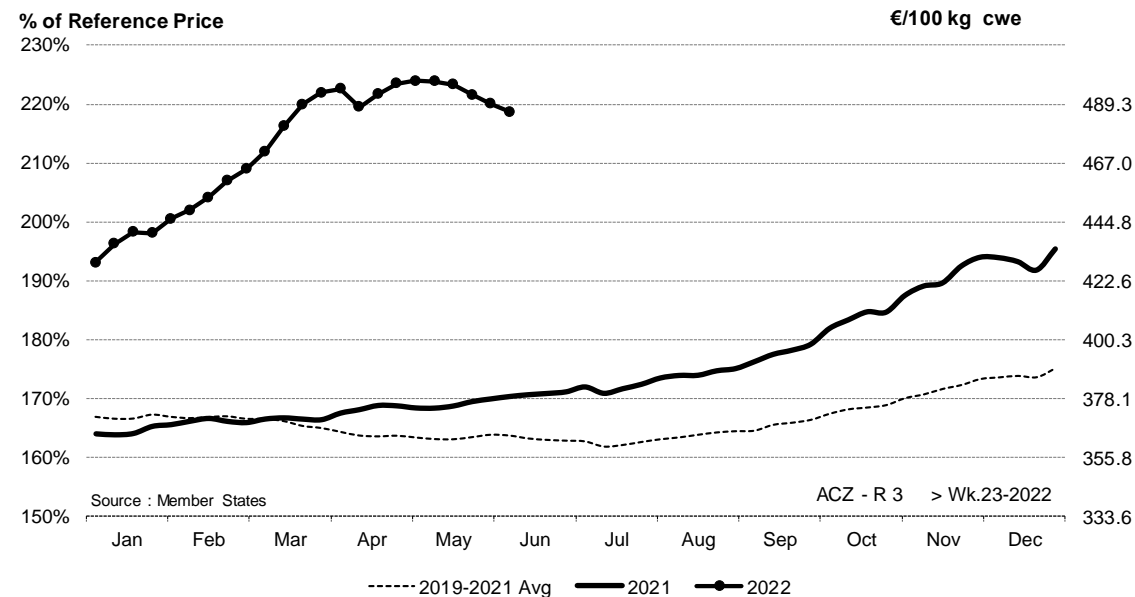
PRICES CARCASSES

EU ACZ R3 Price Comparison between average monthly price June 2021 - May 2022 compared to June 2020 - May 2021



EU EVOLUTION A/C/Z.R3

ACZ - R 3 > Wk.23-2022

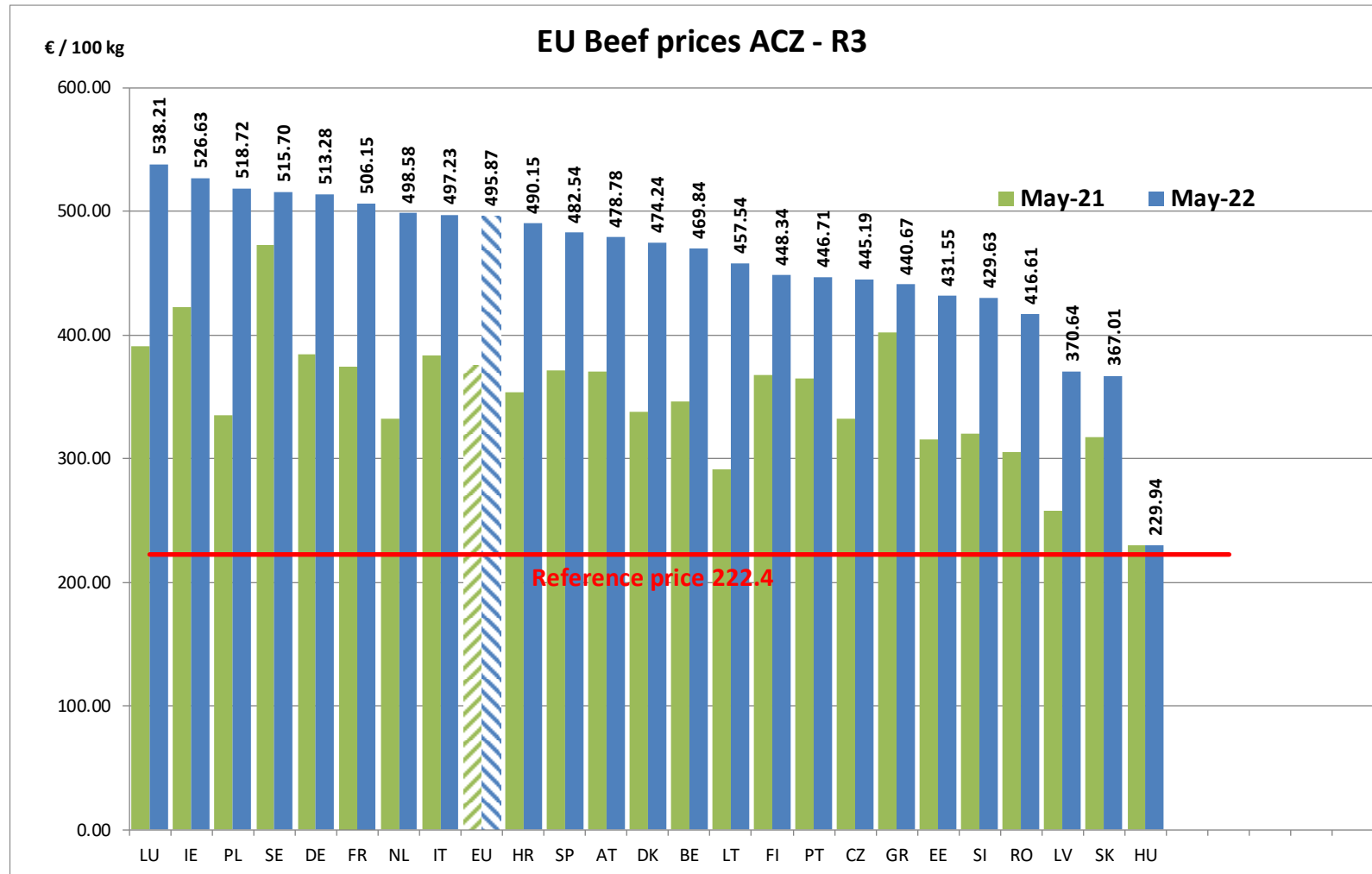


Price in week 23 : **486.27**
 % change y/y : **+ 28.45%**
 % Ref. Price in wk 0 : **218.6%**

Average price in May 2022 : **495.87**
 % change y/y : **+ 32.20%**

PRICES CARCASSES

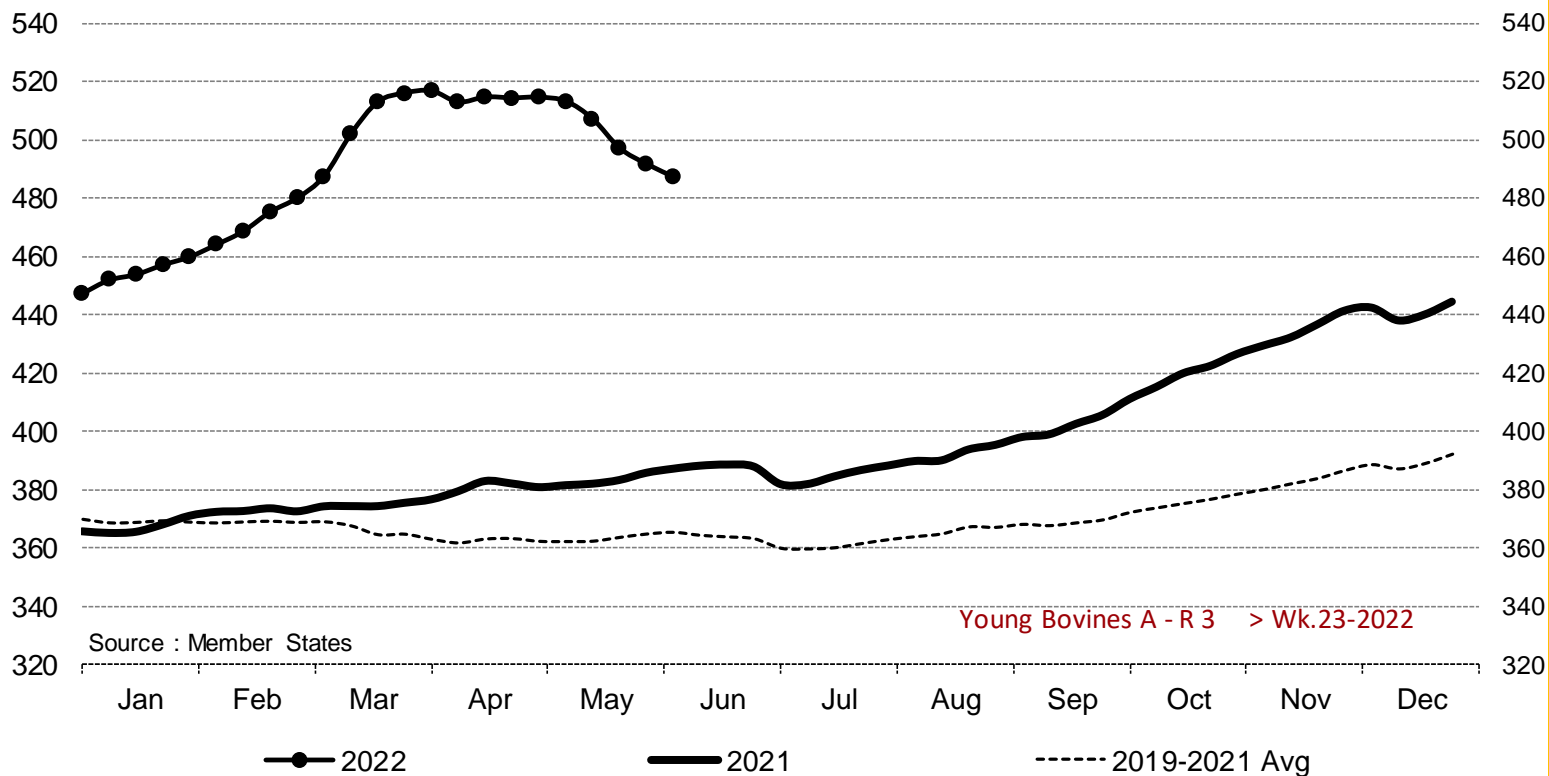
EU EVOLUTION A/C/Z.R3



PRICES CARCASSES

EU EVOLUTION YOUNG BULL – A.R3

Young Bovines A - R 3 > Wk.23-2022



Source : Member States

Young Bovines A - R 3 > Wk.23-2022

Price in week 23 : **487.40**
% change y/y : **+ 25.8%**

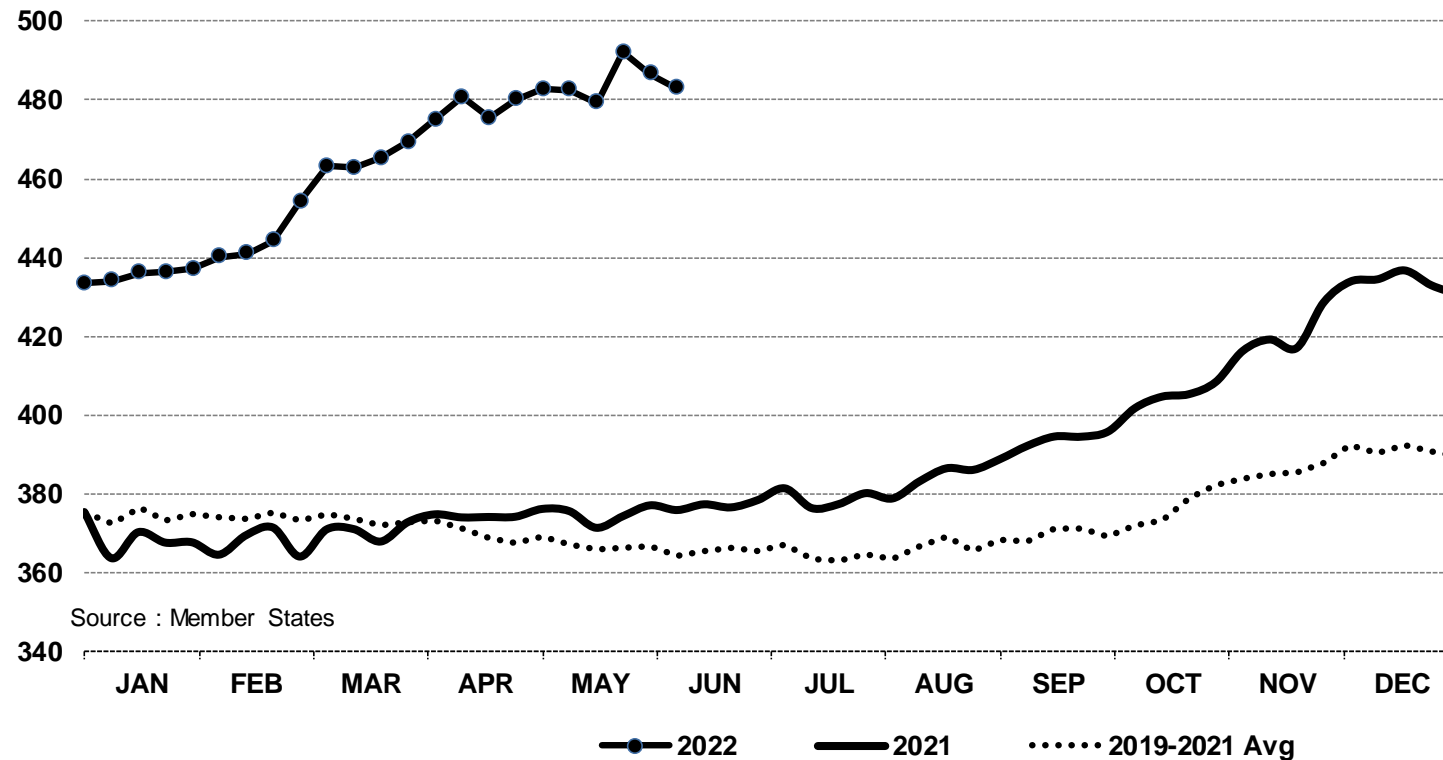
Average price in May 2022 : **507.10**
% change y/y : **+ 32.7%**

PRICES CARCASSES

E.U. EVOLUTION YOUNG BOVINE 8-12M- Z.R3

In € / 100 kg

Young Bovines 8-12m Z - R 3 > Wk.23-2022



Price in week 23 : **482.96**

12/05/2022

Average price in May 2022 : **484.13**

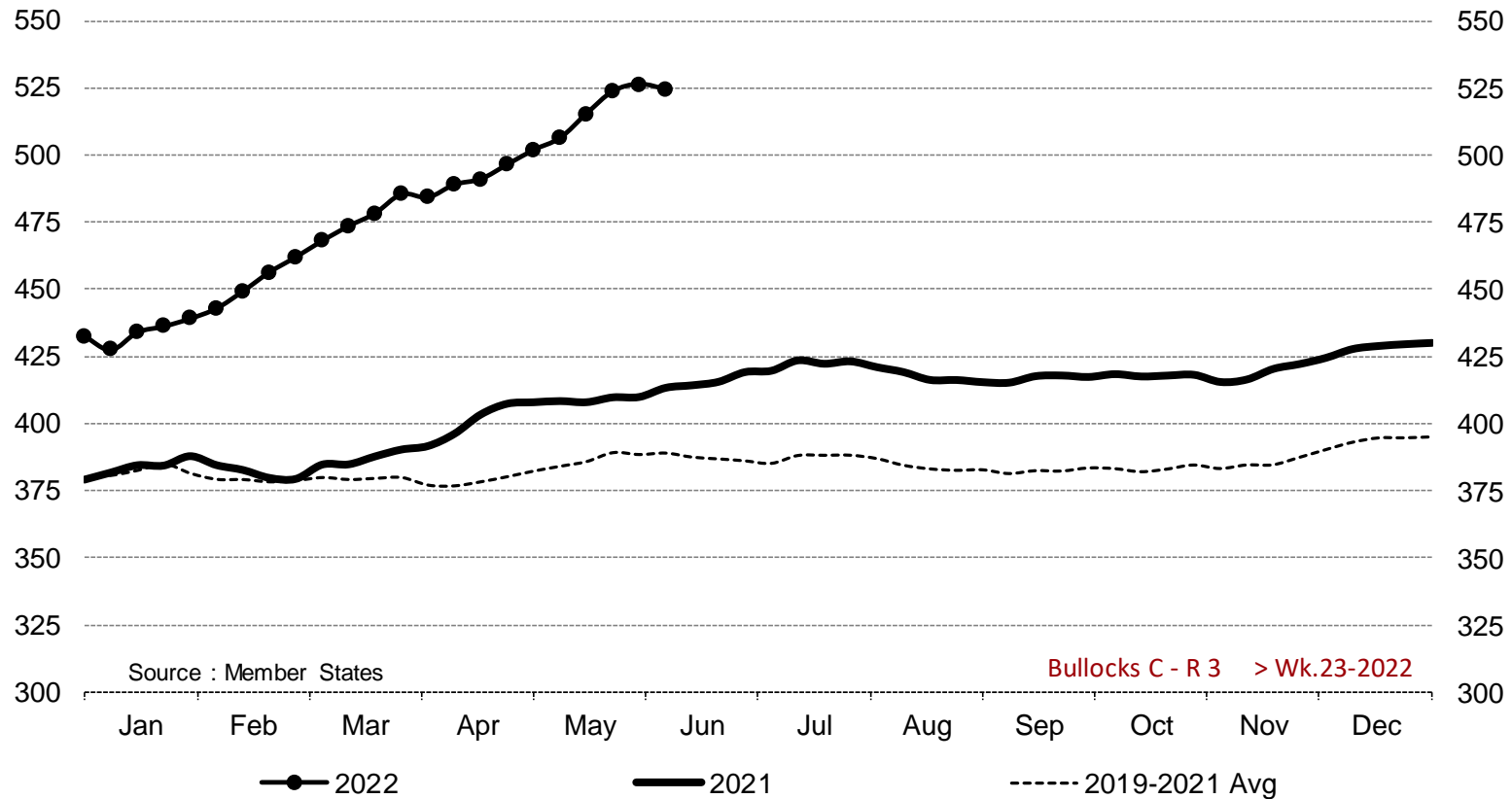
% change y/y : **+ 28.5%**

% change y/y : **+ 29.3%**

PRICES CARCASSES

E.U. EVOLUTION STEER – C.R3

Bullocks C - R 3 > Wk.23-2022



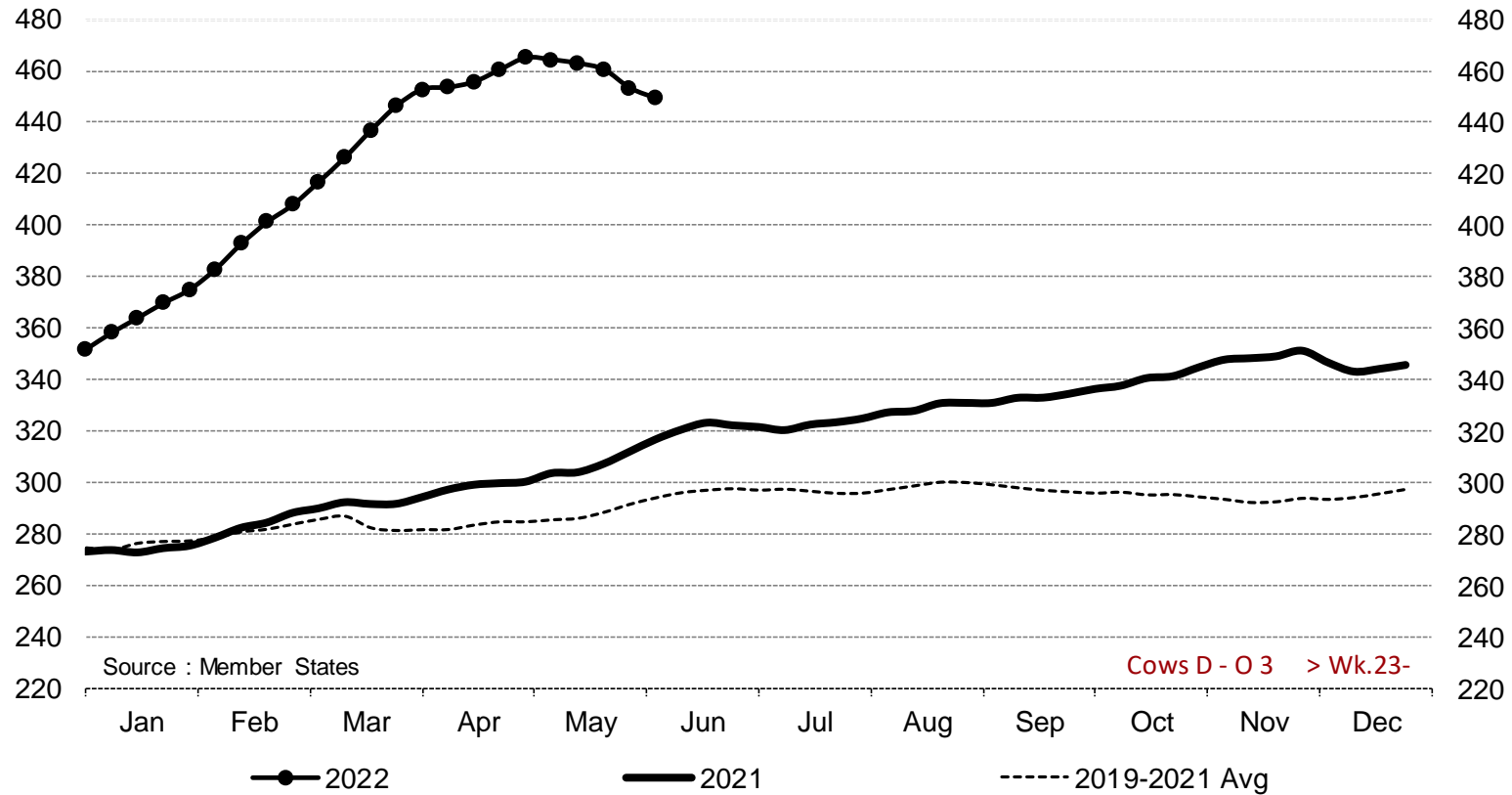
Price in week 23 : **524.26**
% change y/y : **+ 26.9%**

Average price in May 2022 : **512.14**
% change y/y : **+ 25.4%**

PRICES CARCASSES

E.U. EVOLUTION
COW – D.03

Cows D - O 3 > Wk.23-2022



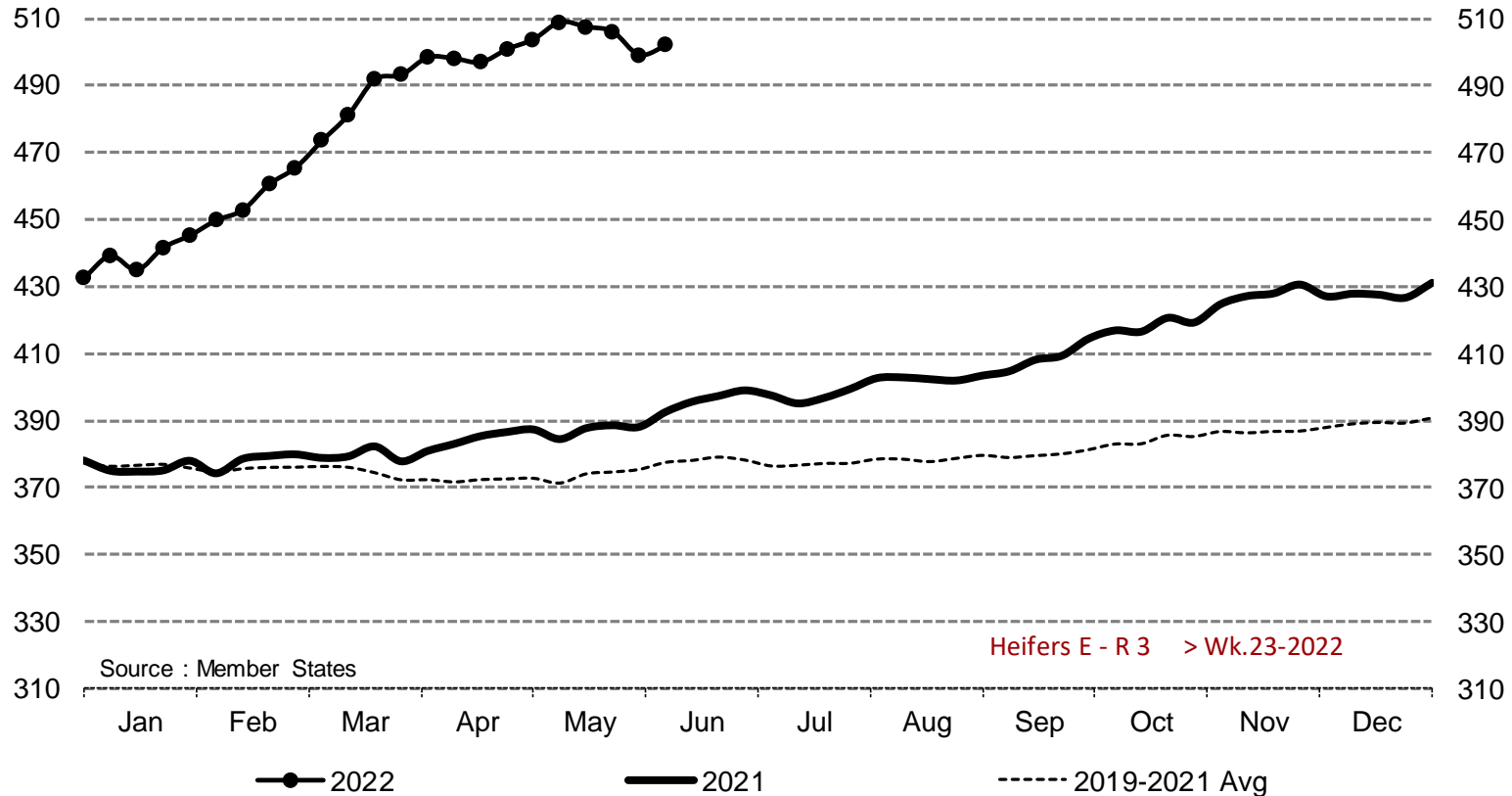
Price in week 23 : **449.26**
% change y/y : **+ 41.9%**

Average price in May 2022 : **462.31**
% change y/y : **+ 52.3%**

PRICES CARCASSES

EU EVOLUTION HEIFER - E.R3

Heifers E - R 3 > Wk.23-2022

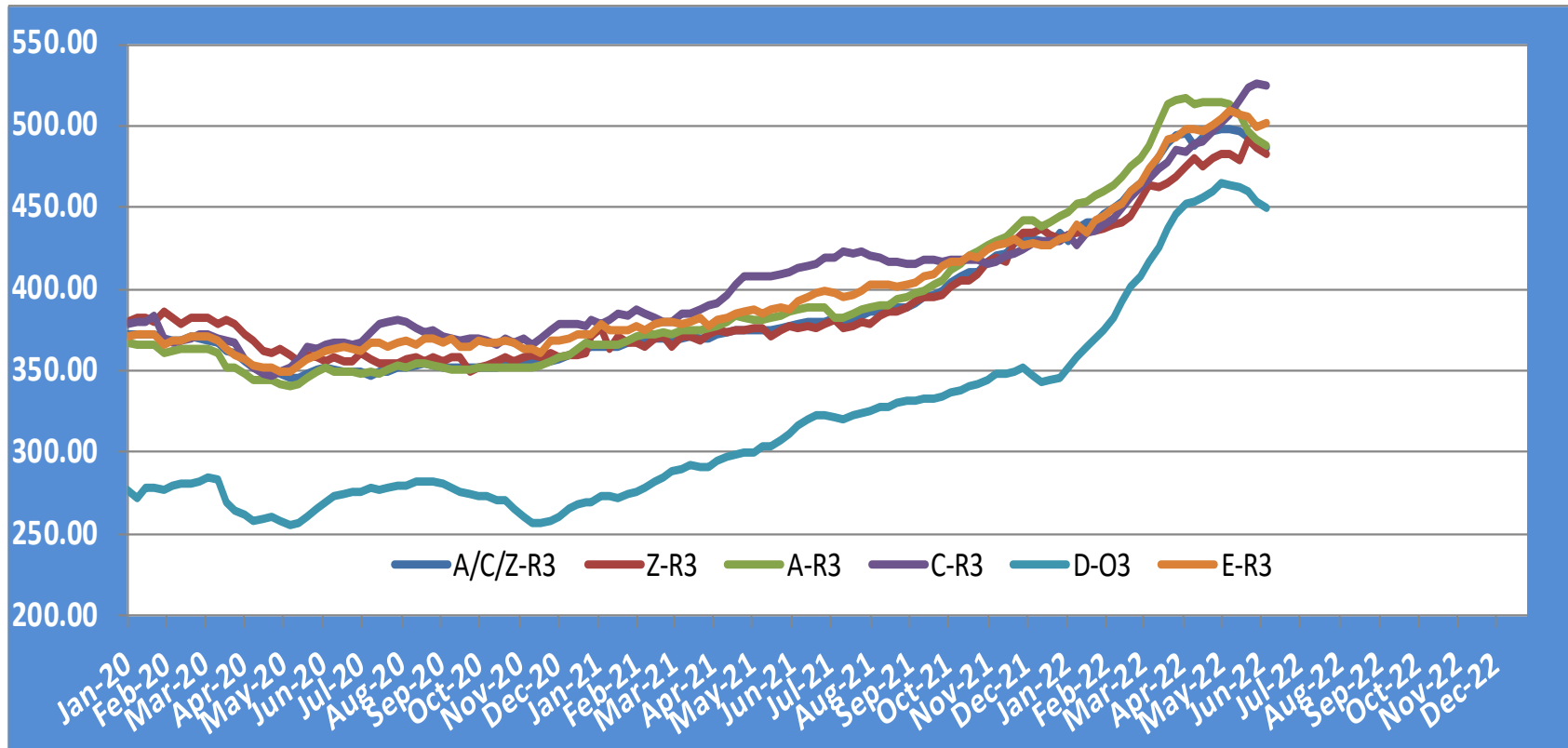


Price in week 23 : **501.92**
% change y/y : **+ 27.9%**

Average price in May 2022 : **505.77**
% change y/y : **+ 30.7%**

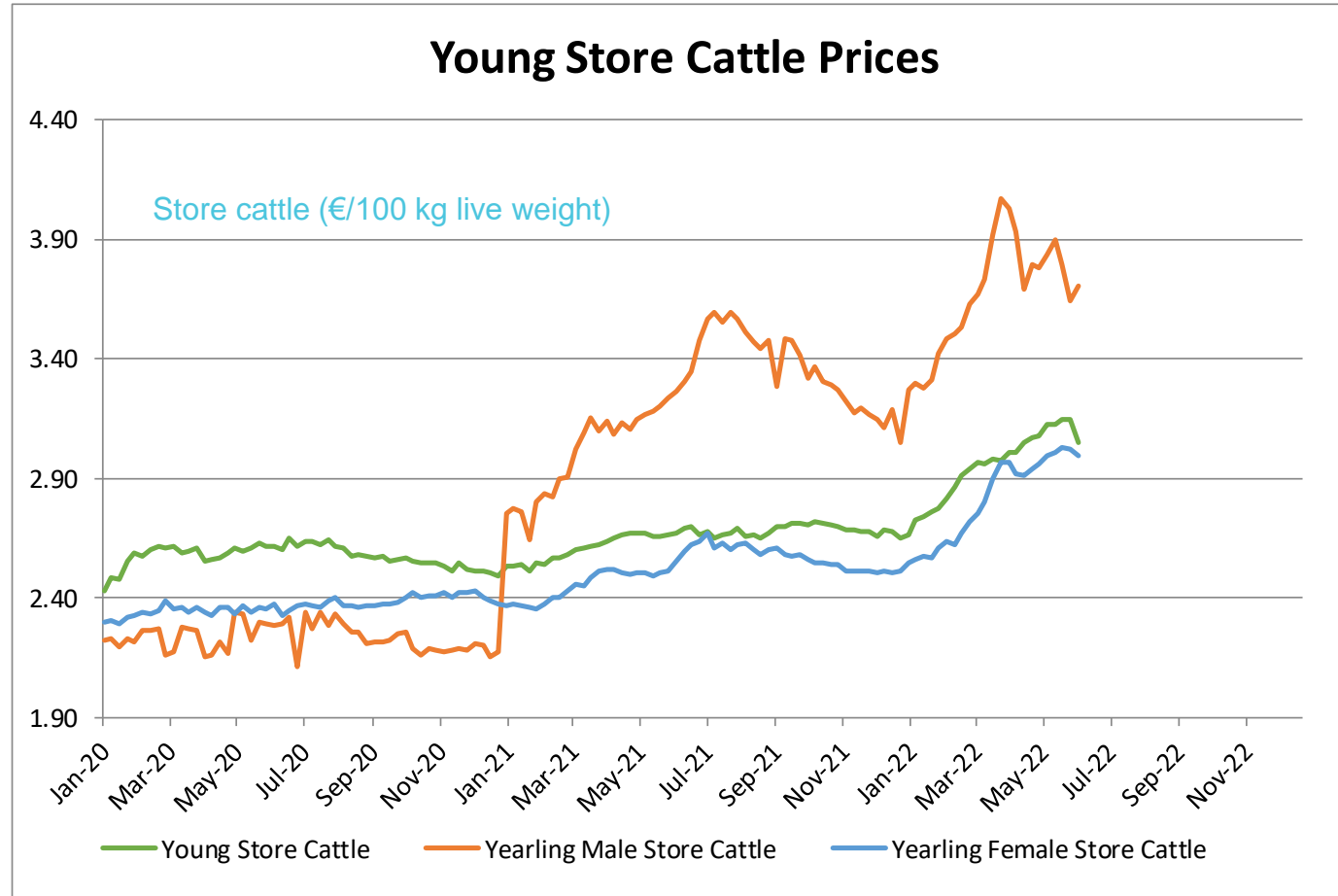
PRICES CARCASSES

EU EVOLUTION ALL CAT GLOBAL VIEW



PRICES LIVE BOVINES

EU EVOLUTION STORE CATTLE



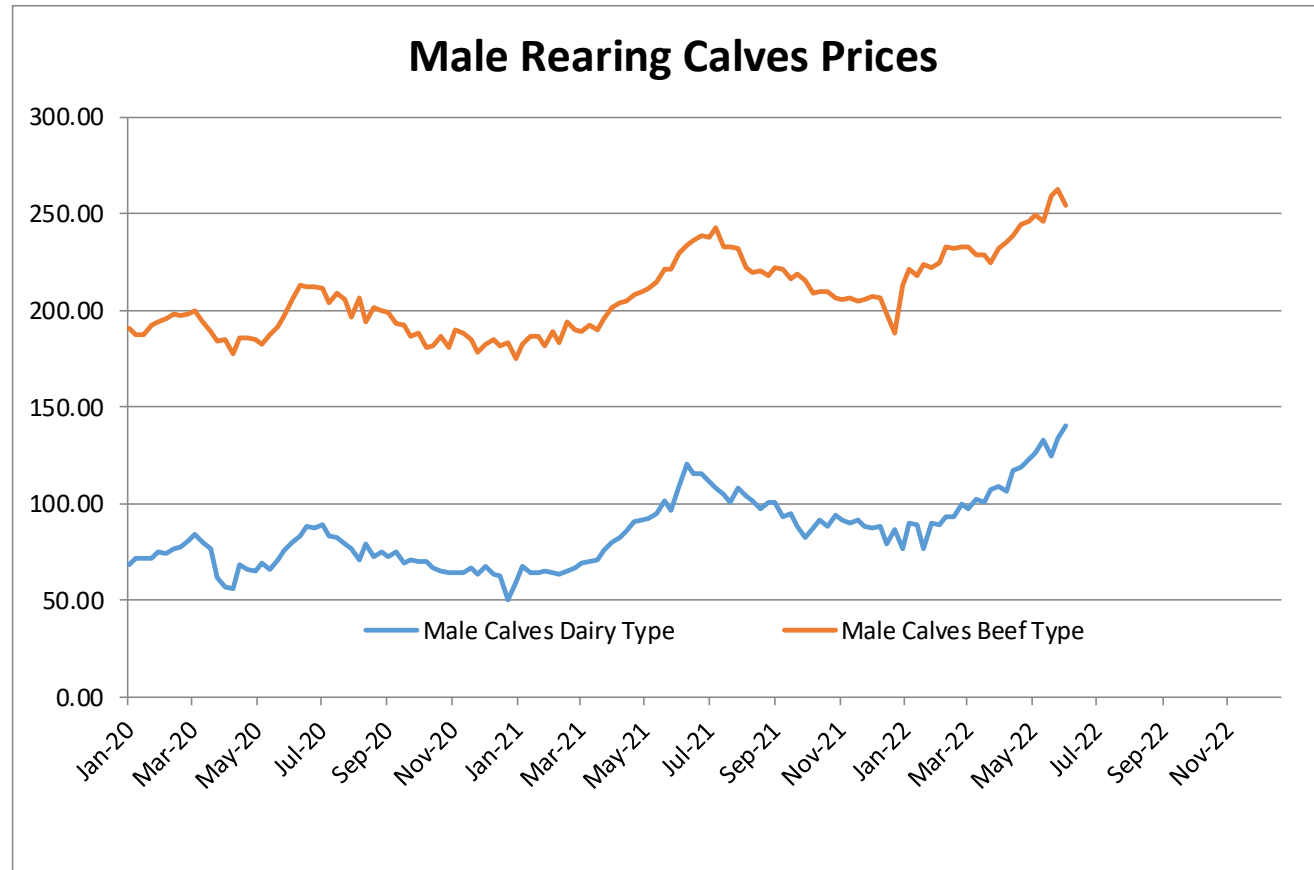
Young Store Cattle Price in	Week 23	3.05	Yearling Male Store Cattle Price	3.71
	Change y/y	+14.13%	Change y/y	+13.50%
Yearling Female Store Cattle Price		3.00		
	Change y/y	+17.30%		

23 June 2022

PRICES LIVE BOVINES

EU EVOLUTION Male Calves – 8D4W

Male calves aged between 8 days and 4 weeks (€/head)



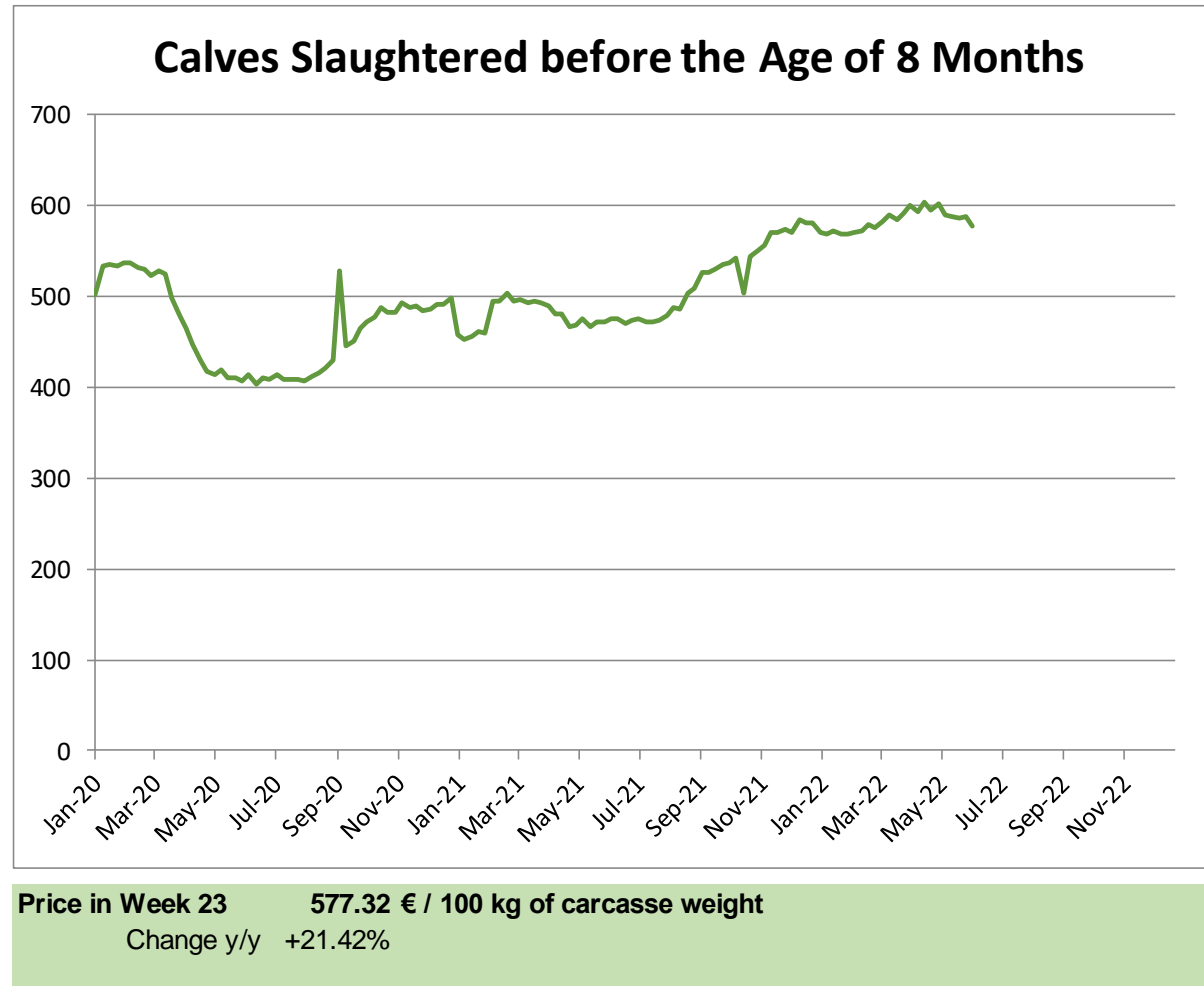
Male Rearing Calves Beef type		Male Rearing Calves Dairy type	
Price in Week 23	254.66	Price in Week 23	140.00
Change y/y	+10.78%	Change y/y	+28.87%

23 June 2022

PRICES LIVE BOVINES

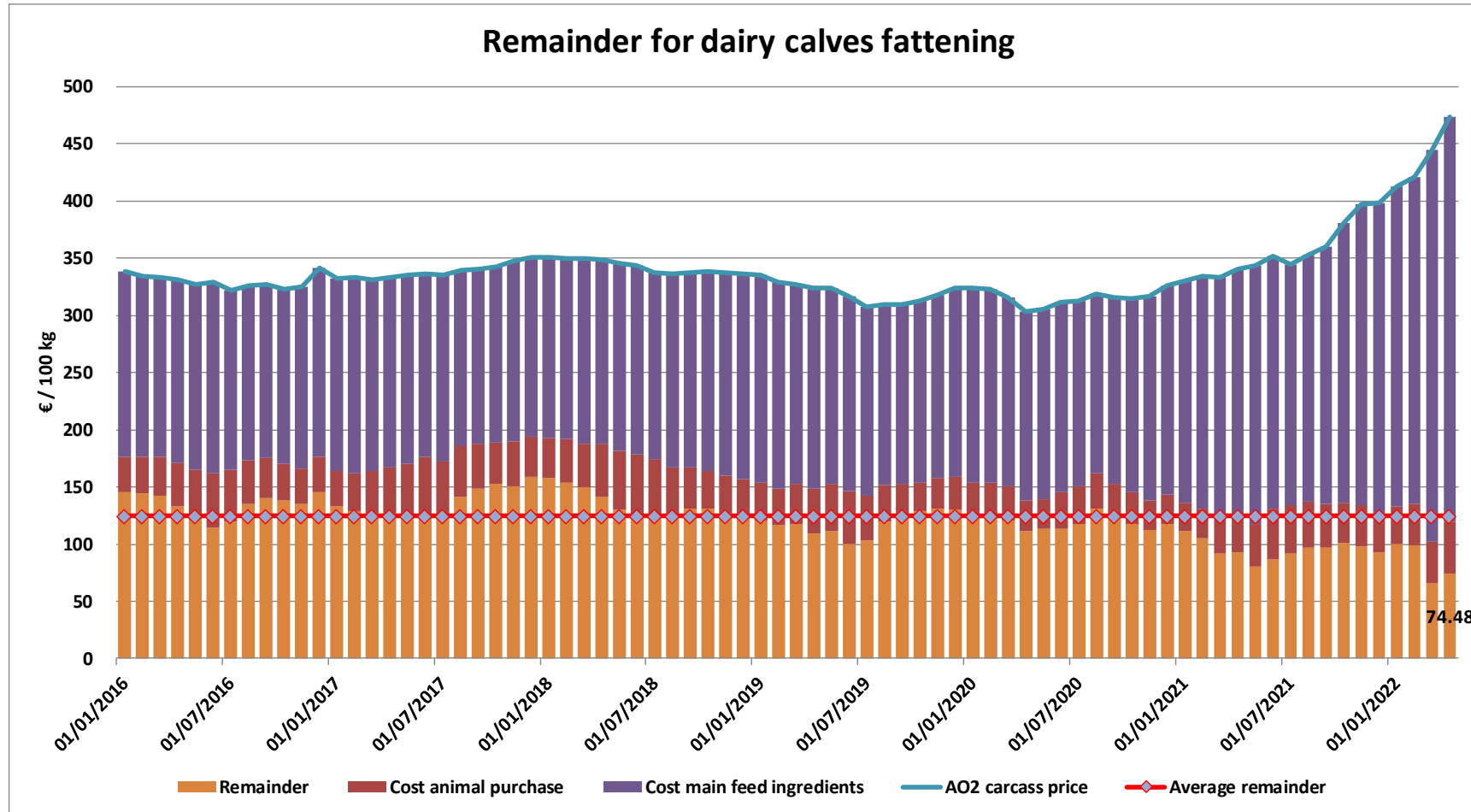
EU EVOLUTION Butcher Calves

Calves slaughtered before the age of less than 8 months
(€/100 kg cw)

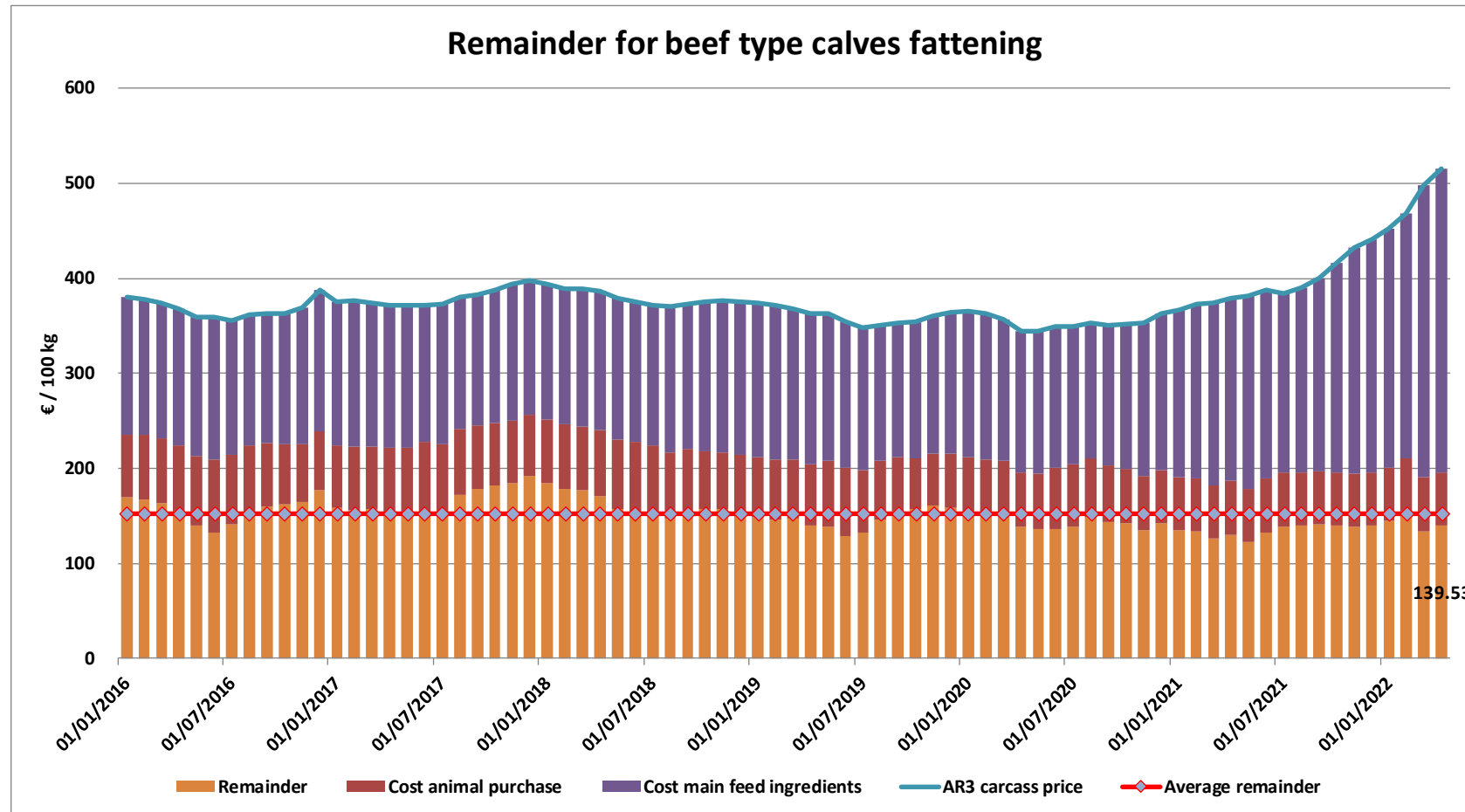


23 June 2022

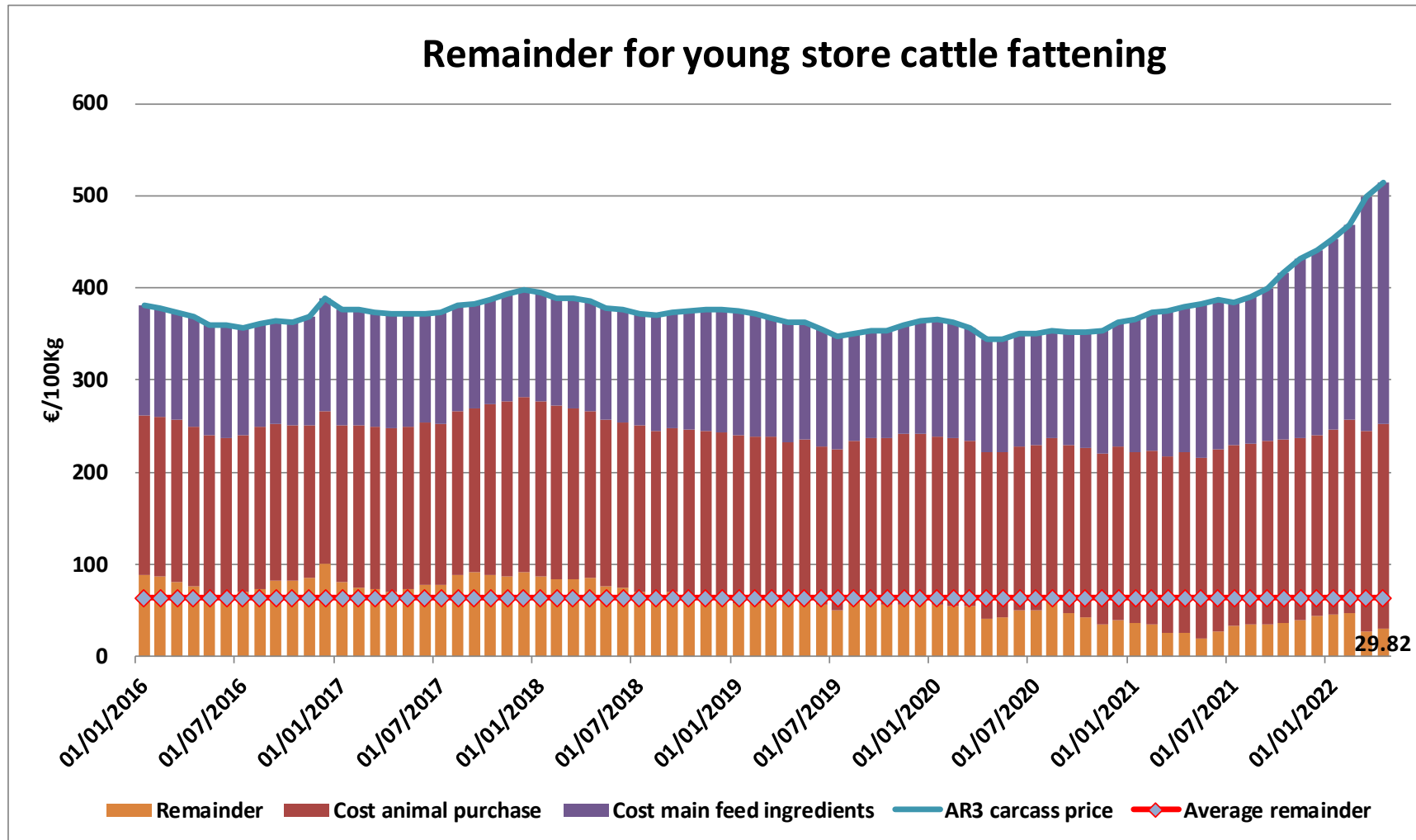
REMAINDERS



REMAINDERS



REMAINDERS



TRADE

EU EXPORTS

Beef & Live Animals

EU Exports of Beef and Live Animals (1): Trade figures (COMEXT – tonnes cwe)

Destinations	2018		2019		2020		2021		Jan-Apr 22		Compared to
	tonnes	%	tonnes	%	tonnes	%	tonnes	%	tonnes	%	
Israel	47 774	6.8%	49 629	7.1%	56 974	8.1%	66 594	9.4%	20 663	10.2%	+ 9.4%
Ghana	36 766	5.2%	39 196	5.6%	47 358	6.7%	47 641	6.7%	12 519	6.2%	- 20.7%
Philippines	28 766	4.1%	34 158	4.9%	39 844	5.7%	45 208	6.4%	12 013	5.9%	- 28.7%
Bosnia-Herz.	38 762	5.5%	41 119	5.9%	35 744	5.1%	41 396	5.9%	11 159	5.5%	- 9.5%
Switzerland	23 761	3.4%	25 188	3.6%	29 993	4.3%	33 916	4.8%	10 901	5.4%	+ 4.6%
Ivory Coast	36 064	5.1%	33 396	4.8%	32 433	4.6%	29 236	4.1%	10 473	5.2%	- 2.1%
Lebanon	42 542	6.1%	36 393	5.2%	33 709	4.8%	19 969	2.8%	9 100	4.5%	- 6.8%
Algeria	35 410	5.0%	57 152	8.2%	39 396	5.6%	24 127	3.4%	8 468	4.2%	- 35.0%
Canada	2 225	0.3%	6 806	1.0%	20 450	2.9%	20 676	2.9%	7 117	3.5%	+ 44.0%
Norway	7 926	1.1%	7 667	1.1%	12 936	1.8%	18 254	2.6%	7 051	3.5%	- 25.2%
Japan	3 452	0.5%	8 007	1.1%	11 885	1.7%	21 888	3.1%	6 511	3.2%	+ 38.8%
Egypt	6 297	0.9%	3 375	0.5%	7 961	1.1%	10 604	1.5%	5 590	2.8%	+++
Kosovo	6 693	1.0%	10 279	1.5%	10 902	1.5%	16 771	2.4%	4 688	2.3%	- 9.5%
Libya	27 878	4.0%	24 541	3.5%	22 352	3.2%	19 725	2.8%	4 616	2.3%	- 37.9%
USA	5 458	0.8%	7 867	1.1%	12 310	1.7%	11 698	1.7%	4 462	2.2%	+ 6.6%
Ukraine	4 186	0.6%	13 836	2.0%	15 837	2.2%	16 583	2.3%	4 263	2.1%	- 26.1%
Other Destinations	347 921	49.6%	301 632	43.1%	274 491	39.0%	261 790	37.1%	62 586	31.0%	
Total (without UK)	701 882		700 242		704 576		706 074		202 180		
% change			- 0%		+ 1%		+ 0%		- 15.2%		

TRADE

EU EXPORTS

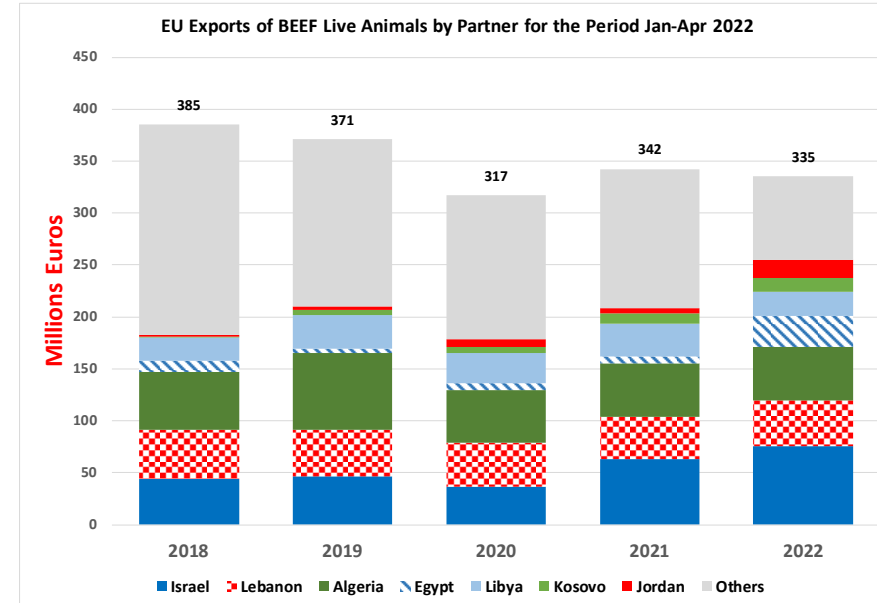
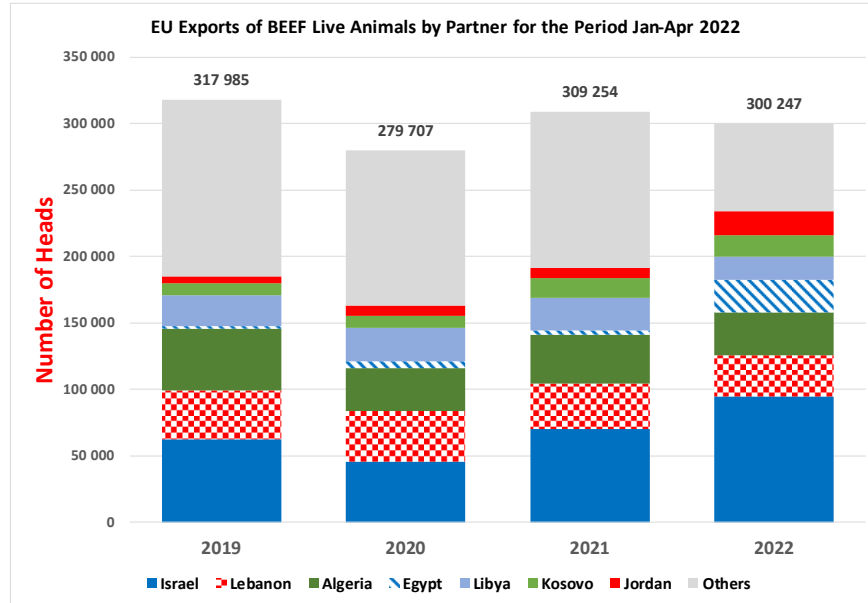
Beef

EU Exports of Beef (excluding fats): Trade figures (COMEXT – tonnes cwe)

Destinations	2018		2019		2020		2021		Jan-Apr 22		Compared to
	tonnes	%	tonnes	%	tonnes	%	tonnes	%	tonnes	%	
Ghana	36 766	8.1%	39 196	8.5%	47 344	10.0%	47 640	9.8%	12 518	9.2%	- 20.7%
Ivory Coast	36 064	7.9%	33 396	7.2%	32 433	6.8%	29 236	6.0%	10 473	7.7%	- 2.1%
Bosnia-Herz.	35 064	7.7%	37 700	8.2%	32 596	6.9%	37 526	7.8%	9 913	7.3%	- 10.9%
Philippines	27 857	6.1%	31 302	6.8%	33 650	7.1%	34 666	7.2%	9 625	7.1%	- 29.6%
Switzerland	19 073	4.2%	20 320	4.4%	25 170	5.3%	27 395	5.7%	8 907	6.6%	+ 10.2%
Canada	2 225	0.5%	6 756	1.5%	20 450	4.3%	20 676	4.3%	7 117	5.2%	+ 44.0%
Norway	7 780	1.7%	7 622	1.7%	12 873	2.7%	18 231	3.8%	7 051	5.2%	- 25.2%
Japan	3 452	0.8%	7 982	1.7%	11 885	2.5%	21 888	4.5%	6 511	4.8%	+ 38.8%
Israel	21 425	4.7%	21 902	4.7%	21 131	4.4%	20 548	4.2%	6 297	4.6%	+ 19.8%
USA	5 441	1.2%	7 866	1.7%	12 308	2.6%	11 469	2.4%	4 462	3.3%	+ 7.9%
Hong Kong	55 439	12.1%	46 639	10.1%	56 713	11.9%	44 823	9.3%	4 222	3.1%	- 75.5%
Ukraine	9 866	2.2%	12 684	2.7%	13 992	2.9%	13 679	2.8%	3 856	2.8%	- 21.5%
Chile	16 410	3.6%	12 461	2.7%	8 664	1.8%	9 915	2.0%	3 492	2.6%	+ 47.3%
North Macedonia	9 483	2.1%	10 744	2.3%	10 034	2.1%	12 777	2.6%	3 229	2.4%	- 21.7%
South Africa	7 214	1.6%	5 391	1.2%	7 743	1.6%	10 237	2.1%	2 489	1.8%	- 23.9%
Senegal	4 953	1.1%	5 248	1.1%	4 627	1.0%	4 530	0.9%	2 443	1.8%	+ 43.8%
<i>Other Destinations</i>	<i>157 852</i>	<i>34.6%</i>	<i>154 541</i>	<i>33.5%</i>	<i>123 368</i>	<i>26.0%</i>	<i>118 750</i>	<i>24.5%</i>	<i>33 055</i>	<i>24.4%</i>	
Total (without UK)	456 364		461 750		474 982		483 987		135 660		
% change			+ 1%		+ 3%		+ 2%		- 15.4%		

TRADE

EU EXPORTS Live Animals



TRADE

EU IMPORTS

Beef

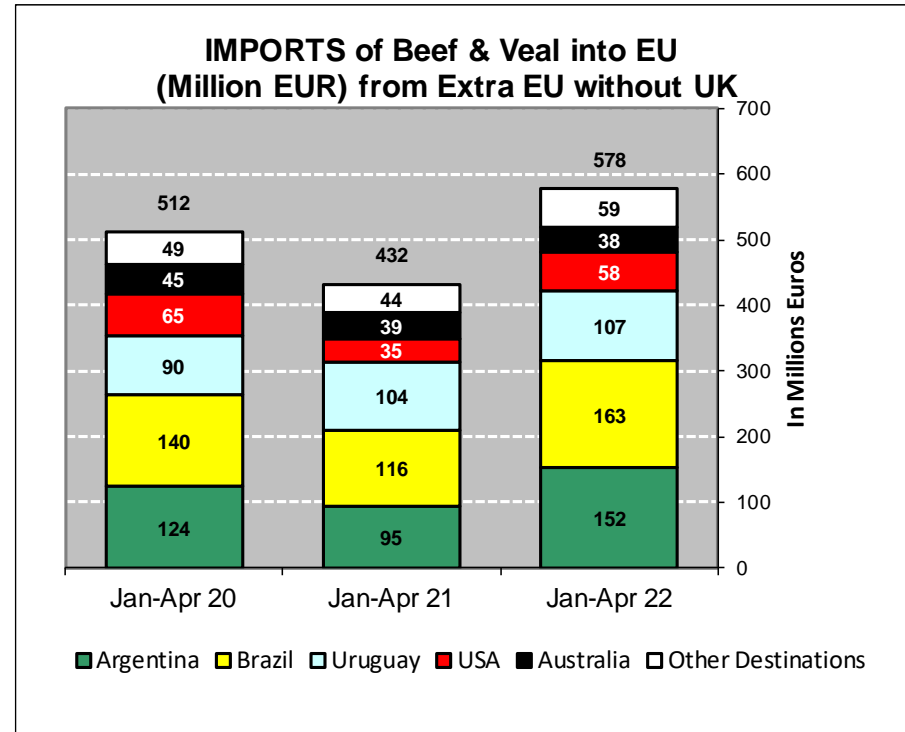
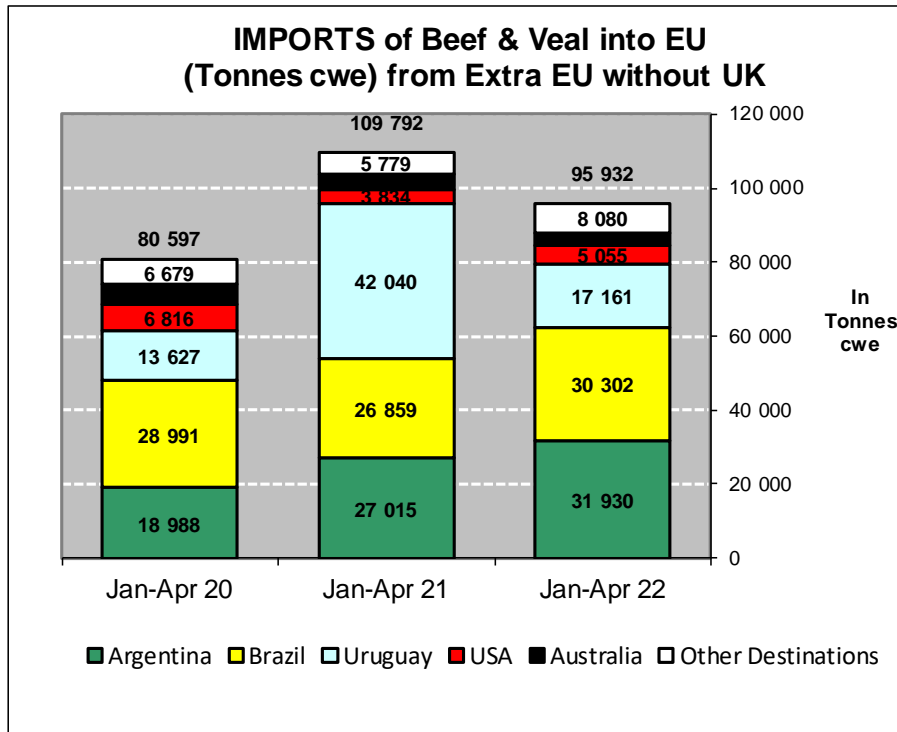
EU Imports of Beef (not including Fats): Trade Figures (COMEXT – tonnes cwe)

Origins	2018		2019		2020		2021		Jan-Apr 22		Compared to
	tonnes	%	tonnes	%	tonnes	%	tonnes	%	tonnes	%	
Brazil	103 979	37.3%	99 569	36.5%	84 139	37.6%	81 601	36.9%	30 302	38.8%	+ 12.8%
Argentina	61 400	22.0%	65 324	23.9%	56 421	25.2%	52 286	23.6%	17 465	22.4%	+ 16.1%
Uruguay	47 922	17.2%	40 483	14.8%	34 611	15.5%	42 660	19.3%	14 156	18.1%	- 15.0%
USA	19 268	6.9%	16 852	6.2%	16 532	7.4%	14 826	6.7%	5 055	6.5%	+ 31.9%
Australia	17 354	6.2%	16 432	6.0%	11 058	4.9%	8 925	4.0%	3 404	4.4%	- 20.2%
New Zealand	7 109	2.6%	6 712	2.5%	6 116	2.7%	4 378	2.0%	1 447	1.9%	+ 18.5%
Paraguay	5 520	2.0%	5 203	1.9%	4 234	1.9%	3 933	1.8%	1 330	1.7%	+++
Switzerland	5 389	1.9%	4 353	1.6%	4 153	1.9%	4 680	2.1%	1 329	1.7%	- 16.7%
Japan	791	0.3%	997	0.4%	789	0.4%	1 478	0.7%	1 070	1.4%	+++
Namibia	3 442	1.2%	7 706	2.8%	1 445	0.6%	1 996	0.9%	823	1.1%	+++
Canada	1 343	0.5%	2 518	0.9%	1 550	0.7%	1 816	0.8%	545	0.7%	- 13.1%
Serbia	1 134	0.4%	1 052	0.4%	931	0.4%	956	0.4%	412	0.5%	+++
Norway	153	0.1%	125	0.0%	335	0.1%	540	0.2%	176	0.2%	+ 74.1%
China	30	0.0%	26	0.0%	0	0.0%	22	0.0%	166	0.2%	+++
Chile	356	0.1%	392	0.1%	168	0.1%	238	0.1%	105	0.1%	+++
Hong Kong	70	0.0%	0	0.0%	25	0.0%	0	0.0%	101	0.1%	+++
<i>Other Destinations</i>	3 445	1.2%	5 329	2.0%	1 080	0.5%	985	0.4%	129	0.2%	
Total to Third Countries	278 704		273 073		223 586		221 319		78 016		
% change			- 2%		- 18%		- 1%		+ 8.2%		

TRADE

EU Imports of Beef and Live Animals (2): Trade Figures (COMEXT)

EU IMPORTS Beef & Live Animals



EU TRADE with UK

EU EXPORTS Beef Products

EU Export of BEEF to UK by Products from Jan to Mar

In Tons of Carcase Weight

	2020			2021			2022			% 2022/2021	
	United Kingdom	Extra-EU	%	United Kingdom	Extra-EU	%	United Kingdom	Extra-EU	%	United Kingdom	Extra-EU
Live Animals	3 240	49 317	6.6%	3 572	54 565	6.5%	3 207	49 380	6.5%	-10.2%	-9.5%
Meats	100 385	224 102	44.8%	64 328	182 565	35.2%	86 064	188 674	45.6%	+33.8%	+3.3%
Fresh	57 511	82 836	69.4%	40 714	65 833	61.8%	46 730	70 444	66.3%	+14.8%	+7.0%
Frozen	11 799	56 087	21.0%	12 398	55 536	22.3%	23 744	57 509	41.3%	+91.5%	+3.6%
Salted Meat	6 547	7 019	93.3%	126	510	24.7%	101	651	15.6%	-19.6%	+27.5%
Prepared	12 256	20 324	60.3%	7 299	14 434	50.6%	10 588	17 333	61.1%	+45.1%	+20.1%
Fresh Offals	5 253	6 056	86.8%	1 339	1 932	69.3%	1 925	2 618	73.5%	+43.8%	+35.5%
Frozen Offals	3 565	45 754	7.8%	2 328	41 129	5.7%	2 812	35 997	7.8%	+20.8%	-12.5%
Salted Offals	3 360	5 907	56.9%	55	3 095	1.8%	64	3 969	1.6%	+16.6%	+28.2%
Prepared Offal	93	118	78.6%	69	95	72.2%	99	153	64.5%	+43.4%	+60.4%
Total Beef	103 625	273 419	37.9%	67 900	237 130	28.6%	89 271	238 053	37.5%	+31.5%	+0.4%

Source : Comext

23 June 2022

EU TRADE with UK

EU IMPORTS Beef Products

EU Import of BEEF from UK by Products from Jan to Mar

In Tons of Carcase Weight

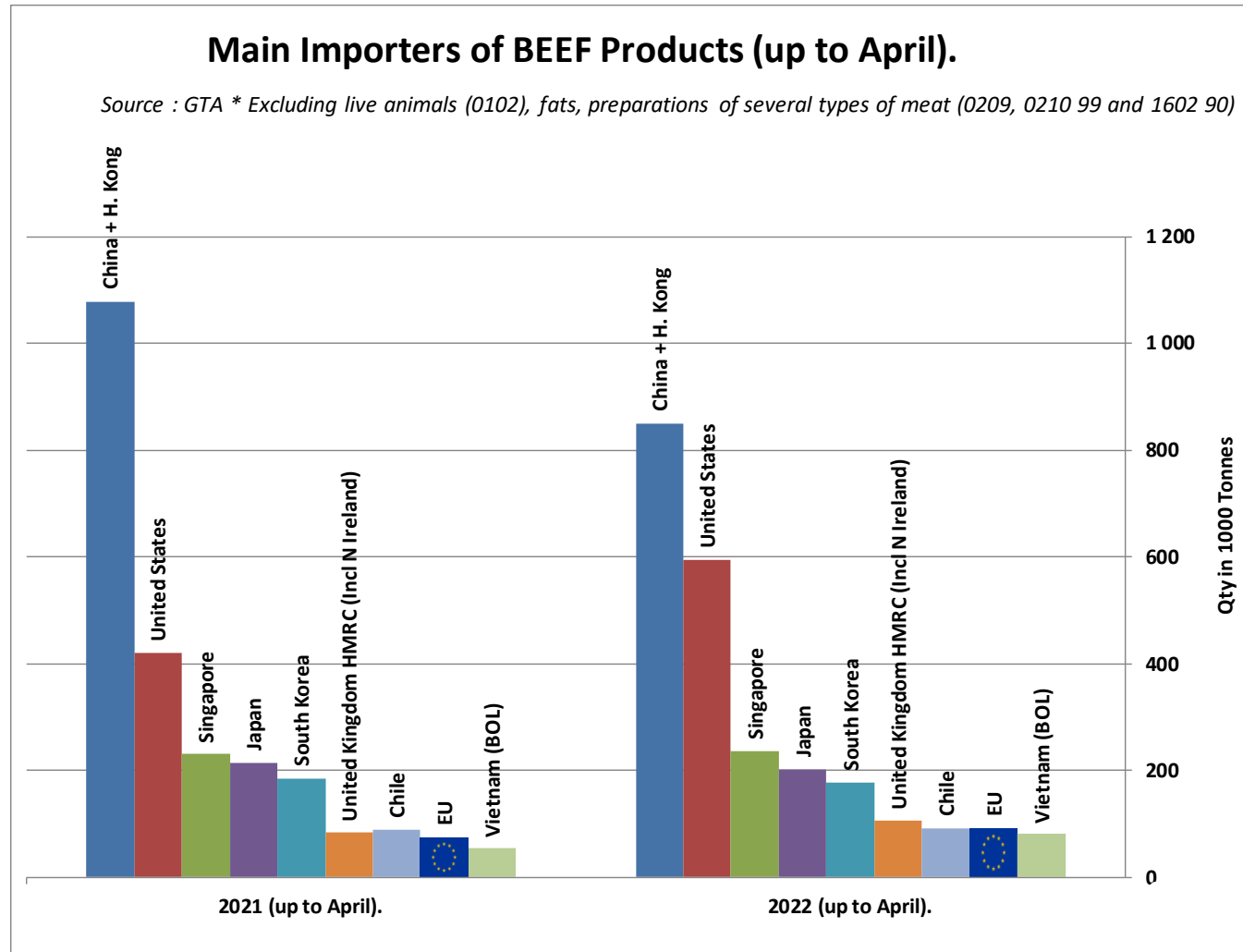
	2020			2021			2022			% 2022/2021	
	United Kingdom	Extra-EU	%	United Kingdom	Extra-EU	%	United Kingdom	Extra-EU	%	United Kingdom	Extra-EU
Live Animals	569	614	92.6%	189	233	81.1%	175	182	96.1%	-7.4%	-21.8%
Meats	33 072	90 425	36.6%	15 853	67 712	23.4%	31 770	87 356	36.4%	+100.4%	+29.0%
Fresh	21 543	54 894	39.2%	10 621	34 612	30.7%	22 754	49 165	46.3%	+114.2%	+42.0%
Frozen	5 811	23 447	24.8%	2 908	25 620	11.4%	5 088	28 982	17.6%	+75.0%	+13.1%
Salted Meat	98	855	11.5%	52	968	5.4%	39	848	4.6%	-25.8%	-12.4%
Prepared	2 483	7 512	33.0%	1 103	4 824	22.9%	2 114	5 847	36.1%	+91.6%	+21.2%
Fresh Offals	1 129	1 481	76.3%	1 081	1 372	78.8%	1 102	1 398	78.8%	+1.9%	+1.8%
Frozen Offals	1 591	1 805	88.1%	78	305	25.7%	662	1 066	62.1%	+++	+++
Salted Offals	400	402	99.7%	6	7	87.9%	8	13	60.9%	+28.4%	+85.3%
Prepared Offal	18	30	61.0%	2	4	38.1%	4	37	10.6%	+150.8%	+++
Total Beef	33 641	91 039	37.0%	16 041	67 945	23.6%	31 945	87 538	36.5%	+99.1%	+28.8%

Source : Estat - Comext

23 June 2022

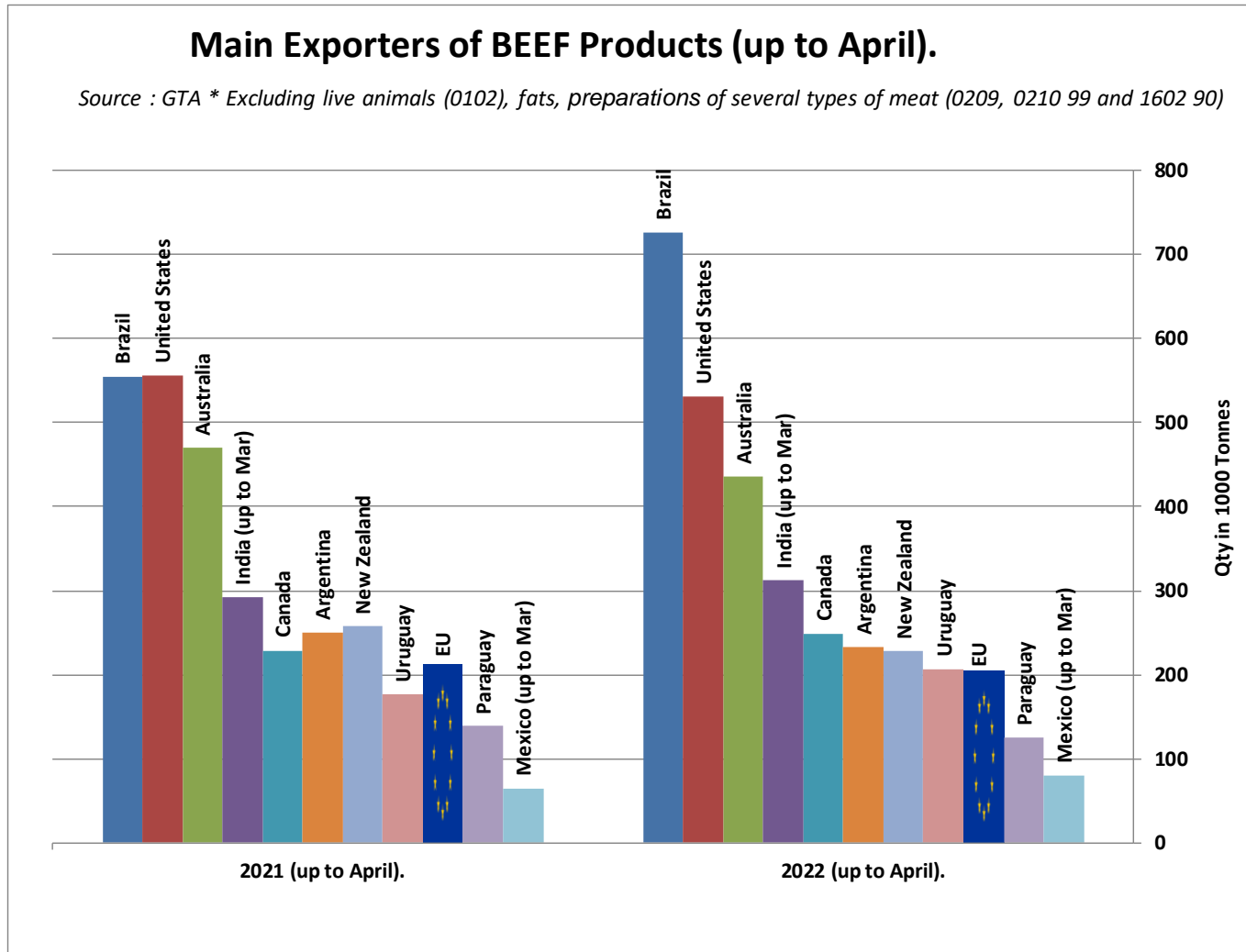
WORLD BEEF MARKET

E.U. + UK IMPORTS BEEF MAIN IMPORTERS



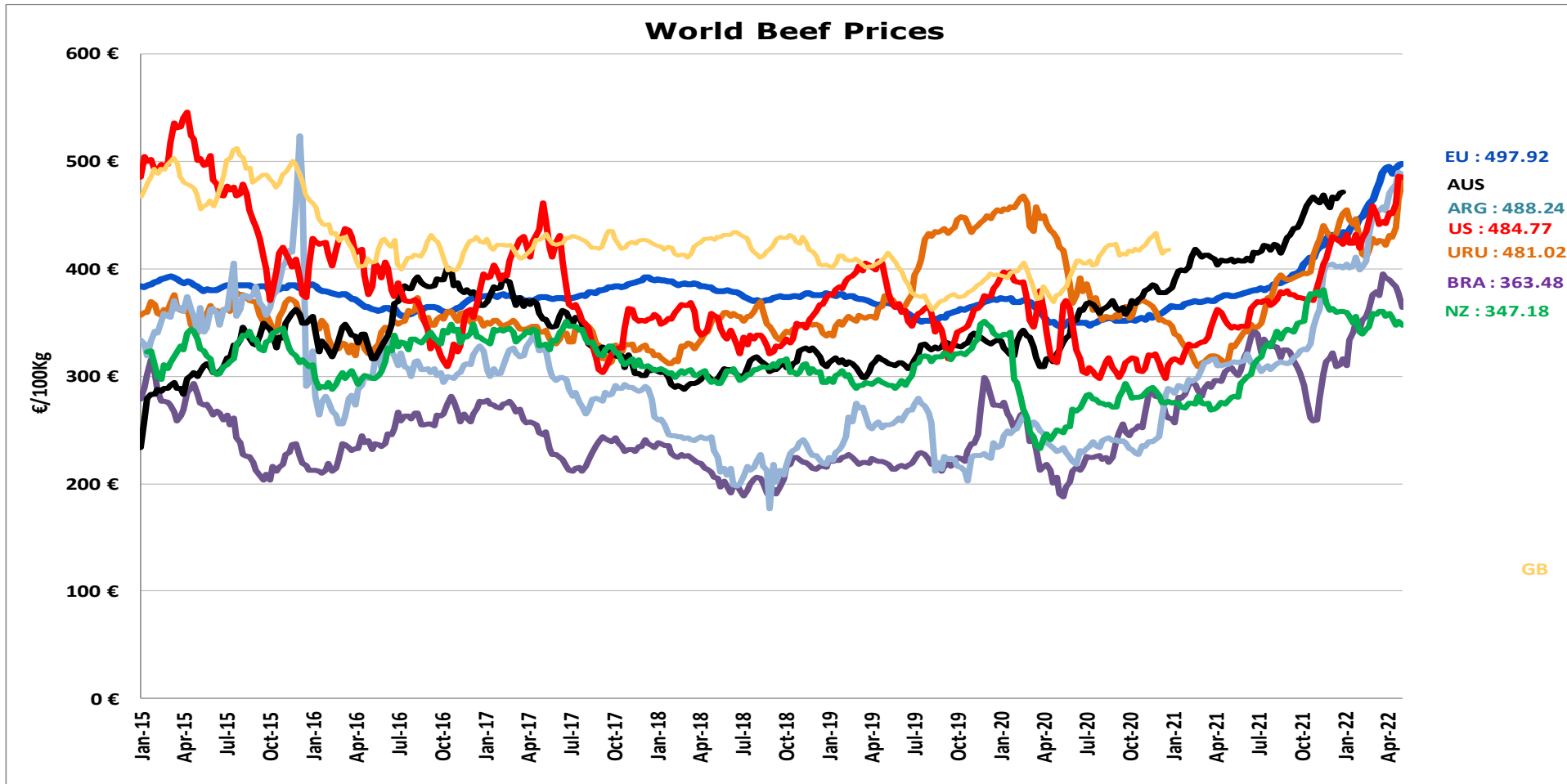
WORLD BEEF MARKET

E.U. + UK EXPORTS BEEF MAIN EXPORTERS



WORLD BEEF MARKET

STEER PRICES EU, US, AUS, NZ



- ECB <http://sdw.ecb.europa.eu/browse.do?node=2018794>
- US <https://www.marketnews.usda.gov/mnp/ls-home>
- AUS <http://statistics.mla.com.au/Report/RunReport/ae59d4ac-74e4-4c56-93bd-982a044d9760>
- UY <http://www.inac.gub.uy/innovaportal/v/11034/10/innova.front/indicadores-y-precios>
- ARG http://www.abc-consorcio.com.ar/Estadisticas/detalle/117/precios_comparativos_del_novillo.html
- BR <http://www.pecuaria.com.br/cotacoes.php>
- NZ http://www.abc-consorcio.com.ar/Estadisticas/detalle/117/precios_comparativos_del_novillo.html

THANK YOU VERY MUCH

More Information at:

EU Market Observatory

https://ec.europa.eu/agriculture/market-observatory/meat_en

And

Agri-FOOD data portal:

<http://agridata.ec.europa.eu/>

Thank you



© European Union 2020

Unless otherwise noted the reuse of this presentation is authorised under the [CC BY 4.0](https://creativecommons.org/licenses/by/4.0/) license. For any use or reproduction of elements that are not owned by the EU, permission may need to be sought directly from the respective right holders.

Slide xx: **element concerned**, source: **e.g. Fotolia.com**; Slide xx: **element concerned**, source: **e.g. iStock.com**

