



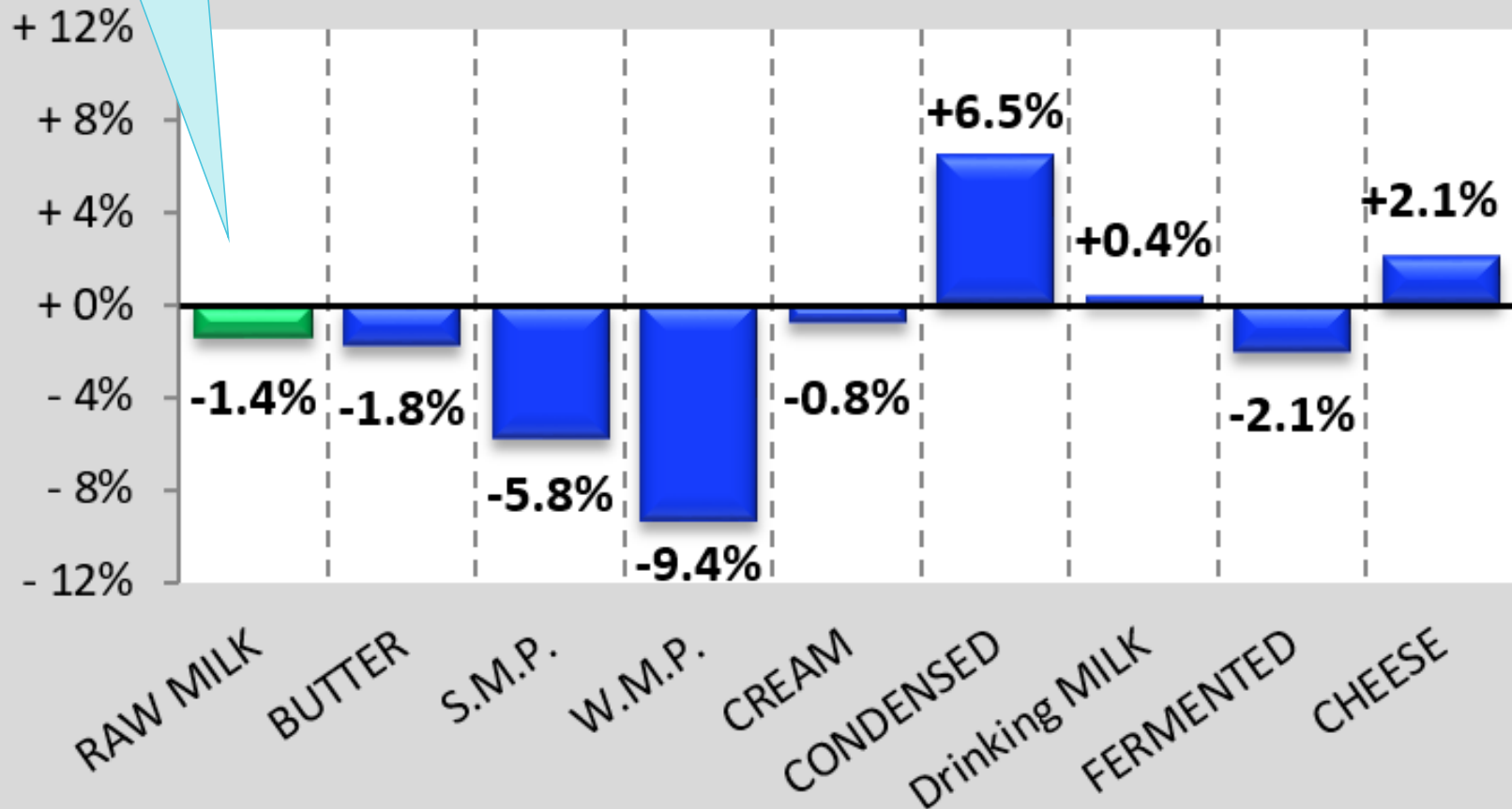
# Milk Market Situation

*Brussels, 17 June 2021*

*The United Kingdom is no longer a Member State of the European Union, however where it is deemed relevant (e.g. for comparison purposes) EU+UK aggregates may still be displayed.*

Jan-Apr 2021/20: -0.7%  
(leap year adjusted: +0.1%)

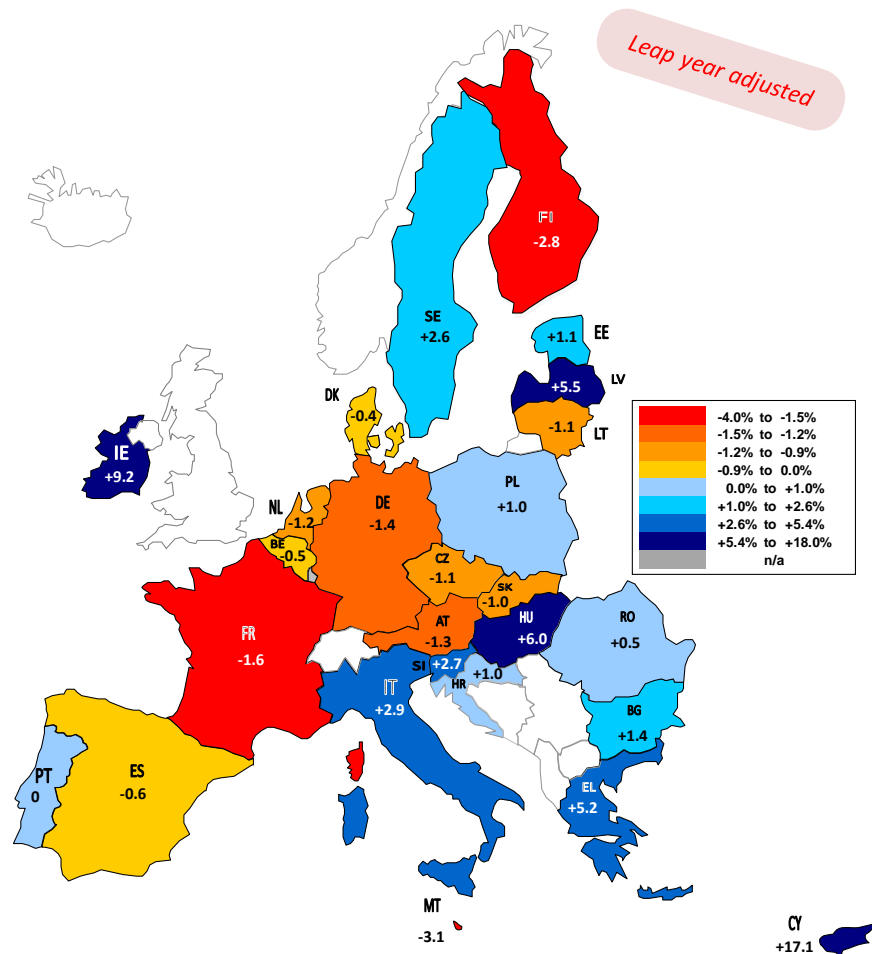
## EU Productions Jan-Mar 2021 compared to Jan-Mar 2020)



!!! Data from some Member States are confidential and are NOT included in this table !!!

# EU Milk Deliveries compared to last period (in %)

(Jan - Apr 2021 / Jan - Apr 2020)



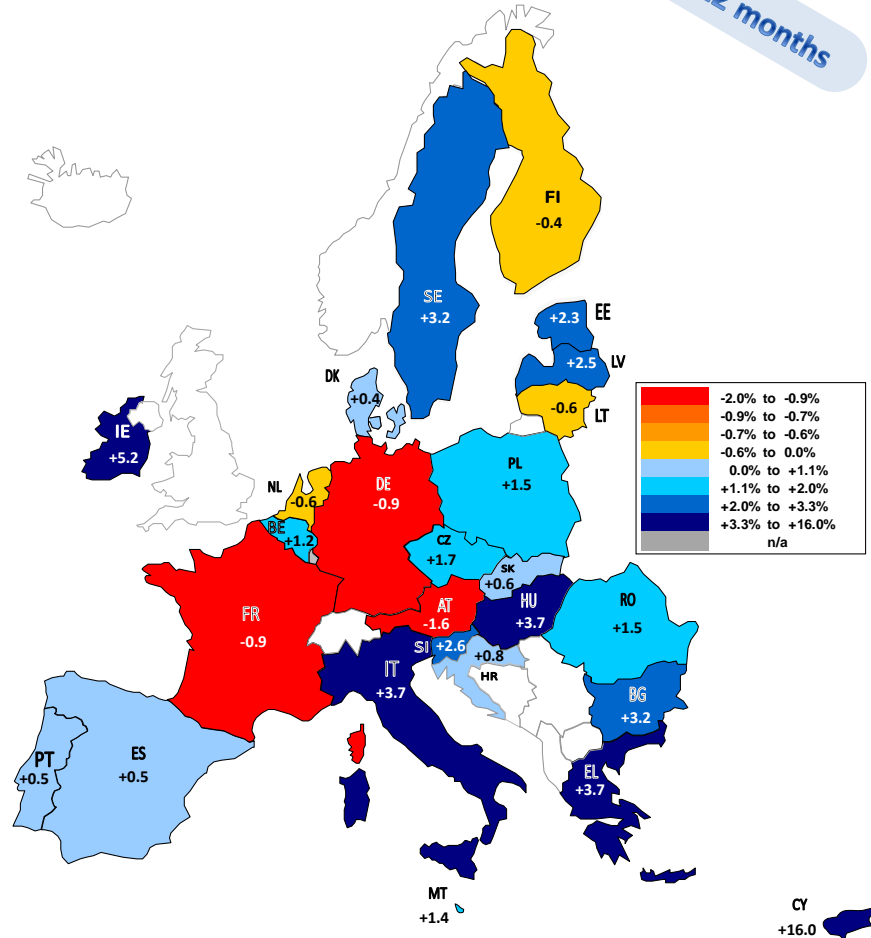
Source : MS' Communications to Eurostat, FEQA, AGEA, Reg.479/2010.1(a)1

The designations employed and the presentation of material on the map do not imply the expression of any opinion whatsoever on the part of the European Union concerning the legal status of any country, territory or area or of its authorities, or concerning the delimitation of its frontiers or boundaries.

# EU Milk Deliveries compared to last period (in %)

(May 2020 - Apr 2021 / May 2019 - Apr 2020)

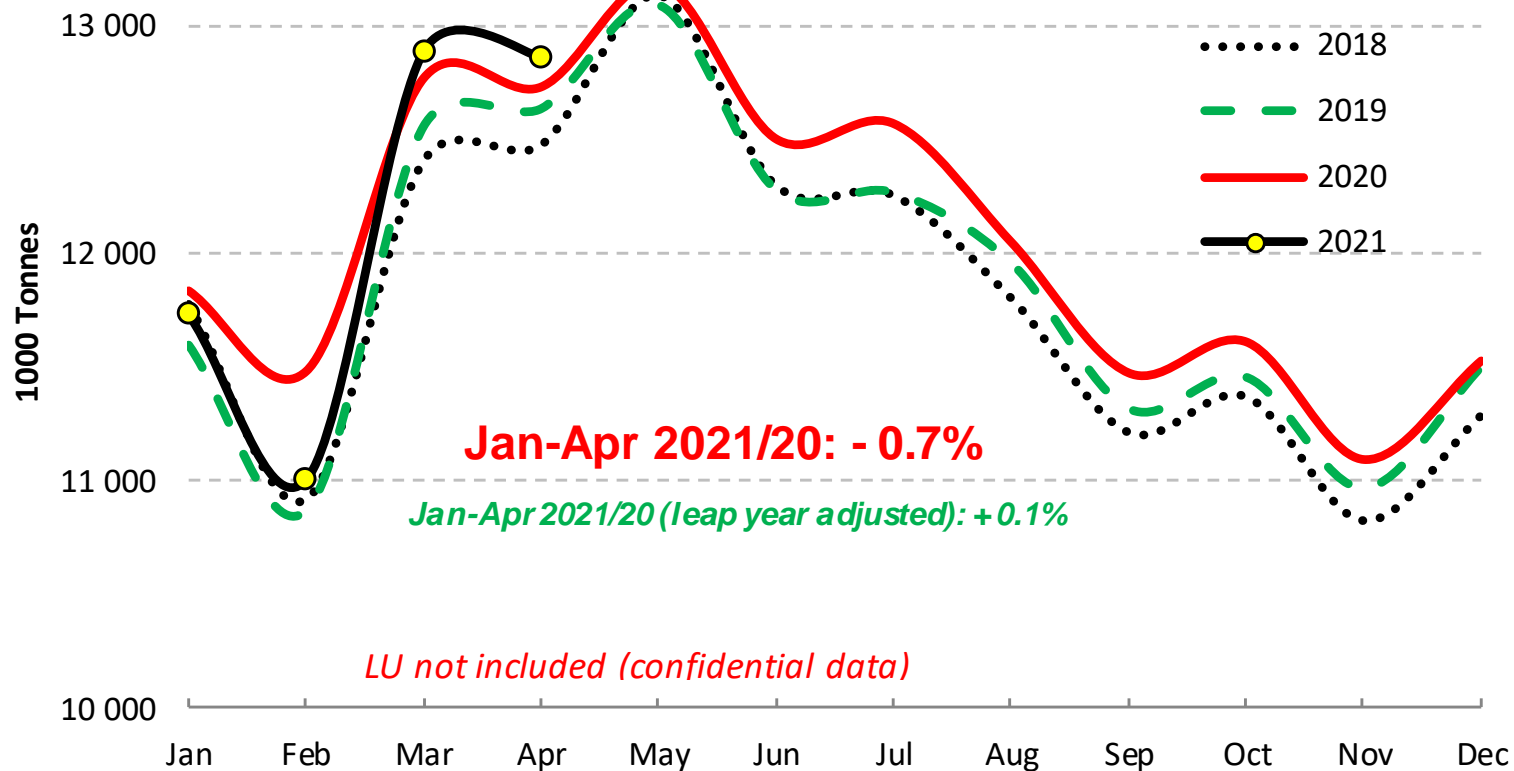
Last 12 months



Source : MS' Communications to Eurostat, FEGA, AGEA, Reg.479/2010.1(a)1

The designations employed and the presentation of material on the map do not imply the expression of any opinion whatsoever on the part of the European Union concerning the legal status of any country, territory or area or of its authorities, or concerning the delimitation of its frontiers or boundaries.

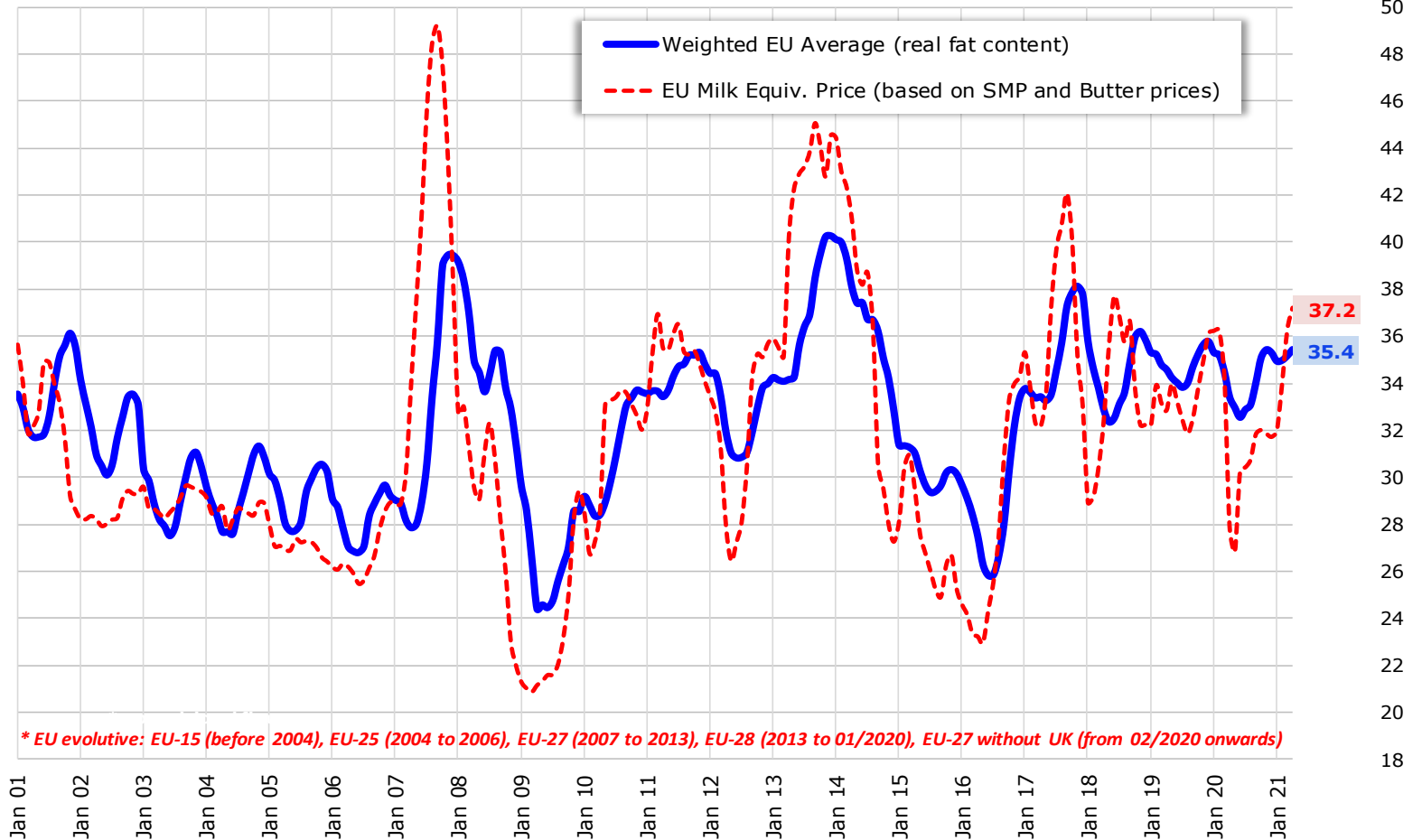
## EU - Cows' milk collected



Source: Estat (Newcronos) - MS notifications - CLAL(IT)

# EU evolutive\* Raw Milk Prices Evolution (up to Apr 2021)

EUR/100 kg

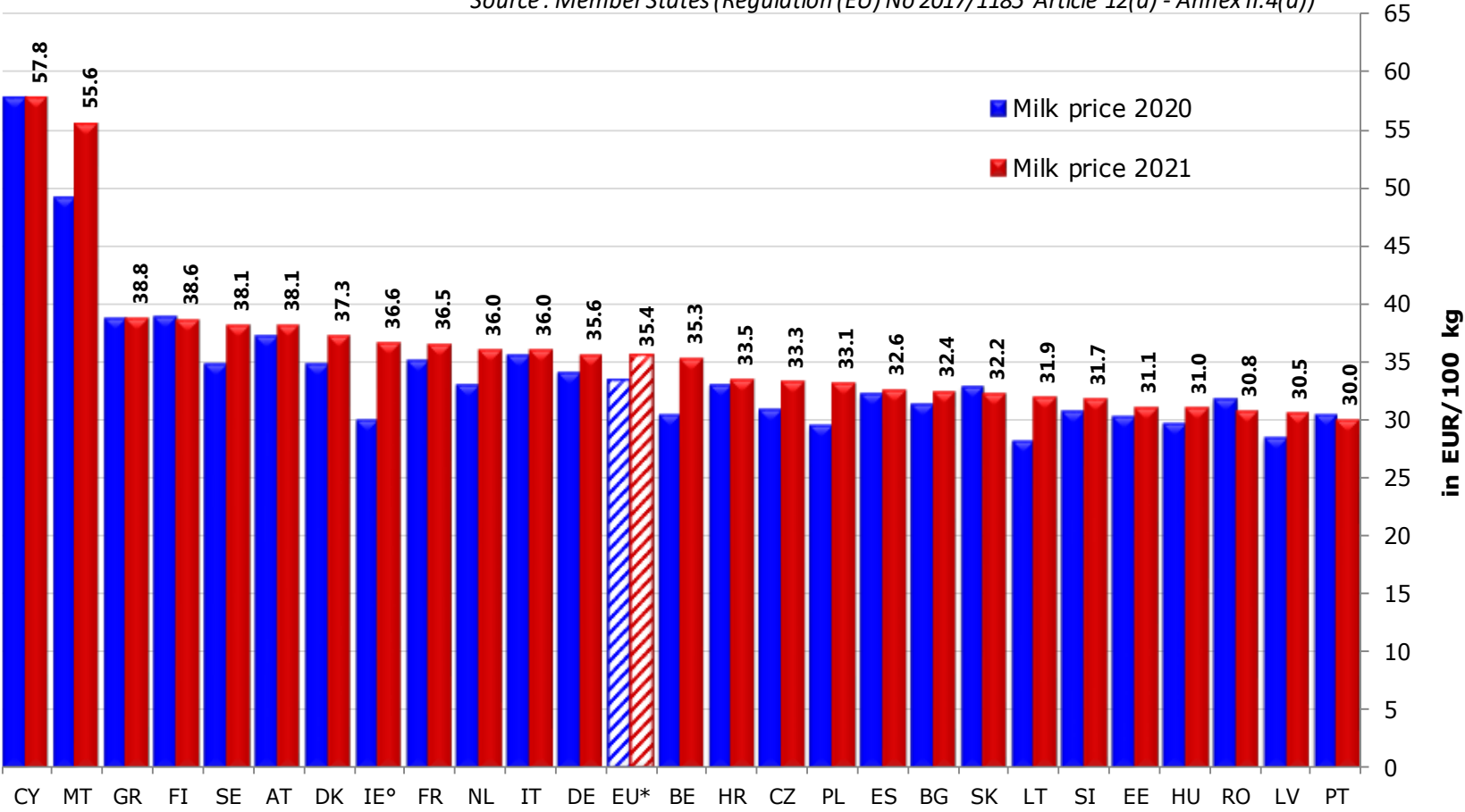


Source : MS' communications under Reg. (EU) No 17/1185 Article 12(a) - Annex II.4(a)

# EU MILK PRICES

(Apr 2021 vs Apr 2020)

Source : Member States (Regulation (EU) No 2017/1185 Article 12(a) - Annex II.4(a))

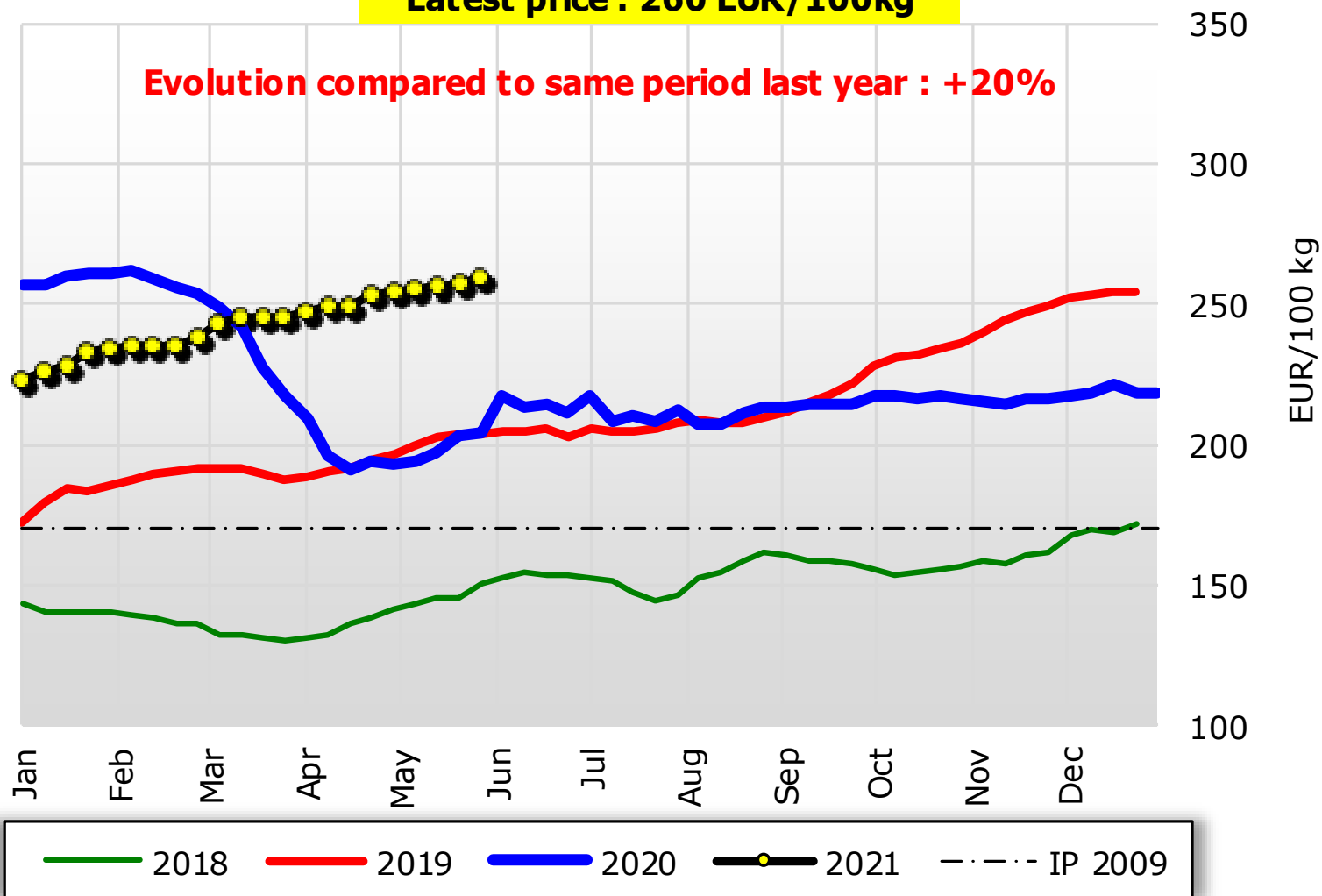


° : estimated figures for Apr 2021

# Weekly EU SMP Prices

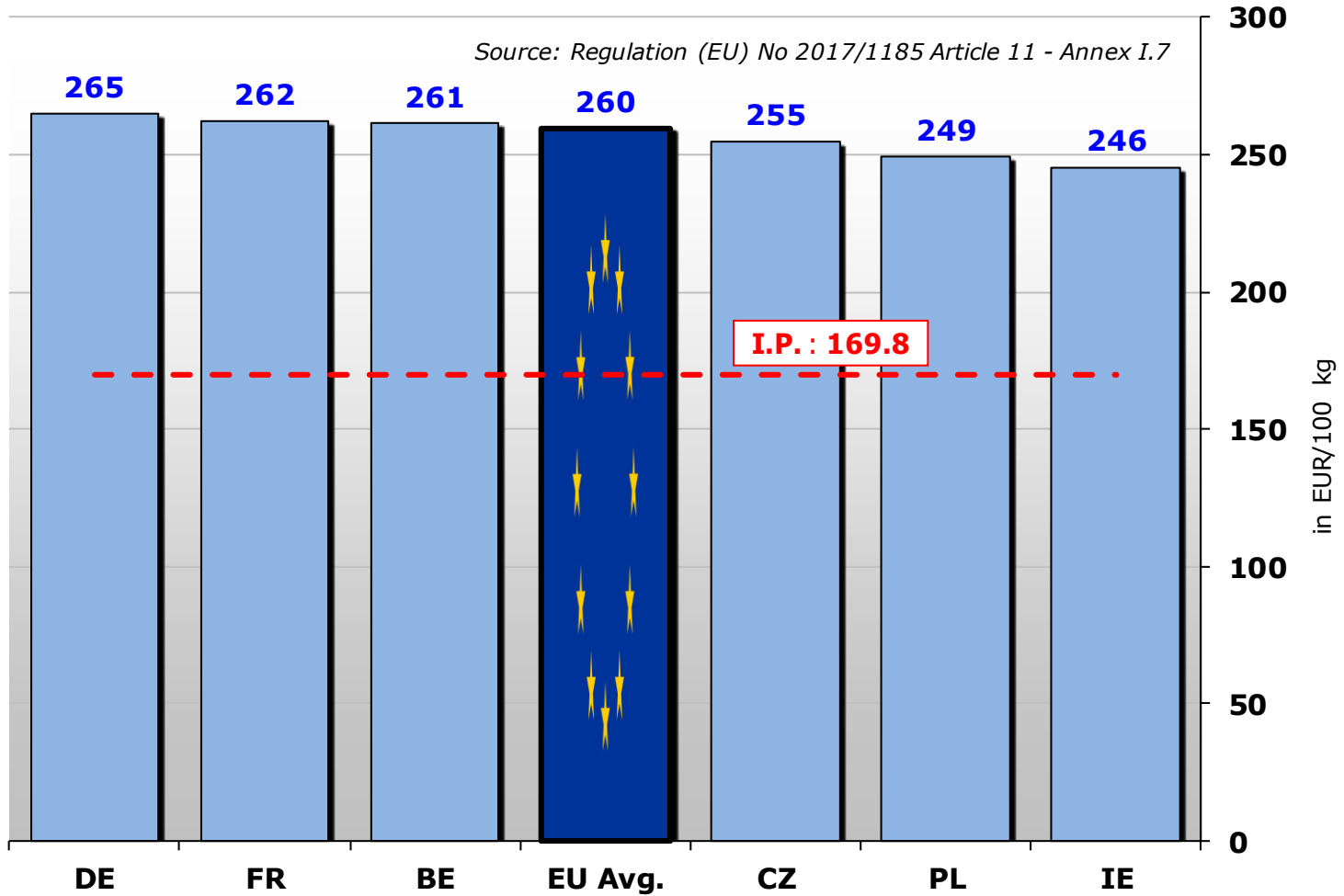
Latest price : 260 EUR/100kg

Evolution compared to same period last year : +20%





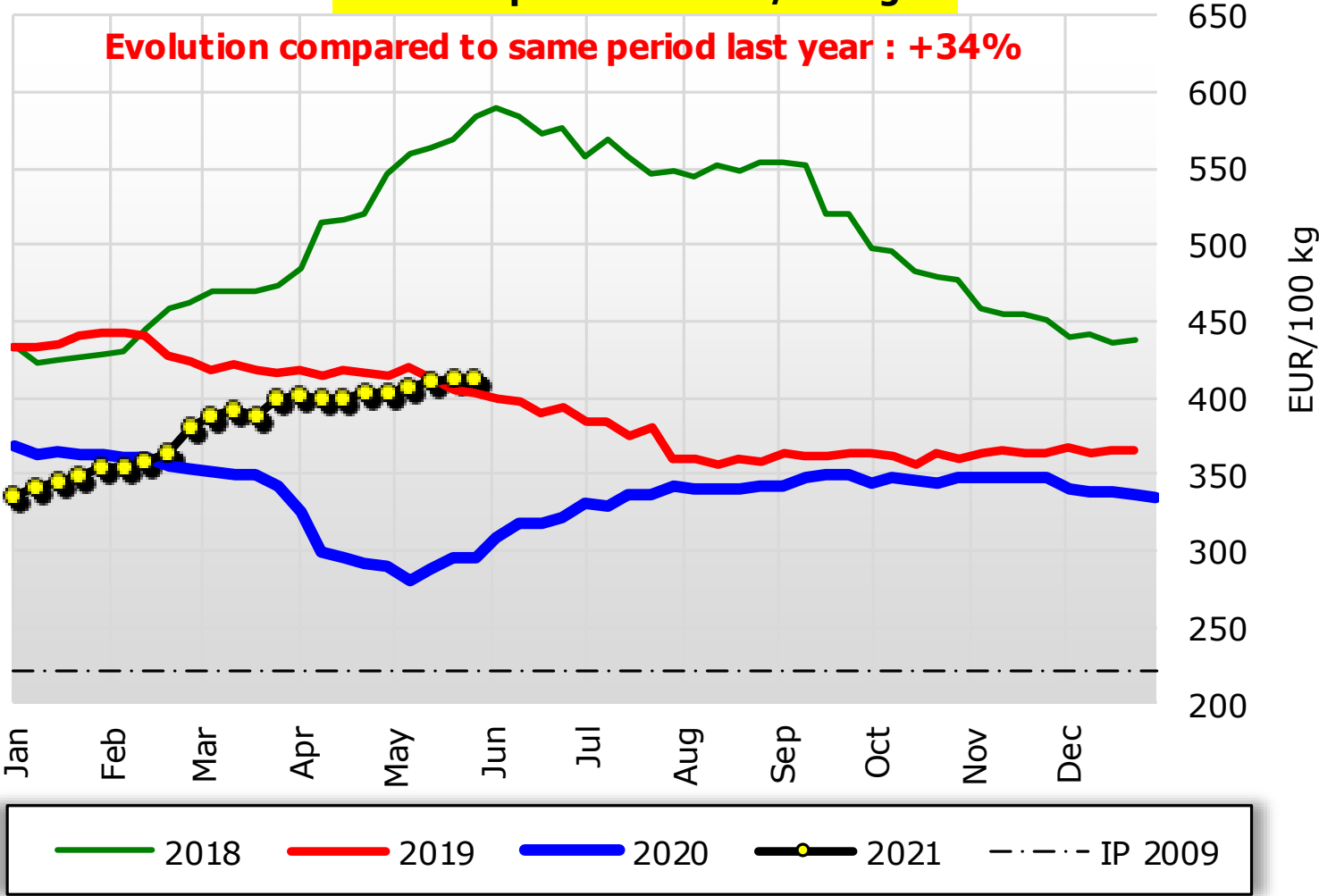
# EU S.M.P. Prices (up to 6.06.2021)



# Weekly EU BUTTER Prices

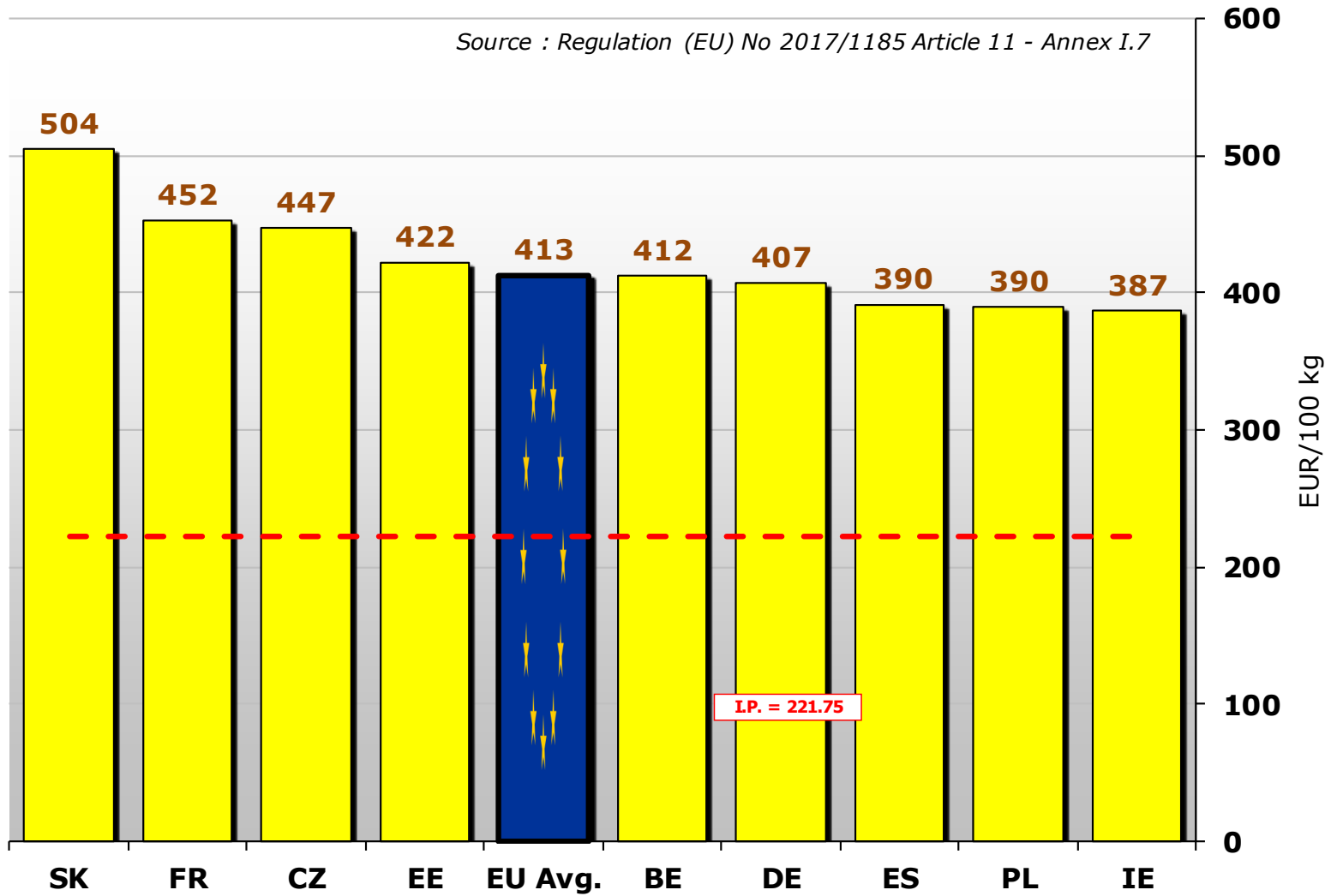
Latest price : 413 EUR/100kg

Evolution compared to same period last year : +34%

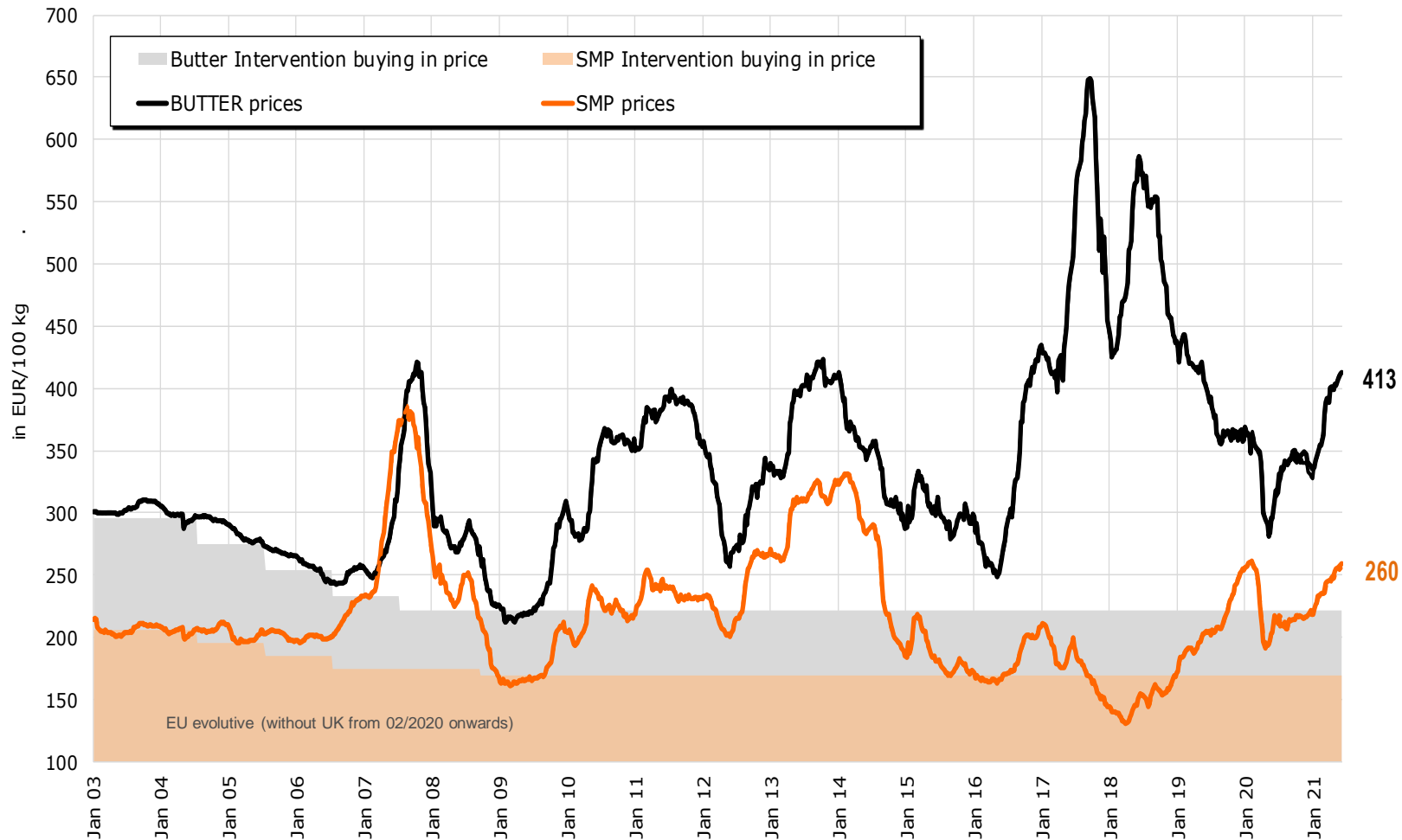


# EU BUTTER Prices (up to 6.06.2021)

Source : Regulation (EU) No 2017/1185 Article 11 - Annex I.7



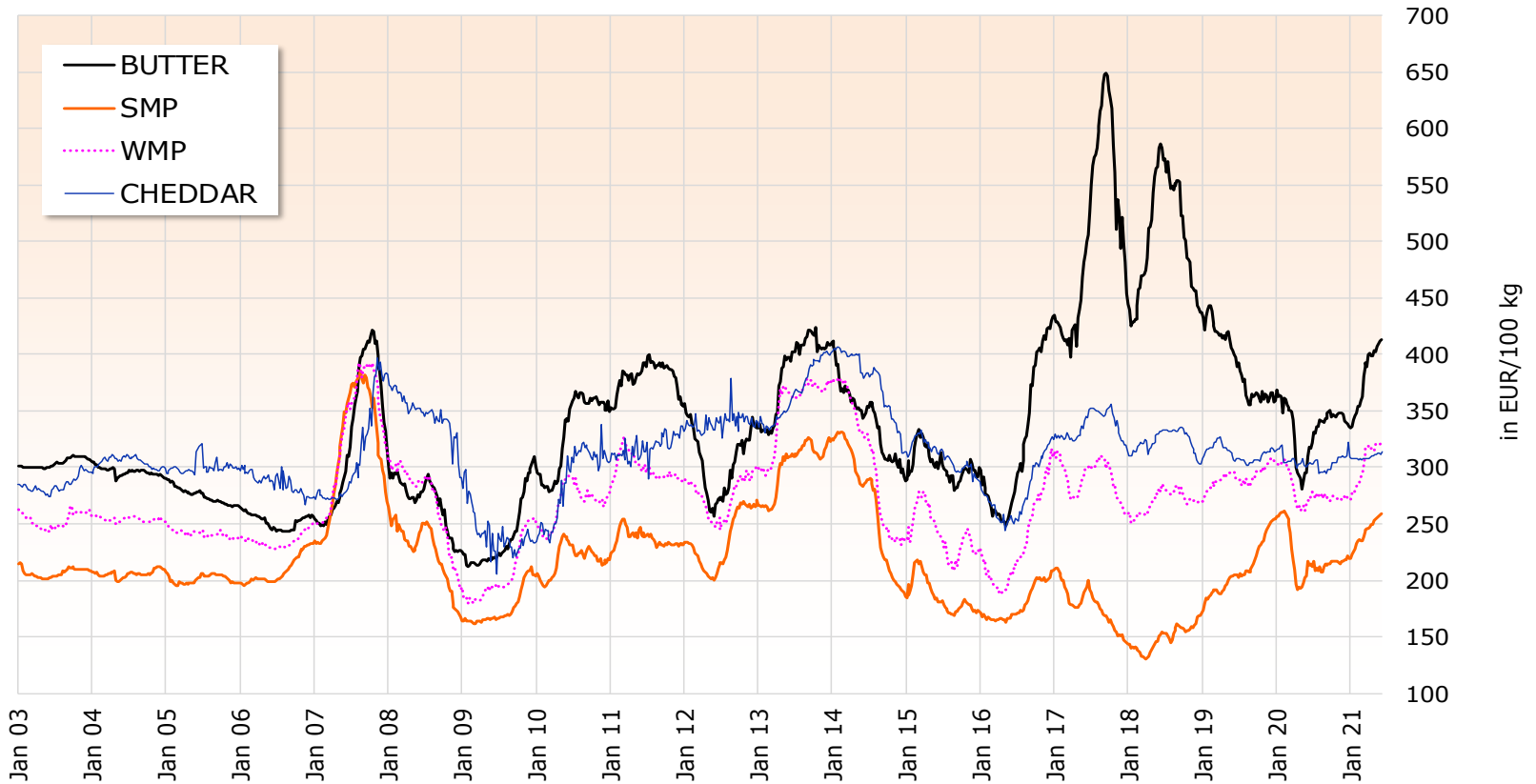
## EU Quotations of Butter and SMP (EU average based on MS communication and weighted by production)



Source: MS' communications under reg. 562/2005 and 479/2010

# EU evolutive\* dairy Quotations

(EU Average Prices based on MS communication and weighted by production)



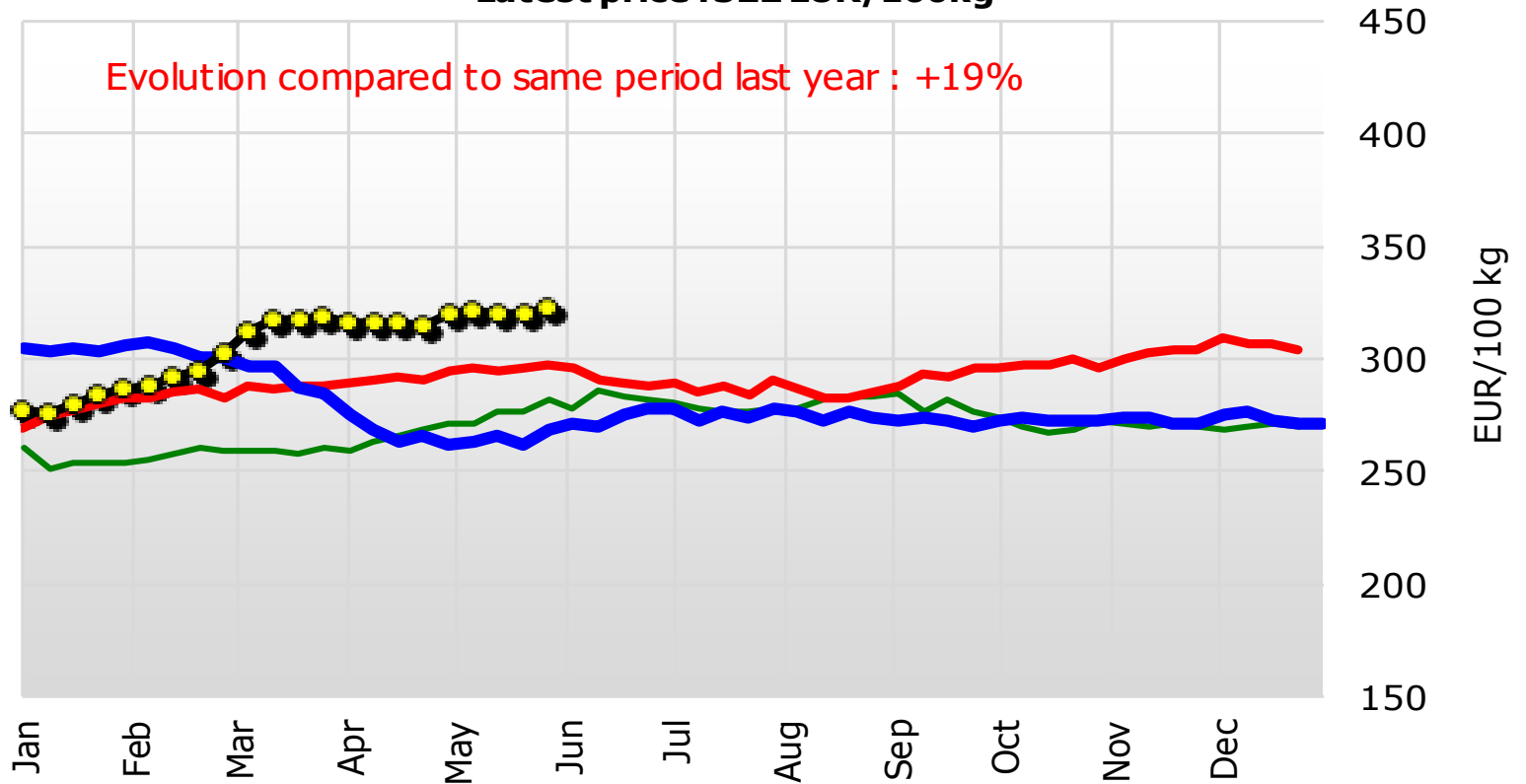
Source: Regulation (EU) No 2017/1185 Article 11 - Annex I.7

\* EU evolutive: EU-15 (before 2004), EU-25 (2004 to 2006), EU-27 (2007 to 2013), EU-28 (2013 to 01/2020), EU-27 without UK (from 02/2020 onwards)

# Weekly EU WMP Prices

Latest price : 322 EUR/100kg

Evolution compared to same period last year : +19%



— 2018

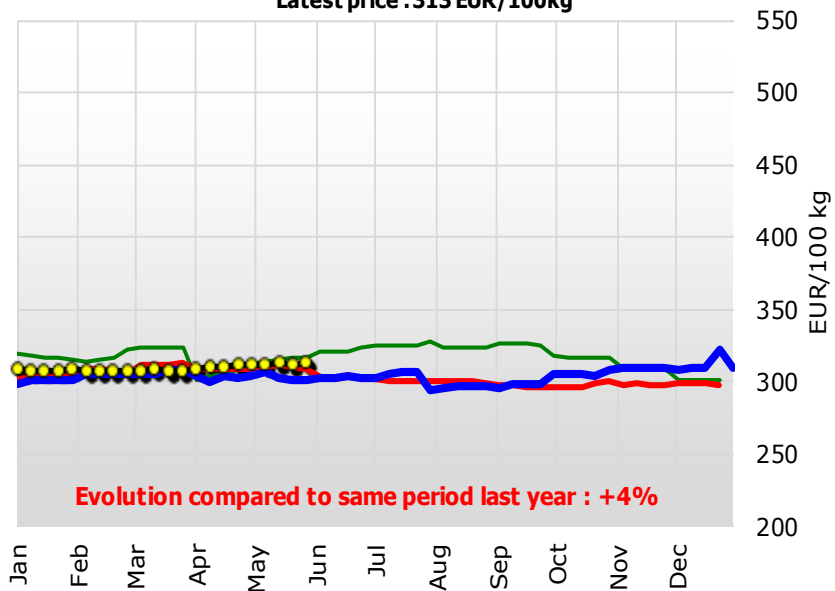
— 2019

— 2020

—● 2021

## Weekly EU\* CHEDDAR Prices

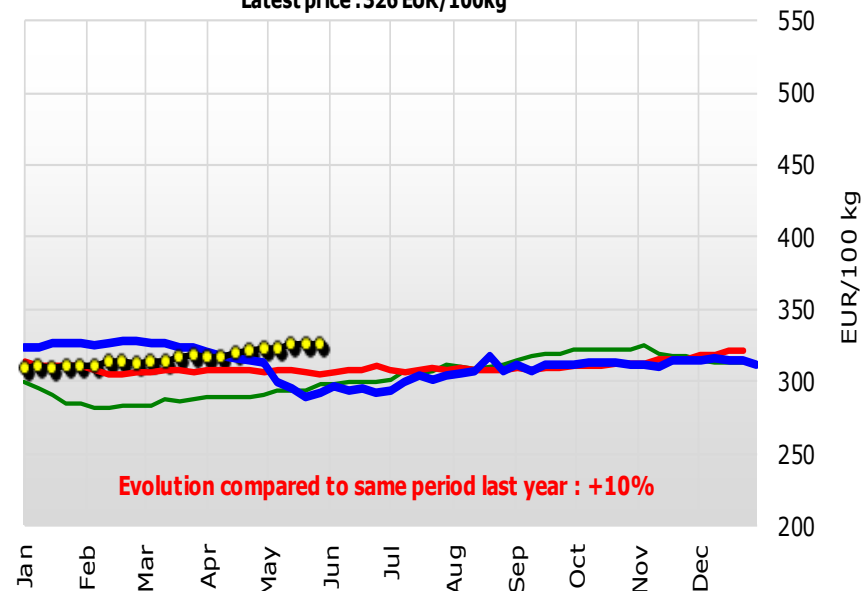
Latest price : 313 EUR/100kg



— 2018 — 2019 — 2020 —●— 2021

## Weekly EU\* EDAM Prices

Latest price : 326 EUR/100kg

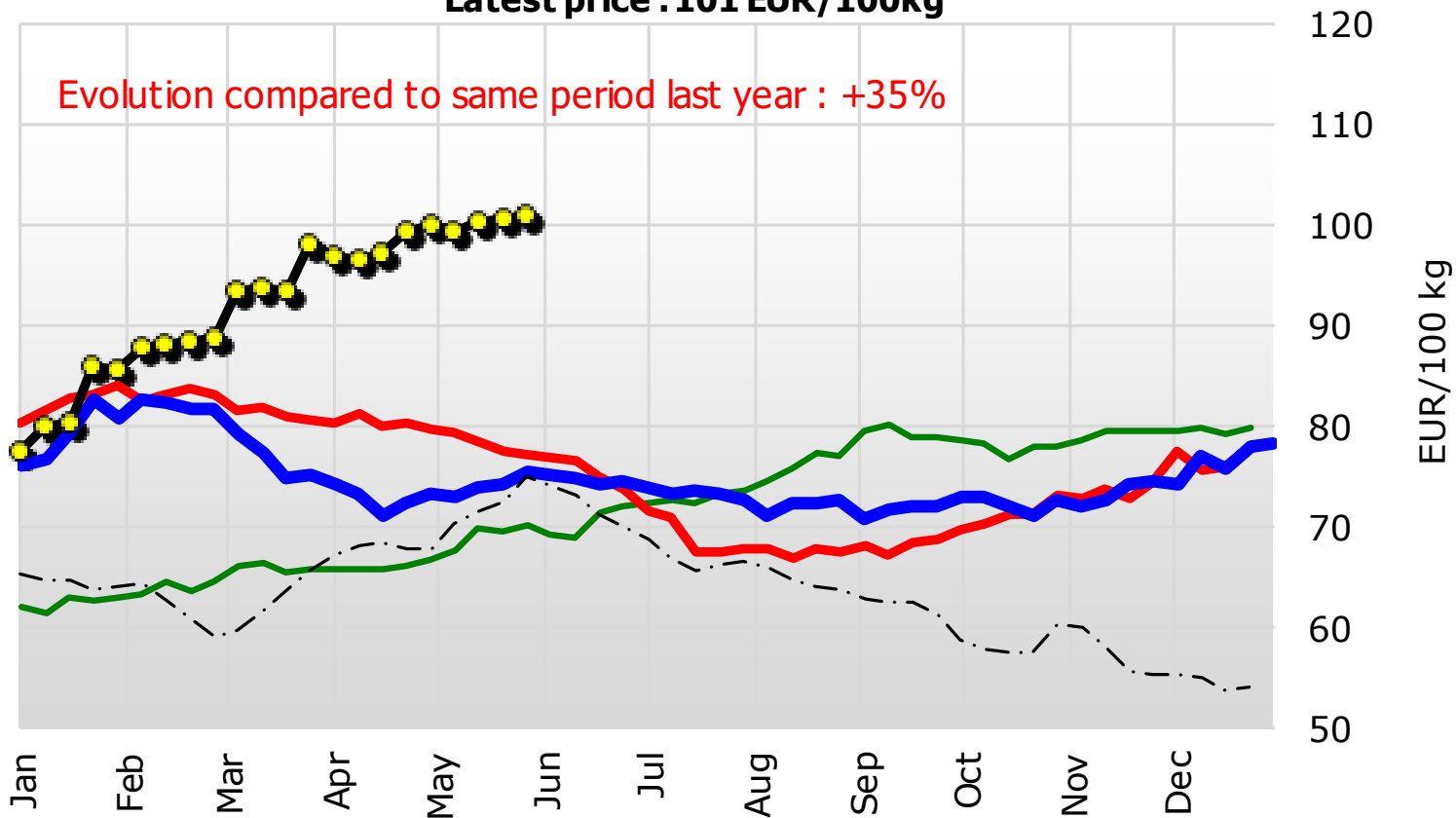


— 2018 — 2019 — 2020 —●— 2021

# Weekly EU WheyPowder Prices

Latest price : 101 EUR/100kg

Evolution compared to same period last year : +35%



— 2018    — 2019    — 2020    —●— 2021    - - - - Series2



9 June 2021

EUR 1 = USD 1.2195 +0.0013(+0.1%)

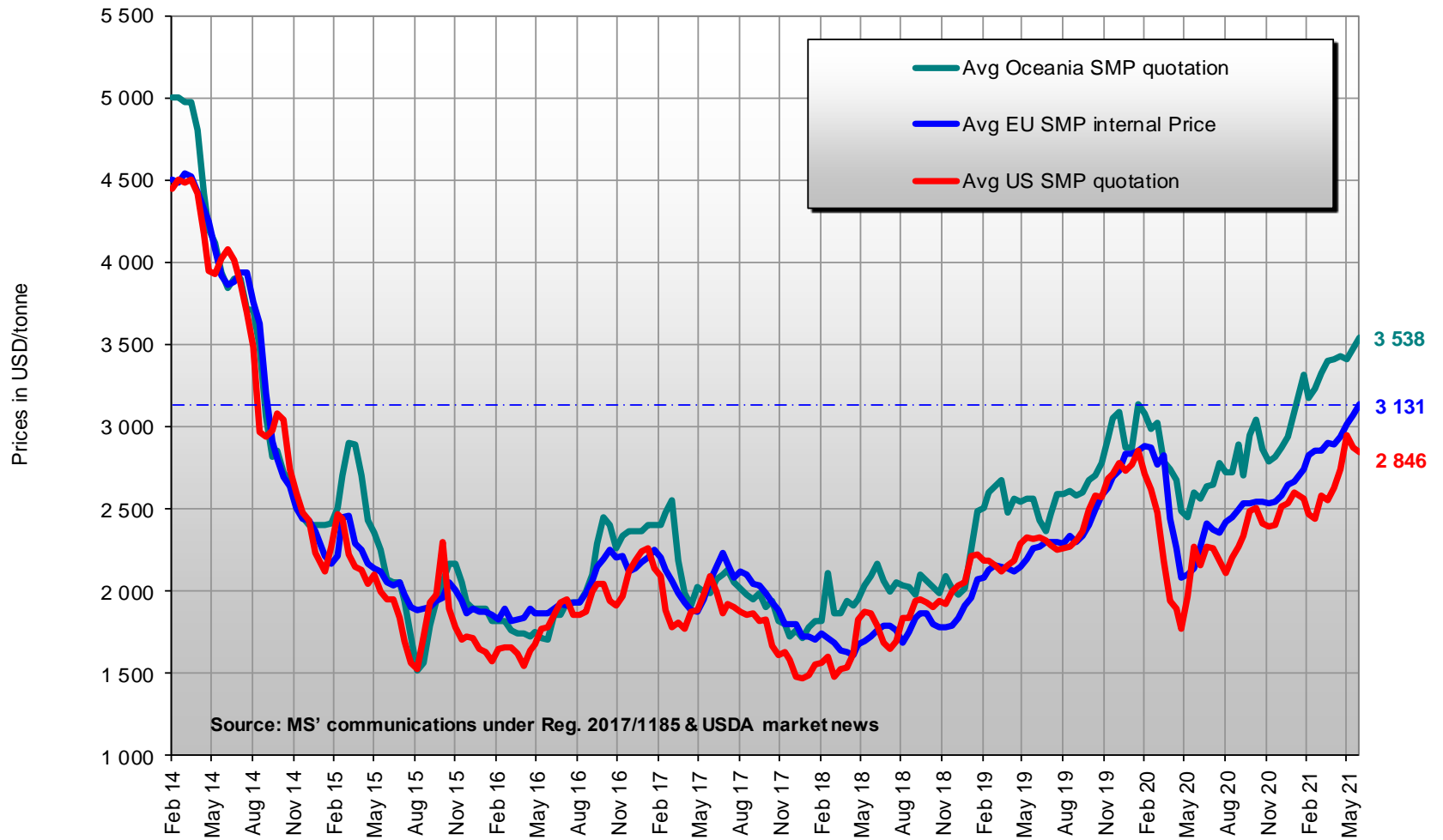
Change from 9 June 2020 to 9 June 2021

Min (30 June 2020)	Max (6 January 2021)	Average
1.1198	1.2338	1.1884



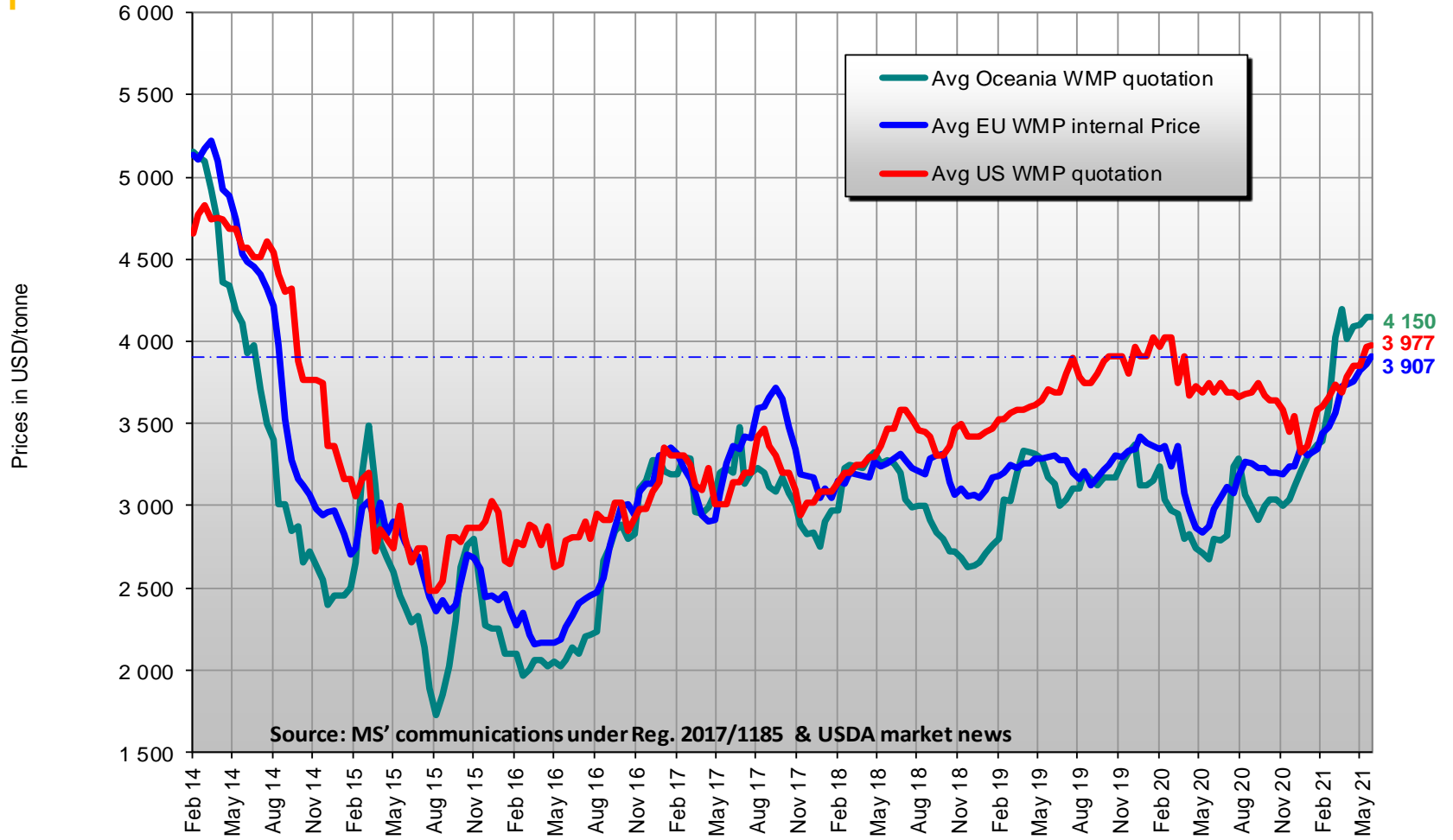
EUR/USD

## EU\*/US/Oceania Quotations of SMP



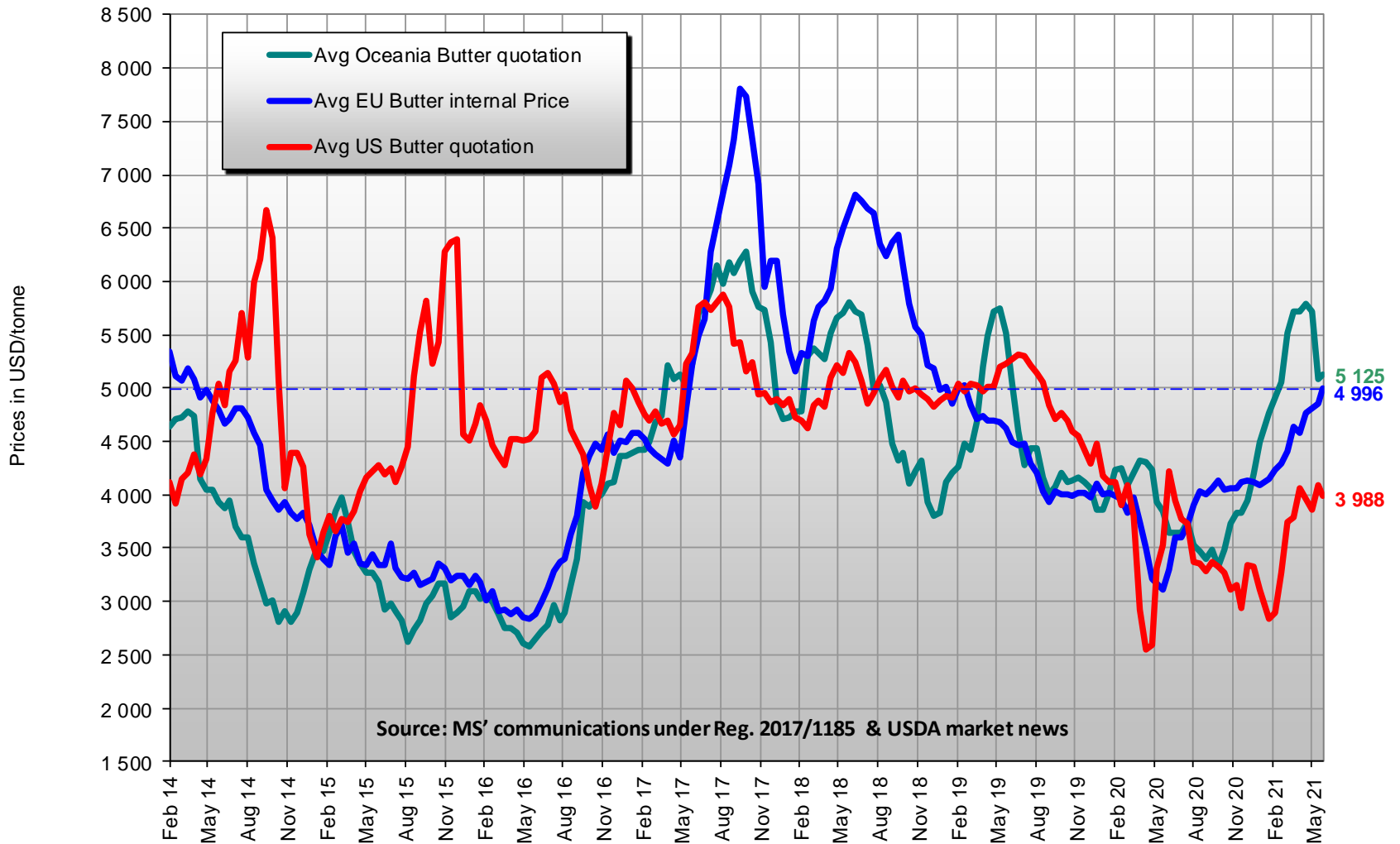
\* EU evolutive

## EU\*/US/Oceania Quotations of WMP



\* EU evolutive

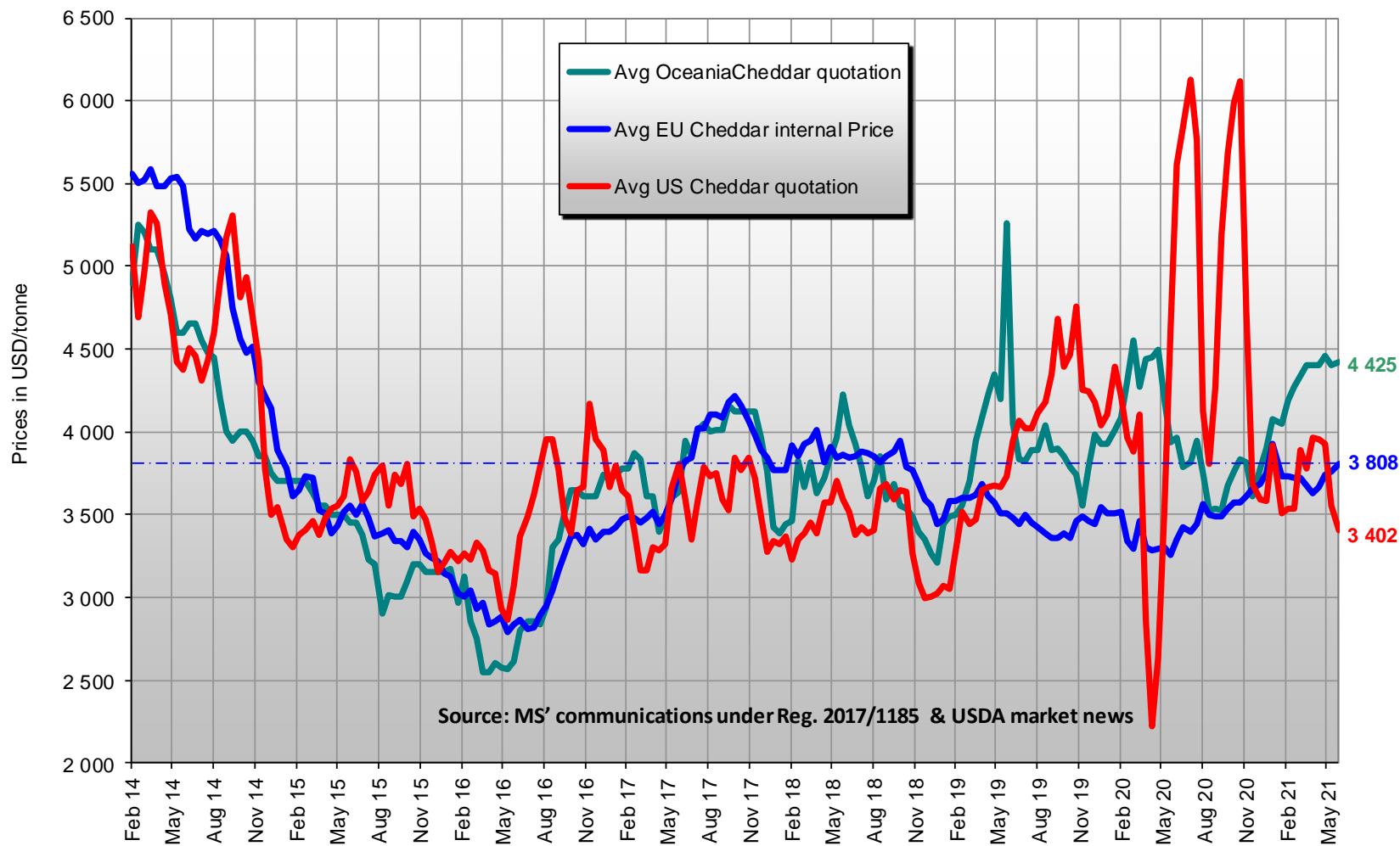
## EU\*/US/Oceania Quotations of Butter



Source: MS' communications under Reg. 2017/1185 & USDA market news

\* EU evolutive

## EU\*/US/Oceania Quotations of Cheddar



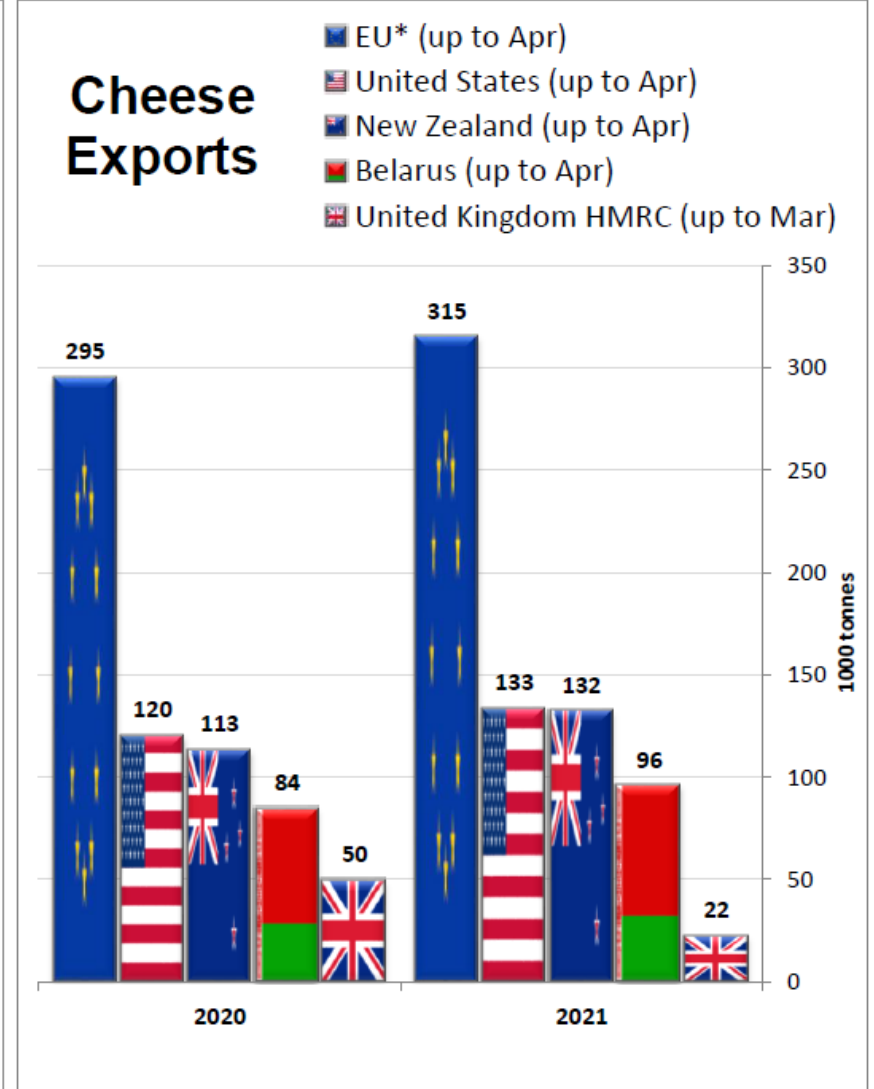
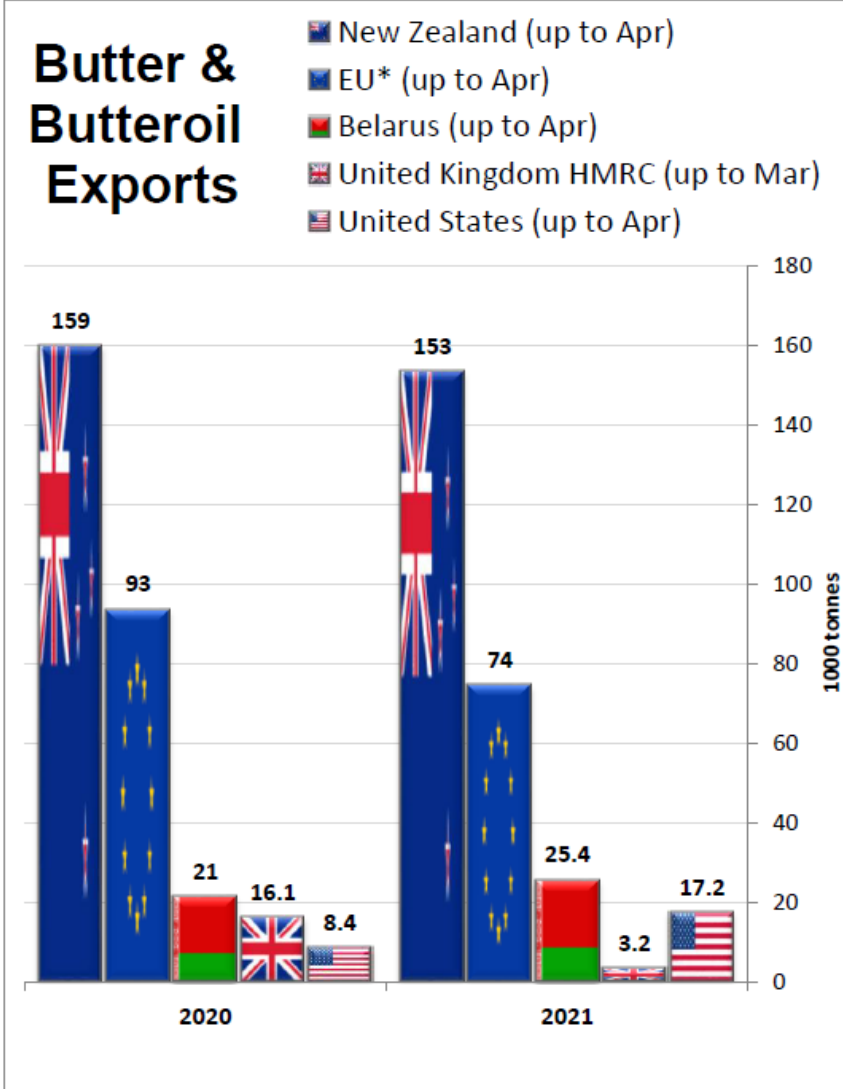
\* EU evolutive

# Main exporters

Notice: EU trade figures do not include trade with UK - For confidentiality reasons, data for Mexico may be incomplete.

Source : IHS Markit/GTA - Eurostat(COMEXT)

Quantity in 1000 Tonnes

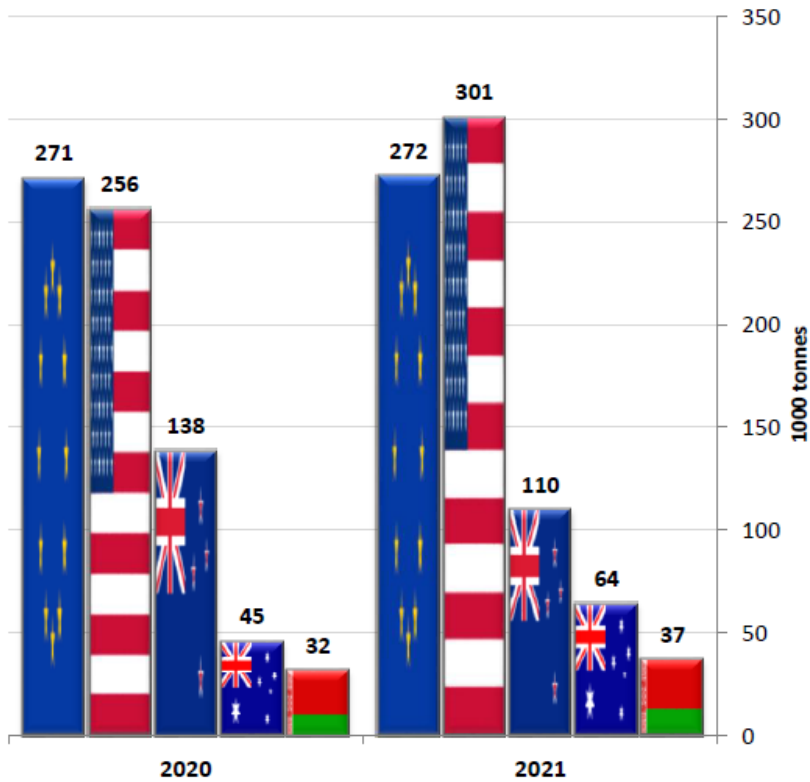


EU\*: without UK






# Main exporters

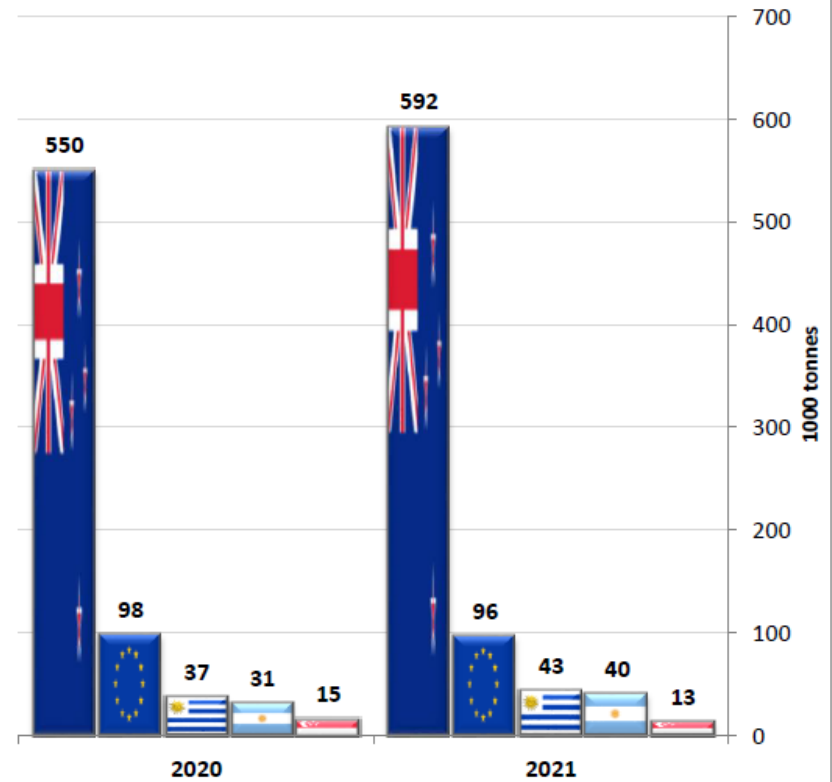
## S.M.P. Exports

-  EU\* (up to Apr)
-  United States (up to Apr)
-  New Zealand (up to Apr)
-  Australia (up to Apr)
-  Belarus (up to Apr)



## W.M.P. Exports

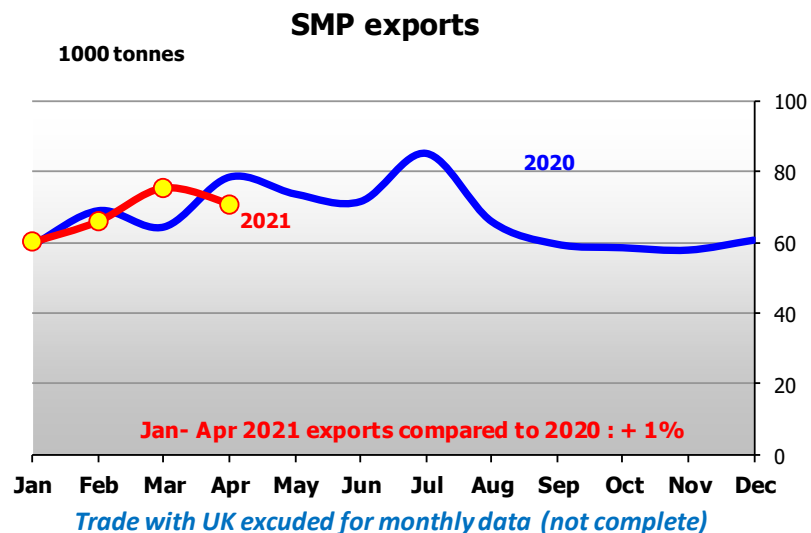
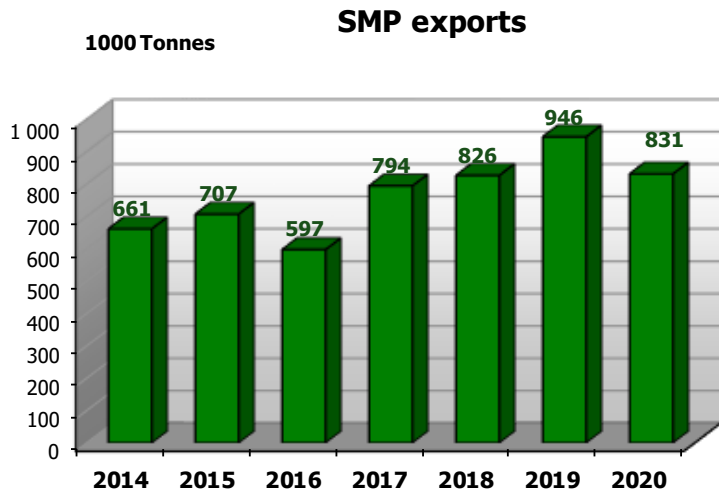
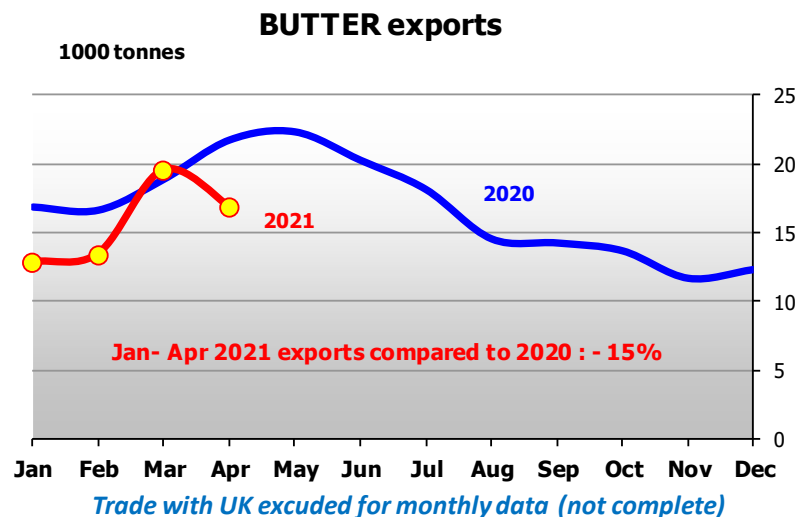
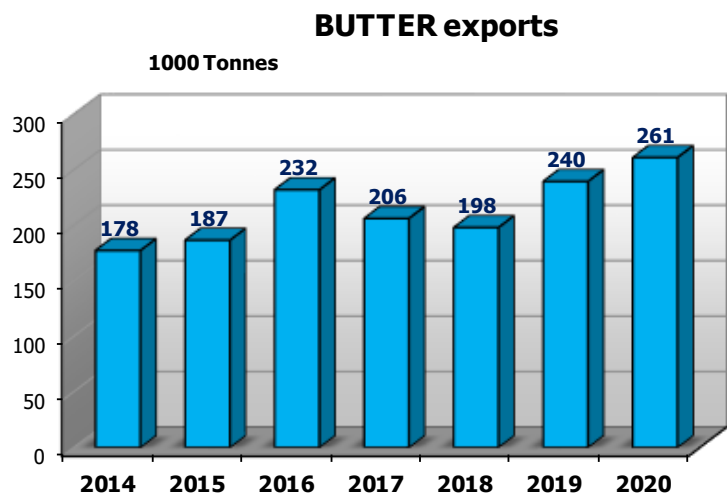
-  New Zealand (up to Apr)
-  EU\* (up to Apr)
-  Uruguay (up to Apr)
-  Argentina (up to Apr)
-  Singapore (up to Apr)



EU\*: without UK

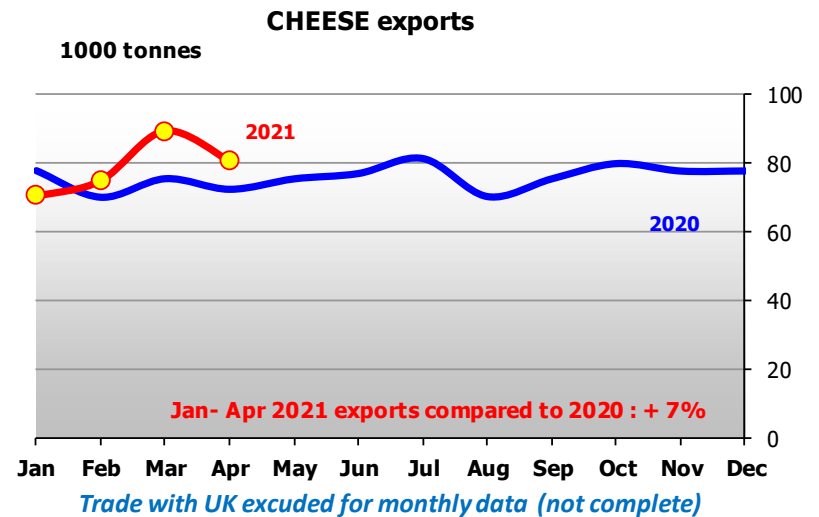
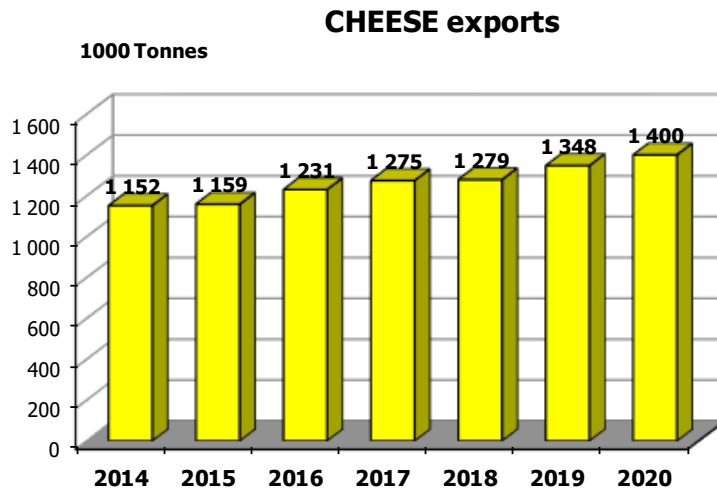
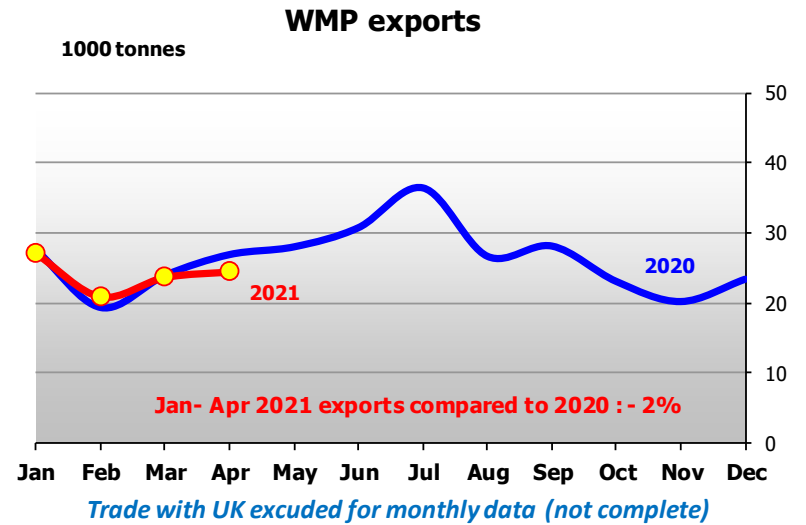
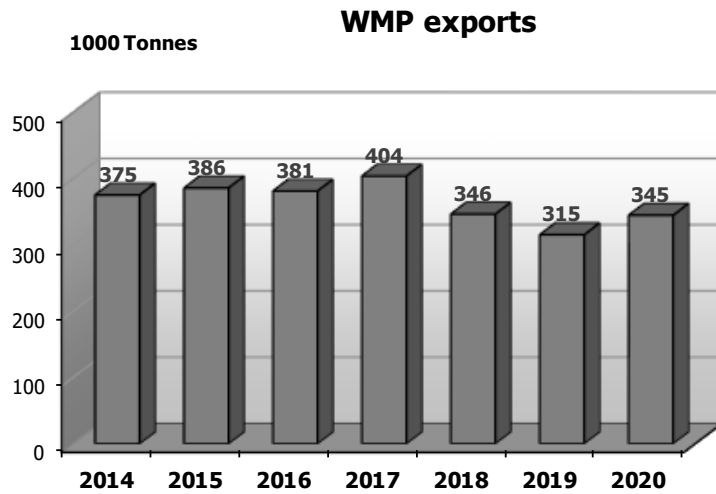
# EU Exports (1/2)

Source : Eurostat (COMEXT)





## EU Exports (2/2)

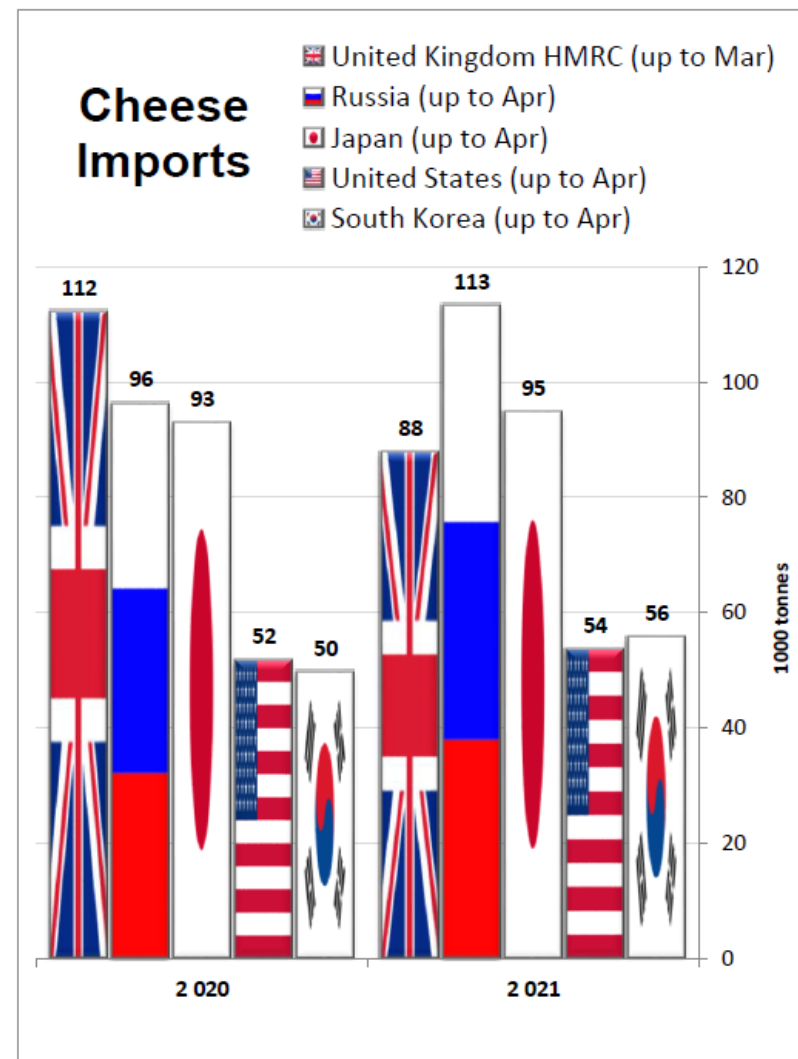
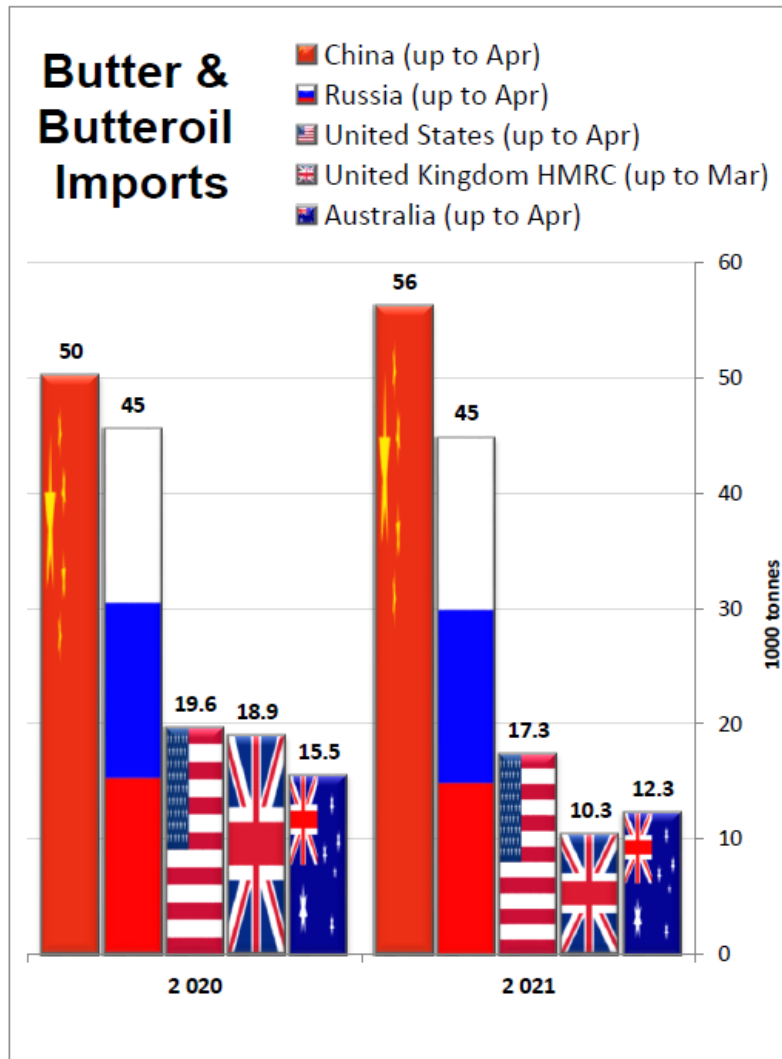


# Main importers

Notice: EU trade figures do not include trade with UK - For confidentiality reasons, data for Mexico may be incomplete.






Source : IHS Markit/GTA - Eurostat(COMEXT)

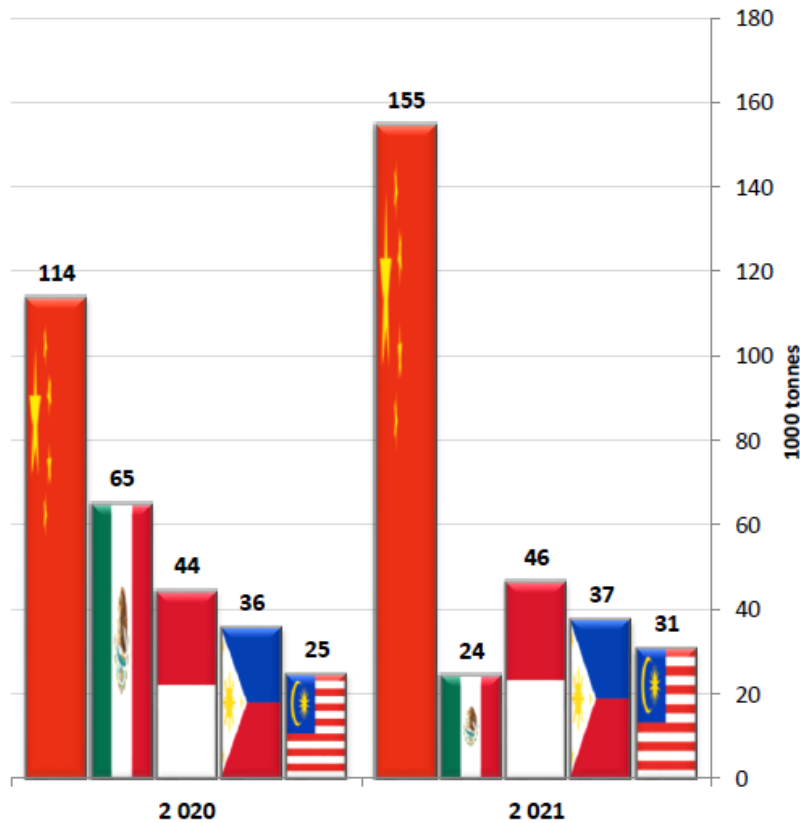
Quantity in 1000 Tonnes








# Main importers

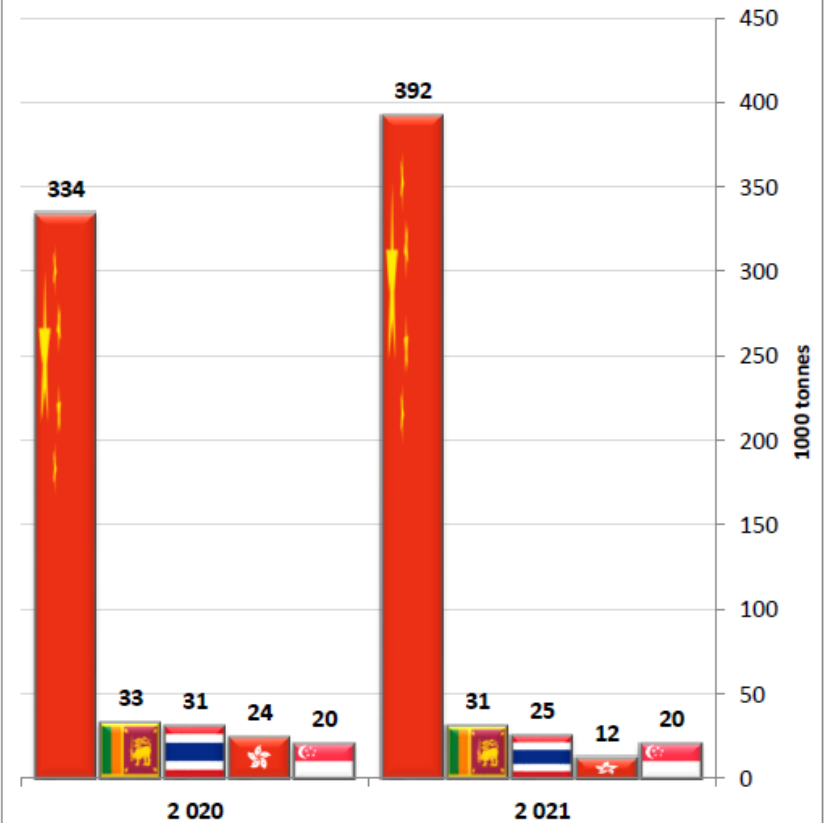
## S.M.P. Imports

-  China (up to Apr)
-  Mexico (up to Mar)
-  Indonesia (up to Mar)
-  Philippines (up to Mar)
-  Malaysia (up to Mar)



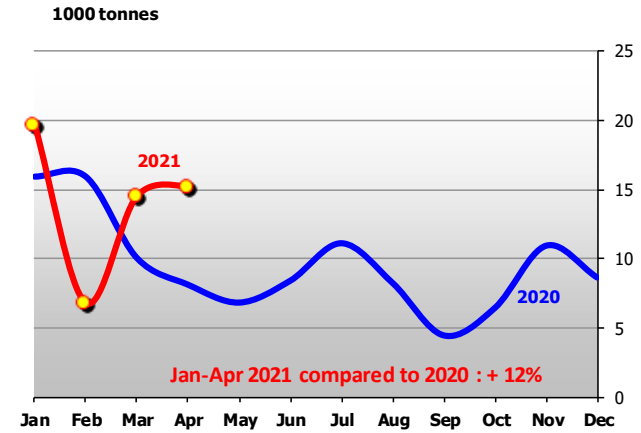
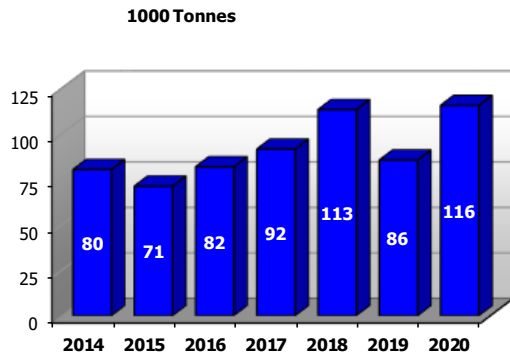
## W.M.P. Imports

-  China (up to Apr)
-  Sri Lanka (up to Apr)
-  Thailand (up to Apr)
-  Hong Kong (up to Apr)
-  Singapore (up to Apr)

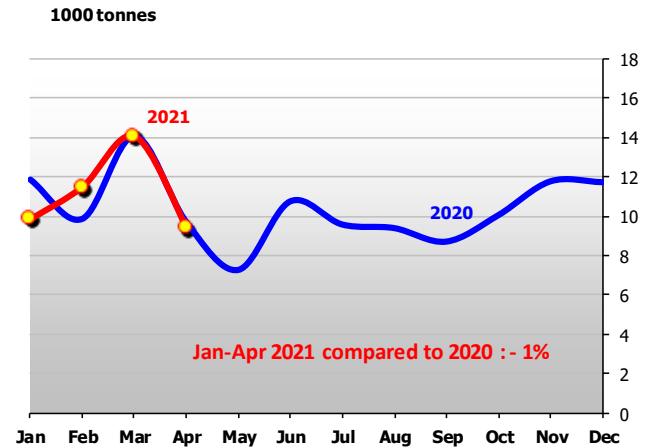
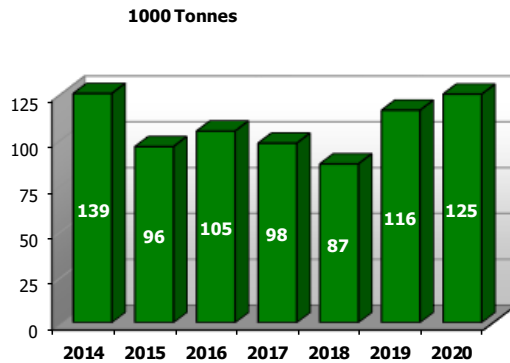


# Main Dairy Importers (Butter + Butteroil 1/2)

## China

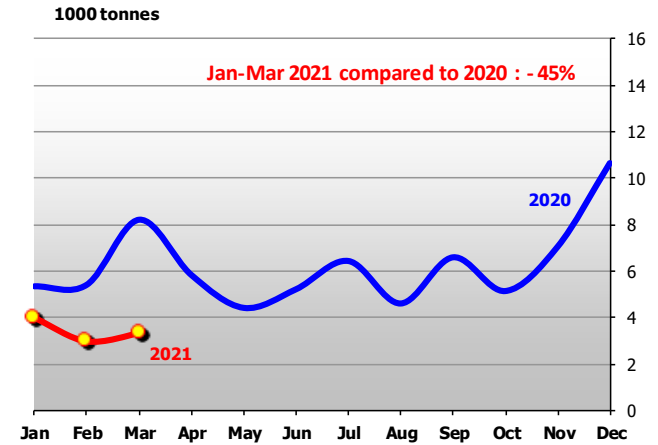
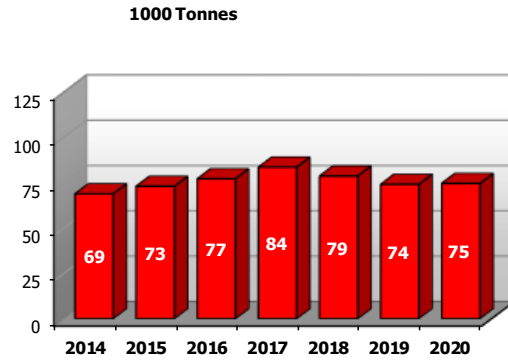


## Russia

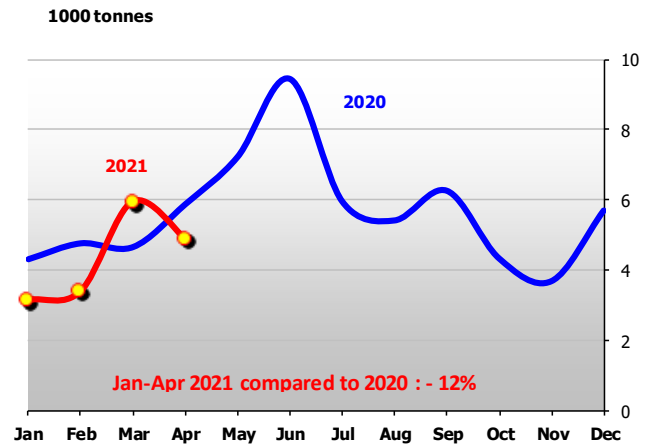
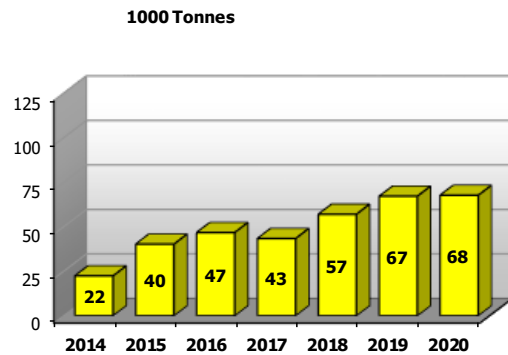


# Main Dairy Importers (Butter + Butteroil 2/2)

## United Kingdom HMRC



## United States

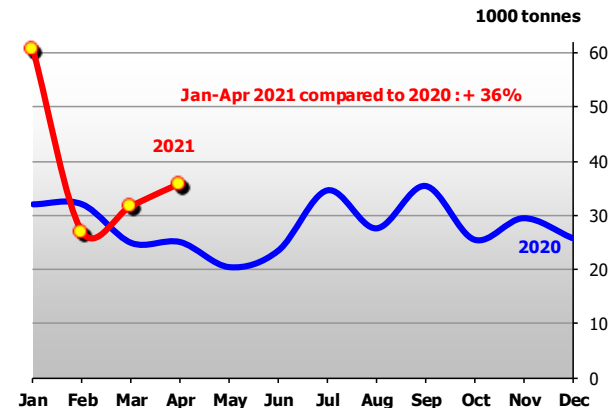
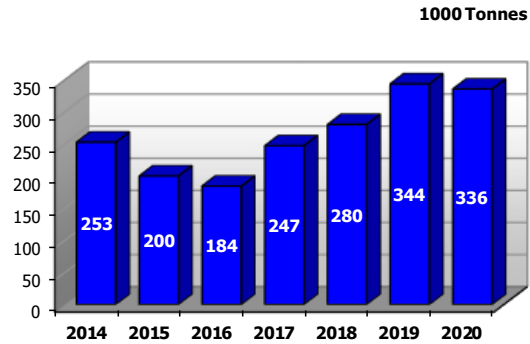


Source: IHS Markit/GTA - Eurostat(COMEXT)

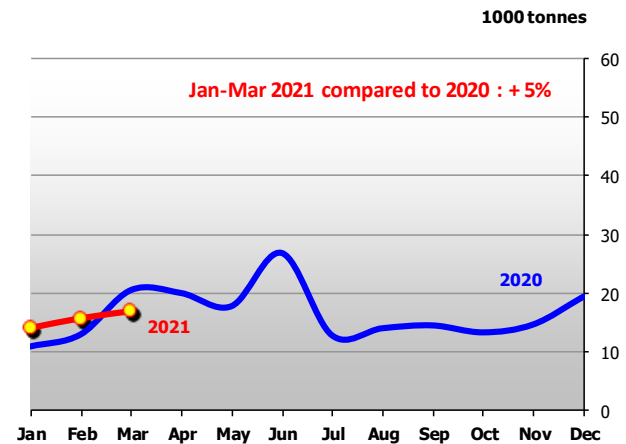
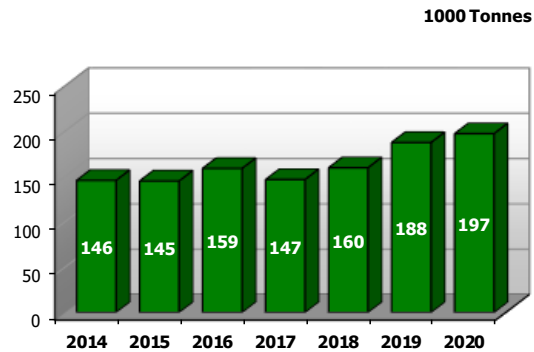
# Main Dairy Importers (S.M.P. - 1/2)

Rem: for confidentiality reasons, trade data from Mexico are incomplete and therefore not presented here.

## China

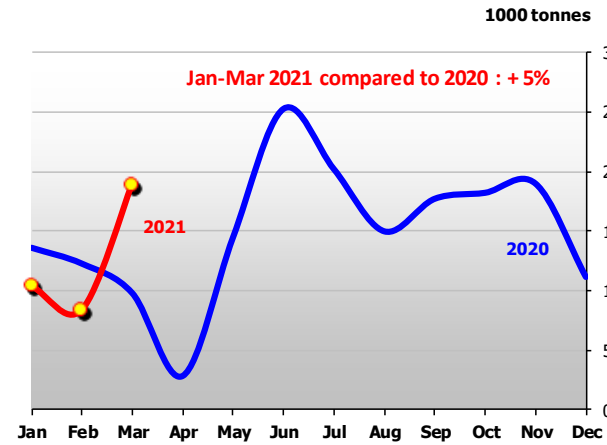
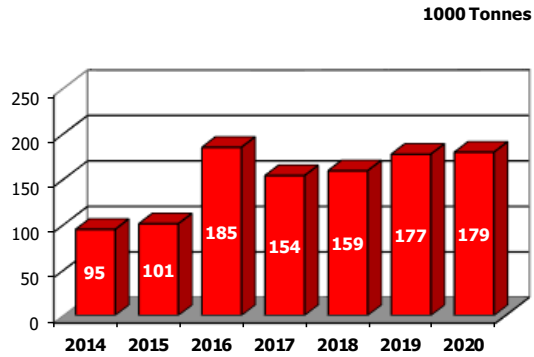


## Indonesia

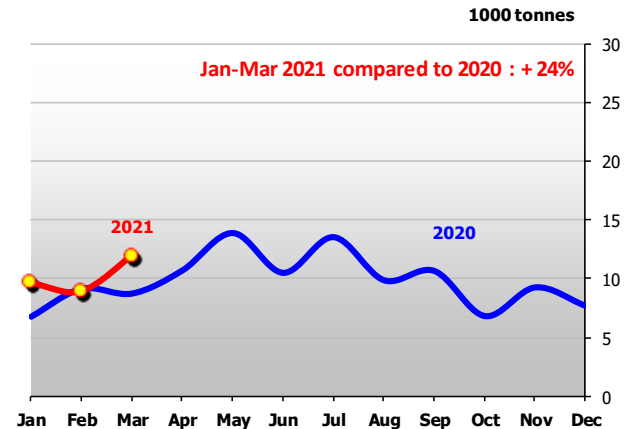
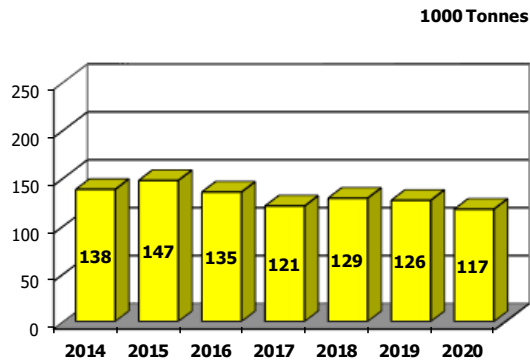


# Main Dairy Importers (S.M.P. – 2/2)

## Philippines

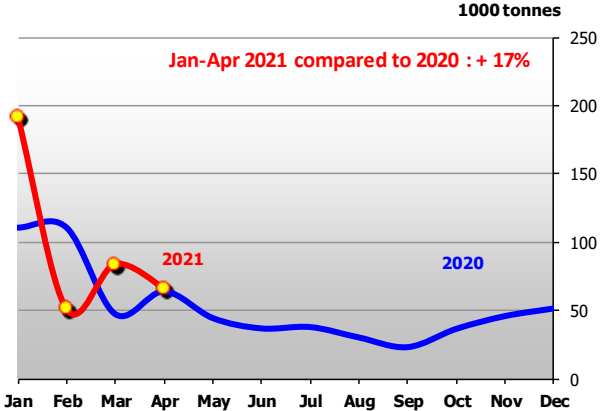
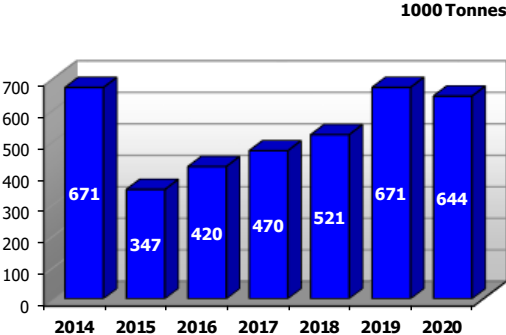


## Malaysia

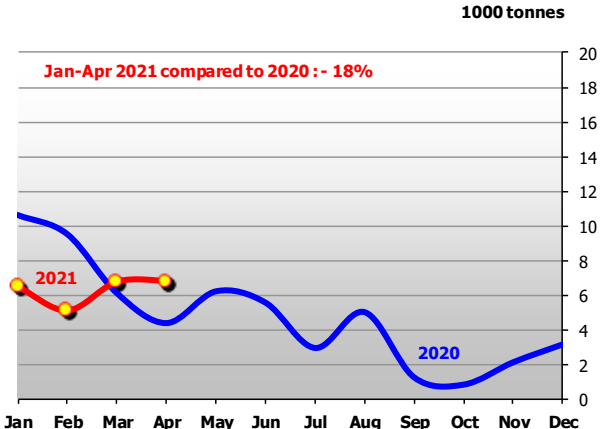
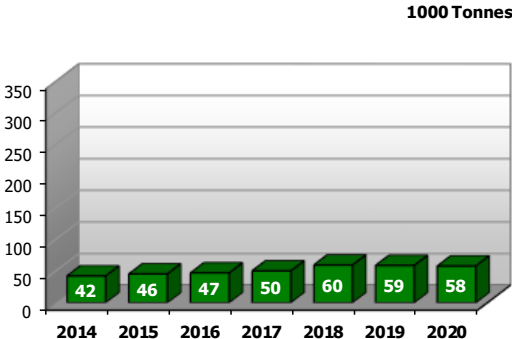


# Main Dairy Importers (W.M.P. 1/2)

## China



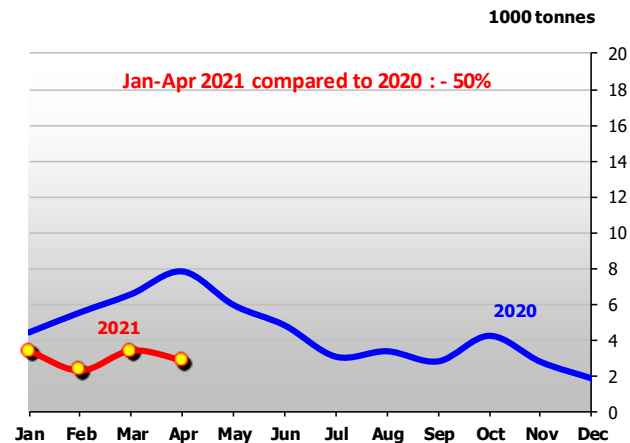
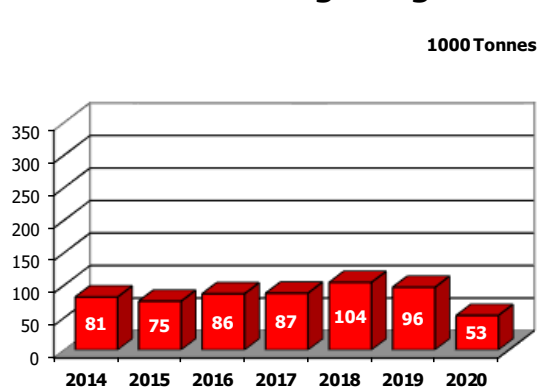
## Thailand



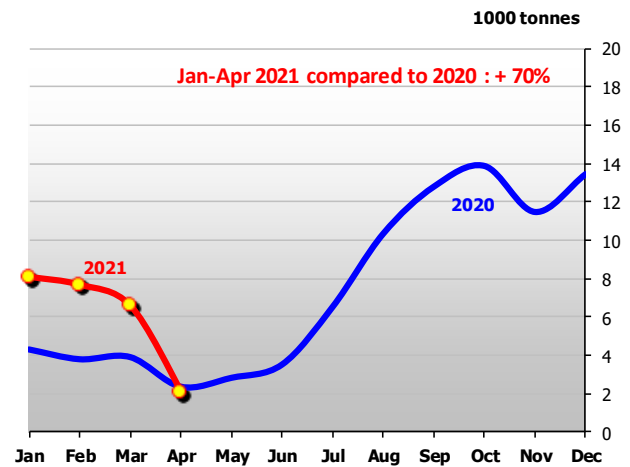
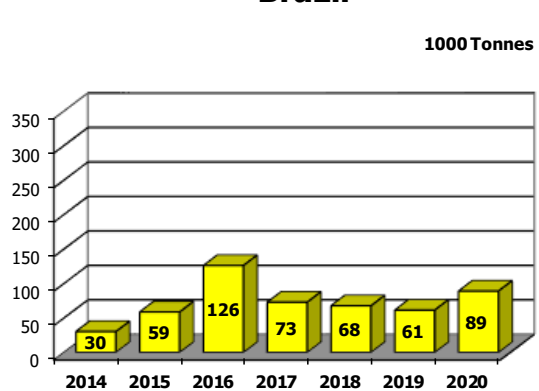


# Main Dairy Importers (W.M.P. 2/2)

## Hong Kong

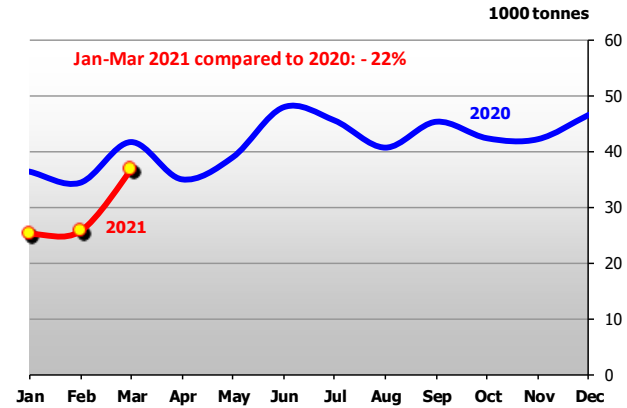
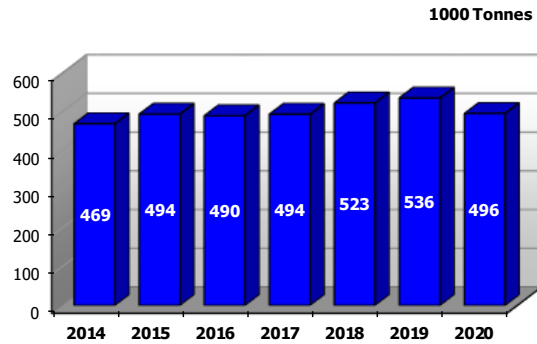


## Brazil

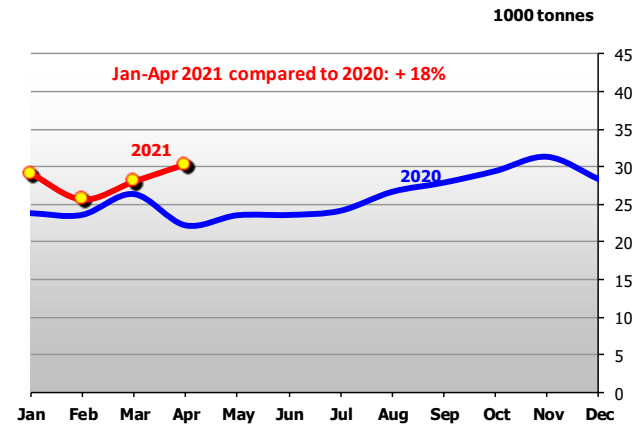
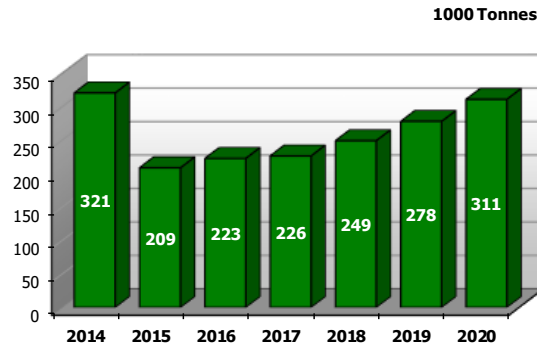


# Main Dairy Importers (Cheese – 1/2)

## United Kingdom HMRC

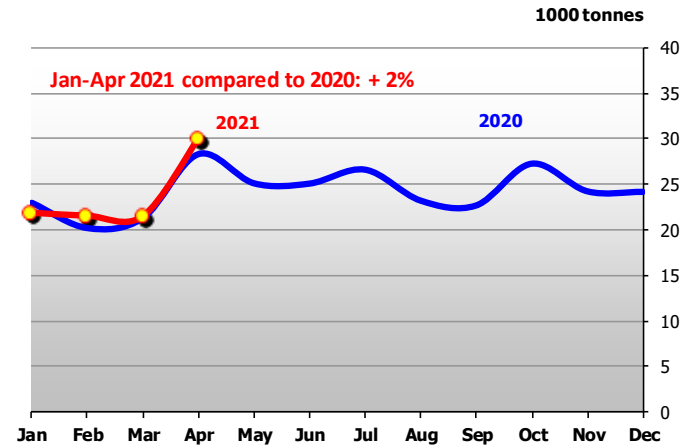
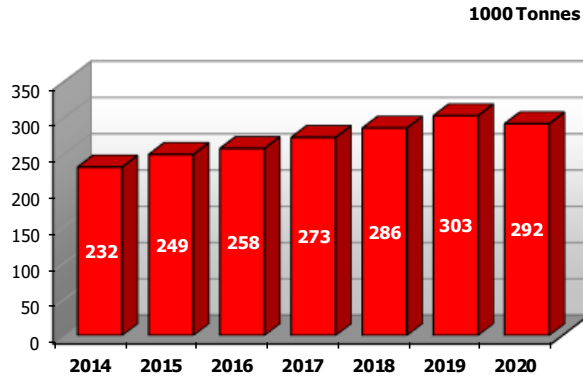


## Russia

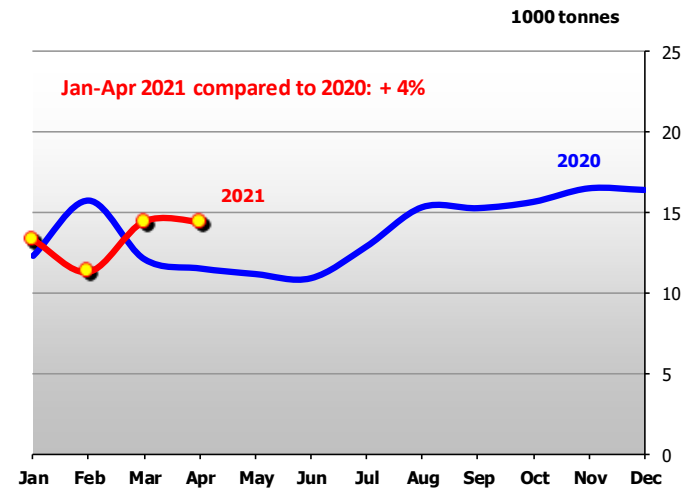
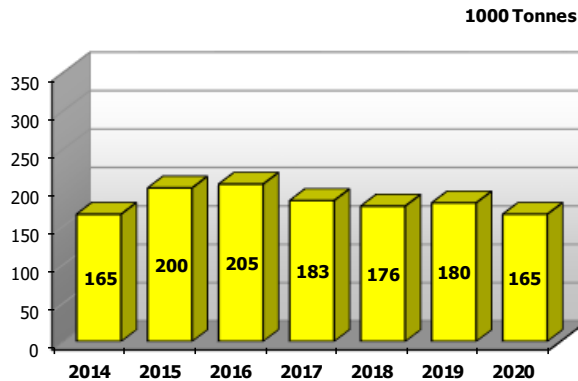


# Main Dairy Importers (Cheese – 2/2)

## Japan

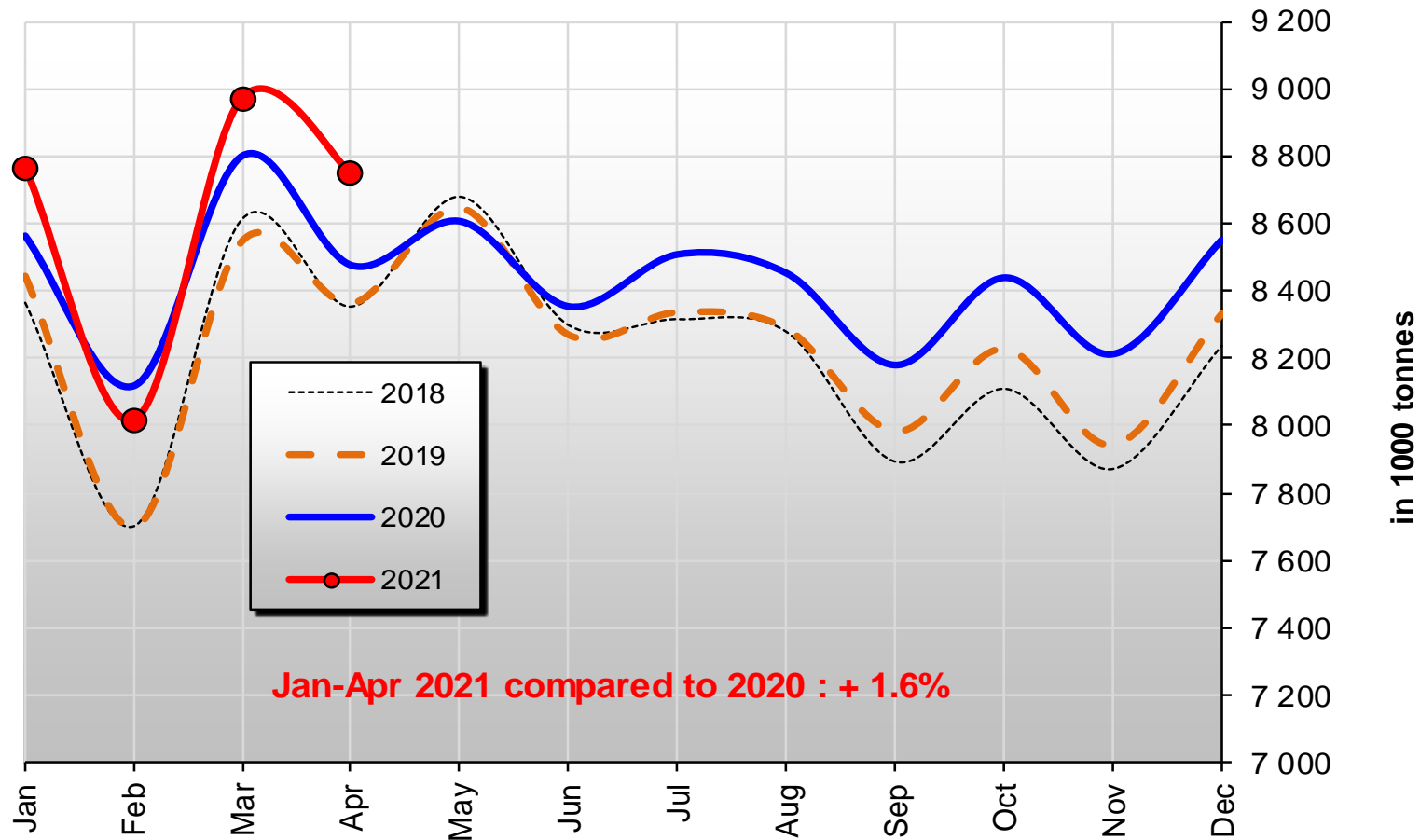


## United States



Source: IHS Markit/GTA - Eurostat(COMEXT)

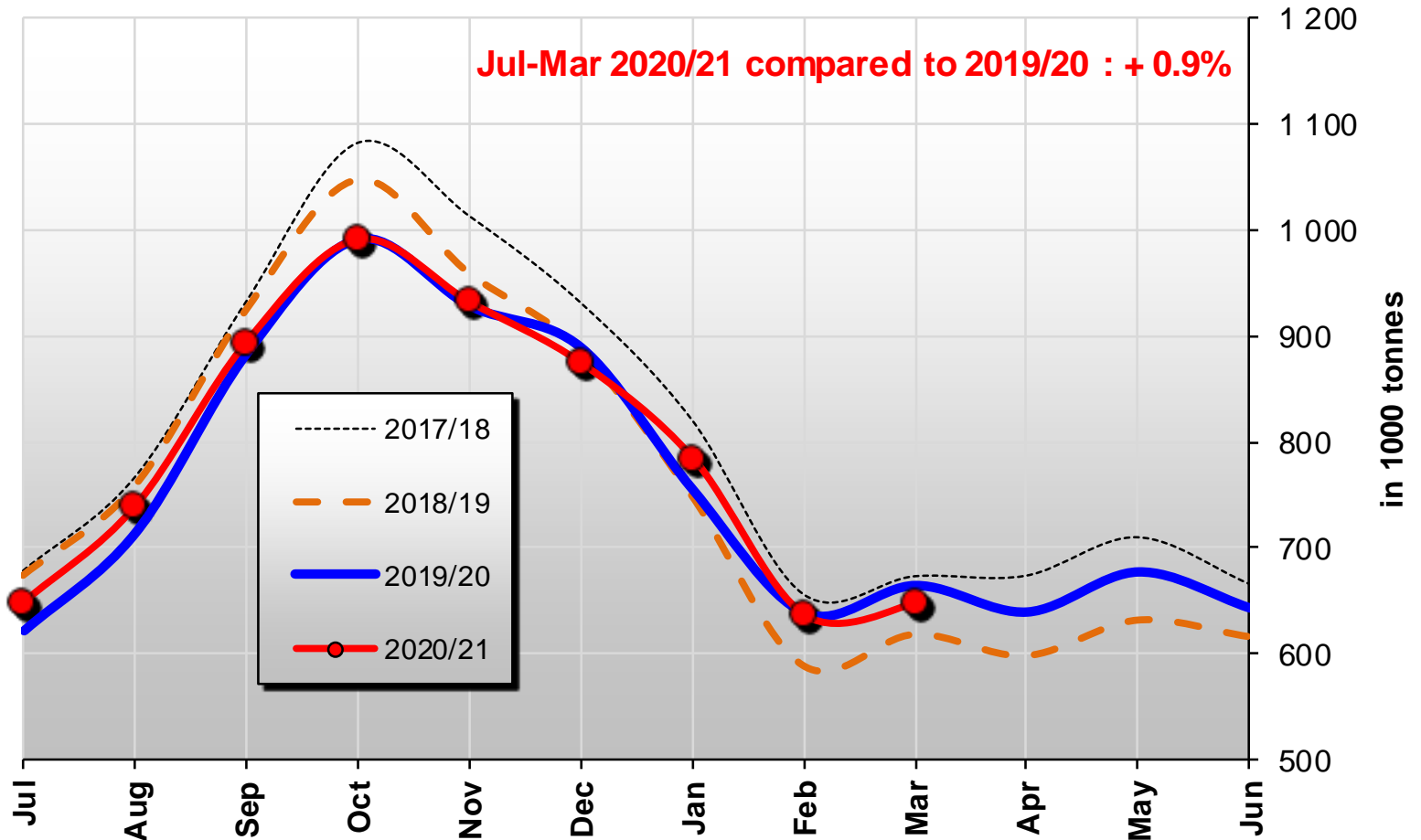
## U.S. milk production



Jan-Apr 2021 compared to 2020 : + 1.6%

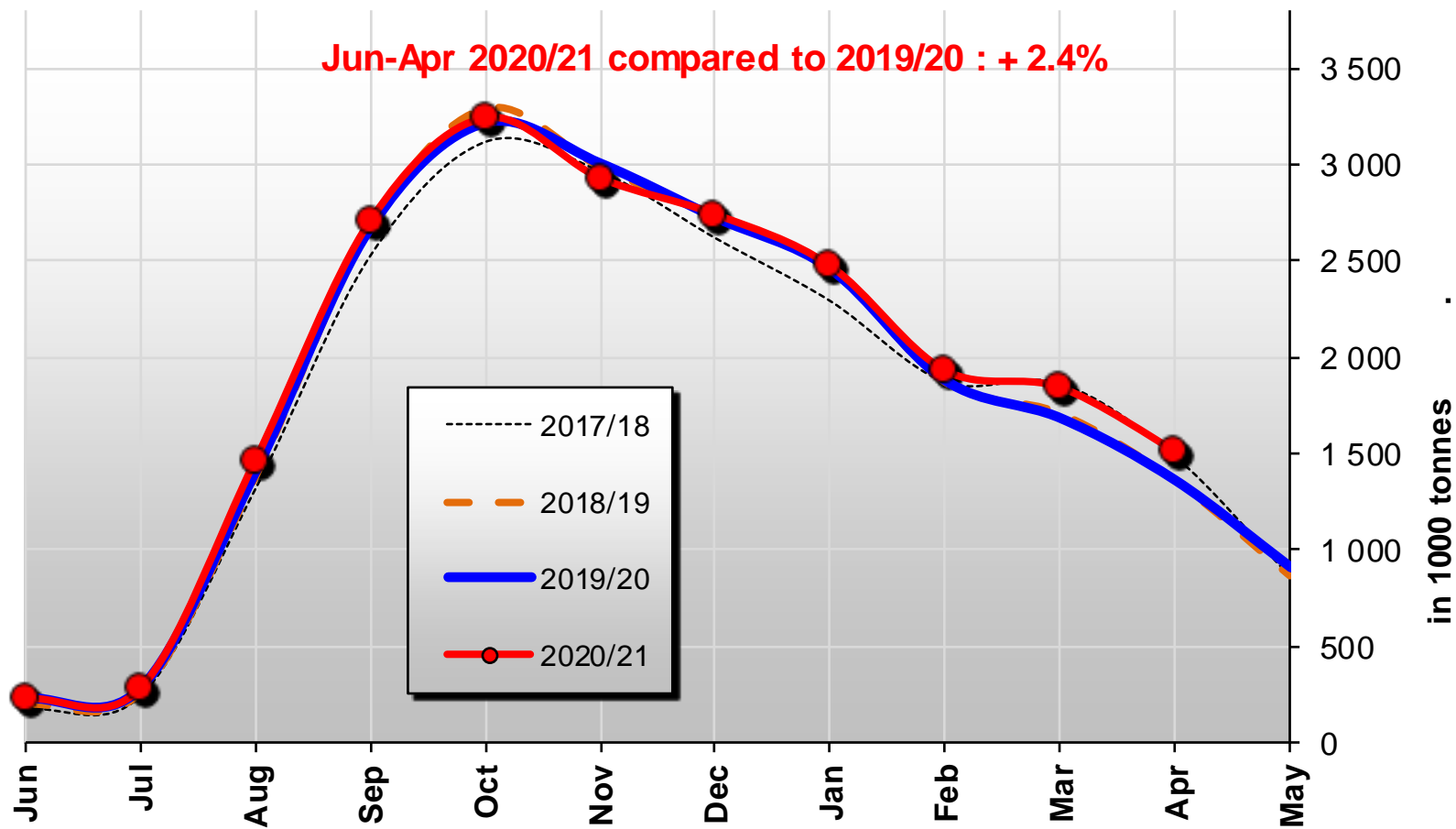
Source: USDA

## Australian milk production



## NZ milk production

Jun-Apr 2020/21 compared to 2019/20 : + 2.4%



# GDT Auction results

## Event 285

1 June 2021

**-0.9%**



Average price (USD/MT, FAS)

**\$4 128**

Anhydrous  
Milk Fat



Butter



Butter Milk  
Powder



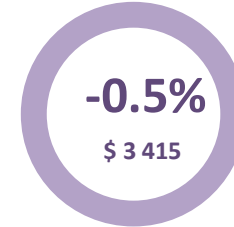
Cheddar



Lactose



Skim Milk  
Powder



Whole Milk  
Powder



Thank you