



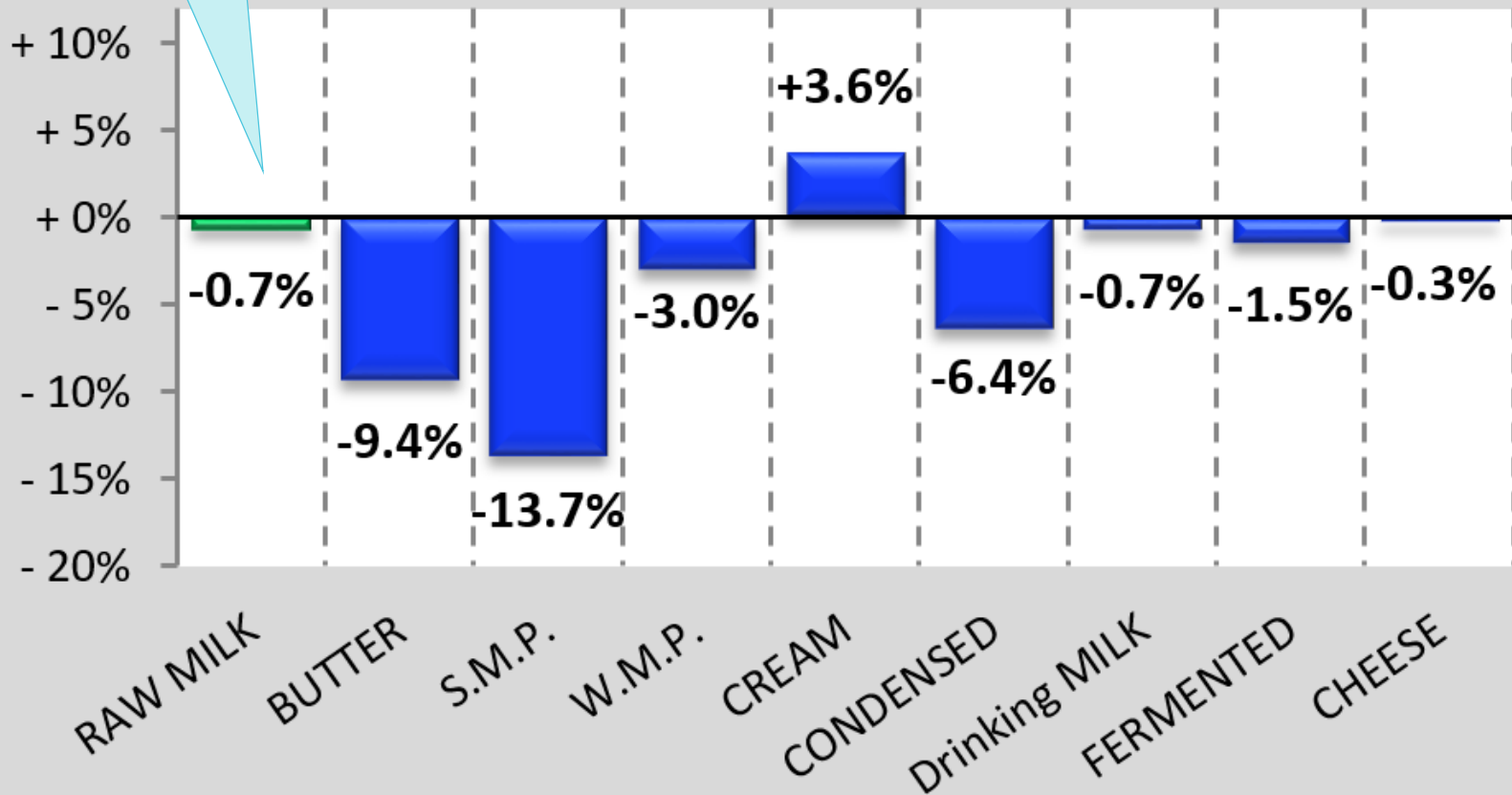
Milk Market Situation

Brussels, 21 April 2022

The United Kingdom is no longer a Member State of the European Union, however where it is deemed relevant (e.g. for comparison purposes) EU+UK aggregates may still be displayed.

Jan-Feb 2022/21: +0.1% (prov.)

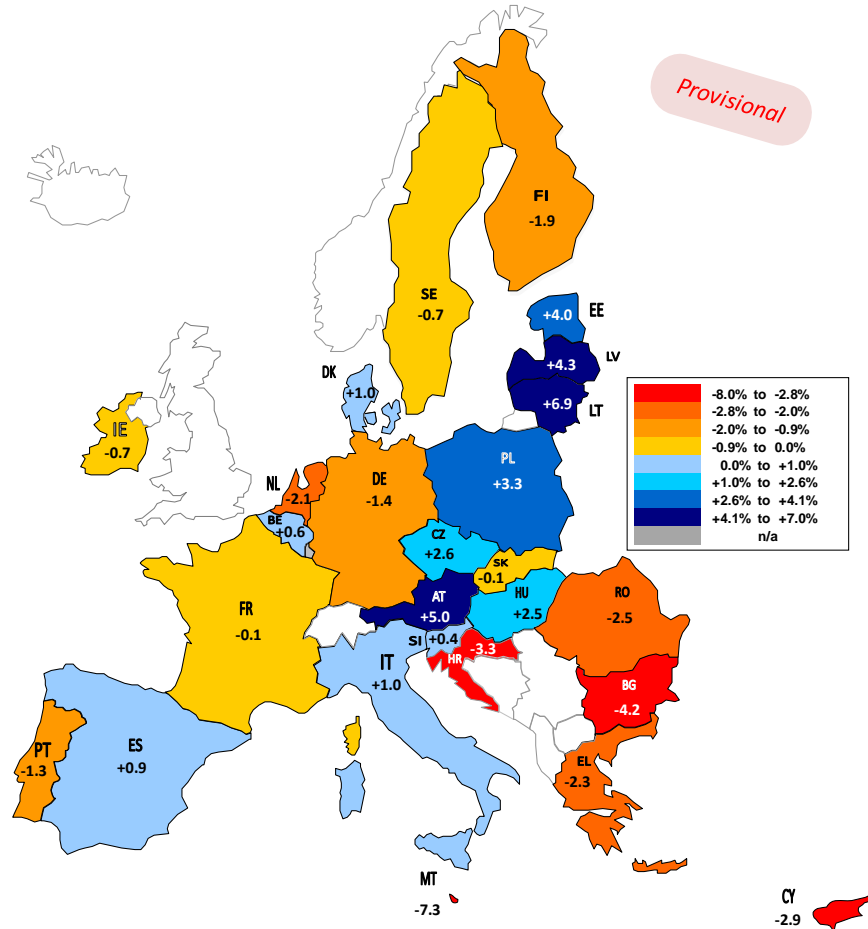
EU Productions Jan 2022 compared to Jan 2021)



!!! Data from some Member States are confidential and are NOT included in this table !!!

EU Milk Deliveries compared to last period (in %)

(Jan - Feb 2022 / Jan - Feb 2021)

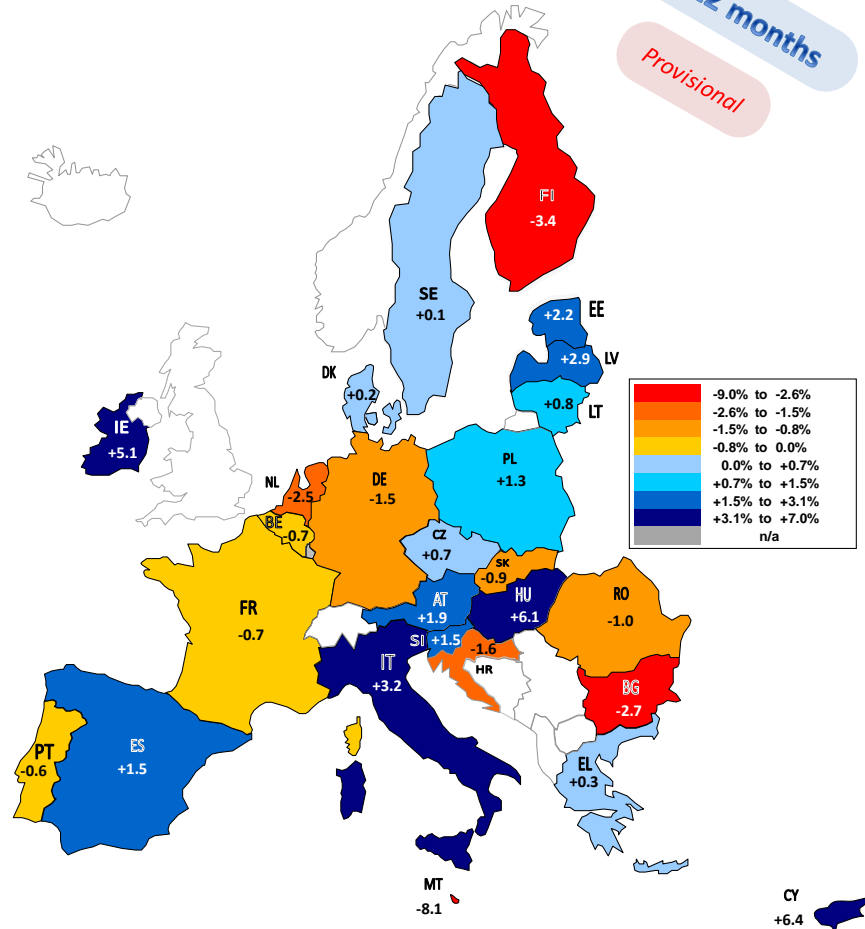


Source : MS' Communications to Eurostat, FEGA, AGEA, Reg.479/2010.1(a)1

The designations employed and the presentation of material on the map do not imply the expression of any opinion whatsoever on the part of the European Union concerning the legal status of any country, territory or area or of its authorities, or concerning the delimitation of its frontiers or boundaries.

EU Milk Deliveries compared to last period (in %)

(Mar 2021 - Feb 2022 / Mar 2020 - Feb 2021)

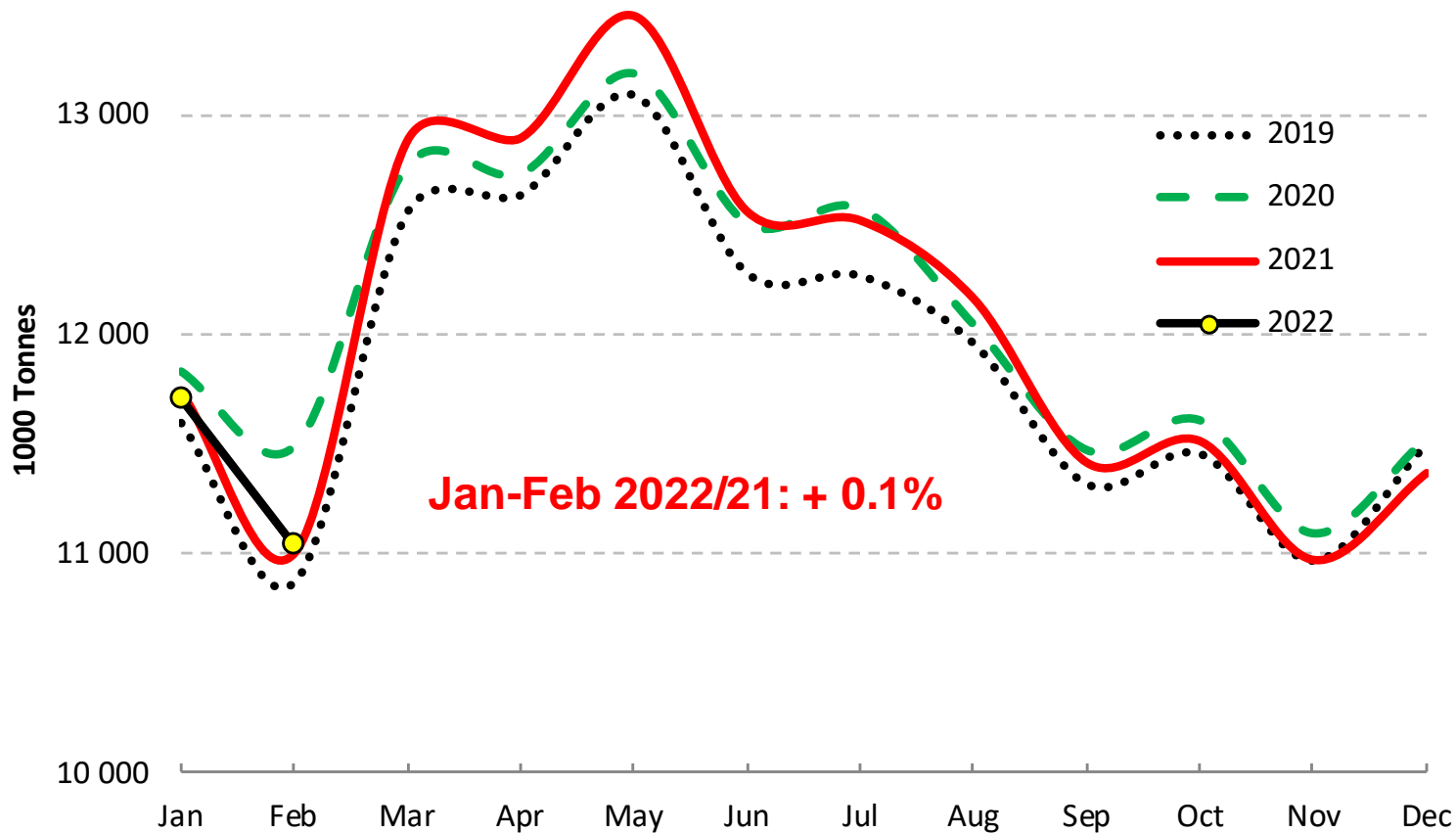


Last 12 months
Provisional

Source : MS' Communications to Eurostat, FEQA, AGEA, Reg.479/2010.1(a)1

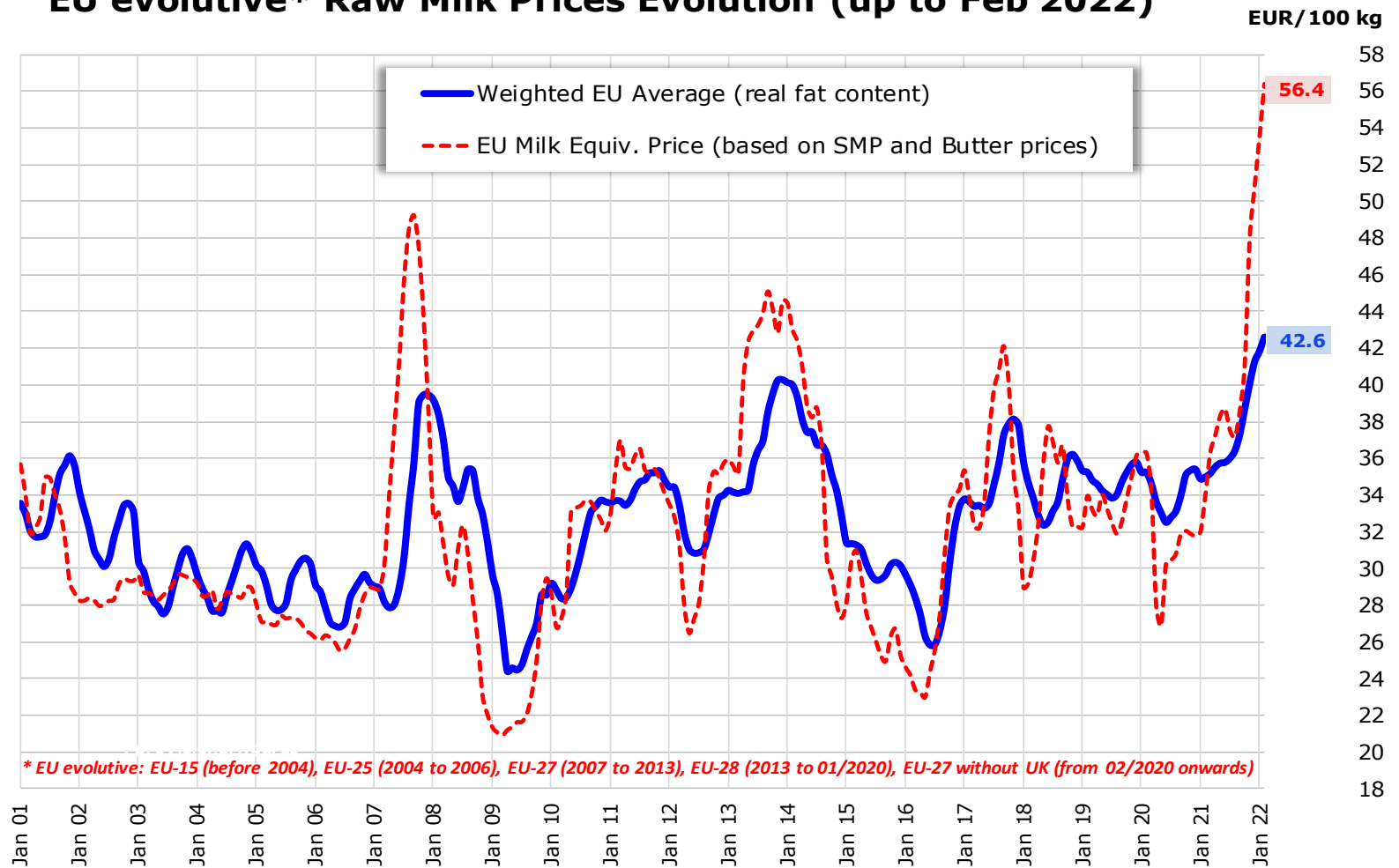
The designations employed and the presentation of material on the map do not imply the expression of any opinion whatsoever on the part of the European Union concerning the legal status of any country, territory or area or of its authorities, or concerning the delimitation of its frontiers or boundaries.

EU - Cows' milk collected



Source: Estat (Newcronos) - MS notifications - CLAL(IT)

EU evolutive* Raw Milk Prices Evolution (up to Feb 2022)



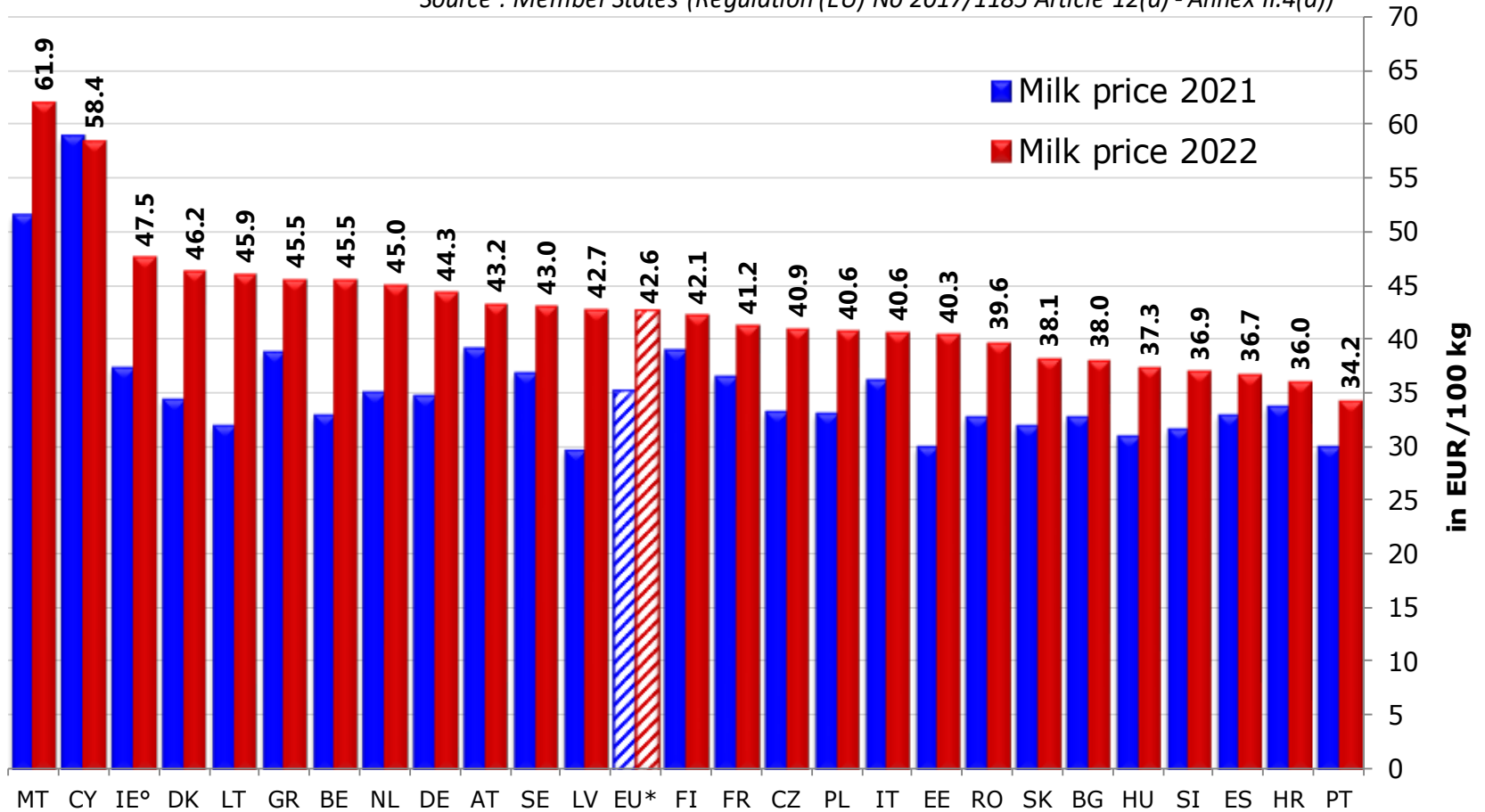
* EU evolutive: EU-15 (before 2004), EU-25 (2004 to 2006), EU-27 (2007 to 2013), EU-28 (2013 to 01/2020), EU-27 without UK (from 02/2020 onwards)

Source : MS' communications under Reg. (EU) No 2017/1185 Article 12(a) - Annex II.4(a)

EU MILK PRICES

(Feb 2022 vs Feb 2021)

Source : Member States (Regulation (EU) No 2017/1185 Article 12(a) - Annex II.4(a))

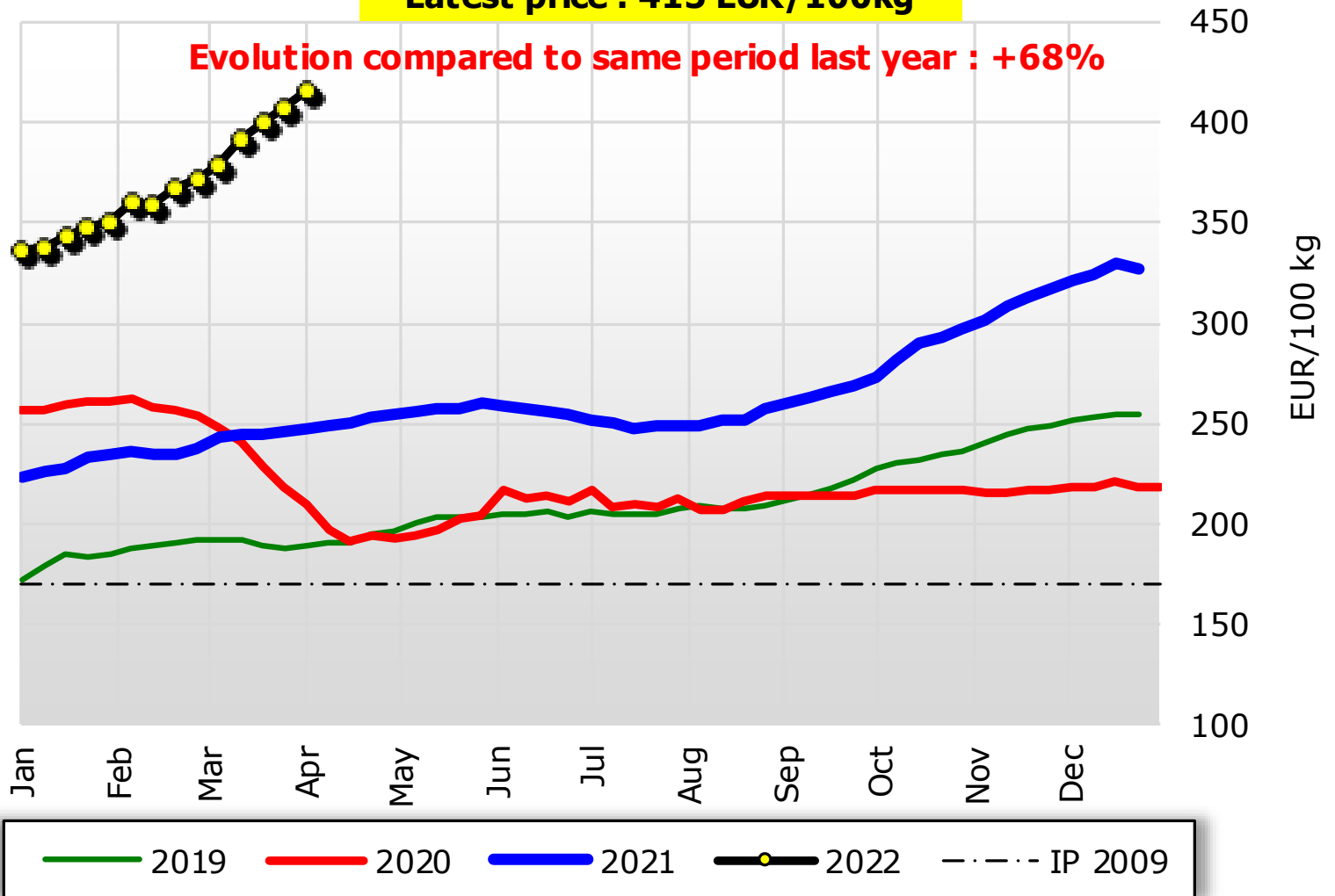


° : estimated figures for Feb 2022

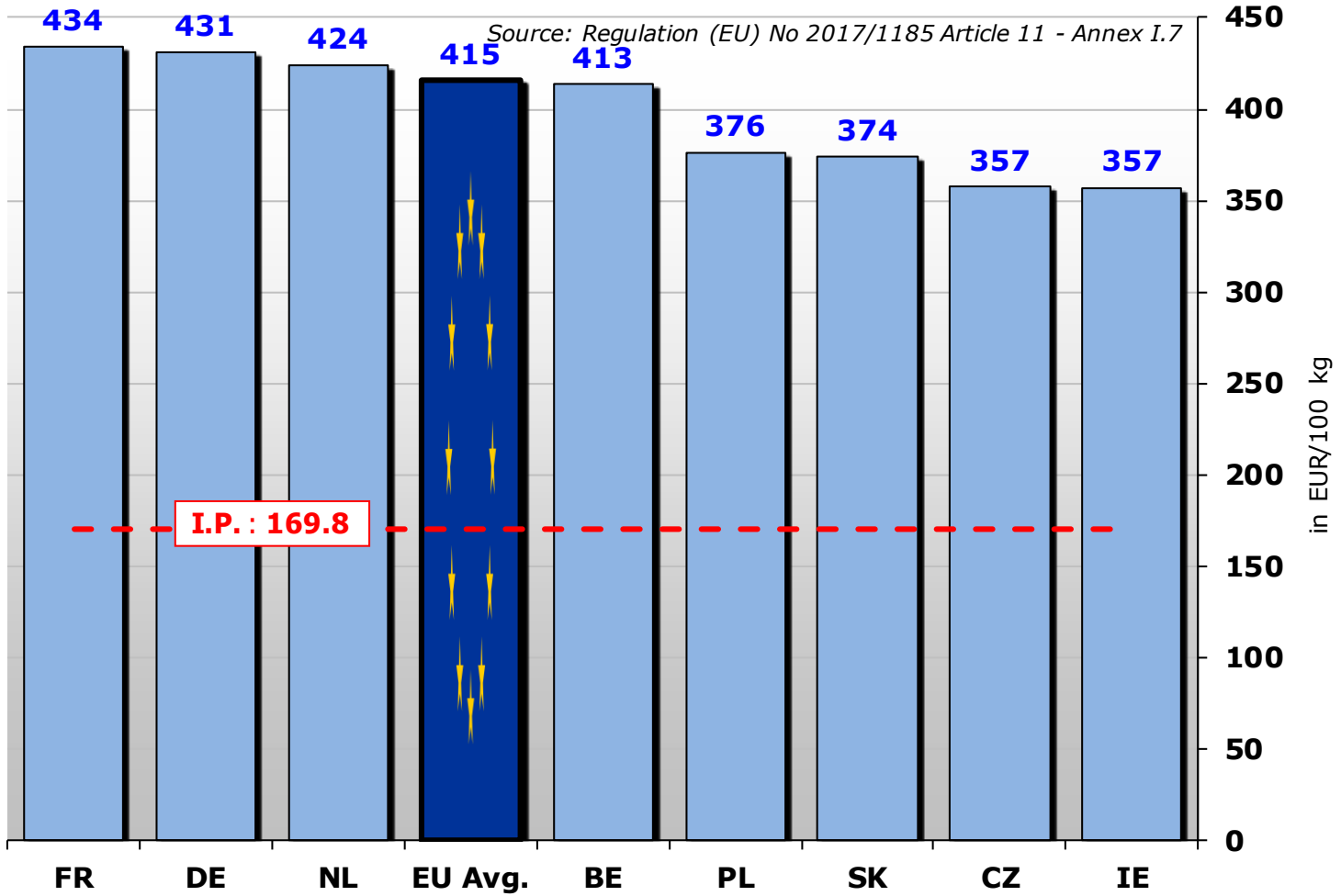
Weekly EU SMP Prices

Latest price : 415 EUR/100kg

Evolution compared to same period last year : +68%



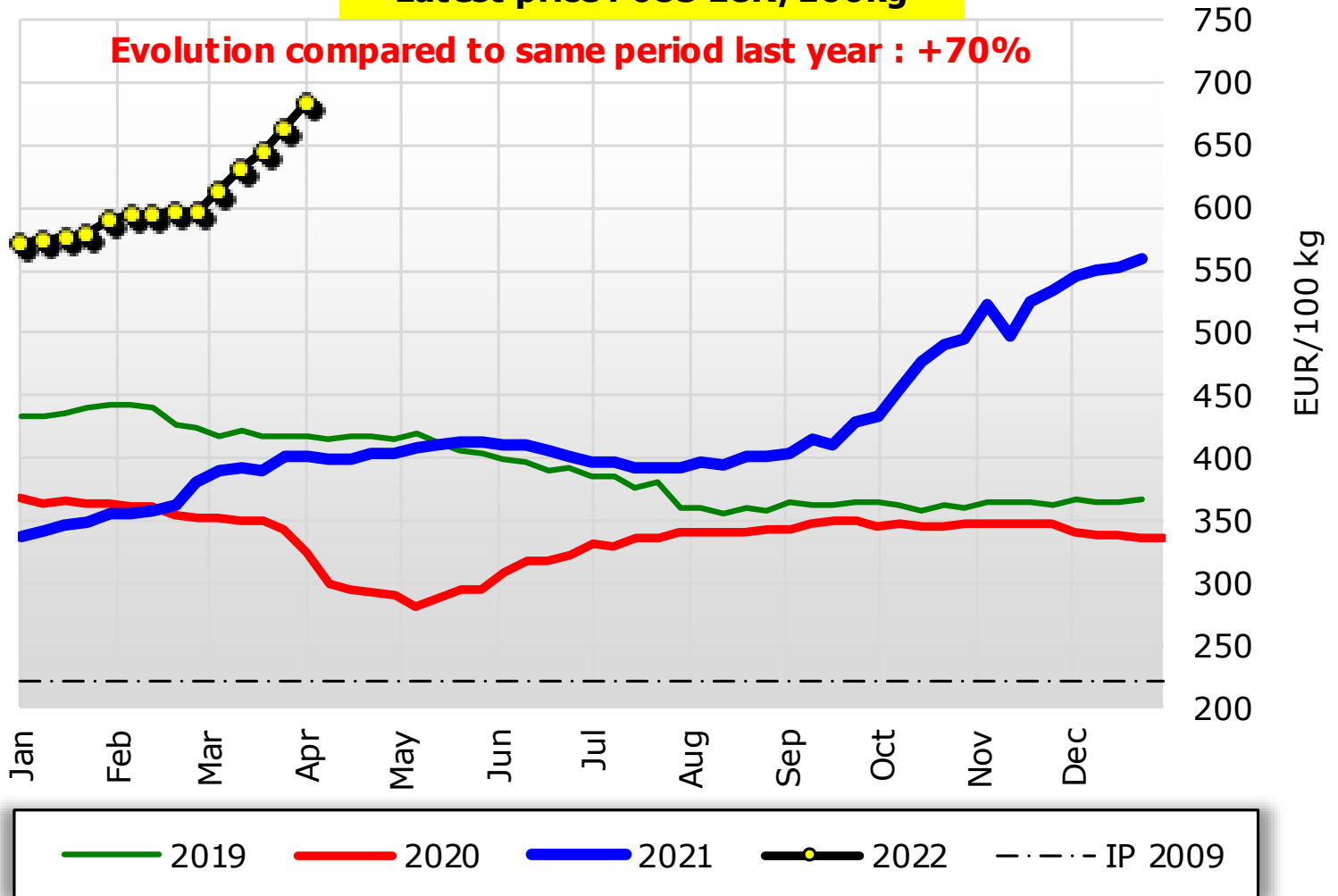
EU S.M.P. Prices (up to 10.04.2022)



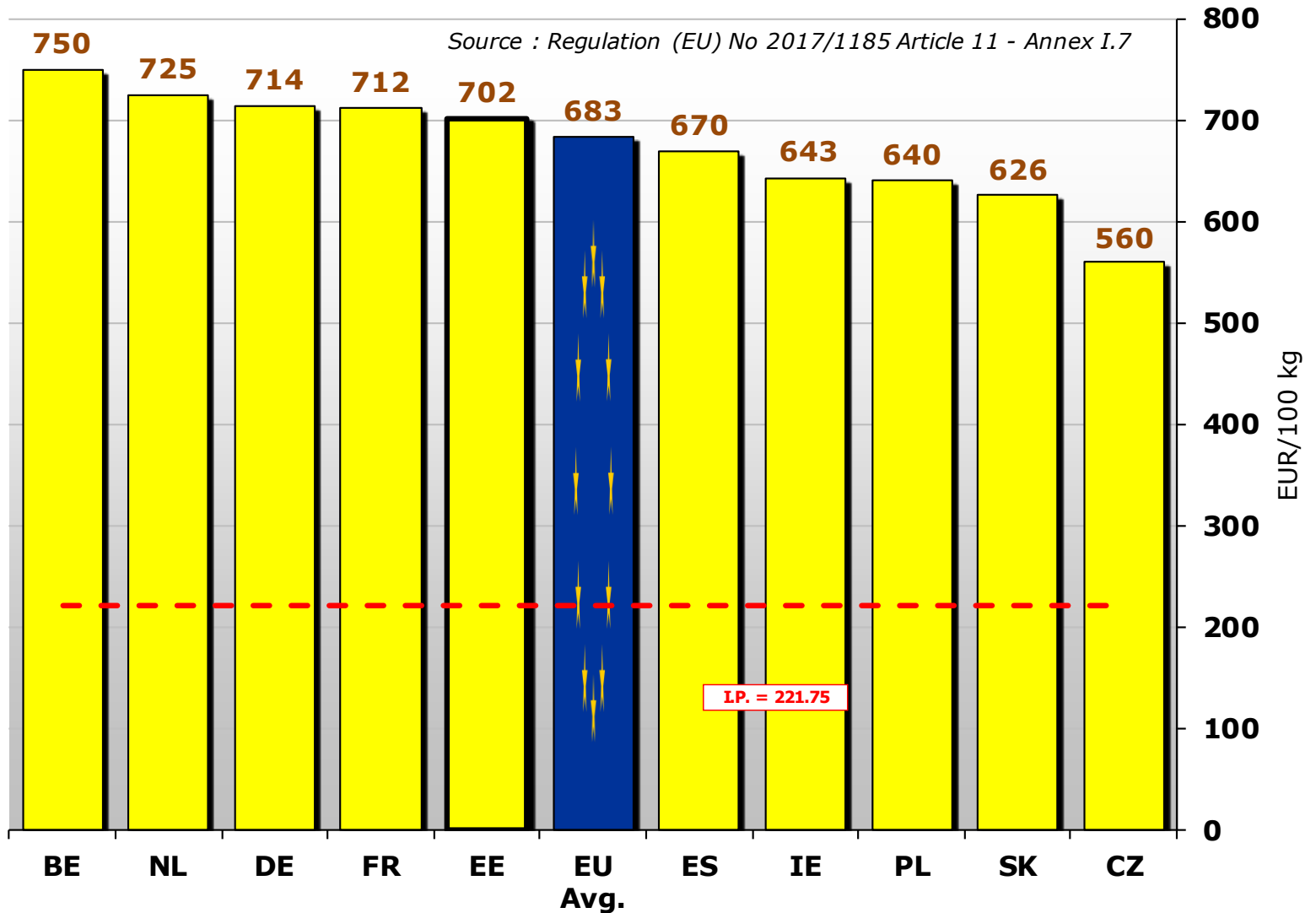
Weekly EU BUTTER Prices

Latest price : 683 EUR/100kg

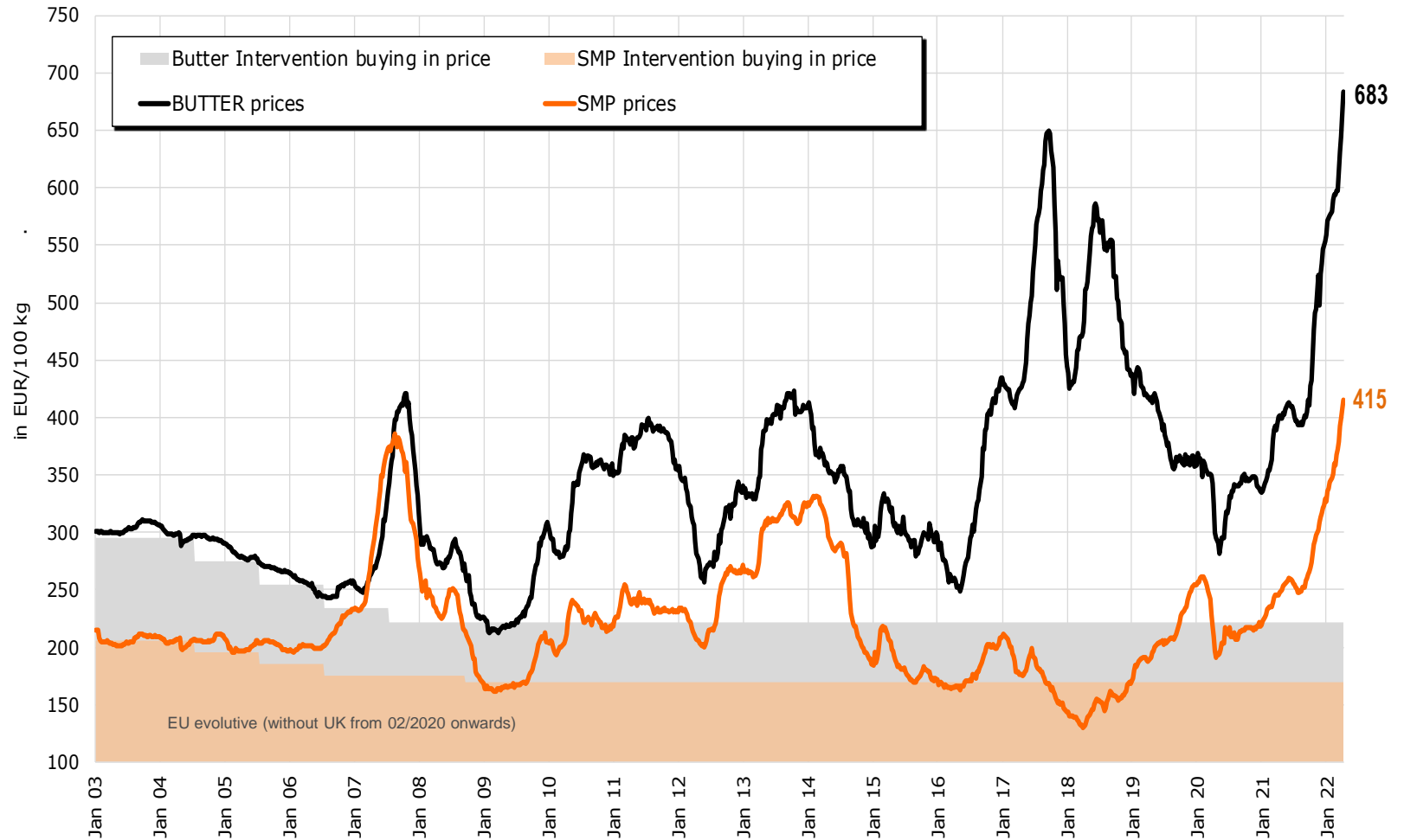
Evolution compared to same period last year : +70%



EU BUTTER Prices (up to 10.04.2022)



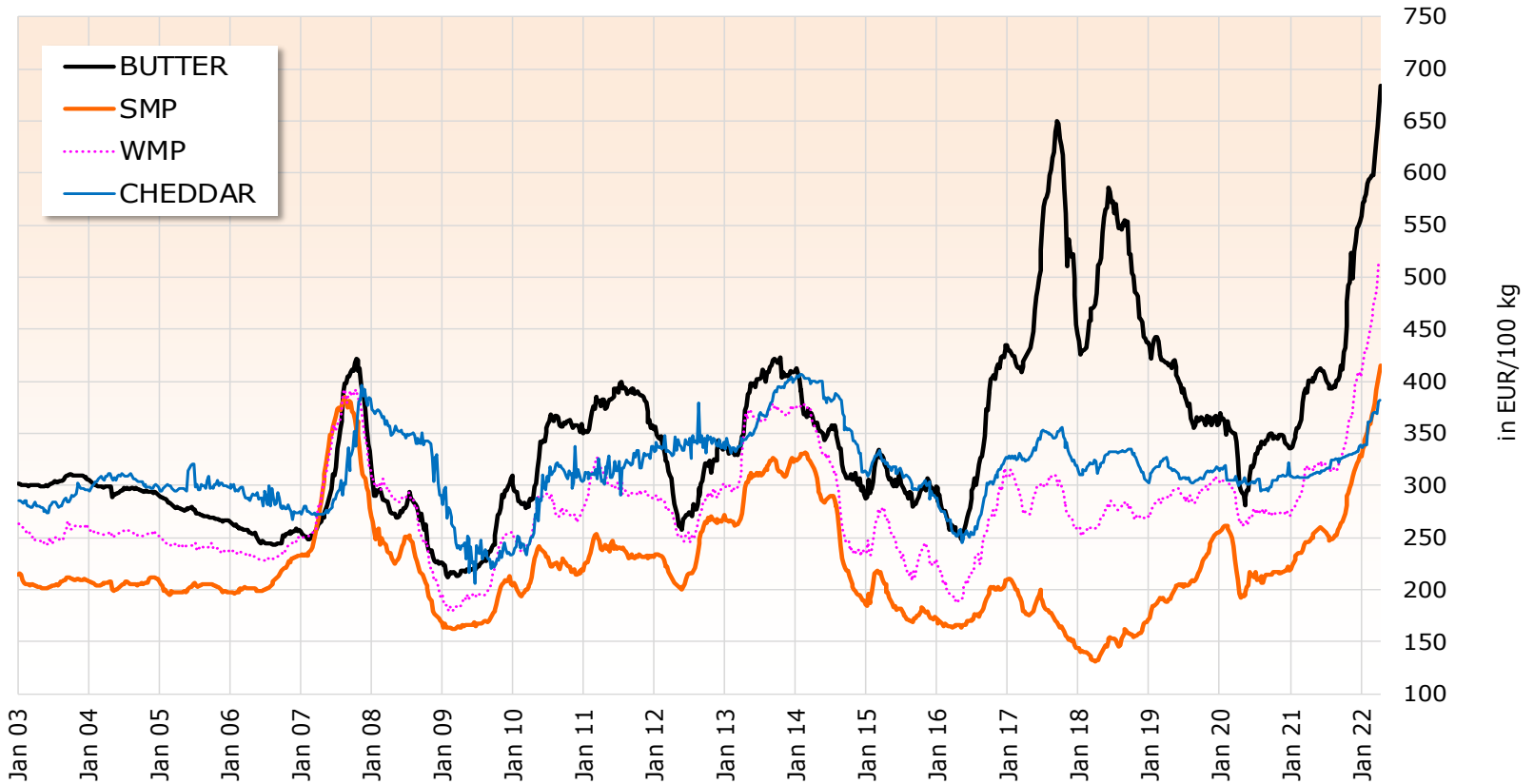
EU Quotations of Butter and SMP (EU average based on MS communication and weighted by production)



Source: MS' communications under reg. 562/2005 and 479/2010

EU evolutive* dairy Quotations

(EU Average Prices based on MS communication and weighted by production)



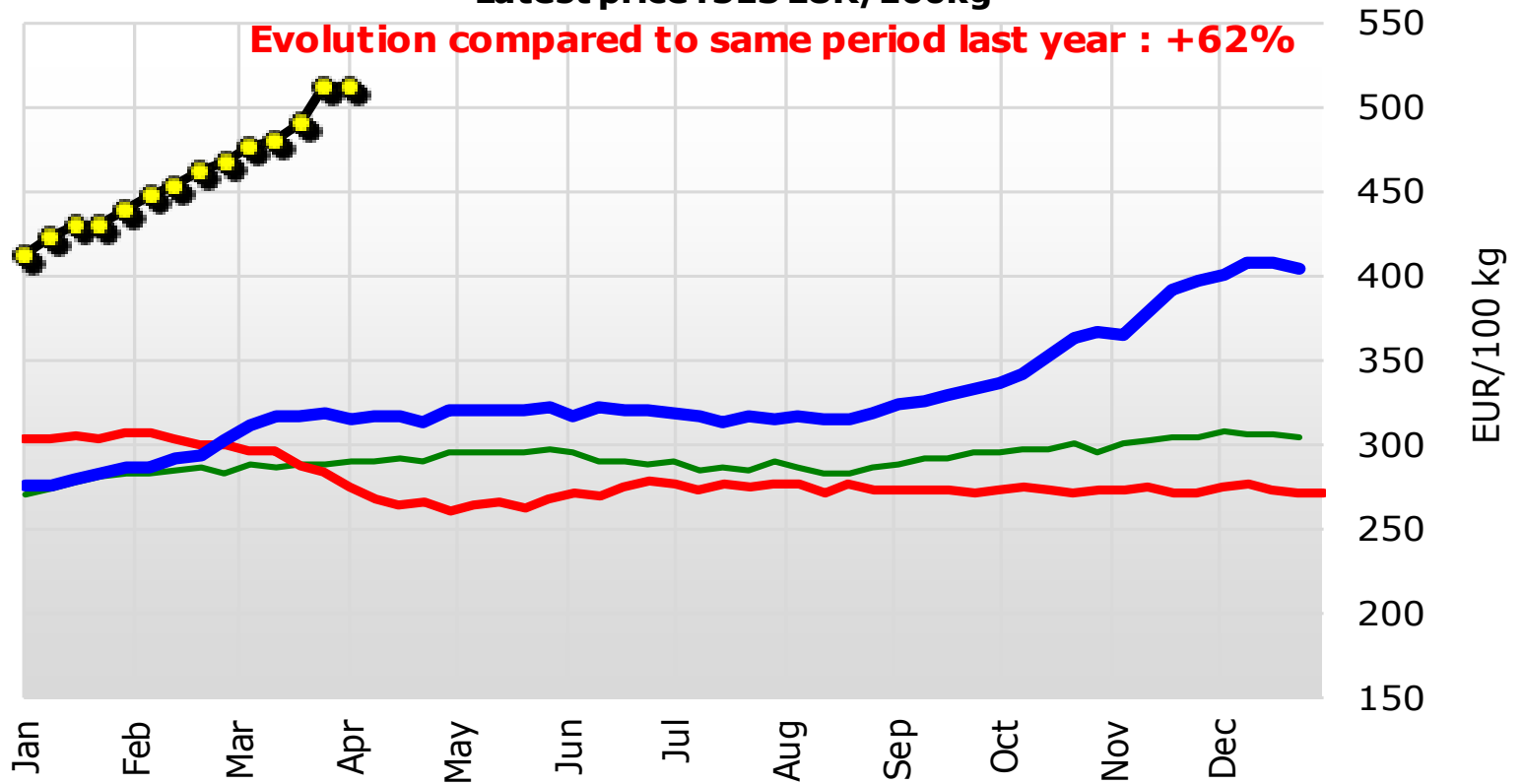
Source: Regulation (EU) No 2017/1185 Article 11 - Annex I.7

* EU evolutive: EU-15 (before 2004), EU-25 (2004 to 2006), EU-27 (2007 to 2013), EU-28 (2013 to 01/2020), EU-27 without UK (from 02/2020 onwards)

Weekly EU WMP Prices

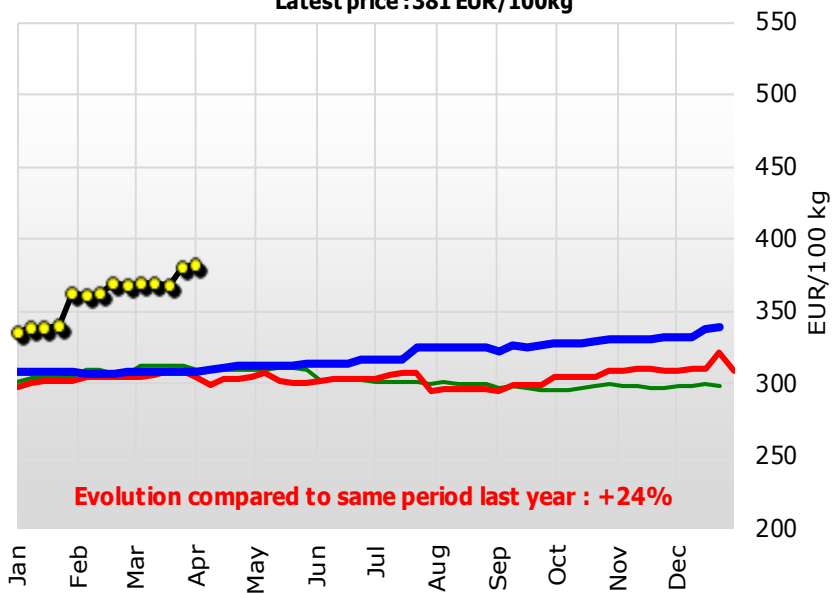
Latest price : 513 EUR/100kg

Evolution compared to same period last year : +62%



Weekly EU CHEDDAR Prices

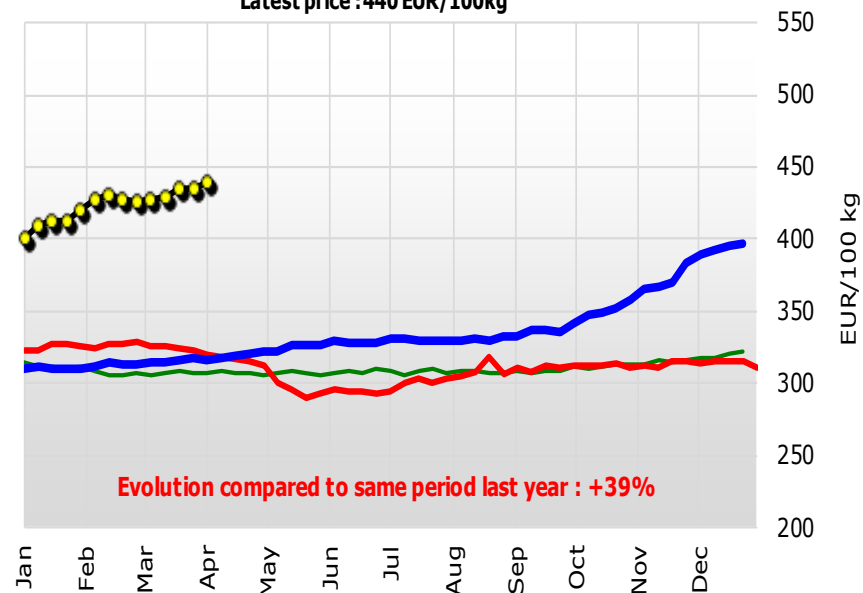
Latest price : 381 EUR/100kg



— 2019 — 2020 — 2021 —●— 2022

Weekly EU EDAM Prices

Latest price : 440 EUR/100kg

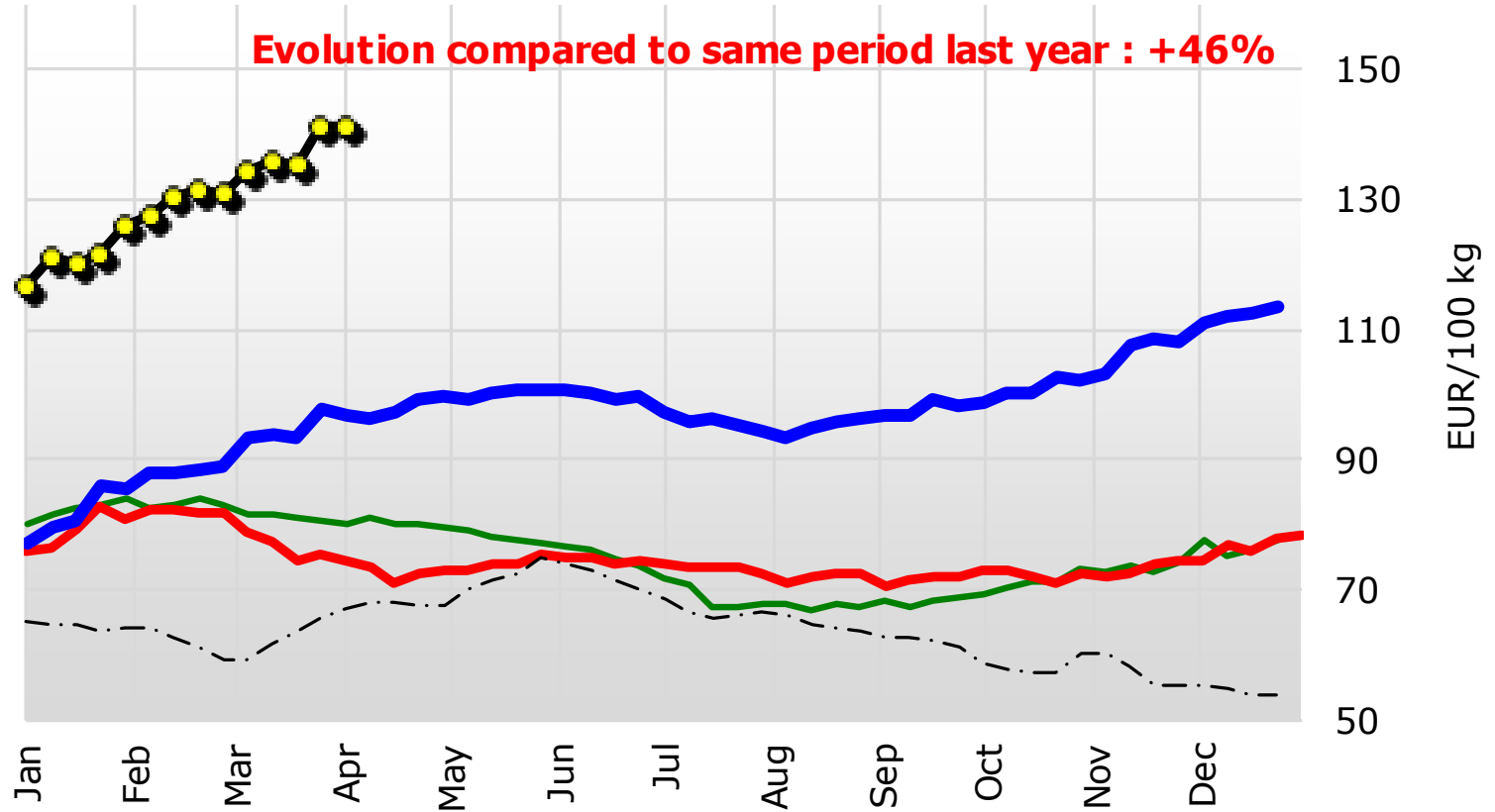


— 2019 — 2020 — 2021 —●— 2022

Weekly EU WheyPowder Prices

Latest price : 141 EUR/100kg

Evolution compared to same period last year : +46%



— 2019 — 2020 — 2021 —●— 2022 - - - - Series2

13 April 2022

EUR 1 = USD 1.0826 -0.0035(-0.3%)

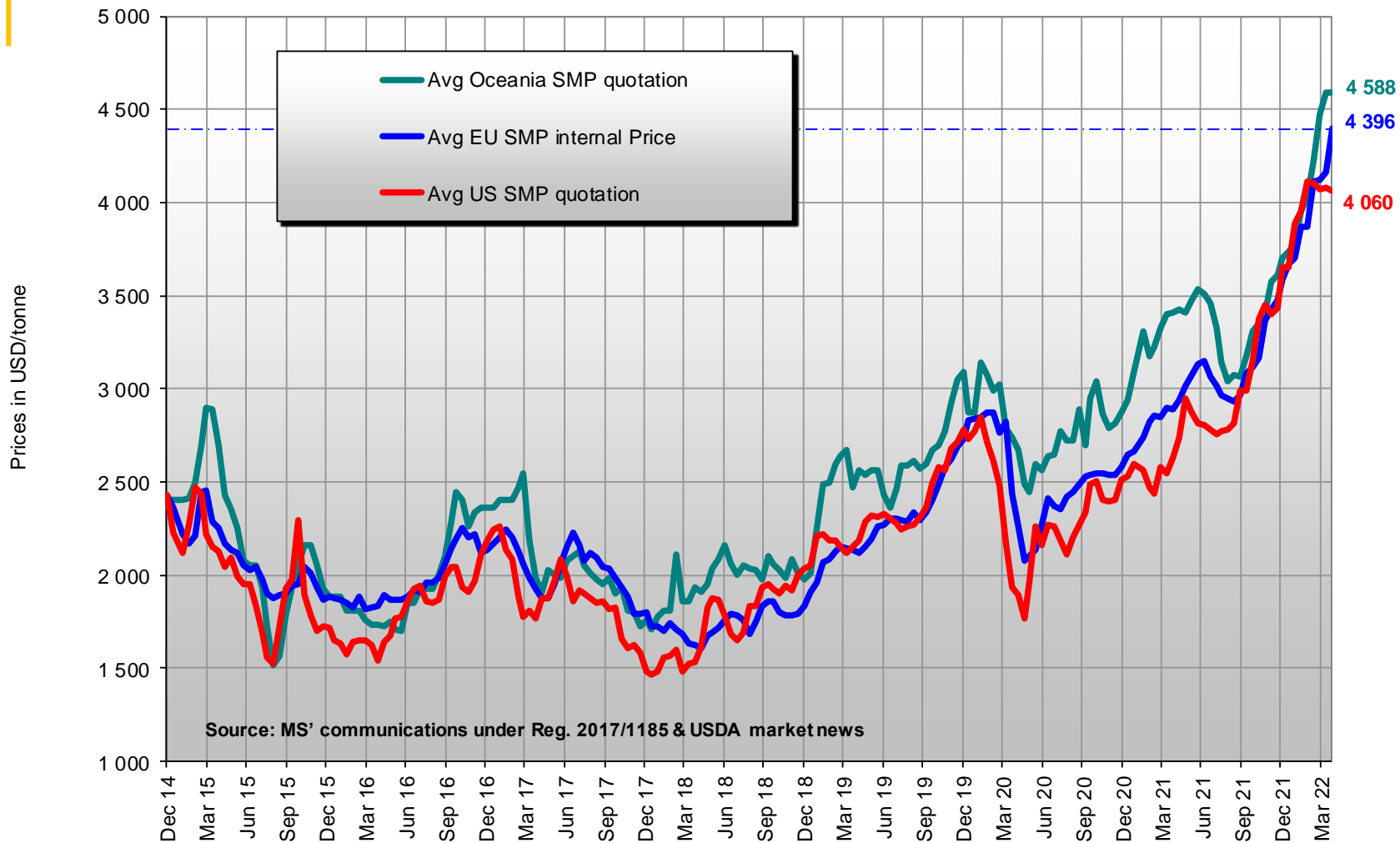
Change from 13 April 2021 to 13 April 2022

Min (13 April 2022)	Max (25 May 2021)	Average
1.0826	1.2264	1.1594



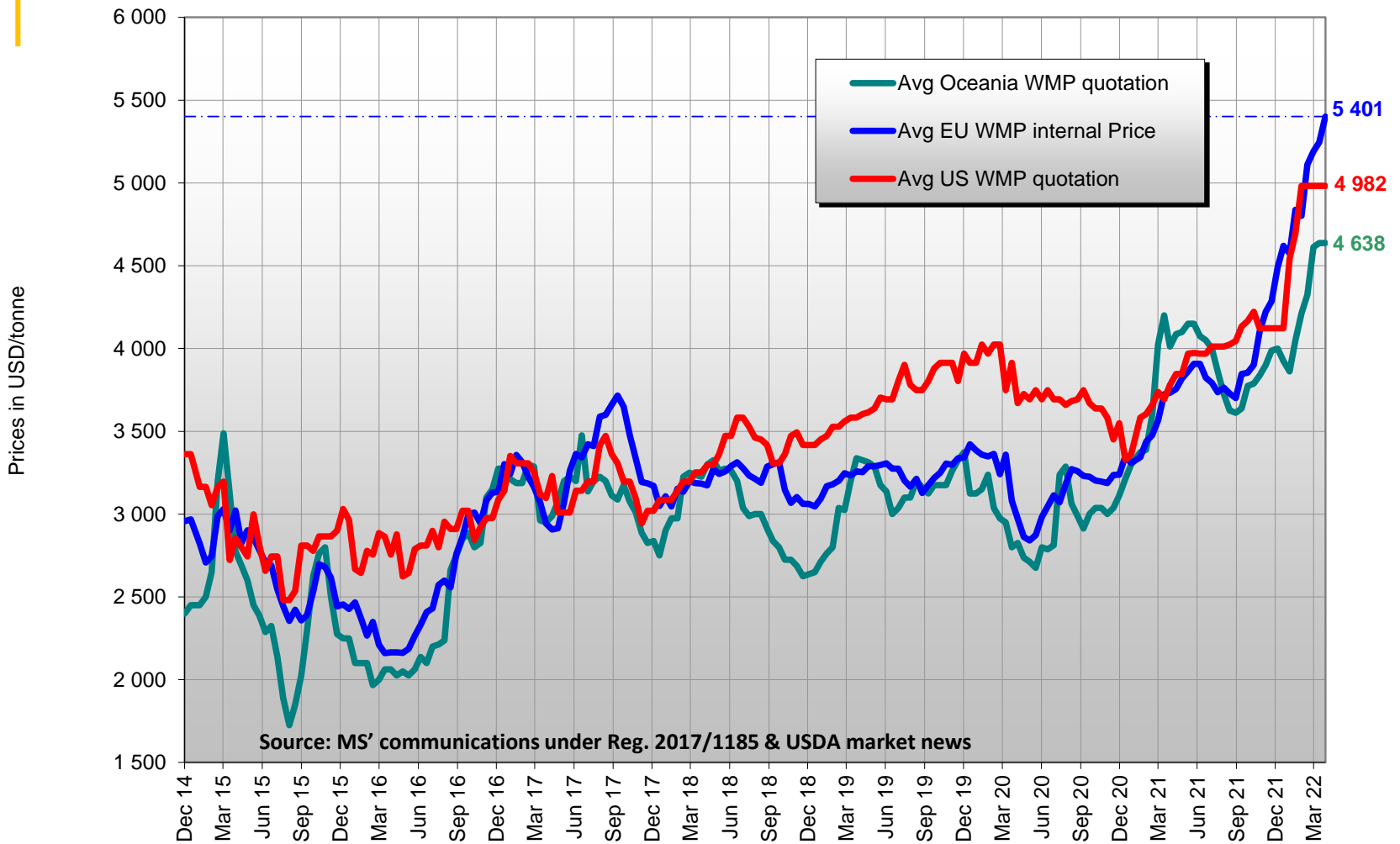
EUR/USD

EU*/US/Oceania Quotations of SMP



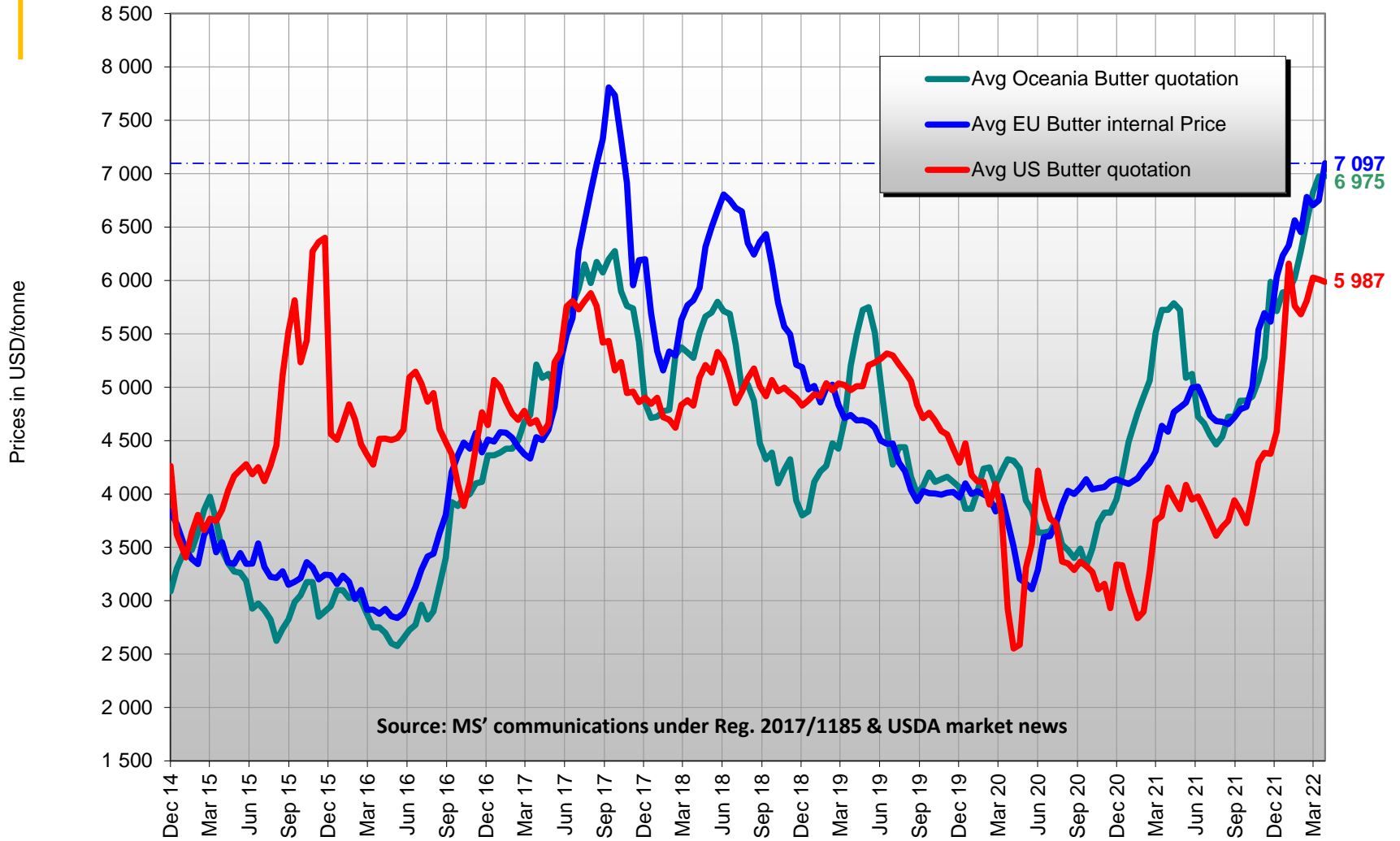
* EU evolutive

EU*/US/Oceania Quotations of WMP



* EU evolutive

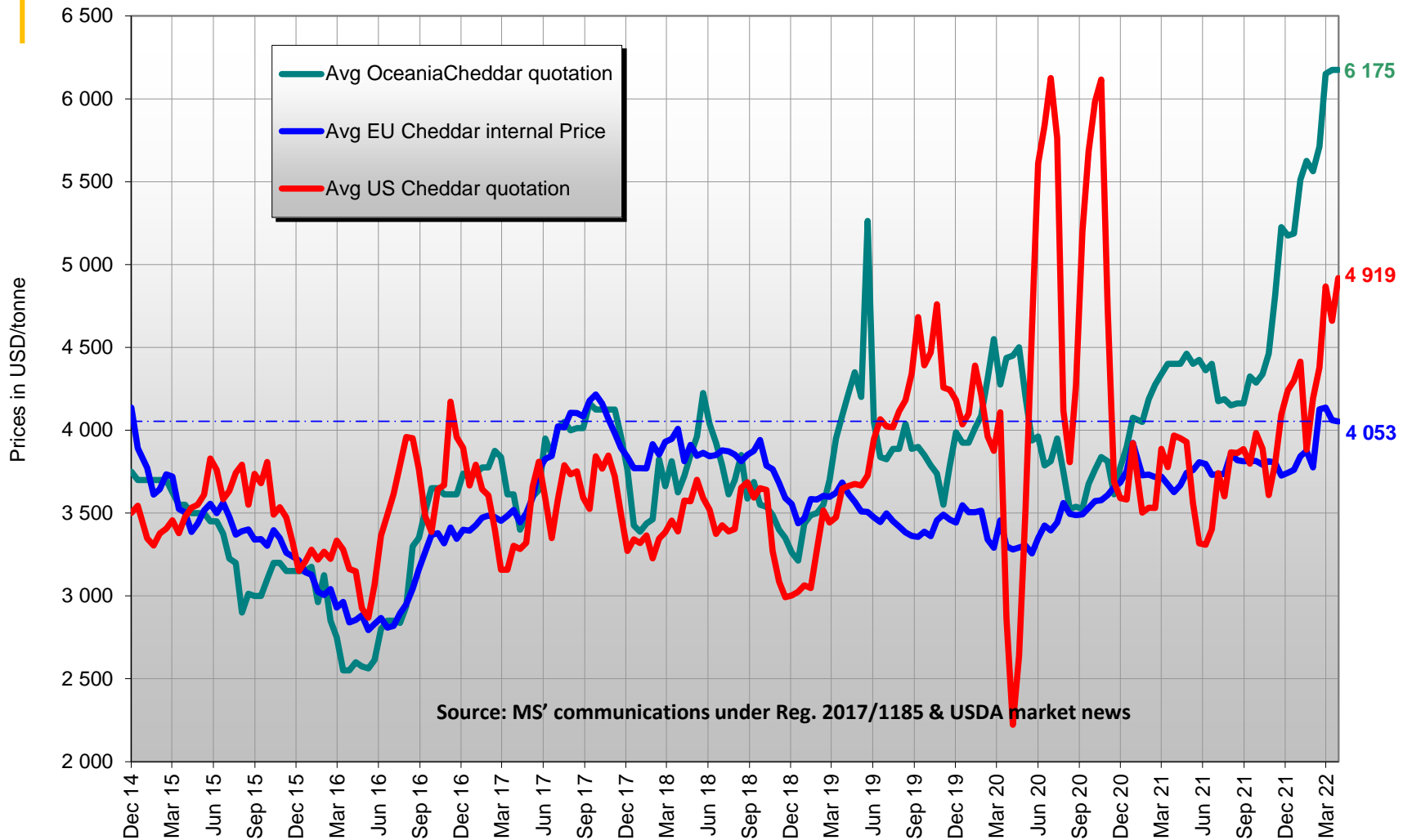
EU*/US/Oceania Quotations of Butter



Source: MS' communications under Reg. 2017/1185 & USDA market news

* EU evolutive

EU*/US/Oceania Quotations of Cheddar



Source: MS' communications under Reg. 2017/1185 & USDA market news

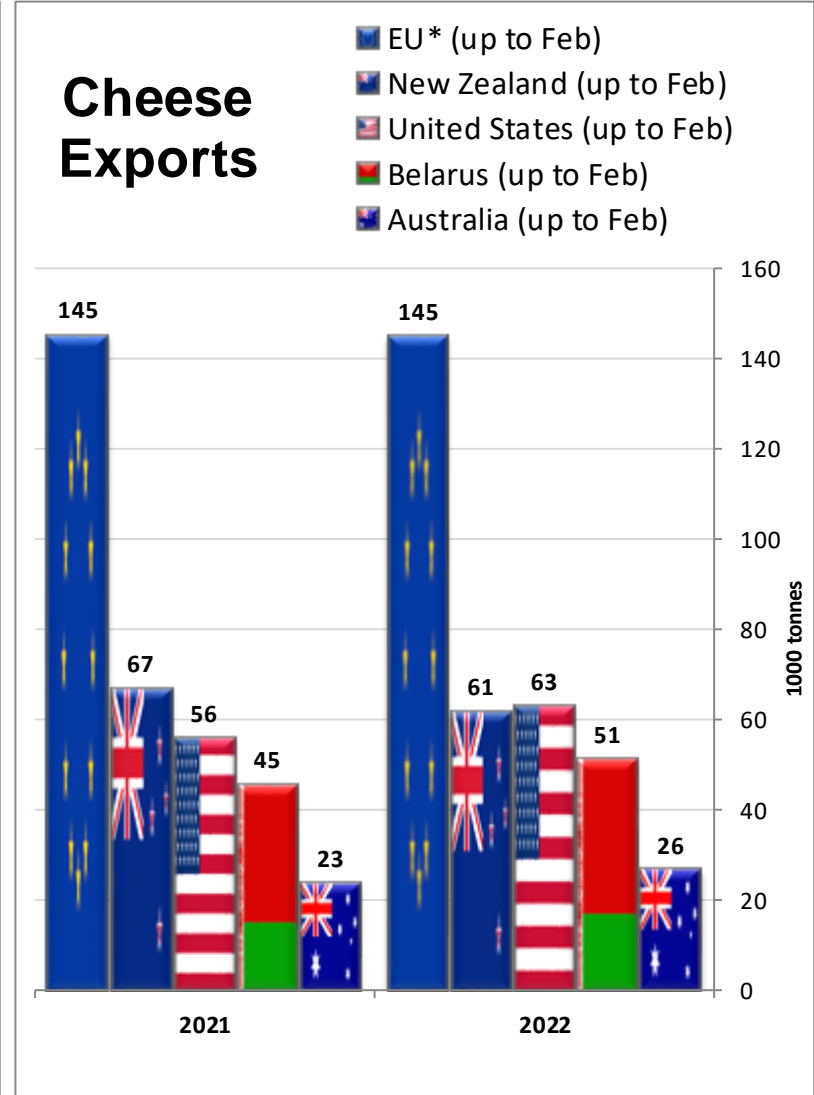
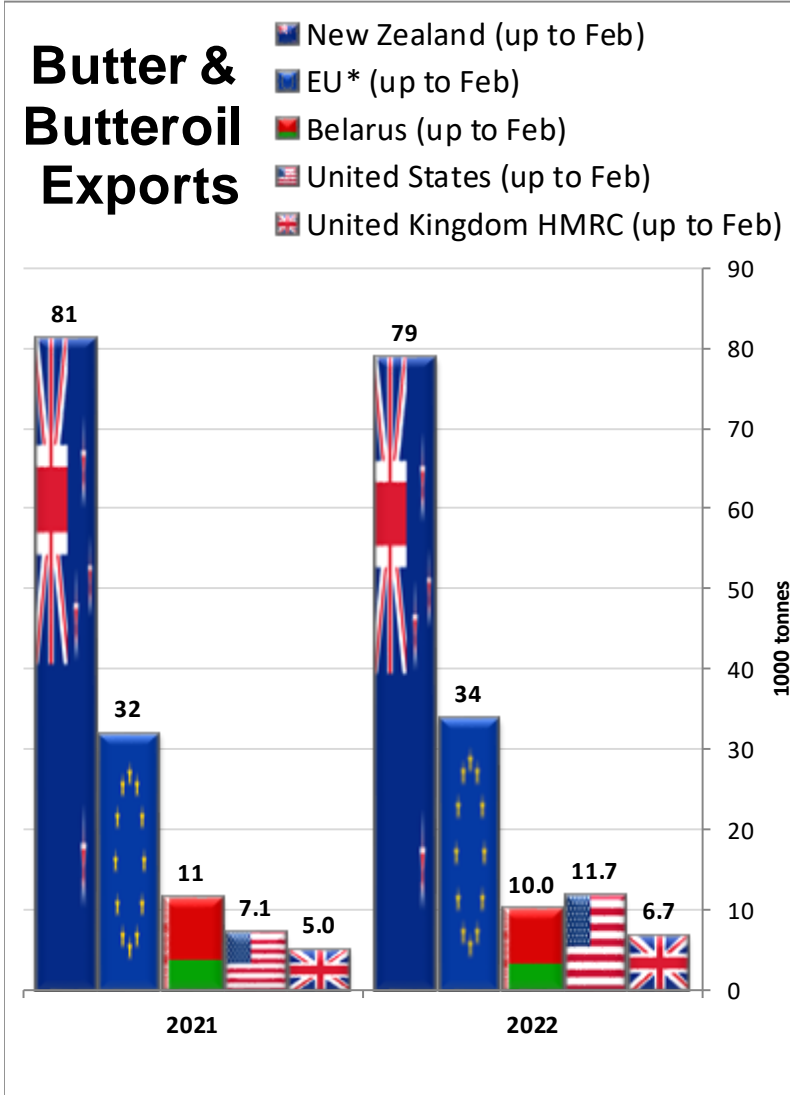
* EU evolutive

Main exporters

Notice: EU trade figures do not include trade with UK - For confidentiality reasons, data for Mexico may be incomplete.

Source : IHS Markit/GTA - Eurostat(COMEXT)






Quantity in 1000 Tonnes

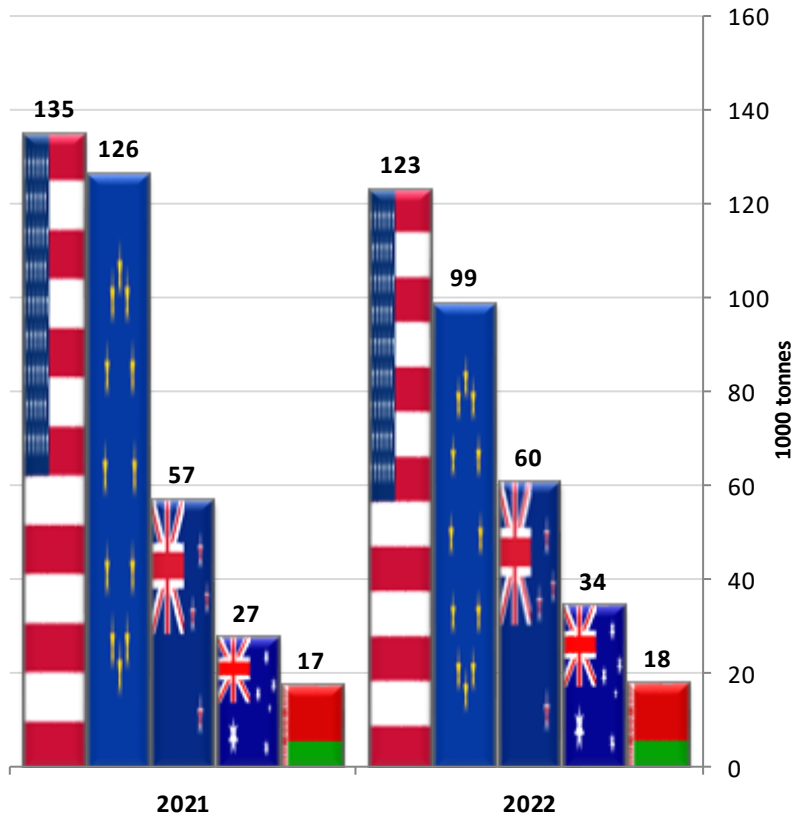


EU*: without UK





Main exporters

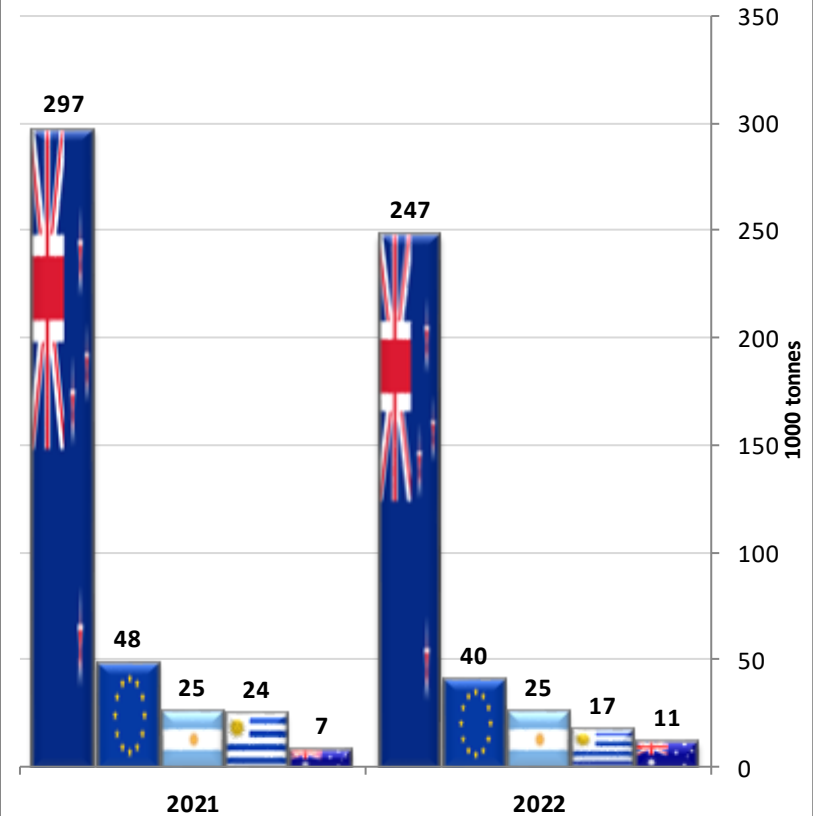
S.M.P. Exports

-  United States (up to Feb)
-  EU* (up to Feb)
-  New Zealand (up to Feb)
-  Australia (up to Feb)
-  Belarus (up to Feb)



W.M.P. Exports

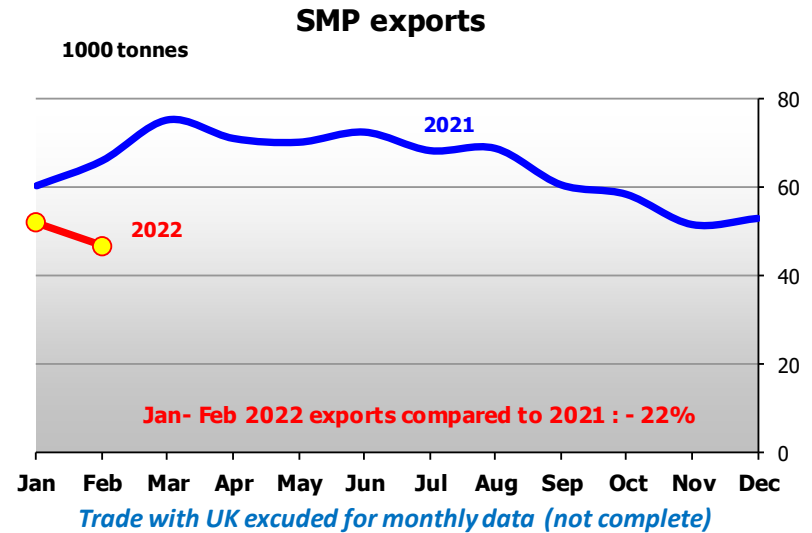
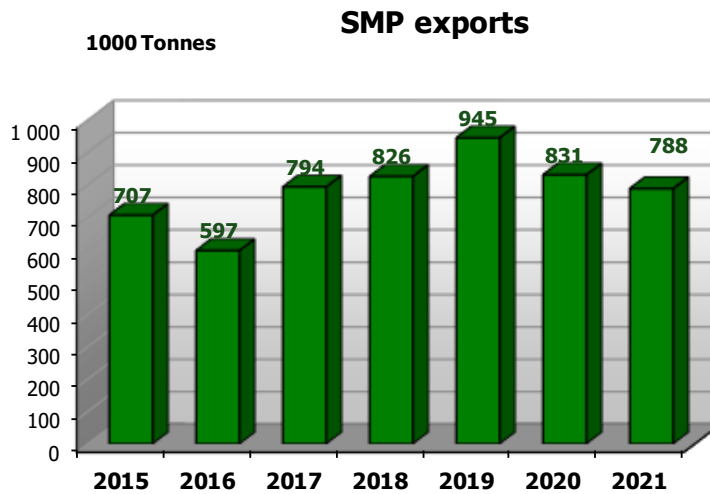
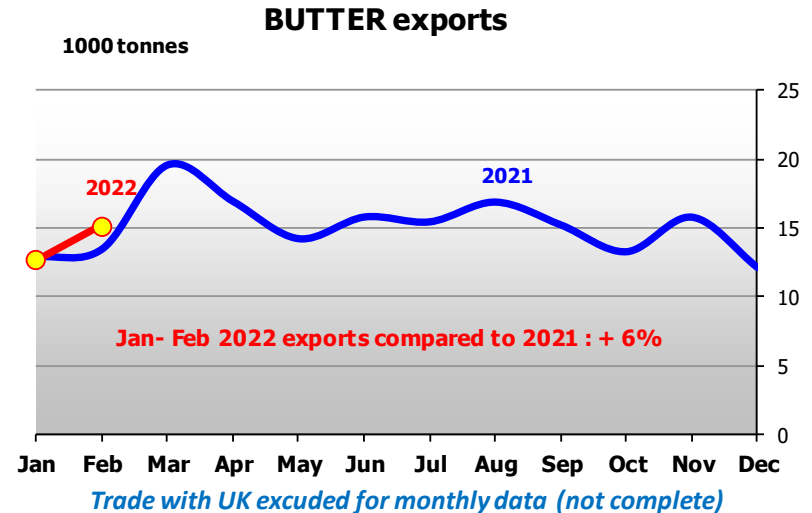
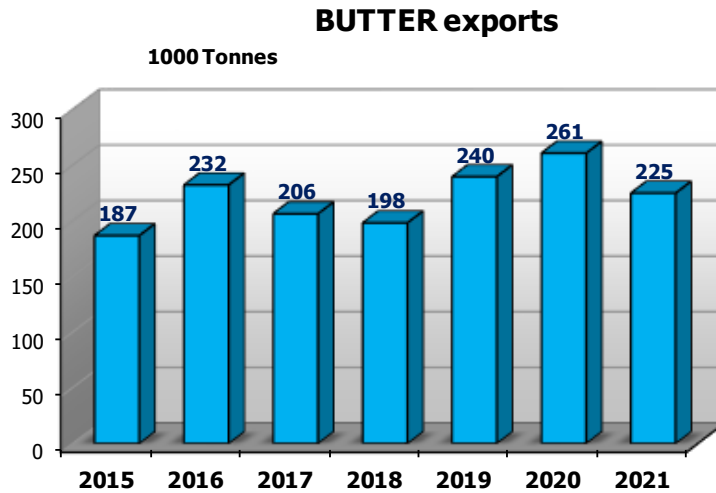
-  New Zealand (up to Feb)
-  EU* (up to Feb)
-  Argentina (up to Feb)
-  Uruguay (up to Feb)
-  Australia (up to Feb)



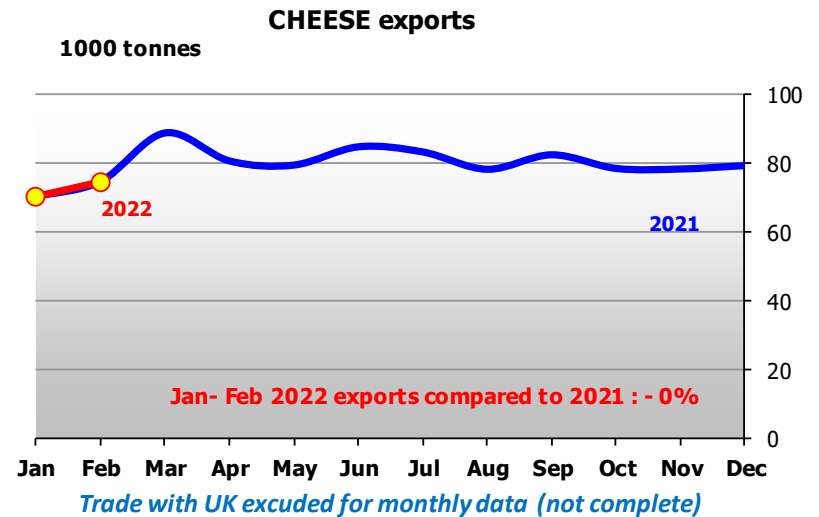
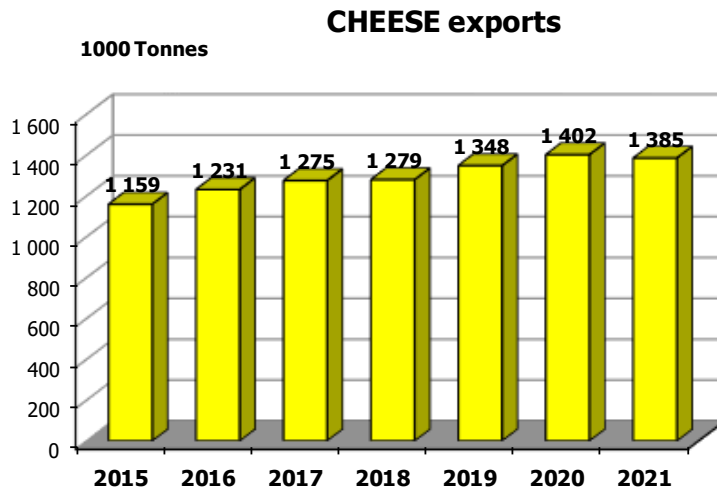
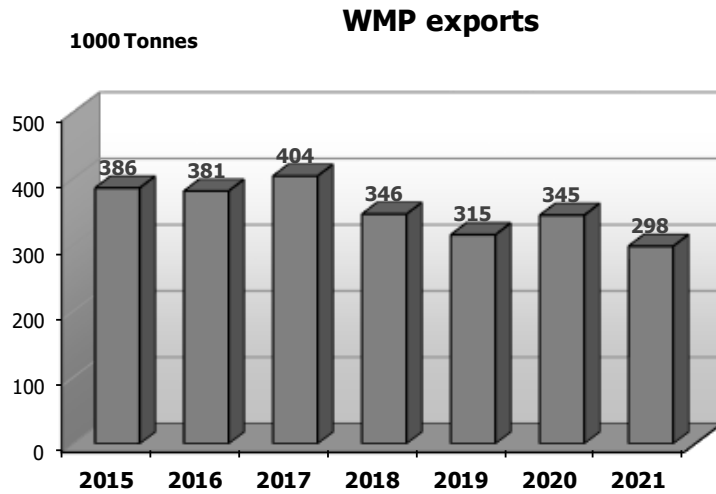
EU*: without UK

EU Exports (1/2)

Source : Eurostat (COMEXT)



EU Exports (2/2)

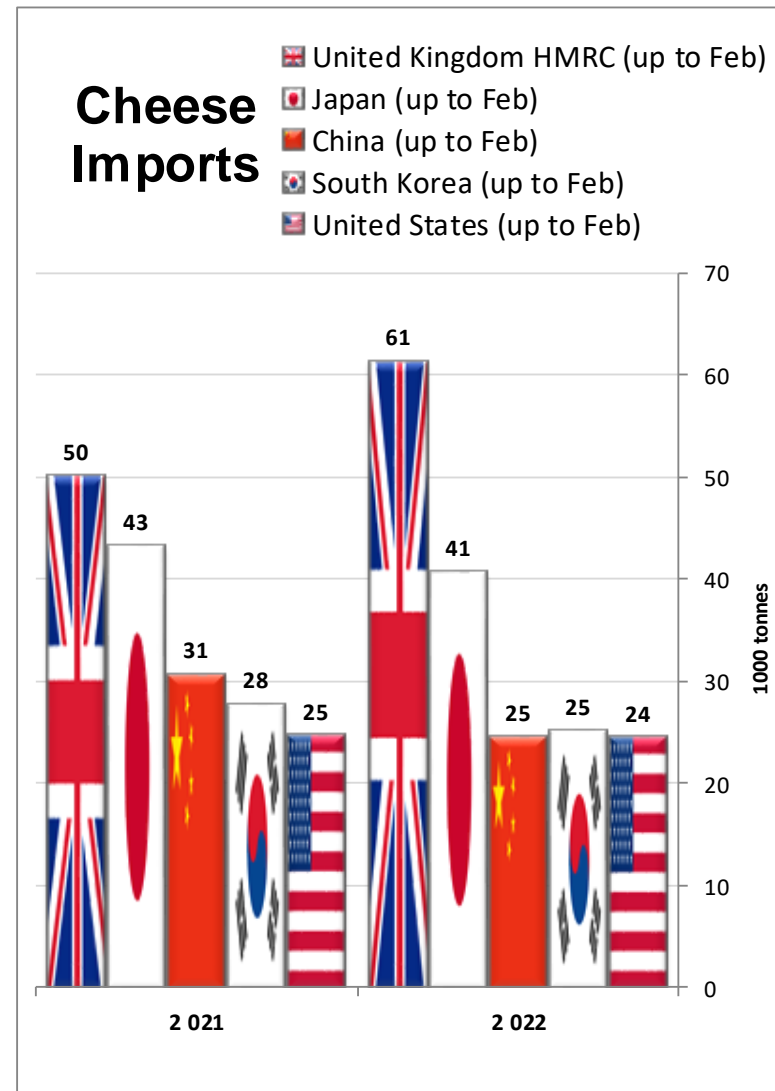
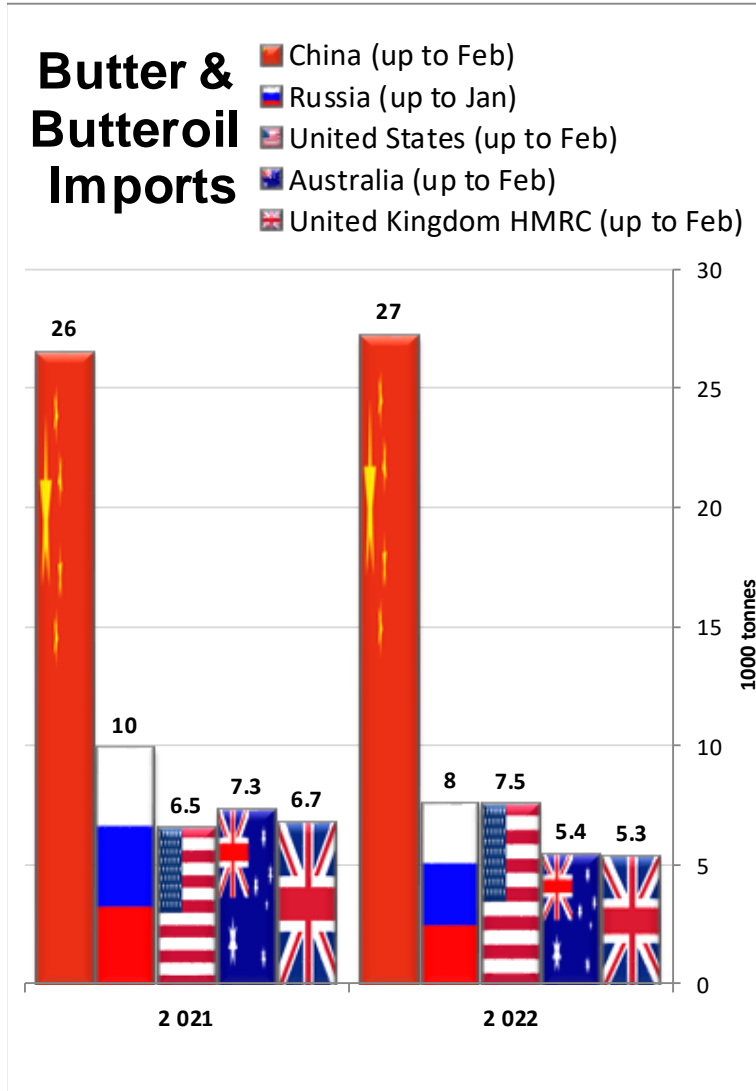


Main importers

Notice: EU trade figures do not include trade with UK - For confidentiality reasons, data for Mexico may be incomplete.





Source : IHS Markit/GTA - Eurostat(COMEXT)

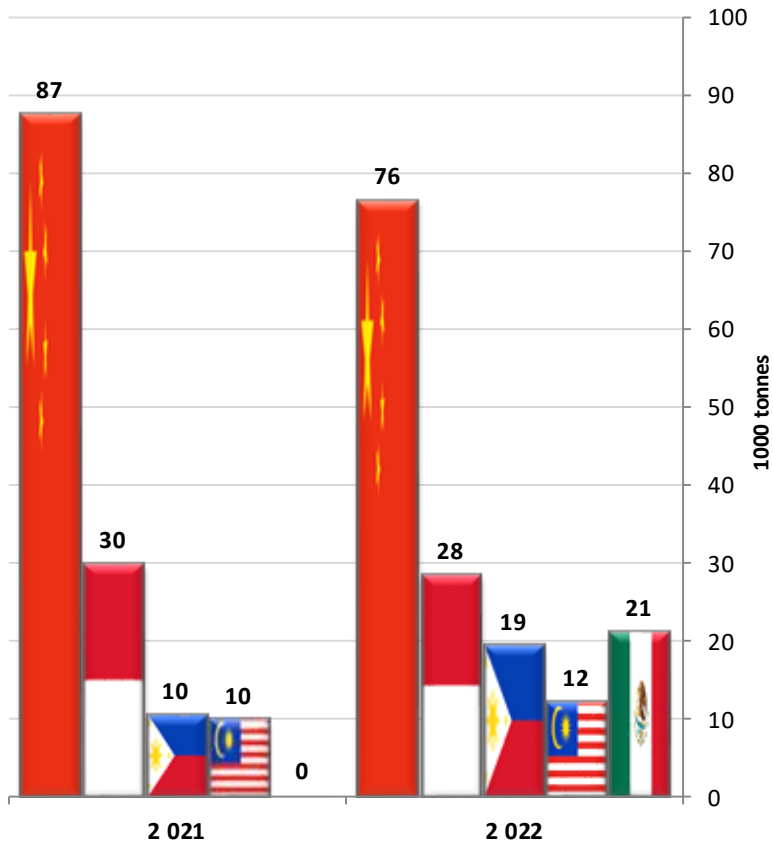
Quantity in 1000 Tonnes








Main importers

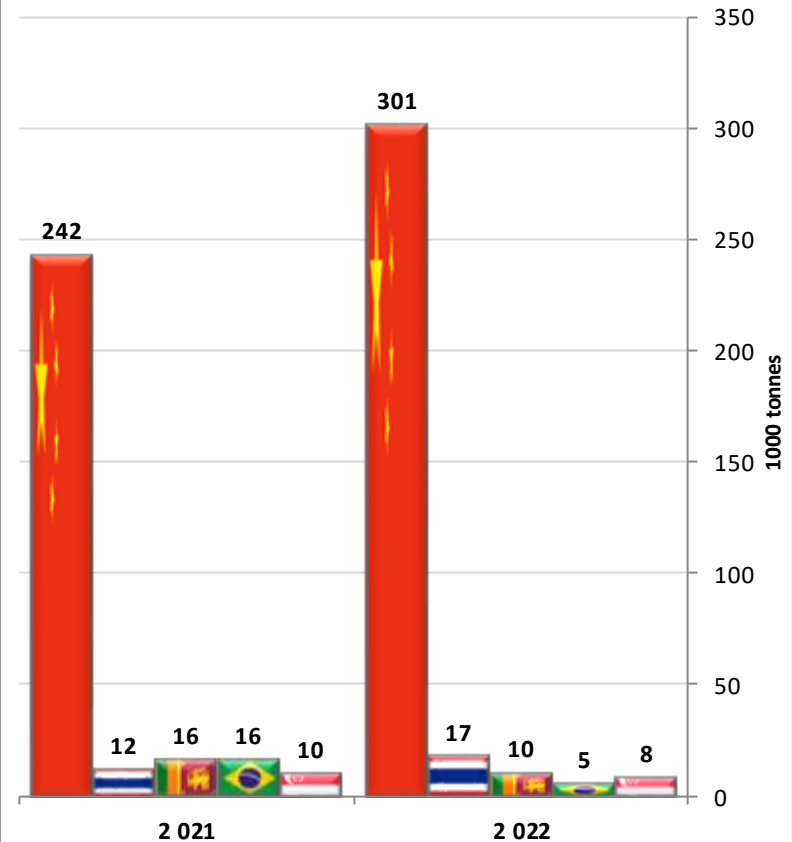
S.M.P. Imports

-  China (up to Feb)
-  Indonesia (up to Feb)
-  Philippines (up to Jan)
-  Malaysia (up to Jan)
-  Mexico (up to Jan)



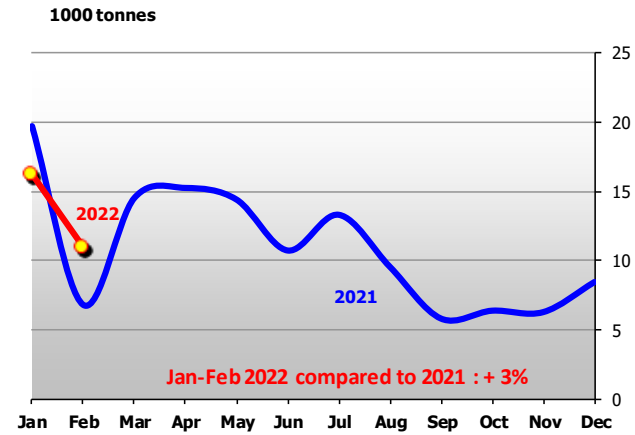
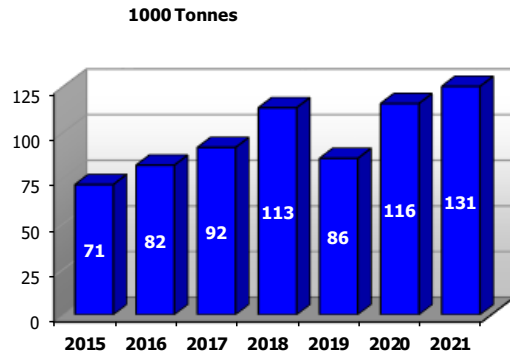
W.M.P. Imports

-  China (up to Feb)
-  Thailand (up to Feb)
-  Sri Lanka (up to Feb)
-  Brazil (up to Feb)
-  Singapore (up to Feb)

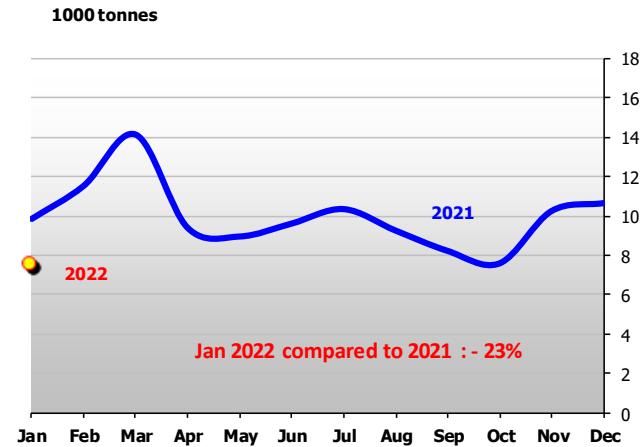
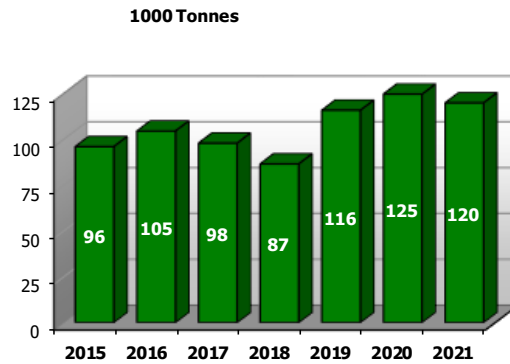


Main Dairy Importers (Butter + Butteroil 1/2)

China

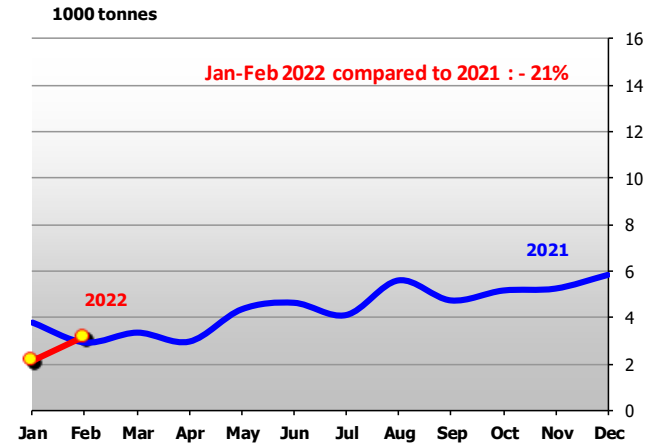
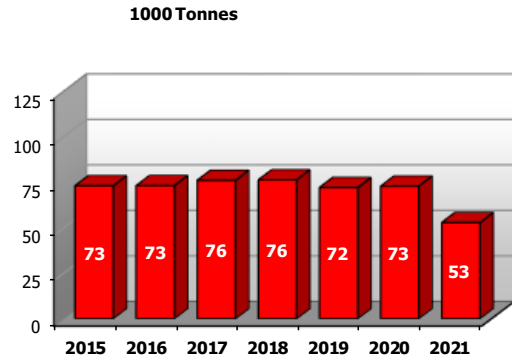


Russia

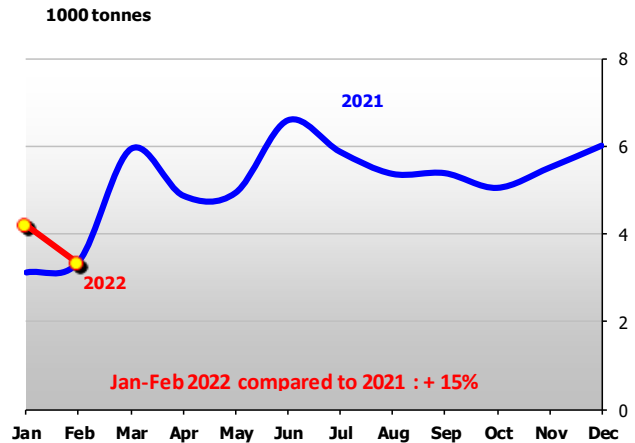
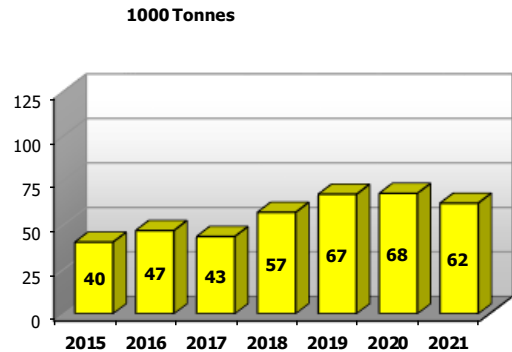


Main Dairy Importers (Butter + Butteroil 2/2)

United Kingdom HMRC



United States

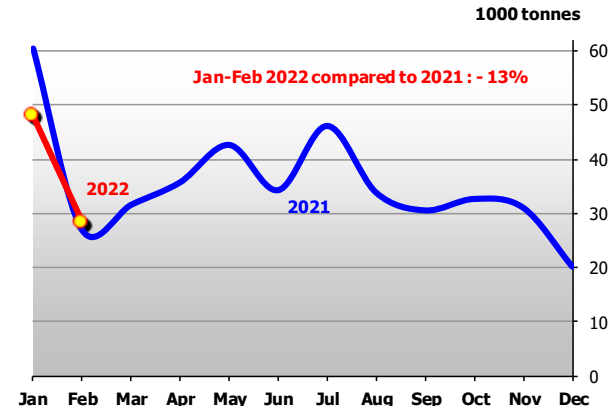
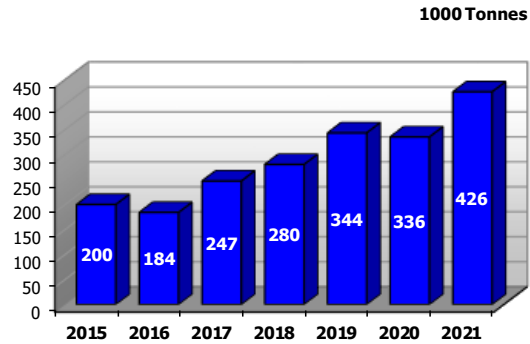


Source: IHS Markit/GTA - Eurostat(COMEXT)

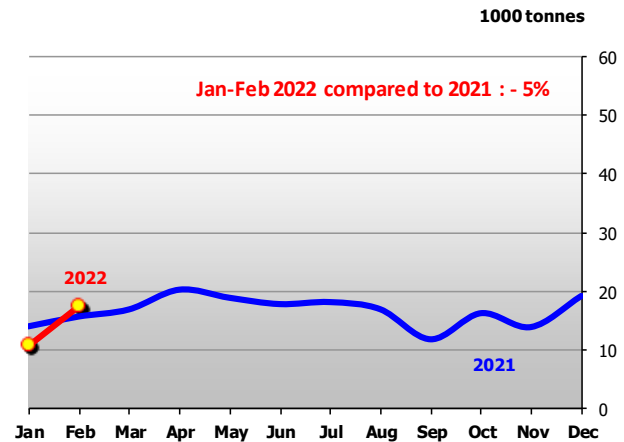
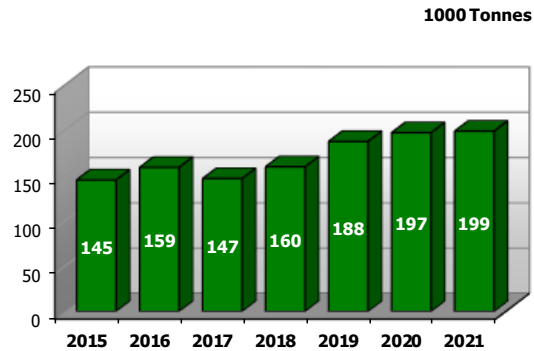
Main Dairy Importers (S.M.P. - 1/2)

Rem: for confidentiality reasons, trade data from Mexico are incomplete and therefore not presented here.

China

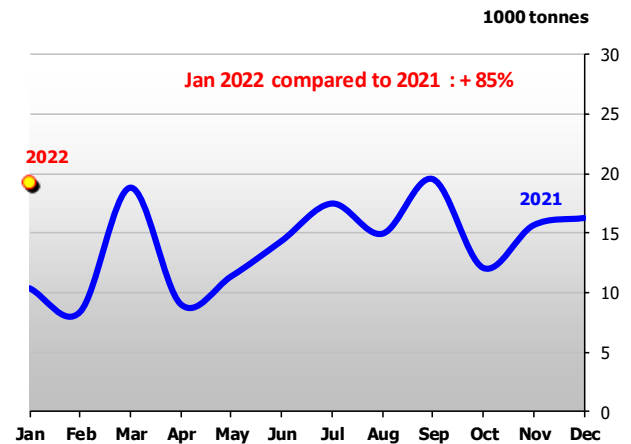
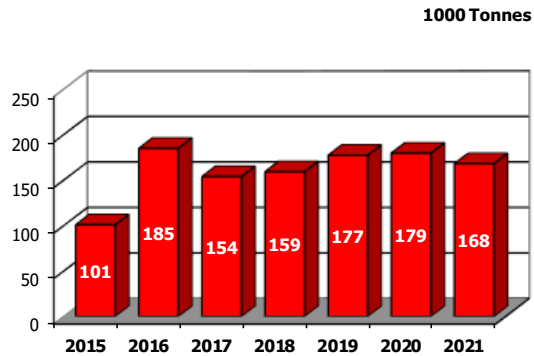


Indonesia

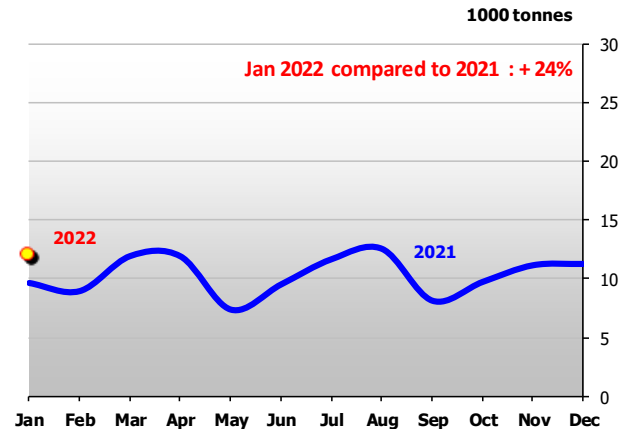
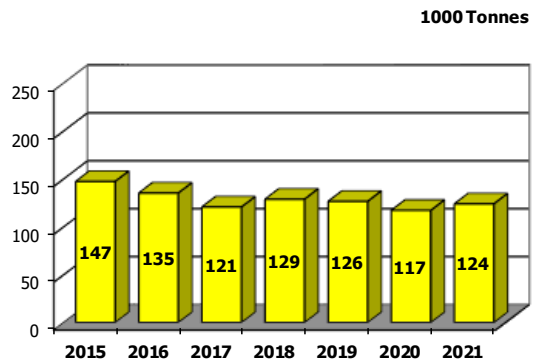


Main Dairy Importers (S.M.P. – 2/2)

Philippines

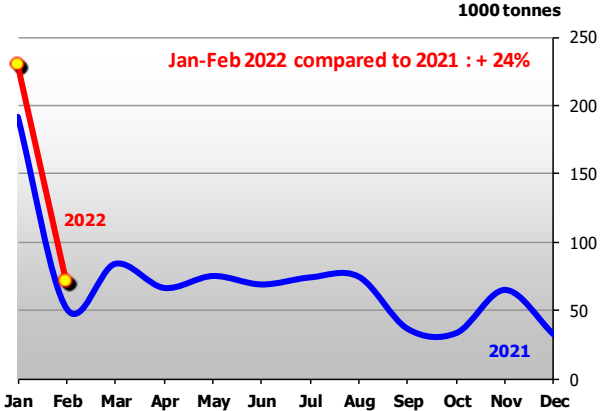
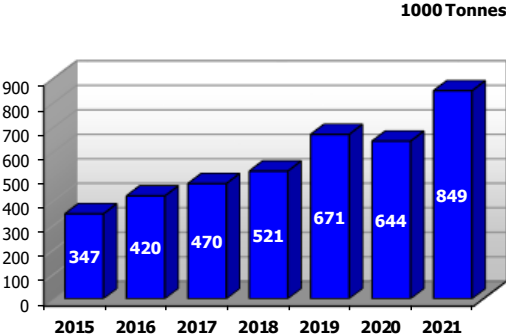


Malaysia

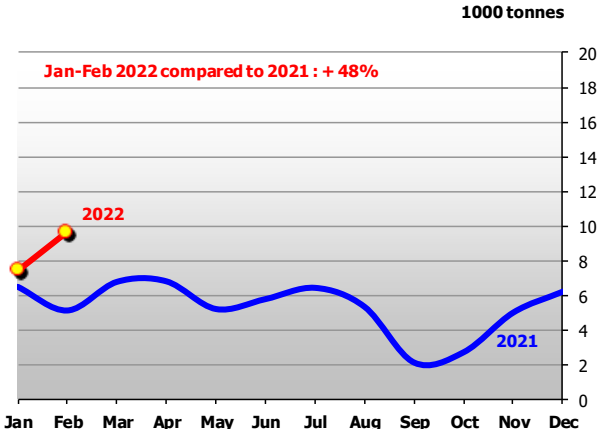
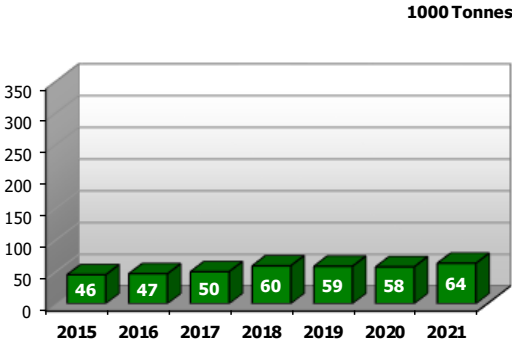


Main Dairy Importers (W.M.P. 1/2)

China

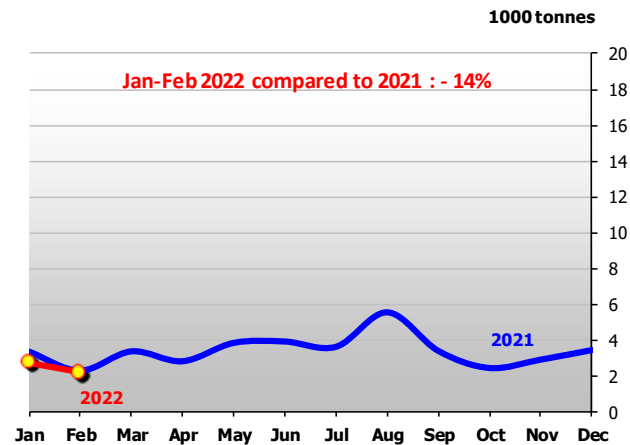
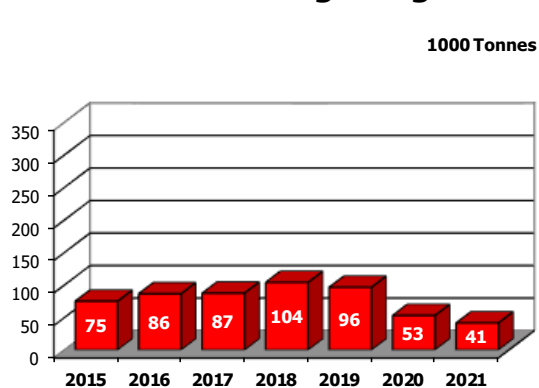


Thailand

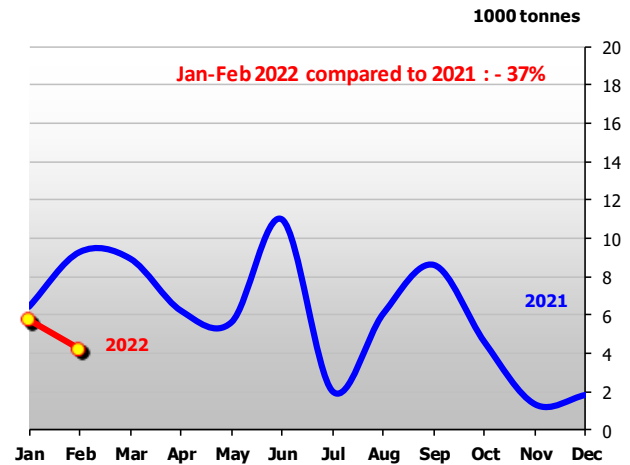
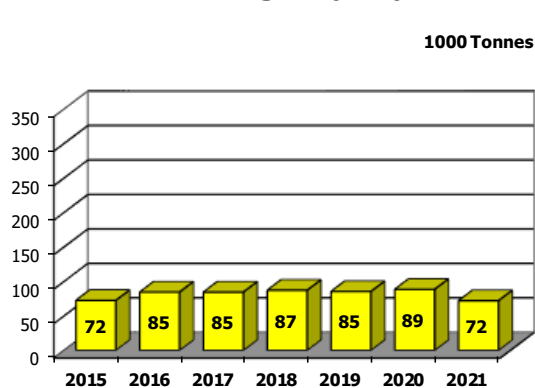


Main Dairy Importers (W.M.P. 2/2)

Hong Kong

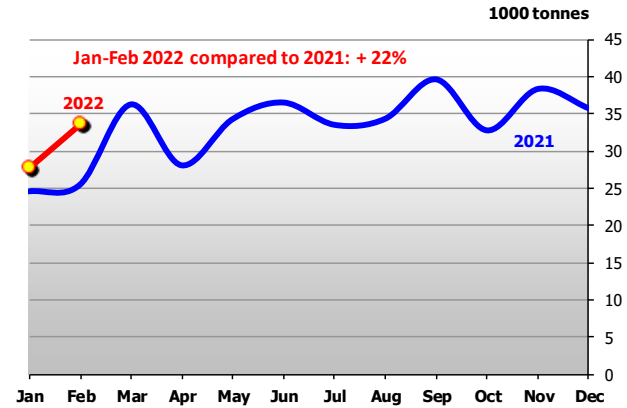
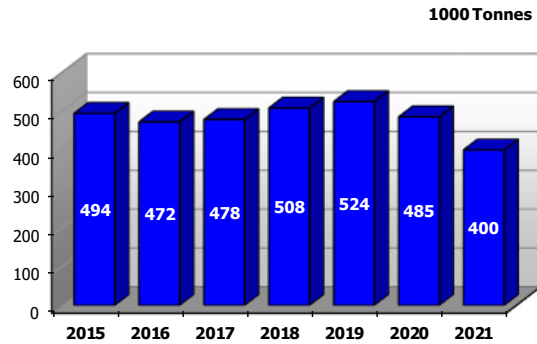


Sri Lanka

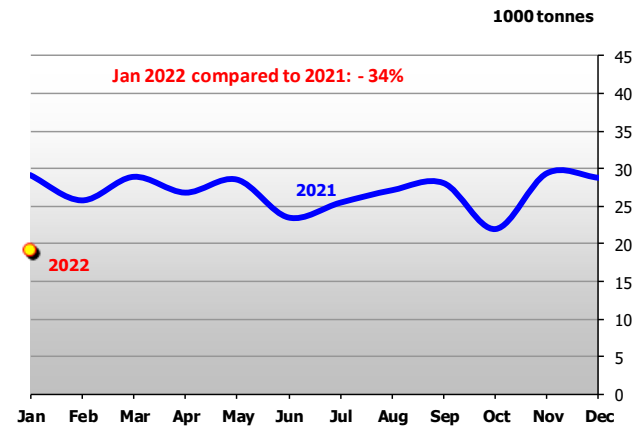
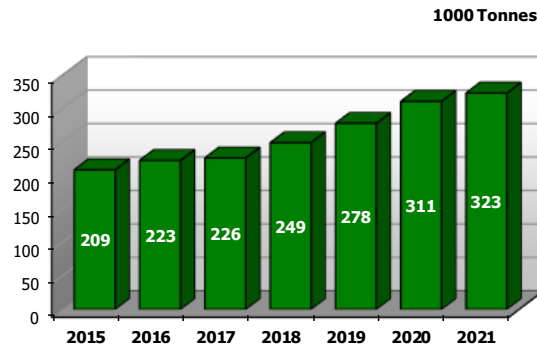


Main Dairy Importers (Cheese – 1/2)

United Kingdom HMRC

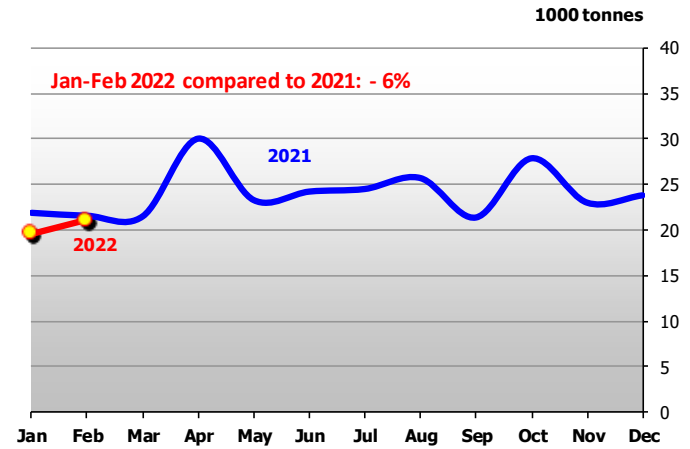
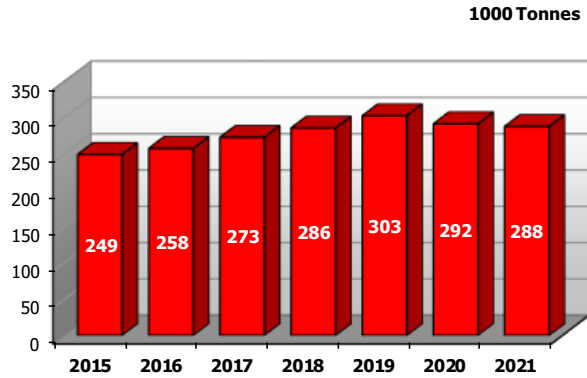


Russia

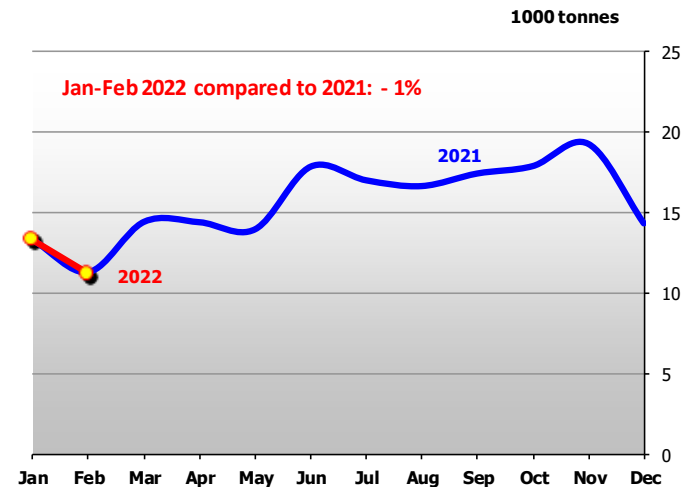
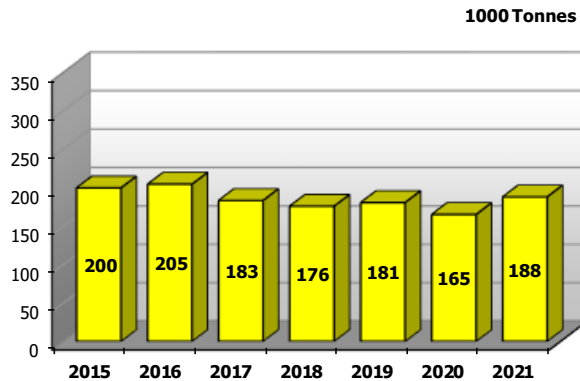


Main Dairy Importers (Cheese – 2/2)

Japan

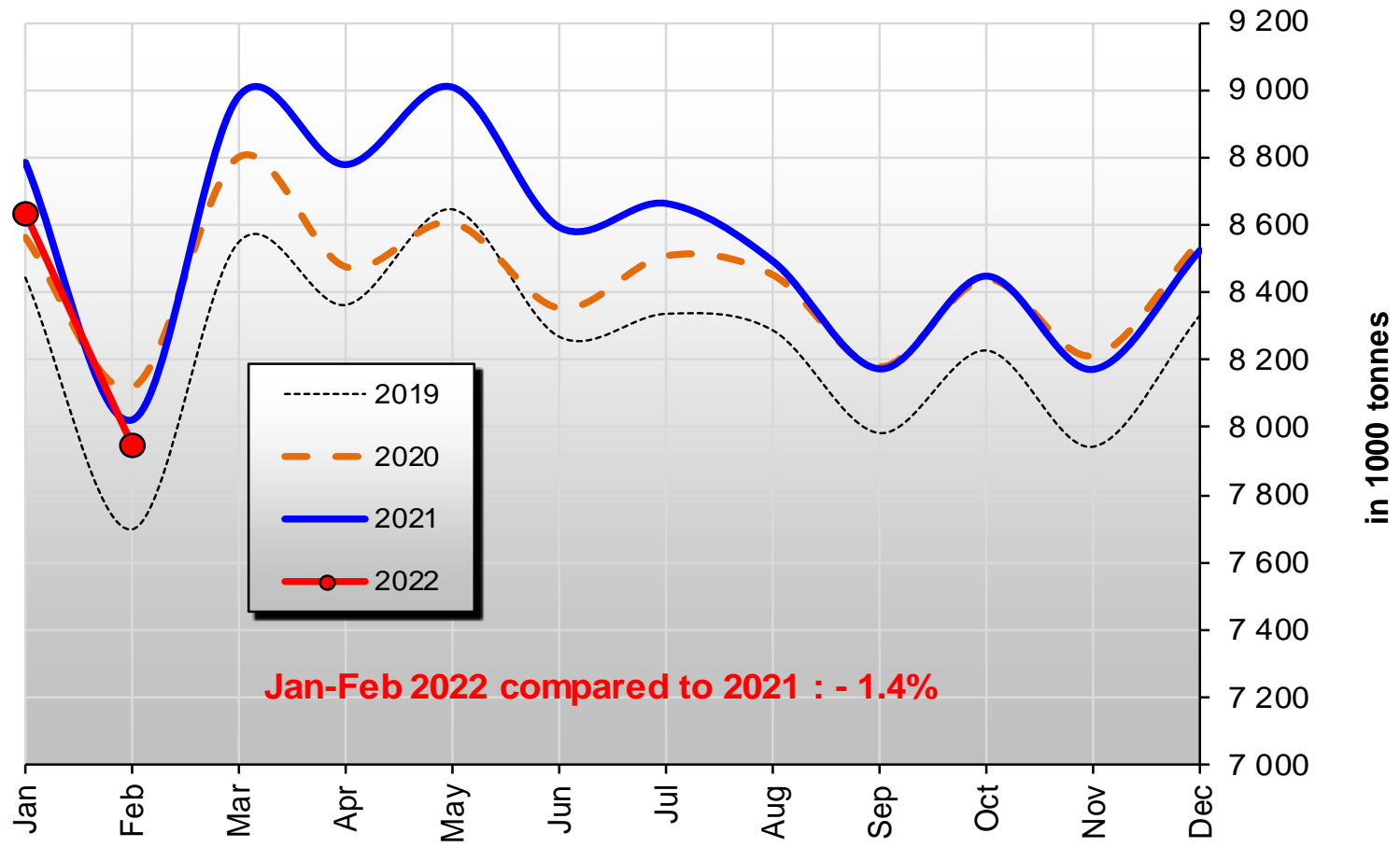


United States



Source: IHS Markit/GTA - Eurostat(COMEXT)

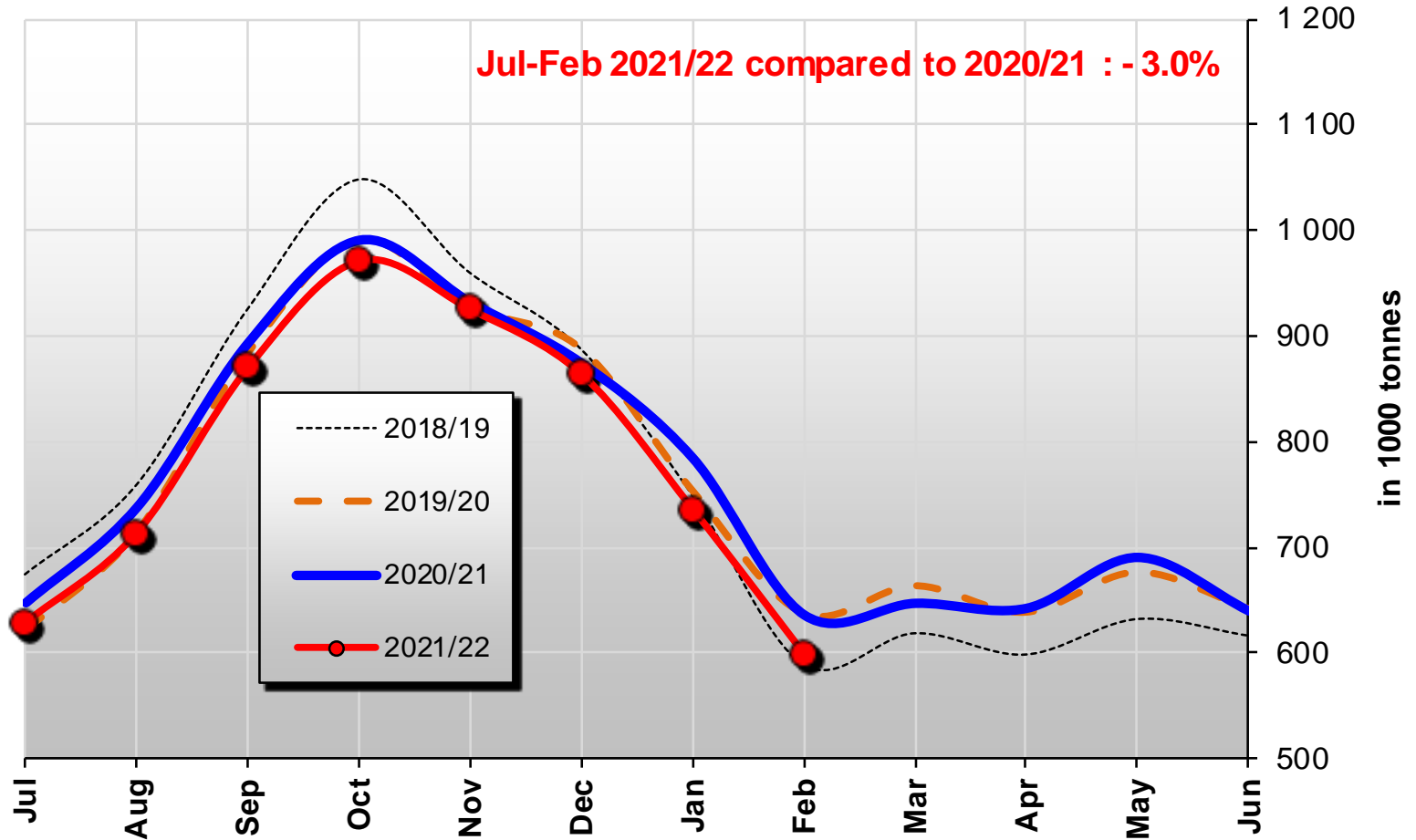
U.S. milk production



Source:USDA

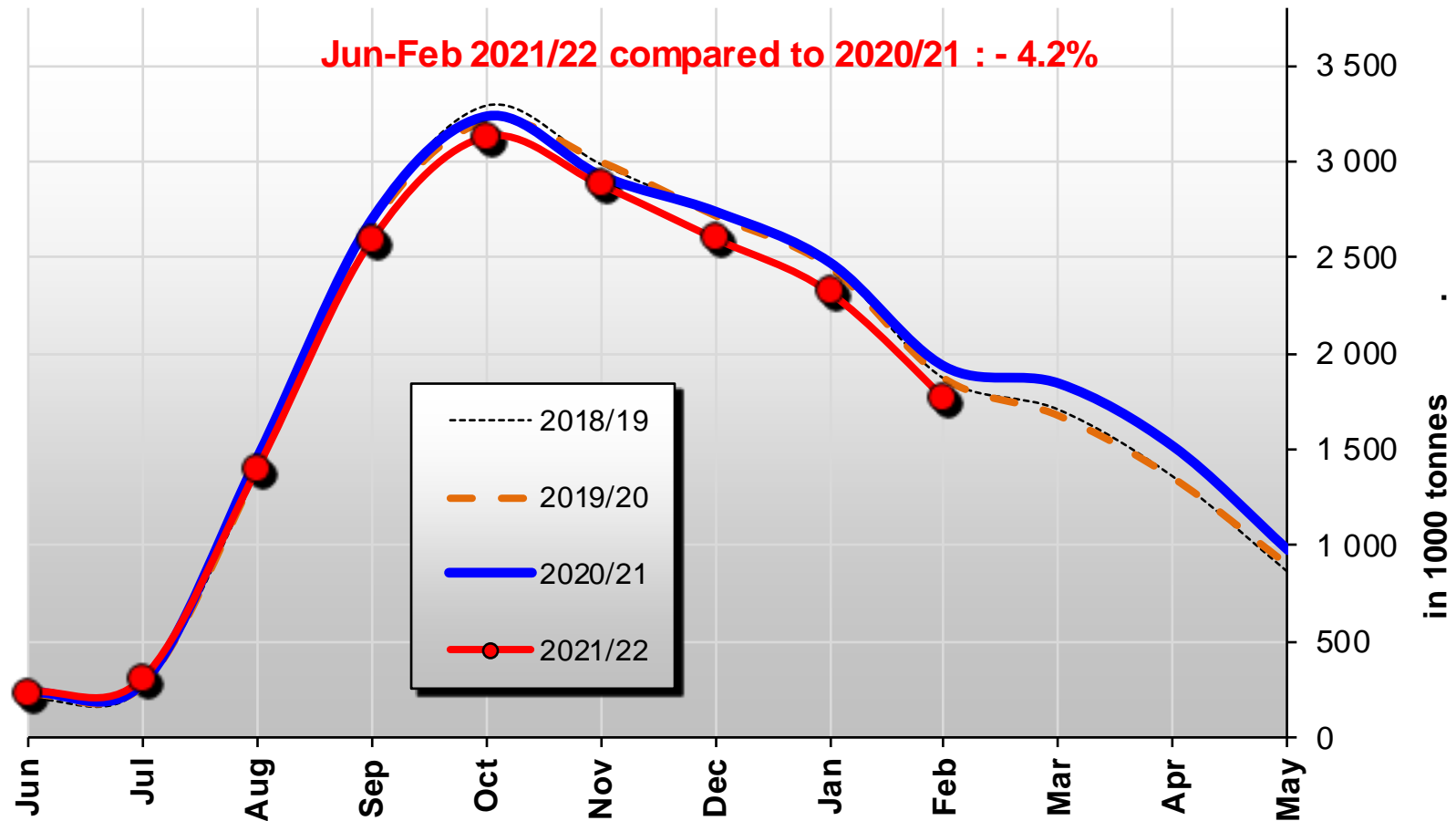
Australian milk production

Jul-Feb 2021/22 compared to 2020/21 : - 3.0%



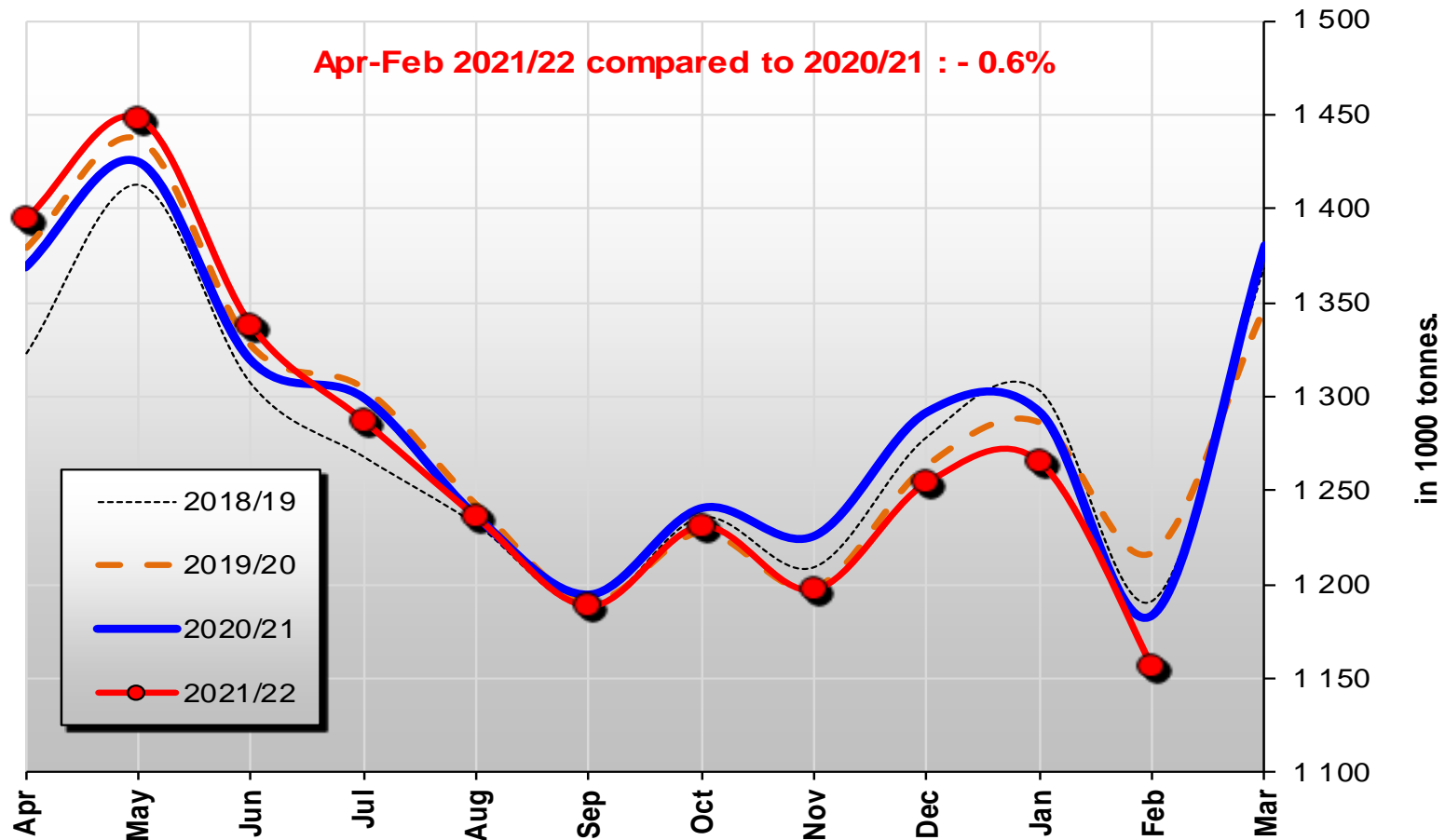
NZ milk production

Jun-Feb 2021/22 compared to 2020/21 : - 4.2%



UK milk production

Apr-Feb 2021/22 compared to 2020/21 : - 0.6%



Source : ahdb.org.uk

GDT Auction results

Event 305

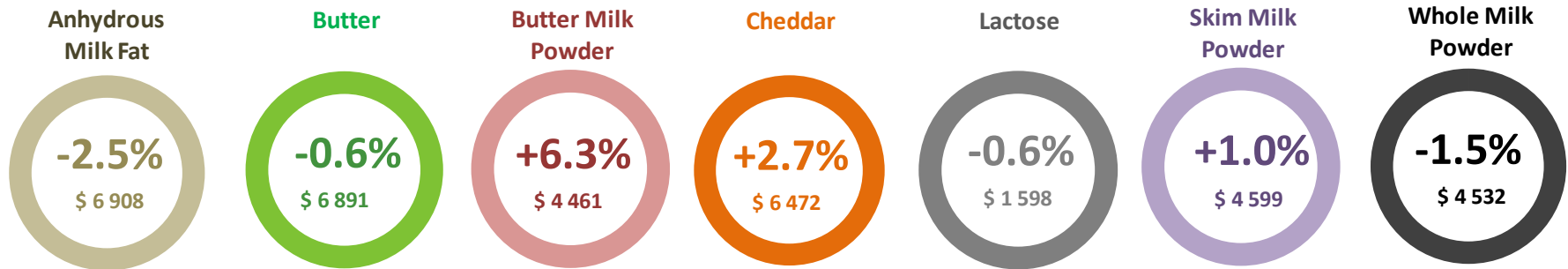
5 April 2022

-1.0%



Average price (USD/MT, FAS)

\$4 981



Thank you