



European
Commission



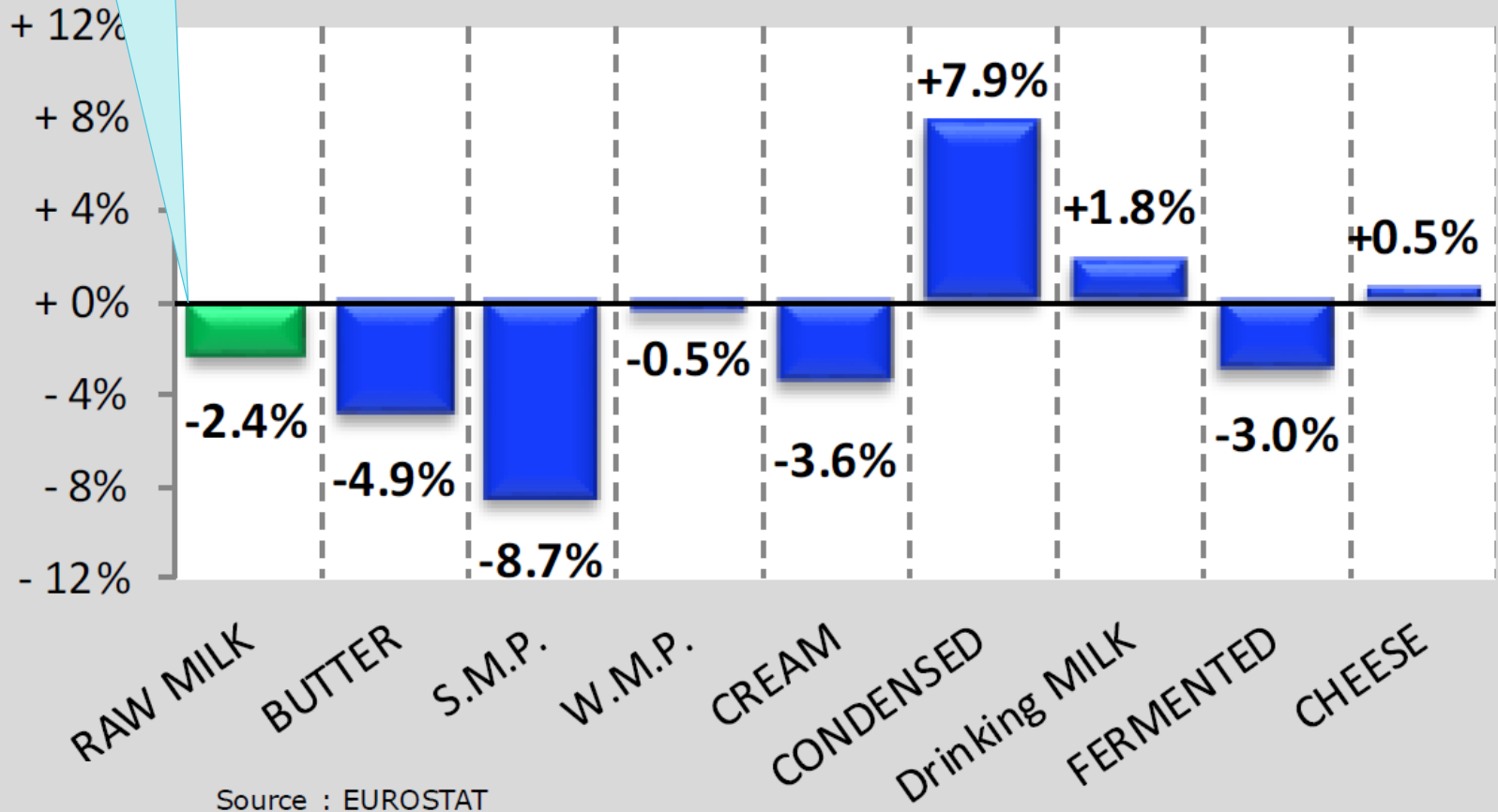
Milk Market Situation

Brussels, 22 April 2021

The United Kingdom is no longer a Member State of the European Union, however where it is deemed relevant (e.g. for comparison purposes) EU+UK aggregates may still be displayed.

Leap year adjusted: -0.7%

EU Productions Jan-Feb 2021 compared to Jan-Feb 2020)

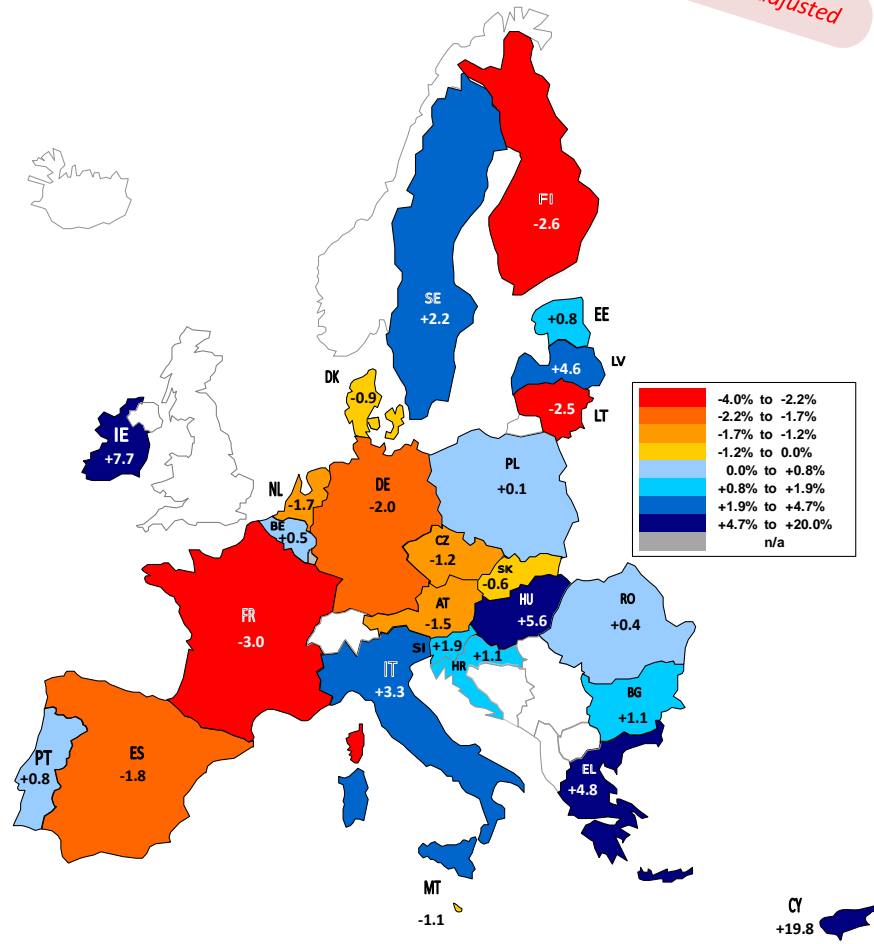


!!! Data from some Member States are confidential and are NOT included in this table !!!

EU Milk Deliveries compared to last period (in %)

(Jan - Feb 2021 / Jan - Feb 2020)

Leap year adjusted



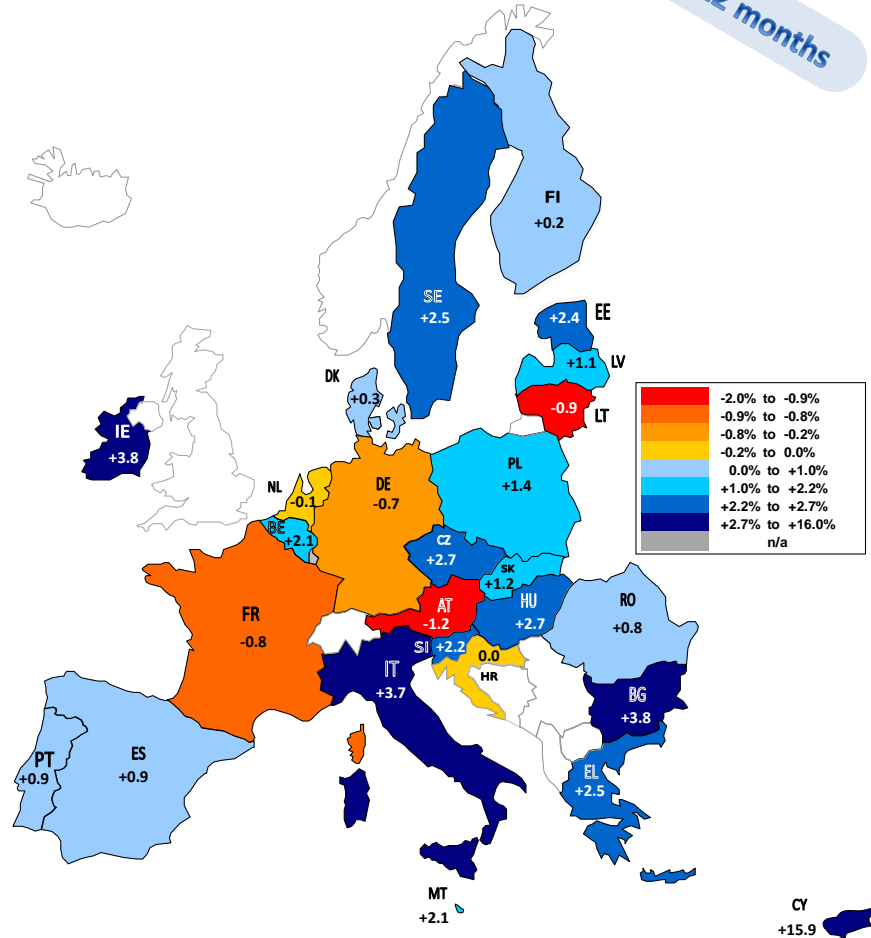
Source : MS' Communications to Eurostat, FEQA, AGEA, Reg.479/2010.1(a)1

The designations employed and the presentation of material on the map do not imply the expression of any opinion whatsoever on the part of the European Union concerning the legal status of any country, territory or area or of its authorities, or concerning the delimitation of its frontiers or boundaries.

EU Milk Deliveries compared to last period (in %)

(Mar 2020 - Feb 2021 / Mar 2019 - Feb 2020)

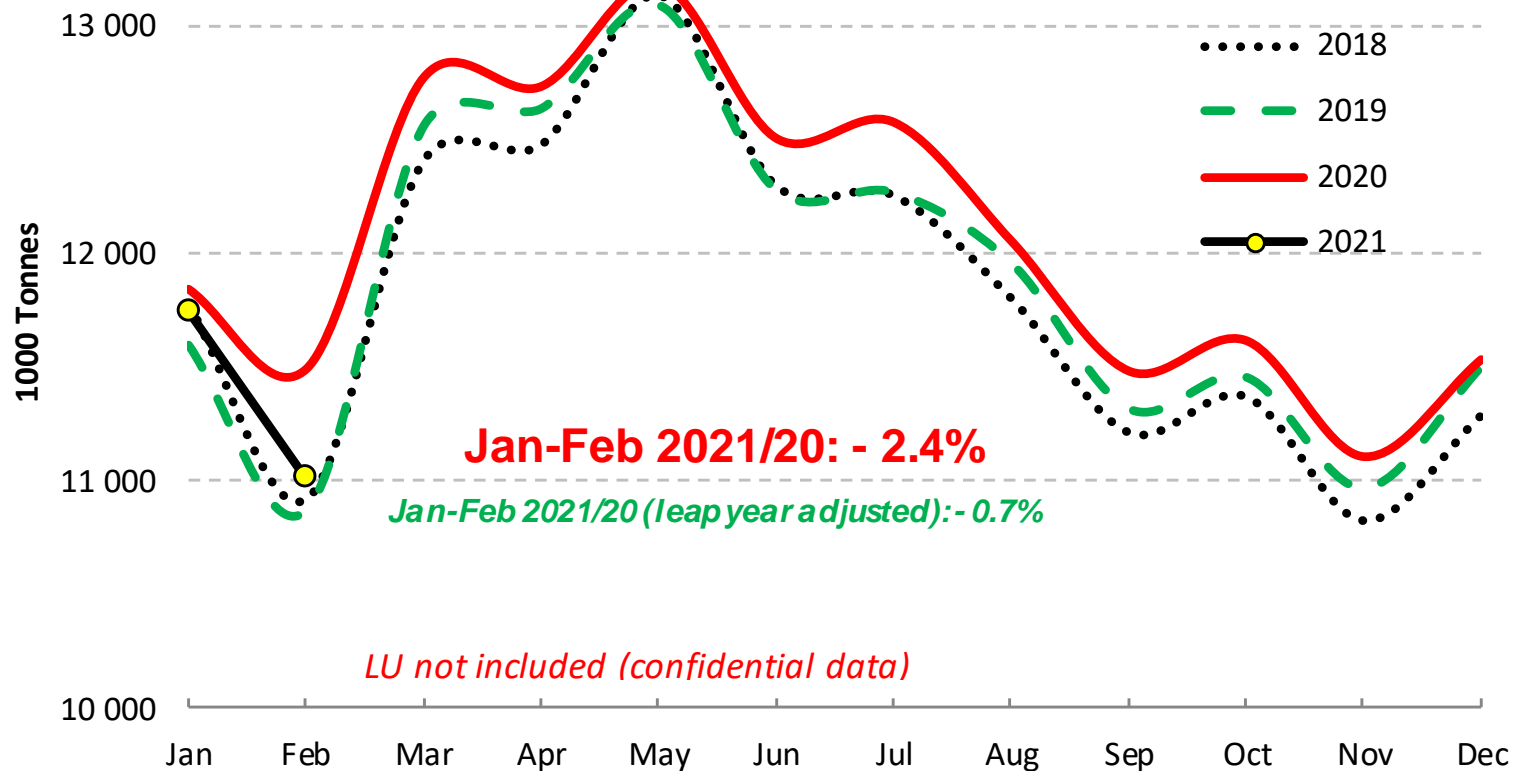
Last 12 months



Source : MS' Communications to Eurostat, FEQA, AGEA, Reg.479/2010.1(a)1

The designations employed and the presentation of material on the map do not imply the expression of any opinion whatsoever on the part of the European Union concerning the legal status of any country, territory or area or of its authorities, or concerning the delimitation of its frontiers or boundaries.

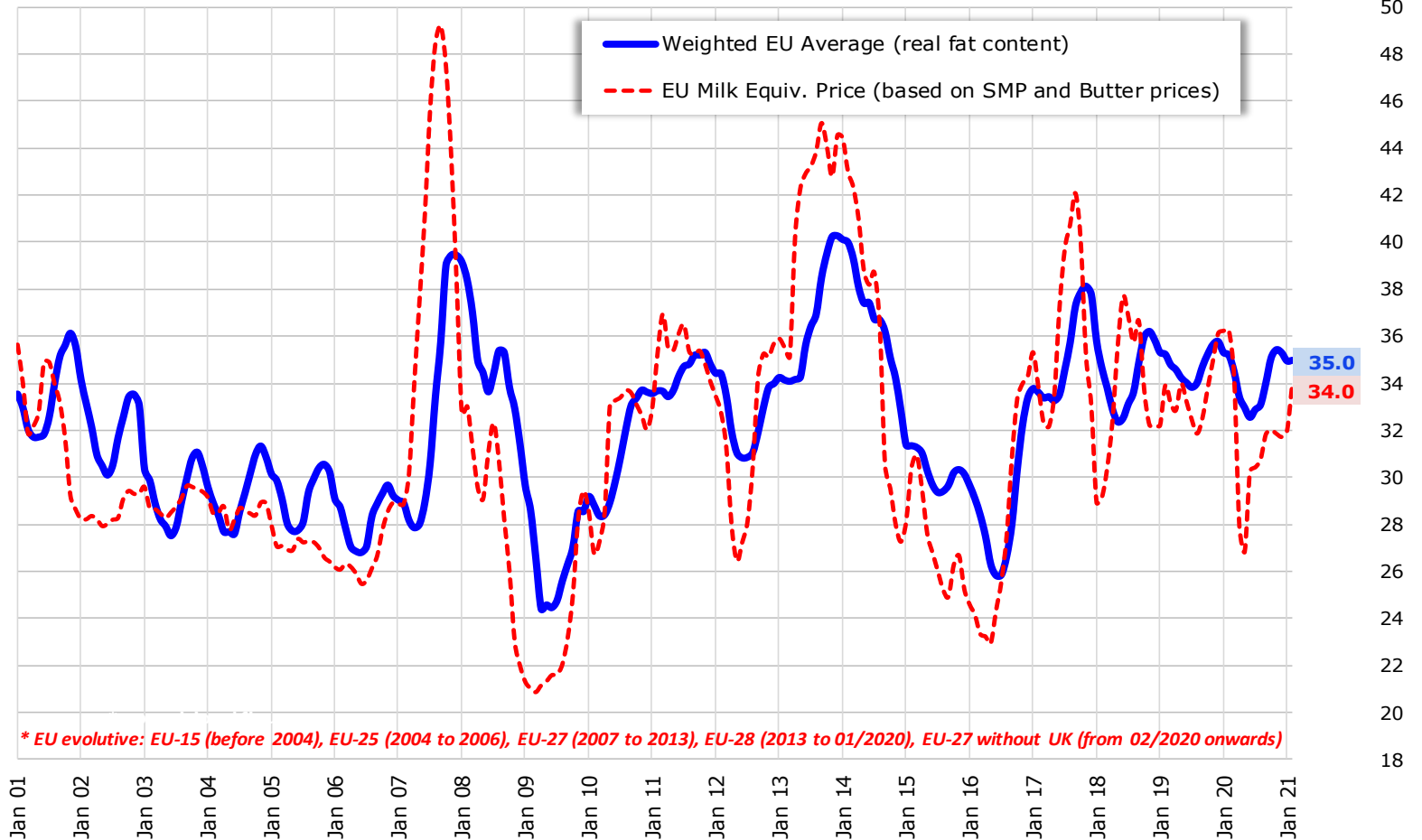
EU - Cows' milk collected



Source: Estat (Newcronos) - MS notifications

EU evolutive* Raw Milk Prices Evolution (up to Feb 2021)

EUR/100 kg



Source : MS' communications under Reg. (EU) No 17/1185 Article 12(a) - Annex II.4(a)

EU* MILK PRICES

(Feb 2021 vs Feb 2020)

Source : Member States (Regulation (EU) No 2017/1185 Article 12(a) - Annex II.4(a))



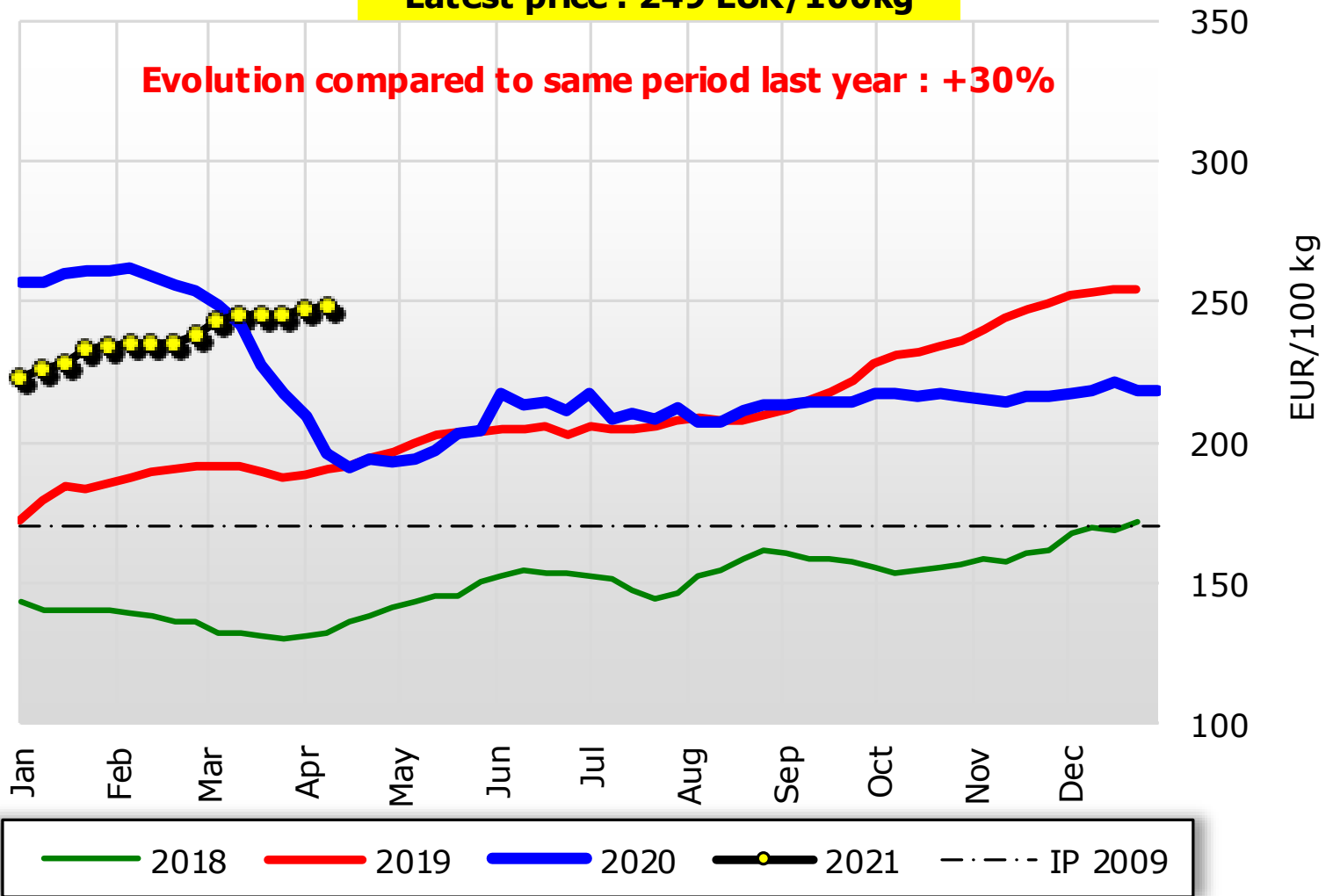
*: without UK

[°] : estimated figures for Feb 2021

Weekly EU SMP Prices

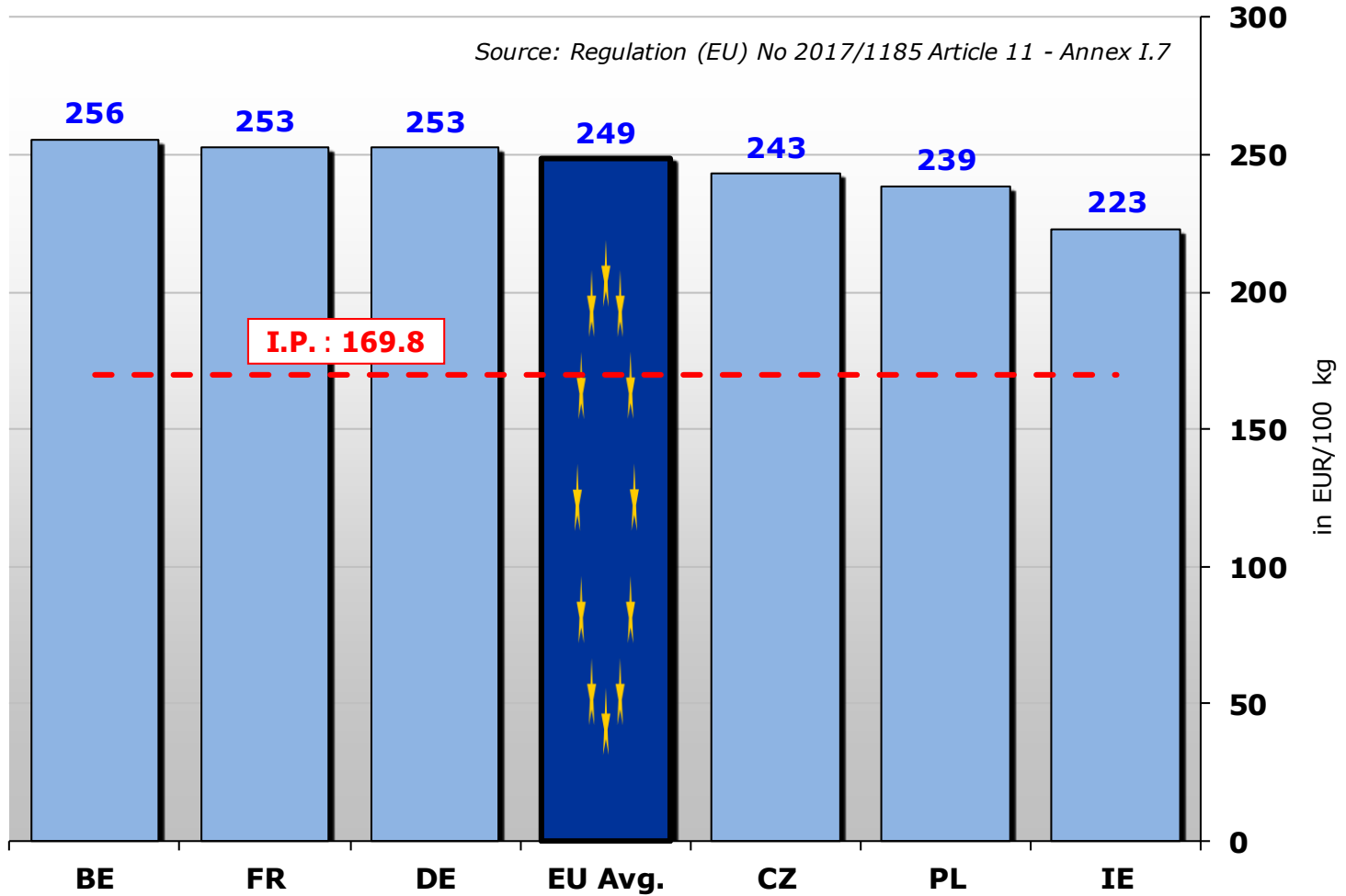
Latest price : 249 EUR/100kg

Evolution compared to same period last year : +30%



EU S.M.P. Prices (up to 18.04.2021)

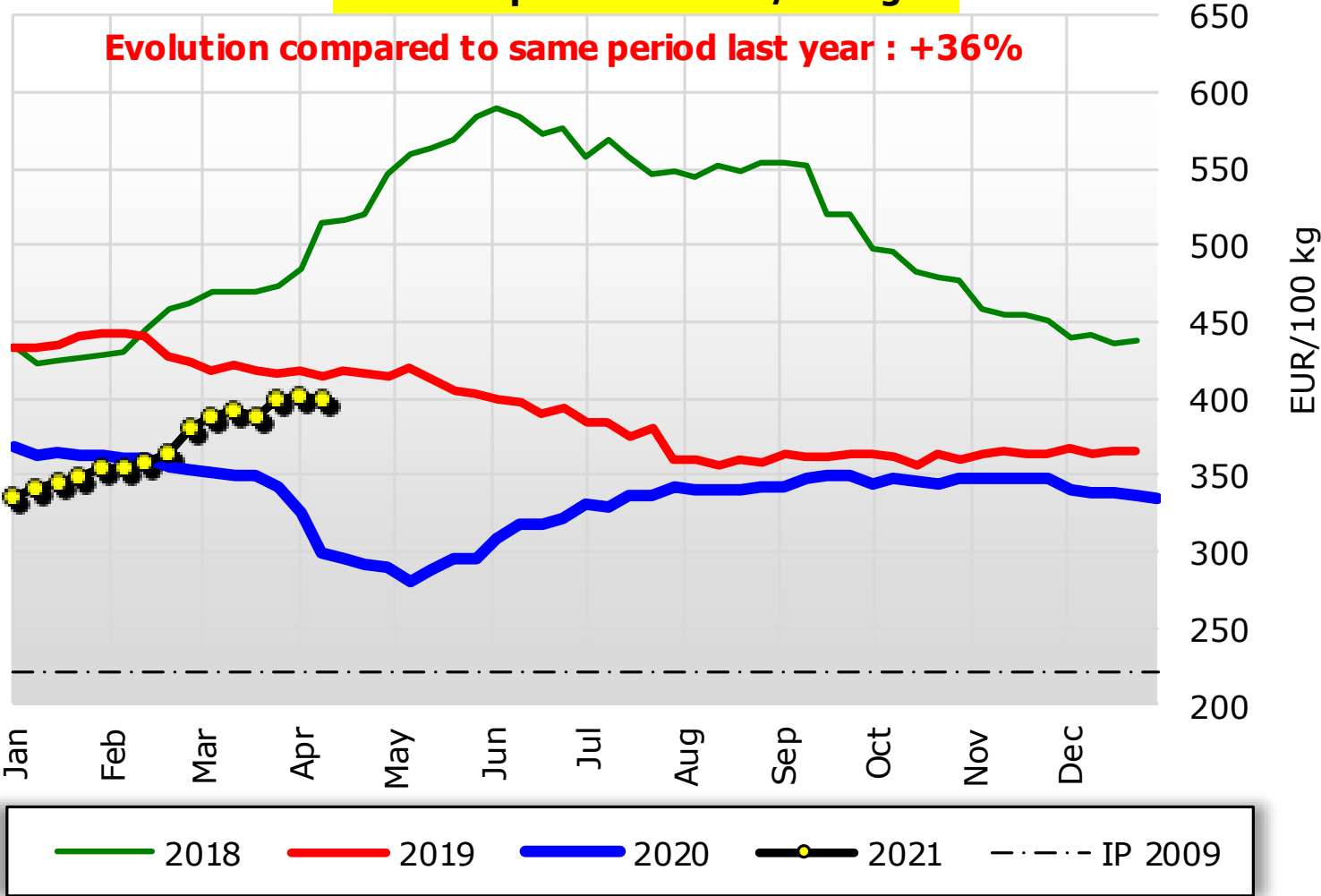
Source: Regulation (EU) No 2017/1185 Article 11 - Annex I.7



Weekly EU BUTTER Prices

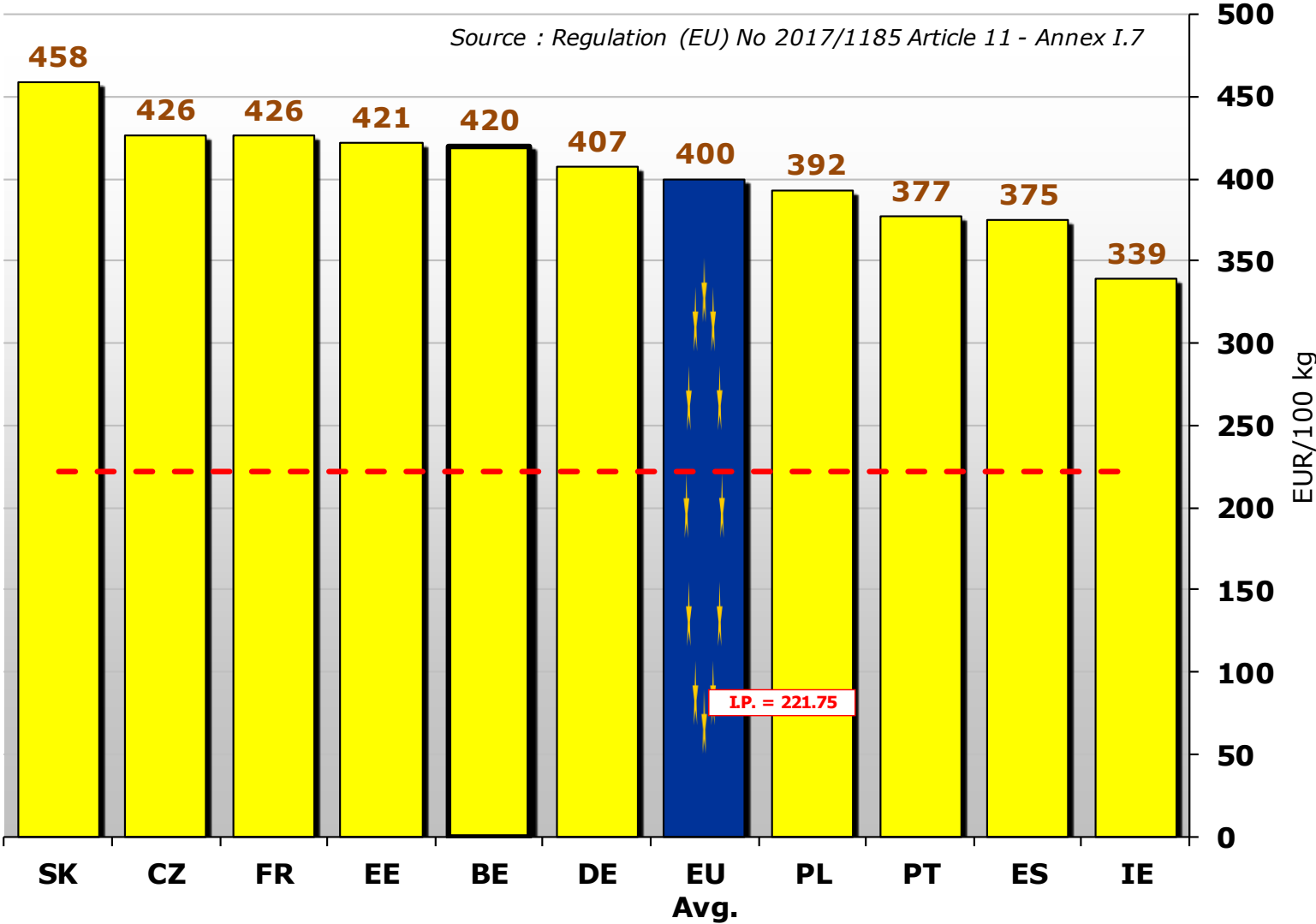
Latest price : 400 EUR/100kg

Evolution compared to same period last year : +36%

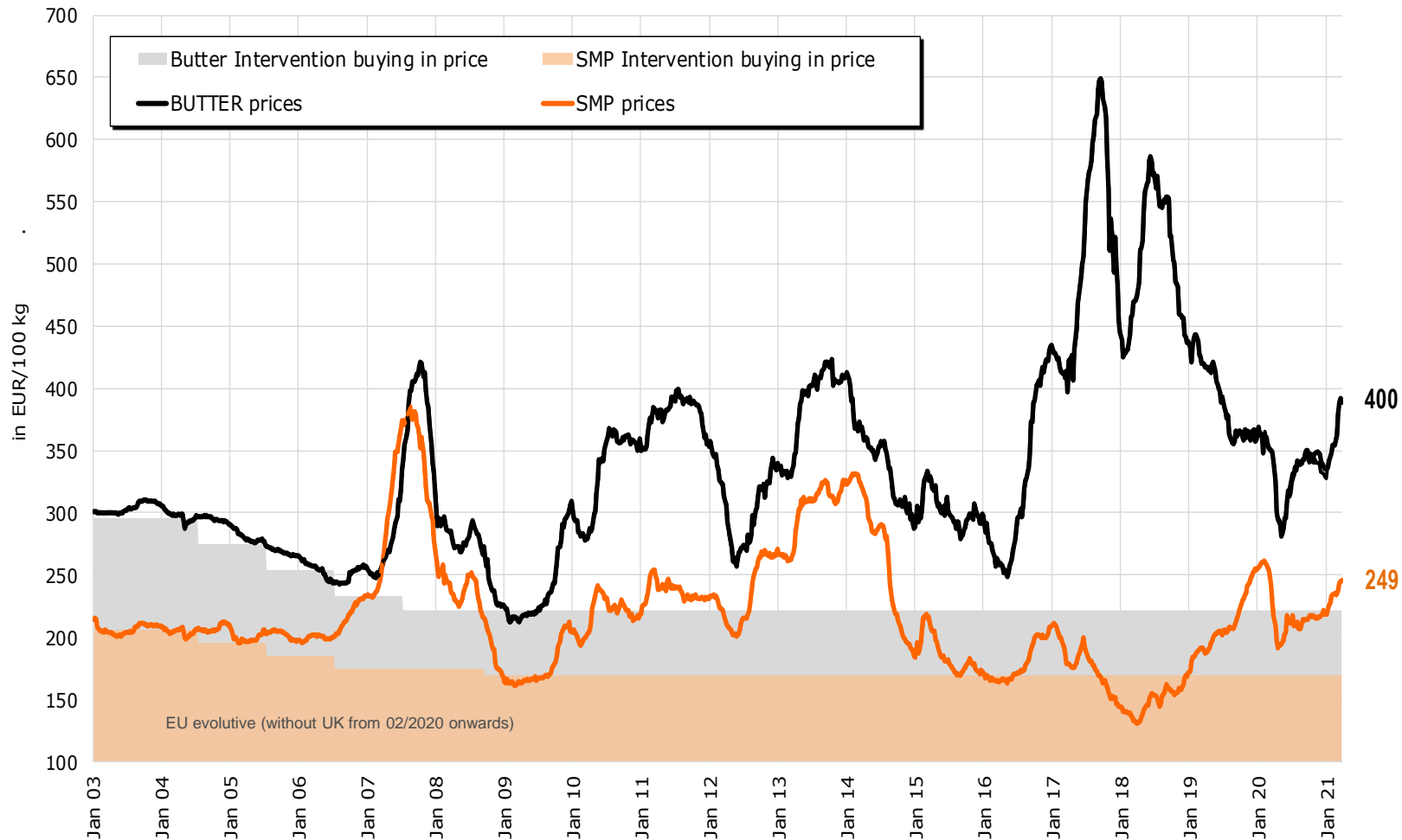


EU BUTTER Prices (up to 18.04.2021)

Source : Regulation (EU) No 2017/1185 Article 11 - Annex I.7



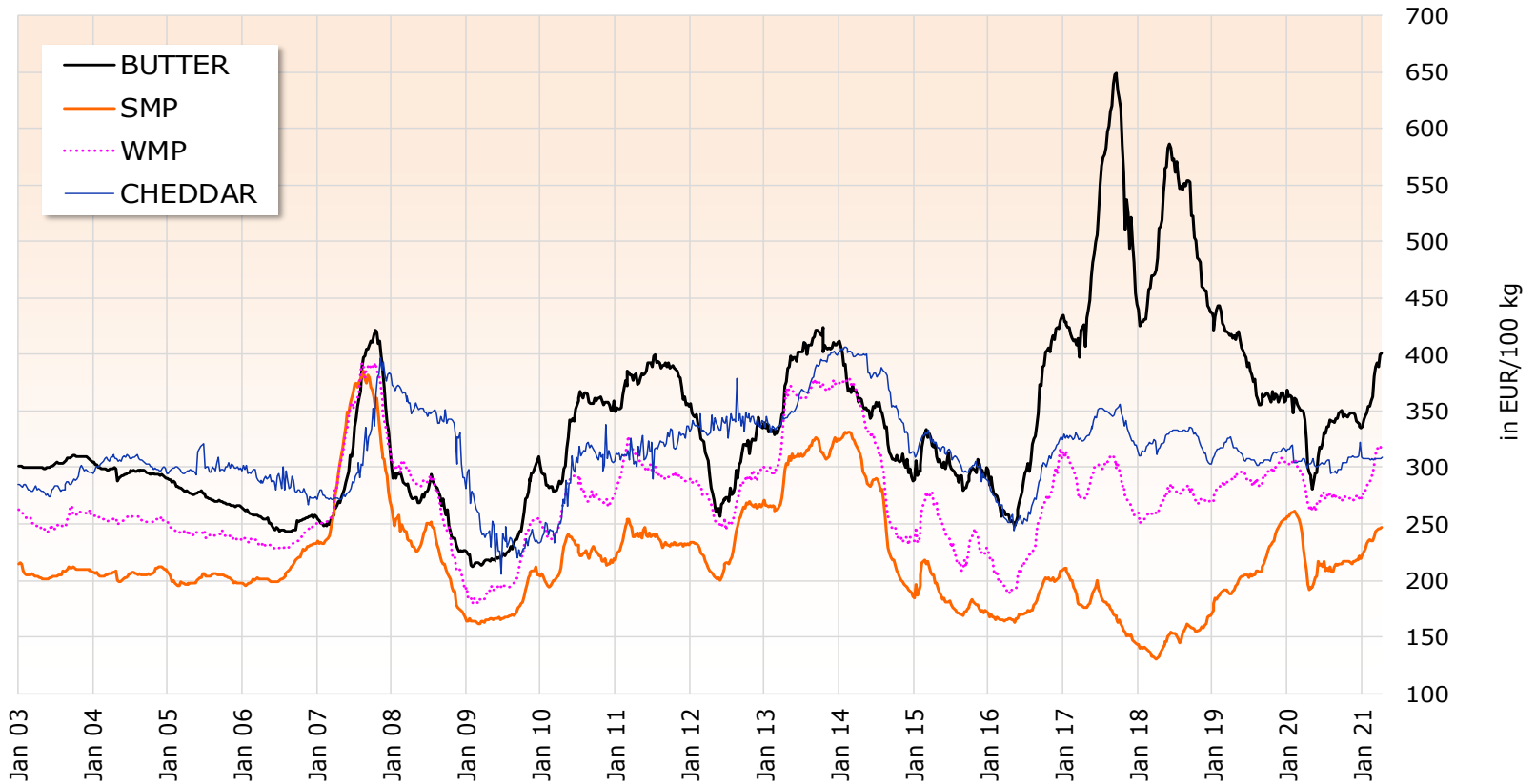
EU Quotations of Butter and SMP (EU average based on MS communication and weighted by production)



Source: MS' communications under reg. 562/2005 and 479/2010

EU evolutive* dairy Quotations

(EU Average Prices based on MS communication and weighted by production)

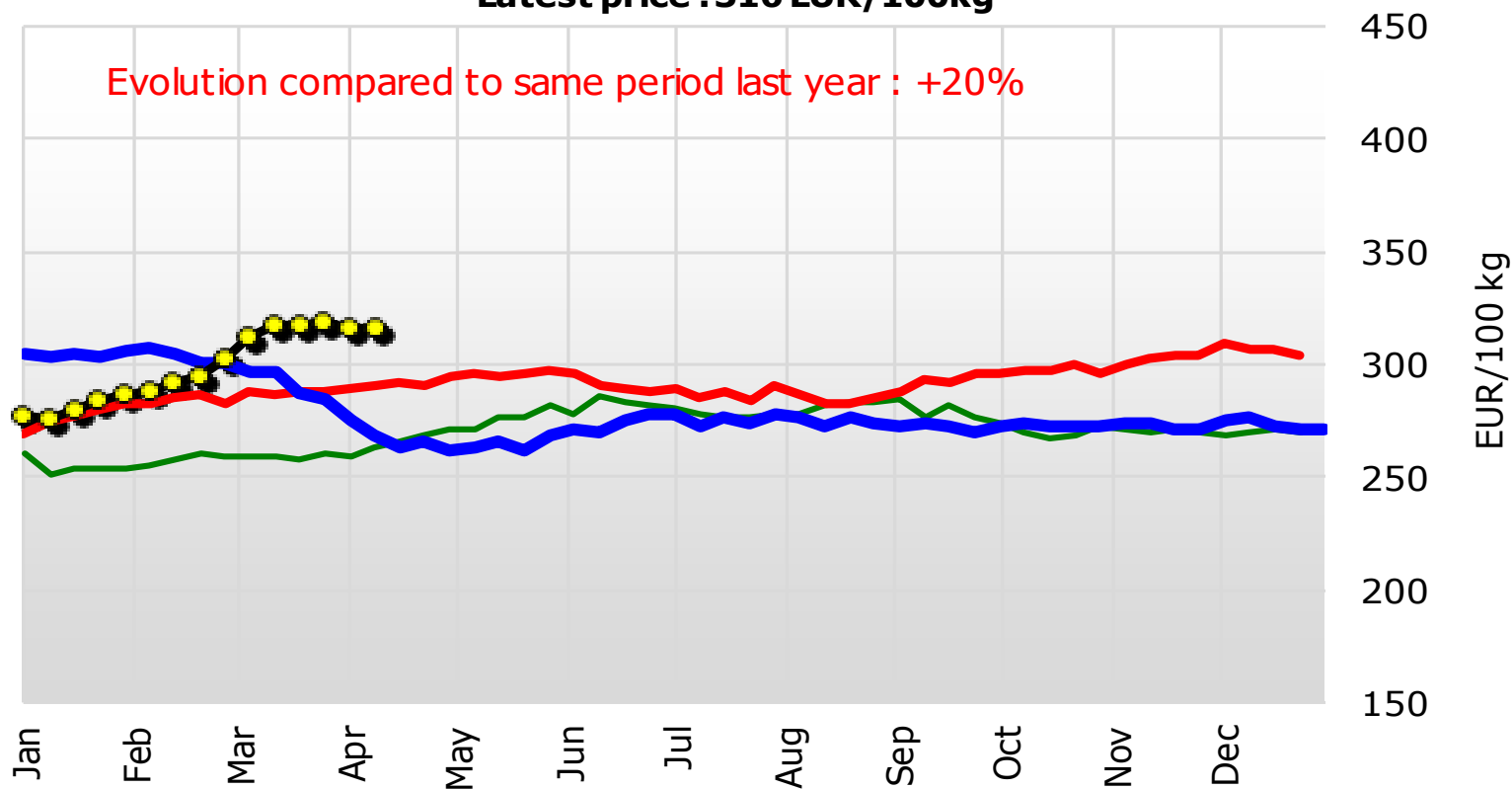


Source: Regulation (EU) No 2017/1185 Article 11 - Annex I.7

* EU evolutive: EU-15 (before 2004), EU-25 (2004 to 2006), EU-27 (2007 to 2013), EU-28 (2013 to 01/2020), EU-27 without UK (from 02/2020 onwards)

Weekly EU WMP Prices

Latest price : 316 EUR/100kg



— 2018

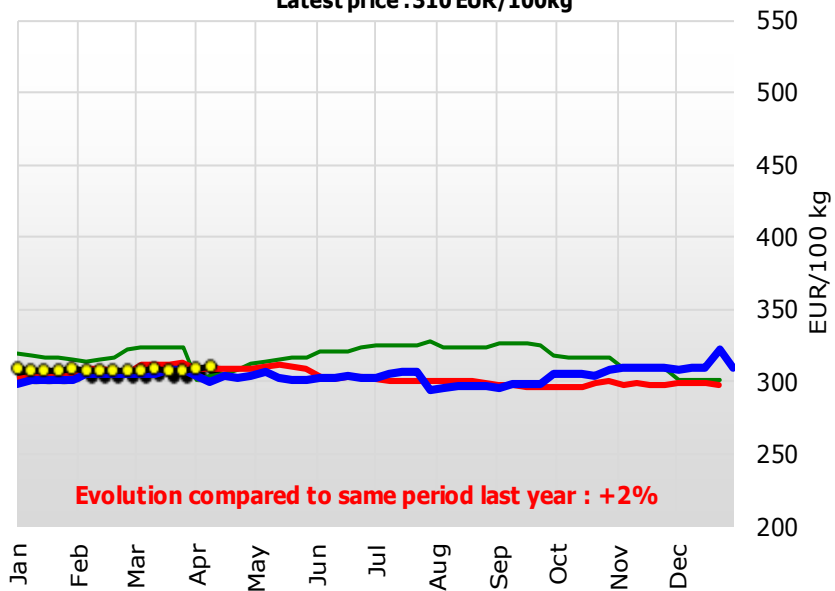
— 2019

— 2020

—● 2021

Weekly EU* CHEDDAR Prices

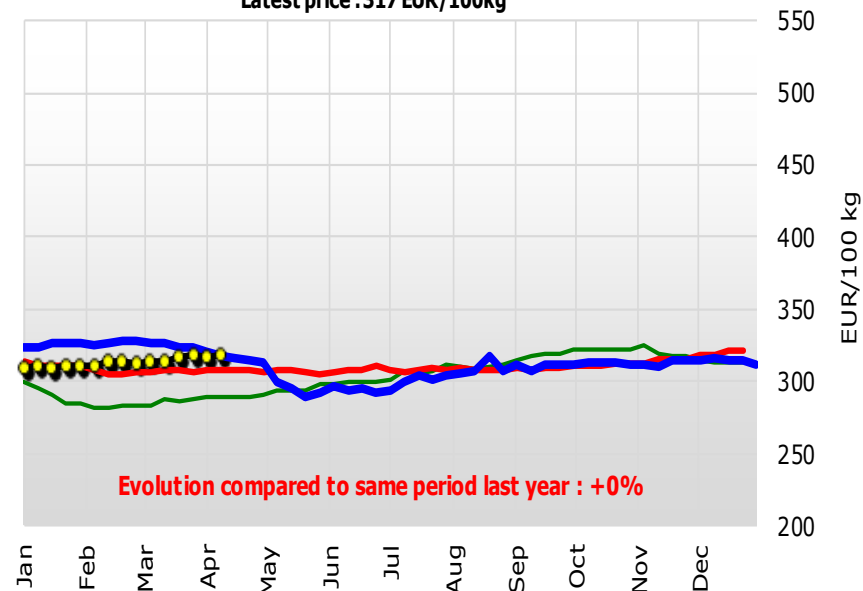
Latest price : 310 EUR/100kg



— 2018 — 2019 — 2020 —●— 2021

Weekly EU* EDAM Prices

Latest price : 317 EUR/100kg

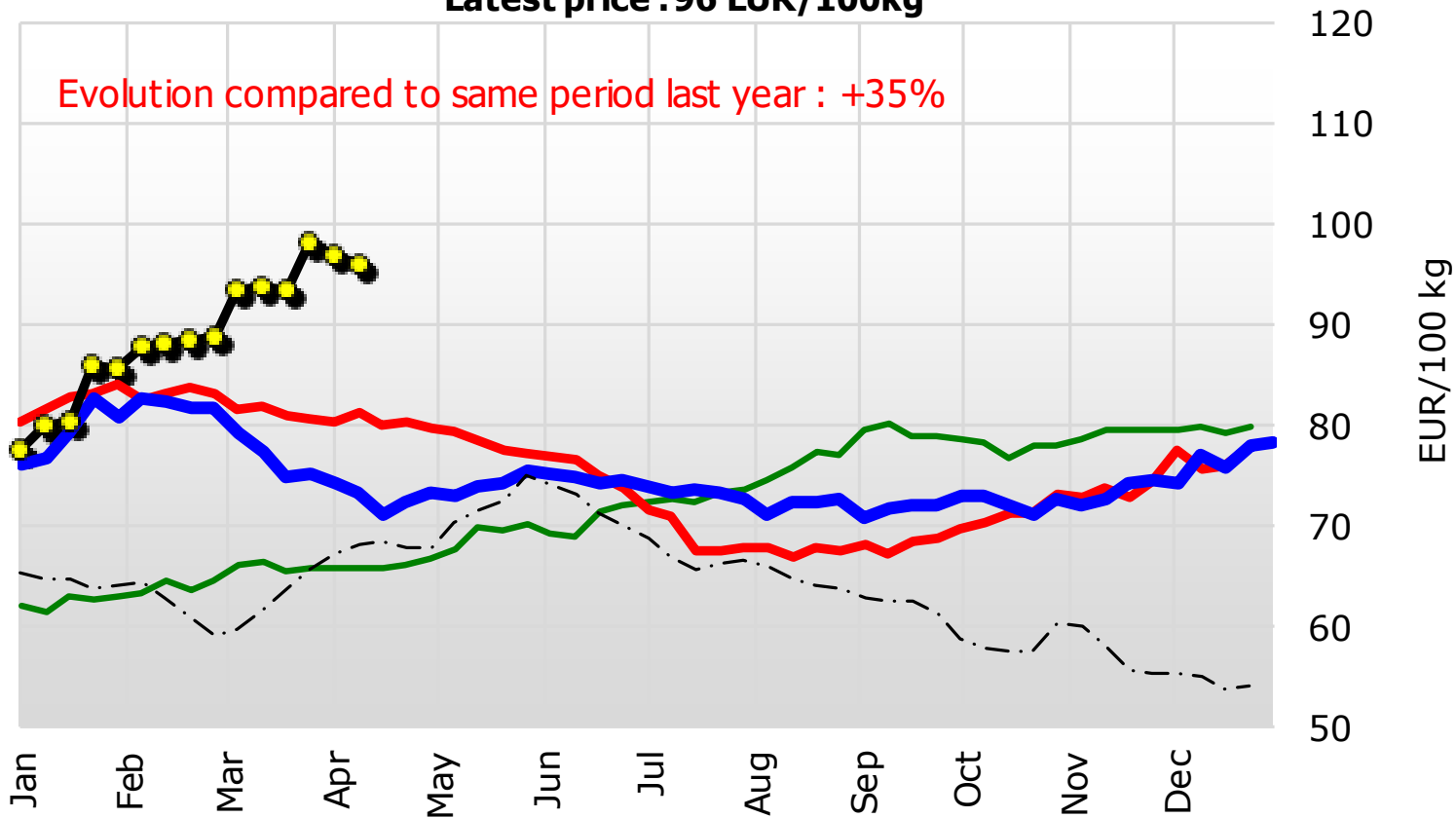


— 2018 — 2019 — 2020 —●— 2021

Weekly EU WheyPowder Prices

Latest price : 96 EUR/100kg

Evolution compared to same period last year : +35%



— 2018 — 2019 — 2020 —●— 2021 - - - - Series2

14 April 2021

EUR 1 = USD 1.1964 +0.0068(+0.6%)

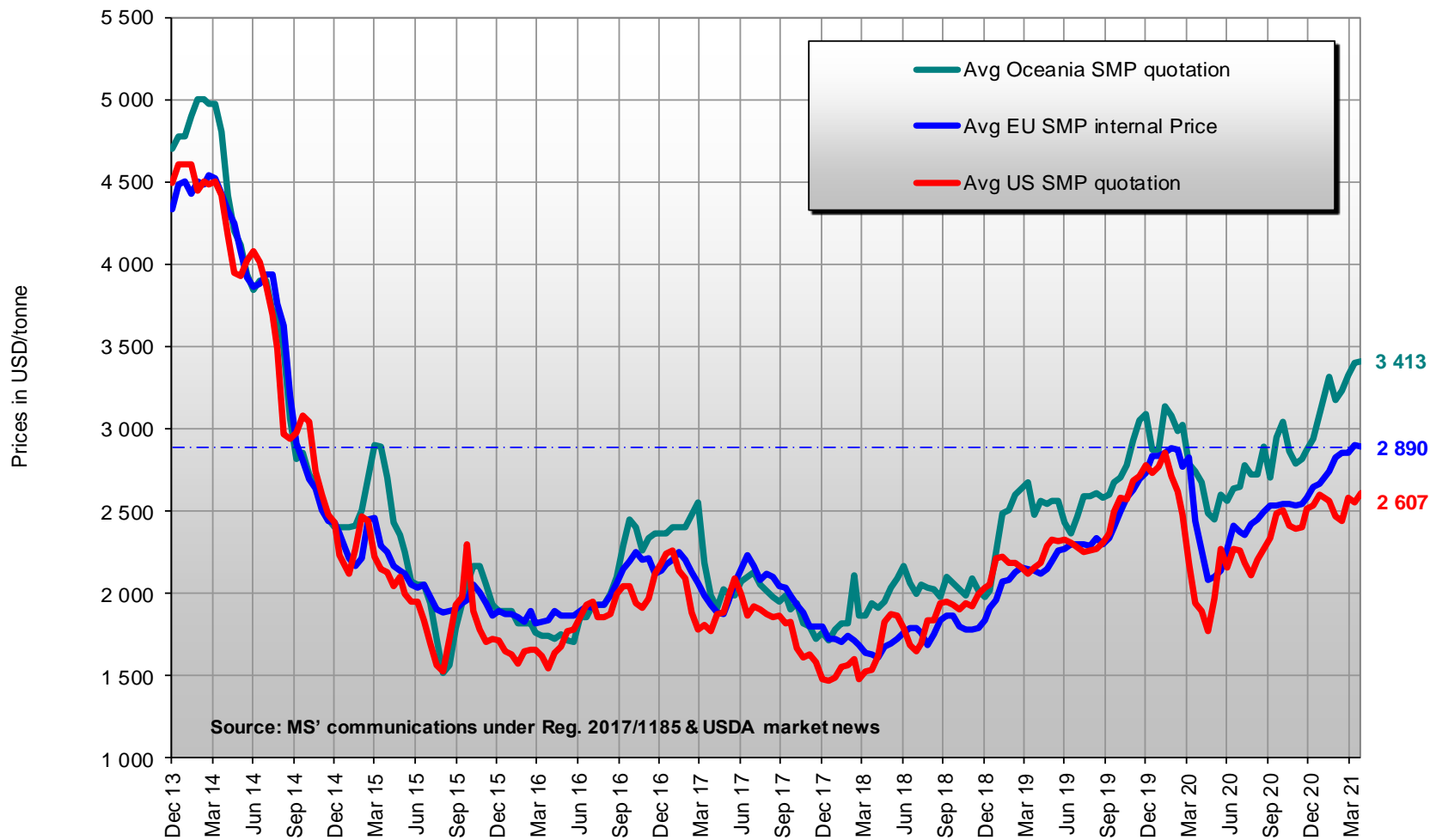
Change from 14 April 2020 to 14 April 2021

Min (23 April 2020)	Max (6 January 2021)	Average
1.0772	1.2338	1.1703



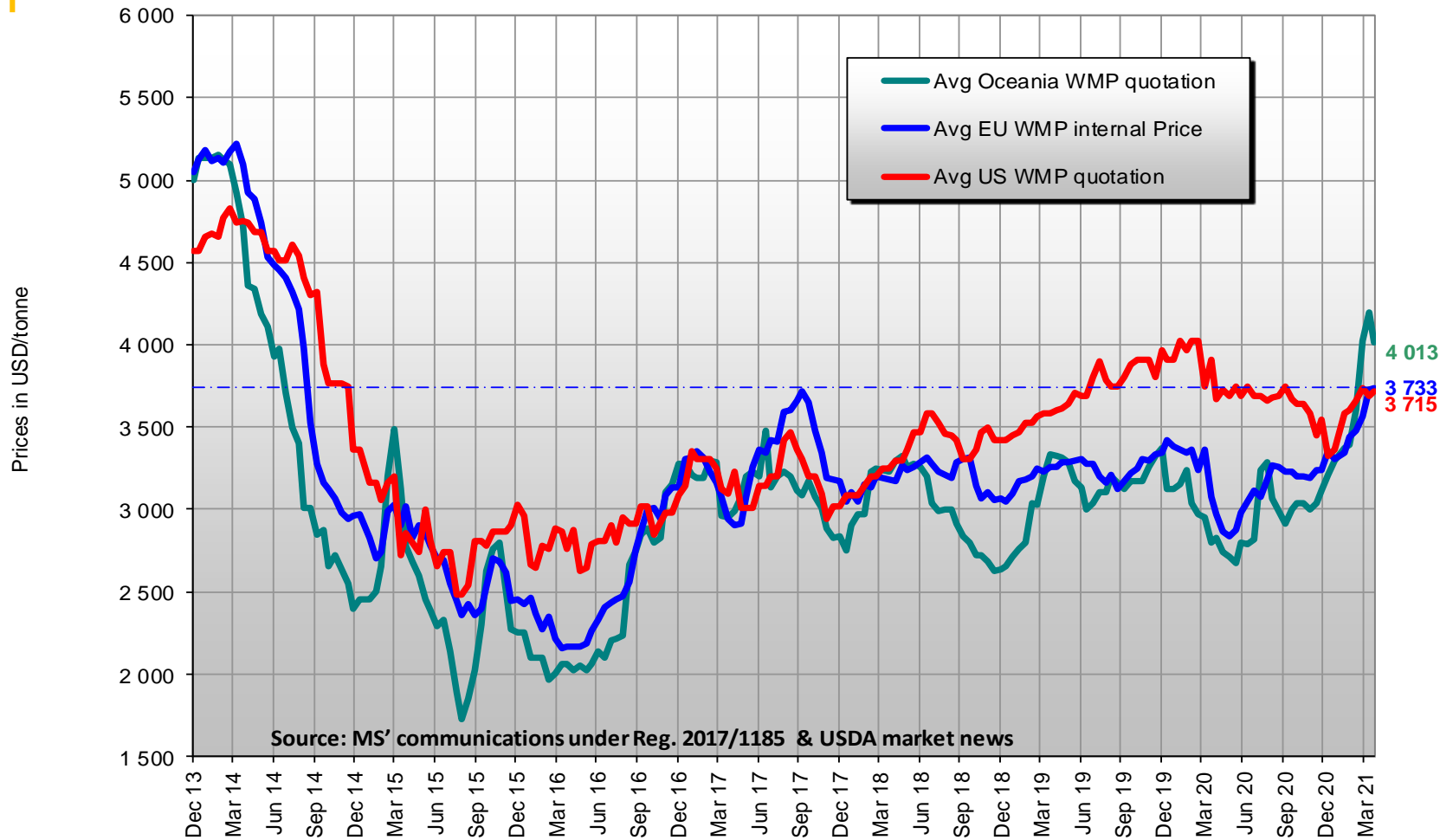
EUR/USD

EU*/US/Oceania Quotations of SMP



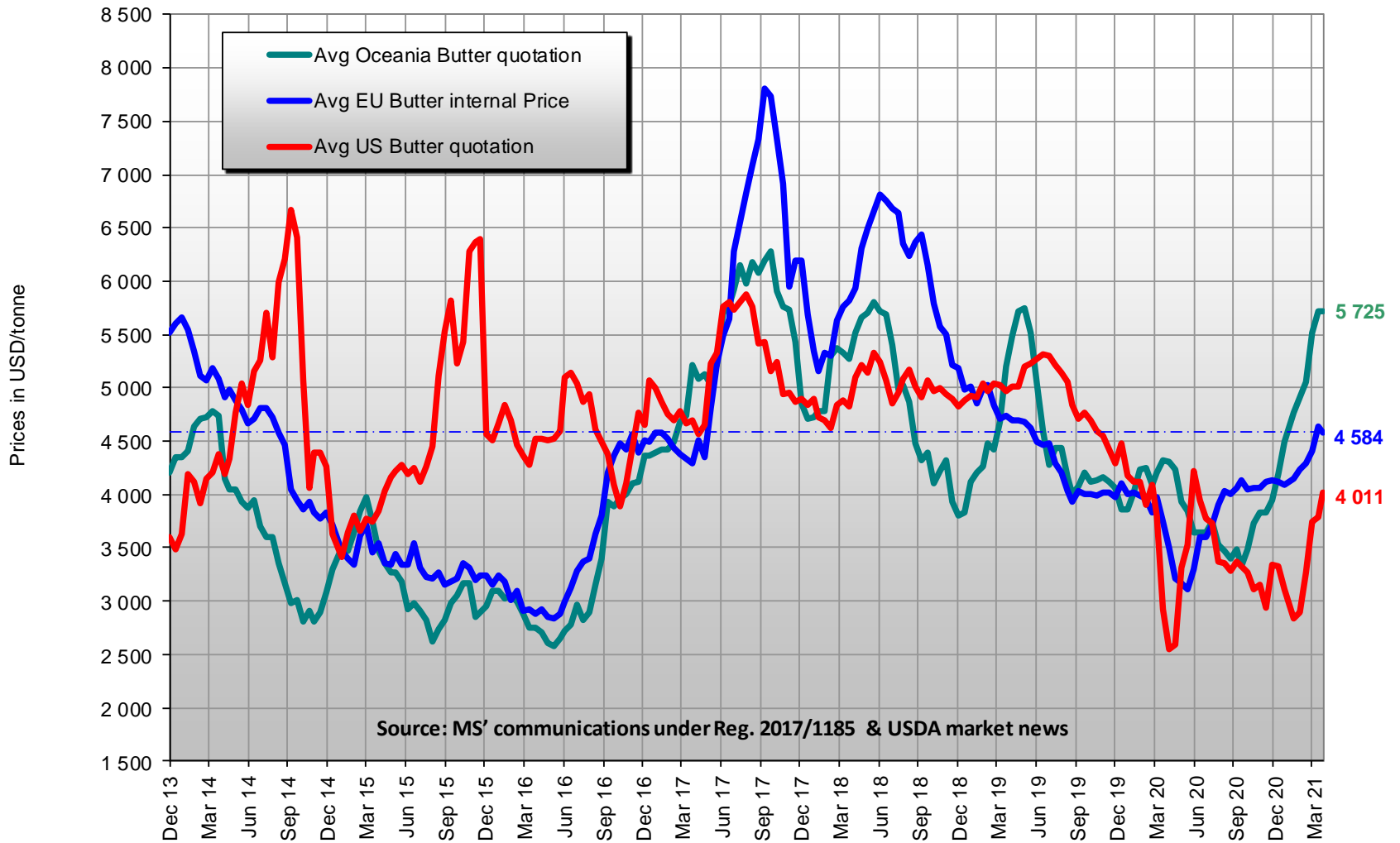
* EU evolutive

EU*/US/Oceania Quotations of WMP



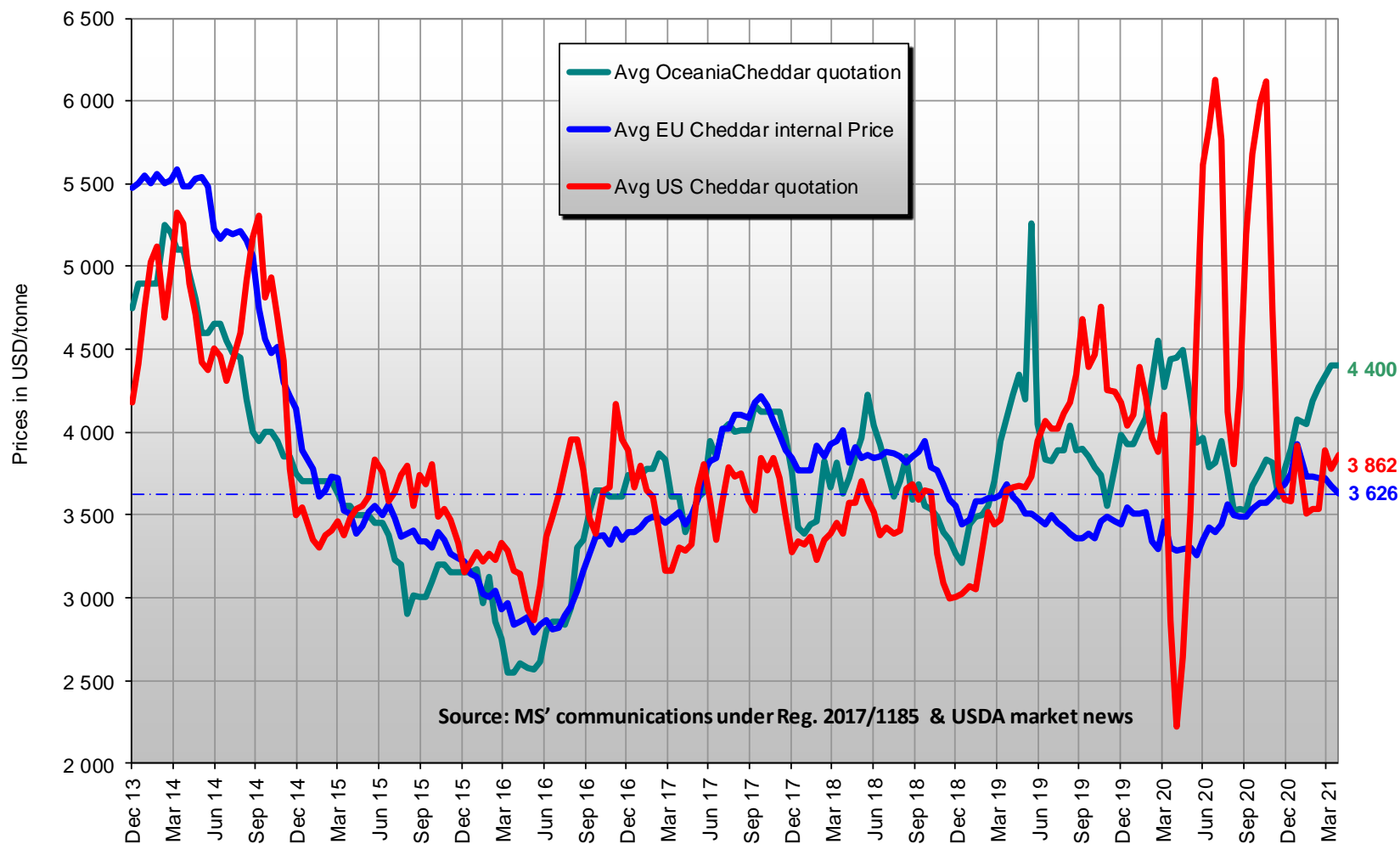
* EU evolutive

EU*/US/Oceania Quotations of Butter



* EU evolutive

EU*/US/Oceania Quotations of Cheddar



Source: MS' communications under Reg. 2017/1185 & USDA market news

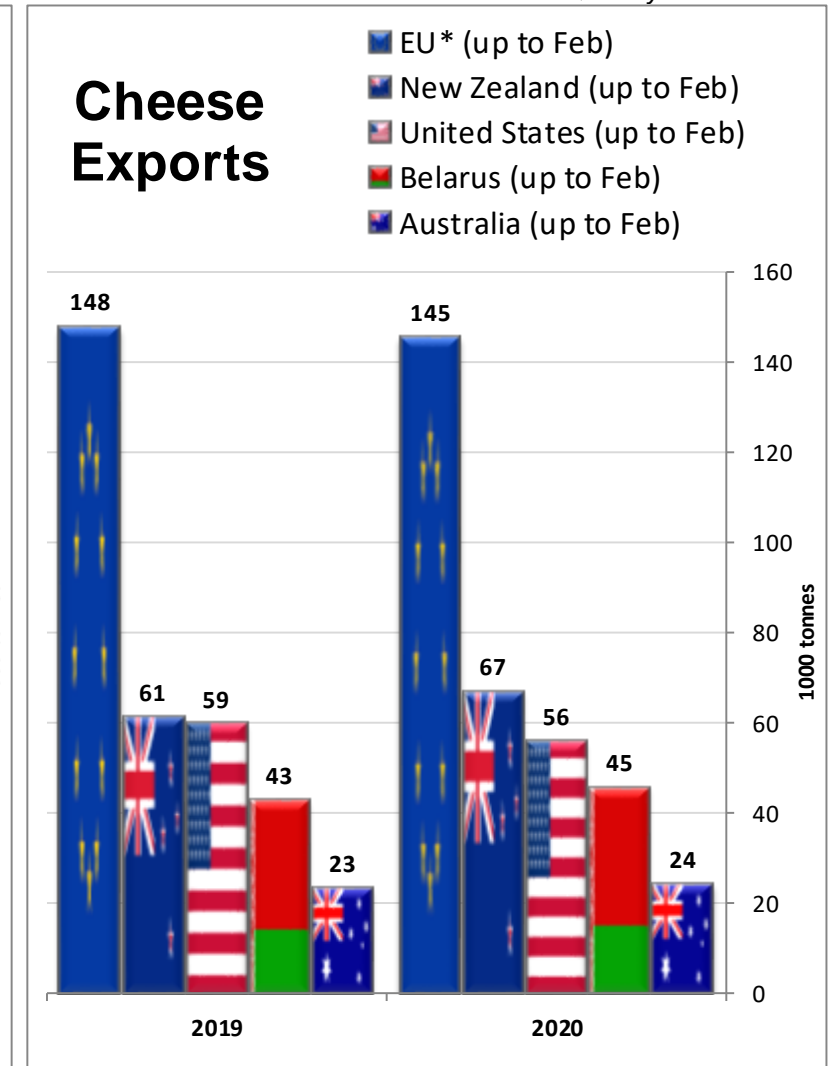
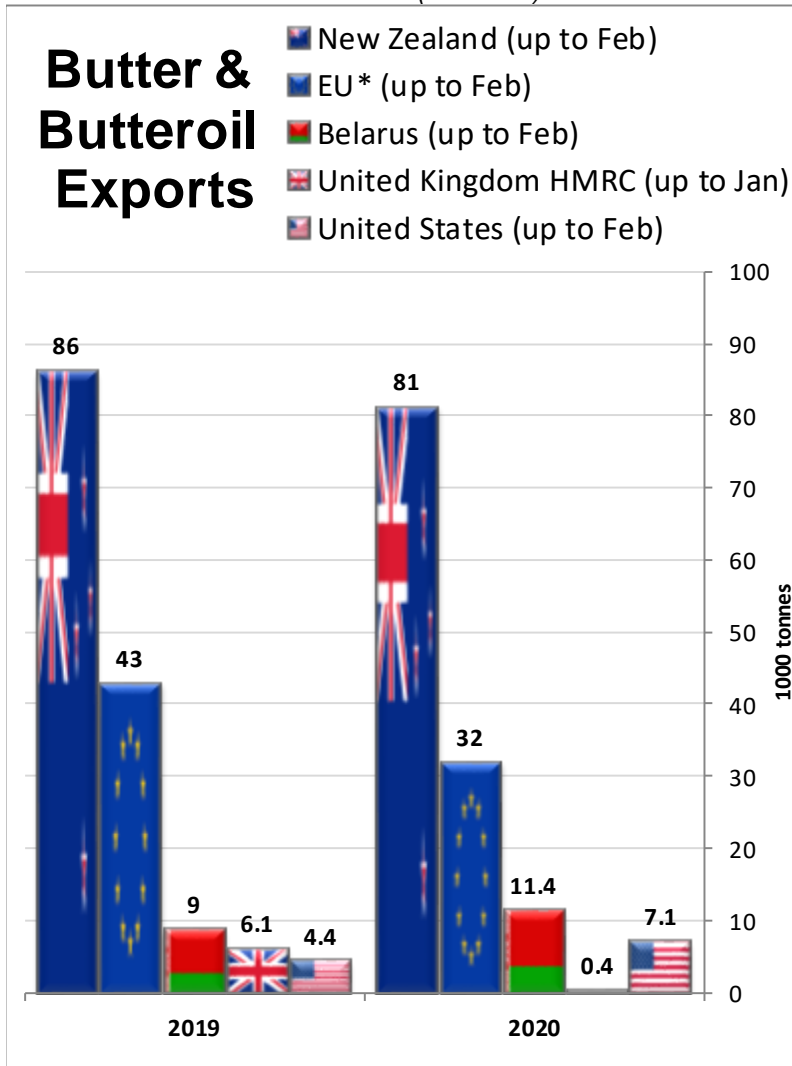
* EU evolutive

Main exporters

Notice: EU trade figures do not include trade with UK - For confidentiality reasons, data for Mexico may be incomplete.

Source : IHS Markit/GTA - Eurostat(COMEXT)

Quantity in 1000 Tonnes

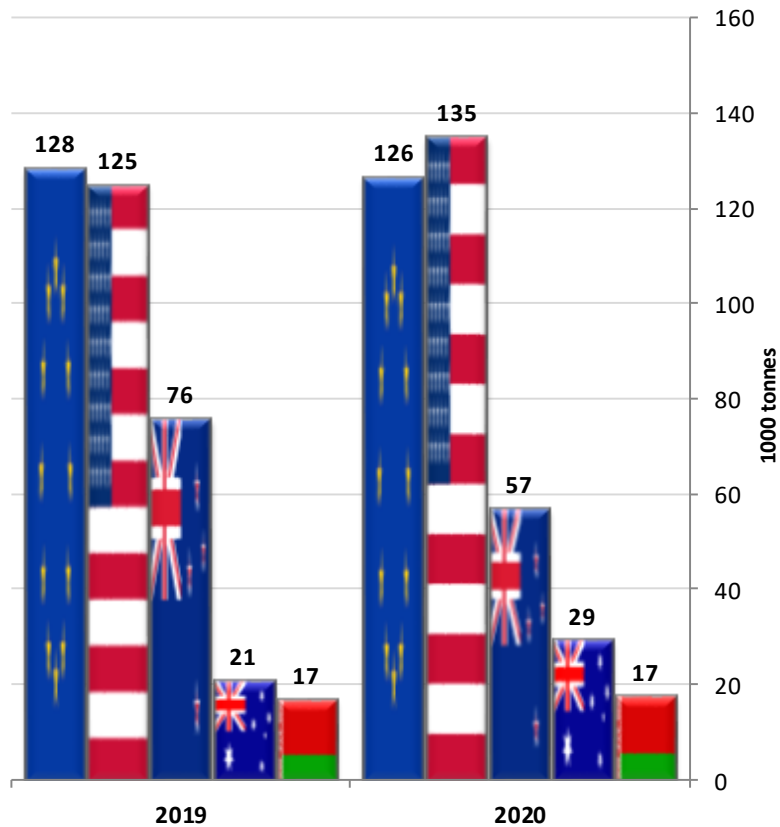


EU*: without UK






Main exporters

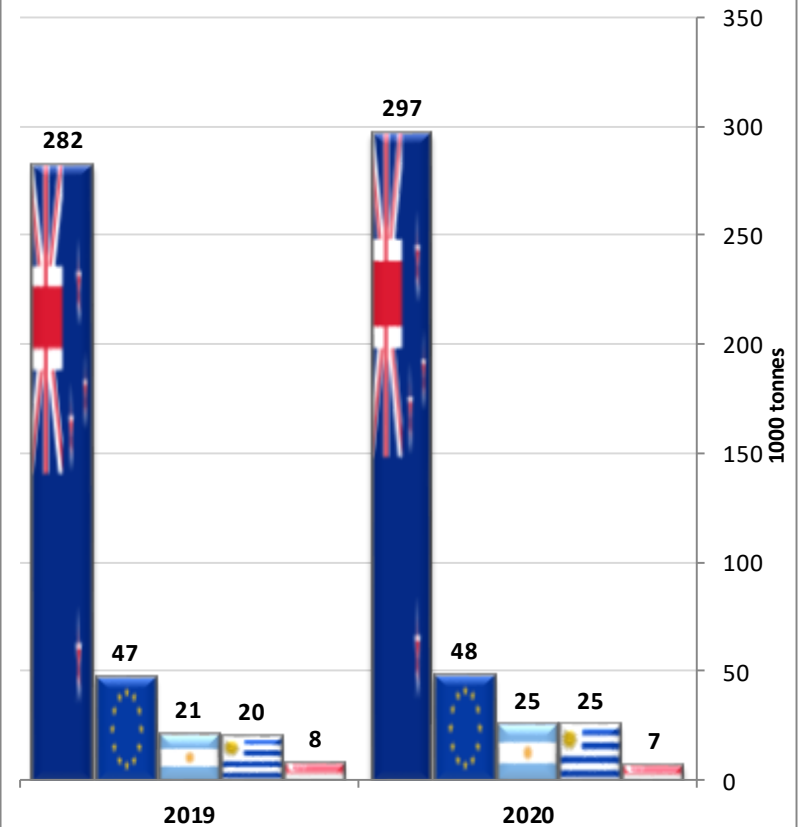
S.M.P. Exports

-  EU* (up to Feb)
-  United States (up to Feb)
-  New Zealand (up to Feb)
-  Australia (up to Feb)
-  Belarus (up to Feb)



W.M.P. Exports

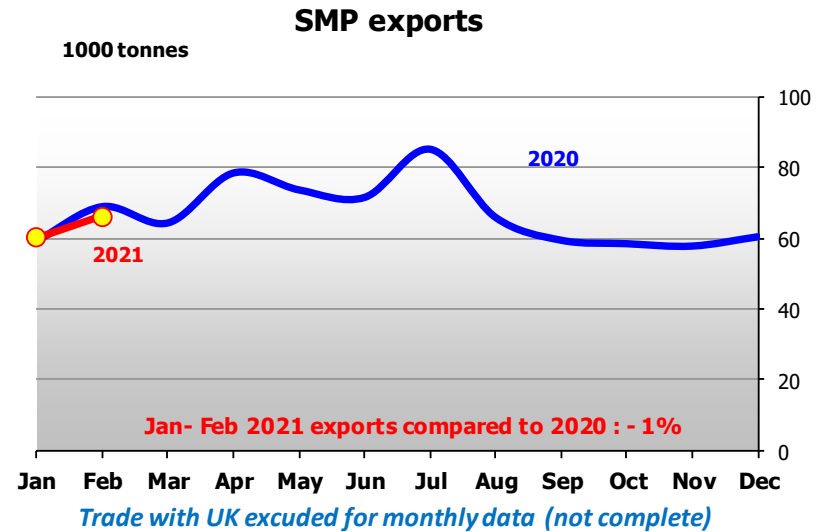
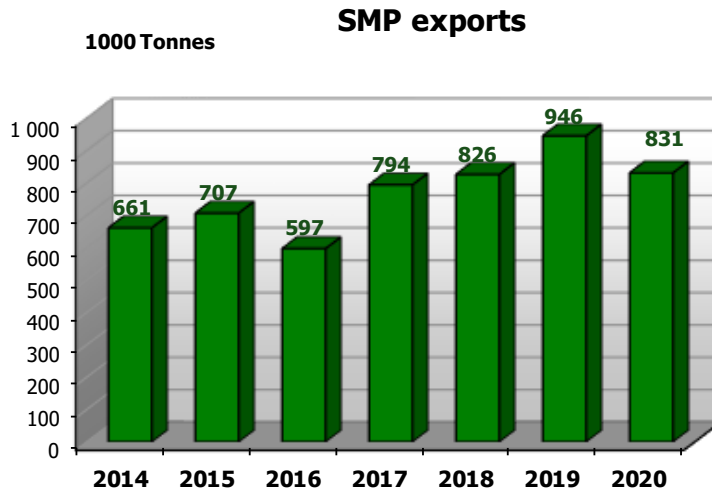
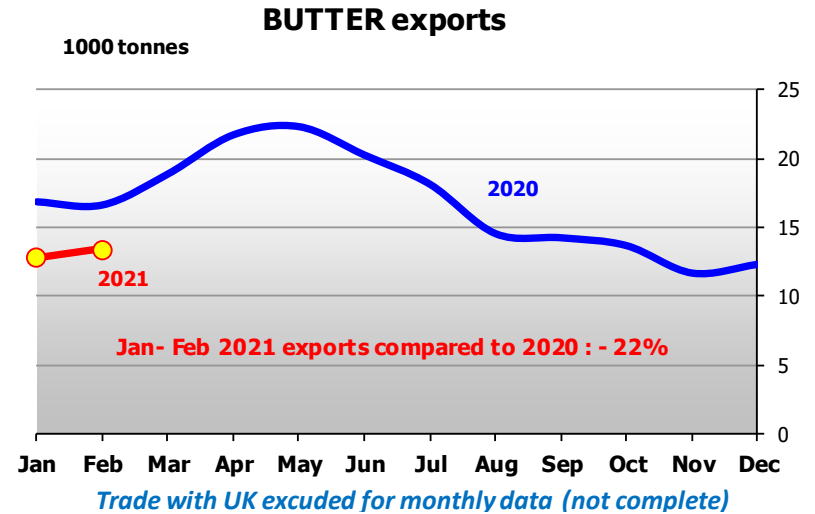
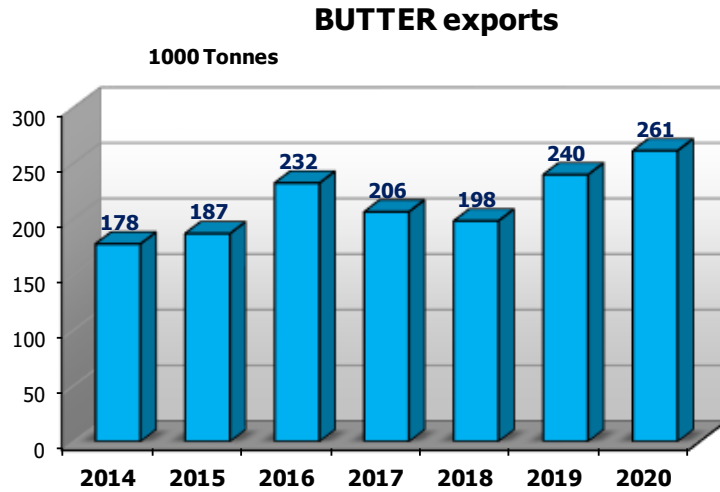
-  New Zealand (up to Feb)
-  EU* (up to Feb)
-  Argentina (up to Feb)
-  Uruguay (up to Feb)
-  Singapore (up to Feb)



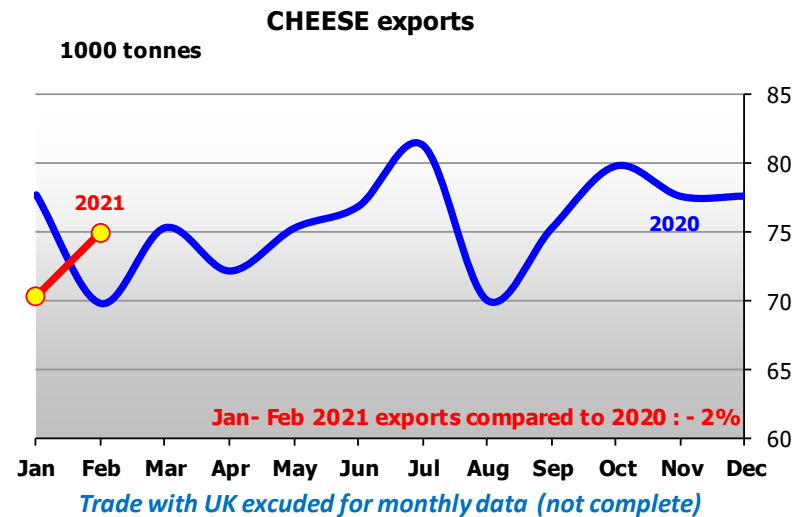
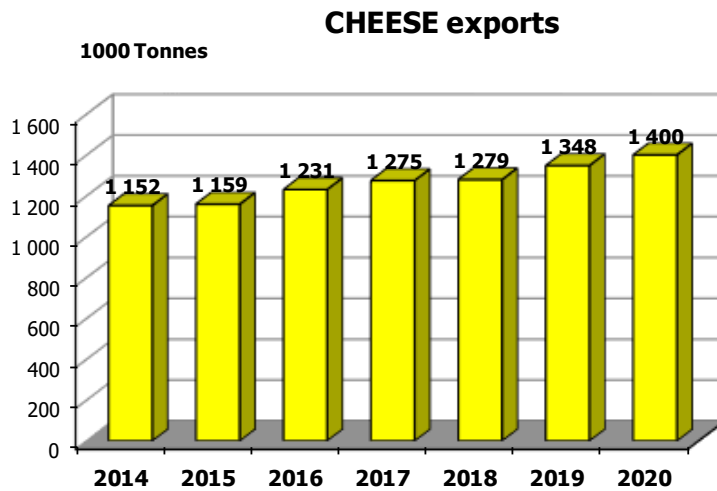
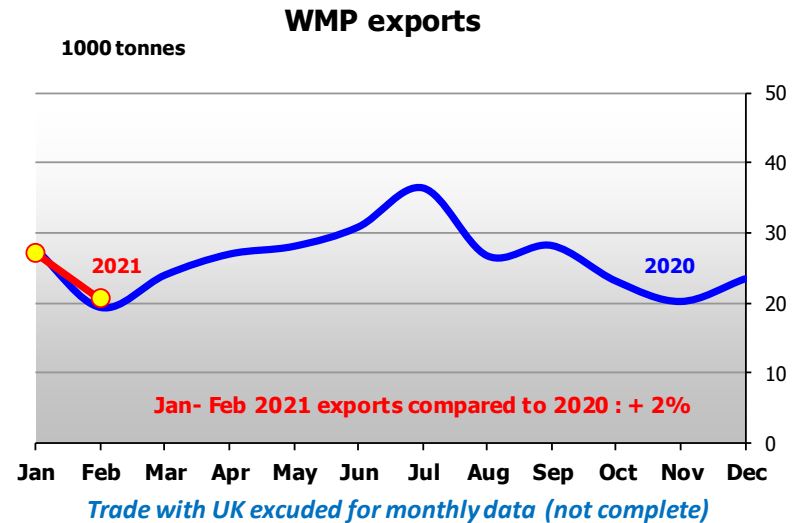
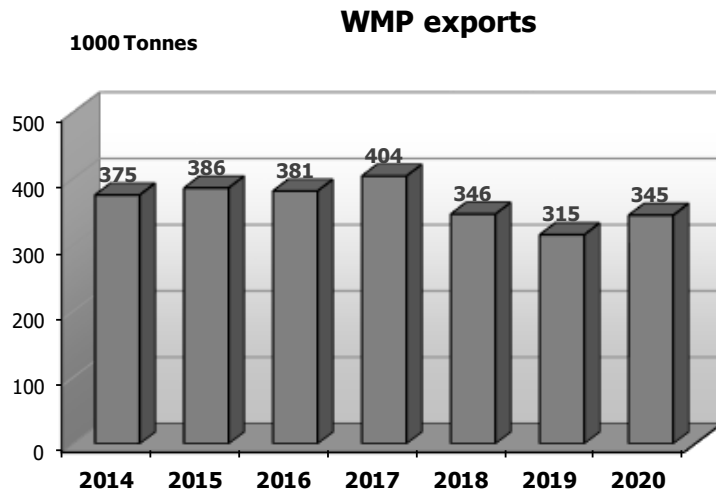
EU*: without UK

EU Exports (1/2)

Source : Eurostat (COMEXT)



EU Exports (2/2)

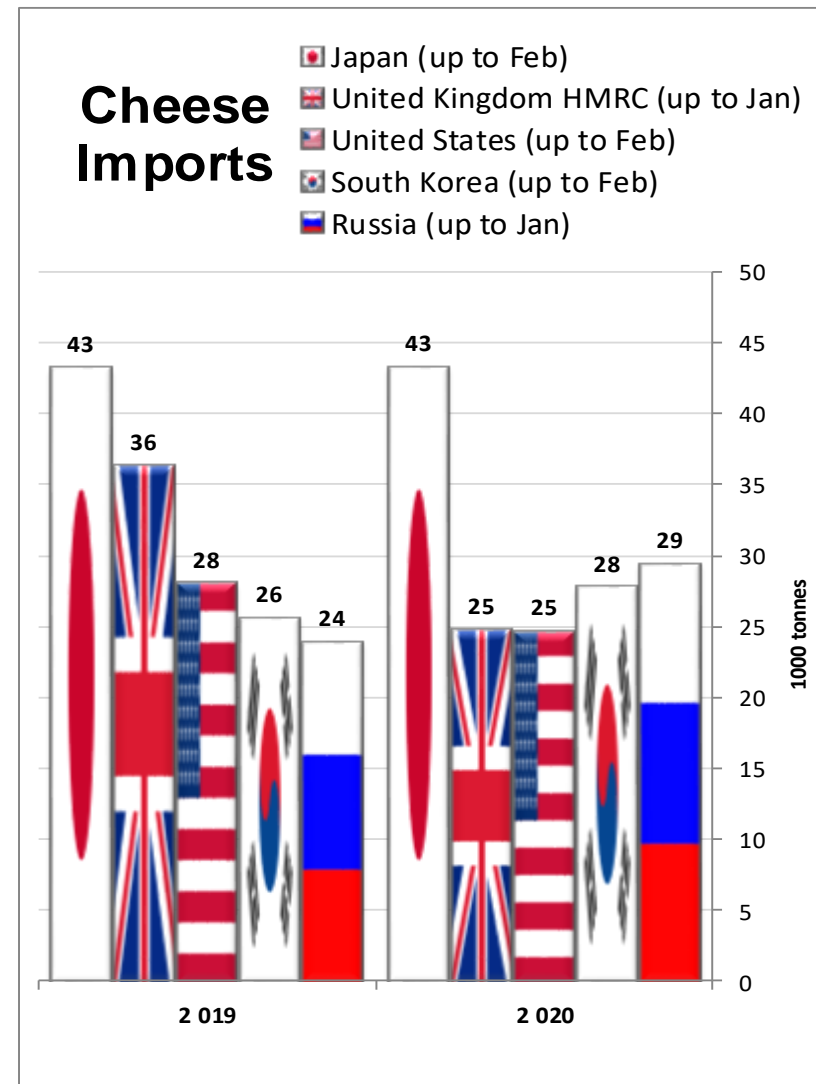
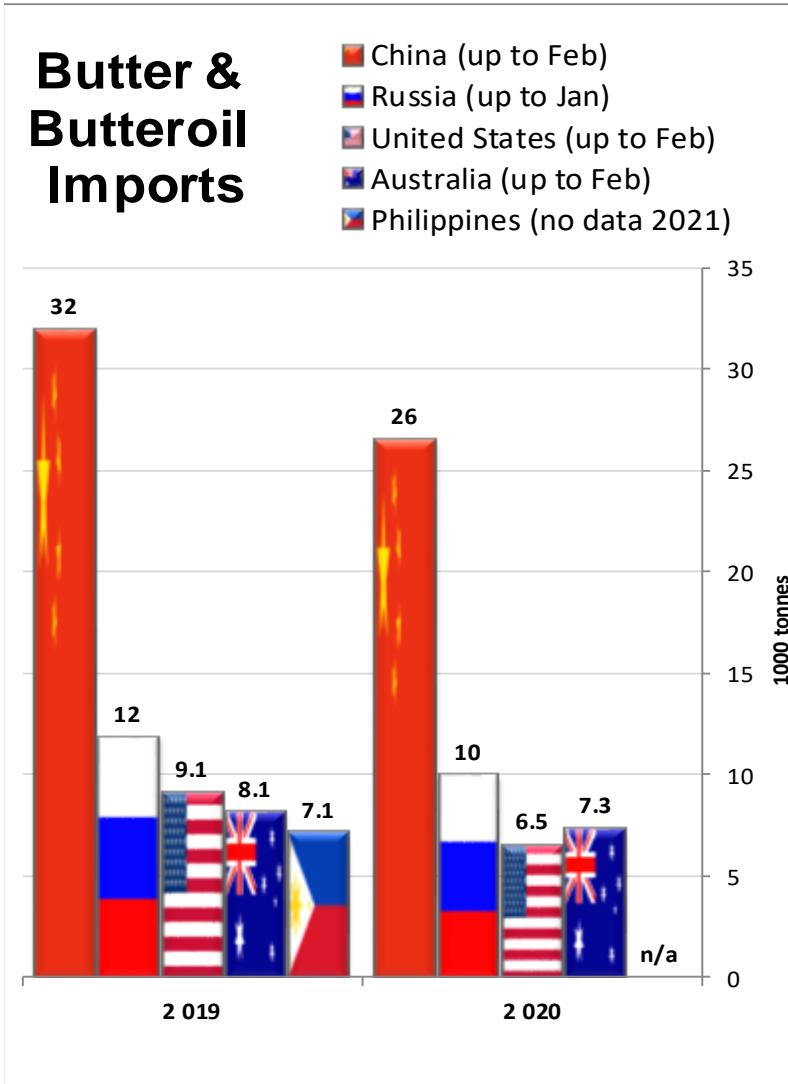


Main importers

Notice: EU trade figures do not include trade with UK - For confidentiality reasons, data for Mexico may be incomplete.






Source : IHS Markit/GTA - Eurostat(COMEXT)

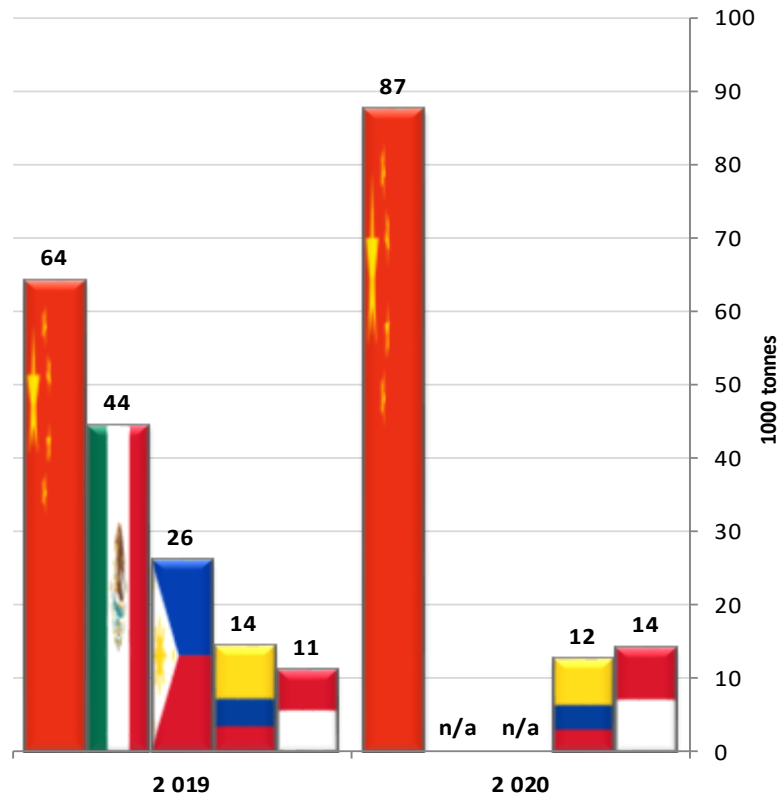
Quantity in 1000 Tonnes








Main importers

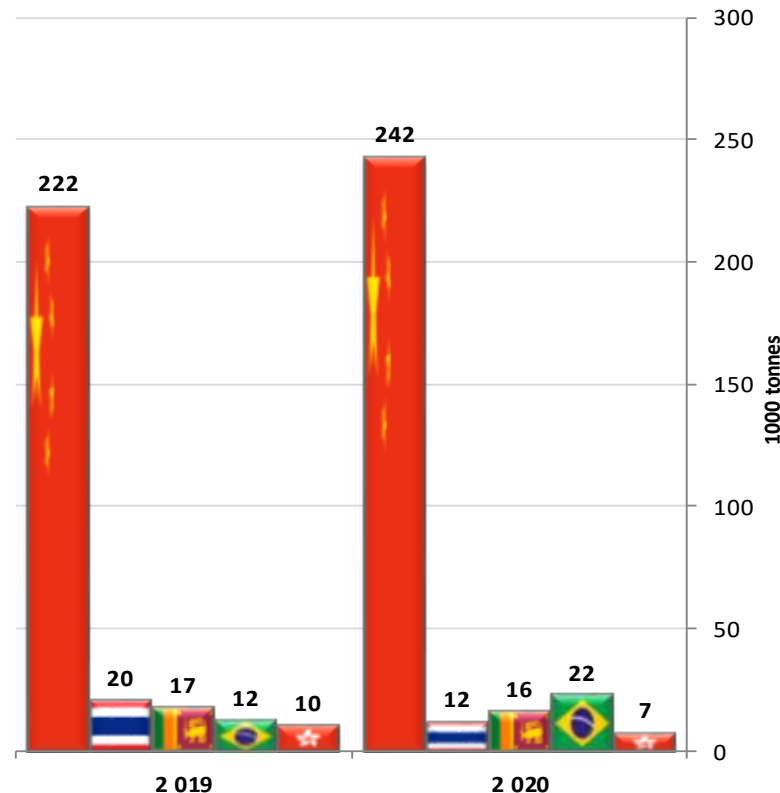
S.M.P. Imports

-  China (up to Feb)
-  Mexico (no data 2021)
-  Philippines (no data 2021)
-  Colombia (up to Jan)
-  Indonesia (up to Jan)



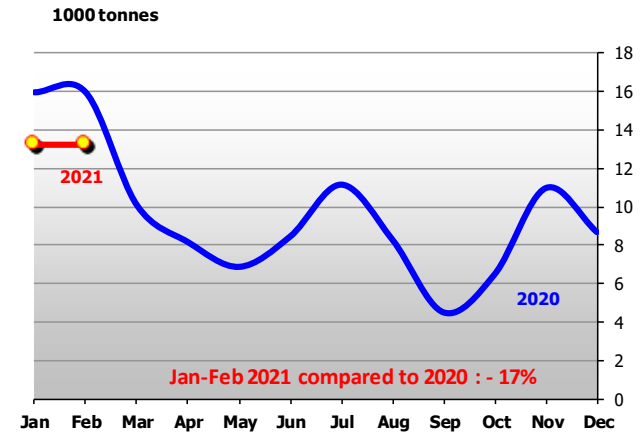
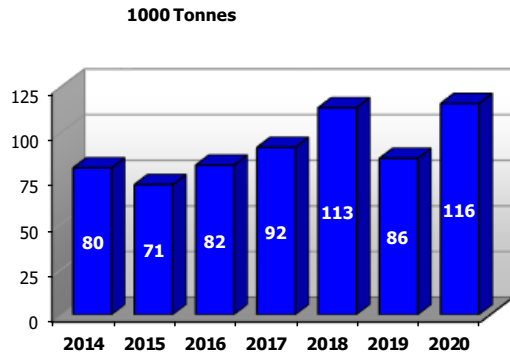
W.M.P. Imports

-  China (up to Feb)
-  Thailand (up to Feb)
-  Sri Lanka (up to Feb)
-  Brazil (up to Mar)
-  Hong Kong (up to Feb)

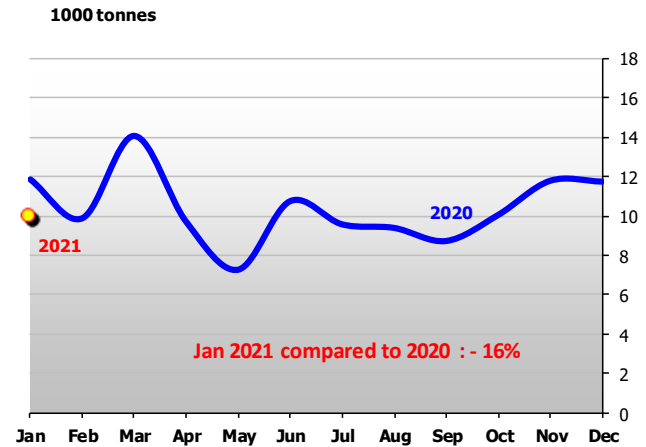
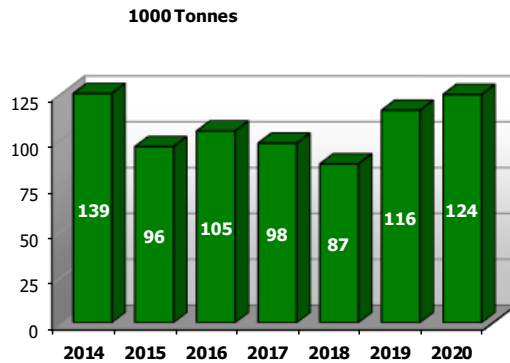


Main Dairy Importers (Butter + Butteroil 1/2)

China

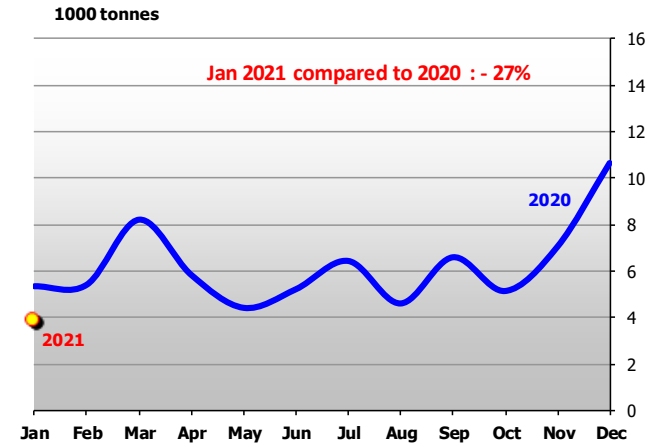
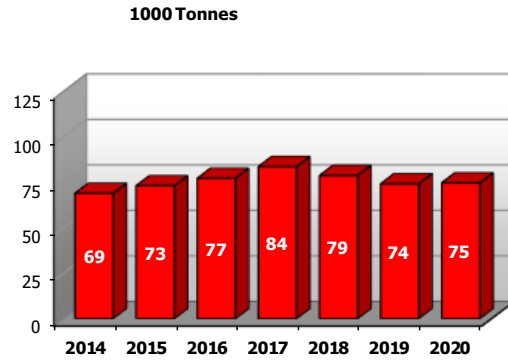


Russia

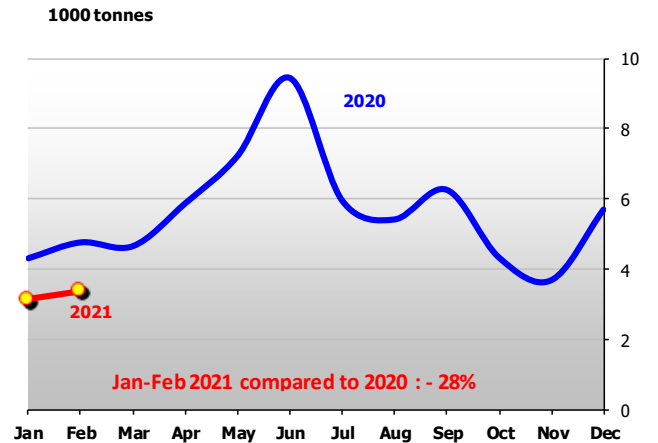
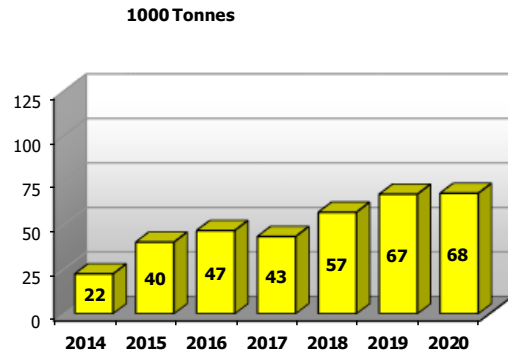


Main Dairy Importers (Butter + Butteroil 2/2)

United Kingdom HMRC



United States

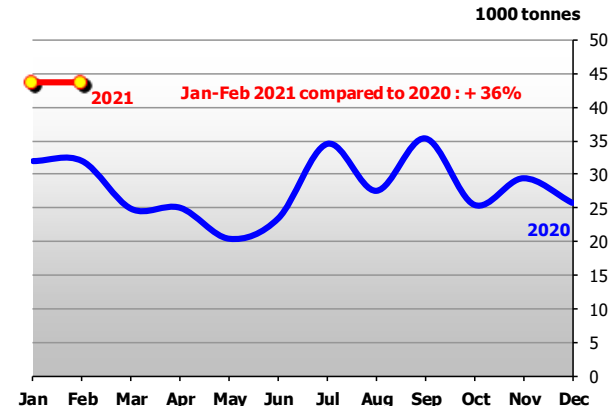
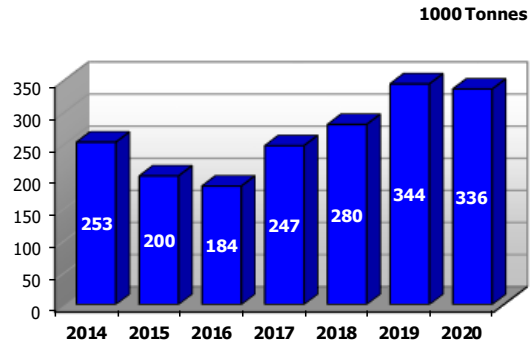


Source: IHS Markit/GTA - Eurostat(COMEXT)

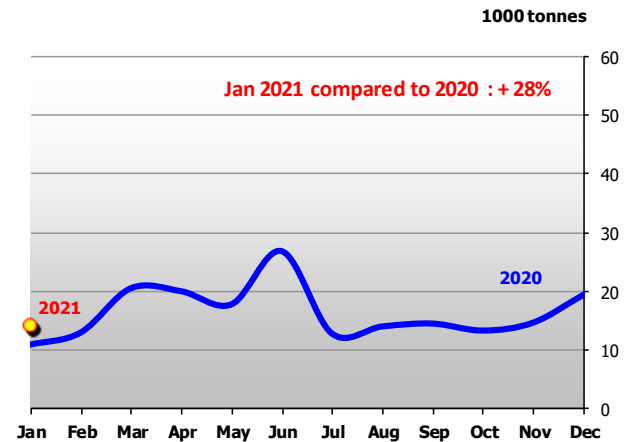
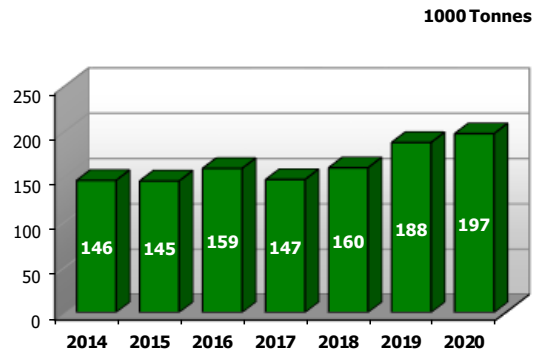
Main Dairy Importers (S.M.P. - 1/2)

Rem: for confidentiality reasons, trade data from Mexico are incomplete and therefore not presented here.

China

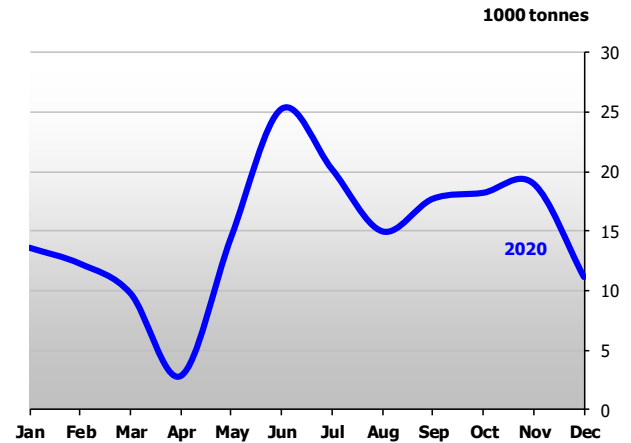
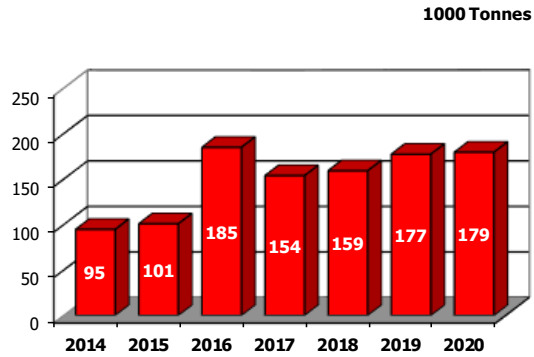


Indonesia

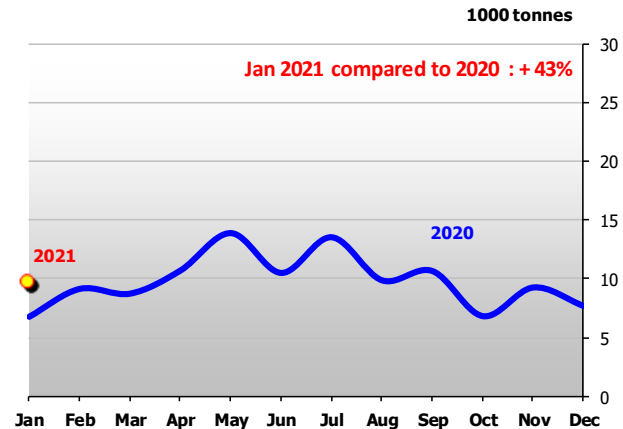
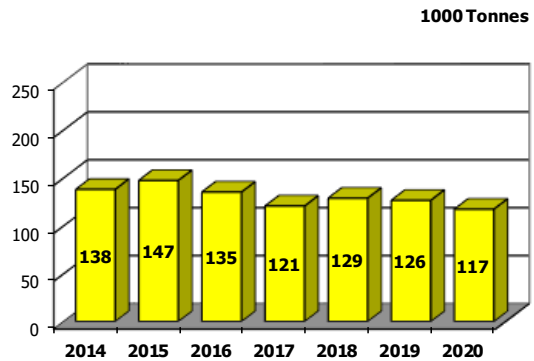


Main Dairy Importers (S.M.P. – 2/2)

Philippines

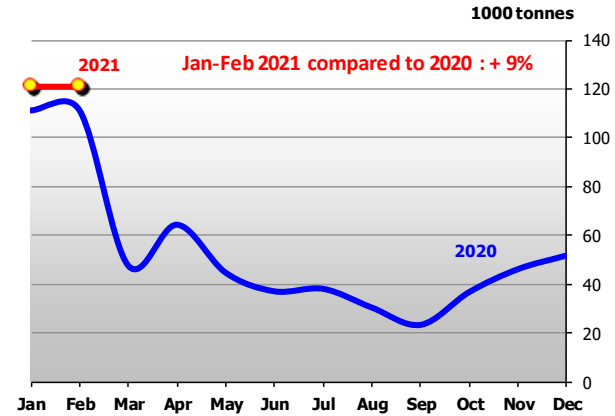
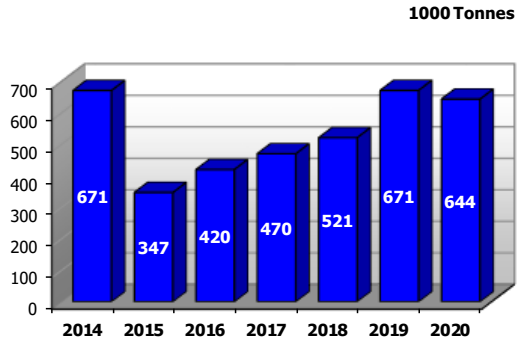


Malaysia

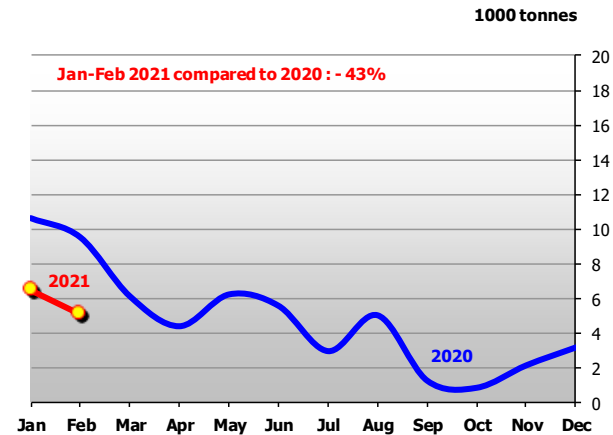
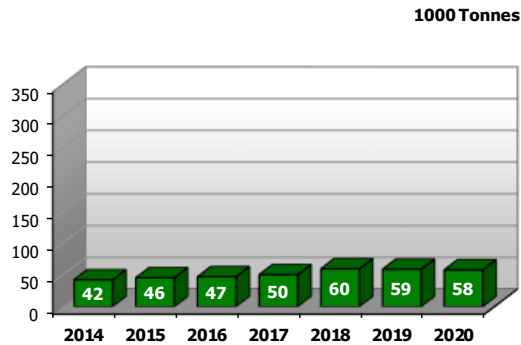


Main Dairy Importers (W.M.P. 1/2)

China

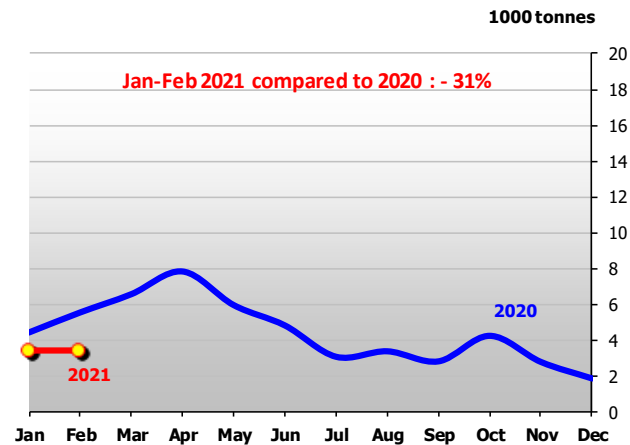
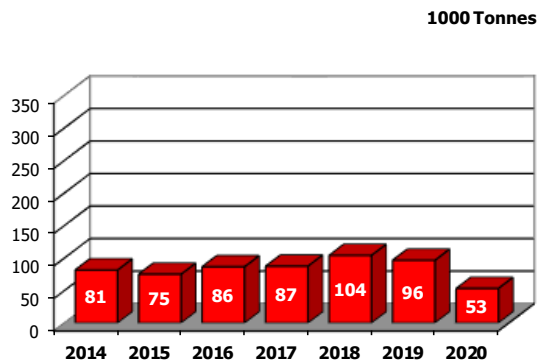


Thailand

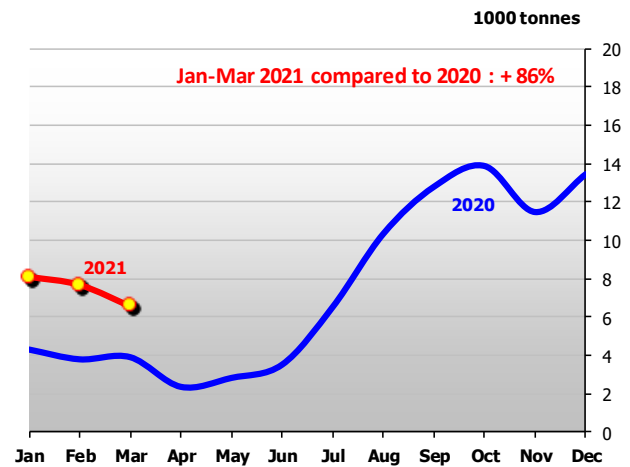
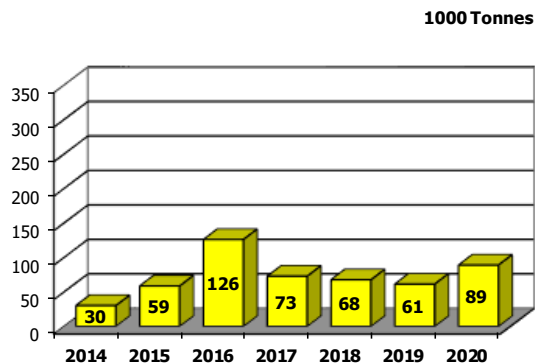


Main Dairy Importers (W.M.P. 2/2)

Hong Kong

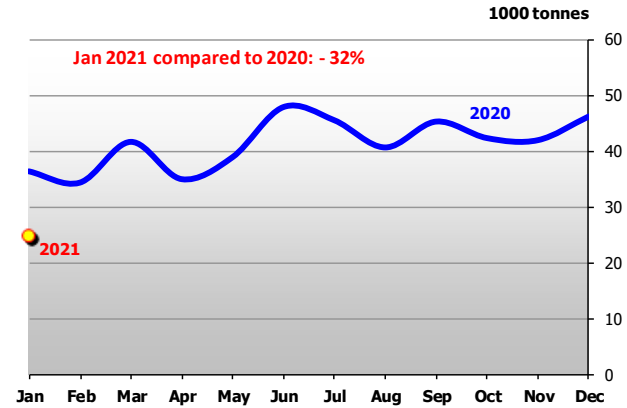
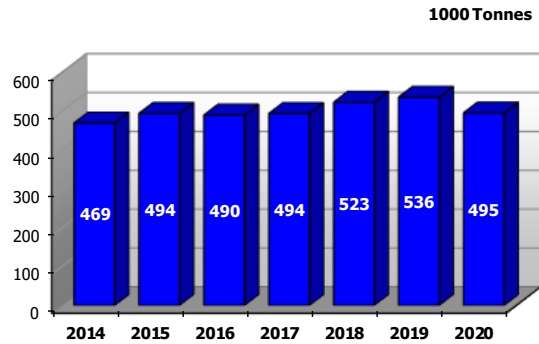


Brazil

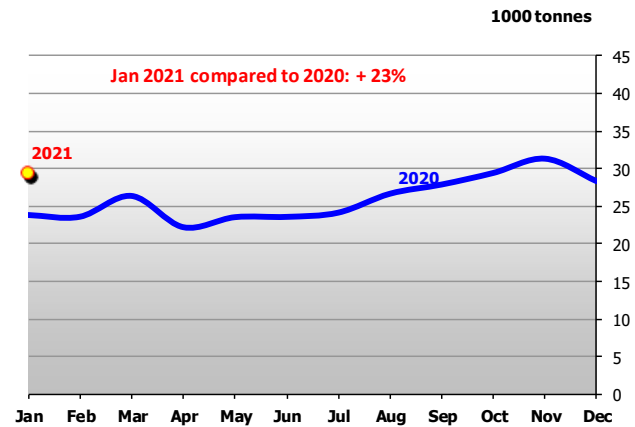
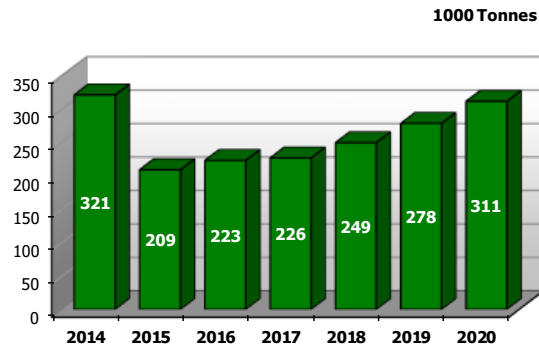


Main Dairy Importers (Cheese – 1/2)

United Kingdom HMRC

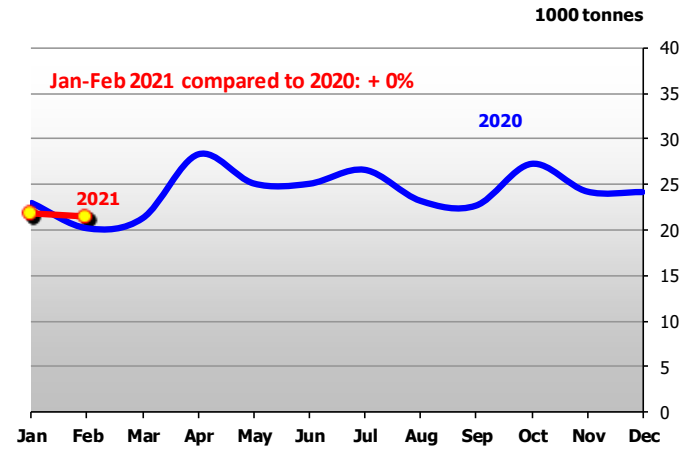
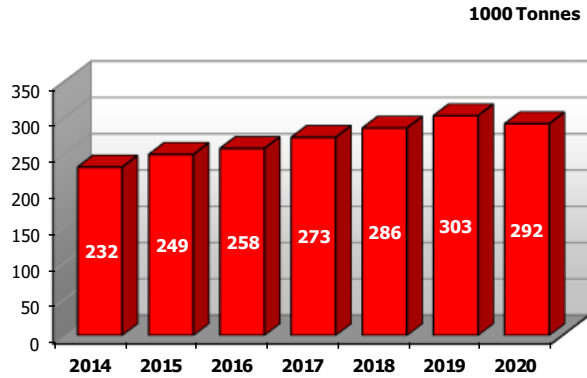


Russia

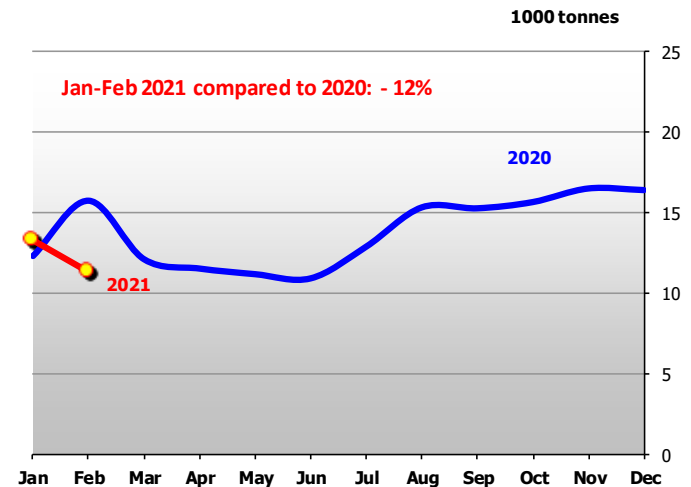
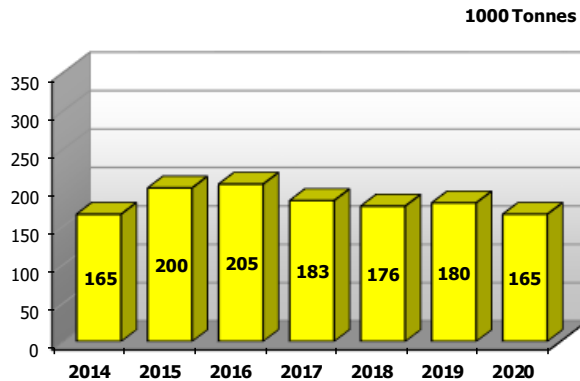


Main Dairy Importers (Cheese – 2/2)

Japan

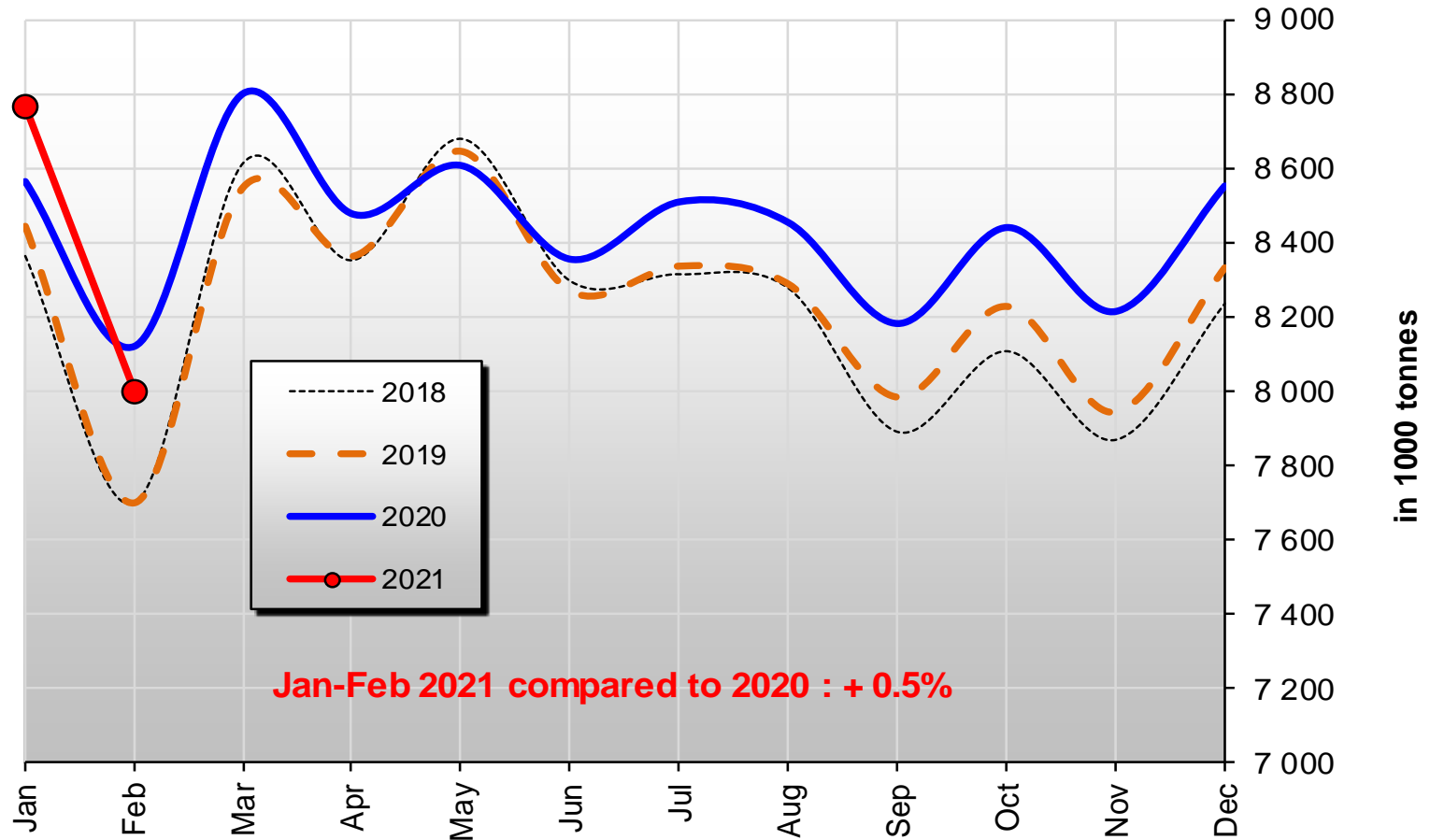


United States



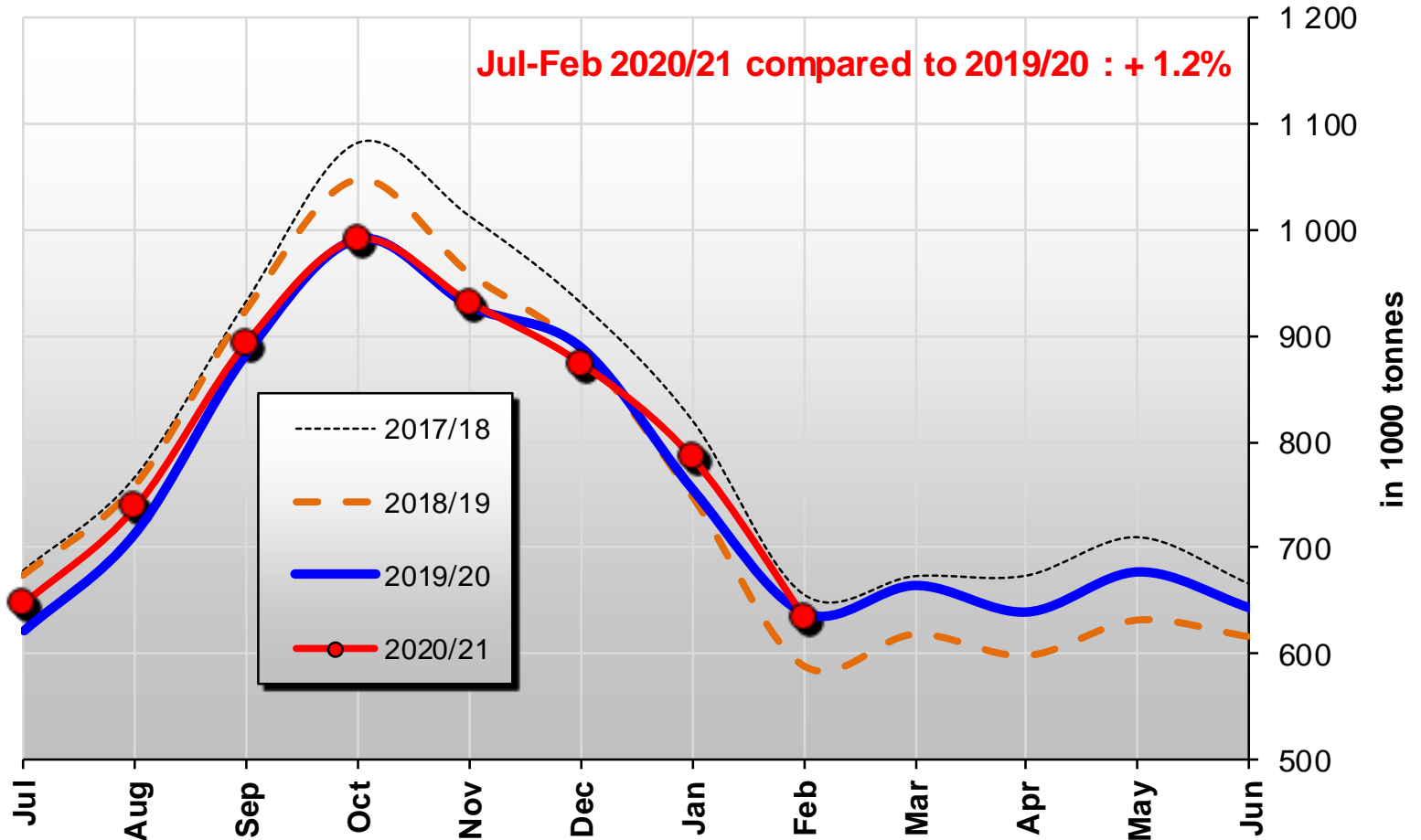
Source: IHS Markit/GTA - Eurostat(COMEXT)

U.S. milk production



Source: USDA

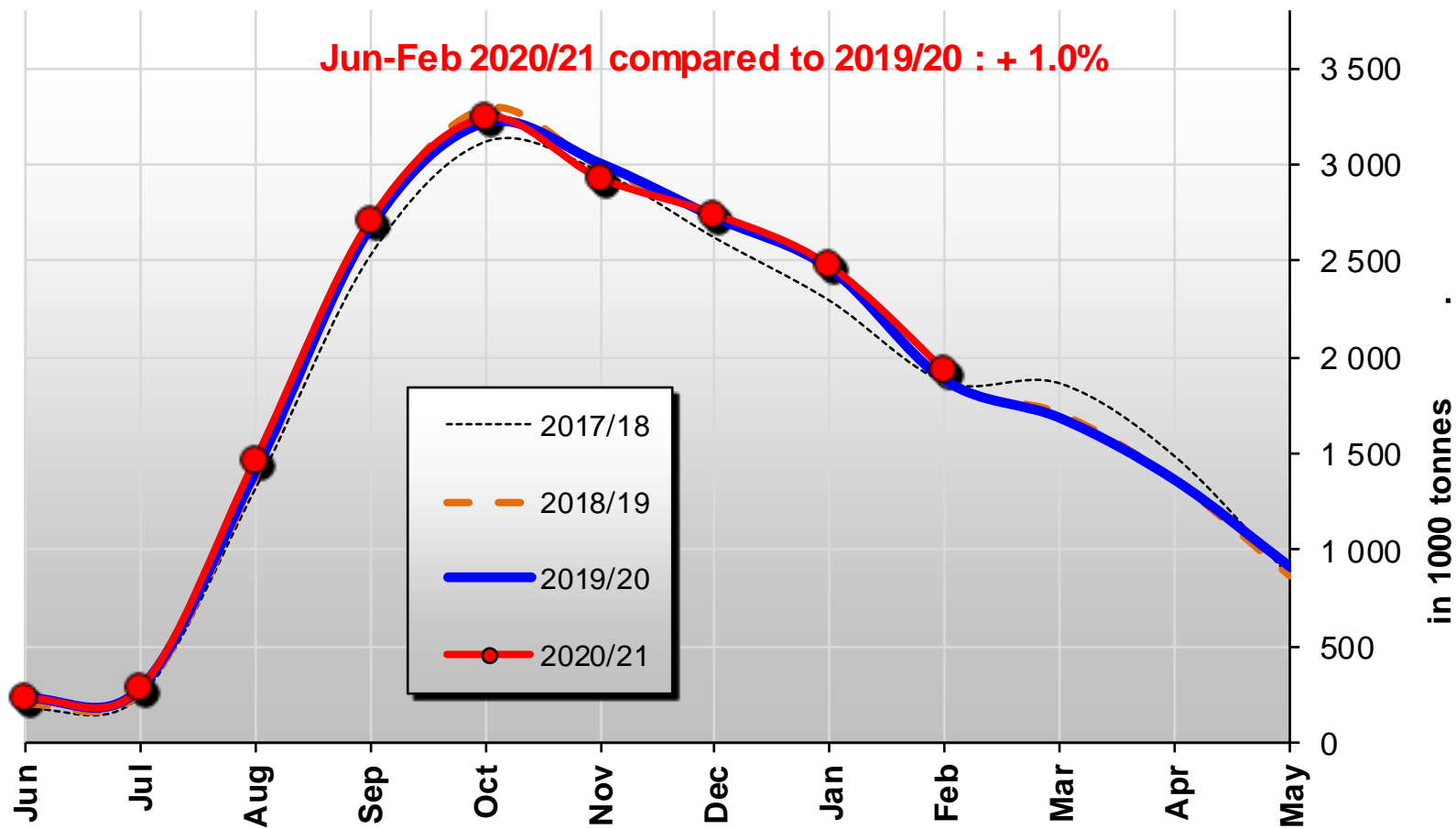
Australian milk production



Source: Dairy Australia

NZ milk production

Jun-Feb 2020/21 compared to 2019/20 : + 1.0%



GDT Auction results

Event 281

6 April 2021

+0.3%



Average price (USD/MT, FAS)

\$4 081

Anhydrous
Milk Fat

+0.8%

\$ 6 209

Butter

+2.0%

\$ 5 776

Butter Milk
Powder

+17.6

\$ 3 710

Cheddar

+2.2%

\$ 4 393

Lactose

-6.5%

\$ 1 307

Skim Milk
Powder

+0.6%

\$ 3 367

Whole Milk
Powder

+0.0%

\$ 4 085

Thank you